



US 20020082499A1

(19) **United States**(12) **Patent Application Publication**  
**Jacobsen et al.**(10) **Pub. No.: US 2002/0082499 A1**(43) **Pub. Date: Jun. 27, 2002**(54) **DETACHABLE COIL FOR ANEURYSM THERAPY****Publication Classification**(51) **Int. Cl.<sup>7</sup>** ..... **A61B 8/00**(52) **U.S. Cl.** ..... **600/439**(75) **Inventors:** **Stephen C. Jacobsen**, Salt Lake City, UT (US); **John Lippert**, Park City, UT (US); **Clark C. Davis**, Salt Lake City, UT (US); **Kent Backman**, Salt Lake City, UT (US)(57) **ABSTRACT**

Correspondence Address:  
**McDermott, Will & Emery**  
**600 13th Street, N.W.**  
**Washington, DC 20005-3096 (US)**

(73) **Assignee:** **PRECISION VASCULAR SYSTEMS, INC.**, West Valley City, UT(21) **Appl. No.:** **10/073,996**(22) **Filed:** **Feb. 14, 2002****Related U.S. Application Data**

(60) Division of application No. 09/420,716, filed on Oct. 20, 1999, now patented, which is a continuation-in-part of application No. 09/023,806, filed on Feb. 13, 1998, now patented.

Apparatus and method are disclosed by which a hollow distal end portion of a wire may be deposited at selected sites in body passageways. The apparatus includes an elongate wire (solid or hollow) having a distal end section for detachment and delivery to a target location, the wire also having a discontinuity located rearwardly of the distal end section for rupturing when vibrational energy is applied to the wire. The discontinuities may take the form of cuts formed in the wire, reduced diameter sections in the wire, adhesive, welded or soldered couplings between the wire and the distal end section, or the wire transitioning from the wire to a large mass disposed on the distal end section. A catheter is coupled to or surrounds the elongate wire to deliver therapeutic liquid to a target body location. The apparatus includes a vibrational energy source couplable to the proximal end of the wire for selectively applying vibrational energy to the wire to travel to the discontinuity and cause detachment of the end section.

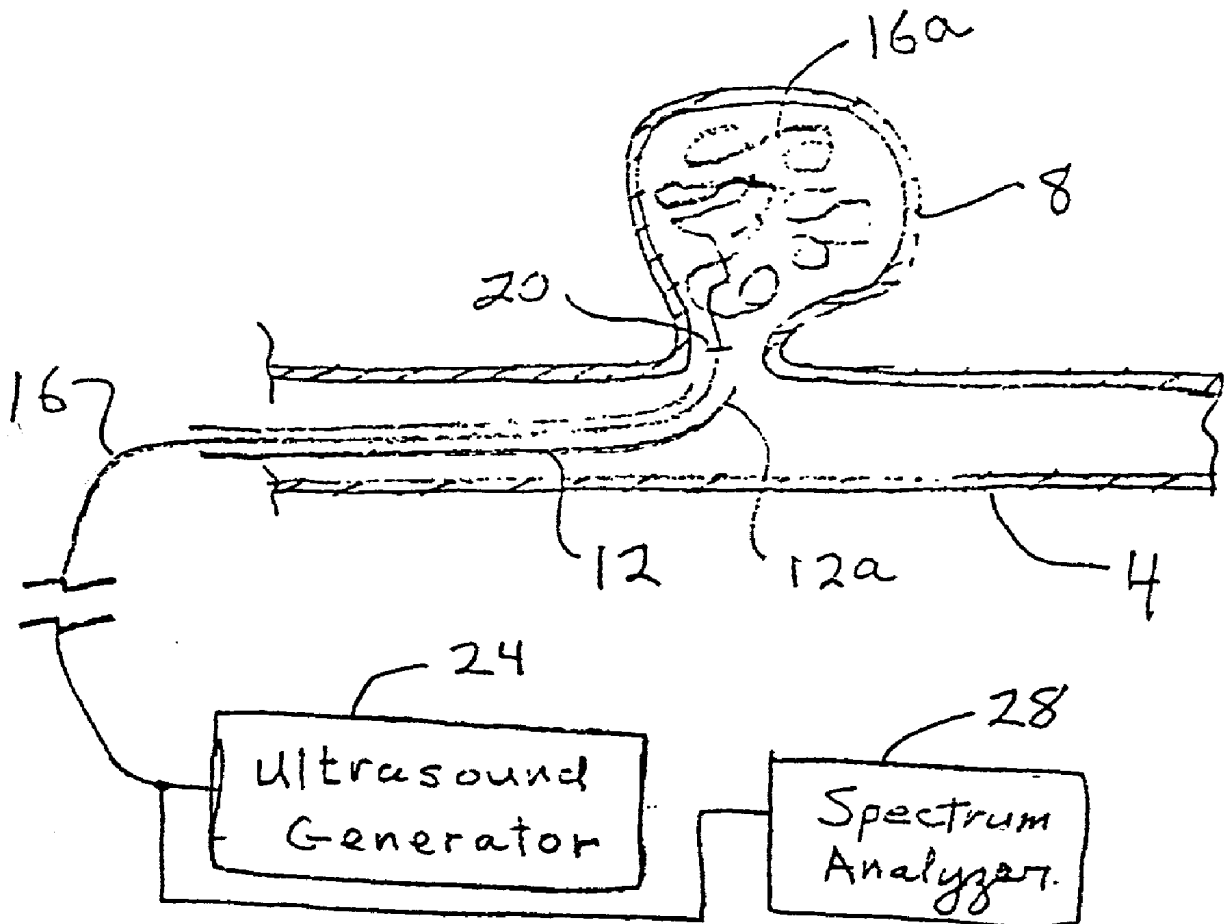


FIG. 1

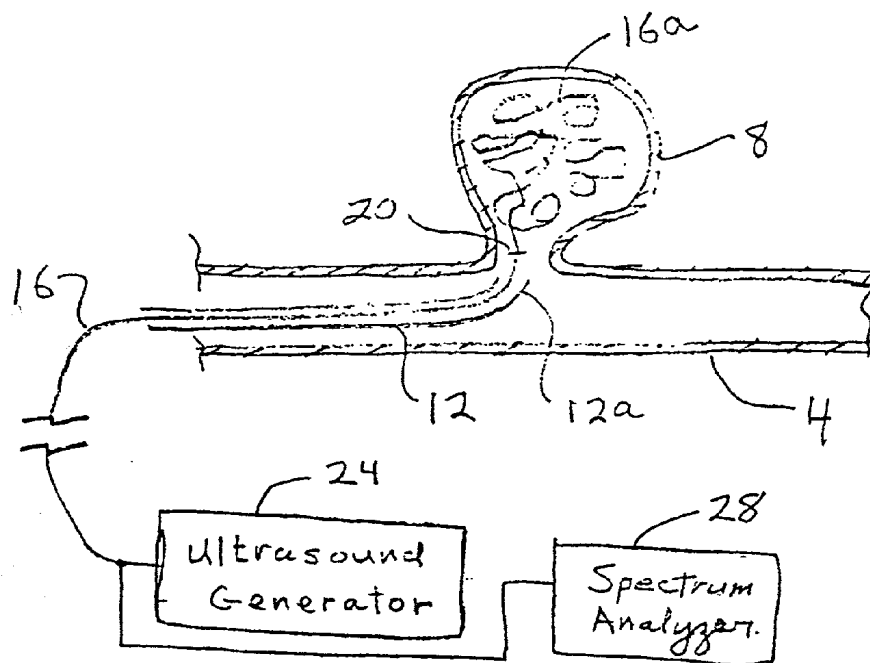


FIG. 2

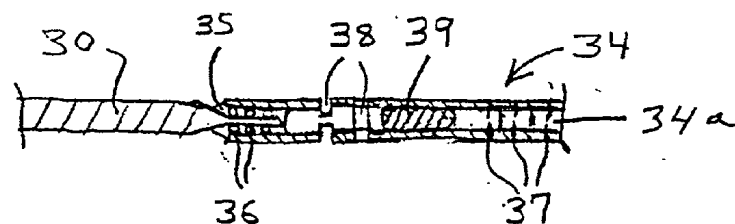


FIG. 3

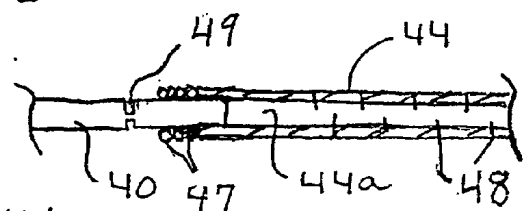


FIG. 4A

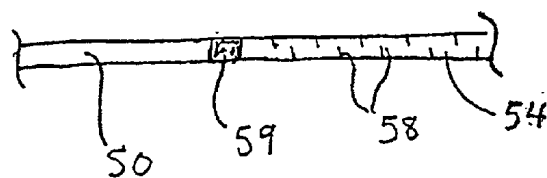


FIG. 4B

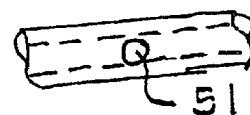


FIG. 4C

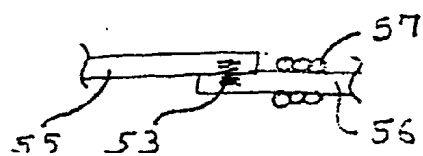


FIG. 5

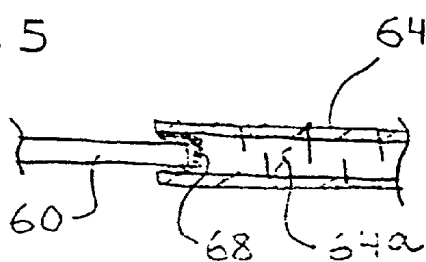


FIG. 6

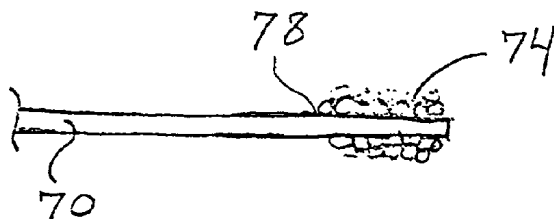


FIG. 7

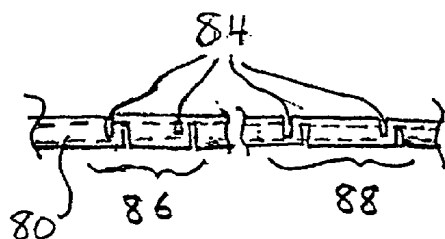


FIG. 8

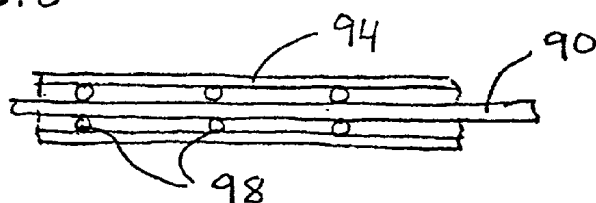


FIG. 9

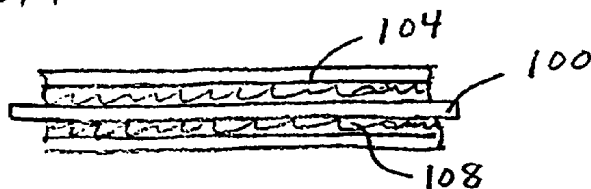
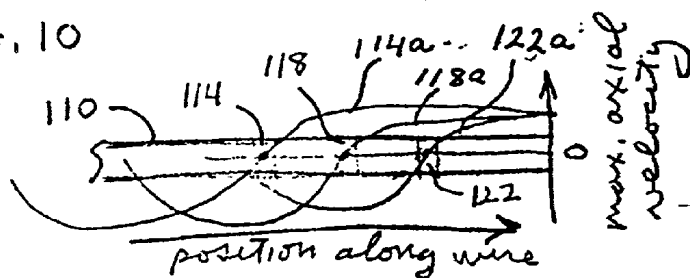


FIG. 10



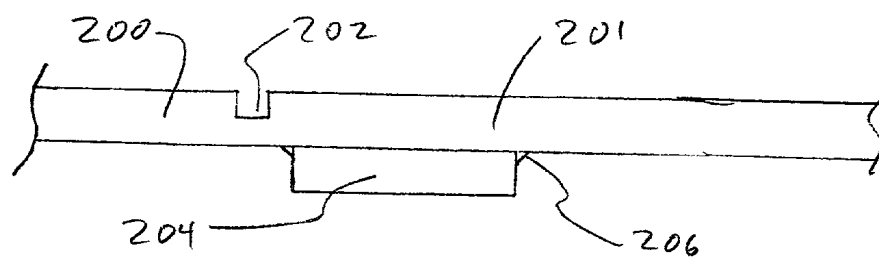


FIG. 11A

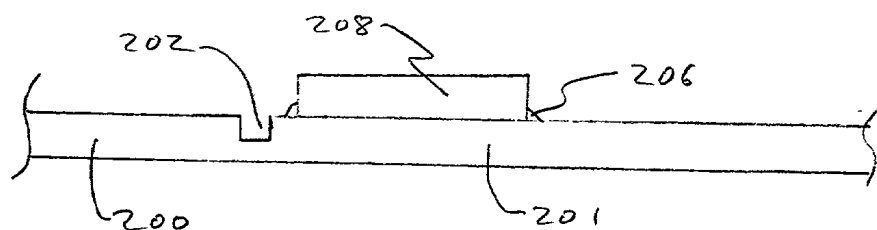


FIG. 11B

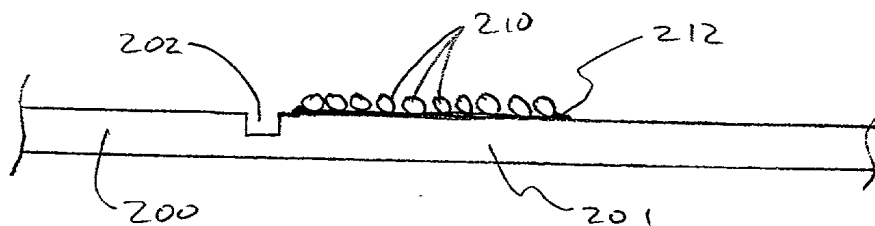


FIG. 11C

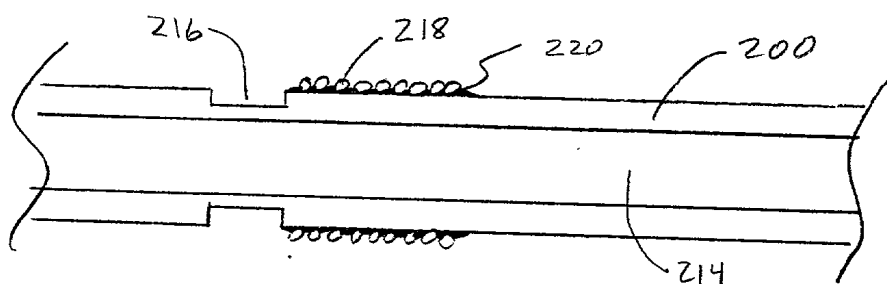


FIG. 12A

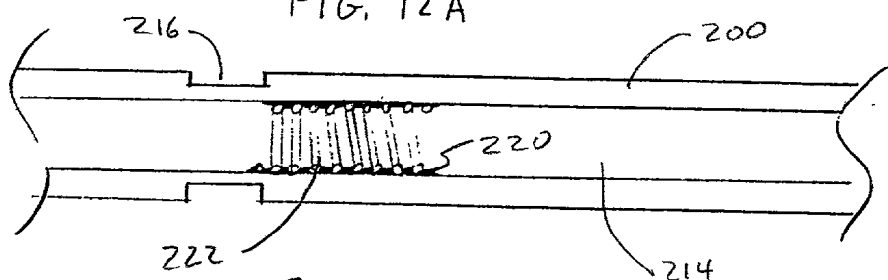
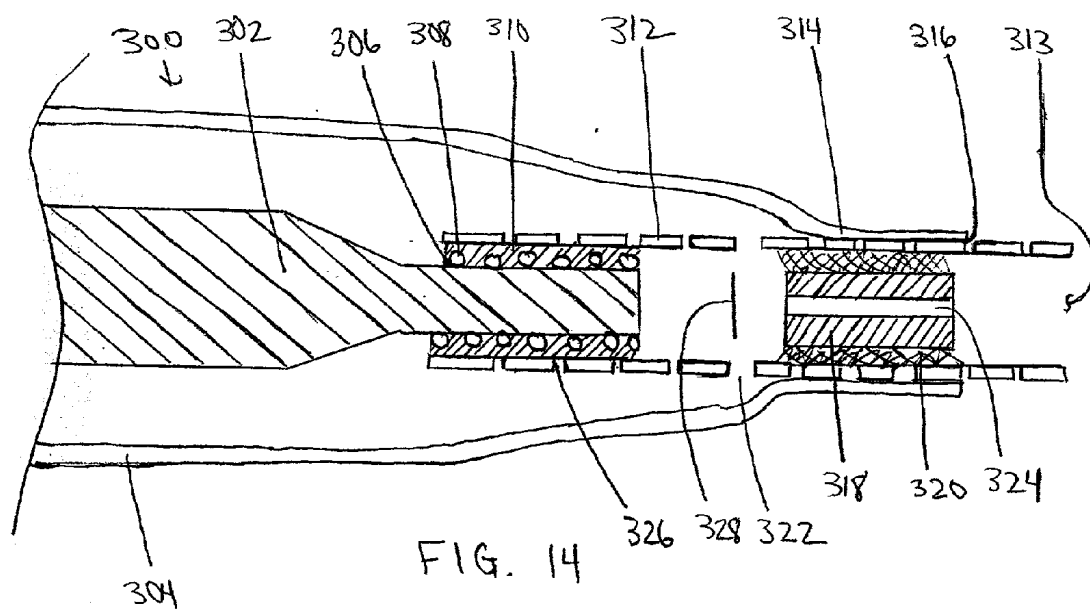
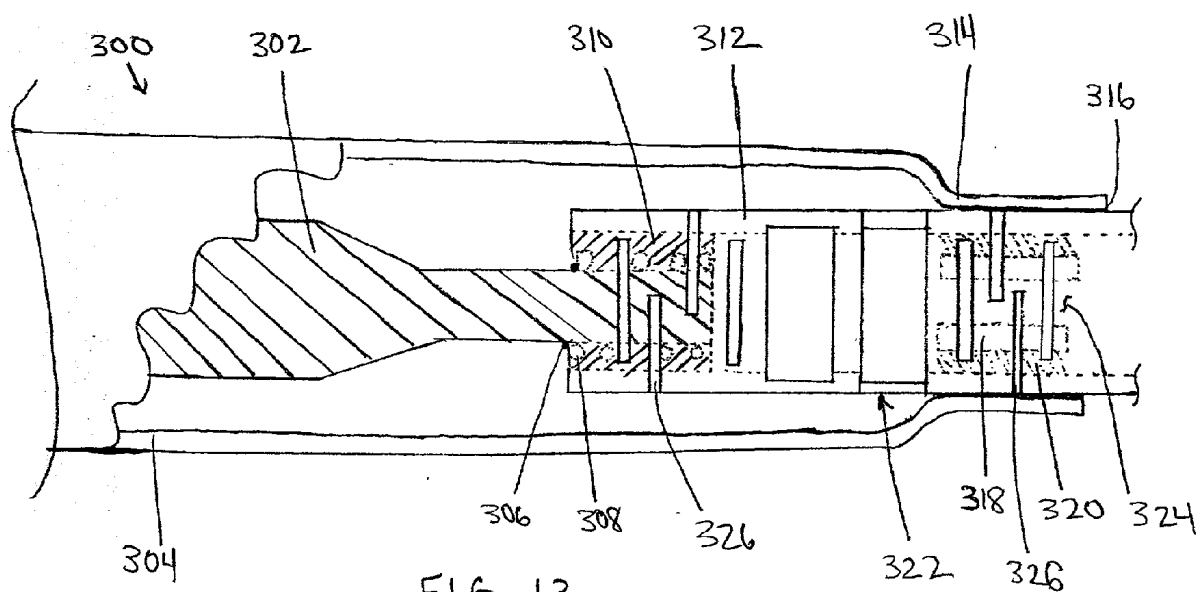


FIG. 12B



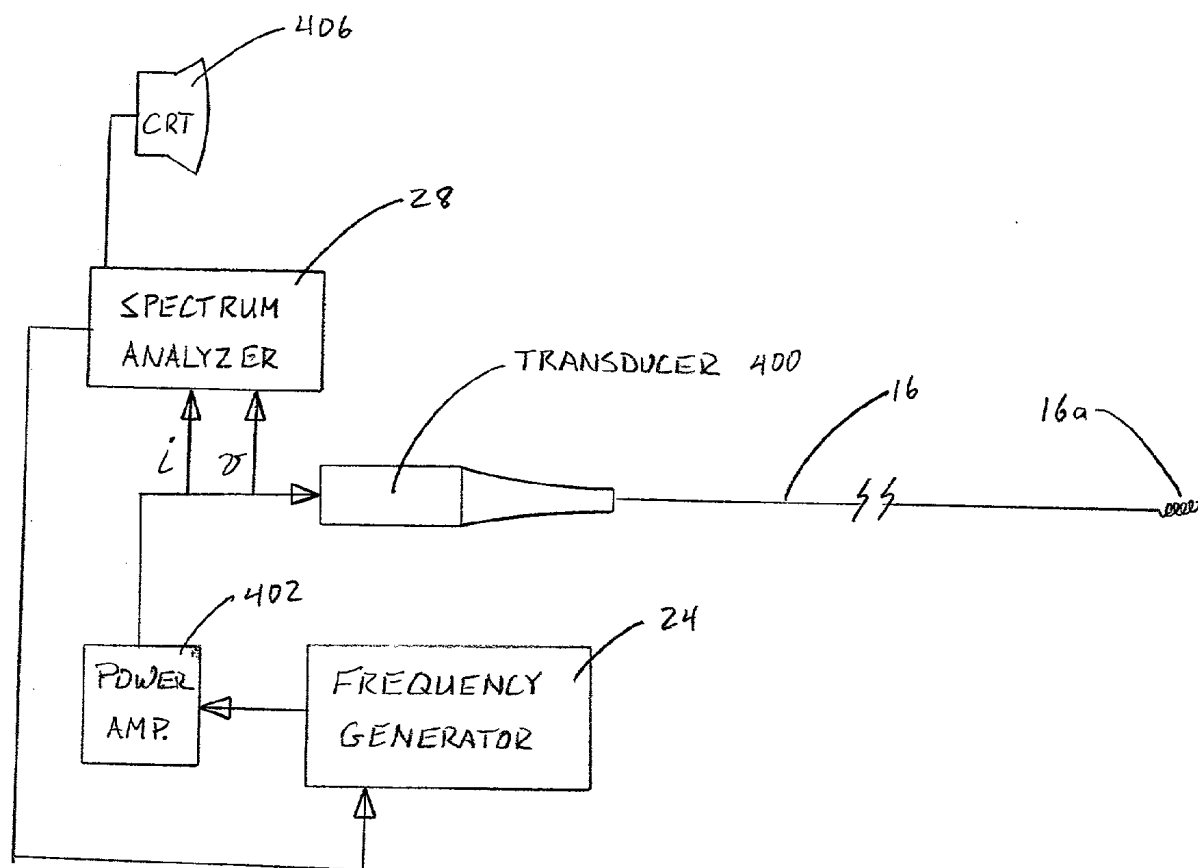


FIG. 15A

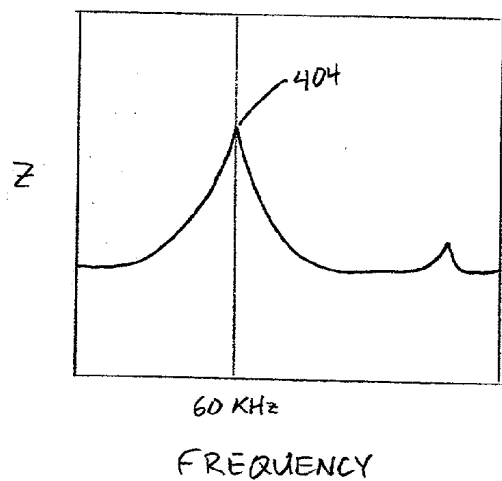


FIG. 15B

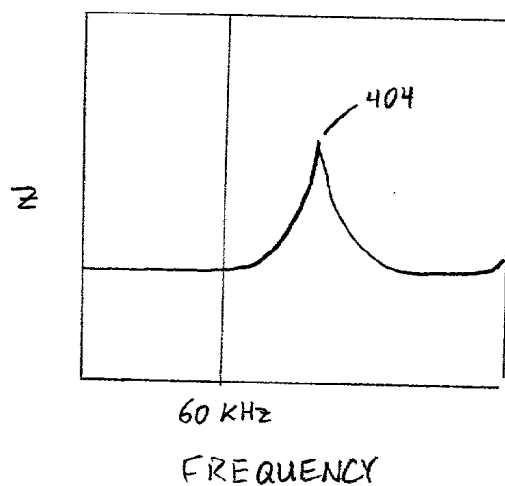


FIG. 15C

**DETACHABLE COIL FOR ANEURYSM THERAPY**

[0001] This application is a continuation-in-part of co-pending application Ser. No. 09/023,806 which was filed on Feb. 13, 1998.

**BACKGROUND OF THE INVENTION****[0002] 1. Field of the Invention**

[0003] The present invention relates to endovascular devices for occluding and/or stabilizing and sealing off vasculature or body passageways, tissue defects, and aneurysms. More specifically, the present invention relates to a method and apparatus for threading wires into body cavities and detaching end sections thereof using vibrational energy, for example, in the form of elastic waves.

**[0004] 2. State of the Art**

[0005] A variety of methods have been developed for occluding and/or stabilizing and sealing off vasculature or body passageways tissue defects and aneurysms with the use of endovascular catheters including injectable particles, injectable glue, and detachable coils and other devices. The use of detachable coils appears to be gaining widest acceptance for aneurysm therapy, perhaps because of the ease and precision of control of the delivery and disposition of the coil at the desired occlusion site.

[0006] One approach for delivering and detaching coils at an occlusion site involves forming or attaching the coil at the distal end of a wire, and then threading the coil and wire through a catheter until the coil is disposed at the occlusion site. An electric current is then applied to the proximal end of the wire and conducted through the wire to the point of origin or attachment of the coil where it causes the coil, for example, by electrolysis, to detach from the wire. See U.S. Pat. Nos. 5,569,245, 5,624,449, 5,122,136, 5,540,680, and 5,354,295.

[0007] Among the problems associated with the electrically detachable coil approach is the time necessary to effectuate detachment (which changes with increasing number of devices delivered), the lack of reliability that the coil will detach, discomfort with the use of a grounding needle (insertable in the flesh of the patient) required for the proper functioning of the device, generation of particulates from the detachment site (electrolysis), and inability to select the size of the coil in vivo.

**OBJECTS AND SUMMARY OF THE INVENTION**

[0008] It is therefore an object of the invention to provide an apparatus and method for selectively detaching an end section of a wire in a body passageway by non-electrical means.

[0009] It is another object of the invention to provide such an apparatus and method in which the end section of the wire may be quickly and reliably detached, independently of the number of devices delivered.

[0010] It is a further object of the invention to provide such an apparatus and method in which little discomfort results to the patient.

[0011] It is still another object of the invention to provide such an apparatus and method, in accordance with one

aspect thereof, in which multiple sections of the end segment of the wire may each be selectively detached at different times.

[0012] It is an additional object of the invention to provide such an apparatus and method, in accordance with another aspect thereof, in which it may readily be determined by the user when the end section of the wire has detached.

[0013] It is a further object of the invention to provide such an apparatus and method in which little preparation of the wire and end section is required to allow for subsequent use and detachment of the end segment.

[0014] It is still another object of the invention to provide such an apparatus and method in which therapeutic fluid may be delivered along with the wire to a target body location.

[0015] The above and other objects of the invention are realized in a specific illustrative embodiment of a wire apparatus with a detachable distal end which includes an elongate wire (either solid or hollow) having a distal end section, and a discontinuity located rearwardly of the distal end section for rupturing when vibrational energy is applied thereto. The apparatus includes a delivery means coupled to the elongate wire for delivering therapeutic fluid to a target body location and a vibrational energy generator, preferably an ultrasound generator, for applying vibrational energy to the wire to travel to the discontinuity to cause detachment of the distal end section. The vibrational energy may comprise axial or torsional waves mechanically induced into the wire.

[0016] In use, the wire is threaded through a vasculature or body passageway to a target location, and therapeutic fluid is injected through a catheter or hollow wire to the target location. Then vibrational energy is applied to the wire to cause the distal end section to detach and remain at the target location to occlude the passageway, and the remainder of the wire is withdrawn from the patient.

[0017] In accordance with one aspect of the invention, the discontinuity could include a cut in the wire, a hole, a reduced diameter section, an abrupt increase in mass, an adhesive, soldered or spot-welded joint which joins the distal end section to the wire, a coil soldered or adhesively attached to either the outer surface of a solid or hollow wire, or to the inner surface of a hollow wire, or a heat or chemically treated section. Alternatively, the distal end section could include a plurality of discontinuities, each adapted to rupture at a different vibrational levels or frequencies, to detach a selected portion of the distal end section which is distal to the discontinuity being ruptured.

[0018] Other objects, features and advantages of the invention will become apparent from a consideration of the following detailed description presented in connection with the accompanying drawings

**BRIEF DESCRIPTION OF THE DRAWINGS**

[0019] **FIG. 1** shows a side, fragmented, cross-sectional view of a wire made in accordance with the principles of the present invention, in which the proximal end of the wire is coupled to an ultrasound generator and the distal end of the wire is formed into a tangled mass disposed in an aneurysm;

[0020] **FIGS. 2-3, 4A-4C, and 5-6** show side, fragmented views of different embodiments for providing discontinui-

ties to allow detachment of end coil sections from delivery wires, all in accordance with the principles of the present invention;

[0021] FIG. 7 is a side, fragmented view of a hollow end coil section having a plurality of discontinuities for tuned resonator detachment, in accordance with the principles of the present invention;

[0022] FIGS. 8 and 9 show side, fragmented views of embodiments of guide wire/catheter combinations where friction between the guide wire and catheter is minimized;

[0023] FIG. 10 is a graphic view of a wire illustrating nodal points responsive to different vibrational frequencies for detachment of end sections;

[0024] FIGS. 11A-11C show side views of different embodiments of the invention having a hollow wire and a mass or group of masses disposed on adjacent or opposite sides of a cut in the hollow wire;

[0025] FIGS. 12A- 12B show sectional views of different embodiments of a hollow wire with a coil mass disposed adjacent a cut in the wire that does not extend entirely through the outer wall of the wire.

[0026] FIG. 13 shows a cut-away view of a catheter and guide wire combination with a wide cut to allow fluid to pass through the slot and out the distal end;

[0027] FIG. 14 is a cross-section view of the catheter and guide wire combination showing the adhesive joint between the guide wire and the distal end of the wire and the fluid passage through the mass in the distal end;

[0028] FIG. 15A depicts a system for determining when detachment of the distal end has occurred; and

[0029] FIGS. 15B and 15C show a plot of impedance ( $z$ ) versus frequency before and after detachment, respectively.

#### DETAILED DESCRIPTION OF THE PREFERRED EMBODIMENT

[0030] Reference will now be made to the drawings in which the various elements of the present invention will be given numeral designations and in which the invention will be discussed so as to enable one skilled in the art to make and use the invention.

[0031] Referring to FIG. 1, there is shown a side, cross-sectional view of a blood vessel 4 in which an aneurysm 8 is shown formed in one side of the vessel. A fragmented view of a catheter 12 is shown threaded in the vessel 4, with a terminal end 12a positioned adjacent the aneurysm 8. Threaded through the catheter 12 is a wire 16, which extends entirely through the catheter 12 and out the terminal end 12a into the aneurysm 8 (or the entrance thereof) to substantially fill the aneurysm with a coiled end section 16a. Wire 16 may be any long prismatic element, whether solid or hollow, and the end section 16a could be tangled, formed into specific shapes, etc. as well as being coiled.

[0032] A discontinuity 20 is formed between the end section 16a of the wire and the rest of the wire 16. The discontinuity 20 may take a variety of shapes and forms, so long as it is designed to rupture, break or separate when vibrational energy of a certain frequency and magnitude is applied to the wire 16. The vibrational energy source in the

FIG. 1 embodiment is preferably an ultrasound generator 24, but could be something as simple as a striker, mallet, hammer, etc. for striking the wire 16 to cause mechanical vibrations to propagate to the discontinuity 20.

[0033] In use, the catheter 12 is threaded through a vasculature or body passageway to a site at which the end section 16a of the wire is to be disposed, such as the aneurysm 8 in FIG. 1. The purpose of such disposal, for example, is to provide an occlusion in the passageway to allow for coagulation of blood to prevent further flow, or, as in the FIG. 1 schematic, to cause scarring in the aneurysm 8 to thereby fill the aneurysm with scar tissue to prevent the bursting thereof, etc. The end section 16a is shown as being coiled or tangled but when threaded through the catheter 12 it would be straightened. Formation of a wire or coil with these properties is frequently accomplished by heat treating or other methods known in the art. Then when the end section 16a is pushed out the terminal end 12a of the catheter, the end section would resume the normally coiled or tangled condition as shown (enhanced also by body warmth).

[0034] After the end section 16a has been guided to the desired target site, the ultrasound generator 24 would be connected to the proximal end of the wire 16 and an ultrasound signal applied thereto. The frequency and amplitude of the signal (observed on a spectrum analyzer 28) would be selected to produce high stress in the discontinuity 20, fatiguing the wire so that it breaks, ruptures, or otherwise separates at the discontinuity, leaving the end section 16a in the aneurysm 8. Because the system uses vibrations in the ultrasonic range, the separation is accomplished rapidly, reliably and without pain to the subject. A more detailed diagram of the vibrational energy system and method are provided in FIG. 15A, described below.

[0035] FIG. 2 shows a fragmented, side, cross-sectional view of a wire 30 made, for example, of stainless steel, connected to a tubular end section 34 made, for example, of nickel titanium alloy or platinum. The terminal end of the wire 30 is tapered, as shown, and is inserted into a hollow 34a in the proximal end of the end section 34, and there secured by an adhesive, solder, or weld 35. A coil 36 made, for example, of stainless steel is soldered, welded or otherwise attached to the terminal end of the wire 30 to enhance the bond between the wire and the end section 34.

[0036] The end section 34 includes a plurality of cuts 37 made to extend generally transversely in the end section and provided to shape the end section into a coiled or tangled configuration, and to allow for more surface area exposure of the end section to blood for inducing clotting. See co-pending U.S. patent application No. 08/568,493, filed Dec. 7, 1995, for a further discussion of the employment of cuts in wire to allow flexibility and control shape while maintaining torquability. Two or more cuts 38 (rotated 90 degrees with respect to one another) are shown spaced rearwardly from the plurality of cuts 37 by a distance greater than the spacing between the cuts 37, and are provided to serve as the discontinuity for rupturing (through fatigue) when the vibrational signal is applied to the wire 30. The cuts 38, of course, could be formed at the same time as the other cuts 37 but, for example, would be made deeper (creating a thinner beam), wider (creating a longer beam), or adjacent a mass 39 disposed in the end section 34, or a



combination of these, to sever or rupture when the vibrational signal is applied to the wire 30.

[0037] FIG. 3 shows a fragmented, side, cross-sectional view of another embodiment of a wire with a discontinuity in accordance with the present invention. Here, a wire 40 made, for example, of stainless steel, is fitted into the hollow 44a of an end section 44 made, for example, of nickel-titanium alloy. The wire 40 would be held in place in the hollow by a suitable adhesive, such as epoxy or cyanoacrylate. A plurality of cuts 48 are made in the end section 44 to provide for coiling and shaping the end section as desired for ultimate disposition at a target site in a body passageway. A cut or diameter reduction 49 is also formed in the wire 40 to provide the desired discontinuity. A coil mass 47 might also be added about the wire 40 to further exaggerate the discontinuity. The cut 49 might advantageously be about 1/2 of the way through the wire 40 in the transverse direction to serve to rupture or separate when an ultrasound signal is applied to the wire.

[0038] FIG. 4A shows another embodiment of a discontinuity between a wire 50 and an end section 54, again including cuts 58. The terminal end of the wire 50 is attached by a section of adhesive 59 to the proximal end of the end section 54. The adhesive 59 is selected from materials that are somewhat brittle, such as sodium silicate, so that when an ultrasound signal is applied to the wire 50, the adhesive 59 will fracture to allow the end section 54 to separate from the wire 50. Alternatively, section 59 of wire 50 could be heat-treated or H+ embrittled to make the wire brittle at that location. As yet another alternative, section 59 could be chemically-treated, such as by etching, to make the wire weaker at that location.

[0039] FIG. 4B shows the discontinuity formed as a hole 51, whereas FIG. 4C shows the discontinuity as a spot weld 53 joining the wire 55 side-by-side to an end section 56. A coil mass 57 provides additional discontinuity. The process of spot welding heats the wire 55, making it more susceptible to fatigue and breaking. In fact, heating alone may be used to create a "discontinuity".

[0040] FIG. 5 shows an embodiment similar to that of FIG. 3 except that the discontinuity does not comprise a cut in either the wire 60 or end section 64. Rather, the discontinuity is formed at the joint or connection between the wire 60 and end section 64 wherein the wire is inserted in the hollow 64a of the end section and held in place by a blood soluble adhesive 68, such as sodium silicate. When the end section 64 is guided through a blood vessel by the wire 60 (i.e., through a catheter inserted in a blood vessel), blood enters the hollow 64a of the end section 64 which, along with blood contacting the adhesive 68 at the proximal end of the end section, operates to dissolve the adhesive and allow separation of the end section from the wire.

[0041] Application of a vibrational signal such as an ultrasound signal to the wire 60 accelerates the dissolution and ultimate separation of the end section 64 from the wire 60 to allow disposition of the end section at the target site. In effect, two mechanisms may be employed to cause separation—providing greater security and safety in ensuring separation.

[0042] The FIG. 6 embodiment includes a wire 70 at the distal end of which is disposed a heavy mass of material 74,

preferably wound about the distal end. For example the mass 74 might include windings of platinum. The abrupt transition from the wire 70 to the heavy mass 74 provides a discontinuity at location 78 just behind the mass so that when vibrational energy of a certain frequency and amplitude is applied to the wire, the wire is caused to break at the discontinuity or stress point 78, releasing the mass 74 at a target site in a body passageway. The wire 70 might also be made of platinum, stainless steel or nickel titanium alloy.

[0043] FIG. 7 shows an embodiment of a detachable wire 80 having a plurality of longitudinally spaced cuts 84 in sections 86 and 88, which act as separate discontinuities. Each of the discontinuities 84 of section 86 are formed or "tuned" with a predetermined depth, width, and/or spacing to rupture in response to different amplitudes and frequencies of vibrational energy than the discontinuities of section 88. In this manner, the user can selectively apply vibrational energy to the wire 80 to cause a selected section of the discontinuities 84 to rupture. Such rupturing can take place successively to deposit lengths of wire at different locations in a body passageway or to deposit all of the lengths (to serve as emboli) at a single location. The "tuning" of the discontinuities 84 is both a function of the characteristics of the cuts, and also of the segment lengths between the discontinuities. Such timing could be used to "deposit" great numbers of particles such as for AVM therapy.

[0044] The ultrasonic vibrational energy can be transmitted down the wire in two different modes of propagation: axial or torsional. In the axial mode, the wire is alternately placed in tension and compression along the axis of the wire as the wave travels. In the torsional transmission mode, the wire is alternately placed in clockwise and counterclockwise torsion about its axis as the wave travels. Both modes are useful.

[0045] The detachment sites shown and described above are configured for detachment in the axial mode. However, torsional waves are advantageous when using a section of wire which has been provided with cuts to enhance its lateral flexibility. The cuts severely reduce the axial stiffness of the wire (particularly of hollow wire), but can be made in such a way as to not reduce the torsional stiffness of the wire as much. (See, e.g. U.S. patent application Ser. No. 08/568,493, filed Dec. 7, 1995). The cut wire therefore is more capable of transmission of torsional than of axial vibration. Where selective detachment is desired, the wave is required to travel through sections of cut wire to reach the various detachment sites. Consequently, the torsion mode is preferred for selective detachment of cut wire.

[0046] The cuts 84 create spring elements to isolate the intermediate uncut sections of the wire 80 which have a mass. When a vibrational energy wave at the resonant frequency of the spring/mass system is applied to the wire 80, the wire is excited longitudinally and the sections of mass between the cuts vibrate longitudinally at high amplitude which fatigues the spring elements (location of cuts) causing them to break. The wire 80 could advantageously be made of stainless steel or nickel titanium alloy.

[0047] FIGS. 8 and 9 show side, cross-sectional, fragmented views of a type of wave guide construction for transmitting vibrational energy along a wire surrounded by a catheter or sleeve. Referring to FIG. 8, there is shown a wire 90 disposed inside of a catheter or sleeve 94 but held

out of touch from the sleeve by supports, for example, in the form of rings spaced apart longitudinally and uniformly along the length of the wire and sleeve. The supports **98** are positioned at the velocity nodal points of the vibrational energy waves which are transmitted along the wire/sleeve combination to cause detachment of an end section (not shown). The velocity nodal points, of course, are those locations in a mechanical wave where there is little or no movement or velocity of the wave-carrying structure, whereas the locations midway between the supports **98** are the antinodes where there is maximum movement of the wave-carrying structure. By providing the supports **98**, the wire and sleeve are held apart to thereby prevent friction between the two as the vibrational energy wave travels down the wire/sleeve combination. Thus, little energy is lost along the length of the wire and sleeve and so detachment of the end section would take less time.

[0048] FIG. 9 is a side, cross-sectional, fragmented view of a wire **100** about which is disposed a sleeve **104** and between which is disposed a hydrophillic coating, elastomeric material, or lubricant **108** to allow the wire and sleeve to move relative to one another without significant friction and thus without loss of vibrational energy.

[0049] FIG. 10 shows a graphic representation of a wire **110** having discontinuities **114**, **118** and **122** spaced longitudinally along the wire. Graphically superimposed over the wire **110** are three vibrational energy waves **114a**, **118a**, and **122a**. In order to cause the wire **110** to separate at one of the selected discontinuities, a vibrational energy wave is applied to the wire so that the nodal point of the wave falls at the desired discontinuity. A vibrational energy wave causes mechanical resonance in the longitudinal direction where nodal points fall at locations which are spaced every one half of the wavelength. As briefly mentioned earlier, at the nodal points along the wire, the velocity or movement of the wire is minimal, but the stress is maximal. Consequently, by applying a vibrational energy wave such as wave **114a** to the wire **110**, the wire would be caused to separate at that location where the greatest stress is occurring and the wire is weakest, because a nodal point of wave **114a** occurs at discontinuity **114**. Similarly, if it were desired that the separation occur at discontinuity **118**, then vibrational energy wave **118a** would be applied to the wire, etc. In the manner described, appropriate mechanical energy waves can be applied to wires to cause separation at selected discontinuities along the wire. The various embodiments described above can be used to occlude blood flow, create scar tissue in aneurysms, in a known manner, or the embodiments could also be used to detach any type of end section device, such as a tubal block; in a body passageway, for example, a fallopian tube; to block passage of eggs; or detach elements containing drugs for delivery to a target site; etc. That is, the embodiments are not limited solely to use in vasculature passageways.

[0050] FIG. 11 A shows a side view of another embodiment of a wire with a discontinuity in accordance with the present invention. Here, a wire **200**, made, for example, of stainless steel, is hollow, allowing therapeutic fluid and drugs to pass therethrough. A plurality of cuts (not shown) may be made in the end section **201** to provide for coiling and configuring the end section as desired for ultimate disposition at a target site in a body passageway. A cut or diameter reduction **202** is also formed in the hollow wire **200**

to provide the desired discontinuity. A bottom mass **203** is added below the cut with an adhesive **206** to further exaggerate the discontinuity. The bottom mass **203** is preferably made of platinum.

[0051] FIG. 11B shows a side view of another embodiment of a wire with a discontinuity similar to FIG. 11A. This embodiment has a top mass **208** added adjacent to the cut **202** with an adhesive **206** to further exaggerate the discontinuity. The top mass **208** is preferably made of platinum, and the adhesive **206** can be epoxy or cyanoacrylate. Alternatively, the mass may be affixed by a welded or soldered connection.

[0052] FIG. 11C is a side view of a hollow wire **200** made, for example, of stainless steel, to allow therapeutic fluid or drugs to pass through to a target body site. A plurality of top masses **210** are attached adjacent to the cut **202** with an adhesive **212** to further exaggerate the discontinuity. The plurality of masses **210** are preferably made of platinum. It will be apparent that the wire of FIG. 11C could be alternatively formed with a plurality of bottom masses attached below the cut **202** in the hollow wire **200**, in the manner of FIG. 11A.

[0053] The hollow wire can also be formed without through-cuts to provide a hollow detachment site that does not allow fluids to escape from the lumen of the hollow wire. As shown in FIG. 12A, a hollow wire **200** with a central lumen **214** is formed with an annular cut **216**, or alternatively a pair of oppositely disposed straight cuts, forming a discontinuity, that does not extend to the lumen. A coil **218** which wraps around the outside of wire **200** is disposed adjacent cut **216** and attached with adhesive **220**, to exaggerate the effect of the discontinuity. Alternatively, as shown in FIG. 12B, a coil **222** may be disposed within lumen **214** of the wire, adjacent the cut **216**.

[0054] FIG. 13 is a side cut away view of a catheter **304** and guide wire combination **302** with a wide cut **322** to allow therapeutic fluid to pass through a fluid passage **324** and into a target body location. The cuts **322** are wide to provide lateral flexibility of the detachment site so that it can be threaded through tortuous anatomy without damage. The guide wire **302** is made, for example, of stainless steel, connected to a tubular distal end section **312** made, for example, of nickel titanium alloy or platinum. The terminal end of the wire **302** is tapered, as shown, and is inserted into the proximal side of the end section **312**, and there secured by an adhesive **310**. A coil **308** made, for example, of stainless steel is soldered **306** or otherwise attached to the terminal end of the wire **302** to enhance the bond between the wire **302** and the end section **312**.

[0055] The end section **312** includes a plurality of cuts **326** formed generally transversely in the end section **312**. Cuts **326** are configured to impart flexibility and to shape the end section **312** into a coiled or tangled configuration. Two or more wide cuts **322** are shown spaced from the plurality of cuts **326** by a distance greater than the spacing between the cuts **326**, and are provided to serve as the discontinuity for rupturing or fatigue when a vibrational signal is applied to the wire **302**. The cuts **322** of course, could be formed at the same time the other cuts **326** are being formed but, would be made deeper or wider, to sever or rupture when the vibrational signal is applied to the wire **302**.

[0056] FIG. 14 is a side cross sectional view of the catheter **304** and guide wire **302** combination with a wide cut

**322** to allow fluid to pass through the cuts **322** and out the hollow distal end section **312**. The terminal end of the wire **302** is tapered and inserted into the distal end section **312** at the proximal side of the end section **312**, and secured by an adhesive **310**. A coil **308** is soldered **306** or otherwise attached to the terminal end of the wire **302** and functions as a mechanical interlock for the adhesive bond **310** between the wire **302** and the end section **312**. A plurality of cuts **326** are formed in the end section **312** extending generally transversely to shape the end section into a coiled or tangled configuration. Two or more cuts **322** are shown spaced from the plurality of cuts **326** by a distance greater than the spacing between the cuts **326**, and are provided to serve as the discontinuity for rupturing when a vibrational signal is applied to the wire **302**. A fatigue area **328** shown in **FIG. 14** ruptures when high-frequency mechanical or ultrasonic energy passes through it.

[0057] Therapeutic fluid is delivered to a target body location through the catheter **304**. The fluid passes through the catheter **304** and into the wide cuts **322**. The therapeutic fluid is retained within the catheter **304** due to the slip fit of the catheter containment sleeve **314** just past the wide cuts **322**. A fluid passage **324** is formed between the platinum masses **318** in the end section **312** to allow fluid to flow out the distal end **313**. The platinum masses **318** are attached to the inside of the distal end **312** with an adhesive **320**. Upon completion of the site specific fluid or drug delivery, an ultrasonic transducer is used to fatigue the wide cut **322**. Upon the localized fracture of the wide cut **322**, the delivery section of the device **300** can be removed. The catheter containment sleeve **314** slides off the wire end **313** via a hydrophilic interface **316**, and this leaves the wire end **313** inside the body. The catheter **304** and the guide wire **302** are then removed.

[0058] Naturally, it will be desirable for a user of this invention to know immediately when the end section of a wire has been detached from the wire so that the wire can be withdrawn from the body passageway. For each of the embodiments described above involving a delivery wire portion and an end section for ultimate detachment at a target site, the combinations of wire and end sections all have natural or resonant frequencies. Thus, when vibrational energy is applied to a wire, such as wire **16** in **FIG. 1**, the resonant frequency of the combination of the wire **16** and end section **16a** will have a certain resonant frequency which can be detected by conventional spectrum analysis methods.

[0059] **FIG. 15A** depicts a system for monitoring and displaying this resonant frequency, and for determining when detachment has occurred. This system shown in **FIG. 15A** is consistent with, but more detailed than that shown in **FIG. 1**. The system generally comprises an ultrasonic transducer **400** connected to a detachable coil device **16** having a detachable end section **16a**, a spectrum analyzer **28**, a frequency generator **24**, and a power amplifier **402**. The ultrasonic transducer **400** is driven with a periodic waveform produced by the frequency generator **24** and amplified by the power amplifier **402**. The electrical impedance,  $z$  (a complex ratio of voltage to current flow) of the transducer is a function of frequency, and of the physical device driven by the transducer (the detachable coil device **16**). The impedance of the transducer is measured by the spectrum analyzer

**28** as shown, or alternatively, may be measured by any other suitable electronic device, such as a microcontroller which is made for that purpose.

[0060] The spectrum analyzer **28** sweeps the frequency input to the transducer **400** while measuring the voltage  $v$  and current  $i$  to the transducer to generate a plot of impedance  $z$  versus frequency, which is displayed on a CRT screen **406** associated with the spectrum analyzer. Two exemplary plots of impedance versus frequency are given in **FIGS. 15B and 15C** as they would appear on CRT screen **406**. These plots show impedance ( $z$ ) versus frequency before and after detachment, respectively. It will be apparent that the plot of impedance versus frequency exhibits resonant peaks. As shown in **FIG. 15B**, when the coil device is unaltered, it may exhibit a resonant peak **404** at 60 KHz, for example. However, when the physical nature of the load on the transducer changes, i.e. the coil detaches, the resonant peak **404** shifts to the right of 60 KHz as shown in **FIG. 15C**.

[0061] Consequently, by observing the resonant frequency display on the analyzer **28**, a user can obtain instantaneous information as to when the end section **16a** has detached from the wire device **16**. As an alternative or addition to visual observation of the impedance versus frequency plot, an indicator lamp, and audible alarm, a secondary indication on the CRT screen, or any other means of providing a discernable signal to the user could be employed which would create a discernable signal only when detachment occurs.

[0062] In the manner described, a method and apparatus have been provided by which an end section of a wire may be easily, reliably and quickly detached from the delivery portion of the wire, generally without pain to the subject. The detached end section may be in the form of a coil, mass or other device and may be deposited in vasculature passageways or other body passageways. Vibrational energy is used to rupture discontinuities separating the delivery portion of the wire from the end section and so no electrical current of any kind is required, making it much safer for the subject.

[0063] It is to be understood that the above-described arrangements are only illustrative of the application of the principles of the present invention. Numerous modifications and alternative arrangements may be devised by those skilled in the art without departing from the spirit and scope of the present invention and the appended claims are intended to cover such modifications and arrangements.

What is claimed is:

1. A wire apparatus configured for threading through a body passageway to a target location, comprising:

- a) an elongate wire having a distal end section for delivery to and detachment at the target location, said wire including at least one discontinuity located rearwardly of the distal end section for rupturing when vibrational energy is applied thereto;
- b) delivery means associated with the elongate wire for delivering therapeutic fluid to the target body location; and
- c) means for selectively applying vibrational energy to the wire to travel to the discontinuity and cause detachment of the distal end section.

2. Apparatus as in claim 1, wherein the at least one discontinuity comprises a cut in the wire.

3. Apparatus as in claim 2, wherein the delivery means comprises a hollow passage formed through the elongate wire to allow therapeutic fluids to flow through the hollow passage and out the distal end section into the target body location.

4. Apparatus as in claim 2, wherein the at least one discontinuity further comprises an abrupt mass of material on the hollow wire.

5. Apparatus as in claim 4, wherein the abrupt mass is a platinum mass attached with an adhesive.

6. Apparatus as in claim 4, wherein the abrupt mass further comprises a plurality of masses.

7. Apparatus as in claim 3, wherein the cut does not communicate with the internal hollow of the wire.

8. Apparatus as in claim 7, wherein the at least one discontinuity further comprises an abrupt mass of material on the hollow wire.

9. Apparatus as in claim 8, wherein the abrupt mass comprises a coil disposed on the outside of the wire.

10. Apparatus as in claim 8, wherein the abrupt mass comprises a coil disposed inside the hollow passage of the wire.

11. Apparatus as in claim 1, wherein the delivery means for delivering the therapeutic flow is a catheter surrounding the elongate wire, said catheter extending past the at least one discontinuity to the distal end section for delivering therapeutic fluid to the target body location.

12. Apparatus as in claim 11, wherein the distal end of the elongate wire is hollow to allow the flow of therapeutic fluid from the catheter through a cut in the wire and out the hollow distal end section into the target body location.

13. Apparatus as in claim 11, wherein the at least one discontinuity comprises an abrupt mass of material in the hollow distal end section of wire.

14. Apparatus as in claim 13, where the abrupt mass inside the hollow distal end section is further comprised of a platinum mass attached with an adhesive.

15. Apparatus as in claim 13, where the abrupt mass inside the hollow distal end section comprises a coil.

16. Apparatus as in claim 1, wherein the distal section of the wire is a nickel titanium tube that allows therapeutic fluid to flow through the tube.

17. Apparatus as in claim 1, wherein the wire comprises:

- a) a first section extending from a proximal end to a terminal end;
- b) a hollow distal end section coupled to the terminal end of the first section by an adhesive; and
- c) a stainless steel winding soldered to the proximal end of the hollow distal end section and to the terminal end of the first section to provide mechanical interlock for a stronger joint, said distal end section having at least one cut which will allow the passage of therapeutic fluid out of the distal end section into the target body location.

18. Apparatus as in claim 1, wherein the vibrational energy applying means is selected from the group comprising an ultrasound generator coupleable to the proximal end of the wire, and a striking hammer coupled to the proximal end of the wire.

19. Apparatus as in claim 1, wherein the vibrational energy applying means applies vibrational energy selected from the group comprising axial and torsional vibrations.

20. Apparatus as in claim 1, wherein the vibrational energy applying means is selectively adjustable to apply energy at a frequency and magnitude selected to cause detachment of the wire at a selected one of the at least one discontinuities.

21. A wire apparatus with a detachable distal end, comprising:

- a) an elongate wire, including a hollow distal end section for delivery to and detachment at a target body location, said wire including at least one discontinuity located proximally of the distal end section for rupturing when vibrational energy is applied thereto, said discontinuity further comprising:

- 1) a terminal end of the elongate wire inserted inside the hollow distal end section;
- 2) a metal winding wrapped around the terminal end of the wire and soldered to the terminal end;
- 3) an adhesive joint binding the wire and the end section, such that the metal winding strengthens the adhesive joint; and
- 4) at least one cut in the hollow tube to allow the passage of a therapeutic fluid through the distal end section;

- b) a catheter surrounding the elongate wire and extending past the discontinuity in the distal end section for delivering therapeutic fluid to the target body location; and

- c) means for selectively applying vibrational energy to the wire to travel to the discontinuity and cause detachment of the distal end section.

22. Apparatus as in claim 21, further comprising a platinum mass disposed within the hollow distal end section, and disposed to allow therapeutic fluid to flow through the distal end section and the at least one cut, wherein the cut aids in detaching the distal end.

23. Apparatus as in claim 21, wherein said at least one cut is deep enough to allow therapeutic fluid to flow through the cut.

24. Apparatus as in claim 21, wherein said at least one cut is wide enough to allow therapeutic fluid to flow through the cut.

25. Apparatus as in claim 21, wherein the wire is constructed of stainless steel, and wherein said distal end section is constructed of nickel titanium alloy.

26. Apparatus as in claim 21, wherein said at least one cut is cut to a depth to readily cause rupturing of the distal end section at the location of the at least one cut when the vibrational energy is applied thereto.

27. Apparatus as in claim 21, wherein the vibrational energy applying means comprises an ultrasound generator coupleable to the proximal end of the wire.

28. Apparatus as in claim 21, wherein the means for selectively applying vibrational energy to the wire is selected from the group comprising means for selectively applying axial and torsional vibrations to the wire.

29. A method of disposition of an occlusive element and delivering a therapeutic fluid to a target location in a vasculature passageway comprising:

- a) threading an elongate wire contained inside a catheter into a vasculature passageway so that a hollow distal end, forming an occlusive element, is disposed at the target location, said distal end being detachable from the wire when an ultrasound signal is applied to the wire;
- b) delivering a therapeutic fluid from the catheter through a wide cut in the hollow distal end to the target location inside the vascular passageway;
- c) applying an ultrasound signal to the wire to cause the distal end thereof to detach at the target location; and
- d) withdrawing the wire from the vasculature passageway, leaving the distal end at the target location.

**30.** The method of claim 29 wherein the step of threading the elongate wire further comprises threading a hollow wire having at least one cut, into the vasculature passageway so that the distal end, forming an occlusive element, is detached from the wire when an ultrasound signal is applied to the wire.

**31.** The method of claim 29, wherein the step of applying an ultrasound signal to the wire to cause the distal end thereof to detach at the target location further comprises:

- e) producing an electrical signal having a periodic waveform of a selected frequency;
- f) converting the electrical signal into mechanical vibration of the wire by means of a transducer disposed at a proximal end of the wire;
- g) measuring the impedance and frequency of the electrical signal due to vibration of the wire;
- h) monitoring the change in impedance to determine when the detachable end section of the wire has detached; and
- i) generating a humanly discernable signal for indicating to a user when detachment has occurred.

**32.** A system for determining when detachment of a detachable distal end section of a wire device has occurred, comprising:

- a) means for converting electrical signals into mechanical vibration of the wire device;
- b) means for producing a periodic waveform of a selected frequency;
- c) means for amplifying the periodic waveform and delivering the waveform to the means for converting electrical signals into mechanical vibration;
- d) means for measuring the impedance of the means for converting electrical signals into mechanical vibration; and
- e) means for monitoring the change in impedance of the means for converting electrical signals into mechanical vibration to determine when the detachable distal end section of the wire device has detached, and generating

a humanly discernable signal for indicating to a user when detachment has occurred.

**33.** The system as in claim 32, further comprising:

- a) a transducer connected to a proximal end of the wire device for converting the electrical signals into mechanical vibration of the wire device;
- b) a frequency generator for producing the periodic waveform;
- c) a power amplifier for amplifying the periodic waveform produced by the frequency generator and delivering the waveform to the transducer;
- d) a spectrum analyzer for measuring the impedance of the transducer and for generating a plot of impedance versus frequency of the waveform exhibiting resonant peaks due to the physical characteristics of the wire device; and
- e) means for displaying the plot of impedance versus frequency of the waveform in a humanly discernable form, whereby a user may detect when the detachable distal end section of the wire device has detached by discerning changes in the resonant peaks of the plot.

**34.** The system as in claim 33, wherein the spectrum analyzer measures the impedance of the transducer by detecting the frequency, voltage, and electrical current input to the transducer.

**35.** The system as in claim 33, wherein the means for displaying the plot of impedance versus frequency of the waveform comprises a CRT display screen.

**36.** The system as in claim 33, further comprising second means for generating a humanly discernable signal for indicating when detachment has occurred.

**37.** The system as in claim 36, wherein the second means for generating a humanly discernable signal for indicating when detachment has occurred is selected from the group comprising an indicator lamp, an audible alarm, and a CRT display indication.

**38.** A method for determining when detachment of a detachable end section of a wire device has occurred, comprising the steps of:

- a) producing an electrical signal having a periodic waveform of a selected frequency;
- b) converting the electrical signal into mechanical vibration of a wire device having a detachable end section;
- c) measuring the impedance and frequency of the electrical signal due to vibration of the wire device;
- d) monitoring the change in impedance to determine when the detachable end section of the wire device has detached; and
- e) generating a humanly discernable signal for indicating to a user when detachment has occurred.

\* \* \* \* \*

专利名称(译)	用于动脉瘤治疗的可拆卸线圈		
公开(公告)号	<a href="#">US20020082499A1</a>	公开(公告)日	2002-06-27
申请号	US10/073996	申请日	2002-02-14
申请(专利权)人(译)	精密血管系统公司.		
当前申请(专利权)人(译)	精密血管系统公司.		
[标]发明人	JACOBSEN STEPHEN C LIPPERT JOHN DAVIS CLARK C BACKMAN KENT		
发明人	JACOBSEN, STEPHEN C. LIPPERT, JOHN DAVIS, CLARK C. BACKMAN, KENT		
IPC分类号	A61B17/00 A61B17/12 A61B18/00 A61F2/82 A61M25/01 A61B8/00		
CPC分类号	A61B17/12022 A61B17/12113 A61B17/1214 A61B2017/12059 A61B17/12172 A61B2017/1205 A61B2019/307 A61B17/12168 A61B2090/037		
其他公开文献	US6997937		
外部链接	<a href="#">Espacenet</a> <a href="#">USPTO</a>		

#### 摘要(译)

公开了一种装置和方法，通过该装置和方法，线的中空远端部分可以沉积在身体通道中的选定位置处。该装置包括细长线（实心或中空），其具有用于分离和输送到目标位置的远端部分，该线还具有位于远端部分后方的不连续部分，用于在振动能量施加到线材时破裂。不连续性可以采取在线中形成的切口，线中直径减小的部分，线和远端部分之间的粘合剂，焊接或焊接连接器的形式，或者从线材过渡到设置在远端上的大质量的线材。结束部分。导管连接到或包围细长线以将治疗液体输送到目标身体位置。该装置包括可耦合到导线近端的振动能量源，用于选择性地向导线施加振动能量以行进到不连续部分并引起端部部分的分离。

