



US 20140358001A1

(19) **United States**(12) **Patent Application Publication**  
**KIM**(10) **Pub. No.: US 2014/0358001 A1**(43) **Pub. Date: Dec. 4, 2014**(54) **ULTRASOUND DIAGNOSIS METHOD AND  
APPARATUS USING THREE-DIMENSIONAL  
VOLUME DATA****Publication Classification**

(51) **Int. Cl.**  
*A61B 8/08* (2006.01)  
*A61B 8/00* (2006.01)  
*A61B 8/14* (2006.01)

(52) **U.S. Cl.**  
CPC ..... *A61B 8/0866* (2013.01); *A61B 8/14*  
(2013.01); *A61B 8/461* (2013.01); *A61B*  
*8/0875* (2013.01); *A61B 8/5223* (2013.01)  
USPC ..... **600/443**

(71) Applicant: **SAMSUNG MEDISON CO., LTD.**,  
Gangwon-do (KR)(72) Inventor: **Sung-yoon KIM**, Gangwon-do (KR)(73) Assignee: **SAMSUNG MEDISON CO., LTD.**,  
Gangwon-do (KR)(21) Appl. No.: **14/089,468**(22) Filed: **Nov. 25, 2013**(30) **Foreign Application Priority Data**

May 31, 2013 (KR) ..... 10-2013-0063101

(57) **ABSTRACT**

Disclosed are an ultrasound diagnosis method and apparatus. The ultrasound diagnosis method and apparatus acquire volume data from an object, cut the volume data in a predetermined direction to decide on a reference plane, detect a long bone included in the volume data by using the reference plane, and extract long bone volume data including the detected long bone from the volume data to display the long bone volume data, thereby diagnosing the object.

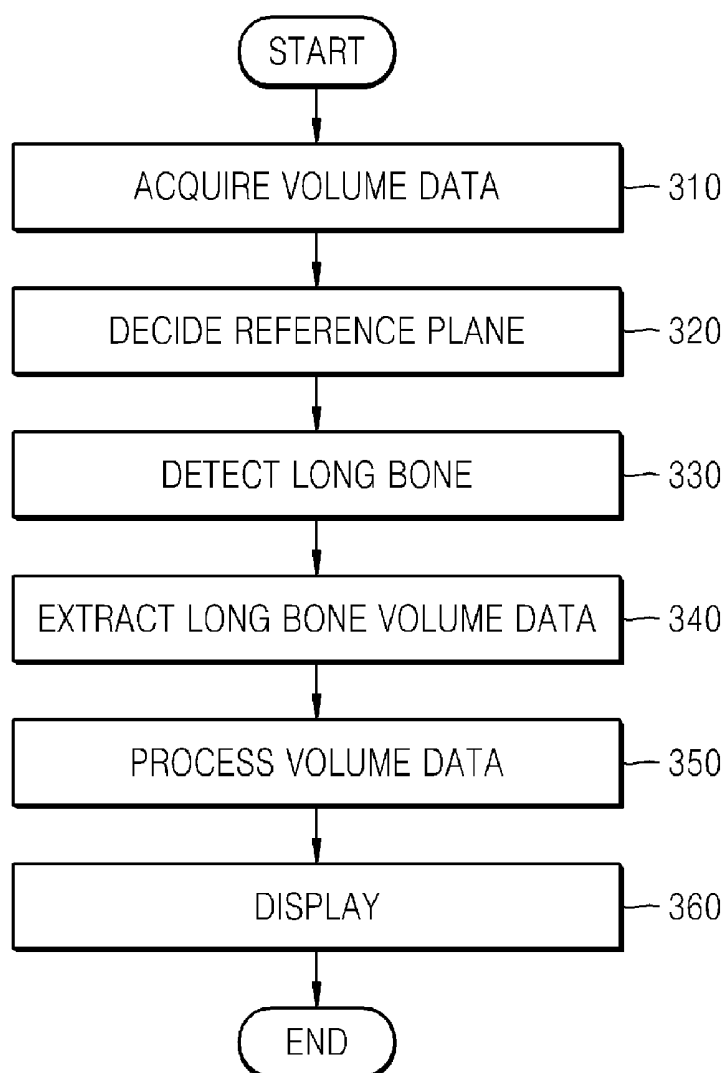
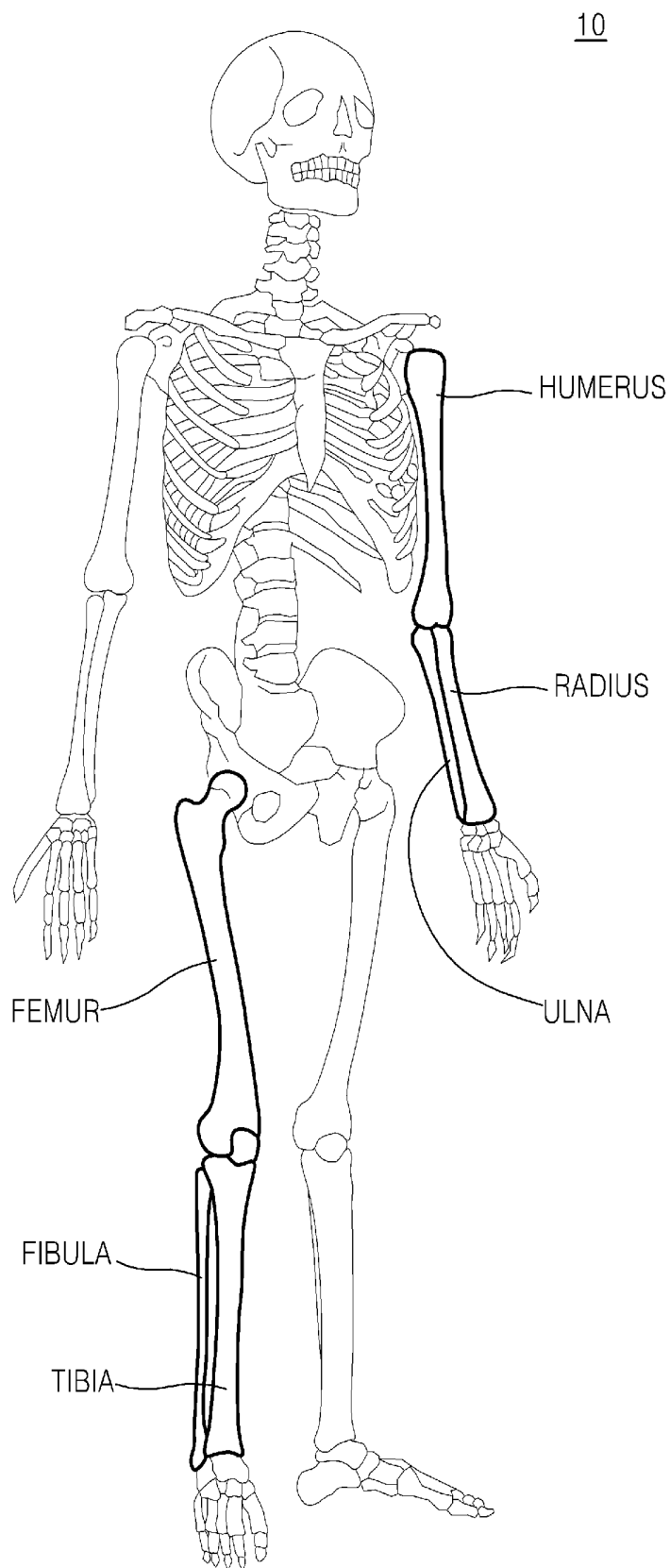
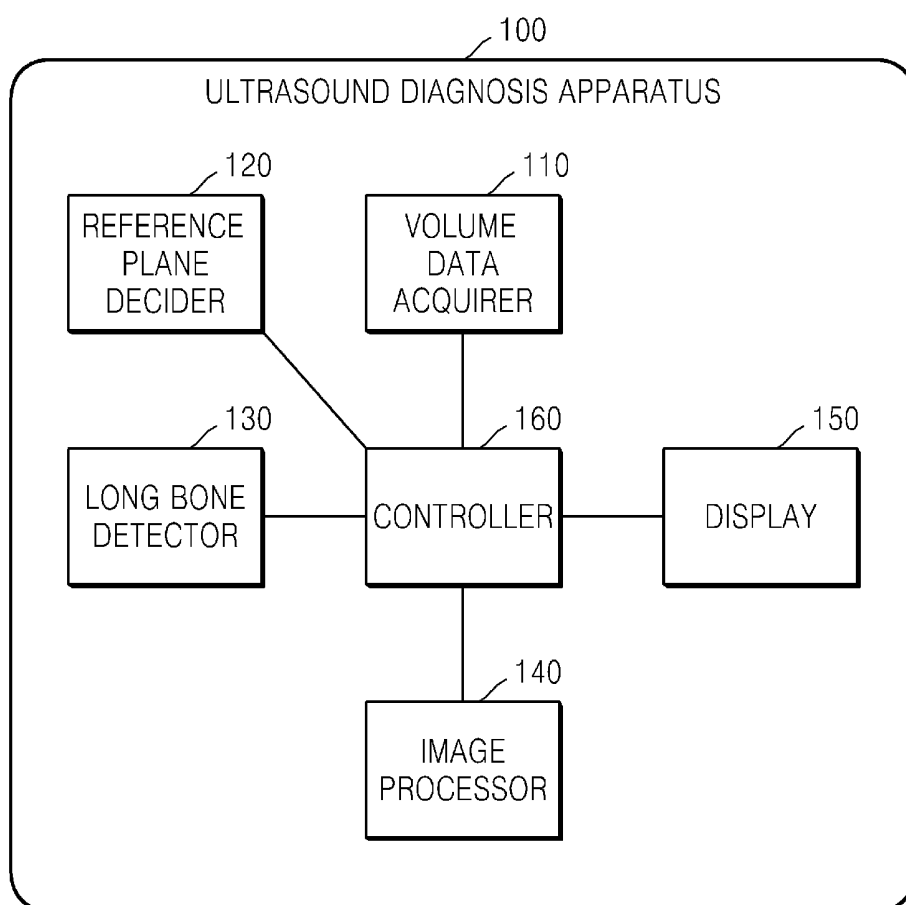
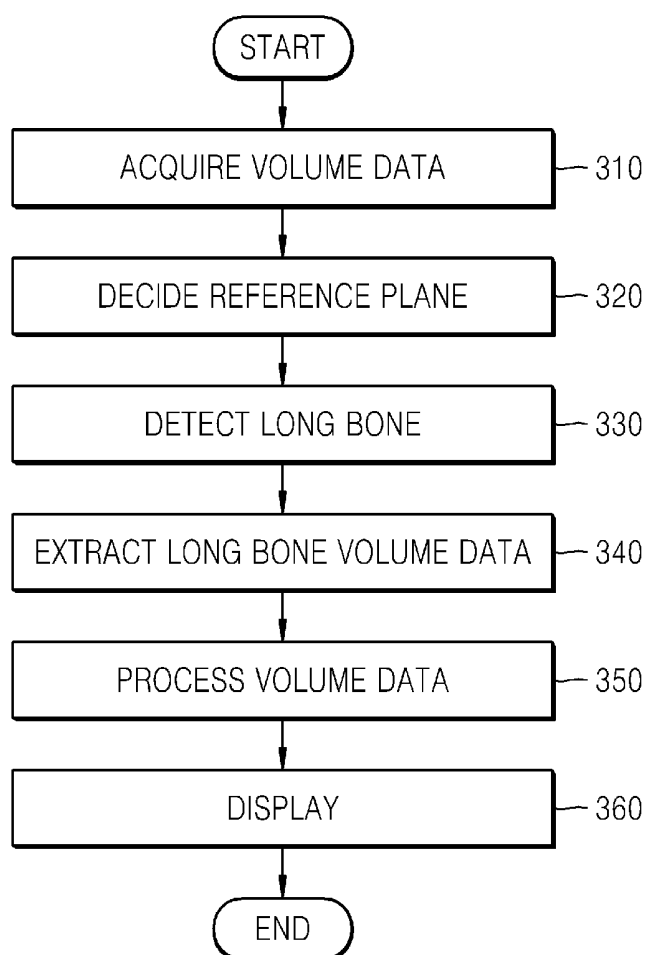


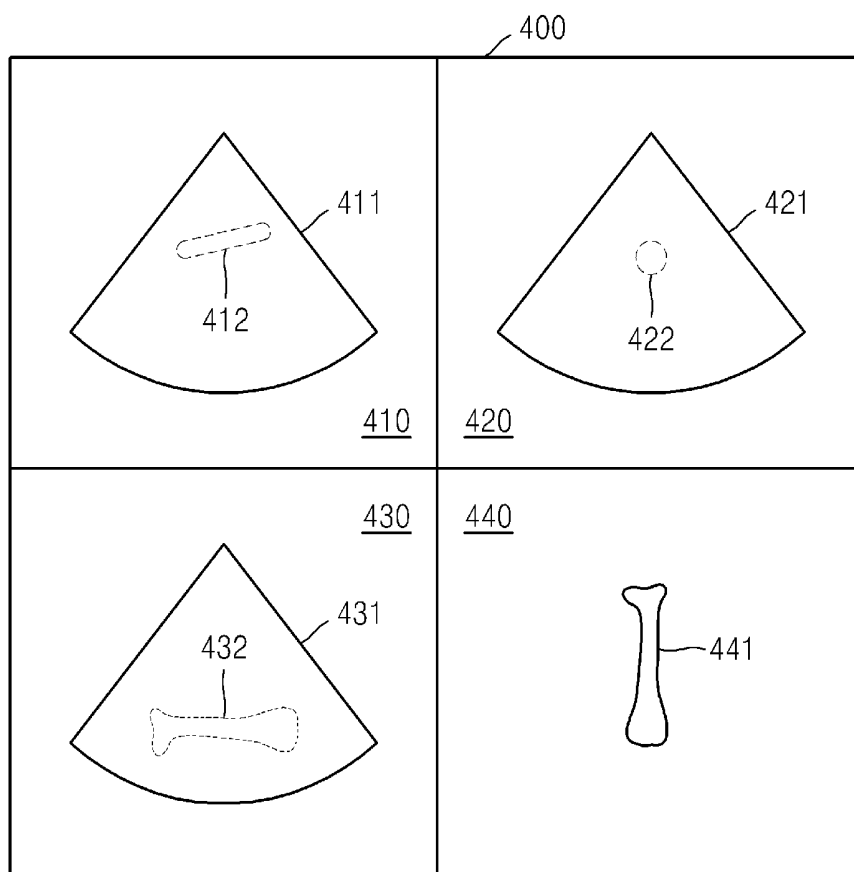
FIG. 1



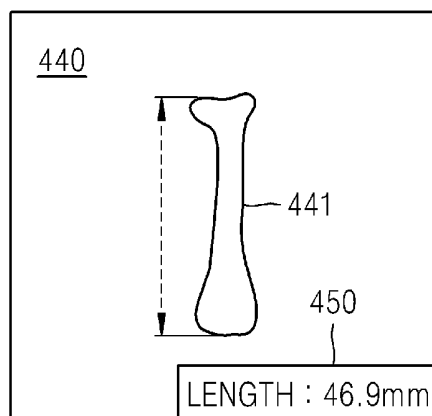
**FIG. 2**

**FIG. 3**

**FIG. 4**



**FIG. 5**



# **ULTRASOUND DIAGNOSIS METHOD AND APPARATUS USING THREE-DIMENSIONAL VOLUME DATA**

## CROSS-REFERENCE TO RELATED PATENT APPLICATION

[0001] This application claims the benefit of Korean Patent Application No. 10-2013-0063101, filed on May 31, 2013, in the Korean Intellectual Property Office, the disclosure of which is incorporated herein in its entirety by reference.

## BACKGROUND OF THE INVENTION

[0002] 1. Field of the Invention

[0003] The present invention relates to an ultrasound diagnosis method and apparatus for diagnosing an object by using volume data displayed by an ultrasound diagnosis apparatus.

[0004] 2. Description of the Related Art

[0005] An ultrasound diagnosis apparatus irradiates an ultrasound signal (generally, a signal having a frequency of 20 KHz or more) onto an internal specific part of an object by using a probe, and obtains an image of the internal specific part of the object by using information of an echo signal reflected from the internal specific part. Especially, the ultrasound diagnosis apparatus is used for medical purposes such as foreign material detection, injury measurement, observation, etc. of the inside of an object. The ultrasound diagnosis apparatus is more stable than X-rays, displays an image in real time, and is stable because an object is not exposed to a radioactivity. Due to such advantages, the ultrasound diagnosis apparatus is widely used along with other image diagnosis apparatuses.

[0006] An image (hereinafter referred to as an ultrasound image) obtained by the ultrasound diagnosis apparatus may be displayed by the ultrasound diagnosis apparatus, or may be stored in a storage medium and displayed by a separate image display device. For example, an ultrasound image may be reduced and displayed on a screen of a mobile terminal, a portable electronic device, a personal digital assistant (PDA), a tablet personal computer (PC), or the like.

[0007] By using the ultrasound diagnosis apparatus, a prenatal ultrasound diagnosis is performed for diagnosing a growth state of a fetus inside a pregnant woman, whether or not a fetus is a deformed fetus, or other symptoms. In the prenatal ultrasound diagnosis, a growth state of a fetus may be measured by measuring various numerical values such as a head circumference (HC), a biparietal diameter (BPD), an abdominal circumference (AC), a long bone, etc.

[0008] A length of a long bone of a fetus indicates a growth state of the fetus, and enables symptoms such as limb reduction defects to be checked. Accordingly, the length of the long bone of the fetus is used as a main indicator among measurement items of the fetus.

## SUMMARY OF THE INVENTION

[0009] The related art measures a long bone of a fetus by using a two-dimensional (2D) ultrasound image that is obtained by scanning an object, in a brightness (B) mode. That is, a user should directly adjust a fan-shaped 2D ultrasound image to measure a long bone.

[0010] However, both end portions of the long bone are concave in their respective middle regions and are convex in both sides, and thus, it is difficult to measure a long bone by using the 2D ultrasound image while scanning in the B mode.

Also, since each of a calf and an antebrachium has two long bones, it is easy for a user of the ultrasound diagnosis apparatus to become confused.

[0011] Due to such problems, a process that measures a long bone by using the 2D ultrasound image has a high error rate and is highly dependent on a user.

[0012] The present invention provides an ultrasound diagnosis method and apparatus using volume data.

[0013] According to an aspect of the present invention, there is provided an ultrasound diagnosis method including: deciding a reference plane for volume data acquired from an object, wherein the reference plane is obtained by cutting the volume data in a predetermined direction; detecting a long bone included in the volume data by using the reference plane; extracting long bone volume data including the long bone from the volume data; and displaying the long bone volume data.

[0014] The detecting of a long bone may include detecting the long bone based on at least one of pixel values and shapes of a plurality of areas included in the reference plane.

[0015] The ultrasound diagnosis method may further include: setting a reference point for the extracted long bone volume data; and rotating the long bone volume data with respect to the reference point such that a length axis of the long bone volume data is toward a predetermined direction.

[0016] The ultrasound diagnosis method may further include measuring a length of the detected long bone and displaying the measured length.

[0017] The reference plane may include at least one of an A plane, a B plane, and a C plane.

[0018] The extracting of long bone volume data may include extracting volume data having a predetermined thickness from a border of the detected long bone.

[0019] The object may include a pregnant woman, and the volume data may include volume data for a fetus inside the pregnant woman.

[0020] The long bone may include at least one of a humerus, a radius, an ulna, a femur, a fibula, and a tibia.

[0021] According to another aspect of the present invention, there is provided an ultrasound diagnosis apparatus including: a volume data acquirer that scans an object to acquire volume data; a reference plane decider that cuts the volume data in a predetermined direction; a long bone detector that detects a long bone included in the volume data by using the reference plane; an image processor that extracts long bone volume data including the long bone from the volume data; and a display that displays the long bone volume data.

[0022] According to another aspect of the present invention, there is provided a computer-readable record medium storing a program for executing the method.

## BRIEF DESCRIPTION OF THE DRAWINGS

[0023] The above and other features and advantages of the present invention will become more apparent by describing in detail exemplary embodiments thereof with reference to the attached drawings in which:

[0024] FIG. 1 is a diagram illustrating a body skeleton in association with an embodiment of the present invention;

[0025] FIG. 2 is a block diagram illustrating a configuration of an ultrasound diagnosis apparatus according to an embodiment of the present invention;

[0026] FIG. 3 is a flowchart illustrating an ultrasound diagnosis method according to an embodiment of the present invention;

[0027] FIG. 4 is a diagram illustrating an example in which an ultrasound image is displayed on a screen of the ultrasound diagnosis apparatus, in association with an embodiment of the present invention; and

[0028] FIG. 5 is a diagram illustrating an example in which a measured length of a long bone is displayed on a screen of the ultrasound diagnosis apparatus, in association with an embodiment of the present invention.

#### DETAILED DESCRIPTION OF THE INVENTION

[0029] Terms used in the present invention have been selected as general terms which are widely used at present, in consideration of the functions of the present invention, but may be altered according to the intent of an operator skilled in the art, conventional practice, or introduction of new technology. Also, there are terms which are arbitrarily selected by the applicant in a specific case, in which case meaning of the terms will be described in detail in a corresponding description portion of the present invention. Therefore, the terms should be defined based on the entire content of this specification instead of a simple name of each of the terms.

[0030] In this disclosure below, when it is described that one comprises (or includes or has) some elements, it should be understood that it may comprise (or include or has) only those elements, or it may comprise (or include or have) other elements as well as those elements if there is no specific limitation. Moreover, each of terms such as "... unit", "... apparatus" and "module" described in specification denotes an element for performing at least one function or operation, and may be implemented in hardware, software or the combination of hardware and software.

[0031] Hereinafter, embodiments of the present invention will be described in detail with reference to the accompanying drawings.

[0032] FIG. 1 is a diagram illustrating a body skeleton. A body skeleton may be largely divided into four kinds of parts such as long bones, short bones, flat bones, and irregular bones.

[0033] Among the body parts, the long bones indicate a growth state of a fetus, and thus are used as a main indicator among measurement items of the fetus. As examples of the long bones, there are a humerus, a radius, an ulna, a femur, a fibula, and a tibia, which are illustrated in FIG. 1.

[0034] In FIG. 1, the long bones constitute arms and legs, and a body part associated with of each of the long bones has a long and cylindrical shape. Also, both end portions of each of the long bones are concave in the middle and are convex on both sides.

[0035] A fetus inside a pregnant woman is not sufficiently long in length of long bones and is not clear in shape of the long bones, and for this reason, it is difficult to measure the long bones. Also, since it is unable to accurately know a pregnant position and posture, the accuracy in the determined length of each long bone depends on the expertise of a user of an ultrasound diagnosis apparatus.

[0036] Hereinafter, in order to solve such problems, an ultrasound diagnosis method and apparatus that measure a long bone by using volume data and a recording medium storing the ultrasound diagnosis method are provided.

[0037] FIG. 2 is a block diagram illustrating a configuration of an ultrasound diagnosis apparatus 100 according to an

embodiment of the present invention. Referring to FIG. 2, the ultrasound diagnosis apparatus 100 according to an embodiment may include a volume data acquirer 110, a reference plane decider 120, a long bone detector 130, an image processor 140, a display 150, and a controller 160. It can be understood by those skilled in the art that the ultrasound diagnosis apparatus 100 may further include another general-purpose element, in addition to the elements of FIG. 1.

[0038] The volume data acquirer 110 acquires volume data by using an ultrasound signal which is transmitted to scan an object. That is, the volume data acquirer 110 generates the volume data by receiving an echo signal generated from the object which is a response to the transmitted ultrasound signal.

[0039] A user of the ultrasound diagnosis apparatus 100 may directly acquire the ultrasound image used to generate the volume data by using a probe (not shown) included in the ultrasound diagnosis apparatus 100. Alternatively, in a picture archiving and communication system (PACS), when a ultrasound data stored in a hospital server is received by the ultrasound diagnosis apparatus 100 in a wired or wireless manner, the volume data acquirer 110 may generate volume data by using the received ultrasound data.

[0040] The volume data acquirer 110 may generate volume data from a 2D ultrasound image which is acquired by scanning an object. Alternatively, the volume data acquirer 110 may use, as volume data, a 3D image which is acquired by using a 3D probe.

[0041] The reference plane decider 120 decides a reference plane for the volume data acquired by the volume data acquirer 110. According to an embodiment, the reference plane decided by the reference plane decider 120 may include at least one of an A plane, a B plane, and a C plane which are obtained by cutting the volume data in a predetermined direction.

[0042] In the embodiment, the A plane may denote a plane which is obtained by cutting the volume data along an axial plane. Also, the B plane may denote a plane which is obtained by cutting the volume data along a sagittal plane, and the C plane may denote a plane which is obtained by cutting the volume data along a coronal plane.

[0043] Alternatively, an external input receiver (not shown) included in the ultrasound diagnosis apparatus 100 may receive an external input signal, which is used to select a direction for cutting the volume data, from a user. Therefore, the reference plane decider 120 may decide a reference plane for segmenting the volume data based on a direction which is decided by the received external input signal. In other words, the user of the ultrasound diagnosis apparatus 100 may directly decide the reference plane for cutting the volume data.

[0044] The long bone detector 130 detects a long bone from the volume data by using the reference plane. The long bone detector 130 may detect the long bone based on at least one of pixel values and shapes of a plurality of areas included in the reference plane. That is, the long bone detector 130 may detect, as an area including information on a long bone, an area having a brightness equal to or higher than a threshold value among the plurality of areas. Also, the long bone detector 130 may detect, as an area including information on a long bone, a cylinder-shaped area among the plurality of areas.

[0045] For example, when the A plane that is the reference plane includes a plurality of areas having different brightness values and shapes, the long bone detector 130 may first detect

an area having a brightness equal to or higher than the threshold value. Then, the long bone detector **130** may detect an area having a cylinder-shaped area, as the area including information on the long bone. Alternatively, the long bone detector **130** may change the order of shapes and brightness values of a plurality of areas, and detect the long bone. The long bone detector **130** may detect the long bone from the volume data by using various factors in addition to the brightness values and shapes of the plurality of areas.

[0046] The image processor **140** processes the volume data in various schemes based on the detected long bone. For example, the image processor **140** may extract long bone volume data from the volume data, and set a reference point for the extracted volume data. Also, the image processor **140** may rotate the volume data, or measure a length of the extracted volume data.

[0047] The image processor **140** may include a plurality of modules that process the volume data in various schemes described above. That is, the image processor **140** may include the plurality of modules such as a volume data extraction module, a reference point setting module, a volume data rotation module, and a length measurement module.

[0048] The volume data extraction module (not shown) included in the image processor **140** extracts the long bone volume data including the detected long bone. For example, the volume data extraction module may extract long bone volume data having a predetermined thickness from a border of the detected long bone, or extract long bone volume data that includes a long bone and has a rectangular parallelepiped shape.

[0049] The reference point setting module (not shown) included in the image processor **140** may set a reference point for the extracted long bone volume data. That is, the reference point setting module may set a central point of the long bone volume data as the reference point, or set a point, corresponding to a position decided by an external input signal, as the reference point.

[0050] The volume data rotation module (not shown) included in the image processor **140** may rotate the volume data with respect to the reference point set by the reference point setting module. In detail, the volume data rotation module may rotate the volume data in order for a length axis of the long bone volume data to be toward a predetermined direction. Details of the embodiment will be described in detail with reference to FIG. 3.

[0051] Moreover, the length measurement module (not shown) included in the image processor **140** measures a length of the detected long bone. That is, the ultrasound diagnosis apparatus **100** may display the extracted long bone volume data, and moreover measure the length of the long bone and display the measured value to the user. Therefore, the user may immediately obtain a desired result even without additional work.

[0052] The display **150** displays at least one of the ultrasound image and the volume data. That is, the display **150** may display various ultrasound images such as the volume data acquired from the object, the reference plane which is obtained by cutting the volume data, and the extracted long bone volume data. According to an embodiment, the display **150** may display a length of the measured long bone.

[0053] The display **150** may include at least one of a liquid crystal display, a thin film transistor-liquid crystal display, an organic light emitting diode display, a flexible display, and a

3D display. Also, the ultrasound diagnosis apparatus **100** may include two or more displays **150** depending on an implementation type.

[0054] According to an embodiment, the display **150** may include the external input receiver (not shown) and a touch screen having a layer structure. That is, the display **150** may be used as both an output device and an input device, in which case the display **150** may receive a touch input using a stylus pen or a part of a human body.

[0055] Moreover, as described above, when the display **150** has the layer structure and includes the touch screen, the display **150** may detect a touch input position, a touch area, and a touch pressure. Also, the touch screen may detect a proximity touch as well as a real touch.

[0056] The controller **160** controls an overall operation of the elements included in the ultrasound diagnosis apparatus **100**. That is, the controller **160** controls the reference plane decider **120** such that the volume data acquirer **110** decides the reference plane for the acquired volume data. Also, the controller **160** may control the long bone detector **130** so as to detect the long bone from the reference plane decided by the reference plane decider **120**, or control the display **150** so as to display an ultrasound image.

[0057] The ultrasound diagnosis apparatus **100** may further include a storage device (not shown) in addition to the illustrated elements. The storage device may store an ultrasound image which is acquired by the ultrasound diagnosis apparatus **100** scanning an object. Alternatively, the storage device may store an ultrasound image which is received from the external server in the PACS. The storage device may store an image of the detected long bone in addition to the above-described details, or store the volume data processed by the image processor **140**.

[0058] FIG. 3 is a flowchart illustrating an ultrasound diagnosis method according to an embodiment of the present invention. Referring to FIG. 3, the ultrasound diagnosis method includes a plurality of operations which are sequentially performed by the volume data acquirer **110**, reference plane decider **120**, long bone detector **130**, image processor **140**, display **150**, and controller **160** of the ultrasound diagnosis apparatus **100**. Therefore, despite details which are not described below, the above-described details of the elements of FIG. 2 may be applied to a description of the flowchart of FIG. 3.

[0059] In operation **310**, the ultrasound diagnosis apparatus **100** acquires volume data. The ultrasound diagnosis apparatus **100** may generate the volume data by using an ultrasound data which is acquired by scanning the body of a pregnant woman, or receive an ultrasound data (which is previously obtained and stored in the external server) in a wired or wireless manner to generate the volume data. Also, the ultrasound diagnosis apparatus **100** may measure the body of the pregnant woman by using the 3D probe to directly acquire the volume data.

[0060] In operation **320**, the ultrasound diagnosis apparatus **100** decides a reference plane for the volume data. That is, the ultrasound diagnosis apparatus **100** may decide on at least one reference plane by cutting the volume data in a predetermined direction.

[0061] For example, when the ultrasound diagnosis apparatus **100** generates volume data, the ultrasound diagnosis apparatus **100** may decide a plane, selected from among a plurality of ultrasound images, as a reference plane for each of an A plane, a B plane, and a C plane. Alternatively, the



ultrasound diagnosis apparatus **100** may decide the reference plane based on an external input signal received from a user.

**[0062]** In operation **330**, the ultrasound diagnosis apparatus **100** detects a long bone by using the reference plane. That is, the ultrasound diagnosis apparatus **100** may detect an area, including information on the long bone, from among a plurality of areas included in the reference plane.

**[0063]** The ultrasound diagnosis apparatus **100** may detect the long bone based on at least one of brightness values and shapes of a plurality of areas. As described above, a brightness value of an area corresponding to a bone is shown higher than that of an area corresponding to a tissue, and thus, the ultrasound diagnosis apparatus **100** may detect, as area including information on a long bone, an area having a brightness value equal to or higher than a threshold value.

**[0064]** Alternatively, the ultrasound diagnosis apparatus **100** may detect, as area including information on a long bone, an area having a cylindrical shape and corresponding to the long bone from among a plurality of areas having a brightness value equal to or higher than the threshold value. The ultrasound diagnosis apparatus **100** may detect the long bone by using various references and algorithms in addition to a brightness value and a shape.

**[0065]** In operation **340**, the ultrasound diagnosis apparatus **100** extracts long bone volume data from the volume data which has been acquired in operation **310**. That is, the ultrasound diagnosis apparatus **100** extracts the long bone volume data by using the information on the long bone detected from the reference plane.

**[0066]** In operation **340**, the ultrasound diagnosis apparatus **100** may extract, as the long bone volume data, volume data having a certain size and including the long bone which has been detected in operation **330**. For example, the ultrasound diagnosis apparatus **100** may detect, as the long bone volume data, volume data having a predetermined uniform thickness from a border of the detected long bone. Alternatively, the ultrasound diagnosis apparatus **100** may decide volume data having a rectangular parallelepiped shape and including the detected long bone, and detect, as the long bone volume data, the decided volume data having a rectangular parallelepiped shape. In other words, in operation **340**, the ultrasound diagnosis apparatus **100** may detect, as the long bone volume data, volume data having various shapes and including the detected long bone.

**[0067]** In operation **350**, the ultrasound diagnosis apparatus **100** processes the volume data in various schemes. As a first example, the ultrasound diagnosis apparatus **100** may decide on a reference point for the long bone volume data. That is, the ultrasound diagnosis apparatus **100** may decide a point, which is a spatial center, as a reference point in the extracted long bone volume data.

**[0068]** As a second example, in operation **350**, the ultrasound diagnosis apparatus **100** may rotate the volume data with respect to the reference point. That is, before displaying the volume data to the user, the ultrasound diagnosis apparatus **100** may rotate entire volume data in order for the long bone volume data to be toward a predetermined direction.

**[0069]** In deciding a degree by which the volume data is rotated, the ultrasound diagnosis apparatus **100** may rotate the volume data in order for a length axis of the detected long bone to be toward the predetermine direction. That is, the ultrasound diagnosis apparatus **100** may rotate the volume

data so as to be aligned in a vertical direction or a lateral direction on a screen of the ultrasound diagnosis apparatus **100**.

**[0070]** As a third example, in operation **360**, the ultrasound diagnosis apparatus **100** may measure a length of the detected long bone. The ultrasound diagnosis apparatus **100** may display the detected long bone volume data to the user, and simultaneously measure the length of the long bone and display the measured length to the user. In operation **360**, the ultrasound diagnosis apparatus **100** processes the volume data through at least one of the above-described examples.

**[0071]** In operation **370**, the ultrasound diagnosis apparatus **100** displays the long bone volume data. That is, the ultrasound diagnosis apparatus **100** displays the processed volume data and/or long bone volume data. According to an embodiment, when the ultrasound diagnosis apparatus **100** has measured the length of the detected long bone, the ultrasound diagnosis apparatus **100** may display the measured length along with the volume data.

**[0072]** FIG. **4** is a diagram illustrating an example in which an ultrasound image is displayed on a screen **400** of the ultrasound diagnosis apparatus **100**, in association with an embodiment of the present invention.

**[0073]** The ultrasound diagnosis apparatus **100** divides the screen **400** into a plurality of areas **410**, **420**, **430** and **440**, and displays a plurality of reference planes **411**, **421** and **431** for segmenting acquired volume data and in the plurality of areas **410**, **420** and **430**, respectively. That is, the ultrasound diagnosis apparatus **100** may display a first reference plane (the A plane **411**) in the first area **410**, display a second reference plane (the B plane **421**) in the second area **420**, and display a third reference plane (the C plane) in the third area **430**.

**[0074]** Subsequently, the ultrasound diagnosis apparatus **100** detects long bones **412**, **422** and **432** from the respective reference planes **411**, **421** and **431**. A long bone has a cylindrical shape, and is shown in different shapes and in the reference planes **411**, **421** and **431**. As illustrated in FIG. **4**, the long bone **412** may be shown as having a cylindrical shape in the A reference plane **411**, the long bone **422** may be shown as having a circular shape in the B reference plane **421**, and the long bone **432** may be shown as having a bony shape in the C reference plane **431**.

**[0075]** Therefore, the ultrasound diagnosis apparatus **100** may first detect an area, including information on a long bone, from one of the reference planes **411**, **421** and **431** based on a brightness value and a shape. Subsequently, the ultrasound diagnosis apparatus **100** may compare a brightness value and shape of an area (which is detected from among different reference planes) and a brightness value and shape of a corresponding area to check for the presence of a long bone.

**[0076]** For example, the ultrasound diagnosis apparatus **100** may decide, as an area including information on a long bone, the area **412** having a brightness value equal to or higher than the threshold value and a cylindrical shape from among a plurality of areas included in the A reference plane **411**. Subsequently, the ultrasound diagnosis apparatus **100** may detect a brightness value and shape of the area **422** corresponding to the area **412** among a plurality of areas included in the B reference plane **421**, and determine whether the detected brightness value is equal to or higher than the threshold value. Likewise, the ultrasound diagnosis apparatus **100** may check whether the detected area represents a long bone by using a shape and brightness value of the area **432** corresponding to the area **412** among a plurality of areas included

in the C reference plane 431. Through such operations, the ultrasound diagnosis apparatus 100 can increase a reliability of information on the detected long bone.

[0077] Subsequently, the ultrasound diagnosis apparatus 100 extracts long bone volume data 441 from acquired volume data based on the detected long bone. An operation of extracting the long bone volume data 441 is as described above with reference to FIGS. 2 and 3. In FIG. 4, an embodiment of the long bone volume data 441 having a predetermined uniform thickness from a border of the detected long bone is illustrated.

[0078] The ultrasound diagnosis apparatus 100 may extract long bone volume data having a rectangular parallelepiped shape and including the detected long bone, or extract long bone volume data having various shapes.

[0079] Various processing operations being performed on volume data before the ultrasound diagnosis apparatus 100 displays the long bone volume data 441 is as described above. That is, the ultrasound diagnosis apparatus 100 may decide a spatial center point of the detected long bone as a reference point, and rotate the volume data with respect to the reference point. In FIG. 4, an embodiment in which a length axis of the long bone volume data 441 is aligned in a vertical direction through the operation is illustrated.

[0080] Alternatively, the ultrasound diagnosis apparatus 100 may project the long bone volume data 441 on a predetermined plane, or perform a 3D rendering operation on the volume data, thus providing a high-quality ultrasound image to a user.

[0081] Subsequently, the ultrasound diagnosis apparatus 100 may display the extracted and processed long bone volume data 441 in the fourth area 440 of the screen 400.

[0082] According to the embodiment described above with reference to FIG. 4, the user may simultaneously observe the plurality of reference planes 411, 421 and 431, which are obtained by cutting the volume data in various directions, and the long bone volume data 441.

[0083] According to the embodiment, a user can accurately determine a position of the long bone volume data 441 in entire volume data, thus efficiently diagnosing an object. Also, the ultrasound diagnosis apparatus 100 automatically detects and displays a long bone from volume data without requiring a user to repeat an operation of directly scanning an object, for detecting the long bone. Accordingly, a user can conveniently and accurately diagnose an object, and thus can solve a problem in which an error of a diagnosis result occurs due to a dependency on the expertise of a user.

[0084] FIG. 5 is a diagram illustrating an example in which a measured length of a long bone is displayed on the screen 400 of the ultrasound diagnosis apparatus 100, in association with an embodiment of the present invention.

[0085] In FIG. 5, the ultrasound diagnosis apparatus 100 detects a long bone, and before displaying the long bone volume data 441 in the fourth area 440, the ultrasound diagnosis apparatus 100 measures a length of the long bone. Subsequently, the ultrasound diagnosis apparatus 100 may display the measured length of the long bone in a predetermined area 450 of the screen 400.

[0086] According to the embodiment of FIG. 5, even without directly measuring a length of a long bone by using a gradation, the ultrasound diagnosis apparatus 100 can accurately measure a length of a detected long bone and provide the measured length to a user. Accordingly, the ultrasound

diagnosis apparatus 100 can accurately measure a change in length of a long bone, according to skills of a user.

[0087] The embodiments of the present invention can be written as computer programs and can be implemented in general-use digital computers that execute the programs using a computer readable recording medium. Also, a structure of data used in the aforementioned embodiments may be recorded in computer-readable recording media through various members. Program storage devices usable for describing a storage device including executable computer codes for performing various methods of the present invention should not be understood as including transitory targets like carrier waves or signals. Examples of the computer readable recording medium include magnetic storage media (e.g., ROM, floppy disks, hard disks, etc.) and optical recording media (e.g., CD-ROMs, or DVDs).

[0088] According to the above-described method and apparatus, a long bone of a fetus is measured from volume data, and the measured result is displayed to a user, thus enabling the user to simply and accurately diagnose the long bone of the fetus.

[0089] Moreover, a 3D-rendered ultrasound image is provided to the user, and thus, the user can diagnose an object by using a high-quality image of the long bone.

[0090] While the present invention has been particularly shown and described with reference to exemplary embodiments thereof, it will be understood by those of ordinary skill in the art that various changes in form and details may be made therein without departing from the spirit and scope of the present invention as defined by the following claims.

What is claimed is:

1. An ultrasound diagnosis method comprising:
  - deciding a reference plane for volume data acquired from an object, wherein the reference plane cuts the volume data in a predetermined direction;
  - detecting a long bone included in the volume data by using the reference plane;
  - extracting long bone volume data including the detected long bone from the volume data; and
  - displaying the extracted long bone volume data.
2. The ultrasound diagnosis method of claim 1, wherein the detecting of the long bone includes detecting the long bone on a basis of at least one of pixel values and shapes of a plurality of areas included in the reference plane.
3. The ultrasound diagnosis method of claim 1, further comprising:
  - setting a reference point for the extracted long bone volume data; and
  - rotating the extracted long bone volume data with respect to the reference point such that a length axis of the long bone volume data is toward a predetermined direction.
4. The ultrasound diagnosis method of claim 1, further comprising measuring a length of the detected long bone and displaying the measured length.
5. The ultrasound diagnosis method of claim 1, wherein the reference plane includes at least one of an A plane, a B plane, and a C plane.
6. The ultrasound diagnosis method of claim 1, wherein the extracting of long bone volume data includes extracting volume data having a predetermined thickness from a border of the detected long bone.

7. The ultrasound diagnosis method of claim 1, wherein, the object includes a body of a pregnant woman, and the volume data includes volume data of a fetus inside the pregnant woman.
8. The ultrasound diagnosis method of claim 1, wherein the long bone includes at least one of a humerus, a radius, an ulna, a femur, a fibula, and a tibia.
9. An ultrasound diagnosis apparatus comprising:  
a volume data acquirer that scans an object to acquire volume data;  
a reference plane decider that decides a reference plane for volume data acquired from an object, wherein the reference plane is obtained by cutting the volume data in a predetermined direction;  
a long bone detector that detects a long bone included in the volume data by using the reference plane;  
an image processor that extracts long bone volume data including the detected long bone from the volume data; and  
a display that displays the extracted long bone volume data.
10. The ultrasound diagnosis apparatus of claim 9, wherein the reference plane decider detects the long bone on a basis of at least one of pixel values and shapes of a plurality of areas included in the reference plane.
11. The ultrasound diagnosis apparatus of claim 9, wherein the image processor sets a reference point for the extracted long bone volume data, and rotates the extracted long bone volume data with respect to the reference point such that a length axis of the long bone volume data is toward a predetermined direction.
12. The ultrasound diagnosis apparatus of claim 9, wherein,  
the image processor measures a length of the detected long bone, and  
the display displays the measured length.
13. The ultrasound diagnosis apparatus of claim 9, wherein the reference plane includes at least one of an A plane, a B plane, and a C plane.
14. The ultrasound diagnosis apparatus of claim 9, wherein the image processor extracts volume data having a predetermined thickness from a border of the detected long bone.
15. The ultrasound diagnosis apparatus of claim 9, wherein,  
the object includes a body of a pregnant woman, and  
the volume data includes volume data of a fetus inside the pregnant woman.
16. The ultrasound diagnosis apparatus of claim 9, wherein the long bone includes at least one of a humerus, a radius, an ulna, a femur, a fibula, and a tibia.
17. A non-transitory computer-readable record medium storing a program, which, when executed by a computer, performs the method of claim 1.

\* \* \* \* \*

专利名称(译)	使用三维体数据的超声诊断方法和装置		
公开(公告)号	<a href="#">US20140358001A1</a>	公开(公告)日	2014-12-04
申请号	US14/089468	申请日	2013-11-25
[标]申请(专利权)人(译)	三星麦迪森株式会社		
申请(专利权)人(译)	三星MEDISON CO. , LTD.		
当前申请(专利权)人(译)	三星MEDISON CO. , LTD.		
[标]发明人	KIM SUNG YOON		
发明人	KIM, SUNG-YOON		
IPC分类号	A61B8/08 A61B8/00 A61B8/14		
CPC分类号	A61B8/0866 A61B8/14 A61B8/5223 A61B8/0875 A61B8/461		
优先权	1020130063101 2013-05-31 KR		
外部链接	<a href="#">Espacenet</a> <a href="#">USPTO</a>		

#### 摘要(译)

公开了一种超声诊断方法和装置。超声诊断方法和装置从对象获取体数据，在预定方向上切割体数据以决定参考平面，通过使用参考平面检测包括在体数据中的长骨，并提取包括长骨量数据的长骨数据从体数据中检测到的长骨，以显示长骨量数据，从而诊断对象。

