



US008241202B2

(12) **United States Patent**
Balbierz et al.

(10) **Patent No.:** **US 8,241,202 B2**
(45) **Date of Patent:** ***Aug. 14, 2012**

(54) **RESTRICTIVE AND/OR OBSTRUCTIVE
IMPLANT FOR INDUCING WEIGHT LOSS**

(75) Inventors: **Daniel J. Balbierz**, Redwood City, CA (US); **William L. Athas**, Chapel Hill, NC (US); **John Lunsford**, San Carlos, CA (US); **William S. Eubanks, Jr.**, Durham, NC (US); **Kevin van Bladel**, Livermore, CA (US)

(73) Assignee: **Barosense, Inc.**, Redwood City, CA (US)

(*) Notice: Subject to any disclaimer, the term of this patent is extended or adjusted under 35 U.S.C. 154(b) by 0 days.

This patent is subject to a terminal disclaimer.

(21) Appl. No.: **12/765,177**

(22) Filed: **Apr. 22, 2010**

(65) **Prior Publication Data**

US 2010/0204719 A1 Aug. 12, 2010

Related U.S. Application Data

(63) Continuation of application No. 11/114,400, filed on Apr. 26, 2005, now Pat. No. 7,717,843.

(60) Provisional application No. 60/565,378, filed on Apr. 26, 2004.

(51) **Int. Cl.**
A61F 2/00 (2006.01)

(52) **U.S. Cl.** **600/37**

(58) **Field of Classification Search** 600/29-31, 600/37; 606/151

See application file for complete search history.

(56) **References Cited**

U.S. PATENT DOCUMENTS

1,408,865 A	3/1922	Codwell
3,663,965 A	5/1972	Lee et al.
4,134,405 A	1/1979	Smit
4,207,890 A	6/1980	Mamajek et al.
4,246,893 A	1/1981	Berson
4,315,509 A	2/1982	Smit
4,331,277 A	5/1982	Green
4,403,604 A	9/1983	Wilkinson et al.
4,416,267 A	11/1983	Garren et al.
4,417,360 A	11/1983	Moasser
4,441,215 A	4/1984	Kaster
4,467,804 A	8/1984	Hardy et al.
4,485,805 A	12/1984	Foster, Jr.

(Continued)

FOREIGN PATENT DOCUMENTS

CH 680263 A5 7/1992

(Continued)

OTHER PUBLICATIONS

International Search report and Written Opinion for PCT application PCT/US2008/088581, Feb. 26, 2009, 9 pages (2009).

(Continued)

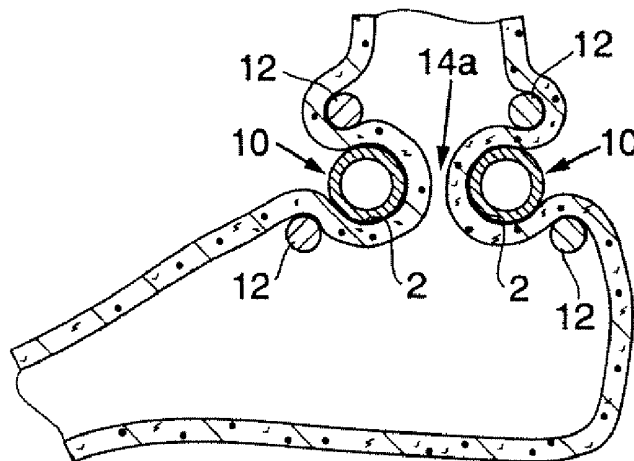
Primary Examiner — Christine Hopkins

(74) *Attorney, Agent, or Firm* — King & Spalding LLP; Peter J. Dehlinger; Kathleen A. Frost

(57) **ABSTRACT**

Described herein is a system for inducing weight loss in a patient, which comprises an extragastric space occupier positionable in contact with an exterior surface of a stomach wall to form an inward protrusion of wall into the stomach, and a retention device positionable in contact with the wall to retain the inward protrusion and to thereby capture the extragastric space occupier within the protrusion.

11 Claims, 7 Drawing Sheets



U.S. PATENT DOCUMENTS					
4,501,264 A	2/1985	Rockey	6,098,629 A	8/2000	Johnson et al.
4,607,618 A	8/1986	Angelchik	6,102,922 A	8/2000	Jakobsson et al.
4,641,653 A	2/1987	Rockey	6,113,609 A	9/2000	Adams
4,648,383 A	3/1987	Angelchik	6,120,534 A	9/2000	Ruiz
4,694,827 A	9/1987	Weiner et al.	6,146,416 A	11/2000	Andersen et al.
4,723,547 A	2/1988	Kullas et al.	6,159,146 A	12/2000	El Gazayerli
4,747,849 A	5/1988	Galtier	6,159,238 A	12/2000	Killion et al.
4,846,836 A	7/1989	Reich	6,197,022 B1	3/2001	Baker
4,848,367 A	7/1989	Avant et al.	6,206,930 B1	3/2001	Burg et al.
4,899,747 A	2/1990	Garren et al.	6,245,088 B1	6/2001	Lawery
4,925,446 A	5/1990	Garay et al.	6,251,132 B1	6/2001	Ravenscroft et al.
4,946,440 A	8/1990	Hall	6,254,642 B1	7/2001	Taylor
4,969,896 A	11/1990	Shors	6,258,120 B1	7/2001	McKenzie et al.
4,997,084 A	3/1991	Opie et al.	6,264,700 B1	7/2001	Kilcoyne et al.
5,006,106 A	4/1991	Angelchik	6,287,334 B1	9/2001	Moll et al.
5,037,021 A	8/1991	Mills et al.	6,302,917 B1	10/2001	Dua et al.
5,061,275 A	10/1991	Wallsten et al.	6,358,197 B1	3/2002	Silverman et al.
5,084,061 A	1/1992	Gau et al.	6,416,522 B1	7/2002	Strecker
5,088,979 A	2/1992	Filipi et al.	6,425,916 B1	7/2002	Garrison et al.
5,163,952 A	11/1992	Froix	6,454,785 B2	9/2002	De Hoyos
5,211,658 A	5/1993	Clouse	6,460,543 B1	10/2002	Forsell
5,234,454 A	8/1993	Bangs	6,461,366 B1	10/2002	Seguin
5,246,456 A	9/1993	Wilkinson	6,494,888 B1	12/2002	Laufer et al.
5,259,399 A	11/1993	Brown	6,494,895 B2	12/2002	Addis
5,263,629 A	11/1993	Trumbull et al.	6,503,264 B1	1/2003	Birk
5,290,217 A	3/1994	Campos	6,506,196 B1	1/2003	Laufer
5,306,300 A	4/1994	Berry	6,527,784 B2	3/2003	Adams et al.
5,314,473 A	5/1994	Godin	6,540,789 B1	4/2003	Silverman et al.
5,327,914 A	7/1994	Shlain	6,544,291 B2	4/2003	Taylor
5,345,949 A	9/1994	Shlain	6,547,801 B1	4/2003	Dargent et al.
5,355,897 A	10/1994	Pietrafitta et al.	6,558,400 B2	5/2003	Deem et al.
5,401,241 A	3/1995	Delany	6,558,429 B2	5/2003	Taylor
5,403,326 A	4/1995	Harrison et al.	6,572,627 B2	6/2003	Gabbay
5,405,377 A	4/1995	Cragg	6,572,629 B2	6/2003	Kaloo et al.
5,431,673 A	7/1995	Summers et al.	6,575,896 B2	6/2003	Silverman et al.
5,486,187 A	1/1996	Schenck	6,592,596 B1	7/2003	Geitz
5,514,176 A	5/1996	Bosley, Jr.	6,596,023 B1	7/2003	Nunez et al.
5,535,935 A	7/1996	Vidal et al.	6,607,555 B2	8/2003	Patterson et al.
5,542,949 A	8/1996	Yoon	6,627,206 B2	9/2003	Lloyd
5,562,239 A	10/1996	Boiarski et al.	6,632,227 B2	10/2003	Adams
5,571,116 A	11/1996	Bolanos et al.	6,663,639 B1	12/2003	Laufer et al.
5,577,654 A	11/1996	Bishop	6,675,809 B2	1/2004	Stack et al.
5,593,434 A	1/1997	Williams	6,676,674 B1 *	1/2004	Dudai 606/151
5,597,107 A	1/1997	Knodel et al.	6,740,098 B2	5/2004	Abrams et al.
5,609,624 A	3/1997	Kalis	6,740,121 B2	5/2004	Geitz
5,628,786 A	5/1997	Banas et al.	6,746,460 B2	6/2004	Gannoe et al.
5,630,539 A	5/1997	Plyley et al.	6,755,869 B2	6/2004	Geitz
5,647,526 A	7/1997	Green et al.	6,764,518 B2	7/2004	Godin
5,653,743 A	8/1997	Martin	6,773,440 B2	8/2004	Gannoe et al.
5,662,713 A	9/1997	Andersen et al.	6,773,441 B1	8/2004	Laufer et al.
5,673,841 A	10/1997	Schulze et al.	6,790,214 B2	9/2004	Kraemer et al.
5,674,241 A	10/1997	Bley et al.	6,790,237 B2	9/2004	Stinson
5,706,998 A	1/1998	Plyley et al.	6,821,285 B2	11/2004	Laufer et al.
5,709,657 A	1/1998	Zimmon	6,835,200 B2	12/2004	Laufer et al.
5,720,776 A	2/1998	Chuter et al.	6,845,776 B2	1/2005	Stack et al.
5,749,918 A	5/1998	Hogendijk et al.	6,916,332 B2	7/2005	Adams
5,762,255 A	6/1998	Chrisman et al.	6,932,838 B2	8/2005	Schwartz et al.
5,771,903 A	6/1998	Jakobsson	6,960,233 B1	11/2005	Berg et al.
5,785,684 A	7/1998	Zimmon	6,966,875 B1	11/2005	Longobardi
5,792,119 A	8/1998	Marx	6,981,978 B2	1/2006	Gannoe
5,820,584 A	10/1998	Crabb	6,981,980 B2	1/2006	Sampson et al.
5,839,639 A	11/1998	Sauer et al.	6,994,715 B2	2/2006	Gannoe et al.
5,848,964 A	12/1998	Samuels	7,011,094 B2	3/2006	Rapackie et al.
5,855,311 A	1/1999	Hamblin et al.	7,020,531 B1	3/2006	Colliou et al.
5,855,601 A	1/1999	Bessler et al.	7,025,791 B2	4/2006	Levine et al.
5,856,445 A	1/1999	Korsmeyer	7,033,373 B2	4/2006	de la Torre et al.
5,861,036 A	1/1999	Godin	7,033,384 B2	4/2006	Gannoe et al.
5,868,141 A	2/1999	Ellias	7,037,344 B2	5/2006	Kagan et al.
5,887,594 A	3/1999	LoCicero, III	7,056,305 B2	6/2006	Alvarez
5,897,562 A	4/1999	Bolanos et al.	7,066,945 B2	6/2006	Hashiba et al.
5,910,144 A	6/1999	Hayashi	7,083,629 B2	8/2006	Weller et al.
5,922,019 A	7/1999	Hankh et al.	7,090,699 B2	8/2006	Geitz
5,947,983 A	9/1999	Solar et al.	7,097,650 B2	8/2006	Weller et al.
5,993,473 A	11/1999	Chan et al.	7,097,665 B2	8/2006	Stack et al.
5,993,483 A	11/1999	Gianotti	7,111,627 B2	9/2006	Stack et al.
6,016,848 A	1/2000	Egrees	7,112,186 B2	9/2006	Shah
6,051,015 A	4/2000	Maahs	7,120,498 B2	10/2006	Imran et al.
6,086,600 A	7/2000	Kortenbach	7,121,283 B2	10/2006	Stack et al.
			7,146,984 B2	12/2006	Stack et al.

7,147,140	B2	12/2006	Wukusick et al.	2004/0117031	A1	6/2004	Stack et al.
7,152,607	B2	12/2006	Stack et al.	2004/0138761	A1	7/2004	Stack et al.
7,160,312	B2	1/2007	Saadat	2004/0143342	A1	7/2004	Stack et al.
7,172,613	B2	2/2007	Wazne	2004/0148034	A1	7/2004	Kagan et al.
7,175,638	B2	2/2007	Gannoe et al.	2004/0153167	A1	8/2004	Stack et al.
7,175,660	B2	2/2007	Cartledge et al.	2004/0158331	A1	8/2004	Stack et al.
7,211,114	B2	5/2007	Bessler et	2004/0162568	A1	8/2004	Saadat et al.
7,214,233	B2	5/2007	Gannoe et al.	2004/0172141	A1	9/2004	Stack et al.
7,220,237	B2	5/2007	Gannoe et al.	2004/0172142	A1	9/2004	Stack et al.
7,220,284	B2	5/2007	Kagan et al.	2004/0186502	A1	9/2004	Sampson et al.
7,223,277	B2	5/2007	DeLegge	2004/0210243	A1	10/2004	Gannoe et al.
7,229,428	B2	6/2007	Gannoe et al.	2004/0215216	A1	10/2004	Gannoe et al.
7,229,453	B2	6/2007	Anderson et al.	2004/0220682	A1	11/2004	Levine et al.
7,255,675	B2	8/2007	Gertner et al.	2004/0225183	A1	11/2004	Michlitsch et al.
7,261,722	B2	8/2007	McGuckin, Jr. et al.	2004/0225305	A1	11/2004	Ewers et al.
7,288,101	B2	10/2007	Deem et al.	2004/0236419	A1	11/2004	Milo
7,306,614	B2	12/2007	Weller et al.	2004/0243152	A1	12/2004	Taylor et al.
7,315,509	B2	1/2008	Jeong et al.	2004/0243223	A1	12/2004	Kraemer et al.
7,316,716	B2	1/2008	Egan	2004/0267378	A1	12/2004	Gazi et al.
7,320,696	B2	1/2008	Gazi et al.	2005/0004430	A1	1/2005	Lee et al.
7,326,207	B2	2/2008	Edwards	2005/0004681	A1	1/2005	Stack et al.
7,335,210	B2	2/2008	Smit	2005/0033326	A1	2/2005	Briganti et al.
7,347,863	B2	3/2008	Rothe et al.	2005/0033345	A1	2/2005	DeLegge
7,347,875	B2	3/2008	Levine et al.	2005/0049718	A1	3/2005	Dann et al.
7,354,454	B2	4/2008	Stack et al.	2005/0075654	A1	4/2005	Kelleher
7,399,304	B2	7/2008	Gambale et al.	2005/0080444	A1	4/2005	Kraemer et al.
7,431,725	B2	10/2008	Stack et al.	2005/0085787	A1	4/2005	Laufer
7,444,183	B2*	10/2008	Knudson et al. 607/40	2005/0096673	A1	5/2005	Stack et al.
7,461,767	B2	12/2008	Viola et al.	2005/0096750	A1	5/2005	Kagan et al.
7,470,251	B2	12/2008	Shah	2005/0149114	A1	7/2005	Cartledge et al.
7,485,142	B2	2/2009	Milo	2005/0159769	A1	7/2005	Alverdy
7,503,922	B2	3/2009	Deem et al.	2005/0177181	A1	8/2005	Kagan et al.
7,520,884	B2	4/2009	Swanstrom et al.	2005/0183732	A1	8/2005	Edwards
7,575,586	B2	8/2009	Berg et al.	2005/0192599	A1	9/2005	Demarais
7,628,821	B2	12/2009	Stack et al.	2005/0192615	A1	9/2005	Torre et al.
7,662,161	B2	2/2010	Briganti et al.	2005/0216040	A1	9/2005	Gertner et al.
7,670,279	B2	3/2010	Gertner	2005/0216042	A1	9/2005	Gertner
7,674,721	B2	3/2010	Usami	2005/0240279	A1	10/2005	Kagan et al.
7,717,843	B2*	5/2010	Balbierz et al. 600/37	2005/0247320	A1	11/2005	Stack et al.
2001/0011543	A1	8/2001	Forsell	2005/0250980	A1	11/2005	Swanstrom et al.
2001/0020189	A1	9/2001	Taylor	2005/0251158	A1	11/2005	Saadat et al.
2001/0020190	A1	9/2001	Taylor	2005/0251162	A1	11/2005	Rothe et al.
2001/0021796	A1	9/2001	Silverman et al.	2005/0256533	A1	11/2005	Roth et al.
2001/0044595	A1	11/2001	Reydel et al.	2005/0256587	A1	11/2005	Egan
2002/0022851	A1	2/2002	Kaloo et al.	2005/0261712	A1	11/2005	Balbierz et al.
2002/0055757	A1	5/2002	Torre et al.	2005/0267405	A1	12/2005	Shah
2002/0072761	A1	6/2002	Abrams et al.	2005/0267499	A1	12/2005	Stack et al.
2002/0082621	A1	6/2002	Schurr et al.	2005/0267595	A1	12/2005	Chen et al.
2002/0099439	A1	7/2002	Schwartz et al.	2005/0267596	A1	12/2005	Chen et al.
2002/0183767	A1	12/2002	Adams et al.	2005/0273060	A1	12/2005	Levy et al.
2002/0183768	A1	12/2002	Deem et al.	2006/0015006	A1	1/2006	Laurence et al.
2003/0009236	A1	1/2003	Godin	2006/0020278	A1	1/2006	Burnett et al.
2003/0040804	A1	2/2003	Stack et al.	2006/0058829	A1	3/2006	Sampson et al.
2003/0040808	A1	2/2003	Stack et al.	2006/0129094	A1	6/2006	Shah
2003/0065359	A1	4/2003	Weller et al.	2006/0151568	A1	7/2006	Weller et al.
2003/0093117	A1	5/2003	Saadat	2006/0155259	A1	7/2006	MacLay
2003/0109892	A1	6/2003	Deem et al.	2006/0155311	A1	7/2006	Hashiba et al.
2003/0120289	A1	6/2003	McGuckin, Jr. et al.	2006/0178560	A1	8/2006	Saadat et al.
2003/0158569	A1	8/2003	Wazne	2006/0178691	A1	8/2006	Binmoeller
2003/0191476	A1	10/2003	Smit	2006/0195139	A1	8/2006	Gertner
2003/0199989	A1	10/2003	Stack et al.	2006/0253142	A1	11/2006	Bjerken
2003/0199990	A1	10/2003	Stack et al.	2006/0271076	A1	11/2006	Weller et al.
2003/0199991	A1	10/2003	Stack et al.	2006/0282095	A1	12/2006	Stokes et al.
2003/0208209	A1	11/2003	Gambale et al.	2006/0287734	A1	12/2006	Stack et al.
2003/0220660	A1	11/2003	Kortenbach et al.	2007/0010864	A1	1/2007	Dann et al.
2004/0006351	A1	1/2004	Gannoe et al.	2007/0032800	A1	2/2007	Ortiz et al.
2004/0024386	A1	2/2004	Deem et al.	2007/0043384	A1	2/2007	Ortiz et al.
2004/0030347	A1	2/2004	Gannoe et al.	2007/0055292	A1	3/2007	Ortiz et al.
2004/0044353	A1	3/2004	Gannoe	2007/0060932	A1	3/2007	Stack et al.
2004/0044354	A1	3/2004	Gannoe et al.	2007/0149994	A1	6/2007	Sosnowski et al.
2004/0044357	A1	3/2004	Gannoe et al.	2007/0175488	A1	8/2007	Cox et al.
2004/0044364	A1	3/2004	DeVries et al.	2007/0191870	A1	8/2007	Baker et al.
2004/0082963	A1	4/2004	Gannoe et al.	2007/0191871	A1	8/2007	Baker et al.
2004/0088023	A1	5/2004	Imran et al.	2007/0198074	A1	8/2007	Dann et al.
2004/0092892	A1	5/2004	Kagan et al.	2007/0219571	A1	9/2007	Balbierz et al.
2004/0092974	A1	5/2004	Gannoe et al.	2007/0239284	A1	10/2007	Skerven et al.
2004/0093091	A1	5/2004	Gannoe et al.	2007/0260327	A1	11/2007	Case et al.
2004/0098043	A1	5/2004	Trout, III	2007/0276432	A1	11/2007	Stack et al.
2004/0107004	A1	6/2004	Levine et al.	2008/0033574	A1	2/2008	Bessler et al.

2008/0065122	A1	3/2008	Stack et al.
2008/0116244	A1	5/2008	Rethy et al.
2008/0190989	A1	8/2008	Crews et al.
2008/0195226	A1	8/2008	Williams et al.
2008/0208355	A1	8/2008	Stack et al.
2008/0208356	A1	8/2008	Stack et al.
2008/0269797	A1	10/2008	Stack et al.
2008/0294179	A1	11/2008	Balbierz et al.
2009/0018558	A1	1/2009	Laufer et al.
2009/0024143	A1	1/2009	Crews et al.
2009/0030284	A1	1/2009	Cole et al.
2009/0125040	A1	5/2009	Hambly et al.
2009/0171383	A1	7/2009	Cole et al.
2009/0177215	A1	7/2009	Stack et al.
2009/0236388	A1	9/2009	Cole et al.
2009/0236389	A1	9/2009	Cole et al.
2009/0236390	A1	9/2009	Cole et al.
2009/0236391	A1	9/2009	Cole et al.
2009/0236392	A1	9/2009	Cole et al.
2009/0236394	A1	9/2009	Cole et al.
2009/0236396	A1	9/2009	Cole et al.
2009/0236397	A1	9/2009	Cole et al.
2009/0236398	A1	9/2009	Cole et al.
2009/0236400	A1	9/2009	Cole et al.
2009/0236401	A1	9/2009	Cole et al.
2009/0299487	A1	12/2009	Stack et al.
2010/0016988	A1	1/2010	Stack et al.
2010/0100109	A1	4/2010	Stack et al.

FOREIGN PATENT DOCUMENTS

EP	0775471	5/1997
EP	1492478	1/2005
EP	1602336	12/2005
FR	2768324	3/1999
JP	09-168597	6/1997
WO	WO 91/01117	2/1991
WO	WO 97/47231	12/1997
WO	WO 00/12027	3/2000
WO	WO 00/32137	6/2000
WO	WO 00/78227	12/2000
WO	WO 01/41671	6/2001
WO	WO 01/45485	6/2001
WO	WO 01/49359	7/2001
WO	WO 01/66018	9/2001
WO	WO 01/85034	11/2001
WO	WO 01/89393	11/2001
WO	WO 02/060328	8/2002
WO	WO 03/017882	3/2003
WO	WO 03/086246	10/2003
WO	WO 03/086247	10/2003
WO	WO 03/090633	11/2003
WO	WO 03/094784	11/2003
WO	WO 03/094785	11/2003
WO	WO 03/099137	12/2003
WO	WO 2004/019765	3/2004
WO	WO 2004/019787	3/2004
WO	WO 2004/032760	4/2004
WO	WO 2004/037064	5/2004
WO	WO 2004/041133	5/2004
WO	WO 2004/064680	8/2004
WO	WO 2004/064685	8/2004
WO	WO 2004/080336	9/2004
WO	WO 2004/110285	12/2004
WO	WO 2005/037152	4/2005
WO	WO 2005/079673	9/2005
WO	WO 2005/096991	10/2005
WO	WO 2005/105003	11/2005
WO	WO 2006/016894	2/2006

WO	WO 2006/055365	5/2006
WO	WO 2006/127593	11/2006
WO	WO 2007/041598	4/2007
WO	WO 2008/030403	3/2008
WO	WO 2008/033409	3/2008
WO	WO 2008/033474	3/2008
WO	WO 2008/141288	11/2008
WO	WO 2009/011881	1/2009
WO	WO 2009/011882	1/2009
WO	WO 2009/086549	7/2009
WO	WO 2009/117533	9/2009
WO	WO 2010/054399	5/2010
WO	WO 2010/054404	5/2010

OTHER PUBLICATIONS

International Search Report from PCT Patent Application No. PCT/US2002/027177 mailed Feb. 14, 2003.

International Search Report from PCT Patent Application No. PCT/US2003/004378 mailed Aug. 13, 2003.

International Search Report from PCT Patent Application No. PCT/US2003/033605 mailed Mar. 29, 2004.

International Search Report from PCT Patent Application No. PCT/US2003/033606 mailed Mar. 29, 2004.

International Search Report from PCT Patent Application No. PCT/US2003/004449 mailed Aug. 13, 2003.

International Search Report from PCT Patent Application No. PCT/US2004/006695 mailed Sep. 8, 2004.

International Search Report from PCT Patent Application No. PCT/US2004/033007 mailed Feb. 9, 2005.

International Search Report from PCT Patent Application No. PCT/US2005/014372 mailed Jul. 28, 2005.

International Search Report from PCT Patent Application No. PCT/US2006/019727 mailed Apr. 19, 2007.

International Search Report from PCT Patent Application No. PCT/US2006/038684 mailed Feb. 14, 2007.

International Search Report from PCT Patent Application No. PCT/US2007/019227 mailed Feb. 20, 2008.

International Search Report from PCT Patent Application No. PCT/US2007/019833 mailed Feb. 20, 2008.

International Search Report from PCT Patent Application No. PCT/US2007/019940 mailed Mar. 14, 2008.

International Search Report from PCT Patent Application No. PCT/US2008/008726 mailed Oct. 16, 2008.

International Search Report from PCT Patent Application No. PCT/US2008/008729 mailed Aug. 18, 2009.

International Search Report from PCT Patent Application No. PCT/US2008/063440 mailed Aug. 1, 2008.

International Search Report from PCT Patent Application No. PCT/US2009/037586 mailed Sep. 28, 2009.

International Search Report from PCT Patent Application No. PCT/US2009/063925 mailed Jan. 12, 2010.

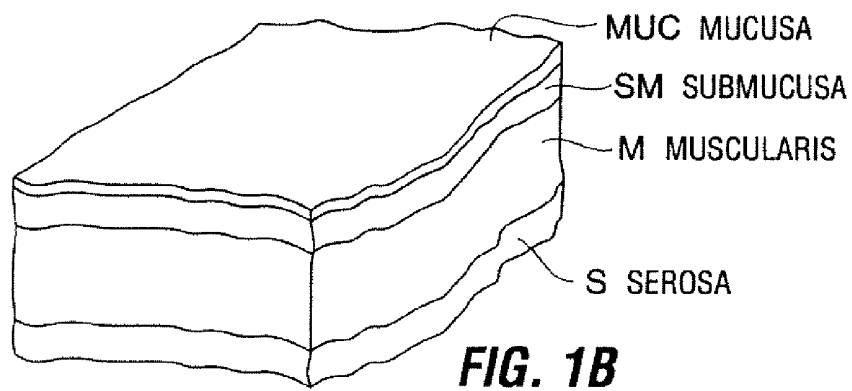
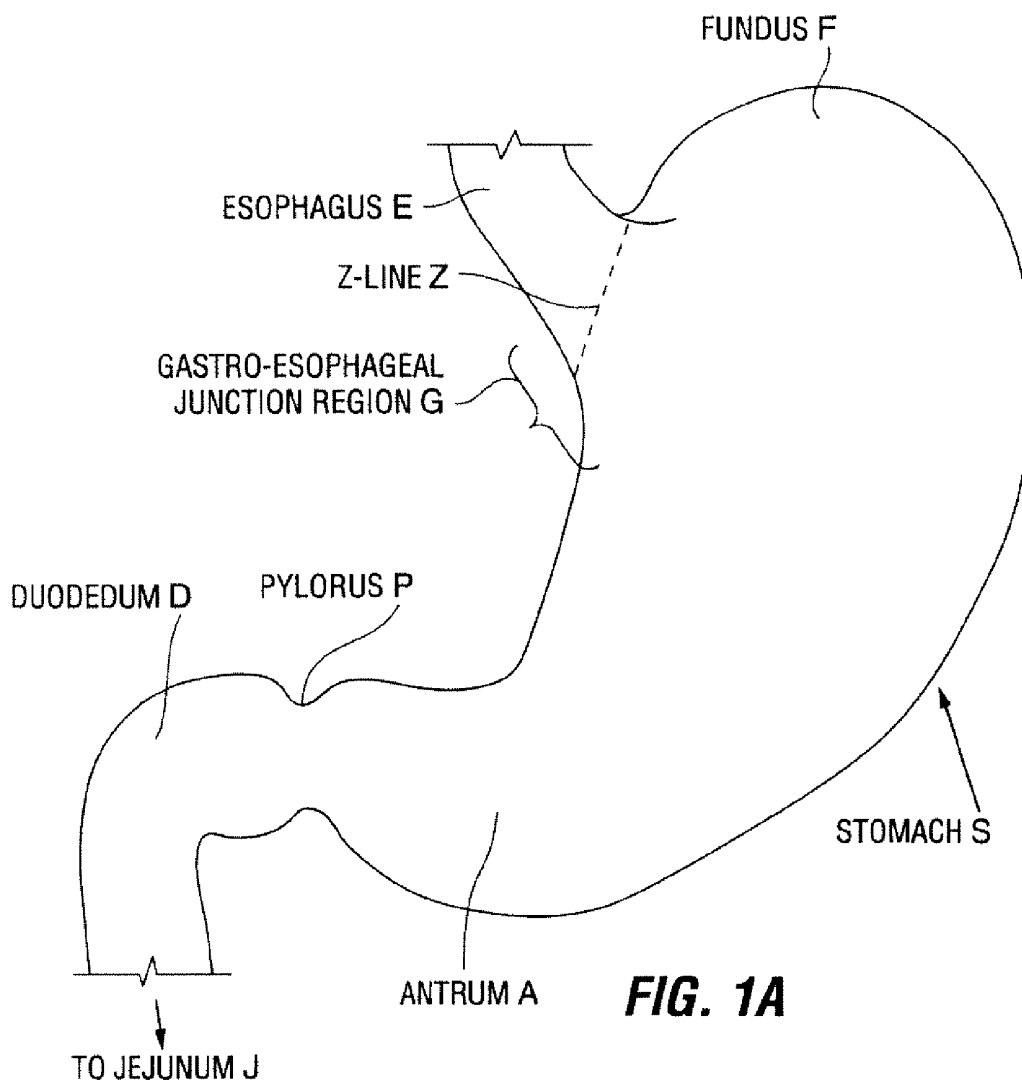
International Search Report from PCT Patent Application No. PCT/US2009/063930 mailed Jan. 12, 2010.

Felsher, et al., "Mucosal apposition in endoscopic suturing", *Gastrointestinal Endoscopy*, vol. 58, No. 6, pp. 867-870, (2003).

Stecco, et al., "Trans-oral plication formation and gastric implant placement in a canine model", Stecco Group, San Jose and Barosense, Inc., Redwood City, CA (2004).

Stecco, et al. "Safety of a gastric restrictive implant in a canine model", Stecco group, San Jose and Barosense, Inc., Redwood City, CA (2004).

* cited by examiner



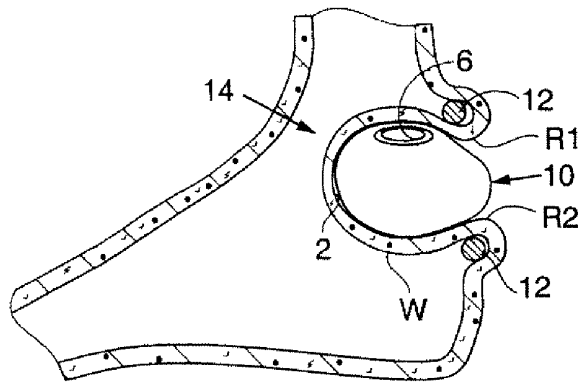


FIG. 2

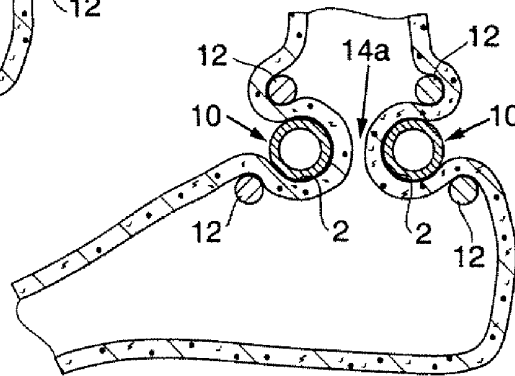


FIG. 3

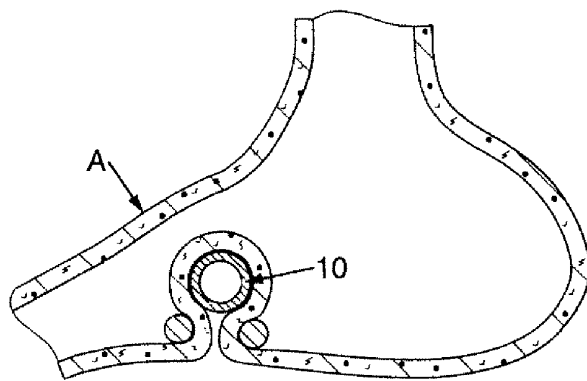


FIG. 4

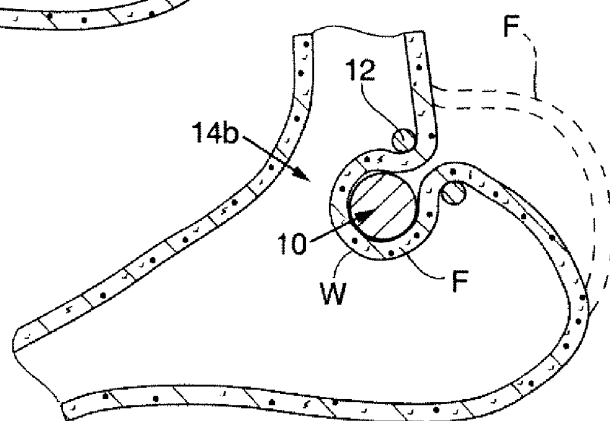


FIG. 5

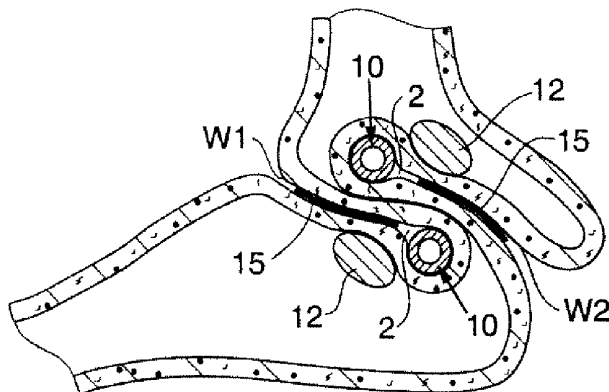


FIG. 6

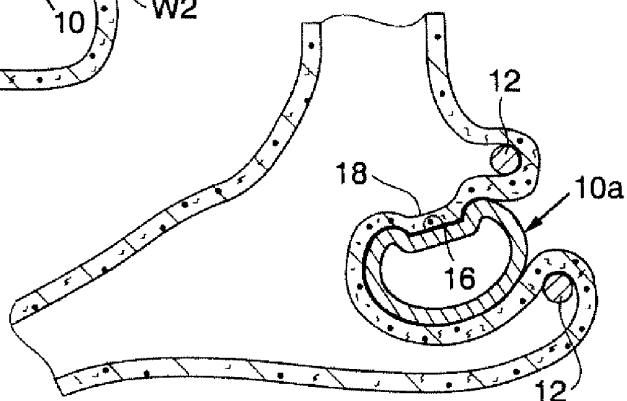


FIG. 7

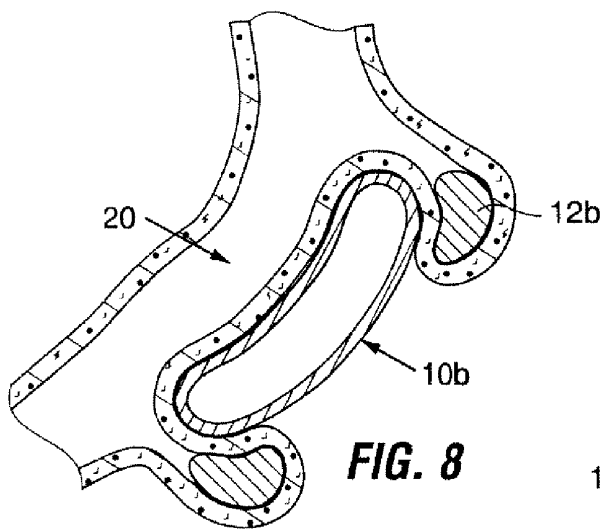


FIG. 8

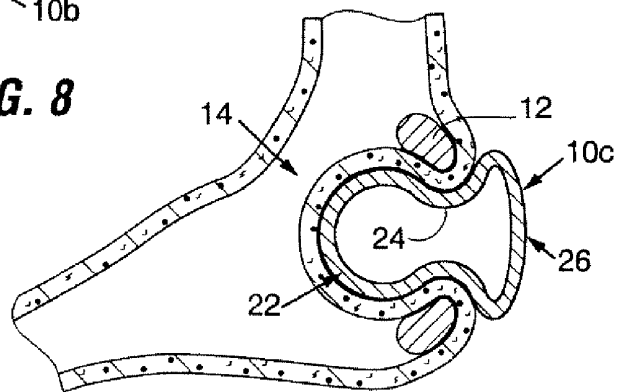


FIG. 9

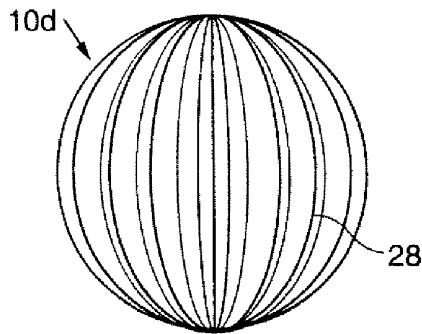


FIG. 10

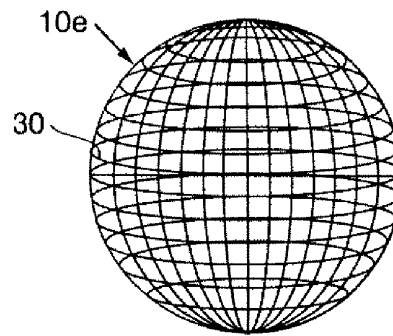


FIG. 11

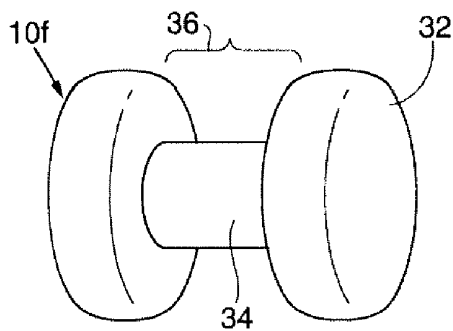


FIG. 12A

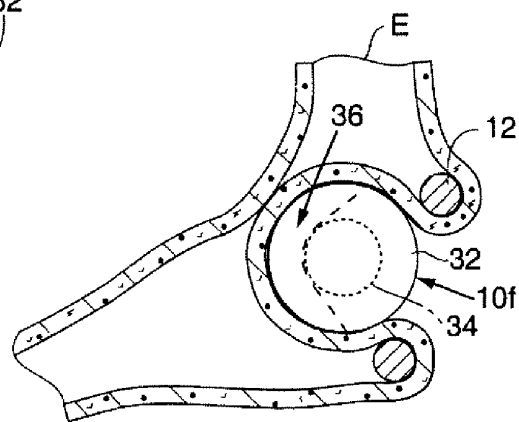


FIG. 12B

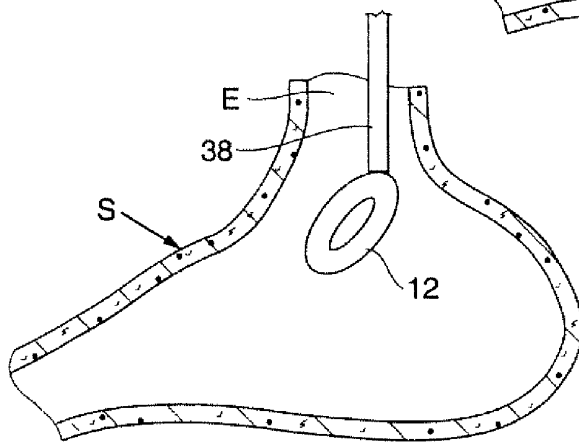


FIG. 13A

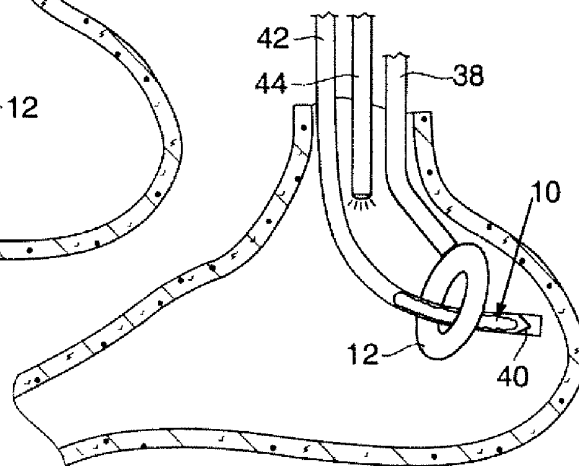


FIG. 13B

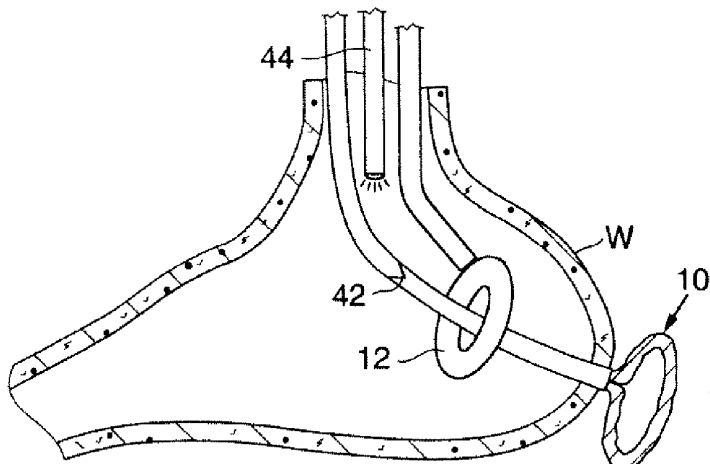


FIG. 13C

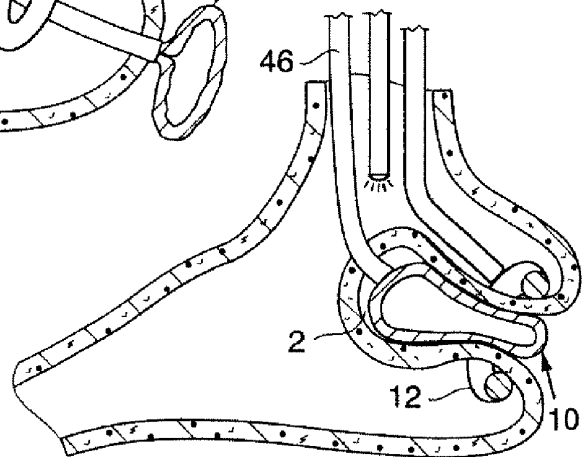


FIG. 13D

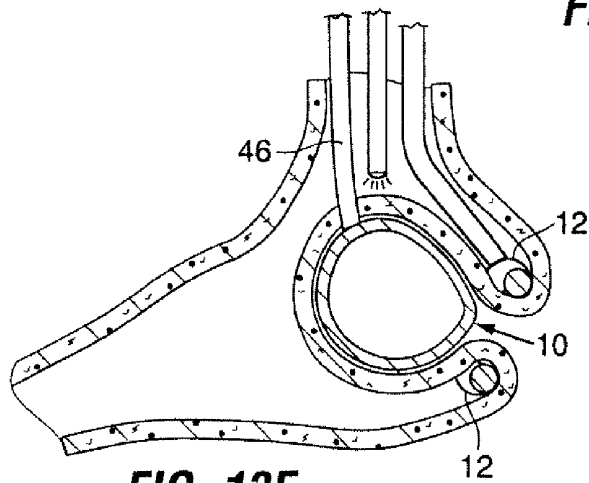


FIG. 13E

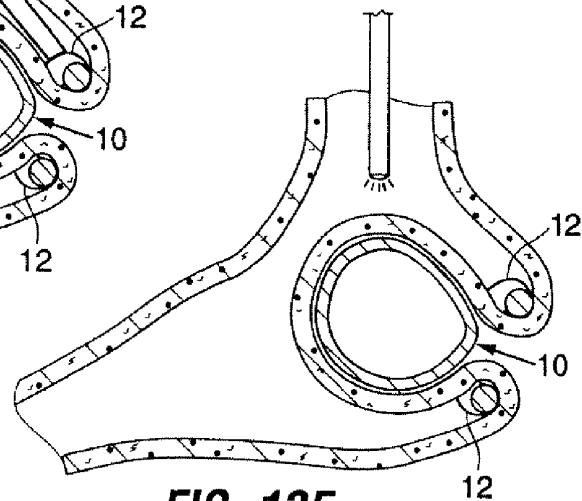
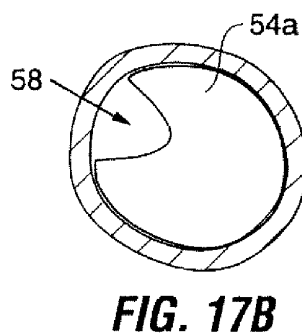
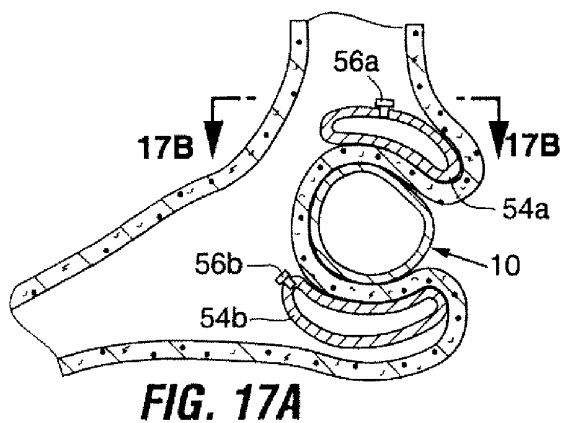
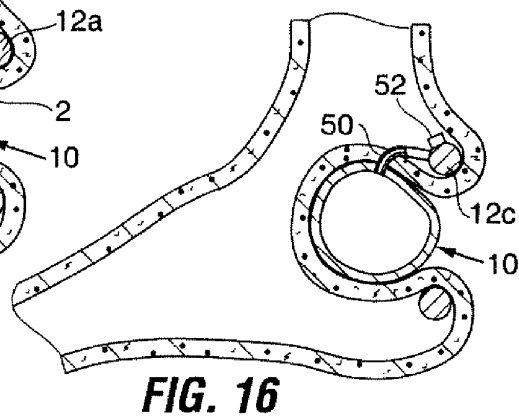
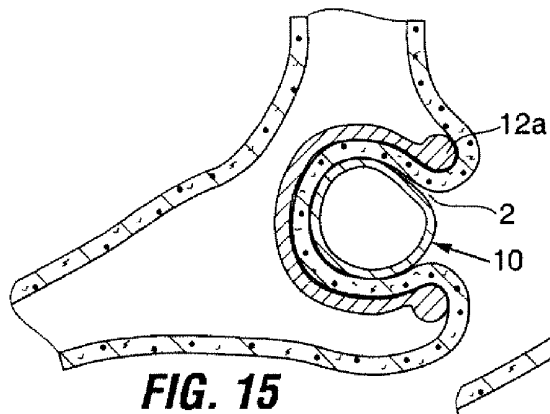
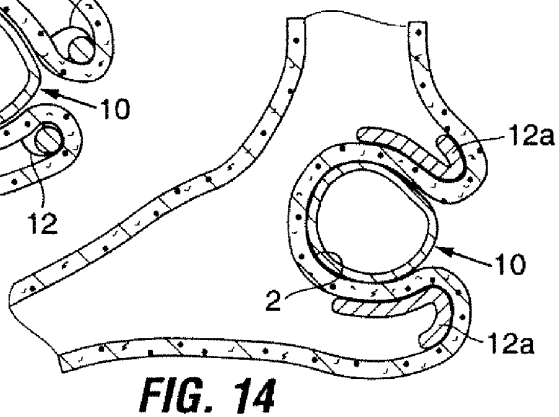
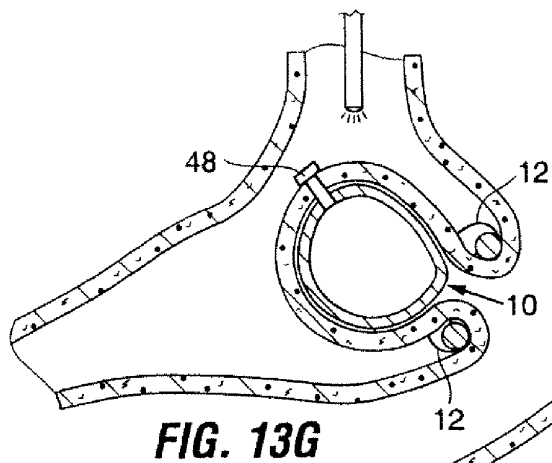


FIG. 13F



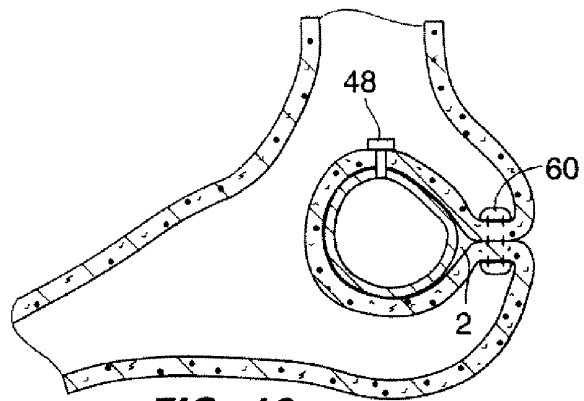


FIG. 18

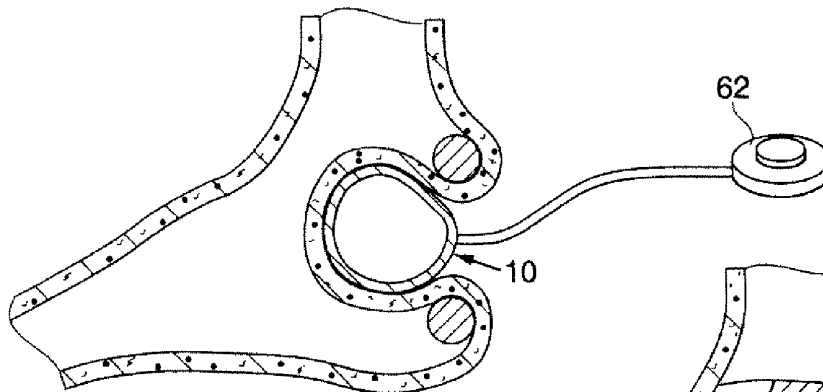


FIG. 19

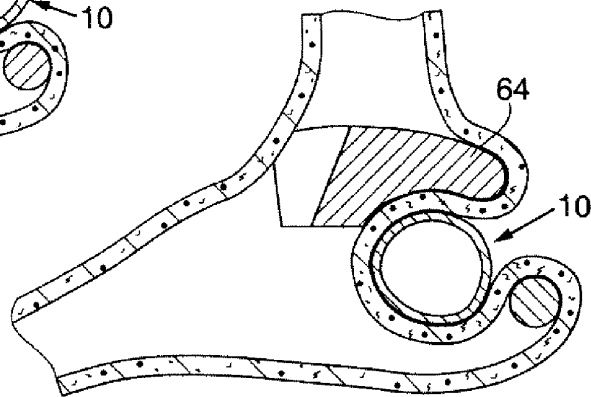


FIG. 20

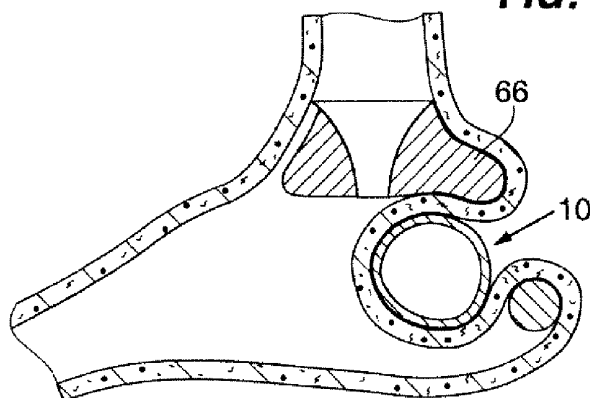


FIG. 21

RESTRICTIVE AND/OR OBSTRUCTIVE IMPLANT FOR INDUCING WEIGHT LOSS

PRIORITY CLAIM

This application is a continuation of U.S. patent application Ser. No. 11/114,400 filed Apr. 26, 2005 now U.S. Pat. No. 7,717,843 which claims the benefit of U.S. Provisional Patent Application No. 60/565,378 filed Apr. 26, 2004, both of which are incorporated herein by reference in their entirety.

FIELD OF THE INVENTION

The present invention relates generally to the field of implants for inducing weight loss in patients, and specifically to devices and methods for reducing the effective volume of a patient's stomach and/or creating restrictions to slow passage of food into the stomach.

BACKGROUND OF THE INVENTION

An anatomical view of a human stomach S and associated features is shown in FIG. 1A. The esophagus E delivers food from the mouth to the proximal portion of the stomach S. The z-line or gastro-esophageal junction Z is the irregularly-shaped border between the thin tissue of the esophagus and the thicker tissue of the stomach wall. The gastro-esophageal junction region G is the region encompassing the distal portion of the esophagus E, the z-line, and the proximal portion of the stomach S.

Stomach S includes a fundus F at its proximal end and an antrum A at its distal end. Antrum A feeds into the pylorus P which attaches to the duodenum D, the proximal region of the small intestine. Within the pylorus P is a sphincter that prevents backflow of food from the duodenum D into the stomach. The middle region of the small intestine, positioned distally of the duodenum D, is the jejunum J.

FIG. 1B illustrates the tissue layers forming the stomach wall. The outermost layer is the serosal layer or "serosa" S and the innermost layer, lining the stomach interior, is the mucosal layer or "mucosa" MUC. The submucosa SM and the multi-layer muscularis M lie between the mucosa and the serosa.

Prior art treatments for obesity range from diet and medication to highly invasive surgical procedures. Some of the more successful surgical procedures are the vertical banded gastroplexy or the proximal gastric pouch with a Roux-en-Y anastomosis. However, known complications are present with each of these procedures. More successful and less invasive options are desired.

A less invasive prior art treatment for obesity includes implantation of a gastric balloon delivered into the stomach via the esophagus. The balloon is an obstructive device—it prevents overeating by occupying volume within the stomach. Although implantation of a gastric balloon is less invasive than other surgical procedures, gastric balloons can migrate down the GI tract, causing obstruction and thus necessitating removal.

BRIEF DESCRIPTION OF THE DRAWINGS

FIG. 1A is a schematic illustration of a human stomach and a portion of the small intestine.

FIG. 1B is a cross-sectional perspective view of a portion of a stomach wall, illustrating the layers of tissue forming the wall.

FIG. 2 is a cross-section view of a stomach illustrating positioning of an obstructive implant.

FIG. 3 is a cross-section view of a stomach illustrating positioning of two obstructive implants.

FIG. 4 is a cross-section view of a stomach illustrating positioning of an obstructive implant in the antral region of the stomach.

FIG. 5 is a cross-section view of a stomach illustrating positioning of an obstructive implant in the fundal region of the stomach.

FIG. 6 is a cross-section view of a stomach illustrating alternative positioning of two obstructive implants FIG. 7 is a cross-section view of a stomach illustrating positioning of an irregularly-shaped obstructive implant.

FIG. 8 is a cross-section view of a stomach illustrating positioning of an elongate obstructive implant.

FIG. 9 is a cross-section view of a stomach illustrating positioning of an obstructive implant having an alternative shape.

FIGS. 10-12A are perspective views of alternative configurations for obstructive implants. FIG. 12B illustrates the implant of FIG. 12A positioned in the stomach.

FIGS. 13A through 13F are a sequence of drawings illustrating endoscopic implantation of an obstructive implant. FIG. 13G is an implantation step that is an alternative to the step shown in FIG. 13F.

FIG. 14 is a cross-section view of a stomach illustrating use of a force-distributing retention band with an obstructive implant.

FIG. 15 is a cross-section view of a stomach illustrating use of an alternative force-distributing retention band with an obstructive implant.

FIGS. 16 through 18 are cross-section views of a stomach illustrating alternate retention methods for obstructive implants.

FIG. 19 illustrates an obstructive implant having a subcutaneous inflation port.

FIGS. 20 and 21 illustrate use of obstructive implants to facilitate retention of other obesity-controlling devices within the stomach.

DETAILED DESCRIPTION OF THE DRAWINGS

Referring to FIG. 2, an obstructive implant 10 includes a body positioned against the exterior of the stomach wall W. The implant occupies stomach volume by causing a portion of the stomach wall W to bulge into the interior volume of the stomach, thus reducing the effective volume of the stomach interior and reducing stomach capacity. Because the implant 10 is positioned outside the stomach, it cannot migrate into the intestinal tract creating obstructions. A retention band 12 is positioned within the stomach encircling a portion of the wall W so as to retain the implant 10 within pocket 2 as shown. The retention band 12 may be a ring that is elastic or inelastic, flexible or fairly rigid. The diameter of the retention band 12 may be adjustable if desired. The retention band 12 is preferably proportioned such that in the event the band becomes free within the stomach, it can pass through the intestinal system without incident. Thus, the retention device 60 is preferably of a size that will not on its own to occupy sufficient space within the stomach to create feelings of satiety, but that relies on the extragastric implant 10 to reduce stomach capacity. Nonetheless, in alternate embodiments the retention band 12 may also perform a space-occupying function, and/or a restrictive and/or obstructive function.

Various positions for the implant are illustrated in the drawings. Depending on the size and positioning of the implant, it

may function as an obstructive device, a restrictive device, or both. In some embodiments, the implant may have an expanded volume in the range of approximately 200-700 cc, sufficient to cause the inwardly-protruding pocket **2** to fill a portion of the stomach, thereby causing the patient to feel full and thus limiting food intake. In FIG. 2, the implant is positioned to function as an obstructive device (i.e. to occupy space so as to reduce effective stomach volume), but also to create a restriction **14** in the stomach. The restriction **14** is a narrowed region of the stomach, which slows the rate at which food can descend from the esophagus into the stomach. Food may accumulate in the region above the restriction, causing the patient to experience feelings of satiety and thus limiting food intake, and/or limiting the amount of food a patient can consume at one time.

FIG. 3 shows a pair of implants **10** and a pair of retention bands **12** positioned in the proximal stomach to create a restriction **14a**. This restriction **14a** may also minimize reflux and thus function as treatment for patients suffering from gastro-intestinal reflux disease (GERD).

FIG. 4 illustrates that the implant **10** may be positioned in the antrum A. It may similarly be positioned at the pylorus P (see FIG. 1A). Alternatively, the implant **10** may be positioned in the fundus F as shown in FIG. 5 again creating an obstruction as well as an (optional) restriction **14b** in the proximal stomach. The original position of the wall of the fundus F is illustrated in dashed lines.

FIG. 6 illustrates that a pair of implants **10** may be positioned against regions of stomach wall **W1**, **W2** on opposite sides of the stomach. These implants are retained in their respective pockets **2** using a single retention band **12** encircling both regions of wall **W1**, **W2** to create an obstruction within the stomach and which creates restricted flow paths on opposite sides of the obstruction.

The configuration illustrated in FIG. 6 is particularly advantageous in that it relies in part on adhesion of the serosal tissue lining the outer surface of the stomach. It has been found that serosal tissue layers can adhere to form relatively strong bonds when held in apposition to one another. Other embodiments including, but not limited to, the FIGS. 2-5, 7 and 8 embodiments may be modified to allow the retention band to retain regions of serosal tissue into contact with one another such that over time the serosal tissue will adhere as a permanent means for retaining the implant **10**. For example, if such a modification was made to the FIG. 2 embodiment, the regions **R1**, **R2** of stomach wall would be drawn into contact with one other, and retention band **12** would retain that contact until the serosal layers adhered to one another. At that time, the retention band (or other retention devices such as sutures, staples, etc.) could be removed from the stomach, such that no device remained in the stomach interior, and the implant remained in the protrusion formed against the exterior stomach wall. It may be further desirable in such embodiments to inflate the implant during a later procedure performed after the serosal layers have adhered to one another. In such embodiments, inflation may be carried out using a needle introduced into the stomach, used to pierce the stomach wall, and then passed into an inflation port (e.g. such as port **26** of FIG. 2 or valve **48** of FIG. 13G). Alternatively, the balloon may be self-sealing (similar to self-sealing tires), also allowing inflation/deflation of the balloon using a needle that pierces the stomach wall and the balloon.

A section of reinforcing and/or ingrowth-promoting material **15** (FIG. 6) may be optionally placed between serosal and/or mucosal tissue layers that are positioned in contact with one another. The material may be a synthetic or non-synthetic mesh, porous material, slotted material, or any other

material through which adhesions will form or onto which tissue will grow. Examples include, but are not limited to, polypropylene, materials sold under the trade names Goretex or Dacron, or tissue graft material such as the Surgisis material sold by Wilson Cook Medical, Inc. The material may be treated with tissue-ingrowth promoting substances such as biologics. If such material is used, the adhesions that form between the serosal tissue layers will pass through and/or onto the interstices of the material and serve to reinforce the bond between the tissue layers. The material may further cause some mechanical abrasion of the adjacent tissue, creating additional scar tissue that would further reinforce the strength of the opposed tissue.

If adhesion of adjacent mucosal tissue surfaces is desired, modification of the interior tissue surface may further be needed in order to optimize adhesion of opposed regions of internal stomach tissue. In particular, it is believed that better adhesion of the interior wall surfaces may be achieved when a portion of the mucosal layer of tissue lining the stomach interior is removed, such that the tissue surfaces sutured in apposition to one another are serosal, sub-mucosal or muscularis layers. It is believed that opposed layers of mucosal tissue do not adhere together as well as opposed layers of serosal, sub-mucosal, or muscularis tissue. Surface modification methods for promoting such tissue adhesion include cutting, ablating (using RF, laser, or chemical ablation) or abrading the mucosal surface within the stomach as indicated by dashed lines. This modification is ideally performed before the folds are placed in apposition. Depending on the depth to which cutting, ablation or abrasion is performed, the sub-mucosal, muscularis, or serosal layer beneath the mucosal layer is exposed. This allows the exposed regions of tissue to be placed in apposition and causes the opposed surfaces to tightly adhere over time.

Although the implants shown in FIGS. 2-6 are illustrated as being spherical, various other configurations may be used. For example, an alternate implant **10a** shown in FIG. 7 may include a recess **16** along its surface such that the portion of the stomach wall **W** following the contour of recess **16** creates a form of pouch or reservoir **18** in the stomach within which food may accumulate. An elongate implant **10b** of the type shown in FIG. 8 may be used to form an elongate restriction **20** while greatly reducing the effective volume of the stomach. FIG. 9 shows an implant **10c** having a modified hourglass configuration including an obstructive portion **22** that functions to bulge the stomach wall inwardly as described in connection with earlier embodiments. A neck **24** extending from the obstructive portion **22** connects with a base portion **26** that helps to distribute forces imparted against the stomach **W** and prevents tissue erosion and/or migration of the implant. As shown in the figure, the retention band **12** preferably seats against the stomach tissue surrounding the neck **24**.

Many other shapes beyond those shown in this application may be used for the implant (such as for accommodating the shape of the anatomy, or for creating a restriction or obstruction of a particular size/shape), without departing from the scope of the present invention.

There are likewise many suitable structures and materials useful for the implant. Some structures and materials are shown and described herein, although again many others may be used without exceeding the scope of the present invention.

For example, the implant may be an elastic or inelastic balloon that is implantable in a deflated state and then inflated within the body using a gas or liquid. A balloon of this type may include a port such as port **26** shown in FIG. 2. During use an inflation needle may be introduced into the stomach,

used to pierce the stomach wall, and then passed into the port 26. The needle may be used to introduce inflation medium into the balloon, or to deflate the balloon if adjustments in balloon size are needed. Alternatively, the balloon may be self-sealing (along the lines of puncture-proof or self-sealing tires), also allowing inflation/deflation of the balloon using a needle that pierces the stomach wall and the balloon. This latter embodiment is advantageous in that it does not necessitate a particular orientation for the balloon as would be needed to orient an inflation port for receipt of an inflation needle.

Other configurations besides balloons are also suitable for the implant. The implant 10*d* may have fluted walls 28 as shown in FIG. 10, or it may be formed of a mesh 30 as shown in FIG. 11. These implants 10*d*, 10*e* may be self-expanding or they may be provided in a fully expanded form. The implant 10*f* of FIG. 12A includes a pair of plates 32 separated by a neck 34. When positioned as shown in FIG. 12B, a portion of the stomach wall W caves into the gap 36 between the plates 32, creating a flow path for food moving from the esophagus E into the stomach. The amount of restriction provided by the implant 10*f* may be selected by selecting a suitable length or width for the neck 34.

The implant need not be a hollow structure, but could instead be entirely solid.

The implant may be implanted endoscopically using tools passed into the stomach via the esophagus. According to the endoscopic approach, the implant is inserted into the stomach and then passed through an opening formed in the stomach wall. Alternatively, a laparoscopic method may be used to pass the implant into the abdominal cavity through incisions or trocar punctures in the skin. The implant may also be introduced using an open surgical approach. In both the laparoscopic and surgical procedures, the retention band 12 is preferably introduced endoscopically into the stomach.

FIGS. 13A through 13F illustrate one method of positioning an inflatable implant using an endoscopic approach. Referring to FIG. 13A, retention band 12 is inserted down the esophagus into the stomach using an endoscopic instrument 38. Next, the implant 10 is passed into the stomach and through the retention band 12 as shown in FIG. 13B. Implant 10 is preferably compressed within a tubular instrument 40 having a tissue-piercing distal end. The instrument 40 may be telescopically disposed within a tubular sheath 42 to prevent the instrument from inadvertently nicking surrounding tissue. Although not shown, an inflation tube extends through the instrument 40 and sheath 42 and is coupled to an inflation port of the implant. An endoscope 44 is used to monitor the procedure.

Referring to FIG. 13C, the tissue-piercing instrument 40 is extended from its sheath and used to pierce through the stomach wall W at a desired implant location. The implant 10 is released from the instrument 40 and partially inflated by passing inflation medium through the inflation tube. The tissue-piercing instrument 40 and its sheath 42 may be removed from the stomach, leaving the inflation tube 46 (FIG. 13D) behind.

Next, tension is applied to the inflation tube 46 to pull the implant 10 towards the stomach so as to create the pocket 2. This step draws the implant 10 and the surrounding stomach wall through the retention band 12 as shown in FIG. 13D. Once a sufficient amount of tissue has been drawn through the retention band, the implant is inflated to the desired size as shown in FIG. 13E. The inflation tube 46 is detached from the implant 10 and the endoscopic instrument 38 is detached from the retention band 12, leaving the implant in place as shown in FIG. 13F. The hole formed in the stomach wall may

be closed using sutures or a sealable gel that solidifies when placed into contact with the tissue.

Referring to FIG. 13G, it should be noted that the implant may include an inflation valve 48 that is left extending through the stomach wall. The valve 48 allows for post-implant size adjustments by allowing inflation medium to be added to or removed from the balloon using an inflation tube passed through the esophagus and attached to the valve. If removal of the balloon is required, the valve may be grasped using endoscopic instruments to draw the balloon back into the stomach and out the esophagus. The valve may be surrounded by a seal to prevent movement of stomach contents into the abdominal space outside the stomach. A gel of a type that will solidify when placed into contact with the stomach surface may be used for this purpose.

The retention band 12 may take alternate forms or be replaced altogether using other types of structures that help to capture the implant 10 in the pocket 2 at the implant site. FIG. 14 illustrates that the cross-sectional area of the restrictive band 12*a* may be large relative to the size of the implant so as to diffuse the forces imparted on the region of stomach wall captured between the band 12*a* and the implant 10 and thereby prevent erosion of, or damage to, the stomach tissue. FIG. 15 illustrates that a large surface-area retention liner 12*b* may alternatively be used so as to distribute forces over a broader surface. Referring to FIG. 16, the restriction ring 12*c* and implant 10 may be coupled together by an inflation tube 50 extending through the stomach wall. A valve 52 is fluidly coupled to the tube 50 and allows for introduction/removal of inflation medium using an inflation tube 50 needed passed into the stomach. The valve 52 and tube 50 facilitate explantation of the implant using a grasping instrument inserted through the esophagus and into the stomach.

The retention band itself may be inflatable. Referring to FIG. 17B, the retention band may include separate inflatable chambers 54*a*, 54*b* each having an inflation port 56*a*, 56*b*. The chambers 54*a*, 54*b* are joined together to form an annular band. The upper chamber 54*a* may be shaped to form a channel 58 for passage of food, as shown in FIG. 17B.

FIG. 18 illustrates that the retention band may be eliminated entirely. As shown, after the implant 10 is pulled against the stomach wall W, stomach tissue adjacent to the pocket 2 can be fastened together using pledgets 60 (or sutures, staples, clips or other means). Over time, a physiological response will cause the regions of serosal tissue held in contact with one another to bond together, thereby retaining the implant in the pocket 2.

Referring to FIG. 19, inflatable implant 10 may be tethered to an inflation port 62 positioned within a subcutaneous pocket in the body. If needed following implantation, an inflation needle may be inserted through the patient's skin and into the inflation port 62 to increase or decrease the amount of inflation medium within the implant.

Referring to FIGS. 20 and 21, it should be noted that while the implant 10 may itself provide restriction and/or obstruction, the implant 10 may also be used to prevent migration of a restrictive and/or obstructive device positioned inside the stomach. For example, device 64 of FIG. 20 or device 66 of FIG. 21 may be positioned in the proximal stomach and seat against the portion of the stomach wall that protrudes inwardly as a result of implant 10.

Components of the type described herein may be supplied individually or as systems which may include various combinations of components such as implants (e.g. implant 10), retention devices (e.g. band 12), implantation instruments, and/or instructions for use. If included, instructions for use may include instructions instructing a user to implant the

implant using methods such as any of those described above. For example, the instructions may instruct the user to create an inward protrusion in the stomach wall such as by positioning an instrument or the implant against an exterior surface of the stomach wall. The instructions may further instruct the user to position the retention device in a manner that at least partially retains the protrusion in the wall and that thus captures implant within the protrusion, externally of the stomach. In some embodiments where a retention band is provided, the instructions for use may instruct the user to encircle a portion of the protrusion in the wall with the retention band. The instructions may instruct the user as to laparoscopic, endoscopic, and/or open surgical approaches such as those described above.

Various components and methods have been described herein. These embodiments are given by way of example and are not intended to limit the scope of the present invention. It should be appreciated, moreover, that the various features of the embodiments that have been described might be combined in various ways to produce numerous additional embodiments.

What is claimed is:

- 1. A method of assisting weight loss in a patient, comprising the steps of:
 - positioning an extragastric space occupier into contact with an exterior surface of a patient's stomach wall;
 - expanding the space occupier to form an inward protrusion of wall into the stomach, said protrusion filling a portion of the stomach; and
 - before or after said expanding, securing the space occupier in position with at least one suture, staple, or clip to retain the space occupier within the inward protrusion.
- 2. The method of claim 1, wherein the securing step places the at least one suture, staple, or clip into contact with an interior surface of the wall.
- 3. The method of claim 1, wherein the step of expanding the space occupier comprises expanding the space occupier to a

volume sufficient to cause the protrusion to fill a portion of the stomach, thereby causing the patient to feel full.

4. The method of claim 3, wherein the expanding step includes expanding the space occupier to a volume in the range of 200-800 cc.

5. The method of claim 1, wherein the step of expanding the space occupier comprises expanding the space occupier to cause the protrusion to create a restriction in the stomach that will slow the rate at which food can descend from the esophagus into the stomach.

6. The method of claim 1, wherein the space occupier includes an inflation port, and wherein the method includes the step of passing an inflation needle extendable through the esophagus into the stomach, engaging inflation port with the inflation needle, and inflating the space occupier using the inflation needle.

7. The method of claim 6, wherein the positioning step includes positioning the inflation port to extend through an opening in the stomach wall.

8. The method of claim 6, wherein the inflation port includes a resealable portion of the space occupier, and engaging step includes passing the needle through the stomach wall into engagement with the inflation port.

9. The method of claim 1, wherein the positioning step includes passing the extragastric space occupier through the esophagus into the stomach, and then passing the extragastric space occupier through an opening formed in the wall of the stomach and into contact with the exterior of the wall.

10. The method of claim 1, wherein the positioning step includes passing the extragastric space occupier laparoscopically into an abdominal cavity and into contact with the exterior of the wall.

11. The method of claim 1, wherein said positioning comprises positioning the extragastric space occupier into contact with an exterior surface of a fundus of the patient's stomach wall.

* * * * *

专利名称(译)	用于引起体重减轻的限制性和/或阻塞性植入物		
公开(公告)号	US8241202	公开(公告)日	2012-08-14
申请号	US12/765177	申请日	2010-04-22
[标]申请(专利权)人(译)	BALBIERZ丹尼尔·J· ATHAS WILLIAM大号 伦斯福德JOHN 班克斯JR威廉二世 VAN Bladel的KEVIN		
申请(专利权)人(译)	BALBIERZ丹尼尔·J· ATHAS WILLIAM大号 伦斯福德JOHN 班克斯JR威廉二世 VAN Bladel的KEVIN		
当前申请(专利权)人(译)	BOSTON SCIENTIFIC SCIMED , INC.		
[标]发明人	BALBIERZ DANIEL J ATHAS WILLIAM L LUNSFORD JOHN EUBANKS JR WILLIAM S VAN BLADEL KEVIN		
发明人	BALBIERZ, DANIEL J. ATHAS, WILLIAM L. LUNSFORD, JOHN EUBANKS, JR., WILLIAM S. VAN BLADEL, KEVIN		
IPC分类号	A61F2/00 A61B17/08 A61B17/12 A61F5/00		
CPC分类号	A61F5/0086 A61F5/0036 A61F5/003 A61B17/12009 A61B2017/12018		
优先权	60/565378 2004-04-26 US		
其他公开文献	US20100204719A1		
外部链接	Espacenet USPTO		

摘要(译)

本文描述了一种用于在患者体内引起体重减轻的系统，其包括可定位成与胃壁的外表面接触以形成向内突出到胃中的壁的胃外空间占据者，以及可定位成与胃接触的保持装置。壁保持向内突出，从而捕获突出物内的胃外空间占据者。

