



US006669635B2

(12) **United States Patent**
Kessman et al.

(10) **Patent No.: US 6,669,635 B2**
(45) **Date of Patent: *Dec. 30, 2003**

(54) **NAVIGATION INFORMATION OVERLAY
ONTO ULTRASOUND IMAGERY**

5,054,492 A 10/1991 Scribner et al.
5,094,241 A 3/1992 Allen
5,097,839 A 3/1992 Allen

(75) Inventors: **Paul Kessman**, Broomfield, CO (US);
Troy Holsing, Broomfield, CO (US);
Jason Trobaugh, Broomfield, CO (US)

(List continued on next page.)

FOREIGN PATENT DOCUMENTS

(73) Assignee: **Surgical Navigation Technologies,
Inc.**, Louisville, CO (US)

EP	0 655 138 B1	4/1998
EP	0 894 473 A2	2/1999
EP	0 922 438 A1	6/1999
WO	WO 94/04938	3/1994
WO	WO 96/25881	8/1996
WO	WO 97/03609	2/1997
WO	WO 99/60939	1/1999

(*) Notice: Subject to any disclaimer, the term of this patent is extended or adjusted under 35 U.S.C. 154(b) by 0 days.

This patent is subject to a terminal disclaimer.

OTHER PUBLICATIONS

International Search Report, Apr. 20, 2001.

C. Davatzikos, et al., "Brain Image Registration Based on Curve Mapping," IEEE, 0-8186-5802-9/94 (1994) pp. 245-254.

(21) Appl. No.: **10/047,927**

(22) Filed: **Jan. 14, 2002**

(65) **Prior Publication Data**

US 2002/0156375 A1 Oct. 24, 2002

Related U.S. Application Data

(63) Continuation of application No. 09/428,720, filed on Oct. 28, 1999, now Pat. No. 6,379,302.

(51) **Int. Cl.⁷ A61B 8/00**

(52) **U.S. Cl. 600/437; 600/461**

(58) **Field of Search 600/407-471;**
128/898, 916, 849, 853, 856; 606/130;
395/119; 227/176.1

(56) **References Cited**

U.S. PATENT DOCUMENTS

4,722,056 A	1/1988	Roberts et al.
4,791,934 A	12/1988	Brunnett
4,821,731 A	4/1989	Martinelli et al.
4,896,673 A	1/1990	Rose et al.
4,945,914 A	8/1990	Allen
4,991,579 A	2/1991	Allen
5,037,374 A	8/1991	Carol

(List continued on next page.)

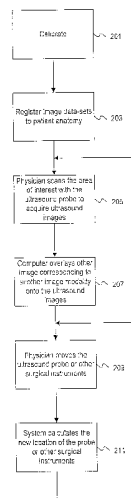
Primary Examiner—Ali M. Imam

(74) *Attorney, Agent, or Firm*—Harness, Dickey & Pierce, P.L.C.

(57) **ABSTRACT**

A surgical instrument navigation system comprises an ultrasound machine and a computer coupled to the ultrasound machine. A memory is coupled to the computer and includes computer instructions that when executed by the computer cause the computer to generate an icon representing the surgical instrument with a tip and the surgical instrument's trajectory and to overlay the icon on a real-time ultrasound image having an image plane, such that when the surgical instrument crosses the ultrasound image plane the format of the surgical instrument's trajectory is changed to represent the surgical instrument's crossing of the ultrasound image's plane. The system also comprises a localizer coupled to the ultrasound machine, and a display coupled to the computer for displaying the generated icon superimposed on the real-time image.

17 Claims, 13 Drawing Sheets



U.S. PATENT DOCUMENTS

5,099,846	A	3/1992	Hardy	5,718,241	A	2/1998	Ben-Haim et al.
5,119,817	A	6/1992	Allen	5,729,129	A	3/1998	Acker
5,142,930	A	9/1992	Allen et al.	5,730,129	A	3/1998	Darrow et al.
5,150,715	A	9/1992	Ishiguro et al.	5,732,703	A	3/1998	Kalfas et al.
5,160,337	A	11/1992	Cosman	5,738,096	A	4/1998	Ben-Haim
5,161,536	A	11/1992	Vilkomerson et al.	5,740,802	A	4/1998	Nafis et al.
5,178,164	A	1/1993	Allen	5,748,767	A	5/1998	Raab
5,186,174	A	2/1993	Schlöndorff et al.	5,752,513	A	5/1998	Acker et al.
5,198,877	A	3/1993	Schulz	RE35,816	E	6/1998	Schulz
5,211,164	A	5/1993	Allen	5,762,064	A	6/1998	Polvani
5,222,499	A	6/1993	Allen et al.	5,765,561	A	6/1998	Chen et al.
5,230,338	A	7/1993	Allen et al.	5,769,861	A	6/1998	Vilsmeier
5,230,623	A	7/1993	Guthrie et al.	5,772,594	A	6/1998	Barrick
5,249,581	A	10/1993	Horbal et al.	5,776,064	A	7/1998	Kalfas et al.
5,251,127	A	10/1993	Raab	5,787,866	A	8/1998	Sugiyama et al.
5,251,635	A	10/1993	Dumoulin et al.	5,787,886	A	8/1998	Kelly et al.
5,253,647	A	10/1993	Takahashi et al.	5,797,849	A	8/1998	Vesely et al.
5,255,680	A	10/1993	Darrow et al.	5,829,444	A	11/1998	Ferre et al.
5,257,628	A	11/1993	Ishiguro et al.	5,833,608	A	11/1998	Acker
5,257,998	A	11/1993	Ota et al.	5,836,954	A	11/1998	Heilbrun et al.
5,261,404	A	11/1993	Mick et al.	5,840,025	A	11/1998	Ben-Haim
5,265,610	A	11/1993	Darrow et al.	5,848,967	A	12/1998	Cosman
5,271,400	A	12/1993	Dumoulin et al.	5,851,183	A	12/1998	Bucholz
5,279,309	A	1/1994	Taylor et al.	5,871,445	A	2/1999	Bucholz
5,295,483	A	3/1994	Nowacki et al.	5,871,455	A	2/1999	Ueno
5,299,254	A	3/1994	Dancer et al.	5,873,822	A	2/1999	Ferre et al.
5,299,288	A	3/1994	Glassman et al.	5,891,034	A	4/1999	Bucholz
5,305,203	A	4/1994	Raab	5,907,395	A	5/1999	Schulz et al.
5,309,913	A	5/1994	Kormos et al.	5,913,820	A	6/1999	Bladen et al.
5,318,025	A	6/1994	Dumoulin et al.	5,920,395	A	7/1999	Schulz
5,345,938	A	9/1994	Nishiki et al.	5,921,992	A	7/1999	Costales et al.
5,359,417	A	10/1994	Müller et al.	5,947,981	A	9/1999	Cosman
5,371,778	A	12/1994	Yanof et al.	5,967,982	A	10/1999	Barnett
5,377,678	A	1/1995	Dumoulin et al.	5,971,997	A	10/1999	Guthrie et al.
5,383,454	A	1/1995	Bucholz	5,980,535	A	11/1999	Barnett et al.
5,391,199	A	2/1995	Ben-Haim	5,987,349	A	11/1999	Schulz
5,394,875	A	3/1995	Lewis et al.	6,016,439	A	1/2000	Acker
5,397,329	A	3/1995	Allen	6,019,725	A	2/2000	Vessely et al.
5,398,684	A	3/1995	Hardy	6,021,342	A	2/2000	Brabrand
5,402,801	A	4/1995	Taylor	6,165,181	A	12/2000	Heilbrun et al.
5,413,573	A	5/1995	Koivukangas	6,216,029	B1 *	4/2001	Paltieli 600/427
5,423,334	A	6/1995	Jordan	6,285,902	B1 *	9/2001	Kienzle et al. 600/427
5,443,489	A	8/1995	Ben-Haim	6,379,302	B1 *	4/2002	Kessman et al. 600/437
5,446,548	A	8/1995	Gerig et al.				
5,447,154	A	9/1995	Cinquin et al.				
5,480,422	A	1/1996	Ben-Haim				
5,483,961	A	1/1996	Kelly et al.				
5,494,034	A	2/1996	Schlöndorff et al.				
5,503,320	A	4/1996	Webster et al.				
5,515,160	A	5/1996	Schulz et al.				
5,517,990	A	5/1996	Kalfas et al.				
5,531,227	A	7/1996	Schneider				
5,531,520	A	7/1996	Grimson et al.				
5,546,951	A	8/1996	Ben-Haim				
5,558,091	A	9/1996	Acker et al.				
5,569,809	A	10/1996	Ben-Haim				
5,572,999	A	11/1996	Funda et al.				
5,590,215	A	12/1996	Allen				
5,592,939	A	1/1997	Martinelli				
5,603,318	A	2/1997	Heilbrun et al.				
5,608,849	A	3/1997	King, Jr.				
5,622,170	A	4/1997	Schulz				
5,638,819	A	6/1997	Manwaring et al.				
5,662,111	A	9/1997	Cosman				
5,676,673	A	10/1997	Ferre et al.				
5,682,890	A	11/1997	Kormos et al.				
5,694,945	A	12/1997	Ben-Haim				
5,695,501	A	12/1997	Carol et al.				
5,697,377	A	12/1997	Wittkamp				
5,715,822	A	2/1998	Watkins et al.				

OTHER PUBLICATIONS

Stereotactic Image Systems, Inc. "Affordable PC Based Graphics for Stereotactic Surgery," Stereotactic One, Scantec, Inc. undated.

K. Foley, "The StealthStation™: Three-Dimensional Image-Interactive Guidance for the Spine Surgeon," Spinal Frontiers (Apr. 1996) pp. 7-9.

S. Lavallée, et al., Matching 3-D Smooth Surfaces with their 2-D Projections using 3-D Distance Maps, SPIE, Geometric Methods in Computer Vision, vol. 1570, (Jul. 25-26, 1991) pp. 322-336.

Sulzer Orthopedics Ltd., Product Information, "NAVIT-RACK™ Computer Assisted Surgery System," SULZER-MEDICA, Edition 3/98.

K. Foley, "Image Guided Spine Surgery Utilizing Frameless Stereotaxy," presentation papers (undated).

Product Information on The Laitinen Stereotactic System, . . . opening new doors in stereotaxis, (undated).

D. Norman, et al., "Localization with the EMI Scanner," The American Journal of Roentgenology Radium Therapy and Nuclear Medicine, vol. 125, No. 4, (Dec. 1975) pp. 961-964.

- R. Levinthal, "Technique for Accurate Localization with the CT Scanner," *Bulletin of the Los Angeles Neurological Societies*, vol. 41, No. 1, (Jan. 1976) pp. 6-8.
- M. Bergström, et al., "Stereotaxic Computed Tomography," *The American Journal of Roentgenology*, vol. 127 (1976) pp. 167-170.
- R. Penn, et al., "Stereotactic Surgery with Image Processing of Computerized Tomographic Scans," *Neurosurgery*, vol. 3., No. 2 (1978) pp. 157-163.
- F. Munding, "Treatment of Small Cerebral Gliomas with CT-Aided Stereotaxic Curietherapy," *Neuroradiology*, vol. 16, (Dec. 15, 1978) pp. 564-567.
- D. O'Leary, "Localization of vertex lesions seen on CT scan," *Journal of Neurosurgery*, vol. 49, Jul. 1978), pp. 71-74.
- R. Brown, "A computerized tomography-computer graphics approach to stereotaxic localization," *Journal of Neurosurgery*, vol. 50, No. 6, (Jun. 1979), pp. 715-720.
- J. Boëthius, "Stereotaxic computerized tomography with a GE 8800 scanner," *Journal of Neurosurgery*, vol. 52, No. 6, (Jun. 1980) pp. 794-800.
- M. Heilbrun, "Computed Tomography-Guided Stereotactic Systems," *Computed Tomographic Stereotaxy*, Chapter 31 (undated) pp. 564-581.
- G. Selvik, et al., "A Roentgen Stereophotogrammetric System," *Acta Radiologica Diagnosis*, vol. 24, No. 4 (1983) pp. 343-352.
- M. Heilbrun, et al., "Preliminary experience with Brown-Roberts-Wells (BRW) computerized tomography stereotaxic guidance system," *Journal of Neurosurgery*, vol. 59, Aug. 9, 1983) pp. 217-222.
- A. Patil, "Computed Tomography Plane of the Target Approach in Computed Tomographic Stereotaxis," *Neurosurgery*, vol. 15, No. 3, (Sep. 1984) pp. 410-414.
- J. Hatch, "Reference-Display System for the Integration of CT Scanning and the Operating Microscope," Thesis, Thayer School of Engineering, Dartmouth College, (1984) 189 pages.
- Y. Kwok, "A Robot with Improved Absolute Positioning Accuracy for CT Guided Stereotactic Brain Surgery," *IEEE Transactions on Biomedical Engineering*, vol. 35, No. 2, (Feb. 1988) pp. 153-160.
- Y. Kosugi, et al., "An Articulated Neurosurgical Navigation System Using MRI and CT Images," *IEEE Transactions on Biomedical Engineering*, vol. 35, No. 2, (Feb. 1988) pp. 147-152.
- E. Friets, "A Frameless Stereotaxic Operating Microscope for Neurosurgery," *IEEE Transactions on Biomedical Engineering*, vol. 36, No. 6, (Jun. 1989) pp. 608-617.
- S. Lavallee, "A New System for Computer Assisted Neurosurgery," *IEEE Engineering in Medicine and Biology Society 11th Annual International Conference*, (1989) 2 pages.
- S. Lavallee, edited by H. Lemke et al., "Computer Assisted Driving of a Needle Into the Brain," *Computer Assisted Radiology* (1989) pp. 416-420.
- D. Levin, et al., "Multimodality 3-D views of the Brain Created from MRI and PET scans," *Magnetic Resonance Imaging*, Special Issue: SMRI Seventh Annual Meeting Program and Abstracts, vol. 7, Supplement 1 (1989) p. 89.
- C. Pelizzari, "Accurate Three-Dimensional Registration of CT, PET, and/or MR Images of the Brain," *Journal of Computer Assisted Tomography*, vol. 13, No. 1 (Jan./Feb. 1989) pp. 20-26.
- D. Levin, "The Brain: Integrated Three-dimensional Display of MR and PET Images," *Radiology*, vol. 172, No. 3, (Sep. 1989) p. 783-789.
- S. Lavallee, et al., "Computer Assisted Medical Interventions," *NATO ASI Series*, vol. F, No. 60 (1990) pp. 301-312.
- W. Krybus, et al., "Navigation Support for Surgery by Means of Optical Position Detection," *Proceedings of the International Symposium. CAR '91 Computer Assisted Radiology*, pp. 362-366.
- P. Kelly, "Stereotactic Imaging, Surgical Planning and Computer-Assisted Resection of Intracranial Lesions: Methods and Results," *Advances and Technical Standards in Neurosurgery*, vol. 17, (1990) pp. 77-118.
- L. Adams, et al., "Computer-Assisted Surgery," *Medical Imaging, IEEE Computer Graphics and applications*, (May, 1990).
- A. Kato, "A frameless, armless navigational system for computer-assisted neurosurgery," *Journal of Neurosurgery*, vol. 74, (May 1991) pp. 845-849.
- S. Lavallee, et al., "Matching of Medical Images for Computed and Robot Assisted Surgery," *TIMB-IMAG, Faculte de Medecine de Grenoble*, undated, 2 pages.
- Reported by Bill Dever, RT associate editor, "3-D in the OR, guided endoscopic surgery," *Radiology Today* (Feb. 1991) 2 pages.
- L. Holman, "Computer-Assisted Superimposition of Magnetic Resonance and High-Resolution Technetium-99m-HMPAO and Thallium-201 SPECT Images of the Brain," *The Journal of Nuclear Medicine*, vol. 32, No. 8, (Aug. 1991) pp. 1478-1484.
- K. Smith, "Multimodality Image Analysis and Display Methods for Improved Tumor Localization in Stereotactic Neurosurgery," *Annual International Conference of the IEEE Engineering in Medicine and Biology Society*, vol. 13, No. 1 (1991) p. 0210.
- P. Clarysse, "A Computer-Assisted System for 3-D Frameless Localization in Stereotaxic MRI," *IEEE Transactions in Medical Imaging*, vol. 10, No. 4, (Dec. 1991) pp. 523-529.
- L. Adams, et al., "Orientation Aid for Head and Neck Surgeons," *Innov. Tech. Biol. Med.*, vol. 13, No. 4, (1992) pp. 410-424.
- K. Smith, "Computer Methods for Improved Diagnostic Image Display Applied to Stereotactic Neurosurgery," *Stereotactic Neurosurgery Display* (Nov. 1991) pp. 371-386.
- K. Obergfell, et al., "End-Point Position Measurements of Long-Reach Flexible Manipulators," *Georgia Institute of Technology, School of Mechanical Engineering*, (undated).
- P. Cinquin, et al., *IGOR: "Image Guided Operating Robot. Methodology, Applications," TIMB-IMAG, Faculte de Medecine de Grenoble* (undated) pp. 1-2.
- M. Heilbrun, et al., "Stereotactic Localization and Guidance Using a Machine Vision Technique," *Stereotactic and Functional Neurosurgery*, 58/1-4/92 (Sep. 1992) pp. 94-98.
- L. Klimck, et al., "Long-Term Experience with Different Types of Localization Systems in Skull-Base Surgery," *Ear, Nose and Throat Surgery*, (undated) pp. 635-638.
- R. Buchholz, et al., "Intraoperative localization using a three dimensional optical digitizer," *SPIE Proceedings of Clinical Applications of Modern Imaging Technology*, vol. 1894 (Jan. 17-19 1993) pp. 312-322.
- R. Buchholz, et al., "Variables affecting the accuracy of stereotactic localization using computerized tomography," *Journal of Neurosurgery*, vol. 79, (Nov. 1993) pp. 667-673.

- S. Lavallee, et al., "Computer Assisted Spine Surgery: a technique for accurate transpedicular screw fixation using CT data and a 3-D optical localizer," TIMC, Faculte de Medecine de Grenoble, (undated) pp. 315-322.
- C. Gallen, et al., "Intracranial Neurosurgery Guided by Functional Imaging," *Surg. Neurol.*, vol. 42, (1994) pp. 523-530.
- J. Henderson, "An Accurate and Ergonomic Method of Registration for Image-Guided Neurosurgery," *Computerized Medical Imaging and Graphics*, vol. 18, No. 4, (Jul.-Aug. 1994) pp. 273-277.
- K. Smith, "The Neurostation™—a Highly Accurate, Minimally Invasive Solution to Frameless Stereotactic Neurosurgery," *Computerized Medical Imaging and Graphics*, vol. 18, No. 4, (1994) pp. 247-256.
- S. Lavallee, "Image guided operating robot: a clinical application in stereotactic neurosurgery," *First International Symposium on Medical Robotics and Computer Assisted Surgery*, IEEE vol. 92 (Sep. 22-24, 1994) pp. 618-624.
- E. Benzel, "Magnetic Source Imaging: A Review of the Magnes System of Biomagnetic Technologies Incorporated," *Neurosurgery*, vol. 33, No. 2, Aug. 1993) pp. 252-259.
- D. Kondiziolka, et al., "Guided Neurosurgery Using the ISG Viewing Wand," vol. 17, No. 8 (1995) pp. 1-6.
- J. Golfinos, et al., "Clinical use of a frameless stereotactic arm: results of 325 cases," *Journal of Neurosurgery*, vol. 83 (Aug. 1995) pp. 197-205.
- P. Kelly, "The NeuroStation System for Image-Guided, Frameless Stereotaxy," *Neurosurgery*, vol. 37, No. 2 (Aug. 1995) pp. 348-350.
- K. Foley, et al., "Image-guided Intraoperative Spinal Localization," reprinted from *Intraoperative Neuroprotection*, Chapter 19, Part Three *Intraoperative Neuroprotection: Monitoring* (1996) pp. 325-340.
- R. Bucholz, et al., "Image-guided Surgical Techniques for Infections and Trauma of the Central Nervous System," *Clinical Frontiers of Interactive Image-Guided Neurosurgery*, vol. 7, No. 2, (Apr. 1996), pp. 187-200.
- C. Siegel, "Creating 3D Models from Medical Images Using AVS," Hippocrates Project, N.Y.U. School of Medicine (undated), 4 pages.
- R. Bucholz, "Intraoperative Ultrasonic Brain Shift Monitor and Analysis," St. Louis University Hospital (undated) 2 pages.
- R. Bucholz, "The Correction of Stereotactic Inaccuracy Caused by Brain Shift Using an Intraoperative Ultrasound Device," *VCRMed-MRCAS'97* (Mar. 19-22, 1997) pp. 459-466.
- W. Grimson, et al., "Image-Guided Surgery," *Scientific American* (Jun. 1999) pp. 63-69.
- C. Pelizzari, "Interactive 3D Patient-Image Registration," *Computer Science 511, Information Processing in Medical Imaging* (Jul. 1991) pp. 132-141.
- C.A. Pelizzari, et al., "Three Dimensional Correlation of PET, CT and MRI Images," Abstract No. 528, *The Journal of Nuclear Medicine, Abstract Book, Proceedings of the 34th Annual Meeting*, vol. 28, No. 4, (Apr. 1997) p. 682.
- Product Information on Vector Vision, Sooooo Easy, BrainLAB GmbH (undated).

* cited by examiner

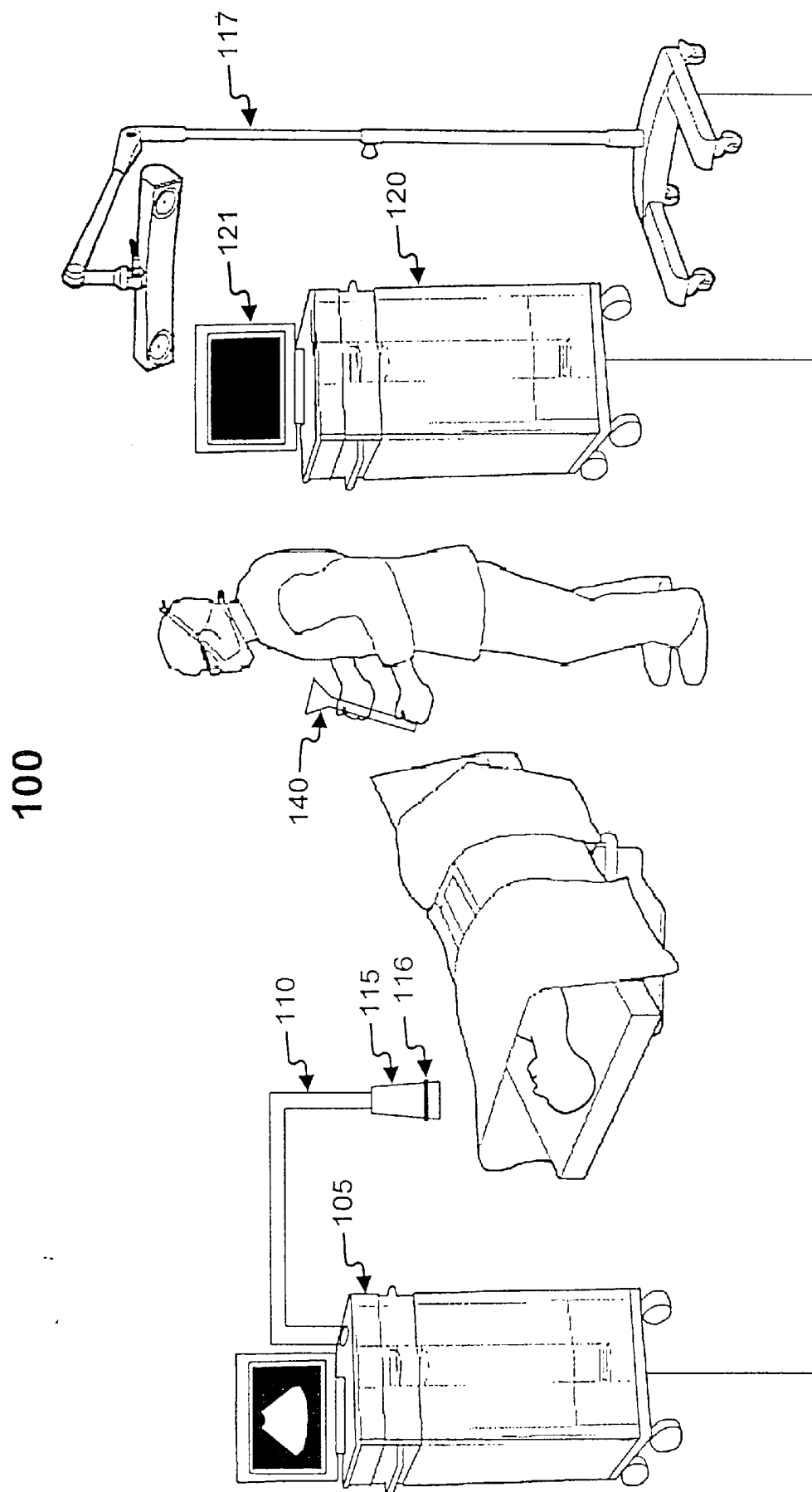


Fig. 1

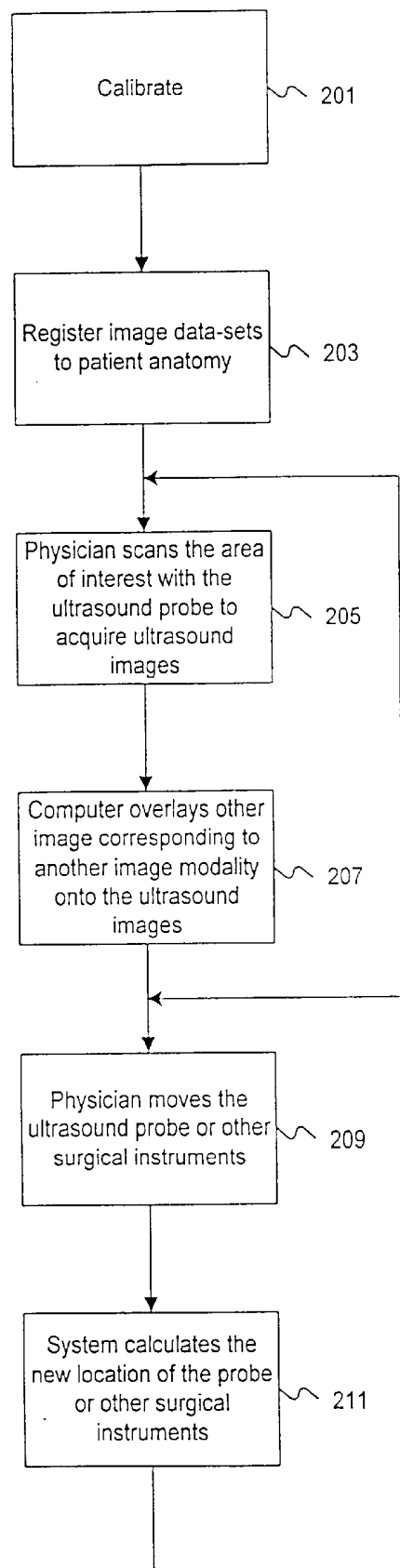


FIG. 2

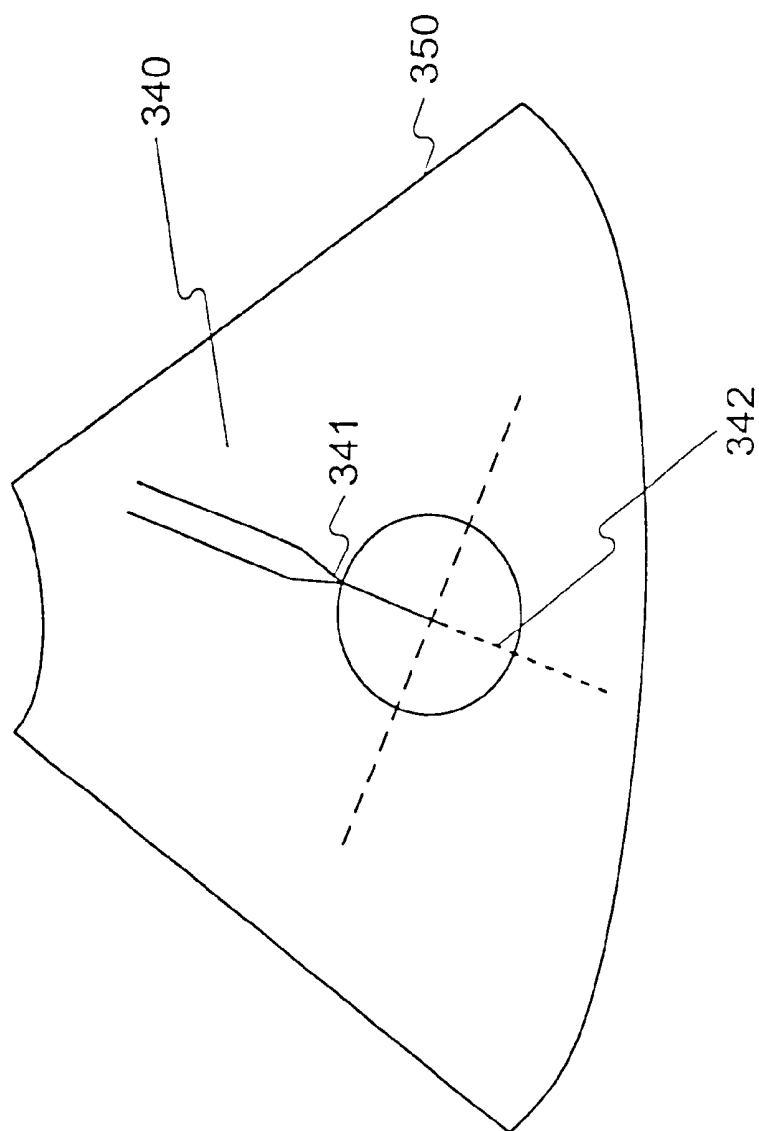


FIG. 3

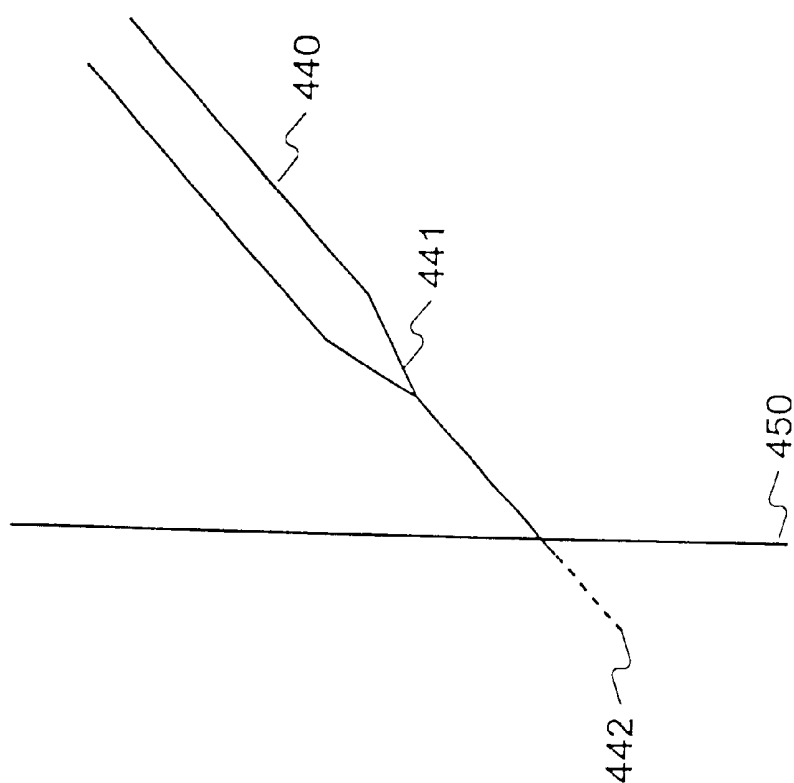


FIG. 4

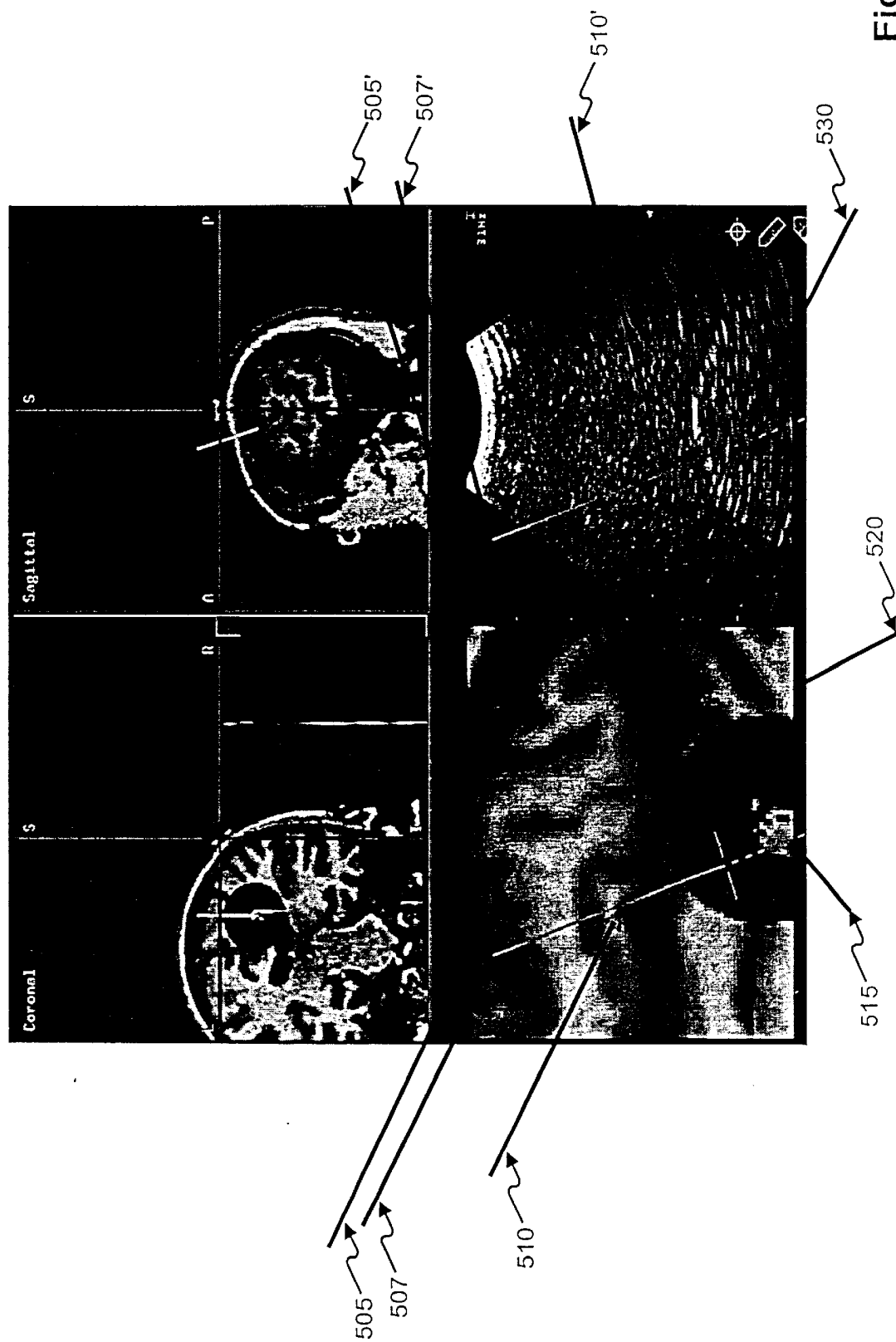


Fig. 5

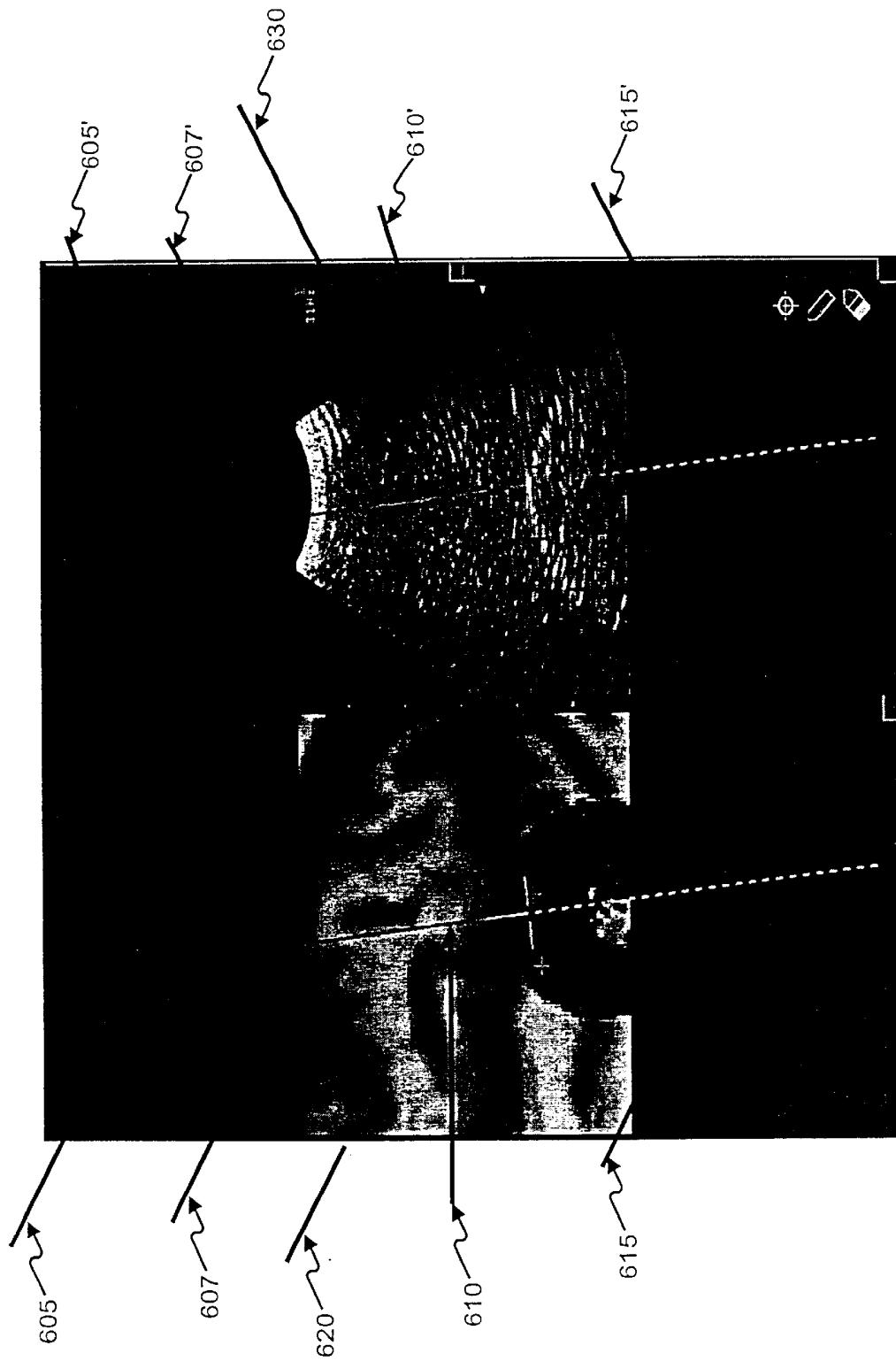


Fig. 6

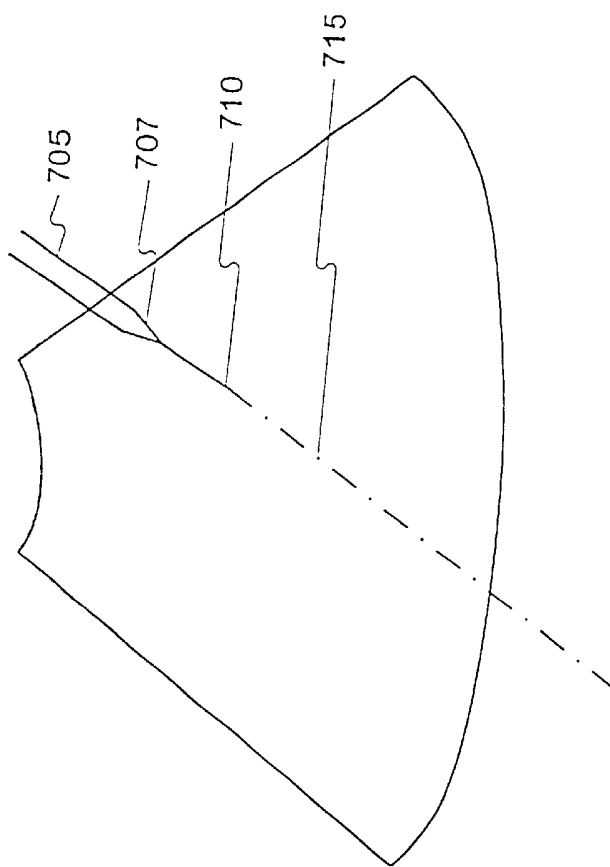


FIG. 7

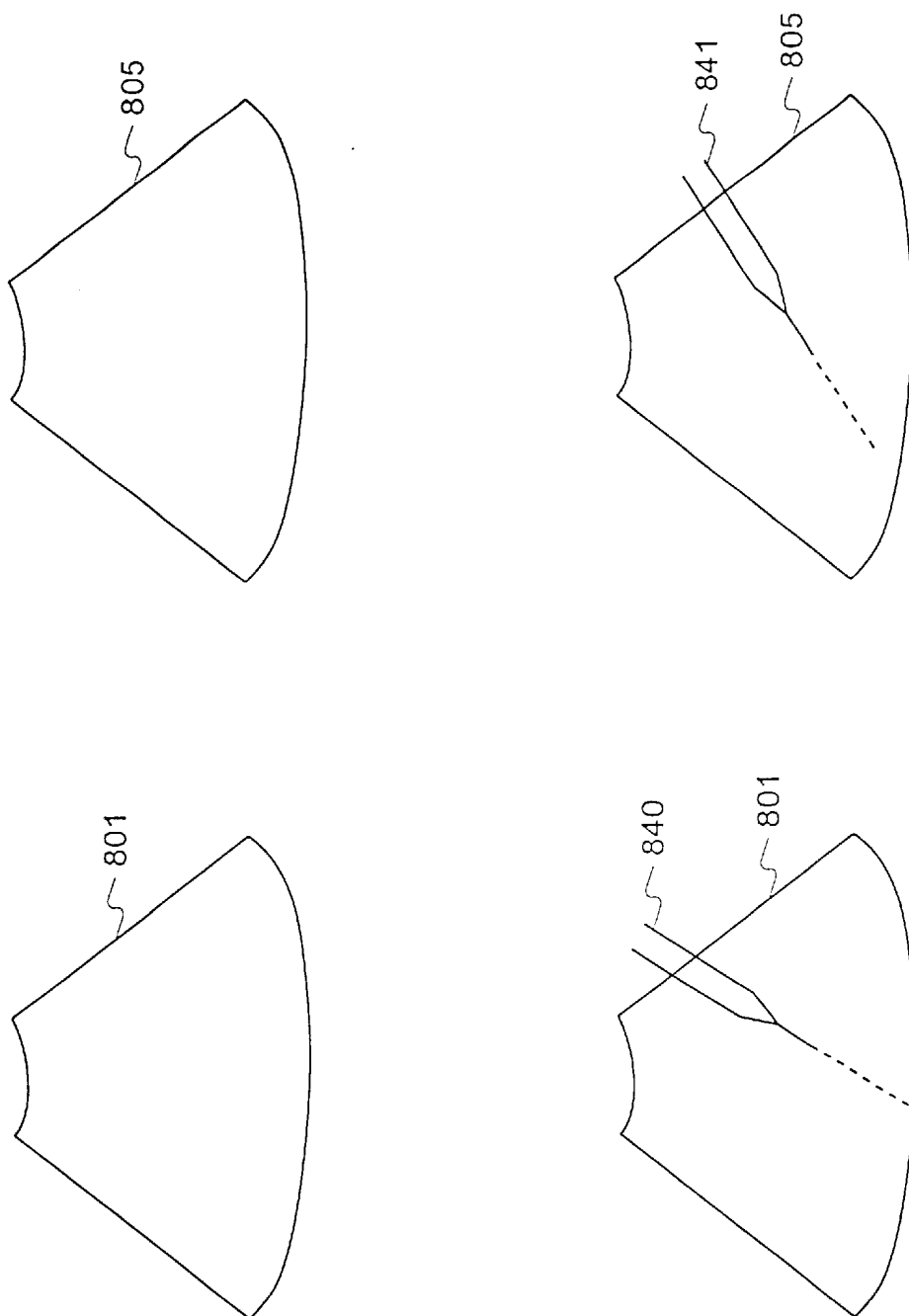


FIG. 8

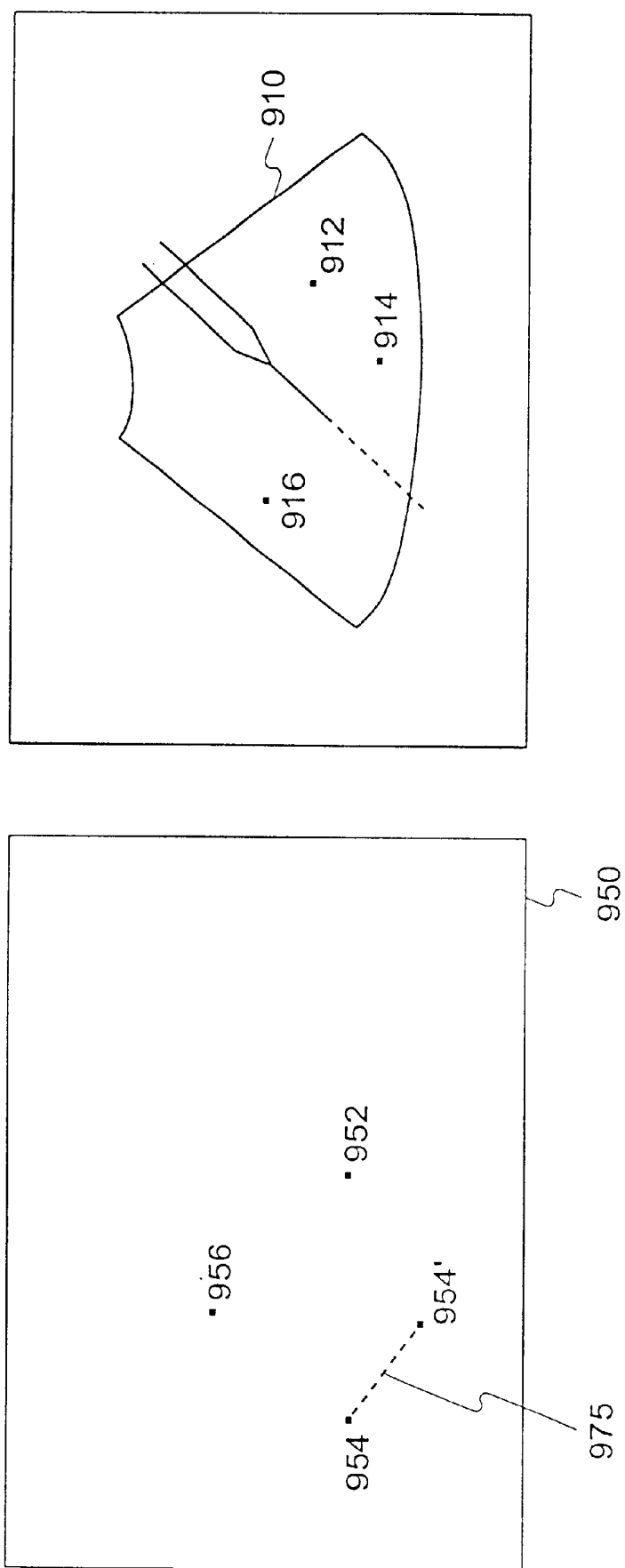


FIG. 9

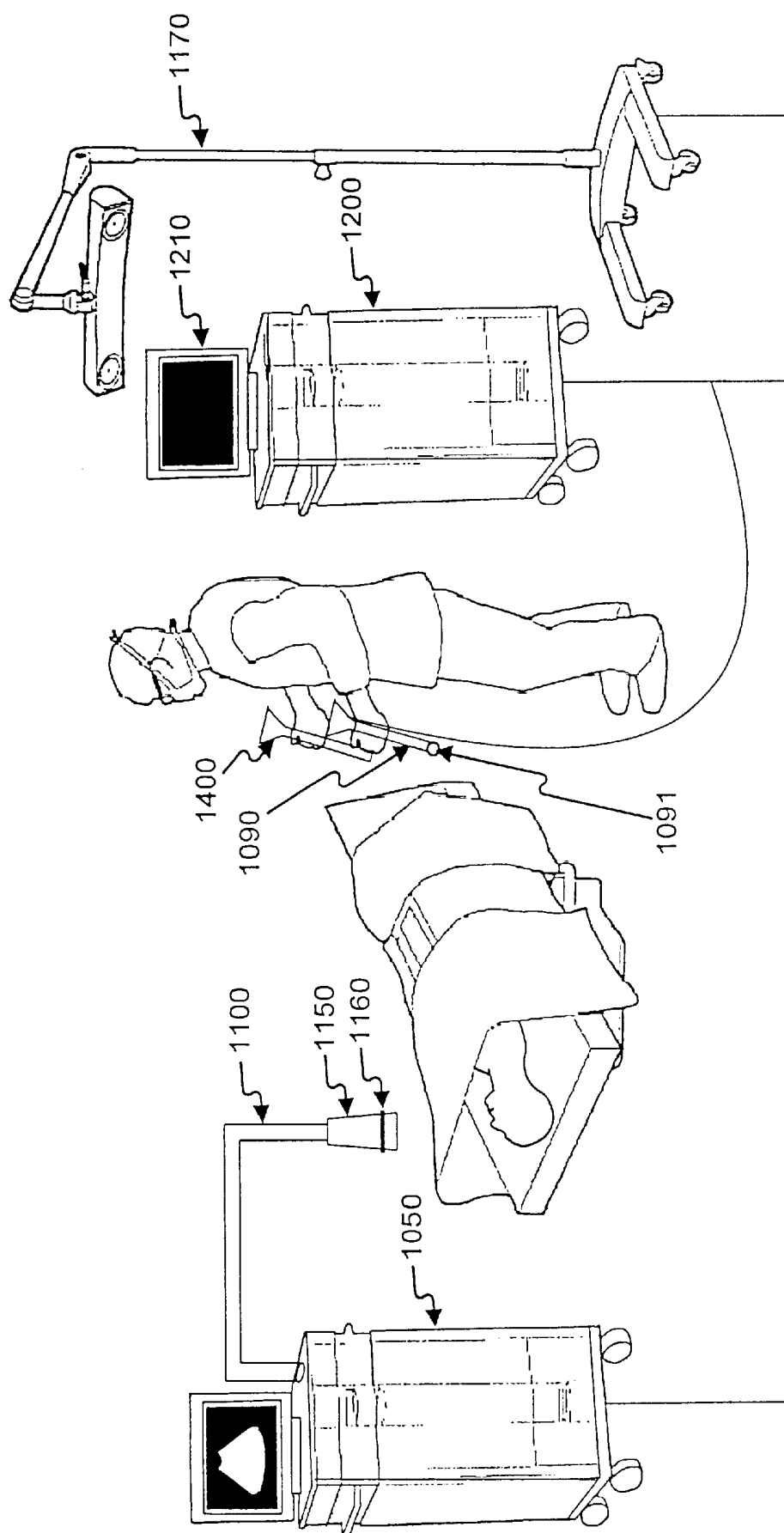
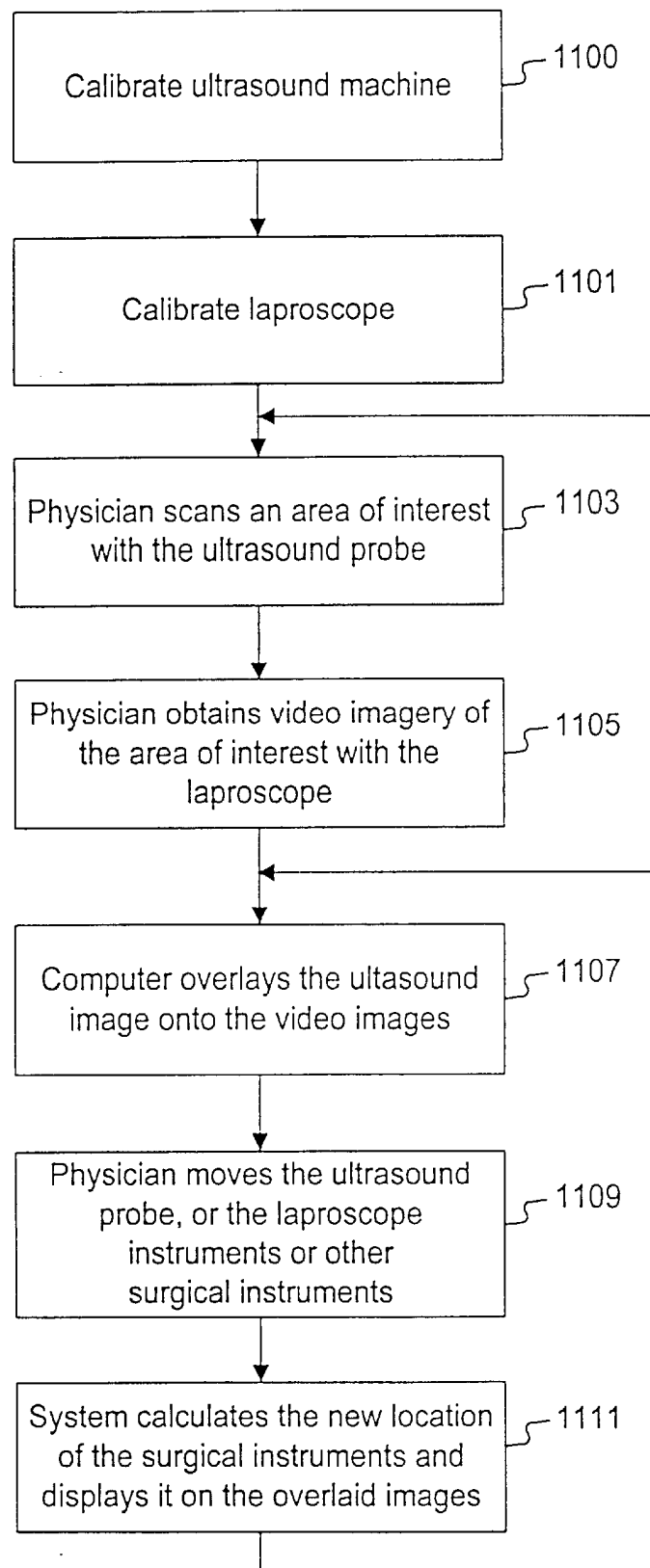


Fig. 10

**Fig. 11**

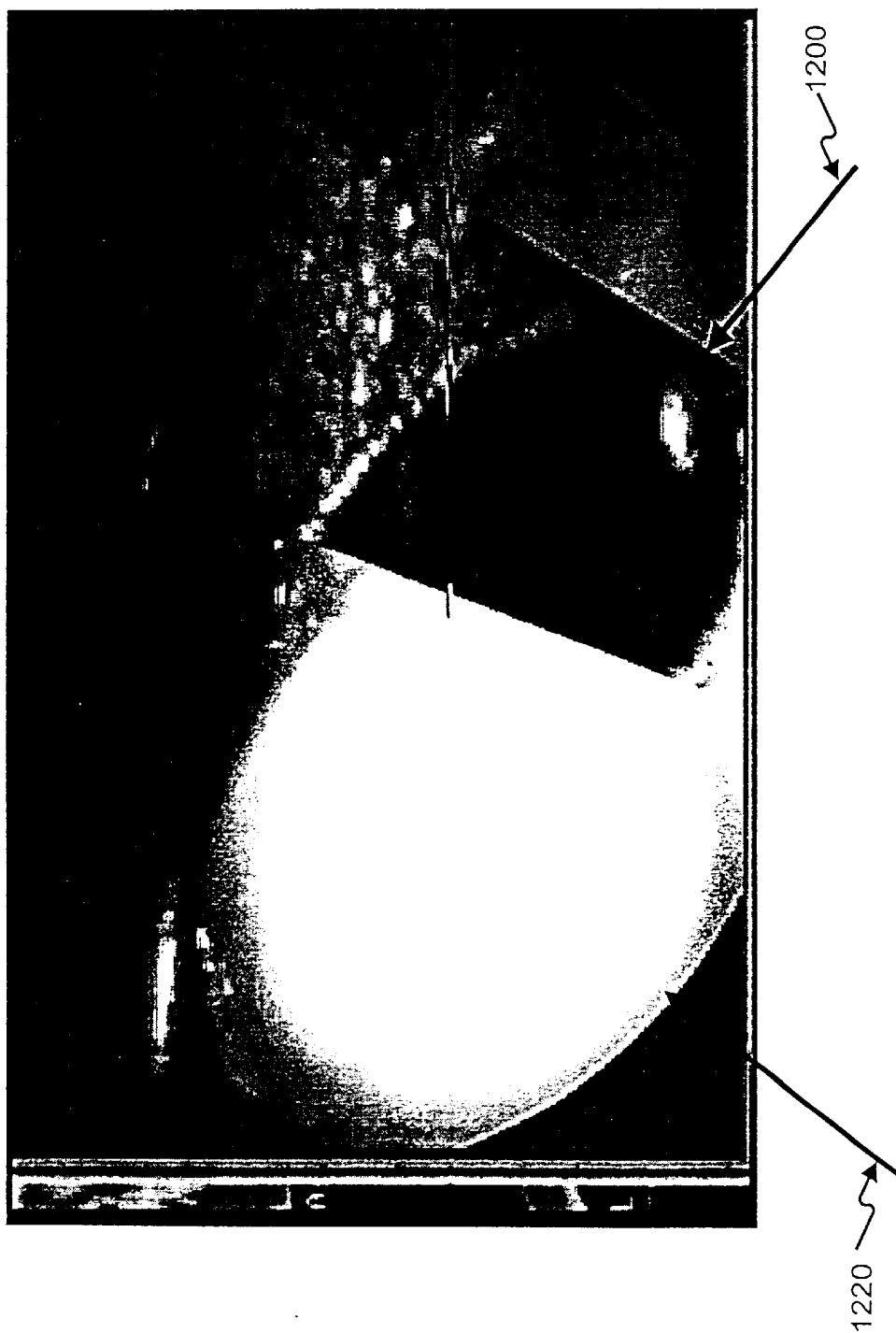


Fig. 12

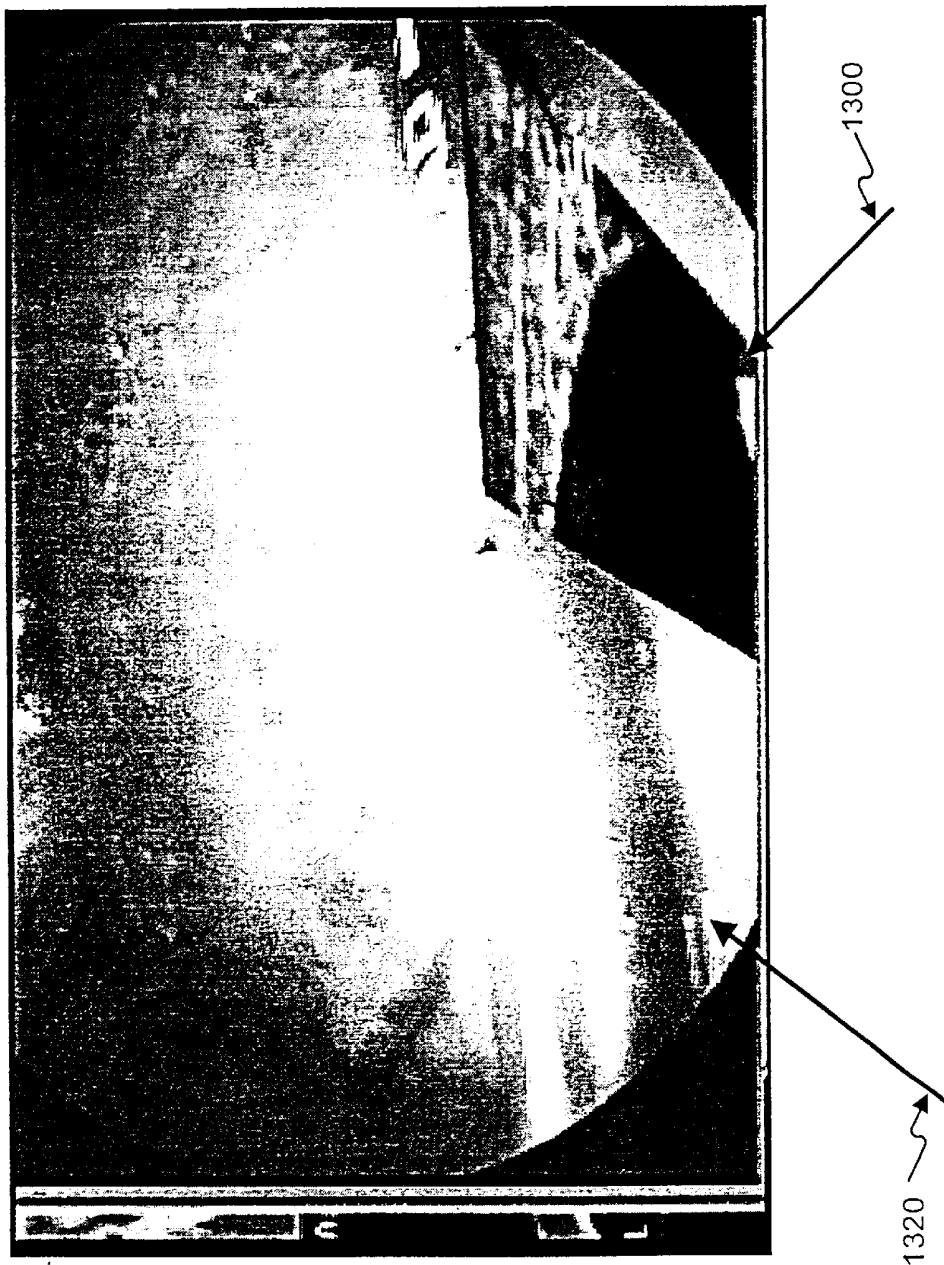


Fig. 13

NAVIGATION INFORMATION OVERLAY ONTO ULTRASOUND IMAGERY

CONCURRENTLY FILED APPLICATIONS

The following United States patent applications, which were concurrently filed with this one on Oct. 28, 1999, are fully incorporated herein by reference: Method and System for Navigating a Catheter Probe in the Presence of Field-influencing Objects, by Michael Martinelli, Paul Kessman and Brad Jascob; Patient-shielding and Coil System, by Michael Martinelli, Paul Kessman and Brad Jascob; Coil Structures and Methods for Generating Magnetic Fields, by Brad Jascob, Paul Kessman and Michael Martinelli; Registration of Human Anatomy Integrated for Electromagnetic Localization, by Mark W. Hunter and Paul Kessman; System for Translation of Electromagnetic and Optical Localization Systems, by Mark W. Hunter and Paul Kessman; Surgical Communication and Power System, by Mark W. Hunter, Paul Kessman and Brad Jascob; and Surgical Sensor, by Mark W. Hunter, Sheri McCoid and Paul Kessman.

1. Field of the Invention

The present invention is directed generally to image guided surgery, and more particularly, to systems and methods for surgical navigation using one or more real-time ultrasound images overlaid onto pre-acquired images from other image modalities.

2. Description of the Related Art

Physicians have used pre-acquired ultrasound images to plan surgery for many years. Traditionally, ultrasound machines provide two-dimensional images of the relevant human anatomy. Physicians use such images to diagnose, among other things, fetal deformities. However, until recently, physicians have not used such ultrasound images that have been either pre-acquired or acquired in real time during surgery for surgical navigation purposes.

Some recent systems permit the use of ultrasound images in conjunction with a specialized software running on a computer to plan and execute a surgery. For example, among other systems, the Ultraguide system permits a physician to represent an icon representation of a surgical instrument on an ultrasound image. This system also plots a trajectory of a surgical instruments probe on a two-dimensional ultrasound image.

Similarly, the Life Imaging system also provides some help to a physician by converting two-dimensional ultrasound images into a three-dimensional cube. Subsequently, the physician may view an iconic representation of a surgical instrument on the cube.

However, none of these systems permit a physician to overlay images from other image modalities over ultrasound images along with a display of a surgical instrument on the overlaid images.

SUMMARY OF THE INVENTION

Objects and advantages of the invention will be set forth in part in the description which follows, and in part will be obvious from the description, or may be learned by practice of the invention. The objects and advantages of the invention will be realized and attained by means of the elements and combinations particularly pointed out in the appended claims.

One aspect of the present invention is directed to a surgical navigation system comprising several devices. In particular, the surgical navigation system includes an ultra-

sound machine, a computer coupled to the ultrasound machine, such that image data corresponding to the images acquired by the ultrasound machine can be transferred to the computer. In addition, the surgical navigation system includes a memory coupled to the computer which has computer instructions. The computer instructions when executed by the computer cause the computer to generate an icon representing the surgical instrument with a tip and the surgical instrument's trajectory and to overlay the icon on a real-time ultrasound image, such that when the surgical instrument crosses the ultrasound image plane the form at of the surgical instrument's trajectory is changed to represent the surgical instrument's crossing of the ultrasound image's plane. Furthermore, the surgical navigation system includes a localizer coupled to the ultrasound machine, which permits the system to localize the ultrasound probe, a part of the ultrasound machine. Finally, the surgical navigation system includes a display coupled to the computer for displaying the generated icon superimposed on the real-time ultrasound image acquired by the ultrasound machine.

The surgical navigation system further includes a display which can display a side view of the ultrasound image with a representation of the surgical instrument's trajectory displaying the angle at which the surgical instrument's trajectory intersects with the ultrasound image. In addition, the claimed system can calculate the angle at which the surgical instrument's trajectory intersects with the ultrasound image. Moreover, the claimed system can also represent the angle at which the surgical instrument's trajectory intersects with the ultrasound image using periodic markers.

Another surgical navigation system consistent with the present invention includes, an ultrasound machine and a video imaging device, such as a laparoscope where the ultrasound machine and the video-imaging device are coupled to the computer in a way that image data from both of these devices can be transferred to the computer. Alternatively, the video imaging device may also be an X-ray machine. In addition, the surgical navigation system has localizers attached to both the ultrasound machine and to the video imaging device. Furthermore, the system includes, a memory coupled to the computer, where the memory includes computer instructions. The computer instructions when executed by the computer cause the computer to overlay the video images acquired by the video imaging device onto the ultrasound image acquired by the ultrasound device such that the two images correspond to a common coordinate system. Finally, the system includes a display that can display the overlaid images.

In addition to the above mentioned systems, the concepts of the present invention may be practiced as a number of related methods.

One method consistent with the present invention is surgical navigation using images from other image modalities overlaid over ultrasound images. The method comprises calibrating the system, a step which need be performed initially only; registering image data-sets from other image modalities to patient anatomy, a physician scanning an area of interest using the ultrasound probe; the computer overlaying images from other image modalities onto the ultrasound images; the physician moving the ultrasound probe or other surgical instruments; and the system calculating a new location of the surgical instruments.

Another method consistent with the present invention is a method for calculating and displaying an ultrasound probe's angle relative to an ultrasound image plane. The method comprises drawing a circle with its center at the point where

the ultrasound probe's trajectory crosses the ultrasound image plane. The circle's radius represents the angle of the ultrasound probe relative to the ultrasound image plane. The angle of the ultrasound probe relative to the ultrasound image plane may also be displayed using periodic markers consistent with the present invention.

Still another method consistent with the present invention is a method to overlay image segmentations onto ultrasound images for surgical navigation. The method comprises extracting a two dimensional image from the three-dimensional image data-set; overlaying the extracted segmentation onto an ultrasound image corresponding to the same human anatomy; displaying the overlaid image along with an iconic representation of the surgical instruments; the physician moving the ultrasound probe or other surgical instruments; and the system calculating a new location of the surgical instruments.

An additional method consistent with the present invention is surgical navigation using three-dimensional image data-sets. The method comprises a physician acquiring a three-dimensional ultrasound image data-set; a computer reconstructing the image data-set into an orthogonal data-set; displaying the three-dimensional image on a display along with an iconic representation of the surgical instruments; the physician moving the ultrasound probe or other surgical instruments; and the system calculating a new location of the surgical instruments.

Yet another method consistent with the present invention is a method for detecting organ-matter shift from the time when CT or MR image data-sets are created to the time when the patient is operated upon. The method comprises correlating a real-time ultrasound image and a pre-acquired three-dimensional image to obtain a correlated two-dimensional image; selecting a first set of points on the real-time ultrasound image; selecting a corresponding second set of points on the correlated two-dimensional image; and displaying a vector representing the distance and the direction of the organ-matter shift.

It is to be understood that both the foregoing general description and the following detailed description are exemplary and explanatory only and are not restrictive of the invention, as claimed.

The accompanying drawings, which are incorporated in and constitute a part of this specification, illustrate one (several) embodiment(s) of the invention and together with the description, serve to explain the principles of the invention.

BRIEF DESCRIPTION OF THE DRAWINGS

The accompanying drawings, which are incorporated in and constitute a part of this specification, illustrate systems and methods consistent with the invention and, together with the description, serve to explain the advantages and principles of the invention.

FIG. 1 is a diagram of an exemplary system used to overlay ultrasound images onto pre-acquired images from other image modalities;

FIG. 2 is a flow chart illustrating methods consistent with the present invention for navigation using overlaid images;

FIG. 3 is a diagram illustrating a method consistent with the present invention for measuring the angle of a surgical instrument's trajectory relative to an ultrasound image plane;

FIG. 4 is a diagram showing a display of a side view of an ultrasound image with an iconic representation of a

surgical instrument and its trajectory indicating the angle of the surgical instrument relative to the ultrasound probe;

FIG. 5 is a pictorial image showing an MR data-set image and an ultrasound image side by side on a display consistent with the present invention;

FIG. 6 is a pictorial image representing a closer view of the MR image and the ultrasound image;

FIG. 7 is a diagram illustrating a method consistent with the present invention for displaying the angle of an ultrasound probe relative to an ultrasound image plane;

FIG. 8 is a diagram illustrating the use of orthogonal ultrasound images in surgical navigation consistent with the present invention;

FIG. 9 is a diagram illustrating a method consistent with the present invention for detecting shift in organ matter;

FIG. 10 is a diagram of an exemplary system used to overlay ultrasound images onto video images acquired using a laparoscope or an X-ray machine;

FIG. 11 is a flow chart illustrating methods consistent with the present invention for navigation using overlaid ultrasound and video images;

FIGS. 12 and 13 are pictorial images representing two video laparoscope images of a gallbladder with an ultrasound image overlaid in correct perspective.

DETAILED DESCRIPTION

Reference will now be made in detail to an implementation consistent with the present invention as illustrated in the accompanying drawings. Wherever possible, the same reference numbers will be used throughout the drawings and the following description to refer to the same or like parts.

Ultrasound Navigation System Overview

Methods and systems consistent with the present invention permit physicians to navigate surgical probes more accurately without relying upon memorized models of the particular anatomy they may be operating upon. This is because the present system permits a physician to overlay ultrasound images over images from other image modalities giving the physician a three-dimensional image of the particular anatomy overlaid onto the ultrasound image relevant to that anatomy. Overlaying of images along with correlation of points in images from different image modalities can also help the physician in detecting organ-matter shift.

FIG. 1 is a diagram of an exemplary ultrasound navigation system 100 used to acquire ultrasound images. Ultrasound machine 105 is a standard ultrasound machine capable of acquiring ultrasound images and displaying them on the built-in monitor. The ultrasound machine has a probe 115 attached to it via an arm 110, such that the ultrasound probe 115 can be manipulated by a physician to point it at the area of interest to the physician. For example, the physician can point the ultrasound probe 115, on the head of a patient to acquire ultrasound images corresponding to the head of that patient. The ultrasound probe 115 has a localizer 116, also referred to as a tracking marker, attached at its distal end. The localizer 116 can include optical, electromagnetic, acoustic device, or other suitable devices known in the prior art. Localization is a standard technique used in image guided surgery to locate the orientation and position of a surgical instrument or an ultrasound probe relative to a patient's position known in the art. For example, each of the following references discuss systems and methods that permit localization, each of which is incorporated by reference: PCT Publication WO 96/11624 to Bucholz et al., published

Apr. 25, 1996; U.S. Pat. No. 5,384,454 to Bucholz; U.S. Pat. No. 5,851,183 to Bucholz; and U.S. Pat. No. 5,871,445 to Bucholz.

Referring further to FIG. 1, the ultrasound machine **105** is connected to a computer **120** such that the acquired ultrasound image data can be transferred to the computer **120**. The computer **120** is connected to a display **121**, such that images stored on a storage media can be digitally manipulated, saved, printed, or displayed on the display **121**. Three-dimensional images, such as pre-acquired images obtained from computed tomography (CT) or Magnetic Resonance Imaging (MR) image data-sets for a particular patient, stored on a storage media, such as an external tape-drive, not shown, attached to the computer **120** may also be manipulated by computer **120** and displayed by the display **121**. In addition, the images displayed on the display **121** may also be displayed through a head-mounted display worn by the physician.

Additionally, although FIG. 1 shows only one computer **120**, one may have multiple computers implemented as a single computer to perform the functions performed by the computer **120**. Moreover, one may not need external storage media for storing the images since those images could be stored on a remote server connected to the computer **120** through a local area network (LAN). In addition, even though FIG. 1 shows only one display **121** coupled to the computer **120**, one may have multiple displays, including LCD displays, connected to the computer **120**.

Moreover, even though FIG. 1 only illustrates the use of a patient specific CT/MR data-set, the disclosed system may also have three-dimensional atlas data-sets stored on the computer **120**. For example, one may have a three-dimensional atlas data-set for the human brain or the kidney stored on a remote server accessible to the computer **120** through a LAN, or on the storage media attached to the computer **120**. Atlas data is non-patient specific three-dimensional data describing a "generic" patient. Atlas data may be acquired using CT, MR or other imaging modalities from a particular patient; and may even comprise images from several modalities which are spatially registered (e.g., CT and MR together in a common coordinate system). Atlas data may also have annotations describing anatomy, physiology, pathology, or "optimal" planning information.

In addition, in general, the term "pre-acquired," as used herein, is not intended to imply any required minimum duration between the acquisition of image data-sets and displaying the corresponding images. Accordingly, a physician may "pre-acquire" image data-sets during surgery while operating upon a patient using the disclosed system.

To operate upon a patient using the disclosed ultrasound surgical navigation system, the patient is positioned between the ultrasound probe **115** and the tracking sensor **117**.

A surgical instrument **140** is also embedded with tracking markers, such as for example, emitters and/or reflectors. These markers permit determination of the three dimensional position of an object relative to a patient. The determination of the three dimensional position of an object relative to a patient is known in the art. As mentioned earlier, each of the Bucholz references discuss systems and methods for determination of the three dimensional position of an object relative to a patient. Using known systems in the prior art, the disclosed system can locate the position and orientation of a surgical instrument or a probe being used to operate upon the patient.

Ultrasound Navigation System Setup and Operation

FIG. 2 is a flow chart illustrating the steps for methods consistent with the present invention for ultrasound naviga-

tional guidance using the system of FIG. 1. As shown, there are six main steps involved in using the ultrasound navigational guidance system. A physician needs to initially perform the first step, Calibrate **201**. After calibrating, discussed hereinafter, in the second step **203**, the pre-acquired data-sets belonging to other image modalities may need to be registered in order to obtain a correspondence between these images and the real-time ultrasound images. This step, discussed in detail later, need not be performed every time. Subsequently, in step **205** the physician scans the area of interest of the human anatomy with the ultrasound probe **115**. For example, the physician may scan the brain of a patient to obtain ultrasound images of the brain. Next, in step **207** the computer overlays the pre-acquired images corresponding to other image modalities, such as CT and MR onto the ultrasound images. Later, in step **209** the physician may move the surgical instruments or the ultrasound probe. Finally, in the sixth step **211**, the system can calculate and display the new position and orientation of the surgical instruments or the ultrasound probe on different images and also on three-dimensional images overlaid on the real-time ultrasound images.

During surgery, the physician may go back to step **205** and scan another area of interest and accordingly the computer may overlay pre-acquired images belonging to other image modalities onto the new ultrasound images. Alternatively, the physician may simply move the ultrasound probe **115** or other surgical instruments as per step **209**, and yet remain within the earlier scanned area of interest. Consequently, the system calculates the new location of the ultrasound probe **115** or other surgical instruments and displays the overlapping images on the display **121** attached to the system.

Referring to FIG. 2, as discussed above, a physician or her assistant calibrates the navigational guidance system before using the system for the first time (step **201**). In addition, the physician may need to calibrate the system later occasionally to improve the system's accuracy. Indeed, calibration may be performed by service technician familiar with the navigational guidance system. Calibration is the process used to precisely calculate the location of the ultrasound image plane relative to the localizer **116**.

Calibration of image guided surgical devices is known in the art. In addition, U.S. Pat. No. 6,470,207, issued Oct. 22, 2002, assigned to the same assignee, describes calibration in the context of a navigational guidance system using x-rays, which is incorporated by reference. In general, calibration consists of using a calibration device, which may contain objects, such as rows and columns of wires, inside a frame, that can be detected by an ultrasound machine. A user scans the calibration device with the ultrasound probe **115** and the attached localizer **116**. The ultrasound navigation system with the help of software running on the computer **120** locates the intersection of wires, which appear as dots in the scanned image of the calibration device. The computer **120** then calculates a transformation between these dots and the actual intersection of the wires that formed a dot located on the actual calibration device.

As discussed earlier, a physician, or the physician's assistant, may use Computed Tomography (CT) or Magnetic Resonance Imaging (MRI) to acquire CT or MR data-sets corresponding to each one of these image modalities. These pre-acquired image data-sets can be stored on a storage device coupled to the computer **120**. In addition, these three-dimensional data sets may be acquired by the physician during the operation. Furthermore, the present invention is not limited to using CT or MR images. One may use images from other image modalities as well with the present

invention. For example, images acquired using other diagnostic tools, such as Positron Emission Tomography (PET) or X-rays may also be used.

With the ultrasound navigation system setup and the data-sets corresponding to other image modalities acquired, the physician may in step 205 begin surgery by scanning the specific area of human anatomy which needs operative care with the ultrasound probe 115. The real-time image of the specific area acquired by the ultrasound probe 115 is displayed on the display which is part of the ultrasound machine. Next, upon the physician's command the system overlays the three-dimensional image corresponding to a different image modality data-set onto the ultrasound image along with an iconic representation of the surgical instrument 140.

However, before overlaying the three-dimensional image with a graphical representation of a surgical instrument, the correspondence between points in the three-dimensional image and points in the patient's reference frame may need to be determined in step 203, as shown in FIG. 2. The process to achieve this correspondence is known as registration of the image. One method for performing image registration is described in the previously mentioned publications to Bucholz. Another method for performing image registration is described in U.S. Pat. No. 6,470,207, issued Oct. 22, 2002, to the same assignee.

In general, three-dimensional patient specific images can be registered to a patient on the operating room table (surgical space) using multiple two-dimensional image projections. This process, generally referred to as 2D/3D registration, uses two pre-established spatial transformations to relate the surgical space to the three-dimensional image space. Accordingly, the first transformation is between the ultrasound images and the three-dimensional image data-set, such as a CT or an MR data-set corresponding to the same patient.

The second transformation is between the coordinate system of the ultrasound images and an externally measurable reference system, which can be achieved using a tracking sensor 117. Tracking sensor 117 is a real-time infrared tracking sensor linked to computer 120. Specially constructed surgical instruments and other markers, also known as localizers, in the field of tracking sensor 117 can be detected and located in three-dimensional space. For example, a surgical instrument 140, such as a drill, may be embedded with tracking elements, such as for example, infrared emitters/reflectors on its handle. Tracking sensor 117 can then detect the presence and location of infrared emitters/reflectors. Because the relative spatial locations of the emitters/reflectors in instrument 140 are known a priori, tracking sensor 117 and computer 120 are able to locate instrument 140 in three-dimensional space using known mathematical transformations. Instead of using infrared tracking sensor 117 and corresponding infrared emitters/reflectors, other types of positional location devices are known in the art, and may be used. For example, a positional location device may also be based on magnetic fields, optic emissions, sonic emissions, or radio waves. Once these two transformations have been established, the system may relate the surgical space directly to the three-dimensional image space.

Finally, with a display of the surgical instrument overlaid on the ultrasound image, which in turn is blended with a three-dimensional image from another modality the physician can guide the surgical instrument more effectively. Several well known techniques can be used to blend the

images. For example, a computer may implement an algorithm that for each pixel establishes α as the blending ratio. Assuming X is a pixel from the ultrasound image and Y is a pixel from the MR or CT image. Then the computer may perform the following calculation to arrive at a pixel Z for the blended image:

$$\text{Blended Image Pixel } Z = ((X * \alpha) + (Y * (1 - \alpha)))$$

Referring to FIGS. 1 and 5, when during surgery the physician moves the ultrasound probe 115 or other surgical instrument(s) in step 509, the system calculates the new location of the ultrasound probe 115 or the location of other surgical instruments. The system does this by using a technique called localization, which as discussed earlier, is known in the art.

In addition to above methods and techniques a physician may achieve better surgical navigation using the techniques and methods discussed below.

Displaying Surgical Instrument to Ultrasound Image Angle

Referring to FIGS. 1, 3, and 4 the ultrasound navigation system may also be used to calculate and display the angle of a surgical instrument 340 to the ultrasound image plane 350. The computer 120 may calculate the angle by drawing a circle with its center at the point where the surgical instrument's trajectory 342 passes through the ultrasound image plane 350. The radius of the circle may represent the angle of the trajectory 342 to the ultrasound plane 350. This is because the computer 120 may use trigonometric techniques such as drawing a perpendicular line from the tip 341 of the surgical instrument 340 onto the ultrasound image plane 350. Accordingly, the radius of a circle drawn by the computer 120 with its center at the point where the surgical instrument's trajectory 342 passes through the ultrasound image plane 350 may represent the angle of the surgical instrument 340 to the ultrasound image plane 350. The system may display this angle on the display 121 as shown in FIG. 4.

Referring to FIG. 4, the system may display a side view of the ultrasound image plane 450. It may also display the trajectory of a surgical instrument 440 intersecting with the ultrasound image plane 450 and changing the display of the trajectory to a dotted representation 442 after the trajectory crosses the ultrasound image plane 450.

FIG. 5 is a pictorial image showing an MR data-set image 515 and an ultrasound image 530 side by side on the display 120. Both images have an iconic representation of a surgical instrument 505 superimposed on the images. The figure also indicates that the system displays a trajectory of a surgical instrument tip 507 and changes the trajectory from a solid line trajectory 510 to a dashed line trajectory 515 when the trajectory crosses the MR data-set image plane and the ultrasound image plane respectively. FIG. 6 is another pictorial image representing a zoomed-in view of the MR image and the ultrasound image. A physician may select either view or may display both views on the display 121.

Displaying Surgical Instrument to Ultrasound Image Angle Using Periodic Markers

Referring to FIG. 7, the disclosed system can display the angle of the surgical instrument 140 relative to the ultrasound image plane by displaying periodic markers 715. The distance between the periodic markers changes as a function of the cosine of the angle between the surgical instrument

trajectory 710 and the ultrasound image plane. Accordingly, the periodic markers may also indicate the angle of the surgical instrument trajectory 710 to the ultrasound image.

Displaying Orthogonal Images for Better Navigation

Referring to FIG. 8, the ultrasound navigation system may also display multiple orthogonal ultrasound images 801 and 805. In addition, the system may also upon command display iconic representation 840 of a surgical instrument

Overlaying Segmentations onto Ultrasound Images

The system disclosed in FIG. 1, may also be used to overlay image segmentations onto ultrasound images for surgical navigation. In general, segmentations are surfaces or sets of other information extracted from a three-dimensional data-set. Segmentations can be obtained by the computer 120, on command, from the pre-acquired three-dimensional image data-sets by using known computer graphics algorithms. The extracted segmentation can then be overlaid onto an ultrasound image in the correct perspective by the computer 120. The overlaid image can be displayed by the display 121, as discussed earlier.

In addition, referring to FIG. 1, and as discussed earlier, the computer 120 also displays an iconic representation of any surgical instrument 140 with tracking sensors. Also, the computer 120 can recalculate and display the location of the surgical instrument 140 onto the overlaid image when the physician moves the surgical instrument 140 during surgical navigation.

Surgical Navigation with Three-dimensional Image Data-sets

The ultrasound navigation system shown in FIG. 1 may also be used to help a physician in surgical navigation by displaying three-dimensional ultrasound image data-sets. A physician or a physician's assistant can acquire a three-dimensional ultrasound image data-set by using known techniques that may be free-hand or may involve use of mechanical movements. Once the image data is acquired using any of the known techniques, the computer 120 can then using graphics related mathematical computations reconstruct this data into an orthogonal data-set. Later, the computer 120 can display the orthogonal data-set as a three-dimensional image on the display 121.

The computer 120 then overlays a real-time ultrasound image over the pre-acquired and computationally generated three-dimensional image in the right perspective. In addition, the computer 120 with the help of known algorithms can map an ultrasound image relating to an area of interest onto the surface of the pre-acquired three-dimensional image of the same area. The general technique of mapping an image onto the surface of a three-dimensional image in the correct perspective is known in the art, and is referred to as texture mapping. Accordingly, using known texture mapping algorithms, an ultrasound image of an area of interest can be mapped onto a three-dimensional image of a particular area of human anatomy, and can be displayed on the display 121, aiding a physician in better surgical navigation.

In general; however, due to perspective transformation or the curvature of the surface, texture mapping may result in a distorted image. To alleviate this problem, the disclosed system may use known filtering-techniques that help reduce

distortion. Thus, the computer 120 with the help of software can execute instructions corresponding to known filtering algorithms, which can reduce image distortion.

In addition, referring to FIG. 1, and as discussed earlier, the computer 120 also displays an iconic representation of any surgical instrument 140 with tracking sensors. Also, the computer 120 can recalculate and display the location of the surgical instrument 140 onto the texture mapped ultrasound image when the physician moves the surgical instrument 140 during surgical navigation.

Detecting Organ Shift Using the Ultrasound Navigation System

The ultrasound navigation system shown in FIG. 1 may also be used to detect organ-matter shift during surgery. Detection of organ-matter shift is important since a patient's organ-matter may have shifted from the time when CT or MR data-sets for that patient were created to the time when the patient is actually operated upon. For example, a physician's assistant may have obtained CT or MR images of a patient needing neurosurgery. However, the physician scheduled to operate upon the patient may not operate upon the patient until a later time during which the grey-matter or other organic matter comprising the brain may have shifted. Referring to FIG. 9, once the ultrasound image 910 and the extracted CT or MR two-dimensional image 950 are correlated the computer 120 with the help of software can perform certain calculations and measurements to indicate organ-matter shift.

Correlation involves performing registration, localization, and calibration. Registration, as discussed earlier, involves determining the correspondence between points in the three-dimensional image and points in the patient's reference frame. One method for performing image registration is described in the previously mentioned publications to Bucholz. Another method for performing image registration is described in U.S. Pat. No. 6,470,207, issued Oct. 22, 2002, to the same assignee.

In general, as discussed earlier, three-dimensional patient specific images can be registered to a patient on the operating room table (surgical space) using multiple two-dimensional image projections. This process, generally referred to as 2D/3D registration, uses two pre-established spatial transformations to relate the surgical space to the three-dimensional image space. Accordingly, the first transformation is between the ultrasound images and the three-dimensional image data-set, such as a CT or an MR data-set corresponding to the same patient. The second transformation is between the coordinate system of the ultrasound images and an externally measurable reference system which can be achieved using a tracking sensor 117. The tracking sensor 117 is also known as a localizer array, and the process of achieving the previously mentioned transformation is referred to as localization.

Tracking sensor 117 is a real-time infrared tracking sensor linked to computer 120. Specially constructed surgical instruments and other markers in the field of tracking sensor 117 can be detected and located in three-dimensional space. For example, a surgical instrument 140, such as a drill, is embedded with infrared emitters/reflectors on its handle. Tracking sensor 117 detects the presence and location of infrared emitters/reflectors. Because the relative spatial locations of the emitters/reflectors in instrument 140 are known a priori, tracking sensor 117 and computer 120 are able to locate instrument 140 in three-dimensional space using well known mathematical transformations. Instead of using infra-

red tracking sensor **117** and corresponding infrared emitters/reflectors, other types of positional location devices are known in the art, and may be used. For example, a positional location device may also be based on magnetic fields, sonic emissions, or radio waves. Once these two transformations have been established, the system may relate the surgical space directly to the three-dimensional image space.

Finally, the system may need to be calibrated. Calibration is the process to precisely calculate the location of the ultrasound image plane relative to the localizer **116**. Consequently, calibration improves the interpretation of the ultrasound images where the ultrasound probe **115** may have been displaced in relation to the localizer **116**.

As discussed earlier, calibration of image guided surgical devices is known in the art. For example, the previously mentioned Bucholz references describe calibration. In addition, U.S. Pat. No. 6,470,207, issued Oct. 22, 2002, assigned to the same assignee, describes calibration in the context of a navigational guidance system using x-rays. In general calibration consists of using a calibration device, which may contain objects, such as rows and columns of wires inside a frame, that can be detected by an ultrasound machine. A user scans the calibration device with the ultrasound probe **115** and the attached localizer **116**. The ultrasound navigation system with the help of software running on the computer **120** locates the intersection of wires, which appear as dots in the scanned image of the calibration device. The computer **120** then calculates a transformation between these dots and the actual intersection of the wires that formed a dot located on the actual calibration device. computer **120** then calculates a transformation between these dots and the actual intersection of the wires that formed a dot located on the actual calibration device.

Once the system disclosed in FIG. 1 has registered, calibrated, and localized the images, the system may be used to detect organ-matter shift using certain measurements. To perform these measurements, points **912**, **914**, and **916** must first be established within the ultrasound image **910**. These points may be established using any peripheral device attached to the computer **120**. For example, a mouse attached to the computer **120** may be used to select the points of interest on the ultrasound image **910**.

Once these points are selected the software on computer **120** can then transform the coordinates of these points into a three-dimensional image generated from CT or MR data-set specific to a patient. Next, the software running on computer **120** can extract the correlated CT or MR two-dimensional image from the three-dimensional CT or MR data-set. Having done so, the computer **120** can display the extracted two-dimensional image on the display **121**.

The physician can then select points **952**, **954**, and **956** on the extracted two-dimensional image **950** corresponding to the ultrasound image **910** by finding the corresponding anatomy in the extracted two-dimensional image **950**. The computer **120** can then display the distance and the trajectory **975** between the corresponding points, giving the physician a graphical view of the extent of the organ-matter shift. For example, referring to FIG. 6, the dotted line **975** represents the organ-matter shift as indicated by the distance between point **954** and point **954'**, which is where the corresponding point to **914** would have appeared had the organ-matter not shifted.

Overlay of Video Imagery onto Ultrasound Images

Referring to FIG. 10, an ultrasound machine **1050** is connected to a computer **1200** such that the acquired ultra-

sound images can be transferred to the computer **1200**. The computer **1200** is connected to a display **1210**, such that images stored on a storage media can be digitally manipulated, saved, printed or displayed on the display **1210**. Also, an X-ray machine or a laparoscope **1090** may also be connected to the computer such that X-ray images or video imagery from the laparoscope **1090** can be transferred to the computer **1200**. In addition, like the ultrasound images, these images can also be digitally manipulated, saved, printed, or displayed on the display **1210**.

Referring to FIG. 10, both the ultrasound machine **1050** and the laparoscope **1090** have each a localizer **1160**, **1091** attached to them. As discussed earlier, the localizers could be, for example, either optical, electromagnetic, acoustic, or other known systems. In addition, localization is a standard technique used in image guided surgery to locate the orientation and the position of a surgical instrument, an ultrasound probe, or a laparoscope, relative to a patient's position and is known in the art. As mentioned earlier, each of the Bucholz references discuss systems and methods that permit localization.

FIG. 11 is a flow chart illustrating the steps for methods consistent with the present invention for ultrasound and video navigational guidance using the system of FIG. 10. As shown in FIG. 11, there are seven main steps involved in using the disclosed system. A physician needs to perform the first two steps: Calibrate ultrasound machine (step **1100**) and Calibrate laparoscope (step **1101**), only occasionally. After calibration, which need not be performed every time, the physician in the third step, step **1103**, scans an area of interest of human anatomy using the ultrasound probe. Subsequently, in step **1105** the physician obtains a video image of the same area of that particular patient using a laparoscope **1090**. Note that the physician may in this step use an X-ray machine to acquire an image of the same area of anatomy as well. In general, a physician may use any known system that permits the physician to obtain a video image of the relevant area of interest.

Later, in step **1107**, the computer overlays the acquired ultrasound image onto the video image. For the images to be useful in surgical navigation the system ensures that the ultrasound probe **1150** and the laparoscope **1090** are localized. As discussed earlier, localization is a known technique. In the next step **1109**, the physician during surgery may move the ultrasound probe **1150**, or the laparoscope **1090**. In addition, the physician may be using a surgical instrument **1400**, which also has been localized, to perform the surgery. In step **1111**, the system calculates the new location of the surgical instrument **1400** and displays it on the overlaid images. If the physician, scans a different area of interest, then the system displays the overlaid images corresponding to the new area of interest. In addition, the system calculates the new location of the surgical instrument **1400** and displays an iconic representation of the surgical instrument **1400** on the display **1210**.

FIGS. 12 and 13 are pictorial images representing the two video laparoscope images **1220** and **1320** of a gallbladder with an ultrasound image **1200/1300** overlaid in correct perspective.

What is claimed is:

1. A surgical navigation system for use in navigating a patient, said surgical navigation system comprising:
 - an ultrasound machine operable to acquire an ultrasound image of the patient;
 - a video imaging device operable to acquire a video image of the patient;

13

a first localizer attached to said ultrasound machine;
 a second localizer attached to said video imaging device;
 a computer in communication with said ultrasound machine and said video imaging device, said computer operable to overlay the ultrasound image acquired by the ultrasound device onto the video image acquired by said video imaging device, such that the two images correspond to a common coordinate system; and

a display operable to display the overlaid image.

2. The surgical instrument navigation system as defined in claim 1 wherein said first and said second localizers are selected from a group of localizers consisting of optical, electromagnetic, acoustic localizers or any combination thereof.

3. The surgical instrument navigation system as defined in claim 1 wherein said video imaging device is selected from a group consisting of an x-ray machine, a laparoscope or any combination thereof.

4. The surgical instrument navigation system as defined in claim 1 further comprising a surgical instrument having a third localizer attached to a surgical instrument.

5. The surgical instrument navigation system as defined in claim 4 wherein said computer calculates a location of said surgical instrument and said display displays an iconic representation of said surgical instrument on the overlaid image.

6. The surgical instrument navigation system as defined in claim 1 further comprising a position tracking device operable to track positions of said first and second localizers.

7. A method for surgical navigation using overlaid images from other image modalities onto ultrasound images comprising:

scanning an area of interest using an ultrasound probe to acquire an ultrasound image corresponding to that area of interest;

overlying an image from other image modalities onto the ultrasound image to create an overlaid image, such that the two images correspond to a common coordinate system;

displaying an iconic representation of a surgical instrument onto the overlaid image; and

recalculating and displaying a new location of the surgical instrument onto the overlaid image in response to a movement of the surgical instrument.

8. The method as defined in claim 7 wherein overlaying images from other modalities onto the ultrasound image includes overlaying an image segmentation onto the ultrasound image.

9. The method as defined in claim 8 wherein said image segmentation is a surface extracted from a three-dimensional data set.

14

10. The method as defined in claim 7 wherein overlaying images from other modalities onto the ultrasound image includes overlaying atlas data onto the ultrasound image.

11. The method as defined in claim 10 wherein said atlas data includes annotations describing at least one of anatomy, physiology, pathology, and planning information.

12. The method as defined in claim 7 wherein overlaying images from other modalities onto the ultrasound image includes overlaying images acquired from a group consisting of computed tomography (CT), magnetic resonance imaging (MRI), positron emission tomography (PET), x-rays or any combination thereof.

13. A method for representing the real-time position of a surgical instrument and its trajectory in an overlaid image comprising:

acquiring a first image from an image device;

acquiring a second real-time ultrasound image;

overlying the first image onto the second real-time ultrasound image, such that the two images correspond to a common coordinate system;

tracking a real-time position of the surgical instrument;

generating an icon of the surgical instrument and overlaying the icon on the overlaid image;

generating a trajectory of the surgical instrument on the overlaid image; and

changing the format of the surgical instrument's trajectory when the surgical instrument crosses an ultrasound image plane.

14. The method as defined in claim 13 wherein changing the format of the surgical instrument's trajectory to represent the surgical instrument crossing the ultrasound image plane further includes changing the trajectory to a dotted representation after the trajectory crosses the ultrasound image plane.

15. The method as defined in claim 13 further comprising displaying an angle of the surgical instrument relative to the ultrasound image plane by displaying periodic markers.

16. The method as defined in claim 15 further comprising changing the distance between the periodic markers as a function of the cosine of the angle between the surgical instrument trajectory and the ultrasound image plane.

17. The method as defined in claim 13 further comprising displaying an angle of the surgical instrument relative to the ultrasound image plane by drawing a circle with its center at a point where the surgical instrument's trajectory passes through the ultrasound image plane where the radius of the circle represents the angle of the trajectory to the ultrasound image plane.

* * * * *

专利名称(译)	导航信息覆盖在超声图像上		
公开(公告)号	US6669635	公开(公告)日	2003-12-30
申请号	US10/047927	申请日	2002-01-14
[标]申请(专利权)人(译)	KESSMAN PAUL HOLSING TROY TROBAUGH JASON		
申请(专利权)人(译)	KESSMAN PAUL HOLSING TROY TROBAUGH JASON		
当前申请(专利权)人(译)	手术导航TECHNOLOGIES , INC.		
[标]发明人	KESSMAN PAUL HOLSING TROY TROBAUGH JASON		
发明人	KESSMAN, PAUL HOLSING, TROY TROBAUGH, JASON		
IPC分类号	A61B19/00 A61B17/34 A61B8/00		
CPC分类号	A61B8/0841 A61B19/52 A61B19/5244 A61B17/3403 A61B19/5212 A61B2019/507 A61B8/0816 A61B2019/5255 A61B2019/5276 A61B2019/5291 A61B2019/566 Y10S128/916 A61B2019/5238 A61B34/20 A61B90/36 A61B90/361 A61B2034/107 A61B2034/2055 A61B2034/256 A61B2090/365 A61B2090/376 A61B2090/378		
其他公开文献	US20020156375A1		
外部链接	Espacenet USPTO		

摘要(译)

手术器械导航系统包括超声机器和耦合到超声机器的计算机。存储器耦合到计算机并且包括计算机指令，该计算机指令在由计算机执行时使得计算机生成表示具有尖端和手术器械的轨迹的手术器械的图标并且将图标覆盖在具有以下内容的实时超声图像上。图像平面，使得当外科手术器械穿过超声图像平面时，外科器械的轨迹的格式被改变以表示外科手术器械穿过超声图像的平面。该系统还包括耦合到超声机器的定位器，以及耦合到计算机的显示器，用于显示叠加在实时图像上的生成的图标。

