

(19) World Intellectual Property Organization
International Bureau



(43) International Publication Date
19 February 2009 (19.02.2009)

PCT

(10) International Publication Number
WO 2009/023136 A2

(51) International Patent Classification:
A61B 17/94 (2006.01)

(21) International Application Number:
PCT/US2008/009530

(22) International Filing Date: 8 August 2008 (08.08.2008)

(25) Filing Language: English

(26) Publication Language: English

(30) Priority Data:
60/964,319 10 August 2007 (10.08.2007) US
61/060,970 12 June 2008 (12.06.2008) US

(71) Applicant (for all designated States except US): YALE UNIVERSITY [US/US]; Two Whitney Avenue, New Haven, CT 06511 (US).

(72) Inventor; and

(75) Inventor/Applicant (for US only): ROBERTS, Kurt, Eric [US/US]; 227 Church Street, Apt. 7G, New Haven, CT 06510 (US).

(74) Agent: CALCAGNI, Jennifer, A.; Carmody & Torrance LLP, 50 Leavenworth Street, P.O. Box 1110, Waterbury, CT 06721-1110 (US).

(81) Designated States (unless otherwise indicated, for every kind of national protection available): AE, AG, AL, AM, AO, AT, AU, AZ, BA, BB, BG, BH, BR, BW, BY, BZ, CA, CH, CN, CO, CR, CU, CZ, DE, DK, DM, DO, DZ, EC, EE, EG, ES, FI, GB, GD, GE, GH, GM, GT, HN, HR, HU, ID, IL, IN, IS, JP, KE, KG, KM, KN, KP, KR, KZ, LA, LC, LK, LR, LS, LT, LU, LY, MA, MD, ME, MG, MK, MN, MW, MX, MY, MZ, NA, NG, NI, NO, NZ, OM, PG, PH, PL, PT, RO, RS, RU, SC, SD, SE, SG, SK, SL, SM, ST, SV, SY, TJ, TM, TN, TR, TT, TZ, UA, UG, US, UZ, VC, VN, ZA, ZM, ZW.

(84) Designated States (unless otherwise indicated, for every kind of regional protection available): ARIPO (BW, GH, GM, KE, LS, MW, MZ, NA, SD, SL, SZ, TZ, UG, ZM, ZW), Eurasian (AM, AZ, BY, KG, KZ, MD, RU, TJ, TM), European (AT, BE, BG, CH, CY, CZ, DE, DK, EE, ES, FI, FR, GB, GR, HR, HU, IE, IS, IT, LT, LU, LV, MC, MT, NL, NO, PL, PT, RO, SE, SI, SK, TR), OAPI (BF, BJ, CF, CG, CI, CM, GA, GN, GQ, GW, ML, MR, NE, SN, TD, TG).

Declaration under Rule 4.17:

— of inventorship (Rule 4.17(iv))

Published:

— without international search report and to be republished upon receipt of that report



WO 2009/023136 A2

(54) Title: SUSPENSION/RETRACTION DEVICE FOR SURGICAL MANIPULATION

(57) Abstract: A device that can be delivered into a body cavity to manipulate tissue intracorporeally while being controlled extracorporeally and a method of using the device to perform a single-port laparoscopic or natural orifice surgery. The device is being capable of being passed through an interior diameter of a single port into the body cavity. The device comprises an anchor or suspension element that is attachable or mountable to the tissue intracorporeally, a guide element attached to the anchor or suspension element that allows for manipulation of at least one structure in at least one direction, and at least one structure attached to a suture or thread that is passable through the interior diameter of the port and positionable by the guide element. The anchor or suspension element and the guide element provide leverage for moving the structure intracorporeally and the structure is controllable extracorporeally by manipulating the suture or thread so that the structure moves in at least one direction intracorporeally.

In most laparoscopic surgeries, there are typically at least three tools that are required to perform the surgery – an endoscope, a grasper or lifter, and a cutting tool, which may be a scissor tool or electro-cautery. Furthermore, in a traditional laparoscopic surgical process, each tool that is needed/used requires its own trocar port. In addition, if
5 access to a particular location is not possible from a current port, either a new port must be inserted or the tool in one of the other ports must be removed and then reinstalled.

There is always a risk of puncturing vital organs or blood vessels during the
10 insertion of the trocar ports. Also, the repositioning of tools or the insertion of another port can result in a delay in the progress of the surgery, causing the patient to be under anesthesia for longer time periods and causing delays for the surgeon.

In the case of laparoscopic appendectomies, the classic laproscopic technique
15 typically utilizes three ports, which most commonly include one 12 mm and two 5 mm ports. The first port allows a laparoscope for visualization, the second harbors an instrument for dissection and the last port facilitates the use of an instrument for retraction of the appendix.

20 Over the past few years efforts have been made to reduce the number of ports required from three to two ports, or even a single port, and two-port techniques, hybrid approaches, and single-port assisted techniques have been developed in this regard. The two-port appendectomy technique is very similar to the standard three-port technique with the exception of one port allowing access for a rigid endoscope with a working channel
25 and a second port that is used for a grasping instrument to provide retraction of the appendix.

In the hybrid technique, laparoscopy is combined with standard open techniques and the appendix is pulled out through the umbilicus in children or a right lower quadrant
30 incision in adults to perform a traditional open appendectomy extracorporeally. The hybrid technique in which the appendix is pulled through a single incision in the umbilicus is only possible in the pediatric population because of the close proximity of the appendix and the umbilicus.

The single-port assisted technique uses one rigid endoscope with a working channel. The third port usually required for the retraction of the appendix is replaced by a sling suture that is put through the anterior abdominal wall in the right lower quadrant. The sling is then utilized to pull the appendix to the abdominal wall in order to provide the tension needed to perform the appendectomy intracorporeally. However, in order to place the transabdominal sling suture, the skin must be transversed twice with a needle to elevate the appendix to the abdominal wall.

Thus, it would be desirable to provide an improved laparoscopic technique that reduces the number of ports needed to perform laparoscopic surgery.

In addition, recent advances in laparoscopic surgical techniques have also allowed certain laparoscopic surgeries to be performed intraluminally, i.e., where access is gained through a natural orifice such as the vagina, rectum or esophagus. Thus, it would also be desirable to provide an improved technique for performing laparoscopic surgery intraluminally through a natural orifice.

SUMMARY OF THE INVENTION

It is an object of the present invention to provide an improved technique for laparoscopic surgery that promotes faster healing, less pain and less infection.

It is another object of the present invention to provide a single-port surgical technique as compared to the multiple-port techniques used previously.

It is still another object of the present invention to provide a puppeteer technique that allows a structure to be moved intracorporeally in various directions by controlling or manipulating the structure extracorporeally.

In one embodiment, the present invention relates generally to a device that can be delivered into a body cavity to manipulate tissue intracorporeally while being controlled extracorporeally, said device being capable of being passed through an interior diameter of a port into the body cavity, said device comprising:

a) an anchor or suspension means, wherein said anchor or suspension means is attached or mounted adjacent to tissue intracorporeally;

b) a guide means attached to the anchor or suspension means, where said guide means allows for manipulation of at least one structure in at least one direction; and

5 c) at least one structure attached to a suture or thread that is passable through the interior diameter of the port and positionable by the guide means;

wherein the anchor or suspension means and the guide means provide leverage for moving the structure intracorporeally; and

10 wherein the structure is controllable extracorporeally by manipulating the suture or thread, whereby the structure moves in at least one direction intracorporeally.

In another embodiment, the present invention relates to a kit for performing a single-port laparoscopic or natural orifice surgery comprising a device that can be delivered into a body cavity through a single port to manipulate tissue intracorporeally while being controlled extracorporeally, said device being capable of being passed through
15 the single port into the body cavity, said kit comprising:

a) optionally, a trocar port;

20 b) an anchor or suspension element capable of passing through an inner diameter of the port, wherein said anchor or suspension element is attachable or mountable adjacent to an inner wall of the body cavity;

c) a guide element attached to the anchor or suspension element, where said guide element allows for manipulation of at least one structure in at least one direction; and

25 c) at least one structure attached to at least one suture that is passable through the inner diameter of the port and positionable in at least one direction by the guide element;

wherein the anchor or suspension element and the guide element provide leverage for moving the at least one structure intracorporeally within the body cavity; and

30 wherein the at least one structure is controllable extracorporeally by manipulating the at least one suture, whereby the at least one structure moves in at least one direction intracorporeally within the body cavity.

In still another embodiment, the present invention relates generally to a method of performing a single-port laparoscopic or natural orifice surgery with a device comprising (i) an anchor or suspension element that is attachable or mountable to or mountable adjacent to an interior wall of the body cavity; (ii) at least one guide element attached to the anchor or suspension element, where said at least one guide element allows for manipulation of at least one structure in at least one direction; and (iii) at least one structure attached to at least one suture that is positionable in at least one direction by the guide element; wherein the device is capable of being delivered into a body cavity through a single port to manipulate tissue intracorporeally while being controlled extracorporeally, the method comprising the steps of:

- a) making a single incision in the wall of the body cavity to create a single port through which the device is passed;
- b) passing the anchor or suspension element through the interior diameter of the port and attaching the anchor or suspension element to or mounting the anchor or suspension element adjacent to the interior wall of the body cavity;
- d) passing the at least one structure attached to the at least one suture through the at least one guide element; and
- e) controlling the at least one structure intracorporeally by manipulating the at least one structure extracorporeally, whereby the at least one structure moves in at least one direction intracorporeally within the body cavity;

wherein the anchor or suspension element and the guide element provide leverage for moving the at least one structure intracorporeally within the body cavity.

BRIEF DESCRIPTION OF THE FIGURES

For a fuller understanding of the invention, reference is made to the following description taken in connection with the accompanying figures, in which:

Figure 1 depicts a device that can be delivered into a body cavity in which the guide means comprises a loop in accordance with a first embodiment of the invention.

Figure 2 depicts a device with a grasper or clamp in accordance another embodiment of the invention.

Figure 3 depicts a device that can be delivered into a body cavity in which the guide means comprises an elongated rigid member in accordance with another embodiment of the invention.

Figure 4 depicts a variation of the elongated rigid member guide means depicted in
5 Figure 3.

Figure 5 depicts a device that can be delivered into a body cavity in which the guide means comprises an openwork grid in accordance with another embodiment of the invention.

Figure 6 depicts a variation of the elongated rigid member having telescoping
10 portions.

Figure 7 depicts a basic principle of the novel technique of the invention as applied to a laparoscopic appendectomy.

Figure 8 depicts a laparoscopic appendectomy performed in accordance with the present invention in which a 0-polysorb stitch is being placed to the anterior abdominal
15 wall for the creation of the loop to be used as the guide means of the invention.

Figure 9 depicts a laparoscopic appendectomy performed in accordance with the present invention in which the appendix is getting caught by Surgitie® for later retraction.

Figure 10 depicts a laparoscopic appendectomy performed in accordance with the
20 present invention in which the attached string/suture to the appendix is pulled through the loop and subsequently through the port to allow for retraction of the appendix.

Figure 11 depicts a laparoscopic appendectomy performed in accordance with the present invention in which the appendix is pulled to the abdominal wall to expose the base of the appendix for dissection.

Figure 12 depicts a laparoscopic appendectomy performed in accordance with the
25 present invention in which ligation at the base of the appendix with Surgitie® is shown.

Figure 13 depicts a laparoscopic appendectomy performed in accordance with the present invention in which the appendix is being transected.

Figure 14 depicts a laparoscopic appendectomy performed in accordance with the
30 present invention in which the appendix is being placed in an EndoCatch® bag for retrieval.

Also, while not all elements are labeled in each figure, all elements with the same reference number indicate similar or identical parts.

DETAILED DESCRIPTION OF THE PREFERRED EMBODIMENTS

The present invention relates generally to a device that can be delivered into a body cavity to manipulate tissue intracorporeally while being controlled extracorporeally.

5 In one embodiment, the device may be wirelessly controlled extracorporeally. The device is designed to be capable of being passed through an interior diameter of an incision (port) into the body cavity.

The present invention relates generally to a laparoscopic technique that uses a
10 single port without the need for any additional skin incisions or transdermally traversing needles and that is performed entirely intracorporeally. In addition, in one embodiment, the present invention allows the single incision to be placed anywhere on the abdominal wall to provide the ability to hide the resulting scar in the umbilicus or in the suprapubic hairline. It can be desirable for cosmetic reasons to move laparoscopic incisions to hide
15 them in the suprapubic hairline by decreasing the length of the incisions visible on the anterior abdominal wall.

The single-port technique of the invention is usable to perform various laparoscopic procedures including laparoscopic exploration, laparoscopic
20 cholecystectomy, laparoscopic common bile duct exploration, laparoscopic drainage of pancreatic pseudocysts, laparoscopic distal pancreatectomy, laparoscopic appendectomy, laparoscopic hernia repair, laparoscopic hiatal hernia repair, laparoscopic lumbar hernia repair, laparoscopic gastric bypass, laparoscopic splenectomy, laparoscopic Nissen fundoplication, laparoscopic Heller myotomy, laparoscopic left and right
25 hemicolectomies, laparoscopic abdominal-perineal resection, laparoscopic Ripsten procedure, laparoscopic reversal of colostomy, laparoscopic adrenalectomy, laparoscopic nephrectomy, laparoscopic nephroureterectomy, laparoscopic pyeloplasty, laparoscopic prostatectomy, laparoscopic feeding jejunostomy, laparoscopic small bowel resection, laparoscopic gastro-entero anastomosis, laparoscopic gastrectomy, laparoscopic repair of
30 duodenal ulcer, laparoscopic liver resection, laparoscopic hepatic artery balloon pump placement, laparoscopic tumor staging, laparoscopic anterior spinal fusion, laparoscopic exploration of chronic abdominal pain, laparoscopic placement of peritoneal dialysis catheter, laparoscopic esophagectomy, laparoscopic procedures for treatment of infertility

related to polycystic ovarian syndrome, laparoscopic pelvic lymph node sampling, among others, given by way of example and not limitation.

5 The single-port technique of the invention generally employs an innovative
“puppeteer technique” which utilizes a pulley or other means of providing leverage in the
intra-abdominal cavity. In one embodiment, the pulley is in the form of an intra-
abdominally placed loop that is used as an axle to elevate the appendix to the abdominal
wall with a string. In a manner similar to a puppeteer moving the limbs of his puppet(s)
with a string, the surgeon pulls this string extracorporeally, which moves and retracts the
10 appendix, by way of example and not limitation, to the abdominal wall. Thus, in most
instances, no further incisions, ports, or transdermally traversing needles are needed. If
necessary however, such as if complications arise, a second port may be used to assist in the
surgery.

15 In one embodiment, the device comprises:

- a) an anchor or suspension means or element, wherein said anchor or suspension means or element is attached or mounted adjacent to tissue intracorporeally;
- b) a guide means or element attached to the anchor or suspension means or element, where said guide means or element allows for manipulation of at least one
20 structure in at least one direction; and
- c) at least one structure attached to a suture or thread that is passable through the interior diameter of the port and positionable by the guide means or element;
wherein the anchor or suspension means or element and the guide means or element provide leverage for moving the structure intracorporeally; and
25 wherein the structure is controllable extracorporeally by manipulating the suture or thread, whereby the structure moves in at least one direction intracorporeally.

30 In one embodiment, the body cavity is an abdomen and said anchor or suspension means or element is intracorporeally attached to or mounted adjacent to an intra-abdominal wall.

An example of a first embodiment of the device of the invention is depicted in Figure 1 which shows a port 2 inserted into tissue 4. A hook 6 is used as the anchor or

suspension means and is attached to a loop 8 which is used as the guide means. A structure X, which is attached to a suture 10 is then threaded through the loop 8 and is usable in the surgical procedure. In this example, X can be a hook 12, a noose 14 or a clamp or grasper 16.

5

The anchor or suspension means 6 can be any means that would be known to those skilled in the art for anchoring to tissue within the abdominal cavity. For example, the anchor or suspension means 6 may comprise at least one suture or at least one hook that is stitched or hooked into an intra-abdominal wall. In another embodiment, the anchor or suspension means 6 may comprises a plurality of magnets. In this embodiment, a corresponding plurality of magnets is provided extracorporeally to provide the magnetic force to hold the guide means or element, which is attached to the anchor or suspension means or element, in place intracorporeally.

15 The guide means can be any of a number of elements that are used to provide guidance and leverage to the at least one structure that is introduced through the port and into the body cavity. Examples of guide means that are usable in the practice of the invention include, for example, at least one of a loop 8, an elongated member 12 (depicted in Figure 3) and an openwork grid 16 (depicted in Figure 5). The guide means can be
20 constructed of various materials, including for example, metals such as stainless steel and aluminum, various plastics, organic materials, natural and synthetic textiles, glass, and biodegradable materials, by way of example and not limitation.

In one embodiment, and as depicted in Figure 1, the guide means or element is a
25 loop 8 and the structure X with the suture 10 attached thereto is threaded through the loop 8. The loop 8 then acts as a fulcrum to create intra-abdominal tension and countertension to control the structure intracorporeally by manipulating the suture 10 extracorporeally, i.e., the structure X is a puppet that is manipulated by the string (suture). In another embodiment, the structure can be controlled intracorporeally by wireless means
30 extracorporeally.

In another embodiment, as depicted in Figure 3, the guide means or element is a semi-rigid elongated member 12 that has sufficient flexibility to bend without breaking.

The elongated member 12 typically has one or more notches 13, one or more hooks, one or more loops 14 (depicted in Figure 4), or other such "guiding" features mounted thereon or holes drilled therethrough so that the structure X can be threaded through the notches, hooks, loops or holes, to guide the structure X within the abdomen or body cavity and
5 provide leverage to the structure as discussed above.

If desired, the elongated member 12 may comprise two or more rigid flexible portions as depicted in Figure 6. Figure 6 depicts four portions 21, 22, 23 and 24 that are connected by means of joints or connectors 28. Thus the two or more portions 21, 22, 23,
10 24 can be folded onto one another to reduce the size of the elongated member 12 and facilitate easy entry and removal of the elongated member into and out of the body cavity. Furthermore, once the elongated member 12 is positioned within the body cavity and the first portion 21 is attached or mounted adjacent to the inner wall of the body cavity, the other portion(s) 22, 23 and 24 can be manipulated by the one or more sutures attached
15 thereto to telescope the remaining portions into a desired position within the body cavity. In addition, these additional portions 22, 23, 24 can be sutured or otherwise attached to an inner wall of the body cavity to provide additional stability. Furthermore, while four portions are shown in Figure 6, the invention is not limited to four portions and may include as few as two and additional portions as needed to properly position the elongated
20 member 12 within the body cavity.

In another embodiment of the invention, the guide means or element is an openwork grid 16 that is mounted substantially flush to a surface of the tissue with the anchor or suspension means. The openwork grid 16 comprises a plurality of openings 17
25 through which the at least one structure X is passed or guided. The openwork grid 16 can be introduced through the port by rolling the grid into the shape of a cylinder which is then unrolled once it is within the body cavity and is secured to the wall of the body cavity in several places. The openwork grid 16 can then be removed in a similar manner once surgery is completed, i.e., by rolling the grid 16 back into the shape of a cylinder.

30

The structure that is introduced into the abdomen can be any of a number of devices that are needed to perform various types of laparoscopic or other natural orifice or minimally invasive surgeries. For example, the structure can be selected from the group

consisting of a noose, a bag, a receptacle, a hook, a grasper, a dissector, a manipulator, a clamp, a cutting implement, a scalpel, a scissors, a grabber, a lifter, a cauterizer, a dissector, an endoscope, a light or light delivery system, a sensor, an image sensor, a camera, including still and video cameras, a microrobot (such as described in U.S. Patent
5 No. 7,372,229 to Farritor et al., the subject mater of which is herein incorporated by reference in its entirety), and combinations of one or more of the foregoing. Other structures would also be known to those skilled in the art of particular laparoscopic, natural orifice and minimally invasive surgeries described herein and would be usable in the present invention.

10

In one embodiment, as depicted in Figure 2, the at least one structure is a grasper or clamp 25 having moveable pivotable blades or legs 32 and 34. This structure is then connected to one or more sutures 36 and 37 for manipulating the grasper or clamp 25. The structure may be tightened, released, or locked in place by manipulating the at least one
15 suture 36 and 37 attached thereto. Thus the structure 25 may be tightened, and/or released and/or locked in place to grasp or clamp body tissue or may be locked in place or tightened to facilitate removal of the grasper or clamp through the port.

In one embodiment, the structures may be pre-strung on the suture to facilitate ease
20 of use.

The present invention also relates to a kit for performing a single-port laproscopic or natural orifice surgery comprising a device that can be delivered into a body cavity through a single port to manipulate tissue intracorporeally while being controlled
25 extracorporeally, said device being capable of being passed through the single port into the body cavity.

The kit typically comprises:

- a) optionally, a trocar port;
- 30 b) an anchor or suspension means or element capable of passing through an inner diameter of the port, wherein said anchor or suspension means or element is attachable or mountable adjacent to an inner wall of the body cavity;

c) a guide means or element attached to the anchor or suspension means or element, where said guide means or element allows for manipulation of at least one structure in at least one direction; and

c) at least one structure attached to at least one suture that is passable through
5 the inner diameter of the port and positionable in at least one direction by the guide means or element;

wherein the anchor or suspension means or element and the guide means or element provide leverage for moving the at least one structure intracorporeally within the body cavity; and

10 wherein the at least one structure is controllable extracorporeally by manipulating the at least one suture, whereby the at least one structure moves in at least one direction intracorporeally within the body cavity.

In a preferred embodiment, the body cavity is the abdominal cavity and the kit
15 contains structures needed for a performing a specific laparoscopic surgical procedures such as those defined above.

In another embodiment, the kit is designed for performing a laparoscopic
20 appendectomy and the at least one structure comprises at least one of a noose, a bag, a receptacle, a hook, a clamp, scissors, a dissector, an instrument to facilitate removal of at least a portion the appendix, and other structures which may be used in performing a laparoscopic appendectomy.

In a preferred embodiment, the port through which the at least one structure is
25 passable has an interior diameter of between about 5 and about 25 mm.

In another embodiment, the present invention relates to a method of performing a
single-port laproscopic surgery with a device comprising (i) an anchor or suspension
30 element that is attachable or mountable to or mountable adjacent to an interior wall of the body cavity; (ii)at least one guide element attached to the anchor or suspension element, where said at least one guide element allows for manipulation of at least one structure in at least one direction; and (iii) at least one structure attached to at least one suture that is positionable in at least one direction by the guide element; wherein the device is capable

of being delivered into an abdominal body cavity through a single port to manipulate tissue intracorporeally while being controlled extracorporeally, the method comprising the steps of:

- 5 a) making a single incision in the abdominal wall to create an opening in the abdominal wall through which the device is passed;
- b) passing the anchor or suspension element through the interior diameter of the port and attaching the anchor or suspension element to or mounting the anchor or suspension element adjacent to the intra-abdominal wall;
- 10 c) passing the at least one structure attached to the at least one suture through the at least one guide element; and
- d) controlling the at least one structure intracorporeally by manipulating the at least one structure extracorporeally, whereby the at least one structure moves in at least one direction intracorporeally within the abdominal body cavity;
- 15 wherein the anchor or suspension element and the guide element provide leverage for moving the at least one structure intracorporeally within the abdominal cavity.

20 In a preferred embodiment, prior to step c) the abdominal cavity is insufflated to a suitable pressure. The insufflation is typically performed using carbon dioxide or another suitable fluid or inert gas.

The present invention also relates to a method of performing a single-port laproscopic or natural orifice surgery with a device comprising (i) an anchor or suspension element that is attachable or mountable to or mountable adjacent to an interior wall of the
25 body cavity; (ii) at least one guide element attached to the anchor or suspension element, where said at least one guide element allows for manipulation of at least one structure in at least one direction; and (iii) at least one structure attached to at least one suture that is positionable in at least one direction by the guide element; wherein the device is capable
30 of being delivered into a body cavity through a single port to manipulate tissue intracorporeally while being controlled extracorporeally.

The method generally comprises the steps of:

- 5
- a) making a single incision in the wall of the body cavity to create an opening through which the device is passed;
 - b) passing the anchor or suspension element through the interior diameter of the port and attaching the anchor or suspension element to or mounting the anchor or suspension element adjacent to the interior wall of the body cavity;
 - c) passing the at least one structure attached to the at least one suture through the at least one guide element; and
 - d) controlling the at least one structure intracorporeally by manipulating the at least one structure extracorporeally, whereby the at least one structure moves in at least one direction intracorporeally within the body cavity.
- 10

As discussed above, the anchor or suspension element and the guide element provide leverage for moving the at least one structure intracorporeally within the body cavity.

15

The puppeteer technique of the invention has been found to provide adequate retraction to allow for dissection, ligation and transaction of the appendix at its base with no or minimal difficulties as discussed below in Example 1.

20

Example 1. Single-Port Laproscopic Appendectomy Performed on 14 Patients

During the study period, 17 patients with appendicitis presented to Yale New Haven Hospital (YNHH) when the inventor of the present invention as the surgeon on call for the Emergency General Surgery Service. Three patients were excluded according to established exclusion criteria. Thirteen of the remaining fourteen patients (8 females and 5 males) underwent a successful single-port laparoscopic appendectomy as described herein. No major complications were observed. One minor intraoperative complication was observed, in which the suprapubic access could not be established safely and therefore an additional 5 mm port was placed infraumbilically. The laparoscopic appendectomy was then completed with 2 ports without further complications. One minor post-operative complication was seen in which a patient developed postoperative urinary retention, which resolved within 24 hours. Pathological examination revealed acute

25

30

appendicitis in all but one case, in which signs of chronic inflammation of the appendix was identified. The individual patient characteristics are summarized in Table 1.

Table 1. Individual Patient Characteristics

5

Patient	Gender	Age	BMI ¹	Access	OR-Time (min.)	Complications
1	F	22	25.3	TU ²	115	
2	M	46	28.3	TU	123	
3	M	29	29.8	TU	92	
4	M	40	19.4	TU	67	
5	F	47	31.1	TU	84	
6	F	37	36.0	TU	63	
7	F	35	39.0	TU	74	
8	F	40	20.4	SP ³	54	
9	F	29	32.4	SP	95	Urinary retention
10	F	33	29.0	SP	128	
11	F	22	23.4	SP	87	
12	M	25	20.5	SP	68	Inability to gain access—converted to two-port appendectomy
13	M	59	27.5	TU	77	
14	M	49	22.0	TU	79	
	61% F	37.5				

¹ – Body mass index
² – Transumbilical
³ – suprapubic

10 The patients were positioned in a steep Trendelenberg position and left side down to aid in the visualization of the inflamed appendix. One 11 mm trocar is then placed infraumbilically or alternatively in the suprapubic hairline, via the Versastep® Veress system (available from Covidien AG, North Haven, CT). After access was successfully gained, a 10 mm rigid endoscope with a 5 mm working channel (available from Karl
15 Storz, Tuttlingen, Germany) was used for the majority of the surgery. Intermittently, a 5 mm, 30° angled endoscope was needed to allow for the use of a 5 mm Ligasure® device (available from Covidien AG, North Haven, CT) for dissection and coagulation of the mesoappendix. This step is important because the working channel of the endoscope is typically too narrow to allow for the use of the Ligasure® device through the working
20 channel. However, if an endoscope with a large enough working channel was used, this step would likely not be needed.

Retraction for the ability to dissect between the appendiceal artery and the base of the appendix was achieved by pulling the appendix lateral, anterior and cephalad in the manner indicated in Figure 7.

5

First, in order to achieve the fulcrum effect, a “pulley” was created by mounting a loop tied as an air knot (0-Polysorb®, available from Covidien AG, North Haven, CT) to the anterior abdominal wall within the abdominal cavity just cephalad and lateral to the base of the appendix. The loop is subsequently used as an axle as illustrated in Figure 8.

10

Next, a string (Surgitie®, available from Covidien AG, North Haven, CT) was placed around the appendix, as illustrated in Figure 9. The string was threaded through the previously created loop and pulled through the 11 mm port to rest extracorporeally as illustrated in Figure 10. This enabled the surgeon to pull on the string extracorporeally like a “puppeteer”, which resulted in a lateral and anterior movement of the appendix to the abdominal wall, exposing the base of the appendix, as illustrated in Figure 11. Then, the mesoappendix was dissected from the appendiceal base using a Maryland dissector. The Ligasure® device was used to seal and divide the mesoappendix, or a tie (0-Polysorb®) is used for ligation of the mesoappendix as depicted in Figure 12.

15

Subsequently, another tie (0-Polysorb, available from Covidien AG, North Haven, CT) was placed around the appendix and divided using scissors, as illustrated in Figure 13. The appendix was then placed in an EndoCatch® bag (available from Covidien AG, North Haven, CT) and retrieved from the patient’s abdomen, as depicted in Figure 14. The loop or “pulley” was then cut and removed. The 11 mm fascial defect was then closed with a 0-Polysorb statute in a figure 8 configuration. In the final step of the procedure, the skin was approximated with a simple interrupted 4-0 Caprosyn and Indermil® (available from Covidien AG, North Haven, CT) was applied.

20

As discussed above, the laparoscopic incision can be placed either transumbilically or in the suprapubic hairline. Applicant notes that the suprapubic approach has been associated with several complications due to following reasons. Firstly, there may be an inability to access the abdominal cavity safely, because of an incorrect insufflation and

dissection with carbon dioxide of the preperitoneal space at the beginning of the operation which widened the space between the fascia and the peritoneum, and made a safe access difficult. Therefore, it may be necessary to use a primary transumbilical access. Secondly, another possible result of carbon dioxide dissection of the perperitoneal space
5 my lead to postoperative urinary retention due to irritation of the bladder. Thus it is seen that both complications seem to be caused by preperitoneal insufflation with carbon dioxide. To avoid this problem, it may be preferred to use an open Hassan technique or another access method that provides visualization of the intraperitoneal space prior to insufflation with carbon dioxide which would prevent insufflation of the preperitoneal
10 space with carbon dioxide.

While the example is shown as it relates to a laparoscopic appendectomy technique, the invention is not limited to appendectomies but is generally applicable to other laparoscopic and natural orifice surgery techniques that have previously required
15 multiple ports to perform.

Finally, while the invention has been particularly shown and described with respect to preferred embodiments thereof, it will be understood that changes in form and details may be made therein without departing from the scope and spirit of the invention.

What is claimed is:

1. A device that can be delivered into a body cavity to manipulate tissue intracorporeally while being controlled extracorporeally, said device being capable of
5 being passed through an interior diameter of a port into the body cavity, said device comprising:

a) an anchor or suspension means, wherein said anchor or suspension means is attached or mounted adjacent to tissue intracorporeally;

b) a guide means attached to the anchor or suspension means, where said
10 guide means allows for manipulation of at least one structure in at least one direction; and

c) at least one structure attached to a suture or thread that is passable through the interior diameter of the port and positionable by the guide means;

wherein the anchor or suspension means and the guide means provide leverage for moving the structure intracorporeally; and

15 wherein the structure is controllable extracorporeally by manipulating the suture or thread, whereby the structure moves in at least one direction intracorporeally.

2. The device according to claim 1, wherein the body cavity is an abdomen and said anchor or suspension means is intracorporeally attached to or mounted adjacent to an
20 intra-abdominal wall.

3. The device according to claim 1, wherein the anchor or suspension means comprises at least one suture, at least one hook, a plurality of magnets, and combinations of one or more of the foregoing.
25

4. The device according to claim 3, wherein the anchor or suspension means comprises a plurality of magnets and a corresponding plurality of magnets is provided extracorporeally to provide the magnetic force to hold the guide means in place intracorporeally.
30

5. The device according to claim 3, wherein the guide means comprises at least one of a loop, an elongated member and an openwork grid.

6. The device according to claim 5, wherein the guide means is an elongated member and comprises one or more notches, one or more hooks, or one or more loops mounted thereon through which the at least one structure is passed or guided.
- 5 7. The device according to claim 6, wherein the elongated member comprises two or more rigid flexible portions that are connected by means of joints or connectors, wherein the two or more portions are folded onto one another to facilitate easy entry and removal of the elongated member into the body cavity; and wherein once the elongated member is positioned within the body cavity and a first
10 portion is attached or mounted adjacent to the inner wall of the body cavity, at least the second portion is manipulated by the one or more sutures to telescope the at least the second portion into a desired position in the body cavity.
8. The device according to claim 7, wherein the at least the second portion of the
15 elongated member is attached to an inner wall of the body cavity.
9. The device according to claim 5, wherein the guide means is an openwork grid that is mounted substantially flush to a surface of the tissue with the anchor or suspension means, said openwork grid comprising a plurality of openings through which the at least
20 one structure is passed or guided.
10. The device according to claim 1, wherein the structure is selected from the group consisting of a noose, a bag, a receptacle, a hook, a grasper, a dissector, a manipulator, a clamp, a cutting implement, a scalpel, a scissors, a grabber, a lifter, a cauterizer, a
25 dissector, an endoscope, a light or light delivery system, a sensor, an image sensor, a camera, including still and video cameras, a microrobot and combinations of one or more of the foregoing. .
11. The device according to claim 10, wherein the at least one structure is a grasper or
30 clamp having moveable pivotable blades or legs, said at least one structure being connected to one or more sutures for manipulating the grasper or clamp, wherein the grasper or clamp may be tightened, released, or locked in place by manipulating the at least one suture attached thereto;

whereby the grasper or clamp may be tightened, and/or released and/or locked in place to grasp or clamp body tissue; and

whereby the grasper or clamp may be locked in place or tightened to facilitate removal of the grasper or clamp through the port.

5

12. The device according to claim 11, wherein the at least one structure is pre-strung on the suture.

13. A device that can be delivered into a body cavity to manipulate tissue intracorporeally while being controlled extracorporeally, said device being capable of being passed through an interior diameter of a port into the body cavity, said device comprising:

a) an anchor or suspension element, wherein said anchor or suspension element is attached or mounted adjacent to tissue intracorporeally;

15 b) a guide element attached to the anchor or suspension element, where said guide element allows for manipulation of at least one structure in at least one direction; and

c) at least one structure attached to a suture or thread that is passable through the interior diameter of the port and positionable by the guide element;

20 wherein the anchor or suspension element and the guide element provide leverage for moving the structure intracorporeally; and

wherein the structure is controllable extracorporeally by manipulating the suture or thread, whereby the structure moves in at least one direction intracorporeally.

25

14. A kit for performing a single-port laparoscopic or natural orifice surgery comprising a device that can be delivered into a body cavity through a single port to manipulate tissue intracorporeally while being controlled extracorporeally, said device being capable of being passed through the single port into the body cavity, said kit comprising:

30 a) optionally, a trocar port;

b) an anchor or suspension means capable of passing through an inner diameter of the port, wherein said anchor or suspension means is attachable or mountable adjacent to an inner wall of the body cavity;

c) a guide means attached to the anchor or suspension means, where said
5 guide means allows for manipulation of at least one structure in at least one direction; and

c) at least one structure attached to at least one suture that is passable through the inner diameter of the port and positionable in at least one direction by the guide means;

wherein the anchor or suspension means and the guide means provide leverage for moving the at least one structure intracorporeally within the body cavity; and

10 wherein the at least one structure is controllable extracorporeally by manipulating the at least one suture, whereby the at least one structure moves in at least one direction intracorporeally within the body cavity.

15 15. The kit according to claim 14, wherein the body cavity is an abdominal cavity and said kit contains structures needed for performing a laparoscopic surgical procedure.

20 16. The kit according to claim 15, wherein the kit is for performing a laparoscopic appendectomy and said at least one structure comprises at least one of a noose, a bag, a receptacle, a hook, a clamp, scissors, a dissector and an instrument to facilitate removal of at least a portion the appendix.

17. The kit according to claim 14, wherein the port through which the structure is passable has an interior diameter of between about 5 and about 25 mm.

25 18. A kit for performing a single-port laparoscopic or natural orifice surgery comprising a device that can be delivered into a body cavity through a single port to manipulate tissue intracorporeally while being controlled extracorporeally, said device being capable of being passed through the single port into the body cavity, said kit comprising:

30 a) optionally, a trocar port;

b) an anchor or suspension element capable of passing through an inner diameter of the port, wherein said anchor or suspension element is attachable or mountable adjacent to an inner wall of the body cavity;

c) a guide element attached to the anchor or suspension element, where said guide element allows for manipulation of at least one structure in at least one direction; and

5 c) at least one structure attached to at least one suture that is passable through the inner diameter of the port and positionable in at least one direction by the guide element;

wherein the anchor or suspension element and the guide element provide leverage for moving the at least one structure intracorporeally within the body cavity; and

10 wherein the at least one structure is controllable extracorporeally by manipulating the at least one suture, whereby the at least one structure moves in at least one direction intracorporeally within the body cavity.

19. A method of performing a single-port laparoscopic surgery with a device comprising (i) an anchor or suspension element that is attachable or mountable to or
15 mountable adjacent to an interior wall of the body cavity; (ii) at least one guide element attached to the anchor or suspension element, where said at least one guide element allows for manipulation of at least one structure in at least one direction; and (iii) at least one structure attached to at least one suture that is positionable in at least one direction by the guide element; wherein the device is capable of being delivered into an abdominal body
20 cavity through a single port to manipulate tissue intracorporeally while being controlled extracorporeally, the method comprising the steps of:

- a) making a single incision in the abdominal wall to create an opening in the abdominal wall through which the device is passed;
- 25 b) passing the anchor or suspension means through the interior diameter of the port and attaching the anchor or suspension means to or mounting the anchor or suspension adjacent to the intra-abdominal wall;
- c) passing the at least one structure attached to the at least one suture through the at least one guide means; and
- 30 d) controlling the at least one structure intracorporeally by manipulating the at least one structure extracorporeally, whereby the at least one structure moves in at least one direction intracorporeally within the abdominal body cavity;

wherein the anchor or suspension means and the guide means provide leverage for moving the at least one structure intracorporeally within the abdominal cavity.

20. The method according to claim 19, comprising the step of insufflating the
5 abdominal cavity to a suitable pressure prior to step c).

21. A method of performing a single-port laparoscopic or natural orifice surgery with a device comprising (i) an anchor or suspension element that is attachable or mountable to or mountable adjacent to an interior wall of the body cavity; (ii) at least one guide element
10 attached to the anchor or suspension element, where said at least one guide element allows for manipulation of at least one structure in at least one direction; and (iii) at least one structure attached to at least one suture that is positionable in at least one direction by the guide element; wherein the device is capable of being delivered into a body cavity through a single port to manipulate tissue intracorporeally while being controlled extracorporeally,
15 the method comprising the steps of:

- a) making a single incision in the wall of the body cavity to create an opening through which the device is passed;
- b) passing the anchor or suspension element through the interior diameter of the port and attaching the anchor or suspension element to or mounting the
20 anchor or suspension element adjacent to the interior wall of the body cavity;
- d) passing the at least one structure attached to the at least one suture through the at least one guide element; and
- e) controlling the at least one structure intracorporeally by manipulating the at
25 least one structure extracorporeally, whereby the at least one structure moves in at least one direction intracorporeally within the body cavity;

wherein the anchor or suspension element and the guide element provide leverage for moving the at least one structure intracorporeally within the body cavity.

30 22. The method according to claim 21, comprising the step of insufflating the abdominal cavity to a suitable pressure prior to step b).

Device for laparoscopically manipulating tissue structures

1/14

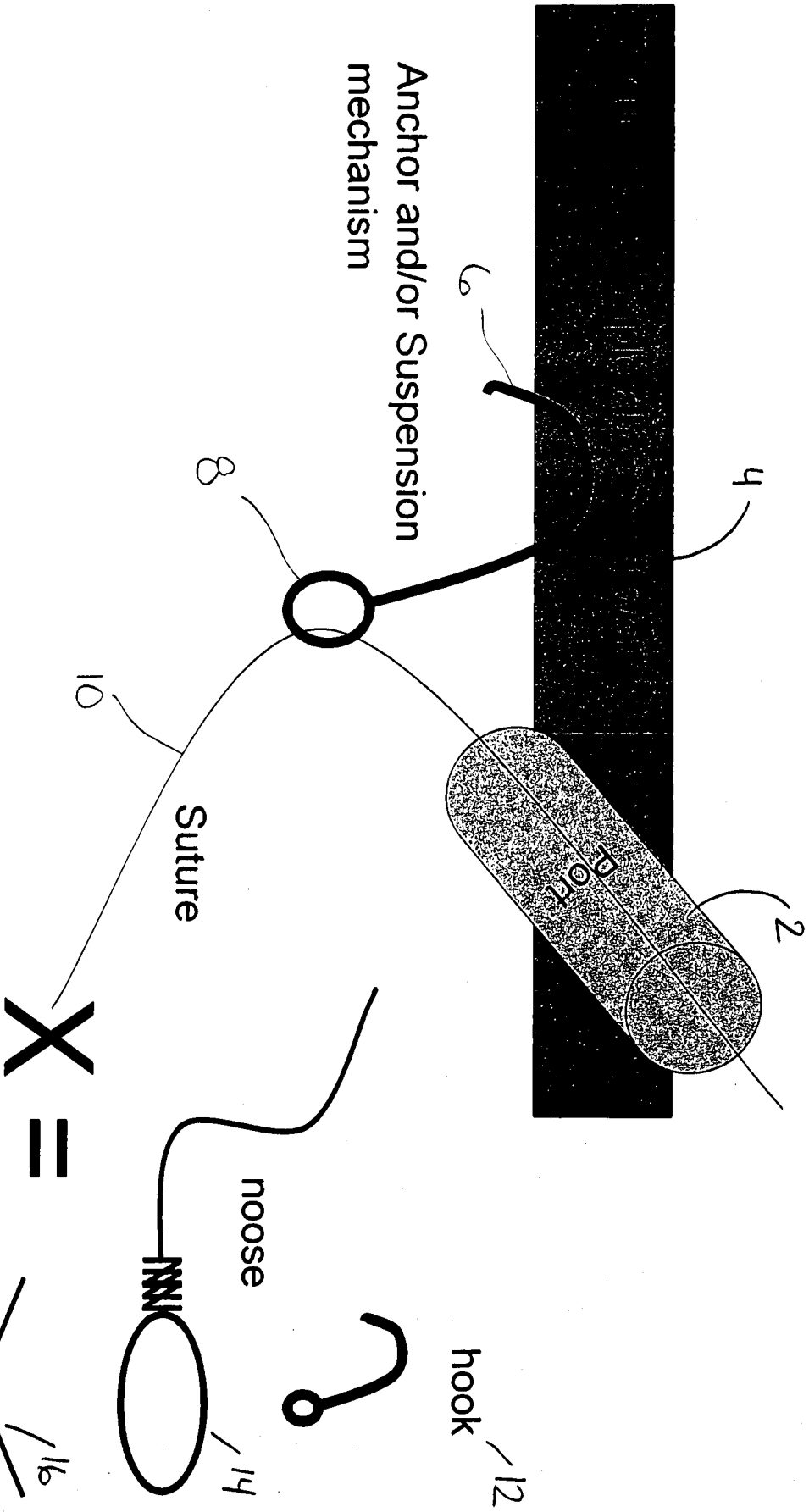


FIGURE 1

~~Clamp/grasper~~

Device for laparoscopically grasping tissue structures

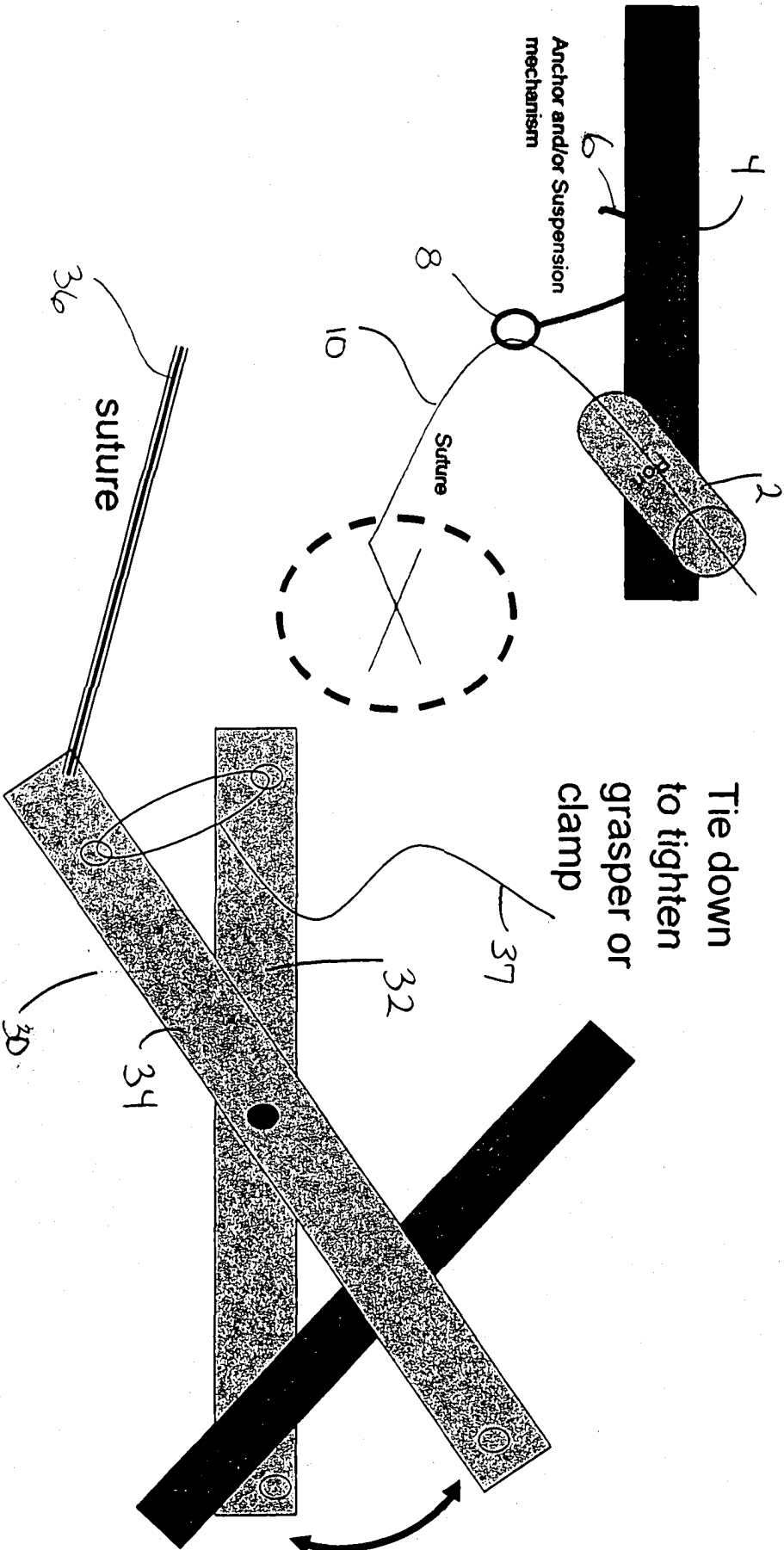
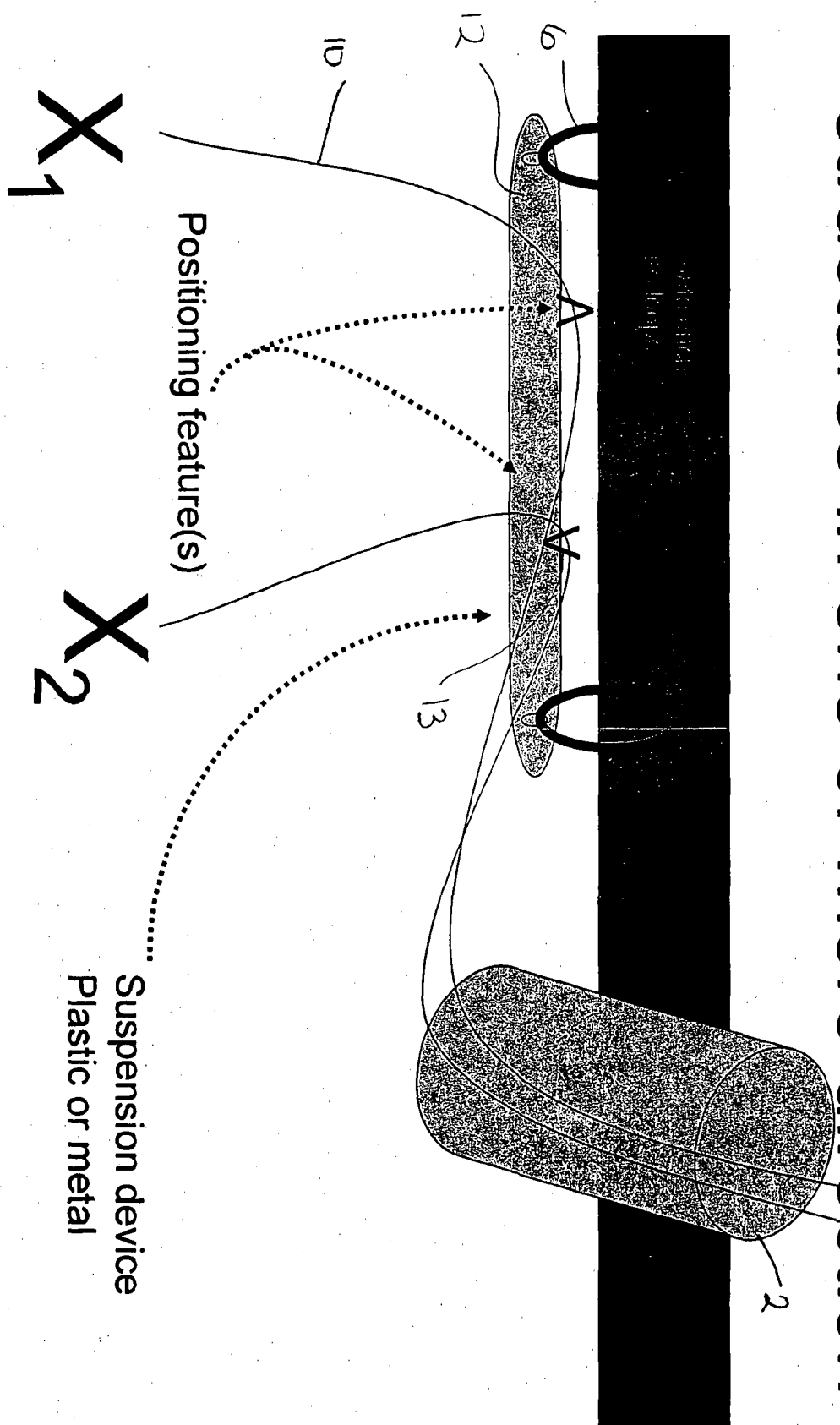


FIGURE 2

Device for laparoscopically manipulating one or more structures in one or more direction



Suspension device
Plastic or metal

FIGURE 3

Device for laparoscopically manipulating multiple structures in multiple directions

4/14

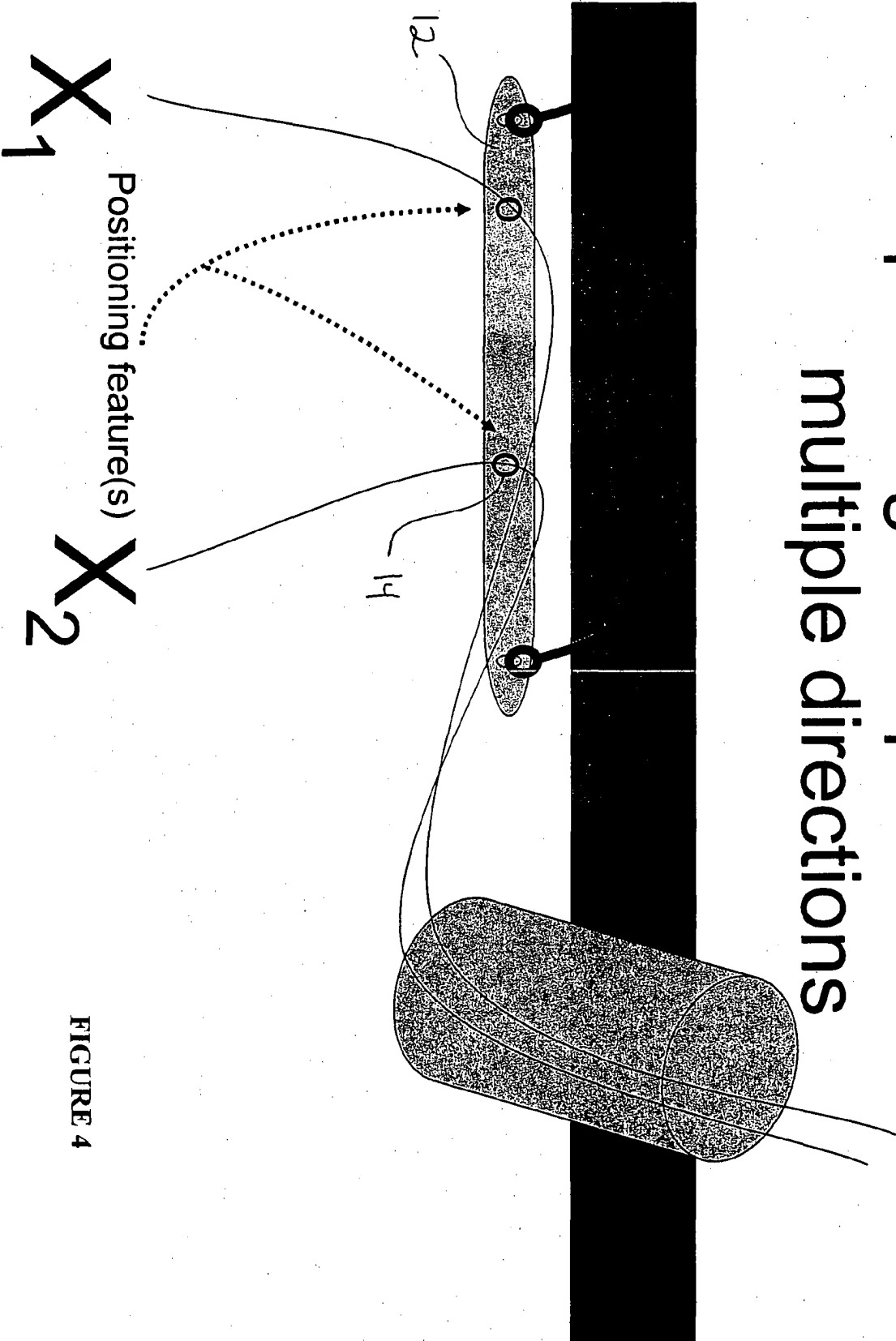


FIGURE 4

Device for laparoscopically manipulating multiple structures in multiple directions-Grid

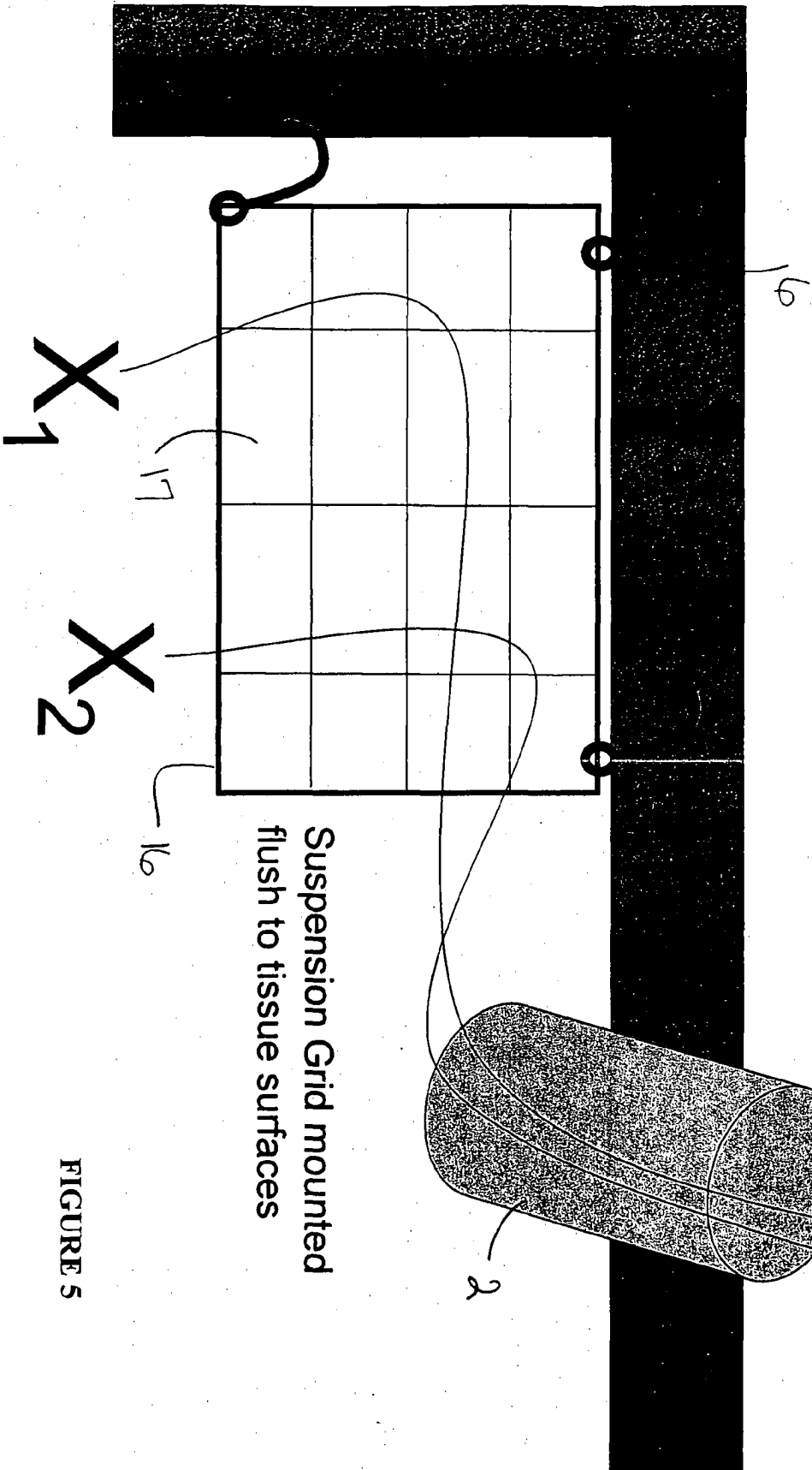
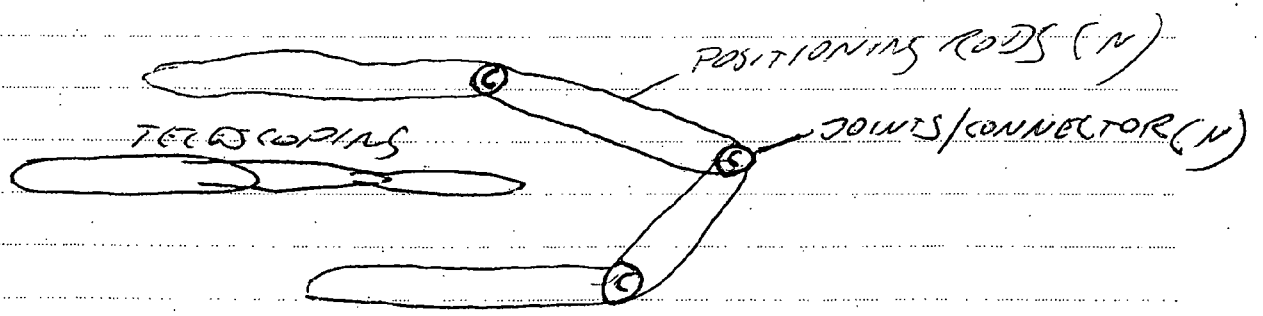
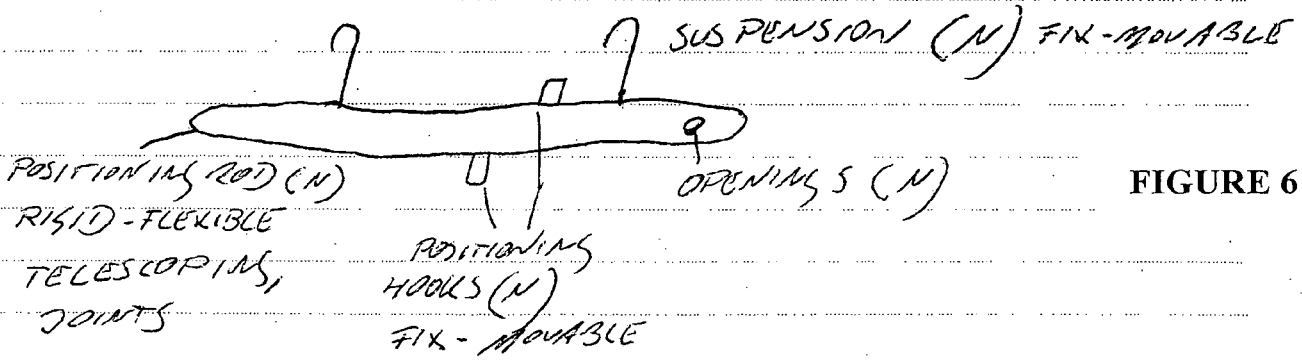
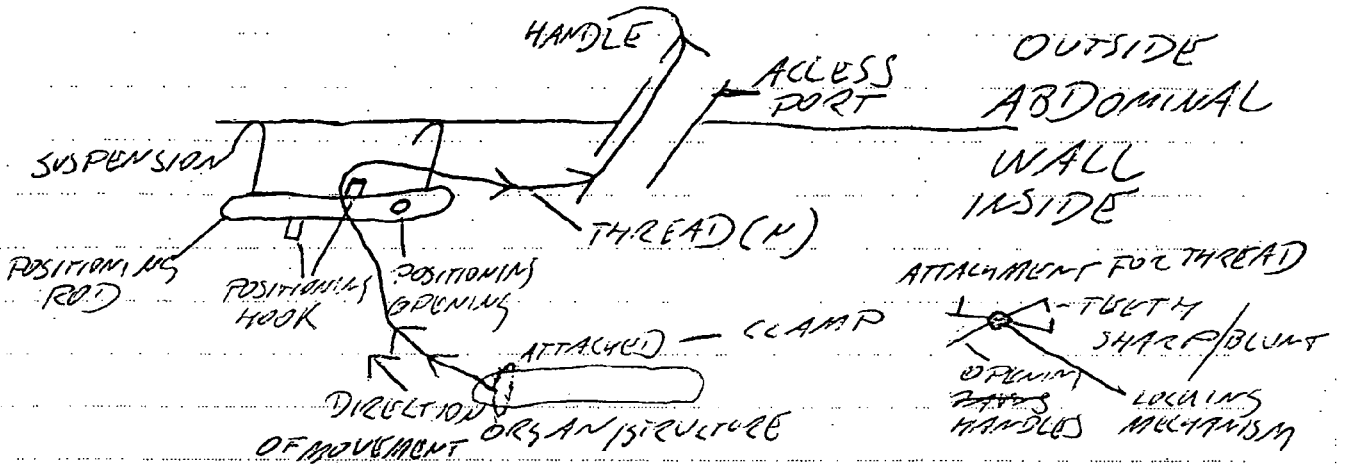


FIGURE 5

SUSPENSION/RETRACTION DEVICE FOR SURGICAL MANIPULATION

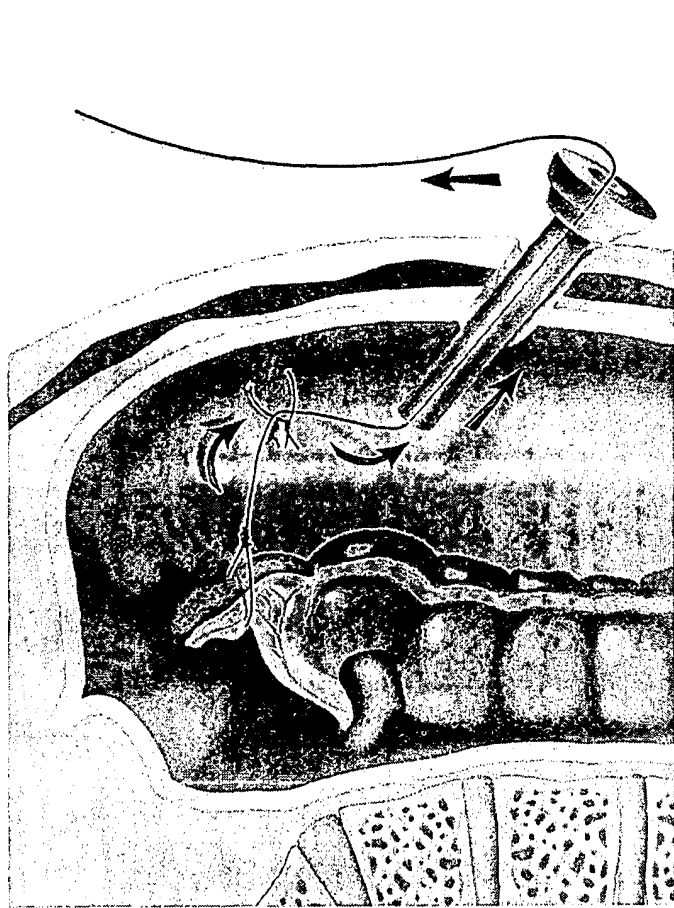


SUSPENSION (N) COR'S POSITIONING RODS
 THREAD OPENING (N) HOOK

TO STRUCTURE

Invented By/Data
 K. R. Roberts 8/5/2007
 (KURT ROBERTS)
 Read & Understood By/Data
 PASE F
 4

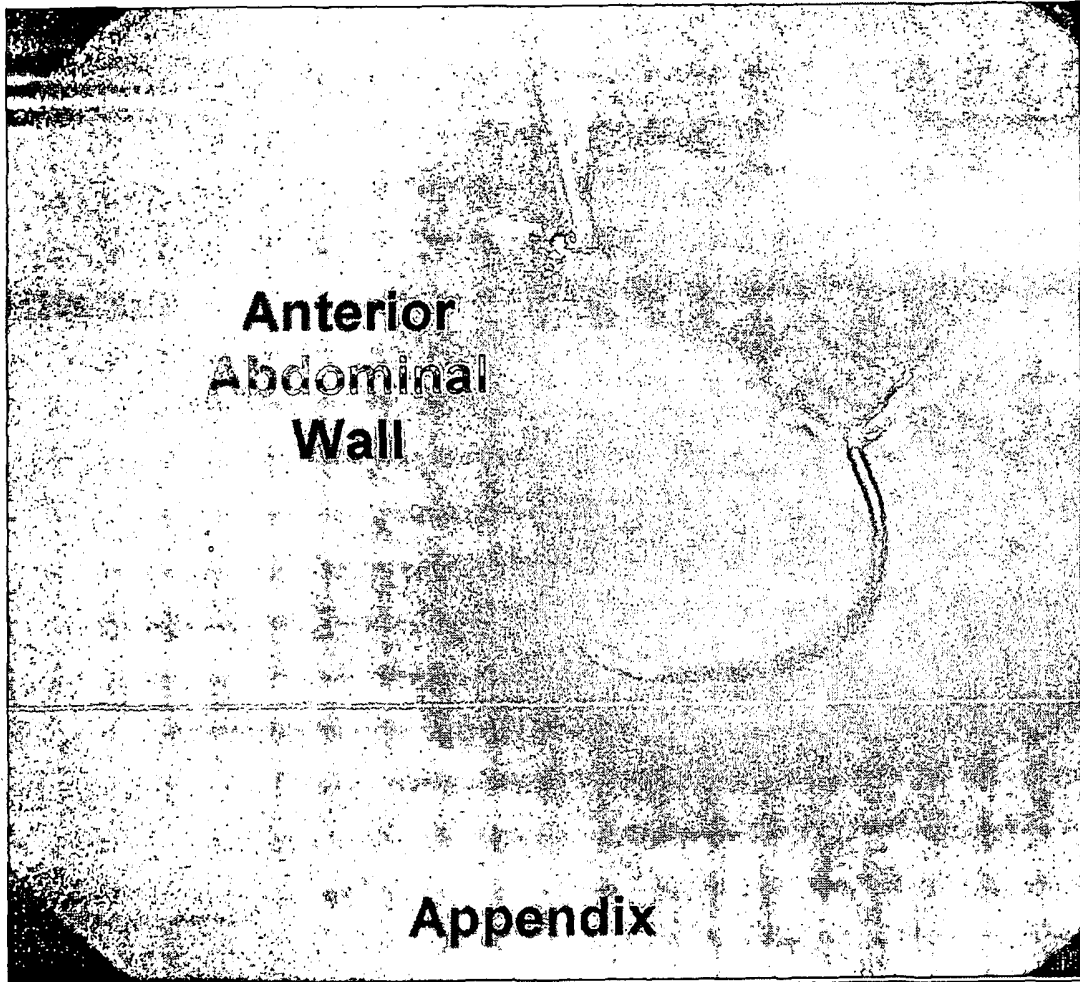
7/14



Drawing of basic principle of puppeteer technique.

FIGURE 7

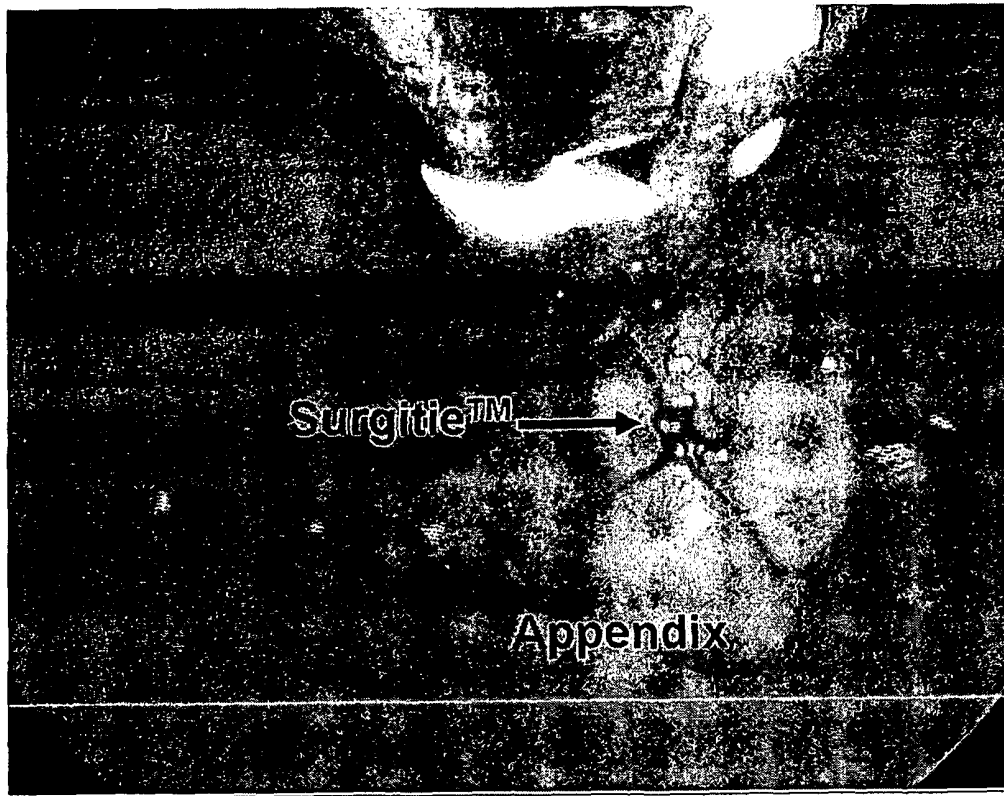
8/14



O-Polysorb stitch is being placed to anterior abdominal wall for the creation of the loop to the anterior abdominal wall to be used as pulley.

FIGURE 8

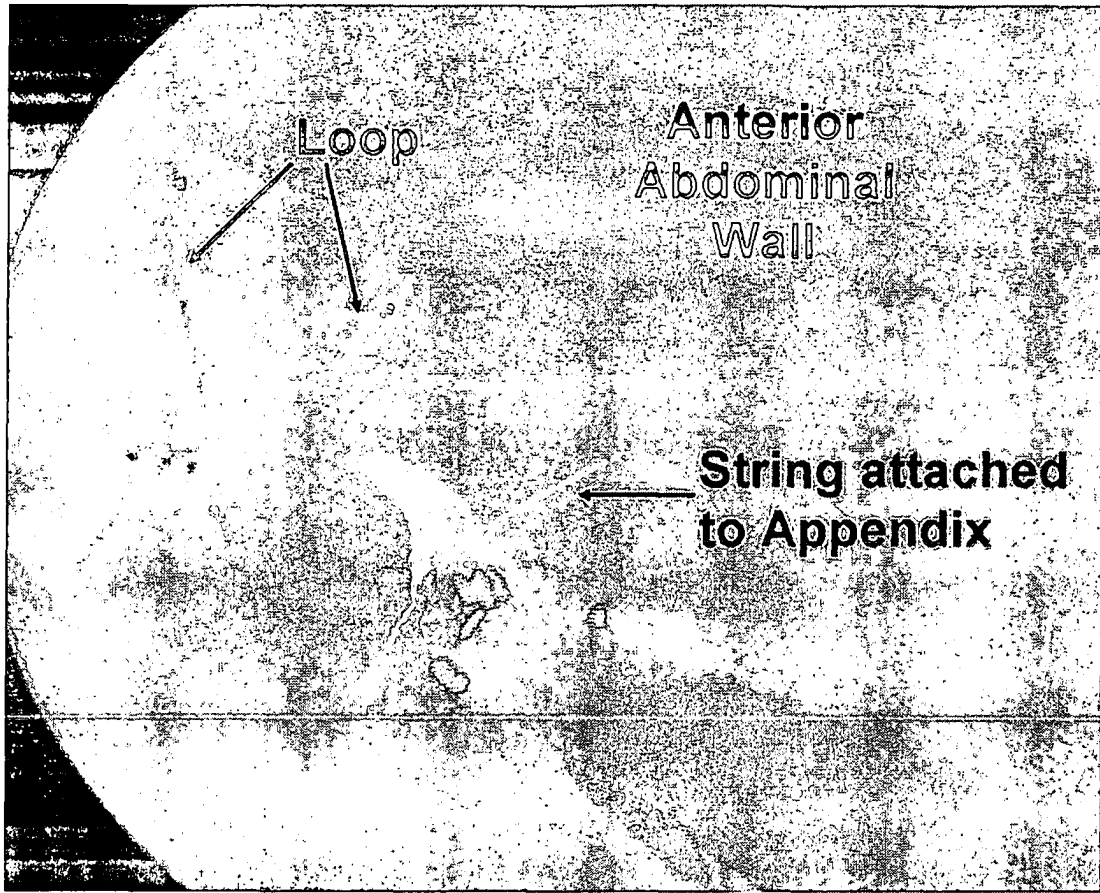
9/14



Appendix is getting caught by Surgitie™ for later retraction.

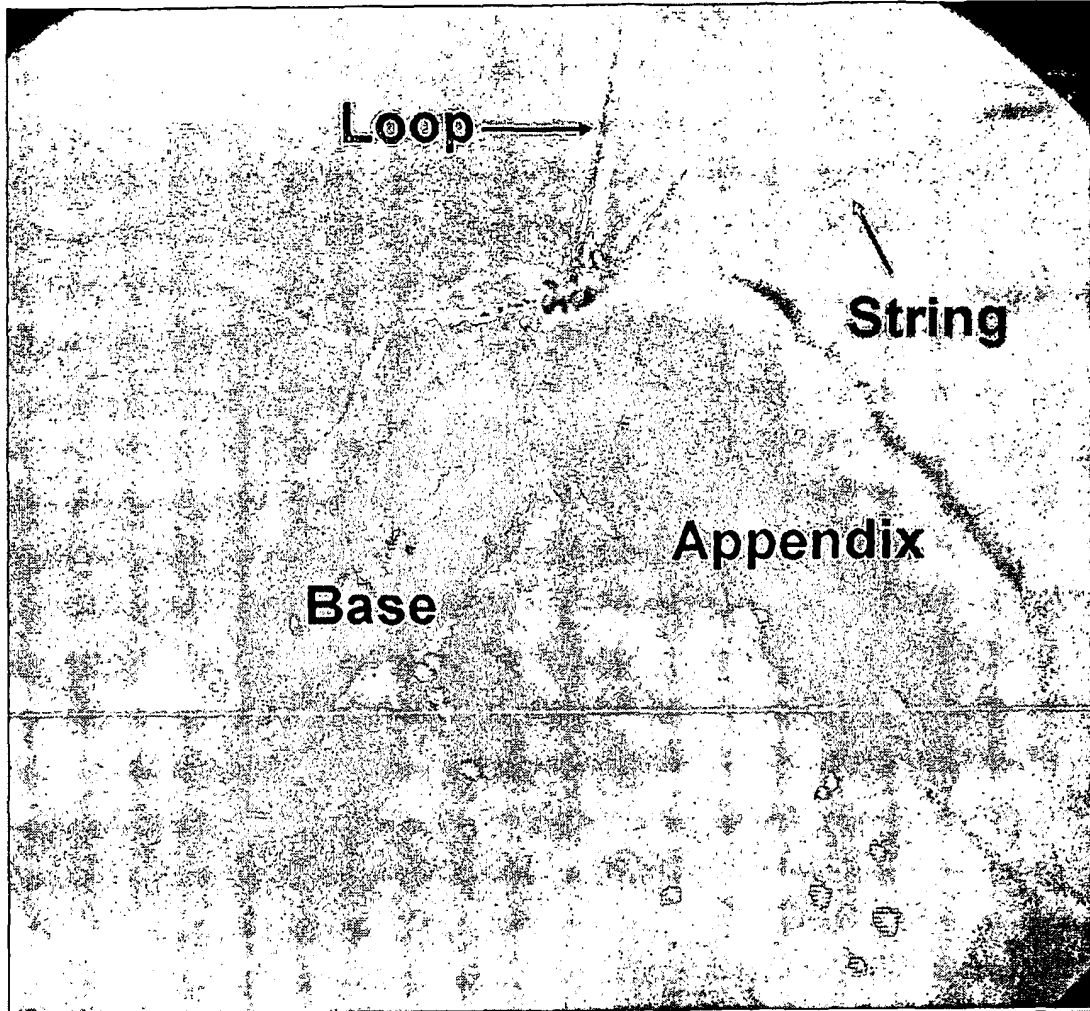
FIGURE 9

10/14



The attached string to appendix will be pulled thru loop and subsequently thru the port to allow for retraction of the appendix.

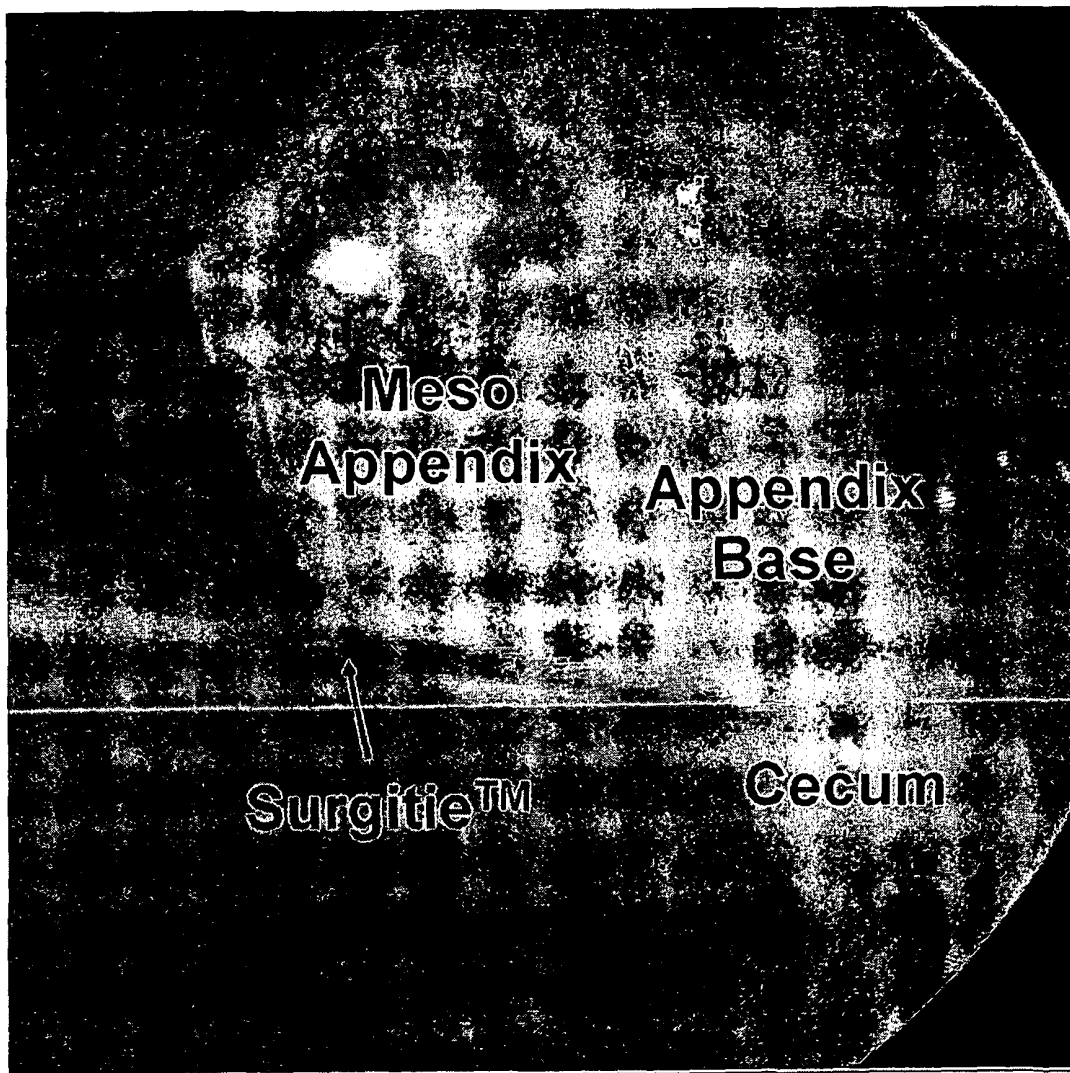
FIGURE 10



Appendix is pulled to abdominal wall to expose the base of the appendix for dissection.

FIGURE 11

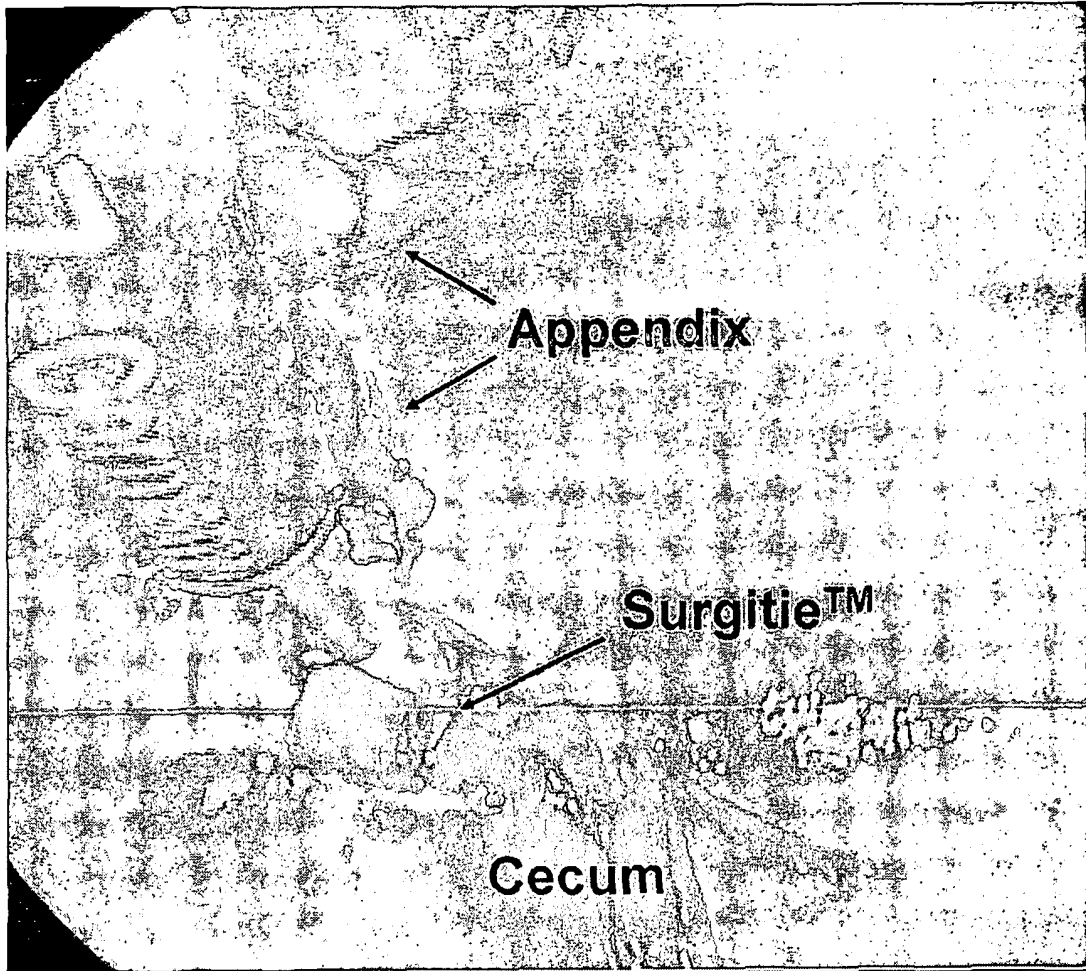
12/14



Ligation at base of appendix with Surgitie™

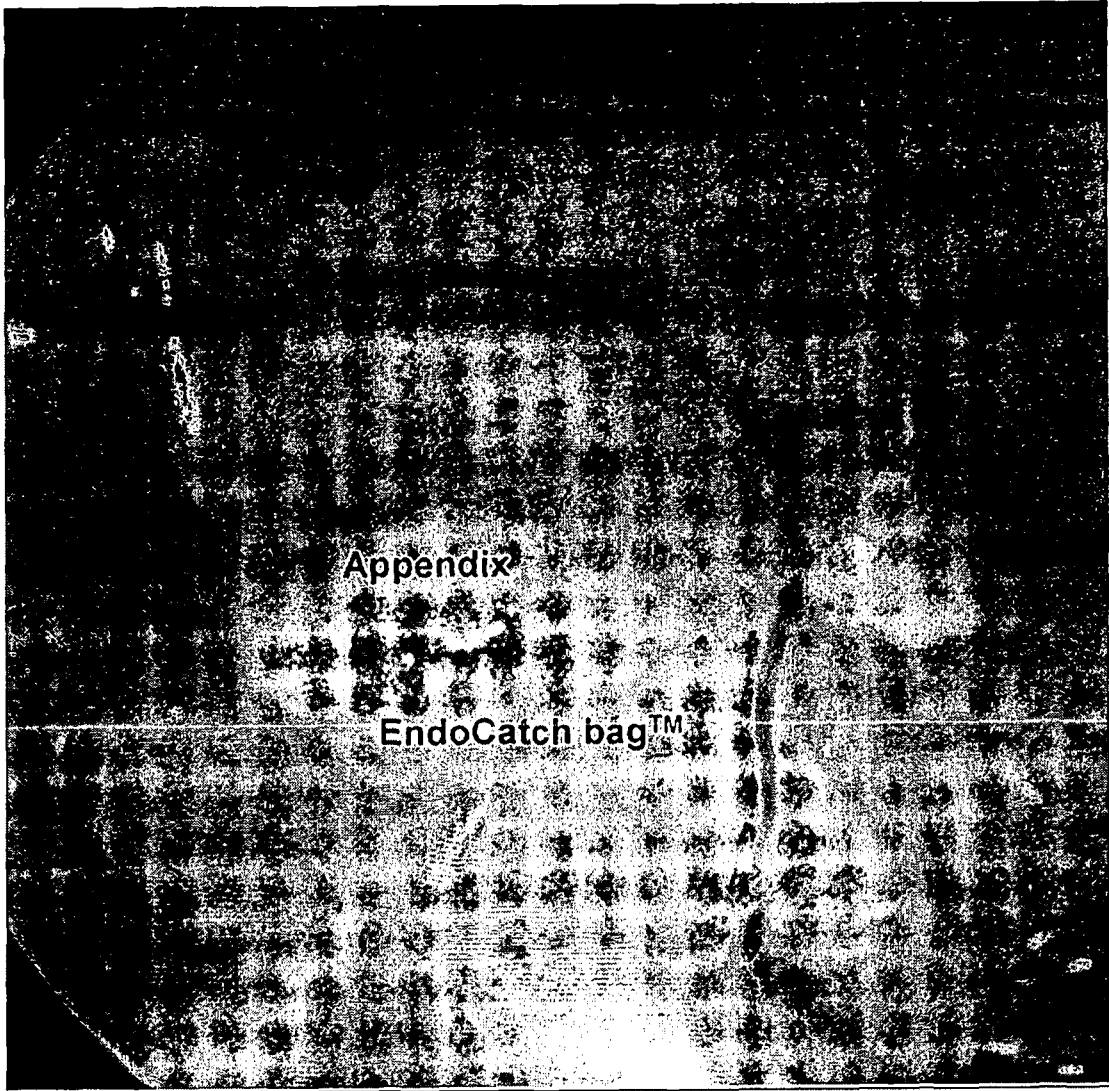
FIGURE 12

13/14



Appendix is being transected.

FIGURE 13



Appendix is being placed in EndoCatch™ bag for retrieval.

FIGURE 14

专利名称(译)	用于手术操作的悬挂/收回装置		
公开(公告)号	EP2182853A2	公开(公告)日	2010-05-12
申请号	EP2008827410	申请日	2008-08-08
[标]申请(专利权)人(译)	耶鲁大学		
申请(专利权)人(译)	耶鲁大学		
当前申请(专利权)人(译)	耶鲁大学		
[标]发明人	ROBERTS KURT ERIC		
发明人	ROBERTS, KURT, ERIC		
IPC分类号	A61B17/00		
CPC分类号	A61B17/0218 A61B17/00234 A61B18/14 A61B18/18 A61B2017/00212 A61B2017/00283 A61B2017/00876 A61B2017/0225 A61B2017/0464 A61B2017/0608		
优先权	60/964319 2007-08-10 US 61/060970 2008-06-12 US		
其他公开文献	EP2182853A4		
外部链接	Espacenet		

摘要(译)

一种可以被输送到体腔中以在体外控制的同时在体内操纵组织的装置以及使用该装置执行单孔腹腔镜或自然孔口手术的方法。该装置能够通过单个端口的内径进入体腔。该装置包括可在体内附着或可安装到组织的锚或悬挂元件，附接到锚或悬挂元件的引导元件，其允许在至少一个方向上操纵至少一个结构，并且至少一个结构附接到缝合线或缝线，其可通过端口的内径并且可由引导元件定位。该结构可通过操纵缝合线或螺线在体外控制，使得结构在体内至少一个方向上移动。