



(11) **EP 1 381 421 B1**

(12) **EUROPEAN PATENT SPECIFICATION**

(45) Date of publication and mention of the grant of the patent:  
**13.06.2012 Bulletin 2012/24**

(51) Int Cl.:  
**A61M 31/00** <sup>(2006.01)</sup> **A61M 5/158** <sup>(2006.01)</sup>  
**A61M 25/00** <sup>(2006.01)</sup>

(21) Application number: **02764290.9**

(86) International application number:  
**PCT/US2002/012653**

(22) Date of filing: **22.04.2002**

(87) International publication number:  
**WO 2002/085444 (31.10.2002 Gazette 2002/44)**

(54) **LAPAROSCOPIC INSERTION DEVICE**

LAPAROSKOPISCHES EINFÜHRUNGSGERÄT  
DISPOSITIF D'INSERTION LAPAROSCOPIQUE

(84) Designated Contracting States:  
**DE FR GB IT**

• **MANZIE, Peter, A.**  
**Burwyn, IL 60402 (US)**

(30) Priority: **24.04.2001 US 841125**

(74) Representative: **Grünecker, Kinkeldey,  
Stockmair & Schwanhäusser  
Leopoldstrasse 4  
80802 München (DE)**

(43) Date of publication of application:  
**21.01.2004 Bulletin 2004/04**

(60) Divisional application:  
**11002879.2 / 2 380 621**

(56) References cited:  
**DE-U- 7 513 482 US-A- 4 254 762**  
**US-A- 5 199 944 US-A- 5 207 648**  
**US-A- 5 514 087 US-A- 5 964 223**  
**US-A- 5 997 497**

(73) Proprietor: **Northgate Technologies Incorporated**  
**Elgin, IL 60123 (US)**

(72) Inventors:  
• **MANTELL, Robert, R.**  
**Arlington Heights, IL 60004 (US)**

**EP 1 381 421 B1**

Note: Within nine months of the publication of the mention of the grant of the European patent in the European Patent Bulletin, any person may give notice to the European Patent Office of opposition to that patent, in accordance with the Implementing Regulations. Notice of opposition shall not be deemed to have been filed until the opposition fee has been paid. (Art. 99(1) European Patent Convention).

**Description****BACKGROUND OF THE INVENTION**5 **Field of the Invention**

[0001] The present invention relates generally to instruments for laparoscopic surgery. In particular, it relates to an improved laparoscopic surgical instrument that can simultaneously perform multiple tasks and procedures independent of one another.

10

**Discussion of Related Art**

[0002] Laparoscopic surgery involves the use of small incisions to insert surgical instruments of 3-10 millimeter (mm) diameter into the abdominal cavity. In performing such surgery, telescopes of 5-11 mm diameter usually also are inserted through the abdominal wall in order to view intraabdominal contents during the surgery. The initial step in laparoscopic surgery is to insert a needle of about 2mm diameter through the abdominal wall such that the tip of the needle lies in the abdominal cavity itself. About 2-4 liters of a medical grade sterilized gas such as carbon dioxide, is insufflated through the needle and into the cavity. This procedure separates the abdominal wall from the organs and also usually separates the organs from one another, as the case may be.

15

[0003] The traditional device for passage of an insufflating gas is the Verres needle which comprises an outer cannula which has a distal needle-like tip for puncturing the abdominal wall and an expanded opposite portion which houses a spring mechanism for retraction of an inner cannula or obturator. The obturator comprises a hollow tube having an enclosed, rounded distal end with a lateral port in close proximity to the said distal end. As the Verres needle penetrates the epidermis and abdominal wall, the obturator retracts into the outer cannula against the bias of the spring to facilitate penetration through the abdominal wall. After penetration of the abdominal wall, the distal end of the obturator is spring-biased out of the Verres needle into the abdominal cavity. An insufflating gas then is delivered to the abdominal cavity from a gas supply detachably connected to the Verres needle so that the insufflating gas can enter the expanded portion of the outer cannula and traverse inside the inner cannula and enter the abdominal cavity through the lateral port located in the distal end of the inner cannula. In this case, the obturator and insufflating gas share a common passage or channel within the inner cannula. The insufflating gas serves to separate the abdominal wall from underlying organs.

20

25

30

[0004] A Verres needle is shown in DE-U-7513482.

[0005] In some known devices, the obturator can be removed so that a medical instrument, such as an endoscope, can be inserted into the space vacated by the obturator and inserted into the abdominal cavity. One disadvantage of the inserting the medical instrument into the Verres needle is that the medical instrument causes a significant restriction to the flow of insufflating gas within the Verres needle since the medical instrument and the insufflating gas share a common passage or channel in the inner cannula. Such restriction in flow of the insufflating gas can limit the effectiveness of the insufflator.

35

[0006] Known trocars are similar to the above-described Verres needle in that they have a cannula that forms a single passage that contains both the insufflating gas and an obturator. One difference between a trocar and a Verres needle is that the Verres needle is typically a 14 gage needle size while trocars are known to have sizes ranging from 10 to 12 mm. One similarity between a trocar and a Verres needle is that the trocars are known that allow the obturator to be removed so that a medical device, such as an endoscope, can be inserted into the cannula. Like the Verres needle described previously, inserting the medical instrument into the cannula causes a significant restriction to the flow of insufflating gas within the trocar due to the sharing of a common passage by the medical instrument and the insufflating gas.

40

45

[0007] Another disadvantage of insertion devices, such as Verres needles and trocars, is that only one fluid can be conveyed within the insertion device at any one time. If multiple fluids are needed to be conveyed to or from the abdominal cavity for instance, then multiple Verres needles or trocars would be needed where each Verres needle or trocar is associated with only one of the multiple fluids. Using multiple insertion devices lead to the disadvantages of increasing the cost of the procedure, the complexity of the procedure and potentially increasing trauma incurred by the patient.

50

[0008] In the alternative, a single Verres needle or trocar could be used where one of the multiple fluids would be conveyed at one period of time and the other multiple fluids would be conveyed at separate and distinct time. Such a mode of operation could lead to contamination of the Verres needle or trocar with multiple fluids, increase the complexity of timing the application of fluids and requiring special metering and/or control devices.

55

**SUMMARY OF THE INVENTION**

[0009] One aspect of the present invention regards an insertion device that includes a housing, a first port attached

to the housing for receiving a first fluid and a first chamber connected to the first port and positioned within the housing, wherein the first chamber has an opening that is in fluid communication with a target area. A second port attached to the housing for receiving a second fluid and a second chamber connected to the second port and positioned within the housing, wherein the second chamber has an opening that is in fluid communication with the target area, wherein the first chamber and the second chamber are permanently not in fluid communication with one another and simultaneously are in fluid communication with the target area.

[0010] Each aspect of the present invention provides the advantage of improving fluid flow in an insertion device during a laparoscopic procedure.

[0011] Each of the first two aspects of the present invention provides the advantage of decreasing the cost of laparoscopic procedures by using a single insertion device for simultaneously conveying multiple fluids during a laparoscopic procedure.

[0012] Each of the first two aspects of the present invention provides the advantage of decreasing the complexity of laparoscopic procedures by simultaneously conveying multiple fluids during a laparoscopic procedure.

[0013] Each of the first two aspects of the present invention provides the advantage of reducing the risk of contamination of an insertion device by multiple fluids conveyed by the insertion device during a laparoscopic procedure.

[0014] The present invention, together with attendant objects and advantages, will be best understood with reference to the detailed description below in connection with the attached drawings.

## BRIEF DESCRIPTION OF THE DRAWINGS

[0015]

FIG. 1 is a side, partially transparent view of an embodiment of an insertion device in an extended mode according to the present invention;

FIG. 2 is a perspective, partially exploded view of the insertion device of FIG. 1;

FIG. 3A is a side cross-sectional view of an embodiment of a lumen sub-assembly to be used with the insertion device of FIG. 1;

FIG. 3B is a side cross-sectional view of an embodiment of a lumen housing to be used with the lumen sub-assembly of FIG. 3A;

FIG. 3C is a side cross-sectional view of an embodiment of a lumen housing adapter to be used with the lumen sub-assembly of FIG. 3A;

FIG. 4 is an enlarged side, partially transparent view of an end of the insertion device of FIG. 1 in an extended mode;

FIG. 5 is a side, partially transparent view of the insertion device of FIG. 1 in a retracted mode;

FIG. 6 is an enlarged side, partially transparent view of an end of the insertion device of FIG. 1 in a retracted mode;

FIG. 7 is cross-sectional view of the insertion device of FIG. 1 as taken along lines 7-7 of FIG. 1;

FIG. 8 is a side, partially transparent view of a second embodiment of an insertion device in an extended mode according to the present invention;

FIG. 9 is a cross-sectional view of a third embodiment of an insertion device according to the present invention;

FIG. 10 is a side, partially transparent view of a fourth embodiment of an insertion device in a retracted mode according to the present invention;

FIG. 11 is a perspective, partially exploded view of the insertion device of FIG. 10;

FIG. 12 is an enlarged side, partially transparent view of an end of the insertion device of FIG. 10 in a retracted mode;

FIG. 13 is a cross-sectional view of the insertion device of FIG. 10 as taken along lines 13-13 of FIG. 10;

FIG. 14 is a side, partially transparent view of a fifth embodiment of an insertion device in an extended mode according to the present invention;

FIG. 15 is a cross-sectional view of a sixth embodiment of an insertion device according to the present invention;

FIG. 16 is a side, partially transparent view of a seventh embodiment of an insertion device in a retracted mode according to the present invention;

FIG. 17 is an enlarged side, partially transparent view of the insertion device of FIG. 16 in an extended mode; and

FIG. 18 is cross-sectional view of the insertion device of FIG. 16 taken along lines 18-18 of FIG. 17.

## DETAILED DESCRIPTION OF THE INVENTION

[0016] Referring now to FIGS. 1-7, an insertion device, such as Verres needle 20, includes a lumen housing sub-assembly 22, a first fluid port section 24 and a second fluid port section 26.

[0017] As shown in FIGS. 1', 2, 3A-B and 5, the lumen housing sub-assembly 22 includes a cylindrical-like lumen housing 28 that is threadedly attached to a lumen housing adapter 29. As shown in FIGS. 3A-B, the lumen housing 28 includes a central channel 30 that extends from a distal end 32 to a proximal end 34 of the lumen housing 28. The central

channel 30 has a length of approximately 1.437 inches. The channel 30 has a diameter that varies in a step-like manner. For example, the channel 30 has four distinct portions: 1) a distal portion A that has a length of approximately 0.312 inches, 2) an intermediate distal portion B that has a length of approximately 0.725 inches, an intermediate proximate portion C that has a length of approximately 0.40 inches, and a proximal portion D that has a length of approximately 0.158 inches. The portions A, B, C and D have, from A to D, stepwise expanding diameter, as shown in Fig. 3A and Fig. 3B.

**[0018]** The portion A of the central channel 30 is threaded, receives and is attached to a threaded male member 35 of a lumen housing adapter 29 as shown in FIG. 3A. The lumen housing adapter 29 has an opening 37 that is aligned with the channel 30 of the lumen housing 28. The attached lumen housing adapter 29 and lumen housing 28 constitute the lumen housing sub assembly 22. Note that a distal end 57 of the lumen housing adapter 29 is attached via silver solder to a needle cannula exterior housing 78. As shown 15 in FIGS. 1, 2 and 4-7, the housing 78 is substantially cylindrical/annular in shape having a length of approximately 4.970 inches, an inner diameter of approximately 0.173 inches and an outer diameter of approximately 0.203 inches. The housing 78 has a 0.093 inch diameter opening 80 that is aligned with an opening 82 of the fluid port section 26. The opening 80 is approximately 0.24 inches from a proximal end of the housing 78. The housing 78 has a second opening 84 formed approximately 4.09 inches from the opening 80 and further includes a needle 86 formed at a distal end thereof. The housing 78 is preferably made of stainless steel.

**[0019]** As shown in FIGS. 1, 2 and 5, the portions A-D of the central channel 30 and the opening 37 receive an inner needle cannula wall 88 that is inserted into and welded into an opening 39 of a cylindrical-like extension 41 of a port, such as stopcock 54, that forms part of the fluid port section 24. The inner needle cannula wall 88 is annular/cylindrical in shape having a length of approximately 7.282 inches, an inner diameter of approximately 0.84 inches and an outer diameter of approximately 0.93 inches. As shown in FIGS. 1, 2 and 4-6, the inner needle cannula wall 88 is inserted into the interior of the housing 78 and has a distal end that is near the distal end of the housing 78.

**[0020]** As shown in FIG. 2, the inner needle cannula wall 88 is also inserted into an O-ring seal 48 and a bias mechanism 43 that includes a spring 44, a stop 45 and a compression piece 47. In particular, the inner needle cannula wall 88 is inserted into aligned openings of the O-ring seal 48, the compression piece 47, the spring 44 and the stop 45. Once the inner needle cannula wall 88 is inserted, the stop 45 is threaded onto a threaded end portion 49 of the extension 41 of the fluid port section 24. At this stage, the extension 41 passes through the aligned openings of the spring 44, compression piece 47 and O-ring seal 48. The extension 41 is inserted into channel 30 of the lumen housing 28 and the compression piece 47 is inserted into portion C of channel 30 of the lumen housing 28. The exterior threads 51 of the compression piece 47 threadedly engage the threads 53 of portion C of channel 30. The end result of the threaded attachment of stop 45 and compression piece 47 is that the spring 44 is captured between the stop 45 and compression piece 47. In addition, the lumen housing 28 is able to slidingly move relative to the fluid port section 24 along the longitudinal length of the extension 41. Such movement is limited in that the compression piece 47 attached to the lumen housing 28 is constrained to move from where the stop 45 is attached to extension 41 to where the O-ring seal 48 that is welded to an annular shoulder 60 of the extension 41. The O-ring seal 48 seals the space between lumen housing 28 and extension 41 when a proximal end 55 of the compression piece 47 abuts against the O-ring seal 48.

**[0021]** After the lumen housing 28 is attached to the fluid port section 24 via bias mechanism 43, an annular-like stainless steel wall 36 of an obturator 38 is inserted into a longitudinal channel 59 formed in the fluid port section 24. The obturator 38 has a length of approximately 8.75 inches and a diameter of approximately 0.063 inches. As shown in FIG. 2, the obturator 38 has a rounded distal end 40. As shown in FIGS. 1, 2 and 5, the proximal end 42 of the obturator 38 is attached via silver solder to a cap 61. The cap 61 has threads that engage a proximal end of the stopcock 54. The cap 61 prevents the obturator 38 from exiting the distal end of the housing 78. As shown in FIGS. 1, 2 and 4-6, the obturator 38 is inserted into the interior of the inner needle cannula wall 88 and has a distal end that is near the distal end of the housing 78.

**[0022]** With the obturator 38 positioned within the inner needle cannula wall 88 and the housing 78, the Verres needle 20 allows for both the obturator 38 and the inner needle cannula wall 88 to be movable relative to the housing 78 from an extended position to a retracted position and vice versa. In the case of the extended position, when no forces are pushing the inner cannula wall 88 toward the proximal end of the Verres needle 20, the spring 44 is maintained at its natural length and so the distal end of the inner cannula wall 88 extends past the housing 78 as shown in FIGS. 1 and 4. Thus, the spring 44 normally biases the inner needle cannula wall 88 to an extended position shown in FIGS. 1 and 4. When no forces are pushing the obturator toward the proximal end of the Verres needle 20, the obturator 38 also extends past the housing 78 as shown in FIGS. 1 and 4. Note that when the inner needle cannula wall 88 is at the extended position, the proximal end 55 of the compression piece 47 seals the O-ring 48 between itself and the shoulder 60.

**[0023]** The retracted position is achieved when a force pushes the inner cannula wall 88 toward the proximal end of the Verres needle 20. Such pushing causes the distal end of the inner cannula wall 88 to enter into the housing 78 and causes the stop 45 and the distal end of the spring 44 to move toward the proximal end of the Verres needle 20 as shown in FIG. 5. This causes the spring 44 to be compressed. When a force pushes the obturator toward the proximal end of the Verres needle 20, the distal end of the obturator 38 also enters into the housing 78 as shown in FIGS. 5 and 6.

**[0024]** As shown in FIGS. 1 and 3, the second fluid port section 26 has a threaded male member 62 that engages

threads 63 formed in the distal portion 57 of the lumen housing adapter 29. The threaded male member 62 is integrally attached to a body 64 that includes an axially extending channel 66 and a radially extending channel 68.

**[0025]** The radially extending channel 68 is threaded and is in fluid communication with the axially extending channel 66. As shown in FIGS. 1 and 5, a threaded male member 70 of a port, such as stopcock 72, is inserted into and threadably engages the channel 68.

**[0026]** The stopcocks 54 and 72 preferably are attached to supplies (not shown) for two isolated fluids. Thus, the stopcocks 54 and 72 allow for two different fluids, to be supplied to the Verres needle 20. For example, stopcocks 54 and 72 can be attached to separate supplies of carbon dioxide. In another embodiment, one of the stopcocks 54 can be attached to a supply of carbon dioxide while the other stopcock is attached to a supply of an aerosolized medication. In accordance with the present invention, the two fluids are permanently not in fluid communication with one another. Note that in this application, the term fluid is deemed to include either a gas or a liquid.

**[0027]** Isolation between the two fluids is accomplished by a pair of chambers 74 and 76 that are formed within the needle cannula exterior housing 78. The annular chamber 74 is defined as the space between the housing 78 and a cannula wall 90. The cannula wall 90 is annular/cylindrical in shape having a length of approximately 4.562 inches, an inner diameter of approximately 0.134 inches and an outer diameter of approximately 0.165 inches. The cannula wall 90 is attached to housing 78 by silver solder. In particular, silver solder is applied to the housing 78 and wall 90 distally of the opening 84. Silver solder is also applied to the housing 78 and wall 90 proximally of opening 82. The silver solder seals the chamber 74 at distal and proximal ends thereof. As shown in FIG. 7, the housing 78 and the wall 90 are concentric about a common axis G so that the annular chamber 74 is concentric about axis G as well. The housing 78 and the wall 90 are spaced from one another by approximately 0.080 inches.

**[0028]** In operation, the stopcock 72 is opened so that a fluid is received by the opening 82 and delivered into the opening 80 of the housing 78. The fluid then flows into the chamber 74 and exits out of the opening 84 of the housing and the annular space 74 between housing 78 and wall 90 and flows into a target area, such as a body cavity or abdomen. Thus, the opening 84 is in fluid communication with a target area.

**[0029]** A second annular chamber 76 is defined as the space between an annular portion of the wall 36 of the obturator 38 and an inner needle cannula wall 88. As shown in FIG. 5, the wall 36 and the cannula wall 88 are concentric about axis G so that the annular chamber 76 is concentric about axis G as well. The wall 36 and the cannula wall 88 are spaced from one another by approximately 0.021 inches. In addition, the wall 88 is movable relative to the housing 78 in that it is attached to the extension 41 of the stopcock 54, which is biased via spring 44 so as to move relative to the housing 78. As mentioned previously, the obturator 38 and wall 36 are attached to the stopcock 54 as well via cap 51. Thus, when stopcock 54 and wall 88 move relative to housing 78, the obturator 38 and wall 36 will also move with stopcock 54 and so move in unison with the wall 88.

**[0030]** As shown in FIGS. 1 and 4-6, the obturator 38, the cannula wall 88 and the annular chamber 76 extend from the distal end of the Verres needle 20 to a distal opening 39 formed in the stopcock 54. In operation after the Verres needle 20 is inserted into the body cavity or abdomen and the obturator 38 is removed after the cap 61 is unthreaded and attached from the stopcock 54, the stopcock 54 remains open so that a fluid is received by the opening 59 and delivered into the annular chamber 76. The fluid then flows the entire length of the chamber 76 and exits a distal opening 94 and the distal end of the chamber 76 and flows into a target area, such as a body cavity or abdomen. Thus, the opening 94 and the distal end of the chamber 76 are in fluid communication with a target area.

**[0031]** When both stopcock 54 and 72 are open at the same time, the fluids associated with the stopcocks flow within the Verres needle 20 do not intermingle within the needle 20 since the annular walls 78 and 90 do not define a volume of space that is common with any volume of space defined by the annular walls 36 and 88. Accordingly, the chambers 74 and 76 are isolated from one another so they are permanently not in fluid communication with one another. The fluids are then expelled out of the Verres needle 20 into the target area so that the chambers 74 and 76 simultaneously are in fluid communication with the target area.

**[0032]** The Verres needle 20 described above with respect to FIGS. 1-7 can be used in a variety of medical procedures to be performed on an animal, such as a human being. In a typical method of treatment, the needle 86 of the housing 78 is used pierce an area of a human patient. During the piercing, the obturator 38 and the cannula wall 88 are pushed by the patient's tissue to a retracted position as shown in FIGS. 5 and 6. Such pushing causes spring 44 to compress as well. Once the needle 86 enters a target area, such as the chest cavity or the abdomen of the human patient, the pressure exerted by the tissue is absent causing spring 44 to expand which results in cannula wall 88 to move to the extended position shown in FIGS. 1 and 4. Since the obturator 38 is mechanically joined to the cannula wall 88, the obturator 38 also moves to the extended position once the needle 86 enters the target area. Upon noticing that the obturator 38 has moved to the extended position, the surgeon determines that the Verres needle 20 has entered into the abdomen whereupon the cap 61 is unthreaded from the stopcock 54, the obturator 38 is removed and an insufflation gas is then directed into the abdomen by opening up either stopcock 54 or 72. With the obturator 38 retained or removed, fluids can be delivered or received within space 74 by utilizing stopcock 72.

**[0033]** The insufflation gas expands the abdomen so that laparoscopic procedures and monitoring can be performed.

**EP 1 381 421 B1**

For example, while the insufflation gas is supplied to the chest cavity or abdomen via chamber 74, for example, the other chamber 76 can be used to simultaneously perform a continuous pressure measurement of the peritoneum. This allows for faster insufflation because the pressure would be read continuously and the insufflator would flow gas continuously to the body cavity via chamber 74 instead of in a stop and start mode that is currently used.

5 **[0034]** In another mode of operation during insufflation via chamber 74, the other chamber 76 can be adapted to receive a medical instrument by the open stopcock 54 and removing the obturator 38 when access to that space is required. Possible medical instruments that can be fed into chamber 76 into the abdomen are: 1) fluid pumps, such as hand pumps, syringe pumps, peristaltic pumps, centrifugal pumps, etc., 2) wall suction, or portable vacuum suction pumps, 3) graspers, scissors, electro-surgical tools, suction/irrigation wands, regular or mini endoscopes, etc., 4) catheters (such as aerosolization ala TMI), 5) infusion devices (gravity fluid bags), syringe injection, biopsy needles etc., 6) humidification devices (evaporative media), and 7) filtering devices, passive (filter media) or active (withdraw a fluid, filter it, and replace it). An example of using a filtering device is shown in FIG. 8 where a filter 96 is attached to stopcock 72 in a well known manner.

10 **[0035]** Besides the medical instruments mentioned above that treat the abdomen, monitoring devices can be connected to the chamber 76, such as 1) pressure relief valves, passive (mechanical) or controlled (electronic) pressure transducers, 2) thermocouples, RTD's, thermistors, etc (temperature), 3) CCD cameras, chip (solid state) cameras, and 4) ultrasonic, and humidity measuring devices.

15 **[0036]** Note that depending on the particular instrument or monitoring involved mentioned above, the stopcock 54 of chamber 76 can be replaced by or used in conjunction with well known rubber seals, injection ports, flap valves and iris valves.

20 **[0037]** There are many ways in which the Verres needle 20 of FIGS. 1-7 can be used. The matrix set forth below shows some of the many possibilities in which the Verres needle 20 conducts a number different functions and or use of devices to enhance medical techniques. Note that the columns of the matrix indicate possible applications that can be performed by one of the ports 54, 72 while the rows indicate applications that can be performed by the other port. An X indicates that the applications for the corresponding row and column can be performed simultaneously. Although the matrix would indicate that only two of the categories would be used in conjunction which each other, in reality, as many of these could be used in combination as is practical to design the introducer (three, four, or five, etc) if the operative area would allow for one device to be used.

30

	Infusing gas	Infusing liquid	Suctioning Gas	Suctioning liquid	Venting or pressure relief	Tool entry (instrument)	Catheter entry
35	Infusing gas	-----	X	X	X	X	X
	Infusing liquid	X	-----	X	X	X	X
40	Suctioning gas	X	X	-----	X	X	X
	Suctioning liquid	X	X	X	-----	X	X
45	Venting or pressure relief	X	X	X	X	-----	X
	Tool entry (instrument)	X	X	X	X	X	-----
50	Catheter entry	X	X	X	X	X	X
	Measure pressure	X	x	X	X	x	X
55	Measure Temperature	X	X	X	X	X	X
	Measure Flow	X	X	X	X	X	X

EP 1 381 421 B1

(continued)

5  
10  
15

	Infusing gas	Infusing liquid	Suctioning Gas	Suctioning liquid	Venting or pressure relief	Tool entry (instrument)	Catheter entry
Endoscopic port	X	X	X	X	X	X	X
Camera (chip) port	X	X	X	X	X	X	X
Medication infusion	X	X	X	X	X	X	X
Moisture infusion	X	X	X	X	X	X	X

20  
25  
30  
35  
40  
45  
50  
55

**[0038]** In summary, the isolated chambers 74 and 76 allow for multiple fluids to be conveyed to a target area. The isolated chambers 74 and 76 allow for a fluid to be supplied to the target area via one chamber while the other chamber simultaneously receives a fluid from the target area. The isolated chambers 74 and 76 also allow for simultaneous supply to or removal of a fluid from a target area while a medical instrument is supplied to the target area via the other chamber. The isolated chambers 74 and 76 allow for simultaneous use of medical instruments and/or monitor devices in the target area. Note that when a medical instrument or monitor device is to be inserted into chamber 76, the obturator 38 can be removed in a well known manner so as to increase the volume of the chamber 76.

**[0039]** While the above description regards using isolated chambers 74 and 76 that are annular and concentric, it is possible to replace the annular walls 88 and 90 of FIGS. 1-8 with separate and nonintersecting tubes 98 and 100 that are shown in FIG. 9. The tube 98 extends from the opening 92 to the distal end of the housing 78. Similarly, tube 100 extends from the opening 80 to the distal end of the housing 78. The tubes 98 and 100 are preferably made of stainless steel or plastic and have a diameter of approximately 0.160 inches. When made of stainless steel, the tubes 98 and 100 are attached to the housing 78 by silver solder. When made of plastic, the tubes 98 and 100 are adhesively bonded to the housing 78.

**[0040]** It is possible to simultaneously apply more than two fluids and/or medical instruments to a target area. This is accomplished by a Verres needle 20' as shown in FIGS. 10-13. In this embodiment, the Verres needle 20 of FIGS. 1-7 is altered so that a third port, such as stopcock 102, is attached to the lumen housing 28' via a threaded attachment. The stopcock 102 has an opening 104 that is in fluid communication with the portion B of central channel 30 of the lumen housing 28'. The stopcock 102 allows for a third fluid to be received by the Verres needle 20'. Note that lumen housing 28' of FIG. 10 differs from lumen housing 28 of FIG. 1 in that the lumen housing 28' is lengthened to accommodate the extra stopcock 102 and so a portion E of channel 30 connecting portions A and B is added.

**[0041]** Isolation between the three fluids is accomplished in part by chambers 74 and 76 as described previously with respect to the Verres needle 20 of FIGS. 1-7. Isolation between the fluid received by stopcock 102 is accomplished by a stationary cannula wall 106 that is positioned within the needle cannula exterior housing 78. The wall 106 is attached to obturator 38 proximally of the opening 104 of the stopcock 102. As shown in FIGS. 12 and 13, the wall 106 is substantially cylindrical/annular in shape having a length of approximately 4.5 inches, an inner diameter of approximately 0.094 inches and an outer diameter of approximately 0.12 inches. The wall 106 and wall 88 define an annular chamber 108 therebetween. The annular wall 88 has a length of approximately 6.75 inches, an inner diameter of approximately 0.73 inches and an outer diameter of approximately 0.84 inches. The separation between walls 88 and 106 is approximately 0.041 inches.

**[0042]** Regarding the formation of the chambers 74 and 76, the annular wall 90 has a length of approximately 7.28 inches, an inner diameter of approximately 0.134 inches and an outer diameter of approximately 0.165 inches. The housing 78 and the wall 90 are spaced from one another by approximately 0.041 inches.

**[0043]** In operation, the stopcock 102 is opened so that a fluid is received by the opening 104 and delivered into the portion E of channel 30. The fluid then flows into portion A of channel 30 and into the chamber 108 positioned between walls 88 and 106. The fluid then flows out of an opening 110 formed in wall 90, exits out of the opening 84 of the housing 78 and flows into a target area, such as a body cavity. The opening 110 is aligned with the opening 84.

**[0044]** When all three stopcock 54, 72 and 102 are open at the same time, the fluids associated with the stopcocks flow within the Verres needle 20 do not intermingle within the needle 20 since the chambers 74, 76 and 108 are isolated from one another so they are permanently not in fluid communication with one another. The fluids are then expelled out of the Verres needle 20' into the target area so that the chambers 74, 76 and 108 simultaneously are in fluid communication with the target area.

[0045] The Verres needle 20' described above with respect to FIGS. 10-13 can be used in a variety of medical procedures, such as those described previously with respect to the Verres needle of FIGS. 1-7. For example, a pressure relief valve 112 can be connected to any of the ports, such as stopcock 72 as shown in FIG. 14 so as to permit the escape of gas in case of an over pressure situation. Other functions that could be performed by stopcock 72 are applying suction to chamber 108 to remove a fluid, providing a filtered exit port to allow smoke removal during electro surgical procedures, positioning an endoscope or an instrument through one of the other ports.

[0046] It should be noted that the matrix of applications discussed previously with respect to the Verres needle 20 of FIGS. 1-7 is applicable to the Verres needle 20' of FIGS. 10-13 in that the stopcock 102 can perform any one of the applications in the column of the matrix simultaneously with any dual application combination for stopcocks 54 and 72 as defined by the matrix.

[0047] While the above description regards using isolated chambers 74, 76 and 108 that are annular and concentric, it is possible to replace the annular walls 88, 90 and 106 with separate and nonintersecting tubes 98, 100 and 114 that are shown in FIG. 15. The tube 98 extends from the opening 92 to the distal end of the housing 78. Tube 100 extends from the opening 80 to the distal end of the housing 78. Similarly, tube 114 extends from portion A of channel 30 to the distal end of the housing 78. The tubes 98, 100 and 114 are preferably made of stainless steel or plastic and have a diameter of approximately 0.098. When made of stainless steel, the tubes 98 and 100 are attached to the housing 78 by silver solder. When made of plastic, the tubes 98 and 100 are adhesively bonded to the housing 78.

[0048] Another embodiment of a Verres needle that uses separate and nonintersecting tubes is shown in FIGS. 16-18. In this embodiment, the Verres needle 20" varies from the Verres needle 20' of FIG. 10 in that the stopcock 72 is now attached to the main body 28 and a fourth stopcock 116 is attached to the main body 28 as well. Thus, four fluids can be received simultaneously by the needle 20". As shown in FIG. 18, the stopcocks 72, 102 and 116 are spaced from one another by approximately 120°. The stopcock 116 has a tube 118 that is connected to it and that extends to the distal end of the housing 78. The tube 118 has a length of approximately 4.9 inches and diameter of approximately 0.098 inches that is the same as tubes 100 and 114. As shown in FIG. 18, the tube 98 is centrally located within main body 28 and the remaining tubes 100, 114 and 118 are each spaced 0.040 inches from the center of tube 98 and are spaced 120° relative to one another.

[0049] The foregoing description is provided to illustrate the invention, and is not to be construed as a limitation. Numerous additions, substitutions and other changes can be made to the invention without departing from its scope as set forth in the appended claims. For example, the present invention can be applied to other insertion devices, such as trocars, where the trocar is inserted into an opening of an animal, such as a human patient, and the opening was formed by an instrument separate from the trocar. In addition, the invention can be used in many fields of medicine, such as minimally invasive surgery, arthroscopy, urology, neurology, gynecology, gastroenterology, general surgery, anesthesiology, cardiology and internal medicine.

## Claims

1. An insertion device which is a trocar or a Veress needle, comprising:

- a housing (28, 78);
- a medical instrument (38);
- a first port (72) attached to said housing for receiving a first fluid;
- a first chamber (74) connected to said first port and positioned within said housing, wherein said first chamber has an opening (84) that is in fluid communication with a target area;
- a second port (54) attached to said housing for receiving a second fluid;
- a second chamber (76) connected to said second port and positioned within said housing, wherein said second chamber has an opening (94) that is in fluid communication with said target area, a third port (102) attached to said housing for receiving a third fluid; and
- an annular wall (88) inserted within said housing, wherein said annular wall and said housing define said first chamber,

### characterized by

- a third chamber (108) connected to said third port and positioned within said housing, wherein said third chamber has an opening (110) that is in fluid communication with said target area, wherein said third chamber, said second chamber and said first chamber are permanently not in fluid communication with one another and simultaneously are in fluid communication with said target area,
- wherein said medical instrument comprises a second annular wall (36) inserted within said housing and within said annular wall, which defines with said annular wall said second chamber.

## EP 1 381 421 B1

2. The insertion device of claim 1, further comprising a third annular wall (106) inserted within said housing and within said second wall, wherein said third annular wall and said second annular wall define said third chamber.
- 5 3. The insertion device of claim 1, further comprising a third annular wall inserted within said housing, wherein said third annular wall does not define a volume of space that is common with any volume of space defined by either said annular wall and said second annular wall.
4. The insertion device of claim 1, wherein said housing comprises a needle formed at one end thereof.
- 10 5. The insertion device of claim 2, wherein said annular wall is movable relative to said housing.
6. The insertion device of claim 5, further comprising a spring that engages said annular wall and said housing.
7. The insertion device of claim 1, wherein a first gas is present within said first chamber and a second gas is present within said second chamber.
- 15 8. The insertion device of claim 7, wherein said first gas comprises carbon dioxide and said second gas comprises carbon dioxide.
9. The insertion device of claim 1, wherein said first fluid comprises carbon dioxide and said second fluid comprises an aerosolized medication.
- 20 10. The insertion device of claim 1, further comprising a pressure transducer in fluid communication with said first port.
11. The insertion device of claim 1, further comprising a pressure relief valve in fluid communication with said first port.
- 25 12. The insertion device of claim 1, further comprising a filter in fluid communication with said first port.

### 30 Patentansprüche

1. Einführvorrichtung, die ein Trokar oder eine Veress-Nadel ist, wobei die Vorrichtung umfasst:
- ein Gehäuse (28, 78);
- 35 ein medizinisches Instrument (38);
- einen ersten Anschluss (72), der an dem Gehäuse angebracht ist, um ein erstes Fluid aufzunehmen;
- eine erste Kammer (74), die mit dem ersten Anschluss verbunden ist und sich im Inneren des Gehäuses befindet, wobei die erste Kammer eine Öffnung (84) hat, die in Fluidverbindung mit einem Zielbereich steht;
- einen zweiten Anschluss (54), der an dem Gehäuse angebracht ist, um ein zweites Fluid aufzunehmen;
- 40 eine zweite Kammer (76), die mit dem zweiten Anschluss verbunden ist und sich im Inneren des Gehäuses befindet, wobei die zweite Kammer eine Öffnung (94) hat, die in Fluidverbindung mit dem Zielbereich steht;
- einen dritten Anschluss (102), der an dem Gehäuse angebracht ist, um ein drittes Fluid aufzunehmen; und
- eine ringförmige Wand (88), die in das Gehäuse eingeführt ist, wobei die ringförmige Wand und das Gehäuse die erste Kammer bilden,
- 45 **gekennzeichnet durch**
- eine dritte Kammer (108), die mit dem dritten Anschluss verbunden ist und sich im Inneren des Gehäuses befindet, wobei die dritte Kammer eine Öffnung (110) hat, die in Fluidverbindung mit dem Zielbereich steht, und die dritte Kammer, die zweite Kammer sowie die erste Kammer nicht permanent in Fluidverbindung miteinander stehen und gleichzeitig in Fluidverbindung mit dem Zielbereich stehen,
- 50 wobei das medizinische Instrument eine zweite ringförmige Wand (36) umfasst, die in das Gehäuse und in die ringförmige Wand eingeführt ist, die mit der ringförmigen Wand die zweite Kammer bildet.
2. Einführvorrichtung nach Anspruch 1, die des Weiteren eine dritte ringförmige Wand (106) umfasst, die in das Gehäuse und in die zweite Wand eingeführt ist, wobei die dritte ringförmige Wand und die zweite ringförmige Wand die dritte Kammer bilden.
- 55 3. Einführvorrichtung nach Anspruch 1, die des Weiteren eine dritte ringförmige Wand umfasst, die in das Gehäuse eingeführt ist, wobei die dritte ringförmige Wand kein Raumvolumen bildet, das eine Einheit mit einem Raumvolumen

bildet, das durch die ringförmige Wand und die zweite ringförmige Wand gebildet wird.

- 5
4. Einführvorrichtung nach Anspruch 1, wobei das Gehäuse eine Nadel umfasst, die an einem Ende desselben ausgebildet ist.
5. Einführvorrichtung nach Anspruch 2, wobei die ringförmige Wand relativ zu dem Gehäuse bewegt werden kann.
6. Einführvorrichtung nach Anspruch 5, die des Weiteren eine Feder umfasst, die mit der ringförmigen Wand und dem Gehäuse in Eingriff ist.
- 10
7. Einführvorrichtung nach Anspruch 1, wobei ein erstes Gas in der ersten Kammer vorhanden ist und ein zweites Gas in der zweiten Kammer vorhanden ist.
8. Einführvorrichtung nach Anspruch 7, wobei das erste Gas Kohlendioxid umfasst und das zweite Gas Kohlendioxid umfasst.
- 15
9. Einführvorrichtung nach Anspruch 1, wobei das erste Fluid Kohlendioxid umfasst und das zweite Fluid ein aerosolisiertes Medikament umfasst.
- 20
10. Einführvorrichtung nach Anspruch 1, die des Weiteren einen Druckwandler umfasst, der in Fluidverbindung mit dem ersten Anschluss steht.
11. Einführvorrichtung nach Anspruch 1, die des Weiteren ein Druckablassventil umfasst, das in Fluidverbindung mit dem ersten Anschluss steht.
- 25
12. Einführvorrichtung nach Anspruch 1, die des Weiteren einen Filter umfasst, der in Fluidverbindung mit dem ersten Anschluss steht.

30 **Revendications**

1. Dispositif d'insertion laparoscopique qui consiste en un trocar ou une aiguille de Veress, comprenant :

une gaine (28, 78) ;

un instrument médical (38) ;

un premier orifice (72) fixé à la gaine pour recevoir un premier fluide ;

une première chambre (74) reliée au premier orifice et placée à l'intérieur de la gaine, étant précisé que la première chambre a une ouverture (84) qui est en communication de fluide avec une zone cible ;

un deuxième orifice (54) relié à la gaine pour recevoir un deuxième fluide ;

une deuxième chambre (76) reliée au deuxième orifice et placée à l'intérieur de la gaine, étant précisé que ladite deuxième chambre a une ouverture (94) qui est en communication de fluide avec la zone cible, un troisième orifice (102) relié à la gaine pour recevoir un troisième fluide ; et

une paroi annulaire (88) insérée dans la gaine, étant précisé que la paroi annulaire et la gaine définissent la première chambre,

**caractérisé par**

une troisième chambre (108) reliée au troisième orifice et placée à l'intérieur de la gaine, étant précisé que la troisième chambre a une ouverture (110) qui est en communication de fluide avec la zone cible, et que les troisième, deuxième et première chambres, en permanence, ne sont pas en communication de fluide entre elles et sont en même temps en communication de fluide avec ladite zone cible,

étant précisé que l'instrument médical comprend une deuxième paroi annulaire (36) insérée dans la gaine et dans la paroi annulaire, qui définit avec celle-ci la deuxième chambre.

2. Dispositif d'insertion de la revendication 1, comprenant par ailleurs une troisième paroi annulaire (106) insérée dans la gaine et dans la deuxième paroi, étant précisé que les troisième et deuxième parois annulaires définissent la troisième chambre.
3. Dispositif d'insertion de la revendication 1, comprenant par ailleurs une troisième paroi annulaire insérée dans la gaine, étant précisé que ladite troisième paroi annulaire ne définit pas un volume d'espace commun avec un volume

## EP 1 381 421 B1

d'espace défini par la paroi annulaire et la deuxième paroi annulaire.

4. Dispositif d'insertion de la revendication 1, étant précisé que la gaine comprend une aiguille formée à l'une de ses extrémités.

5

5. Dispositif d'insertion de la revendication 2, étant précisé que la paroi annulaire est mobile par rapport à la gaine.

6. Dispositif d'insertion de la revendication 5, comprenant par ailleurs un ressort qui est en contact avec la paroi annulaire et la gaine.

10

7. Dispositif d'insertion de la revendication 1, étant précisé qu'il y a un premier gaz à l'intérieur de la première chambre, et un deuxième gaz à l'intérieur de la deuxième chambre.

8. Dispositif d'insertion de la revendication 7, étant précisé que le premier gaz comprend du dioxyde de carbone, et le deuxième gaz comprend du dioxyde de carbone.

15

9. Dispositif d'insertion de la revendication 1, étant précisé que le premier fluide comprend du dioxyde de carbone, et le deuxième fluide comprend un médicament sous forme d'aérosol.

20

10. Dispositif d'insertion de la revendication 1, comprenant par ailleurs un capteur de pression en communication de fluide avec le premier orifice.

11. Dispositif d'insertion de la revendication 1, comprenant par ailleurs une valve de détente en communication de fluide avec le premier orifice.

25

12. Dispositif d'insertion de la revendication 1, comprenant par ailleurs un filtre en communication de fluide avec le premier orifice.

30

35

40

45

50

55

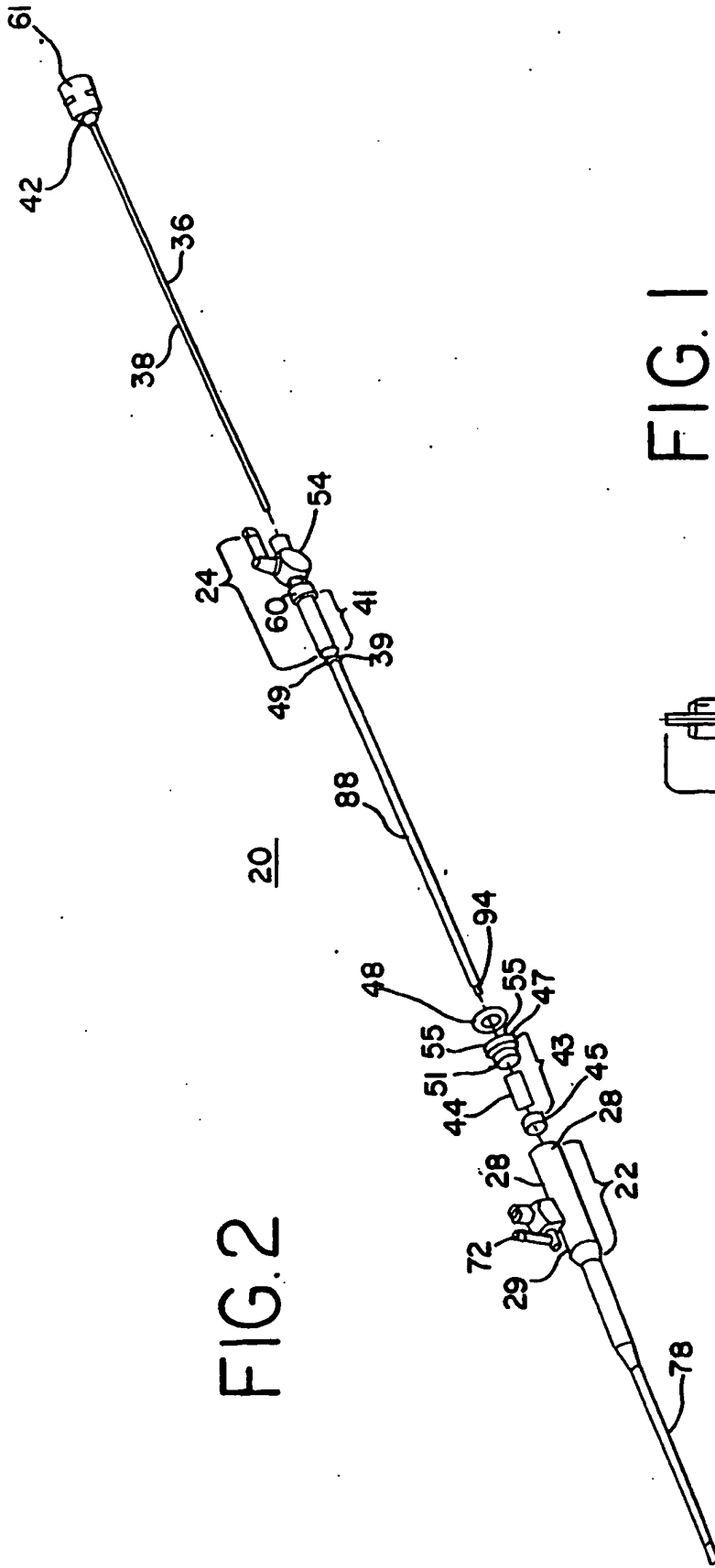
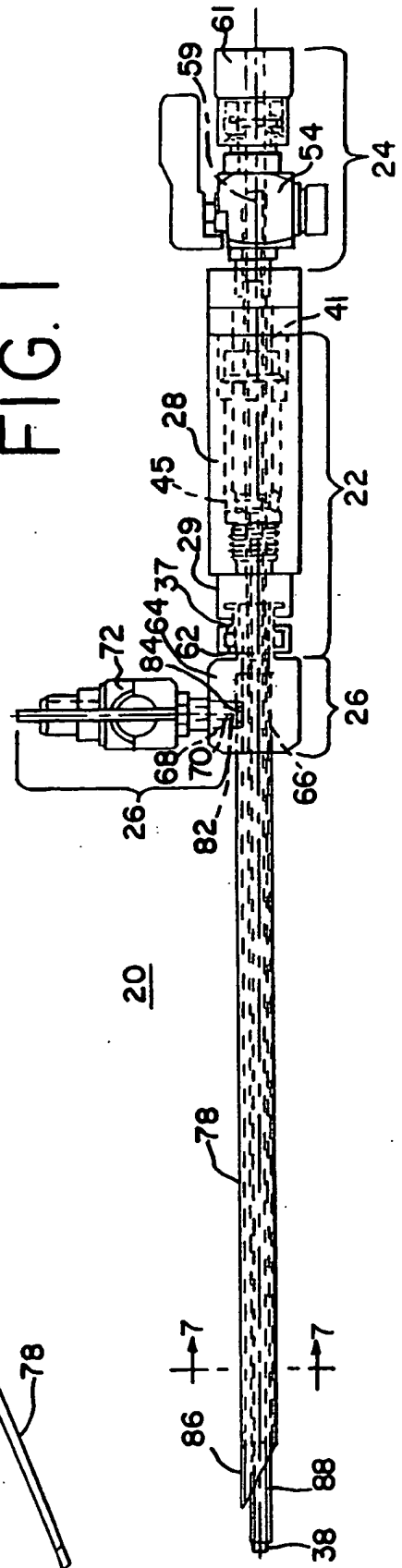


FIG. 1



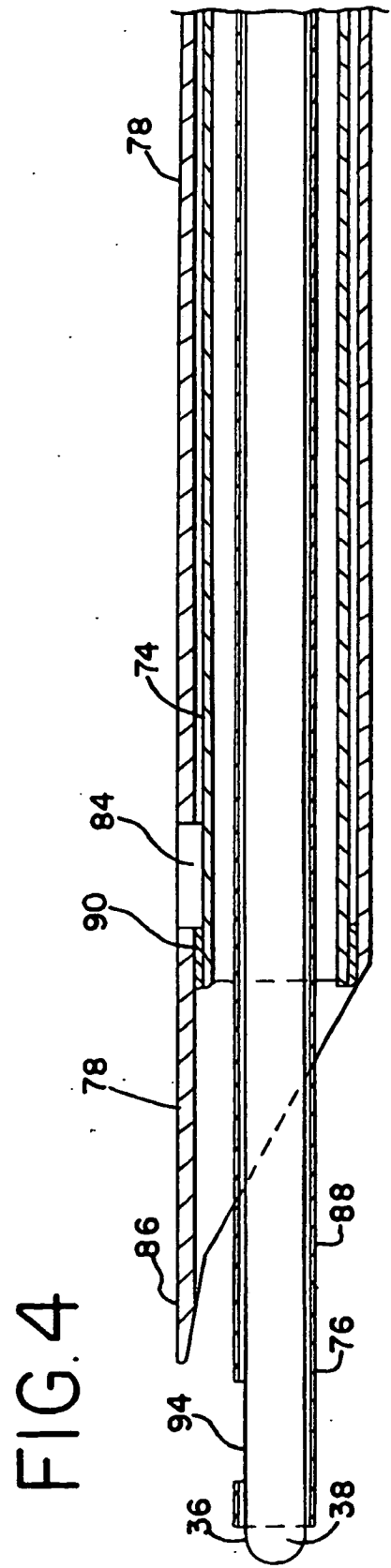
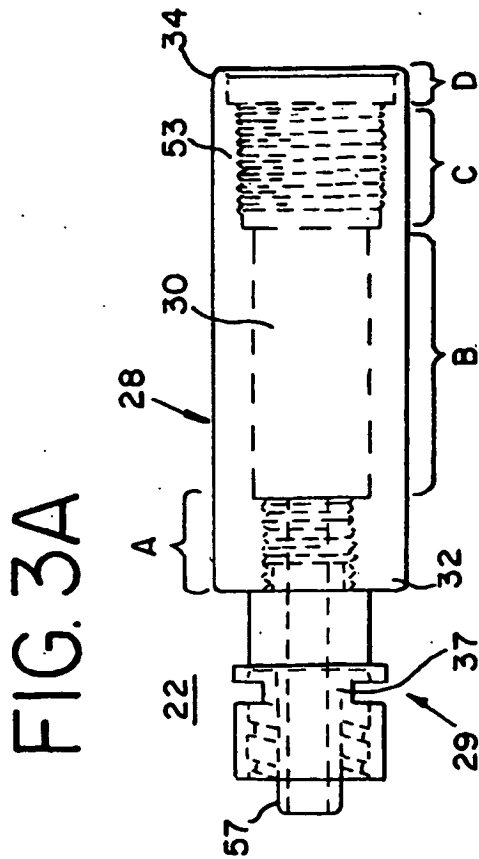
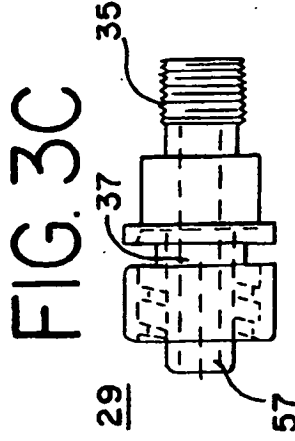
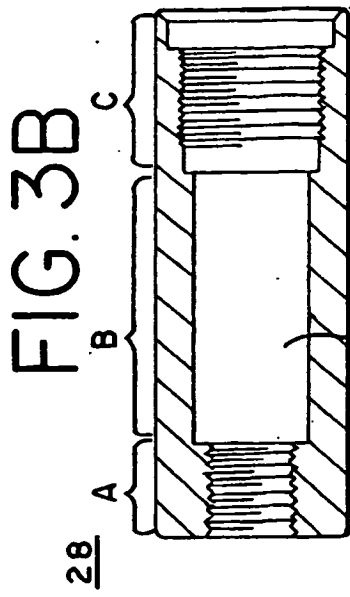


FIG. 5

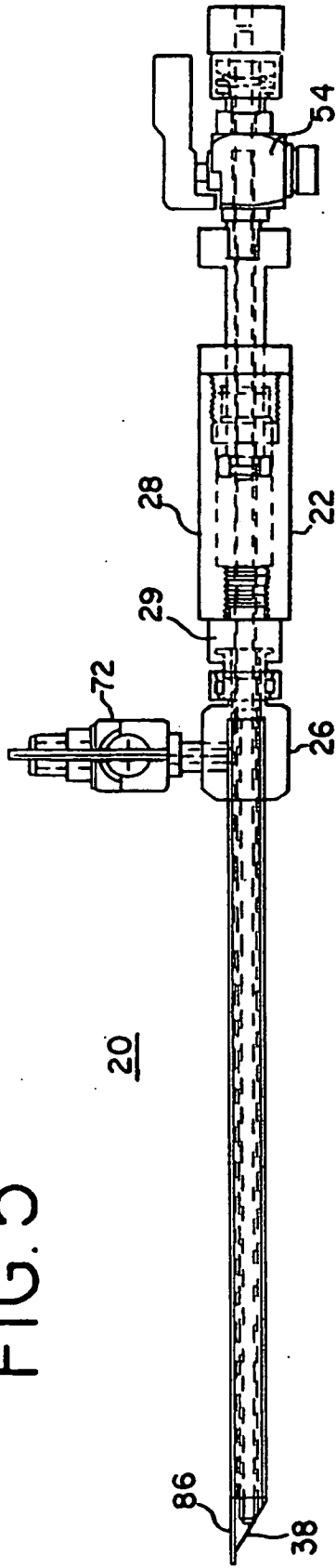


FIG. 6

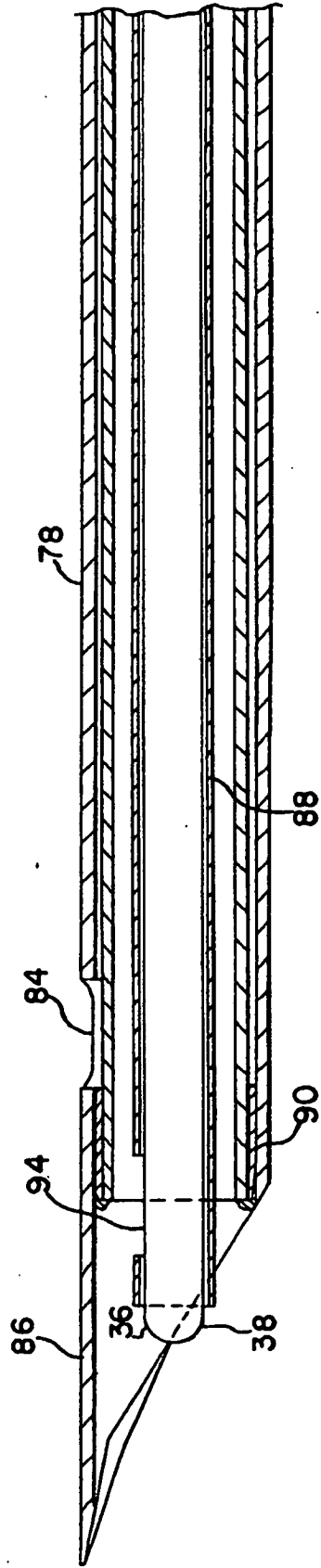


FIG. 9

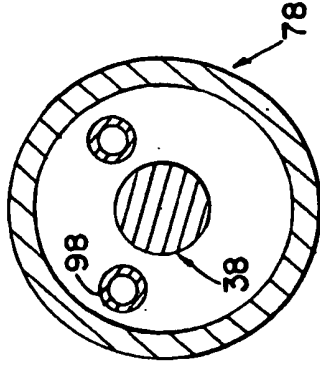


FIG. 7

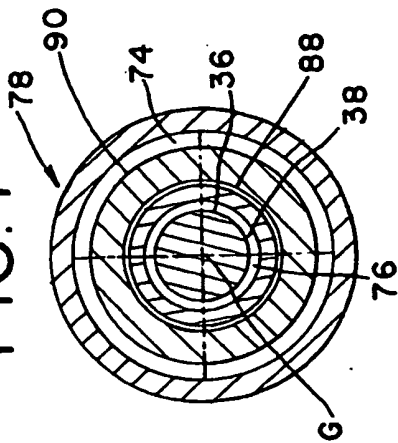
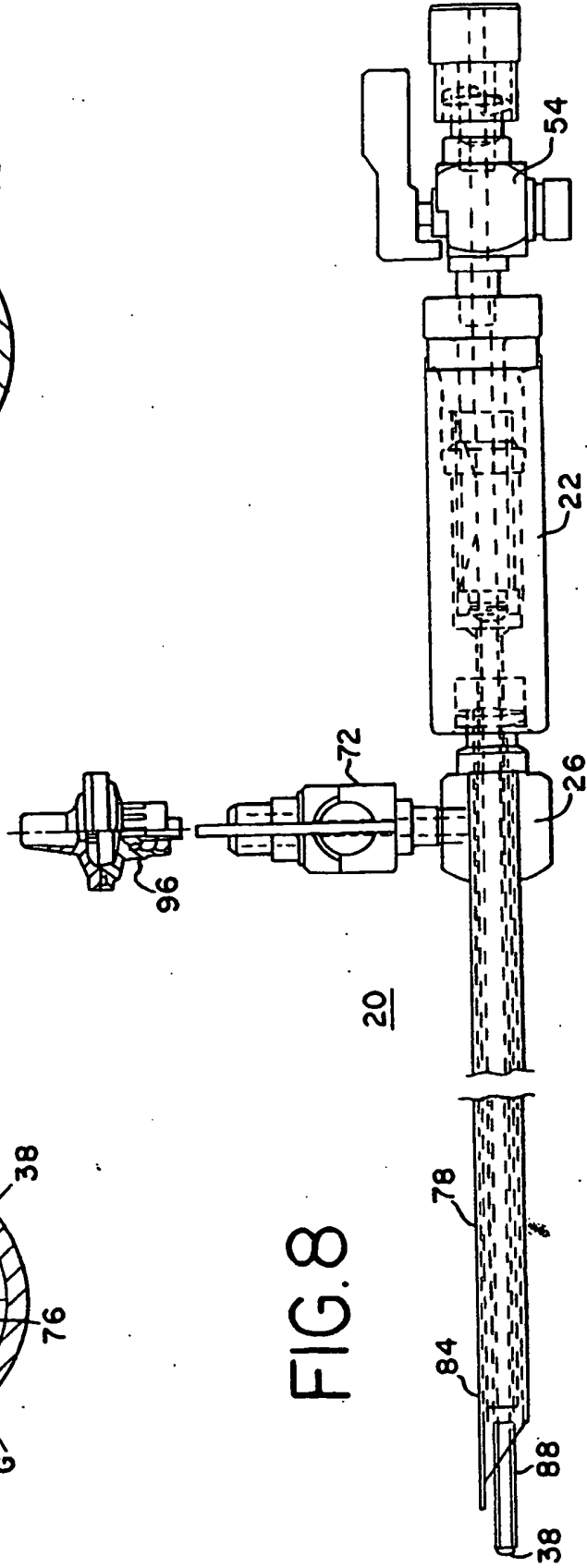


FIG. 8



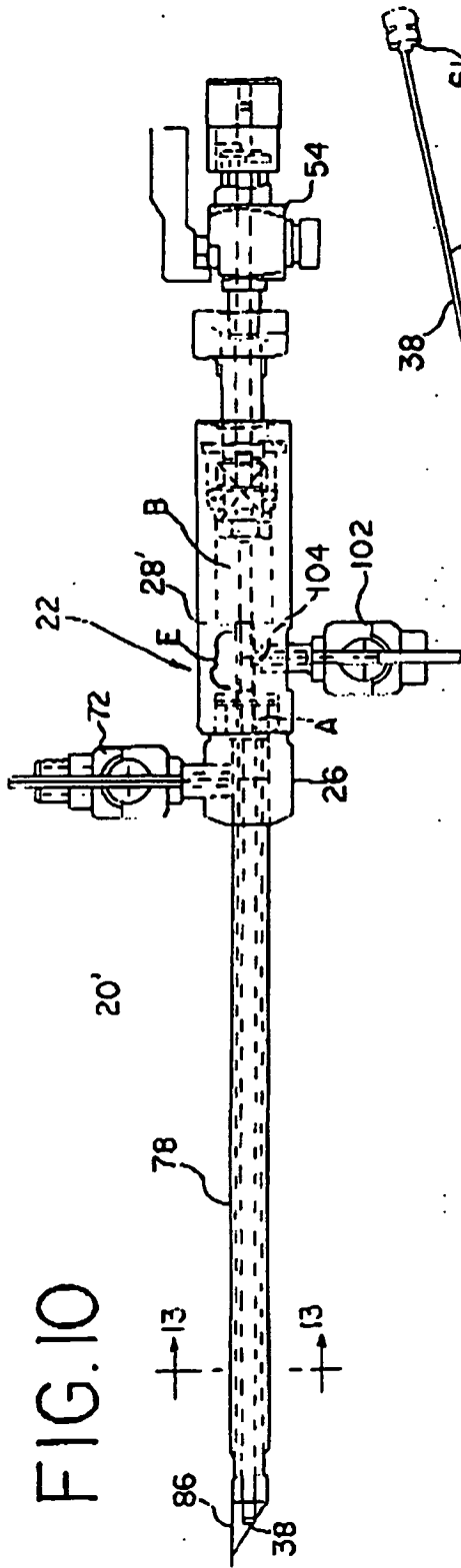


FIG. 10

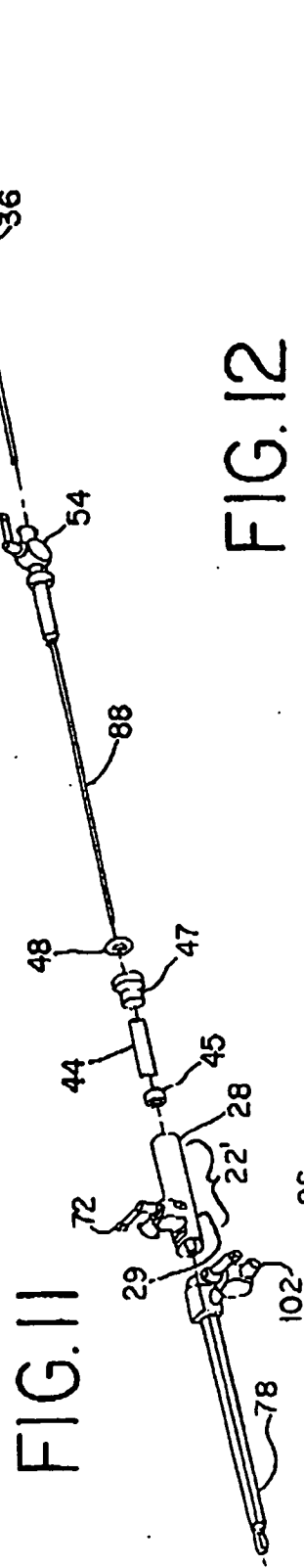


FIG. 11

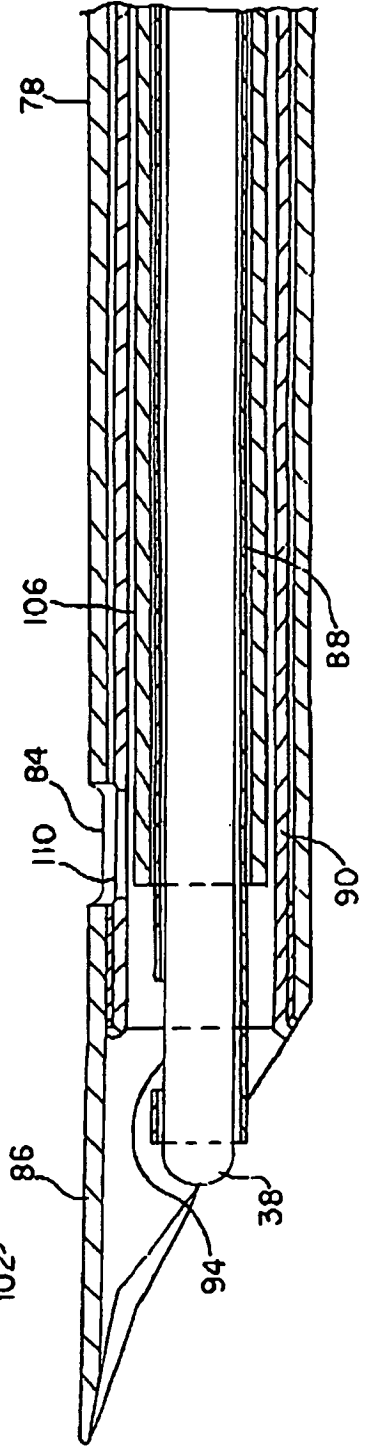


FIG. 12

FIG. 13

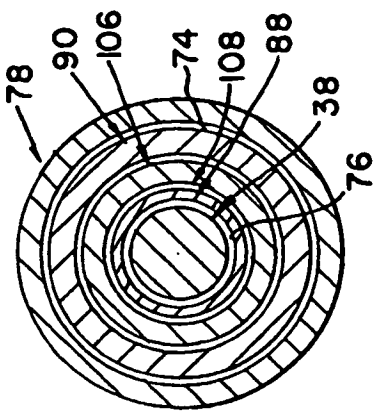


FIG. 15

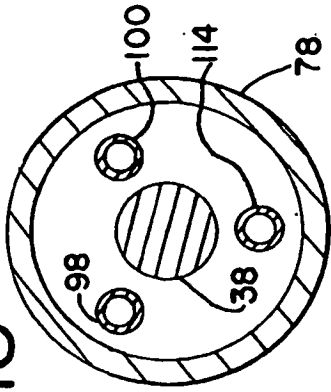
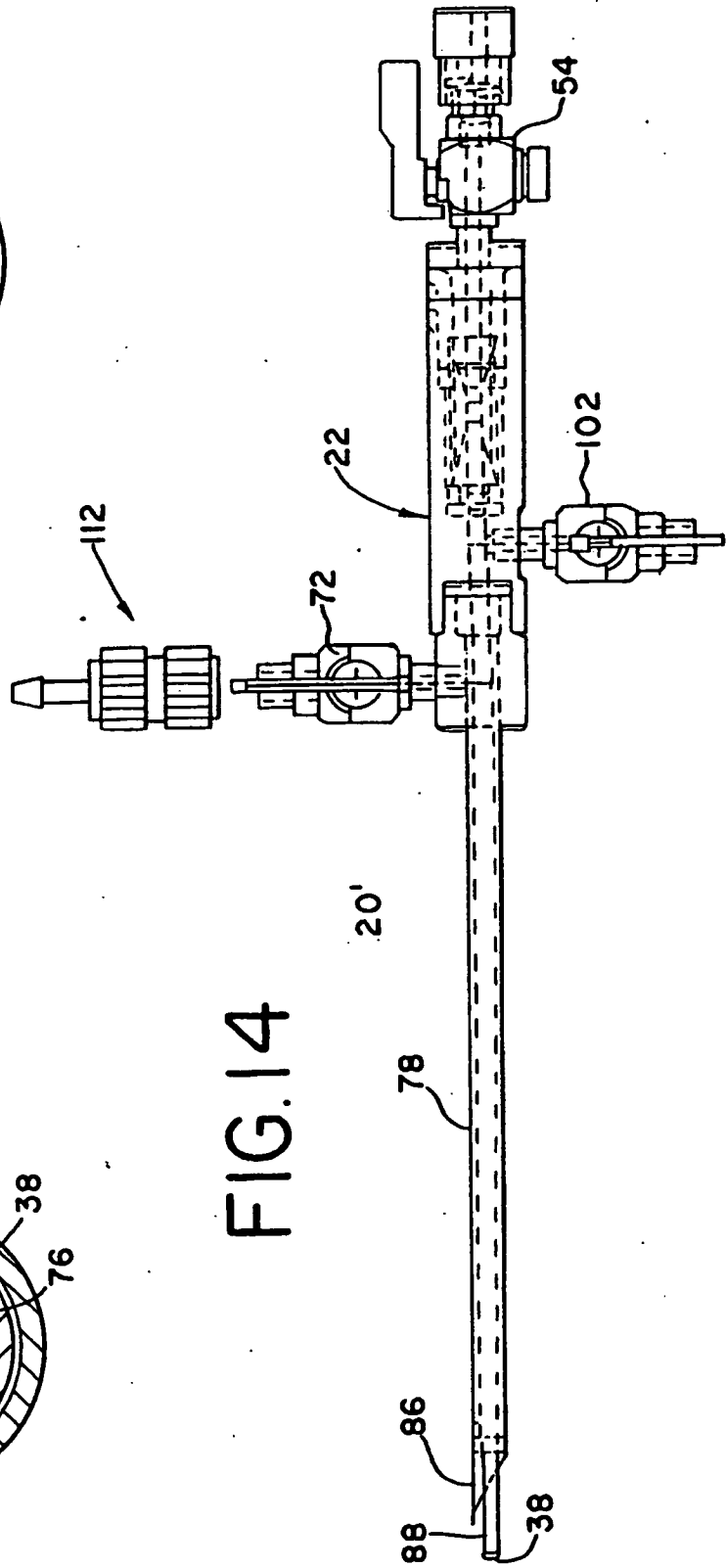
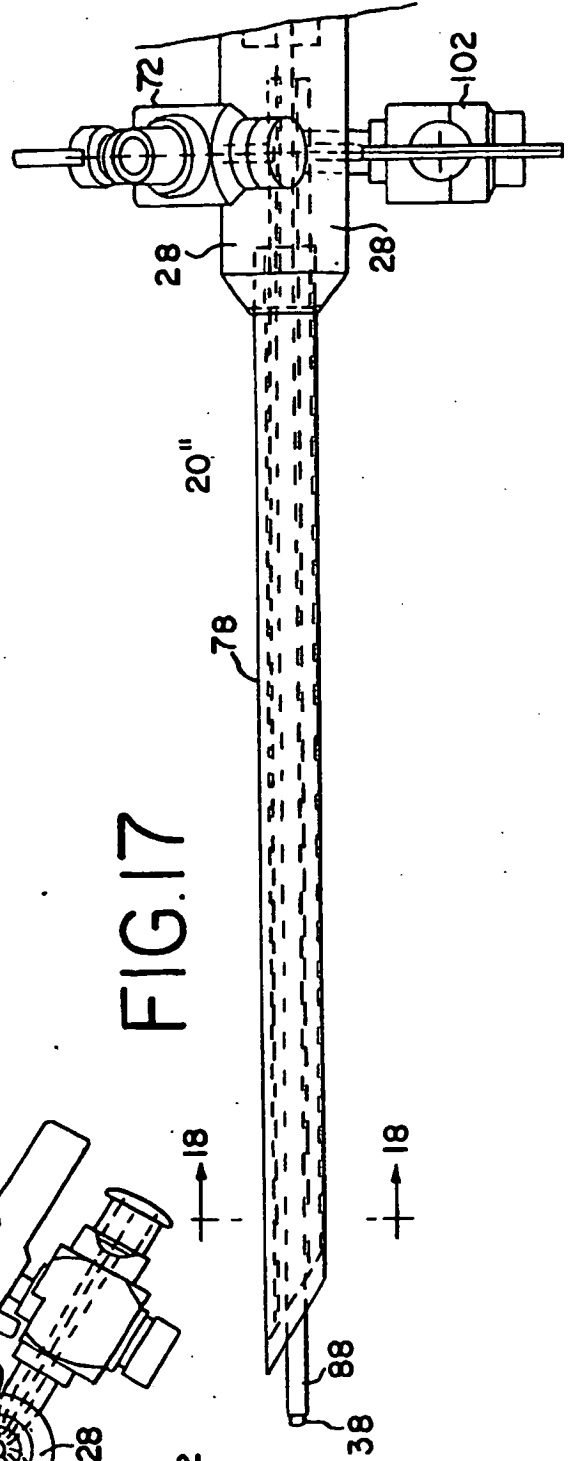
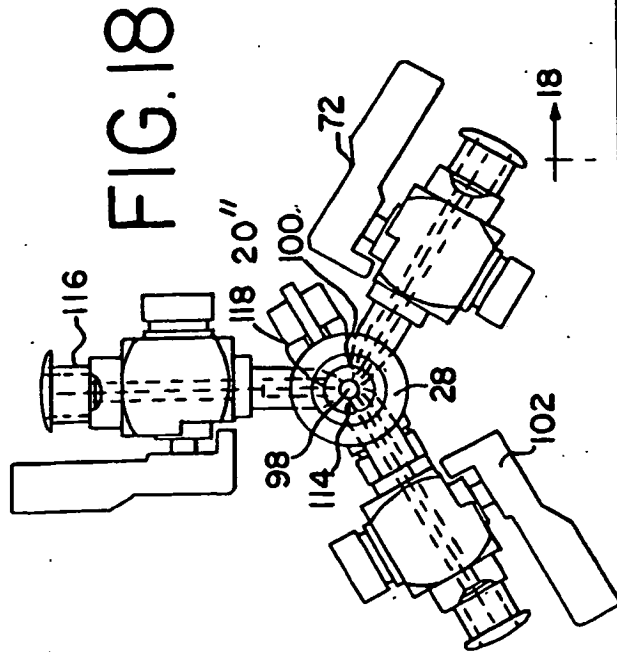
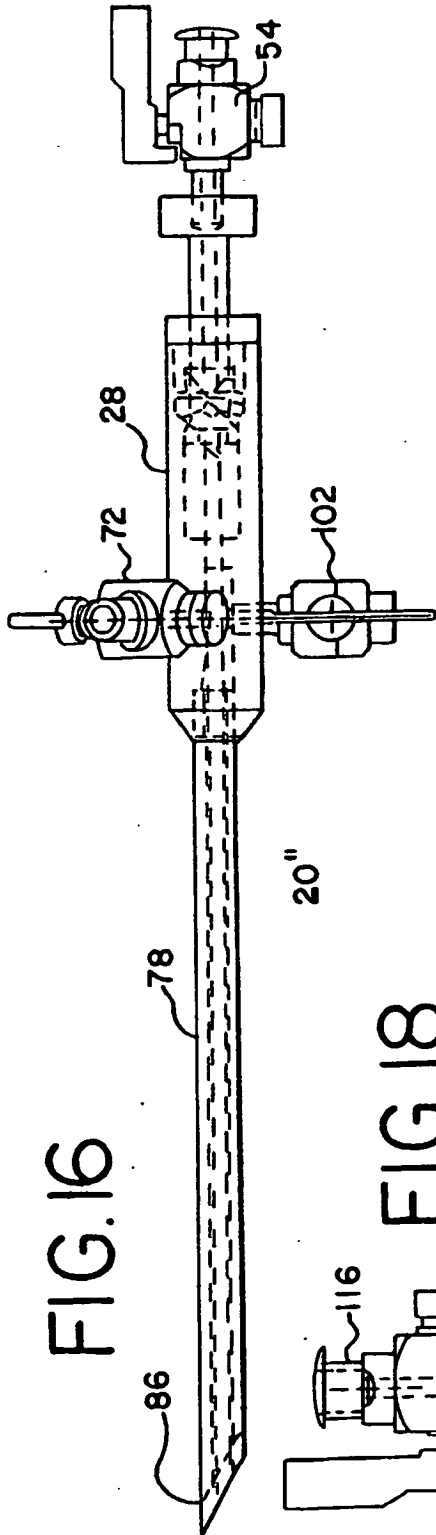


FIG. 14





**REFERENCES CITED IN THE DESCRIPTION**

*This list of references cited by the applicant is for the reader's convenience only. It does not form part of the European patent document. Even though great care has been taken in compiling the references, errors or omissions cannot be excluded and the EPO disclaims all liability in this regard.*

**Patent documents cited in the description**

- DE 7513482 U [0004]

专利名称(译)	腹腔镜插入装置		
公开(公告)号	<a href="#">EP1381421B1</a>	公开(公告)日	2012-06-13
申请号	EP2002764290	申请日	2002-04-22
申请(专利权)人(译)	NORTHGATE技术公司		
当前申请(专利权)人(译)	NORTHGATE技术公司		
[标]发明人	MANTELL ROBERT R MANZIE PETER A		
发明人	MANTELL, ROBERT, R. MANZIE, PETER, A.		
IPC分类号	A61M31/00 A61M5/158 A61M25/00 A61B17/34		
CPC分类号	A61B17/3496 A61B17/3474 A61B2017/3447		
代理机构(译)	GRÜNECKER, KINKELDEY, STOCKMAIR & SCHWANHÄUSSER		
优先权	09/841125 2001-04-24 US		
其他公开文献	EP1381421A1 EP1381421A4		
外部链接	<a href="#">Espacenet</a>		

摘要(译)

一种用于治疗动物体腔的方法和设备，包括将插入装置（20）的一部分插入动物的体腔中并从插入装置供应第一流体和医疗器械或第二流体进入体腔。第一和第二流体或医疗装置不在插入装置（20）内流体连通。

