



US 20100256499A1

(19) **United States**
(12) **Patent Application Publication**
IMAHASHI

(10) **Pub. No.: US 2010/0256499 A1**
(43) **Pub. Date: Oct. 7, 2010**

(54) **ULTRASOUND PROBE**

Publication Classification

(75) Inventor: **Takuya IMAHASHI**, Kawasaki-shi (JP)

(51) **Int. Cl.**
A61B 8/12 (2006.01)

Correspondence Address:
SCULLY SCOTT MURPHY & PRESSER, PC
400 GARDEN CITY PLAZA, SUITE 300
GARDEN CITY, NY 11530 (US)

(52) **U.S. Cl.** **600/459; 600/462; 600/466**

(73) Assignee: **OLYMPUS MEDICAL SYSTEMS CORP.**, Tokyo (JP)

(57) **ABSTRACT**

(21) Appl. No.: **12/767,299**

(22) Filed: **Apr. 26, 2010**

An ultrasound probe of the present invention includes a 2-2 type piezocomposite material made up of piezoelectric layers and resin layers alternately arrayed with the piezoelectric layers being arranged at both ends in an array direction, a signal electrode disposed on one principal surface of the 2-2 type piezocomposite material that extends on one end face in the array direction of the 2-2 type piezocomposite material, a grounding electrode disposed on the other principal surface of the 2-2 type piezocomposite material that extends on the other end face in the array direction of the 2-2 type piezocomposite material, signal wiring connected to a region of the signal electrode that extends on the one end face in the array direction of the 2-2 type piezocomposite material and grounding wiring connected to a region of the grounding electrode that extends on the other end face in the array direction of the 2-2 type piezocomposite material.

Related U.S. Application Data

(63) Continuation of application No. PCT/JP2009/067665, filed on Oct. 9, 2009.

Foreign Application Priority Data

(30) Oct. 14, 2008 (JP) 2008-265580
Oct. 14, 2008 (JP) 2008-265581

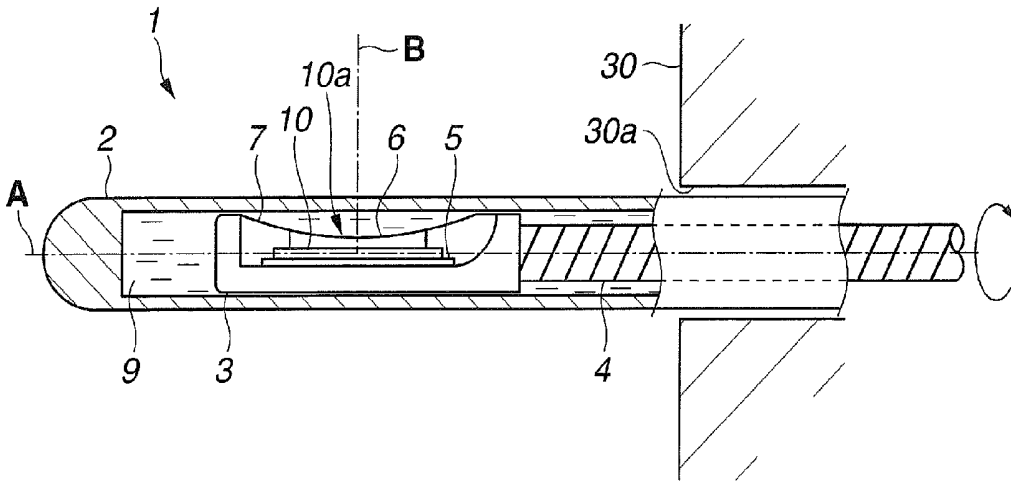


FIG.1

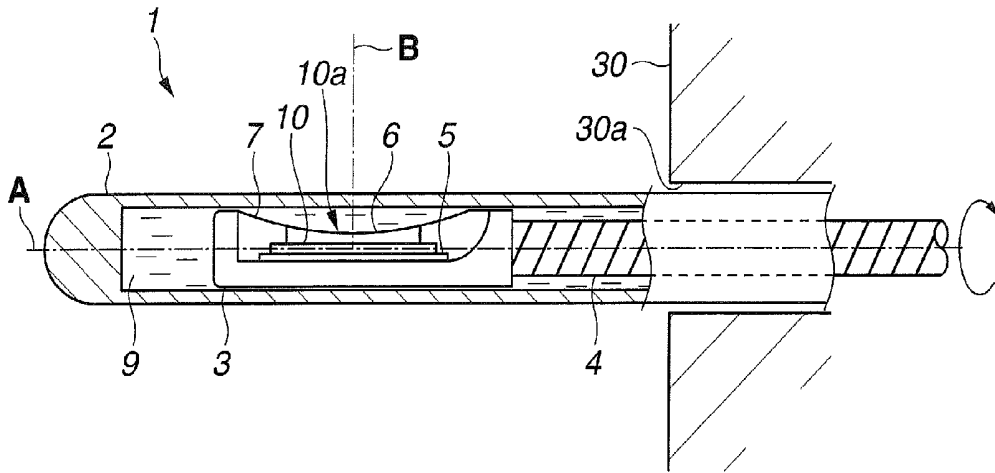


FIG.2

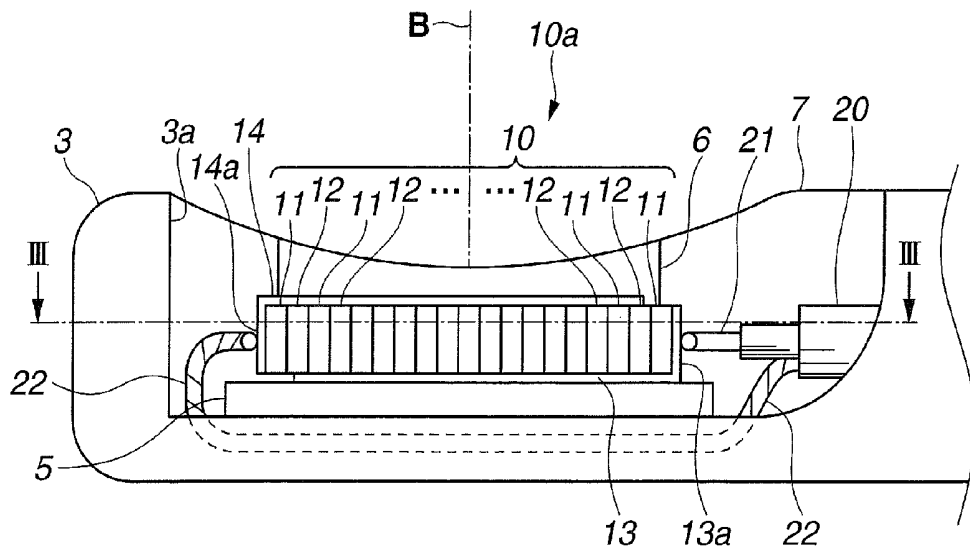


FIG.3

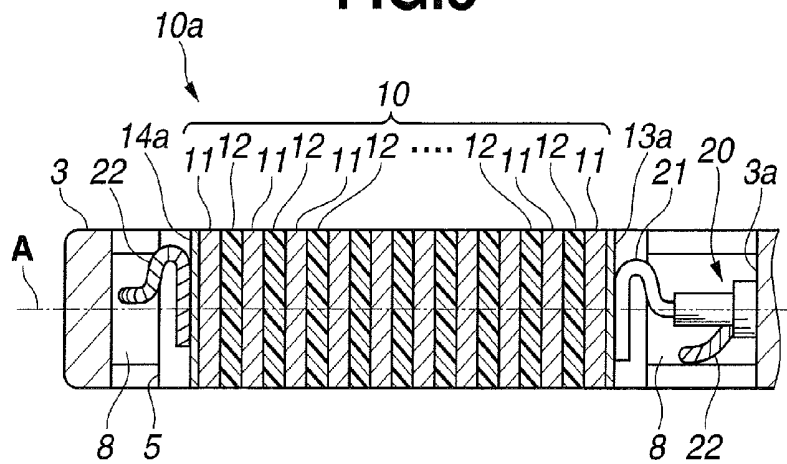


FIG.4

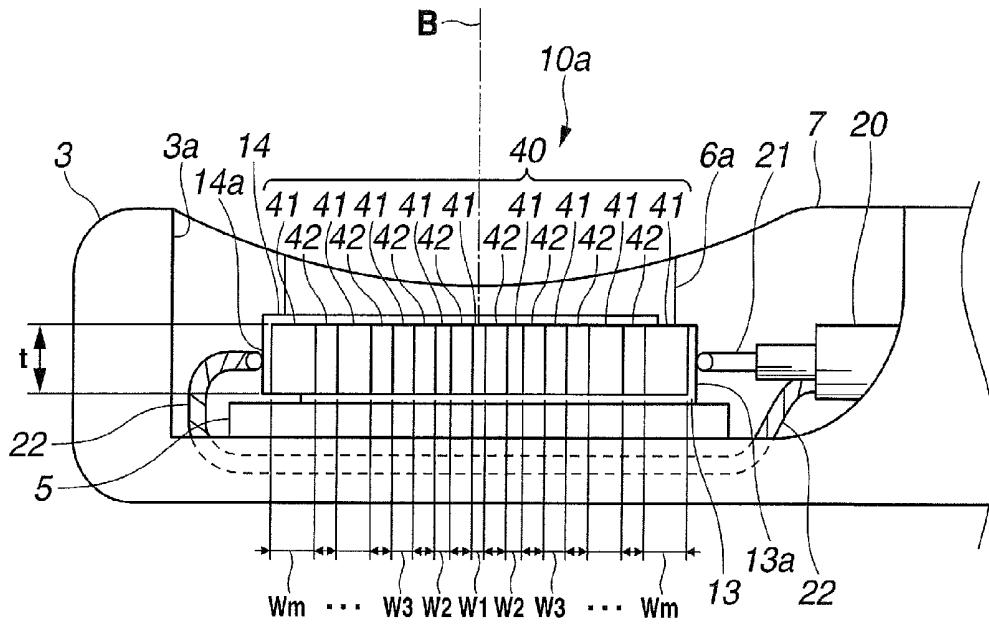


FIG.5

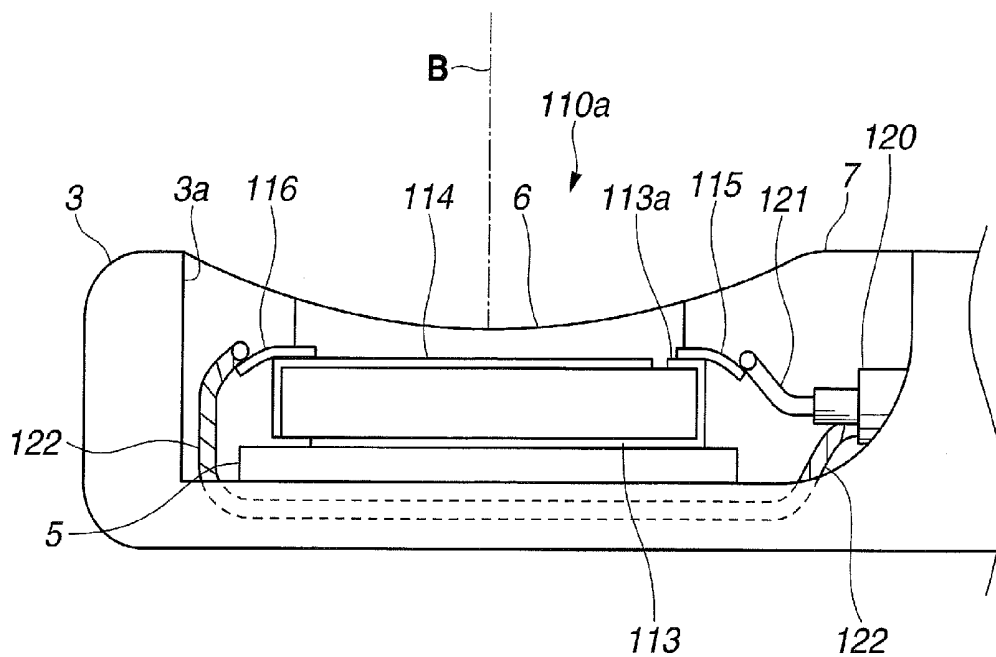


FIG.6

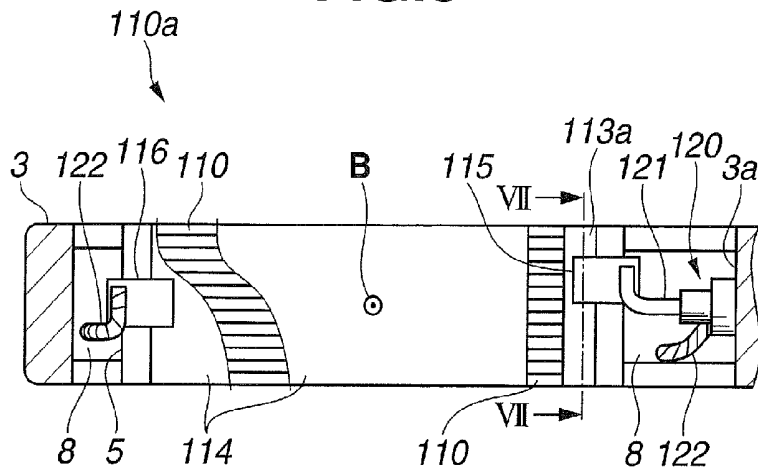


FIG.7

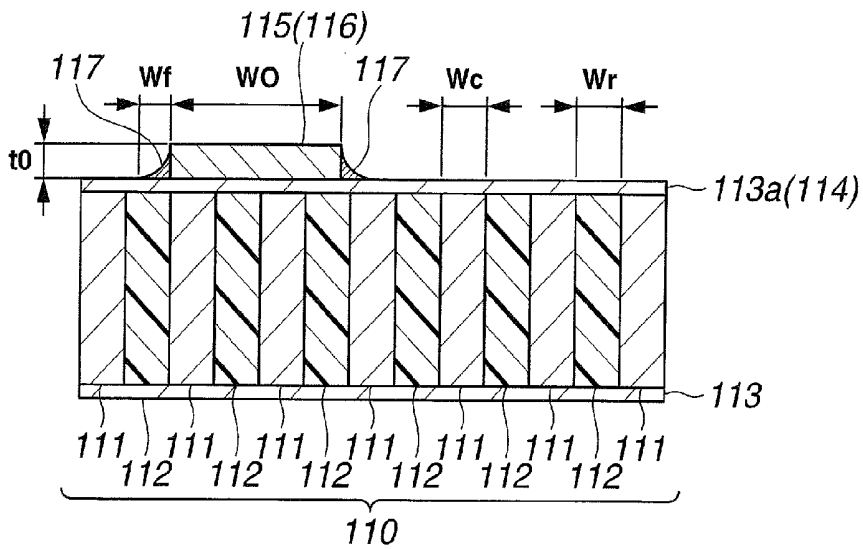
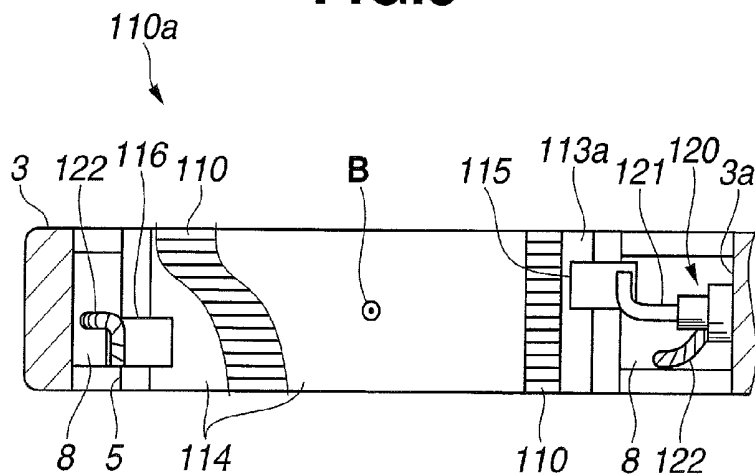


FIG.8



ULTRASOUND PROBE

CROSS REFERENCE TO RELATED APPLICATION

[0001] This application is a continuation application of PCT/JP2009/067665 filed on Oct. 9, 2009 and claims benefit of Japanese Applications No. 2008-265580 filed in Japan on Oct. 14, 2008 and No. 2008-265581 filed in Japan on Oct. 14, 2008, the entire contents of each of which are incorporated herein by their reference.

BACKGROUND OF THE INVENTION

[0002] 1. Field of the Invention

[0003] The present invention relates to an ultrasound probe provided with a piezocomposite material.

[0004] 2. Description of the Related Art

[0005] As an apparatus that acquires an ultrasound image of the interior of a living body, an ultrasound probe is known which is provided with an ultrasound transducer unit that transmits/receives ultrasound to/from an insertion portion inserted into the body such as a digestive tract. As one mode of the ultrasound transducer unit, a piezocomposite material is known which is made up of a piezoelectric material such as PZT and resin. The piezocomposite material has a feature of having high coupling coefficient and the acoustic impedance of this material is nearly the same as that of human body.

[0006] The piezocomposite material is classified into a plurality of modes according to a connectivity combination of piezoelectric material and resin. For example, as disclosed in Japanese Patent Application Laid-Open Publication No. 62-22634 and Japanese Patent Application Laid-Open Publication No. 6-154208, a piezocomposite material in a mode in which gaps in a plurality of columnar piezoelectric materials having one-dimensional connectivity are filled with resin having three-dimensional connectivity is called a "1-3 type piezocomposite material." Electrodes for giving an electric field to the 1-3 type piezocomposite material is formed on both principal surfaces of the 1-3 type piezocomposite material.

SUMMARY OF THE INVENTION

[0007] An ultrasound probe according to the present invention includes a 2-2 type piezocomposite material made up of piezoelectric layers and resin layers alternately arrayed, the piezoelectric layers being arranged at both ends in an array direction, a signal electrode disposed on one principal surface of the 2-2 type piezocomposite material that extends on one end face in the array direction of the 2-2 type piezocomposite material, a grounding electrode disposed on the other principal surface of the 2-2 type piezocomposite material that extends on the other end face in the array direction of the 2-2 type piezocomposite material, signal wiring connected to a region of the signal electrode that extends on the one end face in the array direction of the 2-2 type piezocomposite material, and grounding wiring connected to a region of the grounding electrode that extends on the other end face in the array direction of the 2-2 type piezocomposite material.

BRIEF DESCRIPTION OF THE DRAWINGS

[0008] FIG. 1 is a diagram illustrating a schematic configuration of a distal end portion of an ultrasound probe;

[0009] FIG. 2 is a side view of an ultrasound transmitting/receiving section viewed from a direction orthogonal to a plane made up of an insertion axis and a sound axis;

[0010] FIG. 3 is a diagram illustrating a cross section of FIG. 2 illustrating a configuration of the 2-2 type piezocomposite material and wiring viewed from the sound axis direction;

[0011] FIG. 4 is a diagram illustrating a configuration of a 2-2 type piezocomposite material according to a second embodiment;

[0012] FIG. 5 is a side view of an ultrasound transmitting/receiving section according to a third embodiment viewed from a direction orthogonal to a plane defined by an insertion axis and a sound axis;

[0013] FIG. 6 is a diagram illustrating a connection configuration of the 2-2 type piezocomposite material and wiring of the third embodiment viewed from a sound axis direction;

[0014] FIG. 7 is a VII-VII cross-sectional view of FIG. 6; and

[0015] FIG. 8 is a diagram of an ultrasound transmitting/receiving section according to a fourth embodiment viewed from a direction along a sound axis.

DETAILED DESCRIPTION OF THE PREFERRED EMBODIMENT(S)

[0016] Hereinafter, preferred embodiments of the present invention will be described with reference to the accompanying drawings. In some of the drawings used in the following descriptions, scaling is made to differ from one component to another to illustrate the respective components on the order of size recognizable on the drawings, and the present invention is not limited only to the quantity of components, shapes of components, ratio in size of the components and relative positional relationship between the components described in the drawings.

First Embodiment

[0017] Hereinafter, a first embodiment of the present invention will be described. As shown in FIG. 1, in an ultrasound probe 1 of the present embodiment, at least part thereof is configured more specifically as an insertion portion that can be inserted into a channel pipe 30a provided at the insertion portion of an endoscope 30 inserted into the body of a subject (not shown) and also configured to be insertable/retractable into/from the body of the subject via an opening at a distal end of the channel pipe 30a.

[0018] The insertion portion of the ultrasound probe 1 is mainly configured by including a sheath 2 having a cylindrical shape with a closed distal end, a flexible shaft 4 pivotably inserted in the sheath 2 and a housing 3 fixed to a distal end of the flexible shaft 4 to hold an ultrasound transmitting/receiving section 10a, which will be described in detail later. Furthermore, the sheath 2 is filled with an ultrasound transmission medium 9 such as water or oil.

[0019] Hereinafter, a central axis of the ultrasound probe 1 along the longitudinal direction of the insertion portion (axis shown by A in FIG. 1) will be referred to as an "insertion axis A."

[0020] The flexible shaft 4 is connected to a rotation drive mechanism such as an electric motor provided for an ultrasound observation processor apparatus (not shown) on a proximal end side and a driving force of the rotation drive mechanism to the housing 3 is transmitted by the flexible shaft 4. That is, the housing 3 rotates in the sheath 2 together with the flexible shaft 4 around the insertion axis A as a central axis.

[0021] The ultrasound transmitting/receiving section 10a fixed to the housing 3 is configured to be able to transmit an ultrasound beam of a predetermined frequency band and

receive reflected wave of the ultrasound beam from the living body and is electrically connected to the ultrasound observation apparatus via a coaxial cable **20** (not shown in FIG. **1**) disposed in the flexible shaft **4**.

[0022] In the present embodiment, the ultrasound transmitting/receiving section **10a** is fixed to the housing **3** so as to transmit the ultrasound beam centered on one predetermined direction on a plane substantially orthogonal to the insertion axis. Hereinafter, the axis that becomes the center of the ultrasound beam transmitted by the ultrasound transmitting/receiving section **10a** (axis shown by B in FIG. **1**) will be referred to as a "sound axis B."

[0023] That is, in the ultrasound probe **1** of the present embodiment, the sound axis B is an axis oriented to a specific direction with respect to the ultrasound transmitting/receiving section **10a** and when the housing **3** rotates around the insertion axis A, the sound axis B also rotates around the insertion axis A.

[0024] The ultrasound probe **1** whose schematic configuration has been described above is intended to transmit/receive ultrasound while causing the ultrasound transmitting/receiving section **10a** to rotate around the insertion axis A and is generally referred to as a "mechanical scanning type ultrasound miniature probe" or the like.

[0025] Hereinafter, a detailed configuration of the ultrasound transmitting/receiving section **10a** of the ultrasound probe **1** according to the present embodiment will be described.

[0026] As shown in FIG. **2** and FIG. **3**, the ultrasound transmitting/receiving section **10a** is accommodated in an opening **3a** formed in side faces of the housing **3**. The ultrasound transmitting/receiving section **10a** is fixed in the opening **3a** with seal resin **7** such that the sound axis B is substantially orthogonal to the insertion axis A.

[0027] The ultrasound transmitting/receiving section **10a** is configured by including a 2-2 type piezocomposite material **10**, a signal electrode **13**, a grounding electrode **14**, a backing member **5** and an acoustic matching layer **6**.

[0028] The 2-2 type piezocomposite material **10** is a so-called transducer made up of a plurality of substantially planar piezoelectric layers **11** and a plurality of substantially planar resin layers **12** alternately arrayed. Furthermore, the 2-2 type piezocomposite material **10** according to the present embodiment is configured such that the piezoelectric layers **11** are disposed at both ends in the array direction.

[0029] The piezoelectric layers **11** of the 2-2 type piezocomposite material **10** are disposed in a top-to-bottom direction on the sheet when viewed from the front of FIG. **2**, that is, disposed so as to effectively produce distortion according to the intensity of the electric field in a direction along the sound axis B. In the following descriptions, a pair of surfaces facing the direction of the electric field that causes distortion in the piezoelectric layer **11** in the rectangular parallelepiped 2-2 type piezocomposite material **10** will be referred to as "principal surfaces."

[0030] The 2-2 type piezocomposite material **10** is fixed inside the opening **3a** of the housing **3** so that the array directions of the piezoelectric layer **11** and the resin layer **12** are along the insertion axis A.

[0031] The material making up the piezoelectric layer **11** is not particularly limited as long as the material is a piezoelectric material that produces distortion according to the electric field or one called an "electrostrictive material" and, for example, piezoelectric ceramics such as PZT can be used.

[0032] A pair of electrodes facing each other across the 2-2 type piezocomposite material **10** are disposed on both principal surfaces of the 2-2 type piezocomposite material **10**.

The pair of electrodes extend on both end faces facing parallel to the insertion axis A of the 2-2 type piezocomposite material **10** respectively.

[0033] To be more specific, the pair of electrodes in the present embodiment are made up of the signal electrode **13** to which a signal for giving an electric field to the 2-2 type piezocomposite material **10** is inputted and the grounding electrode **14** which is set to a grounding potential. The signal electrode **13** and the grounding electrode **14** are, for example, thin-films made of a conductive material such as metal like gold or copper and formed using a publicly known technique such as a physical vapor deposition method or a chemical vapor deposition method. The piezoelectric material is known to have high adhesive strength to the electrode compared to resin as disclosed in Japanese Patent Application Laid-Open Publication No. 62-22634.

[0034] The signal electrode **13** is formed on the principal surface (lower surface in FIG. **2**) opposite to the ultrasound transmitting direction of the 2-2 type piezocomposite material **10**. Furthermore, the signal electrode **13** has an extending section **13a** that extends so as to cover an end face facing the proximal end side of the 2-2 type piezocomposite material **10** from the principal surface of the 2-2 type piezocomposite material **10**.

[0035] On the other hand, the grounding electrode **14** is formed on the principal surface (upper surface in FIG. **2**) facing the ultrasound transmitting direction of the 2-2 type piezocomposite material **10**. Furthermore, the grounding electrode **14** has an extending section **14a** that extends so as to cover the end face facing the distal end side of the 2-2 type piezocomposite material **10** from the principal surface of the 2-2 type piezocomposite material **10**.

[0036] Here, since the piezoelectric layers **11** are disposed at both ends in the array direction of the 2-2 type piezocomposite material **10** as described above, the extending section **13a** of the signal electrode **13** and the extending section **14a** of the grounding electrode **14** are formed on the end faces of the piezoelectric layers **11** disposed at both ends in the array direction respectively.

[0037] The signal electrode **13** and the grounding electrode **14** may also be configured to be formed on the principal surfaces opposite to those of the present embodiment respectively. Furthermore, the extending section **13a** of the signal electrode **13** and the extending section **14a** of the grounding electrode **14** may also be formed on the end face of the 2-2 type piezocomposite material **10** opposite to that of the present embodiment.

[0038] The backing member **5** is disposed on the surface opposite to the 2-2 type piezocomposite material **10** of the signal electrode **13**. The backing member **5** is made of resin or the like and intended to attenuate unnecessary ultrasound generated from the 2-2 type piezocomposite material **10**.

[0039] On the other hand, the acoustic matching layer **6** for performing acoustic matching between the 2-2 type piezocomposite material **10** and the ultrasound transmission medium **9** is disposed on the surface opposite to the 2-2 type piezocomposite material **10** of the grounding electrode **14**. Having a concave surface opposite to the grounding electrode **14**, the acoustic matching layer **6** also functions as an acoustic lens that causes ultrasound generated by the 2-2 type piezocomposite material **10** to converge and forms an ultrasound beam along the sound axis B.

[0040] The acoustic matching layer **6** may also be made up of the layer that performs acoustic matching and the layer that functions as an acoustic lens as different members.

[0041] Next, the configuration in which the ultrasound transmitting/receiving section 10a and wiring are connected will be described in detail.

[0042] The coaxial cable 20 is configured by including a signal wiring 21 disposed in the center and a grounding wiring 22 that covers the perimeter of the signal wiring 21 via an insulator. As described above, the coaxial cable 20 is inserted in the flexible shaft 4 and a distal end thereof extends out into the opening 3a of the housing 3.

[0043] The signal wiring 21 and the grounding wiring 22 may also be configured so as to be individually inserted into the flexible shaft 4 and extend out into the housing 3 instead of making up the coaxial cable 20.

[0044] A distal end of the signal wiring 21 is connected to the extending section 13a of the signal electrode 13 formed on the 2-2 type piezocomposite material 10. Furthermore, in the present embodiment, the signal wiring 21 is connected to the extending section 13a of the signal electrode 13 so that the distal end thereof extends in a direction substantially orthogonal to the array direction of the 2-2 type piezocomposite material 10 (direction substantially orthogonal to the insertion axis A).

[0045] By connecting the signal wiring 21 and the extending section 13a with the signal wiring 21 placed along the extending section 13a in this way, it is possible to increase the connection length using solder, conductive adhesive or the like without increasing the height of the ultrasound transmitting/receiving section 10a in the sound axis B direction, improve reliability of the connection between the signal wiring 21 and the signal electrode 13 and make the signal wiring thinner.

[0046] On the other hand, the distal end of the grounding wiring 22 is connected to the extending section 14a of the grounding electrode 14 formed on the 2-2 type piezocomposite material 10. To be more specific, the grounding wiring 22 extends to the distal end side of the 2-2 type piezocomposite material 10 so as to wrap around the side of the backing member 5 opposite to the 2-2 type piezocomposite material 10 in the housing 3 and is connected to the extending section 14a of the grounding electrode 14 formed on the 2-2 type piezocomposite material 10 using solder, conductive adhesive or the like. The region where the grounding wiring 22 wraps around the backing member 5 is fixed by seal resin 8 as shown in FIG. 3.

[0047] Furthermore, in the present embodiment, the grounding wiring 22 is connected to the extending section 14a of the grounding electrode 14 so that the distal end thereof extends in a direction substantially orthogonal to the array direction of the 2-2 type piezocomposite material 10 (direction substantially orthogonal to the insertion axis A).

[0048] By connecting the grounding wiring 22 and the extending section 14a with the grounding wiring 22 placed along the extending section 14a in this way, it is possible to improve reliability of the connection between the grounding wiring 22 and the grounding electrode 14 as in the case of the signal wiring 21.

[0049] As described above, the ultrasound transmitting/receiving section 10a is electrically connected to an ultrasound observation apparatus via the signal wiring 21 and the grounding wiring 22.

[0050] When the extending section 13a of the signal electrode 13 is formed so as to cover the end face on the distal end side of the 2-2 type piezocomposite material 10, it goes without saying that the signal wiring 21 extends to the distal end side as opposed to the present embodiment and is connected to the extending section 13a of the signal electrode 13 formed on the end face on the distal end side.

[0051] In the ultrasound probe 1 configured as described above, the piezoelectric layers 11 are disposed at both ends of the 2-2 type piezocomposite material 10 in the array direction and the signal electrode 13 and the grounding electrode 14 are formed by extending so as to cover the end face facing the outside in the array direction of the piezoelectric layers 11 at both ends. The signal wiring 21 and the grounding wiring 22 are connected to the extending sections 13a and 14a of the signal electrode 13 and the grounding electrode 14 formed on the end face of the 2-2 type piezocomposite material 10 respectively.

[0052] In other words, in the present embodiment, the wiring connected to the electrodes formed on the 2-2 type piezocomposite material 10 is connected to both end faces of the 2-2 type piezocomposite material 10 in the array direction. Thus, the ultrasound probe 1 of the present embodiment can realize downsizing in the sound axis B direction compared to the conventional configuration in which wiring is connected to the principal surface of the piezoelectric material. That is, according to the present embodiment, it is possible to make the ultrasound probe 1 in a smaller diameter than in the related art.

[0053] Furthermore, the signal wiring 21 and the grounding wiring 22 of the present embodiment are connected to the extending section 13a of the signal electrode 13 and the extending section 14a of the grounding electrode 14 formed on planar end faces having relatively large areas. Here, in the 2-2 type piezocomposite material 10, coupling strength (Adhesive, Coulomb, etc.) between the piezoelectric layer 11 and the electrode is higher than that between the resin layer 12 and the electrode.

[0054] That is, the ultrasound probe 1 of the present embodiment has higher adhesive strength between the piezocomposite material and the electrode compared to the configuration of the conventional composite type piezoelectric material in which electrodes are formed on the principal surface made up of the piezoelectric layer and the resin layer, and can thereby prevent an operation failure caused by the electrode peeling off the piezocomposite material.

Second Embodiment

[0055] Hereinafter, a second embodiment of the present invention will be described. The second embodiment is different from the aforementioned first embodiment only in the configurations of the 2-2 type piezocomposite material and the acoustic matching layer. Therefore, hereinafter only the difference will be described and components similar to those in the first embodiment will be assigned the same reference numerals and descriptions thereof will be omitted as appropriate.

[0056] As shown in FIG. 4, a 2-2 type piezocomposite material 40 of the present embodiment is made up of a plurality of piezoelectric layers 41 and a plurality of substantially planar resin layers 42 alternately arrayed as in the case of the first embodiment and the piezoelectric layers 41 are disposed at both ends in the array direction.

[0057] Here, in the present embodiment, the dimension of a width W of the piezoelectric layer 41 making up the 2-2 type piezocomposite material 40 (size in the array direction) is set so as to continuously vary to be the largest at both ends in the array direction and the smallest in the center in the array direction.

[0058] To be more specific, as shown in FIG. 4, when the width W of the piezoelectric layer 41 from the piezoelectric layer 41 located in the center of the 2-2 type piezocomposite material 40 in the array direction toward the ends in the array direction is defined in order as W1, W2, . . . Wn (n is a natural

number and satisfies $1 \leq n \leq m$), the relationship between W_n 's is $W_1 < W_2 < W_3 < \dots < W_m$.

[0059] Furthermore, widths of all resin layers 42 have the same fixed value. Furthermore, a thickness t of the 2-2 piezocomposite material 40 is constant throughout the unit.

[0060] The 2-2 type piezocomposite material 40 of the present embodiment shown in FIG. 4 is configured by including an odd number of piezoelectric layers 41, and therefore there is only one piezoelectric layer 41 of width W_1 located in the center, but if the 2-2 type piezocomposite material 40 is made up of an even number of piezoelectric layers 41, there are two piezoelectric layers 41 of width W_1 on both sides of the sound axis B.

[0061] In the 2-2 type piezocomposite material 40 of the aforementioned present embodiment, the width W of the piezoelectric layer 41 continuously varies in the array direction, and therefore the resonance frequency differs from one piezoelectric material to another and the 2-2 type piezocomposite material 40 is made up of piezoelectric layers 41 having a plurality of different vibration modes. Therefore, the ultrasound probe 1 of the present embodiment can transmit/receive ultrasound in a broader frequency band than the first embodiment.

[0062] Furthermore, an acoustic matching layer 6a of the present embodiment is configured so as to have a thickness which is continuously variable according to a variation in the width W of the piezoelectric layer 41 making up the 2-2 type piezocomposite material 40. To be more specific, the thickness of the acoustic matching layer 6a is set to a value appropriate for a vibration mode of the piezoelectric layer 41 disposed directly therebelow and the acoustic matching layer 6a of the present embodiment has such a shape that the thickness thereof is largest at both ends and smallest in the center in the array direction of the 2-2 type piezocomposite material 40.

[0063] That is, the acoustic matching layer 6a of the present embodiment realizes excellent acoustic matching between the 2-2 type piezocomposite material 40 having a broad frequency band and the living body and also has a function as an acoustic lens that causes ultrasound to converge. Thus, according to the present embodiment, it is possible to acquire an ultrasound image of higher image quality by the ultrasound probe 1.

Third Embodiment

[0064] Incidentally, in the case of a piezocomposite material applicable to an ultrasound probe designed to be inserted in the body, individual piezoelectric materials are finely structured, and it is thereby difficult to position and connect wiring on electrodes formed on the piezoelectric materials, and moreover, the connection strength degrades.

[0065] Furthermore, when wiring is connected to the principal surface of a fine piezoelectric material by soldering or the like, the electromechanical conversion efficiency degrades due to influences of a weight load of the solder. In the case of a piezoelectric material of reduced size and thickness such as an ultrasound probe in particular, a mass ratio of the solder to the mass of the piezoelectric material is large, which may lead to characteristic deterioration. Furthermore, when the thickness of the solder exceeds a predetermined thickness, an unnecessary vibration mode appears and the image quality of an ultrasound image may thereby degrade.

[0066] Thus, with the ultrasound probe provided with a piezocomposite material, it is expected to improve reliability of a wiring connection to the piezocomposite material and reduce influences of the wiring connection on characteristics of the piezocomposite material.

[0067] An ultrasound probe according to a third embodiment, which will be described below, is an ultrasound probe provided with a piezocomposite material that realizes improvement of reliability of the wiring connection to the piezocomposite material and reduction of influences of the wiring connection on characteristics of the piezocomposite material. In the following descriptions, components similar to those in the first embodiment will be assigned the same reference numerals and descriptions thereof will be omitted as appropriate.

[0068] As shown in FIG. 5 and FIG. 6, an ultrasound transmitting/receiving section 110a, which is the ultrasound probe of the present embodiment, is accommodated in an opening 3a formed in side faces of the housing 3. The ultrasound transmitting/receiving section 110a is fixed in the opening 3a with seal resin 7 so that the sound axis B is substantially orthogonal to the insertion axis A.

[0069] The ultrasound transmitting/receiving section 110a is configured by including a 2-2 type piezocomposite material 110, a signal electrode 113, a grounding electrode 114, the backing member 5 and the acoustic matching layer 6.

[0070] As shown in FIG. 7, the 2-2 type piezocomposite material 110 is a so-called electromechanical conversion element made up of a plurality of substantially planar piezoelectric layers 111 and a plurality of substantially planar resin layers 112 alternately arrayed. In the present embodiment, all of the plurality of piezoelectric layers 111 have a width W_c and all of the plurality of resin layers 112 have a width W_r . Here, the width W_c of the piezoelectric layer 111 and the width W_r of the resin layer 112 refer to outside dimensions of the piezoelectric layer 111 and the resin layer 112 in the array direction.

[0071] The piezoelectric layer 111 of the 2-2 type piezocomposite material 110 is disposed so as to effectively produce distortion according to the strength of the electric field in an upward and downward direction on the surface of the sheet when viewed from the front of FIG. 5, that is, in a direction along the sound axis B. In the following descriptions, in the rectangular parallelepiped 2-2 type piezocomposite material 110, a pair of surfaces facing the direction of the electric field that produces distortion in the piezoelectric layer 111 is referred to as "principal surfaces."

[0072] As shown in FIG. 6, the 2-2 type piezocomposite material 110 is fixed in the opening 3a of the housing 3 so that the array directions of the piezoelectric layers 111 and the resin layers 112 are substantially orthogonal to the insertion axis A when viewed from the direction along the sound axis B.

[0073] The material making up the piezoelectric layers 111 is not particularly limited as long as the material is a piezoelectric material that produces distortion according to the electric field or one called an "electrostrictive material" and, for example, piezoelectric ceramics such as PZT can be used.

[0074] A pair of electrodes mutually facing across the 2-2 type piezocomposite material 110 are disposed on both principal surfaces of the 2-2 type piezocomposite material 110. To be more specific, the pair of electrodes according to the present embodiment are made up of the signal electrode 113 to which a signal for giving an electric field to the 2-2 type piezocomposite material 110 is inputted and the grounding electrode 114 which is set to a grounding potential. The signal electrode 113 and the grounding electrode 114 are, for example, a thin-film made of a conductive material such as metal and formed using a publicly known technique such as a physical vapor deposition method or a chemical vapor deposition method.

[0075] The signal electrode 113 is formed on the principal surface (lower surface in FIG. 5) opposite to an ultrasound transmitting direction of the 2-2 type piezocomposite material 110. Furthermore, the signal electrode 113 has an extending section 113a that wraps around on the end face on the proximal end side of the 2-2 type piezocomposite material 110 and covers part of the principal surface (upper surface in FIG. 5) facing the ultrasound transmitting direction of the 2-2 type piezocomposite material 110.

[0076] On the other hand, the grounding electrode 114 is formed on the principal surface facing the ultrasound transmitting direction of the 2-2 type piezocomposite material 110. The grounding electrode 114 is separated by a predetermined width from the extending section 113a of the signal electrode 113 formed on the same principal surface of the 2-2 type piezocomposite material 110.

[0077] That is, in the present embodiment, when the 2-2 type piezocomposite material 110 is viewed from a direction along the sound axis B (viewpoint in FIG. 6), the extending section 113a of the signal electrode 113 and the grounding electrode 114 are formed on the principal surface of the 2-2 type piezocomposite material 110.

[0078] The signal electrode 113 and the grounding electrode 114 may also be configured to be formed on principal surfaces opposite to those of the present embodiment respectively. In this case, part of the grounding electrode 114 formed on the principal surface opposite to the ultrasound transmitting side of the 2-2 type piezocomposite material 110 wraps around on the end face on the proximal end side of the 2-2 type piezocomposite material 110 and extends on the principal surface facing the ultrasound transmitting direction of the 2-2 type piezocomposite material 110.

[0079] The backing member 5 is disposed on the surface opposite to the 2-2 type piezocomposite material 110 of the signal electrode 113. The backing member 5 is made of resin or the like and intended to attenuate unnecessary ultrasound generated from the 2-2 type piezocomposite material 110.

[0080] On the other hand, the acoustic matching layer 6 for performing acoustic matching between the 2-2 type piezocomposite material 110 and the ultrasound transmission medium 9 is disposed on the surface opposite to the 2-2 type piezocomposite material 110 of the grounding electrode 114. The acoustic matching layer 6 has a concave-shaped surface opposite to the grounding electrode 114 and also functions as an acoustic lens that causes ultrasound generated by the 2-2 type piezocomposite material 110 to converge and form an ultrasound beam along the sound axis B.

[0081] For the acoustic matching layer 6, the layer for performing acoustic matching and the layer functioning as an acoustic lens may be made up of different members.

[0082] Next, the configuration in which the ultrasound transmitting/receiving section 110a and wiring are connected will be described in detail.

[0083] A coaxial cable 120 is configured by including signal wiring 121 inserted in the center and a grounding wiring 122 that covers the perimeter of the signal wiring 121 via an insulator. As described above, the coaxial cable 120 is inserted into the flexible shaft 4 and a distal end thereof extends out into the opening 3a of the housing 3.

[0084] The signal wiring 121 and the grounding wiring 122 may also be configured to be individually inserted into the flexible shaft 4 and extend out into the housing 3 instead of making up the coaxial cable 120.

[0085] The distal end of the signal wiring 121 is connected to the extending section 113a of the signal electrode 113 formed on the principal surface of the 2-2 type piezocomposite material 110 via a conductive member 115. The conduc-

tive member 115 is made of a material, at least the surface of which is conductive, and has a shape, which will be described in detail later.

[0086] On the other hand, the distal end of the grounding wiring 122 is connected to the grounding electrode 114 formed on the 2-2 type piezocomposite material 110 via a conductive member 116. More specifically, the grounding wiring 122 extends on the distal end side of the 2-2 type piezocomposite material 110 in the housing 3 so as to wrap around the side of the backing member 5 opposite to the 2-2 type piezocomposite material 110 and is connected to the conductive member 116 connected to the front edge of the grounding electrode 114. The region of the grounding wiring 122 that wraps around the backing member 5 is fixed with the seal resin 8 as shown in FIG. 6.

[0087] The method for connecting the conductive members 115 and 116, the extending section 113a of the signal electrode 113 and the grounding electrode 114 and the method for connecting the conductive members 115 and 116 and the signal wiring 121 and the grounding wiring 122 are not particularly limited as long as the methods are bonding methods having conductivity such as eutectic bonding, diffusion bonding, conductive adhesive or the like, and bonding is performed by soldering as an example in the present embodiment.

[0088] As shown in FIG. 7, the conductive members 115 and 116 have a flat cross section having a width W_0 and a thickness t_0 . To be more specific, the width W_0 of the conductive member 115 is greater than a width of an array of two piezoelectric layers 111 and one resin layer 112 and the thickness t_0 is smaller than a combined width of one piezoelectric layer 111 and one resin layer 112. That is, relationships of $W_0 > W_c + W_r + W_c$ and $t_0 < W_c + W_r$ are satisfied.

[0089] The present embodiment is configured such that the signal wiring 121 and the grounding wiring 122 are connected to the 2-2 piezocomposite material 110 via the conductive members 115 and 116, but it goes without saying that if the cross-sectional shapes of the distal ends of the signal wiring 121 and the grounding wiring 122 satisfy conditions similar to the conditions of the cross-sectional shapes of the conductive members 115 and 116, there can also be a configuration in which the signal wiring 121 and the grounding wiring 122 are directly connected to the 2-2 type piezocomposite material 110.

[0090] When the conductive members 115 and 116 having the cross-sectional shapes that satisfy the aforementioned conditions are connected to the extending section 113a of the signal electrode 113 and the grounding electrode 114 formed on the principal surface of the 2-2 type piezocomposite material 110, the conductive members 115 and 116 are always connected to the extending section 113a and the grounding electrode 114 on the principal surface of two or more piezoelectric layers 111 irrespective of the positions thereof.

[0091] For this reason, positioning of the conductive members 115 and 116 with respect to the 2-2 type piezocomposite material 110 becomes easier compared to the conventional configuration in which wiring is connected to the electrodes on the individual piezoelectric layers. Furthermore, even if peeling or the like occurs on the principal surface of one piezoelectric layer 111, since the conductive members 115 and 116 are connected on the principal surface of another piezoelectric layer 111, continuity between the conductive members 115 and 116 and the extending section 113a and the grounding electrode 114 is never lost.

[0092] That is, according to the present embodiment, connection between the 2-2 type piezocomposite material 110 and wiring becomes easier and the connection strength

improves, and it is thereby possible to improve reliability of the connection between the 2-2 type piezocomposite material **110** and wiring.

[0093] Furthermore, since the thickness t_0 of the conductive member **115** or **116** is made smaller than the combined width of one piezoelectric layer **111** and one resin layer **112** in the present embodiment, it is possible to regulate the thickness (substantially identical to t_0) of a solder fillet **117** formed around the conductive member **115** or **116** as shown in FIG. 7 so as to be smaller than $\frac{1}{2}$ wavelength of ultrasound generated by the 2-2 type piezocomposite material **110**. This can suppress appearance of any unnecessary vibration mode due to influences of solder.

[0094] Furthermore, according to the present embodiment, it is possible to also regulate the width of a wet area W_f of the solder fillet **117** by the thickness t_0 of the conductive member **115** or **116**, and thereby reduce the mass of solder existing on the principal surface of one piezoelectric layer **111** and prevent the electromechanical conversion efficiency of the 2-2 type piezocomposite material **110** from lowering due to influences of the mass of solder.

[0095] As described above, according to the present embodiment, it is possible to improve reliability of a wiring connection to the 2-2 piezocomposite material **110** in the ultrasound probe **1** and suppress influences of the wiring connection on characteristics of the 2-2 piezocomposite material **110**.

[0096] In the aforementioned embodiment, the conductive members **115** and **116** are connected to the signal electrode **113** and the grounding electrode **114** on the principal surface of the 2-2 type piezocomposite material **110**, but the conductive members **115** and **116** may also be configured to be connected to the signal electrode **113** and the grounding electrode **114** on both end faces in a direction along the insertion axis of the 2-2 type piezocomposite material **110**.

Fourth Embodiment

[0097] Hereinafter, a fourth embodiment of the present invention will be described. The fourth embodiment is different from the aforementioned third embodiment only in positions in which the conductive members **115** and **116** are connected to the 2-2 type piezocomposite material. Therefore, only the difference will be described below and components similar to those of the third embodiment will be assigned the same reference numerals and descriptions thereof will be omitted as appropriate.

[0098] As shown in FIG. 8, the conductive members **115** and **116** in the present embodiment are connected to the extending section **113a** of the signal electrode **113** and the grounding electrode **114** at positions not overlapping each other in a direction along the insertion axis.

[0099] That is, of a plurality of piezoelectric layers **111** making up the 2-2 type piezocomposite material **110** in the

present embodiment, the conductive members **115** and **116** are never connected on the principal surface of the same piezoelectric layer **111**.

[0100] Thus, it is possible to make the mass of solder on the principal surface of one piezoelectric layer **111** smaller than that in the third embodiment and more effectively prevent the electromechanical conversion efficiency of the 2-2 type piezocomposite material **110** from lowering due to influences of the mass of solder.

[0101] The present invention is not limited to the aforementioned embodiments, but can be modified as appropriate within the range not departing from the spirit or concept of the invention that can be read from the claims of the invention and the entire specification, and such a modified ultrasound probe will also be included in the technical scope of the present invention.

What is claimed is:

1. An ultrasound probe comprising:
 - a 2-2 type piezocomposite material made up of piezoelectric layers and resin layers alternately arrayed, the piezoelectric layers being arranged at both ends in an array direction;
 - a signal electrode disposed on one principal surface of the 2-2 type piezocomposite material that extends on one end face in the array direction of the 2-2 type piezocomposite material;
 - a grounding electrode disposed on the other principal surface of the 2-2 type piezocomposite material that extends on the other end face in the array direction of the 2-2 type piezocomposite material;
 - signal wiring connected to a region of the signal electrode that extends on the one end face in the array direction of the 2-2 type piezocomposite material; and
 - grounding wiring connected to a region of the grounding electrode that extends on the other end face in the array direction of the 2-2 type piezocomposite material.
2. The ultrasound probe according to claim 1, wherein the ultrasound probe is inserted into a pipe disposed in an endoscope and inserted into a body of a subject, and the 2-2 type piezocomposite material is disposed so that the array direction is along an insertion axis of the ultrasound probe.
3. The ultrasound probe according to claim 1, wherein the 2-2 type piezocomposite material comprises at least three of the piezoelectric layers, the piezoelectric layer has at least two types of width, the widest piezoelectric layers are disposed at both ends in the array direction and the narrowest piezoelectric layer is disposed in a center in the array direction.
4. The ultrasound probe according to claim 3, wherein the width of the piezoelectric layer continuously varies with respect to the array direction.

* * * * *

专利名称(译)	超声探头		
公开(公告)号	US20100256499A1	公开(公告)日	2010-10-07
申请号	US12/767299	申请日	2010-04-26
[标]申请(专利权)人(译)	奥林巴斯医疗株式会社		
申请(专利权)人(译)	奥林巴斯医疗系统股份有限公司.		
当前申请(专利权)人(译)	奥林巴斯医疗系统股份有限公司.		
[标]发明人	IMAHASHI TAKUYA		
发明人	IMAHASHI, TAKUYA		
IPC分类号	A61B8/12		
CPC分类号	A61B8/12 A61B8/445 H01L41/18 B06B1/0629 H01L41/183		
优先权	2008265580 2008-10-14 JP 2008265581 2008-10-14 JP		
外部链接	Espacenet USPTO		

摘要(译)

本发明的超声波探头包括由压电层和树脂层交替排列的2-2型压电复合材料，其中压电层布置在阵列方向的两端，信号电极设置在2的一个主面上。-2型压电复合材料，在2-2型压电复合材料的排列方向的一个端面上延伸，接地电极设置在2-2型压电复合材料的另一个主表面上，在另一个端面上延伸。2-2型压电复合材料的排列方向，信号布线连接到信号电极的区域，该区域在2-2型压电复合材料的排列方向上的一个端面上延伸，并且接地布线连接到接地区域电极在2-2型压电复合材料的排列方向上的另一端面上延伸。

