



US 20140180106A1

(19) **United States**
(12) **Patent Application Publication**
TAKAHASHI et al.

(10) **Pub. No.: US 2014/0180106 A1**
(43) **Pub. Date: Jun. 26, 2014**

(54) **ULTRASONIC DIAGNOSTIC APPARATUS,
ULTRASONIC DIAGNOSTIC APPARATUS
CONTROL METHOD, AND MEDICAL IMAGE
DIAGNOSTIC APPARATUS**

Publication Classification

(51) **Int. Cl.**
A61B 8/00 (2006.01)
A61B 8/14 (2006.01)
(52) **U.S. Cl.**
CPC ... *A61B 8/54* (2013.01); *A61B 8/14* (2013.01);
A61B 8/461 (2013.01); *A61B 8/467* (2013.01)
USPC **600/443; 600/437**

(71) Applicants: **Toshiba Medical Systems Corporation,**
Otawara-shi (JP); **Kabushiki Kaisha**
Toshiba, Minato-ku (JP)

(72) Inventors: **Masami TAKAHASHI,**
Nasushiobara-shi (JP); **Masamichi**
OYANAGI, Otawara-shi (JP)

(57) **ABSTRACT**

(73) Assignees: **Toshiba Medical Systems Corporation,**
Otawara-shi (JP); **Kabushiki Kaisha**
Toshiba, Minato-ku (JP)

Various types of sub-preset conditions corresponding to a selected mother preset condition are read out from a preset condition storage unit which stores at least a plurality of mother preset conditions set concerning image data acquisition conditions and various types of sub-preset conditions set by updating all or some of the image data acquisition conditions included in each of the mother preset conditions. A sub-preset condition suitable for ultrasonic examination on the object is selected from the readout various types of sub-preset conditions. An image data acquisition condition is initialized based on the selected mother preset condition with respect to each unit related to generation of the image data. The image data acquisition condition is updated by using the selected sub-preset condition. Image data is generated based on a reception signal in ultrasonic transmission/reception using the updated image data acquisition condition.

(21) Appl. No.: **14/192,237**

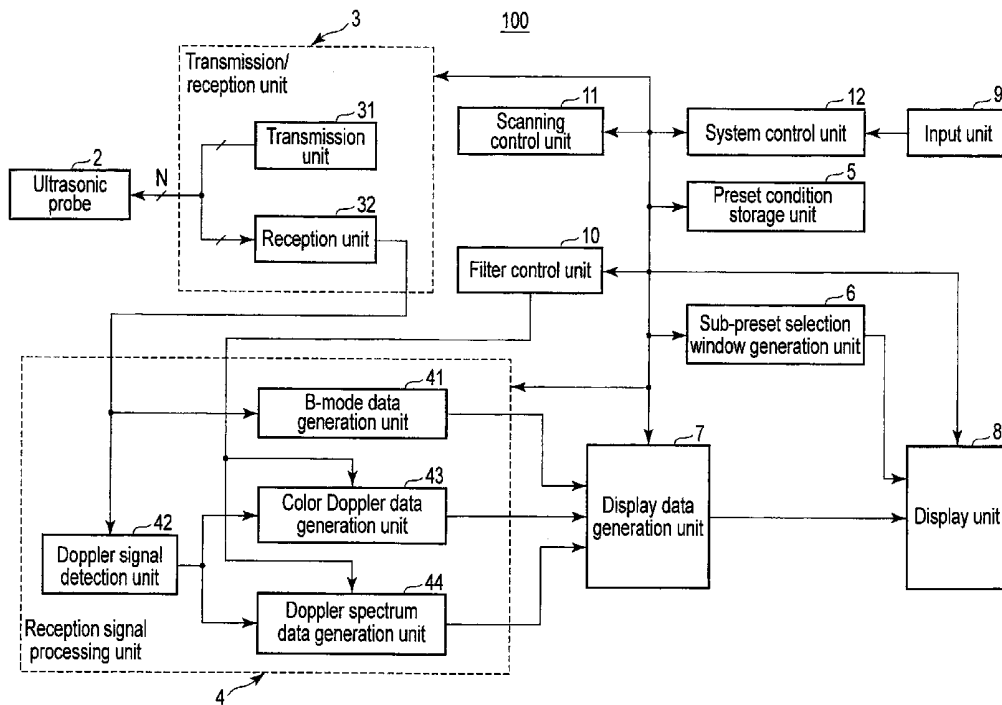
(22) Filed: **Feb. 27, 2014**

Related U.S. Application Data

(63) Continuation of application No. PCT/JP2012/072249,
filed on Aug. 31, 2012.

Foreign Application Priority Data

Aug. 31, 2011 (JP) 2011-190142
Aug. 31, 2012 (JP) 2012-191624



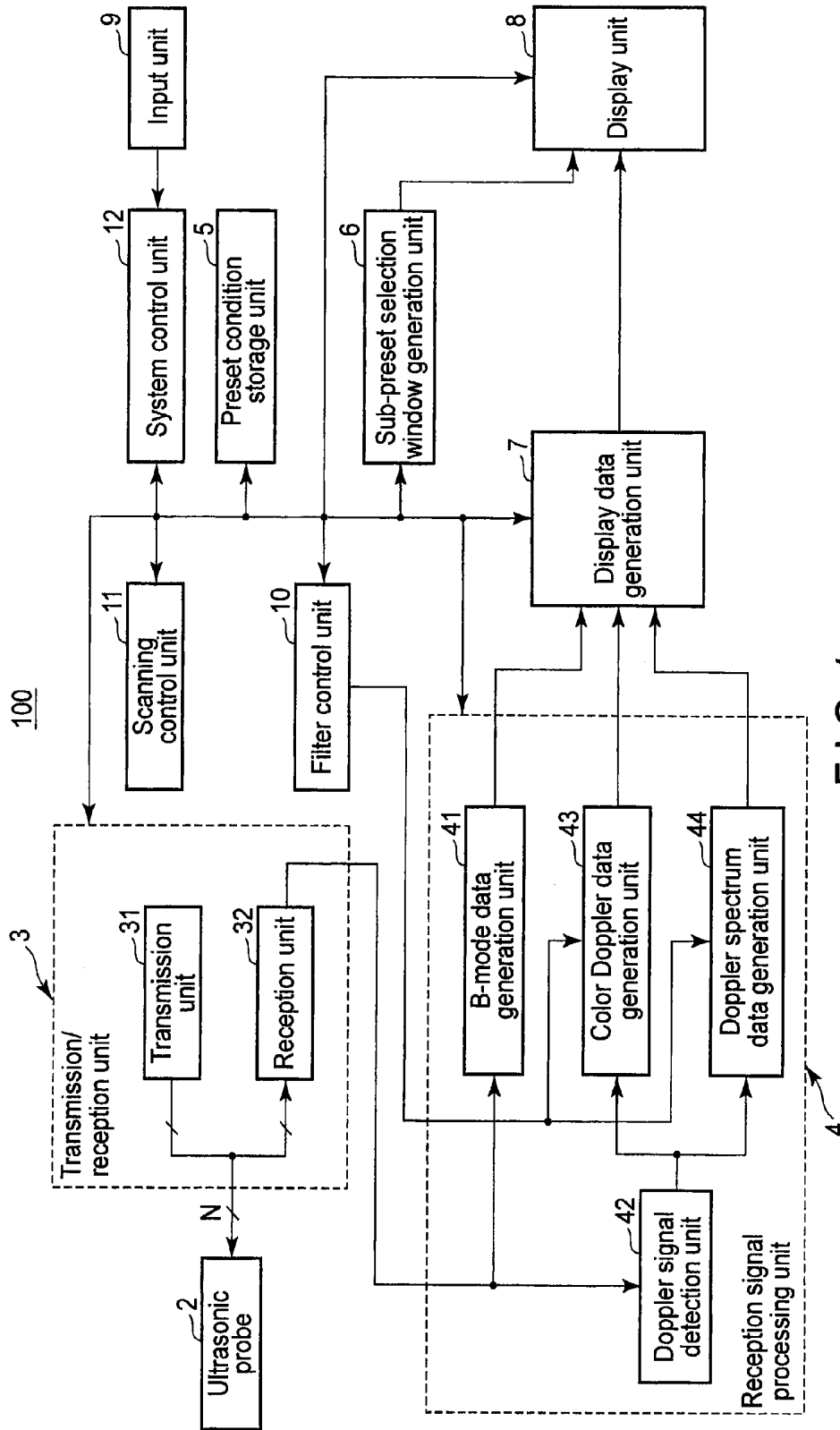


FIG. 1

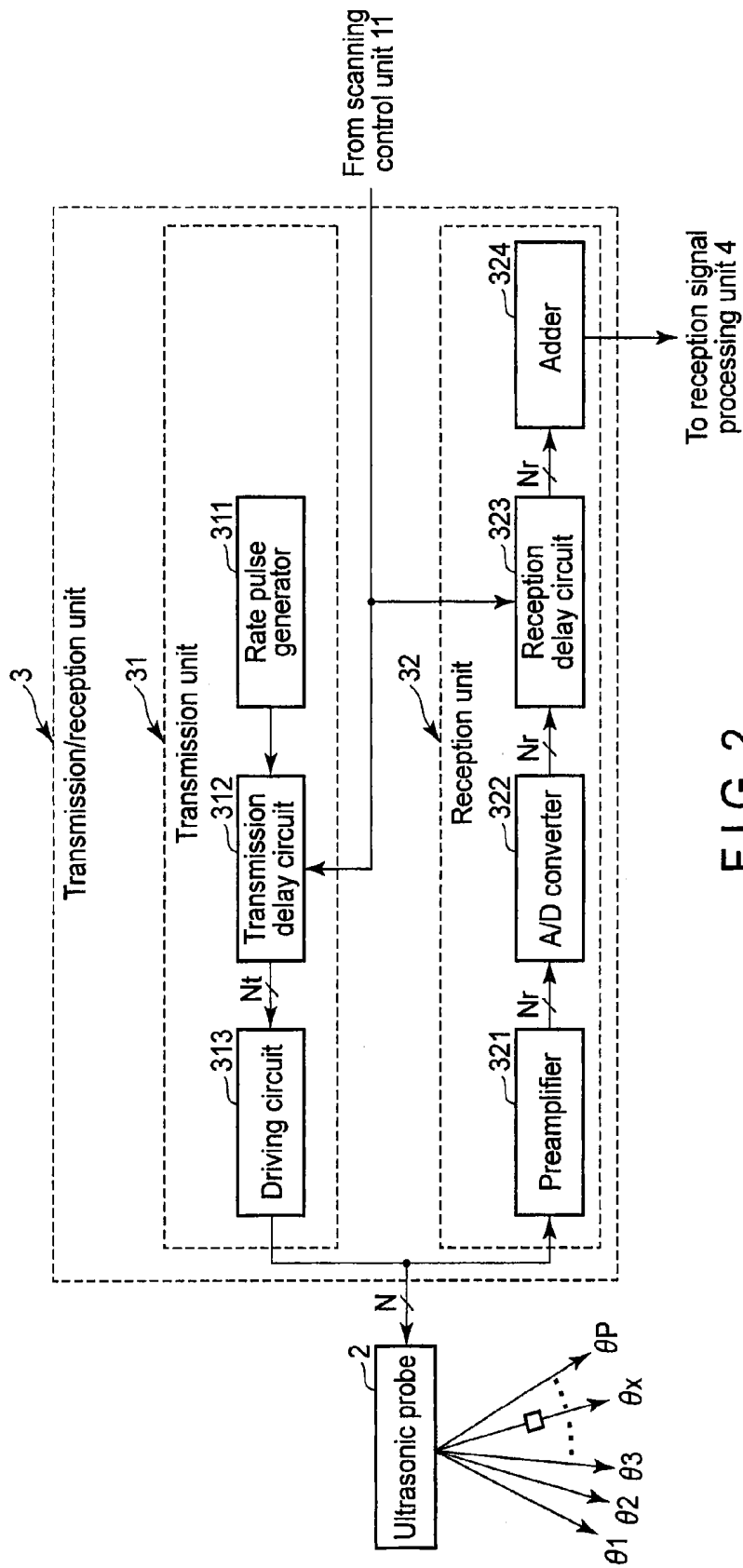


FIG. 2

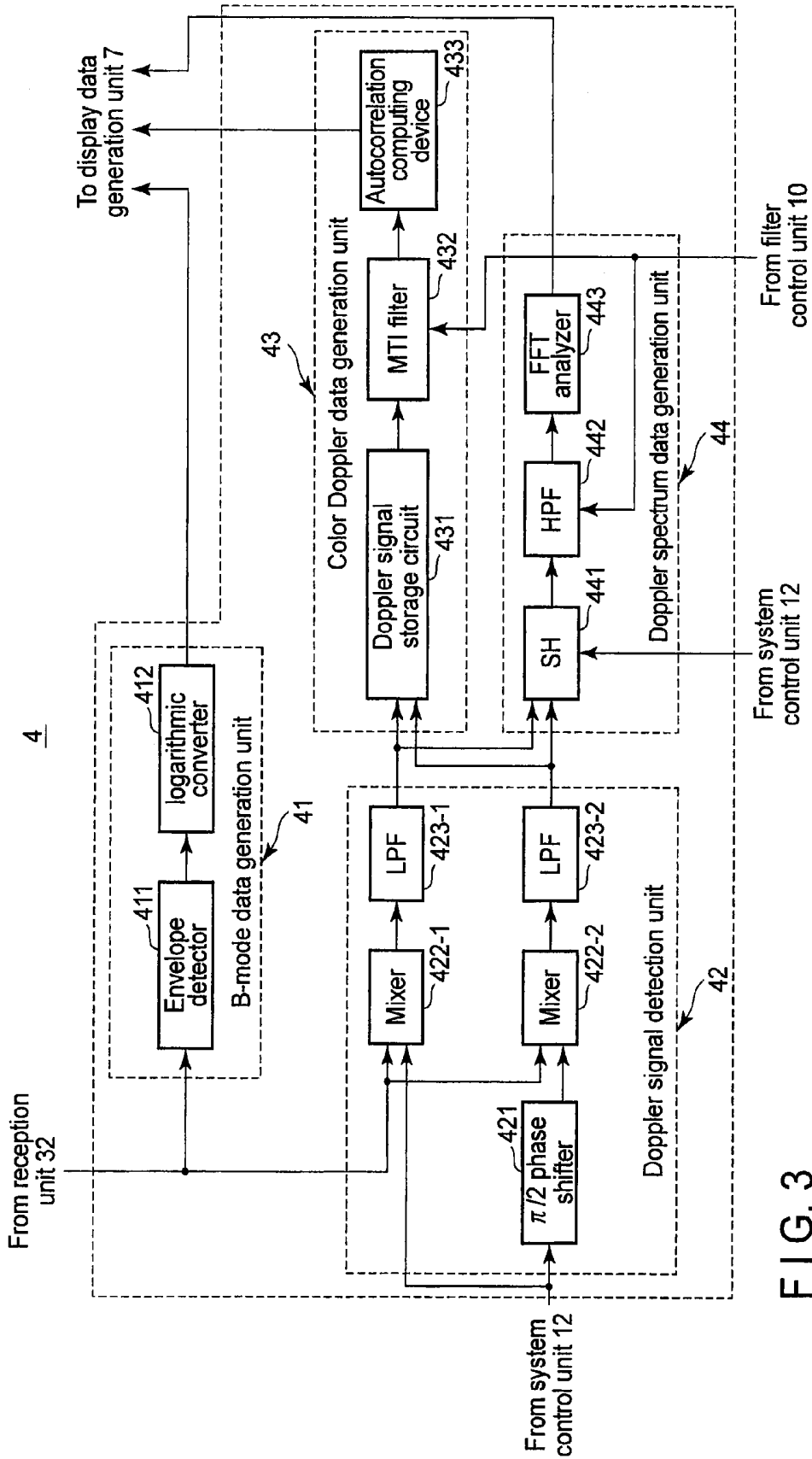


FIG. 3

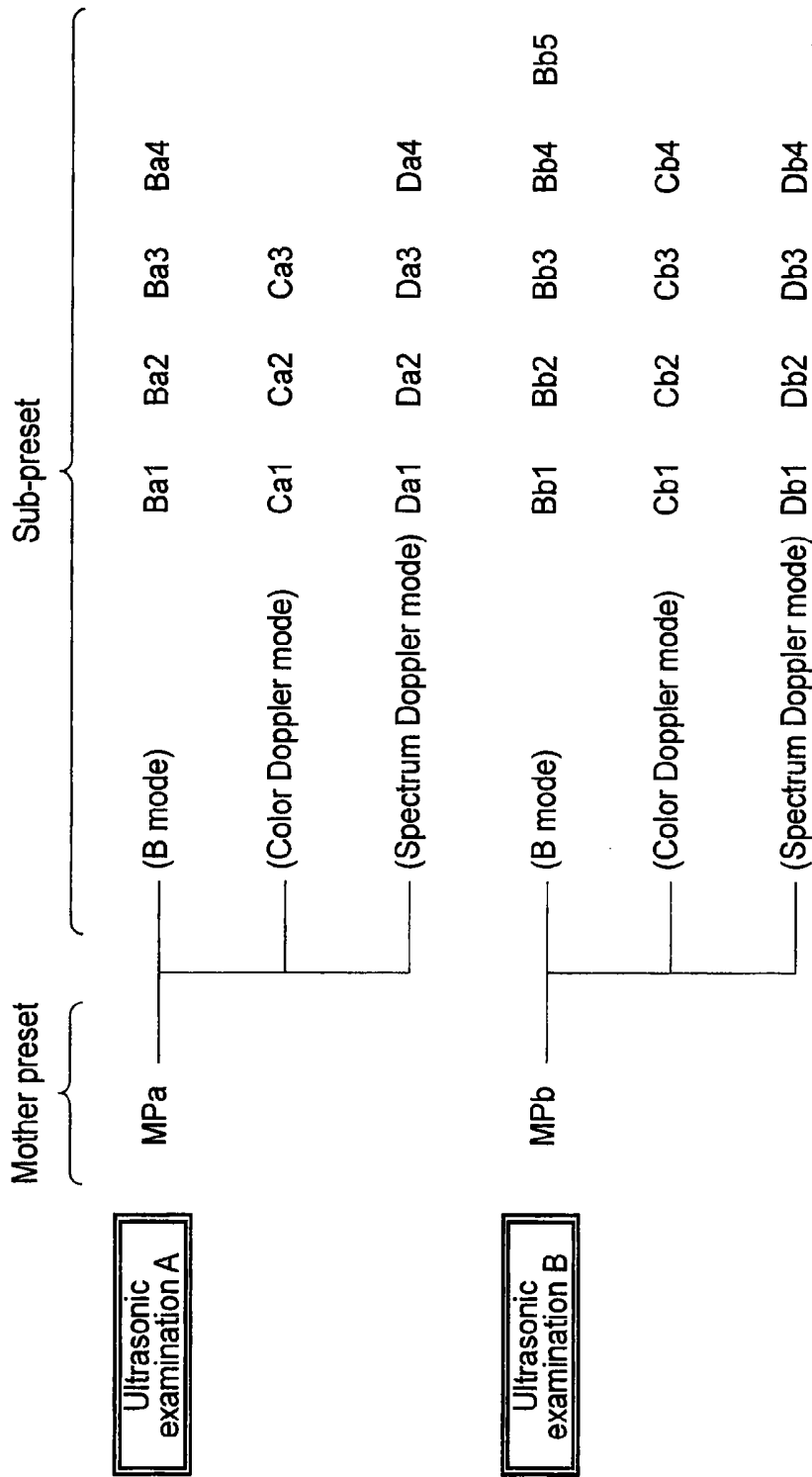


FIG. 4

Mother preset condition MPA		Mother preset item	Mother preset condition
Imaging mode	B mode	Observation depth (D)	Dx(mm)
		Ultrasonic wave focusing distance (F)	Fx(mm)
		Scanning range (W)	Wx(deg, mm)
		Ultrasonic frequency (fo)	fox(Hz)
		Reception gain (G)	Gx(dB)
Color Doppler mode	Rate frequency (fr)	frx(Hz)	
	Filter frequency (fc)	fcx(Hz)	
	Ultrasonic frequency (fo)	fox(Hz)	
	Reception gain (G)	Gx(dB)	
	Rate frequency (fr)	frx(Hz)	
Spectrum Doppler mode	Filter frequency (fc)	fcx(Hz)	
	Ultrasonic frequency (fo)	fox(Hz)	
	Reception gain (G)	Gx(dB)	
	Baseline shift frequency (fs)	fsx(Hz)	

FIG. 5

Sub-preset condition		
Sub-preset name	Sub-preset item	Sub-preset condition
Ba1	Observation depth (D)	Da1(mm)
	Ultrasonic wave focusing distance (F)	Fa1(mm)
	Scanning range (W)	Wa1(deg)
Ba2	Observation depth (D)	Da2(mm)
	Scanning range (W)	Wa2(deg)
	Reception gain (G)	Ga2(dB)
Ba3	Observation depth (D)	Da3(mm)
	Scanning range (W)	Wa3(deg)
Ba4	Observation depth (D)	Da4(mm)

FIG. 6

Sub-preset condition		Sub-preset name	Sub-preset item	Sub-preset condition
	Ba1	Observation depth (D)	Da1(mm)	
		Ultrasonic wave focusing distance (F)	Fa1(mm)	
		Scanning range (W)	Wa1(deg)	
	Ba2	Observation depth (D)	Da2(mm)	
		Ultrasonic wave focusing distance (F)	Fa2(mm)	
		Scanning range (W)	Wa2(deg)	
	Ba3	Observation depth (D)	Da3(mm)	
		Scanning range (W)	Wa3(deg)	
		⋮	⋮	

FIG. 7

Sub-preset condition		
Sub-preset name	Sub-preset item	Sub-preset condition
Ba1	Observation depth (D)	Da1(mm)
	Ultrasonic wave focusing distance (F)	Fa1(mm)
	Scanning range (W)	Wa1(deg)
⋮	⋮	⋮
Ba9	Application	Ap2
Ba10	Probe type	6C3
Ba11	Ultrasonic wave focusing distance (F)	Fa10(mm)
		⋮

FIG. 8

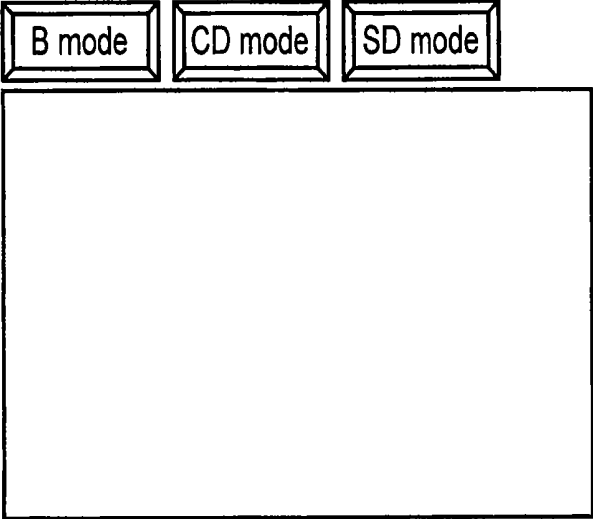


FIG. 9A

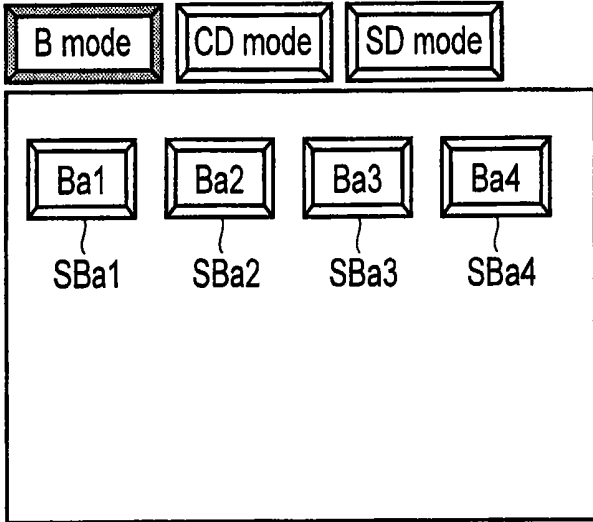


FIG. 9B

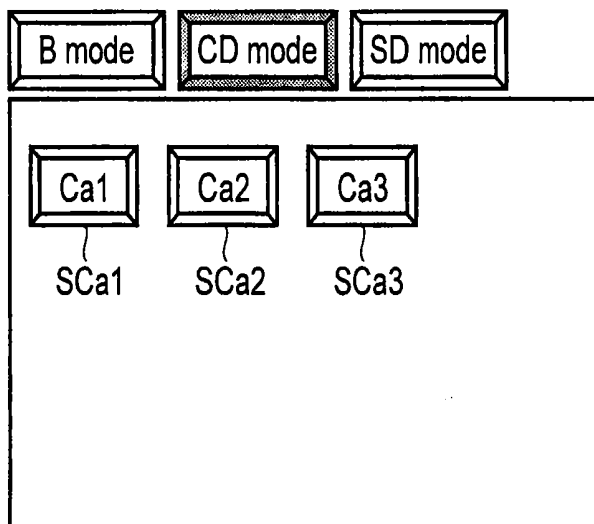


FIG. 9C

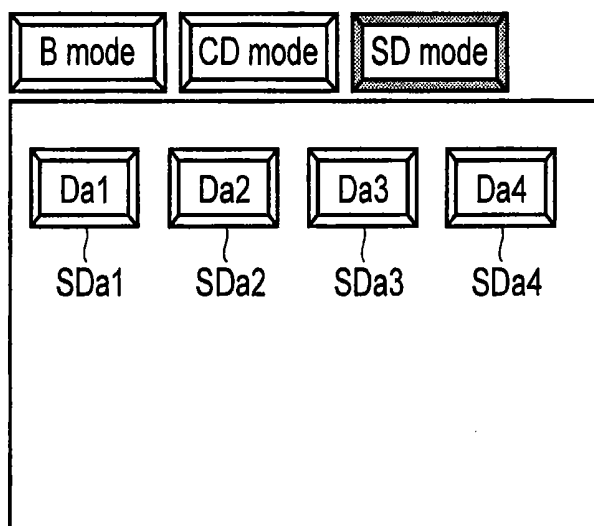


FIG. 9D

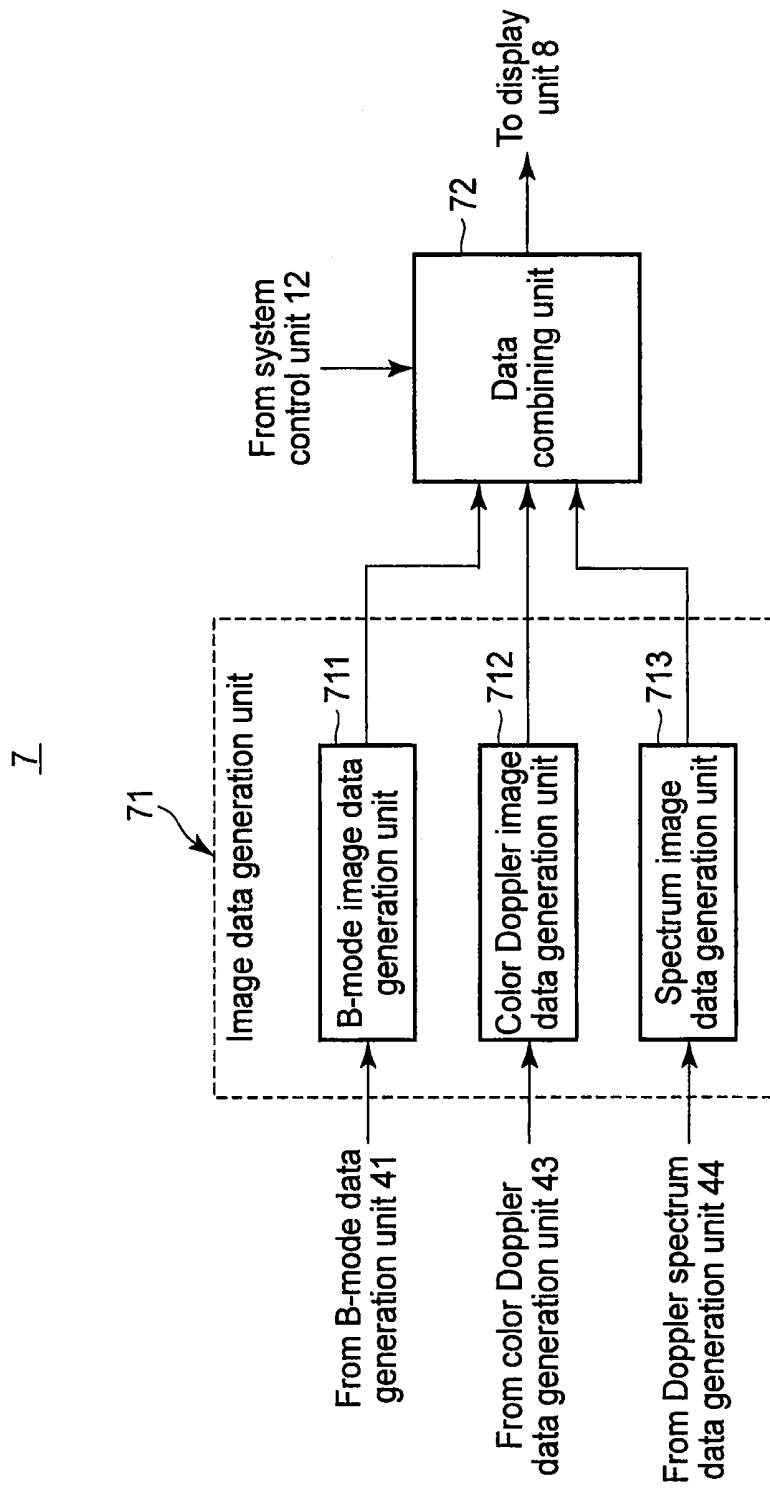


FIG. 10

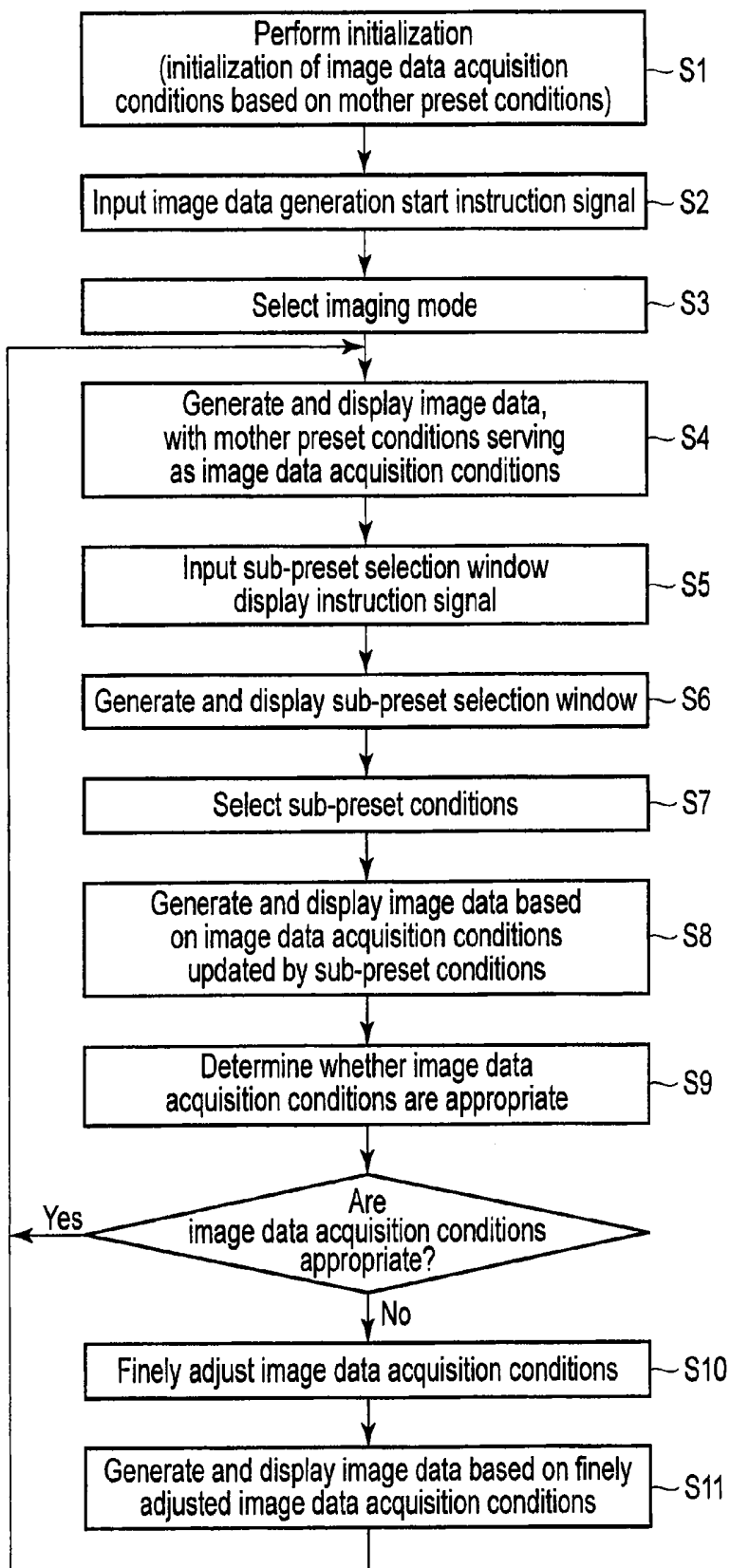


FIG. 11

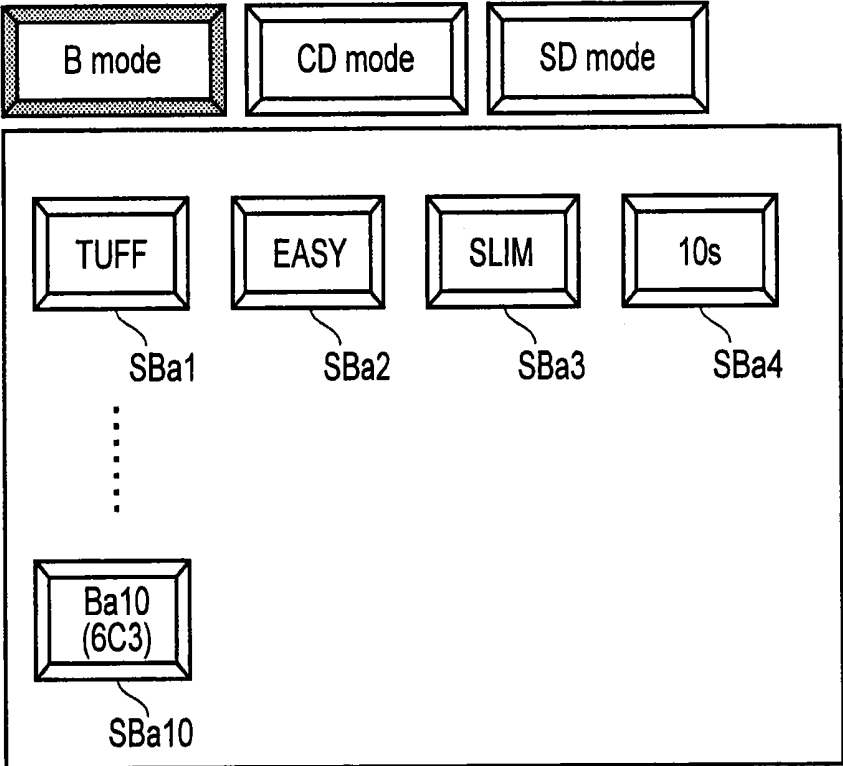


FIG. 12

**ULTRASONIC DIAGNOSTIC APPARATUS,
ULTRASONIC DIAGNOSTIC APPARATUS
CONTROL METHOD, AND MEDICAL IMAGE
DIAGNOSTIC APPARATUS**

CROSS-REFERENCE TO RELATED
APPLICATION

[0001] This application is a Continuation Application of PCT Application NO. PCT/JP2012/072249, based upon and claims the benefit of priority from Japanese Patent Application No. 2011-190142, filed Aug. 31, 2011, and the Japanese Patent Application No. 2012-191624, filed Aug. 31, 2012, the entire contents of which are incorporated herein by reference.

FIELD

[0002] Embodiments described herein relate generally to an ultrasonic diagnostic apparatus which transmits and receives ultrasonic waves to and from an object based on preset conditions set in advance, an ultrasonic diagnostic apparatus control method, and a medical image diagnostic apparatus.

BACKGROUND

[0003] An ultrasonic diagnostic apparatus is designed to apply ultrasonic pulses generated by transducers incorporated in an ultrasonic probe into an object to be examined, convert reflected waves generated by the difference in acoustic impedance between object tissues into electrical signals through the transducers, and display the resultant image on a monitor. This diagnostic method allows easy acquisition of various types of image data by simple operation of only bringing the ultrasonic probe into contact with the body surface, and hence is widely used for functional diagnosis or morphological diagnosis of various organs.

[0004] Ultrasonic diagnostic methods of obtaining biological information by using reflected waves from tissues or blood cells in a living body have rapidly progressed along with two great technical developments of an ultrasonic pulse reflection method and ultrasonic Doppler method. B-mode image data and color Doppler image data obtained by these techniques have become indispensable to recent ultrasonic diagnosis. In addition, a spectrum Doppler method for acquiring spectrum image data that allows quantitative measurement of blood flow information of a diagnostic target region is used for circulatory organ regions, abdominal regions, and the like.

[0005] When performing ultrasonic examination on an object by sequentially acquiring these image data, although image data acquisition conditions constituted by many imaging parameters suitable for the acquisition of the respective image data are set before examination, it is necessary to set the respective imaging parameters used for ultrasonic examination for each examination based on not only the imaging modes set when acquiring the above image data (i.e., the B mode, color Doppler mode, and spectrum Doppler mode) but also the body type, age, and the like of the object. For this reason, it takes much time to set image data acquisition conditions optimal for such ultrasonic examination, leading to a deterioration in examination efficiency.

[0006] In order to solve such a problem, there has recently been practiced a method of initializing a preset standard image data acquisition condition as a preset condition (to be described later as a mother preset condition) and acquiring

desired image data by finely adjusting the preset condition under the observation of image data acquired based on the preset condition.

[0007] Setting the above preset condition before ultrasonic examination makes it possible to efficiently set image data acquisition conditions. However, as has been described above, since optimal image data acquisition conditions vary depending on the body type, age, and the like of the object, it is often necessary to change and update some of the initialized preset conditions during the examination.

[0008] In such a case, the above conventional method has a problem that, for example, since the image data acquisition conditions newly set by updating the preset conditions in the preceding imaging mode return to the image data acquisition conditions in the initialized imaging mode when the imaging mode shifts to the subsequent imaging mode, it is necessary to reset each preset condition every time an imaging mode is restarted or a new imaging mode is selected.

[0009] This disclosure has been made in consideration of the above problem. It is an object to provide an ultrasonic diagnostic apparatus which updates image data acquisition conditions initialized by using a mother preset condition set in advance, based on sub-preset conditions set for each imaging mode as a unit, and can acquire desired image data in a short period of time by generating image data based on the image data acquisition conditions after the update, an ultrasonic diagnostic apparatus control method, and a medical image diagnostic apparatus.

BRIEF DESCRIPTION OF DRAWINGS

[0010] FIG. 1 is a block diagram showing the overall arrangement of an ultrasonic diagnostic apparatus according to this embodiment.

[0011] FIG. 2 is a block diagram showing the concrete arrangement of the transmission/reception unit of the ultrasonic diagnostic apparatus according to this embodiment.

[0012] FIG. 3 is a block diagram showing the concrete arrangement of the reception signal processing unit of the ultrasonic diagnostic apparatus of this embodiment.

[0013] FIG. 4 is a view for explaining mother presets and sub-presets in this embodiment.

[0014] FIG. 5 is a view showing a concrete example of mother preset conditions in this embodiment.

[0015] FIG. 6 is a view showing a concrete example of sub-preset conditions in this embodiment.

[0016] FIG. 7 is a view showing a modification of sub-preset conditions in this embodiment.

[0017] FIG. 8 is a view showing a modification of sub-preset conditions in this embodiment.

[0018] FIG. 9A is a view showing a concrete example of a sub-preset selection window in this embodiment.

[0019] FIG. 9B is a view showing a concrete example of a sub-preset selection window in this embodiment.

[0020] FIG. 9C is a view showing a concrete example of a sub-preset selection window in this embodiment.

[0021] FIG. 9D is a view showing a concrete example of a sub-preset selection window in this embodiment.

[0022] FIG. 10 is a block diagram showing the concrete arrangement of the display data generation unit of the ultrasonic diagnostic apparatus of this embodiment.

[0023] FIG. 11 is a flowchart showing a setting/updating procedure for image data acquisition conditions in this embodiment.

[0024] FIG. 12 is a view showing a modification of the sub-preset selection window in this embodiment.

DETAILED DESCRIPTION

[0025] An ultrasonic diagnostic apparatus disclosed by this embodiment comprises a preset condition storage which stores a plurality of mother preset conditions and various types of sub-preset conditions, the mother preset conditions being concerned with at least image data acquisition conditions and the sub-preset conditions being set by updating all or some of the image data acquisition conditions included in each of the mother preset conditions; a sub-preset condition selection unit configured to read out the various types of sub-preset conditions corresponding to a selected mother preset condition from the preset condition storage unit and select a sub-preset condition suitable for ultrasonic examination on the object from the readout various types of sub-preset conditions; an acquisition condition control unit configured to initialize an image data acquisition condition based on the selected mother preset condition with respect to each unit related to generation of the image data and update the image data acquisition condition by using the selected sub-preset condition; and an image data generation unit configured to generate image data based on a reception signal in ultrasonic transmission/reception using the updated image data acquisition condition.

[0026] An embodiment of this disclosure will be described below with reference to the accompanying drawing.

Embodiment

[0027] According to the ultrasonic diagnostic apparatus of this embodiment to be described below, image data acquisition conditions are initialized by using conditions or values (to be referred to as "mother preset conditions" hereinafter or to be also referred to as "user presets" or "imaging presets" hereinafter) concerning a plurality of parameters set in the ultrasonic diagnostic apparatus which are preset for each ultrasonic examination as a unit. This ultrasonic diagnostic apparatus then updates (changes or adjusts) a condition concerning at least one parameter included in image data acquisition conditions initialized based on mother preset conditions by using a condition or value (sub-preset condition) concerning at least one parameter set in the apparatus for each imaging mode as a unit, and generates image data based on the image data acquisition conditions after the update. The operator then observes the image data obtained as the result of this operation to determine whether the image data acquisition conditions after the update are appropriate. If they are not appropriate, the operator finely adjusts the image data acquisition conditions by using input devices of an input unit.

[0028] This embodiment will exemplify an ultrasonic diagnostic apparatus which can acquire B-mode image data, color Doppler image data, and spectrum image data. However, the embodiment is not limited to this and may be an ultrasonic diagnostic apparatus which can acquire B-mode image data and color Doppler image data or B-mode image data and spectrum image data or an ultrasonic diagnostic apparatus which can acquire any one of the following data: B-mode image data, color Doppler image, and spectrum image data.

[0029] Although the following description will exemplify an ultrasonic diagnostic apparatus which generates the above image data based on the reception signals obtained by sector scanning on an object, this embodiment may be an ultrasonic

diagnostic apparatus which can perform other types of ultrasonic scanning such as convex scanning and linear scanning.

[0030] This embodiment will also exemplify a parameter setting/updating method using mother preset conditions and sub-preset conditions using, for example, an ultrasonic diagnostic apparatus. However, the application of the parameter setting/updating method is not limited to an ultrasonic diagnostic apparatus. For example, this method can be applied to parameter setting/updating operation in various types of medical image diagnostic apparatuses typified by an X-ray diagnostic apparatus, X-ray computed tomography apparatus, magnetic resonance imaging apparatus, and nuclear medicine diagnostic apparatus.

(Apparatus Arrangement)

[0031] The arrangement and function of the ultrasonic diagnostic apparatus according to the embodiment in this disclosure will be described with reference to FIGS. 1, 2, 3, 4, 5, 6, 7, and 8. Note that FIG. 1 is a block diagram showing the overall arrangement of the ultrasonic diagnostic apparatus according to this embodiment, and FIGS. 2, 3, and 8 are block diagrams showing the concrete arrangements of the transmission/reception unit, reception signal processing unit, and display data generation unit of this ultrasonic diagnostic apparatus.

[0032] An ultrasonic diagnostic apparatus 100 shown in FIG. 1 includes an ultrasonic probe 2, a transmission/reception unit 3, a reception signal processing unit 4, a preset condition storage unit 5, a sub-preset selection window generation unit 6, a display data generation unit 7, a display unit 8, an input unit 9, a filter control unit 10, a scanning control unit 11, and a system control unit 12.

[0033] The ultrasonic probe 2 includes an array of a plurality of transducers which emit ultrasonic pulses (transmission ultrasonic waves) into the body of an object and convert the reflected ultrasonic waves (reception ultrasonic waves) obtained from the inside of the body by the transmission ultrasonic waves into electrical signals (reception signals). The transmission/reception unit 3 supplies driving signals for applying transmission ultrasonic waves in a predetermined direction in the object to the transducers, and performs phased addition of reception signals through a plurality of channels which are obtained from the transducers. The reception signal processing unit 4 generates B-mode data, color Doppler data, and Doppler spectrum data by processing the reception signals after phased addition which are obtained in the B mode, color Doppler mode (CD mode), and spectrum Doppler mode (SD mode). The preset condition storage unit 5 stores mother preset conditions set in advance for each ultrasonic examination as a unit and sub-preset conditions set in advance for each imaging mode as a unit. The sub-preset selection window generation unit 6 generates sub-preset selection window data in a predetermined format based on the sub-preset conditions read out from the preset condition storage unit 5. The display data generation unit 7 generates various types of image data based on the B-mode data, color Doppler data, and Doppler spectrum data generated by the reception signal processing unit 4, and generates display data based on the image data. The display unit 8 displays the above display data generated by the display data generation unit 7 and the sub-preset selection window data supplied from the sub-preset selection window generation unit 6. The input unit 9 is a device by which, for example, the operator inputs object information, selects an imaging mode, selects sub-preset conditions, and inputs

various types of instruction signals. The filter control unit **10** controls the filtering characteristics of the MTI (Moving Target Indication) filter and HPF (High-Pass Filter) of the reception signal processing unit **4** based on the mother preset conditions, sub-preset conditions, and the like supplied from the preset condition storage unit **5** via the system control unit **12**. The scanning control unit **11** controls the ultrasonic transmission/reception direction and ultrasonic wave focusing distance relative to the object based on the above mother preset conditions, sub-preset conditions, and the like. The system control unit **12** comprehensively controls the respective units described above. The arrangement and function of each unit will be described in detail below.

[0034] The ultrasonic probe **2** has an array of N transducers (not shown) at its distal end portion. The distal end is brought into contact with the body surface of an object to transmit/receive ultrasonic waves. The transducers are electroacoustic conversion elements each having a function of converting an electrical driving signal into a transmission ultrasonic wave at the time of transmission and converting a reception ultrasonic wave into an electrical reception signal at the time of reception. These transducers are connected to the transmission/reception unit **3** via an N-channel multicore cable. Although this embodiment will exemplify a case of using the ultrasonic probe **2** for sector scanning which includes N transducers, the embodiment may use an ultrasonic probe corresponding to linear scanning, convex scanning, or the like.

[0035] The transmission/reception unit **3** shown in FIG. 2 includes a transmission unit **31** which supplies, to the transducers of the ultrasonic probe **2**, driving signals for emitting ultrasonic pulses in the respective types of imaging modes (i.e., the B mode, color Doppler mode, and spectrum Doppler mode) in a predetermined direction in an object, and a reception unit **32** which performs phased addition of reception signals in a plurality of channels which are obtained from these transducers. The transmission unit **31** includes a rate pulse generator **311**, a transmission delay circuit **312**, and a driving circuit **313**.

[0036] The rate pulse generator **311** generates rate pulses for determining the repetition period of transmission ultrasonic waves emitted into the object, based on the mother preset conditions, sub-preset conditions, and the like supplied from the system control unit **12**, and supplies the obtained rate pulses to the transmission delay circuit **312**. Note that the above rate pulse repetition period is decided based on the observation depth or rate frequency of the mother preset conditions or sub-preset conditions to be described later.

[0037] The transmission delay circuit **312** is constituted by independent delay circuits equal in number to Nt transmission transducers selected from the N transducers incorporated in the ultrasonic probe **2**. The transmission delay circuit **312** gives the above rate pulses output from the rate pulse generator **311** focusing delay times for focusing transmission ultrasonic waves to a predetermined depth to obtain a small beam width at the time of transmission and deflection delay times for emitting the transmission ultrasonic waves in a predetermined direction, in accordance with the scanning control signals supplied from the scanning control unit **11** based on the above mother preset conditions, sub-preset conditions, and the like.

[0038] The driving circuit **313** has a function of driving the Nt transmission transducers incorporated in the ultrasonic probe **2**, and generates driving pulses having focusing delay times for focusing transmission ultrasonic waves to a pre-

terminated depth (distance) and deflection delay times for emitting the ultrasonic waves in a predetermined direction based on the rate pulses supplied from the transmission delay circuit **312**.

[0039] The reception unit **32** includes a preamplifier **321**, A/D converter **322**, reception delay circuit **323**, and adder **324** in Nr channels corresponding to the Nr reception transducers selected from the N transducers incorporated in the ultrasonic probe **2**. The A/D converter **322** converts reception signals in the Nr channels, which are supplied from the reception transducers via the preamplifier **321** in the B mode, color Doppler mode, and spectrum Doppler mode, into digital signals, and sends them to the reception delay circuit **323**.

[0040] The reception delay circuit **323** gives the respective reception signals in the Nr channels, which are output from the A/D converter **322**, focusing delay times for focusing reception ultrasonic waves from a predetermined depth and deflection delay times for setting strong reception directivity in a predetermined direction in accordance with the scanning control signals supplied from the scanning control unit **11** based on mother preset conditions, sub-preset conditions, and the like. The adder **324** adds and combines Nr-channel reception signals output from the reception delay circuit **323**. That is, the reception delay circuit **323** and the adder **324** perform phased addition of reception signals corresponding to reception ultrasonic waves from a predetermined direction.

[0041] Note that the transmission delay circuit **312** and the reception delay circuit **323** decide focusing delay times and deflection delay times based on the ultrasonic wave focusing distance, scanning range, and the like of mother preset conditions or sub-preset conditions to be described later.

[0042] The reception signal processing unit **4** shown in FIG. 3 includes a B-mode data generation unit **41** which generates B-mode data by processing the B-mode reception signal output from the adder **324** of the reception unit **32**, a Doppler signal detection unit **42** which detects the Doppler signal mixed in reception signals in the color Doppler mode and spectrum Doppler mode by performing quadrature detection of the reception signals, a color Doppler data generation unit **43** which generates color Doppler data based on the Doppler signal detected in the color Doppler mode, and a Doppler spectrum data generation unit **44** which generates Doppler spectrum data based on the Doppler signal detected in the spectrum Doppler mode.

[0043] The B-mode data generation unit **41** includes an envelope detector **411** and a logarithmic converter **412**. The envelope detector **411** performs envelope detection of the reception signal after phased addition which is supplied from the adder **324** of the reception unit **32**. The logarithmic converter **412** generates B-mode data by logarithmically converting the amplitude of the envelope-detected reception signal.

[0044] The Doppler signal detection unit **42** includes a $\pi/2$ phase shifter **421**, mixers **422-1** and **422-2**, and LPFs (Low-Pass Filters) **423-1** and **423-2**, and detects a complex Doppler signal constituted by real and imaginary parts by performing quadrature detection of the reception signal supplied from the adder **324** of the reception unit **32**.

[0045] The color Doppler data generation unit **43** includes a Doppler signal storage circuit **431**, an MTI filter **432**, and an autocorrelation computing device **433**. The Doppler signal storage circuit **431** stores the complex components of the Doppler signals output from the LPFs **423-1** and **423-2** of the Doppler signal detection unit **42** at times of ultrasonic trans-

mission/reception in the same direction, i.e., real components (I components) and imaginary components (Q components).

[0046] The MTI filter 432 serving as a digital filter for the removal of low-frequency components sequentially reads out time-series Doppler signals acquired from the same region in the object from the Doppler signal storage circuit 431. The MTI filter 432 then extracts components originating from blood flows (blood flow components) included in these Doppler signals, and removes components (clutter components) originating from the respiratory motion, pulsatory motion, and the like of an organ. More specifically, setting the cutoff frequency or the like of the MTI filter 432 to a suitable value will separate the above blood flow components and clutter components having lower frequencies than the blood flow components.

[0047] The autocorrelation computing device 433 calculates, as color Doppler data, an average flow velocity value of blood flows, a velocity variance indicating blood flow velocity fluctuations, a power value indicating the magnitude of a blood flow component, and the like by performing autocorrelation computation of the blood flow components of the Doppler signals extracted by the MTI filter 432.

[0048] The Doppler spectrum data generation unit 44 includes an SH (Sample Hold circuit) 441, an HPF (High-Pass Filter) 442, and an FFT (Fast-Fourier-Transform) analyzer 443, and generates Doppler spectrum data by frequency-analyzing the Doppler signal in the spectrum Doppler mode which is supplied from the Doppler signal detection unit 42.

[0049] The SH 441 receives the real and imaginary components of the Doppler signals output from the LPFs 423-1 and 423-2 of the Doppler signal detection unit 42 and the position information of a region of interest (range gate) set by the input unit 9. The SH 441 then extracts a Doppler signal corresponding to the region of interest from the Doppler signals acquired in a time-series manner by a plurality of times of ultrasonic transmission/reception in a predetermined direction. On the other hand, the HPF 442 removes clutter components originating from the respiratory motion, pulsatory motion, and the like of the organ which are included in this Doppler signal by filtering processing of the Doppler signal in the region of interest which is output from the SH 441.

[0050] The FFT analyzer 443 includes a computation circuit and storage circuit (not shown), and temporarily stores the Doppler signal of the region of interest which is output from the HPF 442 in the storage circuit. On the other hand, the computation circuit generates Doppler spectrum data by frequency-analyzing the Doppler signal in a predetermined period which is stored in the storage circuit.

[0051] Note that a filter order, cutoff frequency, and the like which decide the frequency characteristics of the MTI filter 432 of the color Doppler data generation unit 43 and the HPF 442 of the Doppler spectrum data generation unit 44 are decided based on the filter frequency and the like of mother preset conditions or sub-preset conditions to be described later. The baseline of the Doppler spectrum data generated by the FFT analyzer 443 is decided based on a baseline shift frequency and the like.

[0052] The preset condition storage unit 5 shown in FIG. 1 includes a mother preset condition storage unit and sub-preset condition storage unit (not shown). Each storage unit stores mother preset conditions set in advance for each ultrasonic

examination as a unit and sub-preset conditions set in advance for each imaging board as a unit.

[0053] FIG. 4 shows the relationship between mother preset conditions and sub-preset conditions. This embodiment performs presetting operation of setting/updating image data acquisition conditions using mother preset conditions and sub-preset conditions by combining the mother preset conditions initialized for each ultrasonic examination as a unit and a plurality of sub-preset conditions used to update some of the mother preset conditions at the time of selection of an imaging mode or observation of image data or the like.

[0054] For example, as shown in FIG. 4, the mother preset condition storage unit stores in advance a mother preset condition MPa set for ultrasonic examination A and mother preset condition MPb set for ultrasonic examination B, and the sub-preset condition storage unit stores in advance a plurality of sub-preset conditions set by updating some of the mother preset conditions MPa and MPb for each imaging mode (the B mode, color Doppler mode, and spectrum Doppler mode) as a unit.

[0055] That is, the sub-preset condition storage unit stores B-mode sub-preset conditions Ba1 to Ba4, color Doppler mode sub-preset conditions Ca1 to Ca3, and spectrum Doppler mode sub-preset conditions Da1 to Da4 corresponding to the mother preset condition MPa, with the identification information of ultrasonic examination A or mother preset condition MPa serving as additional information, and also stores B-mode sub-preset conditions Bb1 to Bb5, color Doppler mode sub-preset conditions Cb1 to Cb3, and spectrum Doppler mode sub-preset conditions Db1 to Da4 corresponding to the mother preset condition MPb, with the identification information of ultrasonic examination B or mother preset condition MPb serving as additional information.

[0056] FIG. 5 shows a concrete example of the mother preset condition MPa corresponding to ultrasonic examination A which is stored in the mother preset condition storage unit of the preset condition storage unit 5. This mother preset condition storage unit stores, for example, "observation depth Dx", "ultrasonic wave focusing distance Fx", "scanning range Wx", "ultrasonic frequency fox", "reception gain Gx", and the like set in advance as B-mode mother preset conditions, "rate frequency frx", "filter frequency fcx", "ultrasonic frequency fox", "reception gain Gx", and the like set in advance as color Doppler mother preset conditions, and "rate frequency frx", "filter frequency fcx", "ultrasonic frequency fox", "reception gain Gx", "baseline shift frequency fs", and the like set in advance as spectrum mode mother preset conditions.

[0057] FIG. 6 shows a concrete example of the B-mode sub-preset conditions Ba1 to Ba4 corresponding to the mother preset condition MPa which are stored in the sub-preset condition storage unit of the preset condition storage unit 5. For example, the sub-preset condition Ba1 is formed by updating "observation depth Dx", "ultrasonic wave focusing distance Fx", and "scanning range Wx" of the mother preset condition MPa to "observation depth Da1", "ultrasonic wave focusing distance Fa1", and "scanning range Wa1", and the sub-preset condition Ba2 is formed by updating "observation depth Dx", "scanning range Wx", and "reception gain Gx" of the mother preset condition MPa to "observation depth Da2", "scanning range Wa2", and "reception gain Ga2". Likewise, the sub-preset condition Ba3 is formed by updating "observation depth Dx" and "scanning range Wx" of the mother preset condition MPa to "observation depth

Da3” and “scanning range Wa3”, and the sub-preset condition Ba4 is formed by updating “observation depth Dx” of the mother preset condition MPa to “observation depth Da4”.

[0058] The sub-preset selection window generation unit 6 in FIG. 1 then receives examination selection information such as “ultrasonic examination A” and imaging mode selection information supplied from the system control unit 12, and extracts sub-preset conditions corresponding to these pieces of selection information from the respective types of sub-preset conditions stored in the sub-preset condition storage unit of the preset condition storage unit 5. The sub-preset selection window generation unit 6 then generates sub-preset selection window data in which one or a plurality of selection buttons indicating the names of obtained sub-preset conditions (sub-preset names) are arranged.

[0059] Obviously, sub-preset conditions which can be set are not limited to the example shown in FIG. 6. For example, first of all, selecting the sub-preset condition Ba1 shown in FIG. 7 will update “observation depth Dx”, “ultrasonic wave focusing distance Fx”, and “scanning range Wx” of the mother preset condition MPa to “observation depth Da1”, “ultrasonic wave focusing distance Fa1”, and “scanning range Wa1”. Subsequently, selecting the sub-preset condition Ba2 constituted by the same combination of items can further update “observation depth Da1”, “ultrasonic wave focusing distance Fa1”, and “scanning range Wa1” to “observation depth Da2”, “ultrasonic wave focusing distance Fa2”, and “ultrasonic wave focusing distance Fa2”, respectively.

[0060] In addition, as shown in FIG. 8, it is possible to set “probe type” as a sub-preset condition item. When acquiring a B-mode image of the lower extremity, the operator may scan the femoral area with a linear probe or scan the knee joint area with a convex probe. In such a case, first of all, upon scanning the femoral area with the linear probe, the operator changes the probe to be used from the linear probe to the convex probe, and selects a sub-preset condition Ba10. This makes it possible to quickly and easily change image data acquisition conditions to values suitable for the convex probe.

[0061] Note that even when the operator selects predetermined sub-preset conditions, and parameters are changed and updated, the currently activated imaging mode (B, Color, Doppler, or the like) is not changed but is maintained.

[0062] FIGS. 9A, 9B, 9C, and 9D show concrete examples of the sub-preset selection window data generated by the sub-preset selection window generation unit 6. FIG. 9A shows the sub-preset selection window data when no imaging mode is selected. FIG. 9B shows the sub-preset selection window data when the B mode is selected. FIG. 9C shows the sub-preset selection window data when the color Doppler mode is selected. FIG. 9D shows the sub-preset selection window data when the spectrum Doppler mode is selected.

[0063] For example, if the B mode is selected as an imaging mode, the sub-preset selection window data shows selection buttons SBa1 to SBa4 respectively corresponding to the B-mode sub-preset conditions Ba1 to Ba4, as shown in FIG. 9B. If the color Doppler mode is selected, the sub-preset selection window data shows selection buttons SCa1 to SCa3 respectively corresponding to the color Doppler sub-preset conditions Ca1 to Ca3, as shown in FIG. 9C. Likewise, if the spectrum Doppler mode is selected, the sub-preset selection window data shows selection buttons SDa1 to SDa4 respectively corresponding to the spectrum Doppler mode sub-preset conditions SDa1 to SDa4, as shown in FIG. 9D.

[0064] The concrete arrangement of the display data generation unit 7 shown in FIG. 1 will be described next with reference to FIG. 10. As shown in the block diagram of FIG. 10, the display data generation unit 7 includes an image data generation unit 71 which generates the respective types of image data based on the B-mode data, color Doppler data, and Doppler spectrum data generated by the reception signal processing unit 4, and a data combining unit 72 which generates display data by combining these image data and adding the object information, image data acquisition conditions, and the like supplied from the system control unit 12 to the resultant image data, as needed.

[0065] The image data generation unit 71 includes a B-mode image data generation unit 711, a color Doppler image data generation unit 712, and a spectrum image data generation unit 713. The B-mode image data generation unit 711 stores reception signals (B-mode data) after logarithmic conversion which are sequentially supplied from the B-mode data generation unit 41 of the reception signal processing unit 4 for each transmission/reception direction as a unit in the self storage circuit, and generates B-mode image data.

[0066] The color Doppler image data generation unit 712 generates color Doppler image data based on the color Doppler data supplied from the color Doppler data generation unit 43 of the reception signal processing unit 4. For example, the color Doppler image data generation unit 712 generates color Doppler image data which allows simultaneous observation of an average flow velocity value and a velocity variance by setting brightness information corresponding to the average blood flow velocity value and hue information corresponding to the velocity variance as pixel values, respectively.

[0067] The spectrum image data generation unit 713 generates spectrum image data by arranging, in the time axis direction, the time-series Doppler spectrum data generated by the Doppler spectrum data generation unit 44 of the reception signal processing unit 4 based on the Doppler signals obtained from a predetermined region of interest (range gate).

[0068] On the other hand, the data combining unit 72 generates display data by converting the B-mode image data, color Doppler image data, and spectrum image data supplied from the image data generation unit 71 into data in a predetermined display format and combining these image data having undergone the conversion processing.

[0069] The display unit 8 in FIG. 1 includes a conversion processing unit and monitor (not shown). The conversion processing unit performs conversion processing such as D/A conversion or television format conversion of the above display data supplied from the display data generation unit 7 and the sub-preset selection window data supplied from the sub-preset selection window generation unit 6, thereby displaying the resultant data on the monitor.

[0070] The input unit 9 includes input devices such as a display panel, keyboard, trackball, mouse, selection buttons, and slide levers on an operation panel, and has a function of selecting an imaging mode such as the B mode, color Doppler mode, or spectrum Doppler mode, a function of selecting sub-preset conditions, and a function of finely adjusting the image data acquisition conditions set/updated based on mother preset conditions and sub-preset conditions. In addition, the operator uses the above display panel and input devices to, for example, input object information, select ultrasonic examination, set display data generation conditions, and input various types of instruction signals including a sub-preset selection window display instruction signal.

[0071] The filter control unit 10 controls the filtering characteristics of the MTI filter 432 and HPF 442 by supplying the filter control signals generated based on the filter frequency and the like of the mother preset conditions or sub-preset conditions supplied from the preset condition storage unit 5 via the system control unit 12 to the MTI filter 432 of the color Doppler data generation unit 43 and the HPF 442 of the Doppler spectrum data generation unit 44. That is, supplying the above filter control signals will form the MTI filter 432 having a frequency characteristic suitable for the generation of color Doppler image data and the HPF 442 having a frequency characteristic suitable for the generation of spectrum image data.

[0072] The scanning control unit 11 performs delay time control on the transmission delay circuit 312 of the transmission unit 31 and the reception delay circuit 323 of the reception unit 32 for ultrasonic transmission/reception in the B mode, color Doppler mode, and spectrum Doppler mode set in advance for a two-dimensional region or three-dimensional region including a diagnostic target portion of the object based on the scanning range and ultrasonic focusing distance of the mother preset conditions or sub-preset conditions supplied from the preset condition storage unit 5 via the system control unit 12. Concrete examples of ultrasonic transmission/reception in the color Doppler mode and spectrum Doppler mode are described in Jpn. Pat. Appln. KOKAI Publication Nos. 2004-329609 and 2005-81081, and hence a detailed description of them will be omitted.

[0073] The system control unit 12 includes a CPU and storage circuit (not shown). The storage circuit stores the mother preset conditions and sub-preset conditions for the ultrasonic examination which are supplied from the preset condition storage unit 5 and various types of input information, selected information, and set information input/selected/set by the input unit 9. In this case, the system control unit 12 reads out the sub-preset conditions selected by the input unit 9 using the sub-preset selection window data displayed on the display unit 8 from the sub-preset condition storage unit of the preset condition storage unit 5, and stores them in the above storage circuit.

[0074] The CPU sets or updates image data acquisition conditions for the ultrasonic examination by using the mother preset conditions and sub-preset conditions read out from the above storage circuit, and comprehensively controls the respective units of the ultrasonic diagnostic apparatus 100 based on the image data acquisition conditions to execute the ultrasonic examination.

[0075] The system control unit 12 further includes an acquisition condition storage unit (not shown). This acquisition condition storage unit stores the image data acquisition conditions updated by sub-preset conditions or the image data acquisition conditions finely adjusted by input devices of the input unit 9, with the identification of the ultrasonic examination or imaging mode being additional information.

[0076] When the input unit 9 selects the same imaging mode a plurality of times, it is possible to efficiently acquire proper image data by generating image data for the imaging mode by using the image data acquisition conditions read out from the above acquisition condition storage unit.

(Image Data Acquisition Condition Setting/Updating Procedure)

[0077] An image data acquisition condition setting/updating procedure in this embodiment will be described along the

flowchart of FIG. 11. The following will exemplify a case in which the apparatus acquires B-mode image data first, and then acquires color Doppler image data or spectrum image data. However, the order of acquisition of image data is not limited to the above order. Furthermore, the embodiment can be applied to a case in which the apparatus acquires one of the above types of image data.

[0078] Before ultrasonic examination on the object, the operator of the ultrasonic diagnostic apparatus 100 inputs object information and sets display data generation conditions with the input unit 9, and then inputs a set instruction signal for image data acquisition conditions. Upon receiving this instruction signal, the system control unit 12 initializes image data acquisition conditions for the respective types of imaging modes (i.e., the B mode, color Doppler mode, and spectrum Doppler mode) by supplying the mother preset conditions for the ultrasonic examination which are read out from the mother preset condition storage unit of the preset condition storage unit 5 to the related units of the ultrasonic diagnostic apparatus 100, together with the above display data generation conditions (step S1 in FIG. 11).

[0079] Upon completion of the above initialization, the operator inputs an image data generation start instruction signal with the input unit 9 (step S2 in FIG. 11), and further selects the B mode as an imaging mode (step S3 in FIG. 11).

[0080] Upon receiving the image data generation start instruction signal and the imaging mode selection information via the system control unit 12, the transmission/reception unit 3, the reception signal processing unit 4, and the display data generation unit 7 respectively select B-mode mother preset conditions from the mother preset conditions initialized as image data acquisition conditions, and display the B-mode image data generated based on the mother preset conditions on the monitor of the display unit 8 (step S4 in FIG. 11).

[0081] Upon observing the B-mode image data displayed on the display unit 8, the operator operates the input unit 9 to input a display instruction signal for a sub-preset selection window for the selection of sub-preset conditions (step S5 in FIG. 11).

[0082] Upon receiving the above display instruction signal via the system control unit 12, the sub-preset selection window generation unit 6 extracts sub-preset conditions corresponding to the above B-mode mother preset conditions from the respective types of sub-preset conditions stored in the sub-preset condition storage unit of the preset condition storage unit 5, generates B-mode sub-preset selection window data in which one or a plurality of selection buttons corresponding to the obtained sub-preset conditions are arranged, and displays the data on the display unit 8 (see FIG. 9B) (step S6 in FIG. 11).

[0083] The operator selects a selection button suitable for the ultrasonic examination from the various selection buttons (e.g., the selection buttons Ba1 to Ba4 in FIG. 9B) indicated on the B-mode sub-preset selection window displayed on the display unit 8. Upon receiving this selection information, the system control unit 12 selects B-mode sub-preset conditions corresponding to the selected selection buttons from the various types of preset conditions stored in the sub-preset condition storage unit of the preset condition storage unit 5 (step S7 in FIG. 11).

[0084] Supplying the obtained B-mode sub-preset conditions to the related units such as the transmission/reception unit 3 and the reception signal processing unit 4 will update

the image data acquisition conditions for the ultrasonic examination which have already been set based on the mother preset conditions. The related units described above then generate B-mode image data based on the image data acquisition conditions updated by the B-mode sub-preset conditions, and display the obtained B-mode image data on the display unit 8 (step S8 in FIG. 11).

[0085] By observing the above image data displayed on the display unit 8, the operator determines whether the updated image data acquisition conditions are appropriate (step S9 in FIG. 11). If the conditions are inappropriate, the operator finely adjusts the inappropriate image data acquisition conditions by using the fine adjustment slide lever and the like provided for the input unit 9 (step S10 in FIG. 11).

[0086] Upon receiving the above finely adjusted information supplied from the input unit 9 via the system control unit 12, the related units such as the transmission/reception unit 3 and the reception signal processing unit 4 update the image data acquisition conditions, which have already been set based on the mother preset conditions and the B-mode sub-preset conditions, by using the above finely adjusted information, and displays the B-mode image data generated based on the image data acquisition conditions after the update on the display unit 8 (step S11 in FIG. 11).

[0087] When acquiring color Doppler image data or spectrum image data upon acquiring the above B-mode image data, the operator selects the color Doppler mode or the spectrum Doppler mode as an imaging mode with the input unit 9 (step S3 in FIG. 11). Upon receiving this selection information, the system control unit 12 controls the respective units of the ultrasonic diagnostic apparatus 100 to repeat steps S4 to S11 described above, thereby setting image data acquisition conditions suitable for each imaging mode and generating and displaying color Doppler image data or spectrum image data based on the image data acquisition conditions (steps S4 to S11 in FIG. 11).

[0088] According to the above embodiment, it is possible to acquire desired image data in a short period of time by updating the image data acquisition conditions, set in advance for each ultrasonic examination as a unit, based on the sub-preset conditions set in advance for each imaging mode as a unit, and generating image data based on the image data acquisition conditions after the update.

[0089] Selecting sub-preset conditions suitable for the ultrasonic examination from the various types of sub-preset conditions set in advance for each imaging mode as a unit, in particular, makes it easy to update the image data acquisition conditions initialized by the mother preset conditions. In addition, selecting desired sub-preset conditions from the above various types of sub-preset conditions indicated as selection buttons on the sub-preset selection window makes it easy to select sub-preset conditions.

[0090] In addition, finely adjusting the image data acquisition conditions updated by sub-preset conditions can accurately set image data acquisition conditions optimal for the ultrasonic examination.

[0091] When selecting the same imaging mode a plurality of times, it is possible to efficiently acquire suitable image data by temporarily storing the image data acquisition conditions updated by sub-preset conditions or the image data acquisition conditions finely adjusted by using the input devices of the input unit, and generating image data for the imaging mode by using the stored image data acquisition conditions.

[0092] Since image data acquisition conditions are updated for each imaging mode as a unit based on sub-preset conditions, it is possible to selectively update image data acquisition conditions in an imaging mode which requires updating. This can prevent unnecessary updating operation. It is therefore possible to greatly reduce the load on the operator as well as improving the examination efficiency with respect to the object.

[0093] Although the embodiment in this disclosure has been described above, the disclosure is not limited to the above embodiment and its modification and can be modified and executed. For example, although the above embodiment has exemplified the ultrasonic diagnostic apparatus 100 which can acquire B-mode image data, color Doppler image data, and spectrum image data, the embodiment may be an ultrasonic diagnostic apparatus which can acquire B-mode image and color Doppler image data or B-mode image data and spectrum image data or an ultrasonic diagnostic apparatus which can acquire any one of the following data: B-mode image data, color Doppler image, and spectrum image data.

[0094] Although the above description is about the ultrasonic diagnostic apparatus 100 which generates the above image data based on the reception signals obtained by sector scanning on an object, this embodiment may be an ultrasonic diagnostic apparatus which can perform other types of ultrasonic scanning such as convex scanning and linear scanning.

[0095] Although the above description has exemplified the case in which sub-preset selection window data and various types of image data are displayed on the same display unit, these data may be displayed on different display units. Note that sub-preset names indicated by the selection buttons of sub-preset selection window data may be decided based on an examination target organ name, operator name, object name, object age, body type, disease condition, and the like, or other user friendly names may be used. Adding such names to the above selection buttons makes it easier for an operator who does not have much clinical experience to select sub-preset conditions. FIG. 12 shows an example of selection button display of sub-preset selection window data in such a case. Note that "(6C3)" in FIG. 12 exemplifies the ID of a probe type.

[0096] Although the above embodiment has exemplified the case in which the image data acquisition conditions initialized by using mother preset conditions set in advance are updated by using the sub-preset conditions set in advance for each imaging mode as a unit, the image data acquisition conditions updated by using the above sub-preset conditions may be further updated by using other preset sub-preset conditions.

[0097] According to the above description, if the image data acquisition conditions updated by sub-preset conditions are inappropriate, the operator finely adjusts the image data acquisition conditions after the update by using input devices of the input unit 9. However, the operator may update image data acquisition conditions before update by using other sub-preset conditions set in advance for each imaging mode as a unit.

[0098] In addition, according to the above description, sub-preset conditions are selected under the observation of the image data generated based on the image data acquisition conditions initialized by using mother preset conditions. However, image data acquisition conditions may be initialized by using mother preset conditions and sub-preset conditions.

[0099] Furthermore, according to the above description, mother preset conditions and sub-preset conditions are set and image data acquisition conditions are set/updated based on these preset conditions for each ultrasonic examination as a unit. However, these operations may be performed for each object or operator as a unit.

[0100] Note that the respective units included in the ultrasonic diagnostic apparatus 100 of this embodiment can be implemented by, for example, using a computer constituted by a CPU, RAM, magnetic storage device, input device, display device, and the like as hardware. For example, the system control unit 12 of the ultrasonic diagnostic apparatus 100 can implement various functions by causing the processor such as the CUP mounted in the above computer to execute predetermined control programs. In this case, the above control programs may be installed in the computer in advance or stored in a computer-readable storage medium. Alternatively, control programs distributed via a network may be installed in the computer.

[0101] While certain embodiments have been described, these embodiments have been presented by way of example only, and are not intended to limit the scope of the inventions. Indeed, the novel methods and systems described herein may be embodied in a variety of other forms; furthermore, various omissions, substitutions and changes in the form of the methods and systems described herein may be made without departing from the spirit of the inventions. The accompanying claims and their equivalents are intended to cover such forms or modifications as would fall within the scope and spirit of the inventions.

1. An ultrasonic diagnostic apparatus comprising:
 - a preset condition storage which stores a plurality of mother preset conditions and various types of sub-preset conditions, the mother preset conditions being concerned with at least image data acquisition conditions and the sub-preset conditions being set by updating all or some of the image data acquisition conditions included in each of the mother preset conditions;
 - a sub-preset condition selection unit configured to read out the various types of sub-preset conditions corresponding to a selected mother preset condition from the preset condition storage unit and select a sub-preset condition suitable for ultrasonic examination on the object from the readout various types of sub-preset conditions;
 - an acquisition condition control unit configured to initialize an image data acquisition condition based on the selected mother preset condition with respect to each unit related to generation of the image data and update the image data acquisition condition by using the selected sub-preset condition; and
 - an image data generation unit configured to generate image data based on a reception signal in ultrasonic transmission/reception using the updated image data acquisition condition.
2. The ultrasonic diagnostic apparatus of claim 1, wherein the preset condition storage unit stores the plurality of mother preset conditions obtained by classifying image data acquisition conditions for each ultrasonic examination as a unit.
3. The ultrasonic diagnostic apparatus of claim 1, wherein the preset condition storage unit stores the various types of sub-preset conditions obtained by classifying image data acquisition conditions included in the mother preset condition for each imaging mode as a unit.

4. The ultrasonic diagnostic apparatus of claim 3, wherein the preset condition storage unit stores the sub-preset condition set by updating an image data acquisition condition included in the mother preset condition with reference to at least one of a body type, age, disease name, and disease condition of an object and a type of ultrasonic probe used for the ultrasonic transmission/reception.

5. The ultrasonic diagnostic apparatus of claim 3, wherein the sub-preset condition selection unit selects a sub-preset condition suitable for ultrasonic examination on the object from the various types of sub-preset conditions based on an updated imaging mode.

6. The ultrasonic diagnostic apparatus of claim 1, further comprising a display unit configured to display the various types of sub-preset conditions corresponding to the selected mother preset condition,

wherein the sub-preset condition selection unit selects a sub-preset condition suitable for ultrasonic examination on the object in response to operation via the display unit.

7. The ultrasonic diagnostic apparatus of claim 6, wherein the display unit displays the various types of sub-preset conditions as selection buttons classified for each imaging mode as a unit.

8. The ultrasonic diagnostic apparatus of claim 6, wherein the display unit displays the various types of sub-preset conditions as selection buttons classified with reference to at least one of a body type, disease name, disease condition, and name of an object and an operator name.

9. The ultrasonic diagnostic apparatus of claim 6, wherein the acquisition condition control unit further updates the image data acquisition condition updated by the sub-preset condition by using another sub-preset condition selected via the display unit.

10. The ultrasonic diagnostic apparatus of claim 1, further comprising an adjustment unit configured to input a condition or a value for adjusting the image data acquisition condition updated by using the sub-preset condition,

wherein the acquisition condition control unit adjusts the image data acquisition condition updated by using the sub-preset condition based on the condition or the value input from the adjustment unit, and

the image data generation unit generates image data based on a reception signal in ultrasonic transmission/reception by using the image data acquisition condition after adjustment.

11. An ultrasonic diagnostic apparatus control method for an ultrasonic diagnostic apparatus, comprising:

reading out various types of sub-preset conditions corresponding to a selected mother preset condition from a preset condition storage unit which stores a plurality of mother preset conditions and various types of sub-preset conditions, the mother preset conditions being concerned with at least image data acquisition conditions and the sub-preset conditions being set by updating all or some of the image data acquisition conditions included in each of the mother preset conditions;

selecting a sub-preset condition suitable for ultrasonic examination on the object from the readout various types of sub-preset conditions;

initializing an image data acquisition condition based on the selected mother preset condition with respect to each unit related to generation of the image data and updating

- the image data acquisition condition by using the selected sub-preset condition; and
generating image data based on a reception signal in ultrasonic transmission/reception using the updated image data acquisition condition.
- 12.** The ultrasonic diagnostic apparatus control method of claim **11**, wherein the plurality of mother preset conditions are obtained by classifying image data acquisition conditions for each ultrasonic examination as a unit.
- 13.** The ultrasonic diagnostic apparatus control method of claim **11**, wherein the various types of sub-preset conditions are obtained by classifying image data acquisition conditions included in the mother preset condition for each imaging mode as a unit.
- 14.** The ultrasonic diagnostic apparatus control method of claim **13**, wherein the sub-preset condition is set by updating an image data acquisition condition included in the mother preset condition with reference to at least one of a body type, age, disease name, and disease condition of an object and a type of ultrasonic probe used for the ultrasonic transmission/reception.
- 15.** The ultrasonic diagnostic apparatus control method of claim **13**, wherein the setting the sub-preset condition comprises selecting a sub-preset condition suitable for ultrasonic examination on the object from the various types of sub-preset conditions based on an updated imaging mode.
- 16.** The ultrasonic diagnostic apparatus control method of claim **11**, further comprising displaying the various types of sub-preset conditions corresponding to the selected mother preset condition,
wherein the selecting the sub-preset condition comprises selecting a sub-preset condition suitable for ultrasonic examination on the object in response to operation via the display unit.
- 17.** The ultrasonic diagnostic apparatus control method of claim **16**, wherein the displaying comprises displaying the various types of sub-preset conditions as selection buttons classified for each imaging mode as a unit.
- 18.** The ultrasonic diagnostic apparatus control method of claim **16**, wherein the displaying comprises displaying the various types of sub-preset conditions as selection buttons

classified with reference to at least one of a body type, disease name, disease condition, and name of an object and an operator name.

19. The ultrasonic diagnostic apparatus control method of claim **16**, comprising further updating the image data acquisition condition updated by the sub-preset condition by using another sub-preset condition selected via the display unit.

20. The ultrasonic diagnostic apparatus control method of claim **11**, further comprising:

inputting a condition or a value for adjusting the image data acquisition condition updated by using the sub-preset condition,

adjusting the image data acquisition condition updated by using the sub-preset condition based on the condition or the value input from the adjustment unit; and

generating image data based on a reception signal in ultrasonic transmission/reception by using the image data acquisition condition after adjustment.

21. A medical image diagnostic apparatus which acquires data by imaging an object and generates image data, comprising:

a preset condition storage unit configured to store at least a plurality of mother preset conditions set in advance concerning image data acquisition conditions and various types of sub-preset conditions set in advance by updating all or some of the image data acquisition conditions included in each of the mother preset conditions;

a sub-preset condition selection unit configured to read out the various types of sub-preset conditions corresponding to the selected mother preset condition from the preset condition storage unit and select a sub-preset condition suitable for ultrasonic examination on the object from the readout various types of sub-preset conditions;

an acquisition condition control unit configured to initialize an image data acquisition condition based on the selected mother preset condition with respect to each unit related to generation of the image data and update the image data acquisition condition by using the selected sub-preset condition; and

an image data generation unit configured to generate image data based on imaging operation using the image data acquisition condition after update.

* * * * *

专利名称(译)	超声波诊断装置，超声波诊断装置控制方法和医用图像诊断装置		
公开(公告)号	US20140180106A1	公开(公告)日	2014-06-26
申请号	US14/192237	申请日	2014-02-27
[标]申请(专利权)人(译)	东芝医疗系统株式会社 株式会社东芝		
申请(专利权)人(译)	东芝医疗系统公司 株式会社东芝		
当前申请(专利权)人(译)	东芝医疗系统公司 株式会社东芝		
[标]发明人	TAKAHASHI MASAMI OYANAGI MASAMICHI		
发明人	TAKAHASHI, MASAMI OYANAGI, MASAMICHI		
IPC分类号	A61B8/00 A61B8/14		
CPC分类号	A61B8/54 A61B8/467 A61B8/461 A61B8/14 A61B8/469 A61B8/585		
优先权	2011190142 2011-08-31 JP 2012191624 2012-08-31 JP		
外部链接	Espacenet USPTO		

摘要(译)

从预设条件存储单元读出与所选择的母预设条件对应的各种类型的子预设条件，该预设条件存储单元至少存储关于图像数据获取条件设置的多个母预设条件和通过更新设置的各种类型的子预设条件。包括在每个母预设条件中的全部或一些图像数据获取条件。从读出的各种类型的子预设条件中选择适合于对象的超声波检查的子预设条件。基于针对与图像数据的生成相关的每个单元的所选择的母预设条件来初始化图像数据获取条件。通过使用所选择的子预设条件来更新图像数据获取条件。使用更新的图像数据获取条件，基于超声波发送/接收中的接收信号生成图像数据。

