



(19) **United States**

(12) **Patent Application Publication**
Suzuki et al.

(10) **Pub. No.: US 2012/0116227 A1**

(43) **Pub. Date: May 10, 2012**

(54) **ULTRASONIC BLOOD VESSEL INSPECTING APPARATUS**

Publication Classification

(75) Inventors: **Hidenori Suzuki**, Nagoya-shi (JP);
Katsushi Iikubo, Nagoya-shi (JP);
Chikao Harada, Nagoya-shi (JP);
Hiroshi Masuda, Nagoya-shi (JP)

(51) **Int. Cl.**
A61B 8/14 (2006.01)

(52) **U.S. Cl.** **600/443**

(73) Assignee: **UNEX CORPORATION**,
Nagoya-shi, Aichi (JP)

(57) **ABSTRACT**

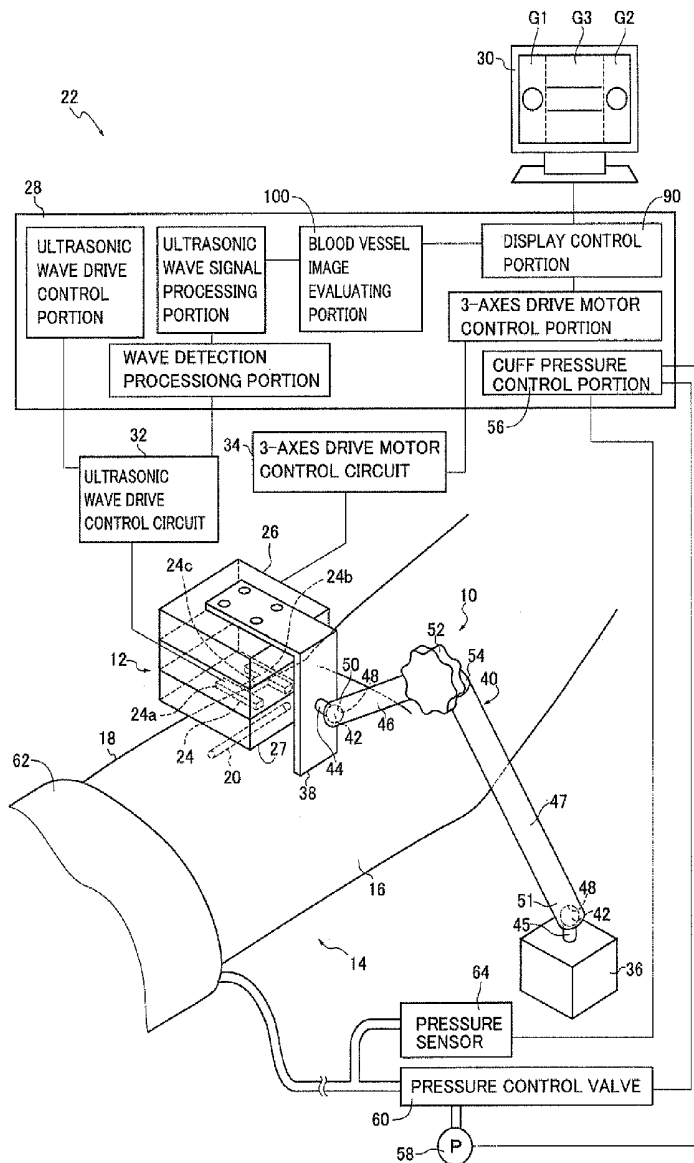
(21) Appl. No.: **13/383,866**

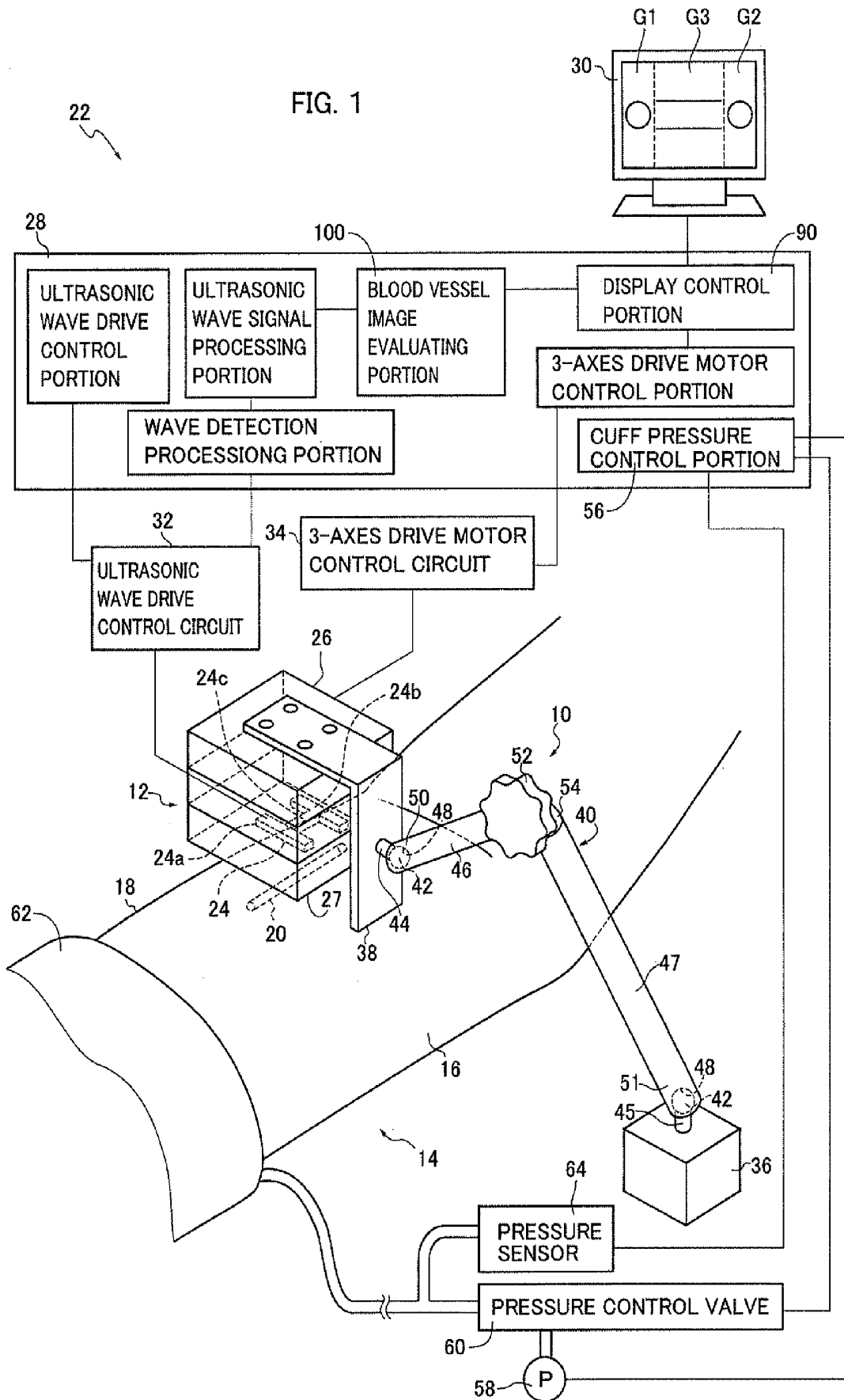
(22) PCT Filed: **Jul. 16, 2009**

(86) PCT No.: **PCT/JP09/62909**

An ultrasonic blood vessel inspecting apparatus provided with a longitudinal cross sectional blood vessel image generating portion configured to generate a longitudinal cross sectional image of a blood vessel located below a skin of a live body, on the basis of reflected wave signals of an ultrasonic wave by using an ultrasonic probe placed on the skin of said live body, includes: an index value calculating portion configured to calculate an index value indicative of a degree of clarity of an image which represents an intima-media complex of said blood vessel and which exists within said longitudinal cross sectional image of the blood vessel.

§ 371 (c)(1),
(2), (4) Date: **Jan. 13, 2012**





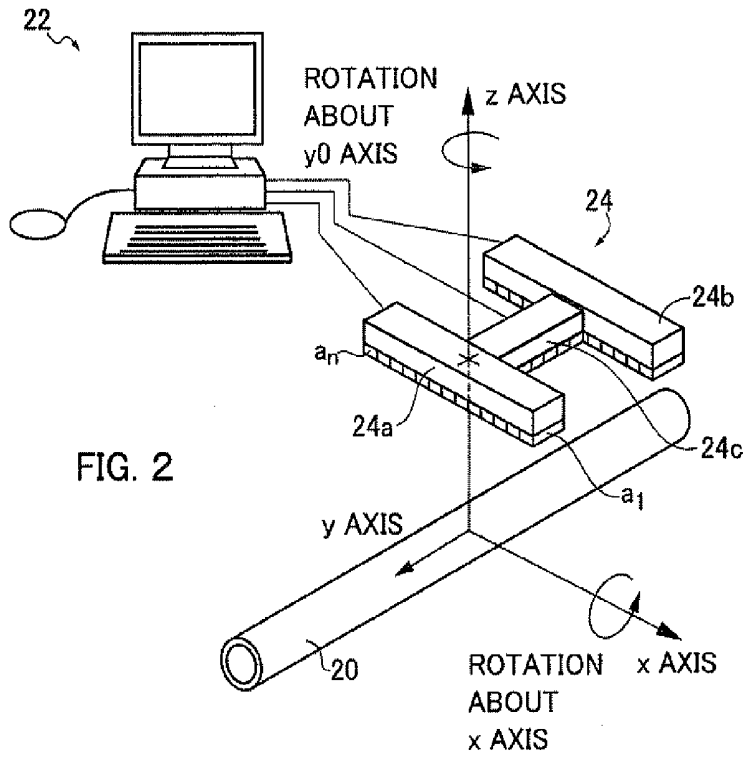
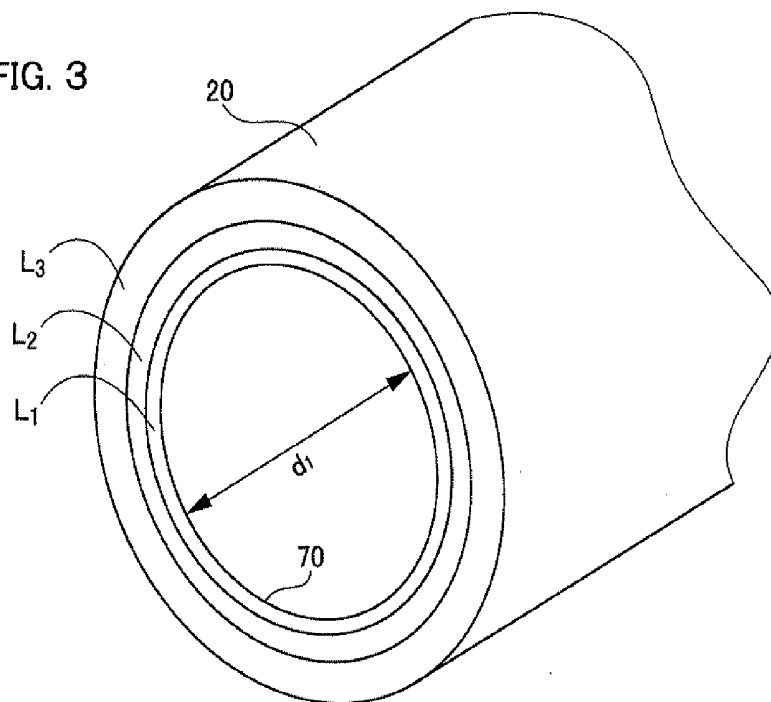


FIG. 3



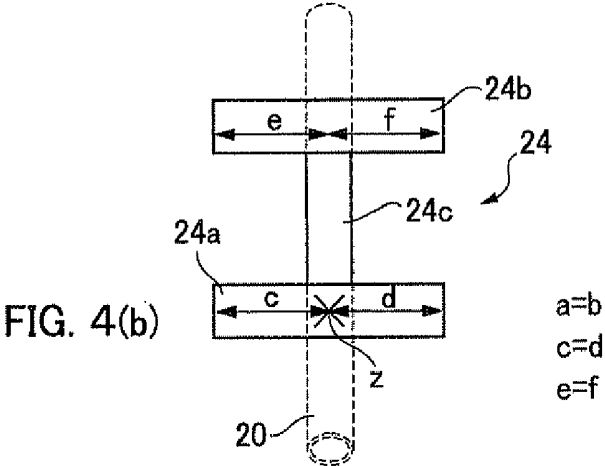
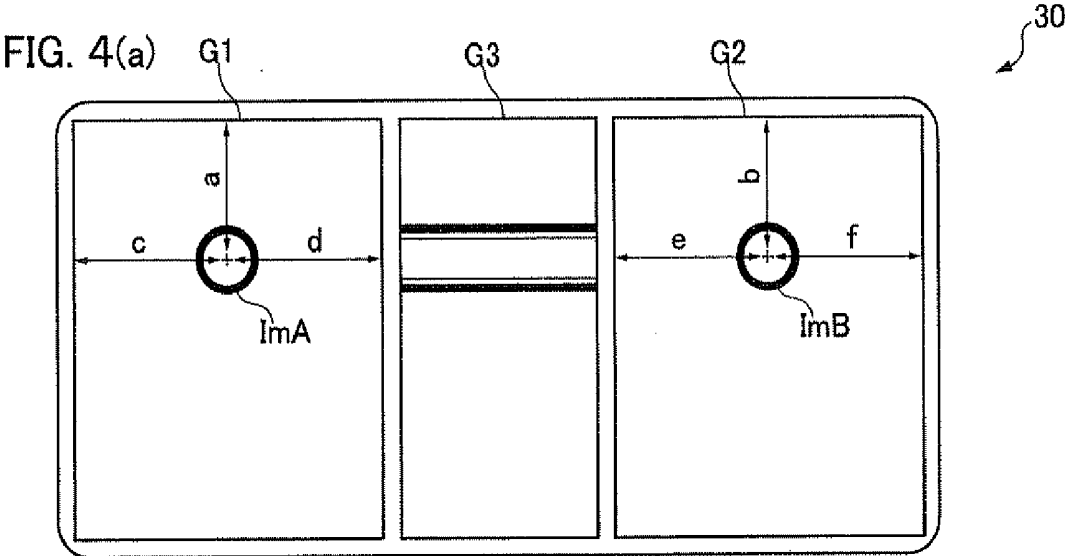


FIG. 5

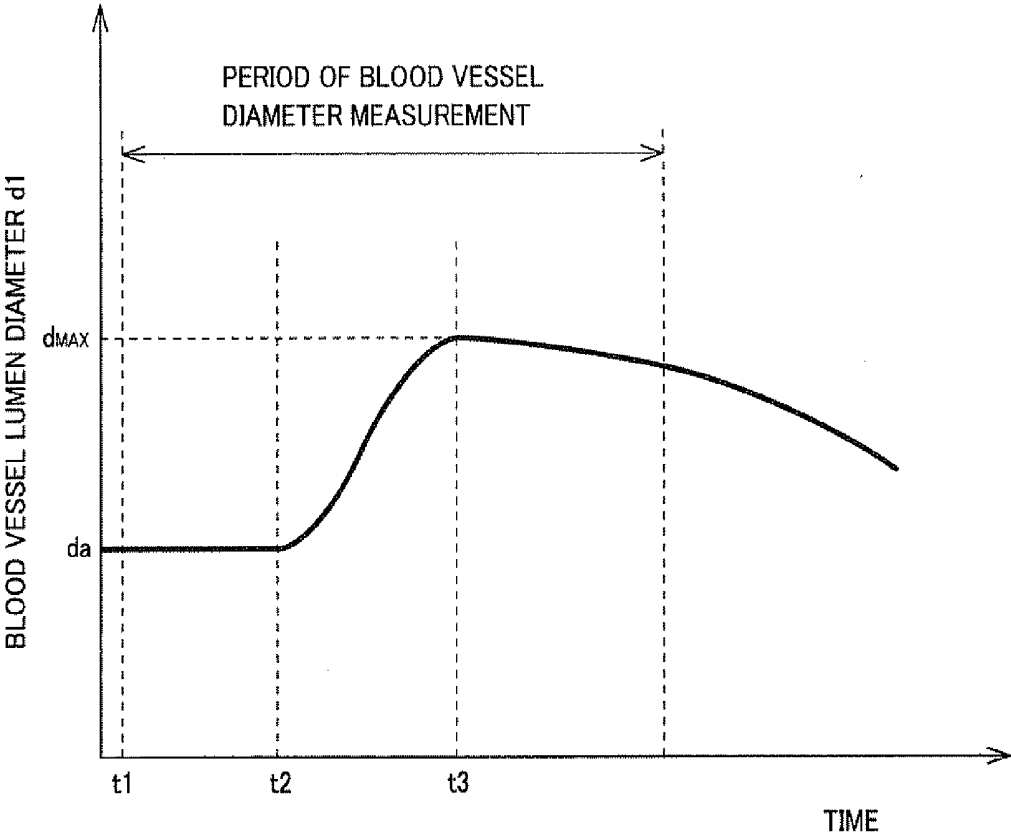
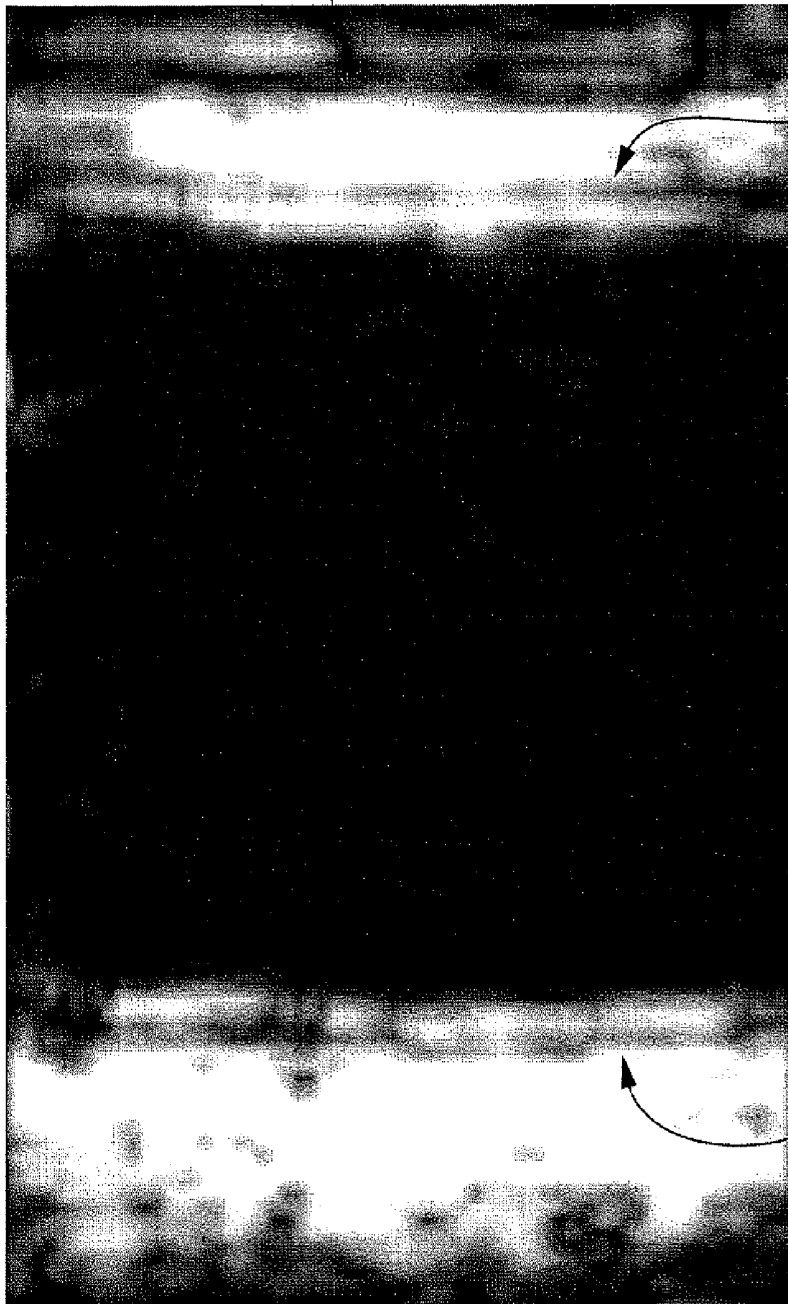


FIG. 6

ON THE SIDE OF PROBE



G3



LOW ECHO BAND
BLIMC (ON FRONT
WALL SIDE) OF
INTIMA-MEDIA
COMPLEX IMC

FRONT WALL
PORTION OF
INTIMA-MEDIA
COMPLEX IMC

BLOOD VESSEL LUMEN

BACK WALL
PORTION OF
INTIMA-MEDIA
COMPLEX IMC

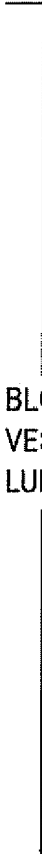
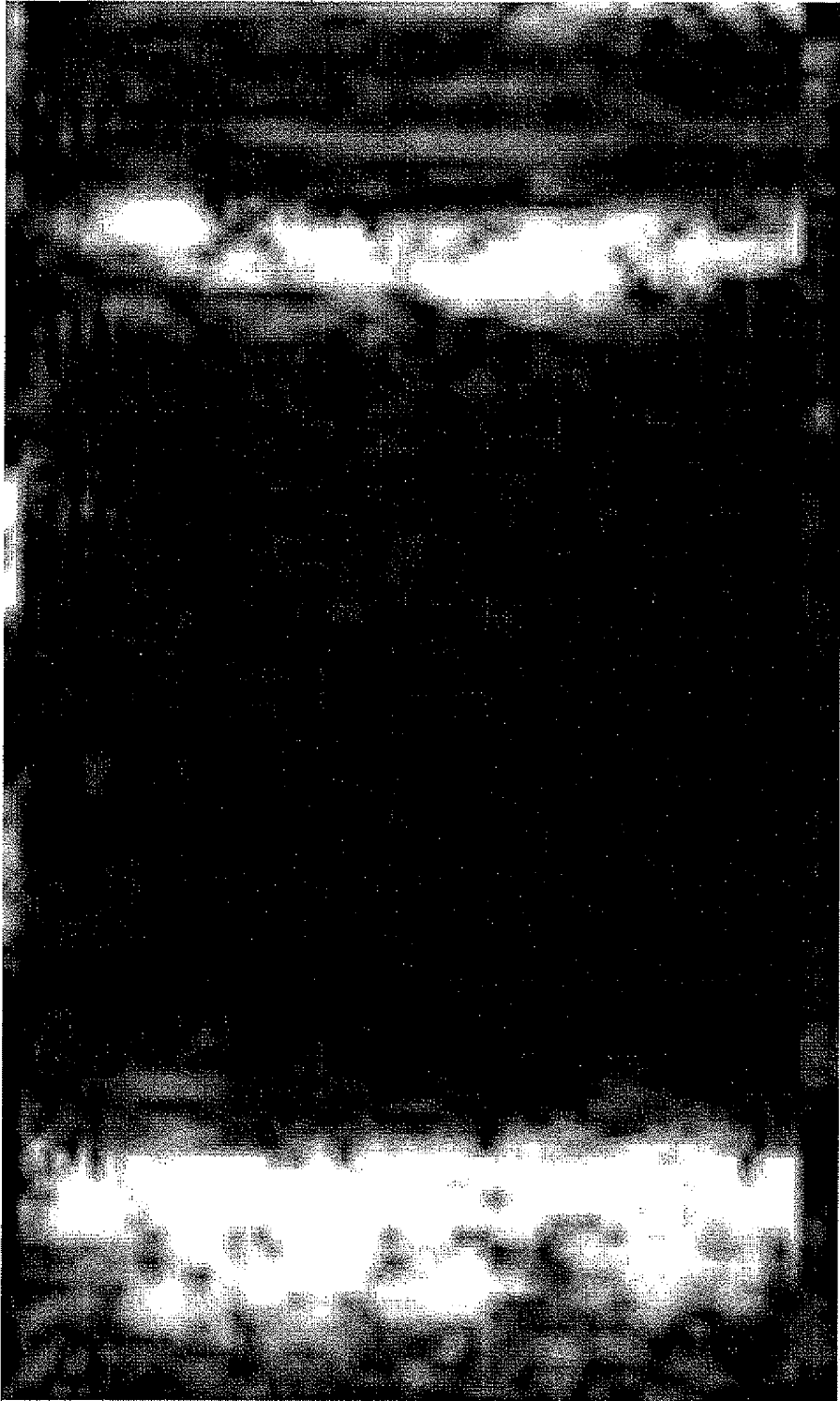
LOW ECHO BAND
BLIMC (ON BACK
WALL SIDE) OF
INTIMA-MEDIA
COMPLEX IMC

FIG. 7

ON THE SIDE OF PROBE



G3



BLOOD
VESSEL
LUMEN

28

FIG. 8

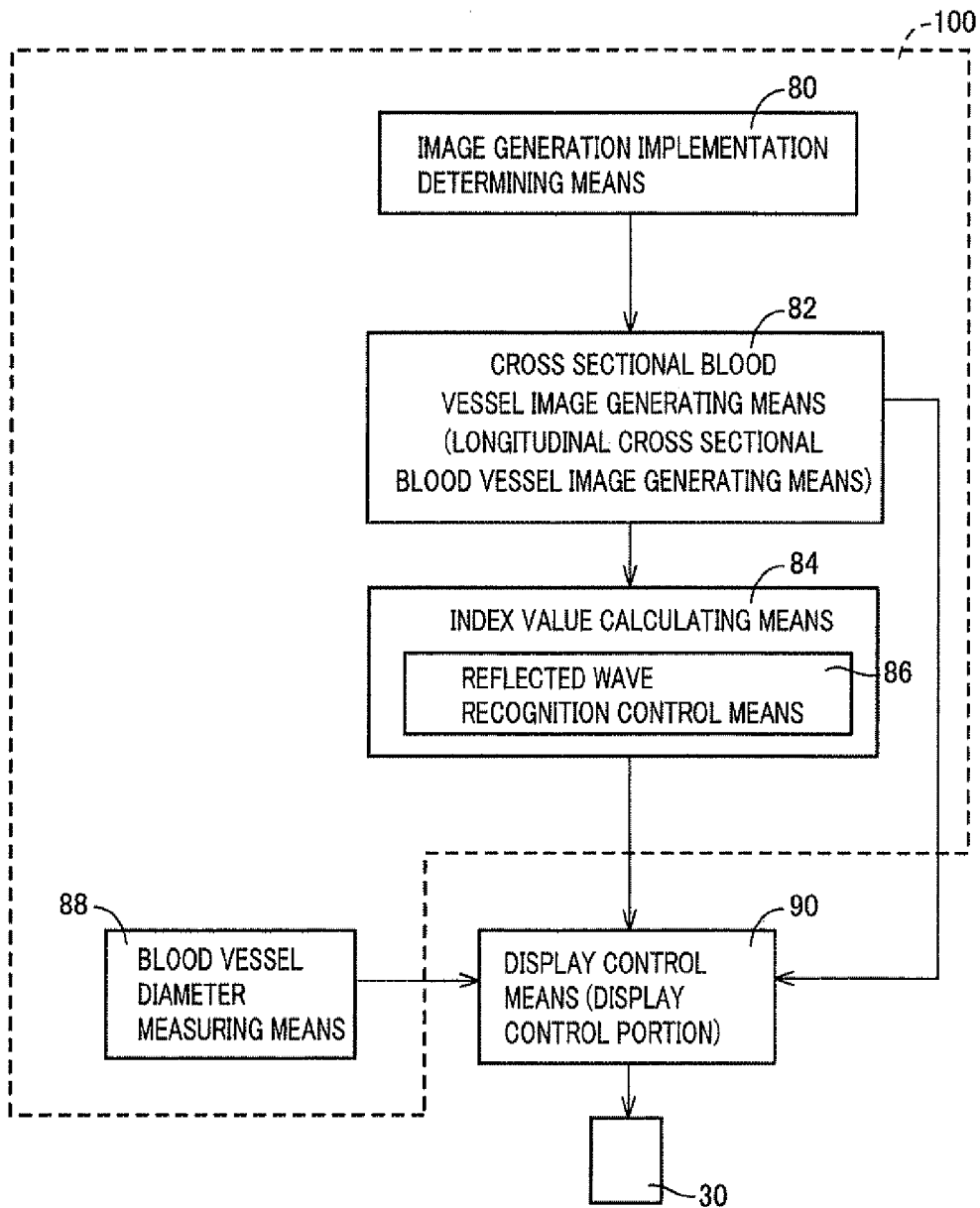
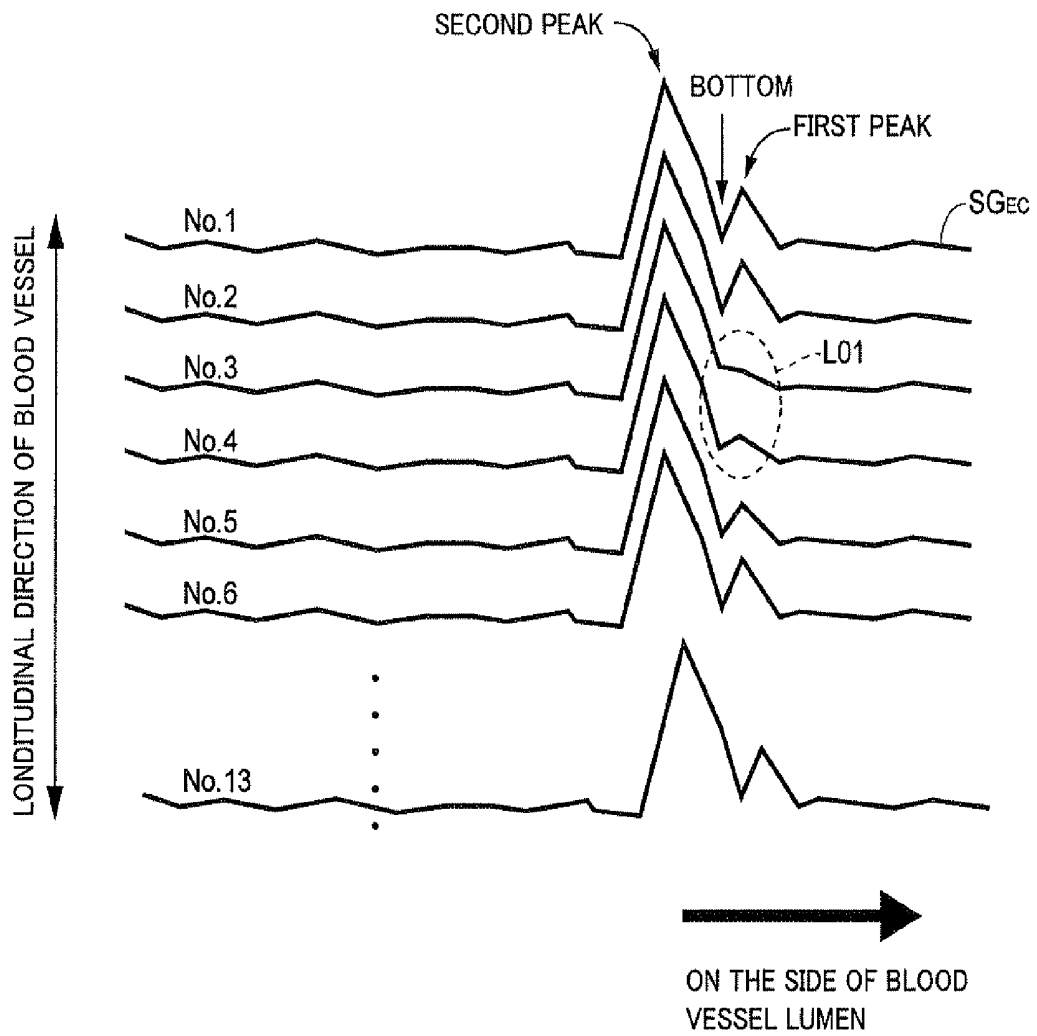


FIG. 9



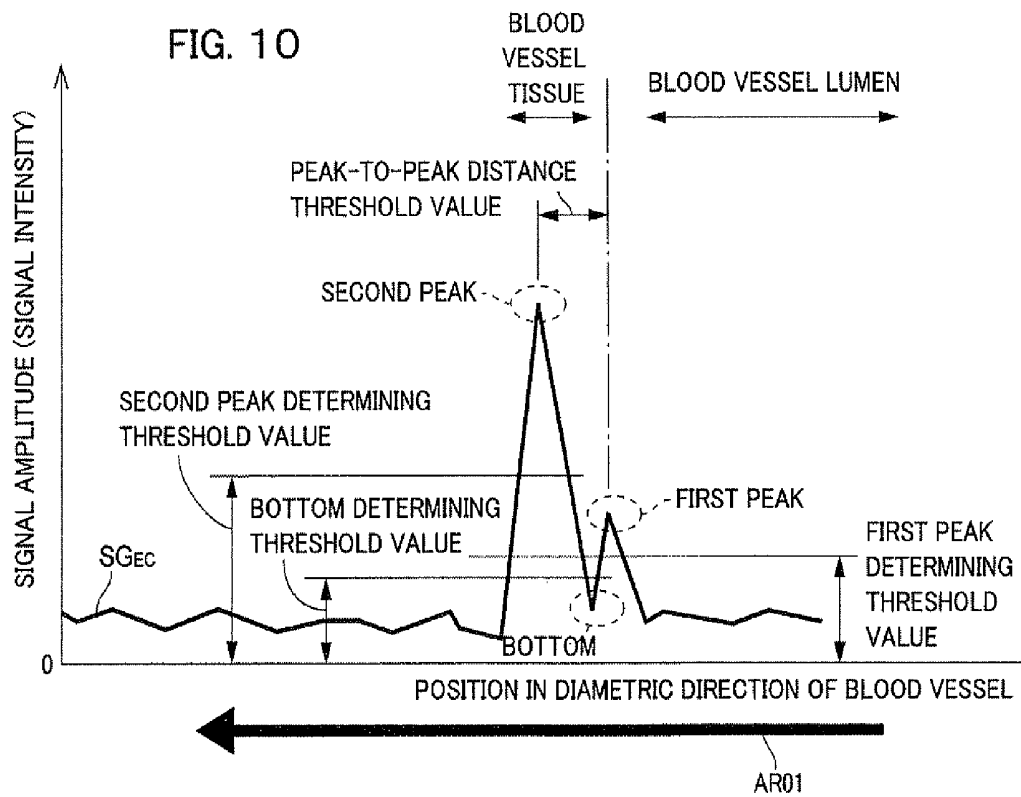


FIG. 11

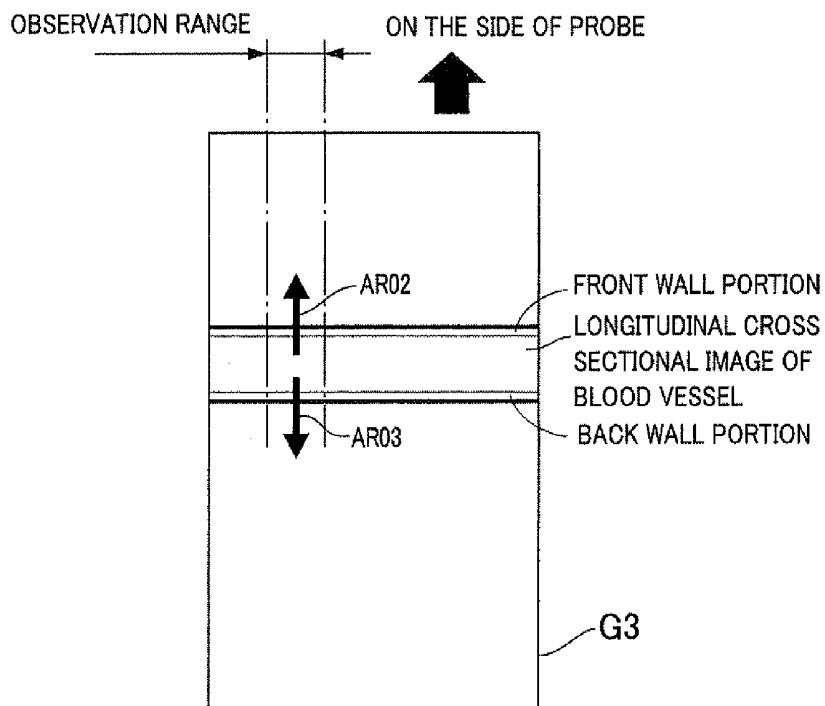
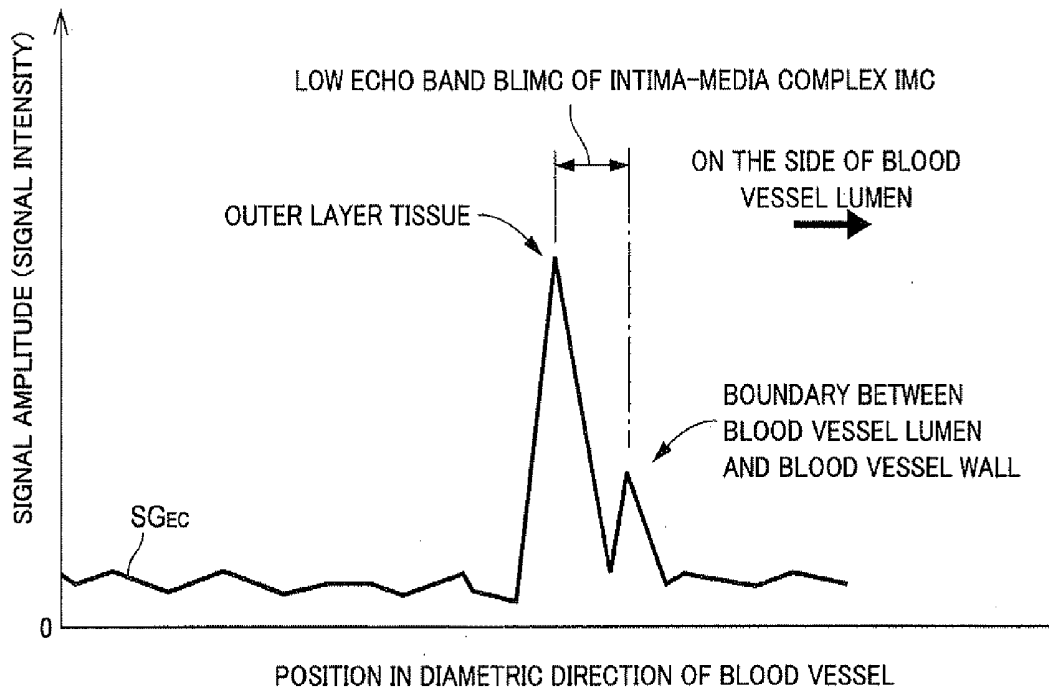


FIG. 12



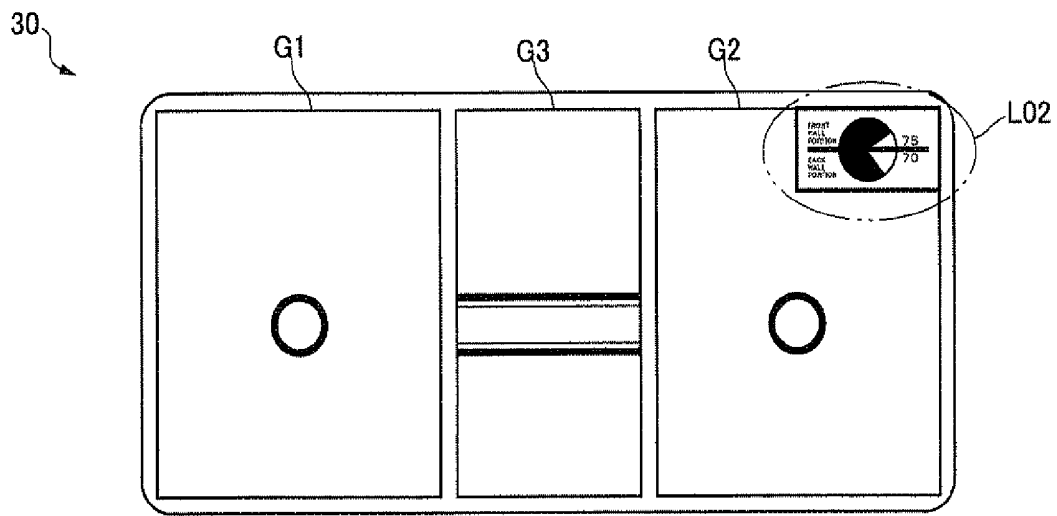


FIG. 13

FIG. 14

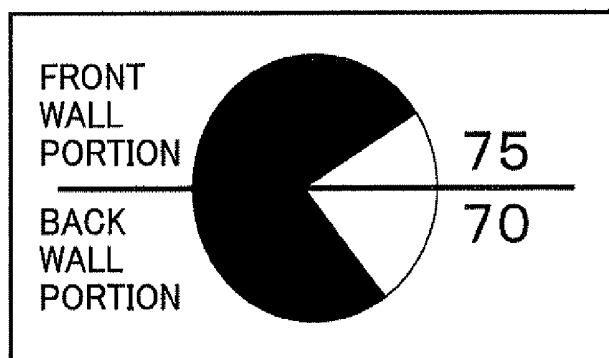


FIG. 15

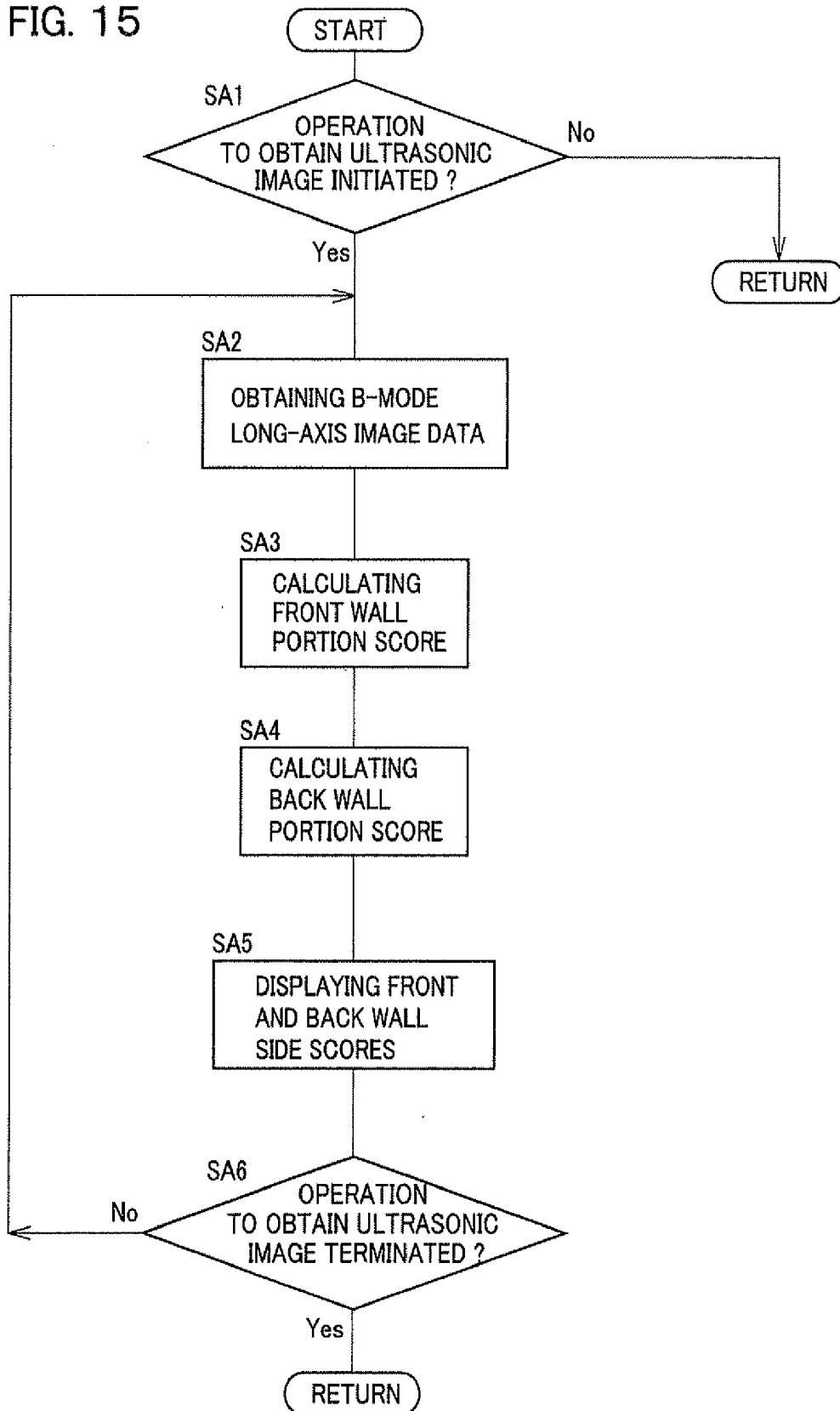
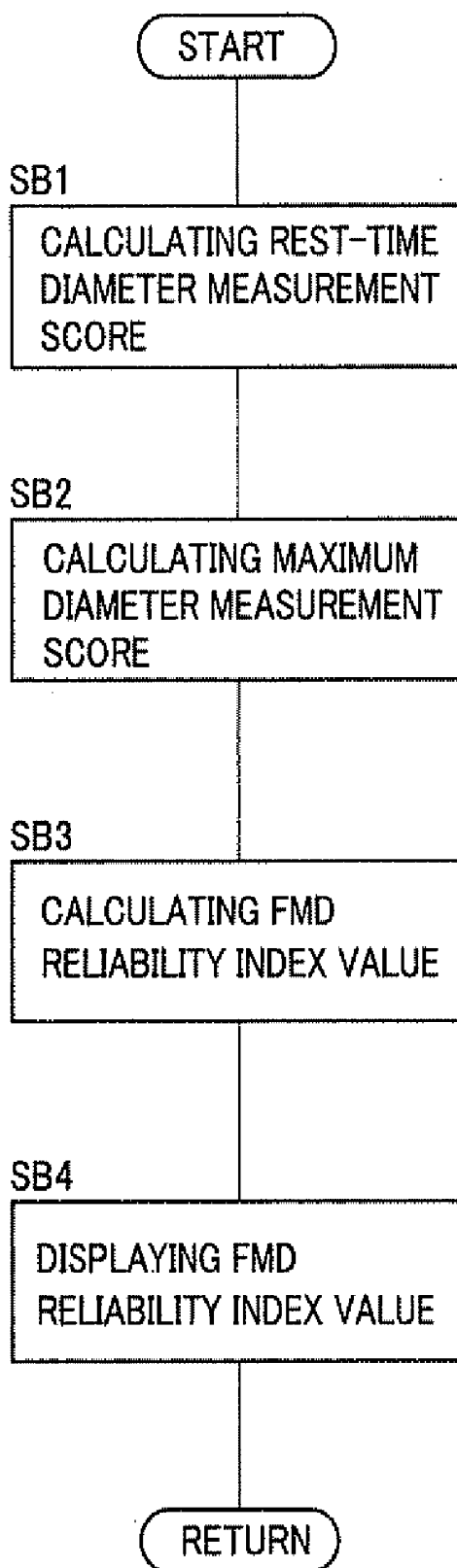
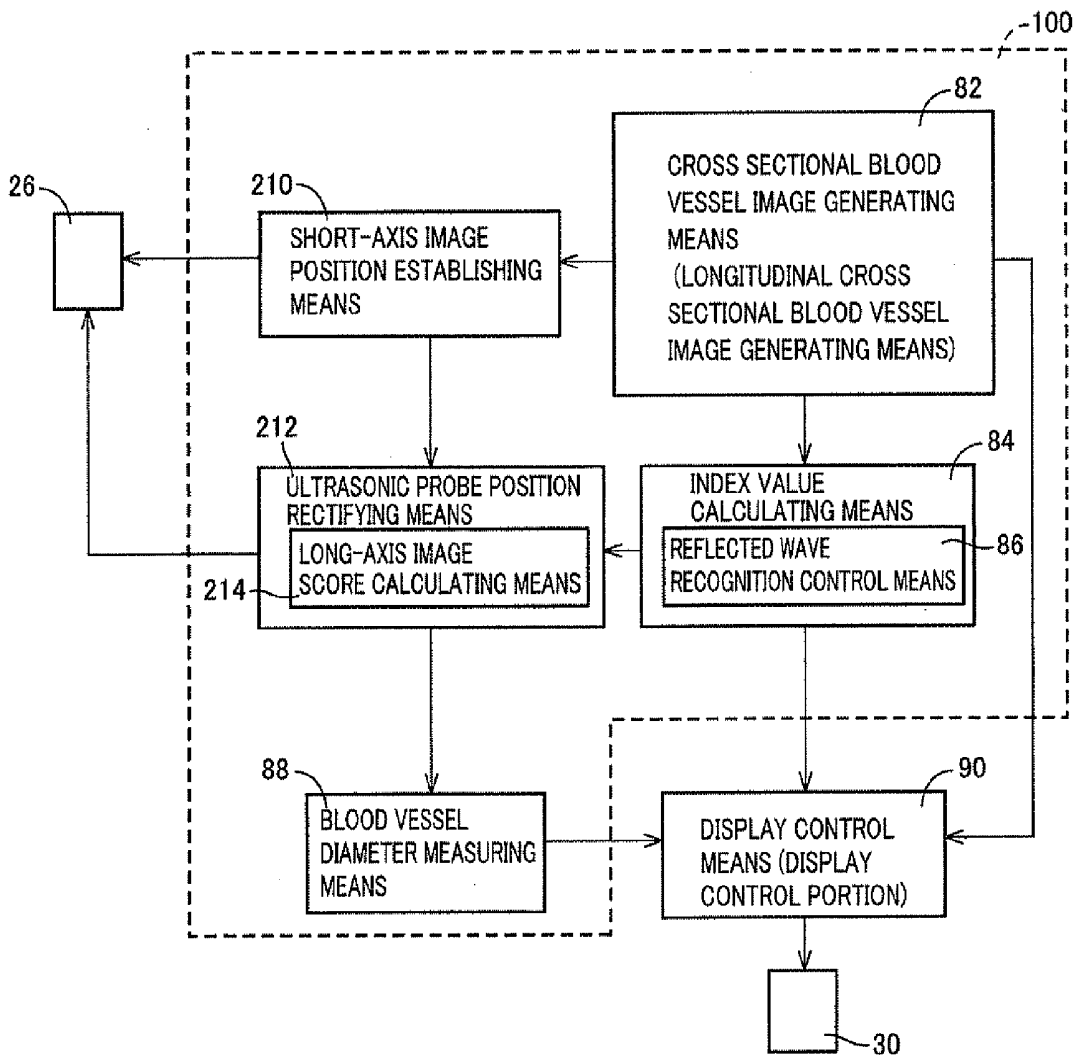


FIG. 16



28

FIG. 17



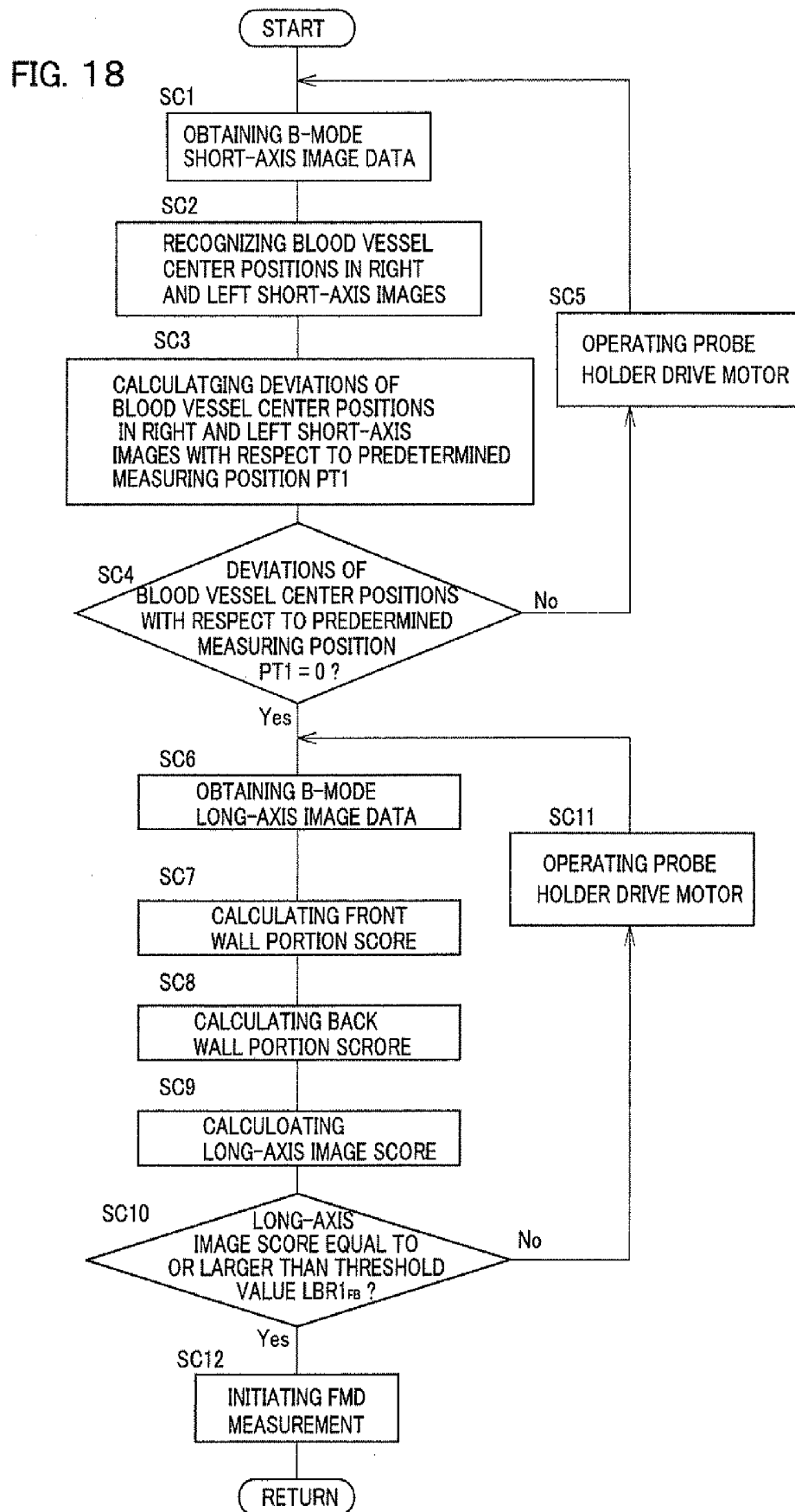
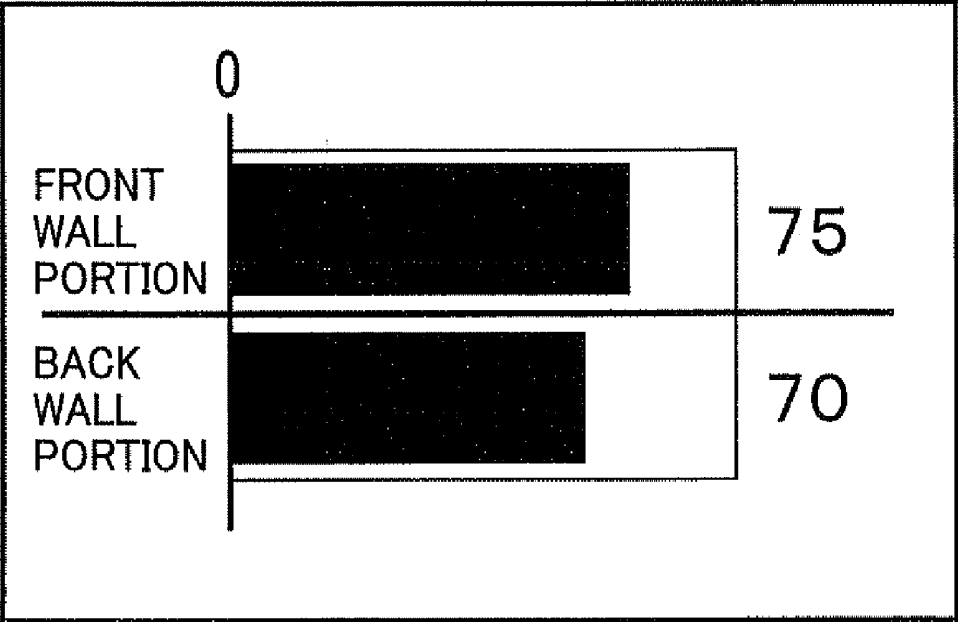


FIG. 19



ULTRASONIC BLOOD VESSEL INSPECTING APPARATUS

TECHNICAL FIELD

[0001] The present invention relates to techniques for generating a cross sectional image of a blood vessel by using an ultrasonic probe.

BACKGROUND ART

[0002] An ultrasonic detector array having a plurality of ultrasonic oscillators which are linearly arranged is used to measure a diameter of a blood vessel (such as an arterial vessel) located below a skin of a live body. Patent Document 1 discloses an example of an ultrasonic blood vessel inspecting apparatus configured to measure a lumen diameter and a thickness of an intima-media complex of the above-described blood vessel, by using an ultrasonic probe of an H-type which consists of mutually parallel first and second ultrasonic detector arrays and a third ultrasonic detector array connecting intermediate portions of the first and second ultrasonic detector arrays, and which is positioned such that the third ultrasonic detector array is parallel to the blood vessel and aligned with a centerline of the blood vessel. The ultrasonic blood vessel inspecting apparatus disclosed in this Patent Document 1 is provided with a multi-axes drive device which is operated to position the above-described ultrasonic probe on the basis of a first short-axis ultrasonic image obtained by the above-described first ultrasonic detector array and a second short-axis ultrasonic image obtained by the above-described second ultrasonic detector array, such that a distance between the above-described first ultrasonic detector array and the centerline of the above-described blood vessel and a distance between the above-described second ultrasonic detector array and the centerline of the blood vessel are equal to each other. Further, the above-described multi-axes drive device is operated to position the above-described ultrasonic probe such that an image of the above-described blood vessel is positioned in a widthwise central portion of each of the above-described first and second short-axis ultrasonic images.

PRIOR ART DOCUMENT

Patent Document

[0003] Patent Document 1: JP-2009-089911 A

SUMMARY OF THE INVENTION

Object Achieved By the Invention

[0004] Actually, however, the blood vessel right below the above-described third ultrasonic detector array may be curved, so that mere automatic positioning of the ultrasonic probe in the ultrasonic blood vessel inspecting apparatus of the above-identified Patent Document 1 does not necessarily enable the above-described third ultrasonic detector array to obtain a long-axis ultrasonic image which is clear enough to permit measurement of the diameter of the blood vessel. Therefore, a fine positional adjustment of the ultrasonic probe is made by a manual operation by the operator after the automatic positioning of the ultrasonic probe, for example, to obtain the long-axis ultrasonic image which is clear enough to permit the measurement of the blood vessel diameter. This manual positioning (fine positional adjustment) of the ultra-

sonic probe by the operator requires a high manipulation skill, resulting in a problem of reduced manual positioning efficiency.

[0005] The present invention was, made in view of the background art described above. It is accordingly an object of this invention to provide an ultrasonic blood vessel inspecting apparatus which is capable of obtaining a clear ultrasonic image of a blood vessel with high efficiency, even where the operator's manipulation skill is low.

Means for Achieving the Object

[0006] The object indicated above is achieved according to the principle of this invention, which provides an ultrasonic blood vessel inspecting apparatus (a) provided with longitudinal cross sectional blood vessel image generating means for generating a longitudinal cross sectional image of a blood vessel located below a skin of a live body, on the basis of reflected wave signals of an ultrasonic wave by using an ultrasonic probe placed on the skin of the above-described live body, (b) characterized by comprising index value calculating means for calculating an index value indicative of a degree of clarity of an image which represents an intima-media complex of the above-described blood vessel and which exists within the above-described longitudinal cross sectional image of the blood vessel.

Advantages of the Invention

[0007] According to the present invention described above, the operator of the ultrasonic blood vessel inspecting apparatus is not required to determine the degree of clarity of the image directly from the longitudinal cross sectional image of the above-described blood vessel (longitudinal cross sectional blood vessel image), but can objectively determine the degree of clarity of the image from the index value indicative of the degree of clarity of the image representing the intima-media complex of the above-described blood vessel, so that the operator can easily make a fine positional adjustment of the ultrasonic probe so as to improve the index values, whereby the longitudinal cross sectional blood vessel image can be efficiently obtained with a high degree of clarity, even where the operator's manipulation skill is low.

[0008] Preferably, the above-described index value calculating means calculates a front wall portion image clarity index value indicative of the degree of clarity of an image of a front wall portion of the above-described intima-media complex within the above-described longitudinal cross sectional image of the blood vessel, and a back wall portion image clarity index value indicative of the degree of clarity of an image of a back wall portion of the above-described intima-media complex within the above-described longitudinal cross sectional image of the blood vessel, the above-described front wall portion being one of opposite wall portions of the blood vessel on the side of the above-described ultrasonic probe while the above-described back wall portion being the other of the opposite wall portions which is remote from the above-described ultrasonic probe. In this case, the above-described ultrasonic probe can be positioned to increase the degree of clarity of the images of the above-described front wall portion and back wall portion within the longitudinal cross sectional image of the blood vessel.

[0009] Also preferably, (a) the ultrasonic blood vessel inspecting apparatus further comprises reflected wave recognition control means configured to implement a reflected

wave recognition control for each of a plurality of the above-described reflected wave signals received by the above-described ultrasonic probe at mutually different positions of reception in a longitudinal direction of the above-described blood vessel, and for each of the above-described front wall portion and the above-described back wall portion, to detect according to a relationship between a magnitude of each reflected wave signal and a position in a diametric direction of the above-described blood vessel: a first peak of each reflected wave signal at which the magnitude is larger than a predetermined first peak determining threshold value; a bottom of each reflected wave signal which is generated at a position of the above-described blood vessel located outwardly of the position of generation of the above-described first peak in the diametric direction of the above-described blood vessel and at which the magnitude is smaller than a predetermined bottom determining threshold value; and a second peak of each reflected wave signal which is generated at a position of the above-described blood vessel located outwardly of the position of generation of the above-described first peak in the diametric direction of the above-described blood vessel but located within a spacing distance from the position of generation of the first peak less than a predetermined peak-to-peak distance threshold value, with the above-described bottom being located therebetween, and at which the magnitude is larger than a predetermined second peak determining threshold value, (b) and the above-described index value calculating means calculates the above-described front wall portion image clarity index value on the basis of a number of the reflected wave signals all of the above-described first peak, the above-described bottom and the above-described second peak of which have been detected by the above-described reflected wave recognition control implemented by the above-described reflected wave recognition control means for the above-described front wall portion, and the above-described back wall portion image clarity index value on the basis of a number of the reflected wave signals all of the above-described first peak, the above-described bottom and the above-described second peak of which have been detected by the above-described reflected wave recognition control implemented by the above-described reflected wave recognition control means for the above-described back wall portion. In this case, the above-described front wall portion image clarity index value and the above-described back wall portion image clarity index value are calculated on the basis of non-fluctuating parameters, so that the above-described front wall portion image clarity index values and the above-described back wall portion image clarity index values which are calculated upon different blood vessel inspections can be compared with each other.

[0010] Also preferably, the above-described reflected wave recognition control means implements the above-described reflected wave recognition control for those of the above-described reflected wave signals which are received within a predetermined observation range in the longitudinal direction of the above-described blood vessel. In this case, it is possible to reduce a control load in the calculation of the above-described front wall portion image clarity index value and the above-described back wall portion image clarity index value, as compared where the above-described reflected wave recognition control is implemented for all of the plurality of the above-described reflected wave signals received by the above-described ultrasonic probe to generate the above-described longitudinal cross sectional blood vessel image.

[0011] Also preferably, the magnitude of each reflected wave signal is an amplitude of each reflected wave signal, or a brightness value obtained by conversion of the amplitude of each reflected wave signal, which brightness value is used to display the longitudinal cross sectional image of the above-described blood vessel. In this case, the above-described first peak, the above-described bottom and the above-described second peak can be easily detected.

[0012] Also preferably, (a) the above-described ultrasonic probe is provided with a pair of parallel ultrasonic detector arrays consisting of a first short-axis ultrasonic detector array and a second short-axis ultrasonic detector array each of which has a plurality of ultrasonic oscillators arranged linearly in a direction perpendicular to a longitudinal direction of the above-described blood vessel, and a long-axis ultrasonic detector array which is disposed adjacent to an intermediate portion of one or both of the first short-axis ultrasonic detector array and the second short-axis ultrasonic detector array and which has a plurality of ultrasonic oscillators arranged linearly in the longitudinal direction of the above-described blood vessel, the above-described first and second short-axis ultrasonic detector arrays and the above-described long-axis ultrasonic detector array lying in one plane, and (b) the above-described longitudinal cross sectional blood vessel image generating means generates the longitudinal cross sectional image of the above-described blood vessel, on the basis of the reflected wave signals of the above-described ultrasonic wave received by the above-described long-axis ultrasonic detector array. In this case, the above-described longitudinal cross sectional blood vessel image can be generated by using the ultrasonic wave probe which is practically available.

[0013] Also preferably, the ultrasonic blood vessel inspecting apparatus further comprises (a) an image display device having a first short-axis image display region for displaying an ultrasonic image obtained by the above-described first short-axis ultrasonic detector array, a second short-axis image display region for displaying an ultrasonic image obtained by the above-described second short-axis ultrasonic detector array, and a long-axis image display region for displaying the longitudinal cross sectional blood vessel image of the above-described blood vessel, (b) a multi-axes drive device configured to position the above-described ultrasonic probe, (c) short-axis image position establishing means for operating the above-described multi-axes drive device to position the above-described ultrasonic probe such that a distance between the above-described first short-axis ultrasonic detector array and a center of the above-described blood vessel is equal to a distance between the above-described second short-axis ultrasonic detector array and the center of the above-described blood vessel, and such that the image of the above-described blood vessel is located at a widthwise central portion of each of the above-described first short-axis image display region and the above-described second short-axis image display region, and (d) ultrasonic probe position rectifying means for operating the above-described multi-axes drive device to position the above-described ultrasonic probe after completion of positioning of the above-described ultrasonic probe under the control of the above-described short-axis image position establishing means, such that a value calculated on the basis of the above-described front wall portion image clarity index value and the above-described back wall portion image clarity index value is held within a predetermined target range. In this case, an operator's load of

manipulation can be reduced. Further, the longitudinal cross sectional blood vessel image can be made clearer even where the operator's manipulation skill is considerably low.

[0014] Also preferably, the ultrasonic blood vessel inspecting apparatus further comprises (a) blood vessel diameter measuring means for measuring in advance a rest-time diameter of the above-described blood vessel before releasing of the above-described blood vessel from blood flow obstruction, and a maximum diameter of the above-described blood vessel after the releasing of the above-described blood vessel from the blood flow obstruction, and calculating a maximum value of a diameter change ratio of the above-described blood vessel after the releasing of the above-described blood vessel from the blood flow obstruction, with respect to the rest-time diameter of the above-described blood vessel, and (b) and the above-described index value calculating means calculates an index value indicative of a degree of reliability of the maximum value of the diameter change ratio of the above-described blood vessel calculated by the above-described blood vessel diameter measuring means after the releasing of the above-described blood vessel with respect to the rest-time diameter of the above-described blood vessel, on the basis of the above-described front wall portion image clarity index value and the above-described back wall portion image clarity index value upon measurement of the above-described rest-time diameter, and the above-described front wall portion image clarity index value and the above-described back wall portion image clarity index value upon measurement of the above-described maximum diameter. Where a plurality of maximum values of the diameter change ratio after the blood vessel releasing from the blood flow obstruction with respect to the rest-time diameter of the above-described blood vessel are measured and compared with each other, the above-described index value indicative of the degree of reliability of each maximum value can be used to eliminate those of the plurality of maximum values the accuracy of measurement of which is low, so that the reliability of a result of FMD evaluation, for instance, can be further improved.

[0015] Also preferably, the above-described index value calculating means commands an image display device to display the above-described front wall portion image clarity index value and the above-described back wall portion image clarity index value, as respective images which are continuously variable according to the above-described index values and which are comparable with each other. In this case, the operator can intuitively perceive the degrees of clarity of the images of the above-described front wall portion and the above-described back wall portion, and more efficiently improve the clarity of the images, than where the degrees of clarity of the images are indicated by numerical values.

BRIEF DESCRIPTION OF THE DRAWINGS

[0016] FIG. 1 is a view showing an overall arrangement of an ultrasonic blood vessel inspecting apparatus according to one embodiment of this invention;

[0017] FIG. 2 is a view for explaining x, y and z axes of a rectangular coordinate system for indicating an attitude of an ultrasonic probe used by the ultrasonic blood vessel inspecting apparatus of FIG. 1, with respect to the blood vessel;

[0018] FIG. 3 is an enlarged view for explaining a multi-layered structure of a blood vessel which is a subject irradiated with an ultrasonic wave generated by the ultrasonic probe of FIG. 2;

[0019] FIG. 4 is a view indicating a relative position between the ultrasonic probe positioned at a predetermined position and the blood vessel upon generation of an ultrasonic image of the blood vessel, and a monitoring image display device which displays the ultrasonic image of the blood vessel;

[0020] FIG. 5 is a time chart indicating an example of a change of a lumen diameter of the blood vessel after releasing of the blood vessel from blood flow obstruction, which is measured with the ultrasonic wave generated from the ultrasonic probe of FIG. 2;

[0021] FIG. 6 is a view indicating an example of a longitudinal cross sectional image of the blood vessel displayed in a long-axis image display region of the monitoring display device of FIG. 1, where the clarity of an intima-media complex of the blood vessel wall is relatively high;

[0022] FIG. 7 is a view indicating another example of the longitudinal cross sectional image of the blood vessel displayed in the long-axis image display region of the monitoring display device of FIG. 1, which is different from that of FIG. 6, where the clarity of the intima-media complex of the blood vessel wall is relatively low;

[0023] FIG. 8 is a functional block diagram for explaining major control functions of an electronic control apparatus included in the ultrasonic blood vessel inspecting apparatus of FIG. 1;

[0024] FIG. 9 is a view illustrating a plurality of reflected wave signals received by a long-axis ultrasonic detector array of FIG. 2 at respective different positions in the longitudinal direction of the blood vessel;

[0025] FIG. 10 is a view indicating one of the plurality of reflected wave signals indicated in FIG. 9, in a two-dimensional coordinate system wherein an amplitude of the signal is taken along a vertical axis while the position of the blood vessel in its diametric direction is taken along a horizontal axis;

[0026] FIG. 11 is a view schematically illustrating the longitudinal cross sectional image of the blood vessel displayed in the long-axis image display region of the monitoring image display device of FIG. 1, for explaining a relationship of the longitudinal cross sectional image of the blood vessel with the view of FIG. 10;

[0027] FIG. 12 is a view indicating the same reflected wave signal as indicated in FIG. 10, for explaining a tissue of the blood vessel as represented by this reflected wave signal;

[0028] FIG. 13 is a view illustrating a longitudinal cross sectional image, a transverse cross sectional image of the blood vessel, a front wall portion image clarity index value and a back wall portion image clarity index value, which are displayed on the monitoring image display device of FIG. 1;

[0029] FIG. 14 is an enlarged view of a portion of the monitoring image display device in which the front wall portion image clarity index value and the back wall portion image clarity index value are indicated;

[0030] FIG. 15 is a flow chart illustrating a major control operation of the electronic control device of FIG. 8, namely, a control operation performed according to the first embodiment to generate the longitudinal cross sectional image of the blood vessel and to calculate the index values indicative of the clarity of the image of the intima-media complex of the blood vessel;

[0031] FIG. 16 is a flow chart illustrating a major control function of the electronic control device of FIG. 8 which is

different from that of FIG. 15, namely, a control operation to calculate index values indicative of the accuracy of measurements for FMD evaluation;

[0032] FIG. 17 is a functional block diagram corresponding to that of FIG. 8, for explaining major control functions of an electronic control device included in the ultrasonic blood vessel inspecting apparatus of FIG. 1 according to a second embodiment of this invention;

[0033] FIG. 18 is a flow chart corresponding to that of FIG. 15, illustrating a major control operation of the electronic control device of FIG. 17, namely, a control operation to automatically locate the ultrasonic probe at an FMD measurement position according to the second embodiment; and

[0034] FIG. 19 is a view corresponding to that of FIG. 14, indicating a front wall portion image clarity index value and a back wall portion image clarity index value which are displayed on the monitoring image display device in a display pattern different from that of FIG. 14.

MODE FOR CARRYING OUT THE INVENTION

[0035] Embodiments of the present invention will be described in detail by reference to the drawings.

Embodiment 1

[0036] FIG. 1 is the view showing an overall arrangement of an ultrasonic blood vessel inspecting apparatus 22 (hereinafter referred to as “blood vessel inspecting apparatus 22”) constructed to perform non-invasion ultrasonic diagnosis of a blood vessel 20 such as an arterial vessel immediately below a skin 18 (more strictly, an outer epidermis) of a brachium 16 of a live body 14, through the skin 18, using a probe unit 12 held by a sensor holder 10.

[0037] The probe unit 12, which functions as a sensor for detecting vital body information relating to the blood vessel 20, that is, blood vessel parameters, is provided with an H-type ultrasonic probe 24, and a multi-axes drive device (positioning device) 26 for linearly positioning the ultrasonic probe 24 in x, y and z directions and angularly positioning the ultrasonic probe 24 about x and z axes. The ultrasonic probe 24 has a pair of mutually parallel ultrasonic detector arrays consisting of a first short-axis ultrasonic detector array 24a and a second short-axis ultrasonic detector array 24b, and a long-axis ultrasonic detector array 24c which connects the first and second short-axis ultrasonic arrays 24a and 24b at longitudinally intermediate portions thereof. The ultrasonic detector arrays 24a, 24b and 24c lie on one plane, namely, on a flat detection plane 27. Each of the first short-axis ultrasonic detector array 24a, second short-axis ultrasonic detector array 24b, and long-axis ultrasonic detector array 24c is an elongate member having a multiplicity of ultrasonic oscillators (vibrators) a_1 - a_n , which are formed of a piezoelectric ceramic material and which are arranged linearly.

[0038] FIG. 2 is the view for explaining the x, y and z axes of a rectangular coordinate system used in the present embodiment. The x axis is parallel to the longitudinal direction of the first short-axis ultrasonic detector array 24a, and located right below the first short-axis ultrasonic detector array 24a, and passes a vertical position of the blood vessel 20 or a point vertically close to that vertical position. The y axis is parallel to the longitudinal direction of the long-axis ultrasonic detector array 24c, and is perpendicular to the x axis, while the z axis passes a point of intersection between the longitudinal direction of the first short-axis ultrasonic detec-

tor array 24a and the longitudinal direction of the long-axis ultrasonic detector array 24c, and is perpendicular to the above-described x and y axes. The ultrasonic probe 24 is translated along the x axis and rotated about the x and z axes by the multi-axes drive device 26.

[0039] As shown in FIG. 3, the blood vessel 20 which is an arterial vessel of the brachium, for instance, has a three-layered structure consisting of an inner layer L_1 , an intermediate layer L_2 and an outer layer L_3 . Since the reflection of an ultrasonic wave takes place in boundary portions having different values of acoustic impedance, a boundary surface between the blood in the lumen of the blood vessel and the inner layer L_1 , and a boundary surface between the intermediate layer L_2 and the outer layer L_3 are displayed as white regions, and the tissue is displayed by white and black spots.

[0040] Referring back to FIG. 1, the blood vessel inspecting apparatus 22 is provided with an electronic control device 28, a monitoring image display device (image display device) 30, an ultrasonic wave drive control circuit 32, and a 3-axes drive motor control circuit 34. The electronic control device 28 is constituted by a so-called microcomputer having a CPU operable to process input signals according to programs preliminarily stored in a ROM, while utilizing a temporary data storage function of a RAM. The above-described electronic control device 28 is configured to command the ultrasonic wave drive control circuit 32 to apply drive signals to the first short-axis ultrasonic detector array 24a, second short-axis ultrasonic detector array 24b and long-axis ultrasonic detector array 24c of the ultrasonic probe 24 of the probe unit 12, for successively irradiating ultrasonic waves in the form of a beam in a beam forming fashion well known in the art. The irradiated ultrasonic waves are reflected as reflected ultrasonic signals, which are detected by the first and second short-axis ultrasonic detector arrays 24a, 24b and long-axis ultrasonic detector array 24c. The reflected ultrasonic signals are processed to generate ultrasonic images of a tissue under the skin 18, and the ultrasonic images are displayed on the monitoring image display device 30.

[0041] As indicated at (a) in FIG. 4, the monitoring image display device 30 has a first short-axis image display region G1 for displaying the ultrasonic image obtained by the first short-axis ultrasonic detector array 24a, a second short-axis image display region G2 for displaying the ultrasonic image obtained by the second short-axis ultrasonic detector array 24b, and a long-axis image display region G3 for displaying the ultrasonic image (longitudinal cross sectional blood vessel image) obtained by the long-axis ultrasonic detector array 24c. These short-axis and long-axis image display regions G1, G2 and G3 have a common vertical axis along which a depth dimension from the skin 18 is indicated. “ImA” and “ImB” indicated at (a) in FIG. 4 represent transverse cross sectional images of the blood vessel 20.

[0042] The monitoring image display device 30 is further configured to chronologically display a change ratio of the diameter of the inner layer, that is, a dilatation ratio R of the lumen diameter, for the FMD (Flow Mediated vasoDilatation) evaluation.

[0043] Upon the above-described FMD evaluation and generation of the ultrasonic images of the blood vessel 20, the ultrasonic probe 24 is located at a predetermined measuring position PT1 with respect to the blood vessel 20, by the multi-axes drive device 26 which is operated according to the drive signals received from the 3-axes drive motor control circuit 34 under the control of the electronic control device

28. At the predetermined measuring position PT1, the first short-axis ultrasonic detector array 24a and the second short-axis ultrasonic detector array 24b are perpendicular to the blood vessel 20, while the long-axis ultrasonic detector array 24c is parallel to the blood vessel 20. Explained by reference to (a) and (b) in FIG. 4, the predetermined measuring position PT1 is the position at which $a=b$, $c=d$, and $e=f$. Namely, at this measuring position PT1, a distance between the above-described first short-axis ultrasonic detector array 24a and a center of the blood vessel 20 is equal to a distance between the above-described second short-axis ultrasonic detector array 24b and the center of the blood vessel 20, and the images of the blood vessel 20 are displayed in widthwise central positions in the first and second short-axis image display regions G1 and G2.

[0044] The sensor holder 10 is constructed to hold the probe unit 12 so as to have a predetermined attitude at the predetermined (i.e. desired) position PT1 in a three-dimensional space, such that the probe unit 12 is held in contact with the skin 18 of the brachium 16 of the live body 14, with a low pressure so as not to cause deformation of the blood vessel 20 immediately below the skin 18. Between the contact surface of the ultrasonic probe 24 of the probe unit 12 and the skin 18, there is usually interposed a well known coupling agent such as jelly, olive oil and glycerin, or a resin bag charged with water, to reduce attenuation of the ultrasonic wave, and reflection and scattering of the ultrasonic wave at the boundary surfaces, for thereby obtaining clear ultrasonic images.

[0045] The above-described sensor holder 10 is provided with a magnet stand 36, unit fixture 38, connecting members 44, 45, and a universal arm 40. The magnet stand 36 is fixed with a magnetic attraction force, for example, to a desk or a pedestal, and the above-described probe unit 12 is fixed to the unit fixture 38. The connecting members 44, 45 are fixed at one end thereof to the unit fixture 38 and the magnet stand 36, respectively, and have spherical distal end portions 42. The universal arm 40 connects the magnet stand 36 and the unit fixture 38 to each other via the connecting members 44, 45 and supports the magnet stand 36 and unit fixture 38, such that the magnet stand 36 and the unit fixture 38 are movable relative to each other. The universal arm 40 has two links 46, 47 pivotably connected to each other, universal joint portions 50, 51 having respective engaging holes 48, and a pivotal joint portion 54. The engaging hole 48 is formed in one end portion of each of the two links 46, 47, and the above-described spherical distal end portion 42 is universally fitted in the engaging hole 48, with a predetermined force of resistance to universal motions of the links 46, 47 relative to the spherical distal end portion 42. The two links 46, 47 are pivotably connected to each other at the other end portions by the pivotal joint portion 54, which has a fixing knob 52 provided with an externally threaded portion screwed in tapped holes formed through the above-indicated other end portions of the links 46, 47, so that pivotal motions of the two links 46, 47 are prevented when the fixing knob 52 is tightened.

[0046] The multi-axes drive device 26 consists of an x-axis rotating (yawing) mechanism fixed to the unit fixture 38 and having an x-axis rotating actuator to rotate the ultrasonic probe 24 about the x axis, an x-axis translating mechanism having an x-axis rotating actuator to translate the ultrasonic probe 24 along the x axis, and a z-axis rotating mechanism having a z-axis rotating actuator to rotate the ultrasonic probe

24 about the z axis. The multi-axes drive device which has the above-described structure controls the position and attitude of the ultrasonic probe 24.

[0047] The ultrasonic wave drive control circuit 32 shown in FIG. 1 is commanded by the electronic control device 28 to drive the multiplicity of linearly arranged ultrasonic oscillators (vibrators) a_1 - a_n of the above-described first short-axis ultrasonic detector array 24a, for example, such that a group of a predetermined number of the ultrasonic oscillators, for example, a group of the 15 ultrasonic oscillators a_1 - a_{15} are concurrently driven at a frequency of about 10 MHz, with a predetermined phase difference, to implement a beam forming operation to successively irradiate ultrasonic wave beams toward the blood vessel 20, such that the ultrasonic wave beams converge in the direction of arrangement of the ultrasonic oscillators. The ultrasonic wave beams are irradiated with the members of the group of the predetermined number of the ultrasonic oscillators being shifted by one oscillator per each beam forming operation, and the thus irradiated ultrasonic wave beams are scanned to detect reflected waves, which are input to the electronic control device 28.

[0048] The electronic control device 28 synthesizes an image on the basis of the above-described reflected waves, that is, a transverse cross sectional image (short-axis image) or a longitudinal cross sectional image (long-axis image) of the blood vessel 20 below the skin 18, and displays the image on the monitoring image display device (image display device) 30. Further, the electronic control device 28 calculates the diameter of the blood vessel 20, or an endothelial skin diameter (blood vessel lumen diameter) d_1 , which is a diameter of an endothelial skin 70, on the basis of the image. In addition, the electronic control device 28 calculates the dilatation ratio (change ratio) $R(\%) = 100 \times (d_1 - d_a) / d_a$ of the blood vessel lumen representative of the FMD (Flow Mediated vasoDilation reaction of the blood vessel) after ischemic reaction congestion, for evaluating the function of the endothelial skin 70 of the blood vessel. " d_a " in the above-indicated equation is the diameter of the blood vessel lumen at rest (base diameter or rest-time diameter).

[0049] FIG. 5 is the time chart indicating an example of a change of the blood vessel lumen diameter d_1 after releasing of the blood vessel from blood flow obstruction (bloodlessness). In the example of FIG. 5, the blood vessel is released from blood flow obstruction, at a point of time t_1 , and the blood vessel lumen diameter d_1 begins to increase at a point of time t_2 , and reaches a maximum value d_{MAX} at a point of time t_3 . Thus, the dilatation ratio R of the blood vessel lumen diameter calculated by the electronic control device 28 is maximized at the point of time t_3 .

[0050] The above-described blood flow obstruction for the FMD evaluation is conducted by a cuff 62 which is wound on the brachium 16, as shown in FIG. 1, and an air pressure of which is controlled by a pressure control valve 60 under the control of a cuff pressure control portion 56 (cuff pressure control means 56) of the electronic control device 28. The pressure control valve 60 controls the pressure of pressurized air delivered from a pneumatic pump 58, so that the air pressure of the cuff 62 is raised to a predetermined blood flow obstruction value higher than the systolic blood pressure of the live body 14. The above-described cuff pressure control portion 56 detects the air pressure of the cuff 62 on the basis of an output signal of a pressure sensor 64 provided to detect the air pressure. In the example of FIG. 5, the air pressure of the cuff 62 is kept at the above-described blood flow obstruct-

tion value under the control of the cuff pressure control portion 56, for a predetermined length of time before a moment of releasing of the blood vessel from the blood flow obstruction, that is, before the point of time t1, and is immediately lowered to the atmospheric pressure value at the point of time t1.

[0051] In the present embodiment wherein the ultrasonic probe 24 is located at the above-described predetermined measuring position PT1 by an operation of the multi-axes drive device 26, a longitudinal cross sectional image of the blood vessel 20 is displayed in the long-axis image displaying region G3, basically with a high degree of clarity of an intima-media complex IMC consisting of the inner layer L_1 and the intermediate layer L_2 , as shown in FIG. 6. In the longitudinal cross sectional image of the blood vessel 20 shown in FIG. 6, a low echo band BL_{IMC} (black lines seen in FIG. 6) of the intima-media complex IMC is clearly displayed continuously in the longitudinal direction of the blood vessel 20, for both of a front wall portion BR_F of the blood vessel 20 in cross section on the side of the ultrasonic probe 24 and a back wall portion BR_B of the blood vessel 20 in cross section on the side remote from the ultrasonic probe 24. Thus, the longitudinal cross sectional image of FIG. 6 is considered to have a high degree of clarity of the image of the intima-media complex IMC. A blood vessel image diagnosis such as FMD evaluation based on this clear image can be made with a sufficiently high degree of accuracy.

[0052] On the other hand, a longitudinal cross sectional image of the blood vessel 20 may not be obtained with a high degree of clarity of the image of the intima-media complex IMC as shown in FIG. 6, in some cases, for instance, where the blood vessel 20 is curved, even when the ultrasonic probe 24 is located at the above-described predetermined measuring position PT1. In the case of FIG. 7, for example, the longitudinal cross sectional image of the blood vessel 20 has a low degree of clarity of the image of the intima-media complex IMC. In the longitudinal cross sectional image of FIG. 7 contrary to that of FIG. 6, a boundary between the lumen and the wall of the blood vessel 20 is discontinuous in the longitudinal direction of the blood vessel 20, for both the front wall portion BR_F and the back wall portion BR_B , and the low echo band BL_{IMC} of the intima-media complex IMC is almost invisible and unclear in the image. Where the longitudinal cross sectional blood vessel image is unclear with respect to the intima-media complex IMC as in the case of FIG. 7, the operator makes a fine positional adjustment of the ultrasonic probe 24, for example, to increase the clarity of the image of the intima-media complex IMC for both of the front wall portion BR_F and the back wall portion BR_B . The blood vessel inspecting apparatus 22 according to the present embodiment has a control function to assist the operator in the fine positional adjustment. A major portion of this control function will be described by reference to FIG. 8.

[0053] FIG. 8 is the functional block diagram for explaining major control functions of the blood vessel inspecting apparatus 22. As shown in FIG. 8, a blood vessel image evaluating portion 100 (shown in FIG. 1) incorporated in the electronic control device 28 is provided with an image generation implementation determining portion in the form of image generation implementation determining means 80, a cross sectional blood vessel image generating portion in the form of cross sectional blood vessel image generating means 82, an index value calculating portion in the form of index

value calculating means 84, and a blood vessel diameter measuring portion in the form of blood vessel diameter measuring means 88.

[0054] The image generation implementation determining means 80 is configured to determine whether the ultrasonic probe 24 is operated to obtain ultrasonic images of the blood vessel 20, or not, namely, determine a moment of initiation and a moment of termination of the operation to obtain the ultrasonic images of the blood vessel 20.

[0055] Where the blood vessel inspecting apparatus 22 is provided with a switch operable to obtain the ultrasonic images of the blood vessel 20, for instance, the image generation implementation determining means 80 determines that the operation to obtain the above-described ultrasonic images is initiated, when the switch is turned on, and determines that the operation to obtain the above-described ultrasonic images is terminated, when the switch is turned off.

[0056] The cross sectional blood vessel image generating means 82 functions as longitudinal cross sectional blood vessel image generating means, and is configured to successively generate the longitudinal cross sectional image of the blood vessel 20 (longitudinal cross sectional blood vessel image) located below the skin of the live body 14, on the basis of a reflected wave signal SG_{EC} of the ultrasonic wave generated from the ultrasonic probe 24 disposed on the skin of the live body. Specifically, the cross sectional blood vessel image generating means 82 successively generates the longitudinal cross sectional blood vessel images on the basis of reflected wave signal SG_{EC} of the ultrasonic wave received by the long-axis ultrasonic detector array 24c successively and repeatedly. Described more specifically, the above-described longitudinal cross sectional image of the blood vessel 20 is an image as displayed in the long-axis image display region G3 indicated in FIG. 6 or 7, and is generated by the cross sectional blood vessel image generating means 82, in a B-mode method as generally known in the art.

[0057] Described in detail, during generating the longitudinal cross sectional blood vessel image, the cross sectional blood vessel image generating means 82 generates the above-described longitudinal cross sectional blood vessel image on the basis of the above-described reflected wave signal SG_{EC} of the ultrasonic wave received by the long-axis ultrasonic detector array 24c. That is, the cross sectional blood vessel image generating means 82 scans and receives the reflected wave signal SG_{EC} of the ultrasonic wave at a predetermined reflected wave reception time interval (line pitch) $PC_{R,v}$ in the longitudinal direction of the long-axis ultrasonic detector array 24c, and generates the above-described longitudinal cross sectional blood vessel image on the basis of the received plurality of reflected wave signals SG_{EC} .

[0058] The cross sectional blood vessel image generating means 82 is further configured to function as transverse cross sectional blood vessel image generating means for successively generating a transverse cross sectional image of the blood vessel 20 (transverse cross sectional blood vessel image) to be displayed in the first short-axis image display region G1, on the basis of the reflected wave signals SG_{EC} of the above-described ultrasonic wave successively and repeatedly received, by the first short-axis ultrasonic detector array 24a, and successively generating a transverse cross sectional image of the blood vessel 20 to be displayed in the second short-axis image display region G2, on the basis of the reflected wave signals SG_{EC} of the above-described ultrasonic wave successively and repeatedly received by the sec-

ond short-axis ultrasonic detector array **24b**. For example, the cross sectional blood vessel image generating means **82** repeatedly generates the above-described longitudinal cross sectional blood vessel image and the above-described transverse cross sectional blood vessel images with a time period T_A or longer which is predetermined to prevent blinking of the images displayed on the monitoring image display device **30**, from a moment at which the image generation implementation determining means **80** determines the initiation of the operation to obtain the above-described ultrasonic images, to a moment at which the image generation implementation determining means **80** determines the termination of the operation.

[0059] The index value calculating means **84** is configured to calculate index values indicative of the clarity of the image of the intima-media complex IMC of the blood vessel **20** existing within the above-described longitudinal cross sectional blood vessel image generated by the cross sectional blood vessel image generating means **82**. For instance, the index value calculating means **84** calculates the index values each time the cross sectional blood vessel image generating means **82** generates the longitudinal cross sectional blood vessel image. Described more specifically, the index value is calculated for each of the front wall portion BR_F and back wall portion BR_B within the above-described longitudinal cross sectional blood vessel image. Namely, the index value calculating means **84** calculates a front wall portion image clarity index value XCR_F indicative of the degree of clarity of the image of the intima-media complex IMC of the front wall portion BR_F existing within the above-described longitudinal cross sectional blood vessel image, and a back wall portion image clarity index value XCR_B indicative of the degree of clarity of the image of the intima-media complex IMC of the back wall portion BR_B existing within the above-described longitudinal cross sectional blood vessel image. To calculate those front wall portion image clarity index value XCR_F and back wall portion image clarity index value XCR_B , the index value calculating means **84** is provided with a reflected wave recognition control portion in the form of reflected wave recognition control means **86**. In this respect, it is noted that the degree of clarity of the image of the above-described intima-media complex IMC means a degree in which the low echo band BL_{IMC} and a high echo band representative of the intima-media complex IMC in the above-described longitudinal cross sectional blood vessel image can be recognized continuously in the longitudinal direction of the blood vessel **20**, since the intima-media complex IMC extends in the longitudinal direction of the blood vessel **20**. It is further confirmed here that the above-described front wall portion image clarity index value XCR_F and the above-described back wall portion image clarity index value XCR_B are collectively considered to be an index value indicative of the degree of clarity of the image representative of the above-described intima-media complex IMC.

[0060] The reflected wave recognition control means **86** is configured to obtain the plurality of reflected wave signals. SG_{EC} received by the blood vessel cross sectional image generating means **82** to generate the above-described longitudinal cross sectional blood vessel image, each time the cross sectional blood vessel image generating means **82** generates the longitudinal cross sectional blood vessel image, for example. The reflected wave recognition control means **86** obtains the reflected wave signal SG_{EC} from the cross sectional blood vessel image generating means **82**, for instance.

The above-described plurality of reflected wave signals SG_{EC} for generating one longitudinal cross sectional blood vessel image are those received by the long-axis ultrasonic detector array **24c** at mutually different positions of reception in the longitudinal direction of the blood vessel. That is, the reflected wave recognition control means **86** obtains the plurality of reflected wave signals SG_{EC} received by the long-axis ultrasonic detector array **24c** at the respective different positions in the longitudinal direction of the blood vessel, as indicated in FIG. 9 by way of example.

[0061] The reflected wave recognition control means **86** implements a reflected wave recognition control, for each of the plurality of reflected wave signals SG_{EC} obtained as described above, and for each of the above-described front wall portion BR_F and back wall portion BR_B , to detect according to a relationship as indicated in FIG. 10 between the amplitude AM_{SG} of the reflected wave signals SG_{EC} and a position PT_R in a diametric direction of the blood vessel **20**: a first peak $PK1$ of each reflected wave signal SG_{EC} at which the amplitude AM_{SG} of the reflected wave signal SG_{EC} is larger than a predetermined first peak determining threshold value $LT1_{PK}$ as indicated in FIG. 10; a bottom BTM of the reflected wave signal SG_{EC} which is generated at a position of the blood vessel **20** located outwardly of the position of generation of the first peak $PK1$ in the diametric direction of the blood vessel **20** and at which the amplitude AM_{SG} is smaller than a predetermined bottom determining threshold value LT_{BTM} , as also indicated in FIG. 10; and a second peak $PK2$ of the reflected wave signal SG_{EC} which is generated at a position of the blood vessel **20** located outwardly of the position of generation of the first peak $PK1$ in the diametric direction of the blood vessel **20** but located within a spacing distance from the position of generation of the first peak $PK1$ not exceeding a predetermined peak-to-peak distance threshold value LT_{SP} , with the bottom BTM being located therebetween, and at which the amplitude AM_{SG} is larger than a predetermined second peak determining threshold value $LT2_{PK}$, as also indicated in FIG. 10. This reflected wave recognition control will be described more specifically by reference to FIG. 10.

[0062] FIG. 10 is the view indicating a portion of one reflected wave signal SG_{EC} , which portion corresponds to the above-described front wall portion BR_F or back wall portion BR_B , in a two-dimensional coordinate system wherein the amplitude AM_{SG} of the reflected wave signal SG_{EC} (signal intensity AM_{SG}) is taken along a vertical axis while a position PT_R of the blood vessel **20** in its diametric direction is taken along a horizontal axis. Where the portion of the reflected wave signal SG_{EC} indicated in FIG. 10 corresponds to the front wall portion BR_F , for example, an arrow-headed line $AR01$ in FIG. 10 corresponds to an arrow-headed line $AR02$ in the longitudinal cross sectional blood vessel image of FIG. 11. Or where the portion of the reflected wave signal SG_{EC} indicated in FIG. 10 corresponds to the back wall portion BR_B , for example, an arrow-headed line $AR01$ in FIG. 10 corresponds to an arrow-headed line $AR03$ in FIG. 11. In the example of FIG. 10, the first peak $PK1$, bottom BTM and second peak $PK2$ of the reflected wave signal SG_{EC} have a triangular waveform of an acute angle respectively. However, any of the first peak $PK1$, bottom BTM and second peak $PK2$ may have a trapezoidal waveform having an almost flat segment, rather than the triangular waveform.

[0063] The reflected wave recognition control means **86** initially recognizes a portion of the reflected wave signal

SG_{EC} which corresponds to the lumen of the blood vessel. For example, the reflected wave recognition control means **86** may recognize this portion from the transverse cross sectional images (short-axis images) of the blood vessel **20**, or may recognize an intermediate position of the relevant portion of the reflected wave signal SG_{EC} representative of each of the front wall portion BR_F and the back wall portion BR_B , as the blood vessel lumen. In the present embodiment, the above-described reflected wave recognition control is implemented with respect to the reflected wave signals SG_{EC} received within a predetermined observation range AOB (indicated in FIG. 11) of the blood vessel **20** in its longitudinal direction, as described below, so that the above-indicated portion corresponding to the blood vessel lumen may be recognized with respect to those of the plurality of reflected wave signals SG_{EC} used to generate the above-described longitudinal cross sectional blood vessel image, which are received within the observation range AOB.

[0064] In the above-described reflected wave recognition control, the reflected wave recognition control means **86** then recognizes the amplitude AM_{SG} of the reflected wave signal SG_{EC} in the diametrically outward direction of the blood vessel from its lumen toward its outer layer as indicated by the arrow-headed line **AR01** in FIG. 10, at one of the front wall portion BR_F and back wall portion BR_B , to detect, as the first peak **PK1**, a maximal point of the signal amplitude AM_{SG} which is larger than the above-described first peak determining threshold value $LT1_{PK}$. Subsequently, the reflected wave recognition control means **86** detects, as the bottom **BTM**, a minimal point of the signal amplitude AM_{SG} which is located outwardly of the position of generation of the first peak **PK1** in the diametric direction of the blood vessel **20** (position along the horizontal axis of the coordinate system of FIG. 10) and at which the amplitude AM_{SG} is smaller than the above-described bottom determining threshold value LT_{BTM} . Then, the reflected wave recognition control means **86** detects, as the second peak **PK2**, a maximal point of the signal amplitude AM_{SG} which is generated at a position of the blood vessel **20** located outwardly of the position of generation of the first peak **PK1** in the diametric direction of the blood vessel **20** but located within a spacing distance from the position of generation of the first peak **PK1** not exceeding the above-described predetermined peak-to-peak distance threshold value LT_{SP} , with the bottom **BTM** being located therebetween, and at which the signal amplitude AM_{SG} is larger than the predetermined second peak determining threshold value $LT2_{PK}$. After the first peak **PK1**, bottom **BTM** and second peak **PK2** have been detected at one of the front wall portion BR_F and back wall portion BR_B , the reflected wave recognition control means **86** repeats the same detection at the other of the front wall portion BR_F and back wall portion BR_B , for the same reflected wave signal SG_{EC} . The reflected wave recognition control means **86** implements the above-described reflected wave recognition control at both of the front wall portion BR_F and back wall portion BR_B , for all of the plurality of reflected wave signals SG_{EC} .

[0065] In the above-described reflected wave recognition control, the amplitude AM_{SG} of the reflected wave signal SG_{EC} is compared with the above-described first peak determining threshold value $LT1_{PK}$, the above-described bottom determining threshold value LT_{BTM} and the above-described second peak determining threshold value $LT2_{PK}$. However, the above-described signal amplitude AM_{SG} compared with the threshold values may be replaced by any other parameter

representative of a magnitude of the reflected wave signal SG_{EC} relating to the above-described longitudinal cross sectional blood vessel image, such as a brightness value obtained by conversion of the above-described signal amplitude AM_{SG} , which brightness value is used to display the longitudinal cross sectional blood vessel image (B-mode long-axis image). The above-described first peak determining threshold value $LT1_{PK}$, the above-described bottom determining threshold value LT_{BTM} and the above-described second peak determining threshold value $LT2_{PK}$ are predetermined by experimentation, to permit visual recognition as respective mutually different ultrasonic image patterns respectively corresponding to the first peak **PK1**, bottom **BTM** and second peak **PK2**. The above-described bottom determining threshold value LT_{BTM} is predetermined to be smaller than the above-described first peak determining threshold value $LT1_{PK}$ and the above-described second peak determining threshold value $LT2_{PK}$. In the example of FIG. 10, the second peak **PK2** is higher than the first peak **PK1**. Since the second peak **PK2** may be lower than the first peak **PK1**, however, the above-described first peak determining threshold value $LT1_{PK}$ and the above-described second peak determining threshold value $LT2_{PK}$ are suitably determined without a specific limitation about sizes of the first and second peak determining threshold values, and may be different from or equal to each other. As indicated in FIG. 12, a portion of the reflected wave signal SG_{EC} which is located between the first peak **PK1** and the second peak **PK2** and which includes the bottom **BTM** is recognized as the above-described low echo band BL_{TMC} of the intima-media complex **IMC**, in the above-described longitudinal cross sectional blood vessel image, so that the above-described peak-to-peak distance threshold value LT_{SP} is predetermined by experimentation on the basis of the thickness of the intima-media complex **IMC** of the live body, for example. Although the reflected wave recognition control means **86** may be configured to implement the above-described reflected wave recognition control for all of the plurality of reflected wave signals SG_{EC} used to generate the above-described longitudinal cross sectional blood vessel image, the reflected wave recognition control means **86** in the present embodiment implements the above-described reflected wave recognition control for only the reflected wave signals SG_{EC} received within the predetermined observation range AOB of the blood vessel **20** in its longitudinal direction, as indicated in FIG. 11, in order to reduce a load of arithmetic operation. This observation range AOB, which corresponds to a portion of the longitudinal dimension of the long-axis ultrasonic detector array **24c**, may be either a constant value or a variable which can be set by the operator, and is predetermined by experimentation so as to permit determination of the degree of clarity of the intima-media complex **IMC** in the above-described longitudinal cross sectional blood vessel image.

[0066] FIG. 10 indicates the example of the reflected wave signal SG_{EC} whose first peak **PK1**, bottom **BTM** and second peak **PK2** are all detected by implementation of the above-described reflected wave recognition control. However, some of the reflected wave signals SG_{EC} may not have any one or all of the first peak **PK1**, bottom **BTM** and second peak **PK2**. In view of this possibility, the reflected wave recognition control means **86** stores in a memory a number QL_{SG} of the reflected wave signals SG_{EC} received within the above-described observation range AOB, all of the first peak **PK1**, bottom **BTM** and second peak **PK2** of which have been detected by

implementation of the above-described reflected wave recognition control, for each of the front wall portion BR_F and the back wall portion BR_B . This number QL_{SG} is referred to as "peak recognized line number QL_{SG} ". In the example of FIG. 9, the number of the reflected wave signals SG_{EC} (number of lines) for which the above-described reflected wave recognition control is implemented is equal to 13 (=observation range AOB/reflected, wave signal reception time interval PC_{RV}). In this case, the reflected wave recognition control means **86** implements the above-described reflected wave recognition control for all of the 13 reflected wave signals SG_{EC} , for each of the front wall portion BR_F and the back wall portion BR_B . Where the first peak PK1 cannot be detected for the No. 3 and No. 4 reflected wave signals SG_{EC} , as indicated by a broken line L01, these two reflected wave signals SG_{EC} are not included in the peak recognized line number QL_{SG} , so that "11" (=13-2) is stored in the memory as the peak recognized line number QL_{SG} .

[0067] After the reflected wave recognition control means **86** implements the above-described reflected wave recognition control for the plurality of reflected wave signals SG_{EC} received within the above-described observation range AOS, the index value calculating means **84** calculates the above-described front wall portion image clarity index value XCR_F , on the basis of the number QL_{SG} (peak recognized line number QL_{SG}) of the reflected wave signals SG_{EC} all of the above-described first peak PK1, bottom BTM and second peak PK2 of which have been detected by the above-described reflected wave recognition control implemented by the reflected wave recognition control means **86** for the front wall portion BR_F . Then, the index value calculating means **84** calculates the above-described back wall portion image clarity index value XCR_B , on the basis of the number QL_{SG} (peak recognized line number QL_{SG}) of the reflected wave signals SG_{EC} all of the above-described first peak PK1, bottom BTM and second peak PK2 of which have been detected by the above-described reflected wave recognition control implemented by the reflected wave recognition control means **86** for the back wall portion BR_B . Described more specifically, the index value calculating means **84** calculates the above-described front wall portion image clarity index value XCR_F ; that is, the front wall portion score XCR_F , according to the following Equation (1), and the above-described back wall portion image clarity index value XCR_B , that is, the back wall portion score XCR_B , according to the following Equation (2). In the following Equations (1) and (2), " XCR_F ", " XCR_B ", " QL_{SG} ", " $QL_{B_{SG}}$ ", " PC_{RV} ", and "AOB" respectively represent: the above-described front wall portion score XCR_F ; the above-described back wall portion score XCR_B ; the peak recognized line number QL_{SG} for the front wall portion BR_F ; the peak recognized line number QL_{SG} for the back wall portion BR_B ; the above-described reflected wave signal reception time interval (line pitch) PC_{RV} ; and the above-described observation range (observation area width) AOB.

$$XCR_F = (QL_{SG} \times PC_{RV}) / AOB \times 100 \quad (1)$$

$$XCR_B = (QL_{B_{SG}} \times PC_{RV}) / AOB \times 100 \quad (2)$$

[0068] Thus, the index value calculating means **84** calculates the above-described front wall portion image clarity index value XCR_F and the above-described back wall portion image clarity index value XCR_B . It will be understood from the above-indicated Equations (1) and (2) that each of the image clarity index values XCR_F and XCR_B is a relative value which changes within a range between 0 and 100. Each time

the index value calculating means **84** calculates the image clarity index values XCR_F and XCR_B , the monitoring image display device **30** displays the front wall portion image clarity index value XCR_F and the back wall portion image clarity index value XCR_B , as indicated by a two-dot chain line L02 in FIG. 13, together with the above-described longitudinal cross sectional blood vessel image and the above-described transverse cross sectional blood vessel images. Described more specifically by reference to FIG. 14 which is the enlarged view of the portion enclosed by the two-dot chain line L02 in FIG. 13, the index value calculating means **84** commands the monitoring image display device **30** to display the front wall portion image clarity index value XCR_F and the back wall portion image clarity index value XCR_B , not only as numerical values, but also as two images or two graphic figures which are continuously variable according to the index values XCR_F , XCR_B and which are comparable with each other. In the example of FIG. 14, the front wall portion image clarity index value XCR_F and back wall portion image clarity index value XCR_B are indicated by respective two graphic figures in the form of a pair of sectors (black areas shown in FIG. 14), being symmetry with respect to a common straight line, center angles of which increase with an increase of the respective index values, so that the surfaces areas of the two sectors accordingly increase. When each of the index values XCR_F , XCR_B is equal to the maximum value of 100, the corresponding sector takes the form of a semicircle. When both of the index values XCR_F , XCR_B are equal to the maximum value, the above-indicated two semicircles cooperate to form a complete circle.

[0069] The blood vessel diameter measuring means **88** is configured to measure the blood vessel lumen diameter d_1 in a non-invasion manner, on the basis of the above-described longitudinal cross sectional blood vessel image. Described more specifically, the blood vessel diameter measuring means **88** measures a blood vessel lumen diameter d_a at rest (rest-time diameter d_r) before releasing of the blood vessel **20** from blood flow obstruction, for measuring the diameter change ratio of the blood vessel **20** (dilatation ration R of the blood vessel lumen diameter d_1) after releasing of the blood vessel **20** from the blood flow obstruction, for implementing the FMD evaluation. The blood vessel diameter measuring means **88** is further configured to measure the blood vessel lumen diameter d_1 from time to time during a predetermined blood vessel diameter measuring time period TIME1 after releasing of the blood vessel **20** from the blood flow obstruction, and to calculate the diameter change ratio R of the blood vessel **20** from time to time, on the basis of the measured blood vessel lumen diameter d_1 and the above-described rest-time diameter d_r , for implementing the FMD evaluation. For instance, the blood vessel diameter measuring means **88** chronologically continuously measures the blood vessel lumen diameter d_1 during the above-described blood vessel diameter measuring time period TIME1 while the blood vessel lumen diameter d_1 varies after releasing of the blood vessel from the blood flow obstruction, as indicated in FIG. 5. Alternatively, the blood vessel diameter measuring means **88** may measure the blood vessel lumen diameter d_1 at one, two or more predetermined measuring point or points of time with respect to the moment of releasing of the blood vessel from the blood flow obstruction. Each predetermined measuring point of time is a point at which the blood vessel lumen diameter d_1 is estimated to have the almost largest value d_{MAX} , and is obtained in advance by experimentation. The above-de-

scribed blood vessel diameter measuring time period TIME1 during which the blood vessel lumen diameter d_1 is to be measured to detect its largest value d_{MAX} after releasing of the blood vessel from the blood flow obstruction is determined by experimentation with respect to the moment of releasing of the blood vessel from the blood flow obstruction, and is stored in the blood vessel diameter measuring means 88. As indicated in FIG. 5, this time period TIME1 includes the point of time (t3) at which the blood vessel lumen diameter d_1 reaches the largest value d_{MAX} and starts from the moment (point of time t1) at which the blood vessel is released from the blood flow obstruction. Thus, the blood vessel diameter measuring means 88 measures the maximum value d_{MAX} (maximum lumen diameter) of the blood vessel 20 after releasing of the blood vessel 20 from the blood flow obstruction.

[0070] The blood vessel diameter measuring means 88 is further configured to calculate a maximum change ratio R_{MAX} of the diameter of the blood vessel 20 after releasing of the blood vessel from the blood flow obstruction with respect to the above-described rest-time diameter d_a after expiration of the above-described blood vessel diameter measuring time period TIME1, namely, to calculate, as a blood vessel dilatation ratio evaluating value (a % FMD value), the maximum value $R_{MAX}(\%) = 100 \times (d_{MAX} - d_a) / d_a$ of the diameter change ratio (dilatation ratio R) of the blood vessel 20 with respect to the rest-time diameter d_a after releasing of the blood vessel 20 from the blood flow obstruction. The monitoring image display device 30 displays the calculated blood vessel dilatation ratio evaluating value R_{MAX} .

[0071] The index value calculating means 84 has, in addition to the above-described function, a function of calculating the front wall portion image clarity index value XCR_F and back wall portion image clarity index value XCR_B at the time of measurement of the above-described rest-time diameter d_a , and the front wall portion image clarity index value XCR_F and back wall portion image clarity index value XCR_B at the time of measurement of the above-described maximum diameter d_{MAX} after the blood vessel releasing from the blood flow obstruction. Then, the index value calculating means 84 calculates an index value XCR_{FMD} indicative of a degree of reliability of the maximum diameter change ratio (blood vessel dilatation ratio evaluating value) R_{MAX} after the blood vessel releasing from the blood flow obstruction, with respect to the rest-time diameter d_a of the blood vessel 20 calculated by the blood vessel diameter measuring means 88, namely, calculates the FMD reliability index value XCR_{FMD} on the basis of the front wall portion image clarity index value XCR_F and back wall portion image clarity index value XCR_B at the time of measurement of the rest-time diameter d_a , and the front wall portion image clarity index value XCR_F and back wall portion image clarity index value XCR_B at the time of measurement of the maximum diameter d_{MAX} . For example, the index value calculating means 84 calculates, as a rest-time diameter measurement score $XCR1$, an average of the front wall portion image clarity index value XCR_F and back wall portion image clarity index value XCR_B at the time of measurement of the above-described rest-time diameter d_a , and calculates, as a maximum diameter measurement score $XCR2$, an average of the front wall portion image clarity index value XCR_F and back wall portion image clarity index value XCR_B at the time of measurement of the above-described maximum diameter d_{MAX} . Then, the index value calculating means 88 calculates the above-described FMD reliability index value XCR_{FMD} on the basis of the rest-time

diameter measurement score $XCR1$ and the maximum diameter measurement score $XCR2$ and according to the following Equation (3). The monitoring image display device 30 displays the calculated FMD reliability index value XCR_{FMD} , together with the above-described blood vessel dilatation ratio evaluating value R_{MAX} . This FMD reliability index value XCR_{FMD} is an index value indicative of the reliability of the above-described blood vessel dilatation ratio evaluating value R_{MAX} , as described above, in other words, an index value indicative of the accuracy of measurement of the blood vessel dilatation ratio evaluating value R_{MAX} . Accordingly, the accuracy of measurement of the above-described blood vessel dilatation ratio evaluating value R_{MAX} increases with an increase of the FMD reliability index value XCR_{FMD} .

$$XCR_{FMD} = (XCR1 + XCR2) / 2 \quad (3)$$

[0072] Display control means 90 (display control portion 90) provided in the electronic control device 28 is configured to command the monitoring image display device 30 to display from time to time the above-described longitudinal cross sectional blood vessel image and the above-described transverse cross sectional images which are generated by the cross sectional blood vessel image generating means 82, and to display from time to time the numerical values and graphic figures (in the form of sectors) indicative of the front wall portion image clarity index value XCR_F and back wall portion image clarity index value XCR_B which are calculated by the index value calculating means 84, as indicated in FIGS. 13 and 14.

[0073] The display control means 90 is further configured to command the monitoring image display device 30 to display the blood vessel dilatation ratio evaluating value R_{MAX} and the above-described FMD reliability index value XCR_{FMD} when the FMD evaluation is implemented, that is, when the blood vessel diameter measuring means 88 calculates the blood vessel dilatation ratio evaluating value R_{MAX} .

[0074] FIG. 15 is a flow chart illustrating a major control operation of the blood vessel inspecting apparatus 22 (electronic control device 28), namely, a control operation to generate the above-described longitudinal cross sectional blood vessel image and to calculate the index values indicative of the degree of clarity of the image of the intima-media complex IMC of the blood vessel 20. This control operation illustrated in FIG. 15 is performed alone, or concurrently with other control operation or operations.

[0075] Initially, step SA1 ("step" being hereinafter omitted) corresponding to the image generation implementation determining means 80 is implemented to determine whether the operation to obtain the ultrasonic image of the blood vessel 20 is initiated or not. If an affirmative determination is obtained in SA1, that is, if the operation to obtain the above-described ultrasonic image is initiated, the control flow goes to SA2. If a negative determination is obtained in SA1, the control operation of the flow chart of FIG. 15 is terminated.

[0076] In SA2 corresponding to the cross sectional blood vessel image generating means 82, the long-axis ultrasonic detector array 24c scans and receives the reflected wave signals SG_{EC} of the ultrasonic wave in its longitudinal direction at the predetermined reflected wave reception time interval PC_{RV} . The received plurality of reflected wave signals SG_{EC} , namely, B-mode long-axis image data are stored in a memory device of the electronic control device 28, and the above-

described longitudinal cross sectional blood vessel image is generated on the basis of the received plurality of reflected wave signals SG_{EC} .

[0077] In SA3 corresponding to the index value calculating means **84** and the reflected wave recognition control means **86**, the above-described reflected wave recognition control is implemented for each of the reflected wave signals SG_{EC} received within the above-described observation range AOB for the front wall portion BR_F . Then, the above-described front wall portion image clarity index value (front wall portion score) XCR_F is calculated on the basis of the number QL_{SG} (QLF_{SG}) of the reflected wave signals SG_{EC} all of the above-described first peak PK1, bottom BTM and second peak PK2 of which have been detected by implementation of the above-described reflected wave recognition control for the front wall portion BR_F .

[0078] In SA4 corresponding to the index value calculating means **84** and the reflected wave recognition control means **86**, the above-described reflected wave recognition control is implemented for each of the reflected wave signals SG_{EC} received within the above-described observation range AOB for the back wall portion BR_B . Then, the above-described back wall portion image clarity index value (back wall portion score) XCR_B is calculated on the basis of the number QL_{SG} (QLB_{SG}) of the reflected wave signals SG_{EC} all of the above-described first peak PK1, bottom BTM and second peak PK2 of which have been detected by implementation of the above-described reflected wave recognition control for the back wall portion BR_B .

[0079] In SA5 corresponding to the display control means **90**, the above-described longitudinal cross sectional blood vessel image generated in the above-described SA2, and the above-described front wall portion score XCR_F and back wall portion score XCR_B calculated in the above-described SA3 and SA4 respectively are displayed in a real-time fashion on the monitoring image display device **30**, as indicated in FIGS. **13** and **14**. In the example of FIG. **14**, the front wall portion score XCR_F and back wall portion score XCR_B are displayed as the numerical values which change within the range between 0 and 100, and as the pair of sectors which cooperate to form a complete circle when both of the front wall portion score XCR_F and back wall portion score XCR_B are equal to the maximum value of 100.

[0080] In SA6 corresponding to the image generation implementation determining means **80**, a determination as to whether the operation to obtain the ultrasonic image of the blood vessel **20** is terminated or not. If an affirmative determination is obtained in SA6, namely if the operation to obtain the above-described ultrasonic image is terminated, the control operation of the flow chart of FIG. **15** is terminated. If a negative determination is obtained in SA6, namely, if the control operation to obtain the above-described ultrasonic image is continued, the control flow goes back to the SA2. Accordingly, the steps SA2 through SA5 are repeatedly implemented during a time period between the moments of initiation and termination of the control operation to obtain the above-described ultrasonic image. For example, those steps are repeatedly implemented with an extremely short cycle time.

[0081] FIG. **16** is the flow chart illustrating a major control function of the blood vessel inspecting apparatus **22** (electronic control device **28**), which is different from that of FIG. **15**, namely, a control operation to calculate the index values indicative of the accuracy of measurements for FMD evalu-

ation. This control operation illustrated in FIG. **16** may be performed alone, or concurrently with other control operation or operations.

[0082] Initially, SB1 corresponding to the index value calculating means **84** and reflected wave recognition control means **86** is implemented to effect the above-described reflected wave recognition control for each of the front wall portion BR_F and back wall portion BR_B , and for each of the plurality of reflected wave signals SG_{EC} which are used to obtain the above-described longitudinal cross sectional blood vessel image for measuring the rest-time diameter d_a for FMD evaluation before the blood vessel releasing from the blood flow obstruction. Described in detail, the above-described reflected wave recognition control is not implemented for all of the plurality of reflected wave signals SG_{EC} , but implemented for each of the plurality of reflected wave signals SG_{EC} received within the above-described observation range AOB. On the basis of a result of this reflected wave recognition control, the front wall portion image clarity index value XCR_F and the back wall portion image clarity index value XCR_B upon measurement of the above-described rest-time diameter d_a are calculated, and an average of these calculated index values is calculated as the above-described rest-time diameter measurement score $XCR1$.

[0083] In SB2 corresponding to the index value calculating means **84** and the reflected wave recognition control means **86**, the above-described reflected wave recognition control is effected for each of the front wall portion BR_F and back wall portion BR_B , and for each of the plurality of reflected wave signals SG_{EC} which are used to obtain the above-described longitudinal cross sectional blood vessel image for measuring the maximum diameter d_{MAX} for FMD evaluation after the blood vessel releasing from the blood flow obstruction. Described in detail, the above-described reflected wave recognition control is not implemented for all of the plurality of reflected wave signals SG_{EC} , but implemented for each of the plurality of reflected wave signals SG_{EC} received within the above-described observation range AOB, as in the above-described SB1. On the basis of a result of this reflected wave recognition control, the front wall portion image clarity index value XCR_F and the back wall portion image clarity index value XCR_B upon measurement of the above-described maximum diameter d_{MAX} are calculated, and an average of these calculated index values is calculated as the above-described maximum diameter measurement score $XCR2$.

[0084] In SB3 corresponding to the index value calculating means **84**, the FMD reliability index value XCR_{FMD} is calculated on the basis of the above-described rest-time diameter measurement score $XCR1$ and maximum diameter measurement score $XCR2$ and according to the above-indicated Equation (3).

[0085] In SB4 corresponding to the display control means **90**, the above-described FMD reliability index value XCR_{FMD} is displayed on the monitoring image display device **30**, together with a result of the FMD evaluation, for instance, together with the above-described blood vessel dilation ratio evaluating value (% FMD value) R_{MAX} .

[0086] The present embodiment has the following advantages (A1) through (A8):

[0087] (A1) The present embodiment is configured such that the cross sectional blood vessel image generating means (longitudinal cross sectional blood vessel image generating means) **82** successively generates the longitudinal cross sectional image of the blood vessel **20** located

below the skin of the live body **14** based on the reflected wave signal SG_{EC} of the ultrasonic obtained, by using the ultrasonic probe **24** placed on the skin of the live body **14**, and the index value calculating means **84** calculates the index values indicative of the degree of clarity of the image of the intima-media complex IMC existing within the longitudinal cross sectional image of the blood vessel **20** generated by the cross sectional blood vessel image generating means **82**. Accordingly, the operator of the blood vessel inspecting apparatus **22** is not required to determine the degree of clarity of the image directly from the longitudinal cross sectional image of the above-described blood vessel **20** (longitudinal cross sectional blood vessel image), but can objectively determine the degree of clarity of the image from the index values of clarity of the image representing the intima-media complex IMC of the above-described blood vessel **20**, so that the operator can easily make a fine positional adjustment of the ultrasonic probe **24** so as to further improve the index values, whereby the longitudinal cross sectional blood vessel image can be efficiently obtained with a high degree of clarity, even where the operator's manipulation skill is low.

[0088] (A2) The present embodiment is further configured such that the above-described index value calculating means **84** calculates the front wall portion image clarity index value XCR_F indicative of the degree of clarity of the image of the intima-media complex IMC of the front wall portion BR_F within the above-described longitudinal cross sectional blood vessel image, and the back wall portion image clarity index value XCR_B indicative of the degree of clarity of the image of the intima-media complex IMC of the back wall portion BR_B within the above-described longitudinal cross sectional blood vessel image. Accordingly, the operator, for example, can efficiently position the ultrasonic probe **24** so as to further increase the degrees of clarity of the images of the front wall portion BR_F and back wall portion BR_B within the above-described longitudinal cross sectional blood vessel image, on the basis of the front wall portion image clarity index value XCR_F and the back wall portion image clarity index value XCR_B .

[0089] (A3) The present embodiment is further configured such that the reflected wave recognition control means **86** configured to implement the reflected wave recognition control for each of the plurality of reflected wave signals SG_{EC} received by the long-axis ultrasonic detector array **24c** at the mutually different positions of reception in the longitudinal direction of the blood vessel, and for each of the above-described front wall portion BR_F and the above-described back wall portion BR_B , to detect according to the relationship as indicated in FIG. **10** between the amplitude AM_{SG} of each reflected wave signal SG_{EC} and the position PT_R in the diametric direction of the blood vessel **20**: the first peak PK1 of each reflected wave signal SG_{EC} at which the amplitude AM_{SG} is larger than the predetermined first peak determining threshold value $LT1_{PK}$; the bottom BTM of each reflected wave signal SG_{EC} which is generated at the position of the blood vessel **20** located outwardly of the position of generation of the first peak PK1 in the diametric direction of the blood vessel **20** and at which the amplitude AM_{SG} is smaller than the predetermined bottom determining threshold value LT_{BTM} ; and the second peak PK2 of each reflected wave signal SG_{EC} which is generated at the position of the blood vessel **20** located outwardly of the position of generation of the first peak PK1 in the diametric

direction of the blood vessel **20** but located within the spacing distance from the position of generation of the first peak PK1 not exceeding the predetermined peak-to-peak distance threshold value LT_{SP} , with the bottom BTM being located therebetween, and at which the amplitude AM_{SG} is larger than the predetermined second peak determining threshold value $LT2_{PK}$. Further, the index value calculating means **84** calculates the above-described front wall portion image clarity index value XCR_F on the basis of the number QL_{SG} of the reflected wave signals SG_{EC} all of the above-described first peak PK1, the above-described bottom BTM and the above-described second peak PK2 of which have been detected by the above-described reflected wave recognition control implemented by the reflected wave recognition control means **86** for the front wall portion BR_F , and the back wall portion image clarity index value XCR_B on the basis of the number QL_{SG} of the reflected wave signals SG_{EC} all of the above-described first peak PK1, the above-described bottom BTM and the above-described second peak PK2 of which have been detected by the above-described reflected wave recognition control implemented by the reflected wave recognition control means **86** for the back wall portion BR_B . Accordingly, the front wall portion image clarity index value XCR_F and the back wall portion image clarity index value XCR_B are calculated on the basis of non-fluctuating parameters, so that the above-described front wall portion image clarity index values XCR_F and the above-described back wall portion image clarity index values XCR_B which are calculated upon different blood vessel inspections can be compared with each other.

[0090] (A4) The present embodiment is further configured such that the reflected wave recognition control means **86** implements the above-described reflected wave recognition control for those of the above-described reflected wave signals SG_{EC} which are received within the predetermined observation range AOB in the longitudinal direction of the blood vessel **20**. Accordingly, it is possible to reduce a control load in the calculation of the above-described front wall portion image clarity index value XCR_F and the above-described back wall portion image clarity index value XCR_B , as compared where the above-described reflected wave recognition control is implemented for all of the plurality of the above-described reflected wave signals SG_{EC} received by the long-axis ultrasonic detector array **24c** to generate the above-described longitudinal cross sectional blood vessel image.

[0091] (A5) The present embodiment is further configured to implement the above-described reflected wave recognition control such that the amplitude AM_{SG} of each reflected wave signal SG_{EC} is compared with the above-described first peak determining threshold value $LT1_{PK}$, the above-described bottom determining threshold value LT_{BTM} , and the second peak determining threshold value $LT2_{PK}$, so that the above-described first peak PK1, the above-described bottom BTM and the above-described second peak PK2 can be easily detected from the reflected wave signal SG_{EC} . It is noted here that the amplitude AM_{SG} of each reflected wave signal SG_{EC} may be replaced by a brightness value obtained by conversion of the amplitude. In this case, the brightness value is compared with the above-described first peak determining threshold value $LT1_{PK}$, the above-described bottom determining threshold value LT_{BTM} , and the second peak determining threshold value $LT2_{PK}$.

[0092] (A6) The present embodiment is further configured such that the ultrasonic probe **24** is provided with the pair of parallel ultrasonic detector arrays consisting of the first short-axis ultrasonic detector array **24a** and the second short-axis ultrasonic detector array **24b** each of which has the plurality of ultrasonic oscillators arranged linearly in the direction perpendicular to the longitudinal direction of the blood vessel **20**, and the long-axis ultrasonic detector array **24c** which is disposed adjacent to the intermediate portion of the first short-axis ultrasonic detector array **24a** and the second short-axis ultrasonic detector array **24b** and which has the plurality of ultrasonic oscillators linearly arranged in the longitudinal direction of the blood vessel **20**, the first and second short-axis ultrasonic detector arrays **24a**, **24b** and the long-axis ultrasonic detector array **24c** lying in one plane, as shown in FIG. 2. The longitudinal cross sectional blood vessel image generating means **82** generates the above-described longitudinal cross sectional blood vessel image, on the basis of the reflected wave signals SG_{EC} of the ultrasonic wave received by the long-axis ultrasonic detector array **24c**. Accordingly, the above-described longitudinal cross sectional blood vessel image can be generated by using the ultrasonic wave probe which is practically available.

[0093] (A7) The present embodiment is further configured such that the blood vessel diameter measuring means **88** measures in advance the rest-time diameter d_a of the blood vessel **20** before releasing of the blood vessel **20** from blood flow obstruction, the maximum diameter d_{MAX} of the blood vessel **20** after the releasing of the blood vessel **20** from the blood flow obstruction, and the maximum value R_{MAX} of the diameter change ratio of the blood vessel **20** after the releasing of the blood vessel **20** from the blood flow obstruction, with respect to the rest-time diameter d_a of the blood vessel **20**, and the index value calculating means **84** calculates the index value (FMD reliability index value) XCR_{FMD} indicative of the degree of reliability of the maximum diameter change ratio value R_{MAX} of the blood vessel **20** measured by the blood vessel diameter measuring means **88** after the releasing of the blood vessel **20** with respect to the rest-time diameter d_a of the blood vessel **20**, on the basis of the front wall portion image clarity index value XCR_F and the back wall portion image clarity index value XCR_B upon measurement of the above-described rest-time diameter d_a , and the front wall portion image clarity index value XCR_F and the back wall portion image clarity index value XCR_B upon measurement of the above-described maximum diameter d_r . Where a plurality of maximum values R_{MAX} of the diameter change ratio after the blood vessel releasing from the blood flow obstruction with respect to the rest-time diameter d_a of the blood vessel **20** are measured and compared with each other, the above-described FMD reliability index value XCR_{FMD} , each obtained for each maximum value R_{MAX} , can be used to eliminate those of the plurality of maximum values R_{MAX} the accuracy of measurement of which is low, so that the reliability of a result of FMD evaluation, for instance, can be further improved. Further, it is possible to make an objective clinic judgment as to whether a re-inspection is necessary when the FMD reliability index value XCR_{FMD} is low. The FMD reliability index value XCR_{FMD} can be a yardstick to evaluate a degree of progress objectively when an operator practice to measure a blood vessel lumen diameter d_1 in FMD evaluation method.

[0094] (A8) The present embodiment is further configured such that, as shown in FIG. 14, the above-described index value

calculating means **84** commands the monitoring image display device **30** to display the above-described front wall portion image clarity index value XCR_F and the above-described back wall portion image clarity index value XCR_B , not only as numerical values, but also as two images or two graphic figures (two sectors) which are continuously variable according to the index values XCR_F , XCR_B and which are comparable with each other. Accordingly, the operator can intuitively perceive the degrees of clarity of the images of the front wall portion BR_F and the back wall portion, and more efficiently improve the clarity of the images, than where the degrees of clarity of the images are indicated by only the numerical values of XCR_F , XCR_B .

[0095] Another embodiment of this invention will be described next. In the following description, the same reference signs will be used to identify the same elements of the embodiments, the description of which is omitted.

Embodiment 2

[0096] In the first embodiment described above, the above-described front wall portion image clarity index value XCR_F and back wall portion image clarity index value XCR_B are calculated and displayed for the operator of the blood vessel inspecting apparatus **22** to make the manual fine positional adjustment of the ultrasonic probe **24** placed on the skin of the live body **14**. However, the fine positional adjustment of the ultrasonic probe **24** may be automatically made by the multi-axes drive device **26** on the basis of the front wall portion image clarity index value XCR_F and back wall portion image clarity index value XCR_B , so that the degree of clarity of the intima-media complex IMC within the above-described longitudinal cross sectional blood vessel image is not lower than a predetermined lower limit. The present second embodiment described below is configured to perform a control operation for the automatic fine positional adjustment of the ultrasonic probe **24**. This control operation may replace the above-described display control according to the first embodiment, or may be performed concurrently with the display control of the first embodiment described above. Aspects of the second embodiment which are different from those of the first embodiment will be primarily described, without redundant description of the common aspects of the first and second embodiments.

[0097] FIG. 17 is the functional block diagram corresponding to that of FIG. 8 according to the first embodiment, for explaining major control functions of the blood vessel inspecting apparatus **22** (blood vessel image evaluating portion **100**). The blood vessel image evaluating portion **100** according to the present embodiment is provided with the cross sectional blood vessel image generating means **82** the index value calculating means **84** and the blood vessel diameter measuring means **88**, as in the first embodiment, and is further provided with a short-axis image position determining portion in the form of short-axis image position establishing means **210**, and an ultrasonic probe position rectifying portion in the form of ultrasonic probe position rectifying means **212**. The ultrasonic probe position rectifying means **212** is provided with a long-axis image score calculating portion in the form of long-axis image score calculating means **214**.

[0098] The cross sectional blood vessel image generating means **82** is configured to successively generate: the transverse cross sectional image of the blood vessel **20**, namely, the first transverse cross sectional blood vessel image to be displayed in the first short-axis image display region **G1**, on

the basis of the reflected wave signals SG_{EC} of the ultrasonic wave received by the first short-axis ultrasonic detector array **24a**; the transverse cross sectional image of the blood vessel **20**, namely, the second transverse cross sectional blood vessel image to be displayed in the second short-axis image display region **G2**, on the basis of the reflected wave signals SG_{EC} of the ultrasonic wave received by the second short-axis ultrasonic detector array **24b**; and the longitudinal cross sectional image of the blood vessel **20**, namely, the longitudinal cross sectional blood vessel image to be displayed in the long-axis image display region **G3**, on the basis of the reflected wave signals SC_{EC} of the ultrasonic received by the long-axis ultrasonic detector array **24c**, as in the first embodiment.

[0099] The short-axis image position establishing means **210** is configured to recognize a center position CR_{BV} of the blood vessel **20** (blood vessel transverse cross section center CR_{BV}) in each of the above-described first transverse cross sectional blood vessel image and the above-described second transverse cross sectional blood vessel image which are generated by the cross sectional blood vessel image generating means **82**. Then, the short-axis image position establishing means **210** operates the multi-axes drive device **26** to position the ultrasonic probe **24** such that a distance between the first short-axis ultrasonic detector array **24a** and the center of the blood vessel **20** (blood vessel cross section center CR_{BV}) is equal to a distance between the second short-axis ultrasonic detector array **24b** and the center of the blood vessel **20** (blood vessel cross section center CR_{BV}), and such that the image of the blood vessel **20** is located at a widthwise central portion of each of the first and second short-axis image display regions **G1** and **G2**. Described by reference to FIG. 4, the multi-axes drive device **26** is operated to position the ultrasonic probe **24** such that $a=b$, $c=d$, and $e=f$, namely, such that the ultrasonic probe **24** is located at the above-described predetermined measuring position **PT1**. For instance, a relationship between a displacement (amount and direction of the displacement) of the blood vessel center position CR_{BV} with respect to the above-described predetermined measuring position **PT1** in each of the above-described first and second transverse cross sectional blood vessel images, and an amount of operation of each actuator of the multi-axes drive device **26** required to locate the ultrasonic probe **24** at the above-described predetermined measuring position **PT1** is obtained by experimentation in advance, and is preset in the short-axis image position establishing means **210**. After the short-axis image position establishing means **210** has recognized the blood vessel center position CR_{BV} in each of the above-described first and second transverse cross sectional blood vessel images, the short-axis image position establishing means **210** calculates the displacement (amount and direction of the displacement) of the blood vessel center position CR_{BV} with respect to the above-described predetermined measuring position **PT1**. Then, the short-axis image position establishing means **210** determines whether the calculated displacement of the blood vessel center position CR_{BV} is zero or within a predetermined permissible range in which the displacement can be considered substantially zero. If it is determined that the displacement of the blood vessel center position CR_{BV} is not zero or within the above-described predetermined permissible range, the short-axis image position establishing means **210** determines the amount of operation of each actuator of the multi-axes drive device **26**, on the basis of the calculated displacement of the blood vessel center position CR_{BV} and according to the preset relationship between the

displacement of the blood vessel center position CR_{BV} and the amount of operation of each actuator. The short-axis image position establishing means **210** repeats the recognition of the blood vessel center position CR_{BV} , the calculation of the displacement of the blood vessel center position CR_{BV} with respect to the above-described predetermined measuring position **PT1**, and the control operation of the multi-axes drive device **26**, until the displacement of the above-described blood vessel center position CR_{BV} is zeroed or falls within the above-described predetermined permissible range, for instance, each time the cross sectional blood vessel image generating means **82** generates the first and second transverse cross sectional blood vessel images. If it is determined that the displacement of the blood vessel center position CR_{BV} is zero or falls within the above-described predetermined permissible range, the short-axis image position establishing means **210** terminates the control operation of the multi-axes drive device **26**, and informs the ultrasonic probe position rectifying means **212** that the positioning of the ultrasonic probe **24** on the basis of the transverse cross sectional blood vessel images is completed.

[0100] The long-axis image score calculating means **214** is configured to calculate a value BR_{FB} indicative of the overall degree of clarity of the image of the intima-media complex IMC at both of the front wall portion BR_F and back wall portion BR_B within the longitudinal cross sectional blood vessel image, namely, an overall clarity index value BR_{FB} , on the basis of the front wall portion image clarity index value XCR_F and back wall portion image clarity index value XCR_B each calculated by the index value calculating means **84**. While the overall clarity index value BR_{FB} may be an average or a sum of the front wall portion image clarity index value XCR_F and back wall portion image clarity index value XCR_B , the overall clarity index value BR_{FB} is the average of the index values XCR_F and XCR_B , that is, an index value average. The long-axis image score calculating means **214** calculates the above-described overall clarity index value BR_{FB} each time the index value calculating means **84** calculates the front wall portion image clarity index value XCR_F and the back wall portion image clarity index value XCR_B , in other words, each time the cross sectional blood vessel image generating means **82** receives (obtains) the reflected wave signals SG_{EC} of the ultrasonic wave for generating the longitudinal cross sectional blood vessel image.

[0101] The ultrasonic probe position rectifying means **212** is configured to operate the multi-axes drive device **26** to position the ultrasonic probe **24** after completion of positioning of the ultrasonic probe **24** under the control of the short-axis image position establishing means **210**, such that the value (overall clarity index value BR_{FB}) calculated on the basis of the front wall portion image clarity index value XCR_F and the back wall portion image clarity index value XCR_B is equal to or larger than a predetermined threshold value (index value average threshold value) $LBR1_{FB}$. That is, the ultrasonic probe position rectifying means **212** makes a fine positional adjustment of the ultrasonic probe **24**. For instance, the above-described index value average threshold value $LBR1_{FB}$ is predetermined by experimentation such that the intima-media complex IMC within the longitudinal cross sectional blood vessel image is clear enough to permit measurement of the blood vessel diameter. Described more specifically, the ultrasonic probe position rectifying means **212** determines whether the overall clarity index value BR_{FB} calculated by the long-axis image score calculating means **214** is

equal to or larger than the above-described index value average threshold value $LBR1_{FB}$, and operates the multi-axes drive device 26 to displace the ultrasonic probe 24 by a predetermined small distance in a direction for increasing the overall clarity index value BR_{FB} , if it is determined that the overall clarity index value BR_{FB} is not equal to or larger than the index value average threshold value $LBR1_{FB}$. The ultrasonic probe position rectifying means 212 repeats this displacement of the ultrasonic probe 24 by the predetermined small distance until the overall clarity index value BR_{FB} has become equal to or larger than the index value average threshold value $LBR1_{FB}$. When it is determined that the overall clarity index value BR_{FB} has become equal to or larger than the index value average threshold value $LBR1_{FB}$, the ultrasonic probe position rectifying means 212 terminates the control operation of the multi-axes drive device 26, and informs the blood vessel diameter measuring means 88 that the fine positional adjustment of the ultrasonic probe 24 is completed. If it is found in the next cycle that the overall clarity index value BR_{FB} decreases after the movement of the ultrasonic probe 24 by the above-described predetermined small distance by operation of the multi-axes drive device 26, the ultrasonic probe position rectifying means 212 then operates the multi-axes drive device 26 to move the ultrasonic probe 24 back to the original position and to further move the ultrasonic probe 24 by the above-described predetermined small distance in the direction opposite to the direction of the prior movement for minute position adjustment of the ultrasonic probe 24. It is also noted that a range of the overall clarity index value BR_{FB} equal to or higher than the index value average threshold value $LBR1_{FB}$ is a predetermined target range according to the present invention.

[0102] The blood vessel diameter measuring means 88 has, in addition to the function described above with respect to the first embodiment, a function of initiating the FMD measurement, more specifically, the measurement of the blood vessel lumen diameter d_1 (d_a, d_{MAX}), when the blood vessel diameter measuring means 88 is informed by the ultrasonic probe position rectifying means 212 that the fine positional adjustment of the ultrasonic probe 24 is completed.

[0103] FIG. 18 is the flow chart corresponding to that of FIG. 15 according to the first embodiment, illustrating a major control operation of the blood vessel inspecting apparatus 22 (electronic control device 28) according to the present embodiment, namely, a control operation to automatically locate the ultrasonic probe 24 at an FMD measurement position. SC6, SC7 and SC8 in FIG. 18 which are respectively identical with the SA2, SA3 and SA4 in FIG. 15 will not be described. The control operation illustrated in FIG. 18 may be performed alone or concurrently with other control operation or operations.

[0104] In SC1 corresponding to the cross sectional blood vessel image generating means 82, the B-mode short-axis image data are obtained. That is, the first short-axis ultrasonic detector array 24a scans and receives (obtains) the reflected wave signals SG_{EC} of the ultrasonic wave at the predetermined reflected wave reception time interval PC_{RV} in the longitudinal direction of the detector array 24a, while the second short-axis ultrasonic detector array 24b scans and receives (obtains) the reflected wave signals SG_{EC} of the ultrasonic wave at the predetermined reflected wave reception time interval PC_{RV} in the longitudinal direction of the detector array 24b. The B-mode short-axis image data (reflected wave signals SG_{EC}) obtained as described above are

stored in the memory device of the electronic control device 28. The above-described first transverse cross sectional blood vessel image is generated on the basis of the reflected wave signals SG_{EC} of the ultrasonic wave received by the first short-axis ultrasonic detector array 24a, while the above-described second transverse cross sectional blood vessel image is generated on the basis of the reflected wave signals SG_{EC} of the ultrasonic wave received by the second short-axis ultrasonic detector array 24b.

[0105] In SC2 corresponding to the short-axis image position establishing means 210, the center position CR_{BV} of the blood vessel 20 is recognized in each of the right and left short-axis images on the monitoring image display device 30, namely, in each of the above-described first transverse cross sectional blood vessel image and the above-described second transverse cross sectional blood vessel image.

[0106] In SC3 corresponding to the short-axis image position establishing means 210, the displacement (amount and direction of the displacement) of the blood vessel center position CR_{BV} in each of the above-described first and second transverse cross sectional blood vessel images with respect to the above-described predetermined measuring position PT1 is calculated.

[0107] SC4 corresponding to the short-axis image position establishing means 210 is implemented to determine whether the displacement of the blood vessel center position CR_{BV} calculated in the above-described SC3 is zero or substantially zero. If an affirmative determination is obtained in this SC4, that is, if the displacement of the above-described blood vessel center position CR_{BV} is zero or substantially zero, the control flow goes to SC6. If a negative determination is obtained in this SC4, on the other hand, the control flow goes to SC5.

[0108] In SC5 corresponding to the short-axis image position establishing means 210, each actuator of the multi-axes drive device 26, that is, a probe holder motor is operated to reduce the displacement of the above-described blood vessel center position CR_{BV} . For instance, the multi-axes drive device 26 is operated in the direction to reduce the displacement of the above-described blood vessel center position CR_{BV} , on the basis of the displacement and according to the relationship obtained in advance by experimentation. SC5 is followed by SC1.

[0109] In SC9 following SC8, the average of the front wall portion image clarity index value (front wall portion score) XCR_F calculated in SC7 and the back wall portion image clarity index value (back wall portion score) XCR_B calculated in SC8 is calculated, and the calculated average is determined as the above-described overall clarity index value BR_{FB} , namely, as a score of the above-described longitudinal cross sectional blood vessel image (long-axis image). This SC9 corresponds to the long-axis image score calculating means 214.

[0110] SC10 corresponding to the ultrasonic probe position rectifying means 212 is implemented to determine whether the overall clarity index value BR_{FB} calculated in the above-described SC9 is equal to or larger than the above-described index value average threshold value $LBR1_{FB}$. If an affirmative determination is obtained in this SC10, that is if the above-described overall clarity index value BR_{FB} calculated in the above-described SC9 is equal to or larger than the above-described index value average threshold value

LBR1_{FB}, the control flow goes to SC12. If a negative determination is obtained in this SC10, the control flow goes to SC11.

[0111] In SC11 corresponding to the ultrasonic probe position rectifying means 212, each actuator (probe holder motor) of the multi-axes drive device 26 is operated in the direction to increase the above-described overall clarity index value BR_{FB}. For example, the position of the ultrasonic probe 24 is moved by the above-described predetermined small distance by an operation of the multi-axes drive device 26. If it is found in the next cycle that the overall clarity index value BR_{FB} decreases after the movement of the ultrasonic probe 24 by the above-described predetermined small distance by the multi-axes drive device 26, the ultrasonic probe position rectifying means 212 then operates the multi-axes drive device 26 to move the ultrasonic probe 24 to the original position and to further move the ultrasonic probe 24 by the above-described predetermined small distance in the direction opposite to the direction of the prior movement. SC11 is followed by SC6.

[0112] In SC12 corresponding to the blood vessel diameter measuring means 88, the FMD measurement, more specifically, the measurement of the blood vessel lumen diameter d_1 (d_a, d_{MAX}) is initiated.

[0113] The present embodiment has the following advantages, in addition to the advantages of the first embodiment described above. In the present embodiment, the short-axis image position establishing means 210 operates the multi-axes drive device 26 to position the ultrasonic probe 24 such that the distance between the first short-axis ultrasonic detector array 24a and the center of the blood vessel 20 (blood vessel transverse cross section center CR_{BV}) is equal to the distance between the second short-axis ultrasonic detector array 24b and the center of the blood vessel 20 (blood vessel transverse cross section center CR_{BV}), and such that the image of the blood vessel 20 is located at the widthwise central portion of each of the first and second short-axis image display regions G1 and G2 in monitoring image display device 30. Then, the ultrasonic probe position rectifying means 212 operates the multi-axes drive device 26 to position the ultrasonic probe 24 after completion of positioning of the ultrasonic probe 24 under the control of the short-axis image position establishing means 210, such that the value (overall clarity index value BR_{FB}) calculated on the basis of the front wall portion image clarity index value XCR_F and the back wall portion image clarity index value XCR_B is equal to or larger than the predetermined index value average threshold value LBR1_{FB}. Accordingly, an operator's load of manipulation can be reduced. Further, the longitudinal cross sectional blood vessel image can be made clearer even where the operator's manipulation skill is considerably low, as compared with the image when the operator makes the manual fine positional adjustment of the ultrasonic probe 24 so as to increase the front wall portion image clarity index value XCR_F and the back wall portion image clarity index value XCR_B. In addition, the FMD measurement including the fine positional adjustment of the ultrasonic probe 24 to improve the clarity of the longitudinal cross sectional blood vessel image is achieved.

[0114] While the embodiments of the present invention have been described in detail by reference to the drawings, for illustrative purpose only, it is to be understood that the invention may be embodied with various changes and improvements which may occur to those skilled in the art.

[0115] For example, the above-indicated Equation (1) used to calculate the above-described front wall portion image clarity index value XCR_F and the above-indicated Equation (2) used to calculate the above-described back wall portion image clarity index value XCR_B in the illustrated embodiments may be replaced by other methods of calculation.

[0116] In the illustrated embodiments, each of the above-described front wall portion image clarity index value XCR_F and back wall portion image clarity index value XCR_B is displayed in the form of a sector on the monitoring image display device 30, as indicated in FIG. 14. However, those image clarity index values may be displayed in any other form such as bars as indicated in FIG. 19 by way of example. While each of the above-described front wall portion image clarity index value XCR_F and back wall portion image clarity index value XCR_B is displayed in the form of the graphic figures (sectors) as well as numerical values in the illustrated embodiments on the monitoring image display device 30, only the numerical values or only the graphic figures may be displayed.

[0117] In the illustrated embodiments, each of the above-described front wall portion image clarity index value XCR_F and back wall portion image clarity index value XCR_B is displayed on the monitoring image display device 30 used to display the above-described longitudinal cross sectional blood vessel image and the above-described transverse cross sectional blood vessel images, as indicated in FIG. 13. However, those clarity index values may be displayed on another display device independent of the monitoring image display device 30.

[0118] In the illustrated embodiments, the above-described FMD reliability index value XCR_{FMD} is calculated by averaging according to the above-indicated Equation (3), the average of the front wall portion image clarity index value XCR_F and back wall portion image clarity index value XCR_B upon measurement of the above-described rest-time diameter d_a , and the average of the front wall portion image clarity index value XCR_F and back wall portion image clarity index value XCR_B upon measurement of the above-described maximum diameter d_{MAX} . However, the method of calculation of the FMD reliability index value XCR_{FMD} is not limited to this specific method. For instance, the FMD reliability index value XCR_{FMD} may be calculated by summing all of those index values XCR_F and XCR_B.

[0119] The reflected wave recognition control means 86 in the illustrated embodiments is configured to implement the above-described reflected wave recognition control with respect to the reflected wave signals SG_{EC} as indicated in FIG. 10. However, the reflected wave signals SG_{EC} may be subjected to a sharpening process prior to the reflected wave recognition control, by using a sharpening (clarifying) filter well known in the art, for sharpening and clarifying the peaks and bottoms of the reflected wave signals SG_{EC}. This sharpening process may be an unsharp masking process or a selective image clarifying process well known in the art. The unsharp masking process is a method of clarifying a blurred image by removing its secondary differential image (Laplacian image), and the selective image clarifying process is a method of selectively clarifying edge portions of an image by extracting only the Laplacian image components of the edge portions to reduce an influence of noises.

[0120] While the illustrated embodiments are arranged to implement the FMD measurement after the positioning of the ultrasonic probe 24, the principle of the present invention is

equally advantageously applicable to a control device configured to implement IMT (intima-media thickness) inspection, or ultrasonic observation of the carotid artery.

[0121] In the illustrated embodiments, the front wall portion image clarity index value XCR_F and back wall portion image clarity index value XCR_B are calculated on the basis of the result of the above-described reflected wave recognition control. However, these clarity index values may be calculated in any other manner, provided the clarity index values are calculated in relation to the degree of clarity of the intima-media complex IMC within the above-described longitudinal cross sectional blood vessel image.

[0122] Although the electronic control device 28 is provided with the blood vessel diameter measuring means 88 in the illustrated embodiments, the electronic control device 28 may not be provided with the blood vessel diameter measuring means 88.

[0123] It is noted that the brachium 16 shown in FIG. 1 in the illustrated embodiments is an upper arm of a human body.

[0124] It is to be understood that the illustrated embodiments described above may be combined together, with specific features given priority of selection.

[0125] It is to be understood that the present invention may be embodied with various other changes not illustrated herein, without departing from the spirit of this invention.

NOMENCLATURE OF REFERENCE SIGNS

- [0126] 14: Live body
- [0127] 20: Blood vessel
- [0128] 22: Blood vessel inspecting apparatus (Ultrasonic blood vessel inspecting apparatus)
- [0129] 24: Ultrasonic probe
- [0130] 24a: First short-axis ultrasonic detector array
- [0131] 24b: Second short-axis ultrasonic detector array
- [0132] 24c: Long-axis ultrasonic detector array
- [0133] 26: Multi-axes drive device
- [0134] 30: Monitoring image display device (Image display device)
- [0135] 82: Cross sectional blood vessel image generating means (Longitudinal cross sectional blood vessel image generating means)
- [0136] 84: Index value calculating means
- [0137] 86: Reflected wave recognition control means
- [0138] 88: Blood vessel diameter measuring means
- [0139] 210: Short-axis image position establishing means
- [0140] 212: Ultrasonic probe position rectifying means
- [0141] IMC: Intima-media complex
- [0142] BR_F : Front wall portion
- [0143] BR_B : Back wall portion
- [0144] SG_{EC} : Reflected wave signal

1. An ultrasonic blood vessel inspecting apparatus provided with a longitudinal cross sectional blood vessel image generating portion configured to generate a longitudinal cross sectional image of a blood vessel located below a skin of a live body, on the basis of reflected wave signals of an ultrasonic wave by using an ultrasonic probe placed on the skin of said live body, comprising:

an index value calculating portion configured to calculate an index value indicative of a degree of clarity of an image which represents an intima-media complex of said blood vessel and which exists within said longitudinal cross sectional image of the blood vessel.

2. The ultrasonic blood vessel inspecting apparatus according to claim 1, wherein said index value calculating portion

calculates a front wall portion image clarity index value indicative of the degree of clarity of an image of a front wall portion of said intima-media complex within said longitudinal cross sectional image of the blood vessel, and a back wall portion image clarity index value indicative of the degree of clarity of an image of a back wall portion of said intima-media complex within said longitudinal cross sectional image of the blood vessel, said front wall portion being one of opposite wall portions of the blood vessel on the side of said ultrasonic probe while said back wall portion being the other of the opposite wall portions which is remote from said ultrasonic probe.

3. The ultrasonic blood vessel inspecting apparatus according to claim 2, further comprising a reflected wave recognition control portion configured to implement a reflected wave recognition control for each of a plurality of said reflected wave signals received by said ultrasonic probe at mutually different positions of reception in a longitudinal direction of said blood vessel, and for each of said front wall portion and said back wall portion, to detect according to a relationship between a magnitude of said each reflected wave signal and a position in a diametric direction of said blood vessel: a first peak of said each reflected wave signal at which the magnitude is larger than a predetermined first peak determining threshold value; a bottom of said each reflected wave signal which is generated at a position of said blood vessel located outwardly of the position of generation of said first peak in the diametric direction of said blood vessel and at which the magnitude is smaller than a predetermined bottom determining threshold value; and a second peak of said each reflected wave signal which is generated at a position of said blood vessel located outwardly of the position of generation of said first peak in the diametric direction of said blood vessel but located within a spacing distance from the position of generation of the first peak less than a predetermined peak-to-peak distance threshold value, with said bottom being located therebetween, and at which the magnitude is larger than a predetermined second peak determining threshold value,

and wherein said index value calculating portion calculates said front wall portion image clarity index value on the basis of a number of the reflected wave signals all of said first peak, said bottom and said second peak of which have been detected by said reflected wave recognition control implemented by said reflected wave recognition control portion for said front wall portion, and said back wall portion image clarity index value on the basis of a number of the reflected wave signals all of said first peak, said bottom and said second peak of which have been detected by said reflected wave recognition control implemented by said reflected wave recognition control portion for said back wall portion.

4. The ultrasonic blood vessel inspecting apparatus according to claim 3, wherein said reflected wave recognition control portion implements said reflected wave recognition control for those of said reflected wave signals which are received within a predetermined observation range in the longitudinal direction of said blood vessel.

5. The ultrasonic blood vessel inspecting apparatus according to claim 3, wherein said magnitude of said each reflected wave signal is an amplitude of said each reflected wave signal, or a brightness value obtained by conversion of said amplitude of said each reflected wave signal, which brightness value is used to display the longitudinal cross sectional image of said blood vessel.

6. The ultrasonic blood vessel inspecting apparatus according to claim 2, wherein said ultrasonic probe is provided with a pair of parallel ultrasonic detector arrays consisting of a first short-axis ultrasonic detector array and a second short-axis ultrasonic detector array each of which has a plurality of ultrasonic oscillators arranged linearly in a direction perpendicular to a longitudinal direction of said blood vessel, and a long-axis ultrasonic detector array which is disposed adjacent to an intermediate portion of one or both of said first short-axis ultrasonic detector array and said second short-axis ultrasonic detector array and which has a plurality of ultrasonic oscillators arranged in the longitudinal direction of said blood vessel, said first and second short-axis ultrasonic detector arrays and said long-axis ultrasonic detector array lying in one plane,

and wherein said longitudinal cross sectional blood vessel image generating portion generates the longitudinal cross sectional image of said blood vessel, on the basis of the reflected wave signals of said above-described ultrasonic wave received by said long-axis ultrasonic detector array.

7. The ultrasonic blood vessel inspecting apparatus according to claim 6, further comprising:

an image display device having a first short-axis image display region for displaying an ultrasonic image obtained by said first short-axis ultrasonic detector array, a second short-axis image display region for displaying an ultrasonic image obtained by said second short-axis ultrasonic detector array, and a long-axis image display region for displaying the longitudinal cross sectional blood vessel image of said blood vessel;

a multi-axes drive device configured to position said ultrasonic probe;

a short-axis image position establishing portion configured to operate said multi-axes drive device to position said ultrasonic probe such that a distance between said first short-axis ultrasonic detector array and a center of said blood vessel is equal to a distance between said second short-axis ultrasonic detector array and the center of said blood vessel, and such that the image of said blood vessel is located at a widthwise central portion of each of

said first short-axis image display region and said second short-axis image display region; and

an ultrasonic probe position rectifying portion configured to operate said multi-axes drive device to position said ultrasonic probe after completion of positioning of said ultrasonic probe under the control of said short-axis image position establishing portion, such that a value calculated on the basis of said front wall portion image clarity index value and said back wall portion image clarity index value is held within a predetermined target range.

8. The ultrasonic blood vessel inspecting apparatus according to claim 2, further comprising blood vessel diameter measuring portion configured to measure in advance a rest-time diameter of said blood vessel before releasing of said blood vessel from blood flow obstruction, and a maximum diameter of said blood vessel after the releasing of said blood vessel from the blood flow obstruction, and calculates a maximum value of a diameter change ratio of said blood vessel after the releasing of said blood vessel from the blood flow obstruction, with respect to the rest-time diameter of said blood vessel,

and wherein said index value calculating portion calculates an index value indicative of a degree of reliability of the maximum value of the diameter change ratio of said blood vessel calculated by said blood vessel diameter measuring portion after the releasing of said blood vessel with respect to the rest-time diameter of said blood vessel, on the basis of said front wall portion image clarity index value and said back wall portion image clarity index value upon measurement of said rest-time diameter, and said front wall portion image clarity index value and said back wall portion image clarity index value upon measurement of said maximum diameter.

9. The ultrasonic blood vessel inspecting apparatus according to claim 2, wherein said index value calculating portion commands an image display device to display said front wall portion image clarity index value and said back wall portion image clarity index value, as respective images which are continuously variable according to said index values and which are comparable with each other.

* * * * *

专利名称(译)	超声波血管检查装置		
公开(公告)号	US20120116227A1	公开(公告)日	2012-05-10
申请号	US13/383866	申请日	2009-07-16
申请(专利权)人(译)	UNEX CORPORATION		
当前申请(专利权)人(译)	UNEX CORPORATION		
[标]发明人	SUZUKI HIDENORI IIKUBO KATSUSHI HARADA CHIKAO MASUDA HIROSHI		
发明人	SUZUKI, HIDENORI IIKUBO, KATSUSHI HARADA, CHIKAO MASUDA, HIROSHI		
IPC分类号	A61B8/14		
CPC分类号	A61B5/02007 A61B8/461 A61B8/0858 A61B8/4218 A61B8/5207 A61B8/5223 A61B8/54 G01S7/52073 G01S7/52074 G01S7/52079 G01S15/8925 G01S15/8936		
其他公开文献	US8939908		
外部链接	Espacenet USPTO		

摘要(译)

一种超声波血管检查装置，其具备纵剖面血管图像生成部，该纵剖面血管图像生成部构成为基于超声波的反射波信号，生成位于活体皮肤下方的血管的纵剖面图像。使用放置在所述活体的皮肤上的超声波探头，包括：指数值计算部分，其被配置为计算指示图像的清晰度的指标值，所述图像表示所述血管的内膜 - 中膜复合体并且存在于所述指标内。所述血管的纵向横截面图像。

