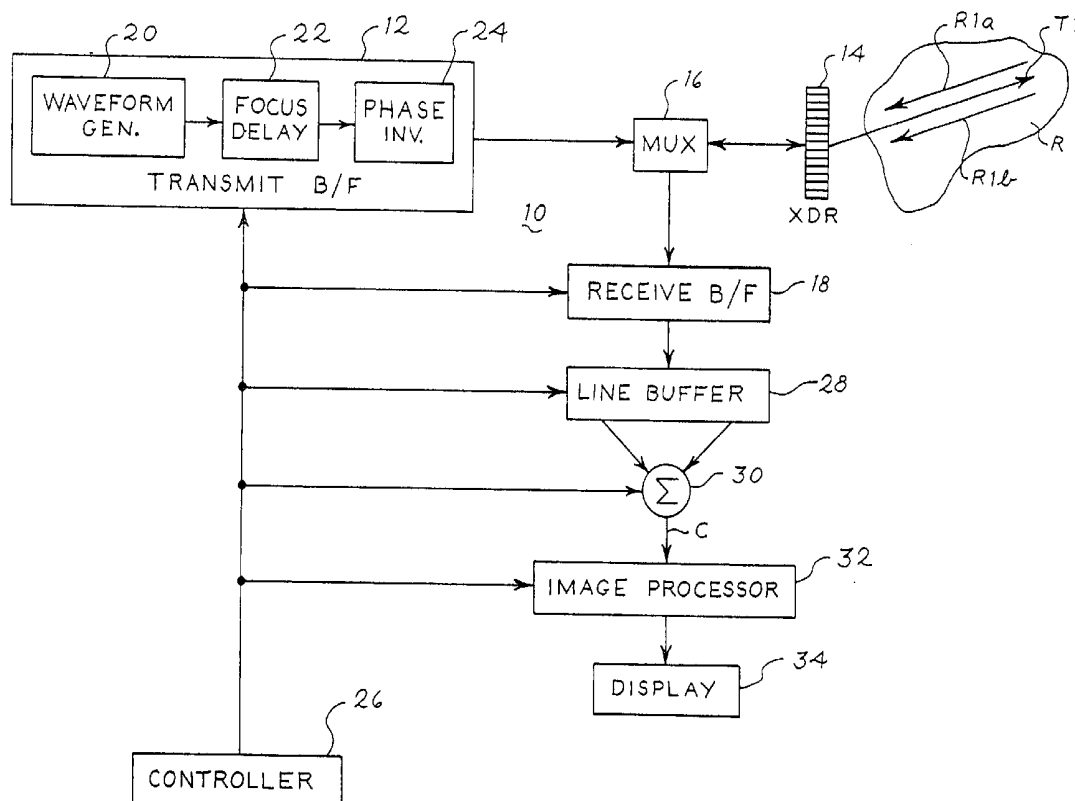


(19) **United States**(12) **Patent Application Publication**
Napolitano et al.(10) **Pub. No.: US 2004/0087857 A1**(43) **Pub. Date: May 6, 2004**(54) **DIAGNOSTIC ULTRASOUND IMAGING
METHOD AND SYSTEM WITH IMPROVED
FRAME RATE**(75) Inventors: **David J. Napolitano**, Pleasanton, CA
(US); **Christopher R. Cole**, Redwood
City, CA (US); **Gregory L. Holley**,
Mountain View, CA (US); **John A.**
Hossack, Palo Alto, CA (US); **Charles**
E. Bradley, Burlingame, CA (US);
Patrick Phillips, Sunnyvale, CA (US)part of application No. 09/198,219, filed on Nov. 23,
1998, now abandoned, which is a continuation-in-part
of application No. 08/993,395, filed on Dec. 18, 1997,
now abandoned, and which is a continuation-in-part
of application No. 08/993,533, filed on Dec. 18, 1997,
now abandoned.**Publication Classification**(51) **Int. Cl.⁷** **A61B 8/00**
(52) **U.S. Cl.** **600/443**

Correspondence Address:

Craig A. Summerfield
BRINKS HOFER GILSON & LIONE
P.O. BOX 10395
CHICAGO, IL 60610 (US)(73) Assignee: **Acuson Corporation**(21) Appl. No.: **10/696,421**(22) Filed: **Oct. 28, 2003****Related U.S. Application Data**(60) Continuation of application No. 10/081,978, filed on
Feb. 21, 2002, now Pat. No. 6,679,846, which is a
division of application No. 09/698,995, filed on Oct.
27, 2000, now Pat. No. 6,436,046, which is a division
of application No. 09/282,396, filed on Mar. 31, 1999,
now Pat. No. 6,193,663, which is a continuation-in-(57) **ABSTRACT**

A medical diagnostic ultrasonic imaging system acquires receive beams from spatially distinct transmit beams. The receive beams alternate in type between at least first and second types across the region being imaged. The first and second types of receive beams differ in at least one scan parameter other than transmit and receive line geometry, and can for example differ in transmit phase, transmit or receive aperture, system frequency, transmit focus, complex phase angle, transmit code or transmit gain. Receive beams associated with spatially distinct ones of the transmit beams (including at least one beam of the first type and at least one beam of the second type) are then combined. In this way, many two-pulse techniques, including, for example, phase inversion techniques, synthetic aperture techniques, synthetic frequency techniques, and synthetic focus techniques, can be used while substantially reducing the frame rate penalty normally associated with such techniques.



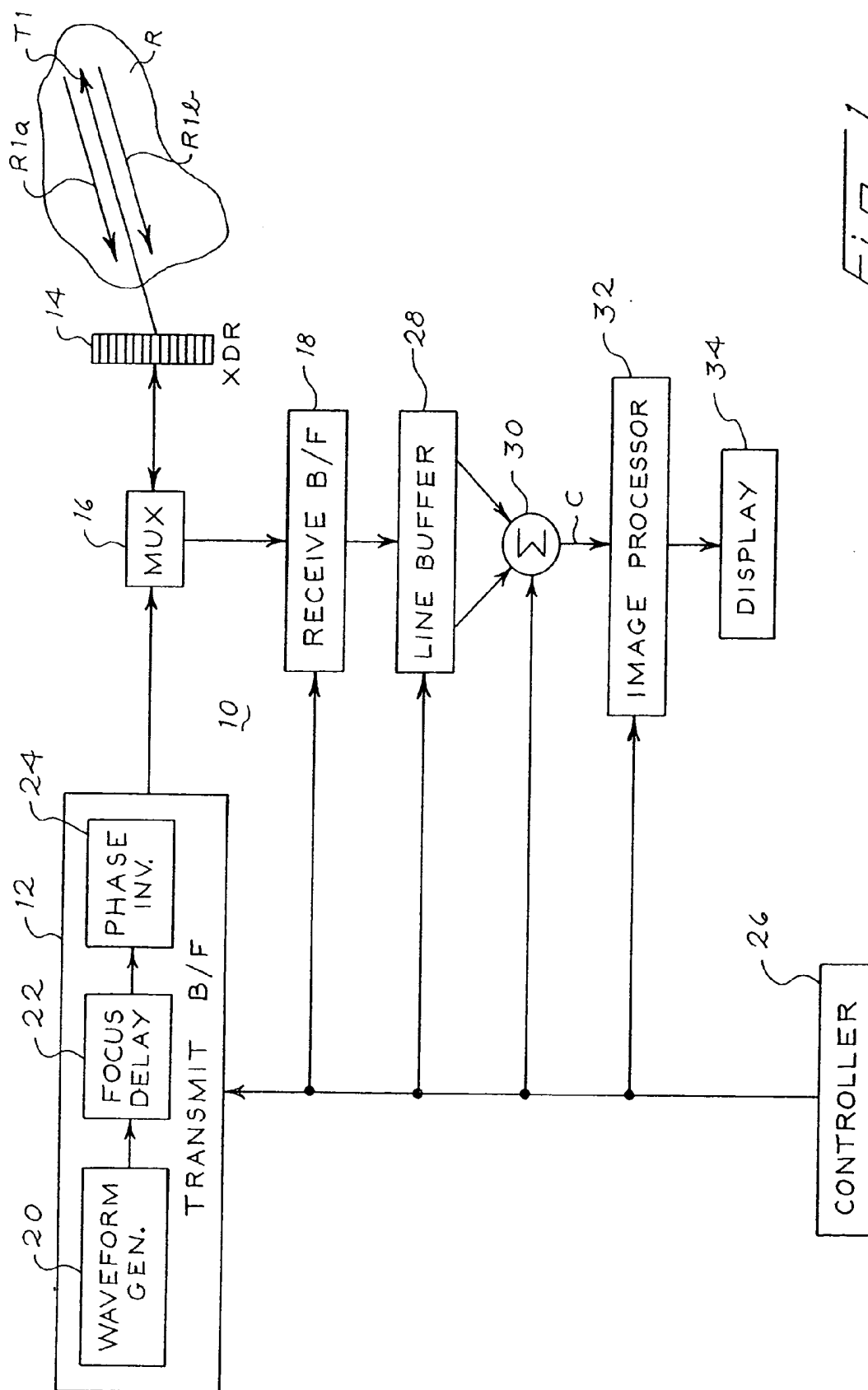
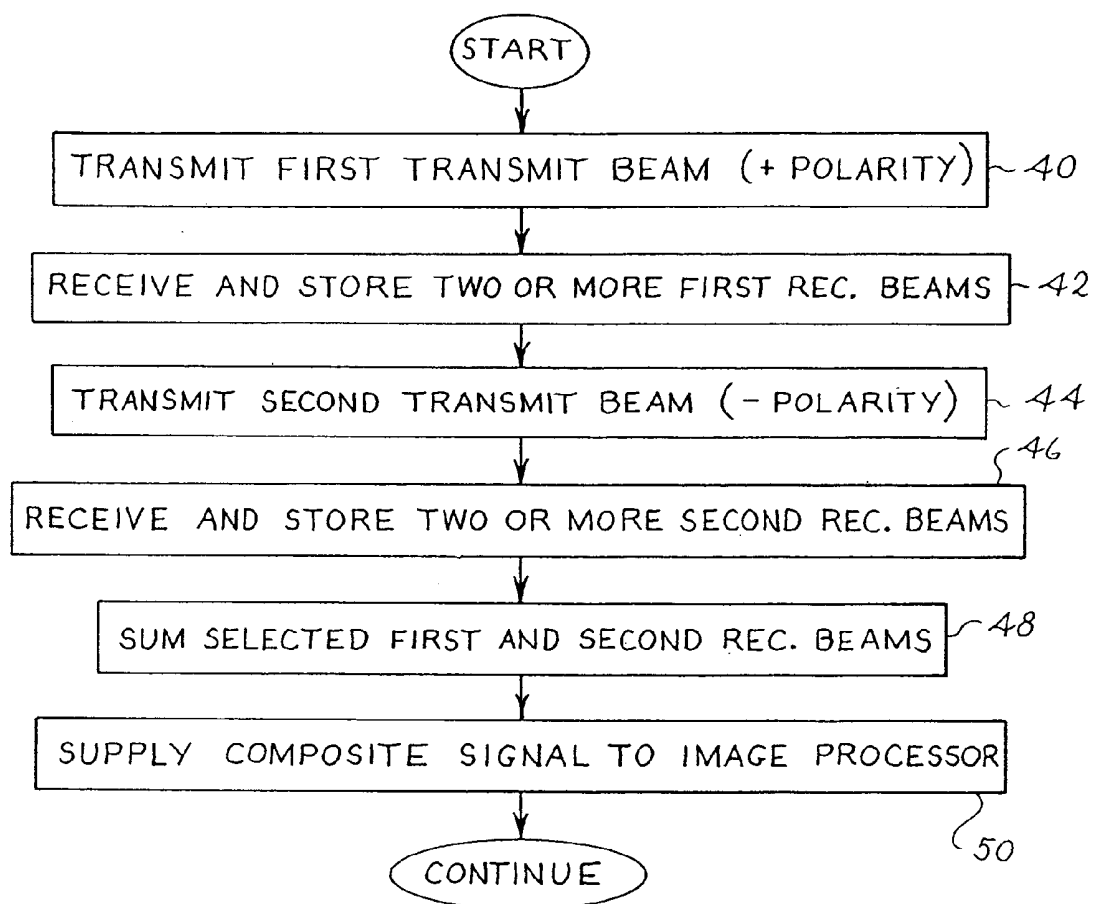
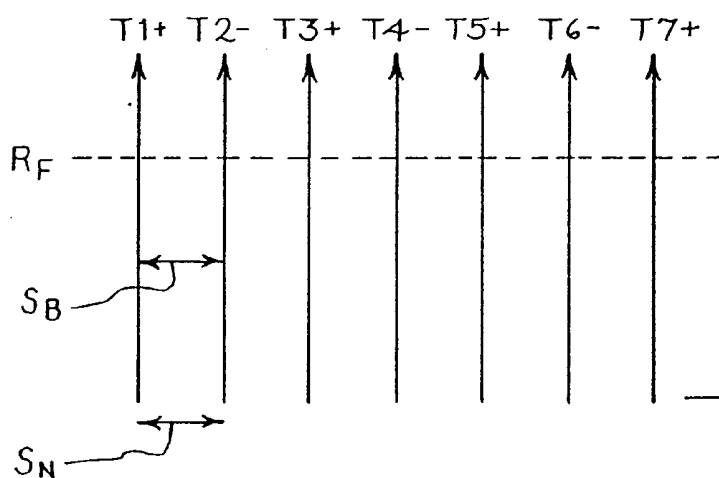
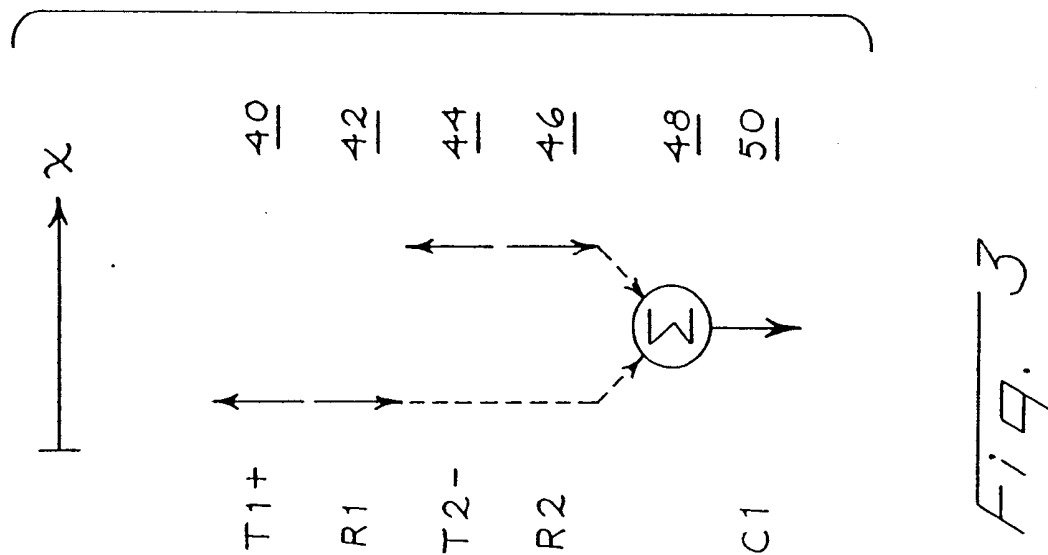
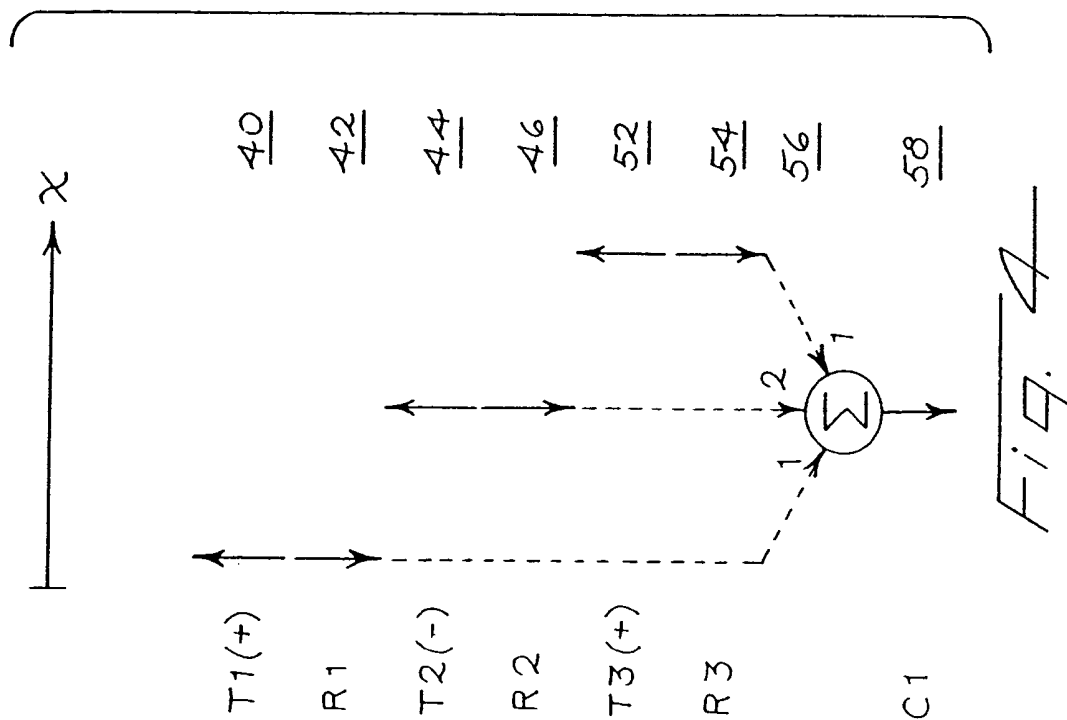
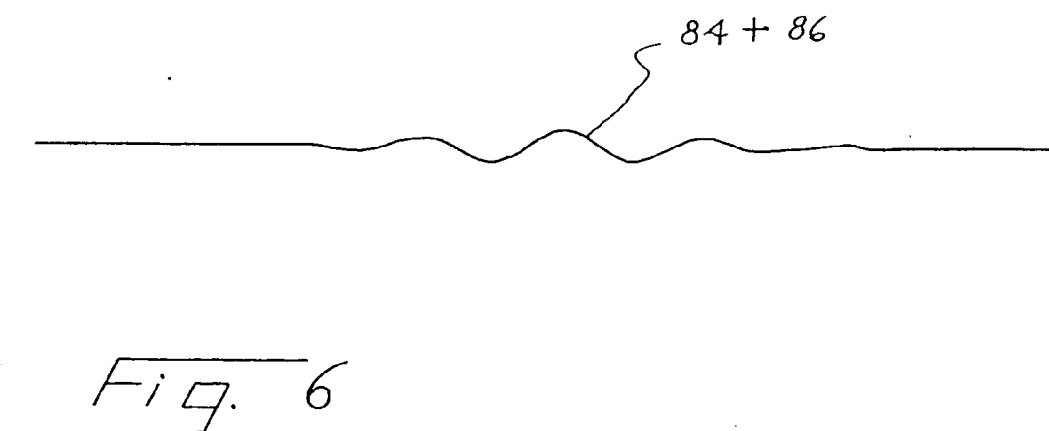
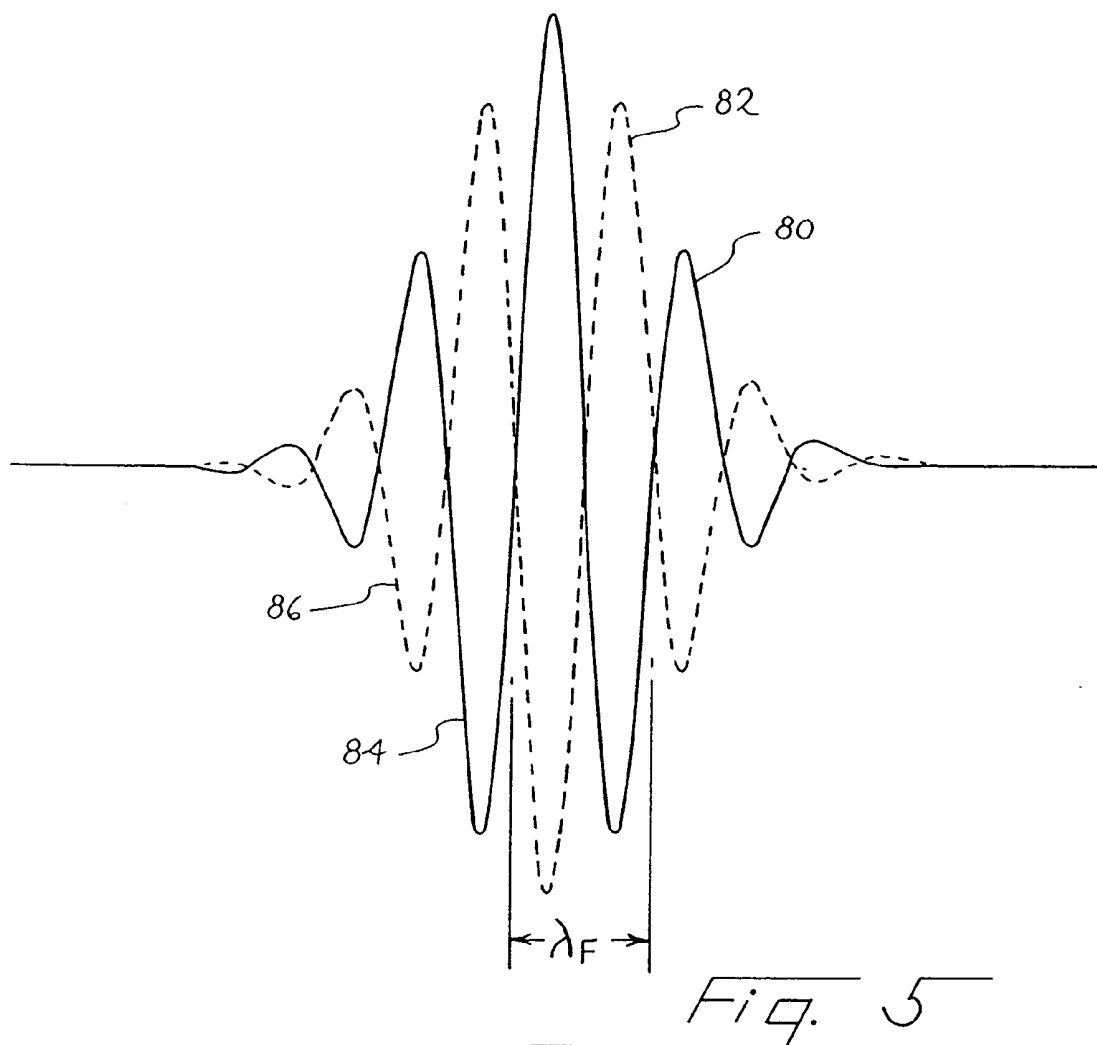


Fig. 1

*Fig. 2**Fig. 11*





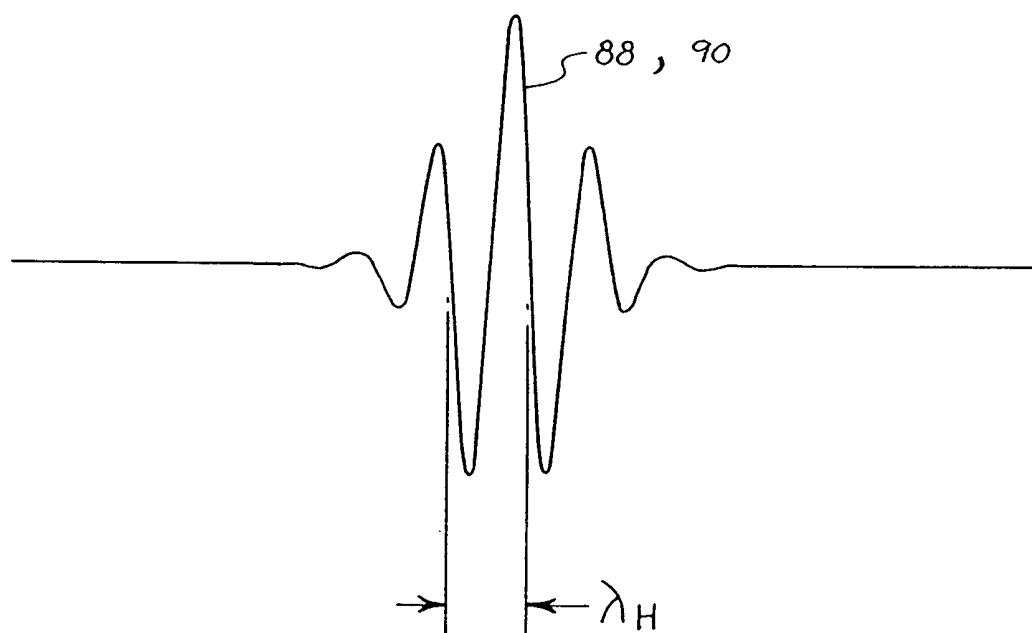


Fig. 7

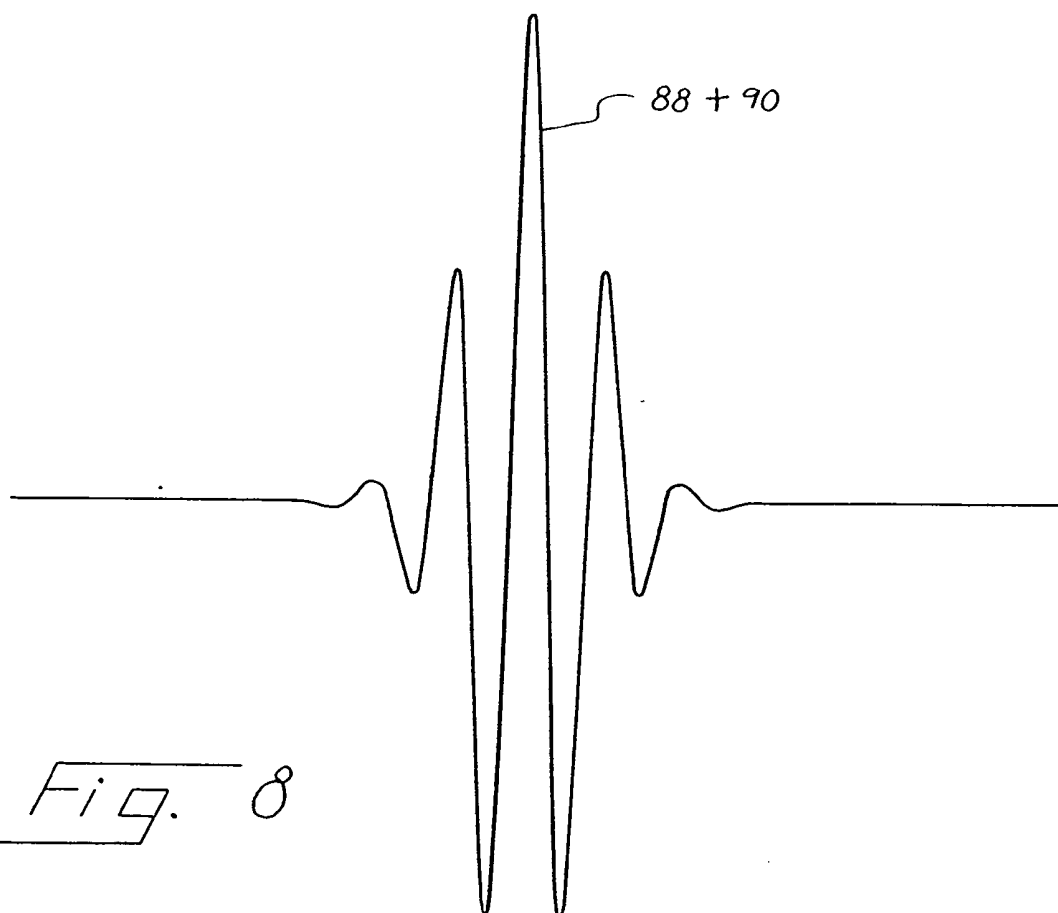


Fig. 8

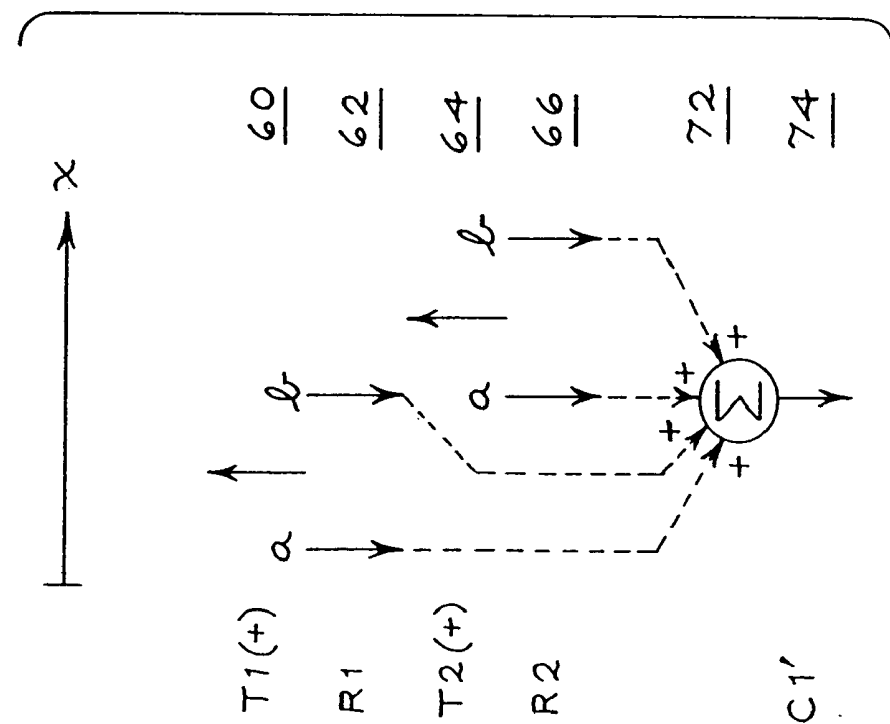


Fig. 10

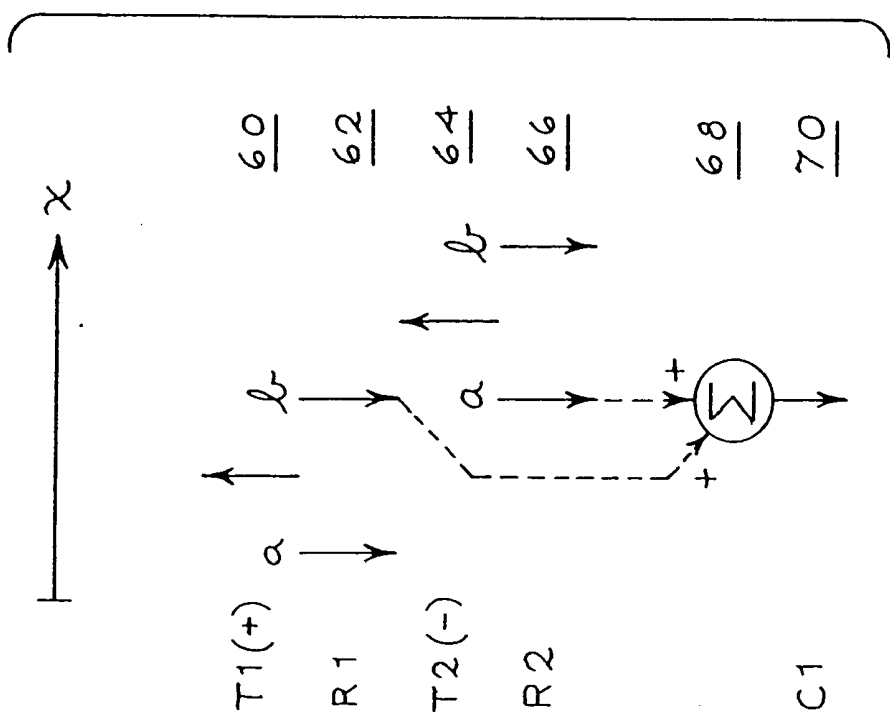


Fig. 9

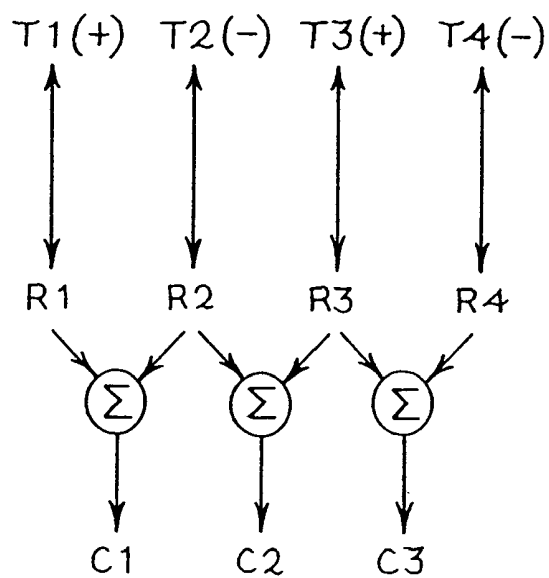


Fig. 12

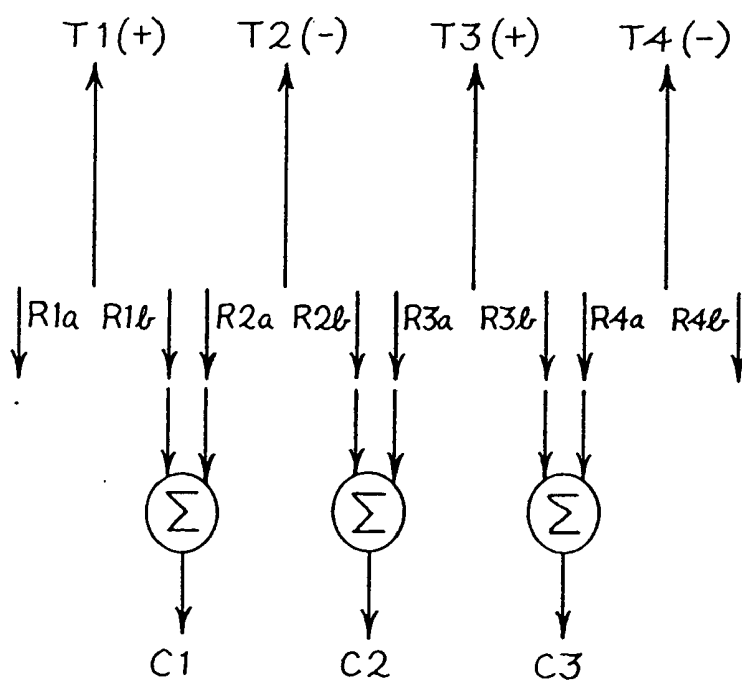


Fig. 13

TRANSMIT APERTURE

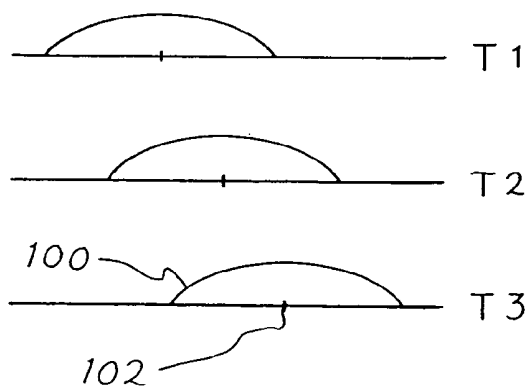


Fig. 14

RECEIVE APERTURE

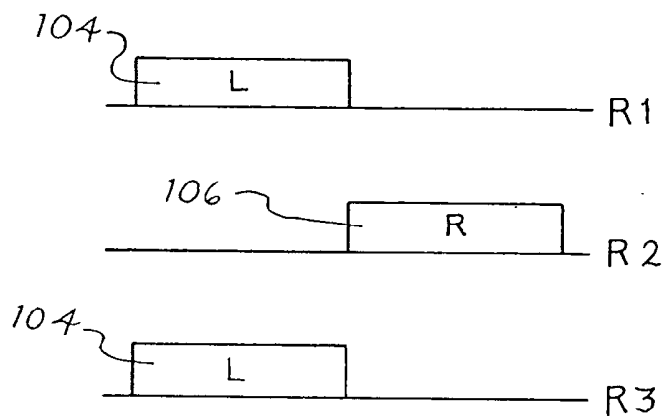


Fig. 15

RECEIVE APERTURE

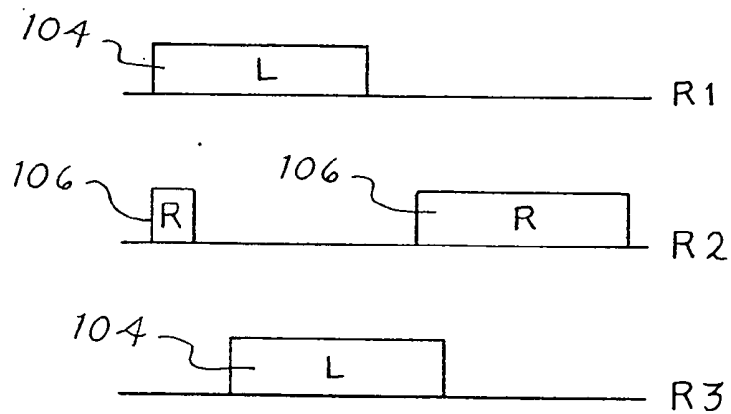


Fig. 16

RECEIVE APERTURE

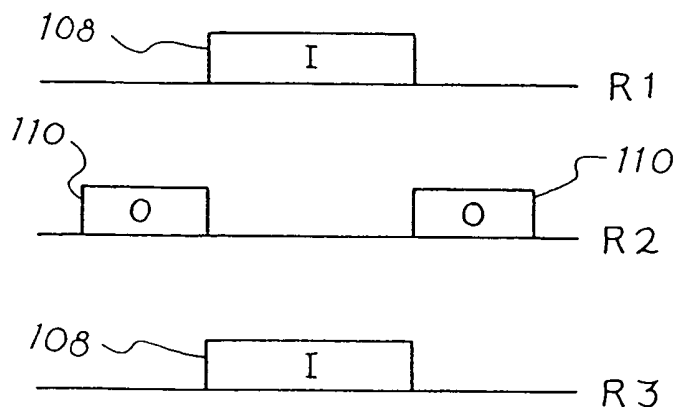


Fig. 17

RECEIVE APERTURE

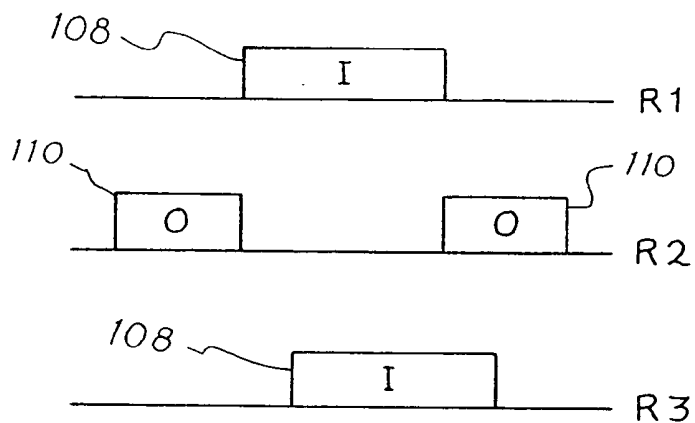


Fig. 18

RECEIVE APERTURE

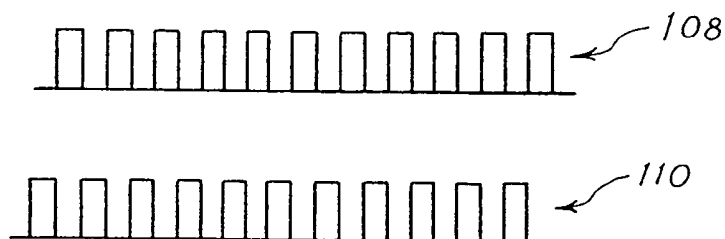


Fig. 19

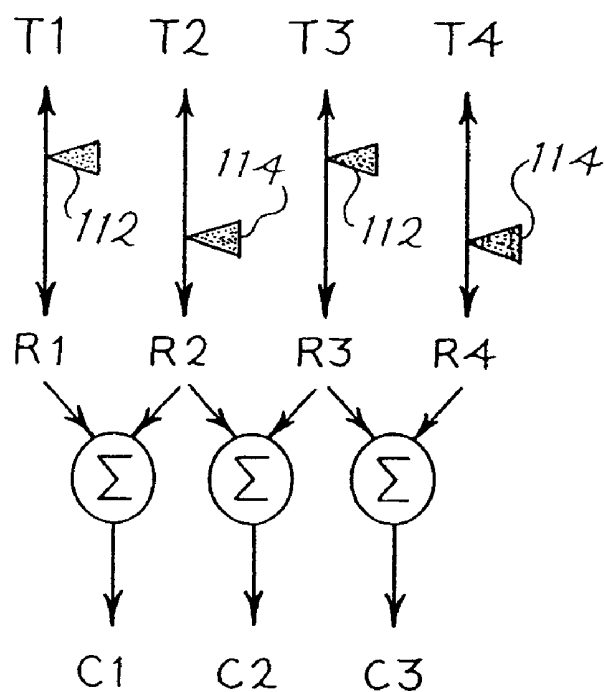


Fig. 20

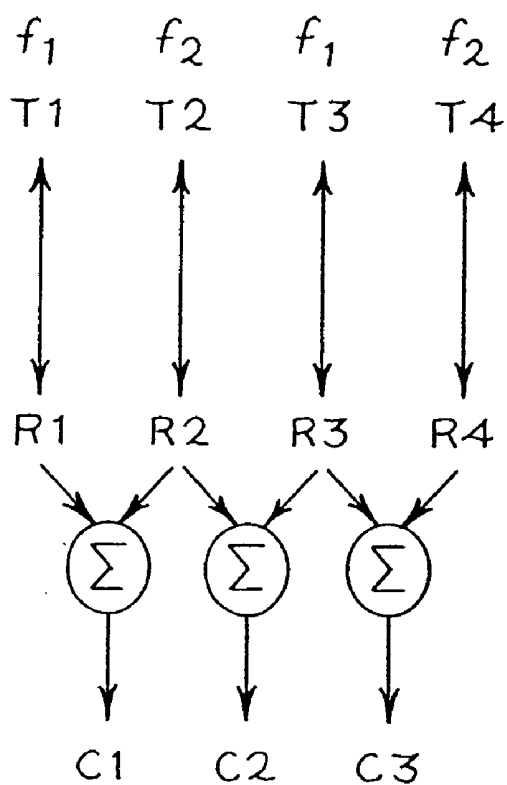


Fig. 21

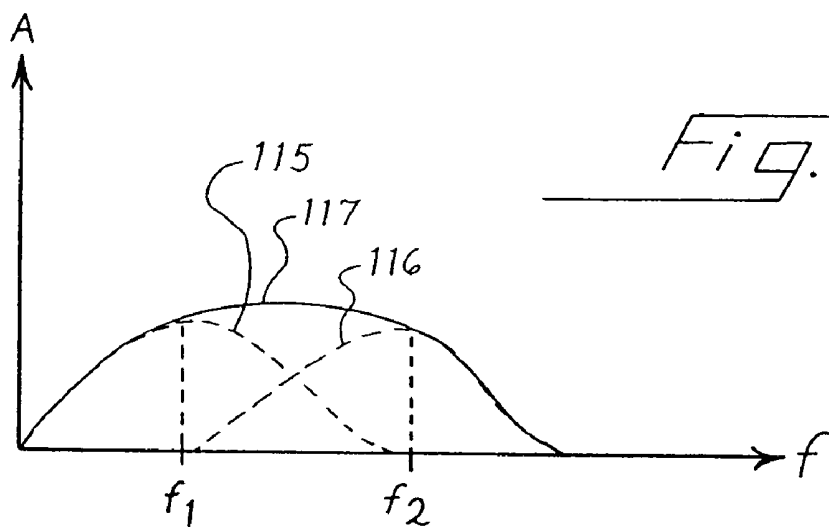


Fig. 22

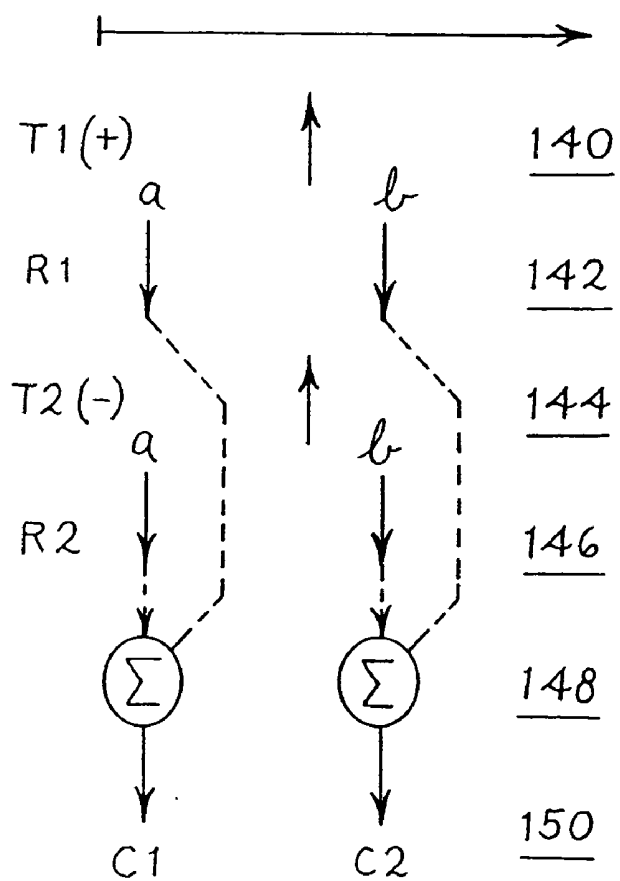


Fig. 23

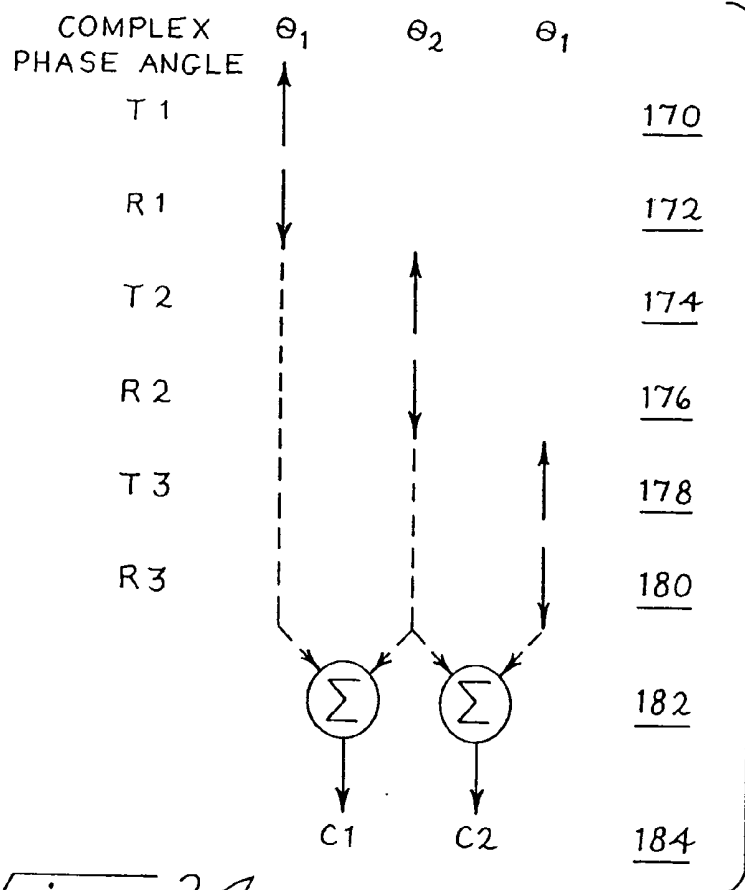


Fig. 24

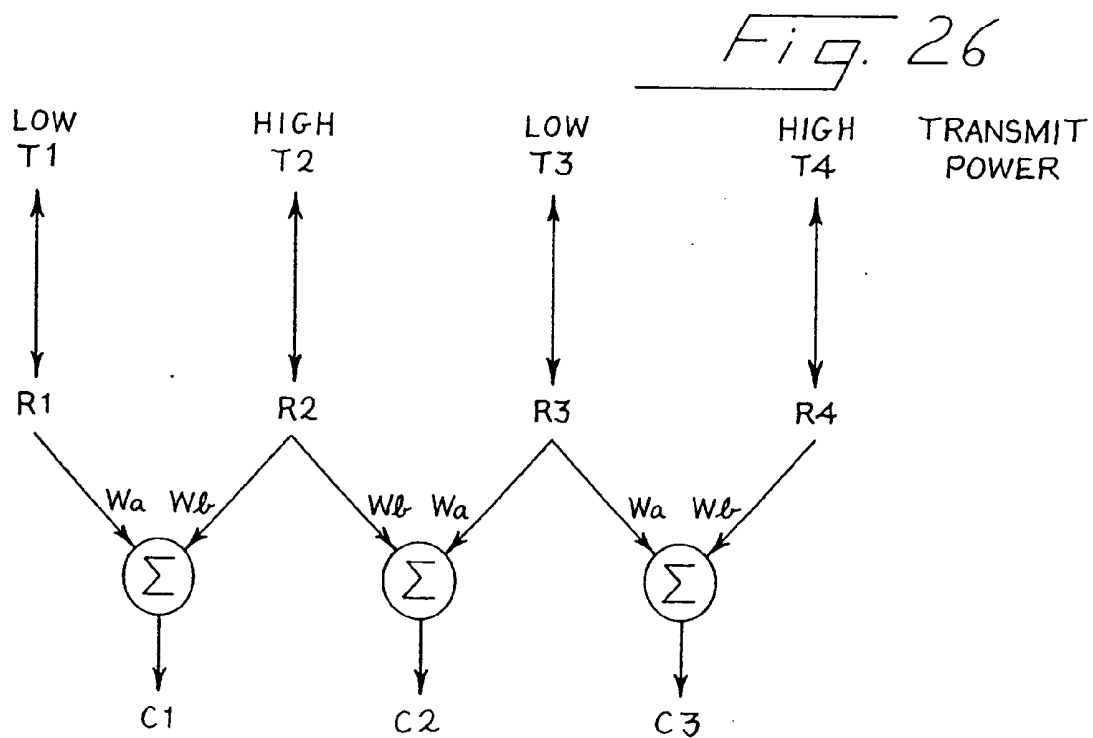


Fig. 26

Fig. 25

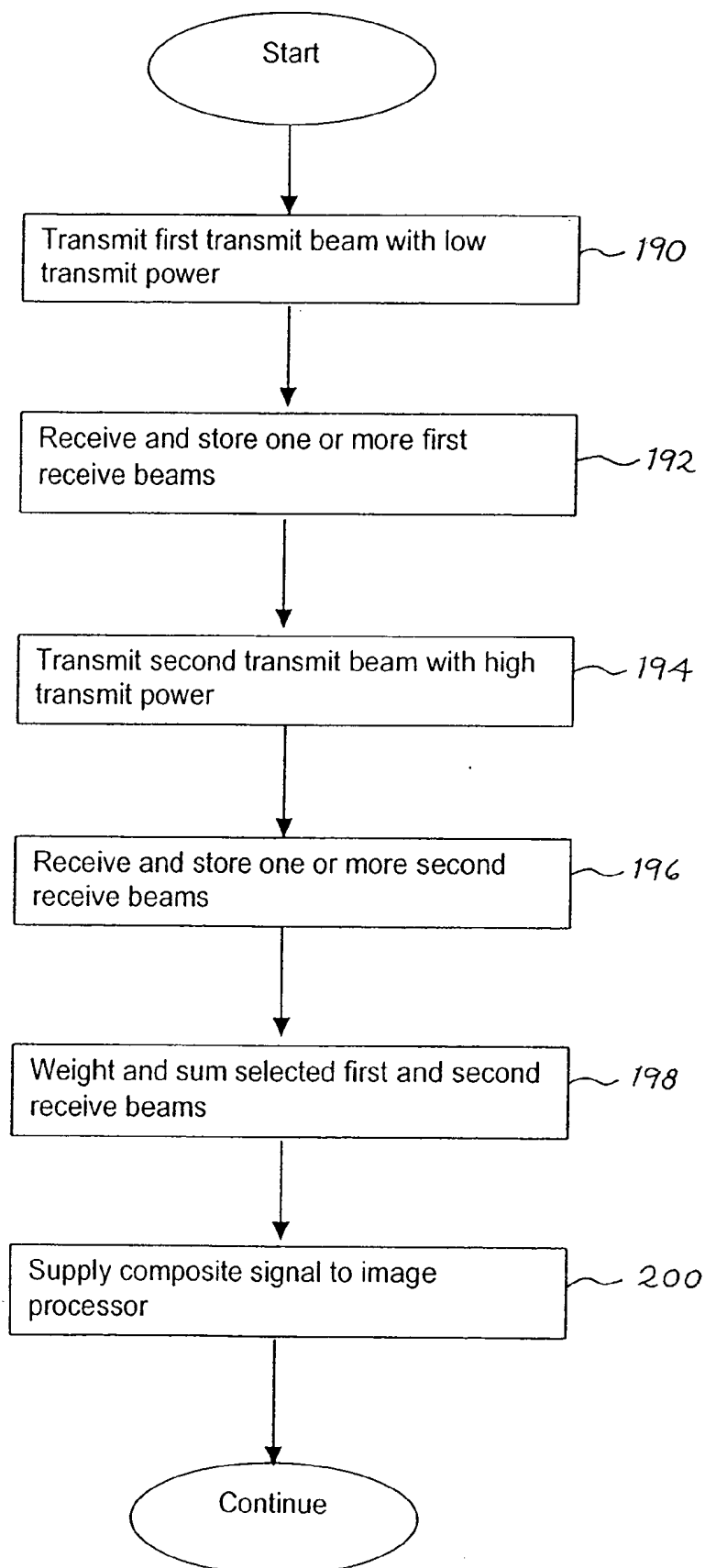


Fig. 27

SCAN LINE	TX GAIN	Wa = 2, Wb = -1	Wa = 4, Wb = -1
		COMPOSITE SIGNAL	COMPOSITE SIGNAL
1	1	HARMONIC	FUNDAMENTAL
2	2	HARMONIC	FUNDAMENTAL
3	1	HARMONIC	FUNDAMENTAL
4	2	HARMONIC	FUNDAMENTAL

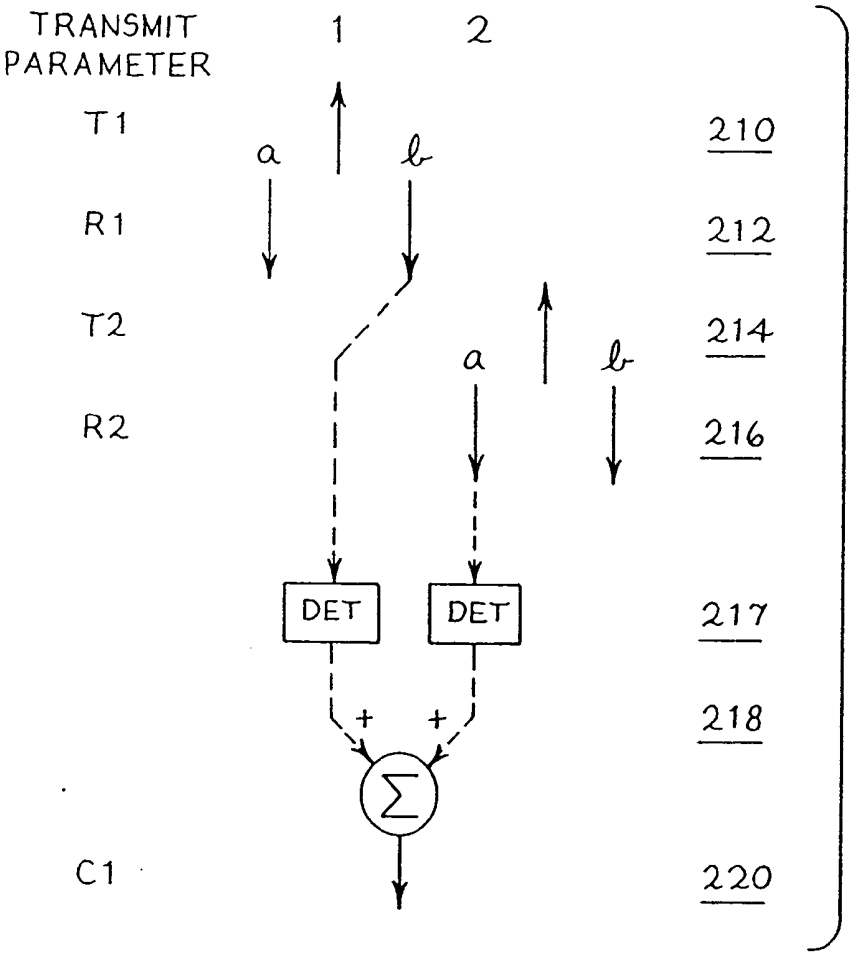


Fig. 29

Fig. 28

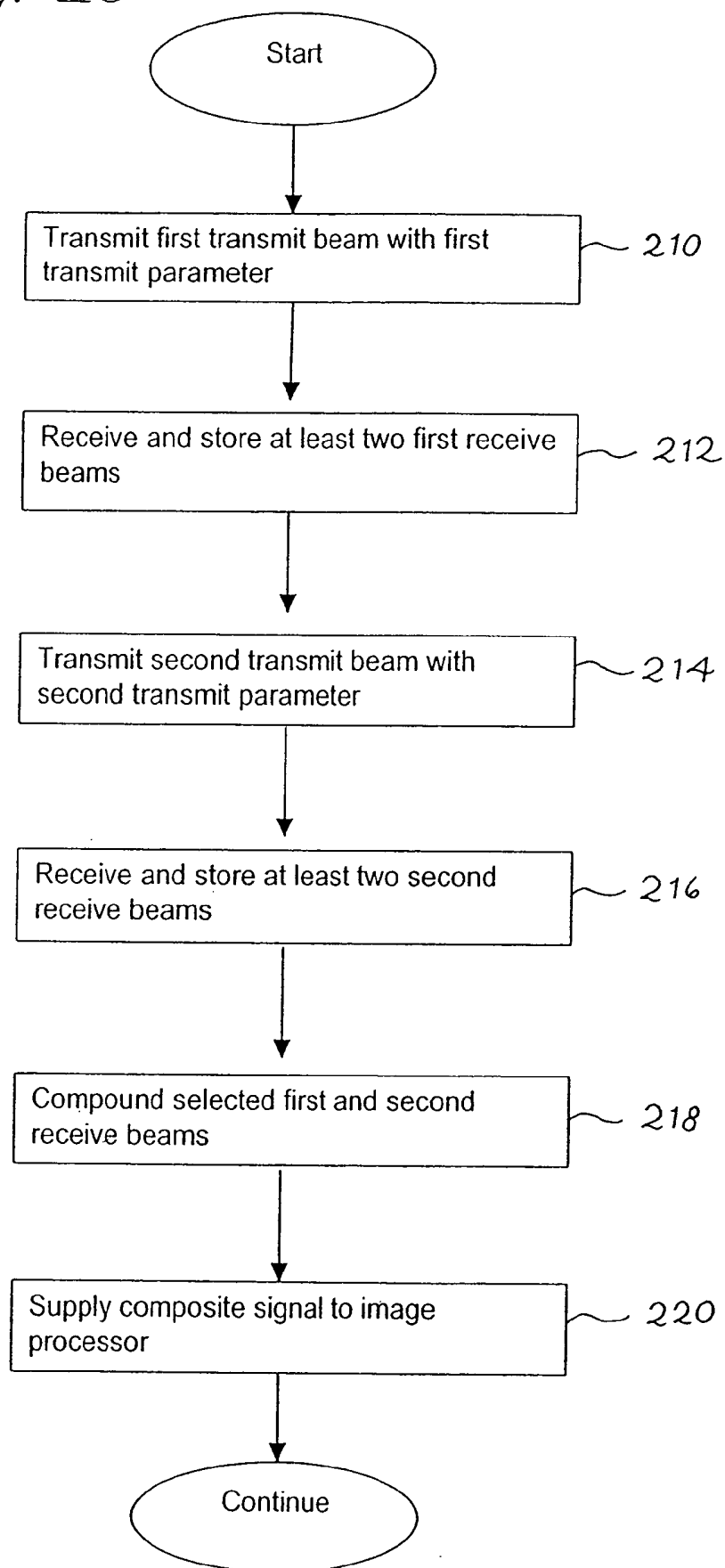
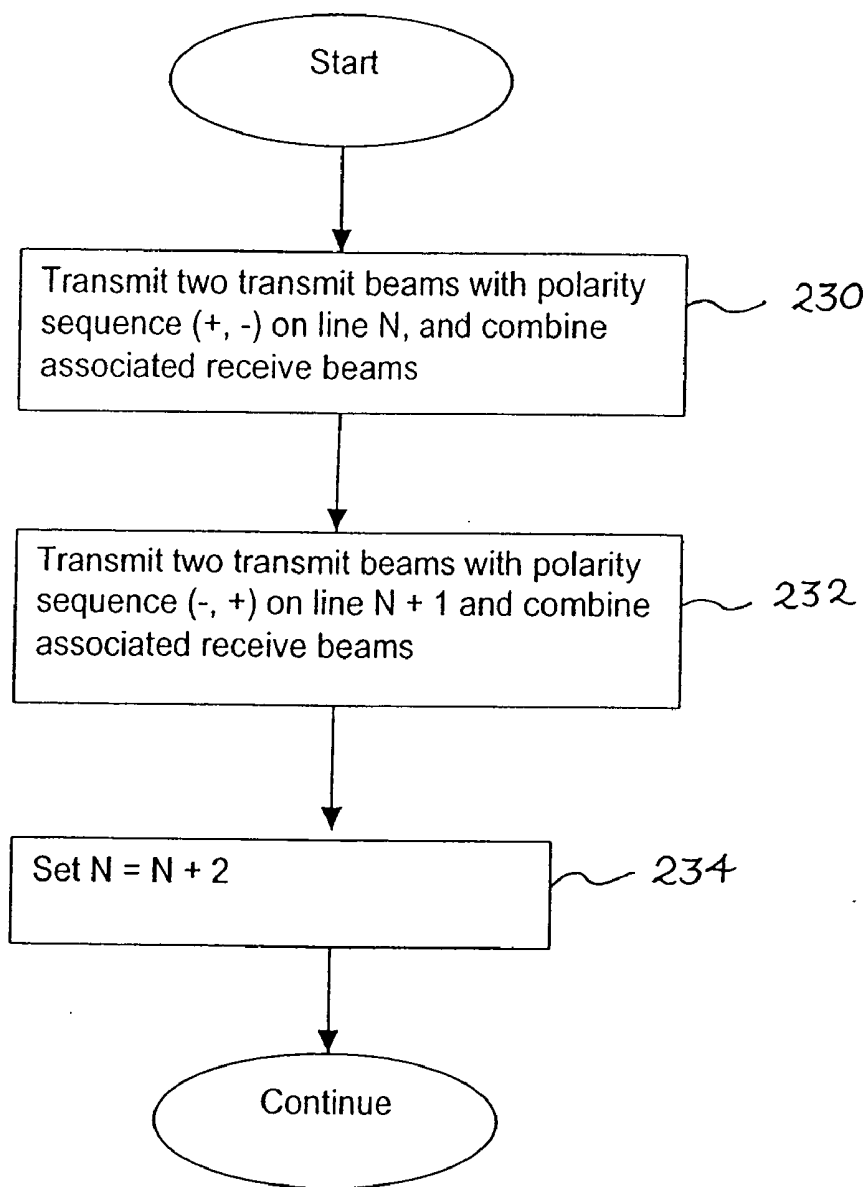


Fig. 30



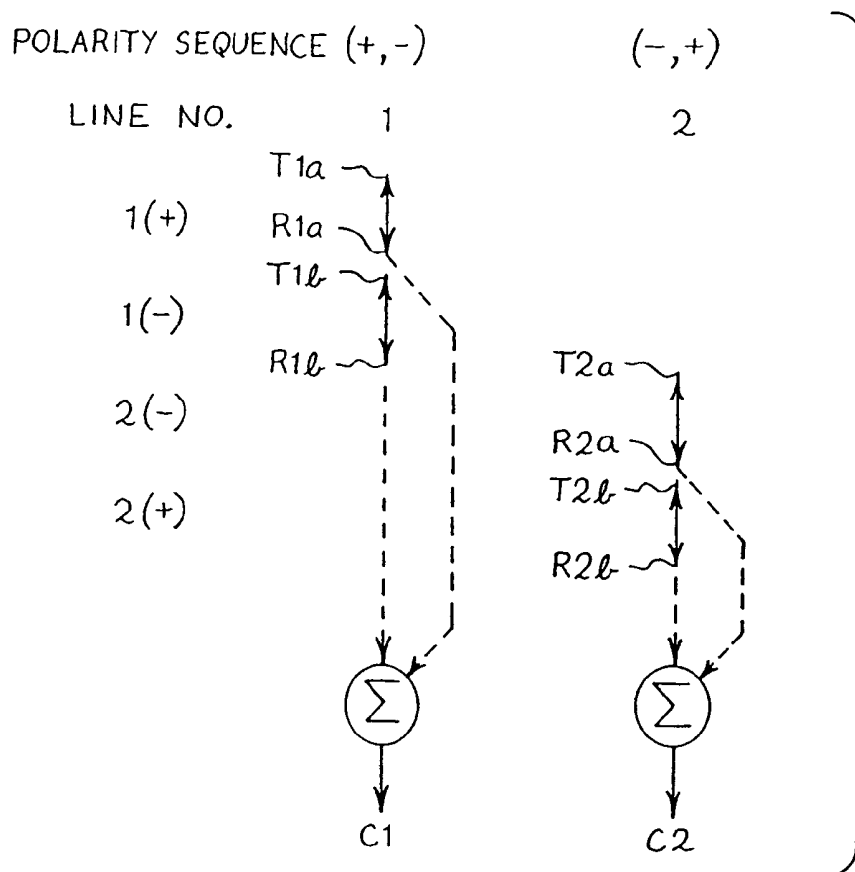


Fig. 31

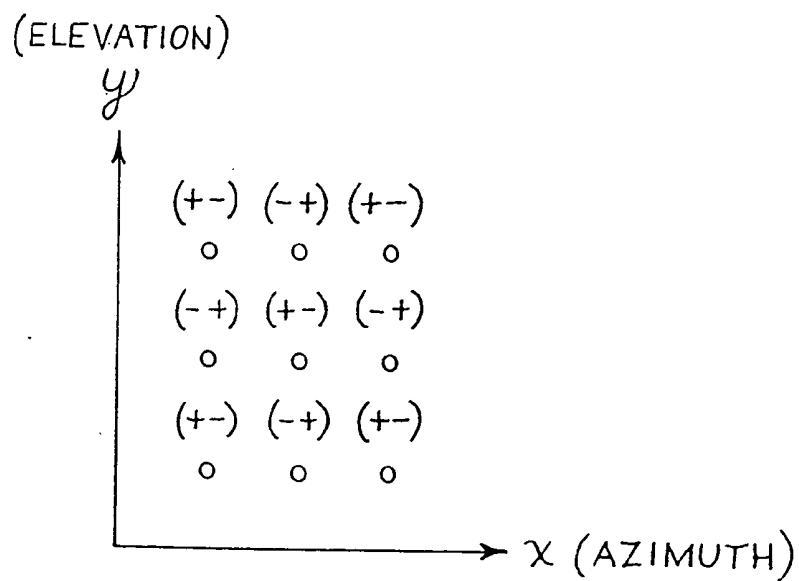


Fig. 32

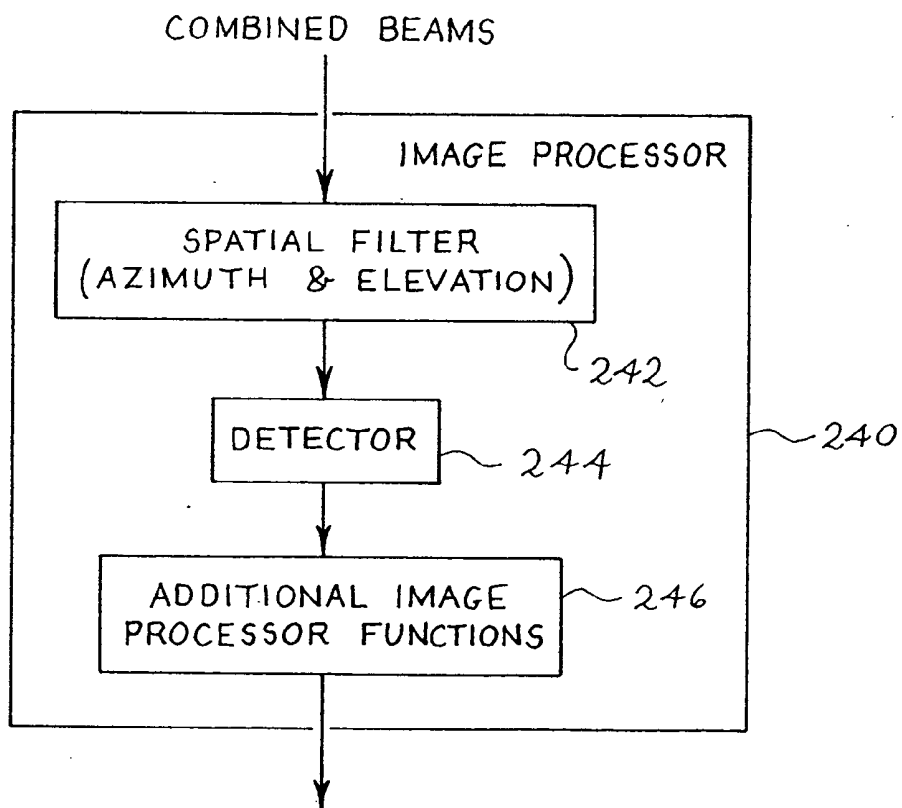
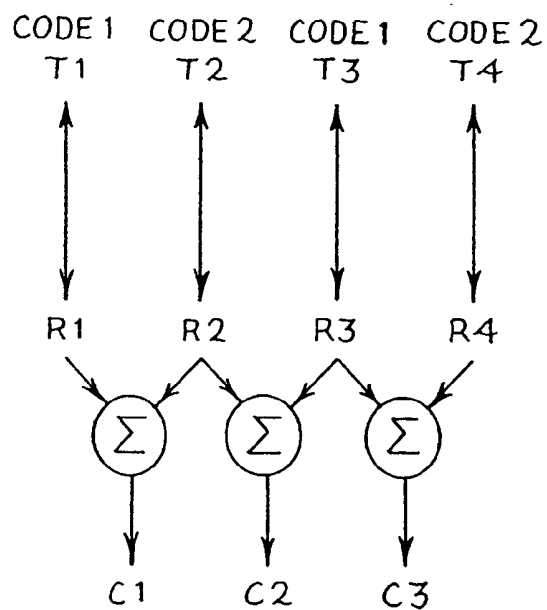


Fig. 34

**DIAGNOSTIC ULTRASOUND IMAGING METHOD
AND SYSTEM WITH IMPROVED FRAME RATE****RELATED APPLICATIONS**

[0001] This application is a continuation-in-part of co-pending U.S. patent application Ser. No. 09/198,219, filed Nov. 23, 1998, which is in turn a continuation-in-part of co-pending U.S. patent application Ser. No. 08/993,395, filed Dec. 18, 1997, and co-pending U.S. patent application Ser. No. 08/993,533, filed Dec. 18, 1997. All three of these related U.S. Patent Applications are hereby incorporated by reference in their entirety.

BACKGROUND OF THE INVENTION

[0002] This invention relates to medical diagnostic ultrasonic imaging methods and systems, and in particular to improvements to such systems that allow an increased frame rate.

[0003] In various medical diagnostic ultrasonic imaging applications, multiple transmit beams are fired along the same ultrasound line. Examples of such applications include two-pulse techniques that use phase inversion subtraction to enhance harmonic image components, synthetic aperture techniques, synthetic spectrum techniques, and sequential focus techniques. The requirement for multiple transmit pulse firings on each ultrasound line results in a substantial reduction in frame rate.

[0004] For example, Chapman U.S. Pat. No. 5,632,277 discloses an ultrasound imaging system that employs phase inversion subtraction to enhance the image. In the disclosed system, two transmit ultrasonic pulses which differ in phase by 180° are focused in the same beam direction. The echo signals associated with these pulses are stored and then summed. Linear echoes destructively interfere in this summation due to the 180° phase difference between the two transmitted ultrasonic pulses. Non-linear echoes do not destructively interfere to the same extent, because the phases associated with non-linear echoes no longer differ by 180°. In this way, the amplitude of the non-linear echoes can be increased relative to the amplitude of the linear echoes in the summed signal.

[0005] The system disclosed in the Chapman patent suffers from the disadvantage that two ultrasonic pulses must be directed along each beam direction, and this requirement reduces the frame rate by a factor of two.

[0006] Similarly, Cole U.S. Pat. No. 5,617,862 discusses a system that coherently sums receive beams along the same steering direction to achieve a synthetic aperture. The disclosed system also results in a substantial reduction in frame rate.

[0007] The reductions in frame rate discussed above are inevitable in the disclosed systems, and in many cases the frame rate may fall to clinically unacceptable levels. Additionally, the multiple firing techniques discussed above reduce frame rate in discrete steps. For example, when two transmit beam firings are required for each transmit beam direction, the frame rate is reduced by a factor of two as compared to conventional single transmit beam operation. It would be advantageous to have a technique whereby a continuous trade off could be made between selected per-

formance factors and the resulting frame rate when employing various multiple-pulse modes of operation.

SUMMARY

[0008] By way of introduction, preferred embodiments described below transmit a plurality of spatially distinct ultrasonic transmit beams into a region. A plurality of receive beams are received from the region, each receive beam associated with a respective one of the transmit beams. The transmit and receive beams include beams of at least first and second types. The first and second types of beams differ in at least one scan parameter other than transmit and receive line geometry, and can for example differ in transmit waveform, receive spectral response phase, aperture, frequency, focus, gain, code, complex phase angle, or alternate polarity sequence. Receive beams associated with spatially distinct ones of the transmit beams (including at least one beam of the first type and at least one beam of the second type) are then preferably combined, either in a coherent manner prior to detection or in a compounding operation subsequent to detection.

[0009] Preferably, the first and second types of beams alternate on a line-by-line or group-of-lines by group-of-lines basis. It is the combination that synthesizes the desired feature such as two-pulse cancellation, synthetic aperture, synthetic spectrum, or multiple focus. This approach allows a continuous tradeoff between performance and frame rate by adjustment of the scan line density. For example, if the same scan line density is used in both the normal mode and one of the alternating line modes described above, there is no frame rate loss.

[0010] The present invention is defined by the following claims, and nothing in this section should be taken as a limitation on those claims.

BRIEF DESCRIPTION OF THE DRAWINGS

[0011] **FIG. 1** is a block diagram of an ultrasonic imaging system that incorporates a presently preferred embodiment of this invention.

[0012] **FIG. 2** is a flowchart of a portion of a method practiced by the system of **FIG. 1**.

[0013] **FIGS. 3 and 4** are schematic diagrams illustrating the formation of a composite signal in two alternative embodiments in which a single receive beam is acquired for each transmit beam.

[0014] **FIGS. 5 through 8** are waveform diagrams illustrating the operation of the method shown in **FIG. 3**.

[0015] **FIGS. 9 and 10** are schematic diagrams of alternative embodiments in which multiple receive beams are acquired for each transmit beam.

[0016] **FIG. 11** is a diagram showing the spacing of a set of transmit beams generated by the system of **FIG. 1** as compared to the Nyquist spacing.

[0017] **FIGS. 12 and 13** are schematic diagrams of the methods of **FIGS. 3 and 9**, respectively.

[0018] **FIG. 14** is a schematic diagram showing transmit apertures utilized in an alternating line aperture embodiment of this invention.

[0019] FIGS. 15-19 are schematic diagrams showing receive apertures used in various alternating line aperture embodiments of this invention.

[0020] FIG. 20 is a flowchart showing an alternating line focus embodiment of this invention.

[0021] FIG. 21 is a flowchart showing an alternating line frequency embodiment of this invention.

[0022] FIG. 22 is a graph showing frequency characteristics of the embodiment of FIG. 21.

[0023] FIG. 23 is a flowchart of an additional embodiment of this invention.

[0024] FIG. 24 is a schematic diagram showing an alternating line complex phase angle embodiment of this invention.

[0025] FIG. 25 is a flowchart showing an alternating line transmit gain embodiment of this invention.

[0026] FIG. 26 is a schematic diagram of the embodiment of FIG. 25.

[0027] FIG. 27 is a chart illustrating alternative modes of operation of the embodiment of FIG. 26.

[0028] FIG. 28 is a flowchart showing an alternating line compounding embodiment of this invention.

[0029] FIG. 29 is a schematic diagram illustrating the embodiment of FIG. 28.

[0030] FIG. 30 is a flowchart of an alternating line polarity sequence embodiment of this invention.

[0031] FIG. 31 is a schematic diagram illustrating operation of the embodiment of FIG. 30.

[0032] FIG. 32 is a schematic diagram illustrating operation of another embodiment of an alternating line polarity sequence embodiment of this invention.

[0033] FIG. 33 is a schematic diagram of an alternating line transmit code embodiment of this invention.

[0034] FIG. 34 is a block diagram of an image processor suitable for use in the embodiment of FIG. 1.

DETAILED DESCRIPTION OF THE PRESENTLY PREFERRED EMBODIMENTS

[0035] The present invention can take many forms, including the specific examples presented in the following sections.

[0036] Alternating Line Phase Embodiments

[0037] Referring now to the drawings, FIG. 1 shows a schematic view of an ultrasonic imaging system 10 that incorporates a presently preferred embodiment of this invention that provides alternating line phase. The system 10 includes a transmit beamformer 12 that is coupled to a phased array transducer 14 by a multiplexer 16. The multiplexer 16 also couples the transducer 14 to a receive beamformer 18.

[0038] The transmit beamformer 12 in part operates as a conventional transmit beamformer to generate a set of transmit signals for the individual transducers included in the transducer 14. For example, the transmit beamformer 12 can include a waveform generator 20 that applies a suitably

shaped ultrasonic pulse to a focus delay 22. The focus delay 22 provides conventional steering delays by any suitable combination of delays, phase shifts and phase rotations. The focus delays are selected to cause ultrasonic signals from the transducer 14 to constructively interfere at a selected transmit focus along a selected transmit beam direction. In FIG. 1, an exemplary transmit beam T1 is shown.

[0039] The transmit beamformer 12 additionally includes a phase inverter 24 that is controlled by a controller 26. In this example, the phase inverter 24 is active only for every other transmit beam. Thus, transmit beams T1, T3, T5, . . . are transmitted with positive polarity, and transmit beams T2, T4, T6, . . . are transmitted with inverted or negative polarity.

[0040] The receive beamformer 18 can operate in a single beam mode, in which a single receive beam is acquired for each transmit beam, or in a multiple receive beam mode, in which multiple receive beams are acquired in association with each transmit beam. Typically, in the single receive beam mode each receive beam is spatially aligned with the associated transmit beam, while in the multiple receive beam mode each of the receive beams is spatially offset from the respective transmit beam. In FIG. 1, two receive beams R1a and R1b are shown in association with the transmit beam T1. As shown in FIG. 1, the transmit beams including the transmit beam T1 are directed into a region R of the subject, and the receive beams R1a, R1b are associated with echoes from the region R.

[0041] The receive beamformer 18 applies appropriate delays and phase rotations to coherently sum receive signals from the transducer 14 to create the desired receive beams along desired directions. These receive beams are applied to a line buffer 28 that stores the receive beams for further processing. In this embodiment, the line buffer 28 stores the receive beams coherently. That is, sufficient timing or phase information is preserved, or sufficient phase corrections were made, to allow the interference effects discussed below to be obtained consistently.

[0042] Selected receive beams associated with multiple, spatially distinct transmit beams are applied to a summer 30 for summation to form a composite signal C that is applied to an image processor 32. The image processor 32 forms a conventional image such as a B mode image and presents this image on a display 34.

[0043] FIG. 2 provides a flowchart of a portion of a method practiced by the system of FIG. 1. The system transmits a first transmit beam of positive polarity in a first direction in step 40, and receives and stores one or more first receive beams associated with this first transmit beam in step 42. Then the transmit beamformer transmits a second transmit beam of negative polarity in a second direction in step 44. The second transmit beam is usually adjacent to the first transmit beam. One or more second receive beams associated with the second transmit beam are received and stored in step 46, and selected ones of the first and second receive beams are summed in step 48 to generate a composite signal, which is supplied to the image processor in step 50.

[0044] FIG. 3 illustrates the method of FIG. 2 diagrammatically. In FIG. 3 the X direction proceeds from left to right, and transmit and receive beams of differing azimuthal positions are plotted at differing X coordinates. Reference

numerals 40-50 have been used in FIG. 3 to designate portions of FIG. 3 that correspond to the correspondingly numbered steps of FIG. 2. Note that the first and second receive beams R1, R2 that are summed in step 48 are associated with spatially distinct transmit beams T1 (positive polarity) and T2 (negative polarity), respectively.

[0045] FIG. 4 shows another embodiment of the method of this invention which includes steps 40-46 as described above. In this embodiment, a third transmit beam T3 (positive polarity) is transmitted along a third spatially distinct direction in step 52, and a corresponding receive beam R3 is acquired in step 54. Thus, the receive beams R1, R2, R3 are all aligned with the corresponding transmit beams T1, T2, T3 and are all spatially distinct. These three receive beams R1, R2, R3 are summed in step 56 using summing values [1, 2, 1] as shown in FIG. 4 to generate a composite signal C1 that is applied to the image processor in step 58.

[0046] FIGS. 5-8 diagrammatically illustrate the benefits obtained with the methods of FIGS. 2-4. FIG. 5 shows the ultrasonic waveform associated with the positive polarity transmit beams T1, T3 in solid lines and the inverted or negative polarity ultrasonic waveform associated with transmit pulse T2 in dotted lines. As shown in FIG. 5, the inverted polarity pulse differs from the positive polarity pulse by phase inversion or a phase shift of 180°. The ultrasonic pulse shown in FIG. 5 is an amplitude modulated sinusoid, and the sinusoid has a fundamental wavelength λ_F . Thus, the pulses shown in FIG. 5 represent the fundamental components 80, 82 of the transmit beams T1 and T2, respectively.

[0047] FIG. 5 can also be taken as a representation of the fundamental components 84, 86 of the receive beams R1, R2, respectively, assuming a different amplitude scale. The fundamental components 84, 86 of the receive beams are created by linear echoes of the fundamental components 80, 82 of the ultrasonic transmit beams, and the fundamental component 84 of the receive beam R1 is 180° out of phase with respect to the fundamental component 86 of the receive beam R2. FIG. 6 schematically shows the summation of the fundamental components 84, 86 of the receive beams R1, R2. Because the fundamental components 84, 86 are substantially equal in amplitude, and because they differ in phase by 180°, the fundamental components 84, 86 of the receive beams R1, R2 destructively interfere to a substantial extent.

[0048] The situation is quite different with respect to the harmonic components of the receive beams R1, R2, as shown in FIG. 7. Because the harmonic components 88, 90 of the receive beams R1, R2 are created by non-linear effects, they are not characterized by a phase shift of 180°. In this case, the harmonic components 88, 90 are second harmonic components having a wavelength λ_H equal to one-half of λ_F . In this case, the harmonic receive components 88, 90 have substantially the same phase, and when summed they constructively interfere as shown in FIG. 8.

[0049] In general, the fundamental components of the receive beams will not destructively interfere completely. Nevertheless, in this embodiment the fundamental components of the receive beams destructively interfere to a greater extent than the harmonic components of the receive beams, such that the harmonic components of the receive beams are emphasized in the composite signals.

[0050] FIGS. 9 and 10 relate to multiple receive beam embodiments of this invention. In the method diagrammed in FIG. 9, a first transmit beam T1 (of positive polarity) is transmitted along a first azimuthal direction in step 60, and two associated receive beams R1a, R1b are acquired in step 62. Multiple-receive-beam beamformers are described in U.S. Pat. No. 5,827,188, assigned to the assignee of the present invention. Note that the receive beams R1a, R1b are offset spatially on respective sides of the transmit beam T1. In step 64, a second transmit beam T2 (of negative polarity) is transmitted along a second transmit direction, spatially distinct from the first transmit direction of the transmit beam T1. Two corresponding receive beams R2a, R2b are acquired in step 66, and two spatially aligned receive beams R1b, R2a are added together in step 68. Note that the summed receive beams R1b, R2a are spatially aligned along the azimuthal direction, but that they are associated with spatially distinct transmit beams T1, T2, respectively. The summing step 68 generates a composite signal C1 that is applied to the image processor in step 70. The method of FIG. 9 is anticipated to provide particularly good rejection of the fundamental component in the composite signal, due to the fact that the summed receive beams R1b and R2a are spatially aligned.

[0051] FIG. 10 shows a modified form of the method of FIG. 9, in which steps 60-66 are performed as described previously. In this case, the summing step 72 sums a total of four receive beams R1a, R1b, R2a, R2b to produce the composite signal C1' that is applied to the image processor in step 74.

[0052] In the methods shown in FIGS. 3, 4, 9 and 10, only a single composite signal is created. In practice, the illustrated methods are repeated as further transmit beams are fired and further receive beams are acquired.

[0053] FIG. 12 shows the manner in which the method of FIG. 3 can be used with multiple transmit beams that traverse the region of interest. In FIG. 12, four transmit beams T1-T4 of alternating polarity are used to acquire associated receive beams R1-R4 that are summed as shown to produce composite signals C1-C3. Thus, three composite signals C1-C3 are acquired using only four transmit events. Similarly, FIG. 13 shows the manner in which the method of FIG. 9 can be used with transmit beams that traverse the region of interest. In these examples, the advantage of fundamental component rejection is obtained without any substantial penalty in frame rate, since the summed receive signals are associated with spatially distinct transmit beams.

[0054] In multiple receive beam embodiments such as those discussed above in conjunction with FIGS. 9 and 13, the receive beams associated with a single transmit beam may be combined to produce an intermediate combined beam aligned with the respective transmit beam. This intermediate combined beam does not provide cancellation of fundamental or harmonic components, but it may be useful in various frequency compounding techniques.

[0055] FIG. 11 schematically shows an array of transmit beams T1-T7 that can be used in the methods described above. In FIG. 11, the focal range R_F is illustrated, and the separation between adjacent transmit beams is indicated by the symbol S_B . In FIG. 11 the Nyquist spacing (i.e. the beam spacing required for Nyquist sampling) is shown by the symbol S_N . In this embodiment, there is a trade-off between

azimuthal spacing of the transmit beams and selective enhancement of the harmonic component in the summing step described above. In particular, if the beam spacing S_B is equal to the Nyquist spacing S_N , an associated azimuthal resolution and level of fundamental component suppression will be obtained. If the transmit beams are positioned more closely together such that the ratio S_B/S_N is less than one, the level of fundamental suppression will be improved in the composite signals at the expense of increased time to acquire a frame of image data. Depending upon the degree of improvement desired in the level of fundamental suppression, the ratio S_B/S_N can be made greater or less than one-half.

[0056] In another mode of operation, the ratio S_B/S_N can be made greater than one such that the azimuthal dimension is sampled with a spacing greater than the Nyquist spacing S_N . In this case, the time required to acquire a frame is reduced, but the level of suppression of the fundamental component in the composite signal is reduced. Relationships between the beam spacing S_B and the Nyquist spacing S_N described above can be applied either at the focal range R_F or ranges spaced from the focal range R_F .

[0057] For a given transmit line density there is substantially no adverse impact on frame rate due to the use of the fundamental suppression method described above. The fundamental components of the receive beams in general will not be perfectly cancelled due to the fact that the associated transmit beams are spatially distinct, and therefore the phase difference between the fundamental components of the summed receive beams will often be substantially different than 180° such as $180^\circ \pm 30^\circ$ or $180^\circ \pm 45^\circ$. However, the more closely the transmit beams are spaced (the more over sampled they are) the better the fundamental cancellation in the composite signal that will be achieved. Thus, the method described above allows a trade-off between frame rate and degree of fundamental rejection in the composite signal. The positive and negative polarity ultrasound lines can approach each other by increasing line density and thereby increasing the rejection of the fundamental component in the composite signal. As a greater degree of over-sampling is used, degradation of lateral resolution associated with the summing step is also reduced.

[0058] The alternating line phase embodiments described above alternate the polarity of the phase of the transmit beam across scan lines. Coherent combination of the pre-detection receive beams cancels fundamental signals and enhances second harmonic signals, thereby allowing an increase in axial resolution. This technique offers a tradeoff between additional rejection of the fundamental component and frame rate as a function of the selected line density. When operated at Nyquist line spacing, the alternating line phase technique described above can provide additional rejection at up to two times the frame rate of conventional two-pulse techniques.

[0059] The alternating line phase techniques can be used (1) to create combined beams that cancel fundamental components and enhance even harmonic components, as described above (by adding the respective receive beams), or (2) to create combined beams that cancel even harmonic components and enhance fundamental components (by subtracting the respective receive beams). If desired, two different combined beams may be generated from a single set

of receive beams, one combined beam emphasizing even harmonic components and the other combined beam emphasizing odd harmonic components. Such combined beams can be compounded to reduce speckle effects.

[0060] The combined signals described above with enhanced second harmonic components and cancelled or suppressed fundamental components may be used in any of the aberration correction techniques described in U.S. patent application Ser. No. 09/061,082 filed Apr. 15, 1998, assigned to the assignee of this invention and hereby incorporated by reference.

[0061] As described above, receive signals $Y1$, $Y2$ associated with differently-phased transmit beams $T1$, $T2$ may be combined by addition (to emphasize the even harmonic components) or by subtraction (to emphasize the fundamental components). Other combinations of $Y1$ and $Y2$ are possible, as described for example in Bradley U.S. patent application Ser. No. 60/095,768, filed Aug. 7, 1998, assigned to the assignee of this invention and hereby incorporated by reference in its entirety. As described in this patent application, the combined signal Z_n can take the form

$$Z_n = |Y1|^n - |Y2|^n$$

[0062] where n is a small positive integer. Z_1 corresponds to the first harmonic component; Z_2 corresponds to a compounded combination of the fundamental and first harmonic components. As used herein, the term "combining" is intended broadly to encompass both linear and nonlinear combinations, including the examples set out above as well as other useful combinations of receive signals or beams.

[0063] Simply by way of example, the alternating line phase techniques described above can be implemented using a Sequoia™ ultrasonic imaging system available from Acuson Corporation, Mountain View, Calif., using an Acuson 8L5 transducer. By way of example, the Sequoia™ imaging system can be programmed with the following scan parameters.

transmit f number	1.85
transmit apodization	half circle
receive f number	1.00
receive apodization	uniform
transmit center frequency	3.5 MHz
receive center frequency	7.0 MHz
transmit focus	25 mm
receive focus	10-25 mm

[0064] Of course, all of these parameters can readily be modified as desired, depending on the application. Multiple simultaneous transmit beam techniques can be used if desired.

[0065] Alternating Line Aperture Embodiments

[0066] In the alternating line aperture embodiments of this invention, the transmit aperture, the receive aperture, or both can be alternated across scan lines. Coherent combination of at least two of the pre-detection receive beams forms a synthetic aperture sum which may increase lateral resolution. In alternative embodiments, the alternate apertures may be left/right, inside/outside, even/odd elements of the transducer, or other variations. For example, transmit beams $T1$ - $T4$ and receive beams $R1$ - $R4$ can be created in the

geometry shown in FIG. 12 discussed above. Adjacent receive beams R1-R2, R2-R3, R3-R4 can be combined to produce composite beams C1, C2 and C3. The system 10 of FIG. 1 can be used to implement these alternating line embodiments. For these embodiments the transmit beams T1-T4 can be all of the same polarity, rather than of alternating polarity as described above in conjunction with FIG. 12.

[0067] As shown in FIG. 14, the transmit beams can be provided with a transmit aperture 100 that is centered on the origin 102 of the respective transmit beam. As the origins 102 shift laterally for successive transmit beams, the transmit apertures 100 are shifted in a similar manner.

[0068] In this embodiment the receive beams can be considered to be of two types which alternate across the region being imaged. These two types differ in receive aperture. For example, as shown in FIG. 15, receive beams of the first type (R1, R3, . . .) are acquired with a receive aperture 104 at the left side of the transducer, and receive beams of the second type (R2, R4, . . .) are acquired with a receive aperture 106 at the right side of the transducer. If desired, the left and right receive apertures 104, 106 may translate across the face of the transducer to follow the origin of the respective receive beams, as shown in FIG. 16. FIG. 16 shows one of the receive apertures wrapping from right to left in receive line R2, though such wrapping is not required.

[0069] FIG. 17 and 18 relate to alternative embodiments in which the receive aperture is divided into an inside portion 108 and two outside portions 110. The receive beams of the first type are acquired using the inside receive aperture 108 and receive beams of the second type are acquired using the outside receive aperture 110. As shown in FIG. 18, the inside and outside receive apertures 108, 110 can be moved across the face of the transducer so as to remain centered on the origin of the respective receive lines, with or without wrapping.

[0070] Many other apertures may be used for the two or more receive apertures associated with respective receive beams. For example, as shown in FIG. 24, even transducer elements may be used for a first receive aperture 108 for receive beams of the first type, and odd transducer elements may be used for a second receive aperture 110 for receive beams of the second type.

[0071] With this arrangement the receive beams that are combined to create the composite beams are of differing types, and the combined beams are therefore characterized by a synthetic aperture that includes signal information associated with multiple apertures (e.g., left/right, inside/outside, or even/odd) in the various embodiments discussed above.

[0072] By way of example, the Acuson Sequoia™ ultrasonic imaging system can be used with an Acuson 8L5 transducer to implement the alternating line aperture embodiments described above. By way of example, the following scan parameters can be used:

transmit f number	2.0
transmit apodization	half circle

-continued

receive f number	1.0
receive apodization	uniform
transmit focus	25 mm
receive focus	10-25 mm

[0073] As before, all of these parameters can readily be modified as desired, depending on the application.

[0074] Though not shown in the drawings, a multiple receive beam acquisition method similar to that of FIG. 13 can also be modified to provide the alternating line aperture features discussed above.

[0075] If desired, the transmit aperture may also be varied between the first and second types of receive beams, and in some cases more than two types of beams will be appropriate. For example, three different receive apertures can be provided, and three receive beams (one from each aperture type) can be coherently summed to create a synthetic aperture combined beam.

[0076] Alternating Line Focus Embodiments

[0077] In these embodiments the location of the transmit focus is alternated across scan lines. Coherent combination of the associated receive beams forms a composite beam with improved transmit depth of field at higher frame rates as compared to standard sequential focusing methods, in which multiple segmented portions of an image are acquired with separate respective, transmit beams are stitched together.

[0078] By way of example, FIG. 20 shows a schematic view of a beam acquisition method similar to that of FIG. 12. In the schematic view of FIG. 20, the transmit focus 112, 114 is indicated by a dark triangle. As shown in FIG. 20, transmit beams of the first type (T1, T3, . . .) are characterized by a relatively deep transmit focus 112, and transmit beams of the second type (T2, T4, . . .) are characterized by a relatively shallow transmit focus 114. Receive beams R1-R2, R2-R3, R3-R4, . . . are combined, and in each case the combined receive beams are associated with transmit beams of the first type as well as transmit beams of the second type. Thus, the resulting composite beams C1, C2, C3 . . . have an improved transmit depth of field.

[0079] Though not shown in the drawings, a multiple receive beam acquisition method similar to that of FIG. 13 can also readily be modified to provide the alternating line focus features discussed above.

[0080] Alternating Line Frequency Embodiments

[0081] At any given system operating frequency (system sampling rate, filter bandwidth, and so forth), there exists only a limited amount of pulse bandwidth, which can be less than that available from the transducer.

[0082] In the alternating line frequency embodiments of this invention, the receive beamformer frequency of operation (system sampling rates, filter bandwidths, and so forth) are alternated from scan line to scan line. Coherent combination of these lines forms a composite line with increased bandwidth at higher frame rates as compared with conventional multipulse methods.

[0083] FIG. 21 shows an embodiment of this invention in which the receive lines of the first type (R1, R3, . . .) are acquired with a frequency of operation f1, while receive beams of a second type (R2, R4, . . .) are acquired with a frequency of operation f2. Adjacent receive beams of the first and second type are coherently combined to produce composite beams C1, C2, C3 . . . having an increased bandwidth, as shown in FIG. 22. In FIG. 22, the bandwidth of the receive beams of the first and second types are shown at 115, 116, respectively, and the bandwidth of the composite beams is shown at 117. This advantage of a large bandwidth for the composite beams is obtained at a high frame rate.

[0084] Though not shown in the drawings, the alternating line frequency embodiments can also implement a multiple receive beam acquisition scheme similar to that of FIG. 13, in which multiple receive beams are acquired in response to each respective transmit beam.

[0085] Alternating Line Complex Phase Angle Embodiments

[0086] Copending U.S. patent application Ser. No. _____ (attorney docket No. 5050/262) which is hereby incorporated by reference in its entirety, discloses ultrasound imaging methods and systems that combine receive signals from at least two separate transmit pulses that are created from respective components of a desired complex insonification signal that differ in the complex phase angle.

[0087] For example, each transmit pulse $h_R(t)$ can be expressed as follows:

$$h_k(t) = \text{Re}\{a(t)\exp\{j2\pi f_c t + j\theta_k\}\}.$$

[0088] In this representation, the term $(j\theta_k)$ is the complex phase angle of the transmit pulse $h_k(t)$, and the transmit pulses $h_k(t)$ are examples of respective components of a single complex insonification signal that differ in complex phase angle. As explained in detail in above-identified application Ser. No. _____ (attorney docket No. 5050/262), the complex phase angles can be selected such that the combined echo signals associated with the transmit pulses exhibit one or more of the following features: selective enhancement of harmonic components of the echo signals, selective enhancement of fundamental components of the echo signals, selective cancellation of unwanted frequency spectra to lower the overall frequency bandwidth and thereby to reduce the sampling rate requirement. The echo signals can be combined in a coherent manner prior to detection, or alternately can be combined subsequent to detection.

[0089] One example of this alternating line mode is shown in FIG. 24, in which the complex phase angle θ_k for scan line k is equal to θ_1 for even scan lines ($k=2, 4, \dots$) and θ_2 for odd scan lines ($k=1, 3, \dots$).

[0090] The difference between θ_1 and θ_2 can be selected as appropriate for the application. For example, the difference can be about 90° in one embodiment.

[0091] As shown in FIG. 24, transmit lines T1, T2 and T3 are successively fired along respective scan lines 1, 2 and 3 in steps 170, 174 and 178, respectively. Receive beams R1, R2, and R3 are acquired in steps 172, 176 and 180, respectively. Each of the receive beams R1, R2, R3 is spatially aligned with the respective transmit beam T1, T2, T3. The transmit beams T1, T2, T3 differ in complex phase angle,

with transmit beams T1 and T3 having the complex phase angle θ_1 and the transmit beam T2 having the complex angle θ_2 . In step 182, the receive beams R1 and R2 are combined to generate respective composite signals C1 and C2. In step 184, the composite signals C1 and C2 are applied to an image processor for further processing.

[0092] Though not shown in the drawings, the alternating complex phase angle embodiments can also implement a multiple receive beam acquisition scheme similar to that of FIG. 13, in which multiple receive beams are required in response to each respective transmit beam. Also, multiple simultaneous transmit beams can be used.

[0093] This mode is one example of the general class of alternating line modes in which the transmit waveform is alternated from scan line to scan line. There are many other examples, including the alternating line transmit code embodiments described below. Also, other characteristics of the transmit waveform can be alternated, including transmit center frequency, bandwidth, spectral shape, and presence/absence of selected components such as a fractional-harmonic seed. See the discussion of fractional harmonic seeds and several multi-pulse methods as described in copending U.S. patent application Ser. No. _____ (attorney docket No. 5050/515) for further details. The entirety of this application is hereby incorporated by reference herein.

[0094] Alternating Line Transmit Gain Embodiments

[0095] In these embodiments of the invention, the transmit power or gain is alternated from scan line to scan line. For example, transmit beams T1, T3, T5, . . . on odd scan lines can be fired with a low transmit gain and transmit beams T2, T4, T6, . . . on even scan lines can be fired with high transmit gain. The resulting echo signals can then be combined with weighting factors selected to cause the composite signals to selectively enhance either harmonic or fundamental components of the echo signals.

[0096] One specific embodiment is flowcharted in FIG. 25 and schematically illustrated in FIG. 26. In step 190, a first transmit beam is transmitted with low transmit power, and in step 192 one or more receive beams are received and stored. In step 194, a second transmit beam is transmitted with high transmit power, and in step 196 one or more second receive beams are received and stored. In step 198, selected first and second receive beams are weighted and combined to form composite signals which are supplied to an image processor in step 200. Note in FIG. 26 that in this embodiment the receive signals R1, R3, . . . associated with lower power transmit signals are weighted with a weighting factor W_A , while the receive signals R2, R4, . . . associated with high power transmission signals are weighted with a weighting factor W_B .

[0097] FIG. 27 illustrates one embodiment of the general method of FIGS. 25 and 26. In the example of FIG. 27, odd numbered scan lines use a transmit gain of 1 and even numbered scan lines use a transmit gain of 2. In this example, the composite signals C1, C2, . . . emphasize the second harmonic component of the echo signals when W_A is set equal to 2 and W_B is set equal to -1. Alternatively, the composite signals C1, C2, . . . emphasize the fundamental component of the echo signals when W_A is set equal to 4 and W_B is set equal to -1. This is because the amplitude of the fundamental components of the echo signals scale substan-

tially linearly with transmit gain, while the amplitudes of the second harmonic components of the echo signals scale approximately with the square of the transmit gain. The combining step 198 of FIG. 25 is preferably performed following detection, though it can be placed at other points along the processing path.

[0098] As before, these embodiments can also use multiple simultaneous transmit beam techniques and multiple simultaneous receive beam techniques.

[0099] Alternating Line Compounding Embodiments

[0100] Another alternating line mode applies the techniques discussed above to achieve speckle reduction. In the embodiment shown in FIGS. 28 and 29, spaced transmit firings are used and multiple receive beams are formed from each transmit firing. Two or more receive beams from each transmit beam are compounded to form composite signals that receive contributions from two or more spatially distinct transmit beams. In this way, image quality is improved.

[0101] As shown in the example of FIG. 28, one ultrasonic imaging method of this type includes steps 210 through 220. The method is schematically shown in FIG. 29. In step 200, a first transmit beam is fired along a first scan line direction and, in step 212, two receive beams R1a, R1b are received. The receive beams R1a and R1b in this embodiment are spaced on respective sides of the transmit beam T1. In step 214, a second transmit beam T2 is fired along a second transmit line, spaced from the first, and in step 216 two receive beams R2a and R2b are received on respective sides of the transmit beam T2. The transmit beams T1, T2 differ in any desired transmit scan parameter, including any of the parameters described in the various alternating line methods described in this specification. In this embodiment, the receive beams R1b and R2a are spatially aligned with one another and spatially distinct from the transmit beams T1, T2. In step 217, the receive beams R1a and R2b are detected, and in step 218, the receive beams R1b and R2a are compounded (subsequent to detection) to generate a composite signal C1 that is supplied to the image processor in step 220.

[0102] The method of FIGS. 28 and 29 can be modified. For example, three, four or more receive beams can be acquired in response to each transmit beam. If desired, an axicon transmit beam focus can be used. In order to improve speckle reduction, the transmit beams T1 and T2 associated with a single composite signal or the receive beams R1b, R2a associated with a combined signal can differ from one another in many ways to enhance speckle reduction. For example, any of the following parameters can be alternated between transmit beams and/or receive beams: transmit focus, transmit/receive center frequency, transmit gain, transmit aperture/apodization, receive gain, receive aperture/apodization, receive filter (high/low/wide/narrow), axicon transmit/circular receive, axicon receive/circular transmit. If desired, delays used for beamforming may be selected to degrade spatial resolution.

[0103] In elevation compounding, when two two-dimensional frames that differ in elevation angle are combined, the compounded two-dimensional frames may differ in any of a number of parameters to enhance speckle reduction, including the following: beam origins, apodization profiles, multiple/single receive beam per transmit event, multiple trans-

mit foci (simultaneous or sequential), different transmit focal depths, or dynamic transmit focusing as described in Hossack U.S. Pat. No. 5,608,690.

[0104] Alternating Line Polarity Sequence Embodiments

[0105] The embodiments described above have involved firing only a single transmit beam along each scan direction. These embodiments can be considered examples of the invention in which the set of transmit beams in each scan direction is equal to 1. Other embodiments of this invention include more than one transmit beam within each set of transmit lines steered to a specific scan line. For example, the polarity sequence can be alternated from transmit scan line to transmit scan line as described below.

[0106] FIG. 31 shows a schematic representation of one embodiment of an alternating line polarity sequence embodiment. In this embodiment transmit line T1a is fired along a first scan line and an associated receive line R1a is then acquired. Then a second transmit beam T1b is fired along the same scan line and the corresponding receive signal R1b is acquired. In this embodiment, the transmit beams T1a and T1b are identical in waveform but opposite in polarity. Receive beams R1a and R1b are combined in a coherent summing operation prior to detection to generate the first combined signal C1. These steps are included in the step 230 of the flowchart of FIG. 30.

[0107] Transmit beams T2a (−polarity) and T2b (+polarity) are fired along a second scan line and associated receive beams R2a, R2b are acquired and coherently summed prior to detection to form a second combined signal C2 (step 232 of FIG. 30). The combined signals C1, C2 preferentially enhance even harmonic responses in the receive signals while suppressing fundamental and odd harmonic responses in view of the phase inversion of the two transmit beams on each transmit line.

[0108] From the foregoing description, it should be apparent that the transmit beams contributing to the combined signal C1 are fired with a first polarity sequence (+−) while the transmit beams associated with the second combined signal C2 are fired with a second, different polarity sequence (−+). In this example, the first polarity sequence (−+) is used for odd numbered scan lines, and the second polarity sequence (+−) is used for even numbered scan lines across the frame.

[0109] As shown in FIG. 32, this technique can also be used in two-dimensional imaging. In one example, the polarity sequence that is used for scan lines distributed in both the azimuthal and elevational direction can be arranged in a checkerboard fashion, as shown in FIG. 32. In this way, the polarity sequence alternates in both the elevation direction and the azimuthal direction.

[0110] The combined signals C1, C2 or FIGS. 30 and 31 are preferably spatially filtered prior to detection as described in detail below in conjunction with FIG. 34. The combination of the alternating line techniques described above in conjunction with the pre-detection spatial filtering techniques described below enhance the suppression of undesired frequency components in the combined signal.

[0111] Alternative embodiments can use multiple transmit beam and/or multiple receive beam techniques. Also, more than two receive beams may be combined, and subtraction

can be used instead of addition to form combined signals that emphasize the fundamental components.

[0112] Alternating Line Transmit Code Embodiments

[0113] As described in co-pending U.S. patent application Ser. No. _____ (attorney docket No. 5050/540), filed on the same date as the present application, multiple transmit codes can be used on successive transmit events. Related co-pending U.S. patent application Ser. No. _____ (attorney docket No. 5050/512) provides further information on coded transmit beams. The entirety of these two co-pending U.S. Patent Applications are hereby incorporated by reference for their teaching of such transmission codes. As explained in greater detail in this application, such transmit codes include transmit phase modulation codes and transmit amplitude modulation codes.

[0114] By varying the transmission code from transmit event to transmit event, the shape of the transmit pulse can be changed in such a way that the echo signals from transmit events with differing transmit codes have markedly different range lobes. By coherently combining echo signals having differing range lobes, undesired range lobes can be reduced or cancelled to a large extent. Examples of suitable codes that can be varied from transmit event to transmit event include frequency modulated codes and Golay codes. Frequency modulated codes include a wide variety of transmit pulses in which the zero crossings are unevenly spaced. Chirp pulses (of either the rising frequency or falling frequency type) are two examples.

[0115] FIG. 33 shows an embodiment of this invention in which transmit code 1 is used for transmit beams T1, T3, . . . on odd transmit lines and transmit code 2 is used for transmit beams T2, T4, . . . on even transmit lines. In this embodiment each transmit event produces a single transmit beam aligned with the respective scan line, and a single receive beam R1, R2, . . . is acquired from each respective transmit beam T1, T2, As shown in FIG. 33, consecutive receive beams associated with consecutive transmit beams of differing transmit code are coherently combined in a summing operation to produce composite signals C1, C2 By choosing the transmit codes such that the receive beams R1, R2 exhibit substantially different range lobes, such range lobes are suppressed in the combined signals C1, C2, . . . by virtue of the summing operation.

[0116] Though not shown in the drawings, alternating line transmit code embodiments can also implement a multiple receive beam acquisition scheme similar to that of FIG. 13, in which multiple receive beams are acquired in response to each respective transmit beam. Similarly, multiple simultaneous transmit beam techniques can be used with these embodiments.

[0117] Embodiments Employing Pre-Detection Spatial Filtering

[0118] In many embodiments, it is preferred to include a spatial filter prior to the detection operation in the image processor 32 of FIG. 1. FIG. 34 shows a diagram of a preferred image processor 240 that includes a spatial filter 242 positioned in the signal path upstream of the detector 244. Block 246 is used to indicate additional image processing functions, which can include any suitable functions, including conventional functions well-known to those skilled in the art.

[0119] The spatial filter 242 preferably performs an azimuthal and/or elevation pre-detection spatial filtering, and can include a real or complex filter. In one embodiment, the spatial filter 242 is made up of a combination of separable range, azimuthal, and elevation filters, which can use either constant filter coefficients or filter coefficients that are varied as a function of range and/or line (azimuth and/or elevation). In another alternative, the spatial filter 242 can include a non-separable spatial filter such as any of the following filters: range/azimuth, range/elevation, azimuth/elevation, or range/azimuth/elevation. As before, the filters may use constant filter coefficients or filter coefficients that vary as a function of range and/or line (azimuth and/or elevation). Preferably, the filters are low-pass filters that have a cutoff frequency determined by simulation or empirically for the particular application.

[0120] The combined beams that are applied to the spatial filter 242 can include any of the combined beams described above. For example, the combined beams may include the combined beams discussed above in conjunction with FIGS. 9 and 13, wherein the combined beams are formed from multiple receive beams associated with a single transmit beam. As another example, the combined beams can also include conventional pulse inversion receive beams such as those described in Chapman, U.S. Pat. No. 5,632,277. In these embodiments, the combined beams are formed as a combination of spatially aligned receive beams associated with spatially aligned transmit beams of opposite polarity.

[0121] Additional Embodiments

[0122] Other embodiments of this invention transmit a set of ultrasonic transmit beams into a region, including in some cases spatially aligned transmit beams.

[0123] Fundamental components of selected transmit beams are characterized by a phase difference of 180°. Ultrasonic receive beams are acquired from the region, and multiple receive beams are associated with each respective one of the transmit beams. At least two receive beams are summed to form a composite signal, and the phase difference in the fundamental transmit components is effective to cause fundamental components of the receive beams to destructively interfere to a greater extent than harmonic components of the receive beams. In some embodiments, three or more receive beams are summed to form the composite signal.

[0124] For example, the system of FIG. 1 can be used to practice the methods of FIGS. 9 and 10 with spatially aligned transmit beams.

[0125] FIG. 23 shows a flowchart of another embodiment of the method of this invention. In the method of FIG. 23, a first transmit beam T1 (positive polarity) is transmitted along a first azimuthal direction in step 140, and in step 142 two spatially distinct receive beams R1a, R1b are received. As shown in FIG. 23, receive beams R1a and R1b are offset on respective sides of the azimuthal direction of the transmit beam T1. In step 144, a second transmit beam T2 (negative polarity) is transmitted along the same azimuthal direction as transmit beam T1, and in step 146 two receive beams R2a, R2b are received. In this embodiment, receive beams R1a, R2a, are spatially aligned and receive beams R1b, R2b are spatially aligned. In step 148, spatially aligned receive beams R1a, R2a are summed and spatially aligned receive

beams **R1b**, **R2b** are separately summed to form composite signals **C1**, **C2** respectively. In step **150** the composite signals **C1**, **C2** are applied to the image processor.

[0126] In the method of **FIG. 23** two transmit beams are required to generate two composite signals, and therefore the composite signals **C1**, **C2** are acquired with no degradation of temporal resolution or frame rate as compared to conventional single pulse imaging techniques.

[0127] Conclusion

[0128] Of course, many changes and modifications can be made to the preferred embodiments described above. For example, combinations of the various embodiments described above are possible. In one alternative embodiment, both transmit phase and receive aperture are alternated among beams, using either sequential or simultaneous alternation techniques. For example, in one sequential alternation embodiment left and right receive apertures are alternated with a positive transmit polarity phase over two scan lines, and then left and right receive apertures are alternated with negative transmit polarity phase over the next two scan lines, and all four scan lines are coherently summed to create the composite beam. In one simultaneous alternation technique a positive transmit polarity pulse/left (or inside or even element) receive aperture configuration is alternated with a negative transmit polarity pulse/right (or outside or odd element) receive aperture, and two scan lines are coherently summed to create the composite beam. Simultaneous alternation techniques are preferred for two or more alternating parameters if there is little or no interaction between or among the parameters. In general, the line density controls the resulting performance level and frame rate. In cases where synthetic line features are available with sufficient bandwidths, each of the proposed modes and combinations described above can be programmed to have the same frame rate advantage; however, performance can be improved since common receive lines can be coincident yet multiple coincident transmit lines are avoided to eliminate any unnecessary decrease in the frame rate. This can offer advantages when tissue motion is an issue, as in cardiology applications.

[0129] The term "alternate" is therefore intended broadly to encompass alternating sets of n elements, $n \geq 2$. Thus, the term "alternating line" is broad enough to cover every other line, every other group of two lines, and so forth. Also, the term "alternate" is intended broadly to encompass every n th line, $n \geq 2$, and the term "alternating line" therefore encompasses every second line, every third line, and so forth.

[0130] In certain of the embodiments described above, selected pre-detection receive beams are coherently combined. Coherent combination is discussed extensively in the above-identified U.S. Pat. No. 5,667,373, assigned to the assignee of this invention, and the entirety of the disclosure of this patent is hereby incorporated by reference for its teaching regarding alternative forms of coherent combination.

[0131] The methods described above can be used both in situations where a non-linear contrast agent is introduced into the region of interest as well as in situations where the region of interest is maintained free of added non-linear contrast agent. For example, the methods described above can be used during a medical diagnostic examination session in which the subject is maintained free of added non-linear

contrast agent during the entire session. In this case, the harmonic components described above are generated by natural processes associated with the propagation of ultrasound through body tissues.

[0132] The systems and methods described above can be implemented using a wide variety of hardware. For example, the transmit beamformer **12** and the receive beamformer **18** can be made to operate using any suitable architecture, including both analog and digital architectures. The beamformers **12**, **18** can also be of the simultaneous multi-beam transmit-multi beam receive type, particularly where simultaneous transmit beams are widely spaced.

[0133] The transducer array **14** can be a one-dimensional, 1.5 dimensional or 2 dimensional array, flat or curved, and of either constant or varying thickness. The transmit beams can be formed of transmit waveforms of the widest variety of shapes including unipolar and bipolar pulses, with or without smoothly rising and falling envelopes. Sinusoidal, square wave or multi-level square wave techniques can be used. The waveform generator **20** and the focus delay **22** can vary widely in complexity and sophistication. The phase inverter **24** can operate in an analog or digital fashion, and it can be implemented by delays, phase rotations or phase inversions. The controller **26** can be included as part of the transmit beamformer **12**; alternately the phase inverter **24** can be implemented separately from the transmit beamformer **12**. The controller **26** may control the phase inverter **24** without controlling other elements of the system. The line buffer **28** and the summer **30** can be implemented as analog or digital systems, and the line buffer **28** may correspond to a digital memory for multiple receive beams.

[0134] In all of the embodiments discussed above, the receive processing is in the same mode for the receive beams that are associated with spatially distinct transmit lines having differing transmit scan parameters. For example, the receive beams associated with spatially distinct transmit beams of differing transmit parameters can both be processed in a B mode processing mode, in a Doppler processing mode, or in other known processing modes.

[0135] All of the techniques described above can be implemented along either the azimuthal dimension or the elevation dimension. Similarly, the alternating line techniques described above can be used in both azimuth and elevation in 3D scanning, as described above in conjunction with **FIG. 32**. Thus, these techniques are well suited for both two-dimensional (range plus azimuthal or elevation) and three-dimensional imaging. As an example, synthetic aperture techniques can be used in elevation with an articulated one-dimensional array, as described in U.S. patent application Ser. No. _____, filed _____ (attorney docket No. 5050/423).

[0136] The methods described above can be implemented over a full frame of image data or part of a frame, and they can be used with a wide variety of ultrasonic imaging signals including B mode signals, Doppler signals and the like.

[0137] The methods described above can also be implemented using M mode techniques, in which a portion of the B mode frame, often a single scan line, is displayed. For example, alternating line techniques can be used to alternate any of the scan parameters discussed above along two adjacent scan lines, and spatially aligned receive beams can then be combined to produce the M mode line.

[0138] The methods described above can be implemented using multiple simultaneous transmit beam techniques, with one or more receive beams acquired for each transmit beam.

[0139] Though the examples described above emphasize second harmonic components, this invention is not limited to use with second harmonic signals.

[0140] As used herein, the term “harmonic” is intended broadly to encompass any non-linear echo signal, including sub-harmonics, fractional harmonics and integral harmonics of 2 and greater.

[0141] In certain of the embodiments described above, various receive parameters are alternated from line to line. Many alternatives are possible including alternating receive spectral response (e.g., receive center frequency, receive spectral bandwidth, shape of receive spectral response) from line to line. In several of the embodiments described above, it is important to provide coherent combination of receive beams prior to detection. Of course, coherent combination requires adequate control of receive beam phase on a scan-line to scan-line basis. Related U.S. patent application Ser. No. _____, filed _____ (attorney docket No. 5050/547), provides one preferred technique for achieving the desired phase alignment.

[0142] As indicated above, various embodiments of this invention will obtain various degrees of cancellation of the fundamental components by destructive interference in the composite signal. Thus, the term “destructive interference” is intended broadly to encompass both partial and complete interference.

[0143] The present invention can be used with any suitable scan line geometry, including sector, Vector®, and parallel beam geometries, for example.

[0144] As used herein, the term “scan parameter” is intended broadly to encompass transmit and/or receive parameters other than beam steering direction and beam origin.

[0145] The term “spatially distinct” is intended broadly to encompass transmit lines that are spatially distinct in azimuth, in elevation, or both.

[0146] With respect to the embodiments described above that utilize transmit beams which are entirely spatially distinct from one another, it may be desirable to fire additional transmit beams which are spatially aligned with previously fired transmit beams.

[0147] The foregoing detailed description has discussed only a few of the many forms that this invention can take. It is therefore intended that the foregoing detailed description be regarded as illustrative rather than limiting. It is only the following claims, including all equivalents, that are intended to define the scope of this invention.

1. A method for transmitting ultrasonic beams into a region in a medical diagnostic imaging system, said method comprising the following steps:

- (a) transmitting respective sets of transmit beams along respective scan directions across at least a portion of a frame;
- (b) cycling a selected transmit parameter T through a sequence $T_1 \dots T_n; T_1 \dots T_n; T_1 \dots T_n$ across said at

least a portion of the frame, where T_1, T_n designate alternative values of the transmit parameter T, and where $n \geq 2$.

2. The method of claim 1 wherein each set of transmit beams includes only one respective transmit beam.

3. The method of claim 1 wherein each set of transmit beams includes only two respective beams.

4. The method of claim 1 wherein each set of transmit beams includes more than one transmit beam.

5. The method of claim 1 wherein the transmit parameter T comprises transmit waveform phase.

6. The method of claim 1 wherein the transmit parameter T comprises transmit focus.

7. The method of claim 1 wherein the transmit parameter T comprises transmit frequency.

8. The method of claim 1 wherein the transmit parameter T comprises transmit aperture.

9. The method of claim 1 wherein the transmit parameter comprises transmit waveform.

10. The method of claim 1 wherein the transmit parameter T comprises transmit phase modulation code.

11. The method of claims 1 or 10 wherein the transmit parameter T comprises transmit amplitude modulation code.

12. The method of claim 1 wherein the transmit parameter T comprises transmit waveform complex phase angle.

13. The method of claim 1 wherein the transmit parameter T comprises fractional harmonic seed amplitude.

14. The method of claim 3 wherein the transmit parameter T comprises pulse inversion polarity sequence, wherein T_1 corresponds to a pulse inversion polarity sequence (+-), wherein T_2 corresponds to a pulse inversion polarity sequence (-+), and wherein $n=2$.

15. The method of claim 4 wherein the transmit parameter T comprises pulse inversion polarity sequence.

16. The method of claim 15 wherein T_1 and T_2 correspond to respective pulse inversion polarity sequences that begin with opposite polarity.

17. The method of claim 1 wherein the transmit parameter T comprises transmit gain.

18. The method of claim 1 wherein the transmit parameter comprises a parameter selected from the group consisting of: transmit waveform, transmit waveform phase, transmit focus, transmit frequency, transmit aperture, transmit phase modulation code, transmit complex phase angle, transmit gain, pulse inversion polarity sequence, and combinations thereof.

19. The method of claim 1 wherein the transmit parameter comprises at least two separately variable transmit parameters.

20. The method of claim 1 wherein all of the transmit beams of step (a) are configured for a single ultrasound imaging mode.

21. The method of claim 20 wherein all of the transmit beams of step (a) are B-mode transmit beams.

22. The method of claim 20 wherein all of the transmit beams of step (a) are Doppler-mode transmit beams.

23. A medical ultrasonic imaging system transmitter comprising:

means for forming respective sets of transmit beams along respective scan directions across at least a portion of a frame;

means for cycling a selected transmit parameter T through a sequence $T_1 \dots T_n; T_1 \dots T_n; T_1 \dots T_n$ across said

at least a portion of the frame, where T_1, T_n designate alternative values of the transmit parameter T, and where $n \geq 2$.

24. The invention of claim 23 wherein each set of transmit beams includes only one respective transmit beam.

25. The invention of claim 23 wherein each set of transmit beams includes only two respective beams.

26. The invention of claim 23 wherein each set of transmit beams includes more than one transmit beam.

27. The invention of claim 23 wherein the transmit parameter T comprises transmit waveform phase.

28. The invention of claim 23 wherein the transmit parameter T comprises transmit focus.

29. The invention of claim 23 wherein the transmit parameter T comprises transmit frequency.

30. The invention of claim 23 wherein the transmit parameter T comprises transmit aperture.

31. The invention of claim 23 wherein the transmit parameter T comprises transmit waveform.

32. The invention of claim 23 wherein the transmit parameter T comprises transmit phase modulation code.

33. The invention of claims 23 or 32 wherein the transmit parameter T comprises transmit amplitude modulation code.

34. The invention of claim 23 wherein the transmit parameter T comprises transmit waveform complex phase angle.

35. The invention of claim 23 wherein the transmit parameter T comprises fractional harmonic seed amplitude.

36. The invention of claim 25 wherein the transmit parameter T comprises pulse inversion polarity sequence, wherein T_1 corresponds to a pulse inversion polarity sequence (+-), wherein T_2 corresponds to a pulse inversion polarity sequence (-+), and wherein $n=2$.

37. The invention of claim 26 wherein the transmit parameter T comprises pulse inversion polarity sequence.

38. The invention of claim 37 wherein T_1 and T_2 correspond to respective pulse inversion polarity sequences that begin with opposite polarity.

39. The invention of claim 23 wherein the transmit parameter T comprises transmit gain.

40. The invention of claim 23 wherein the transmit parameter comprises a parameter selected from the group consisting of: transmit waveform, transmit waveform phase, transmit focus, transmit frequency, transmit aperture, transmit phase modulation code, transmit complex phase angle, transmit gain, pulse inversion polarity sequence, and combinations thereof.

41. The invention of claim 23 wherein the transmit parameter comprises at least two separately variable transmit parameters.

42. The invention of claim 23 wherein all of the transmit beams of step (a) are configured for a single ultrasound imaging mode.

43. The invention of claim 42 wherein all of the transmit beams of step (a) are B-mode transmit beams.

44. The invention of claim 43 wherein all of the transmit beams of step (a) are Doppler-mode transmit beams.

45. A medical diagnostic ultrasound imaging method comprising the following steps:

(a) transmitting a plurality of transmit beams into a region, said transmit beams comprising at least a first and second type of transmit beams that differ in transmit phase;

(b) receiving a plurality of receive beams in response to the transmit beams from the region;

(c) coherently combining at least two of the receive beams, the combined receive beams associated with at least one transmit beam of the first type and at least one transmit beam of the second type; and

(d) spatially filtering the combined receive beams prior to detection.

46. A medical diagnostic ultrasound imaging method comprising the following steps:

(a) transmitting a plurality of spatially distinct ultrasonic transmit beams into a region;

(b) receiving a plurality of receive beams from the region, each receive beam associated with a respective one of the transmit beams; said transmit beams and said associated receive beams comprising at least first and second types of beams which differ in at least one scan parameter other than transmit and receive beam steering direction and beam origin;

(c) combining at least two of the receive beams associated with spatially distinct ones of the transmit beams, said combined receive beams associated with at least one beam of the first type and at least one beam of the second type.

47. The method of claim 46 wherein the at least one scan parameter comprises transmit phase.

48. The method of claim 47 wherein step (c) comprises the step of

(c1) coherently combining said at least two of the receive beams prior to detection to enhance a harmonic component thereof; and

(c2) coherently combining said at least two of the receive beams prior to detection to enhance a fundamental component thereof.

49. The method of claim 46 wherein the at least one scan parameter comprises a plurality of scan parameters.

50. The method of claim 46 wherein the at least one scan parameter comprises aperture.

51. The method of claim 50 wherein step (b) comprises the step of varying receive aperture between a first receive aperture comprising even transducer elements for the first type of beams and a second receive aperture comprising odd transducer elements for the second type of beams.

52. The method of claim 46 wherein the at least one scan parameter comprises system frequency.

53. The method of claim 46 wherein the at least one scan parameter comprises receive spectral response.

54. The method of claim 46 wherein the at least one scan parameter comprises receive center frequency.

55. The method of claim 46 wherein the at least one scan parameter comprises receive spectral bandwidth.

56. The method of claim 46 wherein the at least one scan parameter comprises transmit focus.

57. The method of claim 46 wherein the at least one scan parameter comprises transmit waveform.

58. The method of claim 46 wherein the at least one scan parameter comprises transmit waveform complex phase angle.

59. The method of claim 46 wherein the at least one scan parameter comprises transmit code.

60. The method of claim 46 wherein the at least one scan parameter comprises pulse inversion polarity sequence.

61. The method of claims 46, 47, 56 or 57 wherein the transmit beams transmitted in step (a) alternate between the first and second types of beams across the region.

62. The method of claims 46, 50, 52 or 53 wherein the receive beams received in step (b) alternate between the first and second type of beams across the region.

63. The method of claims 46 wherein a single respective one of the receive beams is received in step (b) in response to each of the transmit beams.

64. The method of claim 46 wherein at least two respective ones of the receive beams are received in step (b) in response to each of the transmit beams.

65. The method of claim 46 wherein the first and second types of beams comprise transmit beams that differ in at least one scan parameter other than transmit beam steering direction and beam origin.

66. The method of claim 46 wherein the first and second types of beams comprise receive beams that differ in at least one scan parameter other than receive beam steering direction and beam origin.

67. The method of claim 46 wherein step (a) comprises the step of transmitting multiple simultaneous transmit beams into the region.

68. The method of claim 46 wherein step (a) comprises the step of transmitting the transmit beams over multiple azimuthal coordinates and multiple elevational coordinates.

69. The method of claim 46 further comprising the step of:

(d) forming an M-mode image from at least some of the combined receive beams.

70. The method of claim 46 further comprising the step of:

(d) spatially filtering the combined receive beams prior to detection.

71. The method of claim 70 wherein step (d) comprises the step of spatially filtering the combined receive beams in azimuth prior to detection.

72. The method of claim 70 wherein step (d) comprises the step of spatially filtering the combined receive beams in elevation prior to detection.

73. The method of claim 70 wherein step (d) comprises the step of applying the combined receive beams to a spatial filter prior to detection, said spatial filter selected from the group consisting of:

a separable azimuth filter, a separable elevation filter, a non-separable range-azimuth filter, a non-separable range-elevation filter, a non-separable azimuth-elevation filter, a non-separable range-azimuth-elevation filter, and combinations thereof.

74. The method of claim 73 wherein the spatial filter comprises constant filter coefficients, said filter coefficients selected from the group consisting of real and complex filter coefficients.

75. The method of claim 73 wherein the spatial filter comprises variable filter coefficients that vary as a function of at least one of range, azimuth and elevation.

76. The method of claim 70 further comprising the step of:

(e) coherently combining at least two of the receive beams associated with a common one of the transmit beams; and

wherein step (d) comprises the step of spatially filtering the combined receive beams of both steps (c) and (e) prior to detection.

77. The method of claim 46 further comprising the step of combining at least two of the receive beams associated with a common one of the transmit beams.

78. The method of claim 46 wherein step (c) comprises the step of coherently combining said at least two of the receive beams prior to detection.

79. The method of claim 46 wherein step (c) comprises the step of compounding said at least two of the receive beams subsequent to detection.

80. A medical diagnostic ultrasound imaging system comprising:

means for transmitting a plurality of spatially distinct ultrasonic transmit beams into a region;

means for receiving a plurality of receive beams from the region, each receive beam associated with a respective one of the transmit beams; said transmit beams and said associated receive beams comprising at least first and second types of beams which differ in at least one scan parameter other than transmit and receive beam steering direction and beam origin;

means for combining at least two of the receive beams associated with spatially distinct ones of the transmit beams, said combined receive beams associated with at least one beam of the first type and at least one beam of the second type.

81. The invention of claim 80 wherein the at least one scan parameter comprises transmit phase.

82. The invention of claim 80 wherein the at least one scan parameter comprises aperture.

83. The invention of claim 80 wherein the receiving means comprises means for varying receive aperture between a first receive aperture comprising even transducer elements for the first type of beams and a second receive aperture comprising odd transducer elements for the second type of beams.

84. The invention of claim 80 wherein the at least one scan parameter comprises system frequency.

85. The invention of claim 80 wherein the at least one scan parameter comprises receive spectral response.

86. The invention of claim 80 wherein the at least one scan parameter comprises transmit focus.

87. The invention of claim 80 wherein the at least one scan parameter comprises transmit waveform.

88. The invention of claim 80 wherein the at least one scan parameter comprises transmit waveform complex phase angle.

89. The invention of claim 80 wherein the at least one scan parameter comprises transmit code.

90. The invention of claim 80 wherein the at least one scan parameter comprises pulse inversion polarity sequence.

91. The invention of claims 80, 81, 86 or 87 wherein the transmitting means alternates the transmit beams between the first and second types of beams across the region.

92. The invention of claims 80, 82, 84 or 85 wherein the receiving means alternates the receive beams between the first and second types of beams across the region.

93. The invention of claim 80 wherein the receiving means receives a single respective one of the receive beams in response to each of the transmit beams.

94. The invention of claim 80 wherein the receiving means receives at least two respective ones of the receive beams in response to each of the transmit beams.

95. The invention of claim 80 wherein the first and second types of beams comprise transmit beams that differ in at least one scan parameter other than transmit beam steering direction and beam origin.

96. The method of claim 80 wherein the first and second types of beams comprise receive beams that differ in at least one scan parameter other than receive beam steering direction and beam origin.

97. The invention of claim 80 wherein the transmitting means comprises a multiple simultaneous beam transmitter.

98. The invention of claim 80 wherein the transmitting means comprises means for transmitting the transmit beams arranged in a pattern that extends over multiple azimuthal coordinates and multiple elevational coordinates.

99. The invention of claim 80 further comprising:

means for processing at least some of the combined receive beams to form an M-mode image.

100. The invention of claims 80 or 90 further comprising:

means for spatially filtering the combined receive beams prior to detection.

101. The invention of claim 100 wherein the filtering means comprises an azimuth filter.

102. The invention of claim 100 wherein the filtering means comprises an elevation filter.

103. The invention of claim 100 wherein the filtering means comprises a spatial filter selected from the group consisting of:

a separable azimuthal filter, a separable elevation filter, a non-separable range-azimuth filter, a non-separable range-elevation filter, a non-separable azimuth-elevation filter, and a non-separable and range-azimuth elevation filter, and combinations thereof.

104. The invention of claim 103 wherein the spatial filter comprises constant filter coefficients selected from the group consisting of real and complex filter coefficients.

105. The invention of claim 103 wherein the spatial filter comprises variable filter coefficients that vary as a function of at least one of range, azimuth and elevation.

106. The invention of claim 100 further comprising:

second means for combining at least two of the receive beams associated with a common one of the transmit beams, and wherein the filtering means comprises means for spatially filtering the combined receive beams of both the first-mentioned combining means and the second combining means prior to detection.

107. The invention of claim 80 further comprising means for combining at least two of the receive beams associated with a common one of the transmit beams.

108. The invention of claim 80 wherein the combining means comprises means for combining said at least two of the receive beams prior to detection.

109. The invention of claim 80 wherein the combining means comprises means for compounding said at least two of the receive beams subsequent to detection.

110. An ultrasonic imaging method comprising the following steps:

(a) transmitting a set of ultrasonic transmit beams into a region, at least some of the transmit beams focused at spatially distinct directions, said transmit beams each

comprising a respective fundamental transmit component, the fundamental transmit components associated with selected ones of the transmit beams characterized by a phase difference;

(b) receiving a plurality of ultrasonic receive beams from the region, each receive beam associated with a respective one of the transmit beams, and each receive beam comprising a respective fundamental receive component and a respective harmonic receive component;

(c) summing at least two of the receive beams associated with spatially distinct ones of the transmit beams to form a composite signal, said phase difference of step (a) selected to cause the fundamental receive components to destructively interfere to a greater extent than the harmonic receive components in the summing step.

111. The method of claim 110 wherein the transmit beams traverse the region.

112. The method of claim 110 wherein each of the receive beams is spatially aligned with the respective associated transmit beam.

113. The method of claim 110 wherein at least some of the receive beams are spatially offset from the respective associated transmit beams.

114. The method of claim 113 wherein step (b) comprises the step of receiving a respective plurality of the receive beams in association with each transmit beam.

115. The method of claims 110 or 114 wherein the receive beams summed in step (c) are spatially aligned.

116. The method of claim 110 wherein the receive beams summed in step (c) are spatially distinct.

117. The method of claim 110 wherein step (b) comprises the step of receiving two of the receive beams in association with each of the transmit beams, and wherein the receive beams summed in step (c) are spatially aligned.

118. The method of claim 110 wherein the phase difference approaches 180° .

119. The method of claim 110 further comprising the step of introducing a non-linear contrast agent into the region prior to step (a).

120. The method of claim 110 wherein steps (a)-(c) are performed during a medical diagnostic examination session, and further comprising the step of maintaining the region free of added non-linear contrast agent during the entire medical diagnostic examination session.

121. The method of claim 110 wherein step (c) comprises the step of coherently summing said at least two of the receive beams to form the composite signal.

122. The method of claim 110 wherein the transmit beams are spaced at a selected range to provide Nyquist sampling.

123. The method of claim 110 wherein the transmit beams are spaced at a selected range by a separation S_B greater than a separation S_N required for Nyquist sampling.

124. The method of claim 110 wherein the transmit beams are spaced at a selected range by a separation S_B less than a separation S_N required for Nyquist sampling, and wherein S_B/S_N is no less than $1/2$.

125. The method of claim 110 wherein the transmit beams are spaced at a selected range by a separation S_B less than a separation S_N required for Nyquist sampling, and wherein S_B/S_N is less than $1/2$.

126. The method of claims 122, 123, 124 or 125 wherein the transmit beams are characterized by a transmit focal range and wherein the selected range is at the transmit focal range.

127. The method of claims **122**, **123**, **124** or **125** wherein the transmit beams are characterized by a transmit focal range, and wherein the selected range is spaced from the transmit focal range.

128. The method of claim **110** wherein step (a) comprises the step of inverting a phase of the fundamental transmit components for alternate ones of the transmit beams such that the phase difference is about equal to 180° .

129. In an ultrasonic imaging system comprising:

a transducer array;

a transmit beamformer coupled to the transducer array and operative to transmit a set of ultrasonic transmit beams into a region, said transmit beams focused at spatially distinct directions, said transmit beams each comprising a respective fundamental transmit component;

a controller coupled to the transmit beamformer and operative to cause the fundamental transmit components associated with selected ones of the transmit beams to differ from one another by a selected phase difference;

a receive beamformer coupled to the transducer array and operative to receive a plurality of receive beams from the region, each receive beam associated with a respective one of the transmit beams, and each receive beam comprising a respective fundamental receive component and a respective harmonic receive component;

a summer operative to sum at least two of the receive beams associated with spatially distinct ones of the transmit beams to form a composite signal, said phase difference effective to cause the fundamental receive components to destructively interfere to a greater extent than the harmonic receive components in the composite signal.

130. The method of claim **129** wherein the transmit beams traverse the region.

131. The method of claim **129** wherein each of the receive beams is spatially aligned with the respective associated transmit beam.

132. The method of claim **129** wherein at least some of the receive beams are spatially offset from the respective associated transmit beams.

133. The method of claim **129** wherein the receive beamformer is operative to receive a respective plurality of the receive beams in association with each transmit beam.

134. The invention of claims **129** or **133** wherein the receive beams summed in the summer are spatially aligned.

135. The invention of claim **129** wherein the receive beams summed in the summer are spatially distinct.

136. The invention of claim **129** wherein the phase difference approaches 180° .

137. The invention of claim **129** wherein the summer is operative to coherently sum said at least two of the receive beams to form the composite signal.

138. The method of claim **129** wherein the transmit beams are spaced at a selected range to provide Nyquist sampling.

139. The method of claim **129** wherein the transmit beams are spaced at a selected range by a separation S_B greater than a separation S_N required for Nyquist sampling.

140. The method of claim **129** wherein the transmit beams are spaced at a selected range by a separation S_B less than a separation S_N required for Nyquist sampling, and wherein S_B/S_N is no less than $1/2$.

141. The method of claim **129** wherein the transmit beams are spaced at a selected range are spaced by a separation S_B less than a separation S_N required for Nyquist sampling, and wherein S_B/S_N is less than $1/2$.

142. The method of claims **138**, **139**, **140** or **141** wherein the transmit beams are characterized by a transmit focal range, and wherein the selected range is at the transmit focal range.

143. The method of claims **138**, **139**, **140** or **141** wherein the transmit beams are characterized by a transmit focal range, and wherein the selected range is spaced from the transmit focal range.

144. The invention of claim **129** wherein the transmit beamformer comprises an inverter, responsive to the controller, operative to invert a phase of the fundamental transmit components for alternate ones of the transmit beams such that the phase difference is about equal to 180° .

145. An ultrasonic imaging method comprising the following steps:

(a) transmitting a set of ultrasonic transmit beams into a region, said transmit beams each comprising a respective fundamental transmit component, the fundamental transmit components associated with selected ones of the transmit beams characterized by a phase difference;

(b) receiving a plurality of ultrasonic receive beams from the region, at least two of the receive beams associated with each respective one of the transmit beams, each receive beam comprising a respective fundamental receive component and a respective harmonic receive component;

(c) summing at least two of the receive beams to form a composite signal, said phase difference effective to cause the fundamental receive components to destructively interfere to a greater extent than the harmonic receive components in the summing step.

146. The method of claim **145** wherein the receive beams summed in step (c) are spatially aligned.

147. The method of claim **145** wherein at least some of the receive beams summed in step (c) are spatially distinct.

148. The method of claims **145** or **146** wherein the transmit beams associated with the receive beams summed in step (c) are spatially aligned.

149. The method of claims **145** or **146** wherein the transmit beams associated with the receive beams summed in step (c) are spatially distinct.

150. An ultrasonic imaging system comprising:

a transducer array;

a transmit beamformer coupled to the transducer array and operative to transmit a set of ultrasonic transmit beams into a region, said transmit beams each comprising a respective fundamental transmit component;

a controller coupled to the transmit beamformer and operative to cause the fundamental transmit components associated with selected ones of the transmit beams to differ from one another by a selected phase difference;

a receive beamformer coupled to the transducer array and operative to receive a plurality of receive beams from the region in response to each respective one of the transmit beams, each receive beam comprising a respective fundamental receive component and a respective harmonic receive component;

a summer operative to sum at least two of the receive beams to form a composite signal, said phase difference effective to cause the fundamental receive components to destructively interfere to a greater extent than the harmonic receive components in the composite signal.

151. The invention of claim 150 wherein the receive beamformer is operative to receive the receive beams summed by the summer as spatially aligned receive beams.

152. The invention of claim 150 wherein the receive beamformer is operative to receive at least some of the receive beams summed by the summer as spatially distinct receive beams.

153. The invention of claims **150** or **151** wherein the transmit beamformer is operative to transmit the transmit beams associated with the receive beams summed by the summer as spatially aligned transmit beams.

154. The invention of claims **150** or **151** wherein the transmit beamformer is operative to transmit the transmit beams associated with the receive beams summed by the summer as spatially distinct transmit beams.

155. An ultrasonic imaging method comprising the following steps:

- (a) transmitting a set of ultrasonic transmit beams into a region, said transmit beams each comprising a respective fundamental transmit component, the fundamental transmit components associated with selected ones of the transmit beams characterized by a phase difference;
- (b) receiving a plurality of ultrasonic receive beams from the region, each receive beam associated with a respective one of the transmit beams, and each receive beam comprising a respective fundamental receive component and a respective harmonic receive component;
- (c) summing at least two spatially distinct ones of the receive beams to form a composite signal, said phase difference effective to cause the fundamental receive components to destructively interfere to a greater extent than the harmonic receive components in the summing step.

156. The method of claim 155 wherein three of the receive beams are summed in step (c).

157. The method of claim 155 wherein four of the receive beams are summed in step (c).

158. An ultrasonic imaging system comprising:

a transducer array;

a transmit beamformer coupled to the transducer array and operative to transmit a set of ultrasonic transmit beams into a region, said transmit beams each comprising a respective fundamental transmit component;

a controller coupled to the transmit beamformer and operative to cause the fundamental transmit components associated with selected ones of the transmit beams to differ from one another by a selected phase difference;

a receive beamformer coupled to the transducer array and operative to receive a plurality of receive beams from the region in response to the transmit beams, each receive beam comprising a respective fundamental receive component and a respective harmonic receive component;

a summer operative to sum at least two spatially distinct ones of the receive beams to form a composite signal, said phase difference effective to cause the fundamental receive components to destructively interfere to a greater extent than the harmonic receive components in the composite signal.

159. The invention of claim 158 wherein the summer is operative to sum three of the receive beams.

160. The invention of claim 158 wherein the summer is operative to sum four of the receive beams.

161. An ultrasonic imaging method comprising the following steps:

- (a) transmitting a set of ultrasonic transmit beams into a region, said transmit beams each comprising a respective fundamental transmit component, the fundamental transmit components associated with selected ones of the transmit beams characterized by a phase difference;
- (b) receiving a plurality of ultrasonic receive beams from the region, each receive beam associated with a respective one of the transmit beams, and each receive beam comprising a respective fundamental receive component and a respective harmonic receive component;
- (c) summing at least three of the receive beams using at least two different summing weights to form a composite signal, said phase difference effective to cause the fundamental receive components to destructively interfere to a greater extent than the harmonic receive components in the summing step.

162. An ultrasonic imaging system comprising:

a transducer array;

a transmit beamformer coupled to the transducer array and operative to transmit a set of ultrasonic transmit beams into a region, said transmit beams each comprising a respective fundamental transmit component;

a controller coupled to the transmit beamformer and operative to cause the fundamental transmit components associated with selected ones of the transmit beams to differ from one another by a selected phase difference;

a receive beamformer coupled to the transducer array and operative to receive a plurality of receive beams from the region in response to the transmit beams, each receive beam comprising a respective fundamental receive component and a respective harmonic receive component;

a summer operative to sum at least three of the receive beams using at least two different summing weights to form a composite signal, said phase difference effective to cause the fundamental receive components to destructively interfere to a greater extent than the harmonic receive components in the composite signal.

163. An ultrasonic imaging method comprising the following steps:

- (a) transmitting a set of ultrasonic transmit beams into a region, said transmit beams each comprising a respective fundamental transmit component, the fundamental transmit components associated with selected ones of the transmit beams characterized by a phase difference;
- (b) receiving a plurality of ultrasonic receive beams from the region, each receive beam associated with a respective one of the transmit beams, and each receive beam comprising a respective fundamental receive component and a respective harmonic receive component;
- (c) summing an odd number of the receive beams to form a composite signal, said phase difference effective to cause the fundamental receive components to destructively interfere to a greater extent than the harmonic receive components in the summing step.

164. The method of claim 163 wherein the odd number is three.

165. An ultrasonic imaging system comprising:

- a transducer array;
- a transmit beamformer coupled to the transducer array and operative to transmit a set of ultrasonic transmit

beams into a region, said transmit beams each comprising a respective fundamental transmit component;

- a controller coupled to the transmit beamformer and operative to cause the fundamental transmit components associated with selected ones of the transmit beams to differ from one another by a selected phase difference;

- a receive beamformer coupled to the transducer array and operative to receive a plurality of receive beams from the region in response to the transmit beams, each receive beam comprising a respective fundamental receive component and a respective harmonic receive component;

- a summer operative to sum an odd number of receive beams to form a composite signal, said phase difference effective to cause the fundamental receive components to destructively interfere to a greater extent than the harmonic receive components in the composite signal.

166. The invention of claim 165 wherein the odd number is three.

* * * * *

专利名称(译)	具有改善的帧速率的诊断超声成像方法和系统		
公开(公告)号	US20040087857A1	公开(公告)日	2004-05-06
申请号	US10/696421	申请日	2003-10-28
[标]申请(专利权)人(译)	阿库森公司		
申请(专利权)人(译)	ACUSON CORPORATION		
当前申请(专利权)人(译)	ACUSON CORPORATION		
[标]发明人	NAPOLITANO DAVID J COLE CHRISTOPHER R HOLLEY GREGORY L HOSSACK JOHN A BRADLEY CHARLES E PHILLIPS PATRICK		
发明人	NAPOLITANO, DAVID J. COLE, CHRISTOPHER R. HOLLEY, GREGORY L. HOSSACK, JOHN A. BRADLEY, CHARLES E. PHILLIPS, PATRICK		
IPC分类号	A61B8/00 G01S7/52 G01S15/89		
CPC分类号	A61B8/00 G01S7/52039 G01S7/52046 G01S7/52085 G01S15/8977 G01S15/8927 G01S15/8959 G01S15/8963 G01S7/52095		
其他公开文献	US7540842		
外部链接	Espacenet USPTO		

摘要(译)

医学诊断超声成像系统从空间上不同的发射波束获取接收波束。接收波束在被成像的区域上以至少第一和第二类型之间的类型交替。第一和第二类型的接收波束在除发射和接收线几何形状之外的至少一个扫描参数方面不同，并且例如可以在发射相位，发射或接收孔径，系统频率，发射焦点，复相角，发射码或传输增益。然后组合与空间上不同的发射波束（包括至少一个第一类型的波束和至少一个第二类型的波束）相关联的接收波束。以这种方式，可以使用许多双脉冲技术，包括例如相位反转技术，合成孔径技术，合成频率技术和合成聚焦技术，同时基本上减少通常与这些技术相关的帧速率损失。

