



US009986972B2

(12) **United States Patent**
Halmann et al.

(10) **Patent No.:** **US 9,986,972 B2**
(45) **Date of Patent:** ***Jun. 5, 2018**

(54) **METHOD AND SYSTEM FOR PDA-BASED
ULTRASOUND**

(71) Applicant: **GE Medical Systems Global
Technology Company, LLC,**
Waukesha, WI (US)

(72) Inventors: **Menachem Halmann,** Milwaukee, WI
(US); **Shinichi Amemiya,** Tokyo (JP)

(73) Assignee: **GE MEDICAL SYSTEMS GLOBAL
TECHNOLOGY COMPANY, LLC,**
Waukesha, WI (US)

(*) Notice: Subject to any disclaimer, the term of this
patent is extended or adjusted under 35
U.S.C. 154(b) by 562 days.

This patent is subject to a terminal dis-
claimer.

(21) Appl. No.: **14/015,252**

(22) Filed: **Aug. 30, 2013**

(65) **Prior Publication Data**

US 2014/0024942 A1 Jan. 23, 2014

Related U.S. Application Data

(60) Continuation of application No. 11/044,401, filed on
Jan. 27, 2005, now Pat. No. 8,535,227, which is a
(Continued)

(51) **Int. Cl.**

A61B 5/05 (2006.01)

A61B 8/00 (2006.01)

(Continued)

(52) **U.S. Cl.**

CPC **A61B 8/462** (2013.01); **A61B 8/14**
(2013.01); **A61B 8/145** (2013.01); **A61B**
8/4411 (2013.01);

(Continued)

(58) **Field of Classification Search**

USPC 600/407, 437, 443-449, 459
See application file for complete search history.

(56) **References Cited**

U.S. PATENT DOCUMENTS

4,043,181 A 8/1977 Nigam
4,428,237 A 1/1984 Zeger et al.

(Continued)

FOREIGN PATENT DOCUMENTS

JP 11508461 T 7/1999
JP 2003506172 A 2/2003

(Continued)

OTHER PUBLICATIONS

US 5,751,608, 05/1998, Koch et al. (withdrawn)

(Continued)

Primary Examiner — Joel F Brutus

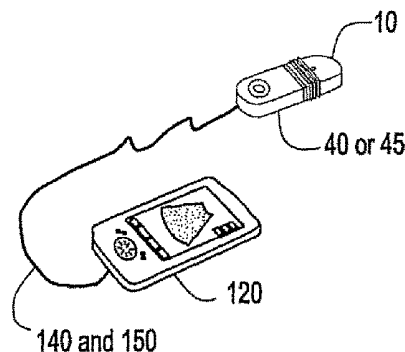
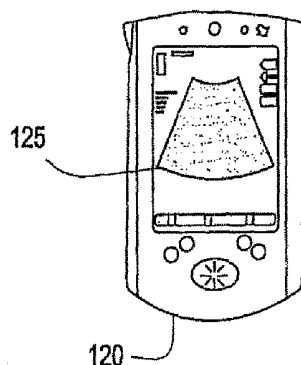
(74) *Attorney, Agent, or Firm* — McAndrews, Held &
Malloy, Ltd.; Jacob Groethe; David Bates

(57)

ABSTRACT

A method and system are disclosed for a compact, inexpen-
sive ultrasound system using an off-the-shelf personal digital
assistant (PDA) device interfacing to a hand-held probe
assembly through a standard digital interface. The hand-held
probe assembly comprises a detachable transducer head
attached to a beamforming module that performs digital
beamforming. The PDA runs Windows applications and
displays menus and images to a user. The PDA also runs
ultrasound data processing software to support a plurality of
imaging modes. An internal battery is provided in the PDA
to power the system. The transducer head is detachable from
the beamforming module.

6 Claims, 6 Drawing Sheets



Related U.S. Application Data

- division of application No. 10/063,342, filed on Apr. 12, 2002, now Pat. No. 7,115,093.
- (60) Provisional application No. 60/332,023, filed on Nov. 21, 2001.
- (51) **Int. Cl.**
A61B 8/14 (2006.01)
G01S 7/52 (2006.01)
G01S 15/89 (2006.01)
A61B 8/08 (2006.01)
- (52) **U.S. Cl.**
 CPC *A61B 8/4427* (2013.01); *A61B 8/4472* (2013.01); *A61B 8/4488* (2013.01); *A61B 8/463* (2013.01); *A61B 8/465* (2013.01); *A61B 8/469* (2013.01); *A61B 8/5207* (2013.01); *A61B 8/56* (2013.01); *G01S 7/5208* (2013.01); *G01S 7/52082* (2013.01); *G01S 7/52085* (2013.01); *G01S 15/8909* (2013.01)

(56) **References Cited**

U.S. PATENT DOCUMENTS

4,777,416 A	10/1988	George et al.	
5,817,024 A *	10/1998	Ogle et al.	600/447
5,930,744 A	7/1999	Koch et al.	
6,063,030 A *	5/2000	Vara et al.	600/437
6,106,472 A	8/2000	Chiang et al.	
6,251,073 B1	6/2001	Imran et al.	
6,416,475 B1	7/2002	Hwang et al.	
6,440,072 B1	8/2002	Schuman et al.	

6,464,636 B1	10/2002	Kinicki et al.	
6,475,146 B1	11/2002	Frelburger et al.	
6,482,158 B2	11/2002	Mault	
6,497,661 B1 *	12/2002	Brock-Fisher	600/437
6,530,887 B1	3/2003	Gilbert et al.	
6,540,685 B1 *	4/2003	Rhoads et al.	600/459
6,569,097 B1	5/2003	McMorrow et al.	
6,569,101 B2	5/2003	Quistgaard et al.	
6,575,908 B2	6/2003	Barnes et al.	
6,610,012 B2	8/2003	Mault	
6,635,019 B2	10/2003	Davidson	
6,716,171 B1	4/2004	Brock-Fisher	
6,969,352 B2	11/2005	Chiang et al.	
6,997,876 B2	2/2006	Mo et al.	
7,022,075 B2	4/2006	Grunwald et al.	
7,238,157 B2	7/2007	McLaughlin et al.	
2003/0164820 A1 *	9/2003	Kent	345/177

FOREIGN PATENT DOCUMENTS

JP	20030033350 A	2/2003
WO	0701768 A2	1/1997
WO	0828631 A2	7/1998
WO	9828631 A2	7/1998
WO	0019905 A1	4/2000
WO	0031634 A1	6/2000
WO	0079300 A1	12/2000
WO	0113796 A1	3/2001

OTHER PUBLICATIONS

Office Actions from the Japanese Patent Office—Application No. 2002-337732—dated Dec. 2, 2008 and May 12, 2009 (2 pages).
 Unofficial translation of German Official Letter for German Patent Application No. 10254191.4 dated Feb. 21, 2014.

* cited by examiner

1
G.
L

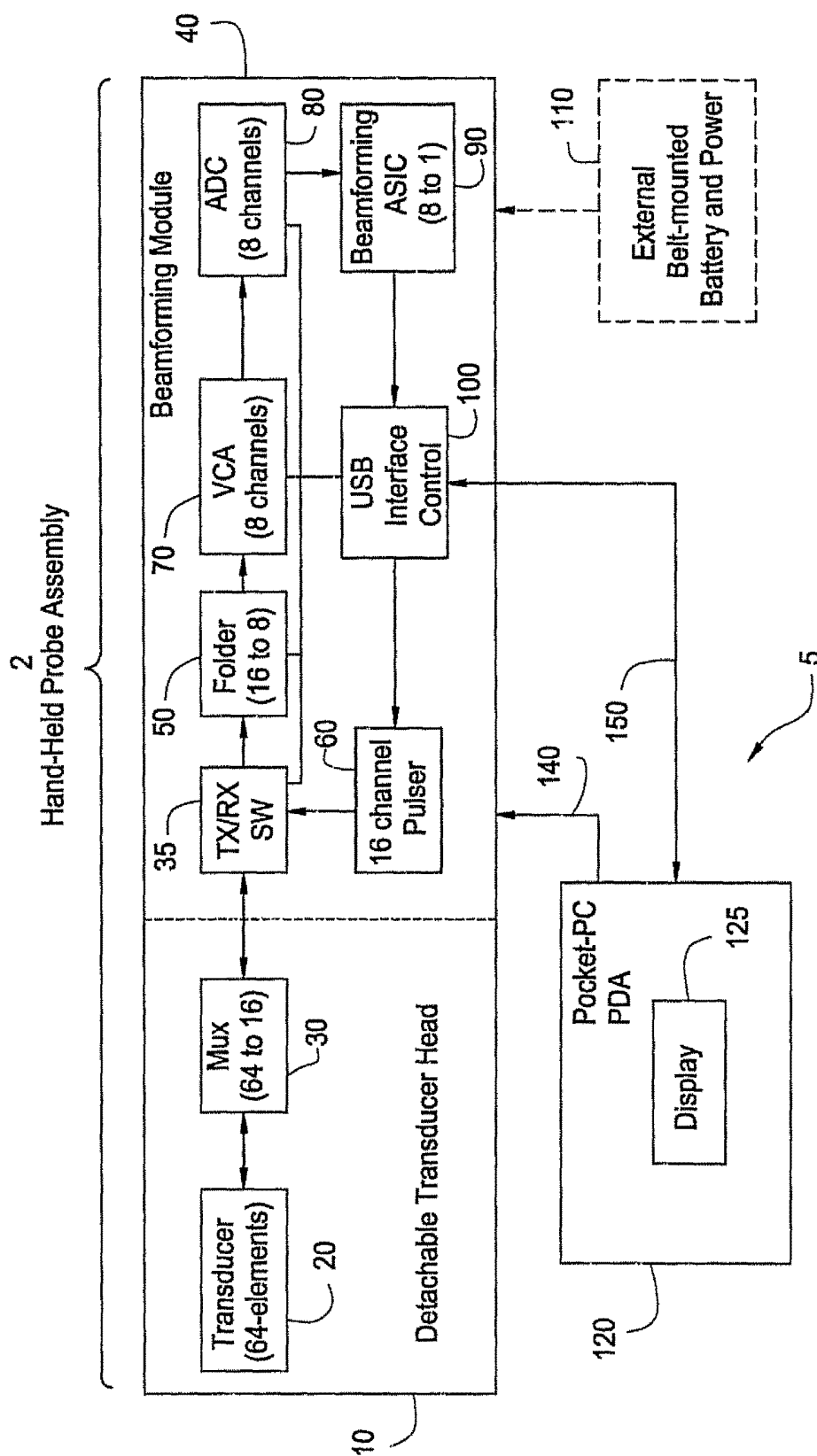


FIG. 1B

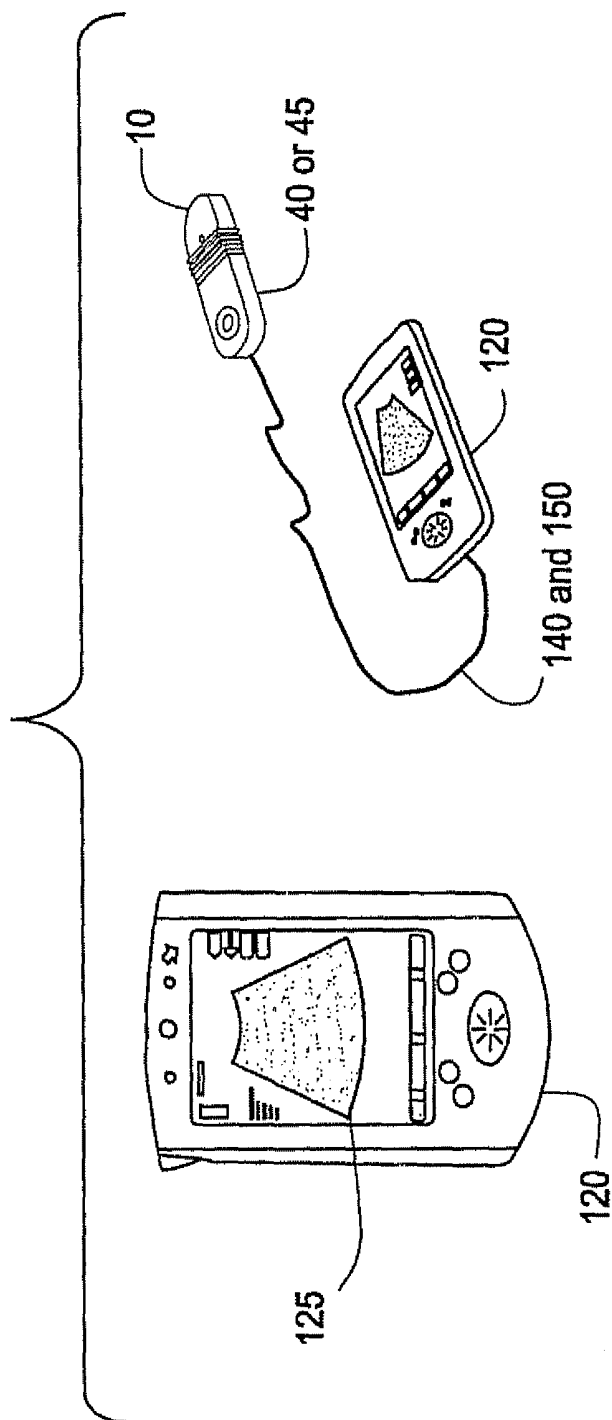


FIG. 2

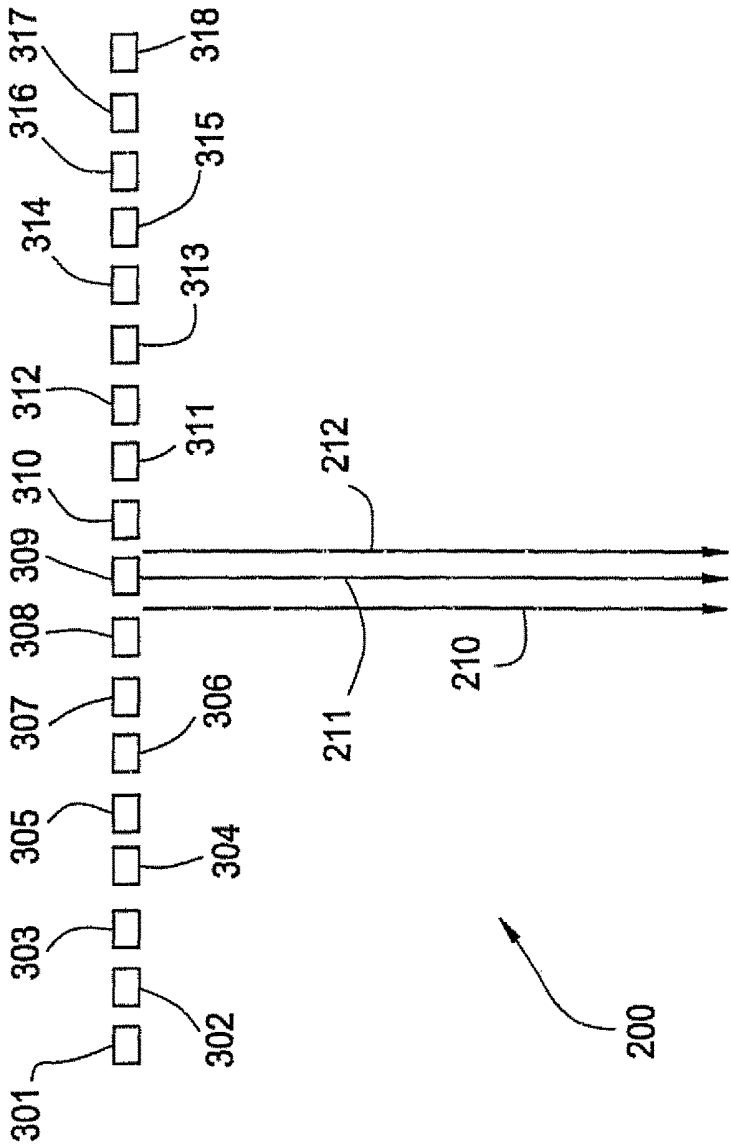


FIG. 3

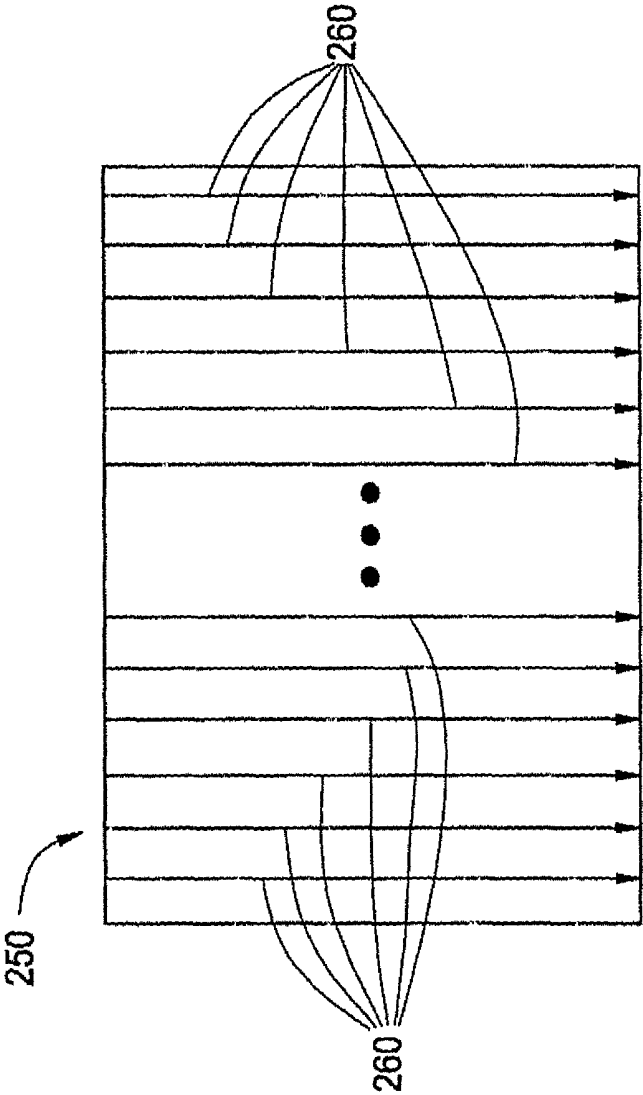
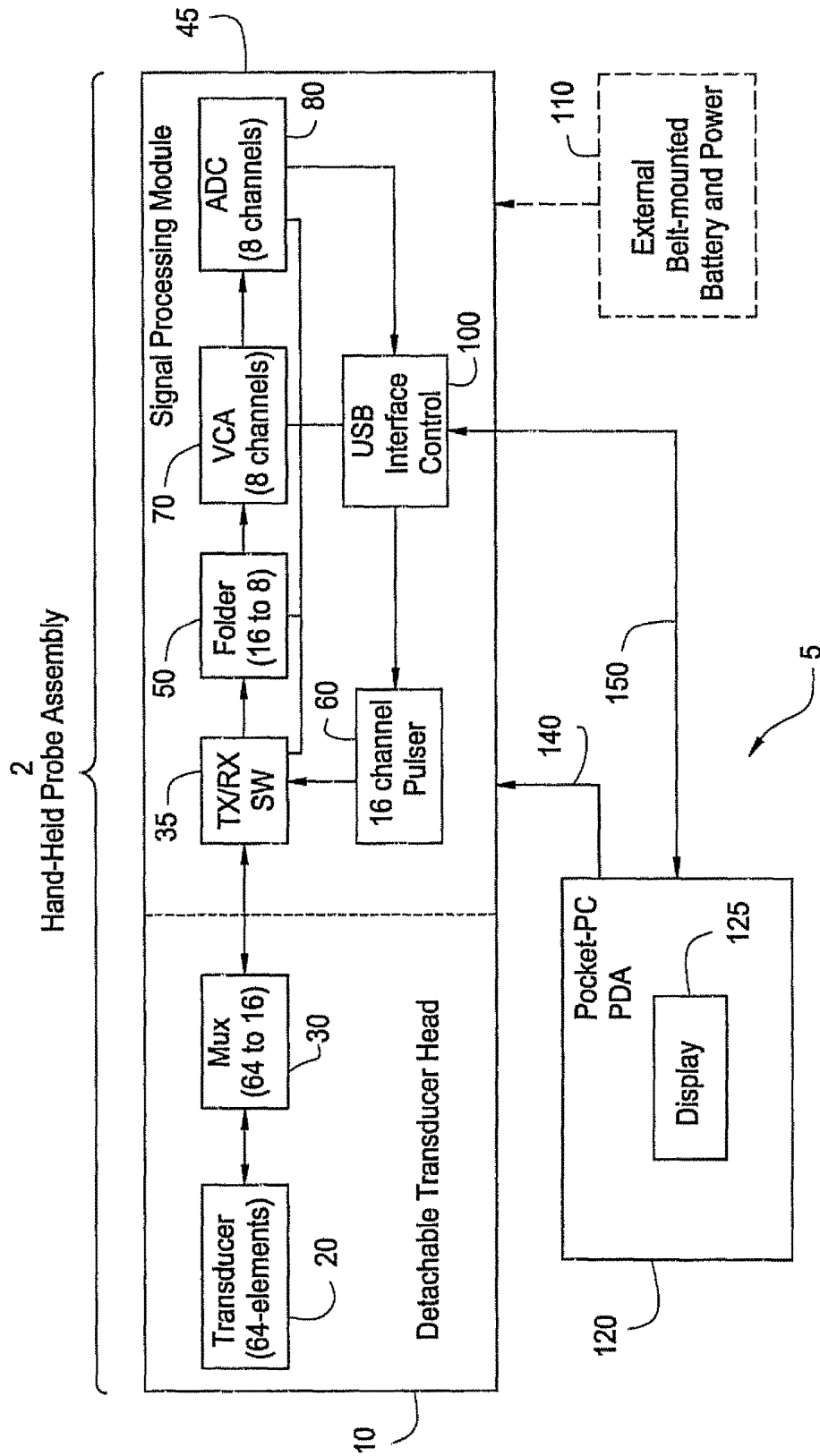
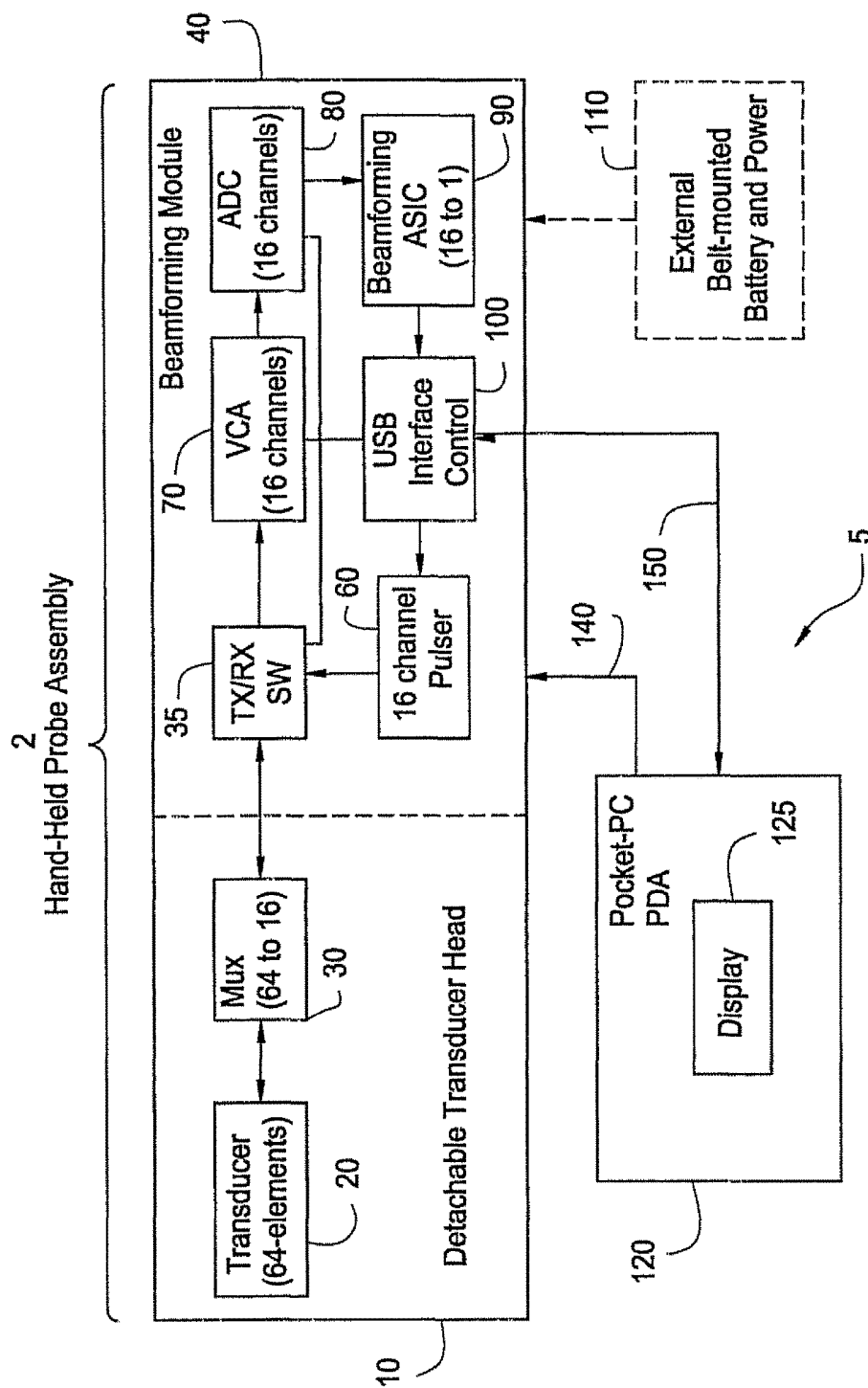


FIG. 4



50
60
70



METHOD AND SYSTEM FOR PDA-BASED ULTRASOUND

CROSS-REFERENCE TO RELATED APPLICATIONS/INCORPORATION BY REFERENCE

The present application is a continuation of U.S. patent application Ser. No. 11/044,401, filed Jan. 27, 2005, which is a divisional of U.S. patent application Ser. No. 10/063,342, now U.S. Pat. No. 7,115,093, filed Apr. 12, 2002, which claims the benefit of U.S. Provisional Application Ser. No. 60/332,023, filed Nov. 21, 2001. The above-identified applications are hereby incorporated herein by reference in their entirety.

FEDERALLY SPONSORED RESEARCH OR DEVELOPMENT

[Not Applicable]

BACKGROUND OF THE INVENTION

Certain embodiments of the present invention relate to a medical diagnostic ultrasound scanner. More particularly, certain embodiments relate to a method and system for configuring a personal digital assistant (PDA) device as an integral part of a portable, hand-held ultrasound system.

Traditional ultrasound systems are often large and bulky and do not lend themselves for ease of portability and tend to be expensive. Therefore, traditional ultrasound systems are not practical for certain market segments such as emergency medical personnel in ambulances, medical school students in training, and physicians and nurses at remote locations.

For example, today, emergency medical personnel (EMP) may use a stethoscope to listen to a patient's chest for lung rattles, or abdominal sounds such as bowel noise, or heart murmurs, etc. If equipped with ultrasound, the EMP could see fluid in the lungs, movement of the bowel, or blood flow in the heart. A more portable type of ultrasound system is required for such an application.

Smaller systems exist but are often still too expensive and/or do not provide desired features. For example, in U.S. Pat. No. 6,106,472 to Chiang et al., a portable ultrasound imaging system is described that uses charge coupled device (CCD) technology and performs beamforming in the analog domain. Such an implementation is limited by the specialized CCD technology and by performing beamforming in the analog domain.

It is more desirable to perform beamforming in the digital domain by first converting ultrasound data from the analog domain to the digital domain by, for example, using a simple analog-to-digital converter (ADC). Beamforming in the digital domain provides more flexibility and potentially better accuracy than beamforming in the analog domain.

A need exists for a small, inexpensive, highly portable ultrasound system employing existing technology that may be used quickly and easily for basic diagnosis in emergency situations at remote locations and for training purposes. A need also exists to perform digital beamforming in a highly portable ultrasound system in order to increase beamforming flexibility and remove the need for specialized hardware.

BRIEF SUMMARY OF THE INVENTION

An embodiment of the present invention provides for a compact, inexpensive ultrasound system using an off-the-

shelf, commercially available personal digital assistant (PDA) device interfacing to a signal beamforming module through a standard digital interface. A detachable ultrasound transducer head also interfaces to the beamforming module to form a hand-held probe assembly. The PDA runs Windows applications and displays menus and images to a user. The PDA is also modified to include ultrasound data processing and application software to support a plurality of ultrasound imaging modes. An internal battery is provided in the PDA to power the system. Digital beamforming is performed within the beamforming module by a beamforming ASIC.

A method is provided for attaching a detachable transducer head to a beamforming module to form a hand-held probe assembly that includes the beamforming module and the detachable transducer head. Ultrasound signals are received with the hand-held probe assembly from a region of interest to generate a plurality of received digital signals within the hand-held probe assembly. The plurality of received digital signals are digitally beamformed within the hand-held probe assembly to generate beams of digital data corresponding to the region of interest. The beams of digital data are transmitted to a commercially available personal digital assistant (PDA) over a standard digital interface to be further processed and displayed to a user as a displayed image representing the region of interest.

Certain embodiments of the present invention afford an approach to interface a standard, off-the-shelf, inexpensive PDA device to a hand-held ultrasound probe assembly to provide ultrasound scanning capability that is highly portable and affordable.

BRIEF DESCRIPTION OF THE DRAWINGS

FIG. 1 is a schematic block diagram of a portable diagnostic ultrasound system formed in accordance with an embodiment of the present invention such that digital beamforming is performed within a hand-held probe assembly.

FIG. 1B shows a realistic illustration of the portable diagnostic ultrasound system of FIG. 1.

FIG. 2 illustrates the formation of ultrasound beams in a scan plane originating at certain locations with respect to transducer elements in accordance with an embodiment of the present invention.

FIG. 3 illustrates an image frame made up of multiple received beams in accordance with an embodiment of the present invention.

FIG. 4 is a schematic block diagram of a diagnostic ultrasound system formed in accordance with another embodiment of the present invention such that digital beamforming is performed in a PDA device.

FIG. 5 is a schematic block diagram of a diagnostic ultrasound system formed in accordance with a third embodiment of the present invention.

The foregoing summary, as well as the following detailed description of certain embodiments of the present invention, will be better understood when read in conjunction with the appended drawings. It should be understood, however, that the present invention is not limited to the arrangements and instrumentality shown in the attached drawings.

DETAILED DESCRIPTION OF THE INVENTION

FIG. 1 is a schematic block diagram of a portable ultrasound system 5 in accordance with an embodiment of the present invention. Certain illustrated elements of the ultra-

sound system **5** include a detachable transducer module **10**, a beamforming module **40**, a PDA device **120**, and, optionally, an external battery/power source **110**. The transducer module **10** attaches to the beamforming module **40** to form a hand-held probe assembly **2**. In an embodiment of the present invention, the PDA **120** includes an internal battery to power the PDA **120** and the hand-held probe assembly **2**. A battery power interface **140** connects between the PDA **120** and the hand-held probe assembly **2**. FIG. **18** shows a more realistic illustration of the ultrasound system **5**.

The transducer module **10** comprises a 64-element transducer array **20** and a 64 channel to 16 channel multiplexer **30**. The beamforming module **40** comprises a pulser **60**, a TX/RX switching module **35**, a folder module **50**, a voltage controlled amplifier (VCA) **70**, an analog-to-digital converter (ADC) **80**, a beamforming ASIC **90**, and a PDA interface controller **100**. The PDA device **120** is a standard, off-the-shelf device such as a Palm Pilot running Windows applications such as Windows-CE applications and having a touch-screen display **125**. The PDA **120** is also modified to include ultrasound data processing and application software to support a plurality of ultrasound imaging modes.

In the transducer module **10**, the transducer array **20** is connected to the multiplexer **30**. When the transducer module **10** is connected to the beamforming module **40**, the multiplexer **30** is then connected to an input of TX/RX switching module **35**.

In the beamforming module **40**, the output of the TX/RX switching module **35** connects to the input of the folder module **50** and the output of the folder module **50** connects to the input of the VCA **70**. The output of the VCA **70** connects to the input of the ADC **80**. The output of the ADC **80** connects to the input of the beamforming ASIC **90**. The output of the beamforming ASIC **90** connects to the input of the PDA interface controller **100**. The output of the 16-channel pulser **60** connects to an input of TX/RX switching module **35**. Optionally, an external battery/power source **110** connects to beamforming module **40**.

The PDA interface controller **100** connects to the pulser **60**, and to the PDA device **120** through a standard digital interface **150**. In an embodiment of the present invention, the standard digital interface **150** is a Universal Serial Bus (USB) interface and the PDA interface controller **100** is a USB controller. Optionally, the standard digital interface **150** may be a parallel interface where the PDA interface controller **100** is a PC card. As a further alternative, the standard digital interface may be a wireless interface such as Bluetooth providing RF communication between the PDA interface controller **100** and the PDA **120**.

The various elements of the portable ultrasound system **5** may be combined or separated according to various embodiments of the present invention. For example, the folder **50** and VCA **70** may be combined into a single processing element. Also, the external battery **110** may be integrated into the beamforming module **40**, becoming an internal battery.

A function of the PDA-based ultrasound scanner **5** is to transmit ultrasound energy into a subject to be imaged, and receive and process backscattered ultrasound signals from the subject to create and display an image on the display **125** of the PDA device **120**. A user selects a transducer head **10** to connect to the beamforming module **40** to form a hand-held probe assembly **2** to be used for a particular scanning application. The transducer head is selected from a group of transducers including linear arrays, curved arrays, and

phased arrays. An imaging mode may be selected from a menu on the display **125** of the PDA device **120** using a touch-screen stylus.

To generate a transmitted beam of ultrasound energy, the PDA device **120** sends digital control signals to the PDA interface controller **100** within the beamforming module **40** through the standard digital interface **150**. The digital control signals instruct the beamforming module **40** to generate transmit parameters to create a beam of a certain shape that originates from a certain point at the surface of the transducer array **20**. The transmit parameters are selected in the pulser **60** in response to the digital control signals from the PDA device **120**. The pulser **60** uses the transmit parameters to properly encode transmit signals to be sent to the transducer array **20** through the TX/RX switching module **35** and the multiplexer **30**. The transmit signals are set at certain levels and phases with respect to each other and are provided to individual transducer elements of the transducer array **20**. The transmit signals excite the transducer elements of the transducer array **20** to emit ultrasound waves with the same phase and level relationships as the transmit signals. As a result, a transmitted beam of ultrasound energy is formed in a subject within a scan plane **200** (see FIG. **2**) along a scan line **210** when the transducer array **20** is acoustically coupled to the subject by using, for example, ultrasound gel.

In an embodiment of the present invention, a single ultrasound beam is formed along a particular scan line (e.g. **210**) using 16 transducer elements. For example, elements **301** through **316** may be used to form a first ultrasound beam along a scan line **210** and elements **302** through **317** may be used to form a second adjacent ultrasound beam along a scan line **212** and so on. As a result, 64 ultrasound beams may be formed to create an image if the transducer array **20** has 64 transducer elements. Alternatively, elements **301** to **316** may be used to form a first ultrasound beam along a scan line **210** and elements **302** through **316** may be used to form a second adjacent ultrasound beam along a scan line **211** and elements **302** through **317** may be used to form a third ultrasound beam along a scan line **212** adjacent to the second ultrasound beam and so on. As a result, 128 ultrasound beams may be formed to create an image if the transducer array **20** has 64 transducer elements. In any event, the pulser **60** sends 16 transmit signals at a time through multiplexer **30** to form a given transmit ultrasound beam along a given scan line. The multiplexer **30** routes the transmit signals to the correct subset of transducer elements in the transducer array **20** to form a particular transmit beam along a particular scan line.

The transducer elements form a two-way transducer array **20**. Once ultrasound waves are transmitted into a subject, the ultrasound waves are backscattered off of tissue and blood samples within the structure. The backscattered waves arrive at the transducer array **20** at different times, depending on the distance into the subject they return from and the angle with respect to the surface of the transducer array **20** at which they return. The transducer elements are responsive to the backscattered waves and convert the ultrasound energy from the backscattered waves into received electrical signals.

The received electrical signals are routed through the multiplexer **30**, 16 signals at a time, to the folder module **50** by way of the TX/RX switching module **35** in beamforming module **40**. The folder module **50** uses the symmetry of the ultrasound beam to process the signals from the 8 right-most transducer elements in the same manner as the signals from the 8 left-most transducer elements since the ultrasound beam originates from the center of 16 transducer elements. The folder module **50** amplifies and weights the received

signals and collapses the original 16 received signals into 8 received signals due to the symmetry of the transducer elements about the received beam to be formed.

Next, the received signals are passed to the VCA 70. The VCA 70 provides the function of gain compensation as a function of time (distance into the image). Next, the ADC 80 digitizes the received signals. The beamforming ASIC 90 then takes the digitized received signals and creates a received beam of data along a scan line (e.g. 210). The beamforming ASIC 90 operates on the digitized received signals by performing time delaying and summing to create the received beam of data corresponding to sample volumes along a scan line (e.g. 210) in the scan plane 200 within the subject. The beamforming ASIC 90 is a digital ASIC performing beamforming in the digital domain and providing beamforming flexibility. For example, the beamforming ASIC 90 may be digitally loaded with various beamforming coefficients and instructions from the PDA 120 to perform different types of digital beamforming.

The received beam of digital data is sent to the PDA device 120 by the PDA interface controller 100 over the standard digital interface 150. The process is repeated for the next receive beam to be formed and so on to generate all of the received beams 260 that make up the image frame 250 for the region of interest (see FIG. 3).

The PDA device 120 collects and processes the received beam data for the entire set of received beams 260 that make up an image frame 250 and displays the resultant image to the user on the display 125 of the PDA device 120. The PDA device 120 performs ultrasound data processing including the ultrasound functions of demodulation, parameter estimation, scan conversion, and display processing. A plurality of ultrasound modes may be supported including Doppler processing modes and non-Doppler processing modes,

Frame rates on the order of 10 frames per second may be achieved and the system may consume less than 5 watts of power, allowing for operation over approximately a 2-hour period of time.

As an alternative, the function of the beamforming ASIC 90 may be performed by software in the PDA device 120 as shown in FIG. 4. Instead of the transducer head attaching to a beamforming module 40, it attaches to a signal processing module 45 that does not include the beamforming ASIC 90. The data out of the ADC 80 is sent to the PDA interface controller 100 and the pre-beamformed data is sent to the PDA 120. Digital beamforming is performed by software within the PDA 120 along with the other subsequent data processing functions.

As a further alternative, the hand-held-probe assembly may include an internal battery to provide power. A docking station may also be provided for the hand-held probe assembly to provide the function of battery recharging.

As still a further alternative, the transducer module 10 may be a sterile probe for use in an operating room (OR), such as in a sterile wireless probe assembly.

As yet another alternative, the beamforming module (or signal processing module) may be designed to perform 16 bit processing. For example, the folder module 50 may be eliminated and the VCA 70 and the ADC 80 may be designed to handle 16 bits instead of just 8 bits as shown in FIG. 5.

The various configurations and interfaces within the system 5 may be combined or separated according to various embodiments of the present invention. For example, the beamforming module 40 may comprise custom hardware

elements such as a small circuit board with digital signal processors or may comprise readily available off-the-shelf components.

In summary, the advantages and features include, among others, a light-weight, portable ultrasound system based on inexpensive, off-the-shelf PDA technology to provide high portability and ease of use for certain users. Digital beamforming provides maximum beamforming flexibility, and a transducer head may be selected from a set of detachable transducer heads to connect to a beamforming or signal processing module to form a hand-held probe assembly. A user may easily change applications by attaching a different transducer head to the beamforming module or signal processing module and/or by selecting a new imaging application on the touch-screen display of the PDA.

While the invention has been described with reference to certain embodiments, it will be understood by those skilled in the art that various changes may be made and equivalents may be substituted without departing from the scope of the invention. In addition, many modifications may be made to adapt a particular situation or material to the teachings of the invention without departing from its scope. Therefore, it is intended that the invention not be limited to the particular embodiment disclosed, but that the invention will include all embodiments falling within the scope of the appended claims.

The invention claimed is:

1. A method of ultrasound imaging, said method comprising:

receiving ultrasound signals of a region of interest with a hand-held probe assembly;

generating a plurality of received digital signals based on said ultrasound signals within said hand-held probe assembly;

transmitting said plurality of received digital signals to a hand-held device having a display;

digitally beamforming said plurality of received digital signals within said hand-held device to generate at least one beam of digital data corresponding to said region of interest; and

creating and displaying an ultrasound image on said display of said hand-held device, wherein said hand-held device is a personal digital assistant (PDA).

2. A method of ultrasound imaging, said method comprising:

receiving ultrasound signals of a region of interest with a hand-held probe assembly;

generating a plurality of received digital signals based on said ultrasound signals within said hand-held probe assembly;

transmitting said plurality of received digital signals to a hand-held device having a display;

digitally beamforming said plurality of received digital signals within said hand-held device to generate at least one beam of digital data corresponding to said region of interest;

creating and displaying an ultrasound image on said display of said hand-held device;

demodulating said at least one beam of digital data, within said hand-held device, to generate demodulated data;

parameter estimating said demodulated data, within said hand-held device, to generate parameter estimate data, wherein said parameter estimating comprises performing Doppler processing;

scan converting said parameter estimate data, within said hand-held device, to generate scan converted data; and

7

display processing said scan converted data, within said hand-held device, to generate a displayed representation of said region of interest on a display of said hand-held device.

3. A method of ultrasound imaging, said method comprising:

receiving ultrasound signals of a region of interest with a hand-held probe assembly;

generating a plurality of received digital signals based on said ultrasound signals within said hand-held probe assembly;

transmitting said plurality of received digital signals to a hand-held device having a display;

digitally beamforming said plurality of received digital signals within said hand-held device to generate at least one beam of digital data corresponding to said region of interest;

creating and displaying an ultrasound image on said display of said hand-held device;

demodulating said at least one beam of digital data, within said hand-held device, to generate demodulated data;

parameter estimating said demodulated data, within said hand-held device, to generate parameter estimate data, wherein said parameter estimating comprises performing non-Doppler processing;

scan converting said parameter estimate data, within said hand-held device, to generate scan converted data; and display processing said scan converted data, within said hand-held device, to generate a displayed representation of said region of interest on a display of said hand-held device.

4. A method of ultrasound imaging, said method comprising:

receiving ultrasound signals of a region of interest with a hand-held probe assembly;

generating a plurality of received digital signals based on said ultrasound signals within said hand-held probe assembly;

transmitting said plurality of received digital signals to a hand-held device having a display;

digitally beamforming said plurality of received digital signals within said hand-held device to generate at least one beam of digital data corresponding to said region of interest;

creating and displaying an ultrasound image on said display of said hand-held device; and

running WINDOWS applications on said hand-held device to display menus and images to a user.

5. A system for performing ultrasound imaging, said system comprising:

a hand-held probe assembly comprising:

8

a signal processing module configured to perform ultrasound signal processing, and

a transducer head attached to said signal processing module; and

a hand-held device comprising a display, said hand-held device connected to said hand-held probe assembly, wherein said hand-held device is configured to perform ultrasound data processing functions comprising digital beamforming, and wherein said hand-held device is configured to create and display ultrasound images on said display;

wherein said hand-held device is a personal digital assistant (PDA).

6. A system for performing ultrasound imaging, said system comprising:

a hand-held probe assembly comprising:

a signal processing module configured to perform ultrasound signal processing, and

a transducer head attached to said signal processing module; and

a hand-held device comprising a display, said hand-held device connected to said hand-held probe assembly, wherein said hand-held device is configured to perform ultrasound data processing functions comprising digital beamforming, and wherein said hand-held device is configured to create and display ultrasound images on said display;

wherein said signal processing module comprises:

an analog-to-digital converter (ADC) configured to convert a third set of received analog signals to a first set of received digital signals;

a pulser module generating a set of analog transmit signals in response to digital control data from said hand-held device and sending said set of analog transmit signals to said transducer head;

a TX/RX switching module to switch between passing said set of analog transmit signals and a first set of received analog signals;

a folder module generating a second set of received analog signals from said first set of received analog signals received from said transducer head via said TX/RX switching module;

a voltage controlled amplifier (VCA) connected to said folder module and generating said third set of received analog signals from said second set of received analog signals; and

a digital interface controller connecting to said ADC and transmitting said first set of received digital signals to said hand-held device and receiving said digital control data from said hand-held device.

* * * * *

专利名称(译)	基于PDA的超声波的方法和系统		
公开(公告)号	US9986972	公开(公告)日	2018-06-05
申请号	US14/015252	申请日	2013-08-30
申请(专利权)人(译)	GE医疗系统的全球技术公司LLC		
当前申请(专利权)人(译)	通用电气医疗系统全球性技术公司，有限责任公司		
[标]发明人	HALMANN MENACHEM AMEMIYA SHINICHI		
发明人	HALMANN, MENACHEM AMEMIYA, SHINICHI		
IPC分类号	A61B5/05 G01S15/89 A61B8/08 A61B8/00 A61B8/14 G01S7/52		
CPC分类号	A61B8/462 G01S15/8909 A61B8/145 A61B8/4411 A61B8/4427 A61B8/4472 A61B8/4488 A61B8/463 A61B8/465 A61B8/469 A61B8/5207 A61B8/56 G01S7/5208 G01S7/52082 G01S7/52085 A61B8/14		
代理人(译)	贝茨DAVID		
优先权	10/063342 2006-10-03 US 60/332023 2001-11-21 US		
其他公开文献	US20140024942A1		
外部链接	Espacenet USPTO		

摘要(译)

公开了一种紧凑，便宜的超声系统的方法和系统，该超声系统使用通过标准数字接口连接到手持式探头组件的现成的个人数字助理（PDA）设备。手持式探头组件包括一个可拆卸的传感器头，连接到执行数字波束形成的波束形成模块。PDA运行Windows应用程序并向用户显示菜单和图像。PDA还运行超声数据处理软件以支持多种成像模式。PDA中提供了一个内部电池来为系统供电。传感器头可从波束形成模块拆卸。

