



US 20030011285A1

(19) **United States**(12) **Patent Application Publication** (10) **Pub. No.: US 2003/0011285 A1**
(43) **Pub. Date:** **Jan. 16, 2003**
Ossmann(54) **ULTRASOUND TRANSDUCER****Publication Classification**(76) Inventor: **William J. Ossmann, Acton, MA (US)**(51) **Int. Cl.⁷** **H01L 41/08**(52) **U.S. Cl.** **310/334**

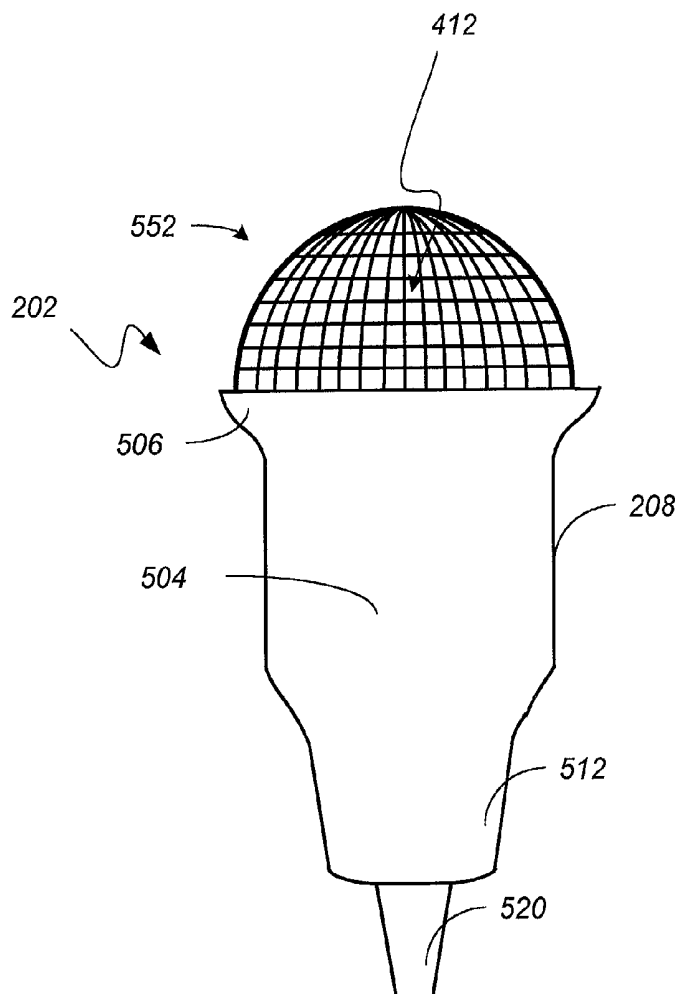
Correspondence Address:

AGILENT TECHNOLOGIES, INC.**Legal Department, DL429****Intellectual Property Administration****P.O. Box 7599****Loveland, CO 80537-0599 (US)**(57) **ABSTRACT**

Acoustic imaging systems are provided. A preferred system includes a protective cover configured to mate with a transducer body. The transducer includes a two-dimensional transducer element matrix array formed by a plurality of individually controllable transducer elements. The protective cover is superposed above the two-dimensional matrix array and is transparent to incident acoustic energy. Preferably, the protective cover is shaped to reduce patient discomfort and repetitive motion injuries to sonographers. Alternative embodiments comprise a shaped two-dimensional transducer element matrix array. Methods for improved ultrasound imaging are also provided.

(21) Appl. No.: **09/919,232**(22) Filed: **Jul. 31, 2001****Related U.S. Application Data**

(60) Provisional application No. 60/301,282, filed on Jun. 27, 2001.



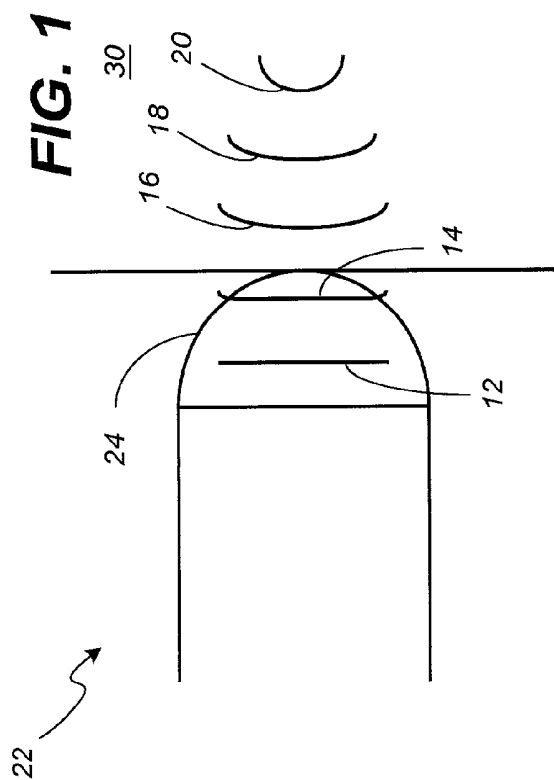
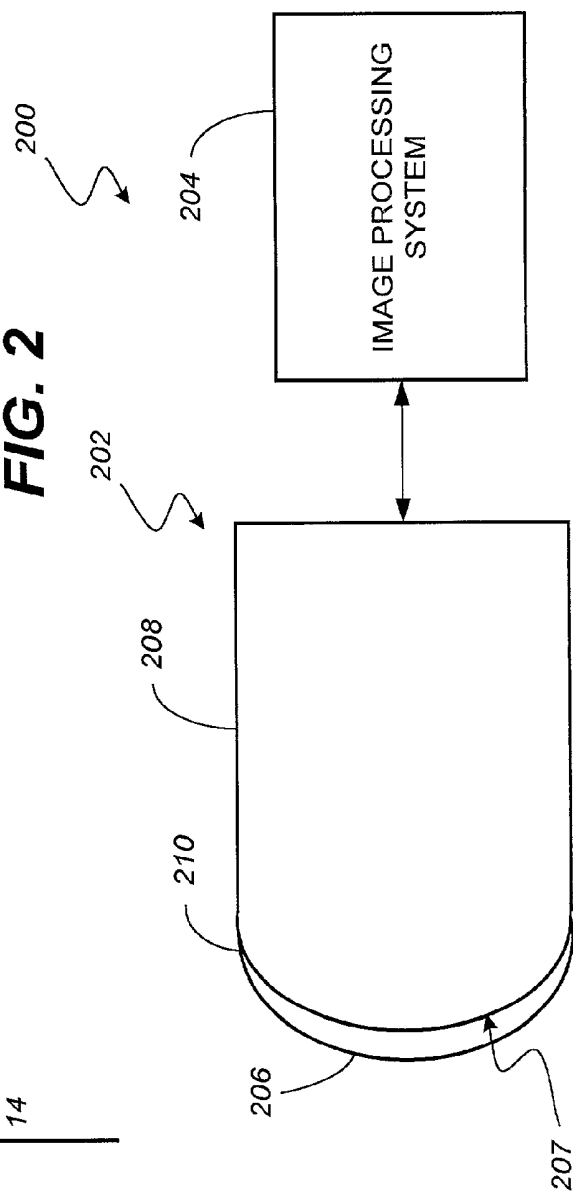


FIG. 2



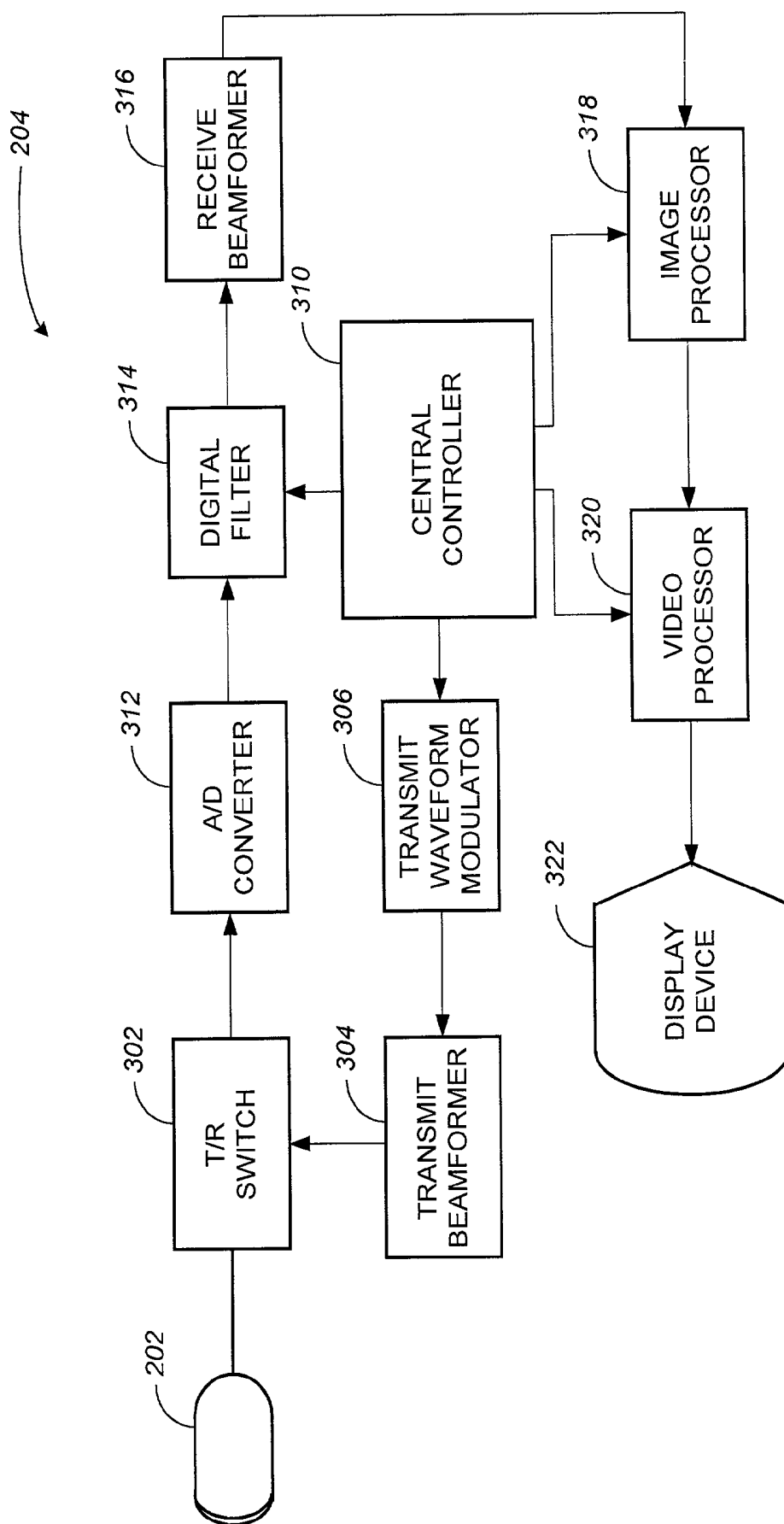
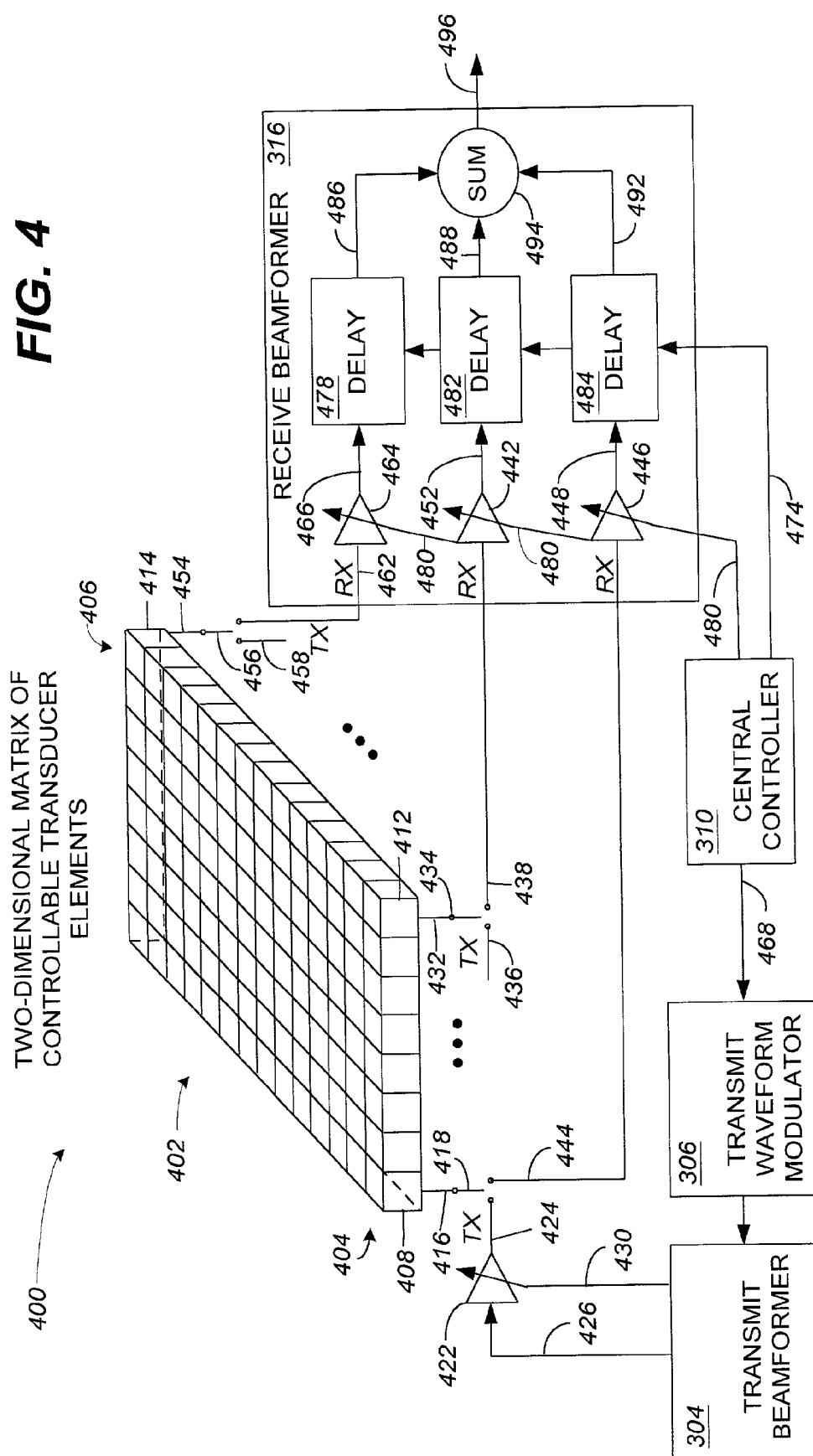


FIG. 3

FIG. 4



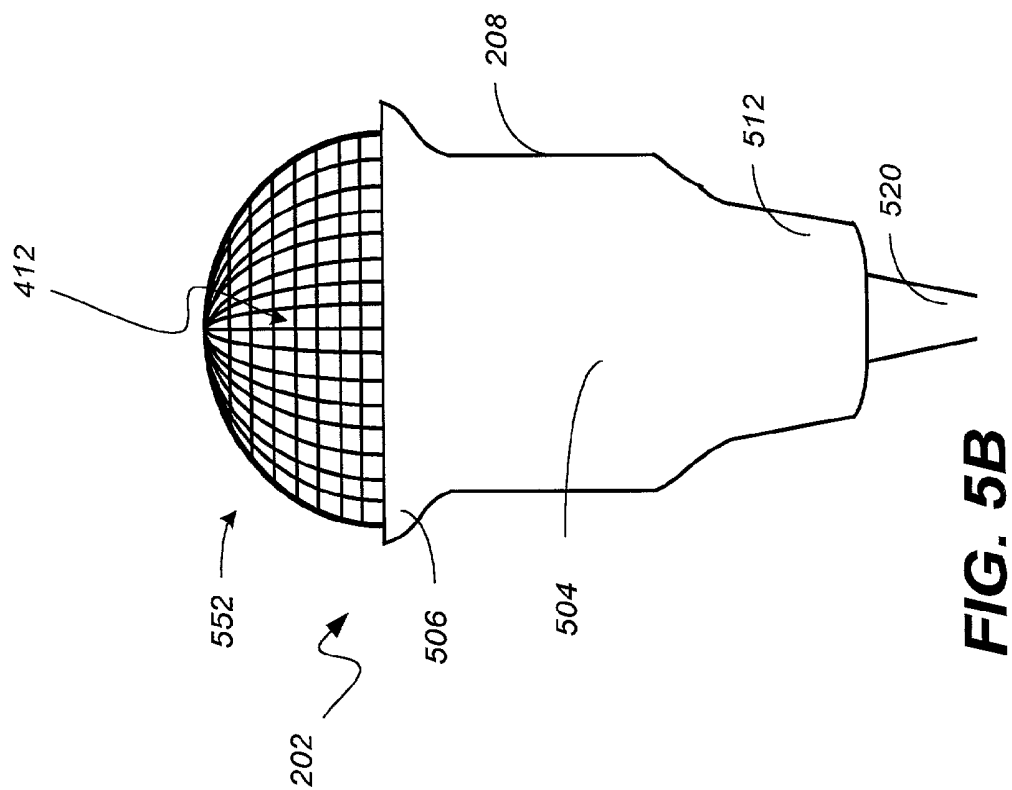
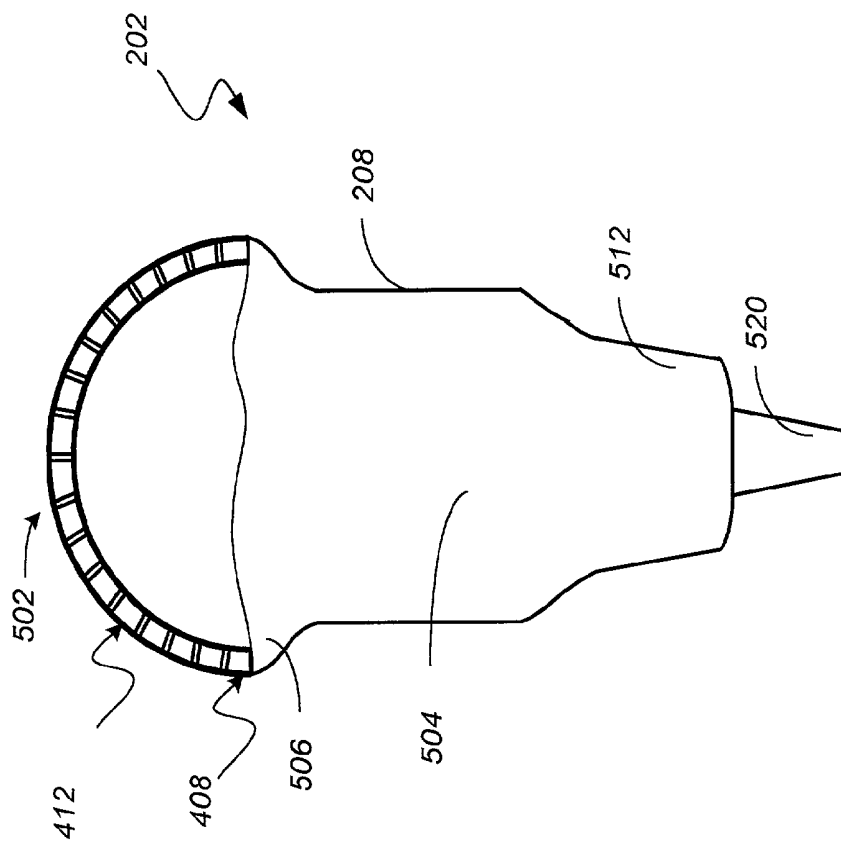


FIG. 5A



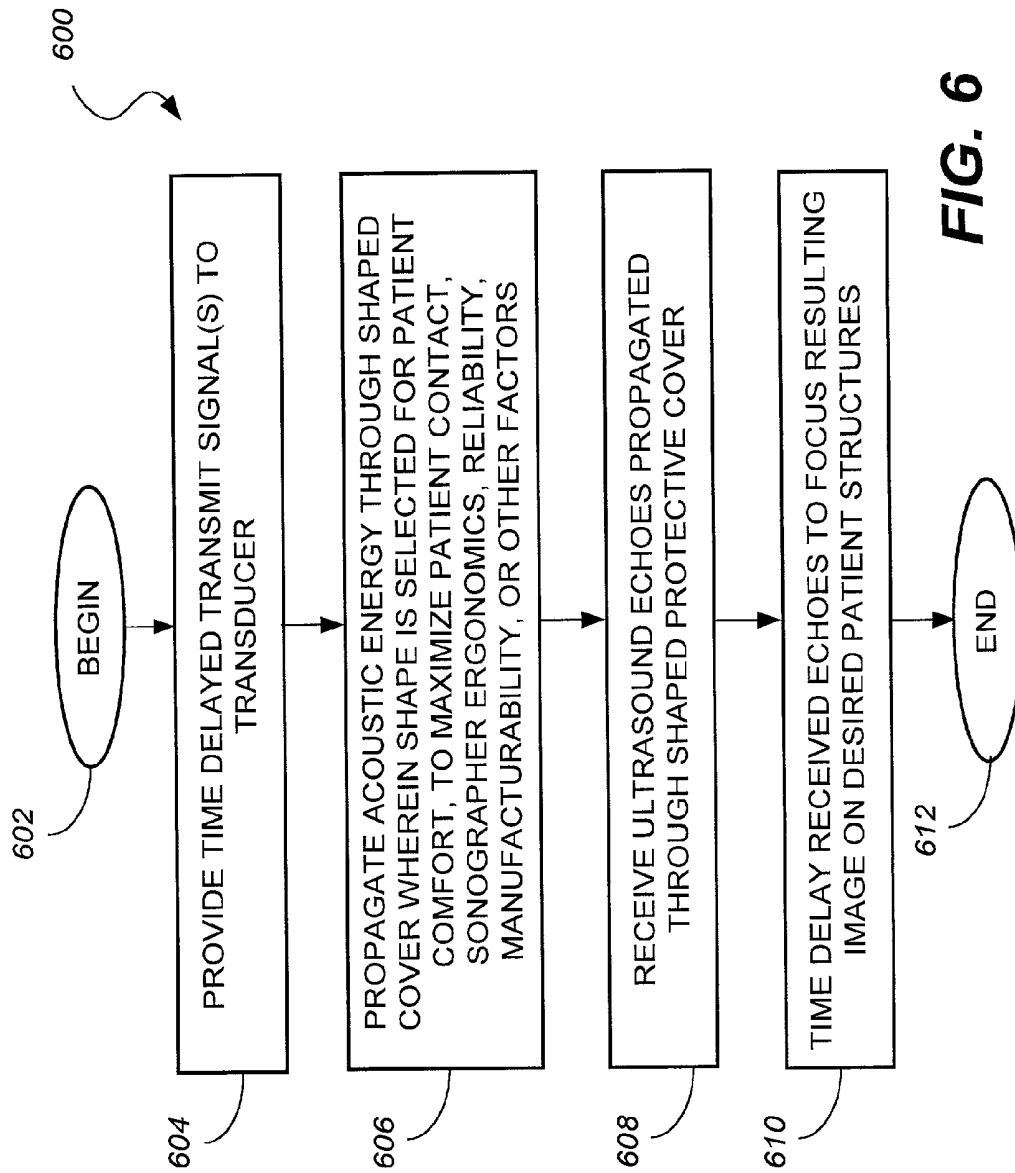


FIG. 6

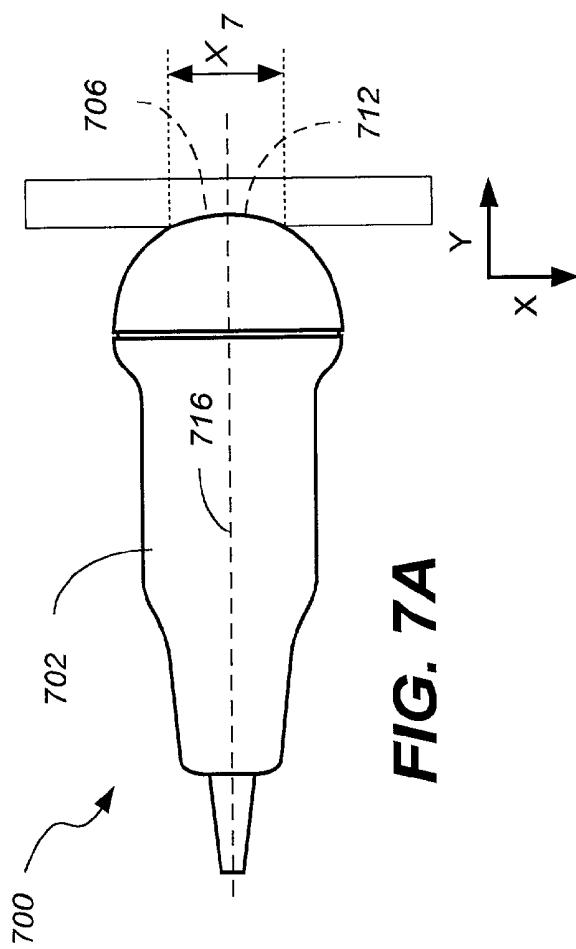


FIG. 7A

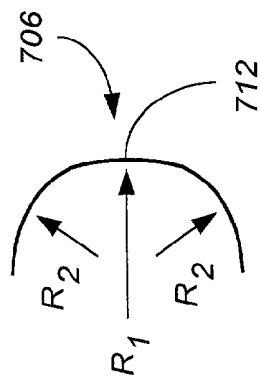


FIG. 7B

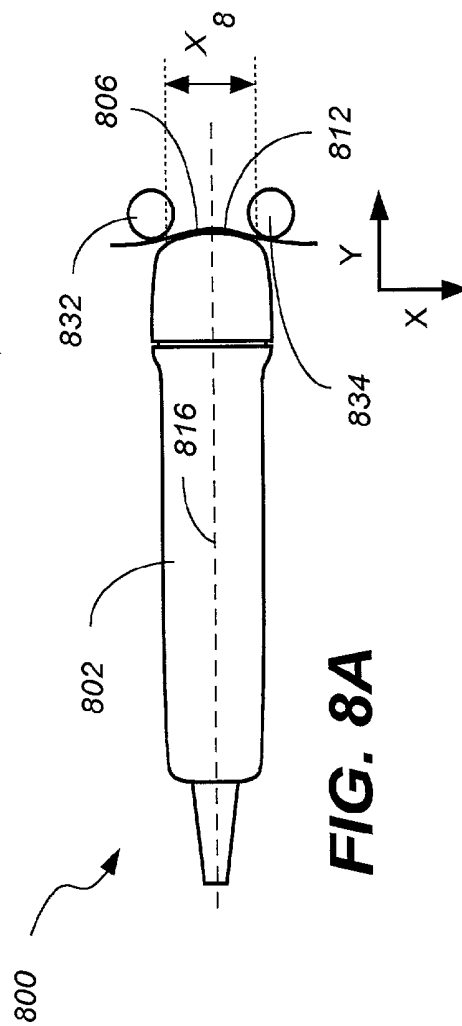


FIG. 8A

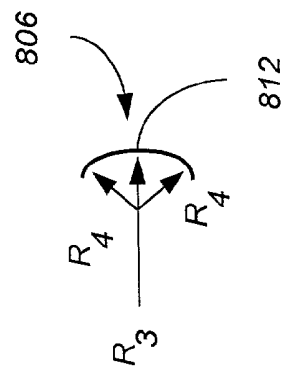


FIG. 8B

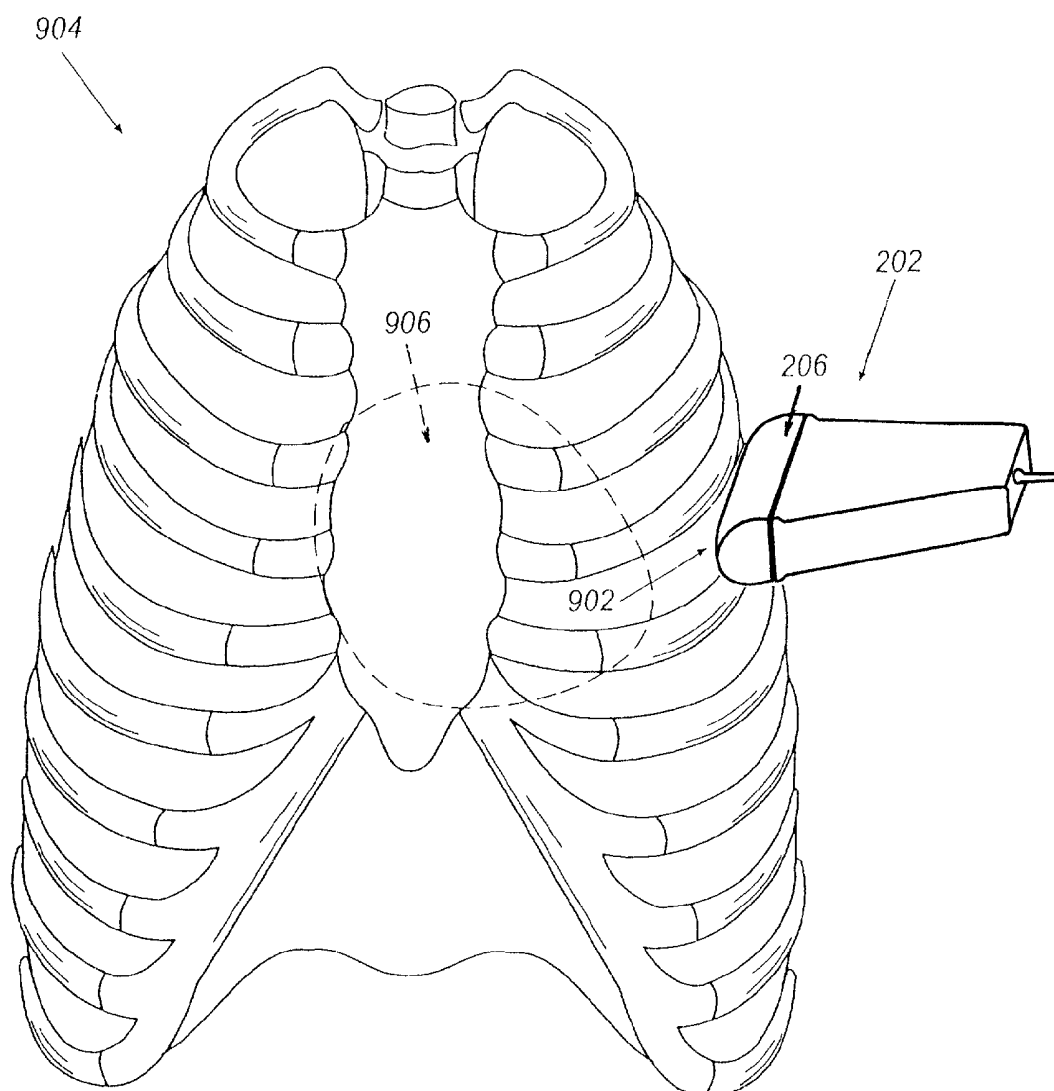
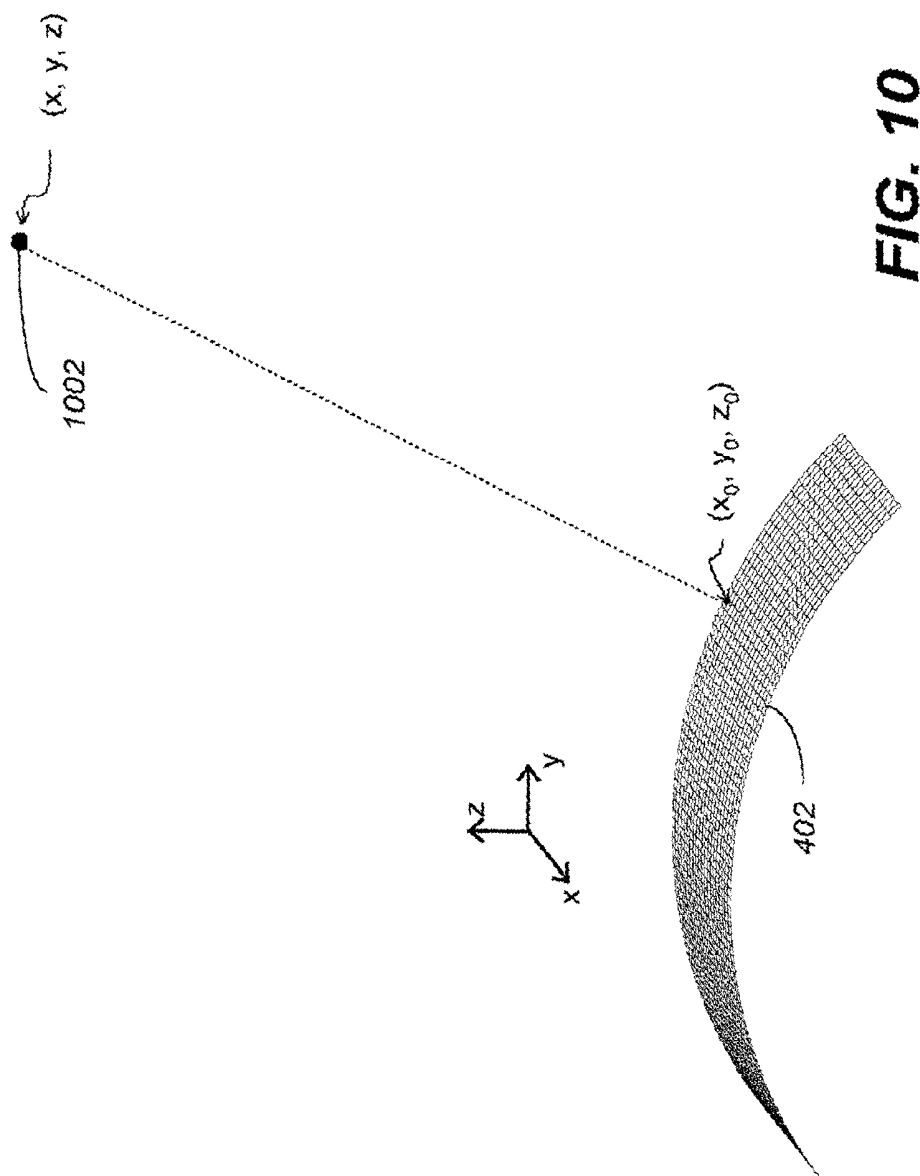
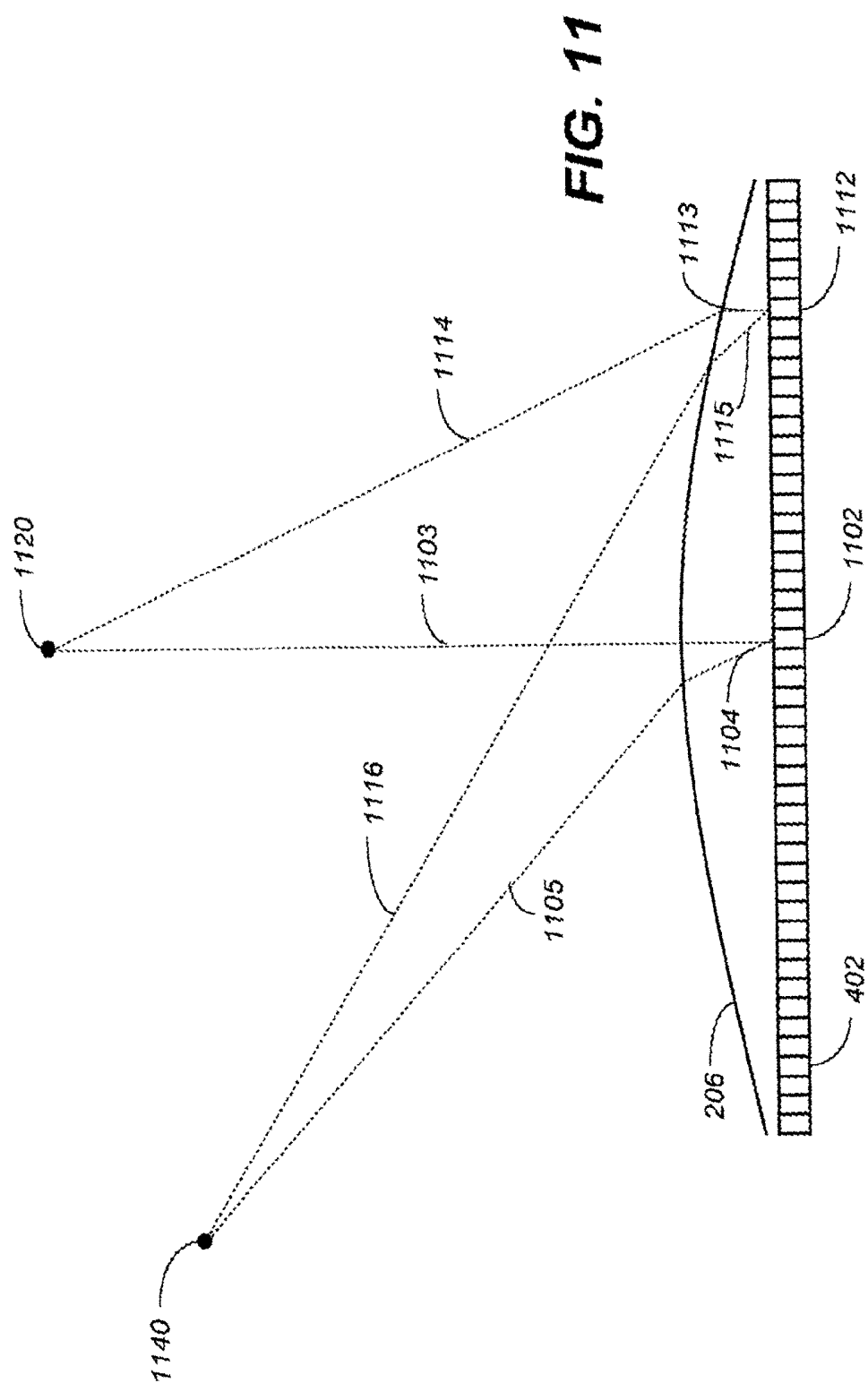


FIG. 9





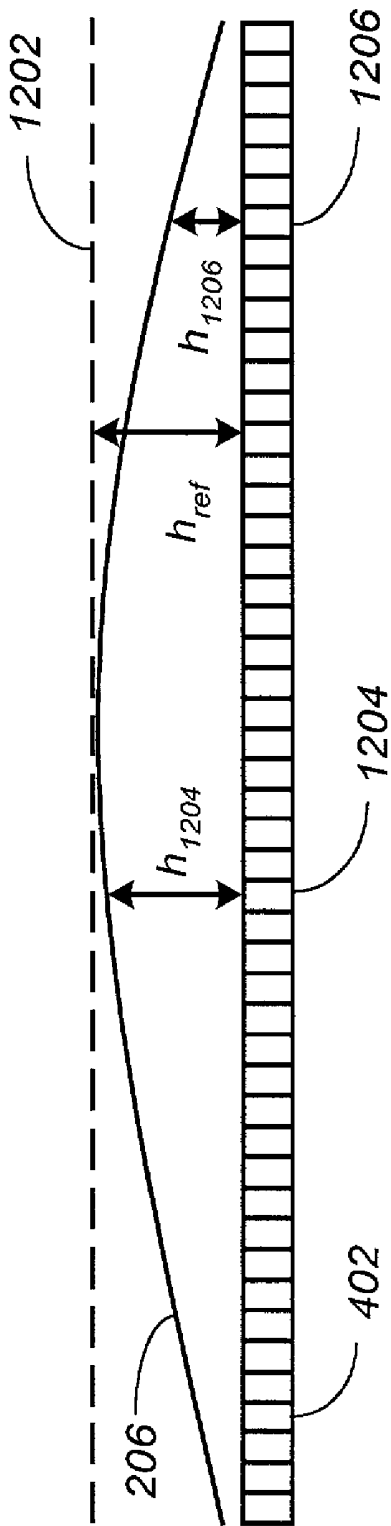


FIG. 12

ULTRASOUND TRANSDUCER

CROSS-REFERENCE TO RELATED APPLICATION

[0001] This application claims priority to copending U.S. provisional application entitled, "IMPROVED ULTRASOUND TRANSDUCER" having Serial No. 60/301,282, filed Jun. 27, 2001, which is entirely incorporated herein by reference.

TECHNICAL FIELD

[0002] The present application generally relates to acoustic imaging. More particularly, the application relates to ultrasonic imaging systems and methods that use transducers with two-dimensional transducer element arrays.

BACKGROUND

[0003] Ultrasound imaging systems have become an important diagnostic tool in many medical specialties. One important advantage of an ultrasound imaging system is real-time scanning. For example, an ultrasound imaging system can produce images so rapidly that a sonographer can scan internal organs or can discern motion within a body, such as blood flow, with real-time, interactive, visual feedback. This allows the sonographer to examine structures of interest and to modify the examination in real-time, thereby improving both diagnostic quality and patient throughput.

[0004] Along with the advantages of real-time, interactive, visual feedback, sonographers are still concerned with system resolution. In an ultrasound imaging system, system resolution depends on the system's ability to focus. The ability to focus depends, in turn, on the effective aperture of a transducer element array in a probe associated with the ultrasound imaging system. Currently two types of arrangements of transducer array elements are used for real-time, ultrasound imaging systems.

[0005] One arrangement comprises a single transducer element or an annular array of transducer elements. Ultrasound imaging systems using this arrangement of transducer array elements rely on mechanical motion of the probe to sweep an acoustic beam over a region of interest.

[0006] A second arrangement of transducer array elements comprises an array of transducer elements which is activated by electronic circuits which produce electronically induced time delays in the transducer element acoustic outputs. These time delays induce measurable phase delays, which cause the acoustic beam produced by the transducer element array to be steered and/or focused.

[0007] Links between electronic circuits which generate transmit pulses for transducer array elements and the transducer array elements that receive the transmit pulses are referred to as beamformer channels. Electronic steering and/or focusing of an acoustic beam produced by the transducer element array is achieved by electronically delaying transmit pulses, on a beamformer channel-by-beamformer channel basis, to create an effective protective cover having varying thickness.

[0008] Due to limits on: (a) the size and complexity of a cable connecting the ultrasound probe with the processing system and (b) the number of beamformer channels avail-

able in a reasonably priced ultrasound system, electronic focusing has been limited to a lateral direction (a direction parallel to the imaging plane). Focusing in an elevation direction (a direction perpendicular to the imaging plane) has been accomplished by placing a mechanical lens, of fixed curvature, on the probe face.

[0009] Conventional modifications in elevation focusing have been accomplished by changing the probe aperture and/or the properties of the mechanical lens. Although it is known that changing frequency can change focal depth (higher frequencies producing deeper focusing than lower frequencies), it is not considered advantageous to change frequency to change focal depth because higher frequencies are attenuated more rapidly in tissue than lower frequencies.

[0010] Consequently, it is known that in order to change elevation focusing of a transducer element array, one ought to change the elevation aperture and/or change the effective curvature of a lens associated with the transducer element array. For example, in imaging a deep organ, the lens ought to have a large aperture and mild curvature and, in imaging a shallower object, the lens ought to have a smaller aperture and a tighter curvature.

[0011] As is known, transducer array elements in an ultrasound probe can be arranged in a one-dimensional (1-D) array, a one-and-a-half-dimensional (1.5-D) array, or a two-dimensional (2-D) array (the size of a typical 1-D transducer array element is on the order of 0.5 wavelengths in the lateral direction and is on the order of 50 wavelengths in the elevation direction). In a 1-D array, transducer elements are generally disposed in the lateral direction, with a single row of elements in the elevation direction. Conventional phase linear arrays and curved arrays are generally considered 1-D transducer element arrays.

[0012] In a 1.5-D array, transducer elements are mounted in both the lateral and elevation directions, but control and data electrical connections are symmetrically connected about the elevation center so that an acoustic beam produced by a 1.5-D array can only be steered in the lateral direction. In a 2-D array, transducer elements are arranged in both the lateral and elevation directions, with electrical connections providing both transmit/receive control and excitation signals to transducer elements arranged in both directions. An acoustic beam produced by a 2-D array can be steered and focused in two dimensions. An example of a 2-D array ultrasound probe can be found in U.S. Pat. No. 5,186,175.

[0013] The advantages of 2-D array imaging are well known. For example, such advantages include the ability to electronically steer in two (2) dimensions (i.e., both lateral and elevation), enhanced resolution due to improved elevation focusing, and improved phase aberration correction through refined comparison of propagation velocities. The flexibility and enhanced resolution associated with 2-D transducers has eliminated the need for an acoustic lens shaped to mechanically focus the acoustic beams. However, the transducer elements still need to be protected. Consequently, the faces of 2-D transducers are configured with a relatively flat acoustically transparent material layer.

[0014] Sonographers can obtain images of a region within a body by properly positioning an ultrasound transducer against the body. In order to obtain images having diagnostic value, the sonographer may have to manipulate the position of the probe by sliding, rotating, and/or tilting the probe with respect to the patient.

[0015] A flat transducer face, such as those used with 2-D transducers, degrades image quality because it provides poorer contact with the body structures of a patient than a transducer with a curved surface. More specifically, a flat transducer surface causes spurious reflections and block portions of the acoustic aperture. Another disadvantage associated with a transducer configured with a flat face is that such transducers either have sharp edges, which can cause patient discomfort, or the transducers have an overly broad footprint to permit rounder edges.

[0016] Transducers configured with an overly broad footprint further impair contact between the transducer face and the patient, which can cause a sonographer to apply greater pressure along the longitudinal axis of the transducer in an attempt to improve contact between the transducer face and the patient. The increase in sonographer induced pressure can result in patient discomfort, as well as repetitive motion injuries to the sonographer. One area where maintaining appropriate contact between the transducer face and the patient is particularly problematic is intercostal cardiac and thoracic imaging. Generally, for these applications, the transducer housing contains a 2-D array of transducer elements selected for the expected enhanced resolution due to improved elevation focusing.

[0017] Consequently, there is a need for an improved transducer that addresses these and/or other shortcomings associated with conventional transducers.

SUMMARY

[0018] Embodiments of the improved ultrasound transducer may be construed as providing acoustic imaging systems. In a preferred embodiment, the system includes a shaped protective cover configured to mate with a transducer body. The protective cover is formed, at least partially, of a material, which exhibits acoustic properties that redirect ultrasound energy passing through the material into the body to be imaged. The shaped protective cover provides patient comfort, an increased acoustical window, and reduces the incidence of repetitive motion injuries to sonographers. An ultrasound imaging system configured with the improved transducer electronically focuses acoustic energy that traverses the protective cover.

[0019] Other embodiments of the present invention may be construed as providing methods for acoustically imaging a patient, for example. A preferred method includes the steps of: (1) providing a transducer having a shaped protective cover formed, at least partially, of an acoustic focusing material; (2) propagating acoustic waves from the protective cover; (3) receiving acoustic waves reflected from structures within the body to be imaged; (4) converting said received acoustic waves to electrical signals; and (5) processing said electrical signals to produce an image.

[0020] Other systems, methods, and features, of the improved ultrasound transducer will be apparent to one skilled in the art upon examination of the following drawings and detailed description. It is intended that all such additional systems, methods, and features are included within this description, are within the scope of the improved ultrasound transducer, and protected by the accompanying claims.

BRIEF DESCRIPTION OF THE DRAWINGS

[0021] The improved ultrasound transducer can be better understood with reference to the following drawings. The

components in the drawings are not necessarily to scale; emphasis instead is placed upon clearly illustrating the principles of the transducer. Moreover, in the drawings, like reference numerals designate corresponding parts throughout the several views.

[0022] FIG. 1 is a schematic diagram depicting a conventional 1-D transducer transmitting acoustic energy into a representative body.

[0023] FIG. 2 is a schematic diagram depicting the improved ultrasound transducer in association with an image processing system.

[0024] FIG. 3 is a schematic diagram of the improved ultrasound transducer of FIG. 2 showing detail of the image processing system.

[0025] FIG. 4 is a schematic diagram illustrating control of the transducer elements of the improved ultrasound transducer of FIG. 2.

[0026] FIG. 5A is a partial cross-sectional side view illustrating an embodiment of the improved ultrasound transducer of FIG. 2.

[0027] FIG. 5B is a side view illustrating another embodiment of the improved ultrasound transducer of FIG. 2.

[0028] FIG. 6 is a flowchart depicting preferred functionality of the imaging system of FIG. 2.

[0029] FIG. 7A is a plan view of an alternative embodiment of the present invention.

[0030] FIG. 7B is a schematic diagram depicting detail of the protective cover of FIG. 7A.

[0031] FIG. 8A is a plan view of an alternative embodiment of the improved ultrasound transducer.

[0032] FIG. 8B is a schematic diagram depicting detail of the protective cover of FIG. 8A.

[0033] FIG. 9 is a schematic diagram depicting representative placement of the improved ultrasound transducer during a representative thoracic imaging procedure.

[0034] FIG. 10 is a schematic diagram illustrating an acoustic beam in both transmit and receive modes used to image a target.

[0035] FIG. 11 is a schematic diagram illustrating multiple acoustic beams in both transmit and receive modes used to image multiple targets.

[0036] FIG. 12 is a schematic diagram illustrating the spatial relationship between the protective cover of the improved transducer of FIG. 2 and the two-dimensional transducer element array.

DETAILED DESCRIPTION

[0037] Conventional one-dimensional (1-D) phased array transducers utilized for ultrasonic imaging typically incorporate lenses that focus acoustic beams transmitted from the transducers. In particular, the mechanical configuration of such a lens typically is selected to focus an acoustic beam from a transducer in an elevation dimension. The elevation dimension also may be focused mechanically, such as by implementing a concave shape at the array of the transducer. The lateral dimension typically is focused electronically.

[0038] By way of example, a conventional 1-D phased array transducer uses a lens that promotes focusing of transmitted acoustic energy within a body, e.g., a human body. Oftentimes, the material of such a lens possesses an acoustic velocity that is less than that of the human body (approximately 1.5 mm/ μ sec). So provided, the acoustic energy propagated into the body by the ultrasound transducer through the acoustic lens tends to converge or focus within the body. Focusing of acoustic energy transmitted from a conventional 1-D transducer within a body is depicted schematically in FIG. 1.

[0039] In FIG. 1, representative acoustic waves 12, 14, 16, 18, and 20 are shown being transmitted from transducer 22 via a focusing lens 24. As depicted therein, the acoustic waves tend to focus as they propagate deeper into body 30 due, at least in part, to the material of the lens 24.

[0040] As is known, acoustic energy propagates at various velocities and with various wave-front shapes depending upon, for example, the acoustic velocity and acoustic impedance of a material(s) through which the acoustic energy is propagated. For instance, the closer the acoustic velocity of a lens material is to that of the body, the closer the energy is transmitted from a transducer and into the body at the incident angle. Additionally, the closer the acoustic impedance of the lens material is to that of the body, more ultrasonic energy is transmitted from the transducer and into the body.

[0041] As shown in FIG. 2, a preferred embodiment 200 of the imaging system incorporates a transducer probe ("transducer") 202. By way of example, transducer 202 can be a two-dimensional (2-D) phased array transducer. Transducer 202 is electrically coupled with an image processing system 204. Image processing system 204 provides various signals to transducer 202 so as to enable the transducer 202 to transmit acoustic energy via a plurality of transducer elements arranged in a 2-D array about a transducer face 207. The transmitted acoustic energy as well as reflected acoustic echoes may then traverse a protective cover 206 manufactured from an acoustically transparent material. The transducer 202 converts the reflected acoustic echoes into electrical signals that are returned to the image processing system.

[0042] Protective cover 206 is maintained in position relative to the transducer body 208 by a nose portion 210 of the transducer body 208. In particular, protective cover 206 is adapted to seat at least partially within an aperture (not shown) defined by the nose portion 210. Various other configurations, however, can be used.

[0043] In prior art transducers, protective cover 206 is configured as an acoustically non-focusing lens. More specifically, protective cover 206 is formed of selected material(s) and/or exhibits a particular shape that enables acoustic energy to be propagated into a body, e.g., a human body, without substantially mechanically focusing the acoustic energy. By way of example, prior art embodiments of the ultrasound transducer 200 may include a protective cover 206 that is at least partially formed of an acoustic-matching material. Such an acoustic-matching material preferably exhibits an acoustic velocity and impedance that substantially match the acoustic velocity and acoustic impedance of a typical body.

[0044] In alternative prior art embodiments, non-focusing is achieved by making the transducer face 207 flat or

convexly curved and maintaining a uniform thickness in that part of the protective cover 206 that lies in the acoustic path. For instance, a material exhibiting an acoustic velocity within the range of approximately 1.4 mm/ μ sec to approximately 1.6 mm/ μ sec could be considered an acoustic-matching material for medical diagnostic applications. An acoustic-matching material also preferably exhibits an acoustic impedance within the range of approximately 1.3MRayl to approximately 1.7MRayl.

[0045] In some embodiments, the acoustically non-focusing protective cover 206 may be formed of butadiene, styrene butadiene, and/or an associated classes of rubbers and/or polymers, among others. These materials typically attenuate acoustic energy at approximately 3 dB/cm at 2 MHz and approximately 8 dB/cm at 5 MHz. As is known, conventional lens materials, such as silicone, attenuate acoustic energy at approximately 9 dB/cm at 2 MHz and approximately 33 dB/cm at 5 MHz.

[0046] It should be noted that one of ordinary skill in the art may choose to provide a protective cover 206 formed of materials that, individually, may not be considered acoustic-matching materials. However, providing a combination of materials that together exhibit acoustic-matching properties, e.g., an acoustic velocity within the range of approximately 1.4 mm/ μ sec to approximately 1.6 mm/ μ sec and an acoustic impedance within the range of approximately 1.3MRayl to approximately 1.7MRayl, is considered for the improved ultrasound transducer.

[0047] By providing an acoustically non-focusing protective cover 206, imaging system 200 may enable transmission of acoustic energy into a patient's body that is suitable for electronic focusing in both the lateral and elevational dimensions. In particular, the imaging system 200 may provide acoustic beams that are conducive to comparatively sensitive electronic focusing. This could facilitate improved zoom imaging functionality as compared to other ultrasound imaging systems, which use mechanically focused lenses. It also is presumed that an imaging system using an acoustically non-focusing protective cover 206 may provide acoustic beams that are particularly well suited for contrast imaging applications. As described in detail hereinafter, improved imaging systems can include various shapes of protective covers 206, which are at least partially formed of acoustic-matching material.

[0048] A disadvantage of the prior art is that the use of a non-focusing protective cover 206 may be undesirable. A suitable acoustic-matching material that meets other transducer requirements such as durability, chemical resistance, and biocompatibility may not be available or may require excessive development effort. Furthermore, requirements for maintaining contact between the transducer 202 and the patient may dictate a shape for the protective cover surface that causes substantial focusing of the acoustic energy. The improved ultrasound transducer 202 advances the art of ultrasound imaging by electronically compensating for the focusing characteristics of the protective cover 206.

[0049] Referring now to FIG. 3, a preferred embodiment of the imaging processing system 204, will be described in detail. It will be appreciated that FIG. 3 does not necessarily illustrate every component of the preferred system, emphasis instead being placed upon the components most relevant to the systems and/or methods disclosed herein.

[0050] As depicted in FIG. 3, image processing system 204 includes the improved transducer 202, which is electrically connected to a T/R switch 302 of the image processing system 204. T/R switch 302 places the transducer 202 in either a transmit or receive mode. In order to facilitate transmission of acoustic energy via the transducer 202 during operation in the transmit mode, image processing system 204 includes a transmit beamformer 304 that sets the transmit frequency, f_o , and magnitude of various transmit signals. The transmit beamformer 304 is in communication with a transmit waveform modulator 306 that generates the various transmitted signal lines. As illustrated in FIG. 3, the transmit beamformer 304 and transmit waveform modulator 306 operate under control of a central controller 310.

[0051] In order to facilitate reception of acoustic energy via the transducer 202 during operation in the receive mode, the image processing system 204 includes an A/D converter 312, which converts analog signals received from the transducer 202 into digital signals. A digital filter 314, e.g., an RF filter, filters signals outside a desired receive band from the received data. Next, a receive beamformer 316 receives the filtered digital signals representing the received ultrasound echoes.

[0052] The receive beamformer 316 may be designed to receive multiple digital echo waveforms (corresponding with a plurality of sets of transducer elements from the 2-D array of transducer elements) from the A/D converter 314. The receive beamformer 316 may combine the multiple digitized echo waveforms to form a single acoustic line. To accomplish this task, a plurality of parallel processing channels within the receive beamformer 316 may delay the separate echo waveforms by different amounts of time and then may add the delayed waveforms together, in order to create a composite digital acoustic line. Furthermore, the receive beamformer 316 may receive a series of data collections for separate acoustic lines in succession over time and process the data in a pipeline-processing manner.

[0053] An image processor 318 may contain a suitable species of random access memory (RAM) and may be configured to receive a series of composite digital acoustic lines from the receive beamformer 316. The acoustic lines can be defined within a three-dimensional coordinate space. The image processor 318 may be configured to mathematically manipulate image information within the received and filtered digital acoustic lines. In addition, the image processor 318 may be configured to accumulate acoustic lines of data over time for signal manipulation. In this regard, the image processor 318 may further include a scan converter to convert the data as stored in the RAM in order to produce pixels for display. Each scan converter may process the data in the RAM once an entire data frame (i.e., a set of all acoustic lines in a single view, or image/picture to be displayed) has been accumulated by the RAM.

[0054] For example, if the received data is stored in RAM using polar coordinates to define the relative location of the echo information, the scan converter may convert the polar coordinate data into rectangular (orthogonal) data capable of being raster scanned via a raster scan capable processor. The ultrasound imaging system 204, having completed the receiving, echo recovery, and image processing functions, to form a plurality of image frames associated with the plu-

rality of ultrasound image planes, may forward the echo image data information to a video processor 320 as illustrated in FIG. 3.

[0055] Video processor 320 may be designed to receive the echo image data information and may be configured to raster scan the image information. The video processor 320 produces picture elements (i.e., pixels) that may be forwarded to the display device 322. In addition, the picture elements may be forwarded to a video memory device (not shown). Video memory devices may include a digital videodisc (DVD) player/recorder, a compact disc (CD) player/recorder, a video cassette recorder (VCR), or other video information storage device. As is known in the art, these video memory devices permit viewing and or post data collection image processing by a user/operator in other than real-time.

[0056] As further illustrated in FIG. 3, display device 322 may be configured to receive the picture elements (i.e., the pixel data) from the video processor 320 and drive a suitable display screen or other imaging device (e.g., a printer/plotter) for viewing of the ultrasound images.

[0057] Many variations of the image processing system 204 presented in FIG. 3 may be operational with the improved ultrasound transducer 202. For example, the receive beamformer 316 may be split into two parts, an analog portion being between the T/R switch 302 and the A/D converter 312 (not shown) and a digital portion disposed after the digital filter 314 as illustrated in FIG. 3.

[0058] Reference is now directed to FIG. 4, which presents a schematic view illustrating a transducer control system 400. The transducer control system 400 controls a two-dimensional transducer element array 402. The two-dimensional transducer element array 402 includes a plurality of ultrasonic transducer elements, exemplar ones of which are illustrated using reference numerals 408, 412 and 414. The ultrasonic transducer elements 408, 412 and 414 are arranged in rows and columns, exemplar ones of which are illustrated using reference numerals 404 and 406, respectively. Such a configuration is sometimes referred to as a matrix array. However, other transducer element configurations are possible.

[0059] Although the schematic of FIG. 4, illustrates a planar 8x14 array of ultrasonic transducer elements, it should be mentioned that the concepts of the invention are applicable to any two-dimensional ultrasonic transducer element array configuration, including configurations in which ultrasonic transducer elements are curved in one or both of the two dimensions. For example, two-dimensional transducer element arrays having cylindrical, spherical, toroidal, or other curved surfaces are possible and may use slightly modified beamforming than that associated with the planar two-dimensional transducer element array 402 illustrated in FIG. 4.

[0060] Each of the elements 408, 412 and 414 of the two-dimensional transducer element array 400 is individually controllable. Specifically, each of the transducer elements 408, 412 and 414 can function as a transmit element and as a receive element, and each receives individualized control signals. For example, ultrasonic transducer element 408 is electrically coupled via connection 416 to a transmit/receive (T/R) switch 418. The T/R switch 418 is controlled

by a signal (not shown) from the central controller 310 to permit the transducer element 408 to function in a transmit mode and in a receive mode.

[0061] When the transducer element 408 is used in a transmit mode, the transducer element 408 receives a transmit pulse from the transmit beamformer 304 through connection 426 and via the variable amplifier 422 via connection 424. The variable amplifier 422 is used to define the characteristics of the transmit pulse applied to the transducer element 408 and is controlled by amplitude controller 420 via connection 430. Although omitted for simplicity, each element in the two-dimensional transducer element array 402 includes a similarly controlled variable amplifier.

[0062] When the transducer element 408 is used in a receive mode, ultrasonic energy that impinges upon the surface of the transducer element 408 is converted to an electrical signal. The electrical signal is communicated via connection 416, through T/R switch 418 (which is now connected to connection 444 by operation of a control signal from the central controller 310) so that the receive signal is applied to variable gain amplifier 446. The variable gain amplifier 446 amplifies the electrical receive signal and supplies the signal over connection 448 to delay element 484.

[0063] In a similar manner, the transducer element 412 receives a transmit pulse via connection 436 and supplies a receive signal via connection 438 to variable gain amplifier 442. Variable gain amplifier 442 supplies the received signal via connection 458 to delay element 482. Similarly, transducer element 414 receives a transmit signal via connection 458, through switch 456 and connection 454, while the receive signal is passed via connection 454, through switch 456 and connection 462 to variable gain amplifier 464. The variable gain amplifier 464 supplies the amplified receive signal on connection 466 to the delay element 478. Each element in the two-dimensional transducer element array 402 is thus controlled, thereby allowing full control over each element in the two-dimensional transducer element array 402.

[0064] The variable gain amplifiers 462, 442 and 446, and the delay elements 478, 482 and 484 are all contained within receive beamformer 316. While shown as having only three variable gain amplifiers and three delay elements, the receive beamformer 316 includes sufficient amplifiers and delay element circuitry (and other processing circuitry) for each of the transducer elements in the two-dimensional transducer element array 402. Furthermore, various multiplexing, sub-beamforming, and other signal processing techniques can be performed by the receive beamformer 316. However, for simplicity of illustration, the receive beamformer 316 in FIG. 2 includes only three delay elements. Each of the amplifiers in the receive beamformer 316 is controlled by a signal via connection 480 from the central controller 310. The signal on connection 480 determines the receive gain applied by each of the variable gain amplifiers 464, 442 and 446. The gain applied by each of the amplifiers may vary. Similarly, each delay element 478, 482 and 484 is operated by a signal from the central controller 310 via connection 474. This control signal determines the amount of delay that each of the delay elements 478, 482, and 484 applies to their respective receive signals. In this manner, the receive aperture can be controlled with a high degree of

precision, because each transducer element in the two-dimensional transducer element array 402 includes a respective variable gain amplifier 442, 446 and 464 and control circuitry.

[0065] The output of delay elements 478, 482, and 484 are respectively supplied via connections 486, 488 and 492 to summing element 494. Summing element 494 combines the output of each delay element and supplies a beamformed signal on connection 496 to additional processing elements, such as the image processor 318 (not shown). In alternative configurations, the variable gain amplifiers 464, 442 and 446 may be located after the delay elements 478, 482, and 484, respectively. Further, the outputs of the delay elements 478, 482, and 484 may be combined into sub-arrays and variable gains may be applied to each sub-array either before or after the sub-array signal passes through its respective delay prior to the summing element 494.

[0066] Importantly, the two-dimensional transducer element array 402 having individually controllable transducer elements 408, 412, and 414 makes the emitted ultrasound pulse pattern variable in two-dimensions. Specifically, the two-dimensional transducer element array 402 can be controlled with respect to the position of each element within the array. By having complete control over the entire aperture, the 2-D transducer element array control system 400 allows the beam plot of the aperture to be controlled with a high degree of precision.

[0067] Calculation of the delays used in the transmit beamformer 304 and receive beamformer 316 may be understood with reference to FIG. 10 wherein it is desired to focus the image at a target 1002, which may be, for example, some structure within the body to be imaged 30. In this case, the transmitted acoustic energy from two-dimensional transducer element array 402 is brought to a focus at target 1002 and the receive beamformer 316 focuses the received acoustic energy to maximize the receive sensitivity at target 1002. In order to transmit acoustic energy focused on target 1002, the central controller 310 may provide delay control signals to the transmit beamformer 304 for each element of the two-dimensional transducer element array 402 via connection 468 and a synchronization signal to provide a time reference for the delays. The transmit beamformer 304 causes transmit signals to be provided to each element of the two-dimensional transducer element array 402 at a beam-forming delay, T_{BF} , after the synchronization pulse via, for example, connection 426, variable gain amplifier 422, connection 424, T/R switch 418, and connection 416. The transmit beamforming delays, T_{BF} , are generally different for every element of the two-dimensional transducer element array 402 and may be calculated as described below. The transmitted acoustic energy propagates to the target in a time, T_p , given by

$$T_p = \frac{1}{v_b} \sqrt{(x - x_0)^2 + (y - y_0)^2 + (z - z_0)^2}, \quad \text{Eq. 1}$$

[0068] where, v_b , is the acoustic propagation velocity in the body, the two-dimensional array element is at coordinates (x_0, y_0, z_0) , and the target 1002 is at coordinates (x, y, z) . The total time, T , from the synchronization pulse to the arrival of the transmitted acoustic energy at the target 1002 may be calculated as follows:

$$T = T_{BF} + T_p. \quad \text{Eq. 2}$$

[0069] To focus the acoustic energy at the target **1002**, the transmit beamforming delays, T_{BF} , must be chosen so that the total delays, T , are the same for every element, thus causing the ultrasonic energy from all of the two-dimensional array elements to arrive at the target **1002** simultaneously. Any set of transmit beamforming delays, T_{BF} , that satisfies the condition that all of the total times, T , from the synchronization pulse to the arrival of the transmitted acoustic energy from the individual elements to the target **1002** are the same is sufficient. It is clear from the above discussion that to achieve a focus at target **1002**, the differences in the transmit beamforming delays, T_{BF} , are completely specified by the geometry.

[0070] On the receive cycle, each element of the two-dimensional transducer element array **402** receives the acoustic energy reflected from the target **1002** after a propagation delay, T_p , which is the same as the propagation delay for that element on transmit. To bring the target into focus, the receive beamformer **316** delays the received signal from each element by a receive beamforming delay, T_{BF} , that is the same as the transmit beamforming delays. As with transmit beamforming, any set of beamforming delays may be used provided the differences in beamforming delays between any two elements are correct.

[0071] Furthermore, as the time after the synchronization pulse increases, the acoustic signals arriving at the two-dimensional transducer element array **402** are due to reflections from targets at progressively deeper depths due to the finite propagation speed of the acoustic energy. The receive beamforming delays, T_{BF} , may be changed as a function of depth to provide receive focus at various target depths. This is referred to as dynamic receive focusing.

[0072] Interposing a protective cover **206** between the two-dimensional transducer element array **402** and the body to be imaged **30** modifies the propagation delays, T_p , by an amount related to the acoustic velocities of the protective cover **206**, the body to be imaged **30**, and to the thickness of the protective cover **206**. Specifically, the protective cover **206** adds a further protective cover delay, T_c , given approximately by the expression:

$$T_c = h \times \left(\frac{1}{v_c} - \frac{1}{v_b} \right), \quad \text{Eq. 3}$$

[0073] where, h is the thickness of the protective cover **206** and v_c is the acoustic velocity within the protective cover **206**. If the protective cover **206** is made of an acoustic-matching material, then v_c is approximately equal to v_b and the protective cover delay, T_c , is approximately zero and no changes are required for the beamforming delays, T_{BF} . Furthermore, if the thickness, h , of the protective cover **206** is the same for all elements, then the protective cover delay, T_c , is the same for all transducer elements regardless of the velocity, v_c . Since only the differences in beamforming delays are important, it is readily seen that a protective cover **206** of uniform thickness does not change the required beamforming delays, T_{BF} .

[0074] If, however, the thickness, h , is not uniform over the two-dimensional transducer element array **402** and the velocity, v_c , is different from the velocity, v_b , then the delay,

T_c , will be different for every element as illustrated in **FIG. 12**. This will cause distortion of the wave fronts emerging from the protective cover **206** during the transmit cycle and entering the protective cover **206** during the receive cycle, resulting in loss of focus and blurring of the image. Delays used in the transmit beamformer **304** and the receive beamformer **316** can be changed from the nominal values obtained from the distance calculation so as to cancel the delay variations caused by the non-uniform thickness of the protective cover **206**, thus maintaining focus and image quality. Stated another way, the new beamformer delays are equal to the beamformer delays minus the protective cover delays or

$$T_{new} = T_{BF} - T_c \quad \text{Eq. 4}$$

[0075] In the event that any of the resultant new beamformer delays is negative, a constant delay can be added to all beamformer channels to make all delays positive. For example, in **FIG. 12**, the two-dimensional transducer element array **402** is covered by a protective cover **206** having a non-uniform thickness such that over representative element **1204** the thickness is h_{1204} , and over representative element **1206** the thickness is h_{1206} . Then the total propagation delay from representative element **1204** to the reference plane **1202** is

$$T_{1204} = \frac{h_{ref}}{v_b} + h_{1204} \times \left(\frac{1}{v_c} - \frac{1}{v_b} \right) \quad \text{Eq. 5}$$

[0076] and the total propagation delay from representative element **1206** to the reference plane **1202** is

$$T_{1206} = \frac{h_{ref}}{v_b} + h_{1206} \times \left(\frac{1}{v_c} - \frac{1}{v_b} \right). \quad \text{Eq. 6}$$

[0077] The procedure described above for calculating beamformer delays is sufficient to produce a good focus under the most commonly encountered operating conditions. Implicit in the procedure, however, is the approximation that the variation across the aperture in the delay generated by the protective cover **206** is the same for all steering angles and focal depths.

[0078] This approximation may not be sufficiently accurate if the beam steering angle with respect to the transducer face is greater than about 45 degrees, or if the active aperture of the transducer **202** is greater than the distance to the desired focal point, or if the protective cover **206** has a thickness greater than about three wavelengths of the incident ultrasound energy, or if the protective cover **206** has areas in which the radius of curvature is less than about three times the width of the area over which it occurs.

[0079] An example of this effect is illustrated in **FIG. 11**. In this regard, acoustic energy propagates from element **1102** to target **1120** along ray **1103**, and from element **1112** to target **1120** along ray **1113** and refracted ray **1114**. Acoustic energy may also propagate from element **1102** to a second target **1140** along ray **1104** and refracted ray **1105**, and from element **1112** to the second target **1140** along ray **1115** and refracted ray **1116**. Although the illustration is not

to scale, it will be apparent that the propagation path lengths through the protective cover **206** and through the body to be imaged **30** may be different for the two different targets, and that these differences may be different for the two transducer elements **1102** and **1112**. Consequently, the delays, T_c through the protective cover **206** become a function not only of the element position, but also of the target position. Those skilled in the art will appreciate that the illustration presented in **FIG. 11** is offered for simplicity of explanation. Individual transducer elements cannot focus by themselves. A plurality of active transducer elements acting together under the control of the image processing system **204** can be made to focus an acoustic beam that traverses the aperture.

[0080] Attention is now returned to the two-dimensional matrix of controllable transducer elements illustrated in **FIG. 4**. The arrangement shown in **FIG. 4** allows a fully sampled, controllable, arbitrary (specified without restraint) two-dimensional delay profile to be applied to the two-dimensional transducer element array **402**. Fully sampled is a term that relates to each transducer element **404**, **412** and **414** being individually controlled. In preferred embodiments of such an arrangement, each individual transducer element of the two-dimensional transducer element array **402** receives some manner of control signal from the central controller **310**.

[0081] The delay profile of the two-dimensional transducer element array aperture is an arbitrary, fully-sampled, controllable function of both dimensions of the aperture. The delay profile thus may be adjusted to compensate for any shape of protective cover **206**, allowing the shape of the protective cover **206** to be specified to provide optimum contact with the body to be imaged **30**, desirable ergonomic qualities, or other attributes as discussed previously, without degrading the image quality.

[0082] Referring now to **FIGS. 5A and 5B**, some preferred embodiments of transducer **202** will be described in greater detail. As depicted in **FIG. 5A**, transducer **202** includes a body **208** and a shaped two-dimensional transducer element array **502**. As illustrated, the two-dimensional element array **502** may comprise a plurality of transducer elements **408**, **412** (two identified for ease of illustration). Body **208** preferably is configured to house one or more of various components required to facilitate transmission and/or reception of acoustic energy via the two-dimensional transducer element array **502**. Note that in the present illustration, the nose **210** and protective cover **206** have been removed to reveal the two-dimensional transducer element array **502**. As illustrated in the partial cross-sectional side view of **FIG. 5A**, the two-dimensional transducer element array **502** may be cylindrically shaped. It should be appreciated that a spherically shaped two-dimensional transducer element array **502** may be selected for applications where a transducer **202** needs to remain in close contact with various surfaces of the human body as may be required.

[0083] Furthermore, body **208** may be ergonomically designed to facilitate proper positioning of the transducer **202** for performing an imaging procedure. The body **208** includes an intermediate portion **504** that is appropriately adapted to be grasped by the hand of an operator. Moreover, the body **208** may be covered by a material that not only protects the transducer electronics but has properties that make the transducer **202** easy to grasp for a sonographer.

[0084] In the embodiment depicted in **FIG. 5A**, body **208** contains a protective cover-mounting portion **506**, which preferably flares radially in an outward fashion from an intermediate portion **504** adapted to engage protective cover **206** (not shown). At the proximal end of the transducer **202**, i.e., the end opposite portion **506**, a tapered or necked portion **512** is provided. Portion **512** defines an aperture for receiving electrical cordage **520**. Cordage **520** is adapted to facilitate electrical communication between the transducer **202** and the image processing system **204** (not shown).

[0085] Various shapes of protective covers **206** may be utilized to protect and shield the underlying shaped two-dimensional transducer element array **502**. Preferred shapes will closely cooperate with underlying two-dimensional transducer element array **502** to provide adequate acoustic coupling. Various considerations, such as the desire to promote good patient contact between the protective cover **206** and the patient, for image quality and patient comfort, as well as sonographer ease of use, for example, may make particular shapes more desirable for particular ultrasound exams. For instance, in some embodiments, the protective cover **206** can be physically configured to facilitate convenient alignment of the transducer **202** with an acoustic window of a patient. In particular, such a protective cover **206** preferably incorporates curved surfaces extending outwardly from the transducer **202**. This configuration tends to facilitate convenient positioning of the protective cover **206** in relation to an acoustic window, such as an acoustic window defined by adjacent ribs of the patient. More specifically, the curved surfaces typically engage the ribs and tend to align the tissue-engagement surface with the acoustic window. As described hereinafter, the tissue-engagement surface may be provided in various configurations.

[0086] As depicted in **FIG. 5B**, transducer **202** includes a body **208** and a shaped two-dimensional transducer element array **552**. As illustrated, the two-dimensional array **552** may comprise a plurality of transducer elements **408**, **412** (two identified for ease of illustration). Here, as in the previous figure, the nose **210** and protective cover **206** have been removed to reveal the two-dimensional transducer element array **552**. As illustrated in the side view of **FIG. 5B**, the two-dimensional transducer element array **552** may be substantially spherically shaped. A spherically shaped two-dimensional transducer element array **552** may be selected for applications where a transducer **202** needs to remain in close contact with various surfaces of the human body as may be required. It should be appreciated that two-dimensional transducer element arrays **402** having toroidal or other curved surfaces (e.g., a saddle surface) are possible and may use slightly modified beamforming than that associated with the planar two-dimensional transducer element array **402** illustrated in **FIG. 4**.

[0087] Reference is now directed to **FIG. 6**, which illustrates an improved method for ultrasound imaging with a two-dimensional transducer element arrays. In this regard, the method for ultrasound imaging **600** starts with step **602**, herein designated as "Begin." The method for ultrasound imaging **600** provides a series of time delayed transmit signals to the shaped transducer as indicated in step **604** to acoustically illuminate a region of interest within a patient's body. The time delays are calculated based on the focusing

geometry illustrated in **FIG. 10** and any variation in delay profile resulting from propagation through the protective cover **206**.

[0088] In accordance with the improved method for ultrasound imaging **600**, the generated acoustic energy is propagated through a protective cover **206** that may be configured to closely mirror the shape of the two-dimensional transducer element array **502**, **552**, etc. as illustrated in step **606**. In alternative embodiments, the two-dimensional transducer element array may be substantially planar with a superposed protective cover **206** of non-uniform thickness.

[0089] As previously described, the shape of the two-dimensional transducer element array **502**, **552**, may be selected based on a number of factors including patient comfort, sonographer ergonomics, the available acoustic window of the patient, as well as a host of other factors.

[0090] Next, in step **608**, the received ultrasound echoes are captured and processed preferably by the same two-dimensional transducer **202** used to perform the transmit function described in steps **604** and **606**. Once the received ultrasound echoes have been converted in to a voltage waveform by the transducer **202**, the received echoes may be time delayed to focus the ultrasound imaging system **204** as to display desired patient structures as indicated in step **610**. As in step **604**, the time delays are calculated on the basis of the focusing geometry illustrated in **FIG. 10** and any variation in delay profile resulting from propagation through the protective cover **206**. It should be appreciated that method steps **604** through **610** may be repeated as desired to perform a diagnostic ultrasound examination. Any of a number of sonographer generated inputs may be used to terminate the method for ultrasound imaging **600** as indicated by step **612**, herein labeled, "End."

[0091] As depicted in **FIG. 7A**, transducer **700** includes a body **702** and a protective cover **706**. The protective cover **706** incorporates a generally spherical tissue-engagement surface **712**, e.g., the tissue-engagement surface generally is formed as a portion of a sphere.

[0092] As shown in **FIG. 7A**, the tissue-engagement surface **712** or outer surface of the protective cover **206** is shaped to provide comfort to both patient and sonographer. It should be appreciated that the particular shape selected may depend on the type of exam, the size of the patient's anatomy, and/or other factors. So configured, this embodiment is capable of transmitting acoustic energy from the transducer **702** and propagating that energy along a path that is generally coextensive with, or else at some angle to a longitudinal axis **716** of the transducer **702**. Preferably, a length X_7 of the tissue-engagement surface **712** is contacted so as to provide an appropriate cross-sectional area of engagement with a body **30** so that an adequate amount of acoustic energy can be propagated from the transducer **702** to the body **30**.

[0093] As shown in **FIG. 7B**, the compound geometric structure of a variation of the embodiment depicted in **FIG. 7A** is described. More specifically, as shown in **FIG. 7B**, the protective cover **706** includes a tissue-engagement surface **712** that primarily is defined by a radius R_1 (in plan view). The surface defined by radius of curvature R_1 transitions at each of its ends to surfaces defined by radii of curvature R_2 . Preferably, radii R_2 are defined by lengths that permit both

good acoustic coupling with the patient, while maintaining a high level of comfort. While radii R_2 are depicted as only slightly shorter than the length of radius R_1 , there are a host of possible relationships including the substantially spherical tissue-engagement surface formed by the external surface of the protective cover **706** as presented in **FIG. 7A**.

[0094] **FIG. 8A** illustrates an alternative embodiment of a transducer **800**. The transducer **800** has a body **802** and a protective cover **806**. Protective cover **806** is configured as an acoustically non-focusing protective cover **806** that substantially follows the shape of an underlying two-dimensional transducer element array (not shown). Preferably, protective cover **806** has a shaped tissue-engagement surface **812** that resembles a portion of a cylinder.

[0095] As illustrated in **FIG. 8A**, the transducer **802** may be configured to form a tissue engagement surface **812** having a width X_8 selected to facilitate propagation of acoustic energy. However, as illustrated, the width also may be selected to exploit an appropriately selected acoustic window. More specifically, if protective cover **806** is to be utilized during a thoracic acoustic-imaging procedure, for example, width X_8 may be selected so as to attempt to improve transducer positioning between adjacently disposed ribs, e.g., ribs **832** and **834**, of the body to be imaged **30**. So positioned, efficient propagation of acoustic energy from the transducer **802**, between the ribs, and deeper into the body may be facilitated. As illustrated in **FIG. 8A**, the protective cover **806** may be substantially cylindrical in order to efficiently propagate acoustic energy through the acoustic window formed by the ribs **832** and **834**.

[0096] As previously described with regard to the substantially spherical embodiment of the transducer **702** in **FIG. 7B**, when viewed from the side (**FIG. 8B**), a tissue-engagement surface **812** formed on the external surface of a protective cover **806** may be defined by a radius of curvature R_3 . Each end of the tissue-engagement surface transitions may be defined by a radius of curvature R_4 that is modified in length from radius R_3 . The protective cover **806** illustrated in **FIG. 8B** reveals a case where R_4 is less than R_3 . So provided the tissue-engagement surface **812** presents a relatively flattened surface over the tissue-engagement area. Thus, the tissue-engagement surface **812** may be viewed as providing a near optimal propagation medium while, advantageously, attempting to exploit the geometry-limited rib access points, among others.

[0097] The external surfaces of protective covers **706** and **806**, expected to form the tissue-engagement surfaces **712** and **812**, generally are curved and can facilitate aligning of the tissue-engagement surface with an acoustic window. More specifically, when the tissue-engagement surface is appropriately sized, the external surfaces of the protective covers **706**, **806** tend to engage the ribs, e.g., ribs **832** and **834**, thereby enabling the tissue-engagement surface to nest between the ribs. Thus, the surfaces tend to align the tissue-engagement surface with the acoustic window. The curved surfaces also can enhance patient comfort during an imaging procedure, as a non-curved surface may tend to cause localized discomfort.

[0098] It should be appreciated that the protective cover covers **706** (**FIG. 7B**) and **806** (**FIG. 8B**) are exemplary only. Some embodiments of the improved transducer may call for arranging a complex protective cover and two-

dimensional transducer element array **502**, **522** that varies over the X, Y, and Z dimensions (see **FIGS. 5A, 5B, and 10**). All such variations are contemplated and within the scope of the improved ultrasound transducer.

[0099] Operation

[0100] As depicted in **FIG. 9**, a preferred embodiment of the transducer **202** is shown in operative engagement with a representative acoustic window. By way of example, the transducer is appropriately positioned at an acoustic window **902** or rib access point of a representative thoracic section **904** so as to enable acoustic imaging of a heart **906**, for example. As illustrated in **FIG. 9**, intercostal access points tend to be geometry-limited structures, i.e., the rib access points provide a bounded area through which acoustic energy may be propagated (acoustic energy is unable to penetrate bone so as to be useful for imaging). Due to the shape of protective covers **706**, **806** the ability to exploit rib access points to provide acoustic imaging of tissues within the bony thorax is potentially increased. Moreover, the material(s) of the protective cover **706**, **806**, possessing acoustic impedance much like that of the body, tends to enhance the amount of acoustic energy propagated through a rib access point. As previously described, the acoustic energy can be electronically focused in both the lateral and elevational dimensions in both transmit and receive modes to appropriately image the structures of the heart.

[0101] It should be emphasized that the above-described embodiments of the improved ultrasound transducer, particularly, any "preferred" embodiments, are merely possible examples of implementations, merely set forth for a clear understanding of the principles of the transducer. Many variations and modifications may be made to the above-described embodiment(s) of the improved ultrasound transducer without departing substantially from the spirit and principles of the invention.

[0102] For example, although the transducer **202** has been described herein in relation to an ultrasonic imaging system **204** for use in medical applications, such as with a patient, such systems may be utilized in various other applications as well. Additionally, various surfaces associated with the protective cover **206** have been described herein as enabling convenient positioning of a transducer **202** relative to an acoustic window. In other embodiments, one or more of these surfaces may be formed as a portion of the transducer body, such as on the nose of the transducer, to provide similar functionality. All such modifications and variations are intended to be included herein within the scope of this disclosure and the present invention and protected by the following claims.

What is claimed is:

1. An acoustic imaging system, comprising:

a transducer including a two-dimensional transducer element matrix array, the transducer having a protective cover configured to mate with a transducer body, the protective cover superposed above the two-dimensional transducer element matrix such that acoustic energy incident at the protective cover is mechanically directed by the protective cover and wherein the transducer element matrix array is encased by the protective cover and the transducer body; and

an image processing system coupled to the transducer configured provide a plurality of individualized excitation signals to the plurality of transducer elements over time such that the two-dimensional transducer element matrix array generates and transmits acoustic energy through the protective cover over time such that acoustic energy transmitted through the protective cover is electronically focused.

2. The acoustic imaging system of claim 1, wherein the protective cover comprises an acoustic material, the acoustic material exhibiting acoustic impedance corresponding to acoustic impedance of a body to be imaged.

3. The acoustic imaging system of claim 1, wherein at least one of the dimensions of the two-dimensional transducer element matrix array is curved.

4. The acoustic imaging system of claim 1, wherein the protective cover is constructed with a non-uniform thickness.

5. The acoustic imaging system of claim 1, wherein the protective cover has an acoustic impedance of between approximately 1.3Mrayl and 1.7Mrayl.

6. The acoustic imaging system of claim 1, wherein the protective cover has a transducer-engagement having a tissue-engagement surface, the transducer-engagement end being configured to engage a transducer body, the tissue engagement surface forming a portion of a substantially cylindrical surface.

7. The acoustic imaging system of claim 6, wherein the tissue engagement surface forms a portion of a substantially spherical surface.

8. The acoustic imaging system of claim 1, wherein the transducer body is ergonomically adapted to be grasped by the hand of an operator.

9. The acoustic imaging system of claim 1, wherein the protective cover has a shape that reduces the probability of a sonographer developing a repetitive motion injury.

10. The acoustic imaging system of claim 1, wherein the image processing system electronically focuses transmitted acoustic energy at a target by compensating for the non-uniform acoustic delays caused by the protective cover.

11. The acoustic imaging system of claim 10, wherein the electronic compensation is a function of the position of the target point.

12. The acoustic imaging system of claim 1, wherein the image processing system receives a plurality of individualized receive mode signals from a plurality of transducer elements, the receive mode signals representative of the incident acoustic energy at a plurality of the transducer elements of the two-dimensional transducer element matrix array that traverses the protective cover.

13. The acoustic imaging system of claim 12, wherein the image processing system electronically focuses the acoustic energy received through the protective cover.

14. The acoustic imaging system of claim 13, wherein electronic focusing comprises compensating for the non-uniform acoustic delays caused by the protective cover.

15. The acoustic imaging system of claim 13, wherein the electronic compensation is a function of the position of the target point.

16. The acoustic imaging system of claim 15, further comprising:

means for accessing an acoustic window of a body to be imaged.

17. The acoustic imaging system of claim 16, wherein the accessing means comprises placing the transducer between adjacently disposed ribs of the body of a patient.

18. A method for acoustically imaging a patient, comprising the steps of:

providing a transducer having a two-dimensional transducer element matrix array, the transducer having a protective cover configured to mate with a transducer body, the protective cover superposed above the two-dimensional transducer element matrix such that acoustic energy transmitted from the protective cover and into the body is mechanically directed by the protective cover, wherein the two-dimensional transducer element matrix array and the protective cover are shaped to reduce patient discomfort;

generating a plurality of time delayed transmit signals to separately control individual transducer elements of the two-dimensional transducer element matrix array to electronically focus acoustic transmit waves that traverse the protective cover; and

receiving a plurality of time delayed response echoes at the separately controllable individual transducer ele-

ments of the two-dimensional transducer element matrix array to electronically focus acoustic receive echoes that traverse the protective cover.

19. The method of claim 18, further comprising the step of processing the reflected acoustic echoes to generate an image.

20. The method of claim 18, further comprises the steps of accessing an acoustic window of a patient; and

transmitting acoustic energy through the protective cover and into the patient via the acoustic window.

21. The method of claim 18, wherein the steps of generating and receiving further comprise:

electronically focusing the acoustic energy in an elevation dimension; and

electronically focusing the acoustic energy in a lateral dimension.

22. The method of claim 20, wherein the step of accessing an acoustic window comprises an acoustic window formed between adjacently disposed ribs of the patient.

* * * * *

专利名称(译)	超声换能器		
公开(公告)号	US20030011285A1	公开(公告)日	2003-01-16
申请号	US09/919232	申请日	2001-07-31
[标]申请(专利权)人(译)	OSSMANN WILLIAM J		
申请(专利权)人(译)	OSSMANN威廉J.		
当前申请(专利权)人(译)	OSSMANN威廉J.		
[标]发明人	OSSMANN WILLIAM J		
发明人	OSSMANN, WILLIAM J.		
IPC分类号	G01N29/24 A61B8/00 A61B8/06 G01S7/521 G01S15/89 G10K11/02 G10K11/34 H04R17/00 H01L41/08		
CPC分类号	A61B8/06 A61B8/13 A61B8/4281 A61B2562/0204 A61B2562/046 G01S7/52079 G01S15/892 G01S15/8925 G01S15/8927 G10K11/02 G10K11/34 A61B8/4494		
优先权	60/301282 2001-06-27 US		
其他公开文献	US7135809		
外部链接	Espacenet USPTO		

摘要(译)

提供声学成像系统。优选的系统包括配置成与换能器主体配合的保护盖。换能器包括由多个可单独控制的换能器元件形成的二维换能器元件矩阵阵列。保护盖叠置在二维矩阵阵列上方，并且对入射声能是透明的。优选地，保护罩成形为减少患者对超声波检查者的不适和重复运动损伤。替代实施例包括成形的二维换能器元件矩阵阵列。还提供了用于改进的超声成像的方法。

