



US010433819B2

(12) **United States Patent**
Lee et al.

(10) **Patent No.:** **US 10,433,819 B2**
(45) **Date of Patent:** **Oct. 8, 2019**

(54) **ULTRASOUND DIAGNOSIS APPARATUS AND METHOD FOR GENERATING IMAGE FROM VOLUME DATA AND DISPLAYING THE SAME**

(58) **Field of Classification Search**
CPC ... A61B 5/7267; A61B 8/0808; A61B 8/0866; A61B 8/463; A61B 8/468; A61B 8/483;
(Continued)

(71) Applicant: **SAMSUNG MEDISON CO., LTD.**,
Hongcheon-gun (KR)

(56) **References Cited**

(72) Inventors: **Kwang-hee Lee**, Hongcheon-gun (KR);
Sung-yoon Kim, Hongcheon-gun (KR);
Jun-sang Yoo, Hongcheon-gun (KR)

U.S. PATENT DOCUMENTS

5,588,435 A * 12/1996 Weng A61B 8/0866
600/443
5,605,155 A * 2/1997 Chalana A61B 5/1075
600/443

(73) Assignee: **SAMSUNG MEDISON CO., LTD.**,
Hongcheon-gun (KR)

(Continued)

(*) Notice: Subject to any disclaimer, the term of this patent is extended or adjusted under 35 U.S.C. 154(b) by 1081 days.

OTHER PUBLICATIONS

Carneiro, Gustavo & Amat, Fernando & Georgescu, Bogdan & Good, S & Comaniciu, Dorin. (2008). Semantic-based indexing of fetal anatomies from 3-D ultrasound data using global/semi-local context and sequential sampling. Proc. IEEE Conf. Computer Vision and Pattern Recognition. 1-8. (Year: 2008).*

(21) Appl. No.: **14/818,470**

(Continued)

(22) Filed: **Aug. 5, 2015**

Primary Examiner — Amelie R Gillman

(65) **Prior Publication Data**
US 2016/0038122 A1 Feb. 11, 2016

(74) *Attorney, Agent, or Firm* — Sughrue Mion, PLLC

(30) **Foreign Application Priority Data**

(57) **ABSTRACT**

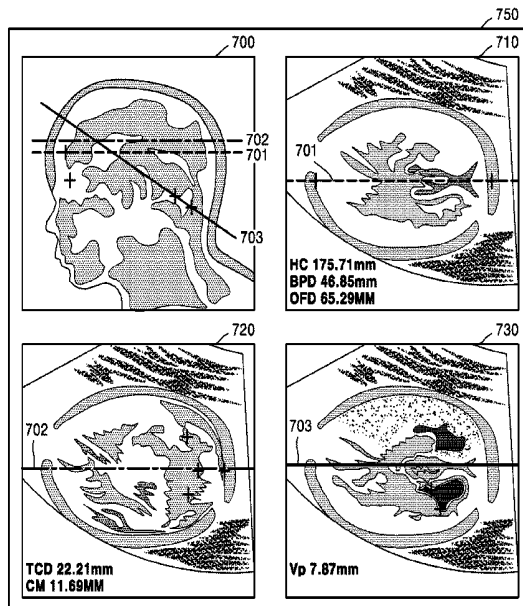
Aug. 5, 2014 (KR) 10-2014-0100699

Provided is an ultrasound diagnosis apparatus including: a data acquisition unit configured to acquire volume data for a head of an object; an image processor configured to detect a mid-sagittal plane (MSP) from the volume data, generate an MSP image corresponding to the MSP, detect at least one measurement plane based on the MSP, and generate at least one measurement plane image corresponding to the at least one measurement plane; and a display configured to display the MSP image and the at least one measurement plane image on a single screen.

(51) **Int. Cl.**
A61B 8/08 (2006.01)
A61B 5/00 (2006.01)
(Continued)

27 Claims, 9 Drawing Sheets

(52) **U.S. Cl.**
CPC *A61B 8/523* (2013.01); *A61B 5/7267* (2013.01); *A61B 8/0808* (2013.01);
(Continued)



- (51) **Int. Cl.**
G06T 7/62 (2017.01)
A61B 8/00 (2006.01)
- (52) **U.S. Cl.**
CPC **A61B 8/0866** (2013.01); **G06T 7/62**
(2017.01); **A61B 8/463** (2013.01); **A61B 8/468**
(2013.01); **A61B 8/483** (2013.01); **A61B**
8/5207 (2013.01); **A61B 8/5223** (2013.01);
G06T 2207/10136 (2013.01); **G06T**
2207/30016 (2013.01); **G06T 2207/30044**
(2013.01)
- (58) **Field of Classification Search**
CPC A61B 8/5207; A61B 8/5223; A61B 8/523;
G06T 2207/10136; G06T 2207/30016;
G06T 2207/30044; G06T 7/62
See application file for complete search history.
- (56) **References Cited**

U.S. PATENT DOCUMENTS

8,083,678 B2 12/2011 Abuhamad
8,556,814 B2 10/2013 Monteiro de Barros Carneiro
et al.
2002/0103429 A1* 8/2002 deCharms A61B 5/055
600/410
2005/0187472 A1* 8/2005 Lysyansky A61B 8/0883
600/437
2005/0228250 A1* 10/2005 Bitter A61B 5/02007
600/407
2005/0283078 A1* 12/2005 Steen A61B 8/06
600/447
2007/0249935 A1* 10/2007 Deschinger A61B 8/0866
600/437

OTHER PUBLICATIONS

The International Society of Ultrasound in Obstetrics & Gynecology (ISUOG), "Sonographic examination of the fetal central nervous system: guidelines for performing the 'basic examination' and the 'fetal neurosonogram'", *Ultrasound Obstet Gynecol*, 29: (2007), pp. 109-116. doi: 10.1002/uog.3909 XP055040876.
Kwang Hee Lee et al., "Robust Mid-Sagittal Plane Extraction in 3-D Ultrasound Fetal Volume for First Trimester Screening", *ACCV 2012, Part II, LNCS 7725*, pp. 316-329, 2013. XP047027130.
Communication dated Dec. 15, 2015, from the European Patent Office in counterpart European Application No. 15176103.8.

* cited by examiner

FIG. 1

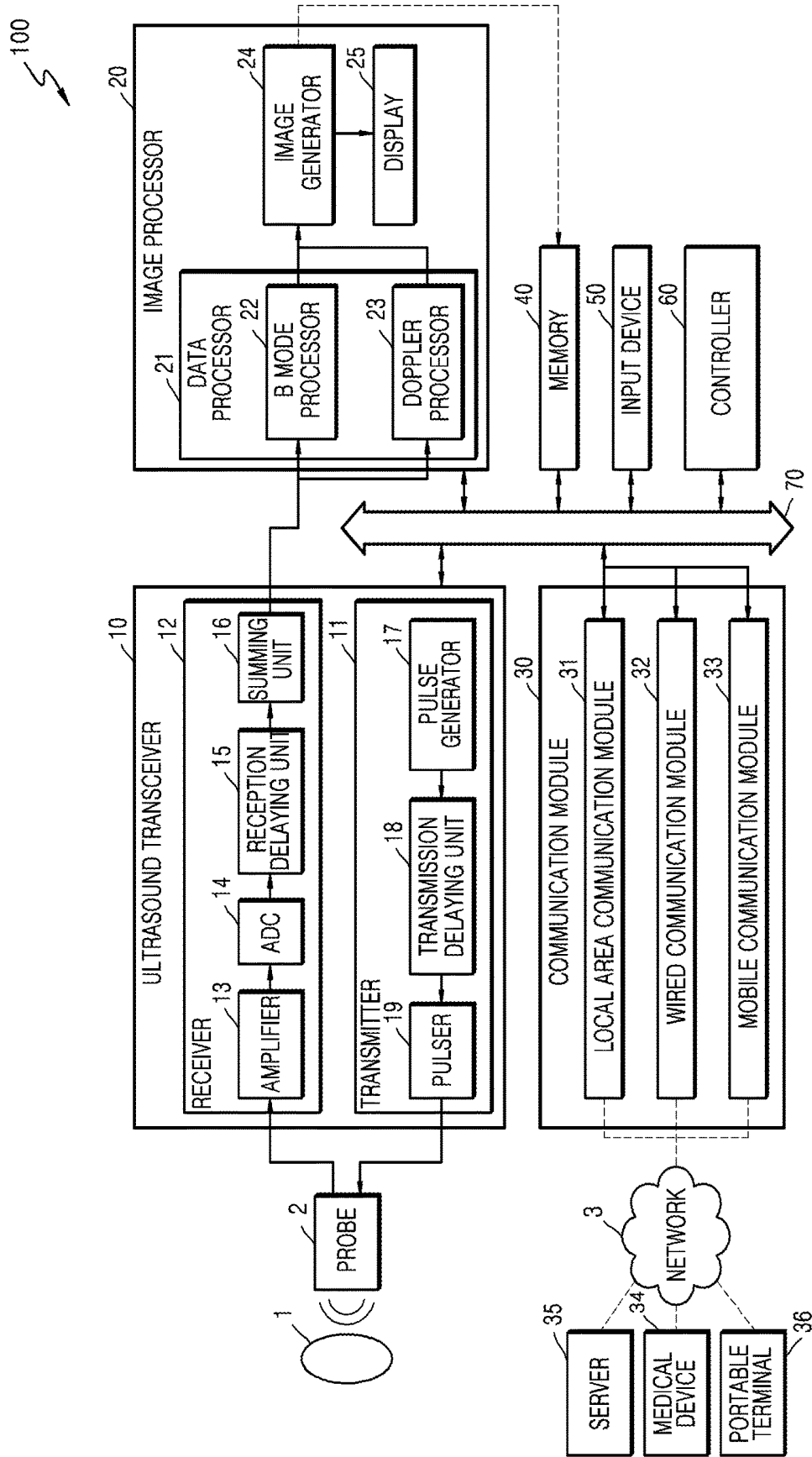


FIG. 2

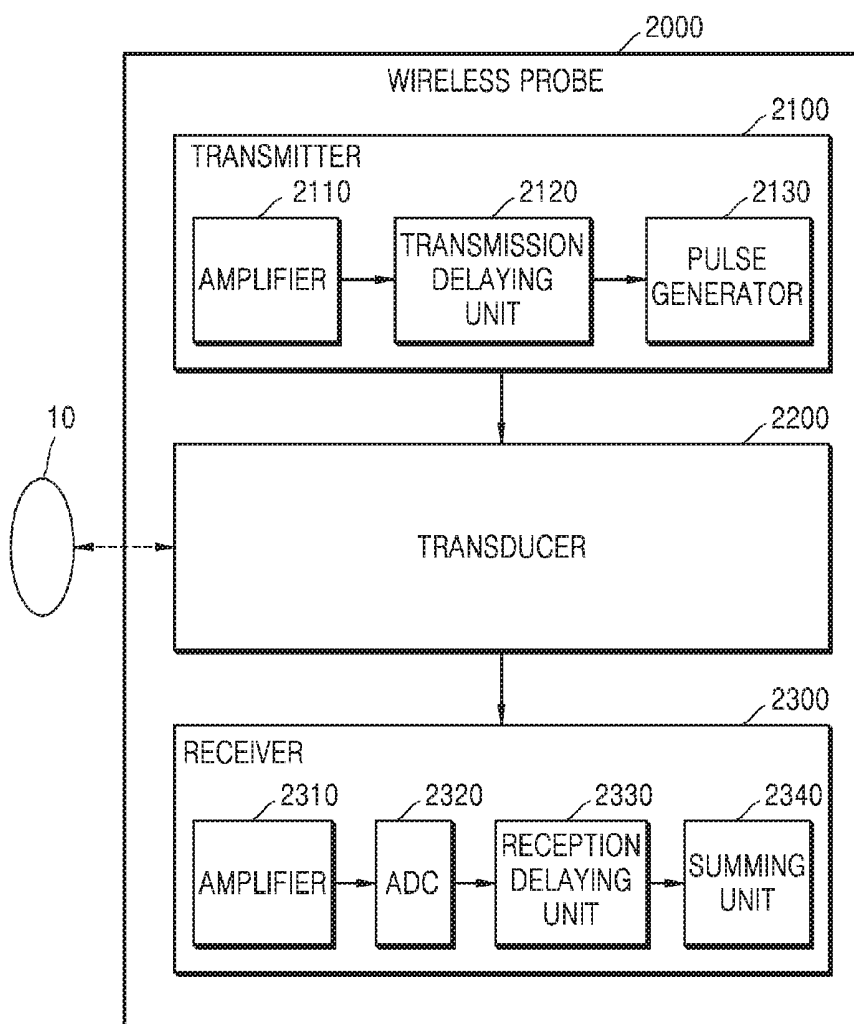


FIG. 3

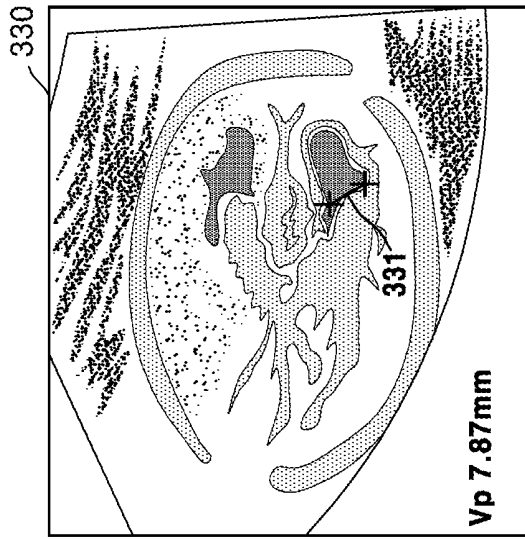
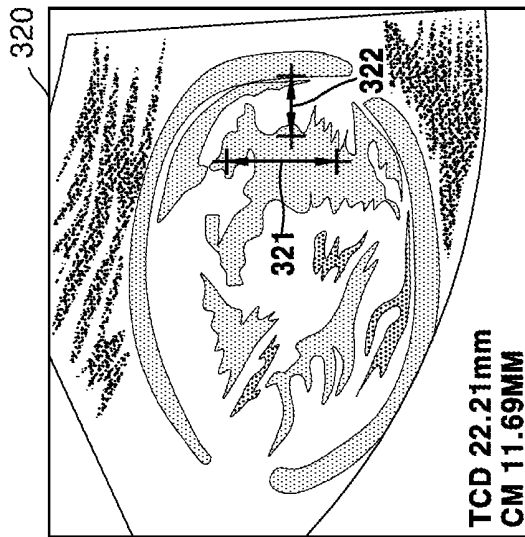
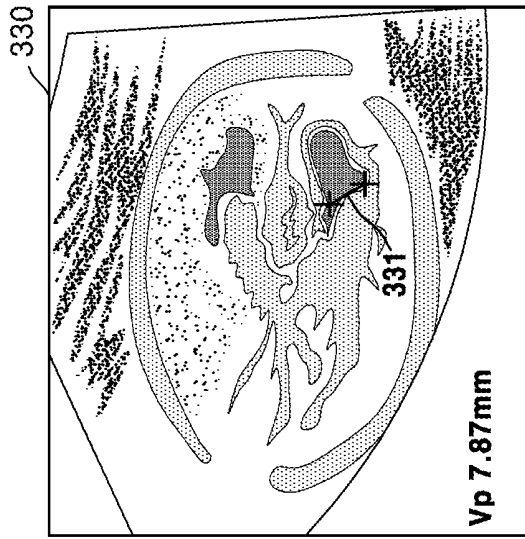


FIG. 4

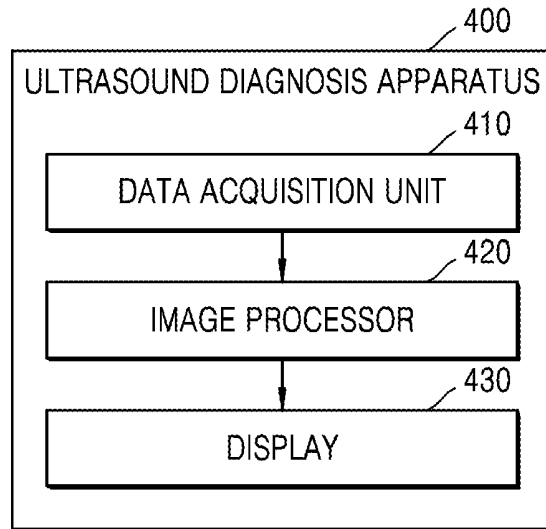


FIG. 5

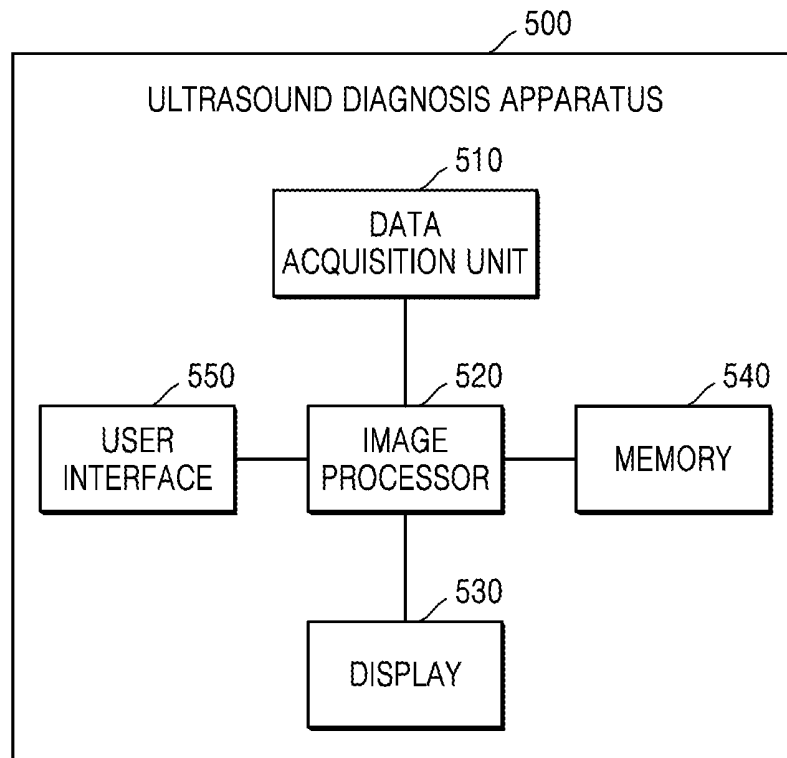


FIG. 6

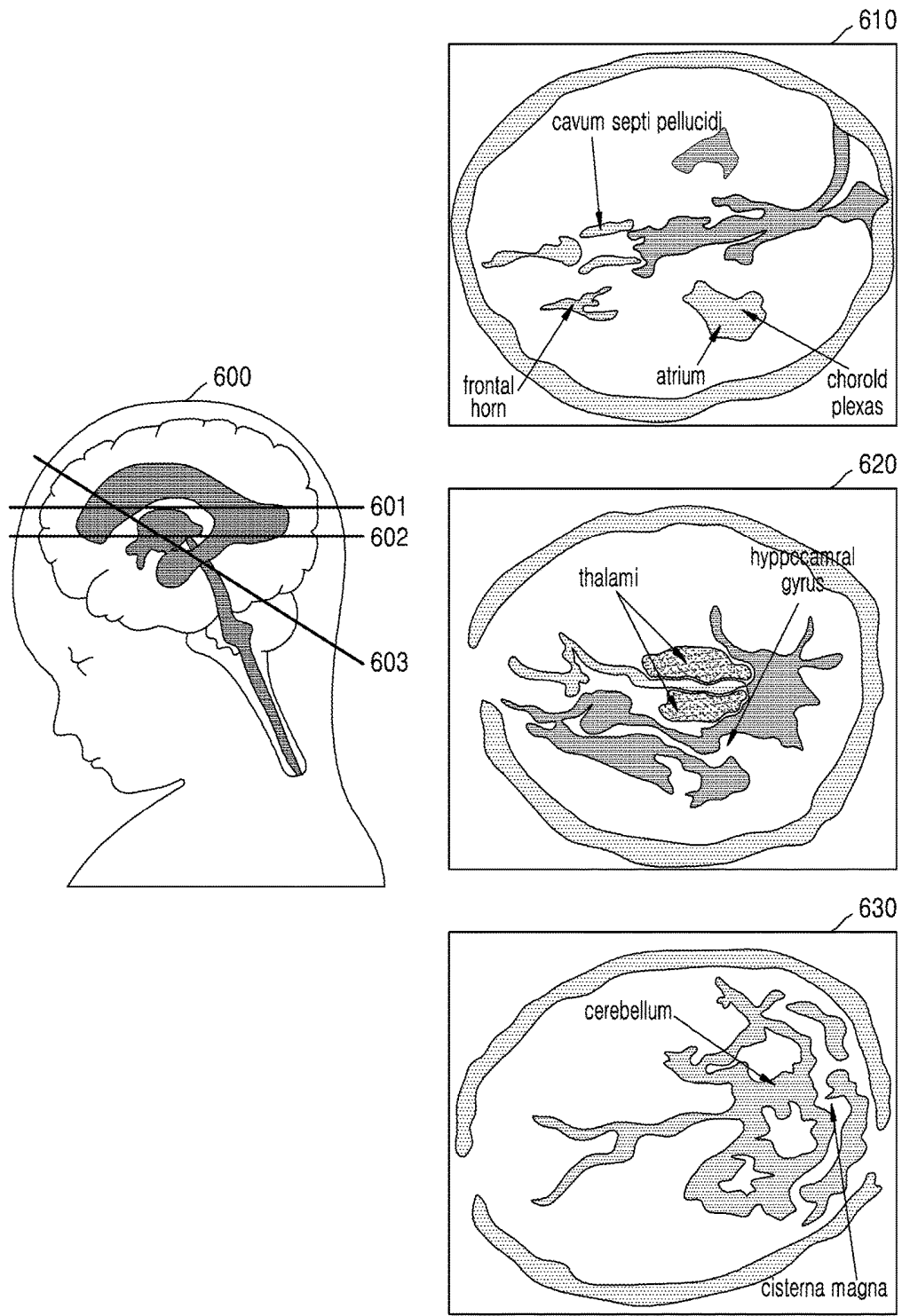


FIG. 7

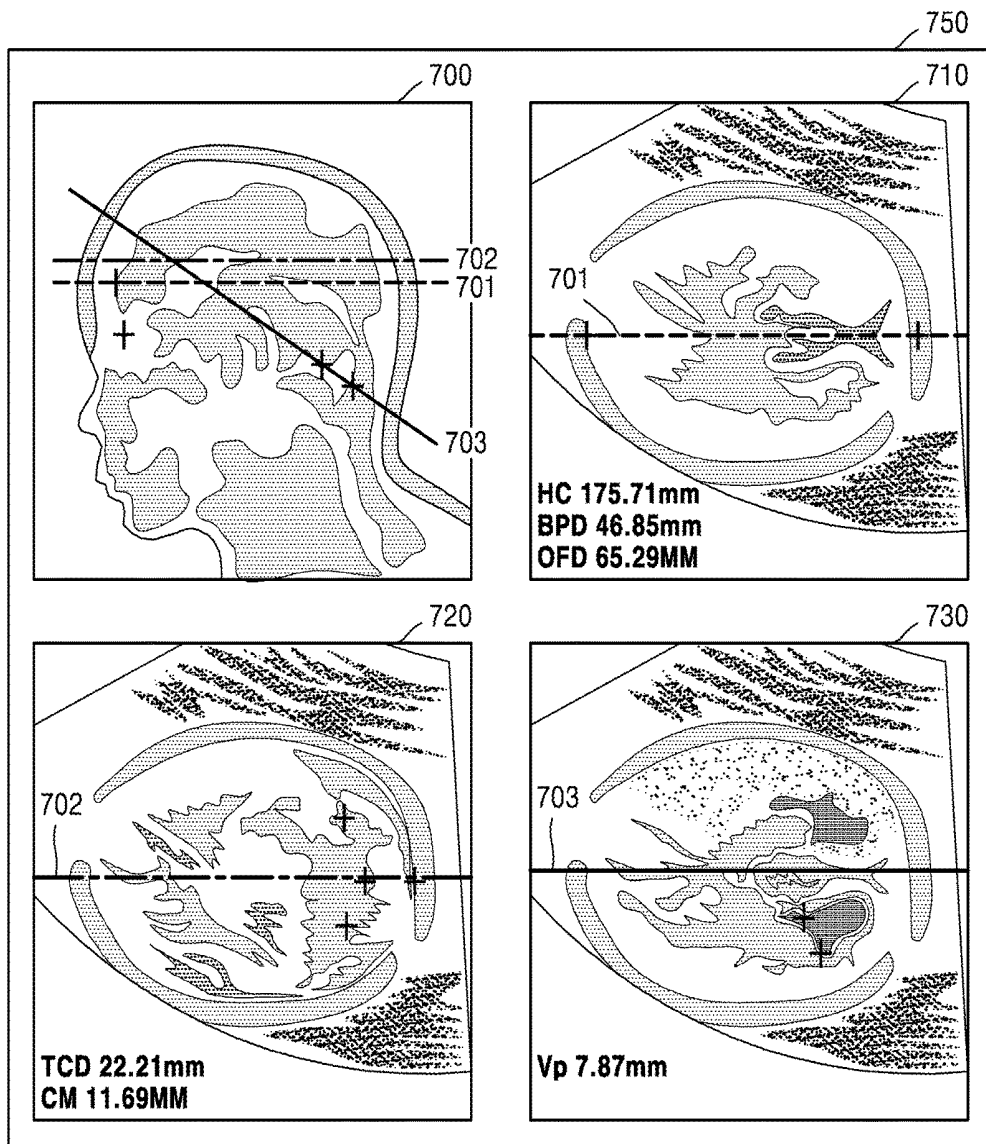


FIG. 8

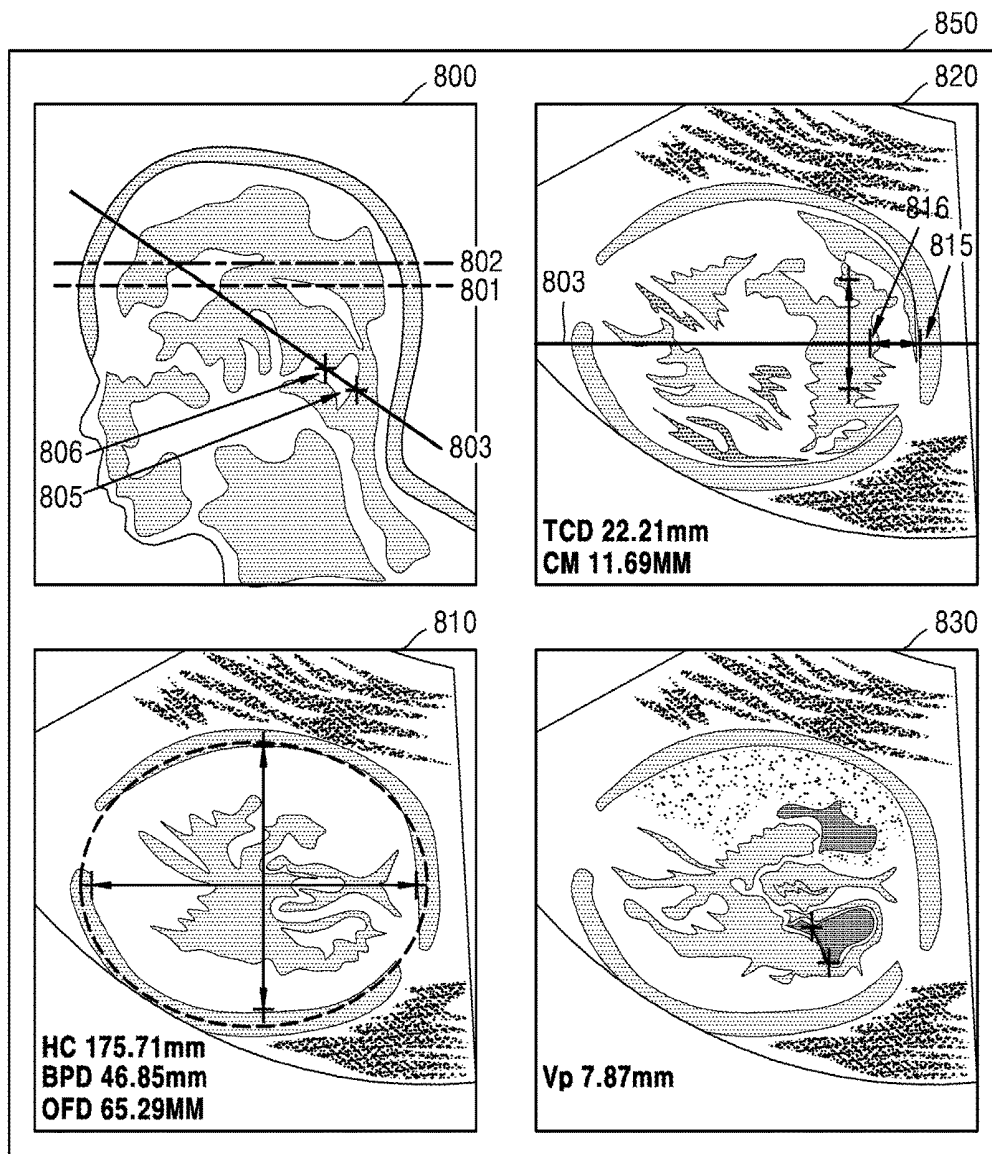


FIG. 9

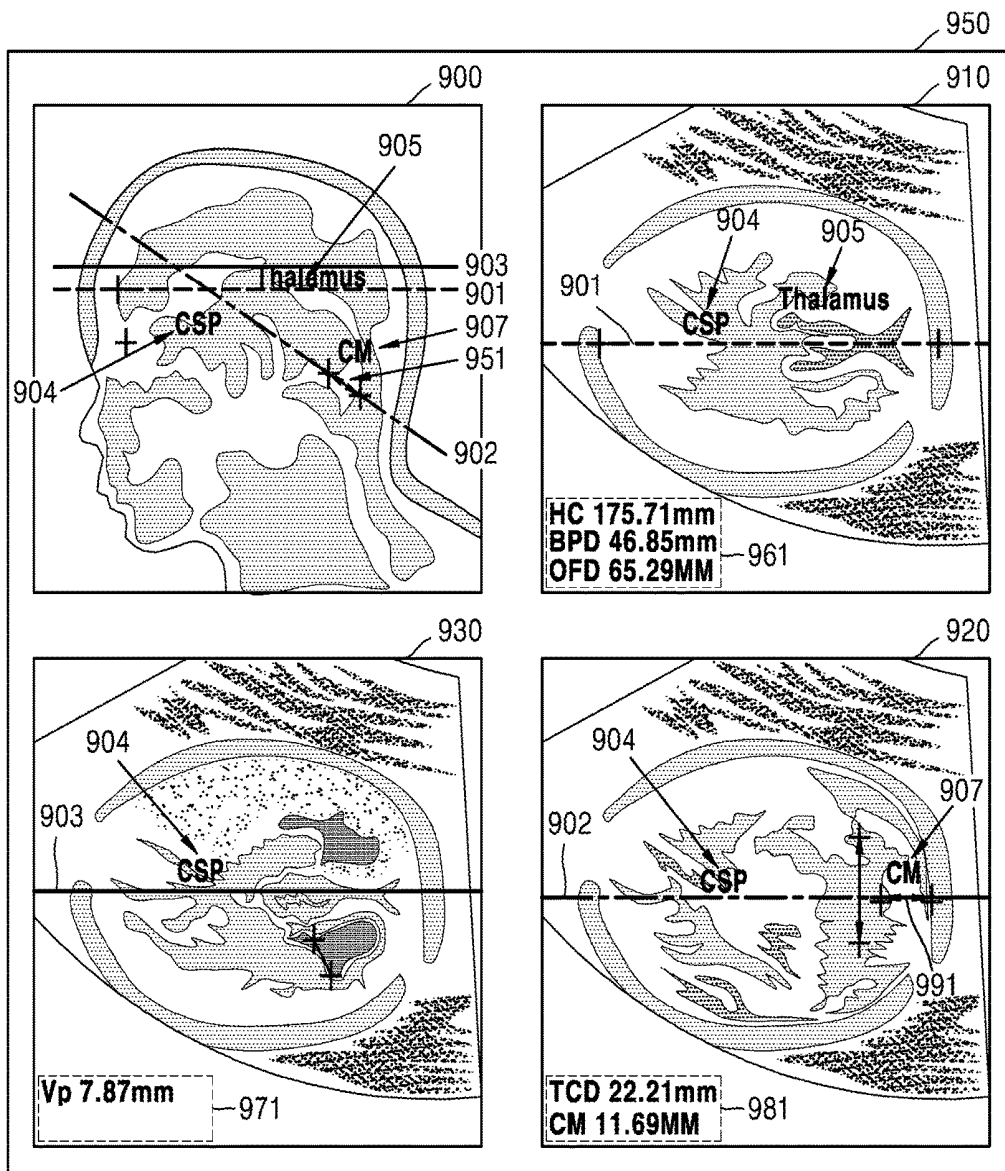
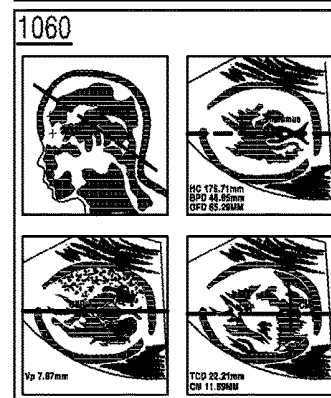
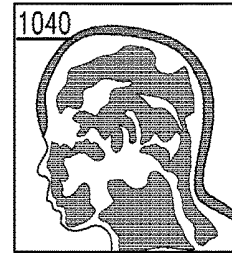
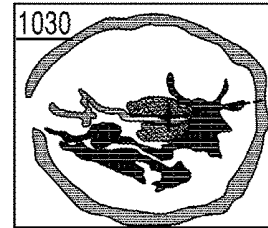
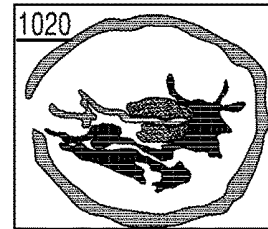
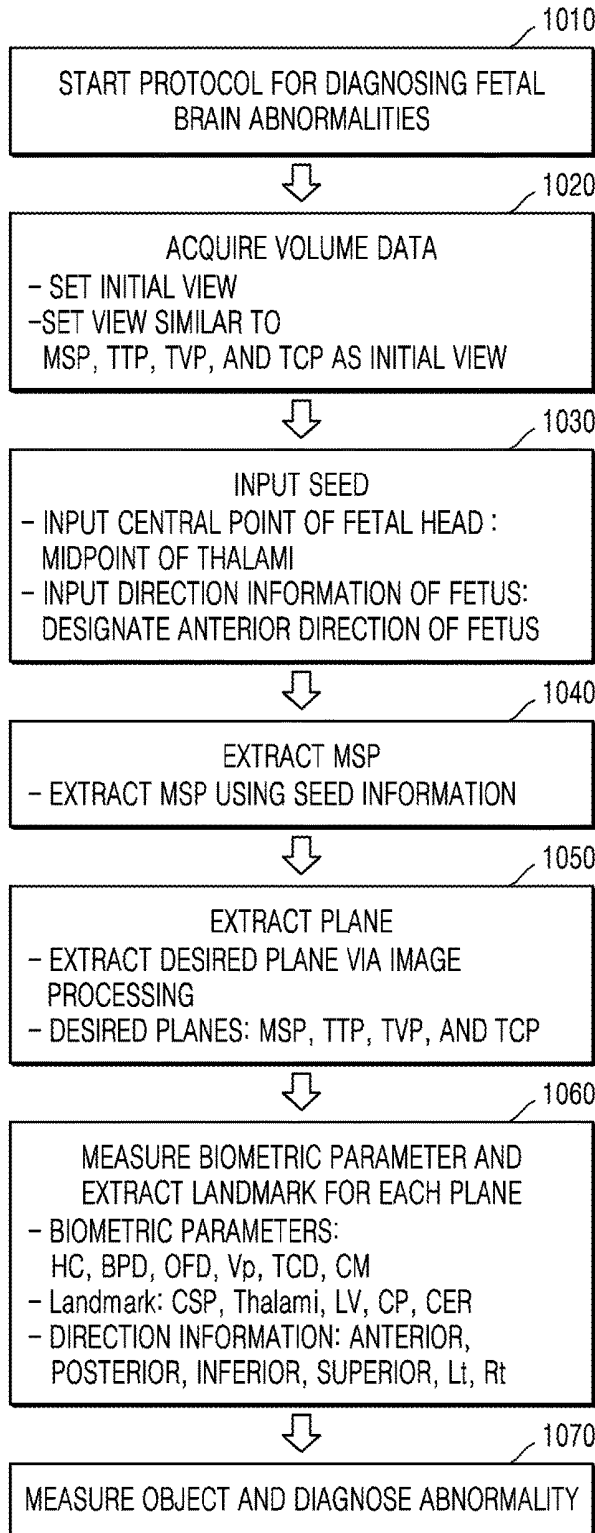


FIG. 10



**ULTRASOUND DIAGNOSIS APPARATUS
AND METHOD FOR GENERATING IMAGE
FROM VOLUME DATA AND DISPLAYING
THE SAME**

CROSS-REFERENCE TO RELATED
APPLICATION

This application claims the benefit of Korean Patent Application No. 10-2014-0100699, filed on Aug. 5, 2014, in the Korean Intellectual Property Office, the disclosure of which is incorporated herein in its entirety by reference.

BACKGROUND

1. Field

One or more exemplary embodiments relate to an ultrasound diagnosis apparatus, and more particularly, to an ultrasound diagnosis apparatus for measuring a fetal head based on a three-dimensional (3D) ultrasound image.

2. Description of the Related Art

Ultrasound diagnosis apparatuses transmit ultrasound signals generated by transducers of a probe to an object and receive echo signals reflected from the object, thereby obtaining at least one image of an internal part of the object (e.g., soft tissue or blood flow). In particular, ultrasound diagnosis apparatuses are used for medical purposes including observing an internal area of an object, detecting foreign substances, and assessing injuries. Such ultrasound diagnosis apparatuses provide high stability, display images in real time, and are safe due to no radiation exposure, compared to X-ray apparatuses. Therefore, an ultrasound diagnosis apparatus is widely used together with other types of imaging diagnosis devices.

In prenatal ultrasound, an ultrasound diagnosis apparatus produces an ultrasound image of a fetus by transmitting ultrasound signals to an object and receiving ultrasound echo signals reflected from the object. In addition, the ultrasound diagnosis apparatus may diagnose a disease in the fetus by measuring the head size of the fetus, and in particular, head circumference (HC), biparietal diameter (BPD), and occipitofrontal diameter (OFD).

Conventionally, to measure a fetus's head size, a two-dimensional (2D) ultrasound image of a cross-sectional plane from which biometric parameters for a fetal head such as HC and BPD are to be measured are obtained by performing a plurality of scans of the fetus. Thus, according to the conventional measuring method, an ultrasound scan needs to be repeated until an ultrasound image of a desired cross-sectional plane is acquired, and thus, it takes a long time to measure a the size of the head of a fetus. Furthermore, since the accuracy of a cross-sectional plane to be acquired may vary depending on the skill level of a medical practitioner who performs an ultrasound scan, it is difficult to accurately measure fetal HC, OFD, and BPD.

SUMMARY

One or more exemplary embodiments include an ultrasound diagnosis apparatus configured to automatically acquire a measurement plane where biometric parameters are to be measured.

One or more exemplary embodiments include an ultrasound diagnosis apparatus configured to allow a user to easily and quickly measure biometric parameters.

Additional aspects will be set forth in part in the description which follows and, in part, will be apparent from the description, or may be learned by practice of the presented exemplary embodiments.

According to one or more exemplary embodiments, an ultrasound diagnosis apparatus includes: a data acquisition unit configured to acquire volume data for a head of an object; an image processor configured to detect a mid-sagittal plane (MSP) from the volume data, generate an MSP image corresponding to the MSP, detect at least one measurement plane based on the MSP, and generate at least one measurement plane image corresponding to the at least one measurement plane; and a display configured to display the MSP image and the at least one measurement plane image on a single screen.

The image processor may acquire a measured value by measuring at least one biometric parameter in the at least one measurement plane image and indicate the measured value on at least one of the at least one measurement plane image and the MSP image.

The position of the at least one measurement plane may be indicated by at least one line on the MSP image.

The at least one line may be indicated in different colors.

The image processor may indicate the measured value on at least one of the at least one measurement plane image and the MSP image by using at least one of a marker and a text.

The display may display on the single screen at least one selected from the measured value, a position of the at least one biometric parameter, a statistical value of a fetal gestational age (number of weeks of pregnancy), and a statistical graph.

The display may display the MSP image and the at least one measurement plane image in a 2x2 layout.

The display may display the MSP image and the at least one measurement plane image in a 2x1 layout.

The image processor may indicate a contour of the at least one measurement plane image in the same color as a line corresponding to the at least one measurement plane indicated on the MSP image.

The image processor may indicate a name of the at least one measurement plane on the at least one measurement plane image in the same color as a line corresponding to the at least one measurement plane indicated on the MSP image.

The at least one biometric parameter may include head circumference (HC), biparietal diameter (BPD), occipital frontal diameter (OFD), transverse cerebellar diameter (TCD), cisterna magna (CM), and posterior ventricle (Vp).

The image processor may extract a falx from the volume data based on user input information and detects the MSP by using the falx or automatically detect the MSP by using a machine learning technique.

The at least one measurement plane may include at least one selected from a transthalamic plane (TTP), a transventricular plane (TVP), or a transcerebella plane (TCP).

The image processor may determine one of a plurality of candidate planes that are perpendicular to the MSP as the TTP, based on a brightness value of a predetermined region.

The image processor may determine one of a plurality of candidate planes that are perpendicular to the MSP and horizontal to the TTP as the TVP, based on a gradient magnitude of a predetermined region.

The image processor may detect a cavum septi pellucidi (CSP) that is a predetermined distance from a central point of the head towards an anterior part of the head in the TTP and determine, as the TCP, one of a plurality of candidate

planes obtained by rotating the TTP around the CSP as a central axis, based on similarity of a predetermined pattern in a predetermined region.

The image processor may measure the at least one biometric parameter by using at least one of an image processing technique and a machine learning classifier.

The ultrasound diagnosis apparatus may further include a user interface configured to receive a request to change a measurement plane.

The image processor may change at least one of a measurement plane image and the at least one line in response to the request and changes a measured value based on the changed measurement plane image.

The user interface may output a menu via which at least one of rotation, movement, and scaling of the at least one line is performed.

When the image processor receives a request to change the at least one measurement plane, the image processor may change the measured value by remeasuring the at least one biometric parameter in response to the request.

When the image processor receives information of selection of a line from among at least one line on the MSP image from the user, the image processor may highlight the measurement plane image corresponding to the selected line.

When the image processor receives information of selection of one measurement plane image from among the at least one measurement plane image from the user, the image processor may highlight a line among the at least one line corresponding to the measurement plane.

According to the one or more exemplary embodiments, the ultrasound diagnosis apparatus enables quicker and easier diagnosis of abnormality of a fetal brain based on three-dimensional (3D) volume data. Furthermore, the ultrasound diagnosis apparatus allows the user to select a desired measurement plane and identify a position of biometric parameters. In addition, inter-observer variance and intra-observer variance in the measurement of an object may be reduced.

BRIEF DESCRIPTION OF THE DRAWINGS

The above and other features and advantages of the present invention will become more apparent by describing in detail exemplary embodiments thereof with reference to accompanying drawings in which:

FIG. 1 is a block diagram of an ultrasound diagnosis apparatus according to an exemplary embodiment;

FIG. 2 is a block diagram of a wireless probe according to an exemplary embodiment;

FIG. 3 is a conceptual diagram illustrating biometric parameters;

FIG. 4 is a block diagram of an ultrasound diagnosis apparatus according to an exemplary embodiment;

FIG. 5 is a block diagram of an ultrasound diagnosis apparatus according to an exemplary embodiment;

FIG. 6 is a conceptual diagram illustrating measurement planes;

FIG. 7 is an exemplary diagram of a screen according to an exemplary embodiment;

FIG. 8 is an exemplary diagram of a screen according to another exemplary embodiment;

FIG. 9 is an exemplary diagram of a screen according to another exemplary embodiment; and

FIG. 10 is a diagram for explaining a protocol for diagnosing fetal brain abnormalities by using volume data, according to an exemplary embodiment.

DETAILED DESCRIPTION

Reference will now be made in detail to exemplary embodiments, examples of which are illustrated in the accompanying drawings, wherein like reference numerals refer to like elements throughout. In this regard, the present exemplary embodiments may have different forms and should not be construed as being limited to the descriptions set forth herein. Accordingly, the exemplary embodiments are merely described below, by referring to the figures, to explain aspects of the present description. Expressions such as “at least one of,” when preceding a list of elements, modify the entire list of elements and do not modify the individual elements of the list.

The terms used in this specification are those general terms currently widely used in the art in consideration of functions regarding the inventive concept, but the terms may vary according to the intention of those of ordinary skill in the art, precedents, or new technology in the art. Also, some terms may be arbitrarily selected by the applicant, and in this case, the meaning of the selected terms will be described in detail in the detailed description of the invention. Thus, the terms used herein should be defined not as simple names thereof but based on their meaning and the overall description of the inventive concept.

When a part “includes” or “comprises” an element, unless there is a particular description contrary thereto, the part can further include other elements, not excluding the other elements. In addition, terms such as “. . . unit”, “. . . module”, or the like refer to units that perform at least one function or operation, and the units may be implemented as hardware or software or as a combination of hardware and software.

Throughout the specification, an “ultrasound image” refers to an image of an object, which is obtained using ultrasound waves. Furthermore, an “object” may be a human, an animal, or a part of a human or animal. For example, the object may be an organ (e.g., the liver, the heart, the womb, the brain, a breast, or the abdomen), a blood vessel, or a combination thereof. Also, the object may be a phantom. The phantom means a material having a density, an effective atomic number, and a volume that are approximately the same as those of an organism.

Throughout the specification, a “user” may be, but is not limited to, a medical expert, for example, a medical doctor, a nurse, a medical laboratory technologist, or a medical imaging expert, or a technician who repairs medical apparatuses.

FIG. 1 illustrates an overall configuration of an ultrasound diagnosis apparatus **100** according to an exemplary embodiment.

Referring to FIG. 1, the ultrasound diagnosis apparatus **100** may include a probe **2**, an ultrasound transceiver **10**, an image processor **20**, a communication module **30**, memory **40**, an input device **50**, and a controller **60**, which may be connected to one another via buses **70**.

The ultrasound diagnosis apparatus **100** may be a cart type apparatus or a portable type apparatus. Examples of portable ultrasound diagnosis apparatuses may include, but are not limited to, a picture archiving and communication system (PACS) viewer, a smartphone, a laptop computer, a personal digital assistant (PDA), and a tablet PC.

The probe **2** transmits ultrasound waves to an object **1** in response to a driving signal applied by the ultrasound transceiver **10** and receives echo signals reflected by the object **1**. The probe **2** includes a plurality of transducers, and the plurality of transducers oscillate in response to electric signals and generate acoustic energy, that is, ultrasound

waves. Furthermore, the probe **2** may be connected to the main body of the ultrasound diagnosis apparatus **100** by wire or wirelessly, and according to embodiments, the ultrasound diagnosis apparatus **100** may include a plurality of probes **2**.

A transmitter **11** supplies a driving signal to the probe **2**. The transmitter **110** includes a pulse generator **17**, a transmission delaying unit **18**, and a pulser **19**. The pulse generator **17** generates pulses for forming transmission ultrasound waves based on a predetermined pulse repetition frequency (PRF), and the transmission delaying unit **18** delays the pulses by delay times necessary for determining transmission directionality. The pulses which have been delayed correspond to a plurality of piezoelectric vibrators included in the probe **2**, respectively. The pulser **19** applies a driving signal (or a driving pulse) to the probe **2** based on timing corresponding to each of the pulses which have been delayed.

A receiver **12** generates ultrasound data by processing echo signals received from the probe **2**. The receiver **120** may include an amplifier **13**, an analog-to-digital converter (ADC) **14**, a reception delaying unit **15**, and a summing unit **16**. The amplifier **13** amplifies echo signals in each channel, and the ADC **14** performs analog-to-digital conversion with respect to the amplified echo signals. The reception delaying unit **15** delays digital echo signals output by the ADC **14** by delay times necessary for determining reception directionality, and the summing unit **16** generates ultrasound data by summing the echo signals processed by the reception delaying unit **15**. In some embodiments, the receiver **12** may not include the amplifier **13**. In other words, if the sensitivity of the probe **2** or the capability of the ADC **14** to process bits is enhanced, the amplifier **13** may be omitted.

The image processor **20** generates an ultrasound image by scan-converting ultrasound data generated by the ultrasound transceiver **10** and displays the ultrasound image. The ultrasound image may be not only a grayscale ultrasound image obtained by scanning an object in an amplitude (A) mode, a brightness (B) mode, and a motion (M) mode, but also a Doppler image showing a movement of an object via a Doppler effect. The Doppler image may be a blood flow Doppler image showing flow of blood (also referred to as a color Doppler image), a tissue Doppler image showing a movement of tissue, or a spectral Doppler image showing a moving speed of an object as a waveform.

AB mode processor **22** extracts B mode components from ultrasound data and processes the B mode components. An image generator **24** may generate an ultrasound image indicating signal intensities as brightness based on the extracted B mode components **22**.

Similarly, a Doppler processor **23** may extract Doppler components from ultrasound data, and the image generator **24** may generate a Doppler image indicating a movement of an object as colors or waveforms based on the extracted Doppler components.

According to an embodiment, the image generator **24** may generate a three-dimensional (3D) ultrasound image via volume-rendering with respect to volume data and may also generate an elasticity image by imaging deformation of the object **1** due to pressure. Furthermore, the image generator **24** may display various pieces of additional information in an ultrasound image by using text and graphics. In addition, the generated ultrasound image may be stored in the memory **40**.

A display **25** displays the generated ultrasound image. The display **25** may display not only an ultrasound image, but also various pieces of information processed by the ultrasound diagnosis apparatus **100** on a screen image via a

graphical user interface (GUI). In addition, the ultrasound diagnosis apparatus **100** may include two or more displays **25** according to embodiments.

The communication module **30** is connected to a network **3** by wire or wirelessly to communicate with an external device or a server. The communication module **30** may exchange data with a hospital server or another medical apparatus in a hospital, which is connected thereto via a PACS. Furthermore, the communication module **300** may perform data communication according to the digital imaging and communications in medicine (DICOM) standard.

The communication module **30** may transmit or receive data related to diagnosis of an object, e.g., an ultrasound image, ultrasound data, and Doppler data of the object, via the network **3** and may also transmit or receive medical images captured by another medical apparatus, e.g., a computed tomography (CT) apparatus, a magnetic resonance imaging (MRI) apparatus, or an X-ray apparatus. Furthermore, the communication module **30** may receive information about a diagnosis history or medical treatment schedule of a patient from a server and utilizes the received information to diagnose the patient. Furthermore, the communication module **30** may perform data communication not only with a server or a medical apparatus in a hospital, but also with a portable terminal of a medical doctor or patient.

The communication module **30** is connected to the network **3** by wire or wirelessly to exchange data with a server **35**, a medical apparatus **34**, or a portable terminal **36**. The communication module **300** may include one or more components for communication with external devices. For example, the communication module **1300** may include a local area communication module **31**, a wired communication module **32**, and a mobile communication module **33**.

The local area communication module **31** refers to a module for local area communication within a predetermined distance. Examples of local area communication techniques according to an embodiment may include, but are not limited to, wireless LAN, Wi-Fi, Bluetooth, ZigBee, Wi-Fi Direct (WFD), ultra wideband (UWB), infrared data association (IrDA), Bluetooth low energy (BLE), and near field communication (NFC).

The wired communication module **32** refers to a module for communication using electric signals or optical signals. Examples of wired communication techniques according to an embodiment may include communication via a twisted pair cable, a coaxial cable, an optical fiber cable, and an Ethernet cable.

The mobile communication module **33** transmits or receives wireless signals to or from at least one selected from a base station, an external terminal, and a server on a mobile communication network. The wireless signals may be voice call signals, video call signals, or various types of data for transmission and reception of text/multimedia messages.

The memory **40** stores various data processed by the ultrasound diagnosis apparatus **100**. For example, the memory **40** may store medical data related to diagnosis of an object, such as ultrasound data and an ultrasound image that are input or output, and may also store algorithms or programs which are to be executed in the ultrasound diagnosis apparatus **100**.

The memory **40** may be any of various storage media, e.g., a flash memory, a hard disk drive, EEPROM, etc. Furthermore, the ultrasound diagnosis apparatus **100** may utilize web storage or a cloud server that performs the storage function of the memory **40** online.

The input device **50** refers to a means via which a user inputs data for controlling the ultrasound diagnosis apparatus **100**. The input device **50** may include hardware components, such as a keypad, a mouse, a touch panel, a touch screen, and a jog switch. However, embodiments are not limited thereto, and the input device **50** may further include any of various other input units including an electrocardiogram (ECG) measuring module, a respiration measuring module, a voice recognition sensor, a gesture recognition sensor, a fingerprint recognition sensor, an iris recognition sensor, a depth sensor, a distance sensor, etc.

The controller **60** may control all operations of the ultrasound diagnosis apparatus **100**. In other words, the controller **60** may control operations among the probe **2**, the ultrasound transceiver **10**, the image processor **20**, the communication module **30**, the memory **40**, and the input device **50** shown in FIG. 1.

All or some of the probe **2**, the ultrasound transceiver **10**, the image processor **20**, the communication module **30**, the memory **40**, the input device **50**, and the controller **60** may be implemented as software modules. However, embodiments of the present invention are not limited thereto, and some of the components stated above may be implemented as hardware modules. Furthermore, at least one selected from the ultrasound transceiver **10**, the image processor **20**, and the communication module **30** may be included in the controller **60**. However, embodiments of the present invention are not limited thereto.

For diagnosis of disease using an ultrasound image, a marker may be set for setting a target region in an ultrasound image including an object or for indicating a predetermined position therein.

In detail, the marker may be set at a region that is to be observed in detail by the user to diagnose a disease or to check the health status of a patient. The present invention provides an ultrasound diagnosis apparatus and a method of displaying an ultrasound image, which are capable of changing and outputting an ultrasound image to more accurately diagnose a region of an object where the marker is set.

FIG. 2 is a block diagram showing a configuration of a wireless probe **2000** according to an embodiment of the present invention. As described above with reference to FIG. 1, the wireless probe **2000** may include a plurality of transducers, and, according to embodiments of the present invention, may include some or all of the components of the ultrasound transceiver **100** shown in FIG. 1.

The wireless probe **2000** according to the embodiment shown in FIG. 2 includes a transmitter **2100**, a transducer **2200**, and a receiver **2300**. Since descriptions thereof are given above with reference to FIG. 1, detailed descriptions thereof will be omitted here. In addition, according to embodiments of the present invention, the wireless probe **2000** may selectively include a reception delaying unit **2330** and a summing unit **2340**.

The wireless probe **2000** may transmit ultrasound signals to the object **10**, receive echo signals from the object **10**, generate ultrasound data, and wirelessly transmit the ultrasound data to the ultrasound diagnosis apparatus **1000** shown in FIG. 1.

The ultrasound diagnosis apparatus **100** may acquire an ultrasound image and measure various biometric parameters which can be used to determine a state of an object based on the acquired ultrasound image. Biometric parameters will now be described in detail with reference to FIG. 3.

FIG. 3 is a conceptual diagram illustrating biometric parameters.

It is hereinafter assumed that an object is a fetus. If the object is fetus, biometric parameters may include head circumference (HC), biparietal diameter (BPD), Occipital frontal diameter (OFD), transverse cerebellar diameter (TCD), cisterna magna (CM), and posterior ventricle (Vp).

A transthalamic plane (TTP), a transventricular plane (TVP), a transcerebellar plane (TCP), etc. may be used as standard planes for measuring biometric parameters.

FIG. 3 illustrates a TTP **310**, a TCP **320**, and a TVP **330**. Predefined measurement planes are needed to measure biometric parameters corresponding to the TTP **310**, the TCP **320**, and the TVP **330**, respectively.

In detail, the TTP **310** is used for measurement of HC (indicated by a dashed line around the circumference of a head), BPD **301**, and OFD **302**. The TCP **320** is needed for measurement of TCD **321** and CM **322**, and the TVP **330** enables measurement of Vp **331**.

Selection of measurement planes is a critical task for accurate measurement of biometric parameters. In a conventional measuring method, since each measurement is performed on a new plane, ranges of inter-observer variance and intra-observer variance in the measurement of an object are wide. This results in a large error range in acquiring a measurement plane, thus making it difficult to acquire an accurate measurement plane.

To solve these problems, an ultrasound diagnosis apparatus according to an exemplary embodiment is configured to automatically acquire a measurement plane and display the measurement plane on a screen together with various pieces of information (e.g., position information of the measurement plane, measured values of biometric parameters, etc.) as described below. This configuration may facilitate review and modification and increase accuracy in acquiring a measurement plane by minimizing ranges of inter-observer variance and intra-observer variance. The operation of the ultrasound diagnosis apparatus according to an exemplary embodiment will now be described in more detail with reference to FIGS. 4 and 5.

FIG. 4 is a block diagram of an ultrasound diagnosis apparatus **400** according to an exemplary embodiment.

The ultrasound diagnosis apparatus **400** according to the present exemplary embodiment may be included in the ultrasound diagnosis apparatus **100** described with reference to FIG. 1. In detail, a data acquisition unit **410**, a controller **420**, and a display **430** may correspond respectively to a data processor **21**, the image generator **24**, and the display **25** shown in FIG. 1.

Furthermore, the ultrasound diagnosis apparatus **400** may correspond to the medical apparatus **34** or the portable terminal **36** and may receive ultrasound data acquired by the ultrasound diagnosis apparatus **100** via a network **3** for use.

Referring to FIG. 4, the ultrasound diagnosis apparatus **400** may include the acquisition unit **410**, the image processor **420**, and the display **430**.

The data acquisition unit **410** acquires volume data for a head of an object. In this case, the volume data may be 3D volume data of the object generated using ultrasound signals received via the probe. Furthermore, a 3D ultrasound image of the object may be generated using 3D volume data. A user may designate an ultrasound scanning range so as to include all biometric parameters.

The data acquisition unit **410** may acquire an axial plane of a fetal head as an initial plane and 3D volume data based on the acquired axial plane of the fetal head. In detail, the user may first designate an initial plane via the probe. In this case, the axial plane of the fetal head geometrically approxi-

mates at least one of a TTP, a TCP, and a TVP and may be arbitrarily selected by the user.

Then, the ultrasound diagnosis apparatus **400** may perform a two-dimensional (2D) scan on the designated initial plane for visualization. The user may check the fetal head in the initial plane via a screen and input a center of the fetal head and a direction of a fetal face, and in particular, an anterior direction thereof in the initial plane as a user input.

When the user inputs a scan command, a 3D ultrasound scan apparatus may perform a 3D ultrasound scan on the fetal head based on a user input and an initial plane, according to the user's scan command. Through the above process, the data acquisition unit **410** may acquire 3D volume data for the fetal head.

The image processor **420** detects a mid-sagittal plane (MSP) from volume data to generate an MSP image corresponding to the MSP and then detects at least one measurement plane based on the MSP to generate at least one measurement plane image corresponding to the at least one measurement plane.

In detail, the image processor **420** may detect an MSP by extracting a falx cerebri from volume data based on the user input information. Furthermore, the image processor **420** may detect an MSP automatically by using symmetry information acquired from the volume data of an object.

In this case, a measurement plane is a plane in an object used that enables measurement of biometric parameters and may include a TTP, a TVP, a TCP, etc.

In other words, the image processor **420** may detect an MSP and then a TTP, a TVP, and a TCP based on the MSP. A method of detecting these measurement planes will be described in more detail below with reference to FIG. 6.

Furthermore, a user input may be a name of a plane that is to be detected. If the user enters a name of a desired plane, the ultrasound diagnosis apparatus **400** may display the desired plane on the screen as a measurement plane image. For example, if the user enters a TTP and a MSP, the ultrasound diagnosis apparatus **400** may display MSP and TTP images via a screen having a 2x1 layout.

Furthermore, the image processor **420** may indicate a position of at least one measurement plane on an MSP image. For example, the position of the at least one measurement plane may be indicated by a line or color. The line or color may accurately indicate which position of an MSP corresponds to the at least one measurement plane.

In this case, if a plurality of lines exists, the plurality of lines may be indicated in different colors. Furthermore, each of the plurality of lines may be indicated in the same color as a contour of its corresponding measurement plane image.

Furthermore, the image processor **420** may display a name of a measurement plane indicated on a measurement plane image in the same color as a line corresponding to the measurement plane on an MSP image.

The image processor **420** may also obtain a measured value by measuring a biometric parameter in at least one measurement plane image and display the measured value in at least one measurement plane image and an MSP image, as described in more detail below with reference to FIGS. 7 through 9.

In this case, the image processor **420** may measure a biometric parameter by using at least one of an image processing technique and a machine learning classifier. Since various techniques for measuring biometric parameters in a measurement plane are well known in the art, detailed descriptions thereof are omitted. In this case, machine learning is a field of artificial intelligence including algorithms that enable a computer to learn from a large

amount of data. For example, machine learning algorithms may teach a computer to automatically find biometric parameters by using a large number of images with biometric parameters indicated thereon and automatically detect the biometric parameters via the taught computer to measure the biometric parameters.

Furthermore, the image processor **420** may indicate a measured value on at least one of a measurement plane image and an MSP image by using at least one of a marker and a text. For example, the image processor **420** may indicate a position of a biometric parameter on a measurement plane image by using a marker and a measured value on or near a measurement plane image as a text. In this case, the image processor **420** may indicate a marker and a text corresponding to one biometric parameter in a different color than that in which a marker and a text corresponding to another biometric parameter are indicated in order to distinguish the biometric parameters from each other.

Furthermore, the image processor **420** may extract a falx from volume data by using user input information and detect an MSP by using the falx. Alternatively, the image processor **420** may automatically detect an MSP by using a machine learning technique. Since various techniques for automatically detecting an MSP are well known in the art, detailed descriptions thereof are omitted.

The display **430** may display an MSP image and at least one measurement plane image on a single screen. For example, the display **430** may display a plurality of ultrasound images in various layouts. In detail, the display **430** may display MSP, TTP, TVP, and TCP images in a 2x2 layout on a single screen.

Alternatively, the display **430** may display an MSP image and one of TTP, TVP, and TCP images in a 2x1 or 1x2 layout on a single screen.

Furthermore, the display **430** may display at least one of a measured value, a position of a biometric parameter, a statistical value of the gestational age of a fetus (number of weeks of pregnancy)), and a statistical graph on a single screen.

Furthermore, the display **430** may combine at least one of a user input, position information of an initial plane, a result of searching for a measurement plane, a result of detection of a landmark, and a result of automatic measurement to thereby display a position (e.g., Anterior, Posterior, Inferior, Superior, Left (Lt), and Right (Rt)) of at least one anatomical landmark (e.g., Cavum Septi Pellucidi (CSP), Cerebellum, Vp, Thalami, Choroid Plexus, and Lateral Ventricle) on a screen.

FIG. 5 is a block diagram of an ultrasound diagnosis apparatus **500** according to an exemplary embodiment.

A data acquisition unit **510**, an image processor **520**, and a display **530** operate in the same way as described with reference to FIG. 4.

A memory **540** stores various data processed by the ultrasound diagnosis apparatus **500**. For example, the memory **540** may store medical data related to diagnosis of an object, such as ultrasound data and an ultrasound image that are input or output, and may also store algorithms or programs which are to be executed in the ultrasound diagnosis apparatus **500**.

The memory **540** may be any of various storage media, e.g., a flash memory, a hard disk drive, EEPROM, etc. Furthermore, the ultrasound diagnosis apparatus **500** may utilize web storage or a cloud server that performs the storage function of the memory **540** online.

A user interface **550** may receive a request to change a measurement plane from a user. Furthermore, the user interface **550** may receive a request to change a measured value from the user.

According to an exemplary embodiment, the user interface **550** may output a menu via which at least one of rotation, movement, and scaling of a line on an MSP image is performed. In other words, the user may change a measurement plane by rotating, moving, or scaling a line corresponding to the measurement plane on the MSP image via the user interface **550**.

The user interface **550** may also output a menu via which at least one of rotation, movement, and scaling of a volume in an MSP image is performed. In other words, the user may change a measurement plane by rotating, moving, and scaling a volume corresponding to the MSP image.

For example, if the user checks a measurement plane via the display **530** to determine that the measurement plane or a measured value is wrong, the user may change the measurement plane or measured value by controlling a line corresponding to the measurement plane on an MSP image or changing a geometry of a brain volume by ultrasound.

The ultrasound diagnosis apparatus **500** according to exemplary embodiments may provide a manual measurement function via the user interface **530**.

Once the ultrasound diagnosis apparatus **500** receives information of selection of a line from among at least one line on an MSP image from the user, the ultrasound diagnosis apparatus **500** may highlight a measurement plane image corresponding to the selected line. For example, if the user selects a line corresponding to a TTP from among lines which are indicated on the MSP image and correspond to the TTP, TCP, and TVP, the ultrasound diagnosis apparatus **500** may highlight a TTP image for the user to recognize the TTP image e. g., by changing a color, a saturation, and a brightness of the TTP image or changing a thickness of a line thereof.

Furthermore, once the ultrasound diagnosis apparatus **500** receives information of selection of a measurement plane image from among at least one measurement plane image from the user, the ultrasound diagnosis apparatus **500** may highlight a line among at least one line corresponding to the measurement plane. For example, if MSP, TTP, TVP, and TCP images are displayed in a 2x2 layout, and the user selects the TTP image, the ultrasound diagnosis apparatus **500** may highlight a line corresponding to the TTP on the MSP image in order for the user to recognize the line, e. g., by changing a color, a saturation, a brightness, and a thickness of the line.

According to exemplary embodiments, the image processor **520** may change a measured value by remeasuring a biometric parameter in response to a user request to change the measured value. For example, if the user interface **530** outputs a menu via which a request to change a measured value is performed, the user may select the request.

According to exemplary embodiments, the image processor **520** may change a measurement plane image and at least one line among at least one line corresponding to the measurement plane displayed on a screen in response to a request to change a measurement plane, and a measured value based on the changed measurement plane image.

FIG. **6** is a conceptual diagram illustrating measurement planes.

As described above, the image processor **520** detects an MSP from volume data and at least one measurement plane

based on the detected MSP. FIG. **6** is a detailed diagram of the MSP and the at least one measurement plane detected by the image processor **520**.

In detail, FIG. **6** illustrates axial views of a fetal head, from among which measurement planes are to be selected. **610**, **620**, and **630** respectively denote TVP, TTP, and TCP. A plurality of lines **601** through **603** are indicated in a fetal head image and respectively correspond to the TVP **610**, the TTP **620**, and the TCP **630**. According to exemplary embodiments, measurement planes may be detected based on an MSP. Detection of the MSP will now be described.

In detail, the image processor **520** may detect a falx from 3D ultrasound volume data by using user input information. In this case, the user input information may be a center of a fetal head and a direction of a fetal face. According to exemplary embodiments, the image processor **520** may detect an MSP by using the falx. Alternatively, the image processor **520** may automatically detect an MSP by using a machine learning technique.

According to exemplary embodiments, a method of determining measurement planes based on a detected MSP will now be described.

The image processor **520** may select a plane having a highest or lowest score as each of measurement planes, from among a plurality of candidate planes that are perpendicular to an MSP. In this case, a score may represent similarity between each of the candidate planes and a measurement plane. For example, the score may be determined by a machine learning classifier, or may be a brightness value of a specific region or the total sum of gradient magnitudes.

For example, the image processor **520** may determine one of a plurality of candidate planes that are perpendicular to an MSP as the TTP **620** based on a brightness value of a predetermined region. In this case, the predetermined region may be an arbitrary region at the rear part of a fetal head. In other words, the image processor **520** may measure a brightness value of a posterior region of a fetal head to determine a plane having a largest brightness value as the TTP **620**.

Furthermore, the image processor **520** may detect a CSP that is located in a predetermined distance from a central point of a fetal head towards an anterior part thereof in the TTP **620** and determine as the TCP **630** one of a plurality of candidate planes obtained by rotating the TTP **620** around the CSP as a central axis, based on similarity of a predetermined pattern in a predetermined region. The predetermined region may be an arbitrary region including CSP, TCD, and CM.

The image processor **520** may also determine one of a plurality of candidate planes that are perpendicular to the MSP and horizontal to the TTP **620** as the TVP **610**, based on a gradient magnitude of a predetermined region. In this case, the predetermined region may be an arbitrary region including Vp.

FIG. **7** is an exemplary diagram of a screen **750** according to an exemplary embodiment.

Referring to FIG. **7**, the screen **750** displayed on the display **530** may include a plurality of ultrasound images arranged in a predetermined layout.

In detail, the screen **750** shows a MSP image **700**, a TTP image **710**, a TCP image **720**, and a TVP image **730**. A plurality of lines **701** through **703** on the MSP image **700** respectively correspond to the TTP image **710**, the TCP image **720**, and the

TVP image **730**.

As described above, an ultrasound diagnosis apparatus according to exemplary embodiments may display an MSP

and measurement planes on a single screen and indicate a correlation therebetween, e.g., by displaying the measurement planes as corresponding lines on the MSP, thereby allowing the user to visually determine whether a detected measurement plane is appropriate.

For example, the image processor 520 may indicate a position of at least one measurement plane on an MSP image. In other words, the position of the at least one measurement plane may be indicated on the MSP image by a line or color. Referring to FIG. 7, the plurality of lines 701 through 703 or color may accurately indicate which positions of the MSP image 700 respectively correspond to measurement planes 710 through 730.

In this case, the plurality of lines 701 through 703 may be indicated in different colors. Furthermore, the plurality of lines 701 through 730 may be indicated in the same colors as contours corresponding to the measurement plane images respectively, i.e., the TTP image 710, the TCP image 720, and the TVP image 730.

Furthermore, the image processor 520 may display a name of a measurement plane indicated on a measurement plane image in the same color as a line corresponding to the measurement plane on an MSP image.

In addition, positions of biometric parameters may be displayed in the MSP and measurement planes, as described in detail with reference to FIG. 8.

FIG. 8 is an exemplary diagram of a screen 850 according to exemplary embodiments.

Referring to FIG. 8, the screen 850 shows a MSP image 800, a TTP image 810, a TCP image 820, and a TVP image 830.

A line 803 on the MSP image 800 corresponds to a line 803 on the TCP image 820. Two points 805 and 806 on the MSP image 800 respectively correspond to two points 815 and 816 on the TCP image 820. In this case, points included in a measurement plane image may be points corresponding to a biometric parameter. For example, a length of a straight line connecting the two points 815 and 816 may be a CM.

Furthermore, lines 801 and 802 on the MSP image 800 respectively correspond to the TTP image 810 and the TVP image 830.

According to exemplary embodiments, the line 803 and its corresponding line 803 and the points 805 and 806 and their corresponding points 815 and 816 indicated on the MSP image 800 and the TCP image 820 allow the user to accurately determine a relative position between an MSP and a measurement plane. Furthermore, the user may accurately identify a position of a biometric parameter on an MSP and a measurement plane.

FIG. 9 is an exemplary diagram of a screen 950 according to another exemplary embodiment.

Referring to FIG. 9, the screen 950 shows a MSP image 900, a TTP image 910, a TCP image 920, and a TVP image 930.

A plurality of lines 901 through 903 on the MSP image 900 respectively correspond to the TTP image 910, the TCP image 920, and the TVP image 930.

As seen on FIG. 9, a CSP line 904, a thalamus line 905, and CM 907 indicated on the MSP image 900 respectively correspond to CSP 904, Thalamus 905, and CM 907 on the TTP image 910, the TCP image 920, and the TVP image 930. In this way, an ultrasound diagnosis apparatus according to exemplary embodiments may visually indicate positions of biometric parameters on measurement planes as well as on an MSP.

Furthermore, a measured value may be indicated in an image corresponding to each measurement plane. For

example, measured values 961 of HC, BPD, and OFD may be indicated in the TTP image 910. A measured value 971 of Vp and measured values 981 of TCD and CM may be indicated respectively on the TVP and TCP images 930 and 920.

Such measured values may be indicated using at least one of marker and text. For example, positions of biometric parameters may be indicated in the measurement plane images 910, 920, and 930 by using a mark 951, and the measured values 961, 971, and 981 may be respectively displayed on or near the measurement plane images 910, 930, and 920 as texts, etc. In this case, a marker and a text corresponding to one biometric parameter may be indicated in a different color than that in which a marker and a text corresponding to another biometric parameter are indicated in order to distinguish the biometric parameters from each other. The marker may be indicated by a sign + as shown in FIG. 9, but is not limited thereto. The marker may be indicated by another sign or color.

As described above, according to the exemplary embodiments, the ultrasound diagnosis apparatus 400 (500) may display a line corresponding to a measurement plane on an MSP image, thereby allow the user to simultaneously identify a position of the measurement plane, a position of a biometric parameter, and a measured value. This may help the user to determine the reliability of a result obtained by using an automatic measurement function.

FIG. 10 is a diagram for explaining a protocol for diagnosing fetal brain abnormalities by using volume data, according to exemplary embodiments.

The left side of FIG. 10 shows operations of the protocol according to the exemplary embodiments, and the right side shows screens, which are provided to a user, corresponding to the operations.

In operation 1020, the user sets an initial view (plane). In detail, the user may set an initial view that is similar to MPS, TTP, TVP, and TCP. The set initial view is displayed on a screen 1020 provided to the user.

In operation 1030, the user inputs a seed, and in particular, a central point of a fetal head and direction information of a fetus. In general, midpoints of thalami and an anterior direction of a fetus may respectively be designated as a central point of a fetal head and direction information of the fetus. A screen 1030, which is provided to the user, shows the central point of the fetal head and the direction information of the fetus which are indicated as a marker and a line, respectively.

In operation 1040, the ultrasound diagnosis apparatus 400 (500) extracts an MSP based on the seed input by the user. The extracted MSP is displayed on a screen 1040 provided to the user.

In operation 1050, the ultrasound diagnosis apparatus 400 performs image processing to extract TTP, TVP, and TCP. Since a process of extracting the measurement planes TTP, TVP, and TCP is described above with reference to FIG. 5, a detailed description thereof is omitted. The extracted MSP, TTP, TVP, and TCP are displayed on a screen 1050 having a 2x2 layout.

In operation 1060, the ultrasound diagnosis apparatus 400 may measure biometric parameters for each of the measurement planes TTP, TVP, and TCP as well as landmarks and direction information. Values of the biometric parameters, the landmarks, and the direction information may be indicated in the measurement planes TTP, TVP, and TCP and is then displayed on a screen 1060

In operation 1070, the user performs measurement of a fetal brain and diagnoses abnormality thereof based on the screens 1020, 1030, 1040, 1050, and 1060 on the right side of FIG. 10.

As described above, an ultrasound diagnosis apparatus 400 according to exemplary embodiments enables quicker and easier diagnosis of abnormality of a fetal brain based on volume data. Furthermore, the ultrasound diagnosis apparatus 400 allows the user to measure a desired position and check and modify the measured position. In addition, inter-observer variance and intra-observer variance in the measurement of a fetal brain may be reduced.

It will be understood by those of ordinary skill in the art that various changes in form and details may be made therein without departing from the spirit and scope of the inventive concept as defined by the following claims. Thus, it should be understood that the exemplary embodiments described therein should be considered in a descriptive sense only and not for purposes of limitation. The scope of the inventive concept is defined not by the detailed description thereof but by the appended claims, and all differences within the scope of the appended claims and their equivalents will be construed as being included in the present inventive concept.

What is claimed is:

1. An ultrasound diagnosis apparatus comprising: an image processor configured to detect a mid-sagittal plane (MSP) from volume data for a head of an object, generate an MSP image corresponding to the MSP, determine a measurement plane among a first plurality of candidate planes that are perpendicular to the MSP, and generate a measurement plane image corresponding to the measurement plane; and a display configured to display the MSP image and the measurement plane image on a single screen, wherein the image processor is further configured to determine the measurement plane, among the first plurality of candidate planes, as a transthalamic plane (TTP), based on a brightness value of a first predetermined region of each of the first plurality of candidate planes, respectively.
2. The ultrasound diagnosis apparatus of claim 1, wherein the image processor is further configured to indicate a position of the measurement plane on the MSP image.
3. The ultrasound diagnosis apparatus of claim 2, wherein the position of the measurement plane is indicated by a line on the MSP image.
4. The ultrasound diagnosis apparatus of claim 3, wherein the display is further configured to display a contour of the measurement plane image in the same color as that of the line indicated on the MSP image.
5. The ultrasound diagnosis apparatus of claim 3, wherein the display is further configured to display a name of the measurement plane on the measurement plane image in the same color as that of the line indicated on the MSP image.
6. The ultrasound diagnosis apparatus of claim 3, further comprising a user interface configured to receive a request to change the measurement plane, wherein the image processor is further configured to change the measurement plane image and the line based on the request and acquire a measured value based on the changed measurement plane image.
7. The ultrasound diagnosis apparatus of claim 6, wherein the user interface is further configured to output a menu, via which at least one from among a rotation, a movement, and a scaling of the line, is performed based on a user input.

8. The ultrasound diagnosis apparatus of claim 1, wherein the image processor is further configured to acquire a measured value by measuring at least one biometric parameter in the measurement plane image and indicate the measured value on at least one from among the measurement plane image and the MSP image.

9. The ultrasound diagnosis apparatus of claim 8, wherein the image processor is further configured to indicate the measured value on at least one from among the measurement plane image and the MSP image by using at least one from among a marker and a text.

10. The ultrasound diagnosis apparatus of claim 9, wherein the display is further configured to display on the single screen at least one selected from the measured value, a position of the at least one biometric parameter, a statistical value of a fetal gestational age, and a statistical graph.

11. The ultrasound diagnosis apparatus of claim 8, wherein the at least one biometric parameter comprises at least one from among a head circumference (HC), a biparietal diameter (BPD), an occipital frontal diameter (OFD), a transverse cerebellar diameter (TCD), a cisterna magna (CM), and a posterior ventricle (Vp).

12. The ultrasound diagnosis apparatus of claim 8, wherein the image processor is further configured to measure the at least one biometric parameter by using at least one from among an image processing technique and a machine learning classifier.

13. The ultrasound diagnosis apparatus of claim 8, wherein, when the image processor receives a request to change the measurement plane, the image processor is further configured to change the measured value by re-measuring the at least one biometric parameter based on the request.

14. The ultrasound diagnosis apparatus of claim 1, wherein the image processor is further configured to determine a plurality of measurement planes among the first plurality of candidate planes, generate a plurality of measurement plane images corresponding to the plurality of measurement planes, and indicate positions of the plurality of measurement planes on the MSP image by lines in a plurality of different colors, respectively,

the measurement plane is one of the plurality of measurement planes, and the measurement plane image is one of the plurality of measurement plane images.

15. The ultrasound diagnosis apparatus of claim 14, wherein when the image processor receives information of selection of a line among the lines on the MSP image from a user, the image processor is further configured to control the display to highlight the, measurement plane image, which is indicated by the selected line, among the plurality of measurement plane images.

16. The ultrasound diagnosis apparatus of claim 14, wherein, when the image processor receives information of selection of one measurement plane image among the plurality of measurement plane images from a user, the image processor is further configured to control the display to highlight a line, which indicates the selected measurement plane, among the lines.

17. The ultrasound diagnosis apparatus of claim 1, wherein the image processor is further configured to acquire the volume data based on an initial plane which is designated by a user via a probe.

18. The ultrasound diagnosis apparatus of claim 17, further comprising a user interface configured to receive an input from the user on the initial plane,

17

wherein the image processor is further configured to acquire the volume data based on the received input on the initial plane.

19. The ultrasound diagnosis apparatus of claim 18, wherein the received input comprises position information of a center of the head and direction information of the head in the initial plane.

20. The ultrasound diagnosis apparatus of claim 19, wherein the direction information of the head comprises an anterior direction of the head.

21. The ultrasound diagnosis apparatus of claim 18, wherein the display is further configured to display a position of an anatomical landmark on at least one from among the MSP image and the measurement plane image based on at least one from among a user input, position information of the initial plane, a result of segmentation, and a result of automatic measurement.

22. The ultrasound diagnosis apparatus of claim 1, wherein the measurement plane image comprises a name of the measurement plane that is entered by a user.

23. The ultrasound diagnosis apparatus of claim 1, wherein the image processor is further configured to determine a plurality of measurement planes among the first plurality of candidate planes and generate a plurality of measurement plane images corresponding to the plurality of measurement planes,

the display is further configured to display the MSP image and the plurality of measurement plane images in a 2×2 layout,

the measurement plane is one of the plurality of measurement planes, and

18

the measurement plane image is one of the plurality of measurement plane images.

24. The ultrasound diagnosis apparatus of claim 1, wherein the display is further configured to display the MSP image and the measurement plane image in a 2×1 layout.

25. The ultrasound diagnosis apparatus of claim 1, wherein the image processor is further configured to extract a falx from the volume data based on user input information and detect the MSP by using the falx or automatically detect the MSP by using a machine learning technique.

26. The ultrasound diagnosis apparatus of claim 1, wherein the image processor is further configured to determine a second plurality of candidate planes that are perpendicular to the MSP and horizontal to the TTP, and determine one of the second plurality of candidate planes as a transventricular plane (TVP) based on a gradient magnitude of a second predetermined region of each of the second plurality of candidate planes, respectively.

27. The ultrasound diagnosis apparatus of claim 1, wherein the image processor is further configured to determine a cavum septi pellucidi (CSP) located at a predetermined distance from a central point of the head towards an anterior part of the head in the TTP, identify a second plurality of candidate planes by rotating the TTP around an axis extending through the CSP, and determine one of the second plurality of candidate planes as a transcerebellar plane (TCP) based on a similarity of a predetermined pattern in a second predetermined region of each of the second plurality of candidate planes, respectively.

* * * * *

专利名称(译)	用于从体数据生成图像并显示该图像的超声诊断设备和方法		
公开(公告)号	US10433819	公开(公告)日	2019-10-08
申请号	US14/818470	申请日	2015-08-05
[标]申请(专利权)人(译)	三星麦迪森株式会社		
申请(专利权)人(译)	三星MEDISON CO. , LTD.		
当前申请(专利权)人(译)	三星MEDISON CO. , LTD.		
[标]发明人	LEE KWANG HEE KIM SUNG YOON YOO JUN SANG		
发明人	LEE, KWANG-HEE KIM, SUNG-YOON YOO, JUN-SANG		
IPC分类号	A61B8/08 G06T7/62 A61B5/00 A61B8/00		
CPC分类号	A61B8/0808 A61B8/523 A61B5/7267 G06T7/62 A61B8/0866 A61B8/483 G06T2207/10136 A61B8/468 A61B8/5207 A61B8/5223 A61B8/463 G06T2207/30016 G06T2207/30044		
代理机构(译)	萨格鲁MION , PLLC		
优先权	1020140100699 2014-08-05 KR		
其他公开文献	US20160038122A1		
外部链接	Espacenet		

摘要(译)

提供一种超声波诊断装置，其包括：数据获取单元，被配置为获取对象的头部的体数据。一种图像处理器，被配置为从体数据中检测矢状中平面（MSP），生成与该MSP相对应的MSP图像，基于该MSP检测至少一个测量平面，并生成与该MSP相对应的至少一个测量平面图像至少一个测量平面；显示器被配置为在单个屏幕上显示MSP图像和至少一个测量平面图像。

