



US 20120265077A1

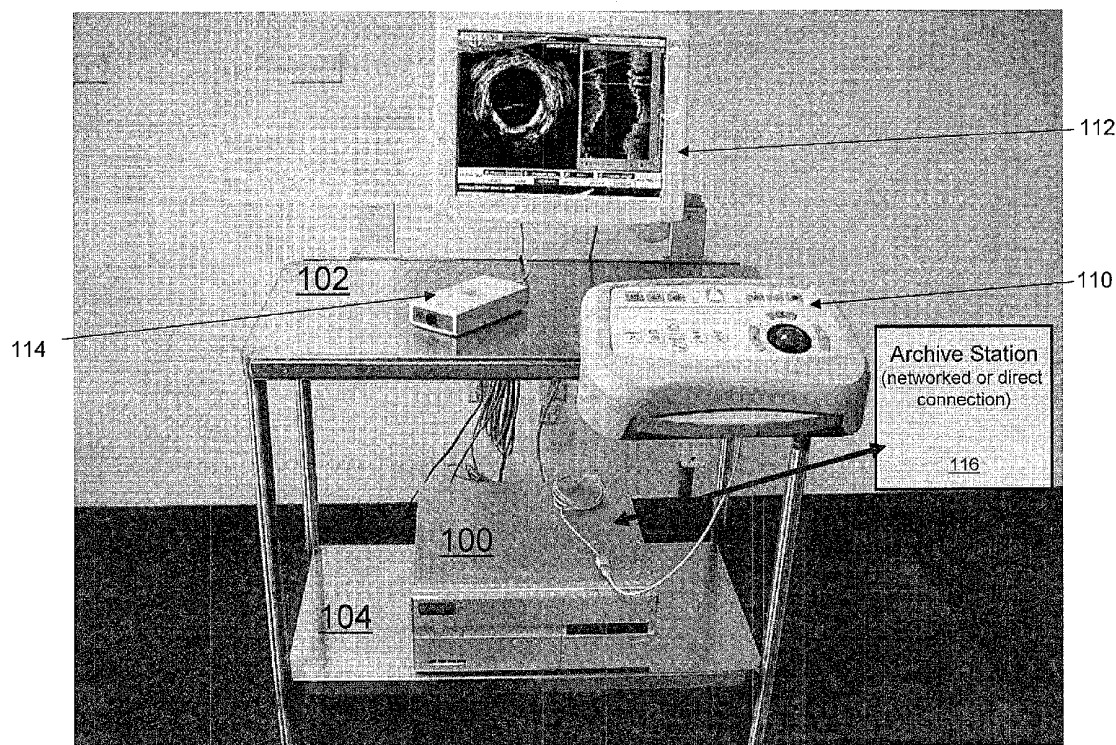
(19) **United States**(12) **Patent Application Publication**
Gille et al.(10) **Pub. No.: US 2012/0265077 A1**(43) **Pub. Date: Oct. 18, 2012**(54) **COMPONENT-BASED CATHETER LAB
INTRAVASCULAR ULTRASOUND SYSTEM**

(60) Provisional application No. 60/727,146, filed on Oct. 13, 2005, provisional application No. 60/825,813, filed on Sep. 15, 2006.

Publication Classification(75) Inventors: **Henrick K. Gille**, Oceanside, CA (US); **Vincent Burgess**, San Diego, CA (US); **Nancy Perry Pool**, El Dorado Hills, CA (US); **Edward A. Oliver**, Folsom, CA (US)(51) **Int. Cl.**
A61B 8/12 (2006.01)(52) **U.S. Cl.** **600/463**(57) **ABSTRACT**(73) Assignee: **Volcano Corporation**, San Diego, CA (US)(21) Appl. No.: **13/481,693**(22) Filed: **May 25, 2012****Related U.S. Application Data**

(63) Continuation of application No. 11/549,402, filed on Oct. 13, 2006, now abandoned.

A componentized intravascular ultrasound system is disclosed that flexibly integrates with a catheter lab infrastructure for acquisition and display of intravascular information in a catheter lab environment. The system includes a patient interface module (PIM) adapted to hold a catheter having an imaging probe located near a distal end, a control panel, a monitor for displaying images and patient data, and a processing unit. The processing unit is communicatively coupled to the PIM, the control panel, and the monitor. Furthermore the processing unit adapted to: coordinate operation of the PIM, the control panel, and the monitor; and generate images from image data provides by the PIM. The PIM, control panel and monitor are independently positionable with regard to one another.



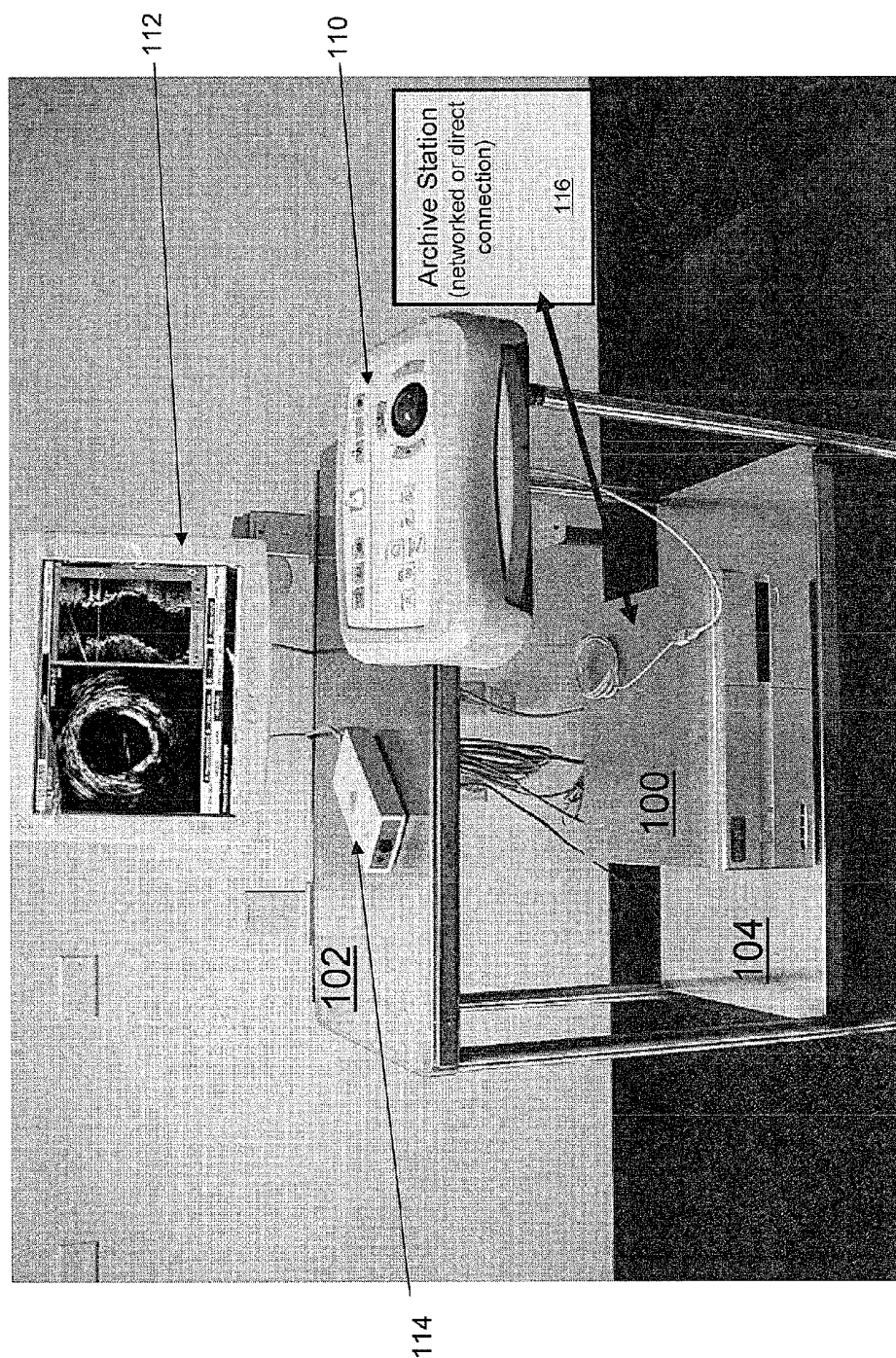


FIG 1



FIG. 2

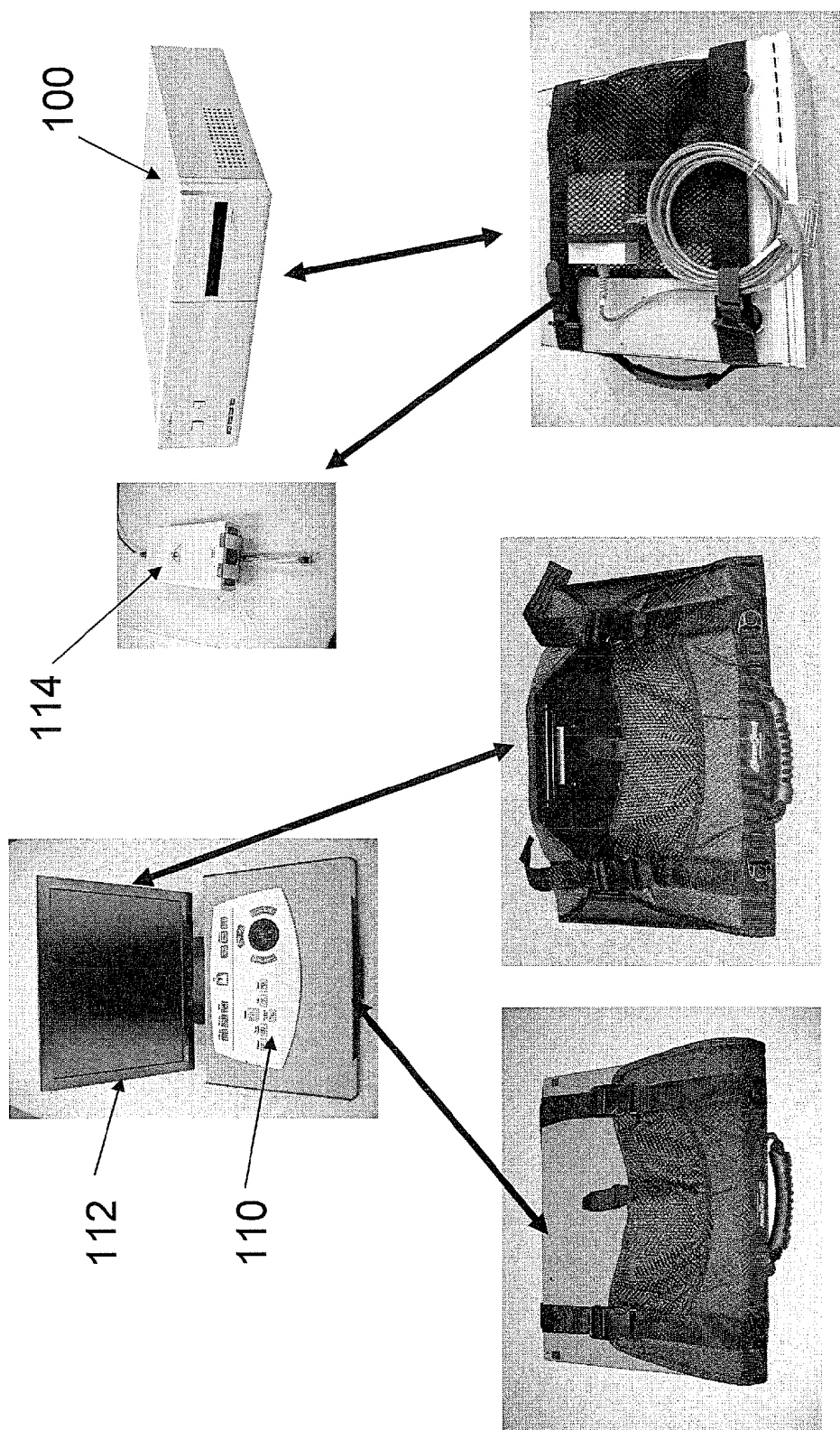


FIG. 3

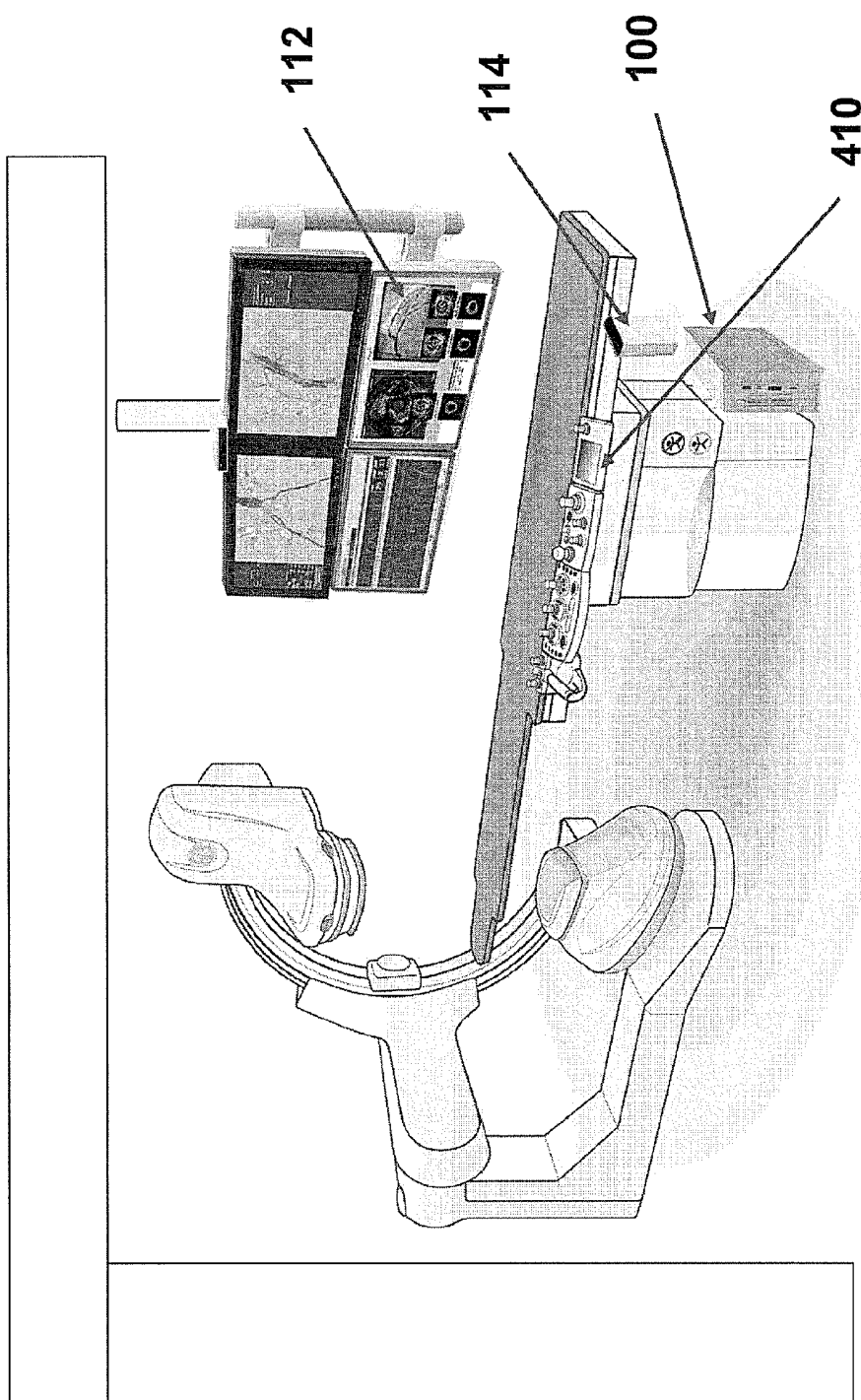


FIG. 4

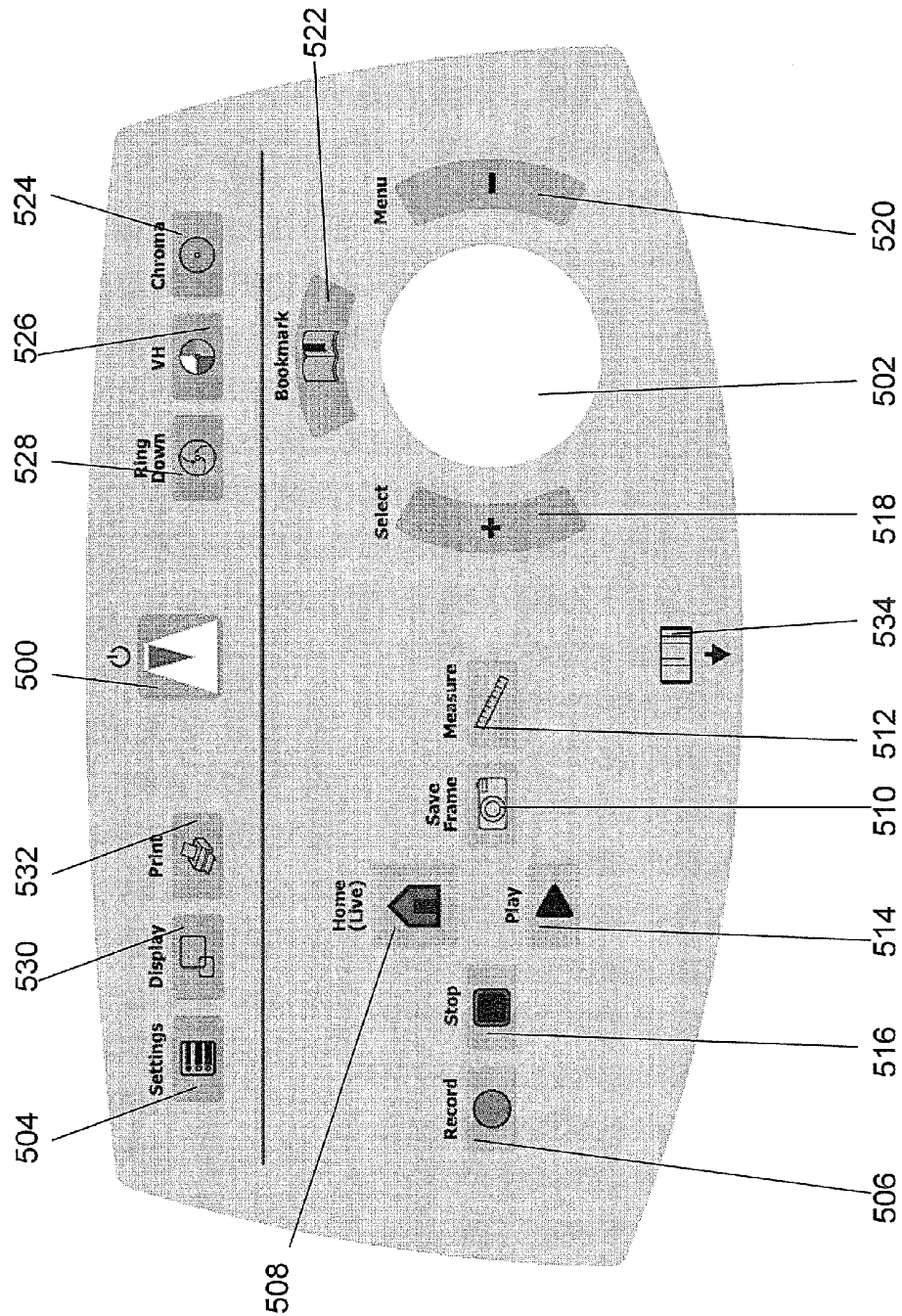


FIG. 5

C_ -	P_ -	S_ -	M_ *-	R_ *-	A_ *
CPU	Primary Monitor	Secondary Monitor	Main Control Panel	Remote Control Panel	Archiving Station
1 On PT, Spanning Rails	1 On PT Volc Monitor	0 NR	1 On PT, LHS or RHS	0 NR	0 NR
2 On PT, LHS Rail	2 Use Existing Customer Monitor	1 In CR, Volc Mon., on Table	2 In CL, on Wall	1 In CL, on Wall	1 Customer DICOM
3 On PT, RHS Rail	3 In CR, Volc Monitor	2 In CL Volc Monitor, Wall	3* In CL, on IV cart	2 In CL, on IV cart	2* Archive in CR
4 In ER Wall Mounted		3 Volc Mon in Display Cluster	4* In CR on Table	3* In CR on Table	3* Archive in 2 nd CR
5 In ER Table Mounted		4 Custom Display	5* in CR Wall	4* in CR Wall	
6 In CR Floor Mount			*=H Attach Printer	*=H Attach Printer	*=H Attach Printer
7 In CR Table Mounted					

FIG. 6

COMPONENT-BASED CATHETER LAB INTRAVASCULAR ULTRASOUND SYSTEM

CROSS-REFERENCE TO RELATED APPLICATION

[0001] This application claims priority of Gille et al. U.S. provisional application Ser. No. 60/727,146 filed on Oct. 13, 2005, entitled "Component-Based Catheter Lab Intravascular Ultrasound System;" and Pool et al. U.S. provisional application Ser. No. 60/825,813 filed on Sep. 15, 2006, entitled "Control Panel for a Catheter Lab Intravascular Ultrasound System", the contents of both of the above-identified provisional applications are expressly incorporated herein by reference in their entirety including the contents and teachings of any references contained therein.

FIELD OF THE INVENTION

[0002] The present invention generally relates to the field of ultrasound imaging systems, and more particularly to systems used to diagnose and treat vascular disease.

BACKGROUND OF THE INVENTION

[0003] The development of new medical technologies has provided an increasing number of options available to doctors for the diagnosis and treatment of cardiovascular diseases. The availability of such equipment has improved the ability of doctors and surgeons to detect and treat cardiovascular disease. Intravascular imaging technologies have enabled doctors to create and view a variety of images generated by a sensor inserter within a vasculature. Such images compliment traditional radiological imaging techniques such as angiography by providing images of the tissue within vessel walls rather than showing a two dimensional lumen image.

[0004] In the area of cardiovascular imaging, doctors now routinely rely upon a variety of products and technologies including intravascular ultrasound (IVUS), angiogram, and MRI imaging devices. In fact, a recent trend is to combine external and invasive (IVUS) imaging methods within a single session with a patient. In fact such diverse technologies are now used even simultaneously to improve tracking the progress of a diagnostic and/or treatment device mounted upon a catheter during treatment of a patient.

[0005] Known IVUS systems such as the InVision system from Volcano Corporation are relatively large multi-component systems that are mounted upon a trolley that takes up a space about the size of a small refrigerator. These systems contain the displays, control panels, power supplies and computers in a single large chassis that is mounted upon a set of wheels to facilitate easy movement to any operating room/imaging lab where it is needed.

[0006] The benefits of IVUS systems are well documented. However, in a relatively crowded operating room environment, the mechanical configuration of known trolley-based IVUS systems can pose problems with regard to having clear, unobstructed access to a patient. Therefore, recent versions of IVUS systems have expanded the form factor options from the trolley to ones that adopt a "distributed integration" approach wherein the components are separated (i.e., they no longer reside within a single chassis) and integrated with existing support structures within an operating room/catheter lab. In a known system, a monitor is mounted permanently on a boom above a patient table, a controller is mounted upon a rail on the patient table, a CPU is placed proximate the patient

table, and a patient interface module is connected to the CPU via a short cable. In the known system, the short power/communications cable connecting the patient interface module to the patient interface module is limited in length and restricts placement of the CPU.

[0007] Another potential barrier to adoption of invasive imaging techniques is the ease of use of such systems. Known systems tend to include generalized interfaces that are not particularly suited/adapted for use in a catheter lab where space is limited and ease of use is desired when a procedure must be completed potentially very quickly and without error. Training is a problem due to staff turn over, so a system that is easy to learn how to use and retain the information is very important.

SUMMARY OF THE INVENTION

[0008] In accordance with the present invention an intravascular ultrasound (IVUS) system is integrated into a catheter lab/operating room as a set of modular IVUS system components. Display, processing unit and control panel components can be placed in their most desired locations (even in another room) without restrictions arising from cable length limitations.

[0009] In particular embodiments, low power processors like the new Intel Pentium Sossaman processor reduce the cooling requirements thereby potentially reducing the size of blower fans and the processing unit chassis. A reduced chassis size expands the potential locations for the processing unit (e.g., under a patient table). The display can be mounted in several locations in the catheter lab or control room. The control panel can be mounted remotely and outside a sterile field.

[0010] The system includes a control panel through which a user controls the acquisition and display of IVUS image information. In illustrative embodiments the physical interface of the control panel is divided into regions associated with particular workflow functionality. The combination of functional regions and functions performed by controls (e.g., buttons, mouse/trackball, etc.) within particular regions facilitates a superior user experience including an enhanced learning curve as well as an ability to make selections by feel (as opposed to sight). In the disclosed embodiment a first region includes a set of IVUS action keys, a second region includes pointer navigation controls (e.g., trackball) with multi-button mouse functionality, and a third region includes controls for selecting modes of IVUS operation.

BRIEF DESCRIPTION OF THE DRAWINGS

[0011] While the claims set forth the features of the present invention with particularity, the invention, together with its objects and advantages, may be best understood from the following detailed description taken in conjunction with the accompanying drawing of which:

[0012] FIG. 1 is a schematic drawing depicting the components and communicative connections of an exemplary IVUS system suitable for integration with catheter lab/operating room infrastructure;

[0013] FIG. 2 depicts an exemplary control panel including a keyboard in its slideout position;

[0014] FIG. 3 depicts an exemplary portable configuration of the system including components and their associated carrying case configuration;

[0015] FIG. 4 depicts an exemplary integrated system including an integrated third party controller;

[0016] FIG. 5 illustratively depicts an exemplary control panel configuration; and

[0017] FIG. 6 comprises a chart outlining a variety of configuration options supported by an exemplary componentized system.

DETAILED DESCRIPTION OF THE DRAWINGS

[0018] The IVUS (intravascular ultrasound) system embodying the present invention is based on the functionality derived from existing IVUS systems, including ChromaFlo and other features present in the existing system. An exemplary system uses legacy internal circuit board architectures incorporated into previously provided systems, including, for example, analog and digital boards. The components of an exemplary system and their general descriptions are provided herein below with reference to FIG. 1. The components are physically divided, appropriately sized, and connected in a manner that improves their ability to seamlessly integrate with existing catheter lab/operating room infrastructure and thereby maximize accessibility to a patient and other medical equipment in the room.

[0019] Turning to FIG. 1, a photographic image depicts a set of the primary components of an IVUS system suitable for integration in a catheter lab/operating room environment. It is noted that the exemplary installation depicted in FIG. 1 depicts mounting/placement of the various components on a "shortened" patient table 102 (used for demonstration purposes). In an actual operating room environment the table is significantly longer and more sturdy in construction to support a patient during a catheterization procedure.

[0020] A processing unit 100, incorporating many of the capabilities and functionality of known personal computers, coordinates operation of the peripheral components of the exemplary IVUS system, processes commands from attached controllers, issues control commands to an IVUS device (via a PIM) and processes IVUS data received from the IVUS device to render corresponding graphical IVUS image data. The resulting IVUS image data drives communicatively coupled graphical displays. The image data is also stored on both local and networked data storage devices.

[0021] In an exemplary embodiment, a housing for the processing unit 100 has suitable dimensions to facilitate placement of the processing unit 100 in a variety of desirable locations, both proximate (e.g., on a shelf 104) and remote from the patient table. In the illustrative example the housing of the processing unit 100 occupies a space of about 16 inches square and about 6 inches deep. The dimensions of the processing unit 100 (housing) vary in accordance with various embodiments of the invention and should not be taken as limiting the scope of the invention. Furthermore, the location of the processing unit 100 is very flexible in view of its size and the signal transmission capabilities of physical communications links between the processing unit 100 and peripherally connected components including: a control panel 110, a monitor 112, and a patient interface module (PIM) 114. The interconnect cabling and the peripheral components are described further herein below.

[0022] The processing unit 100 includes a commercially available mother board with, for example, an INTEL PENTIUM Sossaman (dual-core, low-power consumption) microprocessor, 2 GB of system RAM, one 3.5" hard drive, a medical grade power supply, an ultrasound signal processing

card, and a remote control interface card. In an exemplary embodiment the external interface of the processing unit 100 and embedded control logic support multiple, simultaneously active (i.e., sending asynchronously processed control instructions to the processing unit 100) control panels (e.g., control panel 110) and multiple remote monitors (e.g., monitor 112). The multiple control panels and remote monitors are not limited to two, and can indeed exceed two. Support of multiple active controllers (e.g., control panel 110) allows two or more users to send control signals governing the operation of the system to the processing unit 100 without locking out any of the simultaneous users. Such operating mode supports remote assistance for a user operating the local control panel 110.

[0023] The control panel 110 and the monitor 112 are connected via communications cabling supporting remote positioning/operation of the peripheral components from the processing unit 110 during a catheterization procedure. By design, the processing unit 100 is compact, relatively light weight, very quiet and operates without direct user contact once powered up. The processing unit 100's housing, by way of example, incorporates mechanical mounting features (e.g., hooks, clamps, etc.) allowing the processing unit 100 to be secured to mounting rails on the patient table 102. Alternatively, the processing unit 100 is mountable on wall attached rails. In various embodiments, the processing unit 100 includes a variety of storage devices including, for example: a hard drive, DVD/CD burner/player, VCR recorder/player, etc.). The secondary storage device can also be a peripheral device attached via, for example, a USB cable to the processing unit 100.

[0024] Turning to the control panel 110 component of the system, in the exemplary embodiment, the control panel 110 includes a plastic housing that holds various user input interfaces. Approximate dimensions of the control panel are: 10"×16"×4" (H×W×D). By way of example, the exemplary control panel 110 includes a slide out keyboard 111 (see, FIG. 2) and a touch interface (described further herein below with reference to FIG. 5). The enclosure is mountable on a variety of structures including, for example, a support arm attached to a rail of the patient table 102 or an articulated wall mount. The control panel 110 can be placed away from the immediate vicinity of the patient table 102 such as on a table in a remote control room or mounted to a roll around (e.g., IV pole) cart. The control panel 110 is communicatively coupled to the processing unit 100 via a cable of potentially significant length. In yet other embodiments, the control panel is located on a table near a secondary local medical grade display (not shown) which receives a copy/clone of the primary image displayed on the monitor 112. The second display (e.g., a 15 inch LCD monitor) requires an additional cable from the processing unit 100. The control panel 110 includes, by way of example, an additional USB port so that it can also be connected to a printer or other suitable USB-enabled peripheral device.

[0025] Referring now to the monitor 112, in an exemplary embodiment the monitor 112 is a 19 inch LCD monitor (e.g., an InVision monitor) for providing an image, based upon image data rendered by the processing unit 100, to viewers in the vicinity of the patient table 100. In an exemplary embodiment the monitor 112 is mounted to an articulated arm attached near the "foot" end of the patient table 102. The mounting arm incorporates many degrees of motion freedom thereby enabling rotating and positioning the monitor 112 so

that it is entirely under the patient table and out of the way if desired. When needed for IVUS, the monitor **112** is repositioned so that it is easily viewed by a catheter lab technician standing near the patient table **102**.

[0026] The remote control/display system supported by the processing unit **100** is used to allow remote control of the processing unit **110** by multiple remote control devices (e.g., the control panel **110**). The system similarly supports remote display of video images from the processing unit **100** on multiple displays.

[0027] Primary system components on the processing unit **100** supporting communications between the processing unit **100** and a peripheral control/display device are a CPU integrated signal sender and a remote signal receiver. The interconnection is by means of a single CAT6 double shielded cable from the CPU to each of the 2 remote control panels and each of the 2 remote displays. Power is provided over the CAT6 cable so no remote power supply is required.

[0028] The exemplary system also includes a known PIM **114** to which appropriate IVUS catheters are communicatively coupled for an imaging session. The PIM **114** can be any of a wide variety of interface modules that interface imaging catheters to a processing unit such as processing unit **100**.

[0029] Another notable feature of the illustrative embodiment is the ability of the components to be separated by potentially large distances. Through the use of high quality cabling (both USB and VGA) and sufficiently powered transmission interfaces (e.g., in-line buffer amplifiers), components of the system (including remote instances of peripheral control panels and monitors) are positioned outside the immediate vicinity of the patient table **100**, such as across the room or even in a separate room up to 150 feet from the patient table, without significant signal loss. In an exemplary embodiment, the cable connecting the PIM **114** and the processing unit **100** is up to approximately 100 feet. In such circumstances the extended length is accommodated by a greater gauge wire in the connector cable as well as through adjustments for signal transmission delays.

[0030] In an exemplary embodiment wherein the processing unit **100** is mounted on a lower shelf of the patient table **102**, the wiring to and from the processing unit **100** is routed to remotely located independently/flexibly located (remotely located) peripheral components, including possibly remotely located versions of the control panel **110** and the monitor **112**, by cabling strung across the floor under suitable cable covers. Cabling for other peripheral components positioned in the proximity of the patient table **102**, such as the catheter lab control panel **110** and the patient interface module (PIM) **114**, are routed directly from the processing unit **100** to these components. In the illustrative example in FIG. 1, the monitor **112** is mounted to the patient table **102**, in close proximity to the processing unit **100**, and a direct VGA cable connection is provided. The remaining cable is CPU AC power which should be available from an AC outlet on or near the patient table mounting pedestal. There is no AC power required for the control panels attached to the CPU.

[0031] The cabling between the various components supports communications using a variety of protocols. By way of example, the control devices operate via USB and TCP/IP protocols. The video/analog cables utilize a VGA or analog Ethernet scheme. However, in alternative embodiments digital video signaling schemes are used. Finally, while cables are described for communicatively coupling the components, in

alternative embodiments wireless technology links one or more of the inter-communicating components of the system.

[0032] The exemplary component-based system also includes an archive station **116**. In the illustrative embodiment depicted in FIG. 1, data is moved from the processing unit **100** to a shared image data server running on the archive station **116**. By way of example, the data is transmitted via Ethernet protocol to a DICOM workstation (the archive station **116**) for storage within an appropriate directory or database, or alternatively burning the image data to DVD or other removable computer readable memory media. Data can also be moved from the processing unit **100** by means of a removable flash drive of, for example, 4 GB capacity. The flash drive is thereafter installed on another computer including a DVD burner for review or burning to a DVD. However, in yet another alternative arrangement, archival capabilities are provided in the form of a desk top/tower PC workstation including a commercial monitor (e.g., a 15 inch LCD) and a DVD writer. The workstation connects to the processing unit **100**, for example, by means of an Ethernet. The files stored on the hard drive of the processing unit **100** are moved to the workstation for review and archiving to a DVD without impacting the operation of the processing unit **100**. In still another alternative embodiment the functionality and hardware (e.g., hard drive and CD/DVD burner) of an archive station is incorporated into the processing unit **100**. A printer, such as a color dye sublimation printer, is optionally attached to the workstation to permit image printing.

[0033] The componentized arrangement of the disclosed system facilitates providing a portable system. A portable version of the system (see, FIG. 3) depicted in FIG. 1 uses the same processing unit **100** depicted in FIG. 1. However, the processing unit **100** is mounted in a carrier to allow it to be easily transported. The control panel **110** and archive station **116** are transported by carriers. The monitor **112** is potentially any one of a variety of commercially available medium scale (e.g. 15 inch) LCD monitors. If desired, an optional collapsible cart, chosen from one of many commercially available models is used to transport the separately bagged/encased components.

[0034] Standard-dimensioned mounting rails are generally available in catheter labs. The installation kit for the system, by way of example, includes a set of rail mounting hardware to allow customization of the mechanical installation to meet the unique positioning requirements of each catheter lab.

[0035] Another aspect of the disclosed system is interoperability support. In the exemplary embodiment, the processing unit **100** includes an Ethernet connection that allows connection of the processing unit **100** to a hospital LAN, DICOM workstation, archive workstation, or remote control consoles such as ones provided from GE (see, e.g., controller **410** in FIG. 4), Siemens or other manufacturers. In support of this functionality, one or more additional software modules are provided to interpret commands issued by these remote control devices and provide the proper response (including image data translators to match the supported protocols of the attached devices and their associated image display systems).

[0036] The following summarizes a set of functional/operational features of an exemplary componentized system described herein above. First, the system unobtrusively integrates with existing equipment in a catheter lab. As such the system can always be in position, always powered and ready to perform an IVUS imaging session. Second, the system occupies no floor space. Third, the system does not noticeably

alter the lab's working environment since it generates very little noise (the low power processors generate less heat and therefore smaller fans can be used). Fourth, the system accepts, and processes control commands issued from multiple, simultaneously active distinct controllers. Multiple users can simultaneously submit control commands that are processed as they are received by the processing unit **100**. Similarly, the system supports multiple, potentially remotely located, monitors for displaying IVUS images rendered by the processing unit **100**. Sixth, the system can be dismantled and packaged in hand-held portable carriers in a portable embodiment. The above functionality is provided by a system that incorporates all the functional capabilities of full-size currently available IVUS systems.

[0037] While various examples are provided herein, it is noted that other embodiments include any of a variety of alterations. For example, the processing unit **100** can occupy any of a variety of form factors such as a cube. The motherboard of the processing unit **100** is, by way of example, any microATX or ATX sized board, allowing any of the commercially available PENTIUM processors to be used. The control panel **110** can be connected by means of a WiFi connection using suitable adapters. The video image from the IVUS system can be broadcast to remote locations using wireless technology. Any number of monitors, keyboards, trackballs or mice can be attached to the processing unit **100** and used simultaneously (no controller lock out) with their asynchronous requests being handled as they are received by the processing unit **100**. By adding suitable interface software, the processing unit **100** can be controlled from the control panels of patient tables or X-Ray consoles made by GE, Philips, Siemens, etc.

[0038] The following summarizes features and performance characteristics of the componentized system depicted in FIG. 1, some of which have been discussed previously herein above.

Generated/Displayed Images

[0039] The system supports a combination of tomographic and sagittal views including: tomographic IVUS images, sagittal views either vertically or horizontally simultaneous with tomographic display. All measurements are displayed on imaging views. Data capture and display is carried out in the form of recorded video loops and still images.

[0040] The system supports replaying and reviewing captured images, data capture and display in all modes including: virtual histology, flow. A variety of imaging technologies include Intracardiac Echocardiography (ICE), flow, pressure, etc.

[0041] With regard to the display screen, text is displayed by default in English. Additional supported languages include: French, Italian, German, and Spanish. Other displayed information includes: patient demographic information; current date, time, software version; patient co-morbidity data (in the patient screen); measurements, including distances, areas, longitudinal distances, and borders.

Catheter Support:

[0042] The processing unit **100** supports a variety of cardiovascular and peripheral IVUS catheters (both array and rotating crystal) and flexibly supports later developed cath-

eter designs including Intracardiac Echocardiography (ICE) and capacitive Microfabricated Ultrasonic Transducer (cMUT) catheters.

Instrument Set Up/Functions:

[0043] Standard local video output is provided as well as multiple remote video outputs. Communications set up include network (DICOM) and Ethernet RJ-45. A connector on the processing unit **100** chassis supports remote USB control panel, trackball or keyboard input. The system supports communication with a remote archiving station for color image printing and DVD recording of patient data. The system supports interfacing with controls of others including GE, Siemens, Philips, etc.

Mechanical Design:

[0044] The system components all have computer components and printed circuit boards integrated into a small, reduced weight, housing, suitable for mounting on, or near the patient table in a catheter lab or alternatively a remote location within 30-50 meters of the patient (depending on the component) in a remote control or equipment room. The control panel **110** is mounted from the DIN rails on the patient table **102** in the catheter lab and/or a remote control room. The control panel **110** connects to the processing unit **100** by a single cable. The control panel **110** also includes mounting hardware for mounting from a roll around equipment cart or from a wall. The Control Panel enclosure is also attachable to a boom/arm/mount that can be mounted on or to the control area of the patient table. It should also be capable of being mounted to a roll around IV pole cart.

[0045] It should also be possible to place it on a flat table for desktop use.

Display:

[0046] The monitor **112** is any of a variety of available monitors including 15/17/19 inch (diagonal) flat panel LCD monitors. The monitor is of suitable quality such that the monitor screen is visible in a reduced light catheter lab environment with minimal distortion when viewed from side or off angle (up to 40-45 degrees off angle). The display is mountable in a variety of ways including on an articulated arm that allows the display position to be changed from stowed under the patient table, to easily visible at the patient table. The display is also mountable via a bracket attached to the patient table **102**.

Control Panel:

[0047] The control panel connects to the processing unit **100** via a USB cable and permits operation of the GUI and patient data entry using the pull out keyboard. The control panel is mountable on or near the patient table **102**, on a freestanding mobile IV pole carrier, or from an articulated wall mounted arm, depending on user preferences. The control panel communicates with the processing unit from a remote control room.

User Interface:

[0048] The user interface embodied in the monitor **112** displays and the control panel **110** (described herein below) provide an intuitive, easy to use interface that follows a typical IVUS case workflow. The user can use the mechanical

keys on the control panel or, after powering on, navigate via soft keys on the user interface. The primary operator control is provided through on-screen cursor and screen controls on the monitor **112** display. When operating in a virtual histology mode, the system supports plaque/tissue characterization and volume determinations, including user driven border editing on the tomographic and in-line digital views, and reanalysis of statistics. A remote archiving station consolidates the tasks of saving data, printing data and/or networking data.

Data Storage:

[0049] A variety of data storage is supported by the exemplary system including the following:

[0050] Primary Storage Medium: Internal CPU hard drive (s).

[0051] Secondary Storage: Media will be DVD-R disks for archival purposes.

[0052] Tertiary Storage: Hospital DICOM server via the PACS network.

[0053] Quaternary Storage: Removable USB flash drive for transfer to a workstation.

[0054] Ability to review data on systems from both primary and secondary sources.

[0055] Ability to view Volcano images on a computer, such as in their office or home

[0056] Minimum three, 90 second video loops stored @ 30 fps

LCD/CPU Specification

[0057] In an alternative embodiment the monitor **112** and the processing unit **100** are contained within a single housing and used in hospital catheter laboratories. It is designed to mount from the patient table mounting rails using mounting hardware. The following specifications describe the design details for this variation of the above-described componentized system.

[0058] The case has overall dimensions of 15" H×17" W×5" D and a weight of approximately 25 pounds (about 10 Kg). Cooling is provided via a 1×80-120 ccm cooling fan, blowing air into case, exiting from bottom or sides. The processor is a low power, dual-core PENTIUM Sossaman processor.

[0059] The motherboard includes at least two PCI slots for connecting hosted digital and analog boards of the processing unit **100**.

[0060] Turning to FIG. 5, an exemplary control panel button/trackball interface is depicted. In general, a user interacts with the system through the control panel **110** via a set of buttons configured, by way of example in a manner set forth in FIG. 5. The elements of the control panel include: a Power on/off **500**; a trackball **502** (used to position the cursor on the screen of the monitor **112**); screen selection keys including Settings **504**, Record **506**, Home **508**, Save Frame **510**, measure **512**, play **514**, and stop **516**; Select (+) **518** and Menu (−) **520** keys; a Bookmark **522** key; a standard alphanumeric keyboard (retracted below control panel); a ChromaFlo® **524** key; a VH **526** key; a ringdown key **528**; a display key **530**; a print key **532**; and a Keyboard indicator **534**. The functionality of each of these elements is discussed herein below.

[0061] In an exemplary embodiment the various action/control buttons are grouped to facilitate user workflow and include color coding coordinating with the software keys and icons to promote ease of use. A power button **500** turns the

system on or off and illuminates when the system is plugged in. In addition to the power button **500**, a set of buttons along a top row (e.g., settings **504**, display **530**, and print **532**) facilitate set-up and mode selection. These top-row buttons/actions are generally not part of the routine work flow. The two groups include:

Set-Up & Display

[0062] Settings **504**: Changes system settings like date and time; also permits setting and editing default configurations.

[0063] Display **530**: Displays a large IVUS image with measurements and demographics to facilitate large viewing.

[0064] Print **532**: Prints a 6×4 inch photo of the current image on the screen

Modes

[0065] Ringdown **528**: Turn Ring Down on or off

[0066] VH Mode **526**: Turns virtual histology display on or off

[0067] ChromaFlo (flow image) **524**: Turns ChromaFlo on or off

[0068] Two groups of buttons/controls lie below the top row. The two groups are action-oriented and designed with the user in mind to facilitate ease of use and retention of training. These buttons are typically used during a routine patient case:

Workflow Buttons that Facilitate Ease of Use of System

[0069] Record **506**: Records a video loop

[0070] Stop **516**: Stops the recording of a video loop. Press to Freeze a live image

[0071] Home **508**: Press to view the live image

[0072] Play **514**: Play a recorded video loop

[0073] Save Frame **510**: Press during Live mode to save one frame

[0074] Measure **512**: Provides access to measurement options such as diameter, length and borders

Buttons Grouped Around the Trackball to Facilitate Navigation During the Patient Case

[0075] Select (+) **518**: Press to select tabs, areas, or points. It is similar to left-clicking with a mouse.

[0076] Menu (−) **520**: Press to end your selection points. It is similar to right-clicking with a mouse.

[0077] Bookmark **522**: Press while recording a loop to select specific areas of interest

Trackball **502**

[0078] The trackball **502** moves the cursor on the monitor **112** to allow function selection. The trackball **502** is also useful for selecting annotation locations and making measurements.

[0079] Keyboard **534**: Points to the retractable keyboard beneath the control panel

Alphanumeric Keyboard

[0080] A standard alphanumeric keyboard is contained in a retracting tray under the control panel button/user interface and is used for data entry and image annotation. To use the keyboard, pull the latch underneath the keyboard tray and pull the keyboard tray out.

[0081] Turning briefly to FIG. 6, a two dimensional array presents a set of options associated with each of a set of

components that make up the system. The extent of the choices for each component demonstrates the high degree of configurability and adaptability of the system to various users' needs. The following options are available for the processing unit **100** (that includes a DVD burner/player for archiving and retrieval), location:

- [0082] 1—CPU on patient table, spanning rails
- [0083] 2—CPU on patient table LHS, rail mounted
- [0084] 3—CPU on patient table RHS, rail mounted
- [0085] 4—CPU in Equipment Room, wall mounted
- [0086] 5—CPU in Equipment Room, table mounted
- [0087] 6—CPU in Control Room, floor standing
- [0088] 7—CPU in Control Room, wall mounted

The following options are available for Primary Monitor location:

- [0089] 1—Volcano LCD Monitor, Pt table “foot end” mounted, arm attached to rail
- [0090] 2—Use existing monitor in display cluster (Determine if XGA compatible and where aux video input is located)
- [0091] 3—Remote display, on table in Control Room (Determine cable length from CPU, if >15 ft, use Ethernet link and I/O box)

The following options are available for Secondary Monitor location:

- [0092] 0—None required
- [0093] 1—Remote Volcano display, located on table top in Control Room
- [0094] 2—Wall mounted Volcano display located in Cath Lab
- [0095] 3—Volcano display added to display cluster
- [0096] 4—Existing display, mounted in display cluster (Determine if XGA compatible and if switched video input is available)

The following options are available for Main Control Panel location:

- [0097] 1—Attached to pt table rail, LHS, or RHS
- [0098] 2—Attached to wall mount in Cath Lab
- [0099] 3—Attached to IV portable cart in Cath Lab
- [0100] 4—In Control Room, table mounted
- [0101] 5—In Control Room, wall mounted
- [0102] H—For 3, 4, 5 above, attach color printer

The following options are available for Remote Control Panel location:

- [0103] 0—None required
- [0104] 1—Attached to wall mount in Cath Lab
- [0105] 2—Attached to IV portable cart in Cath Lab
- [0106] 3—In Control Room, table mounted
- [0107] 4—In Control Room, wall mounted
- [0108] H—For 3, 4 above, attach color printer

The following options are available for Archiving Station:

- [0109] 0—None required
- [0110] 1—Use DICOM workstation for archive
- [0111] 2—Volcano Archive station in Control Room
- [0112] 3—Volcano Archive station in Second Control Room
- [0113] H—For 2, 3 above, attach color printer

[0114] The above described component option sets are exemplary and are by no means limiting in nature as the disclosed system is designed with the intention of supporting a highly configurable system.

[0115] Systems and their associated components have been described herein above with reference to exemplary embodiments of the invention including their structures and tech-

niques. In view of the many possible embodiments to which the principles of this invention may be applied, it should be recognized that the embodiments described herein with respect to the drawing figures are meant to be illustrative only and should not be taken as limiting the scope of invention. Therefore, the invention as described herein contemplates all such embodiments as may come within the scope of the following claims and equivalents thereof.

What is claimed is:

1. A componentized system for acquisition and display of intravascular information, comprising:

a patient interface module (PIM) adapted to hold an imaging flexible elongate member having an imaging probe located near a distal end of the flexible elongate member, and configured to obtain information for generating an image of a vessel;

a control panel;

a monitor for displaying images and other data for a patient; and

a processing unit, communicatively coupled to the PIM, the control panel, and the monitor, the processing unit adapted to:

coordinate operation of the PIM, the control panel, and the monitor; and

generate images from image data provides by the PIM, wherein the PIM, control panel and monitor are independently positionable with regard to one another when used in a catheter-based imaging operation.

2. The componentized system of claim **1** wherein communications interfaces and physical cabling support communications between the PIM and the processing unit in instances where the processing unit is located outside a region proximate a patient table.

3. The componentized system of claim **2** wherein a communications link between the PIM and the processing unit includes a buffer amplifier.

4. The componentized system of claim **1** wherein a communications link between the processing unit and the monitor extends beyond a region proximate a patient table.

5. The componentized system of claim **4** wherein the communications link includes a buffer amplifier.

6. The componentized system of claim **1** wherein the processing unit is further adapted to support archiving patient data including images generated by the processing unit.

7. The componentized system of claim **1** further comprising a second control panel, and wherein the processing unit supports and processes input from simultaneously actively manipulated control panels.

8. The componentized system of claim **7** wherein the second control panel comprises a third party control panel provided by a catheter lab control station distinct from the componentized system.

9. The componentized system of claim **1** wherein the components are flexibly integrated with catheter lab infrastructure through a set of connection brackets.

10. The componentized system of claim **9** further comprising a set of integration configuration options characterizing a manner in which components are integrated with catheter lab infrastructure.

11. The componentized system of claim **1** wherein the control panel comprises a set of controls arranged into a set of regions based upon their workflow roles.

12. The componentized system of claim **11** wherein the regions comprise:

a setup region including a set of buttons facilitating setup of the system prior to acquiring patient images.

13. The componentized system of claim **12** wherein the first region is positioned at a portion of the control panel distal to a user of the control panel.

14. The componentized system of claim **11** wherein the regions comprise:

an action-oriented region including a set of buttons accessed while acquiring images from a patient.

15. The componentized system of claim **14** wherein the action-oriented region is positioned at a portion of the control panel proximal to a user of the control panel.

16. A multi-region control panel, for an IVUS system, through which a user controls acquisition and display of IVUS image information, the control panel including a physical interface divided into regions/sectors associated with particular workflow functionality, the regions/sectors comprising:

a first region including a set of IVUS action controls for controlling patient image data acquisition;

a second region including pointer navigation controls; and

a third region including controls for setting up IVUS operation.

17. The multi-region control panel of claim **16** wherein the third region includes a sub-region including a set of controls for selecting modes of IVUS operation.

18. The multi-region control panel of claim **16** wherein the pointer navigation controls support multi-button mouse functionality.

19. The multi-region control panel of claim **16** wherein the third region is positioned at a portion of the control panel distal to a user of the control panel.

20. The multi-region control panel of claim **16** wherein the first region is positioned at a portion of the control panel proximal to a user of the control panel.

* * * * *

专利名称(译)	基于组件的导管实验室血管内超声系统		
公开(公告)号	US20120265077A1	公开(公告)日	2012-10-18
申请号	US13/481693	申请日	2012-05-25
[标]申请(专利权)人(译)	火山公司		
申请(专利权)人(译)	火山CORPORATION		
当前申请(专利权)人(译)	火山CORPORATION		
[标]发明人	GILLE HENRICK K BURGESS VINCENT POOL NANCY PERRY OLIVER EDWARD A		
发明人	GILLE, HENRICK K. BURGESS, VINCENT POOL, NANCY PERRY OLIVER, EDWARD A.		
IPC分类号	A61B8/12		
CPC分类号	A61B5/02007 A61B5/055 A61B6/4441 A61B8/12 A61B8/4411 A61B8/565 A61B8/463 A61B8/467 G01S7/5208 G01S7/52084 G01S15/899 A61B8/462 A61B8/461 A61B8/464 A61B8/468		
优先权	60/727146 2005-10-13 US 60/825813 2006-09-15 US		
其他公开文献	US10667784		
外部链接	Espacenet USPTO		

摘要(译)

公开了一种组件化的血管内超声系统，其与导管实验室基础设施灵活地集成，用于在导管实验室环境中获取和显示血管内信息。该系统包括患者接口模块（PIM），其适于保持具有位于远端附近的成像探针的导管，控制面板，用于显示图像和患者数据的监视器，以及处理单元。处理单元通信地耦合到PIM，控制面板和监视器。此外，处理单元适于：协调PIM，控制面板和监视器的操作；并从PIM提供的图像数据生成图像。PIM，控制面板和监视器可相对于彼此独立定位。

