



US 20140171797A1

(19) **United States**

(12) **Patent Application Publication**  
**Hershey et al.**

(10) **Pub. No.: US 2014/0171797 A1**  
(43) **Pub. Date: Jun. 19, 2014**

(54) **SYSTEMS AND METHODS FOR  
COMMUNICATING ULTRASOUND PROBE  
LOCATION AND IMAGE INFORMATION**

**Publication Classification**

(71) Applicant: **GENERAL ELECTRIC COMPANY,**  
Schenectady, NY (US)

(51) **Int. Cl.**  
*A61B 8/00* (2006.01)

(72) Inventors: **John Erik Hershey,** Ballston Lake, NY  
(US); **Michael James Hartman,** Clifton  
Park, NY (US); **Michael Joseph  
Dell'Anno,** Clifton Park, NY (US);  
**Stanislava Soro,** Niskayuna, NY (US)

(52) **U.S. Cl.**  
CPC ..... *A61B 8/56* (2013.01); *A61B 8/4245*  
(2013.01)

USPC ..... **600/437**

(73) Assignee: **General Electric Company,**  
Schenectady, NY (US)

(57) **ABSTRACT**

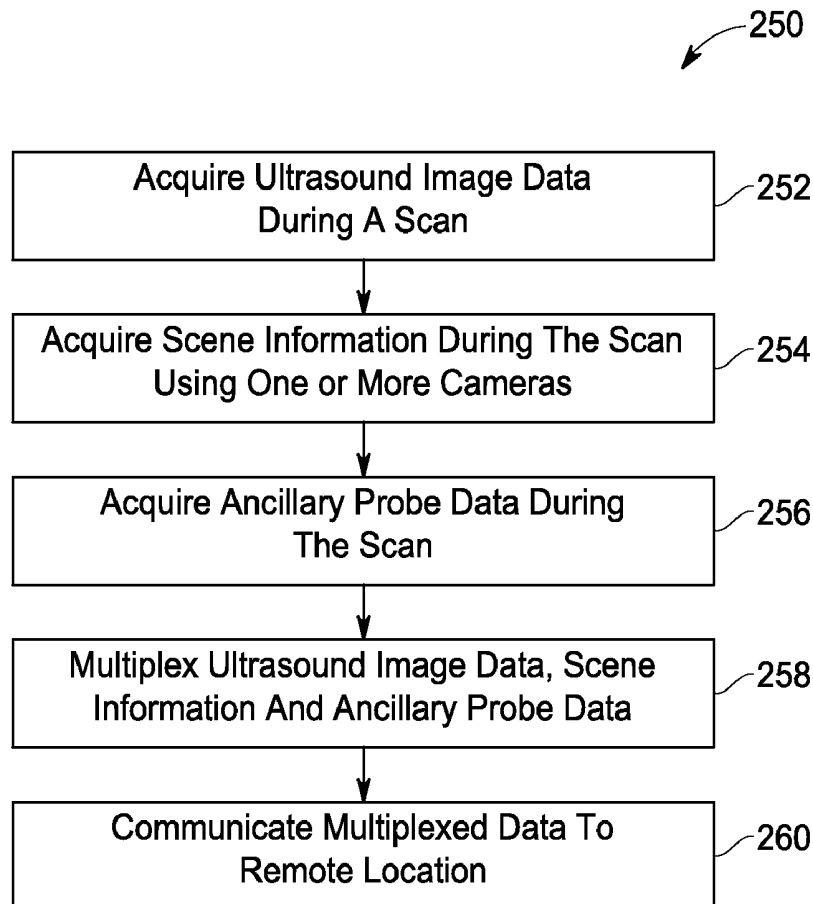
Systems and methods for communicating ultrasound probe location and image information are provided. One system includes an ultrasound device coupled with an ultrasound probe and configured to acquire ultrasound images of a subject. The ultrasound imaging system also includes at least one camera configured to acquire (i) scene information including ultrasound imagery of the ultrasound probe with the subject during an image scan and (ii) ancillary probe data. The ultrasound imaging system further includes a processor configured to receive the ultrasound images and the ancillary probe data and a multiplexing unit configured to receive (i) the ultrasound images and ancillary probe data from the processor and (ii) the scene information from the camera, wherein the multiplexing unit is further configured to associate in time the ultrasound images, ancillary probe data and scene information. The ultrasound imaging system additionally includes a communication device.

(21) Appl. No.: **13/718,934**

(22) Filed: **Dec. 18, 2012**

**Related U.S. Application Data**

(60) Provisional application No. 61/737,428, filed on Dec. 14, 2012.



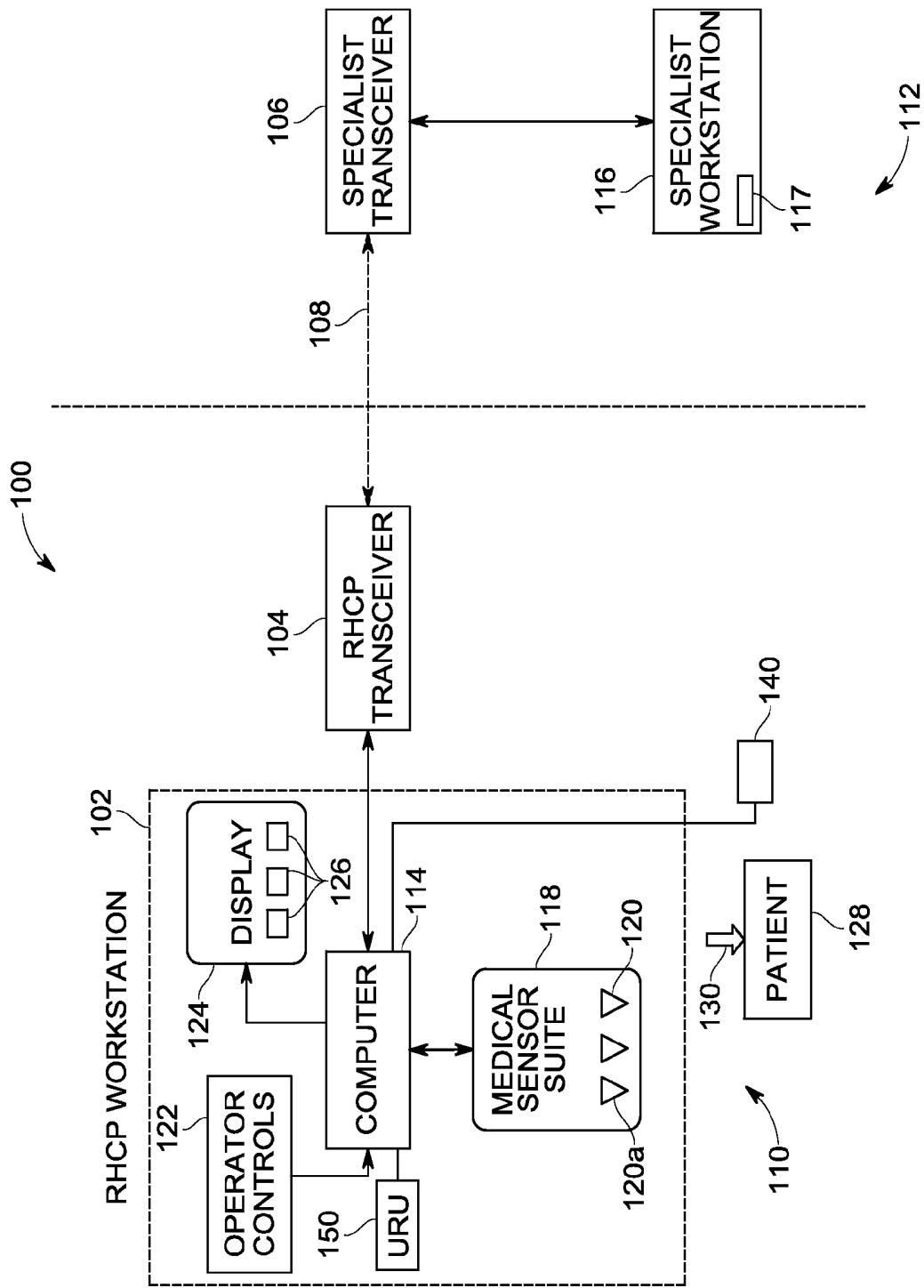


FIG. 1

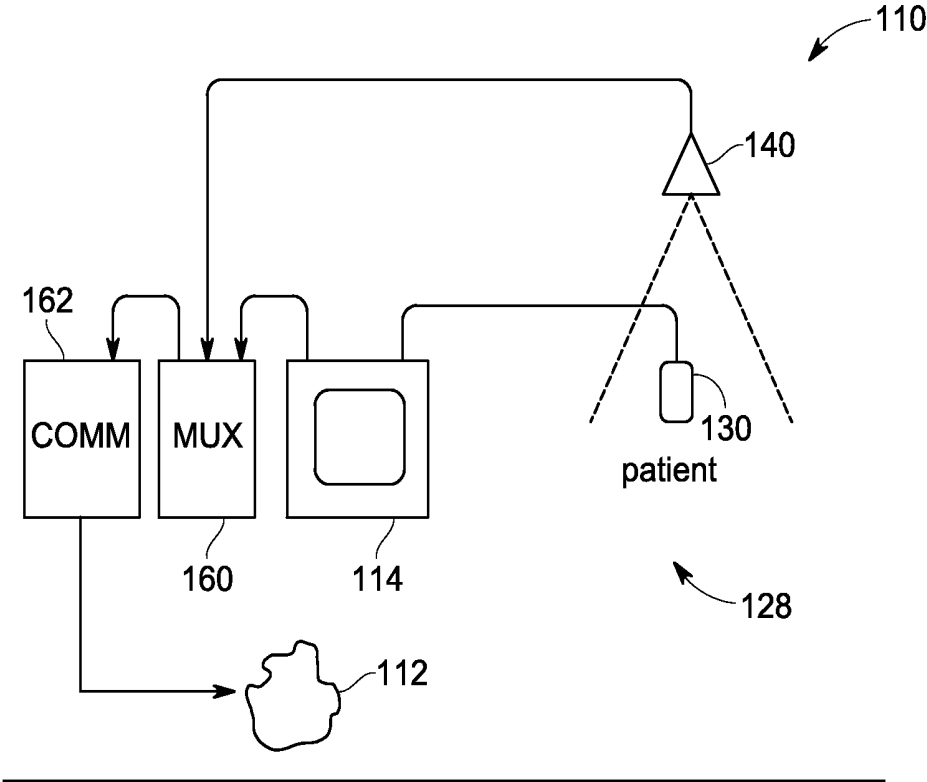


FIG. 2

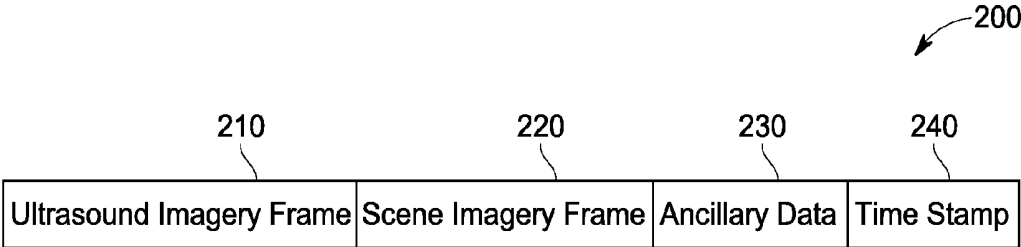


FIG. 3

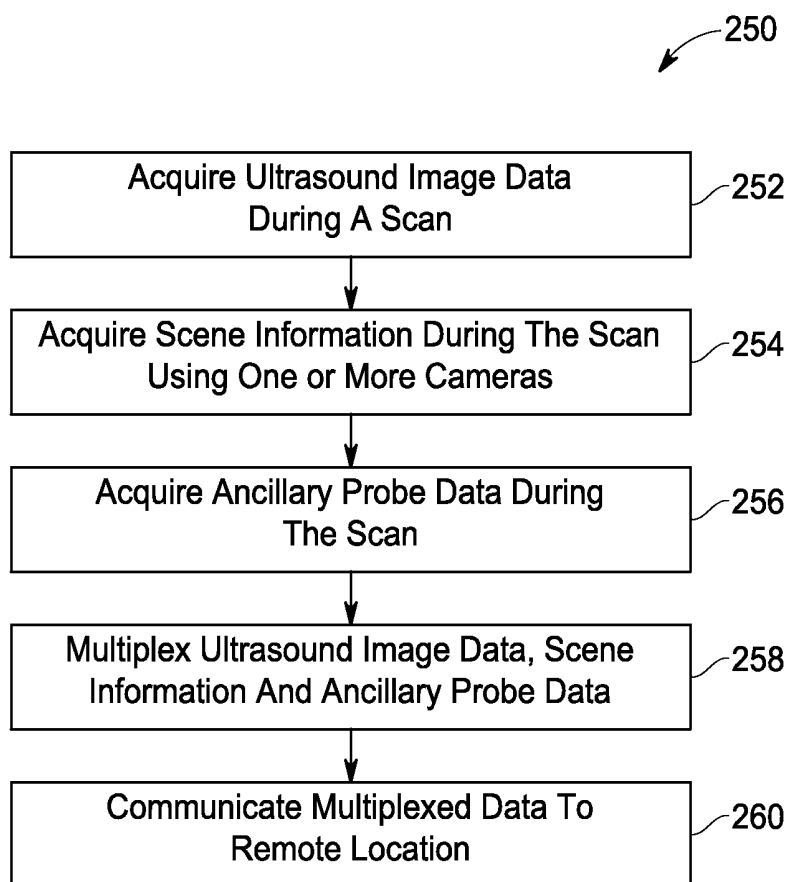


FIG. 4

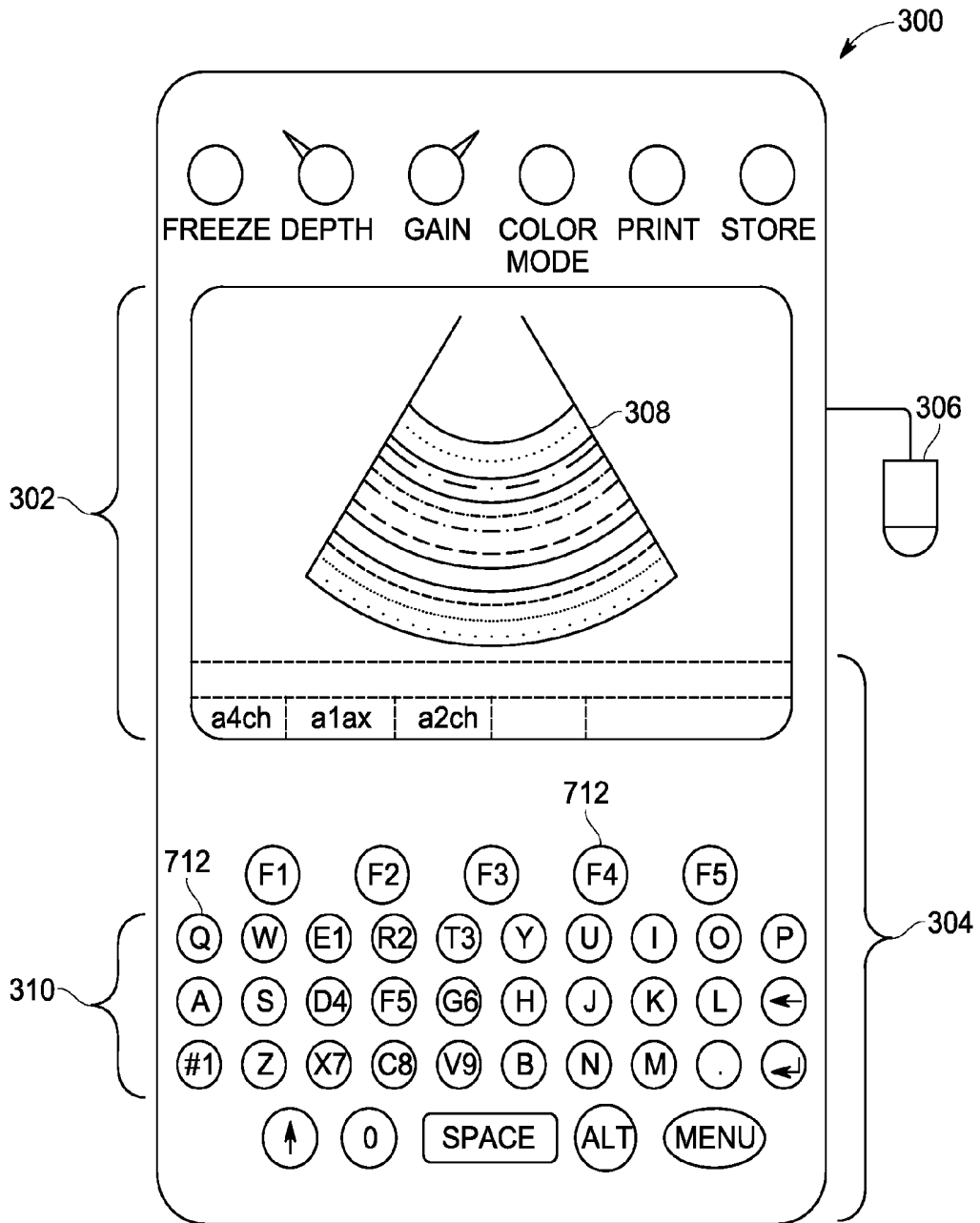


FIG. 5

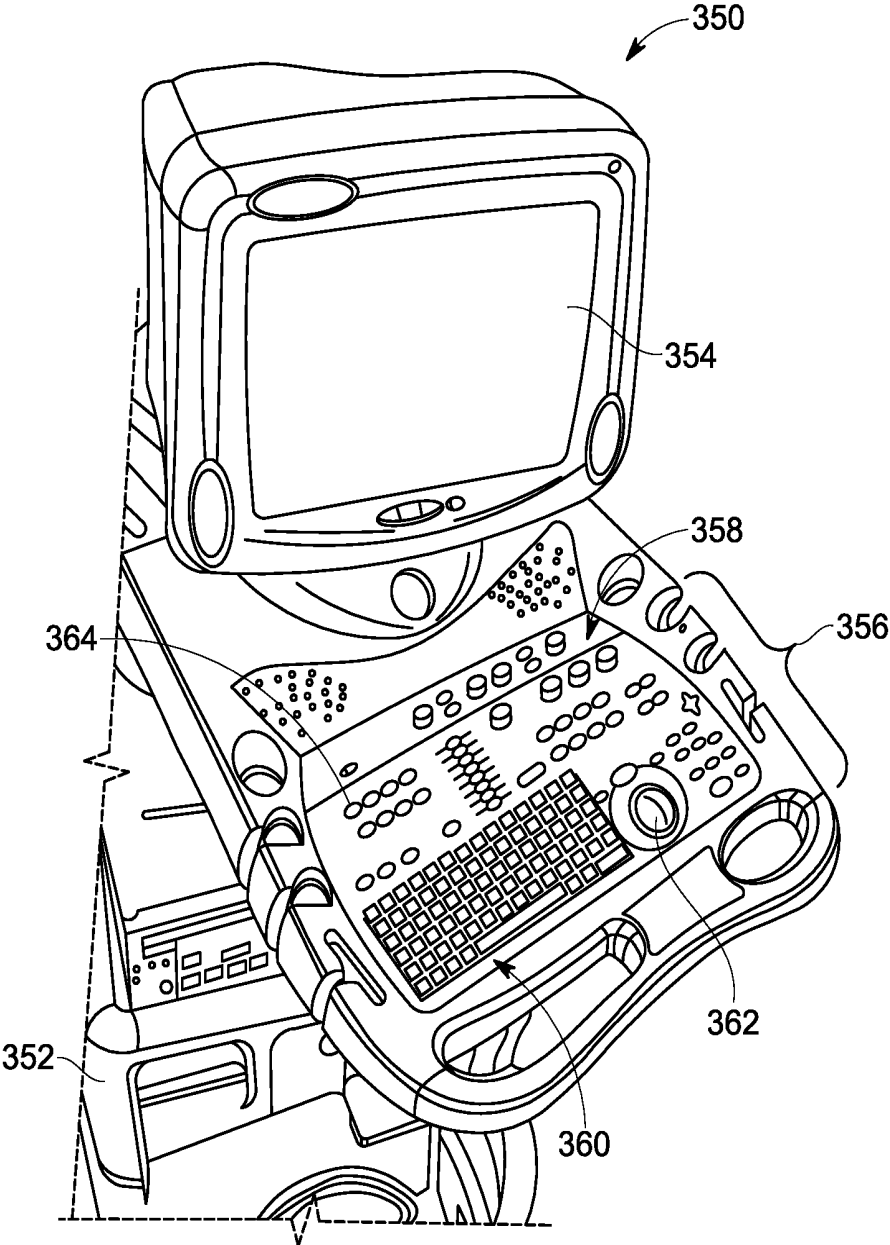


FIG. 6

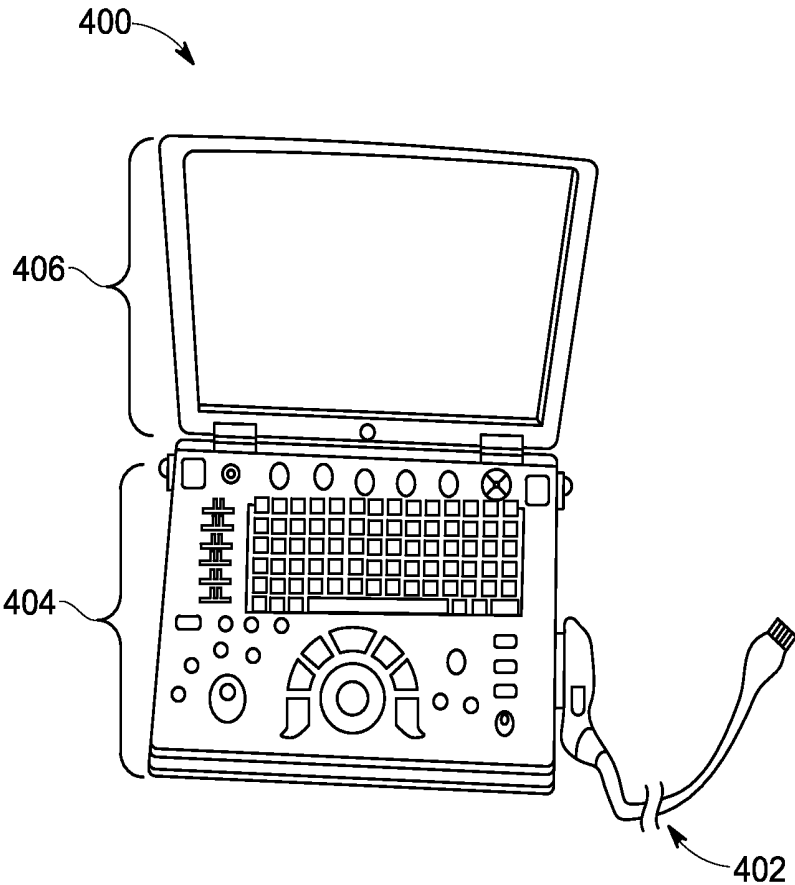


FIG. 7

## SYSTEMS AND METHODS FOR COMMUNICATING ULTRASOUND PROBE LOCATION AND IMAGE INFORMATION

### CROSS REFERENCE TO RELATED APPLICATIONS

**[0001]** This application claims priority to and the benefit of the filing date of U.S. Provisional Application No. 61/737, 428 filed Dec. 14, 2012, the subject matter of which is herein incorporated by reference in its entirety.

### BACKGROUND

**[0002]** Remote health care services, such as performing diagnostic imaging in remote locations that otherwise may not have adequate health care facilities, are increasing. This increase is due in part because in a typical centralized medical care system arrangement, the transportation of patients to a centralized facility takes time, which can result in treating patients later in a disease pathology, increasing cost and deteriorating outcomes.

**[0003]** Ultrasound or sonography has become an increasingly used tool for medical diagnosis. In conventional usage, the health care professional moves, orients, and presses the ultrasound probe over the regions of the patient's body as guided by the health care professional's experience and intuition. When an ultrasound examination is performed at a location remote to a specialist's location, such as by a remote health care practitioner (RHCP) in a medical dispensary remote from a major medical center such as a hospital, the protocol may require diagnosis and direction to be communicated to the remotely located health care professional administering the movement of the ultrasound probe. In these situations, it may not always be sufficiently clear where the ultrasound probe is located on the patient or the track that the probe has traversed.

**[0004]** Also, there are a number of components to the ultrasound probe's control that affect the ultrasound imagery and may aid in the diagnosis. These include the control movements of sliding, rotating, tilting, and compressing. Different operating conditions are also associated with these different control movements. For example, when the probe is slid, the angle of ultrasound beam energy should remain constant with respect to the body. This angle should also remain constant when the probe is rotated. Tilting of the probe is also performed while the probe is at a specific location over the body and may provide more accurate measurements. Compression of the tissue below the ultrasound transducer allows for better viewing of deeper structures and helps differentiate between structures. For example, veins are easily compressed by pressing the probe down, arteries less so, and nerves are essentially incompressible.

**[0005]** However, in remote health care applications, information regarding the ultrasound examination may not be properly communicated to another location, for example, where a specialist is located. Thus, the specialist located remotely from the point of examination may have difficulty associating the remotely acquired ultrasound imagery and probe control with the location on the patient's body corresponding to the imagery.

### SUMMARY

**[0006]** In one embodiment, an ultrasound imaging system is provided that includes an ultrasound device coupled with

an ultrasound probe and configured to acquire ultrasound images of a subject. The ultrasound imaging system also includes at least one camera configured to acquire (i) scene information including ultrasound imagery of the ultrasound probe with the subject during an image scan and (ii) ancillary probe data. The ultrasound imaging system further includes a processor configured to receive the ultrasound images acquired by the ultrasound device and the ancillary probe data acquired by the camera and a multiplexing unit configured to receive (i) the ultrasound images and ancillary probe data from the processor and (ii) the scene information from the camera, wherein the multiplexing unit is further configured to associate in time the ultrasound images, ancillary probe data and scene information. The ultrasound imaging system additionally includes a communication device coupled to the multiplexing unit and configured to communicate the time associated ultrasound images, ancillary probe data and scene information to a remote device.

**[0007]** In another embodiment, an ultrasound imaging system is provided that includes an ultrasound device coupled with an ultrasound probe and configured to acquire ultrasound images of a subject during an ultrasound examination. The ultrasound imaging system further includes at least one camera configured to acquire photographic imagery of the ultrasound probe with the subject during the ultrasound examination and a multiplexing unit configured to associate in time the ultrasound images, the photographic imagery and ancillary probe data. The ultrasound imaging system also includes a communication device coupled to the multiplexing unit and configured to communicate the time associated ultrasound images, photographic imagery and ancillary probe data to a remote device.

**[0008]** In yet another embodiment, a method for communicating ultrasound information is provided. The method includes obtaining ultrasound imagery for a subject, wherein the ultrasound imagery is acquired by an ultrasound probe during an ultrasound examination. The method further includes obtaining photographic scene imagery of the ultrasound probe with the subject during the ultrasound examination, wherein the photographic imagery acquired by a camera. The method also includes obtaining ancillary probe data from at least one of the ultrasound probe or the camera, multiplexing in time the ultrasound imagery with the photographic scene imagery and the ancillary probe data, and communicating the time multiplexed ultrasound imagery, photographic scene imagery and ancillary probe data to a remote device.

### BRIEF DESCRIPTION OF THE DRAWINGS

**[0009]** FIG. 1 is a schematic block diagram of a medical data communication system formed in accordance with an embodiment.

**[0010]** FIG. 2 is a diagram illustrating a camera and communication arrangement within the medical data communication system of FIG. 1.

**[0011]** FIG. 3 is a block diagram of a data packet in accordance with various embodiments.

**[0012]** FIG. 4 is a flowchart of a method for generating and communicating probe location information with ultrasound image data in accordance with various embodiments.

**[0013]** FIG. 5 illustrates a hand carried or pocket-sized ultrasound imaging system formed in accordance with an embodiment.

[0014] FIG. 6 illustrates an ultrasound imaging system formed in accordance with an embodiment and provided on a moveable base.

[0015] FIG. 7 illustrates a 3D-capable miniaturized ultrasound system formed in accordance with an embodiment.

#### DETAILED DESCRIPTION

[0016] The following detailed description of certain embodiments will be better understood when read in conjunction with the appended drawings. To the extent that the figures illustrate diagrams of the functional blocks of various embodiments, the functional blocks are not necessarily indicative of the division between hardware circuitry. Thus, for example, one or more of the functional blocks (e.g., processors, controllers, circuits or memories) may be implemented in a single piece of hardware or multiple pieces of hardware. It should be understood that the various embodiments are not limited to the arrangements and instrumentality shown in the drawings.

[0017] As used herein, an element or step recited in the singular and proceeded with the word “a” or “an” should be understood as not excluding plural of said elements or steps, unless such exclusion is explicitly stated. Furthermore, references to “one embodiment” are not intended to be interpreted as excluding the existence of additional embodiments that also incorporate the recited features. Moreover, unless explicitly stated to the contrary, embodiments “comprising” or “having” an element or a plurality of elements having a particular property may include additional such elements not having that property.

[0018] Various embodiments provide systems and method for conducting or performing an ultrasound examination, photographing the examination, and associating in time, for transmission, the ultrasound imagery with the photographic scene imagery and any ultrasound probe ancillary data (e.g., probe angle, tilt, orientation or compression). For example, in one embodiment, at least one camera may be used to acquire (i) scene information including ultrasound imagery of the ultrasound probe with the subject during an image scan and (ii) ancillary probe data (in some embodiments the ancillary probe data may be alternatively or optionally acquired by a separate device). In various embodiments, ultrasound images acquired from an ultrasound probe along with the scene information from the camera and ancillary probe data are multiplexed or associated in time for transmission from the examination location to a location remote therefrom, such as a specialist's location.

[0019] At least one technical effect of various embodiments is an improved association of remotely acquired ultrasound imagery and probe control with the location on the patient's body corresponding to the imagery.

[0020] Various embodiments provide systems and methods for communicating information relating to an ultrasound scan from one location to another remote location. In one embodiment, an imaging system is provided that communicates information, such as diagnostic images (e.g., ultrasound images), from one location (e.g., a patient examination site) to another location (e.g., a hospital remote from the examination site) along with probe location information, as well as ancillary probe data, which may be communicated over one or more communication channels. It should be noted that the images may be, for example, a streaming series or sequence of images over one or more communication channels. In one embodiment, for example, a remote health care practitioner

(RHCP) may be guided by a specialist using the communicated information. The communicated information is multiplexed, correlated, associated or synchronized in various embodiments.

[0021] FIG. 1 is a schematic block diagram of a medical data communication system 100 for communicating image data, along with images (e.g., photographic images) of an exam and optionally ancillary probe data in accordance with various embodiments. The system 100 is generally configured to acquire medical images, such as ultrasound imagery (e.g., a plurality of ultrasound images over time) at the RHCP's location (as well as probe location information acquired, for example, by one or more cameras) and transmit the ultrasound imagery and probe location information (along with optional ancillary probe data) to, for example, a remotely located specialist for viewing, consultation and/or guidance, which may include providing feedback. The system 100 includes an RHCP workstation 102 that allows acquisition of image data (and probe location information, as well as ancillary probe data) and interface with a user or operator, such as the RHCP. It should be noted that although various embodiments are described in connection with communicating ultrasound data, the various embodiments may be used to communicate other types of medical and non-medical image data, such as other types of medical images, diagnostic audio, electrocardiogram (ECG) and other physiological waveforms, which may be communicated in a streaming manner.

[0022] The system 100 includes an RHCP transceiver 104 that communicates with a remote transceiver, which in the illustrated embodiment is a specialist transceiver 106 (e.g., a transceiver located at a location of a specialist). The transceivers 104, 106 communicate over or form a communication link 108, which may include one or more communication channels (e.g., cellular network communication channels). Accordingly, the communication link 108 provides bi-directional or two-way communication between a first location 110 and a second location 112, which may be an examination location and a specialist location remote therefrom (e.g., miles away), respectively, in one embodiment.

[0023] With respect to the first location 110 where the image data is acquired and processed, the RHCP workstation 102 includes a processor, which is illustrated as a computer 114. The computer 114 is coupled to the RHCP transceiver 104 to allow communication between the computer 114 and another workstation at the second location 112, illustrated as a specialist workstation 116, via the specialist transceiver 106. It should be noted that the RHCP transceiver 104 and the specialist transceiver 106 may form part of or be separate from the RHCP workstation 102 and the specialist workstation 116, respectively. It also should be noted that the workstations 102 and 116 may be any types of workstations usable by different types of operators (and in some embodiments, may be electronic tablet devices, notebook computers, cellular phones, etc.). The specialist workstation 116 may be, for example, a data server where multiple workstations may be connected and interacting with the computer 114 at the patient location, such as the RHCP workstation 102.

[0024] The computer 114 is also connected to one or more medical devices 120 illustrated as a medical sensor suite 118. The medical devices 120 may be removably and operatively coupled to an interface (now shown) of the RHCP workstation 102 to allow communication therebetween. The medical sensor suite 118 may include a plurality of different types or kinds of medical devices, such as plurality of different types

of medical imaging probes that may be used for different imaging applications. In one embodiment, the medical device **120a** is an ultrasound imaging apparatus that may be used to image a patient **128** or a portion of the patient **128**.

[0025] The computer **114** is also coupled to a user input **122** that includes one or more user controls (e.g., keyboard, mouse, touchpad or touchscreen) for interfacing or interacting with the RHCP workstation **102**. The computer **114** is also coupled to a display **124**, which may be configured to display one or more ultrasound images **126**, such as in a time sequence or loop of images, also known as a cine loop. In operation, a user is able to control the display of the images **126** on the display **124** using the user input **122**, for example, controlling the particular display settings. The user input **122** may also allow a user to control the acquisition of the image data used to generate the images **126**, such as the image acquisition settings or controls. In one embodiment, the user input **122** allows control of the ultrasound imaging apparatus **120a**.

[0026] The ultrasound imaging apparatus **120a** is configured to acquire ultrasound image data that may be processed by the ultrasound imaging apparatus **120a** or the RHCP workstation **102** to generate one or more images (e.g., 2D, 3D or 4D images) of a region of interest, for example an anatomy of interest, of a subject, such as the patient **128**. The ultrasound imaging apparatus **120a** or the RHCP workstation **102** generates one or more images by reconstructing imaging data acquired by the ultrasound imaging apparatus **120a**. It should be noted that as used herein, imaging data and image data both generally refer to data that may be used to reconstruct an image.

[0027] In one embodiment, the imaging data is acquired with an imaging probe **130**. The imaging probe **130** may be a hand-held ultrasound imaging probe. Alternatively, the imaging probe **130** may be an infrared-optical tomography probe. The imaging probe **130** may be any suitable probe for acquiring ultrasound images in another embodiment. The imaging probe **130** may be mechanically coupled to the ultrasound imaging apparatus **120a**. Alternatively or optionally, the imaging probe **130** may be in wireless communication with the ultrasound imaging apparatus **120a**. In still other embodiments, the imaging probe **130** is alternatively or optionally coupled to the RHCP workstation **102**.

[0028] The computer **114** is further coupled to a camera **140**, which in one embodiment, is a digital camera. For example, the camera **140** may communicate images with probe location information (and optionally ancillary probe data) for associating in time the location of the imaging probe **130** with one or more corresponding image frames acquired during an image scan by the ultrasound imaging apparatus **120a**, and which are communicated to a remote location. For example, the camera **140** in various embodiments is configured to acquire "scene information", which in various embodiments is one or more (e.g., a series of) digital pictures of the examination scene (which may indicate the position of the probe, such as showing sliding, rotating or tilting of the probe or compression by the probe), including the patient **128** and the probe **130** being used to acquire the ultrasound image data. The camera **140** may acquire digital pictures periodically (e.g., every 3, 5, 10 or 30 seconds) during the ultrasound scan. The camera **140** may be any suitable digital camera, for example, a camera having a defined minimum resolution level (e.g., 5 mega-pixels) and optionally optical or digital

zoom capabilities. In some embodiments, the camera **140** also allows for storage therein of the acquired scene images.

[0029] In operation, data acquired by the ultrasound imaging apparatus **120a** and the camera **140** is accessible and may be communicated between the first location **110** and the second location **112** using the transceivers **104**, **106**. It should be noted that the transceivers **104**, **106** may be configured to communicate using any suitable communication protocol, such as a suitable wireless communication protocol, for example cellular 3G communication protocols. Using this arrangement, data from the computer **114** at the RHCP workstation **102** may be transmitted to a specialist at the specialist workstation **116** and data sent from the specialist may be received at the RHCP workstation **102**.

[0030] Various embodiments provide for acquiring and communicating probe location information correlated or synchronized (e.g., synchronized in time) with the acquired scene information and optionally the ancillary probe data. For example, as shown in FIG. 2, which illustrates the first location **110**, various embodiments acquire information to allow a remotely located specialist to associate the ultrasound probe's position and track on an examined patient. The system **100** in various embodiments provides a multiplexed association scheme to enable this association. It should be noted that FIG. 2 illustrates only some of the components of the system **100** for ease of illustration.

[0031] The patient **128** is shown examined using the ultrasound probe **130**. This data is used to form one or more ultrasound imagery frames by a processor, such as the computer **114**, which may also perform a local image display function.

[0032] The camera **140** (e.g., a digital camera), which may be a scene imagery camera views the patient **128** and the ultrasound probe **130** during the ultrasound examination. The camera **140** may also have sufficient resolution and be so positioned with respect to the patient **128** and the ultrasound probe **130** that the captured scene imagery is sufficient for discerning not only the probe's position on the patient **128**, but also ancillary probe data, such as the probe orientation angle with respect to a reference line on the patient (e.g., an imaginary or virtual line) and the probe's tilt angle with respect to the patient's surface, and/or the probe pressure or compression exerted on the patient **128** thereby compressing the patient's tissue directly under the probe **130**. The ancillary probe data may be determined using image processing techniques that identify the objects within the images and correlate the object positions. In other embodiments, a user may visually determine the ancillary probe data, as well as the probe location.

[0033] In some situations, ancillary probe data, such as the probe orientation angle and tilt angle and compression may be measured by the probe **130**. In particular, the location of the probe may be determined or supplemented using other devices. For example, probes with sensors that allow a determination of the magnetic orientation of the device may be used. As another example, accelerometers may be used in connection with the probe **130**, for example, a three-axis accelerometer, a gyroscope, such as a three-axis gyroscope, or the like that determines the x, y, and z coordinates of the probe **130**. As still another example, local location mechanisms or GPS (or the like) may be used. Thus, in some embodiments the probe **130** may include a sensor coupled therewith (e.g., a differential sensor). The sensor may be externally coupled to the probe **130** or may be formed inte-

grally with and positioned in a housing of the probe **130** in other embodiments. The tracking device may receive and transmit signals indicative of a position thereof and is used to acquire positional data of the probe **130**. For example, the sensor may determine a position and an orientation of the probe **130**. Other position sensing devices may be used, for example, optical, ultrasonic, or electro-magnetic position detection systems.

[0034] In some cases, other ancillary probe data, such as probe compression may be estimated by techniques based on sequential ultrasound image frame cross-correlations by, for example, inferring differential compression by changes in the dimensions of veins within the image as probe pressure is increased.

[0035] It should be noted that the probe location information and/or scene information also may be acquired using different suitable techniques. For example, this information may be acquired as described in co-pending application entitled "Systems and Methods for Providing Ultrasound Probe Location and Image Information" having U.S. application Ser. No. 13/718,762, which is commonly owned.

[0036] In various embodiments, the ultrasound imagery and any ancillary probe data are sent from the computer **114** to a multiplexing (mux) unit **160** which also receives the time associated scene imagery from the camera **140** (e.g., time stamped information). The multiplexing unit **150** creates an association between the ultrasound imagery frames and the scene imagery frames and any time associated ancillary probe data and transfers this data to a communication device (COMM) **162** that sends the data to the remote specialist's location **112**.

[0037] It should be noted that the multiplexing unit **160** may use different methods and techniques to create data associations and is not limited to any specific method or the methods described herein. For example, in one embodiment, the multiplexing unit **160** assigns and/or affixes time tags to the different imagery data and any ancillary probe data and creates a table with time tags to associate the individual ultrasound imagery frames, the scene imagery frames, and any associated ancillary probe data. At the remote specialist's location **112**, the synchronization between the ultrasound imagery frames, the scene imagery frames, and any associated ancillary probe data may be established by using the time tags.

[0038] In another embodiment, an ultrasound imagery frame is embedded with the time synchronized scene imagery frame and any time synchronized ancillary probe data into the same data packet which is sent to the specialist's location **112**. In this embodiment, each of the data packets may also include a time stamp that identifies the time the packet fields within the data packet were produced. This will then allow the data in the data packets to be displayed and studied in the order in which the data packets were produced.

[0039] For example, an exemplary data packet structure is illustrated in FIG. 3. The data packet **200** is composed of field **210** containing an ultrasound imagery frame, field **220** containing the time associated scene imagery frame, field **230** containing any time associated probe ancillary data, and optional field **240** containing the time stamp. Thus, the data packet **200** may include control information and data (which may be referred to as the payload). Accordingly, the data within the different fields may be data that was acquired at the same time and synchronized based on time stamps. The data

packets **200** may be generated, communicated and processed using techniques suitable for transmitting such data, for example, medical data.

[0040] It should be noted that variations and modifications are contemplated. For example, data compression may be used between successive imagery frames, and any successive ancillary probe data. In particular, sequential scene imagery frames may be highly correlated and compressible, such as compression of successive differences.

[0041] In various embodiments, ultrasound data registration is provided, for example, by communicating position information for the probe **130** (e.g., scene images showing the probe **130** in combination with or in contact with the patient **128**) to the computer **114** by one or more cameras **140** and the location of the probe is then referenced to the patient's body along with associating any ancillary probe data. For example, the information from the camera(s) **140** and probe **130** may be time stamped with the time stamp information then used to identify and correlate the image data acquired by the probe **130** to the corresponding location information and any ancillary probe data, such that the information is synchronized in time.

[0042] In various embodiments, the multiplexing unit **160** reserves locations within the multiplexing process to allow portions of the data to align properly with the particular time segment. For example, the communicated information is synchronized or time stamp or synchronizing information is provided to ensure that the ultrasound imagery (e.g., ultrasound image frame) is synchronized in time with the image of the patient to allow correlation or identification of the probe location or orientation (along with other ancillary probe data) with the ultrasound imagery.

[0043] A flowchart of a method **250** in accordance with various embodiments for generating and communicating probe location information (and optionally ancillary probe data) synchronized with ultrasound image data is shown in FIG. 4. The method **250** allows for the determination of the location of the probe relative to the patient's body (and any ancillary probe data) to be communicated to a remote location with the scene information or scene image data such that the probe location information corresponding to frames of ultrasound data are correlated or synchronized. Thus, the image scene of the patient is time synchronized with the acquired probe images and multiplexed into data packets to allow transmission to a remote location where the data may be displayed to a user in a time associated manner.

[0044] The method **250** includes acquiring at **252** ultrasound image data during a scan, for example, an ultrasound examination of a patient. The ultrasound image data may include acquiring ultrasound images using a determined scan protocol. During the scan, the operator may move (e.g., rotate or translate) the probe to acquire different views or image frames of a region of interest, which may be processed to generate ultrasound imagery.

[0045] The method **250** also includes acquiring scene information during the scan at **254**. The scene information in various embodiments provides probe location information during the scan showing the probe in relation to the patient during the scan. In various embodiments, the probe location information is acquired using one or more digital cameras (and optionally the probe or a device coupled to the probe). For example, during the scan, time stamped images of the patient and probe are acquired and stored. The time stamping

of these digital scene images allows for correlation to the ultrasound image data acquired at **252**.

**[0046]** The method **250** further includes acquiring ancillary probe data during the scan at **256**. As described in more detail herein, the ancillary probe data may be acquired or determined using the scene information and alternatively or optionally using the probe or a device coupled with the probe. Thus, while the scene information provides the location of the probe relative to the patient during the scan, the ancillary probe data may provide more information regarding the position (e.g., tilt angle, orientation angle or rotation) of the probe or the operating state or characteristics of the probe (e.g., probe compression on the patient). It should be noted that step **256** is optionally performed in various embodiments.

**[0047]** The method **250** additionally includes multiplexing the ultrasound image data, scene information and ancillary probe data at **258**. In particular, various embodiments provide a multiplexed association scheme such that, for example, a remotely located specialist may use to associate the position of the ultrasound probe and track on an examined patient. For example, data packets are generated that include multiplexed data, which may include ultrasound imagery, image scenes (e.g., photographic images of the examination area including the probe) and ancillary probe data. In one embodiment, each data packet corresponds to a time stamped event during the ultrasound examination. For example, the multiplexing sequence may include reserved locations for the portions of data (e.g., the different types of data or information) for each of a plurality of time segments to ensure data associations such that data packets received at the remote location, when processed, can identify, for example, scene information and ancillary probe data corresponding to particular image frames. Thus, in various embodiments, data packets are created at the location of the examination, such as by populating the packets with data that is associated by the multiplexing in some embodiments. The data packets are then communicated to another location, for example, to a specialist at a remote location. The system at the location of the specialist may parse the received packets to extract data in a plurality of data fields as described in more detail herein.

**[0048]** It should be noted that the data packets may correspond to data for a currently performed ultrasound examination or for a previously performed ultrasound examination.

**[0049]** The method **250** also includes communicating the multiplexed data to a remote location at **260**, for example, from the examination location to a location of the specialist. The communication may be performed using different communication standards or protocols. The communicated multiplexed data may then be processed such that, for example, the specialist located remotely from the point of examination can better associate the remotely acquired ultrasound imagery and probe control with the location on the patient's body corresponding to the ultrasound imagery. For example, photographic scene images synchronized with ultrasound imagery and optionally additional ancillary probe information may be displayed using the multiplexed data.

**[0050]** In various embodiments, the display at, for example, the specialist location may also display a three-dimensional (3D) model (e.g., 3D representation) of the patient. In one embodiment, if the image data is of a poor or lower quality (e.g., the specialist is unable to determine the location of probe), the display at the specialist workstation **116** may additionally, optionally or alternatively display a 3D body model with the probe location overlaid on the model. For

example, as part of the data communicated from the RHCP workstation **102**, respective coordinates of the probe location and orientation can be sent and associated on the 3D body model.

**[0051]** The various embodiments may be implemented in connection with different imaging systems, such as different ultrasound imaging systems. For example, FIG. **5** illustrates a hand carried or pocket-sized ultrasound imaging system **300** (which may be embodied as part of the system **100** shown in FIG. **1**). The ultrasound imaging system **300** may be configured to operate and multiplex images and probe location information (as well as ancillary probe information) as described in the method **250** (shown in FIG. **4**) for communication to a remote location. The ultrasound imaging system **300** has a display **302** and a user interface **304** formed in a single unit. By way of example, the ultrasound imaging system **300** may be approximately two inches wide, approximately four inches in length, and approximately half an inch in depth. The ultrasound imaging system may weigh approximately three ounces. The ultrasound imaging system **700** generally includes the display **302** and the user interface **304**, which may or may not include a keyboard-type interface or touch screen and an input/output (I/O) port for connection to a scanning device, for example, an ultrasound probe **306**. The display **302** may be, for example, a 320×320 pixel color LCD display on which a medical image **308** or series of medical images **308** may be displayed. A typewriter-like keyboard **310** of buttons **312** may optionally be included in the user interface **304**.

**[0052]** The probe **306** may be coupled to the system **300** with wires, cable, or the like. Alternatively, the probe **306** may be physically or mechanically disconnected from the system **300**. The probe **306** may wirelessly transmit acquired ultrasound data to the system **300** directly or through an access point device (not shown), such as an antenna disposed within the system **300**.

**[0053]** FIG. **6** illustrates an ultrasound imaging system **350** (which may be embodied as part of the system **100**) provided on a moveable base **352**. The ultrasound imaging system **350** may be configured to operate as described in the method **250** (shown in FIG. **4**). A display **354** and a user interface **356** are provided and it should be understood that the display **354** may be separate or separable from the user interface **356**. The user interface **356** may optionally be a touchscreen, allowing an operator to select options by touching displayed graphics, icons, and the like.

**[0054]** The user interface **356** also includes control buttons **358** that may be used to control the system **350** as desired or needed, and/or as typically provided. The user interface **356** provides multiple interface options that the user may physically manipulate to interact with ultrasound data and other data that may be displayed, as well as to input information and set and change scanning parameters and viewing angles, etc. For example, a keyboard **360**, trackball **362**, and/or other controls **364** may be provided. One or more probes (such as the probe **130** shown in FIG. **1**) may be communicatively coupled with the system **350** to transmit acquired ultrasound data to the system **350**.

**[0055]** FIG. **7** illustrates a 3D-capable miniaturized ultrasound system **400** (which may be embodied as part of the system **100**). The ultrasound imaging system **400** may be configured to operate as described in the method **250** (shown in FIG. **4**). The ultrasound imaging system **400** has a probe **402** that may be configured to acquire 3D ultrasonic data or

multi-plane ultrasonic data. A user interface **404** including an integrated display **806** is provided to receive commands from an operator. As used herein, “miniaturized” means that the ultrasound system **400** is a handheld or hand-carried device or is configured to be carried in a person’s hand, pocket, brief-case-sized case, or backpack. For example, the ultrasound system **400** may be a hand-carried device having a size of a typical laptop computer. The ultrasound system **400** is easily portable by the operator, such as in locations remote from a hospital or major health care facility. The integrated display **406** (e.g., an internal display) is configured to display, for example, one or more medical images.

**[0056]** The various embodiments and/or components, for example, the modules, or components and controllers therein, also may be implemented as part of one or more computers or processors. The computer or processor may include a computing device, an input device, a display unit and an interface, for example, for accessing the Internet. The computer or processor may include a microprocessor. The microprocessor may be connected to a communication bus. The computer or processor may also include a memory. The memory may include Random Access Memory (RAM) and Read Only Memory (ROM). The computer or processor further may include a storage device, which may be a hard disk drive or a removable storage drive such as a solid-state drive, optical disk drive, flash drive, jump drive, USB drive and the like. The storage device may also be other similar means for loading computer programs or other instructions into the computer or processor.

**[0057]** As used herein, the term “computer” or “module” may include any processor-based or microprocessor-based system including systems using microcontrollers, reduced instruction set computers (RISC), application specific integrated circuits (ASICs), logic circuits, and any other circuit or processor capable of executing the functions described herein. The above examples are exemplary only, and are thus not intended to limit in any way the definition and/or meaning of the term “computer”.

**[0058]** The computer or processor executes a set of instructions that are stored in one or more storage elements, in order to process input data. The storage elements may also store data or other information as desired or needed. The storage element may be in the form of an information source or a physical memory element within a processing machine.

**[0059]** The set of instructions may include various commands that instruct the computer or processor as a processing machine to perform specific operations such as the methods and processes of the various embodiments. The set of instructions may be in the form of a software program. The software may be in various forms such as system software or application software and which may be embodied as a tangible and non-transitory computer readable medium. Further, the software may be in the form of a collection of separate programs or modules, a program module within a larger program or a portion of a program module. The software also may include modular programming in the form of object-oriented programming. The processing of input data by the processing machine may be in response to operator commands, or in response to results of previous processing, or in response to a request made by another processing machine.

**[0060]** As used herein, the terms “software” and “firmware” are interchangeable, and include any computer program stored in memory for execution by a computer, including RAM memory, ROM memory, EPROM memory,

EEPROM memory, and non-volatile RAM (NVRAM) memory. The above memory types are exemplary only, and are thus not limiting as to the types of memory usable for storage of a computer program.

**[0061]** It is to be understood that the above description is intended to be illustrative, and not restrictive. For example, the above-described embodiments (and/or aspects thereof) may be used in combination with each other. In addition, many modifications may be made to adapt a particular situation or material to the teachings of the various embodiments of the described subject matter without departing from their scope. While the dimensions and types of materials described herein are intended to define the parameters of the various embodiments, the embodiments are by no means limiting and are exemplary embodiments. Many other embodiments will be apparent to one of ordinary skill in the art upon reviewing the above description. The scope of the various embodiments should, therefore, be determined with reference to the appended claims, along with the full scope of equivalents to which such claims are entitled. In the appended claims, the terms “including” and “in which” are used as the plain-English equivalents of the respective terms “comprising” and “wherein.” Moreover, in the following claims, the terms “first,” “second,” and “third,” etc. are used merely as labels, and are not intended to impose numerical requirements on their objects. Further, the limitations of the following claims are not written in means-plus-function format and are not intended to be interpreted based on 35 U.S.C. §112, sixth paragraph, unless and until such claim limitations expressly use the phrase “means for” followed by a statement of function void of further structure.

**[0062]** This written description uses examples to disclose the various embodiments, including the best mode, and also to enable one of ordinary skill in the art to practice the various embodiments, including making and using any devices or systems and performing any incorporated methods. The patentable scope of the various embodiments is defined by the claims, and may include other examples that occur to those skilled in the art. Such other examples are intended to be within the scope of the claims if the examples have structural elements that do not differ from the literal language of the claims, or if the examples include equivalent structural elements with insubstantial differences from the literal languages of the claims.

1. An ultrasound imaging system, comprising:
  - an ultrasound device coupled with an ultrasound probe and configured to acquire ultrasound images of a subject;
  - at least one camera configured to acquire (i) scene information including ultrasound imagery of the ultrasound probe with the subject during an image scan and (ii) ancillary probe data;
  - a processor configured to receive the ultrasound images acquired by the ultrasound device and the ancillary probe data acquired by the camera;
  - a multiplexing unit configured to receive (i) the ultrasound images and ancillary probe data from the processor and (ii) the scene information from the camera, the multiplexing unit further configured to associate in time the ultrasound images, ancillary probe data and scene information; and
  - a communication device coupled to the multiplexing unit and configured to communicate the time associated ultrasound images, ancillary probe data and scene information to a remote device.

2. The ultrasound imaging system of claim 1, wherein the camera is a digital camera having at least one of (i) a resolution or (ii) a positioning with respect to the subject and the ultrasound probe to acquire image information of a position of the ultrasound probe on the patient and the ancillary probe data.

3. The ultrasound imaging system of claim 1, wherein the ancillary probe data comprises at least one of a probe orientation angle of the ultrasound probe with respect to a reference line on the subject or a tilt angle of the ultrasound probe with respect to a surface of the subject.

4. The ultrasound imaging system of claim 1, wherein the ancillary probe data comprises one of a pressure or compression of the ultrasound probe on the subject.

5. The ultrasound imaging system of claim 1, wherein the ultrasound images, ancillary probe data and scene information include time tags and wherein the remote device comprises a processor configured to time synchronize the ultrasound images, ancillary probe data and scene information using the time tags.

6. The ultrasound imaging system of claim 1, wherein the communication device is configured to embed an ultrasound image frame of the ultrasound images with a time synchronized scene imagery frame of the scene information and time synchronized ancillary probe data into a single data packet communicated to the remote device.

7. The ultrasound imaging system of claim 6, wherein the data packet comprises a time stamp identifying a time that packet fields in the data packet were created.

8. The ultrasound imaging system of claim 1, wherein the processor is configured to perform compression between successive imagery frames of the scene information and successive ancillary probe data.

9. An ultrasound imaging system, comprising:

an ultrasound device coupled with an ultrasound probe and configured to acquire ultrasound images of a subject during an ultrasound examination;

at least one camera configured to acquire photographic imagery of the ultrasound probe with the subject during the ultrasound examination;

a multiplexing unit configured to associate in time the ultrasound images, the photographic imagery and ancillary probe data; and

a communication device coupled to the multiplexing unit and configured to communicate the time associated ultrasound images, photographic imagery and ancillary probe data to a remote device.

10. The ultrasound imaging system of claim 9, wherein the camera IS configured to acquire the ancillary probe data.

11. The ultrasound imaging system of claim 9, wherein the ultrasound probe is configured to acquire the ancillary probe data.

12. The ultrasound imaging system of claim 9, wherein the ancillary probe data comprises at least one of a probe orientation angle or a tilt angle of the ultrasound probe with respect to the subject.

13. The ultrasound imaging system of claim 9, wherein the ancillary probe data comprises one of a pressure or compression of the ultrasound probe on the subject.

14. A method for communicating ultrasound information, the method comprising:

obtaining ultrasound imagery for a subject, the ultrasound imagery acquired by an ultrasound probe during an ultrasound examination;

obtaining photographic scene imagery of the ultrasound probe with the subject during the ultrasound examination, the photographic imagery acquired by a camera;

obtaining ancillary probe data from at least one of the ultrasound probe or the camera;

multiplexing in time the ultrasound imagery with the photographic scene imagery and the ancillary probe data; and

communicating the time multiplexed ultrasound imagery, photographic scene imagery and ancillary probe data to a remote device.

15. The method of claim 14, further comprising embedding a time synchronized ultrasound image frame from the ultrasound imagery, a time synchronized scene imagery frame from the photographic scene imagery and time synchronized ancillary probe data in a single data packet.

16. The method of claim 14, further comprising displaying on a display of the remote device data associating the ultrasound imagery, the photographic scene imagery and the ancillary probe data.

17. The method of claim 14, further comprising receiving probe control commands from the remote location in response to the communicated time multiplexed ultrasound imagery, photographic scene imagery and ancillary probe data to a remote device.

18. The method of claim 14, wherein the ancillary probe data comprises at least one of a probe orientation angle or a tilt angle of the ultrasound probe with respect to the subject.

19. The method of claim 14, wherein the ancillary probe data comprises one of a pressure or compression of the ultrasound probe on the subject.

20. The method of claim 14, further comprising using time stamping to multiplex in time the ultrasound imagery with the photographic scene imagery and the ancillary probe data.

\* \* \* \* \*

专利名称(译)	用于传送超声探头位置和图像信息的系统和方法		
公开(公告)号	<a href="#">US20140171797A1</a>	公开(公告)日	2014-06-19
申请号	US13/718934	申请日	2012-12-18
[标]申请(专利权)人(译)	通用电气公司		
申请(专利权)人(译)	通用电气公司		
当前申请(专利权)人(译)	通用电气公司		
[标]发明人	HERSHEY JOHN ERIK HARTMAN MICHAEL JAMES DELLANNO MICHAEL JOSEPH SORO STANISLAVA		
发明人	HERSHEY, JOHN ERIK HARTMAN, MICHAEL JAMES DELL'ANNO, MICHAEL JOSEPH SORO, STANISLAVA		
IPC分类号	A61B8/00		
CPC分类号	A61B8/4245 A61B8/56 A61B5/0022 A61B5/0073 A61B8/4254 A61B8/4263 A61B8/4472 G01S7/003 G01S15/899		
优先权	61/737428 2012-12-14 US		
其他公开文献	US9232934		
外部链接	<a href="#">Espacenet</a> <a href="#">USPTO</a>		

摘要(译)

提供了用于传送超声探测器位置和图像信息的系统和方法。一种系统包括超声设备，该超声设备与超声探头耦合并且被配置为获取对象的超声图像。超声成像系统还包括至少一个相机，其被配置为获取(i)场景信息，该场景信息包括在图像扫描期间超声探头与对象的超声成像，以及(ii)辅助探头数据。超声成像系统还包括：处理器，被配置为接收超声图像和辅助探测数据；以及多路复用单元，被配置为从处理器接收(i)超声图像和辅助探测数据，以及(ii)来自摄像机的场景信息，其中，复用单元还被配置为在时间上关联超声图像，辅助探测数据和场景信息。超声成像系统另外包括通信设备。

