



(11) **EP 3 238 635 A1**

(12) **EUROPEAN PATENT APPLICATION**
published in accordance with Art. 153(4) EPC

(43) Date of publication:
01.11.2017 Bulletin 2017/44

(51) Int Cl.:
A61B 8/14 (2006.01) G06T 1/00 (2006.01)

(21) Application number: **15872603.4**

(86) International application number:
PCT/JP2015/083155

(22) Date of filing: **26.11.2015**

(87) International publication number:
WO 2016/104034 (30.06.2016 Gazette 2016/26)

(84) Designated Contracting States:
AL AT BE BG CH CY CZ DE DK EE ES FI FR GB GR HR HU IE IS IT LI LT LU LV MC MK MT NL NO PL PT RO RS SE SI SK SM TR
Designated Extension States:
BA ME
Designated Validation States:
MA MD

(71) Applicant: **Furuno Electric Co., Ltd.**
Nishinomiya-City, Hyogo 662-8580 (JP)

(72) Inventor: **ARAI, Tatsuo**
Nishinomiya-City
Hyogo 662-8580 (JP)

(74) Representative: **CSY London**
10 Fetter Lane
London EC4A 1BR (GB)

(30) Priority: **26.12.2014 JP 2014265167**

(54) **ULTRASOUND BODY TISSUE DETECTING DEVICE, ULTRASOUND BODY TISSUE DETECTING METHOD, AND ULTRASOUND BODY TISSUE DETECTING PROGRAM**

(57) A body tissue to be detected is automatically detected certainly with high precision. An ultrasonic body tissue detecting device 10 may include a transmission/reception unit 11, a two-dimensional data acquisition unit 14, a spatial frequency distribution calculation unit 15 and a determination unit 16. The transmission/reception unit 11 may transmit an ultrasonic signal into a body of a sample and receive an echo signal of the ultrasonic signal. The two-dimensional data acquisition unit 14 may form two-dimensional echo image in a transmitting direc-

tion of the ultrasonic signal and in a scanning direction. The spatial frequency distribution calculation unit 15 may perform a spatial frequency conversion of the two-dimensional echo image and calculate a spatial frequency distribution for a determining position. The determination unit 16 may determine whether the determining position is the body tissue to be detected based on a distribution of amplitude in the transmitting direction of the ultrasonic signal and a distribution of amplitude in the scanning direction of the spatial frequency distribution.

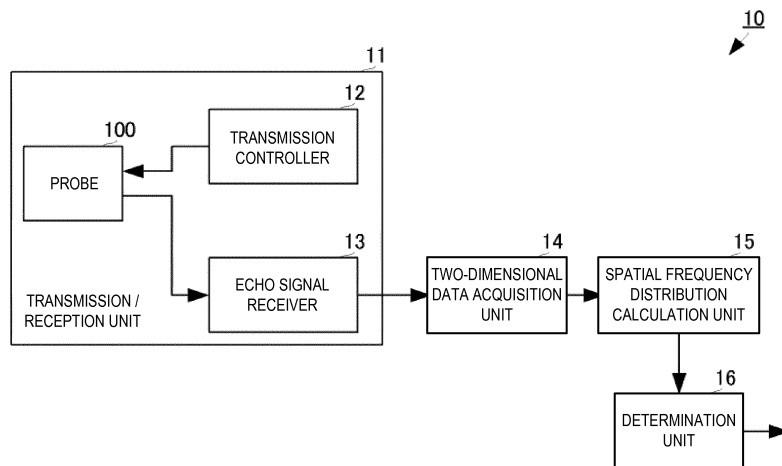


FIG. 1

EP 3 238 635 A1

Description**TECHNICAL FIELD**

5 **[0001]** The present disclosure relates to an ultrasonic body tissue detecting device which transmits an ultrasonic wave into a body and detects target body tissue based on an echo signal of the ultrasonic wave.

BACKGROUND ART

10 **[0002]** Conventionally, various ultrasonic diagnosing devices are devised, as disclosed in Patent Document 1. Such ultrasonic diagnosing devices transmit ultrasonic signals into a body from outside and generate image data to determine a state inside the body based on echo signals of the ultrasonic signals.

15 **[0003]** Specifically, the ultrasonic diagnosing device transmits the ultrasonic signal in a direction perpendicular to the surface of skin using a probe for transmitting and receiving the ultrasonic wave. The ultrasonic diagnosing device then receives the echo signal which is acquired by the ultrasonic signal reflecting on body tissue. The ultrasonic diagnosing device moves the position of the ultrasonic probe along the skin surface and receives the echo signal at a plurality of positions. Thus, the ultrasonic diagnosing device forms two-dimensional echo image in a depth direction parallel to the transmitting direction of the ultrasonic signals and in a scanning direction parallel to the skin surface. For example, the ultrasonic diagnosing device sets a higher luminosity at a position where amplitude of the echo signal is larger and sets
20 a lower luminosity at a position where the amplitude of the echo signal is smaller to form the two-dimensional echo image which expresses the amplitudes of the echo signals by the luminosities.

[0004] Such a two-dimensional echo image is utilizable for processing which detects given body tissue. For example, it is utilizable for processing to detect muscular tissue at a part of the surface of a femur where muscular tissue, subcutaneous tissue, and skin exist in layers.

25 **[0005]** Conventionally, in order to distinguish the muscular tissue from the subcutaneous tissue, an operator observes the pattern of a luminosity distribution of the two-dimensional echo image displayed on a display unit, etc. The operator grasps beforehand the differences between a luminosity distribution pattern of the subcutaneous tissue and a luminosity distribution pattern of the muscular tissue. The operator then distinguishes the muscular tissue from the subcutaneous tissue based on the luminosity distribution patterns. Further, the operator determines that a position where the luminosity
30 distribution pattern changes is a boundary (fascia) between the subcutaneous tissue and the muscular tissue.

[Reference Document of Conventional Art]

[Patent Document]

35

[0006]

[Patent Document 1] JP2011-092686A

40

DESCRIPTION OF THE DISCLOSURE**[Problems to be Solved by the Disclosure]**

45 **[0007]** However, according to the method of observing the two-dimensional echo image by the operator and distinguishing the muscular tissue from the subcutaneous tissue described above, the detection accuracy of the muscular tissue is dependent on the experiences of the operator.

[0008] Moreover, the amplitude of the echo signal (the luminosity of the echo image) for the muscular tissue varies with aging and, thus, the difference between the luminosity distribution patterns of the subcutaneous tissue and the muscular tissue varies according to the age of person of interest for the detection.

50 **[0009]** Thus, the conventional method of observing the two-dimensional echo image and detecting the muscular tissue by the operator is to manually detect the muscular tissue, and it is not easy to detect the muscular tissue securely with high precision. Similarly, when detecting the subcutaneous tissue, the distinction from the muscular tissue is not easy.

[0010] Therefore, the purpose of the present disclosure is to provide an ultrasonic body tissue detecting device, a method of ultrasonically detecting body tissue, and an ultrasonic body tissue detecting program, which automatically
55 detect body tissue to be detected certainly with high precision.

[Summary of the Disclosure]

5 [0011] An ultrasonic body tissue detecting device according to one aspect of the present disclosure, may include a transmission/reception unit, a two-dimensional data acquisition unit, a spatial frequency distribution calculation unit, and a determination unit. The transmission/reception unit may transmit an ultrasonic signal into a body of a sample and receive an echo signal of the ultrasonic signal. The two-dimensional data acquisition unit may acquire two-dimensional data in a transmitting direction of the ultrasonic signal and in a scanning direction substantially perpendicular to the transmitting direction of the ultrasonic signal, based on the echo signals acquired at a plurality of positions along the surface of the sample. The spatial frequency distribution calculation unit may perform a spatial frequency conversion of the two-dimensional data, two-dimensionally into a depth direction defined by the transmitting direction of the ultrasonic signal and into a horizontal direction perpendicular to the depth direction, and calculate a spatial frequency distribution for a determining position. The determination unit may determine whether the determining position is given body tissue based on a distribution of a frequency component in the depth direction and a distribution of a frequency component in the horizontal direction of the spatial frequency distribution.

15 [0012] With this configuration, a difference between the spatial frequency distribution of given body tissue and the spatial frequency distribution of the other body tissue which is adjacent to the given body tissue may be obtained in numeric values. Therefore, by evaluating the numeric values, whether the determining position is the given body tissue may be determined so as to detect the given body tissue.

20 [0013] In addition, in the ultrasonic body tissue detecting device of this aspect of this disclosure, the determination unit may determine based on a difference between the frequency components at two points of which a spatial frequency in the depth direction is identical to a spatial frequency in the horizontal direction in the spatial frequency distribution.

[0014] In addition, in the ultrasonic body tissue detecting device of this aspect of this disclosure, the determination unit may determine based on an integrated value obtained by integrating the difference between the frequency components at the two points in the depth direction and the horizontal direction.

25 [0015] In addition, in the ultrasonic body tissue detecting device of this aspect of this disclosure, the determination unit may determine based on a result of comparison of the integrated value with a given threshold.

[0016] In these configurations, a concrete model to determine the given body tissue is described, and by using these configuration, the given body tissue may be automatically detectable certainly with high precision.

30 [0017] In addition, in the ultrasonic body tissue detecting device of this aspect of this disclosure, the given body tissue may be muscular tissue. The determination unit may determine that the determining position is the muscular tissue if the integrated value is above the threshold.

[0018] With this configuration, the muscular tissue may be automatically detectable as the given body tissue certainly with high precision.

35 [0019] In addition, in the ultrasonic body tissue detecting device of this aspect of this disclosure, the determination unit may detect an angle difference between the transmitting direction of the ultrasonic signal and the depth direction using the spatial frequency distribution. The determination unit may calculate a distribution of frequency component in the depth direction and a distribution of frequency component in the horizontal direction based on the angle difference.

[0020] With this configuration, even if the transmitting direction of the ultrasonic signal is not parallel to the depth direction, the given body tissue may be automatically detectable certainly with high precision.

[Effect of the Disclosure]

45 [0021] According to the present disclosure, the body tissue to be detected, such as the muscular tissue and the subcutaneous tissue, may automatically be detected certainly with high precision.

BRIEF DESCRIPTION OF DRAWINGS**[0022]**

50 Fig. 1 is a configuration view of an ultrasonic body tissue detecting device according to a first embodiment of the present disclosure.

Fig. 2 is a view illustrating one example of a two-dimensional echo image which is formed by the ultrasonic body tissue detecting device according to the first embodiment of the present disclosure.

55 Figs. 3(A) and 3(B) are views illustrating examples of a spatial frequency distribution which are calculated by the ultrasonic body tissue detecting device according to the first embodiment of the present disclosure.

Figs. 4(A) and 4(B) are views illustrating examples of a frequency component characteristic which are calculated by the ultrasonic body tissue detecting device according to the first embodiment of the present disclosure.

Fig. 5 is a flowchart illustrating a processing flow of a method of ultrasonically detecting body tissue according to

the first embodiment of the present disclosure.

Figs. 6(A) and 6(B) illustrate a view of a two-dimensional echo image and a view of a spatial frequency distribution of subcutaneous tissue, when a depth direction is not parallel to a transmitting direction of an ultrasonic signal.

Fig. 7 is a flowchart illustrating a processing flow of a method of ultrasonically detecting body tissue according to a second embodiment of the present disclosure.

MODES FOR CARRYING OUT THE DISCLOSURE

[0023] An ultrasonic body tissue detecting device, a method of ultrasonically detecting body tissue, and an ultrasonic body tissue detecting program according to a first embodiment of the present disclosure are described with reference to the accompanying drawings. Fig. 1 is a configuration view of the ultrasonic body tissue detecting device according to the first embodiment of the present disclosure.

[0024] An ultrasonic body tissue detecting device 10 may include a transmission/reception unit 11, a two-dimensional data acquisition unit 14, a spatial frequency distribution calculation unit 15, and a determination unit 16. The transmission/reception unit 11 may include a transmission controller 12, an echo signal receiver 13, and a probe 100.

[0025] The transmission controller 12 may generate a transmission control signal which is obtained by shaping a carrier wave at a frequency within an ultrasonic range into a pulse shape. The transmission controller 12 may output the transmission control signal to the probe 100.

[0026] The probe 100 may include, for example, a linearly-arrayed ultrasonic transducer comprised of a plurality of elements. The ultrasonic transducer may be excited by the transmission control signal and transmit an ultrasonic signal to the outside (into a body of a sample). Here, the ultrasonic transducer may have its axis in a direction (a transmitting direction of the ultrasonic signal) perpendicular to a transmission/reception surface of the probe 100, and transmit the ultrasonic signal comprised of a given transmission beam angle.

[0027] The transmission/reception surface of the probe 100 may contact a skin surface in parallel to the skin surface of the sample. Thus, the ultrasonic signal transmitted from the ultrasonic transducer may be propagated inside the sample in a direction (a depth direction) substantially perpendicular to the skin surface. That is, the transmitting direction of the ultrasonic signal may be identical to the depth direction.

[0028] The ultrasonic signal may be reflected on each body tissue inside the sample. Specifically, at a position where muscular tissue, subcutaneous tissue, and skin cover the surface of a femur in this order, the ultrasonic signal reflects on the skin, the subcutaneous tissue, the muscular tissue, and the surface of the femur. The echo signal caused by this reflection may be propagated inside the sample in a direction parallel to the transmitting direction of the ultrasonic signal, and then received by the ultrasonic transducer.

[0029] The probe 100 may be disposed so as to be able to scan in a direction parallel to the skin surface of the sample. The probe 100 may transmit the ultrasonic signal from the ultrasonic transducer and receive the echo signal at a plurality of positions in the scanning direction. The probe 100 may output the echo signal received by the ultrasonic transducer to the two-dimensional data acquisition unit 14.

[0030] The two-dimensional data acquisition unit 14 may acquire two-dimensional data based on the echo signals acquired from the plurality of positions on the skin by the probe 100. The two-dimensional data acquisition unit 14 may form a two-dimensional echo image using the two-dimensional data. Specifically, the two-dimensional data acquisition unit 14 may detect an amplitude value of each echo signal at every sampling timing set with a given time interval. Thus, the two-dimensional data acquisition unit 14 may calculate the amplitude value of each echo signal at every sampling point of a plurality of sampling points which are located in the transmitting direction of the ultrasonic signal.

[0031] The two-dimensional data acquisition unit 14 may arrange the plurality of echo signals having the plurality of amplitude values in the scanning direction to obtain a distribution of the amplitude value comprised of a two-dimensional area in the transmitting direction and the scanning direction of the ultrasonic signal. Here, as illustrated in this embodiment, if the transmitting direction of the ultrasonic signal is perpendicular to the skin surface, the transmitting direction of the ultrasonic signal may be the depth direction and the scanning direction may be a horizontal direction which is a direction parallel to the skin. The two-dimensional data acquisition unit 14 may set luminosity according to the amplitude value to form the two-dimensional echo image.

[0032] Fig. 2 is a view illustrating one example of the two-dimensional echo image which is formed by the ultrasonic body tissue detecting device according to the first embodiment of the present disclosure. Note that Fig. 2 is illustrated so that the luminosity is higher (whiter) as the amplitude increases, and the luminosity is lower (blackier) as the amplitude decreases.

[0033] As illustrated by the two-dimensional echo image data of Fig. 2, at the skin surface and at the femur surface, the luminosity may be higher (the amplitude of the echo signal increases). In addition, at the skin surface and at the femur surface, a high-luminosity line part extending in the scanning direction (i.e., a direction parallel to the skin surface) may appear, respectively. Each of the line parts caused by the skin surface and the femur surface may appear thickly (the length in the transmitting direction of the ultrasonic signal is long), without any break of the line part in the scanning

direction.

[0034] As illustrated by the two-dimensional echo image data of Fig. 2, a plurality of high-luminosity line parts extending in the scanning direction may appear in subcutaneous tissue. These line parts may appear comparatively long in the scanning direction, but they may be shorter than the line parts caused by the skin surface and the femur surface. Moreover, these line parts may appear continuously at a certain interval in the transmitting direction (depth direction) of the ultrasonic signal.

[0035] As illustrated by the two-dimensional echo image data of Fig. 2, short line parts may appear in the muscular tissue, and they may tend to be lower in the luminosity for a youth but higher in the luminosity for an aged person. For this reason, if each body part is observed only by the overall luminosity, a relation between an average luminosity of the subcutaneous tissue and an average luminosity of the muscular tissue may be reversed between the youth and the aged person and, thus, the muscular tissue may not be distinguished from the subcutaneous tissue based on the averages of luminosities. Note that these line parts may be shorter than the line parts caused by the subcutaneous tissue. Moreover, these line parts may not always appear substantially at the same interval in the transmitting direction (depth direction) of the ultrasonic signal, but appear at a variable interval in general.

[0036] As illustrated by the two-dimensional echo image data of Fig. 2, the line parts having features similar to the skin surface and the femur surface may appear at a fascia, (i.e., the surface of the muscular tissue). However, the line part caused by the fascia may appear with a thickness substantially equal to the thickness of the line parts which appear in the subcutaneous tissue and the muscular tissue.

[0037] As described above, in the two-dimensional echo image (two-dimensional data), the subcutaneous tissue and the muscular tissue may have different features from the skin surface and the femur surface. Moreover, in the two-dimensional echo image, the subcutaneous tissue may have a different feature from the muscular tissue.

[0038] The spatial frequency distribution calculation unit 15 may calculate a spatial frequency distribution based on the two-dimensional data centering on a determining position. Specifically, the spatial frequency distribution calculation unit 15 may execute a two-dimensional spatial frequency conversion processing, which is defined by a frequency component "u" in the scanning direction (horizontal direction) and a frequency component "v" in the transmitting direction (depth direction) of the ultrasonic signal, based on the two-dimensional data (i.e., the two-dimensional distribution of the amplitude value of the plurality of echo signals).

[0039] Figs. 3A and 3B are views illustrating examples of the spatial frequency distribution calculated by the ultrasonic body tissue detecting device according to the first embodiment of the present disclosure. Fig. 3(A) illustrates a spatial frequency distribution of the subcutaneous tissue, and Fig. 3(B) illustrates a spatial frequency distribution of the muscular tissue.

[0040] As illustrated by the spatial frequency distribution of Fig. 3(A), in the subcutaneous tissue, an intensity value (value) of each frequency component (hereinafter, referred to as "the frequency component") may be higher in the transmitting direction (depth direction) of the ultrasonic signal, over a broad band of frequency from a DC component to a high-frequency component. This is due to that, as described above, in the subcutaneous tissue, the line part (a portion where the amplitude value of the echo signal is high) may appear continuously at a certain interval in the transmitting direction of the ultrasonic signal.

[0041] Moreover, as illustrated by the spatial frequency distribution of Fig. 3(A), in the subcutaneous tissue, the DC component may be higher in the scanning direction (horizontal direction), but other frequency components, especially high-frequency components may be lower. This is due to that, as described above, in the subcutaneous tissue, the line parts may extend in the scanning direction, and the line parts may not be repeated in the scanning direction. On the other hand, since the line parts may be clearly repeated in the depth direction, the high-frequency component in the transmitting direction (depth direction) of the ultrasonic signal may be larger.

[0042] As illustrated by the spatial frequency distribution of Fig. 3(B), in the muscular tissue, the DC component may be higher in both the transmitting direction (depth direction) and the scanning direction (horizontal direction) of the ultrasonic signal, but other frequency components, especially the high-frequency components may be lower.

[0043] This is due to that, as described above, in the muscular tissue, extending lengths of the line parts in the scanning direction may be shorter, and the plurality of line parts may not continuously appear repeatedly in the transmitting direction of the ultrasonic signal.

[0044] As described above, in the spatial frequency distribution, the subcutaneous tissue may have different features from the muscular tissue.

[0045] The spatial frequency distribution calculation unit 15 may calculate the spatial frequency distribution for every determining position, and then output them to the determination unit 16.

[0046] The determination unit 16 may acquire a frequency component characteristic (a v-direction frequency component characteristic) in the ultrasonic wave transmitting direction (depth direction) of the spatial frequency distribution, and a frequency component characteristic (a u-direction frequency component characteristic) in the scanning direction (horizontal direction) of the spatial frequency distribution. The v-direction frequency component characteristic may be expressed by a matrix of each frequency component in the ultrasonic wave transmitting direction centering on a reference

point which is a point representing the DC component. The u-direction frequency component characteristic may be expressed by a matrix of each frequency component in the scanning direction centering on the reference point.

5 [0047] Figs. 4(A) and 4(B) are views illustrating examples of the frequency component characteristic calculated by the ultrasonic body tissue detecting device according to the first embodiment of the present disclosure. Fig. 4(A) illustrates the frequency component characteristic of the subcutaneous tissue, and Fig. 4(B) illustrates the frequency component characteristic of the muscular tissue.

10 [0048] As illustrated by the frequency component characteristic of Fig. 4(A), each frequency component in the v-direction may be regularly higher in the subcutaneous tissue. Moreover, in the subcutaneous tissue, the DC component in the u-direction may be higher, but the frequency component may fall as the frequency becomes higher. For this reason, as for the frequency components away from the reference point in the v-direction and the u-direction by the same frequency distance D_f (see Figs. 3 and 4), the frequency component of the v-direction frequency component characteristic may be larger than the frequency component of the u-direction frequency component characteristic. The same can be said for almost all frequency components, except for those near the reference point. Therefore, a difference between the v-direction frequency component characteristic and the u-direction frequency component characteristic may be higher over a substantially entire band of frequency, except for the frequency components near the DC component.

15 [0049] As illustrated by the frequency component characteristic of Fig. 4(B), in the muscular tissue, the DC component may be high without depending on the v-direction and the u-direction, but the frequency component may fall as the frequency becomes higher. For this reason, as for the frequency components away from the reference point in the v-direction and the u-direction by the frequency distance D_f (see Figs. 3 and 4), the frequency component of the v-direction frequency component characteristic may substantially be identical to the frequency component of the u-direction frequency component characteristic. The same can be said for almost all frequency components including those near the reference point. Therefore, the difference between the v-direction frequency component characteristic and the u-direction frequency component characteristic may be smaller over the substantially entire band of frequency.

20 [0050] The determination unit 16 may determine whether the determining position is the subcutaneous tissue or the muscular tissue based on such a difference between the frequency component characteristic of the subcutaneous tissue and the frequency component characteristic of the muscular tissue. Alternatively, the determination unit 16 may determine whether the determining position is body tissue to be detected (e.g., the muscular tissue).

25 [0051] Specifically, the determination unit 16 may calculate a difference value between the frequency components at two points of which the spatial frequencies in the depth direction and the horizontal direction in the spatial frequency distribution are identical as described above (i.e., a difference value between the frequency components of the v-direction frequency component characteristic and the u-direction frequency component characteristic at the positions away from the reference point by the same frequency distance). The determination unit 16 may calculate this difference value for each frequency component obtained from the spatial frequency distribution. The determination unit 16 may integrate the difference values of the frequency components in the depth direction and the horizontal direction to calculate the integrated value as an index S .

30 [0052] The determination unit 16 may prestore a threshold Th of the index S . The threshold Th may be suitably set from arithmetic values which are acquired as an average value and a minimum value of the index S of the subcutaneous tissue, and an average value and a maximum value of the index S of the muscular tissue by experiments etc. conducted beforehand. For example, a mean value between the average value of the index S of the subcutaneous tissue and the average value of the index S of the muscular tissue may be set as the threshold Th .

35 [0053] The determination unit 16 may compare the index S with the threshold Th , and if the index S is above the threshold Th , it may determine that the determining position is the subcutaneous tissue. On the other hand, if the index S is below the threshold Th , the determination unit 16 may determine that the determining position is the muscular tissue.

40 [0054] The determination unit 16 may move the determining position in the transmitting direction (depth direction) of the ultrasonic signal, and determine whether it is the subcutaneous tissue or the muscular tissue for every determining position. Thus, a boundary (fascia) between the subcutaneous tissue and the muscular tissue may also be detectable for every transmission (every sweep) of the ultrasonic signal, and a range of the subcutaneous tissue (thickness) and a range of the muscular tissue (thickness) may also be detectable.

45 [0055] As described above, the muscular tissue and the subcutaneous tissue may be automatically detectable certainly with high precision by using the configuration of this embodiment. Note that in the embodiment described above, although the detection of the muscular tissue and the subcutaneous tissue may be described as the example, the body tissue to be detected may be automatically detectable certainly with high precision by using the configuration of this embodiment, if body tissue of which the spatial frequency distribution differs exists.

50 [0056] Note that although in the above description, a mode in which each processing may be implemented by an individual functional block, the detection processing of the body tissue by the ultrasonic signal may be programmed and stored, and an arithmetic processing device, such as a computer, may read out and execute the program. In this case, the following flow may be used. Fig. 5 is a flowchart illustrating a processing flow of a method of ultrasonically detecting the body tissue according to the first embodiment of the present disclosure.

[0057] The arithmetic processing device may transmit the ultrasonic signal at different positions, and acquire the echo signals. That is, the arithmetic processing device may acquire the echo signals of a plurality of sweeps (S101).

[0058] The arithmetic processing device may acquire the two-dimensional data including the determining position using the echo signals of the plurality of sweeps (S102).

[0059] The arithmetic processing device may calculate the spatial frequency distribution at the determining position based on the two-dimensional data (S103).

[0060] The arithmetic processing device may calculate the index S based on the difference between the frequency component in the ultrasonic wave transmitting direction (v-direction) and the frequency component in the scanning direction (u-direction) of the spatial frequency distribution (S104).

[0061] If the index S is above the threshold Th (S105: YES), the arithmetic processing device may determine that the determining position is the subcutaneous tissue (S106). If the index S is below the threshold Th (S105: NO), the arithmetic processing device may determine that the determining position is the muscular tissue (S107).

[0062] Next, an ultrasonic body tissue detecting device according to a second embodiment of the present disclosure is described with reference to the accompanying drawings. The ultrasonic body tissue detecting device according to this embodiment may be the same as the ultrasonic body tissue detecting device according to the first embodiment in the fundamental configurations and processings, and may be a device in which a function to correct an inclination (angle difference) of the ultrasonic wave transmitting direction with respect to the depth direction is added to the ultrasonic body tissue detecting device of the first embodiment.

[0063] When the probe 100 contacts the skin surface, the transmission/reception surface of the probe 100 may incline so that the depth direction inside the body may not be parallel to the transmitting direction of the ultrasonic signal (the angle difference is produced between the depth direction and the transmitting direction).

[0064] Fig. 6(A) is a view illustrating a two-dimensional echo image when the depth direction is not parallel to the ultrasonic wave transmitting direction, and Fig. 6(B) is a view illustrating a spatial frequency distribution of the subcutaneous tissue when the depth direction is not parallel to the ultrasonic wave transmitting direction.

[0065] In such a case, as illustrated in Fig. 6(A), the extending direction of the plurality of line parts in the subcutaneous tissue may not be parallel to the scanning direction, and the direction of the plurality of line parts arrayed at intervals may not be parallel to the transmitting direction of the ultrasonic signal.

[0066] Thus, as illustrated in Fig. 6(B), the arrayed direction of the high-frequency components in the spatial frequency distribution of the subcutaneous tissue may not be parallel to the ultrasonic wave transmitting direction.

[0067] As illustrated in Fig. 6(B), the ultrasonic body tissue detecting device of this embodiment may set the arrayed direction of the frequency components with high values (intensity) as a v'-direction, and the direction perpendicular to the v'-direction as a u'-direction. Thus, the v'-direction may be the depth direction and the u'-direction may be the horizontal direction. The ultrasonic body tissue detecting device may determine whether the determining position is the subcutaneous tissue or the muscular tissue based on a difference between a frequency component characteristic in the v'-direction and the frequency component characteristic in the u'-direction.

[0068] For example, determination processing may be performed using the following flow. Fig. 7 is a flowchart illustrating the processing flow of a method of ultrasonically detecting the body tissue according to the second embodiment of the present disclosure.

[0069] The arithmetic processing device may acquire the echo signals of the plurality of sweeps (S201).

[0070] The arithmetic processing device may acquire the two-dimensional data (defined two-dimensionally into the ultrasonic wave transmitting direction and the scanning direction) including the determining position using the echo signals of the plurality of sweeps (S202). Note that the arithmetic processing device may further form two-dimensional echo image data based on the two-dimensional data.

[0071] The arithmetic processing device may calculate the spatial frequency distribution at the determining position using the two-dimensional data (S203).

[0072] The arithmetic processing device may detect a direction in which the frequency component is continuously high over a broad band of frequency using the spatial frequency distribution, and set the direction as the depth direction (v'-direction). As the spatial frequency distribution used for this processing, a distribution at a position near the skin surface may be used. For example, echo signals with short periods of time passed from the transmitting timing of the ultrasonic signal may be selected. The arithmetic processing device may set the direction perpendicular to the depth direction (v'-direction) as the horizontal direction (u'-direction) (S204).

[0073] The arithmetic processing device may calculate the index S based on a difference between the frequency component in the depth direction (v'-direction) and the frequency component in the horizontal direction (u'-direction) in the spatial frequency distribution (S205).

[0074] If the index S is above the threshold Th (S206: YES), the arithmetic processing device may determine that the determining position is the subcutaneous tissue (S207). If the index S is below the threshold Th (S206: NO), the arithmetic processing device may determine that the determining position is the muscular tissue (S208).

[0075] By using such a configuration, the determining position may be automatically detectable whether it is the

subcutaneous tissue or the muscular tissue, certainly and with high precision, even if the transmitting direction of the ultrasonic signal is not parallel to the depth direction. Moreover, this embodiment may be also automatically detectable of the body tissue to be detected certainly and with high precision, similar to the first embodiment.

[0076] Note that, although not illustrated in each embodiment described above, a concrete method of distinguishing the skin surface and the femur surface separately from the subcutaneous tissue and the muscular tissue may be, for example, set as follows.

[0077] The skin surface and the femur surface may have features in a luminosity distribution (a characteristic of a frequency component distribution) which are completely different from the subcutaneous tissue and the muscular tissue, and have features at positions in the transmitting direction of the ultrasonic signal. Therefore, the skin surface and the femur surface may be separable from the subcutaneous tissue and the muscular tissue based on these features.

[0078] For example, a continuity of the line part in the scanning direction may be quantized, and the numeral may be then compared with a threshold. Moreover, for example, a line part nearest to the probe 100 in the ultrasonic wave transmitting direction may be detected as the skin surface, and the furthest line part may be detected as the femur surface.

[0079] Moreover, in the embodiment described above, the mode is illustrated in which the determination may be performed using the integrated value of the difference values between the v-direction frequency component characteristic and the u-direction frequency component characteristic, or the difference value between the v'-direction frequency component characteristic and the u'-direction frequency component characteristic. However, the determination may be performed only based on a difference value between the v-direction frequency component characteristic and the u-direction frequency component characteristic at a position away from the reference point by a given frequency distance, or a difference value between the v'-direction frequency component characteristic and the u'-direction frequency component characteristic. In this case, a position of the frequency which is as high as possible may be set.

DESCRIPTION OF REFERENCE NUMERALS

[0080]

- 10: Ultrasonic Body Tissue Detecting Device
- 11: Transmission/Reception Unit
- 12: Transmission Controller
- 13: Echo Signal Receiver
- 14: Two-Dimensional Data Acquisition Unit
- 15: Spatial Frequency Distribution Calculation Unit
- 16: Determination Unit
- 100: Probe

Claims

1. An ultrasonic body tissue detecting device, comprising:

- a transmission/reception unit configured to transmit an ultrasonic signal into a body of a sample and receive an echo signal of the ultrasonic signal;
- a two-dimensional data acquisition unit configured to acquire two-dimensional data in a transmitting direction of the ultrasonic signal and in a scanning direction substantially perpendicular to the transmitting direction of the ultrasonic signal, based on the echo signals acquired at a plurality of positions along the surface of the sample;
- a spatial frequency distribution calculation unit configured to perform a spatial frequency conversion of the two-dimensional data, two-dimensionally into a depth direction defined by the transmitting direction of the ultrasonic signal and into a horizontal direction perpendicular to the depth direction, and calculate a spatial frequency distribution for a determining position; and
- a determination unit configured to determine whether the determining position is given body tissue based on a distribution of a frequency component in the depth direction and a distribution of a frequency component in the horizontal direction of the spatial frequency distribution.

2. The ultrasonic body tissue detecting device of claim 1, wherein the determination unit determines based on a difference between the frequency components at two points of which a spatial frequency in the depth direction is identical to a spatial frequency in the horizontal direction in the spatial frequency distribution.

3. The ultrasonic body tissue detecting device of claim 2, wherein the determination unit determines based on an

integrated value obtained by integrating the difference between the frequency components at the two points in the depth direction and the horizontal direction.

5 4. The ultrasonic body tissue detecting device of claim 3, wherein the determination unit determines based on a result of comparison of the integrated value with a given threshold.

10 5. The ultrasonic body tissue detecting device of claim 4, wherein, the given body tissue is muscular tissue, and the determination unit determines that the determining position is the muscular tissue if the integrated value is above the threshold.

15 6. The ultrasonic body tissue detecting device of any one of claims 1 to 5, wherein, the determination unit detects an angle difference between the transmitting direction of the ultrasonic signal and the depth direction using the spatial frequency distribution, and the determination unit calculates a distribution of amplitude in the depth direction and a distribution of the amplitude in the horizontal direction based on the angle difference.

20 7. A method of ultrasonically detecting body tissue, comprising:
transmitting an ultrasonic signal into a body of a sample and receiving an echo signal of the ultrasonic signal;
acquiring two-dimensional data in a transmitting direction of the ultrasonic signal and in a scanning direction
substantially perpendicular to the transmitting direction of the ultrasonic signal, based on the echo signals
acquired at a plurality of positions along the surface of the sample;
performing a spatial frequency conversion of the two-dimensional data, two-dimensionally into a depth direction
25 defined by the transmitting direction of the ultrasonic signal and into a horizontal direction perpendicular to the
depth direction, and calculating a spatial frequency distribution for a determining position; and
determining whether the determining position is given body tissue based on a distribution of a frequency component
in the depth direction and a distribution of a frequency component in the horizontal direction of the spatial
frequency distribution.

30 8. The method of claim 7, wherein the determining whether the determining position is given body tissue includes:
detecting an angle difference between the transmitting direction of the ultrasonic signal and the depth direction
using the spatial frequency distribution; and
35 calculating the distribution of the frequency component in the depth direction and the distribution of the frequency
component in the horizontal direction based on the angle difference.

40 9. An ultrasonic body tissue detecting program configured to cause a computer to execute processing to determine
body tissue to be detected based on an echo signal acquired by transmitting an ultrasonic signal into a body of a
sample, the computer being caused to:
acquire two-dimensional data in a transmitting direction of the ultrasonic signal and in a scanning direction
substantially perpendicular to the transmitting direction of the ultrasonic signal, based on the echo signals
acquired at a plurality of positions along the surface of the sample;
45 perform a spatial frequency conversion of the two-dimensional data, two-dimensionally into a depth direction
defined by the transmitting direction of the ultrasonic signal and into a horizontal direction perpendicular to the
depth direction, and calculate a spatial frequency distribution for a determining position; and
determine whether the determining position is given body tissue based on a distribution of a frequency component
in the depth direction and a distribution of a frequency component in the horizontal direction of the spatial
50 frequency distribution.

55 10. The ultrasonic body tissue detecting program of claim 9, wherein the computer is caused to, as the determining
whether the determining position is given body tissue:
detect an angle difference between the transmitting direction of the ultrasonic signal and the depth direction
using the spatial frequency distribution; and
calculate the distribution of the frequency component in the depth direction and the distribution of the frequency
component in the horizontal direction based on the angle difference.

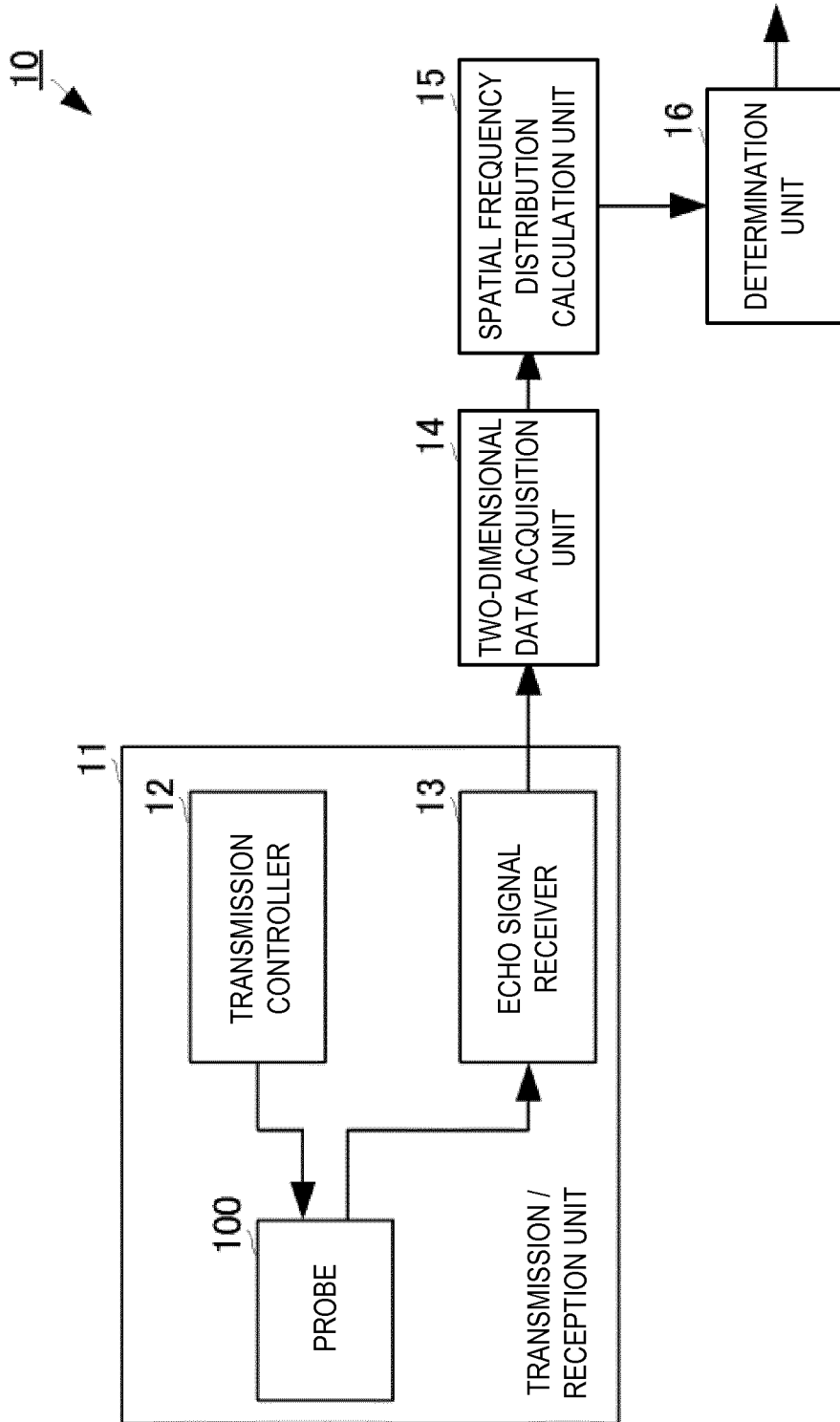


FIG. 1

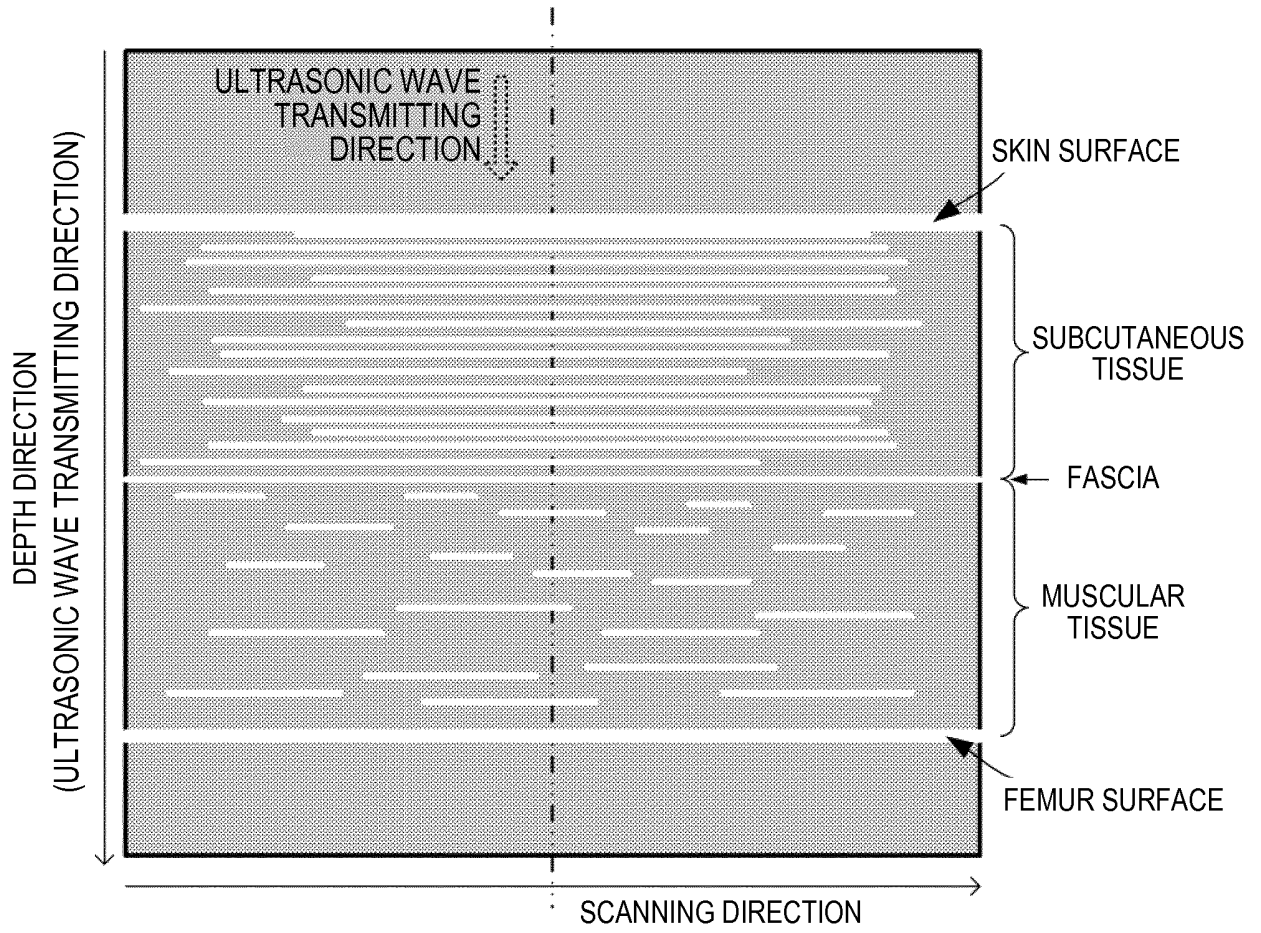


FIG. 2

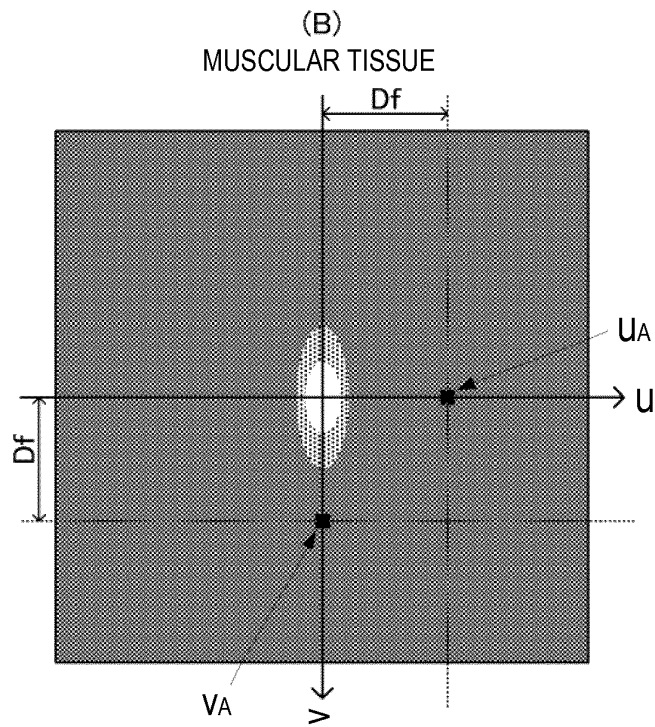
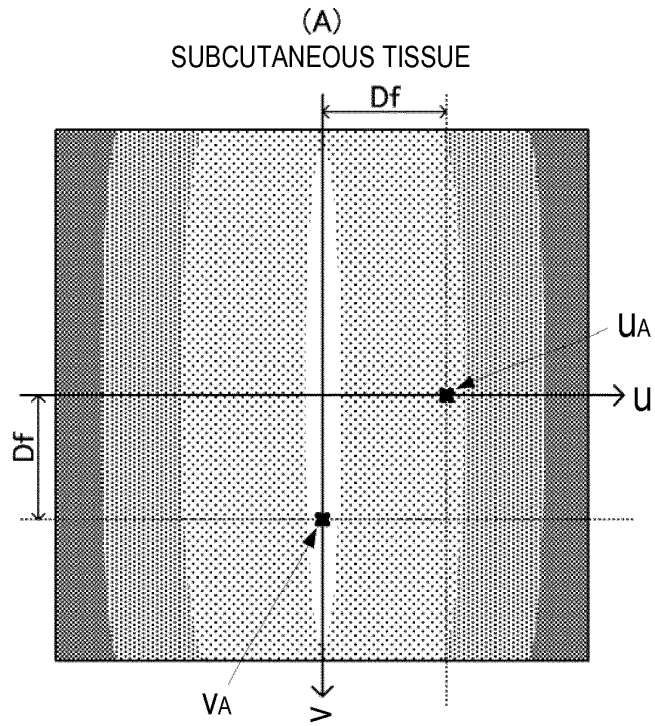


FIG. 3

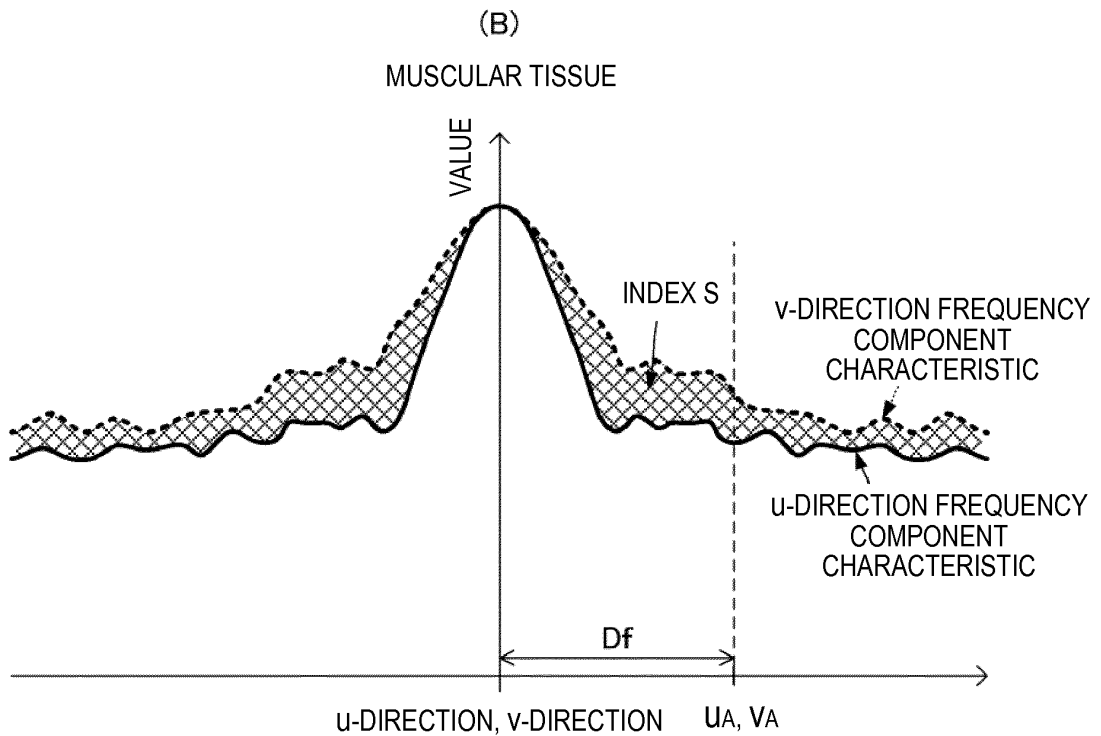
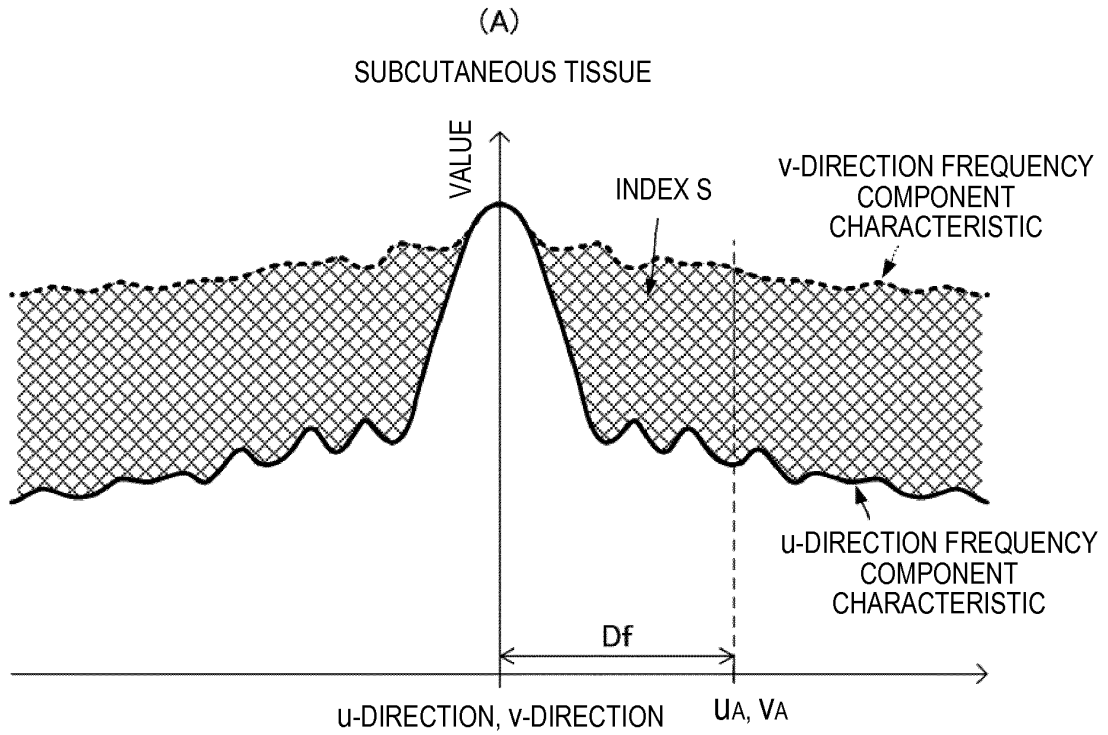


FIG. 4

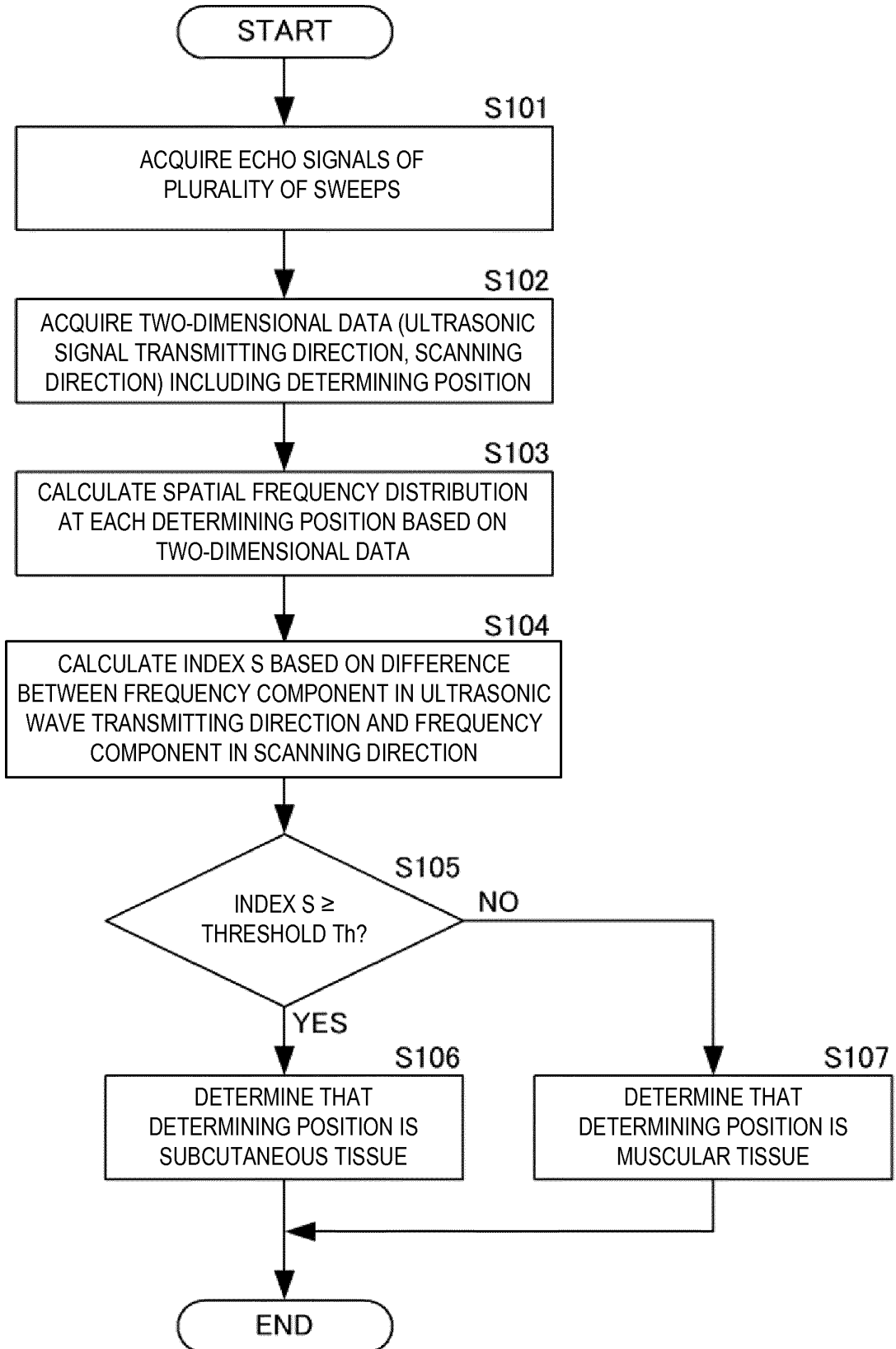


FIG. 5

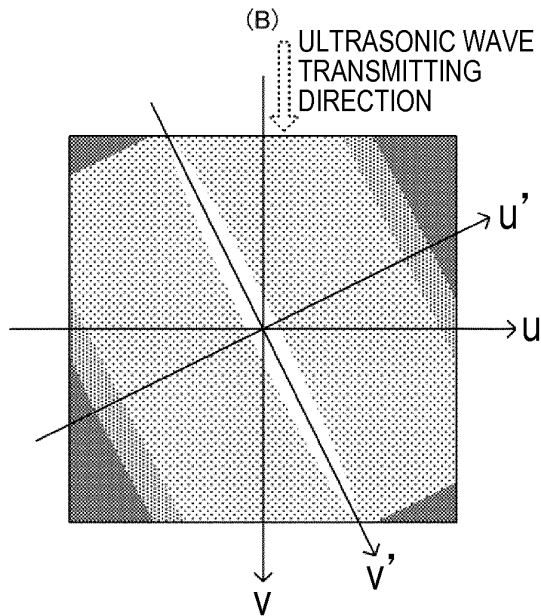
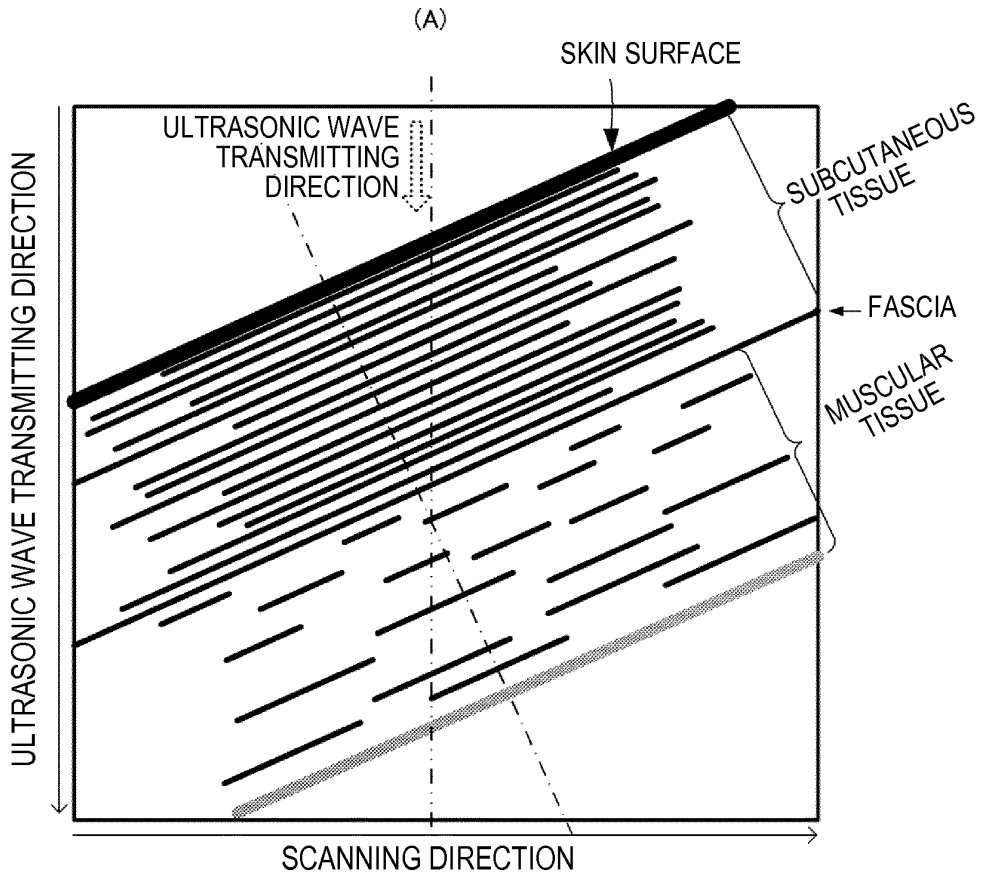


FIG. 6

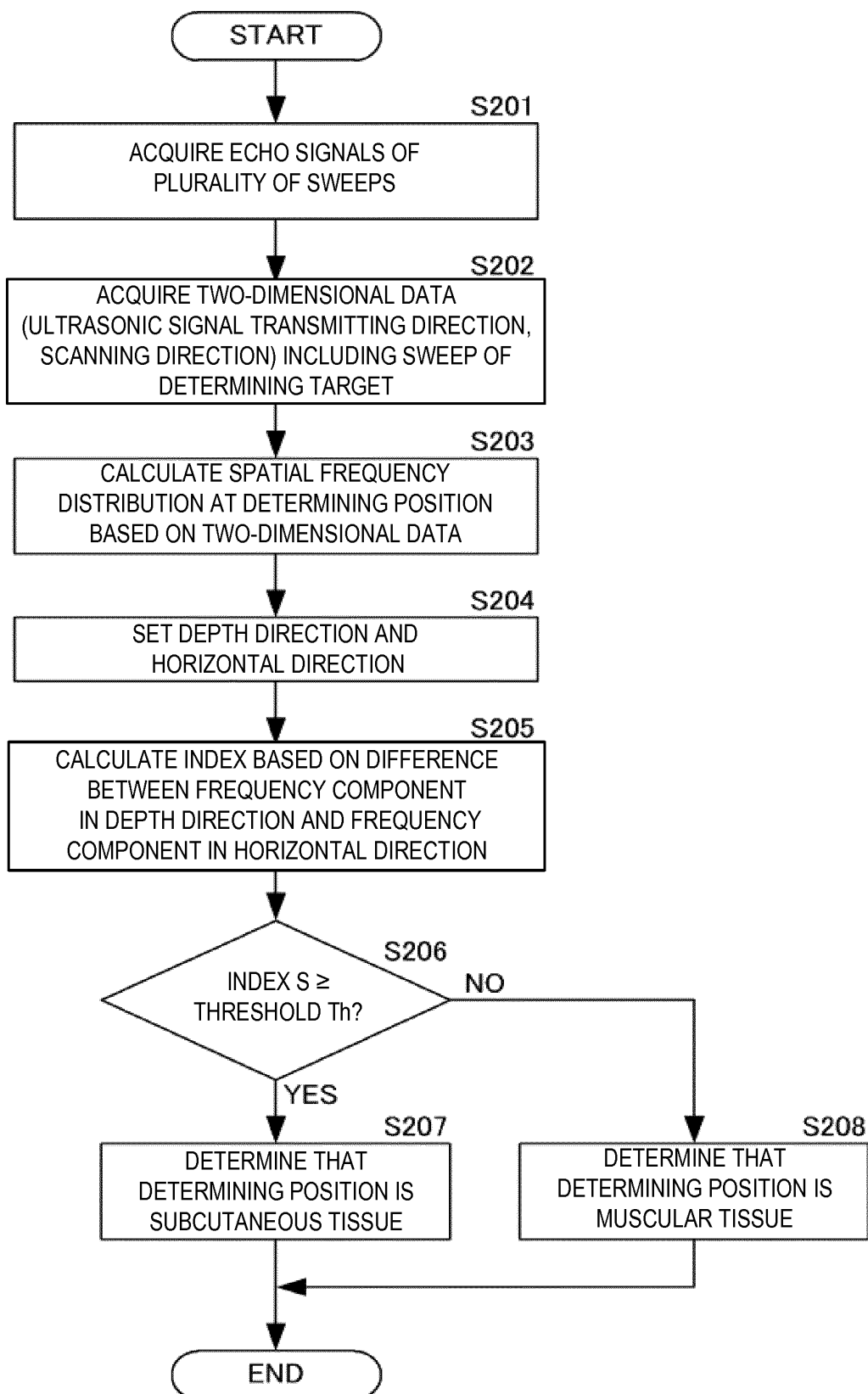


FIG. 7

INTERNATIONAL SEARCH REPORT

International application No.

PCT/JP2015/083155

A. CLASSIFICATION OF SUBJECT MATTER

A61B8/14(2006.01) i, G06T1/00(2006.01) i

According to International Patent Classification (IPC) or to both national classification and IPC

B. FIELDS SEARCHED

Minimum documentation searched (classification system followed by classification symbols)

A61B8/00-8/14, G06T1/00

Documentation searched other than minimum documentation to the extent that such documents are included in the fields searched

Jitsuyo Shinan Koho	1922-1996	Jitsuyo Shinan Toroku Koho	1996-2016
Kokai Jitsuyo Shinan Koho	1971-2016	Toroku Jitsuyo Shinan Koho	1994-2016

Electronic data base consulted during the international search (name of data base and, where practicable, search terms used)

JSTPlus/JMEDPlus/JST7580(JDreamIII), Ichushi WEB, PubMed

C. DOCUMENTS CONSIDERED TO BE RELEVANT

Category*	Citation of document, with indication, where appropriate, of the relevant passages	Relevant to claim No.
A	JP 2007-301035 A (National Institute of Advanced Industrial Science and Technology), 22 November 2007 (22.11.2007), paragraphs [0023] to [0029] (Family: none)	1-10
A	JP 2010-94422 A (National Institute of Advanced Industrial Science and Technology), 30 April 2010 (30.04.2010), paragraphs [0005] to [0010] (Family: none)	1-10
A	JP 61-40678 A (Hitachi Medical Corp.), 26 February 1986 (26.02.1986), claims 1 to 2 & US 4780831 A claims 1 to 3	1-10

 Further documents are listed in the continuation of Box C.
 See patent family annex.

* Special categories of cited documents:

"A" document defining the general state of the art which is not considered to be of particular relevance

"E" earlier application or patent but published on or after the international filing date

"L" document which may throw doubts on priority claim(s) or which is cited to establish the publication date of another citation or other special reason (as specified)

"O" document referring to an oral disclosure, use, exhibition or other means

"P" document published prior to the international filing date but later than the priority date claimed

"T" later document published after the international filing date or priority date and not in conflict with the application but cited to understand the principle or theory underlying the invention

"X" document of particular relevance; the claimed invention cannot be considered novel or cannot be considered to involve an inventive step when the document is taken alone

"Y" document of particular relevance; the claimed invention cannot be considered to involve an inventive step when the document is combined with one or more other such documents, such combination being obvious to a person skilled in the art

"&" document member of the same patent family

Date of the actual completion of the international search
15 February 2016 (15.02.16)Date of mailing of the international search report
23 February 2016 (23.02.16)Name and mailing address of the ISA/
Japan Patent Office
3-4-3, Kasumigaseki, Chiyoda-ku,
Tokyo 100-8915, Japan

Authorized officer

Telephone No.

Form PCT/ISA/210 (second sheet) (January 2015)

INTERNATIONAL SEARCH REPORT

International application No.
PCT/JP2015/083155

C (Continuation). DOCUMENTS CONSIDERED TO BE RELEVANT		
Category*	Citation of document, with indication, where appropriate, of the relevant passages	Relevant to claim No.
A	JP 2014-33914 A (Konica Minolta, Inc.), 24 February 2014 (24.02.2014), paragraph [0077] & US 2014/0046187 A1 paragraph [0130]	1-10

5
10
15
20
25
30
35
40
45
50
55

REFERENCES CITED IN THE DESCRIPTION

This list of references cited by the applicant is for the reader's convenience only. It does not form part of the European patent document. Even though great care has been taken in compiling the references, errors or omissions cannot be excluded and the EPO disclaims all liability in this regard.

Patent documents cited in the description

- JP 2011092686 A [0006]

专利名称(译)	超声体组织检测装置，超声体组织检测方法和超声体组织检测程序		
公开(公告)号	EP3238635A1	公开(公告)日	2017-11-01
申请号	EP2015872603	申请日	2015-11-26
申请(专利权)人(译)	古野电器有限公司.		
当前申请(专利权)人(译)	古野电器有限公司.		
[标]发明人	ARAI TATSUO		
发明人	ARAI, TATSUO		
IPC分类号	A61B8/14 G06T1/00		
CPC分类号	A61B8/46 A61B5/6828 A61B8/085 A61B8/14 A61B8/5207 A61B8/5223 G01S7/52036 G01S15/8915 G01S15/8977 G06T1/00		
优先权	2014265167 2014-12-26 JP		
其他公开文献	EP3238635A4		
外部链接	Espacenet		

摘要(译)

可以高精度地自动检测待检测的身体组织。超声波体组织检测装置10可以包括发送/接收单元11，二维数据获取单元14，空间频率分布计算单元15和确定单元16。发送/接收单元11可以将超声波信号发送到样本体并接收超声信号的回波信号。二维数据获取单元14可以在超声信号的发送方向上和扫描方向上形成二维回波图像。空间频率分布计算单元15可以执行二维回波图像的空间频率转换，并计算用于确定位置的空间频率分布。确定单元16可以基于超声信号的发送方向上的振幅分布和空间频率分布的扫描方向上的振幅分布来确定确定位置是否是要检测的身体组织。

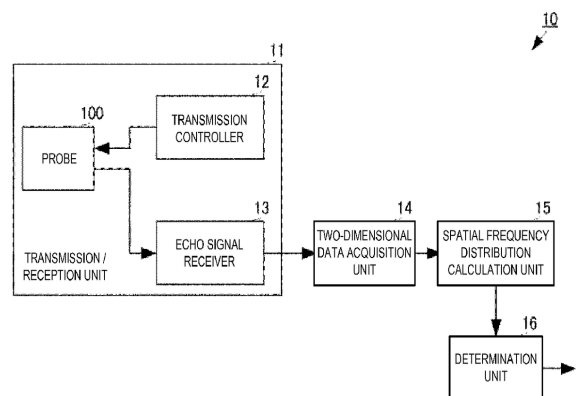


FIG. 1