



(11) **EP 2 336 804 A2**

(12) **EUROPEAN PATENT APPLICATION**

(43) Date of publication: **22.06.2011 Bulletin 2011/25** (51) Int Cl.: **G01S 15/89 (2006.01)**

(21) Application number: **10193595.5**

(22) Date of filing: **03.12.2010**

(84) Designated Contracting States:
AL AT BE BG CH CY CZ DE DK EE ES FI FR GB GR HR HU IE IS IT LI LT LU LV MC MK MT NL NO PL PT RO RS SE SI SK SM TR
Designated Extension States:
BA ME

(72) Inventor: **Lee, Suk Jin**
135-851 Seoul (KR)

(74) Representative: **Schmid, Wolfgang**
Lorenz & Kollegen
Patentanwälte Partnerschaftsgesellschaft
Alte Ulmer Strasse 2
89522 Heidenheim (DE)

(30) Priority: **11.12.2009 KR 20090123003**

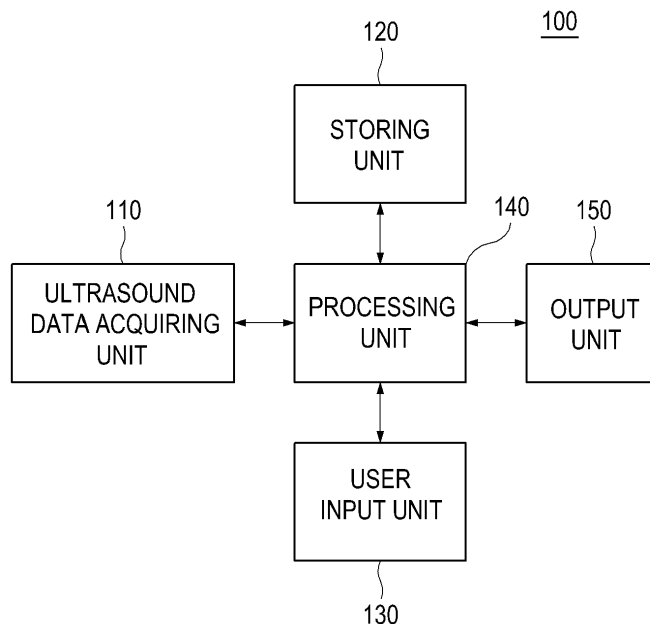
(71) Applicant: **Medison Co., Ltd.**
Kangwon-do 250-875 (KR)

(54) **Ultrasound system and method for providing doppler sound**

(57) Embodiments for providing Doppler sounds are disclosed. In one embodiment, provided is an ultrasound system which may include: an ultrasound data acquiring unit configured to transmit ultrasound signals to a target object and receive ultrasound echo signals reflected there from, to acquire a plurality of ultrasound data associated with the target object, each of which having a synchronization (Sync) number uniquely assigned thereto; a storing unit to store the plurality of ultrasound data

therein; an user input unit configured to allow a user to input a user instruction; and a processing unit coupled to the ultrasound data acquiring unit, the storing unit and the user input unit and configured to form a Doppler mode image having the Sync number based on the plurality of ultrasound data, the processing unit being further configured to extract ultrasound data with a Sync number corresponding to the user instruction from the storing unit, thereby forming the Doppler sound based on the extracted ultrasound data.

FIG. 1



EP 2 336 804 A2

Description

CROSS-REFERENCE TO RELATED APPLICATIONS

[0001] The present application claims priority from Korean Patent Application No. 10-2009-0123003 filed on December 11, 2009.

TECHNICAL FIELD

[0002] Embodiments described herein relate generally to an ultrasound system, and more particularly to an ultrasound system for providing Doppler sound.

BACKGROUND

[0003] Recently, an ultrasound system has been extensively used in the medical field due to its non-invasive and non-destructive nature. Generally, the ultrasound system has become an important and popular diagnostic tool due to its wide range of applications. Specifically, due to its non-invasive and non-destructive nature, the ultrasound diagnostic system has been extensively used in the medical profession.

[0004] In general, such ultrasound system provides a Doppler sound together with a Doppler mode image visualizing velocities of moving objects through the use of a Doppler effect, the Doppler mode image being formed based on Doppler signals obtained in a Doppler mode.

[0005] In the related art, there may be a problem in that, when output of the Doppler mode image and the Doppler sound are temporally interrupted halfway, only a previously-outputted Doppler mode image is outputted and the Doppler sound is not outputted. Thus, it is required for an ultrasound system which provides a Doppler sound at a selected timed interval as necessary.

SUMMARY

[0006] Embodiments for providing Doppler sound, which corresponds to an area defined on a Doppler mode image, are disclosed herein.

[0007] In one embodiment, provided is an ultrasound system which may include an ultrasound data acquiring unit configured to transmit ultrasound signals to a target object and receive ultrasound echo signals reflected there from, to acquire a plurality of ultrasound data associated with the target object, each of which having a synchronization (Sync) number uniquely assigned thereto. The ultrasound system may further include a storing unit to store the plurality of ultrasound data therein. The ultrasound system may further include an user input unit configured to allow a user to input a user instruction. The ultrasound system may further include a processing unit coupled to the ultrasound data acquiring unit, the storing unit and the user input unit and configured to form a Doppler mode image having the Sync number based on the plurality of ultrasound data, the processing unit being fur-

ther configured to extract ultrasound data with a Sync number corresponding to the user instruction from the storing unit, thereby forming the Doppler sound based on the extracted ultrasound data.

[0008] In another embodiment, provided is a method of providing a Doppler mode image and Doppler sound in an ultrasound system, which may include transmitting ultrasound signals to a target object and receiving ultrasound echo signals reflected there from, thereby acquiring a plurality of ultrasound data associated with the target object, each of which having a synchronization (Sync) number uniquely assigned thereto. The method may further include storing the plurality of ultrasound data in a storage. The method may further include generating the Doppler mode image based on the plurality of ultrasound data. The method may further include allowing a user to input a user instruction. The method may further include extracting ultrasound data with a Sync number corresponding to the user instruction from the storage, to thereby form the Doppler sound based on the extracted ultrasound data.

[0009] In yet another embodiment, provided is a computer-readable storage medium storing instructions that, when executed by a computer, cause the computer to perform the operation of transmitting ultrasound signals to a target object and receiving ultrasound echo signals reflected there from, thereby acquiring a plurality of ultrasound data associated with the target object, each of which having a synchronization (Sync) number uniquely assigned thereto. The operation may further include storing the plurality of ultrasound data in a storage. The operation may further include generating the Doppler mode image based on the plurality of ultrasound data. The operation may further include allowing a user to input a user instruction. The operation may further include extracting ultrasound data with a Sync number corresponding to the user instruction from the storage, to thereby form the Doppler sound based on the extracted ultrasound data.

[0010] The Summary is provided to introduce a selection of concepts in a simplified form that are further described below in the Detailed Description. This Summary is not intended to identify key or essential features of the claimed subject matter, nor is it intended to be used in determining the scope of the claimed subject matter.

BRIEF DESCRIPTION OF THE DRAWINGS

[0011]

FIG. 1 is a block diagram showing an illustrative embodiment of an ultrasound system.

FIG. 2 is a block diagram showing an illustrative embodiment of an ultrasound data acquiring unit shown in **FIG. 1**.

FIG. 3 is a block diagram showing an illustrative embodiment of a processing unit shown in **FIG. 1**.

FIG. 4 shows graphs indicative of a region of interest set on a Doppler mode image.

FIG. 5 is an explanatory diagram showing an illustrative embodiment of an open application programming interface.

DETAILED DESCRIPTION

[0012] A detailed description may be provided with reference to the accompanying drawings. One of ordinary skill in the art may realize that the following description is illustrative only and is not in any way limiting. Other embodiments of the present invention may readily suggest themselves to such skilled persons having the benefit of this disclosure. Referring to **FIG. 1**, an illustrative embodiment of an ultrasound system 100 is shown.

[0013] As depicted therein, the ultrasound system 100 may include an ultrasound data acquiring unit 110. The ultrasound data acquiring unit 110 may be operable to transmit ultrasound signals to a target object and receive signals (i.e., ultrasound echo signals) reflected therefrom. The ultrasound data acquiring unit 110 may acquire ultrasound data based on the received ultrasound echo signals. The acquisition of the ultrasound data will be described in detail by referring to **FIG. 2**.

[0014] **FIG. 2** is a block diagram showing an illustrative embodiment of the ultrasound data acquiring unit 110 shown in **FIG. 1**.

[0015] As shown in **FIG. 2**, the ultrasound data acquiring unit 110 may include a transmit (Tx) signal generating section 111. The Tx signal generating section 111 may be operable to generate a plurality of Tx signals in consideration of distances between the transducer elements and focal points. In one embodiment, the Tx signals may be used to obtain a frame of the Doppler mode image. The Tx signal generating section 111 may sequentially and repetitively perform generating the Tx signals, thereby forming the plurality of Tx signals.

[0016] The ultrasound data acquiring unit 110 may include an ultrasound probe 112. Upon reception of the Tx signals provided from the Tx signal generating section 111, the ultrasound probe 112 may be operable to convert the received Tx signals into ultrasound signals. The ultrasound probe 112 may be further operable to transmit the so-converted ultrasound signals to the target object and receive ultrasound echo signals reflected therefrom, thereby generating electrical receive (Rx) signals, which are analog signals. The ultrasound probe 112 may sequentially and repetitively perform generating the Rx signals, thereby forming the plurality of Rx signals.

[0017] The ultrasound data acquiring unit 110 may further include a beam forming section 113. The beam forming section 113 may be operable to convert the electrical Rx signals provided from the ultrasound probe 112 into digital signals. The beam forming section 113 may be further operable to apply delays to the digital signals in consideration of distances between the transducer elements and focal points, thereby outputting digital receive (Rx)-focused signals. The beam forming section 113 may sequentially and repetitively perform converting and fo-

cus for the Rx signals, thereby forming the plurality of electrical Rx-focused signals.

[0018] The ultrasound data acquiring unit 110 may further include an ultrasound data forming section 114. The ultrasound data forming section 114 may be operable to form ultrasound data based on the Rx-focused signals provided from the beam forming section 113. In one embodiment, the ultrasound data may be RF (radio Frequency) data or IQ (In-phase/Quadrature) data. The ultrasound data forming section 114 may sequentially and repetitively perform forming the ultrasound data, thereby forming the plurality of ultrasound data.

[0019] The ultrasound data acquiring unit 110 may further include a synchronization (Sync) number setting section 115. The Sync number setting section 115 may be operable to form Sync numbers based on the ultrasound data provided from the ultrasound data forming section 114, and assign the Sync numbers to respective ultrasound data. The Sync number setting section 115 may sequentially and repetitively perform forming and assigning the Sync numbers, thereby forming the plurality of ultrasound data, thereby assigning different Sync numbers to a plurality of ultrasound data.

[0020] Referring back to **FIG. 1**, an illustrative embodiment of the ultrasound system 100 may further include a storing unit 120. The storing unit 120 may store the plurality of ultrasound data provided from the ultrasound data acquiring unit 110, each having a Sync number uniquely assigned thereto. The storing unit 120 may further store a Doppler mode image, a Doppler sound and a sound graph. Below, a detailed description will be made as to the sound graph.

[0021] The ultrasound system 100 may further include a user input unit 130. The user input unit 130 may allow a user to input a user instruction. In one embodiment, as shown in **FIG. 4**, the user instruction may include a first information for setting a region (hereinafter referred to as a "region of interest") 220 whose the Doppler sound is to be formed on a Doppler mode image 210. In **FIG. 4**, a dotted phantom line represents a position of the Doppler sound currently being outputted. Also in **FIG. 4**, the Sync number may or may not be displayed. In one embodiment, the user instruction may further include a second information for adjusting a sound field of the Doppler sound. The user input unit 110 may include at least one of a control panel, a mouse, a keyboard, a touch screen and the like.

[0022] The ultrasound system 100 may further include a processing unit 140 which is coupled to the ultrasound data acquiring unit 110, the storing unit 120 and the user input unit 130. The processing unit 140 may be operable to form a Doppler mode image based on the ultrasound data provided from the ultrasound data acquiring unit 110. The processing unit 140 may be operable to extract the ultrasound data, which corresponds to the first information provided from the user input unit 130, from the storing unit 120, to thereby form the Doppler sound based on the extracted ultrasound data. The processing unit

140 may be implemented by, for example, CPU (Central Processing Unit), GPU (Graphic Processing Unit) or the like. The operation of the processing unit 140 will be described in detail by referring to FIG. 3.

[0023] FIG. 3 is a block diagram showing an illustrative embodiment of the processing unit 140 shown in FIG. 1.

[0024] As shown in FIG. 3, the processing unit 140 may include a first data processing section 141. The first data processing section 141 may be operable to form the Doppler mode image 210 based on the plurality of ultrasound data provided from the ultrasound data acquiring unit 110, as shown in FIG. 4. Wherein, the Doppler mode image 210 may include a Sync number. The Doppler mode image 210 may be stored in the storing unit 120. The first data processing section 141 may be further operable to form the Doppler sound based on the plurality of ultrasound data provided from the ultrasound data acquiring unit 110.

[0025] The processing unit 140 may further include a setting section 142. The setting section 142 may be operable to set the region to interest 220 on the Doppler mode image 210 responsive to the first information provided from the user input unit 130, as shown in FIG. 4.

[0026] The processing unit 140 may further include an extracting section 143. The extracting section 143 may be operable to detect a Sync number assigned to the Doppler mode image corresponding to the region to interest 220, and scan the storing unit 120, thereby extracting ultrasound data corresponding to the detected Sync number.

[0027] The processing unit 140 may further include a second data processing section 144. The second data processing section 144 may be operable to form a Doppler sound based on the ultrasound data extracted at the extracting section 143. The Doppler sound may be stored in the storing unit 120. The second data processing section 144 may be further operable to set on the Doppler mode image 210 a display mark (depicted by a dotted phantom line in FIG. 4) representing a position at which the Doppler sound is currently being outputted. The second data processing section 144 may be further operable to form a sound graph 230 corresponding to the Doppler sound based on the extracted ultrasound data, as shown in FIG. 4. The sound graph 230 may be stored in the storing unit 120.

[0028] The processing unit 140 may further include a Doppler sound processing section 145. As shown in FIG. 5, the Doppler sound processing section 145 may be operable to form an open application programming interface (simply referred to as 'open API') 310 for adjusting a sound field of the Doppler sound. The Doppler sound processing section 145 may be further operable to adjust the sound field of the Doppler sound provided from the second data processing section 144 responsive to the second information provided from the user input unit 130. The second information may be stored in the storing unit 120 as a preset parameter.

[0029] Referring back to FIG. 1, the output unit 150

may be operable to output the Doppler mode image and the Doppler sound, which are formed in the processing unit 140. In one embodiment, the output unit 150 may further include an image output section (not shown) for outputting the Doppler mode image and a sound output section (not shown) for outputting the Doppler sound.

[0030] Therefore, according to the illustrative embodiments of the present disclosure, it is possible to again output a previously-outputted Doppler mode image and further allow a reverse-play function or the like at a timed interval selected by user, thereby enabling the user to minutely diagnose Doppler sounds.

[0031] Although embodiments have been described with reference to a number of illustrative embodiments thereof, it should be understood that numerous other modifications and embodiments can be devised by those skilled in the art that will fall within the spirit and scope of the principles of this disclosure. More particularly, numerous variations and modifications are possible in the component parts and/or arrangements of the subject combination arrangement within the scope of the disclosure, the drawings and the appended claims. In addition to variations and modifications in the component parts and/or arrangements, alternative uses will also be apparent to those skilled in the art.

Claims

1. An ultrasound system, comprising:

an ultrasound data acquiring unit configured to transmit ultrasound signals to a target object and receive ultrasound echo signals reflected therefrom, thereby acquiring a plurality of ultrasound data associated with the target object, each of which having a synchronization (Sync) number uniquely assigned thereto;

a storing unit to store the plurality of ultrasound data therein;

an user input unit configured to allow a user to input a user instruction; and

a processing unit coupled to the ultrasound data acquiring unit, the storing unit and the user input unit and configured to form a Doppler mode image having the Sync number based on the plurality of ultrasound data, the processing unit being further configured to extract ultrasound data with a Sync number corresponding to the user instruction from the storing unit, thereby forming the Doppler sound based on the extracted ultrasound data.

2. The system of Claim 1, wherein the ultrasound data acquiring unit includes:

a transmit (Tx) signal generating section configured to generate a plurality of Tx signals;

- an ultrasound probe, responsive to each of the plurality of Tx signals,
 configured to transmit the ultrasound signals to the target object and receive the ultrasound echo signals reflected there from, thereby generating a plurality of analog receive (Rx) signals;
 a beam former configured to perform an analog-to-digital converting and a receive-focusing on each of the plurality of analog Rx signals, thereby forming a plurality of digital receive (Rx)-focused signals;
 an ultrasound data forming section configured to form a plurality of ultrasound data based on the digital Rx-focused signals; and
 a synchronization (Sync) number setting section configured to assign the unique Sync number to each of the plurality of ultrasound data.
- 5
- 10
- 15
- 20
- 25
- 30
- 35
- 40
- 45
- 50
- 55
- there from, thereby acquiring a plurality of ultrasound data associated with the target object, each of which having a synchronization (Sync) number uniquely assigned thereto;
 storing the plurality of ultrasound data in a storage ;
 generating the Doppler mode image based on the plurality of ultrasound data;
 allowing a user to input a user instruction;
 extracting ultrasound data with a Sync number corresponding to the user instruction from the storage; and
 forming the Doppler sound based on the extracted ultrasound data.
8. The method of Claim 7, wherein the transmitting includes:
- generating a plurality of transmit (Tx) signals;
 transmitting, responsive to each of the plurality of Tx signals, the ultrasound signals to the target object and receiving the ultrasound echo signals reflected there from, thereby forming a plurality of analog receive (Rx) signals;
 performing an analog-to-digital converting and a receive-focusing on each of the plurality of Rx signals, thereby forming a plurality of digital receive (Rx)-focused signals;
 producing the plurality of ultrasound data based on the plurality of digital Rx-focused signals; and
 assigning the unique Sync number to each of the plurality of ultrasound data.
9. The method of Claim 7, wherein the user instruction include an input information for setting a region of interest whose the Doppler sound is to be formed on a Doppler mode image.
10. The method of Claim 9, wherein the extracting includes:
- setting the region to interest on the Doppler mode image responsive to the first information;
 detecting a Sync number assigned to the Doppler mode image corresponding to the region to interest; and
 scanning the storage to extract the ultrasound data corresponding to the detected Sync number.
11. The method of Claim 7, wherein the forming includes forming a sound graph corresponding to the Doppler sound based on the extracted ultrasound data.
12. The method of Claim 7, further comprising adjusting a sound field of the Doppler sound.
13. A computer-readable storage medium storing in-
3. The system of Claim 1, wherein the user instruction include an input information for setting a region of interest whose the Doppler sound is to be formed on a Doppler mode image.
4. The system of Claim 3, wherein the processing unit includes:
- a first data processing section configured to form the Doppler mode image based on the plurality of ultrasound data;
 a setting section configured to set the region to interest on the Doppler mode image responsive to the first information;
 an extracting section configured to detect a Sync number assigned to the Doppler mode image corresponding to the region to interest, and configured to scan the storing unit to extract ultrasound data corresponding to the detected Sync number; and
 a second data processing section configured to form the Doppler sound based on the extracted ultrasound data.
5. The system of Claim 4, wherein the second data processing section is further configured to form a sound graph corresponding to the Doppler sound based on the extracted ultrasound data.
6. The system of Claim 4, wherein the processing unit further includes a Doppler sound processing section configured to adjust a sound field of the Doppler sound.
7. A method of providing a Doppler mode image and Doppler sound in an ultrasound system, the method comprising:
- transmitting ultrasound signals to a target object and receiving ultrasound echo signals reflected

structions that, when executed by a computer, cause the computer to perform the operations of:

transmitting ultrasound signals to a target object
and receiving ultrasound echo signals reflected
there from, thereby acquiring a plurality of ultra-
sound data associated with the target object,
each of which having a synchronization (Sync)
number uniquely assigned thereto;
storing the plurality of ultrasound data in a stor-
age;
generating the Doppler mode image based on
the plurality of ultrasound data;
allowing a user to input a user instruction;
extracting ultrasound data with a Sync number
corresponding to the user instruction from the
storage; and
forming the Doppler sound based on the extract-
ed ultrasound data.

5

10

15

20

25

30

35

40

45

50

55

FIG. 1

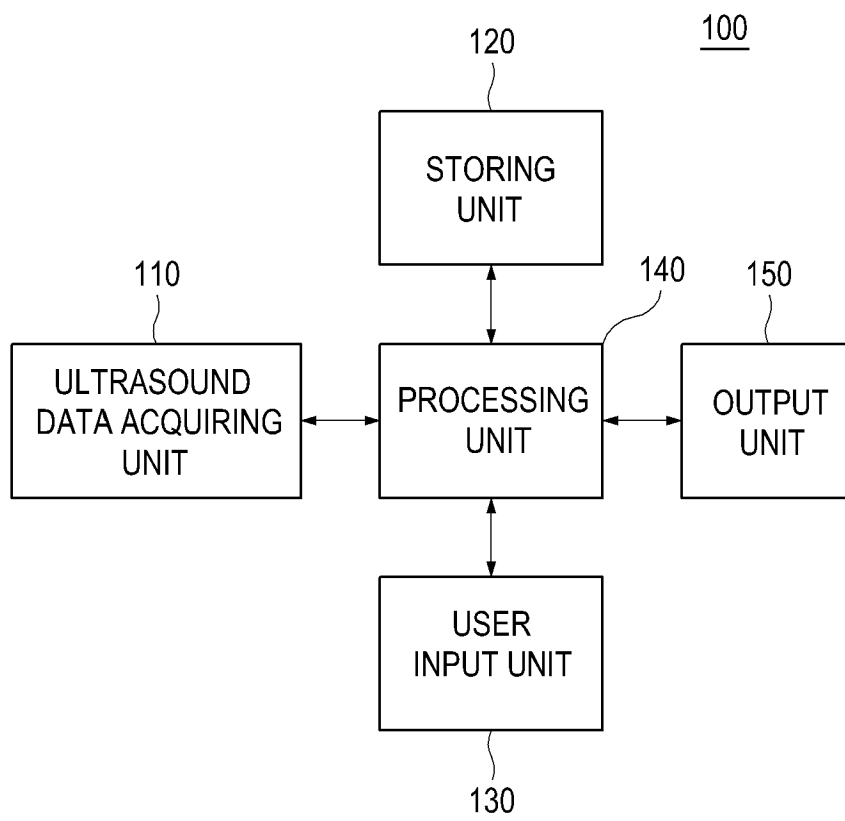


FIG. 2

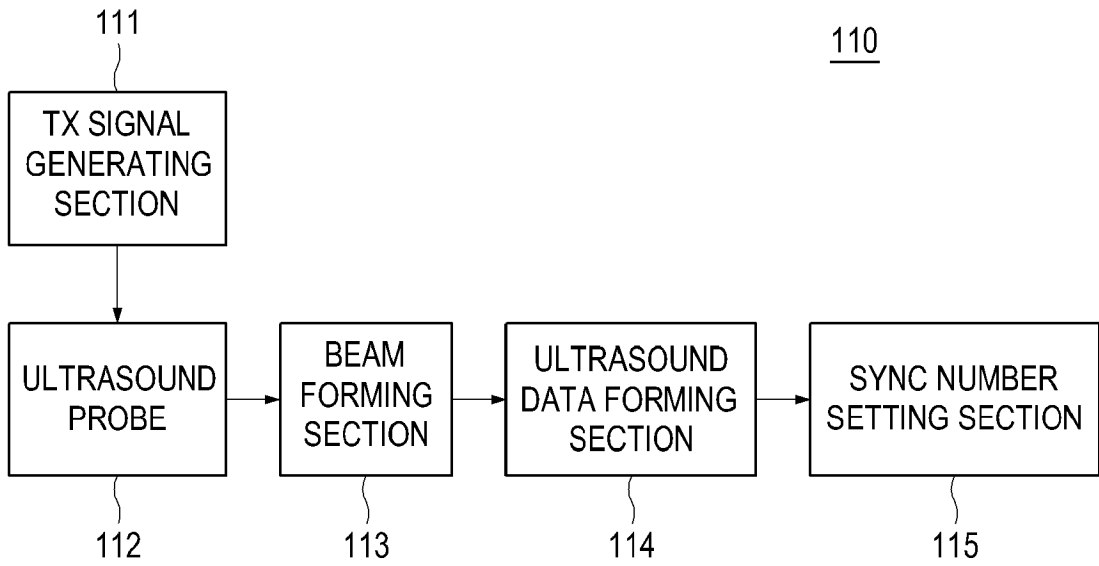


FIG. 3

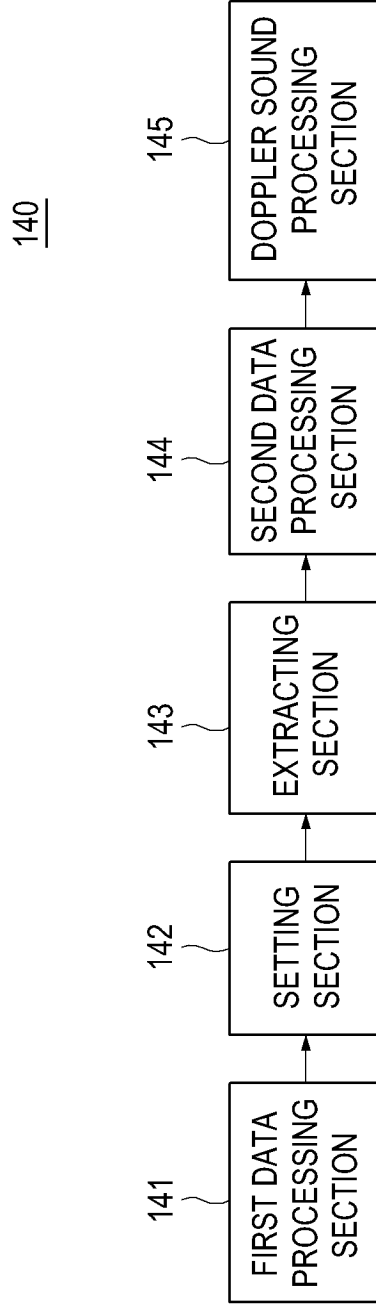


FIG. 4

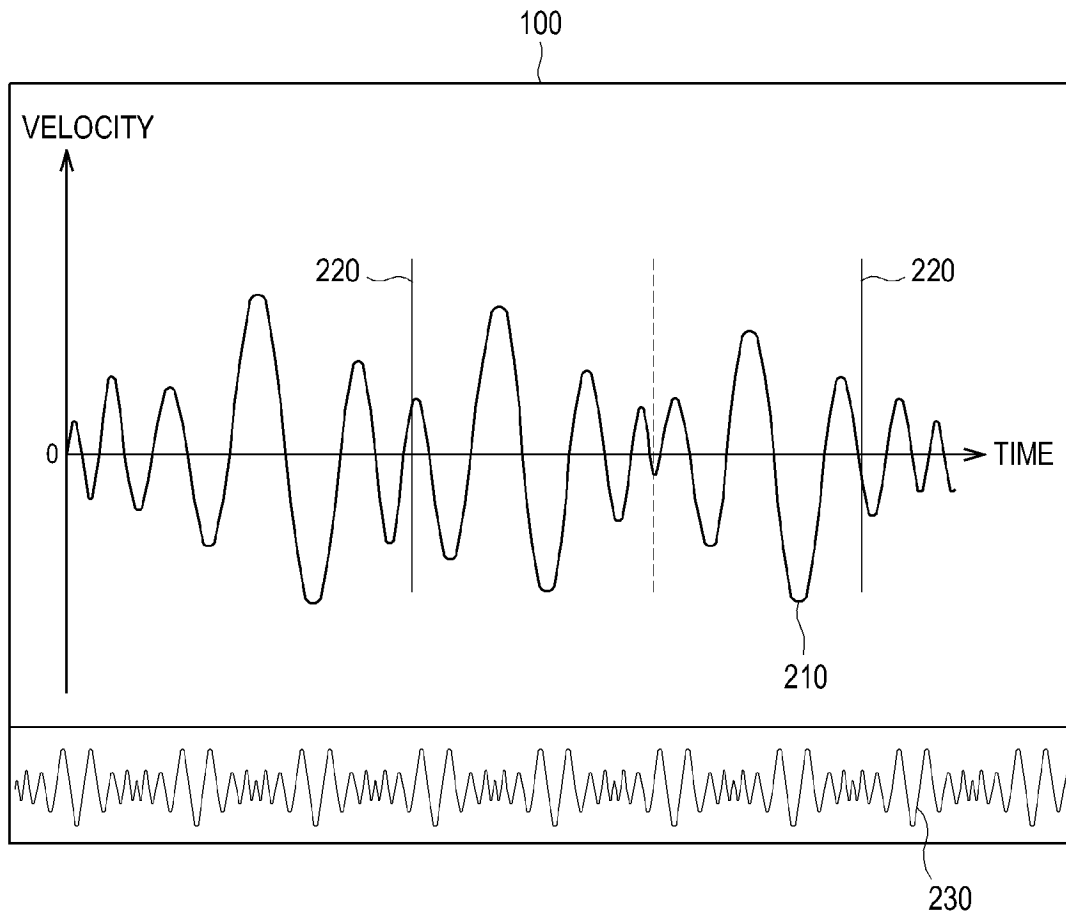
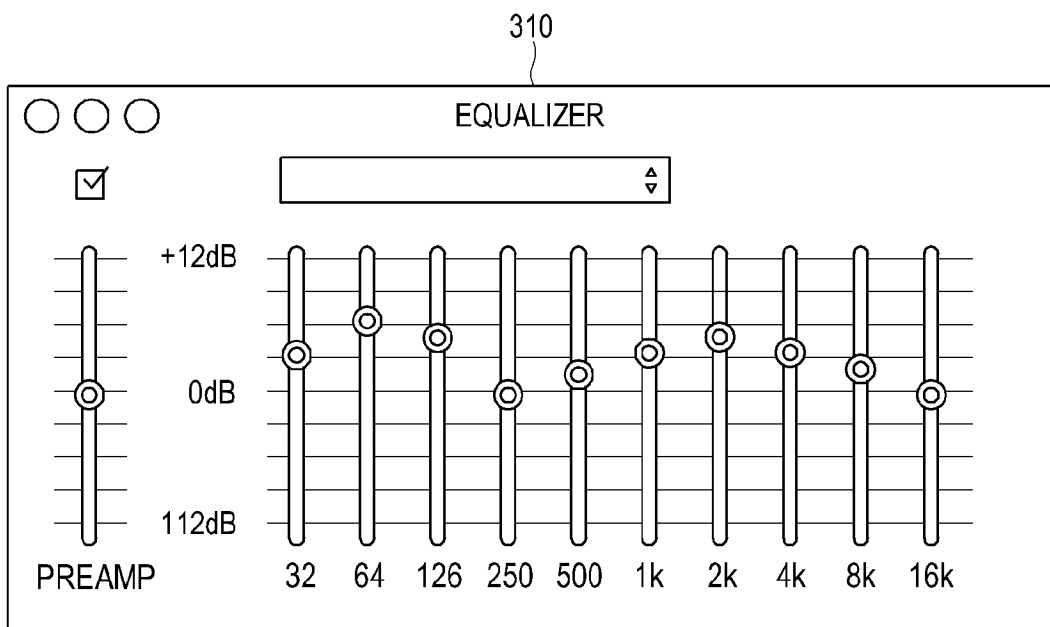


FIG. 5



REFERENCES CITED IN THE DESCRIPTION

This list of references cited by the applicant is for the reader's convenience only. It does not form part of the European patent document. Even though great care has been taken in compiling the references, errors or omissions cannot be excluded and the EPO disclaims all liability in this regard.

Patent documents cited in the description

- KR 1020090123003 [0001]

专利名称(译)	超声系统和提供多普勒声音的方法		
公开(公告)号	EP2336804A2	公开(公告)日	2011-06-22
申请号	EP2010193595	申请日	2010-12-03
申请(专利权)人(译)	MEDISON CO. , LTD.		
当前申请(专利权)人(译)	三星MEDISON CO. , LTD.		
[标]发明人	LEE SUK JIN		
发明人	LEE, SUK JIN		
IPC分类号	G01S15/89 A61B8/00 G01S7/52		
CPC分类号	G01S15/8979 A61B8/467 A61B8/488 G01S7/52084		
代理机构(译)	SCHMID , WOLFGANG		
优先权	1020090123003 2009-12-11 KR		
其他公开文献	EP2336804B1 EP2336804A3		
外部链接	Espacenet		

摘要(译)

公开了用于提供多普勒声音的实施例。在一个实施例中，提供了一种超声系统，其可以包括：超声数据获取单元，被配置为将超声信号发送到目标对象并接收从其反射的超声回波信号，以获取与目标对象相关联的多个超声数据，每个超声数据。其中具有唯一分配给它的同步（Sync）号；存储单元，用于在其中存储多个超声数据；用户输入单元，被配置为允许用户输入用户指令；处理单元，连接超声数据获取单元，存储单元和用户输入单元，用于根据多个超声数据形成具有同步数的多普勒模式图像，处理单元还用于提取超声数据具有与来自存储单元的用户指令对应的Sync号，从而基于提取的超声数据形成多普勒声音。

FIG. 1

