



(12) **EUROPEAN PATENT APPLICATION**
 published in accordance with Art. 153(4) EPC

(43) Date of publication:
06.06.2012 Bulletin 2012/23

(51) Int Cl.:
A61B 8/00 (2006.01)

(21) Application number: **10804099.9**

(86) International application number:
PCT/JP2010/004750

(22) Date of filing: **26.07.2010**

(87) International publication number:
WO 2011/013346 (03.02.2011 Gazette 2011/05)

(84) Designated Contracting States:
AL AT BE BG CH CY CZ DE DK EE ES FI FR GB GR HR HU IE IS IT LI LT LU LV MC MK MT NL NO PL PT RO SE SI SK SM TR

(72) Inventor: **NISHIMURA, Yushi**
Osaka-shi, Osaka 5406207 (JP)

(30) Priority: **29.07.2009 JP 2009176041**

(74) Representative: **Grünecker, Kinkeldey, Stockmair & Schwanhäusser**
Leopoldstrasse 4
80802 München (DE)

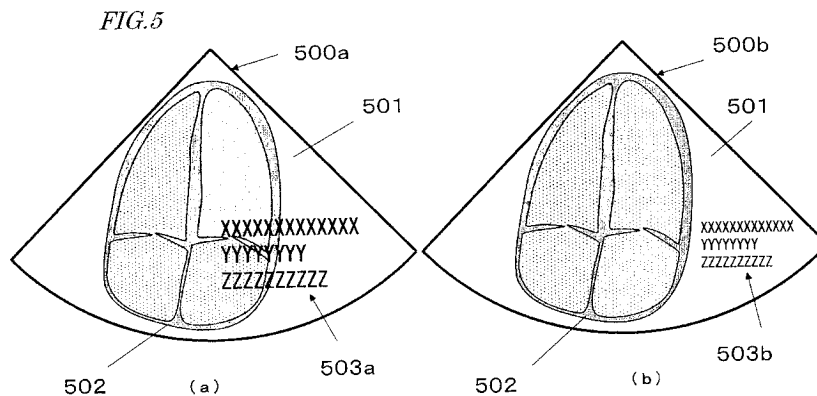
(71) Applicant: **Panasonic Corporation**
Kadoma-shi
Osaka 571-8501 (JP)

(54) **ULTRASONIC DIAGNOSTIC DEVICE**

(57) An ultrasonic diagnostic apparatus is provided in which overlap of a displayed ultrasonic image and displayed diagnostic data can be avoided without imposing the burden of complicated operations on the operator.

An ultrasonic diagnostic apparatus includes: an ultrasonic probe for transmitting an ultrasonic beam to a tissue of a biological body and receiving a reflection wave of the ultrasonic beam reflected from the tissue; an image construction section for constructing an image frame of a first image representing a tomographic image of the tissue based on the reflection wave; an image analysis section for distinguishing a region of no interest based

on an image feature quantity of the image frame, the region of no interest constituting part of the image frame which is exclusive of a region of interest that includes the tomographic image of the tissue; a data generation section for generating a second image that is for display of diagnostic data; an image synthesis section for generating a synthesized image by determining a display position of the second image based on a result of the distinguishment by the image analysis section and superimposing the second image on the image frame of the first image; and a display section for displaying the synthesized image.



Description**TECHNICAL FIELD**

[0001] The present invention relates to an ultrasonic diagnostic apparatus. More particularly, the present invention relates to a technique of displaying diagnostic data by an ultrasonic diagnostic apparatus.

BACKGROUND ART

[0002] The techniques of displaying diagnostic data so as not to overlap a region of interest in an ultrasonic image in an ultrasonic diagnostic apparatus are disclosed in Patent Document 1 and Patent Document 2.

[0003] Patent Document 1 discloses a technique of avoiding overlap of an ultrasonic image and diagnostic data, which is realized by preliminarily storing the display position of the ultrasonic image for every one of the bodies, diagnosed sites, or measurement functions and selecting a relevant one of the bodies, diagnosed sites, or measurement functions at the time of diagnosis.

[0004] Patent Document 2 discloses another technique of avoiding overlap of an ultrasonic image and diagnostic data, which is realized by an operator manually changing the vertical magnification rate, horizontal magnification rate, or display position of the text data region via a user interface.

CITATION LIST**PATENT LITERATURE****[0005]**

Patent Document 1: Japanese Laid-Open Patent Publication No. 11-326

Patent Document 2: Japanese Laid-Open Patent Publication No. 9-47453

SUMMARY OF INVENTION**TECHNICAL PROBLEM**

[0006] In diagnosis with the use of an ultrasonic diagnostic apparatus, an image is obtained through an ultrasonic probe which is in contact with a skin surface of a body. The position of the region of interest in the ultrasonic image may greatly vary depending on, for example, the angle of the probe or the posture of the body at the time of obtaining the image even if the same body or the same site is diagnosed. According to the aforementioned method disclosed in Patent Document 1, the display position of the diagnostic data is preliminarily stored and uniquely fixed. Therefore, the method of Patent Document 1 has difficulty in flexibly treating the variation of the position of the region of interest which may occur due to, for example, the angle of the probe or the posture of

the body.

[0007] Using the method disclosed in Patent Document 2 enables change of the size of the display region of the diagnostic data and movement of the display position. However, these operations need to be manually carried out by an operator and are therefore complicated. Thus, they may disturb the concentration of the operator on the diagnosis.

[0008] The present invention was conceived for the purpose of solving the above problems. One of the objects of the present invention is to provide an ultrasonic diagnostic apparatus in which overlap of an ultrasonic image and diagnostic data can be avoided without imposing the burden of complicated operations on the operator.

SOLUTION TO PROBLEM

[0009] An ultrasonic diagnostic apparatus of the present invention includes: an ultrasonic probe for transmitting an ultrasonic beam to a tissue of a biological body and receiving a reflection wave of the ultrasonic beam reflected from the tissue; an image construction section for constructing an image frame of a first image representing a tomographic image of the tissue based on the reflection wave; an image analysis section for distinguishing a region of no interest based on an image feature quantity of the image frame, the region of no interest constituting part of the image frame which is exclusive of a region of interest that includes the tomographic image of the tissue; a data generation section for generating a second image that is for display of diagnostic data; an image synthesis section for generating a synthesized image by determining a display position of the second image based on a result of the distinguishment by the image analysis section and superimposing the second image on the image frame of the first image; and a display section for displaying the synthesized image.

[0010] The image analysis section may divide the image frame into a plurality of small regions and calculate an image feature quantity of each of the small regions based on a luminance of the small region.

[0011] The image analysis section may calculate a mean value and a variance value of the luminance of each of the small regions and, and if both the mean value and the variance value are smaller than predetermined threshold values, the image analysis section may recognize the small region as being the region of no interest.

[0012] The image synthesis section may assign, as the display position of the second image, a region in the image frame which is recognized by the image analysis section as being the region of no interest, and generate the synthesized image.

[0013] The ultrasonic diagnostic apparatus may further include a user interface for an operator to instruct a change of the display position of the second image in the displayed synthesized image, wherein if the second region overlaps the region of interest as a result of the

change of the display position of the second image which is instructed by the operator via the user interface, the image synthesis section forcedly changes the display position of the second image to a position in the region of no interest.

[0014] The image analysis section may continuously perform distinguishment of the region of no interest, and if the second region overlaps the region of interest as a result of movement of the region of interest within the image frame, the image synthesis section may change the display position of the second image to a position in a region which is presently recognized as the region of no interest.

[0015] The image synthesis section may hold a threshold value as to a distance between the second image and the region of interest across a display screen, and the image synthesis section may assign, as the display position of the second image, such a position that the distance between the second image and the region of interest which are displayed in the display section is smaller than the threshold value.

ADVANTAGEOUS EFFECTS OF INVENTION

[0016] According to the present invention, a region of no interest is distinguished based on an image feature quantity of an image frame, the region of no interest constituting part of the image frame which is exclusive of a region of interest that includes a tomographic image of a tissue. The display position of the second image that is to display diagnostic data is determined based on the distinguishment result, and a synthesized image is generated by superimposing the second image on an image frame of the first image. With this configuration, overlap of the ultrasonic image and the diagnostic data can be avoided without imposing the burden of complicated operations on the operator.

BRIEF DESCRIPTION OF DRAWINGS

[0017]

FIG. 1 is a diagram showing the exterior of an ultrasonic diagnostic apparatus **100** that is an embodiment of the present invention.

FIG. 2 is a block diagram showing one configuration example of the ultrasonic diagnostic apparatus **100** that is an embodiment of the present invention.

FIG. 3 is a flowchart illustrating the operation procedure of the ultrasonic diagnostic apparatus **100**.

FIG. 4 is a diagram showing a synthesized image **400** displayed on a monitor **107**.

FIG. 5(a) is a diagram showing an image **500a** where the arrangement of a diagnostic data image **503a** is not adjusted. FIG. 5(b) is a diagram showing an image **500b** where a downsized diagnostic data image **503b** is displayed.

FIG. 6(a) is a diagram of an example where the po-

sition of the region of interest moves from the initial position **604** to a position **602** in an image frame **600a** so that the region of interest overlaps a diagnostic data image **603a**. FIG. 6(b) is a diagram showing an image frame **600b** where a diagnostic data image **603b** is moved.

FIG. 7(a) is a diagram of an example where an operator instructs via a user interface **106** to move a diagnostic data image from the initial position **704** in a noise region **701** to a position in the region of interest **702**. FIG. 7(b) is a diagram showing a forcedly-moved diagnostic data image **703**.

FIG. 8 is a flowchart illustrating the operation procedure of detecting a noise region.

DESCRIPTION OF EMBODIMENTS

[0018] Hereinafter, an embodiment of an ultrasonic diagnostic apparatus of the present invention is described with reference to the attached drawings.

[0019] FIG. 1 shows the exterior of the ultrasonic diagnostic apparatus **100** of the present embodiment. The ultrasonic diagnostic apparatus **100** displays in real time on a monitor **107** a tomographic image of an internal tissue which is produced using an ultrasonic probe **101**. In that case, an image which shows the diagnostic data of a subject, for example, is superimposed on an image frame of the tomographic image and displayed on the monitor **107**. Note that this diagnostic data" comprehensively represents information about the subject and information about the diagnostic apparatus used and the diagnostic procedure.

[0020] The ultrasonic diagnostic apparatus **100** of the present embodiment determines the display position of the image that shows the diagnostic data, or the like, according to a distinguishment result as to whether it is a region of the image frame in which a tomographic image of a tissue is present (region of interest) or the other region of the image frame which is exclusive of the region of interest (region of no interest), and superimposes the image on the image frame. More specifically, the ultrasonic diagnostic apparatus **100** superimposes an image which shows the diagnostic data, or the like, on the region of no interest of the image frame.

[0021] In the description below, the configuration of the ultrasonic diagnostic apparatus **100** is first described, and then, how the ultrasonic diagnostic apparatus **100** specifies a region of no interest and in what manner an image which shows, for example, data about the subject is superimposed on the specified region of no interest are described in detail.

[0022] FIG. 2 is a block diagram showing a configuration example of the ultrasonic diagnostic apparatus **100** of the present embodiment.

[0023] The ultrasonic diagnostic apparatus **100** includes a probe **101**, an AD converter **102**, a beam former **103**, a wave detection section **104**, an image construction section **105**, a user interface **106**, a monitor **107**, and a

processor **150**.

[0024] The ultrasonic probe **101** transmits and receives an ultrasonic beam. During the operation of the ultrasonic diagnostic apparatus **100**, the ultrasonic probe **101** transmits an ultrasonic beam to a tissue of a biological body and receives a reflection wave of the ultrasonic beam from the tissue of the biological body.

[0025] The AD converter **102** converts the received ultrasonic reflection wave to a digital signal. The beam former **103** performs delayed combination on the AD-converted ultrasonic reflection wave. The wave detection section **104** performs envelope detection on an ultrasonic echo signal obtained by the delayed combination.

[0026] The image construction section **105** performs a signal process on a detected ultrasonic echo signal to construct a tomographic image frame of the tissue.

[0027] The user interface **106** is an entry device, such as a keyboard, which is utilized by an operator for entering diagnostic data (e.g., data about a subject) or data other than the diagnostic data (non-diagnostic data). Note that the user interface **106** may be utilized when instructing whether or not data is displayed on the monitor **107** or when instructing a change of the display position of displayed data. For example, when the operator instructs a change of the display position of a diagnostic data image which will be described later, the user interface **106** may be utilized.

[0028] The monitor **107** may be a display device in which, for example, a liquid crystal or a cathode ray tube is used, and which is configured to display an ultrasonic image and an image of the diagnostic data.

[0029] Note that a touchscreen into which the user interface **106** and the monitor **107** are integrated may be provided.

[0030] The processor **150** is a so-called central processing unit (CPU) and is configured to analyze an image frame of a tomographic image (ultrasonic image) and determine the display position of the diagnostic data and/or non-diagnostic data.

[0031] The processor **150** includes an image analysis section **151** for analyzing an ultrasonic image, a diagnostic data image generation section **152** for generating an image of the diagnostic data, and an image synthesis section **153** for synthesizing the ultrasonic image and the diagnostic data. Each of these components may be configured by hardware or may be configured by software running on the processor **150** to carry out the function of the component.

[0032] When the processor **150** is, for example, a special-purpose integrated circuit chip which is designed and manufactured exclusively for the ultrasonic diagnostic apparatus **100**, the image analysis section **151**, the diagnostic data image generation section **152** and the image synthesis section **153** are configured as independent integrated circuits in the processor **150**.

[0033] When the processor **150** is a general-purpose integrated circuit chip, the image analysis section **151**, the diagnostic data image generation section **152** and

the image synthesis section **153** are realized by the processor **150** and computer programs executed by the processor **150**. Specifically, suppose that there are library programs A, B and C provided for implementing the respective functions of the image analysis section **151**, the diagnostic data image generation section **152** and the image synthesis section **153**. During the execution of the library program A, the processor **150** functions as the image analysis section **151**. During the execution of the library program B, the processor **150** functions as the diagnostic data image generation section **152**. The same applies to the other program. Note that the processor **150** may execute the plurality of programs in parallel, so that the processor **150** seemingly concurrently operates as the image analysis section **151**, the diagnostic data image generation section **152** and the image synthesis section **153**.

[0034] Next, an operation of the ultrasonic diagnostic apparatus **100** is described.

[0035] FIG. **3** is a flowchart which illustrates the procedure in the ultrasonic diagnostic apparatus **100**.

[0036] In step S1, the ultrasonic diagnostic apparatus **100** constructs an image frame of a tomographic image of an internal tissue with the use of an ultrasonic beam of the probe **101**. Specifically, the probe **101** transmits an ultrasonic beam into a biological body and receives a reflection wave of the ultrasonic beam from a tissue inside the biological body, for example. The AD converter **102** converts the received reflection wave of the ultrasonic beam to a digital signal. The beam former **103** performs a delayed combination process on the digital signal. The wave detection section **104** performs envelope detection to remove a transmitted wave (carrier) component from the received signal. The resultant signal is input to the image construction section **105**. The image construction section **105** performs a filtering process, a luminance conversion process, a scan line conversion (scan convert) process, etc., on the input ultrasonic echo signal to construct an ultrasonic tomographic image frame. The ultrasonic tomographic image frame is output to the processor **150**. The image frame is first input to the image analysis section **151** in the processor **150**.

[0037] In step S2, the image analysis section **151** analyzes the tomographic image to distinguish a noise region in the image frame. The "noise region" means a region of the image frame which is exclusive of the region that includes the image of the internal tissue. In the specification of the present application, the noise region is referred to as "region of no interest". Part of the image of the internal tissue which is utilized by an operator for diagnosis, or which is adopted as the basis for diagnosis, is referred to as "region of interest" or "non-noise region". The process of distinguishing the noise region will be described later in detail with reference to FIG. **8**.

[0038] Then, in step S3, the diagnostic data image generation section **152** generates image data based on the diagnostic data entered via the user interface.

[0039] First, the operator uses the user interface **106**

to perform measurements of the image, etc., and enter the diagnostic data. The diagnostic data image generation section 152 converts the entered diagnostic data to image data. This process is, for example, conversion of the diagnostic data entered in the form of text data to an image object. The diagnostic data converted to an image object is hereinafter referred to as "diagnostic data image".

[0040] In step S4, the image synthesis section 153 generates a synthesized image by superimposing the diagnostic data image on the image frame (or synthesizing the diagnostic data image with the image frame) such that the diagnostic data image is displayed on the noise region (region of no interest) in the image frame. Determination as to whether or not the diagnostic data image is on the noise region in the image frame may be made based on whether or not, supposing that the diagnostic data image is rectangular, the entire area of the rectangular image is within the noise region 501.

[0041] In step S5, the monitor 107 displays the synthesized image. FIG. 4 shows the synthesized image 400 displayed on the monitor 107. The synthesized image 400 includes a noise region 401 and a non-noise region 402. A diagnostic data image 403 is displayed in the non-noise region 402.

[0042] When the diagnostic data image 403 is displayed on a region of no interest, the display position of the diagnostic data image 403 is preferably as close to a region of interest as possible. This is for the purpose of minimizing the movement of the sight line of the operator. For example, in the case where the blood vessel wall of the common carotid artery is observed and the intima-media thickness measured, the measured values are preferably displayed in part of the region of no interest which is close to the blood vessel wall.

[0043] Thus, the image synthesis section 153 may generate a synthesized image such that the diagnostic data image is placed at such a position that the distance between the diagnostic data image and the region of interest is smaller than a predetermined threshold value. The operator can preset the threshold value in the image synthesis section 153 via the user interface 106. The image synthesis section 153 holds the threshold value in, for example, an internal memory, and refers to the threshold value in determination of where on the region of no interest the diagnostic data image 403 is to be displayed.

[0044] In the present embodiment, even after the above process is completed, the image analysis section 151 continues the process of distinguishing the noise region as described above as long as generation of ultrasonic images is continued. This is because the positions of the region of interest and the region of no interest may vary depending on, for example, the position of the probe 101. The process performed in this phase will be described later with reference to FIG. 6.

[0045] Hereinafter, a specific example is described.

[0046] FIG. 5(a) shows an image 500a where the ar-

rangement of a diagnostic data image 503a is not adjusted. In the image 500a, the diagnostic data image 503a is displayed in a predetermined size at a predetermined position. As shown, part of the diagnostic data image 503a lies over the noise region 501 while the other part lies over a region of interest 502. In this example, the diagnostic data region is unduly large so that it cannot be displayed without overlapping the region of interest.

[0047] In that case, the image synthesis section 153 displays a diagnostic data image 503b, which is a downsized version of the diagnostic data image 503a, as shown in FIG. 5(b). The image synthesis section 153 downsizes the diagnostic data image stepwise and determines, at every step of downsizing, whether or not the downsized diagnostic data image can be displayed within the noise region 501. This determination is similar to the previously-described determination as to whether or not the diagnostic data image is present on the noise region in the image frame. If the diagnostic data image is rectangular, the determination may be made based on whether or not all the vertexes at the four corners of the rectangular image are in the noise region 501. In this way, a synthesized image 500b, in which the diagnostic data image 503b is placed on the noise region 501 that is different from the region of interest 502, can be displayed.

[0048] FIG. 6(a) shows an example where the position of the region of interest moves from the initial position 604 to a position 602 in an image frame 600a so that the region of interest overlaps a diagnostic data image 603a. Such a move of the region of interest may occur due to, for example, a variation of the angle of the probe 101 or the posture of the body.

[0049] In this situation, the image synthesis section 153 can automatically move the diagnostic data image 603b to a position shown in FIG. 6(b). The image synthesis section 153 analyzes the image 600a after the move of the region of interest to distinguish a noise region 601 again. Then, the diagnostic data image may be superimposed on the image frame such that the diagnostic data image is displayed on the distinguished noise region. In this way, a synthesized image 600b shown in FIG. 6(b) can be obtained.

[0050] Also, the operator can move the display position of the diagnostic data using the user interface 106. FIG. 7(a) shows an example where the operator attempts to move the diagnostic data image from the initial position 704 in a noise region 701 to a position on the region of interest 702 via a user interface 106. In such a situation, the image synthesis section 153 of the processor 501 can automatically (or "forcedly") move the diagnostic data image to a position on the noise region 702 as shown in FIG. 7(b).

[0051] Next, a method of detecting a noise region, which is implemented by the image analysis section 151, is described. FIG. 8 is a flowchart illustrating the operation procedure of detecting a noise region. First, in step S11, the image analysis section 151 divides the image frame

into small regions. In the subsequent step S12, the image analysis section **151** calculates the mean value and the variance value of the luminance of each of the small regions. In the specification of the present application, these physical quantities are also referred to as "image feature quantities".

[0052] In the subsequent step S13, the image analysis section **151** determines whether or not the mean value and the variance value of each of the small regions are smaller than threshold values THm and THv, respectively. The mean value and the variance value of the luminance of the noise component have a tendency to be smaller than those of the luminance of the biological body tissue component. Therefore, if the mean value and the variance value of each of the small regions are smaller than the predetermined threshold values THm and THv, respectively, the small region is estimated to be a noise region. On the other hand, if that condition is not met, the small region is estimated to be a non-noise region (region of interest). Therefore, by determination which is made based on the above criteria, it can be distinguished whether the small region is a noise region or a region of interest. Note that the size of the small region can be arbitrarily determined, although it is desirably equal to the size of the diagnostic data image generated by the diagnostic data image generation section **152**. Note that the threshold values THm and THv can be determined as a function of the mean luminance and the variance of the entire image. Note that the threshold values may vary depending on the noise level of the ultrasonic diagnostic apparatus **100**, the site which is to undergo diagnosis, and the parameters set by a user (such as dynamic range, transmission power, etc.) Therefore, appropriate values may be determined through adjustments on the ultrasonic diagnostic apparatus **100**.

[0053] According to the above process, whether or not each of the small regions is a noise region can be determined based on the image feature quantities. By making the determination on every one of the small regions, the region of interest that includes an image corresponding to the internal tissue and the noise region can be distinguished with the accuracy which depends on the size of the small region.

[0054] In this example, a noise region is detected as a region of no interest, although there is a region of no interest other than the noise region. Even in such a case, the region of no interest can be detected using a variety of methods other than the method illustrated in FIG. **8**. For example, it is highly probable that part of the image which frequently moves is a region of interest, and therefore, a method of distinguishing a region of no interest from a region of interest by means of motion detection which is based on the frame correlation may be applicable.

[0055] When the shape and the luminance pattern of the region of interest are specified beforehand, such as in the case of measurement of the intima-media thickness of the blood vessel wall of the common carotid ar-

tery, the image analysis section **151** may detect the region of interest by means of pattern matching, thereby distinguishing the region of interest and the region of no interest from each other.

[0056] In this example, the tomographic image (B mode) is described, although the extent of the present invention is not limited to the B mode. As a matter of course, the present invention is applicable to typical ultrasonic images of other types, such as M mode, Doppler mode, etc.

[0057] In the above-described embodiment, the user himself enters the diagnostic data using the user interface **106**. However, the "diagnostic data" is merely an example. For example, non-diagnostic data which is irrelevant to diagnosis (e.g., the name of the subject, the date of production of the tomographic image, etc.) may be entered. Further, the user interface **106** may not be used in entering the diagnostic data or non-diagnostic data. The diagnostic data or non-diagnostic data may be produced by the processor **150**. For example, the processor **150** may measure and display the thickness of the tissue in a tomographic image.

[0058] The procedure which has been previously described using the flowchart shown in FIG. **3** may be implemented in the form of a computer program which is executed by the image construction section **105** and the processor **150**. Such a computer program may be recorded in a storage medium, such as CD-ROM, which is to be circulated as a commercial product in the market, or may be distributed via electric communication lines, such as the Internet. Note that, the functions of the image construction section **105** may be realized by the processor **150** which executes computer programs, instead of providing the image construction section **105** as hardware.

INDUSTRIAL APPLICABILITY

[0059] An ultrasonic diagnostic device of the present invention can display various diagnostic data concerning a body so as not to overlap a region of interest of an ultrasonic image and is therefore useful to, for example, medical applications.

PREFERENCE SIGNS LIST

[0060]

| | |
|------------|--|
| 101 | probe |
| 102 | AD converter |
| 103 | beam former |
| 104 | wave detection section |
| 105 | image construction section |
| 106 | user interface |
| 107 | monitor |
| 150 | processor |
| 151 | image analysis section |
| 152 | diagnostic data image generation section |

153 image synthesis section

Claims

1. An ultrasonic diagnostic apparatus, comprising:

an ultrasonic probe configured to transmit an ultrasonic beam to a tissue of a biological body and receiving a reflection wave of the ultrasonic beam reflected from the tissue;

an image construction section configured to construct an image frame of a first image representing a tomographic image of the tissue based on the reflection wave;

an image analysis section configured to distinguish a region of no interest based on an image feature quantity of the image frame, the region of no interest constituting part of the image frame which is exclusive of a region of interest that includes the tomographic image of the tissue;

a data generation section configured to generate a second image that is for display of diagnostic data;

an image synthesis section configured to generate a synthesized image by determining a display position of the second image based on a result of the distinguishment by the image analysis section and superimposing the second image on the image frame of the first image; and a display section configured to display the synthesized image.

2. The ultrasonic diagnostic apparatus of claim 1, wherein the image analysis section divides the image frame into a plurality of small regions and calculates an image feature quantity of each of the small regions based on a luminance of the small region.

3. The ultrasonic diagnostic apparatus of claim 2, wherein

the image analysis section calculates a mean value and a variance value of the luminance of each of the small regions and, and

if both the mean value and the variance value are smaller than predetermined threshold values, the image analysis section recognizes the small region as being the region of no interest.

4. The ultrasonic diagnostic apparatus of claim 1, wherein the image synthesis section assigns, as the display position of the second image, a region in the image frame which is recognized by the image analysis section as being the region of no interest, and generates the synthesized image.

5. The ultrasonic diagnostic apparatus of claim 1, further comprising a user interface for an operator to

instruct a change of the display position of the second image in the displayed synthesized image, wherein if the second region overlaps the region of interest as a result of the change of the display position of the second image which is instructed by the operator via the user interface, the image synthesis section forcedly changes the display position of the second image to a position in the region of no interest.

6. The ultrasonic diagnostic apparatus of claim 1, wherein the image analysis section continuously performs distinguishment of the region of no interest, and if the second region overlaps the region of interest as a result of movement of the region of interest within the image frame, the image synthesis section changes the display position of the second image to a position in a region which is presently recognized as the region of no interest.

7. The ultrasonic diagnostic apparatus of claim 1, wherein the image synthesis section holds a threshold value as to a distance between the second image and the region of interest across a display screen, and the image synthesis section assigns, as the display position of the second image, such a position that the distance between the second image and the region of interest which are displayed in the display section is smaller than the threshold value.

FIG. 1

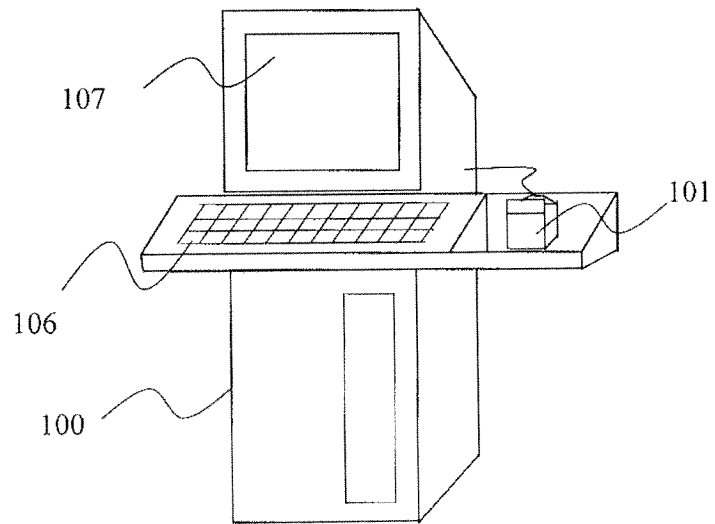


FIG. 2

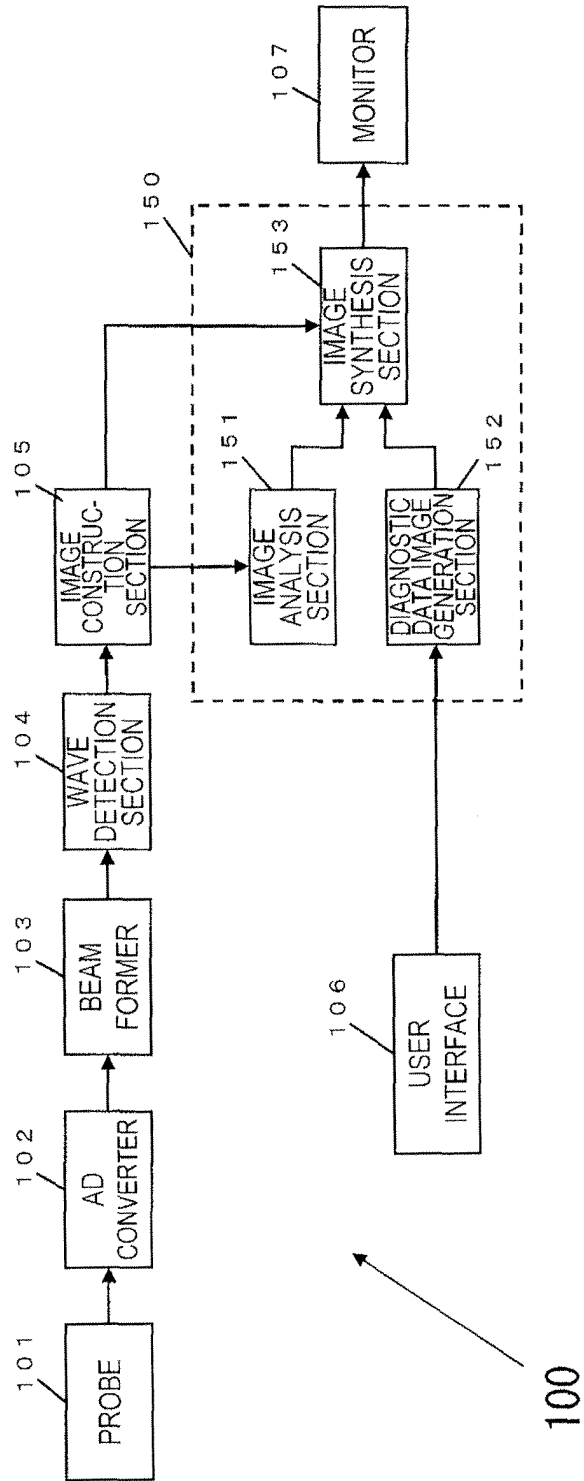


FIG.3

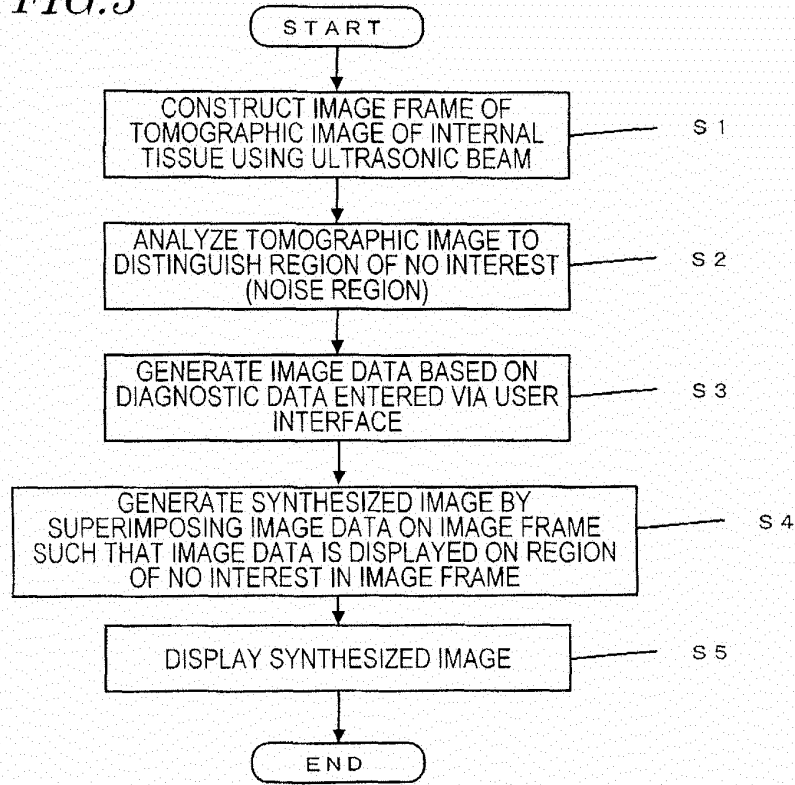


FIG.4

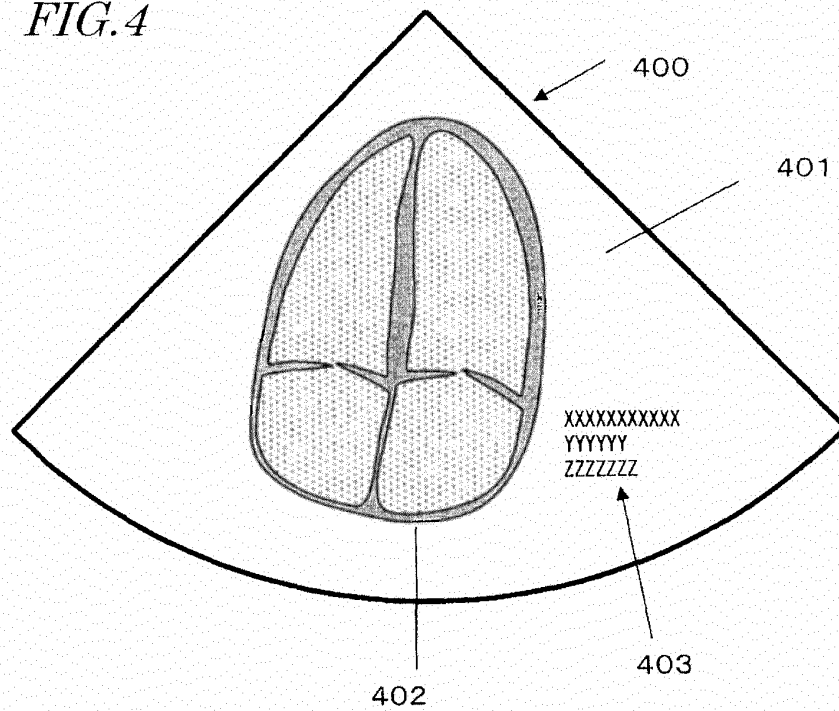


FIG.5

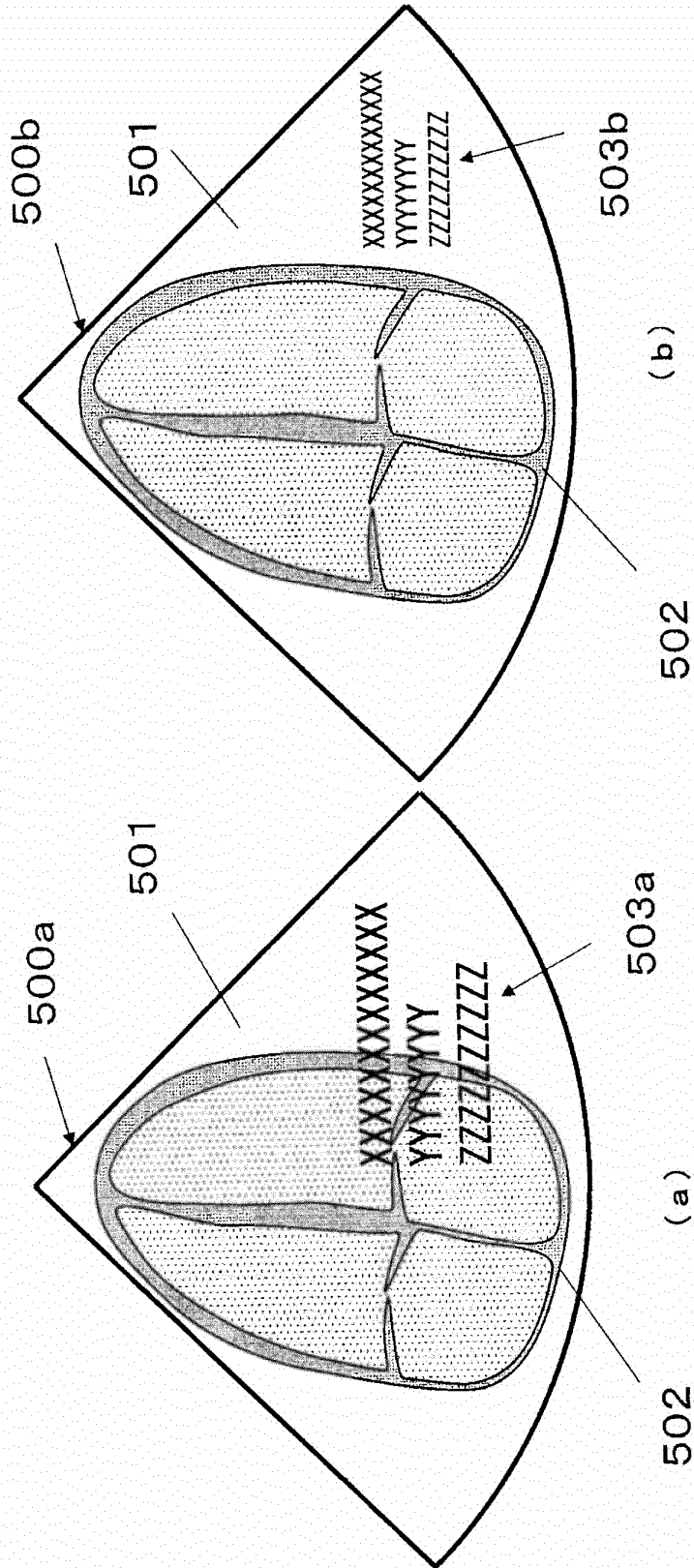


FIG. 6

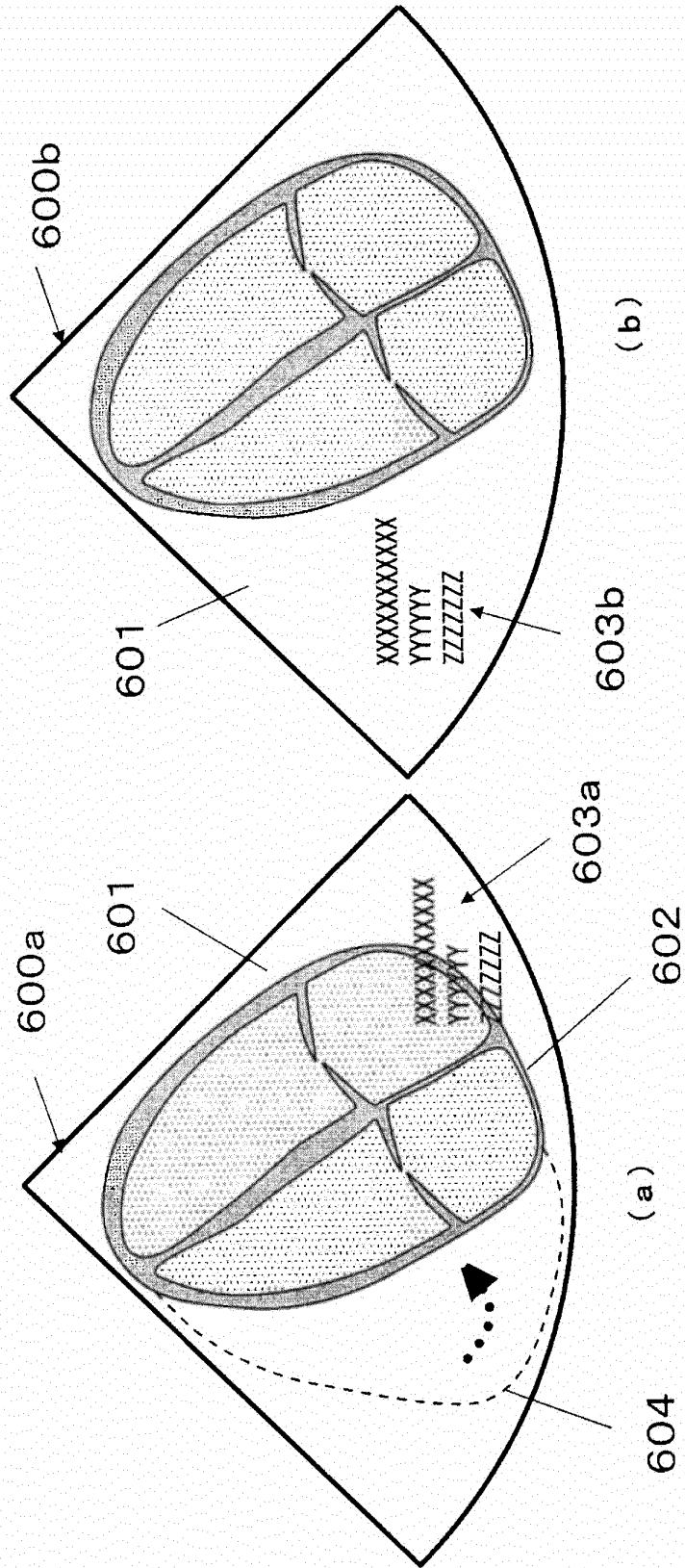


FIG. 7

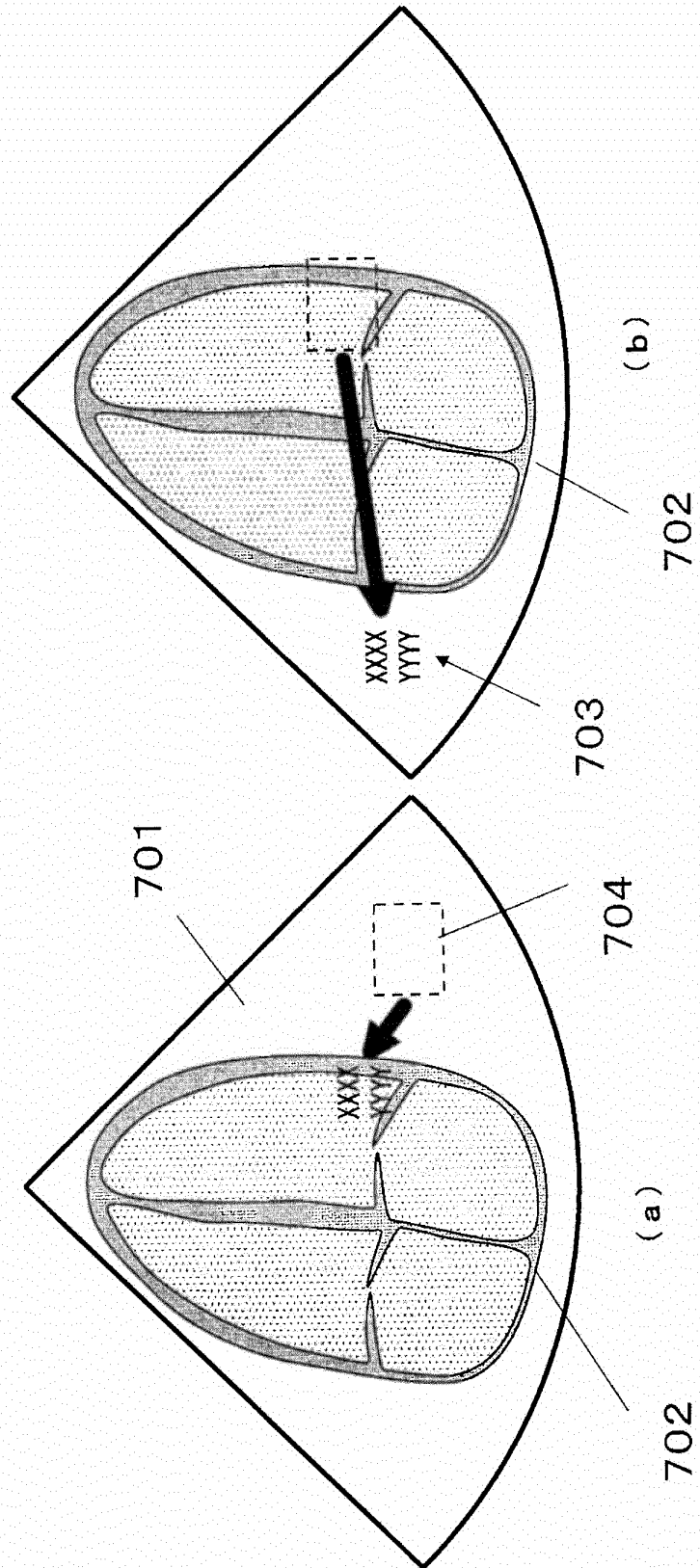
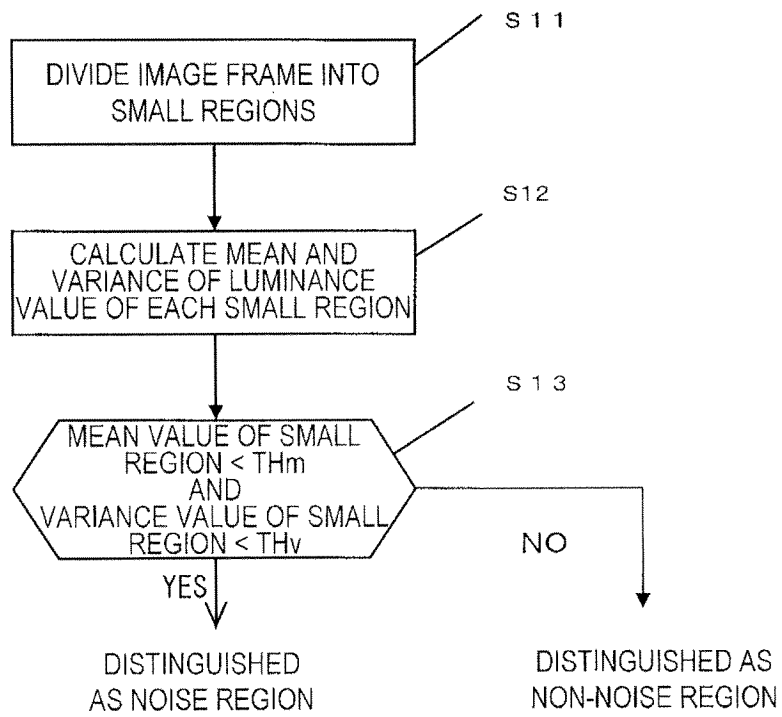


FIG. 8



INTERNATIONAL SEARCH REPORT

International application No.

PCT/JP2010/004750

| A. CLASSIFICATION OF SUBJECT MATTER A61B8/00(2006.01) i | | |
|--|--|--|
| According to International Patent Classification (IPC) or to both national classification and IPC | | |
| B. FIELDS SEARCHED | | |
| Minimum documentation searched (classification system followed by classification symbols) A61B8/00 | | |
| Documentation searched other than minimum documentation to the extent that such documents are included in the fields searched Jitsuyo Shinan Koho 1922-1996 Jitsuyo Shinan Toroku Koho 1996-2010 Kokai Jitsuyo Shinan Koho 1971-2010 Toroku Jitsuyo Shinan Koho 1994-2010 | | |
| Electronic data base consulted during the international search (name of data base and, where practicable, search terms used) | | |
| C. DOCUMENTS CONSIDERED TO BE RELEVANT | | |
| Category* | Citation of document, with indication, where appropriate, of the relevant passages | Relevant to claim No. |
| X Y | JP 59-32444 A (Fujitsu Ltd.), 21 February 1984 (21.02.1984), page 2, upper right column, lines 4 to 11; fig. 1 (Family: none) | 1, 4, 6 2 |
| Y | JP 2006-141465 A (Matsushita Electric Industrial Co., Ltd.), 08 June 2006 (08.06.2006), paragraphs [0008], [0021] to [0036] (Family: none) | 2 |
| X | JP 2001-17425 A (Aloka Co., Ltd.), 23 January 2001 (23.01.2001), paragraphs [0012], [0031] (Family: none) | 7 |
| <input checked="" type="checkbox"/> Further documents are listed in the continuation of Box C. <input type="checkbox"/> See patent family annex. | | |
| * Special categories of cited documents: "A" document defining the general state of the art which is not considered to be of particular relevance "E" earlier application or patent but published on or after the international filing date "L" document which may throw doubts on priority claim(s) or which is cited to establish the publication date of another citation or other special reason (as specified) "O" document referring to an oral disclosure, use, exhibition or other means "P" document published prior to the international filing date but later than the priority date claimed "I" later document published after the international filing date or priority date and not in conflict with the application but cited to understand the principle or theory underlying the invention "X" document of particular relevance; the claimed invention cannot be considered novel or cannot be considered to involve an inventive step when the document is taken alone "Y" document of particular relevance; the claimed invention cannot be considered to involve an inventive step when the document is combined with one or more other such documents, such combination being obvious to a person skilled in the art "&" document member of the same patent family | | |
| Date of the actual completion of the international search 10 August, 2010 (10.08.10) | | Date of mailing of the international search report 24 August, 2010 (24.08.10) |
| Name and mailing address of the ISA/ Japanese Patent Office | | Authorized officer |
| Facsimile No. | | Telephone No. |

Form PCT/ISA/210 (second sheet) (July 2009)

INTERNATIONAL SEARCH REPORT

International application No.

PCT/JP2010/004750

| C (Continuation). DOCUMENTS CONSIDERED TO BE RELEVANT | | |
|---|--|-----------------------|
| Category* | Citation of document, with indication, where appropriate, of the relevant passages | Relevant to claim No. |
| A | JP 11-326 A (Toshiba Medical Systems Engineering Co., Ltd., Toshiba Corp.), 06 January 1999 (06.01.1999), entire text; all drawings (Family: none) | 1-7 |
| A | JP 9-47453 A (Toshiba Medikaru Enjiniaringu Kabushiki Kaisha, Toshiba Corp.), 18 February 1997 (18.02.1997), entire text; all drawings (Family: none) | 1-7 |
| A | JP 5-329159 A (Terumo Corp.), 14 December 1993 (14.12.1993), entire text; all drawings (Family: none) | 2,3 |

Form PCT/ISA/210 (continuation of second sheet) (July 2009)

REFERENCES CITED IN THE DESCRIPTION

This list of references cited by the applicant is for the reader's convenience only. It does not form part of the European patent document. Even though great care has been taken in compiling the references, errors or omissions cannot be excluded and the EPO disclaims all liability in this regard.

Patent documents cited in the description

- JP 11000326 A [0005]
- JP 9047453 A [0005]

| | | | |
|---------------|---|---------|------------|
| 专利名称(译) | 超声诊断设备 | | |
| 公开(公告)号 | EP2460472A1 | 公开(公告)日 | 2012-06-06 |
| 申请号 | EP2010804099 | 申请日 | 2010-07-26 |
| 申请(专利权)人(译) | 松下电器产业株式会社 | | |
| 当前申请(专利权)人(译) | 柯尼卡美能达, INC. | | |
| [标]发明人 | NISHIMURA YUSHI | | |
| 发明人 | NISHIMURA, YUSHI | | |
| IPC分类号 | A61B8/00 | | |
| CPC分类号 | A61B8/00 A61B8/461 A61B8/467 A61B8/469 A61B8/5292 G06T7/11 G06T11/00 G06T2207/10132 G06T2207/30048 H04N1/3871 | | |
| 代理机构(译) | GRÜNECKER, KINKELDEY, STOCKMAIR & SCHWANHÄUSSER | | |
| 优先权 | 2009176041 2009-07-29 JP | | |
| 其他公开文献 | EP2460472A4 | | |
| 外部链接 | Espacenet | | |

摘要(译)

提供一种超声诊断设备,其中可以避免显示的超声图像和显示的诊断数据的重叠,而不会给操作者带来复杂操作的负担。一种超声波诊断装置,包括:超声波探头,用于将超声波束发射到生物体的组织,并接收从组织反射的超声波束的反射波;图像构建部分,用于基于反射波构造表示组织的断层图像的第一图像的图像帧;图像分析部分,用于基于图像帧的图像特征量来区分不感兴趣的区域,构成图像帧的一部分的不感兴趣区域,其不包括包括组织的断层图像的感兴趣区域;数据生成部分,用于生成用于显示诊断数据的第二图像;图像合成部分,用于通过基于图像分析部分的识别结果确定第二图像的显示位置并将第二图像叠加在第一图像的图像帧上来产生合成图像;以及显示合成图像的显示部分。

