



(11) **EP 2 347 714 A1**

(12) **EUROPEAN PATENT APPLICATION**

(43) Date of publication:
27.07.2011 Bulletin 2011/30

(51) Int Cl.:
A61B 8/00 (2006.01) G06T 7/00 (2006.01)
G06F 19/00 (2011.01)

(21) Application number: **11151476.6**

(22) Date of filing: **20.01.2011**

(84) Designated Contracting States:
AL AT BE BG CH CY CZ DE DK EE ES FI FR GB GR HR HU IE IS IT LI LT LU LV MC MK MT NL NO PL PT RO RS SE SI SK SM TR
Designated Extension States:
BA ME

(72) Inventors:
• **Yoo, Jae Heung**
135-851, Seoul (KR)
• **Yang, Eun Ho**
135-851, Seoul (KR)

(30) Priority: **26.01.2010 KR 20100006722**

(74) Representative: **Schmid, Wolfgang**
Lorenz & Kollegen
Patentanwälte Partnerschaftsgesellschaft
Alte Ulmer Strasse 2
89522 Heidenheim (DE)

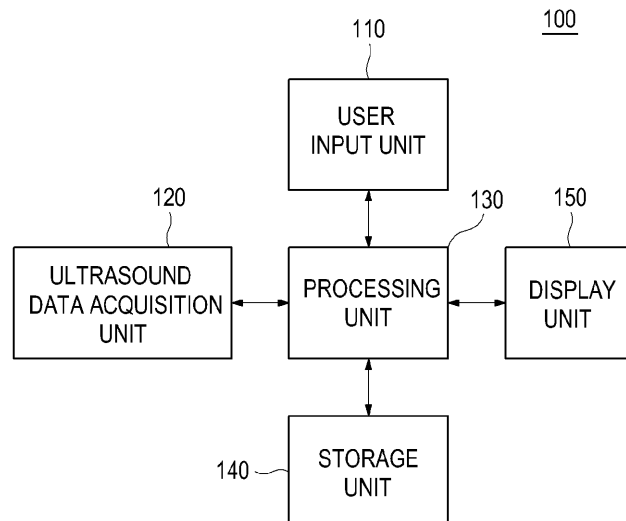
(71) Applicant: **MEDISON CO., LTD.**
Gangwon-do 250-875 (KR)

(54) **Performing image process and size measurement upon a three-dimensional ultrasound image in an ultrasound system**

(57) Embodiments for performing an image process and a size measurement upon a three-dimensional ultrasound image are disclosed. In one embodiment, by way of non-limiting example, an ultrasound system comprises: a user input unit configured to receive input information for setting at least one seed point on a two-dimensional ultrasound image from a user; an ultrasound data acquisition unit configured to transmit and receive ultrasound signals to and from a target object including a plurality of objects of interest and output ultrasound

data; and a processing unit in communication with the user input unit and the ultrasound data acquisition unit, the processing unit being configured to form volume data based on the ultrasound data, form the two-dimensional ultrasound image and a three-dimensional ultrasound image based on volume data, detect at least one object of interest corresponding to the input information from the three-dimensional ultrasound image, and perform an image process and a size measurement of the detected object of interest upon the three-dimensional ultrasound image.

FIG. 1



EP 2 347 714 A1

Description

CROSS-REFERENCE TO RELATED APPLICATIONS

[0001] The present application claims priority from Korean Patent Application No. 10-2010-0006722 filed on January 26, 2010.

TECHNICAL FIELD

[0002] The present disclosure generally relates to ultrasound systems, and more particularly to performing an image process and size measurement upon a three-dimensional (3D) ultrasound image in an ultrasound system.

BACKGROUND

[0003] An ultrasound system has become an important and popular diagnostic tool since it has a wide range of applications. Specifically, due to its non-invasive and non-destructive nature, the ultrasound system has been extensively used in the medical profession. Modern high-performance ultrasound systems and techniques are commonly used to produce two-dimensional (2D) or three-dimensional (3D) ultrasound images of internal features of an object (e.g., human organs).

[0004] The ultrasound system may provide the 3D ultrasound image including clinical information such as spatial information and anatomical figures of the target object, which cannot be provided by the 2D ultrasound image. The ultrasound system may transmit ultrasound signals into a target object and receive ultrasound echo signals reflected from the target object. The ultrasound system may further form volume data based on the ultrasound echo signals. The ultrasound system may further render the volume data to thereby form the 3D ultrasound image.

[0005] The ultrasound system may provide the 3D ultrasound image and the 2D ultrasound image corresponding to an A plane, a B plane and a C plane, which may be mutually orthogonal. However, there is a problem in that it is difficult to estimate how the objects of interest shown in the 2D ultrasound image are three-dimensionally indicated and what sizes the objects of interest have in the 3D ultrasound image.

SUMMARY

[0006] Embodiments for providing a plurality of slice images in an ultrasound system are disclosed herein. In one embodiment, by way of non-limiting example, an ultrasound system comprises: a user input unit configured to receive input information for setting at least one seed point on a two-dimensional ultrasound image from a user; an ultrasound data acquisition unit configured to transmit and receive ultrasound signals to and from a target object including a plurality of objects of interest and output ul-

trasound data; and a processing unit in communication with the user input unit and the ultrasound data acquisition unit, the processing unit being configured to form volume data based on the ultrasound data, form the two-dimensional ultrasound image and a three-dimensional ultrasound image based on volume data, detect at least one object of interest corresponding to the input information from the three-dimensional ultrasound image, and perform an image process and a size measurement of the detected object of interest upon the three-dimensional ultrasound image.

[0007] In another embodiment, there is provided a method of performing an image process and a size measurement upon a three-dimensional ultrasound image, comprising: a) transmitting and receiving ultrasound signals to and from a target object including a plurality of objects of interest and output ultrasound data; b) forming volume data based on the ultrasound data; c) forming a two-dimensional ultrasound image and a three-dimensional ultrasound image based on the volume data; d) receiving input information for setting at least one seed point on the two-dimensional ultrasound image; e) detecting at least one object of interest corresponding to the input information from the three-dimensional ultrasound image; and f) performing an image process and a size measurement of the detected object of interest upon the three-dimensional ultrasound image.

[0008] The Summary is provided to introduce a selection of concepts in a simplified form that are further described below in the Detailed Description. This Summary is not intended to identify key or essential features of the claimed subject matter, nor is it intended to be used in determining the scope of the claimed subject matter.

BRIEF DESCRIPTION OF THE DRAWINGS

[0009]

FIG. 1 is a block diagram showing an illustrative embodiment of an ultrasound system.

FIG. 2 is a block diagram showing an illustrative embodiment of an ultrasound data acquisition unit.

FIG. 3 is a schematic diagram showing an example of acquiring ultrasound data corresponding to a plurality of frames.

FIG. 4 is a flow chart showing a process of performing an image process and a size measurement upon a three-dimensional (3D) ultrasound image.

FIG. 5 is a schematic diagram showing an example of volume data.

FIG. 6 is a schematic diagram showing an example

of the 3D ultrasound image, a plurality of objects of interest and indexes.

FIG. 7 is a schematic diagram showing an example of a plurality of slices and an object of interest (blood vessel).

FIG. 8 is a schematic diagram showing an example of location difference between edges of the object of interest (blood vessel) on adjacent slices.

FIG. 9 is a schematic diagram showing an example of performing a segmentation of the object of interest (blood vessel).

FIG. 10 is a schematic diagram showing an example of the object of interest (blood vessel) and indexes.

FIG. 11 is a schematic diagram showing an example of performing the image process upon the 3D ultrasound image.

DETAILED DESCRIPTION

[0010] A detailed description may be provided with reference to the accompanying drawings. One of ordinary skill in the art may realize that the following description is illustrative only and is not in any way limiting.

[0011] Referring to FIG. 1, an ultrasound system 100 in accordance with an illustrative embodiment is shown. As depicted therein, the ultrasound system 100 includes a user input unit 110. The user input unit 110 is configured to receive input information for setting at least one seed point on a two-dimensional (2D) ultrasound image. The user input unit 110 includes a control panel, a mouse or a keyboard. However, it should be noted herein that the user input unit 110 may not be limited thereto.

[0012] The ultrasound system 100 further includes an ultrasound data acquisition unit 120. The ultrasound data acquisition unit 120 is configured to transmit and receive ultrasound signals to and from a target object and output ultrasound data. The target object includes a plurality of objects of interest (e.g., blood vessels, a heart, etc.).

[0013] FIG. 2 is a block diagram showing an illustrative embodiment of the ultrasound data acquisition unit 120. Referring to FIG. 2, the ultrasound data acquisition unit 120 includes a transmit (Tx) signal generating section 210, an ultrasound probe 220, a beam former 230 and an ultrasound data forming section 240.

[0014] The Tx signal generating section 210 is configured to generate Tx signals. In one embodiment, the Tx signal generating section 210 generates Tx signals for obtaining a plurality of frames F_i ($1 \leq i \leq N$) corresponding to a three-dimensional (3D) ultrasound image at every predetermined time, as shown in FIG. 3.

[0015] FIG. 3 is a schematic diagram showing an ex-

ample of acquiring ultrasound data corresponding to the plurality of frames F_i ($1 \leq i \leq N$). The plurality of frames F_i ($1 \leq i \leq N$) represents sectional planes of the target object (not shown).

[0016] Referring back to FIG. 2, the ultrasound probe 220 includes a plurality of elements (not shown) for reciprocally converting between ultrasound signals and electrical signals. The ultrasound probe 220 is configured to transmit ultrasound signals to the target object in response to the Tx signals provided from the Tx signal generating section 210. The ultrasound probe 220 further receives ultrasound signals (i.e., ultrasound echo signals) from the target object and output the received signals. The received signals are analog signals. The ultrasound probe 220 includes a three-dimensional (3D) mechanical probe or a two-dimensional (2D) array probe. However, it should be noted herein that the ultrasound probe 220 may not be limited thereto.

[0017] The beam former 230 is configured to convert the received signals provided from the ultrasound probe 220 into digital signals. The beam former 230 further applies delays to the digital signals in consideration of the elements and focal points to output digital receive-focused signals.

[0018] The ultrasound data forming section 240 is configured to form ultrasound data corresponding to the frames F_i ($1 \leq i \leq N$) based on the digital receive-focused signals provided from the beam former 230. The ultrasound data forming section 240 further performs various signal processing (e.g., gain adjustment) upon the digital receive-focused signals.

[0019] Referring back to FIG. 1, the ultrasound system 100 further includes a processing unit 130 in communication with the user input unit 110 and the ultrasound data acquisition unit 120. The processing unit 130 includes a central processing unit, a microprocessor or a graphic processing unit. However, it should be noted herein that the processing unit 130 may not be limited thereto.

[0020] FIG. 4 is a flow chart showing a process of performing an image process and a size measurement upon the 3D ultrasound image. The processing unit 130 is configured to synthesize the ultrasound data corresponding to the plurality of frames F_i ($1 \leq i \leq N$) to form volume data 510 as shown in FIG. 5, at step S402 in FIG. 4.

[0021] FIG. 5 is a schematic diagram showing an example of the volume data 510. The volume data 510 include a plurality of voxels (not shown) having brightness values. In FIG. 5, reference numerals 521, 522 and 523 represent an A plane, a B plane and a C plane, respectively. The A plane 521, the B plane 522 and the C plane 523 are mutually orthogonal. Also, in FIG. 5, the axial direction is a Tx direction of the ultrasound signals, the lateral direction is a longitudinal direction of the elements, and the elevation direction is a swing direction of the elements, i.e., a depth direction of the 3D ultrasound image.

[0022] The processing unit 130 is configured to form the 2D ultrasound image based on the volume data 510,

at step S404 in FIG. 4. The 2D ultrasound image is displayed on a display unit 150 in FIG. 1. Thus, the user sets the at least one seed point on the 2D ultrasound image displayed on the display unit 150 by using the user input unit 110. In one embodiment, the 2D ultrasound image is an ultrasound image corresponding to the A plane 521, the B plane 522 or the C plane 523. However, it should be noted herein that the 2D ultrasound image may not be limited thereto.

[0023] The processing unit 130 is configured to render the volume data 510 to form the 3D ultrasound image, at step S406 in FIG. 4. The methods of rendering the volume data 510 are well known in the art. Thus, they have not been described in detail so as not to unnecessarily obscure the present invention.

[0024] The processing unit 130 is configured to perform an edge detection of the objects of interest upon the 3D ultrasound image, at step S408 in FIG. 4. In one embodiment, the processing unit 130 performs the edge detection by using an edge mask such as Sobel, Prewitt, Robert, Canny and the like. In another embodiment, the processing unit 130 performs the edge detection based on a difference of eigenvalues using a structure tensor.

[0025] The processing unit 130 is configured to perform segmentation of the objects of interest upon the 3D ultrasound image based on the detected edges, at step S410 in FIG. 5. Optionally, the processing unit 130 further sets indexes on the segmented objects of interest. The index includes a text, a figure, etc.

[0026] In one embodiment, the processing unit 130 performs the segmentation of the objects of interest IO_1 , IO_2 and IO_3 upon the 3D ultrasound image UI based on the detected edges, as shown in FIG. 6. The processing unit 130 further sets indexes OSG_1 , OSG_2 and OSG_3 on the segmented objects of interest IO_1 , IO_2 and IO_3 .

[0027] In another embodiment, the processing unit 130 sets a plurality of slices S_1 to S_n on the 3D ultrasound image, as shown in FIG. 7. The slices correspond to the frames F_i ($1 \leq i \leq N$). However, it should be noted herein that the slices may not be limited thereto. The processing unit 130 further analyzes a first slice S_1 to detect edges VE_{11} , VE_{12} of the object of interest (i.e., a blood vessel) from the first slice S_1 . The processing unit 130 further analyzes a second slice S_2 to detect edges VE_{21} , VE_{22} of the object of interest from the second slice S_2 . The processing unit 130 further compares the edge VE_{21} of the second slice S_2 with the edge VE_{11} of the first slice S_1 to calculate location difference between the edges VE_{21} and VE_{11} , as shown in FIG. 8. The processing unit 130 further compares the edge VE_{22} of the second slice S_2 with the edge VE_{12} of the first slice S_1 to calculate location difference between the edges VE_{22} and VE_{12} , as shown in FIG. 8. The processing unit 130 further compares the edge VE_{22} of the second slice S_2 with the edge VE_{11} of the first slice S_1 to calculate location difference between the edges VE_{22} and VE_{11} , as shown in FIG. 8. The processing unit 130 further compares the edge VE_{21} of the second slice S_2 with the edge VE_{12} of the first slice

S_1 to calculate location difference between the edges VE_{21} and VE_{12} , as shown in FIG. 8. The processing unit 130 further compares each of the calculated location differences with a predetermined threshold value. If it is determined that the location difference between the edges VE_{21} and VE_{11} and the location difference between the edges VE_{22} and VE_{12} are equal to or less than the threshold value, and the location difference between the edges VE_{22} and VE_{11} and the location difference between the edges VE_{21} and VE_{12} are more than the threshold value, then the processing unit 130 further connects the edge VE_{21} to the edge VE_{11} , and connect the edge VE_{22} to the edge VE_{12} , as shown in FIG. 9. The processing unit 130 performs the segmentation upon a third slice S_3 and a fourth slice S_4 as mentioned above. The processing unit 130 further analyzes a fifth slice S_5 to detect an edge VE_5 from the fifth slice S_5 . The processing unit 130 further compares the edge VE_5 of the fifth slice S_5 with an edge VE_{41} of the fourth slice S_4 to calculate location difference between the edges VE_5 and VE_{41} . The processing unit 130 further compares the edge VE_5 with an edge VE_{42} of the fourth slice S_4 to calculate location difference between the edges VE_5 and VE_{42} . The processing unit 130 further compares the calculated location differences with the threshold value. If it is determined that the location difference between the edges VE_5 and VE_{41} and the location difference between the edges VE_5 and VE_{42} are equal to or less than the threshold value, then the processing unit 130 further connects the edge VE_5 to the edges VE_{41} and VE_{42} . The processing unit 130 further analyzes a sixth slice S_6 to detect edge VE_6 from the sixth slice S_6 . The processing unit 130 further compares the edge VE_6 of the fifth slice S_6 with the edge VE_5 of the fifth slice S_5 to calculate location difference between the edges VE_6 and VE_5 . The processing unit 130 further compares the calculated location difference with the threshold value. If it is determined that the location difference between the edges VE_6 and VE_5 is equal to or less than the threshold value, then the processing unit 130 further connects the edge VE_6 to the edge VE_5 . The processing unit 130 further performs the segmentation of the object of interest upon a seventh slice S_7 to an n^{th} slice S_n as mentioned above.

The processing unit 130 further analyzes the plurality of slices S_1 to S_n to detect a vascular bifurcation VB of the object of interest as shown in FIG. 10. The processing unit 130 further sets indexes VSG_1 , VSG_2 and VSG_3 on the segmented object of interest based on the vascular bifurcation VB.

[0028] The processing unit 130 is configured to set the at least one seed point corresponding to the input information on the 3D ultrasound image, at step S412 in FIG. 4. In one embodiment, the processing unit 130 is configured to set the at least one seed point based on geometrical information of the 2D ultrasound image for the 3D ultrasound image.

[0029] The processing unit 130 is configured to detect at least one object of interest corresponding to the at

least one seed point set on the 3D ultrasound image, at step S414 in FIG. 4.

[0030] The processing unit 130 is configured to perform the image process of the detected object of upon the 3D ultrasound image, at step S416 in FIG. 4. In one embodiment, the processing unit 130 is configured to perform the image process for applying different colors to the detected object of interest upon the 3D ultrasound image. For example, the processing unit 130 performs the image process for applying different colors to the detected objects of interest IO₁ and IO₃ corresponding to seed points SP₁ and SP₂, respectively, upon the 3D ultrasound image UI, as shown in FIG. 11.

[0031] The processing unit 130 is configured to perform the size measurement of the detected object of interest upon the 3D ultrasound image to form measurement information, at step S418 in FIG. 4. The methods of the size measurement are well known in the art. Thus, they have not been described in detail so as not to unnecessarily obscure the present invention.

[0032] Referring back to FIG. 1, the ultrasound system 100 further includes a storage unit 140. The storage unit 140 stores the ultrasound data acquired by the ultrasound data acquisition unit 120. The storage unit 140 further stores the volume data 510 formed by the processing unit 130.

[0033] The ultrasound system 100 further includes the display unit 150. The display unit 150 displays the 2D ultrasound image and the 3D ultrasound image formed by the processing unit 130. The display unit 150 further displays the measurement information formed by the processing unit 130.

[0034] Although embodiments have been described with reference to a number of illustrative embodiments thereof, it should be understood that numerous other modifications and embodiments can be devised by those skilled in the art that will fall within the scope of the principles of this disclosure. More particularly, numerous variations and modifications are possible in the component parts and/or arrangements of the subject combination arrangement within the scope of the disclosure, the drawings and the appended claims. In addition to variations and modifications in the component parts and/or arrangements, alternative uses will also be apparent to those skilled in the art.

Claims

1. An ultrasound system, comprising:

a user input unit configured to receive input information for setting at least one seed point on a two-dimensional ultrasound image from a user;
 an ultrasound data acquisition unit configured to transmit and receive ultrasound signals to and from a target object including a plurality of ob-

jects of interest and output ultrasound data; and a processing unit in communication with the user input unit and the ultrasound data acquisition unit, the processing unit being configured to form volume data based on the ultrasound data, form the two-dimensional ultrasound image and a three-dimensional ultrasound image based on volume data, detect at least one object of interest corresponding to the input information from the three-dimensional ultrasound image, and perform an image process and a size measurement of the detected object of interest upon the three-dimensional ultrasound image.

2. The ultrasound system of Claim 1, wherein the processing unit is configured to:

perform an edge detection of the objects of interest upon the 3D ultrasound image;
 perform a segmentation of the objects of interest upon the 3D ultrasound image based on the detected edges;
 set the at least one seed point corresponding to the input information on the 3D ultrasound image; and
 detect the at least one object of interest corresponding to the at least one seed point from the three-dimensional ultrasound image.

3. The ultrasound system of Claim 1, wherein the processing unit is configured to detect the least one object of interest from the three-dimensional ultrasound image based on geometric information of the two-dimensional ultrasound image for the three-dimensional ultrasound image.

4. The ultrasound system of Claim 1, wherein the processing unit is configured to perform the image process for applying different colors to the detected object of interest upon the three-dimensional ultrasound image.

5. A method of performing an image process and a size measurement upon a three-dimensional ultrasound image, comprising:

a) transmitting and receiving ultrasound signals to and from a target object including a plurality of objects of interest and output ultrasound data;
 b) forming volume data based on the ultrasound data;
 c) forming a two-dimensional ultrasound image and a three-dimensional ultrasound image based on the volume data;
 d) receiving input information for setting at least one seed point on the two-dimensional ultrasound image;
 e) detecting at least one object of interest cor-

responding to the input information from the three-dimensional ultrasound image; and
f) performing an image process and a size measurement of the detected object of interest upon the three-dimensional ultrasound image.

5

6. The method of Claim 5, wherein the step e) comprises:

e1) performing edge detection of the objects of interest upon the three-dimensional ultrasound image;

10

e2) performing segmentation of the objects of interest upon the three-dimensional ultrasound image based on the detected edges;

15

e3) setting the at least one seed point corresponding to the input information on the three-dimensional ultrasound image; and

e4) detecting the at least one object of interest corresponding to the at least one seed point from the three-dimensional ultrasound image.

20

7. The method of Claim 6, wherein the step e4) comprises:

25

detecting the at least one object of interest from the three-dimensional ultrasound image based on geometric information of the two-dimensional ultrasound image for the three-dimensional ultrasound image.

30

8. The method of Claim 5, wherein the step f) comprises:

performing the image process for applying different colors to the detected object of interest upon the three-dimensional ultrasound image.

35

40

45

50

55

FIG. 1

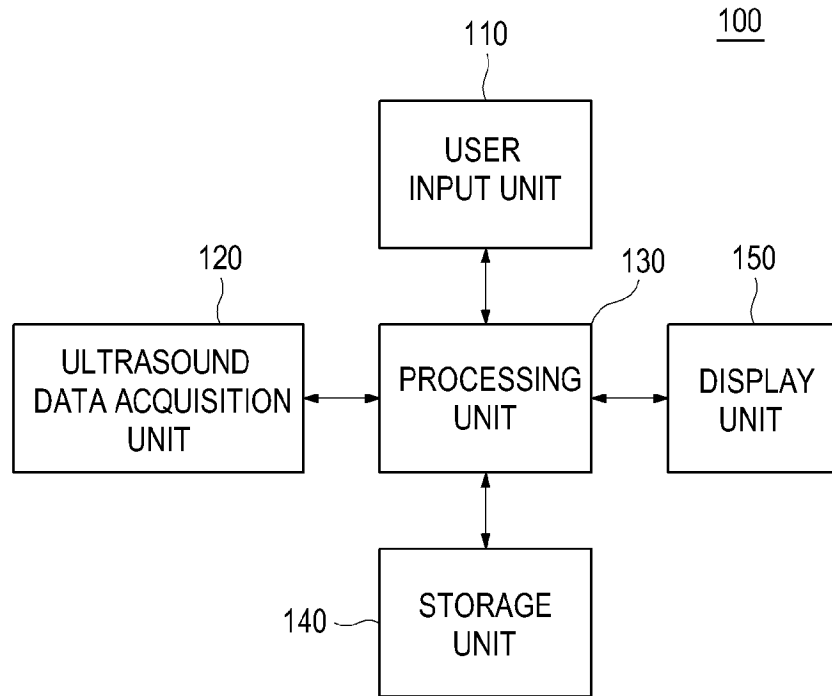


FIG. 2

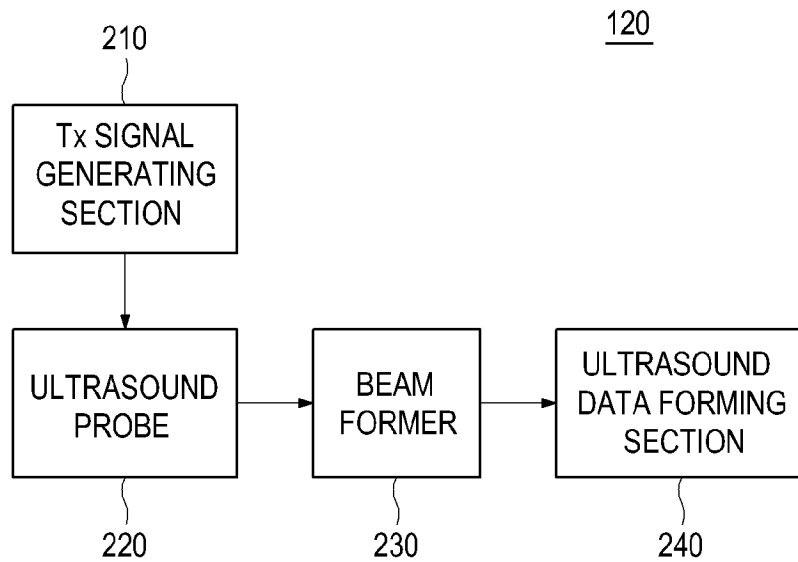


FIG. 3

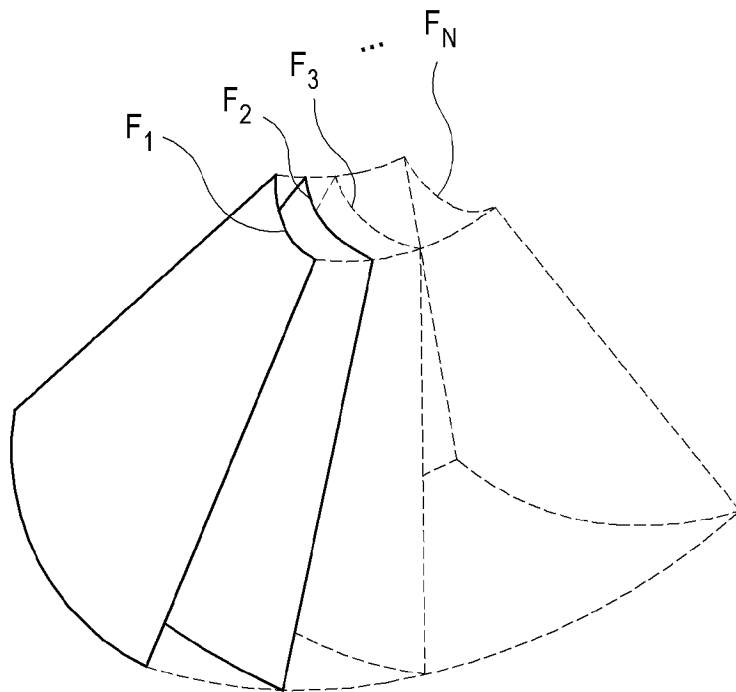


FIG. 4

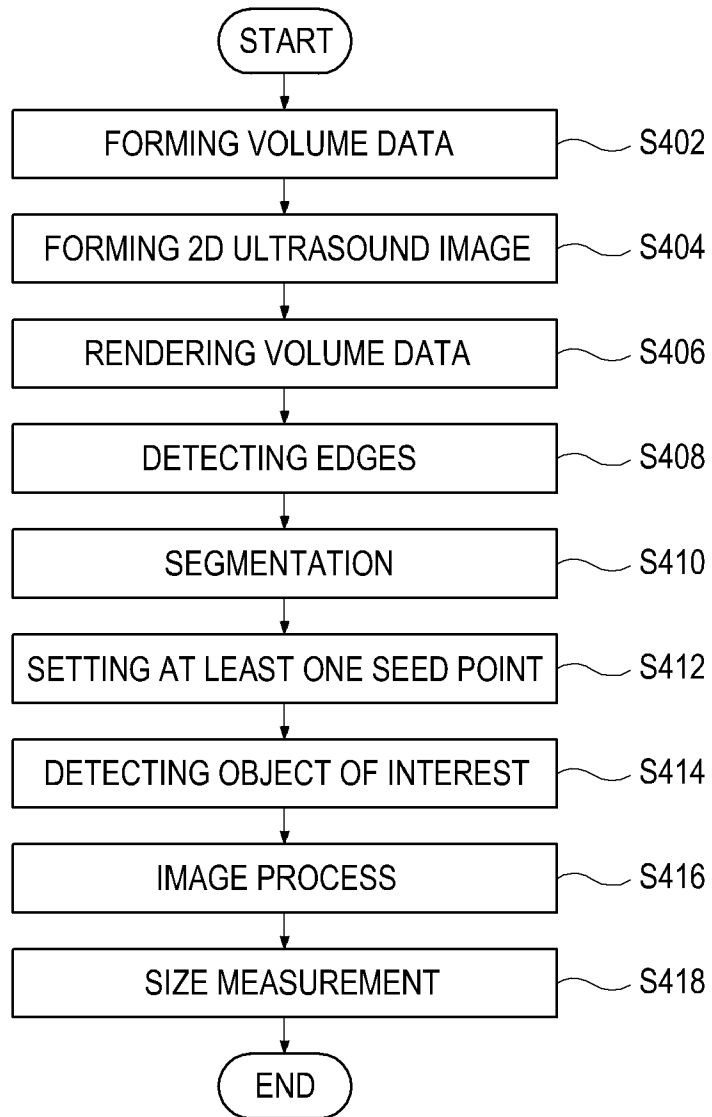


FIG. 5

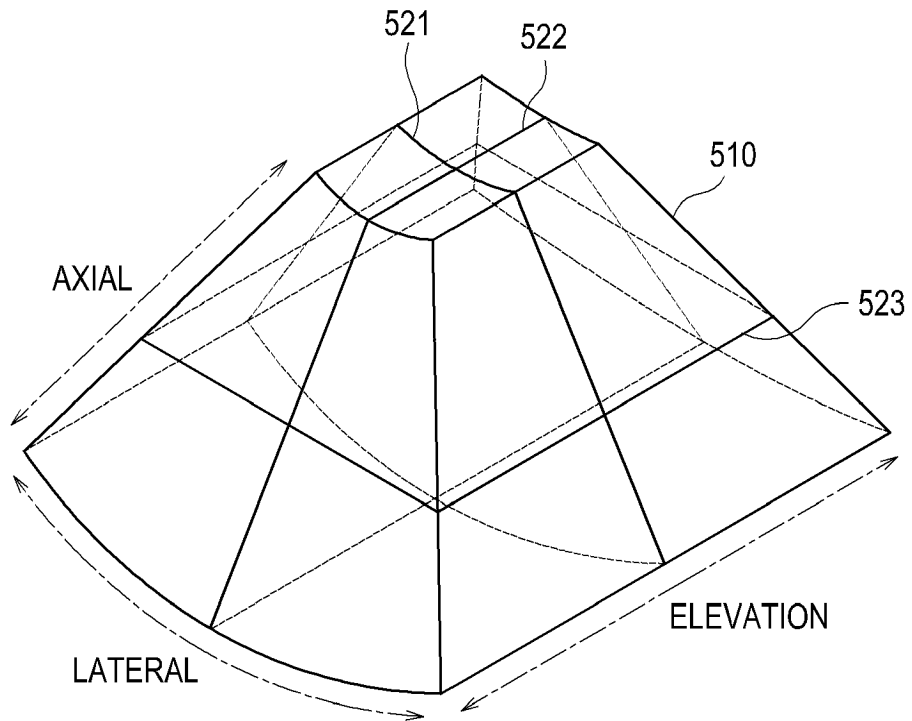


FIG. 6

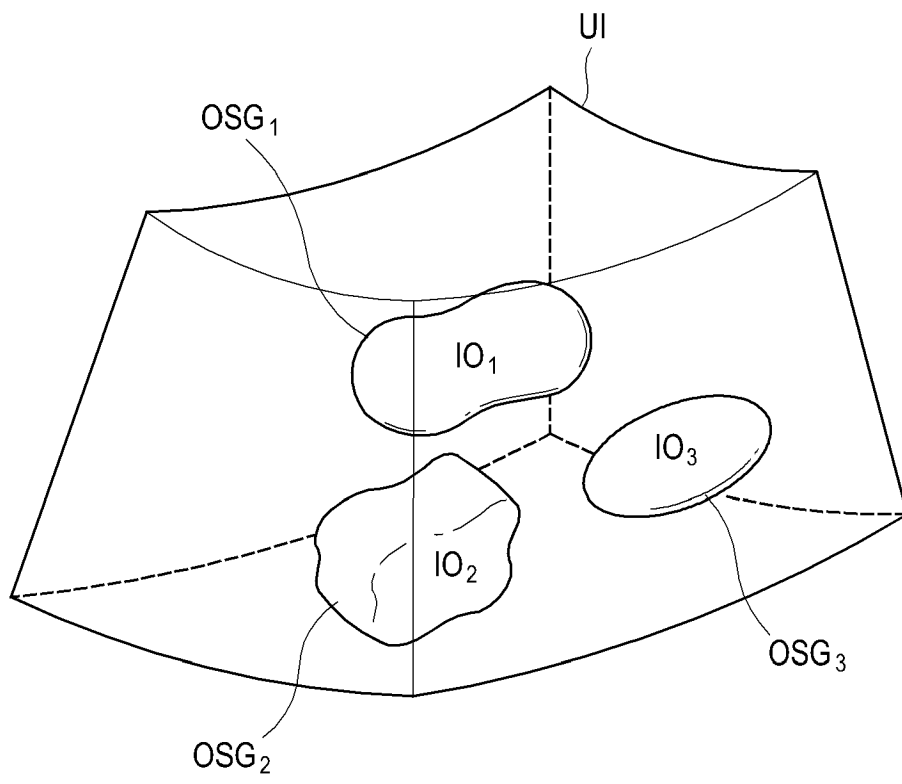


FIG. 7

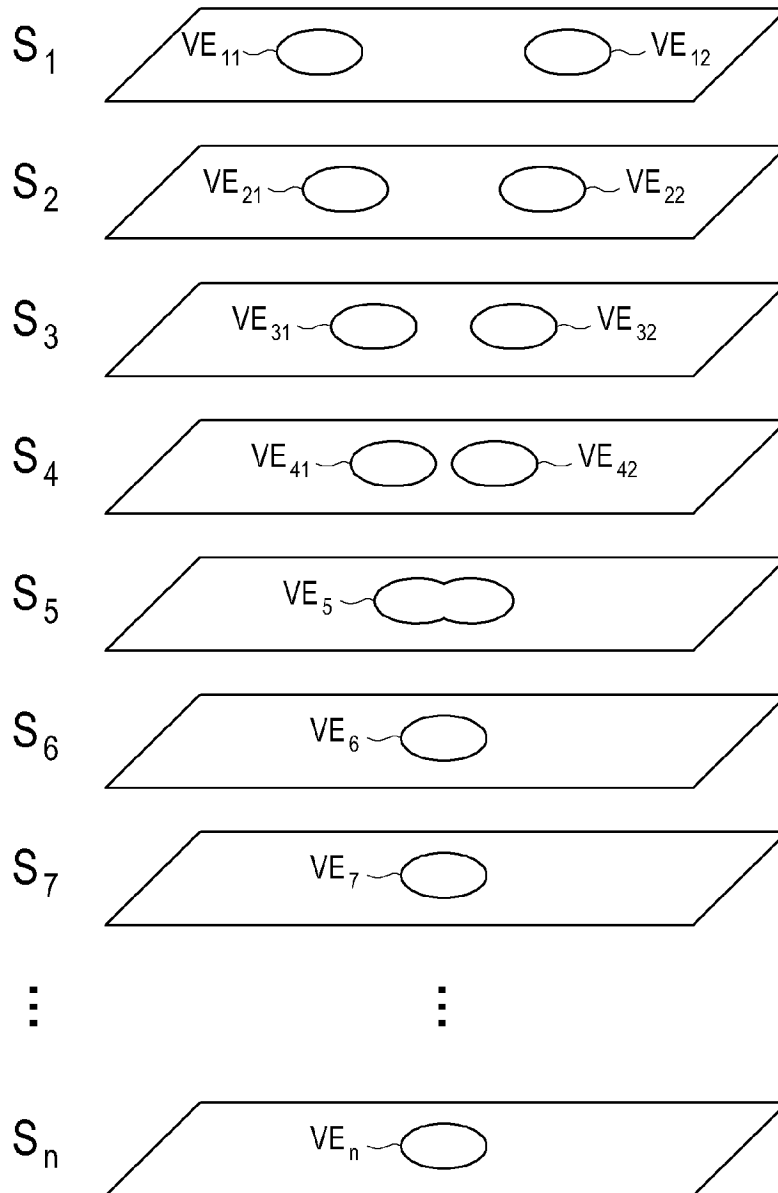


FIG. 8

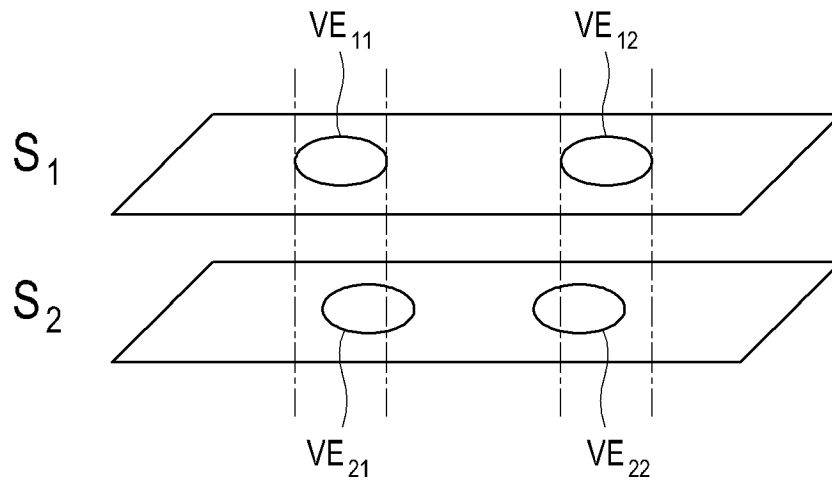


FIG. 9

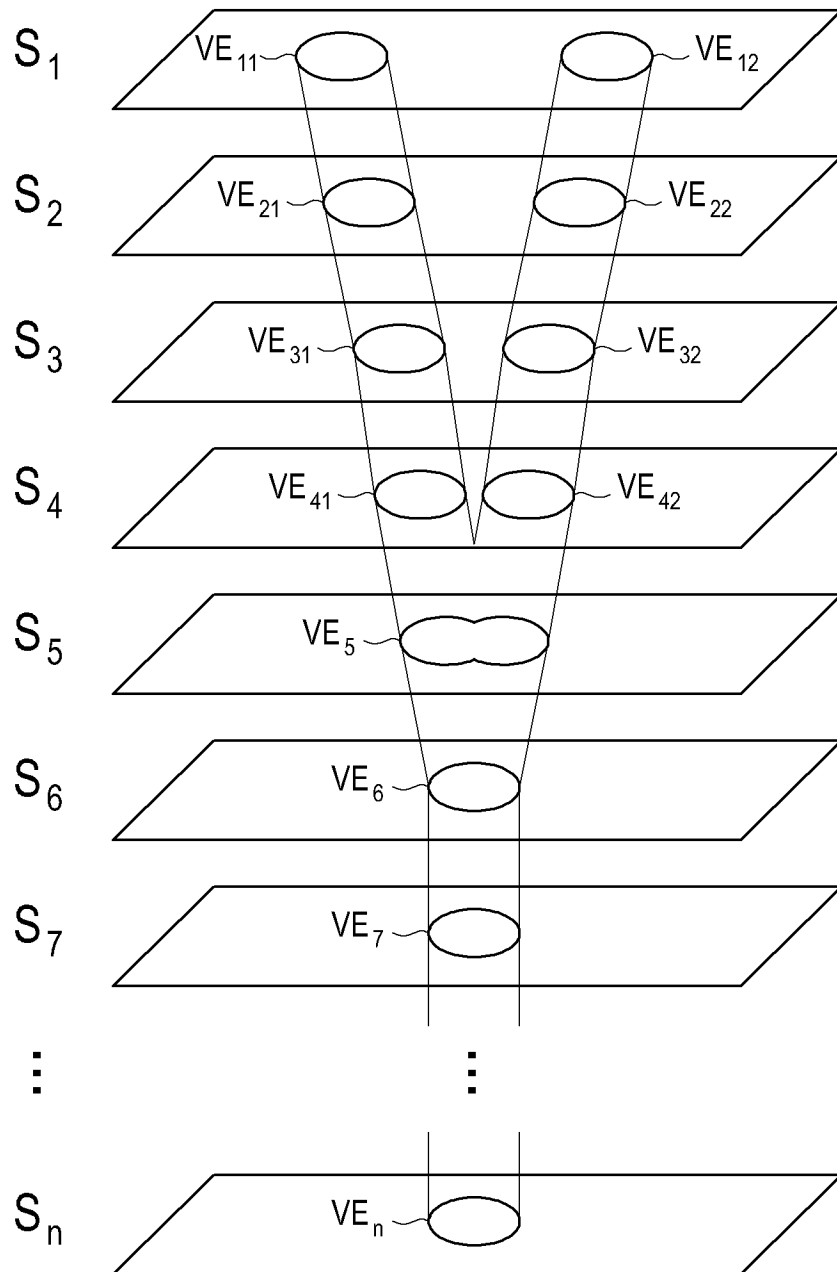


FIG. 10

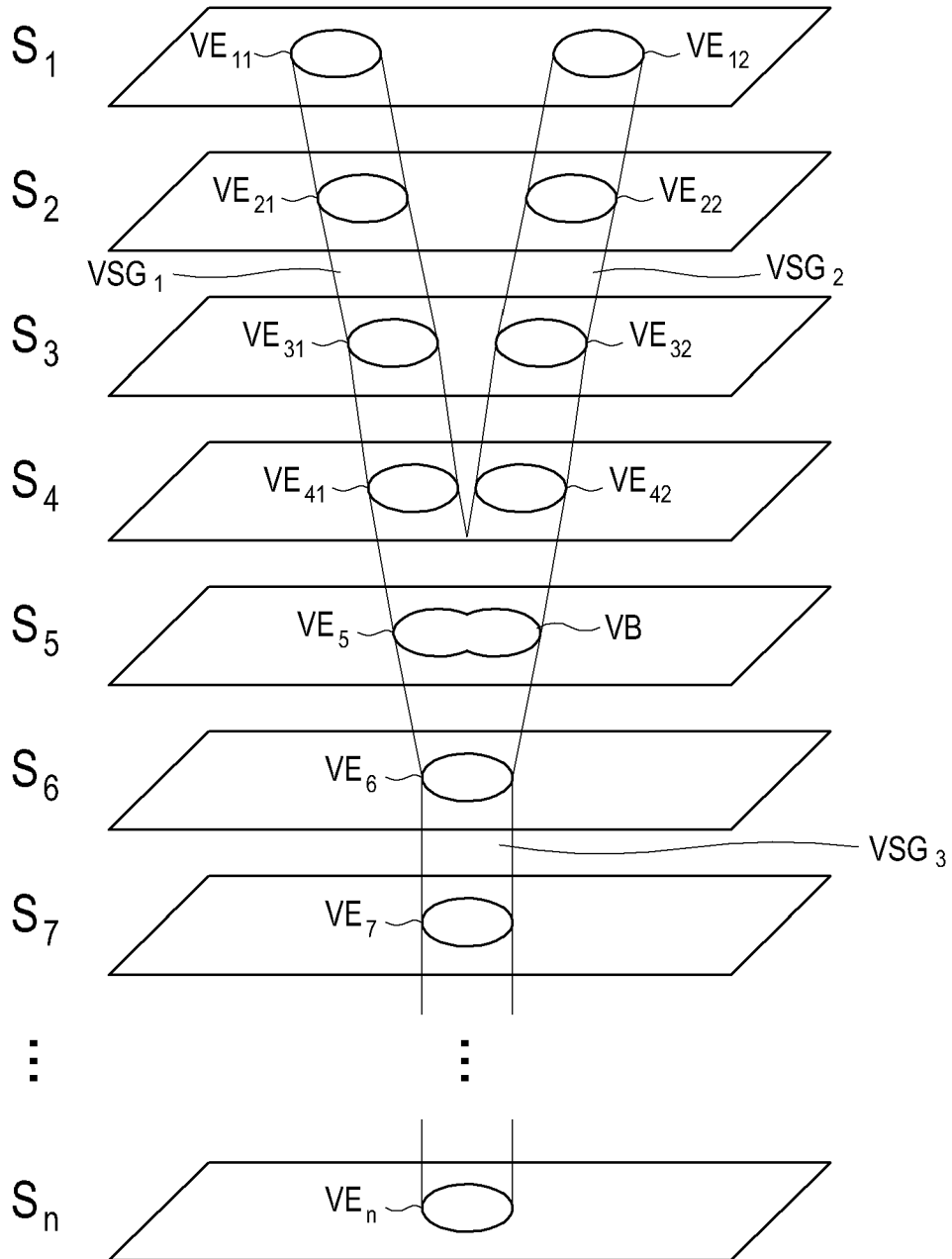
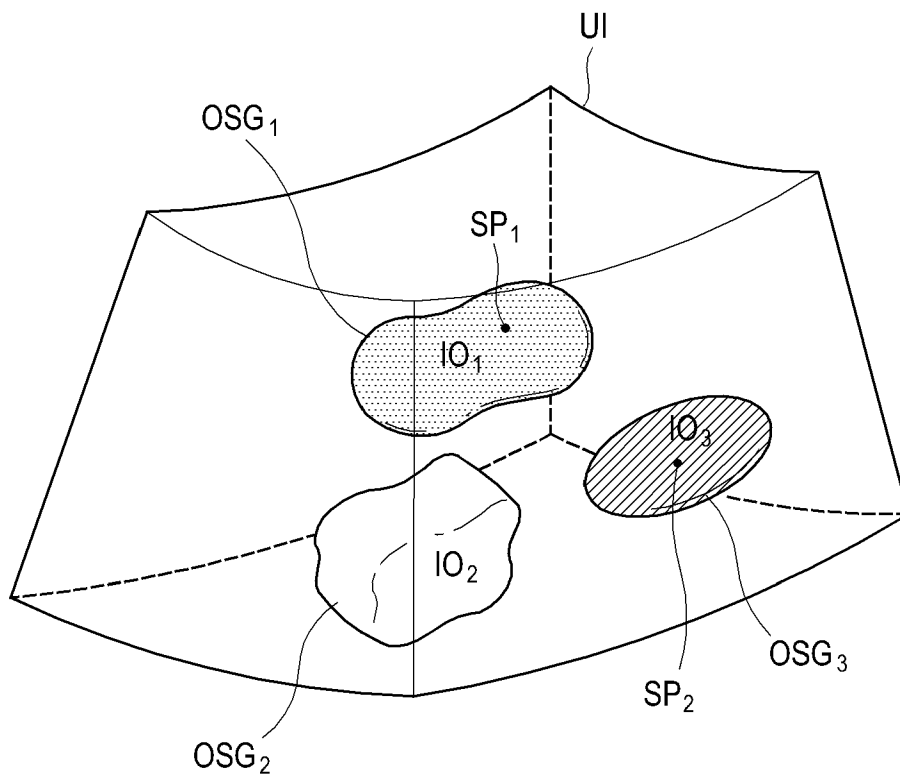


FIG. 11



**ANNEX TO THE EUROPEAN SEARCH REPORT
ON EUROPEAN PATENT APPLICATION NO.**

EP 11 15 1476

This annex lists the patent family members relating to the patent documents cited in the above-mentioned European search report.
The members are as contained in the European Patent Office EDP file on
The European Patent Office is in no way liable for these particulars which are merely given for the purpose of information.

27-05-2011

Patent document cited in search report	Publication date	Patent family member(s)	Publication date
US 2003152262 A1	14-08-2003	CA 2418742 A1	11-08-2003
EP 1892671 A2	27-02-2008	JP 2008049158 A	06-03-2008
		KR 20080019186 A	03-03-2008
		US 2008051653 A1	28-02-2008
US 2008118118 A1	22-05-2008	NONE	
US 6694163 B1	17-02-2004	NONE	
EP 2098993 A1	09-09-2009	JP 2009207899 A	17-09-2009
		KR 20090095150 A	09-09-2009
		US 2009227869 A1	10-09-2009
US 2007133852 A1	14-06-2007	NONE	
US 2008292169 A1	27-11-2008	CN 101849240 A	29-09-2010
		WO 2008144751 A1	27-11-2008

REFERENCES CITED IN THE DESCRIPTION

This list of references cited by the applicant is for the reader's convenience only. It does not form part of the European patent document. Even though great care has been taken in compiling the references, errors or omissions cannot be excluded and the EPO disclaims all liability in this regard.

Patent documents cited in the description

- KR 1020100006722 [0001]

专利名称(译)	在超声系统中对三维超声图像执行图像处理和尺寸测量		
公开(公告)号	EP2347714A1	公开(公告)日	2011-07-27
申请号	EP2011151476	申请日	2011-01-20
申请(专利权)人(译)	MEDISON CO. , LTD.		
当前申请(专利权)人(译)	MEDISON CO. , LTD.		
[标]发明人	YOO JAE HEUNG YANG EUN HO		
发明人	YOO, JAE HEUNG YANG, EUN HO		
IPC分类号	A61B8/00 G06T7/00 G06F19/00		
CPC分类号	A61B8/00 A61B8/483 G01S15/8993 G06T7/12 G06T7/174 G06T2207/10136 G06T2207/20101 G06T2207/30101		
代理机构(译)	SCHMID , WOLFGANG		
优先权	1020100006722 2010-01-26 KR		
外部链接	Espacenet		

摘要(译)

公开了用于在三维超声图像上执行图像处理和尺寸测量的实施例。在一个实施例中，作为非限制性示例，超声系统包括：用户输入单元，被配置为接收用于在来自用户的二维超声图像上设置至少一个种子点的输入信息；超声数据获取单元，被配置为向包括多个感兴趣对象的目标对象发送超声信号和从其接收超声信号，并输出超声数据；处理单元，用于与用户输入单元和超声数据获取单元通信，处理单元，用于根据超声数据形成体数据，形成二维超声图像和基于体积的三维超声图像数据，从三维超声图像中检测与输入信息对应的至少一个感兴趣对象，并在三维超声图像上执行检测到的感兴趣对象的图像处理和尺寸测量。

