



(12) **EUROPEAN PATENT APPLICATION**

(43) Date of publication:
17.07.2019 Bulletin 2019/29

(51) Int Cl.:
A61B 8/08 (2006.01) **A61B 8/12 (2006.01)**
G01S 15/89 (2006.01)

(21) Application number: **19150987.6**

(22) Date of filing: **09.01.2019**

(84) Designated Contracting States:
AL AT BE BG CH CY CZ DE DK EE ES FI FR GB GR HR HU IE IS IT LI LT LU LV MC MK MT NL NO PL PT RO RS SE SI SK SM TR
 Designated Extension States:
BA ME
 Designated Validation States:
KH MA MD TN

(72) Inventors:
 • **BARAM, Alon**
2066522 Yokneam Ilit (IL)
 • **BAR-TAL, Meir**
2066717 Yokneam (IL)
 • **SIGAL, Alona**
2066717 Yokneam (IL)

(30) Priority: **10.01.2018 US 201815866784**

(74) Representative: **Small, Gary James**
Carpmaels & Ransford LLP
One Southampton Row
London WC1B 5HA (GB)

(71) Applicant: **Biosense Webster (Israel) Ltd.**
Yokneam 2066717 (IL)

(54) **MAPPING OF INTRA-BODY CAVITY USING A DISTRIBUTED ULTRASOUND ARRAY ON BASKET CATHETER**

(57) A medical system (20) includes a shaft (22) configured for insertion into an intra-body cavity, such as a cardiac chamber; multiple ultrasound transducers (48), which are distributed over splines that form a basket catheter (40) at a distal end of the shaft, the transducers being configured to transmit ultrasonic signals in the intra-body cavity and to receive echo signals in response to the ultrasonic signals; and a processor (41) configured to calculate a surface of the intra-body cavity by processing

the echo signals using an ellipsoidal back-projection method, which reconstructs ultrasound-wave reflecting surfaces by performing at least one of applying back-projection summation over sub-sets of scattered echo signals distributed over respective sub-sets of constructed ellipsoids and applying a non-linear minimum operator over each of the sub-sets of distributed echo signals to generate a respective minimum value for each sub-set.

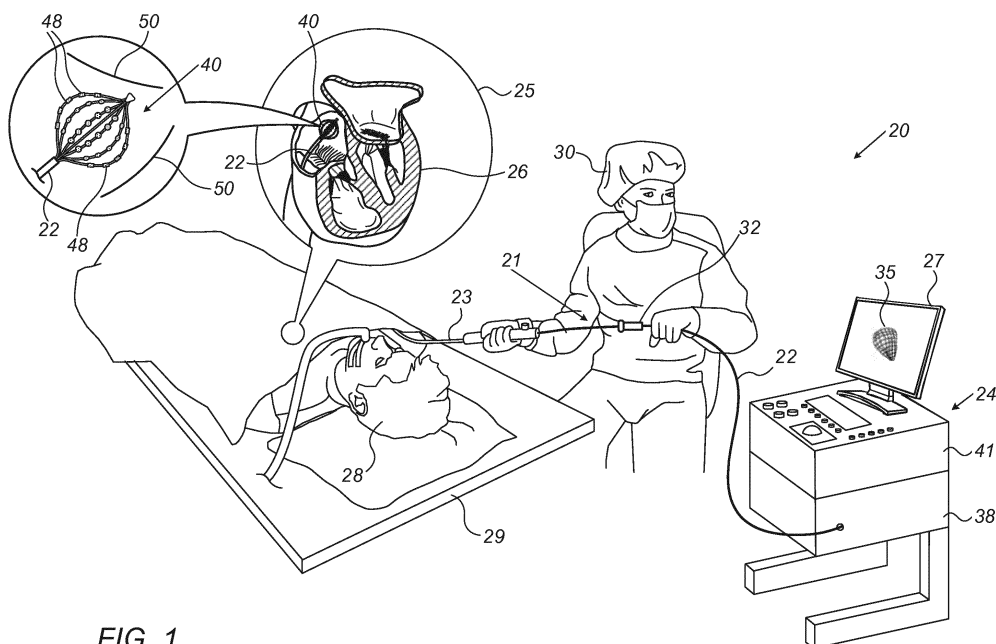


FIG. 1

Description**FIELD OF THE INVENTION**

5 [0001] The present invention relates generally to invasive medical instruments, and particularly to intra-body medical probes employing ultrasound.

BACKGROUND OF THE INVENTION

10 [0002] Methods of ultrasound spatial mapping and image-reconstruction of intra-body cavities, such as cardiac chambers, are often employed in medical applications. For example, U.S. Patent Application Publication 2015/0223757 describes systems, devices and methods for treating and/or diagnosing a heart arrhythmia, such as atrial fibrillation. Specifically, the invention provides a system including a diagnostic catheter and an ablation catheter. The diagnostic catheter includes a shaft, multiple dipole mapping electrodes and multiple ultrasound transducers arranged in a basket geometry. The ablation catheter is received by sliding the diagnostic catheter shaft.

15 [0003] As another example, U.S. Patent 5,235,857 describes a real time 3D medical ultrasound imaging machine. Large extended transmitters are used with a great range of different pulse types, giving improved signal to noise ratio. The imaging machine can use small point like transmitters, one or more annular array transmitters, large curved transmitters or a large flat transmitter. Echoes are received by a sparse array of receiver elements. Image reconstruction is done by filtered ellipsoidal back-projections. The imaging machine additionally promises higher resolution, greater sensitivity 2D real time images displayed simultaneously with the real time 3D image.

20 [0004] A conference paper by Anderson, entitled "3D ellipsoidal back projection images from large arrays. II," Proceedings of the IEEE Ultrasonics Symposium, 1992, describes ellipsoidal back projection imaging that allows 3D ultrasonic images to be obtained in real time, i.e., at 30 frame/s. In doing this, it overcomes a fundamental limitation of conventional focused beam imaging. High-quality ellipsoidal backpropagation images of a point are shown, wherein transmitter and receiver arrays of up to 512 elements are used. A method of synthesizing multiple transmitters using a defocused annular array is described.

25 [0005] U.S. Patent 6,716,166 describes apparatus for mapping a surface of a cavity within a body of a subject using an elongate probe, having a longitudinal axis and including a distal portion adapted for insertion into the cavity. A plurality of acoustic transducers is distributed along the longitudinal axis over the distal portion of the probe, which transducers are adapted to be actuated individually to emit acoustic waves while the probe is in the cavity, and are further adapted to receive the acoustic waves after reflection of the waves from the surface of the cavity and to generate, responsive to the received waves, electrical signals indicative of times of flight of the waves.

30 [0006] U.S. Patent 7,610,078 describes methods and systems for graphically creating a representation of an anatomical structure, such as a heart. The distal end of an elongated probe is moved within the anatomical structure, and geometric shapes are defined within a coordinate system. By defining geometric shapes, such as spheres or circles, as the distal probe end is moved within the anatomical structure such as a heart, the cavity within the anatomical structure can be represented. A representation of at least a portion of the anatomical structure can be graphically generated based on the geometric shapes, e.g., by determining a union of the geometric shapes and conforming the graphical representation around the union of the shapes.

35 [0007] U.S. Patent 9,757,044 describes devices, systems, and methods for determining the dipole densities on heart walls. In particular, a triangularization of the heart wall is performed in which the dipole density of each of multiple regions correlate to the potential measured at various located within the associated cardiac chamber. To create a database of dipole densities, mapping information recorded by multiple electrodes located on one or more catheters and anatomical information is used. Additionally, one or more ultrasound elements are provided, such as on a clamp assembly or integral to a mapping electrode, to produce real time images of device components and surrounding structures. In an embodiment, a basket construction is provided that comprises multiple support arms which include one or more electrodes and one or more ultrasound elements.

SUMMARY OF THE INVENTION

40 [0008] An embodiment of the present invention provides a medical system including a shaft, multiple ultrasound transducers and a processor. The shaft is configured for insertion into an intra-body cavity of a patient. The multiple ultrasound transducers, which are distributed over splines that form a basket catheter at a distal end of the shaft, are configured to transmit ultrasonic signals in the intra-body cavity and to receive echo signals in response to the ultrasonic signals. The processor is configured to calculate a surface of the intra-body cavity by processing the echo signals using an ellipsoidal back-projection method, which reconstructs ultrasound-wave reflecting surfaces by performing at least one of applying back-projection summation over sub-sets of scattered echo signals distributed over respective sub-sets

of constructed ellipsoids and applying a non-linear minimum operator over each of the sub-sets of distributed echo signals to generate a respective minimum value for each sub-set.

[0009] In some embodiments, the processor is configured to present to a user a diagram of the calculated surface of the intra-body cavity. In some embodiments, the intra-body cavity comprises a cardiac chamber.

[0010] There is additionally provided, in accordance with an embodiment of the present invention, a method including inserting a shaft into an intra-body cavity of a patient. Ultrasonic signals are transmitted in the intra-body cavity, and echo signals are received in response to the ultrasonic signals, by multiple ultrasound transducers which are distributed over splines that form a basket catheter at a distal end of the shaft. A surface of the intra-body cavity is calculated by processing the echo signals using an ellipsoidal back-projection method, which reconstructs ultrasound wave reflecting surfaces by performing at least one of applying back-projection summation over sub-sets of scattered echo signals distributed over respective sub-sets of constructed ellipsoids and applying a non-linear minimum operator over each of the sub-sets of distributed echo signals to generate a respective minimum value for each sub-set.

[0011] The present invention will be more fully understood from the following detailed description of the embodiments thereof, taken together with the drawings in which:

BRIEF DESCRIPTION OF THE DRAWINGS

[0012]

Fig. 1 is a schematic, pictorial illustration of a catheter-based cardiac mapping system comprising an ultrasound basket catheter, in accordance with an embodiment of the present invention;

Fig. 2 is a schematic, pictorial illustration of a basket catheter fitted with ultrasound transducers, in accordance with an embodiment of the present invention;

Fig. 3 is a schematic, pictorial illustration of an ellipsoidal back-projection scheme, in accordance with an embodiment of the present invention; and

Fig. 4 is a flow-chart that schematically illustrates a method for mapping and presenting a cardiac chamber, in accordance with an embodiment of the present invention.

DETAILED DESCRIPTION OF EMBODIMENTS

OVERVIEW

[0013] Embodiments of the present invention that are described herein provide systems and methods that produce a spatial map of an intra-body cavity, such as a cardiac chamber, with enhanced contrast, while employing fast acquisition and reconstruction schemes. In some embodiments, an ultrasonic spatial mapping basket catheter is provided. The ultrasound basket catheter is capable of acquiring data to map an entire surface of a cardiac chamber from a single position in the cardiac chamber, e.g., without having to be rotated or moved across the chamber in the process. An improved reconstruction method is also provided, to be used with the ultrasound basket catheter, which enables reconstructing and presenting a spatial map that visualizes the enhanced contrast between the surface of a cardiac chamber and the blood within the chamber.

[0014] In some embodiments, the ultrasound basket catheter is fitted with multiple ultrasound transducers coupled to splines that form the basket shape. The transducers are distributed sparsely over the splines, and operate in Amplitude mode (A-mode) in order to generate and acquire one-dimensional echo signals. These echo signals are subsequently processed by a processor employing an ellipsoidal back-projection method so as to rapidly produce the required spatial map.

[0015] Briefly put, the ellipsoidal back-projection method, described in the Anderson article cited above, treats the following problem: 'assume to have finite number of transmitting/receiving ultrasound transducers where each transducer transmits an echo signal one at a time while all transducers receive scattered echo signals, what are the locations of scatters in the volume and what are the reflected amplitudes from the scatters?'

[0016] In the text hereinafter, the terms scattering and reflection are used interchangeably.

[0017] The method by Anderson solves the problem by first assigning to each scatter at a location X a scattered signal $S(X)$ that is modeled by summing over all potentially contributing signals $S_k(X)$ detected at a given time by the receiving transducers. The partial signals $S_k(X)$ are signals defined by a triplet of coordinates of three objects in space: (source transducer location, scatter location, receiving transducer location). Such triplets uniquely define respective ellipsoids in space. One or more, enumerated K , ellipsoids may contribute to $S(X)$. Thus, the ellipsoid back-projection model constructs the signal at X , as $S(X) = \text{Sum}\{S_k(X)\}$, $k = 1, 2, \dots, K$. In the description hereinafter, a group of signals $\{S_k(X)\}$, is named 'sub-set of scattered signals.'

[0018] In the description above, all the K scatter ellipsoids that belong to a given sub-set are defined by (i) a pair of

transducers, and (ii) a single point location X in the body where a single scattering occurs at. The back-projection of $S(X)$, $P(S(X))$, performed for all coordinates X in a volume generates the required spatial map $P(X)$, as described in detail below.

[0019] In an embodiment, a disclosed variant of the ellipsoidal back-projection method achieves higher contrast between the surface of the chamber and the blood within. To achieve the enhanced contrast, a processor applies a non-linear minimum filter over all sub-sets of scattered signals from all mapped locations in space. As a result, generally all resulting signals are attenuated by the operator, however the signal to noise ratio improves. In the description hereinafter, the term 'signal' means large partial echo amplitudes $S_k(X)$ that usually originate from interfaces. In the description hereinafter, the term 'noise' means small partial echo amplitudes, $S_k(X)$ signals that are erroneously attributed by the back-projection algorithm to scattering, e.g., from nonexistent scatters such as from part of a homogenous environment (e.g., blood pool).

[0020] As a result of the variant described above, the ultrasound-derived density of the blood inside a chamber of a heart receives a proper low value (as opposed to an artificially high value obtained by the original ellipsoidal back-projection method). As indicated above, the ultrasound-derived density of would be attenuated as well, but the overall signal to noise improve. Thus, the variant process described briefly above improves the contrast between chamber-surface and blood.

[0021] The accuracy of a spatial map of a cardiac chamber would benefit from faster acquisition and reconstruction times. In an embodiment, the disclosed method shortens calculation times by producing a synthetic spatial map, which is based on analyzing one-dimensional A-mode signals, rather than attempting to perform an unnecessary and computationally-demanding full image reconstruction.

[0022] The disclosed systems and methods, which combine (i) a basket ultrasound array that instantaneously acquires multiple ultrasound measurements and (ii) an improved reconstruction scheme, may be advantageous to the physician, who may receive more accurate spatial and functional maps of an intra-body cavity, such as a cardiac chamber. Hence, the disclosed system and method may enable the physician to perform efficient invasive diagnostics and possibly subsequent treatment sessions.

SYSTEM DESCRIPTION

[0023] Fig. 1 is a schematic, pictorial illustration of a catheter-based cardiac mapping system 20 comprising an ultrasound basket catheter 40, in accordance with an embodiment of the present invention. System 20 comprises a catheter 21, having a shaft 22 that is navigated by a physician 30 into a heart 26 of a patient 28 lying on a table 29. In the pictured example, physician 30 inserts shaft 22 through a sheath 23, while manipulating the distal end of shaft 22 using a manipulator 32 near the proximal end of the catheter and/or deflection from the sheath 23. As shown in an inset 25, basket catheter 40 is fitted at the distal end of shaft 22. Basket catheter 40 is inserted through sheath 23 in a collapsed state and is then expanded within heart 26.

[0024] In an embodiment, basket catheter 40 is configured to perform spatial mapping of a cardiac chamber of heart 26 by transmitting echo signals and receiving echo signals that were reflected from cardiac chamber surfaces 50. An inset 45 shows basket catheter 40 in an enlarged view, inside a cardiac chamber of heart 26. As seen, basket catheter 40 comprises an array of ultrasound transducers 48 coupled onto splines that form the basket shape.

[0025] The proximal end of catheter 21 is connected to a console 24. Console 24 comprises a processor 41, typically a general-purpose computer, with suitable front end and interface circuits 38 for transmitting and receiving signals to and from catheter 21, as well as for controlling the other components of system 20. In some embodiments, processor 41 is further configured to receive multiple one-dimensional echo signals and to calculate from these signals a map of a surface of a cardiac chamber. In an embodiment, the surface of the surrounding anatomy is presented to physician 30 on a monitor 27, e.g., in a graphical form of a mesh diagram 35.

[0026] As noted above, processor 41 typically comprises a general-purpose computer, which is programmed in software to carry out the functions described herein. The software may be downloaded to the computer in electronic form, over a network, for example, or it may, alternatively or additionally, be provided and/or stored on non-transitory tangible media, such as magnetic, optical, or electronic memory.

[0027] The example configuration shown in Fig. 1 is chosen purely for the sake of conceptual clarity. The disclosed techniques may similarly be applied using other system components and settings. Additionally, system 20 may comprise additional components, such as ones for electrophysiological mapping and/or ablation.

[0028] Although the pictured embodiment relates specifically to the use of an ultrasound basket catheter for cardiac mapping, the elements of system 20 and the methods described herein may alternatively be applied in ultrasound mapping using catheters having other multi-arm geometries.

MAPPING OF INTRA-BODY CAVITY USING A DISTRIBUTED ULTRASOUND ARRAY ON BASKET CATHETER

[0029] Fig. 2 is a schematic, pictorial illustration of a basket catheter 40 fitted with ultrasound transducers 48, in accordance with an embodiment of the present invention. As seen, transducers 48 are coupled to splines 49 that form the basket. Transducers 48 are sparsely distributed (i.e., where a large gap exists between each two neighboring transducers, such that the majority of surface area of a basket surface defined splines 49 is vacant of transducers) approximately spherically beyond the distal end of shaft 22. The array of transducers 48 can achieve the required coverage and detail of features of a cardiac chamber despite being sparse because (a) each transducer has sufficiently large transmitting and receiving acceptance angle (b) the calculations are optimized to utilize sparse arrays, as explained below.

[0030] The example illustration shown in Fig. 2 is chosen purely for the sake of conceptual clarity. The number of transducers and their arrangement may vary. Additional elements. Such as electrodes, may be disposed over splines 49. Other catheter geometries may be used to carry transducers 48, for example such made of spiraling arms.

[0031] Fig. 3 is a schematic, pictorial illustration of an ellipsoidal back-projection scheme, in accordance with an embodiment of the present invention. In order to simplify the graphical presentation, and without loss of generality, Fig. 3 provides a two-dimensional elliptical illustration of the three-dimensional ellipsoidal back-projection model.

[0032] The model by Anderson assumes each transmitting transducer (exemplified by a transducer 48A in Fig. 3) that is located at a position $s \in R^3$ is a source of a spherical ultrasound pressure wave of the form

$P_s(r, t) = P_0 \frac{1}{4\pi r} \delta(r - ct)$, where r is the distance from the transmitter at s and c is the velocity of sound in the medium and P_0 is the signal amplitude. The method examines what happens when a transmitter located at s transmits a pulse scattered by scatter (exemplified by 50AB in Fig. 3) located at X and received by a transducer (exemplified by 48B in Fig. 3) at re . The scattering element is considered as a secondary spherical wave source. Let $D(x, y) = \|x - y\|$ denote the Euclidian distance between positions x and y in R^3 . The pressure pulse wave transmitted by a source at position s arrives at a scatter at position X after time $t_1 = \frac{D(s, X)}{c}$. Then the pulse is scattered in all directions as

$$P_1 \frac{1}{4\pi r} \delta(r - c(t - t_1)) = \widetilde{P}_1 P_0 \frac{\delta(r - ct + D(s, X))}{16\pi^2 r D(s, X)},$$

where P_1 is the incoming pulse amplitude and after substitution \widetilde{P}_1 is the reflected proportion of energy which depends on reflective indices geometry and matter properties. r is the distance from the scatter to a receiver. The receiver located at re thus receives the following amplitude from the scatter:

$$\sigma(s, X, re) = \widetilde{P}_1 P_0 \frac{\delta(ct - (D(s, X) + D(X, re)))}{16\pi^2 D(X, re) D(s, X)} \propto S_k(X),$$

where $S_k(X)$ is the partial signal, and k denotes an index associated a certain transmitter-receiver pair. The signal is received at time $t_{s, re} = \frac{(D(s, X) + D(X, re))}{c}$, which is the travel time from the source to the scattering element and the receiver.

[0033] The triplet (s, X, re) defines an ellipsoid 53 in R^3 with major axis $c \cdot t_{s, re} = D(s, X) + D(X, re)$, where s and re lie on his axis and X is on the boundary. Any other scattering element on the boundary of this ellipsoid will have the same travel time $t_{s, re}$. In other words, the signal received at time $t_{s, re}$ when transmitted at $t = 0$ is the integral over the contribution of all scattering elements that lie on the surface of ellipsoid 53. The acquired signal over time for a transmitter receiver pair at a time t as a surface integral over the induced ellipsoid $E(s, X, t)$ is expressed as:

$$S(s, re, t) = \oint_{X \in E(s, X, t)} \sigma(s, X, re) dX =$$

$$= \oint_{X \in E(s, X, t)} \widetilde{P}_1 P_0 \frac{\delta(ct - (D(s, X) + D(X, re)))}{16\pi^2 D(X, re) D(s, X)} dX$$

5

10 **[0034]** The ellipsoidal back-projection operator is then defined as:

$$P(X) = \iiint_{s, re \in V} S(s, re, t) \delta\left(t - \frac{D(s, X) + D(X, re)}{c}\right) ,$$

15

which is a summation over of all possible receiver-transmitter transducer pairs in the volume at all times in which X contributes to the signal recorded in the receivers. i.e., X defines the ellipsoid among that triplet coordinates.

[0035] Note, in the absence of noise, for locations X where no true scatters exist $P(X)$ should have zero value. This means that ideally, the described method should produce good tissue contrast resolution.

20

[0036] In some implementations use discrete space, time, signals, and number of transmitters/receivers. Sampling is made over a volume of space at some Cartesian grid uniformly. Time is taken at steps dt . The ultrasound array is assumed to include N transmitters/receivers. The discrete back-projection operator takes the form:

$$P'(X) = \sum_{s, re \in N, t} S(s, re, t) \delta\left(s, re, t = \left[\frac{D(s, X) + D(X, re)}{c \cdot dt} \right] dt\right)$$

25

30

[0037] The summation is done only for s, re and t , where $X \in E(s, X, t)$, a group denoted in the description as $\{X\}_K$, where K is the number of the ellipsoids belonging to that group. When there are enough transducers in the array, the discrete operator should well-approximate the continuous one. When computing this operation for every voxel in a sampled grid, a spatial map $P'(X)$, representing the distribution of scattering elements in the volume is received, such as a map of a cardiac chamber.

35

[0038] In practice, a source of spatial-noise exists in $P'(X)$, due to a mechanism where any noise detected by a transducer, such as transducer 48C, can be fitted to respective echo trajectory 52 that erroneously trace the noise detected at transducer 48C as a true signal that originated from emitting transducer 48A. An ellipsoid 54, $E(s, X(50AC), re)$, is constructed thus that is fully defined by pair transducers-pair (48A, 48C) and a nonexistent-scatter 50AC located at X' . In the description hereinafter, an ellipsoid such as ellipsoid 54 may be described as 'noise-generated'. Additional steps described above lead to a non-zero valued $P'(X)$.

40

[0039] The method by Anderson, thus may result in an over estimated ultrasound-derived density of locations such as 50AC (e.g., locations in the blood inside a cardiac chamber). Subsequently, locations like 50AC receive artificially high values on a spatial map, harming contrast resolution, and therefore the ability to resolve true-reflecting surfaces, such as tissue of a cardiac chamber.

45

[0040] The ellipsoidal back-projection method exemplified in Fig. 3 is partially based on U.S. Patent 5,235,857, whose disclosures are incorporated herein by reference.

[0041] As noted above, possibly many more back-projection reconstructed ellipsoids belonging to the same sub-set (i.e., pass through a location X) being defined by other transducer-pairs. Such sub-set of ellipsoids (related to location X), which may contain K ellipsoids, is defined in the description hereinafter as

50

$$\{X\}_K = \{(s, re, t) | X \in E(s, re, t)\}$$

where $\{X\}_K$ contain all ellipsoids constructed from an echo signal with assumed time of flight t , which is assumed to be traveling between a source transducer at position s , scattered at location $\{X\}$, and received (at another transducer at a position re).

55

[0042] As noted, all ellipsoids belonging to sub-set $\{X\}_K$ are noise generated, as no reflections exist in reality from location X' . As indicated above, summing noises, such as a noise over ellipsoid sub-set $\{X\}_K$ may damage the quality of a resulting spatial map.

[0043] In an embodiment, a method is provided for achieving enhanced contrast between blood filling a chamber and a surface of that chamber. This variant over the ellipsoidal back-projection method by Anderson uses the observation that for any location X in a volume, if there is one ellipsoid that is noise generated, then the location lies in free space and all other related ellipsoids are necessarily also noise generated.

[0044] Mathematically, a minimum non-linear operator $F(X)$ is applied over each and any sub-set of scattered signals, $\{S_k(X)\}_K$, from each and any location X .

[0045] The minimum non-linear operator $F(X)$ is applied by a processor in the following way: instead of the processor performing summations on over $\{S_k(X)\}_K$, the minimum non-linear operator is applied over $\{S_k(X)\}_K$, where $\{X\}_K = \{(s, re, t) | X \in E(s, re, t)\}$:

$$F(X) = \text{Min}\{\{S_k(X)\}_K\} = \text{Min}_{(s, re, t) | X \in E(s, re, t)} |S(s, re, t)| ,$$

where $S(s, re, t)$ denotes the acquired signal over time for a transmitter receiver pair at a time t associated with each of the ellipsoids that pass-through location X . Thus $F(X)$ is the global minimum provided by the non-linear minimum filter for any location X .

[0046] Such minimum operation produces a very low value of noise, such as from 50AC at X' , i.e., $F(X')$ yields the lowest noise associated with location like location X' , which would therefore not hurt tissue contrast resolution. As noted above, despite F attenuating also signals, such as from 50AB at X , the overhaul signal to noise improves by applying F .

[0047] In an embodiment, instead of using the absolute value we take the Hilbert transform of the signal which is a method of extracting the signal's envelope. The method by Anderson was suggesting using coherent summing with an anticipation that noise will cancel out. Coherent sum assumes exact phase difference (up to about $\frac{1}{4}$ wavelength) is known. In practice this is very difficult to ensure, since the basket is not rigid and the wavelength is less than 1mm. Using the envelope signal (i.e., energy sums) has the advantage of losing the need for coherent summing making the algorithm more robust to location errors in array element positions. In an embodiment, an error of up to 2mm in intra-transducer distances is acceptable.

[0048] In an embodiment, the present invention is realized by a 64 piezoelectric transducers array is mounted on 12 splines. The transducers have a resonance frequency of about 1.4Mhz and the sampled voxel size is 1.4mm^3 . The transducers are connected to an acquisition system capable of generating pulses and record a sweep of a transmission over all elements in real time. The calculations are performed with weighted directivity (by convolving the transmitted signal with transmitter and receiver transfer function in time, and using Huygens principle in space) and applying calculations performed on Hilbert transformed echo signals. Signals from voxel elements that are in the back side of a transmitting or receiving transducer (i.e., not in the half plane directed by their normal) are discarded. This is done to reduce noise coming from spline echo and other weak reflections. The above embodiments serve as an example. The number and size of transducers, the resonance frequency and the voxel size may vary, among other parameters.

[0049] The example of signals shown in Fig. 3 is chosen purely for the sake of conceptual clarity. As noted above, it is to be understood that the enclosed graphical description is simplified only for the sake of clarity of the figures.

[0050] Fig. 4 is a flow-chart that schematically illustrates a method for mapping and presenting a cardiac chamber, in accordance with an embodiment of the present invention. The method begins by physician 30 inserting and placing an ultrasound basket catheter 40 into a cardiac chamber of heart 26, in a placement step 70. At an acquisition step 72, the array of transducers 48 transmit and receive echo signals, where resulted electrical signals are communicated by wiring running through shaft 22 to processor 41. At a calculation step 74, processor 41 calculates reflection amplitudes starting by fitting a sub-set of scatter ellipsoids to each received sub-set of distributed echo signals. Next, processor 41 applies a non-linear minimum operator over the sub-set of distributed echo signals, at a minimization step 76. As a result, the reflected amplitudes are replaced by the respective output value of the minimum operator (a non-negative minimal value), as explained above, at a replacement step 78. Finally, processor 41 sums over all signals so as to calculate anatomical surface 50 geometry of the cardiac chamber, at calculation step 80. A resulting diagram, such as mesh diagram 35 representing a surface of a cardiac chamber, is presented to physician 30 on display 27, at a presentation step 82.

[0051] The example flow chart shown in Fig. 4 is chosen purely for the sake of conceptual clarity. For example, additional calculation steps that take place are omitted for simplifying the description. Further diagnostic and treatment steps that may be included in the flow-chart, such as electrophysiological mapping and ablation, are also omitted from this description, to keep the flow chart concise.

[0052] Although the embodiments described herein mainly address ultrasound acquisition and reconstruction of cardiac

anatomy, the methods and systems described herein can also be used in other applications, such as in gastroenterology and angioplasty.

[0053] It will thus be appreciated that the embodiments described above are cited by way of example, and that the present invention is not limited to what has been particularly shown and described hereinabove. Rather, the scope of the present invention includes both combinations and sub-combinations of the various features described hereinabove, as well as variations and modifications thereof which would occur to persons skilled in the art upon reading the foregoing description and which are not disclosed in the prior art. Documents incorporated by reference in the present patent application are to be considered an integral part of the application except that to the extent any terms are defined in these incorporated documents in a manner that conflicts with the definitions made explicitly or implicitly in the present specification, only the definitions in the present specification should be considered.

Claims

1. A medical system, comprising:

a shaft for insertion into an intra-body cavity of a patient;
multiple ultrasound transducers, which are distributed over splines that form a basket catheter at a distal end of the shaft, and which are configured to transmit ultrasonic signals in the intra-body cavity and to receive echo signals in response to the ultrasonic signals; and
a processor configured to calculate a surface of the intra-body cavity by processing the echo signals using an ellipsoidal back-projection method, which reconstructs ultrasound-wave reflecting surfaces by performing at least one of:

applying back-projection summation over sub-sets of scattered echo signals distributed over respective sub-sets of constructed ellipsoids; and
applying a non-linear minimum operator over each of the sub-sets of distributed echo signals to generate a respective minimum value for each sub-set.

2. The medical system according to claim 1, wherein the processor is configured to present to a user a diagram of the calculated surface of the intra-body cavity.

3. The medical system according to claim 1, wherein the intra-body cavity comprises a cardiac chamber.

4. A method, comprising:

inserting a shaft into an intra-body cavity of a patient;
transmitting ultrasonic signals in the intra-body cavity, and receiving echo signals in response to the ultrasonic signals, by multiple ultrasound transducers which are distributed over splines that form a basket catheter at a distal end of the shaft; and
calculating, in a processor, a surface of the intra-body cavity by processing the echo signals using an ellipsoidal back-projection method, which reconstructs ultrasound wave reflecting surfaces by performing at least one of:

applying back-projection summation over sub-sets of scattered echo signals distributed over respective sub-sets of constructed ellipsoids; and
applying a non-linear minimum operator over each of the sub-sets of distributed echo signals to generate a respective minimum value for each sub-set.

5. The method according to claim 5, and comprising presenting to a user a diagram of the calculated surface of the intra-body cavity.

6. The method according to claim 5, wherein the intra-body cavity comprises a cardiac chamber.

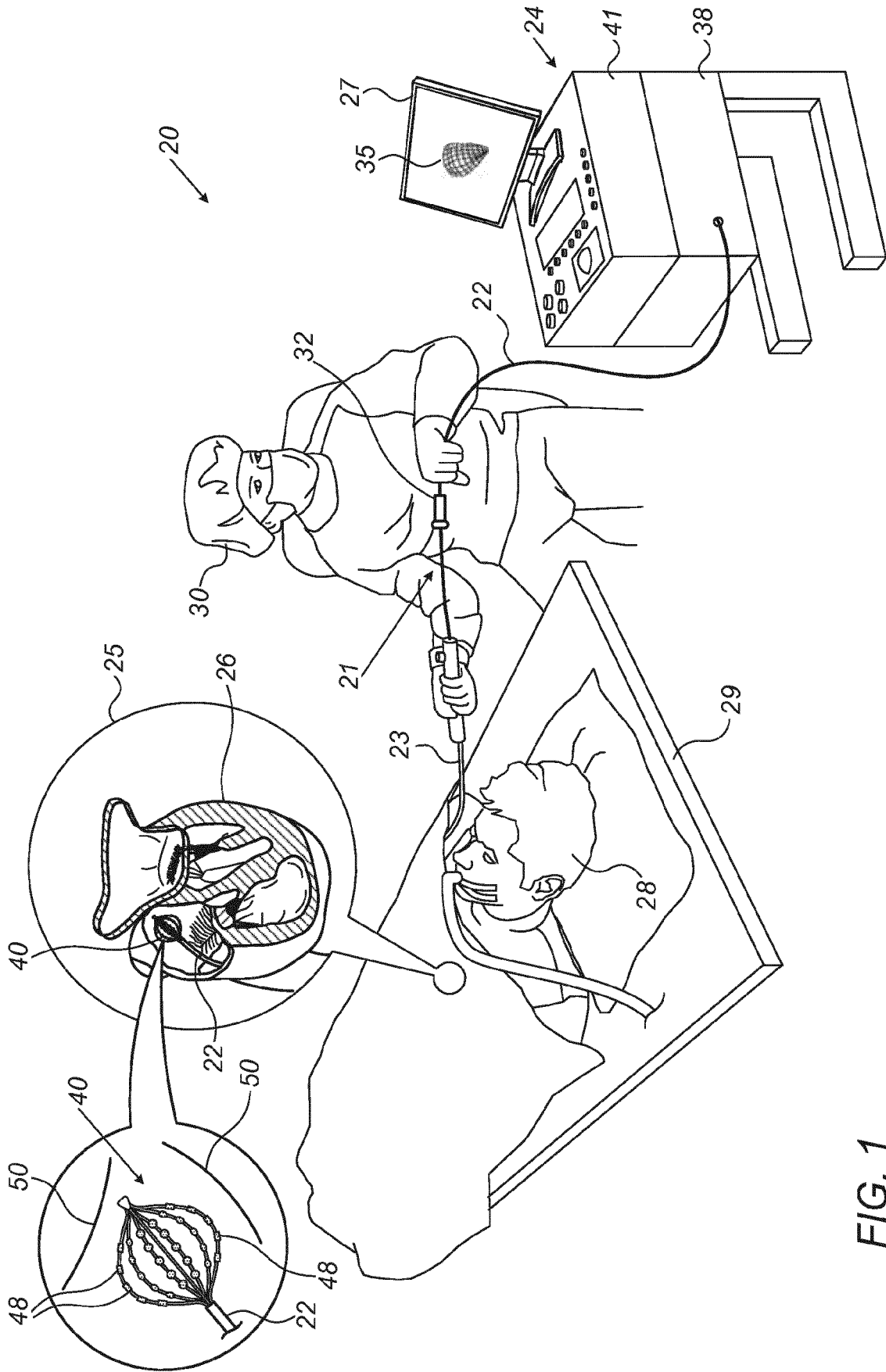


FIG. 1

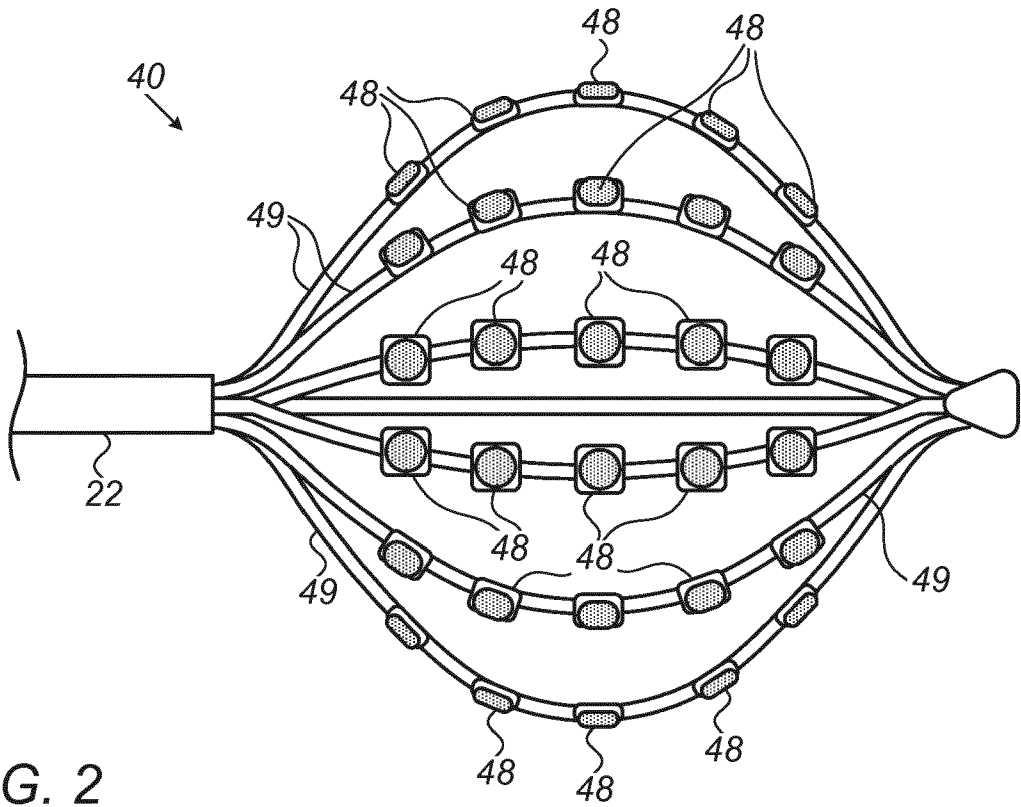


FIG. 2

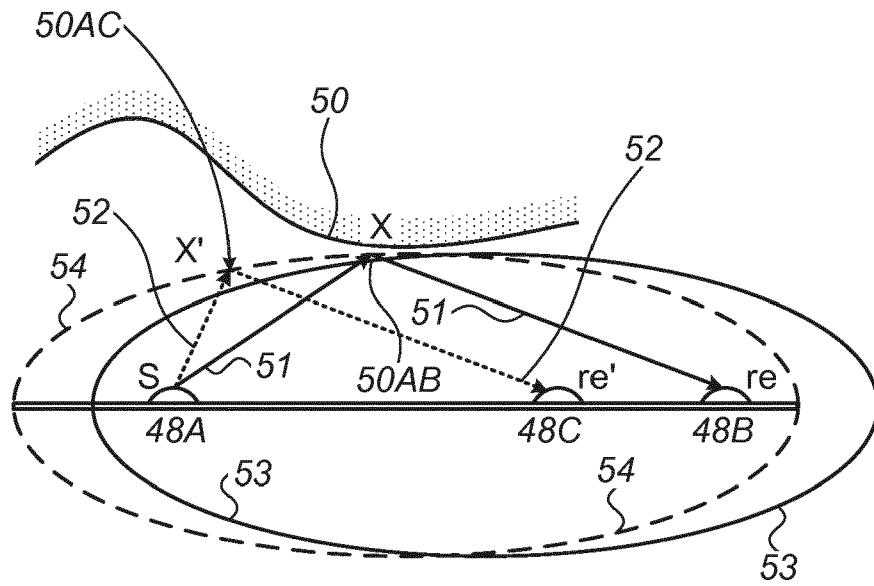


FIG. 3

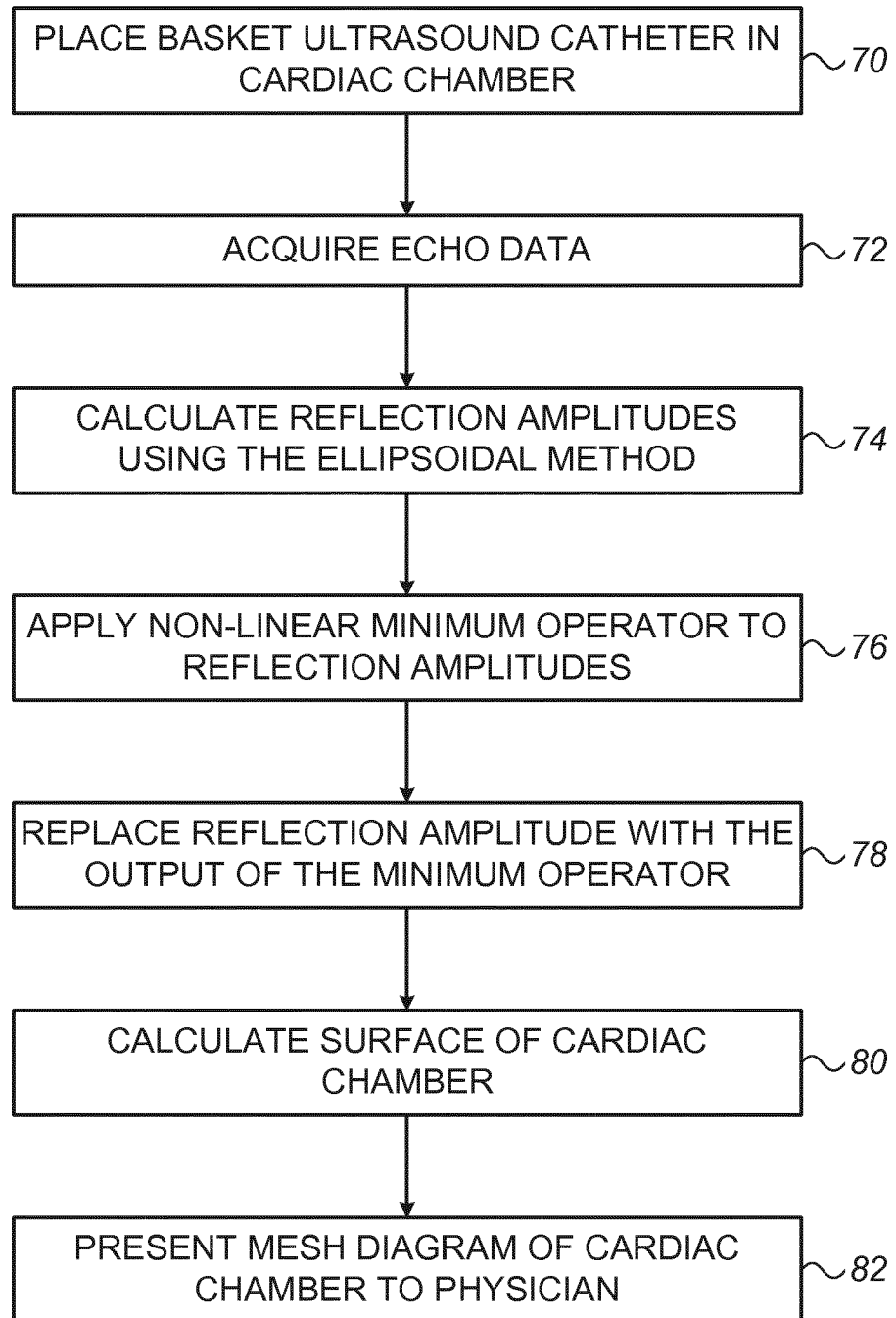


FIG. 4



EUROPEAN SEARCH REPORT

Application Number
EP 19 15 0987

5

10

15

20

25

30

35

40

45

50

55

DOCUMENTS CONSIDERED TO BE RELEVANT			
Category	Citation of document with indication, where appropriate, of relevant passages	Relevant to claim	CLASSIFICATION OF THE APPLICATION (IPC)
Y,D	US 2015/223757 A1 (WERNETH RANDELL L [US] ET AL) 13 August 2015 (2015-08-13) * the whole document * -----	1-6	INV. A61B8/08 A61B8/12 G01S15/89
Y	US 5 027 658 A (ANDERSON FORREST L [US]) 2 July 1991 (1991-07-02) * column 4, line 49 - column 5, line 3 * * column 6, line 50 - column 7, line 41 * * column 10, line 49 - column 11, line 27 * * * column 24, line 1 - line 35; figures * -----	1-6	
Y,D	ANDERSON F: "3D ellipsoidal backprojection images from large arrays. II", ULTRASONICS SYMPOSIUM, 1992. PROCEEDINGS., IEEE 1992 TUCSON, AZ, USA 20-23 OCT. 1, NEW YORK, NY, USA, IEEE, US, 20 October 1992 (1992-10-20), pages 1223-1226, XP010103675, DOI: 10.1109/ULTSYM.1992.275880 ISBN: 978-0-7803-0562-5 * the whole document * -----	1-6	
The present search report has been drawn up for all claims			TECHNICAL FIELDS SEARCHED (IPC)
			A61B G01S G06T
Place of search		Date of completion of the search	Examiner
Munich		3 June 2019	Küster, Gunilla
CATEGORY OF CITED DOCUMENTS			
X : particularly relevant if taken alone Y : particularly relevant if combined with another document of the same category A : technological background O : non-written disclosure P : intermediate document		T : theory or principle underlying the invention E : earlier patent document, but published on, or after the filing date D : document cited in the application L : document cited for other reasons & : member of the same patent family, corresponding document	

EPO FORM 1503 03/82 (P04C01)

ANNEX TO THE EUROPEAN SEARCH REPORT
ON EUROPEAN PATENT APPLICATION NO.

EP 19 15 0987

5 This annex lists the patent family members relating to the patent documents cited in the above-mentioned European search report.
The members are as contained in the European Patent Office EDP file on
The European Patent Office is in no way liable for these particulars which are merely given for the purpose of information.

03-06-2019

Patent document cited in search report	Publication date	Patent family member(s)	Publication date
US 2015223757 A1	13-08-2015	AU 2013308531 A1	19-03-2015
		AU 2018211348 A1	23-08-2018
		CA 2881457 A1	06-03-2014
		CN 104812297 A	29-07-2015
		EP 2890292 A2	08-07-2015
		JP 6316821 B2	25-04-2018
		JP 6510104 B2	08-05-2019
		JP 2015528352 A	28-09-2015
		JP 2018108481 A	12-07-2018
		US D782686 S	28-03-2017
		US 2015223757 A1	13-08-2015
		US 2019021673 A1	24-01-2019
		WO 2014036439 A2	06-03-2014

US 5027658 A	02-07-1991	NONE	

REFERENCES CITED IN THE DESCRIPTION

This list of references cited by the applicant is for the reader's convenience only. It does not form part of the European patent document. Even though great care has been taken in compiling the references, errors or omissions cannot be excluded and the EPO disclaims all liability in this regard.

Patent documents cited in the description

- US 20150223757 A [0002]
- US 5235857 A [0003] [0040]
- US 6716166 B [0005]
- US 7610078 B [0006]
- US 9757044 B [0007]

Non-patent literature cited in the description

- 3D ellipsoidal back projection images from large arrays. II. *Proceedings of the IEEE Ultrasonics Symposium*, 1992 [0004]

专利名称(译)	使用篮式导管上的分布式超声阵列绘制体内腔		
公开(公告)号	EP3510938A1	公开(公告)日	2019-07-17
申请号	EP2019150987	申请日	2019-01-09
[标]申请(专利权)人(译)	韦伯斯特生物官能(以色列)有限公司		
申请(专利权)人(译)	生物传感韦伯斯特(以色列)LTD.		
当前申请(专利权)人(译)	生物传感韦伯斯特(以色列)LTD.		
[标]发明人	BARAM ALON BAR TAL MEIR SIGAL ALONA		
发明人	BARAM, ALON BAR-TAL, MEIR SIGAL, ALONA		
IPC分类号	A61B8/08 A61B8/12 G01S15/89		
CPC分类号	A61B8/12 A61B8/4483 A61B8/4488 A61B8/085 A61B8/0883 A61B8/445 A61B8/461 A61B8/48 A61B8/5207 G01S7/52028 G01S15/8915 G01S15/8929 A61B5/042 A61B5/061 A61B5/1076 A61B5/6858 A61B5/6859 A61B8/54 G06T19/006		
优先权	15/866784 2018-01-10 US		
外部链接	Espacenet		

摘要(译)

一种医疗系统(20),包括轴(22),所述轴(22)构造成用于插入体内腔内,例如心腔;多个超声换能器(48),其分布在轴的远端处形成篮式导管(40)的样条上,换能器被配置为在体内腔中发送超声信号并响应于接收回波信号。超声波信号;处理器(41),被配置为通过使用椭圆形反投影方法处理回波信号来计算体内腔的表面,所述椭圆反投影方法通过执行在子投影上的反投影求和中的至少一个来重建超声波反射表面。分散的回波信号的集合分布在构造的椭圆体的各个子集上,并且在分布的回波信号的每个子集上应用非线性最小算子,以产生每个子集的相应的最小值。

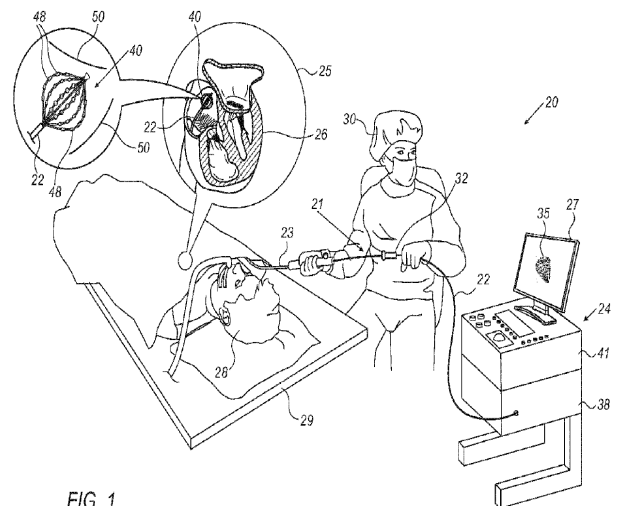


FIG. 1