



(11) **EP 3 158 939 B1**

(12) **EUROPEAN PATENT SPECIFICATION**

(45) Date of publication and mention of the grant of the patent:  
**06.05.2020 Bulletin 2020/19**

(51) Int Cl.:  
**A61B 8/00 (2006.01) A61B 8/08 (2006.01)**

(21) Application number: **16164266.5**

(22) Date of filing: **07.04.2016**

---

(54) **ULTRASONIC APPARATUS AND METHOD FOR CONTROLLING THE SAME**  
**ULTRASCHALLVORRICHTUNG UND VERFAHREN ZUR STEUERUNG DAVON**  
**APPAREIL À ULTRASONS ET SON PROCÉDÉ DE CONTRÔLE**

---

(84) Designated Contracting States:  
**AL AT BE BG CH CY CZ DE DK EE ES FI FR GB GR HR HU IE IS IT LI LT LU LV MC MK MT NL NO PL PT RO RS SE SI SK SM TR**

- **KANG, Hak-II**  
**Gyeonggi-do (KR)**
- **PARK, Sung-Ah**  
**Seoul (KR)**

(30) Priority: **19.10.2015 US 201562243380 P**  
**30.11.2015 KR 20150168351**

(74) Representative: **Grootscholten, Johannes A.M. et al**  
**Arnold & Siedsma**  
**Bezuidenhoutseweg 57**  
**2594 AC The Hague (NL)**

(43) Date of publication of application:  
**26.04.2017 Bulletin 2017/17**

(73) Proprietor: **SAMSUNG MEDISON CO., LTD.**  
**Hongcheon-gun, Gangwon-do (KR)**

(56) References cited:  
**EP-A1- 2 716 232 JP-A- 2000 005 179**  
**JP-K1- 2010 233 956**

(72) Inventors:

- **LEE, Jae Sung**  
**Incheon (KR)**

**EP 3 158 939 B1**

---

Note: Within nine months of the publication of the mention of the grant of the European patent in the European Patent Bulletin, any person may give notice to the European Patent Office of opposition to that patent, in accordance with the Implementing Regulations. Notice of opposition shall not be deemed to have been filed until the opposition fee has been paid. (Art. 99(1) European Patent Convention).

---

**Description**

## BACKGROUND

## 5 1. Field

**[0001]** Embodiments of the present disclosure relate to an ultrasonic apparatus for imaging ultrasonic signals to provide ultrasonic images to a user and a method for controlling the same.

## 10 2. Description of the Related Art

**[0002]** An ultrasonic apparatus transmits ultrasonic waves from a body surface of a target object toward a predetermined portion inside a body, and uses information of ultrasonic echoes reflected from tissues inside the body to noninvasively obtain tomographic images of soft tissues or blood flow.

15 **[0003]** The ultrasonic apparatus has advantages of a compact size, an inexpensive cost, enabling an image display of a target object in real time, and a high safety not causing exposure to radiation including X-rays and the like. With such advantages, an ultrasonic diagnosis apparatus has been widely used for diagnosing cardiac, breast, abdominal, urinary, and gynecological diseases.

20 **[0004]** The ultrasonic apparatus may display ultrasonic images in real time based on ultrasonic waves (ultrasonic echoes) reflected from a target object. If an ultrasonic image being currently displayed contains information of an anatomical position of a target object to be diagnosed, a user may input a select instruction for the ultrasonic image. Once the select instruction is input, an ultrasonic apparatus may freeze the ultrasonic image being displayed in real time to provide continuously the user with the ultrasonic image being currently displayed.

25 **[0005]** Here, reference is made to prior-art publication EP 2716232 A1, which discloses an ultrasonic diagnostic device that measures the modulus of elasticity of a vascular wall, wherein only M-mode images necessary for said measurements are displayed; and relative to which the present disclosure is distinguished by at least the subject-matter in the characterising portions of the appended independent claims.

30 **[0006]** In addition, here reference is made to publication JP 2010 233956 K1, which discloses an ultrasonic diagnostic apparatus capable of securely removing unstable data from ultrasonic image information obtained by detecting blurring caused by shaking by hand or body, and measuring elastic indices.

## SUMMARY

35 **[0007]** Embodiments disclosed herein are to provide an ultrasonic apparatus, which substitutes a frame image having a large motion blur factor and being currently displayed with a frame image having a small motion blur factor and obtained prior to a select instruction input time to display the substituted image when a select instruction for selecting the frame image being displayed or a substitute image display instruction is input, and a method for controlling the same.

**[0008]** In accordance with one embodiment of the present disclosure, an ultrasonic apparatus includes the features of the appended independent apparatus claim.

40 **[0009]** Also, the controller may calculate a motion blur factor of an N<sup>th</sup> frame image based on a difference between the N<sup>th</sup> frame image (N is a natural number equal to or greater than 2) and an N-1<sup>th</sup> frame image, which is a previous frame image of the N<sup>th</sup> frame image, among the plurality of frame images.

**[0010]** Further, the controller may control the display to display a frame image closest to the selected frame image among the frame images, each of which has the motion blur factor equal to or less than the threshold value and is obtained prior to the select instruction input time.

45 **[0011]** Furthermore, the controller may control the display to display at least one frame image obtained during a time period in which a plurality of successive frame images, each of which has a motion blur factor equal to or less than the threshold value, are obtained prior to the select instruction input time, when the time period exceeds a predetermined threshold time.

50 **[0012]** Moreover, the controller may control the display to display a frame image having a minimum motion blur factor among the plurality of successive frame images obtained during the time period.

**[0013]** Also, the controller may control the display to display simultaneously multiple frame images selected based on the motion blur factors among the plurality of successive frame images obtained during the time period.

55 **[0014]** Further, the display may display the motion blur factors of the multiple frame images being simultaneously displayed in association with the multiple frame images.

**[0015]** Furthermore, the input device may receive a select instruction for selecting one among the multiple frame images being simultaneously displayed.

**[0016]** Moreover, the controller may control the display to magnify and display a selected frame image when the select

instruction is input to select one among the multiple frame images being simultaneously displayed.

**[0017]** Also, the controller may control the display to display information related to a motion blur factor of the selected frame image when the motion blur factor of the selected frame image exceeds the threshold value.

**[0018]** Moreover, the ultrasonic apparatus may further include a speaker to output information related to the ultrasonic apparatus as a sound, and the controller may control the speaker to output information related to a motion blur factor of the selected frame image as a sound when the motion blur factor of the selected frame image exceeds the threshold value.

**[0019]** Furthermore, the ultrasonic apparatus may further include an ultrasonic probe to obtain the ultrasonic signals containing information of a target object in real time, and the image processor may generate the plurality of frame images in real time based on the ultrasonic signals obtained in real time.

**[0020]** Also, the ultrasonic apparatus may further include a storage device to store at least one among the plurality of frame images generated in real time.

**[0021]** Further, the controller may control the storage device to store frame images, each of which has a motion blur factor equal to or less than the threshold value, among the plurality of frame images generated in real time.

**[0022]** In accordance with one embodiment of the present disclosure, a method for controlling an ultrasonic apparatus includes the steps of the appended independent method claim.

**[0023]** prior to the select instruction input time.

**[0024]** Furthermore, the displaying of at least one of the frame images, each of which has the motion blur factor equal to or less than the threshold value and is obtained prior to the select instruction input time, may display at least one frame image obtained during a time period in which a plurality of successive frame images, each of which has a motion blur factor equal to or less than the threshold value, are obtained prior to the select instruction input time, when the time period exceeds a predetermined threshold time.

**[0025]** Moreover, the displaying of at least one of the frame images, each of which has the motion blur factor equal to or less than the threshold value and is obtained prior to the select instruction input time, may display a frame image having a minimum motion blur factor among the plurality of successive frame images obtained during the time period.

**[0026]** Also, the displaying of at least one of the frame images, each of which has the motion blur factor equal to or less than the threshold value and is obtained prior to the select instruction input time, may include the steps of selecting multiple frame images being simultaneously displayed based on the motion blur factors among the plurality of successive frame images obtained during the time period, and displaying simultaneously the selected multiple frame images.

**[0027]** Further, the displaying of at least one of the frame images, each of which has the motion blur factor equal to or less than the threshold value and is obtained prior to the select instruction input time, may display the motion blur factors of the multiple frame images being simultaneously displayed in association with the multiple frame images.

**[0028]** Moreover, the method may further include the step of receiving a select instruction for selecting one among the multiple frame images being simultaneously displayed.

**[0029]** Also, the method may further include the step of magnifying and displaying a selected frame image when the select instruction is input to select one among the multiple frame images being simultaneously displayed.

**[0030]** Moreover, the method may further include the step of displaying information related to a motion blur factor of the selected frame image when the motion blur factor of the selected frame image exceeds the threshold value.

**[0031]** Also, the method may further include the step of outputting information related to a motion blur factor of the selected frame image as a sound when the motion blur factor of the selected frame image exceeds the threshold value.

**[0032]** Further, the displaying sequentially of the plurality of frame images generated based on the ultrasonic signals may include the steps of obtaining the ultrasonic signals containing information of a target object in real time, generating the plurality of frame images in real time based on the ultrasonic signals obtained in real time, and displaying sequentially the plurality of frame images generated in real time.

**[0033]** Furthermore, the method may further include the step of storing at least one among the plurality of frame images generated in real time.

**[0034]** Moreover, the storing of at least one among the plurality of frame images generated in real time may store frame images, each of which has a motion blur factor equal to or less than the threshold value, among the plurality of frame images generated in real time.

**[0035]** In accordance with one aspect of the ultrasonic apparatus and the method for controlling the same, a frame image having a small motion blur factor and obtained prior to a select instruction input time may be provided to the user as a substitute image so as to substitute a frame image having a large motion blur factor, which is selected by a select instruction from a user. As a result, accuracy of an ultrasonic diagnosis may be improved.

**[0036]** In accordance with another aspect of the ultrasonic apparatus and the method for controlling the same, a plurality of frame images, each of which has a motion blur factor smaller than that of a frame image selected by a select instruction from a user and having a large motion blur factor, may be provided to the user as candidate substitute images and an instruction for selecting one of the candidate substitute images to be substituted with the selected frame image may be received from the user. As a result, the user may directly select a frame image available for an ultrasonic diagnosis

among the plurality of frame images.

#### BRIEF DESCRIPTION OF THE DRAWINGS

5 **[0037]** The above and other objects, features and advantages of the present invention will become more apparent to those of ordinary skill in the art by describing in detail exemplary embodiments thereof with reference to the accompanying drawings, in which:

10 FIG. 1 is a perspective view of an ultrasonic apparatus according to one embodiment of the present invention;

FIG. 2 is a control block diagram of the ultrasonic apparatus according to one embodiment of the present invention;

15 FIG. 3 is a view illustrating one embodiment of a method for displaying an image freeze icon on a display according to one embodiment of the present invention;

FIG. 4 is a view illustrating an example of a motion blur occurrence on a frame image displayed on the display when a select instruction is input according to one embodiment of the present invention;

20 FIG. 5 is a graph of motion blur factors for times prior to a select instruction input time according to one embodiment of the present invention;

FIGS. 6A and 6B are views for describing a method for displaying a substitute image on the display according to one embodiment of the present invention;

25 FIG. 7 is a view for describing a method for displaying candidate substitute images on the display according to one embodiment of the present invention;

30 FIGS. 8A and 8B are views for describing a method for displaying motion blur factors of the candidate substitute images on the display according to one embodiment of the present invention;

FIG. 9 is a view for describing a method for displaying recommended substitute images on the display according to one embodiment of the present invention; and

35 FIG. 10 is a flowchart of a method for controlling the ultrasonic apparatus according to one embodiment of the present invention.

#### DETAILED DESCRIPTION

40 **[0038]** Reference will now be made in detail to the embodiments of the present disclosure, examples of which are illustrated in the accompanying drawings, wherein like reference numerals refer to like elements throughout.

**[0039]** Hereinafter, embodiments of an ultrasonic apparatus and a method for controlling the same will be described in detail with reference to the accompanying drawings.

**[0040]** FIG. 1 is a perspective view of an ultrasonic apparatus according to one embodiment, and FIG. 2 is a control block diagram of the ultrasonic apparatus according to one embodiment.

45 **[0041]** As shown in FIG. 1, an ultrasonic apparatus 1 may include a main body M and an ultrasonic probe P.

**[0042]** The ultrasonic probe P may be a part contacting directly to a body surface of a target object to collect ultrasonic echoes containing information of the target object. For this purpose, the ultrasonic probe P may include a plurality of transducer elements capable of converting electrical signals into ultrasonic waves, and vice versa.

50 **[0043]** The plurality of transducer elements may be arranged on one surface of the ultrasonic probe P. The ultrasonic probe P at which the plurality of transducer elements are arranged one-dimensionally on one surface thereof is referred to as a 1-dimensional (1D) array probe. The 1D array probe includes a linear array probe at which transducer elements are arranged in a line, a phased array probe, and a convex array probe at which transducer elements are arranged in a curved shape.

55 **[0044]** Otherwise, the ultrasonic probe P at which transducer elements are two-dimensionally arranged is referred to as a 2-dimensional (2D) array probe. The transducer elements may be arranged on a plane surface of the 2D array probe. Alternatively, the transducer elements may be arranged in a curved shape on one surface of the 2D array probe.

**[0045]** The transducer elements may vibrate in response to transmitted signals provided from the main body M to generate ultrasonic waves. The ultrasonic waves generated as described above may be transmitted to an internal side

of the target object. Also, the transducer elements may vibrate in response to ultrasonic echoes reflected from a predetermined portion of the internal side of the target object to generate received signals corresponding to the ultrasonic echoes. The received signals may be transmitted to the main body M to be used for generating an ultrasonic image.

5 [0046] Hereinafter, the transmitted signals received by the ultrasonic probe P and the received signals generated by the ultrasonic probe P are referred to as ultrasonic signals.

[0047] The ultrasonic probe P may generate ultrasonic signals at a predetermined time interval by collecting ultrasonic echoes in real time. The ultrasonic signals generated at the predetermined time interval may be a base of a frame image of an ultrasonic image.

10 [0048] The ultrasonic probe P may be provided to communicate with the main body M through a cable 5. For this purpose, the ultrasonic probe P may be connected to one end of the cable 5, and a male connector 6 may be connected to the other end thereof. The male connector 6 connected to the other end of the cable 5 may be physically connected to a female connector 7 of the main body M, such that the ultrasonic probe P may be connected to the main body M.

[0049] The ultrasonic probe P may transmit and receive ultrasonic signals to and from the main body M through the cable 5. Moreover, the ultrasonic probe P may receive a control signal from the main body M through the cable 5, thereby being controlled by the main body M.

15 [0050] In particular, when a control signal corresponding to a control instruction input through an input device 420 is generated in the main body M, the ultrasonic probe P may receive the control signal through the cable 5, thereby being controlled according to the control instruction. For example, when a control instruction for setting focal depths of ultrasonic signals to be transmitted, a size or a shape of an aperture of the ultrasonic probe P, a steering angle thereof, or the like is input through the input device 420, the main body M may generate a control signal corresponding to the control instruction. The control signal generated as described above may be transmitted to the ultrasonic probe P through the cable 5 to be used for performing a beamforming.

20 [0051] Unlike shown in FIG. 1, the ultrasonic probe P may be wirelessly connected to the main body M. In this case, the ultrasonic probe P may transmit and receive ultrasonic signals to and from the main body M according to a wireless communication method.

25 [0052] The ultrasonic probe P may be connected to the main body M by adopting one of wireless communication methods well-known in the related art. For example, the ultrasonic probe P may be connected to the main body M through wireless Internet methods including a wireless local area network (WLAN), a wireless fidelity (Wi-Fi), a wireless broadband (Wibro), a world interoperability for microwave access (Wimax), a high speed downlink packet access (HSDPA), and the like, or near field communication methods including a Bluetooth, a radio frequency identification (RFID), an infrared data association (IrDA), an ultra wideband (UWB), a Zigbee, and the like.

30 [0053] As shown in FIG. 2, the main body M may include a beamformer 100, an image processor 200, a controller 300, a storage device 500, the input device 420, a display 410, and a speaker 430.

35 [0054] The speaker 430 may inform a user of information related to a status of the ultrasonic apparatus 1 by outputting a predetermined sound. For example, the speaker 430 may output information related to a power supply, an image display, and the ultrasonic probe P of the ultrasonic apparatus 1 as a sound.

40 [0055] Also, the speaker 430 may inform the user of a motion blur occurrence in a frame image being currently selected by the user by outputting a sound, and if a frame image substituted for the motion blurred frame image currently selected is being displayed, the speaker 430 may inform the user of displaying the substituted frame image. A detailed explanation of the aforementioned description will be followed.

[0056] The controller 300 may control an overall operation of the ultrasonic apparatus 1. In particular, the controller 300 may control not only operations of the beamformer 100 and the image processor 200 which are provided inside the main body M, but also operations of the ultrasonic probe P connected to the main body M by wires or wirelessly, the input device 420, and/or the display 410.

45 [0057] For example, the controller 300 may compute delay profiles with respect to the plurality of transducer elements to calculate time delays on the basis of the delay profiles. Using the calculated time delays, the controller 300 may control the beamformer 100 to perform a beamforming on ultrasonic signals. Also, the controller 300 may generate a control signal with respect to each of components of the ultrasonic apparatus 1 according to a control instruction of the user input through the input device 420 to control the ultrasonic apparatus 1.

50 [0058] The beamformer 100 may perform a beamforming on ultrasonic signals so as to enable the ultrasonic probe P to transmit ultrasonic waves, or on ultrasonic signals received from the ultrasonic probe P. At this point, the beamforming may mean a method for aligning ultrasonic waves transmitted to a predetermined point of a target object OB, or aligning ultrasonic echoes reflected from the predetermined point thereof by delaying the ultrasonic waves or the ultrasonic echoes. This is for correcting differences between arrival times of the ultrasonic echoes reaching the predetermined point of the target object OB or being reflected from the predetermined point thereof, at the plurality of transducer elements.

55 [0059] The beamformer 100 may adopt one of beamforming methods well-known in the related art, a combination thereof, or a selective combination thereof.

[0060] The ultrasonic signals undergone the beamforming in the beamformer 100 may be transmitted to the image

processor 200, which will be described later, to be used for generating an ultrasonic image.

**[0061]** The image processor 200 may process the ultrasonic signals undergone the beamforming in the beamformer 100 to generate and transmit an ultrasonic image of the target object OB to the display 410, thereby visually providing the user with anatomical information of the target object OB. For this purpose, the image processor 200 may be implemented in the form of hardware including a microprocessor, and, alternatively, may be implemented by software to be operated on hardware.

**[0062]** As described in detail, when the ultrasonic probe P collects ultrasonic echoes in real time to generate ultrasonic signals at a predetermined time interval, the image processor 200 may generate frame images at a predetermined time interval on the basis of the generated ultrasonic signals.

**[0063]** The storage device 500 may store the ultrasonic image generated by the image processor 200. If the image processor 200 generates a plurality of frame images as the ultrasonic image, the storage device 500 may sequentially or selectively store therein the plurality of frame images.

**[0064]** Furthermore, the storage device 500 may store in advance various information used for controlling the ultrasonic apparatus 1. For example, the storage device 500 may store in advance information related to a power supply control of the ultrasonic apparatus 1, and information used for a transmit beamforming and/or a receive beamforming.

**[0065]** Also, the storage device 500 may store in advance a filter and an algorithm used for determining motion blur factors of the frame images, and a threshold value and a threshold time of a motion blur factor, which are criteria for determining whether or not a substitute frame image is needed to be displayed.

**[0066]** For this purpose, the storage device 500 may be implemented by at least one type storage medium among memories including a flash memory type, a hard disk type, a multimedia card micro type, a card type (for example, a secure digital (SD) memory card, an extreme digital (XD) memory card, or the like), a random access memory (RAM), a static random access memory (SRAM), a read-only memory (ROM), an electrically erasable programmable read-only memory (EEPROM), a programmable read-only memory (PROM), a magnetoresistive random access memory, a magnetic disk, and an optical disk.

**[0067]** The display 410 may be connected to the main body M to display the ultrasonic image generated in the main body M. At this point, the ultrasonic image displayed by the display 410 may be a still image at a predetermined time, or a moving image consisting of a plurality of frame images.

**[0068]** Moreover, the display 410 may display applications related to operations of the ultrasonic apparatus 1. For example, the display 410 may display menus and guide items necessary for an ultrasonic diagnosis.

**[0069]** The display 410 may be implemented by a cathode ray tube (CRT), a liquid crystal display (LCD), an electroluminescence display (ELD), a field emission display (FED), a plasma display, a thin film transistor LCD (TFT-LCD), or an organic light emitting diode (OLED), but it is not limited thereto.

**[0070]** Also, the display 410 may be designed not only to display the ultrasonic image in two dimension but also to provide the user with a three dimensional image. In particular, the display 410 may be designed to allow the user to differently recognize an image through a left eye and a right eye, thereby providing the user with the three dimensional image due to binocular parallax.

**[0071]** Although the ultrasonic apparatus 1 equipped with one display 410 is illustratively shown in FIG. 1, a plurality of displays 410 may be provided. At this point, each of the plurality of displays 410 may display a different image, and at least two thereof may display the same image.

**[0072]** The input device 420 is provided to be connected to the main body M to receive instructions related to operations of the ultrasonic apparatus 1. For example, the input device 420 may receive an ultrasonic diagnosis start instruction, or a mode select instruction of the ultrasonic image.

**[0073]** An example in which the input device 420 is connected by wire to the main body M is illustratively shown in FIG. 1, but the input device 420 may be implemented to transmit to the main body M a control instruction received through a wireless communication method.

**[0074]** The input device 420 may include a variety of means including a keyboard, a mouse, a trackball, a tablet, a touch screen module, or the like, which enables the user to input a control instruction.

**[0075]** Meanwhile, as described in detail, the display 410 may sequentially display the plurality of frame images thereon. At this point, the user may freeze the sequential receiving of the plurality of frame images, and continuously receive one frame image thereof.

**[0076]** For this purpose, the input device 420 may receive a select instruction for selecting one frame image being currently displayed. If the select instruction is input from the user, the controller 300 may control the display 410 to freeze the sequential displaying of the plurality of frame images, thereby continuously providing the user with a frame image being displayed at a current time, that is, at an input time of the select instruction.

**[0077]** FIG. 3 is a view illustrating one embodiment of a method for displaying an image freeze icon on the display 410 according to one embodiment, and FIG. 4 is a view illustrating a motion blur occurrence in a frame image being displayed on the display 410 when the select instruction is input according to one embodiment.

**[0078]** As described in detail, the display 410 may sequentially display the plurality of frame images. While visually

verifying the plurality of frame images being sequentially displayed, the user may acquire anatomical information of an internal side of the target object OB.

[0079] The plurality of frame images displayed as described above may be generated in real time from ultrasonic signals acquired by the ultrasonic probe P in real time, or may be sequentially displayed through the display 410 after being stored in the storage device 500 in advance.

[0080] Also, the display 410 may display a freeze icon in association with the frame image. The user may click the freeze icon through the input device 420, and clicking the freeze icon may mean an input of a select instruction for a frame image being displayed at a clicking time.

[0081] Consequently, the display 410 may freeze the sequential displaying of the plurality of frame images to continuously display the frame image being displayed at the clicking time. Therefore, the user may precisely verify a frame image being displayed at a desired time.

[0082] Typically, while holding the ultrasonic probe P in one hand, the user may move a position of the ultrasonic probe P to receive in real time anatomical images of target objects OB different from each other. Therefore, the user may visually verify viscera or lesions of the internal side of the target object OB to perform an ultrasonic diagnosis on the target object OB.

[0083] At this point, when the frame image being displayed on the display 410 contains viscera or lesions to be observed, the user may fix a position of the ultrasonic probe P and then may use the other hand to input through the input device 420 a select instruction for a frame image being currently displayed, that is, may click the freeze icon. Consequently, the display 410 continuously displays the selected frame image, such that the user may perform a precise diagnosis on the viscera or lesions to be observed.

[0084] However, there may be a problem in which a time difference between a time when the user visually verifies a desired frame image and a time when the user inputs the select instruction through the input device 420 occurs.

[0085] The user may visually verify a frame image  $U_1$  shown in FIG. 3 to input a select instruction for the frame image  $U_1$ . With reference to FIG. 4, the user may input the select instruction by clicking the freeze icon displayed on the display 410 using a cursor C. At this point, the user may operate the ultrasonic probe P and the input device 420 using different hands, such that a position of the ultrasonic probe P may be moved when the user manipulates the input device 420. As a result, unlike the user's intent, a frame image  $U_2$  may be selected.

[0086] It may not be a problem in case that the frame images  $U_1$  and  $U_2$  definitely show viscera or lesions to be observed by the user. However, as shown in FIG. 4, when motion blurs occur in the frame image  $U_2$ , it may be difficult for the user to verify shapes of the lesions or the viscera of the internal side of the target object OB through the frame image  $U_2$ .

[0087] In order to address such a problem, the ultrasonic apparatus 1 according to one embodiment of the disclosed invention may display a substitute image instead of the selected frame image when a motion blurred frame image is selected rather than the frame image to which the user really wants to observe.

[0088] Referring back to FIG. 2, the controller 300 may receive the plurality of frame images, which are generated in the image processor 200 in real time, or stored in the storage device 500 in advance, to digitize motion blur of each of the plurality of frame images, thereby obtaining a motion blur factor.

[0089] The controller 300 may use a previous frame image, that is, an  $N-1^{\text{th}}$  frame image ( $N$  is a natural number equal to or greater than 2) so as to obtain a motion blur factor of an  $N^{\text{th}}$  frame image. Using the  $N-1^{\text{th}}$  frame image, the controller 300 may obtain an edge image of the  $N^{\text{th}}$  frame image and then apply an edge filter to the obtained edge image to obtain a motion blur factor.

[0090] In particular, the controller 300 may obtain the edge image of the  $N^{\text{th}}$  frame image having pixel values consisting of pixel value differences between the  $N^{\text{th}}$  frame image and the  $N-1^{\text{th}}$  frame image. Thereafter, the controller 300 may apply a 3X3 edge filter to each pixel of the edge image. The controller 300 may separately obtain an X-axis pixel value and a Y-axis pixel value of each pixel by applying an edge filter to each pixel of the edge image.

[0091] At this point, the controller 300 may adopt at least one edge filter well-known in the related art among, for example, a Roberts mask, a Prewitt mask, a Sobel mask, a Chen-Frei mask, and the like as the 3X3 edge filter.

[0092] After obtaining the X-axis pixel value and the Y-axis pixel value of each pixel, the controller 300 may use the X- and Y-axis pixel values to obtain a filtered edge image of the  $N^{\text{th}}$  frame image. In particular, the controller 300 may obtain each pixel value of the filtered edge image according to Equation 1.

Equation 1

$$G^N(j, k) = \sqrt{G_x(j, k)^2 + G_y(j, k)^2}$$

**[0093]** Herein,  $G^N(j,k)$  may represent a pixel value at a  $j^{\text{th}}$  column and a  $k^{\text{th}}$  row of the filtered edge image of the  $N^{\text{th}}$  frame image,  $G_x(j,k)$  may represent an X-axis pixel value at the  $j^{\text{th}}$  column and the  $k^{\text{th}}$  row of the filtered edge image of the  $N^{\text{th}}$  frame image, and  $G_y(j,k)$  may represent a Y-axis pixel value at the  $j^{\text{th}}$  column and the  $k^{\text{th}}$  row of the filtered edge image of the  $N^{\text{th}}$  frame image.

**[0094]** Finally, the controller 300 may obtain a motion blur factor of the  $N^{\text{th}}$  frame image using these pixel values. In particular, the motion blur factor  $F$  of the  $N^{\text{th}}$  frame image may be calculated according to Equation 2.

Equation 2

$$F^N = \sum_{j,k} \{G^{N-1}(j,k) - G^N(j,k)\}$$

**[0095]** Herein,  $F^N$  may represent the motion blur factor of the  $N^{\text{th}}$  frame image,  $G^{N-1}(j,k)$  may represent a pixel value at the  $j^{\text{th}}$  column and the  $k^{\text{th}}$  row of the filtered edge image of the  $N-1^{\text{th}}$  frame image, and  $G^N(j,k)$  may represent the pixel value at the  $j^{\text{th}}$  column and the  $k^{\text{th}}$  row of the filtered edge image of the  $N^{\text{th}}$  frame image.

**[0096]** Using the process described in detail, the controller 300 may obtain a motion blur factor of each of the plurality of frame images through the digitization process.

**[0097]** Also, if a motion blur factor of a frame image selected by the user exceeds a threshold value, the controller 300 may display at least one of frame images, each of which has a motion blur factor equal to or less than the threshold value and is obtained prior to a select instruction input time, among the plurality of frame images.

**[0098]** At this point, the threshold value of the motion blur factor  $F_{\text{th}}$  may be determined by a calculation in the ultrasonic apparatus 1, or may be directly input by the user through the input device 420.

**[0099]** FIG. 5 is a graph of motion blur factors for times prior to a select instruction input time according to one embodiment.

**[0100]** According to the process described in detail, the controller 300 may obtain in advance motion blur factors of a currently displayed frame image and a previously displayed frame image. And, if a select instruction for the currently displayed frame image is input from the user, the controller 300 may determine whether or not the motion blur factor of the currently displayed frame image at a select instruction input time exceeds a threshold value.

**[0101]** The threshold value may mean a maximum motion blur factor enabling an ultrasonic diagnosis, such that the controller 300 may continuously display the selected image through the display 410 if a motion blur factor of the selected image is equal to or less than the threshold value.

**[0102]** On the contrary, if the motion blur factor of the selected image exceeds the threshold value, the controller 300 may select a frame image to be substituted for the selected image using the motion blur factors of the plurality of frame images obtained prior to the select instruction input time.

**[0103]** With reference to FIG. 5, the controller 300 may verify a time period  $t_m$  during which the motion blur factors of multiple frame images obtained prior to the select instruction input time among the plurality of frame images are equal to or less than a threshold value  $F_{\text{th}}$ . If the verified time period  $t_m$  exceeds a predetermined threshold time  $t_{\text{th}}$ , the controller 300 may select at least one of the multiple frame images obtained during the time period  $t_m$  among the plurality of frame images as a substitute image for the selected frame image.

**[0104]** The controller 300 according to one embodiment may select a frame image having a minimum motion blur factor among the multiple frame images obtained during the time period  $t_m$  as a substitute image. The display 410 may display the selected frame image thereon to provide an ultrasonic image meeting the user's selection intent.

**[0105]** FIGS. 6A and 6B are views for describing a method for displaying a substitute image on the display 410 according to one embodiment.

**[0106]** As described in detail, the user may input the select instruction by clicking the freeze icon displayed on the display 410. FIG. 6A illustratively shows an example in which the frame image  $U_2$  being displayed at a time when the select instruction is input is selected although the user wants to select a non-motion blurred frame image.

**[0107]** The controller 300 may verify a motion blur factor of the frame image  $U_2$  and then control the display 410 to display thereon an informative icon  $I_2$  for informing about a motion blur occurrence when the verified motion blur factor exceeds a threshold value.

**[0108]** Alternatively, unlike shown in FIG. 6A, the controller 300 may verify the motion blur factor of the frame image  $U_2$  and then control the speaker 430 to output a sound for informing about a motion blur occurrence when the verified motion blur factor exceeds the threshold value.

**[0109]** After informing the user of the motion blur occurrence, the controller 300 may verify whether or not a time period obtaining frame images, each of which has a motion blur factor equal to or less than a threshold value, prior to the select instruction input time exceeds a threshold time. If the time period obtaining the frame images, each of which has a motion

blur factor equal to or less than the threshold value, exceeds the threshold time, the controller 300 may select a frame image having a minimum motion blur factor among the frame images obtained during the time period.

[0110] With reference to FIG. 6B, the controller 300 may control the display 410 to display thereon the frame image  $U_1$  having the minimum motion blur factor during the time period. Therefore, a substitute image closest to a non-motion blurred frame image which the user wants to select may be provided to the user.

[0111] Moreover, the controller 300 may control the display 410 to display thereon a substitute image display informing icon  $I_3$  for informing about a displaying of the substitute image instead of the selected image. Alternatively, the controller 300 may control the speaker 430 to output a sound for informing about the displaying of the substitute image instead of the selected image.

[0112] The controller 300 according to another embodiment may simultaneously display a predetermined number of frame images among a plurality of frame images obtained during the time period  $t_m$  as candidate substitute images.

[0113] FIG. 7 is a view for describing a method for displaying candidate substitute images on the display 410 according to one embodiment, FIGS. 8A and 8B are views for describing a method for displaying motion blur factors of the candidate substitute images on the display 410 according to one embodiment, and FIG. 9 is a view for describing a method for displaying recommended substitute images on the display 410 according to one embodiment.

[0114] When a motion blur occurs in the selected image, the controller 300 may control the display 410 to display simultaneously thereon a predetermined number of frame images among the plurality of frame images obtained prior to the select instruction input time as candidate substitute images.

[0115] In particular, the controller 300 may verify whether or not a time period obtaining frame images, each of which has a motion blur factor equal to or less than a threshold value, prior to the select instruction input time exceeds a threshold time. If the time period obtaining the frame images having the motion blur factors equal to or less than the threshold value exceeds the threshold time, the controller 300 may select a predetermined number of frame images obtained during the time period in an ascending order of the motion blur factors thereof as candidate substitute images.

[0116] As shown in FIG. 7, the controller 300 may select six frame images obtained during the time period in the ascending order of the motion blur factors thereof as candidate substitute images  $U_{c1}$  to  $U_{c6}$ .

[0117] The input device 420 may receive from the user a select instruction for selecting one of a plurality of candidate substitute images as a substitute image. For example, the user may move the cursor C through the input device 420 and then click one of the plurality of candidate substitute images to input the select instruction for selecting a substitute image.

[0118] Therefore, the user may directly select a substitute image useful and available for the ultrasonic diagnosis.

[0119] Alternatively, the controller 300 may control the display 410 to display thereon a motion blur factor corresponding to each of the plurality of candidate substitute images in association therewith. FIG. 8A shows illustratively an example in which the display 410 displays in a bar shape B the motion blur factor corresponding to each of the plurality of candidate substitute images in association therewith, and FIG. 8B shows illustratively an example in which the display 410 displays as a digit F the motion blur factor corresponding to each of the plurality of candidate substitute images in association therewith.

[0120] Therefore, the user may easily select a substitute image having a small motion blur factor by visually verifying the motion blur factor of each of the plurality of frame images displayed in association therewith on a screen.

[0121] Alternatively, the controller 300 may recommend a candidate substitute image having a minimum motion blur factor among the plurality of candidate substitute images as a substitute image. With reference to FIG. 9, the display 410 may display a mark R for recommending the user to select a candidate substitute image  $U_{c2}$  thereon as a substitute image.

[0122] As such, the user may be aided in selecting a substitute image having a small motion blur factor.

[0123] Heretofore, it has been illustratively described for an example in which the ultrasonic apparatus 1 adaptively displays at least one among frame images having motion blur factors equal to or less than a threshold value and obtained prior to a select instruction input time when a motion blur factor of a frame image selected by the user exceeds the threshold value. Alternatively, when a substitute image display instruction is input from the user after a frame image selected by the user is displayed, the ultrasonic apparatus 1 may possibly display at least one among frame images having motion blur factors equal to or less than the threshold value and obtained prior to the select instruction input time.

[0124] FIG. 10 is a flowchart of a method for controlling the ultrasonic apparatus 1 according to one embodiment.

[0125] Firstly, the ultrasonic apparatus 1 may sequentially display a plurality of frame images generated based on ultrasonic signals (800). At this point, the ultrasonic apparatus 1 may convert the ultrasonic signals acquired in real time through the ultrasonic probe P into a plurality of frame images in real time, thereby sequentially displaying the plurality of frame images. Alternatively, the ultrasonic apparatus 1 may store in advance the plurality of frame images and then display sequentially the plurality of stored frame images.

[0126] Thereafter, the ultrasonic apparatus 1 may verify whether or not a select instruction for selecting a frame image being displayed is input in Operation 810. If the select instruction for selecting the frame image being displayed is not input, the ultrasonic apparatus 1 may continue to display the plurality of frame images, sequentially.

[0127] Otherwise, if the select instruction for selecting the frame image being displayed is input, the ultrasonic apparatus 1 may calculate a motion blur factor  $F$  of the selected image in Operation 820. Herein, the motion blur factor  $F$  may be calculated by obtaining an edge image of the selected frame image using a difference between the selected frame image and a previous frame image to apply an edge filter to the obtained edge image.

[0128] After calculating the motion blur factor  $F$ , the ultrasonic apparatus 1 may verify whether or not the motion blur factor  $F$  exceeds a predetermined threshold value  $F_{th}$  in Operation 830. Herein, the threshold value  $F_{th}$  may mean a maximum motion blur factor not requiring a substitute image.

[0129] At this point, the threshold value  $F_{th}$  may be determined through a calculation in the ultrasonic apparatus 1, or otherwise the user may directly input the threshold value  $F_{th}$ .

[0130] If the motion blur factor  $F$  of the selected frame image exceeds the threshold value  $F_{th}$ , the ultrasonic apparatus 1 may display at least one among a plurality of frame images having motion blur factors equal to or less than the threshold value  $F_{th}$  and obtained prior to the select instruction input time as a substitute image in Operation 840. As a result, a non-motion blurred image may be provided to the user, such that the user may perform a more precise ultrasonic diagnosis.

[0131] On the contrary, if the motion blur factor  $F$  of the selected frame image is equal to or less than the threshold value  $F_{th}$ , the ultrasonic apparatus 1 may continuously display the selected image in Operation 850. This is because the selected image has the motion blur factor  $F$  not requiring a substitute image.

## Claims

### 1. An ultrasonic apparatus (1) comprising:

an image processor (200) configured to generate a plurality of frame images based on ultrasonic signals;  
 a display (410) configured to display the plurality of frame images, sequentially;  
 an input device (420) configured to receive a select instruction for selecting a frame image being displayed on the display (410) among the plurality of frame images; and  
 a controller (300) configured to control the display (410) to display the frame image selected by the select instruction,

#### CHARACTERISED IN THAT

the controller (300) is configured to control the display to, when a motion blur factor of the frame image selected by the select instruction exceeds a predetermined threshold value, display at least another one from among the plurality of frame images, each of which has a motion blur factor equal to or less than the predetermined threshold value and is obtained prior to an input time of the select instruction.

2. The ultrasonic apparatus (1) of claim 1, wherein the controller (300) controls the display (410) to display a frame image closest to the selected frame image among the frame images, each of which has the motion blur factor equal to or less than the threshold value and is obtained prior to the select instruction input time.

3. The ultrasonic apparatus (1) of claim 1, wherein the controller (300) controls the display (410) to display at least one frame image obtained during a time period in which a plurality of successive frame images, each of which has a motion blur factor equal to or less than the threshold value, are obtained prior to the select instruction input time, when the time period exceeds a predetermined threshold time.

4. The ultrasonic apparatus (1) of claim 3, wherein the controller (300) controls the display (410) to display a frame image having a minimum motion blur factor among the plurality of successive frame images obtained during the time period.

5. The ultrasonic apparatus (1) of claim 3, wherein the controller (300) controls the display (410) to display simultaneously multiple frame images selected based on the motion blur factors among the plurality of successive frame images obtained during the time period, and wherein the display (410) displays the motion blur factors of the multiple frame images being simultaneously displayed in association with the multiple frame images.

6. The ultrasonic apparatus (1) of claim 3, wherein the controller (300) controls the display (410) to display simultaneously multiple frame images selected based on the motion blur factors among the plurality of successive frame images obtained during the time period, and wherein the input device (420) receives a select instruction for selecting one among the multiple frame images being

simultaneously displayed, and

wherein the controller (300) controls the display (410) to magnify and display a selected frame image when the select instruction is input to select one among the multiple frame images being simultaneously displayed.

5 7. The ultrasonic apparatus (1) of claim 1, wherein the controller (300) controls the display (410) to display information related to a motion blur factor of the selected frame image when the motion blur factor of the selected frame image exceeds the threshold value.

10 8. The ultrasonic apparatus (1) of claim 1, further comprising:

an ultrasonic probe configured to obtain the ultrasonic signals containing information of a target object in real time, wherein the image processor (200) generates the plurality of frame images in real time based on the ultrasonic signals obtained in real time; and

15 a storage device configured to store at least one among the plurality of frame images generated in real time, wherein the controller (300) controls the storage device to store frame images, each of which has a motion blur factor equal to or less than the threshold value, among the plurality of frame images generated in real time.

9. A method for controlling an ultrasonic apparatus, comprising the steps of:

20 displaying sequentially a plurality of frame images generated based on ultrasonic signals;  
receiving a select instruction for selecting the frame image being displayed among the plurality of frame images;  
and

displaying the frame image selected by the select instruction,  
CHARACTERISED BY

25 displaying, when a motion blur factor of the frame image selected by the select instruction exceeds a predetermined threshold value, at least another one from among the plurality of frame images, each of which has a motion blur factor equal to or less than the predetermined threshold value and is obtained prior to an input time of the select instruction.

30 10. The method of claim 9, wherein the displaying of the at least one of the frame images, each of which has the motion blur factor equal to or less than the threshold value and is obtained prior to the select instruction input time, displays a frame image closest to the selected frame image among the frame images, each of which has the motion blur factor equal to or less than the threshold value and is obtained prior to the select instruction input time.

35 11. The method of claim 9, wherein the displaying of the at least one of the frame images, each of which has the motion blur factor equal to or less than the threshold value and is obtained prior to the select instruction input time, displays at least one frame image obtained during a time period in which a plurality of successive frame images, each of which has a motion blur factor equal to or less than the threshold value, are obtained prior to the select instruction input time, when the time period exceeds a predetermined threshold time.

40 12. The method of claim 11, wherein the displaying of the at least one of the frame images, each of which has the motion blur factor equal to or less than the threshold value and is obtained prior to the select instruction input time, displays a frame image having a minimum motion blur factor among the plurality of successive frame images obtained during the time period.

45 13. The method of claim 11, wherein the displaying of the at least one of the frame images, each of which has the motion blur factor equal to or less than the threshold value and is obtained prior to the select instruction input time, includes the steps of:

50 selecting multiple frame images being simultaneously displayed based on the motion blur factors among the plurality of successive frame images obtained during the time period; and  
displaying simultaneously the selected multiple frame images, and  
wherein the displaying of the at least one of the frame images, each of which has the motion blur factor equal to or less than the threshold value and is obtained prior to the select instruction input time, displays the motion blur factors of the multiple frame images being simultaneously displayed in association with the multiple frame images.

55 14. The method of claim 11, wherein the displaying of the at least one of the frame images, each of which has the motion

blur factor equal to or less than the threshold value and is obtained prior to the select instruction input time, includes the steps of:

- 5 selecting multiple frame images being simultaneously displayed based on the motion blur factors among the plurality of successive frame images obtained during the time period;  
 displaying simultaneously the selected multiple frame images;  
 receiving a select instruction for selecting one among the multiple frame images being simultaneously displayed;  
 and  
 10 magnifying and displaying a selected frame image when the select instruction is input to select one among the multiple frame images being simultaneously displayed.

15. The method of claim 9, wherein the displaying sequentially of the plurality of frame images generated based on the ultrasonic signals includes the steps of:

- 15 obtaining the ultrasonic signals containing information of a target object in real time;  
 generating the plurality of frame images in real time based on the ultrasonic signals obtained in real time;  
 displaying sequentially the plurality of frame images generated in real time; and  
 storing at least one among the plurality of frame images generated in real time,  
 wherein the storing of the at least one among the plurality of frame images generated in real time stores frame  
 20 images, each of which has a motion blur factor equal to or less than the threshold value, among the plurality of frame images generated in real time.

## 25 Patentansprüche

1. Ultraschallvorrichtung (1), die Folgendes umfasst:

einen Bildprozessor (200), der dazu konfiguriert ist, basierend auf Ultraschallsignalen eine Vielzahl von Frames zu erzeugen;  
 30 eine Anzeige (410), die dazu konfiguriert ist, die Vielzahl von Frames nacheinander anzuzeigen,  
 eine Eingabevorrichtung (420), die dazu konfiguriert ist, eine Auswahlanweisung zur Auswahl eines Frames aus der Vielzahl von Frames, die auf der Anzeige (410) angezeigt wird, zu empfangen; und  
 eine Steuerung (300), die dazu konfiguriert ist, die Anzeige (410) so zu steuern, dass sie den durch die Auswahlanweisung ausgewählten Frame anzeigt,

35 **DADURCH GEKENNZEICHNET, DASS**

die Steuerung (300) dazu konfiguriert ist, die Anzeige derart zu steuern, dass sie, wenn ein Bewegungsunschärfefaktor des durch die Auswahlanweisung ausgewählten Frames einen vorbestimmten Schwellenwert überschreitet, wenigstens einen weiteren aus der Vielzahl von Frames anzeigt, wobei jeder davon einen Bewegungsunschärfefaktor aufweist, der kleiner oder gleich dem vorbestimmten Schwellenwert ist und vor der  
 40 Eingabezeit der Auswahlanweisung erhalten wurde.

2. Ultraschallvorrichtung (1) nach Anspruch 1, wobei die Steuerung (300) die Anzeige (410) derart steuert, dass sie einen Frame unter den Frames anzeigt, der dem ausgewählten Frame am nächsten ist, wobei jeder davon einen Bewegungsunschärfefaktor aufweist, der kleiner oder gleich dem Schwellenwert ist und vor der Eingabezeit der  
 45 Auswahlanweisung erhalten wurde.

3. Ultraschallvorrichtung (1) nach Anspruch 1, wobei die Steuerung (300) die Anzeige (410) derart steuert, dass sie wenigstens einen Frame anzeigt, der während eines Zeitraums erhalten wurde, in dem eine Vielzahl von aufeinander  
 50 folgenden Frames vor der Eingabezeit der Auswahlanweisung erhalten wurde, von denen jeder einen Bewegungsunschärfefaktor aufweist, der kleiner oder gleich dem Schwellenwert ist, wenn der Zeitraum einen vorbestimmten Schwellenwert überschreitet.

4. Ultraschallvorrichtung (1) nach Anspruch 3, wobei die Steuerung (300) die Anzeige (410) derart steuert, dass sie einen Frame unter der Vielzahl von während des Zeitraums erhaltenen, aufeinander folgenden Frames anzeigt, der  
 55 den niedrigsten Bewegungsunschärfefaktor aufweist.

5. Ultraschallvorrichtung (1) nach Anspruch 3, wobei die Steuerung (300) die Anzeige (410) derart steuert, dass sie gleichzeitig mehrere Frames unter der Vielzahl von während des Zeitraums erhaltenen, aufeinander folgenden

Frames anzeigt, die basierend auf dem Bewegungsunschärfefaktor ausgewählt wurden, und wobei die Anzeige (410) die Bewegungsunschärfefaktoren der mehreren gleichzeitig angezeigten Frames in Verbindung mit den mehreren Frames anzeigt.

- 5 6. Ultraschallvorrichtung (1) nach Anspruch 3, wobei die Steuerung (300) die Anzeige (410) derart steuert, dass sie gleichzeitig mehrere Frames unter der Vielzahl von während des Zeitraums erhaltenen, aufeinander folgenden Frames anzeigt, die basierend auf dem Bewegungsunschärfefaktor ausgewählt wurden, und wobei die Eingabevorrichtung (420) eine Auswahlanweisung zur Auswahl eines unter den mehreren gleichzeitig angezeigten Frames empfängt, und
- 10 wobei die Steuerung (300) die Anzeige (410) derart steuert, dass sie einen ausgewählten Frame vergrößert und anzeigt, wenn die Auswahlanweisung zur Auswahl eines unter den mehreren gleichzeitig angezeigten Frames eingegeben wird.
- 15 7. Ultraschallvorrichtung (1) nach Anspruch 1, wobei die Steuerung (300) die Anzeige (410) derart steuert, dass sie Informationen in Verbindung mit einem Bewegungsunschärfefaktor des ausgewählten Frames anzeigt, wenn der Bewegungsunschärfefaktor des ausgewählten Frames den Schwellenwert überschreitet.
8. Ultraschallvorrichtung (1) nach Anspruch 1, die weiterhin Folgendes umfasst:
- 20 eine Ultraschallsonde, die dazu konfiguriert ist, die Ultraschallsignale, welche Informationen über ein Zielobjekt enthalten, in Echtzeit zu erhalten, wobei der Bildprozessor (200) die Vielzahl von Frames basierend auf den in Echtzeit erhaltenen Ultraschallsignalen in Echtzeit erzeugt; und
- 25 eine Speichervorrichtung, die dazu konfiguriert ist, wenigstens einen aus der Vielzahl von in Echtzeit erzeugten Frames zu speichern, wobei die Steuerung (300) die Speichervorrichtung derart steuert, dass sie Frames aus der Vielzahl von in Echtzeit erzeugten Frames speichert, von denen jeder einen Bewegungsunschärfefaktor aufweist, der kleiner oder gleich dem Schwellenwert ist.
- 30 9. Verfahren zur Steuerung einer Ultraschallvorrichtung, wobei das Verfahren die folgenden Schritte umfasst:
- nacheinander Anzeigen einer Vielzahl von basierend auf Ultraschallsignalen erzeugten Frames;  
Empfangen einer Auswahlanweisung zur Auswahl des Frames aus der Vielzahl von Frames, das angezeigt wird; und
- 35 Anzeigen des durch die Auswahlanweisung ausgewählten Frames,  
**GEKENNZEICHNET DURCH,**  
wenn ein Bewegungsunschärfefaktor des **durch** die Auswahlanweisung ausgewählten Frames einen vorbestimmten Schwellenwert überschreitet, Anzeigen eines weiteren aus der Vielzahl von Frames, wobei jeder davon einen Bewegungsunschärfefaktor aufweist, der kleiner oder gleich dem vorbestimmten Schwellenwert ist und vor der Eingabezeit der Auswahlanweisung erhalten wurde.
- 40
10. Verfahren nach Anspruch 9, wobei das Anzeigen des wenigstens einen der Frames, von denen jeder einen Bewegungsunschärfefaktor aufweist, der kleiner oder gleich dem Schwellenwert ist und vor der Eingabezeit der Auswahlanweisung erhalten wurde, ein Anzeigen eines Frames unter den Frames, der dem ausgewählten Frame am nächsten ist, umfasst, wobei jeder dieser Frames einen Bewegungsunschärfefaktor aufweist, der kleiner oder gleich dem Schwellenwert ist und vor der Eingabezeit der Auswahlanweisung erhalten wurde.
- 45
11. Verfahren nach Anspruch 9, wobei das Anzeigen des wenigstens einen der Frames, von denen jeder einen Bewegungsunschärfefaktor aufweist, der kleiner oder gleich dem Schwellenwert ist und vor der Eingabezeit der Auswahlanweisung erhalten wurde, ein Anzeigen wenigstens eines Frames umfasst, der während eines Zeitraums erhalten wurde, in dem eine Vielzahl von aufeinander folgenden Frames vor der Eingabezeit der Auswahlanweisung erhalten wurde, von denen jeder einen Bewegungsunschärfefaktor aufweist, der kleiner oder gleich dem Schwellenwert ist, wenn der Zeitraum einen vorbestimmten Schwellenwert überschreitet.
- 50
12. Verfahren nach Anspruch 11, wobei das Anzeigen des wenigstens einen der Frames, von denen jeder einen Bewegungsunschärfefaktor aufweist, der kleiner oder gleich dem Schwellenwert ist und vor der Eingabezeit der Auswahlanweisung erhalten wurde, ein Anzeigen eines Frames unter der Vielzahl von während des Zeitraums erhaltenen, aufeinander folgenden Frames umfasst, der den niedrigsten Bewegungsunschärfefaktor aufweist.
- 55

13. Verfahren nach Anspruch 11, wobei das Anzeigen des wenigstens einen der Frames, von denen jeder einen Bewegungsunschärfefaktor aufweist, der kleiner oder gleich dem Schwellenwert ist und vor der Eingabezeit der Auswahlanweisung erhalten wurde, die folgenden Schritte umfasst:

5 basierend auf den Bewegungsunschärfefaktoren Auswählen mehrerer gleichzeitig angezeigter Frames unter der Vielzahl von während des Zeitraums erhaltenen, aufeinander folgenden Frames; und  
gleichzeitiges Anzeigen der ausgewählten mehreren Frames, und  
wobei das Anzeigen des wenigstens einen der Frames, von denen jeder einen Bewegungsunschärfefaktor  
10 aufweist, der kleiner oder gleich dem Schwellenwert ist und vor der Eingabezeit der Auswahlanweisung erhalten wurde, ein Anzeigen der Bewegungsunschärfefaktoren der mehreren gleichzeitig angezeigten Frames in Verbindung mit den mehreren Frames umfasst.

14. Verfahren nach Anspruch 11, wobei das Anzeigen des wenigstens einen der Frames, von denen jeder einen Bewegungsunschärfefaktor aufweist, der kleiner oder gleich dem Schwellenwert ist und vor der Eingabezeit der Auswahlanweisung erhalten wurde, die folgenden Schritte umfasst:

15 basierend auf den Bewegungsunschärfefaktoren Auswählen mehrerer gleichzeitig angezeigter Frames unter der Vielzahl von während des Zeitraums erhaltenen, aufeinander folgenden Frames;  
gleichzeitiges Anzeigen der ausgewählten mehreren Frames;  
20 Empfangen einer Auswahlanweisung zur Auswahl eines unter den mehreren gleichzeitig angezeigten Frames; und  
Vergrößern und Anzeigen eines ausgewählten Frames, wenn die Auswahlanweisung zur Auswahl eines unter den mehreren gleichzeitig angezeigten Frames eingegeben wird.

- 25 15. Verfahren nach Anspruch 9, wobei das aufeinander folgende Anzeigen der Vielzahl von basierend auf den Ultraschallsignalen erzeugten Frames die folgenden Schritte umfasst:

Erhalten der Ultraschallsignale, welche Informationen über ein Zielobjekt enthalten, in Echtzeit;  
Erzeugen der Vielzahl von Frames basierend auf den in Echtzeit erhaltenen Ultraschallsignalen in Echtzeit;  
30 nacheinander Anzeigen der in Echtzeit erzeugten Vielzahl von Frames; und  
Speichern wenigstens eines aus der Vielzahl von in Echtzeit erzeugten Frames,  
wobei das Speichern des wenigstens einen aus der Vielzahl von in Echtzeit erzeugten Frames ein Speichern  
von Frames aus der Vielzahl von in Echtzeit erzeugten Frames umfasst, von denen jeder einen Bewegungs-  
unschärfefaktor aufweist, der kleiner oder gleich dem Schwellenwert ist.

## Revendications

- 40 1. Appareil à ultrasons (1) comprenant :

un processeur d'images (200) conçu pour générer une pluralité de trames compte tenu de signaux ultrasonores,  
un écran (410) conçu pour afficher successivement la pluralité de trames,  
un dispositif de saisie (420) conçu pour recevoir une instruction de sélection visant à la sélection d'une trame  
45 affichée sur l'écran (410) parmi la pluralité de trames, et  
un organe de commande (300) conçu pour commander l'écran (410) de façon qu'il affiche la trame sélectionnée  
par l'instruction de sélection,

### **CARACTÉRISÉ EN CE QUE**

l'organe de commande (300) est conçu pour commander l'écran de façon que, lorsqu'un facteur de flou cinétique  
de la trame sélectionnée par l'instruction de sélection dépasse une valeur seuil prédéterminée, il affiche au  
50 moins une autre trame parmi la pluralité de trames dont chacune a un facteur de flou cinétique inférieur ou égal  
à la valeur seuil prédéterminée et a été obtenue avant le moment de la saisie de l'instruction de sélection.

2. Appareil à ultrasons (1) selon la revendication 1, dans lequel l'organe de commande (300) commande l'écran (410)  
de façon qu'il affiche une trame au plus près de la trame sélectionnée parmi les trames dont chacune a un facteur  
55 de flou cinétique inférieur ou égal à la valeur seuil et a été obtenue avant le moment de la saisie de l'instruction de  
sélection.

3. Appareil à ultrasons (1) selon la revendication 1, dans lequel l'organe de commande (300) commande l'écran (410)

## EP 3 158 939 B1

de façon qu'il affiche au moins une trame obtenue pendant une période au cours de laquelle une pluralité de trames successives, dont chacune a un facteur de flou cinétique inférieur ou égal à la valeur seuil, ont été obtenues avant le moment de la saisie de l'instruction de sélection, lorsque la période dépasse une durée seuil prédéterminée.

- 5 4. Appareil à ultrasons (1) selon la revendication 3, dans lequel l'organe de commande (300) commande l'écran (410) de façon qu'il affiche une trame présentant un facteur de flou cinétique minimal parmi la pluralité de trames successives obtenues pendant ladite période.
- 10 5. Appareil à ultrasons (1) selon la revendication 3, dans lequel l'organe de commande (300) commande l'écran (410) de façon qu'il affiche simultanément des trames multiples choisies compte tenu du facteur de flou cinétique parmi la pluralité de trames successives obtenues pendant ladite période, et dans lequel l'écran (410) affiche le facteur de flou cinétique des trames multiples simultanément affichées, en association avec les trames multiples.
- 15 6. Appareil à ultrasons (1) selon la revendication 3, dans lequel l'organe de commande (300) commande l'écran (410) de façon qu'il affiche simultanément des trames multiples choisies compte tenu du facteur de flou cinétique parmi la pluralité de trames successives obtenues pendant ladite période, et dans lequel le dispositif de saisie (420) reçoit une instruction de sélection visant à la sélection d'une trame parmi les trames multiples simultanément affichées, et
- 20 dans lequel l'organe de commande (300) commande l'écran (410) de façon qu'il grossisse et affiche une trame sélectionnée lorsque l'instruction de sélection est saisie pour sélectionner une trame parmi les trames multiples simultanément affichées.
- 25 7. Appareil à ultrasons (1) selon la revendication 1, dans lequel l'organe de commande (300) commande l'écran (410) de façon qu'il affiche des informations en lien avec le facteur de flou cinétique de la trame sélectionnée lorsque le facteur de flou cinétique de la trame sélectionnée dépasse la valeur seuil.
8. Appareil à ultrasons (1) selon la revendication 1, comprenant en outre :
- 30 une sonde à ultrasons conçue pour obtenir en temps réel les signaux ultrasonores contenant des informations concernant un objet cible, ledit processeur d'images (200) générant la pluralité de trames en temps réel compte tenu des signaux ultrasonores obtenus en temps réel, et un dispositif mémoire conçu pour stocker au moins une trame parmi la pluralité de trames générées en temps réel,
- 35 ledit organe de commande (300) commandant le dispositif mémoire afin qu'il stocke les trames dont chacune a un facteur de flou cinétique inférieur ou égal à la valeur seuil, parmi la pluralité de trames générées en temps réel.
9. Procédé de commande d'un appareil à ultrasons, comprenant les étapes consistant à :
- 40 afficher successivement une pluralité de trames générées compte tenu de signaux ultrasonores, recevoir une instruction de sélection visant à la sélection de la trame affichée parmi la pluralité de trames, et afficher la trame sélectionnée par l'instruction de sélection ;
- CARACTÉRISÉ PAR**
- 45 l'affichage, lorsqu'un facteur de flou cinétique de la trame sélectionnée par l'instruction de sélection dépasse une valeur seuil prédéterminée, d'au moins une autre trame parmi la pluralité de trames dont chacune a un facteur de flou cinétique inférieur ou égal à la valeur seuil prédéterminée et a été obtenue avant le moment de la saisie de l'instruction de sélection.
- 50 10. Procédé selon la revendication 9, dans lequel l'affichage de l'au moins une des trames dont chacune a un facteur de flou cinétique inférieur ou égal à la valeur seuil et a été obtenue avant le moment de la saisie de l'instruction de sélection consiste à afficher une trame au plus près de la trame sélectionnée parmi les trames dont chacune a un facteur de flou cinétique inférieur ou égal à la valeur seuil et a été obtenue avant le moment de la saisie de l'instruction de sélection.
- 55 11. Procédé selon la revendication 9, dans lequel l'affichage de l'au moins une des trames dont chacune a un facteur de flou cinétique inférieur ou égal à la valeur seuil et a été obtenue avant le moment de la saisie de l'instruction de sélection consiste à afficher au moins une trame obtenue pendant une période au cours de laquelle une pluralité

de trames successives, dont chacune a un facteur de flou cinétique inférieur ou égal à la valeur seuil, ont été obtenues avant le moment de la saisie de l'instruction de sélection, lorsque la période dépasse une durée seuil prédéterminée.

5 **12.** Procédé selon la revendication 11, dans lequel l'affichage de l'au moins une des trames dont chacune a un facteur de flou cinétique inférieur ou égal à la valeur seuil et a été obtenue avant le moment de la saisie de l'instruction de sélection consiste à afficher une trame présentant un facteur de flou cinétique minimal parmi la pluralité de trames successives obtenues pendant ladite période.

10 **13.** Procédé selon la revendication 11, dans lequel l'affichage de l'au moins une des trames dont chacune a un facteur de flou cinétique inférieur ou égal à la valeur seuil et a été obtenue avant le moment de la saisie de l'instruction de sélection comporte les étapes consistant à :

15 sélectionner des trames multiples simultanément affichées, compte tenu du facteur de flou cinétique, parmi la pluralité de trames successives obtenues pendant ladite période, et afficher simultanément les trames multiples sélectionnées ;  
l'affichage de l'au moins une des trames dont chacune a un facteur de flou cinétique inférieur ou égal à la valeur seuil et a été obtenue avant le moment de la saisie de l'instruction de sélection consistant à afficher le facteur de flou cinétique des trames multiples simultanément affichées, en association avec les trames multiples.

20 **14.** Procédé selon la revendication 11, dans lequel l'affichage de l'au moins une des trames dont chacune a un facteur de flou cinétique inférieur ou égal à la valeur seuil et a été obtenue avant le moment de la saisie de l'instruction de sélection comporte les étapes consistant à :

25 sélectionner des trames multiples simultanément affichées, compte tenu du facteur de flou cinétique, parmi la pluralité de trames successives obtenues pendant ladite période,  
afficher simultanément les trames multiples sélectionnées,  
recevoir une instruction de sélection visant à la sélection d'une trame parmi les trames multiples simultanément affichées, et  
30 grossir et afficher une trame sélectionnée lorsque l'instruction de sélection est saisie pour sélectionner une trame parmi les trames multiples simultanément affichées.

**15.** Procédé selon la revendication 9, dans lequel l'affichage successif de la pluralité de trames générées compte tenu des signaux ultrasonores comporte les étapes consistant à :

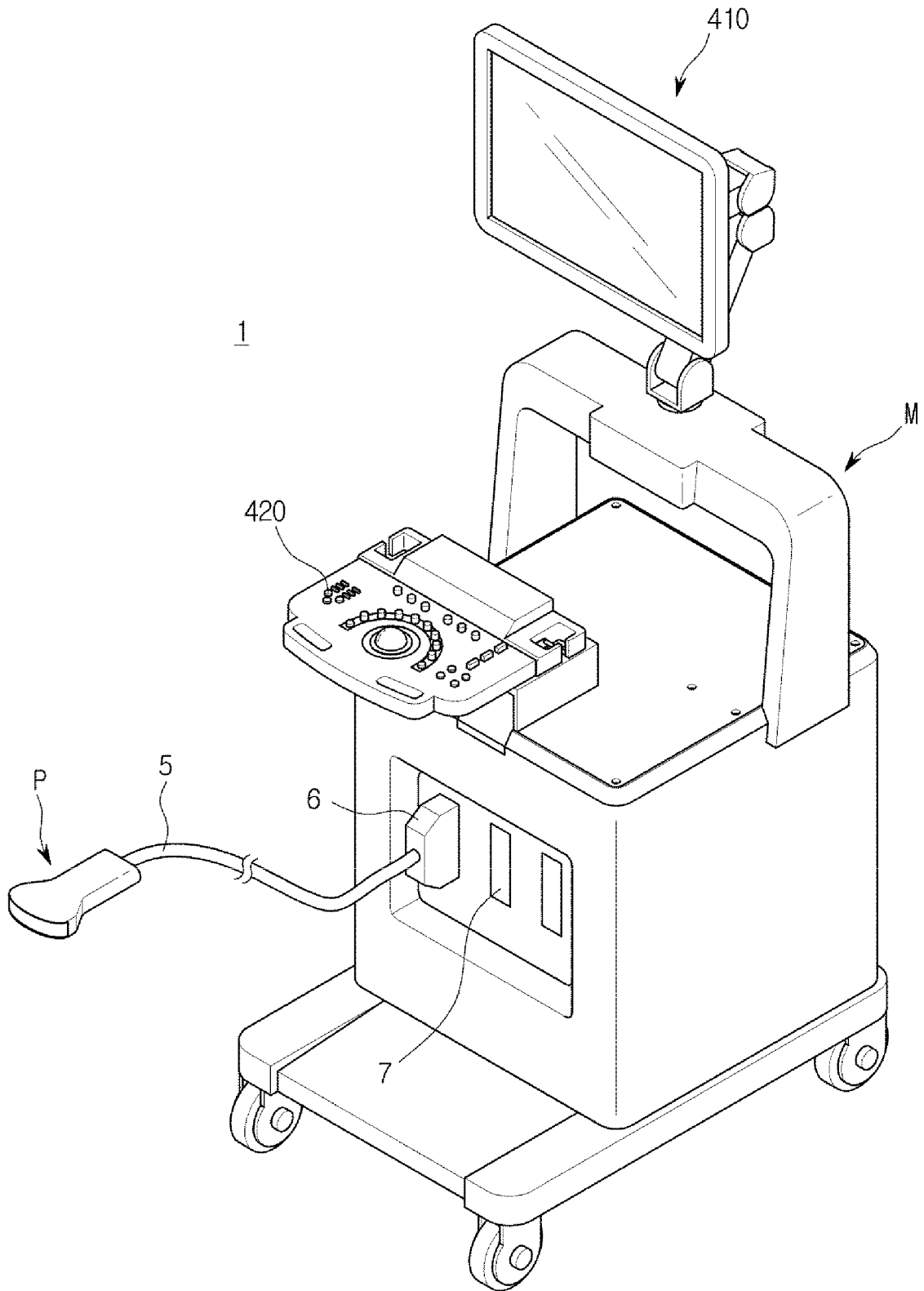
35 obtenir les signaux ultrasonores contenant des informations concernant un objet cible en temps réel,  
générer la pluralité de trames en temps réel compte tenu des signaux ultrasonores obtenus en temps réel,  
afficher successivement la pluralité de trames générées en temps réel, et  
stocker au moins une trame parmi la pluralité de trames générées en temps réel ;  
40 ledit stockage de l'au moins une trame parmi la pluralité de trames générées en temps réel consistant à stocker des trames dont chacune a un facteur de flou cinétique inférieur ou égal à la valeur seuil, parmi la pluralité de trames générées en temps réel.

45

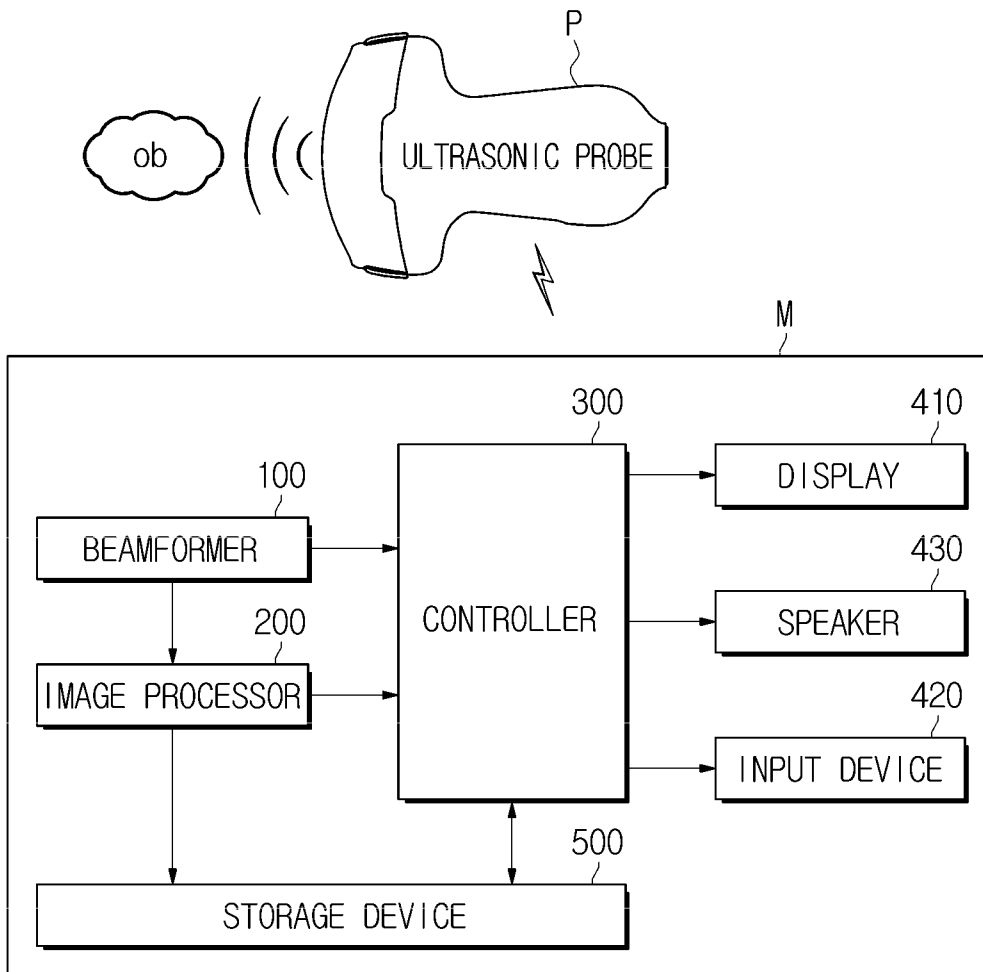
50

55

**FIG. 1**

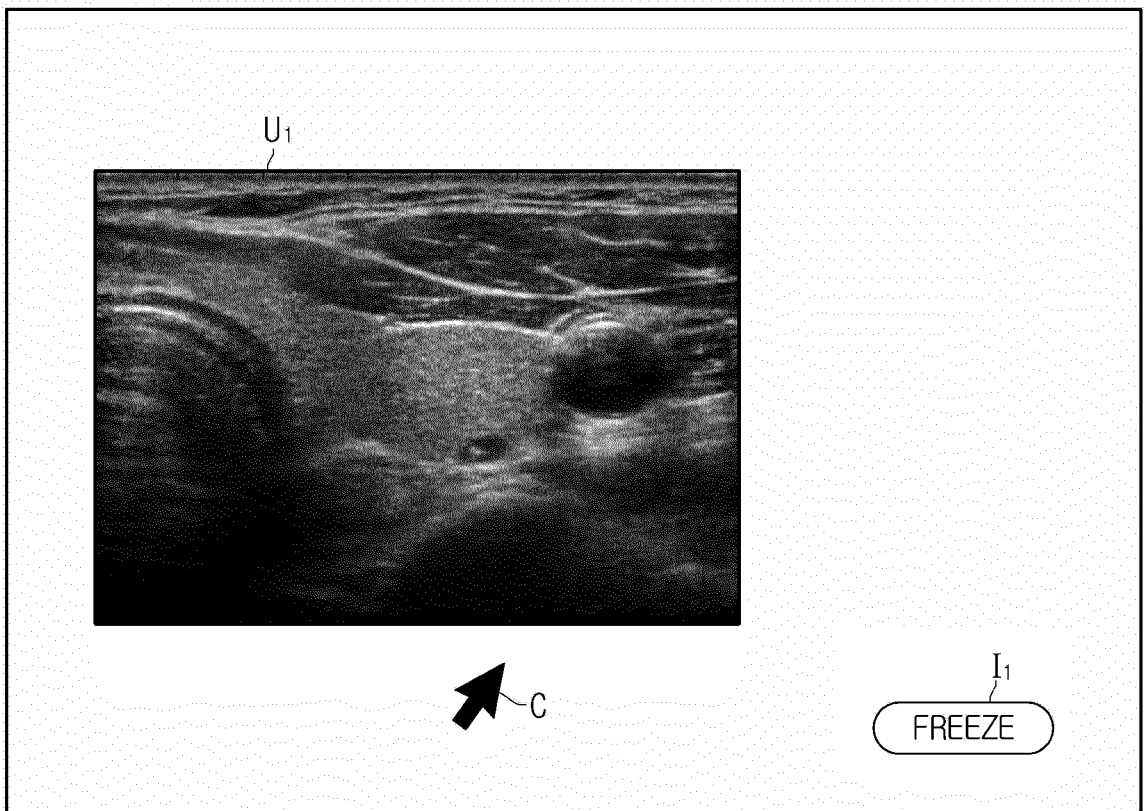


**FIG. 2**



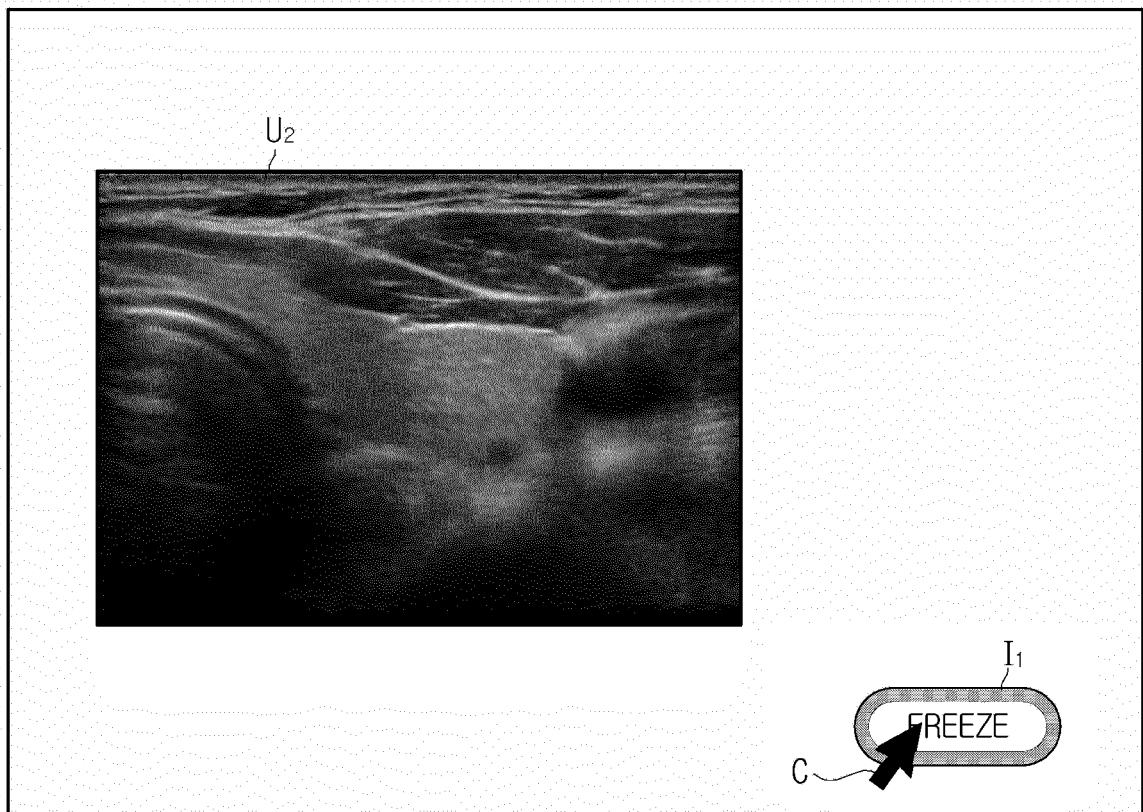
**FIG. 3**

410

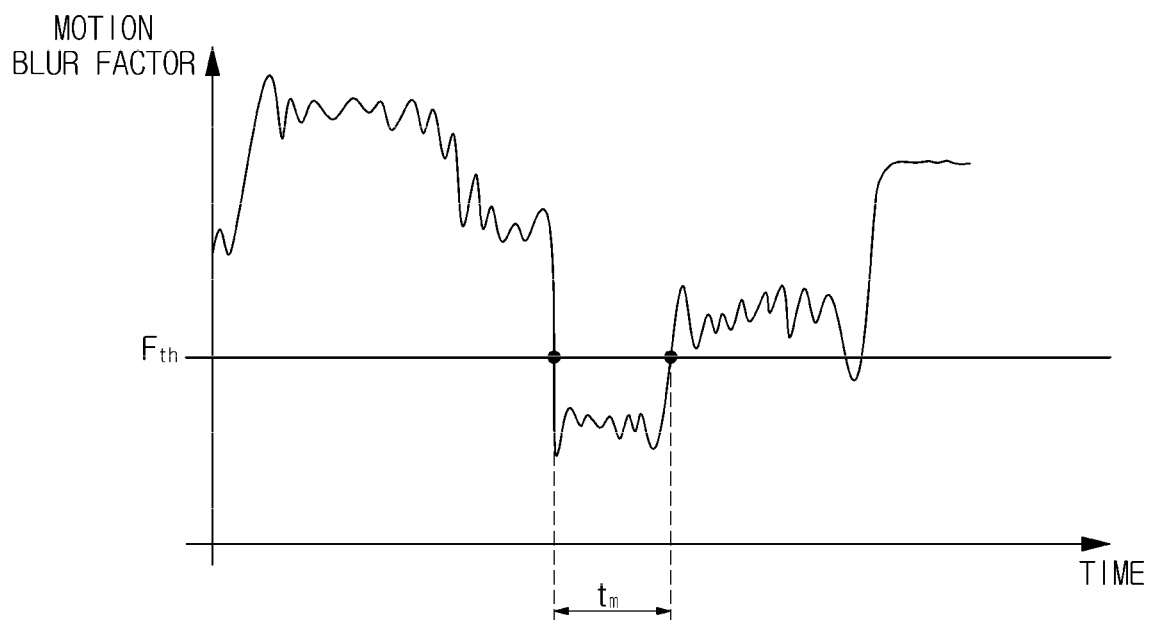


**FIG. 4**

410

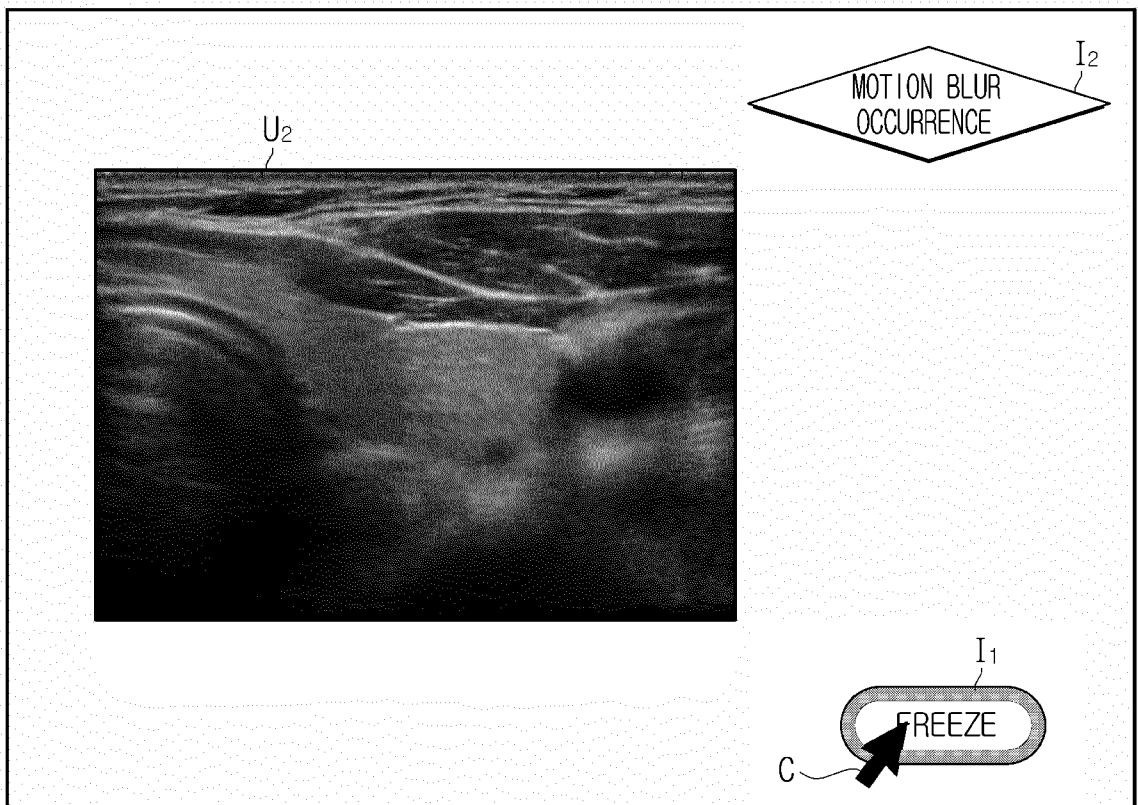


**FIG. 5**



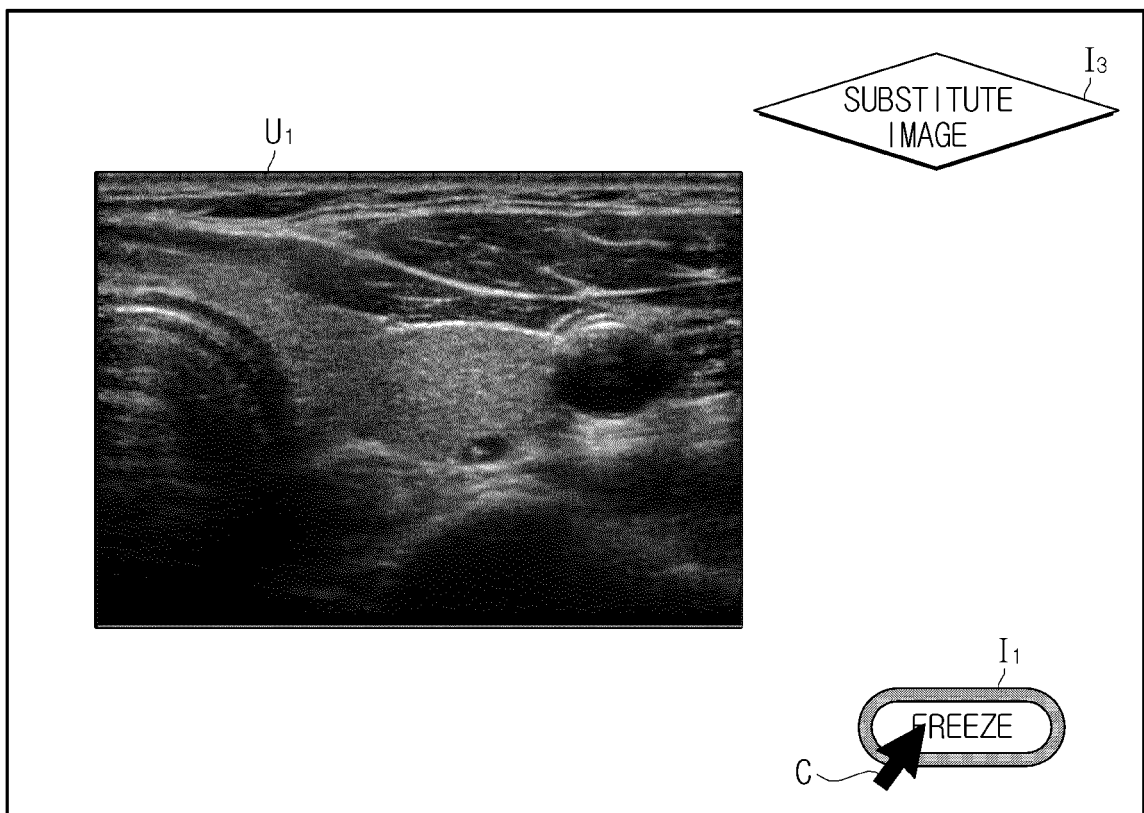
**FIG. 6A**

410



**FIG. 6B**

410



**FIG. 7**

410

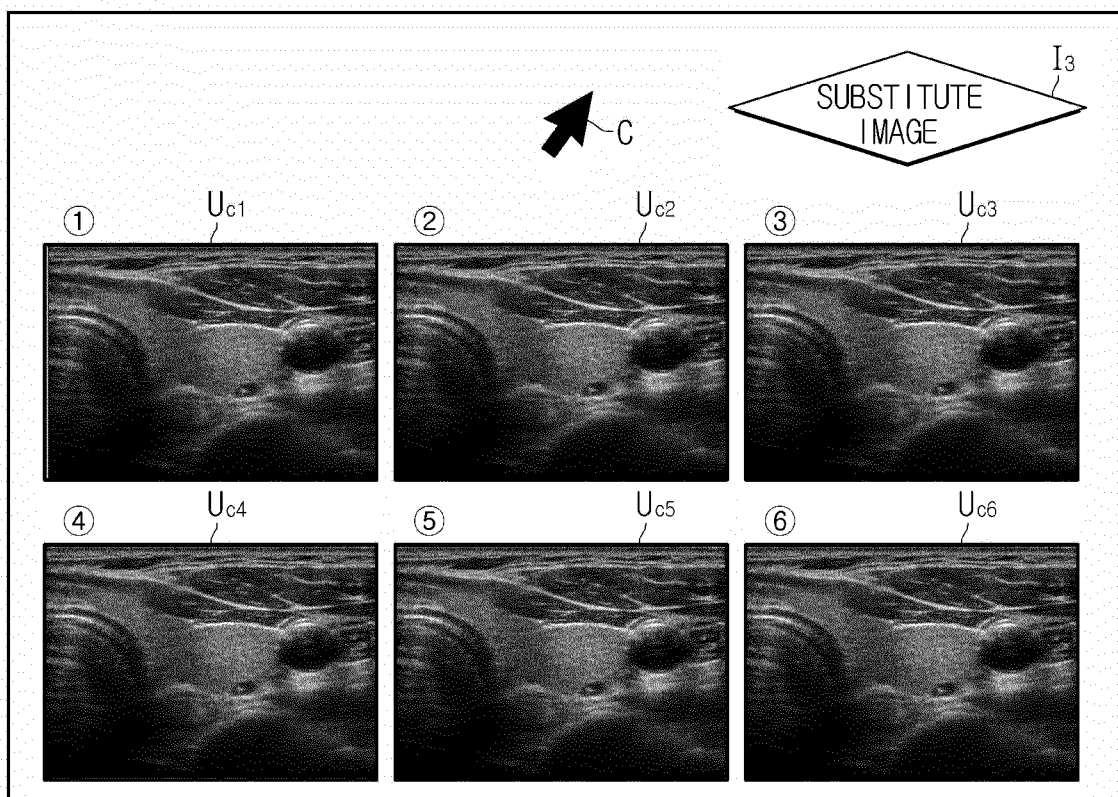


FIG. 8A

410

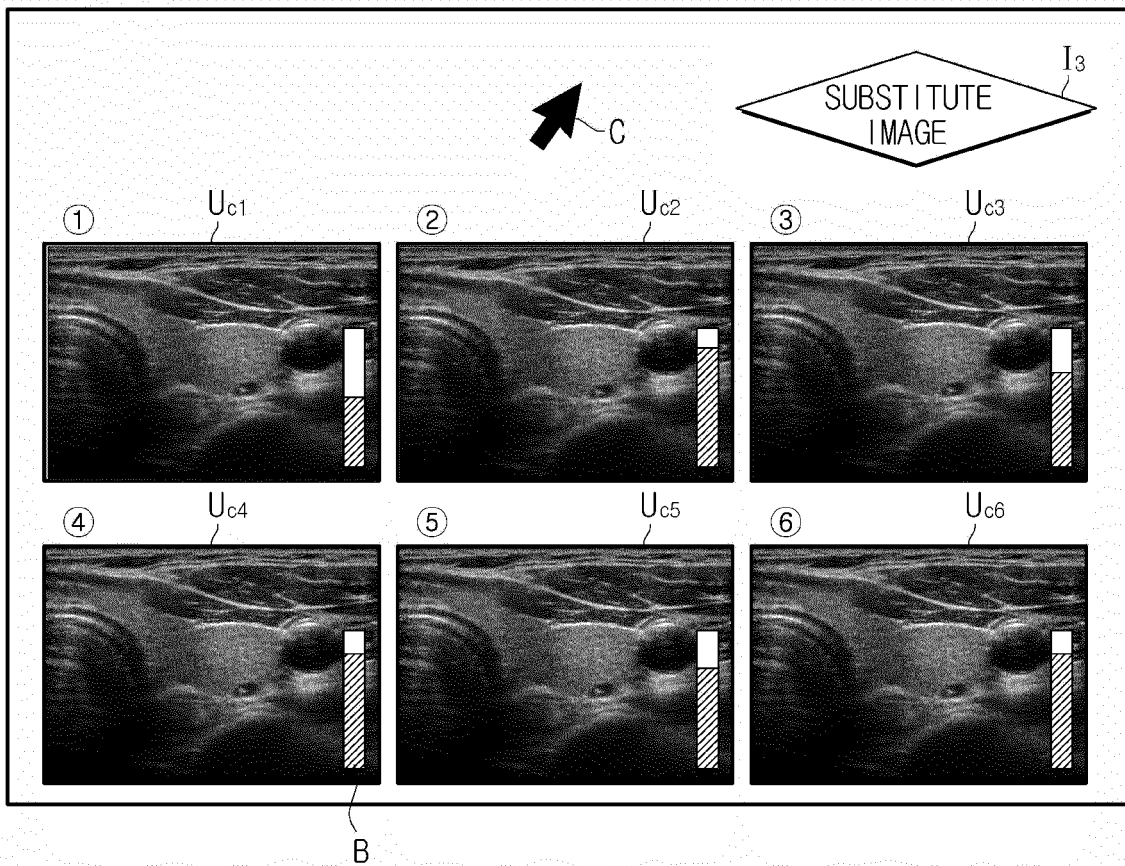


FIG. 8B

410

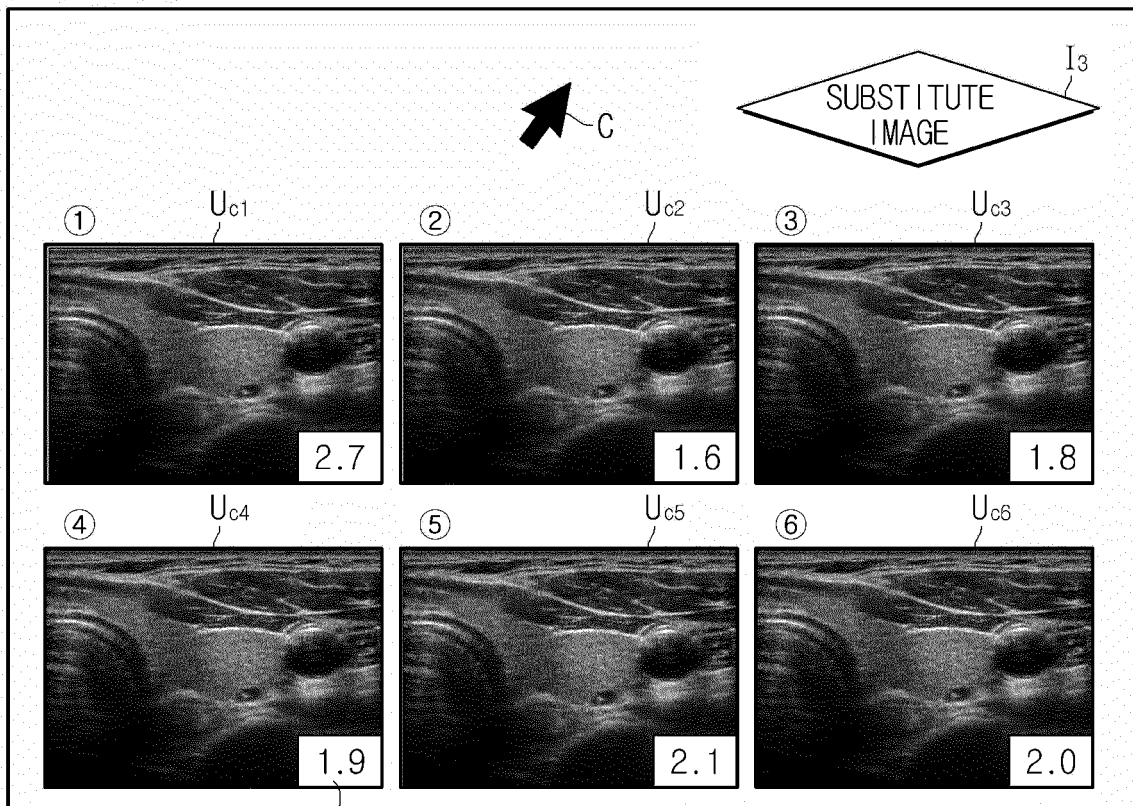


FIG. 9

410

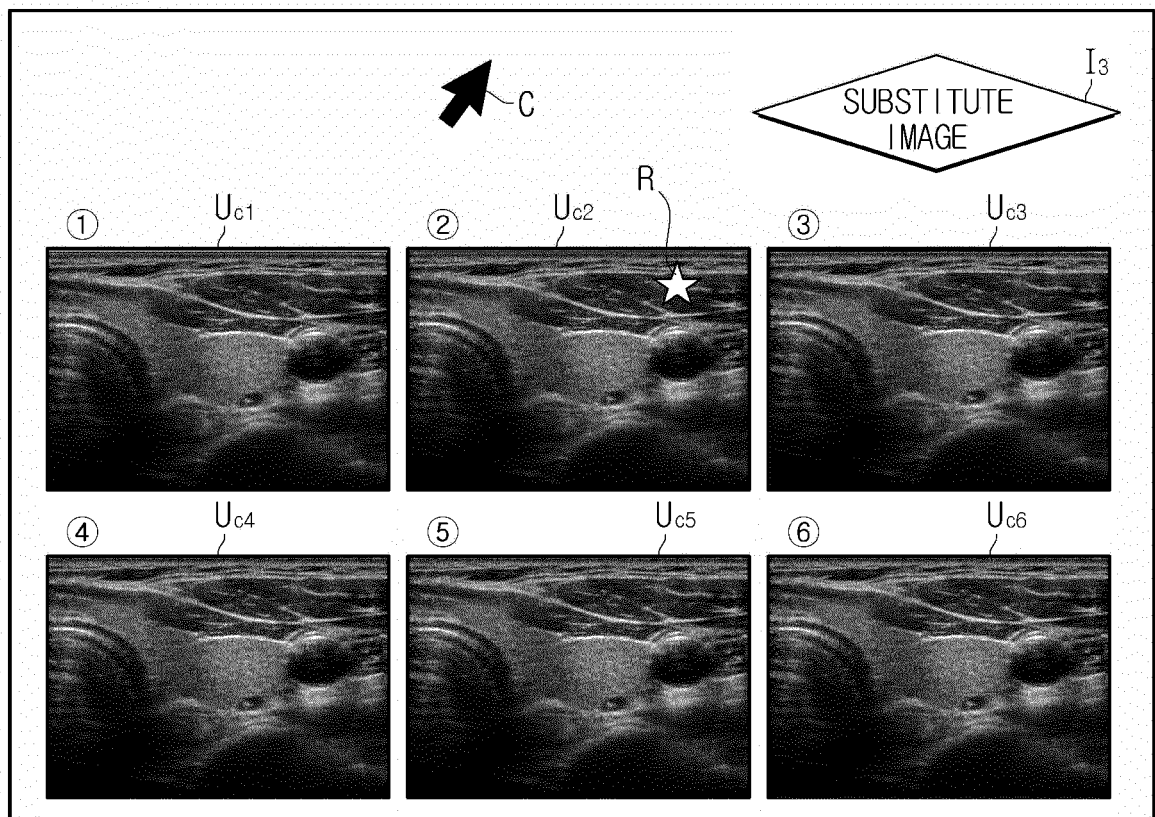
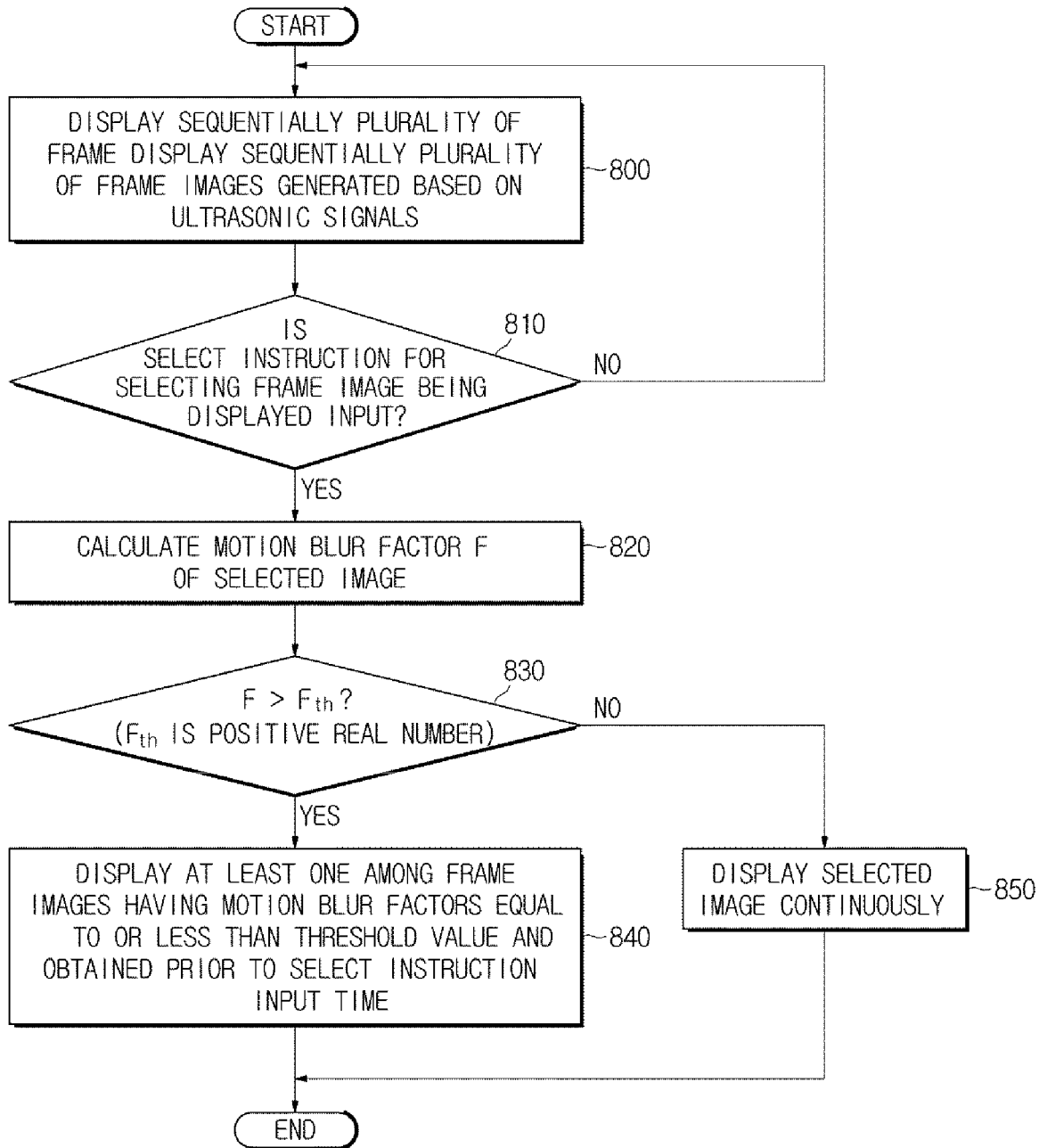


FIG. 10



**REFERENCES CITED IN THE DESCRIPTION**

*This list of references cited by the applicant is for the reader's convenience only. It does not form part of the European patent document. Even though great care has been taken in compiling the references, errors or omissions cannot be excluded and the EPO disclaims all liability in this regard.*

**Patent documents cited in the description**

- EP 2716232 A1 [0005]
- JP 2010233956 A [0006]

专利名称(译)	超声波装置及其控制方法		
公开(公告)号	<a href="#">EP3158939B1</a>	公开(公告)日	2020-05-06
申请号	EP2016164266	申请日	2016-04-07
[标]申请(专利权)人(译)	三星麦迪森株式会社		
申请(专利权)人(译)	三星MEDISON CO. , LTD.		
当前申请(专利权)人(译)	三星MEDISON CO. , LTD.		
[标]发明人	LEE JAE SUNG KANG HAK IL PARK SUNG AH		
发明人	LEE, JAE SUNG KANG, HAK-IL PARK, SUNG-AH		
IPC分类号	A61B8/00 A61B8/08		
CPC分类号	A61B8/4411 A61B8/463 A61B8/52 A61B8/5223 A61B8/085 A61B8/4405 A61B8/464 A61B8/467 A61B8/5276 G06T7/13 A61B8/4444 A61B8/461 G06T3/40 G06T5/003 G06T2200/24 G06T2207/10016 G06T2207/10132		
优先权	62/243380 2015-10-19 US 1020150168351 2015-11-30 KR		
其他公开文献	EP3158939A1		
外部链接	<a href="#">Espacenet</a>		

摘要(译)

本文公开了一种超声装置，其将具有大运动模糊因子的当前正在显示的帧图像替换为具有小运动模糊因子的，在选择指令输入时间之前获得的帧图像以在选择指令时显示替代图像。输入用于选择要显示的帧图像或替代图像显示指令的图像，以及用于控制该图像的方法。超声波装置包括：图像处理器，其基于超声波信号生成多个帧图像；显示器，其用于顺序地显示多个帧图像；输入装置，其接收选择指令，该选择指令用于从显示器中选择在显示器上显示的帧图像。多个帧图像；控制器，其控制显示器以显示多个帧图像中的至少一个帧图像，每个帧图像具有等于或小于预定阈值的运动模糊因子，并且在选择指令输入时间之前获得当选择指令选择的帧图像的运动模糊因子超过阈值时，或者输入替代图像显示指令。

Equation 1

$$G^N(j,k) = \sqrt{G_x(j,k)^2 + G_y(j,k)^2}$$