



(11) **EP 1 845 855 B1**

(12) **EUROPEAN PATENT SPECIFICATION**

(45) Date of publication and mention  
of the grant of the patent:  
**02.03.2011 Bulletin 2011/09**

(21) Application number: **06719666.7**

(22) Date of filing: **27.01.2006**

(51) Int Cl.:  
**A61B 8/14 (2006.01) A61B 5/05 (2006.01)**

(86) International application number:  
**PCT/US2006/002909**

(87) International publication number:  
**WO 2006/081410 (03.08.2006 Gazette 2006/31)**

(54) **SYSTEM FOR NAVIGATING AN ULTRASOUND CATHETER TO IMAGE A BEATING HEART**

SYSTEM ZUR LENKUNG EINES ULTRASCHALLKATHETERS ZUR ABBILDUNG EINES  
SCHLAGENDEN HERZENS

SYSTEME DE NAVIGATION DE CATHETER ULTRASONIQUE AFIN DE REPRODUIRE DES  
IMAGES D'UN COEUR QUI BAT

(84) Designated Contracting States:  
**AT BE BG CH CY CZ DE DK EE ES FI FR GB GR  
HU IE IS IT LI LT LU LV MC NL PL PT RO SE SI  
SK TR**

(30) Priority: **27.01.2005 US 44344**

(43) Date of publication of application:  
**24.10.2007 Bulletin 2007/43**

(73) Proprietor: **St. Jude Medical, Atrial Fibrillation  
Division,  
Inc.  
St. Paul, Minnesota 55117-9913 (US)**

(72) Inventor: **HAUCK, John  
Shoreview, Minnesota 55126 (US)**

(74) Representative: **Kramer - Barske - Schmidtchen  
European Patent Attorneys  
Landsberger Strasse 300  
80687 München (DE)**

(56) References cited:  
**US-A- 5 500 011 US-A- 5 983 126  
US-A1- 2003 231 789 US-A1- 2004 015 065  
US-A1- 2004 097 805 US-A1- 2004 147 837**

- **WITTKAMPF FRED H M ET AL: "Localisa: New  
technique for real-time 3-dimensional  
localization of regular intracardiac electrodes"  
CIRCULATION, LIPPINCOTT WILLIAMS &  
WILKINS, US, vol. 99, no. 10, 16 March 1999  
(1999-03-16), pages 1312-1317, XP008088813  
ISSN: 0009-7322**

Note: Within nine months of the publication of the mention of the grant of the European patent in the European Patent Bulletin, any person may give notice to the European Patent Office of opposition to that patent, in accordance with the Implementing Regulations. Notice of opposition shall not be deemed to have been filed until the opposition fee has been paid. (Art. 99(1) European Patent Convention).

## Description

**[0001]** The present invention relates generally to a system for navigating an ultrasound catheter to image a beating heart.

**[0002]** Using ultrasound to image the interior of a beating heart is a known technique. A series of patents (U.S. 5,345,940, issued Sept. 13, 1994; U.S. 6,544,187, issued April 8, 2003; U.S. 5,713,363, issued Feb. 3, 1998) to Seward et al. describes the intra-cardiac ultrasound echo (ICE) technique. According to this technique, an ultrasonic transducer is situated at a distal end of a catheter that is positioned in a heart chamber. The transducer vibrates in response to a control signal to generate an ultrasonic wave. The transducer senses the reflected wave and transmits the corresponding signal to transceiver circuitry that analyzes the incoming signal and generates an image signal that is shown on a display. In this manner, a user can see, on a monitor, a real-time image of a small portion of the interior surface of the heart. Repositioning or reorienting the catheter, such that the transducer's wave bounces off a different portion of the surface, will yield a new image.

**[0003]** The ICE technique has lacked the ability to link the ultrasound information with other clinical information such as cardiac electrographic data anatomic orientation of the ultrasound data or images.

**[0004]** Further, Wittkamp, in a series of patents (U.S. 5,983,126, issued Nov. 9, 1999; U.S. 5,697,377, issued Dec. 16, 1997), describes the application of orthogonal current pulses to an electrode arrangement on a catheter to yield three-dimensional position data to assist a user in navigating the catheter. More specifically, in the Wittkamp system, current pulses are applied to orthogonally placed patch electrodes placed on the surface of the patient. These patches are used to create specific electric fields inside the patient. The Wittkamp patents teach the delivery of small-amplitude low-current pulses supplied continuously at three different frequencies, one on each axis. Any measurement electrode placed in these electric fields experience a voltage that depends on its location between the various patches or surface electrodes on each axis. The voltage on the measurement electrode in the field when referred to a stable positional reference electrode indicates the position of the measurement electrode with respect to that reference. The three voltages give rise to a location of the measurement electrode in "three space."

**[0005]** US 2004/0254437 A1 describes the application of the Wittkamp technique, with improvements, to locate a catheter positioned in the interior of the heart and to image a catheter in real time. Further, it describes how to sequentially use locations of an electrode in contact with the heart wall to sequentially build a model of a heart chamber.

**[0006]** Devices and techniques are known for determining the location in space and the orientation of the tip of a catheter. A series of patents to Desai (U.S.

5,215,103, issued June 1, 1993; U.S. 5,231,995, issued Aug. 3, 1993; U.S. 5,397,339, issued March 14, 1995; U.S. 4,940,064, issued July 10, 1990; and U.S. 5,500,011, issued March 19, 1996) describes an electrode array arrangement located on a catheter that can be used to determine the location of the catheter tip using Wittkamp's technique.

**[0007]** US 2003/0231789 A1 discloses systems and methods for locating an imaging device within or outside of the body and for displaying a graphical representation of the imaging pattern associated with the imaging device within a global representation of the body. The imaging pattern characterizes the "field of vision" of the imaging device, and the graphical imaging pattern within the global representation of the body visually indicates the portion of the body that is being imaged by the imaging device in relation to the global representation of the body.

**[0008]** What has been needed is a device and method for producing images of the interior of a heart via ultrasound coupled with a navigational system for allowing the user to see what portion of the heart is appearing on the ultrasound image. Further, what has been needed is a method for building a geometry of the heart by successively imaging portions of the heart surface, with successive images being framed based on the location of the frames previously taken and by corresponding manipulation of the imaging device to select a new frame.

## BRIEF SUMMARY OF THE INVENTION

**[0009]** An object of the present invention is to provide a convenient, easy-to-use system and method for ultrasonically imaging a desired portion of a beating heart.

**[0010]** Another object of the present invention is to provide a system for identifying, on a context map, the location of an image obtained of an interior surface of a beating heart via ultrasound.

**[0011]** Yet another object of the present invention is to build a model of a heart chamber through sequential ultrasound imaging with collection and calculation of position and orientation data.

**[0012]** Still another object of the present invention is to allow easy updating or elucidation of important heart structure after a working model of the heart is constructed.

**[0013]** Another object of the invention is to build a geometry of a beating heart without touching the endocardial wall with a probe.

**[0014]** Yet another object of the present invention is to provide a system to provide lower cost transseptal puncture procedures using a smaller catheter than is typically used for ICE.

## BRIEF DESCRIPTION OF THE DRAWINGS

**[0015]** An exemplary version of a system for navigating an ultrasound transducer is shown in the figures wherein like reference numerals refer to equivalent structure

throughout, and wherein:

**[0016]** Fig. 1 is a schematic representation of a system for navigating an ultrasound transducer;

**[0017]** Fig. 2 is a partial view of the system of Fig. 1, with an electrode array in a deployed configuration and with ultrasound waves and echoes depicted;

**[0018]** Figs. 3A, 3B, and 3C are prior art depictions of an electrode array that is employed in the system of Figs. 1 and 2;

**[0019]** Fig. 4a is a schematic illustration of an image of heart geometry and an ultrasonic image generated by the system of Fig. 1 taken at a first frame;

**[0020]** Fig. 4b is a schematic illustration of an image of heart geometry and an ultrasonic image generated by the system of Fig. 1 taken at a second frame; and

**[0021]** Fig. 5 is a flow chart depicting a method of using the system of Fig. 1 to generate a geometry of the heart.

## DETAILED DESCRIPTION OF THE INVENTION

**[0022]** Fig. 1 shows a cardiac imaging and navigation system 1 that coordinates an ultrasonic data acquisition and imaging system 2 with a catheter navigation system 3. The system 1 produces an ultrasonic image 4 of the heart 5 and displays a context or reference map 6 of the heart indicating the portion of the heart 5 that appears in the ultrasonic image frame 4. In a preferred use, the system 1 observes a beating heart 5. The navigation system 1 includes a catheter system 10 electronically linked to a signal processing system 11 that in turn is electronically linked to an image display system 12. In one embodiment, these electronic linkages are made via wire connections. In other embodiments, wireless links may be used for data transfer.

**[0023]** A preferred catheter system 10 is illustrated in Figs. 1 and 2. The catheter system 10 includes a guide tube 15 that is somewhat flexible so that in use it can easily pass through a patient's cardiovascular structures. In use, the catheter's distal end or tip 16 can be positioned within a heart chamber 20 defined by a chamber wall 21, as shown in Figs. 1 and 2.

**[0024]** Proximate the distal end 16 of the catheter system 10, is an ultrasonic transducer 25 that includes a crystal or array of crystals for sending and sensing ultrasonic waves. The transducer 25 is electronically linked to a dedicated ultrasound processor 26 having or linked to transceiver circuitry 26a, control circuitry 26b and imaging circuitry 26c. Via the transceiver 26a, the ultrasound processor 26 triggers a vibration in the ultrasonic transducer 25 that in turn imparts a sound wave 27 (Fig. 2) to the surrounding blood in the heart chamber 20. The wave 27 propagates through the blood in a direction determined or calculable from the known position and orientation of the crystals in the transducer 25. The wave 27 "bounces" against the chamber wall 20. A portion 28 of the wave 27 is reflected by the chamber wall 20 and returns to the transducer 25. The transducer 25 senses the returned wave 28 and sends a signal to the ultrasound

processor 26. The ultrasound processor 26 has data storage and processing functions that calculate the distance "D" between the transducer and the heart wall 21, using the time of travel (t) of the wave 27 through the blood pool that has a known density. In addition, the reflected wave 28 signal is used by the imaging circuitry 26c to generate an image 4 that is displayed on a screen or monitor 29. This frame of the image 4 is typically relatively small (on the order of a few millimeters by a few millimeters) due to the size of the ultrasonic transducer 25 (i.e., the diameter and arrangement of the crystals in the transducer 25), which must be of a small scale to be used in intracardiac applications.

**[0025]** To aid the user in interpreting the ultrasound image 4, the present System 1 employs a catheter navigation system 3 as illustrated in Figs. 1 and 2. This navigation system 3 determines the location in space and the orientation of the catheter distal end 16 and is thereby able to highlight or indicate on a context map 6 what portion of the heart wall 21 is displayed in the ultrasound image 4. Read together, the ultrasound image 4 and the highlighted context map 6 give the user information to position the catheter in a desired location to view pertinent areas of the hearts. In addition, the coordination of the image 4 and the highlighted context map 6 allow the user to manipulate the catheter to sequentially capture a number of image frames to generate a geometry of a larger portion of the heart or of the whole heart.

**[0026]** In greater detail, the catheter navigation system 3 includes a sensor electrode array 35 proximate the distal end 16 of the catheter tube 15. The electrode array 35 preferably includes a small collection of spaced sensor electrodes 40, 42, 44, 46, 48, that are deployed such that they are spaced from one another sufficiently to yield accurate position and orientation data when exposed to orthogonal currents as taught by Wittkamp. An example of an electrode array 35 configuration that achieves this objective is that disclosed by Desai in the patents discussed above. The Desai configuration is illustrated in Figs. 3A-3C and is characterized by a plurality of side sensor electrodes 42, 44, 46, 48 equally spaced around the distal end 16 of the tubular catheter 15. A further, central electrode 40 is fixed to the distal end 16 on the catheter axis 50. The four side electrodes 42, 44, 46, 48 lie in the same plane 52 (Fig. 2) and are equally spaced from adjacent electrodes. The side electrodes 42, 44, 46, 48 are at the apexes of a square pattern with the central electrode 40 in the center of the square. The electrodes may be made of highly electrically conductive material. A plurality of longitudinally-directed slits, as exemplified by slits 55 and 56, are cut through the tube 15 from a point adjacent to the terminating end 60 to a distance away from the terminating end 60. The slits 55, 56 define and form intermediate limbs 62, 63, 64, 65. The electrodes 42, 44, 46, 48 are positioned with one electrode to a limb 62, 63, 64, or 65. By applying a compressive force to the end 60, the limbs 62-65 buckle, thereby spreading the side electrodes 42, 44, 46, 48 apart, as

illustrated in Fig. 3C.

**[0027]** Alternative electrode arrangements are contemplated. An arrangement with at least two electrodes can provide position and orientation data, though increasing the number and spacing of electrodes yields a higher degree of accuracy.

**[0028]** Fig. 1 illustrates additional elements of the navigation system 3. External patch electrodes 70, 71, 72, 73 are placed on the patient, directed substantially near the heart. The electrodes 70-73 are electrically connected via connectors 74 to navigation circuitry 80 which imparts controlled current in a desired fashion to the electrodes 70-73. The navigation circuitry 80 is also electronically connected to the sensor electrodes 40, 42, 44, 46, 48 (as depicted by arrow 75) and receives and processes signals from the sensing electrodes 40, 42, 44, 46, 48.

**[0029]** According to the techniques described by Wittkamp in the patents noted above in the Background section, the navigation circuitry 80 imparts orthogonal current signals through the patient. Each of the signals has a respective characteristic that renders it distinguishable from the other orthogonal signals. In response to the field generated by this current, the sensing electrodes 40, 42, 44, 46, 48 send voltage signals to the navigation circuitry 80. The navigation circuitry 80 processes this signal information in the manner described in US 2004/0254437 A1 to determine the location of the catheter distal end 16, as well as the orientation of the catheter tube 15 as defined by the vector "R" (Fig. 2) extending axially from the end 16 of the catheter tube 15.

**[0030]** In a preferred embodiment the navigation circuitry 80 is linked for data transfer (as depicted by arrow 82) to a computer system 90 having a user interface to allow control of the navigation circuitry. In addition, in a preferred embodiment, the ultrasound processor 26 is linked for data transfer (as depicted by arrow 92) to a computer system having a user interface to allow control of the ultrasound processor. Most preferably, the navigation circuitry 80 and the ultrasound processor 26 are linked to a single computer 90 that coordinates the operation of the imaging being done by the ultrasound system 2 with the navigation system 3.

**[0031]** The navigation circuitry 80 is linked for data transfer (as depicted by arrow 94) to a display screen or monitor 100. Similarly, the ultrasound processor 26 is linked for data transfer (as depicted by arrow 96) to a screen or monitor 102. The navigation circuitry 80 generates a context map 6 of the whole heart 5 or of a relatively large section of the heart 5 with an indication thereon of the location of the catheter distal end 16. More specifically, the computer system 90, with processing capabilities, coordinates the position and orientation data from the navigation system 3 with the distance-to-wall data received from the ultrasound system 2 to compute and illustrate, on monitor 100, the location on the heart of the frame 4 that is simultaneously displayed on an ultrasound image display screen or monitor 102. In this manner, the highlighted or animated region 105 of the

context map 6 depicts the portion or frame of the heart wall at which the ultrasound is "pointed." In one embodiment, monitors 100 and 102 are separate screens; in alternate embodiments, both images (the context map 6 and the ultrasound image 4) are depicted on one monitor. The process of capturing ultrasound data and making the locating calculations occurs fast enough that the distance data can be used to compute motion data if desired.

**[0032]** Fig. 4a further illustrates the relationship between the context map 6 and the ultrasound image frame 4. The highlighted region 105 of the context map 6 indicates the location in the heart of the ultrasound image frame 4. The context map 6 presents a wider field of view than is shown by the ultrasound image frame 4, and the context map 6 includes the frame 4 shown by the ultrasound image. This relationship between the relatively small field of view shown by the ultrasound frame 4 and the relatively larger field of view (including the frame 4) shown by the context map 6 is suggested by projection lines 110, 111.

**[0033]** The system 1 can be used to generate a geometry of the heart through iterative ultrasound imaging made feasible through the manipulation of the catheter system 10 using the navigation system 3 for guidance. Fig. 5 is a flow chart depicting the steps in the iterative process 200. The user positions (205) the catheter system 10 in the chamber of the heart 5. As depicted in step 210, electric potentials are applied to electrodes 70-73 and this potential is sensed by electrodes 40, 42, 44, 46, 48. Using Wittkamp's method, the 3D positions of each sense electrode 40, 42, 44, 46, 48 are determined and displayed. In addition, an orientation vector R is determined. Because the ultrasound crystal is in the known fixed location in relation to the catheter head 60, the location (Lxtal) of the ultrasound crystal is determined.

**[0034]** At essentially the same time, the ultrasound system 2 emits and senses a sound wave. The distance D to the heart wall 21 is calculated as  $D = V_b * t$ , where  $V_b$  is the apriori known velocity of the ultrasound signal in blood and  $t$  is the time measured from issuing the pulse to sensing the returned echo 28. This ultrasound process is indicated by block 215.

**[0035]** Applying the position data from step 210 and the ultrasound data from step 215, the location of a frame or patch 4 of the wall is calculated (220). The ultrasound data is stored in association with the location and orientation data. The location  $L_w$  of the center of the patch or frame 4 is calculated as follows:  $L_w = L_{xtal} + D * R$ . This location is located in relation to the catheter ( $L_w$ ); in addition, the x, y, z coordinates of the wall patch in space can be calculated and stored, since the 3D position and orientation of the transducer 25 is known, along with the distance D to the wall.

**[0036]** A graphic rendering 105 of the patch or frame 4 is created (225) on a screen or monitor 100.

**[0037]** As indicated by decision block 230, if the view of the single frame 4 is sufficient for the user's purposes (235), the process may end here (240). However, if the

user has not viewed the site of interest in full (242), the user may, based upon the graphic image in the context map 6, "build" a geometry of a larger portion of the heart, or of the whole heart, by iteratively or sequentially imaging different frames (which may or may not overlap) of the heart, with the system 1 collecting and storing position and orientation data in association with the ultrasound data for each such frame. To move from frame to frame, the user manipulates the catheter system 10 to change the orientation R of the catheter system 10 or to move the catheter system 10 to a new position within the heart 5, such that the ultrasound system "points at" and displays a different frame or patch 4'. This repositioning step is indicated at reference number 245. Thereafter, the position determining step 210, the ultrasound step 215, the calculation step 220 and the graphic rendering step 225 and the decision step 230 are repeated until the resulting geometry of the heart is sufficient (235) for the user's purposes. The completed geometry is displayed (250). Positioning and orientation of the catheter system 10 may be accomplished manually. Alternatively, the catheter system is coupled to a robotic mechanism controlled, for example, by the computer 90, to position and orient the catheter.

**[0038]** Fig. 4b shows the how the context map 6' appears with the ultrasound system 2 trained on a second patch or frame 105'. The first frame 105 is indicated for reference with broken lines in the drawing of Fig. 4b; it may or may not be indicated in some manner on the context map 6' shown on the monitor 100. Fig. 4b also shows the relationship between the frame 105' on the context map 6' to the ultrasound frame 4' shown on the ultrasound image monitor 102.

**[0039]** The system 1 of the present embodiment offers advantages over traditional ICE, where a large number of crystals in the transducer are necessary to achieve the desired image quality, because the present embodiment allows for a smaller number of crystals to achieve a comparable level of performance, because it has the ability to signal average the acquired data. This is possible because the ultrasound data is acquired from a known location. Combining this knowledge with cardiac gating, multiple acquisitions from a site may be averaged.

**[0040]** Another advantage of the present embodiment with a smaller number of crystals over traditional ICE is that the head of the catheter may be forward-looking, i.e. the wave 27 propagated by the transducer 25 travels in a direction R that is generally parallel to the axis 50 of the catheter 10. Traditional ICE catheters, like those shown by Seward, "look" off to the side of the catheter and therefore are somewhat more difficult to operate.

**[0041]** Yet another advantage is that the catheter system 10, having a customary size and flexibility and being equipped with electrodes, may be used as a standard cardiac electrophysiology mapping catheter.

**[0042]** Although an illustrative version of the device is shown, it should be clear that many modifications to the device may be made without departing from the scope

of the invention. 9

## Claims

1. A system (1) for navigating an ultrasound catheter (15) to image a beating heart (5), comprising:
  - a catheter system (10) carrying sensor electrodes (40, 42, 44, 46, 48) and an ultrasonic transducer (25);
  - an ultrasound system (26) operatively coupled to said transducer for generating a sound wave (27) and sensing an echo wave (28), the ultrasound system being adapted to yield and capture ultrasound data for a frame of the interior surface (21) of the heart;
  - an imaging system (12, 29, 102) for displaying an ultrasound image (4) of said ultrasound image frame;
  - a navigation circuitry (80) operatively coupled to said electrodes; and
  - an imaging system (12, 100), **characterized in that** the navigation circuitry (80) is for determining the location, in the context of a larger portion of the heart than is captured in the ultrasound frame, of the frame; and
  - the imaging system (12, 100) is for displaying a context map (6) of the heart with an indication (105) of the location of the ultrasound image frame on the heart and highlighting a surface on the context map (6) corresponding to the portion of the heart displayed in the ultrasound image (4).
2. A system according to claim 1, further comprising:
  - data processing and storage (26) for storing ultrasound data in association with location data.
3. A system according to any preceding claim, wherein said navigation circuitry (80) is further adapted to determine the orientation of the catheter system (10) as said ultrasound data is captured.
4. A system according to any preceding claim, wherein said catheter system (10) carries five electrodes, one (40) of said electrodes lying on the axis of the catheter (15) and the four other electrodes (42, 44, 46, 48) being spaced approximately equally from one another and equally spaced radially from said axis.
5. An image-generating system according to any one of the claims 1-3, wherein said catheter (15) carries a central electrode (40) and four side electrodes (42, 44, 46, 48) proximate its distal end (16).
6. An image-generating system according to claim 5, wherein said central electrode (40) lies on the longi-

tudinal axis of the catheter (15) and is spaced longitudinally from said side electrodes (42, 44, 46, 48).

7. An image-generating system according to any one of the preceding claims, wherein the imaging system (12, 29, 100, 102) is adapted to display the ultrasound image (4) in real time.

#### Patentansprüche

1. Ein System (1) zum Navigieren eines Ultraschallkatheters (15) zum Darstellen eines schlagenden Herzens (5) enthaltend:

ein Kathetersystem (10), das Sensorelektroden (40, 42, 44, 46, 48) und einen Ultraschallwandler (25) trägt;

ein Ultraschallsystem (26), das operativ mit dem Wandler zum Erzeugen einer Schallwelle (27) und zum Erfassen einer Echowelle (28) verbunden ist, wobei das Ultraschallsystem angepasst ist, Ultraschalldaten für einen Rahmen der Innenoberfläche (21) des Herzens zu gewinnen und zu erfassen;

ein bildgebendes System (12, 29, 102) zum Darstellen eines Ultraschallbilds (4) des Ultraschallbildrahmens;

einen Navigationsschaltkreis (80), der operativ mit den Elektroden verbunden ist; und

ein bildgebendes System (12, 100),

#### dadurch gekennzeichnet, dass

der Navigationsschaltkreis (80) zum Bestimmen des Orts des Rahmens ist, im Zusammenhang eines größeren Bereichs des Herzens als er in dem Ultraschallrahmen erfasst ist; und das bildgebende System (12, 100) zum Darstellen einer Kontextkarte (6) des Herzens mit einer Angabe (105) des Orts des Ultraschallbildrahmens auf dem Herzen und zum Hervorheben einer Oberfläche auf der Kontextkarte (6) entsprechend dem Bereich des Herzens, der in dem Ultraschallbild (4) dargestellt ist, ist.

2. Ein System nach Anspruch 1, weiter enthaltend:

Datenverarbeitung und Speicherung (26) zum Speichern von Ultraschalldaten in Zusammenhang mit Ortsdaten.

3. Ein System nach einem der vorhergehenden Ansprüche, wobei der Navigationsschaltkreis (80) weiter angepasst ist, die Ausrichtung des Kathetersystems (10) zu bestimmen, wenn die Ultraschalldaten erfasst werden.

4. Ein System nach einem der vorhergehenden Ansprüche, wobei das Kathetersystem (10) fünf Elek-

troden trägt, eine (40) der Elektroden auf der Achse des Katheters (15) liegt und die vier anderen Elektroden (42, 44, 46, 48) ungefähr gleich voneinander beabstandet sind und gleichmäßig radial von der Achse beabstandet sind.

5. Ein Bilderzeugungssystem nach einem der Ansprüche 1 bis 3, wobei der Katheter (15) eine zentrale Elektrode (40) und vier Seitenelektroden (42, 44, 46, 48) nahe bei seinem distalen Ende (16) trägt.

6. Ein Bilderzeugungssystem nach Anspruch 5, wobei die zentrale Elektrode (40) auf der longitudinalen Achse des Katheters (15) liegt und in Longitudinalrichtung von den Seitenelektroden (42, 44, 46, 48) beabstandet ist.

7. Ein Bilderzeugungssystem nach einem der vorhergehenden Ansprüche, wobei das bildgebende System (12, 29, 100, 102) angepasst ist, das Ultraschallbild (4) in Echtzeit darzustellen.

#### Revendications

1. Système (1) pour faire naviguer un cathéter à ultrasons (15) pour former une image d'un coeur battant (5), comprenant :

un système de cathéter (10) portant des électrodes capteurs (40, 42, 44, 46, 48) et un transducteur ultrasonique (25) ;

un système à ultrasons (26) couplé en service audit transducteur pour générer une onde sonore (27) et capter un onde d'écho (28), le système à ultrasons étant adapté pour produire et capturer des données ultrasonores pour une ossature de la surface intérieure (21) du coeur, un système d'imagerie (12, 29, 102) pour afficher une image ultrasonore (4) de ladite ossature d'image ultrasonore ;

un circuit de navigation (80) couplé en service auxdites électrodes ; et

un système d'imagerie (12, 100), **caractérisé en ce que** le circuit de navigation (80) sert à déterminer l'emplacement, dans le contexte d'une portion plus grande du coeur que celle capturée dans l'ossature ultrasonore, de l'ossature ; et

le système d'imagerie (12, 100) sert à afficher une carte de contexte (6) du coeur avec une indication (105) de l'emplacement de l'ossature d'image ultrasonore sur le coeur et à faire ressortir une surface sur la carte de contexte (6) correspondant à la partie du coeur affichée dans l'image ultrasonore (4).

2. Système selon la revendication 1, comprenant en

autre :

le traitement et le stockage de données (26)  
pour stocker des données ultrasonores en as-  
sociation avec des données d'emplacement. 5

3. Système selon l'une quelconque des revendications  
précédentes, dans lequel ledit circuit de navigation  
(80) est en outre adapté pour déterminer l'orientation  
du système de cathéter (10) lorsque lesdites don- 10  
nées ultrasonores sont capturées.
4. Système selon l'une quelconque des revendications  
précédentes, dans lequel ledit système de cathéter  
(10) porte cinq électrodes, une (40) desdites élec- 15  
trodes reposant sur l'axe du cathéter (15) et les qua-  
tre autres électrodes (42, 44, 46, 48) étant espacées  
de manière à peu près égale l'une de l'autre et es-  
pacées radialement de manière égale dudit axe. 20
5. Système générateur d'images selon l'une quelcon-  
que des revendications 1 à 3, dans lequel ledit ca-  
théter (15) porte une électrode centrale (40) et quatre  
électrodes latérales (42, 44, 46, 48) à proximité de 25  
son extrémité distale (16).
6. Système générateur d'images selon la revendication  
5, dans lequel ladite électrode centrale (40) s'étend  
sur l'axe longitudinal du cathéter (15) et est espacée  
longitudinalement desdites électrodes latérales (42, 30  
44, 46, 48).
7. Système génération d'images selon l'une quelcon-  
que des revendications précédentes, dans lequel le  
système d'imagerie (12, 29, 100, 102) est adapté 35  
pour afficher l'image ultrasonore (4) en temps réel.

40

45

50

55

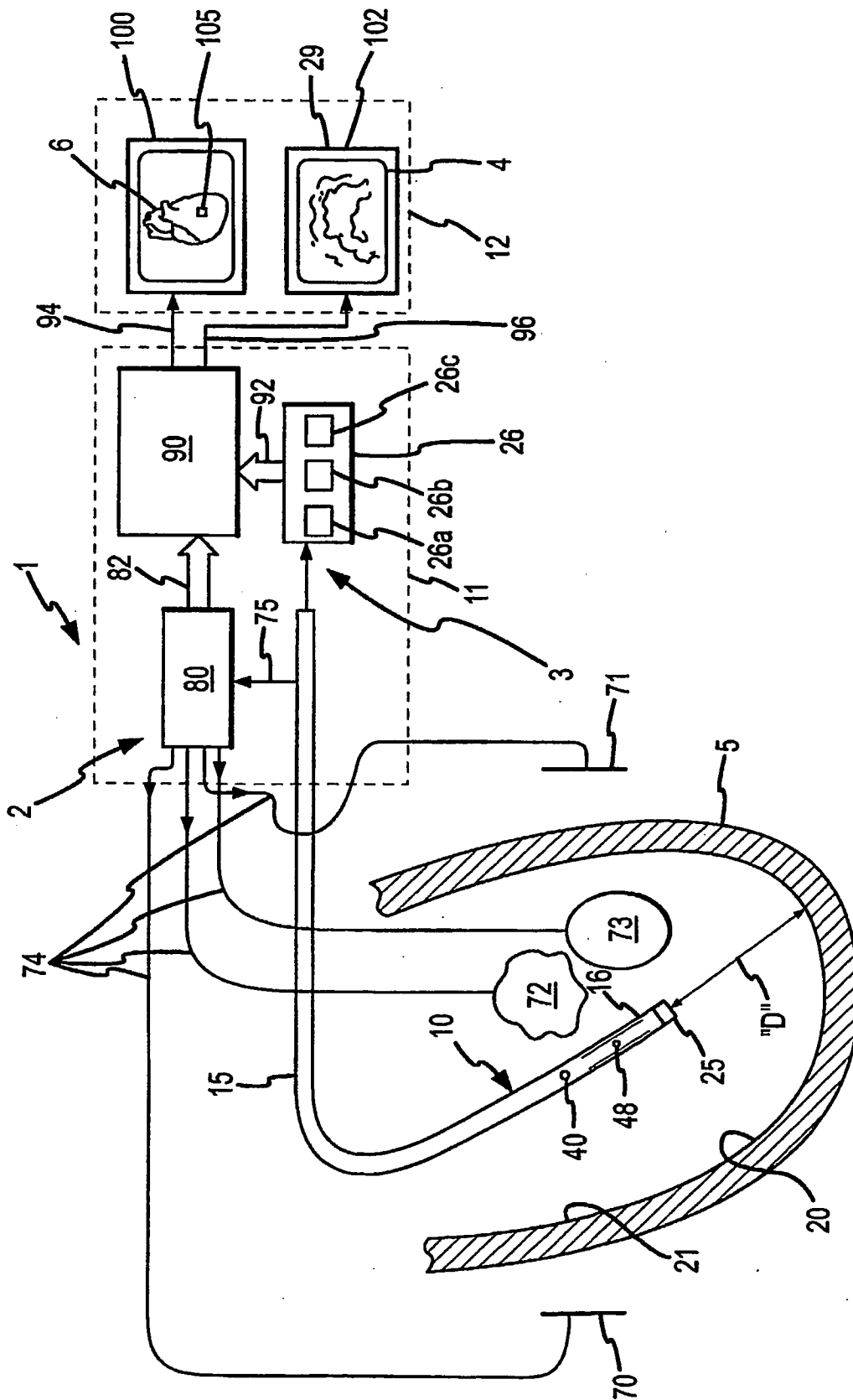


FIG.1



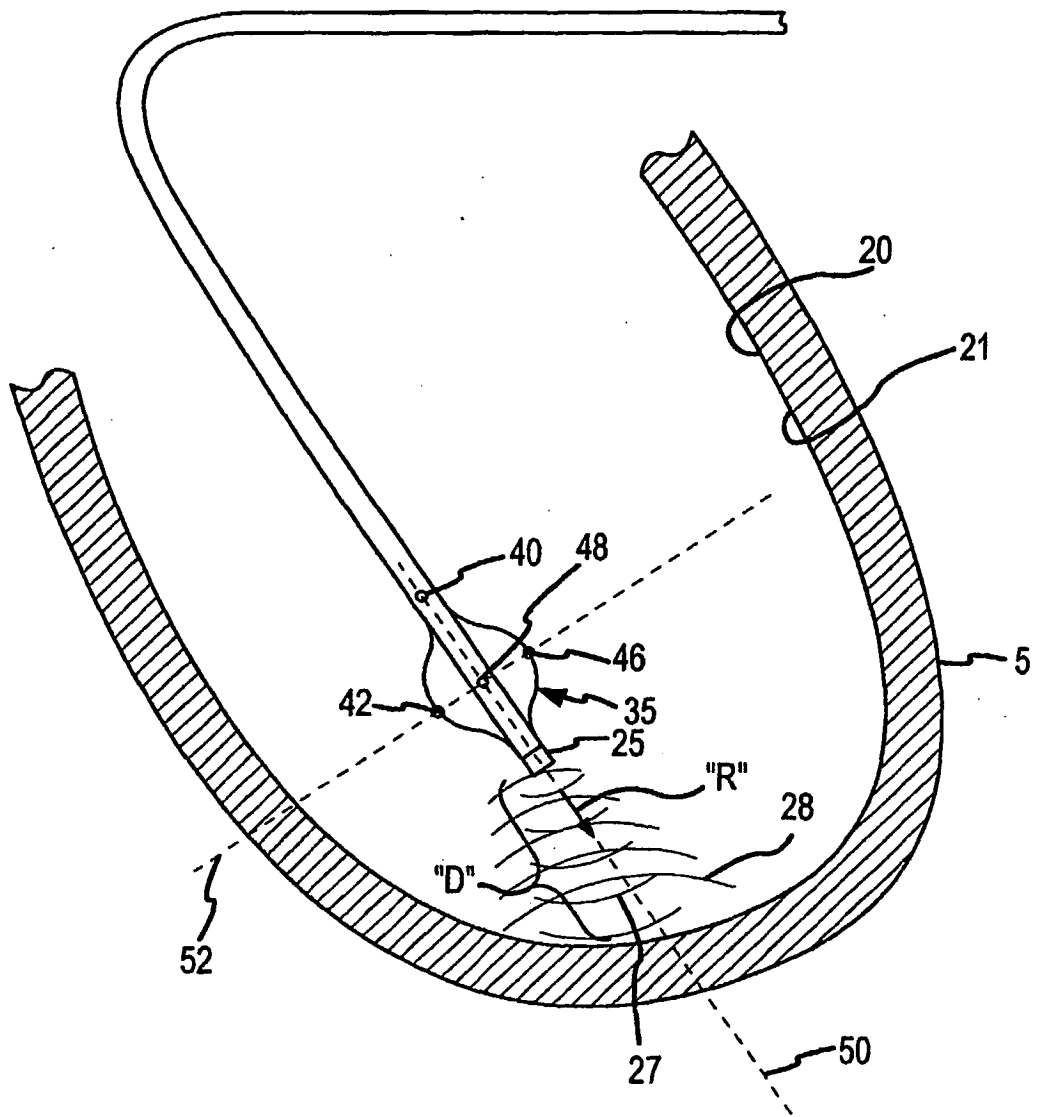
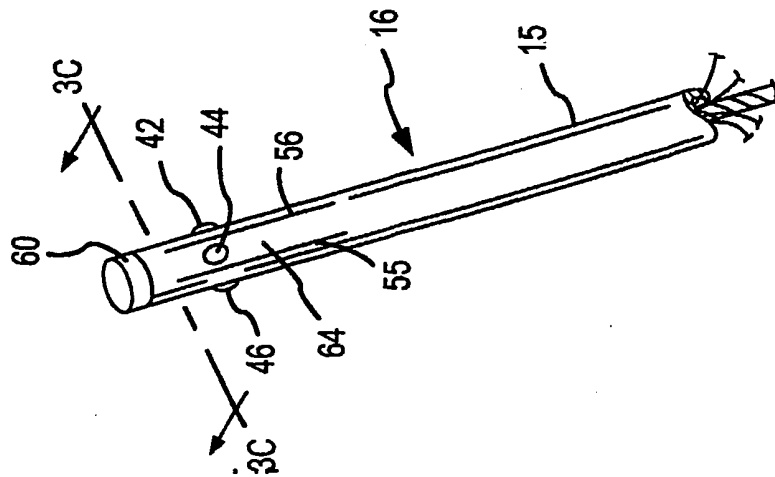
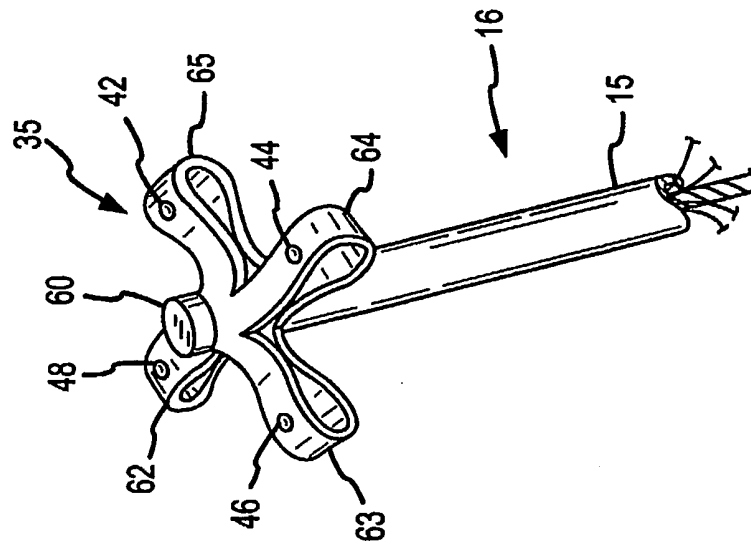


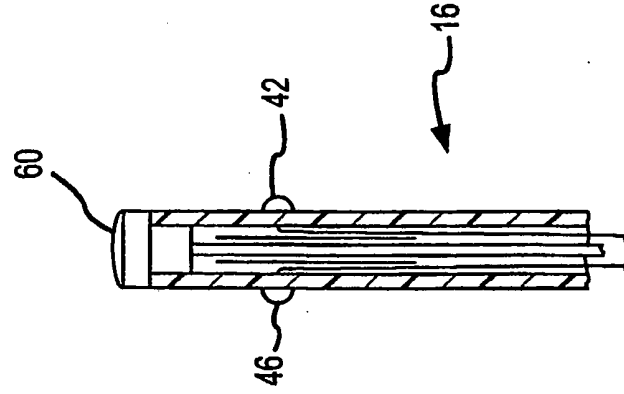
FIG.2



**FIG. 3A**  
**PRIOR ART**



**FIG. 3B**  
**PRIOR ART**



**FIG. 3C**  
**PRIOR ART**

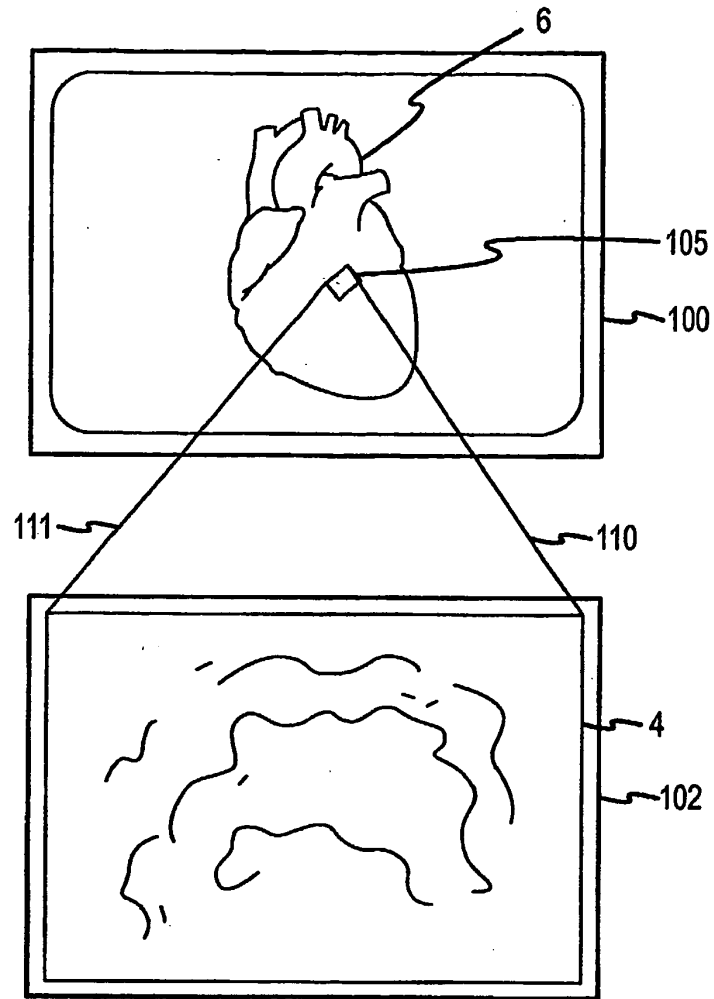


FIG. 4a

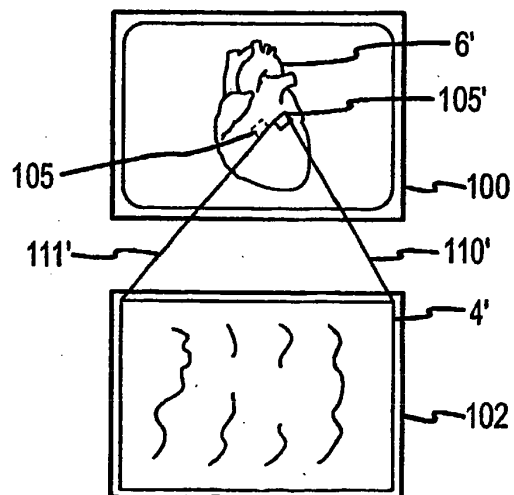


FIG 4b

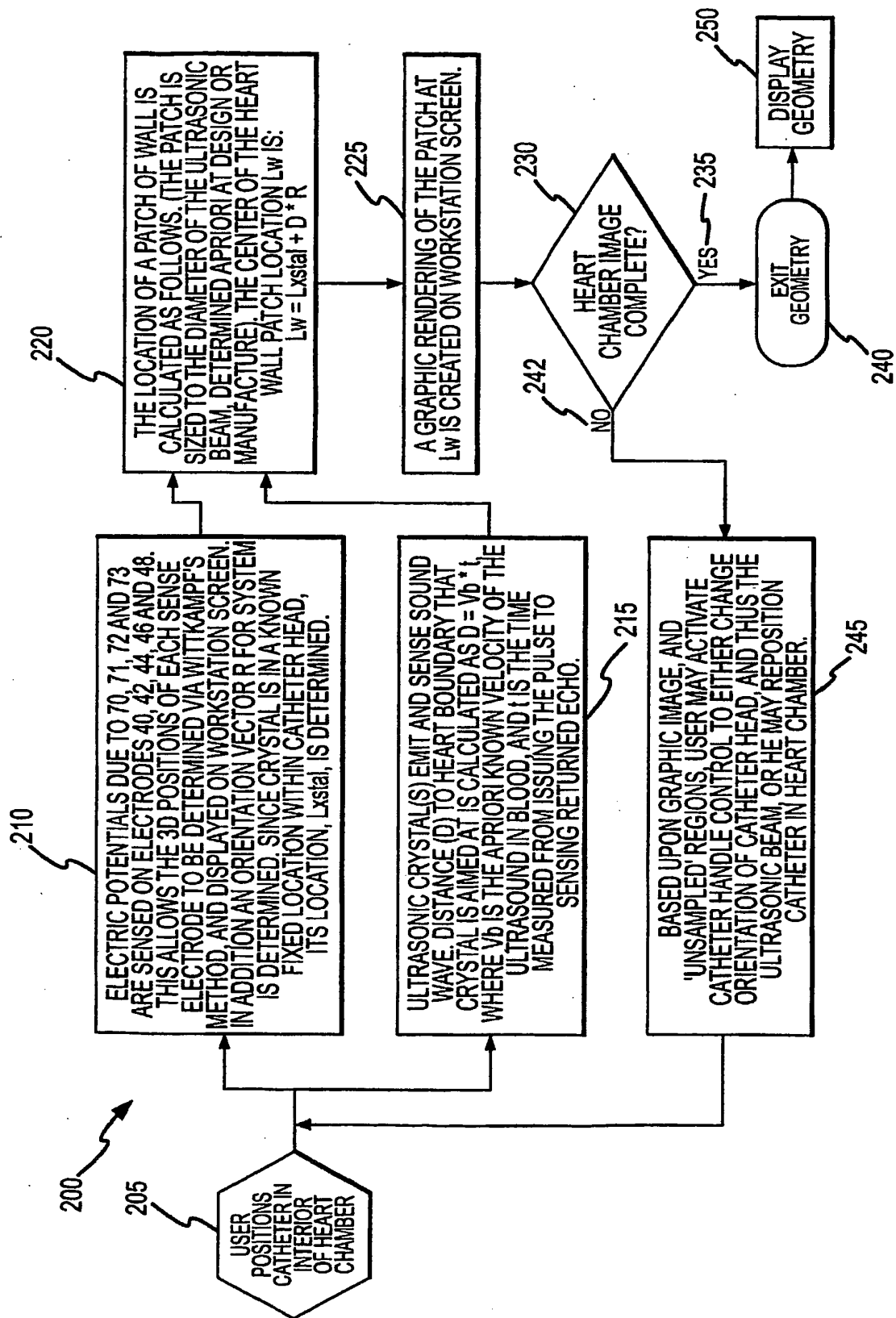


FIG.5

**REFERENCES CITED IN THE DESCRIPTION**

*This list of references cited by the applicant is for the reader's convenience only. It does not form part of the European patent document. Even though great care has been taken in compiling the references, errors or omissions cannot be excluded and the EPO disclaims all liability in this regard.*

**Patent documents cited in the description**

- US 5345940 A [0002]
- US 6544187 B [0002]
- US 5713363 A [0002]
- US 5983126 A [0004]
- US 5697377 A [0004]
- US 20040254437 A1 [0005] [0029]
- US 5215103 A [0006]
- US 5231995 A [0006]
- US 5397339 A [0006]
- US 4940064 A [0006]
- US 5500011 A [0006]
- US 20030231789 A1 [0007]

专利名称(译)	用于导航超声导管以对跳动的心脏成像的系统		
公开(公告)号	<a href="#">EP1845855B1</a>	公开(公告)日	2011-03-02
申请号	EP2006719666	申请日	2006-01-27
[标]申请(专利权)人(译)	圣犹达医疗用品电生理部门有限公司		
申请(专利权)人(译)	ST.犹达医疗用品，房颤DIVISION，INC.		
当前申请(专利权)人(译)	ST.犹达医疗用品，房颤DIVISION，INC.		
[标]发明人	HAUCK JOHN		
发明人	HAUCK, JOHN		
IPC分类号	A61B8/14 A61B5/05 A61B5/042 A61B5/107 A61B19/00 A61N1/05 A61N1/08 A61N1/362 A61N1/37		
CPC分类号	A61B8/0841 A61B5/0422 A61B5/1076 A61B5/6852 A61B8/0883 A61B8/12 A61B8/4254 A61B8/463 A61B8/466 A61B8/5223 A61B8/5253 A61B8/5292 A61B34/20 A61B34/25 A61B90/36 A61B2017/00243 A61B2034/105 A61B2034/2051 A61B2034/2053 A61B2090/367 A61B2090/378 A61B2090/3983 A61B2562/046 A61N1/056 A61N1/3625 A61N1/37 A61N1/3702		
代理机构(译)	KRAMER - HARSH - 施密特陈		
优先权	11/044344 2005-01-27 US		
其他公开文献	EP1845855A2 EP1845855A4		
外部链接	<a href="#">Espacenet</a>		

# 摘要(译)

导管导航与超声成像相结合以产生显示超声成像帧的心脏上的位置的上下文图。

