



(12) **EUROPEAN PATENT APPLICATION**

(43) Date of publication:
27.01.2010 Bulletin 2010/04

(51) Int Cl.:
A61B 8/08 (2006.01) A61B 19/00 (2006.01)

(21) Application number: **09165926.8**

(22) Date of filing: **20.07.2009**

(84) Designated Contracting States:
AT BE BG CH CY CZ DE DK EE ES FI FR GB GR HR HU IE IS IT LI LT LU LV MC MK MT NL NO PL PT RO SE SI SK SM TR
Designated Extension States:
AL BA RS

(72) Inventors:
• **De Beni, Stefano**
I-16123, Genova (IT)
• **Macciò, Marco**
I-16145, Genova (IT)

(30) Priority: **24.07.2008 IT GE20080064**

(74) Representative: **Karaghiosoff, Giorgio**
Alessandro
Studio Karaghiosoff e Frizzi S.r.l.
Via F. Baracca 1R 4° piano
17100 Savona (IT)

(71) Applicant: **Esaote S.p.A.**
20100 Milano (IT)

(54) **Device and method for guiding surgical tools by ultrasonic imaging**

(57) A device for guiding surgical tools by ultrasonic imaging. From 3D images, 2D images are generated corresponding to a view from the tip of the tool.

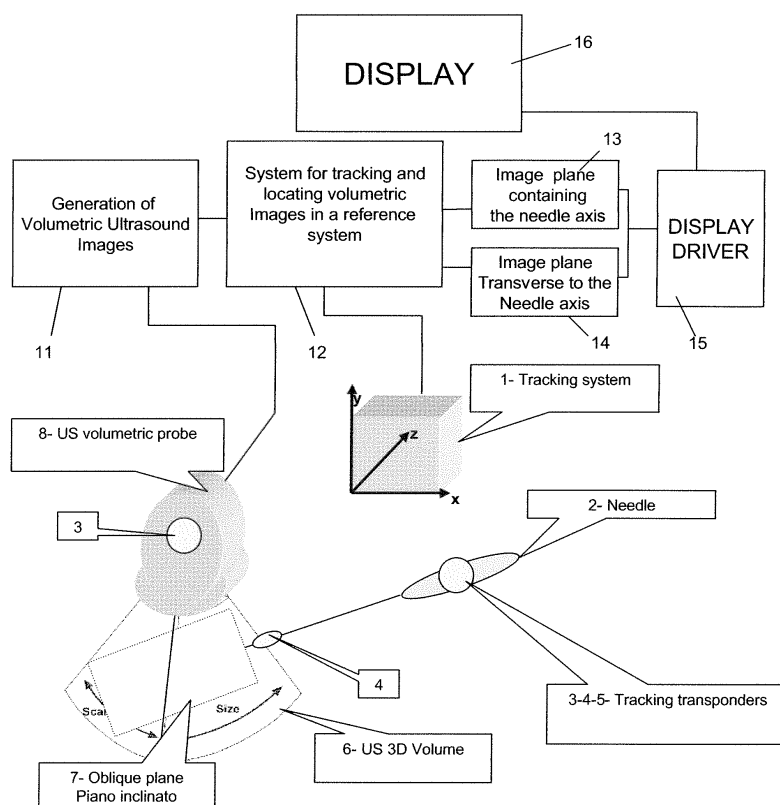


Fig. 1

Description

[0001] The invention relates to a device and a method for guiding surgical tools by ultrasonic imaging.

[0002] The device and method of the invention are particularly applicable to ultrasonically guided minimally invasive surgery and are especially aimed at avoiding the use of the known biopsy kits. The main applications are in the surgical field (biopsy, infiltrations, ablations, etc.). In the past, minimally invasive surgery mainly relied on CT imaging, followed by free-hand needle introduction based on the previously acquired images.

[0003] The advent of ultrasonic imaging machines and biopsy kits allowing biopsy needles to be imaged as they were inserted in the tissue did not solve all the needle guiding problems. In many cases, CT imaging is still used because certain types of diseases cannot be imaged by ultrasound (lungs, bones), wherefore the ultrasonically guided biopsy kit is of no effective help.

[0004] Nonetheless, there undoubtedly exists the need for a needle insertion supporting tool allowing to evaluate beforehand the path of the needle, and hence its position relative to the probe plane and its path before actual insertion, because such tool would provide remarkable help, as well as technological advantage.

[0005] Also, there currently exist neurosurgery navigation systems as well as other virtual navigation systems combined with ultrasonic imaging methods. Nevertheless, these systems require an image of a pre-acquired volume, i.e. acquired prior to the surgical procedure, to be always associated with the surgical tool or ultrasonic probe.

[0006] Document W02006/067676, discloses a method for visualizing the position of an interventional device involving the acquisition of images of an area of interest from an object displaying multiple planes that intersect. The intersection defines the position of the interventional device and the planes that identify the position of the interventional device are displayed as bounding planes. These bounding planes are displayed in a multi-dimensional display, where each plane is only rendered up to where it intersects another plane. Thanks to this only relevant portions of the data are displayed, thereby increasing the readability of the displayed image.

[0007] From the above document it is clear that at least a 3D image of the intervention area is acquired prior of carrying out the intervention and the intervention tool tracking and imaging. The orientation and the position of the tool is determined by the tracking data. The tracking system is registered with the acquired and stored 3D image data and the tracking data are used to determine the bounding planes and the image information along these bonding planes from the previously acquired 3D image data. It is important to consider that in this case volumetric (3D image data of the patient is acquired only once prior of the carrying out of the intervention, so that the determination of the interventional tool in the following intervention due to the tracking data is referred to the volu-

metric image data which has been acquired at an earlier instant. Considering patient movements and also natural movements of the tissues due to heart beats, breathing, etc. the reliability of the information about the relative position of the tool relatively to the a target object is relatively low.

[0008] Document W02005/039391, seems to have considered this problem and suggests a way of solving the above problem. A method is disclosed for assisting a user in guiding a medical instrument to a subsurface target site in a patient. The method generates at least one intraoperative ultrasonic image. The method indicates a target site on the ultrasonic image and determines a 3-D coordinates of the target site in a reference coordinate system. The method tracks the position of the instrument in the coordinate system, projects onto a display device a view field as seen from the position with respect to the tool in the reference system and projects onto the displayed view field indicia of the target site corresponding to the position. By observing the indicia the user can guide the instrument toward the target site by moving the instrument so that the indicia are placed or held in a given state in the displayed field of view.

[0009] The above disclosed method requires an endoscope for determining the images of the target site. Means for acquiring a pre-interventional 3D image which is the reference image, means for acquiring ultrasound images, an interventional tool, means for tracking the ultrasound probe, the endoscope and the interventional tool and means for registering the data from the pre-interventional volumetric image with the endoscopic image, with the ultrasound image data and with the tracking data.

[0010] The system is complex and in order to generate images corresponding to the views of a human user as placed on the tip of the tool and looking in direction of view corresponding to a certain tool orientation, the endoscopic image is needed. Furthermore this image is a video image and not an ultrasound image which could help in see what is behind a certain surface. The ultrasound images displayed are along planes which comprise also the interventional tool image. The computational burden is considerable since the computation shall provide for registering video images of the endoscope, tracking data of the interventional tool and of the endoscope and of the ultrasound probe and the preintervention volumetric images and has to continuously generate images which are recalculated basing on the new position of the tool and of the target.

[0011] Each of the above methods require a pre-interventional volumetric image acquisition, which image data are used for determining the relative position of the tool to the anatomy of the interventional district and to a certain target site and cannot thus be considered pure real-time methods, since a high influence in the image showing the relative position of target site and tool is given by this fact and the position inaccuracy due to systemic physiological tissue movements is still given to a high rate.

[0012] The invention has the object of providing a de-

vice and a method for guiding surgical tools by ultrasonic imaging which, using simple and inexpensive arrangements, can obviate the limitations of current surgical tool guiding and/or virtual navigation systems, while providing a better, easier and more intuitive control of the tool, with higher accuracy and in a substantially real-time mode, without involving any hardware extension image quality degradation or excessively longer scanning and processing times.

[0013] The invention fulfils the above object by providing a device as described hereinbefore, which comprises:

- a) means for acquiring in real-time a time sequence of 3D ultrasonic images of a target area;
- b) means for the contemporary real-time tracking the position and orientation of a surgical tool and means for defining in real-time the position or direction of a characteristic axis of the tool corresponding to the detected position and orientation of the tool;
- c) means for determining in real-time the position of a working or functional end of the tool along said direction or said characteristic axis;
- d) means for determining the relative position in space of each real-time 3D image and the real-time direction or characteristic axis of the tool corresponding to each real-time 3D image;
- e) means for generating, for one or more of the real-time 3D images acquired in a time sequence, a real-time 2D image defined by an image plane that intersects the corresponding real-time 3D image of said time sequence, which real-time 2D image plane has a predetermined inclination relative to the direction or the characteristic axis of the tool determined in real-time and a predetermined distance from the working end of the tool with reference to the said orientation and position of the tool upon acquisition of the corresponding real-time 3D image, said real-time 2D image being generated using the real-time image data of the corresponding real-time 3D image of the time sequence of real-time 3D images;
- g) the inclination of said real-time 2D image plane relative to the direction or the characteristic axis of the tool determined in real-time, and the distance of said 2D image plane relative to the working end of the tool being such that the real-time image generated in the 2D image plane corresponds at least approximately to a vision of the target area from the point of view of an observer situated at or near a part of the tool or said characteristic axis of the tool;
- h) the image generated along said plane including indications of the position of the target to be treated by said tool and/or the position of the functional characteristic axis of said tool in said image as well as the dimensions of the tool in a direction perpendicular to said functional characteristic axis.

[0014] According to a first preferred alternative, the inclination of said 2D image plane relative to the direction

or the characteristic axis of the tool, and the distance of said 2D image plane relative to the working end of the tool are such that the image generated in the 2D image plane corresponds at least approximately to a vision of the target area from the point of view of an observer situated at said working end of the tool, and whose direction of view is coincident with or parallel to the direction or the characteristic axis of the tool, whereas said 2D image includes indications of the position of the target to be treated by said tool and/or the point of coincidence of the characteristic axis of the tool with said 2D image plane and possibly also with the section of the tool along said plane.

[0015] In a second preferred alternative, the cutting plane along which the 2D image is generated is at least parallel to the characteristic axis of the tool. Possibly, this plane is also coincident with said characteristic axis of the tool. In this case, the image being displayed is similar to the image that a user would see in a direction of view perpendicular to that of the characteristic axis of the tool, whereas the position of the characteristic axis of the tool is indicated in said image by two lines parallel to said axis and situated at a distance from each other at least corresponding to the tool size perpendicular to said characteristic axis, and the position of the target to be treated by said tool is also indicated.

[0016] It is important to notice that the acquisition of the volumetric (3-D) ultrasound images is made at the same time, i.e. contemporary to the tracking of the probe and of the tool and to the registration of the tracking coordinates with the coordinates of the said volumetric images, so that the images shown on the 2D image planes is a real-time image, which time delay relatively to the effective one is limited to the time needed for the computation. Computational burden and computational times are dramatically low relatively to prior art systems particularly due to the fact that only ultrasound data are used for generating some sort of endoscopic images which are non video (i.e. surface images) and that the registration step can be carried out at the beginning of the session only once and eventually may be repeated at certain time intervals.

[0017] No endoscopic or video device is needed further to the ultrasound probe and to the tracking means.

[0018] As it will appear also from the following description using a 3-D probe reduces further the computational burden because the probe may be held at a fixed position and the tracking data to be determined are only the ones of the interventional tool.

[0019] Advantageously, the device is provided in combination with a rod or needle-like element and the characteristic direction or characteristic axis is the longitudinal axis of said rod or needle or a direction or axis parallel to said longitudinal axis, whereas the working end is the rod or needle insertion end into the target area.

[0020] A position and orientation identification and detection marker is associated with the tool, and may be advantageously arranged to be coincident with the char-

acteristic axis or an axis parallel thereto or in a predetermined position relative thereto. Particularly in the case of a biopsy needle or the like, the marker may be located at the tip or rear end of the needle or the like.

[0021] Advantageously, according to an improvement, in order to account for and detect any bending of the tool, at least two identification and detection markers are associated therewith, which are located at a certain distance from each other along said direction or said characteristic axis or along an axis parallel to said characteristic axis. The marker/s cooperate with detection means of a system for determining and/or tracking the position and orientation of the tool relative to a predetermined reference system.

[0022] The device further comprises a monitor and means for displaying images on said monitor, which means allow simultaneous, side-by-side or alternate display of images of the target area defined by at least one image plane coincident or parallel to the direction or characteristic axis of the tool and by at least one image plane having the predetermined inclination relative to the direction or the characteristic axis of the tool and the predetermined distance from the working end of the tool.

[0023] Advantageously, the sequence of 3D images is acquired by an ultrasonic probe, whereas the position in space of the acquired image relative to a reference system is determined by probe position and displacement detection systems.

[0024] Particularly a volumetric probe is advantageously used for acquiring the sequence of 3D images.

[0025] Referring to the units that compose the device of the present invention, either one of the two following solutions can be used for detecting the relative position of the probe and the tool.

[0026] In a first embodiment, the means for determining the position and orientation of the tool and particularly the biopsy needle, i.e. the characteristic axis thereof, are the 3D imaging system itself, i.e., in this special case, the means for acquiring the sequence of 3D ultrasonic images. The detected volumetric images also include the image of the tool when the latter is within the field of view, and this image of the tool is used to determine, thanks to the markers, the position and orientation of the tool, i.e. its characteristic axis, relative to the 3D image and hence the position and orientation of the tool in the anatomic region being imaged.

[0027] This technique is not limited to the ultrasonic imaging use. It can be also applied to X-ray or CT imaging. In this case the ring would be displaced instead of the patient table, and the CT images would display both the diseased tissue and the tool, i.e. the biopsy needle.

[0028] In the second embodiment, a tracking system is used for detecting the position and orientation of the probe and the tool, particularly the characteristic axis thereof. The tracking system allows the positions of the probe and tool, e.g. a needle, to be related to each other, to define the cut plane in the tool path. Several different tracking systems are current available, of either electro-

magnetic or optical type. The remarkable advantage of an electromagnetic system consists in that it has very small markers, consisting of micro-receivers that may be also placed at the tip of the needle. A tracking system adapted for use with a needle is the one sold by Ascension Technology with the trade name PCIBird.

[0029] These micro-receivers are used in combination with the transmitter to define the position of the probe and the needle on space and to determine the cut plane. Advantageously, two micro-receivers are associated with the needle at the tip and the rear, to accommodate any bending. Such bending would create curved surfaces formed by the volume 4D.

[0030] Concerning the tools for which the method and device of the invention are particularly suitable, these may be of the minimally invasive type, such as infiltration syringes, biopsy tools, thermoablation needles, HIFU rays. A possible method for standardizing all needle families consists in providing a custom "spindle" equipped with a receiver to be used as an insertion tool designed to be fitted with the special needle for the required procedure.

[0031] The probe, particularly of volumetric type, may be either convex or linear and will be advantageously able to generate a 3D image of the required size. The minimum volume rate required to obtain effects is 4 volumes/sec.

[0032] A volumetric probe may be as disclosed in EP 1 681 019 and in EP 1 167 996 by the applicant hereof.

[0033] The invention also relates to a method for guiding surgical tools by ultrasonic imaging using the above described device, which method includes the steps of:

- a) acquiring a time sequence of 3D ultrasonic images of a target area;
- b) defining a direction or a characteristic working axis for the tool;
- c) defining the position of a working or functional end of the tool along said direction or said characteristic axis;
- d) determining the relative position in space of each of the 3D images of the time sequence of images and the direction or characteristic axis of the tool for each of said 3D images;
- e) defining, for one or more of the 3D imaged acquired in the time sequence, a plane of a 2D image which intersects the corresponding 3D image and has a predetermined inclination relative to the direction or the characteristic axis of the tool and a predetermined distance from the working end of the tool with reference to the orientation and position of the tool upon acquisition of the corresponding 3D image;
- f) using the data of the corresponding 3D image of the sequence of 3D images to generate an image along said 2D image plane;
- g) the inclination of said 2D image plane relative to the direction or the characteristic axis of the tool, and the distance of said 2D image plane relative to the

working end of the tool being such that the image generated in the 2D image plane corresponds at least approximately to a vision of the target area from the point of view of an observer situated at or near a part of the tool or said characteristic axis of the tool; h) the image generated along said plane including indications of the position of the target to be treated by said tool and/or the position of the functional characteristic axis of said tool in said image.

[0034] Particularly relevant for the present invention is the fact that steps a) to c) are contemporary and carried out in real time.

[0035] So each 3-D image is a real time ultrasound image and the position and orientation of the tool is also real-time and related to the a corresponding 3-D image. Thus also the steps and the results of the said steps indicated above with d to h9 are essentially carried out in real-time, if considering vary short computational times. Thus the 2-D image displayed and corresponding to a certain plane as defined in steps g) to h) is practically a real-time image. The time shift between the effective position of the tool in the real world and the one determined by the method being infinitesimal and corresponding to the time needed by the system to carry out the computational steps.

[0036] As additional information, said image may also include indications about the dimensions of the tool in a direction perpendicular to said functional characteristic axis.

[0037] According to a preferred alternative, the cutting plane along which the 2D image is generated has such an inclination that the image being generated corresponds to the one that a user would see if he/she were situated at said working end of the tool in a direction of view coincident or parallel to the direction or the characteristic axis of the tool, whereas said 2D image would include an indication of the position of the target to be treated by said tool and/or the point of coincidence of the characteristic axis of the tool with said plane of the 2D image and possibly also the section of the tool along said plane.

[0038] Advantageously, the method is carried out in combination with tools including a rod or needle-like element and the characteristic direction or characteristic axis is the longitudinal axis of said rod or needle or a direction or axis parallel to said longitudinal axis, whereas the working end is the rod or needle insertion end into the target area.

[0039] In this case the 2D image plane may be perpendicular to the direction or characteristic axis of the tool.

[0040] In a further alternative, the cutting plane along which the 2D image is generated and displayed is parallel to and possibly also coincident with said characteristic axis of the tool. In this case, said image contains indications about a possible range for positioning the needle or tool, i.e. the characteristic axis of the needle or tool,

which range is delimited by two parallel lines spaced to an extent at least corresponding to the detection accuracy of the system. In practice, the two lines delimit the image area in which the image of the tool is expected to appear.

[0041] In order to determine the position and orientation of the tool with reference to an axis and particularly to the characteristic or working axis thereof, one position detection and identification marker has to be placed on the tool in a predetermined position relative to the tool shape.

[0042] Preferably, according to an improvement, at least two identification and detection markers are associated with the tool, and are located at a certain distance from each other along said direction or said characteristic axis or along an axis parallel to said characteristic axis, which markers cooperate with detection means of a system for determining the position and orientation of the tool relative to a predetermined reference system.

[0043] As mentioned above in greater detail, several different systems may be used for determining the position and orientation of the tool relative to the image volume.

[0044] One solution consists in using the tool image that appears in the acquired volumetric images.

[0045] The second solution, which has also been described above, includes a tracking system which uses sensors or transponders on the tool and the ultrasonic probe to determine their position and orientation relative to a reference coordinate system predetermined by the tracking system itself.

[0046] According to an improvement of the method of the invention, the sequence of 3D images is acquired by an ultrasonic probe, whereas the position in space of the acquired image relative to a reference system is determined by probe position and displacement detection systems.

[0047] Advantageously, the sequence of 3D images is acquired using a volumetric probe.

[0048] Considering the above characteristics of the method of the invention, such method is thus based on the concept of using the image planes generated by a volumetric probe to drive an tool, such as a needle, using a tracking system, for optimized selection of both the position of the needle relative to the probe and the image plane to be associated with the needle. In this case, the image plane of the probe may not be coplanar with the image plane of the needle.

[0049] In other words, the volumetric probe is used to generate a real-time 4D volume. The mutual positions of the probe and the needle are defined using the tracking system. These relative position coordinates are used to generate a plane to be associated with the needle, by cutting off the acquired volumes according to the needle position. A real-time image is thus obtained, which is associated with the needle. The volumetric probe is only used as a data generator, whereas the needle is used both for the percutaneous procedure and as a probe.

Thus, by simply moving the needle, the user can display the target and easily select the type of insertion.

[0050] According to another characteristic, the method of the invention may provide simultaneous, side-by-side or alternate display of images of the target area defined by at least one image plane coincident or parallel to the direction or characteristic axis of the tool and by at least one image plane having the predetermined inclination relative to the direction or the characteristic axis of the tool and the predetermined distance from the working end of the tool.

[0051] Images may be also possibly displayed according to different image planes, intersecting the volumetric image with different inclinations and at different points.

[0052] In at least one of the images, the position of the tool is indicated by a symbol which is well differentiated from the image of the target area.

[0053] The above description clearly shows the advantages and differences of the method and device of the present invention as compared with standard neurosurgery navigators. In prior art navigation and guide systems, the surgical tool or the ultrasound probe is associated with an image obtained from a pre-acquired volume and not a real-time image associated with the needle.

[0054] Conversely, the present invention uses a real-time imaging source, to associate the position of the tool and the image of its path. On the other hand, the tracking system may be the imaging source itself, with the tool and its position and orientation in the imaging volume being identified in real time.

[0055] Further improvements will form the subject of the dependent claims.

[0056] The characteristics of the invention and the advantages derived therefrom will appear more clearly from the following description of a non limiting embodiment, illustrated in the annexed drawings, in which:

Figure 1 is a schematic block diagram of the structure of a system of the invention, in which said system is provided in combination with a biopsy needle.

Figure 2 shows a tissue image of the present invention corresponding to the central frame of the succession of frames that cover the acquisition volume of a volumetric probe.

Figure 3 shows an image of the same acquired volume, with the image plane being oriented relative to the characteristic working axis of the needle, and particularly parallel to the needle axis.

Figure 4 shows a schematic icon representing the relative positions and orientations of the needle and the probe.

[0057] A system for guiding surgical tools by real-time ultrasonic imaging is very schematically shown in Figure 1.

[0058] Numeral 8 designates an ultrasonic scan probe which is connected to a probe control unit for ultrasonic imaging and particularly for generating volumetric ultra-

sound images. A variety of volumetric ultrasound imaging methods are known. According to a known method, the probe is provided in combination with a tracking system which detects the position, orientation and displacement of the probe. A succession of ultrasound images is acquired as the probe is moved, said images being grouped into a 3D image composed of the various 2D images acquired at different probe positions along the displacement path, which positions are detected by the tracking system. Thus, the 2D images can be arranged in relative order to form a 3D image.

[0059] Tracking systems are known and widely used for the purpose of acquiring a 3D ultrasound image. An example of tracking system is the system sold by Ascension Technology with the trade name PCI Bird which is incorporated in a currently available product, sold by the owner hereof with the name of "Virtual Navigator".

[0060] In the scheme of Figure 1, the tracking system is represented by the coordinate system designated by numeral 1. The tracking system actually defines the various positions of the probe 8 with reference to a predetermined initial reference point and is thus the operating unit that defines a reference system describing the probe displacement space.

[0061] In principle, there is no limitation as for the type of probe to be used, provided that it can cover a slice area large enough to contain the image to be acquired. Nonetheless, as shown in Figure 1, advantages are achieved from using a volumetric probe. A volumetric probe may be as disclosed in EP 1 681 019 and in EP 1 167 996 by the owner hereof.

[0062] Thus, when the size of the subject to be imaged by ultrasound allows to do so, the probe is not required to be manually displaced by the operating personnel or a specially dedicated device. In other cases, the volumetric probe can be displaced less often and to few different positions, in which it can be held during automatic acquisition of the volumetric image that the probe can generate without being displaced.

[0063] In this case, the tracking system 1 is only used to define the different probe position/s in the space described by the reference system generated or defined by the tracking system 1 itself.

[0064] The tracking systems require at least one detector to be mounted to the element whose displacement or position is to be monitored, which marker/detector, with reference to the tracking system used herein, is a transponder. A transmitter-receiver unit can detect the marking transponder and determine the probe position. The marker means associated with the probe 8 are designated by numeral 3.

[0065] Numeral 6 designates the volumetric image acquired by the volumetric probe 8.

[0066] Numeral 2 designates a surgical tool and particularly a needle or similar elongate, rod-like element. These tools may include, for example, biopsy needles, cannulas for insertion of a variety of devices, thermoablation needles or the like.

[0067] The needle or rod-like element has a characteristic functional axis, and in this case this axis is the axis of the needle which coincides with the insertion axis. Different types of tools may have different characteristic functional axes. For example, in the case of a surgical knife, the characteristic working axis may be the cutting edge of its blade. The characteristic functional axis of a particular type of tool can be determined in an intuitive and simple manner.

[0068] The needle 2 may carry a single sensor or marking transponder, which is sufficient to determine the position of the tool and its orientation, particularly with reference to the characteristic working or functional axis of said needle which, as mentioned above, is the central longitudinal axis of the needle.

[0069] However, according to the improvement of the figures, the tool, i.e. the needle 2 carries two or more sensors or marking transponders, designated by numerals 3, 4. This improvement allows detection of any needle bending, which can be thus accounted for while operating the system.

[0070] Therefore, in the case of the needle 2 of the figures, two transponders are located at a certain distance from each other, coincident with the needle axis, and can be used to determine the needle orientation with particular reference to the insertion direction, as well as any deformation, particularly bending or curving of the needle. When a transponder is mounted directly to the tip or at a predetermined distance therefrom, the position of the needle tip can be determined upon insertion into the body under examination.

[0071] The sensor or transponder at the tip of the needle 2, here the transponder 4, shall not necessarily be placed at the tip but, as mentioned above, it may be located at a predetermined known distance from the tip. In this case, once the position of the transponder 4 has been detected, the position of the tip may be determined by a simple arithmetic operation.

[0072] Numeral 7 designates a cutting plane of the 3D image that has a predetermined inclination relative to the characteristic functional axis, i.e. the longitudinal central axis, i.e. the direction of insertion of the needle 2.

[0073] A 2D image of the object is generated along said cutting plane, using the image data of the 3D image.

[0074] This process consists in determining the subset of voxels of the 3D image that falls within the predetermined cutting plane 7, to generate a 2D image. This may occur in a known manner, as disclosed for instance in the above mentioned patent applications by the applicant hereof, and particularly in EP 1 167 996.

[0075] Processing occurs in a control and processing unit typically incorporated in ultrasonic imaging apparatus, which substantially consists of a processing unit that stores and executes special ultrasound apparatus control programs for transmitting and receiving ultrasound signals, for focusing the ultrasound signals transmitted by the probe and the ultrasound signals received by the probe upon reflection of the transmitted signals, for con-

verting the received signals into image data and for generating and displaying images on a monitor, as well as for monitoring the execution of other operations that depend on the ultrasound signal acquisition and processing mode being used. The processing unit also controls the tracking system, which may be provided as software or dedicated hardware controlled by said software.

[0076] In Figure 1, the processing unit is designated by its functional blocks only, which are generally used to execute the operations of the present invention. Thus, the block 11 generally includes all hardware and software units required for 3D imaging (see also EP 1 681 019 and EP 1 167 996). Thanks to the tracking system, the 3D image is assigned a well-defined position in a reference Cartesian system, which is defined by the tracking system that detects the position of the probe 8. The tracking system simultaneously detects the position of the needle or other tool 2 and the orientation of the characteristic functional axis of such tool 2 with reference to the same reference system defined by the tracking system. This will provide well-defined relative positions between the volumetric image and the position and orientation of the tool 2, i.e. the characteristic functional axis thereof.

[0077] In these conditions, a cutting plane may be defined in the 3D or volumetric image generated by the probe 8, which plane has a predetermined inclination relative to the characteristic functional axis of the tool 2.

[0078] Multiple cutting planes may be also defined, having predetermined and different positions and orientations relative to said characteristic functional axis of the tool 2.

[0079] Particularly, referring to the needle, a cutting plane may be defined, which is oriented perpendicular to the characteristic functional axis of the tool 2 and is at a predetermined distance from the internal or front end tip, with reference to the direction of insertion of the needle. In this case, the image generated along said cutting plane and reconstructed from the volumetric image data, i.e. the voxels that fall within such cutting plane will be as viewed by an observer situated at the tip of the needle and looking towards the longitudinal axis of the needle in the direction of insertion of the latter.

[0080] Alternatively to or in combination with the above, images may be also generated along different cutting planes.

[0081] A possible additional cutting plane might be the plane that contains the longitudinal axis of the needle 2, with the path of the needle into the body under examination being thus visible.

[0082] The images obtained along the various cutting planes may be displayed in succession, i.e. alternate to each other or in side-by-side or simultaneous arrangement.

[0083] This condition is shown by the functional blocks 13 and 14, which designate all hardware and software units required to define the above mentioned cutting planes and generate images along said cutting plane, as well as simultaneously or alternately display them using

display drivers 14 on the display 15.

[0084] The use of a volumetric probe 8 allows the above process to be accomplished in a very short time, wherefore imaging may be deemed to occur in real time.

[0085] Figure 2 shows the central 2D image of a volumetric image obtained using a volumetric probe as disclosed in EP 1 681 019 and EP 1 167 996 respectively.

[0086] Figure 3 shows a 2D image along a plane parallel to the axis of the needle 2, containing an indication of the target 20 to be reached and treated by the needle and the trajectory of the needle 21, i.e. an image as viewed from the needle, and not from the probe. The trajectory of the needle 21 is indicated in the form of a channel delimited by longitudinal dash lines. These lines are parallel to the needle axis and their spacing is at least equal to the external diameter of the needle 2.

[0087] As clearly shown herein, in this case the needle guiding function does not rely on an image of the needle in the body from the point of view of the probe position, but on the needle trajectory that is indicated in the 2D image that corresponds to the image of one of the cutting planes containing the longitudinal axis of the needle.

[0088] The image of Figure 2 may also contain indications about the incidence point of the longitudinal axis of the needle and the 2D image plane and possibly the cross-section of the needle, using the 2D image plane as a cutting plane.

[0089] Alternative to or in combination with the above, the cutting plane of the 3D image, i.e. the 2D image may be a plane parallel to the longitudinal axis of the needle, but situated at a predetermined distance from such axis.

[0090] According to an improvement, a traditional image of the body being examined and the needle may be also displayed in either alternate or simultaneous, side-by-side arrangement.

[0091] In yet another improvement, as shown by way of example in Figure 4, in order to visually check the position of the needle 2 or tool relative to the probe, i.e. to the central longitudinal plane parallel to the long side of the array of electroacoustic transducers of the probe 8 which, in the case of volumetric probes, is parallel to the axis of oscillation of the array of transducers, a schematic image may be displayed in which the probe, said plane, the tool and the predetermined cutting plane/s are indicated in their proper relative positions as detected by the tracking system. By this arrangement, the user may simply ascertain proper operation of the system at a glance.

[0092] The schematic icon image may be displayed at the same time as the ultrasound images, side by side with or in a separate window, partially overlapping one or more of the ultrasound images being displayed. If one or more ultrasound images are displayed, each for a cutting plane having a predetermined position and a predetermined orientation, i.e. a predetermined inclination relative to the axis of the needle 2, i.e. the characteristic functional axis of the tool, then a corresponding schematic icon image may be displayed for each of said im-

ages, in which the probe and the tool, as well as the corresponding cutting plane, are in the relative positions corresponding to the ultrasound image.

[0093] Referring to the above system and method, a variant of the needle tracking means may be provided for determining the position and orientation of the needle relative to the acquired volumetric images.

[0094] According to such variant, the position and orientation of the tool relative to the volumetric images may be determined using the needle image appearing in such volumetric images, instead of providing an external tracking system that detects both the position and orientation of the tool and the position and orientation of ultrasound probe. Once more, the provision of a position identification and indication marker having a predetermined position relative to the shape and size of the tool, particularly the needle, allows the tool to be located within the 3D image, wherefore a cutting plane may be defined in the 3D image, which has predetermined orientation and position relative to the tool, along which cutting plane a 2D image is generated whose pixels are the voxels of the imaging volume which fall within said cutting plane. Therefore, regardless of the means that are used for determining the position and orientation of the tool and/or the characteristic axis thereof, the next steps are the same as in the example in which an external system is used for tracking the position and orientation of the tool and the position and orientation of the ultrasound probe. It shall be obviously noted that the term cutting plane is indented to also mean a thin slice, i.e. a volume delimited by two parallel cutting planes very close to each other within the resolution of the ultrasonic imaging system. This interpretation will be well understood by those skilled in the art, who are perfectly aware that any reference to a 2D image will relate to an image of an area having a predetermined volume, which is formed of a thin slice crossing the subject under examination.

[0095] It has to be noticed that ultrasound 3-D images and probe and tool tracking are carried out at the same time and in real-time. This means that while inserting and displacing the interventional tool the probe acquires a sequence of 3D (three dimensional or volumetric) images of the zone in which the probe is present. Thus to a certain instant a specific 3D-image is associated and to it a specific tracking data for the tool and of the probe are also univocally associated. This image data and the corresponding tracking data of the tool and eventually of the probe are used for constructing by computation the image or images along one or more specific 2D planes (two dimensional planes) having a predetermined orientation in the space defined by the corresponding 3D image and relatively to the tool tip and orientation. So the 2D image or images shown are essentially real time images. The time shift between the effective tool position in the real world and the one as determined by the acquired image and tracking data is limited to the time needed for the acquisition of the image and tracking data and for computing the said data in order to generate the 2D image

or images. These times are relatively short so that the inaccuracy is infinitesimal and can be disregarded. Furthermore it has also to be considered that in the above kind of intervention the tool is normally displaced very carefully and at very low speed and often also step by step, so that the already infinitesimal time shift can be disregarded completely for no having any significant practical effect.

[0096] Concerning the system and method of the present invention, a remarkable advantage has to be noted as compared with prior art systems and methods.

[0097] A true real-time guiding method and system is provided which can furnish a special kind of endoscopic view which is not limited to a video (surface) image, but which goes beyond the visible surfaces and allows the user to efficiently and precisely guide the tool by having a visual and spontaneous feedback of the manipulation of the tool.

[0098] With the invention, the body can be penetrated by the tool, i.e. the needle, from the side opposite the one with the ultrasound probe. In clinical terms, this means that while at present the ultrasound scanning window and the needle access must be located in a well-defined area of the body under examination, possibly providing the best results in terms of both imaging and tool, i.e. needle, insertion, the invention allows simultaneous selection of the best ultrasound scanning window and the best access, because these conditions are independent of each other.

Claims

1. A device for guiding surgical tools by ultrasonic imaging, which device comprises:

- a) means for acquiring a time sequence of 3D ultrasonic images of a target area;
- b) means for determining and/or tracking the position and orientation of a surgical tool and means for defining the position or direction of a characteristic axis of the tool corresponding to the detected position and orientation of the tool;
- c) means for determining the position of a working or functional end of the tool along said direction or said characteristic axis;
- d) means for determining the relative position in space of each 3D image and the direction or characteristic axis of the tool corresponding to each 3D image;
- e) means for generating, for one or more of the 3D images acquired in a time sequence, a 2D image defined by an image plane that intersects the corresponding 3D image of said time sequence, which 2D image plane has a predetermined inclination relative to the direction or the characteristic axis of the tool and a predetermined distance from the working end of the tool

with reference to the orientation and position of the tool upon acquisition of the corresponding 3D image, said 2D image being generated using the image data of the corresponding 3D image of the time sequence of 3D images;

g) the inclination of said 2D image plane relative to the direction or the characteristic axis of the tool, and the distance of said 2D image plane relative to the working end of the tool being such that the image generated in the 2D image plane corresponds at least approximately to a vision of the target area from the point of view of an observer situated at or near a part of the tool or said characteristic axis of the tool;

h) the image generated along said plane including indications of the position of the target to be treated by said tool and/or the position of the functional characteristic axis of said tool in said image and/or possibly the dimensions of the tool in a direction perpendicular to said functional characteristic axis.

2. A device as claimed in claim 1, **characterized in that** the inclination of said 2D image plane relative to the direction or the characteristic axis of the tool, and the distance of said 2D image plane relative to the working end of the tool are such that the image generated in the 2D image plane corresponds at least approximately to a vision of the target area from the point of view of an observer situated at said working end of the tool, and whose direction of view is coincident with or parallel to the direction or the characteristic axis of the tool, whereas said 2D image includes indications of the position of the target to be treated by said tool and/or the point of coincidence of the characteristic axis of the tool with said 2D image plane and possibly also with the section of the tool along said plane.
3. A device as claimed in claim 1, **characterized in that** the 2D plane is parallel to the characteristic axis of the tool and possibly coincident therewith so that the image along said cutting plane substantially corresponds to the image that a user would see in a direction of view perpendicular to said characteristic axis of the tool, whereas the position of the characteristic axis of the tool is indicated in said image by two lines parallel to said axis and situated at a distance from each other at least corresponding to the tool size perpendicular to said characteristic axis, and the position of the target to be treated by said tool is also indicated.
4. A device as claimed in one or more of the preceding claims, **characterized in that** the tool is a rod or needle-like element and the characteristic direction or characteristic axis is the longitudinal axis of said rod or needle or a direction or axis parallel to said

longitudinal axis, whereas the working end is the rod or needle insertion end into the target area.

5. A device as claimed in one or more of the preceding claims, **characterized in that** a marker is associated with the tool, for identifying and detecting the position and orientation of the tool or the characteristic axis thereof, which marker cooperates with detection means of a system for determining and/or tracking the position and orientation of the tool relative to a predetermined reference system. 5
6. A device as claimed in one or more of the preceding claims, **characterized in that** at least two or more identification and detection markers are associated with the tool, and are located at a certain distance from each other along said direction or said characteristic axis or along an axis parallel to said characteristic axis, which markers cooperate with detection means of a system for determining and/or tracking the position and orientation of the tool relative to a predetermined reference system. 10
7. A device as claimed in one or more of the preceding claims, **characterized in that** it comprises a monitor and means for displaying images on said monitor, which means allow simultaneous, side-by-side or alternate display of images of the target area defined by at least one image plane coincident or parallel to the direction or characteristic axis of the tool and by at least one image plane having the predetermined inclination relative to the direction or the characteristic axis of the tool and the predetermined distance from the working end of the tool. 15
8. A device as claimed in one or more of the preceding claims, **characterized in that** the sequence of 3D images is acquired by an ultrasonic probe, whereas the position in space of the acquired image relative to a reference system is determined by probe position and displacement detection systems. 20
9. A device as claimed in one or more of the preceding claims, **characterized in that** a volumetric probe is used for acquiring the sequence of 3D images. 25
10. A device as claimed in one or more of the preceding claims, **characterized in that** it comprises means for detecting or tracking the position and orientation of the tool or the characteristic axis thereof, with reference to the 3D images that determine said position and said orientation from the tool images appearing in the sequence of the 3D images of the area being scanned. 30
11. A device as claimed in one or more of the preceding claims 1 to 9, **characterized in that** it comprises external means for tracking the position and orientation of the tool and/or the characteristic axis of the latter and the ultrasound probe, which means define a reference coordinate system and, in such system, the relative positions and orientations of the tool and the ultrasound probe. 35
12. A method for guiding surgical tools by ultrasonic imaging, comprising the steps of: 40
 - a) acquiring a time sequence of 3D ultrasonic images of a target area;
 - b) defining a direction or a characteristic working axis for the tool;
 - c) defining the position of a working or functional end of the tool along said direction or said characteristic axis;
 - d) determining the relative position in space of each of the 3D images of the time sequence of images and the direction or characteristic axis of the tool for each of said 3D images;
 - e) defining, for one or more of the 3D images acquired in the time sequence, a plane of a 2D image which intersects the corresponding 3D image and has a predetermined inclination relative to the direction or the characteristic axis of the tool and a predetermined distance from the working end of the tool with reference to the orientation and position of the tool upon acquisition of the corresponding 3D image;
 - f) using the data of the corresponding 3D image of the sequence of 3D images to generate an image along said 2D image plane;
 - g) the inclination of said 2D image plane relative to the direction or the characteristic axis of the tool, and the distance of said 2D image plane relative to the working end of the tool being such that the image generated in the 2D image plane corresponds at least approximately to a vision of the target area from the point of view of an observer situated at or near a part of the tool or said characteristic axis of the tool; and
 - h) the image generated along said plane including indications of the position of the target to be treated by said tool and/or the position of the functional characteristic axis of said tool in said image and/or possibly the dimensions of the tool in a direction perpendicular to said functional characteristic axis. 45
13. A method as claimed in claim 12, **characterized in that** the inclination of said 2D image plane relative to the direction or the characteristic axis of the tool, and the distance of said 2D image plane relative to the working end of the tool are such that the image generated in the 2D image plane corresponds at least approximately to a vision of the target area from the point of view of an observer situated at said working end of the tool, and whose 50

tation of the tool and/or the characteristic axis of the latter and the ultrasound probe, which means define a reference coordinate system and, in such system, the relative positions and orientations of the tool and the ultrasound probe.

12. A method for guiding surgical tools by ultrasonic imaging, comprising the steps of:

- a) acquiring a time sequence of 3D ultrasonic images of a target area;
- b) defining a direction or a characteristic working axis for the tool;
- c) defining the position of a working or functional end of the tool along said direction or said characteristic axis;
- d) determining the relative position in space of each of the 3D images of the time sequence of images and the direction or characteristic axis of the tool for each of said 3D images;
- e) defining, for one or more of the 3D images acquired in the time sequence, a plane of a 2D image which intersects the corresponding 3D image and has a predetermined inclination relative to the direction or the characteristic axis of the tool and a predetermined distance from the working end of the tool with reference to the orientation and position of the tool upon acquisition of the corresponding 3D image;
- f) using the data of the corresponding 3D image of the sequence of 3D images to generate an image along said 2D image plane;
- g) the inclination of said 2D image plane relative to the direction or the characteristic axis of the tool, and the distance of said 2D image plane relative to the working end of the tool being such that the image generated in the 2D image plane corresponds at least approximately to a vision of the target area from the point of view of an observer situated at or near a part of the tool or said characteristic axis of the tool; and
- h) the image generated along said plane including indications of the position of the target to be treated by said tool and/or the position of the functional characteristic axis of said tool in said image and/or possibly the dimensions of the tool in a direction perpendicular to said functional characteristic axis. 55

13. A method as claimed in claim 12, **characterized in that** the inclination of said 2D image plane relative to the direction or the characteristic axis of the tool, and the distance of said 2D image plane relative to the working end of the tool are such that the image generated in the 2D image plane corresponds at least approximately to a vision of the target area from the point of view of an observer situated at said working end of the tool, and whose

direction of view is coincident with or parallel to the direction or characteristic axis of the tool.

14. A method as claimed in claim 12 and 13, **characterized in that** the tool is a rod or needle-like element and the characteristic direction or characteristic axis is the longitudinal axis of said rod or needle or a direction or axis parallel to said longitudinal axis, whereas the working end is the rod or needle insertion end into the target area.
15. A method as claimed in claim 14, **characterized in that** the 2D image plane is perpendicular to the direction or characteristic axis of the tool, whereas said 2D image includes an indication of the position of the target to be treated by said tool and/or the point of coincidence of the characteristic axis of the tool with said plane of the 2D image and possibly also the section of the tool along said plane.
16. A method as claimed in claim 12 or 14, **characterized in that** the 2D image plane is parallel to the direction or characteristic axis of the tool and possibly coincident with said characteristic axis so that the image along said cutting plane substantially corresponds to the image that a user would see in a direction of view perpendicular to said characteristic axis of the tool, whereas the position of the characteristic axis of the tool is indicated in said image by two lines parallel to said axis and situated at a distance from each other at least corresponding to the tool size perpendicular to said characteristic axis, and the position of the target to be treated by said tool is also indicated.
17. A method as claimed in one or more of the preceding claims 12 to 16, **characterized in that** a marker is associated with the tool, for identifying and detecting the position and orientation of the tool or the characteristic axis thereof, which marker cooperates with detection means of a system for determining and/or tracking the position and orientation of the tool relative to a predetermined reference system.
18. A method as claimed in one or more of the preceding claims 12 to 16, **characterized in that** at least two or more identification and detection markers are associated with the tool, and are located at a certain distance from each other along said direction or said characteristic axis or along an axis parallel to said characteristic axis, which markers cooperate with detection means of a system for determining and/or tracking the position and orientation of the tool relative to a predetermined reference system.
19. A method as claimed in one or more of the preceding claims, **characterized in that** it provides simultane-

ous, side-by-side or alternate display of images of the target area as defined by at least one image plane coincident or parallel to the direction or characteristic axis of the tool and by at least one image plane having the predetermined inclination relative to the direction or the characteristic axis of the tool and the predetermined distance from the working end of the tool.

20. A method as claimed in claim 19, **characterized in that** in at least one of the images, the position of the tool is indicated by a symbol which is well differentiated from the image of the target area.
21. A method as claimed in one or more of the preceding claims 12 to 20, **characterized in that** the sequence of 3D images is acquired by an ultrasonic probe, whereas the position in space of the acquired image relative to a reference system is determined by probe position and displacement detection systems.
22. A method as claimed in one or more of the preceding claims 12 to 21, **characterized in that** a volumetric probe is used for acquiring the sequence of 3D images.
23. A method as claimed in one or more of the preceding claims 12 to 22, **characterized in that** the system for detecting or tracking the position and orientation of the tool or the characteristic axis thereof with reference to the 3D images consists in the image of the tool that appears in the sequence of the 3D images of the area being scanned.
24. A method as claimed in one or more of the preceding claims 12 to 22, **characterized in that** it comprises external means for tracking the position and orientation of the tool and/or the characteristic axis of the latter and the ultrasound probe, which means define a reference coordinate system and, in such system, the relative positions and orientations of the tool and the ultrasound probe.

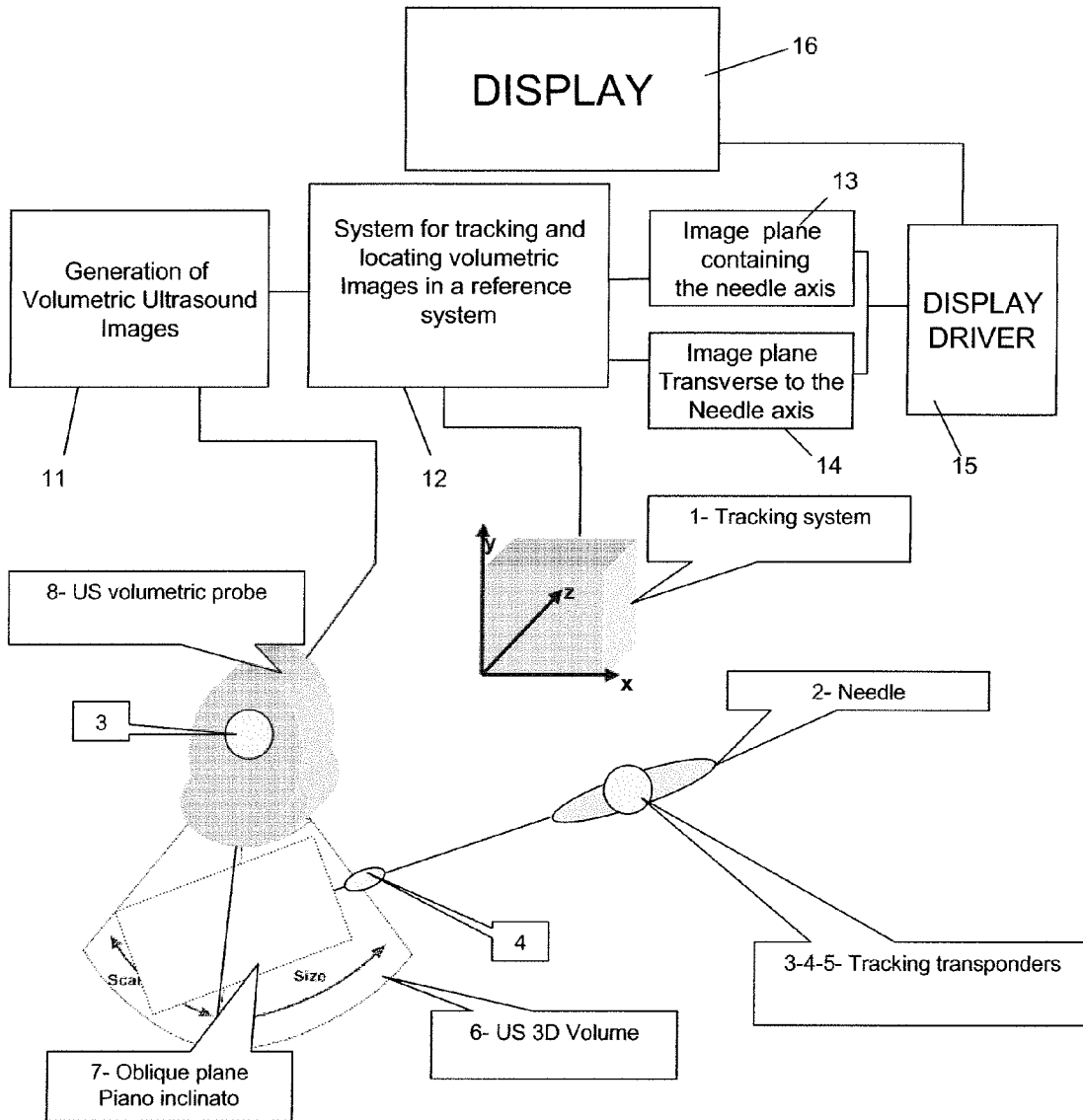


Fig. 1

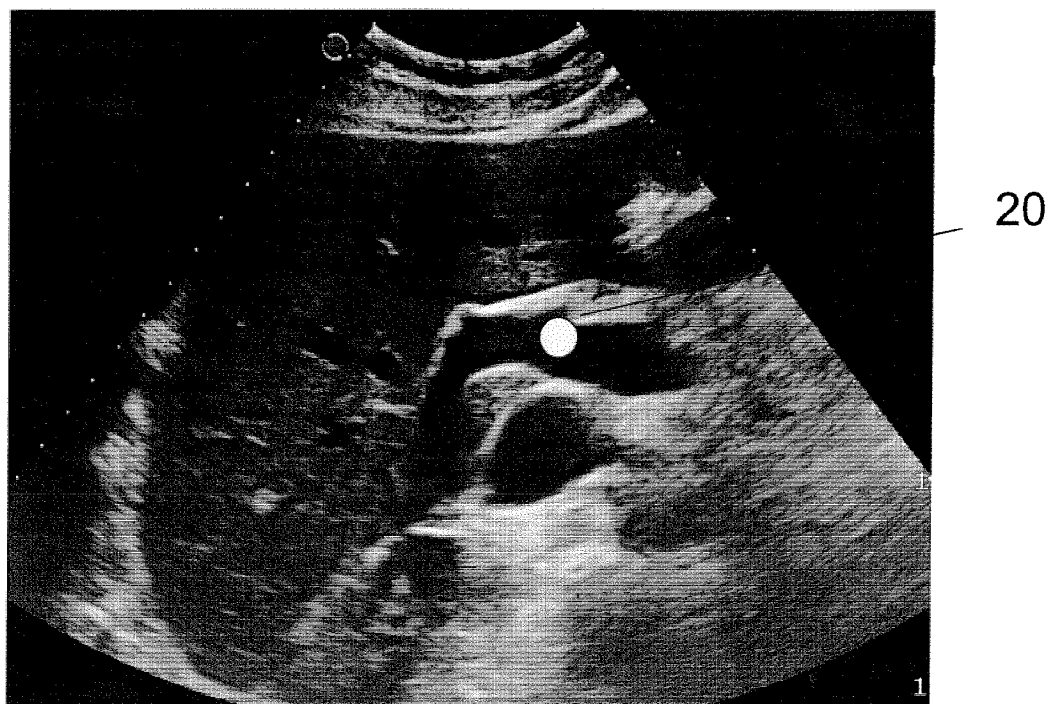


Fig. 2

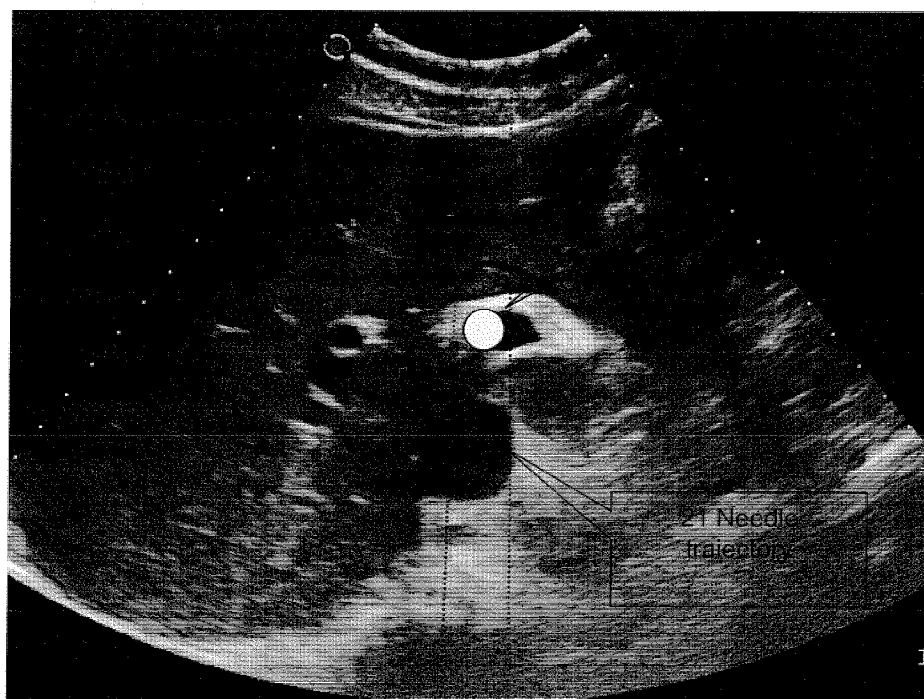


Fig. 3

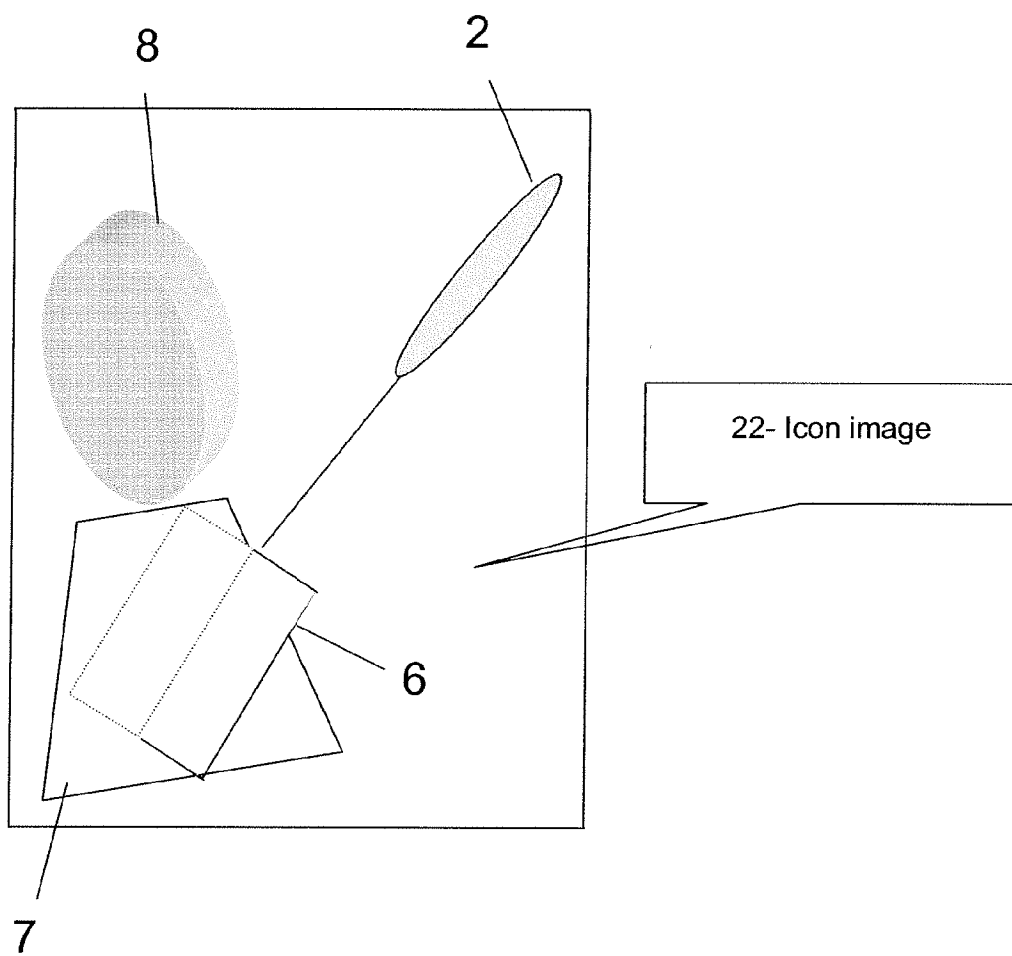


Fig. 4



EUROPEAN SEARCH REPORT

Application Number
EP 09 16 5926

DOCUMENTS CONSIDERED TO BE RELEVANT			
Category	Citation of document with indication, where appropriate, of relevant passages	Relevant to claim	CLASSIFICATION OF THE APPLICATION (IPC)
X	WO 2006/067676 A (KONINKL PHILIPS ELECTRONICS NV [NL]; HASELHOFF ELTJO H [NL]; THELISSEN) 29 June 2006 (2006-06-29)	1-6,8-11	INV. A61B8/08
Y	* the whole document *	7,12-24	ADD. A61B19/00
Y	WO 2005/039391 A (UNIV LELAND STANFORD JUNIOR [US]; SHAHIDI RAMIN [US]) 6 May 2005 (2005-05-06) * abstract * * page 14, line 20 - page 16, line 6 * * figures 3-6 *	7,12-24	
			TECHNICAL FIELDS SEARCHED (IPC)
			A61B
The present search report has been drawn up for all claims			
Place of search Munich		Date of completion of the search 21 August 2009	Examiner Willig, Hendrik
<p>CATEGORY OF CITED DOCUMENTS</p> <p>X : particularly relevant if taken alone Y : particularly relevant if combined with another document of the same category A : technological background O : non-written disclosure P : intermediate document</p> <p>T : theory or principle underlying the invention E : earlier patent document, but published on, or after the filing date D : document cited in the application L : document cited for other reasons</p> <p>& : member of the same patent family, corresponding document</p>			

1
EPO FORM 1503 03.82 (P04C01)

**ANNEX TO THE EUROPEAN SEARCH REPORT
ON EUROPEAN PATENT APPLICATION NO.**

EP 09 16 5926

This annex lists the patent family members relating to the patent documents cited in the above-mentioned European search report.
The members are as contained in the European Patent Office EDP file on
The European Patent Office is in no way liable for these particulars which are merely given for the purpose of information.

21-08-2009

Patent document cited in search report	Publication date	Patent family member(s)	Publication date
WO 2006067676 A	29-06-2006	NONE	

WO 2005039391 A	06-05-2005	EP 1680024 A2	19-07-2006
		EP 1689290 A2	16-08-2006
		JP 2007508913 T	12-04-2007
		JP 2007531553 T	08-11-2007
		US 2007276234 A1	29-11-2007
		US 2007225553 A1	27-09-2007
		WO 2005043319 A2	12-05-2005

REFERENCES CITED IN THE DESCRIPTION

This list of references cited by the applicant is for the reader's convenience only. It does not form part of the European patent document. Even though great care has been taken in compiling the references, errors or omissions cannot be excluded and the EPO disclaims all liability in this regard.

Patent documents cited in the description

- WO 2006067676 A [0006]
- WO 2005039391 A [0008]
- EP 1681019 A [0032] [0061] [0076] [0085]
- EP 1167996 A [0032] [0061] [0074] [0076] [0085]

专利名称(译)	用于通过超声成像引导手术工具的装置和方法		
公开(公告)号	EP2147636A1	公开(公告)日	2010-01-27
申请号	EP2009165926	申请日	2009-07-20
[标]申请(专利权)人(译)	百胜集团		
申请(专利权)人(译)	ESAOTE S.P.A.		
当前申请(专利权)人(译)	ESAOTE S.P.A.		
[标]发明人	DE BENI STEFANO MACCIO MARCO		
发明人	DE BENI, STEFANO MACCIÒ, MARCO		
IPC分类号	A61B8/08 A61B19/00 A61B90/00		
CPC分类号	A61B8/0833 A61B8/0841 A61B8/4245 A61B8/4254 A61B8/483 A61B34/20 A61B2090/364		
优先权	102008901647593 2008-07-24 IT		
其他公开文献	EP2147636B1		
外部链接	Espacenet		

摘要(译)

一种通过超声成像引导手术工具的装置。从3D图像，生成对应于来自工具尖端的视图的2D图像。

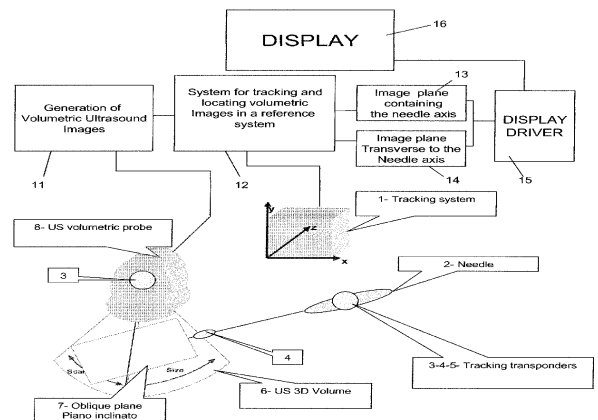


Fig. 1