

(19)



(11)

EP 2 051 638 B1

(12)

EUROPEAN PATENT SPECIFICATION

(45) Date of publication and mention of the grant of the patent:
10.02.2016 Bulletin 2016/06

(51) Int Cl.:
A61B 8/00 (2006.01) G01S 15/89 (2006.01)
G01S 7/52 (2006.01) A61B 8/08 (2006.01)

(21) Application number: **07805302.2**

(86) International application number:
PCT/IB2007/053062

(22) Date of filing: **03.08.2007**

(87) International publication number:
WO 2008/017994 (14.02.2008 Gazette 2008/07)

(54) **ULTRASOUND IMAGING SYSTEM.**

ULTRASCHALLBILDSYSTEM

SYSTÈME D'IMAGERIE ULTRASONORE

(84) Designated Contracting States:
AT BE BG CH CY CZ DE DK EE ES FI FR GB GR HU IE IS IT LI LT LU LV MC MT NL PL PT RO SE SI SK TR

- **GERARD, Olivier**
NL-5656 AE Eindhoven (NL)
- **THIELE, Karl**
NL-5656 AE Eindhoven (NL)

(30) Priority: **09.08.2006 EP 06300867**

(74) Representative: **Verweij, Petronella Daniëlle et al**
Philips Intellectual Property & Standards
High Tech Campus 5
5656 AE Eindhoven (NL)

(43) Date of publication of application:
29.04.2009 Bulletin 2009/18

(73) Proprietor: **Koninklijke Philips N.V.**
5656 AE Eindhoven (NL)

(56) References cited:
EP-A- 1 685 799 US-A- 5 615 680
US-A1- 2004 254 486

(72) Inventors:
• **ALLAIN, Pascal**
NL-5656 AE Eindhoven (NL)

EP 2 051 638 B1

Note: Within nine months of the publication of the mention of the grant of the European patent in the European Patent Bulletin, any person may give notice to the European Patent Office of opposition to that patent, in accordance with the Implementing Regulations. Notice of opposition shall not be deemed to have been filed until the opposition fee has been paid. (Art. 99(1) European Patent Convention).

Description**FIELD OF THE INVENTION**

[0001] The present invention relates to an ultrasound imaging system, and to a corresponding method.

BACKGROUND OF THE INVENTION

[0002] A medical ultrasound imaging system is disclosed in US 5,993,390 which makes it possible to acquire a three dimensional image of an organ. In the example disclosed, the organ is the heart. Such a system cooperates with a matrix of more than a thousand of piezoelectric elements with associated coaxial cables, which are called transducers forming a transducer's array, the transducers allowing to send ultrasound scan lines through the organ. It means that a piezoelectric element allows to transmit an ultrasound pulse, to receive a pressure wave and to convert it into an electrical signal. A scan line is composed of a plurality of electrical signals coming from the piezo-electric elements. This transducer's array and its electronics form an ultrasonic probe which is applied onto a patient body near the organ to be imaged. Hence, an ultrasound image is based upon all the ultrasound scan lines and interpolations between said scan lines, both allowing a definition of said image in different gray levels. The 3D images are usually used to detect a defect on the organ.

[0003] One drawback of said imaging system is that, in order to check an entire organ such as the left ventricle of the heart, with a good image quality, the 3D image rate is low because of the laws of physics governing the acquisition, in particular the speed of sound of 1540m/sec. Typically, the image rate is around 20 Hz (that means only twenty images per second). Indeed, the image acquisition rate is function of:

- The field of view,
- The number of scan lines,
- The scan lines density, and
- The depth of the image.

[0004] In order to decrease the time of acquisition, and thus to increase the image rate, one can decrease the number of scan lines or decrease the scan lines density. But unfortunately, this solution leads to a very low resolution of the image. It is therefore difficult to detect any defect on the organ via the use of the 3D ultrasound image at high image rate.

[0005] EP 1685799 discloses a method for acquiring images at different rates.

SUMMARY OF THE INVENTION

[0006] It is an object of the invention to propose an ultrasound imaging system which allows ultrasound 3D images acquisition of an organ with a good image reso-

lution in order to detect a synchronism defect between different parts of the organ.

[0007] To this end, the ultrasound imaging system comprises :

- A controller for controlling the following operations :
 - Acquisition at a first image rate of a first sequence of ultrasound images of an organ,
 - Acquisition at a second image rate of a second sequence of ultrasound three-dimensional images of a sub-volume covering a part of interest in said first sequence,
 - Acquisition at the second image rate of a third sequence of ultrasound three-dimensional images of a reference sub-volume, and
- A comparator for comparing said second and third sequences of three-dimensional images.

[0008] Hence, thanks to the images acquisition at two different image rates, one can first look for a part of said organ which can be interesting, and one can subsequently focus on said part with more precision and within a faster time acquisition. As a whole view of said part is available at high image rate, it is easier to quantify a synchronism defect as the quality of image is increased.

[0009] According to a not limited embodiment, the second image rate is equal to or higher than 50 Hz. It allows to focus on the sub-volumes with a very good spatial and temporal resolution which lead to a good quality of 3D image.

[0010] In a first embodiment, the images acquired during the first step at the first image rate are in two-dimensions. In this case, the first image rate may be higher than or equal to 40 Hz. It allows to have a large field of view of the organ.

[0011] In a second embodiment, the images acquired during the first step at the first image rate are in three-dimensions. It allows to have a more precise view of the part of the organ which is interesting.

[0012] According to a not limited embodiment, the system further comprises means for enabling selection of said part of interest in said first sequence of ultrasound images. It makes it possible to make an automatic selection or to help a user in selection of a part of interest.

[0013] According to a first variant of selection, the means for enabling selection of the part of interest are arranged to enable a selection based upon velocity information of some parts of the organ. It allows to make a quantitative detection of the part of interest.

[0014] According to a second variant of selection, the means for enabling selection of the part of interest, are arranged to enable a selection based upon a Color Kinesis ® method.

[0015] According to a not limited embodiment of an acquisition of images, the controller is arranged to control acquisition of a plurality of sequence of images in a plu-

rality of planes during a same time period. It allows obtaining an image of portions of lot of segments of the inner wall of the organ when the organ is represented by segments.

[0016] The present invention also relates to a method for ultrasound imaging which comprises the steps of :

- Acquiring at a first image rate a first sequence of ultrasound images of an organ,
- Acquiring at a second image rate a second sequence of ultrasound three-dimensional images of a sub-volume covering a part of interest in said first sequence,
- Acquiring at the second image rate a third sequence of ultrasound three-dimensional images of a reference sub-volume,
- Comparing said second and third sequences of three-dimensional images.

[0017] According to a not limited embodiment, the method further comprises a step of selecting the part of interest.

[0018] According to a first variant of selection, the step of selecting comprises :

- a step of acquiring velocity information of some parts of the organ,
- a step of colorization of these velocity information, and
- a step of visual assessment of a part of the organ whose color is not uniform with the other parts. It allows to make a qualitative detection of the part of interest.

[0019] According to a second variant of selection, the step of selecting comprises :

- a step of acquiring velocity curves associated to some parts of the organ, and
- a step of visual assessment of a delay between these velocity curves at a representative time. It allows to make a qualitative detection of the part of interest.

[0020] The present invention finally relates to a computer program product comprising program instructions for implementing said method.

[0021] These and other aspects of the invention will be apparent from and will be elucidated with reference to the embodiments described hereinafter.

BRIEF DESCRIPTION OF THE DRAWINGS

[0022] The present invention will now be described in more detail, by way of not limited examples, with reference to the accompanying drawings, wherein:

- Figure 1 is a schematic diagram of the ultrasound imaging system according to the present invention which cooperates with an ultrasonic probe;

- Figure 2 is a schematic drawing of an organ such as the heart, from which a sequence of images is acquired via the ultrasound imaging system of Fig. 1;
- Figure 3 is a first view of a segmentation of an organ such as the left ventricle of the heart, used by the ultrasound imaging system of Fig. 1;
- Figure 4 is a second view of a segmentation of an organ such as the left ventricle of the heart, used by the ultrasound imaging system of Fig. 1;
- Figure 5 represents a first variant of images acquisition by means of the ultrasound imaging system of Fig. 1;
- Figure 6 is a schematic diagram of the left ventricle of the heart used when the variant of Figure 5 is applied;
- Figure 7 shows two curves used within the variant of Figure 5;
- Figure 8 represents a second variant of images acquisition by means of the ultrasound imaging system of Fig. 1;
- Figure 9 is a first schematic diagram of the left ventricle of the heart with its walls used within the variant of Figure 8;
- Figure 10 is a second schematic diagram of the left ventricle of the heart with its walls used within the variant of Figure 8;
- Figure 11 is a third schematic diagram of the left ventricle of the heart with its walls used within the variant of of Figure 8;
- Figure 12 is a fourth schematic diagram of the left ventricle of the heart with its walls used within the variant of Figure 8;
- Figure 13 is a schematic diagram of a sequence of images of the left ventricle of the heart acquired in two different planes by the ultrasound imaging system of Figure 1;
- Figure 14 shows a first sub-volume of a part of the heart acquired via the ultrasound imaging system of Fig. 1;
- Figure 15 shows a second sub-volume of a part of the heart acquired via the ultrasound imaging system of Fig. 1; and
- Figure 16 represents a diagram of an embodiment of a method for ultrasound imaging according to the invention.

DETAILED DESCRIPTION OF THE INVENTION

[0023] The ultrasound imaging system SYS can be used to acquire images of any organ such as the heart. The example of a heart HRT will be considered in the following description, and more precisely the left ventricle of the heart.

[0024] The ultrasound imaging system SYS is described in Figure 1.

[0025] It cooperates with a transducer's array TAR and its associated electronics, the whole forming an ultrasonic probe PRB.

[0026] The system SYS comprises :

- A controller CTRL for controlling acquisition of a sequence of images via said ultrasonic probe PRB. This controller CTRL makes it possible to change the image rate acquisition, and to configure the piezoelectric elements of the transducer's array TAR in order to perform the following operations :
 - Acquisition of a first sequence of ultrasound images I1 of an organ at a first image rate IR1,
 - Acquisition at a second image rate IR2 of a second sequence of ultrasound three-dimensional images of a sub-volume S_V1 covering a part of interest RI/VI in said first sequence I1,
 - Acquisition of a third sequence of ultrasound three-dimensional images of a reference sub-volume S_V0 at the second image rate IR2,
- A comparator CMP for comparing said first sub-volume S_V1 with said reference sub-volume S_V0 based upon the three-dimensional images sequences,
- A screen SCR for displaying the sequences of ultrasound images acquired, such as a LCD screen, and
- A user interface M_USER.

[0027] It is to be noted that the controller CTRL comprises a microprocessor that can be preprogrammed by means of instructions or that can be programmed by a user of the system SYS via the interface M_USER.

[0028] In a not limited embodiment, the ultrasound imaging system SYS further comprises :

- Means M_SEL for enabling selection of the part of interest RI/VI within said first sequence of images I1,
- Means M_DEF for determining the first sub-volume S_V1 covering said part of interest RI/VI and for determining the reference sub-volume S_V0.

[0029] One reminds that a heart HRT is composed of a left and a right ventricles LV and RV, an aorta AO, and a left and right atrium LA and RA as shown in Figure 2, and that the arterial blood goes from the left ventricle LV to the aorta AO while the right ventricle RV exits the venous blood received from the right atrium RA to the pulmonary artery. As the way the left ventricle LV is working is indicative of the health of the heart HRT, one focus more particularly on said left ventricle LV when using the ultrasound imaging system SYS.

[0030] Referring now to Figure 3, the inner wall of left ventricle LV of the heart HRT is segmented in seventeen segments SG as defined in the standard "Standardized Myocardial Segmentation and Nomenclature for Tomographic Imaging of the Heart" by the Cardiac Imaging Committee of the Council on Clinical Cardiology of the American Heart Association. Thus, Figure 3 is a display on a circumferential polar plot of such a segmentation

and Figure 4 is a 3D view of such segmentation. The seventeen segments are named by the standard. For example, the segment number 17 is the apex, and the segments number 1 and 7 which identify the locations of the anterior wall at the base and mid-cavity are named basal anterior and mid-anterior. Such a segmentation may be used by the ultrasound imaging system as described below.

[0031] It should be noted that in the present application, the left ventricle LV of the heart HRT is in itself considered as an organ.

[0032] In order to acquire images of a heart HRT, the ultrasonic probe PRB is applied on the body of a patient, at the apex near the heart in a not limited embodiment, and the ultrasound imaging system SYS performs the operations described hereinafter.

1) Acquisition of a first sequence of ultrasound images I1 of the heart HRT, more particularly of the left ventricle LV, at a first image rate IR1. This image rate IR1 is chosen in order to have a large field of view so as to view the entire heart or at least the entire left ventricle LV.

[0033] In a first embodiment, the acquisition can be made in three-dimensions at a first image rate IR1 between 15 et 30HZ. It is to be noted that if the image rate is lower, one can't see the image moving. This 3D acquisition allows obtaining a volume and then making some section in any plane. It is to be noted that in order to view the entire volume of the left ventricle LV, the images acquisition is performed during four cardiac cycles, wherein one fourth of the left ventricle LV is acquired at each cardiac cycle.

[0034] In a second embodiment, the acquisition can be made in two-dimensions at a first image rate IR1 higher than or equal to 40Hz. In a not limited embodiment, this rate may be as high as 180Hz, depending on the structure of the transducer's array TAR. This 2D acquisition is faster than the 3D acquisition but it is only done in a plane perpendicular to the transducer's array TAR.

[0035] In order for the user to choose between the 2D or 3D acquisition, the user interface M_USER comprises means for choosing between these two modes.

2) Selection of a region/volume of interest RI/VI.

[0036] According to a first variant, in a first step 1, one uses the tissue Doppler imaging method, well-known by the person skilled in the art, to acquire velocity information SPD of the segments of the left ventricle LV. The result is a sequence of velocity images of the segments when they move, for example, toward the transducer's array TAR.

[0037] In a second step 2a), and in a first embodiment of this first variant, firstly (2a1), a color CLR is associated to the velocity SPD of the segments of the heart HRT in order to be displayed on the screen SCR. For example,

a red color can be used when the segments contract whereas a blue color can be used when the segments relax. When the heart is working correctly, the whole left ventricle LV should be displayed in red when it contracts, and in blue when it relaxes. If it is not the case, the left ventricle LV is displayed for some parts in red and for other parts in blue. The colors are not uniform. It means that some segments contract or relax later than other segments of the heart HRT because their speed peak are different.

[0038] Secondly (2a2), these segments which define some region/volume of interest R1/V1, are selected. This may be performed automatically by the means M_SEL for enabling selection.

[0039] It is to be noted that, of course, the automatic detection and selection of the region/volume RI/VI based on the difference of colors in a same phase (contraction or relaxation) can be replaced by a visual assessment. To this end, the user interface M_USER comprises means to let the user choose between the automatic and the visual detection/selection of a part of interest RI/VI. In this case the means M_SEL for enabling selection of a part of interest only comprise the means for acquiring the colored velocity images.

[0040] In a second step 2b), and in a second embodiment of this first variant, velocity curves are defined based on the velocity images.

[0041] Firstly (sub-step 2b1), a cursor C is positioned on the image I1 displayed at a first position C1 corresponding to a first segment SG1 of the left ventricle LV, as illustrated in Figure 6 where one slice of a volume V is represented (in the example of 3D image acquisition). A first curve CV1, as illustrated in Figure 7, is defined based upon the velocity images. This curve represents the motion of a portion of the first segment SG1 of the left ventricle LV. As shown in Figure 7, the X-axis represents the time and the Y-axis represents the speed of the motion (in centimeter per second).

[0042] Secondly (sub-step 2b2), the cursor C is positioned on the image I1 displayed at a second position C2 corresponding to a second segment SG2 of the heart HRT. A second curve of motion CV2, as illustrated in Figure 7, is defined.

[0043] Thirdly (sub-step 2b3), one detects a representative time on the two curves CV1 and CV2, here in a not limited embodiment, a time to peak velocity TPV, which is the time at which the portion of a segment of the heart HRT moves the faster, and one compares the two times to peak velocity TPV1, TPV2, in order to detect a delay TD between these two times. In the example of Figure 7, a delay TD is found between segment SG1 and segment SG2.

[0044] Finally (sub-step 2b4), if a delay TD superior to a predetermined threshold is detected, a region of interest RI (in the case of 2D images acquisition) or volume of interest VI (in the case of 3D images acquisition) to be further analyzed is selected.

[0045] If no delay is detected or the delay is too low,

then the second and third sub-steps 2b2, 2b3 are repeated, until a delay between the first segment SG1 and another segment SGN is detected.

[0046] To this end, the second position C2 of the cursor C is changed and one repeats the second and further sub-steps until a delay is detected.

[0047] It is to be noted that more than two cursors can be used if wanted.

[0048] It is to be noted that, of course, the automatic detection of a delay between the two curves, and therefore the automatic selection of the region/volume of interest RI/VI can be replaced by a visual assessment. To this end, the user interface M_USER comprises means to let the user choose between the automatic and the visual selection. In this case the means for enabling selection of a part of interest only comprise the means for computing the curves CV1 and CV2.

[0049] According to a second variant, in a first step 1) illustrated in Fig. 8, after acquisition of the 2D or 3D sequences of images, one determines the inner wall WI of the left ventricle LV. This is done automatically, in a not limited example, by an acoustic quantification method well-known from the person skilled in the art.

[0050] In a second step 2), one follows the contraction of the inner wall WI during a period TSD representative of a systole phase. The inner wall WI and outer wall WO are illustrated in Figure 9.

[0051] One reminds that the systole phase is a phase where the heart HRT contracts which leads to the ejection of the blood into the arteries, and the diastole phase is a phase where the heart HRT relaxes. In order to determine the systole phase, one uses an electrocardiogram ECG of the patient which shows the beginning and the end of the systole. Thus, the acquisition of the ultrasound images are synchronized on said electrocardiogram ECG. In order to make the synchronisation, the ultrasound imaging system SYS comprises an ECG trigger ECG_T. This period TSD is a function of the images rate acquisition IR and can be divided in a number of predefined intervals TIn. This number of intervals depends on the heart rate and the image rate. During each interval TI, one can follow the motion of the inner wall WI from a first time ti to a second time ti+1 of an interval TI. In the example given in Figures 9 to 12, the first interval TI1 is defined by the two times t0 and t1, the second interval TI2 by the the two times t1 and t2,etc.

[0052] In case of a 2D image acquisition, the interval TI may for instance be equal to 10ms which corresponds to an image rate IR1 of 100 Hz.

[0053] The interval will be lower in the case of a 3D image acquisition.

[0054] It is to be noted that the period TSD may also be the diastole phase.

[0055] In a third step 3), one defines a contour associated to each motion of the inner wall WI and which corresponds to each interval TI. In the example illustrated, five surfaces S1 to S5 are drawn, a surface being delimited by two contours. Then, the surfaces SI are

colored with a technique called Color Kinesis® CK well-known by the person skilled in the art. It displays both the magnitude and timing of endocardial motion in real time. The color kinesis display superimposes a color overlay on a two dimensional echocardiographic image. The number of pixels represents the magnitude of endocardial motion, while the different colors represent the timing of endocardial motion according to a predefined color encoded map.

[0056] In a fourth step 4), thanks to the colors applied, the regions/volumes of the heart HRT which contracts correctly and the regions/volumes which do not can be differentiated. These later regions/volumes represent regions/volumes of interest RI/VI that can be selected.

[0057] In the examples of Figures 9 and 10, all the regions/volumes of the heart HRT contracts correctly, whereas in Figure 11 a region/volume of interest RI1/VI1 of the heart HRT doesn't contract at all and in Figure 12, a region/volume of interest RI2/VI2 of the heart HRT contracts with a delay.

[0058] It is to be noted that, of course, the automatic detection of a difference of colors, and therefore the automatic selection of the region/volume RI/VI can be replaced by a visual assessment. To this end, the user interface M_USER comprises means to let the user chose between the automatic and the visual selection.

[0059] In another embodiment (not represented) of this second variant, in the third step 3), one can also extract a velocity curve (as described in the first variant) of a segment of said inner wall WI, the displacement being taken perpendicular to the inner wall (for example axis AX0 as illustrated in Figure 10) or toward the center of gravity of the LV, or toward a predefined axis (for example axis AX1 as illustrated in Figure 10).

[0060] It is to be noted that an X-plane mode can be used in the acquisition operation at the first rate IR1 as explained below.

[0061] The X-Plane mode acquisition makes it possible to acquire sequences of images in a plurality of planes during a same time period, for example during a systole phase.

[0062] For example as illustrated in Figure 13, at least two sequences of images in two different planes P1 and P2 are acquired. It is called a bi-plane mode. A first image I1_1 of the first plane P1 is acquired as illustrated in Figure 13, which is taken as a baseline, and a second image I1_2 of the second plane P2 shifted from some degrees from the baseline. In a not limited embodiment, the shifting is of 60°.

[0063] In a not limited embodiment, three sequences of images are acquired in three different planes P1, P2, P3. The baseline, one sequence shifted from 60° from the baseline and the last one shifted from 120° from the baseline. It allows to have an image of three portions of segments which are in different segments SG of the left ventricle LV.

[0064] For example, the first plane P1 will allow to have an image of a first portion which is in the segments 1, 7,

1, 13, 15, 10 and 4, the second plane P2 will allow to have an image of a second portion which is in the segments 2, 8, 14, 17, 16, 11, 5, and the last plane P3 will allow to have an image of a third portion which is in the segments 3, 9, 14, 17, 16, 12, and 6. Hence, all the segments of the left ventricle are covered.

[0065] In the 2D acquisition, one acquires these two (or three) sequences simultaneously.

[0066] In the 3D acquisition, a volume is acquired and one subsequently acquires two (or three) different sections to obtain these two (or three) sequences.

[0067] It is to be noted that this X-plane mode can also be used for a visual assessment about the existence of some displacement difference between two (or three) different portions of segments, displacement such as radial extension. Such large displacements are visible to the naked eye and show that a delay of contraction between two different segments SG exists. If a delay is detected, a region (if 2D images are acquired) or volume (if 3D images are acquired) of interest RI/VI where a delay exists is selected by the user via the user interface M_USER.

[0068] Hence the controller CTRL and the means for enabling selection M_SEL make it possible to perform a screening of region(s)/volume(s) of interest RI/VI, in order to look for any asynchronism between different parts of the left ventricle LV quantitatively (by way of different curves, or by way of colorization) but in a not precise way. Of course, alternatively, as described before, a qualitative screening (by visual assessment with or without the help of colorization) may be performed.

3) Determination of a sub-volume S_V1, focused on said selected region/volume of interest RI/VI, via the determination means M_DEF. The position and size of said sub-volume S_V1 on the sequence of images I1 (2D or 3D sequence) can be displayed on the screen SCR for example in dash lines.

[0069] The sub-volume S_V1 may be automatically determined and displayed on the screen SCR with its parameters (depth R1, azimuth angle θ_1 and elevation angle) in order to cover the region/volume RI/VI of interest.

[0070] Then, the user can change manually the position and size of said sub-volume (for example with two cursors CC1, CC2 displayed on the screen SCR as illustrated in Figure 14) in order to obtain another image rate for example. To this end, the user interface M_USER comprises means in order to give the user this possibility. It is to be noted that the image rate is a function of the size of the sub-volume S_V1 (at a constant density of scan lines).

[0071] Of course, alternatively, the user can determine himself manually this sub-volume S_V1 with the two cursors CC1, CC2. If the sequence of images acquired at the first rate IR1 are in 2D, the user can define the elevation angle by viewing a second plane P2 of images for

example.

[0072] Thus, the user interface M_USER may comprise means which give the user the choice between an automatic and a manual sub-volume determination.

4) Acquisition of the second sequence of ultrasound three-dimensional images I3D_1 of said sub-volume S_V1 at a second image rate IR2. In a not limited embodiment, this second image rate IR2 is higher or equal to 50Hz. It allows to focus on the region/volume RI/VI with a very good spatial and temporal resolution which lead to a good quality of 3D image.

[0073] It is to be noted that the technique of acquiring a 3D image is well-known by the person skilled in the art and therefore will not be described here.

[0074] It is to be noted that by acquiring 3D dimensional images at a high image rate IR2, a faster acquisition is possible. For example, when the image rate acquisition is increased up to 80Hz, one goes four times faster than when the image rate acquisition is of 20 Hz.

[0075] It is to be noted that the transducer's array used produces a number of scan lines which are spaced, in a not limited embodiment between 0,5° and 1,5°, from each other. This leads to a good density of scan lines which allows obtaining a good spatial resolution of the 3D ultrasound images and thus a better quality of image.

[0076] This 3D sequence I3D_1 of images may be displayed on the screen SCR.

5) Determination of another sub-volume S_V0 which is taken as a reference as illustrated in Figure 15 via the determination means M_DEF.

Of course, in the same way as for the first sub-volume S_V1, alternatively, the user can perform himself this operation.

6) Acquisition of the third sequence of 3D images I3D_2 corresponding to said reference sub-volume S_V0. This 3D sequence I3D_2 of images may be displayed on the screen SCR.

7) Comparison of the sub-volume S_V1 with the reference sub-volume S_V0 via the comparator CMP. This comparison can be performed in many different ways. For instance, it is possible to compute displacement curves representing the displacement of the sub-volume S_V1 and the reference sub-volume S_V0 during a cardiac cycle. If these curves are identical, then there is no asynchronism between the sub-volume S_V1 and the reference sub-volume S_V0. If the curves are different, then there may be asynchronism. One may for instance detect a delay TDL between these two curves at a representative time (such as the time of maximum displacement). As it is known in the field of 3D ultrasonic images, and in particular in Cardiac Resynchronisation Therapy, how to compare 2 different volumes, there is no need

to describe it further. The main difference between the present invention and the prior art is that this comparison is performed between images acquired at higher image rate than in the prior art, which leads to a much more precise comparison.

[0077] The result of the comparison may be displayed on the screen SCR. For instance, the user may be warned that there is a delay TDL between the sub-volume S_V1 and the reference sub-volume S_V0.

[0078] As a summary, Fig. 16 illustrates the method for ultrasound imaging according to the invention where one can see the different operations controlled by the system SYS. Of course, some operations may be performed in parallel. For example, the acquisition of the 3D sequence of the sub-volume S_V1 covering the part of interest RI/VI and the acquisition of the 3D sequence of the reference sub-volume S_V0 may be performed in parallel and may both be displayed on the screen SCR of the system SYS.

[0079] It is to be noted that such an ultrasound imaging system SYS may be used in a plurality of applications for the heart such as, but not limited to, synchronisation measurements.

[0080] The synchronisation measurement allows to detect if a part of the left ventricle is contracting in synchronism with another part of the left ventricle and to detect a potential defect if not. Thanks to the ultrasound imaging system described, one can see if there is a synchronisation or not. Subsequently, one can use a pacemaker to correct this defect of the heart and to stimulate the part of the heart which doesn't work correctly. It is to be noted that there is a synchronism defect of the heart if the delay of contraction between two parts of said heart is around 40ms. One can understand that with the image rate of the 3D acquisition by means of the system described, one can detect such a defect, which would not be possible with the 3D image acquisition rate of 20 Hz (50ms between two images) of the prior art.

[0081] Hence, the ultrasound imaging system of the present invention that has been described comprises the following advantages:

- As seen before, it allows to detect dysfunction between two different parts of the heart with the synchronisation measurement.
- Thanks to the 3D acquisition, one can obtain a sequence of images with a significant number of images (superior or equal to 50 images per second) of the part of the heart which can have some problem in order to have a precise view and this with a good resolution (the number of scan lines being kept around a thousand or more). In this case, one have a good field of view as the image rate acquisition and the density of scan lines are satisfying.
- Moreover, thanks to the acquisition of the first se-

quence of images by the ultrasound imaging system described, one can perform some global volume measurement as the first step gives the inner wall of the heart.

[0082] One reminds that the global volume measurement consists in measuring the volume of blood within the cavity of the heart. More particularly, the ejection fraction EF, which is the fraction of blood ejected by the ventricle relative to its end-diastolic volume, is computed. Therefore, EF is calculated from: $EF = (SV / EDV) \cdot 100$ where SV = stroke volume, EDV = end-diastolic volume.

[0083] Hence, a good estimates of end-diastolic (EDV) and end-systolic volumes (ESV), and stroke volume (SV = EDV-ESV) is provided.

- With the ultrasound imaging system described, one can prevent some heart failure and one can apply the appropriate therapy, for example a cardiac resynchronisation therapy CRT which consists in stimulating the heart's chambers (ventricles plus atriums) to beat simultaneously, so that they are more efficient in pumping blood to the body. The stimulation can take place via a pulse generator and pacing leads (pacemaker), which are placed next to the heart's tissue.

[0084] It should be noted that the above-mentioned embodiments illustrate rather than limit the invention, and that those skilled in the art will be capable of designing many alternative embodiments without departing from the scope of the invention as defined by the appended claims.

[0085] In the claims, any reference signs placed in parentheses shall not be construed as limiting the claims. The word "comprising" and "comprises", and the like, does not exclude the presence of elements or steps other than those listed in any claim or the specification as a whole. The singular reference of an element does not exclude the plural reference of such elements and vice-versa.

[0086] The invention may be implemented by means of hardware comprising several distinct elements, and by means of a suitably programmed computer. In a device claim enumerating several means, several of these means may be embodied by one and the same item of hardware. The mere fact that certain measures are recited in mutually different dependent claims does not indicate that a combination of these measures cannot be used to advantage.

Claims

1. An ultrasound images acquisition system, comprising :

- A controller (CTRL) for controlling the following

operations :

- Acquisition at a first image rate (IR1) of a first sequence of ultrasound images (I1) of an organ (LV),
- Acquisition at a second image rate (IR2) of a second sequence of ultrasound three-dimensional images (I3D_1) of a sub-volume (S_V1) covering a part of interest (RI/VI) in said first sequence (I1),
- Acquisition at the second image rate (IR2) of a third sequence of ultrasound three-dimensional images (I3D_2) of a reference sub-volume (S_V0),

and

- A comparator (CMP) for comparing said second and third sequences of three-dimensional images (I3D_1, I3D_2).

2. An ultrasound images acquisition system as claimed in claim 1, wherein the second image rate (IR2) is equal to or higher than 50 Hz.
3. An ultrasound images acquisition system as claimed in claim 1, wherein the images (I1) acquired at the first image rate (IR1) are in two-dimensions.
4. An ultrasound images acquisition system as claimed in claim 3, wherein the first image rate (IR1) is higher than or equal to 40 Hz.
5. An ultrasound images acquisition system as claimed in claim 1, wherein the images (I1) acquired at the first image rate (IR1) are in three-dimensions.
6. An ultrasound images acquisition system as claimed in claim 1, further comprising means for enabling selection of said part of interest (RI, VI) in said first sequence of ultrasound images (I1).
7. An ultrasound images acquisition system as claimed in claim 6, wherein the means for enabling (M_SEL) selection of the part of interest (RI/VI) are arranged to enable a selection based upon velocity information of some parts of the organ.
8. An ultrasound images acquisition system as claimed in claim 7, wherein the means for enabling selection (M_SEL) of the part of interest (RI/VI), are arranged to enable a selection based upon a Color Kinesis ® method (CK).
9. An ultrasound images acquisition system as claimed in claim 1, wherein the controller (CTRL) is arranged to control acquisition of a plurality of sequences of images in a plurality of planes (P1, P2, P3) during a same time period.

10. A method for ultrasound imaging, comprising the steps of:

- Acquiring at a first image rate (IR1) a first sequence of ultrasound images (I1) of an organ (LV),
- Acquiring at a second image rate (IR2) a second sequence of ultrasound three-dimensional images (I3D_1) of a sub-volume (S_V1) covering a part of interest (RI/VI) in said first sequence (I1),
- Acquiring at the second image rate (IR2) a third sequence of ultrasound three-dimensional images (I3D_2) of a reference sub-volume (S_V0), and
- Comparing said second and third sequences of three-dimensional images (I3D_1, I3D_2).

11. A method for ultrasound imaging as claimed in claim 10, further comprising a step of selecting the part of interest (RI/VI).

12. A method for ultrasound imaging as claimed in claim 11, wherein the step of selecting comprises :

- a step of acquiring velocity information of some parts of the organ,
- a step of colorization of these velocity information, and
- a step of visual assessment of a part of the organ whose color is not uniform with the other parts.

13. A method for ultrasound imaging as claimed in claim 11, wherein the step of selecting comprises :

- a step of acquiring velocity curves (CV1, CV2) associated to some parts of the organ, and
- a step of visual assessment of a delay (TD) between these velocity curves (CV1, CV2) at a representative time (TPV).

14. A computer program product comprising program instructions for implementing, when said program is executed by a processor, a method as claimed in claim 10.

Patentansprüche

1. Ultraschallbilderfassungssystem, das Folgendes umfasst:

- eine Steuereinheit (CTRL) zum Steuern der folgenden Vorgänge:
- Erfassung einer ersten Sequenz von Ultraschallbildern (I1) eines Organs (LV) mit

einer ersten Bildrate (IR1),
 - Erfassung einer zweiten Sequenz von dreidimensionalen Ultraschallbildern (I3D_1) eines Teilvolumens (S_V1), das einen interessierenden Teil (RI/VI) in der genannten ersten Sequenz (I1) abdeckt, mit einer zweiten Bildrate (IR2)
 - Erfassung einer dritten Sequenz von dreidimensionalen Ultraschallbildern (I3D_2) eines Referenz-Teilvolumens (S_V0) mit der zweiten Bildrate (IR2),

und

- eine Komparatoreinheit (CMP) zum Vergleichen der genannten zweiten und dritten Sequenzen von dreidimensionalen Bildern (I3D_1, I3D_2).

2. Ultraschallbilderfassungssystem nach Anspruch 1, wobei die zweite Bildrate (IR2) 50 Hz oder mehr beträgt.

3. Ultraschallbilderfassungssystem nach Anspruch 1, wobei die Bilder (I1), die mit der ersten Bildrate (IR1) erfasst werden, zweidimensional sind.

4. Ultraschallbilderfassungssystem nach Anspruch 3, wobei die erste Bildrate (IR1) 40 Hz oder mehr beträgt.

5. Ultraschallbilderfassungssystem nach Anspruch 1, wobei die Bilder (I1), die mit der ersten Bildrate (IR1) erfasst werden, dreidimensional sind.

6. Ultraschallbilderfassungssystem nach Anspruch 1, das weiterhin Mittel zum Ermöglichen der Auswahl des genannten interessierenden Teils (RI, VI) in der genannten ersten Sequenz von Ultraschallbildern (I1) umfasst.

7. Ultraschallbilderfassungssystem nach Anspruch 6, wobei die Mittel zum Ermöglichen der Auswahl (M_SEL) des genannten interessierenden Teils (RI, VI) dafür ausgelegt sind, eine Auswahl basierend auf Geschwindigkeitsinformationen von einigen Teilen des Organs zu ermöglichen.

8. Ultraschallbilderfassungssystem nach Anspruch 7, wobei die Mittel zum Ermöglichen der Auswahl (M_SEL) des interessierenden Teils (RI/VI) dafür ausgelegt sind, eine Auswahl basierend auf einer Color Kinesis® Methode (CK) zu ermöglichen.

9. Ultraschallbilderfassungssystem nach Anspruch 1, wobei die Steuereinheit (CTRL) dafür ausgelegt ist, die Erfassung einer Vielzahl von Bildsequenzen in einer Vielzahl von Ebenen (P1, P2, P3) während der gleichen Zeitspanne zu steuern.

10. Verfahren zur Ultraschallbildgebung, das die folgenden Schritte umfasst:

- Erfassen einer ersten Sequenz von Ultraschallbildern (I1) eines Organs (LV) mit einer ersten Bildrate (IR1),
- Erfassen einer zweiten Sequenz von dreidimensionalen Ultraschallbildern (I3D_1) eines Teilvolumens (S_V1), das einen interessierenden Teil (R1/V1) in der genannten ersten Sequenz (I1) abdeckt, mit einer zweiten Bildrate (IR2),
- Erfassen einer dritten Sequenz von dreidimensionalen Ultraschallbildern (I3D_2) eines Referenz-Teilvolumens (S_V0) mit der zweiten Bildrate (IR2), und
- Vergleichen der genannten zweiten und dritten Sequenzen von dreidimensionalen Bildern (I3D_1, I3D_2).

11. Verfahren zur Ultraschallbildgebung nach Anspruch 10, das weiterhin einen Schritt des Auswählens des interessierenden Teils (R1/V1) umfasst.

12. Verfahren zur Ultraschallbildgebung nach Anspruch 11, wobei der Schritt des Auswählens Folgendes umfasst:

- einen Schritt des Erfassens von Geschwindigkeitsinformationen von einigen Teilen des Organs,
- einen Schritt des Einfärbens dieser Geschwindigkeitsinformationen, und
- einen Schritt der visuellen Beurteilung eines Teils des Organs, dessen Farbe nicht mit den anderen Teilen einheitlich ist.

13. Verfahren zur Ultraschallbildgebung nach Anspruch 11, wobei der Schritt des Auswählens Folgendes umfasst:

- einen Schritt des Erfassens von zu einigen Teilen des Organs gehörigen Geschwindigkeitskurven (CV1, CV2), und
- einen Schritt der visuellen Beurteilung einer Verzögerung (TD) zwischen diesen Geschwindigkeitskurven (CV1, CV2) zu einem repräsentativen Zeitpunkt (TPV).

14. Computerprogrammprodukt umfassend Programmanweisungen zum Durchführen eines Verfahrens nach Anspruch 10, wenn das genannte Programm durch einen Prozessor ausgeführt wird.

Revendications

1. Système d'acquisition d'images par ultrasons,

comprenant :

un appareil de commande (CTRL) pour commander les opérations suivantes :

- l'acquisition, à une première cadence d'image (IR1), d'une première séquence d'images par ultrasons (I1) d'un organe (LV),
- l'acquisition, à une seconde cadence d'image (IR2), d'une deuxième séquence d'images tridimensionnelles par ultrasons (I3D_1) d'un sous-volume (S_V1) couvrant une partie d'intérêt (R1/V1) dans ladite première séquence (I1),
- l'acquisition, à la seconde cadence d'image (IR2), d'une troisième séquence d'images tridimensionnelles par ultrasons (I3D_2) d'un sous-volume de référence (S_V0), et

un comparateur (CMP) pour comparer lesdites deuxième et troisième séquences d'images tridimensionnelles (I3D_1, I3D_2).

2. Système d'acquisition d'images par ultrasons selon la revendication 1, dans lequel la seconde cadence d'image (IR2) est égale à ou supérieure à 50 Hz.

3. Système d'acquisition d'images par ultrasons selon la revendication 1, dans lequel les images (I1) acquises à la première cadence d'image (IR1) sont en deux dimensions.

4. Système d'acquisition d'images par ultrasons selon la revendication 3, dans lequel la première cadence d'image (IR1) est supérieure ou égale à 40 Hz.

5. Système d'acquisition d'images par ultrasons selon la revendication 1, dans lequel les images (I1) acquises à la première cadence d'image (IR1) sont en trois dimensions.

6. Système d'acquisition d'images par ultrasons selon la revendication 1, comprenant en outre des moyens pour permettre la sélection de ladite partie d'intérêt (R1, V1) dans ladite première séquence d'images par ultrasons (I1).

7. Système d'acquisition d'images par ultrasons selon la revendication 6, dans lequel les moyens pour permettre la sélection (M_SEL) de la partie d'intérêt (R1/V1) sont agencés pour permettre une sélection en fonction d'information de vitesse de certaines parties de l'organe.

8. Système d'acquisition d'images par ultrasons selon la revendication 7, dans lequel les moyens pour per-

mettre la sélection (M_SEL) de la partie d'intérêt (R1/V1), sont agencés pour permettre une sélection en fonction d'une méthode Color Kinesis ® (CK).

instructions de programme pour implémenter, lorsque ledit programme est exécuté par un processeur, un procédé selon la revendication 10.

9. Système d'acquisition d'images par ultrasons selon la revendication 1, dans lequel l'appareil de commande (CTRL) est agencé pour commander l'acquisition d'une pluralité de séquences d'images dans une pluralité de plans (P1, P2, P3) durant une même période. 5
10
10. Procédé pour imagerie par ultrasons, comprenant les étapes de :
- l'acquisition, à une première cadence d'image (IR1), d'une première séquence d'images par ultrasons (I1) d'un organe (LV), 15
 - l'acquisition, à une seconde cadence d'image (IR2), d'une deuxième séquence d'images tridimensionnelles par ultrasons (I3D_1) d'un sous-volume (SV_1) couvrant une partie d'intérêt (R1/V1) dans ladite première séquence (I1), 20
 - l'acquisition, à la seconde cadence d'image (IR2), d'une troisième séquence d'images tridimensionnelles par ultrasons (I3D_2) d'un sous-volume de référence (S_V0), et 25
 - la comparaison desdites deuxième et troisième séquences d'images tridimensionnelles (I3D_1, I3D_2). 30
11. Procédé pour imagerie par ultrasons selon la revendication 10, comprenant en outre une étape de la sélection de la partie d'intérêt (R1V1).
12. Procédé pour imagerie par ultrasons selon la revendication 11, dans lequel l'étape de la sélection comprend : 35
- une étape de l'acquisition d'informations de vitesse de certaines parties de l'organe, 40
 - une étape de colorisation de ces informations de vitesse, et
 - une étape de l'évaluation visuelle d'une partie de l'organe dont la couleur n'est pas uniforme avec les autres parties. 45
13. Procédé pour imagerie par ultrasons selon la revendication 11, dans lequel l'étape de la sélection comprend : 50
- une étape de l'acquisition de courbes de vitesse (CV1, CV2) associées à certaines parties de l'organe, et
 - une étape de l'évaluation visuelle d'un retard (TD) entre ces courbes de vitesse (CV1, CV2) à un temps représentatif (TPV). 55
14. Produit programme d'ordinateur comprenant des

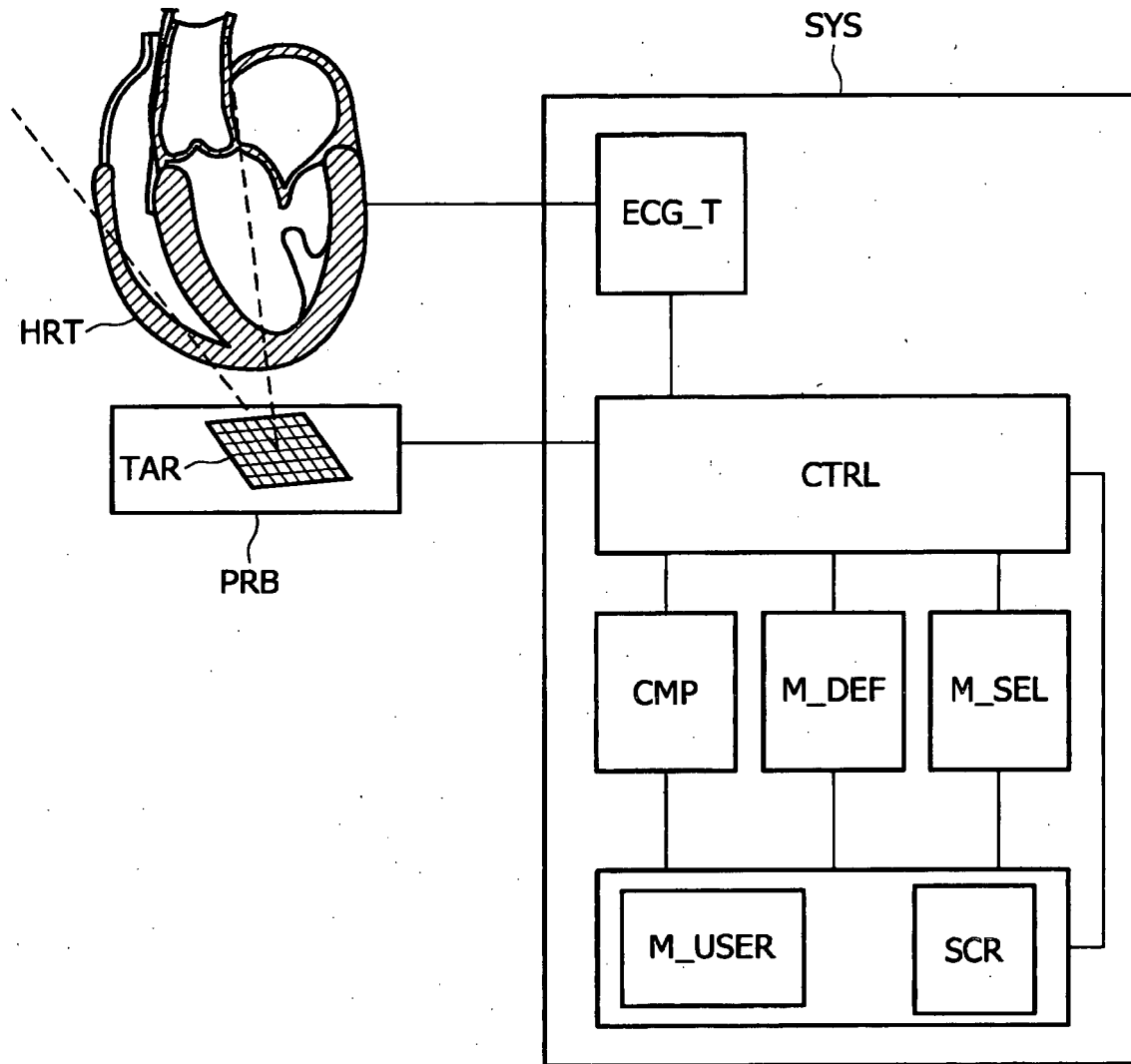


FIG. 1

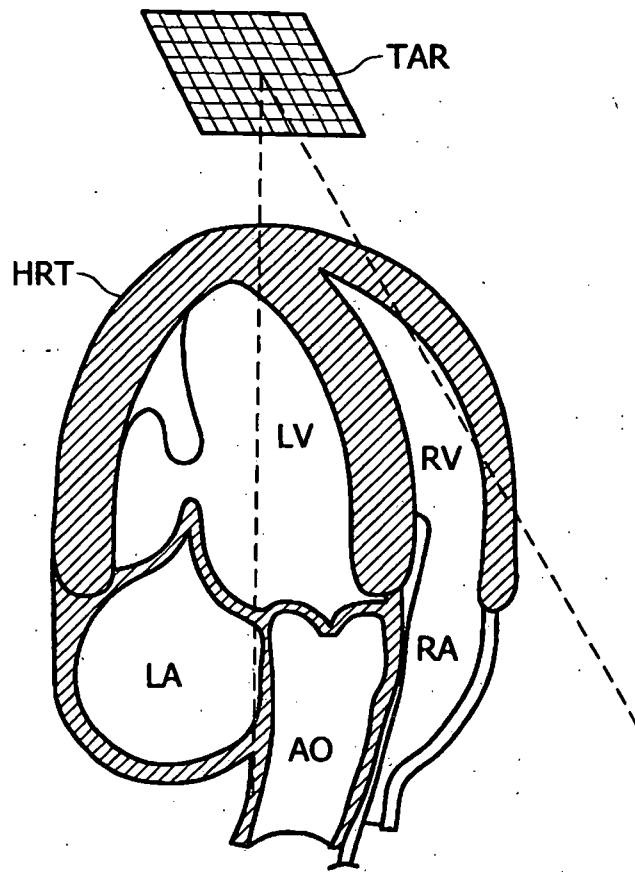


FIG. 2

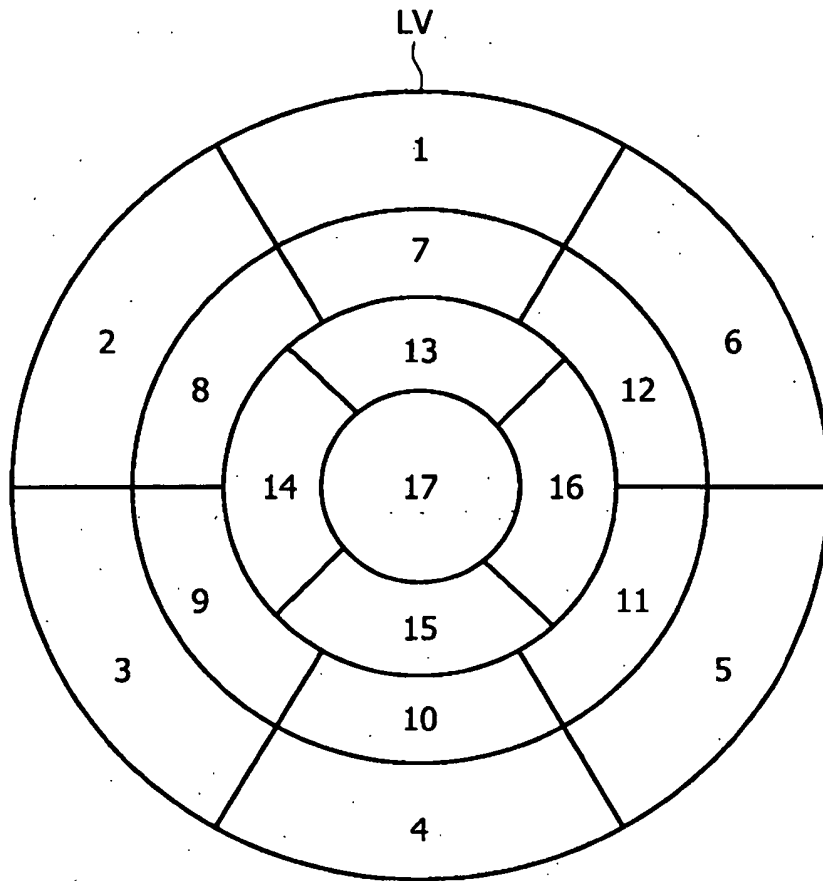


FIG. 3

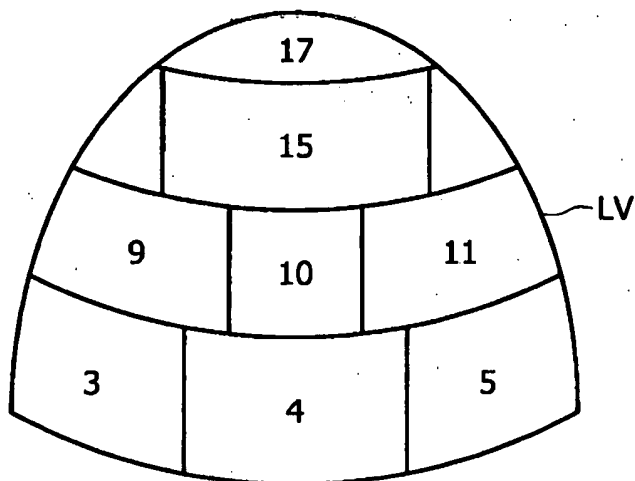


FIG. 4

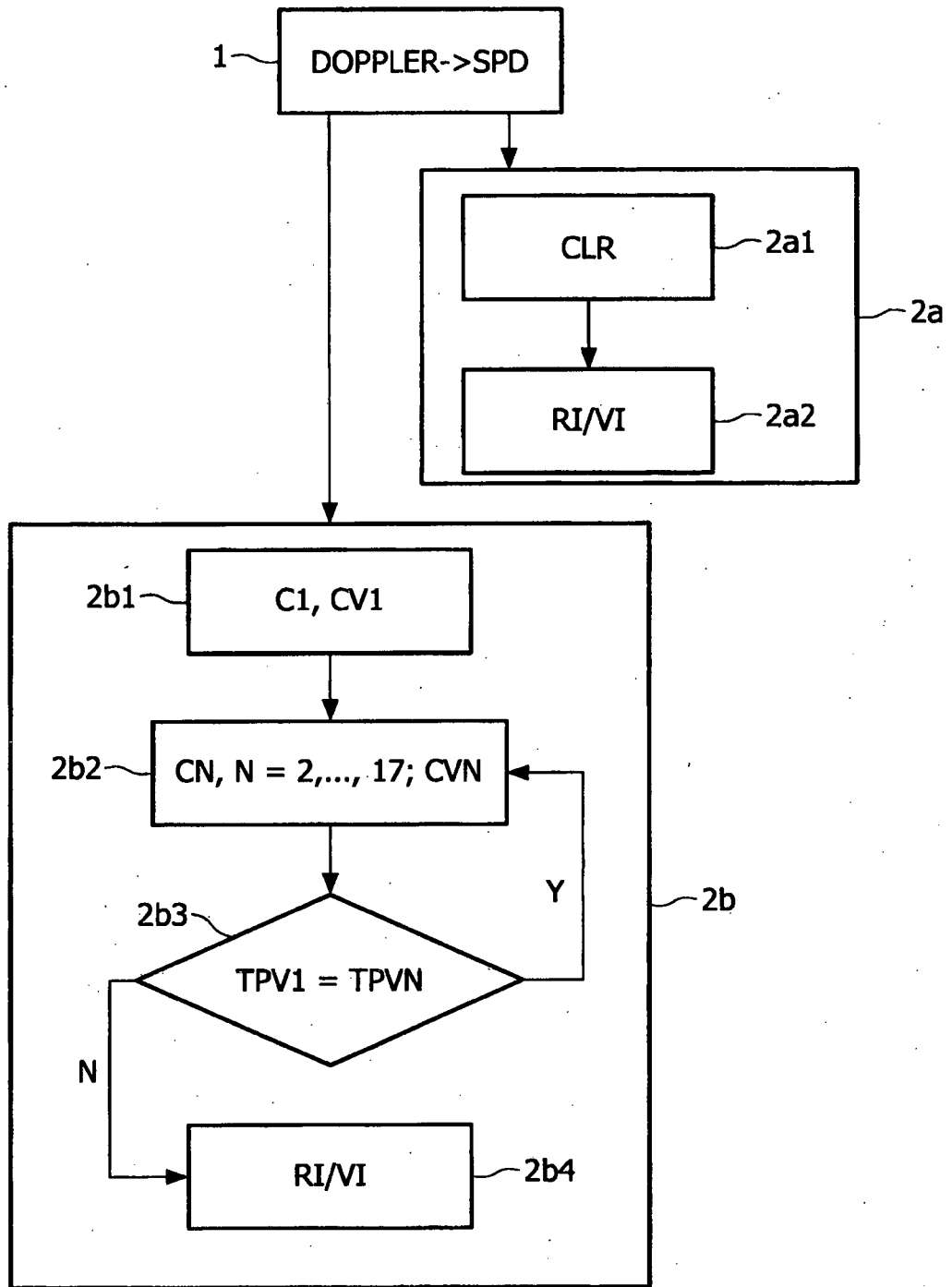


FIG. 5

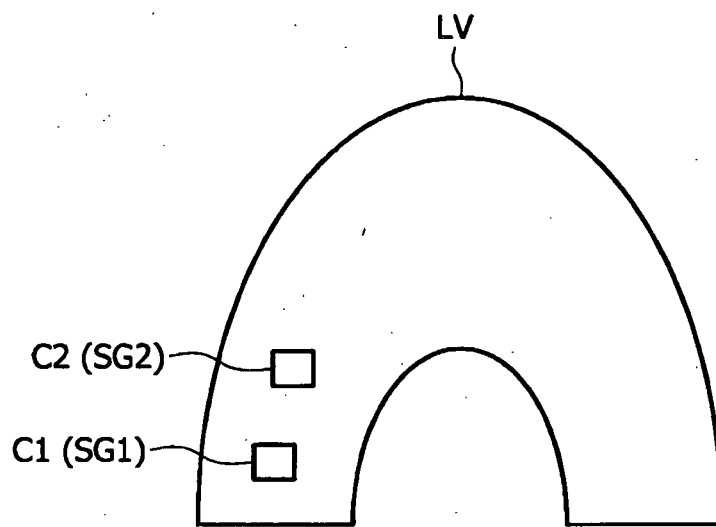


FIG. 6

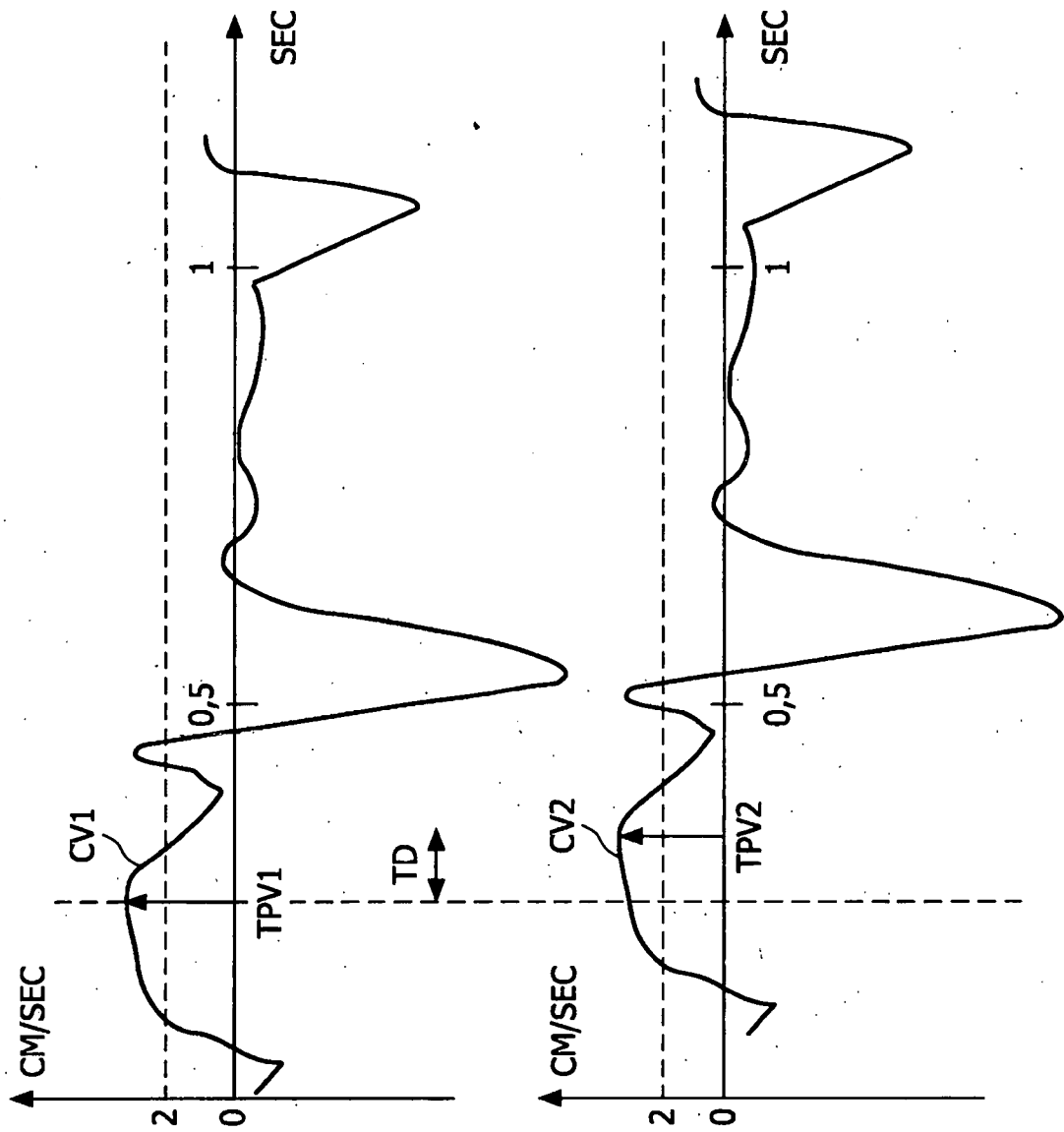


FIG. 7

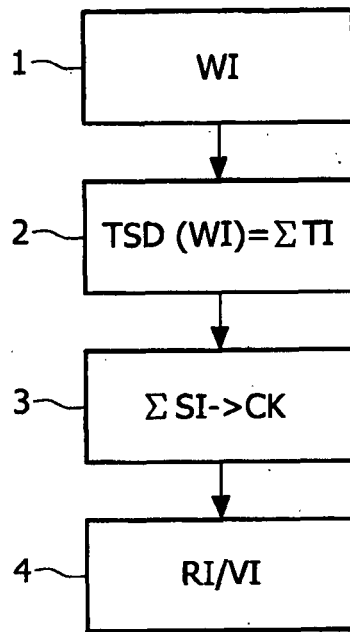


FIG. 8

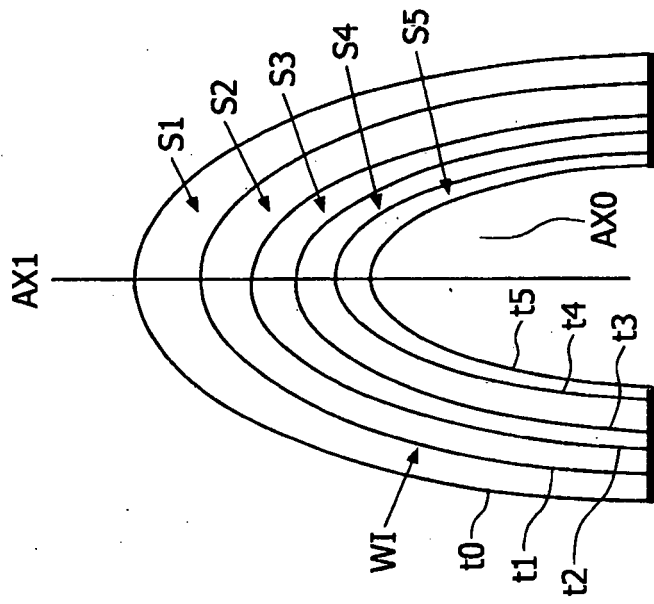


FIG. 9

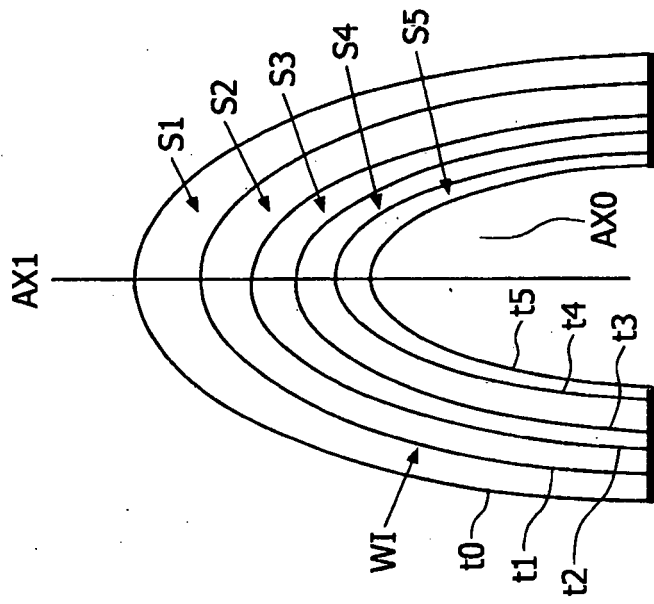


FIG. 10

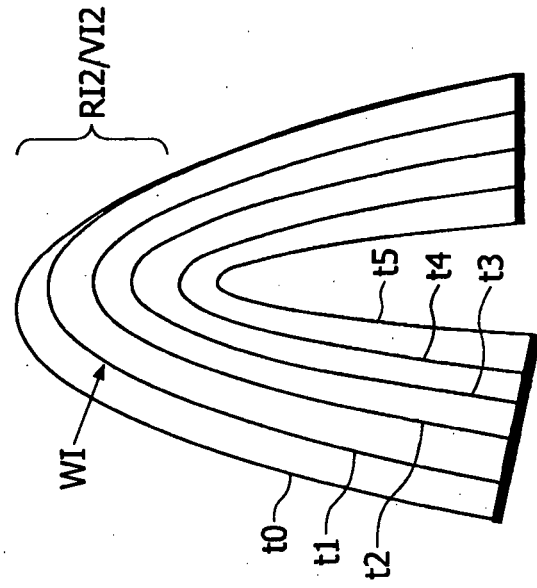


FIG. 11

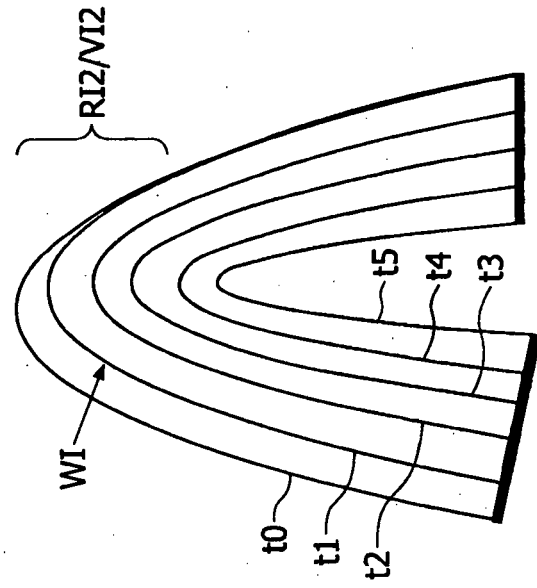


FIG. 12

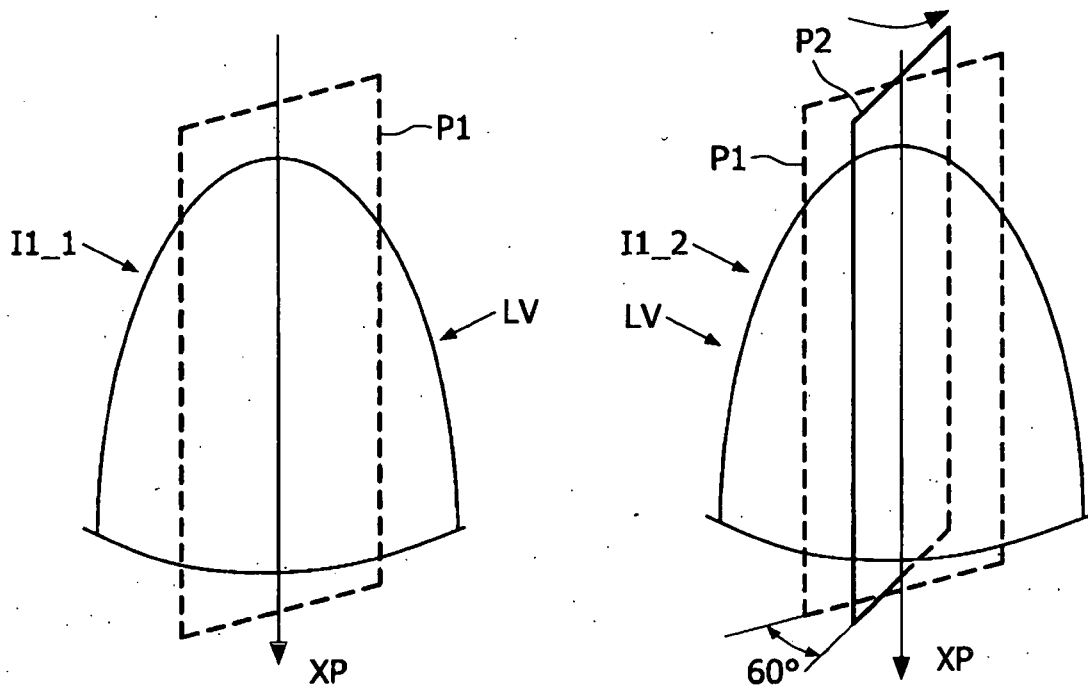


FIG. 13

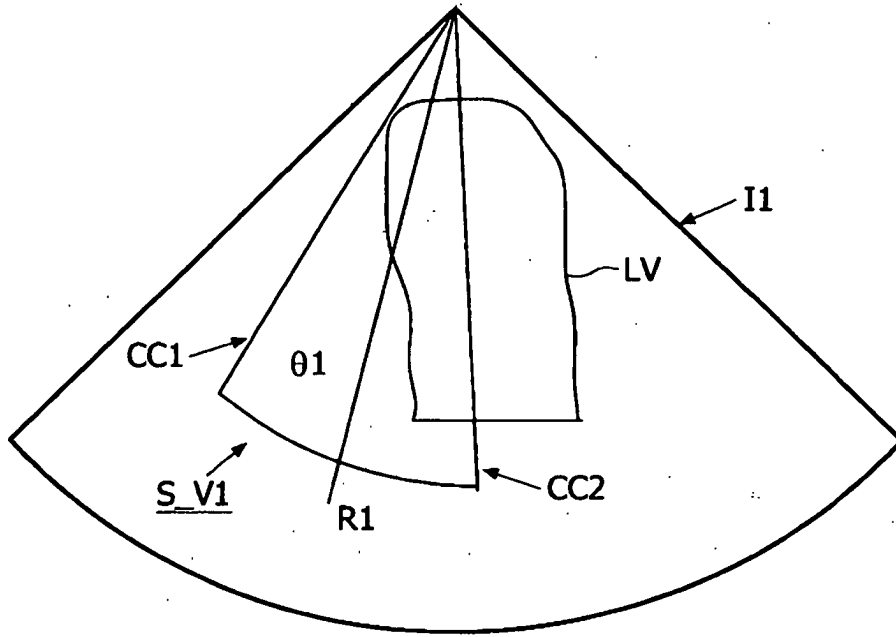


FIG. 14

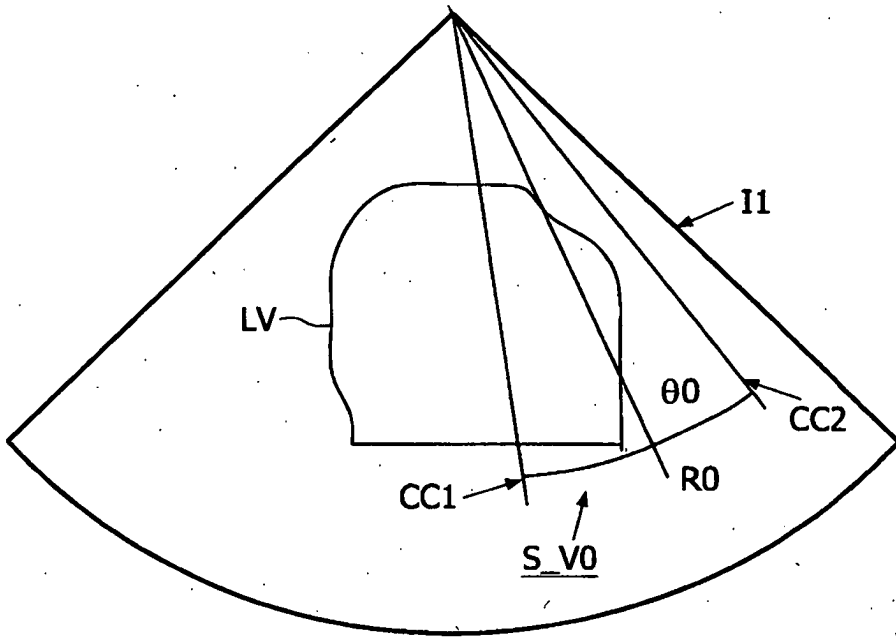


FIG. 15

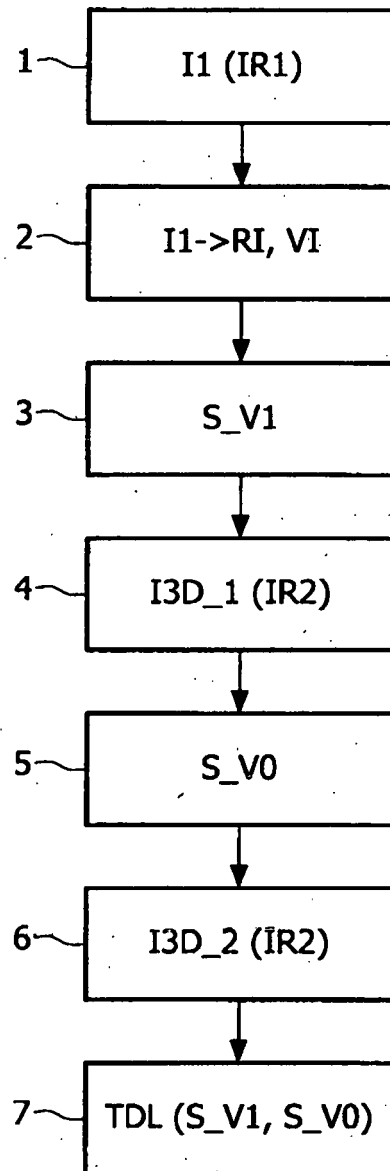


FIG. 16

REFERENCES CITED IN THE DESCRIPTION

This list of references cited by the applicant is for the reader's convenience only. It does not form part of the European patent document. Even though great care has been taken in compiling the references, errors or omissions cannot be excluded and the EPO disclaims all liability in this regard.

Patent documents cited in the description

- US 5993390 A [0002]
- EP 1685799 A [0005]

专利名称(译)	超声成像系统。		
公开(公告)号	EP2051638B1	公开(公告)日	2016-02-10
申请号	EP2007805302	申请日	2007-08-03
[标]申请(专利权)人(译)	皇家飞利浦电子股份有限公司		
申请(专利权)人(译)	皇家飞利浦电子N.V.		
当前申请(专利权)人(译)	皇家飞利浦N.V.		
[标]发明人	ALLAIN PASCAL GERARD OLIVIER THIELE KARL		
发明人	ALLAIN, PASCAL GERARD, OLIVIER THIELE, KARL		
IPC分类号	A61B8/00 G01S15/89 G01S7/52 A61B8/08		
CPC分类号	G01S15/8993 A61B8/08 A61B8/0883 A61B8/483 A61B8/488 A61B8/543 G01S7/52063 G01S7/52071 G01S7/52085 G01S7/52087		
优先权	2006300867 2006-08-09 EP		
其他公开文献	EP2051638A2		
外部链接	Espacenet		

摘要(译)

本发明涉及一种超声图像采集系统。首先，以第一图像速率 (IR1) 获取器官 (LV) 的第一序列超声图像 (I1)。然后，以第二图像速率 (IR2) 获取覆盖第一序列 (I1) 中的感兴趣部分 (RI / VI) 的子体积 (S_V1) 的第二序列超声三维图像 (I3D_1) 和以第二图像速率 (IR2) 获取参考子体积 (S_V0) 的第三超声三维图像序列 (I3D_2)。最后，比较三维图像序列 (I3D_1, I3D_2) 的第二和第三序列。

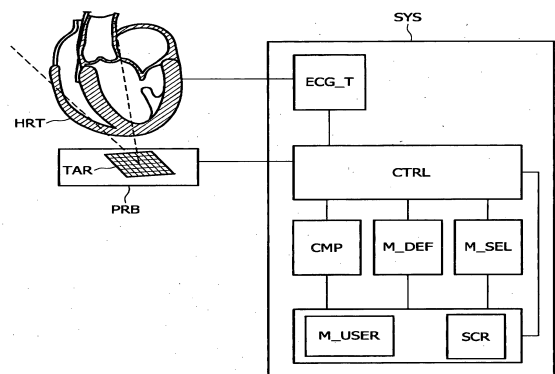


FIG. 1