



(11) **EP 1 515 639 B1**

(12) **EUROPEAN PATENT SPECIFICATION**

(45) Date of publication and mention
of the grant of the patent:
13.01.2010 Bulletin 2010/02

(51) Int Cl.:
A61B 8/00 (2006.01) **G01S 7/52** (2006.01)

(21) Application number: **03720817.0**

(86) International application number:
PCT/IB2003/001982

(22) Date of filing: **16.05.2003**

(87) International publication number:
WO 2003/103497 (18.12.2003 Gazette 2003/51)

(54) **ULTRASONIC DIAGNOSTIC MICROVASCULAR IMAGING**

DIAGNOSTISCHE MIKROVASKULÄRE ULTRASCHALLBILDGEBUNG

VISUALISATION POUR LE DIAGNOSTIC A ULTRASON DU SYSTEME MICROVASCULAIRE

(84) Designated Contracting States:
**AT BE BG CH CY CZ DE DK EE ES FI FR GB GR
HU IE IT LI LU MC NL PT RO SE SI SK TR**

(30) Priority: **11.06.2002 US 170178**

(43) Date of publication of application:
23.03.2005 Bulletin 2005/12

(73) Proprietor: **Koninklijke Philips Electronics N.V.
5621 BA Eindhoven (NL)**

(72) Inventors:
• **HOPE SIMPSON, David
Bothell, WA 98021 (US)**

- **POWERS, Jeffry, E.
Bothell, WA 98021 (US)**
- **SCHAUF, Michael
Bothell, WA 98021 (US)**
- **VILLET, Cyrille
Bothell, WA 98021 (US)**

(74) Representative: **Roche, Denis et al
Philips IP&S France
Société Civile SPID
33 rue de Verdun
BP 313
92156 Suresnes Cedex (FR)**

(56) References cited:
US-A1- 2002 055 681

EP 1 515 639 B1

Note: Within nine months of the publication of the mention of the grant of the European patent in the European Patent Bulletin, any person may give notice to the European Patent Office of opposition to that patent, in accordance with the Implementing Regulations. Notice of opposition shall not be deemed to have been filed until the opposition fee has been paid. (Art. 99(1) European Patent Convention).

Description

[0001] This invention relates to ultrasonic diagnostic imaging systems and, in particular, to ultrasonic diagnostic imaging systems for imaging micro-vascular systems with contrast agents.

[0002] Ultrasonic contrast agents enable clinicians to image and quantify structures and functions in the body which are not otherwise readily seen or measured. The ability of ultrasonic contrast agents to resonate nonlinearly when excited with ultrasound can produce a strong harmonic response, enabling clear segmentation of vessels infused with the contrast agent. A sharply defined image can be produced by disrupting the microbubbles of the contrast agent with high MI ultrasound as described in US patent 5,456,257. The ability to follow the progress of a contrast agent as it infuses the blood vessels of tissue makes it possible to produce measures of myocardial perfusion using contrast, as described in US patent 5,833,613.

[0003] Recent studies of lesions such as breast lesions have focused on the vasculature of the lesion. Early detection of breast lesions and definition of the lesion boundaries can often be ascertained by using ultrasound to look for characteristic vascular structures. In addition, changes in lesion growth and development such as those resulting from chemotherapy often manifest themselves at an early point in time by changes in the lesion vasculature. It is anticipated that these studies may be aided by the use of contrast agents. However, the vascular structures involved are tiny, micro-vascular structures with individual vessels conducting minute amounts of blood flow at very low rates of flow. It would be desirable to be able to use contrast enhanced ultrasound to image and delineate such difficult to detect micro-vascular structures.

[0004] In accordance with the principles of the present invention, ultrasound is used to image micro-vascular structures with the aid of a contrast agent. The harmonic response of the contrast agent reduces clutter, and temporal persistence is used to discern the structure of the micro-vasculature by delineating the track of microbubbles through the tiny vessels.

[0005] In the drawings:

FIGURE 1 illustrates in block diagram form an ultrasonic diagnostic imaging system constructed in accordance with the principles of the present invention;

FIGURE 2 illustrates details of the image processor of FIGURE 1;

FIGURE 3 illustrates a preferred embodiment of an image processor of an ultrasound system constructed in accordance with the principles of the present invention;

FIGURES 4a-4f illustrate the display of microbubbles flowing through micro-vascular structures in accordance with the principles of the present invention;

FIGURE 5 illustrates compound interleave pulse inversion sequences in accordance with a further aspect of the present invention; and

FIGURES 6a-6c illustrate Doppler filter characteristics which may be obtained through compound interleave pulse inversion in accordance with the present invention.

[0006] In contrast-enhanced ultrasonic imaging with microbubble contrast agents, conditions sometimes exist in which the effective concentration of microbubbles in tissue or blood is sufficiently low that individual microbubbles or clusters of microbubbles moving through a vessel appear as point targets in corresponding ultrasound images. The punctate appearance of the contrast agent in these images can make it difficult to identify the architecture of blood vessels in the images. Improving the visibility of such blood vessels is of clinical significance, since the morphology of blood vessels may be used for the detection and, in some cases, differentiation of suspicious lesions. The following apparatus and method improve the visibility of blood vessels and blood flow patterns by using temporal frame to frame processing of ultrasound contrast images.

[0007] Referring to FIGURE 1, an ultrasonic diagnostic imaging system constructed in accordance with the principles of the present invention is shown in block diagram form. A probe 10 includes an array transducer 12 which transmits ultrasound beams into a subject and receives echoes from along the beam directions in response to the transmit beams, all under control of a beamformer 14. Echo signals produced by the beamformer are demodulated into quadrature I,Q components by a quadrature bandpass (QBP) filter 16. Quadrature bandpass filters are well known in the art such as those described in US patent 6,454,714, entitled "Ultrasonic Harmonic Flash Suppression." The echo samples are coupled to an echo processor 20 where the samples are processed for B mode display by amplitude detection and log compression. The echo samples are also coupled to a flow processor 22 where they are used for Doppler estimation as described in US patents 5,386,830, 6,036,643, and 6,095,980. The processed echo and flow signals are coupled to an image processor 30 where they are scan converted into the desired image format and displayed on a display 40 either separately or combined. A sequence of two dimensional images may be stored in an image buffer 32 where they may be replayed for more detailed study, or processed as by rendering to form a three dimensional image or image sequence.

[0008] In accordance with the principles of the present invention the image processor performs frame-to-frame image

processing for contrast-enhanced ultrasound imaging. A first embodiment of an image processor of the present invention is shown in FIGURE 2. The image processor includes a scan converter 34 which converts received contrast signals into a desired display format, such as a rectangular or sector-shaped image. The scan converted images are then filtered by an inter-frame high pass filter 36. The inter-frame high pass filter 36 is a temporal filter that may take the form of an FIR filter, an IIR filter or a frame-to-frame differentiator which filters successive images on a pixel-by-pixel basis. Spatially corresponding pixels which are the same from frame to frame, such as pixels of stationary tissue, will produce a low- or zero-level output. Pixels which differ from frame to frame, as will occur when a microbubble moves into a pixel location or out of a pixel location from frame to frame, will produce a finite output level for display. The inter-frame high pass filter 36 thus reduces signals from stationary and quasi-stationary objects such as tissue and produces display level signals from moving microbubbles in the vasculature.

[0009] The high pass filtered contrast agent signals are applied to a persistence processor 38 which sustains a temporal sequence of detected microbubbles in the image. The persistence processor can have a time constant for the persistence of a displayed microbubble which is greater than zero and as great as one. As the individual microbubble detection events build up (persist) in the image over time, the morphology of the tiny blood vessels through which they are passing becomes visible. The persistence processor 38 can be operated with a high time constant, showing the continual passage of microbubbles through blood vessels and a continual buildup of the flow structure on the screen. The persistence processor can also be given a lower time constant so that microbubble events will slowly decay away with time. Preferably the user is given a reset control 39 to reset the persistence to black at the start of an acquisition sequence or after a high time constant sequence has filled the screen with microbubble events or after tissue or transducer motion. It may further be desirable to combine the transmission of a high MI transmit frame with the reset control 39, causing the reset of the persistence processor to coincide with a high energy frame which strongly disrupts the microbubbles currently in the image region.

[0010] A preferred persistence processor operates in accordance with:

$$\text{OutputPixel}(x,y,k) = \max\{\text{abs}[\text{InputPixel}(x,y,k)], P * \text{OutputPixel}(x,y,k-1)\}$$

where the time constant P has a range of $0 < P \leq 1$. When the time constant P is less than one, the trail of displayed microbubble events will exhibit a fast attack, slow decay brightness that will start as a bright event, then fade to black over time. When the time constant P is equal to one, the persistence processor will perform a maximum intensity projection of the current (k) and previous (k-1) pixel brightnesses.

[0011] While the apparatus and method of the present invention can be used when detecting contrast agents in the fundamental mode, it is preferable to carry out the inventive technique in the harmonic mode, to take advantage of the strong segmentation and clutter rejection benefits of harmonic contrast operation. While a radiofrequency high pass filter can be used to pass the harmonic echo components in preference to the fundamental components, a preferred way to separate the harmonic echo components of the contrast signal is by pulse inversion as described in US patent 5,706,819. As is well known, the pulse inversion technique involves the transmission of two or more transmit events of differently modulated (phase or polarity or amplitude or a combination thereof) transmit pulses along the same beam direction. Echoes received in response to the two transmit events are combined on a spatial basis. Opposite (inverse) phase or amplitude modulation of the transmit pulses will cause fundamental signals of the two events to cancel, while nonlinear (harmonic) components will reinforce each other and thus be separated from the fundamental. The term "pulse" as used in pulse inversion generally refers to the complete transmit-receive cycle of each differently modulated transmit pulse. Thus, two-pulse pulse inversion refers to the transmission of two differently modulated pulses, the reception of echo sequences following each transmit pulse or wave, and the combining of the two echo sequence on a spatial (depth) basis. Pulse inversion of more than two pulses may be employed with the present invention as described in US patent 6,186,950. Pulse inversion may also be performed by transmitting differently modulated pulses in adjacent beam directions, then separating the harmonic components by interpolation between beam locations as described in US patent 6,193,662.

[0012] In the embodiment of FIGURES 1 and 2, pulse inversion harmonic separation is performed prior to scan conversion by the scan converter 34. A convenient implementation is to use a line buffer following the beamformer 14 in which the echo sequence from one pulse is stored while a second, differently modulated echo sequence is acquired. The two sequences are combined to attenuate the fundamental components and accentuate the harmonic components of the contrast echo signals. The harmonic contrast echoes are filtered by the QBP filter 16 and processed by the echo processor 20. The echo data is scan converted and the image frames are temporally high pass filtered and persistence processed for display as described above.

[0013] The ability of a constructed embodiment of the present invention to depict blood vessel morphology is illustrated by the exemplary image sequence of FIGURES 4a-4f. These depict images of a real time image sequence that may

develop over the time period of one to three heart cycles, for instance. In an early image in the sequence shown in FIGURE 4a, some clutter is seen in the near field in the 0-1 cm range, and five microbubbles are seen in the 1-3 cm range. The five microbubbles are depicted because they appeared in different locations in consecutive frames, causing frame-to-frame subtraction (temporal high pass filtering) to produce finite display signals from the moving microbubbles. Signals from stationary tissues in consecutive frames, either fundamental (linear) or harmonic (nonlinear), will appear in the same location from frame to frame, and will be suppressed by the temporal high pass filter. Thus, clutter due to fundamental signal scattering will be reduced by the use of harmonic signals, and stationary tissue clutter will be diminished by the temporal high pass filter, thereby enabling the moving microbubbles to be distinguished in the image.

[0014] At a later time the image of FIGURE 4b is produced. This image shows the five microbubble events which were earlier seen in FIGURE 4a due to persistence processing. This image also shows the five microbubbles at new, adjacent locations as the microbubbles move through the micro-vessels in which they are flowing. At a later time the image of FIGURE 4c is produced. This image shows the previous locations of the five microbubbles by reason of persistence, and updated locations of the five microbubbles identified by temporal filtering. In this image, and in the later images of FIGURES 4d, 4e, and 4f, the tracks produced by the persisted, successive microbubble locations are seen to delineate the tortuous paths of the small blood vessels in which they are flowing. In addition, other tracks begin to appear as the contrast agent begins to reach other blood vessels in the image plane and begins to define their flow paths. FIGURE 4f would inform the clinician that six small vessels are located in the 1-3 cm range of the imaged sector, which may lead to the diagnosis of the presence of a lesion. It is possible that the track of six successive microbubble positions, as seen at 72 and 74 in FIGURE 4f, could be caused by six adjacent vessels which are orthogonal to the image plane, but this is unlikely with longer tracks. The clinician can test this hypothesis by moving the probe slightly and reacquiring the microbubbles to test for a vessel in the image plane.

[0015] If a time constant of $P=1$ is used, the sequence of images will contain an ever-increasing buildup of microbubble tracks until the region of the tracks is virtually all white. The persistence processor can then be reset by the clinician and another sequence acquired. Alternatively, a lower value of $P<1$ can be used, and the older spots in the microbubble track will fade away with time, enabling the image region to be observed for a considerable period of time before needing to be reset.

[0016] It is desirable to conduct microbubble tracking as described above at relatively low transmit power levels (low MI) so that the microbubbles will not be destroyed by the ultrasonic energy but will survive over a period of many frames and be detected as they move through the micro-vasculature. However, it has been found that the procedure is effective even when there is some disruption of the microbubbles in the vessels by the transmit energy, as usually a sufficient presence of microbubbles will survive over a period of several heart cycles.

[0017] A preferred image processor is shown in block diagram form in FIGURE 3. Because the embodiment of FIGURE 2 uses a temporal high pass filter, it will be sensitive to some degree to probe motion. One way to reduce unwanted effects from probe motion is by harmonic flash suppression, as described in the aforementioned US patent 6,454,714. Another approach, which may be used separately or in conjunction with flash suppression, is to perform image registration prior to the inter-frame high pass filter 36, as shown in FIGURE 3. Gross image registration from frame to frame can reduce the blurring of tissue/transducer motion and will lead to a more effective temporal filter. The post-HPF processor 37 can perform image processing tasks such as thresholding, noise reduction, or frame-to-frame speckle tracking. The post-persistence processor 42 may perform image processing such as edge enhancement or segmentation/thresholding. The processed contrast image may be blended with a conventional 2D echo image. The contrast image may also be segmented and applied as a color overlay over the 2D echo image as indicated by the blend/overlay processor 44. Either may be done with or without image registration, but if the contrast image is registered, it is desirable that the 2D image be registered also so that probe and tissue motion are equally diminished in both images.

[0018] The tracks of microbubbles produced by an embodiment of the present invention can be used to calculate the absolute velocity of blood flow through the micro-vasculature. The bubbles can be seen to move a finite amount between frames along the curved paths of the micro-vasculature. Since the scale of the pixel density relative to the anatomy being displayed is known, the distance traveled by a microbubble over a period of frames can be measured in an image. From the knowledge of the frame rate (in frames per second) and the distance a microbubble has moved, the absolute velocity of the flow through the micro-vasculature can be calculated.

[0019] Other temporal display techniques may also be used. The flow into a lesion often shows a clearly pulsatile characteristic as it builds up in the lesion, eventually filling the lesion. Arteries will be filled early in the filling period, with the capillary bed being filled in the latter part of the filling period. Vessels appearing in the early stage of filling can be color coded differently than those filled in the latter stage, giving a visual distinction between arteries and the capillary bed.

[0020] In accordance with a further aspect of the present invention, slowly flowing contrast agents are detected by a compound interleave of pulse inversion pulse ensembles, providing clutter rejection with improved sensitivity to very low velocity blood flow at high acquisition frame rates. In conventional pulse inversion Doppler imaging, it is desirable to have a Doppler frequency filter with a wide stop band at the Nyquist frequency to attenuate tissue signals, which requires a high sampling frequency (PRF, or pulse repetition frequency) and a narrow stop band at DC to sharply attenuate

signals from entirely stationary objects, which requires a long sampling time between the first and last PRI's (pulse repetition intervals). If a total of M pulses per line of sight (beam direction) are required, then NxM pulses must be transmitted, producing an effective Doppler sample frequency of PRF/N, a total dwell time per line of Nx(M-1)/PRF, and a frame interval proportional to NxM.

[0021] In accordance with the principles of the present invention, compound interleaving of pulse inversion pulse sequences is used to produce filters with the desired characteristics in relatively short sampling times. This provides a highly sensitive imaging technique for detecting low flow rates using pulse inversion Doppler operating at high acquisition frame rates. One such pulse sequence is shown in FIGURE 5 for two lines of sight or beam directions. The numbers at the left are a numbered sequence of the pulse repetition intervals (PRIs) used. During the first two PRIs two differently modulated pulses are transmitted in the first line of sight. The different modulation, which could be amplitude, phase, or polarity, is indicated by the "+" and "-" signs adjacent to each PRI line. The echoes of these two pulses are spatially combined to separate the harmonic components. Preferably these two pulses are transmitted in rapid succession so as to reduce motional artifacts in the received echoes, which can result in incomplete fundamental component cancellation.

[0022] Another two pulse sequence is transmitted in the second line of sight during PRIs 3 and 4. These pulses are also differently modulated so that the harmonics of the received echoes can be separated by pulse inversion combining of the received echoes. If a third line of sight were used, the next two pulse transmission would be in the third line. After all of the lines of sight of the sequence have been interrogated by a pair of pulses, the transmitter returns to the first line of sight. In the illustration in which the sequence only uses two lines of sight, pulses are transmitted along the first line of sight in PRIs 5 and 6. As the drawing indicates, both lines of sight are interrogated by rapid, two-pulse sequences in this time-interleaved manner until the full ensemble length has been completed, which in the illustration is three pulse-pairs in length. Each line of sight in this example is sampled by a plurality of fast PRF, two-pulse ensembles which together comprise a slow PRF ensemble length of three.

[0023] The resulting samples are used in a Doppler filter such as a matrix wall filter. Separate filters can be used for the fast PRF and slow PRF filters, or the two can be combined in a single filter. Suitable separate filter coefficients are:

$$\begin{array}{rcl} & & \begin{matrix} 2 & -1 & -1 \\ -1 & 2 & -1 \\ -1 & -1 & 2 \end{matrix} \\ \text{Fast time filter} & = & [.5 \ .5], \quad \text{Slow time filter} = \end{array}$$

The first filter has a frequency response which attenuates fundamental tissue signals at the Nyquist limits of the sampling rate as shown by the Doppler filter response characteristic 60 in FIGURE 6a. The slow time filter will provide a sharp attenuation to this characteristic at DC as shown by the Doppler filter response 62 in FIGURE 6b, which attenuates nonlinear signals from stationary microbubbles and tissue harmonics. Slow moving contrast, which will have a Doppler frequency in the vicinity of zero, will be passed on either side of this central null.

[0024] The frequency response characteristic for this example also is seen to exhibit two other intermediate nulls about halfway between DC and the Nyquist limits of ± 0.25 PRF. These nulls are not likely to affect the result obtained from very slow rates of flow, but can come into play and cause signal drop-out during high flow conditions. In accordance with a further aspect of the present invention, these intermediate nulls are diminished by using aperiodic time-interleaved sequences. The slow time ensemble is made aperiodic by varying the timing of one or more of the fast time ensembles. Another approach to aperiodic compounding is to vary the interleave ratio over consecutive image frames. An example of an aperiodic compound interleave sequence is:

Line number	Temporal sequence of pulses
1	[1, 1, 0, 0, 0, 0, 1, 1, 0, 0, 1, 1, 0, 0]
2	[0, 0, 1, 1, 0, 0, 0, 0, 1, 1, 0, 0, 1, 1]

where each "1" in the sequence indicates that a modulated pulse of some sort is transmitted and echoes received during the particular pulse repetition interval. In this example it is seen that a fast time sequence of two pulses is transmitted and received along line 1, followed by transmission and reception of a fast time sequence of two pulses along line 2. During the next two pulse intervals no pulses are transmitted along either line. Thereafter fast time sequences of two pulses are alternately transmitted along the two lines. The aperiodicity of the slow time ensembles caused by skipping transmission of the normally recurring second fast time ensemble in PRIs 5 and 6 (for line 1) and PRIs 7 and 8 (for line 2) causes the frequency response of the filter to be rippled without sharp intermediate nulls, as shown in FIGURE 6c,

a result which is also aided by expected spectral broadening.

[0025] The aperiodic interleaving of fast time sequences can be extended to conventional Doppler operating in the fundamental mode with or without contrast agents. Aperiodic interleaving and sampling make it possible to generate a Doppler wall filter using very few samples that mimics the performance of wall filters generated with much longer ensemble lengths. For example, consider the following interleaving of four pulses over three lines:

Line number	Temporal sequence of pulses
1	[1, 0, 0, 0, 0, 1, 0, 0, 1, 0, 0, 0, 0, 1, 0, 0]
2	[0, 1, 0, 0, 0, 0, 1, 0, 0, 1, 0, 0, 0, 0, 1, 0]
3	[0, 0, 1, 0, 0, 0, 0, 1, 0, 0, 1, 0, 0, 0, 0, 1]

A wall filter using samples from this aperiodic ensemble will have low frequency performance similar to an ensemble length of 14, (the PRI duration from the first to the last sample along each line) but with only four samples per filter. Preferably the velocity estimation algorithm used will be modified in consideration of the aperiodicity of the sampling.

[0026] The use of aperiodic slow time ensembles may find particular utility in real time three dimensional imaging. In real time 3D it is desirable to be able to scan the entire volumetric region in as short a time as possible, to obtain a high frame rate of display. For Doppler imaging in 3D, a high aliasing cutoff frequency and long (in time) slow time ensembles are desirable in order to detect both high and low flow rates. Traditionally these demands are satisfied by transmitting a long sequence of high PRF pulses down each line, causing long acquisition times and slow frame rates. A time interleaved, aperiodic scan such as that shown above will interrogate each line over a long period of time from the first pulse interval to the last pulse interval, thereby providing good low flow rate sensitivity. The aperiodic timing between consecutive acquisitions along each line provides a high effective aliasing (Nyquist) frequency. Since only a few pulses are needed for each line, many lines can be time interleaved at the cost of only a reduction in the signal to noise ratio of the resultant Doppler estimates.

[0027] Embodiments of the present invention can operate on either demodulated echo samples or r.f. data. The fast time ensembles can be more than two pulses in length, such as the three, four, and five pulse ensembles for pulse inversion described in the aforementioned US patent 6,186,950.

Claims

1. A method for ultrasonically imaging with an ultrasonic contrast agent comprising:

transmitting pulses to an image region of a subject;
receiving echoes from a contrast agent in the image region in response to the transmitted pulses;
detecting the location of a moving contrast agent in the image region at different points in time; and
producing an image showing the locations of the moving contrast agent at the different points in time.

2. The method of Claim 1, further comprising:

forming an image in response to the received echoes; and
wherein detecting comprises temporally high pass filtering temporally different images to detect the location of a contrast agent at a given point in time.

3. The method of Claim 2, wherein temporally high pass filtering comprises performing frame-to-frame subtraction on a spatial basis of temporally different image frames.

4. The method of Claim 3, wherein temporally high pass filtering comprises performing frame-to-frame subtraction on a spatial basis of successive image frames.

5. The method of Claim 1, wherein producing an image comprises producing an image in which the display of the location of a contrast agent at a given point in time persists over a plurality of image intervals.

6. The method of Claim 5, wherein producing an image comprises displaying a maximum intensity projection of the locations of a contrast agent.

7. The method of Claim 5, wherein producing an image comprises displaying the location of a contrast agent at a given

point in time with a slow decay persistence over a plurality of image intervals.

8. The method of Claim 5, wherein producing an image comprises processing image pixel data on a spatial basis in accordance with:

$$\text{OutputPixel}(x,y,k) = \max \{ \text{abs}[\text{InputPixel}(x,y,k)], P * \text{OutputPixel}(x,y,k-1) \},$$

where X and y are pixel coordinates, P is a time constant ranging from 0 to 1, and k is a time marker.

9. An ultrasonic imaging system for harmonic contrast imaging comprising:

an array transducer (12) for interrogating an image field containing a moving contrast agent;
a receiver coupled to the array transducer configured to produce coherent echo signals from the moving contrast agent;
an image processor (30) coupled to the receiver configured to produce images showing the locations of the moving contrast agent at different points in time;
an inter-frame high pass filter (36) coupled to the image processor (30);
a persistence processor (38) coupled to the inter-frame high pass filter (36) configured to produce images depicting the locations of the moving contrast agent at earlier points in time; and
an image display (40).

10. The ultrasonic imaging system of Claim 9, wherein the inter-frame high pass filter (36) comprises a frame-to-frame subtractor.

11. The ultrasonic imaging system of Claim 9, wherein the persistence processor (38) utilizes a persistence time constant to cause the location of the moving contrast agent at a given point in time to persist over a plurality of image intervals.

12. The ultrasonic imaging system of Claim 11, wherein the persistence time constant causes the location of the moving contrast agent at a given point in time to persist indefinitely.

13. The ultrasonic imaging system of Claim 11, wherein the persistence time constant causes the location of the moving contrast agent at a given point in time to persist with a slow decay.

14. The ultrasonic imaging system of Claim 9, wherein the image display (40) acts to display an image depicting the tracks of microbubbles through small blood vessels over time.

15. The ultrasonic imaging system of Claim 9, further comprising an image registration processor (35) coupled to the image processor (30).

Patentansprüche

1. Verfahren zur Ultraschallbildgebung mit einem Ultraschallkontrastmittel, wobei das Verfahren Folgendes umfasst:

Aussenden von Impulsen in eine Bildregion eines Subjekts;
Empfangen von Echos von einem Kontrastmittel in der Bildregion in Reaktion auf die ausgesendeten Impulse;
Detektieren des Orts eines sich bewegenden Kontrastmittels in der Bildregion zu verschiedenen Zeitpunkten;
und
Erzeugen eines Bildes, das die Orte des sich bewegenden Kontrastmittels zu den verschiedenen Zeitpunkten zeigt.

2. Verfahren nach Anspruch 1, das weiterhin Folgendes umfasst:

Formen eines Bildes in Reaktion auf die empfangenen Echos; und
wobei das Detektieren das zeitliche Hochpassfiltern zeitlich unterschiedlicher Bilder umfasst, um den Ort eines Kontrastmittels zu einem bestimmten Zeitpunkt zu detektieren.

3. Verfahren nach Anspruch 2, wobei das zeitliche Hochpassfiltern das Durchführen einer Einzelbild-zu-Einzelbild-Subtraktion auf räumlicher Basis von zeitlich unterschiedlichen Einzelbildern umfasst.
4. Verfahren nach Anspruch 3, wobei das zeitliche Hochpassfiltern das Durchführen einer Einzelbild-zu-Einzelbild-Subtraktion auf räumlicher Basis von aufeinanderfolgenden Einzelbildern umfasst.
5. Verfahren nach Anspruch 1, wobei das Erzeugen eines Bildes das Erzeugen eines Bilds umfasst, in dem die Anzeige des Orts eines Kontrastmittels zu einem bestimmten Zeitpunkt über eine Vielzahl von Bildintervallen fortbesteht.
6. Verfahren nach Anspruch 5, wobei das Erzeugen eines Bildes das Anzeigen einer Maximumintensitätsprojektion der Orte eines Kontrastmittels umfasst.
7. Verfahren nach Anspruch 5, wobei das Erzeugen eines Bildes das Anzeigen des Orts eines Kontrastmittels zu einem bestimmten Zeitpunkt mit langsam abklingendem Fortbestehen über eine Vielzahl von Bildintervallen umfasst.
8. Verfahren nach Anspruch 5, wobei das Erzeugen eines Bildes das Verarbeiten von Bildpixeldaten auf räumlicher Basis gemäß

$$\text{Ausgangspixel}(x,y,k) = \max \{ \text{abs}[\text{Eingangspixel}(x,y,k)], P * \text{Ausgangspixel}(x,y,k-1) \}$$

umfasst, wobei x und y Pixelkoordinaten sind, P eine Zeitkonstante von 0 bis 1 ist und k eine Zeitmarkierung ist.

9. Ultraschallbildgebungssystem zur harmonischen Kontrastbildgebung, das Folgendes umfasst:

einen Array-Wandler (12) zum Abfragen eines ein sich bewegendes Kontrastmittel enthaltenden Bildfeldes;
einen mit dem Array-Wandler gekoppelten Empfänger, der konfiguriert ist, um kohärente Echosignale von dem sich bewegenden Kontrastmittel zu erzeugen;
einen mit dem Empfänger gekoppelten Bildprozessor (30), der konfiguriert ist, um Bilder zu erzeugen, die die Orte des sich bewegenden Kontrastmittels zu unterschiedlichen Zeitpunkten zeigen;
einen Zwischeneinzelbild-Hochpassfilter (36), der mit dem Bildprozessor (30) gekoppelt ist;
einen mit dem Zwischeneinzelbild-Hochpassfilter (36) gekoppelten Fortbestands-Prozessor (38), der konfiguriert ist, um Bilder zu erzeugen, die die Orte des sich bewegenden Kontrastmittels zu früheren Zeitpunkten darstellen; und
eine Bildanzeigevorrichtung (40).

10. Ultraschallbildgebungssystem nach Anspruch 9, wobei der Zwischeneinzelbild-Hochpassfilter (36) einen Einzelbild-zu-Einzelbild-Subtraktor umfasst.
11. Ultraschallbildgebungssystem nach Anspruch 9, wobei der Fortbestands-Prozessor (38) eine Fortbestands-Zeitkonstante verwendet, um zu veranlassen, dass der Ort des sich bewegenden Kontrastmittels zu einem bestimmten Zeitpunkt über eine Vielzahl von Zeitintervallen fortbesteht.
12. Ultraschallbildgebungssystem nach Anspruch 11, wobei die Fortbestands-Zeitkonstante bewirkt, dass der Ort des sich bewegenden Kontrastmittels zu einem bestimmten Zeitpunkt unbegrenzt fortbesteht.
13. Ultraschallbildgebungssystem nach Anspruch 11, wobei die Fortbestands-Zeitkonstante bewirkt, dass der Ort des sich bewegenden Kontrastmittels zu einem bestimmten Zeitpunkt mit langsamem Abklingen fortbesteht.
14. Ultraschallbildgebungssystem nach Anspruch 9, wobei die Bildanzeigevorrichtung (40) dazu dient, ein Bild anzuzeigen, das die Spuren von Mikrobläschen durch kleine Blutgefäße über die Zeit darstellt.
15. Ultraschallbildgebungssystem nach Anspruch 9, weiterhin mit einem Bildregistrierungsprozessor (35), der mit dem Bildprozessor (30) gekoppelt ist.

Revendications

1. Procédé d'imagerie par ultrasons comportant un agent de contraste ultrasonore comprenant :

la transmission d'impulsions à une région d'image d'un sujet ;
la réception d'échos d'un agent de contraste dans la région d'image en réponse aux impulsions transmises ;
la détection de l'emplacement d'un agent de contraste mobile dans la région d'image à différents moments ; et
la production d'une image présentant les emplacements de l'agent de contraste mobile aux différents moments.

2. Procédé selon la revendication 1, comprenant en outre :

la formation d'une image en réponse aux échos reçus ; et
dans lequel la détection comprend le filtrage passe-haut dans le temps d'images différentes dans le temps,
pour détecter l'emplacement d'un agent de contraste à un moment donné.

3. Procédé selon la revendication 2, dans lequel le filtrage passe-haut comprend la réalisation d'une soustraction de cadre à cadre sur une base spatiale de cadres d'image différents dans le temps.

4. Procédé selon la revendication 3, dans lequel le filtrage passe-haut dans le temps comprend la réalisation d'une soustraction de cadre à cadre sur une base spatiale de cadres d'image successifs.

5. Procédé selon la revendication 1, dans lequel la production d'une image comprend la production d'une image dans laquelle l'affichage de l'emplacement d'un agent de contraste à un moment donné dans le temps persiste sur une pluralité d'intervalles d'images.

6. Procédé selon la revendication 5, dans lequel la production d'une image comprend l'affichage d'une projection d'intensité maximale des emplacements d'un agent de contraste.

7. Procédé selon la revendication 5, dans lequel la production d'une image comprend l'affichage de l'emplacement d'un agent de contraste à un moment donné dans le temps, avec une persistance d'écran lente sur une pluralité d'intervalles d'images.

8. Procédé selon la revendication 5, dans lequel la production d'une image comprend le traitement des données de pixels d'image sur une base spatiale selon :

$$\text{pixel de sortie}(x, y, k) = \max \{ \text{abs}[\text{pixel d'entrée}(x, y, k)], P * \text{pixel de sortie}(x, y, k-1) \},$$

où x et y sont les coordonnées de pixel, P est une constante temporelle de 0 à 1 et k est un marqueur temporel.

9. Système d'imagerie ultrasonore pour image de contraste harmonique comprenant :

un réseau transducteur (12) pour interroger un champ d'image contenant un agent de contraste mobile ;
un récepteur couplé au réseau transducteur configuré pour produire des signaux d'écho cohérents de l'agent de contraste mobile ;
un processeur d'image (30) couplé au récepteur configuré pour produire des images montrant les emplacements de l'agent de contraste mobile à différents moments ;
un filtre passe-haut inter-cadre (36) couplé au processeur d'image (30) ;
un processeur de persistance (38) couplé au filtre passe-haut inter-cadre (36) configuré pour produire des images représentant les emplacements de l'agent de contraste mobile à des moments antérieurs ; et
un écran (40).

10. Système d'imagerie ultrasonore selon la revendication 9, dans lequel le filtre passe-haut inter-cadre (36) comprend un soustracteur de cadre à cadre.

11. Système d'imagerie ultrasonore selon la revendication 9, dans lequel le processeur de persistance (38) utilise une constante temporelle de persistance pour entraîner la persistance de l'agent de contraste mobile à un moment

donné dans le temps, sur une pluralité d'intervalles d'image.

12. Système d'imagerie ultrasonore selon la revendication 11, dans lequel la constante temporelle de persistance entraîne la persistance indéfinie de l'emplacement de l'agent de contraste mobile à un moment donné.

13. Système d'imagerie ultrasonore selon la revendication 11, dans lequel la constante de persistance temporelle entraîne la persistance de l'agent de contraste mobile à un moment donné, avec un déclin lent.

14. Système d'imagerie ultrasonore selon la revendication 9, dans lequel l'écran (40) agit de façon à afficher une image représentant les tracés de microbulles dans les petits vaisseaux sanguins dans le temps.

15. Système d'imagerie ultrasonore selon la revendication 9, comprenant en outre un processeur d'enregistrement d'image (35) couplé au processeur d'image (30).

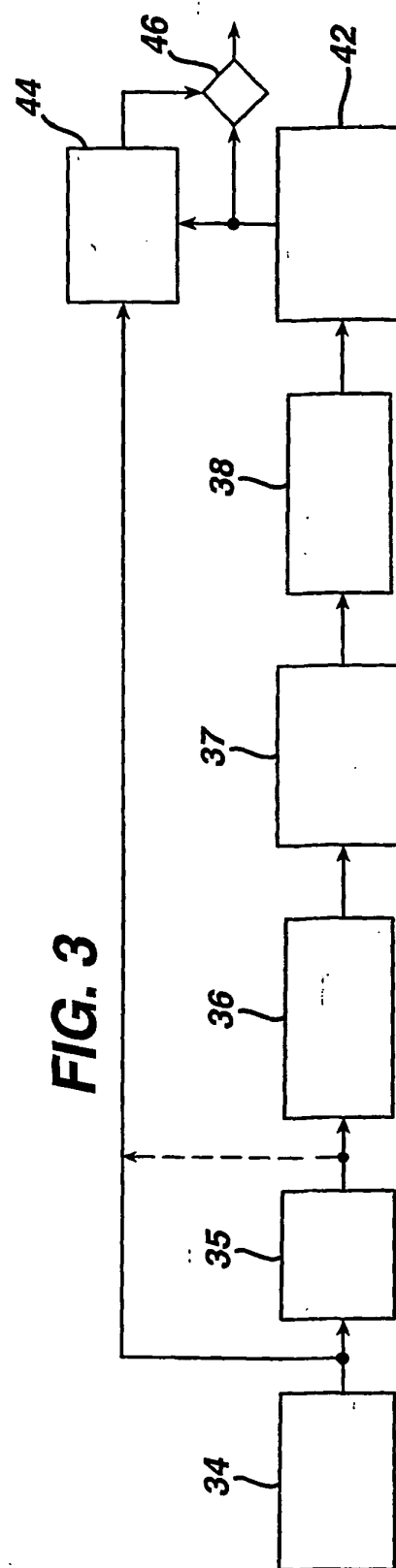
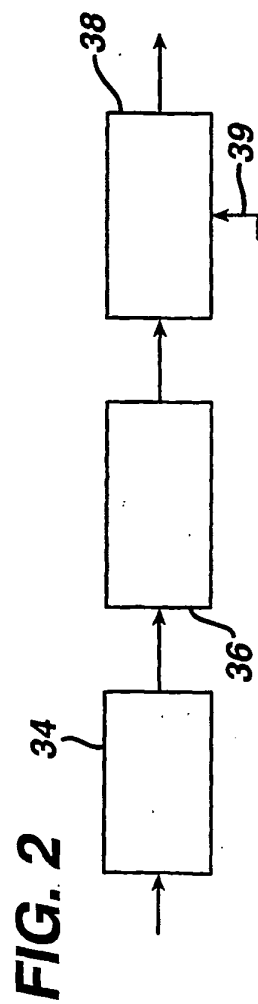
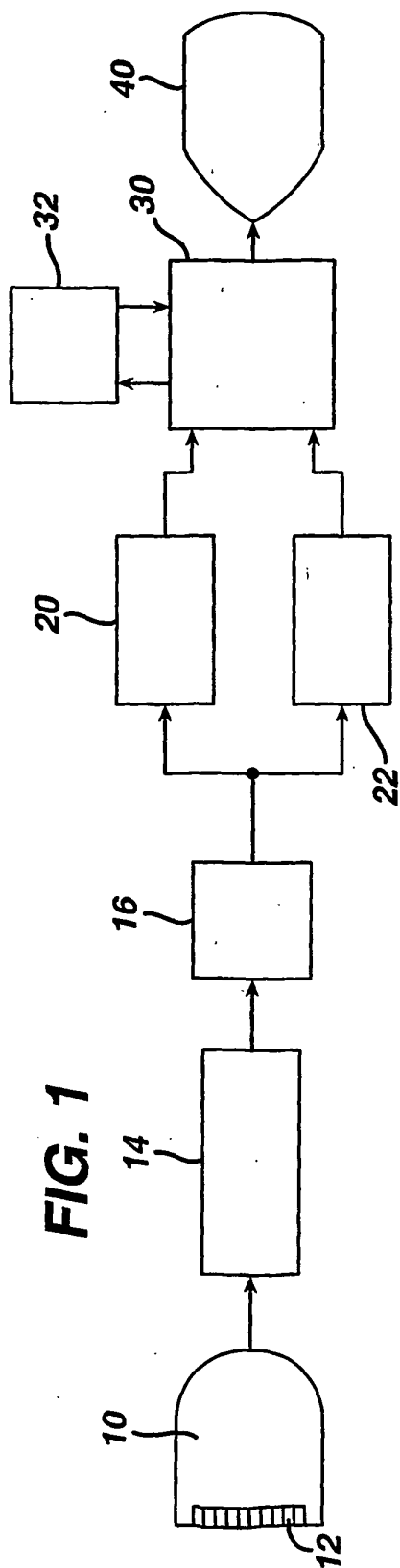


FIG. 4a

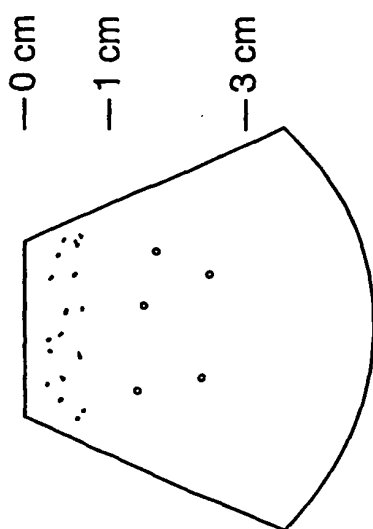


FIG. 4b

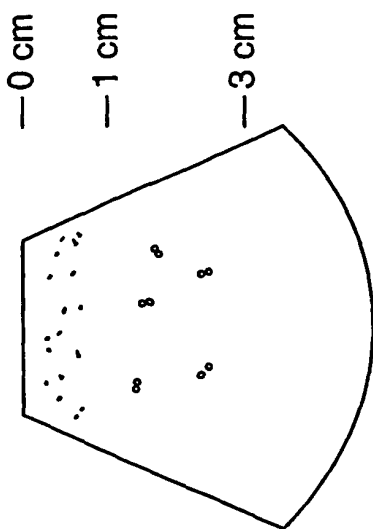


FIG. 4c

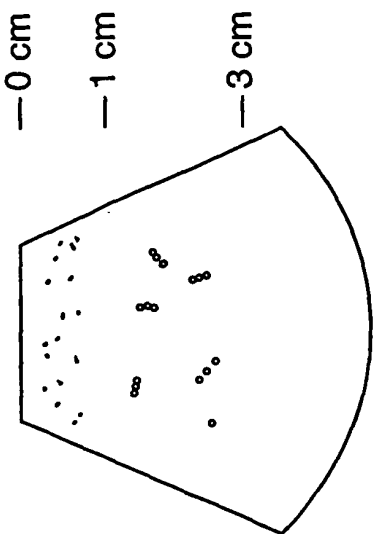


FIG. 4d

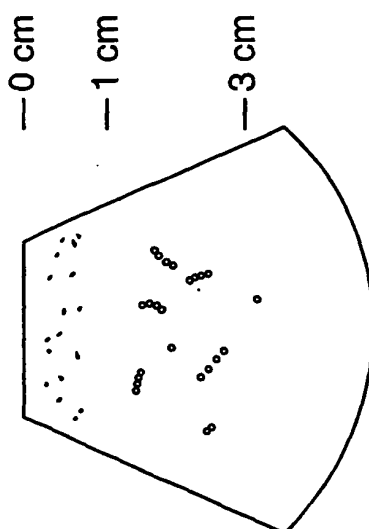


FIG. 4e

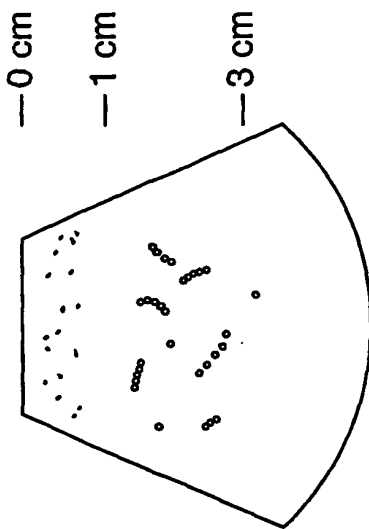


FIG. 4f

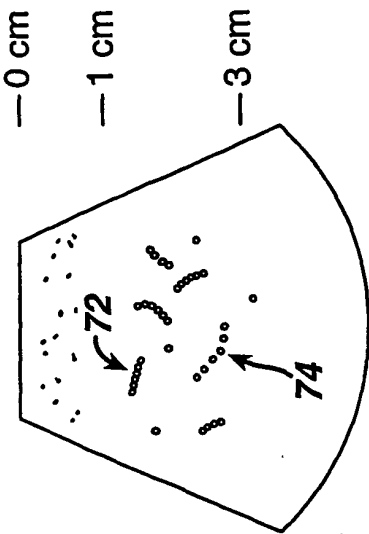


FIG. 5

Line of Sight	
	1 2
PRI	
1	+
2	-
3	
4	+
5	-
6	
7	+
8	-
9	+
10	-
11	+
12	-

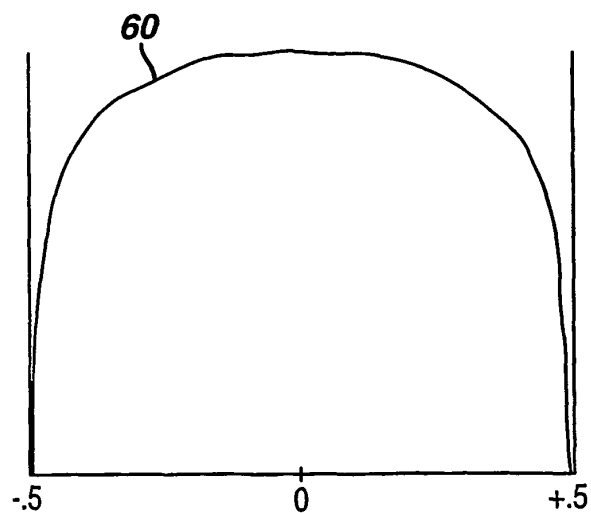


FIG. 6a

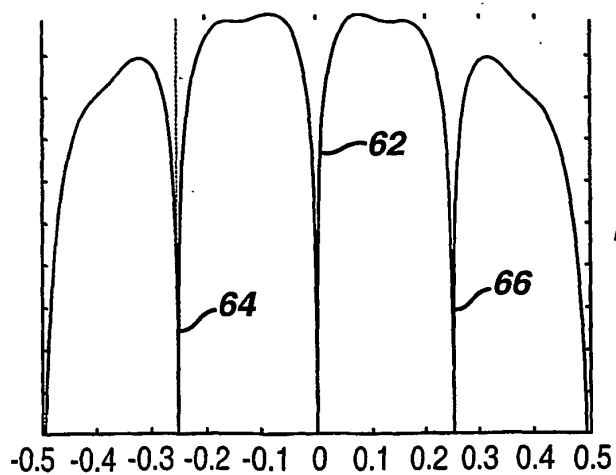


FIG. 6b

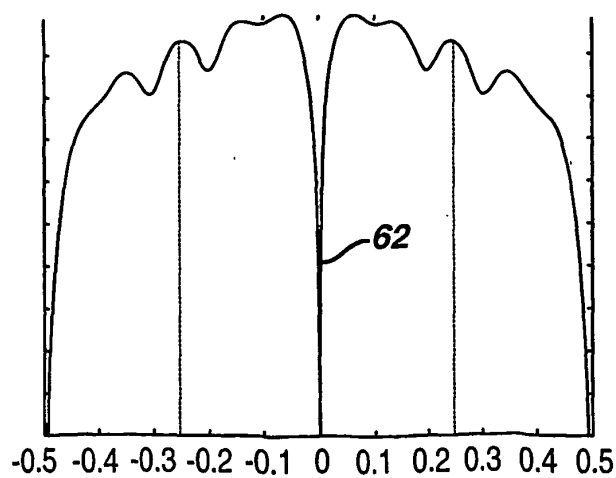


FIG. 6c

REFERENCES CITED IN THE DESCRIPTION

This list of references cited by the applicant is for the reader's convenience only. It does not form part of the European patent document. Even though great care has been taken in compiling the references, errors or omissions cannot be excluded and the EPO disclaims all liability in this regard.

Patent documents cited in the description

- US 5456257 A [0002]
- US 5833613 A [0002]
- US 6454714 B [0007] [0017]
- US 5386830 A [0007]
- US 6036643 A [0007]
- US 6095980 A [0007]
- US 5706819 A [0011]
- US 6186950 B [0011] [0028]
- US 6193662 B [0011]

专利名称(译)	超声诊断微血管成像		
公开(公告)号	EP1515639B1	公开(公告)日	2010-01-13
申请号	EP2003720817	申请日	2003-05-16
[标]申请(专利权)人(译)	皇家飞利浦电子股份有限公司		
申请(专利权)人(译)	皇家飞利浦电子N.V.		
当前申请(专利权)人(译)	皇家飞利浦电子N.V.		
[标]发明人	HOPE SIMPSON DAVID POWERS JEFFRY E SCHAUF MICHAEL VILLET CYRILLE		
发明人	HOPE SIMPSON, DAVID POWERS, JEFFRY, E. SCHAUF, MICHAEL VILLET, CYRILLE		
IPC分类号	A61B8/00 G01S7/52 A61B8/06 G01S15/89		
CPC分类号	A61B8/481 A61B8/06 G01S7/52026 G01S7/52038 G01S7/52039 G01S7/52085 G01S15/8918 G01S15/8963 G01S15/8981		
代理机构(译)	ROCHE , DENIS		
优先权	10/170178 2002-06-11 US		
其他公开文献	EP1515639A1		
外部链接	Espacenet		

摘要(译)

描述了一种借助于造影剂对微小血管进行超声成像的方法和设备。当微泡移动通过血管时，在一系列图像中检测造影剂的微泡的位置。对这些图像进行时间处理以识别移动的微泡，并且处理持久性以描绘图像，该图像显示微泡通过血管跟随的轨迹。最大强度持久性可用于显示通过脉管系统的微泡轨道的稳定累积，或者使用缓慢衰减使得轨道随着时间的推移将褪色为黑色。

$$\text{OutputPre}(x, y, k) = \max(\text{abs}[\text{InputPre}(x, y, k)], P \cdot \text{OutputPre}(x, y, k-1))$$