



US009666061B2

(12) **United States Patent**
Reeder et al.

(10) **Patent No.:** **US 9,666,061 B2**
(45) **Date of Patent:** **May 30, 2017**

(54) **SYSTEM FOR MONITORING CAREGIVERS
AND EQUIPMENT**

(71) Applicant: **Hill-Rom Services, Inc.**, Batesville, IN
(US)

(72) Inventors: **Ryan A. Reeder**, Brookville, IN (US);
Kenneth L. Kramer, Greensburg, IN
(US); **William L. Jacques**, Batesville,
IN (US); **Carl William Riley**, Milan,
IN (US); **Richard J. Schuman**, Cary,
NC (US)

(73) Assignee: **Hill-Rom Services, Inc.**, Batesville, IN
(US)

(*) Notice: Subject to any disclaimer, the term of this
patent is extended or adjusted under 35
U.S.C. 154(b) by 0 days.

(21) Appl. No.: **14/976,388**

(22) Filed: **Dec. 21, 2015**

(65) **Prior Publication Data**

US 2016/0148489 A1 May 26, 2016

Related U.S. Application Data

(63) Continuation of application No. 14/318,803, filed on
Jun. 30, 2014, now Pat. No. 9,230,421, which is a
(Continued)

(51) **Int. Cl.**
G08B 25/00 (2006.01)
A61B 5/00 (2006.01)

(Continued)

(52) **U.S. Cl.**
CPC **G08B 25/008** (2013.01); **A61B 5/0002**
(2013.01); **A61B 5/1113** (2013.01); **A61B**
5/742 (2013.01); **A61B 5/7475** (2013.01);
A61G 12/00 (2013.01); **G06F 19/3406**
(2013.01); **G06F 19/3418** (2013.01); **G06F**

19/3487 (2013.01); **G08B 21/02** (2013.01);
G08B 21/0453 (2013.01); **A61B 5/02055**
(2013.01); **A61B 2560/0242** (2013.01); **A61B**
2560/0443 (2013.01); **A61B 2560/0456**
(2013.01); **A61G 5/10** (2013.01); **A61G 7/018**
(2013.01); **A61G 7/05** (2013.01); **A61G 11/00**
(2013.01);

(Continued)

(58) **Field of Classification Search**

CPC ... **A61B 5/0002**; **A61B 5/1113**; **G06F 19/327**;
G06F 19/3406; **G06F 19/3418**; **Y10S**
128/903; **Y10S 128/904**
USPC **340/501**, **539.12**, **573.1**, **573.4**, **825.69**,
340/286.07; **128/903**, **904**, **920**, **921**;
600/300-301

See application file for complete search history.

(56) **References Cited**

U.S. PATENT DOCUMENTS

4,850,040 A 7/1989 Teich et al.
5,003,984 A 4/1991 Muraki et al.
(Continued)

OTHER PUBLICATIONS

"Cricket v2 User Manual," MIT Computer Science and Artificial
Intelligence Lab, Jan. 2005.

(Continued)

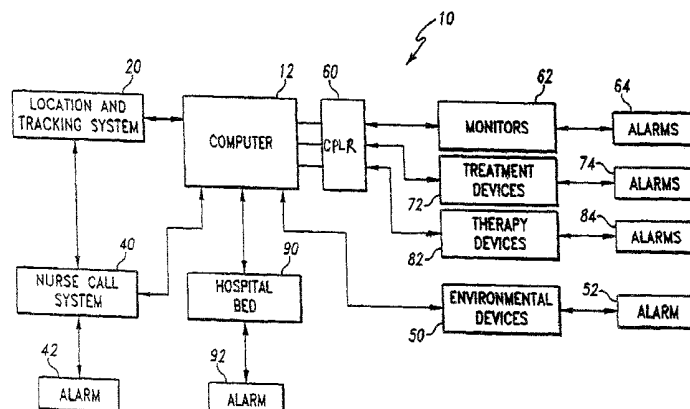
Primary Examiner — Hung T Nguyen

(74) Attorney, Agent, or Firm — Barnes & Thornburg,
LLP

(57) **ABSTRACT**

A hospital monitoring system for monitoring hospital per-
sonnel, a plurality of patient locations for patients, and
associated devices is configured to control the associated
devices based on the presence of hospital personnel or
alarms.

20 Claims, 15 Drawing Sheets



Related U.S. Application Data

continuation of application No. 13/939,329, filed on Jul. 11, 2013, now Pat. No. 8,766,804, which is a continuation of application No. 13/599,110, filed on Aug. 30, 2012, now Pat. No. 8,487,774, which is a continuation of application No. 13/238,899, filed on Sep. 21, 2011, now Pat. No. 8,258,965, which is a continuation of application No. 12/258,058, filed on Oct. 24, 2008, now Pat. No. 8,026,821, which is a continuation of application No. 11/075,979, filed on Mar. 9, 2005, now Pat. No. 7,443,302, which is a continuation of application No. 09/849,688, filed on May 4, 2001, now Pat. No. 6,876,303.

- (60) Provisional application No. 60/202,283, filed on May 5, 2000, provisional application No. 60/202,284, filed on May 5, 2000, provisional application No. 60/229,136, filed on Aug. 30, 2000.

(51) **Int. Cl.**

A61B 5/11 (2006.01)
A61G 12/00 (2006.01)
G08B 21/02 (2006.01)
G08B 21/04 (2006.01)
A61B 5/0205 (2006.01)
A61G 5/10 (2006.01)
A61G 7/018 (2006.01)
A61G 7/05 (2006.01)
A61G 11/00 (2006.01)
G06F 19/00 (2011.01)

(52) **U.S. Cl.**

CPC *A61G 2203/12* (2013.01); *A61G 2203/46* (2013.01); *A61G 2203/80* (2013.01); *A61G 2205/10* (2013.01); *G06F 19/322* (2013.01); *G06F 19/327* (2013.01); *G06F 19/3425* (2013.01); *G06F 19/3456* (2013.01); *G06F 19/3481* (2013.01)

(56) **References Cited**

U.S. PATENT DOCUMENTS

5,036,852 A	8/1991	Leishman	5,772,599 A	6/1998	Nevo et al.
5,228,449 A	7/1993	Christ et al.	5,781,442 A	7/1998	Engleson et al.
5,291,399 A	3/1994	Chaco et al.	5,800,387 A	9/1998	Duffy et al.
5,319,363 A	6/1994	Welch et al.	5,808,552 A	9/1998	Wiley et al.
5,394,882 A	3/1995	Mawhinney et al.	5,822,418 A	10/1998	Yacenda et al.
5,415,167 A	5/1995	Wilk et al.	5,822,544 A	10/1998	Chaco et al.
5,417,222 A *	5/1995	Dempsey A61B 5/0006	5,825,283 A	10/1998	Camhi et al.
		128/903	5,836,910 A	11/1998	Duffy et al.
5,511,553 A	4/1996	Segalowitz et al.	5,838,223 A	11/1998	Gallant et al.
5,515,426 A	5/1996	Yacenda et al.	5,862,803 A	1/1999	Besson et al.
5,534,851 A *	7/1996	Russek A61B 5/0002	5,867,821 A	2/1999	Ballantyne et al.
		128/202.22	5,873,369 A	2/1999	Laniado et al.
5,537,095 A	7/1996	Dick et al.	5,919,141 A	7/1999	Money et al.
5,544,661 A	8/1996	Davis et al.	5,941,846 A	8/1999	Duffy et al.
5,561,412 A	10/1996	Novak et al.	5,944,659 A	8/1999	Flach et al.
5,579,775 A	12/1996	Dempsey et al.	5,957,854 A	9/1999	Besson et al.
5,594,786 A	1/1997	Chaco et al.	5,990,866 A	11/1999	Yollin et al.
5,628,324 A	5/1997	Sarbach	6,009,333 A	12/1999	Chaco et al.
5,664,270 A *	9/1997	Bell G06F 19/3406	6,014,346 A	1/2000	Malone et al.
		5/600	6,028,519 A	2/2000	Dessureau et al.
5,678,562 A	10/1997	Sellers et al.	6,038,469 A	3/2000	Karlsson et al.
5,687,771 A	11/1997	Clough et al.	6,044,283 A	3/2000	Fein et al.
5,689,229 A	11/1997	Chaco et al.	6,044,382 A	3/2000	Martino et al.
5,699,038 A	12/1997	Ulrich et al.	6,047,203 A	4/2000	Sackner et al.
5,712,795 A	1/1998	Layman et al.	6,057,758 A	5/2000	Dempsey et al.
5,713,856 A	2/1998	Eggers et al.	6,067,019 A	5/2000	Scott et al.
5,719,761 A	2/1998	Gatti et al.	6,074,345 A	6/2000	Van Oostrom et al.
5,724,025 A	3/1998	Tavori	6,078,261 A	6/2000	Davsko et al.
5,738,102 A	4/1998	Lemelson	6,080,106 A	6/2000	Lloyd et al.
			6,093,146 A	7/2000	Filangeri et al.
			6,125,350 A	9/2000	Dirbas et al.
			6,132,371 A	10/2000	Dempsey et al.
			6,135,949 A	10/2000	Russo et al.
			6,147,592 A	11/2000	Ulrich et al.
			6,147,618 A	11/2000	Halleck et al.
			6,150,951 A	11/2000	Olejniczak
			6,159,147 A	12/2000	Lichter et al.
			6,160,478 A	12/2000	Jacobsen et al.
			6,167,258 A	12/2000	Schmidt et al.
			6,171,264 B1	1/2001	Bader
			6,186,962 B1	2/2001	Lloyd et al.
			6,198,394 B1	3/2001	Jacobsen et al.
			6,213,942 B1	4/2001	Flach et al.
			6,259,355 B1	7/2001	Chaco et al.
			6,270,457 B1	8/2001	Bardy
			6,277,080 B1	8/2001	Nissiläet al.
			6,289,238 B1	9/2001	Besson et al.
			6,304,774 B1	10/2001	Gorman
			6,336,900 B1	1/2002	Alleckson et al.
			6,336,903 B1	1/2002	Bardy
			6,368,284 B1	4/2002	Bardy
			6,398,727 B1	6/2002	Bui et al.
			6,398,728 B1	6/2002	Bardy
			6,402,691 B1	6/2002	Peddicoord et al.
			6,406,426 B1	6/2002	Reuss et al.
			6,407,335 B1	6/2002	Franklin-Lees et al.
			6,411,840 B1	6/2002	Bardy
			6,416,471 B1	7/2002	Kumar et al.
			6,441,747 B1	8/2002	Khair et al.
			6,443,890 B1	9/2002	Schulze et al.
			6,450,953 B1	9/2002	Place et al.
			6,475,153 B1	11/2002	Khair et al.
			6,493,747 B2	12/2002	Simmon et al.
			6,494,829 B1	12/2002	New, Jr. et al.
			6,496,705 B1	12/2002	Ng et al.
			6,497,656 B1	12/2002	Evans et al.
			6,517,497 B2	2/2003	Rymut et al.
			6,533,729 B1	3/2003	Khair et al.
			6,540,686 B2	4/2003	Heikkilä et al.
			6,544,173 B2	4/2003	West et al.
			6,544,174 B2	4/2003	West et al.
			6,551,252 B2	4/2003	Sackner et al.
			6,559,620 B2	5/2003	Zhou et al.
			6,569,094 B2	5/2003	Suzuki et al.
			6,575,902 B1	6/2003	Burton
			6,577,893 B1	6/2003	Besson et al.
			6,579,231 B1	6/2003	Phipps
			6,589,170 B1	7/2003	Flach et al.
			6,593,528 B2	7/2003	Franklin-Lees et al.

(56)

References Cited

U.S. PATENT DOCUMENTS

6,594,511 B2	7/2003	Stone et al.		7,301,451 B2	11/2007	Hastings
6,595,929 B2	7/2003	Stivoric et al.		7,304,580 B2	12/2007	Sullivan et al.
6,600,421 B2 *	7/2003	Freeman	A61B 5/002 340/3.31	7,319,386 B2	1/2008	Collins, Jr. et al.
6,602,191 B2	8/2003	Quy		7,324,824 B2	1/2008	Smith et al.
6,603,401 B1	8/2003	Ueyama		7,336,563 B2	2/2008	Holm
6,605,038 B1	8/2003	Teller et al.		7,352,652 B2	4/2008	Holm et al.
6,611,705 B2	8/2003	Hopman et al.		7,362,656 B2	4/2008	Holm
6,612,984 B1	9/2003	Kerr, II		7,384,110 B2	6/2008	Hoshiyama et al.
6,616,606 B1	9/2003	Petersen et al.		7,443,302 B2	10/2008	Reeder et al.
6,640,246 B1	10/2003	Gary, Jr. et al.		7,454,885 B2	11/2008	Lin et al.
6,659,947 B1	12/2003	Carter et al.		7,480,951 B2	1/2009	Weismiller et al.
6,669,630 B1	12/2003	Joliat et al.		7,920,061 B2 *	4/2011	Klein A61B 5/1113 340/506
6,671,563 B1	12/2003	Engelson et al.				
6,694,180 B1	2/2004	Boesen		8,026,821 B2	9/2011	Reeder et al.
6,723,046 B2	4/2004	Lichtenstein et al.		8,258,965 B2	9/2012	Reeder et al.
6,731,989 B2	5/2004	Engleson et al.		8,487,774 B2	7/2013	Reeder et al.
6,736,759 B1	5/2004	Stubbs et al.		8,766,804 B2	7/2014	Reeder et al.
6,740,033 B1	5/2004	Olejniczak et al.		9,230,421 B2	1/2016	Reeder et al.
6,748,250 B1	6/2004	Berman et al.		2001/0034475 A1	10/2001	Flach et al.
6,749,566 B2	6/2004	Russ		2002/0103674 A1	8/2002	Reeder et al.
6,758,812 B2	7/2004	Lang		2002/0165731 A1	11/2002	Dempsey
6,773,396 B2	8/2004	Flach et al.		2002/0198986 A1	12/2002	Dempsey
6,817,979 B2	11/2004	Nihtilä		2003/0025604 A1	2/2003	Freeman
6,819,247 B2	11/2004	Bimbach et al.		2003/0141981 A1	7/2003	Bui et al.
6,823,036 B1	11/2004	Chen		2004/0072475 A1	4/2004	Istvan
6,840,904 B2	1/2005	Goldberg		2004/0073127 A1	4/2004	Istvan et al.
6,870,466 B2	3/2005	Rust		2004/0121767 A1	6/2004	Simpson et al.
6,871,211 B2	3/2005	Labounty et al.		2004/0127802 A1	7/2004	Istvan et al.
6,875,174 B2	4/2005	Braun et al.		2004/0147818 A1	7/2004	Levy et al.
6,876,303 B2	4/2005	Reeder et al.		2004/0167465 A1	8/2004	Mihai et al.
6,893,396 B2	5/2005	Schulze et al.		2004/0176667 A1	9/2004	Mihai et al.
6,897,788 B2	5/2005	Khair et al.		2005/0140508 A1	6/2005	Tessier et al.
6,915,170 B2	7/2005	Engleson et al.		2005/0148303 A1	7/2005	Dempsey
6,937,150 B2	8/2005	Medema et al.		2005/0168341 A1	8/2005	Reeder et al.
6,942,616 B2	9/2005	Kerr, II		2005/0177052 A1	8/2005	Istvan et al.
6,984,297 B2	1/2006	Nisch et al.		2005/0197545 A1	9/2005	Hoggle
6,987,965 B2	1/2006	Ng et al.		2005/0206518 A1	9/2005	Welch et al.
6,988,989 B2	1/2006	Weiner et al.		2005/0251002 A1	11/2005	Istvan et al.
7,002,468 B2	2/2006	Eveland et al.		2005/0251003 A1	11/2005	Istvan et al.
7,004,907 B2	2/2006	Banet et al.		2005/0251004 A1	11/2005	Istvan et al.
7,010,337 B2	3/2006	Furnary et al.		2006/0030759 A1	2/2006	Weiner et al.
7,020,508 B2	3/2006	Stivoric et al.		2006/0077759 A1	4/2006	Holm
7,029,455 B2	4/2006	Flaherty		2006/0089539 A1	4/2006	Miodownik et al.
7,053,767 B2	5/2006	Petite et al.		2006/0106649 A1	5/2006	Eggers et al.
7,053,831 B2	5/2006	Dempsey et al.		2006/0122867 A1	6/2006	Eggers et al.
7,088,233 B2	8/2006	Menard		2006/0136271 A1	6/2006	Eggers et al.
7,099,895 B2	8/2006	Dempsey		2006/0143051 A1	6/2006	Eggers et al.
7,103,407 B2	9/2006	Hjelt et al.		2006/0190302 A1	8/2006	Eggers et al.
7,104,955 B2	9/2006	Bardy		2006/0214786 A1	9/2006	Bixler et al.
7,107,106 B2	9/2006	Engleson et al.		2006/0220839 A1	10/2006	Fifoit et al.
7,117,041 B2	10/2006	Engleson et al.		2006/0238350 A1	10/2006	Tessier
7,123,149 B2	10/2006	Nowak et al.		2006/0239195 A1	10/2006	Camins et al.
7,127,261 B2	10/2006	Van Erlach		2006/0242293 A1	10/2006	Russ
7,129,836 B2	10/2006	Lawson et al.		2006/0248221 A1	11/2006	Hottel et al.
7,130,396 B2	10/2006	Rogers et al.		2006/0253281 A1	11/2006	Letzl et al.
7,138,902 B2	11/2006	Menard		2006/0258926 A1	11/2006	Ali et al.
7,153,262 B2	12/2006	Stivoric et al.		2006/0267740 A1	11/2006	Bixler et al.
7,153,263 B2	12/2006	Carter et al.		2006/0277202 A1	12/2006	Dempsey
7,154,398 B2	12/2006	Chen et al.		2006/0279427 A1	12/2006	Becker et al.
7,156,807 B2	1/2007	Carter et al.		2006/0288095 A1	12/2006	Torok et al.
7,171,166 B2	1/2007	Ng et al.		2007/0013511 A1	1/2007	Weiner et al.
7,197,357 B2	3/2007	Istvan et al.		2007/0040692 A1	2/2007	Smith et al.
7,197,492 B2	3/2007	Sullivan		2007/0060976 A1	3/2007	Denzene et al.
7,215,991 B2	5/2007	Besson et al.		2007/0069887 A1	3/2007	Welch et al.
7,222,054 B2	5/2007	Geva		2007/0080801 A1	4/2007	Weismiller et al.
7,231,258 B2	6/2007	Moore et al.		2007/0112602 A1	5/2007	Bellon et al.
7,242,308 B2	7/2007	Ulrich et al.		2007/0123955 A1	5/2007	Verhoef et al.
7,256,708 B2	8/2007	Rosenfeld et al.		2007/0135866 A1	6/2007	Baker et al.
7,272,428 B2	9/2007	Hopman et al.		2007/0142716 A1	6/2007	Biondi
7,277,758 B2	10/2007	DiLorenzo		2007/0156456 A1	7/2007	McGillin et al.
7,283,423 B2	10/2007	Holm et al.		2007/0156707 A1	7/2007	Fuchs et al.
7,292,135 B2	11/2007	Bixler et al.		2007/0180140 A1	8/2007	Welch et al.
7,292,139 B2	11/2007	Mazar et al.		2007/0208235 A1	9/2007	Besson et al.
7,294,105 B1	11/2007	Islam		2007/0229249 A1	10/2007	McNeal et al.
				2007/0233199 A1	10/2007	Moore et al.
				2007/0251835 A1	11/2007	Mehta et al.
				2007/0255111 A1	11/2007	Baldus et al.
				2007/0255250 A1	11/2007	Moberg et al.
				2007/0255348 A1	11/2007	Holtzclaw

(56)

References Cited

U.S. PATENT DOCUMENTS

2007/0258395	A1	11/2007	Jollota et al.
2007/0279211	A1	12/2007	Fenske et al.
2008/0009694	A1	1/2008	Hopman et al.
2008/0018435	A1	1/2008	Brown
2008/0049555	A1	2/2008	Holm et al.
2008/0114689	A1	5/2008	Psynik et al.
2008/0120784	A1	5/2008	Warner et al.
2008/0122616	A1	5/2008	Warner et al.
2008/0126122	A1	5/2008	Warner et al.
2008/0126132	A1	5/2008	Warner et al.
2008/0147442	A1	6/2008	Warner et al.
2009/0096615	A1	4/2009	Reeder et al.
2012/0075464	A1	3/2012	Derenne et al.
2013/0939329		7/2013	Reeder et al.
2013/0300558	A1	11/2013	Reeder et al.
2014/0320290	A1	10/2014	Reeder et al.

OTHER PUBLICATIONS

Priyantha, et al., "The Cricket Location-Support System," ACM MOBICOM, Aug. 2000.

Chakraborty, Anit, "A Distributed Architecture for Mobile, Location-Dependent Applications," Massachusetts Institute of Technology (1999).

Hill-Rom NetLinx, "The COMposer® Communication System," www.hill-rom.com, 1999, 4 pages.

COMposer Communication System Service Manual, Nov. 1995, 426 pages.

The COMposer System Installation Manual, 2003, 225 pages.

Composer Communication System In-Service Getting Started, 1997, 32 pages.

Composer SW Cofig Guide Rev B 1995, 154 pages.

* cited by examiner

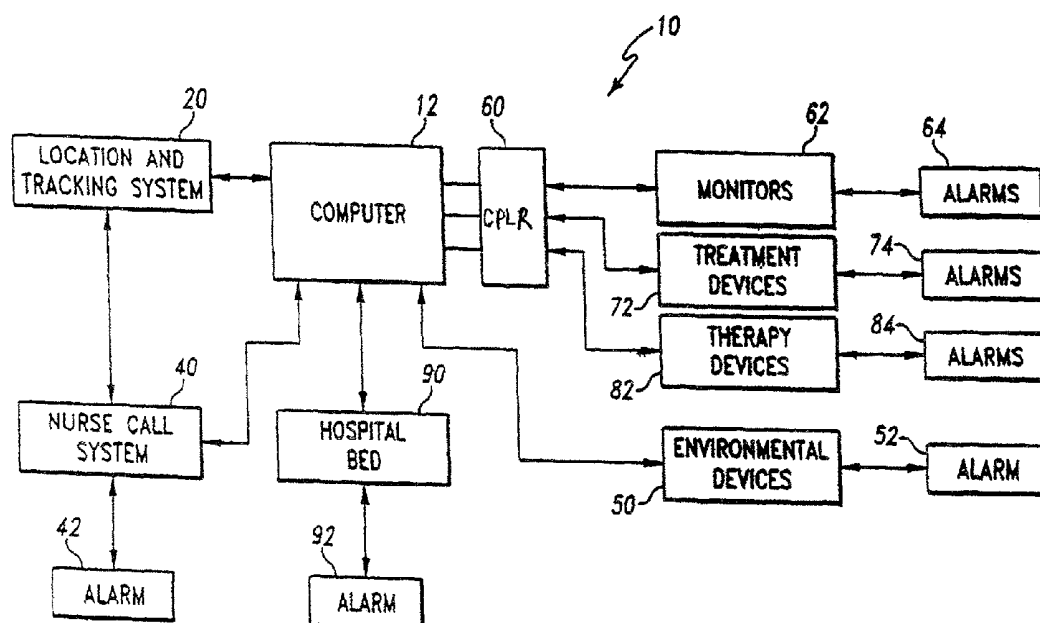
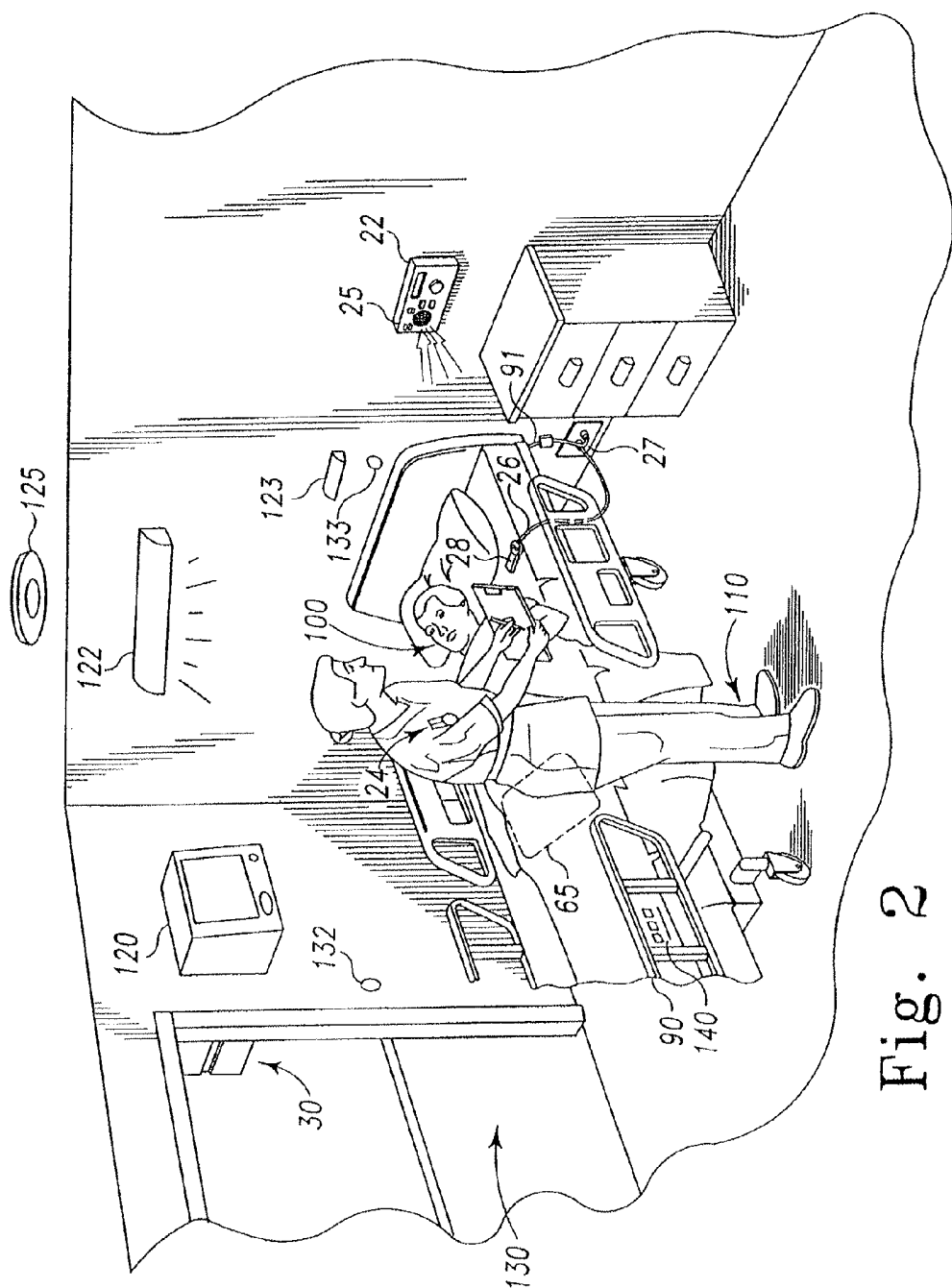


Fig. 1



Fi.
2

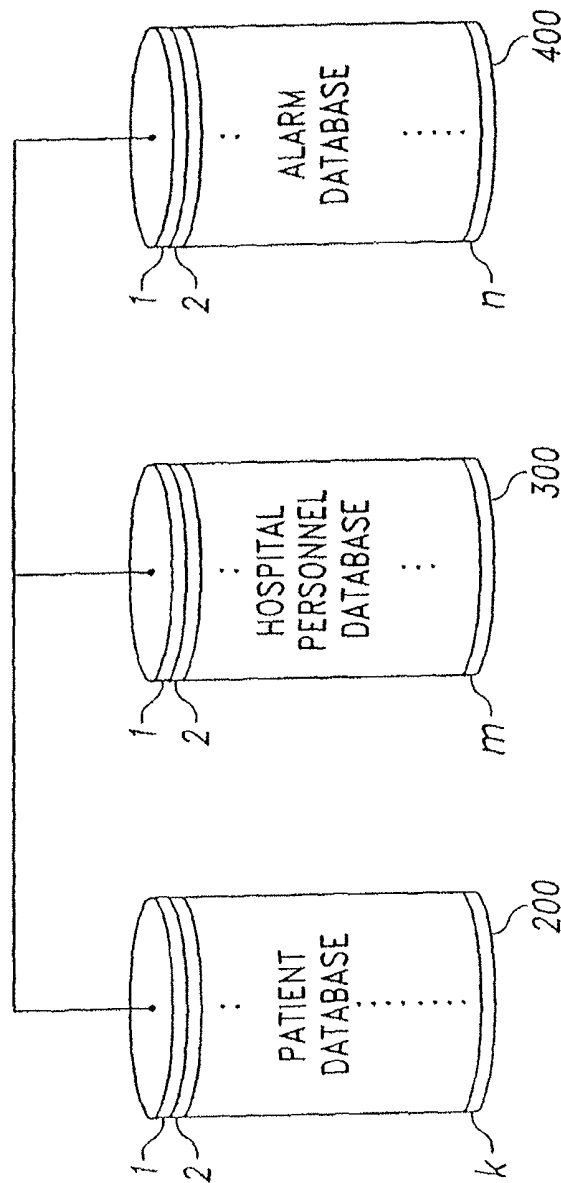


Fig. 3

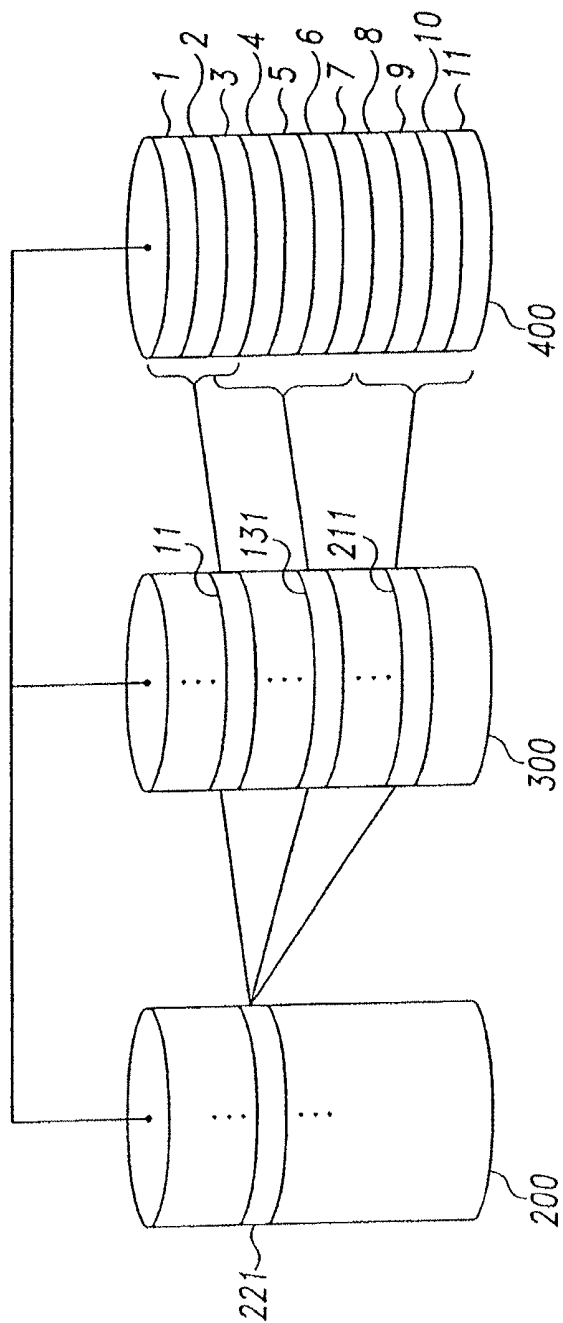


Fig. 4

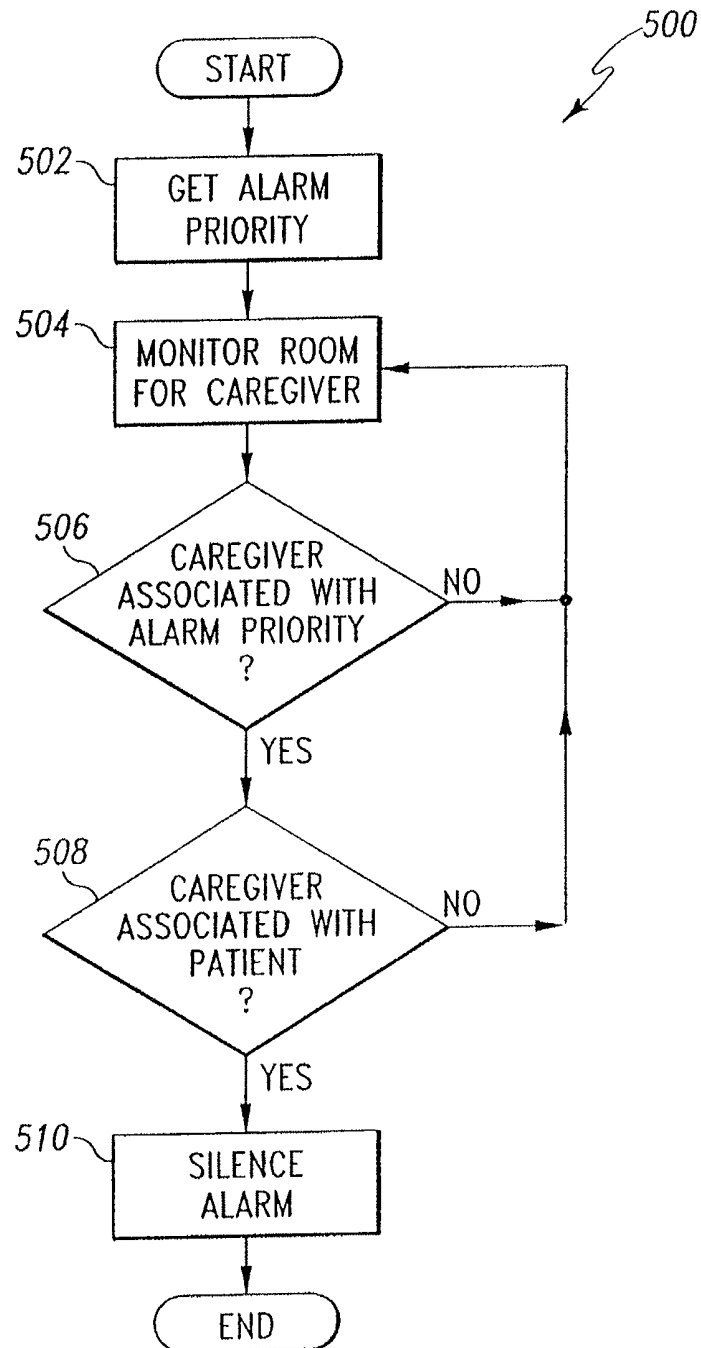


Fig. 5

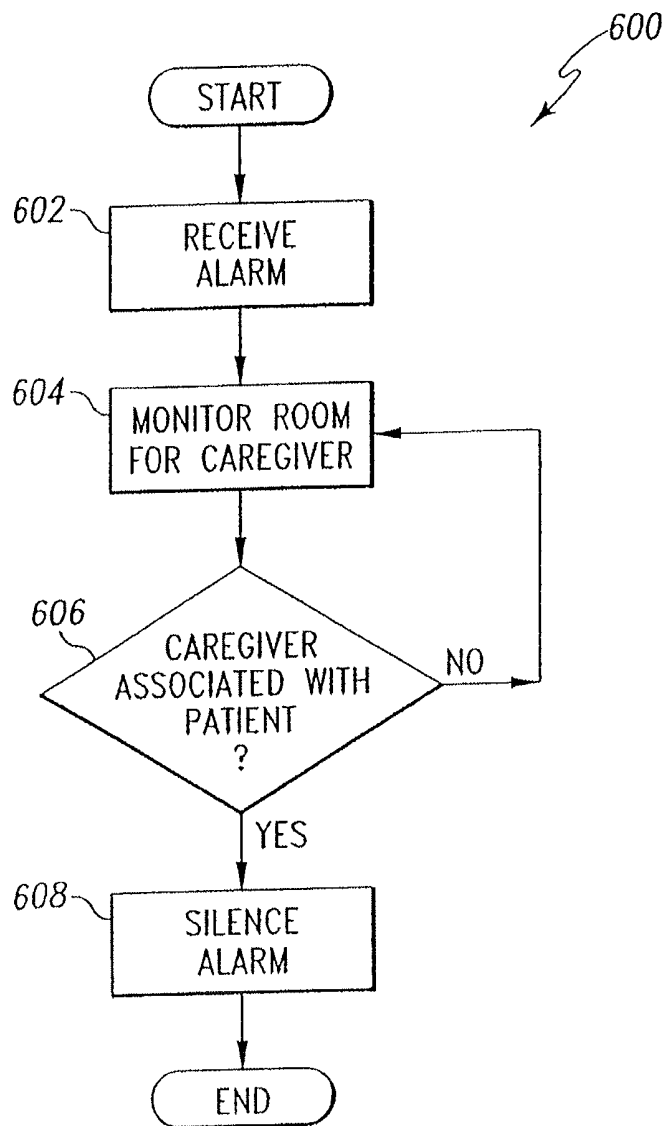


Fig. 6

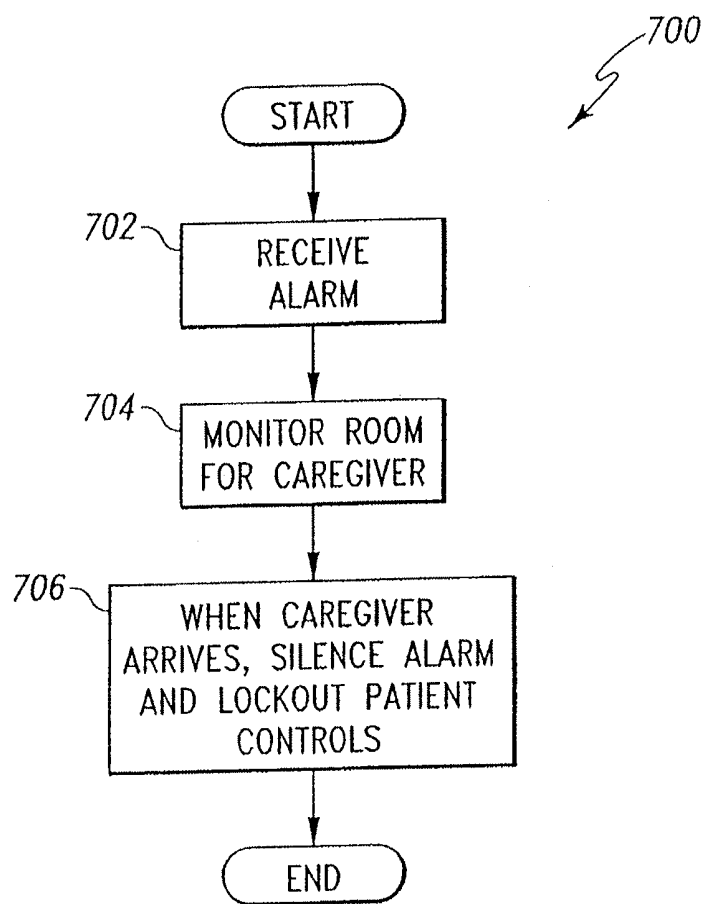


Fig. 7

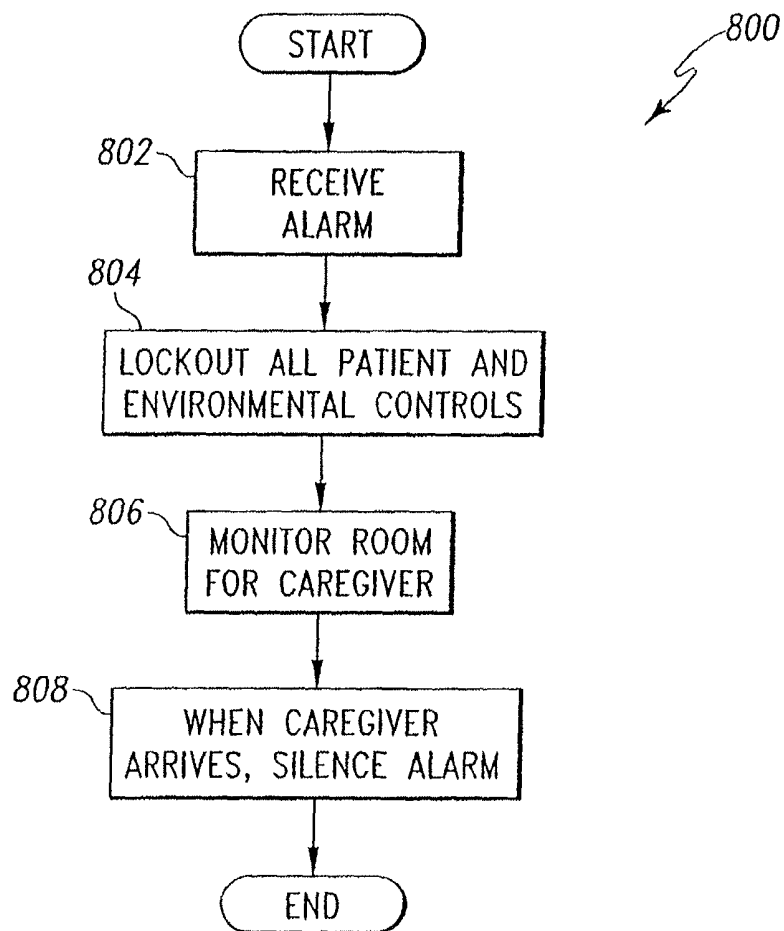
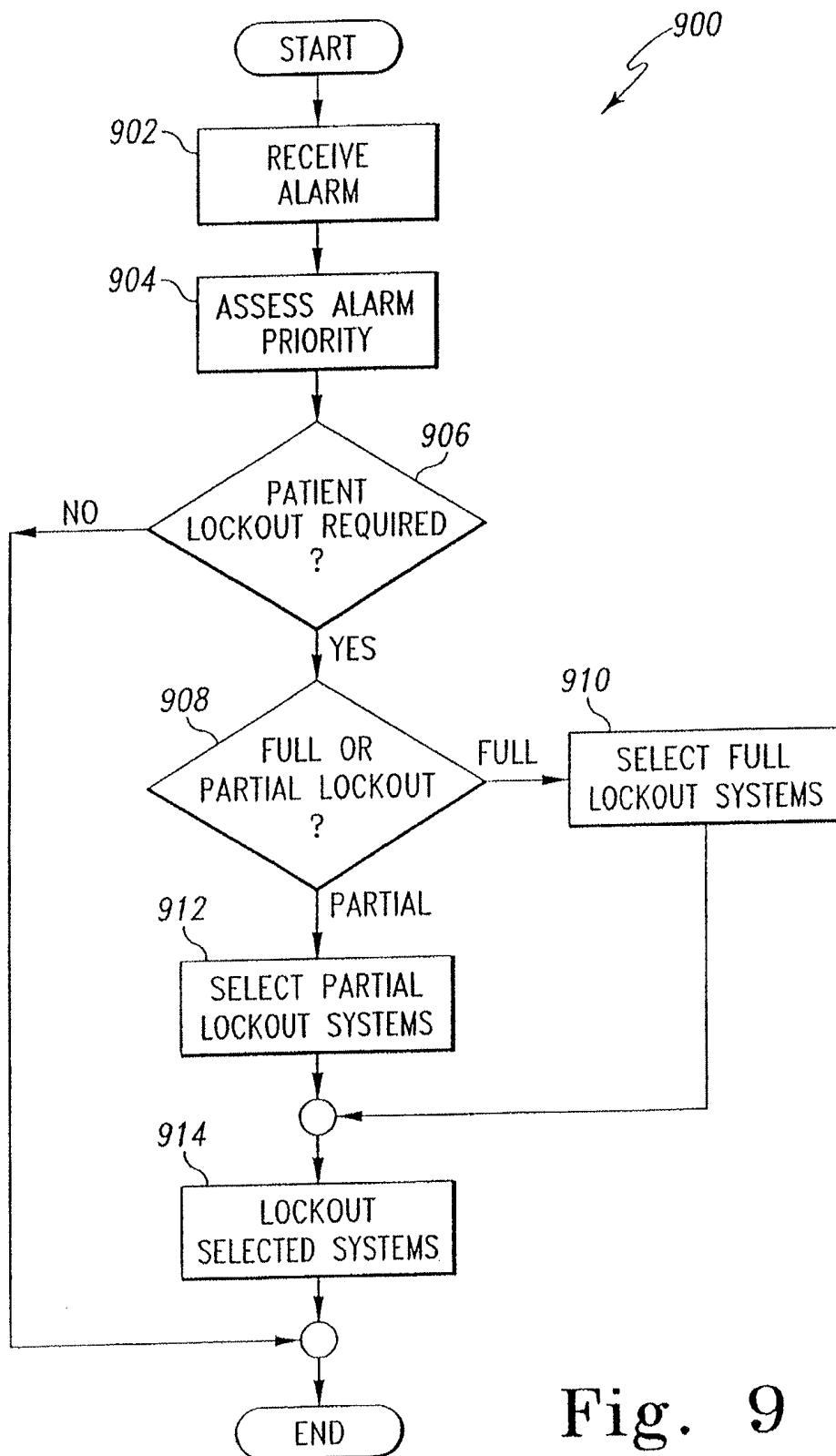


Fig. 8



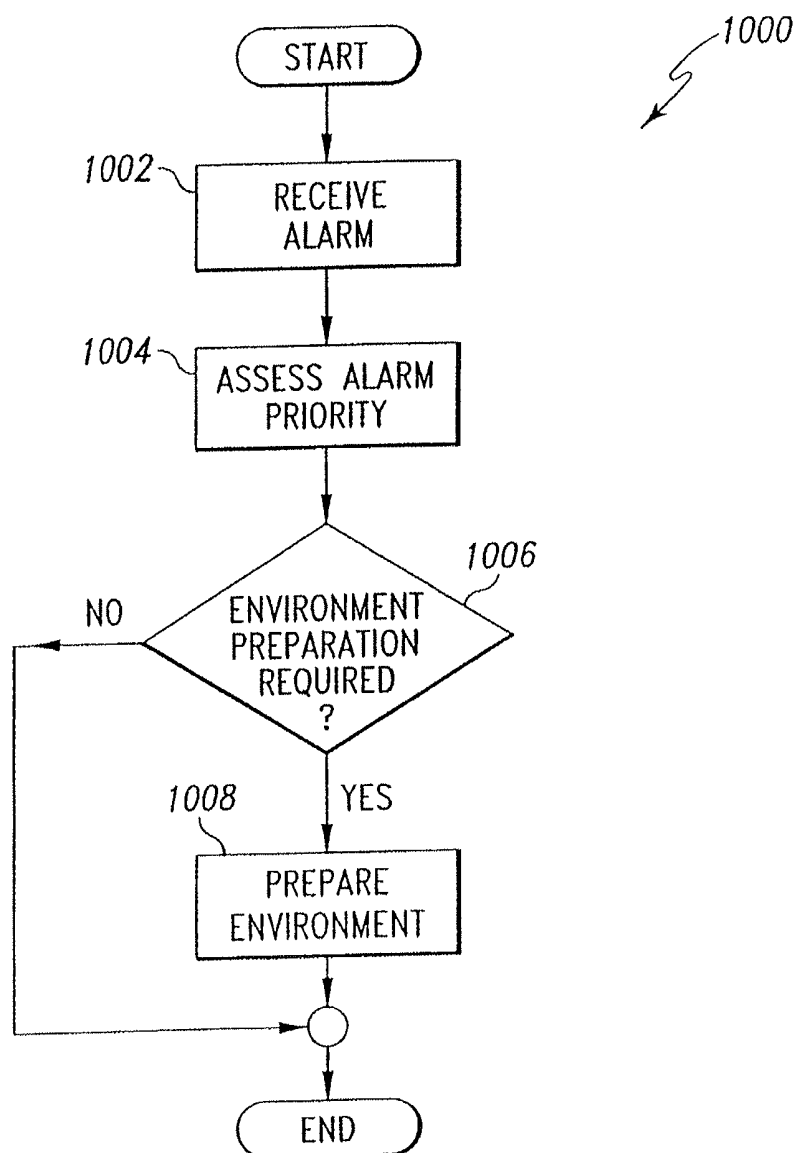
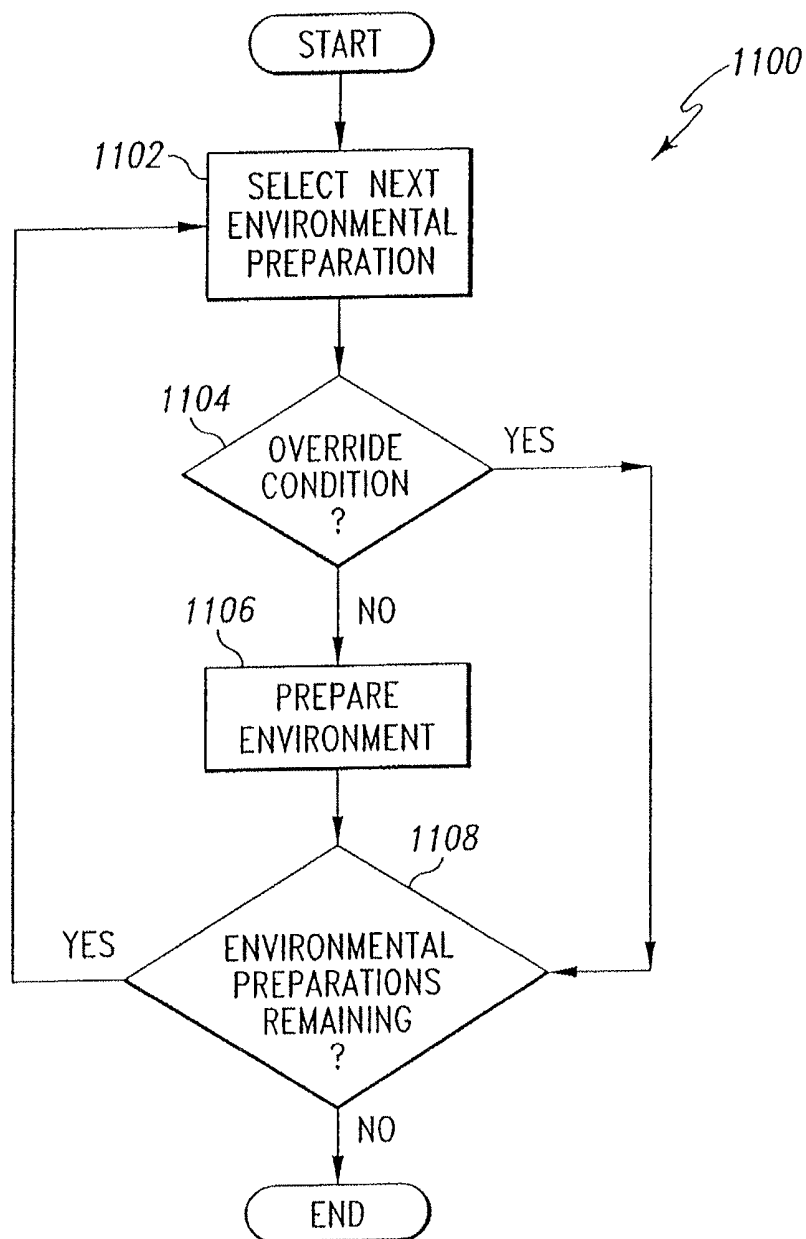


Fig. 10

**Fig. 11**

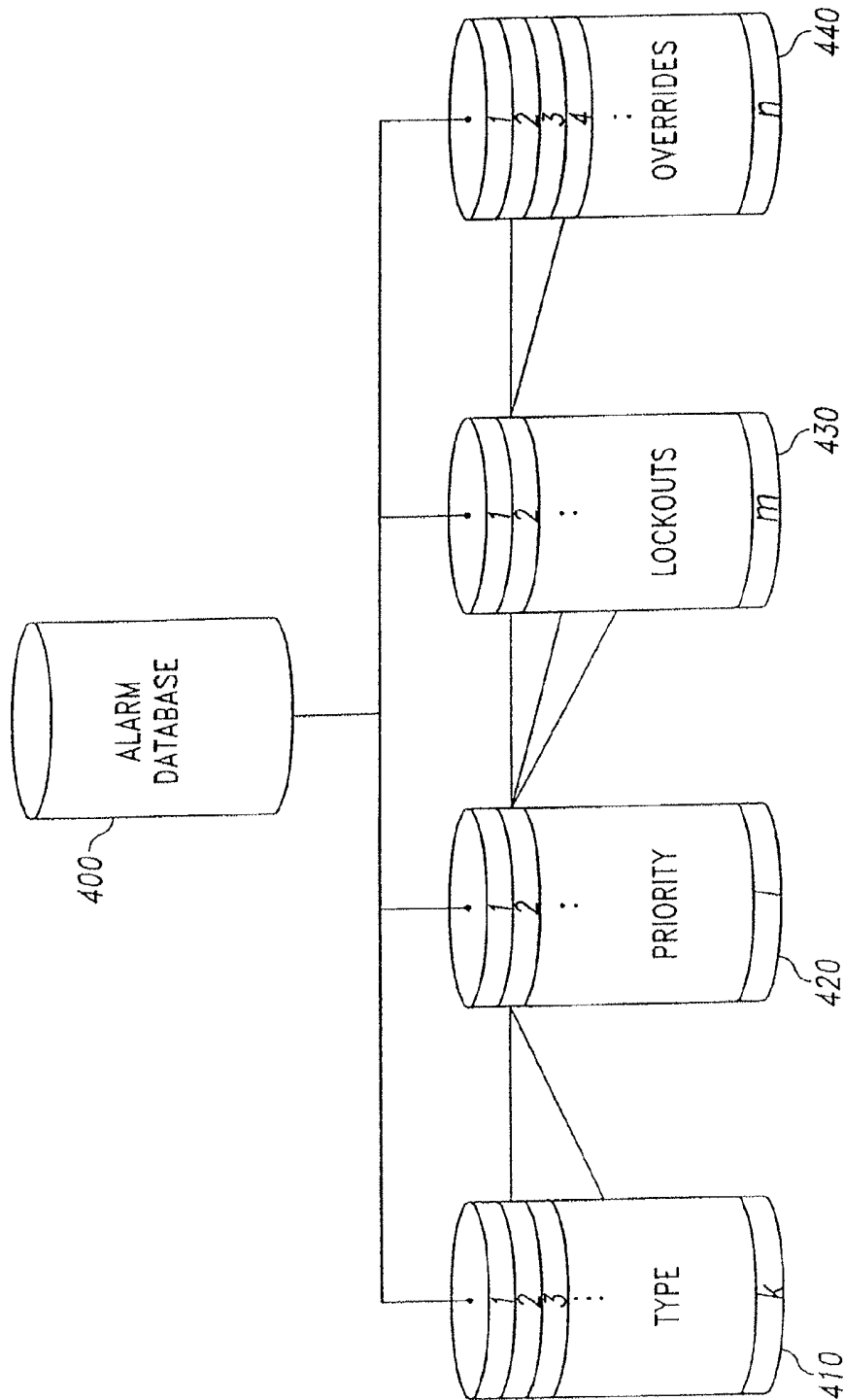


Fig. 12

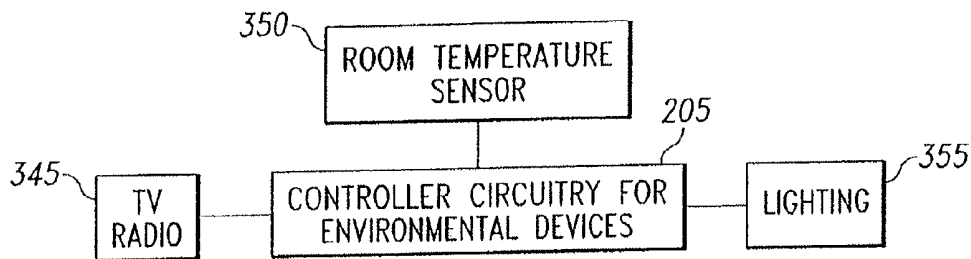


Fig. 13

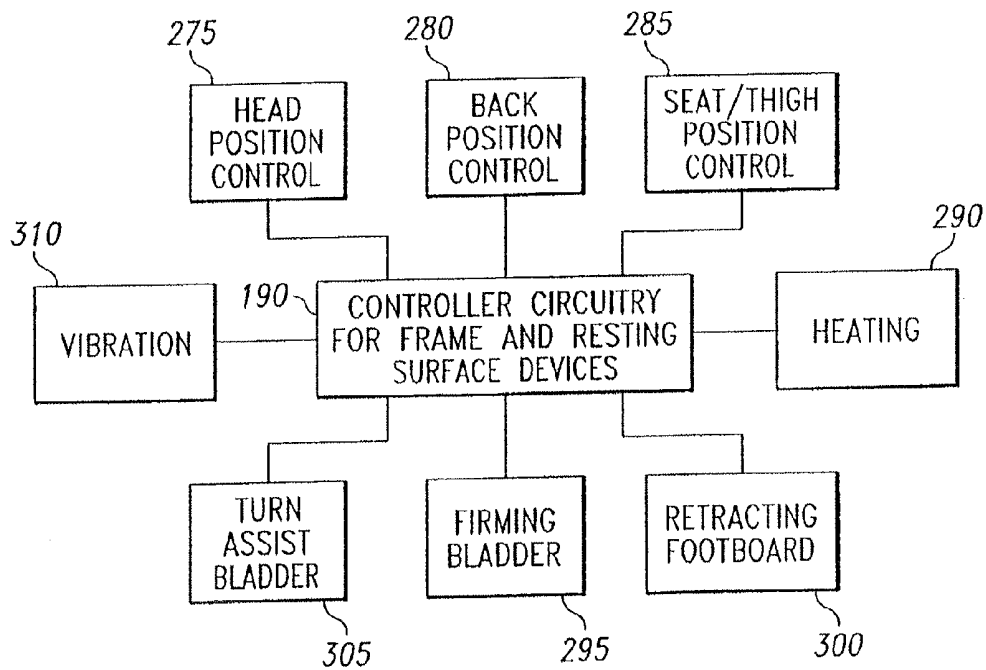


Fig. 14

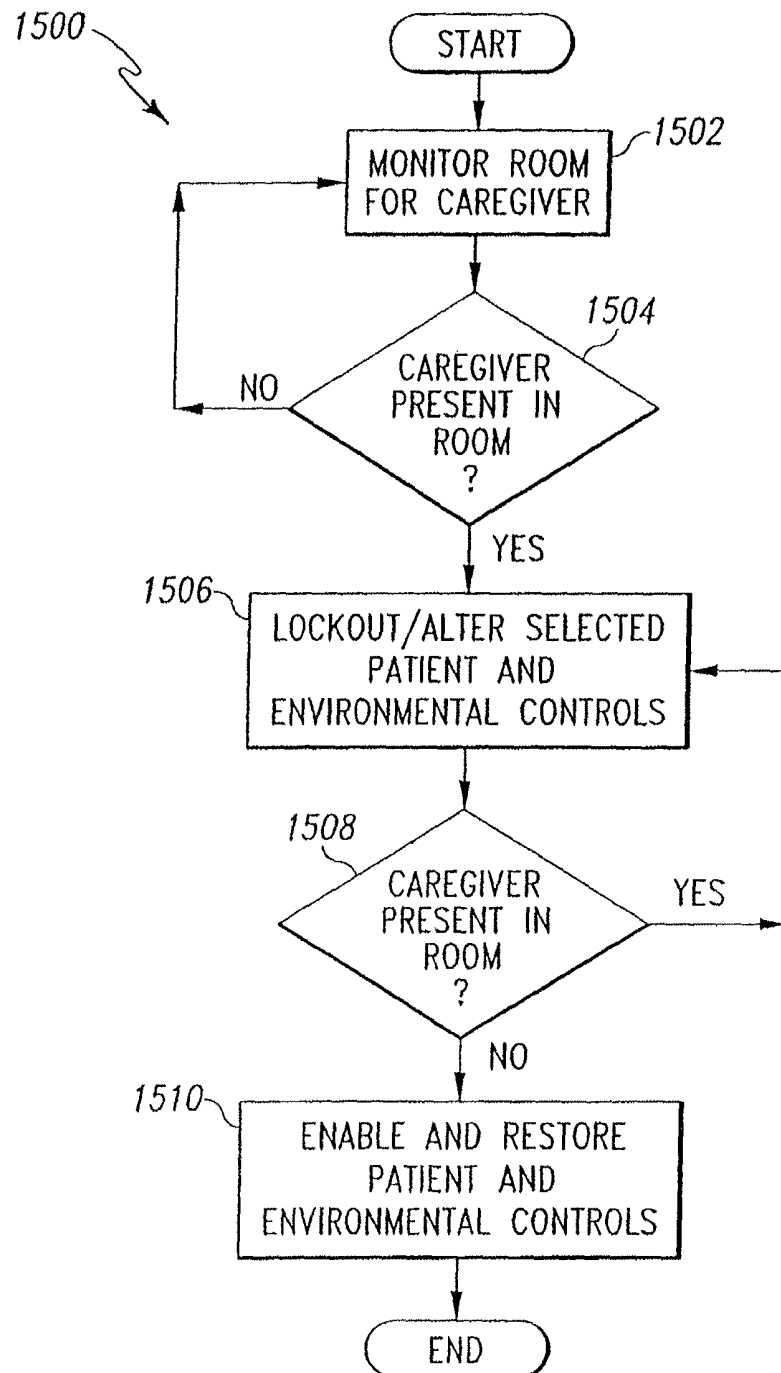


Fig. 15

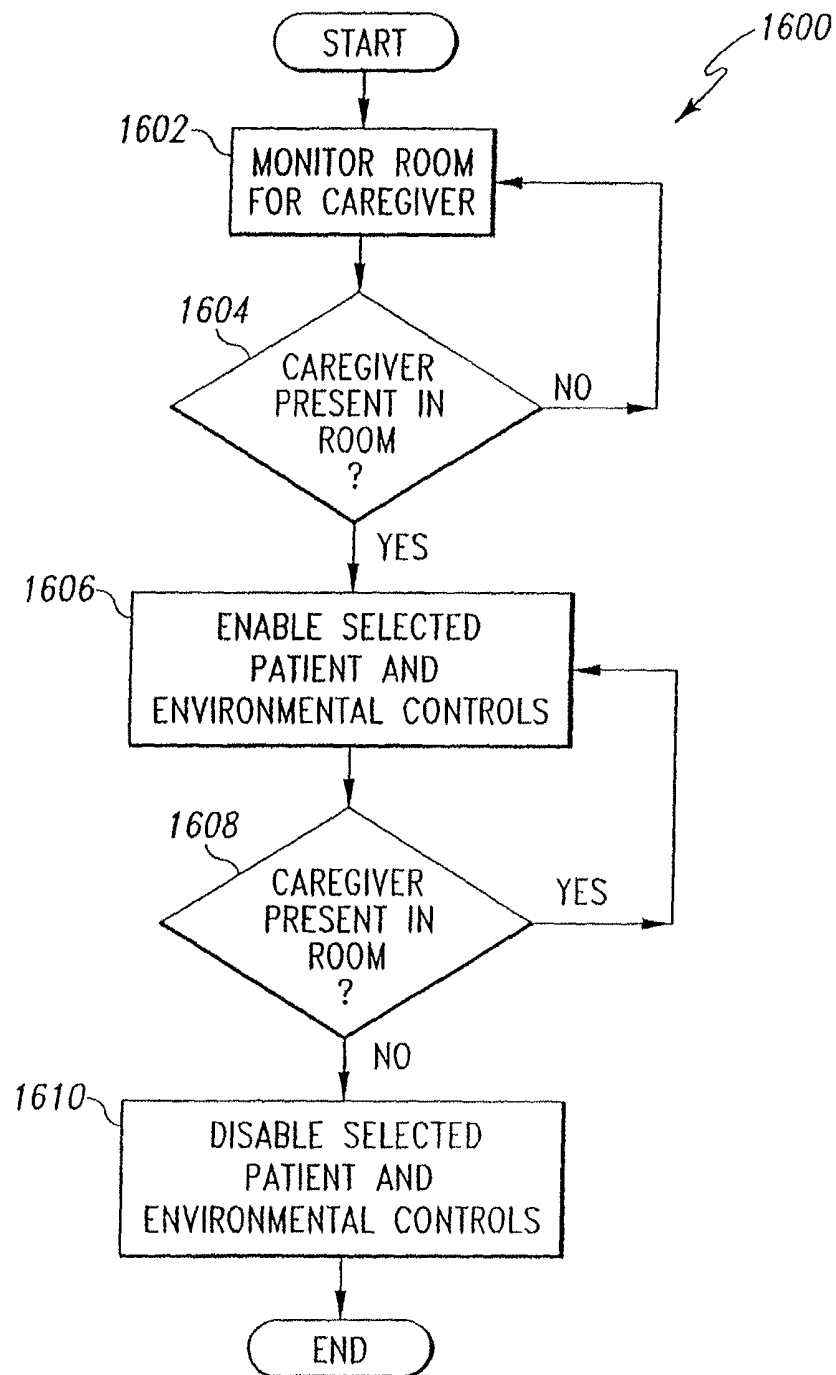


Fig. 16

SYSTEM FOR MONITORING CAREGIVERS AND EQUIPMENT

REFERENCE TO PRIORITY APPLICATIONS

This application is a continuation of U.S. application Ser. No. 14/318,803, filed Jun. 30, 2014, now U.S. Pat. No. 9,230,421, which is a continuation of U.S. application Ser. No. 13/939,329, filed Jul. 11, 2013, now U.S. Pat. No. 8,766,804, which is a continuation of U.S. application Ser. No. 13/599,110, filed Aug. 30, 2012, now U.S. Pat. No. 8,487,774, which is a continuation of U.S. application Ser. No. 13/238,899, filed Sep. 21, 2011, now U.S. Pat. No. 8,258,965, which is a continuation of U.S. application Ser. No. 12/258,058, filed Oct. 24, 2008, now U.S. Pat. No. 8,026,821, which is a continuation of U.S. application Ser. No. 11/075,979, filed Mar. 9, 2005, now U.S. Pat. No. 7,443,302, which is a continuation of U.S. application Ser. No. 09/849,688, filed May 4, 2001, now U.S. Pat. No. 6,876,303, which claims the benefit of U.S. Provisional Application No. 60/202,283, entitled "Patient Point of Care Computer System," filed May 5, 2000, and U.S. Provisional Application No. 60/202,284, entitled "Remote Control for a Hospital Bed," filed May 5, 2000, and U.S. Provisional Application No. 60/229,136, entitled "Patient Point of Care Computer System," filed Aug. 30, 2000, all of which are hereby incorporated herein by reference.

CROSS REFERENCE TO RELATED APPLICATIONS

The disclosures of related U.S. Nonprovisional application Ser. No. 09/849,580, entitled "Patient Point of Care Computer System", filed May 4, 2001, and U.S. Nonprovisional application Ser. No. 09/848,941, entitled "Remote Control for a Hospital Bed" filed May 4, 2001 are incorporated herein by reference.

BACKGROUND AND SUMMARY OF THE INVENTION

The present invention relates to a hospital monitoring system, and more particularly, to hospital monitoring system for monitoring hospital personnel, a plurality of patient locations for patients, and associated devices.

Hospital staff, including doctors, nurses, physician assistants, orderlies, etc., provide patient care while the patient is undergoing treatment and/or therapy during a hospital visit. A number of systems have been developed to facilitate providing patient care, such as personnel locating systems, nurse call systems, bed status information systems, and patient monitoring devices. Details of such systems are disclosed in U.S. Pat. No. 6,067,019 (Bed Exit Detection Apparatus); U.S. Pat. No. 5,838,223 (Patient/Nurse Call System); U.S. Pat. No. 5,808,552 (Patient Detection System for a Patient-Support Device); U.S. Pat. No. 5,699,038 (Bed Status Information System for Hospital Beds); U.S. Pat. No. 5,561,412 (Patient/Nurse Call System); and U.S. Pat. No. 5,537,095 (Incontinence Detection Device), the disclosures of which are incorporated herein by reference. Additionally, co-pending U.S. Nonprovisional application Ser. No. 09/849,580, filed May 4, 2001, entitled "Patient Point of Care Computer System," and Ser. No. 09/848,941, filed May 4, 2001, entitled "Remote Control For a Hospital Bed," the disclosures of which are incorporated herein by reference, also disclose systems that have been developed to facilitate providing patient care.

The systems disclosed above facilitate various patient alarms, such as a patient exiting a bed, an incontinence event, or an emergency call for a caregiver. Typically, a caregiver will enter the patient's room when responding to an alarm. However, the caregiver often must manually silence the alarm, adjust the room lighting, or shut off a television or radio prior to attending to the patient. This manual preparation of the working environment may distract the caregiver and further increases response time to critical alarms. The disclosure is directed toward the automatic silencing of such alarms and/or preparing the working environment when a responsive caregiver enters the patient's room. Further, the disclosure is directed toward preparing the working environment when an alarm is received. Further still, the disclosure is directed toward preparing the working environment when an alarm is received, subject to environmental and patient control overrides depending on the nature of the alarm and time of the alarm.

The system disclosed also provides for automatic lockouts of patient and environmental controls when the caregiver enters the room, regardless of the presence of an alarm. As a caregiver makes his or her rounds, the caregiver may need to tend to the patient's needs. Often a caregiver must ensure that patient activated controls are locked out during this time, as the patient may inadvertently activate a control and interfere with the caregiver's duties. Also disclosed is a system that provides for the automatic enablement of patient controls, bed controls, and/or environmental controls when a caregiver is in the room.

One illustrative embodiment prevents the status of bed lockouts from being changed without an authorized caregiver within the room. When the caregiver enters the room, the system receives a caregiver identification signal from a caregiver badge. After the system authenticates the identification signal, the system then permits the bed lockout status to be changed. The bed lockout controls prevent the patient on bed from actuating certain controls. These lockouts are typically actuated by pressing a button or a combination of two or more buttons on the bed to lock out various bed controls, environmental controls, or other functions.

Another embodiment is designed for use with beds which are movable from a generally flat bed position to a chair position. In this embodiment of the present invention, the bed is unable to move to a chair position unless an authorized caregiver is located within the room. Again, the system must receive and authenticate the identification signal from caregiver badge before the bed is permitted to move to the chair position.

In yet another embodiment, the status of patient environmental controls adjacent a bed is automatically altered when the caregiver enters the room. For example, in one embodiment the sound on a TV/radio device is muted and specific light sources are activated when the caregiver enters the room. A system receives the caregiver identification signal. After the system authenticates the identification signal, the system instructs the TV/radio device to mute all sound and the light source to activate specific lights. In another embodiment, the system locks out one or more of the environmental controls within the room once the control unit authenticates the identification signal from the caregiver badge. Therefore, the patient can no longer control the environmental functions such as, for example, the radio, television or lighting when an authorized caregiver is in the room.

3

According to the invention, a hospital monitoring system for monitoring hospital personnel, a plurality of patient locations for patients, and associated devices is disclosed. The system comprises a plurality of transmitters carried by hospital personnel, each transmitter periodically transmitting a transmitter signal unique to that transmitter; a plurality of receivers, each receiver corresponding to a patient location, the receivers receiving the transmitter signals and outputting a receiver signal; and a computer coupled to the associated devices, the computer configured to receive the receiver signals and determine the presence of hospital personnel in the patient locations, the computer further configured to alter device states based on the presence of hospital personnel.

Also according to the invention, a method of controlling devices in a patient location is provided. The method comprises the steps of associating the patient location to a patient; associating devices to the patient location; determining the presence of hospital personnel in the patient location; and altering the state of the devices based on the presence of hospital personnel.

Also according to the invention, a hospital monitoring system for monitoring hospital personnel, a plurality of patient locations for patients, and associated devices is provided. The system comprises a locating and tracking system configured to locate and track hospital personnel located in the plurality of patient locations; a computer coupled to the associated devices and the locating and tracking system, the computer configured to determine the presence of hospital personnel in the patient locations from the locating and tracking system, the computer further configured to alter device states based on the presence of hospital personnel. The computer also includes a database, the database comprising a patient database, the patient database associated each patient with a patient location; a hospital personnel database, the hospital personnel database associating each hospital personnel with a caregiver or non-caregiver class, the hospital personnel database further associating hospital personnel with a patient; and an alarm database, the alarm database associating a plurality of alarms with the hospital personnel.

Additional features of the invention will become apparent to those skilled in the art upon consideration of the following detailed description of illustrated embodiments exemplifying the best mode of carrying out the invention as presently perceived.

BRIEF DESCRIPTION OF THE DRAWINGS

The detailed description particularly refers to the accompanying figures in which:

FIG. 1 is a block diagram illustrating the components of the hospital monitoring and control system of the present invention;

FIG. 2 is a perspective view of a portion of a hospital room which illustrates a patient station in a patient room and the physical arrangement of other components, including an incontinence detection device;

FIG. 3 depicts a database structure used to associate patients with hospital personnel, and associate hospital personnel with alarms;

FIG. 4 depicts the database association for a specific patient record, the patient associated with hospital personnel, and the hospital personnel associated with alarms;

FIG. 5 is a flowchart of an illustrative embodiment of an automatic alarm silencing process that includes association of patients, hospital personnel and alarms;

4

FIG. 6 is a flowchart of another illustrative embodiment of an automatic alarm silencing process that includes association of patients and hospital personnel;

FIG. 7 is a flowchart of an illustrative embodiment of an alarm silencing process in conjunction with a patient control lockout that includes a lockout of patient activated controls;

FIG. 8 is a flowchart of another illustrative embodiment of an automatic alarm silencing process in conjunction with a patient control lockout that includes a lockout of patient activated controls upon the occurrence of the alarm;

FIG. 9 is a flow chart of another illustrative embodiment describing a process that locks out patient bed controls and environmental controls based on the alarm priority;

FIG. 10 is a flow chart of another illustrative embodiment describing a process that prepares the patient environment for the caregiver based on the alarm priority;

FIG. 11 is a flow chart of another illustrative embodiment describing a process that prepares the patient environment for the caregiver based on the alarm priority, with each environmental preparation subject to an override condition;

FIG. 12 depicts the database association of the alarm database, the database containing Type, Priority, Lockouts and Overrides fields;

FIG. 13 is a block diagram illustrating the control circuitry for several environmental controls;

FIG. 14 is a block diagram illustrating the bed controller and associated bed controls;

FIG. 15 is a flow chart of another illustrative embodiment describing a process which lockouts and/or alters selected patient and environmental controls when a caregiver is present in the room; and

FIG. 16 is a flow chart of another illustrative embodiment describing a process which enables selected patient and environmental controls when a caregiver is present in the room.

DETAILED DESCRIPTION OF THE DRAWINGS

Referring now to the drawings, FIGS. 1 and 2 illustrate a block diagram of the hospital monitoring and control system 10 of the present invention, and an illustrative hospital environment in which the system is utilized.

FIG. 2 illustrates a patient room 130 which includes a patient station 22 and the physical arrangement of other components, including an incontinence detection device 65. The patient station 22 is illustratively a component of a nurse call system 40. Caregiver 110 wears a badge 24 which clips to the caregiver's 110 clothing. The badge 24 transmits a pulse-coded signal, preferably infrared or RF, which is received by receiver 25, which is preferably located at the patient station 22, and/or an overhead receiver 125 so that the location and tracking systems 20 can determine and continuously update locations of caregivers 110 on duty. Overhead light 122 provides room illumination, and reading light 123 provides reading illumination for the patient. Overhead light 122 and reading light 123 are controlled by light controls 132 and 133, respectively.

Pillow unit 28 connects via a cable 26 to a receptacle 27 which, in turn, is connected to the nurse call system 40. Pillow unit 28 allows the patient 100 to manually place a nurse call or alarm via nurse call system 40. Pillow unit also allows patient 100 access to bed 90 controls and environmental controls 50. Bed 90 controls are also accessible by the caregiver 110 via control panel 140.

Incontinence detection device **65** is interposed between the bed **90** and patient **110**. Incontinence detection device **65** is connected to the computer **12** via bed **90** electronics and cable **91** via receptacle **27**.

The system **10** illustratively includes a computer **12** configured to monitor various system alarms, device status, the hospital personnel information, and patient information. Computer **12** is coupled to a location and tracking system **20**. Location and tracking system **20** monitors and tracks the location of hospital personnel, patients and equipment within the hospital. Computer **12** is also connected to nurse call system **40**. Nurse call system **40** is associated with various alarms **42**. The alarms **42** illustratively include the following:

ALARM	PRIORITY	GENERATED BY
Code Blue	1	Human/Input Device
Staff Emergency	2	Human/Input Device
Bathroom	3	Human/Input Device
Shower	4	Human/Input Device
Patient Equipment	5	Automatic/Input Device

Illustratively, the alarms **42** will place a call to a caregiver through location and tracking system **20** and nurse call system **40**.

Computer **12** is also connected to hospital bed **90**. Hospital bed **90** is associated with alarms **92**. Alarms **92** include bed malfunction alarms and/or bed exit alarms, and incontinence detection device **65** alarms. Illustratively, alarms **92** will place a call to a caregiver through location and tracking system **20** and nurse call system **40**.

Bed **90** includes frame and resting surface devices **190** adjust the position of bed **90** and the position and shape of the resting surface, as illustrated in FIG. **14**. In addition, other devices are included in frame and resting surface devices **190**, such as resting surface vibration, temperature and firmness controls. Caregiver **110** accesses and changes the state of frame and resting surface devices **190** via control panel **140**, shown in FIG. **2**. FIG. **14** shows several frame and resting surface devices **190**, however FIG. **14** should not be considered an exhaustive list. Examples of frame and resting surface devices **190** include head position control **275**, back position control **280**, seat/thigh position control **285**, heating control **290**, firming bladder **295**, retracting footboard control **300**, turn assist bladder control **305** and vibration control **310**.

Head position control **275**, back position control **280** and seat/thigh position control **285** all alter the shape of the resting surface of bed **90**. Head position control **275** raises or lowers the head position of the resting surface generally coincident with the head of the patient. Back position control **280** raises or lowers the middle portion of the resting surface generally coincident with the back of the patient. Seat/thigh position control **285** raises or lowers the lower portion of the resting surface generally coincident with the seat and thighs of a patient.

Heating control **290** controls the temperature of the resting surface of bed **90**. Similarly, vibration control **310** controls the vibratory action of the resting surface of bed **90**. Firming bladder control **295** controls the firmness of the resting surface of bed **90**. Retracting footboard control **300** adjusts the length of the foot portion of the resting surface of bed **90**. This allows bed **90** to accommodate patients of various heights comfortably. Turn assist bladder control **305** controls rotation of the patient to reduce the likelihood of pulmonary complications. An interface pressure sensor and

controller for a patient support surface such as an air mattress may also be coupled to the controller **190**.

Computer **12** is also connected to coupler **60**. The computer **12** may be coupled to monitors **62**, treatment devices **72**, and therapy devices **82** through coupler **60**. Illustratively, coupler **60** may be an RS-232 compatible cable or other suitable connector, such as a RS-485 compatible cable, Ethernet, or other network connection device known to those of ordinary skill in the art. Computer **12** processes signals from the monitors **62**, treatment devices **72**, and therapy devices **82** on a real time basis. The monitors **62**, treatment devices **72**, and therapy devices **82** include, but are not limited to, heart rate monitors, temperature sensors, blood pressure monitors (invasive and noninvasive), EKG monitors, blood oxygen sensors, capnographs, ventilators, IV pumps, scales, chest drainage monitors, and the like. Monitors **62**, treatment devices **72** and therapy devices **82** have associated alarms **64**, **74** and **84**, respectively. Illustratively, alarms **64**, **74**, and **84** will place a call to a caregiver through location and tracking system **20** and nurse call system **40**.

Computer **12** is also connected to environmental devices **50**. Alarm **52** is associated with environmental devices **50**. Environmental devices **50** illustratively include temperature control devices, such as a thermostat, and humidity control devices, such as a humidifier. Additionally, environmental devices **50** illustratively include entertainment devices such as a television/radio **120**, and lighting such as overhead light **122** and reading light **123**, all of which do not have alarms associated therewith.

Environmental devices **50** control environmental parameters within the patient room. FIG. **13** shows several different environmental devices **50**; however FIG. **13** should not be considered an exhaustive list. Examples of environmental devices **50** include TV/radio **120** control **345**, room temperature control **350** and lighting control **355**, which control overhead light **122** and reading light **123**.

TV/radio **120** control **345** controls the functions of the TV/radio **120** in the room. Room temperature control **350** is a thermostat control for altering the temperature of the patient's room. Lighting control **355** controls overhead light **122** and reading light **123**, and their brightness level.

In one embodiment, the status of the environmental controls is automatically altered when caregiver **110** enters the room. For example, the sound on TV/radio **120** is muted and overhead light **122** and/or reading light **123** controlled by lighting control **355** are activated. When caregiver **110** enters the room, receiver **25** receives the caregiver identification signal broadcast by caregiver badge **24**. After the computer **12** authenticates the identification signal, the computer **12** instructs TV/radio **120** control **345** to mute all sound and lighting device **355** to illuminate overhead light **122** and reading light **123**.

In another embodiment of the present invention, the computer **12** overrides one or more of the environmental controls within the room once the computer **12** authenticates the identification signal from the badge **24**. In other words, the patient can no longer control the environmental functions such as, for example, the radio, television or lighting when an authorized caregiver **110** is in the room.

Bed **90** includes lockout controls which prevent the patient **100** on bed **90** from actuating certain controls. These lockouts are typically actuated by pressing a button or a combination of two or more buttons on the bed to lock out various bed controls, environmental controls, or other functions. In one embodiment of the present invention, these bed lockouts cannot be changed without an authorized caregiver

110 within the room. In other words, when caregiver 110 enters the room, the receiver 25 receives the caregiver identification signal from the badge 24. After the control unit authenticates the identification signal 24, computer 12 then permits the bed lockout status to be changed.

Certain beds such as the TotalCare® bed available from Hill-Rom, Inc. are capable of moving from a generally flat bed position to a chair position. In one embodiment of the present invention, the bed is unable to move to a chair position unless an authorized caregiver 110 is located within the room. Again, the computer 12 must receive and authenticate the identification signal from badge 24 before the bed is permitted to move to the chair position. Thus, a feature is selectively locked out in the absence of a caregiver 110.

FIG. 15 depicts shows a flow chart 1500 of the illustrative embodiments, and describes a process which lockouts and/or alters selected patient and environmental controls when a caregiver 110 is present in the room. In step 1502, the locating and tracking system 20 monitors the room for a caregiver 110. If a caregiver enters the room, step 1504 exits the monitoring loop and enables step 1506, which locks out and/or alters selected patient and environmental controls. In step 1508, the locating and tracking system 20 monitors the room for the presence of the caregiver 110 and retains the state of 1506 as long as the caregiver 110 is in the room. When the caregiver 110 exits the room, the patient lockouts are removed and the environment is restored, along with the patient 100 controls to alter the environment.

FIG. 16 depicts shows a flow chart 1600 of another one of the illustrative embodiments, and describes a process which enables and/or alters selected patient and environmental controls when a caregiver 110 enters the room. In step 1602, the locating and tracking system 20 monitors the room for a caregiver 110. If a caregiver enters the room, step 1604 exits the monitoring loop and enables step 1606, which enables and/or alters selected patient and environmental controls. In step 1608, the locating and tracking system 20 monitors the room for the presence of the caregiver 110 and retains the state of 1606 as long as the caregiver 110 is in the room. When the caregiver 110 exits the room, the patient and environmental lockouts are restored.

FIG. 3 depicts a database structure used to associate patients with hospital personnel, and associate hospital personnel with alarms. Patient information is stored in patient database 200. As depicted in FIG. 3, there are numerous patients in the database, ranging from record number 1 to k.

Hospital personnel information is stored in hospital personnel database 300. There are numerous hospital personnel in the hospital personnel database 300, ranging from record number 1 to m. Furthermore, hospital personnel information stored in hospital personnel database 300 is categorized by personnel position. Illustratively, the hospital personnel database contains a "doctor" class, a "nurse" class, an "orderly" class, and a "non-caregiver" class. Non-caregiver class illustratively includes security staff, administrative staff, or janitorial staff.

Alarm database 400 stores alarm information for alarm records 1 to n, each record associated with a different alarm. Furthermore, alarm information stored in alarm database 300 includes alarm type and alarm priority. Thus, alarm record 1, for example, may be associated with a cardiac arrest and allocated priority 1, the highest priority and thus requiring immediate attention, and alarm record n may be associated with an incontinence event, and be allocated a lower priority.

FIG. 4 depicts the database association for a specific patient record, the patient associated with hospital personnel, and the hospital personnel associated with alarms. Illustratively, patient record 221 is associated with hospital personnel records 11, 131, and 211. In the present example, the patient represented by patient record 221 has been admitted for a heart procedure requiring surgery. Hospital personnel records 11, 131, and 211 correspond to a surgeon, a cardiologist and a nurse, respectively. Alarms records 1-11 in alarm database 400 are associated with hospital personnel records 11, 131, and 211. In the illustrative example, alarm records 1-3 are associated with hospital personnel record 11, alarm records 3-7 are associated with hospital personnel record 131, and alarm records 8-11 are associated with hospital personnel record 211. Illustratively, alarm record 1 corresponds to a cardiac arrest, and has the highest priority, which requires the attention of a cardiologist. Alarm record 3 corresponds to a less severe cardiac event, such as an irregular heart rate, and thus has a lesser priority, and requires either the cardiologist or surgeon.

The flow diagram 500 of FIG. 5 depicts one illustrative embodiment of the automatic alarm silencing process that includes association of patients, hospital personnel and alarms. In step 502, the computer 12 receives an alarm from either the location and tracking system 20, the nurse call system 40, a treatment device 72, a therapy device 82, environmental devices 50, or the hospital bed 90. Upon receiving the alarm signal, computer 12 gets the alarm priority from alarm database 400, and may also notify the caregiver at their current location. In step 504, the computer monitors the room 130 from which the alarm was received for a caregiver. In the illustrative embodiment disclosed herein, patient station 22 monitors the room 130 via receiver 25. Upon entering the room 130, a caregiver is identified by badge 24, which emits an infrared pulse and is detected by receiver 25. Computer 12 receives the caregiver identification and thus identifies the associated hospital personnel record in hospital personnel database 300.

In step 506, computer 12 determines whether the caregiver in room 130 is associated with the alarm priority stored in alarm database 400. For example, if the alarm priority is 3, indicating a cardiac event of lower priority than a cardiac arrest, and the person entering the room is identified as a non-caregiver, e.g., a security officer, the alarm will not be silenced. Similarly, if the caregiver is identified as a nurse, the alarm will not be silenced. Conversely, if the caregiver is identified as a cardiologist or surgeon, which in this example is associated with the alarm of priority 3, then step 508 determines if the doctor identified is associated with that patient. If the doctor is associated with the patient, then the alarm is silenced in step 510. If the doctor is not associated with the patient, the alarm is not silenced.

The flow diagram 600 of FIG. 6 depicts another illustrative embodiment of the automatic alarm silencing process that includes associating patients with hospital personnel. In step 602, the computer 12 receives an alarm from either the location and tracking system 20, the nurse call system 40, a treatment device 72, a therapy device 82, environmental devices 50, or the hospital bed 90. Upon receiving the alarm signal, computer 12 monitors the room 130 from which the alarm was received for a caregiver, as shown in step 604. In the illustrative embodiment disclosed herein, patient station 22 monitors the room 130 via receiver 25. Upon entering the room 130, a caregiver is identified by badge 24, which emits an infrared and/or RF pulse and is detected by receiver 25. Computer 12 receives the caregiver identification and thus identifies the associated hospital personnel record in hospital

personnel database 300. Step 606 determines if the caregiver is associated with the patient. If the caregiver is associated with the patient, then the alarm is silenced in step 608. If the caregiver is not associated with the patient, the alarm is not silenced.

The flow diagram 700 of FIG. 7 depicts another illustrative embodiment of the automatic alarm silencing process that includes a lockout of patient activated controls. In step 702, the computer 12 receives an alarm from either the location and tracking system 20, the nurse call system 40, a treatment device 72, a therapy device 82, environmental devices 50, or the hospital bed 90. Upon receiving the alarm signal, computer 12 monitors the room 130 from which the alarm was received for a caregiver, as shown in step 704. In the illustrative embodiment disclosed herein, patient station 22 monitors the room 130 via receiver 25. Upon entering the room 130, a caregiver is identified by badge 24, which emits an infrared pulse and is detected by receiver 25. Once the caregiver enters the room, step 706 silences the alarm and locks out any patient activated controls, such as bed 90 controls or television/radio 120 controls, thus decreasing the likelihood that the patient 100 may inadvertently interfere with caregiver 110 while the caregiver 110 administers the required therapy in response to the alarm.

The flow diagram 800 of FIG. 8 depicts another illustrative embodiment of the automatic alarm silencing process in conjunction with a patient control lockout that includes a lockout of patient activated controls immediately upon the occurrence of an alarm. Locking out patient and environmental controls as soon as an alarm is received is desirable should the patient 100 be suffering from severe condition, such as a cardiac arrest or seizure, so as to prevent a patient's involuntary movement from accidentally activating a bed 90 or environmental devices 50.

In step 802, the computer 12 receives an alarm from either the location and tracking system 20, the nurse call system 40, a treatment device 72, a therapy device 82, environmental devices 50, or the hospital bed 90. Upon receiving the alarm signal, computer 12 immediately locks out all patient and environmental controls as shown in step 804. Controller 12 then monitors the room 130 from which the alarm was received for a caregiver, as shown in step 806. Once the caregiver enters the room, step 808 silences the alarm.

Often an alarm may sound when a caregiver 110 is present in the hospital room 130. In such a situation, it is not desirable to automatically cancel the alarm, as the caregiver 110 may not immediately notice the alarm, or the alarm may be suppressed before it emits an audible signal. Accordingly, alternative embodiments to FIGS. 5-8 include a step that determines whether a caregiver 110 is present in the room 130 when the alarm sounds; if a caregiver 110 is present, the alarm is not automatically suppressed by the presence of the caregiver 110. Computer 12 is configured to allow the alarm to sound for a predetermined amount of time so that the caregiver 110 can assess which alarm is sounding. Alternatively, computer 12 is configured to require the caregiver 110 to manually shut off the alarm. Conversely, if a caregiver 110 is not in the room 130, then the processes are the same as depicted in FIGS. 5-8.

Depending on the alarm priority, locking out patient controls may not be desirable. For example, if patient 100 experiences an incontinence event, the patient may desire to exit the bed to personally tend to his hygiene needs. However, locking out the bed controls can impede patient 100 from exiting the bed. Conversely, if the patient is experiencing a seizure, locking out the bed 90 controls and environmental devices 50 is desirable so to prevent a

patient's involuntary movement from accidentally activating a bed 90 or environmental devices 50.

FIG. 9 shows a flow chart 900 of another illustrative embodiment describing a process that locks out patient bed controls and environmental controls based on the alarm priority. In step 902, computer 12 receives an alarm. In step 904, the alarm priority is assessed. Step 906 determines whether a patient lock out is required. A higher priority alarm, such as a code blue or cardiac arrest alarm, will warrant locking out most, if not all, controls accessible by patient 90. Conversely, a lower priority alarm, such as an incontinence event, will warrant few, if any, control lock outs. Thus, step 908 determines whether a full lockout or a partial lockout is required. If a full lockout is required, step 910 selects all patient controls for lockout. Conversely, if only a partial lockout is required, step 912 selects which patient controls are to be locked out. The lockouts can either be preset in the system or manually set by hospital personnel. All selected controls are then locked out in step 914.

Similarly, depending on the priority of the alarm, the patient 100 environment may be prepared for the arrival of the caregiver 110. For example, if patient 100 experiences a cardiac arrest while watching television/radio 120, television/radio 120 will be immediately shut off. As a cardiac arrest usually warrants a response team, shutting off the television/radio 120 will ensure that this device will not distract any member of the response team. Conversely, if a patient 100 experiences only a slight incontinence event while watching television, which may not even be noticeable to the patient 100, the better therapy may be to let the patient 100 rest and tend to the patient 100 at a later time. As such, the television/radio 120 will not be shut off automatically. Thus, the environmental devices 50 may not be altered, based on the event magnitude of an associated alarm.

FIG. 10 shows a flow chart 1000 of another illustrative embodiment describing that process that prepares the patient environment for the caregiver based on the alarm priority. In step 1002, computer 12 receives an alarm. In step 1004, the alarm priority is assessed. Step 1006 determines whether environmental preparation is required. A higher priority alarm, such as a code blue or cardiac arrest alarm, will warrant environmental preparation. Conversely, a lower priority alarm, such as a slight incontinence event, will not require an environmental preparation. If an environmental preparation is required, the environment is prepared in step 1008.

FIG. 11 shows a flow chart 1100 of another illustrative embodiment describing a process that prepares the patient environment for the caregiver based on the alarm priority, with each environmental preparation subject to an override condition. Illustratively, an environmental preparation can be subject to an override condition depending on the time of day. For example, if patient 100 experiences a cardiac arrest in the evening while sleeping, it is likely that room 130 lighting is low or off. Given the severity of a cardiac arrest, which warrants a response team, an environmental preparation includes turning on the room 130 lighting. As such, overhead light 122 will immediately illuminate the room, as a response team will most likely arrive soon after the alarm is generated. Conversely, if a patient 100 experiences only a slight incontinence event during the evening while sleeping, the better therapy may be to let the patient 100 rest and tend to the patient 100 in the morning. As such, no environmental preparations is required and overhead light 122 remains off.

Once the environmental preparations are determined, step 1102 selects the next environmental preparation from the

11

list, beginning with the first. In step **1104**, the environmental preparation is checked for an override condition. Illustratively, overhead light **122**, which normally would illuminate once an incontinence event is detected, will not illuminate if the time is outside visiting hours, e.g., from 8:00 PM-8:00 AM. If no override condition exists, the environment is prepared accordingly in step **1106**; if an override condition for that particular environmental preparation exists, then the environment is not prepared with respect to that particular environmental preparation. If any environmental preparations remain, step **1108** repeats the process for the next environmental preparation. If no environmental preparations remain, then the process is complete.

The lockouts and overrides corresponding to an alarm can be configured through a common database structure. FIG. **12** depicts the database association of the alarm database **400**, the database containing type **410**, priority **420**, lockout **430** and override **440** fields. The type **410** field stores the alarm type. Type **410** field contains records 1 . . . k, priority **420** field contains records 1 . . . l, lockout **430** field contains records 1 . . . m, and override **440** field contains record 1 . . . n.

Illustratively, alarm types correspond to the equipment and/or patient **100** condition. Thus, type **410** values include "Incontinence Event", "Cardiac Arrest", "Low Blood Pressure", "Smoke Alarm", etc.

The priority **420** fields stores the alarm priority and corresponds the alarm priority to the alarm type. Illustratively, a higher alarm priority corresponds to more immediate needs of the patient **100** or possibly a life threatening condition the patient **100** is experiencing. As shown in FIG. **12**, two records from the type **410** field have been assigned a priority 2. Thus, if an alarm corresponding to either of those two records is received, it is assigned priority 2.

The lockouts **430** field stores the patient lockouts, the environmental lockouts, and environmental preparations. Illustratively, the lockouts correspond to the alarm priority. As shown in FIG. **12**, a priority 2 alarm has been assigned three lockouts. Illustratively, the lockouts correspond to bed **90** siderails, overhead light **122**, and television/radio **120**. Thus, if a priority 2 alarm is received, the patient will not be able to operate the bed **90** siderails, overhead light **122**, and television/radio **120**.

The override **440** field stores overrides corresponding to the lockouts **430**. As shown in FIG. **12**, one lockout has two potential overrides. Illustratively, the lockout corresponds to the bed **90** siderail, and the override conditions are "Visiting Hours" or "Minor Incontinence Event." Thus, if a patient **90** experiences an incontinence event that is only a minor event, the bed **90** siderails will not be locked out. Additionally, if the incontinence event occurs during visiting hours, the bed **90** siderails will not be locked out.

One of ordinary skill in the art will readily appreciate that the database configuration of FIGS. **3**, **4** and **12** are illustrative only, and that other configurations or structures are readily apparent. For example, overrides can be correlated to priority, or priority and lockouts, etc. Furthermore, the illustrative fields are not exhaustive and other categorization schemes exist known to those of ordinary skill in the art.

Although the invention has been described in detail with reference to certain illustrated embodiments, variations exist within the scope and spirit of the invention as described and as defined in the following claims.

What is claimed is:

1. A nontransitory method of monitoring a patient room of a healthcare facility, the method comprising:

12

monitoring a patient room for a signal indicating presence of a caregiver in the patient room,
detecting an alarm of at least one piece of patient care equipment in the patient room,

if the caregiver is present in the patient room when the alarm occurs, permitting the alarm to sound for a predetermined amount of time and then signaling the at least one piece of patient care equipment to silence the alarm after the predetermined amount of time has elapsed, and

if the caregiver is not present in the patient room when the alarm occurs, signaling the at least one piece of patient care equipment to silence the alarm in response to the caregiver's presence being detected in the patient room after the alarm sounds.

2. The nontransitory method of claim 1, wherein the at least one piece of patient care equipment comprises at least one of the following: a heart rate monitor, a temperature sensor, a blood pressure monitor, an EKG monitor, a blood oxygen sensor, a capnograph, a ventilator, an IV pump, a scale, a chest drainage monitor, a bed frame, or a resting surface.

3. The nontransitory method of claim 1, further comprising monitoring a location of the at least one piece of patient care equipment in the healthcare facility.

4. The nontransitory method of claim 1, wherein the alarm is indicative of at least one of the following: a device malfunction, a change in patient position, or a change in patient status.

5. The nontransitory method of claim 1, wherein if the caregiver is not present in the patient room when the alarm occurs, placing a call to the caregiver to notify the caregiver of the alarm.

6. The nontransitory method of claim 1, wherein if the caregiver is not present in the patient room when the alarm occurs, routing a call to the caregiver to notify the caregiver of the alarm.

7. The nontransitory method of claim 1, further comprising disabling at least one control of the at least one piece of patient care equipment in response to the caregiver's presence being detected in the patient room.

8. The nontransitory method of claim 1, further comprising continuing to monitor the patient room to determine whether the caregiver is present in the patient room after the presence of the caregiver in the patient room has first been detected.

9. The nontransitory method of claim 1, further comprising associating the patient with the patient room.

10. The nontransitory method of claim 1, further comprising associating the at least one piece of patient care equipment with the patient room.

11. The nontransitory method of claim 1, further comprising associating the at least one piece of patient care equipment with the patient.

12. The nontransitory method of claim 1, further comprising identifying the caregiver as being a certain type of caregiver, and refraining from silencing the alarm if the caregiver is not of the certain type.

13. The nontransitory method of claim 1, further comprising determining the identity of the patient assigned to the patient room, determining whether the caregiver is assigned to the patient, and refraining from silencing the alarm the caregiver is not assigned to the patient.

14. The nontransitory method of claim 1, further comprising identifying the caregiver as being a certain type of caregiver, determining the identity of the patient assigned to the patient room, determining whether the caregiver is

assigned to the patient, and refraining from silencing the alarm unless the caregiver is assigned to the patient and the caregiver is of the certain type.

15. The nontransitory method of claim 1, further comprising altering the state of at least one other device located in the patient room in response to detection of the caregiver's presence in the patient room. 5

16. The nontransitory method of claim 1, further comprising determining a priority of the alarm and altering the state of at least one other device located in the patient room according to the alarm priority. 10

17. The nontransitory method of claim 1, further comprising determining a type of the alarm and altering the state of at least one other device located in the patient room according to the alarm type. 15

18. At least one computer accessible storage medium comprising instructions for executing the nontransitory method of claim 1.

19. A computer configured to execute the nontransitory method of claim 1. 20

20. A system comprising a transmitter, a receiver, and a computer arranged to execute the nontransitory method of claim 1.

* * * * *

专利名称(译)	用于监控护理人员 and 设备的系统		
公开(公告)号	US9666061	公开(公告)日	2017-05-30
申请号	US14/976388	申请日	2015-12-21
[标]申请(专利权)人(译)	希尔 - 罗姆服务股份有限公司		
申请(专利权)人(译)	HILL-ROM SERVICES , INC.		
当前申请(专利权)人(译)	HILL-ROM SERVICES , INC.		
[标]发明人	REEDER RYAN A KRAMER KENNETH L JACQUES WILLIAM L RILEY CARL WILLIAM SCHUMAN RICHARD J		
发明人	REEDER, RYAN A. KRAMER, KENNETH L. JACQUES, WILLIAM L. RILEY, CARL WILLIAM SCHUMAN, RICHARD J.		
IPC分类号	G08B25/00 A61B5/11 A61B5/00 A61G12/00 G08B21/04 G08B21/02 A61B5/0205 A61G5/10 A61G7/018 A61G7/05 A61G11/00 G06F19/00 A61B5/0402 A61B5/08 A61B5/145 A61B19/00 A61G5/00 A61G5/02 A61H3/00 A61H3/04 A61M5/00 A61M16/00 A61N1/39 G06Q50/00		
CPC分类号	G08B25/008 A61B5/0002 A61B5/1113 A61B5/742 A61B5/7475 A61G12/00 G06F19/3406 G06F19/3418 G06F19/3487 G08B21/02 G08B21/0453 A61B5/02055 A61B2560/0242 A61B2560/0443 A61B2560/0456 A61G5/10 A61G7/018 A61G7/05 A61G11/00 A61G2203/12 A61G2203/46 A61G2203/80 A61G2205/10 G06F19/322 G06F19/327 G06F19/3425 G06F19/3456 G06F19/3481 G16H10/60 G16H15/00 G16H40/20 G16H40/63 G16H40/67 G16H80/00		
优先权	13/939329 2014-07-01 US 13/599110 2013-07-16 US 13/238899 2012-09-04 US 12/258058 2011-09-27 US 11/075979 2008-10-28 US 09/849688 2005-04-05 US 60/202283 2000-05-05 US 60/202284 2000-05-05 US 60/229136 2000-08-30 US		
其他公开文献	US20160148489A1		
外部链接	Espacenet USPTO		

摘要(译)

用于监控医院人员，用于患者的多个患者位置以及相关设备的医院监控系统被配置为基于医院人员或警报的存在来控制相关联的设备。

