



(19) **United States**

(12) **Patent Application Publication**
MASUDA et al.

(10) **Pub. No.: US 2019/0240487 A1**
(43) **Pub. Date: Aug. 8, 2019**

(54) **ELECTRICALLY STIMULATING THERAPY DEVICE**

A61B 5/0456 (2006.01)
A61N 1/04 (2006.01)

(71) Applicant: **OTSUKA TECHNO CORPORATION**, Naruto-shi, Tokushima (JP)

(52) **U.S. Cl.**
CPC *A61N 1/36031* (2017.08); *A61N 1/36007* (2013.01); *A61N 1/0456* (2013.01); *A61B 5/7217* (2013.01); *A61B 5/0456* (2013.01); *A61B 5/0408* (2013.01)

(72) Inventors: **Tetsuya MASUDA**, Naruto-shi (JP); **Nobuo TSUKUI**, Naruto-shi (JP)

(73) Assignee: **OTSUKA TECHNO CORPORATION**, Naruto-shi, Tokushima (JP)

(57) **ABSTRACT**

Provided is an electrical stimulation treatment device which can be used more safely than a conventional device. A urination disorder treatment device includes a pair of body-surface electrode pads which are disposed at the back of the sacral bone of a person to be treated to supply an electrical stimulation signal from the back of the sacral bone, a stimulation signal control output circuit from which the pair of body-surface electrode pads supply the stimulation signal, a first measurement portion which is connected to the pair of body-surface electrode pads to measure electrocardiographic data of the person to be treated based on a signal of electrical activity of the heart of the person to be treated, and a control portion which is connected to the first measurement portion to control supply of the stimulation signal to the sacral bone by the pair of body-surface electrode pads based on an electrocardiographic waveform **51** measured by the first measurement portion, and, for example, where a heart rate of the person to be treated is judged to be a normal value from the electrocardiographic data, the control portion delays timing of an output pulse **58** from the pair of body-surface electrode pads so as not to be synchronized with the atrial systole P or the ventricular systole R of the electrocardiographic waveform **51**.

(21) Appl. No.: **16/333,483**

(22) PCT Filed: **Jul. 2, 2018**

(86) PCT No.: **PCT/JP2018/025110**

§ 371 (c)(1),
(2) Date: **Mar. 14, 2019**

(30) **Foreign Application Priority Data**

Sep. 6, 2017 (JP) 2017-171381

Publication Classification

(51) **Int. Cl.**
A61N 1/36 (2006.01)
A61B 5/0408 (2006.01)
A61B 5/00 (2006.01)

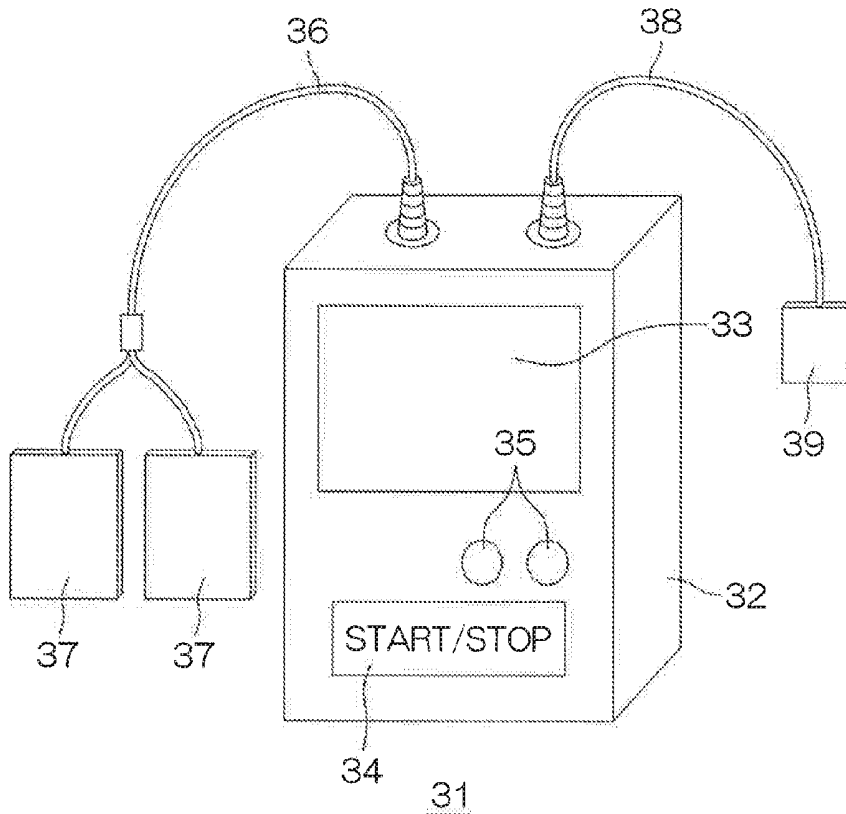
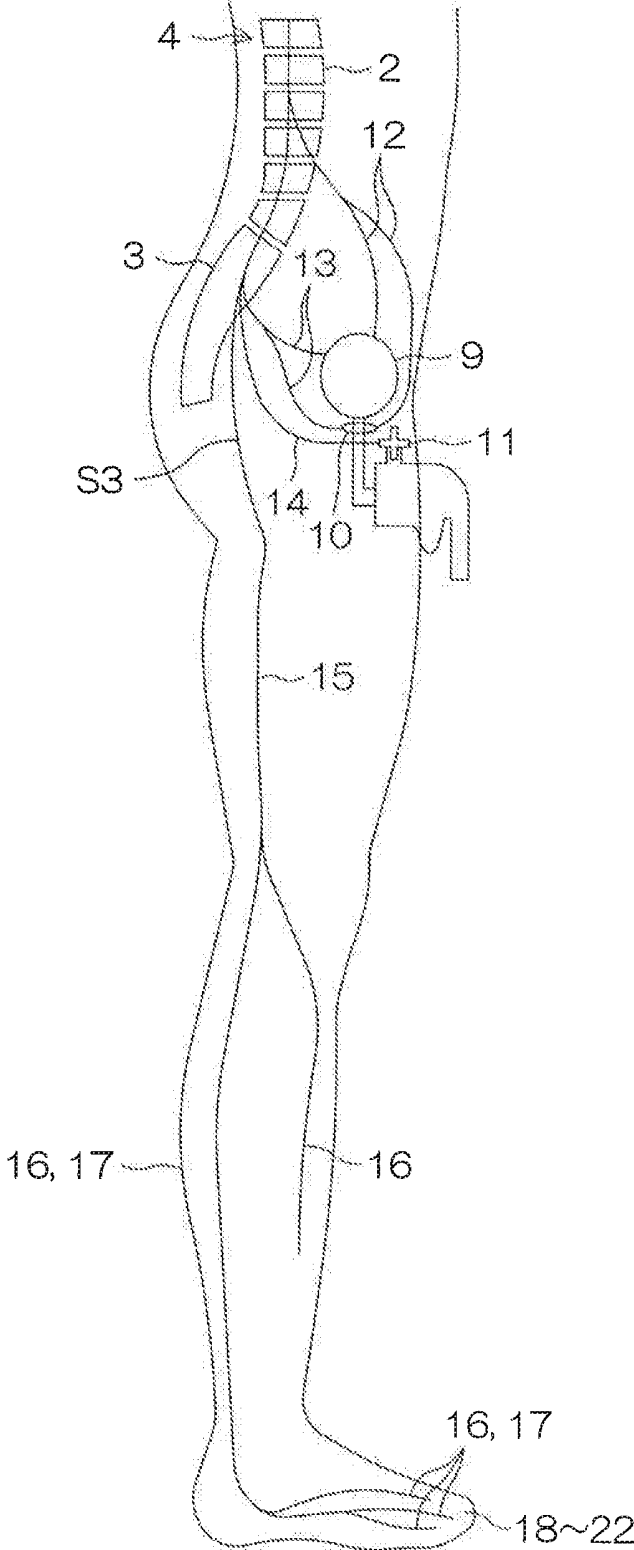


FIG. 1



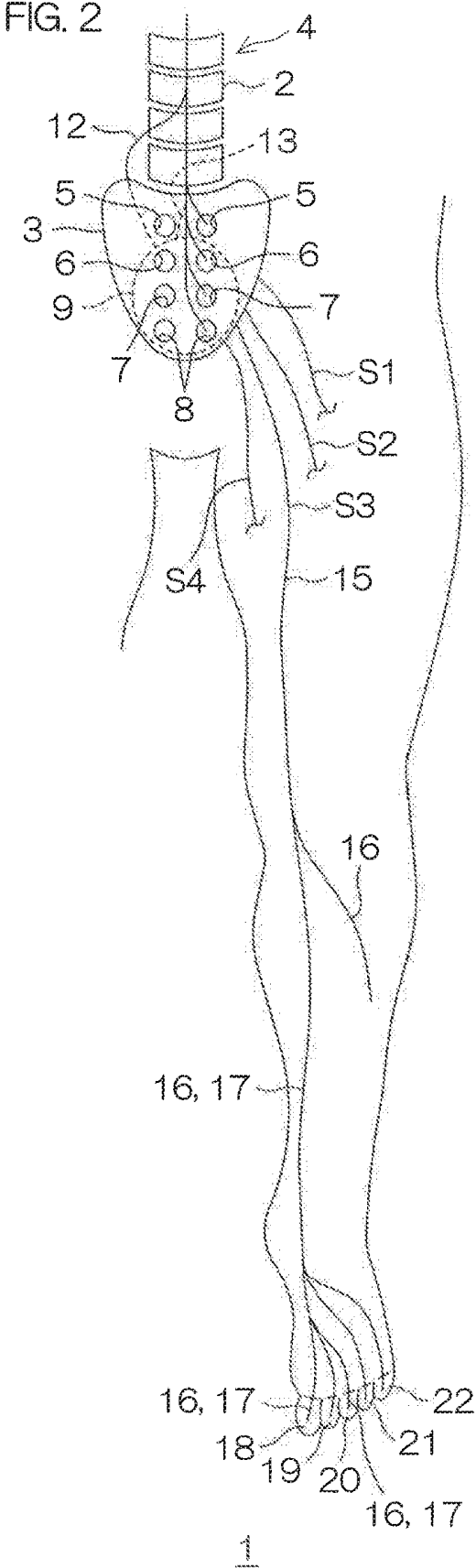


FIG. 3A

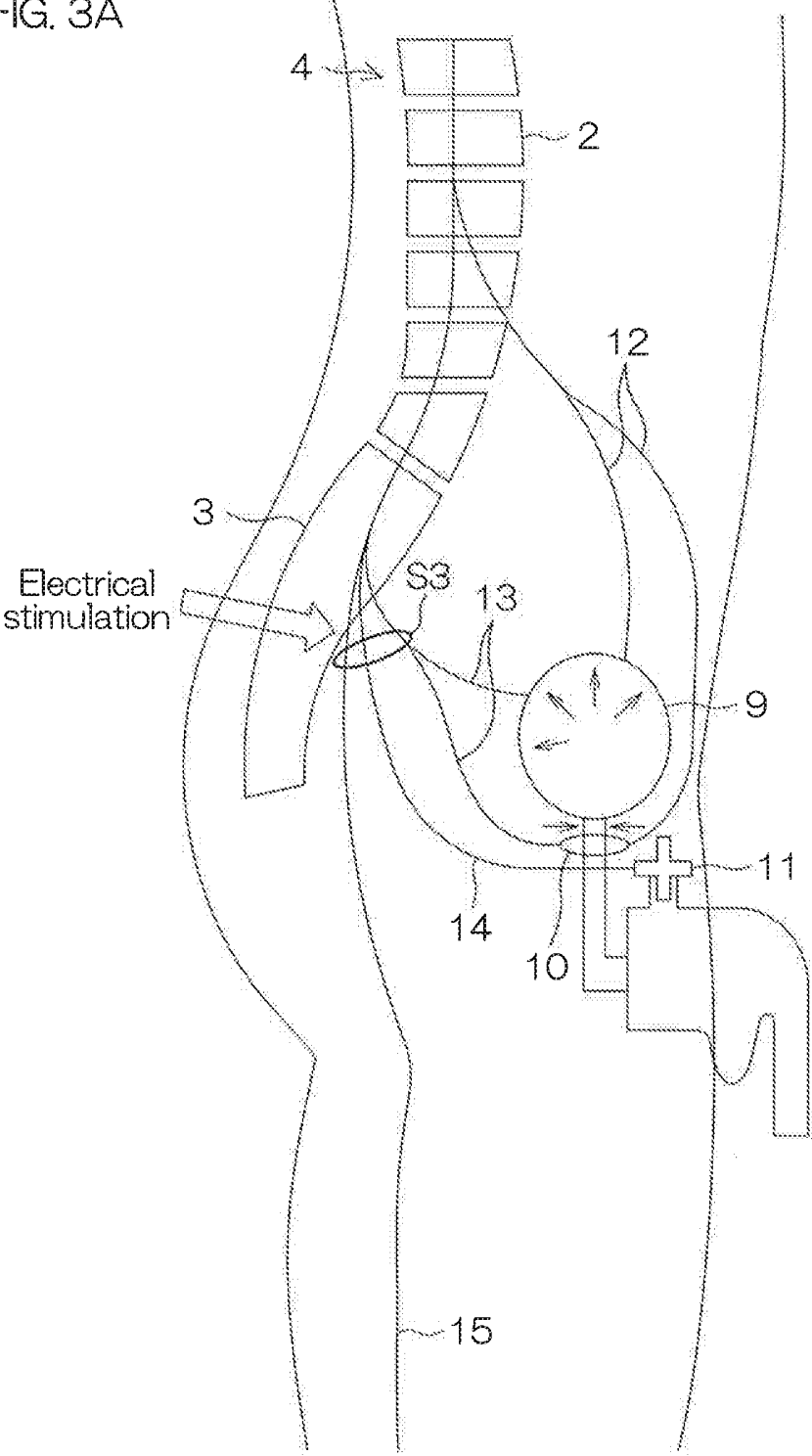


FIG. 3B

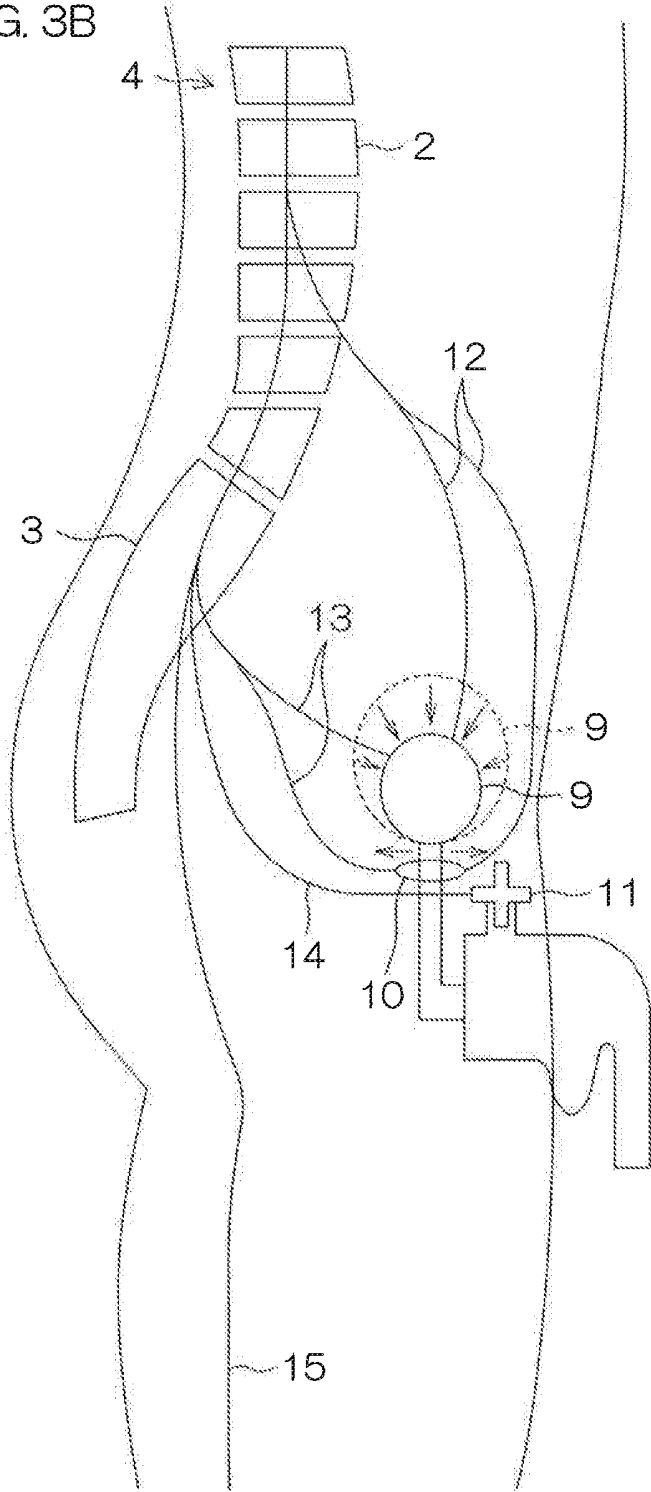


FIG. 4

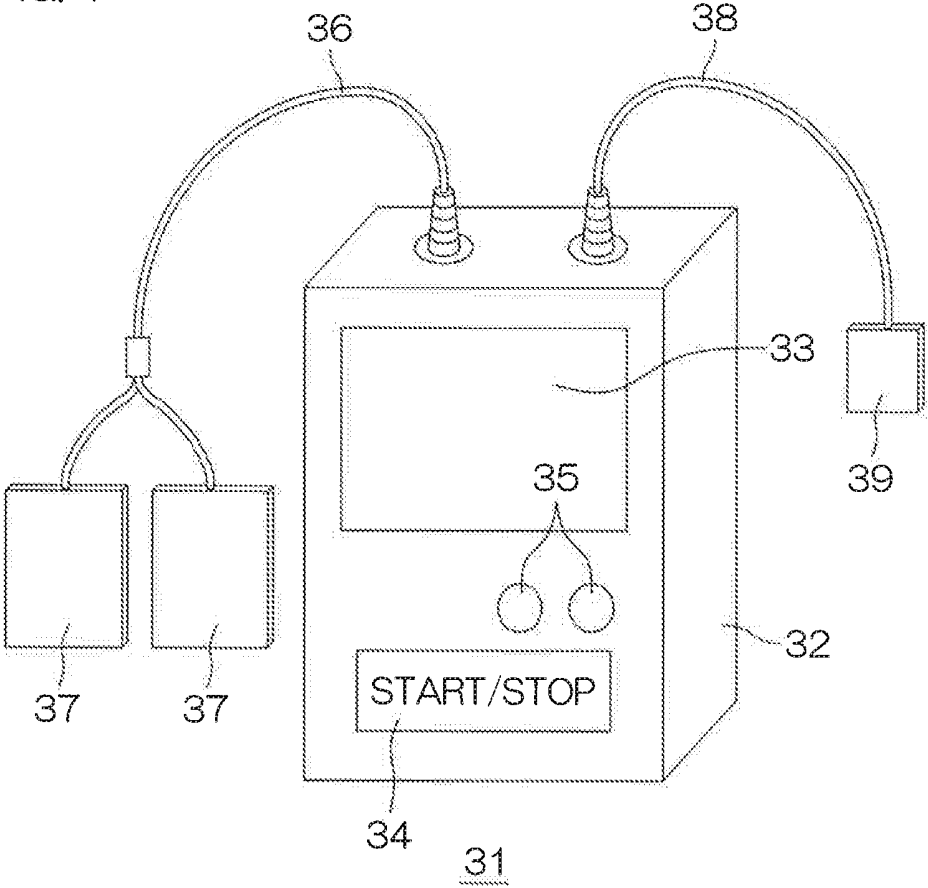


FIG. 6

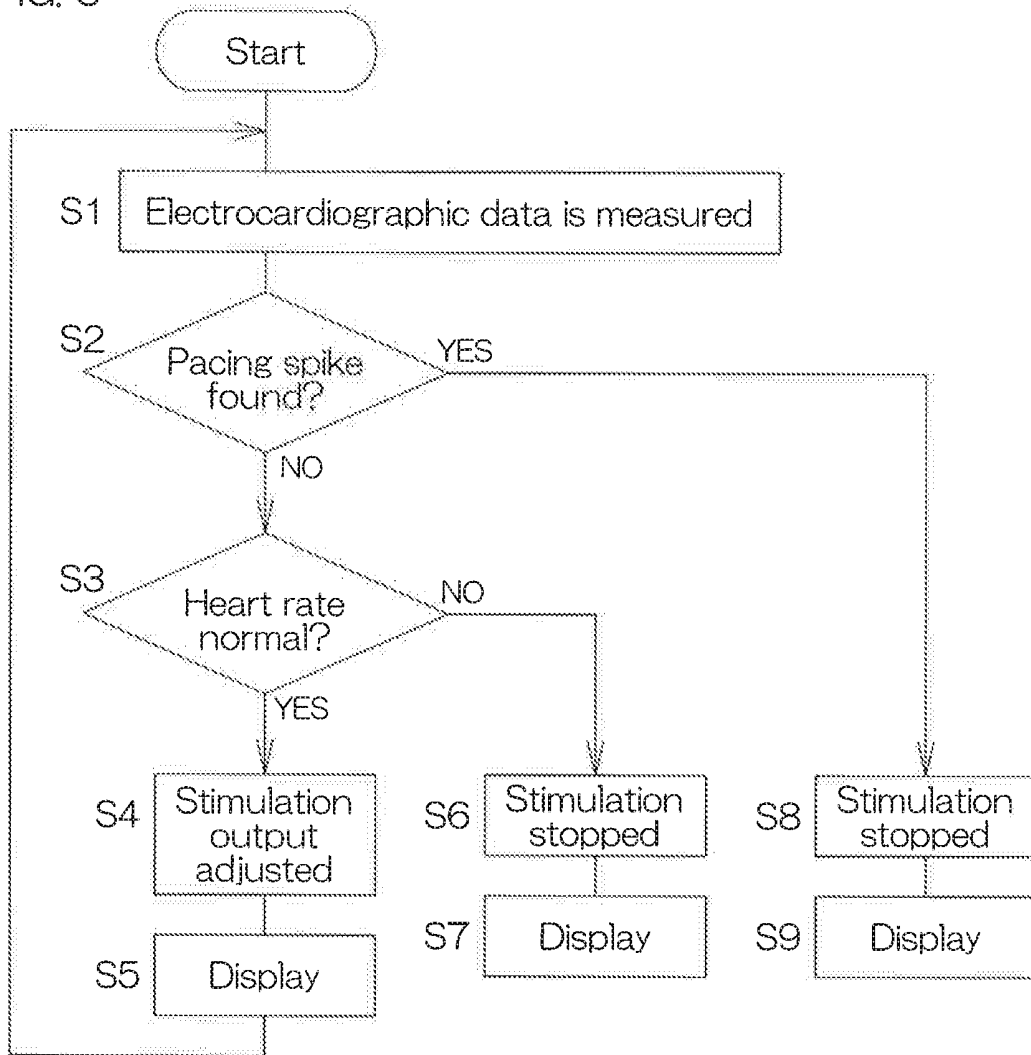


FIG. 7

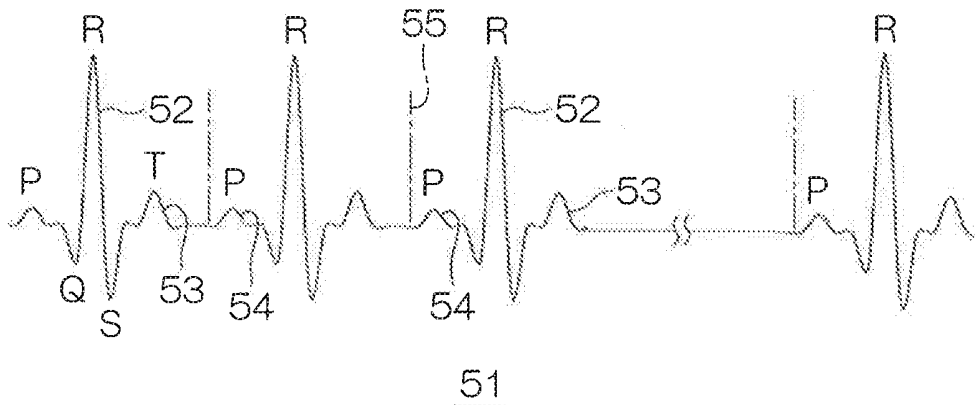


FIG. 8

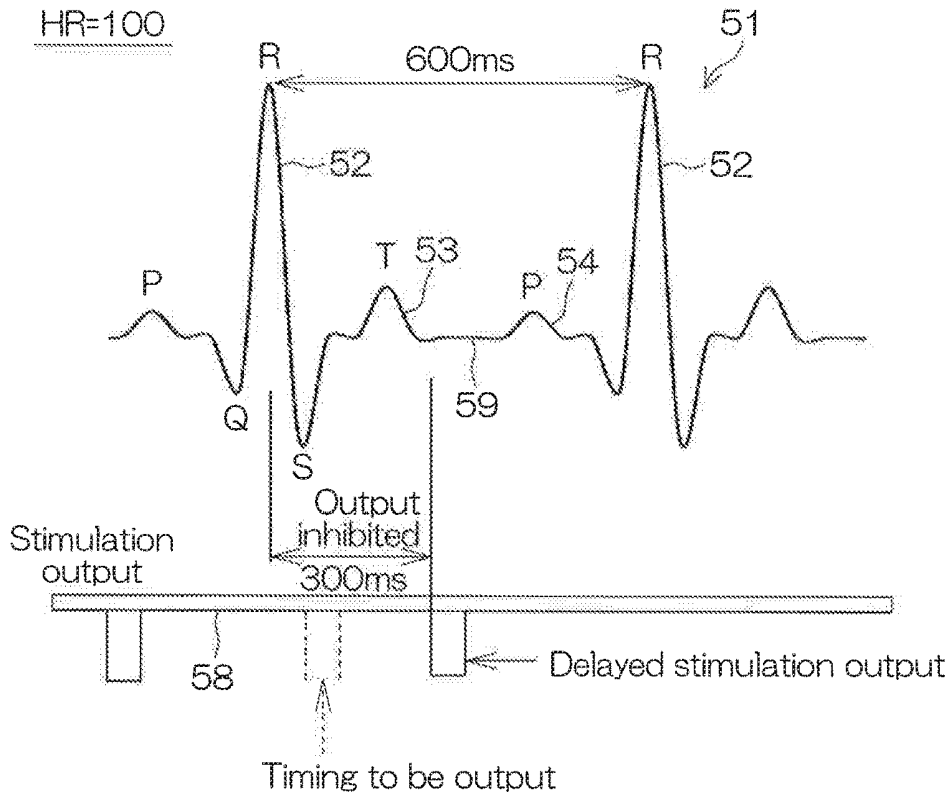


FIG. 9

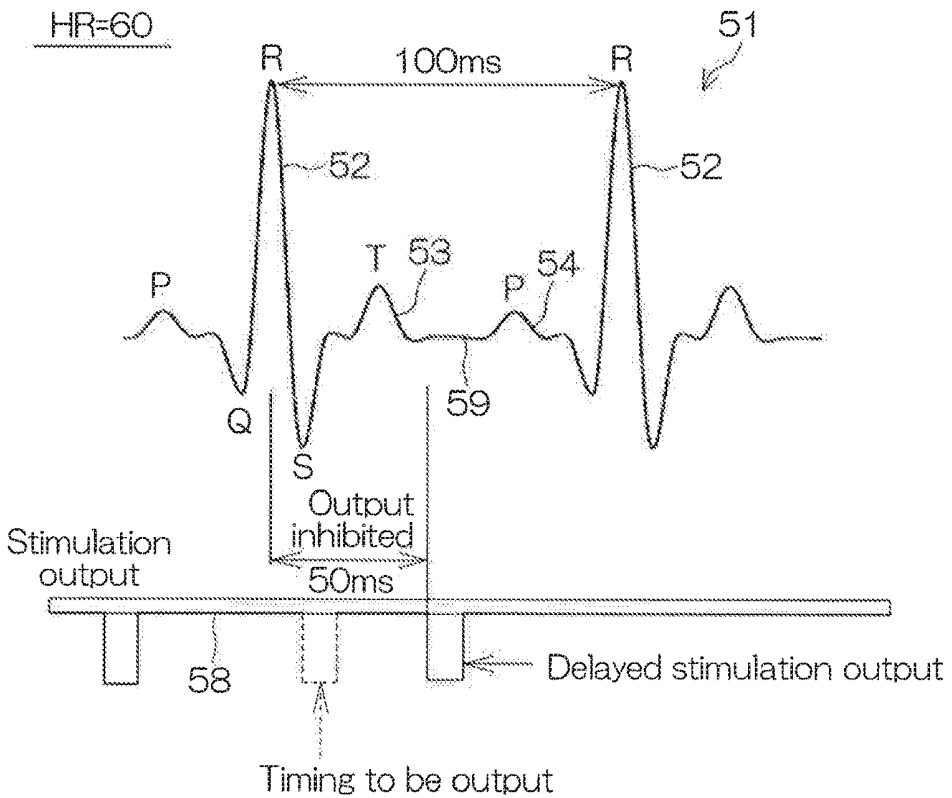


FIG. 10

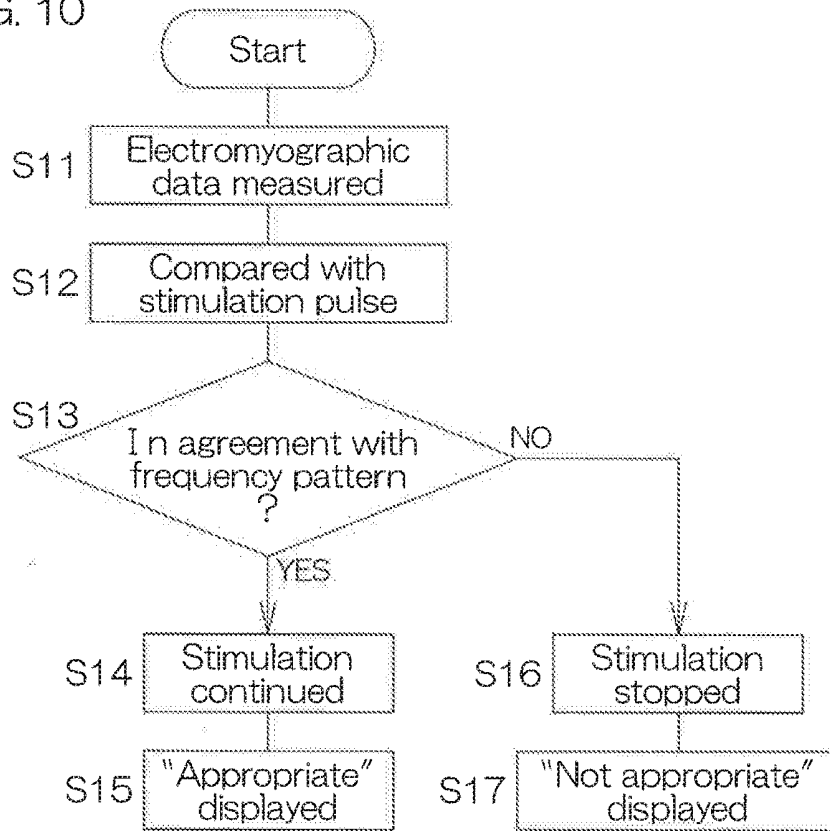


FIG. 11

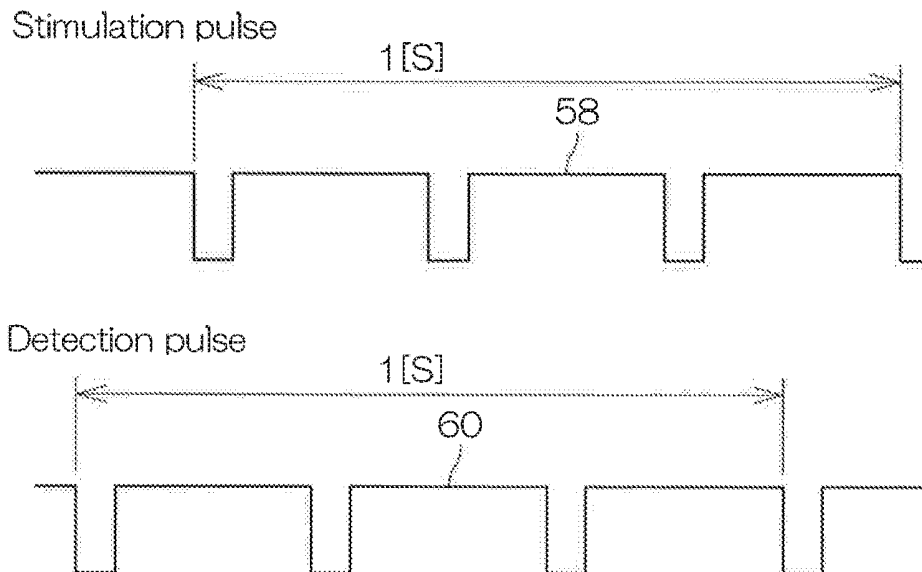
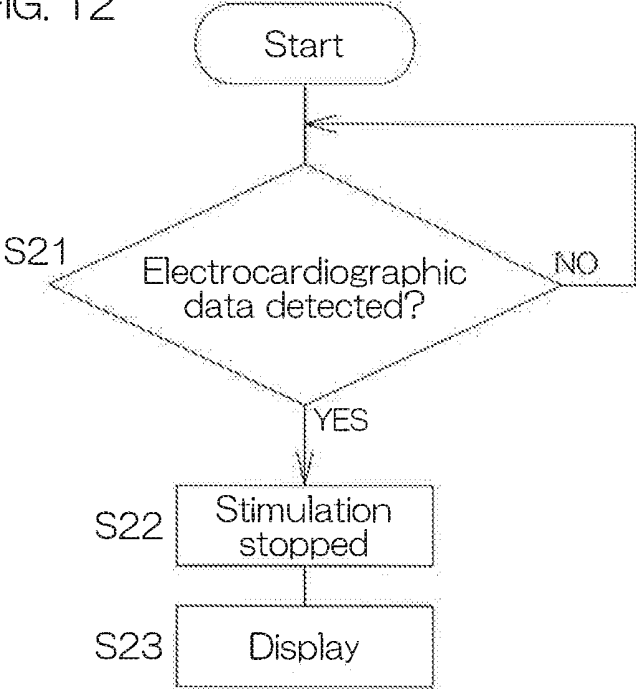
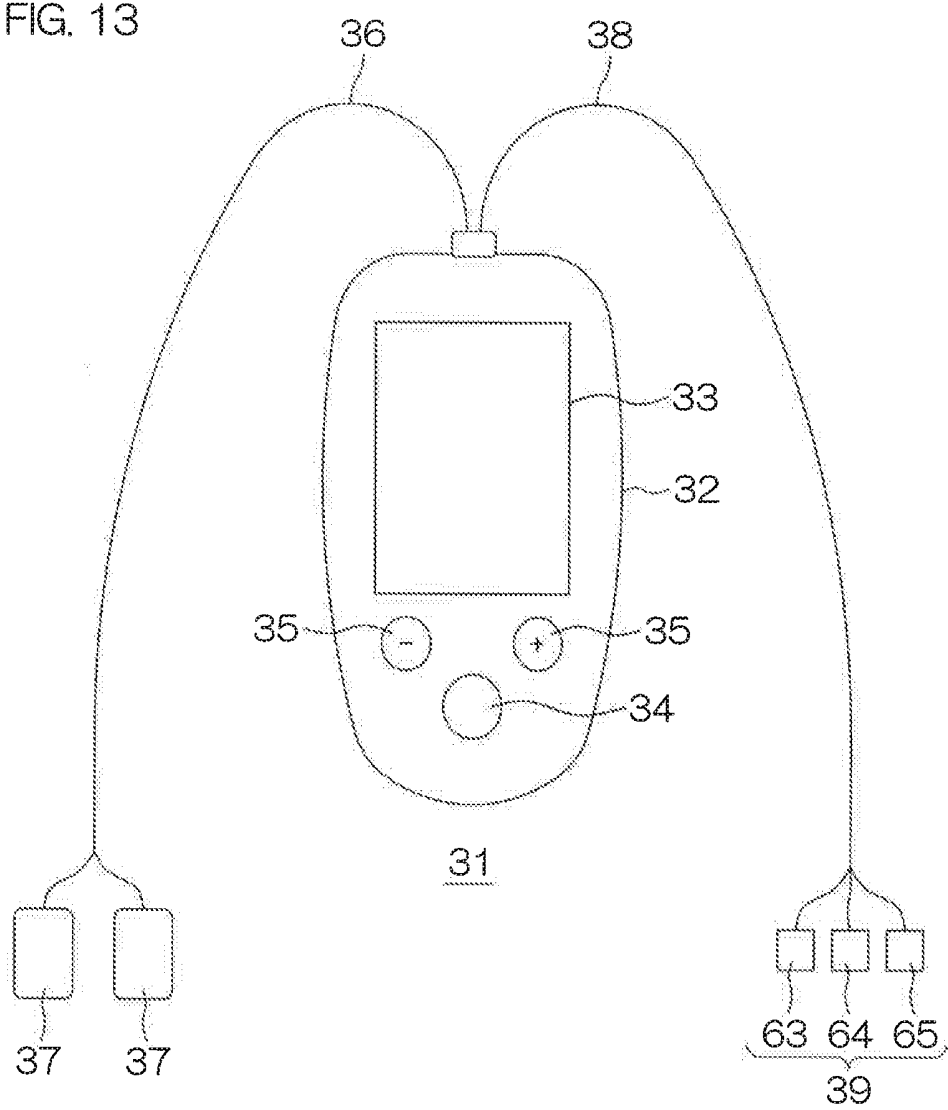


FIG. 12





ELECTRICALLY STIMULATING THERAPY DEVICE

TECHNICAL FIELD

[0001] The present invention relates to a device which is used for electrical stimulation therapy.

BACKGROUND ART

[0002] As an example of a device used for electrical stimulation therapy, there has been so far proposed a device for treating a urination disorder.

[0003] For example, Patent Literature 1 has disclosed a pelvic viscera dysfunction or a pain treatment device which is provided with a CPU (central processing unit), an emergency stimulation switch connected to the CPU, a manual stimulation maximum value setting dial connected to the CPU, a stimulation frequency changeover switch, an output portion having a D/A converter, and electrodes including an indifferent electrode and a different electrode (stimulation electrode) to which an electrical stimulation is applied. In this device, to the pelvic splanchnic nerve and the pudic nerve which are a second to a fourth sacral nerve of the human body, an electrical stimulation is given to excite these nerves from the skin immediately above a second to a fourth posterior sacral foramina, and a urination disorder is treated in this manner.

[0004] Further, for example, Patent Literature 2 has disclosed underwear for wearing an electrode device which is provided with a sacral region surface stimulating electrode that is arranged with an electrode portion composed of a metal sheet and an adhesive pad attached thereto as well as a code which is connected to the metal sheet.

CITATION LIST

Patent Literature

- [0005] Patent Literature 1: Japanese Patent No. 4839457
 [0006] Patent Literature 2: Japanese Patent Application Publication No. 2002-200178

SUMMARY OF INVENTION

Technical Problem

[0007] Since the above-described devices give an electrical stimulation to the nerves of the human body, it is preferable that due care is taken so that cardiac functions will be free from any influence.

[0008] An object of the present invention is to provide an electrical stimulation treatment device which can be used more safely than a conventional device.

Solution to Problem

[0009] An electrical stimulation treatment device of the present invention includes a pair of application electrodes which are disposed on the skin of a person to be treated to supply an electrical stimulation signal to the skin, a signal supplying source from which the pair of application electrodes supply the stimulation signal, a measurement portion which is connected to the pair of application electrodes to measure electrocardiographic data of a person to be treated based on a signal of electrical activity of a heart of a person to be treated, and a control portion which is connected to the

measurement portion to control supply of the stimulation signal by the pair of application electrodes based on the electrocardiographic data measured by the measurement portion, in which the control portion executes any one of the following processing, that is, (1) where a signal which shows the electrocardiographic data is detected, the control portion stops output from the pair of application electrodes, (2) where a heart rate of a person to be treated is judged to be a normal value from the electrocardiographic data, the timing of output from the pair of application electrodes is delayed so as not to be synchronized with the atrial systole P or the ventricular systole R of the electrocardiographic data, (3) where a heart rate of a person to be treated is judged to be bradycardia or tachycardia from the electrocardiographic data, it stops output from the pair of application electrodes, or (4) where a signal is detected which is judged to be supplied from a heart pacemaker with reference to the electrocardiographic data, it stops output from the pair of application electrodes.

[0010] In the electrical stimulation treatment device of the present invention, upon execution of the processing of (2), the control portion may control output of the pair of application electrodes so as to supply the stimulation signal, when a waveform of the electrocardiographic data is in a state of equipotential line.

[0011] In the electrical stimulation treatment device of the present invention, the control portion may judge that the value is normal where a heart rate of a person to be treated is 60 to 100 beats per minute and give a duration from 300 ms to 50 ms from a peak of QRS wave in a waveform of the latest electrocardiographic data as an output inhibition period from the pair of application electrodes.

[0012] In the electrical stimulation treatment device of the present invention, the control portion may execute the processing of (4) where appearance of a pacing spike is detected in a waveform of the electrocardiographic data.

[0013] In the electrical stimulation treatment device of the present invention, a display portion which informs a person to be treated of control results by the control portion based on the electrocardiographic data may also be included.

[0014] In the electrical stimulation treatment device of the present invention, the pair of application electrodes may include a pair of application electrodes which are disposed at the back of the sacral bone of a person to be treated to supply an electrical stimulation signal from the back of the sacral bone.

Advantageous Effects of Invention

[0015] According to the electrical stimulation treatment device of the present invention, the stimulation signal supplied from the pair of application electrodes will be stopped or timing of the supply thereof will be adjusted so as not to influence electrical activity of the heart of a person to be treated. Therefore, the device can be used more safely than a conventional device.

BRIEF DESCRIPTION OF DRAWINGS

[0016] FIG. 1 is a side sectional view of the human body for describing innervation of urination.

[0017] FIG. 2 is a rear view of the human body for describing innervation of urination.

[0018] FIG. 3A is a drawing for describing a mechanism of urination.

[0019] FIG. 3B is a drawing for describing a mechanism of urination.

[0020] FIG. 4 is a schematic diagram of a urination disorder treatment device according to the first preferred embodiment of the present invention.

[0021] FIG. 5 is a block diagram which shows an electrical configuration of the urination disorder treatment device in FIG. 4.

[0022] FIG. 6 is a flow chart which describes one example of processing related to stimulation influence elimination on the heart that is executed by a control portion.

[0023] FIG. 7 is a drawing which describes one example of electrocardiographic waveforms measured by a measurement portion.

[0024] FIG. 8 is a drawing which describes one example of output timing of a stimulation pulse.

[0025] FIG. 9 is a drawing which describes one example of output timing of the stimulation pulse.

[0026] FIG. 10 is a flow chart which describes one example of processing on monitoring of a stimulation site that is executed by the control portion.

[0027] FIG. 11 is a drawing which describes one example of a frequency pattern of the stimulation pulse and that of a detection pulse.

[0028] FIG. 12 is a flow chart which describes one example of processing related to stimulation influence elimination on the heart that is executed by the control portion.

[0029] FIG. 13 is a drawing which describes another mode of the urination disorder treatment device.

DESCRIPTION OF EMBODIMENTS

[0030] Hereinafter, modes of executing the present invention will be described in detail with reference to attached drawings.

[0031] FIG. 1 is a side sectional view of a human body 1 for describing innervation of urination. FIG. 2 is a rear view of the human body 1 which describes innervation of urination. FIG. 3A and FIG. 3B are each a drawing which describes a mechanism of urination. In FIG. 1 to FIGS. 3A and 3B, of various sites of the human body 1, there are shown only sites which are necessary for describing treatment by using a urination disorder treatment device 31 according to a preferred embodiment of the present invention, with a description of other sites being omitted here.

[0032] The human body 1 has a vertebral column 4 which includes a lumbar vertebra 2, a sacral bone 3 and others. The sacral bone 3 assumes a substantially inverted triangular shape, normally having four foramina on both sides symmetrically, from above, a first sacral foramen 5, a second sacral foramen 6, a third sacral foramen 7, and a fourth sacral foramen 8.

[0033] Further, the human body 1 has a bladder 9, an internal urethral sphincter 10 and an external urethral sphincter 11 as sites (organs and muscles) involved in collecting and discharging urine. These sites of 9 to 11 are neurologically controlled to collect and discharge urine in the human body 1.

[0034] In the human body 1, nerves mainly contributing to collection and discharge of urine are a hypogastric nerve (sympathetic nerve) 12, a pelvic nerve (parasympathetic nerve) 13 and a pudic nerve (somatic nerve) 14.

[0035] The hypogastric nerve 12 contributes to suppression of urination (urine collection) and is connected to the bladder 9 and the internal urethral sphincter 10. The pelvic

nerve 13 contributes to the initiation of urination and connected to the bladder 9 and the internal urethral sphincter 10. The pudic nerve 14 is connected to the external urethral sphincter 11.

[0036] As shown in FIG. 3A, in the human body 1, first, the bladder 9 (detrusor muscle) is relaxed by a signal from the hypogastric nerve 12, by which urine can be easily collected in the bladder 9 and the internal urethral sphincter 10 is also contracted. Thereby, urine is prevented from being discharged but collected inside the bladder 9. On the other hand, as shown in FIG. 3B, the bladder 9 (detrusor muscle) is contracted by a signal from the pelvic nerve 13, and the internal urethral sphincter 10 is also relaxed. Thereby, urine is discharged outside the bladder 9. Then, the external urethral sphincter 11 as a voluntary muscle is relaxed by a command from the brain of the human body 1 (one's own volition) by way of the pudic nerve 14 which is a somatic nerve, and an abdominal muscle pressure is applied to discharge urine.

[0037] As described above, if the hypogastric nerve 12 and the pelvic nerve 13 are both normally engaged in activity to appropriately contract and relax the bladder 9 and the internal urethral sphincter 10, urine is collected or discharged normally. However, for example, when the hypogastric nerve 12 is activated at a lower level or the pelvic nerve 13 is activated excessively, the bladder 9 is more likely to contract and the internal urethral sphincter 10 is more likely to relax. As a result, urine is more easily collected in the bladder 9, which may trigger onset of a urination disorder such as a urine collection failure (overactive bladder).

[0038] Thus, in the preferred embodiment, as shown in FIG. 3A, an electrical stimulation signal is given to the skin on the sacral bone 3 from the back of the sacral bone 3, thereby stimulating the sacral plexus. More specifically, as shown in FIG. 2, there are stimulated a first sacral nerve S1 which passes through the first sacral foramen 5, a second sacral nerve S2 which passes through the second sacral foramen 6, a third sacral nerve S3 which passes through the third sacral foramen 7 and a fourth sacral nerve S4 which passes through the fourth sacral foramen 8. Thereby, for example, as shown in FIG. 3A, the third sacral nerve S3 is stimulated to suppress innervation which causes the bladder 9 to be contracted by the pelvic nerve 13. Further, this electrical stimulation is also sent to the hypogastric nerve 12, thereby accelerating innervation which allows the bladder 9 to be relaxed by the hypogastric nerve 12. As a result, suppression of the pelvic nerve 13 is well-balanced with acceleration of the hypogastric nerve 12, by which the bladder 9 is appropriately relaxed to improve an overactive bladder.

[0039] Next, the above-described electrical stimulation is also transmitted to the nerves present at sites other than the buttocks and peripheries thereof at which the sacral plexus is found. For example, as shown in FIG. 2, some of the third sacral nerves S3 partially descend the femur as an ischiadic nerve 15 and finally are divided into a peroneal nerve 16 and a tibial nerve 17. The peroneal nerve 16 and the tibial nerve 17 extend up to toes of the human body 1 (a first toe 18 (big toe), a second toe 19, a third toe 20, a fourth toe 21 and a fifth toe 22 (little toe)) as terminal portions of the ischiadic nerve 15. That is, the peroneal nerve 16 and the tibial nerve 17 of

the toes **18** to **22** are connected by way of the ischiadic nerve **15** to the hypogastric nerve **12**, the pelvic nerve **13** and the pudic nerve **14**.

[0040] Next, a description will be given of a configuration and operation of a urination disorder treatment device **31** as an example of an electrical stimulation treatment device according to the first preferred embodiment of the present invention.

First Preferred Embodiment

[0041] FIG. 4 is a schematic diagram of the urination disorder treatment device **31** according to the first preferred embodiment of the present invention.

[0042] The urination disorder treatment device **31** is physically arranged with a body **32**, a monitor **33** placed on a front surface of the body **32**, a start/stop button **34** and a plurality of operation buttons **35**, **35** which are placed below the monitor **33**, a pair of body-surface electrode pads **37** which is connected to the body **32** by way of a wiring **36**, as an example of the application electrodes of the present invention, and a toe-use electrode pad **39** which is connected to the body **32** by way of a wiring **38**, as an example of the detection electrode of the present invention.

[0043] The body **32** may be, for example, a plastic-made case. Further, although not shown in the drawing, at the back of the body **32**, there may be provided a removable back lid for housing a battery for a power source of the urination disorder treatment device **31**. The power source of the urination disorder treatment device **31** may not necessarily be a battery but may be obtained, for example, from an electrical outlet by way of an AC adaptor. Alternatively, the battery may be used together with the outlet.

[0044] The monitor **33** may be, for example, a black-and-white or color liquid crystal monitor. On the monitor **33**, there can be displayed, for example, a pulse waveform and a frequency of an electrical stimulation signal by the body-surface electrode pad **37**, an electrocardiographic waveform and a heart rate of a person to be treated, an error message and others. Thereby, the person to be treated is able to easily know the operating state of the urination disorder treatment device **31**.

[0045] The operation button **35** may have various functions depending on a type of the urination disorder treatment device **31**. For example, as a memory function of the urination disorder treatment device **31**, a treatment menu including a width of a pulse wave (pulse width), a frequency of a stimulation signal, suitable for each of a plurality of persons to be treated is stored in the urination disorder treatment device **31**, and the button, etc., that is operated in reading a treatment menu may be provided.

[0046] As the body-surface electrode pad **37** and the toe-use electrode pad **39**, for example, a publicly-known adhesive gel pad, etc., may be used.

[0047] In using the urination disorder treatment device **31**, at first, a person to be treated attaches the body-surface electrode pad **37**, for example, on the skin immediately above the back of the sacral bone of the person. The operation button **35** is used to select a treatment menu suitable for the person, and the start/stop button **34** is pushed. Thereby, an electrical stimulation signal is output from the body-surface electrode pad **37** to stimulate the third sacral nerve S3. Then, it is possible to start the treatment by the urination disorder treatment device **31**. Conditions of the stimulation signal (output pulse) may be, for example, 1 μs

(second) to 500 μs (second) of the pulse width and 1 Hz to 50 Hz of the pulse frequency.

[0048] On the other hand, the toe-use electrode pad **39** may be attached to a toe as a detection electrode for confirming (monitoring) whether or not the stimulation signal from the body-surface electrode pad **37** is appropriately delivered to the pelvic nerve **13** and the pudic nerve **14**. The toe to which the toe-use electrode pad **39** is attached may be any one of the first toe **18** to the fifth toe **22**. However, the first toe **18** is preferable in view of easy attachment.

[0049] Next, a detailed description will be given of “processing related to stimulation influence elimination on the heart” and “processing on monitoring of a stimulation site” executed by the urination disorder treatment device **31**, together with an electrical configuration of the urination disorder treatment device **31**.

[0050] FIG. 5 is a block diagram which shows an electrical configuration of the urination disorder treatment device **31** in FIG. 4.

[0051] The urination disorder treatment device **31** includes, as an electrical configuration, a control portion **40**, a first measurement portion **41** for measuring electrocardiographic data of a person to be treated, a second measurement portion **42** for measuring electromyographic data of toes of the person to be treated, and a stimulation signal control output circuit **43**, as an example of the signal supplying source of the present invention, which outputs a stimulation signal to the person to be treated under conditions based on control of the control portion **40**. The control portion **40**, the first measurement portion **41**, and the second measurement portion **42** may be arranged as a microcomputer including, for example, a CPU, memories such as a ROM and a RAM as well as a timer.

[0052] The first measurement portion **41** and the stimulation signal control output circuit **43** are connected in parallel between the body-surface electrode pad **37** and the control portion **40**. That is, the first measurement portion **41** measures the electrocardiographic data of a person to be treated by the body-surface electrode pad **37** from which a signal from the stimulation signal control output circuit **43** is output. For example, an input protection circuit **44**, a signal amplifying circuit **45**, an A/D converting circuit **46**, etc., may be provided between the first measurement portion **41** and the body-surface electrode pad **37**. In addition, a selector switch **47** for selecting output of the signal amplifying circuit **45** which is input to the A/D converting circuit **46** may be provided between the signal amplifying circuit **45** and the A/D converting circuit **46**. The selector switch **47** is to output a plurality of signals as a single signal.

[0053] The second measurement portion **42** is connected between the control portion **40** and the toe-use electrode pad **39**. For example, an input protection circuit **48**, a signal amplifying circuit **49**, an A/D converting circuit **50** and others may also be provided between the second measurement portion **42** and the toe-use electrode pad **39**.

[0054] The control portion **40** is connected to the monitor **33**, and contents of processing at the control portion **40** are displayed on the monitor **33**, whenever necessary.

<Processing Related to Stimulation Influence Elimination on the Heart>

[0055] FIG. 6 is a flow chart which describes an example of the processing related to stimulation influence elimination

on the heart which is executed by the control portion 40. FIG. 7 is a drawing which describes an example of electrocardiographic waveforms measured by the first measurement portion 41. FIG. 8 and FIG. 9 are each a drawing which describes an example of the timing of outputting a stimulation pulse.

[0056] As described above, when a user pushes the start/stop button 34 to start the treatment by the urination disorder treatment device 31, there is a case that electrocardiographic data may be detected by the first measurement portion 41 depending on a position at which the body-surface electrode pad 37 is attached, although no electrocardiographic data is detected if the body-surface electrode pad 37 is attached appropriately. At this time, for example, as shown in FIG. 6, the electrocardiographic data is measured by the first measurement portion 41 (Step S1). More specifically, based on signals of electrical activity of the heart of a person to be treated which are obtained from the pair of body-surface electrode pads 37 (one of them is a positive (+) electrode and the other is a negative (-) electrode), the electrocardiographic data of the person to be treated is measured by the first measurement portion 41. Thereby, for example, an electrocardiographic waveform 51 shown in FIG. 7 is prepared. The electrocardiographic waveform 51 in FIG. 7 includes, for example, a QRS wave 52, a T wave 53 and a P wave 54.

[0057] Next, a judgment is made for whether a signal of pacing spike 55 is found in the obtained electrocardiographic waveform 51 or not (Step S2). Where no pacing spike 55 is found (NO in Step S2), next, a heart rate of the person to be treated is measured based on the electrocardiographic waveform 51. The heart rate can be calculated, for example, with reference to a length between peaks 56 of the QRS waves 52 or a length between peaks 57 of the P waves 54 in the electrocardiographic waveform 51.

[0058] Next, where the heart rate is normal (for example, 60 to 100 beats per minute) (YES in Step S3), stimulation output is controlled to delay the timing of output from the pair of body-surface electrode pad 37 so as not to be synchronized with the atrial systole P or the ventricular systole R of the electrocardiographic data (Step S4).

[0059] More specifically, as shown in FIG. 8, where a length between the peaks 56 of the QRS waves 52 in the electrocardiographic waveform 51 is 600 ms and where the calculated heart rate is 100, 300 ms from the peak 56 of the QRS wave 52 is given as an output inhibition period, and a pulse 58 of the stimulation output is controlled so as to be later than the QRS wave 52 and the T wave. Further, as shown in FIG. 9, where a length between the peaks 56 of the QRS waves 52 in the electrocardiographic waveform 51 is 100 ms and where the calculated heart rate is 60, 50 ms from the peak 56 of the QRS wave 52 is given as an output inhibition period and a stimulation pulse 58 is controlled so as to be later than the QRS wave 52 and the T wave. Thereby, the stimulation pulse 58 is output when the electrocardiographic waveform 51 is in a state of equipotential line 59, and an electrical stimulation is given to the sacral plexus from the pair of body-surface electrode pads 37.

[0060] Next, as shown in FIG. 8 and FIG. 9, an image obtained by comparing the electrocardiographic waveform 51 with the stimulation pulse 58 is displayed on the monitor 33 (Step S5). Thereby, a person to be treated is able to know his/her own electrocardiographic waveform 51 and the tim-

ing at which the stimulation pulse 58 is output to the electrocardiographic waveform 51.

[0061] On the other hand, where, as a result of measurement of the heart rate based on the electrocardiographic waveform 51, there is found bradycardia with the heart rate lower than a normal rate or tachycardia with the heart rate higher than a normal rate (NO in Step S3), stimulation from the pair of body-surface electrode pads 37 is automatically stopped (Step S6). Then, an error message, for example, "the treatment has been stopped due to a low (or high) heart rate" is displayed on the monitor 33 together with the heart rate (Step S7).

[0062] Further, where appearance of the pacing spike 55 (refer to FIG. 7) in the electrocardiographic waveform 51 has been judged after preparation of the electrocardiographic waveform 51 (YES in Step S2), stimulation from the pair of body-surface electrode pads 37 is automatically stopped (Step S8). Then, an error message, for example, "the treatment has been stopped due to use of a pacemaker" is displayed on the monitor 33 (Step S9).

[0063] As described so far, according to the urination disorder treatment device 31, for example, even where the body-surface electrode pad 37 is attached to a site relatively close to the heart and an electrical stimulation from the urination disorder treatment device 31 is accidentally turned on, the above-described processing is executed immediately by detection of the electrocardiographic data. That is, supply of the stimulation signal supplied from the pair of body-surface electrode pads 37 will be stopped (Steps S6, S8) or timing of the supply thereof will be adjusted (Step S4) so as not to influence electrical activity of the heart of a person to be treated. Thus, it is possible to suppress influences to the heart of the person to be treated by the urination disorder treatment device 31. As a result, it is possible to use the urination disorder treatment device 31 more safely than a conventional device.

<Processing on Monitoring of a Stimulation Site>

[0064] FIG. 10 is a flow chart which describes an example of processing on confirmation of a stimulation site executed by the control portion 40. FIG. 11 is a drawing which describes an example of frequency patterns of a stimulation pulse and a detection pulse.

[0065] As described above, a user pushes the start/stop button 34 to start the treatment by the urination disorder treatment device 31. Unless the pair of body-surface electrode pads 37 are used by being attached to a predetermined position, no electrical stimulation is sufficiently given to the sacral plexus, thereby reducing effects of the treatment.

[0066] Thus, in the urination disorder treatment device 31, the toe-use electrode pad 39 attached to the toes 18 to 22 is used to detect minute myoelectricity resulting from muscular activity of the toes 18 to 22, and electromyographic data of the toes 18 to 22 is prepared (Step S11).

[0067] Next, as shown in FIG. 11, the stimulation pulse is compared with a detection pulse 60 of the electromyographic data (Step S12). Where an electrical stimulation by the pair of body-surface electrode pads 37 is given, for example, to the third sacral nerve S3, only at the timing when the stimulation is given, myoelectricity is detected to obtain electromyographic data at terminal portions of the peroneal nerve 16 and the tibial nerve 17 present in the toes 18 to 22. Therefore, if a frequency pattern of the stimulation pulse 58 is in agreement with a frequency pattern of the

detection pulse 60, it is judged that the pair of body-surface electrode pads 37 are attached at appropriate positions to give an electrical stimulation (YES in Step S13). The electrical stimulation is continuously applied by the pair of body-surface electrode pads 37 (Step S14) and the fact that pads are attached at appropriate positions is displayed on the monitor 33 (Step S15).

[0068] On the other hand, where the pair of body-surface electrode pads 37 are not attached to the skin immediately above the sacral bone 3 but attached to the femur of a person to be treated, for example, a position farther away from the sacral bone 3, myoelectricity is detected (detected at a different frequency pattern) even at the timing when no stimulation is given or no myoelectricity is detected at the timing when the stimulation is given. At this time, the health of a person to be treated may be adversely affected depending on a position at which the pair of body-surface electrode pads 37 are attached. For example, if the pair of body-surface electrode pads 37 are attached to a position close to the heart, the heart of the person to be treated may be affected by the stimulation.

[0069] Thus, where myoelectricity is detected even at the timing when no stimulation is given or no myoelectricity is detected at the timing when the stimulation is given (NO in Step S13), application of the electrical stimulation by the pair of body-surface electrode pads 37 is stopped (Step S16) and the fact that pads are not attached at appropriate positions is displayed on the monitor 33 (Step S17).

[0070] As described so far, according to the urination disorder treatment device 31, it is possible to easily confirm whether or not a stimulation signal is appropriately transmitted from the pair of body-surface electrode pads 37 to the sacral bone or a nerve passing through the vicinity of the sacral bone based on the electromyographic data on the toes 18 to 22. Further, the toes 18 to 22 are terminal portions of the tibial nerve 17 and the peroneal nerve 16 and, therefore, noise is less likely to enter as compared with a case where a biological signal is detected at other parts of the human body 1 and the biological signal occurring in response to a stimulation signal can be clearly detected. Further, since the toes 18 to 22 are different from a site such as the perineum to which it is difficult to attach an electrode, the electrode can be easily attached to them. As a result, it is possible to confirm in a simplified manner with high accuracy whether the urination disorder treatment device 31 is appropriately used or not (whether the stimulation signal is appropriately transmitted or not).

[0071] One preferred embodiment of the present invention has been so far described. However, the present invention may be carried out in other modes.

Second Preferred Embodiment

[0072] For example, in the first preferred embodiment described above, a description has been given of a configuration of the urination disorder treatment device 31 which is a portable type. However, the electrical configuration and the control of the urination disorder treatment device shown in FIG. 5 to FIG. 11 may be applied to a stationary type urination disorder treatment device 31 in which a monitor is separated from a main body of the treatment device.

Third Preferred Embodiment

[0073] Further, in the first preferred embodiment described above, as an example of the display portion of the

present invention, there is shown the monitor 33 which displays a message or an image for a user. However, a means for displaying an operating state of the urination disorder treatment device 31 for a user is not necessarily limited to the monitor 33. For example, a message to a person to be treated (for example, an error message or an incorrect position at which the electrode is attached) may be in advance printed on a front panel of the body 32 to illuminate characters thereof by using an LED, etc., or to switch on a lamp near the characters, so that the person to be treated can be informed.

Fourth Preferred Embodiment

[0074] Further, in the first preferred embodiment described above, an image obtained by comparing the electrocardiographic waveform 51 with the stimulation pulse 58 may not be displayed on the monitor 33.

Fifth Preferred Embodiment

[0075] Further, in the urination disorder treatment device 31 according to the first preferred embodiment described above, where the toe-use electrode pad 39 attached to the toes 18 to 22 is used to detect minute myoelectricity resulting from muscular activity of the toes 18 to 22 and prepare electromyographic data of the toes 18 to 22 (Step S1), myoelectricity obtained by the plurality of stimulation timings may be added and averaged to prepare the electromyographic data.

Sixth Preferred Embodiment

[0076] Further, in the first preferred embodiment described above, only the urination disorder treatment device 31 is adopted as an example of the electrical stimulation treatment device. However, the present invention is not limited to the urination disorder treatment device but can be applied to devices in general which are used in electrical stimulation therapy for diseases other than a urination disorder.

Seventh Preferred Embodiment

[0077] Further, in the first preferred embodiment described above, three patterns are shown as the processing related to stimulation influence elimination on the heart. However, for example, as shown in FIG. 12, at a stage that the electrocardiographic data is detected (YES in Step S21), stimulation is stopped (Step S22) and an error message may be displayed on the monitor 33 (Step S23). This method is a mode which can be used most safely.

Eighth Preferred Embodiment

[0078] Further, with reference to FIG. 13, the urination disorder treatment device 31 may be provided with a substantially oval-shaped body 32. The monitor 33 may be formed in a rectangular shape which is longer along a longitudinal direction of the body 32 and disposed so as to be closer to one end portion of the body 32 in the longitudinal direction. The start/stop button 34 and the plurality of operation buttons 35, 35 may be disposed on a side of the other end portion of the body 32 in the longitudinal direction in relation to the monitor 33.

[0079] Further, as shown in FIG. 13, the toe-use electrode pad 39 may include a first electrode pad 63, a second

electrode pad **64** and a third electrode pad **65**. In this preferred embodiment, the third electrode pad **65** may be a reference electrode, and the first electrode pad **63** may be a negative potential electrode (negative electrode) in relation to the third electrode pad **65**. The second electrode pad **64** may be a positive potential electrode (positive electrode) in relation to the third electrode pad **65**.

[0080] In addition, the design of the present invention may be modified in various ways without departing from the scope described in the claims.

[0081] The present application corresponds to Japanese Patent Application No. 2017-171381 filed in the Japan Patent Office on Sep. 6, 2017, and the entire disclosure of this application is incorporated herein by reference.

REFERENCE SIGNS LIST

[0082] 1: Human body
 [0083] 2: Vertebral column
 [0084] 3: Sacral bone
 [0085] 4: Lumbar vertebra
 [0086] 5: First sacral foramen
 [0087] 6: Second sacral foramen
 [0088] 7: Third sacral foramen
 [0089] 8: Fourth sacral foramen
 [0090] 9: Bladder
 [0091] 10: Internal urethral sphincter
 [0092] 11: External urethral sphincter
 [0093] 12: Hypogastric nerve
 [0094] 13: Pelvic nerve
 [0095] 14: Pudic nerve
 [0096] 15: Ischiadic nerve
 [0097] 16: Peroneal nerve
 [0098] 17: Tibial nerve
 [0099] 18: First toe (big toe)
 [0100] 19: Second toe
 [0101] 20: Third toe
 [0102] 21: Fourth toe
 [0103] 22: Fifth toe (little toe)
 [0104] 23: Control portion
 [0105] 24: First measurement portion
 [0106] 25: Second measurement portion
 [0107] 26: Stimulation signal control output circuit
 [0108] 31: Urination disorder treatment device
 [0109] 32: Body
 [0110] 33: Monitor
 [0111] 34: Start/stop button
 [0112] 35: Operation button
 [0113] 36: Wiring
 [0114] 37: Body-surface electrode pad
 [0115] 38: Wiring
 [0116] 39: Toe-use electrode pad
 [0117] 40: Control portion
 [0118] 41: First measurement portion
 [0119] 42: Second measurement portion
 [0120] 43: Stimulation signal control output circuit
 [0121] 44: Input protection circuit
 [0122] 45: Signal amplifying circuit
 [0123] 46: A/D converting circuit
 [0124] 47: Selector switch
 [0125] 48: Input protection circuit
 [0126] 49: Signal amplifying circuit
 [0127] 50: A/D converting circuit
 [0128] 51: Electrocardiographic waveform
 [0129] 52: QRS wave

[0130] 53: T wave
 [0131] 54: P wave
 [0132] 55: Pacing spike
 [0133] 56: Peak of QRS wave
 [0134] 57: Peak of P wave
 [0135] 58: Stimulation pulse
 [0136] 59: Equipotential line
 [0137] 60: Detection pulse
 [0138] 63: First electrode pad
 [0139] 64: Second electrode pad
 [0140] 65: Third electrode pad

1. An electrical stimulation treatment device comprising:
 - a pair of application electrodes which are disposed on the skin of a person to be treated to supply an electrical stimulation signal to the skin;
 - a signal supplying source from which the pair of application electrodes supply the stimulation signal;
 - a measurement portion which is connected to the pair of application electrodes to measure electrocardiographic data of a person to be treated based on a signal of electrical activity of a heart of a person to be treated; and
 - a control portion which is connected to the measurement portion to control supply of the stimulation signal by the pair of application electrodes based on the electrocardiographic data measured by the measurement portion; wherein
 - the control portion executes any one of the following processing, that is,
 - (1) where a signal which shows the electrocardiographic data is detected, the control portion stops output from the pair of application electrodes,
 - (2) where a heart rate of a person to be treated is judged to be a normal value from the electrocardiographic data, the timing of output from the pair of application electrodes is delayed so as not to be synchronized with the atrial systole P or the ventricular systole R of the electrocardiographic data,
 - (3) where a heart rate of a person to be treated is judged to be bradycardia or tachycardia from the electrocardiographic data, it stops output from the pair of application electrodes, or
 - (4) where a signal is detected which is judged to be supplied from a heart pacemaker with reference to the electrocardiographic data, it stops output from the pair of application electrodes.
2. The electrical stimulation treatment device according to claim 1, wherein
 - upon execution of the processing (2), the control portion controls output of the pair of application electrodes so as to supply the stimulation signal when a waveform of the electrocardiographic data is in a state of equipotential line.
3. The electrical stimulation treatment device according to claim 1, wherein
 - the control portion judges the normal value where a heart rate of a person to be treated is 60 to 100 beats per minute, and a duration from 300 ms to 50 ms from a peak of QRS wave in a waveform of the latest electrocardiographic data is given as an output inhibition period from the pair of application electrodes.
4. The electrical stimulation treatment device according to claim 1, wherein

the control portion executes the processing of (4) where appearance of a pacing spike is detected in a waveform of the electrocardiographic data.

5. The electrical stimulation treatment device according to claim 1 which also includes a display portion that informs a person to be treated of control results by the control portion based on the electrocardiographic data.

6. The electrical stimulation treatment device according to claim 1, wherein

the pair of application electrodes include a pair of application electrodes which are disposed at the back of the sacral bone of a person to be treated to supply an electrical stimulation signal from the back of the sacral bone.

* * * * *

专利名称(译)	电刺激治疗装置		
公开(公告)号	US20190240487A1	公开(公告)日	2019-08-08
申请号	US16/333483	申请日	2018-07-02
[标]申请(专利权)人(译)	大冢科技株式会社		
申请(专利权)人(译)	大冢技术株式会社		
当前申请(专利权)人(译)	大冢技术株式会社		
[标]发明人	MASUDA TETSUYA TSUKUI NOBUO		
发明人	MASUDA, TETSUYA TSUKUI, NOBUO		
IPC分类号	A61N1/36 A61B5/0408 A61B5/00 A61B5/0456 A61N1/04		
CPC分类号	A61N1/36031 A61N1/36007 A61B5/0408 A61B5/7217 A61B5/0456 A61N1/0456 A61B5/0245 A61B5/04085 A61B5/0464 A61B5/0488 A61B5/0492 A61B5/4836 A61B5/6823 A61B5/6829 A61N1/36		
优先权	2017171381 2017-09-06 JP		
外部链接	Espacenet USPTO		

摘要(译)

提供一种电刺激治疗装置，其可以比传统装置更安全地使用。排尿障碍治疗装置包括一对体表电极垫，其设置在待治疗的人的骶骨的后部以从骶骨的后部提供电刺激信号，刺激信号控制输出电路一对体表电极垫从其提供刺激信号，第一测量部分连接到一对体表电极垫，以基于电活动信号测量待治疗者的心电图数据。待治疗者的心脏，以及连接到第一测量部分的控制部分，以基于心电图波形控制由一对体表电极垫向骶骨提供刺激信号 51 由第一测量部分测量，并且例如，从心电图仪判断待治疗者的心率是正常值在数据中，控制部分延迟来自一对体表电极垫的输出脉冲 58 的定时，以便不与心房收缩P或心电图波形的心室收缩R同步 51。

