



US010426399B1

(12) **United States Patent**
Kayyali et al.

(10) **Patent No.:** **US 10,426,399 B1**
(45) **Date of Patent:** ***Oct. 1, 2019**

- (54) **METHOD AND DEVICE FOR IN-HOME SLEEP AND SIGNAL ANALYSIS**
- (71) Applicants: **Hani Kayyali**, Shaker Heights, OH (US); **Craig A. Frederick**, Solon, OH (US); **Christian Martin**, Sandusky, OH (US); **Robert N. Schmidt**, Ft. Myers, FL (US); **Brian Kolkowski**, Leroy, OH (US)
- (72) Inventors: **Hani Kayyali**, Shaker Heights, OH (US); **Craig A. Frederick**, Solon, OH (US); **Christian Martin**, Sandusky, OH (US); **Robert N. Schmidt**, Ft. Myers, FL (US); **Brian Kolkowski**, Leroy, OH (US)
- (73) Assignee: **Cleveland Medial Devices Inc.**, Cleveland, OH (US)
- (*) Notice: Subject to any disclaimer, the term of this patent is extended or adjusted under 35 U.S.C. 154(b) by 285 days.

This patent is subject to a terminal disclaimer.

- (21) Appl. No.: **15/229,242**
- (22) Filed: **Aug. 5, 2016**

Related U.S. Application Data

- (63) Continuation of application No. 11/811,156, filed on Jun. 8, 2007.
- (51) **Int. Cl.**
A61B 5/00 (2006.01)
A61B 5/0205 (2006.01)
(Continued)

- (52) **U.S. Cl.**
CPC **A61B 5/4815** (2013.01); **A61B 5/0022** (2013.01); **A61B 5/0077** (2013.01); **A61B 5/0205** (2013.01); **A61B 5/0402** (2013.01); **A61B 5/0476** (2013.01); **A61B 5/0488** (2013.01); **A61B 5/0496** (2013.01); **A61B 5/6814** (2013.01); **A61B 5/6828** (2013.01); **A61B 5/085** (2013.01); **A61B 5/087** (2013.01);
(Continued)
- (58) **Field of Classification Search**
CPC combination set(s) only.
See application file for complete search history.

- (56) **References Cited**
U.S. PATENT DOCUMENTS

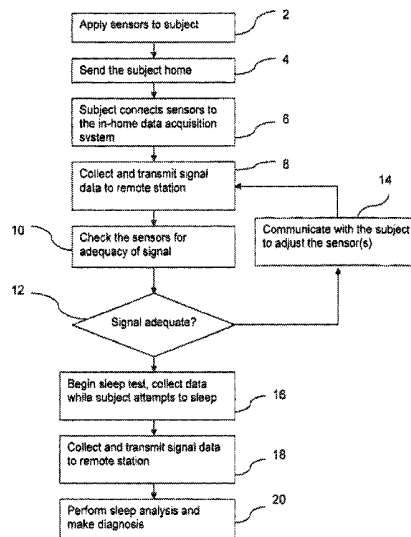
5,974,340 A * 10/1999 Kadhiresan A61N 1/36542 607/18
6,306,088 B1 * 10/2001 Krausman A61B 5/02055 600/301

(Continued)

Primary Examiner — John R Downey
Assistant Examiner — Shirley Jian
(74) *Attorney, Agent, or Firm* — Brian Kolkowski

- (57) **ABSTRACT**
The present invention provides a method of conducting a sleep analysis by collecting physiologic and kinetic data from a subject, preferably via a wireless in-home data acquisition system, while the subject attempts to sleep at home. The sleep analysis, including clinical and research sleep studies and cardiorespiratory studies, can be used in the diagnosis of sleeping disorders and other diseases or conditions with sleep signatures, such as Parkinson's, epilepsy, chronic heart failure, chronic obstructive pulmonary disorder, or other neurological, cardiac, pulmonary, or muscular disorders. The method of the present invention can also be used to determine if environmental factors at the subject's home are preventing restorative sleep.

19 Claims, 8 Drawing Sheets



(51)	Int. Cl.		8,172,766 B1 *	5/2012	Kayyali	A61B 5/02055	
	<i>A61B 5/0402</i>	(2006.01)					128/204.23	
	<i>A61B 5/0476</i>	(2006.01)	8,545,416 B1 *	10/2013	Kayyali	A61B 5/085	
	<i>A61B 5/0488</i>	(2006.01)					128/204.23	
	<i>A61B 5/0496</i>	(2006.01)	8,639,354 B2 *	1/2014	Bolea	A61N 1/0556	
	<i>A61B 5/085</i>	(2006.01)					607/118	
	<i>A61B 5/087</i>	(2006.01)	8,679,012 B1 *	3/2014	Kayyali	A61B 5/0002	
	<i>A61B 5/113</i>	(2006.01)					600/301	
	<i>A61B 5/1455</i>	(2006.01)	9,202,008 B1 *	12/2015	Frederick	A61B 5/721	
(52)	U.S. Cl.		2002/0032386 A1 *	3/2002	Sackner	A61B 5/0205	
	CPC	<i>A61B 5/1135</i> (2013.01); <i>A61B 5/14552</i>					600/536	
		(2013.01); <i>A61B 2505/07</i> (2013.01); <i>A61B</i>	2003/0135127 A1 *	7/2003	Sackner	A61B 5/0205	
		<i>2560/0242</i> (2013.01)					600/536	
			2005/0113703 A1 *	5/2005	Farrington	A61B 5/0428	
							600/509	
(56)	References Cited		2005/0121033 A1 *	6/2005	Starr	A61M 16/024	
	U.S. PATENT DOCUMENTS						128/204.18	
			2005/0240087 A1 *	10/2005	Keenan	A61B 5/0205	
							600/301	
	6,551,252 B2 *	4/2003 Sackner	A61B 5/0205	2006/0084877 A1 *	4/2006 Ujhazy	A61M 16/0051
				600/301				600/483
	6,997,882 B1 *	2/2006 Parker	A61B 5/08	2007/0246045 A1 *	10/2007 Hoffman	A61M 16/0057
				600/301				128/204.18
	7,267,652 B2 *	9/2007 Coyle	A61B 5/0806	2010/0204550 A1 *	8/2010 Heneghan	G16H 50/30
				600/529				600/301
	7,382,247 B2 *	6/2008 Welch	A61B 5/0024	2012/0022626 A1 *	1/2012 Bolea	A61N 1/0556
				340/539.12				607/118
	7,502,643 B2 *	3/2009 Farrington	A61B 5/0428	2015/0148624 A1 *	5/2015 Benaron	A61B 5/0059
				600/509				600/306
	7,515,044 B2 *	4/2009 Welch	A61B 5/0024	2015/0148625 A1 *	5/2015 Benaron	A61B 5/0059
				340/539.12				600/306
	7,670,295 B2 *	3/2010 Sackner	A61B 5/0205	2015/0164375 A1 *	6/2015 Schindhelm	A61B 5/08
				600/481				600/534
	7,942,824 B1 *	5/2011 Kayyali	A61B 5/021				
				128/204.23				

* cited by examiner

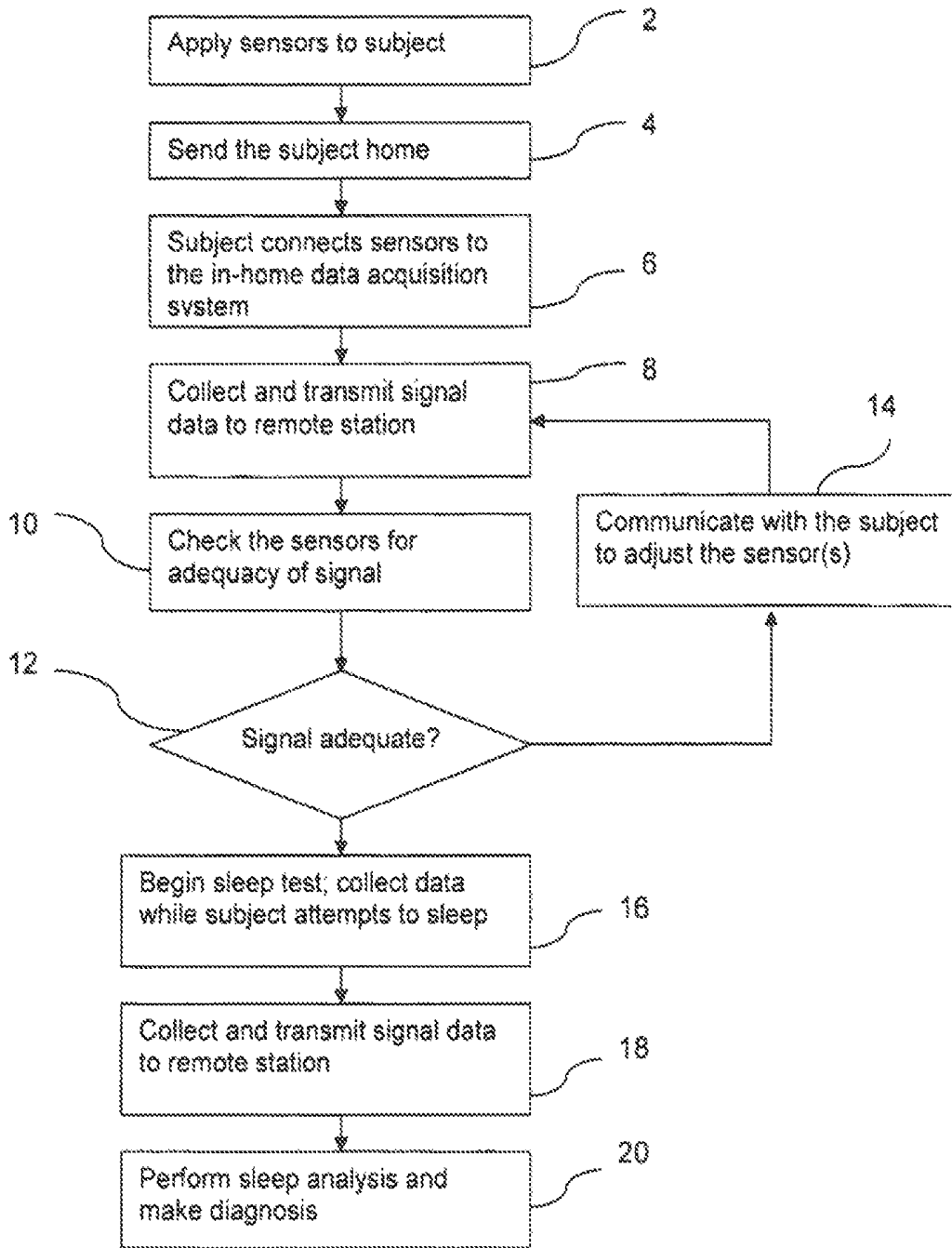


Fig. 1

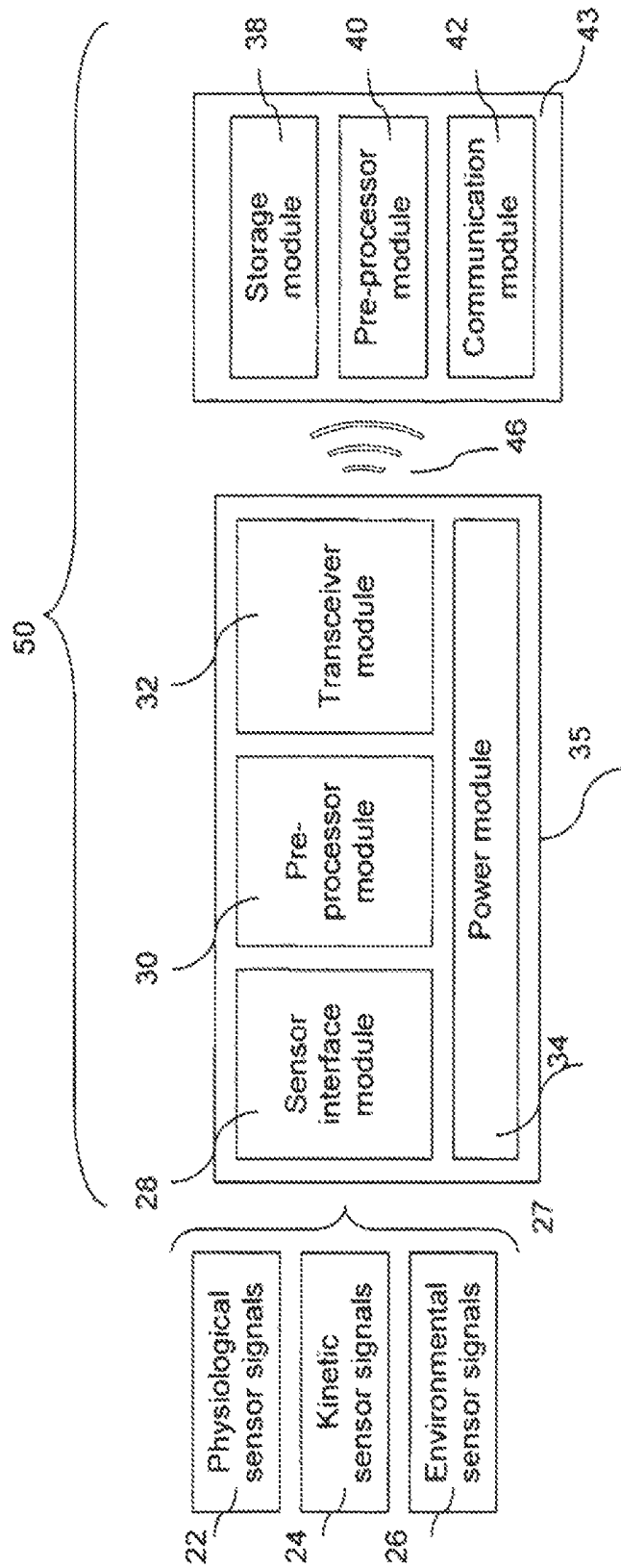


Fig. 2

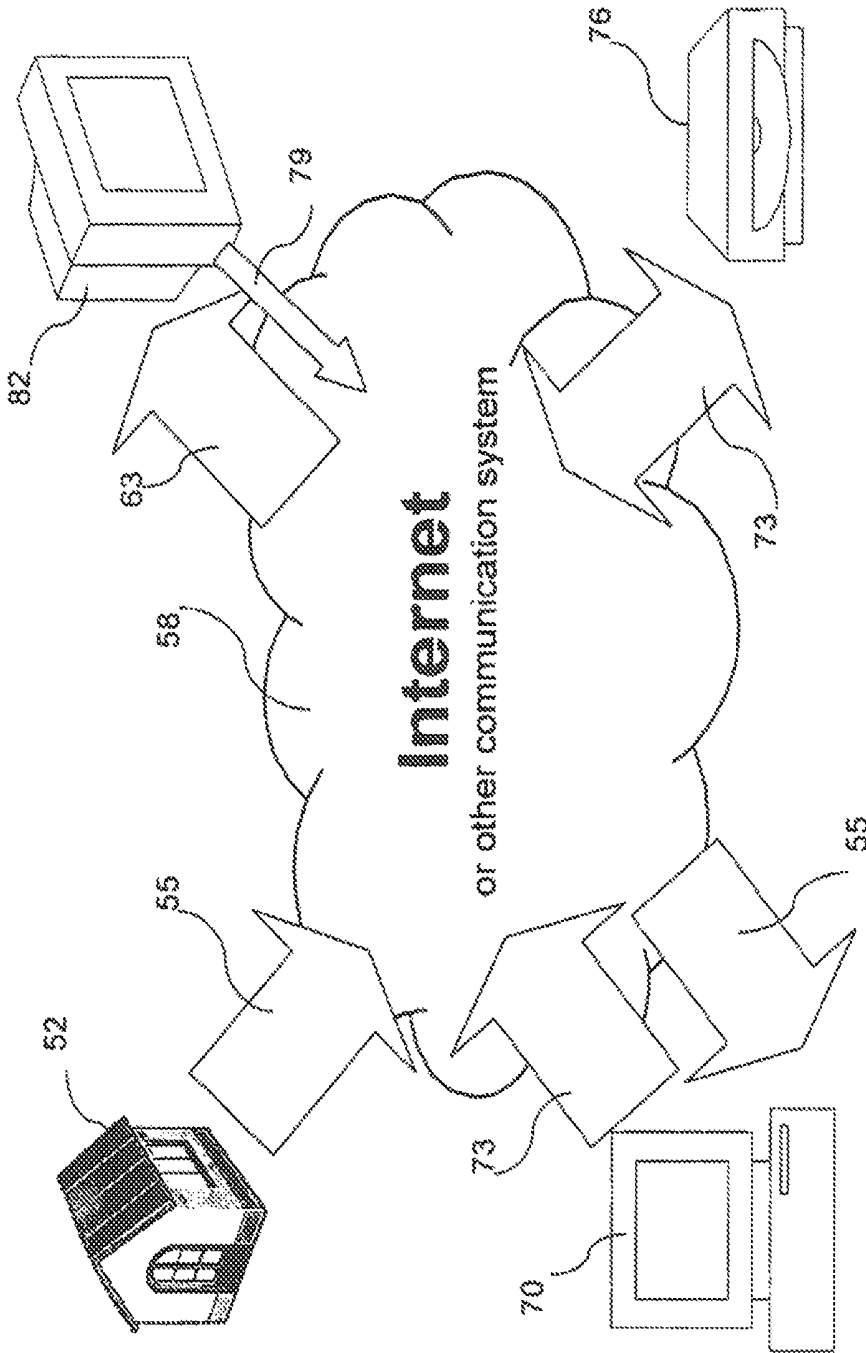


Fig. 3

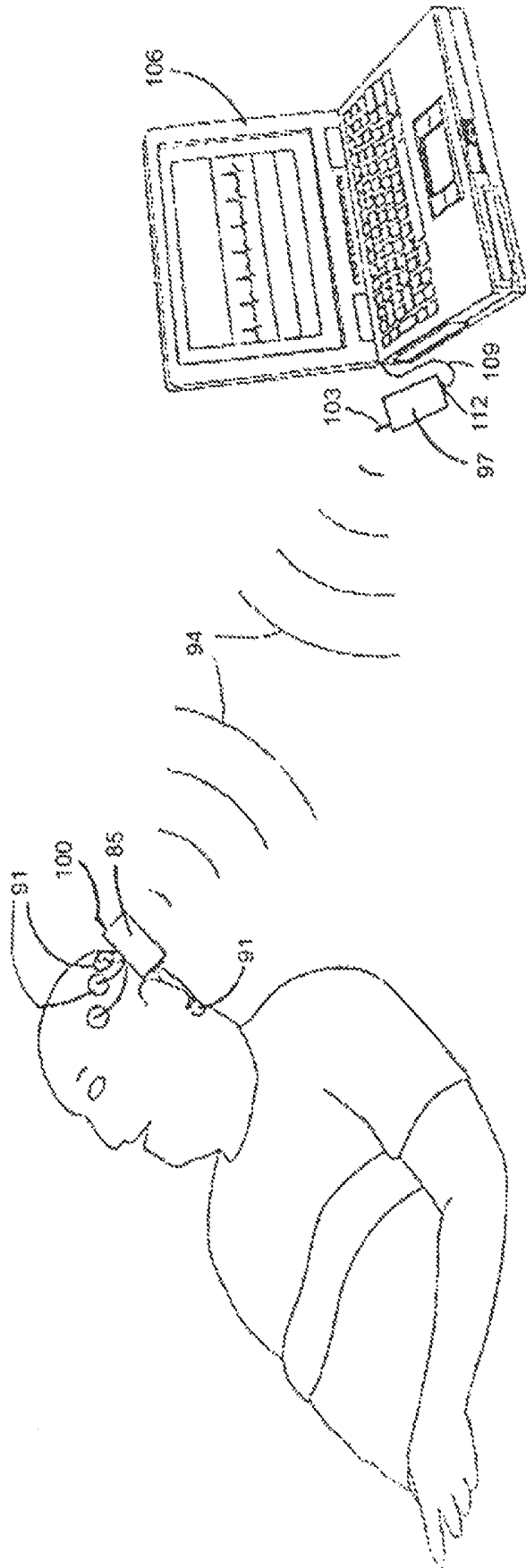


Fig. 4

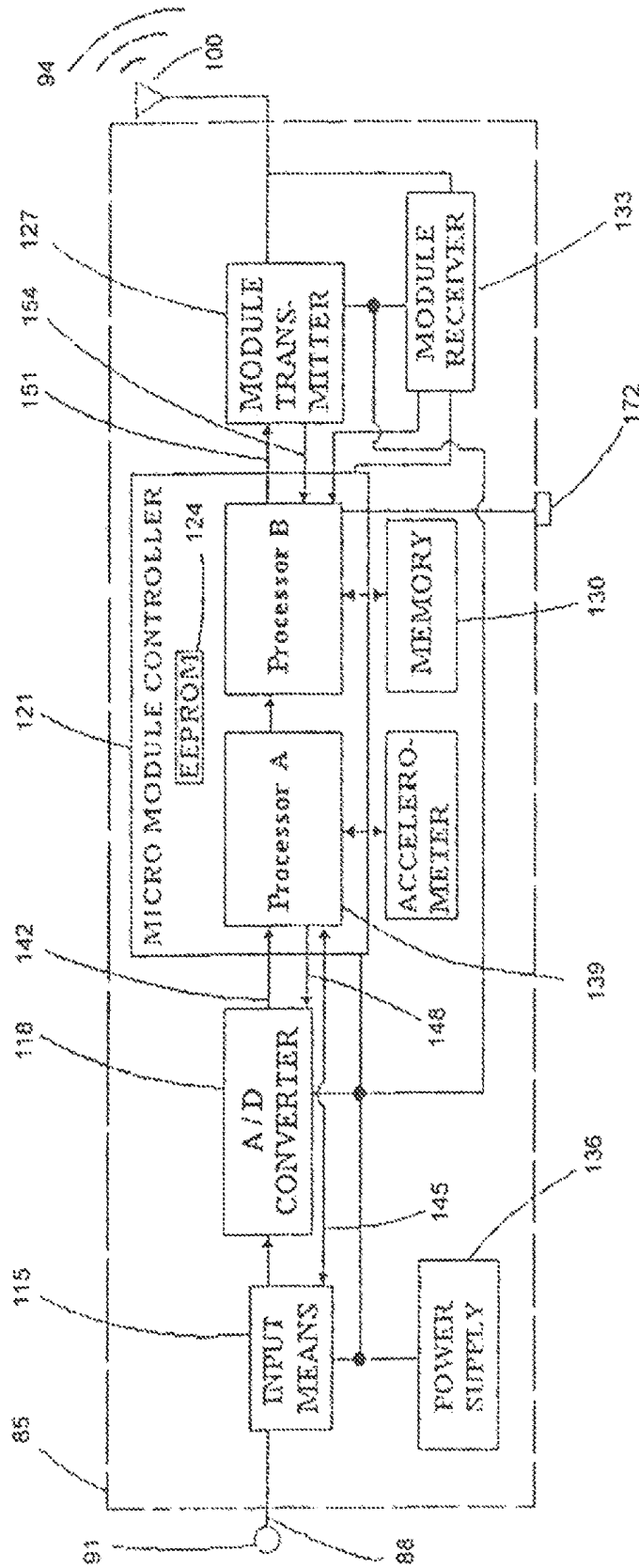


Fig. 5

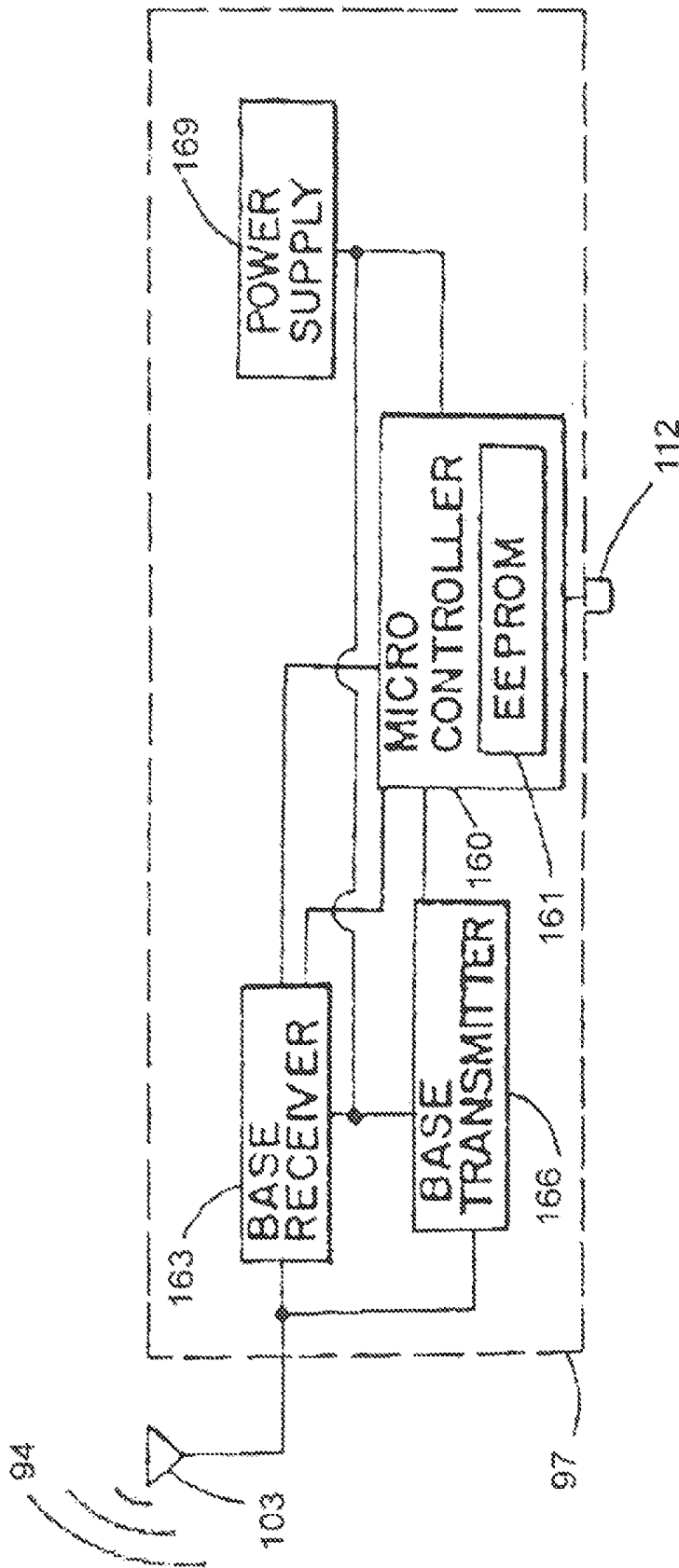


Fig. 6

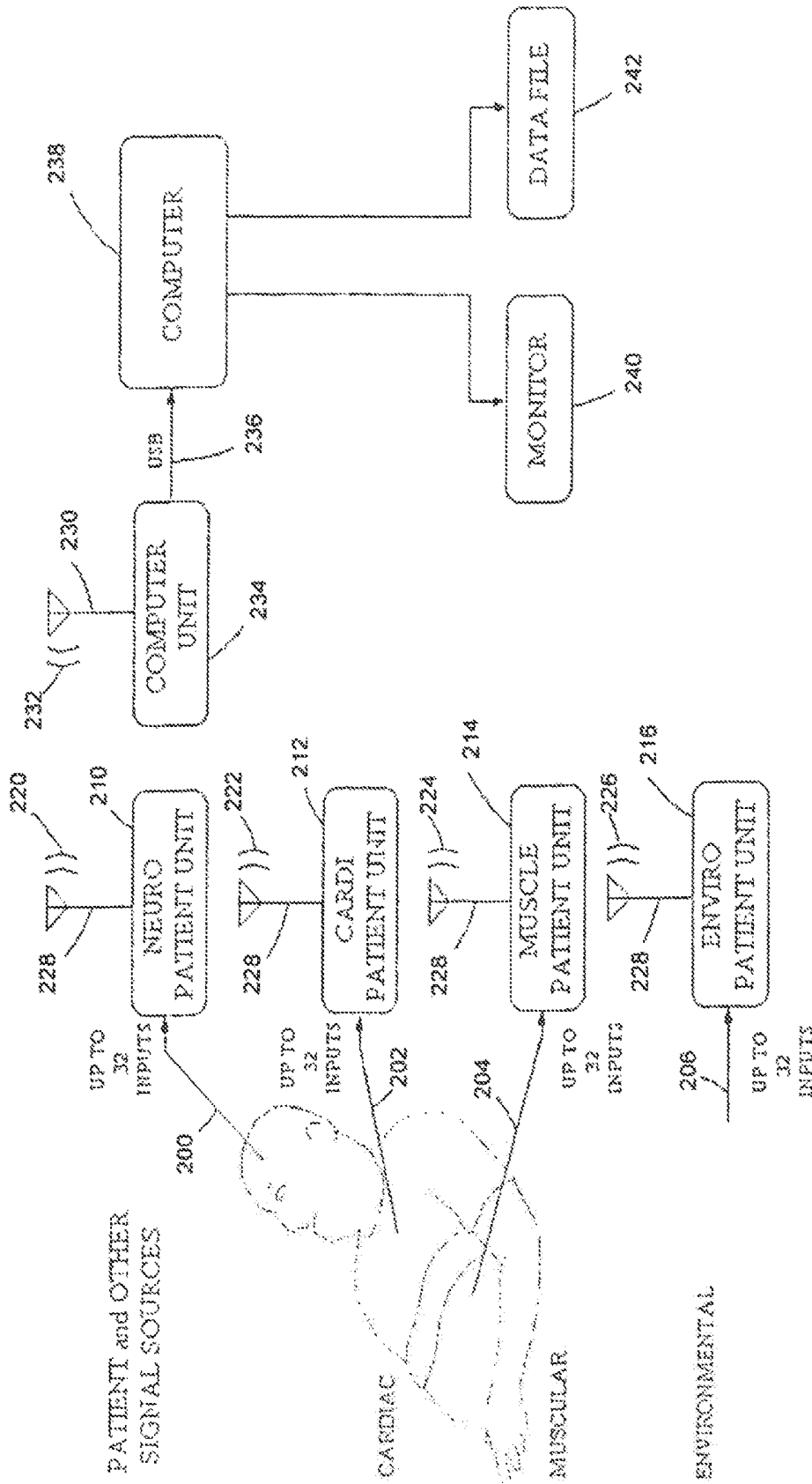


Fig. 7

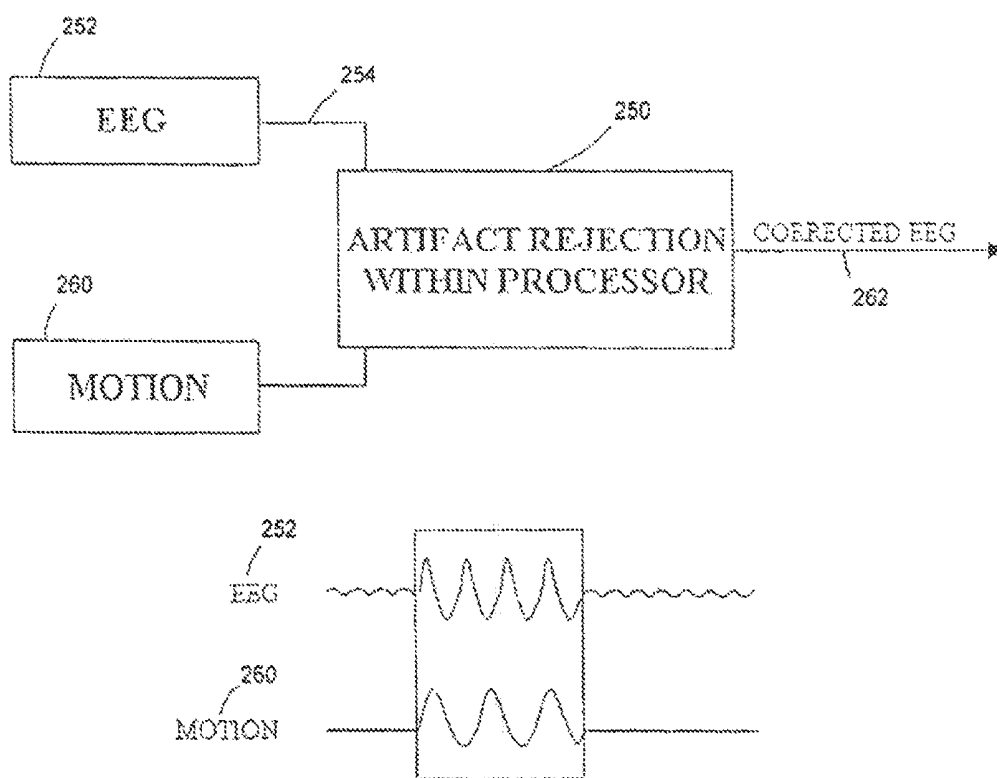


Fig. 8

METHOD AND DEVICE FOR IN-HOME SLEEP AND SIGNAL ANALYSIS

CROSS-REFERENCE TO RELATED APPLICATIONS

This application claims priority as a continuation of U.S. patent application Ser. No. 11/811,156 filed on Jun. 8, 2007.

The U.S. Government has a paid-up license in this invention and the right in limited circumstances to require the patent owner to license others on reasonable terms provided for by the terms of grant numbers 2R44NS042451-04 and 5R44NS042451-03 awarded by the National Institutes of Health.

BACKGROUND OF THE INVENTION

Nearly one in seven people in the United States suffer from some type of chronic sleep disorder, and only 50% of people are estimated to get the recommended seven to eight hours of sleep each night. It is further estimated that sleep deprivation and its associated medical and social costs (loss of productivity, industrial accidents, etc.) exceed \$150 billion dollars per year. Excessive sleepiness can deteriorate the quality of life and is a major cause of morbidity and mortality due to its role in industrial and transportation accidents. Sleepiness further has undesirable effects on motor vehicle driving, employment, higher earning and job promotion opportunities, education, recreation, and personal life.

Primary sleep disorders affect approximately 50 million Americans of all ages and include narcolepsy, restless legs/periodic leg movement, insomnia, and most commonly, obstructive sleep apnea (OSA). OSA's prevalence in society is comparable with diabetes, asthma, and the lifetime risk of colon cancer. OSA is grossly under diagnosed; an estimated 80-90% of persons afflicted have not received a clinical diagnosis. Secondary sleep disorders include loss of sleep due to pain associated with chronic infections, neurological/psychiatric disorders, or alcohol/substance abuse disorders.

Sleeping disorders are currently diagnosed by two general methods. Subjective methods, such as the Epworth and Stanford Sleepiness Scale, generally involve questionnaires that require patients to answer a series of qualitative questions regarding their sleepiness during the day. With these subjective methods, however, it is found that the patients usually underestimate their level of sleepiness or they deliberately falsify their responses because of their concern regarding punitive action or as an effort to obtain restricted stimulant medication.

The second group of methods uses physiological evaluations, such as all-night polysomnography to evaluate a patient's sleep architecture (e.g., obtaining respiratory disturbance index to diagnose sleep apnea). A polysomnogram (PSG) can also be followed by an all-day test such as the Multiple Sleep Latency Test (MSLT) or its modified version, the Maintenance of Wakefulness Test (MWT). The PSG typically requires patients to spend the night in a sleep laboratory connected to multiple sensors while they attempt to sleep. Because it is conducted in a lab setting, a PSG cannot provide information about a patient's sleeping environment, such as noise, light, or allergens. A PSG also can be difficult to conduct because of a patient's travel concerns or anxiety related to sleeping away from home. Many patients also exhibit a "first night effect" related to a change in sleeping environment. The first night effect often requires a second night in the sleep lab to obtain accurate results.

Therefore, the first night effect can easily double the cost of conducting a PSG in a sleep lab.

To combat the difficulties of conducting a PSG in a sleep lab, various methods have been employed to attempt to conduct a PSG test in a patient's home. The systems used in these methods have not been capable of transmitting data. Therefore, these systems have only allowed unattended PSG tests. These methods involve storage of the data to a computer hard disc or other media for the duration of the test. After the test is completed, the media is received, read, and analyzed. Obtaining the data creates an additional delay between completion of the test and the final diagnosis that is not present for a lab-based PSG. Further, unattended tests are plagued with signal failure. In one study involving unattended home PSG, data from over 23% of the patients were unusable due to missing channels, even though a technician called the PSG recording device every 30 minutes to check the quality of the recordings.

None of the current methods for conducting a PSG at home allow transmission of the collected data during the test. All of the current methods require the PSG data to be stored during the test and read only after the test has been completed. As such, the data cannot be periodically or continuously checked for adequacy. Even if the data were periodically evaluated, the current methods do not use a step of allowing a remote monitor to communicate with the subject to correct any sensor/signal problems. The current methods also do not include live video feeds, enabling a remote monitor to visualize the subject during the test. Because of the lack of data availability, communication, and video, the current methods of conducting a PSG at home are by definition unattended sleep studies. It is therefore an object of the present invention to provide a method of conducting a sleep analysis at home wherein the data is transmitted at substantially the same time it that is collected or created. It is another object of the present invention to provide a method of conducting a sleep analysis at home that is remotely attended. It is another object of the present invention to provide a method of conducting a sleep analysis that includes information about the patient's sleeping environment, including environmental factors. It is still another object of the present invention that this method of conducting a sleep analysis be inexpensive.

SUMMARY OF THE INVENTION

The present invention provides a method of conducting a sleep analysis by collecting physiologic and kinetic data from a subject, preferably via a wireless in-home data acquisition system, while the subject attempts to sleep at home. The sleep analysis, including clinical and research sleep studies and cardiorespiratory studies, can be used in the diagnosis of sleeping disorders and other diseases or conditions with sleep signatures, such as Parkinson's, epilepsy, chronic heart failure, chronic obstructive pulmonary disorder, or other neurological, cardiac, pulmonary, or muscular disorders. The method of the present invention can also be used to determine if environmental factors at the subject's home are preventing restorative sleep.

The method of conducting a sleep study at home includes a number of steps that enhance this method over other methods presently used. These features available in various embodiments of the present invention may include, but are not necessarily limited to: a step for hooking up the patient with the necessary sensors at the doctor's office or the home, a step for collecting multiple channels of data to evaluate a number of physiological, kinetic, and environmental fea-

tures of the subject and sleeping location; a step for including a subject's body motion; a step for using removable memory for data buffering and storage; a step for movement artifact correction using video; a step for transmitting data wirelessly to a remote processing or monitoring station after a manual or automatic radio frequency (RF) sweep; a step for remotely checking the data for adequacy; a step for remotely monitoring the subject via streaming data and audio/video for the duration of the test; a step for communicating with the subject during the test; and a step for adjusting electrodes and other sensors during the test.

The software used in various steps of the present invention allows the in-home data acquisition system to perform a number of operations that other systems cannot accomplish with the same type of hardware. The use of software filtering allows determination of airflow, tidal volume, ventilation rate, and snore detection from a single pressure transducer. The use of software also makes many of the video-related features possible. Software is used to synchronize video with the other signals for display. Software is also used to remove data artifacts created by subject movement. The software corrects motion artifacts by using data acquired from accelerometers and video.

The present invention may include a step of transmitting data via a wired network such as a dial-up modem, cellular networks, digital subscriber lines (DSL), cable broadband, fiber-optic lines, satellite communications, direct radio, infra-red links, and the like. The data can be transmitted once, at multiple points during the test, or continuously. With continuous data transmission, the sleep test can be remotely monitored from anywhere around the world. The data furthermore may be monitored by multiple viewing stations by methods including but not limited to serial retransmission from one station to another, or simultaneous transmission by 3-way or conference calling, broadcasting or the like. The data from the acquisition system is available for remote monitoring in real time, it can be saved and scored later, or may be quantitatively analyzed and scored (even automatically) and then viewed. With automatic or computer-assisted scoring, the software can alert a individual performing remote monitoring when a physiological event (such as a drop in oxygen saturation) or a technological event (such as an electrode becoming disconnected) occurs.

Various embodiments of the present invention include the step of applying at least two sensors to the subject. The sensors can be applied at any location, such as a physician's office or place of business, or the subject's home or other sleeping location. The subject's sleeping location includes but is not limited to the subject's home, apartment, or the like, as well as a hotel, nursing home, or other location where an individual could sleep and where this analysis could be done more controllably and/or less expensively than in an attended sleep lab or hospital setting. Similarly, the sensors can be applied by a variety of individuals, including but not limited to a physician, nurse, sleep technician, or other healthcare professional. Just as preferably, the sensors could be applied by the subject or the subject's spouse, friend, roommate, or other individual capable of attaching the various sensors with guidance and instruction.

In one embodiment, the present invention includes the steps of applying two or more sensors to a subject; connecting the sensors to an in-home data acquisition system capable of transmitting the signals from the sensors or retransmitting a signal based at least in part on at least one of the signals from the sensors; collecting signals from the sensors while the subject attempts to sleep at home; and

analyzing the signals to determine whether the subject has a sleeping disorder. The first and second steps of this (and every other) embodiment can also be switched, meaning the sensors are connected to the in-home data acquisition system and then applied to the subject. The step of collecting data while the subject attempts to sleep allows for diagnosis of insomnias in addition to parasomnias and other conditions that manifest while the subject actually sleeps. Further, it is understood that the first step of the present invention involving applying two or more sensors to a subject can be accomplished by applying any combination of sensors, including two or more EEG electrodes.

Another embodiment of the present invention includes the steps of applying two or more sensors to a subject; connecting the sensors to an in-home data acquisition system; collecting signals from the sensors while the subject attempts to sleep at home; storing the signals on removable memory; retrieving the signals; and analyzing the signals to determine whether the subject has a sleeping disorder. The steps of storing and retrieving the signals allow the analysis to be completed at a convenient time, rather than requiring analysis as the data is collected. These steps also allow the in-home data acquisition system to be reused after the data is removed with the removable memory, even if the data has not been viewed or analyzed.

In another embodiment, the present invention includes the steps of applying two or more sensors to a subject; connecting the sensors to an in-home data acquisition system; collecting signals from the sensors while the subject attempts to sleep at home; pre-processing the signals, for example to remove motion artifacts, and thereby creating a new signal or signals; and analyzing the original signals and/or the new signals to determine whether the subject has a sleeping disorder. The step of pre-processing the signals to remove motion artifacts improves the quality of the data. For example, the presence of motion artifact can result in misdiagnosis, prolong procedure duration, and lead to delayed or inappropriate treatment decisions. Thus, it is imperative to remove motion artifacts from the biopotential signal to prevent these problems from occurring during the sleep analysis.

In another embodiment, the present invention includes the steps of applying two or more sensors to a subject; setting up a video camera in the subject's sleeping location; connecting the sensors and camera to an in-home data acquisition system; collecting signals from the sensors and camera while the subject attempts to sleep at home; and analyzing data to determine whether the subject has a sleeping disorder. The step of using a video camera allows for monitoring and analysis of the subject's environment. For example, the use of video can indicate that the subject's complaints may be related to changes in light levels, sleeping disorders of the subject's bedmate, frequent tossing and turning indicative of an unsuitable mattress, coughing or sneezing indicative of poor air quality or the presence of allergens, pets sleeping with the subject, and the like.

In another embodiment, the present invention includes the steps of applying a set of sensors to a subject, the sensors being for two electroencephalogram (EEG) channels, two electro-oculogram (EOG) channels, one chin electromyogram (EMG) channel, one nasal airflow channel, one oral airflow channel, two electrocardiogram (ECG) channels, one thoracic respiratory effort channel, one abdominal respiratory effort channel, one pulse oximetry channel, one leg EMG channel, and one accelerometer; connecting the sensors to a wireless in-home data acquisition system; collecting signals from the applied sensors and from additional

environmental sensors while the subject attempts to sleep, the environmental sensors being a digital infrared video camera, an ambient light sensor, and an audio channel; pre-processing the signals, for example to remove motion artifacts and to derive a snore signal; using removable memory as a buffer to wirelessly transmit the data to a remote monitoring and/or remote analysis location; evaluating the data to determine if it is adequate for later diagnosis; storing the data on a removable memory card; conducting an RF sweep; wirelessly and continuously transmitting all the data from the physiologic, kinetic, and environmental sensors to a remote monitoring location; continuously monitoring the subject from the remote monitoring location using the continuously transmitted data, including the video feed; contacting the subject to make any necessary changes to the test, including but not limited to waking the patient, asking the patient to adjust sensors, altering the type of sleep test to focus on certain channels, or stopping the test; using the video channel to process the data, for example to remove motion artifacts in the collected signals; and analyzing the data to determine whether the subject has a sleeping disorder. This embodiment allows for conducting a complete polysomnogram (PSG) with additional environmental signals that is virtually or remotely attended. This embodiment allows replication of a sleep lab PSG with the subject comfortably at home. Allowing the subject to attempt to sleep at home eliminates the "first night effect" and provides more accurate data for the sleep diagnosis because the home PSG method controls for the subject's sleeping environment. Subjects are also generally more comfortable sleeping at home and are more willing to participate in full PSG studies that do not involve traveling to a sleep lab or sleeping in a new environment.

In yet another embodiment, the present invention includes the steps of providing a subject with a kit of sensors, an in-home data acquisition system, and instructions; sending the subject home; having the subject use the instructions and/or live help (ex., telephone or videoconferencing assistance) to apply the physiologic and kinetic sensors, set up any environmental sensors, and connect all the sensors to the in-home data acquisition system; collecting some preliminary data from the subject; wirelessly transmitting the preliminary data to a remote monitoring or analysis location; evaluating the data to determine if it is adequate for later diagnosis; optionally instructing the subject to adjust any sensors to obtain adequate data; collecting signals from the sensors while the subject attempts to sleep at home; wirelessly transmitting all the data to a remote monitoring location; continuously monitoring the subject from the remote monitoring location; and analyzing the data to determine whether the subject has a sleeping disorder. The step of providing the subject with a kit of sensors, an in-home data acquisition system, and instructions, as well as the step of having the subject set up the system at home with the availability of live assistance, allows the subject to participate in a sleep study without ever leaving home. This embodiment is particularly useful for homebound individuals, or individuals who live too far away from a sleep study facility.

In still a further embodiment, the present invention includes the steps of applying two or more sensors to a subject; connecting the sensors to an in-home data acquisition system; collecting signals from the sensors while the subject attempts to sleep at home; pre-processing the signals, for example to apply a filter or remove motion artifacts; transmitting the pre-processed physiological signal at least

in part wirelessly to a remote monitor or processor; and analyzing the data to determine whether the subject has a sleep disorder.

In still a further embodiment, the present invention includes the steps of applying two or more sensors to a subject; connecting the sensors to an in-home data acquisition system; collecting signals from the sensors while the subject attempts to sleep at home; filtering the physiological signal; transmitting the filtered physiological signal wirelessly to a base station; re-transmitting the filtered physiological signal from the base station to a remote monitor or processor over telephone lines, fiber optic cable, cable broadband, satellite communications, and/or a cellular tower; and analyzing the data to determine whether the subject has a sleep disorder.

In still a further embodiment, the present invention includes the steps of applying two or more sensors to a subject; connecting the sensors to an in-home data acquisition system; collecting signals from the sensors while the subject attempts to sleep at home; transmitting to another location the signals or another signal based at least in part on at least one of the signals from the sensors applied to the subject at a substantially same time as the signals are received or created; and analyzing the data to determine whether the subject has a sleep disorder. The step of transmitting or retransmitting the signals at a substantially same time allows real-time analysis of the data, rather than waiting for the conclusion of the test in order to begin data analysis. Real-time analysis also enables the individual performing remote monitoring and analysis to recognize a physiological event (such as a drop in oxygen saturation, seizure activity, changes in heart rate, and the like) or a technological event (such as an electrode becoming disconnected, inappropriate movement of a sensor, and the like) occurs.

In still a further embodiment, the present invention includes the steps of applying two or more sensors to a subject; connecting the sensors to an in-home data acquisition system; collecting signals from the sensors while the subject attempts to sleep at home; maintaining the availability of communication between the subject and a remote monitor for the duration of the test; and analyzing the data to determine whether the subject has a sleep disorder.

Additional features and advantages of the invention will be set forth in the detailed description that follows, and in part will be readily apparent to those skilled in the art from that description or recognized by practicing the invention as described herein, including the detailed description that follows, the claims, as well as the appended drawings.

It is to be understood that both the foregoing general description and the following detailed description are merely exemplary of the invention, and are intended to provide an overview or framework for understanding the nature and character of the invention as it is claimed. The accompanying drawings are included to provide a further understanding of the invention, and are incorporated in and constitute a part of this specification. The drawings illustrate various embodiments of the invention and together with the description serve to explain the principles and operation of the invention.

BRIEF DESCRIPTION OF THE DRAWINGS

FIG. 1 Block diagram of one embodiment of the present invention showing the steps of checking the adequacy of signals and communicating with the subject.

FIG. 2 Signal flow diagram of one embodiment of the present invention showing the in-home data acquisition system.

FIG. 3 Schematic representation of one embodiment of the present invention showing the remote data acquisition method.

FIG. 4 Schematic representation of one embodiment of the present invention used with a subject to acquire EEG signals from the subject and then transmit them to the receiver and attached computer.

FIG. 5 Block diagram of one embodiment of the signal processing step of the present invention.

FIG. 6 Block diagram of one embodiment of the base station used in the present invention.

FIG. 7 Schematic representation of one embodiment of the present invention showing an in-home data acquisition system of multiple interface boxes used on a single subject, wherein the interface boxes are transmitting to a single receiver.

FIG. 8 Block diagram of one embodiment of the present invention showing the motion artifact rejection process.

DESCRIPTION OF THE PREFERRED EMBODIMENTS

The present invention is related to a method of home sleep and signal analysis, particularly electroencephalogram (EEG) signal analysis. The present invention is further related to the devices used in executing the method. The present invention includes various embodiments of a method of home sleep analysis. These embodiments include but are not limited to one or more of the following steps.

Various embodiments of the present invention include a step for determining whether the subject being analyzed for a sleep disorder maintained a normal sleeping pattern prior to the analysis. This step can be performed or accomplished a number of ways. In the simplest form, the subject can be questioned regarding his or her previous sleep patterns. In a somewhat more complex form the subject can be requested to fill out a questionnaire, which then can be graded to determine whether his or her previous sleep patterns were normal (or appeared normal). In an even more complex form the subject might undergo all night polysomnography to evaluate the subject's sleep architecture (e.g., obtaining respiratory disturbance index to diagnose sleep apnea). One of the objectives of this step is to ensure that the results of the subject's brain wave analysis are not the result of or affected by the subject's previous environmental factors i.e., intentional lack of sleep, etc. It is clear that there are numerous ways beyond those examples previously mentioned of determining whether the subject being analyzed maintained or thought they were maintaining a normal sleeping pattern prior to analysis, therefore the examples given above are included as exemplary rather than as a limitation, and those ways of determining whether the subject maintained or thought they were maintaining a normal sleeping pattern known to those skilled in the art are considered to be included in the present invention.

Various embodiments of the present invention include the step of conducting an at-home sleep analysis that is attended from a remote location. Such remote attendance can be accomplished by an individual in a remote location (a remote monitor) periodically or continuously viewing the data transmitted from the in-home data acquisition system, including signals from the sensors applied to the subject,

signals from the environmental sensors, and a pre-processed signal or signals based at least in part on at least one of the sensors.

The preferred embodiment of secure data transmission that is compatible with HIPAA and HCFR guidelines will be implemented using a virtual private network. More preferably, the virtual private network will be implemented using a specialized security appliance, such as the PIX 506E, from Cisco Systems, Inc, capable of implementing IKE and IPsec VPN standards using data encryption techniques such as 168-bit 3DES, 256-bit AES, and the like. Still more preferably, secure transmission will be provided by a 3rd party service provider or by the healthcare facility's information technology department. The system will offer configuration management facilities to allow it to adapt to changing guidelines for protecting patient health information (PHI).

Preferably, the data includes a video channel. Preferably, the remote monitor is capable of communicating with the subject, subject's assistant, or other individual near the subject. Such communication allows the remote monitor to provide instructions to the subject, subject's assistant, or other individual near the subject, for example, to adjust a sensor, close window blinds, remove a source of noise, or wake the subject. More preferably, the remote monitor is capable of two-way communication with the subject, subject's assistant, or other individual near the subject. Such communication allows the subject, subject's assistant, or other individual close to the subject to ask the remote monitor questions, for example, to clarify instructions.

Various embodiments of the present invention include the step of applying at least two sensors to the subject. The sensors can be applied at any location. Preferably, the sensors are applied in a physician's office or place of business. The physician's place of business includes but is not limited to an office building, a freestanding sleep center, location within a hospital, mobile vehicle or trailer, leased space, or similar location. Just as preferably, the sensors could be applied in the subject's home or other sleeping location. The subject's sleeping location includes but is not limited to the subject's home, apartment, and the like, as well as a hotel, nursing facility, or other location where an individual could sleep and where this analysis could be done more controllably and/or less expensively than in a sleep lab or hospital setting. Similarly, the sensors can be applied by a variety of individuals, including but not limited to a physician, nurse, sleep technician, or other healthcare professional. Just as preferably, the sensors could be applied by the subject or the subject's spouse, friend, roommate, or other individual capable of attaching the various sensors. More preferably, the sensors could be applied by the subject or the subject's spouse, friend, roommate, or other individual capable of attaching the various sensors with guidance and instruction. Such guidance and instruction can include static information such as pamphlets, audio recordings (on cassettes, compact discs, and the like), video recordings (on videocassettes, digital video discs, and the like), websites, and the like, as well as dynamic information such as direct real-time communication via telephone, cell phone, videoconference, and the like.

The sensors that are used with various embodiments of the present invention are described herein but can also be any of those known to those skilled in the art for the applications of this method. The collected physiological, kinetic, and environmental signals can be obtained by any method known in the art. Preferably, those sensors include, but are not limited, to wet or dry electrodes, photodetectors, accelerometers, pneumotachometers, strain gauges, thermal

sensors, pH sensors, chemical sensors, gas sensors (such as oxygen and carbon dioxide sensors), transducers, piezo sensors, magnetometers, pressure sensors, static charge-sensitive beds, microphones, audio monitors, video monitors, and the like. The invention is envisioned to include those sensors subsequently developed by those skilled in the art to detect these types of signals. For example, the sensors can be magnetic sensors. Because electro-physiological signals are, in general, electrical currents that produce associated magnetic fields, the present invention further anticipates methods of sensing those magnetic fields to acquire the signal. For example, new magnetic sensors could collect brain wave signals similar to those that can be obtained through a traditional electrode applied to the subject's scalp.

Various embodiments of the present invention include a step for applying sensors to the subject. This step can be performed or accomplished in a number of ways. In the simplest form, two sensors are applied to the subject to measure a single channel of physiologic or kinetic data. In a somewhat more complex form, multiple sensors are applied to the subject to collect data sufficient for a full PSG test. The preferred set of sensors for PSG testing includes sensors for two EEG channels, one EOG channels, one chin EMG channel, one nasal airflow channel, one oral airflow channel, one ECG channel, one thoracic respiratory effort channel, one abdominal respiratory effort channel, one pulse oximetry channel, and one shin or leg EMG channel. More preferably, the minimal set of PSG sensors is augmented with at least one additional channel of EOG, one channel of body position (ex., an accelerometer), one channel of video, and optionally one channel of audio. In an even more complex form, many sensors are applied to the subject to collect full PSG data as well as additional physiological, kinetic, and environmental data. For example, additional EEG electrodes may be applied to the subject to rule out seizure disorders, an esophageal pH sensor may be used to detect acid reflux, and a hygrometer or photometer may be used to detect ambient humidity or light, respectively. The set of sensors can be two sensors. More preferably, four sensors are used. Still more preferably five sensors; still more preferably seven sensors; still more preferably ten sensors; still more preferably twelve sensors; still more preferably fifteen sensors; still more preferably twenty-four sensors.

Electro-physiological signals such as EEG, ECG, EMG, EOG, electroneurogram (ENG), electroretinogram (ERG), and the like can be collected via electrodes placed at one or several relevant locations on the subject's body. For example when measuring brain wave or EEG signals, electrodes may be placed at one or several locations on the subject's scalp. In order to obtain a good electro-physiological signal, it is desirable to have low impedances for the electrodes. Typical electrodes placed on the skin may have an impedance in the range of from 5 to 10 k Ω . It is in generally desirable to reduce such impedance levels to below 2 k Ω . A conductive paste or gel may be applied to the electrode to create a connection with an impedance below 2 k Ω . Alternatively or in conjunction with the conductive gel, a subject's skin may be mechanically abraded, the electrode may be amplified, or a dry electrode may be used. Dry physiological recording electrodes of the type described in U.S. Pat. No. 7,032,301 are herein incorporated by reference. Dry electrodes are advantageous because they use no gel that can dry out, skin abrasion or cleaning is unnecessary, and the electrode can be applied in hairy areas such as the scalp. Additionally if electrodes are used as the sensors, preferably at least two electrodes are used for each channel of data—one signal

electrode and one reference electrode. Optionally, a single reference electrode may be used for more than one channel.

When electrodes are used to collect EEG or brain wave signals, common locations for the electrodes include frontal (F), parietal (P), mastoid process (A), central (C), and occipital (O). Preferably for the present invention, when electrodes are used to collect EEG or brain wave data, at least one electrode is placed in the occipital position and referenced against an electrode placed on the mastoid process (A). More preferably, when electrodes are used to collect EEG or brain wave data, electrodes are placed to obtain a second channel of data from the central location. If further EEG or brain wave signal channels are desired, the number of electrodes required will depend on whether separate reference electrodes or a single reference electrode is used.

If electrodes are used to collect cardiac signals using an ECG, they may be placed at specific points on the subject's body. The ECG is used to measure the rate and regularity of heartbeats, determine the size and position of the heart chambers assess any damage to the heart, and diagnose sleeping disorders. An ECG is important as a tool to detect the cardiac abnormalities that can be associated with respiratory-related disorders.

As the heart undergoes depolarization and repolarization, electrical currents spread throughout the body because the body acts as a volume conductor. The electrical currents generated by the heart are commonly measured by an array of twelve electrodes placed on the arms, legs, and chest. Although a full ECG test typically involves twelve electrodes, only two are required for many tests such as a sleep study. When electrodes are used to collect ECG with the present invention, preferably only two electrodes are used. When two electrodes are used to collect ECG, preferably one is placed on the subject's left-hand ribcage under the armpit, and the other preferably on the right-hand shoulder near the clavicle bone. Optionally, a full set of twelve ECG electrodes may be used, such as if the subject is suspected to have a cardiac disorder. The specific location of each electrode on a subject's body is well known to those skilled in the art and varies between both individuals and types of subjects. If electrodes are used to collect ECG, preferably the electrode leads are connected to a device contained in the signal processing module of the in-home data acquisition system used in the present invention that measures potential differences between selected electrodes to produce ECG tracings.

The two basic types of ECG leads are bipolar and unipolar. Bipolar leads (standard limb leads) have a single positive and a single negative electrode between which electrical potentials are measured. Unipolar leads (augmented leads and chest leads) have a single positive recording electrode and use a combination of the other electrodes to serve as a composite negative electrode. Either type of lead is acceptable for collecting ECG signals in the present invention.

Other sensors can be used to measure various parameters of a subject's respirations. Measurement of airflow is preferably measured using sensors or devices such as a pneumotachometer, strain gauges, thermal sensors, transducers, piezo sensors, magnetometers, pressure sensors, static charge-sensitive beds, and the like. These sensors or devices also preferably measure nasal pressure, respiratory inductance plethysmography, thoracic impedance, expired carbon dioxide, tracheal sound, snore sound, blood pressure and the like. Measurement of respiratory effort is preferably measured by a respiration belt, esophageal pressure, surface

diaphragmatic EMG, and the like. Measurement of oxygenation and ventilation is preferably measured by pulse oximetry, transcutaneous oxygen monitoring, transcutaneous carbon dioxide monitoring, expired end carbon dioxide monitoring, and the like.

One example of such a sensor for measuring respirations either directly or indirectly is a respiration belt. Respiration belts can be used to measure a subject's abdominal and/or thoracic expansion over a measurement time period. The respiration belts may contain a strain gauge, a pressure transducer, or other sensors that can indirectly measure a subject's respirations and the variability of respirations by providing a signal that correlates to the thoracic/abdominal expansion/contractions of the subject's thoracic/abdominal cavity. If respiration belts are used, they may be placed at one or several locations on the subject's torso or in any other manner known to those skilled in the art. Preferably, when respiration belts are used, they are positioned below the axilla and/or at the level of the umbilicus to measure rib cage and abdominal excursions. More preferably, at least two belts are used, with one positioned at the axilla and the other at the umbilicus.

Another example of a sensor or method for measuring respirations either directly or indirectly is a nasal cannula or a facemask used to measure the subject's respiratory airflow. Nasal or oral airflow can be measured quantitatively and directly with a pneumotachograph consisting of a pressure transducer connected to either a standard oxygen nasal cannula placed in the nose or a facemask over the subject's mouth and nose. Airflow can be estimated by measuring nasal or oral airway pressure that decreases during inspiration and increases during expiration. Inspiration and expiration produce fluctuations on the pressure transducer's signal that is proportional to airflow. A single pressure transducer can be used to measure the combined oral and nasal airflow. Alternatively, the oral and nasal components of these measurements can be acquired directly through the use of at least two pressure transducers, one transducer for each component. Preferably, the pressure transducer(s) are internal to the interface box. If two transducers are used for nasal and oral measurements, preferably each has a separate air port into the interface box.

Software filtering can obtain "snore signals" from a single pressure transducer signal by extracting the high frequency portion of the transducer signal. This method eliminates the need for a separate sensor, such as a microphone or another transducer, and also reduces the system resources required to detect both snore and airflow. A modified nasal cannula or facemask connected to a carbon dioxide or oxygen sensor may be used to measure respective concentrations of these gases. In addition, a variety of other sensors can be connected with either a nasal cannula or facemask to measure a subject's respirations directly or indirectly.

Still another example of a sensor or method of directly or indirectly measuring respirations of the subject is a pulse oximeter. The pulse oximeter can measure the oxygenation of the subject's blood by producing a source of light at two wavelengths (650 nm and 90S, 910, or 940 nm). Hemoglobin partially absorbs the light by amounts that differ depending on whether it is saturated or desaturated with oxygen. Calculating the absorption at the two wavelengths leads to an estimate of the proportion of oxygenated hemoglobin. Preferably, pulse oximeters are placed on a subject's earlobe or fingertip. More preferably, the pulse oximeter is placed on the subject's index finger. In one embodiment of the present invention, a pulse oximeter is built-in or hard-wired to the interface box. Alternatively, the pulse oximeter can be a

separate unit in communication with either the interface box or the base station via either a wired or wireless connection.

Kinetic data can be obtained by accelerometers placed on the subject. Alternatively, several accelerometers can be placed in various locations on the subject, for example on the wrists, torso, and legs. These accelerometers can provide both motion and general position/orientation data by measuring gravity. A video signal can also provide some kinetic data after processing. Alternatively, stereo video signals can provide three-dimensional position and motion information. Kinetic data includes but is not limited to frequent tossing and turning indicative of an unsuitable mattress, excessive movement of bedding indicating unsuitable sleeping temperatures, and unusual movement patterns indicating pain.

Environmental data can be collected by video cameras, microphones (to detect noise level, etc.), photodetectors, light meters, thermal sensors, particle detectors, chemical sensors, mold sensors, olfactory sensors, barometers, hygrometers, and the like. Environmental data can provide insight into the subject's sleeping location and habits that is unavailable in the traditional laboratory setting. Environmental data can indicate that the subject's sleeping location is a potential source of the subject's sleeping difficulty. By way of example, but not limitation, environmental data can indicate that the subject's sleeping location has an unsuitable temperature, humidity, light level, noise level, or air quality. For example, these environmental conditions can cause sweating, shivering, sneezing, coughing, noise, and/or motion that disrupts the patient's sleep. The environmental sensors can be placed anywhere in the subject's sleeping location or on the subject, if appropriate. Preferably, the environmental sensors are placed near, but not necessarily on, the subject.

Other sensors can be used to measure various parameters of a subject's physiological, kinetic, or environmental conditions. These other parameters are preferably measured using sensors or devices such as a photodetectors, light meters, accelerometers, pneumotachometers, strain gauges, thermal sensors, pH sensors, chemical sensors, transducers, piezo sensors, magnetometers, pressure sensors, static charge-sensitive beds, audio monitors, microphones, reflective markers, video monitors, hygrometers, and the like. Because the system is programmable, potentially any transducer-type sensor that outputs an electrical signal can be used with the system.

Various embodiments of the present invention include the step of connecting the applied sensors to an in-home data acquisition system. The sensors can be connected to the in-home data acquisition system either before or after they are applied to the subject. As an example of connecting the sensors to the in-home data acquisition system after the sensors are applied to the subject, a physician can apply the sensors to the subject and then send the subject home. While at home, the subject can connect the applied sensors to the in-home data acquisition system. Alternatively, the sensors can be connected to the in-home data acquisition system and then applied to the subject.

The sensors can be permanently hardwired to at least part of the in-home data acquisition system. More preferably, the sensors are connected to at least part of the in-home data acquisition system via releasable connector. The physiological sensors are generally hardwired (permanently or via releasable connector) to the in-home data acquisition system, but the ongoing evolution in wireless sensor technology may allow sensors to contain transmitters. Optionally, such sensors are wirelessly connected to the in-home data acquisition system. As such, these sensors and the wireless

connection method are considered to be part of the present invention. With the advances in microelectromechanical systems (MEMS) sensor technology, the sensors may have integrated analog amplification, integrated A/D converters, and integrated memory cells for calibration, allowing for some signal conditioning directly on the sensor before transmission.

Preferably, the sensors are all connected in the same way at the same time, although this is certainly not required. It is possible, but less preferable, to connect the sensors with a combination of methods (i.e., hardwired or wireless) at a combination of times (i.e., some before application to the subject, and some after application to the subject).

Various embodiments of the present invention use an in-home data acquisition system. The in-home data acquisition system is preferably portable. By portable, it is meant, among other things, that the device is capable of being transported relatively easily. Relative ease in transport means that the device is easily worn and carried, generally in a carrying case, to the point of use or application and then worn by the subject without significantly affecting any range of motion. Furthermore, any components of the in-home data acquisition system that are attached to or worn by the subject, such as the sensors and patient interface box, should also be lightweight. Preferably, these patient-contacting components of the device (including the sensors and the patient interface box) weigh less than about 10 lbs., more preferably less than about 7.5 lbs., even more preferably less than about 5 lbs., and most preferably less than about 2.5 lbs. Thus, the patient-contacting components of the device preferably are battery-powered and use a data storage memory card and/or wireless transmission of data, allowing the subject to be untethered. Furthermore, the entire in-home data acquisition system (including the patient-contacting components as well as any environmental sensors, base station, or other components) preferably should be relatively lightweight. By relatively lightweight, it is meant preferably the entire in-home data acquisition system, including all components such as any processors, computers, video screens, cameras, and the like preferably weigh less in total than about 20 lbs., more preferably less than about 15 lbs., and most preferably less than about 10 lbs. This in-home data acquisition system preferably can fit in a reasonably sized carrying case so the patient or assistant can easily transport the system. By being lightweight and compact, the device should gain greater acceptance for use by the subject.

While the equipment and methods used in the various embodiments of the present invention can be used in rooms or buildings adjacent to the subject's sleeping location, due to the equipment's robust nature these methods are preferably performed over greater distances. Preferably, the subject's sleeping location and the remote locations, for example the location of the remote monitor, are separate buildings. Preferably, the subject's sleeping location is at least 1 mile from the remote location(s) receiving the data; more preferably, the subject's sleeping location is at least 5 miles from the remote location(s) receiving the data; even more preferably, the subject's sleeping location is at least twenty miles from the remote location(s) receiving the data; still more preferably, the subject's sleeping location is at least fifty miles from the remote location(s) receiving the data; still even more preferably, the subject's sleeping location is at least two hundred-fifty miles from the remote location(s) receiving the data; more preferably, the subject's sleeping location is in a different state from the remote location(s) receiving the data; and most preferably, the

subject's sleeping location is in a different country from the remote location(s) receiving the data.

Various embodiments of the present invention use an in-home data acquisition system capable of receiving signals from the sensors applied to the subject and capable of retransmitting the signals or transmitting another signal based at least in part on at least one of the signals. In its simplest form, the in-home data acquisition system preferably should interface with the sensors applied to the subject and retransmit the signals from the sensors. Preferably, the in-home data acquisition system wirelessly transmits the signals from the sensors. Optionally, the in-home data acquisition system also pre-processes the signals from the sensors and transmits the pre-processed signals. Further optionally, the data acquisition is also capable of storing the signals from the sensors and/or any pre-processed signals.

Optionally, the in-home data acquisition system can be a single box containing a sensor interface module, a pre-processor module, and a transmitter module. Further optionally, the in-home data acquisition system could consist of several boxes that communicate with each other, each box containing one or more modules. For example, the data acquisition could consist of (a) a patient interface box containing a sensor interface module, a pre-processor, a transmitter, and a receiver; and (b) a base station box containing a second pre-processor, a transmitter, and a receiver. In this example, the transmitter and receiver of the patient box are used to communicate with the base station box. The transmitter and receiver of the base station box are used to both communicate with the patient box and a remote monitoring station, remote analysis station, remote data storage station, and the like. Similarly, the data acquisition could consist of (a) a patient interface box containing a sensor interface module, a transmitter, and a receiver; (b) a processor box containing a pre-processor, a transmitter, and a receiver; and (c) a base station box containing only a receiver and a transmitter. In these configurations, it is not necessary for the transmitters to be of the same type. For example, the transmitter in the patient interface box can be a wired or Bluetooth transmitter, and the transmitter in the base station box can be a WiFi or IEEE 802.11 transmitter designed to establish connections over larger distances.

Various embodiments of the present invention use an in-home data acquisition system capable of storing and/or retransmitting the signals from the sensors or storing and/or transmitting another signal based at least in part on at least one of the signals. The in-home data acquisition system can be programmed to send all signal data to the removable memory, to transmit all data, or to both transmit all data and send a copy of the data to the removable memory. When the in-home data acquisition system is programmed to store a signal or pre-processed signal, the signals from the sensors can be saved on a medium in order to be retrieved and analyzed at a later date. Media on which data can be saved include, but are not limited to chart recorders, hard drive, floppy disks, computer networks, optical storage, solid-state memory, magnetic tape, punch cards, etc. Preferably, data are stored on removable memory. For both storing and transmitting or retransmitting data, flexible use of removable memory can either buffer signal data or store the data for later transmission. Preferably, nonvolatile removable memory can be used to customize the system's buffering capacity and completely store the data.

If the in-home data acquisition system is configured to transmit the data, the removable memory acts as a buffer. In this situation, if the in-home data acquisition system loses its connection with the receiving station, the in-home data

acquisition system will temporarily store the data in the removable memory until the connection is restored and data transmission can resume. If however the in-home data acquisition system is configured to send all data to the removable memory for storage, then the system does not transmit any information at that time. In this situation, the data stored on the removable memory can be retrieved by either transmission from the in-home data acquisition system, or by removing the memory for direct reading.

The method of directly reading will depend on the format of the removable memory. Preferably the removable memory is easily removable and can be removed instantly or almost instantly without tools. The memory is preferably in the form of a card and most preferably in the form of a small easily removable card with an imprint (or upper or lower surface) area of less than about two sq. in. If the removable memory is being used for data storage, preferably it can write data as fast as it is produced by the system, and it possesses enough memory capacity for the duration of the test. These demands will obviously depend on the type of test being conducted, tests requiring more sensors, higher sampling rates, and longer duration of testing will require faster write speeds and larger data capacity. The type of removable memory used can be almost any type that meets the needs of the test being applied. Some examples of the possible types of memory that could be used include but are not limited to Flash Memory such as CompactFlash, Smart-Media, Miniature Card, SD/MMC, Memory Stick, or xD-Picture Card. Alternatively, a portable hard drive, CD-RW burner, DVD-RW burner or other data storage peripheral could be used. Preferably, a SD/MMC—flash memory card is used due to its small size. A PCMCIA card is least preferable because of the size and weight.

When the in-home data acquisition system is programmed to retransmit the signals from the sensors, preferably the in-home data acquisition system transmits the signals to a processor for analysis. More preferably, the in-home data acquisition system immediately retransmits the signals to a processor for analysis. Optionally, the in-home data acquisition system receives the signals from one or more of the aforementioned sensors and stores the signals for later transmission and analysis. Optionally, the in-home data acquisition system both stores the signals and immediately retransmits the signals.

When the in-home data acquisition system is programmed to retransmit the signals from the sensors or transmit a signal based at least in part on the signal from the sensors (collectively “to transmit” in this section), the in-home data acquisition system can transmit through either a wireless system, a tethered system, or some combination thereof. When the system is configured to transmit data, preferably the data transmission step utilizes a two-way (bi-directional) data transmission. Using two-way data transmission significantly increases data integrity. By transmitting redundant information, the receiver (the processor, monitoring station, or the like) can recognize errors and request a renewed transmission of the data. In the presence of excessive transmission problems, such as transmission over excessive distances or obstacles absorbing the signals, the in-home data acquisition system can control the data transmission or independently manipulate the data. With control of data transmission it is also possible to control or re-set the parameters of the system, e.g., changing the transmission channel or encryption scheme. For example, if the signal transmitted is superimposed by other sources of interference, the receiving component could secure a flawless transmission by changing the channel. Another example

would be if the transmitted signal is too weak, the receiving component could transmit a command to increase the transmitting power. Still another example would be for the receiving component to change the data format of the transmission, e.g., in order to increase the redundant information in the data flow. Increased redundancy allows easier detection and correction of transmission errors. In this way, safe data transmissions are possible even with the poorest transmission qualities. This technique opens a simple way to reduce the transmission power requirements, thereby reducing the energy requirements and providing longer battery life. Another advantage of a bi-directional digital data transmission lies in the possibility of transmitting test codes in order to filter out external interferences, for example, refraction or scatter from the transmission current. In this way, it is possible to reconstruct falsely transmitted data.

Several preferable embodiments of this method employ a wireless in-home data acquisition system. This wireless in-home data acquisition system consists of several components, each wirelessly connected. Data is collected from the sensors described above by a patient interface box. The patient interface box then wirelessly transmits the data to a separate signal pre-processing module, which then wirelessly transmits the pre-processed signal to a receiver. Alternatively, the patient interface box processes the signal and then directly transmits the processed signal directly to the receiver using wireless technology. Further alternatively, the patient interface box wirelessly transmits the signals to the receiver, which then pre-processes the signal. Preferably, the wireless technology used by the in-home data acquisition system components is radio frequency based. Most preferably, the wireless technology is digital radio frequency based. The signals from the sensors and/or the pre-processed signals are transmitted wirelessly to a receiver, which can be a base station, a transceiver hooked to a computer, a personal digital assistant (PDA), a cellular phone, a wireless network, or the like. Most preferably, the physiological signals are transmitted wirelessly in digital format to a receiver.

Wireless signals between the wireless in-home data acquisition system components are both received and transmitted via frequencies preferably less than about 2.0 GHz. More preferably, the frequencies are primarily 902-928 MHz, but Wireless Medical Telemetry Bands (WMTS), 608-614 MHz, 1395-1400 MHz, or 1429-1432 MHz can also be used. The present invention may also use other less preferable frequencies above 2.0 GHz for data transmission, including but not limited to such standards as Bluetooth, WiFi, IEEE 802.11, and the like.

When a component of the wireless in-home data acquisition system is configured to wirelessly transmit data, it is preferably capable of conducting a RF sweep to detect an occupied frequency or possible interference. The system is capable of operating in either “manual” or “automatic” mode. In the manual mode, the system conducts an RF sweep and displays the results of the scan to the system monitor. The user of the system can then manually choose which frequency or channel to use for data transmission. In automatic mode, the system conducts a RF sweep and automatically chooses which frequencies to use for data transmission. The system also preferably employs a form of frequency hopping to avoid interference and improve security. The system scans the RF environment then picks a channel over which to transmit based on the amount of interference occurring in the frequency range.

The receiver (base station, remote communication station, or the like) of various embodiments of the wireless in-home data acquisition system can be any device known to receive

RF transmissions used by those skilled in the art to receive transmissions of data. By way of example but not limitation, the receiver can include a communications device for relaying the transmission, a communications device for re-processing the transmission then relaying it to another remote communication station, a computer with wireless capabilities, a PDA with wireless capabilities, a processor, a processor with display capabilities, and combinations of these devices. Optionally, the receiver can further transmit data to another device and/or back. Further optionally, two different receivers can be used, one for receiving transmitted data and another for sending data. For example, with the wireless in-home data acquisition system used in the present invention, the receiver can be a wireless router that establishes a broadband Internet connection and transmits the physiological signal to a remote Internet site for analysis, preferably by the subject's physician or another clinician. Other examples of a receiver are a PDA, computer, or cell phone that receives the data transmission, optionally re-processes the information, and re-transmits the information via cell towers, land phone lines, or cable to a remote processor or remote monitoring site for analysis. Other examples of a receiver are a computer or processor that receives the data transmission and displays the data or records it on some recording medium that can be displayed or transferred for analysis at a later time.

Preferably, the in-home data acquisition system retransmits the signals from the sensors applied to the subject or transmits a signal based at least in part on at least one of the physiological, kinetic, or environmental signals at substantially a same time as the signal is received or generated. At substantially the same time preferably means within approximately one hour. More preferably, at substantially the same time means within thirty minutes. Still more preferably, at substantially the same time means within ten minutes. Still more preferably, at substantially the same time means within approximately one minute. Still more preferably, at substantially the same time means within milliseconds of when the signal is received or generated. Most preferably, a substantially same time means that the signal is transmitted or retransmitted at a nearly instantaneous time as it is received or generated. Transmitting or retransmitting the signal at substantially a same time allows the physician or monitoring service to review the subject's physiological and kinetic signals and the environmental signals and if necessary to make a determination, which could include modifying the patient's treatment protocols or asking the subject to adjust the sensors.

Various embodiments of the present invention include a step of monitoring a patient from a separate monitoring location. Data transmitted in a remote monitoring application may include, but are not limited to, physiological data, kinetic data, environmental data, audio, and/or video recording. It is preferable that both audio and video communications be components of the envisioned system in order to provide interaction between patient and caregiver.

The envisioned remote monitoring step will require data processing, storage, and transmission. This step may be completed or accomplished in one or more modules of the in-home data acquisition system. The preferred embodiment realizes the remote system as two separate components with a patient interface module that can collect, digitize, store, and transmit data to a base station module that can store, process, compress, encrypt, and transmit data to a remote monitoring location.

Preferably, the data is transmitted from a base station to a database or remote monitoring location with a wireless module or card through a cellular service provider. The envisioned remote monitoring application may allow for multiple remote monitoring locations anywhere in the world. Remote data collection to monitoring station configurations may include, but are not limited to one-to-one, one-to-many, many-to-one, or many-to-many. The envisioned system may include a central server, or group of servers that can collect data from one or more remote sites and offer delivery to multiple viewing clients.

It is preferable that the remote monitoring application employ a wireless network link between the patient and caregiver such as a cellular wireless network. Other wireless techniques include but are not limited to satellite communications, direct radio, infrared links, and the like. Data transmission through a wired network such as dial-up modem, digital subscriber line (DSL), or fiber-optic, while less preferable, can also be used. Bandwidth management facilities will be employed to facilitate remote monitoring in low-speed communication networks. Several data compression techniques are envisioned to maximize system utilization in low-bandwidth environments.

Data compression using lossless encoding techniques can provide basic throughput optimization, while certain lossy encoding techniques will offer far greater throughput while still providing useful data. Lossy encoding techniques may induce but are not limited to decimation, or transmission of a compressed image of the data. The preferred method for encoding will include special processing from the transmitter that will preprocess the data according to user-selectable options, such as digital filtering, and take into the account the desired visual representation of that information, such as pixel height and target image width. Facilities can be made within the system to control the encoding in order to optimize utilization on any given network. Control over the encoding methods may include, but is not limited to selection of a subset of the entire set of signals, target image size, and decimation ratio.

Data encryption can be applied to secure data transmissions over any network. Encryption methods may include but are not limited to simple obfuscation and sophisticated ciphers.

The preferred embodiment of the aforementioned remote monitoring system (a form of the in-home data acquisition system) will consist of several system modules. A patient interface module will collect physiological and kinetic data and transmit them to a base station module. The base station module will receive the physiological and kinetic data from the patient module, and will also directly connect to the environmental sensors. The base station module will consist of an embedded computer equipped with a cellular wireless data/voice card and a night-vision video acquisition system. The embedded computer will collect, analyze, compress, and encrypt the data and relay them to one or more viewing caregivers. The remote monitoring systems will broadcast their dynamically assigned IP addresses to a dedicated address server, which will be used for lookup by the viewing caregivers. Computer software used by caregivers will enumerate each remote monitoring system in the field using the aforementioned address server and allow caregivers to select one or more for monitoring. The software will have the ability to control data acquisition including start and stop of acquisition, as well as system reconfiguration.

The software will also provide real-time control over the display of data including page width, amplitude, color, montage, and the like. The software will also provide both

real-time video and audio communication with the patient using dual services from the cellular card. Video will preferably be transmitted through the data connection, and audio will preferably be transmitted through the voice connection.

Signal quality of the signals from all the sensors can be affected by the posture and movement of the subject. For methods of the present invention, it is important to reduce motion artifacts from the sensor placement. Errors in the form of noise can occur when biopotential data acquisition is performed on a subject. For example, a motion artifact is noise that is introduced to a biopotential signal via motion of an electrode placed on the skin of a subject. A motion artifact can also be caused by bending of the electrical leads connected to any sensor. The presence of motion artifacts can result in misdiagnosis, prolong procedure duration and can lead to delayed or inappropriate treatment decisions. Thus, it is imperative to remove motion artifact from the biopotential signal to prevent these problems from occurring during treatment.

The present method of collecting signals from a subject includes a means of reducing motion artifacts. Preferably, the electrode sensors are used with conductive gels or adhesives. More preferably, dry electrodes are used with or without conductive gels or adhesives. Still more preferably, the device's firmware and/or software uses body motion information for artifact correction. Most preferably, a combination of the above methods is used.

The most common methods for reducing the effects of motion artifacts in sensors such as electrodes have focused on skin deformation. These methods include removing the upper epidermal layer of the skin by abrasion, puncturing the skin near the electrode, or measuring skin stretch at the electrode site. The methods for skin abrasion ensure good electrical contact between the electrode and the subject's skin. In this method, an abrasive pad is mechanically rotated on the skin to abrade the skin surface before electrode placement. Moreover, medical electrodes have been used with an abrading member to prepare the skin after application of the electrode whereby an applicator gun rotates the abrading member. Methods of skin preparation that abrade the skin with a bundle of fibers have also been disclosed. The methods discussed above provide a light abrasion of the skin to reduce the electrical potential and minimize the impedance of the skin, thereby reducing motion artifacts.

Skin abrasion methods can cause unnecessary subject discomfort, prolong procedure preparation time and can vary based on operator experience. Furthermore, skin abrasions methods can lead to infection, and do not provide an effective solution to long term monitoring. Dry physiological recording electrodes could be used as an alternative to gel electrodes. Dry physiological recording electrodes of the type described in U.S. Pat. No. 7,032,301 are herein incorporated by reference. Dry physiological electrodes do not require any of the skin abrasion techniques mentioned above and are less likely to produce motion artifacts in general.

Although the above-mentioned methods reduce motion artifacts, they do not completely eliminate them. The invention preferably incorporates a step to more completely remove motion and other artifacts by firmware and/or software correction that utilizes information collected preferably from a sensor or device to detect body motion, and more preferably from an accelerometer. In certain embodiments of the present invention, a 3-D accelerometer is directly connected to the in-home data acquisition system. The in-home data acquisition system receives signal inputs from the accelerometer and at least one set of other physiological or kinetic signals. The microprocessor applies par-

ticular tests and algorithms comparing the two signal sets to correct any motion artifacts that have occurred. The processor in one embodiment applies a time synchronization test, which compares the at least one set of physiological or kinetic signal data to the accelerometer signal data synchronized in time to detect motion artifacts and then remove those artifacts. Alternatively, the processor may apply a more complicated frequency analysis. Frequency analysis preferably in the form of wavelet analysis can be applied to the accelerometer and at least one set of physiological or kinetic signals to yield artifact detection. Yet another alternative is to create a neural net model to improve artifact detection and rejection. This allows for the system to be taught over time to detect and correct motion artifacts that typically occur during a test study. The above examples are only examples of possible embodiments of the present invention and are not limitations. The accelerometer data need not be analyzed before wireless transmission; it could be transmitted analyzed by a base station, computer, or the like after transmission. As should be obvious to those skilled in the art, a 2-D accelerometer or an appropriate array of accelerometers could also be used. Gyroscopes could be used as well for these purposes.

Sensors can be used to detect motion of the subject's body or a portion of the subject's body. The motion information can then be used to detect the posture and movement of the subject and to correct for error in the form of noise or motion artifact in the other sensor channels. To detect motion, various embodiments of the present invention include sensors, devices, and methods of determining the posture and movement of the subject. This information can be used when analyzing the physiological signals. The posture and movement of the subject is preferably determined by signals received from an accelerometer or an array of two or more accelerometers. Accelerometers are known in the art and are suitable for use as motion-monitoring units. Various other types of sensors can be additionally or alternatively used to sense the criteria (e.g., vibration, force, speed, and direction) used in determining motion. For particularly low power designs, the one or more sensors used can be largely mechanical.

Body movement of the subject will result in a high amplitude signal from the accelerometer. The in-home data acquisition system can also monitor the sensor signals for any indication that the subject has moved, for example from a supine position to an upright position. For example, the integrated velocity signal computed from the vertical acceleration component of the sensor data can be used to determine that the subject has just stood up from a chair or sat up in bed. A sudden change in the vertical signal, particularly following a prolonged period with little activity while the subject is sleeping or resting, confirms that a posture-changing event occurred.

In addition, a video camera can be used to detect subject movement and position, and the information then used to correct any artifacts that may have arisen from such movement. Preferably, the camera is a digital camera. More preferably, the camera is a wireless digital camera. Still more preferably, the camera is a wireless digital infrared camera. Preferably, the video acquired from the camera is processed so that the subject's movement and position are isolated from other information in the video. The movement and position data that are acquired from the video is then preferably analyzed by software algorithms. This analysis will yield the information needed to make artifact corrections of the physiological signals.

One specific embodiment of the present invention using video subject movement detection involves the use of specially marked electrodes. The electrodes can be any appropriate electrode known in the art. The only change to the electrode is that they preferably have predetermined high contrast marks on them to make them more visible to the video camera. These marking could be manufactured into the electrodes or simply be a sticker that is placed on the back of the electrodes. These markings enable the video system to accurately distinguish the electrodes from the rest of the video image. Using the markers on each visible electrode, the system can calculate of the movement of each individual electrode, thus allowing for more accurate artifact correction.

In another specific embodiment of the invention, the system can detect subject movement by monitoring the actual movement of the subject's body. Software is applied to the video that first isolates the position of the subject's body, including limbs, and then continues to monitor the motion of the subject.

There are numerous advantages to using video over other means of artifact detection and correction. Foremost, video allows for the calculation of movement artifacts from each individual electrode without the need for accelerometers. This makes the use of video very cost effective in relation to other available methods. The video also can be used in conjunction with the accelerometer data to correct for motion artifacts, thus increasing the precision and accuracy of the system's motion artifact correction capabilities.

Various embodiments of the present invention include the step of pre-processing the signals received from the sensors attached to the subject. The processor or pre-processor of various embodiments of the present invention can be independent, a part of the interface box, or a part of the base station. Optionally, pre-processing can correct artifacts, derive a snore signal, filter a signal, or compress and/or encrypt the data for transmission, each as described above. Preferably, the preprocessing step corrects for artifacts present in the sensor signals.

Various embodiments of the present invention include the step of analyzing the received signals to determine if the patient has a sleeping disorder. This step can be performed or accomplished a number of ways. In one form, a sleep technician or other sleep trained individual scores the sleep test in accordance with Rechtschaffen and Kales (R&K) criteria. Another form uses a standard MSLT analysis. Still another form involves automatic or computer-assisted scoring of the data. The analysis step can include a full R&K score, or specific features can be targeted. For example, in cases of suspected sleep-related breathing disorders, the analysis can focus on detecting and classifying respiratory events. Any analysis method used to diagnose sleeping disorders (including but not limited to insomnia, excessive daytime sleepiness, parasomnias, restless leg syndrome, periodic limb movement disorder, and sleep-disordered breathing such as apneas) based on physiological and/or kinetic data collected while the subject attempts to sleep is an appropriate means of completing this step. Analysis can also include subjective information from the subject, such as the subject's response to questions. Such questions include, but are not limited to, standard subjective questionnaires such as the Epworth and Stanford Sleepiness Scale, and asking if the subject slept well.

The analysis can occur after receipt of the entire data set. More preferably, the analysis can take place in near-real time as the data are received. Still more preferably, the analysis is computer-assisted and takes place in near-real time.

Alternatively, the data can be partially analyzed, with or without computer assistance, in near-real time, and then fully analyzed at a later time. If at least some of the analysis is conducted in near-real time with computer assistance, the analysis software can provide an alert signal to draw attention to a physiological or technological event. Physiological events include, but are not limited to, changes in blood oxygen saturation, changes in pulse, changes in sleep stage, and subject movement, such as leaving the bed. Technological events include, but are not limited to, movement of a sensor, changes in electrode impedance, or loss of data. Once alerted to a physiological or technological event, the remote monitor can take action, including but not limited to communicating with the subject to address a problem, making a note of the event, conducting more detailed analysis, altering the test parameters, or alerting another individual such as a physician, nurse, sleep technician or other sleep trained individual, or the subject's assistant.

Various embodiments of the present invention include the step of evaluating the received signals to determine if they are adequate for later analysis. This step can be performed or accomplished a number of ways. In the simplest form, the signal can be evaluated once just prior to the start of the sleep study. In another form, the signal is evaluated periodically during the study to determine its quality. Preferably, the signal(s) are evaluated both at the start of the study and periodically during the study. Most preferably, the signals are evaluated at the beginning of the study and continuously during the study. If the signals are evaluated for adequacy, preferably the subject can be contacted to adjust the sensor as necessary. In this way, corrective action can adjust an inadequate signal to increase the value of the sleep study data and enable later analysis.

By transmitting the data wirelessly in this application it is meant that the data at least in part of the data transfer process is transmitted wirelessly. This means for example that the data may be transmitted wirelessly from the patient data acquisition box to the base station and then sent via wireless cellular card, internet, through the testing facilities LAN, or any other communication system. This also means for example that the data may be transmitted directly from the patient data acquisition box through a wireless cellular card then over the internet to a database which distributes the data over a hardwired system to the sleep unit or lab. This also means for example that the data may be transmitted directly from the patient data acquisition box with a wireless WIFI card directly to a wireless network then over the internet to a processor which retransmits the processed data to the sleep unit or laboratory. Preferably, the patient data acquisition box, however, needs to wirelessly transmit the data. This allows for a simplified patient hookup and improved patient mobility.

The data collected for the sleep analysis conducted under the various methods of the present invention can be viewed by any number of medical personnel and the patient themselves, if appropriate. Preferably, the data is available to a sleep technician or other sleep trained individual, to a doctor making the analysis/diagnosis based on the data, and others involved in these methods. This data can be reviewed at multiple locations including but not limited to the doctor's home or office, or anywhere else the doctor or other individuals associated with the analysis/diagnosis have access to the internet or an intranet.

FIG. 1 is a block diagram of one embodiment of the sleep analysis method of the present invention showing, among other things, the steps of checking the adequacy of signals and communicating with the subject. In this embodiment, a

physician, nurse, technician, or the like applies sensors to the subject **2** at the physician's office or place of business. The subject is sent home **4** with an in-home data acquisition system. At home, the subject or the subject's assistant connects the sensors to the in-home data acquisition system **6**. The in-home data acquisition system collects some data from the sensors and transmits the data to a remote station **8**. At the remote station, a remote monitor checks the signals for adequacy **10**. If the signal is not adequate for later analysis **12**, the remote monitor communicates with the subject to adjust the sensor **14**. After the subject adjusts the sensor as instructed by the remote monitor, the in-home data acquisition system collects and transmits more data to the remote monitoring station **8**. The signal from the adjusted sensor is checked for adequacy **10**. The signal check loop **8**, **10**, **12**, **14** is repeated until the signals from the sensors are adequate for later analysis.

After the in-home data acquisition system is sending adequate signals **12**, the sleep test is started by collecting data while the subject attempts to sleep at home **16**. During the test, data is collected and transmitted to the remote monitoring station **18**. Based on the transmitted data, a sleep analysis is performed and the patient is diagnosed **20**.

FIG. **2** is a signal flow diagram of one embodiment of the data flow through the wireless in-home data acquisition system used in certain embodiments of the present invention. The sensors generate physiological signals **22**, kinetic signals **24**, and environmental signals **26**. The sensor signals **27** interface with the wireless in-home data acquisition system **50**, consisting of (a) a patient interface box **35** containing a sensor interface module **28**, a preprocessor module **30**, a transceiver module **32**, and a power module **34**, and (b) a base station **43** containing a storage module **38**, a second pre-processor module **40**, and a communication module **42**. Typically, the patient interface box **35** is worn by the subject during the test period. For portability of the patient interface box **35**, the power module **34** can be battery-based. The patient interface box **35** sends data via wireless signal **46** to the base station **43**. The base station **43** uses the communication module **42** to retransmit the signals from the sensors **27** and/or transmit signals based at least in part on at least one of the signals **27** to remote stations (not shown). Optionally, environmental signals **26** could be fed directly into the base station **43**. Further optionally, all the signals **27** could be fed directly into a single box (not shown) containing the sensor interface module **28**, pre-processor module **30**, storage module **38**, communication module **42**, and power module **34**. Although transmission between the patient interlace box **35** and the base station box **43** is shown in FIG. **2** as wireless **46**, the connection could also be wired in other embodiments of the in-home data acquisition system.

FIG. **3** is schematic of the remote data acquisition device and system of the present invention. In FIG. **3**, a wireless in-home data acquisition system **50** (shown in FIG. **2**) is used to receive, filter, and optionally analyze signals **27** (shown in FIG. **2**) from sensors (not shown) on a subject (not shown). The wireless in-home data acquisition system **50** transmits a signal based, at least in part, on one or more of the signals from the sensors on the subject. The in-home data acquisition system **50** transmits a signal **55** preferably in real time from the subject's home **52** to a server **70** for analysis. The signal **55** is transmitted over the internet or other communication system **58**. Such other communication systems include satellites, cellular networks, local area networks (LAN), other wide area networks (WAN), or other telecommunications system. If the signal **55** is transmitted

over the internet **58**, preferably the signal **55** is transmitted using a cellular card provided by cellular providers such as for example Sprint, Cingular, AT&T, T-Mobile, Alltel, Verizon or the like. The signal **55** that is transmitted over the internet or other communication system **58** can be compressed to provide better resolution or greater efficiency. The server **70** performs data analysis (not shown). The analyzed data **73** is then entered into a database **76**. The analyzed data **73** in the database **76** is then accessible and can be requested **79** and sent to multiple review stations **82** anywhere in the world via the internet or other communications system **58** for further analysis and review by clinicians, technicians, researchers, doctors and other sleep trained individuals. The communications systems used for data transmission need not be the same at all stages. For example, a cellular network can be used to transmit data between the subject's home **52** and the remote analysis server **70**. Then the internet can be used to transmit data between the remote analysis server **70** and the database **76**. Finally in this example, a LAN can be used to transmit data between the database **76** and a review station **82**.

FIG. **4** shows a diagram outlining the wireless in-home data acquisition system in more detail. In FIG. **4**, a patient interface box **85** receives signal (not shown) from a sensor **91**. This sensor **91** can be an EEG electrode (as shown) or any of the other sensors described herein or known in the art. Although one type of sensor **91** is shown, the patient interface box **85** is capable of accepting multiple signals from multiple sensors **91**. In a very simple embodiment of the present invention, the patient interface box **85** generates a wireless signal **94** encoded with data corresponding to the signal from the sensor **91**. The patient interface box **85** transmits the wireless signal **94** to base station **97**. In FIG. **4**, the wireless signal **94** is shown as radio frequency (RF). In this case, the patient interface box **85** generates a radio frequency signal **94** by frequency modulating a frequency carrier and transmits the radio frequency signal through module antenna **100**. The base station **97** receives the radio frequency signal **94** through base antenna **103**, demodulates the radio frequency signal **94**, and decodes the data. It is understood that other wireless means can be utilized with the present invention, such as infrared and optical, for example. RF wireless transmission is preferred. Although one module antenna **100** and one base antenna **103** are shown in this embodiment, it is understood that two or more types of antennas can be used and are included in the present invention. An external programming means **106**, shown in FIG. **4** as a personal computer, contains software that is used to program the patient interface box **85** and the base station **97** through data interface cable **109**. The data interface cable **109** is connected to the base station **97** by connector **112**. Instead of a data interface cable **109**, the patient interface box **85** and the base station **97** can be programmed by radio frequency (or other type) of signals transmitted between an external programming means **106** and a base station **97** and the patient interface box **85** or to another base station **97**. RF signals, therefore, can be both transmitted and received by both patient interface box **85** and base station **97**. In this event the patient interface box **85** also includes a module receiver **133** (shown on FIG. **5**) while the base station **97** also includes a base transmitter **84**, in effect making both the patient interface box **85** and the base station **97** into transceivers. In addition, the data interface cable **109** also can be used to convey data from the base station **97** to the external programming means **106**. If a personal computer is the external programming means **106**, it can monitor, analyze, and display the data in addition to its programming func-

tions. The base receiver **80** and module receiver **133** (shown on FIG. **5**) can be any appropriate receivers, such as direct or single conversion types. The base receiver **80** preferably is a double conversion superheterodyne receiver while the module receiver **133** (shown on FIG. **5**) preferably is a single conversion receiver. Advantageously, the receiver employed will have automatic frequency control to facilitate accurate and consistent tuning of the radio frequency signal **94** received thereby.

Referring now to FIG. **5**, there is shown a block diagram of the signal processing module **85** with the sensor **91** and the module antenna **100**. The signal processing module **85** comprises input means **115**, analog-to-digital (A/D) means **118**, a module microcontroller **121** with a nonvolatile memory, advantageously, an EEPROM **124**, a module transmitter **127**, a connection to removable memory **130**, a module receiver **133** and a module power supply **136**. Although the module antenna **100** is shown externally located from the signal processing module **85**, it can also be incorporated therein. The module antenna **100** may be a printed spiral antenna printed on a circuit board or on the case of the signal processing module **85** or other type of antenna. A module power supply **136** provides electrical power to the signal processing module **85** which includes the input means **115**, A/D means **118**, module microcontroller **121**, module transmitter **127** and module receiver **133**. Additionally the signal processing module **85** will preferably contain an accelerometer connected to a microprocessor **139** for position detection, motion detection, and motion artifact correction.

The input means **115** is adjustable either under control of the module microcontroller **121** or by means of individually populatable components based upon the specific external input **88** (i.e. signal from any sensor) characteristics and range enabling the input means **115** to accept that specific external input **88**. For example, if the input is a 4-20 mA analog signal, the input means **88** is programmed by the module microcontroller **121** and/or populated with the components needed to accept that range and characteristic of signals. If the input characteristics change the programming and/or components change accordingly but the same platform circuit board design is utilized. In other words, the same platform design is utilized notwithstanding the character, range, or quantity (i.e. number of external inputs **88**) [up to a predetermined limit] of the input. For example, bioelectric signals such as EEG, EMG, EKG, EOG, or the like have typical amplitudes of a few microvolts up to a few tens of millivolts. For a given application, a specific frequency band of interest might be from 0.1 Hz to 100 Hz, whereas another application may require measurement of signals from 20 Hz to 10 kHz. Alternatively, measurement of vital signs such as body temperature and respiration rate may deal with signals in a range of +5 volts, with a frequency content from DC (0 Hz) to 20 Hz. For other medical applications, the information of interest may be contained in the signal as a current, current loop sensor, or it may take the form of resistance, impedance, capacitance, inductance, conductivity, or some other parameter. The present invention anticipates using a single device for measuring such widely disparate signal types and presents distinct economic advantages, especially to small enterprises such as a medical clinic located in a rural area, which would be empowered by this invention to conduct tests that would otherwise require the patient travel to a large medical center, with all the attendant cost thereof.

A single system possesses these capabilities due to the selectively adaptable input means **115** and A/D means **118**,

the frequency-agile module transmitter **127** and base transmitter **116**, and the programmable module microcontroller **121** and EEPROM **124**. One universal platform design then can be utilized for all applications. In addition, the signal processing module **85** can comprise multiple copies of the input means **115** and the A/D means **118**. Cost savings can be achieved by multiplexing at several different points in the input means **115** and the A/D means **118** allowing hardware to be shared among external inputs **88**.

After receipt by the input means **115**, the external input **88** is inputted to the A/D means **118**. The A/D means **118** converts the input to a digital signal **142** and conditions it. The A/D means **118** utilizes at least one programmable A/D converter. This programmable A/D converter may be an AD7714 as manufactured by Analog Devices or similar. Depending upon the application, the input means **115** may also include at least one low noise differential preamp. This preamp may be an INA126 as manufactured by Burr-Brown or similar. The module microcontroller **121** can be programmed to control the input means **115** and the A/D means **118** to provide specific number of external inputs **88**, sampling rate, filtering and gain. These parameters are initially configured by programming the module microcontroller **121** to control the input means **115** and the A/D means **118** via input communications line **145** and A/D communications line **148** based upon the input characteristics and the particular application. If different sensors are used, the A/D converter is reconfigured by reprogramming the module microcontroller **121**. In this manner, the input means **115** and the A/D means **118** can be configured to accept analog inputs of 4-20 mA, +/-5 volts, +/-15 volts or a range from +/-microvolts to millivolts. They also can be configured to accept digital inputs for digital applications such as detection of contact closure.

The module microcontroller **121** controls the operation of the signal processing module **85**. In the present invention, the module microcontroller **121** includes a serial EEPROM **124** but any nonvolatile memory (or volatile memory if the signal processing module remains powered) can be used. The EEPROM **124** can also be a separate component external to the module microcontroller **121**. Advantageously, the module microcontroller **121** may be PIC16C74A PIC16C74B or a PIC16C77 both manufactured by MicroChip, or an Amtel AT90S8515 or similar. The module microcontroller may advantageously contain two microprocessors in series as shown in FIG. **5**. The module microcontroller **121** is programmed by the external programming means **106** (shown in FIG. **4**) through the connector **172** or through radio frequency signal from the base station **97** (shown in FIG. **4**). The same module microcontroller **121**, therefore, can be utilized for all applications and inputs by programming it for those applications and inputs. If the application or inputs change, the module microcontroller **121** is modified by merely reprogramming. The digital signal **142** is inputted to the module microcontroller **121**. The module microcontroller **121** formats the digital signal **142** into a digital data stream **151** encoded with the data from the digital signal **142**. The digital data stream **151** is composed of data bytes corresponding to the encoded data and additional data bytes to provide error correction and housekeeping functions. Advantageously, the digital data stream **151** is organized in data packets with the appropriate error correction data bytes coordinated on a per data packet basis. These packets can incorporate data from a single input channel or from several input channels in a single packet, or for some applications may advantageously include several temporally differing measurements of one or a plurality of

input channels in a single packet. The digital data stream 151 is used to modulate the carrier frequency generated by the transmitter 127.

The module transmitter 127 is under module microcontroller 121 control. The module transmitter 127 employs frequency synthesis to generate the carrier frequency. In the preferred embodiment, this frequency synthesis is accomplished by a voltage controlled crystal reference oscillator and a voltage controlled oscillator in a phase lock loop circuit. The digital data stream 151 is used to frequency modulate the carrier frequency resulting in the radio frequency signal 94 which is then transmitted through the module antenna 100. The generation of the carrier frequency is controlled by the module microcontroller 121 through programming in the EEPROM 124, making the module transmitter 127 frequency agile over a broad frequency spectrum. In the United States and Canada a preferred operating band for the carrier frequency is 902 to 928 MHz. The EEPROM 124 can be programmed such that the module microcontroller 121 can instruct the module transmitter 127 to generate a carrier frequency in increments between 902 to 928 MHz, as small as about 5 to 10 kHz. In the US and other countries of the world, the carrier frequency may be in the 902-928 MHz, Wireless Medical Telemetry Bands (WMTS), 608-614 MHz, 1395-1400 MHz, or 1429-1432 MHz or other authorized band. This allows the system to be usable in non-North American applications and provides additional flexibility.

The voltage controlled crystal oscillator (not shown) in the module transmitter 127, not only provides the reference frequency for the module transmitter 127 but, advantageously also provides the clock function 154 for the module microcontroller 121 and the A/D means 118 assuring that all components of the signal processing module 85 are synchronized. An alternate design can use a plurality of reference frequency sources where this arrangement can provide certain advantages such as size or power consumption in the implementation.

The module receiver 133 in the signal processing module 85 receives RF signals from the base station 97 (shown in FIG. 4). The signals from the base station 97 can be used to operate and control the signal processing module 85 by programming and reprogramming the module microprocessor 121 and EEPROM 124 therein.

Referring now to FIG. 6, the base station 97 has a base antenna 103 through which RF signals 94 are received. Base microcontroller 160 controls the operation of the base station 97 including base receiver 163, base transmitter 166, and base power supply 169. Base receiver 163 receives the RF signal 94 from base antenna 103. The base receiver 163 demodulates the RF signal 94 and the base microcontroller 160 removes any error correction and performs other house-keeping tasks. The data is then downloaded through connector 112 to the external programming means 106 (shown in FIG. 4) or other personal computer (PC) or data storage/viewing device for viewing in real time, storage, or analysis, or is downloaded to removable memory of some form.

FIG. 7 is a schematic diagram of a multi-task monitoring system. In FIG. 7, a patient or subject is shown having the neurological 200, cardiac 202, muscular 204, and other environmental conditions 206 measured by sensors (not shown) and input into four separate data acquisition units 210, 212, 214, and 216. In this example, each unit 210, 212, 214, and 216 can accept up to 32 inputs. The units transmit signals 220, 222, 224, and 226 at different wireless radio frequencies from their respective antennas 228. The signals 220, 222, 224, and 226 do not interfere with each other

because they have been manually or automatically selected to reduce interference as described earlier in the application. The signals can be received 232 simultaneously or in some ordered fashion by the antenna 230 on the receiving unit 234. The receiving unit 234 is both data and electrically connected via a USB connection 236 to a main processor or computer 238. The physiological signals are then processed or further processed by the computer 238, depending on whether processing took place in the data acquisition units 210, 212, 214, and 216. The information or data from the computer 238 can be output to a monitor 240 and/or into a data file 242.

FIG. 8 is a diagram of an artifact rejection module 250 that can be used in either the in-home data acquisition system (not shown) or a computer or processor (not shown) linked to the data acquisition unit of the present invention. In FIG. 8, a subject's EEG signal 252 is preferably continuously fed 254 into artifact rejection algorithms within the data acquisition unit processor. Simultaneously sensor signals 260 from the subject's movement or motion are also fed into the artifact rejection processor so the EEG signal can be corrected 262 for effects of abnormal or prejudicial motion by the subject. The sensors for determining the subject's motion are described above, but the most preferred is an accelerometer that is incorporated into the EEG data acquisition unit itself.

It will be apparent to those skilled in the art that various modifications and variations can be made to the present invention without departing from the spirit and scope of the invention. Thus, it is intended that the present invention cover the modifications and variations of this invention provided they come within the scope of the appended claims and their equivalents.

What we claim is:

1. A method of conducting home sleep testing comprising the steps of:

providing a subject with a portable patient interface box worn by the subject on its torso and a nasal cannula or a facemask, a respiratory effort belt and a fingertip pulse oximeter, the patient interface box comprising a battery, at least one kinetic sensor, a nonvolatile digital memory, a pressure transducer, an air port for connecting a nasal cannula or a facemask to the pressure transducer within the patient interface box, and releasable connector sensor inputs to electrically connect and disconnect the respiratory effort belt and the fingertip pulse oximeter, the nasal cannula or facemask for measuring airflow of the subject, the respiratory effort belt for measuring respiratory effort of the subject, the kinetic sensor for measuring body position or orientation and the fingertip pulse oximeter for measuring oxygenation of the subject;

applying and connecting the nasal cannula or facemask, the respiratory effort belt and the fingertip pulse oximeter to the subject, and further the patient interface box to the subject's torso;

measuring and collecting data through the patient interface box of the airflow, respiratory effort, body position or orientation and oxygenation of the subject while the subject attempts to sleep at home;

digitizing and storing the collected data from the subject in the nonvolatile digital memory of the patient interface box;

transferring the collected data to a location remote from the subject's home;

providing a computer or a processor at the remote location for analyzing the transferred collected data to identify

and draw attention to physiological or technological events in the data indicative of a sleeping disorder; and further analyzing at a minimum the transferred collected data and/or the identified physiological and technological events in the data at the remote location or another remote location to determine whether the subject suffers from a sleeping disorder.

2. The method in claim 1, further including a step of providing a computer or processor at the subject's location for checking the adequacy of the collected data from the sensors prior to a transmitter transferring the collected data to the remote location.

3. The method in claim 1, wherein the collected data is transferred via cellular systems, internet, satellite, wired-network and/or land lines to a location remote from the subject's home.

4. The method in claim 1, further including a step of determining whether the subject being analyzed for a sleep disorder maintained a normal sleeping pattern prior to analysis based on subjective input from the subject or polysomnography data.

5. The method in claim 1, further including a step of the computer or processor performing automatic scoring of the data prior to said further analyzing.

6. The method of claim 1, further comprising a step of at least in part removing or identifying movement artifacts in the collected data prior to the computer or processor analysis of the collected data by an algorithm of the computer or processor comparing signals from the at least one kinetic sensor with at least one other kinetic or physiological signal to identify and/or remove movement artifacts identified from the signals.

7. The method of claim 1, wherein the patient interface box is capable of providing two way communication between the subject or their care provider and a sleep technician at the remote location.

8. A method of conducting home sleep testing comprising the steps of:

providing a subject with a portable patient interface box worn by the subject on its torso and a nasal cannula or a facemask, a respiratory effort belt and a fingertip pulse oximeter, the patient interface box comprising a battery, at least one kinetic sensor for measuring body position, a nonvolatile digital memory, a pressure transducer, an air port for connecting a nasal cannula or a facemask to the pressure transducer within the patient interface box, and releasable connector sensor inputs to electrically connect and disconnect the respiratory effort belt and the fingertip pulse oximeter, the nasal cannula or facemask for measuring airflow of the subject, the respiratory effort belt for measuring respiratory effort of the subject, the kinetic sensor for measuring body position or orientation and the fingertip pulse oximeter for measuring oxygenation of the subject;

applying and connecting the nasal cannula or facemask, the respiratory effort belt and the fingertip pulse oximeter to the subject and to the patient interface box, and further the patient interface box to the subject's torso; measuring and collecting data of the airflow, respiratory effort, body position or orientation and oxygenation of the subject while the subject attempts to sleep at home; digitizing and storing the collected data from the subject in the nonvolatile digital memory of the patient interface box;

transferring the collected data via cellular systems, internet, satellite, wired-network and/or land lines to a location remote from the subject's home;

providing a computer or a processor at the remote location for analyzing the transferred collected data to identify

and draw attention to physiological or technological events in the data indicative of a sleeping disorder; and further analyzing at a minimum the transferred collected data and/or the identified physiological and technological events in the data at the remote location or another remote location to determine whether the subject suffers from a sleeping disorder.

9. The method in claim 8, further including a step of providing a computer or processor at the subject's location for checking the adequacy of the collected data from the sensors prior to a transmitter transferring the collected data to the remote location.

10. The method in claim 8, further including a step of determining whether the subject being analyzed for a sleep disorder maintained a normal sleeping pattern prior to analysis based on subjective input from the subject or polysomnography data.

11. The method in claim 8, further including a step of the computer or processor performing automatic scoring of the data prior to said further analyzing.

12. The method of claim 8, further comprising a step of at least in part removing or identifying movement artifacts in the collected data prior to the computer or processor analysis of the collected data by an algorithm of the computer or processor comparing signals from the at least one kinetic sensor with at least one other kinetic or physiological signal to identify and/or remove movement artifacts identified from the signals.

13. The method of claim 8, wherein the patient interface box is capable of providing two way communication between the subject or their care provider and a sleep technician at the remote location.

14. A method of conducting home sleep testing comprising the steps of:

providing a subject with a portable patient interface box worn by the subject on its torso and a nasal cannula or a facemask, a respiratory effort belt and a fingertip pulse oximeter, the patient interface box comprising a battery, at least one kinetic sensor for measuring body position, a nonvolatile digital memory, a pressure transducer, an air port for connecting a nasal cannula or a facemask to the pressure transducer within the patient interface box, and releasable connector sensor inputs to electrically connect and disconnect the respiratory effort belt and the fingertip pulse oximeter, the nasal cannula or facemask for measuring airflow of the subject, the respiratory effort belt for measuring respiratory effort of the subject, the kinetic sensor for or orientation and the fingertip pulse oximeter for measuring oxygenation of the subject;

applying and connecting the nasal cannula or facemask, the respiratory effort belt and the fingertip pulse oximeter to the subject, and further the patient interface box to the subject's torso;

measuring and collecting data of the airflow, respiratory effort, body position or orientation and oxygenation of the subject while the subject attempts to sleep at home; digitizing and storing the collected data from the subject in the nonvolatile digital memory of the patient interface box;

transferring the collected data wirelessly, at least in part, to a location or database remote from the subject's home;

providing a computer or a processor at the remote location for analyzing the transferred collected data to identify and draw attention to physiological or technological events in the data indicative of a sleeping disorder; and further analyzing at a minimum the transferred collected data and/or the identified physiological and technological events in the data at the remote location or another

remote location to determine whether the subject suffers from a sleeping disorder.

15. The method in claim 14, further including a step of providing a computer or processor at the subject's location for checking the adequacy of the collected data from the sensors prior to a transmitter transferring the collected data to the remote location. 5

16. The method in claim 14, wherein the patient interface box is capable of two way communication between the subject or their care provider and a sleep trained individual at the remote location. 10

17. The method in claim 14, further including a step determining whether the subject being analyzed for a sleep disorder maintained a normal sleeping pattern prior to analysis based on subjective input from the subject or polysomnography data. 15

18. The method in claim 14, further including a step of the computer or processor performing automatic scoring of the data prior to said further analyzing.

19. The method of claim 14, further comprising a step of at least in part removing or identifying movement artifacts in the collected data prior to the computer or processor analysis of the collected data by an algorithm of the computer or processor comparing signals from the at least one kinetic sensor with at least one other kinetic or physiological signal to identify and/or remove movement artifacts identified from the signals. 20 25

* * * * *

专利名称(译)	家庭睡眠和信号分析的方法和装置		
公开(公告)号	US10426399	公开(公告)日	2019-10-01
申请号	US15/229242	申请日	2016-08-05
[标]申请(专利权)人(译)	kayyali哈尼族 弗雷德里克克雷格 MARTIN CHRISTIAN SCHMIDT ROBERT N kolkowski布瑞恩		
申请(专利权)人(译)	KAYYALI, 哈尼族 冯检基, CRAIG A. MARTIN, CHRISTIAN SCHMIDT, ROBERT N. kolkowski, 布瑞恩		
[标]发明人	KAYYALI HANI FREDERICK CRAIG A MARTIN CHRISTIAN SCHMIDT ROBERT N KOLKOWSKI BRIAN		
发明人	KAYYALI, HANI FREDERICK, CRAIG A. MARTIN, CHRISTIAN SCHMIDT, ROBERT N. KOLKOWSKI, BRIAN		
IPC分类号	A61B5/00 A61B5/0488 A61B5/0496 A61B5/0476 A61B5/0205 A61B5/0402 A61B5/085 A61B5/113 A61B5/1455 A61B5/087		
CPC分类号	A61B5/4815 A61B5/0488 A61B5/0476 A61B5/0496 A61B5/0402 A61B5/0022 A61B5/6814 A61B5/ /0205 A61B5/0077 A61B5/6828 A61B5/1135 A61B5/085 A61B2505/07 A61B2560/0242 A61B5/14552 A61B5/087 G16H40/67		
代理人(译)	kolkowski, 布瑞恩		
外部链接	Espacenet		

摘要(译)

本发明提供了一种进行睡眠分析的方法，该方法通过在受试者试图在家中睡觉时优选地经由无线家庭数据采集系统收集来自受试者的生理和动力学数据。睡眠分析，包括临床和研究性睡眠研究和心肺研究，可用于诊断睡眠障碍和其他具有睡眠特征的疾病或状况，例如帕金森氏病，癫痫病，慢性心力衰竭，慢性阻塞性肺病或其他神经系统疾病，心脏，肺部或肌肉疾病。本发明的方法还可以用于确定对象家中的环境因素是否正在阻止恢复性睡眠。

