



US009486151B2

(12) **United States Patent**
Ghosh et al.

(10) **Patent No.:** **US 9,486,151 B2**
(45) **Date of Patent:** ***Nov. 8, 2016**

(54) **METRICS OF ELECTRICAL
DYSSYNCHRONY AND ELECTRICAL
ACTIVATION PATTERNS FROM SURFACE
ECG ELECTRODES**

(71) Applicant: **Medtronic, Inc.**, Minneapolis, MN
(US)

(72) Inventors: **Subham Ghosh**, Blaine, MN (US);
Jeffrey M Gillberg, Coon Rapids, MN
(US)

(73) Assignee: **Medtronic, Inc.**, Minneapolis, MN
(US)

(*) Notice: Subject to any disclaimer, the term of this
patent is extended or adjusted under 35
U.S.C. 154(b) by 0 days.

This patent is subject to a terminal dis-
claimer.

(21) Appl. No.: **14/190,508**

(22) Filed: **Feb. 26, 2014**

(65) **Prior Publication Data**

US 2014/0371807 A1 Dec. 18, 2014

Related U.S. Application Data

(60) Provisional application No. 61/834,133, filed on Jun.
12, 2013.

(51) **Int. Cl.**
A61N 1/365 (2006.01)
A61B 5/0408 (2006.01)
(Continued)

(52) **U.S. Cl.**
CPC **A61B 5/04085** (2013.01); **A61B 5/0452**
(2013.01); **A61B 5/6805** (2013.01); **A61B**
5/7282 (2013.01); **A61N 1/3627** (2013.01);
A61N 1/3682 (2013.01); **A61N 1/3684**
(2013.01)

(58) **Field of Classification Search**
CPC A61N 1/3627; A61N 1/3682; A61N
1/3684; A61B 5/0452

See application file for complete search history.

(56) **References Cited**

U.S. PATENT DOCUMENTS

4,233,987 A 11/1980 Feingold
4,428,378 A 1/1984 Anderson et al.
(Continued)

FOREIGN PATENT DOCUMENTS

CN 1043621 A 11/1990
EP 1 072 284 A2 1/2001
(Continued)

OTHER PUBLICATIONS

Biffi et al., "Occurrence of Phrenic Nerve Stimulation in Cardiac
Resynchronization Therapy Patients: the Role of Left Ventricular
Lead Type and Placement Site," *Europace*, 2013; 15:77-82.
(Continued)

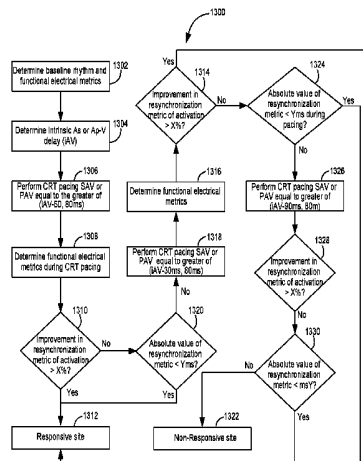
Primary Examiner — George Evanisko

(74) *Attorney, Agent, or Firm* — Carol F. Barry

(57) **ABSTRACT**

A method and system of cardiac pacing is disclosed. A
baseline rhythm is determined using a plurality of body-
surface electrodes. A set of baseline functional electrical
metrics is determined in response to determining the base-
line rhythm. Resynchronization pacing is delivered using a
right ventricular electrode and a pacing left ventricular
electrode or only with a left ventricular electrode. A set of
functional electrical metrics relating to cardiac depolariza-
tion and repolarization is determined in response to resyn-
chronization pacing. A determination is made as to whether
relative reduction of at least one functional electrical metric
from the set of functional electrical metrics exceeds X % of
its corresponding value from the set of baseline functional
electrical metrics. A determination is made as to whether an
absolute value of at least one electrical metric from the set
of the functional electrical metrics is less than Y ms. A
determination is made as to whether a site is responsive to
cardiac resynchronization therapy (CRT).

40 Claims, 15 Drawing Sheets



(56)

References Cited

U.S. PATENT DOCUMENTS

2008/0242976 A1 10/2008 Robertson et al.
 2008/0269818 A1 10/2008 Sullivan et al.
 2008/0269823 A1 10/2008 Burnes et al.
 2008/0281195 A1 11/2008 Heimdal
 2008/0306567 A1 12/2008 Park et al.
 2008/0306568 A1 12/2008 Ding et al.
 2009/0005832 A1 1/2009 Zhu et al.
 2009/0036947 A1 2/2009 Westlund et al.
 2009/0043352 A1 2/2009 Brooke et al.
 2009/0048528 A1 2/2009 Hopenfeld et al.
 2009/0053102 A2 2/2009 Rudy et al.
 2009/0054941 A1 2/2009 Eggen et al.
 2009/0054946 A1 2/2009 Sommer et al.
 2009/0084382 A1 4/2009 Jalde et al.
 2009/0093857 A1 4/2009 Markowitz et al.
 2009/0099468 A1 4/2009 Thiagalingam et al.
 2009/0099619 A1 4/2009 Lessmeier et al.
 2009/0112109 A1 4/2009 Kuklik et al.
 2009/0143838 A1 6/2009 Libbus et al.
 2009/0157134 A1 6/2009 Ziglio et al.
 2009/0157136 A1 6/2009 Yang et al.
 2009/0198298 A1 8/2009 Kaiser et al.
 2009/0216112 A1 8/2009 Assis et al.
 2009/0232448 A1 9/2009 Barmash et al.
 2009/0234414 A1 9/2009 Sambelashvili et al.
 2009/0254140 A1 10/2009 Rosenberg et al.
 2009/0270729 A1 10/2009 Corbucci et al.
 2009/0270937 A1 10/2009 Yonce et al.
 2009/0299201 A1 12/2009 Gunderson
 2009/0299423 A1 12/2009 Min
 2009/0306732 A1 12/2009 Rosenberg et al.
 2009/0318995 A1 12/2009 Keel et al.
 2010/0022873 A1 1/2010 Hunter et al.
 2010/0049063 A1 2/2010 Dobak, III
 2010/0069987 A1 3/2010 Min et al.
 2010/0094149 A1 4/2010 Kohut et al.
 2010/0113954 A1 5/2010 Zhou
 2010/0114229 A1 5/2010 Chinchoy
 2010/0121403 A1 5/2010 Schechter et al.
 2010/0145405 A1 6/2010 Min
 2010/0174137 A1 7/2010 Shim
 2010/0198292 A1 8/2010 Honeck et al.
 2010/0228138 A1 9/2010 Chen
 2010/0234916 A1 9/2010 Turcott et al.
 2010/0254583 A1 10/2010 Chan et al.
 2010/0268059 A1 10/2010 Ryu et al.
 2011/0004111 A1 1/2011 Gill et al.
 2011/0004264 A1 1/2011 Siejko et al.
 2011/0022112 A1 1/2011 Min
 2011/0054286 A1 3/2011 Crosby
 2011/0054559 A1 3/2011 Rosenberg et al.
 2011/0054560 A1 3/2011 Rosenberg et al.
 2011/0092809 A1 4/2011 Nguyen et al.
 2011/0112398 A1 5/2011 Zarkh et al.
 2011/0118803 A1 5/2011 Hou et al.
 2011/0137369 A1 6/2011 Ryu et al.
 2011/0144510 A1 6/2011 Ryu et al.
 2011/0172728 A1 7/2011 Wang
 2011/0190615 A1 8/2011 Phillips et al.
 2011/0201915 A1 8/2011 Gogin et al.
 2011/0213260 A1 9/2011 Keel et al.
 2011/0319954 A1 12/2011 Niazi et al.
 2012/0004567 A1 1/2012 Eberle et al.
 2012/0101543 A1 4/2012 Demmer et al.
 2012/0101546 A1 4/2012 Stadler et al.
 2012/0203090 A1 8/2012 Min
 2012/0253419 A1 10/2012 Rosenberg et al.
 2012/0283587 A1 11/2012 Ghosh et al.
 2012/0284003 A1 11/2012 Ghosh et al.
 2012/0296387 A1 11/2012 Zhang et al.
 2012/0296388 A1 11/2012 Zhang et al.
 2012/0302904 A1 11/2012 Lian et al.
 2012/0303084 A1 11/2012 Kleckner et al.
 2012/0310297 A1 12/2012 Sweeney
 2012/0330179 A1 12/2012 Yuk et al.

2013/0006332 A1 1/2013 Sommer et al.
 2013/0018250 A1 1/2013 Caprio et al.
 2013/0018251 A1 1/2013 Caprio et al.
 2013/0030491 A1 1/2013 Stadler et al.
 2013/0060298 A1 3/2013 Splett et al.
 2013/0072790 A1 3/2013 Ludwig et al.
 2013/0096446 A1 4/2013 Michael et al.
 2013/0116739 A1 5/2013 Brada et al.
 2013/0131529 A1 5/2013 Jia et al.
 2013/0131749 A1 5/2013 Sheldon et al.
 2013/0131751 A1 5/2013 Stadler et al.
 2013/0150913 A1 6/2013 Bornzin et al.
 2013/0165983 A1 6/2013 Ghosh et al.
 2013/0165988 A1 6/2013 Ghosh
 2013/0261471 A1 10/2013 Saha et al.
 2013/0261688 A1 10/2013 Dong et al.
 2013/0289640 A1 10/2013 Zhang et al.
 2013/0296726 A1* 11/2013 Niebauer et al. 600/510
 2013/0304407 A1 11/2013 George et al.
 2013/0324828 A1 12/2013 Nishiwaki et al.
 2014/0005563 A1 1/2014 Ramanathan et al.
 2014/0018872 A1 1/2014 Siejko et al.
 2014/0135866 A1 5/2014 Ramanathan et al.
 2014/0135867 A1 5/2014 Demmer et al.
 2014/0163633 A1 6/2014 Ghosh et al.
 2014/0222099 A1 8/2014 Sweeney
 2014/0236252 A1 8/2014 Ghosh et al.
 2014/0276125 A1 9/2014 Hou et al.
 2014/0277233 A1 9/2014 Ghosh
 2014/0323882 A1 10/2014 Ghosh et al.
 2014/0323892 A1 10/2014 Ghosh et al.
 2014/0323893 A1 10/2014 Ghosh et al.
 2014/0371808 A1 12/2014 Ghosh et al.
 2014/0371832 A1 12/2014 Ghosh et al.
 2014/0371833 A1 12/2014 Ghosh et al.
 2015/0032016 A1 1/2015 Ghosh
 2015/0032171 A1 1/2015 Ghosh
 2015/0032172 A1 1/2015 Ghosh
 2015/0032173 A1 1/2015 Ghosh
 2015/0142069 A1 5/2015 Sambelashvili
 2015/0157225 A1 6/2015 Gillberg et al.
 2015/0157231 A1 6/2015 Gillberg et al.
 2015/0157232 A1 6/2015 Gillberg et al.
 2015/0157865 A1 6/2015 Gillberg et al.
 2015/0265840 A1 9/2015 Ghosh et al.
 2016/0030747 A1 2/2016 Thakur et al.
 2016/0030751 A1 2/2016 Ghosh et al.

FOREIGN PATENT DOCUMENTS

EP 1 504 713 A1 2/2005
 EP 2 016 976 A1 1/2009
 EP 2 391 270 A1 7/2011
 EP 1 925 337 B1 3/2012
 EP 2 436 309 A2 4/2012
 EP 2 435 132 B1 8/2013
 WO WO 98/26712 A1 6/1998
 WO WO 00/45700 A1 8/2000
 WO WO 01/67950 A1 9/2001
 WO 03/070323 A1 8/2003
 WO WO 2005/056108 A2 6/2005
 WO 2006/069215 A2 6/2006
 WO WO 2006/105474 A2 10/2006
 WO WO 2006/115777 A1 11/2006
 WO WO 2006/117773 A1 11/2006
 WO WO 2007/013994 A2 2/2007
 WO 2007/027940 A2 3/2007
 WO WO 2007/013994 A3 4/2007
 WO 2007/027940 A3 6/2007
 WO WO 2007/139456 A1 12/2007
 WO WO 2008/151077 A2 12/2008
 WO 2006/069215 A3 6/2009
 WO WO 2009/079344 A1 6/2009
 WO WO 2009/139911 A2 11/2009
 WO WO 2009/148429 A1 12/2009
 WO WO 2010/019494 A1 2/2010
 WO WO 2010/071520 A1 6/2010
 WO WO 2010/088040 A1 8/2010
 WO WO 2010/088485 A1 8/2010

(56) References Cited

FOREIGN PATENT DOCUMENTS

WO	WO 2011/070166	A1	6/2011
WO	WO 2011/090622	A1	7/2011
WO	WO 2011/099992	A1	8/2011
WO	WO 2012/037471	A2	3/2012
WO	WO 2012/037471	A3	6/2012
WO	WO 2012/106297	A2	8/2012
WO	WO 2012/106297	A3	8/2012
WO	WO 2012/109618	A2	8/2012
WO	WO 2012/110940	A1	8/2012
WO	WO 2012/109618	A3	11/2012
WO	WO 2012/151364	A1	11/2012
WO	WO 2012/151389	A1	11/2012
WO	WO 2013/006724	A2	1/2013
WO	WO 2013/010165	A1	1/2013
WO	WO 2013/010184	A1	1/2013
WO	WO 2013/006724	A3	4/2013
WO	WO 2014/179454	A1	11/2014
WO	WO 2014/179459	A2	11/2014
WO	WO 2014/179459	A3	1/2015
WO	WO 2015/013271	A1	1/2015
WO	WO 2015/013493	A1	1/2015
WO	WO 2015/013574	A1	1/2015

OTHER PUBLICATIONS

"CardioGuide System Enables Real-Time Navigation of Left Ventricular Leads During Medtronic CRT Implants," Press Release, Apr. 9, 2013, Medtronic, Inc., 2 pgs.

Cuculich, P.S., et al., "The Electrophysiological Cardiac Ventricular Substrate in Patients After Myocardial Infection" *J. Am. Coll. Cardiol.* 2011; 58:1893-1902.

Czerwinska et al., "Method of Segmentation of Thorax Organs Images Applied to Modeling the Cardiac Electrical Field," *Engineering in Medicine and Biology Society*, Proceedings of the 22nd Annual International Conference of the IEEE, vol. 1, 23, Jul. 23, 2000.; pp. 402-405.

Dawoud, F. et al., "Inverse Electrocardiographic Imaging to Assess Electrical Dyssynchrony in Cardiac Resynchronization Therapy Patients," *Computing in Cardiology*, 2012; 39:993-996.

Ghosh et al. "Accuracy of Quadratic Versus Linear Interpolation in Noninvasive Electrocardiographic Imaging (ECGI)," *Annals of Biomedical Engineering*, vol. 33, No. 9. Sep. 2005; pp. 1187-1201.

Ghosh et al., "Cardiac Memory in Patients with Wolff-Parkinson-White Syndrome: Noninvasive Imaging of Activation and Repolarization Before and After Catheter Ablation" *Circulation*, 2008; 118:907-915. Published online Aug. 12, 2008.

Ghosh et al. "Application of L1-Norm Regularization to Epicardial Potential Solution of the Inverse Electrocardiography Problem," *Annals of Biomedical Engineering*, vol. 37, No. 5, May 2009; pp. 902-912.

Ghosh et al., "Electrophysiological Substrate and Intraventricular LV Dyssynchrony in Non-ischemic Heart Failure Patients Undergoing Cardiac Resynchronization Therapy," *Heart rhythm : the official journal of the Heart Rhythm Society*, 2011; 8(5):692-699.

Gold et al., "Comparison of Stimulation Sites within Left Ventricular Veins on the Acute Hemodynamic Effects of Cardiac Resynchronization Therapy" *Heart Rhythm*, Apr. 2005; 2(4):376-381.

Gulrajani, "The Forward and Inverse Problems of Electrocardiography," *IEEE Engineering in Medicine and Biology*, IEEE Service Center, vol. 17, No. 5, Sep. 1, 1988; pp. 84-101, 122.

Hansen, "Regularization Tools: A Matlab Package for Analysis and Solution of Discrete Ill-Posed Problems," Version 4.1 for Matlab 7.3; Mar. 2008; 128 pages. Retrieved from the Internet: Jun. 19, 2014 <http://www.mathworks.com/matlabcentral/fileexchange/52-regtools>.

Hayes et al., "Cardiac Resynchronization Therapy and the Relationship of Percent Biventricular Pacing to Symptoms and Survival," *Heart Rhythm*, Sep. 2011; 8(9):1469-1475.

"Heart Failure Management" datasheet [online]. Medtronic, Minneapolis, Minnesota, [Last updated on Jun. 3, 2013]. Retrieved from the Internet: www.medtronic.com; 9 pages.

Jia et al., "Electrocardiographic Imaging of Cardiac Resynchronization Therapy in Heart Failure: Observation of Variable Electrophysiologic Responses," *Heart Rhythm*, vol. 3, No. 3; Mar. 1, 2006, pp. 296-310.

Kornreich, "Body Surface Potential Mapping of ST Segment Changes in Acute Myocardial Infarction," *Circulation*, 1993; 87: 773-782.

Medtronic Vitatron CARELINK ENCORE® Programmer Model 29901 Reference Manual, 2013, Medtronic, Inc., Minneapolis, MN.

Modre et al., "Noninvasive Myocardial Activation Time Imaging: A Novel Inverse Algorithm Applied to Clinical ECG Mapping Data" *IEEE Transactions on Biomedical Engineering*, vol. 49; No. 10, Oct. 2002; pp. 1153-1161.

Potse et al., "Mathematical Modeling and Simulation of Ventricular Activation Sequences: Implications for Cardiac Resynchronization Therapy," *J. of Cardiovasc. Trans. Res.*, 2012; 5:146-158.

Prinzen et al., "Cardiac Resynchronization Therapy State-of-the-Art of Current Applications, Guidelines, Ongoing Trials, and Areas of Controversy" *Circulation*, 2013; 128: 2407-2418.

Ryu et al., "Simultaneous Electrical and Mechanical Mapping Using 3D Cardiac Mapping System: Novel Approach for Optimal Cardiac Resynchronization Therapy," *Journal of Cardiovascular Electrophysiology*, Feb. 2010; 21(2):219-22.

Silva et al., "Cardiac Resynchronization Therapy in Pediatric Congenital Heart Disease: Insights from Noninvasive Electrocardiographic Imaging" *Heart Rhythm*, vol. 6, No. 8. Aug. 1, 2009; pp. 1178-1185.

Singh et al., "Left Ventricular Lead Position and Clinical Outcome in the Multicenter Automatic Defibrillator Implantation Trial-Cardiac Resynchronization Therapy (MADIT-CRT) Trial," *Circulation*, 2011; 123:1159-1166.

Sperzel et al., "Intraoperative Characterization of Interventricular Mechanical Dyssynchrony Using Electroanatomic Mapping System—A Feasibility Study," *Journal of Interventional Cardiac Electrophysiology*, Nov. 2012; 35(2):189-96.

Steinhaus BM., "Estimating cardiac transmembrane activation and recovery times from unipolar and bipolar extracellular electrograms : a simulation study," *Circulation Research*, 1989, 64:449-462.

Strik et al., "Electrical and Mechanical Ventricular Activation During Left Bundle Branch Block and Resynchronization," *J. of Cardiovasc. Trans. Res.*, 2012; 5:117-126.

Sweeney et al., "Analysis of Ventricular Activation Using Surface Electrocardiography to Predict Left Ventricular Reverse Volumetric Remodeling During Cardiac Resynchronization Therapy," *Circulation*, Feb. 9, 2010; 121(5):626-634.

Turner et al., "Electrical and Mechanical Components of Dyssynchrony in Heart Failure Patients with Normal QRS Duration and Left Bundle-Branch Block," *Circulation* 2004; 109: 2544-2549.

Van Deursen et al., "Vectorcardiography as a Tool for Wasy Optimization of Cardiac Resynchronization Therapy in Canine LBBB Hearts," *Circulation Arrhythmia and Electrophysiology*, Jun. 1, 2012; 5(3):544-52. Available online Apr. 24, 2012.

Vardas et al., The Task Force for Cardiac Pacing and Cardiac Resynchronization Therapy of the European Society of Cardiology. Developed in Collaboration with the European Heart Rhythm Association, *European Heart Journal*, 2007; 28:2256-2295.

Varma et al., "Placebo CRT," *Journal of Cardiovascular Electrophysiology*, vol. 19, Aug. 2008; p. 878.

Williams et al., "Short-Term Hemodynamic Effects of Cardiac Resynchronization Therapy in Patients With Heart Failure, a Narrow QRS Duration, and No Dyssynchrony," *Circulation*, Oct. 27, 2009; 120: 1687-1694.

Miri et al., "Applicability of body surface potential map in computerized optimization of biventricular pacing," *Annals of Biomedical Engineering*, vol. 38, No. 3, Mar. 2010, pp. 865-875.

Miri et al., "Comparison of the electrophysiologically based optimization methods with different pacing parameters in patient undergoing resynchronization treatment," *30th Annual International IEEE EMBS Conference*, Aug. 2008, pp. 1741-1744.

(56)

References Cited

OTHER PUBLICATIONS

Miri et al., "Computerized Optimization of Biventricular Pacing Using Body Surface Potential Map," *31st Annual International Conference of the IEEE EMBS*, Sep. 2009, pp. 2815-2818.

Miri et al., "Efficiency of Timing Delays and Electrode Positions in Optimization of Biventricular Pacing: A Simulation Study," *IEEE*

Transactions on Biomedical Engineering, Nov. 2009, pp. 2573-2582.

Svendsen et al., "Computational Models of Cardiac Electrical Activation," Chapter 5, *Computational* Nov. 2010, pp. 73-88.

Wang et al., "Application of the Method of Fundamental Solutions to Potential-based Inverse Electrocardiography," *Annals of Biomedical Engineering*, Aug. 2006, pp. 1272-1288.

* cited by examiner

1

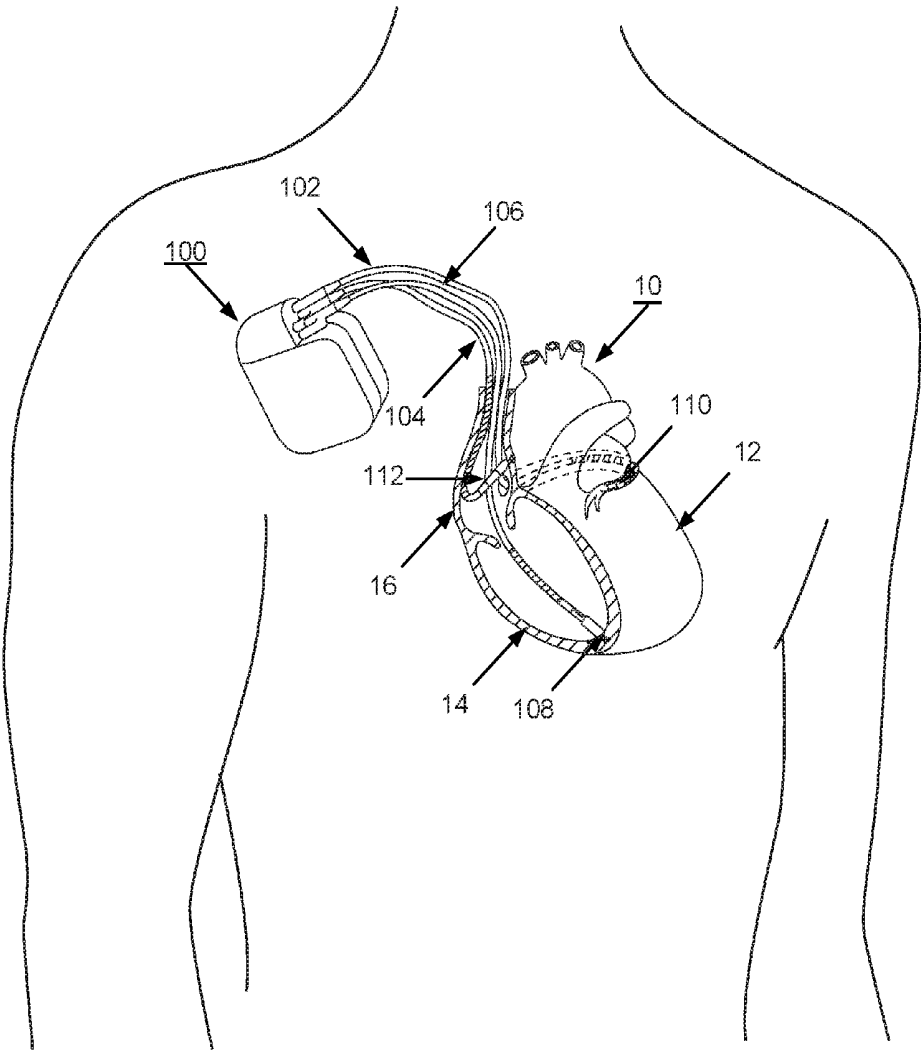


Fig. 1

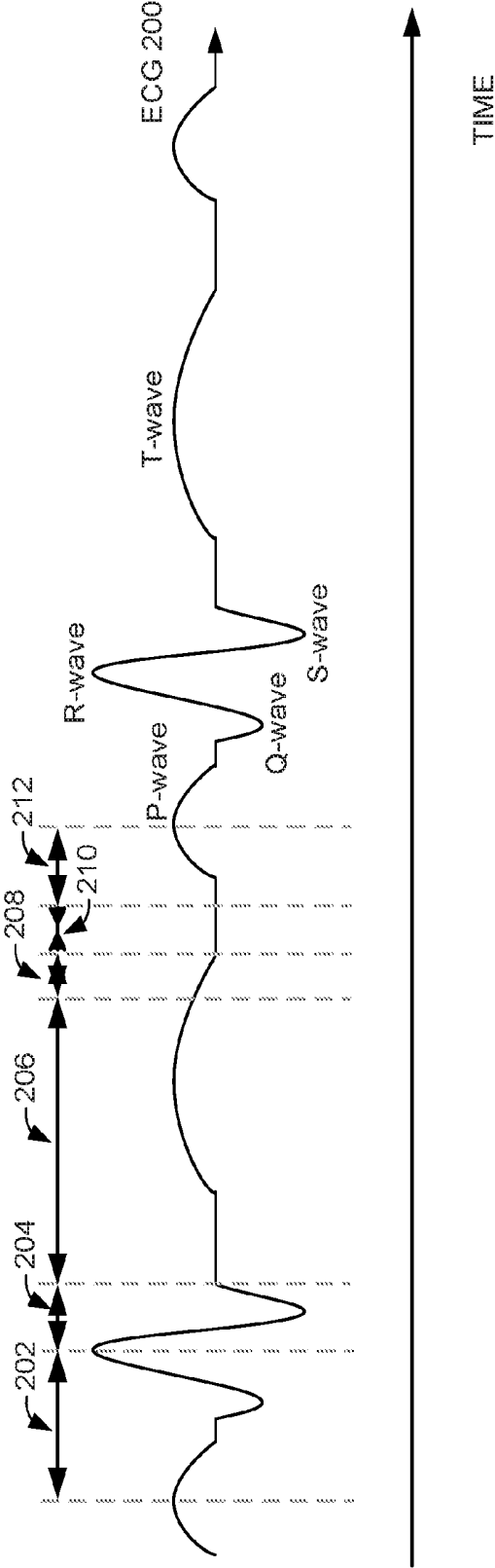


Fig. 2

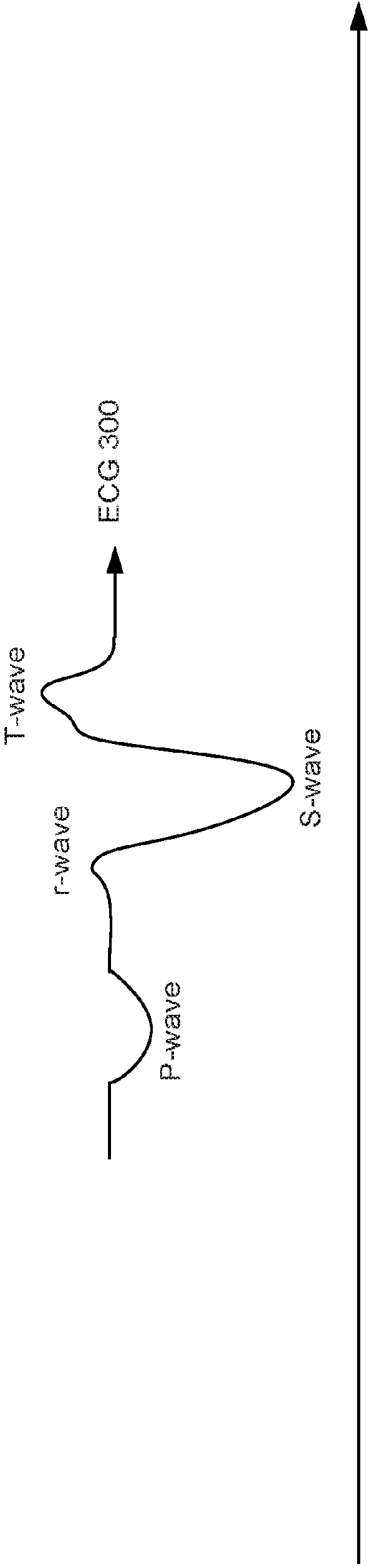


Fig. 3

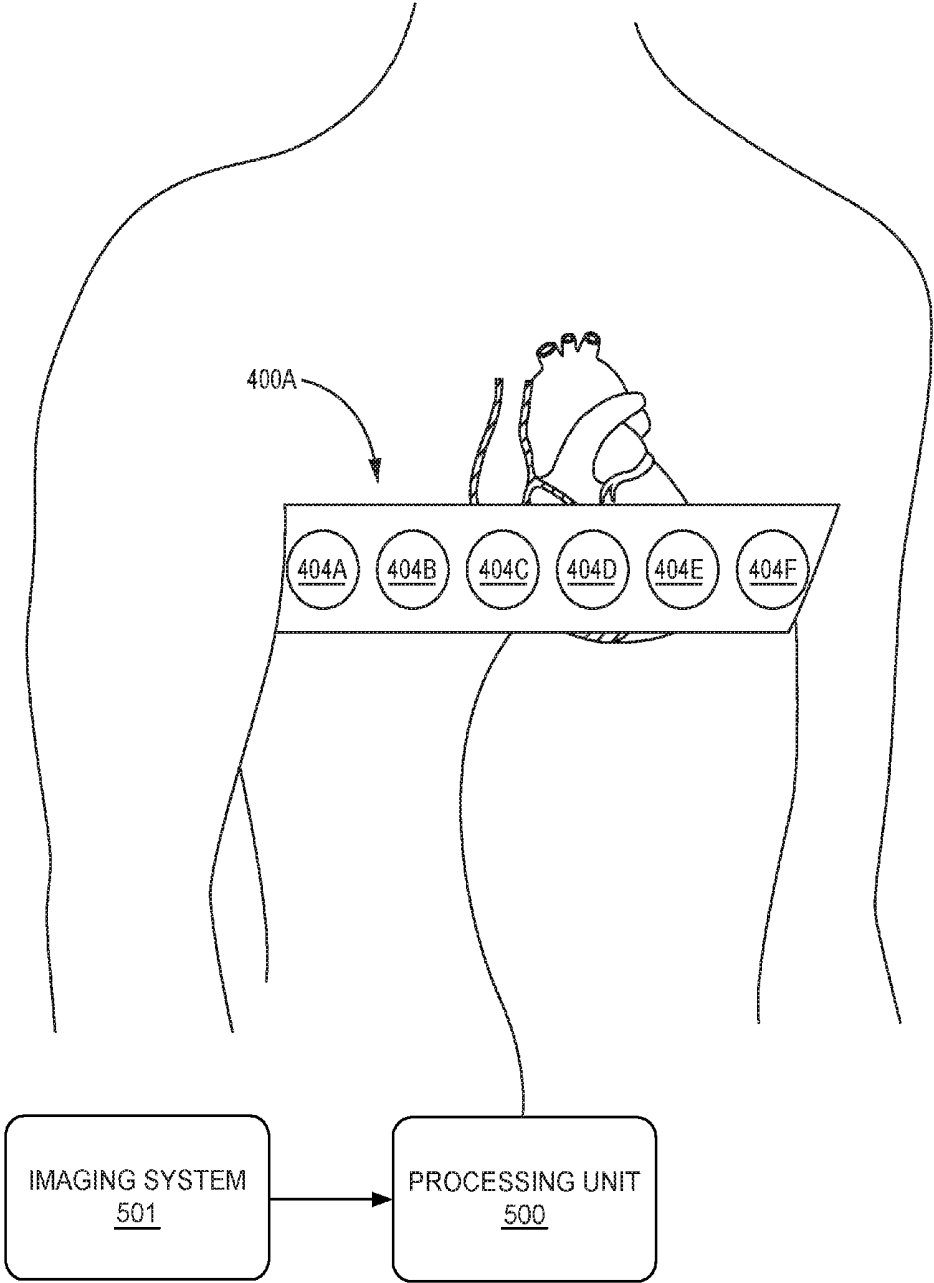


Fig. 4A

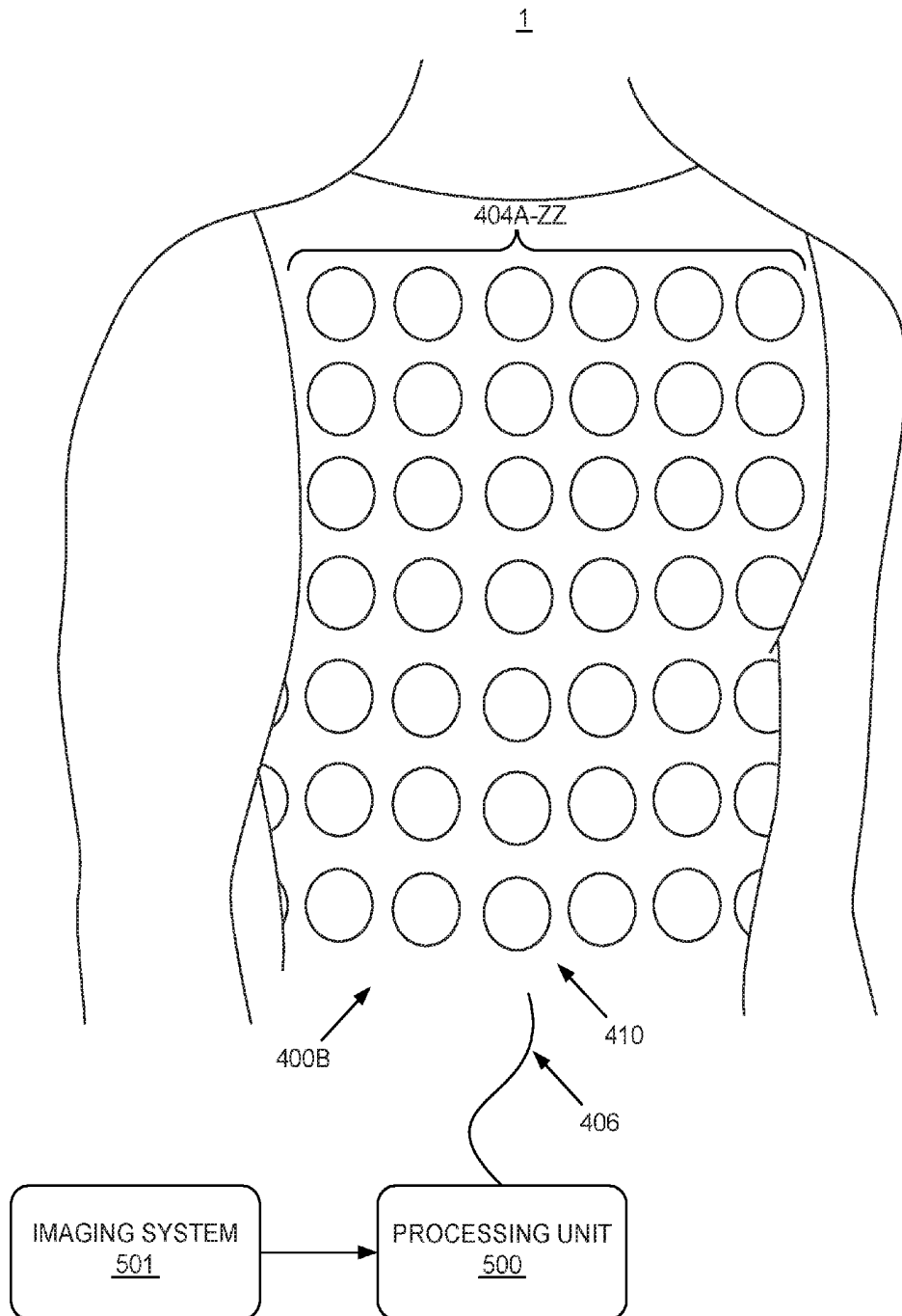


Fig. 4B

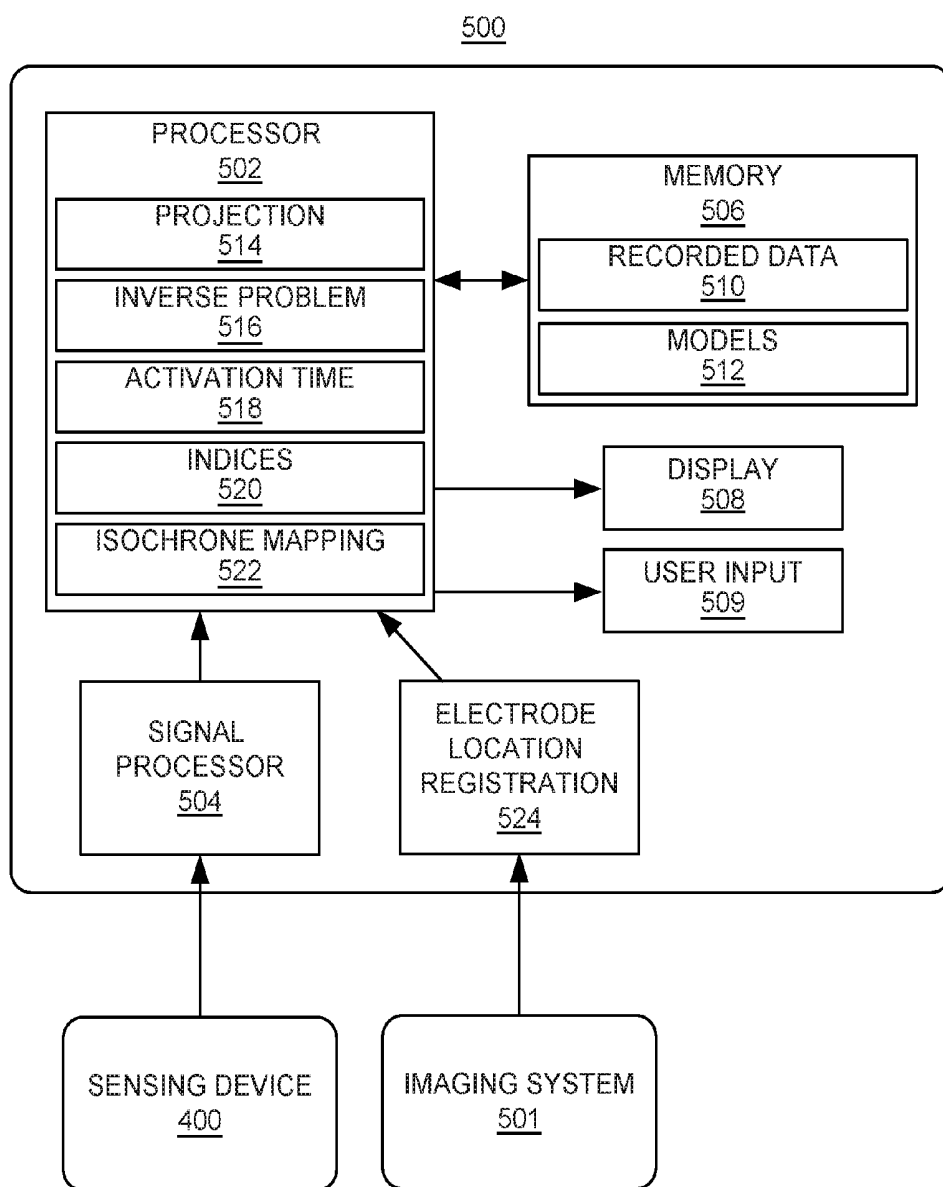


Fig. 5

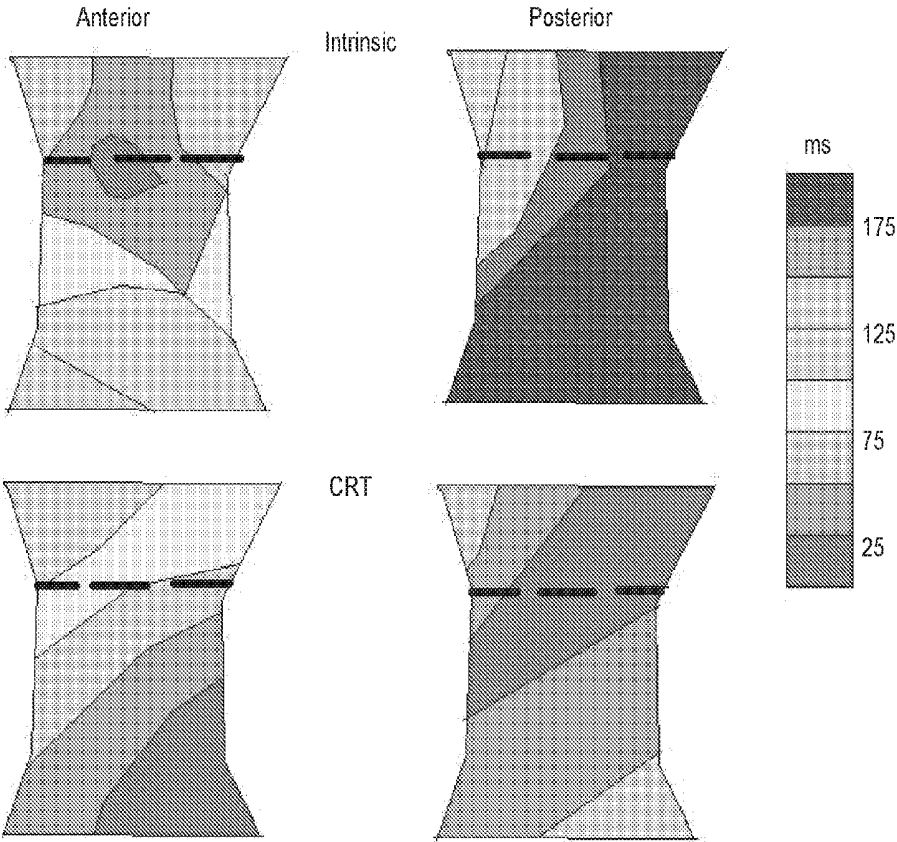


Fig. 6

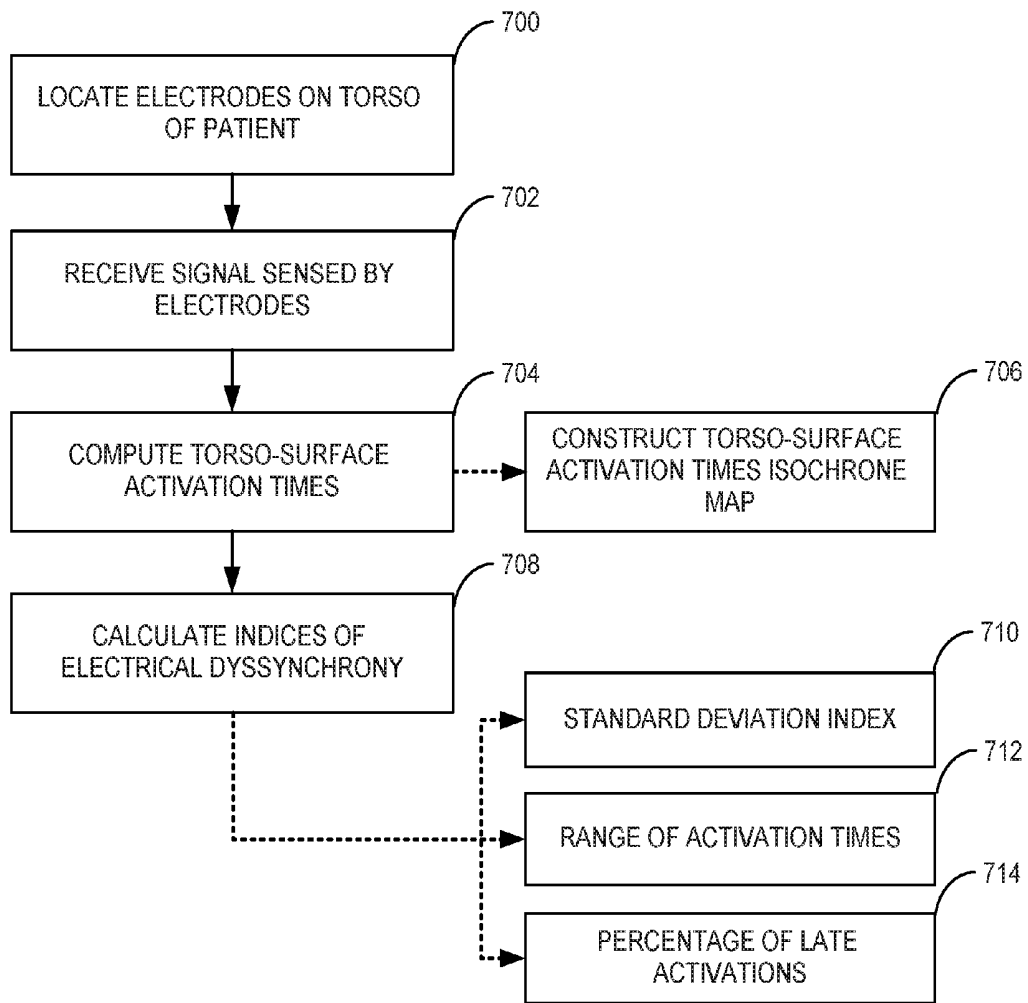


Fig. 7

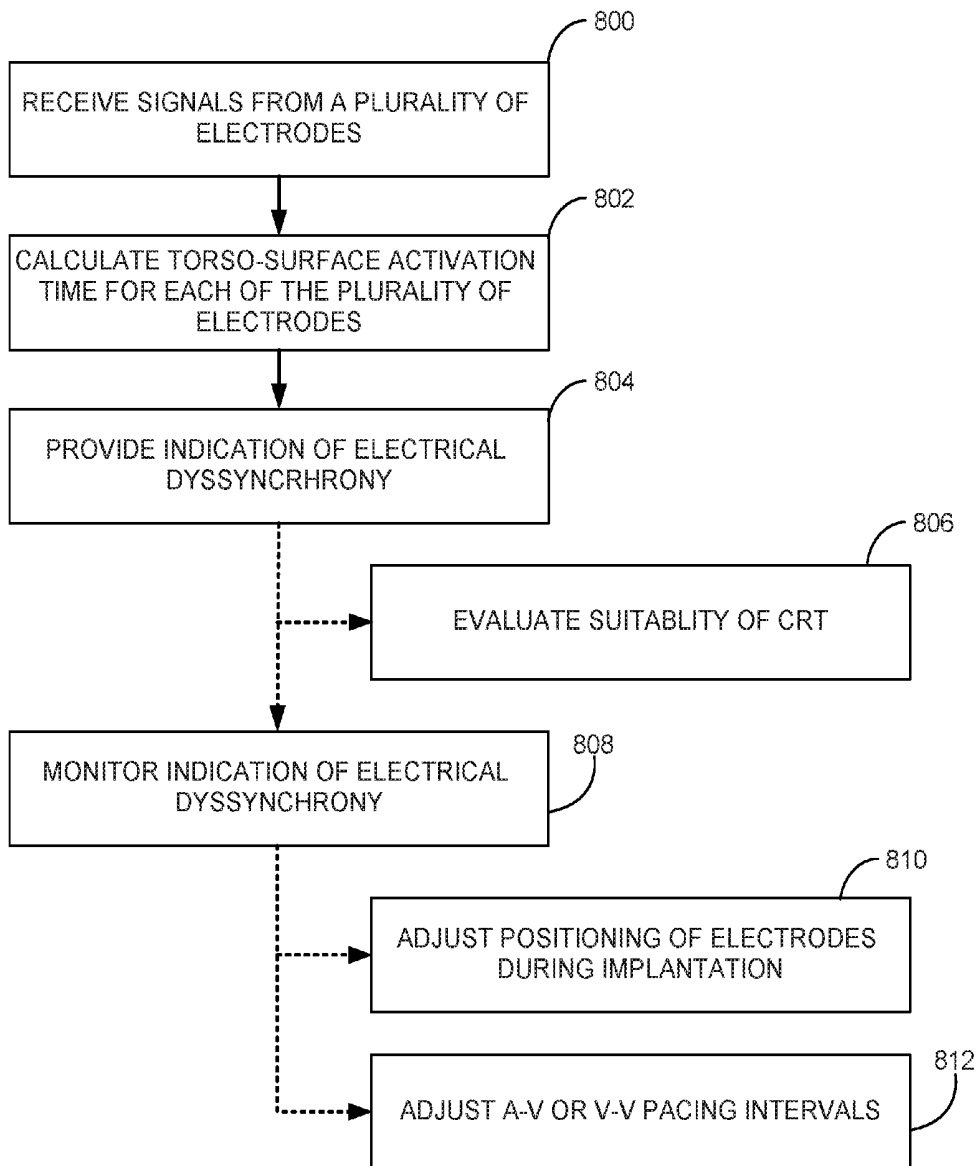


Fig. 8

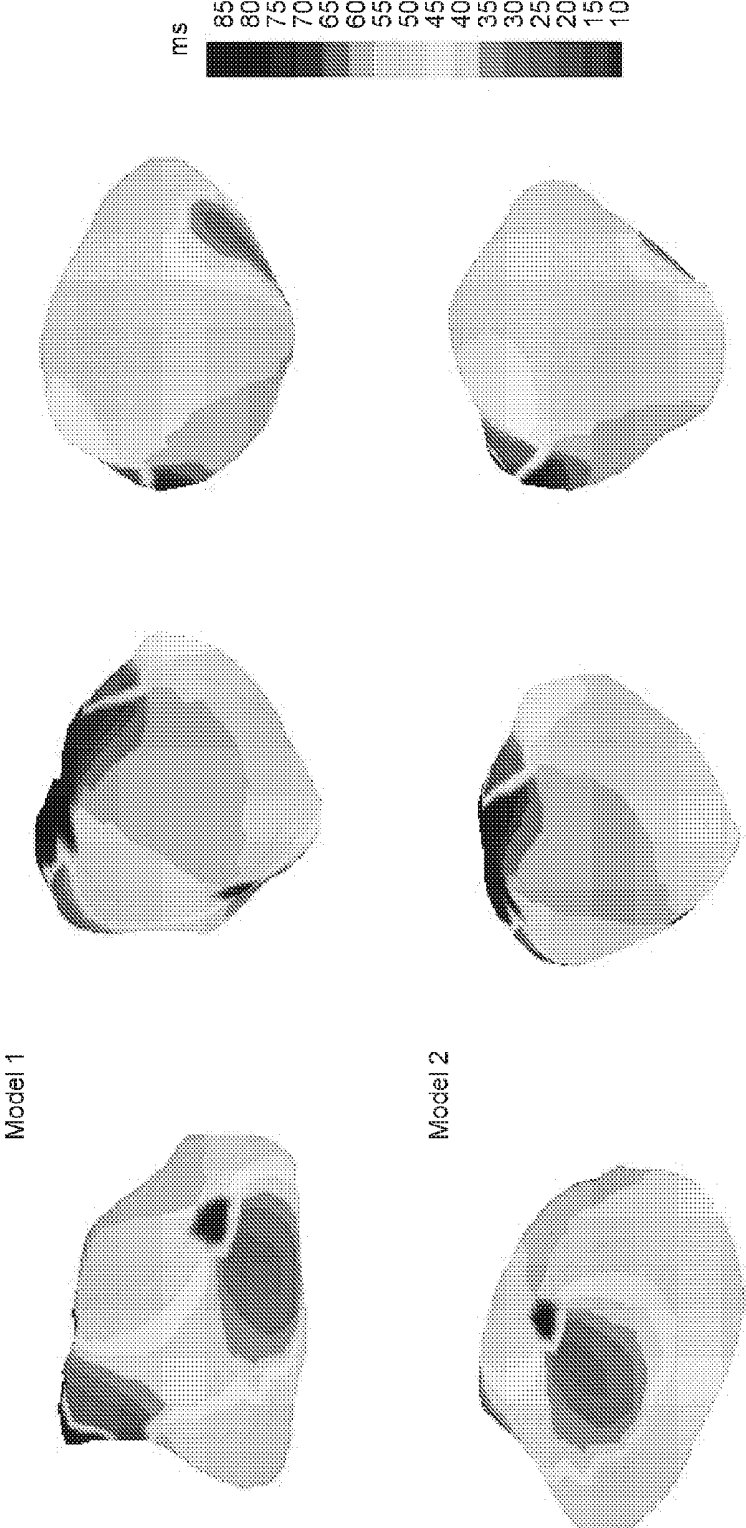


Fig. 9

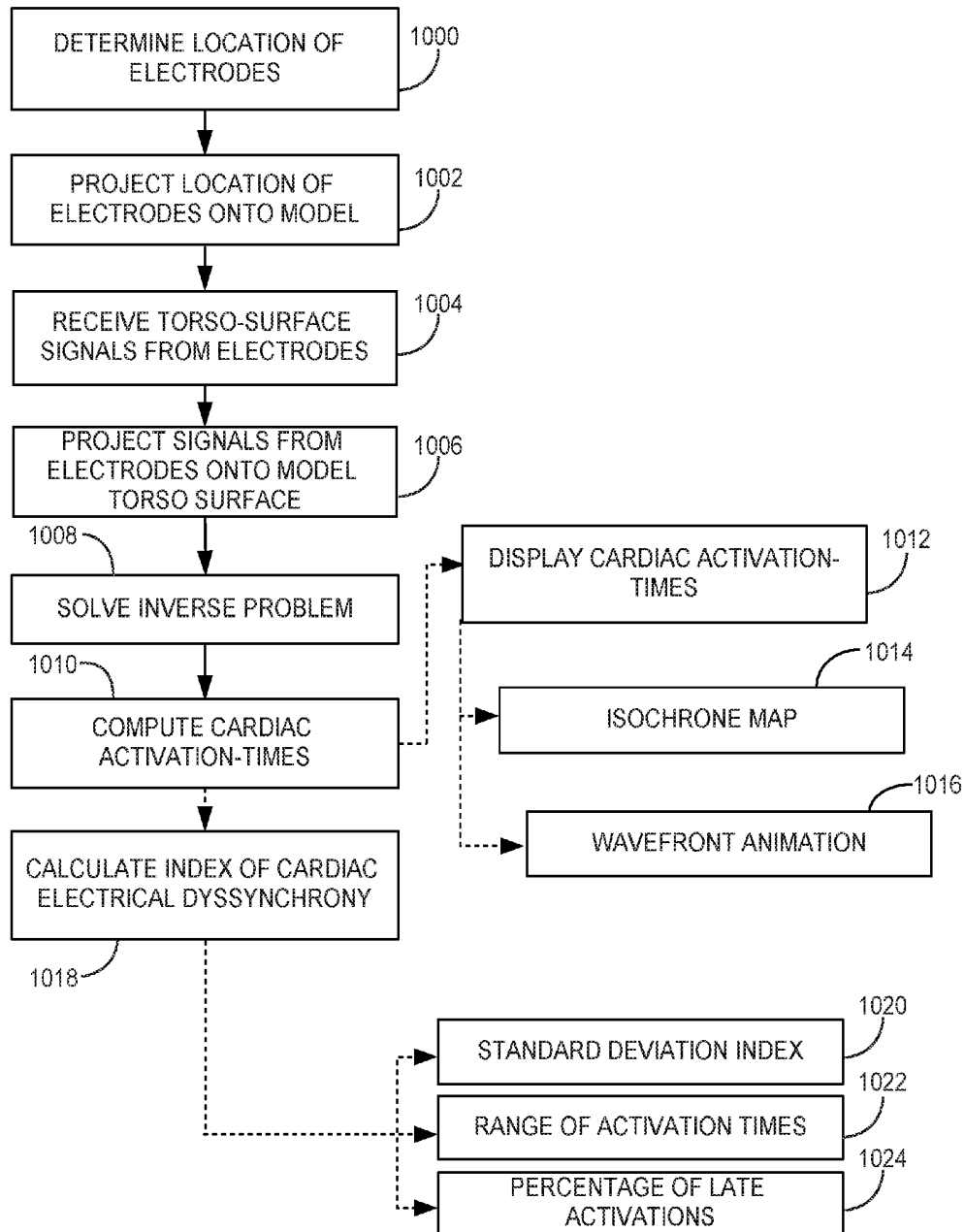


Fig. 10

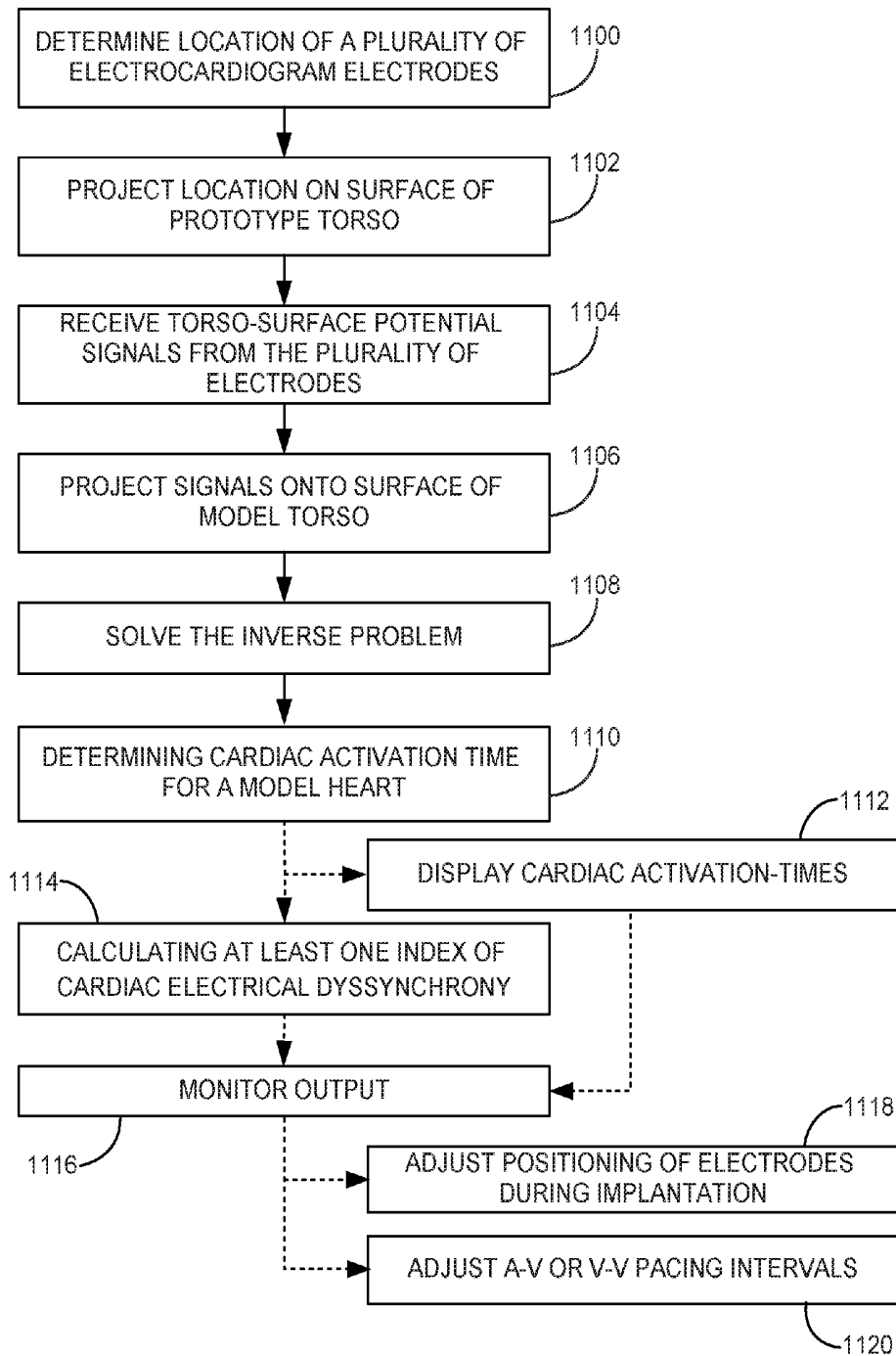


Fig. 11

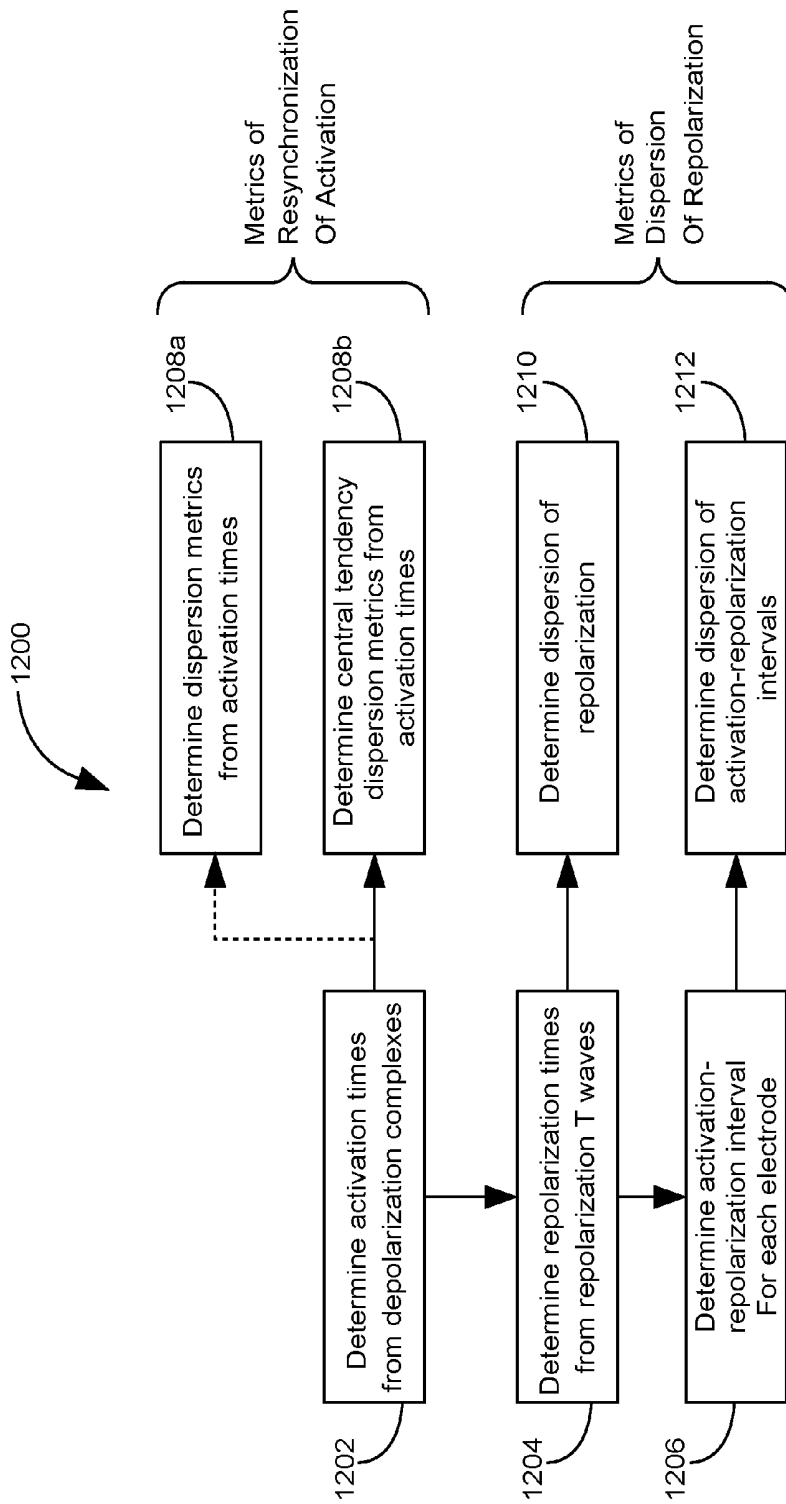


Fig. 12

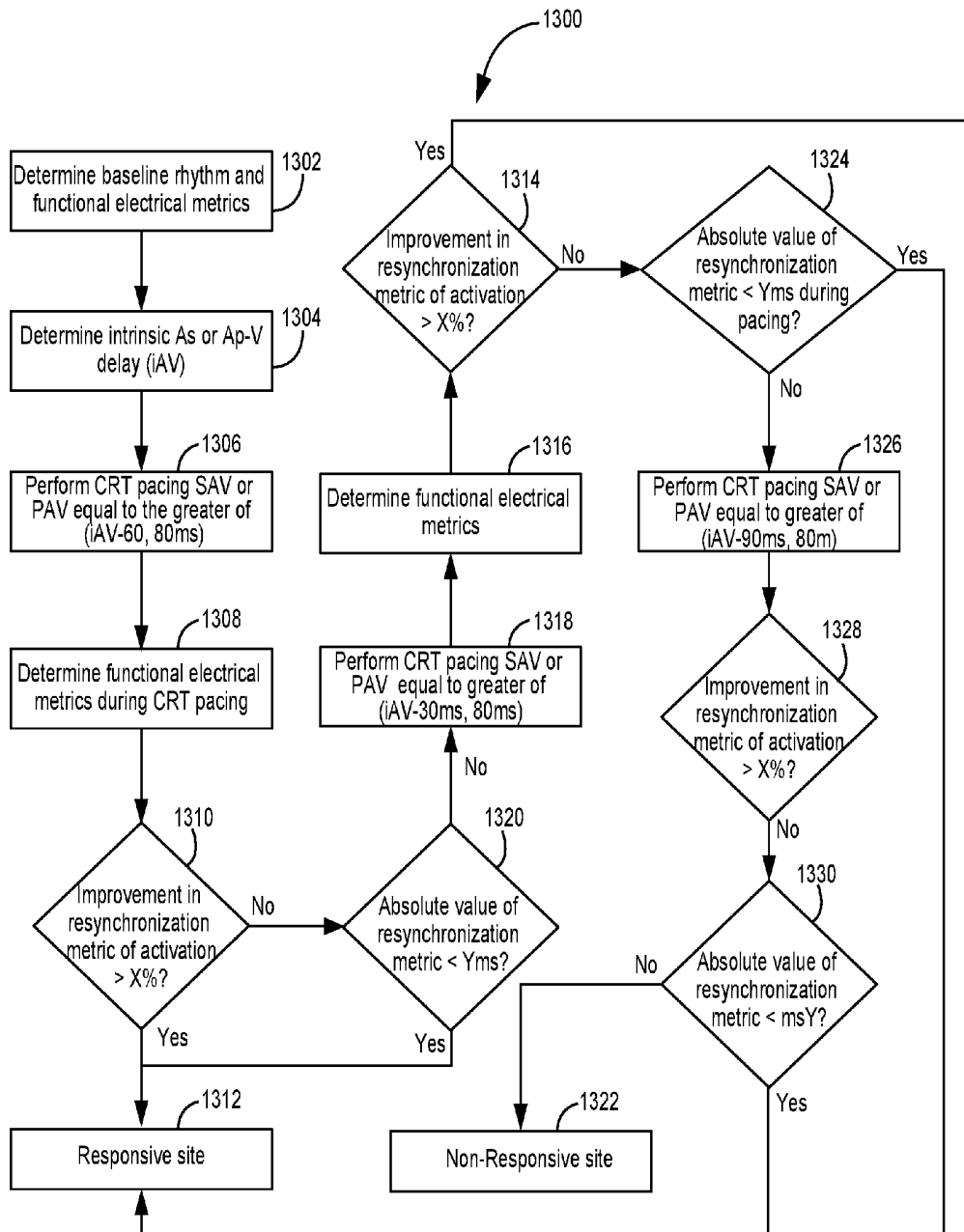


Fig. 13

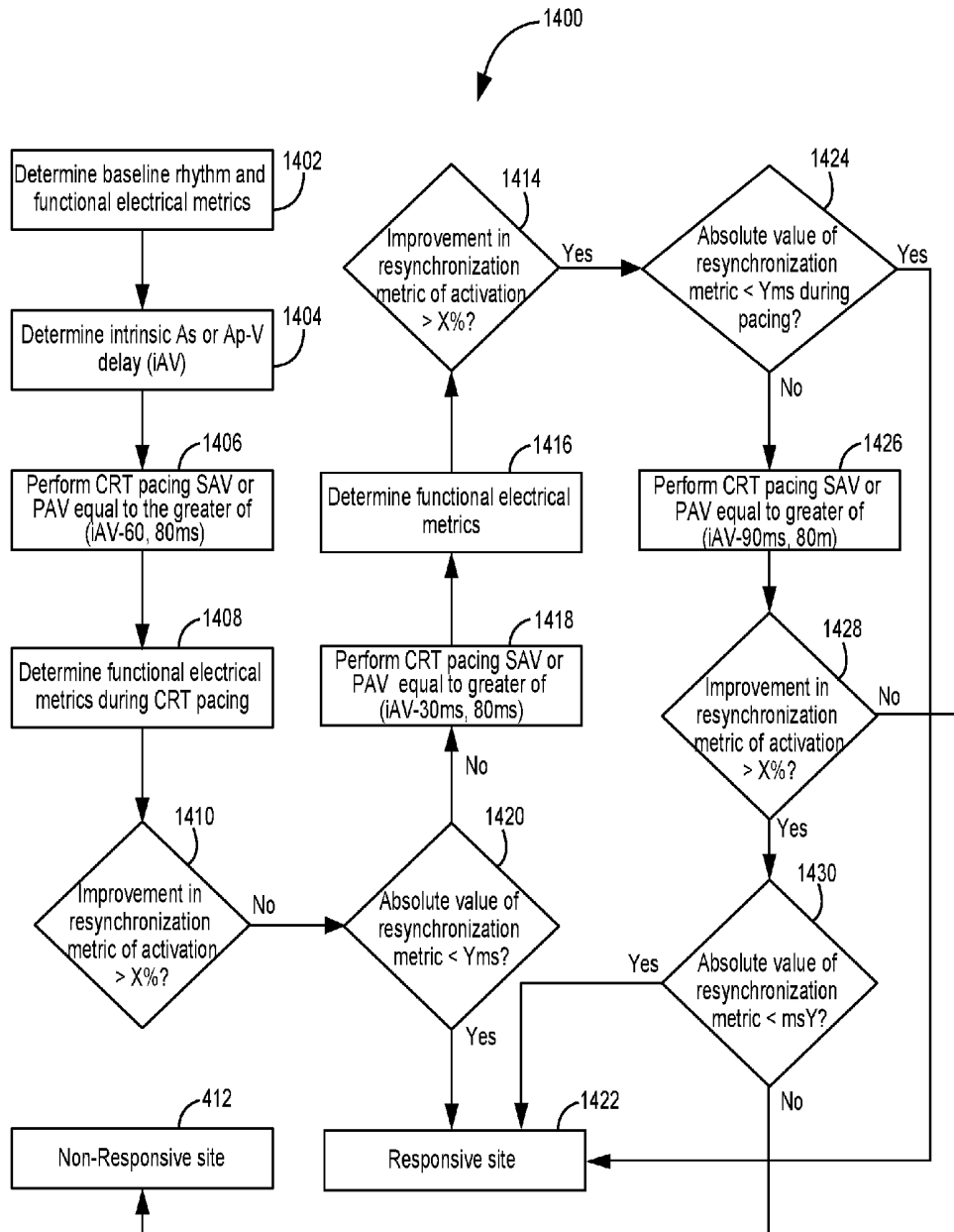


Fig. 14

METRICS OF ELECTRICAL DYSSYNCHRONY AND ELECTRICAL ACTIVATION PATTERNS FROM SURFACE ECG ELECTRODES

CROSS-REFERENCE TO RELATED APPLICATIONS

This application claims the benefit of U.S. Provisional Application No. 61/834,133, filed on Jun. 12, 2013. The disclosure of the above application is incorporated herein by reference in its entirety.

TECHNICAL FIELD

The disclosure relates to electrophysiology and, more particularly, to evaluating the electrical activation patterns of the heart.

BACKGROUND

The beat of the heart is controlled by the sinoatrial node, a group of conductive cells located in the right atrium near the entrance of the superior vena cava. The depolarization signal generated by the sinoatrial node activates the atrioventricular node. The atrioventricular node briefly delays the propagation of the depolarization signal, allowing the atria to drain, before passing the depolarization signal to the ventricles of the heart. The coordinated contraction of both ventricles drives the flow of blood through the torso of a patient. In certain circumstances, the conduction of the depolarization signal from the atrioventricular node to the left and right ventricles may be interrupted or slowed. This may result in a dyssynchrony in the contraction of the left and right ventricles, which may lead to heart failure or death.

Cardiac Resynchronization Therapy (CRT) may correct the symptoms of electrical dyssynchrony by providing pacing therapy to one or both ventricles or atria, e.g., by providing pacing to encourage earlier activation of the left or right ventricles. By pacing the contraction of the ventricles, the ventricles may be controlled so that the ventricles contract in synchrony. Some patients undergoing CRT have experienced improved ejection fraction, increased exercise capacity, and an improved feeling of well-being.

Providing CRT to a patient may involve determining whether the patient will derive benefit from the CRT prior to implantation of a cardiac rhythm device, determining optimal site for placement of one or more ventricular pacing leads, and programming of device parameters, such as selection of electrodes on multi-polar right or left ventricular leads, as well as selection of the timing of the pacing pulses delivered to the electrodes, such as atrioventricular (A-V) and intra-ventricular (V-V) delays. Assessment of electrical dyssynchrony for these purposes has typically involved clinically assessing QRS duration. Though CRT is recommended typically for patients with wide QRS duration, hemodynamic improvements through CRT have been reported in narrow QRS heart failure patients. Thus, some patients who may benefit from CRT may not be prescribed CRT based on present electrical dyssynchrony evaluation techniques. It is desirable to develop additional methods or systems that perform a noninvasive assessment of cardiac electrical dyssynchrony in order to identify patients who are able to benefit from CRT.

BRIEF DESCRIPTION OF DRAWINGS

FIG. 1 is a conceptual diagram illustrating an example system that may be used to provide CRT to a heart of a patient.

FIG. 2 is a timing diagram showing an example ECG tracing of two healthy heart beats.

FIG. 3 is a timing diagram showing an example ECG tracing of a patient suffering from left bundle branch block.

FIGS. 4A and 4B are conceptual diagrams illustrating example systems for measuring torso-surface potentials.

FIG. 5 is a block diagram illustrating an example system for measuring torso-surface potentials.

FIG. 6 is a series of simulated isochrone maps of torso-surface activation times for typical left bundle branch block intrinsic rhythm and CRT pacing.

FIG. 7 is a flow diagram illustrating an example operation of a system to provide indications of the cardiac electrical dyssynchrony of a patient based on torso-surface activation times.

FIG. 8 is a flow diagram illustrating an example technique for prescribing and configuring CRT based on an assessment cardiac electrical dyssynchrony of a patient via the torso-surface activation times.

FIG. 9 is a series of isochrone maps of cardiac activation times constructed with two different heart-torso models using body-surface ECG data from the same patient.

FIG. 10 is a flow diagram illustrating an example operation of a system to measure the cardiac electrical dyssynchrony of a patient via the cardiac activation times.

FIG. 11 is a flow diagram illustrating an example technique for configuring CRT based on an assessment of cardiac electrical dyssynchrony of a patient via the cardiac activation times.

FIG. 12 is a flow diagram illustrating an example operation of a system to determine an optimal location of a lead through processing resynchronization of activation data and/or dispersion of repolarization data.

FIG. 13 is a flow diagram illustrating an example operation of a system that requires a single functional electrical metric requirement to be substantially satisfied in order to determine whether a site is responsive for stable non-tachycardia baseline with at least some 1:1 atrioventricular (AV) rhythm.

FIG. 14 is a flow diagram illustrating another embodiment of an exemplary operation of a system that requires two functional electrical metric requirements to be substantially satisfied in order to determine whether a site is responsive for stable non-tachycardia baseline with at least some 1:1 AV rhythm.

DETAILED DESCRIPTION

The present disclosure provides methods depicted in flow diagrams 13 and 14 and/or systems that can assess cardiac electrical dyssynchrony through a noninvasive ECG belt or array. The functional electrical metrics are derived from measurements of a cardiac cycle taken from an array of surface electrodes. In one or more embodiments, the array can be one or more rows of electrodes on a front portion of a torso in the upper to middle regions (i.e. around the nipple-line) and another row of electrodes on a posterior section of the torso.

Functional electrical metrics of electrical dyssynchrony and electrical activation patterns are used in a variety of cardiac resynchronization therapy (CRT) applications. For example, the functional electrical metrics can be used to obtain feedback on efficacy of cardiac resynchronization during implant, which may be helpful in determining an optimal placement of a medical electrical lead. Additionally, an optimal pacing vector can be selected by employing features of the present disclosure. CRT timing parameters

(e.g. A-V delay, V-V delay) can also be optimized through evaluation of multisite pacing. Significantly, patient selection is also improved by determining which patients can potentially benefit from CRT pacing. For example, non-tachycardia patients may benefit from CRT pacing as implemented herein.

One or more embodiments of cardiac pacing are disclosed herein. In one or more embodiments, a baseline rhythm is determined using a plurality of body-surface electrodes. Thereafter, a set of baseline functional electrical metrics is determined. Resynchronization pacing is delivered using a right ventricular electrode and a pacing left ventricular electrode or only pacing with a left ventricular electrode. A set of functional electrical metrics relating to cardiac depolarization and repolarization is determined in response to resynchronization pacing. A determination is then made as to whether relative reduction of at least one functional electrical metric from the set of functional electrical metrics exceeds X % of its corresponding value from the set of baseline functional electrical metrics. A determination is then made as to whether an absolute value of at least one electrical metric from the set of the functional electrical metrics is less than Y ms. A determination is then made as to whether a site is responsive to cardiac resynchronization therapy (CRT) based upon the functional electrical metric data compared to the baseline.

FIG. 1 is a conceptual diagram illustrating an example system that may be used to provide CRT to heart 10 of patient 1. The system may include an implantable medical device (IMD) 100. IMD 100 may be a CRT pacemaker or CRT defibrillator. IMD 100 may be equipped with one or more leads; leads 102, 104, and 106; that are inserted into or on the surface of the left ventricle 12, right ventricle 14, or right atrium 16 of heart 10. Leads 102, 104, and 106 may be equipped with one or more electrodes 108, 110, and 112.

A heart 10 may suffer from electrical dyssynchrony. Electrical dyssynchrony may occur when the depolarization signals that start the contraction of ventricles 12 and 14 do not reach the ventricles in a coordinated manner, and results in an inefficient pumping action of heart 10. Patient 1 may experience symptoms of heart failure. Electrical dyssynchrony may be caused by damage to the electrical system of heart 10, e.g., a bundle branch block or damage to the fascicle of heart 10. Alternate conduction pathways may form within heart 10, but these pathways may slow the progress of the electrical depolarization signal and result in the asynchronous contraction of ventricles 12 and 14.

IMD 100 provides CRT stimulation to heart 10 of patient 1. IMD 100 is depicted as being configured to deliver stimulation to right atrium 16, right ventricle 14, and left ventricle 12 of heart 10. In other examples, IMD 100 may be configured to deliver stimulation to other portions of heart 10 depending on the condition of patient 1. IMD 100 may interact with an external programmer (not shown) to adjust operating characteristics, such as A-V and V-V delays, of the therapy delivered by IMD 100. In some examples, IMD 100 may also be configured to sense the electrical activity of heart 10 through the electrodes on one or more of leads 102, 104, and 106.

As shown in FIG. 1, leads 102, 104, 106 may extend into the heart 10 of patient 1 to deliver electrical stimulation to heart 10 and synchronize the contraction of ventricles 12 and 14. Right ventricular lead 106 extends through one or more veins (not shown), the superior vena cava (not shown), and right atrium 16, and into right ventricle 14. Left ventricular coronary sinus lead 102 extends through one or more veins, the vena cava, right atrium 16, and into the coronary sinus

(not shown) to a region adjacent to the free wall of left ventricle 12 of heart 10. Right atrial lead 104 extends through one or more veins and the vena cava, and into the right atrium 16 of heart 10.

In other configurations, IMD 100 may be equipped with more or fewer leads, depending on the requirements of the therapy provided to patient 1. For example, IMD 100 may be equipped with leads that extend to greater or fewer chambers of heart 10. In some examples, IMD 100 may be equipped with multiple leads that extend to a common chamber of heart, e.g., multiple leads extending to the left ventricle 12. IMD 100 may also be equipped with one or more leads that are placed on the heart through other means providing access to the cardiac tissue, such as surgical epicardial lead placement, and other pericardial access approaches. In some examples, IMD 100 may be equipped with a left ventricular lead that is placed on the heart endocardially. Additionally, although illustrated as implanted on the right side of patient 1 in FIG. 1, IMD 100 may in other examples be implanted on the left side of the pectoral region of the patient, or within the abdomen of the patient.

Electrodes 108, 110, and 112 may attach to portions of heart 10 to provide electrical stimulation or sense the electrical depolarization and repolarization signals of heart 10. Electrode 108, in right ventricle 14, may be affixed to the wall of heart 10 via a screw based mechanism. Electrode 110 may comprise multiple electrodes mounted the same lead, allowing lead 102 to both transmit therapeutic shocks as well as electrical sense data detected by electrode 110. Electrodes 110 and 112 may be attached to the surface of heart 10 via glue, barbs, or another permanent or semi-permanent attachment mechanism.

FIGS. 2 and 3 contrast timing diagrams from a healthy heart (FIG. 2) and a heart experiencing electrical dyssynchrony (FIG. 3). The timing diagram of FIG. 2 shows an example ECG tracing 200 in conjunction with certain periods or phases of the mechanical cardiac cycle. The depiction and associated description of FIG. 2 are generalized in the sense that the relationship between the timing of electrical and mechanical events is not necessarily as described for all subjects, or at all times for any given subject.

ECG tracing 200 depicts the electrical signal of two example healthy cardiac cycles. The electrical signal of a healthy heart comprises a series of 5 characteristic waves: the P-wave, Q-wave, R-wave, S-wave, and T-wave. Each of these waves, and the intervals between them, correspond to discrete events in the functioning of a healthy heart.

In general, at some point during period 202, which stretches from the peak of a P-wave to the peak of the subsequent R-wave, atrial systole occurs, which is the contraction of the atria that drives blood from the atria into the ventricles. Period 204, from the peak of the R-wave to the opening of the aortic valve, generally marks a period of isovolumetric contraction. The atrioventricular and aortic valves are closed, preventing blood flow and leading to an increase in pressure in the ventricles but not yet in the aorta. Period 206, bounded by the opening and closing of the aortic valves is generally when ejection occurs during the cardiac cycle. During ejection period 206 the ventricles contract and empty of blood, driving the blood into cardiovascular system. As the contraction of the ventricles complete, the pressure of the blood within the cardiovascular system closes the aortic valves. Period 208, bounded by the closing of the aortic valves and the opening of the atrioventricular valves, is the isovolumetric relaxation of the ventricles. Periods 210 and 212 are collectively known as the late diastole, where the whole heart relaxes and the atria fill with

blood. Period **210** corresponds to a rapid inflow of blood while period **212** corresponds to diastasis, the period of slower flow blood into the atria before the atrial systole **202** occurs again.

The P-wave marks the stimulation of the atria and the beginning of the cardiac cycle. The atria contract under the stimulation, forcing blood into the ventricles. The PR segment marks the delay as the depolarization signal travels from the atrioventricular node to the Purkinje fibers. The Q-wave marks the depolarization of the interventricular septum as an initial part of the depolarization of the ventricles. The R-wave follows the Q-wave and represents the depolarization of the ventricles. The S-wave follows the R-wave and represents the later depolarization of the ventricles. The T-wave marks the recovery and repolarization of the ventricles in preparation for the next beat of the heart.

The QRS complex, spanning from the beginning of the Q-wave to the end of the S-wave, represents the electrical activation of the myocardium. Ventricular contraction of both the left and right ventricles is in response to the electrical activation. The QRS complex typically lasts from 80 to 120 ms. The relatively large amplitude of the QRS complex is due to the large muscle mass of the ventricles. Issues affecting the synchrony of the ventricular contraction may be demonstrated in the deformation of the QRS complex. For example, electrical dyssynchrony in the contraction of the ventricles can widen the R-wave or produce two R-wave peaks, typically labeled the r-wave and R'-wave, corresponding to the depolarization of each ventricle. The S-wave and the T-wave may be morphological different than in an ECG tracing of a healthy heart.

FIG. 3 is a timing diagram showing ECG tracing **300**. ECG tracing **300** depicts the electrical signal of a patient suffering from a left bundle branch block. A sign of the condition is the presence of an rS complex versus the typical QRS complex, though other variations of Q, R, and S waves form combinations that may be present in patients suffering from a left bundle branch block, right bundle branch blocks, or other ventricular conduction conditions. The extended duration of the rS complex indicates an extended ventricular contraction time, likely due to electrical dyssynchronies.

Diagnosis of a left or right bundle branch block, or cardiac electrical dyssynchrony in general, typically involves measuring the duration of the QRS complex (or other complex marking the depolarization of the ventricles). QRS complexes lasting 100 ms or longer may indicate a partial bundle branch block and 120 ms or longer a complete bundle branch block. In FIG. 3, the initial Q-wave is not visible, instead the tracing shows an initial r-wave, corresponding to the initial depolarization of the right ventricle and followed by an S-wave marking the rapid depolarization of both ventricles after the cardiac signal has reached the left ventricle after traveling through the myocardium of the heart, rather than through the bundle branches. Because the myocardium conducts electricity more slowly than the bundle branches, the entire complex is spread out over a longer period.

Absent a case of bundle branch block—such as the one shown in FIG. 3—or other condition, diagnosis may be more challenging. Occult dyssynchronies may be present that, while responsive to CRT, may not be readily identifiable from an examination of the typical 12-lead ECG. These occult dyssynchronies may manifest in the electrical signals generated by the heart and measured on the surface of the torso and may be diagnosable through alternative means of analysis, such as by determining cardiac activation times at a plurality of spatially distributed locations according to the techniques described herein.

FIGS. 4A and 4B are conceptual diagrams illustrating example systems for measuring body-surface potentials and, more particularly, torso-surface potentials. In one example illustrated in FIG. 4A, sensing device **400A**, comprising a set of electrodes **404A-F** (generically “electrodes **404**”) and strap **408**, is wrapped around the torso of patient **1** such that the electrodes surround heart **10**.

As illustrated in FIG. 4A, electrodes **404** may be positioned around the circumference of patient **1**, including the posterior, lateral, and anterior surfaces of the torso of patient **1**. In other examples, electrodes **404** may be positioned on any one or more of the posterior, lateral, and anterior surfaces of the torso. Electrodes **404** may be electrically connected to processing unit **500** via wired connection **406**. Some configurations may use a wireless connection to transmit the signals sensed by electrodes **404** to processing unit **500**, e.g., as channels of data.

Although in the example of FIG. 4A sensing device **400A** comprises strap **408**, in other examples any of a variety of mechanisms, e.g., tape or adhesives, may be employed to aid in the spacing and placement of electrodes **404**. In some examples, strap **408** may comprise an elastic band, strip of tape, or cloth. In some examples, electrodes **404** may be placed individually on the torso of patient **1**.

Electrodes **404** may surround heart **10** of patient **1** and record the electrical signals associated with the depolarization and repolarization of heart **10** after the signals have propagated through the torso of patient **1**. Each of electrodes **404** may be used in a unipolar configuration to sense the torso-surface potentials that reflect the cardiac signals. Processing unit **500** may also be coupled to a return or indifferent electrode (not shown) which may be used in combination with each of electrodes **404** for unipolar sensing. In some examples, there may be 12 to 16 electrodes **404** spatially distributed around the torso of patient **1**. Other configurations may have more or fewer electrodes **404**.

Processing unit **500** may record and analyze the torso-surface potential signals sensed by electrodes **404**. As described herein, processing unit **500** may be configured to provide an output to a user indicating the electrical dyssynchrony in heart **10** of patient **1**. The user may make a diagnosis, prescribe CRT, position therapy devices, e.g., leads, or adjust or select treatment parameters based on the indicated electrical dyssynchrony.

In some examples, the analysis of the torso-surface potential signals by processing unit **500** may take into consideration the location of electrodes **404** on the surface of the torso of patient **1**. In such examples, processing unit **500** may be communicatively coupled to an imaging device **501**, which may provide an image that allows processing unit **500** to determine coordinate locations of each of electrodes **404** on the surface of patient **1**. Electrodes **404** may be visible, or made transparent through the inclusion or removal of certain materials or elements, in the image provided by imaging system **501**.

FIG. 4B illustrates an example configuration of a system that may be used to evaluate electrical dyssynchrony in heart **10** of patient **1**. The system comprises a sensing device **400B**, which may comprise vest **410** and electrodes **404A-ZZ** (generically “electrodes **404**”), a processing unit **500**, and imaging system **501**. Processing unit **500** and imaging system **501** may perform substantially as described above with respect to FIG. 4A. As illustrated in FIG. 4B, electrodes **404** are distributed over the torso of patient **1**, including the anterior, lateral, and posterior surfaces of the torso of patient **1**.

Sensing device **400B** may comprise a fabric vest **410** with electrodes **404** attached to the fabric. Sensing device **400B** may maintain the position and spacing of electrodes **404** on the torso of patient **1**. Sensing device **400B** may be marked to assist in determining the location of electrodes **404** on the surface of the torso of patient **1**. In some examples, there may be 150 to 256 electrodes **404** distributed around the torso of patient **1** using sensing device **400B**, though other configurations may have more or fewer electrodes **404**.

FIG. **5** is a block diagram illustrating an example system for measuring torso-surface potentials and providing indications of electrical dyssynchrony. The example system may comprise a processing unit **500** and a set of electrodes **404** on a sensing device **400**, e.g., one of example sensing devices **400A** or **400B** (FIGS. **4A** and **4B**). The system may also include an imaging system **501**.

As illustrated in FIG. **5**, processing unit **500** may comprise a processor **502**, signal processor **504**, memory **506**, display **508**, and user input device **509**. Processing unit **500** may also include an electrode location registration module **524**. In the illustrated example, processor **502** comprises a number of modules and, more particularly, a projection module **514**, an inverse problem module **516**, an activation time module **518**, an indices module **520**, and an isochrones mapping module **522**. Memory **506** may store recorded data **510** and models **512**.

Processing unit **500** may comprise one or more computing devices, which may be co-located, or dispersed at various locations. The various modules of processing unit **500**, e.g., processor **502**, projection module **514**, inverse problem module **516**, activation time module **518**, statistics module **520**, isochrones mapping module **522**, signal processor **504**, electrode location registration module **524**, display **508**, memory **506**, recorded data **510** and torso models **512** may be implemented in one or more computing devices, which may be co-located, or dispersed at various locations. Processor **502**, and the modules of processor **502**, may be implemented in one or more processors, e.g., microprocessors, of one or more computing devices, as software modules executed by the processor(s). Electrode location registration module **524** may, in some examples, be implemented in imaging system **501**.

In addition to the various data described herein, memory **506** may comprise program instructions that, when executed by a programmable processor, e.g., processor **502**, cause the processor and any components thereof to provide the functionality attributed to a processor and processing unit herein. Memory **506** may include any volatile, non-volatile, magnetic, optical, or electrical media, such as a hard disk, magnetic tape, random access memory (RAM), read-only memory (ROM), CD-ROM, non-volatile RAM (NVRAM), electrically-erasable programmable ROM (EEPROM), flash memory, or any other digital or analog media. Memory **506** may comprise one or more co-located or distributed memories. Memory **506** may comprise a tangible article that acts as a non-transitory storage medium for data and program instructions.

The torso-surface potential signals sensed by electrodes **404** of sensing device **400** may be received by signal processor **504** of processing unit **500**. Signal processor **504** may include an analog-to-digital converter to digitize the torso-surface potential signals. Signal processor **504** may also include various other components to filter or otherwise condition the digital signals for receipt by processor **502**.

Electrode location registration module **524** may receive imaging data from imaging system **501**. Electrode location registration module **524** analyzes the imaging data. In par-

ticular, electrode registration location module **524** identifies electrodes **404**, or elements co-located with the electrodes that are more clearly visible via the imaging modality, within the images. Electrode location registration module **524** may further identify the locations of each of the electrodes on the surface of the patient and/or within a three-dimensional coordinate system. In some examples, the locations of electrodes **404** may be manually identified and registered with processing unit **500**, e.g., by a user, via electrode registration module **524**.

The imaging data may comprise data representing one or more images of patient **1** wearing electrodes **404**, e.g., of a sensing device **400**. In some examples, the images may be obtained before or during a medical procedure, e.g., a surgical procedure to implant a cardiac rhythm device and lead system for delivery of CRT.

In some examples, processor **502** may store the torso-surface potential signals, imaging data from imaging system, electrode location data from electrode location registration module, or any values disclosed herein that are derived by processing of such signals and data by processor **502**, within memory **506** as recorded data **510**. Each recorded torso-surface potential signal, or other values derived therefrom, may be associated with a location of the electrode **404** that sensed the torso-surface potential signal. In this manner, the torso-surface potential data may be correlated with the position of electrodes **404** on the torso of patient **1**, or within a three-dimensional coordinate system, enabling spatial mapping of the data to particular locations on the surface of the torso or within the coordinate system. In some examples, aspects of the techniques described herein may be performed at some time after the acquisition of the torso-surface potential signals and location data based on recorded data **510**.

Processor **502** may be configured to provide one or more indications of electrical dyssynchrony based on the torso-surface potential signals and, in some examples, the electrode location data. Example indications of electrical dyssynchrony include indices illustrating activation times for each electrode/location distributed about the torso or heart, or for one or more subsets of electrodes located within a common region, e.g., within a left posterior, left anterior, right posterior, or right anterior region. In some examples, processor **502** may be configured to provide a set of two or more different indications, e.g., several different indications, for each of two or more different regions, e.g., several different regions, of the torso or heart.

Some indications of dyssynchrony may include statistical values or other indices derived from activation times for each electrode location or one or more subsets of electrodes within one or more regions. Other examples indications of electrical dyssynchrony that may be determined based on activation times at various electrodes/locations include graphical indications, such as an isochrone or other activation maps, or an animation of electrical activation. Other examples indications of electrical dyssynchrony that may be determined based on activation times at various electrodes/locations include identifying one of a predetermined number of dyssynchrony levels, e.g., high, medium, or low, via text or color, e.g., red, yellow, green, for example.

In some examples, the various indications of dyssynchrony for one or more regions may be determined based on data collected at two or more different times and/or under two or more different conditions. For example, the various indications of dyssynchrony may be determined based on torso-potential signals collected during intrinsic conduction of heart **10**, and also determined based on torso-potential

signals collected during CRT. In this manner, the potential dyssynchrony-reducing benefit of CRT may be evaluated for the patient by comparing the different values, graphical representations, or the like, resulting from intrinsic conduction and CRT. As another example, the various indications of dyssynchrony may be determined each of a plurality of different times based on torso-potential signals collected during delivery of CRT with different lead positions, electrode configurations, or CRT parameters, e.g., A-V or V-V interval values. In this manner, the relative dyssynchrony-reducing benefits of the different lead positions, electrode configurations, or CRT parameters positions may be evaluated for the patient by comparing the different values, graphical representations, or the like.

Models **512** may include a plurality of different models, e.g., three-dimensional models, of the human torso and heart. A model torso or model heart may be constructed by manual or semi-automatic image segmentation from available databases of previously acquired medical images (CT/MRI) of a plurality of subjects, e.g., cardiomyopathy patients, different than patient **1**, using commercially available software. Each model may be discretized using a boundary element method. A plurality of different torso models may be generated. The different models may represent different subject characteristics, such as different genders, disease states, physical characteristics (e.g., large frame, medium frame and small frame), and heart sizes (e.g., x-large, large, medium, small). By providing input via user input **509**, a user may select from among the various model torsos and model hearts that may be stored as models **512** in memory **506**, so that the user may more closely match the actual torso and heart **10** of patient **1** with the dimensions and geometry of a model torso and model heart. In some examples, medical images of the patient, e.g., CT or MRI images, may be manually or semi-automatically segmented, registered, and compared to models **512** for selection from amongst the models **512**. Furthermore, single or multiple view 2-D medical images (e.g., x-ray, fluoroscopy) may be segmented or measured to determine approximate heart and torso dimensions specific to the patient in order to select the best fit model torso and heart.

Projection module **514** may project the locations of electrodes **404**, e.g., stored as recorded data **510** within of memory **506**, onto an appropriate, e.g., user-selected, model torso contained in model data module **512** of memory **506**. By projecting the location of electrodes **404** onto the model torso, projection module **514** may also project the torso-surface potential signals of patient **1** sensed by electrodes **404** onto the model torso. In other examples, the measured electrical potentials may be interpolated and resamples at electrode positions given by the model. In some examples, projecting the torso-surface potentials onto the model torso may allow processor **502**, via inverse problem module **516**, to estimate the electrical activity of at various locations or regions of the model heart corresponding to heart **10** of patient **1** that produced the measured torso-surface potentials.

Inverse problem module **516** may be configured to solve the inverse problem of electrocardiography based on the projection of the measured torso-surface potentials, recorded by electrodes **404**, onto the model torso. Solving the inverse problem of electrocardiography may involve the estimation of potentials or activation times in heart **10** based on a relationship between the torso and heart potentials. In one example method, model epicardial potentials are computed from model torso potentials assuming a source-less volume conductor between the model heart and the model torso in an

inverse Cauchy problem for Laplace's equation. In another example method, an analytic relationship between torso-surface potentials and the cardiac transmembrane potential is assumed. Torso-surface potentials may be simulated based on this relationship. In some examples, inverse problem module **516** may utilize techniques described by Ghosh et al. in "Accuracy of Quadratic Versus Linear Interpolation in Non-Invasive Electrocardiographic Imaging (ECGI)," *Annals of Biomedical Engineering*, Vol. 33, No. 9, September 2005, or in "Application of the L1-Norm Regularization to Epicardial Potential Solution of the Inverse Electrocardiography Problem," *Annals of Biomedical Engineering*, Vol. 37, No. 5, 2009, both of which are incorporated herein by reference in their entirety. In other examples, any known techniques for solving the inverse problem of electrocardiography may be employed by inverse problem module **516**.

Activation time module **518** may compute the activation times directly from measured torso-surface potentials, or by estimating model transmembrane potentials. In either case, an activation time for each electrode/location may be determined as a time period between two events, such as between the QRS complex onset and the minimum derivative (or steepest negative slope) of the sensed torso potential signal or estimate epicardial potential signal. Thus, in one example, cardiac activation times are estimated from the steepest negative slope of the model epicardial electrograms. Cardiac activation times (parameters in the analytic relationship between torso-surface potential and cardiac transmembrane potential) may, in other configurations, be computed based on minimizing the least square difference between the measured torso-surface potentials and simulated torso-surface potentials. A color-coded isochrone map of ventricular, epicardial, or torso-surface activation times may be shown by display **308**. In other examples, display **308** may show a two-color animation of propagation of the activation wavefront across the surface of the model heart or the torso-surface.

Indices module **520** may be configured to compute one or more indices of electrical dyssynchrony from the torso-surface or cardiac activation times. These indices may aid in the determination of whether the patient is a candidate for CRT, placement of CRT leads, and selection of CRT parameters. For example, LV lead **102** (FIG. 1) may be positioned at the site that reduces dyssynchrony from one or more indices or, alternatively, the largest electrical resynchronization as demonstrated by the indices. The same indices may be also used for programming A-V and/or V-V delays during follow-up. As indicated above, the indices may be determined based on the activation times for all electrodes/locations, or for one or more subsets of electrodes in one or more regions, e.g., to facilitate comparison or isolation of a region, such as the posterior and/or left anterior, or left ventricular region.

One of the indices of electrical dyssynchrony may be a standard deviation index computed as the standard deviation of the activations-times (SDAT) of some or all of electrodes **404** on the surface of the torso of patient **1**. In some examples, the SDAT may be calculated using the estimated cardiac activation times over the surface of a model heart.

A second example index of electrical dyssynchrony is a range of activation times (RAT) which may be computed as the difference between the maximum and the minimum torso-surface or cardiac activation times, e.g., overall, or for a region. The RAT reflects the span of activation times while the SDAT gives an estimate of the dispersion of the activation times from a mean. The SDAT also provides an estimate of the heterogeneity of the activation times, because if

activation times are spatially heterogeneous, the individual activation times will be further away from the mean activation time, indicating that one or more regions of heart **10** have been delayed in activation. In some examples, the RAT may be calculated using the estimated cardiac activation times over the surface of a model heart.

A third example index of electrical dyssynchrony estimates the percentage of electrodes **404** located within a particular region of interest for the torso or heart, whose associated activation times are greater than a certain percentile, for example the 70th percentile, of measured QRS complex duration or the determined activation times for electrodes **404**. The region of interest may be a posterior, left anterior, and/or left-ventricular region, as examples. This index, the percentage of late activation (PLAT), provides an estimate of percentage of the region of interest, e.g., posterior and left-anterior area associated with the left ventricular area of heart **10**, which activates late. A large value for PLAT may imply delayed activation of substantial portion of the region, e.g., the left ventricle **12** (FIG. **1**), and the potential benefit of electrical resynchronization through CRT by pre-exciting the late region, e.g., of left ventricle **12**. In other examples, the PLAT may be determined for other subsets of electrodes in other regions, such as a right anterior region to evaluate delayed activation in the right ventricle. Furthermore, in some examples, the PLAT may be calculated using the estimated cardiac activation times over the surface of a model heart for either the whole heart or for a particular region, e.g., left or right ventricle, of the heart.

Isochrone module **522** may be configured to generate an isochrone map depicting the dispersion of activation times over the surface of the torso of patient **1** or a model heart. Isochrone module **522** may incorporate changes in the torso-surface or cardiac activation times in near real-time, which may permit near instant feedback as a user adjusts a CRT device or monitors patient **1** to determine if CRT is appropriate. Isochrone maps generated by isochrone module **522** may be presented to the user via display **508**.

In general, processor **502** may generate a variety of images or signals for display to a user via display **508** based on the measured torso-surface potentials, calculated torso-surface or estimated cardiac activation times, or the degree of change in electrical dyssynchrony. For example, a graded response reflecting the efficacy of a particular location of the LV lead **102** during biventricular pacing or single ventricle fusion pacing may be provided to the physician in terms of a red, yellow and green signal. A red signal may be shown if the reduction in electrical dyssynchrony during CRT pacing compared to intrinsic rhythm is negative (an increase in electrical dyssynchrony) or minimal, e.g., less than 5%. CRT pacing includes biventricular pacing or fusion pacing described, for example, in application Ser. No. 13/464,228, and Ser. No. 13/772,890 filed on May 4, 2012 and Feb. 21, 2013, respectively and incorporated by reference herein, in their entirety. A yellow signal may be triggered if there is some reduction in electrical dyssynchrony during CRT pacing compared to intrinsic rhythm, for example between 5% and 15%, but there may be potentially better sites for lead placement. If the reduction in electrical dyssynchrony during CRT pacing compared to intrinsic rhythm is substantial, e.g., greater than 15%, a green signal may be triggered indicating to the physician that the present site provides effective changes in synchronization. The feedback from this system in combination with other criteria (like magnitude of pacing threshold, impedance, battery life, phrenic nerve stimulation) may be also used to choose an optimal pacing vector for one or more multipolar leads. The feedback from

this system may be also used for selecting optimal device timings (A-V delay, V-V delay, etc) influencing the extent of fusion of intrinsic activation with paced activation from single or multiple ventricular sites, or discerning acute benefit of single site fusion pacing versus multi-site pacing and choice of appropriate pacing type.

Display **508** may also display three-dimensional maps of electrical activity over the surface of the torso of patient **1** or over a model heart. These maps may be isochrone maps showing regions of synchronous electrical activity as the depolarization progresses through heart **10** of patient **1**. Such information may be useful to a practitioner in diagnosing asynchronous electrical activity and developing an appropriate treatment, as well as evaluating the effectiveness of the treatment.

FIG. **6** is a series of simulated isochrone maps **600** of torso-surface activation times over the torso of a patient suffering from an electrical dyssynchrony in the left ventricle before and during treatment with a CRT device. The isochrone maps before (intrinsic) and after treatment are divided into two views: anterior and posterior. Line **602** represents the location of a subset of electrodes **404**, e.g., a subset of electrodes **404** of sensing device **400B**, that may be used to calculate one or more indices of electrical dyssynchrony. In some examples, line **602** may represent electrodes **404** on sensing device **400A**.

The isochrone maps **600** of the natural and CRT assisted torso-surface activation times may be generated using multiple electrodes **404** distributed over the surface of the torso of a patient, e.g., using sensing device **400B**. Generation of the isochrone maps **600** may include determining the location of electrodes **404**, and sensing torso-surface potential signals with the electrodes. Generation of the isochrone maps **600** may further include calculating the torso-surface activation time for each electrode or electrode location by determining the point in the recorded QRS complex of the signal sensed by the electrodes corresponding to the maximum negative slope. In other examples, the torso-surface activation times may be determined by identifying the minimum derivative of the QRS complex. The measured torso-surface activation times may then be standardized and an isochrone map of the surface of the torso of the patient generated.

The delayed activation of certain locations associated with certain ones of electrodes **404** due to the electrical dyssynchrony is apparent in the posterior views of the intrinsic torso-surface activation times. Regions **604** indicate increased delay in the activation of the underlying heart. The corresponding posterior view during treatment with a CRT device indicate that regions **606**, the same location as regions **604** on the maps of intrinsic torso-surface activation times, exhibits increased synchrony in electrical ventricular activity. The CRT maps exhibit decreased range and a lower standard deviation of torso-surface activation times. Further, the posterior regions no longer exhibit delayed activation times. The isochrone map of the torso-surface activation times during intrinsic and CRT pacing and changes in distribution of activation-times from intrinsic to CRT pacing may be used for diagnostic purposes or the adjustment of a CRT device.

One or more indices of electrical dyssynchrony may also be calculated from the torso-surface activation times used to generate isochrone maps **600**. For example, SDAT, an indication of the spread of the activation times, for the patient's intrinsic heart rhythm using the complete set of electrodes **404** is 64. Using the reduced lead set marked by line **602** results in an SDAT of 62. The RAT for the intrinsic heart

rhythm and complete lead set is 166.5 while the reduced lead set has a RAT of 160. PLAT for the intrinsic heart rhythm using the reduced and complete lead sets are 56.15% and 66.67%, respectively. This indicates that using a reduced lead set that circumscribes the heart of the patient, e.g., sensing device 400A and associated electrodes 404, may provide comparable indices of electrical dyssynchrony compared to using an electrode set covering the torso of the patient, such as sensing device 400B.

The indices of electrical dyssynchrony also provide indication of the effectiveness of the CRT device, with the SDAT for the reduced set of electrodes declining to 24, the RAT to 70 and PLAT to 36%. This indicates that the torso-surface activation times during CRT treatment were more narrowly distributed and in a smaller range than in the normal heart rhythm and that the percentage of electrodes 404 located on the left anterior surface of the torso of the patient registering late activation times decreased markedly.

FIG. 7 is a flow diagram illustrating an example operation of a system to evaluate the cardiac electrical dyssynchrony of a patient via the torso-surface activation times. The location of electrodes, e.g., electrodes 404 (FIGS. 4A and 4B), distributed over the surface of the torso of the patient may be determined (700). A cardiac event, e.g., a depolarization, may generate an electrical signal that propagates through the torso of a patient, e.g., patient 1 (FIG. 1) and registers on the electrodes. The signal sensed by the electrodes may be received (702), e.g., by processing unit 500 (FIG. 5). The processing unit may calculate the torso-surface activation times (704). In some examples, the processing unit may also construct a torso-surface activation times isochrone map (706). The processing unit may also calculate at least one index of cardiac electrical dyssynchrony (708). These indices may comprise one or more of the SDAT (710), RAT (712), and the PLAT (714).

A cardiac event, such as a depolarization, generates an electrical signal that propagates through the torso. The electrical signal may comprise a QRS complex, or a variant caused by a heart related condition such as a left or right bundle branch block. The electrical signal may not propagate uniformly through the torso of a patient due to variations in conductivity within the torso and the heart. These delays may manifest in electrodes distributed over the surface of the torso of the patient registering the same electrical signal at different points in time.

The electrical signal generated by the cardiac event may register on the plurality of electrodes distributed over the surface of the torso of patient. The electrodes may be distributed over the anterior, lateral, and/or posterior surfaces of the torso, allowing the generation of a three-dimensional picture of the electrical activity occurring within the torso. In some examples, the electrodes may be placed to provide extensive coverage both above and below the heart, e.g., by using sensing device 400B (FIG. 4B). In other examples, a reduced set of electrodes may be arranged around the circumference of the torso, circumscribing the heart of the patient, e.g., using sensing device 400A (FIG. 4A). The electrodes may receive the complete waveform of the electrical signal generated by the cardiac event, and transmit the signal to a processing unit.

The location of electrodes distributed over the surface of the torso of the patient may be determined (700). Locating the electrodes may be performed automatically, e.g. by imaging system 501 and electrode location registration module 524 of processing unit 500 (FIG. 5). The electrodes may be located by analyzing one or more images of the torso of a patient and performing a pattern matching routine, e.g.,

recognizing the shape of an electrode against the torso of the patient, and storing the location of the electrode on the torso of the patient in processing unit memory. In other examples, the location of sensing device 400A or 400B may be determined and the locations of the electrodes determined based on the position of the sensing device, e.g., basing the position of the electrode on the patient through the known position of the electrode on the sensing device. In another example, the position of the electrodes may be measured manually.

The processing unit may receive the electrical signal from the electrodes and record the output in memory (702). The processing unit may record the raw output, e.g., the raw ECG tracing from each electrode, as well as location data for the electrodes, allowing the electrical signals detected by the electrodes to be mapped onto the surface of the torso of the patient.

The processing unit may compute the torso-surface activation times (704). A processor, e.g., processor 502 of processing unit 500 (FIG. 5), may retrieve ECG tracing data stored within the processing unit memory and analyze the tracing to detect depolarization of the ventricles of the heart, typically marked by a QRS complex in the tracing. The processor may, in some examples, detect ventricular depolarization by determining the time of the minimum derivative (or steepest negative slope) within the QRS complex measured with respect to the time of QRS complex onset. The determination of the activation time may be made for each electrode and stored in the processing unit memory.

In some configurations, the processing unit may construct an isochrone map of the torso-surface activation times, allowing the user to visually inspect the propagation of the electrical signals of the heart after progression through the torso of the patient. The isochrone map may be constructed by dividing the range of measured torso-surface activation times into a series of sub-ranges. The location of each electrode on the surface of the torso of the patient may be graphically represented. Regions of electrodes whose measured activation times fall within the same sub-range may be represented by the same color on the graphical representation.

The processing unit may also calculate one or more indices of electrical dyssynchrony based on the torso-surface activation times (708). These indices may include the SDAT (710), RAT (712), and PLAT (714). In some examples, the PLAT may be determined as the percentage of posterior electrodes activating after a certain percentage of the QRS complex duration.

As discussed above, in some examples, the construction of a torso-surface activation times isochrone map (706), or other graphical representation of dyssynchrony, as well as the calculation of indices of electrical dyssynchrony (708), may be performed for a particular region of the torso based the signals received from electrodes (702) in such regions. Graphical representations and indices of electrical dyssynchrony may be determined for each of a plurality of regions based on the signals received from the electrodes for such regions. In some examples, the representations and indices for various regions may be presented together or compared.

FIG. 8 is a flow diagram illustrating an example technique for measuring the cardiac electrical dyssynchrony of a patient via measured torso-surface activation times. A processing unit 500 may receive torso-surface potential signals from a plurality of electrodes (800), e.g., electrodes 404 (FIGS. 4A and 4B). The processing unit 500 may calculate the torso-surface activation times for each of the plurality of

electrodes (802). The processing unit 500 may provide at least one indication of cardiac electrical dyssynchrony (804).

A user may evaluate whether a patient is a candidate for CRT based on the at least one indication of electrical dyssynchrony (806). The user may also monitor the at least one indication of electrical dyssynchrony (808), and use the changes in the at least one indication to aid in adjusting the positioning of electrodes, e.g., electrodes 108, 110, and 112 (FIG. 1), during implantation of a CRT device (810), e.g., IMD 100 (FIG. 1), or selection of the various programmable parameters, such as electrode combination and the A-V or V-V pacing intervals, of the CRT device (812), during implantation or a follow-up visit.

The various indications of cardiac electrical dyssynchrony described herein, such as statistical or other indices, or graphical representations of activation times, may indicate the presence of damage to electrical conductivity of the heart of the patient, for example the presence of a left or right bundle branch block, that may not be apparent from the examination of a standard 12-lead ECG readout. For example, a large SDAT indicates that the activation of the ventricles is occurring over a large time span, indicating that the depolarization of the ventricles is not occurring simultaneously. A large RAT also indicates a broad range of activation times and asynchronous contraction of the ventricles. A high PLAT indicates that a specific region of the heart, e.g., the posterior regions associated with the left ventricle, may be failing to activate in concert with the measured QRS complex. Additionally, by monitoring the at least one indication of cardiac electrical dyssynchrony, the user may detect changes in the electrical activity of the heart caused by different treatments or treatment configurations.

As described above, the various indications of electrical dyssynchrony, such as statistical indexes, may be calculated for each of a plurality of regions, e.g., posterior, left anterior, or the like, based on torso-surface activation times from the region. Additionally, evaluating whether a patient is a candidate for CRT based on the at least one indication of electrical dyssynchrony (806) may include determining the one or more indications of electrical dyssynchrony based on torso-surface activation times both during intrinsic conduction of the heart, and during CRT. Differences between the indications during intrinsic conduction and CRT may indicate that CRT would provide benefit for the patient, e.g., that the patient is a candidate for CRT. As described above, the user may also evaluate whether a patient is a candidate for CRT based on at least one indication of electrical dyssynchrony based on intrinsic rhythm alone. Furthermore, monitoring the at least one indication of electrical dyssynchrony (808) during implantation or a follow-up visit may include determining the one or more indications of electrical dyssynchrony for each of a plurality of lead positions, electrode configurations, or other parameter values based on torso-surface activation times resulting from delivery of CRT at the positions, or with the electrode configurations or parameter values. In this manner, differences between dyssynchrony indications associated with various locations, electrode configurations, or parameter values may be compared to determine preferred locations, configurations, or values.

FIG. 9 is a series of isochrone maps of cardiac activation times. Views 900, 902 and 904 were constructed using torso-surface potentials measured on the surface of the torso of a patient and projected onto three dimensional models of the torso and the heart of the patient. Views 910, 912, and 914 were constructed using the measured torso-surface

potentials of the same patient projected onto a different model torso and model heart.

The three-dimensional representation of the hearts depicted in views 900, 902, 904, 910, 912 and 914 were constructed using computer tomography (CT) images of hearts obtained from databases of previously acquired cardiothoracic images. The locations of the electrodes, e.g., electrodes 404 of sensing device 400B (FIG. 4B), on the torso of the patient may be plotted to approximate locations on a model torso. A computer may be used to solve the inverse problem of electrocardiography, which includes determining the electrical activity on the surface of the heart that would produce the measured torso-surface potentials. The isochrone maps illustrated in views 900, 902, 904, 910, 912 and 914 are based on images of hearts of two different patients, which are also used to determine the geometry of the heart and relationship to the corresponding torso for solving the inverse problem of electrocardiography.

The model torsos and hearts may be constructed by manual or semi-automatic image segmentation from available databases of previously acquired medical images (CT/MRI) of cardiomyopathy patients using commercially available software. Each model may be discretized using boundary element method and may be further manipulated to account for patients with different physical characteristics (e.g., large frame, medium frame and small frame) and heart sizes (e.g., x-large, large, medium, small).

A user may select the appropriate model torso and heart to suit the patient, e.g., a patient having a large torso may be simulated with a large frame model torso. In some examples, medical images of the patient, e.g., CT or MRI images, may be manually or semi-automatically segmented, registered, and compared to a variety of available models for selection from amongst the models. One or more views of 2-D medical images (e.g., X-ray or fluoroscopy) may also be used. The user may project the measured torso-surface potentials from the torso of the patient onto the corresponding locations on the model torso. The inverse problem of propagating the electrical signals from the model torso to the model heart may then be solved, and activation times for the model heart may be estimated.

In one example in which the techniques of this disclosure were applied, human thoracic CT images for other subjects were obtained from image databases. Semi-automatic image segmentation was performed on the images to generate the three-dimensional representation of the different models of hearts and torsos. In some examples, image segmentation may be done with the AMIRA software package commercially-available from Visage Imaging, Inc., of San Diego, Calif.

For the example, the projection of electrode locations on the patient torso to the model torso was approximate. In particular, the locations electrodes on the patient torso to the model torso the locations of the electrodes on the patient torso were projected onto the surface of the model torso based on the order in which the electrodes were mounted on the patient. For the purpose of this projection, the patient and model torsos were divided into right anterior, left anterior, right posterior and left posterior regions, using the sternum (anterior) and the spine (posterior) as references. Electrodes were arranged in vertical strips and three strips were applied to each region of the torso. Electrodes in these regions were projected on to the corresponding segments of the model torso. The method described is one of many techniques that may be used to registered or map the geometrical distribution of measured electrical potentials. For example, the measured electrical potentials. For example, the measured

electrical potentials may be interpolated and resampled at electrode positions given by the model. Projection of the electrode locations from segments of the patient torso onto the corresponding segments of the model torso in the correct order enabled the activation patterns and spatial dispersion of activation on the model heart to reflect the activation patterns and spatial dispersion of activation on the actual patient heart with relative accuracy. In one example, the inverse problem of electrocardiography may be solved using the Matlab regularization toolbox (Hansen P C, Regularization Tools: A Matlab package for analysis and solution of discrete ill-posed problems, Numerical Algorithms, 6(1994), pp 1-35).

Input data-sets for solving the inverse problem consistent with the example may include multi-electrode surface ECG measurements, the 3-D Cartesian coordinates of the model heart and torso surfaces, and the mesh over each model surface which specified the connectivity of the different points on each surface. An output consistent with the techniques of this disclosure may include activation times on the 3-D model heart surface which can be visualized using visualization software and computer graphics tools. In some examples, the 3-D model heart surface may be visualized using the tools in Matlab (Mathworks Inc, Natick, Mass.) or more advanced visualization software, such as Tecplot (Tecplot Inc, Bellevue, Wash.).

Comparing estimated cardiac activation times on two different, both cardiac activation times determined from the same torso-surface potential signals for one subject, show similar patterns and distribution. For example, region 906 of views 902 and 904 corresponds in size and activation time to region 916 of views 912 and 914. Region 908 of views 902 and 904 corresponds to region 918 of views 912 and 914. Additionally, the standard deviations of activations time for both models are both derived from the same torso-surface potentials for one subject, were similar (17.6 and 15.5 ms). The overall pattern of cardiac activation and measures of dispersion of cardiac activation times are thus not dependent on a specific heart-torso model. Using a generic heart-torso model may allow a user to create an isochrone model of the cardiac activation time suitable for diagnosis and observation while avoiding expense, inconvenience, and radiation exposure that may be caused by the CT scan or other imaging that may be used to produce a patient-specific model of the heart of the patient.

FIG. 10 is a flow diagram illustrating an example operation of a system to measure the cardiac electrical dyssynchrony of a patient via the cardiac activation times. Processing unit 500 determines the location of the electrodes 404, e.g., based on an analysis of imaging data by an electrode location registration module 524. Processing unit projects the locations of the electrodes onto a model torso, e.g., a selected model torso (1002).

A cardiac event, e.g., depolarization, occurs causing an electrical signal to propagate through the torso of the patient, and register on the electrodes distributed on the surface of the torso of the patient. The torso-surface potential signals sensed by the electrodes may be received by processing unit 500 (1004). The processing unit may project the signals onto the surface of the model torso based on the determined locations of the electrodes (1006).

The processing unit may solve the inverse problem of determining epicardial potentials based on torso-surface potentials (1008). The processing unit may then calculate cardiac activation times at a variety of locations of the model heart based upon the projected torso-surface potentials (1010). The cardiac activation times may be computed by,

for example, determining the greatest negative slope of the epicardial electrogram potentials (1016) or by least squares minimization in the solution of the inverse problem (1018). The cardiac activation time may be displayed (1012). Examples of potential methods for displaying cardiac activation times include isochrone maps (1014) and a movie depicting the progression of the wavefront over the model heart (1016). The processing unit may be configured to allow a user select between, or display simultaneously, various display modes, including the wave front movie and isochrone maps. Additionally, one or more indices of cardiac electrical dyssynchrony may be calculated (1018), including the SDAT (1020), RAT (1022), and PLAT (1024).

For solving the inverse problem (1008), epicardial potentials may be computed from projected torso-surface potentials assuming a source-less volume conductor between the heart and the torso in an inverse Cauchy problem for Laplace's equation. Alternatively, an analytic relation between torso-surface potentials and the cardiac transmembrane potential may be assumed. Additionally, cardiac activation times may be estimated (1010) from the steepest negative slope of the epicardial electrograms determined from the inverse solution of the torso-surface potential/epicardial potential transformation. In other examples, model torso-surface potentials may be simulated based on the analytic relationship approach to determining the cardiac transmembrane potential from torso-surface potential. Cardiac activation times (parameters in the analytic relationship) may be computed based on minimizing the least square difference between the projected model torso-surface potentials and simulated torso-surface potentials.

In some examples, the construction of a torso-surface activation times isochrone map (1014), wavefront animation (1016), or other graphical representation of cardiac electrical dyssynchrony, as well as the calculation of indices of cardiac electrical dyssynchrony (1018), may be performed for a particular region of the model heart based the computed cardiac activation times in such regions. Graphical representations and indices of cardiac electrical dyssynchrony may be determined for each of a plurality of regions based on the computed cardiac activation times in such regions. In some examples, the representations and indices for various regions may be presented together or compared.

FIG. 11 is a flow diagram illustrating an example technique for measuring the cardiac electrical dyssynchrony of a patient via determined cardiac activation times. The techniques may comprise determining the location of a plurality of electrodes (1100), projecting the location of the electrodes onto the surface of a model torso (1102), recording the output of the plurality of electrodes (1104), projecting the output of the plurality of the electrodes on the surface of the model torso (1106), solving the inverse problem (1108) and determining the cardiac activation times for a model heart from the projected torso-surface potentials (1110). The cardiac activation times may be displayed (1112). One or more indices of electrical dyssynchrony may be calculated (1114). The output, the indices of cardiac electrical dyssynchrony and cardiac activation time maps, may be monitored, allowing a user to diagnose the patient, adjust the position of CRT electrodes during implantation (1118), or adjust A-V or V-V pacing intervals of the CRT device (1120).

A user may monitor the output of the calculations (1116), e.g., the at least one indices of cardiac electrical dyssynchrony or the display of cardiac activation times. Monitoring these values may allow the user to diagnose a condition that might benefit from CRT or to evaluate the effectiveness of CRT. For example, the at least one index of cardiac electrical

dyssynchrony may indicate the presence of damage to electrical conductivity of the heart of the patient, for example the presence of a left or right bundle branch block, that may not be apparent from the examination of a standard 12 lead ECG readout. A large SDAT indicates that the activation of the ventricles is occurring over a large time span, indicating that the depolarization of the ventricles is not occurring simultaneously. A large RAT also indicates a broad range of activation times and asynchronous contraction of the ventricles. A high PLAT may indicate that a specific region of the heart, e.g., the posterior regions more associated with the left ventricle, is failing to activate in concert with the measured QRS complex.

The user may adjust the positioning of CRT electrodes, e.g., electrodes **108**, **110**, and **112** of IMD **100** (FIG. 1) according to the displayed cardiac activation times or the indices of cardiac electrical dyssynchrony. For example, the processing unit, via a display, may implement system that displays shifting colors based on the percentage change of the indices of cardiac electrical dyssynchrony. As the position of the CRT electrodes are adjusted (**1118**), the displayed colors may shift from red to yellow to green based on the percentage improvement of the indices of cardiac electrical dyssynchrony. This may allow a user to rapidly determine if the adjustments of the CRT electrodes are having a positive effect on the symptoms of the patient. In another example, the user may adjust the A-V or V-V pacing intervals of an implanted CRT device (**118**). The minimum value of the indices of cardiac electrical dyssynchrony may indicate adequate pacing intervals. Isochrone maps or wave front propagation movies may also be used to aid in CRT adjustments or to diagnose conditions that may be responsive to CRT treatment.

As indicated above, to facilitate evaluating whether a patient is a candidate for CRT based on the monitored output (**1116**), the one or more indications of cardiac electrical dyssynchrony, e.g., indices or graphical indications, may be determined based on torso-surface activation times during both intrinsic conduction of the heart, and during CRT. Differences between the indications during intrinsic conduction and CRT may indicate that CRT would provide benefit for the patient, e.g., that the patient is a candidate for CRT. Furthermore, during implantation or a follow-up visit, the one or more indications of cardiac electrical dyssynchrony may be determined for each of a plurality of lead positions, electrode configurations, or other parameter values based on torso-surface activation times resulting from delivery of CRT at the positions, or with the electrode configurations or parameter values. In this manner, differences between cardiac electrical dyssynchrony indications associated with various locations, electrode configurations, or parameter values may be compared to determine preferred locations, configurations, or values.

In one or more embodiments, indices or metrics of electrical dyssynchrony and electrical activation patterns are determined from surface ECG electrodes associated with sensing device **400a**, **400b**. Vector optimization can also be achieved through implementing features described herein.

FIG. 12 is a flow diagram illustrating an exemplary method **1200** in which a sensing device **404a**, **404b** is employed to determine, prior to implant, functional electrical metric data used to determine efficacy of cardiac resynchronization for an implant of an IMD **100**. Method **1200** can also be used to determine the effectiveness of CRT for a patient.

As used herein, metric is defined as a standard of measurement. Functional electrical metrics comprise resynchro-

nization of activation metrics and/or dispersion of repolarization metrics. Exemplary cardiac resynchronization of activation metrics include dispersion metrics and central tendency metrics applied on activation-times obtained from electrical signals (e.g. QRS complex on surface ECG) indicative of cardiac depolarization. Dispersion metrics include standard deviation, range, and interquartile deviation of activation times measured with a plurality of electrodes. In comparison, central tendency is a mean, a median, or a mode, for example, of the absolute values of the activation times associated with signals acquired from electrodes. Central tendency is designated as Y in the figures.

Dispersion of ventricular repolarization, assessed as QT dispersion in the ECG or by multiple monophasic action potential (MAP) recordings, is defined as the difference between the earliest and latest repolarization. Exemplary dispersion of cardiac repolarization metrics include standard deviation, range, and interquartile difference of the recovery times and/or activation-recovery intervals associated with electrical signals (e.g. T-waves on surface ECG) indicative of cardiac repolarization.

At block **1202**, one or more activation times are determined from depolarization complexes sensed from electrodes on sensing device **400a,b**. Depolarization of the ventricles occurs before contraction of the ventricles. A depolarization wave spreads through the ventricles and is exhibited by the QRS complex.

One or more resynchronization of activation metrics can be determined at one or more blocks **1208a,b**. At block **1208a**, metrics of dispersion (e.g. one or more of measures like standard deviation, range, interquartile difference etc.) are computed from activation times of all or a subset (e.g. left-sided electrodes only) of electrodes.

Yet another metric of resynchronization of activation can be determined at block **1208b**. At block **1208b**, metrics of central tendency (e.g. mean, median, mode) of activation times corresponding to all or a subset (e.g. left-sided electrodes only) of electrodes are determined. As indicated by the ghost (dotted) lines in FIG. 12, processor **502** can execute computer instructions in blocks **1208a,b** at the same time or about the same time.

In one or more embodiments, metrics of dispersion of repolarization are determined at block **1204**. Ventricular repolarization is exemplified by T waves on a surface ECG or a cardiac electrogram (e.g. Twave peak, Twave end, Twave dV/dt max) that are acquired from electrodes on sensing device **400a**, **400b**.

At block **1210**, dispersion of repolarization metrics (e.g. standard deviation, range, interquartile difference etc.) are computed for signals acquired from all or a subset (e.g. left-sided electrodes only) of electrodes.

At block **1206**, an activation-repolarization interval (ARI) corresponding to each electrode on sensing device **404a,b** is determined by calculating the difference between the repolarization time and the corresponding activation time. The ARI is the interval between a point selected on the QRS wave to represent the activation time and a point selected on the T-wave to represent the recovery time on an ECG or cardiac electrogram (EGM) signal.

At block **1212**, computation of dispersion metrics (e.g. standard deviation, range, interquartile difference etc.) is performed on ARI from all or a subset (e.g. left-sided electrodes only) of electrodes. The functional electrical metrics, determined from executing the computer instructions of method **1200**, are then stored into memory.

FIG. 13 is a flow diagram illustrating an exemplary method **1300** in which a system is employed to determine

whether a patient, exhibiting a stable non-tachycardia baseline with at least some 1:1 atrial to ventricular (AV) conduction, is responsive to CRT pacing. Non-tachycardia is a heart rate or pattern that is not tachycardia (i.e. 100+ beats per minute (bpm) in a resting adult). Supraventricular tachycardia (SVT) is an example of an elevated heart rate but the baseline pattern is typically not as serious as tachycardia. Stable non-tachycardia baseline patients can possess characteristics of a cardiac condition (e.g. tiredness, cannot walk a normal distance without resting, nausea, and an elevated heart rate). Excluding a normal heart rate level, exemplary elevated heart rates can range from 120 bpm or less, 100 bpm or less, or 90 bpm or less. Identifying responsive sites in non-arrhythmic rhythm patients at the time of implant can potentially lead to better patient outcomes and reduce the burden of healthcare costs in future patient management.

Method 1300 begins at block 1302 in which a baseline rhythm and one or more functional electrical metrics are determined. Baseline rhythm (also simply referred to as a baseline) is the rhythm of the patient before receiving resynchronization therapy. For example, the baseline rhythm may include one of sinus rhythm, atrial pacing, right ventricular only pacing with or without synchronization to atria. The baseline electrical functional metrics are determined by measuring electrical activation times and repolarization times without resynchronization pacing.

At block 1304, a baseline atrioventricular (iAV) delay is determined. A patient's baseline AV conduction time is the time between a baseline atrial (e.g., right atrium) event (e.g., atrial pace or intrinsic atrial event (depolarization)) and a baseline ventricular (e.g., right ventricle) event (depolarization). Depolarization of the atria is sensed by an IMD when the heart naturally depolarizes. For example, the baseline events may be the intrinsic atrio-ventricular rhythm. As used herein, an "intrinsic" ventricular event or conduction is one that occurs or is conducted naturally. An exemplary method for sampling iAV is described relative to application Ser. No. 13/193,735 entitled "MODIFICATION OF AV CONDUCTION TIME SAMPLING RATE," filed on Jul. 29, 2011, incorporated by reference in its entirety. iAV is calculated by acquiring the intrinsic atrial sense (As) or atrial pace (Ap) and subtracting a ventricular (V) beat therefrom. At block 1306, CRT pacing is performed using pacemaker timed intervals. Pacemaker timed intervals end with ventricular pacing pulses and start with either a sensed atrial event or a paced atrial event. In particular, CRT pacing is performed using a sensed AV (SAV) interval (i.e. an interval starting with a sensed atrial event and ending with ventricular pacing pulses) or a paced AV (PAV) interval (i.e. an interval starting with a paced atrial event and ending with ventricular pacing pulses). The SAV or PAV is equal to the greater of iAV-60 ms and 80 ms. Specifically, the optimal AV ("AVopt" or "first AV delay") delay is set to whichever AV delay (i.e. SAV or PAV) is equal to the greater of iAV-60 ms or 80 ms.

At block 1308, one or more functional electrical metrics is determined using the SAV or PAV from operation 1306. At block 1310, a determination is made as to whether improvement of greater than X % is achieved in a resynchronization metric of activation. X % can be a value between 5% and 20%. Yet another range for X % may be a value between 10% and 25%. Yet another range for X % can be a value between 15% and 30%. Still yet another range can be between 10% and 100%.

The YES path from block 1310 indicates that improvement of greater than X % is achieved in a resynchronization metric of activation. The YES path from block 1310 continues to block 1312 in which the tissue site is determined to

be a responsive site. A responsive site indicates the patient may benefit from CRT by placing an electrode at the tissue site and utilizing the functional electrical metrics indicated by method 1300. The NO path from block 1310 continues to block 1320.

At block 1320, a determination is made as to whether an absolute value of a resynchronization metric $< Y_{ms}$ is attained. Y represents central tendency of the activation times. Y can be any value between 15 ms to about 150 ms. Yet another range for Y can be between 20 ms and 50 ms. Still yet another range for Y can be between 25 ms and 60 ms. If the absolute value of the resynchronization metric $< Y_{ms}$ is attained, then the YES path from block 1320 continues to block 1312 in which it is determined that the tissue site is a responsive site. The NO path from block 1320 continues to block 1318 in which CRT pacing is performed at an AV delay (e.g. SAV or PAV) that is selected based upon whichever AV delay (e.g. SAV or PAV) is the greater of iAV-30 ms or 80 ms. The AV delay for block 1318, referred to as a second AV delay, is equivalent to AVopt+30 ms. By using two or more AV delays in method 1300, a patient's response or non-response to CRT can be confirmed.

At block 1316, one or more functional electrical metrics are determined while employing the SAV or PAV selected at block 1318. Preferably, functional electrical metrics that are determined at block 1316 include standard deviation and mean of global and/or regional electrical activation times; however, any previously listed functional electrical metrics can be determined at block 1316 for use in method 1300. At block 1314, while an IMD uses the SAV or PAV selected at block 1318, a determination is made as to whether an improvement of greater than X % is achieved in the resynchronization metric of activation. If an improvement of greater than X % is achieved in the resynchronization metric of activation, then the YES path from block 1314 continues to block 1312 in which the tissue site is determined to be responsive. The patient may benefit from CRT by placing an electrode at the tissue site deemed responsive to CRT while utilizing the functional electrical metrics indicated by method 1300.

The NO path from block 1314 continues to block 1324 in which a determination is made as to whether an absolute value of resynchronization metric $< Y_{ms}$ during CRT pacing. If the absolute value of resynchronization metric $< Y_{ms}$ during CRT pacing, then the YES path from block 1324 continues to block 1312 in which the tissue site is determined to be responsive. The patient may benefit from CRT by placing an electrode at the tissue site and utilizing the functional electrical metrics indicated by method 1300. The NO path from block 1324 continues to block 1326 in which CRT pacing is performed using an AV delay (i.e., SAV or PAV) that achieves the greater of iAV-90 ms or 80 ms.

At block 1328, a determination is made as to whether X % improvement is attained in a resynchronization metric of activation using the SAV or PAV from block 1326. The YES path from block 1328 continues to block 1312 determines that the tissue site is responsive and is a good site. The NO path from block 1328 continues to block 1330 in which a determination is made as to whether an absolute value of resynchronization metric $< Y_{ms}$. The YES path from block 1330 continues to block 1312 in which the tissue site is deemed responsive. The NO path from block 1330 continues to block 1322 in which the site is deemed non-responsive; therefore, an electrode should not be placed in this location.

Exemplary data was generated utilizing method 1300. The generated data includes baseline resynchronization metrics determined at block 1302. Two functional electrical

metrics, metric 1 and metric 2, were employed. The first metric (i.e. metric 1) corresponds to standard deviation of activation times from all surface electrodes. The second metric corresponds to the standard deviation of activation times of electrodes which are on the left side of the torso. The baseline metrics, determined during intrinsic conduction, indicated an iAV of 160 ms, metric 1 is 55 ms, and metric 2 is 80 ms. In this example, a responsive site was determined to be a relative improvement in metric 1 of greater than 10% and/or metric 2 is less than 20 ms for placement of an electrode on a medical electrical lead.

Tables 1 and 2, presented below, summarize data generated for the resynchronization metrics during CRT pacing from site 1 and site 2, respectively.

TABLE 1

Resynchronization metrics during CRT Pacing from Site 1			
	First AV	Second AV	Third AV
AV delay	iAV-60 ms	iAV-30 ms	80 ms
Metric 1	58 ms	59 ms	52 ms
Metric 2	84 ms	91 ms	96 ms
Relative reduction in metric 1	-5.40%	-6.77%	3.63%

From Table 1, a negative relative reduction occurred with iAV-60 ms and iAV-30 ms. Negative relative reduction involves an increased metric value during pacing compared to baseline. The more positive the relative reduction, the greater the improvement in resynchronization compared to the baseline. Substantially positive relative reduction involves resynchronization that is substantially improved compared to baseline. As indicated, the third AV delay is 80 ms because, in this example, iAV-90 ms—160 ms—90 ms=70 ms. Since 80 ms is greater of iAV-90 ms and 80 ms, a AV delay of 80 ms is set for the third AV delay. Based upon this data, Site 1 is non-responsive.

Site 2 is determined to be responsive; therefore, it is unnecessary to employ iAV-30 ms and iAV-90 ms. As shown in the table, the AV delay is set at iAV-60 ms. Metric 1 is 38 ms while metric 2 is 24 ms. The positive relative reduction shows a substantially improved resynchronization over the baseline.

TABLE 2

Resynchronization metrics during CRT Pacing from Site 2	
	AV
AV delay	iAV-60 ms
Metric 1	38 ms
Metric 2	24 ms
Relative reduction in metric 1	34.00%

Method 1400 of flow diagram of FIG. 14 exemplifies a method which two functional electrical metric requirements are substantially met or must be met in order to select an optimal electrode on a lead. Method 1400 is the same or similar as the flow diagram of FIG. 13 as to blocks 1302, 1304, 1306, 1308, 1316, 1318, 1320, 1322, 1324, 1326 and 1330. In particular blocks 1302, 1304, 1306, 1308, 1316, 1318, 1320, 1322, 1324, 1326 and 1330 correspond to blocks 1402, 1404, 1406, 1408, 1416, 1418, 1420, 1422, 1424, 1426 and 1430, respectively; therefore the description of the 1300 blocks are incorporated herein. Additionally,

variables such as X % and Y used in FIG. 14 possess the same or about the same ranges as previously described relative to FIG. 13.

Method 1400 is different from method 1300 based upon the paths exiting blocks 1410, 1414, and 1428. For example, at block 1410, a determination is made as to whether employing the functional electrical metrics at block 1408 improves the resynchronization metric of activation by X %. If so, the YES path from block 1410 continues to block 1420. In contrast, if the functional electrical metrics do not achieve X %, then the NO path from block 1410 continues to block 1418.

Paths exiting block 1414 is another difference to method 1300. At block 1414, a determination is made as to whether employing the functional electrical metrics at block 1408 improves the resynchronization metric of activation by X %. An affirmative response to block 1414 leads to block 1424 while a negative response leads to block 1426.

Paths exiting block 1428 is also different from method 1300. At block 1428, a determination is made as to whether employing the functional electrical metrics at block 1408 improves the resynchronization metric of activation by X %. An affirmative response to block 1428 leads to block 1430 while a negative response leads to block 1412.

Exemplary data was generated relative to four left ventricular (LV) electrodes (e.g. LV1, LV2, LV3, LV4) located on the left ventricular lead. Exemplary left ventricular leads that employ LV1-LV4 are shown and described in application Ser. No. 13/464,228, and Ser. No. 13/772,890, incorporated herein). The relative improvement of resynchronization is presented in Table 3 for each electrode and each metric. Electrodes able to elicit a positive response generally are able to achieve greater than 10% relative improvement in metric 1 and less than or equal to 20 ms for the metric 2 of resynchronization. According to the present example, LV1 and LV4 satisfy this criteria.

TABLE 3

Summary of LV electrode and resynchronization		
LV electrode	Metric 1--Relative improvement of resynchronization	Metric 2--resynchronization
LV1	12%	12 ms
LV2	-5%	10 ms
LV3	-6%	15 ms
LV4	14%	12 ms

Data can also be generated as to dispersion of repolarization metrics. In this example, dispersion of repolarization metrics is used to break the tie between LV1 and LV4 with respect to determining optimal location from which to deliver pacing pulses. For example, dispersion of repolarization metric for LV1 equaled 60 ms while that for LV4 equaled 300 ms. Based upon this data, LV1 is the optimal electrode from which to pace.

In one or more embodiments, the cardiac improvement information may include dyssynchrony information. Dyssynchrony information may be defined as information indicative of the mechanical and/or electrical dyssynchrony of the heart. In at least one embodiment, the dyssynchrony information may include a standard deviation of ventricular activation times corresponding to electrodes on the surface array. Further, regional dyssynchrony may be also computed from the standard deviation of activation times corresponding to electrodes located in certain anatomic areas of the

torso, for e.g. electrodes on the left side of the torso would be used to compute regional LV dyssynchrony.

Various examples of this disclosure have been described in which to select an optimal electrode from which to pace through the combination of relative changes in metrics of electrical dyssynchrony/activation from baseline to CRT pacing and/or absolute values of those metrics during CRT pacing may be used for discerning response to cardiac resynchronization therapy during pacing. For example, a X % reduction in electrical dyssynchrony or left ventricular electrical dyssynchrony < Y ms may be used to identify a good or optimal lead location. X % may be any value from 5% to 100% and Y may be any value from 15 to 150 ms. A site is designated as a bad location or non-responder location if the site does not yield the changes in electrical dyssynchrony metrics as described above during biventricular pacing at a plurality of A-V delays. For example, pacing may be performed at AV delays based on measurement of the intrinsic sensed or paced A-V timing (iSAV or iPAV). In one embodiment, pacing is performed at a sensed or paced A-V delay equal to iSAV-60 or iPAV-60 ms respectively. If desired changes in electrical activation and dyssynchrony parameters (as defined for a responsive site) are not obtained, pacing may be performed at a AV delay equal to the lesser of iSAV (or iPAV)-90 ms to about 80 ms. If desired changes are still not obtained, biventricular pacing may be performed at one additional A-V delay, iSAV (or iPAV)-30 ms. If electrical activation and electrical dyssynchrony metrics do not change favorably during pacing for any of these A-V delays. The site may be defined as a non-responder site and the lead may be moved to additional sites for automatic evaluation.

However, one of ordinary skill in the art will appreciate that various modifications may be made to the described embodiments without departing from the scope of the claims. For example, although SDAT, RAT and PLAT have been discussed as example statistical indices of the dispersion of activation times, other indices or metrics of the dispersion of the timing of depolarization may be determined according to the techniques of this disclosure. As one example, a range of activation times between two specific regions, e.g., anterior and posterior, may be determined. As another example, a range or variability of activation times after excluding certain locations or regions may be determined according to the techniques of this disclosure. The excluded locations or regions may be those that are believed to be scar tissue, e.g., identified by low amplitude electrical signals, or locations or regions that are beyond the extent of the far-field QRS complex. In general, calculation of an index may include determining any statistical or other value based on the torso-surface or cardiac activation times, or some subset thereof. These and other examples are within the scope of the following claims.

The invention claimed is:

1. A method of cardiac pacing comprising:
 - (a) determining a baseline rhythm using a plurality of body-surface electrodes;
 - (b) determining a set of baseline functional electrical metrics in response to determining the baseline rhythm;
 - (c) delivering resynchronization pacing using a right ventricular electrode and a left ventricular electrode or delivering the resynchronization pacing using only a left ventricular electrode;
 - (d) determining a set of functional electrical metrics relating to cardiac depolarization and repolarization in response to resynchronization pacing;

(e) determining whether relative reduction of at least one functional electrical metric from the set of functional electrical metrics in step d exceeds X % of its corresponding value from the set of baseline functional electrical metrics in step (b);

(f) determining whether an absolute value of at least one electrical metric from the set of the functional electrical metrics in step (d) is less than Y ms; and

(g) determining that a site is responsive to cardiac resynchronization therapy (CRT) in response to determining whether steps (e) or (f) are met.

2. The method of claim 1 wherein the baseline functional electrical metrics includes an intrinsic atrioventricular (iAV) delay.

3. The method of claim 2 wherein resynchronization pacing is delivered using a set of AV delays.

4. The method of claim 3 wherein the resynchronization pacing is delivered using a first AV delay, the first AV delay comprising a sensed AV (SAV) interval or a paced AV (PAV) interval, the SAV or the PAV is equal to the greater of an intrinsic iAV-60 ms and 80 ms.

5. The method of claim 4 wherein the resynchronization pacing is delivered using a second AV delay, the second AV delay comprising a SAV interval or a PAV interval being set at one of iAV-30 ms and iAV-90 ms.

6. The method of claim 5 wherein the resynchronization pacing is delivered using a third AV delay, the third AV delay being set at one of iAV-30 ms and iAV-90 ms.

7. The method of claim 5, wherein the second AV delay uses the SAV interval provided the first AV delay used the SAV interval.

8. The method of claim 5, wherein the second AV delay uses the PAV interval provided the first AV delay used the PAV interval.

9. The method of claim 5, wherein the second AV delay uses the PAV interval while the first AV delay used the SAV interval.

10. The method of claim 3 wherein the set of AV delays are employed to confirm response or non-response.

11. The method of claim 3 wherein selection of an AV delay is dependent upon AV delay values near the intrinsic AV delay (iAV).

12. The method of claim 3 wherein AV delay values near the iAV includes AV delays greater than or equal to (iAV-30 ms or iAV-90 ms), 80 ms.

13. The method of claim 1 wherein the functional electrical metrics are indicative of electrical dyssynchrony during a cardiac depolarization process and dispersion of repolarization during a cardiac repolarization process.

14. The method of claim 1 wherein the functional electrical metrics are associated with at least one resynchronization of activation metric.

15. The method of claim 14 wherein the resynchronization of activation metric relates to dispersion of electrical activation times corresponding to a plurality of the body-surface electrodes on a torso or on certain predefined anatomic areas of the torso.

16. The method of claim 15 wherein at least one resynchronization of activation metric is standard deviation of activation times acquired from all the torso electrodes.

17. The method of claim 15 wherein at least one resynchronization of activation metric is standard deviation of activation times of only left-sided electrodes of the torso electrodes.

18. The method of claim 14 wherein at least one resynchronization of activation metric is associated with central tendency of electrical activation times corresponding to a

plurality of the body-surface electrodes on a torso or on certain predefined anatomic areas of the torso.

19. The method of claim 18 wherein the central tendency of electrical activation times reflects one of an average global activation time and an average regional activation time.

20. The method of claim 1, wherein X % ranges from about 5% to about 100%.

21. The method of claim 1, wherein Y ranges from about 15 ms to about 150 ms.

22. The method of claim 1 further comprising:
selecting an optimal site to locate a lead.

23. The method of claim 1 wherein the functional electrical metrics comprise a measure of dispersion, and further wherein the measure of dispersion includes standard deviation, range or interquartile deviation of activation times, repolarization times, activation-recovery intervals associated with a plurality of the body-surface electrodes.

24. The method of claim 1, wherein the functional electrical metrics comprise a central tendency, and further wherein the central tendency is one of a mean, a median, mode or a sum of absolute values of activation times associated with a plurality of the body-surface electrodes.

25. The method of claim 1, wherein the method further comprises determining a non-responsive site as one which does not satisfy step (g) for resynchronization pacing delivered at any of a set of AV delays separated from each other by at least 20 ms.

26. The method of claim 1, wherein delivering resynchronization pacing and determining a set of functional electrical metrics comprises:

delivering resynchronization pacing using a first LV pacing electrode and a second LV pacing electrode; and determining a first and second functional electrical metric of the set of functional electrical metrics relating to cardiac depolarization and repolarization in response to the resynchronization pacing using each of the first LV pacing electrode and the second LV pacing electrode, the method further comprising:

determining the first LV pacing electrode and the second LV pacing electrode are equivalently responsive based upon the first functional electrical metric determined in response to the resynchronization pacing using each of the first LV pacing electrode and the second LV pacing electrode; and

selecting one of the first LV electrode and the second LV electrode as an optimal electrode from which to pace in response to generating data based upon the second functional electrical metric determined in response to the resynchronization pacing using each of the first LV pacing electrode and the second LV pacing electrode.

27. A method of cardiac pacing comprising:

(a) determining a baseline rhythm using a plurality of body-surface electrodes;

(b) determining a set of baseline functional electrical metrics in response to determining the baseline rhythm;

(c) delivering resynchronization pacing using a right ventricular electrode and a pacing left ventricular electrode or delivering resynchronization pacing using only a left ventricular electrode;

(d) determining a set of functional electrical metrics relating to cardiac depolarization and repolarization in response to resynchronization pacing;

(e) determining whether relative reduction of a first functional electrical metric from the set of functional electrical metrics in step (d) exceeds X % of a first electrical

functional metric from the set of baseline functional electrical metrics in step (b);

(f) determining whether an absolute value of a second functional electrical metric from the set of the functional electrical metrics is less than Y ms; and

(g) determining that a site is responsive to CRT in response to determining whether steps (e) and (f) are met.

28. The method of claim 27, wherein X % ranges from about 5% ms to about 100% ms.

29. The method of claim 27, wherein Y ranges from about 15 ms to about 150 ms.

30. A system of cardiac pacing comprising:
a plurality of body-surface electrodes;

means for determining a baseline rhythm using the plurality of body-surface electrodes;

means for determining a set of baseline functional electrical metrics in response to determining the baseline rhythm;

at least one of a right ventricular electrode and a pacing left ventricular electrode;

delivering means for delivering resynchronization pacing using the right ventricular electrode and the pacing left ventricular electrode or delivering means for delivering resynchronization pacing using only the left ventricular electrode;

means for determining a set of functional electrical metrics relating to cardiac depolarization and repolarization in response to resynchronization pacing;

means for determining whether relative reduction of a first functional electrical metric from the set of functional electrical metrics exceeds X % of a first electrical functional metric from the set of baseline functional electrical metrics;

means for determining whether an absolute value of a second functional electrical metric from the set of the functional electrical metrics is less than Y ms; and

means for determining that a site is responsive to CRT in response to determining whether the relative reduction of the first functional electrical metric from the set of functional electrical metrics exceeds X % of the first electrical functional metric from the set of baseline functional electrical metrics and whether the absolute value of the second functional electrical metric from the set of the functional electrical metrics is less than Y ms.

31. The system of claim 30, wherein X % ranges from about 5% ms to about 100% ms.

32. The system of claim 30, wherein Y ranges from about 15 ms to about 150 ms.

33. The system of claim 30 wherein the baseline functional electrical metrics includes an atrioventricular (iAV) delay.

34. The system of claim 33 wherein the resynchronization pacing is delivered using a set of AV delays.

35. The system of claim 34 wherein the resynchronization pacing is delivered using a first AV delay, the first AV delay comprising a sensed AV (SAV) interval or a paced AV (PAV) interval, the SAV or the PAV is equal to the greater of an intrinsic iAV-60 ms and 80 ms.

36. The system of claim 35 wherein the resynchronization pacing is delivered using a second AV delay, the second AV delay comprising a SAV interval or a PAV interval being set at one of iAV-30 ms and iAV-90 ms.

37. The system of claim 36 wherein the resynchronization pacing is delivered using a third AV delay, the third AV delay being set at one of iAV-30 ms and iAV-90 ms.

29

30

38. The system of claim 34 wherein the set of AV delays are employed to confirm response or non-response to CRT pacing.

39. The system of claim 38 wherein selection of an AV delay is dependent upon the set of AV delay values near the iAV delay. 5

40. The system of claim 39 wherein AV delay values near the iAV includes AV delays greater than or equal to (iAV-30 ms or iAV-90 ms), 80 ms.

* * * * *

10

UNITED STATES PATENT AND TRADEMARK OFFICE
CERTIFICATE OF CORRECTION

PATENT NO. : 9,486,151 B2
APPLICATION NO. : 14/190508
DATED : November 8, 2016
INVENTOR(S) : Ghosh and Gillberg

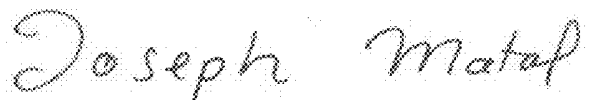
Page 1 of 1

It is certified that error appears in the above-identified patent and that said Letters Patent is hereby corrected as shown below:

In the Claims

In Column 26, Line 15, in Claim 3, delete "wherein resynchronization" and insert --wherein the resynchronization--

Signed and Sealed this
Nineteenth Day of September, 2017



Joseph Matal
*Performing the Functions and Duties of the
Under Secretary of Commerce for Intellectual Property and
Director of the United States Patent and Trademark Office*

专利名称(译)	表面ECG电极的电不同步和电激活模式的度量		
公开(公告)号	US9486151	公开(公告)日	2016-11-08
申请号	US14/190508	申请日	2014-02-26
[标]申请(专利权)人(译)	美敦力公司		
申请(专利权)人(译)	美敦力公司, INC.		
当前申请(专利权)人(译)	美敦力公司, INC.		
[标]发明人	GHOSH SUBHAM GILLBERG JEFFREY M		
发明人	GHOSH, SUBHAM GILLBERG, JEFFREY M		
IPC分类号	A61N1/365 A61N1/368 A61N1/362 A61B5/0452 A61B5/00 A61B5/0408		
CPC分类号	A61B5/6805 A61B5/7282 A61N1/3627 A61N1/3682 A61N1/3684 A61B5/04085 A61B5/0452 A61N1/36842 A61N1/36843		
优先权	61/834133 2013-06-12 US		
其他公开文献	US20140371807A1		
外部链接	Espacenet USPTO		

摘要(译)

公开了一种心脏起搏的方法和系统。使用多个体表电极确定基线节律。响应于确定基线节律确定一组基线功能电指标。使用右心室电极和起搏左心室电极或仅使用左心室电极来递送重新同步起搏。响应于重新同步起搏,确定与心脏去极化和复极化相关的一组功能性电学指标。确定至少一个功能电测量值与该组功能电测量值的相对减少是否超过来自该组基线功能电测量值的其对应值的X%。确定来自该组功能电学指标的至少一个电学指标的绝对值是否小于Y ms。确定部位是否对心脏再同步治疗(CRT)有响应。

