

US009717924B2

(12) **United States Patent**
Snyder

(10) **Patent No.:** **US 9,717,924 B2**
(45) **Date of Patent:** ***Aug. 1, 2017**

(54) **EXTERNAL DEFIBRILLATOR WITH SHOCK
ACTIVATED BY CESSATION OF
PRECORDIAL COMPRESSIONS**

A61B 5/046 (2006.01)
A61B 5/00 (2006.01)

(52) **U.S. Cl.**
CPC *A61N 1/3925* (2013.01); *A61B 5/0428*
(2013.01); *A61B 5/7203* (2013.01); *A61B*
5/7207 (2013.01); *A61N 1/39* (2013.01); *A61B*
5/046 (2013.01); *A61B 5/726* (2013.01)

(71) Applicant: **KONINKLIJKE PHILIPS N.V.**,
Eindhoven (NL)

(72) Inventor: **David Snyder**, Bainbridge Island, WA
(US)

(58) **Field of Classification Search**
USPC 607/5; 600/509
See application file for complete search history.

(73) Assignee: **KONINKLIJKE PHILIPS N.V.**,
Eindhoven (NL)

(56) **References Cited**

(*) Notice: Subject to any disclaimer, the term of this
patent is extended or adjusted under 35
U.S.C. 154(b) by 0 days.

This patent is subject to a terminal dis-
claimer.

U.S. PATENT DOCUMENTS

4,588,383 A 5/1986 Parker et al.
4,610,254 A 9/1986 Roberts et al.

(Continued)

FOREIGN PATENT DOCUMENTS

DE 4243889 A1 7/1993
EP 1079310 A 2/2001
WO 02072197 A 9/2002

Primary Examiner — Nicole F Johnson

(21) Appl. No.: **14/859,431**

(22) Filed: **Sep. 21, 2015**

(65) **Prior Publication Data**

US 2016/0008613 A1 Jan. 14, 2016

Related U.S. Application Data

(62) Division of application No. 10/537,792, filed as
application No. PCT/IB03/05812 on Dec. 5, 2003,
now Pat. No. 9,168,385.

(60) Provisional application No. 60/476,981, filed on Jun.
9, 2003, provisional application No. 60/433,375, filed
on Dec. 13, 2002.

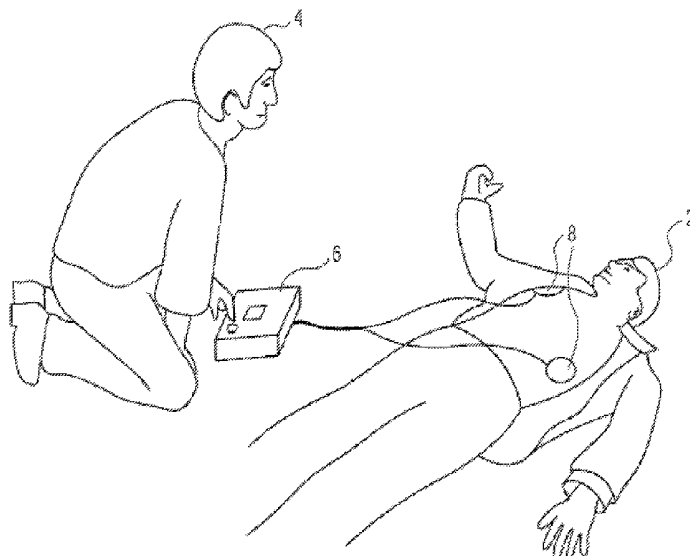
(51) **Int. Cl.**

A61N 1/00 (2006.01)
A61H 31/00 (2006.01)
A61N 1/39 (2006.01)
A61B 5/0428 (2006.01)

(57) **ABSTRACT**

A defibrillator having a pair of electrodes for delivering an
artifact-compensated defibrillation shock and a method
thereof is provided. The defibrillator can be deployed rapidly
while administering a cardio-pulmonary resuscitation (CPR)
on the patient. Upon detection of an end of the CPR
operation, a correlation signal indicative of signal corruption
is detected and analyzed rapidly to determine an appropriate
energy level discharged across the pair of electrodes. There-
after, a notification signal is sent to the user of the defibril-
lator prior to delivering the defibrillation shock to the
patient. The artifact-compensated defibrillation shock is
delivered if for a predetermined period of time no movement
is detected.

16 Claims, 4 Drawing Sheets



(56)

References Cited

U.S. PATENT DOCUMENTS

4,619,265	A	10/1986	Morgan et al.	
4,928,674	A	5/1990	Halperin et al.	
5,077,667	A	12/1991	Brown et al.	
5,474,574	A	12/1995	Payne et al.	
5,496,257	A	3/1996	Kelly et al.	
5,611,815	A *	3/1997	Cole	A61N 1/39 607/5
5,674,253	A	10/1997	Adams et al.	
5,735,879	A	4/1998	Gliner et al.	
6,125,298	A	9/2000	Olsen et al.	
6,171,257	B1	1/2001	Weil et al.	
6,174,295	B1	1/2001	Cantrell et al.	
6,263,238	B1	7/2001	Donohoo et al.	
6,287,328	B1	9/2001	Lyster et al.	
6,351,671	B1	2/2002	Myklebust et al.	
6,427,083	B1	7/2002	Totman et al.	
6,496,731	B1	12/2002	Lovett	
6,697,671	B1	2/2004	Nova et al.	
6,827,695	B2	12/2004	Palazzolo et al.	
6,961,612	B2	11/2005	Elghazzawi et al.	
6,990,373	B2	1/2006	Jayne et al.	
7,006,865	B1	2/2006	Cohen et al.	
7,085,601	B1	8/2006	Bardy et al.	
7,089,055	B2	8/2006	Cates et al.	
2003/0023277	A1	1/2003	Owen et al.	
2003/0088285	A1	5/2003	Marcovecchio et al.	
2003/0130697	A1	7/2003	Halperin et al.	
2003/0144699	A1	7/2003	Freeman	
2003/0195567	A1	10/2003	Jayne et al.	
2004/0162585	A1 *	8/2004	Elghazzawi	A61N 1/3925 607/5
2007/0299354	A1	12/2007	Striepe et al.	

* cited by examiner

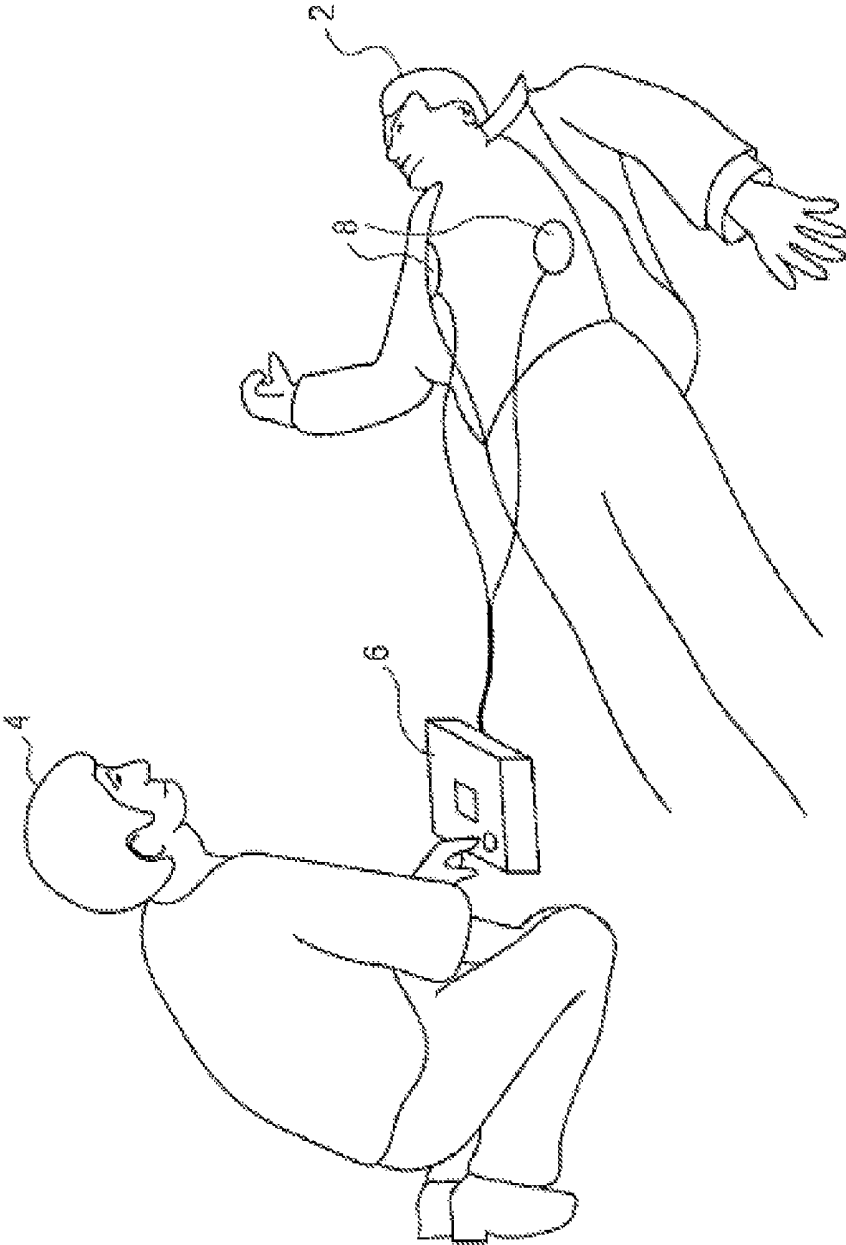


FIG. 1

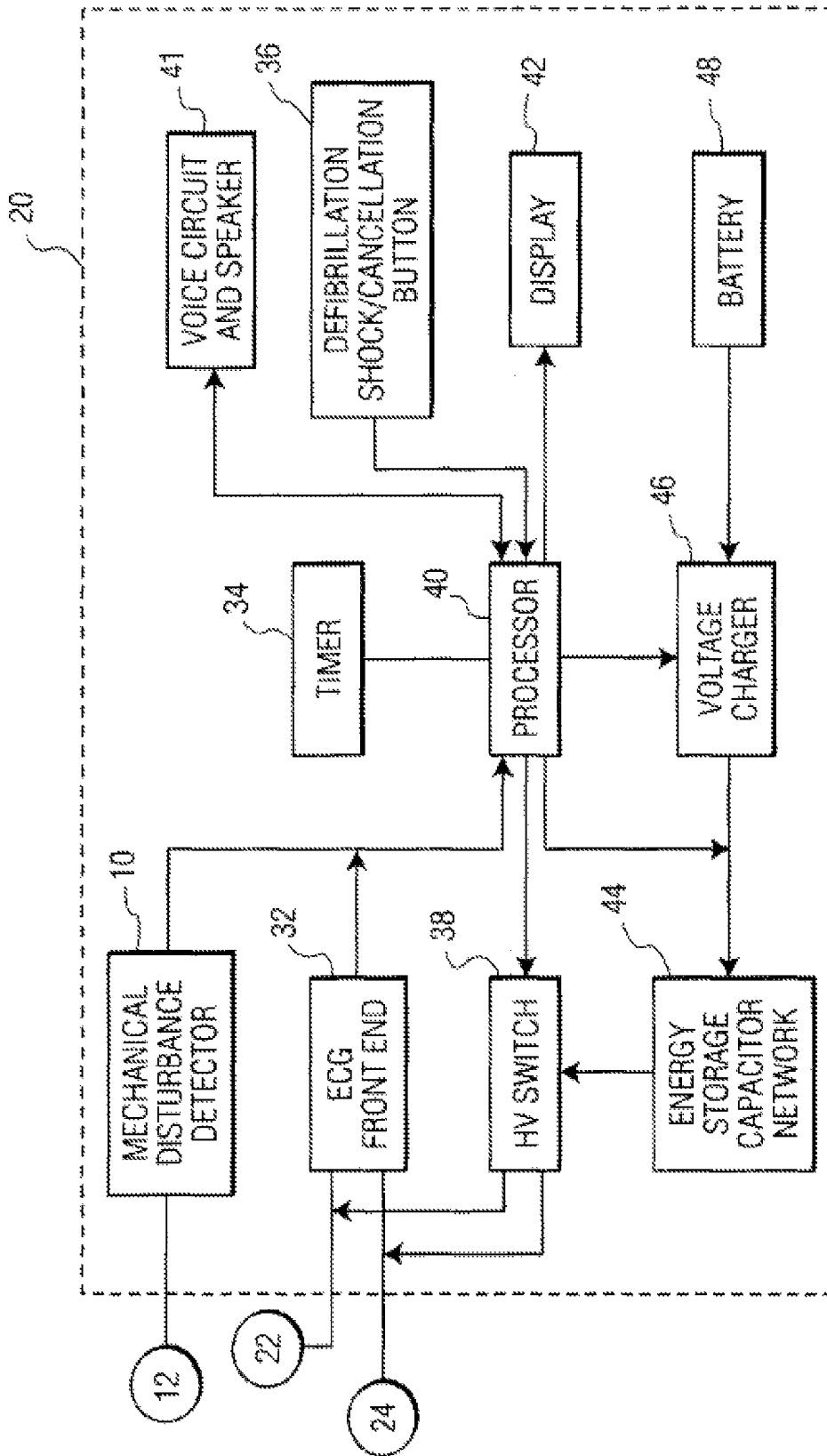


FIG. 2

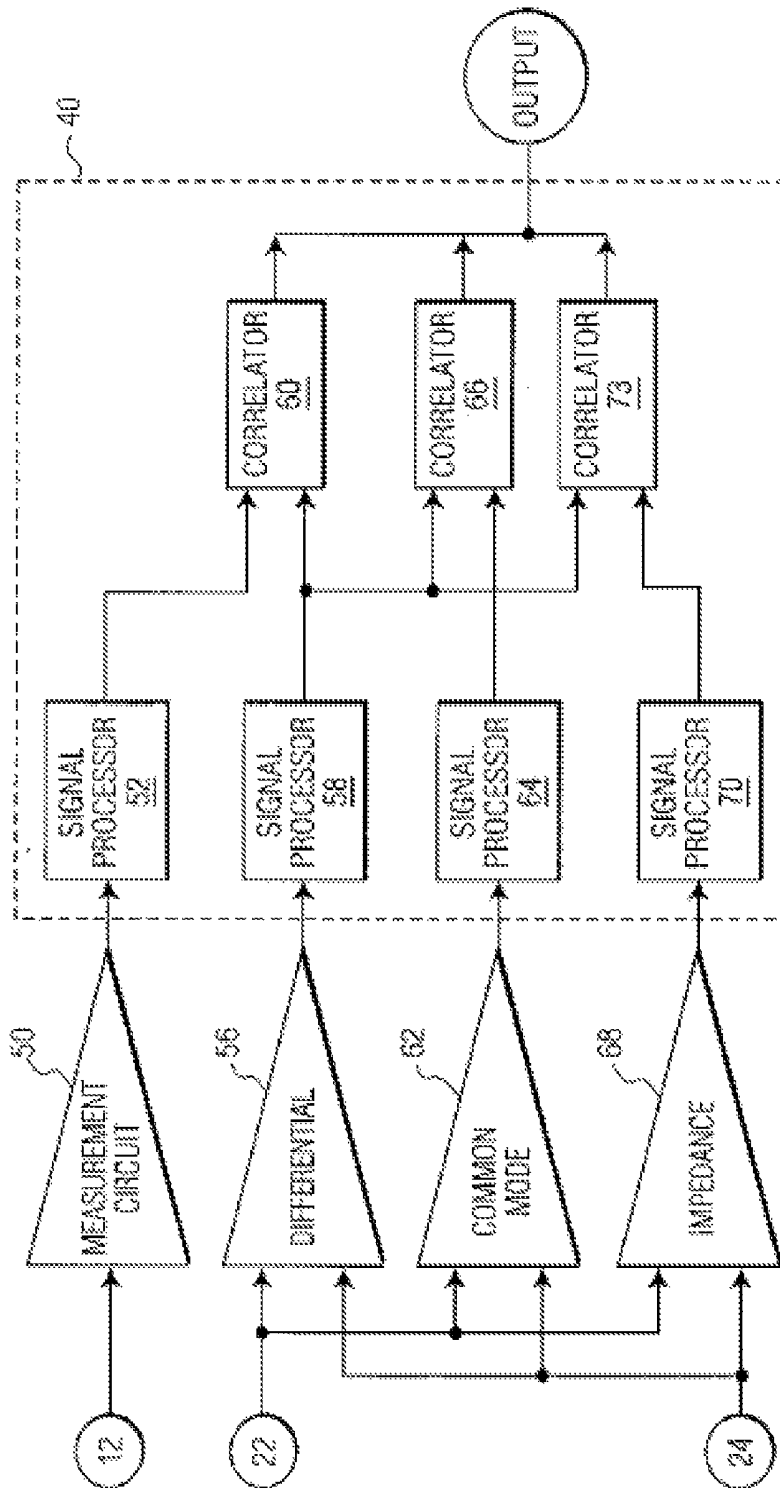


FIG. 3

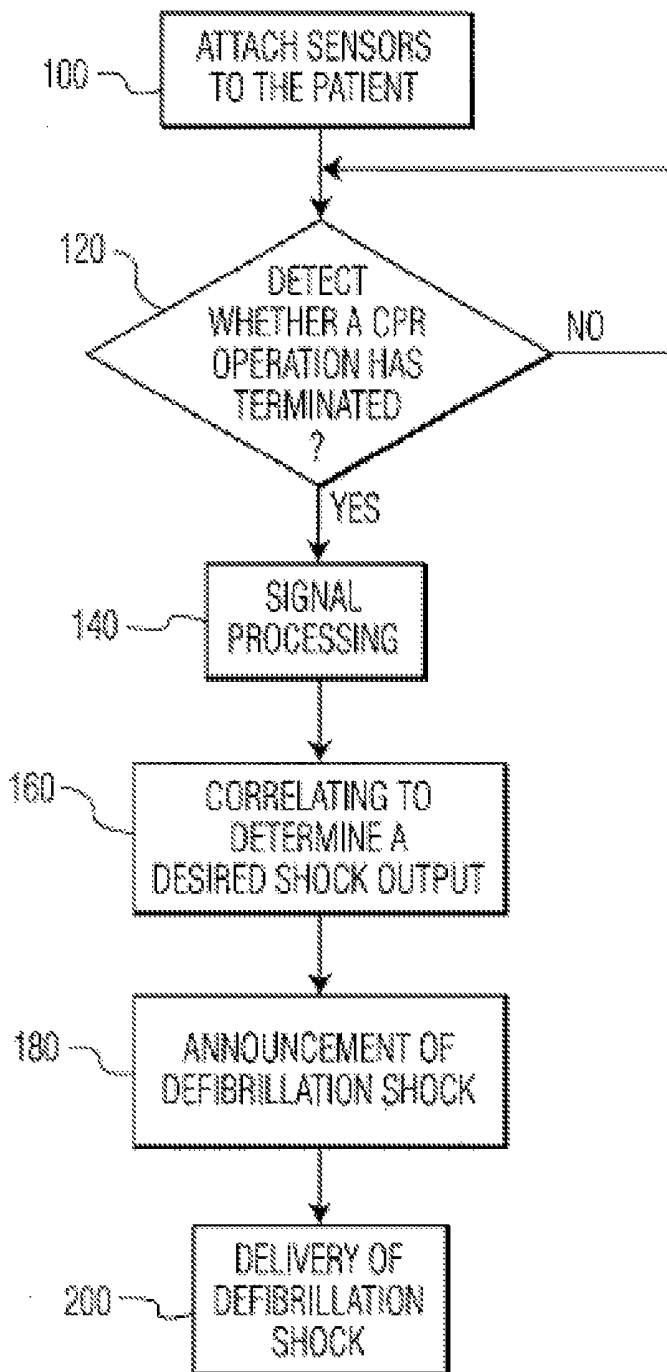


FIG. 4

EXTERNAL DEFIBRILLATOR WITH SHOCK ACTIVATED BY CESSATION OF PRECARDIAL COMPRESSIONS

CROSS REFERENCE TO RELATED APPLICATION

This application is a divisional application of U.S. Pat. No. 9,168,385 issued Oct. 27, 2015, based on U.S. utility application Ser. No. 10/537,792 filed Jun. 6, 2005, which in turn is a National Stage Entry of WO 2004/054656 A1, corresponding to PCT Application No. PCT/IB2003/005812 filed on Dec. 5, 2003, which in turn claims the benefit of U.S. provisional application Ser. No. 60/476,981 filed Jun. 9, 2003 and of U.S. provisional application Ser. no. 60/433,375 filed Dec. 13, 2002, all of which are incorporated herein by reference.

BACKGROUND OF THE INFORMATION

1. Field of the Invention

The present invention relates to devices used in electrical therapy and, in particular, to a defibrillator for delivering artifact-compensated defibrillation pulses while cardio-pulmonary resuscitation (CPR) is being performed on a patient.

2. Description of the Related Art

Medical equipment manufacturers have developed Automated Electronic Defibrillators (AEDs) to provide early defibrillation. AEDs deliver a high-amplitude current pulse, waveform, or shock to the heart in order to restore the patient's heart rhythm to a normal level. For example, FIG. 1 depicts the conventional AED 6 being applied to a cardiac arrest victim 2 by a rescuer 4. As shown in FIG. 1, a pair of defibrillation electrodes 8 is placed on anterior-anterior (AA) positions on the victim's torso for delivering the shocks. At the same time, it is also necessary to perform a cardio-pulmonary resuscitation (CPR) on the patient while delivering the defibrillation shocks in order to revive the victim from the cardiac arrest.

In treating victims of cardiac arrest with a defibrillator, it is important that the treatment be performed very rapidly as their chances of surviving the cardiac arrest decrease drastically over time following the cardiac arrest. Thus, a quick response to cardiac arrest in administering a defibrillation shock after performing the CPR precordial compressions at the rescue scene is critical. In addition to deploying a defibrillation shock rapidly as needed to improve the resuscitation benefit, measuring accurate signals in the presence of other artifact signals, such as the movement of the victim during the CPR operation, is vital when making a correct decision with respect to a patient's treatment or, for devices that use algorithms to make decisions.

With regards to the above paragraph, there are two time intervals that are of importance, only one of which is addressed by this invention. The chance of survival decreases rapidly following the loss of circulation. Consequently the time from the beginning of the arrest until the first defibrillation shock is important. This interval is important whether or not CPR is performed, but is not addressed by this particular invention. When CPR is performed, some level of circulation is restored artificially, which can improve the chances of survival. When CPR is discontinued to allow the AED to analyze the heart rhythm (via the ECG), circulation is once again stopped. A long interval between discontinuation of CPR and shock delivery will decrease the chance of survival. It is this second interval that is addressed by this invention. Therefore, the present invention provides

an improved defibrillator that is easy to use and that enables a minimally trained user to easily, rapidly, and effectively deploy the defibrillator to treat the patient, while reducing the time interval between precordial compressions and delivery of a defibrillation shock.

SUMMARY OF THE INVENTION

The present invention is directed to a method and system for quickly and accurately applying the defibrillating shock to a victim of sudden cardiac arrest following delivery of CPR precordial compressions.

DETAILED DESCRIPTION OF THE DRAWINGS

A more complete understanding of the method and apparatus of the present invention is available by reference to the following detailed description when taken in conjunction with the accompanying drawings wherein:

FIG. 1 is an illustration of a defibrillator being applied to a patient under cardiac arrest according to an embodiment of the present invention;

FIG. 2 depicts a representative hardware of the defibrillator illustrated in FIG. 1 according to an embodiment of the present invention;

FIG. 3 is a diagram of the hardware configured to deliver an artifact-compensated defibrillation shock according to an embodiment of the present invention; and,

FIG. 4 is a flow chart illustrating the operation steps of the defibrillation system in accordance with the present invention.

DETAILED DESCRIPTION OF THE EMBODIMENTS

In the following description, for purposes of explanation rather than limitation, specific details are set forth such as the particular architecture, interfaces, techniques, etc., in order to provide a thorough understanding of the present invention. For purposes of simplicity and clarity, detailed descriptions of well-known devices, circuits, and methods are omitted so as not to obscure the description of the present invention with unnecessary detail.

In the prior art system, portable automated external defibrillators do not consider the mechanical disturbance of the patient as an inhibitor/enable of shock delivery. In particular, the mechanical movement of the patient's chest is not compensated during the delivery of electrical therapy, thus producing a corrupted signal, which is measured by the defibrillator. In addition, other artifacts that corrupt the signals, including mechanical disturbances of sensors, electromagnetic interference, etc., are used to trigger the treatable shocks, thus resulting in inaccurate reading when delivering the defibrillation shock. Furthermore, prior art defibrillators have presented a shock hazard to the rescuer as the defibrillators are incapable of detecting whether the rescuer was in physical contact with the patient. One way to address this problem in the prior is to provide a "no touch" interval period prior to delivering the therapy shocks. However, this delay is undesirable as it delays the interval between the CPR precordial compressions and the delivery of defibrillation shock, thus preventing a quick response in administering a defibrillation shock which is vital in increasing the chance of surviving the cardiac arrest.

The above paragraph is not an accurate description of the prior art. First, let's distinguish between motion detection and artifact detection. Motion detection determines, via

means of an external transducer or patient dependent parameter (e.g. transthoracic impedance), that the patient is being physically disturbed. It does not compare the disturbance signal to the patient's ECG to determine whether the motion has been manifested as corruption of the ECG signal. Artifact detection acquires a disturbance signal, which can be patient motion or any other possible source of ECG disturbance (e.g. electromagnetic), and compares it to the patient's ECG, e.g. by cross-correlation, in order to determine if the disturbance has manifested itself as corruption of the ECG. Such a corruption would make analysis of the ECG for shock advisory purposes unreliable, since the ECG is known to contain signals that are not of cardiac origin.

A typical AED therapy sequence following CPR is as follows:

1. Instruct rescuer "stop CPR", or "do not touch the patient."
2. Allow a short interval (e.g. 3 seconds or less) for the rescuer to discontinue CPR.
3. Begin acquiring ECG & disturbance signal for analysis.
4. Analyze an interval (e.g. 4.5 seconds) of ECG and disturbance signal. If motion is detected, repeat step 4, otherwise proceed to step 5.
5. If ECG analysis indicates VF or VT, begin charging therapy capacitor. At this point, the shock button is not armed, i.e. pressing it will have no effect.
6. Once capacitor is fully charged, arm the shock button and instruct the rescuer to press it.

The ForeRunner and FR2 (Philips) AED therapy sequence following CPR is as follows:

1. Instruct rescuer "do not touch the patient." Begin charging the therapy capacitor to an intermediate level (Philips patented precharge).

2. Allow a short interval (e.g. 3 seconds or less) for the rescuer to discontinue CPR.

3. Begin acquiring ECG & disturbance signal for analysis.

4. Analyze an interval (e.g. 4.5 seconds) of ECG and disturbance signal. If artifact is detected, repeat step 4, otherwise proceed to step 5.

5. If ECG analysis indicates VF or VT, finish charging therapy capacitor. At this point, the shock button is not armed, i.e. pressing it will have no effect.

6. Once capacitor is fully charged, arm the shock button and instruct the rescuer to press it.

1. The therapy sequence that we wish to protect is as follows: At a predetermined interval prior to the end of CPR, begin charging the therapy capacitor to an intermediate level (Philips patented precharge).

2. Instruct rescuer "stop CPR", or "do not touch the patient". Initiate final charging of therapy capacitor.

3. Allow a short interval (e.g. 3 seconds or less) for the rescuer to discontinue CPR.

4. Begin acquiring ECG & disturbance signal for analysis.

5. Analyze an interval (e.g. 4.5 seconds) of ECG and disturbance signal. If artifact and/or motion is detected, repeat step 5, otherwise proceed to step 6.

6. If ECG analysis indicates VF or VT, arm the shock button as soon as full charge is achieved (which may be immediately) and instruct the rescuer to press it. Otherwise, instruct "no shock advised."

An alternative embodiment is as follows:

1. Instruct rescuer "stop CPR", or "do not touch the patient". Immediately begin charging the therapy capacitor to full charge.

2. Allow a short interval (e.g. 3 seconds or less) for the rescuer to discontinue CPR.

3. Begin acquiring ECG & disturbance signal for analysis.

4. Analyze an interval (e.g. 4.5 seconds) of ECG and disturbance signal. If artifact and/or motion is detected, repeat step 4, otherwise proceed to step 5.

5. If ECG analysis indicates VF or VT, arm the shock button as soon as full charge is achieved (which may be immediately) and instruct the rescuer to press it. Otherwise, instruct "no shock advised."

In other words, the ideas that we wish to protect are:

Initiate full charge of the therapy capacitor prior to having knowledge as to whether we will recommend a shock or not. This may, or may not, be preceded by pre-charging the capacitor.

Acquiring ECG and disturbance data during the capacitor charging operation (there is Philips prior art for this; both ForeRunner and FR2).

If ECG analysis indicates a heart rhythm deemed to be "shockable" (i.e. would benefit from electrical shock therapy), and a disturbance criteria is met, arm the defibrillator shock button immediately (with little or no delay to complete capacitor charging). Alternatively, the shock may be delivered automatically.

The disturbance criteria may be any of the following:

The absence of disturbance (e.g. motion), as determined solely from one or more disturbance signals

The absence of artifact, as determined by cross-correlation (or similar operation) of the ECG and one or more disturbance signals (Philips patented)

the absence of disturbance AND artifact.

In contrast, the present invention provides a defibrillation system in which the delivery of electrical therapy shocks is triggered by a combination of the detection of a treatable arrhythmia via an ECG analysis and a detection of the cessation or absence of CPR precordial compressions. Moreover, the inventive defibrillation system reduces the time interval between precordial compressions and a subsequent delivery of the defibrillation shock to less than 5 seconds. Furthermore, the inventive system detects the corruption of signals using a variable artifact analysis to determine an appropriate output level of the defibrillation shocks.

FIG. 2 is a simplified block diagram of the defibrillator in accordance with the embodiment of the present invention. The defibrillator 20 may include a mechanical disturbance detector 10, an electrocardiogram (ECG) front end 32, a timer 34, a defibrillation activation/deactivation button 36, a HV switch 38, a processor 40, a display 42, an energy storage capacitor network 44, a voltage charger 46, and a battery 48. It should be noted that any number of commercially or publicly available defibrillator configured to generate a defibrillation shock can be utilized in various implementations in accordance with the preferred embodiment of the present invention.

As shown in FIG. 2, the mechanical disturbance detector 10 is connected to a sensor 12 that is placed on the patient to detect the movement of the patient during the delivery of CPR precordial compressions. The movement of the patient that may potentially corrupt the accurate assessment of the signal of interest is detected and forwarded to the processor 40. Similarly, the ECG front end 32 is connected to the electrodes 22 and 24 that are placed on the patient to amplify, filter, and digitize (using an analog to a digital converter) an electrical ECG signal generated by the patient's heart. The detected ECG samples are received by the processor 40, which runs a shock advisory algorithm for detecting VF or other shockable rhythm requiring treatment by the defibrillation shock. The ECG front end 32 is also capable of measuring the patient impedance across the electrodes 22 and 24 using a low-level test signal that is a

non-therapeutic pulse to measure the voltage drop across the electrodes **22** and **24**. The detected patient impedance is analyzed by the processor **40** to determine the appropriate energy level desired to be delivered to the patient. In an alternate embodiment, the function of the mechanical disturbance detector **10** and the ECG front end **32** can be merged as one component, such that one of the electrode connected to the ECG front end **32** may serve as a sensor for detecting the movement of the patient.

The HV switch **38** is configured to sequentially deliver the defibrillation pulse across the pair of electrodes **22** and **24** to the patient in the desired polarity and duration. It should be noted that the HV switch **38** could be adapted to deliver a single polarity (monophasic), both negative and positive polarities (biphasic) or multiple negative and positive polarities (multiphasic) in the preferred embodiment. The timer **34** is connected to the processor **40** for providing a defibrillation pulse interval or duration when delivering the defibrillation pulse across the electrode pair **22** and **24**. The activation/deactivation button **36** is connected to the processor **40** to enable the user to activate/deactivate the delivery of a defibrillation pulse across the electrodes **22** and **24** when the VF or other shockable rhythm is detected. Note that the activation/deactivation button **36** can function in both AED and manual modes in the preferred embodiment. The voice circuit/speaker **41** is coupled to the processor **40** and provides voice instructions to the user during the operation of the defibrillator **20**. The display **42**, connected to the processor **40**, is preferably a liquid crystal display (LCD) and provides audio and visible feedback to the user. The battery **48** provides power for the defibrillator **20** and in particular for the voltage charger **46**, which charges the capacitors in the energy-storage capacitor network **44**. The energy-storage capacitor network **44** includes a plurality of capacitors and resistors that are arranged in series or parallel arrangement, or a combination of series and parallel arrangement, to supply a plurality of voltage-level outputs across the electrodes **22** and **24**. It will be apparent to those skilled in the art that a variety of RC arrangements can be implemented to generate different voltage levels. In an alternate embodiment, the function of the energy-storage capacitor network **44** can be performed by functionally equivalent circuits, such as a digital-processor circuit or an application-specific integrated circuit (ASIC).

In operation, the electrodes **22** and **24** connected to the ECG front end **32** is placed on a patient for obtaining the patient impedance. The processor **40** uses the information received from the ECG front end **32** to control the shape of the waveform of the defibrillation pulse delivered to the patient in real time. The defibrillation pulse delivered to the patient may be a fixed level, or a number of defibrillation pulses at different energy levels. This can be achieved by selecting the appropriate voltage level of the energy-storage capacitor network **44** from the set of configurations to deliver the desired impedance-compensated defibrillation pulse to the patient.

When a rescuer performs chest compressions as part of doing CPR on the patient, the resulting chest movement tends to disturb the electrodes placed on the chest area. This is undesirable for detecting ECG signals as the movement of the electrodes on the chest skin area generates interfering electrical noise or artifacts, which may corrupt the ECG signal. As discussed in detail later, the artifact in the ECG signal caused by mechanical disturbances of sensors, electromagnetic interference, other environmental conditions, or artifact caused by movement due to the cardio-pulmonary resuscitation (CPR) operation are nevertheless useful as

indicators that CPR is being performed, when CPR is concluded, and when the patient is being handled. An accelerometer or other motion sensor may be included in some embodiments for such detection purposes. As such, the sensor **12**, such as an accelerometer that is connected to the mechanical disturbance detector **10** is also placed on the patient for detecting the patient's movement in response to the precordial compressions. The defibrillator **20** is also provided with the display **42** for visually indicating the shock annunciation, or may be equipped with a voice circuit and speaker **41** for providing audible announcement just prior to delivering the defibrillation shocks.

Note that during the rescue attempt, if renewed mechanical disturbance is detected, the defibrillation activation/deactivation **36** is provided for cancellation of the shock within the brief delay interval prior to therapy deliver. Alternatively, the motion of new mechanical disturbance can be detected automatically and cause the cancellation of the defibrillation shock therapy.

FIG. 3 is a detailed description of the components that enable a rapid analysis during mechanical disturbances, so that arrhythmia determination can be made using artifact-free ECG following the cessation of mechanical disturbance. Note that detecting artifact can be performed in a variety of ways. For example, signal processing and correlation of processed signals in accordance with the present invention may include various embodiments described in U.S. Pat. No. 6,287,328, filed by the applicant and issued on Sep. 11, 2001, entitled "Multivariable Artifact Assessment," the teachings of which are incorporated herein by reference.

Briefly, an input signal indicative of patient movement is received via the sensor **12** and provided to the measurement circuit **50**. The signal is then sent to a signal processor **52** and forwarded to a correlator **60**, and the correlated signal is processed by the processor **40**. The processor **40** then evaluates the signals to produce an output signal. As will be appreciated by those skilled in the art, an appropriate signal processing includes, for example, band-pass filters, Fourier transforms, wavelet transforms, and joint time-frequency spectrograms. In addition, the method for correlating the data can be any correlation method known in the art. For example, correlation methods include specific and general cross-correlation techniques, which include known mathematical functions as well as any process that effectively correlates the data. Specific implementations include, but are not limited to, finite sampled or continuous estimates of cross-covariance and cross-correlation, both biased and unbiased. Alternatively, correlation may perform similarity comparisons between any multiple signals.

Meanwhile, an input signal indicative of the patient impedance is received across the electrodes **22** and **24** and transmitted to a differential-mode amplifier **56** and a common-mode amplifier **62** which amplify the signal prior to transmitting the signal to the signals processors. The resulting signals are then transmitted to their respective signal processors **58** and **64** which process the signals to emphasize particular features. The resulting processed signals are then transmitted to a correlator **66**, which correlates the signals. At the same time, the input signal is transmitted to impedance detector **68**, which provides a trans-electrode impedance signal to a signal processor **70**. Signal processor **70** processes the signal from the impedance detector **68** to emphasize particular features of the signal. The resulting processed signal is then transmitted to a correlator **73**, which correlates the signal from signal processor **70** with the processed signal from the differential amplifier signal processor **58**. Once the signals have been correlated at their

respective correlators **60**, **66**, and **73**, the resulting signals are processed by the processor **40**, which then further evaluates the results of the correlators **60**, **66**, and **73** to provide an indication of the degree of corruption of the signal of interest. The processor **40** finally provides an output signal, which may be analyzed further as discussed with respect to FIG. **4** below.

FIG. **4** is a flow chart illustrating the operation steps of delivering an artifact-compensated defibrillation shock while administering a CPR treatment according to the present invention. Initially, the inventive defibrillator **20** is deployed in step **100** by attaching the sensor **12** and the electrodes **22**, **24** to the cardiac victim to analyze a patient input signal. The input signal due to potentially corrupted signal and/or the movement of the patient during a CPR operation is detected. Note that it is common to perform CPR precordial compressions on the victim in conjunction with the use of the defibrillator during rescue attempts. As such, in step **120**, the system **20** determines whether a CPR operation has stopped using the input signal from the sensor **12** in step **120**. If so, the electrodes **22** and **24** connected to the ECG front end **32** detect an input signal, i.e., ventricular fibrillation (VF) and the patient impedance is measured by measuring a low-level test signal or delivering a non-therapeutic signal in step **140**.

Thereafter, the signal processing is implemented in order to emphasize a particular feature of the data in the input signal in step **160**. Here, various implementations of processing, including known techniques such as filters, Fourier transforms, wavelet transforms, and joint time-frequency spectrograms, are employed. For example, the lower spectral portion of a Fourier transform of an ECG signal might be correlated with a similarly processed impedance signal in order to enhance the detection of an artifact resulting from a defibrillator operator performing CPR on a patient being monitored. Accordingly, the correlating step **160** performs the function of measuring similarities between the processed cardiac signal and the processed corrupted signals. The resulting comparisons are then analyzed to determine an indication of the amount of artifacts present within the potentially corrupted cardiac signal.

The result of the comparisons is processed by the processor **40** in order to determine the level of the defibrillation shock, which may include a series of successive defibrillation shocks at a predetermined interval, to be delivered to the patient. The energy level may be determined by the operator manually, or it can be determined by automatically utilizing a common protocol known in the art. Here, the processor **40** also determines the polarity and duration of the defibrillation shock. After determining the desired energy level output, the processor **40** sends a notification signal to the user in step **180** prior to delivering the defibrillation shock. At the same time, the processor **40** sends a signal to the HV switch **38** to actuate the switches to discharge the desired defibrillation shock to the patient. Alternatively, the processor **40** may notify the operator via the display **42** to press the shock button **36** to actuate manually the delivery of the defibrillation shock to the patient. Finally, the defibrillation shock is discharged to the patient in step **200**, then the patient's heart is monitored to determine whether a subsequent defibrillation shock is necessary. If so, the above steps may be repeated to deliver the subsequent defibrillation shock.

While the preferred embodiments of the present invention have been illustrated and described, it will be understood by those skilled in the art that various changes and modifications may be made and equivalents may be substituted for elements thereof without departing from the true scope of

the present invention. In addition, many modifications may be made to adapt to a particular situation and the teaching of the present invention without departing from the central scope. Therefore, it is intended that the present invention not be limited to the particular embodiment disclosed as the best mode contemplated for carrying out the present invention, but that the present invention include all embodiments falling within the scope of the appended claims.

The invention claimed is:

1. A method for applying electrotherapy in an automatic external defibrillator having a high voltage energy source, an ECG detector, and a CPR therapy module, the method comprising the steps of:

prompting a start of a CPR therapy interval;
detecting an indication of CPR cessation; and,
arming the AED for electrotherapy shock based on the detecting step.

2. The electrotherapy method of claim **1**, wherein the arming step is complete in less than about 10 seconds from detection of the indication.

3. The electrotherapy method of claim **1**, wherein the indication is based upon a predetermined end of the CPR therapy interval.

4. The electrotherapy method of claim **3**, wherein the arming step includes initiating a charging of the high voltage energy source prior to the predetermined end of the CPR therapy interval.

5. The electrotherapy method of claim **3**, wherein the arming step includes completing a charging of the high voltage energy source prior to the predetermined end of the CPR therapy interval.

6. The electrotherapy method of claim **3**, further comprising the steps of:

obtaining an ECG signal from the ECG detector prior to the end of the CPR therapy interval; and
determining whether the ECG signal is corrupted by CPR activity, wherein the arming step is further based on determining an uncorrupted ECG signal.

7. The electrotherapy method of claim **1**, wherein the indication of CPR cessation includes a signal generated by CPR activity.

8. The electrotherapy method of claim **7**, further comprising the steps of:

obtaining an ECG signal from the ECG detector prior to the CPR cessation;
determining whether the ECG signal is uncorrupted by CPR activity; wherein the arming step is further based on the determining step.

9. A defibrillator comprising:

a CPR prompting system arranged to prompt a start of a CPR delivery interval;

a detector arranged to detect a signal indicating a cessation of CPR delivery;

an energy delivery unit arranged to provide a defibrillation shock;

a charging circuit arranged to charge the energy delivery unit; and,

a controller arranged to (i) control the charging circuit to charge the energy delivery unit and (ii) arm the energy delivery unit for providing the defibrillation shock at a desired charge level, in response to the signal indicating the cessation of CPR delivery.

10. The defibrillator of claim **9** wherein an interval between receiving the signal and charging the energy delivery unit is less than about 10 seconds.

11. The defibrillator of claim 9, wherein the signal further includes a completion signal indicating an end of a predetermined CPR delivery interval.

12. The defibrillator of claim 11, wherein the controller activates the charging circuit prior to the end of the predetermined CPR delivery interval. 5

13. The defibrillator of claim 12, wherein the controller controls the charging circuit to charge the energy source to a final value prior to the end of the predetermined CPR delivery interval. 10

14. The defibrillator of claim 9, wherein the detector is also arranged to detect an ECG rhythm signal.

15. The defibrillator of claim 9, wherein the signal includes a component indicative of CPR motion.

16. The defibrillator of claim 15, further comprising: 15
an ECG detector arranged to obtain an ECG signal prior to the cessation of CPR, wherein the controller further charges the energy delivery unit responsive to a detection of a shockable ECG rhythm.

* * * * *

20

专利名称(译)	外部除颤器通过停止心前压迫激活休克		
公开(公告)号	US9717924	公开(公告)日	2017-08-01
申请号	US14/859431	申请日	2015-09-21
[标]申请(专利权)人(译)	皇家飞利浦电子股份有限公司		
申请(专利权)人(译)	皇家飞利浦N.V.		
当前申请(专利权)人(译)	皇家飞利浦N.V.		
[标]发明人	SNYDER DAVID		
发明人	SNYDER, DAVID		
IPC分类号	A61N1/00 A61H31/00 A61N1/39 A61B5/0428 A61B5/046 A61B5/00		
CPC分类号	A61N1/3925 A61B5/0428 A61B5/7203 A61B5/7207 A61N1/39 A61B5/046 A61B5/726 A61N1/39044		
优先权	PCT/IB2003/005812 2003-12-05 WO 60/476981 2003-06-09 US 60/433375 2002-12-13 US		
其他公开文献	US20160008613A1		
外部链接	Espacenet USPTO		

摘要(译)

本发明提供一种除颤器及其方法，所述除颤器具有一对用于传递伪影补偿的除颤电击的电极。在对患者进行心肺复苏 (CPR) 的同时，可以快速部署除颤器。在检测到CPR操作结束时，检测并快速分析指示信号损坏的相关信号，以确定在该对电极上放电的适当能级。此后，在将除颤电击传递给患者之前，将通知信号发送给除颤器的用户。如果在预定的时间段内没有检测到移动，则传递伪影补偿的除颤电击。

