



US010039490B2

(12) **United States Patent**  
**Ranucci**

(10) **Patent No.:** **US 10,039,490 B2**  
(45) **Date of Patent:** **Aug. 7, 2018**

(54) **MONITORING SYSTEM FOR CARDIAC SURGICAL OPERATIONS WITH CARDIOPULMONARY BYPASS**

(58) **Field of Classification Search**  
CPC ..... A61M 2230/205; A61M 2230/005; A61M 1/3666; A61M 1/3621

See application file for complete search history.

(71) Applicant: **Sorin Group Italia S.r.l.**, Milan (IT)

(56) **References Cited**

(72) Inventor: **Marco Ranucci**, Milan (IT)

U.S. PATENT DOCUMENTS

(73) Assignee: **Sorin Group Italia, S.r.l.**, Mirandola (IT)

5,241,965 A 9/1993 Mick  
5,251,632 A 10/1993 Delpy  
(Continued)

(\*) Notice: Subject to any disclaimer, the term of this patent is extended or adjusted under 35 U.S.C. 154(b) by 68 days.

FOREIGN PATENT DOCUMENTS

(21) Appl. No.: **14/738,805**

EP 1514562 A2 3/2005  
JP 2001505808 A 5/2001  
(Continued)

(22) Filed: **Jun. 12, 2015**

OTHER PUBLICATIONS

(65) **Prior Publication Data**

US 2015/0272487 A1 Oct. 1, 2015

“Hierarchy of Regional Oxygen Delivery During Cardiopulmonary Bypass”, US Boston, JM Slater, TA Orszulak, DJ Cook; Ann Thorac Surg 2001; 71:260-4.\*

(Continued)

**Related U.S. Application Data**

(60) Division of application No. 14/064,510, filed on Oct. 28, 2013, now abandoned, which is a continuation of (Continued)

*Primary Examiner* — Patricia Mallari

*Assistant Examiner* — Karen Toth

(74) *Attorney, Agent, or Firm* — Faegre Baker Daniels LLP

(30) **Foreign Application Priority Data**

May 13, 2005 (IT) ..... MI20050866  
Oct. 4, 2005 (EP) ..... 05021607

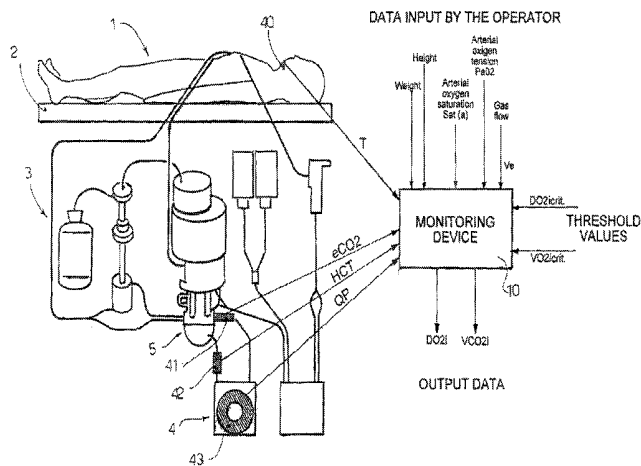
(57) **ABSTRACT**

(51) **Int. Cl.**  
*A61B 5/02* (2006.01)  
*A61B 5/00* (2006.01)  
(Continued)

A monitoring system for cardiac operations with cardiopulmonary bypass comprising: a processor operatively connected to a heart-lung machine; a pump flow detecting device connected to a pump of the heart-lung machine to continuously measure the pump flow value and send it to the processor; a hematocrit reading device to continuously measure the blood hematocrit value and to send it to the processor; a data input device to allow the operator to manually input data regarding the arterial oxygen saturation and the arterial oxygen tension; computing means integrated in the processor to compute the oxygen delivery value on the basis of the measured pump flow, the measured hematocrit

(Continued)

(52) **U.S. Cl.**  
CPC ..... *A61B 5/4836* (2013.01); *A61B 5/01* (2013.01); *A61B 5/0205* (2013.01); *A61B 5/082* (2013.01);  
(Continued)



value, the preset value of arterial oxygen saturation, and the preset value of arterial oxygen tension; and a display connected to the processor to display in real-time the computed oxygen delivery value.

**21 Claims, 6 Drawing Sheets**

**Related U.S. Application Data**

application No. 13/705,169, filed on Dec. 5, 2012, now Pat. No. 8,690,784, which is a continuation of application No. 12/250,212, filed on Oct. 13, 2008, now abandoned, which is a division of application No. 11/432,608, filed on May 11, 2006, now Pat. No. 7,435,220.

(51) **Int. Cl.**

- A61M 1/36* (2006.01)
- A61B 5/0205* (2006.01)
- A61B 5/08* (2006.01)
- A61B 5/145* (2006.01)
- A61M 1/32* (2006.01)
- A61M 1/14* (2006.01)
- A61B 5/01* (2006.01)
- G16H 40/63* (2018.01)

(52) **U.S. Cl.**

- CPC ..... *A61B 5/0816* (2013.01); *A61B 5/14535* (2013.01); *A61B 5/14542* (2013.01); *A61B 5/14546* (2013.01); *A61B 5/4866* (2013.01); *A61B 5/6866* (2013.01); *A61B 5/7278* (2013.01); *A61B 5/742* (2013.01); *A61B 5/746* (2013.01); *A61M 1/14* (2013.01); *A61M 1/32* (2013.01); *A61M 1/3621* (2013.01); *A61M 1/3666* (2013.01); *G16H 40/63* (2018.01); *A61B 2505/05* (2013.01); *A61M 2230/20* (2013.01); *A61M 2230/205* (2013.01); *A61M 2230/207* (2013.01)

(56)

**References Cited**

U.S. PATENT DOCUMENTS

5,365,922	A	11/1994	Raemer	
5,402,796	A	4/1995	Packer et al.	
5,551,435	A	9/1996	Sramek	
5,591,399	A	1/1997	Goldman et al.	
5,634,461	A	6/1997	Faithfull et al.	
5,682,877	A	11/1997	Mondry	
5,735,268	A *	4/1998	Chua .....	A61M 16/00 128/203.12
5,743,268	A	4/1998	Kabal	
5,752,509	A	5/1998	Lachmann et al.	
5,788,647	A	8/1998	Eggers	
5,810,759	A *	9/1998	Merz .....	A61M 1/1698 422/44
5,931,779	A	6/1999	Arakaki et al.	
5,937,858	A	8/1999	Connell	
5,978,691	A	11/1999	Mills	
6,059,732	A	5/2000	Orr et al.	
6,098,617	A	8/2000	Connell	
6,110,139	A	8/2000	Loubser	
6,144,444	A	11/2000	Haworth et al.	
6,155,975	A	12/2000	Urich et al.	
6,234,963	B1	5/2001	Blike et al.	
6,371,114	B1 *	4/2002	Schmidt .....	A61M 16/00 128/204.18
6,390,977	B1	5/2002	Faithfull et al.	
6,512,938	B2	1/2003	Claire et al.	
6,581,595	B1	6/2003	Murdock et al.	

6,671,529	B2	12/2003	Claire et al.	
6,675,798	B1	1/2004	Tyomkin et al.	
6,706,007	B2	3/2004	Gelfand et al.	
6,743,172	B1 *	6/2004	Blike .....	A61B 5/14551 600/300
7,198,751	B2	4/2007	Carpenter et al.	
7,435,220	B2	10/2008	Ranucci	
7,927,286	B2	4/2011	Ranucci	
7,931,601	B2	4/2011	Ranucci	
8,690,784	B2	4/2014	Ranucci	
2002/0035315	A1 *	3/2002	Ali .....	A61B 5/1455 600/300
2003/0191373	A1 *	10/2003	Blike .....	A61B 5/00 600/300
2004/0133187	A1 *	7/2004	Hickle .....	G06F 19/3456 604/890.1
2004/0217054	A1	11/2004	Olsen et al.	
2005/0056080	A1	3/2005	Lucci et al.	
2005/0139213	A1	6/2005	Blike	
2006/0047351	A1	3/2006	Hugo	
2006/0257283	A1	11/2006	Ranucci	
2008/0248581	A1 *	10/2008	Chu .....	G01N 33/66 436/66
2009/0043173	A1	2/2009	Ranucci	
2009/0043212	A1	2/2009	Ranucci	
2009/0043219	A1	2/2009	Ranucci	
2009/0118592	A1	5/2009	Klitgaard	
2013/0094996	A1 *	4/2013	Janssenswillen .....	G16H 40/63 422/45
2013/0096398	A1	4/2013	Ranucci	
2014/0050616	A1	2/2014	Ranucci	
2014/0079590	A1	3/2014	Rossi et al.	
2014/0296676	A1	10/2014	Ranucci	

FOREIGN PATENT DOCUMENTS

JP	2002200164	A	7/2002
JP	2002542900	A	12/2002
WO	WO199825514	A1	6/1998
WO	WO200066197	A1	11/2000

OTHER PUBLICATIONS

Evidence-Based Systematic Literature Review of Hemoglobin/Hematocrit and All-Cause Mortality in Dialysis Patients by Nataliya Volkova and Lenore Arab (American Journal of Kidney Diseases, vol. 47, No. 1 Jan. 2006: pp. 24-36).\*

Definition of threshold: <http://www.macmillandictionary.com/dictionary/american/threshold>, retrieved Jun. 20, 2017.\*

Alston, R. Peter et al., "Measurement of Systemic Carbon Dioxide production During Cardiopulmonary Bypass: a comparison of Fick's Principle With Oxygentor Exhaust Output", Perfusion, vol. 18, No. 6, Nov. 1, 2003, pp. 339-344.

Bakker, Jan et al., "Veno-arterial Carbon Dioxide Gradient in Human Septic Shock", Chest, Feb. 1992, vol. 101, No. 2, pp. 509-515.

Brigeno, Juan C. et al., "Oxygen Transport and Consumption During Experimental Cardiopulmonary Bypass Using Oxyfluor", ASAIO Journal 1999, pp. 322-327.

Costeff, Hanan, "A Simple Empirical Formula for Calculating Approximate Surface Area in Children", Arch. Dis. Childh., 1966, No. 41, pp. 681-683.

Demers et al., "Outcome with high blood lactate levels during cardiopulmonary bypass in adult cardiac surgery", Ann Thorac Surg, 70: 2082-6 (2000).

European Search Report issued in EP Application No. 05021607, dated Aug. 9, 2007, 8 pages.

Fang et al., "Impact of minimum hematocrit during cardiopulmonary bypass on mortality in patients undergoing coronary artery surgery", Circulation, 96(suppl II):194-9 (1997).

Gilson, George J. et al., "Systemic hemodynamics and oxygen transport during pregnancy in chronically instrumented, conscious rats", The American Physiological Society, Heart and Circulatory Physiology; Published Dec. 1, 1992, vol. 263, pp. H1911-H1918.

(56)

**References Cited**

## OTHER PUBLICATIONS

Habib et al. "Adverse effects of low hematocrit during cardiopulmonary bypass in the adult: should current practice be changed?", *J Thorac Cardiovasc Surg*, 125: 1438-50 (2003).

Joachimsson et al., "Adverse Effects of Hyperoxemia During Cardiopulmonary Bypass", *Journal of Thoracic and Cardiovascular Surgery*, Mosby-Year Book, Inc., St. Louis, MO, U.S., 112(3):812-819 (Sep. 1996).

Karkouti et al., "Hemodilution during cardiopulmonary bypass is an independent risk factor for acute renal failure in adult cardiac surgery", *J Thorac Cardiovasc Surg*, 129: 391-400 (2005)

Parolari, Alessandro et al., "cardiopulmonary bypass and oxygen consumption: oxygen delivery and hemodynamics", *The Annals of Thoracic Surgery*, 1999, vol. 67, pp. 1320-1327.

Partial European Search Report issued in EP Application No. 05021607, dated May 14, 2007, 5 pages.

Partial European Search Report issued in EP Application No. 09160554, dated Jul. 28, 2009, 7 pages.

Ranucci et al., "Acute renal injury and lowest hematocrit during cardiopulmonary bypass: not only a matter of cellular hypoxemia", *Ann Thorac Surg*, 78:1880-1 (2004)

Ranucci et al., "Oxygen delivery during cardiopulmonary bypass and acute renal failure following coronary operations", *Ann Thorac Surg*, 80(6):2213-2220 (Dec. 2005).

Ranucci et al., "Risk factors for renal dysfunction after coronary surgery: the role of cardiopulmonary bypass technique", *Perfusion*, 9:319-26 (1994).

Ranucci, Marco et al., "Anaerobic Metabolism During Cardiopulmonary Bypass: Predictive Value of Carbon Dioxide Derived Parameters, © 2006, The Society of Thoracic Surgeons", vol. 81, pp. 2189-2195.

Stafford-Smith et al., "Low hematocrit but not perfusion pressure during CPB is predictive for renal failure following CABG 30 surgery" [Abstract], *Anesth Analg*, 86:SCA1-SCA124 (1998).

Swaminathan et al. "The association of lowest hematocrit during cardiopulmonary bypass with acute renal injury after coronary artery bypass surgery", *Ann Thorac Surg*, 76: 784-92 (2003).

\* cited by examiner

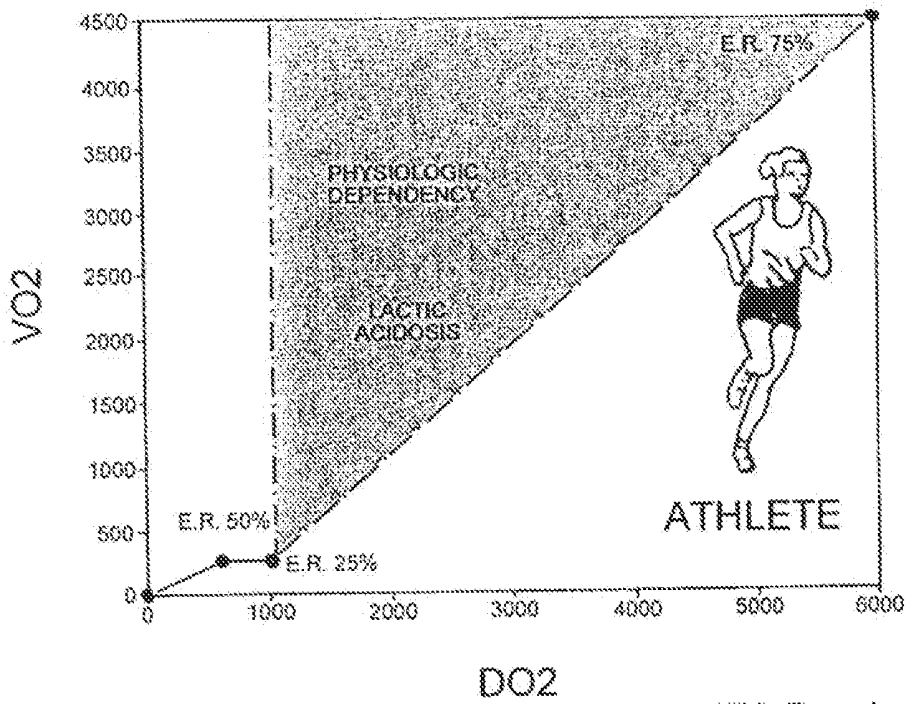
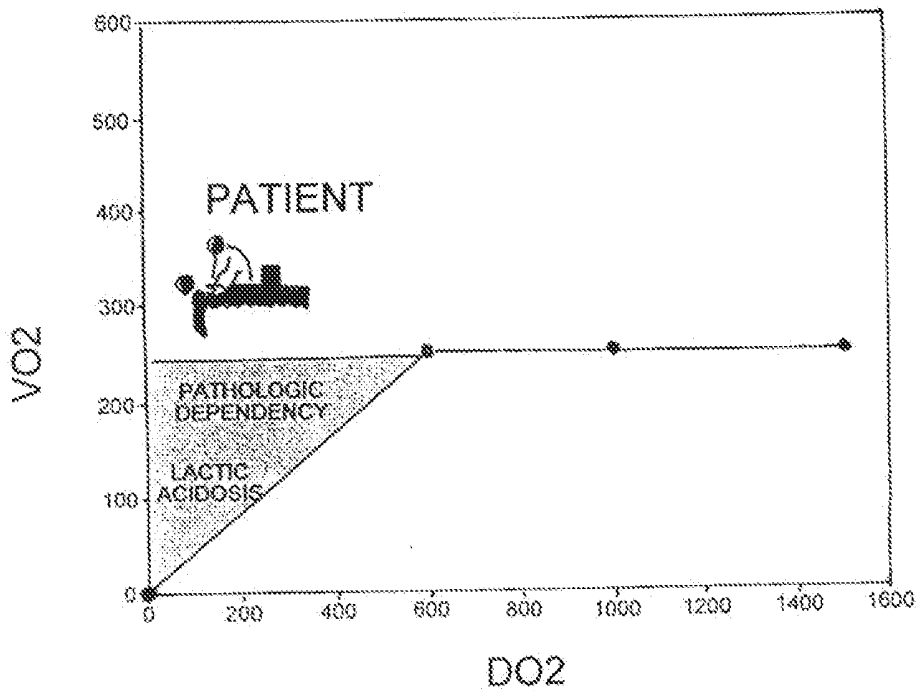


FIG. 1

FIG. 2



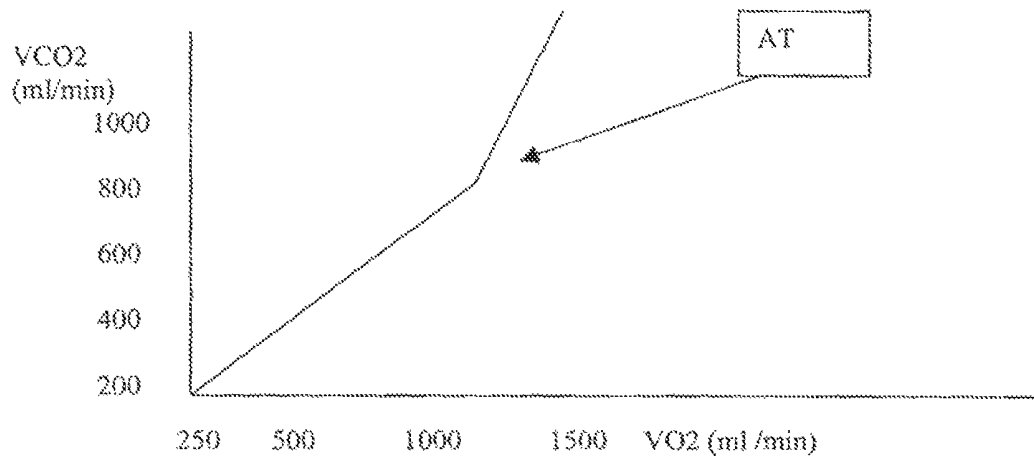
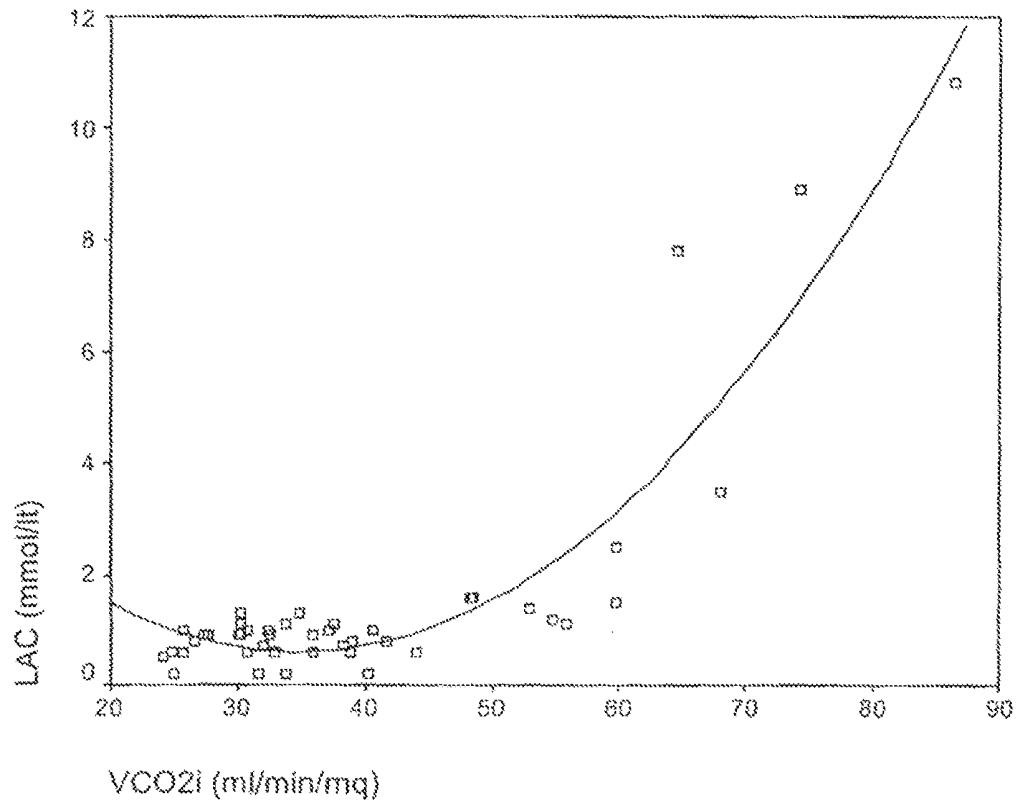


FIG. 3

FIG. 4



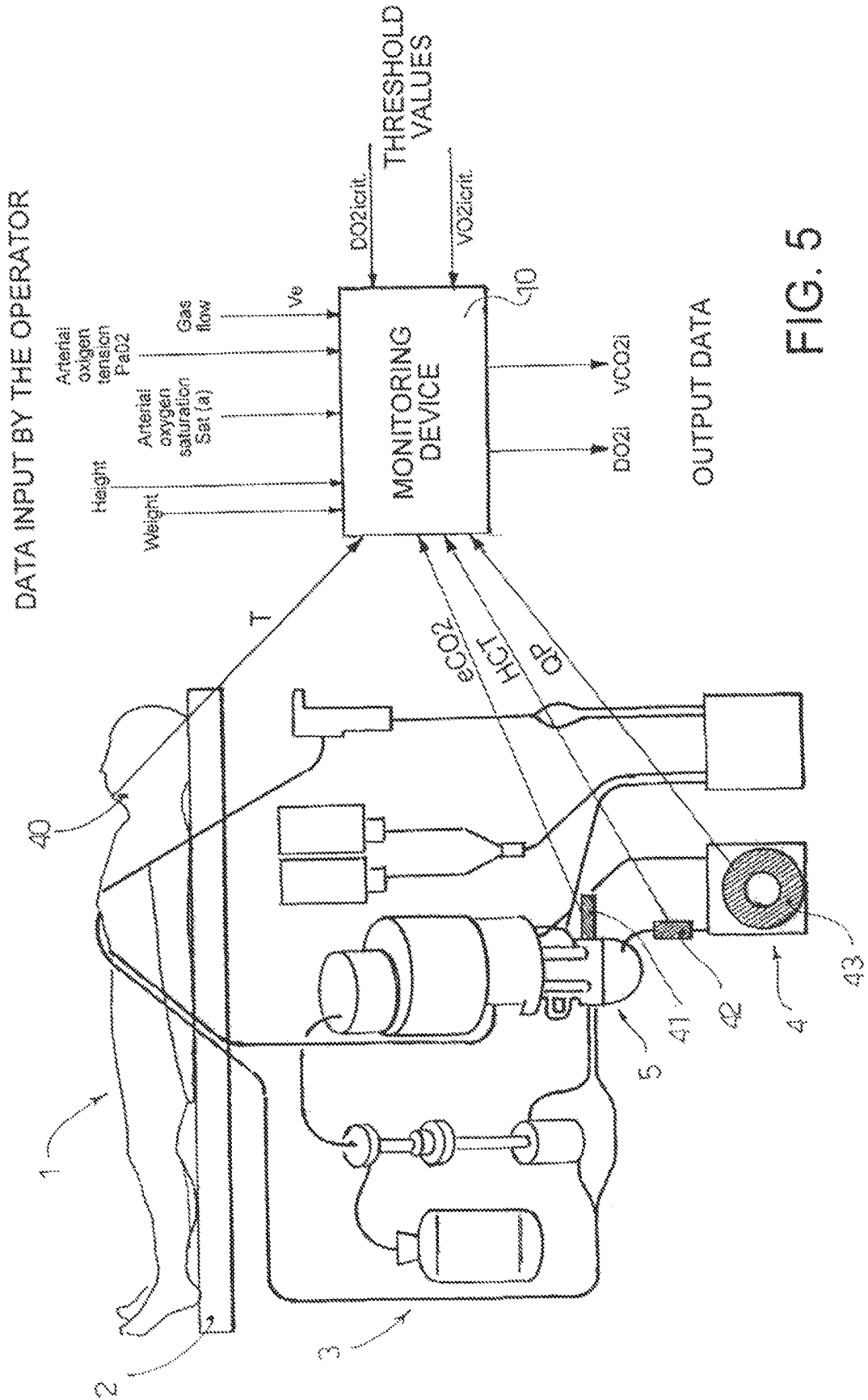


FIG. 5

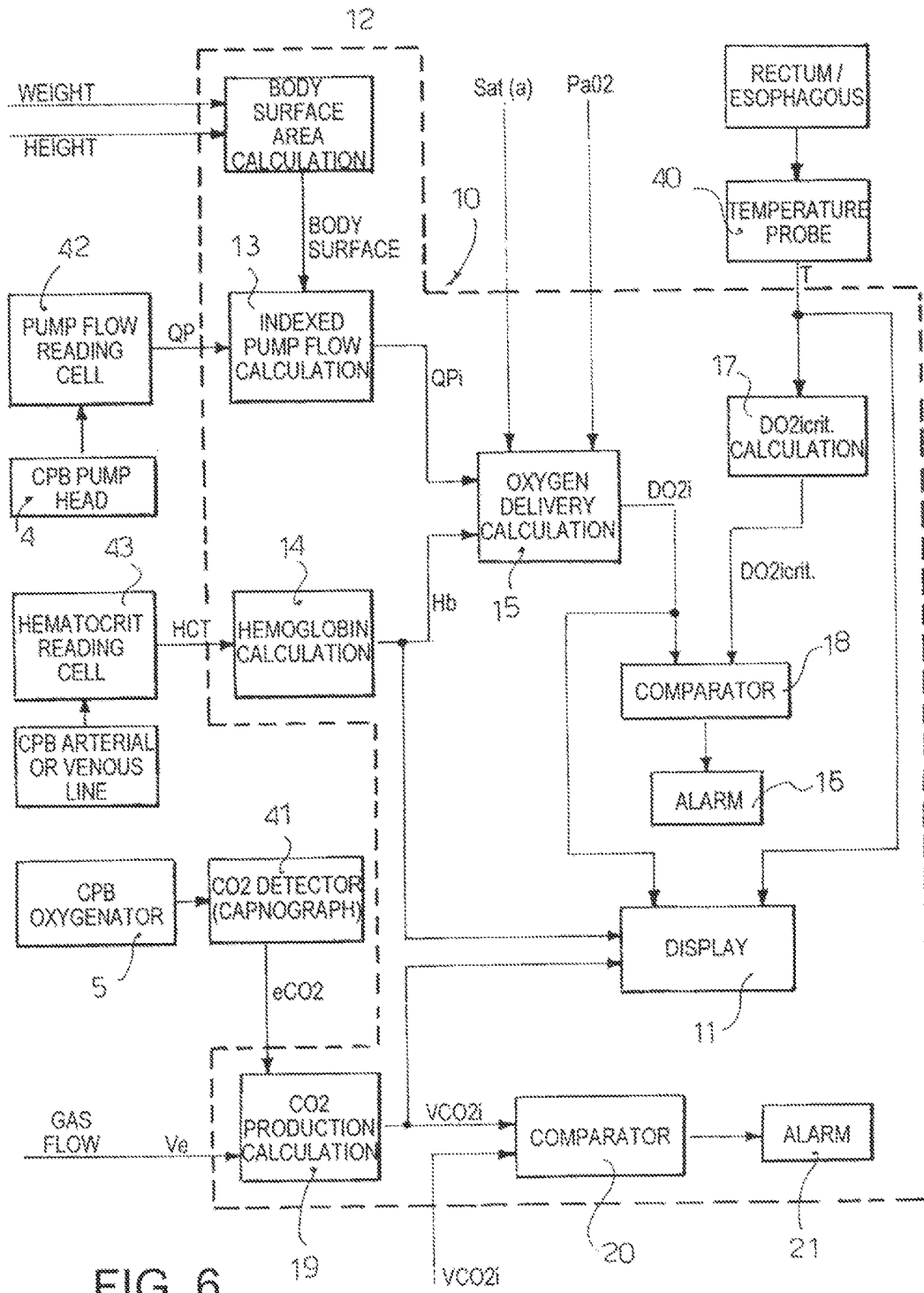


FIG. 6

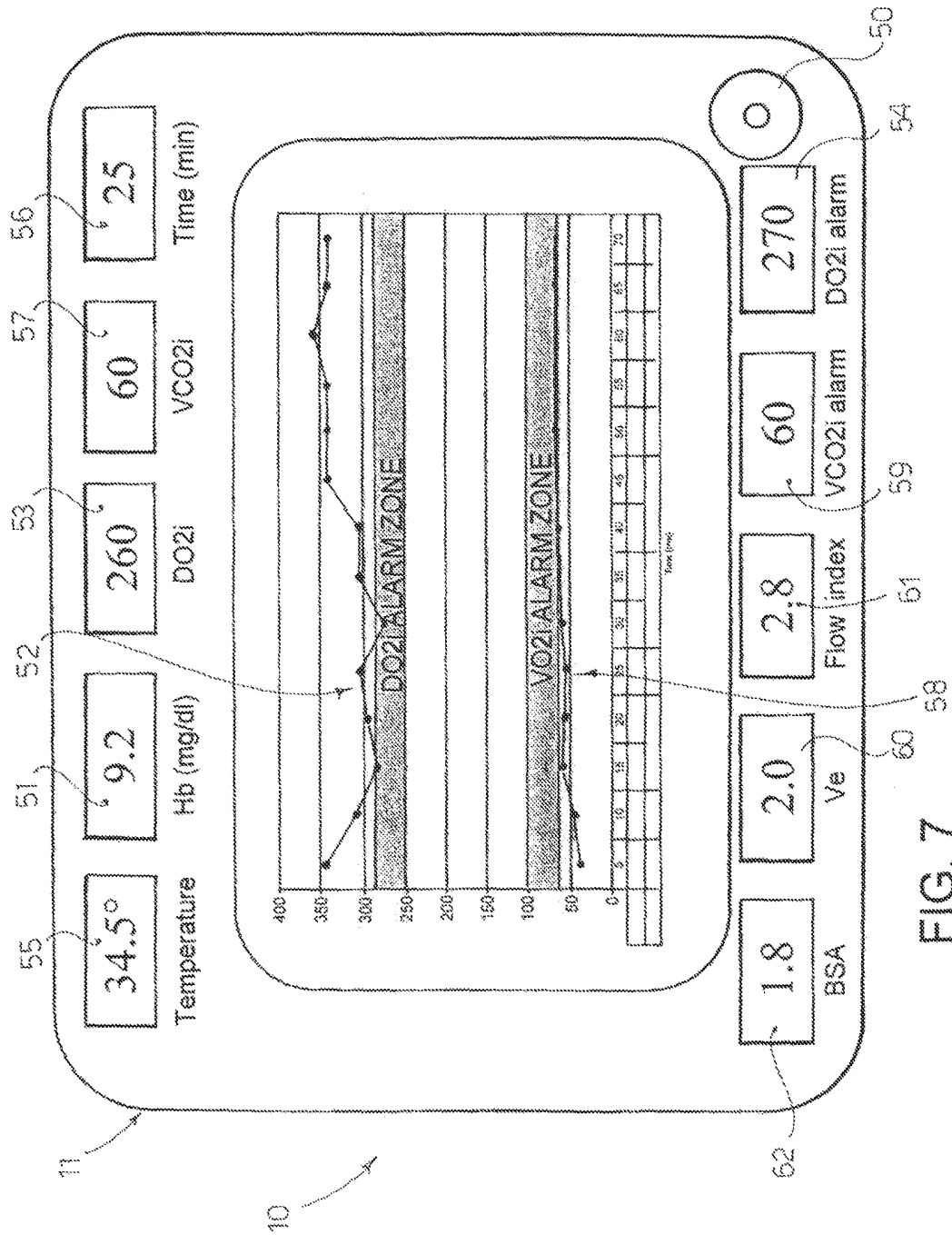


FIG. 7

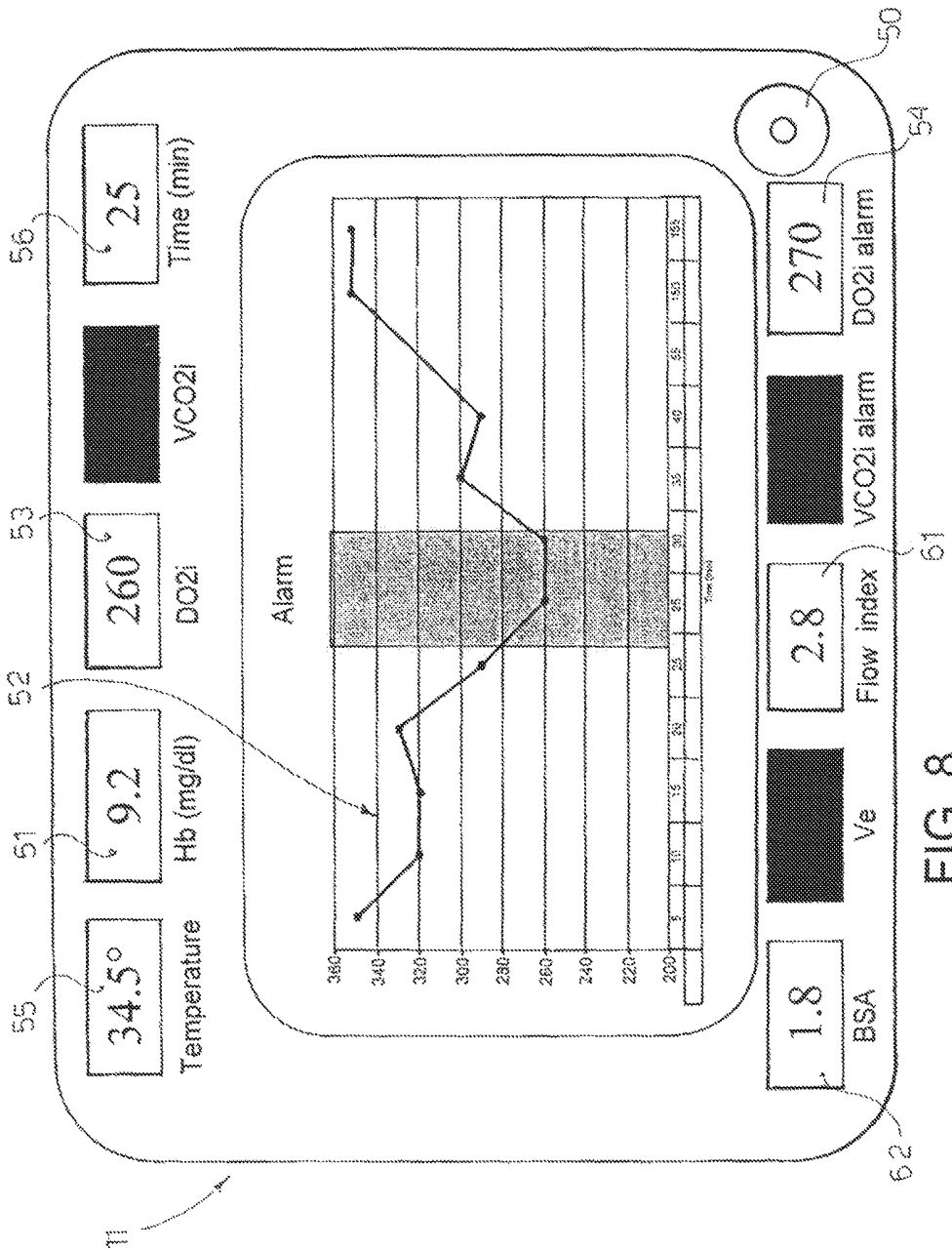


FIG. 8

# MONITORING SYSTEM FOR CARDIAC SURGICAL OPERATIONS WITH CARDIOPULMONARY BYPASS

## CROSS-REFERENCE TO RELATED APPLICATION

This application is a division of U.S. application Ser. No. 14/064,510, filed Oct. 28, 2013, which is a continuation of U.S. application Ser. No. 13/705,169, filed on Dec. 5, 2012, now U.S. Pat. No. 8,690,784, which is a continuation of U.S. application Ser. No. 12/250,212, filed on Oct. 13, 2008, which is a division of U.S. application Ser. No. 11/432,608, filed on May 11, 2006, now U.S. Pat. No. 7,435,220, which claims foreign priority of Italian Patent Application No. MI2005000866, filed May 13, 2005, and European Patent Application No. 05021607.6, filed Oct. 4, 2005, the contents of each of which are hereby incorporated herein by reference.

## TECHNICAL FIELD

The present invention provides a monitoring system to be applied during cardiac surgery operations requiring a cardiopulmonary bypass (CPB).

## BACKGROUND

During cardiac operations with extracorporeal circulation and CPB, the heart and lung function is artificially replaced by a heart-lung machine. This device receives the venous blood of the patient and delivers it (through a roller or centrifugal pump) to an oxygenator which provides the carbon dioxide (CO<sub>2</sub>) clearance and the oxygen (O<sub>2</sub>) supply to the patient, by means of a trans-membrane exchange between blood and a gas flow (oxygen and air at variable concentrations).

## SUMMARY

The adequate pump flow for the patient is usually determined on the basis of specific tables which take into account the body surface area and the temperature at which the CPB is performed. The lower the temperature, the lower is the needed pump flow (because the metabolic needs are decreased). For instance, in a temperature range between 24 and 37° C., the flow may vary between 2.0 and 3.0 L/min/m<sup>2</sup>. The goal of the pump flow is to provide to the various organs an oxygen amount adequate to sustain the metabolic needs. This does not depend only on the pump flow, but also on the blood oxygen content and therefore on the hemoglobin (Hb) concentration. Since during CPB there is a hemodilutional anemic status (sometimes severe, with an Hb concentration that falls from the normal 15 g/100 ml to 5-10 g/100 ml), it is clear that the possibility of providing an insufficient oxygen delivery (DO<sub>2</sub>) is real and quite frequent.

Recently, many scientific papers have demonstrated that insufficient oxygen delivery, either due to excessive anemia, to a low flow, or both, is responsible for postoperative complications and surgical mortality increase (References 1-8).

At present, the only continuous monitoring available of a DO<sub>2</sub>-derived parameter during CPB is represented by the continuous venous oxygen saturation (SvO<sub>2</sub>) monitoring. This monitoring is based on the relationship between the

oxygen consumption (VO<sub>2</sub>), that is a metabolic needs marker, the blood flow and the peripheral oxygen extraction (artero-venous difference):

$$VO_2 = \text{Flow} \times (a-v \text{ O}_2 \text{ difference})$$

If the pump flow is inadequate to maintain the needed VO<sub>2</sub>, it is necessary to extract more oxygen from the periphery, and hence the venous blood will be less saturated (from the normal 75% the saturation may decrease to 60% or less).

Presently, three venous oxygen saturation (SvO<sub>2</sub>) systems are commercially available: (DataMaster Dideco™; CU Terumo™; O2Sat Spectrum Medical™). With the exception of the last one, all these systems measure other variables (hematocrit, electrolytes, etc.) by means of very expensive disposable cells. Therefore, these monitoring systems are not routinely used, and their application is usually reserved for specific, high-risk categories of patients (i.e., congenital, pediatric cardiac surgery patients).

Moreover, the SvO<sub>2</sub> measurement is not a guarantee of adequate pump flow. As a matter of fact, the SvO<sub>2</sub> decreases only for a very profound DO<sub>2</sub> decrease. This is due to the fact that the SvO<sub>2</sub> represents the status of the whole venous blood coming from the patient. This blood comes even, and to a great extent, from various organs and districts which, under anesthesia, have a VO<sub>2</sub> close to zero (muscles, skin, subcutaneous tissues, etc.) and that therefore contribute to the total venous blood with their own venous blood having a SvO<sub>2</sub> close to 100%. Therefore, in case of a low perfusion to one or more among the most important organs (kidney, brain, gut and the heart itself), which determines a venous blood desaturation down to 60%, the total mixing may result in a global SvO<sub>2</sub> still in a normal range (70-75%).

The aim of the present invention is to overcome the drawbacks of the prior art and create a monitoring system that provides adequate continuous and on-line information about the oxygen delivery (DO<sub>2</sub>) and carbon dioxide production (VCO<sub>2</sub>) values during the operation, and about the adequacy of the oxygen delivery (DO<sub>2</sub>) with respect to the metabolic needs of the patient.

Another aim of the present invention is to provide a monitoring system which is reliable, accurate, and at the same time cheap and easy to be applied.

These aims are achieved according to the invention by means of the device and method whose characteristics are respectively listed in the attached independent claims. Advantageous embodiments of the invention are apparent from the dependent claims.

The pathophysiological bases used for structuring the monitoring system according to the invention are the following:

### Definitions and Abbreviations

HCT: hematocrit (%)  
 Hb: hemoglobin (g/dL)  
 CPB: cardiopulmonary bypass  
 T: temperature (° C.)  
 VO<sub>2</sub>: oxygen consumption (mL/min)  
 VO<sub>2i</sub>: oxygen consumption indexed (mL/min/m<sup>2</sup>)  
 DO<sub>2</sub>: oxygen delivery (mL/min)  
 DO<sub>2i</sub>: oxygen delivery indexed (mL/min/m<sup>2</sup>)  
 O<sub>2</sub> ER: oxygen extraction rate (%)  
 VCO<sub>2</sub>: carbon dioxide production (mL/min)  
 VCO<sub>2i</sub>: carbon dioxide production indexed (mL/min/m<sup>2</sup>)  
 Ve: ventilation (L/min)  
 eCO<sub>2</sub>: exhaled carbon dioxide (mmHg)

AT=anaerobic threshold  
 LAC=lactates  
 Qc=cardiac output (mL/min)  
 IC=cardiac index ( $Qc/m^2$ ), (mL/min/m<sup>2</sup>)  
 Qp=pump flow (mL/min)  
 IP=pump flow indexed ( $Qp/m^2$ ), (mL/min/m<sup>2</sup>)  
 CaO<sub>2</sub>=arterial oxygen content (mL/dL)  
 Cv O<sub>2</sub>=venous oxygen content (mL/dL)  
 PaO<sub>2</sub>=arterial oxygen tension (mmHg)  
 PvO<sub>2</sub>=venous oxygen tension (mmHg)  
 a=arterial  
 v=venous  
 Sat=Hb saturation (%)

The following equations are applied to implement the monitoring system according to the invention:

$$VO_2 = Qc \times (CaO_2 - CvO_2) \text{ in a normal circulation} \quad (1)$$

$$VO_2 = Qp \times (CaO_2 - CvO_2) \text{ during CPB} \quad (2)$$

$$DO_2 = Qc \times CaO_2 \text{ in a normal circulation} \quad (3)$$

$$DO_2 = Qp \times CaO_2 \text{ during CPB} \quad (4)$$

$$O_2 \text{ ER} = VO_2 / DO_2 (\%) \quad (5)$$

$$Hb = HCT / 3 \quad (6)$$

$$CaO_2 = Hb \times 1.36 \times Sat(a) + PaO_2 \times 0.003 \quad (7)$$

$$CvO_2 = Hb \times 1.36 \times Sat(v) + PvO_2 \times 0.003 \quad (8)$$

$$VCO_2 = Vex \times CO_2 \times 1.15 \quad (9)$$

For instance, a normal subject weighing 70 kg has the following physiologic parameters:

Hb=15 g/dL  
 PaO<sub>2</sub>=90 mmHg  
 Sat(a) Hb=99%=0.99  
 PvO<sub>2</sub>=40 mmHg  
 Sat(v) Hb=75%=0.75  
 Qc=5000 mL/min  
 CaO<sub>2</sub>=15×1.36×0.99+90×0.003=20.4 mL/dL  
 CvO<sub>2</sub>=15×1.36×0.75+40×0.003=15.4 mL/dL  
 VO<sub>2</sub>=5 L/min×(20.4 mL/dL-15.4 mL/dL)=5 L/min×5 mL/dL=5 L/min×50 mL/L=250 mL/min  
 DO<sub>2</sub>=5 L/min×20.4 mL/dL=5 L/min×200 mL/L=1000 mL/min  
 O<sub>2</sub> ER=250/1000=25%  
 VCO<sub>2</sub>=200 mL/min  
 LAC=<1.5 mMol/L

The oxygen consumption (VO<sub>2</sub>) represents the metabolic needs of the whole organism; it is the sum of the metabolic needs of each specific organ. Under basal conditions (at rest), it is about 3-4 mL/min/kg, i.e. about 250 ml/min for a subject weighting 70 kgs. Applying the equations (3) and (7), the oxygen delivery (DO<sub>2</sub>) may be calculated, and is about 1000 mL/min. Therefore, a considerable functional reserve exists, since the DO<sub>2</sub> is about 4 times greater than the VO<sub>2</sub>. The VO<sub>2</sub> may increase depending on the metabolic needs (basically under physical exercise, but even in pathologic conditions like septic shock). A top level endurance athlete may reach a maximal VO<sub>2</sub> of about 5,000 mL/min.

Of course, to meet these increasing oxygen demands, the DO<sub>2</sub> must increase as well: it can reach, in an athlete during exercise, the value of 6,000 mL/min (Qc: 30 L/min with an unchanged arterial oxygen content of 20 mL/dL). As a consequence, the O<sub>2</sub> ER may increase up to 75%.

FIG. 1 is a diagram showing the relationship between DO<sub>2</sub> and VO<sub>2</sub> in an athlete during physical exercise. If the athlete (that, for example, is running a marathon) falls into the dark triangular zone (where the DO<sub>2</sub> is unable to support the VO<sub>2</sub>), he is forced to use other metabolic mechanisms in order to develop mechanical energy. As a matter of fact, he will use the anaerobic lactic acid metabolism, which develops energy but at the expenses of lactic acid formation, local and systemic acidosis, and finally exercise stops usually within 2 minutes. In other words, the VO<sub>2</sub> is physiologically dependent on the DO<sub>2</sub>.

In the medical field, of course, the situation is different. The DO<sub>2</sub> may pathologically decrease in case of: decreased arterial oxygen content due to anemia; decreased arterial oxygen content due to hypoxia; and decreased cardiac output.

However, due to the existence of the above-mentioned physiological reserve, the VO<sub>2</sub> may be maintained even for a DO<sub>2</sub> decrease down to about 600 mL/min (DO<sub>2i</sub> 320 mL/min/m<sup>2</sup>), due to the increased O<sub>2</sub> ER.

FIG. 2 is a diagram showing the relationship between DO<sub>2</sub> and VO<sub>2</sub> in the range observed during medical conditions (i.e. cardiac operation). Below a DO<sub>2</sub> of 600 mL/min, the VO<sub>2</sub> starts decreasing. The patient meets, exactly as the athlete, a lactic acidosis, with lactates (LAC) production. In other words, he experiences a shock.

The DO<sub>2</sub> level below which the VO<sub>2</sub> starts decreasing and becomes pathologically dependent on the DO<sub>2</sub> is called the critical DO<sub>2</sub> (DO<sub>2crit</sub>). Maintaining the DO<sub>2</sub> above this threshold is very important in many pathological conditions, to avoid an acidosis-shock status. The DO<sub>2crit</sub> is higher during a septic shock.

Since 1994, in a paper published in *Perfusion*, Ranucci and coworkers demonstrated that in a series of 300 consecutive patients that underwent myocardial revascularization with CPB, the presence of a severe hemodilution was an independent risk factor for a postoperative acute renal failure (ARF). In particular, the cut-off value was identified at an HCT<25%.

Subsequently, other authors have demonstrated that the lowest HCT during CPB was an independent risk factor for many "adverse outcomes" in cardiac surgery. Stafford-Smith and coworkers, in 1998 (*Anesth Analg*), confirmed the relationship between hemodilution and ARF.

More recently, the lowest hematocrit on CPB has been recognized as an independent risk factor for postoperative low cardiac output and hospital mortality by Fang and coworkers (*Circulation*, 1997), and for an impressive series of postoperative adverse events by Habib and coworkers in 2003 (*J Thorac Cardiovasc Surg*). The relationship between hemodilution and ARF has been subsequently confirmed by Swaminathan and coworkers in 2003 (*Ann Thorac Surg*), Ranucci and coworkers 2004 and 2005 (*Ann Thorac Surg*) and Karkouti and coworkers in 2005 (*J Thorac Cardiovasc Surg*). The critical HCT value below which the ARF risk significantly increases is located between 23% and 26%.

Almost all the authors ascribe this relationship to an insufficient oxygen supply (DO<sub>2</sub>) to the various organs. The kidney, in particular, due to its physiologic condition of hypoxic perfusion, seems to be at high risk.

Surprisingly, all the studies demonstrating a relationship between HCT and ARF or other organ damages failed to consider that the HCT is only one of the two determinants of the DO<sub>2</sub> during CPB: the other is the pump flow (Qp). This would not influence the DO<sub>2</sub> if the Qp was a constant, but this is not the case. In all the studies, the pump flow (Qp) varied from a Q<sub>pi</sub> of 2.0 L/min/m<sup>2</sup> to a Q<sub>pi</sub> of 3.0 L/min/m<sup>2</sup>,

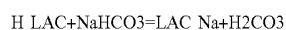
and the variation was dependent on the perfusion pressure. An HCT of 24% results in a DO<sub>2i</sub> of 230 ml/min/m<sup>2</sup> if the Q<sub>pi</sub> is 2.0 L/min/m<sup>2</sup>, and of 344 ml/min/m<sup>2</sup> if the Q<sub>pi</sub> is 3.0 L/min/m<sup>2</sup>.

In a scientific paper in *The Annals of Thoracic Surgery*, not published at the priority dates of the present application, Ranucci and coworkers actually demonstrated that the DO<sub>2i</sub>, rather than the HCT, is the best predictor of ARF. Moreover, in presence of perioperative blood transfusions, the DO<sub>2i</sub> remains the only determinant of ARF. The DO<sub>2i,crit</sub> identified in this paper is 272 ml/min/m<sup>2</sup>, very close to the one previously defined as the DO<sub>2i</sub> below which the VO<sub>2</sub> becomes pathologically dependent on the DO<sub>2</sub>. In other words, maintaining the DO<sub>2i</sub> above this threshold allows a decrease in the hypoxic organ dysfunction or the elimination of the hypoxic organ dysfunction; in presence of a low HCT, an adequate increase of the Q<sub>p</sub> may minimize the deleterious effects of hypoxemia. As a consequence, a continuous monitoring of the DO<sub>2</sub> is of paramount importance in order to limit the postoperative complications, namely the renal ones.

Measuring a low HCT has poor clinical value, since the only possible (and arguable) countermeasure is a blood transfusion. On the other hand, the DO<sub>2</sub> may be modulated by increasing the pump flow.

The level of DO<sub>2i,crit</sub> below which the LAC production begins, is identified by the concept of "anaerobic threshold" (AT). In athletes, it is the level of expressed mechanical power at which the LAC production begins; in a patient, it is the level of DO<sub>2i,crit</sub> below which the LAC production begins.

It has been demonstrated that the LAC value during CPB is predictive for postoperative complications. The problem is that the LAC value is not available on-line, and only some devices (blood gas analyzers) provide it. It is however possible to make an "indirect" assessment of the AT. As a matter of fact, under steady conditions, the VO<sub>2</sub>/VCO<sub>2</sub> ratio is a constant, while during anaerobic lactic acid metabolism the VCO<sub>2</sub> increases more than the VO<sub>2</sub>. This happens because the lactic acid undergoes the following transformation:



and the H<sub>2</sub>CO<sub>3</sub> is split into H<sub>2</sub>O and CO<sub>2</sub>, with a further CO<sub>2</sub> production.

FIG. 3 is a diagram showing the relationship between VO<sub>2</sub> and VCO<sub>2</sub>. The relationship between VCO<sub>2</sub> and LAC production has been demonstrated in 15 consecutive patients under CPB, in an experimental trial performed by the inventor himself. In FIG. 4 the graphical relationship between VCO<sub>2</sub> and LAC production is reported. From this relationship, it appears that a VCO<sub>i</sub> value of 60 ml/min/m<sup>2</sup> is a sensitive predictor of lactic acidosis.

Based on the previous experimental information, according to the invention, a monitoring system for cardiac operations with CPB has been developed. This monitoring system includes:

- a processor connected to a heart-lung machine;
- a pump flow reading device, connected to a pump of the heart-lung machine, to continuously measure the pump flow and to send the pump flow data to the processor;
- a hematocrit value reading device, inserted inside the venous or arterial line, to continuously measure the hematocrit value and to send it to the processor;
- a data input device, to allow the operator to manually input the data regarding the arterial oxygen saturation (Sat(a)) and the arterial oxygen tension (PaO<sub>2</sub>);

computing means integrated in the processor, to compute the oxygen delivery (DO<sub>2i</sub>) value on the basis of the measured pump flow (Q<sub>p</sub>), the measured hematocrit (HCT), the preset value of arterial oxygen saturation (Sat(a)), and the preset value of arterial oxygen tension (PaO<sub>2</sub>); and

a display connected to the processor, to visualize in real-time the value of DO<sub>2i</sub> calculated.

Advantageously, the system may be implemented with a CO<sub>2</sub> reading device, to continuously detect the exhaled CO<sub>2</sub> (eCO<sub>2</sub>) at the oxygenator gas escape of the heart-lung machine. The data input device allows the operator to insert the gas flow value (V<sub>e</sub>), the computing means computes the CO<sub>2</sub> production (VCO<sub>2i</sub>) on the basis of the preset gas flow (V<sub>e</sub>) value and the detected exhaled CO<sub>2</sub> (eCO<sub>2</sub>), and the display shows the calculated value of CO<sub>2</sub> production (VCO<sub>2i</sub>).

In one embodiment, the invention provides a monitoring system further comprising: comparing means to compare the above mentioned oxygen delivery (DO<sub>2i</sub>) value with a threshold value of oxygen delivery (DO<sub>2i,crit</sub>); and an alarm which is triggered when the oxygen delivery (DO<sub>2i</sub>) value falls below the threshold value of oxygen delivery (DO<sub>2i,crit</sub>). In one embodiment, the threshold value of oxygen delivery (DO<sub>2i,crit</sub>) is preset by the operator at a value of about 270 ml/min/m<sup>2</sup>. In one embodiment, the monitoring system further comprises a temperature detecting device able to continuously measure the body temperature (T) of the patient and to send the temperature values to the processor, to be subsequently displayed by the display. The monitoring system can further comprise an oxygen delivery threshold computing means, receiving as input the temperature (T) value of the patient as detected.

In one embodiment of the monitoring system, the processor includes a hemoglobin value computing means able to calculate the hemoglobin (Hb) value from the detected hematocrit (HCT) value, and to send it to the oxygen delivery computing means, to be subsequently displayed in the display. In another embodiment of the monitoring system, the processor includes a computing means able to calculate the indexed pump flow (Q<sub>pi</sub>) from the pump flow (Q<sub>p</sub>) and the value of body surface area (BSA) of the patient. In an embodiment of the monitoring system, the data input device can allow the operator to manually input data regarding the weight and height of the patient so that the computing means is able to compute the body surface area (BSA) of the patient. In one embodiment, the pump flow detecting device includes a Doppler reading cell.

The invention provides a monitoring system for cardiac operations with cardiopulmonary bypass comprising: a processor operatively connected to a heart-lung machine; a CO<sub>2</sub> detecting device placed at the oxygenator of the heart-lung machine to continuously detect the exhaled CO<sub>2</sub> (eCO<sub>2</sub>) value and send it to the processor; a data input device allowing the operator to manually input data regarding the gas flow (V<sub>e</sub>) of the heart-lung machine; computing means able to calculate the CO<sub>2</sub> production (VCO<sub>2i</sub>) from the preset gas flow (V<sub>e</sub>) and the exhaled CO<sub>2</sub> (eCO<sub>2</sub>) detected; and a display connected to the processor to display in real-time the above CO<sub>2</sub> production (VCO<sub>2i</sub>) as calculated. In one embodiment, the monitoring system further comprises comparison means to compare the above CO<sub>2</sub> production (VCO<sub>2i</sub>) calculated value with a CO<sub>2</sub> production threshold value (VCO<sub>2i,crit</sub>); and an alarm that is triggered whenever the CO<sub>2</sub> production (VCO<sub>2i</sub>) value exceeds the CO<sub>2</sub> production threshold value (VCO<sub>2i,crit</sub>).

The invention provides a method of monitoring a patient's parameters during a cardiac operation with cardiopulmonary bypass and a heart-lung machine, the method comprising: continuously detecting the pump flow (Qp) from a pump of the heart-lung machine; continuously detecting the hematocrit (HCT) value from the arterial or venous line of the heart-lung machine; setting an arterial oxygen saturation (Sat(a)) value derived from the arterial blood of the patient; setting an arterial oxygen tension (PaO2) value derived from the arterial blood of the patient; computing the oxygen delivery (DO2i) of the patient from the detected and set values; and displaying the oxygen delivery (DO2i) value as calculated. In one embodiment the method further comprises: setting an oxygen delivery threshold (DO2i<sub>crit</sub>) value; comparing the calculated oxygen delivery (DO2i) value with the oxygen delivery threshold (DO2i<sub>crit</sub>) value; and triggering a warning signal whenever the calculated oxygen delivery (DO2i) value falls below the set oxygen delivery threshold (DO2i<sub>crit</sub>) value. In one embodiment, the warning signal is not triggered when the calculated oxygen delivery (DO2i) value falls below the set oxygen delivery threshold (DO2i<sub>crit</sub>) value for a period of time shorter than a preset time period. In one embodiment, the method further comprises the continuous detection and display of the patient's temperature (T). In one embodiment, the method comprises calculating the oxygen delivery threshold (DO2i<sub>crit</sub>) value from the detected body temperature (T).

The invention provides a method of monitoring a patient's parameters during a cardiac operation with cardiopulmonary bypass and a heart-lung machine, the method comprising: continuously detecting the exhaled carbon dioxide (eCO2) from the oxygenator of the heart-lung machine; setting a gas flow (Ve) value of the heart-lung machine; computing the carbon dioxide production (VCO2i) of the patient from the detected values of exhaled carbon dioxide (eCO2) and set values of gas flow (Ve); and displaying the calculated carbon dioxide production (VCO2i) value. In one embodiment, the method further comprises: setting a carbon dioxide production threshold (VCO2i<sub>crit</sub>) value; comparing the calculated carbon dioxide production (VCO2i) value with the set carbon dioxide production threshold (VCO2i<sub>crit</sub>) value; and triggering a warning signal whenever the calculated carbon dioxide production (VCO2i) value exceeds the set carbon dioxide production threshold (VCO2i<sub>crit</sub>) value.

The invention provides a monitoring system for cardiac surgical operations comprising: a processor connected to a heart-lung machine; pump flow reading device connected to a pump of the heart-lung machine for measuring the value of the pump flow (Qp) and sending it to the processor; blood hematocrit (HCT) value reading device connected to the heart-lung machine circuit for measuring the HCT value and sending it to the processor; CO2 detecting device to detect the exhaled CO2 (eCO2) at the oxygenator gas escape, data input device to manually input data relative to the arterial oxygen saturation (Sat(a)), arterial oxygen tension (PaO2), and gas flow (Ve); and computing means to compute the oxygen delivery value (DO2i) and the CO2 production value (VCO2i) on the basis of the detected and set values, and a display connected to the processor, to show the calculated values of (DO2i) and (VCO2i).

Further characteristics of the invention will be clarified by the following detailed description, referring to a non-limiting embodiment thereof illustrated in the attached drawings.

#### BRIEF DESCRIPTION OF THE DRAWINGS

FIG. 1 is a graph illustrating the relationship between VO2 and DO2 in an athlete under physical exercise.

FIG. 2 is a graph illustrating the relationship between VO2 and DO2 in a patient under cardiac operation.

FIG. 3 is a graph illustrating the relationship between VCO2 and VO2.

FIG. 4 is a graph illustrating the relationship between LAC and VCO2i.

FIG. 5 is a schematic view of a heart-lung machine connected to the patient and a block diagram of a monitoring system according to the invention.

FIG. 6 is a block diagram illustrating in a more detailed way a monitoring system according to the invention.

FIG. 7 is a front view of a monitoring device according to the invention, showing a screen view of the display.

FIG. 8 is a view of a monitoring device according to the invention similar to FIG. 7, in a minimal configuration.

In the following description, and with reference to FIGS. 5, 6, 7, and 8, the monitoring system for cardiac operations with cardiopulmonary bypass is described, according to the invention.

FIG. 5 shows a patient 1 laying on a surgical table 2. A heart-lung machine, comprehensively identified by the number 3, is connected to the patient 1. As already known in the art, a heart-lung machine 3 comprises a venous extracorporeal circuit, collecting blood from the venous system of the patient. A roller or centrifugal mechanical pump 4 pumps the venous blood from a venous extracorporeal circuit towards an oxygenator 5, whose role is removing CO2 from the venous blood and supplying oxygen (O2). The blood oxygenated by the oxygenator 5, is sent, again by the same roller or centrifugal pump 4, to an arterial extracorporeal circuit connected to the arterial system of the patient, therefore creating a total bypass of the heart and lungs of the patient.

#### DETAILED DESCRIPTION

The monitoring system, according to the invention, comprehensively identified by the reference number 10, is operatively connected to the heart-lung machine 3. The monitoring system 10 comprises a processor able to perform calculations, as subsequently explained, and a monitor screen or display 11 that works as an interface with the operator.

Manual Data Input from the Operator

Using the knob 50 (FIGS. 7 and 8), placed in the front part of the monitoring system 10, the operator may input data that will be stored by the processor memory of the monitoring system 10. Data manually inserted by the operator are:

- (1) Height and weight of the patient.
- (2) The arterial oxygen saturation (Sat(a)). This value, during CPB procedures, is usually 100%. However, in case of extraordinary events like an oxygenator malfunction, the value of (Sat(a)) may decrease. In this case, the operator may manually change this value using the knob 50.
- (3) The arterial oxygen tension (PaO2) value. This PaO2 value is measured by the perfusionist on the arterial blood of the patient with blood gas analysis, using an adequate and specific device.
- (4) The gas flow value (Ve). This Ve value is established by the perfusionist operating the heart-lung machine 3. Generally, the Ve is regulated with a flow-meter, in a range between 1 and 5 L/min, according to the patient's parameters. This Ve value rarely changes during a CPB procedure, and therefore can be manually inserted by the operator. However, as an alternative, the monitoring

system 10 may include an electronic flow-meter connected to the heart-lung machine 3, to continuously detect the Ve value.

#### Heart-Lung Machine Interfaced Data

The monitoring device 10 is equipped with some electrical connections to the heart-lung machine 3, as to continuously receive data collected by adequate sensors placed in specific positions of the heart-lung machine. These continuously collected data are:

- (1) Patient's body temperature (T). This temperature T is continuously measured by a temperature probe inserted inside the esophagus or the rectum of the patient. The temperature probe 40 sends an electronic signal of the temperature to a monitor of the heart-lung machine visualizing, in real-time, the temperature value. In this case, it is sufficient to interface with an electrical connection the monitor of the heart-lung machine 3 with the monitoring device 10, for a continuous input of the temperature value T.
- (2) Exhaled carbon dioxide (eCO<sub>2</sub>). This eCO<sub>2</sub> value is continuously measured through a CO<sub>2</sub> detector 41 placed at the gas escape of the oxygenator 5 to detect the sidestream CO<sub>2</sub> exhaled from the oxygenator 5. The CO<sub>2</sub> detector 41 can be any kind of CO<sub>2</sub> detector among the various commercially available and reusable capnographs.
- (3) Hematocrit (HCT). The HCT value is continuously measured through a hematocrit reading cell 42 placed inside the arterial or venous circuit of the heart-lung machine 3. For instance, in FIG. 5, the hematocrit reading cell 42 is placed inside the arterial line between the pump 4 and the oxygenator 5. The hematocrit reading cell 42 is commercially available and disposable.
- (4) Pump flow (Q<sub>p</sub>). The Q<sub>p</sub> value is continuously measured through the Doppler reading cell 43, placed on the arterial line of the heart-lung machine 3. This kind of Doppler reading cell 43 measures the blood flow on the basis of the Doppler principle (red cells velocity).

If the pump 4 of the extracorporeal circuit is a centrifugal pump, it is already equipped with the Doppler reading cell 43. Conversely, if the pump 4 is a roller pump, the Doppler reading cell 43 may be added. In the alternative, the Doppler reading cell 43 may be omitted, since the roller pump head is provided with a flow measuring system. In this case, the data regarding the pump flow Q<sub>p</sub> is directly sent to the monitoring device 10.

With specific reference to FIG. 6, the operation of the monitoring system 10 is described below. The processor of the monitoring system 10 includes a first computing program 12 that, based on the weight and height of the patient as input by the operator calculates, according to pre-defined tables, the body surface area (BSA) of the patient.

The BSA value is sent to a second computing program 13 that receives the input value of the pump flow Q<sub>p</sub> as detected by the pump 4 of the heart-lung machine 3. The second computing program 13 calculates the indexed pump flow Q<sub>pi</sub>, according to the relationship  $Q_{pi} = Q_p / BSA$ .

A third computing program 14 receives the input value HCT as detected by the hematocrit reading cell 43 placed inside the venous or arterial line of the heart-lung machine. The third computing program 14, based on the equation (6), calculates the hemoglobin value Hb. The Hb value is sent to the display 11 and displayed in a window 51 of the display 11 (FIG. 7).

The pump flow indexed Q<sub>pi</sub> computed by the second computing program 13 and the hemoglobin value Hb com-

puted by the third computing program 14 are sent to a fourth computing program 15 that receives as input values the values of arterial oxygen saturation (Sat(a)) and arterial oxygen tension (PaO<sub>2</sub>) manually entered by the operator. The fourth computing program 15, according to the equation (4), calculates the indexed oxygen delivery value (DO<sub>2i</sub>).

As shown in FIG. 7, the DO<sub>2i</sub> value is visualized in real time in a window 53 of the display 11 and as a graphical pattern 52 (as a function of time). The display 11 is provided with a chronometer window 56 showing the time passed from the beginning of the CPB.

As shown in FIG. 6, the DO<sub>2i</sub> value is sent to a comparator 18 which compares it to a threshold value of DO<sub>2i<sub>crit</sub></sub> that is displayed in a window 54 (FIG. 7) of the display 11. This threshold value is set at 270 ml/min/m<sup>2</sup> at a temperature between 34° C. and 37° C., and decreases as a function of temperature, in a linear fashion.

Therefore the threshold value of DO<sub>2i<sub>crit</sub></sub> be preset by the operator or may be calculated by a computing program 17 depending on the temperature value T determined by the temperature probe 40. The temperature T value determined by the probe 40 is sent to the display 11 to be displayed in a window 55.

When the DO<sub>2i</sub> value falls below the DO<sub>2i<sub>crit</sub></sub>, the comparing device 16 sends a control signal to an alarm 16 that is triggered, alerting the operator of a potentially dangerous condition.

The alarm 16 is not triggered by brief decreases of the pump flow Q<sub>p</sub> (often needed during CPB). Therefore, the alarm 16 could be set to be activated after 5 minutes of consecutive detection of a DO<sub>2i</sub> below the DO<sub>2i<sub>crit</sub></sub>. However, a recording of all the periods of low flow can be made, to analyze and avoid the possibility that many short periods of low flow may create an additional effect. It is reasonable to consider no more than 20 minutes (as a total) of DO<sub>2i</sub> below the DO<sub>2i<sub>crit</sub></sub> during a normal CPB lasting about 90 minutes. The monitoring device 10 is equipped with a computing program 19, which receives as input values the exhaled carbon dioxide eCO<sub>2</sub> as detected by the CO<sub>2</sub> sensor 41 and the gas flow Ve set by the operator. According to these input data, the computing program 19 calculates the indexed carbon dioxide production VCO<sub>2i</sub> applying the equation (9).

The VCO<sub>2i</sub> value as calculated by the computing program 19 is sent to the display 11 and displayed in real time in a window 57 (FIG. 7) in its graphical relationship 58 as a function of time.

The VCO<sub>2i</sub> value is sent to a second comparator 20 which compares it with an anaerobic threshold value VCO<sub>2i<sub>crit</sub></sub> set by the operator; by default the VCO<sub>2i<sub>crit</sub></sub> is preset at 60 ml/min/m<sup>2</sup>. As shown in FIG. 7, the display 11 is provided with a window 59 showing the value of anaerobic threshold VCO<sub>2i<sub>crit</sub></sub> set by the operator.

Back to FIG. 6, when the VCO<sub>2i</sub> exceeds the VCO<sub>2i<sub>crit</sub></sub> an alarm signal is sent to a second alarm 21, which, when triggered, alerts the operator of a warning condition. Moreover, as shown in FIG. 7, the display 11 is provided with: a window 60 where the gas flow value Ve set by the operator is displayed; a window 61 where the indexed pump flow value Q<sub>pi</sub> arriving from the computing program 13 is displayed; and a window 62 where the body surface area of the patient is displayed as calculated by the computing program 12.

The monitoring system 10 can be equipped with a data recording system and a printer interface, and/or a digital data recording system. The display 11 could include two configurations: a complete configuration, as the one shown in

FIG. 7, and a reduced configuration, only considering the DO<sub>2</sub> parameter, as shown in FIG. 8.

The above description and accompanying drawings are provided for the purpose of describing embodiments of the invention and are not intended to limit the scope of the invention in any way. It will be apparent to those skilled in the art that various modifications and variations can be made in the systems and methods for cardiac operations without departing from the spirit or scope of the invention. Thus, it is intended that the present invention cover the modifications and variations of this invention provided they come within the scope of the appended claims and their equivalents.

## REFERENCES

1. Ranucci M., Pavesi M., Mazza E., et al. Risk factors for renal dysfunction after coronary surgery: the role of cardiopulmonary bypass technique. *Perfusion* 1994; 9:319-26.
2. Stafford-Smith M., Conlon P. J., White W. D., et al. Low hematocrit but not perfusion pressure during CPB is predictive for renal failure following CABG surgery [Abstract]. *Anesth Analg* 1998; 86: SCA 11-124.
3. Fang W. C., Helm R. E., Krieger K. H., et al. Impact of minimum hematocrit during cardiopulmonary bypass on mortality in patients undergoing coronary artery surgery. *Circulation* 1997; 96(suppl II):194-9.
4. Habib R. H., Zacharias A., Schwann T. A., Riordan C. J., Durham S. J., Shah A. Adverse effects of low hematocrit during cardiopulmonary bypass in the adult: should current practice be changed? *J Thorac Cardiovasc Surg* 2003; 125:1438-50.
5. Swaminathan M., Phillips-Bute B. G., Conlon P. J., Smith P. K., Newman M. F., Stafford-Smith M. The association of lowest hematocrit during cardiopulmonary bypass with acute renal injury after coronary artery bypass surgery. *Ann Thorac Surg* 2003; 76:784-92.
6. Karkouti K., Beattie W. S., Wijeyesundera D. N., et al. Hemodilution during cardiopulmonary bypass is an independent risk factor for acute renal failure in adult cardiac surgery. *J Thorac Cardiovasc Surg* 2005; 129:391-400.
7. Ranucci M., Romitti F., Isgr G., et al. Oxygen delivery during cardiopulmonary bypass and acute renal failure following coronary operations. *Ann Thorac Surg* 2005; in press.
8. Ranucci M., Menicanti L., Frigiola A. Acute renal injury and lowest hematocrit during cardiopulmonary bypass: not only a matter of cellular hypoxemia. *Ann Thorac Surg* 2004; 78:1880-1.
9. Demers P., Elkouri S., Martineau R., et al. Outcome with high blood lactate levels during cardiopulmonary bypass in adult cardiac surgery. *Ann Thorac Surg* 2000; 70:2082-6.

I claim:

1. A monitoring system for cardiac operations with cardiopulmonary bypass, the monitoring system comprising: a controller configured to:
  - receive a hematocrit and/or hemoglobin value of a patient,
  - receive a pump flow rate value,
  - receive an arterial oxygen saturation value of the patient,
  - calculate an indexed oxygen delivery value based on at least each of the arterial oxygen saturation value, the hematocrit and/or hemoglobin value, a body surface area of the patient, and the pump flow rate value,

- compare the calculated indexed oxygen delivery value against an indexed oxygen delivery value threshold, and
- trigger an alarm if the calculated indexed oxygen delivery value is below the indexed oxygen delivery value threshold; and
- a display operably coupled to the controller, the display configured to display:
  - in a first window of the display, the calculated indexed oxygen delivery value, and
  - in a plurality of windows positioned at least partially around the first window, values of physiological parameters of the patient and parameters of the monitoring system including the pump flow rate value.
- 2. The monitoring system of claim 1, wherein the controller is further configured to receive a temperature value of the patient.
- 3. The monitoring system of claim 2, wherein the indexed oxygen delivery value threshold is based, at least in part, on the temperature value of the patient.
- 4. The monitoring system of claim 3, wherein for a first temperature value of the patient, the indexed oxygen delivery value threshold is a first value and for a second, different temperature value of the patient, the indexed oxygen delivery value threshold is a second, different value.
- 5. The monitoring system of claim 1, wherein the controller is further configured to determine an accumulated amount of time at which the calculated indexed oxygen delivery value is below the indexed oxygen delivery value threshold.
- 6. The monitoring system of claim 5, wherein if the accumulated amount of time reaches a predetermined accumulated amount of time threshold, the controller is configured to trigger an alarm.
- 7. The monitoring system of claim 1, wherein the controller is further configured to:
  - receive a venous oxygen saturation value of the patient; and
  - calculate an indexed oxygen consumption value based on each of the arterial oxygen saturation value, the venous oxygen saturation value, the hematocrit and/or hemoglobin value, and the pump flow rate value,
 wherein one of the values physiological parameters of the patient displayed in the plurality of windows the venous oxygen saturation value.
- 8. The monitoring system of claim 1, wherein the monitoring system includes a manual data input device to allow an operator to manually input data.
- 9. A method of monitoring a patient during a cardiac operation, the method comprising:
  - receiving at least one of a real-time hematocrit value of the patient and a real-time hemoglobin value of the patient;
  - receiving a real-time pump flow rate value;
  - receiving an arterial oxygen saturation value of the patient;
  - causing at least one controller to calculate an indexed oxygen delivery value in real-time based on each of the arterial oxygen value, the at least one of a real-time hematocrit value and a real-time hemoglobin value, a body surface area of the patient, and the real-time pump flow rate value;
  - causing the at least one controller to compare the calculated real-time indexed oxygen delivery value against an indexed oxygen delivery value threshold;

13

displaying, as a function of time, via a display, the calculated indexed oxygen delivery value in a first window of the display that is at least partially surrounded by a plurality of windows of the display; displaying the real-time value of the pump flow rate value in one of the plurality of windows; and displaying the at least one of a real-time hematocrit value and a real-time hemoglobin value in one of the plurality of windows.

10. The method of claim 9, further comprising:  
 determining, by the at least one controller, that the calculated real-time indexed oxygen delivery value is below the indexed oxygen delivery value threshold; and  
 causing the at least one controller to trigger an alarm in response to determining that the calculated real-time indexed oxygen delivery value is below the indexed oxygen delivery value threshold.

11. The method of claim 10, further comprising receiving a temperature value of the patient.

12. The method of claim 11, wherein the indexed oxygen delivery value threshold is based, at least in part, on the temperature value of the patient.

13. The method of claim 12, wherein for a first temperature value of the patient, the indexed oxygen delivery value threshold is a first value and for a second, different temperature value of the patient, the indexed oxygen delivery value threshold is a second, different value.

14. The method of claim 9, further comprising causing the at least one controller to determine an accumulated amount of time at which the calculated real-time indexed oxygen delivery value is below the indexed oxygen delivery value threshold.

15. The method of claim 14, wherein if the accumulated amount of time reaches a predetermined threshold amount of time, causing the controller to trigger an alarm.

16. The method of claim 9, further comprising:  
 receiving a real-time venous oxygen saturation value of the patient; and  
 causing the at least one controller to calculate an oxygen consumption value in real-time based on each of the arterial oxygen saturation value, the real-time venous oxygen saturation value, the at least one of a real-time hematocrit value and a real-time hemoglobin value, and the real-time pump flow rate value; and  
 causing the display to display the real-time venous oxygen saturation value in one of the plurality of windows.

17. The method of claim 9, wherein the indexed oxygen delivery threshold is one of a threshold associated with hypoxic organ dysfunction, a threshold associated with hypoxemia, and a threshold associated with lactic acidosis.

14

18. The method of claim 9, wherein receiving an arterial oxygen saturation value comprises receiving one of a preset arterial oxygen saturation value, a manually input arterial oxygen saturation value, and a calculated arterial oxygen saturation value.

19. A monitoring system for cardiac operations with cardiopulmonary bypass, the monitoring system comprising:  
 a controller configured to:  
 receive a pump flow rate value of a pump,  
 receive an arterial oxygen value of a patient,  
 receive a venous oxygen value of the patient,  
 calculate an indexed oxygen delivery value in response to at least the received pump flow rate value being multiplied by the arterial oxygen value and divided by a body surface area of the patient, the arterial oxygen value being based at least in part on a hematocrit value or hemoglobin value of the patient,  
 calculate an indexed oxygen consumption value in response to at least the received pump flow rate being divided by a body surface area of the patient and multiplied by a number calculated by subtracting the venous oxygen value from the arterial oxygen value,  
 compare the calculated indexed oxygen delivery value to an indexed oxygen delivery value threshold, compare the calculated indexed oxygen consumption value to an anaerobic threshold, and  
 trigger an alarm based on the occurrence of the calculated indexed oxygen delivery value falling below the indexed oxygen delivery value threshold or the calculated indexed oxygen consumption value exceeding the anaerobic threshold; and  
 a display operably connected to the controller and configured to display:  
 in a first window of the display, the calculated indexed oxygen delivery value and the calculated indexed oxygen consumption value, and  
 in a plurality of windows positioned at least partially around the first window, values of physiological parameters of the patient.

20. The monitoring system of claim 19, wherein the controller is further configured to determine an accumulated amount of time in which the calculated indexed oxygen delivery value is below the indexed oxygen delivery value threshold.

21. The monitoring system of claim 20, wherein if the accumulated amount of time reaches a predetermined accumulated amount of time threshold, the controller is configured to trigger an alarm.

\* \* \* \* \*

专利名称(译)	用于心肺外科手术的心肺外科手术监测系统		
公开(公告)号	<a href="#">US10039490</a>	公开(公告)日	2018-08-07
申请号	US14/738805	申请日	2015-06-12
[标]申请(专利权)人(译)	索林集团意大利有限责任公司		
申请(专利权)人(译)	索林集团ITALIA S.R.L.		
当前申请(专利权)人(译)	索林集团ITALIA , S.R.L.		
[标]发明人	RANUCCI MARCO		
发明人	RANUCCI, MARCO		
IPC分类号	A61B5/02 G16H40/63 A61M1/14 A61B5/00 A61M1/36 A61B5/0205 A61B5/08 A61B5/145 A61M1/32 A61B5/01 G06F19/00		
CPC分类号	A61B5/4836 A61B5/0205 A61B5/082 A61B5/0816 A61B5/14535 A61B5/14542 A61B5/14546 A61B5/4866 A61B5/6866 A61B5/7278 A61B5/742 A61B5/746 A61M1/14 A61M1/32 A61M1/3621 A61M1/3666 G16H40/63 A61B5/01 A61M2230/207 A61B2505/05 A61M2230/20 A61M2230/205 G16Z99/00 G06F19/00		
代理机构(译)	FAEGRE BAKER丹尼尔斯律师事务所		
优先权	102005901311381 2005-05-13 IT 2005021607 2005-10-04 EP		
其他公开文献	US20150272487A1		
外部链接	<a href="#">Espacenet</a>		

摘要(译)

一种用于心肺手术的监测系统的监测装置，包括：可操作地连接到心肺机的处理器；泵流量检测装置，连接到心肺机的泵，连续测量泵流量值并将其发送给处理器；血细胞比容读数装置，用于连续测量血液血细胞比容值并将其发送给处理器；数据输入装置，允许操作者手动输入关于动脉血氧饱和度和动脉氧张力的数据；计算装置集成在处理器中，根据测量的泵流量，测量的血细胞比容值，动脉血氧饱和度的预设值和动脉氧张力的预设值计算氧输送值；和连接到处理器的显示器，以实时显示计算的氧气输送值。

