



US008977336B2

(12) **United States Patent**
Huennekens et al.

(10) **Patent No.:** **US 8,977,336 B2**
(45) **Date of Patent:** ***Mar. 10, 2015**

(54) **DISTRIBUTED MEDICAL SENSING SYSTEM AND METHOD**

(71) Applicant: **Volcano Corporation**, San Diego, CA (US)

(72) Inventors: **R. Scott Huennekens**, San Diego, CA (US); **David M. Sheehan**, Poway, CA (US); **Jason Spencer**, Rocklin, CA (US); **Rex Kerr**, Folsom, CA (US); **Bill Clark**, Davis, CA (US); **Richard E. Mansker**, Sacramento, CA (US)

(73) Assignee: **Volcano Corporation**, San Diego, CA (US)

(*) Notice: Subject to any disclaimer, the term of this patent is extended or adjusted under 35 U.S.C. 154(b) by 105 days.

This patent is subject to a terminal disclaimer.

(21) Appl. No.: **13/624,500**

(22) Filed: **Sep. 21, 2012**

(65) **Prior Publication Data**

US 2013/0023762 A1 Jan. 24, 2013

Related U.S. Application Data

(63) Continuation of application No. PCT/US2012/032343, filed on Apr. 5, 2012.

(60) Provisional application No. 61/473,591, filed on Apr. 8, 2011.

(51) **Int. Cl.**
A61B 5/05 (2006.01)
G06Q 50/22 (2012.01)

(Continued)

(52) **U.S. Cl.**
CPC **G06Q 50/22** (2013.01); **A61B 8/565** (2013.01); **A61B 5/0013** (2013.01)

USPC **600/407**; 600/427

(58) **Field of Classification Search**
USPC 600/407; 382/128; 705/2
See application file for complete search history.

(56) **References Cited**

U.S. PATENT DOCUMENTS

5,010,890 A 4/1991 Pfohl et al.
5,987,519 A 11/1999 Pfeifer et al.

(Continued)

OTHER PUBLICATIONS

International Search Report received in Patent Cooperation Treaty Application No. PCT/US2012/032343, dated Oct. 31, 2012, 3 pages.

(Continued)

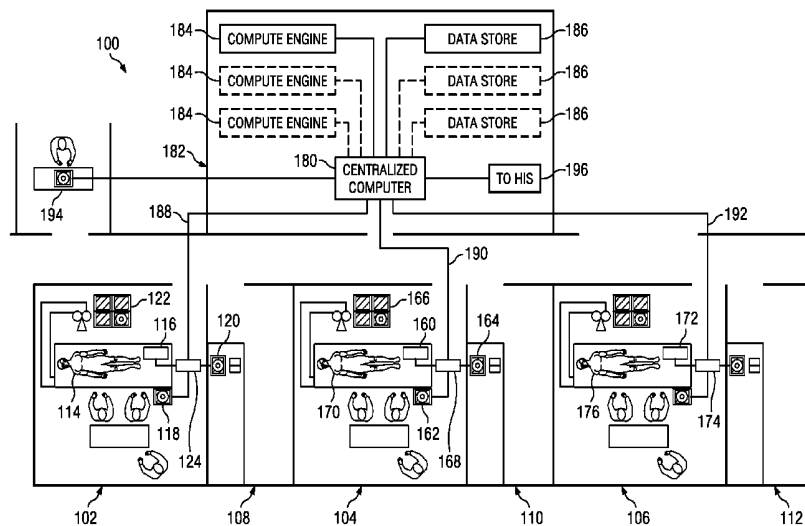
Primary Examiner — Jonathan Cwern

(74) *Attorney, Agent, or Firm* — Haynes and Boone, LLP

(57) **ABSTRACT**

A distributed medical sensing system including a first body sensing device configured to sense medical characteristics, the first body sensing device being located in a first sterile field and a second body sensing device configured to sense medical characteristics, the second body sensing device being located in a second sterile field, the second sterile field being spaced from the first sterile field. The system also includes a computing device outside of the first and second sterile fields and communicatively coupled to the first and second body sensing devices, the computing device configured to respectively receive first and second medical characteristic data from the first and second body sensing devices, process the first and second medical characteristic data, and transmit the processed first and second medical characteristic data to respective first and second user interface devices.

28 Claims, 6 Drawing Sheets



- (51) **Int. Cl.**
A61B 8/00 (2006.01)
A61B 5/00 (2006.01)

(56) **References Cited**

U.S. PATENT DOCUMENTS

6,364,834	B1	4/2002	Reuss et al.	
6,544,174	B2	4/2003	West et al.	
6,694,180	B1	2/2004	Boesen et al.	
6,862,542	B2*	3/2005	Lockhart et al.	702/76
6,870,484	B1	3/2005	Brinksfeld et al.	
6,956,572	B2	10/2005	Zaleski	
7,280,864	B2*	10/2007	Jenkins	600/428
8,289,284	B2	10/2012	Glynn et al.	
2002/0087092	A1	7/2002	Stoycos et al.	
2005/0215876	A1*	9/2005	Chen et al.	600/407
2006/0116908	A1	6/2006	Dew et al.	
2006/0220839	A1	10/2006	Fifolt et al.	
2006/0287586	A1	12/2006	Murphy	

2007/0083111	A1	4/2007	Hossack et al.	
2007/0123771	A1*	5/2007	Redel et al.	600/407
2007/0124169	A1*	5/2007	Irving et al.	705/2
2007/0197901	A1*	8/2007	Viswanathan	600/411
2007/0232933	A1	10/2007	Gille et al.	
2008/0008366	A1*	1/2008	Desh et al.	382/128
2008/0045809	A1	2/2008	Hermannsson	
2008/0146925	A1*	6/2008	Byrd et al.	600/438
2009/0093980	A1*	4/2009	Kemp et al.	702/77
2009/0273467	A1	11/2009	Elixmann et al.	
2010/0150023	A1*	6/2010	Witzel et al.	370/254
2011/0001605	A1	1/2011	Kiani et al.	
2011/0105854	A1	5/2011	Kiani et al.	

OTHER PUBLICATIONS

European Patent Office, "Extended European Search Report and Search Opinion," for European application No. 12768655.8, mailed Jul. 30, 2014, 7 pages.

* cited by examiner

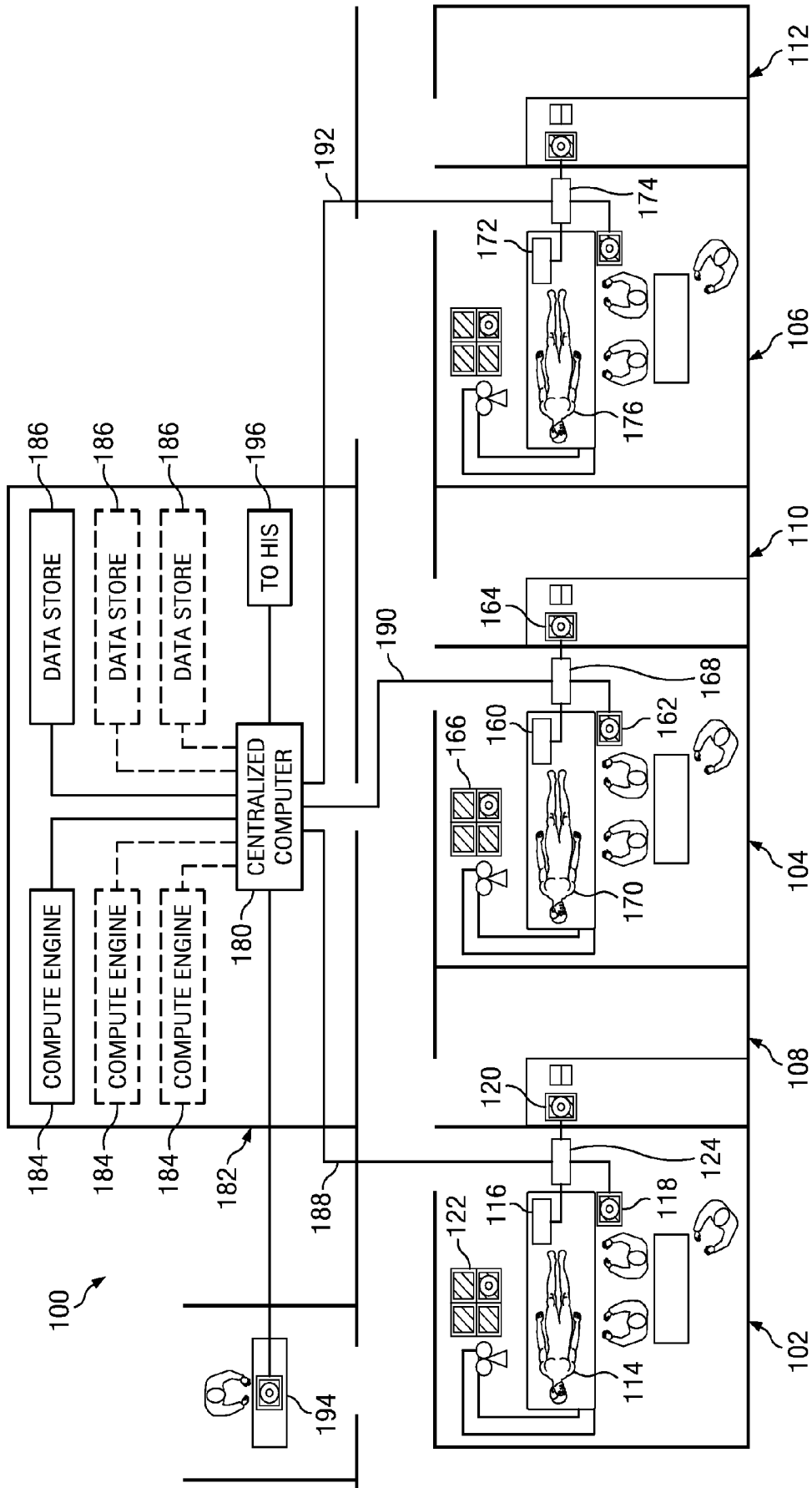


Fig. 1

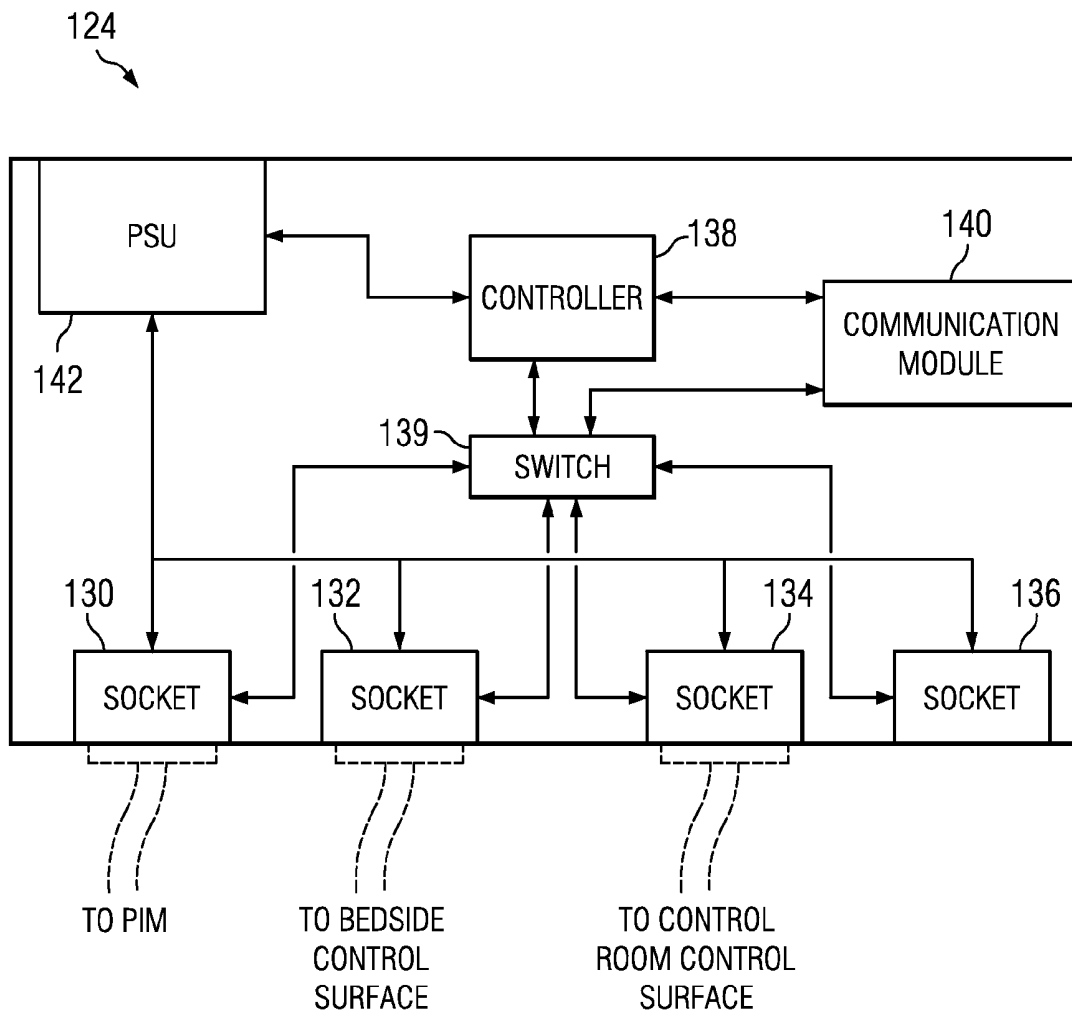


Fig. 2

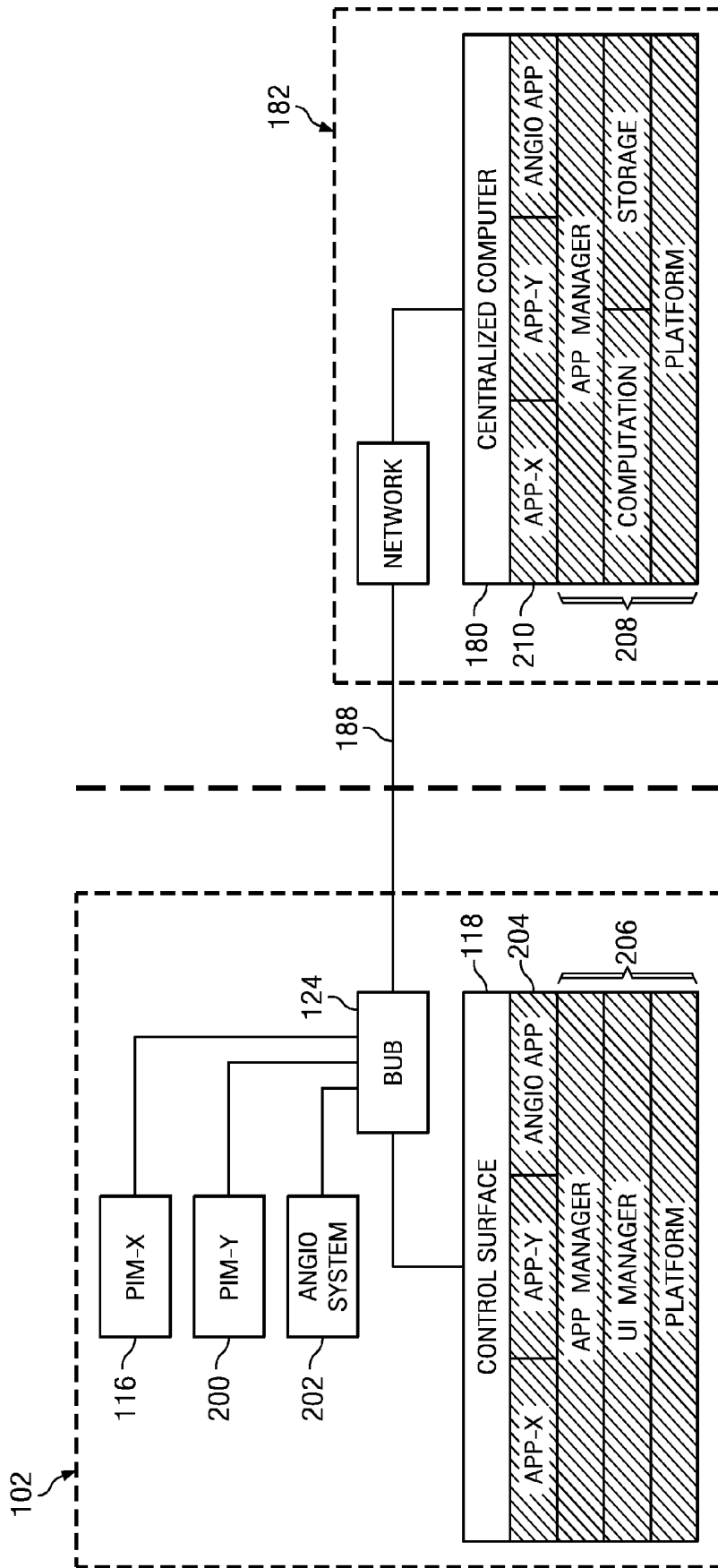


Fig. 3

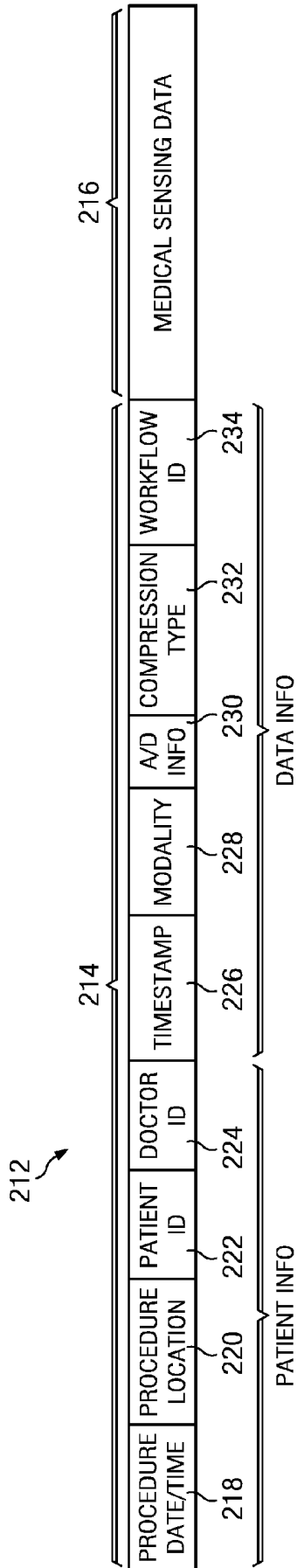


Fig. 4

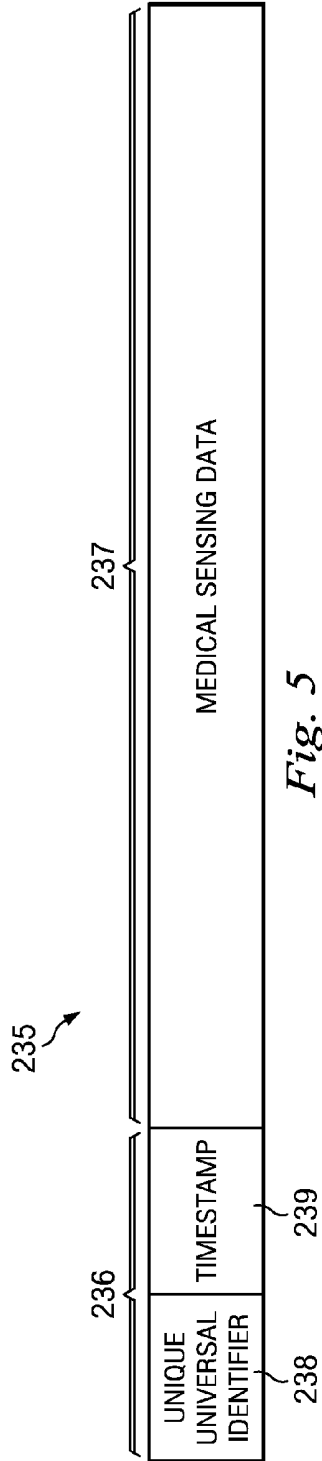


Fig. 5

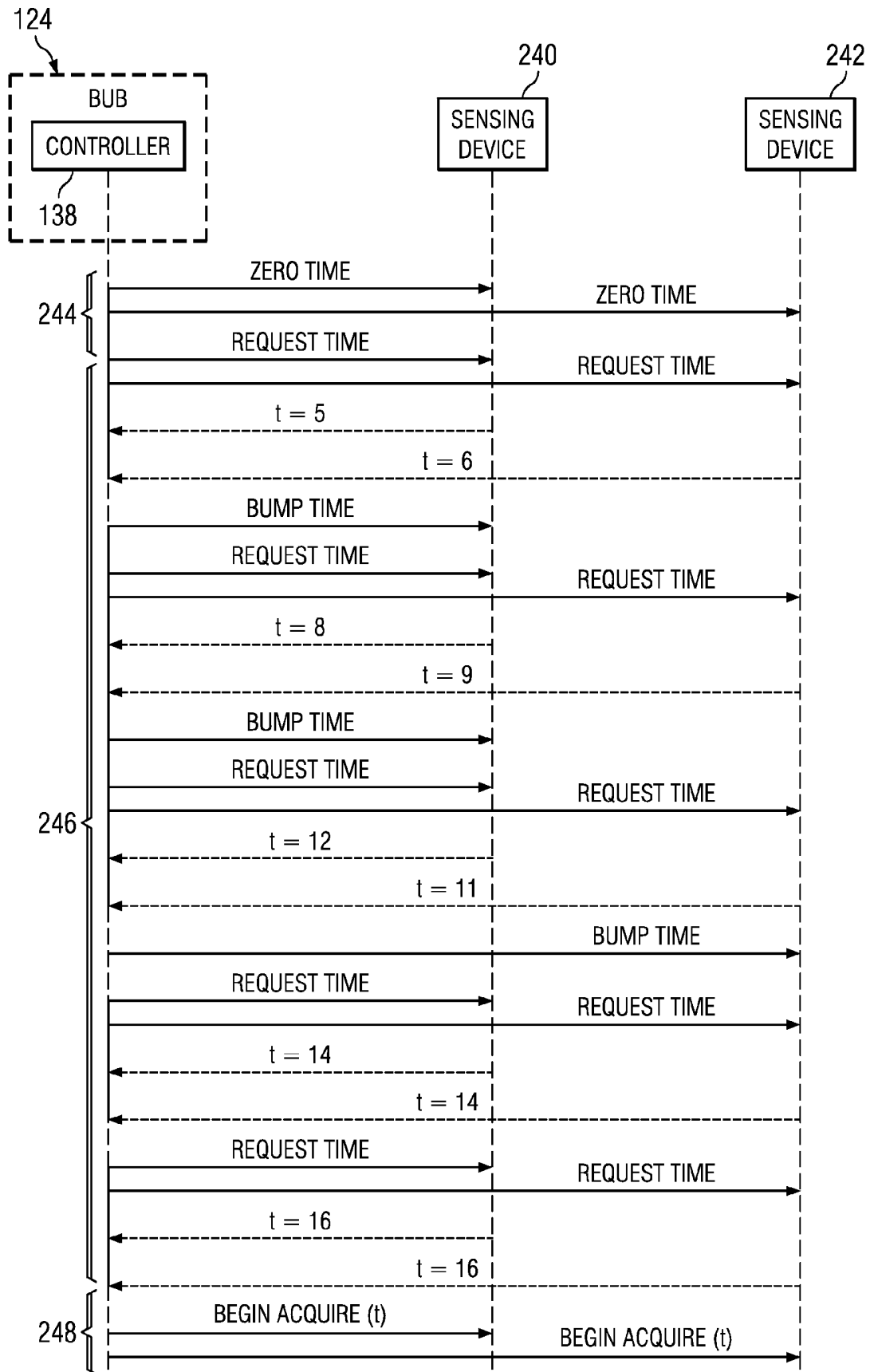


Fig. 6

DISTRIBUTED MEDICAL SENSING SYSTEM AND METHOD

CROSS-REFERENCE TO RELATED APPLICATIONS

This application is a continuation of PCT Patent Application No. PCT/US12/32343 filed on Apr. 5, 2012, entitled "DISTRIBUTED MEDICAL SENSING SYSTEM AND METHOD," which claims the benefit of U.S. Provisional Application No. 61/473,591 filed on Apr. 8, 2011 and incorporated by reference herein. The present application claims the benefit of each of the foregoing applications.

TECHNICAL FIELD

Embodiments of the present disclosure relate generally to the field of medical devices and, more particularly, to sensing and imaging systems and associated methods of use.

BACKGROUND

Innovations in diagnosing and verifying the level of success of treatment of disease have migrated from external imaging processes to internal diagnostic processes. In particular, diagnostic equipment and processes have been developed for diagnosing vasculature blockages and other vasculature disease by means of ultra-miniature sensors placed upon the distal end of a flexible elongate member such as a catheter, or a guide wire used for catheterization procedures. For example, known medical sensing techniques include angiography, intravascular ultrasound (IVUS), forward looking IVUS (FL-IVUS), fractional flow reserve (FFR) determination, a coronary flow reserve (CFR) determination, optical coherence tomography (OCT), trans-esophageal echocardiography, and image-guided therapy. Each of these techniques may be better suited for different diagnostic situations. To increase the chance of successful treatment, health care facilities may have a multitude of imaging and sensing modalities on hand in a catheter lab during a procedure. However, each imaging modality in a catheter lab traditionally requires its own special-purpose diagnostic equipment. For instance, an imaging modality may require a catheter, a patient isolation module (PIM), a user control interface, a display, a specialized power unit, and a processing unit such as a customized personal computer. Traditionally, all of this equipment is located in the catheter room itself during a procedure and depends on a substantial wiring infrastructure for network connectivity and dependable power. Physical space is typically at a premium in catheter labs and each additional imaging modality employed in a catheter lab complicates the pre-procedure setup and limits the movement of health care professionals during procedures. Additionally, known problems arise when attempting to locate portions of a diagnostic system outside of a catheter lab. For instance, data transmitted between a PIM and a processing unit may degrade as the distance between the two increases. Similarly, traditional long-distance communication links do not support the bandwidth required for modern cardiovascular imaging techniques.

While the existing devices and methods have been generally adequate for their intended purposes, they have not been entirely satisfactory in all respects. The medical sensing systems and associated methods of the present disclosure overcome one or more of the shortcomings of the prior art.

SUMMARY

In one exemplary aspect, the present disclosure is directed to a distributed medical sensing system. The system includes

a first body sensing device configured to sense medical characteristics, the first body sensing device being located in a first sterile field and a second body sensing device configured to sense medical characteristics, the second body sensing device being located in a second sterile field, the second sterile field being spaced from the first sterile field. The system also includes a computing device outside of the first and second sterile fields and communicatively coupled to the first and second body sensing devices, the computing device configured to respectively receive first and second medical characteristic data from the first and second body sensing devices, process the first and second medical characteristic data, and transmit the processed first and second medical characteristic data to respective first and second user interface devices, the first user interface being associated with the first sterile field and the second user interface device being associated with the second sterile field.

In another exemplary aspect, the present disclosure is directed to a method of processing medical data. The method includes receiving, at a computing device, first and second medical characteristic data from respective first and second body sensing devices, the first and second body sensing devices being located in respective spaced first and second sterile fields, and the computing device being outside of the first and second sterile fields and processing, with the computing device, the first and second medical characteristic data. The method also includes transmitting, with the computing device, the processed first and second medical characteristic data to respective first and second user interface devices, the first user interface being associated with the first sterile field and the second user interface device being associated with the second sterile field.

In yet another exemplary aspect, the present disclosure is directed to a cloud-based medical processing system. The system includes a medical sensing device disposed in a sterile field in medical facility and configured to collect medical data from a patient in the sterile field and a site manager disposed in the medical facility coupled to a data network, the site manager configured to transmit the medical data off-site via the data network and to receive processed medical data via the data network. The system also includes a centralized computing device located off-site from the medical facility and communicatively coupled to the site manager via the data network, the centralized computing device being configured to receive medical data from the site manager, process the medical data, transmit processed medical data back to the site manager.

BRIEF DESCRIPTION OF THE DRAWINGS

FIG. 1 is a schematic drawing depicting a distributed medical sensing system according to one embodiment of the present disclosure.

FIG. 2 is a functional block diagram of an exemplary embodiment of an aspect of the distributed medical sensing system of FIG. 1, specifically, a bedside utility box.

FIG. 3 is a functional block diagram of another aspect of the distributed medical sensing system of FIG. 1 that includes a software framework executing on a bedside control surface and a software framework executing on a centralized computer.

FIG. 4 is an illustration of a message format utilized by the distributed medical sensing system of FIG. 1 in one embodiment of the present disclosure.

FIG. 5 is an illustration of a different message format utilized by the distributed medical sensing system of FIG. 1 in another embodiment of the present disclosure.

FIG. 6 is an illustration of a method for synchronizing data acquisition from multiple medical sensing devices in the system of FIG. 1.

FIG. 7 is a schematic drawing depicting a distributed medical sensing system according to another embodiment of the present disclosure.

DETAILED DESCRIPTION

For the purposes of promoting an understanding of the principles of the present disclosure, reference will now be made to the embodiments illustrated in the drawings, and specific language will be used to describe the same. It will nevertheless be understood that no limitation of the scope of the disclosure is intended. Any alterations and further modifications in the described devices, instruments, methods, and any further application of the principles of the disclosure as described herein are contemplated as would normally occur to one skilled in the art to which the disclosure relates. In particular, it is fully contemplated that the features, components, and/or steps described with respect to one embodiment may be combined with the features, components, and/or steps described with respect to other embodiments of the present disclosure.

FIG. 1 is a schematic drawing depicting a distributed medical sensing system 100 according to one embodiment of the present disclosure. The distributed medical sensing system 100 is a network-based distributed computational and storage solution for multiple modality medical sensing. Generally, in the medical sensing system 100, medical data is collected by network-connected sensing instruments in catheter labs but processed and stored in a centralized location and returned to the catheter labs for display to and analysis by health care professionals.

In the present embodiment, the medical sensing system 100 is implemented in a health care facility with catheter labs 102, 104, and 106. As illustrated in FIG. 1, each catheter lab 102, 104, and 106 has an associated control room 108, 110, and 112. The catheter labs 102, 104, and 106 are sterile but their associated control rooms 108, 110, and 112 may or may not be sterile depending on the requirements of a procedure and/or health care facility. Each catheter lab/control room pair may be used to perform on a patient any number of medical sensing procedures such as angiography, intravascular ultrasound (IVUS), forward looking IVUS (FL-IVUS), a fractional flow reserve (FFR) determination, a coronary flow reserve (CFR) determination, optical coherence tomography (OCT), computed tomography, intracardiac echocardiography (ICE), intravascular palpography, transesophageal ultrasound, or any other medical imaging modalities known in the art. For example, in catheter lab 102 a patient 114 may be undergoing an IVUS procedure, in which a phased-array catheter (not illustrated) is inserted into the patient's arteries. The medical sensing system 100 includes a number of interconnected diagnostic tools in the catheter lab 102 and control room 108 to facilitate this procedure, including a patient isolation module (PIM) 116, a bedside control surface 118, a control room control surface 120, and a boom display 122. The medical sensing system 100 further includes a bedside utility box (BUB) 124 in the catheter lab 102 to interconnect these diagnostic tools and to connect to system 100. That is, the BUB 124 is a central hub to which the diagnostic tools in the catheter lab 102 and control room 108 connect to the network-based system 100. In one embodiment, each of the PIM 116, bedside control surface 118, and control room control surface 120 connect to the BUB 124 with similar standardized connectors and communicate with the BUB 124

using a standardized protocol. The BUB 124 will be described in greater detail in association with FIG. 2.

Although the BUB 124 is shown as a unit for connecting multiple diagnostic devices to the system 100, it is contemplated that in a further embodiment each diagnostic device may include a communication module that can directly access the system 100 and communicate with one or more other devices connected to the network of system 100. Such communication modules include processors and/or logic to send addressed messages over the network and receive addresses messages from the network. In one aspect the network may utilize the TCP/IP protocol for network communication. Such network communications may be made over a wired connection or over a wireless connection.

In the illustrated embodiment, the BUB 124 is communicatively coupled to the patient isolation module (PIM) 116, which is, in turn, coupled to a sensor device (not-illustrated) that collects medical data from a patient. In general, the PIM 116 is a patient communication system that acts as an intermediary between the medical sensing system 100 and data collection sensors. In some embodiments, the PIM and the BUB together may be considered a patient communication system. In the above example of IVUS, the PIM 116 is the intermediary between the BUB 124 and a phased-array catheter. For convenience purposes, the PIM 116 may hang from the patient table or may be placed in another location near the patient. The PIM 116 provides power to the phased-array catheter by way of its connection to the BUB 124. Typically, different sensory instruments require different amounts of power, and thus their associated PIMs may draw different amounts of power from the BUB 124. The PIM 116 further transmits data collected with the catheter to the BUB 124. In one embodiment, the PIM 116 includes an analog to digital (A/D) converter and transmits digital data to the BUB 124, however, in other embodiments the PIM transmits analog data to the BUB. Further, in some embodiments, the PIM 116 and BUB 124 communicate with a standardized data transmission protocol, such as Synchronous Optical Networking (SONET). In the illustrated embodiment, the PIM 116 and BUB 124 communicate over a wired connection such as a standard copper link or a fiber optic link but, alternatively, the PIM 116 and BUB 124 may wirelessly communicate. Although only one PIM is depicted as connected to the BUB 124, additional PIMs associated with different medical sensing modalities may be connected to BUB 124. Any such additional PIMs may communicate with the BUB 124 concurrently with the PIM 116. Additionally, in some embodiments, such as those in which patient data is collected using angiography, the illustrated PIM may be replaced with a C-arm. In such embodiments, the C-arm may act as the power and data intermediary between the actual data collection tools and the system 100. U.S. Patent Application Publication No. US 2007/0232933, entitled "Component-Based Catheter Lab Intravascular Ultrasound System," discloses a component-based IVUS system that includes a PIM and is hereby incorporated by reference in its entirety.

The bedside control surface 118 is also communicatively coupled to the BUB 124 and provides user control of the particular medical sensing modality (or modalities) being used to diagnose the patient 114. In the current embodiment, the bedside control surface 118 is a touch screen that provides user controls and diagnostic images on a single surface. In alternative embodiments, however, the bedside control surface 118 may include both a non-interactive display and separate controls such as physical buttons and/or a joystick. In the illustrated embodiment, the bedside control surface 118 and BUB 124 communicate over a wired connection such as a

standard copper link or a fiber optic link but, alternatively, the control surface **118** and BUB **124** may wirelessly communicate. Further, in some embodiments, the bedside control surface **118** may be also communicatively coupled directly to the PIM **116**. The bedside control surface **118** includes an integrated processing unit to drive a graphical user interface (GUI)-based workflow presented on the touch screen. In an exemplary embodiment, the particular GUI-based workflow presented by the bedside control surface **118** depends on the medical sensing modality being used to diagnose the patient **114**. To this end, the bedside control surface **118** is capable of displaying multiple GUI-based workflows, each corresponding to a particular sensor or imaging modality or simultaneous combination thereof. A software framework executing on the bedside control surface **118** manages the multiple workflows. This software framework will be discussed in greater detail in association with FIG. **3**. Further, in some embodiments, the bedside control surface **118** automatically displays an appropriate workflow based on the particular PIM connected to the BUB **124**. In the event that multiple PIMs are coupled to BUB **124**, the bedside control surface **118** may present a user with a modality selector screen on which the appropriate GUI-based workflow may be selected. U.S. Pat. No. 7,134,994, entitled "Multipurpose Host System For Invasive Cardiovascular Diagnostic Measurement Acquisition and Display," discloses a multifunction diagnostic system with a multi-mode graphical user interface and is hereby incorporated by reference in its entirety. U.S. Patent Application Publication No. US 2008/0269572, entitled "Multipurpose Host System For Invasive Cardiovascular Diagnostic Measurement Acquisition Including An Enhanced Dynamically Configured Graphical Display," discloses a method for dynamically switching between cardiovascular diagnostic GUIs and is also hereby incorporated by reference in its entirety.

The control room control surface **120** in the control room **108** is also communicatively coupled to the BUB **124** and, as shown in FIG. **1**, is adjacent to catheter lab **102**. In the illustrated embodiment, the control room control surface **120** and BUB **124** communicate over a wired connection such as a standard copper link or a fiber optic link but, alternatively, the control surface **120** and BUB **124** may wirelessly communicate. In the current embodiment, the control room control surface **120** is similar to the bedside control surface **118** in that it includes a touch screen, integrated processing unit, and multitude of GUI-based workflows corresponding to different medical sensing modalities. During a procedure, however, the control room control surface **120** may be used to carry out a different aspect of the procedure's workflow than the bedside control surface **118**. In alternative embodiments, the control room control surface **120** may include a non-interactive display and standalone controls such as a mouse and keyboard. Further, the processing unit of the control room control surface **120** may be more powerful than the processing unit of the bedside control surface **118**. In one embodiment, the control room control surface **120** may drive the boom display **122**. The boom display **122** may include an array of monitors, each capable of displaying different information associated with a medical sensing procedure. For example, during an IVUS procedure, one monitor in the boom display **122** may display a tomographic view and one monitor may display a sagittal view. In alternative embodiments, the boom display **122** may be coupled directly to and driven by the BUB **124**, the bedside control surface **118**, or another network-connected device.

With reference now to FIG. **2**, the BUB **124** is described in greater detail. FIG. **2** is a functional block diagram of an

exemplary embodiment of the BUB **124**. The BUB **124** includes connector sockets **130**, **132**, **134**, and **136**. In one embodiment, the sockets **130**, **132**, **134**, and **136** may be substantially similar (i.e. standardized), but in other embodiments, each socket may be a dedicated socket specifically configured to cooperate with a specific medical sensing system. As illustrated, the BUB **124** includes four connector sockets, but alternatively it may include a greater number or fewer number of sockets. Diagnostic tools such as medical sensing devices and user interfaces may connect to the sockets and become part of the network-based system **100**. For example, PIM **116** may connect to socket **130**, bedside control surface **118** may connect to socket **132**, and control room control surface **120** may connect to socket **134**. Upon connection of a diagnostic tool to a socket, the BUB **124** provides data connectivity and power to that diagnostic tool. In the current embodiment, diagnostic tools such as PIM **116** are communicatively coupled to the BUB **124** via a wired connection, but, alternatively, data transfer may be accomplished over a fiber optic link or wireless connection. In the latter case, the sockets **130**, **132**, **134**, and **136** may be replaced with a multi-connection wireless communication module.

The BUB **124** further includes a controller **138**, a switch **139**, and a communication module **140**. In one some embodiments, the controller **138** may be a low-power microcontroller with integrated memory and peripherals. The controller **138** is operable, among other things, to route data from the sockets **130**, **132**, **134**, and **136** to the communication module **140** via the switch **139**. The switch **139** may be a hardware-based switch or may be a software-based switch integrated into the communication module **140**. In the current embodiment, the controller **138** includes an analog to digital (A/D) converter which the controller may selectively utilize based on whether data incoming from a connected PIM is analog or digital. For example, the controller **138** may convert analog data from a PIM to digital data before it is routed to the communication module. Additionally, in some embodiments, the controller **138** may be operable to associate identifying information with the medical sensing data when it is digitized. More specifically, the controller **138** may create a plurality of messages from the incoming analog data stream, where each message contains a portion of the digitized medical sensing data and a header. The contents of these messages will be described in more detail in association with FIGS. **4** and **5**. Further, in some embodiments where the PIMs digitize the sensing data before transmitting it to the BUBs, the PIMs themselves may be operable to create these messages.

Further, in the event that multiple medical sensing devices are coupled to the BUB **124**, the controller **138** may be operable to facilitate time synchronization among the devices for co-registration purposes. For instance, in one embodiment, the controller **138** may be operable to serve as a master time server for the downstream sensing devices using a network-based time synchronization protocol such as the Precision Time Protocol (PTP) or the Network Time Protocol (NTP). In another embodiment, the controller **138** may be operable to assign a common timestamp to data as it arrives into the BUB **124** from a plurality of medical sensing devices. Further, in another embodiment, the controller **138** may communicate with connected medical sensing devices using a synchronous protocol such as Synchronous Optical Networking (SONET), and may assign timestamps to incoming medical sensing data based on the multiplexed communication. Still further, in other embodiments, the BUB **124** may include a dedicated real-time clock to synchronize sampling by connected medical sensing devices. In such an embodiment, the real-time clock may distribute a synchronization signal to connected

sensing devices and also the controller **138** which may act as a co-registration processor. In some embodiments, the real-time clock may be integrated into the controller **138**.

Further, in some embodiments, the controller **138** may be operable to modify the medical data received from the medical sensing devices before it is routed to the communication module **140**. For example, in some embodiments, the controller **138** may compress the data before it is transmitted over the network-based system **100**. In this manner, large data sets produced by imaging modalities such as OCT may be more efficiently moved over system **100**. In some embodiment, the controller **138** may also be operable to filter incoming sensing data in some manner. As mentioned above, PIMs in system **100** may communicate directly with the system **100** without the use of BUBs, in which case, and compression and/or filtering of medical data may take place in the PIMs themselves rather than in the BUBs.

The communication module **140** in the BUB **124** is a high-speed communication port operable to transmit data between the diagnostic tools connected to the BUB **124** and the distributed medical sensing system **100**. In embodiments in which the system **100** includes a packet-based network, the communication module **140** is operable to packetize medical sensing data routed through (and possibly digitized by) the controller **138**, address the resulting packets, and send the packets out over the system **100**. In the embodiments in which the controller **138** segments incoming sensing data into messages, the communication module **140** may encapsulate the messages into TCP/IP packets for transmission over the network-based system **100**. In the illustrated embodiment, the communication module **140** is an InfiniBand switched fabric communications module, however, in other embodiments the communications module may be a HyperTransport communication module, a fiber optic link module, a Gigabit Ethernet module, a high-speed wireless module or some other high-speed link module known in the art. Still further, in some embodiments, the above A/D conversion and packetizing/addressing/sending functionality of the BUB **124** may be instead embedded into a PIM, thereby negating the necessity of a BUB.

The BUB **124** further includes a medical-grade power supply unit (PSU) **142**. The PSU **142** provides power to the controller **138** and the diagnostic tools (e.g. medical sensing devices, control surfaces) connected to the sockets **130**, **132**, **134**, and **136**. Note that the block diagram shown in FIG. **2** has been simplified for the sake of clarity. A person of ordinary skill in the art would understand that elements of the BUB **124** may be rearranged or combined and that additional elements may be added without changing the functionality described herein. U.S. Provisional Patent Application No. 61/473,625, entitled "MEDICAL SENSING COMMUNICATION SYSTEM AND METHOD" and filed on Apr. 8, 2011, discloses a bedside utility box that intelligently couples medical sensing-related tools and is hereby incorporated by reference in its entirety.

With reference back to FIG. **1**, the distributed medical sensing system **100** includes a second set of diagnostic tools in the catheter lab **104** and associated control room **110**, including a PIM **160**, a bedside control surface **162**, a control room control surface **164**, and a boom display **166**. A BUB **168** interconnects the diagnostic tools in the catheter lab **104** and control room **110** and may be similar to the BUB **124**. Like catheter lab **102**, catheter lab **104** supports any number of medical sensing modalities. For instance, a patient **170** may be undergoing an OCT procedure, in which an OCT catheter (not illustrated) is inserted into the patient's arteries. The OCT catheter is coupled to the PIM **160**, which in turn is

coupled to the BUB **168**. Similarly, the bedside control surface **162** and control room control surface **164** are also connected to the BUB **168**.

Further, the distributed medical sensing system **100** includes an additional set of diagnostic tools in the catheter lab **106** and associated control room **112**, including a PIM **172** coupled to a BUB **174**. Here, a patient **176** may be undergoing yet another procedure, for example, a FFR procedure, in which a pressure sensor at the distal end of a guide wire or catheter is inserted into the patient's body.

The distributed medical sensing system **100** further includes a centralized computer **180** that is operable to manage system resources in the network and also to process medical data collected in catheter labs **102**, **104**, and **106**. In the illustrated embodiment, the centralized computer **180** is a single server-type computer, but, in other embodiments, centralized computer may be multiple interconnected computers. A software framework executing on the centralized computer **180** manages the processing of medical data transmitted from the catheter labs. This software framework will be discussed in greater detail in association with FIG. **3**. In the current embodiment, the centralized computer **180** is located in a server room **182** in the same health care facility as the catheter labs and, as such, may be separated by tens to hundreds of meters from the catheter labs depending on the size of the health care facility. However, in other embodiments the centralized computer **180** may be located outside of the health care facility many kilometers away, as discussed later in association with FIG. **7**. Further, the processing power of the centralized computer **180** is scalable depending on the needs of the health care facility. To this end, as illustrated in FIG. **1**, the medical sensing system **100** includes an array of compute engines **184** communicatively coupled to the centralized computer **180** in the server room **182**. The number of compute engines in the array **184** may be increased or decreased according to processing needs. For example, a health care facility that transitions from performing mostly low processor intensive procedures, such as FFR, to performing mostly processor intensive procedures, such as OCT, may add additional compute engines to the array **184**, thereby increasing the processing power of the centralized computer **180**. In the current embodiment, the compute engines in the array **184** are server-type computers clustered together in a high-speed network, however, the compute engines may alternatively be networked processors in a massively parallel processor implementation. Further, in other embodiments, the compute engine array may be implemented with general-purpose computing on graphics processing units (GPGPUs). In such a scenario, each compute engine may be an add-in card with an array of graphics processing units (GPUs) such as a Tesla GPGPU card available from Nvidia Corporation of Santa Clara, Calif. When diagnostic data is transmitted to the centralized computer **180** from the catheter labs, the computer is operable to process the data in a parallel manner using the compute engine array **184**. U.S. Patent Application Publication No. US 2009/0093980, entitled "Real Time SD-OCT With Distributed Acquisition and Processing," discloses a system for processing medical data in parallel and is hereby incorporated by reference in its entirety. And U.S. patent application Ser. No. 12/978,344, entitled "Integrated System Architectures and Methods of Use," discloses an integrated system for collecting and processing medical data and is hereby incorporated by reference in its entirety.

The diagnostic system **100** further includes a storage array **186** coupled to the centralized computer **180**. In one embodiment, the storage array **186** is configured to store patient data in a manner conforming to Digital Imaging and Communica-

tions in Medicine (DICOM) standards. For example, the storage array **186** may archive patient images collected by the various medical sensing modalities in the catheter labs **102**, **104**, and **106**. Like the compute engine array **184**, the storage array **186** is scalable to meet the needs of the health care facility. In the current embodiment, the storage array **186** is a storage area network of interconnected storage devices, but alternatively it may be an array of hard disks in the centralized computer **180**, an array of tape drives, or some other scalable storage solution.

The BUBs **124**, **168**, and **174** are communicatively coupled to the centralized computer **180** by communication interconnects **188**, **190**, and **192**. In the current embodiment, the communication interconnects are InfiniBand links but alternatively may be another type of high-speed interconnect such as HyperTransport links, or may be high-speed wireless communication interconnects. The BUBs **124**, **168**, and **174**, centralized computer **180**, and other network devices in the diagnostic system **100** may communicate over the communication interconnects using a secure protocol, such as Transport Layer Security (TLS) over TCP/IP. Additionally, to help facilitate co-registration of multi-modality sensing data the BUBs **124**, **168**, and **174** may communicate with the centralized computer **180** using a synchronized protocol such as SONET. Further, to reduce wiring clutter in the catheter labs, the interconnects **188**, **190**, and **192** may extend toward their respective catheter lab underneath the floor in a cable trench and break out of the floor in the labs through cabling ports near their respective BUBs **118**, **168**, and **174**, and make a single connection to the BUBs.

Further, a doctor or other health professional may access the medical sensing system **100** through a networked computing device **194**. The computing device **194** may access patient information stored on the storage array **186**, or, in some embodiments, monitor one or more on-going procedures in the catheter labs in real time. The computing device **194** may access the system **100** through a wired or wireless network connection using a known communication protocol such as Ethernet or IEEE 802.11. In some embodiments a network bridge may be required to interconnect a standard Ethernet-based network and a high-speed network, such as the above-described InfiniBand network. In the current embodiment, the computing device **194** is a laptop used by a doctor in a doctor's office, but in other embodiments the computing device may be a PC, smartphone, tablet computer, or other device with a network connection located inside or outside of the health care facility. Additionally, the medical sensing system **100** may be communicatively coupled to a hospital information system (HIS) **196** that manages the administrative, financial and clinical aspects of the health care facility, and also communicatively coupled to a picture archive and communication system (PACS) of the health care facility. In some embodiments, the centralized computer **180** may be operable to request patient workflow data from DICOM servers on the HIS **196**. For instance, the centralized computer **180** may use the DICOM patient data to schedule procedures in the catheter labs and also customize workflows for particular patients. The connections to the HIS **196** and PACS may be implemented using a network bridge or some other networking device.

With reference now to FIG. 3, the software frameworks executing in the distributed medical sensing system **100** are described in greater detail. FIG. 3 is a functional block diagram of a portion of the system **100**, including the software framework executing on the bedside control surface **118** and the software framework executing on the centralized computer **180**. The left portion of FIG. 3 illustrates one configura-

tion of catheter lab **102**, in which two PIMs, an angiography system, and the bedside control surface **118** are connected to BUB **124**. Specifically, the PIM **116**, a PIM **200**, and an angiography system **202** are connected to the BUB **124**. In the current embodiment, the PIMs **116** and **200** and angiography system **202** are used for different medical sensing modalities, and thus the associated workflows are different. However, in the exemplary embodiment, a health care professional may control all three medical sensing workflows from the bedside control surface **118**. In more detail, the bedside control surface **118** includes a software framework in which user interface (UI) applications for each medical sensing modality may execute within a UI application layer **204**. The software framework also includes a software stack **206** that executes underneath and supports the layer of UI applications **204**. In the current embodiment, the software stack **206** exposes a set of application programming interfaces (APIs) with which the applications in the UI application layer **206** may call to access system resources such as a look-and-feel toolbox and communication infrastructure.

Using components of the look-and-feel toolbox, each UI application **204** may present a GUI that gives a user control over an imaging or signaling modality workflow and also presents imaging or signaling data collected from the associated PIM and processed by the centralized computer **180**. Further, co-registration UI applications may present and/or combine processed image or signaling data from multiple modalities. For instance, a UI application may display an electrocardiogram (ECG) wave adjacent to IVUS imaging data or may display an IVUS image overlaid with borders that were previously drawn on an OCT image. Such co-registration UI applications may harness the parallel processing power of the centralized computer **180** and acquire data from two medical data streams simultaneously to facilitate a real time co-registration workflow. In an exemplary embodiment, additional UI applications may be added to the application layer **204** to support new medical sensing modalities or co-registration techniques developed after the control surface **118** has been deployed. Further, the API-based software framework allows the UI applications **204** to be independent of the software stack **206** and thus written by third parties to control a custom workflow. As mentioned above, in some embodiments, the bedside control surface **118** may automatically select the appropriate UI application (and thus the appropriate workflow) based on the particular PIM connected to the BUB **124**. In the event that multiple PIMs are coupled to BUB **124**, as is illustrated in FIG. 3, the bedside control surface **118** may present a user with a modality selector screen on which the desired GUI may be selected.

As described in association with FIG. 1, the BUB **124** is communicatively coupled to the centralized computer **180** via the communication interconnect **188**. Like the bedside control surface **118**, the centralized computer **180** includes an API-based software framework in which processing applications associated with medical sensing modalities may execute. In particular, the centralized computer **180** includes a software stack **208** that executes underneath and supports a layer of processing applications **210**. Processing applications in the application layer **210** may correspond to a medical sensing modality in use in the health care facility and processes all data for that particular sensing modality. For example, every PIM in the health care facility that collects IVUS data may send the data over the system **100** to an IVUS processing application in the application layer **210** on centralized computer **180**. The IVUS processing application may interpret the IVUS data and send image data back over the system **100** to IVUS UI applications on the bedside control

surfaces for display. Further, in some embodiments, the application layer **210** may include co-registration applications, in which medical sensing data from a plurality of medical sensing devices are co-registered and returned to co-registration UI applications on control surfaces. To support such co-registration applications, in one embodiment, the software stack **208** may expose one or more time synchronization APIs for use by the applications. For instance, the centralized computer **180** may act as a master clock using the NTP or PTP protocols where each BUB in the system **100** is a client or, alternatively, the computer **180** may include a dedicated real-time clock. In either case, co-registration applications in the application layer **210** may have access to synchronization data via APIs exposed by the software stack **208**. U.S. Provisional Patent Application No. 61/473,570, entitled "MULTI-MODALITY MEDICAL SENSING SYSTEM AND METHOD" and filed on Apr. 8, 2011, discloses a computing resource with a similar modular API-based software framework capable of processing multi-modality medical sensing data and is hereby incorporated by reference in its entirety.

The software stack **208** executing on the centralized computer **180** is operable to utilize the parallel processing power of the compute engine array **184**. As such, the processing applications **210** can process signaling and imaging data from multiple on-going procedures concurrently. In this regard, in some embodiments, the software stack **208** may intelligently make use of the computing resources available to centralized computer **180** by identifying generic computing tasks common to concurrently executing processing applications. For example, the software stack **208** may determine that two processing applications (associated with different modalities) each need to perform filtering, image processing, and scan conversion processes on incoming sensing data. Once these common tasks are identified, the software stack **208** may utilize a library of parallel algorithms to process these tasks concurrently.

Further, after processing medical sensing data for a procedure, the processing applications **210** may store the data in the storage array **186**. Additionally, the processing applications **210** may manage the workflows for the associated UI applications installed on the control surfaces. In an exemplary embodiment, additional processing applications may be added to the application layer **210** to support new medical sensing modalities and new UI applications on the control surfaces. For example, to support a new medical sensing modality, a third party may develop a new catheter-based sensor, new PIM, new UI application, and new processing application. In such a scenario, the new PIM may connect to BUB **124**, the new UI application may be installed onto the existing control surface **118** and call the APIs exposed by the software stack **206**, and the new processing application may be installed onto the centralized computer **180** and call the APIs exposed by the software stack **208**.

With reference now to FIG. 4, illustrated is a message format utilized by the distributed medical sensing system **100** in one embodiment of the present disclosure. As mentioned above, in some embodiments, a BUB may convert incoming medical sensing data into a plurality of messages containing digitized sensing data and associated identifying information. FIG. 4 illustrates an example message **212**. The message **212** includes a header **214** and a payload **216**. The payload **216** includes digitized medical sensing data collected with the medical sensing devices in system **100**. The header **214** includes information associated with the sensing data in the payload **216**. In more detail, the header includes a patient info portion and a data info portion, where the former generally includes information about the patient and procedure from

which the medical sensing data came and the latter generally includes information about the data characteristics. More specifically, in the illustrated embodiment, the patient info portion of header **214** includes blocks **218**, **220**, **222**, and **224** that respectively contain procedure date and time, procedure location (e.g. health care facility, catheter lab, etc), patient identification (e.g. name, social security number, date of birth, etc), and doctor identification (e.g. name, license number, etc). In some embodiments, the patient info portion may additionally contain security access information that limits where or by whom the sensing data may be viewed. As illustrated, the data info portion of the header **214** includes blocks **226**, **228**, **230**, **232**, and **234** that respectively contain a timestamp, modality of the sensing data, analog to digital conversion information, compression info, and a workflow ID. In one embodiment, the timestamp in block **226** may correspond to the point in time the data in payload **216** was collected. This timestamp may be used to facilitate co-registration of the sensing data with data of a different modality. The modality information in block **228** may include the modality of the data in payload **216** (e.g. IVUS, OCT, etc) and, in some embodiments, may also include the information about the specific medical sensing device with which the data was taken. The A/D information in block **230** may include information pertaining to the manner in which the sensing data in payload **216** was digitized, for example, sampling rate information and error correction information. The compression information in block **232** may include a flag indicating whether the data in payload **216** is compressed and, if necessary, the type of compression with which it is compressed. Finally, the workflow identification in block **234** may identify the workflow in which the data in payload **216** was collected. In some embodiments, this information may enable the centralized computer **180** to determine which processing application should process the data in payload **216**. And it may enable a control surface in a catheter lab to determine which UI application should display the data once it is processed. The example message **212** is only one embodiment of a message that may be utilized in system **100**, and, in other embodiments, the system **100** may utilize a different message format that includes additional and/or different information.

Further, in some embodiments, when a BUB first establishes a data connection with the centralized computer **180** to send medical sensing data, it may initially send one or more messages containing information similar to message **212**. But, after the data connection has been established, the BUB may send messages with a smaller header containing only essential information such as a connection identifier and a timestamp. In such a scenario, the centralized computer **180** may store the remainder of the header info and associate it with the connection identifier. In this manner, medical sensing data may be more efficiently transmitted over the network-based system **100**. The shortened message **236** is only one embodiment of a message that may be utilized in system **100**, and, in other embodiments, the system **100** may utilize a different shortened message format that includes additional and/or different information. Or, the system **100** may not use a shortened message format at all.

With reference now to FIG. 5, illustrated is a different message format utilized by the distributed medical sensing system **100** in another embodiment of the present disclosure. FIG. 5 illustrates an example message **235**. The message **235** includes a header **236** and a payload **237**. Like the payload **216** of message **212**, the payload **237** includes digitized medical sensing data collected with the medical sensing devices in system **100**. However, the header **236** associates different information with the sensing data than the header **214** of

message **212**. The header **236** includes blocks **238** and **239** that respectively hold a unique universal identifier (UID) and a timestamp (or sequence number). Generally, the UID in block **238** is used to associate the data in payload **237** with data acquisition information stored in the centralized computer **180**. In more detail, during the preparatory stages of a data acquisition workflow, the centralized computer **180** may allocate a UID and associate it with a storage location in the storage array **186** and a processing chain in the compute engine array **184**. Further, the centralized computer **180** may push the UID down to the medical sensing tools that will be used in the procedure. Thus, when data acquisition starts, the BUB (or in some embodiments, the PIM) may tag the collected data with the UID by inserting it into the message header. In this manner, identifying information about the data such as patient identify, doctor identify, procedure date/time, location, data modality, data compression, PIM identify, catheter identify may be centrally stored on the centralized computer rather than stored in a message. Further, in some embodiments, the centralized computer **180** may allocate a different UID to associate with a processed version of medical sensing data. A network-connected user interface, such as bedside control surface **118**, may then access the processed data using the associated UID. Still further, if one set of medical sensing data has multiple processed versions, each processed version may be associated with a different UID. In this manner, different user interfaces may specifically access different processed versions depending on the display capabilities of the user interface.

With reference now to FIGS. **1**, **2**, and **3**, in operation, the distributed medical sensing system **100** is a distributed computational and storage solution for multiple modality medical sensing. Generally, in system **100**, medical signaling and imaging data is collected by sensing instruments in catheter labs but processed and stored in a centralized, remote location and returned to the catheter labs for analysis by health care professionals.

For example, if the patient **114** is to undergo an IVUS procedure in catheter lab **102** a technician or doctor connects a phased-array catheter and associated PIM to the BUB **124** before the procedure. Upon connection, the bedside control surface **118** automatically displays the GUI associated with the IVUS procedure so a technician may start the IVUS workflow. As mentioned above, the centralized computer **180** may customize the IVUS workflow based on patient data retrieved from DICOM servers in the HIS **196**. When the patient is ready, a health care provider inserts the sterile catheter into the patient's arteries and begins gathering tissue characteristic data. The PIM sends the data to the BUB **124** which, in turn, routes the data to the centralized computer **180** in the remote server room **182**. In the centralized computer **180**, an IVUS processing application in the application layer **210** interprets the tissue data and transforms it into IVUS image data. To decrease turn-around time, the software stack **208** may split up the workload and process the data in parallel using multiple compute engines in the array **184**. After processing is complete, the processing application may store the image data in the storage array **186**. The centralized computer **180** returns the processed image data to the control room **102** and the BUB **124** routes it to the bedside control surface **118** and the control room control surface **120**. An IVUS UI application in the application layer **204** presents the image data to the user of the bedside control surface **118** as part of the IVUS workflow. At the same time, an IVUS UI application in the control room control surface **120** may present the processed diagnostic data in a different manner to a user of the control room control surface. The control room control surface **120**

may also drive the image data to the boom display **122**. In this manner, the health care professionals carrying out the IVUS procedure may simultaneously execute multiple tasks within the workflow, or simultaneously execute multiple workflows. For instance, a doctor manipulating the catheter may view a tomographic perspective of the procedure on the boom display **122** while a bedside technician controls the workflow from the bedside control surface **118** and a second technician in the control room **108** traces borders on the image data in real time using the control room control surface **120**. In the case of the border tracing workflow, the centralized computer **180** may selectively provide the control room control surface **120** with IVUS image frames on which borders may be drawn. The control room control surface **120** may then send the centralized computer **180** the annotated IVUS images so that they may be archived. In this manner, a clinician operating the control room control surface may simultaneously and independently work on the medical sensing data being acquired in the adjacent catheter lab.

While the health care professionals perform the IVUS procedure in the catheter lab **102**, the medical sensing system **100** may simultaneously support an OCT procedure in the catheter lab **104**. In such a case, when the patient **170** is ready, a doctor connects an OCT catheter and associated PIM **160** to the BUB **168**, the bedside control surface **162** presents the OCT workflow GUI, and the doctor begins collecting data. The BUB **168** routes the raw OCT data to the centralized computer **180** where an OCT processing application in the application layer **210** interprets the data. To process the OCT data efficiently, the software stack **208** assigns the data to compute engines not already processing data for the concurrent IVUS procedure. After the OCT image data has been processed, it is stored in the storage array **186** and returned to the BUB **168** in the catheter lab **104**, where it is routed to the control surfaces **162** and **164**. OCT UI applications executing in the application layers **204** present the image data to the doctor and technicians performing tasks in the OCT workflow.

Further, the medical sensing system **100** may simultaneously support a third procedure in catheter lab **106**, such as an FFR procedure, in which FFR data is sent to centralized computer **180** for processing by an FFR processing application. Although FIG. **1** depicts only three catheter labs, one of ordinary skill in the art would recognize that the medical sensing system **100** may simultaneously support additional diagnostic procedure in additional catheter labs. Also, additional or different diagnostic procedure may be performed in the catheter labs **102**, **104**, and **106**. For instance, three OCT procedures may be simultaneously performed in the catheter labs **102**, **104**, and **106**, whereby the centralized computer **180** may process the OCT data from the labs in parallel using the compute engine array **184**.

Additionally, multiple medical sensing modalities may be used concurrently in a single catheter lab. For instance, clinicians in catheter lab **102** may carryout a multimodality workflow that utilizes both IVUS and OCT imaging data. In such a case, a UI application on the bedside control surface **118** may coordinate the collection of data with two catheters. PIMs associated with the two catheters may be active and transmitting data to the centralized computer **180** where a co-registration processing application may interpret and co-register the image data. The co-registered data may then be returned to catheter lab **102** and a co-registration UI application may display synchronized images on the bedside control surface **118** and, if desired, boom display **122**.

As mentioned above, the distributed medical sensing system **100** may include time synchronization elements to facili-

tate co-registration of data from different modalities. Temporal co-registration may be accomplished in different ways using system **100**. First, time synchronization among devices in system **100** may be accomplished with network time synchronization using a network-based time synchronization protocol such as Precision Time Protocol (PTP) or Network Time Protocol (NTP). In such a case, the centralized computer **180** may act as a (grand)master clock where the BUBs in the system are the clients. In turn, the BUB may act as master time servers for sensing and control devices downstream of them in the catheter labs. Through this protocol, all medical sensing devices may be synchronized to within 100 μ s or better. Data acquisition may then be controlled (i.e. started/stopped) at a pre-determined time by workflows executing on control surfaces. In this scenario, data is collected and time-stamped by each medical sensing device and forwarded through the system **100** to the centralized computer **180** for processing and archival. By having a timestamp based on a mutual clock, any sample from one data set may be matched temporally with a sample from another, even where the sample periods are not common and sampling clocks drift from the mutual network clock. As an example, in this embodiment, clinicians in catheter lab **102** may carry out a multimodality workflow by using a Forward-Looking Intracardiac Echo (FLICE) device and functional measurement pressure wires, where each is coupled to BUB **124** via their associated PIMs. In this case, BUB **124** is a local time server and each of these sensing devices is a time protocol client. After the catheters are positioned in the patient **114**, the respective devices collect, timestamp, and forward data to the BUB **124**, where it is forwarded to the centralized computer **180**. A co-registration processing application in the application layer **210** reassembles the data into matched sets according to timestamps (i.e. matches FLICE frames to pressure samples) and sends the co-registered, processed data to the bedside control surface **118** for display. A UI application in the application layer **204** renders the pressure waves and moving FLICE images on the screen.

In other embodiments, rather than have the medical sensing devices themselves apply timestamps, the BUBs in system **100** may apply the timestamp at receipt of the sensing data before forwarding it on to the centralized computer for processing. In this manner, it is possible to get time-stamped data without requiring the medical sensing devices to act as a time protocol client. This is advantageous for legacy devices, third-party devices without network time protocol support, and devices that only transmit analog data to the BUBs. Further, in other embodiments, the centralized computer **180** may timestamp data as it arrives from medical sensing devices on the system **100**.

Second, time synchronization among devices in medical sensing system **100** may be accomplished with real-time clocks driving synchronized sampling by medical sensing devices. As mentioned above, in some embodiments, the BUBs may include a dedicated real-time clock. In this scenario, synchronization signals from this clock may be distributed to the medical sensing devices coupled to the BUB and also a co-registration processor (e.g. the controller **138** in BUB **124** or the centralized computer **180**). The synchronization signal may be carried by an individual conductor from the BUBs to the medical sensing devices or may be bundled into a system cable that carries network signals and power to the sensing devices. This synchronization signal may be a traditional, square-wave clock signal or a periodic, edge-based synch signal. In either case, the signal may be divided down or used as-is to produce a synchronization event on all sensing devices with a period less than or equal to the desired

synchronization accuracy. A timestamp consisting of the enumerated counts of synchronization events may then be applied to collected data by each of the BUB-connected devices to identify a particular instant in time on a common time-base.

With reference now to FIG. **6**, illustrated is a method for synchronizing data acquisition from multiple medical sensing devices coupled to the BUB **124**. Specifically, FIG. **6** illustrates time synchronization in an embodiment in which the controller **138** in BUB **124** acts as a co-registration processor for medical sensing devices **240** and **242** coupled to the BUB **124**. In this embodiment, the BUB **124** includes a real-time clock that sends a synchronization signal to both the controller **138** and the sensing devices **240** and **242**. During an initialization phase **244**, the controller **138** oversees the setup of network connections to the medical sensing devices **240** and **242** connected to the BUB **124** and ensures they are in a state to begin synchronous data acquisition. Specifically, during the initialization phase **244**, the controller **138** initially sends network messages to zero each sensing device's timestamp. Then, during a synchronization phase **246**, the controller **138** requests timestamps from each device a number of times in synchronization with the synch signal until the sensing devices **240** and **242** are consistently reporting the same timestamp. If a timestamp received from one device is behind another (due to network congestion when sending the zero command or the request time command), the controller **138** will command the slower device to advance its timestamp by the difference between the two timestamps. This process is repeated until sensing devices **240** and **242** consistently report the same timestamp. At that time, a common time-base is established. In embodiments using a broadcast-capable network, the need to adjust timestamps on any sensing device may seldom be seen. Next, during a data acquisition phase **248** and after a common timestamp has been established between sensing devices **240** and **242**, controller **138** sends a message to start synchronized data acquisition at a common time in the future. This start time is chosen to allow enough time for each sensing device to prepare for full data-rate acquisition in synchronization with the real-time clock. When the start time arrives, the sensing devices **240** and **242** begin collecting, time-stamping, and forwarding data to the controller **138**.

Third, time synchronization among sensing devices in medical sensing system **100** may be accomplished with the use of a synchronous network such as SONET. As mentioned above, in some embodiments, the centralized computer **180** may communicate with the BUBs using the SONET protocol, and the BUBs, in turn, may communicate with the medical sensing devices coupled to them using SONET. In such a scenario, time-division multiplexing (TDM) is used to synchronize data sent from the BUBs to the centralized computer **180**. For example, if two sensing devices are coupled to BUB **124**, the communication channel from the BUB **124** to the centralized computer **180** may be divided into timeslots, where data from each sensing device is assigned one or more timeslots. If one of the sensing devices generates more data than the other per unit time (e.g. FFR vs. OCT), the data-heavy device may be dynamically assigned a greater number of timeslots. In any case, the medical sensing devices are each connected to the BUB **124** over a synchronous link with a throughput that is a divisor of the throughput of the communication interconnect **188** from the BUB **124** to the centralized computer **180**. Based on clinician input and known medical sensing device characteristics (possibly determined dynamically), the BUB **124** may allocate timeslots to each device according to the workflow in the catheter lab **102**. The

BUB **124** may relay this timeslot configuration to the centralized computer, where it may be stored for future reference. After the medical sensing devices have been assigned timeslots as above, the devices begin streaming data to the BUB **124**. At the co-registration begin time (a user-defined “start” point, or occurrence of some other identified condition), each TDM packet and all sub-channels of those packets, are assigned a monotonically increasing timestamp based on the packet number, packet size, number of channels configured in the timeslot map, and communication interconnect **188** bandwidth. Synchronized timestamps may then be applied to the data by the BUB **124** or the centralized computer **180**.

Additionally, in some embodiments, the distributed medical sensing system **100** may be used to temporally co-register data acquired at substantially different times. In such embodiments, the centralized computer **180** may rely on a highly accurate time server which retains its frequency with high precision over long periods of time. Internet time servers using atomic clocks as master clocks commonly provide this functionality. The centralized computer **180** may alternatively have its own atomic clock in the system **100**. In general, to co-register data sets acquired at different times, the timestamp of the first sample of each data set is subtracted from each sample, leaving only a delta time between samples. The two data sets may then be treated as if they were acquired simultaneously. For example, in one embodiment, OCT data may first be collected from the patient **114** in catheter lab **102**, processed by centralized computer **180**, and stored in data store array **186**. Then, at a later time, IVUS data may be collected from the patient **114**, processed by centralized computer **180**, and stored in data store array **186**. In each case, the data may be time-stamped using one of the above described methods. In another embodiment, this common frequency-controlled clock may be used to co-register sensing data from two sequential acquisitions during the same procedure. For example, the common clock may be used to co-register data from a pre-stent IVUS pullback and data from a post-stent IVUS pullback.

To co-register the collected and time-stamped OCT and IVUS data, a co-registration processing application in the application layer **210** on the centralized computer **180** may retrieve the data sets from the data store array **186** and subtract the first timestamp of each data set from all other timestamps in the sets. The co-registration processing application, through interaction with a clinician via a UI application on the bedside controller **118** or through an automatic location detection algorithm, chooses a data frame in each of the data sets that correspond to the same physical location in patient **114**. The timestamps of these two frames are then subtracted, which gives an offset of timestamps between the data sets. Finally, this offset is subtracted from all timestamps in the data set with the greater value at the matched frame, so that the timestamps corresponding to the matched frames in each stack are equal. Additionally, in other embodiments, a similar method may be utilized to co-register archived data with data collected in real-time.

Further, the network-centric design of the distributed medical sensing system **100** may be advantageously utilized to perform any number of “telemedicine” tasks. For example, medical sensing data collected in catheter lab **102** and processed by the centralized computer **180** may be accessed by any number of network-connected devices outside of catheter lab **102** for training purposes, consultation purposes, etc. In addition to enabling remote, non-interactive viewing, the system **100** may provide remote interactive access to ongoing workflows. For instance, a consulting doctor in a remote

health care facility may monitor a catheterization procedure and take control of the workflow if the need arises. In another example, a clinician performing an IVUS procedure in catheter lab **102** may request that a clinician performing a different procedure in catheter lab **104** momentarily take control of the IVUS workflow or ask for a second opinion of an IVUS image returned by the centralized computer **180**. In such a case, the centralized computer **180** would direct the boom display **166** and control surface **162** in catheter lab **104** to temporarily display the IVUS workflow from catheter lab **102**. Interactivity may be further expanded such that an entire workflow may be controlled by a network-connected clinician outside of the catheter lab. For example, robotic data collection tools may be connected to the system **100** through a BUB or other networked device. In such a scenario, the system **100** may provide remote control functionality to a remote clinician through a graphical user interface with appropriate robot-centric controls.

Referring now to FIG. 7, shown is a schematic drawing depicting a distributed medical sensing system **250** according to another embodiment of the present disclosure. The medical sensing system **250** is similar to the medical sensing system **100** shown in FIG. 1 and may be alternatively implemented in the health care facility with the catheter labs **102**, **104**, and **106**. Like medical sensing system **100**, medical sensing system **250** utilizes centralized computing and storage to support diagnostic procedures in the catheter labs, however, in system **250** the computing and storage resources are located off-site (i.e. in the “cloud”).

In more detail, the medical sensing system **250** includes a site manager **252** stored in the centrally located server room **182**. In an exemplary embodiment, the site manager **252** is a computer communicatively coupled to the BUBs **124**, **168**, and **174** via the communication interconnects **188**, **190**, and **192** and is operable to coordinate use of cloud resources and remote management. More specifically, the site manager **252** is operable to schedule data processing jobs for the medical sensing workflows in the catheter labs **102**, **104**, and **106**. To mitigate against slower or un-reliable cloud networks, the site manager **252** may be configured to temporarily store data acquired locally before forwarding the data to the centralized computer **254**. When the site manager **252** receives acknowledgement of successful storage of the data in the storage array **258** and/or receipt of processed data from the compute engine **256**, the site manager may then safely discard the temporary local copy of the data. Further, in some embodiments, the site manager **252** may be configured to encrypt the unprocessed diagnostic data according to DICOM standards before sending it offsite for processing.

The medical sensing system **250** further includes a centralized computer **254**, an array of compute engines **256**, and a storage array **258**, all stored in an off-site processing center **260**. The off-site processing center **260** may be remote from the health care facility, in that it may be located in different city, state, or country. The centralized computer **254**, array of compute engines **256**, and storage array **258** are scalable to meet the needs of the processing center **260** and may be similar to the centralized computer **180**, array of compute engines **184**, and storage array **186** of FIG. 1. The computing resources in processing center **260** may be generally more powerful than those depicted in FIG. 1 because processing center **260** may serve the processing needs of many health care facilities. Like the centralized computer **180**, the centralized computer **254** includes a software framework with a software stack similar to software stack **208** and a processing application layer similar to application layer **210**. The processing application layer in centralized computer **254** thus

includes processing applications corresponding to the types of medical sensing modalities performed at the health care facilities serviced by the processing center, and also may include co-registration processing applications used by the health care facilities. In some embodiments, the processing center **260** may be managed independently of the health care facilities it services and health care facilities may be charged for the use of the processing center. In one embodiment, health care facilities may be charged per procedure for the use of the computing resources in the processing center **260**.

The centralized computer **254** in the processing center **260** is communicatively coupled to the site manager **252** via a communication interconnect **262**. The communication interconnect **256** is a long-distance broadband connection operable to quickly transfer large datasets from the health care facility to the processing center **260** and back. In one embodiment, the communication interconnect **256** may be a 10 Giga-bit Ethernet link or, but in other embodiments it may be another type of long distance broadband connection such as an ATM over SONET (OC-12 or better) link.

Although illustrative embodiments have been shown and described, a wide range of modification, change, and substitution is contemplated in the foregoing disclosure and in some instances, some features of the present disclosure may be employed without a corresponding use of the other features. For example, in some embodiments, the centralized computing resources of the medical sensing system **100** may be used to process non-cardiovascular diagnostic data such data from cranial or peripheral arteries, as well as data from non-vascular body portions. Further, the system **100** may be used to collect and process MRI data, or may be utilized in computer assisted surgery (CAS) applications. It is understood that such variations may be made in the foregoing without departing from the scope of the present disclosure. Accordingly, it is appropriate that the appended claims be construed broadly and in a manner consistent with the scope of the present disclosure.

What is claimed is:

1. A distributed medical sensing system, comprising:

a first medical sensing device configured to collect and timestamp first medical sensing data;

a second medical sensing device configured to collect and timestamp second medical sensing data, the first and second medical sensing devices being located in a first sterile field and being associated with different medical sensing modalities;

a hub communicatively coupled to the first and second medical sensing devices and including a real-time clock, the hub being configured to transmit synchronization signals to the first and second medical sensing devices based on the real-time clock, wherein the first and second medical sensing devices are configured to respectively timestamp the first and second medical sensing data based on the synchronization signals received from the hub;

a bedside controller communicatively coupled to the hub and configured to provide user control of the first and second medical sensing devices, wherein the bedside controller includes a touch screen display configured to provide a first graphical user interface (GUI) corresponding to at least one of the first and second medical sensing devices such that a first aspect of a medical workflow associated with the sterile field is controllable with a user input via the first GUI, wherein the first GUI is automatically provided in response to at least one of the first and second medical sensing devices being communicatively coupled to the hub, and wherein the at least

one of the first and second medical sensing devices collects medical sensing data in response to a corresponding user input received at the bedside controller via the first GUI;

a control room controller communicatively coupled to the hub and disposed outside of the sterile field, wherein the control room controller is configured to provide a second GUI such that a second aspect of the medical workflow associated with the sterile field is controllable with a user input via the second GUI, wherein the bedside controller and the control room controller are configured to simultaneously control the first and second aspects of the medical workflow in response to respective first and second user inputs associated with the first and second aspects of the medical workflow in the first sterile field, wherein the first and second aspects of the medical workflow are different; and

a centralized computer communicatively coupled to the hub, wherein the centralized computer is configured to receive the first and second medical sensing data from the hub and temporally co-register the first and second medical sensing data based on the timestamps attached thereto.

2. The distributed medical sensing system of claim **1**, wherein the synchronization signals comprise one of square-wave clock signals and edge based clock signals.

3. The distributed medical sensing system of claim **1**, further including a conductor coupled between the hub and the at least one of the first and second medical sensing devices configured to carry the synchronization signals therebetween.

4. The distributed medical sensing system of claim **1**, wherein the medical sensing modality associated with the first medical sensing device is one of intravascular ultrasound (IVUS) imaging, intravascular photoacoustic (IVPA) imaging, optical coherence tomography (OCT), forward looking IVUS (FL-IVUS), fractional flow reserve (FFR), coronary flow reserve (CFR), and angiography; and

wherein the medical sensing modality associated with the second medical sensing device is a different one of IVUS imaging, IVPA imaging, OCT, FL-IVUS, FFR, CFR, and angiography.

5. The distributed medical sensing system of claim **1**, wherein the centralized computer includes a master real-time clock, the centralized computer being configured to synchronize the real-time clock of the hub with the master real-time clock.

6. The distributed medical sensing system of claim **5**, further including a plurality of hubs communicatively coupled to the centralized computer and each having a real-time clock, the centralized computer being configured to synchronize the real-time clock in each of the plurality of hubs with the master real-time clock.

7. The distributed medical sensing system of claim **6**, wherein the plurality of hubs are within different procedure rooms; and

wherein the centralized computer is disposed in a different room than the sterile field.

8. The distributed medical sensing system of claim **7**, wherein the centralized computer is located in a different building from the sterile field.

9. The distributed medical sensing system of claim **7**, wherein the plurality of hubs are in different buildings from each other.

10. The distributed medical sensing system of claim 7, wherein the plurality of hubs are in the same building; and further including a site manager communicatively interposed between the plurality of hubs and the centralized computer, the site manager being operable to manage data transmission between the plurality of hubs and the centralized computer.

11. The distributed medical sensing system of claim 6, wherein the centralized computer includes a scalable array of compute engines.

12. The distributed medical sensing system of claim 1, wherein the centralized computer is configured to process the first and second medical sensing data received from the hub and transmit the processed first and second medical sensing data to at least one of the bedside controller and the control room controller.

13. The distributed medical sensing system of claim 12, further including a data store located outside of the sterile field, the data store being configured to store at least the processed first and second medical sensing data.

14. The distributed medical sensing system of claim 1, wherein the at least one of the first and second medical sensing devices include a catheter configured to enter into a vessel of a body.

15. The distributed medical sensing system of claim 14, wherein the catheter includes a sensor configured for one of intravascular ultrasound (IVUS) imaging, optical coherence tomography (OCT), and a fractional flow reserve (FFR) determination.

16. The distributed medical sensing system of claim 1, further including a site manager communicatively interposed between the hub and the centralized computer, the site manager being operable to manage data transmission between the hub and the centralized computer.

17. A method of collecting medical data, comprising:

coupling a bedside controller and a control room controller to a hub, wherein the bedside controller is disposed within a sterile field and the control room controller is disposed outside the sterile field;

coupling a first body sensing device to the hub, the first body sensing device including a first sensor disposed thereon;

coupling a second body sensing device to the hub, the second body sensing device including a second sensor disposed thereon, the first and second body sensing devices being associated with different sensing modalities, wherein the bedside controller includes a touch screen display configured to provide a first graphical user interface (GUI) corresponding to at least one of the first and second body sensing devices such that a first aspect of a medical workflow associated with the sterile field is controllable with a user input via the first GUI, and wherein the first GUI is automatically provided in response at least one of the first and second body sensing devices being coupled to the hub, and wherein the control room controller is configured to provide a second GUI such that a second aspect of the medical workflow associated with the sterile field is controllable with a user input via the second GUI, wherein the bedside controller and the control room controller are configured to simultaneously control the first and second aspects of the medical workflow in the sterile field in response to respective first and second user inputs associated with the first and second aspects of the medical workflow, wherein the first and second aspects of the medical workflow are different;

receiving, at the hub, a master time synchronization signal from a centralized computing device including a master real-time clock, the centralized computing device being configured to synchronize a real-time clock of the hub with the master real-time clock;

transmitting, with the hub, initialization messages to the first and second body sensing devices communicatively coupled to the hub to reset respective timestamps in the first and second body sensing devices;

synchronizing, with the hub, the timestamps of the first and second body sensing devices so that each reports the same timestamp in response to a request from the hub;

transmitting, with the hub, a start message to the first and second medical body sensing devices in response to a corresponding user input received at the bedside controller via the first GUI, the start message causing the first and second medical sensing devices to begin acquisition of medical sensing data at a common time; and

receiving, at the hub, first medical data having a first timestamp from the first body sensing device and second medical data having a second timestamp from the second body sensing device, wherein the first timestamp and the second timestamp are the same if the first and second medical data were collected concurrently.

18. The method of claim 17, wherein the synchronizing includes:

requesting and receiving, with the hub, timestamps from each of the first and second body sensing devices;

comparing the requested timestamps received from the first and second body sensing devices;

commanding, with the hub, one of the first and second body sensing devices to advance its timestamp if the requested timestamps are not the same; and

repeating the requesting, comparing, and commanding until the each of the first and second body sensing devices reports the same timestamp in response to a request from the hub.

19. The method of claim 17, wherein the hub utilizes the real-time clock to perform the synchronizing.

20. The method of claim 17, further including transmitting, with the hub, synchronization signals to the first and second body sensing devices to synchronize medical data collection.

21. The method of claim 17, wherein the first and second medical sensing devices are located in the sterile field.

22. The method of claim 21, wherein the centralized computing device is remote from the sterile field.

23. The method of claim 17,

wherein the first body sensing device is associated with one of intravascular ultrasound (IVUS) imaging, intravascular photoacoustic (IVPA) imaging, optical coherence tomography (OCT), forward looking IVUS (FL-IVUS), fractional flow reserve (FFR), coronary flow reserve (CFR), and angiography; and

wherein the second body sensing device is associated with a different one of IVUS imaging, IVPA imaging, OCT, FL-IVUS, FFR, CFR, and angiography.

24. A distributed medical sensing system, comprising:

a centralized computer configured to process medical sensing data received over a communication network, the centralized computer including a grandmaster time server;

a hub communicatively coupled to the centralized computer via the communication network, the hub including a master time server that is synchronized to the grandmaster time server;

a first medical sensing device communicatively coupled to the hub and configured to collect first medical data asso-

23

ciated with a first medical sensing modality, the first medical sensing device being a first time client of the master time server; and
 a second medical sensing device communicatively coupled to the hub and configured to collect second medical data associated with a second medical sensing modality different than the first medical sensing modality, the second medical sensing device being a second time client of the master time server, wherein the hub is configured to synchronize collection of the first and second medical sensing data using the master time server, wherein the hub is further configured to associate timestamps with the first and second medical data as it is received from the first and second medical sensing devices, the timestamps being based on the master time server, and wherein the centralized computer is further configured to receive the first and second medical data from the hub and temporally co-register the first and second medical data based on the timestamps attached thereto;
 a bedside controller communicatively coupled to the hub, wherein the bedside controller is configured to control the first and second medical sensing devices, wherein the bedside controller includes a touch screen display configured to provide a first graphical user interface (GUI) corresponding to at least one of the first and second medical sensing devices such that a first aspect of a medical workflow is controllable with a user input via the first GUI, and wherein the first GUI is automatically provided in response to the at least one of the first and second medical sensing devices being communicatively coupled to the hub, and wherein the at least one of the first and second medical sensing devices collects medical data in response to a corresponding user input received at the bedside controller via the first GUI;

24

a control room controller configured to provide a second GUI such that a second aspect of the medical workflow associated is controllable with a user input via the second GUI, wherein the bedside controller and the control room controller are configured to simultaneously control the first and second aspects of the medical workflow in response to respective first and second user inputs associated with the first and second aspects of the medical workflow, wherein the first and second aspects of the medical workflow are different.

25. The distributed medical sensing system of claim **24**, wherein the hub is further configured to transmit synchronization signals to the first and second medical sensing devices based on the master time server to synchronize collection of the first and second medical sensing data.

26. The distributed medical sensing system of claim **24**, wherein the first medical sensing modality is one of intravascular ultrasound (IVUS) imaging, intravascular photoacoustic (IVPA) imaging, optical coherence tomography (OCT), forward looking IVUS (FL-IVUS), fractional flow reserve (FFR), coronary flow reserve (CFR), and angiography; and

wherein the second medical sensing modality is a different one of IVUS imaging, IVPA imaging, OCT, FL-IVUS, FFR, CFR, and angiography.

27. The distributed medical sensing system of claim **24**, wherein the grandmaster time server synchronizes the master time server using a network-based time synchronization protocol.

28. The distributed medical sensing system of claim **27**, wherein the network-based time synchronization protocol is one of Precision Time Protocol (PTP) and Network Time Protocol (NTP).

* * * * *

专利名称(译)	分布式医疗传感系统和方法		
公开(公告)号	US8977336	公开(公告)日	2015-03-10
申请号	US13/624500	申请日	2012-09-21
[标]申请(专利权)人(译)	火山公司		
申请(专利权)人(译)	火山CORPORATION ,		
当前申请(专利权)人(译)	火山CORPORATION		
[标]发明人	HUENNEKENS R SCOTT SHEEHAN DAVID M SPENCER JASON KERR REX CLARK BILL MANSKER RICHARD E		
发明人	HUENNEKENS, R. SCOTT SHEEHAN, DAVID M. SPENCER, JASON KERR, REX CLARK, BILL MANSKER, RICHARD E.		
IPC分类号	A61B5/05 A61B5/00 A61B8/00 G06Q50/22		
CPC分类号	G06Q50/22 A61B8/565 A61B5/0013 G16H30/20 A61B5/002 A61B5/0066 A61B5/0084 A61B8/12 A61B8/54		
代理机构(译)	海恩斯和布恩, LLP		
优先权	61/473591 2011-04-08 US		
其他公开文献	US20130023762A1		
外部链接	Espacenet USPTO		

摘要(译)

一种分布式医疗传感系统，包括：第一身体感测装置，被配置为感测医疗特征，第一身体感测装置位于第一无菌区域中；以及第二身体感测装置，被配置为感测医疗特征，第二身体感测装置位于在第二无菌区域中，第二无菌区域与第一无菌区域间隔开。该系统还包括在第一和第二无菌区域外部并且通信地耦合到第一和第二身体感测设备的计算设备，该计算设备被配置为分别从第一和第二身体感测设备接收第一和第二医疗特征数据，处理第一和第二医疗特征数据，并将处理后的第一和第二医疗特征数据发送到相应的第一和第二医疗特征数据。

