

US007756587B2

(12) **United States Patent**
Penner et al.

(10) **Patent No.:** **US 7,756,587 B2**
(45) **Date of Patent:** ***Jul. 13, 2010**

(54) **SYSTEMS AND METHODS FOR
COMMUNICATING WITH IMPLANTABLE
DEVICES**

(75) Inventors: **Avi Penner**, Tel Aviv (IL); **Eyal Doron**,
Kiryat Yam (IL)

(73) Assignee: **Cardiac Pacemakers, Inc.**, St. Paul,
MN (US)

(*) Notice: Subject to any disclaimer, the term of this
patent is extended or adjusted under 35
U.S.C. 154(b) by 483 days.

This patent is subject to a terminal dis-
claimer.

(21) Appl. No.: **11/876,620**

(22) Filed: **Oct. 22, 2007**

(65) **Prior Publication Data**

US 2008/0103553 A1 May 1, 2008

Related U.S. Application Data

(63) Continuation of application No. 11/276,576, filed on
Mar. 6, 2006, now Pat. No. 7,617,001, which is a
continuation of application No. 09/989,912, filed on
Nov. 19, 2001, now Pat. No. 7,024,248, which is a
continuation-in-part of application No. 09/690,015,
filed on Oct. 16, 2000, now Pat. No. 6,628,989.

(51) **Int. Cl.**
A61N 1/18 (2006.01)

(52) **U.S. Cl.** **607/60; 607/30; 607/32**

(58) **Field of Classification Search** **128/897-899,**
128/903-904; 607/29-34, 59-61

See application file for complete search history.

(56) **References Cited**

U.S. PATENT DOCUMENTS

2,786,899 A 3/1957 Carlisle
3,536,836 A 10/1970 Pfeiffer

(Continued)

FOREIGN PATENT DOCUMENTS

EP 0 499 939 8/1992

(Continued)

OTHER PUBLICATIONS

Y. Porat, et al., "Method for Transfer of Energy to an Electronic
Circuit Implanted in a Living Body and a Device for Such Method",
PCT Publication No. WO 98/43338, Oct. 1, 1998.

(Continued)

Primary Examiner—Carl H Layno

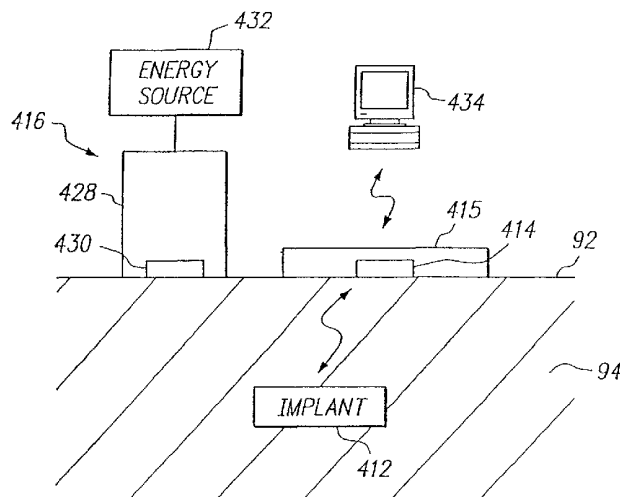
Assistant Examiner—Jessica Sarcione

(74) *Attorney, Agent, or Firm*—Faegre & Benson LLP

(57) **ABSTRACT**

Systems and methods for communicating with an implant
within a patient's body using acoustic telemetry includes an
external communications device attachable to the patient's
skin. The device includes an acoustic transducer for transmit-
ting acoustic signals into the patient's body and/or for receiv-
ing acoustic signals from the implant. The device includes a
battery for providing electrical energy to operate the device, a
processor for extracting data from acoustic signals received
from the implant, and memory for storing the data. The device
may include an interface for communicating with a recorder
or computer, e.g., to transfer data from the implant and/or to
receive instructions for controlling the implant. The device is
secured to the patient's skin for controlling, monitoring, or
otherwise communicating with the implant, while allowing
the patient to remain mobile.

20 Claims, 4 Drawing Sheets



U.S. PATENT DOCUMENTS					
3,672,352 A	6/1972	Summers	5,759,199 A	6/1998	Snell et al.
3,757,770 A	9/1973	Brayshaw et al.	5,800,478 A	9/1998	Chen et al.
3,805,796 A	4/1974	Terry, Jr. et al.	5,807,258 A	9/1998	Cimochowski et al.
3,853,117 A	12/1974	Murr	5,814,089 A	9/1998	Stokes et al.
3,943,915 A	3/1976	Severson	5,833,603 A	11/1998	Kovacs et al.
3,970,987 A	7/1976	Kolm	5,861,018 A	1/1999	Feierbach
4,026,276 A	5/1977	Chubbuck	5,891,180 A	4/1999	Greeninger et al.
4,041,954 A	8/1977	Ohara	5,904,708 A	5/1999	Goedeke
4,062,354 A	12/1977	Taylor et al.	5,925,001 A	7/1999	Hoyt et al.
4,082,097 A	4/1978	Mann et al.	5,935,078 A	8/1999	Feierbach
4,099,530 A	7/1978	Chen et al.	5,957,861 A	9/1999	Combs et al.
4,127,110 A	11/1978	Bullara	5,967,989 A	10/1999	Cimochowski et al.
4,170,742 A	10/1979	Itagaki et al.	6,015,387 A	1/2000	Schwartz et al.
4,206,761 A	6/1980	Cosman	6,030,374 A	2/2000	McDaniel
4,206,762 A	6/1980	Cosman	6,070,103 A	5/2000	Ogden
4,265,252 A	5/1981	Chubbuck et al.	6,140,740 A	10/2000	Porat et al.
4,281,666 A	8/1981	Cosman	6,141,588 A	10/2000	Cox
4,281,667 A	8/1981	Cosman	6,162,238 A	12/2000	Kaplan et al.
4,340,038 A	7/1982	McKean	6,164,284 A	12/2000	Schulman et al.
4,354,506 A	10/1982	Sakaguchi et al.	6,167,303 A	12/2000	Thompson
4,361,153 A	11/1982	Slocum et al.	6,170,488 B1	1/2001	Spillman, Jr. et al.
4,378,809 A	4/1983	Cosman	6,176,840 B1	1/2001	Nishimura et al.
4,385,636 A	5/1983	Cosman	6,183,426 B1	2/2001	Akisada et al.
4,407,296 A	10/1983	Anderson	6,185,452 B1	2/2001	Schulman et al.
4,471,786 A	9/1984	Inagaki et al.	6,185,454 B1	2/2001	Thompson
4,481,950 A	11/1984	Duggan	6,185,460 B1	2/2001	Thompson
4,494,950 A	1/1985	Fischell	6,198,963 B1	3/2001	Haim et al.
4,519,401 A	5/1985	Ko et al.	6,198,965 B1	3/2001	Penner et al.
4,556,061 A	12/1985	Barreras et al.	6,198,971 B1	3/2001	Leysieffer
4,593,703 A	6/1986	Cosman	6,200,265 B1	3/2001	Walsh et al.
4,596,255 A	6/1986	Snell et al.	6,236,889 B1	5/2001	Soykan et al.
4,614,192 A	9/1986	Imran et al.	6,237,398 B1	5/2001	Porat et al.
4,616,640 A	10/1986	Kaali et al.	6,248,080 B1	6/2001	Miesel et al.
4,651,740 A	3/1987	Schroeppe	6,259,951 B1	7/2001	Kuzma et al.
4,653,508 A	3/1987	Cosman	6,260,152 B1	7/2001	Cole et al.
4,660,568 A	4/1987	Cosman	6,261,249 B1	7/2001	Tallish et al.
4,676,255 A	6/1987	Cosman	6,277,078 B1	8/2001	Porat et al.
4,677,985 A	7/1987	Bro et al.	6,315,721 B2	11/2001	Schulman et al.
4,708,127 A	11/1987	Abdelghani	6,431,175 B1	8/2002	Penner et al.
4,719,919 A	1/1988	Marchosky et al.	6,432,050 B1	8/2002	Porat et al.
4,791,915 A	12/1988	Barsotti et al.	6,442,413 B1	8/2002	Silver
4,791,936 A	12/1988	Snell et al.	6,442,433 B1	8/2002	Linberg
4,793,825 A	12/1988	Benjamin et al.	6,472,991 B1	10/2002	Schulman et al.
4,869,251 A	9/1989	Lekholm et al.	6,473,638 B2	10/2002	Ferek-Petric
4,885,002 A	12/1989	Watanabe et al.	6,564,807 B1	5/2003	Schulman et al.
4,911,217 A	3/1990	Dunn et al.	6,577,899 B2	6/2003	Lebel et al.
5,074,310 A	12/1991	Mick	6,584,352 B2	6/2003	Combs et al.
5,113,859 A	5/1992	Funke	6,607,485 B2	8/2003	Bardy
5,117,835 A	6/1992	Mick	6,628,989 B1	9/2003	Penner et al.
5,160,870 A	11/1992	Carson et al.	6,644,322 B2	11/2003	Webb
5,168,869 A	12/1992	Chirife	6,664,763 B2	12/2003	Echarri et al.
5,184,605 A	2/1993	Grzeszykowski	6,671,552 B2	12/2003	Merritt et al.
5,218,861 A	6/1993	Brown et al.	6,676,601 B1	1/2004	Lacoste
5,279,292 A	1/1994	Baumann et al.	6,689,091 B2	2/2004	Bui et al.
5,291,899 A	3/1994	Watanabe et al.	6,712,772 B2	3/2004	Cohen et al.
5,381,067 A	1/1995	Greenstein et al.	6,731,976 B2	5/2004	Penn et al.
5,423,334 A	6/1995	Jordan	6,735,532 B2	5/2004	Freed et al.
5,433,736 A	7/1995	Nilsson	6,754,538 B2	6/2004	Linberg
5,445,150 A	8/1995	Dumoulin et al.	6,764,446 B2	7/2004	Wolinsky et al.
5,495,453 A	2/1996	Wocieczowski et al.	6,790,187 B2	9/2004	Thompson et al.
5,562,621 A	10/1996	Claude et al.	6,799,280 B1	9/2004	Edenfield et al.
5,619,997 A	4/1997	Kaplan	6,804,557 B1	10/2004	Kroll
5,620,475 A	4/1997	Magnusson	6,826,430 B2	11/2004	Faltys et al.
5,704,352 A	1/1998	Tremblay et al.	6,855,115 B2	2/2005	Fonseca et al.
5,704,366 A	1/1998	Tacklind et al.	6,873,869 B2	3/2005	Fischer
5,712,917 A	1/1998	Offutt	6,960,801 B2	11/2005	Lung
5,721,886 A	2/1998	Miller	6,970,037 B2	11/2005	Sakhuja et al.
5,724,985 A	3/1998	Snell et al.	6,978,181 B1	12/2005	Snell
5,743,267 A	4/1998	Nikolic et al.	6,985,088 B2	1/2006	Goetz et al.
5,749,909 A	5/1998	Schroeppe et al.	6,985,773 B2	1/2006	Von Arx et al.
5,757,104 A	5/1998	Getman et al.	6,988,215 B2	1/2006	Splett et al.
			6,993,393 B2	1/2006	Von Arx et al.
			7,003,349 B1	2/2006	Andersson et al.

7,013,178	B2	3/2006	Reinke et al.	
7,024,248	B2	4/2006	Penner et al.	
7,027,871	B2	4/2006	Burnes et al.	
7,027,872	B2	4/2006	Thompson	
7,035,684	B2	4/2006	Lee	
7,060,030	B2	6/2006	Von Arx et al.	
7,061,381	B2	6/2006	Forcier et al.	
7,082,334	B2	7/2006	Boute et al.	
7,096,068	B2	8/2006	Mass et al.	
7,123,964	B2	10/2006	Betzold et al.	
7,198,603	B2	4/2007	Penner et al.	
7,203,551	B2	4/2007	Houben et al.	
7,209,790	B2	4/2007	Thompson et al.	
7,212,133	B2	5/2007	Goetz et al.	
7,236,821	B2	6/2007	Cates et al.	
7,273,457	B2	9/2007	Penner et al.	
7,283,874	B2	10/2007	Penner et al.	
7,286,872	B2	10/2007	Kramer et al.	
7,319,903	B2	1/2008	Bange et al.	
7,335,161	B2	2/2008	Von Arx et al.	
7,353,063	B2	4/2008	Simms, Jr.	
7,469,161	B1	12/2008	Gandhi et al.	
7,479,108	B2	1/2009	Rini et al.	
7,617,001	B2 *	11/2009	Penner et al.	607/60
2001/0025139	A1	9/2001	Pearlman	
2002/0045921	A1	4/2002	Wolinsky et al.	
2002/0065540	A1	5/2002	Lebel et al.	
2002/0077673	A1	6/2002	Penner et al.	
2002/0151770	A1	10/2002	Noll, III et al.	
2003/0114897	A1	6/2003	Von Arx et al.	
2003/0212441	A1	11/2003	Starkweather et al.	
2004/0039424	A1	2/2004	Merritt et al.	
2004/0133092	A1	7/2004	Kain	
2004/0152999	A1	8/2004	Cohen et al.	
2004/0172083	A1	9/2004	Penner	
2004/0210141	A1	10/2004	Miller	
2005/0113705	A1	5/2005	Fischell et al.	
2005/0159785	A1	7/2005	Rueter	
2005/0159789	A1	7/2005	Brockway et al.	
2005/0288727	A1	12/2005	Penner	
2006/0009818	A1	1/2006	Von Arx et al.	
2006/0020307	A1	1/2006	Davis et al.	
2006/0025834	A1	2/2006	Von Arx et al.	
2006/0031378	A1	2/2006	Vallapureddy et al.	
2006/0041287	A1	2/2006	Dewing et al.	
2006/0041288	A1	2/2006	Dewing et al.	
2006/0058627	A1	3/2006	Flaherty et al.	
2006/0064134	A1	3/2006	Mazar et al.	
2006/0064135	A1	3/2006	Brockway	
2006/0064142	A1	3/2006	Chavan et al.	
2006/0085039	A1	4/2006	Hastings et al.	
2006/0122667	A1	6/2006	Chavan et al.	
2006/0142819	A1	6/2006	Penner et al.	
2006/0149329	A1	7/2006	Penner	
2007/0010742	A1	1/2007	Torp et al.	
2007/0142728	A1	6/2007	Penner et al.	
2007/0150014	A1	6/2007	Kramer et al.	
2007/0162090	A1	7/2007	Penner	
2007/0179549	A1	8/2007	Russie	
2007/0250126	A1	10/2007	Maile et al.	
2008/0071178	A1	3/2008	Greenland et al.	
2008/0108915	A1	5/2008	Penner	
2008/0171941	A1	7/2008	Huelskamp et al.	

2008/0195002 A1 8/2008 Thompson et al.

FOREIGN PATENT DOCUMENTS

EP	0 928 598	12/1998
WO	WO88/02250	4/1988
WO	WO 98/43338	10/1998
WO	WO 99/34453	7/1999
WO	WO 00/47109	8/2000
WO	WO 01/28627 A1	4/2001
WO	WO 01/74278 A2	10/2001
WO	WO01/97907	12/2001
WO	WO 02/03347	1/2002
WO	WO03/002243	1/2003
WO	WO03/096889	11/2003
WO	WO2005/009535	2/2005
WO	WO2005/053786	6/2005
WO	WO2006/060668	6/2006
WO	WO2007/070794	6/2007
WO	WO2007/080487	7/2007
WO	WO2007/127696	11/2007
WO	WO2008/118908	10/2008

OTHER PUBLICATIONS

M.M. Friedman, "Piezoelectric Transducer", PCT Publication No. WO 99/34453, Jul. 8, 1999.

Lone Wolinsky, et al., U.S. Appl. No. 2002/045921 A1, Apr. 18, 2002.

Harrison et al., "A Low-Power Low-Noise CMOS Amplifier for Neural Recording Applications," IEEE Journal of Solid-State Circuits 38(6):958-965, Jun. 2003.

IEEE Transactions on Biomedical Engineering, vol. 42, No. 5, May 1995, Title: Data Transmission from an Implantable Biotelemetry by Load-Shift Keying Using Circuit Configuration Modulator, by Zhengnian Tang, Brian Smith, John H. Schild, and P. Hunter Peckham, pp. 524-528.

Ishiwara et al., "Current Status and Prospects of FET-Type Ferroelectric Memories," Journal of Semiconductor Technology and Science 1(1): 1-14, Mar. 2001.

Neurosurgery Clinics of North America vol. 4, No. 4, Oct. 1993, Hydrocephalus, Title: The Treatment of Hydrocephalus by Paul M. Kanev, MD, and T.S. Park, MD., pp. 611-619.

Neurosurgery Clinics of North America, vol. 4, No. 4, Oct. 1993, Hydrocephalus, Title: Complications in Ventricular Cerebrospinal Fluid Shunting by Jeffrey P. Blount, MD, John A. Campbell, MD, and Stephen J. Haines, MD, pp. 633-656.

Neurosurgery Update II Vascular, Spinal, Pediatric, and Functional Neurosurgery, Published by McGraw-Hill, Inc., 1991, Editors Robert H. Wilkins, M.D., and Setti S. Rengachary, M.D., Title Shunt Complications by R. Michael Scott, pp. 300-319.

Neurosurgery, vol. 34, No. 5, May 1994, Concepts and Innovations, Title: A New Ventricular Catheter for the Prevention and Treatment of Proximal Obstruction in Cerebrospinal Fluid Shunts, by Enrique C.G. Ventureyra, M.D., F.R.C.S.(C), F.A.C.S., Michael J. Higgins, M.D., pp. 924-926.

Neurosurgery, vol. 34, No. 6, Jun. 1994, Rapid Communication, Title: The Use of the Codman-Medos Programmable Hakim Valve in the Management of Patients with Hydrocephalus: Illustrative Cases, by Peter McL. Black, M.D., Ph.D., Rodolfo Hakim, M.D., Nancy Olsen Bailey, R.N., B.S.N., M.B.A., pp. 1110-1113.

Pediatric Neurosurgery 2nd Edition, Surgery of the Developing Nervous System, Published by W.B. Saunders Company Harcourt Brace Jovanovich, Inc., 1989. Title: Treatment of Hydrocephalus by Harold L. Rekate, M.D.; Ventricular Shunts: Complications and Results by Robert L. McLaurin, M.D.; pp. 200-229.

* cited by examiner

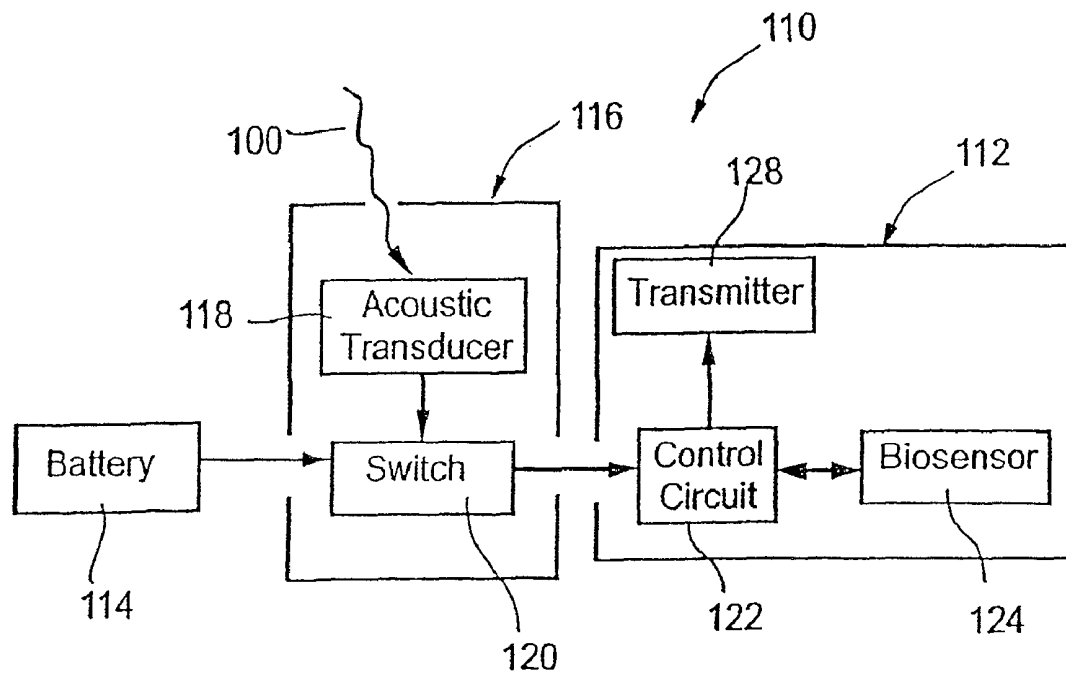


Fig. 1A

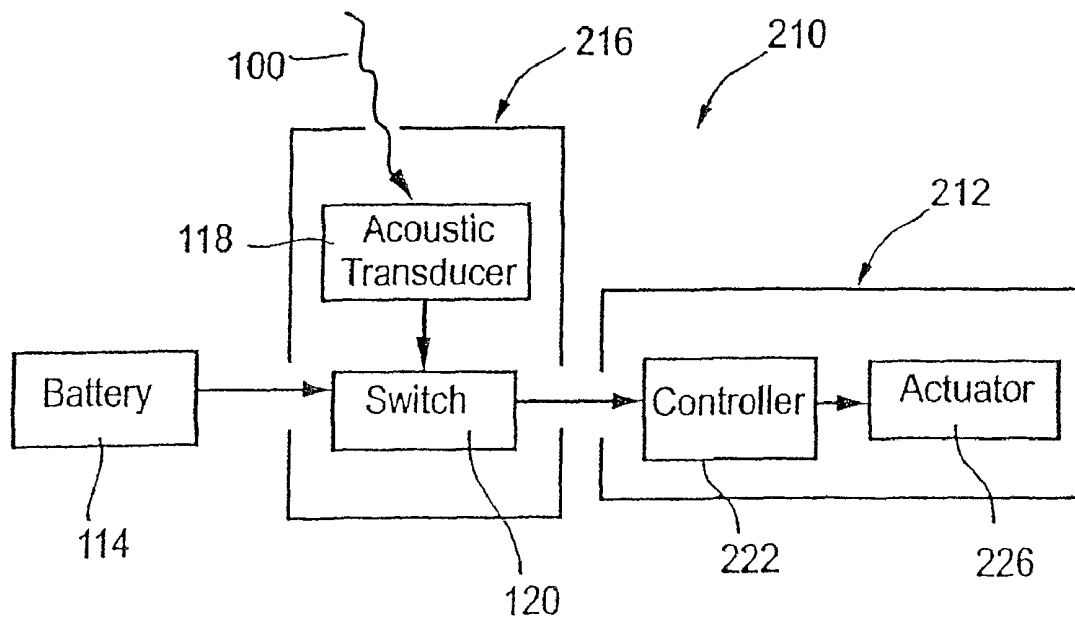


Fig. 1B

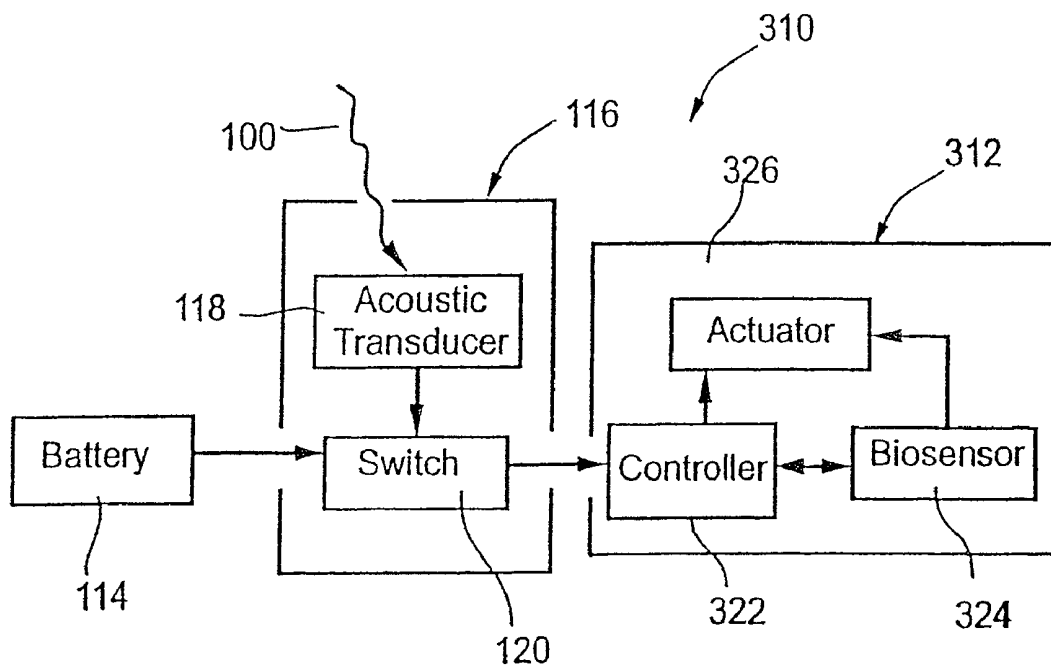


Fig. 1C

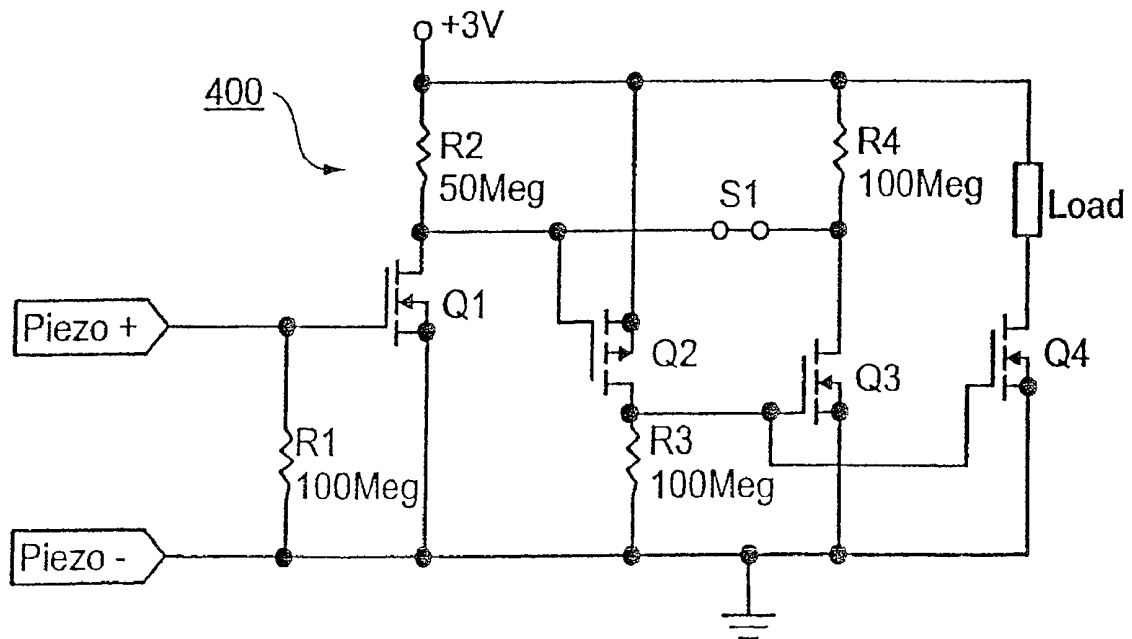
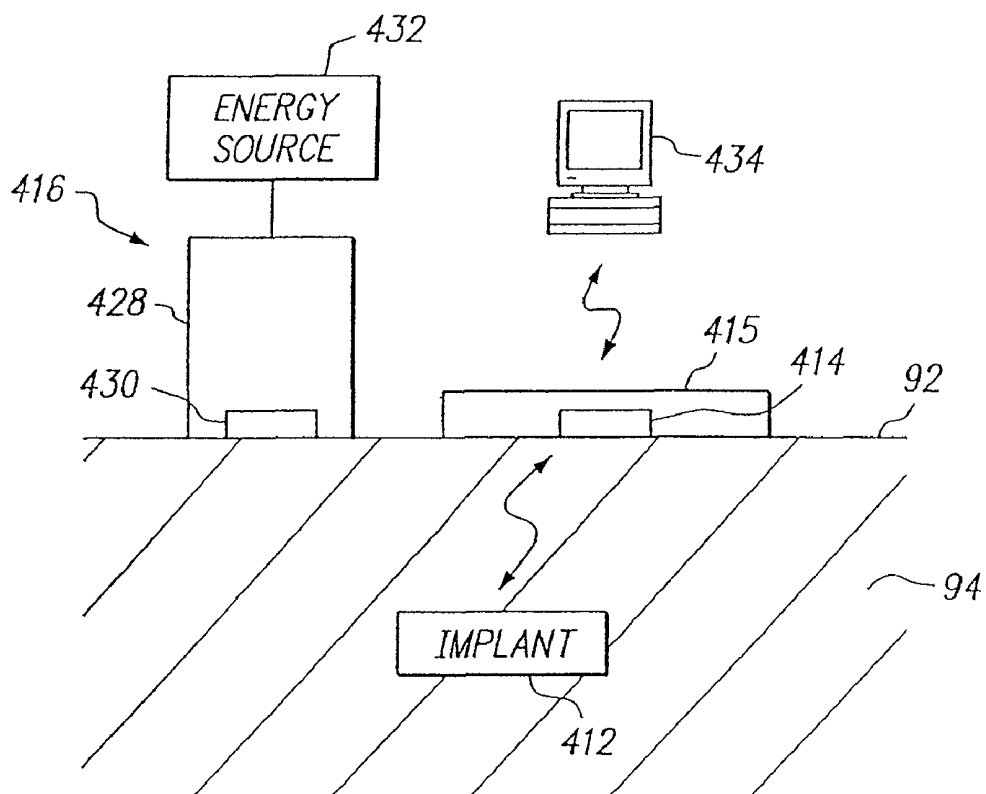
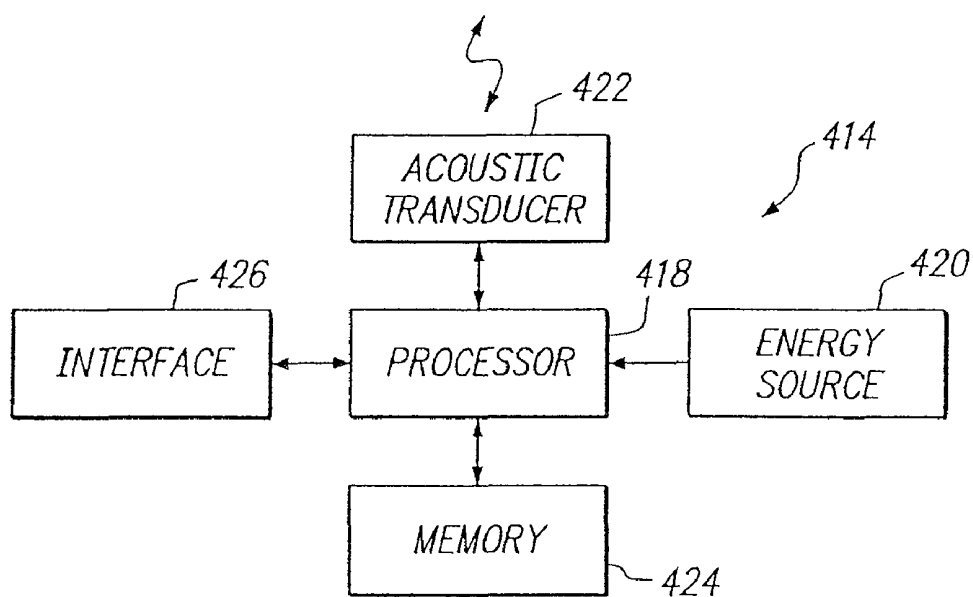


Fig. 2

**FIG. 3****FIG. 4**

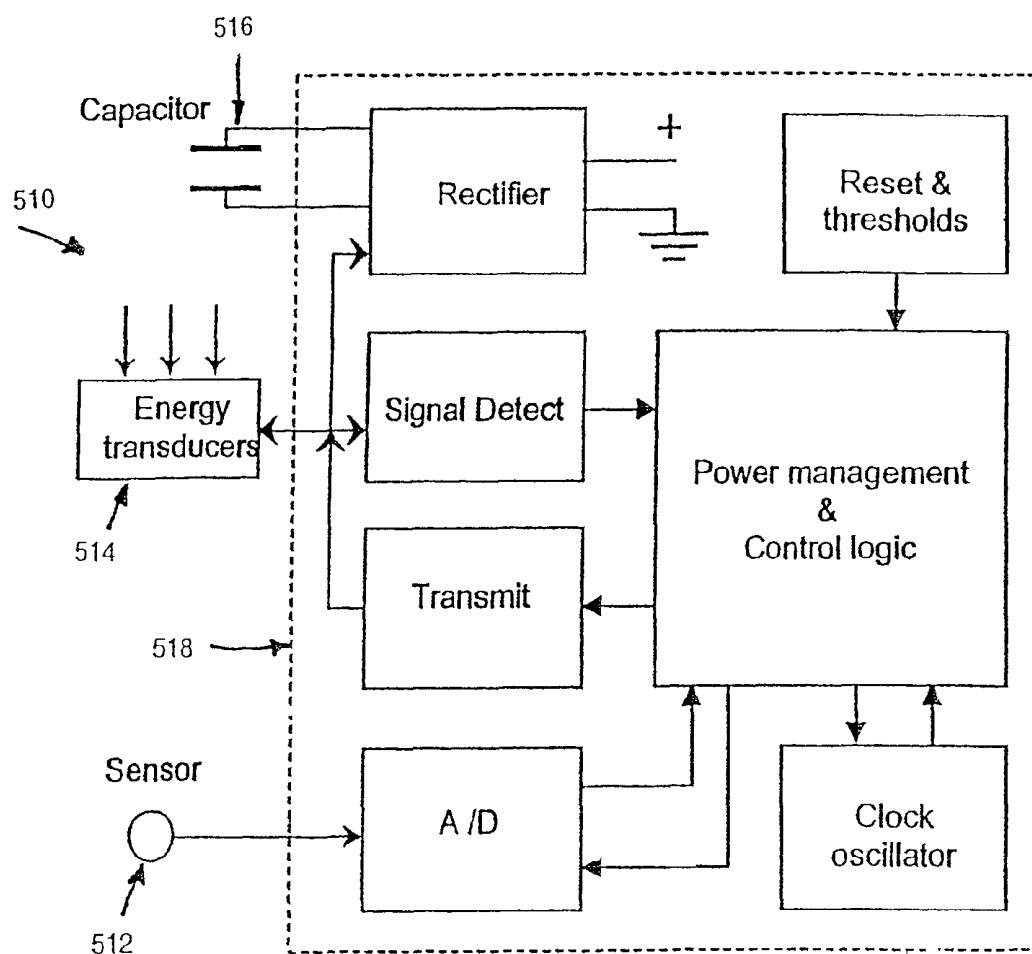


Fig. 5

SYSTEMS AND METHODS FOR COMMUNICATING WITH IMPLANTABLE DEVICES

CROSS-REFERENCE TO RELATED APPLICATIONS

This application is a continuation of U.S. application Ser. No. 11/276,576, filed Mar. 6, 2006 (now U.S. Pat. No. 7,617,001), which is a continuation of U.S. application Ser. No. 09/989,912, filed Nov. 19, 2001 (now U.S. Pat. No. 7,024,248) which is a continuation-in-part of U.S. application Ser. No. 09/690,015, filed Oct. 16, 2000 (now U.S. Pat. No. 6,628,989). All of these applications are expressly incorporated herein by reference.

FIELD OF THE INVENTION

The present invention relates generally to systems and methods for measuring physiological conditions and/or performing therapeutic functions within a patient's body, particularly to systems and methods for controlling and/or energizing devices that may be implanted within a body, and more particularly to implants that may be energized, activated, controlled, and/or otherwise communicate via acoustic energy.

BACKGROUND OF THE INVENTION

Devices are known that may be implanted within a patient's body for monitoring one or more physiological conditions and/or to provide therapeutic functions. For example, sensors or transducers may be located deep within the body for monitoring a variety of properties, such as temperature, pressure, strain, fluid flow, chemical properties, electrical properties, magnetic properties, and the like. In addition, devices may be implanted that perform one or more therapeutic functions, such as drug delivery, defibrillation, electrical stimulation, and the like.

Often it is desirable to communicate with such devices once they are implanted within a patient by external command, for example, to obtain data, and/or to activate or otherwise control the implant. An implant may include wire leads from the implant to an exterior surface of the patient, thereby allowing an external controller or other device to be directly coupled to the implant. Alternatively, the implant may be remotely controlled, e.g., using an external induction device. For example, an external radio frequency (RF) transmitter may be used to communicate with the implant. RF energy, however, may only penetrate a few millimeters into a body, because of the body's dielectric nature, and therefore may not be able to communicate effectively with an implant that is located deep within the body. In addition, although an RF transmitter may be able to induce a current within an implant, the implant's receiving antenna, generally a low impedance coil, may generate a voltage that is too low to provide a reliable switching mechanism.

In a further alternative, electromagnetic energy may be used to control an implant, since a body generally does not attenuate magnetic fields. The presence of external magnetic fields encountered by the patient during normal activity, however, may expose the patient to the risk of false positives, i.e., accidental activation or deactivation of the implant. Furthermore, external electromagnetic systems may be cumbersome and may not be able to effectively transfer coded information to an implant.

Accordingly, systems and methods for communicating with an implant that may be implanted within a patient's body, such as a pressure sensor, a drug delivery device, a pacemaker, or a nerve stimulator, would be considered useful.

SUMMARY OF THE INVENTION

The present invention is generally directed to systems and methods for communicating with implants or other devices that are placed, e.g., using open surgical or minimally invasive techniques, within a mammalian body. The implant may include one or more sensors for monitoring pressure or other physiological parameters and/or may perform one or more therapeutic functions. More particularly, the present invention is directed to external systems for controlling, activating, energizing, and/or otherwise communicating with such implants using acoustic telemetry, and to methods for using such systems.

In accordance with one aspect of the present invention, a system is provided for communicating with an implant within a body that includes an external communications device, e.g., a controller, securable to an exterior surface of a patient's body. Preferably, the controller is sufficiently small and portable that it may remain secured to the patient, possibly for extended time periods. For example, the device may be attached to or within a patch that may be secured to a patient's skin.

In one embodiment, the device is an external controller that generally includes one or more acoustic transducers, including a first acoustic transducer, for transmitting one or more acoustic signals into the patient's body. The controller may also include an energy source for powering the one or more acoustic transducers, and/or a processor or other electrical circuit for controlling operation of the controller. In addition, one or more of the acoustic transducers, such as the first acoustic transducer, may be configured for receiving acoustic signals from an implant within the patient's body. The controller may include memory for storing data, and the processor may extract sensor data and/or other data from acoustic signals received from an implant, e.g., for storage in the memory. In addition, the controller may include a connector, lead, transmitter, receiver, or other interface for communicating with a recorder or other electronic device, such as a computer, personal digital assistant, or a wireless device, such as a cellular phone. The controller may be coupled to such an electronic device for transferring sensor data or other data stored in the memory of the controller and/or for receiving instructions or commands from the electronic device.

In addition, the system may include an implant for placement within the patient's body. The implant may include an electrical circuit for performing one or more commands when the implant is activated, an energy storage device, and/or one or more acoustic transducers, e.g., a second acoustic transducer, coupled to the electrical circuit and/or the energy storage device. Optionally, the electrical circuit may include a switch coupled to the energy storage device and/or the second acoustic transducer. The second acoustic transducer may receive one or more acoustic signals from the first acoustic transducer of the external device. For example, the switch may be closed and/or opened in response to a first acoustic signal to begin or discontinue current flow from the energy storage device to the electrical circuit or other components of the implant.

In a preferred embodiment, the external controller's processor controls the first acoustic transducer to transmit a first acoustic signal and/or a second acoustic signal. The switch of the implant may be closed when the first acoustic signal is

received by the second acoustic transducer, while the switch may be opened when the second acoustic signal is received by the second acoustic transducer. In addition or alternatively, the first acoustic transducer may transmit first and second acoustic signals separated by a delay. The switch may be closed and/or opened only when the second acoustic transducer receives the first and second acoustic signals separated by a predetermined delay, thereby minimizing the risk of accidental activation or deactivation of the implant.

In yet another alternative, the first acoustic transducer may transmit a first acoustic signal, e.g., an activation signal, followed by a second acoustic signal, e.g., including a set of commands. The second acoustic transducer may receive the first and second acoustic signals, and the electrical circuit of the implant may extract the set of commands from the second acoustic signal, and control operation of the implant as instructed by the set of commands. In a further alternative, the implant may run continuously or intermittently, and the external controller may control, monitor, energize, and/or program the implant using acoustic telemetry during operation of the implant.

In an exemplary embodiment, the implant may include a sensor coupled to the electrical circuit, and the one or more commands may include measuring a physiological parameter within the body using the sensor. The second acoustic transmitter may transmit one or more acoustic signals including sensor data indicating the physiological parameter to the controller. In an alternative embodiment, the implant may be coupled to a therapeutic device or may include an internal therapeutic device coupled to the electrical circuit. The electrical circuit may control the therapeutic device in response to a physiological parameter measured by the sensor or in response to acoustic signals received from the external controller. For example, the implant may include a pacemaker that may be implanted via a minimally invasive catheter-based procedure. Any programming and/or interrogation of the pacemaker may be accomplished using acoustic telemetry from the external controller. In yet another alternative embodiment, the implant may include an actuator coupled to the electrical circuit, and the one or more commands may include activating the actuator to control a therapeutic device coupled to the actuator, such as a nerve stimulator or a controlled delivery drug release system.

In addition, the energy storage device of the implant may include a rechargeable device, such as a capacitor or a battery. For this embodiment, the system may include an external charger that may include a probe configured for placement against an exterior of the patient's body. The charger may include a source of electrical energy, such as a radio frequency (RF) generator, that is coupled to the probe. The probe may include another acoustic transducer, e.g., a third acoustic transducer, for converting electrical energy from the source of electrical energy into acoustic energy. The third acoustic transducer may transmit acoustic signals including acoustic energy into the patient's body. One or more acoustic transducers of the implant, e.g., the second acoustic transducer, may be configured for converting these acoustic signals into electrical energy for recharging the energy storage device and/or powering the implant.

Thus, a system in accordance with the present invention may include an external controller that has sufficient power to control its own operation and to communicate with the implant. Because of its limited energy requirements, however, the controller may be relatively small and portable, e.g., may be attached to the patient, while still allowing the patient to engage in normal physical activity. The controller may be used to communicate with an implant, e.g., periodically acti-

vating or deactivating the implant, and/or recording data generated and transmitted by the implant. Because it is located outside the patient's body, the controller may be more easily programmed or reprogrammed than the implant, and/or may be repaired or replaced if necessary without requiring an interventional procedure.

In addition, the system may include a separate external charger that includes a substantially more powerful energy source, enabling it to recharge the energy storage device of the implant. For this reason, unlike the external controller, the charger may be a relatively bulky device that may include a portable probe for contacting the patient's skin, and a large energy generator or converter that is stationary or of limited mobility. In an alternative embodiment, the external controller and charger may be provided as a single device, e.g., including one or more acoustic transducers and/or one or more processors for performing the functions of both devices, as described above. In this embodiment, however, portability of the system and convenience to the patient may be compromised.

Other objects and features of the present invention will become apparent from consideration of the following description taken in conjunction with the accompanying drawings.

BRIEF DESCRIPTION OF THE DRAWINGS

The invention is herein described, by way of example only, with reference to the accompanying drawings, wherein:

FIGS. 1A-1C are schematic drawings, showing exemplary embodiments of an implant, in accordance with the present invention.

FIG. 2 is a schematic of an exemplary circuit for use as an acoustic switch, in accordance with the present invention.

FIG. 3 is a cross-sectional view of a patient's body, showing a system for communicating with an implant, in accordance with the present invention.

FIG. 4 is a schematic of an external controller for communicating with an implant, such as that shown in FIG. 3, in accordance with the present invention.

FIG. 5 is a schematic of another exemplary embodiment of an implant, in accordance with the present invention.

DESCRIPTION OF THE PREFERRED EMBODIMENTS

Turning to the drawings, FIGS. 1A-1C schematically show several exemplary embodiments of an implant **110**, **210**, **310**, in accordance with the present invention. Generally, the implant **110**, **210**, **310** includes an electrical circuit **112**, **212**, **312** configured for performing one or more functions or commands when the implant **110**, **210**, **310** is activated, as described further below. In addition, the implant **110**, **210**, **310** includes an energy storage device **114** and optionally may include a switch **116** coupled to the electrical circuit **112**, **212**, **312** and the energy storage device **114**. The switch **116** may be activated upon acoustic excitation **100** from an external acoustic energy source (not shown) to allow current flow from the energy storage device **114** to the electrical circuit **112**, **212**, **312**.

In a preferred embodiment, the switch **116** includes an acoustic transducer **118**, such as that disclosed in PCT Publication No. WO 99/34,453, published Jul. 8, 1999, or in U.S. application Ser. No. 09/888,272, filed Jun. 21, 2001, the disclosures of which are expressly incorporated herein by reference. In addition, the switch **116** also includes a switch circuit **120**, such as switch circuit **400** shown in FIG. 2, although

alternatively other switches, such as a miniature electromechanical switch and the like (not shown) may be provided. In a further alternative, the acoustic transducer **118** may be coupled to the electrical circuit **112**, **212**, **312** and/or the energy storage device **114**, and the switch circuit **120** may be eliminated.

The energy storage device **114** may be any of a variety of known devices, such as an energy exchanger, a battery and/or a capacitor (not shown). Preferably, the energy storage device **114** is capable of storing electrical energy substantially indefinitely for as long as the acoustic switch **116** remains open, i.e., when the implant **110**, **210**, **310** is in a "sleep" mode. In addition, the energy storage device **114** may be capable of being charged from an external source, e.g., inductively using acoustic telemetry, as will be appreciated by those skilled in the art. In a preferred embodiment, the energy storage device **114** includes both a capacitor and a primary, non-rechargeable battery. Alternatively, the energy storage device **114** may include a secondary, rechargeable battery and/or capacitor that may be energized before activation or use of the implant **110**, **210**, **310**.

The implant **110**, **210**, **310** may be surgically or minimally invasively inserted within a human body in order to carry out a variety of monitoring and/or therapeutic functions. For example, the electrical circuit **112**, **212**, **312** may include a control circuit **122**, **222**, **322**, a biosensor **124**, **324**, an actuator **226**, **326**, and/or a transmitter **128**, as explained in application Ser. No. 09/690,015, incorporated by reference above. The implant **210**, **310** may be configured for providing one or more therapeutic functions, for example, to activate and/or control a therapeutic device implanted within a patient's body, such as an atrial defibrillator or pacemaker, a pain relief stimulator, a neuro-stimulator, a drug delivery device, and/or a light source used for photodynamic therapy. Alternatively, the implant may be used to monitor a radiation dose including ionizing, magnetic and/or acoustic radiation, to monitor flow in a bypass graft, to produce cell oxygenation and membrane electroporation, and the like. In addition or alternatively, the implant **110** may be used to measure one or more physiological parameters within the patient's body, such as pressure, temperature, electrical impedance, position, strain, pH, and the like.

The implant may operate in one of two modes, a "sleep" or "passive" mode when the implant remains dormant and not in use, i.e., when the acoustic switch **116** is open, and an "active" mode, when the acoustic switch **116** is closed, and electrical energy is delivered from the energy storage device **114** to the electrical circuit **112**, **212**, **312**. Alternatively, the implant may operate continuously or intermittently. Because the acoustic switch **116** is open in the sleep mode, there is substantially no energy consumption from the energy storage device **114**, and consequently, the implant may remain in the sleep mode virtually indefinitely, i.e., until activated. Thus, an implant in accordance with the present invention may be more energy efficient and, therefore, may require a relatively small energy storage device than implants that continuously draw at least a small amount of current in their "passive" mode.

Turning to FIG. 1A, a first preferred embodiment of an implant **110** is shown in which the electrical circuit **112** includes a control circuit **122**, a biosensor **124** coupled to the controller **122**, and a transmitter **128** coupled to the control circuit **122**. The controller **122** may include circuitry for activating or controlling the biosensor **124**, for receiving signals from the biosensor **124**, and/or for processing the signals into data, for example, to be transmitted by the transmitter **128**. Optionally, the electrical circuit **112** may include

memory (not shown) for storing the data. The transmitter **128** may be any device capable of transmitting data from the control circuit **122** to a remote location outside the body, such as an acoustic transmitter, a radio frequency transmitter, and the like. Preferably, the control circuit **122** is coupled to the acoustic transducer **118** such that the acoustic transducer **118** may be used as a transmitter **128**, as well as a receiver, instead of providing a separate transmitter.

The biosensor **124** may include one or more sensors capable of measuring physiological parameters, such as pressure, temperature, electrical impedance, position, strain, pH, fluid flow, electrochemical sensor, and the like. Thus, the biosensor **124** may generate a signal proportional to a physiological parameter that may be processed and/or relayed by the control circuit **122** to the transmitter **128**, which, in turn, may generate a transmission signal to be received by a device outside the patient's body. Data regarding the physiological parameter(s) may be transmitted continuously or periodically until the acoustic switch **116** is deactivated, or for a fixed predetermined time, as will be appreciated by those skilled in the art.

Turning to FIG. 1B, a second preferred embodiment of an implant **210** is shown in which the electrical circuit **212** includes a control circuit **222** and an actuator **226**. The actuator **226** may be coupled to a therapeutic device (not shown) provided in or otherwise coupled to the implant **210**, such as a light source, a nerve stimulator, a defibrillator, an electrochemical oxidation/reduction electrode, or a valve communicating with an implanted drug reservoir (in the implant or otherwise implanted within the body in association with the implant).

When the switch **120** is closed, the control circuit **222** may activate the actuator **226** using a pre-programmed protocol, e.g., to complete a predetermined therapeutic procedure, whereupon the switch **120** may automatically open, or the controller **222** may follow a continuous or looped protocol until the switch **120** is deactivated. Alternatively, the acoustic transducer **118** may be coupled to the control circuit **222** for communicating a new or unique set of commands to the control circuit **222**. For example, a particular course of treatment for a patient having the implant **210** may be determined, such as a flow rate and duration of drug delivery, drug activation, drug production, or an energy level and duration of electrical stimulation. Acoustic signals including commands specifying this course of treatment may be transmitted from an external controller (not shown), as described below, to the acoustic switch **116**, e.g., along with or subsequent to the activation signal **100**. The control circuit **222** may interpret these commands and control the actuator **226** accordingly to complete the course of treatment.

Turning to FIG. 1C, yet another preferred embodiment of an implant **310** is shown in which the electrical circuit **312** includes a control circuit **322**, a biosensor **324**, and an actuator **326**, all of which may be coupled to one another. This embodiment may operate similarly to the embodiments described above, e.g., to obtain data regarding one or more physiological parameters and/or to control a therapeutic device. In addition, once activated, the control circuit **322** may control the actuator **326** in response to data obtained from the biosensor **324** to control or adjust automatically a course of treatment being provided by a device connected to the actuator **326**. For example, the actuator **326** may be coupled to an insulin pump (not shown), and the biosensor **324** may measure glucose levels within the patient's body. The control circuit **322** may control the actuator to open or close a valve on the insulin pump to adjust a rate of insulin

delivery based upon glucose levels measured by the biosensor 324 in order to maintain the patient's glucose within a desired range.

Turning to FIG. 2, a preferred embodiment of a switch 400 is shown that may be incorporated into an implant in accordance with the present invention. The switch 400 includes a piezoelectric transducer, or other acoustic transducer (not shown, but generally connected to the switch 400 at locations piezo + and piezo -), a plurality of MOSFET transistors (Q1-Q4) and resistors (R1-R4), and switch S1. A "load" may be coupled to the switch 400, such as one of the electrical circuits described above. In the switch's "sleep" mode, all of the MOSFET transistors (Q1-Q4) are in an off state. To maintain the off state, the gates of the transistors are biased by pull-up and pull-down resistors. The gates of N-channel transistors (Q1, Q3 & Q4) are biased to ground and the gate of P-channel transistor Q2 is biased to +3V. During this quiescent stage, switch S1 is closed and no current flows through the circuit. Therefore, although an energy storage device (not shown, but coupled between the hot post, labeled with an exemplary voltage of +3V, and ground) is connected to the switch 400, no current is being drawn therefrom since all of the transistors are quiescent.

When the acoustic transducer of the implant detects an external acoustic signal, e.g., having a particular frequency, such as the transducer's resonant frequency, the voltage on the transistor Q1 will exceed the transistor threshold voltage of about one half of a volt. Transistor Q1 is thereby switched on and current flows through transistor Q1 and pull-up resistor R2. As a result of the current flow through transistor Q1, the voltage on the drain of transistor Q1 and the gate of transistor Q2 drops from +3V substantially to zero (ground). This drop in voltage switches on the P-channel transistor Q2, which begins to conduct current through transistor Q2 and pull-down resistor R3.

As a result of the current flowing through transistor Q2, the voltage on the drain of transistor Q2 and the gates of transistors Q3 and Q4 increases from substantially zero to +3V. The increase in voltage switches on transistors Q3 and Q4. As a result, transistor Q3 begins to conduct current through resistor R4 and main switching transistor Q4 begins to conduct current through the "load," thereby switching on the electrical circuit.

As a result of the current flowing through transistor Q3, the gate of transistor Q2 is connected to ground through transistor Q3, irrespective of whether or not transistor Q1 is conducting. At this stage, the transistors (Q2, Q3, & Q4) are latched to the conducting state, even if the piezoelectric voltage on transistor Q1 is subsequently reduced to zero and transistor Q1 ceases to conduct. Thus, main switching transistor Q4 will remain on until switch S1 is opened.

In order to deactivate or open the switch 400, switch S1 must be opened, for example, while there is no acoustic excitation of the piezoelectric transducer. If this occurs, the gate of transistor Q2 increases to +3V due to pull-up resistor R2. Transistor Q2 then switches off, thereby, in turn, switching off transistors Q3 and Q4. At this stage, the switch 400 returns to its sleep mode, even if switch S1 is again closed. The switch 400 will only return to its active mode upon receiving a new acoustic activation signal from the piezoelectric transducer.

It should be apparent to one of ordinary skill in the art that the above-mentioned electrical circuit is not the only possible implementation of a switch for use with the present invention. For example, the switching operation may be performed using a CMOS circuit, which may draw less current when switched on, an electromechanical switch, and the like.

Turning to FIGS. 3 and 4, a system 410 is shown for communicating with an implant 412, such as one of those described above. Generally, the system 410 includes an external communications device or controller 414, and may include a charger 416, one or more implants 412 (only one shown for simplicity), and an external recorder, computer, or other electronic device 434.

With particular reference to FIG. 4, the external controller 414 may include a processor or other electrical circuit 418 for controlling its operation, and an energy source 420, e.g., a nonrechargeable or a rechargeable battery, coupled to the processor 418 and/or other components of the controller 414, such as a power amplifier or an oscillator (not shown). In addition, the controller 414 may include one or more acoustic transducers 422 that are configured for converting between electrical energy and acoustic energy, similar to those described above. As shown, a single acoustic transducer 422 is provided that may communicate using acoustic telemetry, i.e., capable both of converting electrical energy to acoustic energy to transmit acoustic signals, and converting acoustic energy to electrical energy to receive acoustic signals, as explained further below. Alternatively, separate and/or multiple acoustic transducers may be provided for transmitting and receiving acoustic signals.

In a preferred embodiment, the controller 414 also includes memory 424 coupled to the processor 418, e.g., for storing data provided to the controller 414, as explained further below. The memory 424 may be a temporary buffer that holds data before transfer to another device, or non-volatile memory capable of storing the data substantially indefinitely, e.g., until extracted by the processor 418 or other electronic device. For example, the memory 424 may be a memory card or an eeprom (not shown) built into the controller 414 or otherwise coupled to the processor 418. The controller 414 may also include an interface 426, such as a lead or connector, or a transmitter and/or receiver, that may communicate with the external electronic device, as explained further below.

Preferably, the controller 414 is carried by a patch 415 that may be secured to a patient, e.g., to the patient's skin 92. For example, the patch 415 may include one or more layers of substantially flexible material to which the controller 414 and/or its individual components are attached. The patch 415 may include a single flexible membrane (not shown) to which the controller 414 is bonded or otherwise attached, e.g., using a substantially permanent adhesive, which may facilitate the patch 415 conforming to a patient's anatomy. Alternatively, the controller 414 may be secured between layers of material, e.g., within a pouch or other compartment (not shown) within the patch 415. For example, the patch 415 may include a pair of membranes (not shown) defining the pouch or compartment. The space within which the controller 414 is disposed may be filled with material to acoustically couple the acoustic transducer(s) (formed, for example, from PZT, composite PZT, Quartz, PVDF, and/or other piezoelectric material) of the controller 414 to an outer surface of the patch 415. Alternatively, the acoustic transducer(s) may be exposed, e.g., in a window formed in a wall of the patch 415.

The patch 415 may be formed from a flexible piezoelectric material, such as PVDF or a PVDF copolymer. Such polymers may allow the patch 415 to produce ultrasonic waves, as well as allowing the controller 414 to be secured to the patient's skin 92. Thus, the wall of the patch 415 itself may provide an acoustic transducer for the controller 414, i.e., for transmitting acoustic energy to and/or receiving acoustic energy from the implant 412.

The patch 415 may then be secured to the patient's skin 92 using a material, such as a layer of adhesive (not shown),

substantially permanently affixed or otherwise provided on a surface of the patch. The adhesive may be hydrogel, silicon, polyurethane, polyethylene, polypropylene, fluorocarbon polymer, and the like. Alternatively, a separate adhesive may be applied to the patch **415** and/or to the patient's skin **92** before applying the patch **415** in order to secure the controller **414** to the patient's skin **92**. Such an adhesive may enhance acoustically coupling of the acoustic transducer(s) of the controller **414** to the patient's skin **92**, and consequently to the implant **412** within the patient's body **94**. Optionally, additional wetting material, including water, silicone oil, silicone gel, hydrogel, and the like, and/or other acoustically conductive material may be provided between the patch **415** or the acoustic transducer **422**, and the patient's skin **92**, e.g., to provide substantial continuity and minimize reflection or other losses and/or to secure the patch **415** to the patient.

Alternatively, the controller **414** may be carried by a belt (not shown) that may be secured around the patient, e.g., such that the acoustic transducer **422** is secured against the patient's skin. The belt may carry other components of the system **410**, e.g., an external power supply for the controller **414**. For example, a battery pack (not shown) may be carried by the belt that may be coupled to the controller **414** for providing electrical energy for its operation.

The patch **415** may be relatively light and compact, for example, having a maximum surface dimension (e.g., width or height) not more than about ten to two hundred millimeters (10-200 mm), a thickness not more than about five to one hundred millimeters (5-100 mm), and a weight not more than about twenty to four hundred grams (20-400 g), such that the controller **414** may be inconspicuously attached to the patient. Thus, the patient may be able to resume normal physical activity, without substantial impairment from the controller. Yet, the internal energy source of the controller **414** may be sufficiently large to communicate with the implant **412** for an extended period of time, e.g., for hours or days, without requiring recharging or continuous coupling to a separate energy source.

The system **410** may be used to control, energize, and/or otherwise communicate with the implant **412**. For example, the controller **414** may be used to activate the implant **412**. One or more external acoustic energy waves or signals **430** may be transmitted from the controller **414** into the patient's body **94**, e.g., generally towards the location of the implant **412** until the signal is received by the acoustic transducer (not shown in FIGS. 3 and 4) of the implant **412**. Upon excitation by the acoustic wave(s) **430** the acoustic transducer produces an electrical output that is used to close, open, or otherwise activate the switch (also not shown in FIGS. 3 and 4) of the implant **412**. Preferably, in order to achieve reliable switching, the acoustic transducer of the implant **412** is configured to generate a voltage of at least several tenths of a volt upon excitation that may be used as an activation signal to close the switch, as described above.

As a safety measure against false positives (e.g., erroneous activation or deactivation), the controller **414** may be configured to direct its acoustic transducer **422** to transmit an initiation signal followed by a confirmation signal. When the acoustic transducer of the implant **412** receives these signals, the electrical circuit may monitor the signals for a proper sequence of signals, thereby ensuring that the acoustic switch of the implant **412** only closes upon receiving the proper initiation and confirmation signals. For example, the acoustic switch may only acknowledge an activation signal that includes a first pulse followed by a second pulse separated by a predetermined delay. Use of a confirmation signal may be

particularly important for certain applications, for example, to prevent unintentional release of drugs by a drug delivery implant.

In addition to an activation signal, the controller **414** may transmit a second acoustic signal that may be the same as or different than the acoustic wave(s) used to activate the acoustic switch of the implant **412**. Thus, the switch may be opened when the acoustic transducer of the implant **412** receives this second acoustic signal, e.g., by the acoustic transducer generating a termination signal in response to the second acoustic signal, in order to return the implant **412** to its sleep mode.

For example, once activated, the switch may remain closed indefinitely, e.g., until the energy storage device (not shown in FIGS. 3 and 4) of the implant **412** is completely depleted, falls below a predetermined threshold, or until a termination signal is received by the acoustic transducer of the implant **412** from the controller **414**. Alternatively, the acoustic switch of the implant **412** may include a timer (not shown), such that the switch remains closed only for a predetermined time, whereupon the switch may automatically open, returning the implant **412** to its sleep mode.

FIG. 5 shows an alternative embodiment of an implant **510** that does not include an acoustic switch. Generally, the implant includes a sensor **512**, one or more energy transducers **514**, one or more energy storage devices **516**, and a control circuit **518**, similar to the embodiments described above. The sensor **512** is preferably a pressure sensor for measuring intra-body pressure, such as an absolute variable capacitance type pressure sensor. In alternative embodiments, one or more other sensors may be provided instead of or in addition to a pressure sensor **512**. For example, the sensor **512** may include one or more biosensors capable of measuring physiological parameters, such as temperature, electrical impedance, position, strain, pH, fluid flow, and the like. An external controller (not shown), such as that described above, may also be used to communicate with this implant.

Returning to FIG. 3, an external controller **414** in accordance with the present invention preferably has only sufficient power to control its own operation and to communicate with the implant **412**. Because of its limited energy requirements, the controller **414** may be relatively small and portable, e.g., may be attached to the patient, while still allowing the patient to engage in normal physical activity. The controller **414** may be used to communicate with the implant **412**, e.g., periodically activating or deactivating the implant **412**, and/or recording data generated and transmitted by the implant **412**. Because it is located outside the patient's body, the controller **414** may be more easily programmed or reprogrammed than the implant **412** itself, and/or may be repaired or replaced if necessary or desired.

In addition to the external controller **414**, the system **410** may include one or more electronic devices **434** that may be coupled to the controller **414** via the interface **426**, such as a recorder, a computer, a personal digital assistant, and/or a wireless device, such as a cellular telephone. The electronic device **434** may be directly coupled to the controller **414**, by a connector or lead (not shown) extending from the patch **415** within which the controller **414** is provided. Alternatively, the controller **414** and/or patch **415** may include a wireless transmitter and/or receiver (not shown), e.g., a short-range RF transceiver, for communicating with the electronic device **434**.

The electronic device **434** may be used to extract data from the memory **424** of the controller **414**, e.g., sensor data and the like, received from the implant **412**. This data may be included in a patient database maintained by health care professionals monitoring the patient receiving the implant **412**.

In addition, the electronic device **434** may be used to program the controller **414**, e.g., to program commands, timing sequences, and the like.

The system **410** may also include an external charger **416**. For example, the implant **412** may include a rechargeable energy storage device (not shown in FIG. 3), preferably one or more capacitors, that are coupled to the acoustic transducer (also not shown in FIG. 3). The charger **416** may include a probe **428**, including an acoustic transducer **430** for contacting a patient's skin **92**. The charger **416** also includes a source of electrical energy **432**, such as a radio frequency (RF) generator, that is coupled to the acoustic transducer **430**. The charger **416** may also include electrical circuits for controlling its operation and buttons or other controls (not shown) for activating and/or deactivating the acoustic transducer **430**.

The charger **416** may be used to charge or recharge the implant, e.g., periodically or before each activation. Because the charger **416** includes a substantially more powerful energy source than the controller **414**, the charger **416** is generally a relatively bulky device compared to the controller **414**, in particular due to the energy generator, which may be stationary or of limited mobility. In addition, the charger **416** may be used to recharge the controller **414** periodically, e.g., by a direct or wireless coupling. Alternatively, the controller **414** and patch **415** may be disposable, e.g., after its energy has been depleted, and replaced with another.

For purposes of comparison, an exemplary charger **416** may need to generate about ten kiloPascals (10 kPa) of acoustic energy for about twenty seconds (20 sec.) in order to fully charge the implant **412**. In contrast, an exemplary controller **414** may be limited to outputting relatively smaller bursts of acoustic energy for communicating with, but not charging, the implant **412**. Such acoustic signals may have a duration of as little as about one millisecond (1 ms), as opposed to the significantly longer charging signals generated by the charger **416**.

The transducer **422** of the controller **414** may consume about one Watt (1 W) of power to produce a 1 kPa acoustic signal for about one millisecond. If the controller **414** communicates with the implant **412** on an hourly basis, the energy source **420** of the controller **414** may only need sufficient capacity to provide 0.024 Watt seconds per day (0.024 W-sec./day). Because of this low energy requirement, the energy source **420**, and, consequently, the controller **414**, may be relatively compact and portable, as compared to the charger **416**. Thus, the energy source **420** may be self-contained within the controller **414**, i.e., carried by the patch **415**. Alternatively, a portable energy source, e.g., an external battery pack (not shown) may be provided for supplying electrical energy to the controller **414** that may be carried by the patient, e.g., on a belt (not shown).

In an alternative embodiment, the controller and charger may be provided as a single device (not shown), e.g., including one or more acoustic transducers and/or one or more processors for performing the functions of both devices, as described above. In this embodiment, the implant **412** may operate in a "half-duplex" mode, a quasi-continuous mode, or in a "full-duplex" mode, as described in the applications incorporated above.

It will be appreciated that the above descriptions are intended only to serve as examples, and that many other embodiments are possible within the spirit and the scope of the present invention.

What is claimed is:

1. A system for communicating with a medical device implanted within a patient's body, comprising:

one or more implants for placement within the body, each implant including an electrical circuit configured to perform one or more commands when the implant is activated, an energy storage device, an acoustic switch coupled between the electrical circuit and the energy storage device, and one or more acoustic implant transducers coupled to the acoustic switch, the one or more acoustic implant transducers configured for receiving an acoustic control signal to activate the acoustic switch between a first state, in which current is limited from flowing from the energy storage device to the electrical circuit, and a second state, in which current flows from the energy storage device to the electrical circuit;

an external controller for placement outside of the body, the external controller including one or more acoustic controller transducers for transmitting and receiving acoustic signals, wherein the transmitted acoustic signals include at least the acoustic control signal; and an external monitoring device in communication with the external controller, the external monitoring device configured to monitor one or more physiological parameters within the body.

2. The system of claim 1, wherein at least one of the one or more implants includes a biosensor coupled to the electrical circuit and adapted to sense a physiological parameter within the body.

3. The system of claim 2, wherein the at least one implant includes a transmitter, and wherein the implant is configured to transmit a data signal including sensor data from the biosensor to a device located outside of the body.

4. The system of claim 3, wherein the at least one implant is configured to transmit the sensor data to the external controller.

5. The system of claim 2, wherein the at least one implant is configured to transmit an acoustic data signal to the external controller, the acoustic data signal including sensor data from the biosensor.

6. The system of claim 5, wherein the external controller includes a processor for extracting the sensor data from the acoustic data signal.

7. The system of claim 5, wherein the external controller includes an interface for transferring the sensor data to the external monitoring device.

8. The system of claim 2, wherein at least one of the one or more implants includes an actuator coupled to the switch and a therapeutic device implanted within the body.

9. The system of claim 8, wherein the electrical circuit is configured to control the therapeutic device in response to a physiological parameter measured by the biosensor.

10. The system of claim 1, wherein at least one of the one or more implants includes an actuator coupled to the switch and a therapeutic device implanted within the body.

11. The system of claim 10, wherein the electrical circuit is configured to control the therapeutic device in response to an acoustic signal received from the external controller.

12. The system of claim 1, wherein the external monitoring device includes a patient database for monitoring the patient.

13. The system of claim 1, wherein the external monitoring device includes a means for programming the external controller.

14. A system for communicating with a medical device implanted within a patient's body, comprising:

one or more implants for placement within the body, each implant including an electrical circuit configured to perform one or more commands when the implant is activated, an energy storage device, an acoustic switch coupled between the electrical circuit and the energy

13

storage device, and one or more acoustic implant transducers coupled to the acoustic switch, the one or more acoustic implant transducers configured for receiving an acoustic control signal to activate the acoustic switch between a first state, in which current is limited from flowing from the energy storage device to the electrical circuit, and a second state, in which current flows from the energy storage device to the electrical circuit, wherein at least one of the one or more implants includes a biosensor adapted to sense one or more physiological parameters within the body;

an external controller for placement outside of the body, the external controller including one or more acoustic controller transducers configured to receive an acoustic data signal transmitted from the at least one implant, the acoustic data signal including sensor data received from the biosensor, wherein the one or more acoustic controller transducers are configured to transmit acoustic signals, the transmitted acoustic signals including the acoustic control signal; and
an external monitoring device in communication with the external controller, the external monitoring device configured to monitor the sensor data received from the biosensor.

15. The system of claim 14, wherein the external controller includes a processor for extracting the sensor data from the acoustic data signal.

16. The system of claim 14, wherein the external controller includes an interface for transferring the sensor data to the external monitoring device.

17. The system of claim 14, wherein at least one of the one or more implants includes an actuator coupled to the switch and a therapeutic device implanted within the body.

18. The system of claim 17, wherein the electrical circuit is configured to control the therapeutic device in response to a physiological parameter measured by the biosensor.

14

19. The system of claim 14, wherein the external monitoring device includes a patient database for monitoring the patient.

20. A system for communicating with a medical device implanted within a patient's body, comprising:

one or more implants for placement within the body, each implant including an electrical circuit configured to perform one or more commands when the implant is activated, an energy storage device, an acoustic switch coupled between the electrical circuit and the energy storage device, and one or more acoustic implant transducers coupled to the acoustic switch, the one or more acoustic implant transducers configured for receiving an acoustic control signal to activate the acoustic switch between a first state, in which current is limited from flowing from the energy storage device to the electrical circuit, and a second state, in which current flows from the energy storage device to the electrical circuit, wherein at least one of the one or more implants includes a biosensor adapted to sense one or more physiological parameters within the body;

an external controller for placement outside of the body, the external controller including one or more acoustic controller transducers configured to receive an acoustic data signal transmitted by the at least one implant, and a processor configured to extract sensor data from the biosensor, wherein the one or more acoustic controller transducers are configured to transmit acoustic signals, the transmitted acoustic signals including the acoustic control signal; and

a patient management database adapted to store the extracted sensor data from the biosensor.

* * * * *

专利名称(译)	用于与可植入设备通信的系统和方法		
公开(公告)号	US7756587	公开(公告)日	2010-07-13
申请号	US11/876620	申请日	2007-10-22
[标]申请(专利权)人(译)	REMON医疗TECH		
申请(专利权)人(译)	REMON MEDICAL TECHNOLOGIES LTD.		
当前申请(专利权)人(译)	心脏起搏器, INC.		
[标]发明人	PENNER AVI DORON EYAL		
发明人	PENNER, AVI DORON, EYAL		
IPC分类号	A61N1/18 A61B5/00 A61B5/0215 A61B5/07 A61B5/103 A61B8/00 A61M37/00 A61N1/08 A61N1/34 A61N1/36 A61N1/372 A61N1/378		
CPC分类号	A61B5/00 A61B5/0031 A61B5/02 A61B5/0215 A61B5/076 A61B5/1112 A61B5/14539 A61B5/4839 A61B8/56 A61N1/08 A61N1/37217 A61N1/3787 A61B8/4281 A61B8/4472 A61B2560/0209 A61B2560/0214 A61B2560/0219 A61B2560/0242 A61B2560/0257 A61B2560/0412 A61B2562/028 A61N1/37235 A61N1/37252 Y10S128/903		
代理机构(译)	FAEGRE & BENSON有限责任公司		
优先权	09/690015 2000-10-16 US		
其他公开文献	US20080103553A1		
外部链接	Espacenet USPTO		

摘要(译)

使用声学遥测技术与患者体内的植入物通信的系统和方法包括可附接到患者皮肤的外部通信设备。该装置包括声换能器, 用于将声信号传输到患者体内和/或用于从植入物接收声信号。该装置包括用于提供电能以操作该装置的电池, 用于从植入物接收的声信号中提取数据的处理器, 以及用于存储数据的存储器。该设备可以包括用于与记录器或计算机通信的接口, 例如, 从植入物传输数据和/或接收用于控制植入物的指令。该装置固定到患者的皮肤上, 用于控制, 监测或以其他方式与植入物通信, 同时允许患者保持活动。

