



US008938299B2

(12) **United States Patent**
Christopherson et al.

(10) **Patent No.:** **US 8,938,299 B2**
(45) **Date of Patent:** **Jan. 20, 2015**

(54) **SYSTEM FOR TREATING SLEEP
DISORDERED BREATHING**

(75) Inventors: **Mark A. Christopherson**, Shoreview, MN (US); **Quan Ni**, Shoreview, MN (US); **Timothy P. Herbert**, Maple Grove, MN (US); **John Rondoni**, Plymouth, MN (US)

(73) Assignee: **Inspire Medical Systems, Inc.**, Maple Grove, MN (US)

(*) Notice: Subject to any disclaimer, the term of this patent is extended or adjusted under 35 U.S.C. 154(b) by 66 days.

(21) Appl. No.: **13/130,287**

(22) PCT Filed: **Nov. 19, 2009**

(86) PCT No.: **PCT/US2009/065165**

§ 371 (c)(1),
(2), (4) Date: **Jun. 24, 2011**

(87) PCT Pub. No.: **WO2010/059839**

PCT Pub. Date: **May 27, 2010**

(65) **Prior Publication Data**

US 2011/0264164 A1 Oct. 27, 2011

Related U.S. Application Data

(60) Provisional application No. 61/116,149, filed on Nov. 19, 2008.

(51) **Int. Cl.**
A61N 1/36 (2006.01)
A61B 5/08 (2006.01)
A61B 5/00 (2006.01)

(52) **U.S. Cl.**
CPC **A61N 1/3601** (2013.01); **A61B 5/0803** (2013.01); **A61B 5/0809** (2013.01); **A61B 5/4818** (2013.01)

USPC **607/42**; 600/529; 600/538; 600/546

(58) **Field of Classification Search**
USPC **607/42**; 600/529, 538, 546
See application file for complete search history.

(56) **References Cited**

U.S. PATENT DOCUMENTS

4,379,462 A 4/1983 Borkan
4,567,892 A 2/1986 Plicchi et al.

(Continued)

FOREIGN PATENT DOCUMENTS

WO 2004064634 8/2004
WO 2006047264 5/2006

(Continued)

OTHER PUBLICATIONS

Eisele Article—David W. Eisele, MD et al., “Tongue neuromuscular and direct hypoglossal nerve stimulation for obstructive sleep apnea,” *Otolaryngologic Clinics of North America*, *Otolaryngol Clin N Am* 36 (2003) 501-510 (10 pages).

(Continued)

Primary Examiner — Niketa Patel

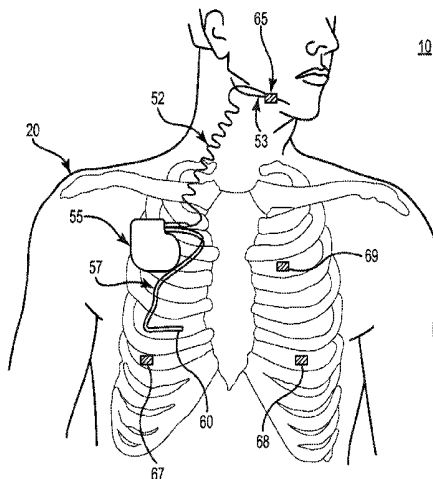
Assistant Examiner — Christopher A Flory

(74) *Attorney, Agent, or Firm* — Dicke, Billig & Czaja, PLLC

(57) **ABSTRACT**

A system is disclosed for applying a treatment therapy for sleep disordered breathing. The system includes a sensing module configured to sense physiologic conditions and an implantable pulse generator in communication with the sensing module and including an automatic therapy manager. The automatic therapy manager operates in a first state to detect sleep indicative behavior, a second state to detect sleep disordered breathing behavior, and a third state to apply a nerve stimulation signal.

6 Claims, 17 Drawing Sheets



(56)

References Cited

U.S. PATENT DOCUMENTS

4,573,481	A	3/1986	Bullara	6,251,126	B1	6/2001	Ottenhoff et al.	
4,630,614	A	12/1986	Atlas	6,269,269	B1	7/2001	Ottenhoff et al.	
4,813,431	A	3/1989	Brown	6,307,481	B1	10/2001	Lehrman et al.	
4,830,008	A	5/1989	Meer	6,309,350	B1	10/2001	Van Tassel et al.	
4,960,133	A	10/1990	Hewson	6,314,324	B1	11/2001	Latner et al.	
5,016,808	A	5/1991	Heil, Jr. et al.	6,342,039	B1	1/2002	Lynn et al.	
5,105,826	A	4/1992	Smits et al.	6,345,202	B2	2/2002	Richmond et al.	
5,121,754	A	6/1992	Mullett	6,361,494	B1	3/2002	Lindenthaler	
5,133,354	A	7/1992	Kallok	6,393,325	B1	5/2002	Mann	
5,134,995	A	8/1992	Gruenke et al.	6,449,507	B1	9/2002	Hill et al.	
5,148,802	A	9/1992	Sanders et al.	6,450,957	B1	9/2002	Yoshimi et al.	
5,158,080	A	10/1992	Kallok	6,456,866	B1	9/2002	Durand et al.	
5,167,229	A	12/1992	Peckham	6,522,928	B2	2/2003	Whitehurst et al.	
5,174,287	A	12/1992	Kallok et al.	6,532,388	B1	3/2003	Hill et al.	
5,178,156	A	1/1993	Takishima et al.	6,542,776	B1	4/2003	Gordon et al.	
5,203,343	A	4/1993	Axe et al.	6,574,507	B1	6/2003	Bonnet	
5,211,173	A	5/1993	Kallok et al.	6,587,725	B1	7/2003	Durand et al.	
5,215,082	A	6/1993	Kallok et al.	6,606,521	B2	8/2003	Paspa et al.	
5,233,983	A	8/1993	Markowitz	6,609,016	B1	8/2003	Lynn	
5,238,006	A	8/1993	Markowitz	6,609,032	B1	8/2003	Woods et al.	
5,239,995	A	8/1993	Estes et al.	6,629,527	B1	10/2003	Estes et al.	
5,245,995	A	9/1993	Sullivan et al.	6,641,542	B2	11/2003	Cho et al.	
5,265,624	A	11/1993	Bowman	6,645,143	B2	11/2003	Van Tassel et al.	
5,281,219	A	1/1994	Kallok	6,647,289	B2	11/2003	Prutchi	
5,300,094	A	4/1994	Kallok et al.	6,651,652	B1	11/2003	Ward	
5,335,657	A	8/1994	Terry, Jr. et al.	6,654,634	B1	11/2003	Prass	
5,344,438	A	9/1994	Testerman	6,665,560	B2	12/2003	Becker et al.	
5,351,394	A	10/1994	Weinberg	6,666,830	B1	12/2003	Lehrman et al.	
5,385,144	A	1/1995	Yamanishi et al.	6,689,068	B2	2/2004	Hale et al.	
5,388,578	A	2/1995	Yomtov et al.	6,703,939	B2	3/2004	Lehrman et al.	
5,398,682	A	3/1995	Lynn	6,712,772	B2	3/2004	Cohen et al.	
5,458,137	A	10/1995	Axe et al.	6,718,208	B2	4/2004	Hill et al.	
5,483,969	A	1/1996	Testerman et al.	6,719,708	B1	4/2004	Jansen	
5,485,851	A	1/1996	Erickson	6,731,976	B2	5/2004	Penn et al.	
5,522,862	A	6/1996	Testerman et al.	6,731,984	B2	5/2004	Cho et al.	
5,524,632	A	6/1996	Stein et al.	6,735,471	B2	5/2004	Hill et al.	
5,531,778	A	7/1996	Maschino et al.	6,752,765	B1	6/2004	Jensen et al.	
5,540,731	A	7/1996	Testerman	6,770,022	B2	8/2004	Mechlenburg et al.	
5,540,732	A	7/1996	Testerman	6,773,404	B2	8/2004	Poezevera et al.	
5,540,733	A	7/1996	Testerman	6,805,667	B2	10/2004	Christopherson et al.	
5,540,734	A	7/1996	Zabara	6,811,538	B2	11/2004	Westbrook et al.	
5,546,952	A	8/1996	Erickson	6,829,508	B2	12/2004	Schulman et al.	
5,549,655	A	8/1996	Erickson	6,842,647	B1	1/2005	Griffith et al.	
5,588,439	A	12/1996	Hollub	6,881,192	B1	4/2005	Park	
5,591,216	A	1/1997	Testerman et al.	6,890,306	B2	5/2005	Poezevera	
5,605,151	A	2/1997	Lynn	6,893,405	B2	5/2005	Kumar et al.	
5,645,053	A	7/1997	Remmers et al.	6,904,320	B2 *	6/2005	Park et al. 607/17	
5,671,733	A	9/1997	Raviv et al.	6,907,293	B2	6/2005	Grill	
5,797,852	A	8/1998	Karakasoglu et al.	6,928,324	B2 *	8/2005	Park et al. 607/20	
5,823,187	A	10/1998	Estes et al.	6,935,335	B1	8/2005	Lehrman et al.	
5,843,135	A	12/1998	Weijand et al.	6,936,011	B2	8/2005	Sheldon	
5,860,938	A	1/1999	LaFontaine	6,964,641	B2	11/2005	Cho et al.	
5,895,360	A	4/1999	Christopherson et al.	6,978,171	B2	12/2005	Goetz et al.	
5,904,141	A	5/1999	Estes et al.	6,988,498	B2	1/2006	Berthon-Jones	
5,919,221	A	7/1999	Miesel	7,025,730	B2	4/2006	Cho et al.	
5,944,680	A	8/1999	Christopherson et al.	7,041,049	B1	5/2006	Raniere	
5,999,846	A	12/1999	Pardey et al.	7,054,692	B1	5/2006	Whitehurst et al.	
6,015,389	A	1/2000	Brown	7,077,810	B2	7/2006	Lange et al.	
6,021,352	A	2/2000	Christopherson et al.	7,081,095	B2	7/2006	Lynn et al.	
6,041,780	A	3/2000	Richard et al.	7,082,331	B1 *	7/2006	Park et al. 607/42	
6,052,624	A	4/2000	Mann	7,082,336	B2	7/2006	Ransbury et al.	
6,099,479	A	8/2000	Christopherson et al.	7,087,053	B2	8/2006	Vanney	
6,120,441	A	9/2000	Griebel	7,117,036	B2	10/2006	Florio	
6,125,290	A	9/2000	Miesel	7,128,717	B1	10/2006	Thach et al.	
6,125,291	A	9/2000	Miesel	7,130,687	B2 *	10/2006	Cho et al. 607/17	
6,126,611	A	10/2000	Bourgeois et al.	7,145,461	B2	12/2006	Lehrman et al.	
6,132,384	A	10/2000	Christopherson et al.	7,149,573	B2	12/2006	Wang	
6,134,459	A	10/2000	Roberts et al.	7,155,278	B2	12/2006	King et al.	
6,144,866	A	11/2000	Miesel et al.	7,160,252	B2	1/2007	Cho et al.	
6,181,961	B1	1/2001	Prass	7,160,255	B2	1/2007	Saadat	
6,198,952	B1	3/2001	Miesel	7,167,743	B2	1/2007	Heruth et al.	
6,223,064	B1	4/2001	Lynn et al.	7,174,215	B2	2/2007	Bradley	
6,240,316	B1	5/2001	Richmond et al.	7,186,220	B2	3/2007	Stahmann et al.	
6,248,080	B1	6/2001	Miesel et al.	7,187,978	B2	3/2007	Malek et al.	
6,249,703	B1	6/2001	Stanton et al.	7,189,204	B2	3/2007	Ni et al.	
				7,195,594	B2	3/2007	Eigler et al.	
				7,200,440	B2	4/2007	Kim et al.	
				7,206,635	B2	4/2007	Cho et al.	
				7,212,862	B2	5/2007	Park et al.	

(56)

References Cited

U.S. PATENT DOCUMENTS					
7,252,640	B2	8/2007	Ni et al.	2002/0156507	A1 10/2002 Lindenthaler
7,269,457	B2	9/2007	Shafer et al.	2003/0093128	A1 5/2003 Freed et al.
7,269,459	B1	9/2007	Koh	2003/0114895	A1 6/2003 Gordon et al.
7,277,749	B2	10/2007	Gordon et al.	2003/0114905	A1 6/2003 Kuzma
7,330,760	B2	2/2008	Heruth et al.	2003/0163059	A1 8/2003 Poezevera et al.
7,336,996	B2	2/2008	Hartley et al.	2003/0195571	A1* 10/2003 Burnes et al. 607/9
7,351,208	B2	4/2008	Brodnick et al.	2003/0216789	A1 11/2003 Deem et al.
7,366,572	B2	4/2008	Heruth et al.	2004/0015204	A1 1/2004 Whitehurst et al.
7,371,220	B1	5/2008	Koh et al.	2004/0073272	A1 4/2004 Knudson et al.
7,387,608	B2	6/2008	Dunlop et al.	2004/0111139	A1 6/2004 McCreery
7,395,113	B2	7/2008	Heruth et al.	2004/0116819	A1 6/2004 Alt
7,396,333	B2	7/2008	Stahmann et al.	2004/0162499	A1 8/2004 Nagai et al.
7,398,115	B2	7/2008	Lynn	2004/0210261	A1* 10/2004 King et al. 607/9
7,422,015	B2	9/2008	Delisle et al.	2004/0215288	A1 10/2004 Lee et al.
7,438,686	B2	10/2008	Cho et al.	2004/0230278	A1 11/2004 Dahl et al.
7,447,545	B2	11/2008	Heruth et al.	2004/0260310	A1 12/2004 Harris
7,454,250	B1	11/2008	Bjorling et al.	2005/0004610	A1 1/2005 Kim et al.
7,463,928	B2	12/2008	Lee et al.	2005/0042589	A1 2/2005 Hatlestad et al.
7,468,040	B2	12/2008	Hartley et al.	2005/0043765	A1 2/2005 Williams et al.
7,469,697	B2	12/2008	Lee et al.	2005/0043772	A1 2/2005 Stahmann et al.
7,473,227	B2	1/2009	Hsu et al.	2005/0074741	A1 4/2005 Lee et al.
7,491,181	B2	2/2009	Heruth et al.	2005/0076908	A1 4/2005 Lee et al.
7,509,164	B2	3/2009	Jensen et al.	2005/0080348	A1 4/2005 Stahmann et al.
7,510,531	B2	3/2009	Lee et al.	2005/0080461	A1 4/2005 Stahmann et al.
7,526,341	B2	4/2009	Goetz et al.	2005/0081847	A1 4/2005 Lee et al.
7,542,803	B2	6/2009	Heruth et al.	2005/0085865	A1* 4/2005 Tehrani 607/42
7,572,225	B2	8/2009	Stahmann et al.	2005/0085866	A1* 4/2005 Tehrani 607/42
7,590,455	B2	9/2009	Heruth et al.	2005/0085868	A1 4/2005 Tehrani et al.
7,591,265	B2	9/2009	Lee et al.	2005/0085869	A1 4/2005 Tehrani et al.
7,596,413	B2*	9/2009	Libbus et al. 607/42	2005/0085874	A1 4/2005 Davis et al.
7,596,414	B2	9/2009	Whitehurst et al.	2005/0101833	A1 5/2005 Hsu et al.
7,603,170	B2	10/2009	Hatlestad et al.	2005/0107838	A1* 5/2005 Lovett et al. 607/17
7,610,094	B2	10/2009	Stahmann et al.	2005/0113710	A1 5/2005 Stahmann et al.
7,634,315	B2	12/2009	Cholette	2005/0115561	A1 6/2005 Stahmann et al.
7,644,714	B2	1/2010	Atkinson et al.	2005/0145246	A1 7/2005 Hartley et al.
7,662,105	B2	2/2010	Hatlestad	2005/0165457	A1 7/2005 Benser et al.
7,672,728	B2	3/2010	Libbus et al.	2005/0182457	A1 8/2005 Thorpe
7,678,061	B2	3/2010	Lee et al.	2005/0209513	A1 9/2005 Heruth et al.
7,680,537	B2*	3/2010	Stahmann et al. 607/42	2005/0209643	A1 9/2005 Heruth et al.
7,680,538	B2	3/2010	Durand et al.	2005/0222503	A1 10/2005 Dunlop et al.
7,702,385	B2	4/2010	Moffitt et al.	2005/0234523	A1 10/2005 Levin et al.
7,717,848	B2	5/2010	Heruth et al.	2005/0251216	A1 11/2005 Hill et al.
7,720,541	B2*	5/2010	Stahmann et al. 607/42	2005/0261747	A1 11/2005 Schuler et al.
7,725,195	B2	5/2010	Lima et al.	2005/0267380	A1 12/2005 Poezevara
7,726,209	B2	6/2010	Ruotienstenmaki	2005/0267547	A1 12/2005 Knudson et al.
7,734,340	B2	6/2010	De Ridder	2005/0277844	A1 12/2005 Strother et al.
7,734,350	B2*	6/2010	Dubnov et al. 607/42	2005/0277999	A1 12/2005 Strother et al.
7,742,819	B2	6/2010	Moffitt	2005/0278000	A1 12/2005 Strother et al.
7,747,323	B2	6/2010	Libbus et al.	2006/0004429	A1 1/2006 Mrva et al.
7,751,880	B1	7/2010	Cholette	2006/0030894	A1* 2/2006 Tehrani 607/42
7,757,690	B2*	7/2010	Stahmann et al. 128/204.18	2006/0036294	A1* 2/2006 Tehrani 607/42
7,775,993	B2	8/2010	Heruth et al.	2006/0052836	A1 3/2006 Kim et al.
7,783,353	B2	8/2010	Libbus et al.	2006/0058852	A1 3/2006 Koh et al.
7,792,583	B2	9/2010	Miesel et al.	2006/0064029	A1 3/2006 Arad (Abboud)
7,792,590	B1	9/2010	Pianca et al.	2006/0079802	A1 4/2006 Jensen et al.
7,809,442	B2	10/2010	Bolea et al.	2006/0095088	A1 5/2006 De Ridder
7,818,063	B2	10/2010	Wallace et al.	2006/0103407	A1 5/2006 Kakizawa et al.
7,853,322	B2	12/2010	Bourget et al.	2006/0135886	A1 6/2006 Lippert et al.
7,881,798	B2	2/2011	Miesel et al.	2006/0142815	A1 6/2006 Tehrani et al.
7,887,493	B2*	2/2011	Stahmann et al. 600/529	2006/0167497	A1 7/2006 Armstrong et al.
7,908,013	B2	3/2011	Miesel et al.	2006/0184204	A1 8/2006 He
7,917,230	B2	3/2011	Bly	2006/0224209	A1 10/2006 Meyer
7,942,822	B1	5/2011	Koh	2006/0241506	A1 10/2006 Melker et al.
7,957,797	B2	6/2011	Bourget et al.	2006/0241708	A1 10/2006 Boute
7,957,809	B2	6/2011	Bourget et al.	2006/0247729	A1 11/2006 Tehrani et al.
7,979,128	B2	7/2011	Tehrani et al.	2006/0259079	A1 11/2006 King
8,016,776	B2	9/2011	Bourget et al.	2006/0264777	A1 11/2006 Drew
8,021,299	B2	9/2011	Miesel et al.	2006/0266369	A1 11/2006 Atkinson et al.
8,150,531	B2	4/2012	Skelton	2006/0271137	A1 11/2006 Stanton-Hicks
8,160,711	B2	4/2012	Tehrani et al.	2006/0276701	A1 12/2006 Ray
8,175,720	B2	5/2012	Skelton et al.	2006/0282127	A1 12/2006 Zealear
2001/0010010	A1	7/2001	Richmond et al.	2006/0293723	A1 12/2006 Whitehurst et al.
2002/0010495	A1	1/2002	Freed et al.	2007/0021785	A1 1/2007 Inman et al.
2002/0049479	A1	4/2002	Pitts	2007/0027482	A1 2/2007 Parnis et al.
2002/0128700	A1	9/2002	Cross, Jr.	2007/0038265	A1 2/2007 Tcheng et al.
				2007/0150022	A1 6/2007 Ujhazy et al.
				2007/0233204	A1 10/2007 Lima et al.
				2007/0255379	A1 11/2007 Williams et al.
				2008/0009685	A1 1/2008 Kim et al.

(56)

References Cited

FOREIGN PATENT DOCUMENTS

U.S. PATENT DOCUMENTS

2008/0039904 A1 2/2008 Bulkes
 2008/0046055 A1 2/2008 Durand et al.
 2008/0064977 A1 3/2008 Kelleher et al.
 2008/0092894 A1* 4/2008 Nicolazzi et al. 128/204.23
 2008/0103545 A1 5/2008 Bolea et al.
 2008/0103570 A1 5/2008 Gerber
 2008/0109046 A1 5/2008 Lima et al.
 2008/0109048 A1 5/2008 Moffitt
 2008/0132802 A1 6/2008 Ni et al.
 2008/0294060 A1 11/2008 Haro et al.
 2009/0024047 A1 1/2009 Shipley et al.
 2009/0062882 A1 3/2009 Zhang et al.
 2009/0112116 A1 4/2009 Lee et al.
 2009/0118787 A1 5/2009 Moffitt et al.
 2009/0234427 A1 9/2009 Chinn et al.
 2009/0270707 A1 10/2009 Alfoqaha et al.
 2009/0287279 A1 11/2009 Parramon et al.
 2009/0308395 A1 12/2009 Lee et al.
 2009/0326408 A1 12/2009 Moon
 2010/0010566 A1 1/2010 Thacker et al.
 2010/0016749 A1* 1/2010 Atsma et al. 600/529
 2010/0036285 A1 2/2010 Govari et al.
 2010/0094379 A1 4/2010 Meadows et al.
 2010/0125310 A1 5/2010 Wilson et al.
 2010/0125314 A1 5/2010 Bradley et al.
 2010/0125315 A1 5/2010 Parramon et al.
 2010/0137931 A1 6/2010 Hopper et al.
 2010/0137949 A1 6/2010 Mazgalev et al.
 2010/0152553 A1 6/2010 Ujhazy et al.
 2010/0174341 A1 7/2010 Bolea et al.
 2010/0198103 A1 8/2010 Meadows et al.
 2010/0228133 A1 9/2010 Averina et al.
 2010/0228317 A1 9/2010 Libbus et al.
 2010/0241195 A1 9/2010 Meadows et al.
 2010/0262210 A1 10/2010 Parramon et al.
 2011/0093036 A1 4/2011 Mashiach
 2011/0112601 A1 5/2011 Meadows et al.
 2011/0137197 A1* 6/2011 Stahmann et al. 600/546
 2011/0152965 A1 6/2011 Mashiach et al.

WO 2006057734 6/2006
 WO 2006102591 9/2006
 WO 2007068284 6/2007
 WO 2007140597 12/2007
 WO 2008025155 3/2008
 WO 2008048471 4/2008
 WO 2009048580 4/2009
 WO 2009048581 4/2009
 WO 2009135138 11/2009
 WO 2009135142 11/2009
 WO 2009140636 11/2009
 WO 2010039853 4/2010
 WO 2010117810 10/2010
 WO 2009135140 8/2011

OTHER PUBLICATIONS

Goodall Article—Eleanor V. Goodhall et al., “Position-Selective Activation of Peripheral Nerve Fibers with a Cuff Electrode,” IEEE Transaction on Biomedical Engineering, vol. 43, No. 8, Aug. 1996, pp. 851-856.
 Naples Article—Gregory G. Naples et al., “A Spiral Nerve Cuff Electrode for Peripheral Nerve Stimulation,” 8088 IEEE Transactions on Biomedical Engineering, 35. Nov. 1988, No. 11, New York, NY, pp. 905-915.
 Oliven Article—Arie Oliven et al., “Upper airway response to electrical stimulation of the genioglossus in obstructive sleep apnea,” Journal of Applied Physiology, vol. 95, pp. 2023-2029, Nov. 2003, www.jap.physiology.org on Sep. 18, 2006. (8 pages).
 PCT Search Report, PCT/US2009/065165, Aug. 12, 2011, 1 page.
 Schwartz Article—Alan R. Schwartz MD et al., Therapeutic Electrical Stimulation of the Hypoglossal Nerve in Obstructive Sleep Apnea, Arch Otolaryngol HeadAnd Neck Surg., vol. 127, Oct. 2001, pp. 1216-1223. Copyright 2001 American Medical Association. (8 pages).
 Mann Article—Eric A. Mann et al., “The Effect of Neuromuscular Stimulation of the Genioglossus on the Hypopharyngeal Airway”, The American Laryngological, Rhinological and Otologic Society, Inc., Feb. 2002, pp. 351-356.

* cited by examiner

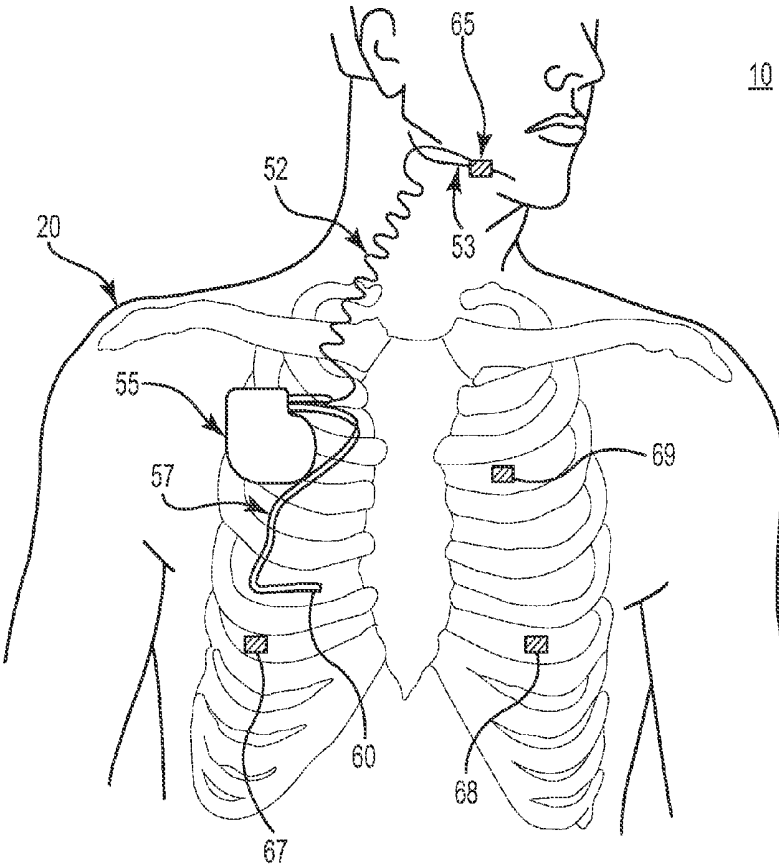


Fig. 1

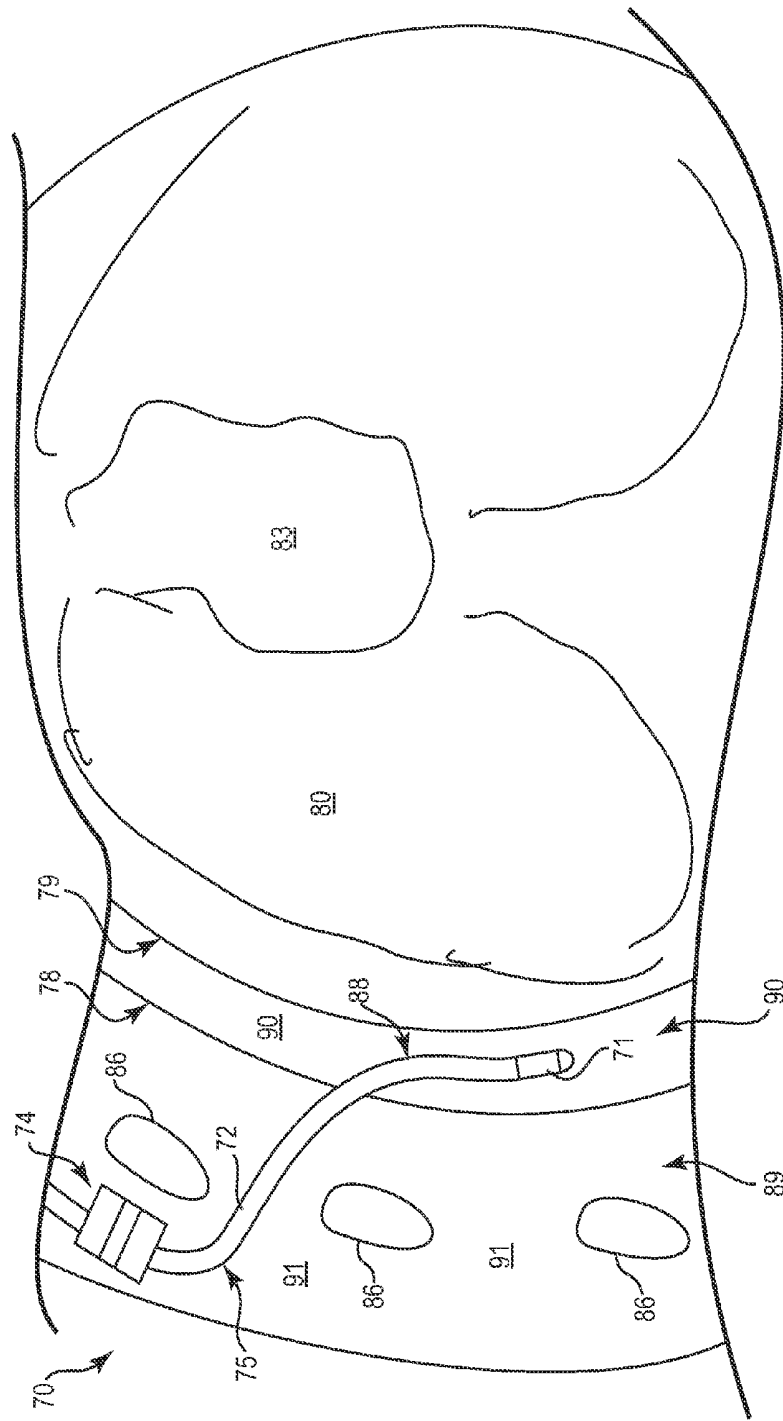


Fig. 2

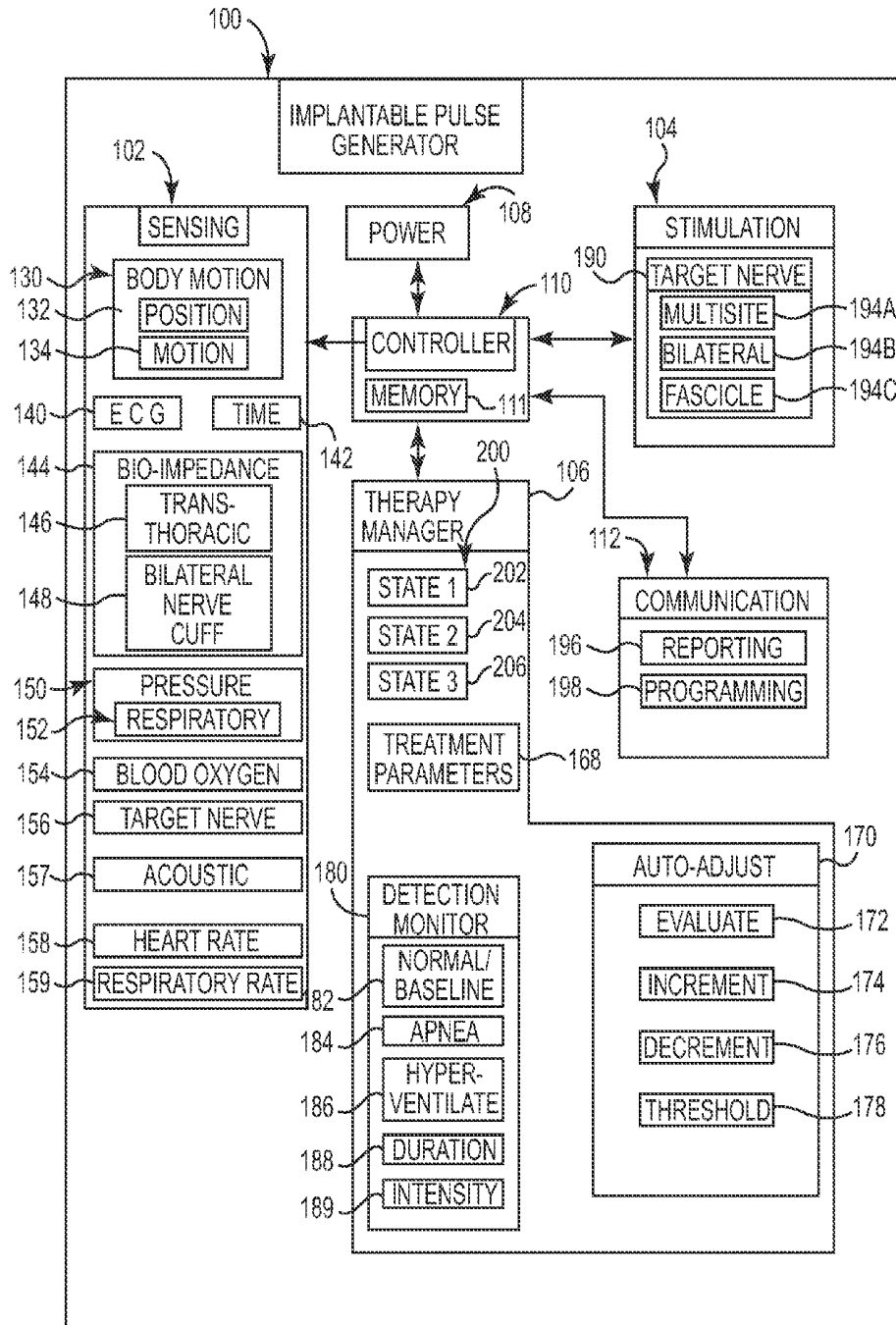


Fig. 3A

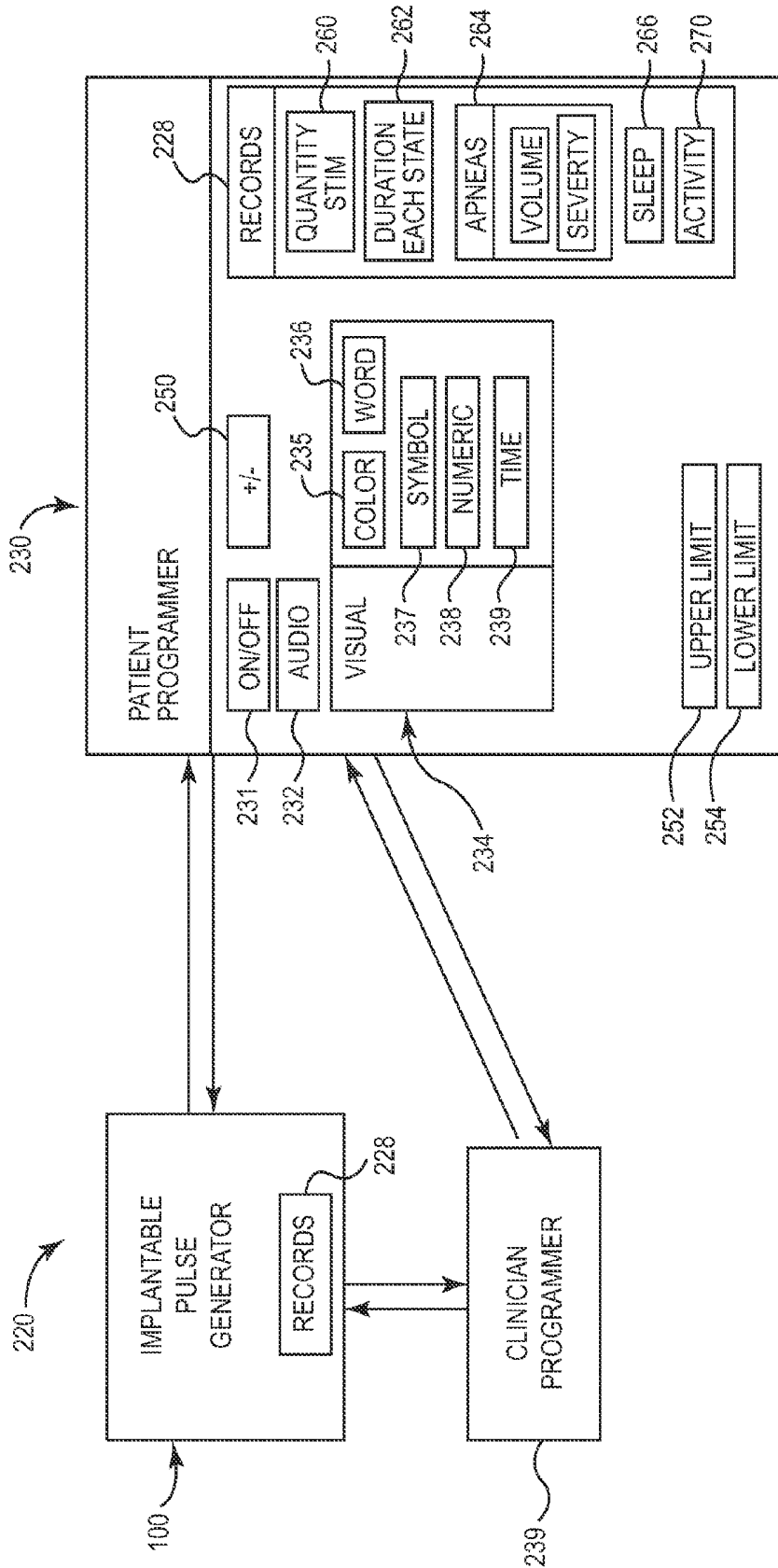


Fig. 3B

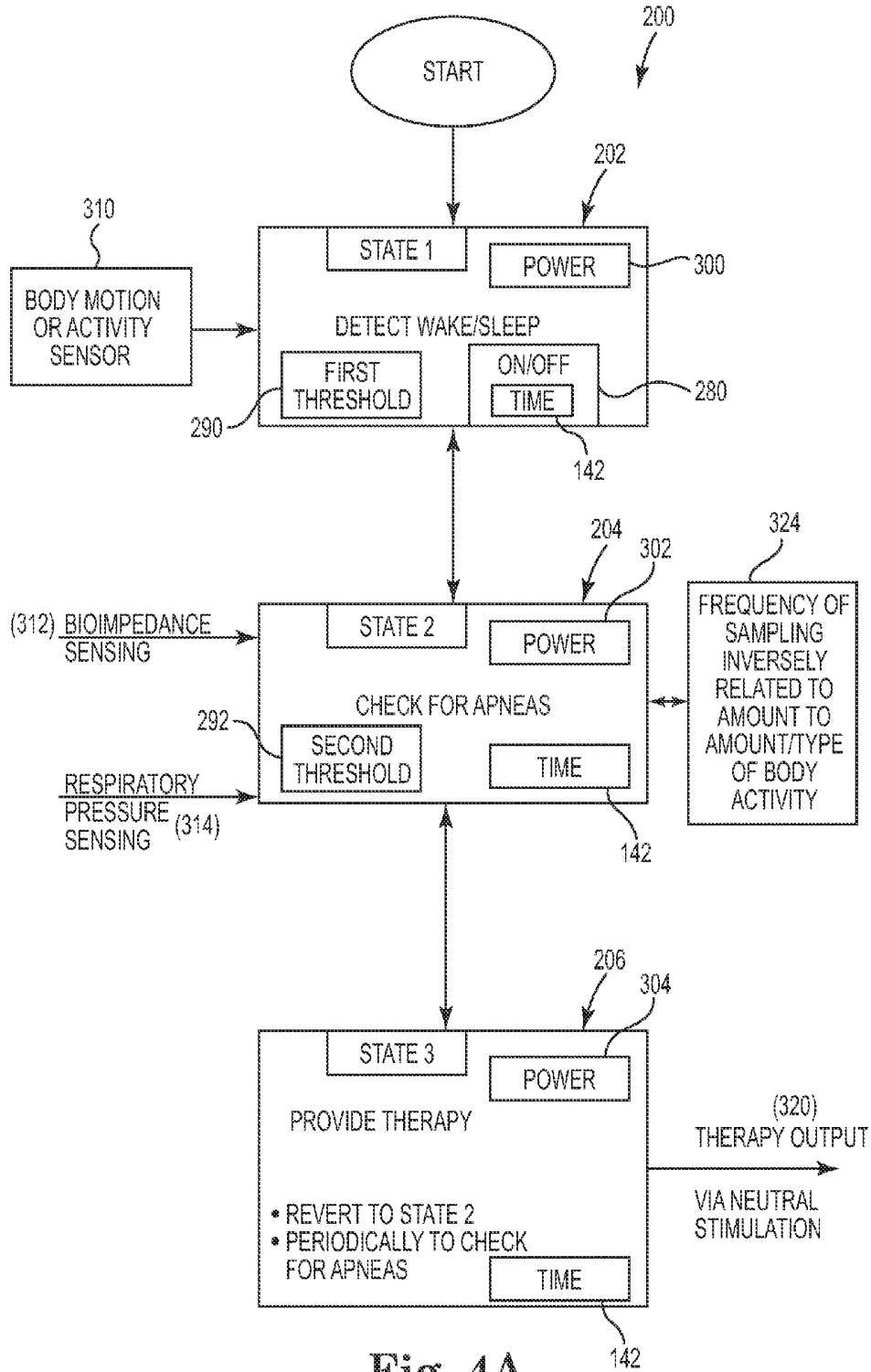


Fig. 4A

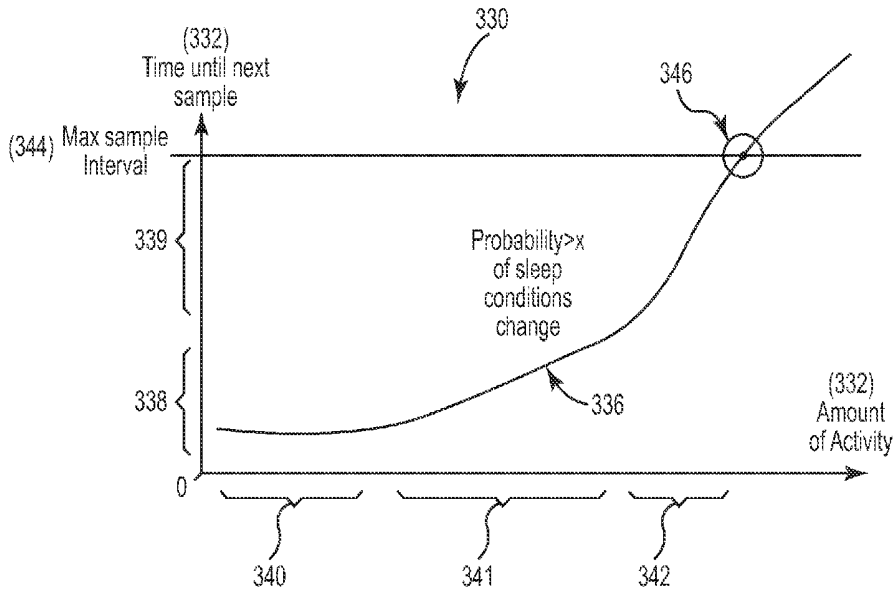


Fig. 4B

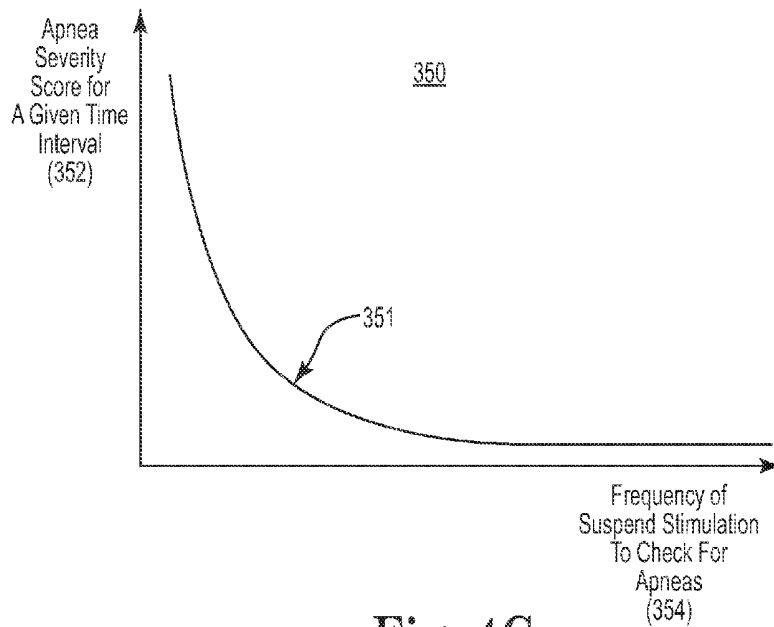


Fig. 4C

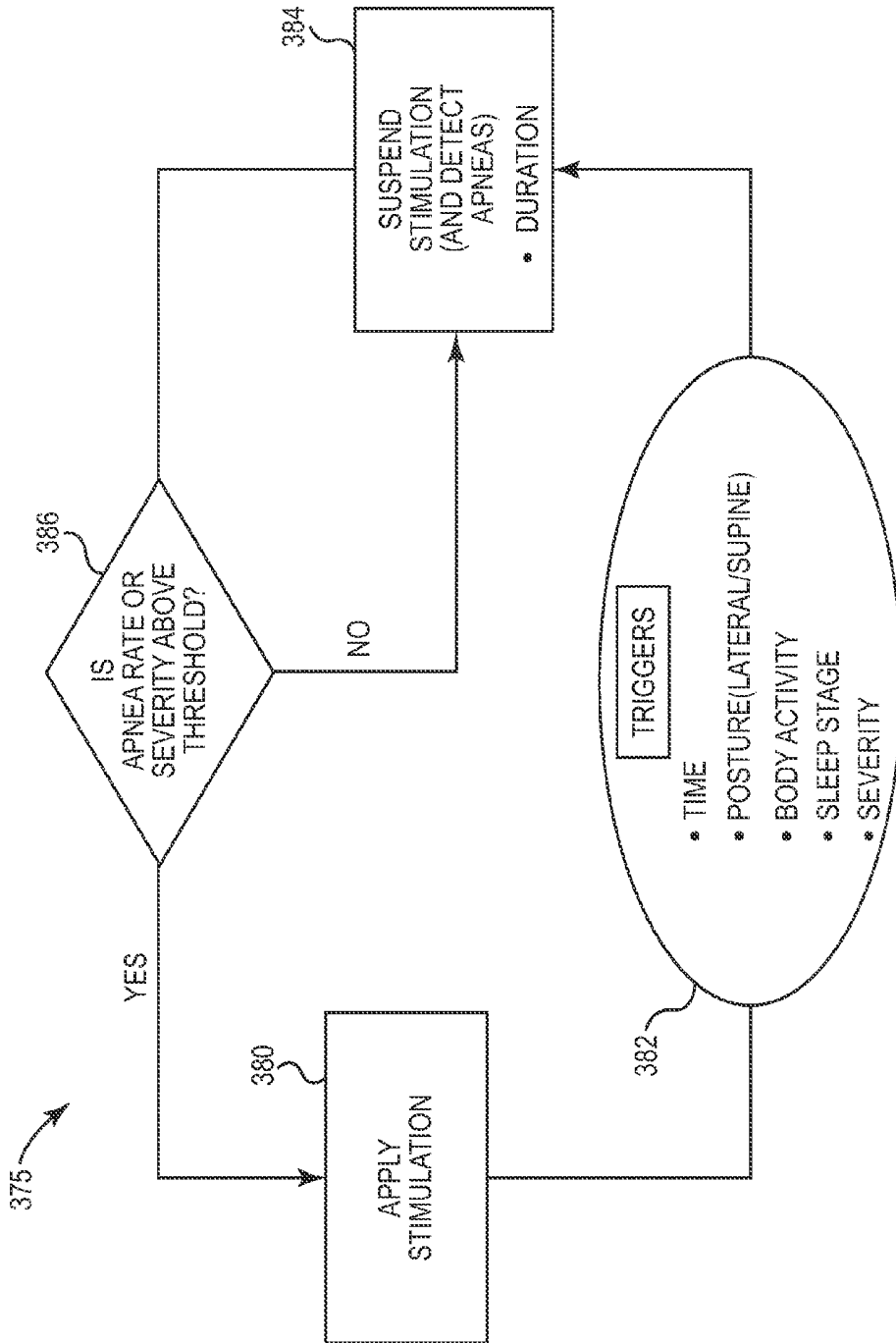
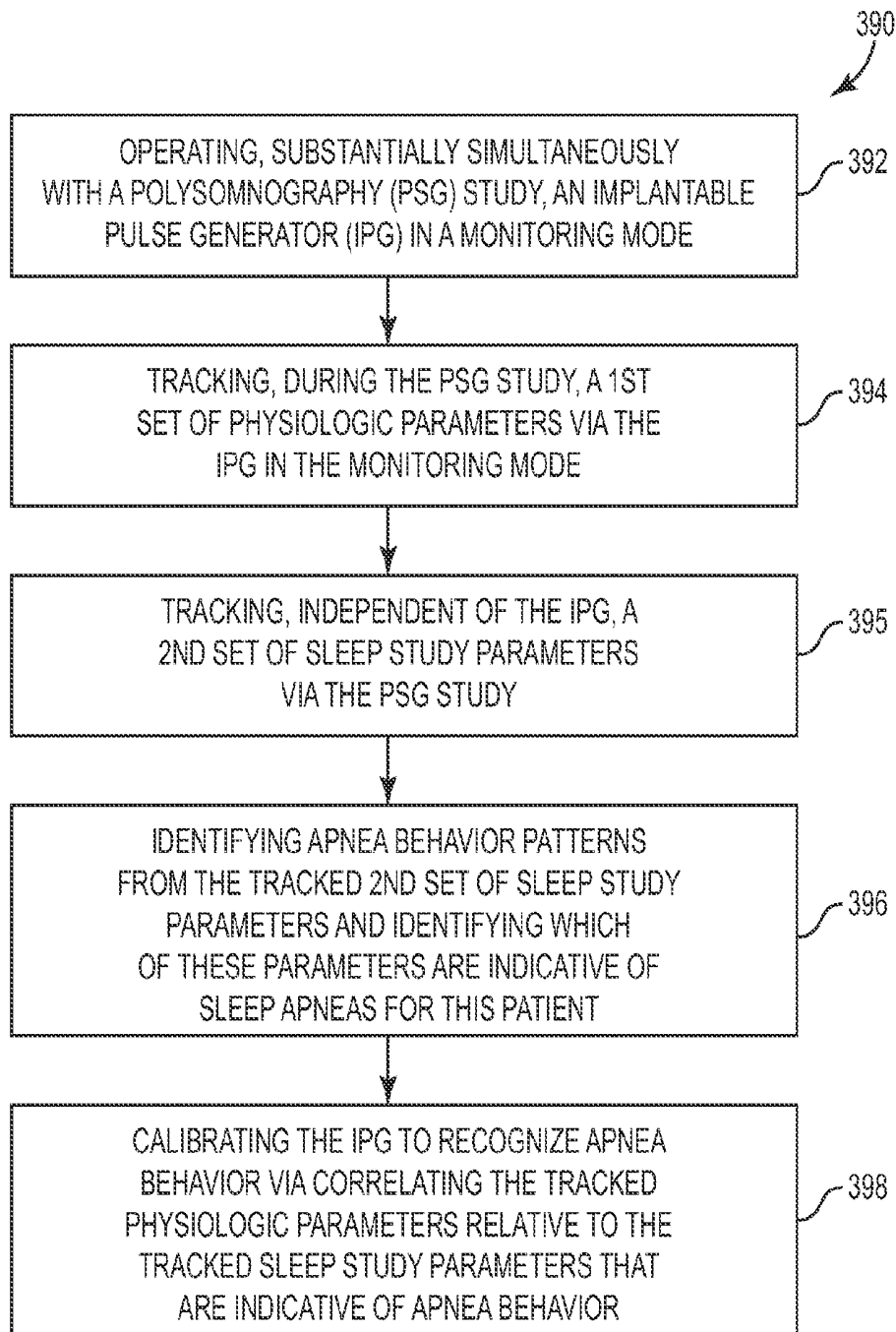


Fig. 4D

**Fig. 4E**

SLEEP STUDY PARAMETERS	EVENTS	IPG THERAPY PARAMETERS	NIGHT OF WEEK	TIME OF DAY	SLEEP STAGE	BODY POSTURE	PATIENT FACTORS
AIRFLOW/AT NOSTRILS AND MOUTH (410)	APNEA (413)	AMPLITUDE PATTERN OF BIO-IMPEDANCE AND RESPIRATORY PRESSURE (416)	NIGHT OF WEEK	TIME OF DAY	SLEEP STAGE	BODY POSTURE	AGE, SEX, SMOKER WEIGHT, NECK, HYPERTENSION
% ↓ EXTERNALLY MEASURED Sat O ₂ (411) OVER TIME PERIOD	APNEA (414)	INTERNALLY MEASURED SAT O ₂ (417)	NIGHT OF WEEK	TIME OF DAY	SLEEP STAGE	BODY POSTURE	AGE, SEX, SMOKER WEIGHT, NECK, HYPERTENSION
N/A (412)	APNEA (415)	↑ INTRA PLEURAL PRESSURE (418)	NIGHT OF WEEK	TIME OF DAY	SLEEP STAGE	BODY POSTURE	AGE, SEX, SMOKER WEIGHT, NECK, HYPERTENSION
SLEEP STAGE (425)	APNEA	ARRAY OF IPG PARAMETERS HR, Sat O ₂ BIO IMPEDANCE, RESPIRATORY PRESSURE	NIGHT OF WEEK	TIME OF DAY	N/A	BODY POSTURE	AGE, SEX, SMOKER WEIGHT, NECK, HYPERTENSION

Fig. 4F

426

450

452 454 456 458 460

PATIENT	PSG	IPG	DEMO	RESPONSIVE RATING
JOE	PSG 1	IPG 1	AGE, ETC	8
FRED	PSG 2	IPG 2	AGE, ETC	2
SUE	PSG 3	IPG 3	AGE, ETC	4
RON	PSG 4	IPG 4	AGE, ETC	9

Fig. 4G

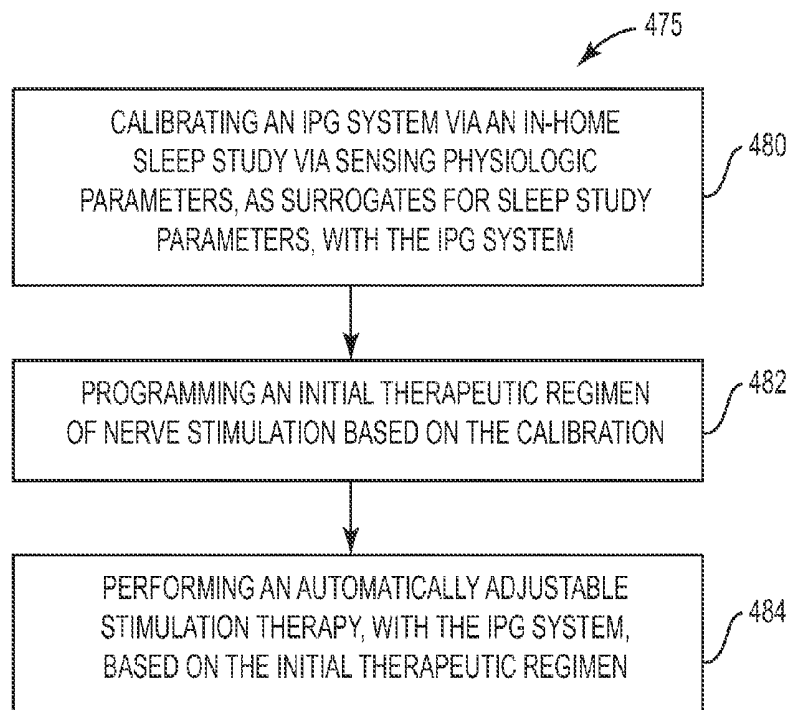


Fig. 4H

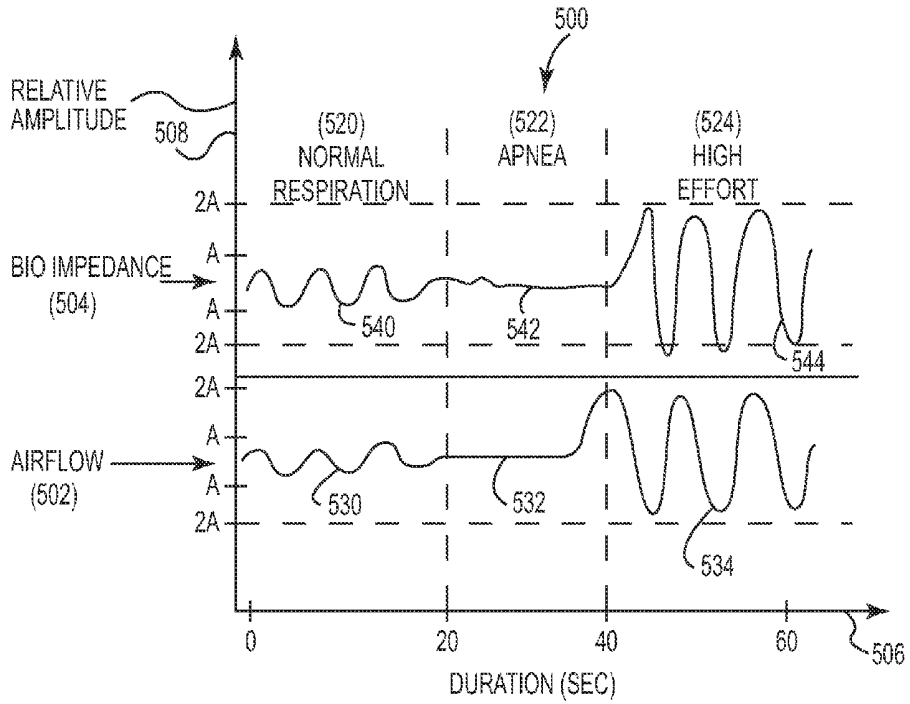


Fig. 5

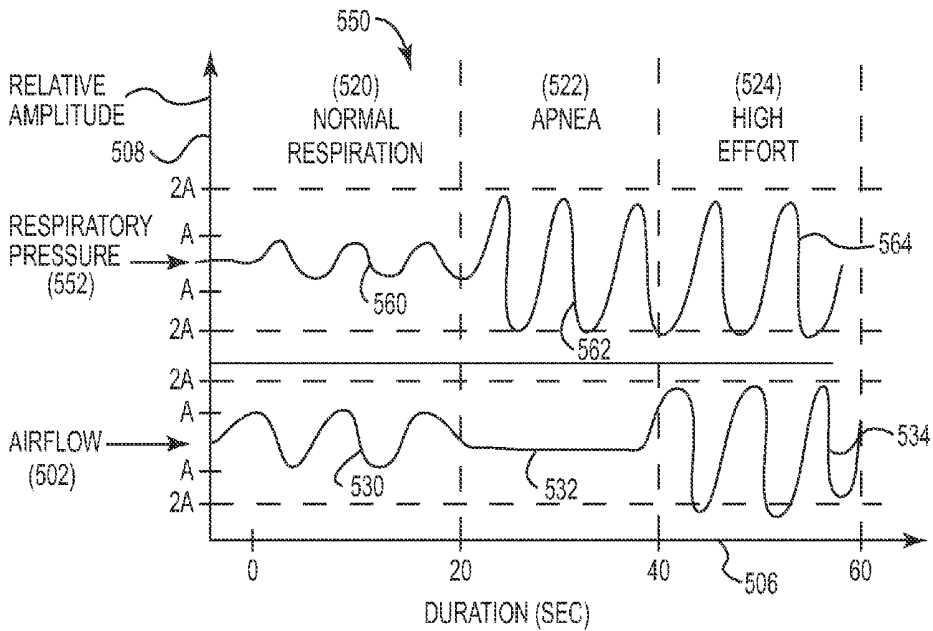


Fig. 6

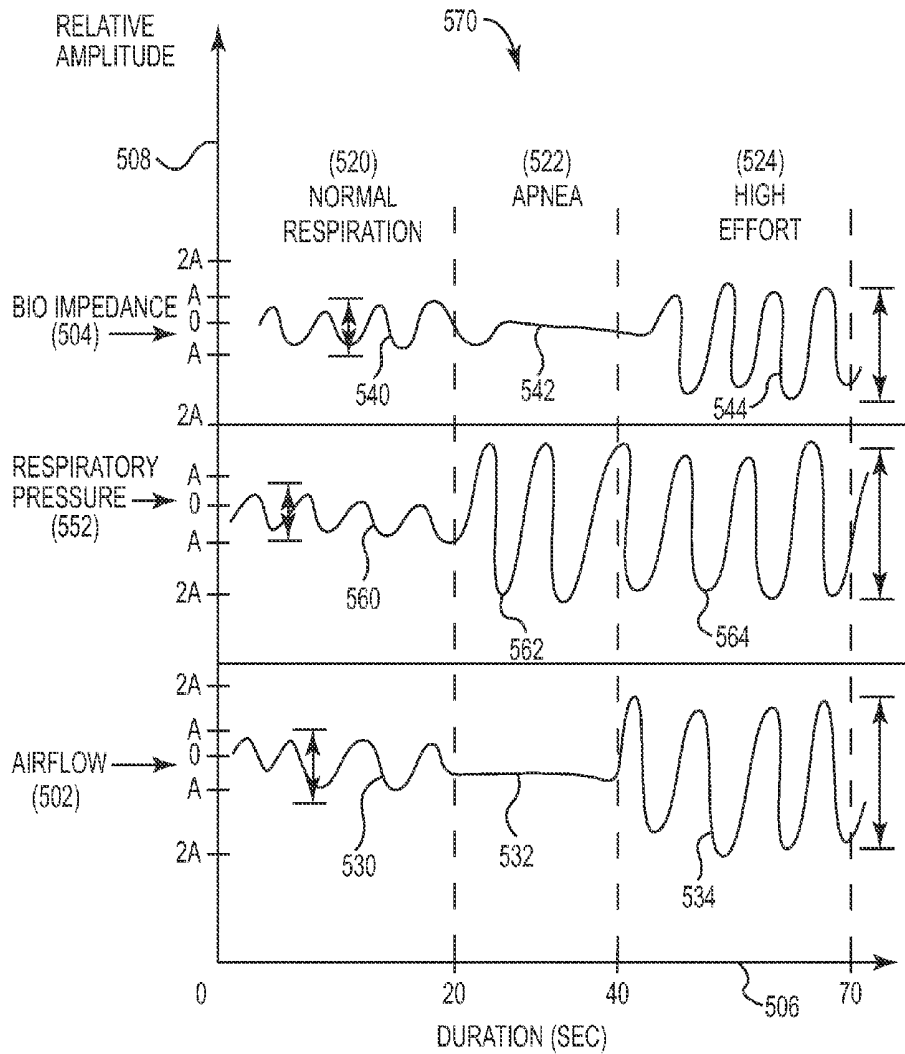


Fig. 7A

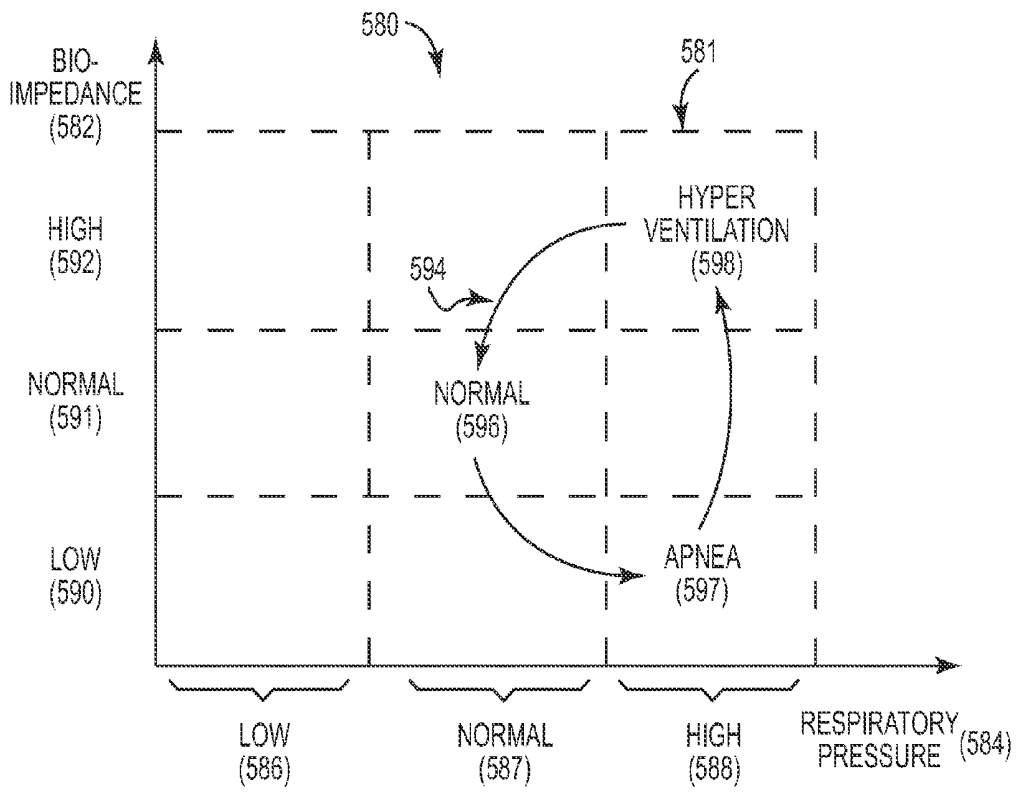


Fig. 7B

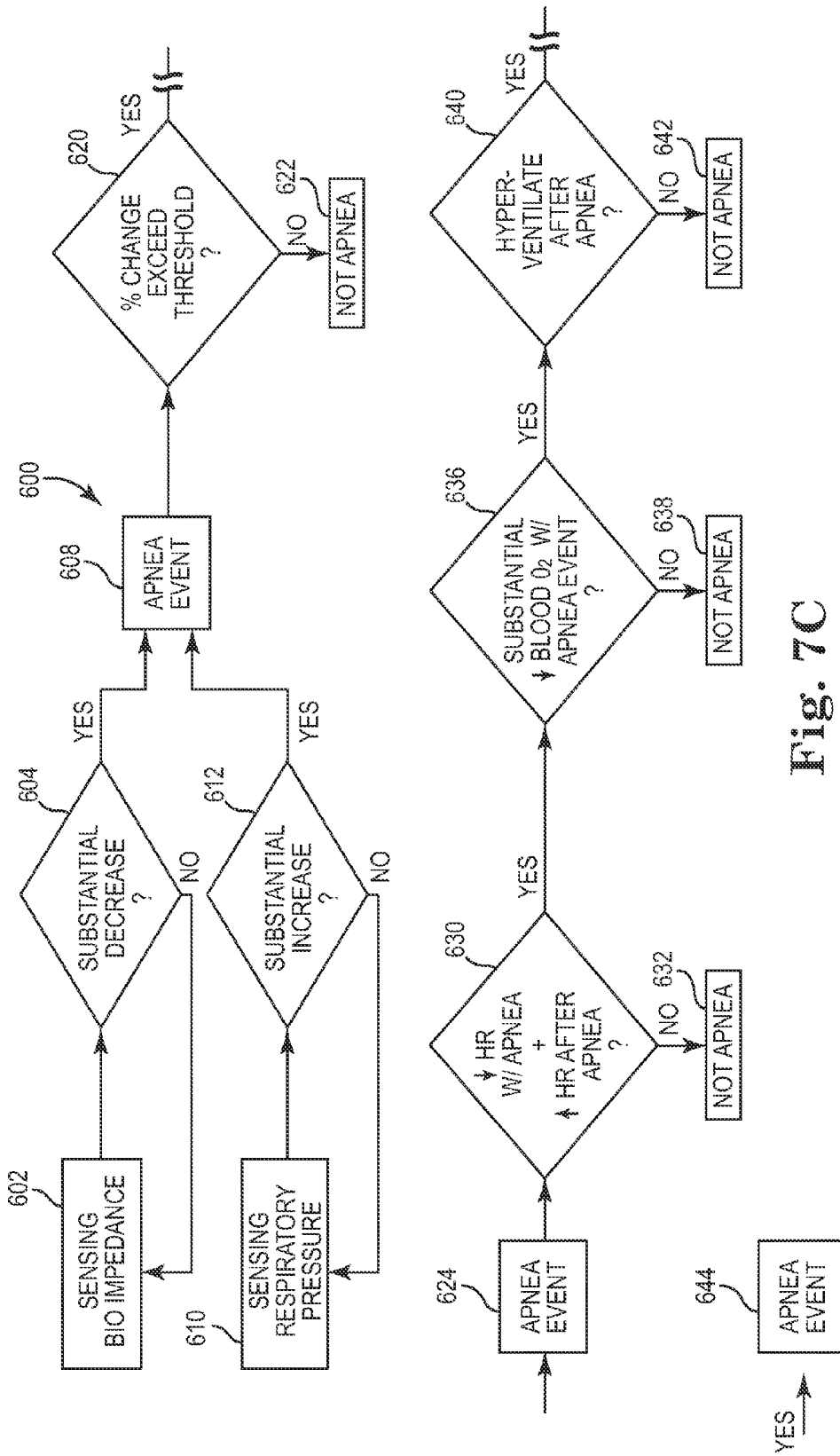


Fig. 7C

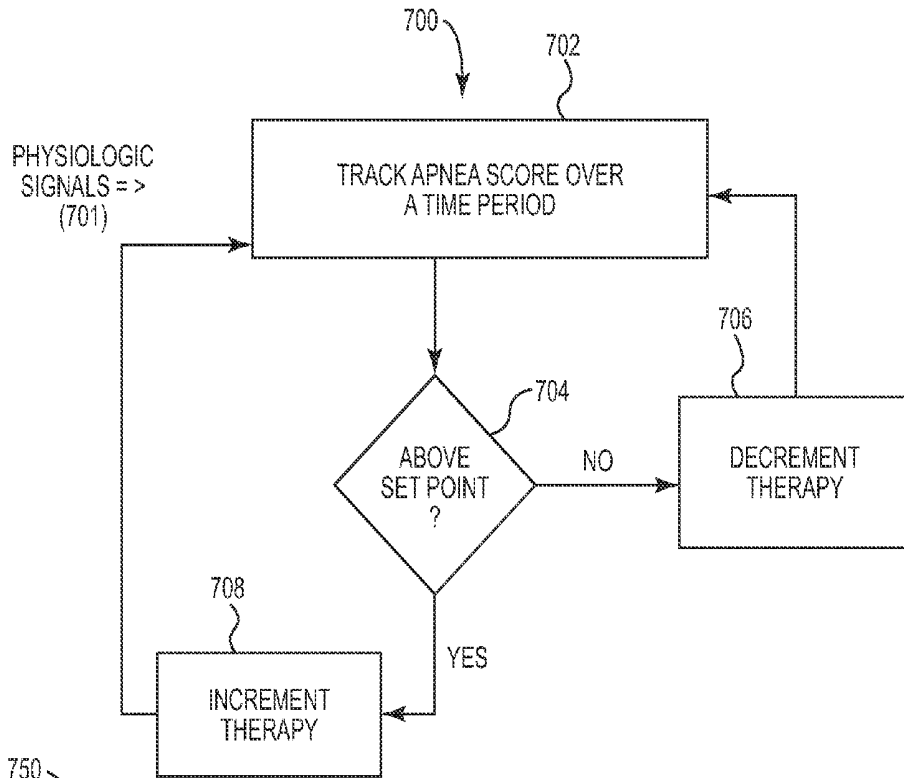


Fig. 8A

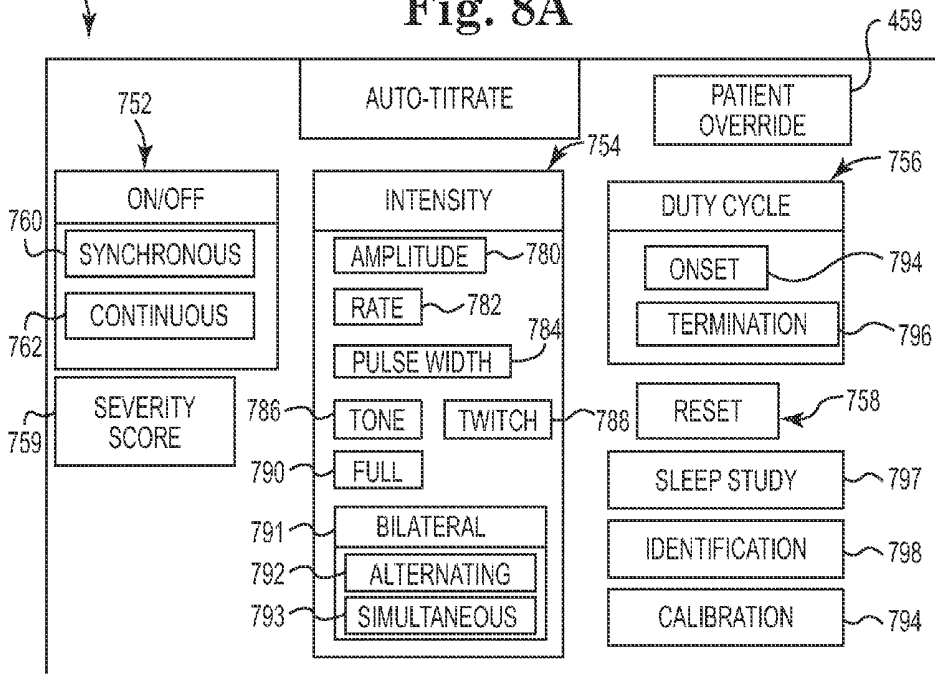


Fig. 9

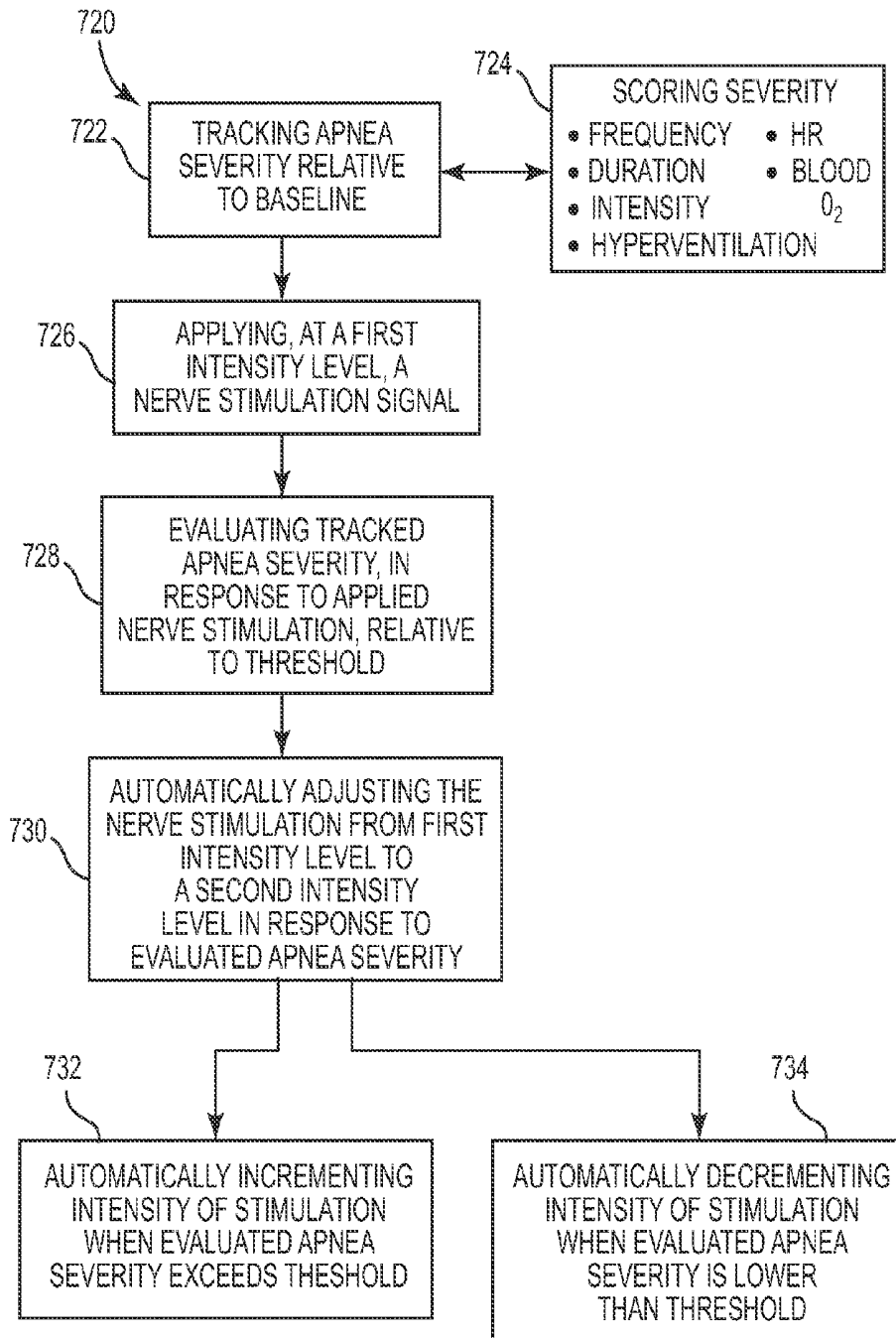


Fig. 8B

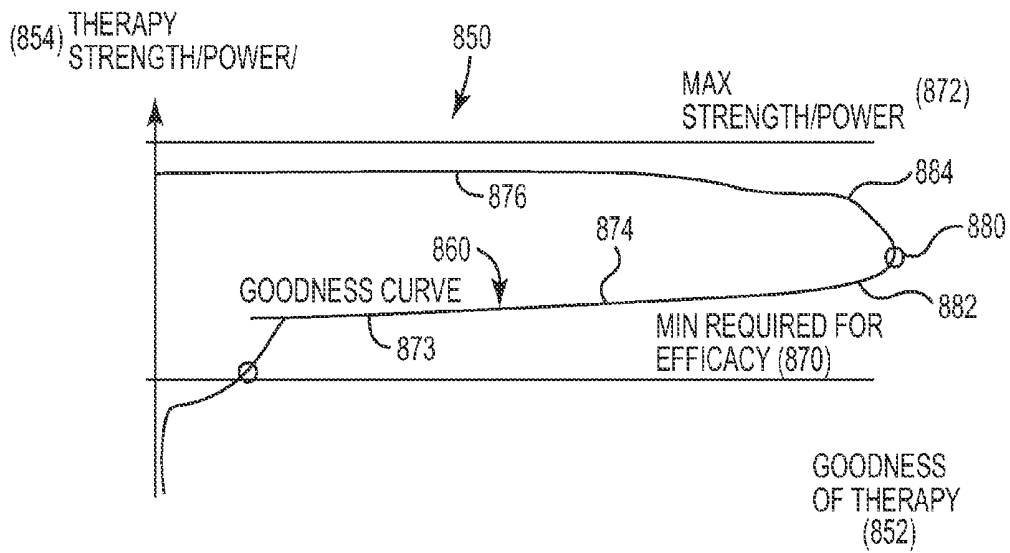


Fig. 10

SYSTEM FOR TREATING SLEEP DISORDERED BREATHING

CROSS-REFERENCE TO RELATED APPLICATIONS

This application is a Non-Provisional Application that claims priority to Provisional U.S. Patent Application Ser. No. 61/116,149, entitled "METHOD OF TREATING SLEEP APNEA," having a filing date of Nov. 19, 2008, and also claims priority to PCT Application PCT/US2009/065165, entitled "METHOD OF TREATING SLEEP DISORDERED BREATHING," having a filing date of Nov. 19, 2009 and which are incorporated herein by reference.

BACKGROUND

The present disclosure relates generally to an implantable stimulation system for stimulating and monitoring soft tissue in a patient, and more particularly, the present disclosure relates to a method of automatically initiating and adjusting therapeutic treatment of sleep apneas.

Sleep apnea generally refers to the cessation of breathing during sleep. One type of sleep apnea, referred to as obstructive sleep apnea (OSA), is characterized by repetitive pauses in breathing during sleep due to the obstruction and/or collapse of the upper airway, and is usually accompanied by a reduction in blood oxygenation saturation.

One treatment for sleep disordered breathing behavior, such as obstructive sleep apneas and hypopneas, has included the delivery of electrical stimulation to the hypoglossal nerve, located in the neck region under the chin. Such stimulation therapy activates the upper airway muscles to maintain upper airway patency. In treatment of sleep apnea, increased respiratory effort resulting from the difficulty in breathing through an obstructed airway is avoided by synchronized stimulation of an upper airway muscle or muscle group that holds the airway open during the inspiratory phase of breathing. For example, the genioglossus muscle is stimulated during treatment of sleep apnea by a nerve electrode cuff placed around the hypoglossal nerve.

BRIEF DESCRIPTION OF THE DRAWINGS

Aspects and features of the present disclosure will be appreciated as the same becomes better understood by reference to the following detailed description of the embodiments of the present disclosure when considered in connection with the accompanying drawings, wherein:

FIG. 1 is a schematic illustration of an implantable stimulation system, according to an embodiment of the present disclosure;

FIG. 2 is a schematic illustration of a method of placement for a respiratory pressure sensor, according to an embodiment of the present disclosure;

FIG. 3A is a block diagram of an implantable pulse generator, according to an embodiment of the present disclosure;

FIG. 3B is a block diagram of a therapy system including an implantable pulse generator, patient programmer, and a clinician programmer, according to an embodiment of the present disclosure;

FIG. 4A is a block diagram of a multi-tier treatment system including different states of operation, according to an embodiment of the present disclosure;

FIG. 4B is a graph schematically illustrating a probabilistic profile to determine a time interval between consecutive samples for detecting an apnea, according to an embodiment of the present disclosure;

FIG. 4C is a graph schematically illustrating a probabilistic profile to determine a frequency at which stimulation will be suspended in order to detect apneas, according to an embodiment of the present disclosure;

FIG. 4D is a block flow diagram schematically illustrating a method of suspending stimulation in order to detect apneas, according to an embodiment of the present disclosure;

FIG. 4E is a flow diagram schematically illustrating a method of correlating sleep study parameters and therapy parameters associated with an implantable pulse generator, according to an embodiment of the present disclosure;

FIG. 4F is a block diagram schematically illustrating a correlation profile between sleep study parameters and therapy parameters associated with an implantable pulse generator, according to an embodiment of the present disclosure;

FIG. 4G is a chart schematically illustrating an index for implantable pulse generators, according to an embodiment of the present disclosure;

FIG. 4H is a flow diagram schematically illustrating a method of therapy based on an implantable pulse generator system calibrated relative to a sleep study, according to an embodiment of the present disclosure;

FIG. 5 is a graph array schematically illustrating detection of an apnea via a bio-impedance signal, according to an embodiment of the present disclosure;

FIG. 6 is a graph array schematically illustrating detection of an apnea via a respiratory pressure signal, according to an embodiment of the present disclosure;

FIG. 7A is a graph array schematically illustrating detection of an apnea via mapping a bio-impedance signal and a respiratory pressure signal, according to an embodiment of the present disclosure;

FIG. 7B is a graph schematically illustrating a grid of breathing states via mapping a bio-impedance signal relative to a respiratory pressure signal, according to an embodiment of the present disclosure;

FIG. 7C is a flow diagram of a method of detecting sleep disordered breathing behavior, according to an embodiment of the present disclosure;

FIG. 8A is a flow diagram of a method of automatically adjusting the level of therapy, according to an embodiment of the present disclosure;

FIG. 8B is a flow diagram of a method of automatically adjusting a level of therapy, according to an embodiment of the present disclosure;

FIG. 9 is a block diagram of an auto-titrate module of a system for treating sleep disordered breathing behavior, according to an embodiment of the present disclosure; and

FIG. 10 is a graph schematically illustrating a stimulation goodness function applied in a method of treating apneas, according to an embodiment of the present disclosure.

DESCRIPTION OF EMBODIMENTS

The following detailed description is merely exemplary in nature and is not intended to limit the present disclosure or the application and uses of the present disclosure. Furthermore, there is no intention to be bound by any expressed or implied theory presented in the preceding technical field, background, or the following detailed description.

FIG. 1 is a schematic diagram of an implantable stimulation system, according to an embodiment of the present disclosure. The system is adapted to treat sleep disordered breathing behavior, such as obstructive sleep apnea, hypopnea, and/or central sleep apnea. As illustrated in FIG. 1, an example of an implantable stimulation system 10 according to one embodiment of the present disclosure includes an

implantable pulse generator (IPG) 55, capable of being surgically positioned within a pectoral region of a patient 20, and a stimulation lead 52 electrically coupled with the IPG 55 via a connector (not shown) positioned within a connection port of the IPG 55. The lead 52 includes a nerve cuff electrode or electrode system 65 and extends from the IPG 55 so that the electrode system 65 is positioned in proximity to a desired nerve, such as the hypoglossal nerve 53 of the patient 20, to enable stimulation of the nerve 53, as described below in detail. It will be understood that in some embodiments, two leads 52 are provided with so that one lead 52 is implanted to be coupled relative to a nerve on a left side of the body and the other lead 52 is implanted to be coupled relative to a nerve on a second side of the body, as described in more detail below. An exemplary implantable stimulation system in which lead 52 may be utilized, for example, is described in U.S. Pat. No. 6,572,543 to Christopherson et al., which is incorporated herein by reference in its entirety. In this exemplary system, a sensor lead 57 electrically coupled to the IPG 55 and extends from the IPG 55 so that a sensor or transducer 60 can be positioned in the patient 20 for sensing of respiratory effort.

In some embodiments, system 10 also comprises additional sensors to obtain further physiologic data associated with respiratory functions. For example, system 10 may include various sensors (e.g., sensors 67, 68, 69 in FIG. 1) distributed about the chest area for measuring a trans-thoracic bio-impedance signal, an electrocardiogram (ECG) signal, or other respiratory-associated signals.

In some embodiments, the sensing and stimulation system for treating sleep disordered breathing behavior is a totally implantable system which provides therapeutic solutions for patients diagnosed with sleep disordered breathing. In other embodiments, one or more components of the system are not implanted in a body of the patient. A few non-limiting examples of such non-implanted components include external sensors (respiration, impedance, etc.), an external processing unit, or an external power source. Of course, it is further understood that the implanted portion(s) of the system provides a communication pathway to enable transmission of data and/or controls signals both to and from the implanted portions of the system relative to the external portions of the system. The communication pathway includes a radio-frequency (RF) telemetry link or other wireless communication protocols.

Whether partially implantable or totally implantable, the system is designed to stimulate the hypoglossal nerve (or other nerves related to affecting airway patency via tongue protrusion or other muscle contractions/relaxations) during inspiration to thereby prevent obstructions or occlusions in the upper airway during sleep. In one embodiment, the implantable system comprises an implantable pulse generator (IPG), a peripheral nerve cuff stimulation lead, and a pressure sensing lead.

In one embodiment, the sensor 60 is a respiratory pressure sensor that is surgically implanted in a region that has pressure continuity with the pleura via an intrapleural placement or an extrapleural placement (including but not limited to an intercostal placement), as will be further described in association with FIG. 2. The location for placement of the sensor 60 is, at least in part, chosen as a function of a delay, i.e. the propagation time associated with a pressure waveform characteristic of respiratory effort propagating from the respiratory point of origin to the sensor position. The chosen location is also a function of the amount of filtering necessary to achieve a usable sensed signal at a particular location, i.e. the amount of filtering that is necessary to remove waveforms other than the waveform associated with the desired sensed

characteristic, such as the filtering required to remove cardiac waveform activity, for example. The positioning of the sensor 60 enables the IPG 55 to receive respiratory effort waveform information and to use this information to control delivery of the therapy.

As schematically illustrated in FIG. 2, in one embodiment of the present disclosure, an implantable stimulation system 10 comprises a sensing system 70 including a lead 75 configured to place a respiratory pressure sensor 71 within an intrapleural space 90 so that sensor 71 is positioned in close proximity to the lung 80. In this arrangement, the sensor 71 becomes directly coupled relative to the respiratory pressures at the pleura. In another aspect, the intrapleural space 90 includes the cavity between the parietal pleura 78 and a pulmonary pleura 79. Finally, it will be understood that FIG. 2 illustrates generous spacing between adjacent anatomical structures for illustrative purposes.

In the one embodiment, lead 75 includes a lead body 72 that supports sensor 71 at its distal end and an anchor 74 (such as a wing-like fixation member) located at a more proximal portion of lead body 72. The anchor 74 ensures that sensor 71 remains positioned to orient the membrane portion of the sensor to face along the lung 80 subsequent to implantation of the sensor 71. The lead body 72 is positioned through an inter-costal space 91 into the pleural space 90 (with a position of sensor 71 and lead body 72 as indicated by reference numeral 88) so that the IPG 55 (FIG. 1) receives sensor waveforms from the sensor 71, thereby enabling the IPG 55 (FIG. 1) to deliver electrical stimulation synchronously with inspiration, according to a therapeutic treatment regimen in accordance with embodiments of the present disclosure.

As further illustrated by FIG. 2, the lead 75 will be inserted so that lead body 72 extends through the intercostal space (e.g. between two ribs 86) to position the sensor 71 for placement intrapleurally, as indicated generally via indicator 90. In one embodiment, the lead 75 incorporates a piezo-electric crystal mounted into a sealed housing and capable of monitoring intra-thoracic pressure associated with respiration. In other embodiments, monitoring the respiratory pressure comprises monitoring other physiological data indicative of respiratory pressure (in addition to or instead of monitoring intra-thoracic pressure). The sensor 71 is powered by the IPG 55 (FIG. 1) and the IPG 55 also contains internal circuitry to accept and process the respiration signal from the lead 75.

In one embodiment, the system includes a lead anchor 74 located remotely (by a distance of several centimeters or so) from where the sensor 71 is placed intrapleurally. Tissue movements on the sensor and lead can induce unwanted signal components as well as lead migration/dislodgement; therefore anchoring of the lead body 72, close to where the lead 75 enters the thoracic cavity is warranted. With this in mind, the anchor 74 will be sutured to a subcutaneous connective tissue, such as an intra-costal muscle or fascia during implant, and the anchor 74 is fixed or secured to the lead body 72 and not allowed to slide.

In other embodiments, the respiratory sensor 71 is placed external to the intrapleural space. In yet other embodiments, the respiratory sensor can be any one of an airflow sensor, a pressure sensor, a volume sensor, an accelerometer, an acoustic sensor, a temperature sensor, a mechanical strain sensor, or an effort sensor.

In one embodiment, sensing respiratory pressure is implemented in a manner substantially similar to the methods and systems of respiratory sensing disclosed in PCT Patent Application Number PCT/US2009/044207, entitled "Method and Apparatus for Sensing Respiratory Pressure in An Implant-

able Stimulation System,” having a filing date of May 15, 2009, and which is incorporated herein by reference.

FIG. 3A is a block diagram schematically illustrating an implantable pulse generator (IPG) 100, according to one embodiment of the present disclosure. In one embodiment, IPG 100 comprises at least substantially the same features and attributes as IPG 55 of FIG. 1. As illustrated in FIG. 3A, IPG 100 includes a sensing module 102, a stimulation module 104, a therapy manager 106, a power management module 108, a controller 110 with a memory 111, and a communication module 112.

Components and methods of the present disclosure, including but not limited to memory module 111, may be implemented in hardware via a microprocessor, programmable logic, or state machine, in firmware, or in software within a given device. Components and methods of the present disclosure, including but not limited to memory module 111, may reside in software on one or more computer-readable media. The term computer-readable media as used herein is defined to include any kind of memory, volatile or non-volatile, such as floppy disks, hard disks, CD-ROMs, flash memory, read-only memory (ROM), and random access memory (RAM).

Via an array of parameters, the sensing module 102 of IPG 100 receives and tracks signals from various physiologic sensors in order to determine a respiratory state of a patient, such as whether or not the patient is asleep or awake, and other respiratory-associated indicators, etc. In one embodiment, at least some of the physiologic sensors are contained within or on a housing of the IPG and at least some of the physiologic sensors are external to the IPG. In any case, whether the physiologic sensors are external or internal to the IPG 100, the signals produced by those sensors are received and processed by the sensing module 102. In some embodiments, the sensing module 102 is contained within the IPG 100, although it will be understood that in other embodiments, at least a portion of the sensing module 102 can be external to a housing of the IPG 100 provided that communication is maintained between those external portions of sensing module 102 and the IPG 100.

For example, in one embodiment, the sensing module 102 comprises a body parameter 130, which includes at least one of a position-sensing component 132 or a motion-sensing component 134. In one embodiment, the motion-sensing component 134 tracks sensing of “seismic” activity (via an accelerometer or a piezoelectric transducer) that is indicative of walking, body motion, talking, etc. In another embodiment, the position-sensing component 132 tracks sensing of a body position or posture via an accelerometer or other transducer. In one embodiment, the position-sensing component distinguishes whether a patient is lying down in a generally horizontal position or standing up (or sitting up) in generally vertical position. In some embodiments, when the patient is in a generally horizontal position, the position-sensing component distinguishes between a supine position (i.e., lying on their back) and a lateral decubitus position (i.e., lying on their side). In some embodiments, body parameter 130 utilizes signals from both the position-sensing component 132 and the motion-sensing component 134.

Other parameters tracked via sensing module 102 include one or more of the following parameters: an ECG parameter 140; a time parameter 142; a bio-impedance parameter 144; a pressure parameter 150; a blood oxygen parameter 154 and/or a respiratory rate parameter 159. In one aspect, the ECG parameter 140 tracks electrocardiography information of the patient, and in some embodiments, a heart rate is tracked as a separate component via heart rate parameter 158. In one

aspect, the pressure parameter 150 includes a respiratory pressure component 152, which includes a thoracic pressure component and/or other pressure component indicative of respiration of the patient. In one aspect, the time parameter 142 tracks elapsed time while in other aspects, the time parameter 142 tracks the time of day in addition to or instead of the elapsed time. In particular, in cooperation with a therapy manager 106, the time parameter 142 can be used to activate or deactivate a therapy regimen according to a time of day, as described later in association with at least FIGS. 4A and 8.

In some embodiments, the bio-impedance parameter 144 tracks measurements of bio-impedance of the patient. In one embodiment, the bio-impedance parameter 144 includes a trans-thoracic bio-impedance parameter that tracks a trans-thoracic bio-impedance, such as that described in association with sensors 67, 68, and 69 of FIG. 1, and as further described later in association with at least FIGS. 5-7B. In another embodiment, the bio-impedance parameter 144 includes a bilateral nerve electrode (e.g. a cuff electrode) parameter that tracks a bio-impedance measured between a pair of nerve electrodes spaced apart from each other on opposite sides of the body, as described later in association with at least FIG. 5.

It is also understood that system 10 (FIG. 1) would include, or be connected to, the analogous physiologic sensor (e.g., LED-type tissue perfusion oxygen saturation) implanted within or attached to the body of the patient to provide data to each one of their respective parameters (e.g., blood oxygenation parameter 154) of the sensing module 102.

In some embodiments, sensing module 102 also includes a target nerve parameter 156 which represents physiologic data regarding the activity of a nerve to be stimulated, such as the hypoglossal nerve or other nerve related to influencing airway patency via muscle contraction.

In some embodiments, sensing module 102 also includes an acoustic sensing parameter 157 which represents physiologic data from respiratory airflow or cardiac activity that is sensed acoustically and that is indicative of respiratory effort.

In some embodiments, when data from obtained one or more of physiologic sensing parameters 140-144, 150-154, 157-159 of sensing module 102 reveals an ongoing inconsistent respiratory pattern, this information is used to indicate a potential waking state in which therapy should not be applied. In one aspect, the indication of a potential waking state is corroborated with information obtained via body parameter 130 prior to reaching a decision to abort a therapy or to delay the initiation of therapy. In further reference to FIG. 3A, therapy manager 106 of IPG 100 is configured to automatically control initiation of and/or adjustment of a sleep apnea therapy, in accordance with the principles of the present disclosure. In one embodiment, therapy manager 106 includes a multi-tier system 200 in which the IPG 100 will operate in one of three states of operation, including a first state 202, a second state 204, and a third state 206. This multi-tier system 200 will be later described in more detail in association with FIG. 4A.

In some embodiments, therapy manager 106 also includes an auto-titrate module 170 which may or may not operate in coordination with multi-tier system 200 (FIG. 4A). The auto-titrate module 170 is configured to direct the IPG 100 to automatically increment or decrement the level of therapy as implemented by various treatment parameters 168 (including but not limited to an amplitude, frequency, and/or pulse width of stimulation as well as a stimulation duty cycle and/or application of bilateral or unilateral stimulation, etc.) to maximize efficacy while minimizing power consumption and/or patient annoyance. In one aspect, efficacy is measured

according to the number of apnea/hypopnea events and/or an apnea severity score (e.g. severity score parameter **759** in FIG. **9**) that also incorporates a duration or an intensity (e.g., a decrease in blood oxygen) of each apnea/hypopnea event. Application of the auto-titrate module **170** is later described in more detail in association with at least FIGS. **8A**, **8B**, and **9**.

With this in mind, in some embodiments, auto-titrate module **170** comprises an evaluate function **172**, an increment function **174**, a decrement function **176**, and a threshold function **178**. The evaluate function **172** is configured to evaluate the severity of sleep disordered breathing behavior both before and after the application of therapeutic nerve stimulation. The threshold function **178** enables setting a threshold of the severity of sleep disordered breathing that requires treatment by therapeutic nerve stimulation. If the severity of the sleep disordered breathing behavior falls below the threshold by a substantial portion, then auto-titrate module automatically decrements (decreases in one or more measured steps) the intensity of the nerve stimulation via decrement function **176**. However, if the severity of the sleep disordered breathing behavior meets or exceeds the threshold, then auto-titrate module automatically increments (increases in one or more measured steps) the intensity of the nerve stimulation via increment function **174**. In this way, the auto-titrate module **170** persistently evaluates and adjusts an intensity of therapeutic nerve stimulation so that enough stimulation is provided to treat the sleep disordered breathing but also so that unnecessary stimulation is avoided. Further application of the auto-titrate module **170** is later described in more detail in association with at least FIGS. **8A**, **8B**, and **9**.

In some embodiments, therapy manager **106** also includes a detection monitor **180** which may or may cooperate with the multi-tier system **200** of FIG. **4A**. In general terms, the detection monitor **180** observes, via sensing module **102**, physiologic conditions of the patient to detect whether sleep disordered breathing is occurring, and based on such observations, initiate, adjust, or terminate a therapeutic nerve stimulation according to the general principles of the present disclosure. In one embodiment, the detection monitor **180** includes a baseline function **182**, an apnea function **184**, a hyperventilation function **186**, a duration function **188**, and an intensity function **190**. The baseline function **182** tracks and determines a baseline breathing pattern for the patient in the absence of sleep disordered breathing. The apnea function **184** detects sleep disordered breathing, such as obstructive sleep apneas, hypopneas, and/or central sleep apneas, relative to the baseline breathing patterns of the patient. The hyperventilation function **186** is configured to assist identifying a sleep disordered breathing behavior based on parameters associated with a hyperventilation period following the sleep disordered breathing behavior. The duration function **188** tracks a duration of sleep disordered breathing events and/or duration of the ensuing hyperventilation, while the intensity function **190** tracks an intensity or severity of sleep disordered breathing events and/or of an intensity of the ensuing hyperventilation. In some embodiments, the functions **182-189** of the detection monitor **180** are implemented via the systems and methods described in association with at least FIGS. **3A-7C**.

In one embodiment, controller **110** of IPG **100** comprises one or more processing units and associated memories **111** configured to generate control signals directing the operation of IPG **100**, including the operation of at least sensing module **102**, therapy manager **106**, power module **108**, stimulation module **104**, and communication module **112**. Accordingly, controller **110** is in communication with, and provides coord-

inated control over, each of the respective modules/managers **102-112** according to instructions in memory **111**. In one aspect, in response to or based upon commands received via programming parameter **198** of communication module **112** and/or instructions contained in the memory **111** associated with controller **110** in response to physiologic data gathered via a sensing module **102**, controller **110** generates control signals directing operation of stimulation module **104** to selectively control stimulation of a target nerve, such as the hypoglossal nerve, to restore airway patency and thereby reduce or eliminate apneic events. In one aspect, memory **111** stores a log of administered therapy and/or sensed physiologic data including data obtained during apnea/hypopnea events and data representing the efficacy of therapy during those events.

It is also understood that at least some of the components and parameters of the various modules and managers **102-112** could be located in a different pattern among the modules and managers **102-112** than shown and described in association with FIG. **3A**.

For purposes of this application, the term "processing unit" shall mean a presently developed or future developed processing unit that executes sequences of instructions contained in a memory. Execution of the sequences of instructions causes the processing unit to perform steps such as generating control signals. The instructions may be loaded in a random access memory (RAM) for execution by the processing unit from a read only memory (ROM), a mass storage device, or some other persistent storage, as represented by a memory **111** associated with controller **110**. In other embodiments, hard wired circuitry may be used in place of or in combination with software instructions to implement the functions described. For example, controller **110** may be embodied as part of one or more application-specific integrated circuits (ASICs). Unless otherwise specifically noted, the controller is not limited to any specific combination of hardware circuitry and software, nor limited to any particular source for the instructions executed by the processing unit.

In general terms, the stimulation module **104** of IPG **100** is configured to generate and apply a neuro-stimulation signal according to a treatment regimen programmed by a physician and/or in cooperation with therapy manager **106**. In one embodiment, stimulation module **104** includes a target nerve module **190** configured to track and apply the treatment parameters for a target nerve such as the hypoglossal nerve. In some embodiments, the target nerve module **190** comprises a multi-site parameter **194A**, a bilateral parameter **194B**, and/or a fascicle parameter **194C**. The multi-site parameter **194A** enables and tracks the stimulation of multiple sites (by using two or more different electrode cuffs) spaced apart along a single nerve (e.g., hypoglossal nerve) to selectively activate tongue-protruder muscles and/or tongue-retractor muscles. Accordingly the multi-site parameter **194A** enables targeting multiple sites along the target nerve (including different trunks or branches) to stimulate multiple muscle groups associated with restoring airway patency.

In some embodiments, the bilateral parameter **194B** enables and tracks the stimulation of a single type of nerve on different sides of the body (e.g. left side and right side) via a pair of stimulation cuff electrodes spaced apart on opposite sides of the body. In one aspect, this arrangement enables alternating activation of a particular muscle (e.g. a tongue retractor or tongue protruder) by alternating stimulation between the left and right side of the body to reduce the duty cycle to any one nerve by 50%, which in turn, reduces any potential for nerve fatigue. In another aspect, bilateral parameter **194B** enables switching to simultaneous bilateral stimu-

lation (i.e. stimulating both nerves synchronous with a certain phase of respiration) if the patient is in a period of sleep that requires more aggressive therapy to prevent apneas.

In one embodiment, the fascicle parameter **194C** enables selective stimulation and tracking of one or more different fascicles of a particular nerve being stimulated. This arrangement ensures stimulation occurs among a full range of different fascicles of a nerve, thereby potentially lessening overall fatigue of a nerve. Moreover, in some embodiments in which the nerve stimulation signal is configured to generate tone in the innervated muscle without causing a full contraction, stimulation of a fuller range of the fascicles can lead to more uniform tone throughout the muscle.

In general terms, the communication module **112** of the IPG **100** is configured to facilitate wireless communication to and from the IPG **100** in a manner familiar to those skilled in the art. Accordingly, the communication module **112** includes a reporting module **196** configured to report activities of the IPG **100** (including sensed physiologic data, stimulation history, number of apneas and/or hypopneas detected, etc.) and a programming module **198** configured to receive initial or further programming of the IPG **100** from an external source, such as a patient programmer, clinician programmer, etc.

Furthermore, in some embodiments, at periodic intervals (e.g., daily, weekly), a report is communicated to the patient. Accordingly, FIG. 3B schematically illustrates a communication system **220** including IPG **100**, clinician programmer **239**, and patient programmer **230**. First, at these periodic intervals, a history of the therapy is stored in records **228** (i.e. a portion of memory **111**) of IPG **100**. At the same periodic intervals or other periodic intervals, this history is communicated to the patient programmer in a reporting format that is easily discernible by the patient.

Referring again to FIG. 3B, in some embodiments, patient programmer **230** includes an on/off function **231**, an increase/decrease function **250**, an audio alert function **232**, and/or a visual reporting function **234**. The on/off function **231** provides the patient an option to control the power state of the IPG **100** to override the automatic functioning of the therapy applied via IPG **100**. Likewise, the increase/decrease function **250** enables the patient to request a preference for a higher level of therapy in the event that the patient perceives that more therapy would be helpful or a preference for a lower level of therapy in the event that the patient is experiencing discomfort. This increase/decrease function **250** of the patient programmer **230** activates an override function **459** of an auto-titrate module **750**, described in association with FIG. 9, that permits the patient to force a reduction or set an upper limit of stimulation in the otherwise automatically self-adjusting therapy. Of course, the physician is also able to limit how much control a patient is given to adjust or override their therapy.

With further reference to FIG. 3B, the audio alert function **232** provides an audio alert to the patient when attention to the patient programmer **230** or IPG **100** is warranted. Furthermore, the visual reporting function **234** is configured to communicate information about the history of therapy and/or about the state of the IPG **100** via one or more of a color light function **235**, word function **236**, symbol function **237**, numeric function **238**, and a time function **239**. This information keeps the patient informed about the efficacy of the system and/or whether the system is functioning properly. For example, a green colored light in the color function **235** may indicate that the device is functioning properly while red light may indicate a malfunction. Via words and/or numerals, the patient programmer **230** also communicates details about the therapy in the last week or last day, such as the hours that

stimulation was applied and how many apnea events were detected. Among other details, this information confirms to the patient that they are receiving efficacious therapy and/or can inform the patient to schedule a physician visit if the therapy is not working.

In another aspect, the history of the therapy stored in records **228** of IPG **100** is sent to the physician via a telemetry internet link for the physician to review an entire daily or weekly therapy profile. Alternatively, the physician can also download or obtain this information directly from the patient while in their office using a clinician programmer **239**. This information will include the circumstances of any instances in which a patient requested changes to the therapy, such as an attempted change via the increase/decrease function **250** of the patient programmer **230**. Upon review, this information (e.g., AHI data) is used by the physician to further program the IPG to be more aggressive or less aggressive as necessary by directly programming the desired therapeutic regimen and/or defining at least some of the parameters guiding an automatic self-adjusting method of therapy.

Moreover, in some embodiments, the patient programmer **230** includes an upper limit function **252** and a lower limit function **254**. In one aspect, the upper limit function **252** enables a patient to set an upper limit of a therapy at which the patient is comfortable such that any increases made via the increase/decrease function **250** will be constrained by this upper limit. These limit functions **250**, **252** are also controllable by a physician via communication between the clinician programmer **239** and the patient programmer **230** (or via communication directly between the clinician programmer **239** and the IPG **100**). The lower limit function **254** constrains downward adjustments by the patient so that the therapy stays within a therapeutic range, and can be adjusted via the clinician programmer **239** in a manner previously described above.

In one aspect, the history communicated from the patient to the physician via records parameter **228** includes, but is not limited to, a stimulation quantity **260** and a duration spent in each of the first, second, and third states **202-206** at **262** (including parameters of the applied stimulation signal). In addition, via an apneas module **264**, records parameter **228** tracks a volume, frequency, and severity of sleep disordered breathing event. Via an activity parameter **270** and sleep parameter **266**, patient programmer **230** tracks activity levels of the patient (both frequency and duration of activity or sleep), as illustrated in FIG. 3B. In one aspect, this history and information is automatically formulated into graphical and numerical reports that provide the physician with a nightly synopsis of the patient's sleep apnea patterns and the effectiveness of the therapy. In addition, these reports may include a trend report within a night or for a period of multiple nights that enable detection of patterns or changes in the patient's health and/or enable evaluation of adjustments made to the therapy by the physician during the multiple night period. In some embodiments, some portion of this information available via records parameter **228** is reported to the patient.

Moreover, as later described in more detail within this disclosure, in some embodiments, the IPG **100** and system **200** is operated in second state **204** for an extended period of time (or even all night) to provide the physician with an in-home pseudo sleep study. In one aspect, the information from this pseudo sleep study is sent via a patient internet appliance to the physician to enable the physician to adjust or tailor the patient's therapy regimen.

It will be understood that the various components, functions, parameters, and modules of the systems and methods of the present disclosure can be configured, combined, and/or

separated to form different groupings than those described and illustrated in FIGS. 1-10 while still achieving the general principles of the present disclosure described herein.

FIG. 4A is a schematic illustration of a system 200 for automatically treating sleep disordered breathing, according to one embodiment of the present disclosure. In one embodiment, system 200 comprises at least substantially the same features and attributes as the systems and components previously described in association with FIGS. 1-3B. As illustrated in FIG. 4A, a multi-tiered system 200 automatically initiates, terminates, and/or applies a therapy with the system operating in one of three states. Among other features, this system provides on/off control of the therapy such that the patient does not have to manually turn the IPG on or off, which insures patient compliance with the therapy while also greatly improving the patient's satisfaction and quality of life.

As illustrated in FIG. 4A, in general terms, in a first state 202 of operation of system 200, system 200 determines whether sleep-indicative behavior is present and the sensed behavior is measured against a first threshold 290 (e.g. first criteria). In some embodiments, a degree of sleep-indicative behavior is measured via a body motion/activity sensor 310 that senses body posture and "seismic" activity that is indicative of walking, body motion, talking, etc. In one embodiment, this sensor 310 comprises an accelerometer configured to sense a body position or posture. In another embodiment, the body activity sensor 310 comprises an accelerometer or piezoelectric transducer, which is configured for sensing motion. In some embodiments, sensor 310 comprises both a position-sensing component and a motion-sensing component. In one aspect, this physiologic data is tracked via body motion parameter 130 of IPG 100. It is understood that in some embodiments, the awake or sleep state of the patient is alternatively indicated or further indicated via one of more of the physiologic parameters tracked in sensing module 102 (FIG. 3A), including (but not limited to) the heart rate parameter 158 or respiratory rate parameter 159.

In either case, the IPG 100 performs this sensing of sleep-indicative behavior for a short period of time (e.g., less than 1 minute) at periodic intervals (e.g. at least every 5 minutes). If the body activity sensor 310 detects inactivity for a significant period of time (e.g. greater than 10 minutes), the system would enter a second state of operation. It is understood that each of the specific times listed above (e.g. sensing for 1 minute between intervals of 5 minutes and providing 10 minutes for an inactivity threshold, respectively) are merely examples and that other times can be selected and/or can be programmed by a physician. In some instances, a brief occasion of activity and/or cyclic periods of activity may be indicative of sleep disordered breathing behavior. Accordingly, when operating in the first state 202, the system will monitor for consistent levels of sleep-indicative behavior, such as inactivity, as well as body posture, to ensure that the system is properly identifying whether the patient is awake or asleep to thereby determine whether the system should enter the second state 202.

In some embodiments, the sensor polling times are performed on a probabilistic model in which sensing is performed according to a dynamic schedule based on the amount of body activity measured at a particular sensing time. For example, if a large amount of body activity is measured at time X, then the next polling time would take place much later at time Y. However, if a small amount of body activity is measured at time X, then the next polling time would take place at a time generally equal to (or less than) Y-X.

In one non-limiting example, a probabilistic polling profile 336 (for sensing of potential apneas) is illustrated in FIG. 4B

in which a magnitude of a time interval between consecutive samples 332 (y-axis) is mapped relative to an amount of sensed body activity 334 (x-axis). As previously described, the general activity level of the patient is sensed according to body motion, body posture, heart rate, respiratory rate, and/or other parameters to determine whether or not the patient is asleep or awake, or somewhere in between a sleeping state and an awake state.

As shown in FIG. 4B, according to a probabilistic sampling function, when the amount of sensed body activity is relatively low (340), then a relatively short time interval between samples (338) is applied whereas when the amount of sensed body activity is relatively high (342), then a relatively larger time interval is provided between consecutive samples (339). In general, as the amount of body activity increases, the amount of time between samples (i.e., the size of the sampling interval 332) increases until a maximum sample interval (344) is reached, at which time the size of the sampling interval remains at the maximum until the body activity level drops below the point (346) at which the maximum sample interval is initiated. Stated in other terms, this probabilistic model expresses the probability of a change in sleep conditions such that as the amount of body activity increases to a high range of body activity, there is a much lower likelihood of a change in sleep conditions because the patient is fairly active, and therefore, a much greater time interval can occur between consecutive data samples regarding potential apneic events. In general terms, this probabilistic model conserves energy, thereby contributing the longevity of the IPG 100 in the patient, among other advantages.

Referring again to FIG. 4A, in another aspect, because the body motion/activity sensor 310 (such as an accelerometer) is a low-power sensor, the first state 202 of operation minimizes current drain on the system. In other words, minimal energy is used to first determine a gross level of patient awake/activity (as compared to the activity in a sleep state) using a first level 300 of power before performing more power intensive sensing and signal processing, such as those actions that occur in the second state 202 or third state 206 of operation. In this regard, in accordance with principles of the present disclosure, in one embodiment controller 110 is configured to generate control signals to cause only the sensing module 102 (and not the stimulation module 104) to be supplied with power so that the IPG 100 conserves power until and unless sleep disordered breathing events are detected.

Moreover, in one embodiment, controller 110 can be configured to further limit the power to just one or two select sensors of the system, such as the body motion sensor (e.g., accelerometer parameter 132), so the system is not unnecessarily using power to track numerous physiologic data during periods of normal patient activity (e.g., walking, eating, working, etc.). On the other hand, in some embodiments, controller 110 can also be configured to limit power consumption by deactivating certain sensors of the system when the patient goes to sleep.

In another embodiment, controller 110 further limits power consumption by limiting the frequency at which one or more sensors capture data. For example, instead of continuously capturing data, controller 110 causes the one or more sensors to capture data once for a given time period, for example, once every 5 minutes or every 10 minutes. In yet another embodiment, to further reduce power consumption, the controller 110 causes the frequency of data capture for one set of sensors to be increased during therapy (in the third state 206) while the frequency of data capture for another set of sensors is decreased (or terminated) during therapy.

In some embodiments, first state **202** comprises an on/off function **280** including a time parameter **142**. In one aspect, when operating in an “off” mode, the on/off function **280** can prevent a false transition to second state **204** by deactivating the sensing functions in first state **202** during certain periods of time (in accordance with time parameter **142**), such as a standard wakefulness time period (e.g. preset nominal awake hours between 6 am and 10 pm) or other programmable waking periods. This arrangement ensures that the treatment regimen will not be active during nominal awake hours. In addition, this limit provides power conservation by preventing a transition to a higher power consumption state. On the other hand, in this embodiment, when operating in an “on” mode, the on/off function **280** enables detection of an asleep state during nominal non-waking hours (e.g., between 10 p.m. and 6 a.m.) to confirm the sleep state of the patient prior to enabling any transition to second state **204**. Accordingly, upon detecting that the patient is asleep, the “on” mode permits a transition to second state **204** to detect apneas and to potentially provide a therapy in the third state **206**.

In one embodiment, the on/off function **280** operates to provide an automatic nocturnal therapy function or sleep schedule parameter, in which the second state **204** of operation (and a potential implementation of the third state of operation) is automatically implemented during a standard sleeping time frame (e.g., preset nominal sleeping hours, such as but not limited to 10 p.m. to 6 a.m.).

In another embodiment, instead of operating first state **202** to trigger a transition to second state **204** based upon sensing body position/posture and sensing body motion (to determine whether the patient is awake or asleep), first state **202** is operated solely as an on/off state such that during normal waking hours (i.e., a standard wakefulness period or awake schedule), the first state **202** will not permit a transition to second state **204**, thereby preventing stimulation therapy during the “off” period (i.e., during waking hours). In this embodiment, during non-waking hours (e.g., a repeating nocturnal time period, such as 10 p.m. to 6 a.m.) first state **202** becomes effectively suspended and second state **204** is automatically implemented so that the system remains in at least the second state **204** throughout the non-waking hours to check for apneas and is authorized to provide therapy as needed without spending time or energy identifying whether the patient is awake or asleep.

It will be further understood, that in some embodiments, the time function **142** is present in the second and third states **204**, **206** of operation.

In one aspect of the second state **204** of the system **200**, the system operates at a second level **302** of power to conserve a significant amount of power by not enabling any electrical stimulation of the target nerve. Accordingly, power is not significantly increased from the second level **302** to the third level **304** of power until the system **200** reaches the third state **206**, when the patient is detected to be in a sleep state and simultaneously in a state that requires therapy to treat the apneas/hypopneas. This power savings can significantly prolong the life of the system.

In a second state **204** of operation of the system, the IPG continues to monitor the body motion/activity information, such that the system will return to the first state **202** if the sleep-indicative behavior (e.g., the patient’s activity level and/or body position) fails to meet the first threshold **290**, thereby indicating that the patient has entered awake or active state. In some embodiments, system **200** operates in an additive manner or progressive function such that operation in a successive state (e.g. second state **204**) includes maintaining

activation of or performance of the features of a previous state (e.g. first state **202**) of operation.

In addition to the use of a body activity/motion sensor, in a second state **204** the IPG **100** determines whether sleep disordered breathing, such as apneas/hypopneas, are occurring via monitoring additional physiologic data. For example, the other physiologic data gathered by the IPG can be obtained through the use of one or more of a respiratory sensor, a heart rate sensor, or blood oxygen sensor (e.g. for measuring oxygen saturation), or other sensors of the type previously described in association with FIG. **3A**. For example, while heart rate information can be used in a variety of ways, in some embodiments, an increased heart rate that substantially coincides with at least part of the sleep disordered breathing behavior is used to assist in confirming that the observed behavior is in fact sleep disordered breathing behavior. In particular, in one embodiment, sleep disordered breathing behavior is confirmed via detection of a decreasing heart rate generally coinciding with initiation of the sleep disordered breathing behavior and an increasing heart rate generally coinciding with the termination of the sleep disordered breathing behavior (e.g. an obstructive sleep apnea event). In another example, an identification of sleep disordered breathing behavior is corroborated by detecting a decrease in blood oxygen saturation that substantially coincides with at least part of the sleep disordered breathing behavior. In another example, confirmation of sleep disordered breathing behavior is provided via detection of hyperventilation that occurs (or is initiated) during part of the suspected sleep-disordered breathing behavior.

In some embodiments, at **324** the second state **204** operates to sample physiologic conditions (in order to detect sleep disordered breathing) in a probabilistic manner or periodically at a frequency that is inversely related to the amount or type of body activity (and posture) sensed via sensor **310**, in a manner consistent with that previously described in association with FIG. **4B**.

In one embodiment, as illustrated in FIG. **4A**, the primary physiologic data used to determine whether or not an apnea is occurring includes a bio-impedance signal **312** (e.g., a trans-thoracic parameter or a non-thoracic parameter) and/or a respiratory pressure signal **314** (e.g., intrapleural or other respiratory parameter), as further described later in more detail in association with FIGS. **5-7**. In the event that apneas or hypopneas suitable for treatment are detected, the system transitions from the second state **204** to the third state **206**. In some embodiments, system **200** operates via a bypass function in which second state **204** is omitted thereby enabling the system **200** to operate in an acute mode. In this arrangement, as soon as a patient’s patient sleep is detected in first state **202** (or the “on” function is activated), system **200** automatically proceeds to implementing therapy in the third state **206**. In one non-limiting example, this arrangement is employed when a patient has an acute case of sleep disordered breathing (e.g., obstructive sleep apnea, hypopneas, etc.) such that any time the patient enters a sleep state, it is practically assured that sleep disordered breathing will take place. Moreover, a physician can program system **200** to operate in an acute mode as patient circumstances warrant. In a third state **206** of operation of the system **200**, the system **200** applies a therapy to treat sleep disordered breathing, such as the use of stimulation of the hypoglossal nerve (as represented by output **320** in FIG. **4A**) synchronous with inspiration to keep the upper airway from obstructing. In some embodiments, stimulation of the hypoglossal nerve is synchronized to be OFF during at least a portion of expiration. In some embodiments, the

therapy is applied via an auto-titrate module **750** as will be further described in association with FIG. **9**.

In this third state **206**, the system **200** will periodically or temporarily suspend therapy at regular intervals (for example, every 5, 10, or 15 minutes) for a period of time (e.g., 30 seconds, 1, 2, 3, 4, 5 or more minutes) to determine whether or not apneas/hypopneas are occurring or whether an apnea severity score is above a predetermined threshold. In other words, system **200** is programmable to vary the amount of time that a stimulation protocol is suspended and to vary the frequency at which a stimulation protocol is suspended.

In some embodiments, the frequency of suspending stimulation is based on a probabilistic profile **351** as schematically illustrated by graph **350** in FIG. **4C**. According to this profile **351**, the greater the apnea severity score (based on at least a frequency and/or intensity of apneas), the less often that therapy will be suspended to check for apneas. On the other hand, when there is a lower apnea severity score, the more often that therapy will be suspended as fewer adjustments are expected to be made. In addition, in the latter scenario, the time of suspension can be longer as it is expected that less therapy is needed. Of course, in some embodiments, the system **200** is also programmable to have longer or shorter durations of suspended therapy independent of the frequency at which therapy is suspended.

In some embodiments, additional parameters are considered in determining the duration or, or the frequency of, suspending therapy to check for apneas. For example, one parameter is how long sleep has been going on because too frequent or too long of a suspension of therapy early in the intended sleep period (e.g., the first hour) could inhibit the patient from getting to sleep. As another example, if other samples (in the early periods of the intended sleep period) have indicated a high apnea severity score requiring significant stimulation therapy, then another sample may not be needed for some time or even all night. On the other hand, if apnea severity scores early in the intended sleep period were low, then a longer suspension period may be needed to get a statistically significant respiration cycles. These determinations also can be linked to other sleep data. For example, if a body-motion sensor or body-position sensor indicates less restful sleep, then suspension should probably occur less frequently and for less time.

A temporary suspension of the therapy reverts the system **200** to operation in the second state **204** in which the IPG **100** monitors physiologic data for detection of apneas and/or hypopneas without applying a therapy. If no apneas/hypopneas are detected during this temporary suspension of therapy (or if the apnea severity score is below the predetermined threshold), the IPG **100** will remain in the second state **202** of operation. On the other hand, if apneas or hypopneas are still detected (or the apnea severity score is above the predetermined threshold) during a temporary suspension of therapy, the system will once again resume operation in the third state **206** in order to deliver the needed stimulation therapy for treating the sleep disordered breathing behavior.

While the automated decision by system **200** to suspend therapy can be based strictly on time parameters and/or a time-based probabilistic profile as previously described, in other embodiments the automated decision by system **200** to suspend therapy is made by additional factors independent of, or in combination with, time-based parameters. With this in mind, FIG. **4D** schematically illustrates a method of initiating and terminating suspension of therapy as performed as part of third state **206** (or as part of a state-less decision model). FIG. **4D** illustrates a loop **375** in which stimulation is applied (**380**) until or unless one or more triggers **382** are present, at which

time a suspension function causes system **200** to move to a state of suspended therapy (at **384**). One of these triggers **382** includes a preset time-based model, such as the probabilistic model previously described in association with FIG. **4C** or a fixed time interval. In some embodiments, a posture change function provides another trigger to temporarily suspend application of a stimulation signal based on a change in posture, such as a change in sleeping position when the patient rolls over between a supine and lateral position. In one example, such body position would be monitored by the position-sensing component **132** of body parameter **130** in sensing module **102** of implantable pulse generator **100**, as illustrated in FIG. **3A**. These changes in position can interrupt an apneic state, and therefore such repositioning is an appropriate trigger to suspend therapy to enable detection of whether any apneas are occurring so that therapy is not unnecessarily applied when the changed sleeping position terminated the apnea(s).

Moreover, even when a therapeutic nerve stimulation signal is not being applied when a patient in the supine position, in some embodiments, the sensed supine position is used to as a trigger to check for sleep-disordered breathing behavior more frequently (for example in the second state **204** in FIG. **4A**) because patients are generally more prone to exhibit sleep disordered breathing behavior in the supine position. Similarly, when other physiologic data such as respiratory waveforms, bio-impedance, heart rate, blood oxygen saturation etc. indicate that sleep disordered breathing behavior is occurring, knowing whether the patient is in the supine position or not helps to confirm whether or not the suspected sleep disordered breathing behavior is truly sleep disordered breathing behavior, as described herein in more detail in association with at least parameter **130** of FIG. **3A**, second state **204** in FIG. **4A**, and/or parameter **423** in FIG. **4F**.

For example, if the monitored physiologic data in cooperation with the body position data reveals that a particular patient rarely exhibits sleep disordered breathing behavior when in a lateral decubitus (i.e., lying on their side), then this body sensing information helps to prevent false positives of sleep disordered breathing behavior when the patient is lying on their side. Alternatively, this same data would ensure the accuracy of indicating sleep disordered breathing behavior when the conclusion from primary physiologic data indicating sleep disordered breathing behavior is bolstered by sensing the patient is in a supine position, where most (if not all) of their sleep disordered breathing behavior takes place.

In yet other embodiments, the body position data is used as part of method to determine the aggressiveness of a therapy regimen to apply to the patient. For example, in one embodiment, when the body position parameter **132** reveals that the patient is in a supine position they will receive (via a therapy manager **106** of IPG **100** in FIG. **3A** and auto-titrate module **750** in FIG. **9**) a first regimen of therapy and when in a lateral decubitus position (laying on their side), they will receive a second regimen of therapy that is less aggressive than the first regimen of therapy. However, for other patients, the body position data (via parameter **132**) is used to apply a less aggressive therapy when the patient is in a supine position and a more aggressive therapy when the patient is in a lateral decubitus position.

Another trigger also includes body activity, as a patient may get out of bed for a period of time, thereby terminating apneic events.

In some embodiments, a severity score of the sleep disordered breathing behavior acts as a trigger (**382**) to suspend stimulation in order to detect or monitor for sleep disordered breathing behavior. For example, in one embodiment, a fre-

quency of suspending stimulation (to monitor for sleep disordered breathing) is inversely proportional to the severity score of the sleep disordered breathing behavior. In other words, the more severe (e.g. frequency, duration, intensity) the sleep disordered breathing behavior, the less often that stimulation is suspended to check for such breathing behavior and the less severe the sleep disordered breathing behavior, the more often that stimulation is suspended to check for disordered breathing behaviors.

In some embodiments, one or more different stages of sleep may act as triggers to warrant suspending therapy to check whether or not any sleep disordered breathings behavior is occurring. For example, if the sensed physiologic parameters reveal that the patient is likely in a deeper stage of sleep for a sufficient period of time, then these sleep stages would trigger the suspension of therapy to move the system **200** out of the stimulation mode and start detecting possible sleep disordered breathing. Accordingly, in some embodiments, as described later in more detail, system **200** is trained by operating simultaneously with a sleep study (e.g., polysomnography) in which different sleep stages (among other patterns) are recognized and in which a patient's different physiologic parameters are tracked relative to those sleep stages. By correlating these sleep study parameters with sensed physiologic parameters of the IPG **100** (FIG. 3A), the IPG **100** becomes calibrated for a particular patient to recognize sleep stages and other sleep patterns which are useful in some embodiments for applying and/or suspending therapy via the IPG **100**.

With further reference to FIG. 4D, a suspension of therapy is terminated and therapy is resumed via reversion to third state **206** according to one or more triggers **382** such as a preset (or probabilistic) time interval or when an apnea severity score detected during the suspended therapy rises above a threshold (e.g., an AHI of 10). It will be understood that in this context the term apnea is used to refer generally to obstructive sleep apnea, hypopneas, or central sleep apnea. Therapy is then applied until one of the triggers **382** forces suspension of therapy.

In general terms, this arrangement insures that therapy is suspended when it is no longer necessary and resumed when necessary. This suspension mechanism aids in preventing overstimulation/fatigue of a nerve, conserves power, and reduces patient annoyance due to stimulation therapy that occurs when the patient is not sleeping.

In some embodiments, this multi-tier system **200** illustrated in at least FIG. 4A operates according to a progressive function that provides a dynamic or progressive activation of successive states of operation along with a reversion function in which the system **200** automatically reverts to one of the lower states of operation when operation in a higher state becomes unnecessary. In one aspect, the first and second state employ a sensing portion of the IPG **100** without activation of the stimulation portion of the IPG **100**. This arrangement saves power in cooperation with power management module **108** (FIG. 3A), which can increase the longevity of an implantable battery-operated device, such as the IPG **100**. Moreover, because the first state of operation employs only a single sensing parameter (e.g. the body motion/activity sensing) in some embodiments, the IPG **100** can operate in a very low state of power most of the time. In addition to conserving power as part of the power management function of module **108**, this arrangement minimizes patient annoyance by insuring that therapy is provided only when needed. Even when criteria to move from the first state **202** to the second state **204** of operation are met, a relatively low state of power is employed in a second state **204** of operation while sensing

appropriate physiological sensors to detect sleep disordered breathing behavior. Moreover, this relatively low state of power in the second state **204** of operation is substantially less (for example, less by at least an order of magnitude) than the amount of power used in a third state **206** of operation to provide therapy via stimulating a target nerve.

In another aspect, in addition to conserving power, limiting the first state **202** or second state **204** of operation to a low power state in which no stimulation takes place when not affirmatively providing a neuro-stimulation therapy (such as in the third state **206**) also can avoid an unnecessary long term stimulation of the nerve.

Accordingly, a multi-tier system **200** in accordance with principles of the present disclosure ensures that the patient will automatically receive therapeutic treatment for their sleep disordered breathing behaviors at the appropriate time without undue interference with, or fatigue of, normal nerve function while the system **200** dynamically manages power consumption and operational states of the IPG **100**.

It is also understood that the system **200** of providing therapy can also be provided via protocols other than the state-based protocol illustrated and described in association with FIG. 3A. For example, in other embodiments, system **200** is implemented via rule based protocols and/or other protocols that do not strictly rely on the sequence and/or interaction of three states of operation.

It is also understood that the identification of a sleep apnea or hypopnea via an IPG **100** and the associated systems and methods described herein is performed in a manner that varies somewhat from how apneas/hypopneas are identified in a sleep study. For example, in a sleep study, an apnea or hypopnea is defined as a certain physiologic events, such as a decrease (e.g., 3%) in blood oxygen saturation for a period of at least ten seconds. Moreover, in a sleep lab, the physician scores events using predefined criteria, based on the sensor parameters obtained in a sleep lab, and this scoring results in the AHI count.

Accordingly, because the implantable systems described herein do not have sensors that correspond exactly with the types of sensors used in a sleep lab, the AHI count determined via the implantable systems in accordance with embodiments of the present disclosure will differ somewhat from the sleep lab-determined AHI count. Nevertheless, the implantable system/methods of embodiments of the present disclosure include a number of physiologically sensed data (e.g., internally measured blood oxygen saturation) that can act as surrogates for the types of information obtained in a sleep lab (e.g., externally measured blood oxygen saturation).

FIG. 4E is a flow diagram that schematically illustrates a method **390** of correlating sleep study parameters with physiologic parameters of the implantable pulse generator system, in accordance with an embodiment of the present disclosure. As illustrated in FIG. 4E, at **392** the method **390** includes operating, substantially simultaneously with a polysomnography (PSG) study, an implantable pulse generator (IPG) system in a monitoring mode. At **394**, a first set of physiologic parameters is tracked, during the polysomnography study, via the IPG system in its monitoring mode. A second set of sleep study parameters is tracked, independent of the IPG system, via the polysomnography study (at **395**). At **396**, method **390** includes identifying sleep disordered breathing patterns (e.g. apneas and/or hypopneas) from the tracked second set of sleep study parameters and identifying which of these parameters are indicative of sleep disordered breathing for a particular patient. At **398**, the implantable pulse generator is calibrated to recognize sleep disordered breathing for a particular patient via correlating the tracked physiologic IPG-

based parameters/conditions relative to the tracked PSG-based sleep study parameters that are indicative of sleep disordered breathing behavior for that particular patient.

With this in mind, FIG. 4F provides a chart 400 that schematically illustrates a comparison of some sleep study parameters 402 relative to some IPG therapy parameters 408. As previously noted, in some embodiments, the IPG therapy parameters 408 are calibrated relative to one or more related sleep study parameters 402. For example, an IPG 100 within a patient operates during a sleep study such that parameters for the IPG 100 and parameters for the polysomnograph (PSG) monitor are both tracked. By looking at profiles of sleep disordered breathing behavior, a correlation is made between the IPG parameters 418 and the PSG parameters 402 such that the IPG 100 is calibrated to sleep study data.

In one example, one sleep study parameter includes an airflow measured at the mouth-nostril airflow pathway (410), which is indicative of a sleep disordered breathing when this airflow is substantially reduced. In one aspect, the mouth-nostril airflow is measured at the nostrils and/or mouth. While this parameter may not be exactly reproduced in embodiments which are totally implantable, a combination of parameters to be described in more detail in association with FIGS. 5-7B provides a good indication of an sleep disordered breathing behavior that is commensurate with the extent to which the mouth-nostril-airflow parameter 410 of a sleep study indicates sleep disordered breathing. In particular, a dramatic change in the amplitude patterns 416 (and in opposite directions) of both a bio-impedance signal and a respiratory pressure signal provide an indication that a sleep disordered breathing behavior (e.g., an apneic event) 413 is occurring or has occurred. Accordingly, this combination of the amplitude patterns 416 of the bio-impedance and respiratory pressure signals (determined via IPG 100 and system 100) act as a surrogate to the mouth-nostril-airflow parameter 410 typically measured in a sleep study.

In another example, referring again to FIG. 4F, the internally measured blood oxygen saturation parameter 417 (via IPG 100 and system 200) acts as a surrogate for the externally measured blood oxygen saturation parameter 411 available via a sleep study. While there are some differences between these two respective parameters 417 and 411, by training IPG 100 via a sleep study, the internally measured blood oxygen saturation parameter 417 (via IPG 100 and system 200) will be calibrated relative to the externally measured blood oxygen saturation parameter 411 to account for such differences. In this way, the internally measured blood oxygen saturation parameter 417 can function as an accurate trigger for occurrences of sleep disordered breathing in this patient.

In other respects, the one or more physiologic data points of the implantable systems/method of the present disclosure may provide information that is more helpful in determining an automatic self-adjusting therapy than information obtained via a sleep lab. For example, embodiments of the present disclosure measure intra-pleural pressures 418, which can be correlated to the degree of obstruction of the upper airway. As the obstruction increases in a progression from an open airway to hypopnea to a full obstruction, the magnitude of the intra-pleural pressure increases. Accordingly, embodiments of the present disclosure enable measurement and identification of increases in the intra-pleural pressures 418 which in turn, are indicative of sleep disordered breathing events 415. In one aspect, this feature enables the systems/methods of present disclosure to provide sleep disordered breathing scoring (e.g., apnea scoring) that is more sophisticated than conventional scoring methods associated with a sleep lab.

Moreover, in one embodiment, after initially calibrating the IPG 100 during a sleep study, the IPG 100 is permitted to operate during a second sleep study so that the IPG 100 is able to self-learn in direct association with the data provided via the PSG. Using this method, physiologic data sensed via the IPG 100 that is indicative of an sleep disordered breathing behavior is matched with indicative physiologic data/observations sensed via the PSG monitoring system that is indicative of sleep disordered breathing behavior. In one aspect, this direct calibration lessens the time that the IPG would spend self-learning an appropriate baseline therapy regimen for a patient because the PSG would allow direct real-time programming of the IPG as the sleep study occurs. In other words, the IPG would be automatically programmed with a pattern of the sleep disordered breathing patterns, sleep habits, etc. so that the IPG will know in advance for this patient which time of night, day of the week, body position, heart rate, etc. that will trigger apneic behavior or normal breathing. As a result, the automatic therapy regimen will be tailored to a specific patient's needs rather than having the patient receive a conventional one-size-fits-all stimulation therapy that would have a greater potential to consistently overstimulate or understimulate the patient.

In this regard, FIG. 4F further illustrates such additional parameters which are correlated with the PSG-related primary parameters and the IPG-related primary parameters. In some instances, these additional parameters may or may not be tracked in a polysomnography study or via the IPG. As shown in FIG. 4F, a night-of-week parameter 420 tracks which night or nights of the week that the sleep disordered breathing behavior occurs while time-of-day parameter 421 tracks one or more points in time within a 24 hour period that the sleep disordered breathing occurs. A sleep stage parameter 421 tracks which, and how many, stages of sleep within a sleeping period (such as 10 pm to 6 am) that the sleep disordered breathing occurs. A body posture parameter 423 tracks which body posture coincides with occurrence of the sleep disordered breathing, and when (relative to a sleep stage, time of day, or night-of-the-week) the patient typically enters that body posture. Other parameters, such as patient demographic factors 424 are tracked as well, such as age, sex, smoker, weight, neck, hypertension, etc.

In some embodiments, this method of correlation includes correlating a sleep stage parameter 425 relative to sleep disordered breathing events and relative to an array of IPG-related parameters 426, such as a heart rate, a blood oxygen saturation, a bio-impedance, and/or a respiratory pressure.

In another embodiment, as illustrated by chart 450 of FIG. 4G, after a number of IPG-based systems 456 (e.g., IPG 1, IPG 2, etc.) are calibrated relative to sleep study parameters 454 (e.g. PSG 1, PSG 2, etc.) for a number of patients 452 (e.g. Joe, Fred, etc), embodiments of the present disclosure can use a correlation of the sleep study parameters relative to the IPG parameters to develop a predictive index 460 (e.g., responsive ratings) that would predict how beneficial an IPG might be for a particular patient prior to implantation of the IPG in the patient. In one aspect, the responsive rating expresses on a scale from 1 to 10 (with ten being the highest) how efficacious the implantable pulse generator would be to treat sleep disordered breathing for a patient having the type of polysomnography study and demographics like those provided in the chart.

In some embodiments, in addition to or instead of sensing physiologic parameters via IPG 100 during a formal sleep study, system 200 (FIG. 4A) of an implanted IPG 100 is operated only in the second state 204 for an extended period of time (or even all night) to provide the physician with a

pseudo sleep study performed in the home of the patient. In other words, the IPG 100 and system 200 act as an implanted polysomnography device. In one aspect, the data from the in-home pseudo sleep study is sent via a patient internet appliance (e.g., patient programmer 230 of FIG. 3B) to the physician, thereby allowing the physician to better tailor the stimulation therapy to the sleeping habits/behavior of the patient. In some respects, the in-home pseudo sleep study can potentially provide better data than a formal sleep study regarding the actual sleeping behavior or habits of the patient because the patient would be sleeping in their normal sleeping environment, such as their own bed, under their own climate control, etc.

Accordingly, FIG. 4H illustrates one embodiment of a method 475 of treating sleep disordered breathing, according to an embodiment of the present disclosure. As illustrated in FIG. 4H, at 480 method 475 includes calibrating an IPG system via an in-home pseudo sleep study via sensing physiologic parameters, as surrogates for conventional sleep study parameters, with the IPG system. At 482, in initial therapeutic regimen of nerve stimulation therapy, based on the calibration, is programmed into the IPG system. At 484, method 475 includes performing an automatically adjustable stimulation therapy, via the programmed, calibrated IPG system, based on the initial therapeutic regimen.

In some embodiments, prior to performing the in-home pseudo sleep study, sensing parameters of the IPG 100 and system 200 are calibrated relative to conventional sensing parameters of a formal sleep study by operating the IPG 100 and system 200 in a sensing mode (e.g. second state 204 in FIG. 4A) during the formal sleep study in a manner substantially the same as described above.

While any number of physiologic parameters can be used with varying success to detect sleep disordered breathing, such as an apnea and/or hypopnea, in one embodiment of the present disclosure, the sensing module 102 of the IPG 100 detects apneas/hypopneas via a trans-thoracic bio-impedance parameter. In particular, a measurement of trans-thoracic impedance is used to track the relative amplitude of the respiratory waveform. Physiologically speaking, the bio-impedance of the lungs varies as the lungs fill and empty with air. An air filled lung has a slightly higher impedance. In another aspect, a varying respiratory drive will also cause the amplitude of the bio-impedance to vary, with a larger respiratory drive increasing the signal amplitude of the bio-impedance.

Upon obtaining the trans-thoracic bio-impedance signal via the sensing module 102 of IPG 100, the bio-impedance signal is further processed to identify an average peak amplitude over time. A sleep disordered breathing event is detected by further identifying cyclic amplitude variations that occur for a duration substantially similar to the already known duration of a typical apneic event. In this regard, FIG. 5 provides a graph 500 schematically illustrating a respiratory airflow signal 502 corresponding generally to respiratory drive/effort and a trans-thoracic, bio-impedance signal 504. As shown in FIG. 5, a relative amplitude (represented by y-axis 508) of these signals is separately tracked over a time period (represented by x-axis 506).

In the above-described embodiment, the bio-impedance signal 504 is obtained via a trans-thoracic sensing mechanism. However, in other embodiments, the bio-impedance signal 504 is obtained via other sensing mechanisms such as previously identified in association with bilateral nerve electrode parameter 148 of FIG. 3A. For example, in one embodiment, when a stimulation cuff electrode is provided on each of the left and right sides of the body to enable potential bilateral stimulation (simultaneous or alternating), a bio-impedance

can be measured between these respective nerve electrode cuffs, which are spaced apart on opposite sides of the body. In the event of a collapsed airway, a change in the pattern of this bio-impedance signal will be detected and can be used to indicate an apneic/hypopnea event. Of course, monitoring a bio-impedance signal in embodiments of the present disclosure is not strictly limited to either the trans-thoracic sensing mechanism or the sensing mechanism provided by the spaced apart stimulation cuffs.

In particular, in observing the amplitude signal (of the bio-impedance measurement) during a typical apneic event, the system would observe a 10 to 40 second time period of a low amplitude signal (which directly corresponds to the obstruction) followed by a very high amplitude signal (of the bio-impedance measurement) due to the arousal from sleep and the ensuing hyperventilation. In FIG. 5, the bio-impedance signal 504 during normal respiration is represented by segment 540, while the relatively low amplitude bio-impedance signal 504 during the sleep disordered breathing event is represented by segment 542 which is then followed by the relatively high amplitude signal in high-effort segment 544. Moreover, the relatively low amplitude segment 542 of the bio-impedance signal 504 substantially corresponds to the relatively low amplitude segment 532 of the airflow signal 502 caused by the obstruction. Finally, the high amplitude segment 534 of airflow signal 502 represents an increase to respiratory drive as the patient is aroused and exerts a high effort (represented by portion 274) to recover from the sleep disordered breathing event(s).

Accordingly, in one embodiment the IPG 100 uses this physiologic data illustrated in FIG. 5 to identify a sleep disordered breathing behavior. In one aspect, this data would be detected via a sensing module 102 of IPG 100 with system 200 in a second state 204 of operation.

In another embodiment of the present disclosure, the sensing module 102 of IPG 100 detects an apnea or hypopnea via a respiratory pressure parameter. As previously described in association with FIGS. 1-2, a measurement of respiratory pressure can be made by placing a pressure sensor in the extrapleural space (represented by 89 in FIG. 2) or the intrapleural space (represented by dashed lines 88 and identifier 90 in FIG. 2). The respiratory pressure signal will provide a respiratory signal proportional to the negative pressures generated during inspiration. For example, the magnitude of the amplitude of the respiratory pressure will vary due to the level of respiratory drive or effort and also will vary based on any flow restriction in the upper airway.

In this regard, FIG. 6 provides a graph 550 schematically illustrating the respiratory airflow signal 502 corresponding generally to respiratory drive/effort and a respiratory pressure signal 552. As shown in FIG. 6, a relative amplitude (represented by y-axis 508) of these signals is separately tracked over a time period (represented by x-axis 506).

In particular, in observing the amplitude signal (of the respiratory pressure measurement) during a typical apneic event, the system would observe a 10 to 40 second time period of a high amplitude signal (which directly corresponds to the obstruction) continued by a very high amplitude signal (of the respiratory pressure measurement) due to the arousal from sleep and the ensuing hyperventilation. In FIG. 6, the respiratory pressure signal 552 during normal respiration is represented by segment 560, while the relatively high amplitude respiratory pressure signal 552 during the sleep disordered breathing event is represented by segment 562 which is then followed by the relatively high amplitude signal in high-effort segment 564. Moreover, the relatively high amplitude segment 562 of the respiratory pressure signal 552 (representing

an increased magnitude of inspiratory negative pressure) substantially corresponds to the relatively low amplitude segment **532** of the airflow signal **502** caused by the obstruction.

Thus, the sensing module **102** of the IPG **100** (when operating in second state **204** of multi-tier system **200**) can detect apneas or hypopneas (using physiologic data such as that illustrated in FIG. **6**) by tracking the respiratory amplitude from a respiratory pressure sensor and identifying average peak pressures and detecting cyclic amplitude variations that have a time component similar to the period of apneic events.

In yet another embodiment, sensing module **102** of IPG **100** can detect an apnea or a hypopnea by using more than one primary physiologic signal as a determining factor. Accordingly, as illustrated in FIG. **7A**, both a bio-impedance signal **504** and a respiratory pressure signal **552** are used together to determine when an apnea or hypopnea is occurring. While the example shown in the FIG. **7A** illustrates a trans-thoracic bio-impedance signal, it is understood that other bio-impedance signals can be tracked and used in combination with a respiratory pressure signal **552** to determine whether an apnea or hypopnea is occurring.

While using either a bio-impedance sensing signal **504** (FIG. **5**) or a respiratory pressure sensing signal **552** (FIG. **6**) alone will provide some level of apnea detection, these respective sensing signals lack specificity as the signal amplitudes both vary with respiratory drive and with restricted/obstructed airflow (apnea/hypopnea). However, the combination of using physiologic data from both a bio-impedance sensor and a respiratory pressure sensor provides excellent apnea/hypopnea detection as both sensors have significant changes in amplitude due to increased respiratory drive. In some embodiments, these substantial changes comprise opposing amplitude changes during the occurrence of the apneas/hypopneas. In particular, as illustrated in FIG. **7A**, the respiratory pressure amplitude (signal **552**) significantly increases (segment **562**) due to the flow restriction and the bio-impedance signal (**504**) decreases (segment **542**) to a negligible level in response to the flow restriction (segment **532**) of airflow signal **502**. As illustrated by the sleep disordered breathing **522** portion of graph **570** of FIG. **7A**, when the relative amplitudes of the two signals **504**, **552** move in opposite directions (one increasing by large amounts and one decreasing by large amounts) as depicted in the sleep disordered breathing portion **522** of graph **570**, then an obstructed air flow or apnea/hypopnea is detected. However, it will be understood that in some embodiments, because of variations from patient to patient, the respiratory pressure can decrease (instead of increasing) during at least part of the sleep disordered breathing behavior. To the extent that actual patient-to-patient behavior varies in the physiologic conditions exhibited during sleep disordered breathing, these variances are accounted for via calibration of an implantable pulse generator system (as described in association with at least FIGS. **4E-4H**) such that the therapeutic stimulation regimen and detection model is tailored for each patient to ensure accuracy in identifying sleep disordered breathing for each particular patient. In some embodiments, when the sleep disordered breathing event is a central sleep apnea event, the substantial change in the amplitude of the sensed bio-impedance signal includes a substantial decrease in the amplitude of the sensed bio-impedance signal and the substantial change in the amplitude of the sensed respiratory pressure signal includes a substantial decrease in the amplitude of the sensed respiratory pressure signal. In other embodiments, the sleep disordered breathing event is a hypopnea event, and the substantial change in the amplitude of the sensed bio-impedance signal

bio-impedance signal and the substantial change in the amplitude of the sensed respiratory pressure signal includes a substantial increase in the amplitude of the sensed respiratory pressure signal. However, in the case of the hypopnea event, the respective substantial decrease in the amplitude of the sensed bio-impedance signal and the respective substantial increase in the amplitude of the sensed respiratory pressure signal are of a lower magnitude change, respectively, than occur in an obstructive sleep apnea event.

In some embodiments, a method of detecting the presence of a sleep disordered breathing behavior includes mapping the bio-impedance signal relative to the respiratory pressure signal to identify whether a sleep disordered breathing behavior, and in particular, whether an obstructive sleep apnea has occurred. In one non-limiting example, FIG. **7B** is a graph **580** that schematically illustrates different breathing patterns as a grid **581** based upon the bio-impedance signal **582** (y-axis) relative to the respiratory pressure signal **584** (x-axis). As illustrated in FIG. **7B**, a combination of a normal amplitude **587** of respiratory pressures and a normal amplitude **591** of bio-impedance measurements indicate that normal breathing **596** is occurring.

However, as illustrated via graph **580** of FIG. **7B**, as an obstructive sleep apnea (or hypopnea) develops, the bio-impedance and respiratory pressure signals move in the opposite directions, resulting in a combination of a high amplitude **588** of respiratory pressures and a low amplitude **590** of bio-impedance signals to indicate an obstructive sleep apnea **597**. As the body responds to the obstructive sleep apnea via hyperventilation, a combination of a high amplitude **588** of respiratory pressures and a high amplitude **592** of bio-impedance signals indicates a high effort or hyperventilation pattern **598**. For example, in FIG. **7A**, hyperventilation is observable from the amplitude of respiration pressure (segment **564**) being about twice the amplitude of respiration pressure during normal breathing (segment **560**) and with the amplitude of bio-impedance during hyperventilation (segment **544**) being substantially higher than the amplitude of bio-impedance during normal breathing (segment **540**) or during the apneic event.

With these different breathing patterns in mind, graph **580** further illustrates a cycle **594** that moves from normal breathing (segment **596**) to apneic events (**597**) to hyperventilation (**598**) and then returning to normal breathing (**596**) as the obstruction lessens.

In some embodiments, in addition to monitoring the amplitude of hyperventilation following a sleep disordered breathing behavior, the system monitors a duration or length of a hyperventilation event. This duration also can be correlated to a level of oxygen desaturation caused by the preceding sleep disordered breathing event. In this manner, the duration of the hyperventilation event is used as at least one factor in determining a sleep disordered breathing severity score, with greater durations of hyperventilation being generally associated with, and representative of, more severe sleep disordered breathing and with lower durations of hyperventilation being representative of less severe sleep disordered breathing.

In some embodiments, a hyperventilation function (such as hyperventilation function **186** of therapy manager **106** in FIG. **3A**) identifies a hyperventilation period following a sleep disordered breathing event via identifying a substantial change in the amplitude of the sensed bio-impedance signal after the sleep disordered breathing event. Moreover, in some embodiments, the hyperventilation function is configured to identify the hyperventilation period via a substantial change in an amplitude of the sensed respiratory pressure signal after the sleep disordered breathing event that occurs substantially simultaneously with the substantial change in the amplitude

of the sensed bio-impedance signal after the sleep disordered breathing event. In some embodiments, the hyperventilation function is configured to identify, a severity of a sleep disordered breathing event preceding the hyperventilation period based on at least one of a duration of the hyperventilation period, a duration of the sleep disordered breathing event, or a lowest blood oxygen saturation following the sleep disordered breathing event.

In some embodiments, a method of detecting the presence of a sleep disordered breathing behavior includes tracking a percentage change in both the bio-impedance signal and the respiratory pressure signal to determine whether an sleep disordered breathing has occurred. For example, one can track the bio-impedance signal and the respiratory pressure signal during normal respiration to establish a baseline and then identify a percentage decrease (or an absolute decrease) in the bio-impedance signal and a percentage increase (or an absolute increase) in the respiratory pressure signal during a potential sleep disordered breathing event. If one or both of the respective percentage decrease (bio-impedance) and percentage increase (respiratory pressure) exceed a predetermined threshold (e.g., 50%, 75%, 100%, etc.), then the system concludes that an apnea/hypopnea event has taken place. As a further illustration, FIG. 7A provides a non-limiting example and illustrates that bio-impedance signal **504** decreased generally by 100% (represented by amplitude **0**) in segment **542** (as compared to amplitude **A** in normal respiratory segment **540**) and that respiratory pressure signal **552** increased generally by 100% (as represented by amplitude **2A**) in segment **562** (as compared to amplitude **A** in normal respiratory segment **560**). Assuming that the measurement comprises an average (100%) of the two respective percentage changes (100, and 100), and the threshold is a 90% change, then the 100% average change in the respective signals exceed the threshold (e.g., 90%) which indicates that an sleep disordered breathing event has occurred. The occurrence of this sleep disordered breathing event is modeled by the corresponding segment **532** of airflow signal **502**.

In some embodiments, the threshold average percentage change is based on at least one of a minimum quantity of breaths, a minimum preset quantity of respiratory cycles, or a predetermined period of time including multiple respiratory cycles.

For these reasons, in accordance with the principles of the present disclosure, using a combination of the bio-impedance signal and the respiratory pressure signal enables a robust method of detecting apneas or hypopneas, which is less likely to produce a false positive identification of an apnea.

However, embodiments of the present disclosure are not limited to detecting an apnea (or hypopnea) solely through the use of the bio-impedance signal and/or the respiratory pressure signal. Other physiologic signals are known to provide an indication that apneas/hypopneas are occurring. These signals can be processed to further confirm that apneas/hypopneas are occurring to augment the approaches above. For example, a heart rate is known to decrease at the onset of an obstructive apnea, followed by a fast rise in heart rate toward the end of the apnea and immediately following the apnea. In another example, a blood oxygen level (measured optically via an implanted system) is known to drop during and following an apneic event. Accordingly, such physiologic data can be obtained via the sensing module **102** of the IPG **100** to further confirm the presence or absence of the apnea/and hypopnea. Moreover, in addition to the primary physiologic data of the respiratory pressure and the bio-impedance illustrated in FIG. 7A, the data from these physiologic signals (e.g., heart rate, blood oxygen) is additionally used to mea-

sure the duration and/or intensity of an apnea/hypopnea event, which provides an indication of the severity of the apnea/hypopnea event.

With these general principles in mind, FIG. 7C schematically illustrates a method **600** of identifying sleep disordered breathing behavior (such as an apnea even or hypopnea event), in accordance with an embodiment of the present disclosure. As illustrated in FIG. 7C, method **600** includes sensing a bio-impedance (at **602**) and detecting whether a substantial change (such as substantial decrease) has occurred. At **610**, method **600** includes sensing respiratory pressure and detecting whether a substantial change (e.g. increase) has occurred. If a substantial change in both the sensed bio-impedance and the sensed respiratory pressure is detected, then an apnea event (sleep disordered breathing) is identified at **608**. However, additional thresholds can be used to further confirm the presence or absence of a sleep disordered breathing event. In some embodiments, as at **620**, method **600** queries whether the percentage change in the sensed bio-impedance and/or the sensed respiratory pressure exceeds a threshold (e.g. a threshold percentage change). If not, the sensed behavior is determined not to be an apnea event (at **622**). However, if the threshold is met or exceeded, then method confirms the presence of an apnea event at **624**.

In some embodiments, further confirmation is provided in method **600** via observing, at **630**, whether the sensed heart rate decreases during a portion of the potential apnea event and then increases after the potential apnea event. If not, then no apnea event occurred (at **632**). However, if that heart rate behavior is confirmed, then further confirmation of an apnea event (i.e., sleep disordered breathing behavior) is provided. In some embodiments, further confirmation is provided in method **600**, at **636**, via observing a substantial decrease in blood oxygen saturation that substantially coincides with sleep disordered breathing behavior. If this observation is lacking, then method **600** could determine that no apnea event occurred **638**. In some embodiments, further confirmation of sleep disordered breathing is made at **640** in method **600** via detecting hyperventilation after the potential apnea event. If the hyperventilation is not found, then no apnea event has occurred. However, if such hyperventilation is identified, then method confirms a presence of a sleep disordered breathing event or behavior. It will be understood that in some embodiments, the various confirmatory queries at **620**, **630**, **636**, and **640** can be performed in any order or performed simultaneously, and that one or more of the particular queries can be omitted or other confirmatory queries based on physiologic conditions can be added.

Another embodiment of the present disclosure includes a system and method to automatically adjust the level of therapy to treat sleep disordered breathing behavior based on the measurement of AHI (Apnea Hypopnea Index) or another apnea severity index or scoring tool. With this system, the level of therapy will be automatically adjusted to match the needs of the patient, which are known to vary based on sleep state, body position, and other physiologic factors (e.g., alcohol use, sleepiness, etc.). Adjustments to the therapy include incrementing or decrementing the level of therapy, as described below in more detail. In addition, as will be apparent from the description below, this "auto-titration" system and method for automatically adjusting the level of therapy operates in a substantially different manner than conventional Continuous Positive Airway Pressure (CPAP) systems. Among other differences, an implantable neuro-stimulation system, in accordance with principles of the present disclosure, presents a substantially different type of approach to treating sleep disordered breathing behavior (such as, but not

limited to obstructive sleep apneas). Consequently, the types of therapy parameters and control systems used in an implantable neuro-stimulation system are substantially different than the therapy parameters and control systems used in the CPAP systems.

FIG. 8A is a flow diagram schematically illustrating a method 700 of automatically adjusting a level of therapy, in accordance with embodiments and principles of the present disclosure. In one embodiment, method 700 is performed using the systems, components and other methods previously described in association with FIGS. 1-7B. In other embodiments, method 700 is performed using other systems and components.

As shown in FIG. 8A, at box 702 method 700 includes measuring the number of apneas (AHI) or an apnea severity score over a time period to track the frequency of apnea/hypopnea events based on physiologic signals 701 provided via sensing module 102 of IPG 100. The method includes establishing a predetermined setpoint corresponding to an acceptable number of apneas/hypopneas over a period of time (e.g. number of apneas per hour) or a setpoint corresponding to an acceptable apnea severity score. In some embodiments, the set point is fixed while in other embodiments, the setpoint is programmable (e.g., 0, 1, 3, 5, 10 events/hour etc.). In another embodiment, in addition to counting the number of apneas/hypopneas within a given time period, the method also looks at the intensity and/or duration of one or more apnea events to determine whether the measured patient behavior is above or below a setpoint. In this latter embodiment, the number of apneas, the duration of an apnea, and intensity of apneas (as well as other physiologic data) are combined into a severity score. In one embodiment, the intensity of an apnea event is at least partially determined by a percentage decrease (or absolute measurement) of blood oxygen level, a change in heart rate, and/or a duration of hyperventilation following an apnea.

As shown at box 704, the system/method periodically queries whether or not the measured AHI (or other index) is above the predetermined set point. If the query at box 704 is answered affirmatively (i.e. yes), then too many apnea/hypopneas are occurring, and method 700 proceeds to increment or increase the level of therapy, as represented by box 708. As the level of therapy is increased, method 700 continues the ongoing measurements of the number of apnea events (or an apnea severity score), as represented by box 702.

On the other hand, if the query at box 704 is answered negatively (i.e. no), then the current level of therapy is considered to be at least adequately treating the apnea/hypopnea condition of the patient. However, it is possible that a lower level of therapy could still adequately treat the apnea/hypopnea condition of the patient. Using a lower level of therapy would be desirable to avoid potential fatigue of the target nerve, while also reducing the amount of power consumed by the IPG 100. Once the level of therapy is decremented (as represented by box 706), method 700 maintains its measurements of the number of apnea events (or an apnea severity score) to determine if an adequate level of therapy is being maintained.

In this way, method 700 continually assesses the level of therapy administered to the patient and then automatically implements an increment or a decrement in the level of therapy, as warranted, to prevent the patient from receiving unnecessary stimulation (i.e., preventing overstimulation) to the target nerve while ensuring that at least a therapeutic level of therapy is maintained. In one aspect, this method 700 also terminates all stimulation when no therapy is warranted for an extended period of time. In some embodiments, an increment-

tal increase in the level of therapy is executed in steps that are substantially larger (e.g. 50%, 100%) than the steps in which the level of therapy is decremented. In other words, increases in the level of therapy are made more aggressively than decreases in therapy. With this arrangement, the method 700 moves more quickly to eliminate the apnea events but moves slower when attempting to find a lower beneficial level of therapy.

In one embodiment, the controller has either pre-determined or programmable maximum stimulation settings to prevent overstimulation to the target nerve or surrounding tissue, initiating a patient arousal, or inducing discomfort to the patient. These maximum levels may be programmed by a physician while conducting an office query of the functionality of the system. In this way, boundaries are established for the auto-titrate method such that the parameters of therapy generally remain within the limits of comfort of most patients. Moreover, in some embodiments, the method 700 includes a patient override function (represented as patient override function 459 in FIG. 9) configured to enable the patient to override the method of automatic therapy to reduce the level (amplitude, duration, etc.) of therapy when the therapy is not comfortable for the patient. In some embodiments, this function is available by the increase/decrease function 250 of patient programmer 230, as previously described in association with FIG. 2.

FIG. 8B further illustrates a method 720 of automatically adjustable therapy to treat sleep disordered breathing, according to an embodiment of the present disclosure. As illustrated in FIG. 8B, at 722 method 720 includes tracking a severity of sleep disordered breathing behavior relative to a baseline. This severity is based on one or more of a frequency of the sleep disordered breathing (SDB) events, a duration of the respective SDB events, an intensity of the respective SDB events, a presence of hyperventilation (as well as its duration or intensity), a change in heart rate, and/or a change in blood oxygen saturation.

At 726, method 720 includes applying, at a first intensity level, a nerve stimulation signal to an airway-patency related nerve. At 728, method 720 includes evaluating the tracked severity of the SDB behavior, in response to the applied nerve stimulation, relative to threshold. The nerve stimulation regimen is automatically adjusted, at 730, from the first intensity level to a second intensity level in response to the evaluated severity of the SDB behavior. This adjustment takes place either at 732 as an automatic incrementing of the intensity level of nerve stimulation when the evaluated SDB severity meets or exceeds a threshold or at 734 as an automatic decrementing of the intensity level of nerve stimulation when the evaluated SDB severity falls below that threshold.

In some embodiments, method 700 of automatically applying a therapy is at least partially governed by a stimulation goodness function. In particular, a setpoint is selected, monitored and adjusted dynamically according to a stimulation goodness function that balances at least the factors of patient comfort (based on feedback via the patient programmer or clinician programmer), therapeutic efficacy, and longevity. In one embodiment, the stimulation goodness function operates in a manner illustrated by FIG. 10.

FIG. 10 schematically illustrates a method of automatically adjusting a setpoint in which increasing amounts of therapeutic stimulation 854 (y-axis) are mapped relative to a goodness parameter 852 of the therapy (x-axis). Increasing amounts of goodness correspond to increased levels of patient comfort, longevity of the device, and therapeutic efficacy in reducing the number or severity of apneic events. As shown in FIG. 10, graph 850 depicts a stimulation goodness profile 860

and also identifies an upper limit **872** on the strength or power of stimulation (**854**) applied to the target nerve and a lower limit **570** on the strength or power of stimulation required to achieve a minimum level of efficacious treatment. In some embodiments, one or both of the lower limit and the upper limit corresponds to a physician defined setpoint while in other embodiments, one or both of the lower limit and the upper limit corresponds to a manufactured defined setpoint. Alternatively, the upper limit and/or the lower limit are determined algorithmically through monitoring apnea events and/or patient commands.

As can be seen from FIG. **10**, at lower amounts of strength/power, the measured goodness (**852**) is relatively low (shown at **873**) and with increasing amounts of strength/power, the measured goodness gradually increases (shown by segments **874** and **882**) providing a better therapeutic experience for the patient until an optimum point **880** is achieved. At this point, any further increases in strength/power will cause a gradual decrease in measured goodness (shown by segment **884**) for the patient as further increases in strength/power is applied. In other words, the optimum point **880** represents the point above the minimum strength/power that provides the greatest overall benefit to the patient while any further increases in strength/power reduce the overall benefit to the patient, i.e., the point of diminishing returns. In other words, any increases in the intensity of stimulation beyond point **880** will result in a decrease in patient comfort, an increase in energy usage, and/or a decrease in efficacy. Accordingly, by implementing a stimulation goodness function, small dynamic increases in the level of stimulation above a minimum limit and/or physician-defined settings can lead to a large increase in the overall benefit to the patient. On the other hand, when the setpoint is too high, the stimulation goodness function can dynamically guide the setpoint to a lower value to increase the overall benefit to the patient.

In one embodiment, the level of therapy can be incremented or decremented via the auto-titrate module **170** (and the treatment parameters module **168**) of the therapy manager **106** of IPG **100** shown in FIG. **3A**. In this regard, FIG. **9** is a block diagram schematically illustrating additional features and attributes of the auto-titrate module **170** (and the treatment parameters module **168**) that is employed in accordance with the method **700** of automatically adjusting a level of therapy to treat sleep disordered breathing behavior.

As illustrated in FIG. **9**, the auto-titrate module **750** is configured to maintain, increment, or decrement the level of therapy in accordance with method **700** illustrated by FIG. **8A**. In one embodiment, the auto-titrate module **750** includes one or more of the following functions and modules including: an on/off module **752**; an intensity module **754**; a duty cycle module **756**; a reset module **758**; a patient override function **459**, and a sleep study parameter **797**.

In one embodiment, the On/Off module **752** is configured to activate or deactivate stimulation to the target nerves/muscles of the upper airway (that restores airway patency). In one aspect, an "Off" state of module **752** corresponds to first state **202** or second state **204** of system **200** (see FIG. **4A**) in which the IPG **100** monitors the body motion or activity of the patient or is configured to detect apneas but a state in which no stimulation is applied. However, an "On" state of module **752** directly corresponds to third state **206** of system **200** in which a stimulation therapy is to be applied to the patient.

Moreover, when this On/Off module **752** is in an "On" state, stimulation to the target nerve may be applied continuously or synchronized (via stimulation module **104** of IPG **100**—FIG. **3A**) with respiration/inspiration in accordance with a continuous parameter **762** and a synchronous param-

eter **760**, respectively. In another aspect, the intensity module **754** selects an amplitude (parameter **780**), a rate (parameter **782**), and/or a pulse width (parameter **784**) of the stimulation signal to the target nerve to achieve a desired level of nerve recruitment. It is also understood that in some embodiments the intensity module **754** includes, or can operate in coordination with, a multisite parameter **194A**, bilateral parameter **194B**, and fascicle parameter **194C**, as previously described in association with IPG **100** of FIG. **3A**. Moreover, intensity module **754** is configured to further modulate the stimulation intensity by applying a sub-threshold intensity that provides minor tone to the innervated muscle (as represented by tone parameter **786**), a twitch intensity (represented by twitch parameter **788**), and/or varying levels of nerve/muscle recruitment all the way up to full nerve/muscle recruitment (as represented by full parameter **790**).

In one embodiment, the auto-titrate module **750** is self-learning. In other words, by using a predetermined order of parameter adjustments to adjust the amplitude, rate, and/or pulse width of stimulation (i.e., stimulation parameter settings), a desired level of nerve recruitment is achieved. In some embodiments, this predetermined order is automatically used prior to obtaining data in response to a therapy on a given patient and may be based on statistical analysis of a population of patients. In use, the auto-titrate module **750** will monitor the available sensing and stimulation parameters, evaluate the response to therapy (using the predetermined order/level of settings) for a given patient, and then identify (and implement) the optimal settings for stimulation therapy. In another aspect, the auto-titrate module **750** iteratively repeats the process of applying the most recently determined optimal parameter settings, evaluates the therapy response, and adjusts the parameter settings. In this way, the auto-titrate module **750** self learns the best therapy setting as the therapy is applied over a period of time.

In one embodiment, as previously described, the auto-titrate module **750** includes a sleep study parameter **797** configured to direct that the IPG **100** (as part of system **200** and/or method **700**) implanted within the patient learn therapy parameters for that particular patient in coordination with a polysomnograph or other sleep study system. In this arrangement, the sensing module **102** of IPG **100** (FIG. **2**) is active during the sleep study so that parameters sensed via IPG **100** are correlated with, and calibrated, relative to known sleep study parameters that are indicative of various apnea-related physiologic events, patterns, and behaviors. A few examples of such correlation was previously described in association with FIG. **4E**. Accordingly, via the sleep study the IPG **100** learns a patient's physiologic patterns surrounding an apnea event, which helps to establish a baseline or initial set of stimulation therapy settings for auto-titrate module **750** (as part of system **200** and method **700**). After this baseline is established, the system **200** and/or method **700** operates in substantially the same manner previously described in association with at least FIGS. **1-8**.

In some embodiments, the auto-titrate module **750** also includes a stimulation duty cycle module **756** that manages the duration of the stimulation time, including the amount of time the stimulation starts before inspiration onset or after inspiration onset, as the timing of this onset (as represented by onset parameter **794**) is known to affect the aggressiveness and effectiveness of the therapy. For example, starting stimulation after the onset of inspiration may be ineffective due to the airway obstructing prior to stimulation (and once obstructed stimulation may not be capable of overcoming the obstruction.). However, starting stimulation well in advance of inspiration onset may be beneficial in preventing flow

restriction or full obstruction by providing stimulation before the airway closes. Accordingly, one method of treatment includes triggering stimulation of the target nerve prior to inspiration onset. One patent describing the time period surrounding inspiration onset (in relation to triggering stimulation of a nerve to treat apnea) is Christopherson U.S. Pat. No. 5,944,680, titled RESPIRATORY EFFORT DETECTION METHOD AND APPARATUSES, and which is hereby incorporated by reference in its entirety. In another aspect, an incomplete emptying of the lungs will reduce the volume of fresh air that can be inspired in the next breath. Accordingly, in some embodiments, the duty cycle module **756** includes a termination parameter **796** that controls the timing of stimulation turn-off (i.e., termination) before or after the end of inspiration.

Referring again to FIG. 9, in some embodiments of the present disclosure, auto-titrate module **750** includes a reset module **758**. In general terms, the reset module **758** is configured to facilitate synchronizing stimulation of the upper airway with respiration. Signal processing of the respiration waveform can become challenging during cycles of apneas or hypopneas, primarily due to the widely varied morphologies of the respiratory signals. Yet, once stable synchronization of the stimulation with the respiratory waveform is achieved, apneas/hypopneas are readily prevented.

Accordingly, in light of the difficulty in performing such signal processing during the cycles of apneas/hypopneas, in this one embodiment, the reset module **758** applies (during the cycles of apneas/hypopneas) a substantially continuous or continuous burst of stimulation (or other predetermined time period) that effectively “resets” the patient to stable respiration. In some embodiments, this burst of stimulation can last about twenty seconds. In one embodiment, the substantially continuous burst of stimulation lasts a first time period greater than a duration of two nominal respiration cycles. During this reset, the system can better synchronize the stimulation with respiration because the patient is in a non-apneic period of respiration. This “reset” stimulation allows several unobstructed breaths to occur and allows the signal processing to track a stable respiratory signal. After the reset, each separate application of stimulation is limited to a duration corresponding to a portion (or fraction) of a single respiratory cycle (according to the methods of treatment and embodiments of the present disclosure previously described herein) to ensure that nerve/muscle fatigue does not occur. In one embodiment, the reset module **758** also tracks the respiratory pressure signal during the reset mode to observe the efficacy of the substantially continuous burst of stimulation.

In another embodiment, when consistent respiratory information cannot be obtained because of a noisy environment (or for other reasons), stimulation is completely suspended until suitable respiratory information is obtainable or stimulation is converted to an alternate stimulation having a fixed, intermittent duty cycle. In one non-limiting example, the alternate stimulation has a duty cycle of 2 seconds stimulation separated by 3 second periods of no stimulation.

In another embodiment, a bilateral function **791** of auto-titrate module **750** (such as auto-titrate module **170** of therapy manager **106** in FIG. 3A) cooperates with the bilateral parameter **194B** of stimulation module **104** (FIG. 3A) to determine whether to alternately (via function **792**) or simultaneously (via function **793**) stimulate the left side and right side of the body. Moreover, when used in conjunction with the multi-site parameter **194A** of stimulation module **104** (FIG. 3A), the auto-titrate module **750** also determines whether to simulta-

neously or alternately stimulate different sites along one or more nerves, whether on the left side or the right side of the body.

While at least one exemplary embodiment has been presented in the foregoing detailed description, it should be appreciated that variations exist. It should also be appreciated that the exemplary embodiment or exemplary embodiments are only examples, and are not intended to limit the scope, applicability, or configuration of the present disclosure in any way. Rather, the foregoing detailed description will provide those skilled in the art with a convenient road map for implementing the exemplary embodiment or exemplary embodiments. It should be understood that various changes can be made in the function and arrangement of elements without departing from the scope of the present disclosure as set forth in the appended claims and the legal equivalents thereof.

The invention claimed is:

1. A system of applying a treatment therapy for sleep disordered breathing, comprising:

a sensing module including an array of sensors configured to sense physiologic conditions, the array including at least one of a body activity sensor, a body posture sensor, and a respiration sensor; and

an implantable pulse generator in communication with the sensing module and including an automatic therapy manager configured to operate in:

a first state to detect sleep indicative behavior by sensing physiologic conditions via at least the respective body activity sensor and body posture sensor;

a second state to monitor the sensed physiologic conditions to detect sleep disordered breathing behavior, wherein the therapy manager transitions into the second state when the detected sleep-indicative behavior meets a first criteria; and

a third state to apply a nerve stimulation signal, synchronous with inspiration, to an airway patency-related nerve, wherein the therapy manager transitions into the third state upon detecting, in the second state, sleep disordered breathing behavior exceeding a second criteria,

wherein the automatic therapy manager includes an inverse relationship sampling function configured, in cooperation with the sensing module, to perform sampling of physiologic conditions in the second state at intervals according to an inverse relationship between the amount of patient body activity and the frequency of sampling, such that upon sensing a higher degree of patient body activity that corresponds to a lower likelihood of detecting sleep, performing a lower frequency of sampling physiologic conditions and upon sensing a lower degree of patient body activity corresponding to higher likelihood of detecting sleep, performing a higher frequency of sampling physiologic conditions.

2. The system of claim 1, wherein the automatic therapy manager includes a suspension function configured, upon detecting the sleep disordered breathing behavior falling below the second criteria, to suspend the third state of operation and maintaining the respective first and second state of operation.

3. The system of claim 1, wherein the automatic therapy manager includes a bypass function configured, upon detecting a sleep state in the first state of operation, to bypass the second state of operation and immediately implement the third state of operation.

4. A system of applying a treatment therapy for sleep disordered breathing, comprising:

33

a sensing module including an array of sensors configured to sense physiologic conditions, the array including at least one of a body activity sensor, a body posture sensor, and a respiration sensor; and
 an implantable pulse generator in communication with the sensing module and including an automatic therapy manager configured to operate in:
 a first state to detect sleep indicative behavior by sensing physiologic conditions via at least the respective body activity sensor and body posture sensor;
 a second state to monitor the sensed physiologic conditions to detect sleep disordered breathing behavior, wherein the therapy manager transitions into the second state when the detected sleep-indicative behavior meets a first criteria; and
 a third state to apply a nerve stimulation signal, synchronous with inspiration, to an airway patency-related nerve, wherein the therapy manager transitions into the third state upon detecting, in the second state, sleep disordered breathing behavior exceeding a second criteria, wherein the detection of sleep disordered breathing behavior exceeding the second criteria includes detection of an occurrence of at least one obstructive sleep apnea event,
 wherein the automatic therapy manager includes a periodic suspension function configured to:
 periodically suspend the third state of operation while maintaining the respective first and second state of operation during the periodic suspensions;

34

detect whether the monitored sleep disordered breathing behavior exceeds the second criteria; and
 implement at least one of maintaining suspension of the third state of operation if the monitored sleep disordered breathing behavior fails to meet the second criteria or resuming the third state of operation if the monitored sleep disordered breathing behavior meets or exceeds the second criteria,
 wherein the periodic suspension function is configured to periodically suspend the third state of operation at a frequency and for a predetermined suspension time period,
 wherein the frequency of suspending is inversely proportional to a severity score of the sleep disordered breathing behavior, such that upon a relatively higher severity score, a lower frequency of suspending occurs and upon a relatively lower severity score, a higher frequency of suspending occurs, wherein the severity score is based at least one of a quantity, duration, and intensity of obstructive sleep apneas within a given time period.
 5. The system of claim 4, wherein the periodic suspension function is configured to automatically forego suspension of the third state of operation during an initial sleep stage of a daily sleep period.
 6. The system of claim 4, wherein the periodic suspension function is configured to automatically forego suspension of the third state of operation for a daily sleep period upon detecting that the monitored sleep disordered breathing behavior substantially exceeds the second criteria.

* * * * *

专利名称(译)	治疗睡眠呼吸紊乱的系统		
公开(公告)号	US8938299	公开(公告)日	2015-01-20
申请号	US13/130287	申请日	2009-11-19
申请(专利权)人(译)	INSPIRE医疗系统, INC.		
当前申请(专利权)人(译)	INSPIRE医疗系统, INC.		
[标]发明人	CHRISTOPHERSON MARK A NI QUAN HERBERT TIMOTHY P RONDONI JOHN		
发明人	CHRISTOPHERSON, MARK A. NI, QUAN HERBERT, TIMOTHY P. RONDONI, JOHN		
IPC分类号	A61B5/00 A61B5/08 A61N1/36		
CPC分类号	A61B5/0809 A61N1/3601 A61B5/0803 A61B5/4818 A61B5/0205 A61B5/02405 A61B5/053 A61B5/14542 A61B5/4836 A61B5/686 A61B5/7282 A61B2562/0214 A61B2562/0247 A61B5/024 A61B5/0538		
审查员(译)	帕特尔NIKETA		
优先权	61/116149 2008-11-19 US		
其他公开文献	US20110264164A1		
外部链接	Espacenet USPTO		

摘要(译)

公开了一种用于应用睡眠呼吸紊乱的治疗疗法的系统。该系统包括：感测模块，被配置为感测生理状况；以及可植入脉冲发生器，与感测模块通信并且包括自动治疗管理器。自动治疗管理器以第一状态操作以检测睡眠指示行为，第二状态检测睡眠呼吸紊乱行为，以及第三状态以应用神经刺激信号。

