



US007621871B2

(12) **United States Patent**
Downs, III et al.

(10) **Patent No.:** **US 7,621,871 B2**
(45) **Date of Patent:** **Nov. 24, 2009**

(54) **SYSTEMS AND METHODS FOR MONITORING AND EVALUATING INDIVIDUAL PERFORMANCE**

(58) **Field of Classification Search** None
See application file for complete search history.

(75) Inventors: **J. Hunter Downs, III**, Honolulu, HI (US); **Traci H. Downs**, Honolulu, HI (US); **J Patrick Stautzenberger**, Haleiwa, HI (US); **Erin Nishimura**, Honolulu, HI (US); **Jason Akagi**, Waimanalo, HI (US); **Brendan F. P. O'Donnell**, Honolulu, HI (US); **Fahrettin Olcay Cirit**, Honolulu, HI (US); **Evan D. Rapoport**, Honolulu, HI (US)

(56) **References Cited**

U.S. PATENT DOCUMENTS

6,530,884	B2 *	3/2003	Balkin et al.	600/300
2002/0005784	A1	1/2002	Balkin et al.	
2003/0166558	A1	9/2003	Frangione et al.	
2004/0082862	A1	4/2004	Chance	
2005/0053904	A1 *	3/2005	Shephard et al.	434/236
2005/0177031	A1 *	8/2005	Hursh	600/300
2005/0215889	A1	9/2005	Patterson, II	
2005/0282911	A1	12/2005	Hakkarainen et al.	

* cited by examiner

Primary Examiner—Robert L Nasser

(74) *Attorney, Agent, or Firm*—Virtual Law Partners LLP

(73) Assignee: **Archinoetics, LLC**, Honolulu, HI (US)

(*) Notice: Subject to any disclaimer, the term of this patent is extended or adjusted under 35 U.S.C. 154(b) by 302 days.

(57) **ABSTRACT**

Systems, devices and methods for monitoring and evaluating cognitive effectiveness are provided. In one exemplary embodiment, a system for monitoring cognitive effectiveness can include a central network communicatively coupled with a local computing device, which can in turn be communicatively coupled with a portable monitoring device. The portable monitoring device can be located in proximity with a subject and configured to collect data from the subject usable in determining a cognitive effectiveness level. Adaptive methods for determining cognitive performance are also provided.

(21) Appl. No.: **11/424,742**

(22) Filed: **Jun. 16, 2006**

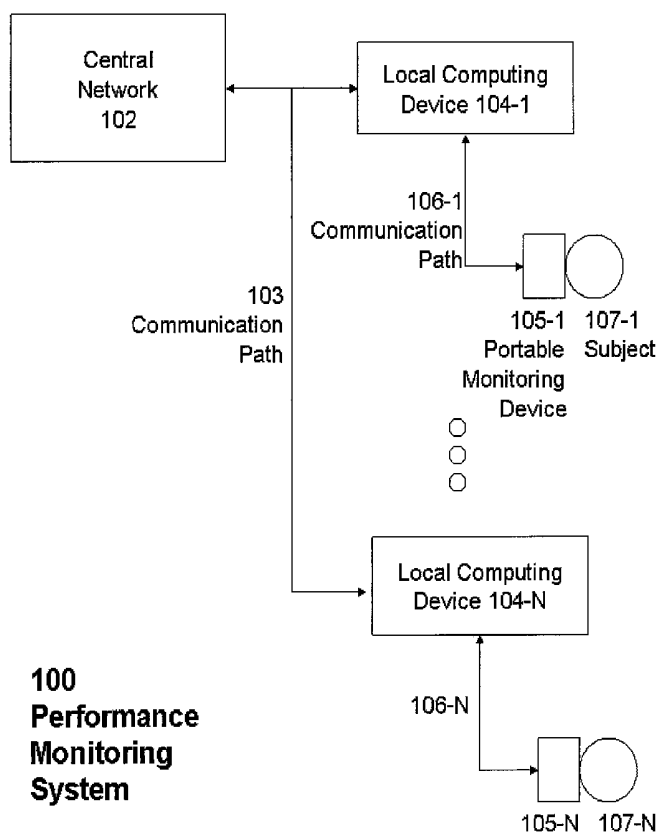
(65) **Prior Publication Data**

US 2007/0293731 A1 Dec. 20, 2007

(51) **Int. Cl.**
A61B 5/00 (2006.01)

(52) **U.S. Cl.** 600/300

20 Claims, 7 Drawing Sheets



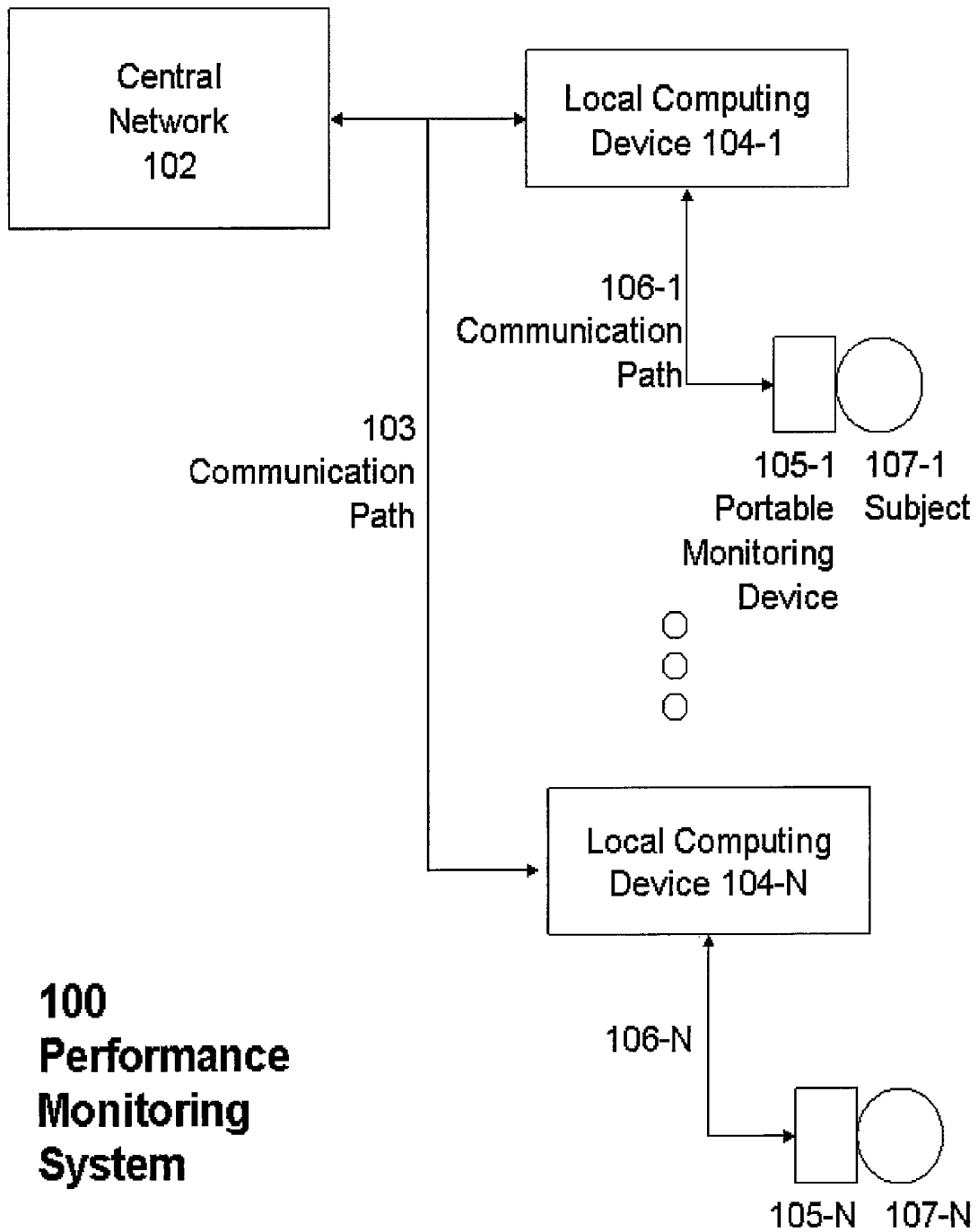


Figure 1

105

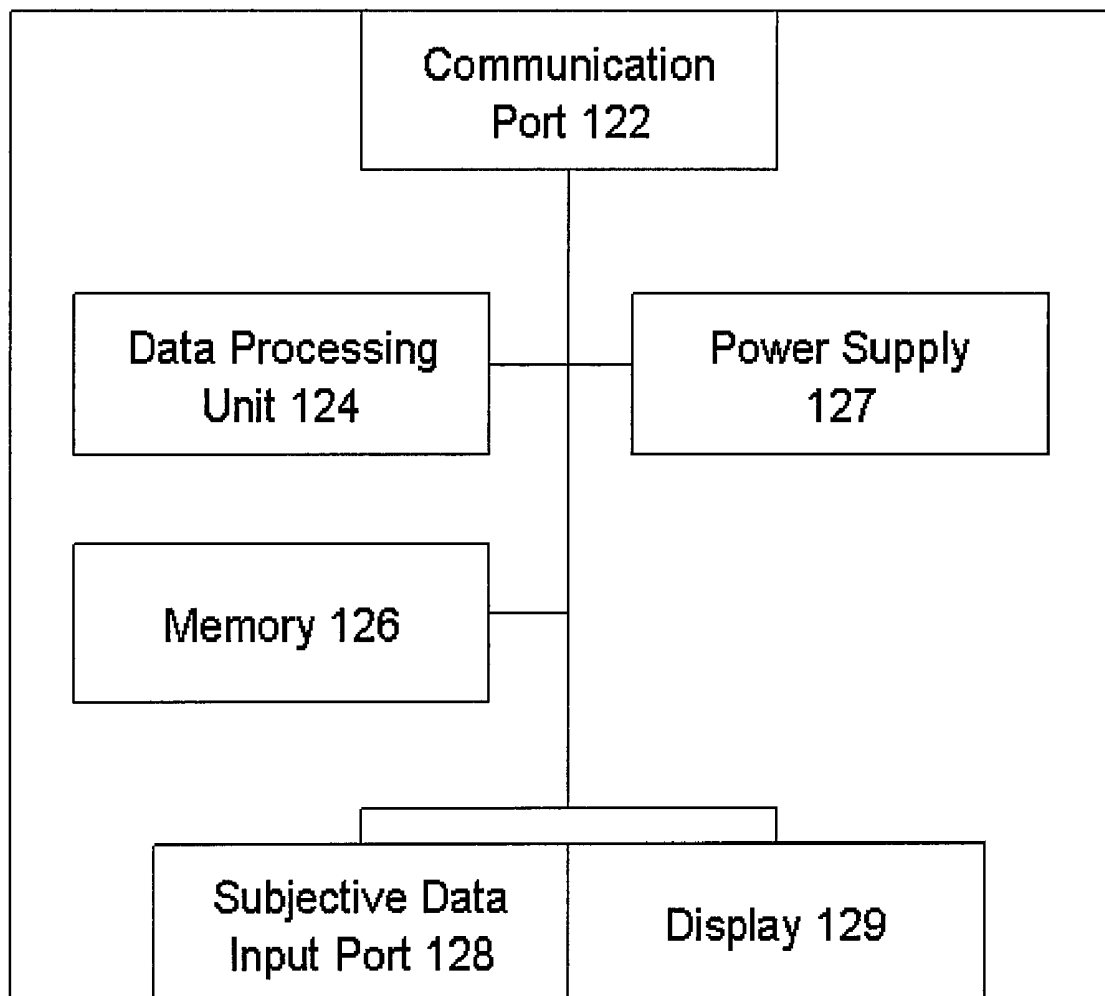


Figure 2A

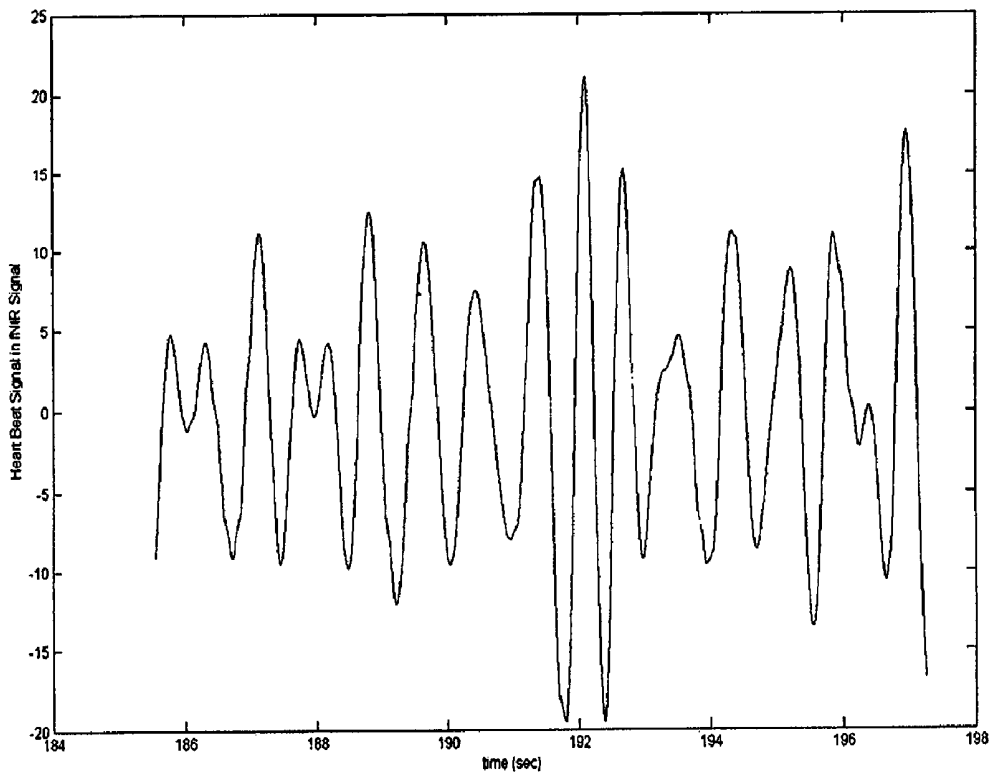


FIG. 3A

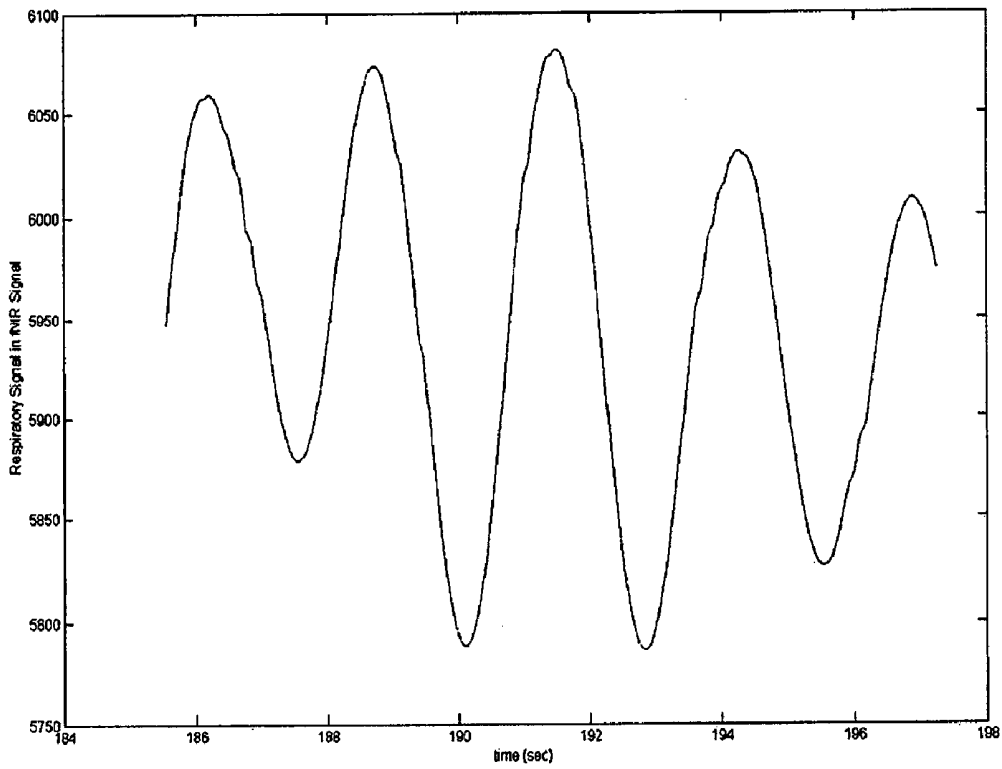


FIG. 3B

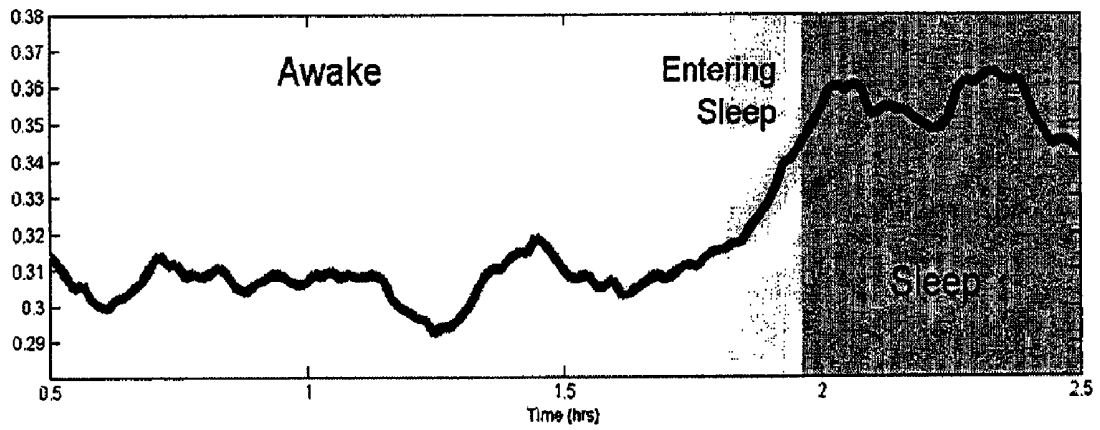


FIG. 3C

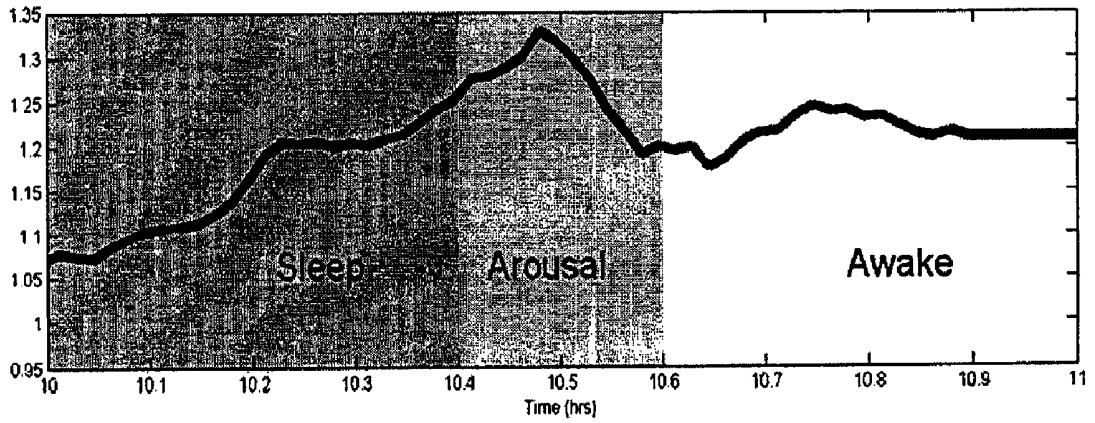


FIG. 3D

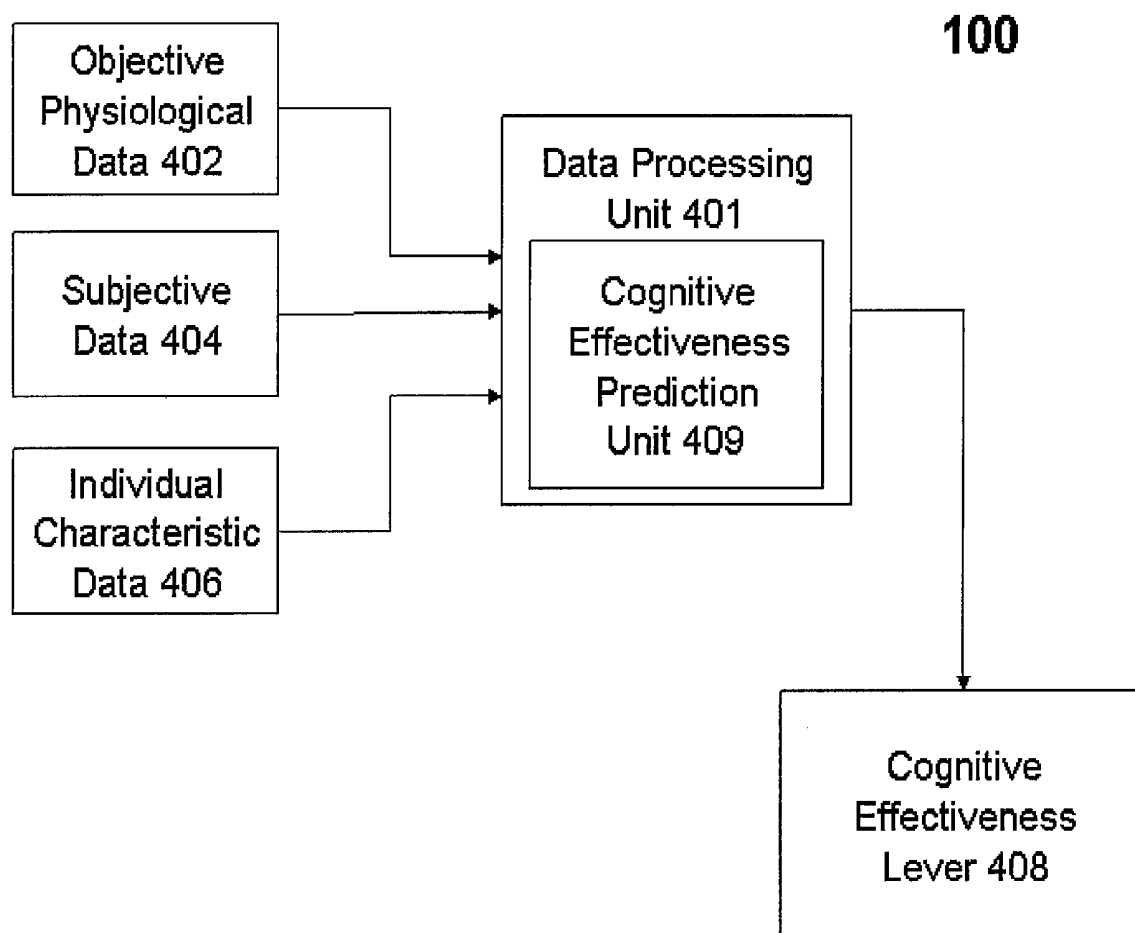


Figure 4

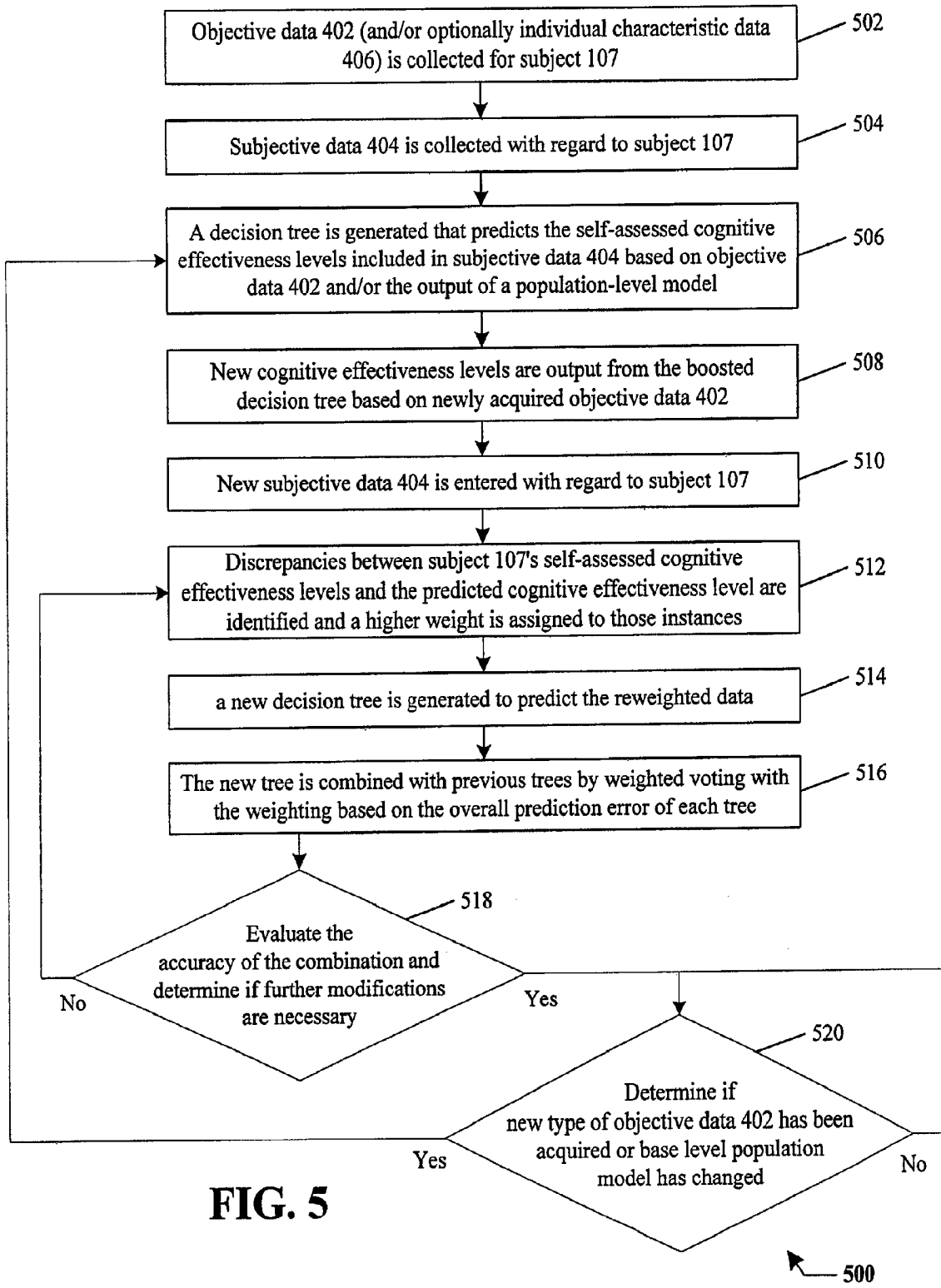


FIG. 5

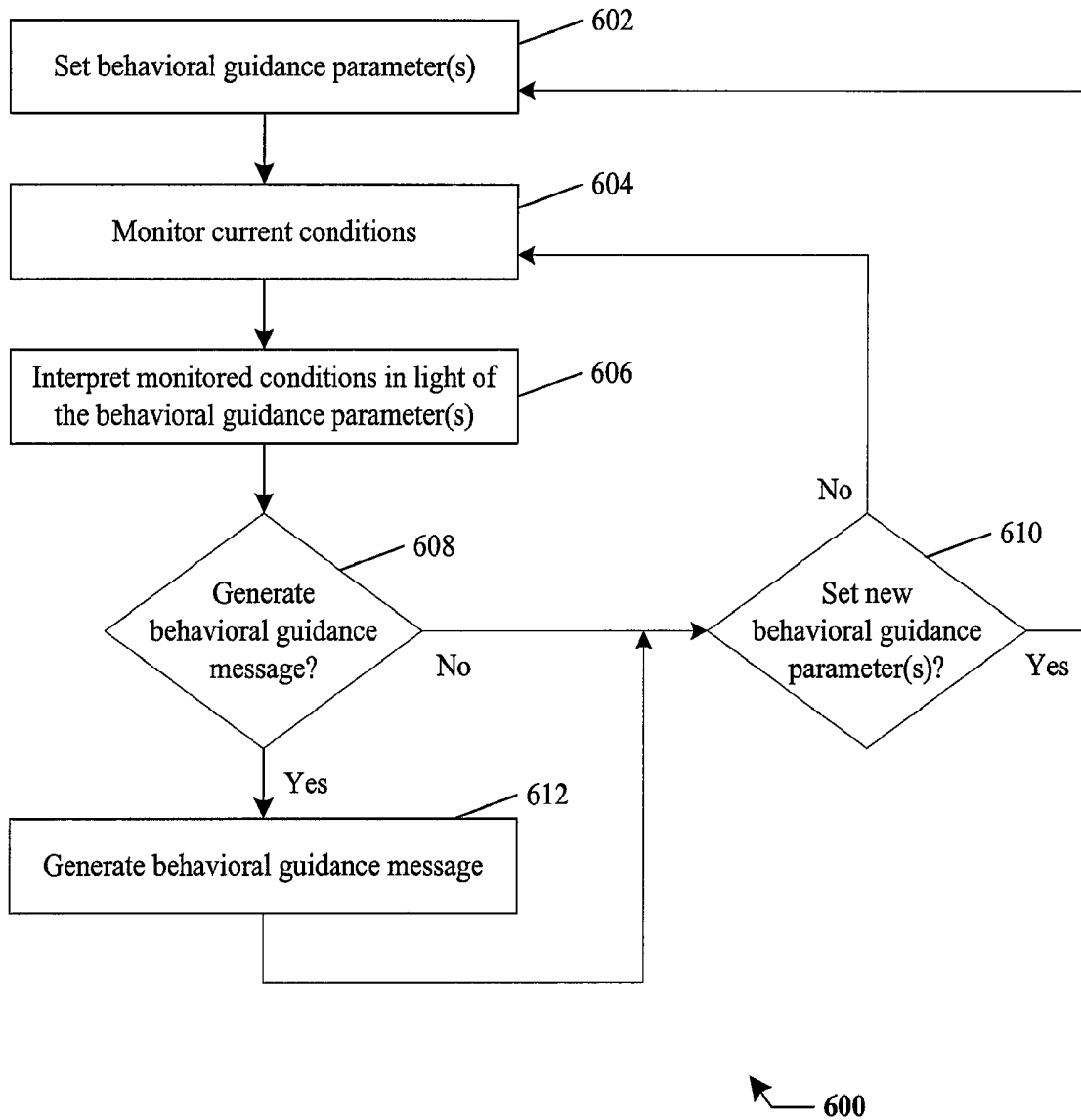


FIG. 6

SYSTEMS AND METHODS FOR MONITORING AND EVALUATING INDIVIDUAL PERFORMANCE

FIELD OF THE INVENTION

The present invention relates generally to the remote monitoring of individual performance with distributed systems and evaluating the monitored performance.

BACKGROUND OF THE INVENTION

Recently, societal trends have indicated that a sizable portion of the population have been and will continue to suffer from sleep deprivation. Although much research has been performed on the causes of and potential remedies for sleep deprivation, research into the effects of sleep deprivation on the cognitive performance of an individual has been relatively more limited.

Much of the research into the effect of sleep loss on cognitive effectiveness has been directed towards algorithmic techniques for correlating sleep and wake states with cognitive effectiveness levels. U.S. Pat. No. 6,241,686 (hereinafter "Balkin") entitled "System and Method for Predicting Human Cognitive Performance Using Data from an Actigraph" and U.S. Pat. No. 6,579,233 (hereinafter "Hursh") entitled "System and Method for Evaluating Task Effectiveness Based on Sleep Pattern" each propose algorithmic techniques for correlating sleep loss with cognitive effectiveness and making past or future predictions of cognitive performance based, generally, on measured sleep and wake states and are fully incorporated by reference herein.

In addition to the algorithmic techniques, these and other references propose systems for measuring the sleep and wake states of an individual, performing analysis of this measured data and presenting the results to a user. However, these approaches lack the capability to adapt sufficiently to variations between individual users, fail to present data to users in a fully comprehensive manner, and suffer from inefficient data collection and analysis techniques.

Accordingly, improved devices, systems and methods for monitoring and evaluating individual performance are needed.

SUMMARY

Improved devices, systems and methods for monitoring and evaluating individual performance and the like, are provided in this section by the way of exemplary embodiments. These embodiments are examples only and are not intended to limit the invention.

In one exemplary embodiment, a method of monitoring individual performance is provided that includes measuring a objective data parameter corresponding to a first aspect of a subject, collecting a subjective data parameter corresponding to a second aspect of the subject by way of a user interface, and determining a cognitive effectiveness level of the subject based at least on the objective and subjective data parameters.

The determined cognitive effectiveness level can be one of a past, current or future cognitive effectiveness level. Also, the cognitive effectiveness level can be determined with a cognitive effectiveness determination algorithm.

The objective data parameter can be any of multiple types of parameters. In one embodiment the objective data parameter can be representative of the subject's physical motion, such as an actigraph data parameter, while in another embodiment the objective data parameter can be a parameter repre-

sentative of a blood oxygen level of the subject. In yet another exemplary embodiment, the objective data parameter can be a near infrared spectroscopy (NIRS) signal parameter.

The subjective data parameter can be any of multiple types of parameters. In one embodiment, the subjective data parameter can be a data parameter representative of a subject's manual indication of a subjective mental state, such as a wake state and the like. In another exemplary embodiment, the subjective data parameter can be a response to a test input by the subject.

In another exemplary embodiment, the cognitive effectiveness level of the subject can be determined based on at least the objective data parameter, and the determined cognitive effectiveness level can be adjusted based upon the collected subjective data parameter. For instance, the subjective data parameter can correspond to a wake state and the boundary of the wake state can be adjusted based upon the collected subjective data parameter and a new cognitive effectiveness level can be determined therefrom.

In another exemplary embodiment, the cognitive effectiveness level of the subject can be determined by inputting the objective and subjective data parameters into a cognitive effectiveness determination algorithm.

In another exemplary embodiment, the method can further include collecting an individual characteristic data parameter corresponding to a third aspect of the subject and determining the cognitive effectiveness level of the subject based at least on the objective, subjective and individual characteristic data parameters. The individual characteristic data parameter can be a gender of the subject, a racial origin of the subject, a genetic characteristic of the subject and the like.

In another exemplary embodiment, the cognitive effectiveness level can be determined with a cognitive effectiveness determination algorithm and the cognitive effectiveness determination algorithm can be adapted to the traits of the subject. The adaptation can include altering a population-level based cognitive effectiveness determination algorithm into a subject-based cognitive effectiveness determination algorithm.

Other devices, systems, methods, features and advantages of the invention will be or will become apparent to one with skill in the art upon examination of the following figures and detailed description. It is intended that all such additional systems, methods, features and advantages be included within this description, be within the scope of the invention, and be protected by the accompanying claims. It is also intended that the invention is not limited to require the details of the example embodiments.

BRIEF DESCRIPTION OF THE FIGURES

The details of the invention, both as to its structure and operation, maybe gleaned in part by study of the accompanying figures, in which like reference numerals refer to like parts. The components in the figures are not necessarily to scale, emphasis instead being placed upon illustrating the principles of the invention. Moreover, all illustrations are intended to convey concepts, where relative sizes, shapes and other detailed attributes may be illustrated schematically rather than literally or precisely.

FIG. 1 is a block diagram depicting an exemplary embodiment of a performance monitoring system.

FIG. 2A is a block diagram depicting an exemplary embodiment of a portable monitoring device.

FIGS. 3A-B are exemplary graphs of cardiac and respiratory cycles, respectively, derived from data collected by an exemplary embodiment of the portable monitoring device.

FIGS. 3C-D are exemplary graphs of spectral data derived from cardiac cycle data collected by an exemplary embodiment of the portable monitoring device.

FIG. 4 is a functional block diagram depicting another exemplary embodiment of a performance monitoring system.

FIG. 5 is a flow diagram depicting an exemplary method of determining a cognitive effectiveness level.

FIG. 6 is a flow diagram depicting an exemplary method of providing behavioral guidance.

DETAILED DESCRIPTION

Provided herein are improved systems and methods for monitoring and evaluating individual performance including, but not limited to, individual cognitive performance. FIG. 1 is a block diagram depicting an exemplary embodiment of performance monitoring system 100. Performance monitoring system 100 is a distributed system capable of monitoring the performance of one or more individual subjects at different physical locations. System 100 preferably includes a central network 102 in communication with one or more local computing devices 104-1 through 104-N, preferably by way of a public or private communication path 103, such as the internet. It should be noted that N can be any number desired. Local computing devices 104-1 through 104-N are in communication with a portable monitoring device 105-1 through 105-N by way of a communication path 106-1 through 106-N, respectively, as depicted here. Each communication path 106 is preferably a wireless communication path, although wired communication can be used as well. Each portable monitoring device 105 is preferably physically coupled to an individual subject 107 to be monitored. Each of communication paths 103 and 106 can be bidirectional to allow for data transfer between each of the devices within system 100. Furthermore, a single local computing device 104 can also communicate with multiple portable monitoring devices 105 if desired.

In one exemplary embodiment, system 100 operates to monitor cognitive effectiveness of the various subjects 107-1 through 107-N. For instance, portable monitoring device 105-1 can collect data from corresponding subject 107-1 and communicate that data to the corresponding local computing device 104-1 by way of communication path 106-1. Local computing device 104-1 can then assemble the data reported from portable monitoring device 105-1, process and format the assembled data and communicate the resulting data to central network 102 by way of communication path 103. Central network 102 can then further analyze the data and output a cognitive effectiveness level for subject 107-1 back to local computing device 104-1 or any other desired location.

In the embodiment depicted here, portable monitoring device 105 is preferably configured to collect one or more data parameters that correspond to one or more physiological aspects of subject 107. This data parameter, or set of data parameters, is preferably capable of being used to determine (or predict) a past, present or future cognitive effectiveness level. The collected data parameter can be any data parameter usable to determine cognitive effectiveness including, but not limited to, activity data, sleep/wake data, event data, objective data, and subjective data (e.g., data generated from direct user input).

In one exemplary embodiment, these data parameters can be representative of the subject's sleep/wake state at a given moment in time, i.e., whether the subject is awake or asleep at a given moment in time. These data parameters can be classified as being objectively or subjectively derived. These data parameters can then be used to determine a cognitive effective-

ness level, which is an estimated quantification of the relative amount of cognitive ability, such as decision-making ability, which subject 107 can expect to have at a given moment in time—before, during or after collection of the data parameter.

FIG. 2 is a block diagram depicting an exemplary embodiment of portable monitoring device 105. In this embodiment, portable monitoring device 105 can include a sensor 120 configured to collect data and a communication port 122 configured to communicate the collected data to another device, preferably local computing device 104. Portable monitoring device 105 can also include a data processing unit 124, a bus 125, a memory 126, a power supply 127, a subjective data input port 128, and/or a display 129.

Portable monitoring device 105 can collect data of any desired physiological aspect in any desired manner. For instance, in one exemplary embodiment, portable monitoring device 105 can collect physiological data representative of the motion level of subject 107 with sensor 120 configured as an actigraph. The collected motion level data can then be correlated to a current sleep/wake state of subject 107 with an appropriate algorithmic technique, such as the Cole-Kripke algorithm (described in "Automatic Sleep/Wake Identification from Wrist Actigraphy" published in *Sleep*, vol. 15, pp. 461-469 (1992)) and other algorithms, not limited to those based on the number of zero-crossings detected by the actigraph. Subsequently, the sleep/wake state can be used to determine a cognitive effectiveness level of subject 107 using an appropriate algorithmic technique, such as the techniques described in the Hursh or Balkin references above.

In another exemplary embodiment, portable monitoring device 105 can collect other physiological data representative of physiological aspects of subject 107 including, but not limited to biometric data such as heart rate, breathing rate, blood pressure, skin temperature, galvanic skin response, blood oxygenation level, brain and/or nervous system electrical activity level and the like. In one exemplary embodiment, sensor 120 is configured as an infrared sensor, such as a near infrared spectroscopy (NIRS) sensor. In this embodiment, NIRS sensor 120 can collect physiological data, such as blood oxygenation levels, breath rate, heart rate and other data that can then be used to determine a cognitive effectiveness level. An embodiment that implements NIRS sensor 120 will be described in more detail below.

Portable monitoring device 105 is preferably configured to be wearable on subject 107, although device 105 can also be placed in proximity with subject 107 without making actual physical contact, if desired. Portable monitoring device 105 can also be implantable if desired. When configured to be wearable, portable monitoring device 105 can be worn around the wrist, ankle, neck, or head, or worn on any other part of the body as desired.

As mentioned above, portable monitoring device 105 is preferably configured to communicate with local computing device 104 by way of communication port 122. This communication can occur in real-time as data is collected, at predetermined intervals, as a result of prompting by local computing device 104, any combination thereof or otherwise. Communication port 122 can be configured to communicate externally in any desired manner. In one exemplary embodiment, port 122 is configured to communicate wirelessly using IEEE 802.11, Bluetooth, ZigBee, any mobile communication standard (e.g., WCDMA, GSM etc.), infrared communication and the like. In another exemplary embodiment, port 122 is configured as a wired port, such as a universal serial bus (USB) port, an IEEE 1394 FireWire port, and the like.

As mentioned above, portable monitoring device **105** can include subjective data input port **128** and display **129**. Subjective data input port **128** can be any device used to input data including, but not limited to, a button, switch, rollerball, trackball, wheel/button combination, touchscreen, touch-panel, keyboard, any combination thereof and the like. Furthermore, display **129** can be any type of display including, but not limited to a cathode ray tube (CRT), liquid crystal display (LCD), light emitting device (LED), any combination thereof and the like. Also, port **128** and display **129** can be combined such as in a touchscreen display. Of course, one of skill in the art will appreciate that certain configurations are preferable given the preferred configuration of device **105** as being portable. Thus, the configuration for port **128** and display **129** preferably takes into account weight, size and space in the actual implementation.

As will be described in more detail below, port **128** and display **129** can be used to enter subjective data. The subjective data can indicate subject **107**'s current mental state, including a sleep/wake state, subject **107**'s self-appraised cognitive effectiveness level, answers input by subject **107** to cognitive effectiveness tests, such as tests of reaction time, comprehension and/or memory, as well as other types of subjective data that will be appreciated by one of ordinary skill in the art.

Local computing device **104** is configured to communicate with portable monitoring device **105** and preferably includes a processing unit and a user interface. Local computing device **104** is preferably a personal desktop or notebook computer, but can also be a handheld computing device such as a personal digital assistant (PDA), a personal email device (e.g., a BLACKBERRY), a mobile phone, any combination thereof and the like. Local computing device **104** preferably receives data collected by portable monitoring device **105** and processes it into a desired format. This processing can include data conditioning, data filtering, encryption, and/or compression. Local computing device **104** can be configured to send the formatted data to central network **102**.

Central network **102** preferably includes a processing unit configured to process the formatted data from local computing device **104** into a cognitive effectiveness level. A data analyst can manually monitor and process data received at central network **102**, or all data monitoring and processing can be performed automatically. Once the data has been processed into the desired format, the data can be sent back to subject **107** for assessment or can be sent to a third party (embodiments involving a third party will be discussed in more detail below).

It should be noted that the division of data processing between central network **102**, local computing device **104** and portable monitoring device **105** can be organized in any manner desired. For instance, the bulk of data processing can be performed at central network **102** if desired, with local computing device **104** acting as an intermediary to transfer data from portable monitoring device **105** to central network **102**. Alternatively, the bulk of data processing can be performed on either portable monitoring device **105** or local computing device **104**, with communication with central network **102** for the purpose of data processing avoided altogether.

For instance, in one exemplary embodiment, raw actigraphy data can be collected in the form of a zero-crossing count. This information can then be stored in memory on portable monitoring device **105**, where it can be time-stamped and transmitted at a predetermined interval. Local computing device **104** can then receive the data, compile it into tabular format, store a back-up copy of the raw data, compress the

data, condition the data, encrypt the data, and transmit the modified actigraphy data along with any other data, such as subjective data and other data entered into local computing device **104** (such as travel information, event start time, event end time, individual-specific pieces of data such as age, sex or location, and the like) to central network **102** where this data is input to the cognitive effectiveness determination algorithm (such as the algorithm described in the Hursh or Balkin references, which are incorporated above).

Similarly, the evaluation or assessment of the cognitive effectiveness level can be performed in any manner desired. In one exemplary embodiment, subject **107** can evaluate the cognitive effectiveness data through a user interface located on local computing device **104**, or through display **129** located on portable monitoring device **105**. A software tool can be used to facilitate presentation of the cognitive effectiveness data to subject **107**. One exemplary tool is the Fatigue Analysis Software Tool/Fatigue Avoidance Scheduling Tool (FAST), described in published U.S. patent application Ser. No. 2003/0018242, entitled "Interface for a System and Method for Evaluating Task Effectiveness Based on Sleep Pattern," which is fully incorporated by reference herein.

As mentioned above, portable monitoring device **105** can be configured to monitor physiological aspects of subject **107** with an NIRS sensor **120**. In one exemplary embodiment, NIRS sensor **120** is configured to measure the oxy- and deoxy-hemoglobin concentrations in subject **107**'s blood with NIRS. From this NIRS signal, other physiological signals can be obtained or derived. For instance, the dominant measured NIRS signals can include signal oscillations from each heart and respiratory cycle. These signal oscillations can cause rises and drops in the NIRS signal, corresponding to each heart beat and breath taken by the subject. These signal oscillations are overlaid on the raw NIRS signal and can be extracted using filtering. The heartbeat signal, extracted through a band-pass filter, is depicted in the exemplary graph of FIG. 3A. The respiratory signal, extracted through a low-pass filter from the same data, is depicted in the exemplary graph of FIG. 3B, with the same time window as in FIG. 3A. The signals of FIGS. 3A-B can be used to determine the heart and respiratory rates, respectively, of subject **107**. This processing can occur in any desired processing unit within system **100**.

The heartbeat signal can be used to derive a heart rate variability (HRV) signal. In one exemplary embodiment, the HRV signal is derived through a peak detection algorithm and outlier removal based on an estimated change in heart rate between consecutive beats. The HRV signal is then spectrally analyzed using a fast fourier transform (FFT). Spectral analysis of the HRV signal has been shown to reveal indicators of sleep onset and fatigue levels, after the removal of motion artifacts from the received optical signal, preferably through artifact removal algorithms.

FIGS. 3C-D are exemplary graphs depicting spectral data from the HRV signal derived from heart rate data. This spectral data shows expected changes due to sleep onset and arousal. FIG. 3C depicts an expected increase in the high frequency variance (HFV) of the HRV signal due to the onset of sleep. FIG. 3D depicts the expected peak in the low frequency variance (LFV) due to an arousal from sleep. Respiratory rate can be derived from the NIRS signal as well and can be used to reveal indicators of sleep onset and arousals, if desired.

In addition to collecting objective data representing a physiological aspect of subject **107**, system **100** can be configured to collect subjective data as well, and determine cognitive effectiveness based on both the collected objective and

subjective data. In one exemplary embodiment, objective data collected by sensor **120** is processed and correlated to a sleep/wake state of subject **107** using a sleep/wake state determination algorithm, and then processed to determine a cognitive effectiveness level using a cognitive effectiveness determination algorithm. Portable monitoring device **105** can be configured to allow subject **107** to manually input an indication that subject **107** is awake through subjective data input port **128**. Subject **107** can be prompted to enter subjective input by device **105** or subject **107** can enter subjective input voluntarily. This subjective data can be used to verify the sleep/wake state that was determined based on the objective data. If a discrepancy exists, the bounds for the sleep/wake state can be modified accordingly to yield a more accurate cognitive effectiveness prediction.

System **100** can also be configured to collect subjective data relating to the cognizant state of subject **107** at a given point in time. This data can be collected through a cognitive effectiveness test that evaluates subject **107**'s ability to perform tasks of varying degrees of difficulty. Examples can include tests of subject **107**'s reaction time, ability to comprehend relatively complex information, short term memory, long term memory and the like. These tests can be administered through the local computing device **104**, through the portable monitoring device **105**, or through other devices. The results of the test or tests can be reported to system **100** and used to verify the accuracy of subject **107**'s current predicted cognitive effectiveness level or the test results can be used to directly predict subject **107**'s cognitive effectiveness level at a past, current or future point in time.

Also, correlation can be performed with the objective data to adjust the sleep/wake determination algorithm to attempt to eliminate future discrepancies. For instance, if the sleep/wake determination algorithm incorrectly predicts a sleep state based on certain objective data characteristics, the algorithm can be modified, or tuned, to more accurately predict sleep/wake states in the future. As a result, system **100** can be configured to dynamically adapt to the characteristics of each individual subject **107**. Preferably, this is an iterative process that continues over time, in order to continually adapt the algorithm to the characteristics of the individual subject **107**.

For instance, in another exemplary embodiment, system **100** can be configured to implement an adaptive algorithm by first measuring activity with actigraph sensor **120** and determining a corresponding sleep/wake state based on the Cole-Kripke algorithm. Sleep scores are assigned to epochs of uniform time period based on the collected objective actigraph data. Subjective data, when available, can be used to modify the bounds for sleep and wake periods. The subjective data can be stored and used to individually optimize the Cole-Kripke algorithm parameters and weights for a given subject **107**.

In another exemplary embodiment, a host of physiological aspects and other individual-specific characteristics are used to adaptively improve the accuracy of the cognitive effectiveness predictions over time. FIG. **4** is a functional block diagram depicting an exemplary embodiment of system **100** configured for algorithmic adaptation. Here, system **100** includes a processing unit **401**, which can be located anywhere throughout system **100** (if implemented in portable monitoring device **105**, processing unit **401** would be equivalent to processing unit **124**). Here, processing unit **401** includes a cognitive effectiveness prediction unit **409** that is configured to use a customizable population-level model for predicting a cognitive effectiveness level **408**. In this embodiment, objective physiological data **402**, subjective data **404**,

and/or individual characteristic data **406** are each collected and input into processing unit **401**, for use by cognitive effectiveness prediction unit **409**.

Objective physiological data **402** can be any data relating to the measurable aspects of the body of subject **107**, such as motion/activity data, heart rate, breathing rate, blood pressure, skin temperature, galvanic skin response, blood oxygenation level, brain and/or nervous system electrical activity level and the like. This data **402** is preferably obtained by sensor **120** within portable monitoring device **105**.

Subjective data **404** can be any data that is based on a subjective assessment of subject **107**. Subjective data **404** is typically input by subject **107**, but can also be input by another individual possessing information on the state of subject **107**. Subjective data **404** can be data confirming whether subject **107** is currently asleep or awake, data confirming whether subject **107** was asleep or awake at a past point in time, data representative of when subject **107** plans to sleep or wake in the future, data representative of a current or past cognitive effectiveness level of subject **107**, data representative of a current or past feeling of exhaustion, feedback data representative of subject **107**'s evaluation of a previously output cognitive effectiveness level **408** and the like. This data **404** is preferably obtained by subjective input into subjective data input port **128** in portable monitoring device **105** or subjective input into local computing device **104**.

Individual characteristic data **406** can be any data that is representative of a broad individual characteristic. Examples can include race, gender, pharmacological data, heritage, genetic traits and the like. This data **406** is preferably obtained by input into subjective data input port **128** in portable monitoring device **105**, input into local computing device **104** by subject **104** or input into central network **102** by another party with knowledge of the individual characteristics of subject **107** freely disclosed by subject **107**.

Cognitive effectiveness prediction unit **409** is preferably configured to predict a cognitive effectiveness level **408** based on any or all of the input data **402-406** and, also, adapt itself to improve the accuracy of predictions based on any or all of the input data **402-406**. In one exemplary embodiment, feedback provided by subject **107** on the accuracy of a current cognitive effectiveness level **408** can be input as subjective data **404** and used by cognitive effectiveness prediction unit **409** to rescale or individually customize the population-level model appropriately to bring further predictions in-line with subject **107**'s self-assessment. In other words, the population-level model (or algorithm) can be customized, adapted, or individualized into a relatively more subject-based model to improve the accuracy of predictions for a given subject **107**. In doing so, the model is no longer optimized to produce accurate predictions for any member of a given population, but is instead optimized for a subset, or even an individual, within the population.

Furthermore, adjustments to the population-level model as well as data **402-406** can be shared with central network **102** and used to correlate changes to the population-level model with specific input data **402-406** to improve the accuracy of the population-level model for other individuals. For instance, based on adjustments made for male and female subjects **107**, the population-level model can be customized to take into account the gender of a new subject **107** using system **100** for the first time.

In one exemplary embodiment, cognitive effectiveness prediction unit **408** is configured to use a boosted decision tree technique to adapt the population-level model to a subject-based model for a given subject **107**. FIG. **5** is a flow diagram depicting one exemplary method **500** where cogni-

tive effectiveness prediction unit **408** uses a boosted decision tree technique. At **502**, objective data **402** (and/or optionally individual characteristic data **406**) is collected for subject **107**. At **504**, subjective data **404** is collected with regard to subject **107**. Preferably, subjective data **404** includes self-assessed cognitive effectiveness levels entered by subject **107**. At **506**, a decision tree is generated that predicts the self-assessed cognitive effectiveness levels included in subjective data **404** based on objective data **402** and/or the output of a population-level model.

At **508**, new cognitive effectiveness levels are output from the boosted decision tree based on newly acquired objective data **402** (and/or optionally individual characteristic data **406**). At **510**, new subjective data **404** is entered with regard to subject **107**, preferably including subject **107**'s self-assessed cognitive effectiveness levels. At **512**, discrepancies between subject **107**'s self-assessed cognitive effectiveness levels and the predicted cognitive effectiveness level output by the decision tree are identified and a higher weight is assigned to those instances. At **514**, a new decision tree is generated to predict the reweighted data. At **516**, this new tree is combined with previous trees by weighted voting with the weighting based on the overall prediction error of each tree. At **518**, the accuracy of the combination is evaluated and if further modifications are necessary, the method reverts to **512**. If not, the method proceeds to **520** and waits for new types of objective data **402** (or individual data **406**) to be acquired or changes in the base level population model, in which case the method reverts to **506**.

In addition to providing a predicted level of cognitive effectiveness, system **100** can be configured to provide behavioral guidance to subject **107** based on the predicted cognitive effectiveness level. The behavioral guidance can be provided in real-time and can inform subject **107** as to the effect current and/or future behavior will have on subject **107**'s cognitive effectiveness level. As mentioned above, portable monitoring device **105** can include display **129**. Portable monitoring device **105** can generate a behavioral guidance message with processing unit **124** (or receive a behavioral guidance message by way of communication port **122**) and present the message to subject **107** on display **129**. A behavioral guidance message can be generated at pre-determined intervals during certain times of the day, can be generated as a result of prompting by subject **107**, can be generated as a result of variations in data collected by sensor **120**, or in any other desired manner.

Preferably, the conditions under which a behavioral guidance message should be generated are stored in system **100** as a set of behavioral guidance parameters. The behavioral guidance parameters can include time parameters, date parameters, predicted cognitive effectiveness level parameters, objective data parameters, subjective data parameters, individual characteristic data parameters, interval parameters (i.e., how often should a behavioral guidance message be generated and is this interval fixed or variable dependent on the time of day, date, severity of collected objective or subjective data, etc.) and the like.

In one exemplary embodiment, a behavioral guidance message informs the user as to what consequences sleep time will have on cognitive effectiveness for the next day. For instance, if a set of behavioral guidance parameters are used that specify that should system **100** detect that subject **107** is still awake past a predetermined time of day, for instance, 10 o'clock p.m., system **100** can be configured to generate a behavioral guidance message and display it on portable monitoring device **105**. The behavioral guidance message can contain information such as an average cognitive effectiveness

level for a specific event or time period in the future subject **107** can expect to achieve if subject **107** goes to sleep within 30 minutes (e.g., 90% of maximum), 60 minutes (e.g., 85% of maximum) and 90 minutes (e.g., 80% of maximum) from the current time, and wakes at a normal time the following day. In such an instance, subject **107** preferably sees a quantified representation of the consequences of continuing to remain awake, through the ever-decreasing predicted cognitive effectiveness levels. Updated behavioral guidance messages can be continually generated at predetermined intervals until system **100** detects that subject **107** has gone to sleep.

FIG. **6** is a flow diagram depicting an exemplary embodiment of a method **600** of providing behavioral guidance, which can be performed with system **100**. At **602**, one or more behavioral guidance parameters are set. Next, at **604**, system **100** monitors the current conditions, which can include collected data (e.g., objective data **402**, subjective data **404**, and/or individual characteristic data **406**) as well as generally known data (e.g., time, day, etc.). Then, at **606**, system **100** interprets the monitored conditions in light of the behavioral guidance parameters and, at **608**, determines whether the monitored conditions are such that a behavioral guidance message should be generated. If not, then system **100** proceeds to **610** to determine if new behavioral guidance parameters are to be set. If so, system **100** proceeds back to **602** and if not, system **100** proceeds back to **604**. If a behavioral guidance message should be generated, then system **100** can proceed from **608** to **612** where the behavioral guidance message is generated. After which, system **100** can proceed to **610** to determine if new behavioral guidance parameters are to be set.

While the invention is susceptible to various modifications and alternative forms, a specific example thereof has been shown in the drawings and is herein described in detail. It should be understood, however, that the invention is not to be limited to the particular form disclosed, but to the contrary, the invention is to cover all modifications, equivalents, and alternatives falling within the spirit of the disclosure.

What is claimed is:

1. A method of monitoring individual performance, comprising:
 - measuring an objective data parameter corresponding to a first aspect of a subject;
 - collecting a subjective data parameter corresponding to a second aspect of the subject by way of a user interface; and
 - determining a cognitive effectiveness level of the subject based at least on the objective and subjective data parameters;
- wherein the subjective data parameter is a data parameter representative of a subject's manual indication of a subjective mental state, the subjective mental state including a wake state.
2. The method of claim **1**, wherein the determined cognitive effectiveness level is one of a past, current or future cognitive effectiveness level.
3. The method of claim **1**, wherein determining a cognitive effectiveness level comprises determining a cognitive effectiveness level with a cognitive effectiveness determination algorithm.
4. The method of claim **1**, wherein the objective data parameter is representative of the subject's motion.
5. The method of claim **4**, wherein the objective data parameter is an actigraph data parameter.
6. The method of claim **1**, wherein the objective data parameter is a parameter representative of a blood oxygen level.

11

- 7. The method of claim 6, wherein the objective data parameter is a near infrared spectroscopy signal parameter.
- 8. The method of claim 1, wherein the subjective mental state is the subject's own mental state.
- 9. The method of claim 1, wherein the subjective data parameter is a response to a test.
- 10. The method of claim 1, wherein determining a cognitive effectiveness level of the subject based at least on the objective and subjective data parameters further comprises:
 - determining the cognitive effectiveness level of the subject based on at least on the objective data parameter; and
 - adjusting the determined cognitive effectiveness level based upon the subjective data parameter.
- 11. The method of claim 10, wherein the subjective data parameter corresponds to a wake state and adjusting the determined cognitive effectiveness level based upon the subjective data parameter comprises:
 - adjusting the boundary of a wake state based upon the subjective data parameter; and
 - determining a new cognitive effectiveness level.
- 12. The method of claim 1, wherein determining the cognitive effectiveness level of the subject based at least on the objective and subjective data parameters comprises inputting the objective and subjective data parameters into a cognitive effectiveness determination algorithm.
- 13. The method of claim 1, further comprising:
 - collecting an individual characteristic data parameter corresponding to a third aspect of the subject; and
 - determining the cognitive effectiveness level of the subject based at least on the objective, subjective and individual characteristic data parameters.
- 14. The method of claim 13, wherein the individual characteristic data parameter is a gender of the subject.
- 15. A method of monitoring individual performance, comprising:
 - measuring an objective data parameter corresponding to a first aspect of a subject;
 - collecting a subjective data parameter corresponding to a second aspect of the subject by way of a user interface;
 - determining a cognitive effectiveness level of the subject based at least on the objective and subjective data parameters;
 - collecting an individual characteristic data parameter corresponding to a third aspect of the subject; and
 - determining the cognitive effectiveness level of the subject based at least on the objective, subjective and individual characteristic data parameters wherein the individual characteristic data parameter is a racial origin of the subject.
- 16. A method of monitoring individual performance, comprising:
 - measuring an objective data parameter corresponding to a first aspect of a subject;

12

- collecting a subjective data parameter corresponding to a second aspect of the subject by way of a user interface; and
- determining a cognitive effectiveness level of the subject based at least on the objective and subjective data parameters;
- collecting an individual characteristic data parameter corresponding to a third aspect of the subject; and
- determining the cognitive effectiveness level of the subject based at least on the objective, subjective and individual characteristic data parameters;
- wherein the individual characteristic data parameter is a genetic characteristic of the subject.
- 17. A method of monitoring individual performance, comprising:
 - measuring an objective data parameter corresponding to a first aspect of a subject;
 - collecting a subjective data parameter corresponding to a second aspect of the subject by way of a user interface;
 - determining a cognitive effectiveness level of the subject based at least on the objective and subjective data parameters;
 - determining the cognitive effectiveness level with a cognitive effectiveness determination algorithm; and
 - adapting the cognitive effectiveness determination algorithm to the subject.
- 18. The method of claim 17, wherein adapting the cognitive effectiveness determination algorithm comprises altering a population-level based cognitive effectiveness determination algorithm into a subject-based cognitive effectiveness determination algorithm.
- 19. A method for us in monitoring individual performance using an algorithm for determining cognitive effectiveness, comprising:
 - measuring at least one objective data parameter corresponding to at least a first aspect of a subject;
 - collecting at least one subjective data parameter corresponding to at least a second aspect of the subject by way of at least one user interface; and
 - adapting the algorithm for the subject based on at least on the objective data parameter and the at least one subjective data parameter for the subject.
- 20. The method of claim 19 further comprising:
 - collecting at least one individual characteristic data parameter corresponding to at least a third aspect of the subject; and wherein the adapting further includes adapting the algorithm for the subject based on at least on the objective data parameter, the at least one subjective data parameter, and the at least one individual characteristic data parameter for the subject.

* * * * *

专利名称(译)	用于监视和评估个人表现的系统和方法		
公开(公告)号	US7621871	公开(公告)日	2009-11-24
申请号	US11/424742	申请日	2006-06-16
[标]申请(专利权)人(译)	DOWNS J HUNTER DOWNS TRACI H STAUTZENBERGER J PATRICK 西村ERIN AKAGI JASON 奥唐奈BRENDAN在fp cirit fahrettin奥马尔 拉波波特EVAN D		
申请(专利权)人(译)	DOWNS J HUNTER DOWNS TRACI H STAUTZENBERGER J PATRICK 西村ERIN AKAGI JASON O'DONNELL BRENDAN在fp cirit fahrettin奥马尔 拉波波特EVAN D		
当前申请(专利权)人(译)	ARCHINOETICS , LLC		
[标]发明人	DOWNS III J HUNTER DOWNS TRACI H STAUTZENBERGER J PATRICK NISHIMURA ERIN AKAGI JASON O'DONNELL BRENDAN F P CIRIT FAHRETTIN OLCAY RAPOPORT EVAN D		
发明人	DOWNS, III, J. HUNTER DOWNS, TRACI H. STAUTZENBERGER, J PATRICK NISHIMURA, ERIN AKAGI, JASON O'DONNELL, BRENDAN F. P. CIRIT, FAHRETTIN OLCAY RAPOPORT, EVAN D.		
IPC分类号	A61B5/00		
CPC分类号	A61B5/16 A61B5/4809 G06F19/3406 G06F19/3418 G06F19/3437 G06F19/345 A61B5/7232 G16H40/63 G16H50/20 G16H50/50		
其他公开文献	US20070293731A1		
外部链接	Espacenet USPTO		

摘要(译)

提供了用于监测和评估认知有效性的系统，设备和方法。在一个示例性实施例中，用于监视认知有效性的系统可以包括与本地计算设备通信地耦合的中央网络，该本地计算设备又可以与便携式监视设备通信地耦合。便携式监测设备可以位于受试者附近并且被配

置为从可用于确定认知有效性水平的受试者收集数据。还提供了用于确定认知表现的自适应方法。

