



US008451113B2

(12) **United States Patent**
Mazar et al.

(10) **Patent No.:** **US 8,451,113 B2**
(45) **Date of Patent:** ***May 28, 2013**

(54) **REPEATER PROVIDING DATA EXCHANGE WITH A MEDICAL DEVICE FOR REMOTE PATIENT CARE AND METHOD THEREOF**

(75) Inventors: **Scott T. Mazar**, Woodbury, MN (US);
Yatheendhar D. Manicka, Woodbury, MN (US)

(73) Assignee: **Cardiac Pacemakers, Inc.**, St. Paul, MN (US)

(*) Notice: Subject to any disclaimer, the term of this patent is extended or adjusted under 35 U.S.C. 154(b) by 0 days.

This patent is subject to a terminal disclaimer.

(21) Appl. No.: **13/371,240**

(22) Filed: **Feb. 10, 2012**

(65) **Prior Publication Data**

US 2012/0139720 A1 Jun. 7, 2012

Related U.S. Application Data

(63) Continuation of application No. 12/874,899, filed on Sep. 2, 2010, now Pat. No. 8,130,093, which is a continuation of application No. 11/872,841, filed on Oct. 16, 2007, now Pat. No. 7,791,467, which is a continuation of application No. 11/327,879, filed on Jan. 9, 2006, now Pat. No. 7,292,139, which is a continuation of application No. 10/321,885, filed on Dec. 17, 2002, now Pat. No. 7,009,511.

(51) **Int. Cl.**
G08B 1/00 (2006.01)

(52) **U.S. Cl.**
USPC **340/531; 340/539.1; 340/539.11; 340/539.12**

(58) **Field of Classification Search**

USPC 340/531, 539.1, 539.11, 539.12; 705/2, 705/3

See application file for complete search history.

(56) **References Cited**

U.S. PATENT DOCUMENTS

4,142,533 A	3/1979	Brownlee et al.
4,531,527 A	7/1985	Reinhold, Jr. et al.
4,658,831 A	4/1987	Reinhard et al.
4,681,111 A	7/1987	Silvian
4,686,999 A	8/1987	Snyder et al.

(Continued)

FOREIGN PATENT DOCUMENTS

EP	0554955	8/1992
EP	0513457	11/1992

(Continued)

OTHER PUBLICATIONS

Deffie, "The First Ten Years of Public-Key Cryptography," Proceedings of the IEEE, 76(5): 560-577 (May 1988).

(Continued)

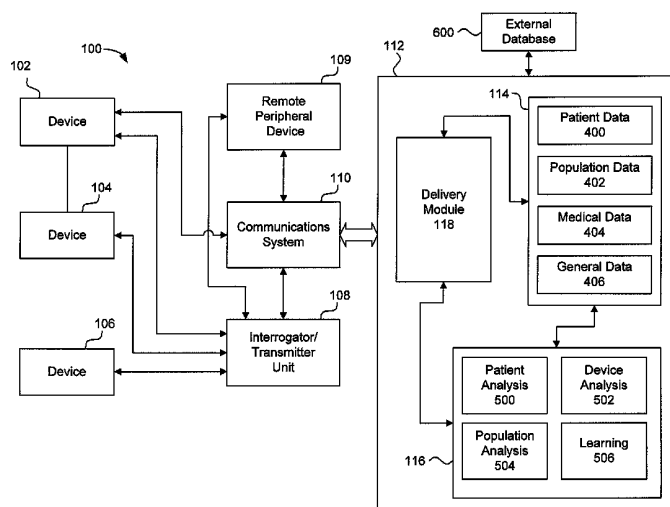
Primary Examiner — Daryl Pope

(74) *Attorney, Agent, or Firm* — Pauly, DeVries Smith & Deffner LLC

(57) **ABSTRACT**

A repeater providing data exchange with a medical device for remote patient care and method thereof are provided. The repeater includes a transmission device configured to send the data over a wireless medium to a data repository and a processing device configured to detect conditions in respect of an associated communication medium that could affect data exchange, where the processing device is configured to send the data based at least in part on the conditions. The processing device is further configured to analyze the data from the medical device to detect a problem with the medical device.

20 Claims, 7 Drawing Sheets



U.S. PATENT DOCUMENTS

4,705,043 A	11/1987	Imran	5,778,882 A	7/1998	Raymond et al.
4,757,816 A	7/1988	Ryan et al.	5,785,650 A	7/1998	Akasaka et al.
4,793,353 A	12/1988	Borkan	5,791,342 A	8/1998	Woodard
4,809,697 A	3/1989	Causey, III et al.	5,792,062 A	8/1998	Poon et al.
4,852,570 A	8/1989	Levine	5,792,207 A	8/1998	Dietrich
4,932,408 A	6/1990	Schaldach	5,814,089 A	9/1998	Stokes et al.
4,947,407 A	8/1990	Silvian	5,819,251 A	10/1998	Kremer et al.
4,952,928 A	8/1990	Carroll	5,836,983 A	11/1998	Weijand et al.
4,958,645 A	9/1990	Cadell et al.	5,843,133 A	12/1998	Routh et al.
4,969,464 A	11/1990	Callaghan et al.	5,843,139 A	12/1998	Goedeke et al.
4,974,607 A	12/1990	Miwa	5,855,593 A	1/1999	Olson et al.
4,987,897 A	1/1991	Funke	5,860,918 A	1/1999	Schradi et al.
5,040,536 A	8/1991	Riff	5,861,014 A	1/1999	Familoni
5,058,581 A	10/1991	Silvian	5,861,018 A	1/1999	Freierbach
5,081,987 A	1/1992	Nigam	5,876,353 A	3/1999	Riff
5,113,859 A	5/1992	Funke	5,879,375 A	3/1999	Larson, Jr. et al.
5,113,869 A	5/1992	Nappholz et al.	5,891,178 A	4/1999	Mann et al.
5,117,825 A	6/1992	Grevious	5,897,493 A	4/1999	Brown
5,133,346 A	7/1992	Kulkarni	5,899,928 A	5/1999	Sholder et al.
5,137,022 A	8/1992	Henry	5,899,931 A	5/1999	Deschamp et al.
5,199,428 A	4/1993	Obel et al.	5,911,132 A	6/1999	Sloane
5,241,961 A	9/1993	Henry	5,917,414 A	6/1999	Oppelt et al.
5,292,343 A	3/1994	Blanchette	5,919,214 A	7/1999	Ciarello et al.
5,331,549 A	7/1994	Crawford, Jr.	5,931,857 A	8/1999	Prieve et al.
5,331,966 A	7/1994	Bennett et al.	5,935,078 A	8/1999	Freierbach
5,336,245 A	8/1994	Adams et al.	5,944,659 A	8/1999	Flasch et al.
5,355,889 A	10/1994	Nevo et al.	5,954,640 A	9/1999	Szabo
5,357,427 A	10/1994	Langen et al.	5,957,861 A	9/1999	Combs et al.
5,383,915 A	1/1995	Adams	5,974,124 A	10/1999	Schlueter, Jr. et al.
5,390,238 A	2/1995	Kirk et al.	5,987,352 A	11/1999	Klein et al.
5,413,594 A	5/1995	Williams	5,999,857 A	12/1999	Weijand et al.
5,415,181 A	5/1995	Hogrefe et al.	6,024,699 A	2/2000	Surwit et al.
5,416,695 A	5/1995	Stutman et al.	6,047,203 A	4/2000	Sackner et al.
5,421,343 A	6/1995	Feng	6,050,940 A	4/2000	Braun et al.
5,437,278 A	8/1995	Wilk	6,067,466 A	5/2000	Selker et al.
5,438,983 A	8/1995	Falcone	6,073,046 A	6/2000	Patel et al.
5,458,122 A	10/1995	Hethuin	6,080,106 A	6/2000	Lloyd et al.
5,464,012 A	11/1995	Falcone	6,083,248 A	7/2000	Thompson
5,476,485 A	12/1995	Weinberg et al.	6,093,146 A *	7/2000	Filangeri 600/300
5,481,262 A	1/1996	Urbas et al.	6,095,985 A	8/2000	Raymond et al.
5,509,927 A	4/1996	Epstein et al.	6,102,856 A	8/2000	Groff et al.
5,522,865 A	6/1996	Schulman et al.	6,122,351 A	9/2000	Schlueter, Jr. et al.
5,544,661 A	8/1996	Davis et al.	6,139,494 A	10/2000	Cairnes
5,549,654 A	8/1996	Powell	6,141,584 A	10/2000	Rockwell et al.
5,553,609 A	9/1996	Chen et al.	6,155,267 A	12/2000	Nelson
5,576,952 A	11/1996	Stutman et al.	6,168,563 B1	1/2001	Brown
5,584,868 A	12/1996	Salo et al.	6,170,488 B1	1/2001	Spillman et al.
5,591,215 A	1/1997	Greenhut et al.	6,171,237 B1	1/2001	Avital et al.
5,603,331 A	2/1997	Heemels et al.	6,171,256 B1	1/2001	Joo et al.
5,626,630 A	5/1997	Markowitz et al.	6,185,452 B1	2/2001	Schulman et al.
5,629,678 A	5/1997	Gargano et al.	6,200,264 B1	3/2001	Satherley et al.
5,630,836 A	5/1997	Prem et al.	6,203,495 B1	3/2001	Bardy
5,660,183 A	8/1997	Chiang et al.	6,206,835 B1	3/2001	Spillman et al.
5,674,249 A	10/1997	de Coriolis et al.	6,208,894 B1	3/2001	Schulman et al.
5,683,432 A	11/1997	Goedeke et al.	6,213,942 B1	4/2001	Flasch
5,687,734 A	11/1997	Dempsey et al.	6,216,038 B1	4/2001	Hartlaub et al.
5,697,959 A	12/1997	Poore	6,221,011 B1	4/2001	Bardy
5,704,366 A	1/1998	Taklind et al.	6,223,078 B1	4/2001	Marcovecchio
5,711,297 A	1/1998	Iliff	6,223,083 B1	4/2001	Rosar
5,713,350 A	2/1998	Yokota et al.	6,225,901 B1	5/2001	Kail, IV
5,713,937 A	2/1998	Nappholz et al.	6,236,889 B1	5/2001	Soykan et al.
5,720,770 A	2/1998	Nappholz et al.	6,246,992 B1	6/2001	Brown
5,720,771 A	2/1998	Snell	6,249,705 B1	6/2001	Snell
5,724,580 A	3/1998	Levin et al.	6,250,309 B1	6/2001	Krichen et al.
5,724,983 A	3/1998	Seiker et al.	6,261,230 B1	7/2001	Bardy
5,738,102 A	4/1998	Lemelson	6,263,245 B1	7/2001	Snell
5,741,315 A	4/1998	Lee et al.	6,263,246 B1	7/2001	Goedeke
5,743,267 A	4/1998	Nikolic et al.	6,263,247 B1	7/2001	Mueller et al.
5,749,907 A	5/1998	Mann	6,270,457 B1	8/2001	Bardy
5,749,908 A	5/1998	Snell	6,287,252 B1	9/2001	Lugo
5,752,976 A	5/1998	Duffin et al.	6,289,238 B1	9/2001	Besson et al.
5,752,977 A	5/1998	Grevious et al.	6,290,646 B1	9/2001	Cosentino et al.
5,766,232 A	6/1998	Grevious et al.	6,292,698 B1	9/2001	Duffin et al.
5,769,074 A	6/1998	Barnhill et al.	6,302,844 B1	10/2001	Walker et al.
5,769,876 A	6/1998	Silvian	6,304,788 B1	10/2001	Eady
5,772,586 A	6/1998	Heinonen et al.	6,319,200 B1	11/2001	Lai et al.
5,772,604 A	6/1998	Langberg et al.	6,329,929 B1	12/2001	Weijand et al.
5,774,501 A	6/1998	Halpern et al.	6,336,900 B1	1/2002	Alleckson et al.
			6,345,203 B1	2/2002	Mueller et al.

6,349,234	B2	2/2002	Pauly et al.	
6,363,282	B1	3/2002	Nichols et al.	
6,416,471	B1	7/2002	Kumar et al.	
6,418,346	B1	7/2002	Nelson et al.	
6,442,432	B2	8/2002	Lee	
6,442,433	B1	8/2002	Linberg	
6,454,705	B1	9/2002	Cosentino et al.	
6,477,242	B1	11/2002	Freeny	
6,477,424	B1	11/2002	Thompson et al.	
6,480,745	B2	11/2002	Nelson et al.	
6,485,418	B2	11/2002	Yasushi et al.	
6,497,657	B2	12/2002	Nunome	
6,544,171	B2	4/2003	Beetz et al.	
6,544,173	B2	4/2003	West et al.	
6,544,174	B2	4/2003	West et al.	
6,564,104	B2	5/2003	Nelson et al.	
6,569,094	B2	5/2003	Suzuki et al.	
6,577,901	B2	6/2003	Thompson	
6,599,250	B2	7/2003	Webb et al.	
6,602,191	B2	8/2003	Quy	
6,622,050	B2	9/2003	Thompson	
6,687,547	B2	2/2004	Goedeke et al.	
6,754,538	B2	6/2004	Linberg	
6,780,156	B2	8/2004	Haueter et al.	
6,804,558	B2	10/2004	Haller et al.	
6,824,512	B2	11/2004	Warkentin et al.	
6,827,670	B1	12/2004	Stark et al.	
6,893,396	B2	5/2005	Schulze et al.	
6,974,413	B2	12/2005	Bardy	
7,009,511	B2 *	3/2006	Mazar et al.	340/531
7,027,872	B2	4/2006	Thompson	
7,058,453	B2	6/2006	Nelson et al.	
7,096,067	B2	8/2006	Linberg	
7,149,773	B2	12/2006	Haller et al.	
7,181,505	B2	2/2007	Haller et al.	
7,261,690	B2	8/2007	Teller et al.	
7,292,139	B2	11/2007	Mazar et al.	
7,791,467	B2	9/2010	Mazar et al.	
8,130,093	B2	3/2012	Mazar et al.	
2001/0044588	A1	11/2001	Mault	
2001/0051787	A1	12/2001	Haller et al.	
2002/0013538	A1	1/2002	Teller	
2002/0013614	A1	1/2002	Thompson	
2002/0052539	A1	5/2002	Haller et al.	
2010/0328062	A1	12/2010	Mazar	
2012/0139720	A1	6/2012	Mazar et al.	

FOREIGN PATENT DOCUMENTS

EP	0531889	3/1993
EP	0711531	5/1996

EP	0887759	12/1998
JP	00245338	10/1990
JP	05245117	9/1993
JP	2006014128	1/1994
JP	11178801	7/1999
JP	2000-041957	2/2000
JP	2000-271097	10/2000
JP	02178968	3/2001
JP	2002-224053	8/2002
JP	2002-245167	8/2002
JP	2002-355305	12/2002
WO	9739792	10/1997
WO	9801742	1/1998
WO	9946718	9/1999

OTHER PUBLICATIONS

Moody, G. B., "Integration of Real-Time and Off-Line Clinical Data in the MIMIC Database", Computers in Cardiology, 1997, vol. 24, pp. 585-588.

Long, W. J. et al., "Differential Diagnosis Generation From a Causal Network With Probabilities", Computers in Cardiology 1988, Proceedings, pp. 185-188.

Official Action dated Oct. 7, 2009 in co-pending Japanese Patent Application No. 2004-562331 (5 pages).

PCT International Search Report and Written Opinion from International Application No. PCT/US2003/40693, corresponding to U.S. Appl. No. 10/321,885, mailed Jul. 7, 2008, pp. 1-6.

Supplementary European Search Report from EP Application No. 03813807, corresponding to U.S. Appl. No. 11/872,841, mailed Jun. 22, 2009, pp. 1-5.

Official Communication from the European Patent Office for EP Patent Application No. 03813807.9, dated Oct. 27, 2009, which corresponds to U.S. Appl. No. 10/321,885, which is the parent application to the present application (U.S. Appl. No. 11/872,841) (7 pages).

Notice of Allowance mailed Jul. 8, 2011 in co-pending U.S. Appl. No. 12/874,899, "Repeater Providing Data Exchange with a Medical Device for Remote Patient Care and Method Thereof," (5 pages).

Notice of Allowance Received, mailed Oct. 6, 2011—in co-pending U.S. Appl. No. 12/874,899. "Repeater Providing Data Exchange with a Medical Device for Remote Patient Care and method thereof." 6 Pgs.

* cited by examiner

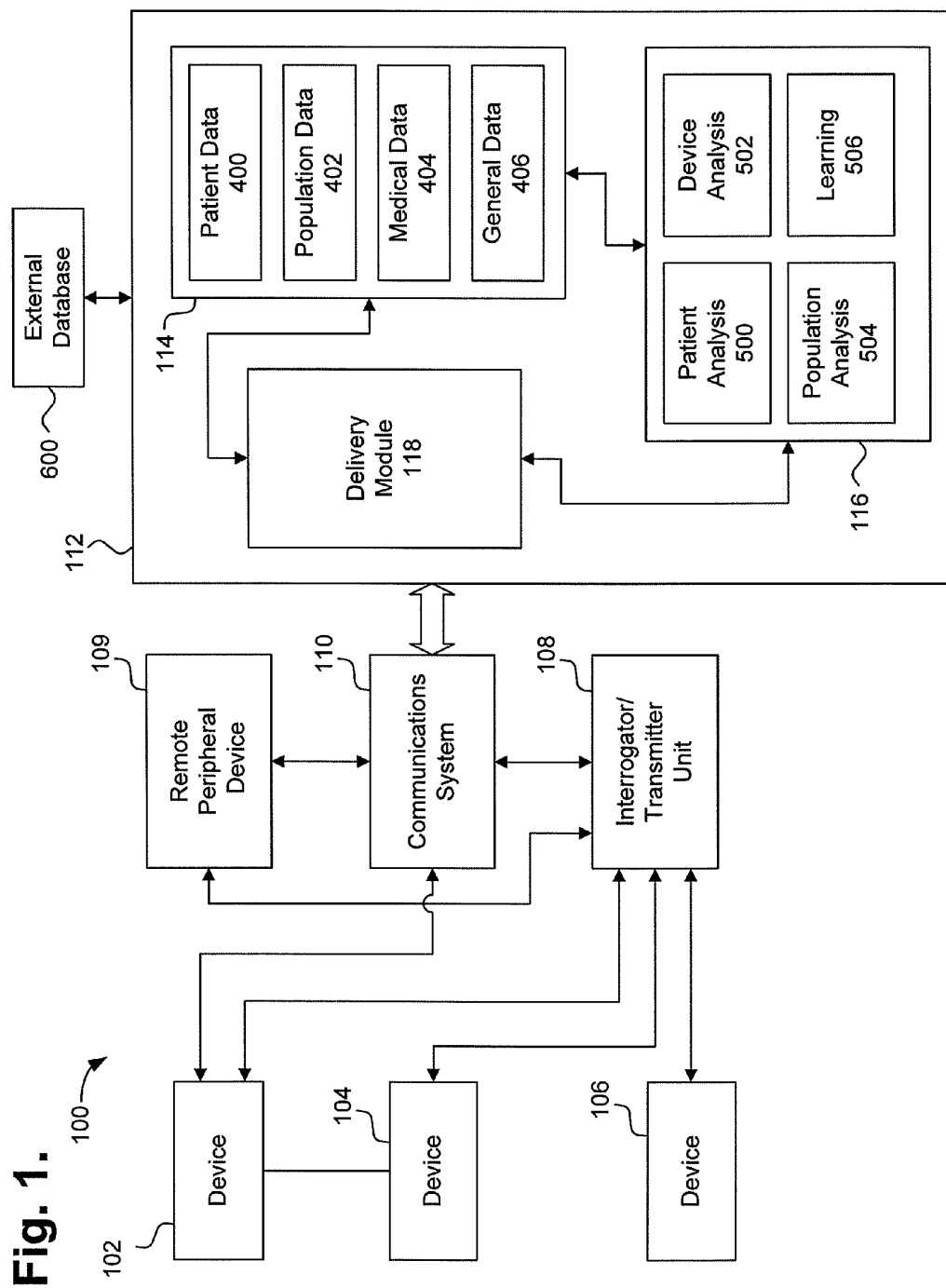


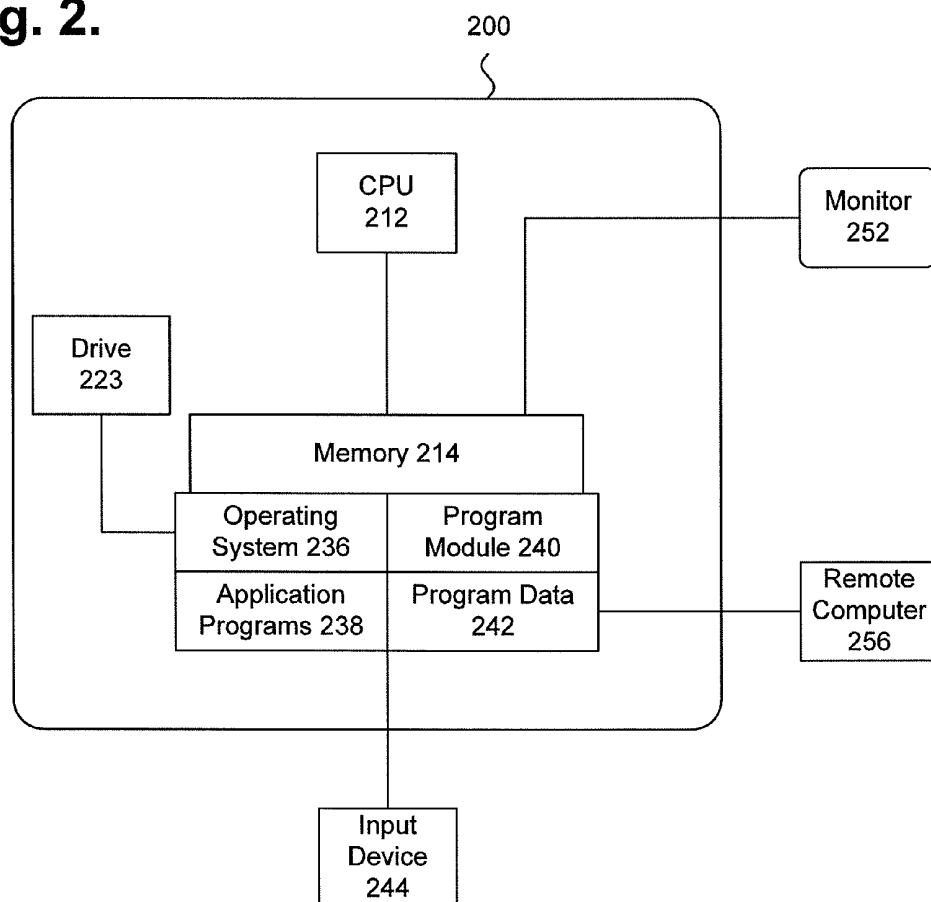
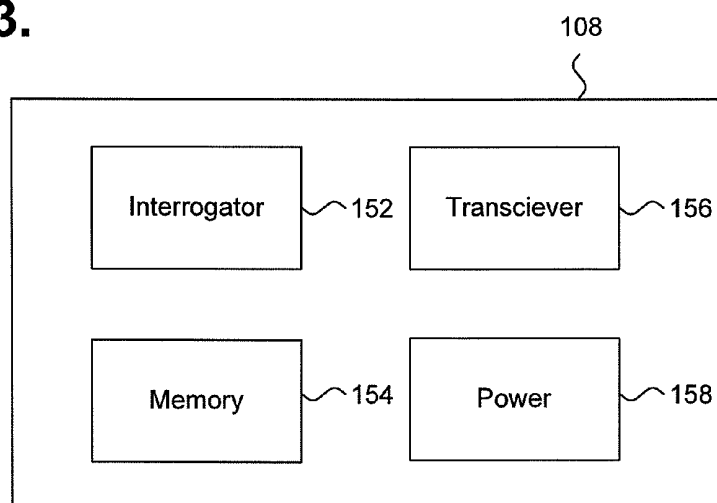
Fig. 2.**Fig. 3.**

Fig. 4.

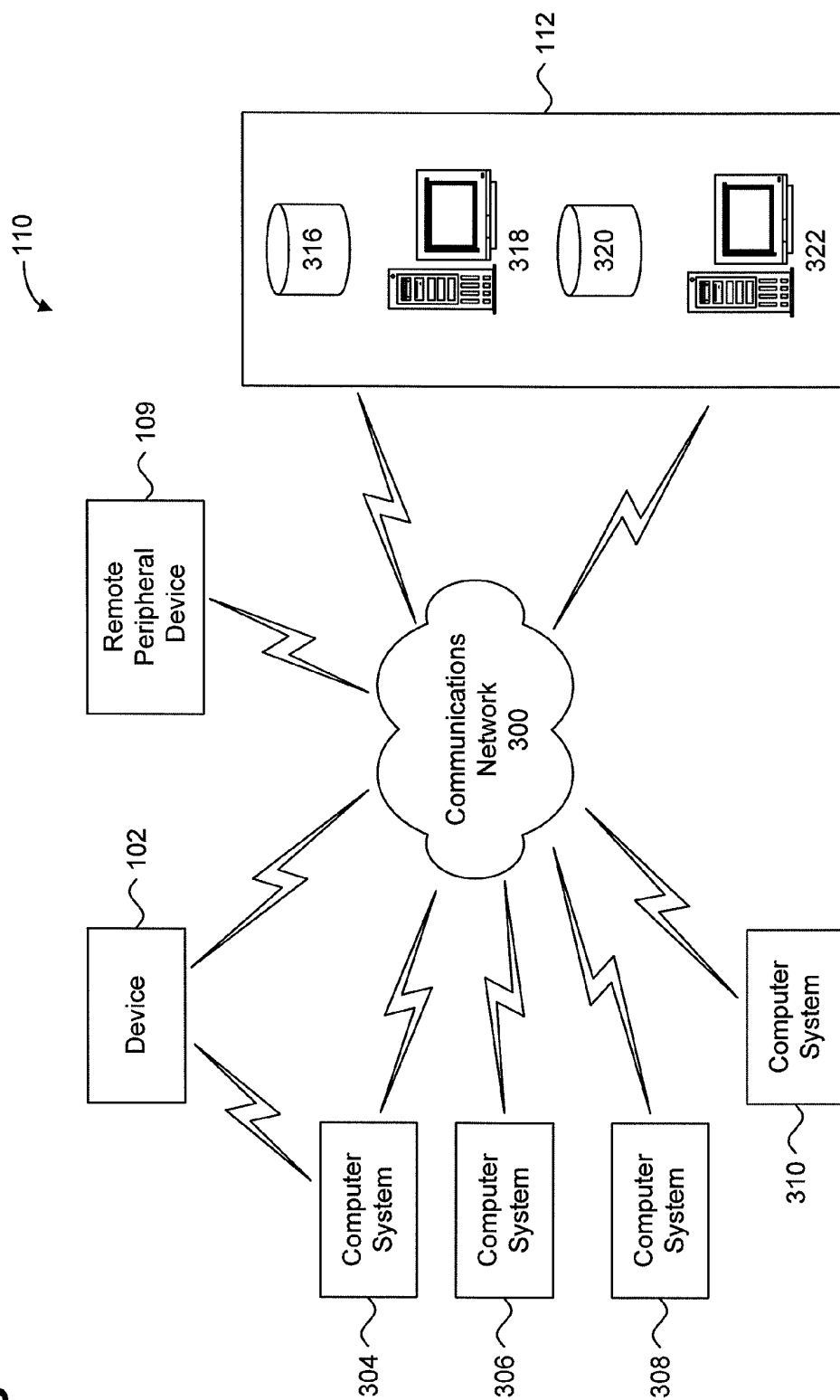


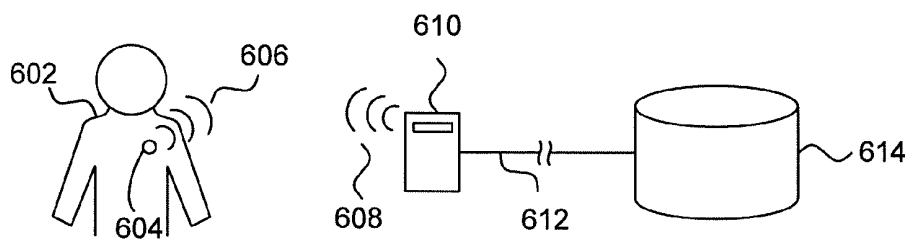
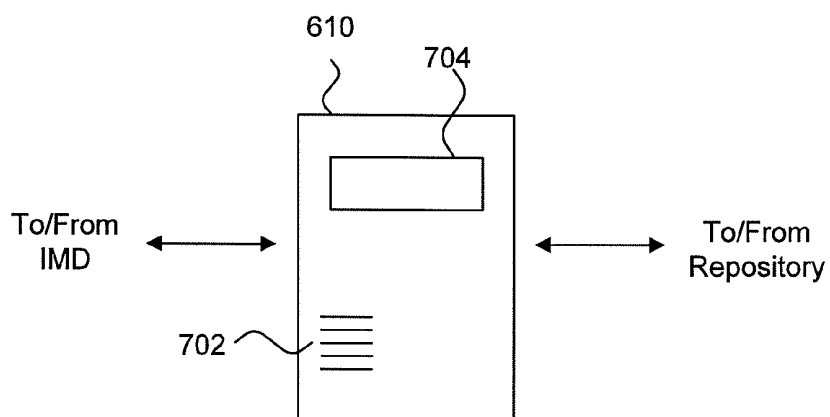
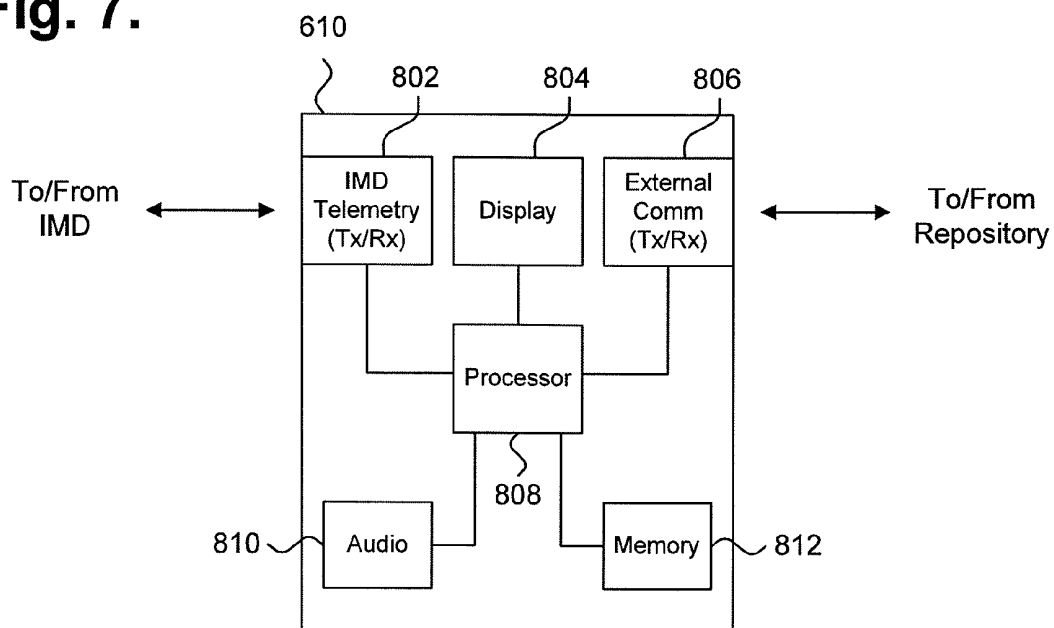
Fig. 5.**Fig. 6.****Fig. 7.**

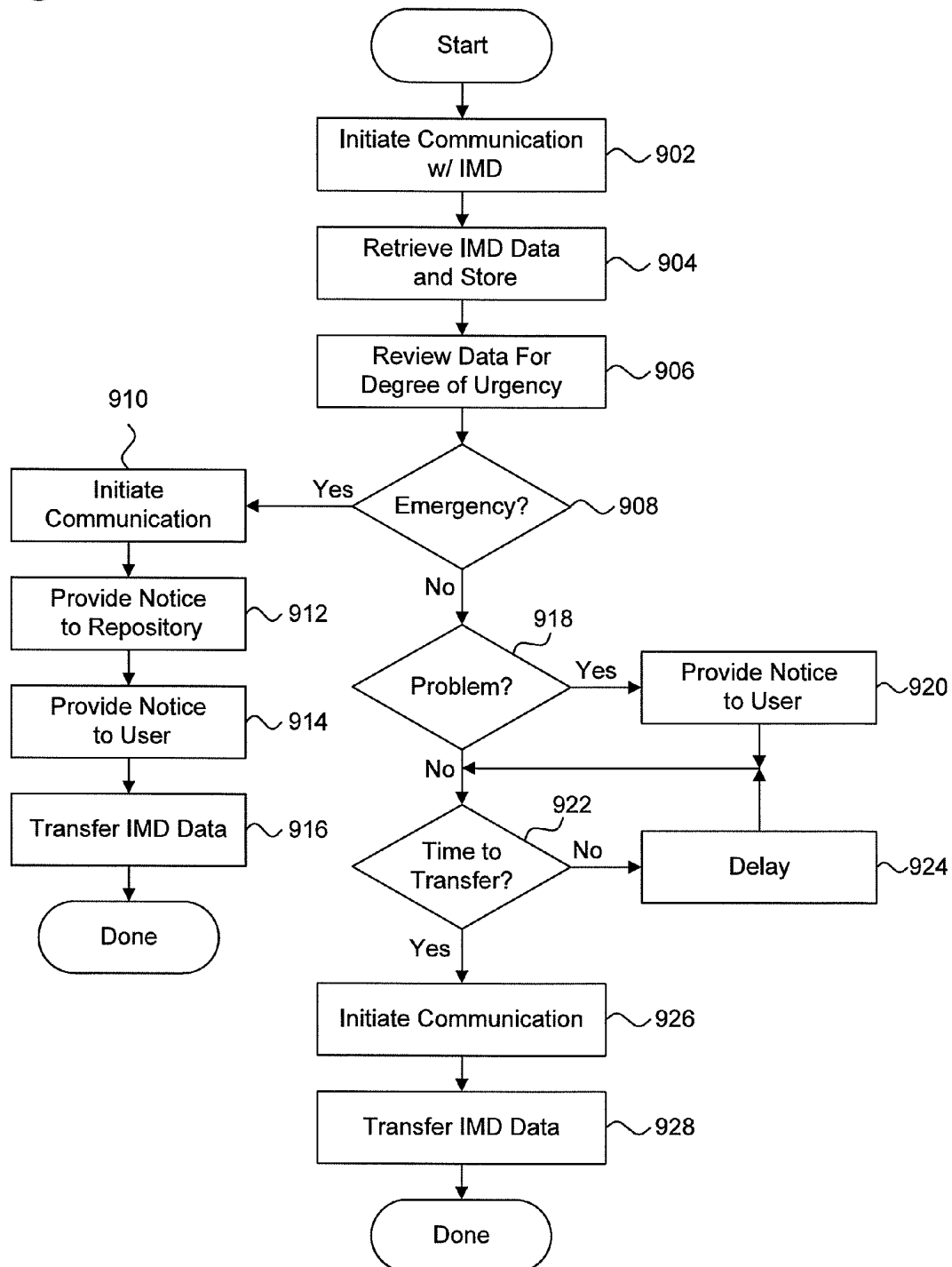
Fig. 8.

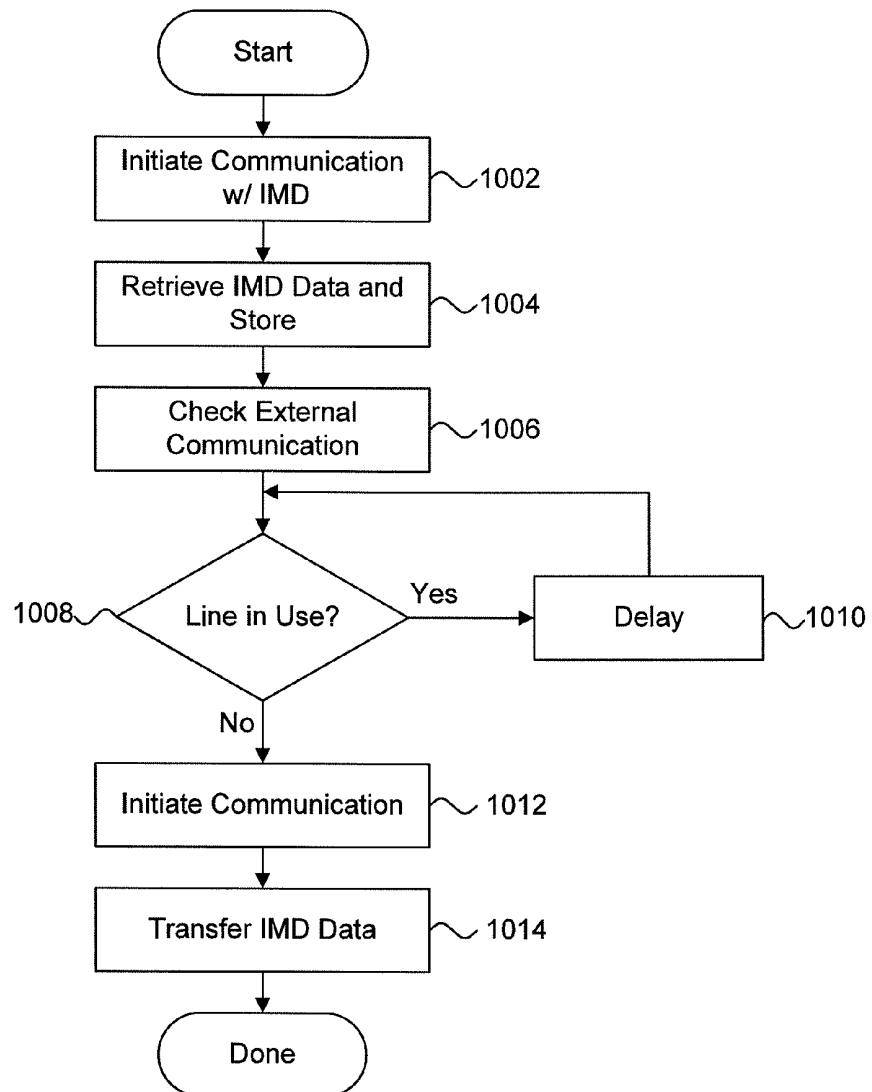
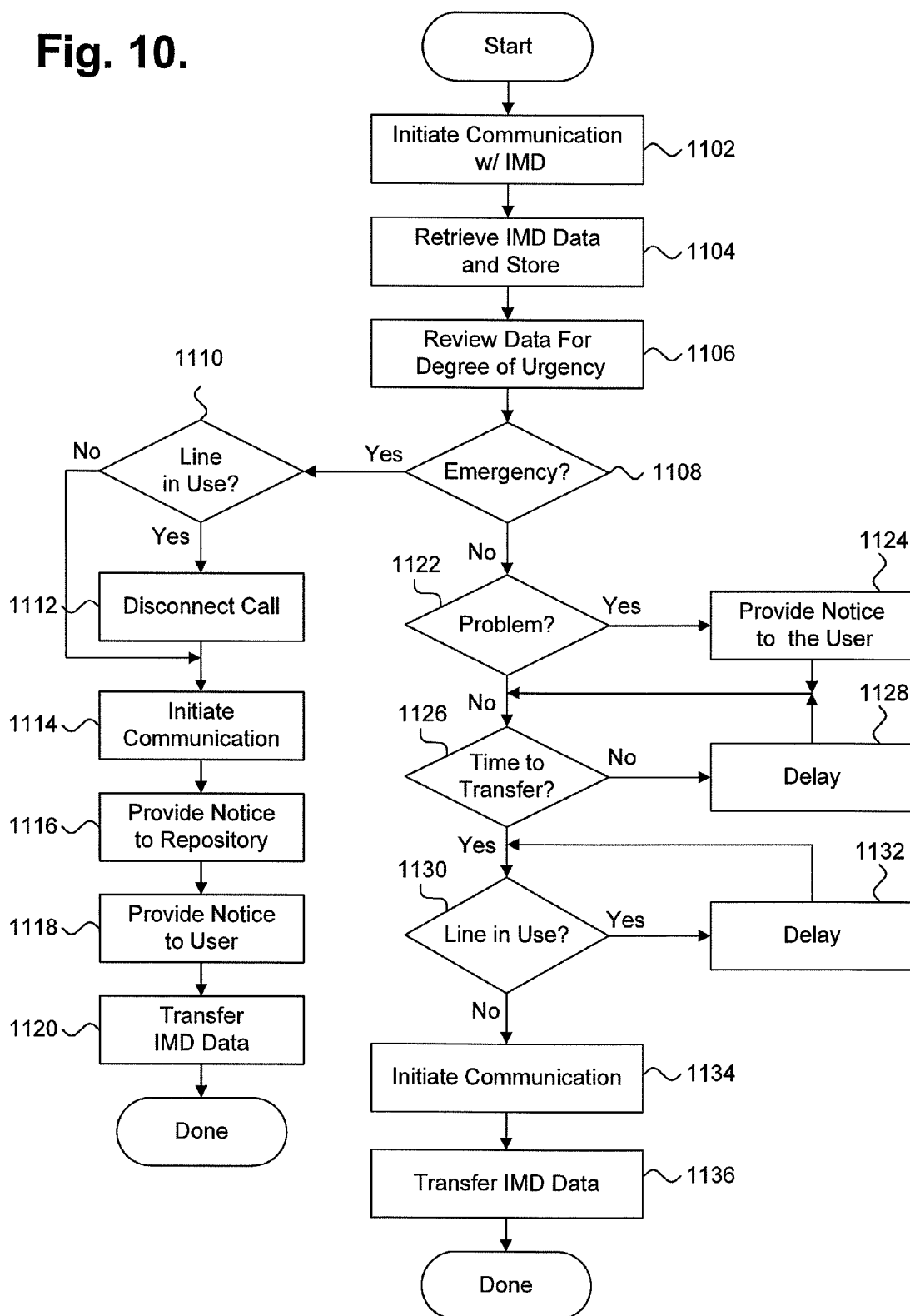
Fig. 9.

Fig. 10.

1

REPEATER PROVIDING DATA EXCHANGE WITH A MEDICAL DEVICE FOR REMOTE PATIENT CARE AND METHOD THEREOF

CROSS-REFERENCE TO RELATED APPLICATION

This patent application is a continuation of U.S. patent application Ser. No. 12/874,899, filed Sep. 2, 2010, now U.S. Pat. No. 8,130,093, which is a continuation of U.S. patent application Ser. No. 11/872,841, filed Oct. 16, 2007, now U.S. Pat. No. 7,791,467, which is a continuation of U.S. patent application Ser. No. 11/327,879, filed Jan. 9, 2006, now U.S. Pat. No. 7,292,139, which is a continuation of U.S. patent application Ser. No. 10/321,885, filed Dec. 17, 2002, now U.S. Pat. No. 7,009,511, the priority of filing dates of which are claimed, and the disclosures of which are incorporated by reference.

FIELD

The present relay device relates generally to advanced patient management systems, and more specifically to providing information between a medical device and a repository of the advanced patient management system through a repeater device.

BACKGROUND

In an effort to limit the number of follow-ups necessary to monitor the device and the data that it acquires, an advanced patient management system may provide a communication infrastructure. This infrastructure allows the implantable medical device to communicate over long distances at virtually any time with a backend system that monitors the implantable device and the patient. Furthermore, this backend system allows monitoring of the patient on a more frequent basis than ordinary follow-up visits can practically allow. The back end system communicates with the implantable device through a repeater that the patient keeps in close proximity. The conventional repeater device interrogates the medical device through some form of wireless communication such as inductive coupling. The repeater device retrieves data from the medical device and transmits the data through another communication medium, such as a standard telephone line, to the remote location.

Some conventional repeater devices form a direct line of communication between the medical device and the remote location and thereby act as a conduit for the data. Generally, the patient operates these conventional repeater devices and must initiate the communication of the data at appropriate times. Other conventional repeater devices may retrieve the data from the medical device at an appropriate time and maintain it until another appropriate time when it is sent to the remote location. However, the patient must also initiate the communication between these conventional repeater devices and the remote location, or the repeater device uses a preset timer to initiate communication without regard for additional considerations.

Requiring the patient to initiate communication with the remote location is overly burdensome, especially in situations where the repeater device collects data at one time and then at some later time sends the data to the remote location. Furthermore, requiring the patient to initiate communications with the remote location makes the advanced patient management system vulnerable to human error. Relying solely on a preset timer to initiate communications with the remote loca-

2

tion is also problematic. For example, the telephone line relied upon by the repeater device may be in use or is otherwise unavailable at the preset time, or an emergency situation may be occurring that requires immediate attention rather than communication after a preset delay period.

SUMMARY

The problems discussed above and others are addressed by various embodiments. These embodiments allow the repeater device to automatically communicate with the remote location to transfer the patient data.

In one embodiment, a repeater providing data exchange with a medical device for remote patient care is provided. The repeater includes a receiver configured to communicate with the medical device to obtain data, and a memory to maintain the data once it has been received. The repeater further includes a transmission device configured to send the data over a wireless medium to a data repository and a processing device configured to detect conditions in respect of an associated communication medium that could affect data exchange, where the processing device is configured to send the data based at least in part on the conditions. The processing device is further configured to analyze the data from the medical device to detect a problem with the medical device.

In another embodiment, a medical device system is provided comprising a medical device providing a patient data set for use in automated patient care. The medical device includes one or more sensors to monitor data of a patient enrolled in automated patient care and generate a patient data set, a memory to store the data set for a short term, and an interface providing external access to the data set, wherein the data set are periodically retrieved. The medical device system further includes a repeater for retrieving the data set from the medical device and relaying the data set to a repository, wherein the repeater is configured to analyze the data set to detect a problem with the medical device, wherein the repeater is further configured to detect conditions in respect of an associated communication medium that could affect data exchange, wherein the repeater is further configured to transmit to the repository based on the conditions.

In yet another embodiment, a process for transmitting a patient data set for use in automated patient care includes the steps of storing a plurality of sets of collected device data regularly recorded by a medical device for a patient enrolled in automated patient care and analyzing the collected device data sets to detect a problem with the medical device. The process further includes detecting and analyzing conditions in respect of an associated communication medium that could affect data exchange and transmitting the collected device data sets from a repeater over a wireless medium.

In one embodiment, the repeater device automatically communicates with the remote location by initiating communication after considering additional factors such as the accessibility or condition of the communications medium being used to pass the data and/or whether the condition of the patient requires immediate attention.

One embodiment provides an auto-configurable repeater for remote patient care and method thereof. A storage maintains data exchanged with a patient medical device. A processor includes a plurality of interfaces to an external device, including a wireless interface and a wired interface. A selection module automatically specifies one of the wireless interface and the wired interface based on conditions in respect of an associated communication medium that could affect data

exchange. A transfer module accesses the data in the storage and exchanges the data with an external device over the specified interface.

A further embodiment provides a repeater providing data exchange with a medical device for remote patient care and method thereof. A plurality of interfaces include a medical device interface interconnected with a medical device, a wireless interface coupled to a wireless medium, and a wired interface coupled to a wired medium. An interface selector includes a test module operable over the wireless interface and the wired interface to evaluate conditions on each respective medium that could affect data exchange over each of the interfaces. The interface selector further includes a selection module specifying data exchange to occur using one of the wireless interface and the wired interface based on the evaluated conditions. An interrogator module exchanges data with the medical device over the medical device interface. A data transfer module exchanges the data with an external device over the specified interface.

These and various other features as well as advantages will be apparent from a reading of the following detailed description and a review of the associated drawings.

BRIEF DESCRIPTION OF THE DRAWINGS

In the drawings, which are not necessarily drawn to scale, like numerals describe substantially similar components throughout the several views. Like numerals having different letter suffixes represent different instances of substantially similar components. The drawings illustrate generally, by way of example, but not by way of limitation, various embodiments discussed in the present document.

FIG. 1 illustrates an example advanced patient management system;

FIG. 2 illustrates an example computer system for use with the advanced patient management system;

FIG. 3 illustrates an example interrogator/transceiver unit for use with the advanced patient management system; and

FIG. 4 illustrates an example communication system for use with the advanced patient management system;

FIG. 5 illustrates communication between an implantable medical device, an external repeater device, and a repository;

FIG. 6 illustrates exemplary external repeater device of FIG. 5 in more detail;

FIG. 7 illustrates components of the exemplary repeater device;

FIG. 8 illustrates an exemplary operational flow of communication between the implantable medical device, the external repeater device, and the repository where the degree of urgency of the data is determined and considered in relation to data transfer to the repository;

FIG. 9 illustrates an exemplary operational flow of communication between the implantable medical device, the external repeater device, and the repository where the condition of the communication medium is considered in relation to data transfer to the repository;

FIG. 10 illustrates an exemplary operational flow of communication between the implantable medical device, the external repeater device, and the repository where both the degree of urgency of the data and the condition of the communication medium are considered in relation to data transfer to the repository.

DETAILED DESCRIPTION

Prior to discussing the devices and communication protocols of the embodiments, an example of an advanced patient

management system is discussed to provide an example of an environmental context for the embodiments. However, it is to be understood that the advanced patient management system described herein in conjunction with the embodiments is only one example of an environmental context and that the embodiments are applicable to other environmental contexts that may or may not include an advanced patient management system. The devices and communication protocols of the embodiments are described below with reference to FIGS. 5-10 and section V. Repeater Communications.

An advanced patient management system is configured to collect patient-specific information, store and collate the information, and generate actionable recommendations to enable the predictive management of patients. The advanced patient management system is also configured to leverage a remote communications infrastructure to provide automatic device follow-ups to collect data, coordinate therapy, and to determine if remote devices are functioning properly. The term "patient" is used herein to mean any individual from whom information is collected. The term "caregiver" is used herein to mean any provider of services, such as health care providers including, but not limited to, nurses, doctors, and other health care provider staff.

FIG. 1 illustrates an example advanced patient management system 100. Advanced patient management system 100 generally includes the following components: one or more devices 102, 104, and 106, one or more interrogator/transceiver units 108, a communication system 110, one or more remote peripheral devices 109, and a host 112.

Each component of the advanced patient management system 100 can communicate using the communication system 110. Some components may also communicate directly with one another. For example, devices 102 and 104 may be configured to communicate directly with one another. The various components of the example advanced patient management system 100 illustrated herein are described below.

Devices

Devices 102, 104, and 106 can be implantable devices or external devices that may provide one or more of the following functions with respect to a patient: (1) sensing, (2) data analysis, and (3) therapy. For example, in one embodiment, devices 102, 104, and 106 are either implanted or external devices used to measure a variety of physiological, subjective, and environmental conditions of a patient using electrical, mechanical, and/or chemical means. The devices 102, 104, and 106 can be configured to automatically gather data or can require manual intervention by the patient. The devices 102, 104, and 106 can be configured to store data related to the physiological and/or subjective measurements and/or transmit the data to the communication system 110 using a variety of methods, described in detail below. Although three devices 102, 104, and 106 are illustrated in the example embodiment shown, more or fewer devices may be used for a given patient.

The devices 102, 104, and 106 can be configured to analyze the measured data and act upon the analyzed data. For example, the devices 102, 104, and 106 are configured to modify therapy or provide alarm indications based on the analysis of the data.

In one embodiment, devices 102, 104, and 106 also provide therapy. Therapy can be provided automatically or in response to an external communication. Devices 102, 104, and 106 are programmable in that the characteristics of their sensing, therapy (e.g., duration and interval), or communication can be altered by communication between the devices 102, 104, and 106 and other components of the advanced patient management system 100. Devices 102, 104, and 106 can also perform self-checks or be interrogated by the com-

munication system **110** to verify that the devices are functioning properly. Examples of different embodiments of the devices **102**, **104**, and **106** are provided below.

Devices implanted within the body have the ability to sense and communicate as well as to provide therapy. Implantable devices can provide direct measurement of characteristics of the body, including, without limitation, electrical cardiac activity (e.g., a pacemaker, cardiac resynchronization management device, defibrillator, etc.), physical motion, temperature, heart rate, activity, blood pressure, breathing patterns, ejection fractions, blood viscosity, blood chemistry, blood glucose levels, and other patient-specific clinical physiological parameters, while minimizing the need for patient compliance.

A heart rhythm sensor, typically found in a pacemaker or defibrillator, is one example of an implantable device. In the heart, an electrical wave activates the heart muscle just prior to contraction. As is known in the art, electrical circuits and lead-wires transduce the heart's activation event and reject other, non-essential electrical events. By measuring the time interval between activation events, the heart rhythm can be determined. A transthoracic impedance sensor is another example of a sensor in an implantable device. During the respiratory cycle, large volumes of air pass into and out of the body. The electrical resistance of the thorax changes markedly as a result of large differences in conductivity of air and body tissues. The thoracic resistance can be measured during respiration and converted into a measurable electrical signal (i.e., impedance) so that breathing rate and profile can be approximated. Implantable devices can also sense chemical conditions, such as glucose levels, blood oxygen levels, etc. Further, the advanced patient management system **100** may utilize other implantable devices as well that provide physiological measurements of the patient, such as drug pumps, neurological devices (e.g., stimulators), oxygen sensors, etc.

Derived measurements can also be determined from the implantable device sensors. For example, a sleep sensor can rely on measurements taken by an implanted accelerometer that measures body activity levels. The sleep sensor can estimate sleeping patterns based on the measured activity levels. Other derived measurements include, but are not limited to, a functional capacity indicator, autonomic tone indicator, sleep quality indicator, cough indicator, anxiety indicator, and cardiovascular wellness indicator for calculating a quality of life indicator quantifying a patient's overall health and well-being.

Devices **102**, **104**, and **106** can also be external devices, or devices that are not implanted in the human body, that are used to measure physiological data. Such devices include a multitude of devices to measure data relating to the human body, such as temperature (e.g., a thermometer), blood pressure (e.g., a sphygmomanometer), blood characteristics (e.g., glucose levels), body weight, physical strength, mental acuity, diet, heart characteristics, and relative geographic position (e.g., a Global Positioning System (GPS)).

Devices **102**, **104**, and **106** can also be environmental sensors. The devices can be placed in a variety of geographic locations (in close proximity to patient or distributed throughout a population) and record non-patient specific characteristics such as, but not limited to, temperature, air quality, humidity, carbon monoxide level, oxygen level, barometric pressure, light intensity, and sound.

One or more of the devices **102**, **104**, and **106** (for example, device **106**) may be external devices that measure subjective or perceptive data from the patient. Subjective data is information related to a patient's feelings, perceptions, and/or opinions, as opposed to objective physiological data. For

example, the "subjective" devices can measure patient responses to inquiries such as "How do you feel?" and "How is your pain?" The device can prompt the patient and record subjective data from the patient using visual and/or audible cues. For example, the patient can press coded response buttons or type an appropriate response on a keypad. Alternatively, subjective data may be collected by allowing the patient to speak into a microphone and using speech recognition software to process the subjective data.

In one example embodiment, the subjective device presents the patient with a relatively small number of responses to each question posed to the patient. For example, the responses available to the patient may include three faces representing feelings of happiness, nominalness, and sadness. Averaged over time, a trend of a patient's well being will emerge with a finer resolution than the quanta of the three responses.

The subjective data can be collected from the patient at set times, or, alternatively, collected whenever the patient feels like providing subjective data. The subjective data can also be collected substantially contemporaneously with physiological data to provide greater insight into overall patient wellness. The subjective device **106** can be any device that accepts input from a patient or other concerned individual and/or provides information in a format that is recognizable to the patient. Device **106** typically includes a keypad, mouse, display, handheld device, interactive TV, cellular telephone or other radio frequency ("RF") communications device, cordless phone, corded phone, speaker, microphone, email message, or physical stimulus.

In one example embodiment, the subjective device **106** includes or is part of a computer system **200**, as illustrated in FIG. 2. The example computer system **200** includes a central processor unit **212** and a system memory **214**. The computer system **200** further includes one or more drives **223** for reading data from and writing data to, as well as an input device **244**, such as a keyboard or mouse, and a monitor **252** or other type of display device. A number of program modules may be stored on the drive **223**, including an operating system **236**, one or more application programs **238**, other program modules **240**, and program data **242**. The computer system **200** can operate in a networked environment using logical connections to one or more remote computers or computer systems **256**. Computer system **200** can also include hand-held computers such as a PDA computer.

The advanced patient management system **100** may also include one or more remote peripheral devices **109**. The remote peripheral device **109** may include, for example and without limitation, cellular telephones, pagers, PDA devices, facsimiles, remote computers, printers, video and/or audio devices, etc. The remote peripheral device **109** can communicate using wired or wireless technologies and may be used by the patient or caregiver to communicate with the communication system **110** and/or the host **112**. For example, the remote peripheral device **109** can be used by the caregiver to receive alerts from the host **112** based on data collected from the patient and to send instructions from the caregiver to either the patient or other clinical staff. In another example, the remote peripheral device **109** is used by the patient to receive periodic or real time updates and alerts regarding the patient's health and well-being.

Interrogator/Transceiver Unit

Referring now to FIG. 3, the example advanced patient management system **100** includes one or more interrogator/transceiver units ("ITUs"), such as ITU **108**. The ITU **108** includes an interrogator module **152** for sending and receiving data from a device, such as devices **102**, **104**, and **106**, a

memory module 154 for storing data, and a transceiver module 156 for sending and receiving data to and from other components of the APM system 100. The transceiver module may also operate as an interrogator of the devices 102, 104 and 106. The ITU 108 also includes a power module 158 that

The ITU 108 may perform one or more of the following functions: (1) data storage; (2) data analysis; (3) data forwarding; (4) patient interaction; (5) patient feedback; and (6) data communications. For example, the ITU 108 may facilitate communications between the devices 102, 104, and 106 and the communication system 110. The ITU 108 can, periodically or in real-time, interrogate and download into memory clinically relevant patient data from the devices 102, 104, and/or 106. This data includes, in the cardiac sensor context, for example, P and R-wave measurements, pacing, shocking events, lead impedances, pacing thresholds, battery voltage, capacitor charge times, ATR episodes with electrograms, tachycardia episodes with electrograms, histogram information, and any other clinical information necessary to ensure patient health and proper device function. The data is sent to the ITU 108 by the devices 102, 104, and 106 in real-time or periodically uploaded from buffers in the devices.

The ITU 108 may also allow patient interaction. For example, the ITU 108 may include a patient interface and allow the patient to input subjective data. In addition, the ITU 108 may provide feedback to the patient based on the data that has been analyzed or based on information communicated by the communication system 110.

In another embodiment, the ITU 108 includes a telemetry link from the devices to a network that forms the basis of a wireless LAN in the patient's home. The ITU 108 systematically uploads information from the devices 102, 104, and/or 106 while the patient is sleeping, for example. The uploaded data is transmitted through the communication system 110 or directly to the host 112. In addition, in one embodiment the ITU 108 functions in a hybrid form, utilizing wireless communication when available and defaulting to a local wireless portal or a wired connection when the wireless communication becomes unavailable.

Some devices, such as legacy implanted cardiac rhythm management ("CRM") devices, communicate via an internal telemetry transceiver that communicates with an external programmer. The communication range of such devices is typically 1 to 4 inches. ITU 108 may include a special short-range interrogator that communicates with a legacy device.

When the interrogator 152 uses radio frequency to communicate with the devices 102, 104, 106, the ITU 108 may be in the form of a small device that is placed in an inconspicuous place within the patient's residence. Alternatively, the ITU 108 may be implemented as part of a commonly-used appliance in the patient's residence. For example, the ITU may be integrated with an alarm clock that is positioned near the patient's bed. In another embodiment, the ITU may be implemented as part of the patient's personal computer system. Other embodiments are also possible.

In another embodiment, the ITU 108 may comprise a hand-held device such as a PDA, cellular telephone, or other similar device that is in wireless communication with the devices 102, 104, and 106. The hand-held device may upload the data to the communication system 110 wirelessly. Alternatively, the hand-held device may periodically be placed in a cradle or other similar device that is configured to transmit the data to the communication system 110.

In one embodiment, the ITU 108 can perform analysis on the data and provide immediate feedback, as well as perform a variety of self-diagnostic tests to verify that it is functioning

properly and that communication with the communication system 110 has not be compromised. For example, the ITU 108 can perform a diagnostic loop-back test at a time set by the host 112, which involves sending a request through the communication system 110 to the host 112. The host 112 can then reply with a response back through the communication system 110 to the ITU 108. If a specific duration elapses before the ITU 108 receives the response or the ITU 108 receives an unexpected response, or if the host 112 does not receive the diagnostic test communication, the ITU 108 can provide indications that the system is not functioning properly and the host 112 can alert an operator that there may be compromised communications with that specific ITU 108. For example, if wireless communications between the ITU 108 and the communication system 110 have been interrupted, and the ITU 108 performs a self-diagnostic test that fails, the ITU 108 may alert the patient so that corrective action may be taken. The alert can take the form of a sound or a visual and/or audible annunciator to alert the patient that communication has been interrupted. In another embodiment, the ITU 108 can automatically fail-back to a wired system to communicate with the communication system 110 and perform the same communications compromise checks.

In other embodiments of the advanced patient management system 100, the ITU 108 function can be integrated into devices 102, 104, and 106, so that the devices can communicate directly with the communication system 110 and/or host 112. The devices 102, 104 and 106 can incorporate multi-mode wireless telecommunications such as cellular, BLUE-TOOTH, or IEEE 802.11B to communicate with the communication system 110 directly or through a local wireless to a wired portal in the patients' home. For example, device 102 may include a miniature cellular phone capable of wirelessly uploading clinical data from the device on a periodic basis. This is particularly advantageous for devices that are mobile (e.g., an implanted device in a patient that is traveling).

To conserve the energy of the devices 102, 104, and 106, particularly when the devices (e.g., device 102) are configured to communicate directly with the communication system 110 without using an ITU 108, in one example embodiment the devices are configured to communicate during a given duty cycle. For example, the device 102 can be configured to communicate with the communication system 110 at given intervals, such as once a week. The device 102 can record data for the time period (e.g., a week) and transmit the data to the communication system 110 during the portion of the cycle that transmission is active and then conserve energy for the rest of the cycle. In another example, the device 102 conserves energy and only communicates with the communication system 110 when an "interesting" event, such as a heart arrhythmia, has occurred. In this manner, device 102 can communicate directly with the communication system 110 and/or host 112 without requiring an ITU 108, while conserving the energy of the device by communicating only during a given duty cycle.

The interrogation rate of the ITU 108 can be varied depending on disease state and other relevant factors. In addition, the devices 102, 104, and 106 can be configured to "wake up" frequently (e.g., once every couple minutes) to provide the ITU 108 an access window for the ITU 108 to provide commands to the devices 102, 104, and 106, as well as upload data from the devices.

If multiple devices, such as devices 102, 104, and 106, are provided for a given patient, each device may include its own means for communicating with the ITU 108 or communication system 110. Alternatively, a single telemetry system may be implemented as part of one of the devices, or separate from

the devices, and each device **102**, **104**, and **106** can use this single telemetry system to communication with the ITU **108** or the communication system **110**.

In yet another embodiment, the devices **102**, **104**, and **106** include wires or leads extending from devices **102**, **104**, and **106** to an area external of the patient to provide a direct physical connection. The external leads can be connected, for example, to the ITU **108** or a similar device to provide communications between the devices **102**, **104**, and **106** and the other components of the advanced patient management system **100**.

The advanced patient management system **100** can also involve a hybrid use of the ITU **108**. For example, the devices **102**, **104**, and **106** can intelligently communicate via short-range telemetry with the ITU when the patient is located within the patient's home and communicate directly with the communication system **110** or host **112** when the patient is traveling. This may be advantageous, for example, to conserve battery power when the devices are located near an ITU. Communication System

Communication system **110** provides for communications between and among the various components of the advanced patient management system **100**, such as the devices **102**, **104**, and **106**, host **112**, and remote peripheral device **109**. FIG. 4 illustrates one embodiment for the communication system **110**. The communication system **110** includes a plurality of computer systems **304**, **306**, **308**, and **310**, as well as device **102**, host **112**, and remote peripheral device **109**, connected to one another by the communications network **300**. The communications network **300** may be, for example, a local area network (LAN), wide area network (WAN), or the Internet. Communications among the various components, as described more fully below, may be implemented using wired or wireless technologies.

In the example embodiment illustrated, the host **112** includes server computers **318** and **322** that communicate with computers **304**, **306**, **308**, and **310** using a variety of communications protocols, described more fully below. The server computers **318** and **322** store information in databases **316** and **320**. This information may also be stored in a distributed manner across one or more additional servers.

A variety of communication methods and protocols may be used to facilitate communication between devices **102**, **104**, and **106**, ITU **108**, communication system **110**, host **112**, and remote peripheral device **109**. For example, wired and wireless communications methods may be used. Wired communication methods may include, for example and without limitation, traditional copper-line communications such as DSL, broadband technologies such as ISDN and cable modems, and fiber optics, while wireless communications may include cellular, satellite, radio frequency (RF), Infrared, etc.

For any given communication method, a multitude of standard and/or proprietary communication protocols may be used. For example and without limitation, protocols such as radio frequency pulse coding, spread spectrum, direct sequence, time-hopping, frequency hopping, SMTP, FTP, and TCP/IP may be used. Other proprietary methods and protocols may also be used. Further, a combination of two or more of the communication methods and protocols may also be used.

The various communications between the components of the advanced patient management system **100** may be made secure using several different techniques. For example, encryption and/or tunneling techniques may be used to protect data transmissions. Alternatively, a priority data exchange format and interface that are kept confidential may also be used. Authentication can be implemented using, for

example, digital signatures based on a known key structure (e.g., PGP or RSA). Other physical security and authentication measures may also be used, such as security cards and biometric security apparatuses (e.g., retina scans, iris scans, fingerprint scans, veinprint scans, voice, facial geometry recognition, etc.). Conventional security methods such as firewalls may be used to protect information residing on one or more of the storage media of the advanced patient management system **100**. Encryption, authentication and verification techniques may also be used to detect and correct data transmission errors.

Communications among the various components of the advanced patient management system **100** may be enhanced using compression techniques to allow large amounts of data to be transmitted efficiently. For example, the devices **102**, **104**, and **106** or the ITU **108** may compress the recorded information prior to transmitting the information to the ITU **108** or directly to the communication system **110**.

The communication methods and protocols described above can facilitate periodic and/or real-time delivery of data. Host

The example host **112** includes a database module **114**, an analysis module **116**, and a delivery module **118** (see FIG. 1). Host **112** preferably includes enough processing power to analyze and process large amounts of data collected from each patient, as well as to process statistics and perform analysis for large populations. For example, the host **112** may include a mainframe computer or multi-processor workstation. The host **112** may also include one or more personal computer systems containing sufficient computing power and memory. The host **112** may include storage medium (e.g., hard disks, optical data storage devices, etc.) sufficient to store the massive amount of high-resolution data that is collected from the patients and analyzed.

The host **112** may also include identification and contact information (e.g., IP addresses, telephone numbers, or a product serial number) for the various devices communicating with it, such as ITU **108** and peripheral device **109**. For example, each ITU **108** is assigned a hard-coded or static identifier (e.g., IP address, telephone number, etc.), which allows the host **112** to identify which patient's information the host **112** is receiving at a given instant. Alternatively, each device **102**, **104**, and **106** may be assigned a unique identification number, or a unique patient identification number may be transmitted with each transmission of patient data.

When a device is first activated, several methods may be used to associate data received by the advanced patient management system **100** with a given patient. For example, each device may include a unique identification number and a registration form that is filled out by the patient, caregiver, or field representative. The registration form can be used to collect the necessary information to associate collected data with the patient. Alternatively, the user can logon to a web site to allow for the registration information to be collected. In another embodiment, a barcode is included on each device that is scanned prior to or in conjunction deployment of the device to provide the information necessary to associate the recorded data with the given patient.

Referring again to FIG. 1, the example database module **114** includes a patient database **400**, a population database **402**, a medical database **404**, and a general database **406**, all of which are described further below.

The patient database **400** includes patient specific data, including data acquired by the devices **102**, **104**, and **106**. The patient database **400** also includes a patient's medical records. The patient database **400** can include historical information regarding the devices **102**, **104**, and **106**. For example,

if device **102** is an implantable cardioverter defibrillator (ICD), the patient database **400** records the following device information: P and R measurements, pacing frequency, pacing thresholds, shocking events, recharge time, lead impedance, battery voltage/remaining life, ATR episode and EGMs, histogram information, and other device-specific information. The information stored in the database **400** can be recorded at various times depending on the patient requirements or device requirements. For example, the database **400** is updated at periodic intervals that coincide with the patient downloading data from the device. Alternatively, data in the database **400** can be updated in real time. Typically, the sampling frequency depends on the health condition being monitored and the co-morbidities.

The population database **402** includes non-patient specific data, such as data relating to other patients and population trends. The population database **402** also records epidemic-class device statistics and patient statistics. The population database **402** also includes data relating to staffing by health care providers, environmental data, pharmaceuticals, etc.

The example medical database **404** includes clinical data relating to the treatment of diseases. For example, the medical database **404** includes historical trend data for multiple patients in the form of a record of progression of their disease (s) along with markers of key events.

The general database **406** includes non-medical data of interest to the patient. This can include information relating to news, finances, shopping, technology, entertainment, and/or sports. The general database **406** can be customized to provide general information of specific interest to the patient. For example, stock information can be presented along with the latest health information as detected from the devices **102**, **104**, and **106**.

In another embodiment, information is also provided from an external source, such as external database **600**. For example, the external database **600** includes external medical records maintained by a third party, such as drug prescription records maintained by a pharmacy, providing information regarding the type of drugs that have been prescribed for a patient.

The example analysis module **116** includes a patient analysis module **500**, device analysis module **502**, population analysis module **504**, and learning module **506**.

Patient analysis module **500** may utilize information collected by the advanced patient management system **100**, as well as information for other relevant sources, to analyze data related to a patient and provide timely and predictive assessments of the patient's well-being. In performing this analysis, the patient device module **500** may utilize data collected from a variety of sources, include patient specific physiological and subjective data collected by the advanced patient management system **100**, medical and historical records (e.g., lab test results, histories of illnesses, etc., drugs currently and previously administered, etc.), as well as information related to population trends provided from sources external to the advanced patient management system **100**.

For example, in one embodiment, the patient analysis module **500** makes a predictive diagnosis of an oncoming event based on information stored in the database module **114**. For example, the data continuously gathered from a device of a given patient at a heightened risk for a chronic disease event (such as de-compensations in heart failure) is analyzed. Based on this analysis, therapy, typically device-based or pharmaceutical, is then be applied to the patient either through the device or through clinician intervention.

In another example embodiment, the patient analysis module **500** provides a diagnosis of patient health status and

predicted trend based on present and recent historical data collected from a device as interpreted by a system of expert knowledge derived from working practices within clinics. For example, the patient analysis module **500** performs probabilistic calculations using currently-collected information combined with regularly-collected historical information to predict patient health degradation.

In another example embodiment, the patient analysis module **500** may conduct pre-evaluation of the incoming data stream combined with patient historical information and information from patients with similar disease states. The pre-evaluation system is based on data derived from working clinical practices and the records of outcomes. The derived data is processed in a neural network, fuzzy logic system, or equivalent system to reflect the clinical practice. Further, the patient analysis module **500** may also provide means for periodic processing of present and historical data to yield a multidimensional health state indication along with disease trend prediction, next phase of disease progression co-morbidities, and inferences about what other possible diseases may be involved. The patient analysis module **500** may also integrate data collected from internal and external devices with subjective data to optimize management of overall patient health.

Device analysis module **502** analyzes data from the devices **102**, **104**, and **106** and ITU **108** to predict and determine device issues or failures. For example, if an implanted device **102** fails to communicate at an expected time, device analysis module **502** determines the source of the failure and takes action to restore the performance of the device **102**. The device analysis module **502** may also perform additional deterministic and probabilistic calculations. For example, the device analysis module **502** gathers data related to charge levels within a given device, such as an ICD, and provides analysis and alerting functions based on this information if, for example, the charge level reaches a point at which replacement of the device and/or battery is necessary. Similarly, early degradation or imminent failure of implanted devices can be identified and proactively addressed, or at-risk devices can be closely monitored.

Population analysis module **504** uses the data collected in the database module **114** to manage the health of a population. For example, a clinic managing cardiac patients can access the advanced patient management system **100** and thereby obtain device-supplied advance information to predict and optimize resource allocation both as to immediate care and as a predictive metric for future need of practicing specialists. As another example, the spread of disease in remote populations can be localized and quarantined rapidly before further spread.

In one embodiment, population analysis module **504** trends the patient population therapy and management as recorded by the devices and directs health care resources to best satisfy the needs of the population. The resources can include people, facilities, supplies, and/or pharmaceuticals. In other embodiments, the population analysis module detects epidemics and other events that affect large population groups. The population analysis module **504** can issue alerts that can initiate a population quarantine, redirect resources to balance size of staffing with number of presenting population, and predict future need of qualified specialists.

The population analysis module **504** may utilize a variety of characteristics to identify like-situated patients, such as, for example, sex, age, genetic makeup, etc. The population analysis module **504** may develop large amounts of data related to a given population based on the information col-

lected by the advanced patient management system **100**. In addition, the population analysis module **504** may integrate information from a variety of other sources. For example, the population analysis module **504** may utilize data from public domain databases (e.g., the National Institute of Health), public and governmental and health agency databases, private insurance companies, medical societies (e.g., the American Heart Association), and genomic records (e.g., DNA sequences).

In one embodiment, the host **112** may be used as a “data clearinghouse,” to gather and integrate data collected from the devices **102**, **104**, and **106**, as well as data from sources outside the advanced patient management system **100**. The integrated data can be shared with other interested entities, subject to privacy restrictions, thereby increasing the quality and integration of data available.

Learning module **506** analyzes the data provided from the various information sources, including the data collected by the advanced patient system **100** and external information sources. For example, the learning module **506** analyzes historical symptoms, diagnoses, and outcomes along with time development of the diseases and co-morbidities. The learning module **506** can be implemented via a neural network (or equivalent) system.

The learning module **506** can be partially trained (i.e., the learning module **506** may be implemented with a given set of preset values and then learn as the advanced patient management system functions) or untrained (i.e., the learning module **506** is initiated with no preset values and must learn from scratch as the advanced patient management system functions). In other alternative embodiments, the learning module **506** may continue to learn and adjust as the advanced patient management system functions (i.e., in real time), or the learning module **506** may remain at a given level of learning and only advanced to a higher level of understanding when manually allowed to do so.

In a neural network embodiment, new clinical information is presented to create new neural network coefficients that are distributed as a neural network knowledge upgrade. The learning module **506** can include a module for verifying the neural network conclusions for clinical accuracy and significance. The learning module can analyze a database of test cases, appropriate outcomes and relative occurrence of misidentification of the proper outcomes. In some embodiments, the learning module **506** can update the analysis module **116** when the analysis algorithms exceed a threshold level of acceptable misidentifications.

The example learning module **506** uses various algorithms and mathematical modeling such as, for example, trend and statistical analysis, data mining, pattern recognition, cluster analysis, neural networks and fuzzy logic. Learning module **506** may perform deterministic and probabilistic calculations. Deterministic calculations include algorithms for which a clear correlation is known between the data analyzed and a given outcome. For example, there may be a clear correlation between the energy left in a battery of an implantable device and the amount of time left before the battery must be replaced.

A probabilistic calculation involves the correlation between data and a given outcome that is less than 100 percent certain. Probabilistic determinations require an analysis of several possible outcomes and an assignment of probabilities for those outcomes (e.g., an increase in weight of a patient may, at a 25% probability, signal an impending de-compensation event and/or indicate that other tests are needed). The learning module **506** performs probabilistic calculations and selects a given response based on less than a 100% probabil-

ity. Further, as the learning module **506** “learns” for previous determinations (e.g., through a neural network configuration), the learning module **506** becomes more proficient at assigning probabilities for a given data pattern, thereby being able to more confidently select a given response. As the amount of data that has been analyzed by the learning module **506** grows, the learning module **506** becomes more and more accurate at assigning probabilities based on data patterns. A bifurcated analysis may be performed for diseases exhibiting similar symptoms. As progressive quantities of data are collected and the understanding of a given disease state advances, disease analysis is refined where a former singular classification may split into two or more sub-classes.

In addition, patient-specific clinical information can be stored and tracked for hundreds of thousands of individual patients, enabling a first-level electronic clinical analysis of the patient’s clinical status and an intelligent estimate of the patient’s short-term clinical prognosis. The learning module **506** is capable of tracking and forecasting a patient’s clinical status with increasing levels of sophistication by measuring a number of interacting co-morbidities, all of which may serve individually or collectively to degrade the patient’s health. This enables learning module **506**, as well as caregivers, to formulate a predictive medical response to oncoming acute events in the treatment of patients with chronic diseases such as heart failure, diabetes, pain, cancer, and asthma/COPD, as well as possibly head-off acute catastrophic conditions such as MI and stroke.

Delivery module **118** coordinates the delivery of feedback based on the analysis performed by the host **112**. In response to the analysis module **116**, delivery module **118** can manage the devices **102**, **104**, and **106**, perform diagnostic data recovery, program the devices, and otherwise deliver information as needed. In some embodiments, the delivery module **118** can manage a web interface that can be accessed by patients or caregivers. The information gathered by an implanted device can be periodically transmitted to a web site that is securely accessible to the caregiver and/or patient in a timely manner. In other embodiments, a patient accesses detailed health information with diagnostic recommendations based upon analysis algorithms derived from leading health care institutions.

For example, the caregiver and/or patient can access the data and analysis performed on the data by accessing one or more general content providers. In one example, the patient’s health information is accessed through a general portal such as My Yahoo provided by Yahoo! Inc. of Sunnyvale, Calif. A patient can access his or her My Yahoo homepage and receive information regarding current health and trends derived from the information gathered from the devices **102**, **104**, and **106**, as well as other health information gathered from other sources. The patient may also access other information in addition to health information on the My Yahoo website, such as weather and stock market information. Other electronic delivery methods such as email, facsimile, etc. can also be used for alert distribution.

In an alternative embodiment, the data collected and integrated by the advanced patient system **100**, as well as any analysis performed by the system **100**, is delivered by delivery module **118** to a caregiver’s hospital computer system for access by the caregiver. A standard or custom interface facilitates communication between the advanced patient management system **100** and a legacy hospital system used by the caregiver so that the caregiver can access all relevant information using a system familiar to the caregiver.

The advanced patient management system **100** can also be configured so that various components of the system (e.g.,

ITU 108, communication system 110, and/or host 112) provide reporting to various individuals (e.g., patient and/or caregiver). For example, different levels of reporting can be provided by (1) the ITU 108 and (2) the host 112. The ITU 108 may be configured to conduct rudimentary analysis of data gathered from devices 102, 104, and 106, and provide reporting should an acute situation be identified. For example, if the ITU 108 detects that a significant heart arrhythmia is imminent or currently taking place, the ITU 108 provides reporting to the patient in the form of an audible or visual alarm.

The host 112 can provide a more sophisticated reporting system. For example, the host 112 can provide exception-based reporting and alerts that categorize different reporting events based on importance. Some reporting events do not require caregiver intervention and therefore can be reported automatically. In other escalating situations, caregiver and/or emergency response personnel need to become involved. For example, based on the data collected by the advanced patient management system 100, the delivery module 118 can communicate directly with the devices 102, 104, and 106, contact a pharmacy to order a specific medication for the patient, and/or contact 911 emergency response. In an alternative embodiment, the delivery module 118 and/or the patient may also establish a voice communication link between the patient and a caregiver, if warranted.

In addition to forms of reporting including visual and/or audible information, the advanced patient management system 100 can also communicate with and reconfigure one or more of the devices 102, 104, and 106. For example, if device 102 is part of a cardiac rhythm management system, the host 112 can communicate with the device 102 and reconfigure the therapy provided by the cardiac rhythm management system based on the data collected from one or more of the devices 102, 104, and 106. In another embodiment, the delivery module 118 can provide to the ITU 108 recorded data, an ideal range for the data, a conclusion based on the recorded data, and a recommended course of action. This information can be displayed on the ITU 108 for the patient to review or made available on the peripheral device 109 for the patient and/or clinician to review.

One or more headings have been provided above to assist in describing the various embodiments disclosed herein. The use of headings, and the resulting division of the description by the headings, should not be construed as limiting in any way. The subject matter described under one heading can be combined with subject matter described under one or more of the other headings without limitation and as desired.

Repeater Communications

FIG. 5 shows a patient 602 that has a medical device 604 coupled thereto. In this example, the medical device 604 is an implantable medical device such as a pacemaker. The medical device 604 communicates bi-directionally with a repeater device 610, such as an ITU 108 described above, by sending signals 606 to the repeater 610 and receiving signals 608 sent by the repeater 610. Signals 606, 608 can be achieved through inductive coupling, RF electromagnetic signaling, acoustic signaling, or other signaling methods known in the art. Furthermore, the signaling may occur wirelessly or through a wired connection, depending upon whether the device 604 is implanted or external to the patient's body 602.

Typically, an implanted medical device 604 will communicate using on-board telemetry as is known in the art. The on-board telemetry of the implanted medical device 604 performs a handshake with an external device such as the repeater device 610 to establish communications. The repeater device 610 interrogates the medical device 604 to retrieve data that the medical device 604 has been storing in

on-board memory. For example, an implantable medical device 604 may store the number of times a particular cardiac episode has occurred since the last time the repeater device 610 downloaded the data.

The repeater device 610 captures the data and stores it in on-board memory, as discussed in greater detail below. Subsequently, the repeater device 610 transmits the data through a communication medium 612 to a data repository 614, such as an advanced patient management system maintaining a database of patient information as discussed above. The communication medium 612 and associated form of communication between the repeater device 610 and the repository 614 can take on various forms known in the art as discussed above in relation to the communication system 110 of FIGS. 1 and 4.

For example, a public switched telephone network (PSTN) may be used whereby the repeater device 610 accesses the telephone line of the patient's home and places a call to a repository telephone number to establish the connection entirely through the PSTN. As one alternative, the repeater device 610 may utilize a dial-up connection or an always-on connection to an Internet Service Provider (ISP) where the repository 614 is accessible through the Internet. Additionally, as discussed above, the repeater device 610 may incorporate wireless communication abilities enabling the repeater device 610 to transmit data wirelessly to the PSTN or wireless Internet through a cellular base station.

As mentioned above, the communication between the repeater device 610 and the medical device 604 may be bi-directional so that the repeater device 610 can also send data to the medical device 604. Furthermore, the communication between the repeater device 610 and the repository 614 may be bi-directional. This enables the repeater device 610 to forward data from the medical device 604 to the repository 614 and also forward data from the repository 614 to the medical device 604.

For instance, the repeater device 610 may forward data from the medical device 604 to the repository 614. After analysis of the data at the repository 614, it may be determined that reprogramming of the medical device 604 is necessary to compensate for a change in the patient's condition. The new programming may then be transferred from the repository 614 through the repeater device 610 to the medical device 604 where it can be implemented.

FIG. 6 is a view of an exemplary repeater device 610. The repeater device 610 may include audio and/or visual annunciation abilities to communicate progress and/or alerts to the patient 602. For example, a liquid crystal display (LCD) 704 may be included to provide a visual cue to the patient about progress of upload from the medical device 604 and the progress of download to the repository 614. Furthermore, LCD 704 may be used to provide instructions for use of the medical device 604 and/or repeater device 610 as well as alerts. Similarly, an audio speaker 702 may provide audible cues including progress reports and warnings to the patient 602. Various other types of annunciation may be employed as well, including light emitting diodes (LEDs), etc.

In some embodiments, the repeater device 610 may include intelligence for analyzing the data being retrieved from the medical device 604. For example, the repeater device 610 may include programming that analyzes the data for episodes of cardiac activity that are precursors to a serious cardiac event. In this case, the repeater device 610 may annunciate to the patient 602 that a visit to a physician is necessary and immediately notify the repository 614 of the emergency situation. Likewise, the data from the medical device 604 may indicate that the medical device 604 itself has a problem, such

as a broken cardiac lead. The repeater device **610** may be programmed to recognize this condition from the retrieved data and annunciate to the patient **602** that a visit to the physician is necessary.

FIG. 7 is a view of the major components of the exemplary repeater device **610** of FIG. 5. This repeater device **610** contains telemetry **802** that enables communication with a medical device **604**, such as an implantable medical device (IMD). As discussed above, such telemetry **802** may employ inductive coupling techniques to wirelessly transmit data to and from the repeater device **610**. RF communications are a wireless alternative to inductive coupling and provide better range between the medical device **604** and the repeater device **610**. Wired connections from the medical device **604** to telemetry **802** are another alternative for medical devices **604** worn externally.

The telemetry **802** demodulates or otherwise recovers data from the signal from the medical device **604** and provides the data to the processor **808**. Alternatively, the telemetry **802** provides the received signal to the processor **808** which then demodulates or otherwise recovers the data from the signal. The processor **808** stores the data in memory **812**, such as random access memory (RAM) where it can later be accessed. In certain embodiments, the processor **808** may perform data analysis to determine the urgency of the data.

Data analysis by the repeater **610** may include analyzing raw data recorded by the medical device **604** to detect physiological conditions and specific episodes. Data analysis may also include interpreting data generated by the medical device **604** that signals such conditions and episodes, such as where the medical device **604** analyzes raw data to determine the conditions and episodes prior to sending the data to the repeater **610**. Data analysis of raw data to determine physiological condition and specific episodes is well known in the art, but examples include detecting cardiac arrhythmias, conduction disorders, pulse rate, episodes of tachycardia or bradycardia, and other physiological conditions.

The processor **808** provides the data from memory **812** to an external communications device **806**, such as a telephone line interface (modem), a wireless digital or analog RF transceiver, and/or an always-on Internet connection (i.e., cable or DSL modem). The external communications device **806** interfaces with the communication medium **612** to transfer the data to the repository **614**. Data transfer may occur through techniques well known in the art, including standard modulation techniques, circuit switched connections, and/or packet switched connections as is appropriate. The external communications device **806** is also configurable to receive data from the repository **614** through the communication medium **612**.

The processor **808** controls annunciation devices including the display circuit **804** and audio circuit **810** to provide information to the user **602**. The display circuit **804** controls the LCD display **704** to provide visual information such as instructions for use, problems with the repeater **610** or medical device **604**, or emergency alerts. Likewise, the audio circuit **810** controls the speaker **702** to provide audible information.

Logical operations of the processor **808** and its interaction with the various components shown in FIG. 7 are shown for several different embodiments in FIGS. 9-11. These logical operations of the various embodiments are implemented (1) as a sequence of computer implemented acts or program modules and/or (2) as interconnected machine logic circuits or circuit modules. The implementation is a matter of choice dependent on the performance requirements of the repeater **610**. Accordingly, the logical operations making up embodi-

ments described herein are referred to variously as operations, structural devices, acts, or modules. It will be recognized by one skilled in the art that these operations, structural devices, acts and modules may be implemented in software, in firmware, in special purpose digital logic, and any combination thereof without deviating from the spirit and scope as recited within the claims attached hereto.

FIG. 8 shows exemplary logical operations where the repeater **610** considers the urgency of the data when coordinating the transfer of data to the repository **614**. The operations begin with the processor **808** initiating communication with the medical device **604** through the telemetry **802** at communication operation **902**. At data operation **904**, the processor **808** retrieves the data through the telemetry **802** and stores the data in memory **812**. At analysis operation **906**, the processor **808** reviews the data to determine the degree of urgency. As discussed above, the processor **808** may review the data to determine whether the medical device **604** has found a specific condition or episode, or the processor **808** may employ its own analysis logic on the raw data recorded by the medical device **604** to find a specific condition or episode. In addition to or as an alternative to determining the degree of urgency based on analysis of the data, the processor may detect the degree of urgency by receiving input provided by a user. For example, the patient may press a button of the repeater that provides a signal to the processor **808** that the patient knows the data should be treated as urgent such as if a particular episode is occurring that the patient is aware of.

At query operation **908**, the processor **808** detects from the analysis or otherwise whether the degree of urgency of the data indicates an emergency situation, such as where the data analysis shows that the user **602** needs immediate medical attention due to an imminent cardiac arrest or if the patient has indicated that the data is urgent. When the degree of urgency indicates an emergency situation, the repeater **610** proceeds to immediately initiate communication at communication operation **910**. A notice of the emergency situation is transferred to the repository **614** at notice operation **912** to trigger an alarm so that repository personnel may take emergency action including dispatching paramedics to the user's location.

The repeater **610** also warns the user **602** of the emergency through visual and/or audible warnings at notice operation **914**. The data stored in memory **812**, including at least the data signaling the emergency situation, may then be transferred to the repository **614** at transfer operation **916**. The repository personnel may then review the data to further assess the situation and assist paramedics.

If query operation **908** detects that there is no emergency, then query operation **918** tests whether the analyzed data indicates a problem. A problem may be detected from the data where the medical device **604** reports a malfunction, such as a broken cardiac lead, or reports other information that indicates the patient **602** should seek medical attention by some future point in time, although not immediately. If such a problem is detected, then the repeater **610** provides audible and/or visual notice of the problem to the user **602** at notice operation **920**.

Once notice of the problem has been given to the user **602**, or if query operation **918** detects no problem, then operational flow transitions to query operation **922** which detects whether it is an appropriate time to transfer data to the repository **614**. For example, the repeater **610** may be configured so that transfers occur over a telephone line during low-activity periods such as 3 a.m. Other factors may be considered as well in addition to or as an alternative to the time of day. If query operation **922** detects that the proper time has arrived, then the

processor 808 initiates communication with the repository 614 at communication operation 926. Data is then transferred to the repository 614 at transfer operation 928. If the proper time for transfer has not arrived, then the processor 808 waits out a delay 924, and then query operation 922 again detects whether the proper time has arrived.

FIG. 9 shows the logical operations where the repeater 610 considers the condition of the communication medium when coordinating transfer of data to the repository 614. The logical operations begin at communication operation 1002 where the repeater 610 initiates communication with the medical device 604. The repeater 610 retrieves the data from the medical device 604 and stores it in memory 812 at data operation 1004.

After the data has been obtained from the medical device 604, the repeater 610 checks the condition of the external communication medium 614 through interface 806 at test operation 1006. In this example, checking the condition of the communication medium 614 involves determining whether the telephone line is already in use. Other communication medium conditions may be determined as well. For example, if a wireless connection is being used to communicate with the repository 614, the strength of the wireless signal may be referenced to determine whether the signal is strong enough to communicate. As another example, if the Internet is being used to transfer data to the repository 614, the available bandwidth through the Internet connection may be determined to decide whether the data should be transferred.

The processor 808 may be configured so that test operation 1006 occurs as soon as the data has been retrieved or occurs at a later point in time, such as at a low-activity part of the day. After test operation 1006 has been performed, query operation 1008 detects whether the condition of the communication medium 614 is satisfactory. In this example, query operation 1008 detects whether the telephone line is in use. If so, the processor 808 stalls data transfer for a delay period 1010, and operational flow returns to test operation 1006 to again check the condition of the communication medium.

Once query operation 1008 detects that the telephone line is not in use, then communication operation 1012 initiates communication through the interface 806 with the repository 614. Once communication has been established, then data is transferred between the repeater device 610 and the repository 614 at transfer operation 1014.

FIG. 10 shows an example of logical operations of the repeater device 610 where both the urgency of the data and the condition of the communication medium are considered when coordinating data transfer to the repository 614. The operations begin with the processor 808 initiating communication with the medical device 604 through the telemetry 802 at communication operation 1112. At data operation 1104, the processor 808 retrieves the data through the telemetry 802 and stores the data in memory 812. At analysis operation 1106, the processor 808 reviews the data to determine the degree of urgency.

At query operation 1108, the processor 808 detects from the analysis whether the degree of urgency of the data indicates an emergency situation, such as where the data analysis shows that the user 602 needs immediate medical attention due to an imminent cardiac arrest. When the degree of urgency indicates an emergency situation, the repeater 610 proceeds to immediately detect whether the telephone line is in use at query operation 1110. If so, then the telephone line interface 806 short circuits the telephone line to disconnect the current telephone call that is occupying the telephone line.

Once the telephone line has been freed or once query operation 1110 detects that the telephone line is not in use, the

processor 808 initiates communication at communication operation 1114. A notice of the emergency situation is transferred to the repository 614 at notice operation 1116 to trigger an alarm so that repository personnel may take emergency action including dispatching paramedics to the user's location.

The repeater 610 also warns the user 602 of the emergency through visual and/or audible warnings at notice operation 1118. The data stored in memory 812, including at least the data signaling the emergency situation, may then be transferred to the repository 614 at transfer operation 1120. The repository personnel may then review the data to further assess the situation and assist paramedics.

If query operation 1108 detects that there is no emergency, then query operation 1122 tests whether the analyzed data indicates a problem. As discussed above, a problem may be detected from the data where the medical device 604 reports a malfunction, such as a broken cardiac lead, or reports other information that indicates the patient 602 should seek medical attention by some future point in time, although not immediately. If such a problem is detected, then the repeater 610 provides audible and/or visual notice of the problem to the user 602 at notice operation 1124.

Once notice of the problem has been given to the user 602, or if query operation 1122 detects no problem, then operational flow transitions to query operation 1126 which detects whether it is an appropriate time to transfer data to the repository 614, such as during a low-activity period. If query operation 1126 detects that the proper time for transfer has not arrived, then the processor 808 waits out a delay 1128, and then query operation 1126 again detects whether the proper time has arrived.

If query operation 1126 detects that the proper time has arrived, then query operation 1130 detects whether the telephone line is in use. If so, then the processor 808 stalls for a delay period 1132 and then again checks the telephone line at query operation 1130. If the telephone line is not in use, then the processor 808 initiates communication with the repository 614 at communication operation 1134. Data is then transferred to the repository 614 at transfer operation 1136.

The various embodiments described above are provided by way of illustration only and should not be construed to limit. Those skilled in the art will readily recognize various modifications and changes that may be made without following the example embodiments and applications illustrated and described herein, and without departing from the true spirit and scope, which is set forth in the following claim.

What is claimed is:

1. A repeater for relaying data to a repository from a medical device, comprising:
 - a receiver configured to receive data from an implantable cardiac rhythm management device;
 - a memory configured to maintain the data once it has been received;
 - a transmission device configured to send the data to a data repository over a communication medium; and
 - a processing device configured to:
 - detect conditions of the communication medium that could affect data exchange and send the data based at least in part on the conditions,
 - recognize a problem with the cardiac rhythm management device, and
 - consider a degree of urgency and send the data based at least in part on the degree of urgency.
2. The repeater of claim 1, wherein the processing device is configured to recognize a problem with the cardiac rhythm management device comprising a broken cardiac lead.

21

3. The repeater of claim 1, wherein the transmission device is configured to send the data to a data repository over a communication medium comprising a telephone line.

4. The repeater of claim 3, wherein the processing device is configured to detect conditions of the communication medium that could affect exchange comprising the telephone line being already in use.

5. The repeater of claim 1, wherein the receiver is configured to receive data from the cardiac rhythm management device through inductive coupling.

6. The repeater of claim 1, further comprising an interface configured to receive the degree of urgency from a user.

7. The repeater of claim 1, wherein the processor is configured to perform analysis of the data to determine the degree of urgency.

8. The repeater of claim 1, wherein the transmission device is configured to send the data to a data repository over a communication medium comprising a wireless communication medium.

9. The repeater of claim 1, wherein the processing device is further configured to perform self-diagnostic tests to detect conditions of the communication medium.

10. The repeater of claim 1, further comprising an annunciation interface in communication with the processing device, wherein the annunciation interface configured to annunciate warnings to a user.

11. A system for relaying data to a repository from a medical device, comprising:

- a cardiac rhythm management device configured for implantation in a user;
- a receiver configured to receive data from the cardiac rhythm management device;
- a memory configured to maintain the data once it has been received;
- a transmission device configured to send the data to a data repository over a communication medium; and
- a processing device configured to:

22

detect conditions of the communication medium that could affect data exchange and send the data based at least in part on the conditions, recognize a problem with the cardiac rhythm management device, and

consider a degree of urgency and send the data based at least in part on the degree of urgency.

12. The system of claim 11, wherein the processing device is configured to recognize a problem with the cardiac rhythm management device comprising a broken cardiac lead.

13. The system of claim 11, wherein the transmission device is configured to send the data to a data repository over a communication medium comprising a telephone line.

14. The system of claim 13, wherein the processing device is configured to detect conditions of the communication medium that could affect exchange comprising the telephone line being in-use.

15. The system of claim 11, wherein the receiver is configured to receive data from the cardiac rhythm management device through inductive coupling.

16. The system of claim 11, further comprising an interface configured to receive the degree of urgency from a user.

17. The system of claim 11, wherein the processor is configured to perform analysis of the data to determine the degree of urgency.

18. The system of claim 11, the transmission device configured to send the data to a data repository over a communication medium comprising a wireless communication medium.

19. The system of claim 11, wherein the processing device is further configured to perform self-diagnostic tests to detect conditions of the communication medium.

20. The system of claim 11, further comprising an annunciation interface in communication with the processing device, wherein the annunciation interface is configured to annunciate warnings to a user.

* * * * *

专利名称(译)	中继器提供与医疗设备的数据交换以用于远程患者护理及其方法		
公开(公告)号	US8451113	公开(公告)日	2013-05-28
申请号	US13/371240	申请日	2012-02-10
[标]申请(专利权)人(译)	心脏起搏器股份公司		
申请(专利权)人(译)	心脏起搏器, INC.		
当前申请(专利权)人(译)	心脏起搏器, INC.		
[标]发明人	MAZAR SCOTT T MANICKA YATHEENDHAR D		
发明人	MAZAR, SCOTT T. MANICKA, YATHEENDHAR D.		
IPC分类号	G08B1/00 A61B5/00 A61B5/0205 A61B5/0215 A61B5/08 G06F19/00 G06Q50/22 G06Q50/24 G16H10/60 H04B17/40		
CPC分类号	A61B5/0031 A61B5/0022 A61B5/0809 A61B5/4839 G06F19/3406 G06F19/3418 G06F19/345 G06Q50/22 G06Q50/24 H04B17/00 A61B5/02055 A61B5/0215 A61B5/14532 A61B2560/0209 A61B2560/0271 A61B2560/045 G06F19/322 G06F19/3493 A61B5/747 G16H10/60 G16H40/63 G16H40/67 G16H50/20 G16H50/80 G16H70/20		
优先权	11/872841 2010-09-07 US 11/327879 2007-11-06 US 10/321885 2006-03-07 US		
其他公开文献	US20120139720A1		
外部链接	Espacenet USPTO		

摘要(译)

提供了一种与医疗设备进行数据交换以进行远程患者护理的转发器及其方法。转发器包括：传输设备，被配置为通过无线介质将数据发送到数据储存库；以及处理设备，被配置为检测关于可能影响数据交换的关联通信介质的条件，其中处理设备被配置为发送数据。至少部分地基于条件。处理设备还被配置为分析来自医疗设备的数据以检测医疗设备的问题。

