



US007431696B1

(12) **United States Patent**
Brady et al.

(10) **Patent No.:** **US 7,431,696 B1**
(45) **Date of Patent:** ***Oct. 7, 2008**

(54) **MONITORING DEVICE, METHOD AND SYSTEM**

(56) **References Cited**

U.S. PATENT DOCUMENTS

(75) Inventors: **Donald Brady**, San Diego, CA (US);
Mark Hunt, San Diego, CA (US);
Sammy I. Elhag, San Diego, CA (US);
Nikolai Rulkov, San Diego, CA (US);
Steve Lui, San Diego, CA (US)

4,700,708	A *	10/1987	New et al.	600/331
6,393,311	B1	5/2002	Edgar, Jr. et al.	
6,605,038	B1	8/2003	Teller et al.	
6,720,734	B2	4/2004	Norris	
6,866,639	B2 *	3/2005	Causevic et al.	600/559
7,179,228	B2	2/2007	Banet	
7,186,220	B2 *	3/2007	Stahmann et al.	600/529
2006/0069319	A1 *	3/2006	Elhag et al.	600/344

(73) Assignee: **Impact Sports Technologies, Inc.**, Las Vegas, NV (US)

(*) Notice: Subject to any disclaimer, the term of this patent is extended or adjusted under 35 U.S.C. 154(b) by 0 days.

* cited by examiner

Primary Examiner—Robert L Nasser
(74) *Attorney, Agent, or Firm*—Clause Eight IPS LLP; Michael Catania

This patent is subject to a terminal disclaimer.

(21) Appl. No.: **11/953,073**

(57) **ABSTRACT**

(22) Filed: **Dec. 10, 2007**

A monitoring device (20) for monitoring the vital signs of a user is disclosed herein. The monitoring device (20) is preferably an article (25) having an optical sensor (30) and a circuitry assembly (35). The optical sensor (30) preferably comprises a photodetector (130) and a plurality of light emitting diodes (135). The monitoring device (20) preferably provides for the display of the following information about the user: pulse rate; blood oxygenation levels; calories expended by the user of a pre-set time period; target zones of activity; time; or distance traveled.

Related U.S. Application Data

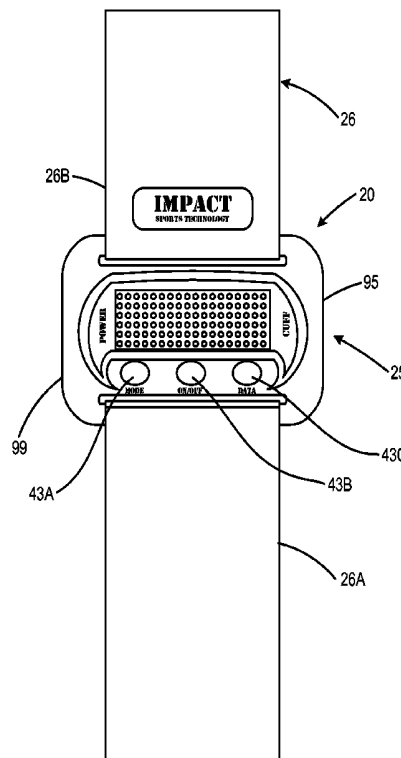
(63) Continuation of application No. 11/762,078, filed on Jun. 13, 2007.

(51) **Int. Cl.**
A61B 5/00 (2006.01)

(52) **U.S. Cl.** **600/300; 600/500**

(58) **Field of Classification Search** None
See application file for complete search history.

1 Claim, 16 Drawing Sheets



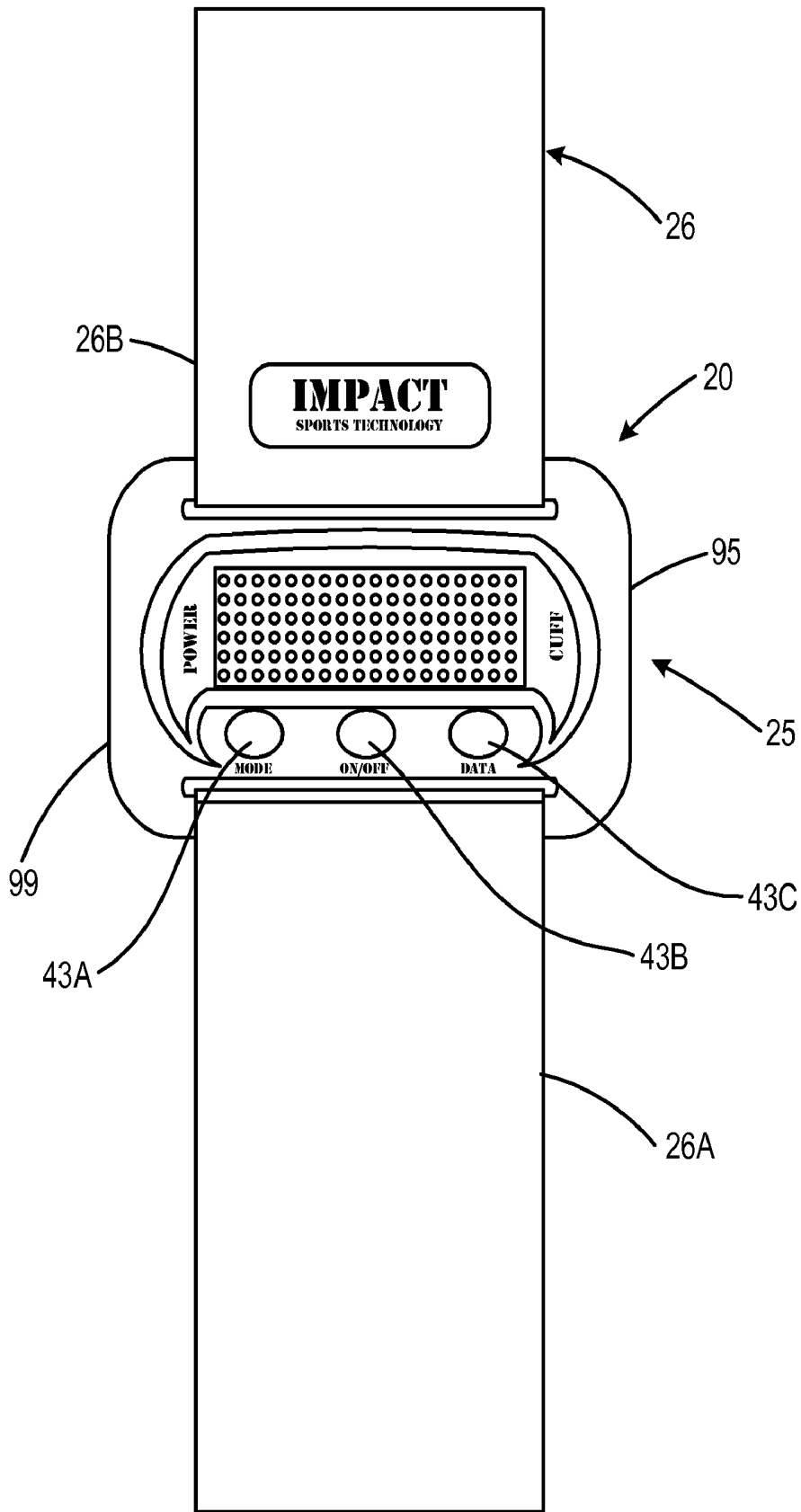


FIGURE 1

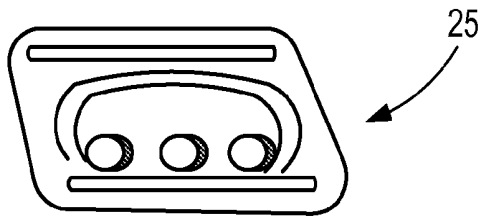


FIGURE 2

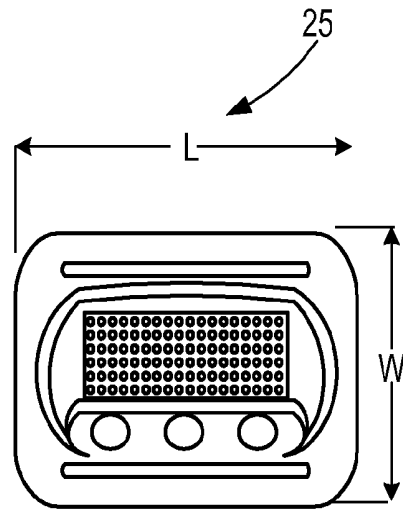


FIGURE 2A

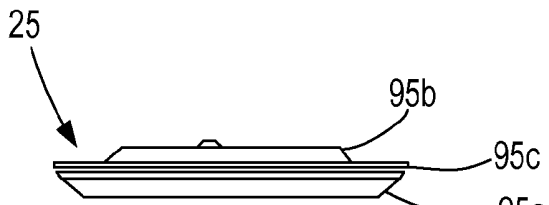


FIGURE 2B



FIGURE 2D

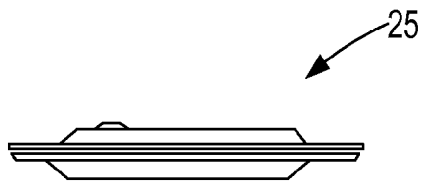


FIGURE 2C

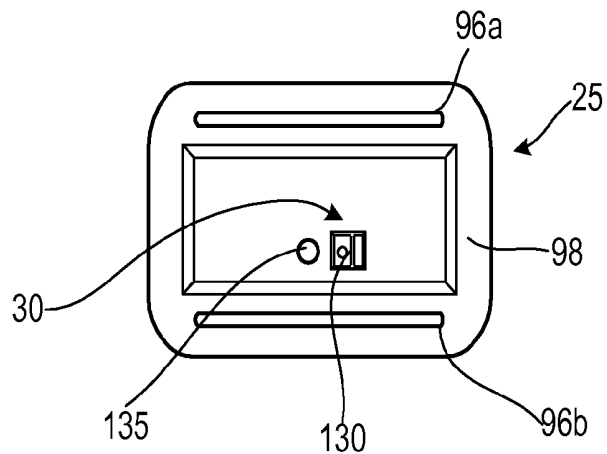


FIGURE 2E

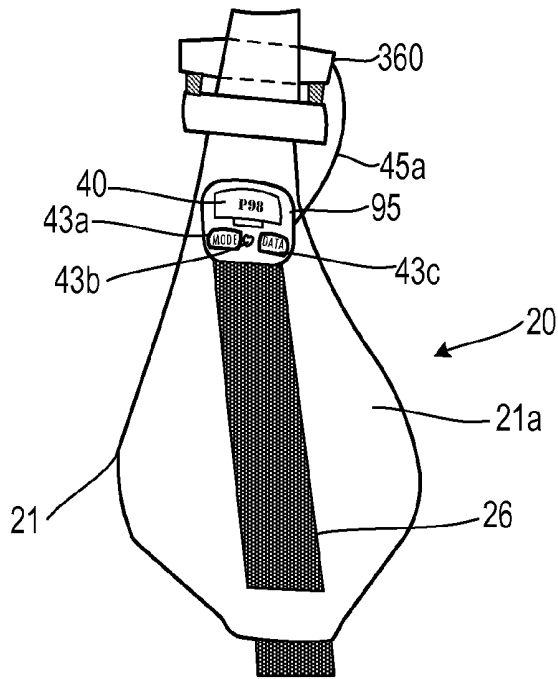


FIGURE 3

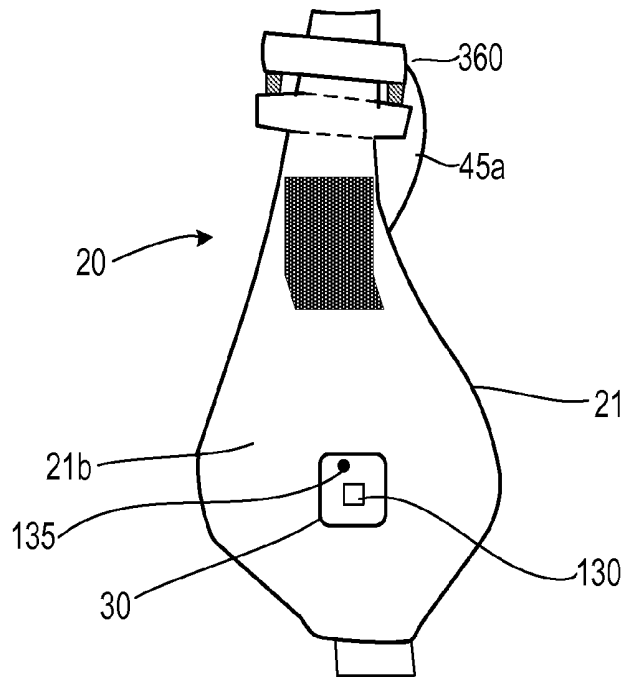


FIGURE 3A

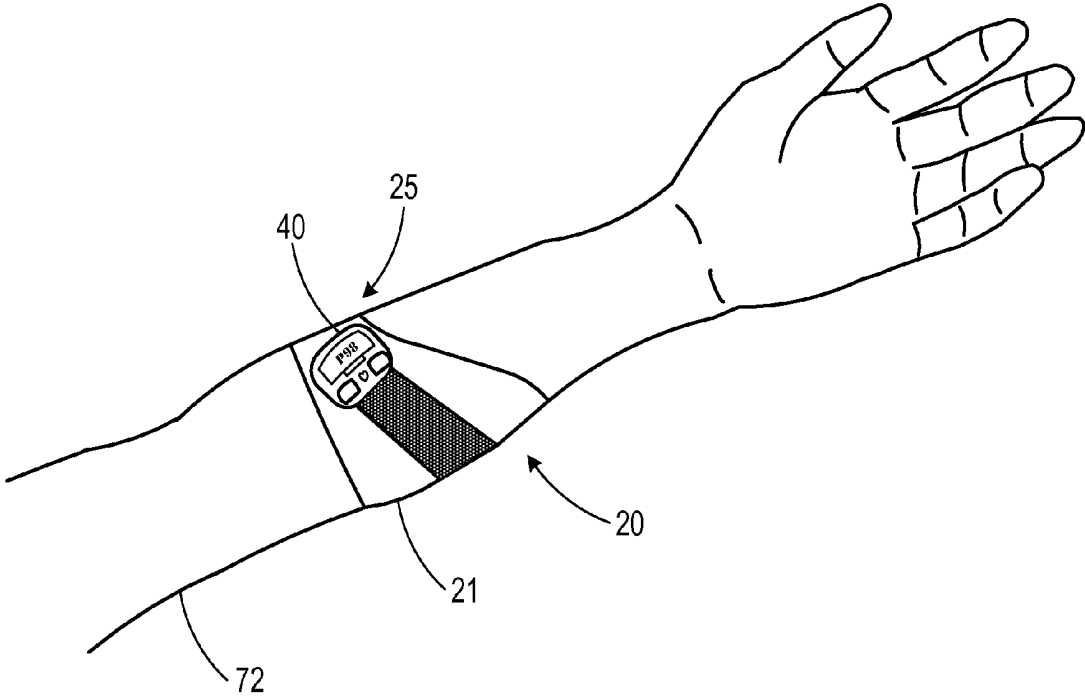


FIGURE 3B

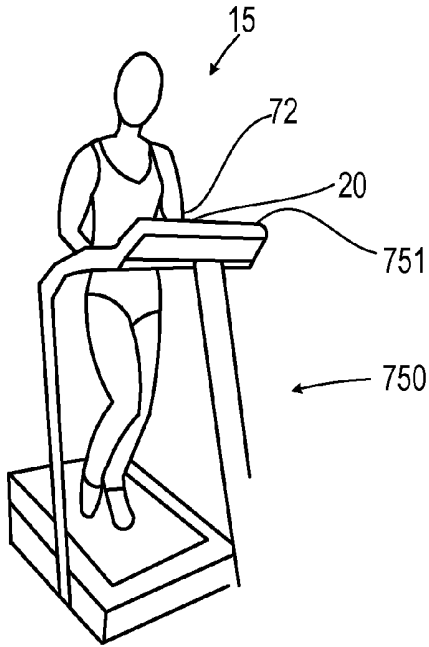


FIGURE 5

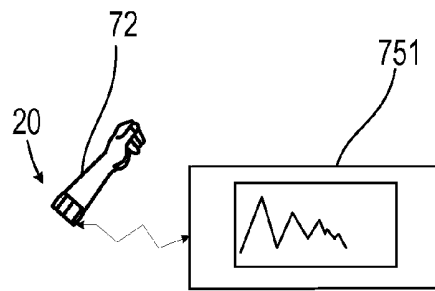


FIGURE 6

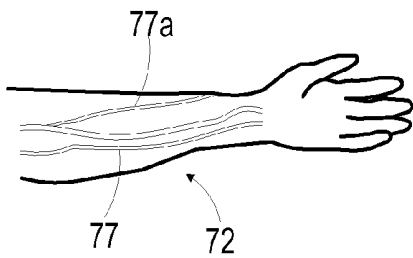


FIGURE 4

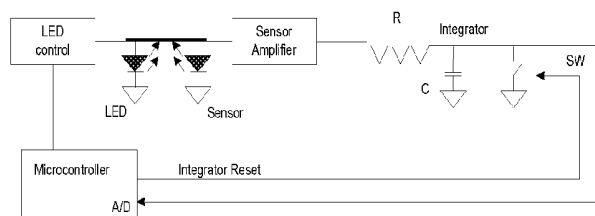


FIGURE 7

1300

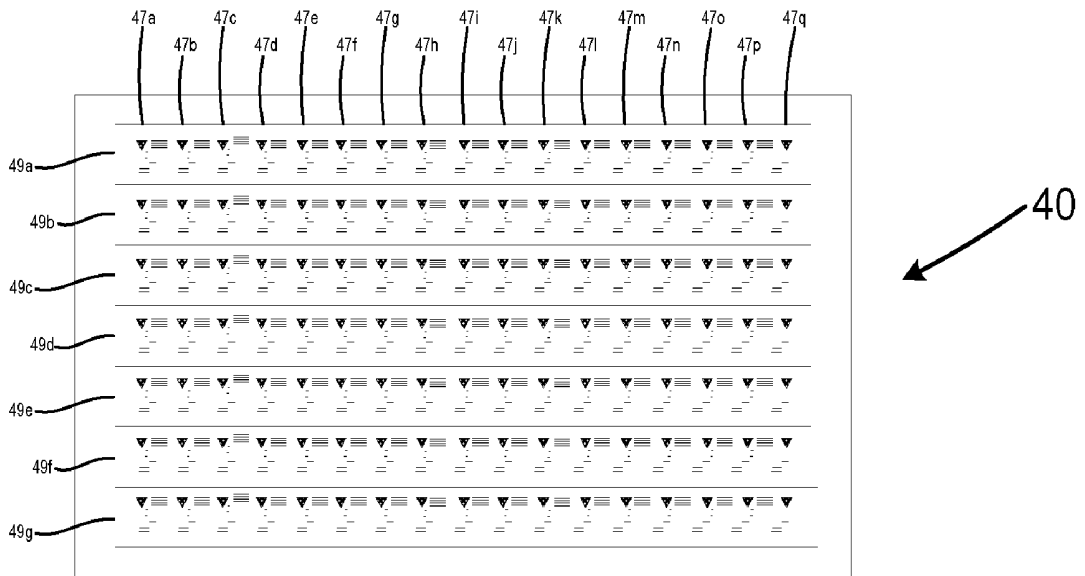


FIGURE 8

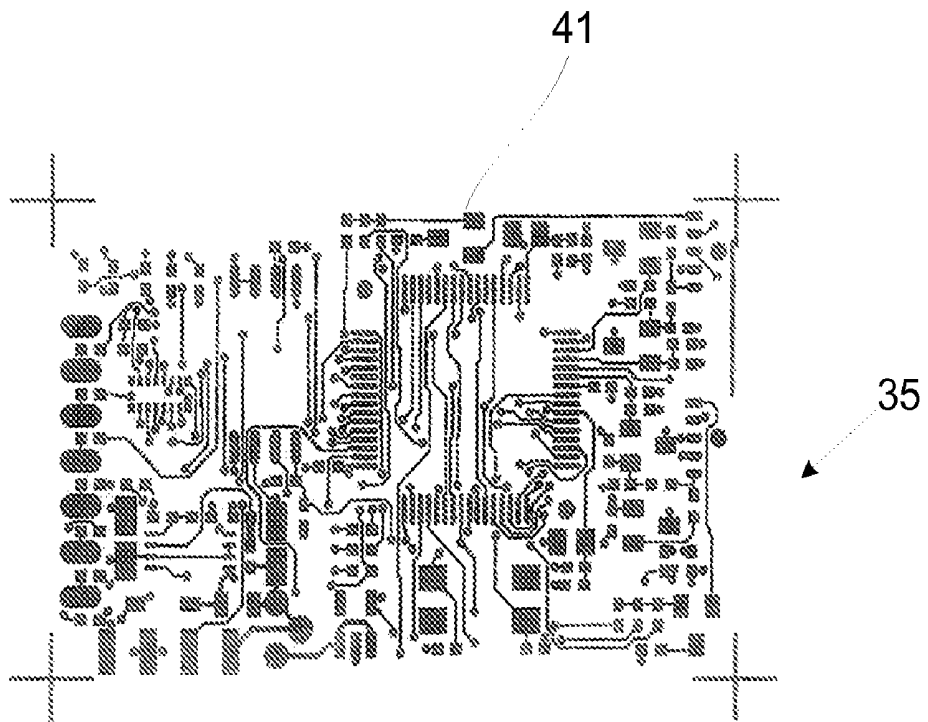


FIGURE 9

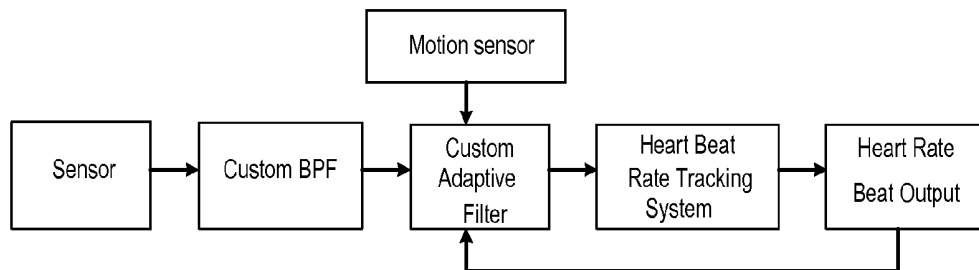


FIGURE 12

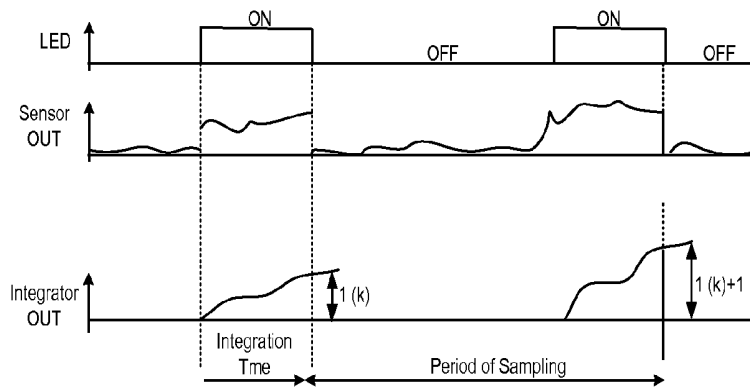


FIGURE 11

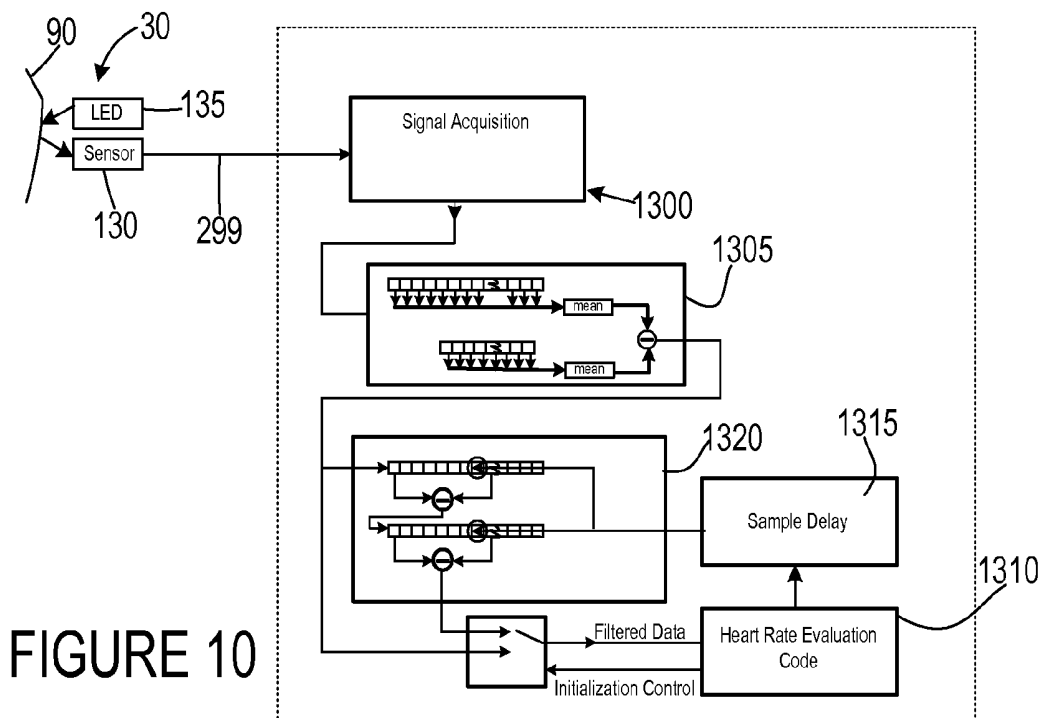


FIGURE 10

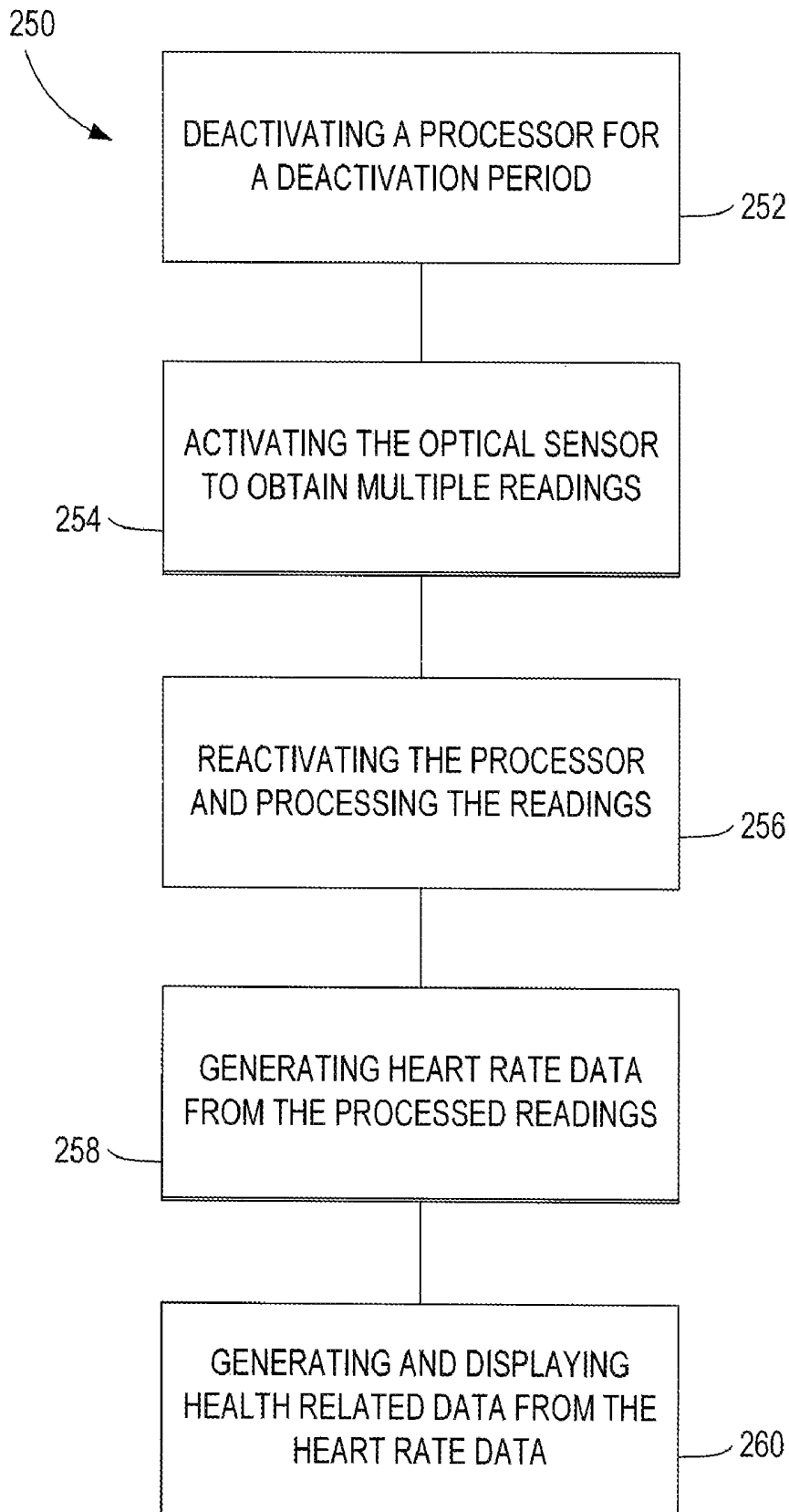


FIGURE 13

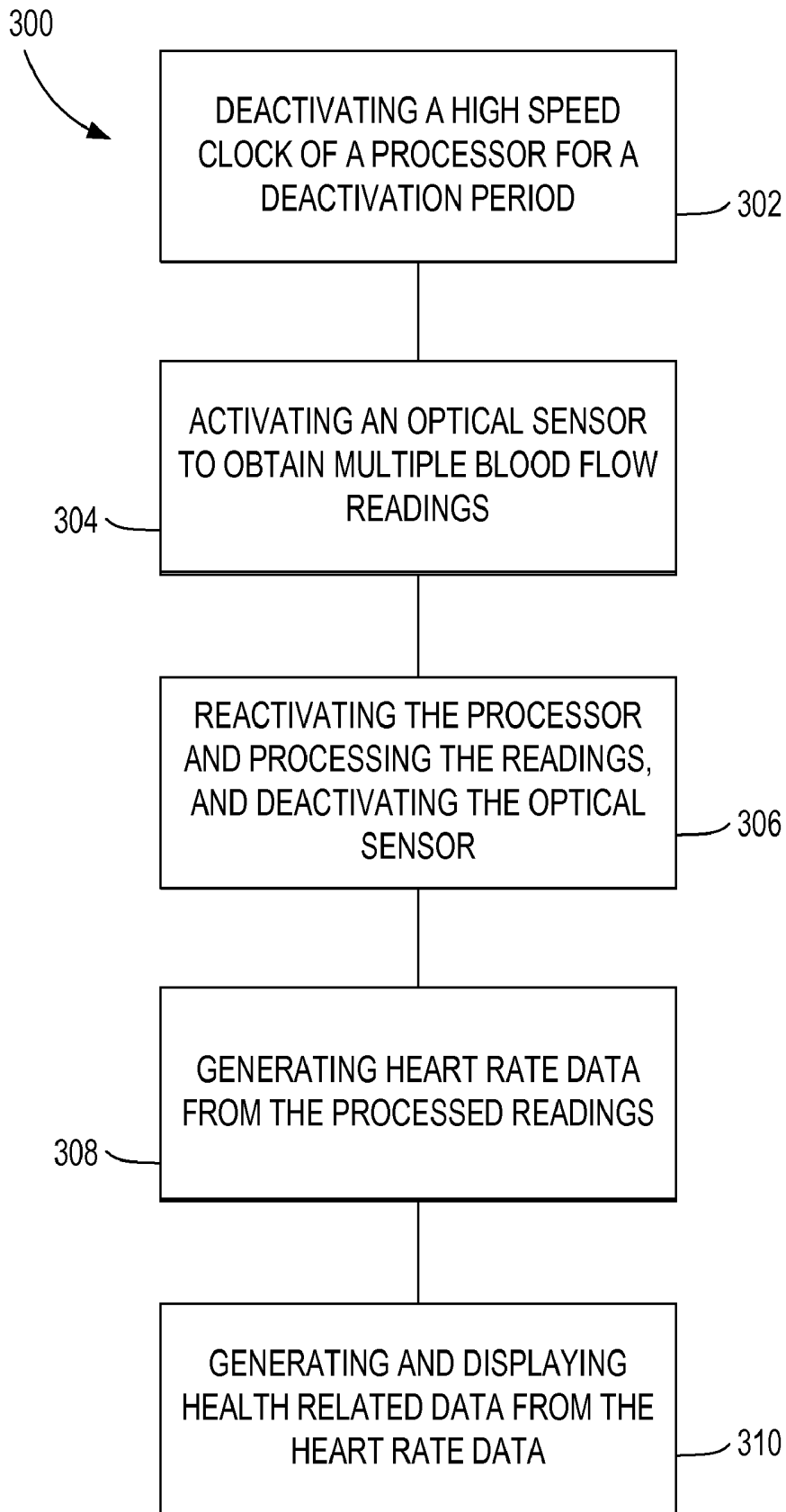


FIGURE 14

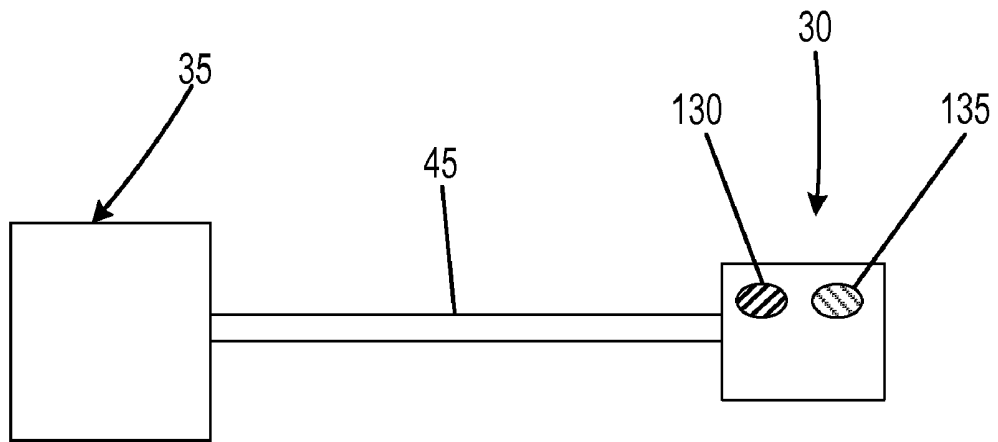


FIGURE 15 (PRIOR ART)

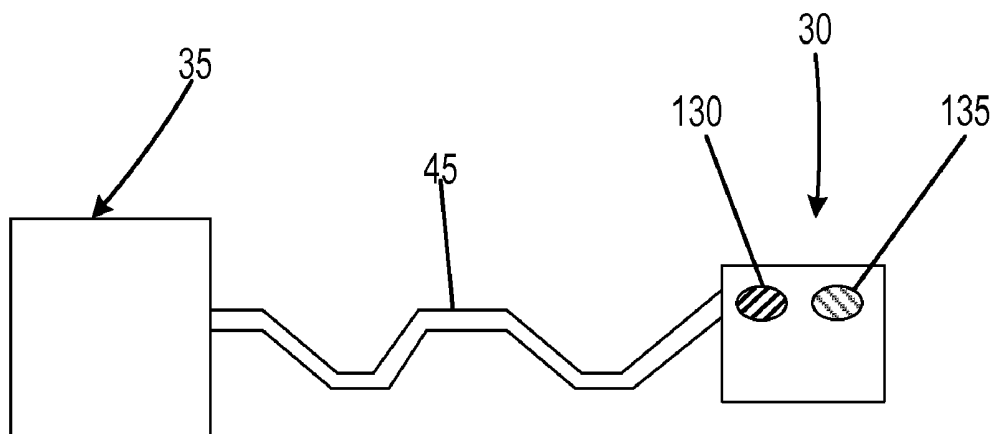


FIGURE 16

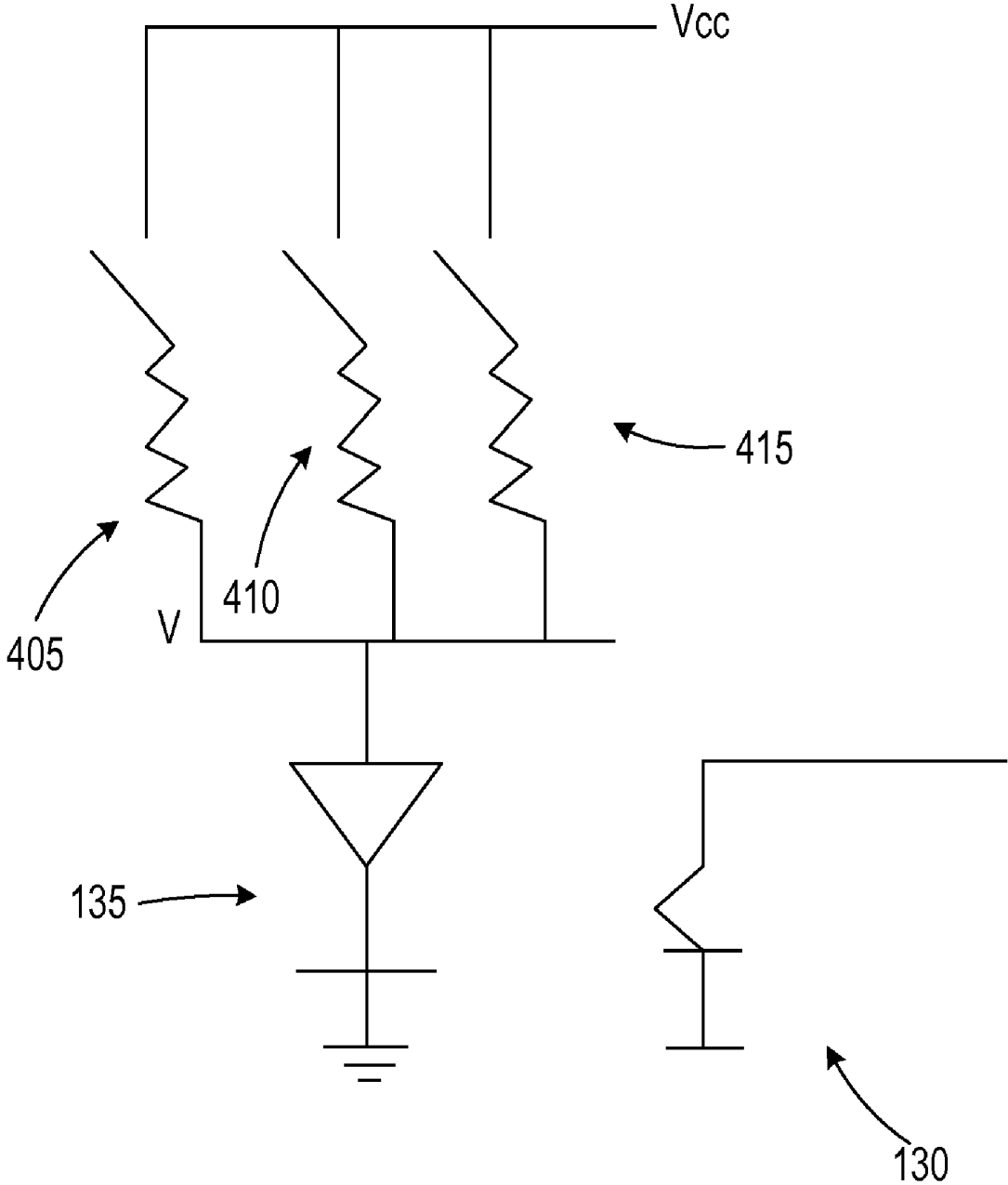


FIGURE 17

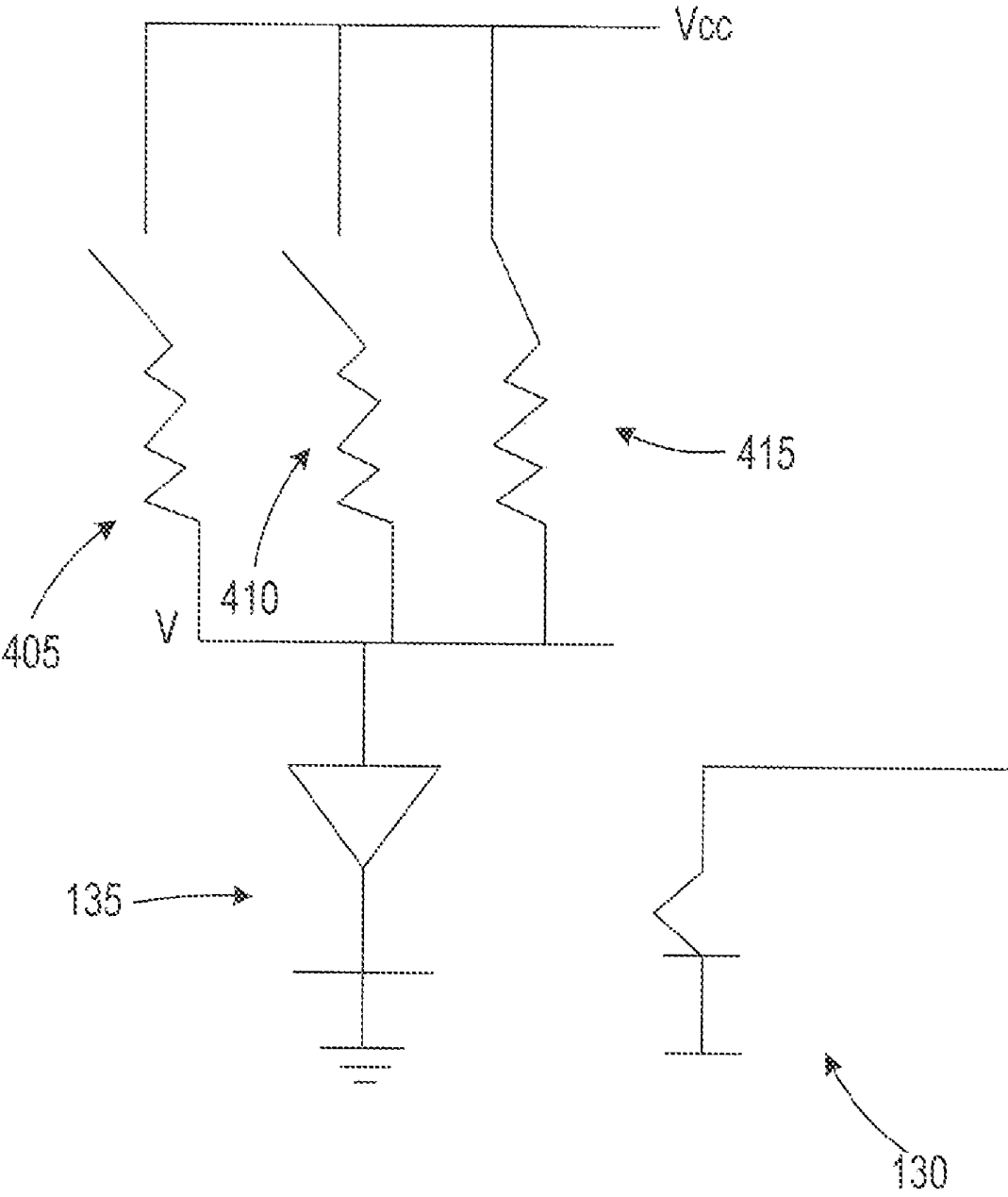


FIGURE 17A

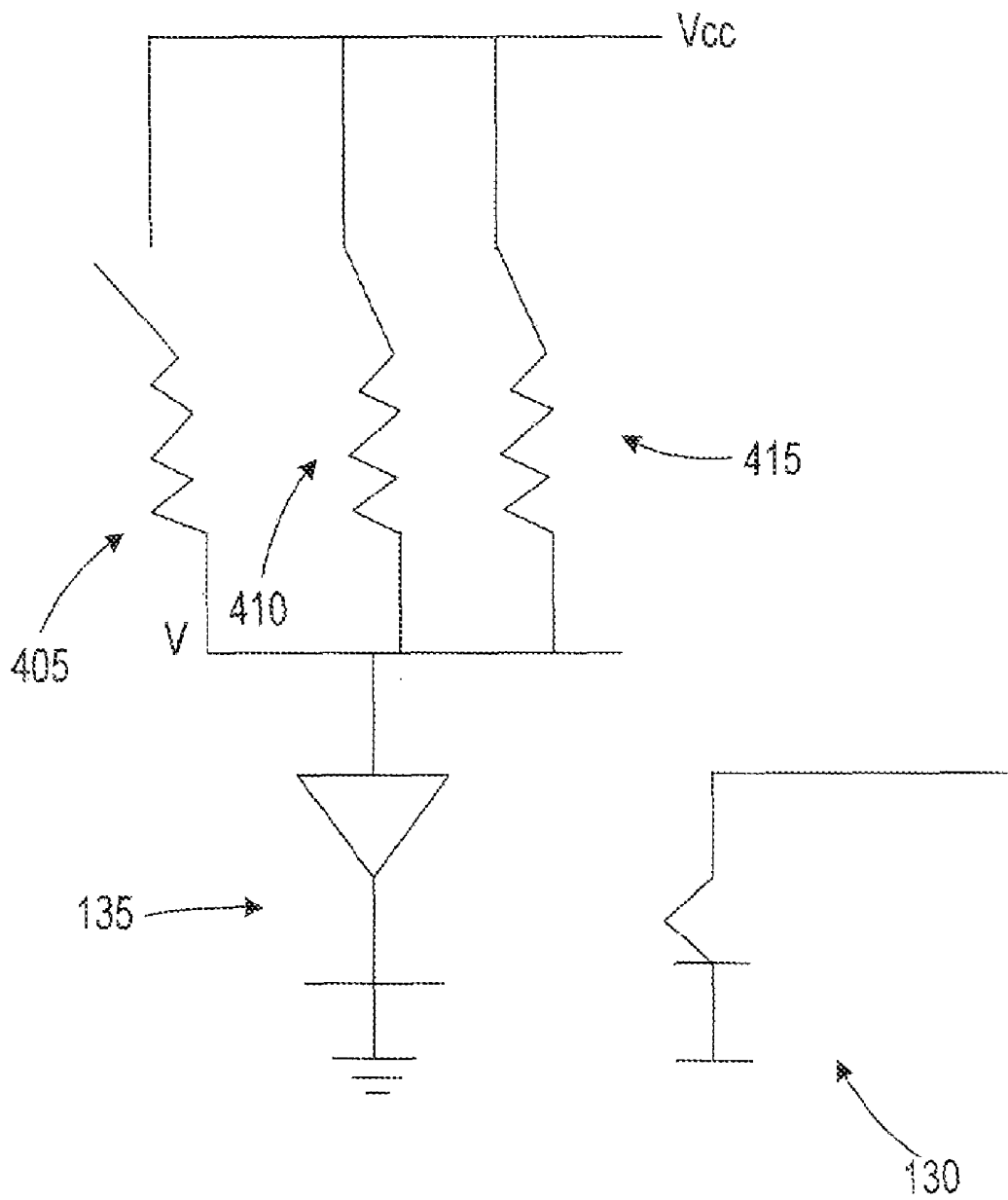


FIGURE 17B

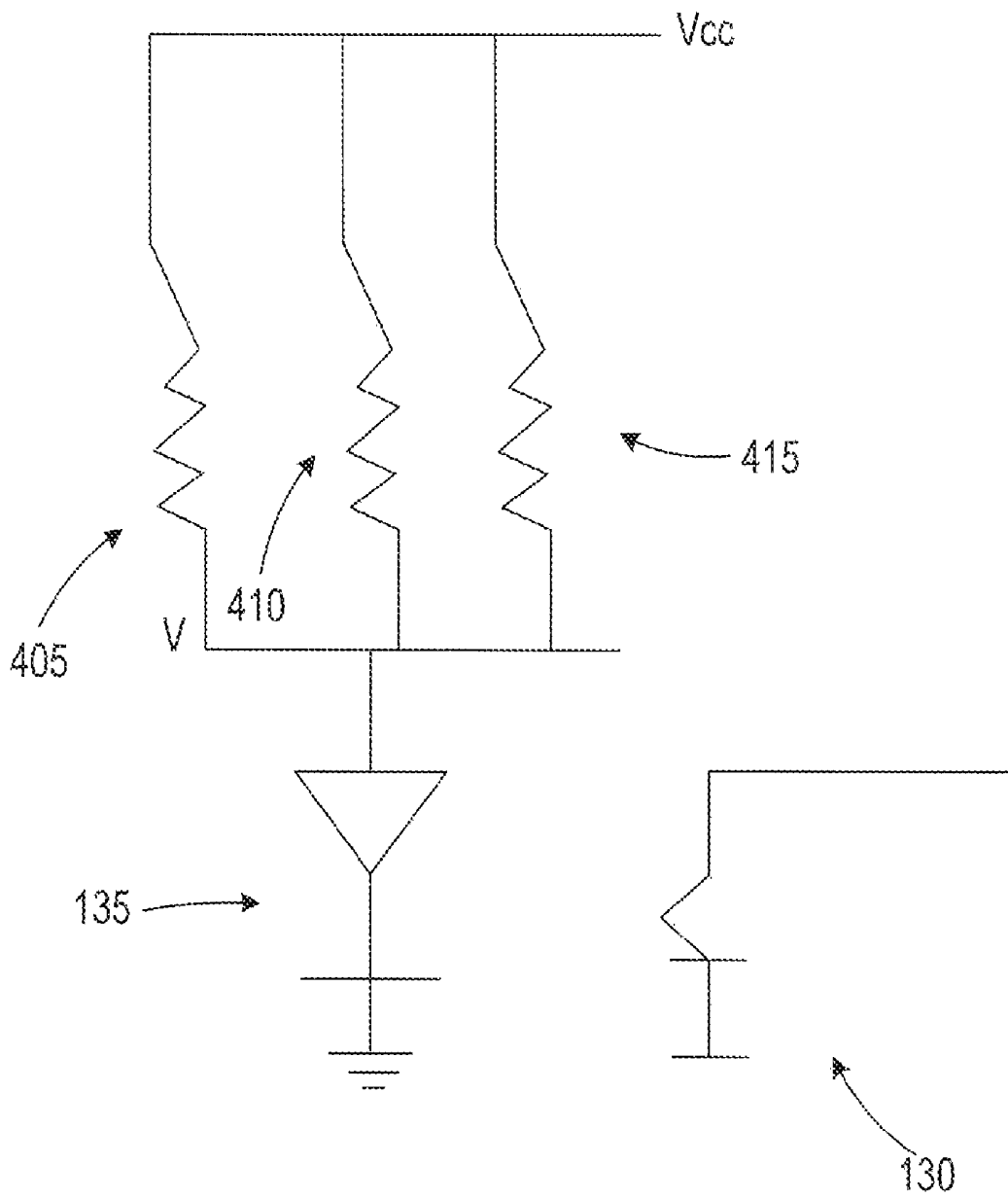


FIGURE 17C

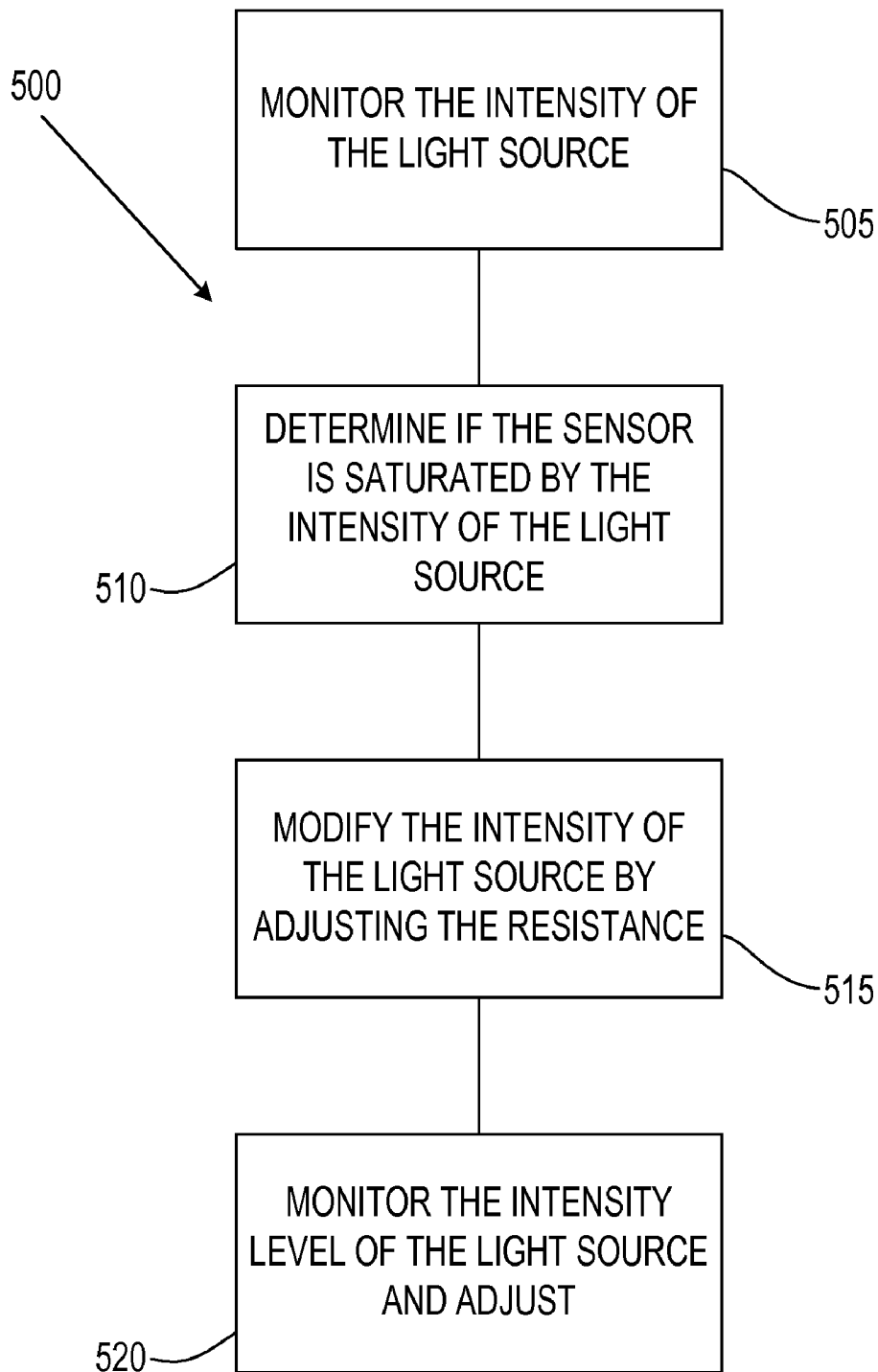


FIGURE 18

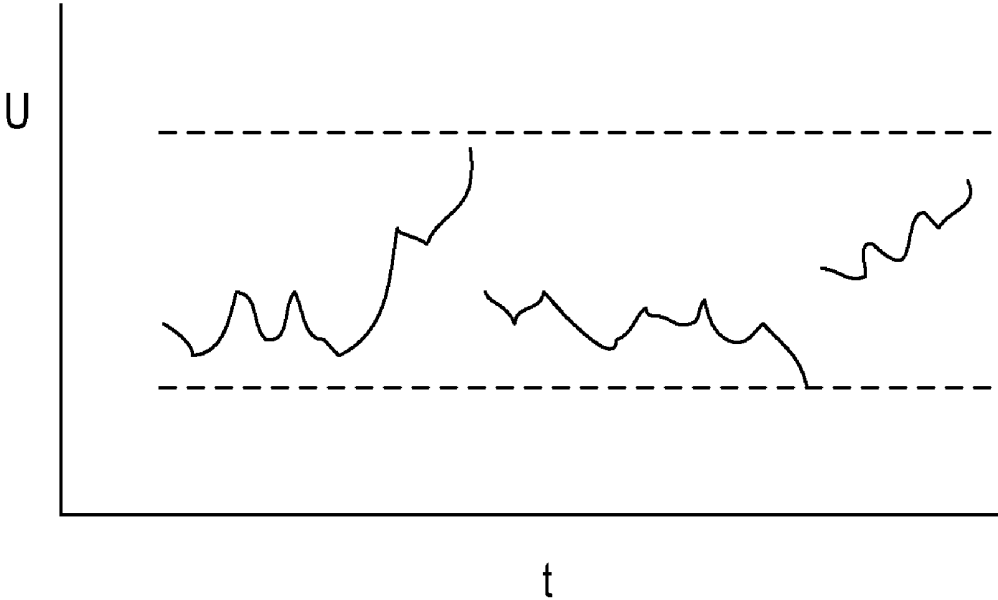


FIGURE 19

MONITORING DEVICE, METHOD AND SYSTEM

CROSS REFERENCES TO RELATED APPLICATIONS

The Present Application is a continuation application of U.S. patent application Ser. No. 11/762,078, filed on Jun. 13, 2007.

STATEMENT REGARDING FEDERALLY SPONSORED RESEARCH OR DEVELOPMENT

Not Applicable

BACKGROUND OF THE INVENTION

1. Field of the Invention

The present invention is related to real-time vital sign monitoring devices. More specifically, the present invention relates to a device for monitoring a user's vital signs.

2. Description of the Related Art

There is a need to know how one is doing from a health perspective. In some individuals, there is a daily, even hourly, need to know one's health. The prior art has provided some devices to meet this need.

One such device is a pulse oximetry device. Pulse oximetry is used to determine the oxygen saturation of arterial blood. Pulse oximeter devices typically contain two light emitting diodes: one in the red band of light (660 nanometers) and one in the infrared band of light (940 nanometers). Oxyhemoglobin absorbs infrared light while deoxyhemoglobin absorbs visible red light. Pulse oximeter devices also contain sensors that detect the ratio of red/infrared absorption several hundred times per second. A preferred algorithm for calculating the absorption is derived from the Beer-Lambert Law, which determines the transmitted light from the incident light multiplied by the exponential of the negative of the product of the distance through the medium, the concentration of the solute and the extinction coefficient of the solute.

The major advantages of pulse oximetry devices include the fact that the devices are non-invasive, easy to use, allows for continuous monitoring, permits early detection of desaturation and is relatively inexpensive. The disadvantages of pulse oximetry devices are that it is prone to artifact, it is inaccurate at saturation levels below 70%, and there is a minimal risk of burns in poor perfusion states. Several factors can cause inaccurate readings using pulse oximetry including ambient light, deep skin pigment, excessive motion, fingernail polish, low flow caused by cardiac bypass, hypotension, vasoconstriction, and the like.

In monitoring one's health there is a constant need to know how many calories have been expended whether exercising or going about one's daily routine. A calorie is a measure of heat, generated when energy is produced in our bodies. The amount of calories burned during exercise is a measure of the total amount of energy used during a workout. This can be important, since increased energy usage through exercise helps reduce body fat. There are several means to measure this expenditure of energy. To calculate the calories burned during exercise one multiplies the intensity level of the exercise by one's body weight (in kilograms). This provides the amount of calories burned in an hour. A unit of measurement called a MET is used to rate the intensity of an exercise. One MET is equal to the amount of energy expended at rest.

For example, the intensity of walking 3 miles per hour ("mph") is about 3.3 METS. At this speed, a person who weighs 132 pounds (60 kilograms) will burn about 200 calories per hour ($60 \times 3.3 = 198$).

The computer controls in higher-quality exercise equipment can provide a calculation of how many calories are burned by an individual using the equipment. Based on the workload, the computer controls of the equipment calculate exercise intensity and calories burned according to established formulae.

The readings provided by equipment are only accurate if one is able to input one's body weight. If the machine does not allow this, then the "calories per hour" or "calories used" displays are only approximations. The machines have built-in standard weights (usually 174 pounds) that are used when there is no specific user weight.

There are devices that utilize a watch-type monitor to provide the wearer with heart rate as measured by a heartbeat sensor in a chest belt.

However, the prior art devices often suffer from noise, light and motion related problems. These problems are increased when the user participates in an athletic activity such as running. Further, attempting to correct one problem often creates additional problems such as increasing a sensor output which results in a shorter battery life.

The prior art has failed to provide a means for monitoring one's health that is accurate, easy to wear on one's body for extended time periods, allows the user to input information and control the output, and provides sufficient information to the user about the user's health. Thus, there is a need for a monitoring device that can be worn for an extended period and provide health information to a user.

BRIEF SUMMARY OF THE INVENTION

The present invention provides a solution to the shortcomings of the prior art. The present invention is accurate, comfortable to wear by a user for extended time periods, allows for input and controlled output by the user, is light weight, and provides sufficient real-time information to the user about the user's health.

One aspect of the present invention is a method for monitoring a user's vital signs. The method begins with deactivating a processor for a deactivation period of 128 to 640 microseconds. Next, an optical sensor is activated during the deactivation period to generate a signal corresponding to the flow of blood through at least one artery of the user. The optical sensor comprises a photodetector and a plurality of light-emitting diodes. Next, the processor is reactivated to process the signal to obtain an average pulse value of a first set of time periods. The signal is processed to obtain an average pulse value of a second set of time periods, with the second set of time periods less than the first set of time periods. The average pulse value of the second set of time periods is subtracted from the average pulse value of the first set of time periods to generate a first filtered pulse data value. Next, the first filtered pulse data value is processed to obtain a first heart rate value. Next, the first heart rate value is used to filter the subsequent average pulse values generated from the digital signal to obtain a real-time heart rate value of the user wherein the real-time heart rate value is based on 60 to 180 sample readings and each of the sample readings is based on 4 to 15 sub-sample readings. Next, the real-time heart rate data of the user is processed for analysis of real-time calories expended by the user and for real-time display of a plurality of the user's vital signs. Next, the plurality of user's vital signs is displayed on a display member.

Yet another aspect of the present invention is a system for real time monitoring of a user's vital sign during a live event within a playing environment. The system includes a monitoring device, a computing device and an electro-optical display. The monitoring device is attached to an arm, wrist or ankle of the user. The monitoring device comprises means for generating a real-time vital sign signal corresponding to the heart rate of the user, and means for transmitting the real-time vital sign signal outside of the playing environment. The computing device is positioned outside of the playing environment. The computing device comprises means for receiving the real-time vital sign signal from the monitoring device, and means for processing the real-time vital sign signal for transmission to and image on the electro-optical display.

Yet another aspect of the present invention is a monitoring device for monitoring the health of a user. The monitoring device includes an article to be worn on the user's wrist, arm or ankle. The monitoring device also includes an optical sensor, a circuitry assembly, a display member and a control component. The optical sensor is disposed on the interior surface of the article. The circuitry assembly is preferably embedded within the annular body of the article. The display member is preferably attached to an exterior surface of the annular body of the article. The control component is disposed on the exterior surface of the annular body of the article. The control component controls the input of information and the output of information displayed on the display member.

Having briefly described the present invention, the above and further objects, features and advantages thereof will be recognized by those skilled in the pertinent art from the following detailed description of the invention when taken in conjunction with the accompanying drawings.

BRIEF DESCRIPTION OF THE SEVERAL VIEWS OF THE DRAWINGS

FIG. 1 is a plan view of a preferred embodiment of a monitoring device worn by a user.

FIG. 2 is a perspective view of the article of the monitoring device worn by a user.

FIG. 2A is a plan view of the article of the monitoring device.

FIG. 2B is a front side view of the article of the monitoring device.

FIG. 2C is a rear side view of the article of the monitoring device.

FIG. 2D is an edge side view of the article of the monitoring device.

FIG. 2E is a bottom plan view of the article of the monitoring device.

FIG. 3 is a top view of an alternative embodiment of the monitoring device of the present invention.

FIG. 3A is bottom view of the monitoring device of FIG. 3.

FIG. 3B is a top perspective view of the monitoring device worn on a user's arm.

FIG. 4 is a schematic view of arteries within a human arm.

FIG. 5 is a front view of a user running on exercise equipment with the monitoring device on her arm.

FIG. 6 is an isolated view of a display unit of the exercise equipment of FIG. 5.

FIG. 7 is a schematic flow chart of the signal acquisition step of the flow chart of FIG. 10.

FIG. 8 is a schematic view of the display member circuitry.

FIG. 9 is a schematic view of the circuitry assembly.

FIG. 10 is a flow chart of a signal processing method of the present invention.

FIG. 11 is an illustration of the waveforms of the data sampling during the signal processing method.

FIG. 12 is a flow chart of a portion of the signal processing step utilizing a motion sensor to reduce the affect of motion.

FIG. 13 is a flow chart of a noise reduction method of the present invention.

FIG. 14 is a flow chart of a specific noise reduction method of the present invention.

FIG. 15 is a schematic diagram of a prior art connection of a processor to an optical sensor.

FIG. 16 is a schematic diagram of a connection of a processor to an optical sensor utilized by the present invention.

FIG. 17 is a schematic diagram of a light source intensity controlling mechanism of the present invention.

FIG. 17A is a schematic diagram of the light source intensity controlling mechanism of FIG. 17 with a single resistor connected.

FIG. 17B is a schematic diagram of the light source intensity controlling mechanism of FIG. 17 with a single resistor connected.

FIG. 17C is a schematic diagram of the light source intensity controlling mechanism of FIG. 17 with two resistors connected.

FIG. 18 is a flow chart of a light source intensity controlling method of the present invention.

FIG. 19 is a graph illustrating the method and mechanism of controlling the intensity of the light source over time.

DETAILED DESCRIPTION OF THE INVENTION

As shown in FIGS. 1-2E, monitoring device is generally designated 20. The monitoring device 20 preferably includes an article 25 and an attachment band 26, preferably composed of first strap 26a and second strap 26b. The straps 26a and 26b are preferably attached to each other with a VELCRO® hook and loop material. The article 25 preferably includes an optical sensor 30, a circuitry assembly 35, control components 43a-43c and optionally a display member 40. The monitoring device 20 is preferably worn on a user's wrist 71, arm 72 or ankle 73. The article 25 preferably has a housing 95 that is sized to securely attach to a user's wrist 71, arm 72 or ankle 73, and the housing has an interior surface 98 and an exterior surface 99. The housing 95 also preferably has a pair of slots 96a and 96b for placement of the straps 96a and 96b there-through for attachment purposes.

It is desirous to adapt the monitoring device 20 to the anatomy of the user's arm 72 or even the user's ankle. The strap 96 is preferably composed of neoprene, leather, synthetic leather, LYCRA, another similar material, or a combination thereof. The article 25 is preferably composed of a semi-rigid or rigid plastic with a rubber-like or semi-flex plastic bottom layer for contact with the user's body. The bottom layer of the housing 95 may have a curve surface for contact with a user's body. The article 25 preferably has a mass ranging from 5 grams to 50 grams. Preferably, the lower the mass of the article 25, the more comfort to the user. The article 25 preferably has a thickness ranging from 5 mm to 10 mm, and is most preferably 6.5 mm. The bottom layer 95a preferably has a thickness ranging from 3.0 mm to 5.0 mm, and most preferably is 3.3 mm. A top layer 95a preferably has a thickness ranging from 2.0 mm to 5.0 mm, and most preferably is 2.63 mm. A mid-layer 95c preferably has a thickness ranging from 0.25 mm to 1.0 mm, and most preferably is 0.5 mm. The housing 95 preferably has a width, W, ranging from 30 mm to 50 mm, more preferably from 35 mm to 45 mm, and is most preferably approximately 40 mm. The housing 95 preferably has a length, L, ranging from 40 mm to 65 mm,

more preferably from 50 mm to 60 mm, and is most preferably approximately 55 mm. The article **25** preferably has a mass ranging from 5 grams to 50 grams, and more preferably from 10 grams to 40 grams. The light weight of the article **25** provides for more comfort to the user. The optical sensor **30** is preferably positioned on the interior surface **98** of the housing **95** and electrically connected to the circuitry assembly **35**.

Although the monitoring device **20** is described in reference to an article worn on a user's arm, wrist or ankle, those skilled in the pertinent art will recognize that the monitoring device **20** may take other forms such as eyewear disclosed in U.S. patent application Ser. No. 11/566,228, which is hereby incorporated by reference in its entirety or a glove such as disclosed in U.S. patent application Ser. No. 11/473,641, which is hereby incorporated by reference in its entirety.

The optical sensor **30** of the monitoring device **20** is preferably positioned over the radial artery **77** or ulnar artery **77a** (as shown in FIG. 4) if the article **25** is worn on the user's arm **72**. The optical sensor **30** of the monitoring device **20** is preferably positioned over the posterior tibial artery of a user if the article **25** is worn on the user's ankle. However, those skilled in the pertinent art will recognize that the optical sensor may be placed over other arteries of the user without departing from the scope and spirit of the present invention. Further, the optical sensor **30** need only be in proximity to an artery of the user in order to obtain a reading or signal.

In a preferred embodiment, the optical sensor **30** is a plurality of light emitting diodes ("LED") **135** based on green light wherein the LEDs **135** generate green light (wavelength of 500-570 nm), and a photodetector **130** detects the green light. Yet in an alternative embodiment, the optical sensor **30** is a photodetector **130** and a single LED **135** transmitting light at a wavelength of approximately 900 nanometers as a pulsed infrared LED. Yet further, the optical sensor is a combination of a green light LED and a pulsed infrared LED to offset noise affects of ambient light and sunlight. As the heart pumps blood through the arteries in the user's arm, ankle or wrist, the photodetector **130**, which is typically a photodiode, detects reflectance/transmission at the wavelengths (green, red or infrared), and in response generates a radiation-induced signal.

A preferred optical sensor **30** utilizing green light is a TRS1755 sensor from TAOS, Inc of Plano Tex. The TRS1755 comprises a green LED light source (567 nm wavelength) and a light-to-voltage converter. The output voltage is directly proportional to the reflected light intensity. Another preferred photodetector **130** is a light-to-voltage photodetector such as the TSL260R and TSL261, TSL261R photodetectors available from TAOS, Inc of Plano Tex. Alternatively, the photodetector **130** is a light-to-frequency photodetector such as the TSL245R, which is also available from TAOS, Inc. The light-to-voltage photodetectors have an integrated transimpedance amplifier on a single monolithic integrated circuit, which reduces the need for ambient light filtering. The TSL261 photodetector preferably operates at a wavelength greater than 750 nanometers, and optimally at 940 nanometers, which would preferably have a LED that radiates light at those wavelengths.

In a preferred embodiment, the circuit assembly **35** is flexible to allow for the contour of the user's arm, wrist or ankle, and the movement thereof. The circuitry assembly and display member **40** are preferably separate components electrically connected within the housing **95**. In one embodiment, discussed below, the display member **40** is removed and the signal is sent to a device such as a personal digital assistant, laptop computer, mobile telephone, exercise equipment, or the like for display and even processing of the user's real-time

vital signs information. Alternatively, the circuitry assembly **35** includes a flexible microprocessor board which is a low power, micro-size easily integrated board which provides blood oxygenation level, pulse rate (heart rate), signal strength bargraph, plethysmogram and status bits data. The microprocessor can also store data. The microprocessor can process the data to display pulse rate, blood oxygenation levels, calories expended by the user of a pre-set time period, target zone activity, time and dynamic blood pressure. Further, microprocessor preferably includes an automatic gain control for preventing saturation of the photodetector, which allows for the device to be used on different portions of the human body.

The display member **40** is preferably a light emitting diode ("LED"). Alternatively, the display member **40** is a liquid crystal display ("LCD") or other similar display device. As shown in FIG. 8, the display member **40** is an LED array which preferably has seven rows **49a-49g** and seventeen columns **47a-47q**. Further, LED array is angled to allow for a greater aspect ratio. The LED array allows for each column to be illuminated separately thereby giving the appearance of a moving display. For example, if the term "200 calories expended" is displayed on the display member **40**, the "2" of the "200" would preferably first appear in column **47q** and then subsequently in each of the other columns **47p-47a**, from the right-most column to the left-most column thereby giving the appearance of the term scrolling along the display member **40**. The terms or words alternatively scroll from left to right. Still alternatively, all of the columns are illuminated at once or all flash in strobe like manner. Further, the user's real-time pulse waveform is displayed in motion on the display member **40** as a default setting. Those skilled in the pertinent art will recognize alternative methods of displaying information on the display member **40** without departing from the scope and spirit of the present invention.

As shown in FIG. 9, a microprocessor **41** processes the signal generated from the optical sensor **30** to generate the plurality of vital sign information for the user which is displayed on the display member **40**. The control components **43a-c** are connected to the circuit assembly **35** to control the input of information and the output of information displayed on the display member **40**.

The monitoring device **20** is preferably powered by a power source **360** positioned on the article **25**. Preferably the power source is a battery. The power source **360** is preferably connected to the circuit assembly **35** by positive wire **45a** and ground wire **45b**, and the ground wire **45b** and positive wire **45c** are embedded within the article **25**. The power source **360** is preferably an AA or AAA disposable or rechargeable battery. The power source **360** is alternatively a lithium ion rechargeable battery such as available from NEC-Tokin. The power source **360** preferably has an accessible port for recharging. The circuit assembly **35** preferably requires 5 volts and draws a current of 20-to 40 milliamps. The power source **360** preferably provides at least 900 milliamp hours of power to the monitoring device **20**.

As shown in FIGS. 3, 3A and 3B, an alternative embodiment of the monitoring device **20** comprises a light shield **21** with the article **25** disposed on an exterior surface **21a** of the light shield **21**, and the optical sensor **30** disposed on an interior surface **21b** of the light shield **21**. The light shield **21** is preferably composed of a light-weight, non-transparent (preferably opaque) cloth material. The light shield **21** prevents or substantially eliminates environmental light from interfering with the optical sensor **30** thereby reducing interference with the signal. In a preferred embodiment, the light shield **21** is black in color. A user preferably wears the moni-

toring device **20** on the user's arm **72** as shown in FIG. **3B**, with a display member **40** visible to the user. In this embodiment, the article **25** contains a circuitry assembly **35**, as discussed above, within the housing **95** of the article **25**. The display member **40** is preferably a LED display monitor, and alternatively a LCD display monitor.

A connection wire arrangement **45** is shown in FIG. **16**, wherein the connection **45** between the microprocessor **41** of the circuitry assembly **35** and the optical sensor **30** is preferably non-planar or non-straight in order to reduce noise in the signal. The optical sensor **30** preferably comprises a photodetector **130**, and first and second LEDs **130a** and **130b**, which transmit light **137**. Using two LEDs on each side of a photodetector creates a more mechanically stable optical sensor **30**. The prior art connection assembly is shown in FIG. **15** wherein the connection wire **45'** is straight and prone to noise due to movement of the circuitry assembly **35** relative to the optical sensor **30**, especially lateral movement. The present invention has a non-straight or non-planar connection wire **45** which reduces noise due to movement of the circuitry assembly **35** relative to the optical sensor **30**. The alternating portions of the connection wire **45** absorb the shock of lateral movement and oscillating movement of the circuitry assembly **35** relative to the optical sensor **30**.

The monitoring device **20** alternatively has a short-range wireless transceiver **36b** which is preferably a transmitter operating on a wireless protocol, e.g. BLUETOOTH, part-15, or 802.11. "Part-15" refers to a conventional low-power, short-range wireless protocol, such as that used in cordless telephones. The short-range wireless transmitter **36b** (e.g., a BLUETOOTH transmitter) receives information from the microprocessor and transmits this information in the form of a packet through an antenna. An external laptop computer or hand-held device features a similar antenna coupled to a matched wireless, short-range receiver that receives the packet. In certain embodiments, the hand-held device is a cellular telephone with a Bluetooth circuit integrated directly into a chipset used in the cellular telephone. In this case, the cellular telephone may include a software application that receives, processes, and displays the information. The secondary wireless component may also include a long-range wireless transmitter that transmits information over a terrestrial, satellite, or 802.11-based wireless network. Suitable networks include those operating at least one of the following protocols: CDMA, GSM, GPRS, Mobitex, DataTac, iDEN, and analogs and derivatives thereof. Alternatively, the hand-held device is a pager or PDA.

As shown in FIGS. **5** and **6**, in yet an alternative system utilizing the monitoring device **20**, a user **15** wears the monitoring device **20** on the user's arm while exercising on exercise equipment **750**. In this embodiment, a wireless signal is transmitted to the exercise equipment **750** to be displayed on a display **751** of the exercise equipment **750**. In this embodiment, it is unnecessary for the monitoring device **20** to have a display **40** since the information is transmitted to the exercise equipment **750**. As shown in FIG. **5**, a user **15** preferably wears the monitoring device **20** on her arm **72** over the radial artery.

A general method is as follows. The light source **135** transmits light through at least one artery of the user. The photodetector **130** detects the light. The pulse rate is determined by the signals received by the photo-detector **130**. An optical sensor **30** with a photodetector **130** and LEDs **135** are preferably utilized.

This information is sent to the circuitry assembly **35** for creation of user's real-time pulse rate. The microprocessor **41** further processes the information to display pulse rate, calo-

ries expended by the user of a pre-set time period, target zones of activity, time and/or dynamic blood pressure. The information is displayed on a display member or electro-optical display.

In a preferred embodiment, the housing **95** has three control buttons **43a-c**. The control buttons **43a-c** are preferably positioned in relation to the display member **40** to allow the user immediate visual feedback of the user's inputted information. The middle control button **43b** preferably activates and deactivates the article **25**. The left button **43a** is preferably used to scroll through the different modes. The right button **43c** is preferably used to input data. The control buttons **43a-c** allow for the user's personal data to be entered and for choices to be selected by the user. The left button **43a** preferably allows for the user's calories burned to be displayed on the display member **40** and for the activity to be reset, and allows for other fitness monitoring features to be displayed.

To activate the article **25**, the middle button **43b** is depressed for preferably 0.5 seconds and then released. The display member will appear with a current pulse of the user and a calories burned display. The microprocessor preferably stores the calories burned and accumulates the values for a daily calories burned value and a total calories burned value until the activity is reset.

To enter the user's personal data, the middle button **43b** is depressed for 2 seconds and then released. The user will enter gender, age, mass, height and resting heart rate. Entering the data entails pushing the middle button to select a category (gender, age, . . .) and then pushing the right or left button to scroll through the available options or to enter a value (e.g. age of the user). The middle button **43b** is pressed again to save the entry. This process is preformed until the user's has entered all of the data that the user wishes to enter into the microprocessor. The display member **40** will then display a heart rate and current calories burned value. A preset resting heart rate for men and women is preferably stored on the microprocessor, and used as a default resting heart rate. However, the user may enter their own resting heart rate value if the user is aware of that value. To access daily calories, the left button **43a** is pushed by the user and the display member **40** will illustrate the value for daily calories burned by the user. If the left button **43a** is pushed again, the value for total calories burned by the user will be displayed on the display member **40**. The left button **43a** is pushed again to return to a heart rate value on the display member **40**.

The right button **43c** is pushed to scroll through the choices of other output values, which comprises: basal metabolic rate; average heart rate; minimum heart rate; maximum heart rate; fat burn heart rate exercise target zone; cardio burn heart rate exercise target zone; and, summary of daily calories burned. The basal metabolic rate (displayed as "BMR") is an estimate of the total calories burned by the user in one day without exercise, and is based on the user inputted personal data. The average heart rate (displayed as "avHR") is the average heart rate of the user between resets, and is an overall indicator of fitness. The lower the average heart rate, the healthier the heart. The average heart rate is also a measure of the effectiveness of the exercise program employed by the user since a decrease in the average heart rate of the user will indicate the user's fitness has improved. The minimum heart rate (displayed as "mnHR") of the user is typically measured during sleep and periods of relaxation. The maximum heart rate (displayed as "mxHR") is typically measured during intense workouts. The fat burn heart rate exercise target zone (displayed as "fatB") displays a low and high range for the heart rate of the user to optimize fat burning during exercise. The cardio burn heart rate exercise target zone provides a high and

low range for the heart rate of the user to optimize cardio conditioning during exercise. The summary of daily calories burned (displayed as "cal") displays the daily calories burned by the user.

In yet an alternative embodiment, an accelerometer, not shown, is embedded within the article **25** and connected to the circuitry assembly **35** in order to provide information on the distance traveled by the user. In a preferred embodiment, the accelerometer is a multiple-axis accelerometer, such as the ADXL202 made by Analog Devices of Norwood, Mass. This device is a standard micro-electronic-machine ("MEMs") module that measures acceleration and deceleration using an array of silicon-based structures.

In yet another embodiment, the monitoring device **20** comprises a first thermistor, not shown, for measuring the temperature of the user's skin and a second thermistor, not shown, for measuring the temperature of the air. The temperature readings are displayed on the display member **40** and the skin temperature is preferably utilized in further determining the calories expended by the user during a set time period. One such commercially available thermistor is sold under the brand LM34 from National Semiconductor of Santa Clara, Calif. A microcontroller that is utilized with the thermistor is sold under the brand name ATmega 8535 by Atmel of San Jose, Calif.

The monitoring device **20** may also be able to download the information to a computer for further processing and storage of information. The download may be wireless or through cable connection. The information can generate an activity log or a calorie chart.

The microprocessor can use various methods to calculate calories burned by a user. One such method uses the Harris-Benedict formula. Other methods are set forth at www.unu.edu/unupress/food2 which relevant parts are hereby incorporated by reference. The Harris-Benedict formula uses the factors of height, weight, age, and sex to determine basal metabolic rate (BMR). This equation is very accurate in all but the extremely muscular (will underestimate calorie needs) and the extremely overweight (will overestimate caloric needs) user.

The equations for men and women are set forth below:

$$\text{Men: BMR} = 66 + (13.7 \times \text{mass (kg)}) + (5 \times \text{height (cm)}) - (6.8 \times \text{age (years)})$$

$$\text{Women: BMR} = 655 + (9.6 \times \text{mass}) + (1.8 \times \text{height}) - (4.7 \times \text{age})$$

The calories burned are calculated by multiplying the BMR by the following appropriate activity factor: sedentary; lightly active; moderately active; very active; and extra active.

Sedentary=BMR multiplied by 1.2 (little or no exercise, desk job)

Lightly active=BMR multiplied by 1.375 (light exercise/sports 1-3 days/wk)

Moderately Active=BMR multiplied by 1.55 (moderate exercise/sports 3-5 days/wk)

Very active=BMR multiplied by 1.725 (hard exercise/sports 6-7 days/wk)

Extra Active=BMR multiplied by 1.9 (hard daily exercise/sports & physical job or 2 X day training, marathon, football camp, contest, etc.)

Various target zones may also be calculated by the microprocessor. These target zones include: fat burn zone; cardio zone; moderate activity zone; weight management zone; aerobic zone; anaerobic threshold zone; and red-line zone.

$$\text{Fat Burn Zone} = (220 - \text{age}) \times 60\% \text{ \& } 70\%$$

An example for a thirty-eight year old female:

i. $(220 - 38) \times 0.6 = 109$

ii. $(220 - 38) \times 0.7 = 127$

iii. Fat Burn Zone between 109 to 127 heart beats per minute.

$$\text{Cardio Zone} = (220 - \text{your age}) \times 70\% \text{ \& } 80\%$$

An example for a thirty-eight year old female:

i. $(220 - 38) \times 0.7 = 127$

ii. $(220 - 38) \times 0.8 = 146$

iii. Cardio zone is between 127 & 146 heart beats per minute.

Moderate Activity Zone, at 50 to 60 percent of your maximum heart rate, burns fat more readily than carbohydrates. That is the zone one should exercise at if one wants slow, even conditioning with little pain or strain.

Weight Management Zone, at 60 to 70 percent of maximum, strengthens ones heart and burns sufficient calories to lower one's body weight.

Aerobic Zone, at 70 to 80 percent of maximum, not only strengthens one's heart but also trains one's body to process oxygen more efficiently, improving endurance.

Anaerobic Threshold Zone, at 80 to 90 percent of maximum, improves one's ability to rid one's body of the lactic acid buildup that leads to muscles ache near one's performance limit. Over time, training in this zone will raise one's limit.

Red-Line Zone, at 90 to 100 percent of maximum, is where serious athletes train when they are striving for speed instead of endurance.

EXAMPLE ONE

Female, 30 yrs old, height 167.6 centimeters, weight 54.5 kilograms.

The $\text{BMR} = 655 + 523 + 302 - 141 = 1339$ calories/day.

The BMR is 1339 calories per day. The activity level is moderately active (work out 3-4 times per week). The activity factor is 1.55. The $\text{TDEE} = 1.55 \times 1339 = 2075$ calories/day. TDEE is calculated by multiplying the BMR of the user by the activity multiplier of the user.

The heart rate may be used to dynamically determine an activity level and periodically recalculate the calories burned based upon that factor. An example of such an activity level look up table might be as follows:

Activity/Intensity Multiplier Based on Heart Rate

Sedentary=BMR \times 1.2 (little or no exercise, average heart rate 65- 75 bpm or lower)

Lightly active=BMR \times 3.5 (light exercise, 75 bpm-115 bpm)

Mod. active=BMR \times 5.75 (moderate exercise, 115-140 pm)

Very active=BMR \times 9.25 (hard exercise, 140-175 bpm)

Extra active=BMR \times 13 (175 bpm—maximum heart rate as calculated with MHR formula)

For example, while sitting at a desk, a man in the above example might have a heart rate of between 65 and 75 beats per minute (BPM). (The average heart rate for an adult is between 65 and 75 beats per minute.) Based on this dynamically updated heart rate his activity level might be considered sedentary. If the heart rate remained in this range for 30 minutes, based on the Harris-Benedict formula he would have expended $1.34 \text{ calories a minute} \times 1.2 \text{ (activity level)} \times 30 \text{ minutes}$, which is equal to 48.24 calories burned.

If the man were to run a mile for 30 minutes, with a heart rate ranging between 120 and 130 bpm, his activity level might be considered very active. His caloric expenditure would be $1.34 \text{ calories a minute} \times 9.25 \text{ (activity level)} \times 30 \text{ minutes}$, which is equal to 371.85.

Another equation is weight multiplied by time multiplied by an activity factor multiplied by 0.000119.

FIG. 10 illustrates a block diagram of a flow chart of a signal processing method of the present invention. As shown in FIG. 10, the photodetector 130 of the optical sensor 30 receives light from the light source 135 while in proximity to the user's artery. The light source 135 is preferably a plurality of LEDs 135. In a preferred embodiment, the optical sensor 30 is a TRS1755 which includes a green LED light source (567 nm wavelength) and a light-to-voltage converter. The output voltage is directly proportional to the reflected light intensity. The signal 299 is sent to the microprocessor 41. At block 1300, the signal acquisition is performed. As shown in FIG. 7, in the pulse mode the LED 135 is periodically activated for short intervals of time by a signal from the microcontroller. The reflected pulse of light is received by the sensor, with the generation of a voltage pulse having an amplitude proportional to the intensity of the reflected light. When the LED is activated, the switch, SW, is open by the action of the control signal from the microcontroller, and the capacitor, C, integrates the pulse generated from the sensor by charging through the resistor R. Immediately prior to deactivation of the LED, the analog-to-digital converter acquires the value of the voltage integrated across the capacitor, C. The analog-to-digital converter generates a data sample in digital form which is utilized by the microcontroller for evaluation of the heart rate the wearer. Subsequent to the sample being acquired by the analog-to-digital converter, the LED is deactivated and the capacitor, C, is shortcut by switch, SW, to reset the integrator, RC. A signal indicating sensor saturation is also sent to the microcontroller for light control of the LEDs. This states remains unchanged for a given time interval after which the process is repeated, which is illustrated in FIG. 11. The signals are shown in FIG. 11, with the raw sensor signal received from the sensor amplifier shown as varying between reflected light when the LEDs are on and an ambient light level when the LEDs are off. The filtered signal from the high pass filter ("HPF") is shown as the filtered sensor signal in FIG. 7. The integrator reset signal is shown as integrator out signal in FIG. 11, and the integrator reset signal in FIG. 7. A noise reduction and power reduction process is discussed below in reference to FIGS. 13 and 14.

At block 1305, a band pass filter is implemented preferably with two sets of data from the analog-to-digital converter. At block 1305, an average of the values of data samples within each of a first set of samples is calculated by the microprocessor. For example, the values of data samples within forty-four samples are summed and then divided by forty-four to generate an average value for the first set of samples. Next, an average of the values of data samples within a second set of samples is calculated by the microprocessor. For example, the values of data samples within twenty-two samples are summed and then divided by twenty-two to generate an average value for the second set of samples. Preferably, the second set of samples is less than the first set of samples. Next, the average value of the second set of samples is subtracted from the average value for the first set of samples to generate a first filtered pulse data value.

At block 1310, the filtered pulse data value is processed using a heart rate evaluation code to generate a first heart rate value. In a preferred method, the heart rate evaluation code obtains the heart rate by calculating the distance between crossing points of the voltage through zero. Once the first heart rate value is known, then an adaptive resonant filter is utilized to generate a filtered second heart rate value by

attenuating interference caused by motion artifacts. At block 1315, a sample delay is computed as the period of evaluated heart rate divided by two.

At block 1320, preferably a two cascade adaptive resonant filter generates a second filtered pulse data value which is processed at block 1310 using the heart rate evaluation code to generate a second heart rate value. Those skilled in the pertinent art will recognize that three, four, or more, cascade adaptive resonant filters may be utilized in generating the second filtered pulse data value. Essentially, the highest and lowest values are disregarded in calculating the filtered second heart rate value. Alternatively, a phase is established and any values outside of the phase are disregarded in calculating the second heart rate value. The filtering is preferably continued during the use of the monitor thereby further refining the heart rate value of the user.

As shown in FIG. 12, a motion sensor 1100 is included in an alternative embodiment to assist in identifying motion noise and filtering the noise from the signal sent by the sensor 30. The motion sensor 1100, such as an accelerometer, is integrated into the circuitry and software of the monitoring device 20. As the motion sensor detects an arm swinging, the noise component is utilized with the signal processing noise filtering techniques to provide additional filtering to remove the noise element and improve the accuracy of the monitoring device 20. More specifically, the signal from the sensor 30 is transmitted to the processor where a custom blood pressure filter 41w processes the signal which is further processed at by custom adaptive filter 41x before being sent to a heart beat tracking system 41y and then transmitted to a heart rate beat output 41z. The heart rate beat output 41z provides feedback to the custom adaptive filter 41x which also receives input from the motion sensor 1100.

Still further, a battery source containing twin AAA batteries is built into a buckle for the straps 26a and 26b. The battery holder is preferably similar in appearance to a shoe buckle.

FIG. 13 illustrates a noise reduction method of the present invention. Due to the desire to minimize power consumption of the monitoring device 20, and achieve very accurate signal measurements using the optical sensor 30, the present invention preferably utilizes the method 200 illustrated in FIG. 13. At block 202, the processor 41 is deactivated for a deactivation period in order to conserve power and to eliminate noise for a signal measurement. The deactivation period ranges from 128 to 640 microseconds, more preferably from 200 microseconds to 400 microseconds, and more preferably from 225 microseconds to 300 microseconds. In reference to FIG. 10, this deactivation period occurs during block 1300. At block 204, during the deactivation period, the optical sensor 30 is activated to obtain multiple readings using the light source 135 and the photodetector 130. Preferably 4 to 25 sub-readings or sub-samples are obtained during the deactivation period. The sub-readings or sub-samples are averaged for noise reduction to provide a reading or sample value. In a single second, from 500 to 1500 sub-readings or sub-samples are obtained by the optical sensor 30. At block 206, the processor 41 is reactivated and the reading values are processed by processor 41. At block 208, heart rate data is generated from the readings by the processor 41. At block 210, health related data is generated from the heart rate data, and the health related data and the heart rate data are displayed on the display member 40.

FIG. 14 illustrates a more specific method 300 for noise reduction during a signal reading. At block 302, a high speed clock of a processor 41 is deactivated for a deactivation period as discussed above. At block 304, the optical sensor 30 is activated during the deactivation period to obtain multiple

readings as discussed above. At block 306, the processor 41 is reactivated and the readings are processed. The optical sensor 30 is also deactivated. At block 308, heart rate data is generated from the readings by the processor 41. At block 310, health related data is generated from the heart rate data, and the health related data and the heart rate data are displayed on the display member 40.

FIG. 17 illustrates a mechanism for controlling the intensity of the light source 135 using a plurality of resistors 405, 410 and 415 in parallel. Usually, an optical sensor 30 has a light source 135 set for a single intensity for placement at a single location on a user. However, if the optical sensor 30 is placed at a different location, e.g. from the lower arm to the upper arm, the intensity of the light source 135 may be too great for the photodetector 130 and lead to saturation of the photodetector 130 which terminates the signal reading. The present invention preferably adjusts the intensity of the light source 135 using feedback from the photodetector 130 to indicate whether the light intensity is too high or too low. As shown in FIGS. 17, 17A, 17B and 17C, the current flow through the resistors 405, 410 and 415 is changed, which results in changes in the light intensity of the light source 135. Equation A below illustrates the resistance:

$$1/R_{eff} = S_1(1/R_1) + S_2(1/R_2) + S_3(1/R_3)$$

where $S_n = \text{Switch}_n$ having a value of 0 or 1, and $R_n = \text{resistor}$, in ohms. In one embodiment, resistor 405 has a resistance of 400 Ohms, resistor 410 has a resistance of 200 Ohms and resistor 415 has a resistance of 100 Ohms. Various combinations of the resistors can be switched on to control the light intensity.

FIG. 17A has current flowing through a single line and a single resistor. FIG. 17C has current flowing through all of the lines. Although FIG. 17C utilizes the most resistors 410 and 415, it has the greatest current flow and the highest intensity. The current flow is given by the equation B:

$$(V_{cc} - V) / R_{eff} = I_{LED}$$

where I_{LED} is the current flow. Although only three resistors are shown, those skilled in the pertinent art will recognize the more or fewer resistors may be used without departing from the scope and spirit of the present invention.

FIG. 18 is a preferred method 500 for controlling the light intensity of the optical sensor 30. At block 505, the light intensity of the light source 135 is monitored. At block 510, the sensor/photodetector is determined to be saturated by the light source. At block 515, the intensity of the light source is modified by adjusting the resistance and the flow of current to the light source 135. At block 520, the light intensity is again monitored and adjusted if necessary. In a preferred embodiment, this automatic gain mechanism prevents the green light from overwhelming the photodetector thereby maintaining an accurate reading no matter where the optical sensor is placed on the user.

FIG. 19 illustrates how the control mechanism operates to maintain a proper light intensity. As the signal reaches the upper limit, the photodetector becomes saturated and the processor lowers the current flow, which results in a break in the signal. Then as the signal is lowered it becomes too low and the processor increases the light intensity resulting in a break in the signal.

From the foregoing it is believed that those skilled in the pertinent art will recognize the meritorious advancement of this invention and will readily understand that while the present invention has been described in association with a preferred embodiment thereof, and other embodiments illustrated in the accompanying drawings, numerous changes modification and substitutions of equivalents may be made therein without departing from the spirit and scope of this invention which is intended to be unlimited by the foregoing except as may appear in the following appended claim. Therefore, the embodiments of the invention in which an exclusive property or privilege is claimed are defined in the following appended claims.

We claim:

1. A method of monitoring a user's vital signs, the method comprising:
 - deactivating a processor for a deactivation period of 128 to 640 microseconds;
 - activating an optical sensor during the deactivation period to generate a signal corresponding to the flow of blood through at least one artery of the user, the optical sensor comprising a photodetector and a plurality of light-emitting diodes;
 - reactivating the processor to process the signal to obtain an average pulse value of a first set of time periods;
 - processing the signal to obtain an average pulse value of a second set of time periods, the second set of time periods less than the first set of time periods;
 - subtracting the average pulse value of the second set of time periods from the average pulse value of the first set of time periods to generate a first filtered pulse data value;
 - processing the first filtered pulse data value to obtain a first heart rate value;
 - using the first heart rate value to filter the subsequent average pulse values generated from the digital signal to obtain a real-time heart rate value of the user wherein the real-time heart rate value is based on 60 to 180 sample readings and each of the sample readings is based on 4 to 15 sub-sample readings; and
 - processing the real-time heart rate data of the user for analysis of real-time calories expended by the user and for real-time display of a plurality of the user's vital signs.

* * * * *

专利名称(译)	监控设备，方法和系统		
公开(公告)号	US7431696	公开(公告)日	2008-10-07
申请号	US11/953073	申请日	2007-12-10
[标]申请(专利权)人(译)	冲击运动TECH		
申请(专利权)人(译)	冲击运动TECHNOLOGIES, INC.		
当前申请(专利权)人(译)	冲击运动TECHNOLOGIES, INC.		
[标]发明人	BRADY DONALD HUNT MARK ELHAG SAMMY I RULKOV NIKOLAI LUI STEVE		
发明人	BRADY, DONALD HUNT, MARK ELHAG, SAMMY I. RULKOV, NIKOLAI LUI, STEVE		
IPC分类号	A61B5/00		
CPC分类号	A61B5/02055 A61B5/14552 A61B5/222 A61B5/681 A61B5/11		
外部链接	Espacenet USPTO		

摘要(译)

本文公开了一种用于监测用户生命体征的监测设备(20)。监视装置(20)优选地是具有光学传感器(30)和电路组件(35)的物品(25)。光学传感器(30)优选地包括光电检测器(130)和多个发光二极管(135)。监视装置(20)优选地提供关于用户的以下信息的显示：脉搏率；血氧水平；用户在预先设定的时间段内消耗的卡路里；目标活动区域；时间；或旅行距离。

