



(19) **United States**

(12) **Patent Application Publication** (10) **Pub. No.: US 2004/0039260 A1**

Bardy (43) **Pub. Date: Feb. 26, 2004**

(54) **SYSTEM AND METHOD FOR DETERMINING A REFERENCE BASELINE OF PATIENT INFORMATION FOR AUTOMATED REMOTE PATIENT CARE**

(52) **U.S. Cl. 600/300**

(76) **Inventor: Gust H. Bardy, Seattle, WA (US)**

(57) **ABSTRACT**

Correspondence Address:

**Law Offices of Patrick J.S. Inouye
Suite 258
810 Third Avenue
Seattle, WA 98104 (US)**

(21) **Appl. No.: 10/645,980**

(22) **Filed: Aug. 22, 2003**

Related U.S. Application Data

(63) Continuation of application No. 09/789,416, filed on Feb. 20, 2001, which is a continuation of application No. 09/361,332, filed on Jul. 26, 1999, now Pat. No. 6,221,011.

Publication Classification

(51) **Int. Cl.⁷ A61B 5/00**

A system for determining a reference baseline of patient information for automated remote patient care is presented. A medical device regularly records and stores measures sets including individual measures relating to patient information by a medical device adapted to be implanted during an initial time period. A database collects one or more patient care records containing the collected measures sets. A database module stores the collected measures set into a patient care record within the database. A server receives the collected device measures set from the medical device via a receiver. An analysis module within the server processes the collected device measures set into a set of reference measures. Each reference measure is representative of measured or derived patient information. The reference measures set is stored into the patient care record as data in a reference baseline indicating an initial patient status.

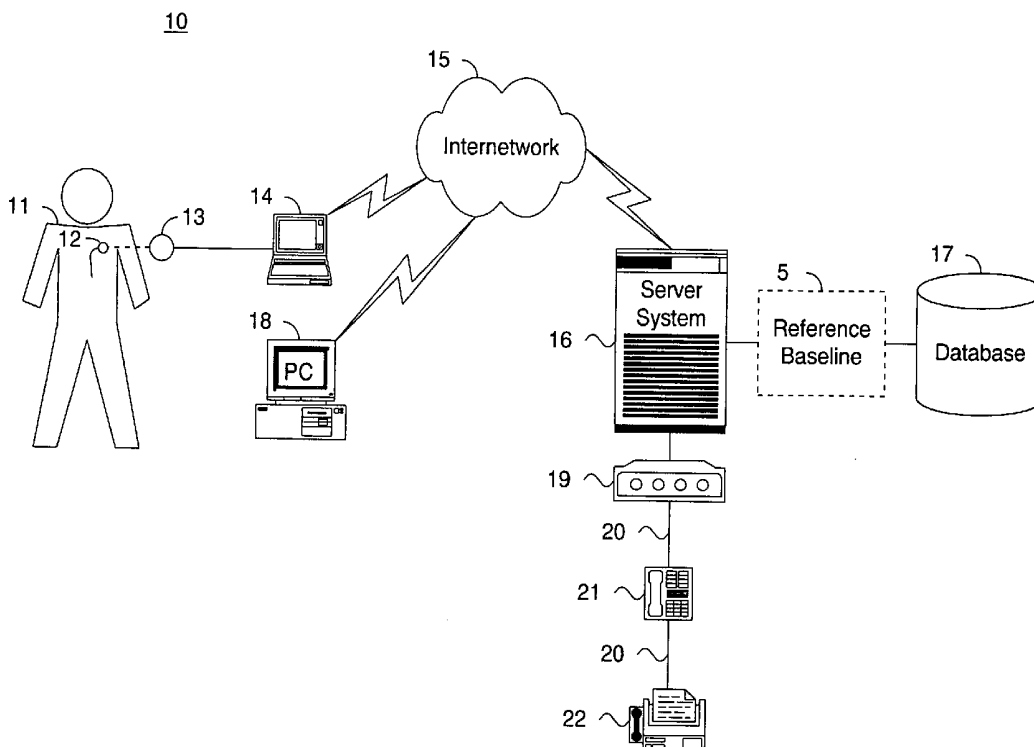
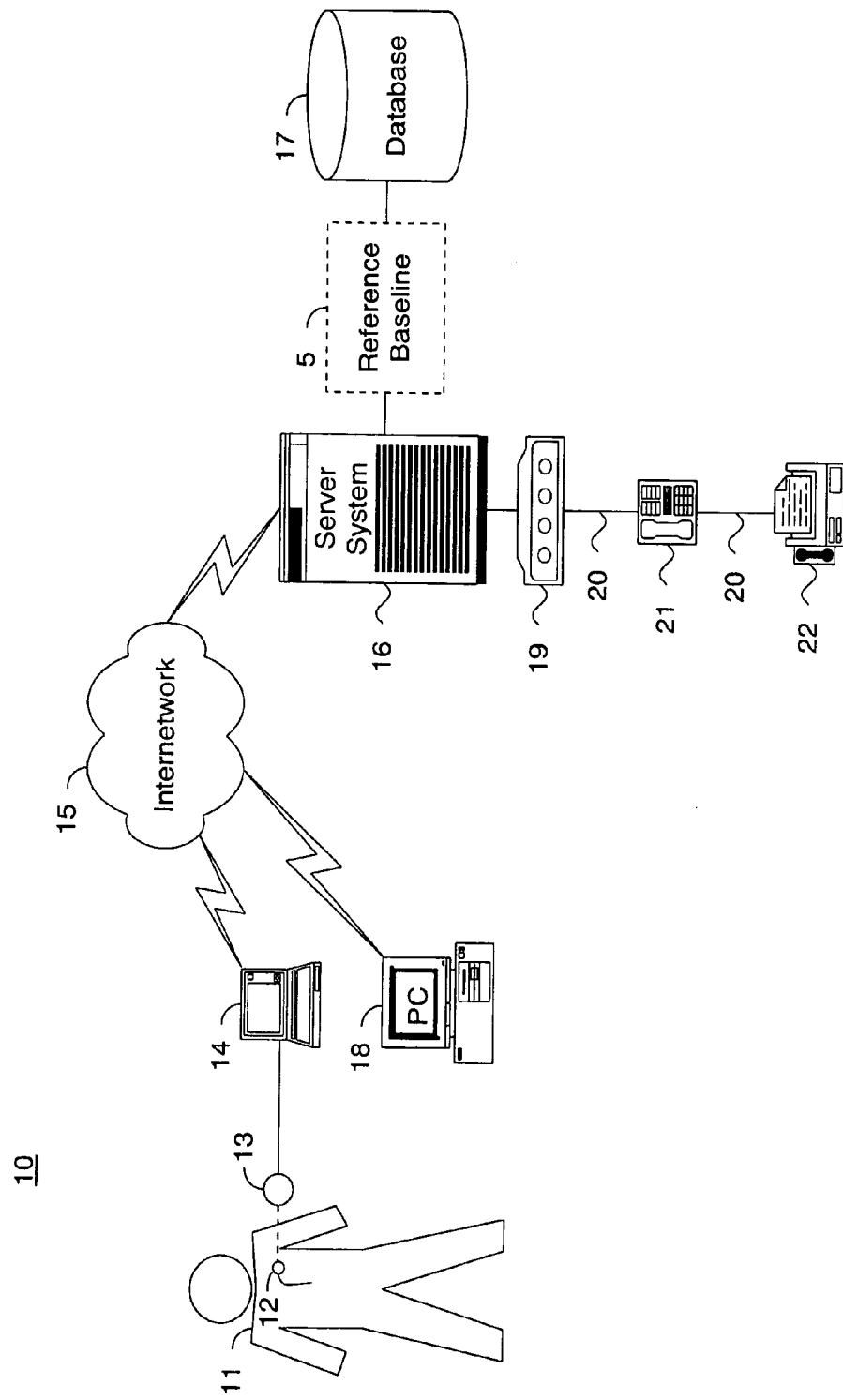


Figure 1A.



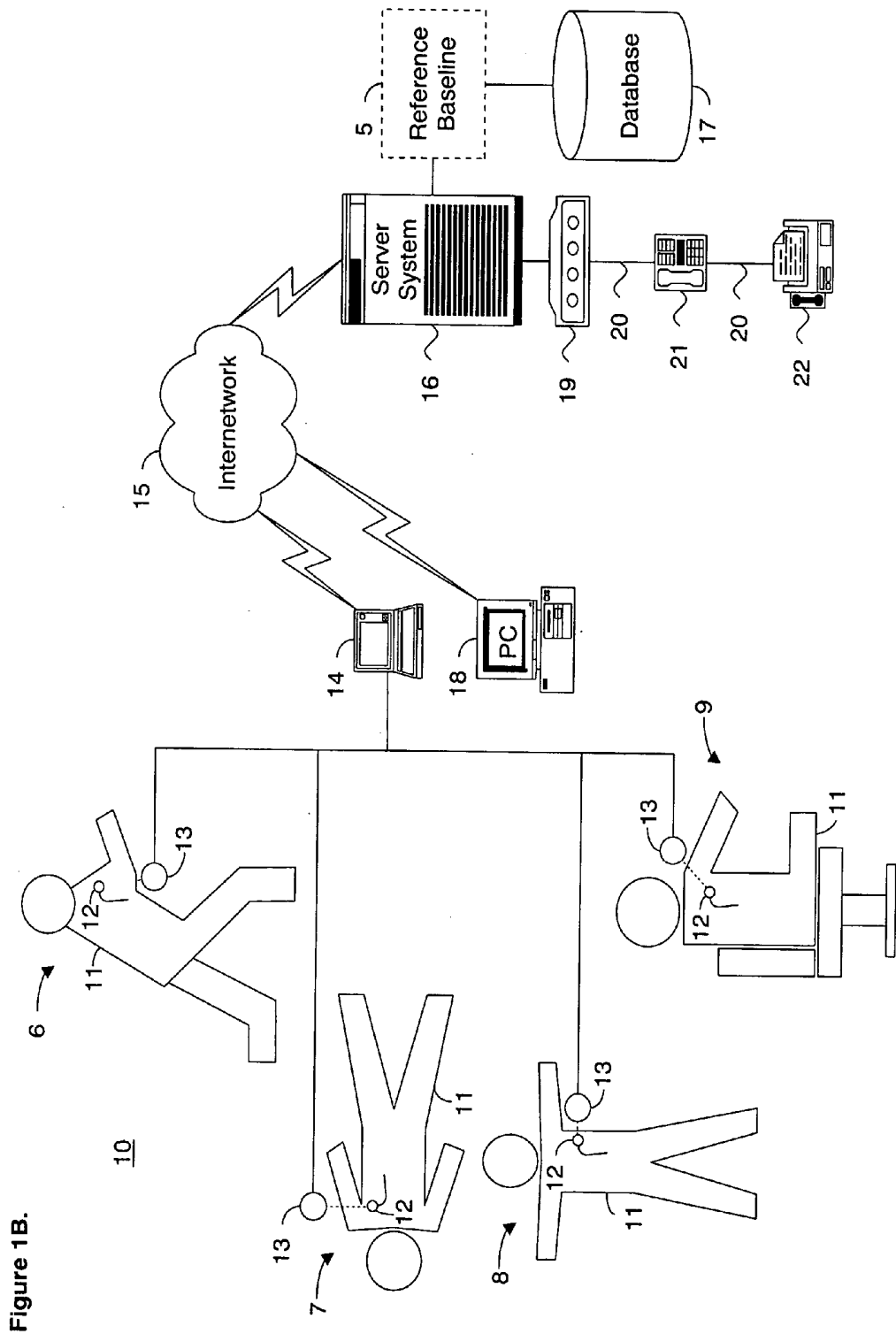


Figure 1B.

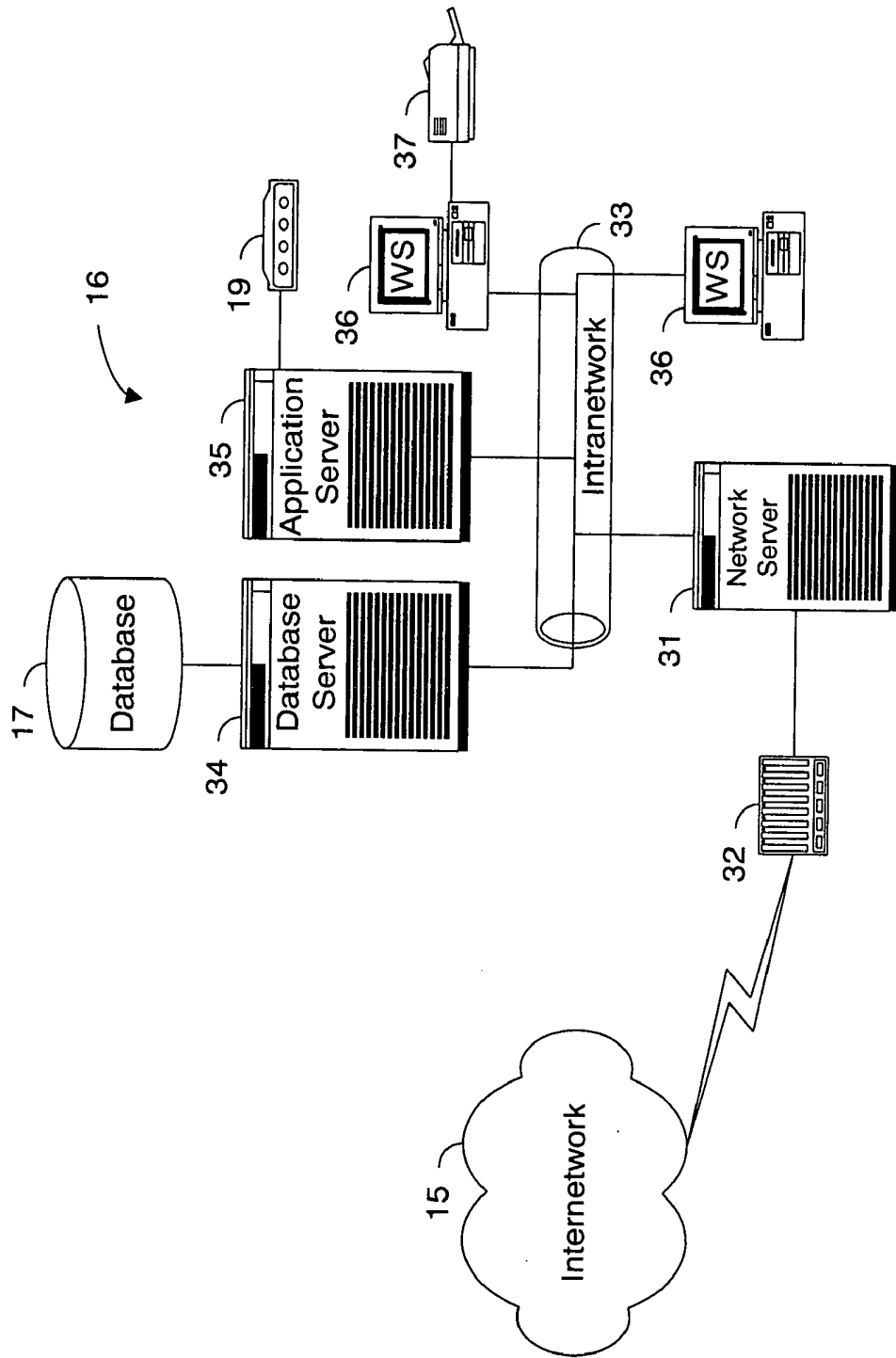


Figure 2.

Figure 3.

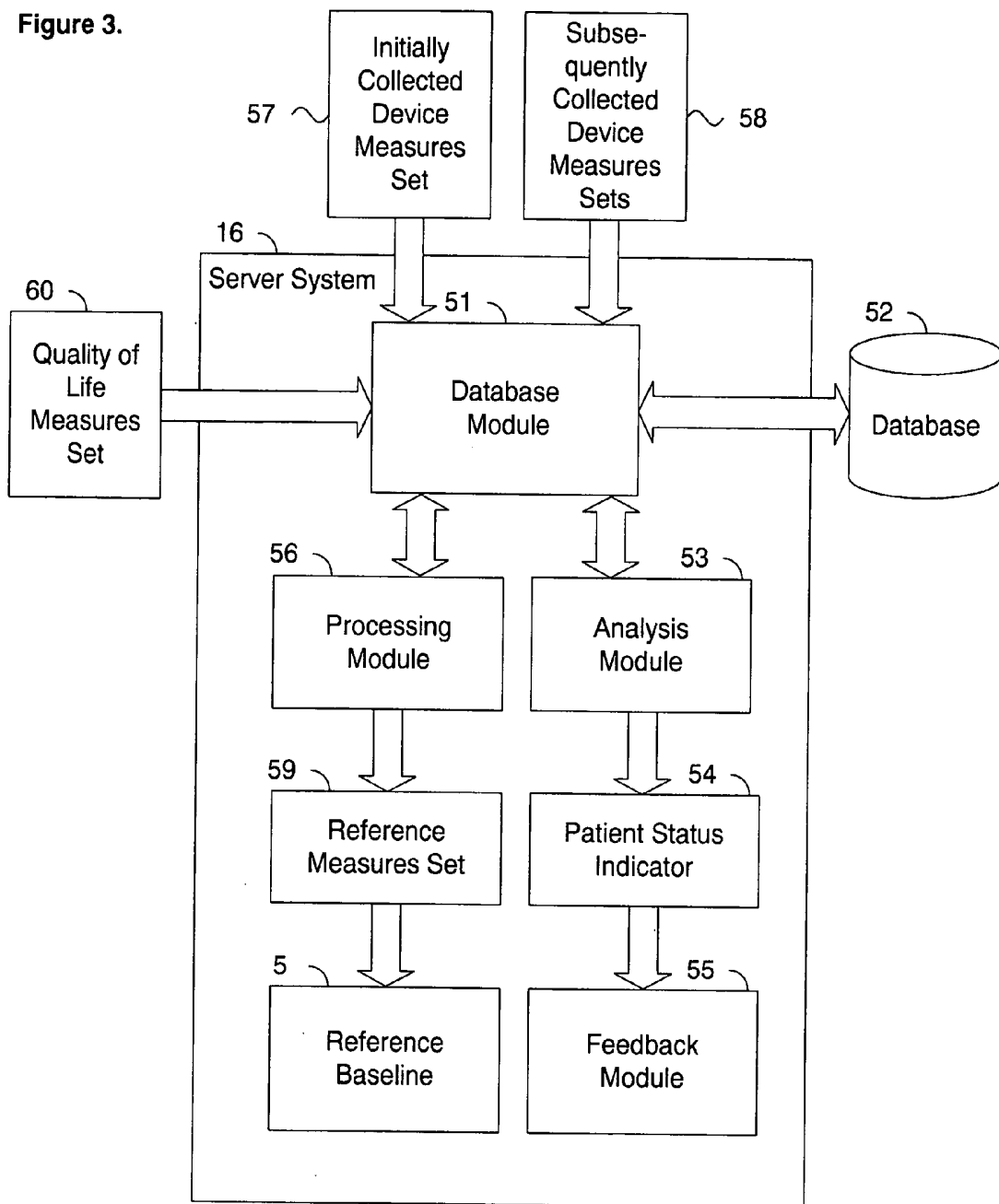
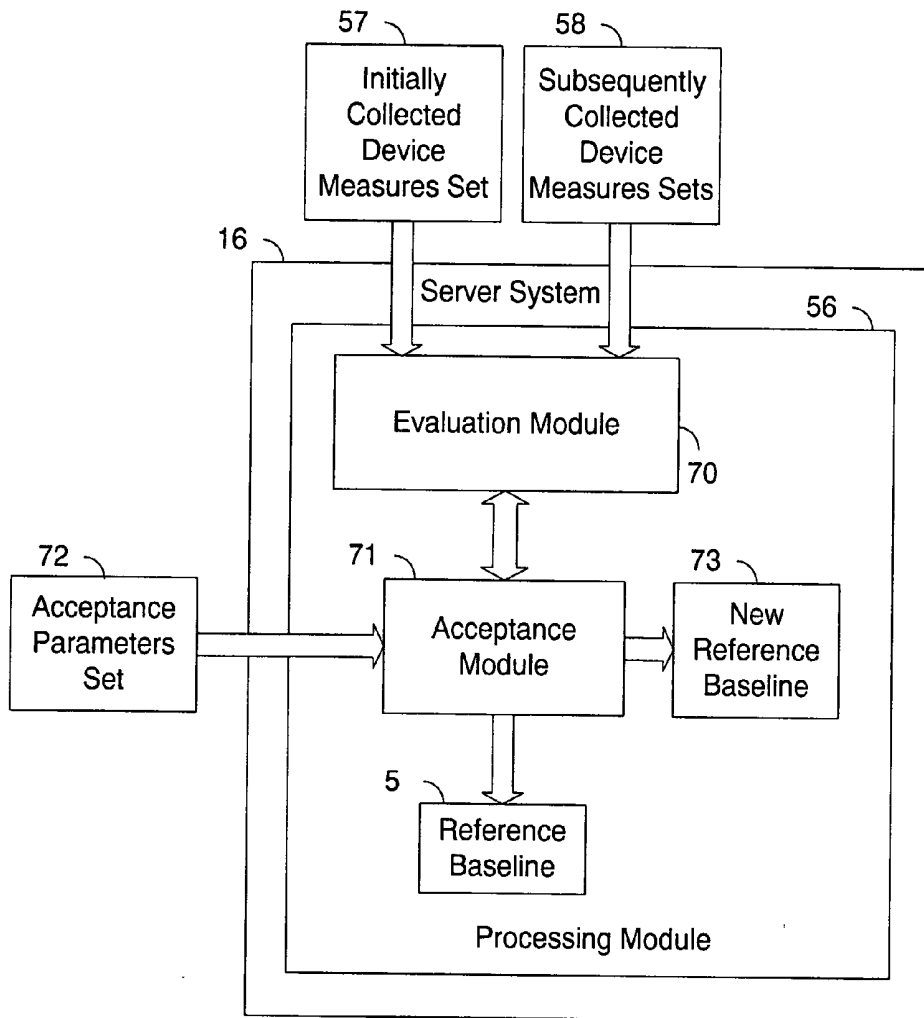


Figure 4.



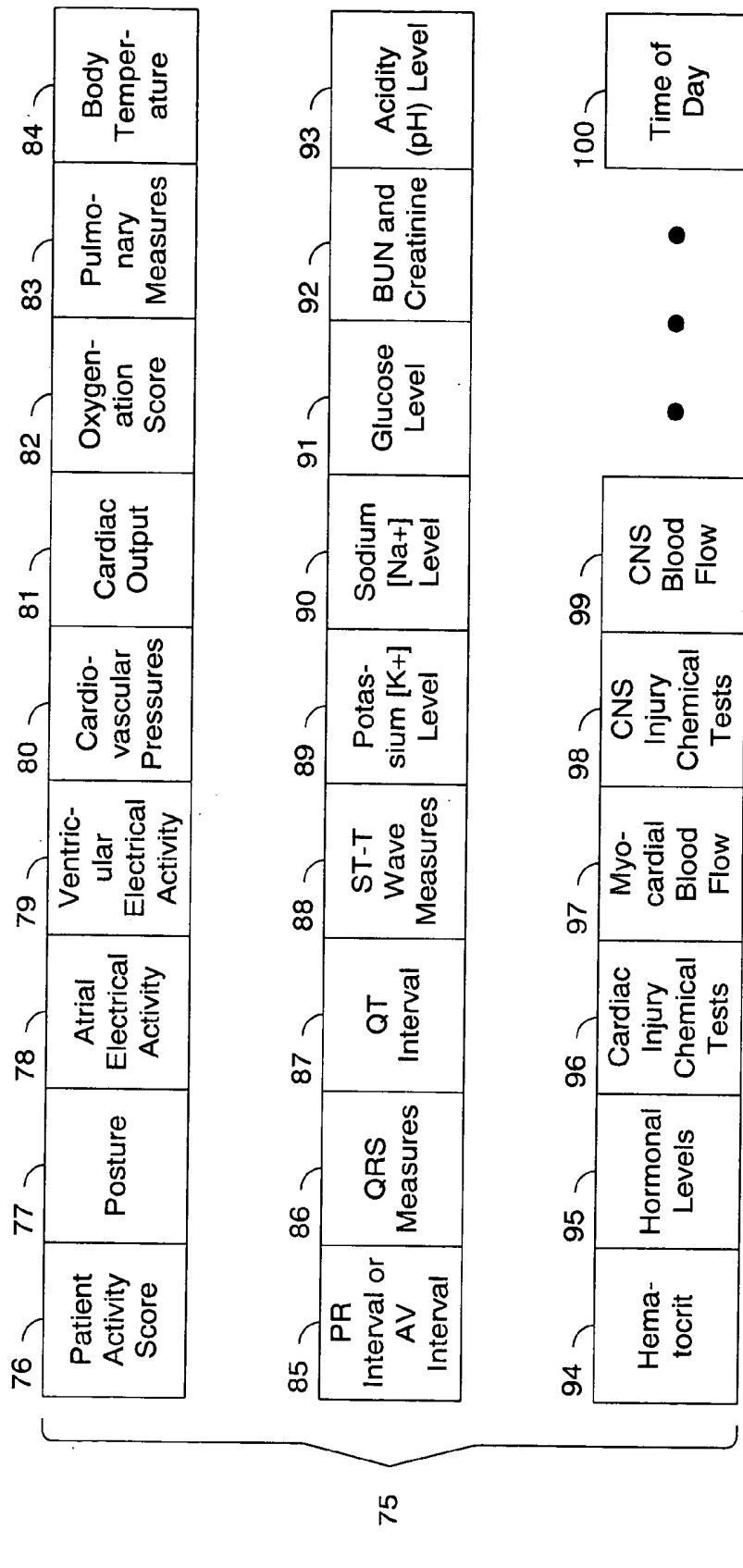


Figure 5.

Figure 6.

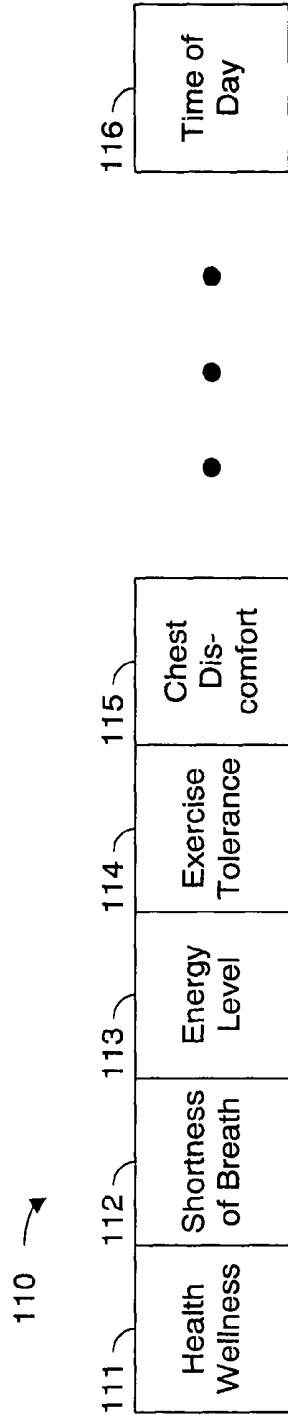


Figure 7.

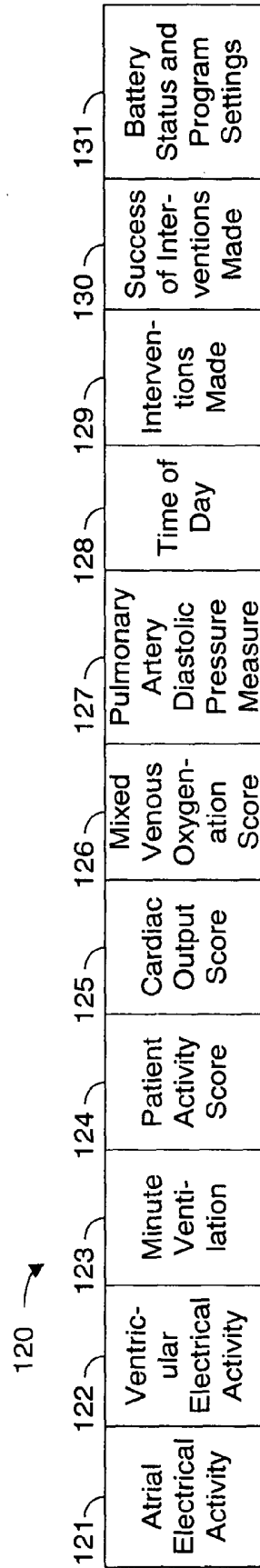


Figure 8A.

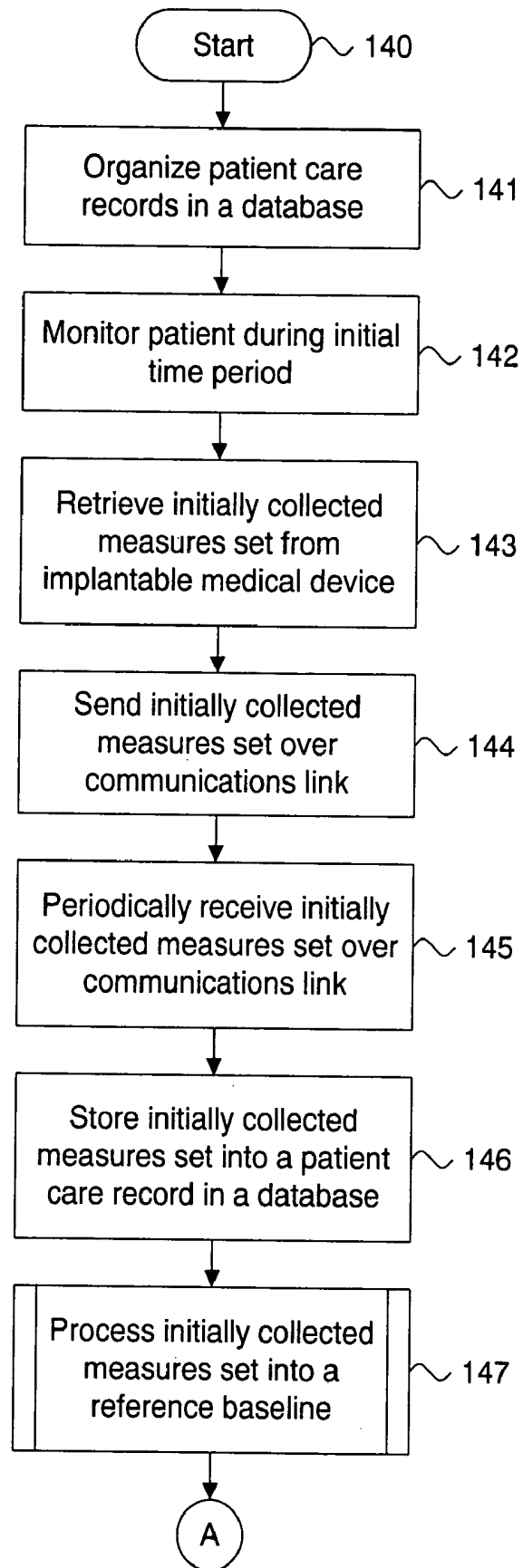


Figure 8B.

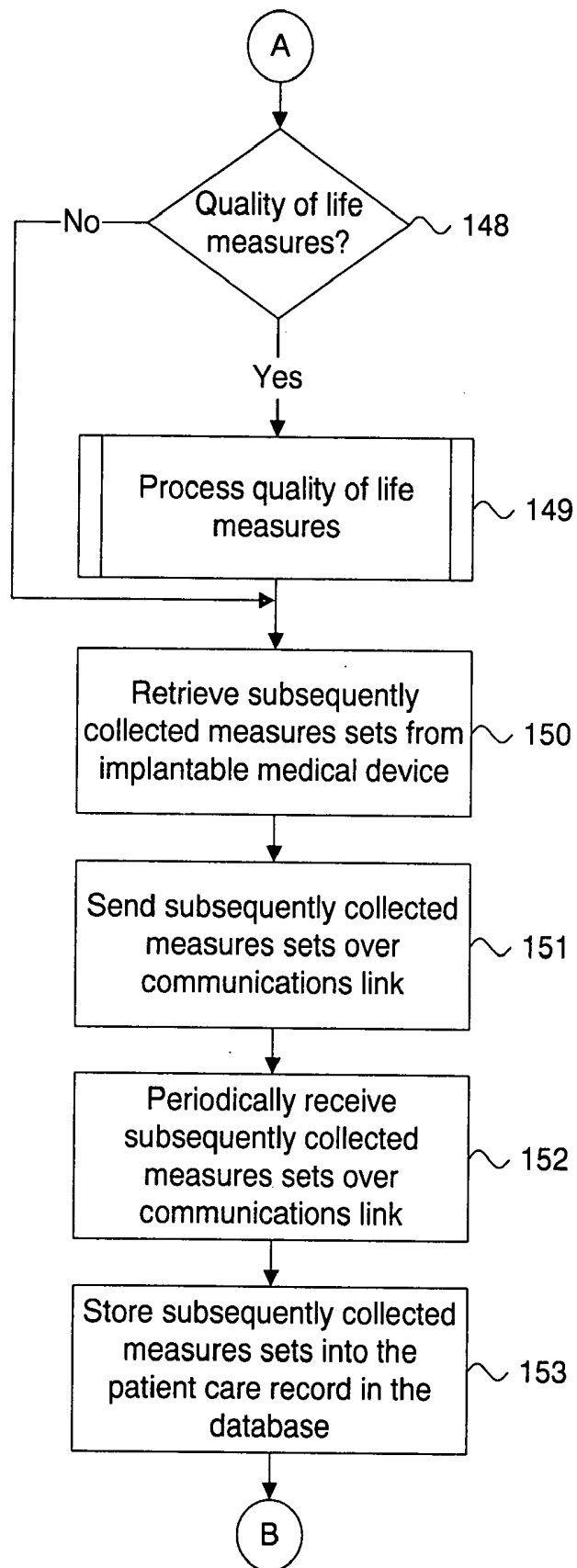


Figure 8C.

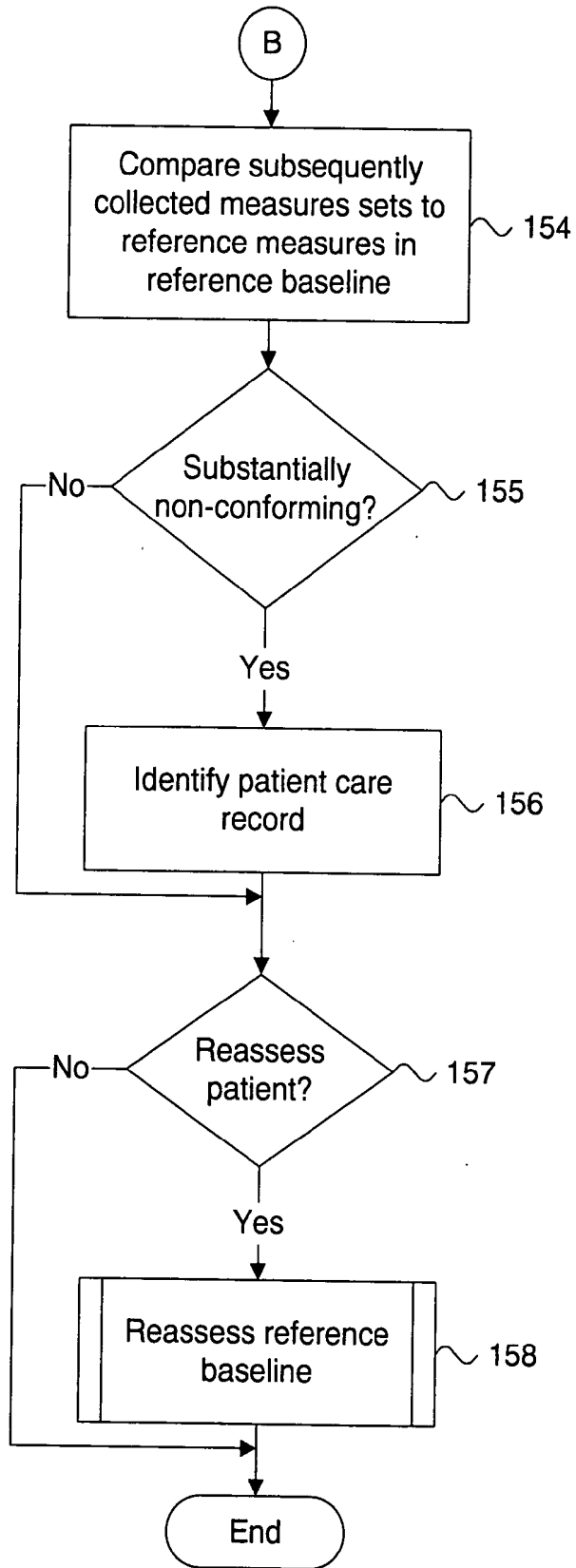


Figure 9.

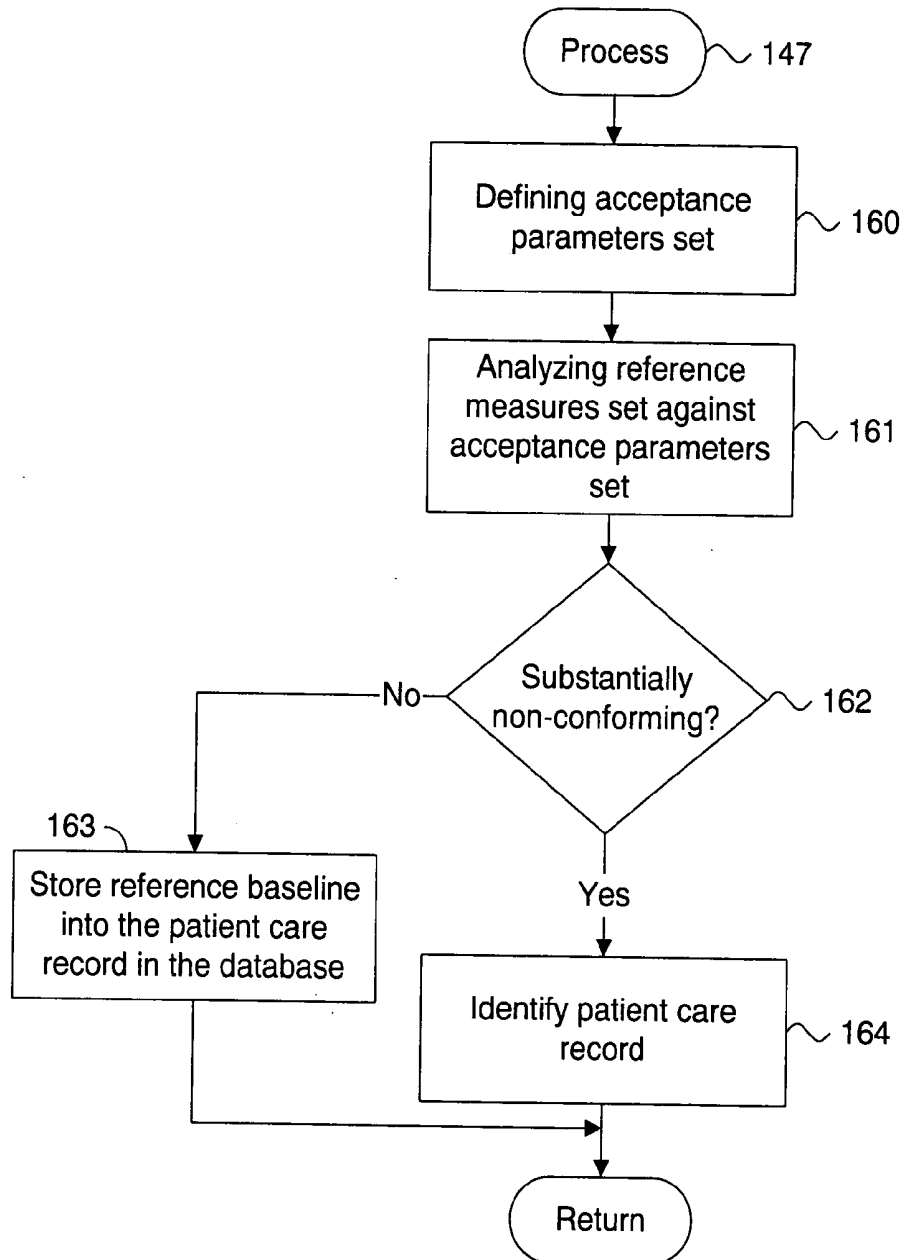


Figure 10.

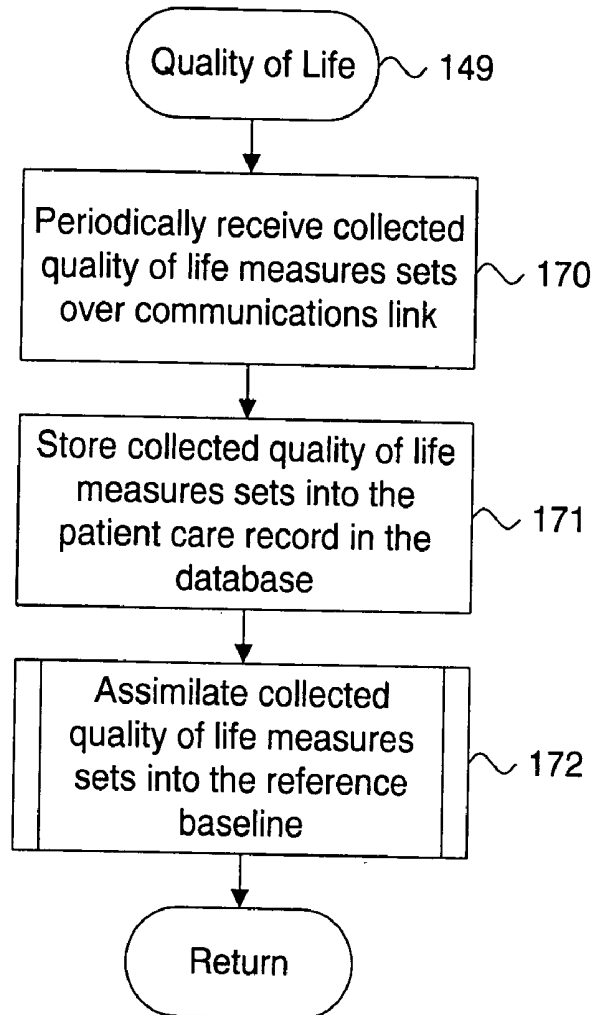
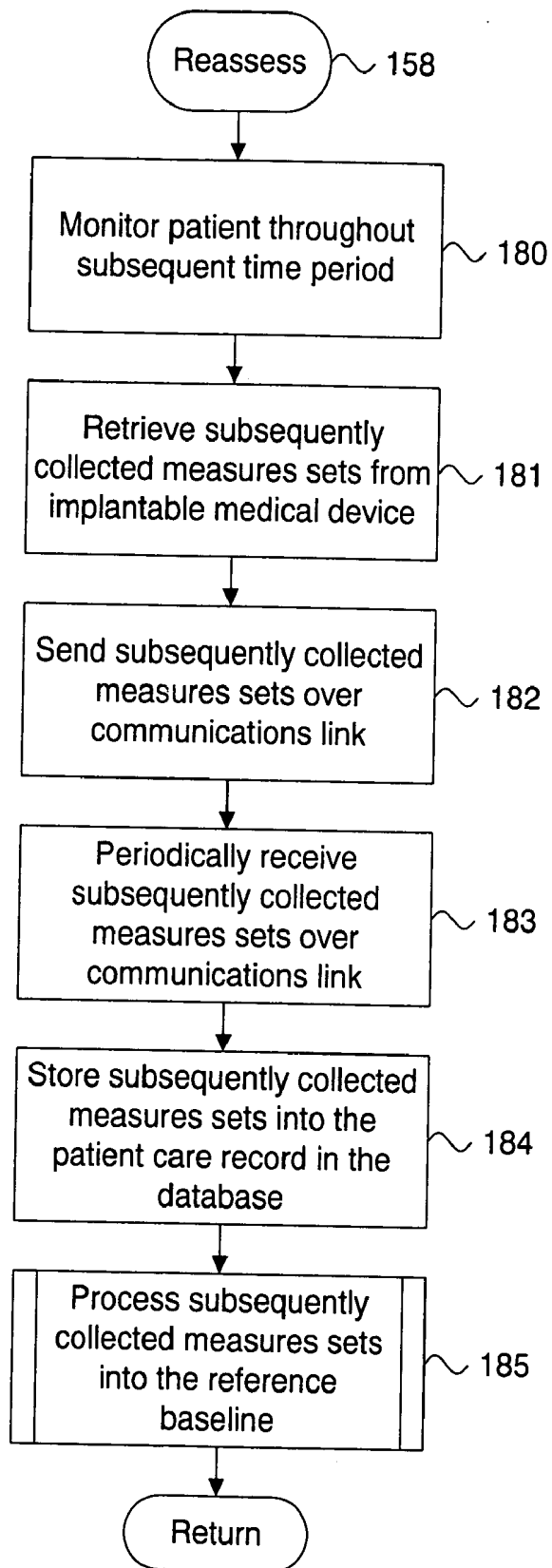


Figure 11.



**SYSTEM AND METHOD FOR DETERMINING A
REFERENCE BASELINE OF PATIENT
INFORMATION FOR AUTOMATED REMOTE
PATIENT CARE**

**CROSS-REFERENCE TO RELATED
APPLICATION**

[0001] This patent application is a continuation of U.S. patent application Ser. No. 09/789,416, filed Feb. 20, 2001, pending; which is a continuation of U.S. Pat. No. 6,221,011, issued Apr. 24, 2001, the disclosures of which are incorporated by reference.

FIELD OF THE INVENTION

[0002] The present invention relates in general to automated data collection and analysis, and, in particular, to a system and method for determining a reference baseline of individual patient status for use in an automated collection and analysis patient care system.

BACKGROUND OF THE INVENTION

[0003] Implantable pulse generators (IPGs) are medical devices commonly used to treat irregular heartbeats, known as arrhythmias. There are three basic types. Cardiac pacemakers are used to manage bradycardia, an abnormally slow or irregular heartbeat. Bradycardia can cause symptoms such as fatigue, dizziness, and fainting. Implantable cardioverter defibrillators (ICDs) are used to treat tachycardia, heart rhythms that are abnormally fast and life threatening. Tachycardia can result in sudden cardiac death (SCD). Implantable cardiovascular monitors and therapeutic devices are used to monitor and treat structural problems of the heart, such as congestive heart failure, as well as rhythm problems.

[0004] Pacemakers and ICDs are equipped with an on-board, volatile memory in which telemetered signals can be stored for later retrieval and analysis. In addition, a growing class of cardiac medical devices, including implantable heart failure monitors, implantable event monitors, cardiovascular monitors, and therapy devices, are being used to provide similar stored device information. These devices are able to store more than thirty minutes of per heartbeat data. Typically, the telemetered signals can provide patient device information recorded on a per heartbeat, binned average basis, or derived basis from, for example, atrial electrical activity, ventricular electrical activity, minute ventilation, patient activity score, cardiac output score, mixed venous oxygen score, cardiovascular pressure measures, time of day, and any interventions and the relative success of such interventions. Telemetered signals are also stored in a broader class of monitors and therapeutic devices for other areas of medicine, including metabolism, endocrinology, hematology, neurology, muscular disorders, gastroenterology, urology, ophthalmology, otolaryngology, orthopedics, and similar medical subspecialties.

[0005] These telemetered signals can be remotely collected and analyzed using an automated patient care system. One such system is described in a related, commonly-owned U.S. patent application Ser. No. 09/324,894, filed Jun. 3, 1999, pending. The telemetered signals are recorded by an implantable medical device, such as an IPG or monitor, and periodically retrieved using an interrogator, programmer,

telemetered signals transceiver, or similar device, for subsequent download. The downloaded telemetered signals are received by a network server on a regular, e.g., daily, basis as sets of collected measures which are stored along with other patient records in a database. The information is analyzed in an automated fashion and feedback, which includes a patient status indicator, is provided to the patient.

[0006] While such a system can serve as a valuable tool in automated, remote patient care, the accuracy of the patient care, particularly during the first few weeks of care, and the quality of the feedback provided to the patient would benefit from being normalized to a reference baseline of patient wellness. In particular, a starting point needs to be established for each individual patient for use in any such system in which medical device information, such as telemetered signals from implantable medical devices, is continuously monitored, collected, and analyzed. The starting point could serve as a reference baseline indicating overall patient status and wellness from the outset of remote patient care.

[0007] In addition, automated remote patient care poses a further challenge vis-avis evaluating quality of life issues. Unlike in a traditional clinical setting, physicians participating in providing remote patient care are not able to interact with their patients in person. Consequently, quality of life measures, such as how the patient subjectively looks and feels, whether the patient has shortness of breath, can work, can sleep, is depressed, is sexually active, can perform activities of daily life, and so on, cannot be implicitly gathered and evaluated.

[0008] Reference baseline health assessments are widely used in conventional patient health care monitoring services. Typically, a patient's vital signs, consisting of heart rate, blood pressure, weight, and blood sugar level, are measured both at the outset of care and periodically throughout the period of service. However, these measures are limited in their usefulness and do not provide the scope of detailed medical information made available through implantable medical devices. Moreover, such measures are generally obtained through manual means and do not ordinarily directly tie into quality of life assessments. Further, a significant amount of time generally passes between the collection of sets of these measures.

[0009] Thus, there is a need for an approach to determining a meaningful reference baseline of individual patient status for use in a system and method for providing automated, remote patient care through the continuous monitoring and analysis of patient information retrieved from an implantable medical device. Preferably, such an approach would establish the reference baseline through initially received measures or after a reasonable period of observation. The reference baseline could be tied to the completion of a set of prescribed physical stressors. Periodic reassessments should be obtainable as necessary. Moreover, the reference baseline should preferably be capable of correlation to quality of life assessments.

[0010] There is a further need for an approach to monitoring patient wellness based on a reference baseline for use in an automated patient care system. Preferably, such an approach would dynamically determine whether the patient is trending into an area of potential medical concern.

[0011] There is a further need for an approach to determining a situation in which remote patient care is inappro-

priate based on a reference baseline of patient wellness. Preferably, such an approach would include a range of acceptance parameters as part of the reference baseline, thereby enabling those potential patients whose reference baseline falls outside those acceptance parameters to be identified.

SUMMARY OF THE INVENTION

[0012] The present invention provides a system and method for determining a reference baseline for use in an automated collection and analysis patient care system. The present invention further provides a system and method for monitoring a patient status using a reference baseline in an automated collection and analysis patient care system.

[0013] An embodiment of the present invention is a system, method, and storage medium for determining a reference baseline of individual patient status for use in an automated collection and analysis patient care system. A set of collected measures is retrieved from a medical device adapted to be implanted in a patient. The collected device measures set includes individual measures which each relate to patient information recorded by the medical device adapted to be implanted during an initial time period. The collected device measures set is received from the medical device adapted to be implanted over a communications link which is interfaced to a network server. The collected device measures set is stored into a patient care record for the individual patient within a database server organized to store one or more patient care records. The collected device measures set is processed into a set of reference measures. Each reference measure is representative of at least one of measured or derived patient information. The reference measures set is stored into the patient care record as data in a reference baseline indicating an initial patient status.

[0014] A further embodiment of the present invention is a system, method, and storage medium for monitoring a patient status for an individual patient using a reference baseline in an automated collection and analysis patient care system. A set of collected measures recorded by a medical device adapted to be implanted in an individual patient is processed into a set of reference measures. The reference measures set is stored into a patient care record as data in a reference baseline indicating an initial patient status. The patient care record is stored within a database server. The collected device measures set includes individual measures which each relate to patient information recorded by the medical device adapted to be implanted throughout an initial time period. Each reference measure is representative of at least one of measured or derived patient information. A set of collected measures is periodically received from the medical device adapted to be implanted over a communications link which is interfaced to a network server. The collected device measures set includes individual measures which each relate to patient information recorded by the medical device adapted to be implanted subsequent to the initial time period. The subsequently collected device measures set is stored into the patient care record for the individual patient. One or more of the subsequently collected device measures sets in the patient care record are compared to the reference measures set. Any such subsequently collected measure substantially non-conforming to the corresponding reference measure is identified.

[0015] The present invention provides a meaningful, quantitative measure of patient wellness for use as a refer-

ence baseline in an automated system and method for continuous, remote patient care. The reference baseline increases the accuracy of remote patient care, particularly during the first few weeks of care, by providing a grounded starting assessment of the patient's health and well-being.

[0016] A collateral benefit of the reference baseline is the removal of physician "bias" which can occur when the apparent normal outward appearance of a patient belies an underlying condition that potentially requires medical attention. The reference baseline serves to objectify a patient's self-assessment of wellness.

[0017] The present invention also provides an objective approach to humanizing the raw measures recorded by medical devices, including implantable medical devices. Using known quality of life assessment instruments, a patient can be evaluated and scored for relative quality of life at a given point in time. The reference baseline of the present invention provides a means for correlating the quality of life assessment to machine-recorded measures, thereby assisting a physician in furthering patient care.

[0018] Finally, the present invention improves the chronicling of legal responsibility in patient care. A prescribed course of treatment can be traced back to a grounded point in time memorialized by the reference baseline. Thus, a medical audit trail can be generated with a higher degree of accuracy and certainty based on having an established originating point of reference.

[0019] Still other embodiments of the present invention will become readily apparent to those skilled in the art from the following detailed description, wherein is described embodiments of the invention by way of illustrating the best mode contemplated for carrying out the invention. As will be realized, the invention is capable of other and different embodiments and its several details are capable of modifications in various obvious respects, all without departing from the spirit and the scope of the present invention. Accordingly, the drawings and detailed description are to be regarded as illustrative in nature and not as restrictive.

BRIEF DESCRIPTION OF THE DRAWINGS

[0020] FIGS. 1A and 1B are block diagrams showing a system for determining a reference baseline of individual patient status for use in an automated collection and analysis patient care system in accordance with the present invention;

[0021] FIG. 2 is a block diagram showing the hardware components of the server system of the system of FIG. 1A;

[0022] FIG. 3 is a block diagram showing the software modules of the server system of the system of FIG. 1A;

[0023] FIG. 4 is a block diagram showing the processing module of the server system of FIG. 1A;

[0024] FIG. 5 is a database schema showing, by way of example, the organization of a reference baseline record for cardiac patient care stored as part of a patient care record in the database of the system of FIG. 1A;

[0025] FIG. 6 is a database schema showing, by way of example, the organization of a reference baseline quality of life record for cardiac patient care stored as part of a patient care record in the database of the system of FIG. 1A;

[0026] FIG. 7 is a database schema showing, by way of example, the organization of a monitoring record for cardiac patient care stored as part of a patient care record in the database of the system of FIG. 1A;

[0027] FIGS. 8A-8C are flow diagrams showing a method for determining a reference baseline for use in monitoring a patient status in an automated collection and analysis patient care system in accordance with the present invention; and

[0028] FIG. 9 is a flow diagram showing the routine for processing a reference baseline for use in the method of FIGS. 8A-8C;

[0029] FIG. 10 is a flow diagram showing the routine for processing quality of life measures for use in the method of FIGS. 8A-8C; and

[0030] FIG. 11 is a flow diagram showing the routine for reassessing a new reference baseline for use in the method of FIGS. 8A-8C.

DETAILED DESCRIPTION

[0031] FIG. 1A is a block diagram showing a system 10 for determining a reference baseline 5 of patient status for an individual patient 11 for use in an automated collection and analysis patient care system in accordance with the present invention. An automated collection and analysis patient care system suitable for use with the present invention is disclosed in the related, commonly-assigned U.S. Pat. No. 6,312,378, issued Nov. 6, 2001, the disclosure of which is incorporated herein by reference. A patient 11 is a recipient of an implantable medical device 12, such as, by way of example, an IPG or a heart failure or event monitor, with a set of leads extending into his or her heart. Alternatively, subcutaneous monitors or devices inserted into other organs (not shown) without leads could also be used. The implantable medical device 12 includes circuitry for recording into a short-term, volatile memory telemetered signals, which are stored as a set of collected measures for later retrieval.

[0032] For an exemplary cardiac implantable medical device, the telemetered signals non-exclusively present patient information recorded on a per heartbeat, binned average or derived basis and relating to: atrial electrical activity, ventricular electrical activity, minute ventilation, patient activity score, cardiac output score, mixed venous oxygenation score, cardiovascular pressure measures, time of day, the number and types of interventions made, and the relative success of any interventions, plus the status of the batteries and programmed settings. Examples of pacemakers suitable for use in the present invention include the Discovery line of pacemakers, manufactured by Guidant Corporation, Indianapolis, Ind. Examples of ICDs suitable for use in the present invention include the Gem line of ICDs, manufactured by Medtronic Corporation, Minneapolis, Minn.

[0033] In the described embodiment, the patient 11 has a cardiac implantable medical device. However, a wide range of related implantable medical devices are used in other areas of medicine and a growing number of these devices are also capable of measuring and recording patient information for later retrieval. These implantable medical devices include monitoring and therapeutic devices for use in metabolism, endocrinology, hematology, neurology, muscular disorders, gastroenterology, urology, ophthalmology, otolaryngology, orthopedics, and similar medical subspe-

cialties. One skilled in the art would readily recognize the applicability of the present invention to these related implantable medical devices.

[0034] The telemetered signals stored in the implantable medical device 12 are retrieved upon completion of an initial observation period and subsequently retrieved on a continuous, periodic basis. By way of example, a programmer 14 can be used to retrieve the telemetered signals. However, any form of programmer, interrogator, recorder, monitor, or telemetered signals transceiver suitable for communicating with an implantable medical device 12 could be used, as is known in the art. In addition, a personal computer or digital data processor could be interfaced to the implantable medical device 12, either directly or via a telemetered signals transceiver configured to communicate with the implantable medical device 12.

[0035] Using the programmer 14, a magnetized reed switch (not shown) within the implantable medical device 12 closes in response to the placement of a wand 14 over the location of the implantable medical device 12. The programmer 14 communicates with the implantable medical device 12 via RF signals exchanged through the wand 14. Programming or interrogating instructions are sent to the implantable medical device 12 and the stored telemetered signals are downloaded into the programmer 14. Once downloaded, the telemetered signals are sent via an internetwork 15, such as the Internet, to a server system 16 which periodically receives and stores the telemetered signals in a database 17, as further described below with reference to FIG. 2.

[0036] An example of a programmer 14 suitable for use in the present invention is the Model 2901 Programmer Recorder Monitor, manufactured by Guidant Corporation, Indianapolis, Ind., which includes the capability to store retrieved telemetered signals on a proprietary removable floppy diskette. The telemetered signals could later be electronically transferred using a personal computer or similar processing device to the internetwork 15, as is known in the art.

[0037] Other alternate telemetered signals transfer means could also be employed. For instance, the stored telemetered signals could be retrieved from the implantable medical device 12 and electronically transferred to the internetwork 15 using the combination of a remote external programmer and analyzer and a remote telephonic communicator, such as described in U.S. Pat. No. 5,113,869, the disclosure of which is incorporated herein by reference. Similarly, the stored telemetered signals could be retrieved and remotely downloaded to the server system 16 using a world-wide patient location and data telemetry system, such as described in U.S. Pat. No. 5,752,976, the disclosure of which is incorporated herein by reference.

[0038] The initial set of telemetered signals recorded during the initial observation period is processed by the server system 16 into a set of reference measures and stored as a reference baseline 5 in the database 17, as further described below with reference to FIG. 3. The purpose of the observation period is to establish a reference baseline 5 containing a set of reference measures that can include both measured and derived patient information. The reference baseline 5 can link "hard" machine-recorded data with "soft" patient-provided self-assessment data from which can

be generated a wellness status indicator. In addition, the reference baseline 5 can be used to identify patients for whom remote patient care may be inappropriate and for patient wellness comparison and analysis during subsequent, on-going remote patient care. The reference baseline 5 is maintained in the database 17 and can be reassessed as needed or on a periodic basis.

[0039] Subsequent to the initial observation period, the patient is remotely monitored by the server system 16 through the periodic receipt of telemetered signals from the implantable medical device 12 via the internetwork 15. Feedback is then provided back to the patient 11 through a variety of means. By way of example, the feedback can be sent as an electronic mail message generated automatically by the server system 16 for transmission over the internetwork 15. The electronic mail message is received by personal computer 18 (PC) situated for local access by the patient 11. Alternatively, the feedback can be sent through a telephone interface device 19 as an automated voice mail message to a telephone 21 or as an automated facsimile message to a facsimile machine 22, both also situated for local access by the patient 11. In addition to a personal computer 18, telephone 21, and facsimile machine 22, feedback could be sent to other related devices, including a network computer, wireless computer, personal data assistant, television, or digital data processor.

[0040] FIG. 1B is a block diagram showing a further embodiment of the present invention in which the patient 11 is monitored by the implantable medical device 12 while engaged in performing a prescribed set of timed physical stressors during an initial observation period or during a subsequent observation period if the patient 11 is being reassessed. The stressors are a set of normal, patient activities and cardiovascular and respiratory maneuvers that allow consistent, reproducible physiological functions to be measured by the implantable medical device 12. These maneuvers include activities such as a change in posture, simple physical exercises, breathing state, including holding breath and hyperventilating, and oxygen challenges. By way of example, the stressors include timed physical activities such as running in place 6, recumbency 7, standing 8, sitting motionless 9, and reprogramming at least one of pacing interventions and pacing modes of the implantable medical device 12, as further described below with reference to FIG. 5.

[0041] In a still further embodiment of the present invention, at least one of pacing interventions and pacing modes of the implantable medical device 12 is reprogrammed by the programmer 14 during the initial observation period or during a subsequent observation period if the patient 11 is being reassessed. The patient 11 is then monitored by the reprogrammed implantable medical device 12.

[0042] FIG. 2 is a block diagram showing the hardware components of the server system 16 of the system 10 of FIG. 1A. The server system 16 consists of three individual servers: network server 31, database server 34, and application server 35. These servers are interconnected via an intranetwork 33. In the described embodiment, the functionality of the server system 16 is distributed among these three servers for efficiency and processing speed, although the functionality could also be performed by a single server or cluster of servers. The network server 31 is the primary

interface of the server system 16 onto the internetwork 15. The network server 31 periodically receives the collected telemetered signals sent by remote implantable medical devices over the internetwork 15. The network server 31 is interfaced to the internetwork 15 through a router 32. To ensure reliable data exchange, the network server 31 implements a TCP/IP protocol stack, although other forms of network protocol stacks are suitable.

[0043] The database server 34 organizes the patient care records in the database 17 and provides storage of and access to information held in those records. A high volume of data in the form of collected device measures sets from individual patients is received. The database server 34 frees the network server 31 from having to categorize and store the individual collected device measures sets in the appropriate patient care record.

[0044] The application server 35 operates management applications, assimilates the reference measures into the reference baseline 5 (shown in FIG. 1A), and performs data analysis of the patient care records, as further described below with reference to FIG. 3. The application server 35 communicates feedback to the individual patients either through electronic mail sent back over the internetwork 15 via the network server 31 or as automated voice mail or facsimile messages through the telephone interface device 19.

[0045] The server system 16 also includes a plurality of individual workstations 36 (WS) interconnected to the intranetwork 33, some of which can include peripheral devices, such as a printer 37. The workstations 36 are for use by the data management and programming staff, nursing staff, office staff, and other consultants and authorized personnel.

[0046] The database 17 consists of a high-capacity storage medium configured to store individual patient care records and related health care information. Preferably, the database 17 is configured as a set of high-speed, high capacity hard drives, such as organized into a Redundant Array of Inexpensive Disks (RAID) volume. However, any form of volatile storage, non-volatile storage, removable storage, fixed storage, random access storage, sequential access storage, permanent storage, erasable storage, and the like would be equally suitable. The organization of the database 17 is further described below with reference to FIGS. 5-7.

[0047] The individual servers and workstations are general purpose, programmed digital computing devices consisting of a central processing unit (CPU), random access memory (RAM), non-volatile secondary storage, such as a hard drive or CD ROM drive, network interfaces, and peripheral devices, including user interfacing means, such as a keyboard and display. Program code, including software programs, and data are loaded into the RAM for execution and processing by the CPU and results are generated for display, output, transmittal, or storage. In the described embodiment, the individual servers are Intel Pentium-based server systems, such as available from Dell Computers, Austin, Tex., or Compaq Computers, Houston, Tex. Each system is preferably equipped with 128 MB RAM, 100 GB hard drive capacity, data backup facilities, and related hardware for interconnection to the intranetwork 33 and internetwork 15. In addition, the workstations 36 are also Intel Pentium-based personal computer or workstation systems,

also available from Dell Computers, Austin, Tex., or Compaq Computers, Houston, Tex. Each workstation is preferably equipped with 64 MB RAM, 10 GB hard drive capacity, and related hardware for interconnection to the intranetwork **33**. Other types of server and workstation systems, including personal computers, minicomputers, mainframe computers, supercomputers, parallel computers, workstations, digital data processors and the like would be equally suitable, as is known in the art.

[0048] The telemetered signals are communicated over an internetwork **15**, such as the Internet. However, any type of electronic communications link could be used, including an intranetwork link, serial link, data telephone link, satellite link, radio-frequency link, infrared link, fiber optic link, coaxial cable link, television link, and the like, as is known in the art. Also, the network server **31** is interfaced to the internetwork **15** using a T-1 network router **32**, such as manufactured by Cisco Systems, Inc., San Jose, Calif. However, any type of interfacing device suitable for interconnecting a server to a network could be used, including a data modem, cable modem, network interface, serial connection, data port, hub, frame relay, digital PBX, and the like, as is known in the art.

[0049] FIG. 3 is a block diagram showing the software modules of the server system **16** of the system **10** of FIG. 1A. Each module is a computer program written as source code in a conventional programming language, such as the C or Java programming languages, and is presented for execution by the CPU as object or byte code, as is known in the art. The various implementations of the source code and object and byte codes can be held on a computer-readable storage medium or embodied on a transmission medium in a carrier wave.

[0050] There are three basic software modules, which functionally define the primary operations performed by the server system **16**: database module **51**, analysis module **53**, and processing module **56**. In the described embodiment, these modules are executed in a distributed computing environment, although a single server or a cluster of servers could also perform the functionality of these modules. The module functions are further described below beginning with reference to FIGS. 8A-8C.

[0051] A reference baseline **5** is established at the outset of providing a patient with remote patient care. The server system **16** periodically receives an initially collected device measures set **57**. This set represents patient information which was collected from the implantable medical device **12** (shown in FIG. 1A) during the initial observation period, as further discussed below with reference to FIG. 5. In addition, the server system **16** can also periodically receive quality of life measures sets **60** recorded by the patient **11**, as further described below with reference to FIG. 6. Both the initially collected device measures set **57** and quality of life measures set **60** are forwarded to the database module **51** for storage in the patient's patient care record in the database **52**. During subsequent, on-going monitoring for remote patient care, the server system **16** periodically receives subsequently collected device measures sets **58**, which are also forwarded to the database module **51** for storage.

[0052] The database module **51** organizes the individual patient care records stored in the database **52** and provides the facilities for efficiently storing and accessing the col-

lected device measures sets **57**, **58** and patient data maintained in those records. Exemplary database schemes for use in storing the initially collected device measures set **57**, quality of life measures set **60**, and subsequently collected device measures sets **58** in a patient care record are described below, by way of example, with reference to FIGS. 5-7. The database server **34** (shown in FIG. 2) performs the functionality of the database module **51**. Any type of database organization could be utilized, including a flat file system, hierarchical database, relational database, or distributed database, such as provided by database vendors, such as Oracle Corporation, Redwood Shores, Calif.

[0053] The processing module **56** processes the initially collected device measures set **57** and, if available, the quality of life measures set **60**, stored in the patient care records in the database **52** into the reference baseline **5**. The reference baseline **5** includes a set of reference measures **59** which can be either directly measured or indirectly derived patient information. The reference baseline **5** can be used to identify patients for whom remote patient care might be inappropriate and to monitor patient wellness in a continuous, on-going basis.

[0054] On a periodic basis or as needed, the processing module **56** reassesses the reference baseline **5**. Subsequently collected device measures sets **58** are received from the implantable medical device **12** (shown in FIG. 1A) subsequent to the initial observation period. The processing module **56** reassimilates these additional collected device measures sets into a new reference baseline. The operations performed by the processing module **56** are further described below with reference to FIG. 4. The application server **35** (shown in FIG. 2) performs the functionality of the processing module **56**.

[0055] The analysis module **53** analyzes the subsequently collected device measures sets **58** stored in the patient care records in the database **52**. The analysis module **53** monitors patient wellness and makes an automated determination in the form of a patient status indicator **54**. Subsequently collected device measures sets **58** are periodically received from implantable medical devices and maintained by the database module **51** in the database **52**. Through the use of this collected information, the analysis module **53** can continuously follow the medical well being of a patient and can recognize any trends in the collected information that might warrant medical intervention. The analysis module **53** compares individual measures and derived measures obtained from both the care records for the individual patient and the care records for a disease specific group of patients or the patient population in general. The analytic operations performed by the analysis module **53** are further described below with reference to FIG. 4. The application server **35** (shown in FIG. 2) performs the functionality of the analysis module **53**.

[0056] The feedback module **55** provides automated feedback to the individual patient based, in part, on the patient status indicator **54**. As described above, the feedback could be by electronic mail or by automated voice mail or facsimile. Preferably, the feedback is provided in a tiered manner. In the described embodiment, four levels of automated feedback are provided. At a first level, an interpretation of the patient status indicator **54** is provided. At a second level, a notification of potential medical concern based on

the patient status indicator **54** is provided. This feedback level could also be coupled with human contact by specially trained technicians or medical personnel. At a third level, the notification of potential medical concern is forwarded to medical practitioners located in the patient's geographic area. Finally, at a fourth level, a set of reprogramming instructions based on the patient status indicator **54** could be transmitted directly to the implantable medical device to modify the programming instructions contained therein. As is customary in the medical arts, the basic tiered feedback scheme would be modified in the event of bona fide medical emergency. The application server **35** (shown in **FIG. 2**) performs the functionality of the feedback module **55**.

[0057] **FIG. 4** is a block diagram showing the processing module **56** of the server system **16** of **FIG. 1A**. The processing module **53** contains two functional submodules: evaluation module **70** and acceptance module **71**. The purpose of the evaluation module **70** is to process the initially collected device measures set **57** by determining any derived measures and calculating appropriate statistical values, including means and standard deviations, for the reference measures set **59** in the reference baseline **5**. The purpose of the acceptance module **71** is to analyze the reference measures set **59** against the acceptance parameters set **72**. A patient care record storing a reference measures set **59** substantially out of conformity with the acceptance parameters set **72** could be indicative of a patient for whom remote patient care is inappropriate. Consequently, the acceptance module **71** identifies each patient care record storing at least one reference measure which is substantially non-conforming to a corresponding parameter in the acceptance parameters set **72**.

[0058] For instance, an acceptance parameter for heart rate might be specified as a mean heart rate within a range of 40-90 beats per minute (bpm) over a 24-hour period. However, a patient care record storing a reference measure falling either substantially above or below this acceptance parameter, for example, in excess of 90 bpm, would be considered substantially non-conforming. The acceptance parameters set **72** are further described below with reference to **FIG. 5**.

[0059] The evaluation module **70** also determines new reference baselines **73** when necessary. For instance, the new reference baseline **73** might be reassessed on an annual or quarterly basis, as the needs of the patient **11** dictate. Similarly, the new reference baseline **73** might be reassessed for a patient whose patient care record stores a subsequently collected device measures set **58** substantially out of conformity with the reference measures set **59** in the original reference baseline **5**. The new reference baseline **73** would be assessed by the processing module **56** using subsequently collected device measures sets **58** during a subsequent observation period.

[0060] **FIG. 5** is a database schema showing, by way of example, the organization of a reference baseline record **75** for cardiac patient care stored as part of a patient care record in the database **17** of the system **10** of **FIG. 1A**. The reference baseline record **75** corresponds to the reference baseline **5**, although only the information pertaining to the set of reference measures in the reference baseline **5** are shown. Each patient care record would also contain normal identifying and treatment profile information, as well as medical history and other pertinent data (not shown). For

instance, during the initial observation period, the patient **11** maintains a diary of activities, including the onset of bed-time and waking time, plus the time and dosing of any medications, including non-prescription drugs. The observation period can be expanded to include additional information about the normal range of patient activities as necessary, including a range of potential anticipated activities as well as expected travel times and periods away from home. In addition, information from any set of medical records could be included in the patient care record. The diary, medication, activity, and medical record information and medical test information (e.g., electrocardiogram, echocardiogram, and/or coronary angiogram) is incorporated into the patient care record and is updated with continuing patient information, such as changes in medication, as is customary in the art.

[0061] The reference measures set **59** stored in the reference baseline record **75** are processed from the initial collected device measures set **57** (shown in **FIG. 3**), as further described below with reference to **FIG. 9**. The implantable medical device **12** (shown in **FIG. 1A**) records the initial collected device measures set **57** during the initial observation period. For example, for a cardiac patient, the reference baseline record **75** stores the following information as part of the reference measures set **59**: patient activity score **76**, posture **77** (e.g., from barometric pressure), atrial electrical activity **78** (e.g., atrial rate), ventricular electrical activity **79** (e.g., ventricular rate), cardiovascular pressures **80**, cardiac output **81**, oxygenation score **82** (e.g., mixed venous oxygenation), pulmonary measures **83** (e.g., transthoracic impedance, measures of lung wetness, and/or minute ventilation), body temperature **84**, PR interval **85** (or AV interval), QRS measures **86** (e.g., width, amplitude, frequency content, and/or morphology), QT interval **87**, ST-T wave measures **88** (e.g., T wave alternans or ST segment depression or elevation), potassium [K+] level **89**, sodium [Na+] level **90**, glucose level **91**, blood urea nitrogen and creatinine **92**, acidity (pH) level **93**, hematocrit **94**, hormonal levels **95** (e.g., insulin, epinephrine), cardiac injury chemical tests **96** (e.g., troponin, myocardial band creatinine kinase), myocardial blood flow **97**, central nervous system injury chemical tests **98** (e.g., cerebral band creatinine kinase), central nervous system (CNS) blood flow **99**, and time of day **100**. Other types of reference measures are possible. In addition, a well-documented set of derived measures can be determined based on the reference measures, as is known in the art.

[0062] In the described embodiment, the initial and any subsequent observation periods last for about one 7-day period during which time the patient **11** might be asked to perform, if possible, repeated physical stressors representative of both relatively normal activity and/or activities designed to test the response of the body to modest activity and physiologic perturbations for use as the baseline "reference" measures that might be recorded daily for a period of one week prior to initiating fee-for-service monitoring. Reference measures taken and derived from the observation period are recorded, processed, and stored by the system **10**. The reference measures include both measured and derived measures, including patient activity score **76**, posture **77**, atrial electrical activity **78**, ventricular electrical activity **79**, cardiovascular pressures **80**, cardiac output **81**, oxygenation score **82**, pulmonary measures **83**, body temperature **84**, PR interval **85** (or AV interval), QRS measures **86**, QT interval

87, ST-T wave measures 88, potassium [K+] level 89, sodium [Na+] level 90, glucose level 91, blood urea nitrogen and creatinine 92, acidity (pH) level 93, hematocrit 94, hormonal levels 95, cardiac injury chemical tests 96, myocardial blood flow 97, central nervous system injury chemical tests 98, central nervous system (CNS) blood flow 99, and time of day 100. Other combination and derivative measures can also be determined, as known in the art.

[0063] An illustrative prescribed set of timed physical stressors for a non-ambulatory patient 11 is as follows:

[0064] (1) Running in place 6: if possible, the patient 11 must run in place for about five minutes;

[0065] (2) Walking (not shown): if possible, the patient 11 must walk for about six minutes and the total distance walked is measured;

[0066] (3) Ascending stairs (not shown): if possible, the patient 11 must ascend two flights of stairs;

[0067] (4) Recumbency 7: if possible, the patient 11 must recline following about two minutes of motionless immobile upright posture. Upon recumbency, the patient 11 must remain as immobile as possible for about ten minutes;

[0068] (5) Standing 8: if possible, the patient 11 must briskly assume an upright standing posture after the ten-minute recumbency 7 and must remain standing without activity for about five minutes;

[0069] (6) Coughing (not shown): if possible, the patient 11 must cough forcefully about three times when in an upright position to record the cardiovascular pressures 80;

[0070] (7) Hyperventilation (not shown): if possible, the patient 11 must hyperventilate over thirty seconds with full deep and rapid breaths to record ventilatory status;

[0071] (8) Sitting motionless 9: when a physician is complicit, the patient 11 must, if possible, use an approximately 2.0 liter per minute nasal cannula while transmitting data for about twenty minutes while sitting to evaluate cardiopulmonary response;

[0072] (9) Program AAI and VVI temporary pacing interventions for five minutes, at low and high rates, if applicable (e.g., 40 bpm and 120 bpm) to evaluate cardiopulmonary response; and

[0073] (10) Test dual site or biventricular pacing modes, if applicable, for approximately 20 minutes to evaluate cardiopulmonary response.

[0074] These physical and pacing stimulus stressors must be annotated with date and time of day 100 and correlated with symptoms and the quality of life measures 110. Heart rate, temperature, and time of day are directly measured while the patient activity score and cardiac output score are derived. These physical stressors are merely illustrative in nature and the set of physical and pacing stimulus stressors actually performed by any given patient would necessarily depend upon their age and physical condition as well as device implanted. Also, during the observation period, the temperature is monitored with QT interval shortening and, if the patient is in atrial fibrillation, the patient 11 must undergo

an incremental ventricular pacing protocol to assess his or her response to rate stabilization. Finally, a T-wave alternans measurement (not shown) can be integrated into the reference baseline 5 during rest and sinus rhythm activities.

[0075] In a further embodiment of the present invention, the reference measures set 59 in the reference baseline 5 are reassessed on an annual or, if necessary, quarterly, basis. In addition, if the reference measures set 59 was recorded during a period when the patient 11 was unstable or recovering from a recent illness, the reference baseline 5 is reassessed when the patient 11 is again stable, as further described below with reference to FIG. 11.

[0076] As further described below with reference to FIG. 9, the reference measures are analyzed against the acceptance parameters set 72. The acceptance parameters are those indicator values consistent with the presence of some form of chronic yet stable disease which does not require immediate emergency care. In the described embodiment, the acceptance parameters set 72 for the reference measures 59 in the reference baseline record 75 are, by way of example, as follows: cardiac output 81 falling below 2.5 liters/minute/m²; heart rate below 40 bpm or above 120 bpm; body temperature 84 over 101° F. and below 97° F.; patient activity 76 score of 1.0 or below; oxygenation score 82 of less than 60% mixed venous saturation at rest; pulmonary artery diastolic pressure greater than 20 mm Hg at rest; and minute ventilation less than 10.0 liters/minute at rest.

[0077] FIG. 6 is a database schema showing, by way of example, the organization of a reference baseline quality of life record 110 for cardiac patient care stored as part of a patient care record in the database 17 of the system 10 of FIG. 1A. A quality of life score is a semi-quantitative self-assessment of an individual patient's physical and emotional well being. Non-commercial, non-proprietary standardized automated quality of life scoring systems are readily available, such as provided by the Duke Activities Status Indicator. These scoring systems can be provided for use by the patient 11 on the personal computer 18 (shown in FIG. 1A) and the patient 11 can then record his or her quality of life scores for periodic download to the server system 16.

[0078] For example, for a cardiac patient, the reference baseline quality of life record 110 stores the following information as part of the reference measures set 59: health wellness 111, shortness of breath 112, energy level 113, exercise tolerance 114, chest discomfort 115, time of day 116, and other quality of life measures as would be known to one skilled in the art. Using the quality of life scores 111-116 in the reference baseline quality of life record 110, the patient 11 can be notified automatically when variable physiological changes matches his or her symptomatology.

[0079] A quality of life indicator is a vehicle through which a patient can remotely communicate to the patient care system how he or she is subjectively feeling. When tied to machine-recorded physiological measures, a quality of life indicator can provide valuable additional information to medical practitioners and the automated collection and analysis patient care system 10 not otherwise discernible without having the patient physically present. For instance, a scoring system using a scale of 1.0 to 10.0 could be used with 10.0 indicating normal wellness and 1.0 indicating

severe health problems. Upon the completion of the initial observation period, a patient might indicate a health wellness score **111** of 5.0 and a cardiac output score of 5.0. After one month of remote patient care, the patient might then indicate a health wellness score **111** of 4.0 and a cardiac output score of 4.0 and a week later indicate a health wellness score **111** of 3.5 and a cardiac output score of 3.5. Based on a comparison of the health wellness scores **111** and the cardiac output scores, the system **10** would identify a trend indicating the necessity of potential medical intervention while a comparison of the cardiac output scores alone might not lead to the same prognosis.

[0080] **FIG. 7** is a database schema showing, by way of example, the organization of a monitoring record **120** for cardiac patient care stored as part of a patient care record in the database **17** of the system **10** of **FIG. 1A**. Each patient care record stores a multitude of subsequently collected device measures sets **58** (shown in **FIG. 3**) for each individual patient **11**. Each set represents a recorded snapshot of telemetered signals data which were recorded, for instance, on a per heartbeat or binned average basis by the implantable medical device **12**. For example, for a cardiac patient, the following information would be recorded as a subsequently collected device measures set **58**: atrial electrical activity **121**, ventricular electrical activity **122**, minute ventilation **123**, patient activity score **124**, cardiac output score **125**, mixed venous oxygen score **126**, pulmonary artery diastolic pressure measure **127**, time of day **128**, interventions made by the implantable medical device **129**, and the relative success of any interventions made **130**. In addition, the implantable medical device **12** would also communicate device specific information, including battery status and program settings **131**. Other types of collected or combined measures are possible as previously described. In addition, a well-documented set of derived measures can be determined based on the collected measures, as is known in the art.

[0081] **FIGS. 8A-8C** are flow diagrams showing a method **140** for determining a reference baseline **5** for use in monitoring a patient status in an automated collection and analysis patient care system **10** in accordance with the present invention. The method **140** operates in two phases: collection and processing of an initial reference baseline **5** (blocks **141-149**) and monitoring using the reference baseline **5** (blocks **150-158**). The method **140** is implemented as a conventional computer program for execution by the server system **16** (shown in **FIG. 1A**). As a preparatory step, the patient care records are organized in the database **17** with a unique patient care record assigned to each individual patient (block **141**).

[0082] The collection and processing of the initial reference baseline **5** begins with the patient **11** being monitored by the implantable medical device **12** (shown in **FIG. 1A**). The implantable medical device **12** records the initially collected device measures set **57** during the initial observation period (block **142**), as described above with reference to **FIG. 5**. Alternatively, the patient **11** could be engaged in performing the prescribed set of timed physical stressors during the initial observation period, as described above with reference to **FIG. 1B**. As well, the implantable medical device **12** could be reprogrammed by the programmer **14** during the initial observation period, also as described above with reference to **FIG. 1B**. The initially collected device

measures set **57** is retrieved from the implantable medical device **12** (block **143**) using a programmer, interrogator, telemetered signals transceiver, and the like. The retrieved initially collected device measures sets are sent over the internetwork **15** or similar communications link (block **144**) and periodically received by the server system **16** (block **145**). The initially collected device measures set **57** is stored into a patient care record in the database **17** for the individual patient **11** (block **146**). The initially collected device measures set **57** is processed into the reference baseline **5** (block **147**) which stores a reference measures set **59**, as further described below with reference to **FIG. 9**.

[0083] If quality of life measures are included as part of the reference baseline **5** (block **148**), the set of quality of life measures are processed (block **149**), as further described below with reference to **FIG. 10**. Otherwise, the processing of quality of life measures is skipped (block **148**).

[0084] Monitoring using the reference baseline **5** begins with the retrieval of the subsequently collected device measures sets **58** from the implantable medical device **12** (block **150**) using a programmer, interrogator, telemetered signals transceiver, and the like. The subsequently collected device measures sets **58** are sent, on a substantially regular basis, over the internetwork **15** or similar communications link (block **151**) and periodically received by the server system **16** (block **152**). The subsequently collected device measures sets **58** are stored into the patient care record in the database **17** for that individual patient (block **153**).

[0085] The subsequently collected device measures sets **58** are compared to the reference measures in the reference baseline **5** (block **154**). If the subsequently collected device measures sets **58** are substantially non-conforming (block **155**), the patient care record is identified (block **156**). Otherwise, monitoring continues as before.

[0086] In the described embodiment, substantial non-conformity refers to a significant departure from a set of parameters defining ranges of relative normal activity and normal exercise responses for that patient. Relative normal activity is defined as follows. Note the "test exercise period" refers to running in place, walking, and ascending stairs physical stressors described above:

[0087] (1) Heart rate stays within a range of 40-90 bpm without upward or downward change in mean heart rate ± 1.0 standard deviation (SD) over a 24 hour period;

[0088] (2) Wake patient activity score during awake hours stays within a range of ± 1.0 SD without change in the mean activity score over a 24 hour period with no score equal to the minimum activity score noted during sleep;

[0089] (3) Sleep period activity score stays within a range of ± 1.0 SD of typical sleep scores for that patient for the six to ten hour period of sleep with no score less than the minimum score observed during normal awake behavior during the initial observation period or during normal sleep;

[0090] (4) Minute ventilation **123** during normal awake hours stays within a range of ± 1.0 SD without change in the mean score over a 24 hour period with no score equal to the minimum or maximum minute

- ventilation **123** noted during the test exercise period or the minimum or maximum minute ventilation **123** noted during the initial observation period;
- [**0091**] (5) Cardiac output score **125** during normal awake hours stays within a range of 1.0 SD without change in the mean cardiac output score over a 24 hour period with no score equal to the minimum cardiac output score noted during the test exercise period or the minimum cardiac output score noted during the initial observation period;
- [**0092**] (6) Mixed venous oxygenation score **126** during normal awake hours stays within a range of ± 1.0 SD without change in the mean mixed venous oxygenation score over a 24 hour period with no score equal to the minimum mixed venous oxygenation score noted during the test exercise period or the minimum mixed venous oxygenation score noted during the initial observation period;
- [**0093**] (7) Pulmonary artery diastolic pressure measure **127** during normal awake hours stays within a range of ± 1.0 SD without change in the mean pulmonary artery diastolic pressure measure **127** over a 24 hour period with no score equal to the minimum or maximum pulmonary artery diastolic pressure measure **127** noted during the test exercise period or during the initial observation period;
- [**0094**] (8) Potassium levels [K+] score during normal awake hours stays within a range of ± 1.0 SD without change in the mean K+ levels over a 24 hour period with no score less than 3.5 meq/liter or greater than 5.0 meq/liter noted during the test exercise period or during the initial observation period;
- [**0095**] (9) Sodium levels [Na+] score during normal awake hours stays within a range of ± 1.0 SD without change in the mean Na+ levels over a 24 hour period with no score less than 135 meq/liter or greater than 145 meq/liter during the test exercise period or during the initial observation period;
- [**0096**] (10) Acidity (pH) score during normal awake hours stays within a range of ± 1.0 SD without change in the mean pH score over a 24 hour period with no score equal to the minimum or maximum pH score noted during the test exercise period or the minimum or maximum pH scores noted during the initial observation period;
- [**0097**] (11) Glucose levels during normal awake hours stays within a range of 1.0 SD without change in the mean glucose levels over a 24 hour period with no score less than 60 mg/dl or greater than 200 mg/dl during the test exercise period or during the initial observation period;
- [**0098**] (12) Blood urea nitrogen (BUN) or creatinine (Cr) levels during normal awake hours stays within a range of ± 1.0 SD without change in the mean BUN or Cr levels score over a 24 hour period with no score equal to the maximum BUN or creatinine levels noted during the test exercise period or the maximum BUN or Cr levels noted during the initial observation period;
- [**0099**] (13) Hematocrit levels during normal awake hours stays within a range of ± 1.0 SD without change in the mean hematocrit levels score over a 24 hour period with no score less than a hematocrit of 30 during the test exercise period or during the initial observation period;
- [**0100**] (14) Troponin, creatinine kinase myocardial band, or other cardiac marker of myocardial infarction or ischemia, level during normal awake hours stays within a range of ± 1.0 SD without change in the mean troponin level score over a 24 hour period with no score equal to the maximum troponin level score noted during the test exercise period or the maximum troponin level scores noted during the initial observation period;
- [**0101**] (15) Central nervous system (CNS) creatinine kinase (CK) or equivalent markers of CNS ischemia or infarction levels during normal awake hours stays within a range of ± 1.0 SD without change in the mean CNS CK levels over a 24 hour period with no score equal to the maximum CNS CK levels score noted during the test exercise period or the maximum CNS CK levels scores noted during the initial observation period;
- [**0102**] (16) Barometric pressure during normal awake hours stays within a range of ± 1.0 SD without change in the mean barometric pressure score over a 24 hour period with no score equal to the minimum or maximum barometric pressure noted during the test exercise period or the minimum or maximum barometric pressure noted during the initial observation period;
- [**0103**] (17) PR interval (or intrinsic AV interval) of sinus rhythm during normal awake hours stays within a range of ± 1.0 SD without change in the mean PR interval over a 24 hour period with no score equal to the minimum or maximum PR interval noted during the test exercise period or the minimum or maximum PR interval noted during the initial observation period;
- [**0104**] (18) QT interval during normal awake hours stays within a range of ± 1.0 SD without change in the mean QT interval over a 24 hour period with no score equal to the minimum or maximum QT interval noted during the test exercise period or the minimum or maximum QT interval noted during the initial observation period;
- [**0105**] (19) QRS duration during normal awake hours stays within a range of ± 1.0 SD without change in the mean QRS duration over a 24 hour period with no score equal to the maximum QRS duration noted during the test exercise period or the maximum QRS duration noted during the initial observation period;
- [**0106**] (20) ST segment depression or elevation during normal awake hours stays within a range of ± 1.0 SD without change in the mean ST segment depression or elevation over a 24 hour period with no score equal to the maximum ST segment depression or elevation noted during the test exercise period or the

maximum ST segment depression or elevation noted during the initial observation period; and

[0107] (21) Temperature during normal awake hours stays within a range of ± 1.0 SD without change in the mean temperature over a 24 hour period with no score equal to the minimum or maximum temperature score noted during the test exercise period or the minimum or maximum temperature noted during the initial observation period.

[0108] For an exemplary, non-ambulatory patient with no major impairments of the major limbs, reference exercise can be defined as follows:

[0109] (1) Heart rate increases by 10 bpm for each one point increase in activity score. Note that to be considered "normal exercise," heart rate generally should not increase when the activity score does not increase at least 1.0 SD above that noted during the twenty-four hour reference period or greater than that observed during any reference exercise periods. Heart rate should decrease to the baseline value over fifteen minutes once activity stops or returns to the baseline activity level;

[0110] (2) Patient activity score 124 rises at least 1.0 SD over that observed in the mean activity score over a 24 hour period or greater than that observed during any reference exercise periods;

[0111] (3) Cardiac output score 125 rises at least 1.0 SD over that observed in the mean cardiac output score over a 24 hour period or within 0.5 SD of the two minute test exercise period. Cardiac output score should increase 0.5 liters per minute with each 10 bpm increase in heart rate period or greater than that observed during any reference exercise periods;

[0112] (4) In conjunction with an increase in activity score and heart rate, mixed venous oxygenation score 126 falls at least 1.0 SD below observed in the mean oxygenation score over a 24 hour period or be less than any oxygenation score observed during the reference exercise periods. Oxygenation score should decrease 5.0 mm Hg with each 10 bpm increase in heart rate or 1.0 SD increase in cardiac output score during exercise;

[0113] (5) In conjunction with an increase in activity score and heart rate, pulmonary artery diastolic pressure measure 127 rises at least 1.0 SD over that observed in the mean cardiovascular pressure score over a 24 hour period or is greater than that observed during the reference exercise periods;

[0114] (6) In conjunction with an increase in activity score and heart rate, minute ventilation 123 rises at least 1.0 SD over that observed over a 24 hour reference period or greater than that observed during any reference exercise period. Minute ventilation should rise 1.0 liter per minute with each 10 bpm increase in heart rate; and

[0115] (7) In conjunction with an increase in activity score and heart rate, temperature should rise at least 1.0 SD over that observed in the mean temperature over a 24 hour period or greater than that observed

during the reference exercise periods. Temperature should rise 0.1° F. with each 10 bpm increase in heart rate.

[0116] Finally, if the time for a periodic reassessment has arrived or the subsequently collected device measures sets 58 are substantially non-conforming (block 157), the reference baseline 5 is reassessed (block 158) and a new reference baseline 73 determined, as further described below with reference to FIG. 11. Otherwise, the routine returns.

[0117] In the described embodiment, the reference baseline 5 is preferably reassessed on an annual or, if necessary, quarterly basis. In addition, the reference baseline 5 might be reassessed if physiological findings dictate that new interventions might be indicated or if the patient 11 indicates a change in medications and general health status. Other bases for reassessing the reference baseline 5 are feasible.

[0118] FIG. 9 is a flow diagram showing the routine 147 for processing a reference baseline 5 for use in the method 140 of FIGS. 8A-8C. The purpose of this routine is to analyze the initially collected device measures set 57 and create a reference baseline 5, if possible. First, the acceptance parameters set 72 (shown in FIG. 3) is defined (block 160) and the reference measures set 59 in the reference baseline 5, including any quality of life measures, are analyzed against the acceptance parameters set (block 161), as described above with reference to FIG. 5. If the reference measures in the reference baseline 5 are substantially non-conforming to the acceptance parameters set (block 162), the patient care record is identified (block 164). Otherwise, if conforming (block 162), the baseline reference 72 is stored into the patient care record in the database 17 (block 163). The routine then returns.

[0119] FIG. 10 is a flow diagram showing the routine 149 for processing quality of life measures for use in the method 140 of FIGS. 8A-8C. The purpose of this routine is to process and store a collected quality of life measures set 60 into the reference baseline 5. Collected quality of life measures sets 60 are periodically received by the server system 16 over the internetwork 15 or similar communications link (block 170). The quality of life measures were previously recorded by the patient 11 using, for example, the personal computer 18 (shown in FIG. 1A) and downloaded onto the internetwork 15 or similar communications link. The collected quality of life measures set 60 is stored into a patient care record in the database 17 for the individual patient 11 (block 171). The collected quality of life measures set 60 is then assimilated into the reference baseline 5 (block 172), as further described above with reference to FIG. 9. The routine then returns.

[0120] FIG. 11 is a flow diagram showing the routine 158 for reassessing a new reference baseline 73 for use in the method 140 of FIGS. 8A-8C. The purpose of this routine is to reassess a new reference baseline 5 periodically or when necessary. Similar to the collection and assimilation of the initial reference baseline 5, the routine begins with the patient 11 being monitored by the implantable medical device 12 (shown in FIG. 1A). The implantable medical device 12 records subsequently collected device measures sets 58 throughout a subsequent observation period (block 180), as described above with reference to FIG. 5. Alternatively, the patient 11 could be engaged in performing the prescribed set of timed physical stressors, as described

above with reference to **FIG. 1B**. As well, the implantable medical device **12** could be reprogrammed by the programmer **14** during the subsequent observation period, also as described above with reference to **FIG. 1B**. The subsequently collected device measures sets **58** are retrieved from the implantable medical device **12** (block **181**) using a programmer, interrogator, telemetered signals transceiver, and the like. The retrieved subsequently collected device measures sets are sent over the internetwork **15** or similar communications link (block **182**) and periodically received by the server system **16** (block **183**). The subsequently collected device measures sets **58** are stored into the patient care record in the database **17** for the individual patient **11** (block **184**). Finally, the subsequently collected device measures sets **58** are assimilated into the new reference baseline **73** (block **185**), as further described above with reference to **FIG. 9**. The routine then returns.

[0121] The determination of a reference baseline consisting of reference measures makes possible improved and more accurate treatment methodologies based on an algorithmic analysis of the subsequently collected data sets. Each successive introduction of a new collected device measures set into the database server would help to continually improve the accuracy and effectiveness of the algorithms used.

[0122] While the invention has been particularly shown and described as referenced to the embodiments thereof, those skilled in the art will understand that the foregoing and other changes in form and detail may be made therein without departing from the spirit and scope of the invention.

What is claimed is:

1. A system for determining a reference baseline of patient information for automated remote patient care, comprising:

a medical device regularly recording and storing measures sets comprising individual measures which each relate to patient information by a medical device adapted to be implanted for an individual patient during an initial time period;

a database collecting one or more patient care records, comprising:

one or more patient care records which each comprise a plurality of the collected measures sets;

a database module storing the collected measures set into a patient care record for the individual patient within the database; and

a server, comprising:

a receiver receiving the collected device measures set from the medical device adapted to be implanted;

an analysis module processing the collected device measures set into a set of reference measures, each reference measure being representative of at least one of measured or derived patient information, and storing the reference measures set into the patient care record as data in a reference baseline indicating an initial patient status.

2. A system according to claim 1, further comprising:

a remote client recording a set of quality of life measures during the initial time period;

the database storing the collected quality of life measures set into the patient care record for the individual patient; and

the server receiving the quality of life measures set from the remote client, and assimilating the collected quality of life measures set into the reference baseline data stored in the patient care record.

3. A system according to claim 1, further comprising:

the medical device adapted to be implanted monitoring the individual patient while the individual patient is performing a prescribed set of timed physical stressors during the initial time period.

4. A system according to claim 1, further comprising:

a programmer reprogramming at least one of pacing interventions and pacing modes of the medical device adapted to be implanted during the initial time period; and

the medical device adapted to be implanted monitoring the individual patient subsequent to the reprogramming during the initial time period.

5. A system according to claim 1, further comprising:

a feedback recorder recording feedback from the individual patient during the initial time period;

the database storing the recorded feedback into the patient care record for the individual patient; and

the server receiving the recorded feedback from the remote client, and assimilating the recorded feedback into the reference baseline data stored in the patient care record.

6. A system according to claim 5, wherein the feedback recorder comprises at least one of an audio recorder, a digital camera, or a video camera.

7. A system according to claim 1, further comprising:

a set of acceptance parameters stored within the database with each acceptance parameter corresponding to the same type of patient information to which at least one of the reference measures relates;

the server further comprising:

an evaluation module analyzing the reference measures set for each patient care record against the acceptance parameters set; and

an acceptance module identifying each patient care record storing a reference measures set having at least one reference measure substantially non-conforming to the corresponding acceptance parameter.

8. A system according to claim 1, the application server further comprising:

an analysis module analyzing one or more collected device measures sets in the patient care record for the individual patient relative to the reference measures sets in the reference baseline to determine a patient status indicator.

9. A system according to claim 8, the application server further comprising:

the analysis module analyzing one or more of the collected device measures sets in the patient care record for the individual patient relative to one or more other

collected device measures sets stored in the database to further determine the patient status indicator.

10. A system according to claim 1, wherein each of the set of reference measures is selected from the group comprising patient activity score, posture, atrial electrical activity, ventricular electrical activity, cardiovascular pressures, cardiac output, oxygenation, pulmonary measures, body temperature, PR interval, QRS measures, QT interval, ST-T wave measures, potassium [K+] level, sodium [Na+] level, glucose level, blood urea nitrogen and creatinine, acidity (pH) level, hematocrit, hormonal levels, cardiac injury chemical tests, myocardial blood flow, central nervous system injury chemical tests, central nervous system (CNS) blood flow, and time of day and combinations and derivatives thereof.

11. A method for determining a reference baseline of patient information for automated remote patient care, comprising:

regularly recording and storing measures sets comprising individual measures which each relate to patient information by a medical device adapted to be implanted for an individual patient during an initial time period;

receiving the collected device measures set from the medical device adapted to be implanted;

collecting one or more patient care records into a database, comprising:

organizing one or more patient care records which each comprise a plurality of the collected measures sets;

storing the collected measures set into a patient care record for the individual patient within the database; and

processing the collected device measures set into a set of reference measures, each reference measure being representative of at least one of measured or derived patient information, and storing the reference measures set into the patient care record as data in a reference baseline indicating an initial patient status.

12. A method according to claim 11, further comprising:

receiving a set of quality of life measures recorded by the individual patient during the initial time period;

storing the collected quality of life measures set into the patient care record for the individual patient within the database; and

assimilating the collected quality of life measures set into the reference baseline data stored in the patient care record.

13. A method according to claim 11, further comprising:

monitoring the individual patient using the medical device adapted to be implanted while the individual patient is performing a prescribed set of timed physical stressors during the initial time period.

14. A method according to claim 11, further comprising:

reprogramming at least one of pacing interventions and pacing modes of the medical device adapted to be implanted during the initial time period; and

monitoring the individual patient using the medical device adapted to be implanted subsequent to the reprogramming during the initial time period.

15. A method according to claim 11, further comprising:

receiving feedback recorded by the individual patient during the initial time period which is interfaced to the server;

storing the recorded feedback into the patient care record for the individual patient within the database; and

assimilating the recorded feedback into the reference baseline data stored in the patient care record.

16. A method according to claim 15, wherein the feedback comprises at least one of audio, digitized imagery, or video feedback.

17. A method according to claim 11, further comprising:

defining a set of acceptance parameters with each acceptance parameter corresponding to the same type of patient information to which at least one of the reference measures relates;

analyzing the reference measures set for each patient care record against the acceptance parameters set; and

identifying each patient care record storing a reference measures set having at least one reference measure substantially non-conforming to the corresponding acceptance parameter.

18. A method according to claim 11, further comprising:

analyzing one or more collected device measures sets in the patient care record for the individual patient relative to the reference measures sets in the reference baseline to determine a patient status indicator.

19. A method according to claim 18, further comprising:

analyzing one or more of the collected device measures sets in the patient care record for the individual patient relative to one or more other collected device measures sets stored in the database to further determine the patient status indicator.

20. A method according to claim 11, wherein each of the set of reference measures is selected from the group comprising patient activity score, posture, atrial electrical activity, ventricular electrical activity, cardiovascular pressures, cardiac output, oxygenation, pulmonary measures, body temperature, PR interval, QRS measures, QT interval, ST-T wave measures, potassium [K+] level, sodium [Na+] level, glucose level, blood urea nitrogen and creatinine, acidity (pH) level, hematocrit, hormonal levels, cardiac injury chemical tests, myocardial blood flow, central nervous system injury chemical tests, central nervous system (CNS) blood flow, and time of day and combinations and derivatives thereof.

21. A computer-readable storage medium holding code for determining a reference baseline of patient information for automated remote patient care, comprising:

code for regularly recording and storing measures sets comprising individual measures which each relate to patient information by a medical device adapted to be implanted for an individual patient during an initial time period;

code for receiving the collected device measures set from the medical device adapted to be implanted;

code for collecting one or more patient care records into a database, comprising:

code for organizing one or more patient care records which each comprise a plurality of the collected measures sets;

code for storing the collected measures set into a patient care record for the individual patient within the database; and

code for processing the collected device measures set into a set of reference measures, each reference measure being representative of at least one of measured or derived patient information, and storing the reference measures set into the patient care record as data in a reference baseline indicating an initial patient status.

22. A storage medium according to claim 21, further comprising:

code for receiving a set of quality of life measures recorded by the individual patient during the initial time period;

code for storing the collected quality of life measures set into the patient care record for the individual patient within the database; and

code for assimilating the collected quality of life measures set into the reference baseline data stored in the patient care record.

23. A storage medium according to claim 21, further comprising:

code for monitoring the individual patient using the medical device adapted to be implanted while the individual patient is performing a prescribed set of timed physical stressors during the initial time period.

24. A storage medium according to claim 21, further comprising:

code for reprogramming at least one of pacing interventions and pacing modes of the medical device adapted to be implanted during the initial time period; and

code for monitoring the individual patient using the medical device adapted to be implanted subsequent to the reprogramming during the initial time period.

25. A storage medium according to claim 21, further comprising:

code for receiving feedback recorded by the individual patient during the initial time period;

code for storing the recorded feedback into the patient care record for the individual patient within the database; and

code for assimilating the recorded feedback into the reference baseline data stored in the patient care record.

26. A storage medium according to claim 21, further comprising:

code for defining a set of acceptance parameters with each acceptance parameter corresponding to the same type of patient information to which at least one of the reference measures relates;

code for analyzing the reference measures set for each patient care record against the acceptance parameters set; and

code for identifying each patient care record storing a reference measures set having at least one reference

measure substantially non-conforming to the corresponding acceptance parameter.

27. A storage medium according to claim 21, further comprising:

code for analyzing one or more collected device measures sets in the patient care record for the individual patient relative to the reference measures sets in the reference baseline to determine a patient status indicator.

28. A storage medium according to claim 21, further comprising:

code for analyzing one or more of the collected device measures sets in the patient care record for the individual patient relative to one or more other collected device measures sets stored in the database to further determine the patient status indicator.

29. A system for monitoring a patient status for using a reference baseline for automated remote patient care, comprising:

a server, comprising:

a processing module processing a set of collected measures regularly recorded by a medical device adapted to be implanted in an individual patient into a set of reference measures and storing the reference measures set in a reference baseline indicating an initial patient status, the collected device measures set comprising individual measures which each relate to patient information recorded by the medical device throughout an initial time period, each reference measure being representative of at least one of measured or derived patient information; and

an analysis module periodically receiving a set of collected measures from the medical device, the collected device measures set comprising individual measures which each relate to patient information recorded by the medical device subsequent to the initial time period, and comparing one or more of the subsequently collected device measures sets in the patient care record to the reference measures set and identifying any such subsequently collected measure substantially non-conforming to the corresponding reference measure; and

a database storing the patient care record, including the subsequently collected device measures set into the patient care record for the individual patient.

30. A system according to claim 29, the application server further comprising:

an analysis module analyzing one or more of the subsequently collected device measures sets in the patient care record for the individual patient relative to one or more other subsequently collected device measures sets stored in the database to determine a patient status indicator.

31. A system according to claim 29, the application server further comprising:

a feedback module providing automated feedback based on the patient status indicator to the individual patient over a feedback communications link configured between the server and a feedback client.

- 32.** A system according to claim 29, further comprising:
the server receiving initially feedback recorded by the individual patient during the initial time period and receiving feedback recorded by the individual patient subsequent to the initial time period;
the database storing the initially recorded feedback as reference feedback into the patient care record for the individual patient within the database and storing the subsequently recorded feedback into the patient care record for the individual patient; and
the analyzing module comparing the subsequently recorded feedback to the reference feedback in the patient care record and identifying any such subsequently recorded feedback substantially non-conforming to the reference feedback.
- 33.** A system according to claim 32, wherein the patient feedback comprises at least one of audio, digitized imagery, or video feedback.
- 34.** A system according to claim 29, further comprising:
the application server further comprising a reevaluation module processing a new set of collected measures recorded by a medical device adapted to be implanted in an individual patient into a new set of reference measures, the new collected device measures set comprising individual measures which each relate to patient information recorded by the medical device adapted to be implanted subsequent to the initial time period, each new reference measure being representative of at least one of measured or derived patient information; and
the database storing the new reference measures set into the patient care record as a new reference baseline indicating a revised patient status.
- 35.** A system according to claim 29, further comprising:
the database storing an initial set of quality of life measures recorded by the individual patient during the initial time period into the patient care record within the database and storing a subsequently collected quality of life measures set received by the server into the patient care record for the individual patient;
the application server assimilating the initial quality of life measures set into the reference baseline data stored in the patient care record; and
the application server comparing one or more of the subsequently collected quality of life measures to the initial quality of life measures in the reference measures set and identifying any such subsequently collected quality of life measure substantially non-conforming to the corresponding quality of life reference measure.
- 36.** A system according to claim 29, the application server further comprising:
a monitoring module monitoring the individual patient using the medical device adapted to be implanted while the individual patient is performing a prescribed set of timed physical stressors during the initial time period.
- 37.** A system according to claim 36, wherein the prescribed set of activities are representative of substantially normal activity, further comprising:
the server determining relative abnormal activity response based on any subsequently collected measure identified as being substantially non-conforming to the corresponding reference measure.
- 38.** A system according to claim 36, wherein the prescribed set of activities are representative of substantially normal exercise, further comprising:
the server determining relative abnormal exercise response based on any subsequently collected measure identified as being substantially non-conforming to the corresponding reference measure.
- 39.** A system according to claim 29, wherein the reference measures set comprises at least one of the following: patient activity score, posture, atrial electrical activity, ventricular electrical activity, cardiovascular pressures, cardiac output, oxygenation, pulmonary measures, body temperature, PR interval, QRS measures, QT interval, ST-T wave measures, potassium [K+] level, sodium [Na+] level, glucose level, blood urea nitrogen and creatinine, acidity (pH) level, hematocrit, hormonal levels, cardiac injury chemical tests, myocardial blood flow, central nervous system injury chemical tests, central nervous system (CNS) blood flow, and time of day and combinations and derivatives thereof.
- 40.** A method for monitoring a patient status for using a reference baseline for automated remote patient care, comprising:
processing a set of collected measures regularly recorded by a medical device adapted to be implanted in an individual patient into a set of reference measures and storing the reference measures set in a reference baseline indicating an initial patient status, the collected device measures set comprising individual measures which each relate to patient information recorded by the medical device throughout an initial time period, each reference measure being representative of at least one of measured or derived patient information;
periodically receiving a set of collected measures from the medical device, the collected device measures set comprising individual measures which each relate to patient information recorded by the medical device subsequent to the initial time period;
comparing one or more of the subsequently collected device measures sets in the patient care record to the reference measures set and identifying any such subsequently collected measure substantially non-conforming to the corresponding reference measure; and
storing the patient care record in a database, including the subsequently collected device measures set into the patient care record for the individual patient.
- 41.** A method according to claim 40, further comprising:
analyzing one or more of the subsequently collected device measures sets in the patient care record for the individual patient relative to one or more other subsequently collected device measures sets stored in the database to determine a patient status indicator.
- 42.** A method according to claim 40, further comprising:
providing automated feedback based on the patient status indicator to the individual patient over a feedback communications link configured between a server and a feedback client.

43. A method according to claim 40, further comprising:
 receiving feedback recorded by the individual patient during the initial time period and storing the recorded feedback as reference feedback into the patient care record for the individual patient within the database;
 receiving feedback recorded by the individual patient subsequent to the initial time period;
 storing the subsequently recorded feedback into the patient care record for the individual patient within the database; and
 comparing the subsequently recorded feedback to the reference feedback in the patient care record and identifying any such subsequently recorded feedback substantially non-conforming to the reference feedback.
44. A method according to claim 43, wherein the patient feedback comprises at least one of audio, digitized imagery, or video feedback.
45. A method according to claim 40, further comprising:
 processing a new set of collected measures recorded by the medical device into a new set of reference measures and storing the new reference measures set into the patient care record as a new reference baseline indicating a revised patient status, the new collected device measures set comprising individual measures which each relate to patient information recorded by the medical device adapted to be implanted subsequent to the initial time period, each new reference measure being representative of at least one of measured or derived patient information.
46. A method according to claim 40, further comprising:
 storing a set of quality of life measures recorded by the individual patient during the initial time period into the patient care record and assimilating the quality of life measures into the reference baseline data stored in the patient care record;
 receiving a quality of life measures set recorded by the individual patient subsequent to the initial time period;
 storing the subsequently collected quality of life measures set into the patient care record for the individual patient within the database; and
 comparing one or more of the subsequently collected quality of life measures to the quality of life measures in the reference measures set and identifying any such subsequently collected quality of life measure substantially non-conforming to the corresponding quality of life reference measure.
47. A method according to claim 40, further comprising:
 monitoring the individual patient using the medical device adapted to be implanted while the individual patient is performing a prescribed set of timed physical stressors during the initial time period.
48. A method according to claim 47, wherein the prescribed set of activities are representative of substantially normal activity, further comprising:
 determining relative abnormal activity response based on any subsequently collected measure identified as being substantially non-conforming to the corresponding reference measure.
49. A method according to claim 47, wherein the prescribed set of activities are representative of substantially normal exercise, further comprising:
 determining relative abnormal exercise response based on any subsequently collected measure identified as being substantially non-conforming to the corresponding reference measure.
50. A method according to claim 40, wherein the reference measures set comprises at least one of the following: patient activity score, posture, atrial electrical activity, ventricular electrical activity, cardiovascular pressures, cardiac output, oxygenation, pulmonary measures, body temperature, PR interval, QRS measures, QT interval, ST-T wave measures, potassium [K+] level, sodium [Na+] level, glucose level, blood urea nitrogen and creatinine, acidity (pH) level, hematocrit, hormonal levels, cardiac injury chemical tests, myocardial blood flow, central nervous system injury chemical tests, central nervous system (CNS) blood flow, and time of day and combinations and derivatives thereof.
51. A computer-readable storage medium holding code for monitoring a patient status for using a reference baseline for automated remote patient care, comprising:
 code for processing a set of collected measures regularly recorded by a medical device adapted to be implanted in an individual patient into a set of reference measures and storing the reference measures set in a reference baseline indicating an initial patient status, the collected device measures set comprising individual measures which each relate to patient information recorded by the medical device throughout an initial time period, each reference measure being representative of at least one of measured or derived patient information;
 code for periodically receiving a set of collected measures from the medical device, the collected device measures set comprising individual measures which each relate to patient information recorded by the medical device subsequent to the initial time period;
 code for comparing one or more of the subsequently collected device measures sets in the patient care record to the reference measures set and identifying any such subsequently collected measure substantially non-conforming to the corresponding reference measure; and
 code for storing the patient care record in a database, including the subsequently collected device measures set into the patient care record for the individual patient.
52. A storage medium according to claim 51, further comprising:
 code for analyzing one or more of the subsequently collected device measures sets in the patient care record for the individual patient relative to one or more other subsequently collected device measures sets stored in the database to determine a patient status indicator.
53. A storage medium according to claim 51, further comprising:
 code for providing automated feedback based on the patient status indicator to the individual patient over a feedback communications link configured between the server and a feedback client.
54. A storage medium according to claim 51, further comprising:

code for storing feedback recorded by the individual patient during the initial time period which is interfaced to the server and storing the recorded feedback as reference feedback into the patient care record for the individual patient within the database;

code for receiving feedback recorded by the individual patient subsequent to the initial time period which is interfaced to the server;

code for storing the subsequently recorded feedback into the patient care record for the individual patient within the database; and

code for comparing the subsequently recorded feedback to the reference feedback in the patient care record and identifying any such subsequently recorded feedback substantially non-conforming to the reference feedback.

55. A storage medium according to claim 51, further comprising:

code for processing a new set of collected measures recorded by a medical device adapted to be implanted in an individual patient into a new set of reference measures and storing the new reference measures set into the patient care record as a new reference baseline indicating a revised patient status, the new collected device measures set comprising individual measures which each relate to patient information recorded by the medical device adapted to be implanted subsequent to the initial time period, each new reference measure being representative of at least one of measured or derived patient information.

56. A storage medium according to claim 51, further comprising:

code for storing a set of quality of life measures recorded by the individual patient during the initial time period into the patient care record and assimilating the quality of life measures into the reference baseline data stored in the patient care record;

code for receiving a quality of life measures set recorded by the individual patient subsequent to the initial time period which is interfaced to the server;

code for storing the subsequently collected quality of life measures set into the patient care record for the individual patient within the database; and

code for comparing one or more of the subsequently collected quality of life measures to the quality of life measures in the reference measures set and identifying any such subsequently collected quality of life measure substantially non-conforming to the corresponding quality of life reference measure.

57. A storage medium according to claim 51, further comprising:

code for monitoring the individual patient using the medical device while the individual patient is performing a prescribed set of timed physical stressors during the initial time period.

58. A storage medium according to claim 57, wherein the prescribed set of activities are representative of substantially normal activity, further comprising:

code for determining relative abnormal activity response based on any subsequently collected measure identified as being substantially non-conforming to the corresponding reference measure.

59. A storage medium according to claim 57, wherein the prescribed set of activities are representative of substantially normal exercise, further comprising:

code for determining relative abnormal exercise response based on any subsequently collected measure identified as being substantially non-conforming to the corresponding reference measure.

* * * * *

专利名称(译)	用于确定用于自动远程患者护理的患者信息的参考基线的系统和方法		
公开(公告)号	US20040039260A1	公开(公告)日	2004-02-26
申请号	US10/645980	申请日	2003-08-22
[标]申请(专利权)人(译)	BARDY GUST ^ h		
申请(专利权)人(译)	BARDY GUST H.		
当前申请(专利权)人(译)	BARDY GUST H.		
[标]发明人	BARDY GUST H		
发明人	BARDY, GUST H.		
IPC分类号	A61B5/00 A61N1/372 G06F19/00		
CPC分类号	A61B5/0002 A61B5/4884 G06F19/322 Y10S128/92 G06F19/3418 G06F19/3431 G06Q50/24 G06F19/324		
其他公开文献	US6893397		
外部链接	Espacenet	USPTO	

摘要(译)

提出了一种用于确定用于自动远程患者护理的患者信息的参考基线的系统。医疗设备通过适于在初始时间段内植入的医疗设备定期记录和存储包括与患者信息相关的个体测量的测量集。数据库收集包含所收集的度量集的一个或多个患者护理记录。数据库模块将收集的度量集存储在数据库内的患者护理记录中。服务器通过接收器接收从医疗设备设置的收集的设备测量值。服务器内的分析模块将收集的设备度量集处理成一组参考度量。每个参考测量值代表测量或导出的患者信息。所设置的参考测量值作为指示初始患者状态的参考基线中的数据存储在患者护理记录中。

