



US006733447B2

(12) **United States Patent**
Lai et al.

(10) **Patent No.:** US 6,733,447 B2
(45) **Date of Patent:** May 11, 2004

(54) **METHOD AND SYSTEM FOR REMOTELY MONITORING MULTIPLE MEDICAL PARAMETERS**

(75) **Inventors:** Joseph Lai, Brookfield, WI (US); Lawrence A. Buyan, Greenfield, WI (US); Renee S. DuBore, Wauwatosa, WI (US); Brian Lewis Pate, Tampa, FL (US); James L. Reuss, Waukesha, WI (US)

(73) **Assignee:** Criticare Systems, Inc., Waukesha, WI (US)

(*) **Notice:** Subject to any disclaimer, the term of this patent is extended or adjusted under 35 U.S.C. 154(b) by 29 days.

4,883,057 A	11/1989	Broderick
4,958,645 A	9/1990	Cadell et al.
4,981,141 A	1/1991	Segalowitz
5,153,584 A	10/1992	Engira
5,307,817 A	5/1994	Guggenbuhl et al.
5,349,953 A	9/1994	McCarthy et al.
5,381,798 A	1/1995	Burrows
5,410,471 A	4/1995	Alyfuku et al.
5,415,181 A	5/1995	Hogrefe et al.
5,416,695 A	5/1995	Stutman et al.
5,421,343 A	6/1995	Feng
5,458,123 A	10/1995	Unger
5,462,051 A	10/1995	Oka et al.
5,488,631 A *	1/1996	Gold et al. 375/206
5,536,084 A	7/1996	Curtis et al.
5,544,661 A	8/1996	Davis et al.
5,553,609 A	9/1996	Chen et al.
5,576,952 A	11/1996	Stutman et al.

(List continued on next page.)

(21) **Appl. No.:** 09/990,851

(22) **Filed:** Nov. 19, 2001

(65) **Prior Publication Data**

US 2002/0049371 A1 Apr. 25, 2002

Related U.S. Application Data

(62) Division of application No. 09/226,055, filed on Jan. 5, 1999, now Pat. No. 6,319,200, which is a continuation of application No. 08/747,859, filed on Nov. 13, 1996, now Pat. No. 5,855,550.

(51) **Int. Cl.⁷** A61B 5/00

(52) **U.S. Cl.** 600/300

(58) **Field of Search** 600/300, 301; 128/903

(56) **References Cited**

U.S. PATENT DOCUMENTS

3,646,606 A	2/1972	Buxton et al.
3,786,190 A	1/1974	Pori
4,494,553 A	1/1985	Sciarra et al.
4,517,982 A	5/1985	Shiga et al.
4,556,063 A	12/1985	Thompson et al.

OTHER PUBLICATIONS

Technical Service Bulletin (Advertisement), Dawe's Laboratories, "Nutrition and Feeding Management of Baby Calves", No. 266, pp. 1-3. No date listed.

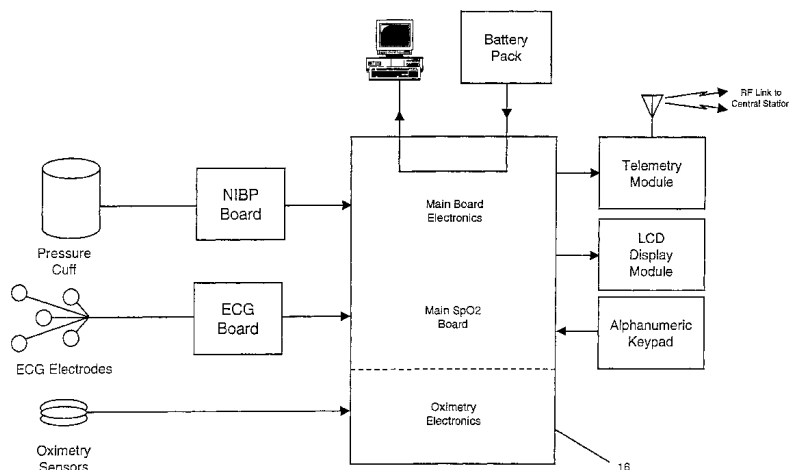
Primary Examiner—Robert L. Nasser

(74) *Attorney, Agent, or Firm*—Reinhart Boerner Van Deuren s.c.

(57) **ABSTRACT**

The invention relates to a medical parameter monitoring device which allows the monitoring of a plurality of medical parameters from a remote location. The invention uses a central monitoring system which transmits and receives data parameters via RF from remote patient monitors. The monitoring system utilized a digital spread spectrum RF transceiver between the central monitoring system to the remote monitors. Forward error correcting, frequency hopping, and spread spectrum communications are employed to provide accurate transmission of data for a plurality of physiological parameters. Transmitted data can be automatically registered into storage in the central monitoring system.

9 Claims, 5 Drawing Sheets



US 6,733,447 B2

Page 2

U.S. PATENT DOCUMENTS

5,594,786 A	1/1997	Chaco et al.	5,735,285 A	4/1998	Albert et al.	
5,617,871 A	4/1997	Burrows	5,754,111 A	5/1998	Garcia	
5,619,991 A	4/1997	Sloane	5,767,791 A	* 6/1998	Stoop et al.	128/903
5,664,270 A	* 9/1997	Bell et al.	5,827,180 A	10/1998	Goodman	
5,678,562 A	10/1997	Sellers	5,944,659 A	* 8/1999	Flach et al.	600/300
5,704,366 A	1/1998	Tacklind et al.	5,961,448 A	10/1999	Swenson et al.	
5,718,234 A	2/1998	Warden et al.	6,319,200 B1	11/2001	Lai et al.	

* cited by examiner

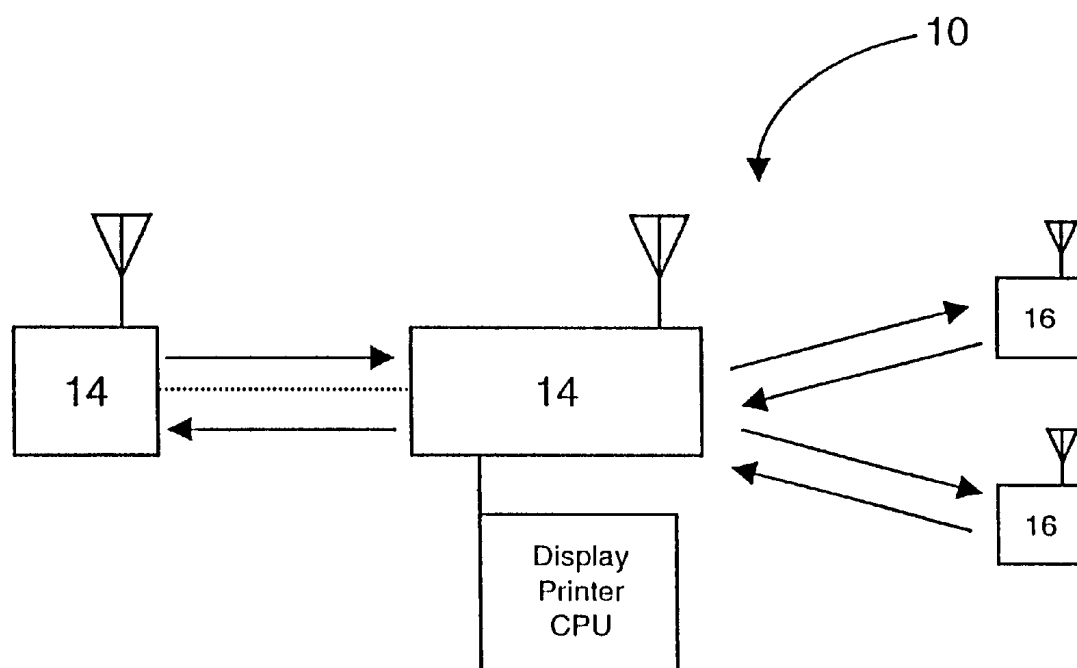


FIG. 1

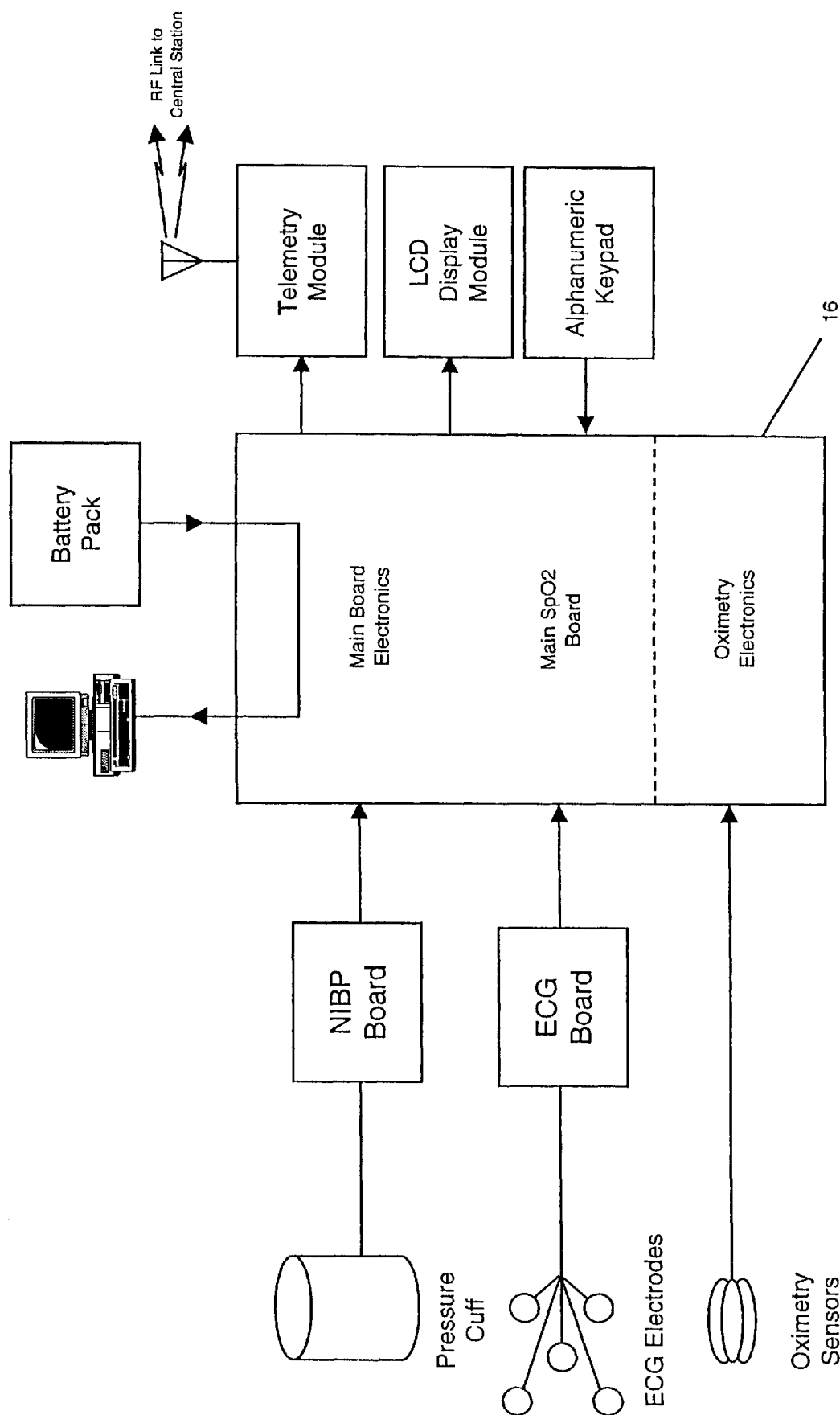


FIG. 2

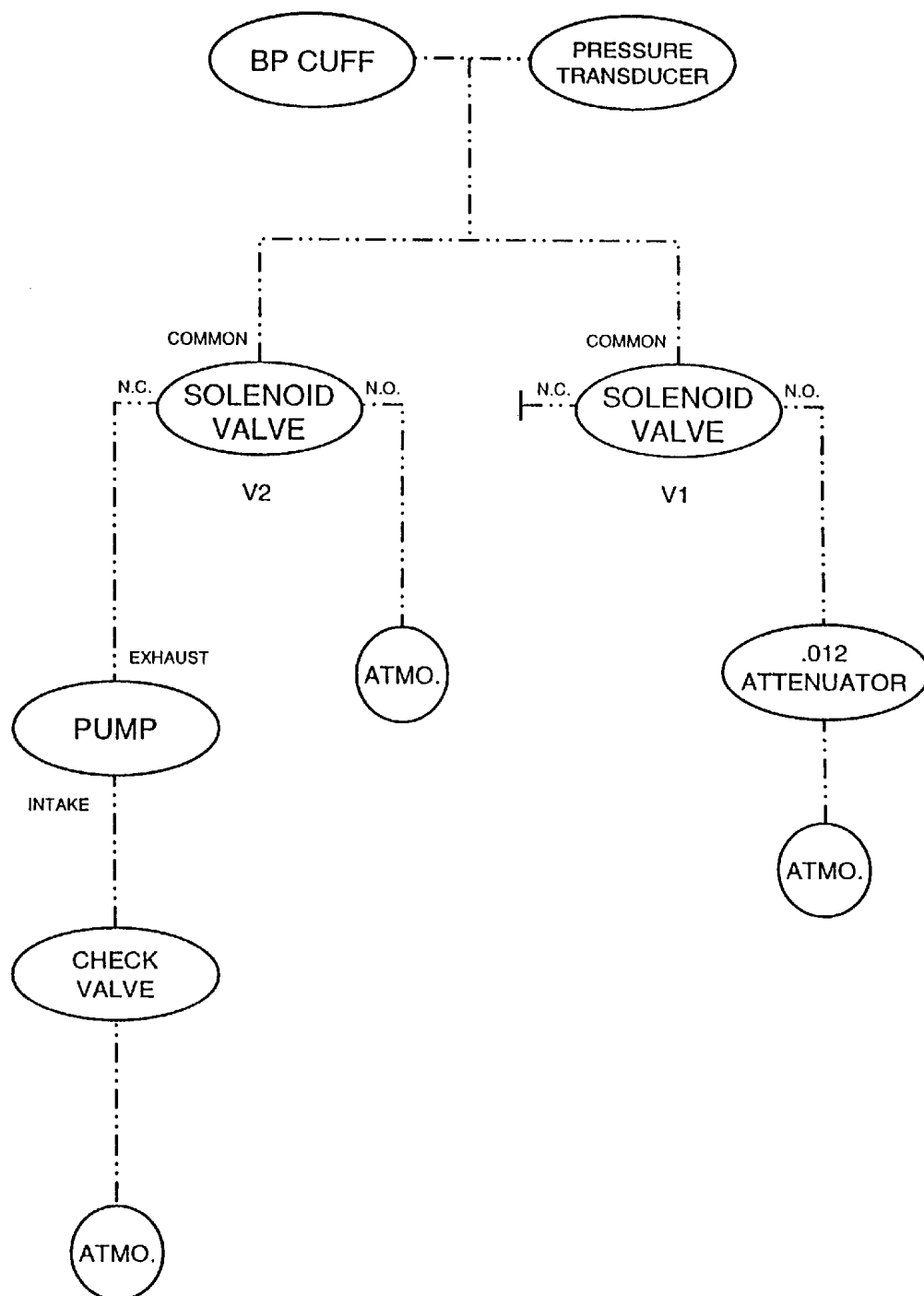


FIG. 3

Software Block Diagram

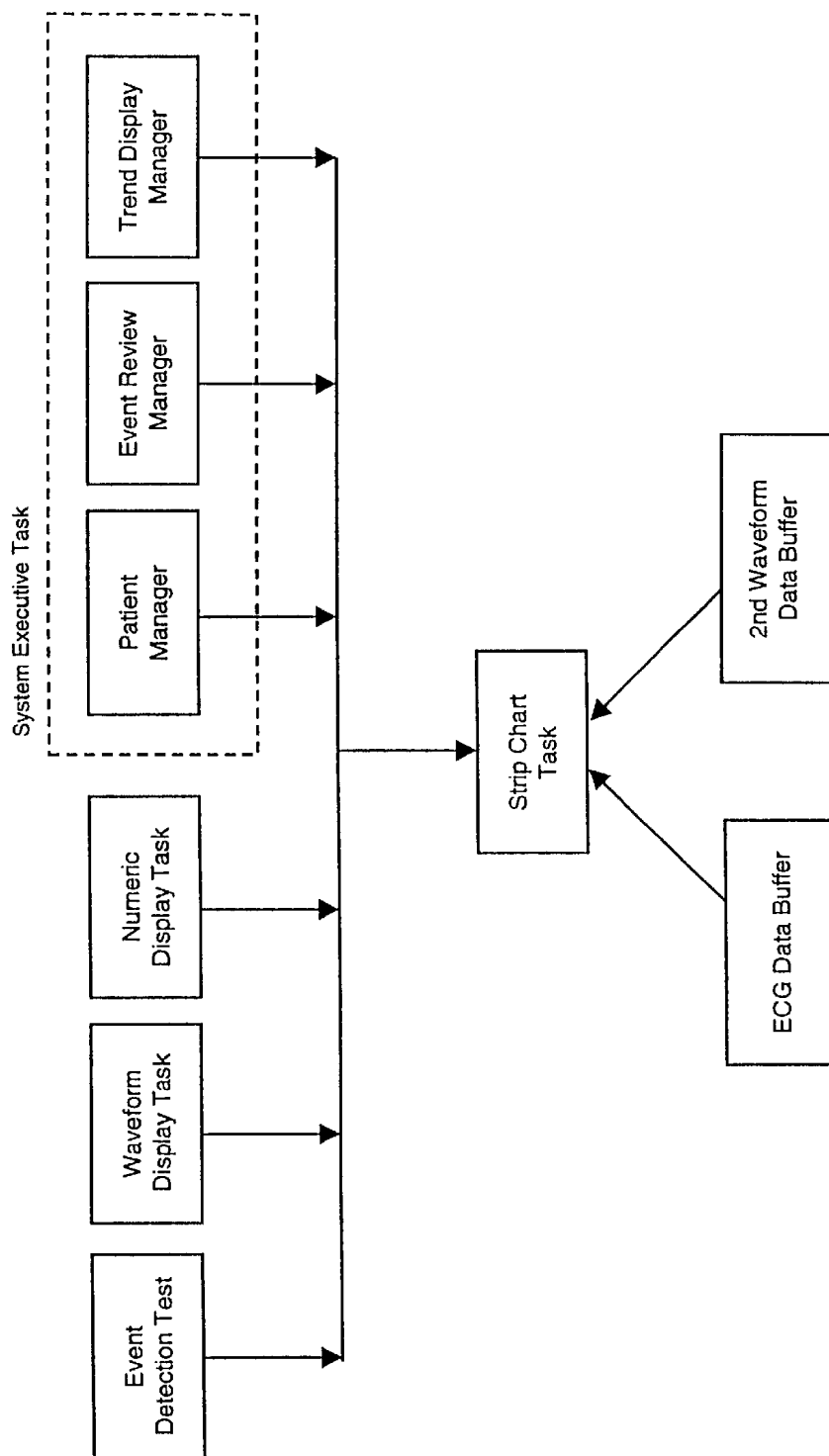


FIG. 4

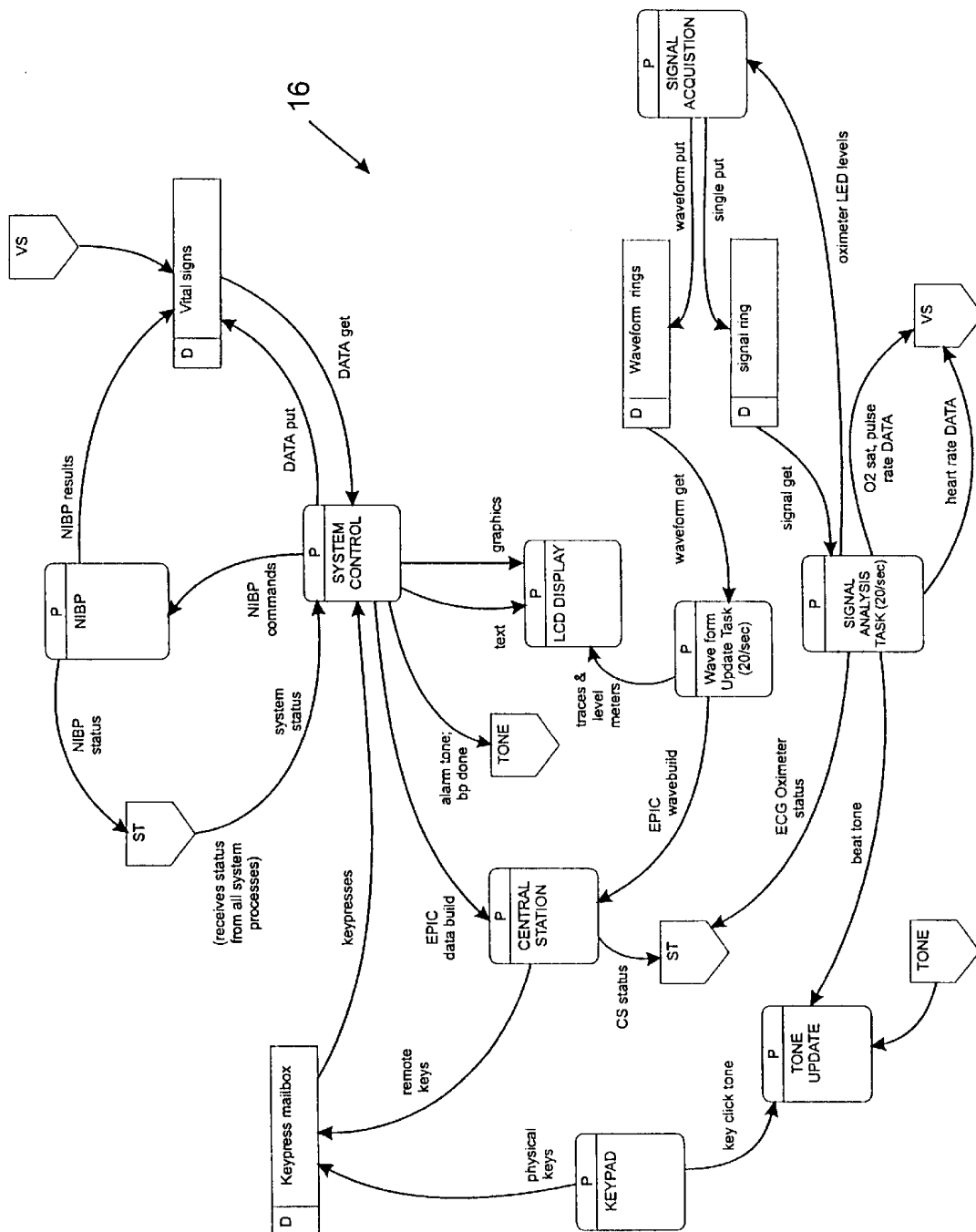


FIG. 5

METHOD AND SYSTEM FOR REMOTELY MONITORING MULTIPLE MEDICAL PARAMETERS

CROSS REFERENCE TO RELATED APPLICATIONS

This application is a division of application Ser. No. 09/226,055, filed on Jan. 5, 1999 now U.S. Pat. No. 6,319,200, which is continuation of application Ser. No. 08/747,859, filed on Nov. 13, 1996, U.S. Pat. No. 5,855,550.

BACKGROUND OF THE INVENTION

This invention relates generally to medical parameter monitoring and more particularly to monitoring multiple medical parameters of one or more subjects from a remote location. One preferred embodiment of the invention comprises a patient monitor and transceiver unit in one or more parts, one unit for each of a plurality of patients; a remote display/control device at a central monitoring system; and a communications system between the patient units and the remote display/control device.

Systems presently available for remote monitoring commonly employ either a hardwired connection between the patient monitor and the remote display/control device, or a unidirectional RF transmission from the monitor to remote display/control device only. Typically, analog signal data is transmitted, although digital data can also be encoded and transmitted. The remote display/control device generally supports a number of patient monitors with transmitters, communicating with receivers at the remote display/control device. The patient monitors themselves usually can only monitor one parameter (e.g., ECG), although some systems permit the combination of multiple monitoring devices, sometimes with multiple transmitters per patient. The use of unidirectional analog RF technology limits the patient sensor monitors to performing pre-programmed tasks, with the only control being manual operation of the patient monitor itself. The analog signal quality received at the remote display/control unit tends to be dependent upon the distance from the transmitter to the antenna (e); objects (building components, movable objects, etc.) in between the transmitter and receiver may compromise performance. Furthermore, transmission technologies such as UHF, which employ a particular base frequency for data transmission, face serious problems due to interference from other transmission sources which happen to be transmitting at or near the same frequency.

It is therefore an object of the invention to provide an improved medical monitoring system including a patient monitor and a central monitoring system using bidirectional data transmission.

It is a further object of the invention to provide a novel medical monitoring system that enables dynamic control of remote monitoring simultaneously with medical parameter and/or waveform data acquisition.

It is yet another object of the invention to provide an improved medical monitoring system which can receive and control a plurality of medical parameters and/or waveforms being monitored at remote locations.

It is a further object of the invention to provide a component which can be used therewith to automatically acquire and store data pertaining to various physiological parameters.

It is yet another object of the invention to provide a telemetry system which enables automatic acceptance of

patient data and immediate analysis thereof and/or comparison with previously-acquired data.

It is another object of the present invention to use RF communication and automatic registration of critical data, as well as in combination with forward error correcting, frequency hopping, spread spectrum technology, to provide significantly improved results which are surprising and unexpected in view of the prior art.

Other objects, features and advantages of the present invention will be apparent from the following description of the preferred embodiments, taken in conjunction with the accompanying drawings described below wherein like components have like numerals throughout several views.

BRIEF DESCRIPTION OF THE DRAWINGS

FIG. 1 is a block diagram of a medical monitoring system constructed in accordance with one form of the invention;

FIG. 2 is a block diagram showing one preferred embodiment of a patient monitor of the present invention;

FIG. 3 is a schematic representation of the pneumatic function of a non-invasive blood pressure component of the type which can be used with a preferred embodiment of the invention;

FIG. 4 is a block diagram illustrating software configurations and/or networks of one type which can be used in accordance with the system and/or method of this invention; and

FIG. 5 is a block diagram showing a medical monitoring system constructed in accordance with one form of the invention.

SUMMARY OF THE INVENTION

Referring to the figures and more particularly to FIG. 1, a monitoring system constructed in accordance with one form of the invention is shown generally at 10. This preferred embodiment of the invention transmits remotely monitored digital medical data using bidirectional, preferably spread-spectrum RF transmission of digital data which can include forward error correction. Bidirectional transmission permits a remote display/control device 12 of a central monitoring system 14 to control the monitoring process completely, including selection of medical parameters and/or waveforms to be determined by a patient monitor 16 borne by the patient or located at bedside. This ability to control the patient monitor 16 is important in supporting a broad range of different types of patient monitors 16, from small ambulatory monitoring devices to large bedside monitors with a broad assortment of monitoring capabilities. By permitting dynamic configuration, the mix of patient monitors 16 can change to suit the current patient population. A further feature of this preferred embodiment is the ability to identify the location of a patient being monitored by the system. Additionally, these bidirectional capabilities enable messages to be sent directly from the central monitoring system 14 or devices coupled thereto to the patient monitor 16 or devices coupled thereto. For example, a nurse can respond to a call signal initiated by the patient by sending a message from the central monitoring system 14 to an alphanumeric display at bedside. Methods for direct digital signal formation from input signals produced by a sensor device can be used with preferred embodiments of the invention, and U.S. patent application Ser. No. 08/683,617, now U.S. Pat. No. 5,842,981, is incorporated by reference herein in its entirety for further details regarding such digital signal formation techniques and its incorporation as part of a combination of elements.

The present invention also offers automatic physiological registration of the patients through RF communication once the patient monitors **16** are connected to the patient as described below. This facilitates an immediate acquisition of any and all parameters and/or waveforms associated with the central monitoring system which may be applicable to the respective patient. These parameters and/or waveforms can comprise ECG, NIBP, SpO₂, respiration, temperature, four invasive lines, alarms, remote recording, and transmitter ID number, as well as other relevant patient information. Further, the bidirectional capabilities of the present invention allow selection of which parameters or waveforms to monitor with patient monitors **16** from the remote, central monitoring system **14**. Additionally, the data sampling rates and all other monitoring parameters can be changed remotely using the central monitoring system **14**.

As mentioned above and as shown in the figures, the present invention can include an automated data acquisition and/or storage component. Such a component, in its various embodiments, can without limitation be incorporated for use in conjunction with the clinical analysis of transmitted data. This component accommodates automatic patient admission and facilitates the immediate transfer/receipt of data to a central central monitoring system. When a patient is connected to a telemetry transmitter, clinical data is at once available and can be analyzed for various diagnostic purposes. This aspect of the invention can allow for the immediate clinical presentation and analysis of ECG, NIBP, SO₂, as well as other pertinent information. This automated component is preferably located in the central monitoring system **14** although it can be located in or coupled to one or more of the patient monitors **16** or other devices.

By way of comparison, the prior art—affording a telemetry interface limited to one or two parameters—is somewhat restrictive in that a central monitoring system must wait for manual acceptance of data transmitted to a central station. For example, an end user of the prior art must manually instruct a central receiving location to learn a transmitted ECG pattern before such data is available for further comparison and analysis. The acceptance delay inherent to the prior art can cause valuable clinical data to be irretrievably lost. In other instances, with manual acquisition and storage of data, substantial delays may occur before the data is available for evaluation. However, with the present invention, once the patient monitor **16** is activated, data can be acquired, stored and evaluated upon transmission/reception. For example, ECG data can be automatically stored and evaluated for comparison to future output ECG data by a central monitoring system **16**.

Referring, in part, to the figures, the data acquisition/storage component of this invention can, alternatively, be described in relation to other invention components. Data describing various physiological parameters can be displayed on conventional computer display monitors interfaced with the central monitoring system **14** or other receiving device hardwired or otherwise communicating with the central monitoring system **14**. The central monitoring system **14** preferably includes a printer, a computer monitor, a CPU such as a conventional personal computer and a conventional RF transmitter, an RF receiver or an integral RF transceiver. Automatic physiological registration of the patients is afforded through RF communication once the patient monitor **16** is connected to a patient. This facilitates an immediate acquisition of any and all parameters associated with a host monitor and applicable to a respective patient. Such parameters can include, but are not limited to ECG, NIBP, SPO₂, respiration and temperature. Compre-

hensive trending of such parameters over time is available. A 24-hour trending capability is preferred. The trending can involve single or multiple parameters and is especially useful for cardiorespiratory patients, or those with other cardiovascular abnormalities. Invasive lines, alarms, remote recording and transmitter identification can, without limitation, also be incorporated.

While a variety of spectrums and telemetry techniques can be used satisfactorily, preferably a transmitted event signal is digitized inside a host monitor and transmitted via RF communication using ISM band technology in conjunction with forward correcting, frequency hopping, spread spectrum technology, to the central monitoring system **14** or other component. The event can be a 36-second stored event chosen to bracket the time of the event. If so, the central receiving central monitoring system can provide a display six seconds before the event, six seconds during the event, and for 24 seconds following the event. Other display sequences are possible. The station can also, as needed, incorporate disk drive technology, preferably a 1.44 MB floppy disk drive, which enables a clinician to store and/or retrieve patient data. In preferred embodiments of this sort, the central central monitoring system can analyze and store up to 120 events. Such events can be cataloged in an appropriate manner for easy retrieval, such that a running total of events can be reviewed and, as needed, compared to those events not yet reviewed. Events can also be reprinted, stored on a floppy disk, or deleted at any time according to standard operating procedure.

As indicated above, the present invention allows transmission of several physiological parameters simultaneously, through hardwire, RF or other communication in contrast to the prior art, where simultaneous transmission is limited. The present invention overcomes such a limitation, without degradation of signal and without a slowdown in system function. Simultaneous transmission, alone or in conjunction with other components of the present invention, permits maintenance monitoring capabilities during the transport of the patient. For instance, a clinician using the present invention is able to transport the patient in such a way as to continuously monitor both invasive and non-invasive physiological parameters. By way of comparison, an end user of the prior art would necessarily disconnect the patient from a host monitor and reconnect that patient to a second monitor, one especially built for transporting the patient. The advance represented by the present invention assists the administration of health care. Continued, uninterrupted monitoring of all parameters and/or waveforms, both invasive and non-invasive, is possible throughout the transport and completion of a subsequent procedure. Furthermore, if hemodynamic monitoring circuits are involved, dispensing with the need to disconnect a patient will decrease the inclement risk of contamination. The patient can be transported immediately and when required, without delay due to changes in monitoring requirements. The continued, uninterrupted monitoring of all parameters and waveforms can be accomplished in several ways.

In accordance with one preferred embodiment of the invention, a plurality of the central monitoring systems **14** are located throughout a facility and can communicate with one another via hardwire, RF or other communication methods. Transfer of a patient from one central monitoring system **14** to another can be accomplished either by manually initiating a transfer function at the initiating central monitoring system **14**, or can be accomplished automatically by sensing when a patient enters a zone allocated to another central monitoring system **14**. The manual transfer method

has the advantage of requiring personnel to consciously execute the command and monitor the results of the transfer. In this way, no patient is inadvertently lost by the system. Appropriate confirmation can be provided to ensure the transfer has been effectively completed. In accordance with the automatic transfer method, the fields of the central monitoring system **14** preferably overlap so that continuous monitoring from a central location can take place.

Alternatively, monitoring can be switched from central monitoring by the central monitoring system **14** to the patient monitors **16** in transit. When a transfer is completed, the patient can be automatically registered into the appropriate central monitoring system **14** to which the patient is being transferred. Communication between the central monitoring system **14** enable historical patient data to be transferred during or subsequent to the transfer procedure.

While a variety of techniques can be used, preferably the ISM frequency band is divided into a number of discrete channels. Each of the central monitoring system **14** can then operate on its own channel.

In accordance with another preferred embodiment of the invention, the central monitoring systems **14** can be accessed from another remote location, such as a lounge and interrogation of certain patient parameters and waveforms can be initiated. In this way, nurses or other personnel can monitor a patient while performing activities in locations other than a central monitoring system.

A preferred embodiment of the present invention is as presented through the multiple parameter telemetry system available under the MPT trademark from Criticare Systems, Inc. of Waukesha, Wis. The non-invasive blood pressure component of this embodiment utilizes oscillometric measurement upon inflation. It can average less than 40 seconds, standard adult cuff. Various automatic measurement cycles are available. Continuous readings are available for up to five minutes. Operative pressures range from 30–300 mm Hg for adults and 20–150 mm Hg for neonates. Such a component typically has an accuracy of $\pm 2\%$ or ± 2 mm Hg over the full range of pressures. The pulse oximetry component has a range of 0–99%, with a resolution of 1%. Typically, accuracy is $\pm 2\%$ (70–99%) and $\pm 3\%$ (50–69%). Dual wavelength LED is a preferred method of operation. The ECG component utilizes band widths of 0.05–100 Hz and 0.5–40 Hz. Heart (pulse) rate is measurable over a range of 20–300 beats per minutes, with updates available from beat to beat. Such a component is accurate to ± 1 BPM or 1% (the larger)—ECG and/or ± 2 BPM or 2% (the larger)— SpO_2 and NIBP. Other parameters and waveforms that can be monitored include invasive blood pressure monitors at multiple sites, respiration monitors, body temperature monitors, inspired and expired CO_2 levels in inspired and expired air, O_2 levels in inspired and expired air, anesthetic levels including nitrous oxide levels in inspired and expired air. It will be apparent to one of ordinary skill in the art that the patient monitors **16** can include any number of conventional monitoring devices for monitoring these parameters and waveforms. With respect to particular RF specifications, the receiver frequency and transmitter frequency can be ISM 902–928 MHz although any legally permissible frequency range can be used. An internal antenna is preferably used with the frequency hopping spectrum spreading techniques which are well known in the art.

In accordance with another preferred embodiment of the invention, an external RF modem can be used with conventional bedside monitors such as those commercially avail-

able from the assignee of the present invention. The external RF modem can be used to communicate with the central monitoring system **14** instead of requiring a specially configured patient monitor **16** including RF transceiver technology.

While preferred embodiments of the invention have been shown and described, it will be clear to those skilled in the art that various changes and modifications can be made without departing from the invention in its broader aspects as set forth in the claims provided hereinafter.

What is claimed is:

1. A method for providing simultaneous monitoring of at least one physiological parameter of a patient at a plurality of locations, the method comprising the following steps:

coupling at least one patient monitor including a display and a transceiver to the patient;

establishing a bi-directional RF communications link using spread spectrum digital transmissions in the ISM band between the patient monitor and a central monitoring system;

selecting the physiological parameter to monitor and at least one waveform characteristic of the central monitoring system;

selecting a sampling rate at the central monitoring system; transmitting the selected physiological parameter and the selected waveform characteristic to the patient monitor;

collecting the physiological parameter;

displaying a continuous waveform representation of the physiological parameter at the patient monitor; and

displaying a continuous waveform representation of the physiological parameter at the central monitoring system.

2. A system for monitoring physiological data, comprising:

sensors for blood pressure, pulse rate, blood oxygen concentration and electrocardiographic information;

a patient monitor coupled to the sensors for continually collecting and transmitting the physiological data corresponding to a patient, the patient monitor including a display;

a central monitoring system for storage, analysis, and display of continuous physiological data, the central monitoring system including a transmitter for transmitting at least one monitoring parameter to said patient monitor, wherein the at least one monitoring parameter is a sampling rate; and

a digital spread-spectrum radio-frequency transmitter for transmitting physiological data from said patient monitor to said central monitoring system.

3. The system as defined in claim 2, wherein the monitoring parameter further includes a waveform specification.

4. The system as defined in claim 2, further comprising a second central monitoring system.

5. The system as defined in claim 2, wherein a dynamic waveform is displayed on the display of the patient monitor.

6. A method for providing simultaneous monitoring of at least one physiological parameter of a patient, the method comprising the following steps:

coupling at least one patient monitor to the patient, the patient monitor including a display and a transceiver to the patient;

establishing a bi-directional RF communications link using spread spectrum digital transmissions in the ISM band between the patient monitor and a central monitoring system;

7

selecting at the central monitor system a physiological parameter to monitor;
selecting a sampling rate at the central monitoring system;
collecting the physiological parameter;
displaying a continuous waveform representation of the physiological parameter at the patient monitor; and
displaying a continuous waveform representation of the physiological parameter at the central monitoring system.

7. The method as defined in claim 6, further comprising the step of detecting a patient location.

8

8. The method as defined in claim 6, further comprising the step of coupling a second patient monitor to a second patient.

9. The method as defined in claim 6, further comprising the steps of:

selecting at least one waveform characteristic of the central monitoring system; and

transmitting the selected physiological parameter and the selected waveform characteristic to the patient monitor.

* * * * *

专利名称(译)	用于远程监控多个医疗参数的方法和系统		
公开(公告)号	US6733447	公开(公告)日	2004-05-11
申请号	US09/990851	申请日	2001-11-19
[标]申请(专利权)人(译)	赖JOSEPH 不厌劳伦斯 DUBORE RENEE小号 PATE BRIAN LEWIS REUSS詹姆斯·L·		
申请(专利权)人(译)	赖JOSEPH 不厌LAWRENCE A. DUBORE RENEE S. PATE BRIAN LEWIS REUSS JAMES L.		
当前申请(专利权)人(译)	CRITICARE系统公司.		
[标]发明人	LAI JOSEPH BUYAN LAWRENCE A DUBORE RENEE S PATE BRIAN LEWIS REUSS JAMES L		
发明人	LAI, JOSEPH BUYAN, LAWRENCE A. DUBORE, RENEE S. PATE, BRIAN LEWIS REUSS, JAMES L.		
IPC分类号	A61B5/0205 A61B5/00		
CPC分类号	A61B5/0205 A61B5/002 Y10S128/903 Y10S128/904		
其他公开文献	US20020049371A1		
外部链接	Espacenet USPTO		

摘要(译)

本发明涉及一种医疗参数监测装置，其允许从远程位置监测多个医疗参数。本发明使用中央监视系统，该系统通过来自远程患者监视器的RF发送和接收日期参数。监控系统利用中央监控系统与远程监控器之间的数字扩频RF收发器。采用前向纠错，跳频和扩频信号通信来为多个生理参数提供准确的数据传输。传输的数据可以自动注册到中央监控系统的存储中。

