



US007909769B2

(12) **United States Patent**
Zhu et al.

(10) **Patent No.:** **US 7,909,769 B2**
(45) **Date of Patent:** **Mar. 22, 2011**

(54) **CARBON DIOXIDE AND ACTIVITY MONITORING**

6,249,700 B1 6/2001 Alt
6,662,048 B2 12/2003 Balczewski et al.
7,037,273 B2 5/2006 Zhu et al.
7,479,107 B2 1/2009 Zhu et al.

(75) Inventors: **Qingsheng Zhu**, Wexford, PA (US);
Julio C. Spinelli, Shoreview, MN (US)

(Continued)

(73) Assignee: **Cardiac Pacemakers, Inc.**, St. Paul, MN (US)

OTHER PUBLICATIONS

“U.S. Appl. No. 10/154,142 Non-Final Office Action mailed Jan. 11, 2005”, 6 pgs.

(*) Notice: Subject to any disclaimer, the term of this patent is extended or adjusted under 35 U.S.C. 154(b) by 70 days.

(Continued)

(21) Appl. No.: **12/319,740**

Primary Examiner — Charles A Marmor, II
Assistant Examiner — Navin Natnithithadha

(22) Filed: **Jan. 12, 2009**

(74) *Attorney, Agent, or Firm* — Schwegman, Lundberg & Woessner, P.A.

(65) **Prior Publication Data**

(57) **ABSTRACT**

US 2009/0131775 A1 May 21, 2009

An implanted heart monitor includes sensors that measure various aspects of the heart failure patient's heart. A remote heart monitoring system connects the implanted heart monitor to a care provider, such as a physician. The data provided by the implanted heart monitor permits the care provider to obtain valuable data on the heart in order to make health care decisions affecting the heart failure patient's treatment. In many cases, the measurement of core body temperature and other patient data will enable the care provider to alter the patient's treatment to address the patient's condition. The implanted heart monitor can communicate over a wireless communication link with an external monitor. The implanted heart monitor may be implemented as part of a pacing device (i.e., pace maker) or may be a separate unit devoted to monitoring functions. The external monitor communicates with a monitoring station over a communication link. The monitoring station can operate as a centralized data collection unit, collecting data from multiple external monitors and multiple implanted heart monitors. Various other aspects of a heart failure patient's heart and/or body can be monitored, such as heart rate, blood pH levels, blood CO₂ levels, and any other indications of the heart failure patient's activity. Various predetermined thresholds may be set to trigger alarms and/or data reports.

Related U.S. Application Data

(60) Continuation of application No. 11/258,432, filed on Oct. 25, 2005, now Pat. No. 7,479,107, which is a division of application No. 10/154,142, filed on May 22, 2002, now Pat. No. 7,037,273.

(51) **Int. Cl.**

A61B 5/02 (2006.01)
A61B 5/00 (2006.01)
A61B 5/103 (2006.01)

(52) **U.S. Cl.** **600/483; 600/481; 600/595; 600/549**

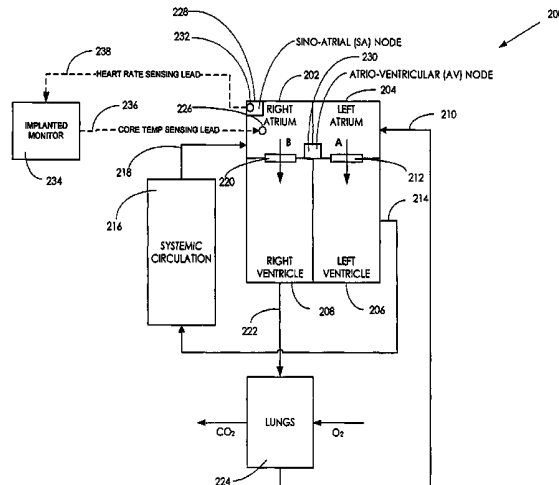
(58) **Field of Classification Search** **600/481, 600/483, 484, 595, 549**
See application file for complete search history.

(56) **References Cited**

U.S. PATENT DOCUMENTS

5,029,582 A 7/1991 Lekholm
5,044,366 A 9/1991 Alt
5,336,244 A 8/1994 Weijand
5,454,838 A 10/1995 Vallana et al.
5,622,182 A * 4/1997 Jaffe 600/531
6,216,023 B1 * 4/2001 Holte et al. 600/345

18 Claims, 4 Drawing Sheets



U.S. PATENT DOCUMENTS

2003/0013945 A1* 1/2003 Graindorge et al. 600/300
 2003/0125774 A1 7/2003 Salo
 2003/0153953 A1* 8/2003 Park et al. 607/17
 2003/0167081 A1 9/2003 Zhu et al.
 2006/0047191 A1 3/2006 Zhu et al.

OTHER PUBLICATIONS

"U.S. Appl. No. 10/154,142 Notice of Allowance mailed Jun. 23, 2005", 7 pgs.

"U.S. Appl. No. 10/154,142 Response filed Apr. 11, 2005 to Non-Final Office Action mailed Jan. 11, 2005", 11 pgs.

"U.S. Appl. No. 10/154,142 Response filed Oct. 22, 2004 to Restriction Requirement mailed Sep. 24, 2004", 2 pgs.

"U.S. Appl. No. 10/154,142 Restriction Requirement mailed Sep. 24, 2004", 5 pgs.

"U.S. Appl. No. 10/154,142 Supplemental Notice of Allowance mailed Mar. 1, 2006", 3 pgs.

"U.S. Appl. No. 10/154,142 Supplemental Notice of Allowance mailed Aug. 18, 2005", 3 pgs.

"U.S. Appl. No. 11/258,432 Notice of Allowance mailed Sep. 15, 2008", 6 pgs.

"U.S. Appl. No. 11/258,432 Response filed Jan. 22, 2008 to Non-Final Office Action mailed Sep. 21, 2007", 12 pgs.

"U.S. Appl. No. 11/258,432 Ex Parte Quayle mailed May 30, 2008", 5 pgs.

"U.S. Appl. No. 11/258,432 Examiner's Interview Summary mailed Jul. 25, 2008", 2 pgs.

"U.S. Appl. No. 11/258,432 Non-Final Office Action mailed Sep. 21, 2007", 7 pgs.

Adamsons, K., et al., "Influence of temperature on blood pH of the human adult and newborn", *J Appl Physiol.*, 19, (Sep. 1964), 897-900.

Alonso, C., "Electrocardiographic Predictive Factors of Long-Term Clinical Improvement with Multisite Biventricular Pacing in Advanced Heart Failure", *The American Journal of Cardiology*, 84(12), (Dec. 1999), 1417-1421.

Ashwood, E. R., et al., "Temperature correction of blood-gas and pH measurements", *Clin Chem.*, 29 (11), (Nov. 1983), 1877-1885.

Farwell, D., et al., "How Many People with Heart Failure are Appropriate for Biventricular Resynchronization?", *European Heart Journal* (England), vol. 21, No. 15, (Aug. 2000), 1246-1250.

Fearnot, N. E., et al., "Evaluation of the Temperature Response to Exercise Testing in Patients with Single Chamber, Rate Adaptive

Pacemakers: A Multicenter Study", *Pacing and Clinical Electrophysiology*, 12, (Nov. 1989), 1806-1815.

Greenburg, A. G., et al., "Temperature coefficients for Pco₂ and pH in whole blood. Finding Pco₂ and pH at low temperatures", *Arch Surg.*, 91(6), (Dec. 1965), 867-871.

Le Franc, P., et al., "Triple Chamber Pacemaker for End-Stage Heart Failure in a Patient with a Previously Implanted Automatic Defibrillator", *Pacing and Clinical Electrophysiology*, 21(8), (Aug. 1998), 1672-1675.

Mcelroy, P. A., et al., "Physiologic Correlates of the Heart Rate Response to Upright Isonotic Exercise: Relevance to Rate-Responsive Pacemakers", *Journal of the American College of Cardiology*, 11(1), (Jan. 1988), 94-99.

Reeves, R. B., "Temperature-induced changes in blood acid-base status: Donnan r_{c1} and red cell volume", *J Appl Physiol.*, 40(5), (May 1976), 762-7.

Reeves, R. B., "Temperature-induced changes in blood acid-base status: pH and PCO₂ in a binary buffer", *J Appl Physiol.*, 40(5), (May 1976), 752-761.

Rosenthal, T. B., "The effect of temperature on the pH of blood and plasma in vitro", *J. Biol. Chem.*, 173, (1948), 25-30.

Rubin, S. A., "Core Temperature Regulation of Heart Rate During Exercise in Humans", *Division of Cardiology, Cedars-Sinai Medical Center, and Department of Medicine*, University of California, Los Angeles, CA, (1987), 1997-2002.

Shellock, F. G., et al., "Mixed Venous Blood Temperature Response to Exercise in Heart Failure Patients Treated with Short-term Vasodilators", *Division of Cardiology, Cedars-Sinai Medical Center, and Department of Medicine*, University of California, Los Angeles, CA, (Dec. 1985), 503-514.

Shellock, F. G., et al., "Muscle and Femoral Vein Temperatures During Short-Term Maximal Exercise in Heart Failure", *Division of Cardiology, Cedars-Sinai Medical Center, and Department of Medicine*, University of California, Los Angeles, CA, (Feb. 1985), 400-408.

Stadie, W. C., et al., "The effect of temperature on the acid-base-protein equilibrium and its influence on the CO₂ absorption curve of whole blood, true and separated serum", *J. Biol. Chem.*, 66, (1925), 901-920.

Walker, S., et al., "Bi-Ventricular Pacing in Congestive Cardiac Failure, Current Experience and Future Directions", *European Heart Journal* (England), 21(11), (Jun. 2000), 884-889.

* cited by examiner

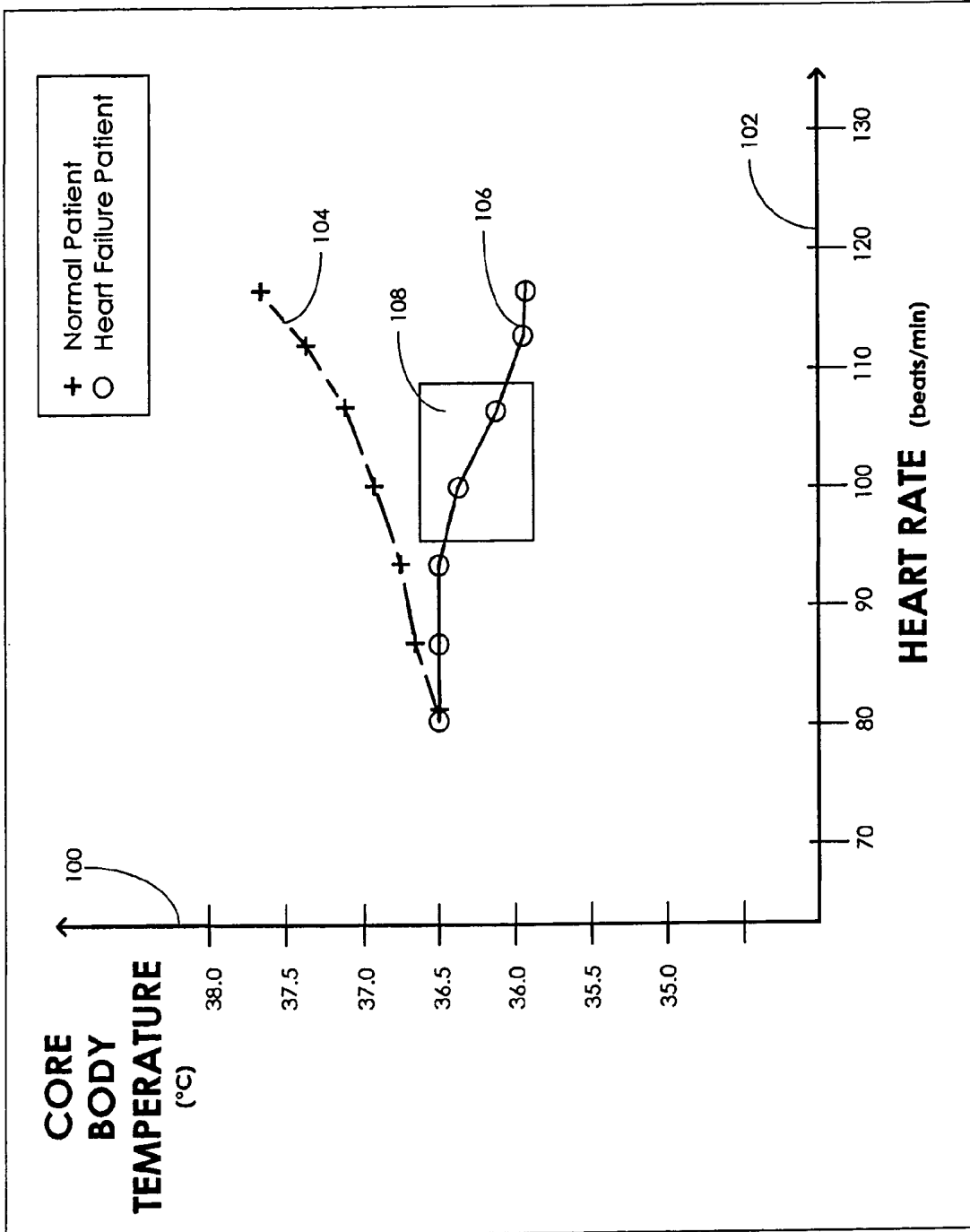


Fig. 1

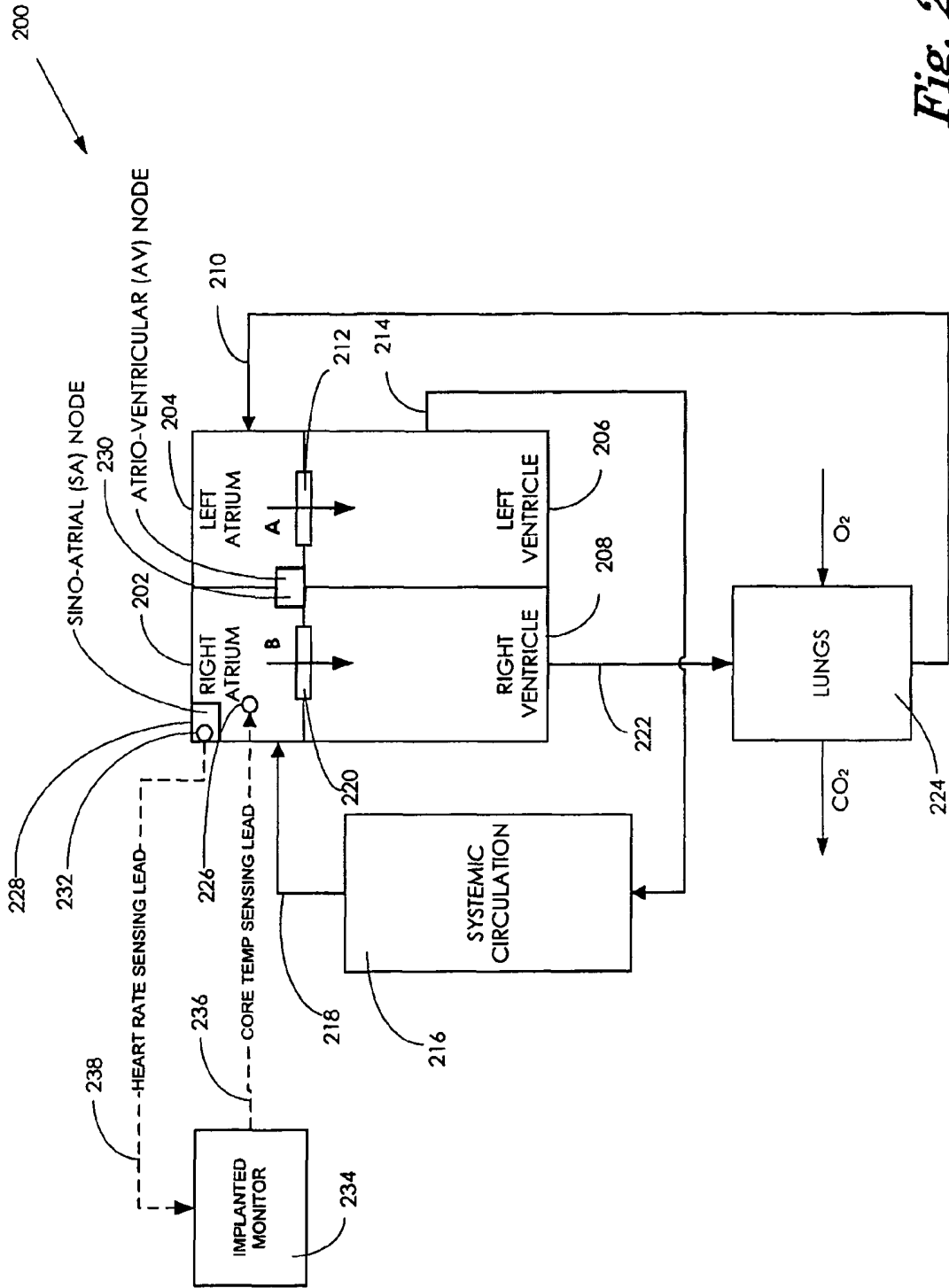


Fig. 2

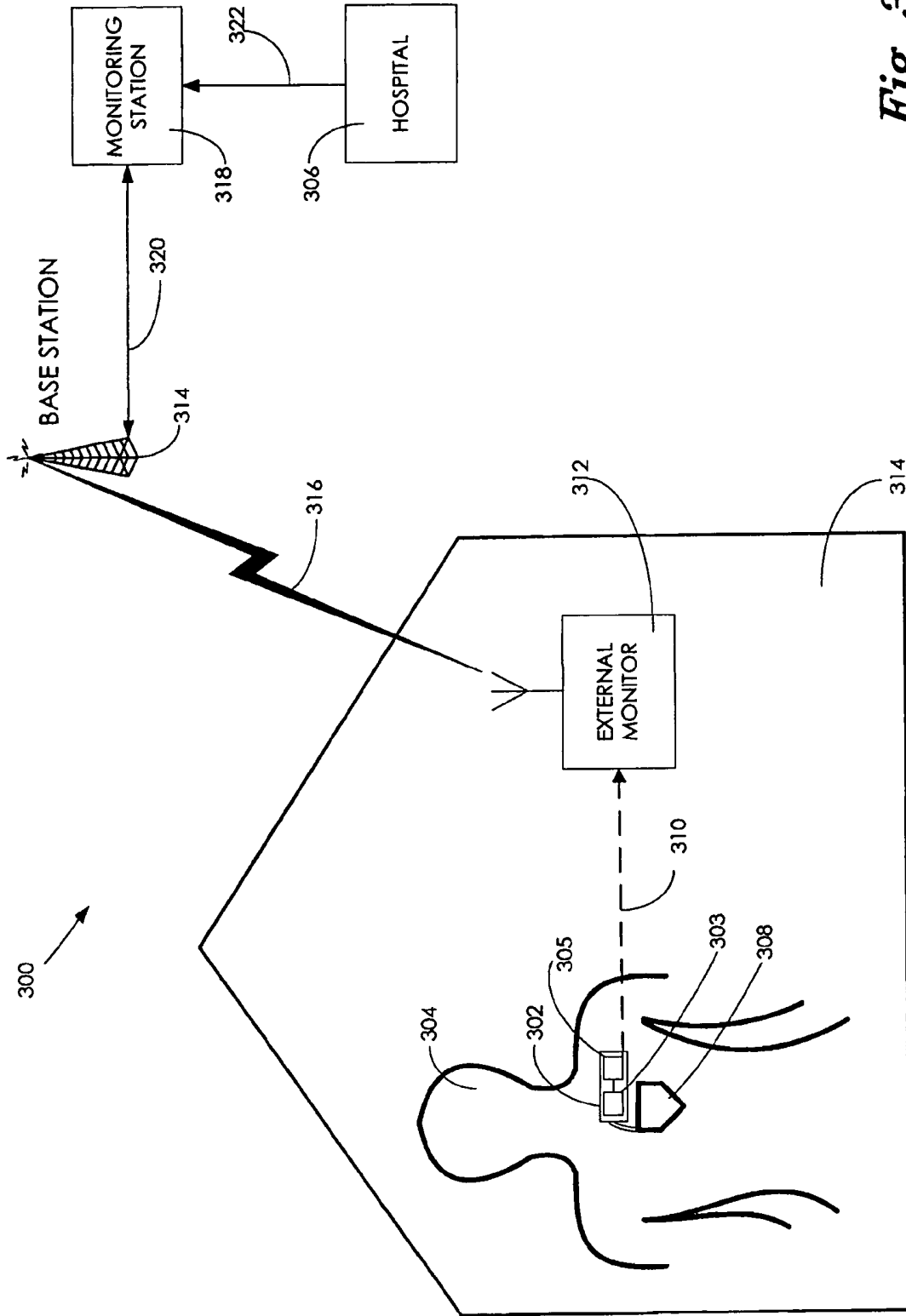


Fig. 3

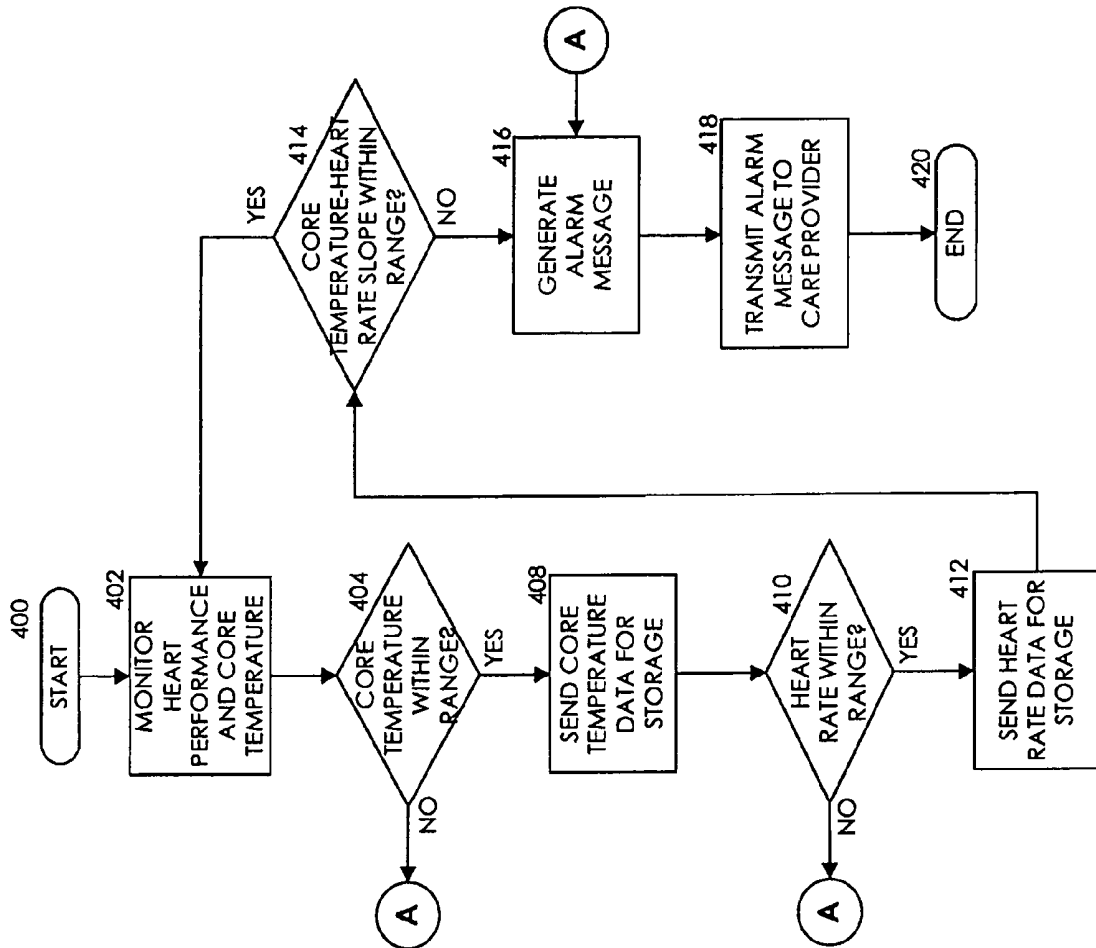


Fig. 4

CARBON DIOXIDE AND ACTIVITY MONITORING

CROSS REFERENCE TO RELATED APPLICATIONS

This application is a continuation of U.S. patent application Ser. No. 11/258,432, filed Oct. 25, 2005, now U.S. Pat. No. 7,479,107, which is a divisional of U.S. patent application Ser. No. 10/154,142, filed May 22, 2002, now U.S. Pat. No. 7,037,273, said applications are incorporated herein by reference.

FIELD OF THE INVENTION

The present invention relates to monitoring heart performance in heart failure patients. More specifically, the present invention relates to monitoring heart performance to detect the occurrence of a drop in core body temperature in heart failure patients.

BACKGROUND OF THE INVENTION

As early as 1985, medical literature documented a relationship between decreased core body temperature and increased bodily activity in heart failure patients. In a paper by Stanley A. Rubin (RUBIN, STANLEY A. *Core body temperature regulation of heart rate during exercise in humans*. J. Appl. Physiol. 62(5): 1997-2001, 1987), a significant correlation was found between an observed change in core body temperature and heart rate changes in heart failure patients. Rubin defined core body temperature as the mixed venous blood pool found in the pulmonary artery. Using a thermistor mounted on the distal end of a Swan-Ganz catheter, Rubin found that the core body temperature of heart failure patients decreased during exercise, while the core body temperature in normal patients typically increased during exercise.

This relationship between core body temperature and heart activity has been observed in other studies. In a paper by Frank G. Shellock, et al. (SHELLOCK, FRANK G., H. J. C. SWAN, AND STANLEY A. RUBIN. *Muscle and femoral vein temperatures during short term maximal exercise in heart failure*. J. Appl. Physiol. 58(2): 400-408, 1985), reductions in core body temperatures in heart failure patients were observed while the heart failure patients underwent exercise. Shellock, et al. concluded that the core body temperature decrease observed in heart failure patients is partially caused by the re-distribution of cooler blood from the underperfused skeletal muscles into the core blood during exercise. Another paper by Shellock and Rubin (FRANK G. SHELLOCK AND STANLEY A. RUBIN. *Mixed venous blood temperature response to exercise in heart failure patients treated with short-term vasodilators*. Clinical Physiology 5, 503-514, 1985), also concluded that the core body temperature drop was due to circulatory inadequacies. This conclusion was based on Shellock's and Rubin's conclusion that heart failure patients treated with vasodilators experience an attenuation of the core body temperature response typical during exercise, as a result of vasodilator-induced improvement in circulation.

More recent research ascribes the drop in core body temperature to low blood pH levels. As a heart failure patient exercises, the heart failure patient experiences an increase of CO₂ in its blood as the blood attempts to eliminate the CO₂ from the exercising muscles. The heart failure patient will normally increase its breathing volume in an attempt to evacuate the increased level of CO₂ from the blood. However, in heart failure patients, the blood system cannot deliver the

blood to the lungs fast enough to support an adequate CO₂ for O₂ exchange in the lungs. It is well known that higher levels of CO₂ correlate with lower levels of blood pH. As CO₂ accumulates in the heart failure patient's body, the blood's pH level drops. Because pH is a catalyst for virtually every chemical reaction in the body, the heart failure patient's chemical reactions will be slowed by the reduced pH levels. As the blood's pH level drops with the increased CO₂ levels, the heart failure patient's bodily chemical reactions responsible for heat production during exercise are slowed and the core body temperature stays flat or decreases.

While the core body temperature drop phenomenon has been documented in the literature described above, little has been done to apply this knowledge to benefit heart failure patients. A heart failure patient may require immediate medical attention or an alteration of medical treatment in certain conditions where an increase in heart activity and a decrease in core body temperature are coincident.

Therefore, there is a need in the art for a core body temperature monitoring system that can determine when the core body temperature level of a heart failure patient is outside of an acceptable range. The monitoring system also should determine whether the relationship between the core body temperature level and the activity of the heart failure patient is outside of an acceptable range. The monitoring system should be capable of generating an alarm when an unacceptable level has been detected. The monitoring system also should be able to transmit an alarm to a remote location.

SUMMARY OF THE INVENTION

An implanted heart monitor of the present invention includes sensors that measure various aspects of the heart failure patient's heart. A remote heart monitoring system can connect the implanted heart monitor to a care provider, such as a physician. The data provided by the implanted heart monitor permits the care provider to obtain valuable data on the heart in order to make health care decisions affecting the heart failure patient's treatment. In many cases, the measurement of core body temperature and other patient data will enable the care provider to alter the patient's treatment to address the patient's condition. The implanted heart monitor can communicate over a wireless communication link with an external monitor. The implanted heart monitor may be implemented as part of a pacing device (i.e., pace maker) or may be a separate unit devoted to monitoring functions. The external monitor communicates with a monitoring station over a communication link. The monitoring station can operate as a centralized data collection unit, collecting data from multiple external monitors and multiple implanted heart monitors. Various other aspects of a heart failure patient's heart and/or body can be monitored, such as heart rate, blood pH levels, blood CO₂ levels, and any other indications of the heart failure patient's activity. Various predetermined thresholds may be set to trigger alarms and/or data reports.

In one aspect of the present invention, a heart monitoring system is provided. The heart monitoring system includes a temperature sensor for determining a core body temperature of a patient and a bodily activity sensor for determining a bodily activity level of the patient. A communication link is used for transmitting the core body temperature and the bodily activity level to an external monitor.

In another aspect of the invention, a method is provided for diagnosing a performance level of a heart in a patient. A core body temperature and a bodily activity level are determined. A relationship between the core body temperature and the bodily activity level is also determined. In response to deter-

mining that the relationship between the core body temperature and the bodily activity level is outside of a predetermined acceptable relationship range, a first alarm message is generated.

In yet another aspect of the invention, an implantable heart monitor is provided. The implantable heart monitor has a core body temperature sensor for determining a core body temperature of a patient. A bodily activity sensor is used to determine a bodily activity level of a patient. The implantable heart monitor also has a transmission unit for transmitting the core body temperature and the bodily activity level to an external monitor and a processing unit for calculating a relationship between the core body temperature and the bodily activity level and for generating an alarm message in response to a determination that the relationship is outside of a pre-defined acceptable range. The transmission unit can transmit the alarm message to the external monitor.

The various aspects of the present invention may be more clearly understood and appreciated from a review of the following detailed description of the disclosed embodiments and by reference to the drawings and claims.

BRIEF DESCRIPTION OF THE DRAWINGS

FIG. 1 is a graph depicting an exemplary relationship between observed core body temperature measurements and heart rate measurements in normal patients and in heart failure patients.

FIG. 2 is a block diagram depicting the blood system of a heart failure patient with an implanted heart monitor that is an exemplary embodiment of the present invention.

FIG. 3 is a block diagram of a remote heart monitoring system that is an exemplary embodiment of the present invention.

FIG. 4 is a flow chart depicting an exemplary method for monitoring and reporting core body temperature and heart rate levels for a heart failure patient.

DETAILED DESCRIPTION

In an exemplary embodiment of the present invention, an implanted heart monitor includes sensors that measure various aspects of a heart failure patient's heart. A remote heart monitoring system connects the implanted heart monitor to a care provider, such as a physician. The data provided by the implanted heart monitor permits the care provider to obtain valuable data on the heart in order to make health care decisions affecting the heart failure patient's treatment. In many cases, the measurement of core body temperature and other patient data will enable the care provider to alter the patient's treatment to address the patient's condition. The implanted heart monitor can communicate over a wireless communication link with an external monitor. The implanted heart monitor may be implemented as part of a pacing device (i.e., pace maker) or may be a separate unit devoted to monitoring functions. The external monitor communicates with a monitoring station over a communication link. The monitoring station can operate as a centralized data collection unit, collecting data from multiple external monitors and multiple implanted heart monitors. Various other aspects of a heart failure patient's heart and/or body can be monitored, such as heart rate, blood pH levels, blood CO₂ levels, and any other indications of the heart failure patient's activity. Various predetermined thresholds may be set to trigger alarms and/or data reports.

FIG. 1 is a graph depicting an exemplary relationship between observed core body temperature measurements and

heart rate measurements in normal patients and in heart failure patients. The graph of FIG. 1 is a two-dimensional graph with core body temperature levels indicated on the y axis **100** in degrees Celsius and heart rate levels indicated on the x axis **102** in beats per minute. The graph of FIG. 1 relates core body temperature measurements and heart rate measurements for normal patients along normal curve **104**. The graph of FIG. 1 relates core body temperature measurements and heart rate measurements for heart failure patients along the heart failure patient curve **106**.

As can be seen from the graph, in normal patients, core body temperature increases in approximately a direct relationship with an increase in heart rate. In heart failure patients, on the other hand, core body temperature stays constant or is reduced as the heart failure patient's heart rate increases. As described above, this phenomenon has been well documented in medical literature. As mentioned above, recent research ascribes the drop in core body temperature to low blood pH levels. As a heart failure patient exercises, the heart failure patient experiences an increase of CO₂ in its blood as the blood attempts to eliminate the CO₂ from the exercising muscles. The heart failure patient will normally increase its breathing volume in an attempt to evacuate the increased level of CO₂ from the blood. However, in heart failure patients, the blood system cannot deliver the blood to the lungs fast enough to support an adequate CO₂ for O₂ exchange in the lungs. It is well known that higher levels of CO₂ correlate with lower levels of blood pH. As CO₂ accumulates in the heart failure patient's body, the blood's pH level drops. Because pH is a catalyst for virtually every chemical reaction in the body, the heart failure patient's chemical reactions will be slowed by the reduced pH levels. As the blood's pH level drops with the increased CO₂ levels, the heart failure patient's bodily chemical reactions responsible for heat production during exercise are slowed and the core body temperature stays flat or decreases.

In the graph of FIG. 1, a critical zone **108** has been defined. Although the critical zone **108** could be tailored for any diagnostic and/or treatment purposes, it represents the occurrence of a critical event in the relationship between the core body temperature and the heart rate. In the case of FIG. 1, the negative slope of heart failure patient curve **106** indicates that the core body temperature is dropping rapidly as the patient's heart rate increases. By monitoring the slope of the heart failure patient curve **106**, a care provider (e.g., attending physician) could determine that a heart failure patient is experiencing adverse heart conditions. In response to this determination, the care provider could alter the patient's medical treatment or instruct the patient to seek medical attention. In the example of FIG. 1, heart rate is used as an indicator of a heart failure patient's bodily activity. Typically, increased bodily activity results in increased heart rate. However, as is well known in the art, a heart failure patient's heart rate can increase for various reasons. Thus, monitoring heart rate alone is not necessarily an indication that the heart failure patient is experiencing increased bodily activity. Those skilled in the art will also appreciate that other aspects of the heart failure patient's diagnostics can be used to indicate increased bodily activity. Such data may include breathing volume, patient motion, and CO₂ levels.

Core body temperature is indicative of the temperature of blood returning to the heart from the rest of patient's body. Of course, core body temperature can increase and decrease for various reasons. Consequently, the increase or decrease in core body temperature alone is not necessarily indicative of an adverse heart condition. A concurrent decrease in core body temperature and increase in patient bodily activity is

indicative of an adverse heart condition. Consequently, exemplary embodiments of the present invention enable more effective treatment of a heart failure patient by monitoring the relationship between core body temperature and heart rate (or other indications of bodily activity).

FIG. 2 is a block diagram depicting the blood system of a heart failure patient with a heart monitor that is an exemplary embodiment of the present invention. The typical heart 200 includes a right atrium 202, a left atrium 204, a right ventricle 208, and a left ventricle 206. The left atrium 204 brings in arterialized blood from the lungs through the pulmonary veins 210. The pumping action of the heart 200 forces blood from the left atrium 204 to the left ventricle 206 through a one-way left heart valve 212 in the direction of arrow A. The pumping action of the heart 200 forces blood from the left ventricle 206 through the aorta 214 to the body's systemic circulation system 216. The systemic circulation system 216 is a short-hand reference to the network of blood vessels that distribute blood to all parts of the body. Blood is returned to the heart 200 from the systemic circulation system 216 through the venae cavae 218. The returning blood is characterized by having a higher CO₂ content. The blood transports oxygen to the systemic circulation system 216 and eliminates CO₂ from the systemic circulation system.

Blood with high CO₂ content enters the right atrium 202 through the venae cavae 218. The pumping action of the heart forces blood from the right atrium 202 to the right ventricle 208 through a one-way right heart valve 220 in the direction of arrow B. The pumping action of the heart then forces the blood from the right ventricle 208 through the pulmonary artery 222 to the lungs 224. The blood is ultimately forced into capillaries in the lungs that expose the blood to air sacs. The air sacs of the lung 224 provide the architecture for exchanging CO₂ in the blood for oxygen in the lungs. Once the exchange has been made, the blood is forced from the lungs back into the heart 200 through the pulmonary veins 210.

Core body temperature is normally measured in the return path of the blood circulation system. Because all of the body's blood returns through the venae cavae 218 to the right atrium 202, the blood entering the right atrium is referred to as the mixed venous blood pool. Notably, the blood in the venous blood pool has dissipated as much heat as possible in the systemic circulation system 216 prior to re-entering the heart 200. A temperature sensor, such as a thermistor, can be placed in or near the right atrium 202 to measure the core body temperature in the venous blood pool. In a one embodiment as shown in FIG. 2, a core body temperature sensor 226 is located inside the right atrium 202. Those skilled in the art will appreciate the core body temperature may be measured in various locations in addition to a location in the right atrium 202. For example, measurements of skeletal muscle temperature, myocardial muscle temperature, or even skin temperature can be measured and correlated to a corresponding core body temperature to determine the measured core body temperature. In a practical application, a core body temperature sensor could be integrated into the outer casing of a conventional implanted pacing device. A temperature correlation table could be used to approximate the core body temperature, based on the temperature detected at the pacing device casing.

The right atrium 202 includes a sino-atrial (SA) node 228. The SA node 228 signals an electrical impulse to propagate through the heart 200 to cause the heart to beat. The SA node receives an electrical impulse from the nervous system and converts the electrical impulse to a heartbeat. An atrio-ventricular (AV) node 230 is a cluster of muscle cells located in

the wall between the right atrium 202 and the left atrium 204. The AV node 230 is part of the heart's 200 electrical system. The AV node 230 helps deliver heartbeat signals from the atria to the ventricles. Heart rate measurements are often taken at the SA node 228, because the SA node is the contact point from which the body's natural heart pacing signals emanate. Even in heart failure patients, the SA node 228 will usually receive a detectable signal from the nervous system. The natural heart-pacing signal can be detected by means of a heart rate sensing lead 232, attached to the heart 200 at the SA node 228.

The core body temperature sensor 226 and the heart rate sensor 232 can be connected to an implanted monitor 234 by a core body temperature sensing lead 236 and a heart rate sensing lead 238, respectively. The implanted monitor 234 can be an integrated component of a pacing device or may simply be an implanted monitor with no pacing functionality. In an exemplary embodiment of the present invention, the implanted monitor 234 can communicate with an external monitor (not shown) to communicate various data collected from the patient and/or analysis performed on collected data. In any event, the implanted monitor 234 can measure heart rate and core body temperature data and can transmit that data to an external entity such as a care provider, an external monitor/alarm unit, or an external data collection center.

The implanted monitor 234 also can determine the relationship between collected data such as core body temperature and heart rate data. For example, the implanted monitor 234 could be used to calculate the slope of a graph of the relationship between a heart failure patient's heart rate and core body temperature measurements. As described above, the data collected and/or analyzed by the implanted monitor 234 may include various indications of bodily activity and/or heart performance.

FIG. 3 is a block diagram of a remote heart monitoring system 300 that is an exemplary embodiment of the present invention. The remote heart monitoring system 300 connects a heart monitor 302, implanted in a heart failure patient 304, to a care provider (e.g., a physician), for example, a physician at a hospital 306. The implanted heart monitor 302 includes sensors that measure various aspects of the heart failure patient's heart 308. The implanted heart monitor 302 can include a processing unit 303 for processing the measured data and for analyzing the data to, for example, determine a relationship between the measured data. In one example, the processing unit 303 is configured for calculating or otherwise determining a relationship between blood pH level and bodily activity level. In a further example, the processing unit 303 is configured for generating an alarm message in response to a determination that the relationship is outside of a predefined acceptable range. The implanted heart monitor 302 communicates over a wireless communication link 310 with an external monitor 312. The implanted heart monitor 302 may include a transmission unit 305 for communicating with the external monitor over the wireless communication link 310. In one example, the implanted heart monitor is operative to transmit the core body temperature and the bodily activity level to the external monitor, such as, for instance, a remote monitoring station.

The implanted heart monitor 302 may be implemented as part of a pacing device (i.e., pace maker) or may be a separate unit devoted to monitoring bodily functions. The external monitor can be located within the heart failure patient's home 314 or may be mobile. Those skilled in the art will appreciate that various implementations of the external monitor 312 are possible within the scope of the present invention. It should also be appreciated that the connection between the

implanted heart monitor **302** and the external monitor **312** could be a hardwire connection (i.e., not wireless), for example, when the remote heart monitoring system **300** is used in a hospital room context.

The external monitor **312** communicates with a base station **314** over a wireless communication link **316**. Again, those of ordinary skill in the art will appreciate that a hardwire connection could be used between the external monitor **312** and the base station **314**. However, as with the wireless communication link **310** between the implanted heart monitor **302** and the external monitor **312**, the wireless communication link **316** provides the most versatility and convenience to the patient.

The base station **314** is connected to a monitoring station **318** over a communication link **320**. The monitoring station can be used to collect data from the implanted heart monitor **302**, via the external monitor **312**. Notably, the monitoring station **318** can collect data from multiple external monitors and multiple implanted heart monitors. That is, the monitoring station **318** can operate as a centralized data collection unit. The monitoring station **318** can communicate with a hospital **306** over a communication link **322**. The monitoring station **318** can communicate with multiple hospitals and/or care providers to deliver monitored and/or stored data.

In the remote heart monitoring system **300** of FIG. 3, various aspects of a heart failure patient's heart and/or body can be monitored. For example, the implanted heart monitor **302** may monitor core body temperature, ventilation rate, oxygen consumption rate, heart rate, blood pH levels, blood CO₂ levels, bodily movement, and any other indication of the heart failure patient's bodily activity. In one example, a pH level sensor determines a core body temperature by determining a blood pH level and correlating a blood pH level into a core body temperature. In a further example, the implanted heart monitor **302** is operatively connected to a blood pH level sensor and a bodily activity sensor and is configured to receive and process data representative of the blood pH level and the bodily activity level. In this example, the implanted heart monitor **302** processes data representative of blood pH level and correlates the blood pH data into a core body temperature. Various predetermined thresholds may be set to trigger alarms and/or data reports. For example, if the heart monitor **302** determines that the measured core body temperature is outside a predefined acceptable range, the heart monitor may trigger an alarm. Alternatively, the heart monitor **302** may simply deliver the data to the external monitor **312**.

The external monitor **312** may compare the measured levels to predetermined acceptable ranges and trigger alarms when a variance is detected. Similarly, predetermined thresholds may be set for the heart failure patient's heart rate and for the relationship between measured indications. For example, an alarm may be triggered when the slope of a graph of core body temperature versus heart rate is too low.

While the remote heart monitoring system **300** of FIG. 3 has been described in the context of monitoring the conditions of a heart failure patient, it will be appreciated by those skilled in the art that the remote monitoring system could be implemented to monitor virtually any aspect of a patient's health or activity.

The implanted heart monitor **302** periodically collects data and reports the collected data to the external monitor **312**. The external monitor **312** can process the data and relay the data to the monitoring station **318** at predetermined intervals, via the base station **314**. The external monitor **312** may make a determination that the collected data indicates a change in patient wellness. In response to a determination that the patient's wellness has improved or declined, the external monitor **312**

may generate a wellness report separate from the routinized collected data reporting. The external monitor **312** may determine that the collected data justifies the transmission of an alarm. In this case, the external monitor **312** can transmit an alarm request to the monitoring station that can then generate an alarm and convey the alarm to the appropriate care provider at the hospital **306**. Those skilled in the art will appreciate that the functionality of the implanted monitor and of the external monitor could be integrated into a single unit. It will also be appreciated that the implanted monitor could detect and transmit virtually any heart condition and/or body condition data.

The heart monitoring system **300** of FIG. 3 could be used in conjunction with a pacing device or any other heart failure treatment regimen. When the implanted heart monitor **302** detects an out-of-range condition, an alarm may be generated for the care provider, as described above. If, for example, the core body temperature measurement is outside of a predefined acceptable range, the care provider may access the patient's historical records to determine potential causes. The care provider also may cause the monitoring station **318** to initiate special communications with the external monitor **312** to gather more recent data on the patient's heart or other diagnostic information. If the care provider receives an alarm indicating a relationship between the core body temperature and the bodily activity level, the care provider may contact the patient and urge the patient to seek immediate treatment. Of course, in a hospital context, the care provider may simply go to the patient's hospital room and attend to the patient.

Generally, a significant decrease in a heart failure patient's core body temperature without a coincident increase in bodily activity may signal an imminent heart failure episode, such as cardiac arrest. A decrease in a heart failure patient's core body temperature that is coincident with an increase in bodily activity is an expected relationship. However, if the decrease in core body temperature during increased bodily activity is too rapid, it too may signal an imminent heart failure episode, such as cardiac arrest. In any event, the data provided by the implanted heart monitor permits the care provider to obtain valuable data on the heart in order to make health care decisions affecting the heart failure patient's treatment. In many cases, the measurement of core body temperature and other patient data will enable the care provider to alter the patient's treatment to address the patient's condition (i.e., make the patient's condition less pathological). This treatment alteration may be as simple as alerting the patient to cease vigorous exercise, or as complex as modifying the operational parameters of the patient's pacing device (i.e., pacemaker).

FIG. 4 is a flow chart depicting an exemplary method for monitoring and reporting core body temperature and heart rate levels for a heart failure patient. The method of FIG. 4 begins at start block **400** and proceeds to step **402**. At step **402**, the heart performance and core body temperature of a heart failure patient is monitored. As described in connection with FIG. 2, the step of monitoring heart performance may be performed by an implanted heart monitor with a heart rate sensor operative to detect a heart rate. The core body temperature monitoring may be performed by an implanted heart monitor that uses a core body temperature sensor to determine the temperature of a venous blood pool.

The method proceeds from step **402** to decision block **404**. At decision block **404**, a determination is made as to whether the core body temperature is within a predetermined range. If the core body temperature is within the predetermined range, the method branches to step **408**. On the other hand, if the monitored core body temperature is not within the predetermined range, the method branches to step **416** through con-

nector A. In the exemplary method of FIG. 4, the predetermined range for core body temperatures may represent a range of core body temperature determined by a care provider to be a safe range for the patient. Those skilled in the art will appreciate that the range may differ from one heart failure patient to another and could, therefore, be configurable on a per-patient basis.

At step 416, an alarm message is generated to indicate that the measured core body temperature is outside of an acceptable range. The method proceeds from step 416 to step 418, wherein the alarm message is transmitted to the care provider. Those skilled in the art will appreciate that a single alarm may be used for any out-of-range condition. Alternatively, a separate alarm may be used for each out of range condition. The alarm message may include an indication of the measured data that has been determined to be out of the acceptable range. The method proceeds from step 418 to step 420 and heart performance and core body temperature monitoring is continued.

Returning now to decision block 404, if a determination is made that the core body temperature is within the predefined range, the method branches from decision block 404 to step 408. At step 408, the core body temperature data is transmitted for storage. In the remote heart monitoring system 300 of FIG. 3, the core body temperature data may be stored in the external monitor 312 for later transmission or may be stored in the monitoring station 318 in a centralized patient database. The method proceeds from step 408 to decision block 410.

At decision block 410, a determination is made as to whether the heart failure patient's heart rate is within a predefined acceptable range. If the patient's heart rate is outside of the acceptable range, the method branches to step 416, via connector A. The method proceeds from step 416 to generate an alarm indicating the out-of-range condition, as described above. If, at decision block 410, a determination is made that the heart rate is within the predefined acceptable range, the method branches from decision block 410 to step 412.

At step 412, the heart rate data is sent for storage. As described above, the heart rate data may be stored in an external monitor, a monitoring station, or any other acceptable storage means for subsequent retrieval. A method proceeds from step 412 to decision block 414. At decision block 414, a determination is made as to whether the core body temperature versus heart rate slope is within a predefined acceptable range. As described above in connection with FIG. 1, the relationship between the core body temperature and the heart rate (or any other indication of bodily activity) is a useful measurement for diagnosing a heart failure patient. If the slope is outside of the acceptable range, the method branches to step 416 and an alarm is generated as described above. If, on the other hand, the slope is within the range, the method branches from decision block 414 to step 402 and core body temperature monitoring is continued.

Although the present invention has been described in connection with various exemplary embodiments, those of ordinary skill in the art will understand that many modifications can be made thereto within the scope of the claims that follow. Accordingly, it is not intended that the scope of the invention in any way be limited by the above description, but instead be determined entirely by reference to the claims that follow.

We claim:

1. A heart monitoring apparatus, comprising:

a CO₂ level sensor configured to determine a blood CO₂ level of a patient;

a bodily activity sensor configured to determine a physical bodily activity level of the patient;

a processing unit configured to process data representative of the CO₂ level and the physical bodily activity level of the patient, the processing unit configured to use the data representative of the blood CO₂ level and the physical bodily activity level to generate a diagnostic; and

a transmission unit configured to transmit the data representative of the blood CO₂ level and the physical bodily activity level to a monitor, wherein the heart monitoring apparatus is configured to correlate the blood CO₂ level with a core body temperature of the patient.

2. The heart monitoring apparatus of claim 1, wherein the processing unit is configured to determine a relationship between the blood CO₂ level and the physical bodily activity level and to generate an alarm message in response to a determination that the relationship is outside of a predefined acceptable range.

3. The heart monitoring apparatus of claim 2, wherein the transmission unit is configured to transmit the alarm message to the monitor.

4. The heart monitoring apparatus of claim 2, wherein the CO₂ level sensor is configured to be implanted within the patient.

5. The heart monitoring apparatus of claim 4, wherein the bodily activity level sensor is configured to be implanted within the patient.

6. The heart monitoring apparatus of claim 5, wherein the monitor is an external monitor that is configured to communicate the alarm message with an external remote monitoring station.

7. The heart monitoring apparatus of claim 1, wherein the transmission unit is configured to transmit data representative of the core body temperature to the monitor.

8. The heart monitoring apparatus of claim 1, wherein the monitor is configured to be implanted within the patient.

9. A method, comprising:

determining a blood CO₂ level of a patient;

determining a physical bodily activity level of the patient; using data representative of the blood CO₂ level and the physical bodily activity level to generate a diagnostic using a processing unit;

transmitting the data representative of the blood CO₂ level and the physical bodily activity level to a monitor; and correlating the blood CO₂ level with a core body temperature of the patient.

10. The method of claim 9, comprising:

determining a relationship between the blood CO₂ level and the physical bodily activity level; and

generating an alarm message in response to a determination that the relationship between the blood CO₂ level and the physical bodily activity level is outside of a predefined acceptable range.

11. The method of claim 10, wherein determining the relationship includes processing data representative of the blood CO₂ level and the physical bodily activity level of the patient.

12. The method of claim 10, comprising transmitting the alarm message to a monitor.

13. The method of claim 10, comprising altering a patient treatment regimen in response to the determination that the relationship between the blood CO₂ level and the physical bodily activity level is outside of the predefined acceptable range.

14. The method of claim 9, wherein determining the physical bodily activity level includes determining a ventilation rate of the patient.

15. The method of claim 9, wherein determining the physical bodily activity level includes determining an acceleration rate of the patient.

11

16. The method of claim 9, comprising transmitting the data representative of the blood CO₂ level and the physical bodily activity level to an external remote monitoring station.

17. An apparatus, comprising:

means for determining a blood CO₂ level of a patient; 5
means for determining a physical bodily activity level of the patient;

means for using data representative of the blood CO₂ level and the physical bodily activity level to generate a diagnostic; and

means for transmitting the data representative of the blood CO₂ level and the physical bodily activity level to a monitor; and 10

12

means for correlating the blood CO₂ level with a core body temperature of the patient.

18. The apparatus of claim 17, comprising:

means for determining a relationship between the blood CO₂ level and the physical bodily activity level; and

means for generating an alarm message in response to a determination that the relationship between the blood CO₂ level and the physical bodily activity level is outside of a predefined acceptable range.

* * * * *

专利名称(译)	二氧化碳和活动监测		
公开(公告)号	US7909769	公开(公告)日	2011-03-22
申请号	US12/319740	申请日	2009-01-12
[标]申请(专利权)人(译)	SPINELLI JULIO		
申请(专利权)人(译)	朱庆生 SPINELLI JULIO		
当前申请(专利权)人(译)	心脏起搏器, INC.		
[标]发明人	ZHU QINGSHENG SPINELLI JULIO C		
发明人	ZHU, QINGSHENG SPINELLI, JULIO C.		
IPC分类号	A61B5/02 A61B5/103 A61B5/00 A61B5/01 A61B5/024 A61B5/07		
CPC分类号	A61B5/0008 A61B5/076 A61B5/14539 A61B5/024 A61B5/145		
其他公开文献	US20090131775A1		
外部链接	Espacenet USPTO		

摘要(译)

植入式心脏监测器包括测量心力衰竭患者心脏各个方面的传感器。远程心脏监测系统将植入的心脏监测器连接到护理提供者,例如医生。由植入式心脏监测器提供的数据允许护理提供者获得关于心脏的有价值数据,以便做出影响心力衰竭患者治疗的健康护理决定。在许多情况下,核心体温和其他患者数据的测量将使护理提供者能够改变患者的治疗以解决患者的病情。植入式心脏监测器可以通过无线通信链路与外部监视器通信。植入式心脏监测器可以实现为起搏设备(即起搏器)的一部分,或者可以是专用于监视功能的单独单元。外部监视器通过通信链路与监视站通信。监测站可作为集中数据采集单元运行,从多个外部监测器和多个植入式心脏监测器收集数据。可以监测心力衰竭患者的心脏和/或身体的各种其他方面,例如心率,血液pH水平,血液CO₂水平以及心力衰竭患者活动的任何其他指示。可以设置各种预定阈值以触发警报和/或数据报告。

