



US006908437B2

(12) **United States Patent**
Bardy

(10) **Patent No.:** **US 6,908,437 B2**

(45) **Date of Patent:** ***Jun. 21, 2005**

(54) **SYSTEM AND METHOD FOR DIAGNOSING AND MONITORING CONGESTIVE HEART FAILURE FOR AUTOMATED REMOTE PATIENT CARE**

(75) **Inventor:** **Gust H. Bardy, Seattle, WA (US)**

(73) **Assignee:** **Cardiac Intelligence Corporation, Seattle, WA (US)**

(*) **Notice:** Subject to any disclaimer, the term of this patent is extended or adjusted under 35 U.S.C. 154(b) by 0 days.

5,040,536 A	8/1991	Riff
5,113,859 A	5/1992	Funke
5,113,869 A	5/1992	Nappholz et al.
5,133,346 A	7/1992	Kulkarni
5,199,428 A	4/1993	Obel et al.
5,331,549 A	7/1994	Crawford, Jr.
5,336,245 A	8/1994	Adams et al.
5,355,889 A	10/1994	Nevo et al.
5,357,427 A	10/1994	Langen et al.
5,390,238 A	2/1995	Kirk et al.
5,416,695 A	5/1995	Stutman et al.

(Continued)

This patent is subject to a terminal disclaimer.

(21) **Appl. No.:** **10/646,105**

(22) **Filed:** **Aug. 22, 2003**

(65) **Prior Publication Data**

US 2004/0147982 A1 Jul. 29, 2004

Related U.S. Application Data

(63) Continuation of application No. 10/042,402, filed on Jan. 7, 2002, now Pat. No. 6,811,537, which is a continuation of application No. 09/441,623, filed on Nov. 16, 1999, now Pat. No. 6,336,903.

(51) **Int. Cl.⁷** **A61B 5/0402**

(52) **U.S. Cl.** **600/508**

(58) **Field of Search** 600/508, 509, 600/513, 300, 301; 128/920, 923; 607/4, 5, 9

(56) **References Cited**

U.S. PATENT DOCUMENTS

4,142,533 A	3/1979	Brownlee et al.
4,531,527 A	7/1985	Reinhold, Jr. et al.
4,686,999 A	8/1987	Snyder et al.
4,809,697 A	3/1989	Causey, III et al.
4,852,570 A	8/1989	Levine
4,958,645 A	9/1990	Cadell et al.
4,974,607 A	12/1990	Miwa
4,987,897 A	1/1991	Funke

OTHER PUBLICATIONS

Moody GB, "Integration of Real-Time and Off-Line Clinical Data in the MIMIC Database," *Computers in Cardiology* 1997 vol. 24, pp. 585-588, Cambridge, MA USA.

Long WJ, et al., "Differential Diagnosis Generation From A Causal Network With Probabilities," *Computers in Cardiology*, 1988, Proceedings, pp. 185-188, Washington DC, USA.

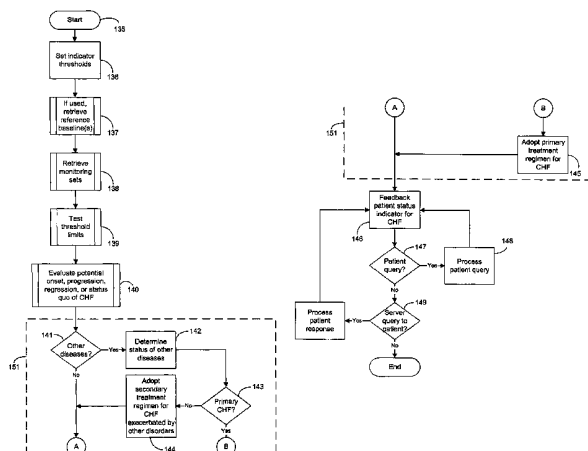
Primary Examiner—George R. Evanisko

(74) *Attorney, Agent, or Firm*—Patrick J.S. Inouye

(57) **ABSTRACT**

A system for diagnosing and monitoring congestive heart failure for automated remote patient care is presented. A database stores a plurality of monitoring sets relating to patient information recorded on a substantially continuous basis. A server retrieving and processing the monitoring sets includes a comparison module determining patient status changes by comparing at least one recorded measure from one of the monitoring sets to at least one other recorded measure from another of the monitoring sets with both recorded measures relating to a type of patient information and an analysis module testing each patient status change for one of an onset, a progression, a regression, and a status quo of congestive heart failure against a predetermined indicator threshold corresponding to a type of patient information as the recorded measures. The indicator threshold corresponds to a quantifiable physiological measure of a pathophysiology indicative of congestive heart failure.

81 Claims, 23 Drawing Sheets



U.S. PATENT DOCUMENTS

5,421,343 A 6/1995 Feng
 5,437,278 A 8/1995 Wilk
 5,438,983 A 8/1995 Falcone
 5,464,012 A 11/1995 Falcone
 5,544,661 A 8/1996 Davis et al.
 5,553,609 A 9/1996 Chen et al.
 5,576,952 A 11/1996 Stutman
 5,591,215 A 1/1997 Greenhut et al.
 5,603,331 A 2/1997 Heemels et al.
 5,660,183 A 8/1997 Chiang et al.
 5,687,734 A 11/1997 Dempsey et al.
 5,697,959 A 12/1997 Poore
 5,704,366 A 1/1998 Tracklind et al.
 5,711,297 A 1/1998 Iliff
 5,713,350 A 2/1998 Yokota et al.
 5,720,770 A 2/1998 Nappholz et al.
 5,720,771 A 2/1998 Snell
 5,724,580 A 3/1998 Levi et al.
 5,724,983 A 3/1998 Selker et al.
 5,738,102 A 4/1998 Lemelson
 5,743,267 A 4/1998 Nikolic
 5,749,907 A 5/1998 Mann
 5,749,908 A 5/1998 Snell
 5,752,976 A 5/1998 Duffin et al.
 5,769,074 A 6/1998 Barnhill et al.
 5,772,586 A 6/1998 Heinonen et al.
 5,772,604 A 6/1998 Langberg et al.
 5,778,882 A 7/1998 Raymond et al.
 5,785,650 A 7/1998 Akasaka et al.
 5,792,062 A 8/1998 Poon et al.
 5,855,593 A 1/1999 Olson et al.
 5,876,353 A * 3/1999 Riff 607/9
 5,879,375 A 3/1999 Larson, Jr. et al.
 5,891,178 A 4/1999 Mann et al.
 5,897,493 A 4/1999 Brown
 5,911,132 A 6/1999 Sloane
 5,931,857 A 8/1999 Prieve
 5,954,640 A 9/1999 Szabo
 5,957,861 A 9/1999 Combs et al.
 5,974,124 A 10/1999 Schlueter, Jr. et al.
 5,987,352 A 11/1999 Klein et al.

6,024,699 A 2/2000 Surwit et al.
 6,047,203 A 4/2000 Sackner et al.
 6,050,940 A 4/2000 Braun
 6,067,466 A 5/2000 Selker
 6,073,046 A 6/2000 Patel
 6,080,106 A 6/2000 Lloyd et al.
 6,083,248 A 7/2000 Thompson
 6,093,146 A 7/2000 Filangeri
 6,095,985 A 8/2000 Raymond et al.
 6,102,856 A 8/2000 Groff et al.
 6,122,351 A 9/2000 Schlueter, Jr. et al.
 6,139,494 A 10/2000 Cairnes
 6,155,267 A 12/2000 Nelson
 6,168,563 B1 1/2001 Brown
 6,171,237 B1 1/2001 Avitall et al.
 6,171,256 B1 1/2001 Joo et al.
 6,223,078 B1 4/2001 Marcovecchio
 6,225,901 B1 5/2001 Kail, IV
 6,246,992 B1 6/2001 Brown
 6,249,705 B1 6/2001 Snell
 8,250,309 6/2001 Krichen et al.
 6,263,245 B1 7/2001 Snell
 6,287,252 B1 9/2001 Lugo
 6,290,646 B1 9/2001 Cosentino et al.
 6,302,844 B1 10/2001 Walker
 6,336,900 B1 1/2002 Alleckson
 6,336,903 B1 * 1/2002 Bardy 600/508
 6,363,282 B1 3/2002 Nichols et al.
 6,416,471 B1 7/2002 Kumar et al.
 6,442,433 B1 8/2002 Linberg
 6,454,705 B1 9/2002 Cosentino
 6,477,424 B1 11/2002 Thompson et al.

FOREIGN PATENT DOCUMENTS

EP 0 34 2859 11/1989
 EP 0 513 457 11/1992
 EP 0 531 889 A2 3/1993
 EP 0 711 531 A1 5/1996
 WO WO 97/39792 10/1997
 WO WO 98/01742 2/1998
 WO WO 99/46718 9/1999

* cited by examiner

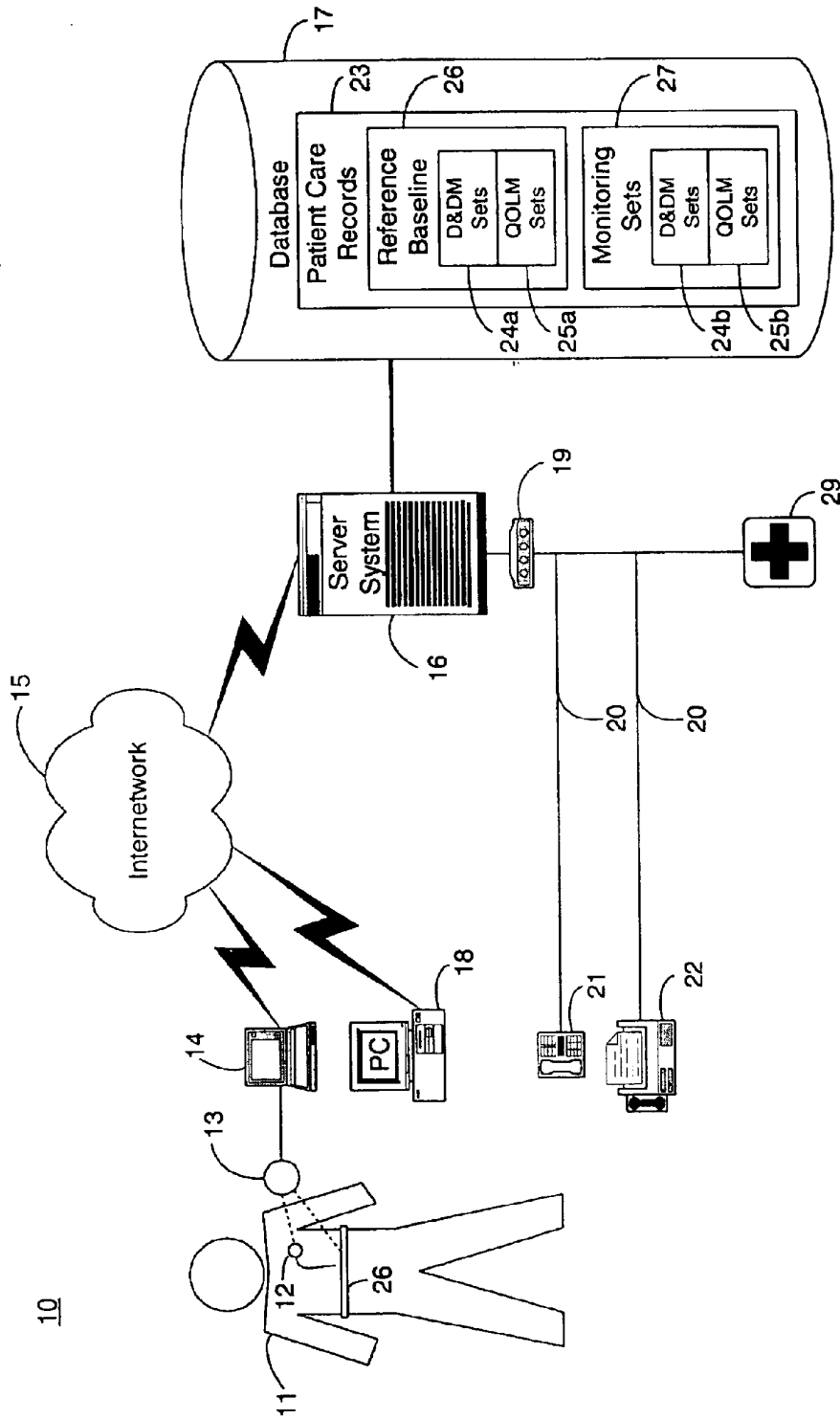


Figure 1.

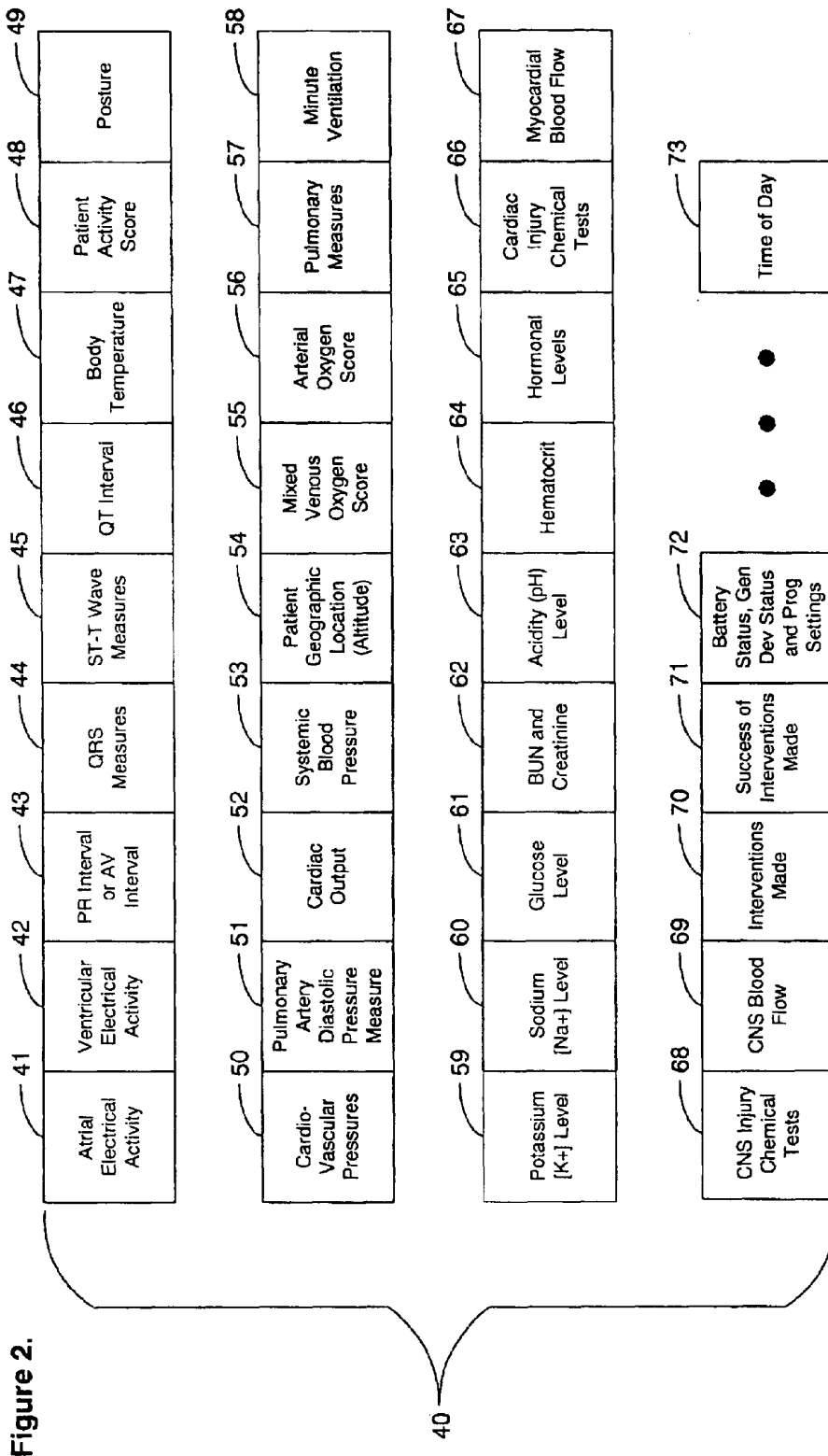


Figure 3.

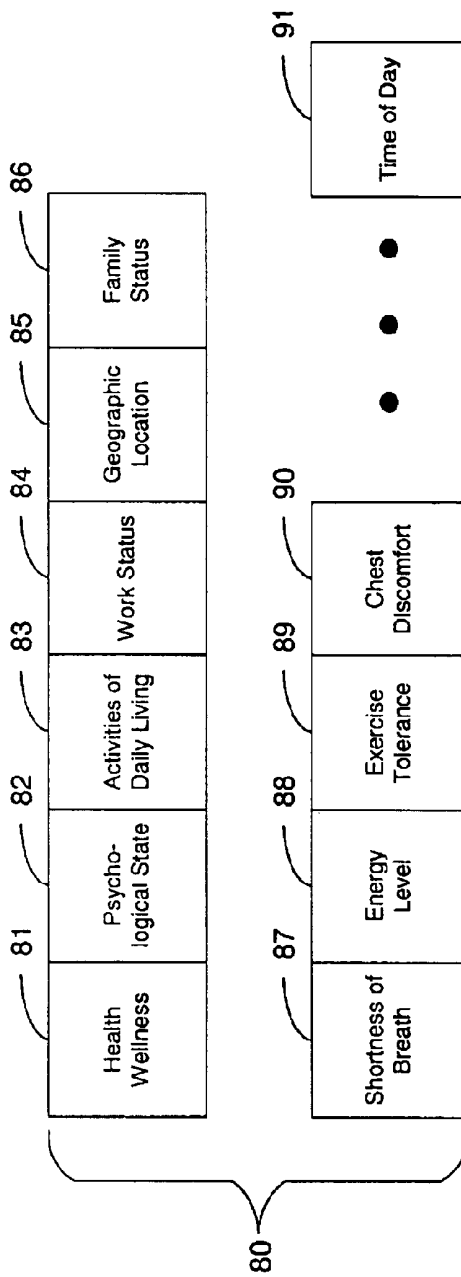


Figure 4.

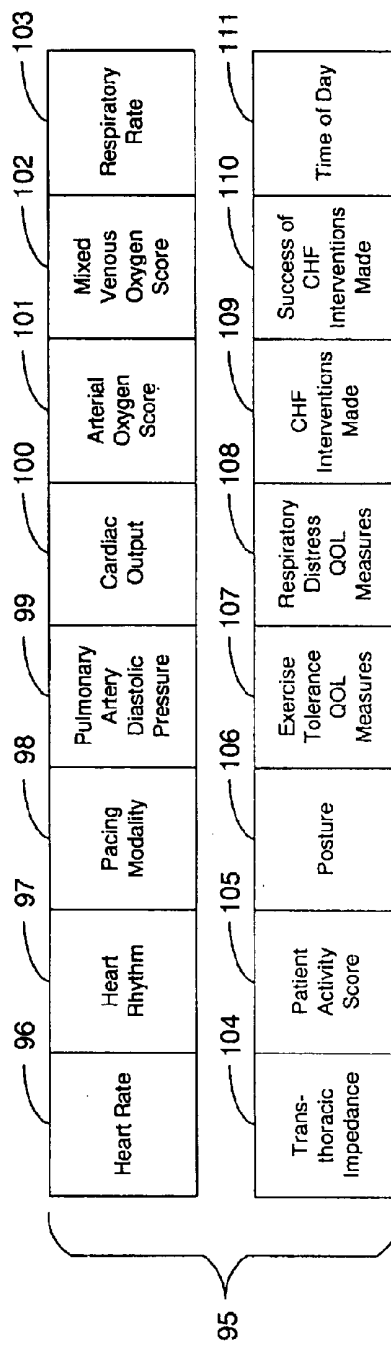


Figure 5.

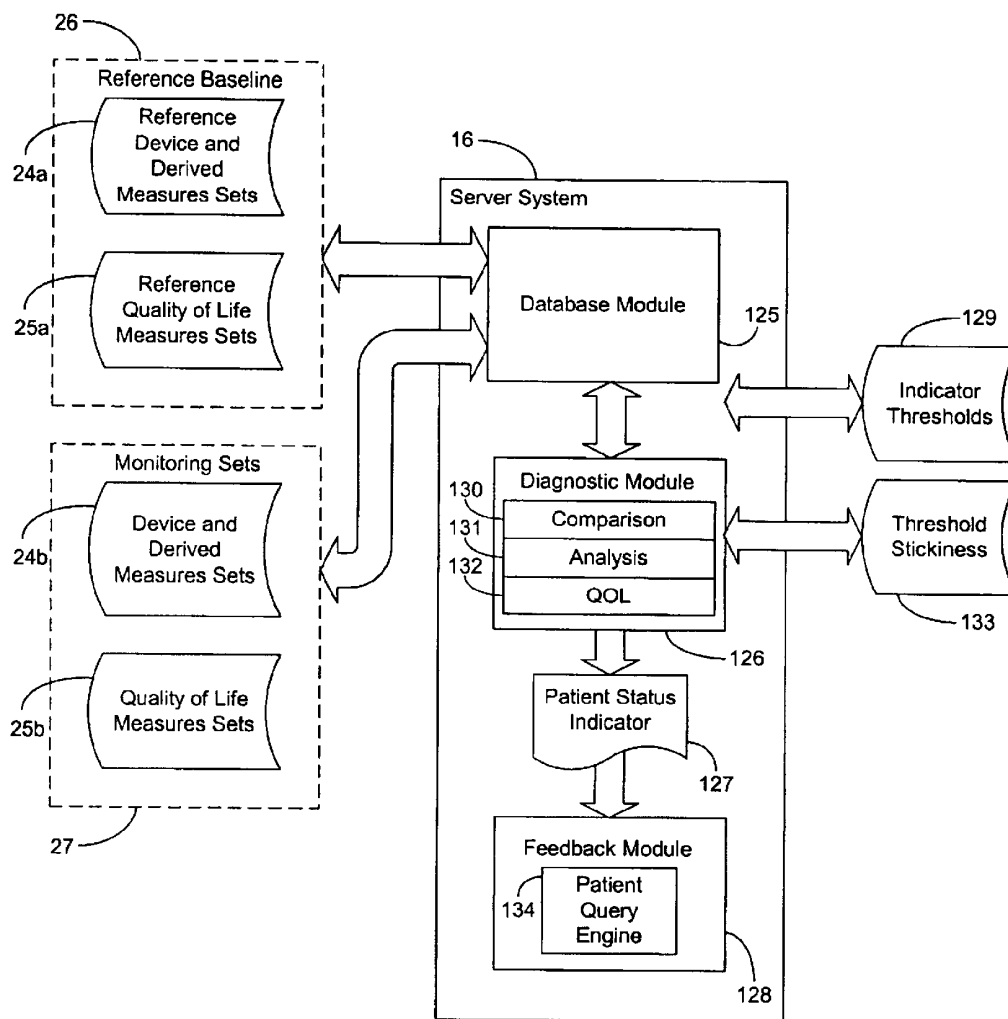


Figure 6.

Patient 1

Set 0				Set n-2	Set n-1	Set n
X_0	•	•	•	X_{n-2}	X_{n-1}	X_n
Y_0	•	•	•	Y_{n-2}	Y_{n-1}	Y_n
Z_0	•	•	•	Z_{n-2}	Z_{n-1}	Z_n

time →

Patient 2

Set 0				Set n-2	Set n-1	Set n
X_0'	•	•	•	X_{n-2}'	X_{n-1}'	X_n'
Y_0'	•	•	•	Y_{n-2}'	Y_{n-1}'	Y_n'
Z_0'	•	•	•	Z_{n-2}'	Z_{n-1}'	Z_n'

time →

Patient 3

Set 0				Set n-2	Set n-1	Set n
X_0''	•	•	•	X_{n-2}''	X_{n-1}''	X_n''
Y_0''	•	•	•	Y_{n-2}''	Y_{n-1}''	Y_n''
Z_0''	•	•	•	Z_{n-2}''	Z_{n-1}''	Z_n''

time →

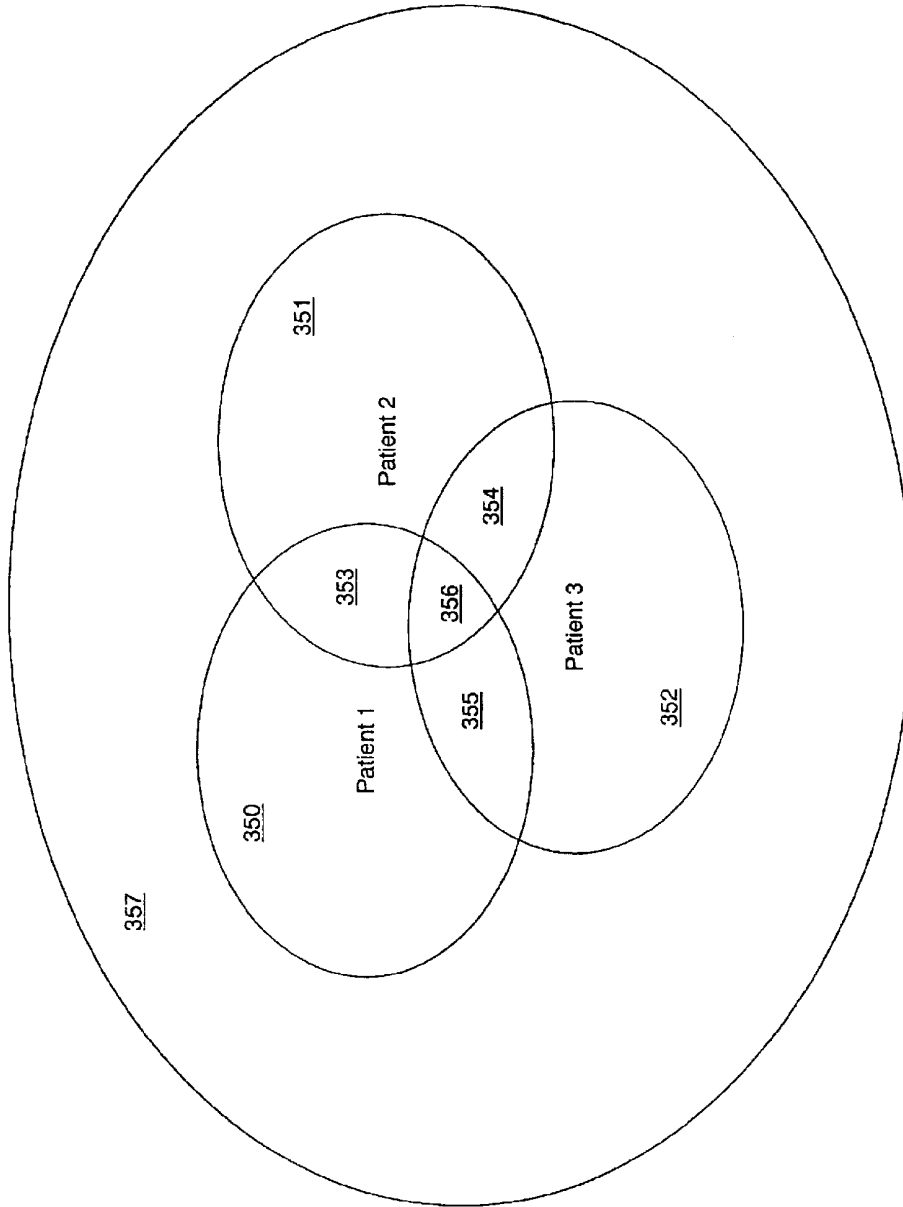


Figure 7.

Figure 8A.

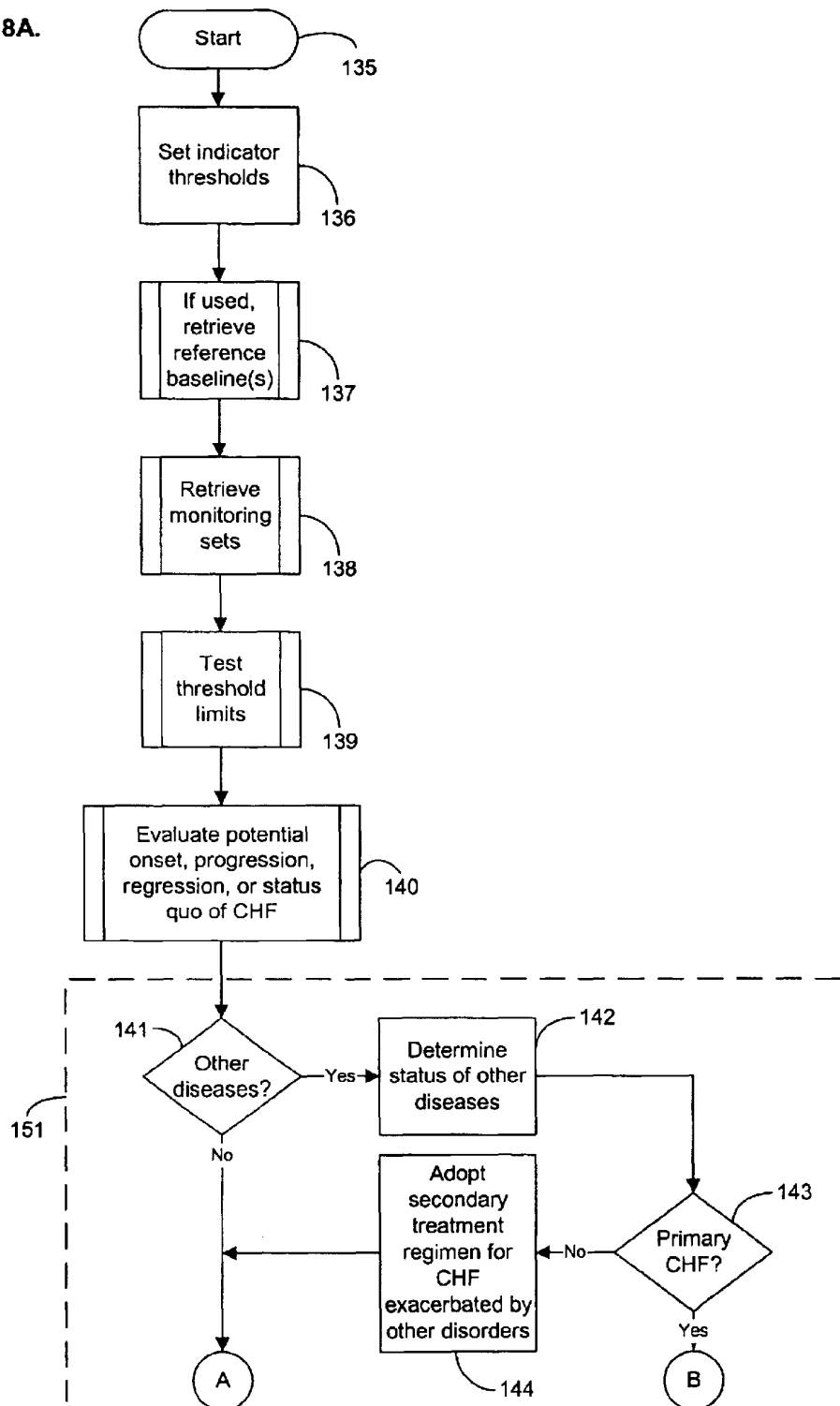


Figure 8B.

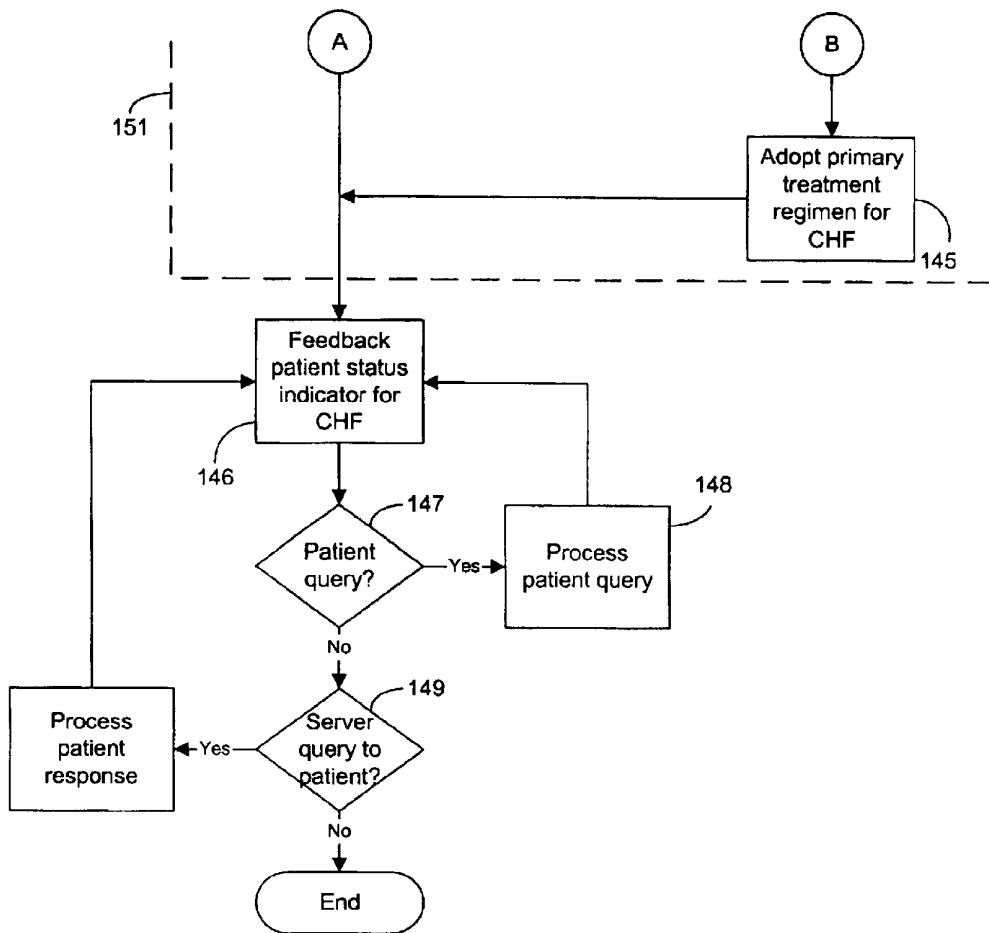


Figure 9.

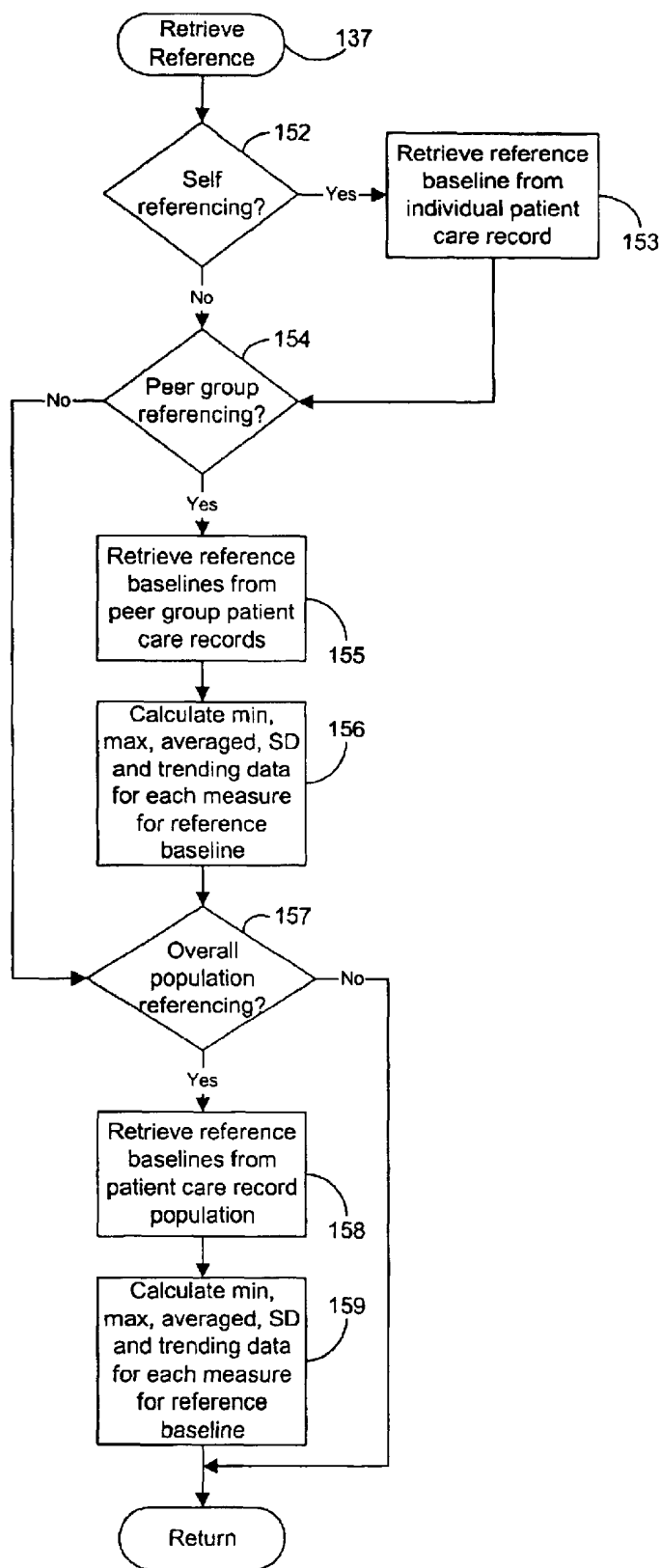


Figure 10.

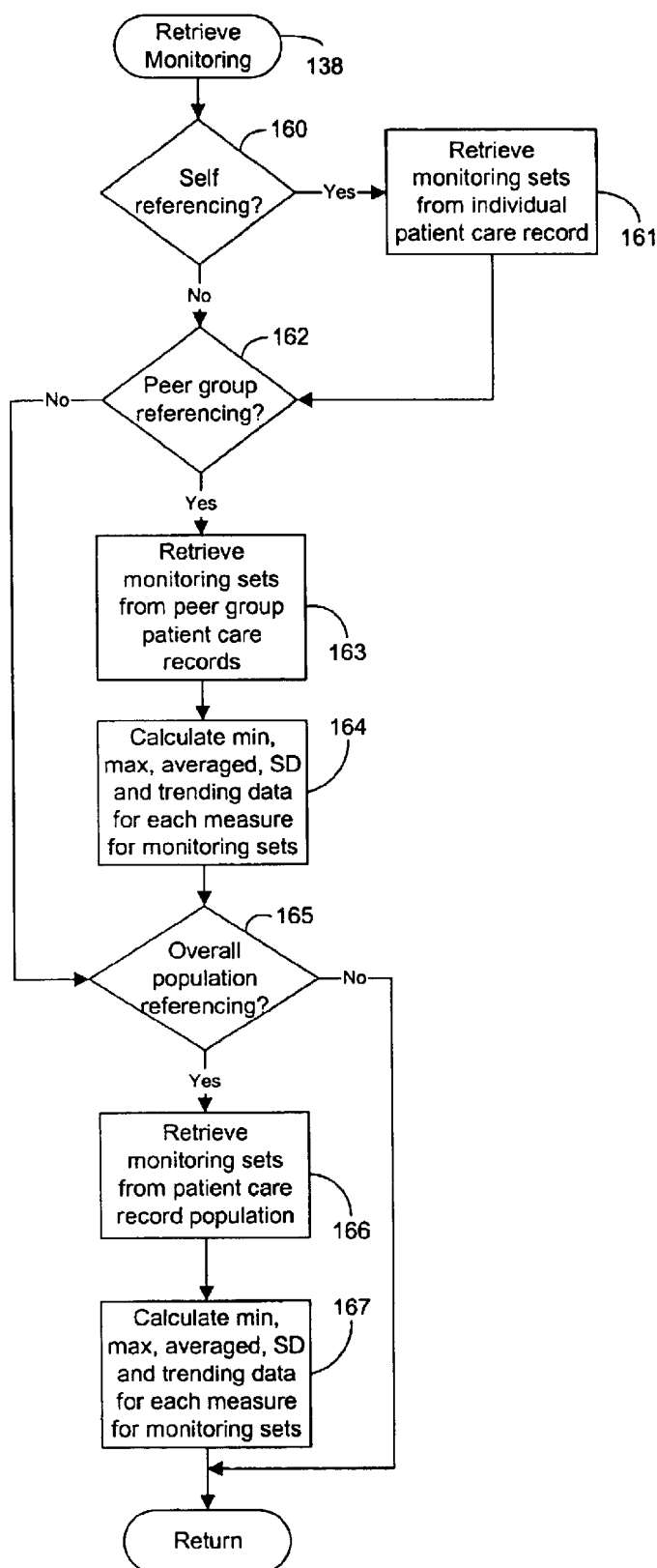


Figure 11A.

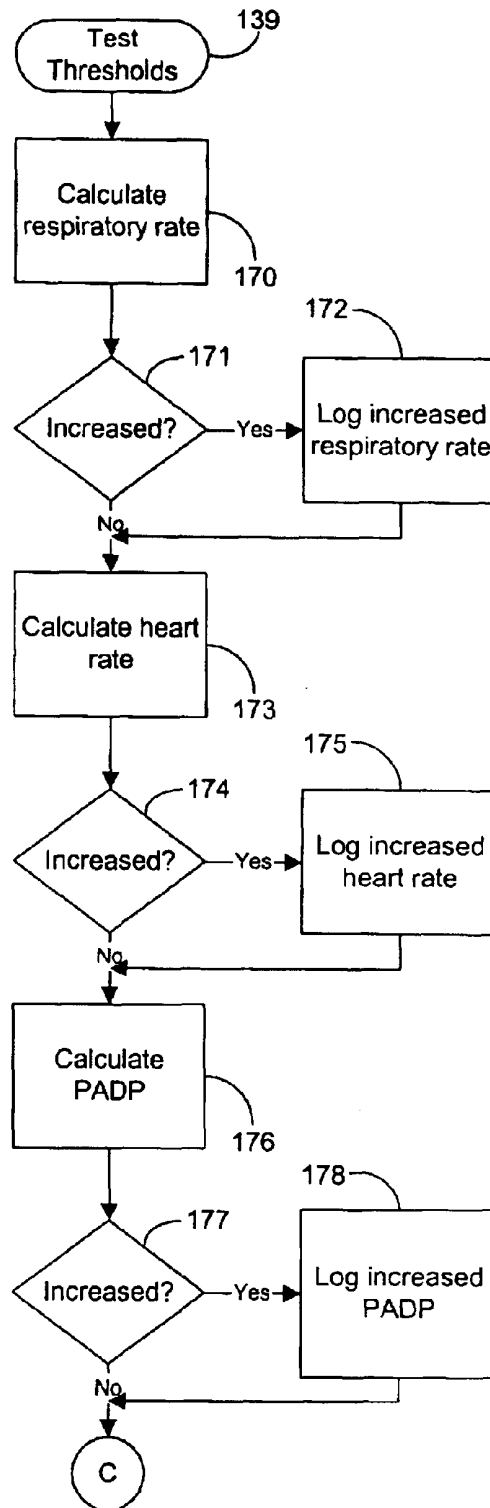


Figure 11B.

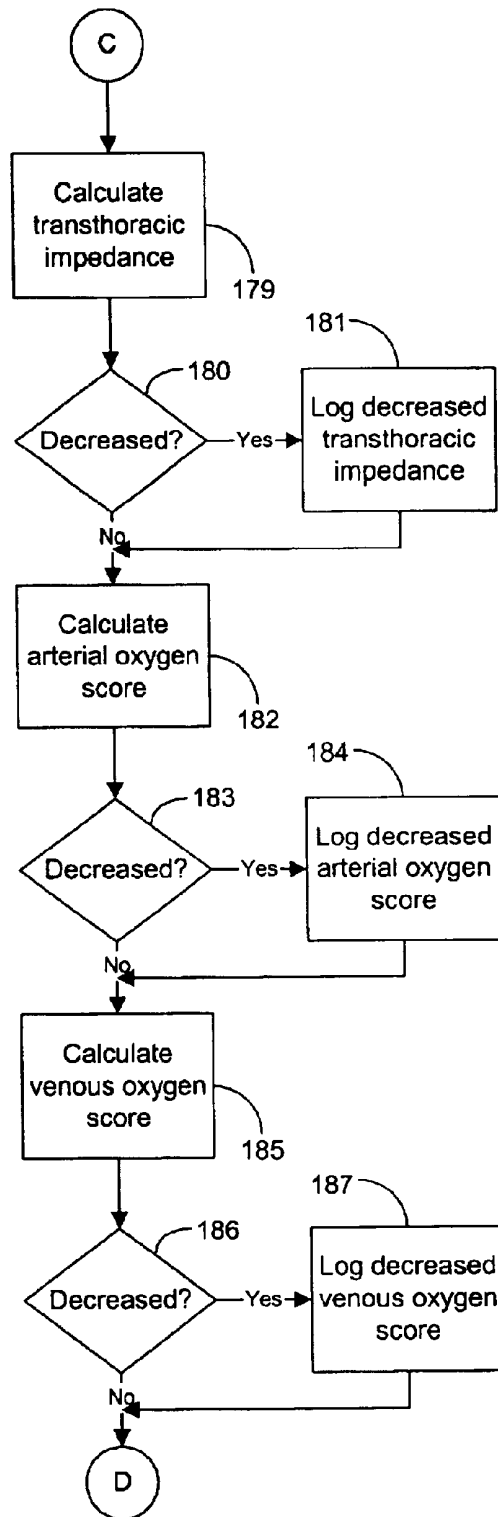


Figure 11C.

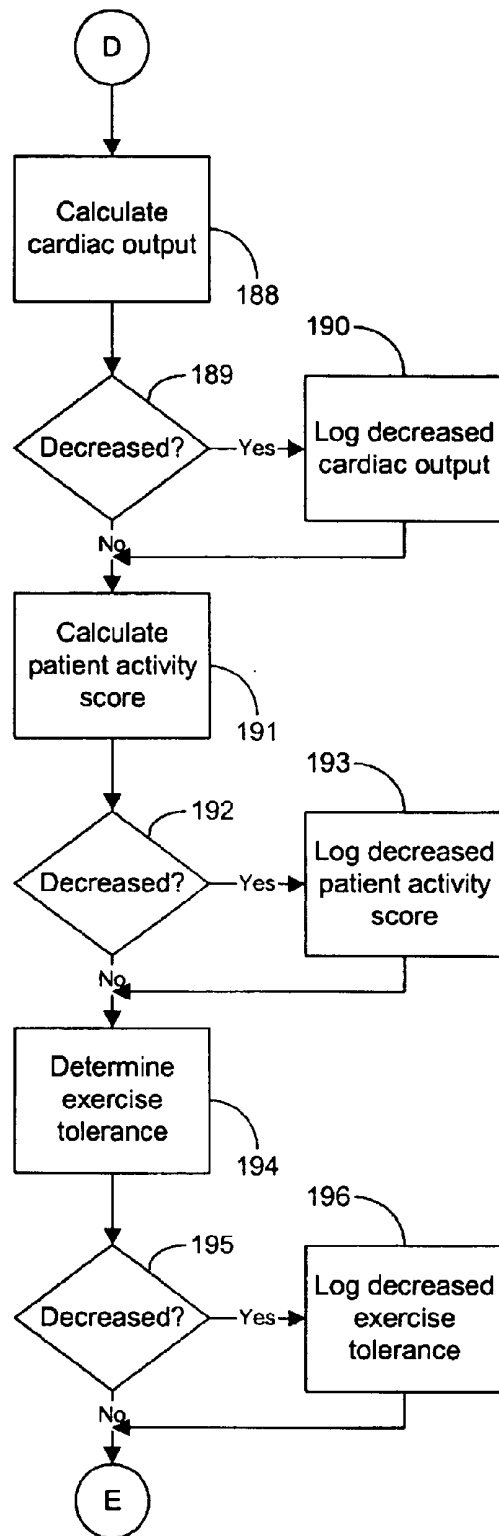


Figure 11D.

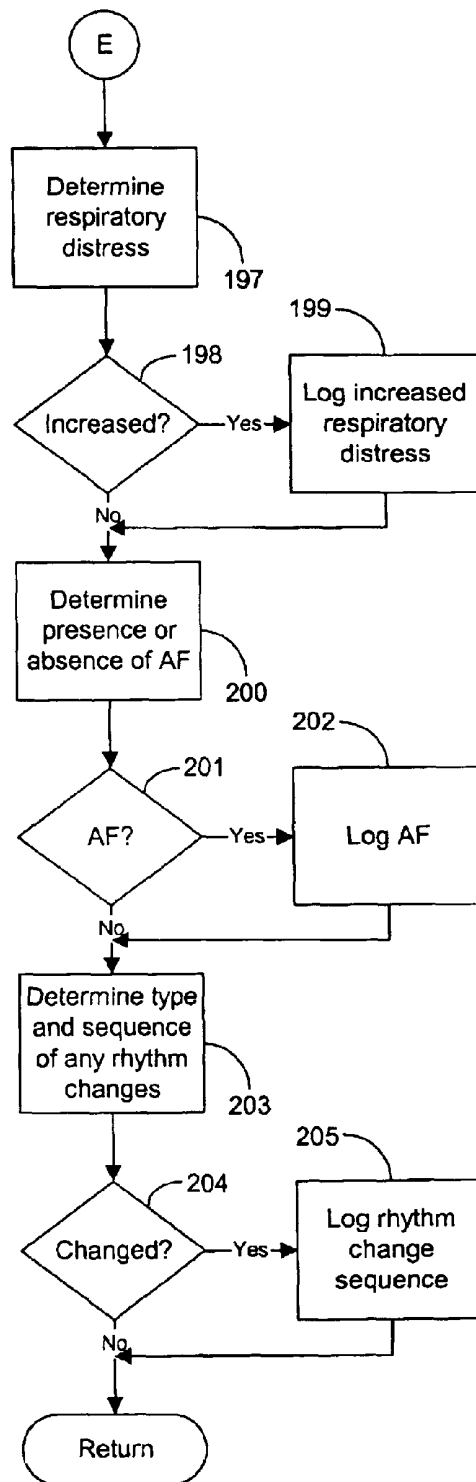


Figure 12.

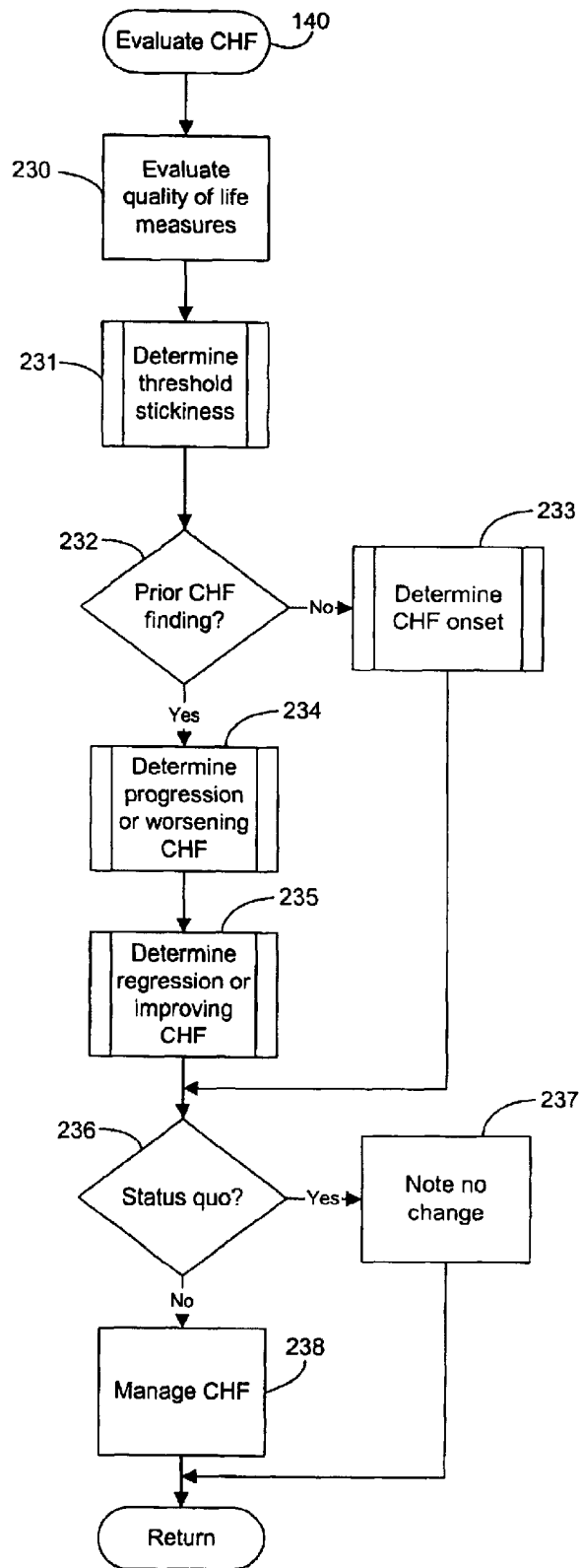


Figure 13A.

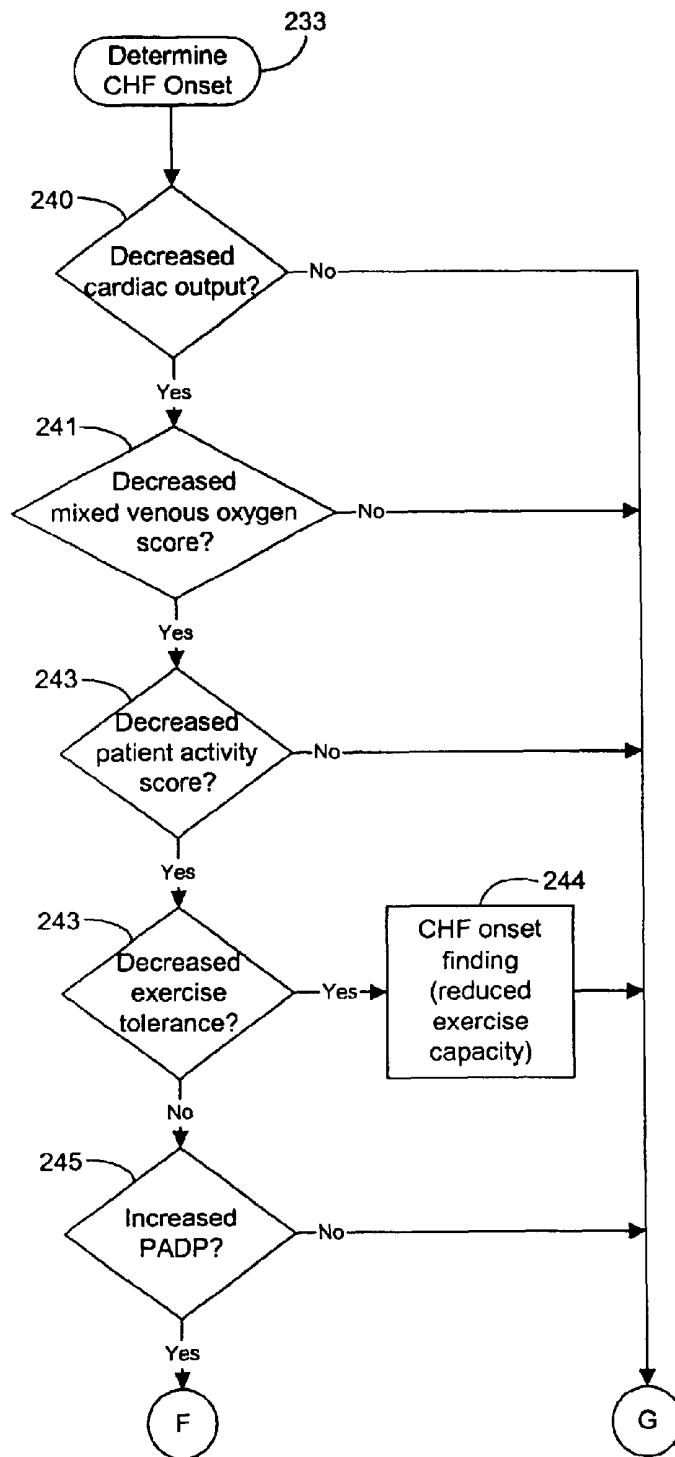


Figure 13B.

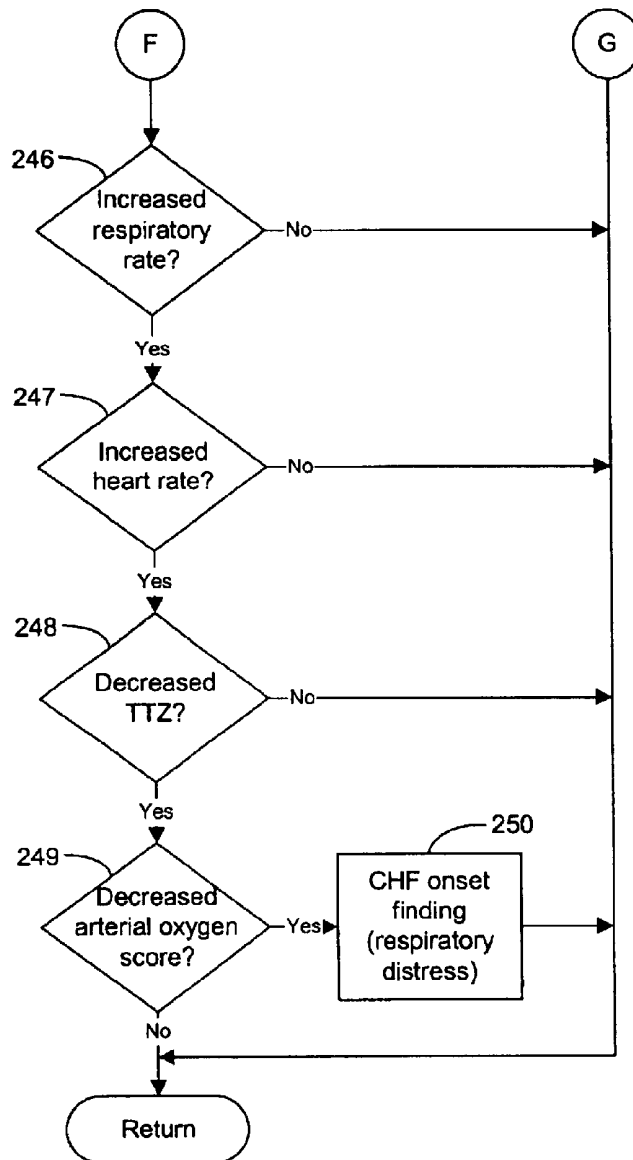


Figure 14A.

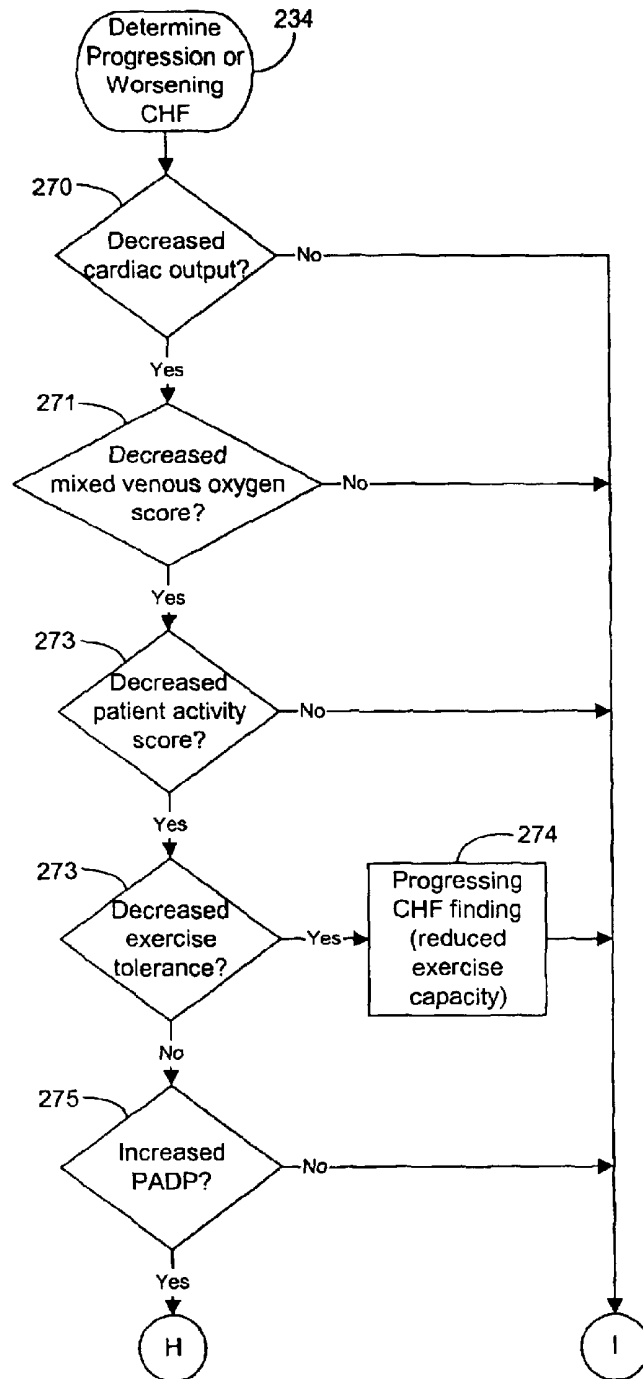


Figure 14B.

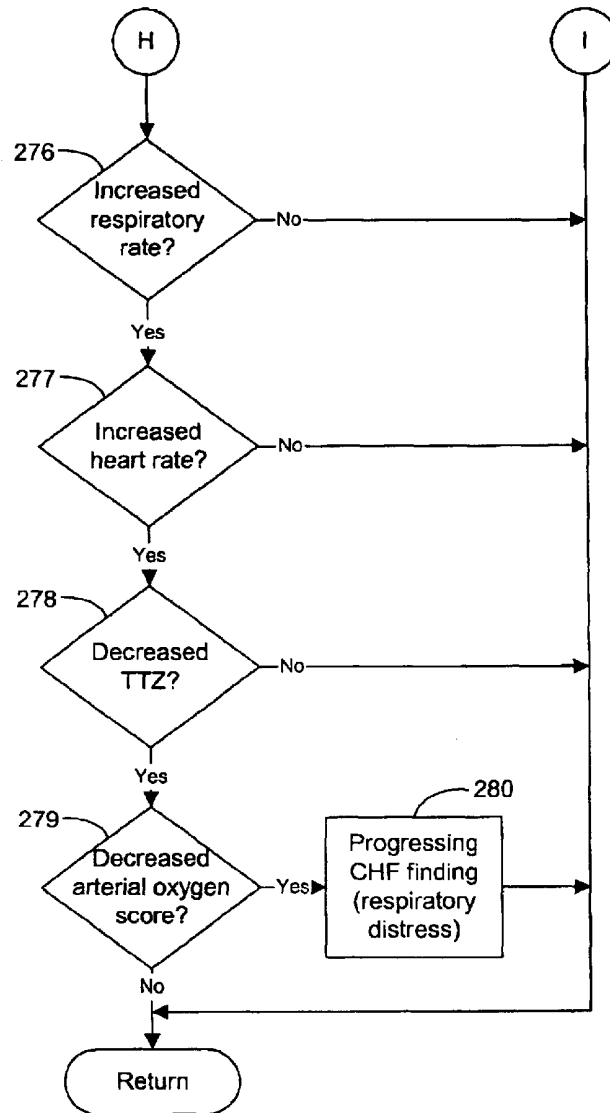


Figure 15A.

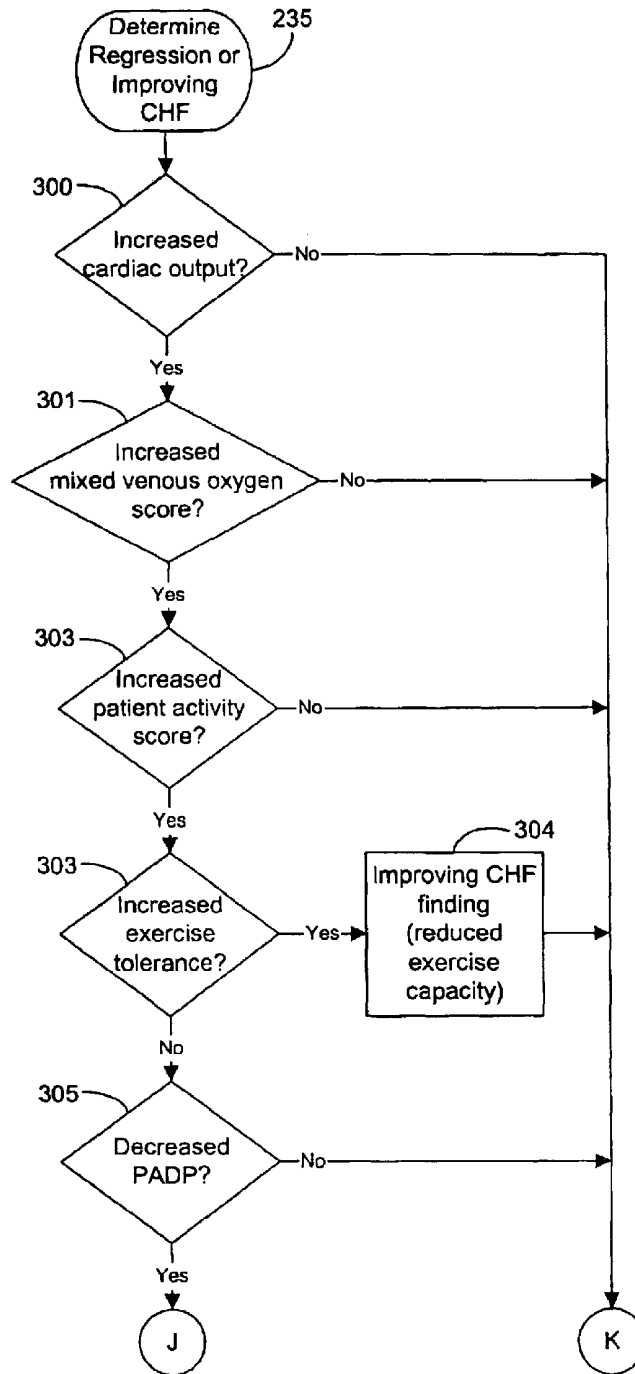


Figure 15B.

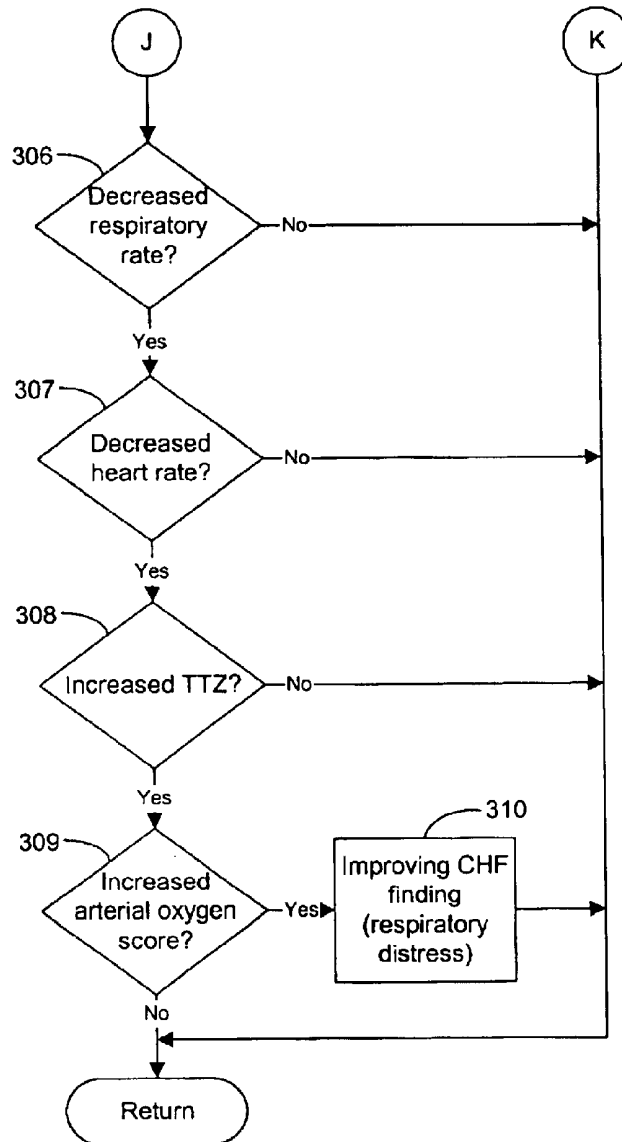
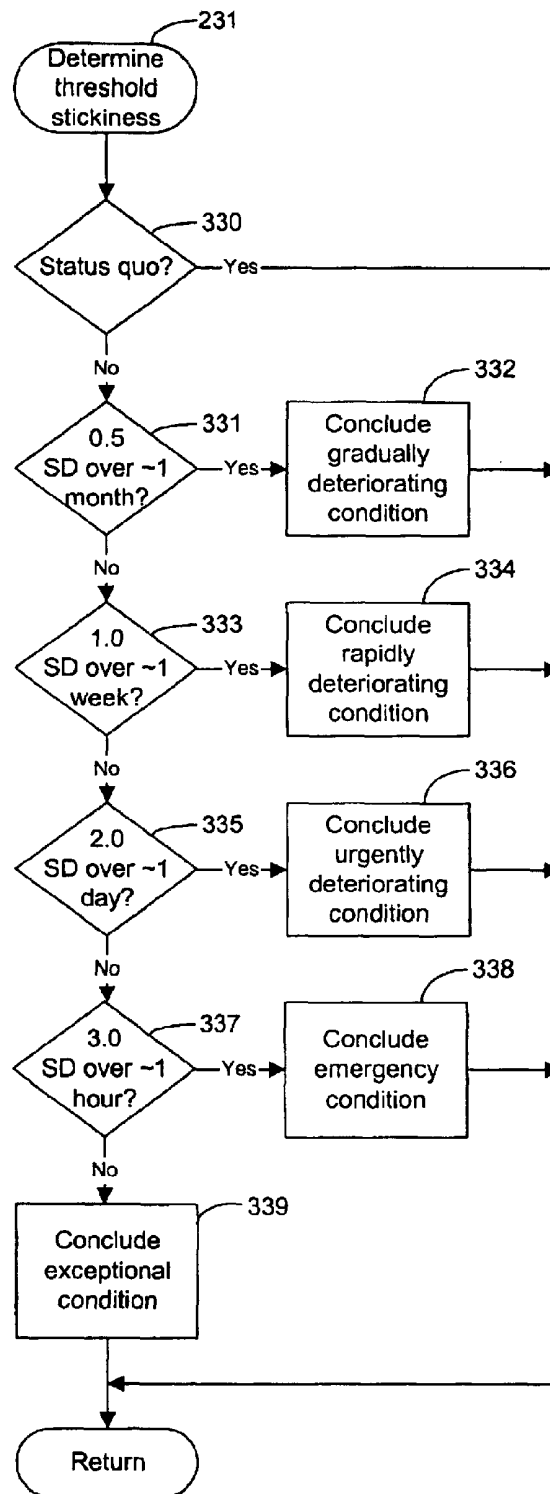


Figure 16.



**SYSTEM AND METHOD FOR DIAGNOSING
AND MONITORING CONGESTIVE HEART
FAILURE FOR AUTOMATED REMOTE
PATIENT CARE**

**CROSS-REFERENCE TO RELATED
APPLICATION**

This patent application is a continuation of U.S. patent application Ser. No. 10/042,402, filed Jan. 7, 2002, now U.S. Pat. No. 6,811,537; which is a continuation of application Ser. No. 09/441,623, filed Nov. 16, 1999, now U.S. Pat. No. 6,336,903, issued Jan. 8, 2002, the disclosures of which are incorporated by reference.

FIELD OF THE INVENTION

The present invention relates in general to congestive heart failure (CHF) diagnosis and analysis, and, in particular, to an automated collection and analysis patient care system and method for diagnosing and monitoring congestive heart failure and outcomes thereof throughout disease onset, progression, regression, and status quo.

BACKGROUND OF THE INVENTION

Presently, congestive heart failure is one of the leading causes of cardiovascular disease-related deaths in the world. Clinically, congestive heart failure involves circulatory congestion caused by heart disorders that are primarily characterized by abnormalities of left ventricular function and neurohormonal regulation. Congestive heart failure occurs when these abnormalities cause the heart to fail to pump blood at a rate required by the metabolizing tissues. The effects of congestive heart failure range from impairment during physical exertion to a complete failure of cardiac pumping function at any level of activity. Clinical manifestations of congestive heart failure include respiratory distress, such as shortness of breath and fatigue, and reduced exercise capacity or tolerance.

Several factors make the early diagnosis and prevention of congestive heart failure, as well as the monitoring of the progression of congestive heart failure, relatively difficult. First, the onset of congestive heart failure is generally subtle and erratic. Often, the symptoms are ignored and the patient compensates by changing his or her daily activities. As a result, many congestive heart failure conditions or deteriorations in congestive heart failure remain undiagnosed until more serious problems arise, such as pulmonary edema or cardiac arrest. Moreover, the susceptibility to suffer from congestive heart failure depends upon the patient's age, sex, physical condition, and other factors, such as diabetes, lung disease, high blood pressure, and kidney function. No one factor is dispositive. Finally, annual or even monthly check-ups provide, at best, a "snapshot" of patient wellness and the incremental and subtle clinicophysiological changes which portend the onset or progression of congestive heart failure often go unnoticed, even with regular health care. Documentation of subtle improvements following therapy, that can guide and refine further evaluation and therapy, can be equally elusive.

Nevertheless, taking advantage of frequently and regularly measured physiological measures, such as recorded manually by a patient, via an external monitoring or therapeutic device, or via implantable device technologies, can provide a degree of detection and prevention heretofore unknown. For instance, patients already suffering from some form of treatable heart disease often receive an implantable

pulse generator (IPG), cardiovascular or heart failure monitor, therapeutic device, or similar external wearable device, with which rhythm and structural problems of the heart can be monitored and treated. These types of devices are useful for detecting physiological changes in patient conditions through the retrieval and analysis of telemetered signals stored in an on-board, volatile memory. Typically, these devices can store more than thirty minutes of per heartbeat data recorded on a per heartbeat, binned average basis, or on a derived basis from, for example, atrial or ventricular electrical activity, minute ventilation, patient activity score, cardiac output score, mixed venous oxygen score, cardiovascular pressure measures, and the like. However the proper analysis of retrieved telemetered signals requires detailed medical subspecialty knowledge, particularly by cardiologists and cardiac electrophysiologists.

Alternatively, these telemetered signals can be remotely collected and analyzed using an automated patient care system. One such system is described in a related, commonly assigned application U.S. Pat. No. 6,312,378, issued Nov. 6, 2001, the disclosure of which is incorporated herein by reference. A medical device adapted to be implanted in an individual patient records telemetered signals that are then retrieved on a regular, periodic basis using an interrogator or similar interfacing device. The telemetered signals are downloaded via an internetwork onto a network server on a regular, e.g., daily, basis and stored as sets of collected measures in a database along with other patient care records. The information is then analyzed in an automated fashion and feedback, which includes a patient status indicator, is provided to the patient.

While such an automated system can serve as a valuable tool in providing remote patient care, an approach to systematically correlating and analyzing the raw collected telemetered signals, as well as manually collected physiological measures, through applied cardiovascular medical knowledge to accurately diagnose the onset of a particular medical condition, such as congestive heart failure, is needed. One automated patient care system directed to a patient-specific monitoring function is described in U.S. Pat. No. 5,113,869 ('869) to Nappholz et al. The '869 patent discloses an implantable, programmable electrocardiography (ECG) patient monitoring device that senses and analyzes ECG signals to detect ECG and physiological signal characteristics predictive of malignant cardiac arrhythmias. The monitoring device can communicate a warning signal to an external device when arrhythmias are predicted. However, the Nappholz device is limited to detecting tachycardias. Unlike requirements for automated congestive heart failure monitoring, the Nappholz device focuses on rudimentary ECG signals indicative of malignant cardiac tachycardias, an already well established technique that can be readily used with on-board signal detection techniques. Also, the Nappholz device is patient specific only and is unable to automatically take into consideration a broader patient or peer group history for reference to detect and consider the progression or improvement of cardiovascular disease. Moreover, the Nappholz device has a limited capability to automatically self-reference multiple data points in time and cannot detect disease regression even in the individual patient. Also, the Nappholz device must be implanted and cannot function as an external monitor. Finally, the Nappholz device is incapable of tracking the cardiovascular and cardiopulmonary consequences of any rhythm disorder.

Consequently, there is a need for a systematic approach to detecting trends in regularly collected physiological data

indicative of the onset, progression, regression, or status quo of congestive heart failure diagnosed and monitored using an automated, remote patient care system. The physiological data could be telemetered signals data recorded either by an external or an implantable medical device or, alternatively, individual measures collected through manual means. Preferably, such an approach would be capable of diagnosing both acute and chronic congestive heart failure conditions, as well as the symptoms of other cardiovascular diseases. In addition, findings from individual, peer group, and general population patient care records could be integrated into continuous, on-going monitoring and analysis.

SUMMARY OF THE INVENTION

The present invention provides a system and method for diagnosing and monitoring the onset, progression, regression, and status quo of congestive heart failure using an automated collection and analysis patient care system. Measures of patient cardiovascular information are either recorded by an external or implantable medical device, such as an IPG, cardiovascular or heart failure monitor, or therapeutic device, or manually through conventional patient-operable means. The measures are collected on a regular, periodic basis for storage in a database along with other patient care records. Derived measures are developed from the stored measures. Select stored and derived measures are analyzed and changes in patient condition are logged. The logged changes are compared to quantified indicator thresholds to detect findings of respiratory distress or reduced exercise capacity indicative of the two principal cardiovascular pathophysiological manifestations of congestive heart failure: elevated left ventricular end diastolic pressure and reduced cardiac output, respectively.

An embodiment of the present invention is an automated system and method for diagnosing and monitoring congestive heart failure and outcomes thereof. A plurality of monitoring sets is retrieved from a database. Each of the monitoring sets includes recorded measures relating to patient information recorded on a substantially continuous basis. A patient status change is determined by comparing at least one recorded measure from each of the monitoring sets to at least one other recorded measure. Both recorded measures relate to the same type of patient information. Each patient status change is tested against an indicator threshold corresponding to the same type of patient information as the recorded measures that were compared. The indicator threshold corresponds to a quantifiable physiological measure of a pathophysiology indicative of congestive heart failure.

A further embodiment is an automated collection and analysis patient care system and method for diagnosing and monitoring congestive heart failure and outcomes thereof. A plurality of monitoring sets is retrieved from a database. Each monitoring set includes recorded measures that each relates to patient information and include either medical device measures or derived measures calculable therefrom. The medical device measures are recorded on a substantially continuous basis. A set of indicator thresholds is defined. Each indicator threshold corresponds to a quantifiable physiological measure of a pathophysiology indicative of congestive heart failure and relates to the same type of patient information as at least one of the recorded measures. A congestive heart failure finding is diagnosed. A change in patient status is determined by comparing at least one recorded measure to at least one other recorded measure with both recorded measures relating to the same type of patient information. Each patient status change is compared

to the indicator threshold corresponding to the same type of patient information as the recorded measures that were compared.

A further embodiment is an automated patient care system and method for diagnosing and monitoring congestive heart failure and outcomes thereof. Recorded measures organized into a monitoring set for an individual patient are stored into a database. Each recorded measure is recorded on a substantially continuous basis and relates to at least one aspect of monitoring reduced exercise capacity and/or respiratory distress. A plurality of the monitoring sets is periodically retrieved from the database. At least one measure related to congestive heart failure onset, progression, regression, and status quo is evaluated. A patient status change is determined by comparing at least one recorded measure from each of the monitoring sets to at least one other recorded measure with both recorded measures relating to the same type of patient information. Each patient status change is tested against an indicator threshold corresponding to the same type of patient information as the recorded measures that were compared. The indicator threshold corresponds to a quantifiable physiological measure of a pathophysiology indicative of reduced exercise capacity and/or respiratory distress.

The present invention provides a capability to detect and track subtle trends and incremental changes in recorded patient information for diagnosing and monitoring congestive heart failure. When coupled with an enrollment in a remote patient monitoring service having the capability to remotely and continuously collect and analyze external or implantable medical device measures, congestive heart failure detection, prevention, and tracking regression from therapeutic maneuvers become feasible.

Still other embodiments of the present invention will become readily apparent to those skilled in the art from the following detailed description, wherein is described embodiments of the invention by way of illustrating the best mode contemplated for carrying out the invention. As will be realized, the invention is capable of other and different embodiments and its several details are capable of modifications in various obvious respects, all without departing from the spirit and the scope of the present invention. Accordingly, the drawings and detailed description are to be regarded as illustrative in nature and not as restrictive.

BRIEF DESCRIPTION OF THE DRAWINGS

FIG. 1 is a block diagram showing an automated collection and analysis patient care system for diagnosing and monitoring congestive heart failure and outcomes thereof in accordance with the present invention;

FIG. 2 is a database schema showing, by way of example, the organization of a device and derived measures set record for care of patients with congestive heart failure stored as part of a patient care record in the database of the system of FIG. 1;

FIG. 3 is a database schema showing, by way of example, the organization of a quality of life and symptom measures set record for care of patients with congestive heart failure stored as part of a patient care record in the database of the system of FIG. 1;

FIG. 4 is a database schema showing, by way of example, the organization of a combined measures set record for care of patients with congestive heart failure stored as part of a patient care record in the database of the system of FIG. 1;

FIG. 5 is a block diagram showing the software modules of the server system of the system of FIG. 1;

FIG. 6 is a record view showing, by way of example, a set of partial patient care records for care of patients with congestive heart failure stored in the database of the system of FIG. 1;

FIG. 7 is a Venn diagram showing, by way of example, peer group overlap between the partial patient care records of FIG. 6;

FIGS. 8A–8B are flow diagrams showing a method for diagnosing and monitoring congestive heart failure and outcomes thereof using an automated collection and analysis patient care system in accordance with the present invention;

FIG. 9 is a flow diagram showing the routine for retrieving reference baseline sets for use in the method of FIGS. 8A–8B;

FIG. 10 is a flow diagram showing the routine for retrieving monitoring sets for use in the method of FIGS. 8A–8B;

FIGS. 11A–11D are flow diagrams showing the routine for testing threshold limits for use in the method of FIGS. 8A–8B;

FIG. 12 is a flow diagram showing the routine for evaluating the onset, progression, regression, and status quo of congestive heart failure for use in the method of FIGS. 8A–8B;

FIGS. 13A–13B are flow diagrams showing the routine for determining an onset of congestive heart failure for use in the routine of FIG. 12;

FIGS. 14A–14B are flow diagrams showing the routine for determining progression or worsening of congestive heart failure for use in the routine of FIG. 12;

FIGS. 15A–15B are flow diagrams showing the routine for determining regression or improving of congestive heart failure for use in the routine of FIG. 12; and

FIG. 16 is a flow diagram showing the routine for determining threshold stickiness (“hysteresis”) for use in the method of FIG. 12.

DETAILED DESCRIPTION

FIG. 1 is a block diagram showing an automated collection and analysis patient care system 10 for diagnosing and monitoring congestive heart failure in accordance with the present invention. An exemplary automated collection and analysis patient care system suitable for use with the present invention is disclosed in the related, commonly assigned application U.S. Pat. No. 6,312,378, issued Nov. 6, 2001, the disclosure of which is incorporated herein by reference. Preferably, an individual patient 11 is a recipient of an implantable medical device 12, such as, by way of example, an IPG, cardiovascular or heart failure monitor, or therapeutic device, with a set of leads extending into his or her heart and electrodes implanted throughout the cardiopulmonary system. Alternatively, an external monitoring or therapeutic medical device 26, a subcutaneous monitor or device inserted into other organs, a cutaneous monitor, or even a manual physiological measurement device, such as an electrocardiogram or heart rate monitor, could be used. The implantable medical device 12 and external medical device 26 include circuitry for recording into a short-term, volatile memory telemetered signals stored for later retrieval, which become part of a set of device and derived measures, such as described below, by way of example, with reference to FIG. 2. Exemplary implantable medical devices suitable for use in the present invention include the Discovery line of pacemakers, manufactured by Guidant Corporation, Indianapolis, Ind., and the Gem line of ICDs, manufactured by Medtronic Corporation, Minneapolis, Minn.

The telemetered signals stored in the implantable medical device 12 are preferably retrieved upon the completion of an initial observation period and subsequently thereafter on a

continuous, periodic (daily) basis, such as described in the related, commonly assigned U.S. Pat. No. 6,221,011, issued Apr. 24, 2001, the disclosure of which is incorporated herein by reference. A programmer 14, personal computer 18, or similar device for communicating with an implantable medical device 12 can be used to retrieve the telemetered signals. A magnetized reed switch (not shown) within the implantable medical device 12 closes in response to the placement of a wand 13 over the site of the implantable medical device 12. The programmer 14 sends programming or interrogating instructions to and retrieves stored telemetered signals from the implantable medical device 12 via RF signals exchanged through the wand 13. Similar communication means are used for accessing the external medical device 26. Once downloaded, the telemetered signals are sent via an internetwork 15, such as the Internet, to a server system 16 which periodically receives and stores the telemetered signals as device measures in patient care records 23 in a database 17, as further described below, by way of example, with reference to FIGS. 2 and 3. An exemplary programmer 14 suitable for use in the present invention is the Model 2901 Programmer Recorder Monitor, manufactured by Guidant Corporation, Indianapolis, Ind.

The patient 11 is remotely monitored by the server system 16 via the internetwork 15 through the periodic receipt of the retrieved device measures from the implantable medical device 12 or external medical device 26. The patient care records 23 in the database 17 are organized into two identified sets of device measures: an optional reference baseline 26 recorded during an initial observation period and monitoring sets 27 recorded subsequently thereafter. The device measures sets are periodically analyzed and compared by the server system 16 to indicator thresholds corresponding to quantifiable physiological measures of a pathophysiology indicative of congestive heart failure, as further described below with reference to FIG. 5. As necessary, feedback is provided to the patient 11. By way of example, the feedback includes an electronic mail message automatically sent by the server system 16 over the internetwork 15 to a personal computer 18 (PC) situated for local access by the patient 11. Alternatively, the feedback can be sent through a telephone interface device 19 as an automated voice mail message to a telephone 21 or as an automated facsimile message to a facsimile machine 22, both also situated for local access by the patient 11. Moreover, simultaneous notifications can also be delivered to the patient’s physician, hospital, or emergency medical services provider 29 using similar feedback means to deliver the information.

The server system 10 can consist of either a single computer system or a cooperatively networked or clustered set of computer systems. Each computer system is a general purpose, programmed digital computing device consisting of a central processing unit (CPU), random access memory (RAM), non-volatile secondary storage, such as a hard drive or CD ROM drive, network interfaces, and peripheral devices, including user interfacing means, such as a keyboard and display. Program code, including software programs, and data are loaded into the RAM for execution and processing by the CPU and results are generated for display, output, transmittal, or storage, as is known in the art.

The database 17 stores patient care records 23 for each individual patient to whom remote patient care is being provided. Each patient care record 23 contains normal patient identification and treatment profile information, as well as medical history, medications taken, height and weight, and other pertinent data (not shown). The patient care records 23 consist primarily of two sets of data: device

and derived measures (D&DM) sets **24a**, **24b** and quality of life (QOL) sets **25a**, **25b**, the organization of which are further described below with respect to FIGS. **2** and **3**, respectively. The device and derived measures sets **24a**, **24b** and quality of life and symptom measures sets **25a**, **25b** can be further logically categorized into two potentially overlapping sets. The reference baseline **26** is a special set of device and derived reference measures sets **24a** and quality of life and symptom measures sets **25a** recorded and determined during an initial observation period. Monitoring sets **27** are device and derived measures sets **24b** and quality of life and symptom measures sets **25b** recorded and determined thereafter on a regular, continuous basis. Other forms of database organization are feasible.

The implantable medical device **12** and, in a more limited fashion, the external medical device **26**, record patient information for care of patients with congestive heart failure on a regular basis. The recorded patient information is downloaded and stored in the database **17** as part of a patient care record **23**. Further patient information can be derived from recorded data, as is known in the art. FIG. **2** is a database schema showing, by way of example, the organization of a device and derived measures set record **40** for patient care stored as part of a patient care record in the database **17** of the system of FIG. **1**. Each record **40** stores patient information which includes a snapshot of telemetered signals data which were recorded by the implantable medical device **12** or the external medical device **26**, for instance, on per heartbeat, binned average or derived bases; measures derived from the recorded device measures; and manually collected information, such as obtained through a patient medical history interview or questionnaire. The following non-exclusive information can be recorded for a patient: atrial electrical activity **41**, ventricular electrical activity **42**, PR interval or AV interval **43**, QRS measures **44**, ST-T wave measures **45**, QT interval **46**, body temperature **47**, patient activity score **48**, posture **49**, cardiovascular pressures **50**, pulmonary artery diastolic pressure measure **51**, cardiac output **52**, systemic blood pressure **53**, patient geographic location (altitude) **54**, mixed venous oxygen score **55**, arterial oxygen score **56**, pulmonary measures **57**, minute ventilation **58**, potassium [K+] level **59**, sodium [Na+] level **60**, glucose level **61**, blood urea nitrogen (BUN) and creatinine **62**, acidity (pH) level **63**, hematocrit **64**, hormonal levels **65**, cardiac injury chemical tests **66**, myocardial blood flow **67**, central nervous system (CNS) injury chemical tests **68**, central nervous system blood flow **69**, interventions made by the implantable medical device or external medical device **70**, and the relative success of any interventions made **71**. In addition, the implantable medical device or external medical device communicates device-specific information, including battery status, general device status and program settings **72** and the time of day **73** for the various recorded measures. Other types of collected, recorded, combined, or derived measures are possible, as is known in the art.

The device and derived measures sets **24a**, **24b** (shown in FIG. **1**), along with quality of life and symptom measures sets **25a**, **25b**, as further described below with reference to FIG. **3**, are continuously and periodically received by the server system **16** as part of the on-going patient care monitoring and analysis function. These regularly collected data sets are collectively categorized as the monitoring sets **27** (shown in FIG. **1**). In addition, select device and derived measures sets **24a** and quality of life and symptom measures sets **25a** can be designated as a reference baseline **26** at the outset of patient care to improve the accuracy and mean-

ingfulness of the serial monitoring sets **27**. Select patient information is collected, recorded, and derived during an initial period of observation or patient care, such as described in the related, commonly assigned U.S. Pat. No. 6,221,011, issued Apr. 24, 2001, the disclosure of which is incorporated herein by reference.

As an adjunct to remote patient care through the monitoring of measured physiological data via the implantable medical device **12** or external medical device **26**, quality of life and symptom measures sets **25a** can also be stored in the database **17** as part of the reference baseline **26**, if used, and the monitoring sets **27**. A quality of life measure is a semi-quantitative self-assessment of an individual patient's physical and emotional well being and a record of symptoms, such as provided by the Duke Activities Status Indicator. These scoring systems can be provided for use by the patient **11** on the personal computer **18** (shown in FIG. **1**) to record his or her quality of life scores for both initial and periodic download to the server system **16**. FIG. **3** is a database schema showing, by way of example, the organization of a quality of life record **80** for use in the database **17**. The following information is recorded for a patient: overall health wellness **81**, psychological state **82**, activities of daily living **83**, work status **84**, geographic location **85**, family status **86**, shortness of breath **87**, energy level **88**, exercise tolerance **89**, chest discomfort **90**, time of day **91**, and other quality of life and symptom measures as would be known to one skilled in the art.

Other types of quality of life and symptom measures are possible, such as those indicated by responses to the Minnesota Living with Heart Failure Questionnaire described in E. Braunwald, ed., "Heart Disease—A Textbook of Cardiovascular Medicine," pp. 452–454, W. B. Saunders Co. (1997), the disclosure of which is incorporated herein by reference. Similarly, functional classifications based on the relationship between symptoms and the amount of effort required to provoke them can serve as quality of life and symptom measures, such as the New York Heart Association (NYHA) classifications I, II, III and IV, also described in *Ibid.*

The patient may also add non-device quantitative measures, such as the six-minute walk distance, as complementary data to the device and derived measures sets **24a**, **24b** and the symptoms during the six-minute walk to quality of life and symptom measures sets **25a**, **25b**.

On a periodic basis, the patient information stored in the database **17** is analyzed and compared to pre-determined cutoff levels, which, when exceeded, can provide etiological indications of congestive heart failure symptoms. FIG. **4** is a database schema showing, by way of example, the organization of a combined measures set record **95** for use in the database **17**. Each record **95** stores patient information obtained or derived from the device and derived measures sets **24a**, **24b** and quality of life and symptom measures sets **25a**, **25b** as maintained in the reference baseline **26**, if used, and the monitoring sets **27**. The combined measures set **95** represents those measures most (but not exhaustively or exclusively) relevant to a pathophysiology indicative of congestive heart failure and are determined as further described below with reference to FIGS. **8A–8B**. The following information is stored for a patient: heart rate **96**, heart rhythm (e.g., normal sinus vs. atrial fibrillation) **97**, pacing modality **98**, pulmonary artery diastolic pressure **99**, cardiac output **100**, arterial oxygen score **101**, mixed venous oxygen score **102**, respiratory rate **103**, transthoracic impedance **104**, patient activity score **105**, posture **106**, exercise tolerance quality of life and symptom measures **107**, respiratory

distress quality of life and symptom measures **108**, any interventions made to treat congestive heart failure **109**, including treatment by medical device, via drug infusion administered by the patient or by a medical device, surgery, and any other form of medical intervention as is known in the art, the relative success of any such interventions made **110**, and time of day **111**. Other types of comparison measures regarding congestive heart failure are possible as is known in the art. In the described embodiment, each combined measures set **95** is sequentially retrieved from the database **17** and processed. Alternatively, each combined measures set **95** could be stored within a dynamic data structure maintained transitorily in the random access memory of the server system **16** during the analysis and comparison operations.

FIG. 5 is a block diagram showing the software modules of the server system **16** of the system **10** of FIG. 1. Each module is a computer program written as source code in a conventional programming language, such as the C or Java programming languages, and is presented for execution by the CPU of the server system **16** as object or byte code, as is known in the art. The various implementations of the source code and object and byte codes can be held on a computer-readable storage medium or embodied on a transmission medium in a carrier wave. The server system **16** includes three primary software modules, database module **125**, diagnostic module **126**, and feedback module **128**, which perform integrated functions as follows.

First, the database module **125** organizes the individual patient care records **23** stored in the database **17** (shown in FIG. 1) and efficiently stores and accesses the reference baseline **26**, monitoring sets **27**, and patient care data maintained in those records. Any type of database organization could be utilized, including a flat file system, hierarchical database, relational database, or distributed database, such as provided by database vendors, such as Oracle Corporation, Redwood Shores, Calif.

Next, the diagnostic module **126** makes findings of congestive heart failure based on the comparison and analysis of the data measures from the reference baseline **26** and monitoring sets **27**. The diagnostic module includes three modules: comparison module **130**, analysis module **131**, and quality of life module **132**. The comparison module **130** compares recorded and derived measures retrieved from the reference baseline **26**, if used, and monitoring sets **27** to indicator thresholds **129**. The database **17** stores individual patient care records **23** for patients suffering from various health disorders and diseases for which they are receiving remote patient care. For purposes of comparison and analysis by the comparison module **130**, these records can be categorized into peer groups containing the records for those patients suffering from similar disorders, as well as being viewed in reference to the overall patient population. The definition of the peer group can be progressively refined as the overall patient population grows. To illustrate, FIG. 6 is a record view showing, by way of example, a set of partial patient care records for care of patients with congestive heart failure stored in the database **17** for three patients, Patient 1, Patient 2, and Patient 3. For each patient, three sets of peer measures, X, Y, and Z, are shown. Each of the measures, X, Y, and Z, could be either collected or derived measures from the reference baseline **26**, if used, and monitoring sets **27**.

The same measures are organized into time-based sets with Set 0 representing sibling measures made at a reference time $t=0$. Similarly, Set $n-2$, Set $n-1$ and Set n each represent sibling measures made at later reference times $t=n-2$, $t=n-1$ and $t=n$, respectively. Thus, for a given patient,

such as Patient 1, serial peer measures, such as peer measure X_0 through X_n , represent the same type of patient information monitored over time. The combined peer measures for all patients can be categorized into a health disorder- or disease-matched peer group. The definition of disease-matched peer group is a progressive definition, refined over time as the number of monitored patients grows. Measures representing different types of patient information, such as measures X_0 , Y_0 , and Z_0 , are sibling measures. These are measures which are also measured over time, but which might have medically significant meaning when compared to each other within a set for an individual patient.

The comparison module **130** performs two basic forms of comparison. First, individual measures for a given patient can be compared to other individual measures for that same patient (self-referencing). These comparisons might be peer-to-peer measures, that is, measures relating to a one specific type of patient information, projected over time, for instance, X_n , X_{n-1} , X_{n-2} , . . . X_0 , or sibling-to-sibling measures, that is, measures relating to multiple types of patient information measured during the same time period, for a single snapshot, for instance, X_n , Y_n , and Z_n , or projected over time, for instance, X_n , Y_n , Z_n , X_{n-1} , Y_{n-1} , Z_{n-1} , X_{n-2} , Y_{n-2} , Z_{n-2} , . . . X_0 , Y_0 , Z_0 . Second, individual measures for a given patient can be compared to other individual measures for a group of other patients sharing the same disorder- or disease-specific characteristics (peer group referencing) or to the patient population in general (population referencing). Again, these comparisons might be peer-to-peer measures projected over time, for instance, X_n , X_n , X_n , X_{n-1} , X_{n-1} , X_{n-1} , X_{n-2} , X_{n-2} , X_{n-2} , . . . X_0 , X_0 , X_0 , or comparing the individual patient's measures to an average from the group. Similarly, these comparisons might be sibling-to-sibling measures for single snapshots, for instance, X_n , X_n , X_n , Y_n , Y_n , Y_n , and Z_n , Z_n , Z_n , or projected over time, for instance, X_n , X_n , X_n , Y_n , Y_n , Y_n , Z_n , Z_n , Z_n , X_{n-1} , X_{n-1} , X_{n-1} , Y_{n-1} , Y_{n-1} , Y_{n-1} , Z_{n-1} , Z_{n-1} , Z_{n-1} , X_{n-2} , X_{n-2} , X_{n-2} , Y_{n-2} , Y_{n-2} , Y_{n-2} , Z_{n-2} , Z_{n-2} , Z_{n-2} , . . . X_0 , X_0 , X_0 , Y_0 , Y_0 , Y_0 , and Z_0 , Z_0 , Z_0 . Other forms of comparisons are feasible, including multiple disease diagnoses for diseases exhibiting similar abnormalities in physiological measures that might result from a second disease but manifest in different combinations or onset in different temporal sequences.

FIG. 7 is a Venn diagram showing, by way of example, peer group overlap between the partial patient care records **23** of FIG. 1. Each patient care record **23** includes characteristics data **350**, **351**, **352**, including personal traits, demographics, medical history, and related personal data, for patients 1, 2 and 3, respectively. For example, the characteristics data **350** for patient 1 might include personal traits which include gender and age, such as male and an age between 40-45; a demographic of resident of New York City; and a medical history consisting of anterior myocardial infarction, congestive heart failure and diabetes. Similarly, the characteristics data **351** for patient 2 might include identical personal traits, thereby resulting in partial overlap **353** of characteristics data **350** and **351**. Similar characteristics overlap **354**, **355**, **356** can exist between each respective patient. The overall patient population **357** would include the universe of all characteristics data. As the monitoring population grows, the number of patients with personal traits matching those of the monitored patient will grow, increasing the value of peer group referencing. Large peer groups, well matched across all monitored measures, will result in a well known natural history of disease and will allow for more accurate prediction of the clinical course of

the patient being monitored. If the population of patients is relatively small, only some traits **356** will be uniformly present in any particular peer group. Eventually, peer groups, for instance, composed of 100 or more patients each, would evolve under conditions in which there would be complete overlap of substantially all salient data, thereby forming a powerful core reference group for any new patient being monitored.

Referring back to FIG. 5, the analysis module **131** analyzes the results from the comparison module **130**, which are stored as a combined measures set **95** (not shown), to a set of indicator thresholds **129**, as further described below with reference to FIGS. 8A-8B. Similarly, the quality of life module **132** compares quality of life and symptom measures set **25a**, **25b** from the reference baseline **26** and monitoring sets **27**, the results of which are incorporated into the comparisons performed by the analysis module **131**, in part, to either refute or support the findings based on physiological "hard" data. Finally, the feedback module **128** provides automated feedback to the individual patient based, in part, on the patient status indicator **127** generated by the diagnostic module **126**. As described above, the feedback could be by electronic mail or by automated voice mail or facsimile. The feedback can also include normalized voice feedback, such as described in the related, commonly assigned U.S. Pat. No. 6,203,495, issued Mar. 20, 2001, the disclosure of which is incorporated herein by reference. In addition, the feedback module **128** determines whether any changes to interventive measures are appropriate based on threshold stickiness ("hysteresis") **133**, as further described below with reference to FIG. 16. The threshold stickiness **133** can prevent fickleness in diagnostic routines resulting from transient, non-trending and non-significant fluctuations in the various collected and derived measures in favor of more certainty in diagnosis. In a further embodiment of the present invention, the feedback module **128** includes a patient query engine **134** which enables the individual patient **11** to interactively query the server system **16** regarding the diagnosis, therapeutic maneuvers, and treatment regimen. Conversely, the patient query engines **134**, found in interactive expert systems for diagnosing medical conditions, can interactively query the patient. Using the personal computer **18** (shown in FIG. 1), the patient can have an interactive dialogue with the automated server system **16**, as well as human experts as necessary, to self assess his or her medical condition. Such expert systems are well known in the art, an example of which is the MYCIN expert system developed at Stanford University and described in Buchanan, B. & Shortliffe, E., "RULE-BASED EXPERT SYSTEMS. The MYCIN Experiments of the Stanford Heuristic Programming Project," Addison-Wesley (1984). The various forms of feedback described above help to increase the accuracy and specificity of the reporting of the quality of life and symptomatic measures.

FIGS. 8A-8B are flow diagrams showing a method for diagnosing and monitoring congestive heart failure and outcomes thereof **135** using an automated collection and analysis patient care system **10** in accordance with the present invention. First, the indicator thresholds **129** (shown in FIG. 5) are set (block **136**) by defining a quantifiable physiological measure of a pathophysiology indicative of congestive heart failure and relating to the each type of patient information in the combined device and derived measures set **95** (shown in FIG. 4). The actual values of each indicator threshold can be finite cutoff values, weighted values, or statistical ranges, as discussed below with reference to FIGS. 11A-11D. Next, the reference baseline **26**

(block **137**) and monitoring sets **27** (block **138**) are retrieved from the database **17**, as further described below with reference to FIGS. 9 and 10, respectively. Each measure in the combined device and derived measures set **95** is tested against the threshold limits defined for each indicator threshold **129** (block **139**), as further described below with reference to FIGS. 11A-11D. The potential onset, progression, regression, or status quo of congestive heart failure is then evaluated (block **140**) based upon the findings of the threshold limits tests (block **139**), as further described below with reference to FIGS. 13A-13B, 14A-14B, 15A-15B.

In a further embodiment, multiple near-simultaneous disorders are considered in addition to primary congestive heart failure. Primary congestive heart failure is defined as the onset or progression of congestive heart failure without obvious inciting cause. Secondary congestive heart failure is defined as the onset or progression of congestive heart failure (in a patient with or without pre-existing congestive heart failure) from another disease process, such as coronary insufficiency, respiratory insufficiency, atrial fibrillation, and so forth. Other health disorders and diseases can potentially share the same forms of symptomatology as congestive heart failure, such as myocardial ischemia, respiratory insufficiency, pneumonia, exacerbation of chronic bronchitis, renal failure, sleep-apnea, stroke, anemia, atrial fibrillation, other cardiac arrhythmias, and so forth. If more than one abnormality is present, the relative sequence and magnitude of onset of abnormalities in the monitored measures becomes most important in sorting and prioritizing disease diagnosis and treatment.

Thus, if other disorders or diseases are being cross-referenced and diagnosed (block **141**), their status is determined (block **142**). In the described embodiment, the operations of ordering and prioritizing multiple near-simultaneous disorders (box **151**) by the testing of threshold limits and analysis in a manner similar to congestive heart failure as described above, preferably in parallel to the present determination, is described in the related, commonly assigned U.S. Pat. No. 6,440,066, entitled "Automated Collection And Analysis Patient Care System And Method For Ordering And Prioritizing Multiple Health Disorders To Identify An Index Disorder," issued Aug. 27, 2002, the disclosure of which is incorporated herein by reference. If congestive heart failure is due to an obvious inciting cause, i.e., secondary congestive heart failure, (block **143**), an appropriate treatment regimen for congestive heart failure as exacerbated by other disorders is adopted that includes treatment of secondary disorders, e.g., myocardial ischemia, respiratory insufficiency, atrial fibrillation, and so forth (block **144**) and a suitable patient status indicator **127** for congestive heart failure is provided (block **146**) to the patient. Suitable devices and approaches to diagnosing and treating myocardial infarction, respiratory distress and atrial fibrillation are described in related, commonly-assigned U.S. Pat. No. 6,368,284, entitled "Automated Collection And Analysis Patient Care System And Method For Diagnosing And Monitoring Myocardial Ischemia And Outcomes Thereof," issued Apr. 9, 2002; U.S. Pat. No. 6,398,728, entitled "Automated Collection And Analysis Patient Care System And Method For Diagnosing And Monitoring Respiratory Insufficiency And Outcomes Thereof," issued Jun. 4, 2002; and U.S. Pat. No. 6,411,840, entitled "Automated Collection And Analysis Patient Care System And Method For Diagnosing And Monitoring The Outcomes Of Atrial Fibrillation" issued Jun. 25, 2002, the disclosures of which are incorporated herein by reference.

Otherwise, if primary congestive heart failure is indicated (block **143**), a primary treatment regimen is followed (block

145). A patient status indicator 127 for congestive heart failure is provided (block 146) to the patient regarding physical well-being, disease prognosis, including any determinations of disease onset, progression, regression, or status quo, and other pertinent medical and general information of potential interest to the patient.

Finally, in a further embodiment, if the patient submits a query to the server system 16 (block 147), the patient query is interactively processed by the patient query engine (block 148). Similarly, if the server elects to query the patient (block 149), the server query is interactively processed by the server query engine (block 150). The method then terminates if no further patient or server queries are submitted.

FIG. 9 is a flow diagram showing the routine for retrieving reference baseline sets 137 for use in the method of FIGS. 8A–8B. The purpose of this routine is to retrieve the appropriate reference baseline sets 26, if used, from the database 17 based on the types of comparisons being performed. First, if the comparisons are self referencing with respect to the measures stored in the individual patient care record 23 (block 152), the reference device and derived measures set 24a and reference quality of life and symptom measures set 25a, if used, are retrieved for the individual patient from the database 17 (block 153). Next, if the comparisons are peer group referencing with respect to measures stored in the patient care records 23 for a health disorder- or disease-specific peer group (block 154), the reference device and derived measures set 24a and reference quality of life and symptom measures set 25a, if used, are retrieved from each patient care record 23 for the peer group from the database 17 (block 155). Data for each measure (e.g., minimum, maximum, averaged, standard deviation (SD), and trending data) from the reference baseline 26 for the peer group is then calculated (block 156). Finally, if the comparisons are population referencing with respect to measures stored in the patient care records 23 for the overall patient population (block 157), the reference device and derived measures set 24a and reference quality of life and symptom measures set 25a, if used, are retrieved from each patient care record 23 from the database 17 (block 158). Minimum, maximum, averaged, standard deviation, and trending data and other numerical processes using the data, as is known in the art, for each measure from the reference baseline 26 for the peer group is then calculated (block 159). The routine then returns.

FIG. 10 is a flow diagram showing the routine for retrieving monitoring sets 138 for use in the method of FIGS. 8A–8B. The purpose of this routine is to retrieve the appropriate monitoring sets 27 from the database 17 based on the types of comparisons being performed. First, if the comparisons are self referencing with respect to the measures stored in the individual patient care record 23 (block 160), the device and derived measures set 24b and quality of life and symptom measures set 25b, if used, are retrieved for the individual patient from the database 17 (block 161). Next, if the comparisons are peer group referencing with respect to measures stored in the patient care records 23 for a health disorder- or disease-specific peer group (block 162), the device and derived measures set 24b and quality of life and symptom measures set 25b, if used, are retrieved from each patient care record 23 for the peer group from the database 17 (block 163). Data for each measure (e.g., minimum, maximum, averaged, standard deviation, and trending data) from the monitoring sets 27 for the peer group is then calculated (block 164). Finally, if the comparisons are population referencing with respect to measures stored in the

patient care records 23 for the overall patient population (block 165), the device and derived measures set 24b and quality of life and symptom measures set 25b, if used, are retrieved from each patient care record 23 from the database 17 (block 166). Minimum, maximum, averaged, standard deviation, and trending data and other numerical processes using the data, as is known in the art, for each measure from the monitoring sets 27 for the peer group is then calculated (block 167). The routine then returns.

FIGS. 11A–11D are flow diagrams showing the routine for testing threshold limits 139 for use in the method of FIGS. 8A and 8B. The purpose of this routine is to analyze, compare, and log any differences between the observed, objective measures stored in the reference baseline 26, if used, and the monitoring sets 27 to the indicator thresholds 129. Briefly, the routine consists of tests pertaining to each of the indicators relevant to diagnosing and monitoring congestive heart failure. The threshold tests focus primarily on: (1) changes to and rates of change for the indicators themselves, as stored in the combined device and derived measures set 95 (shown in FIG. 4) or similar data structure; and (2) violations of absolute threshold limits which trigger an alert. The timing and degree of change may vary with each measure and with the natural fluctuations noted in that measure during the reference baseline period. In addition, the timing and degree of change might also vary with the individual and the natural history of a measure for that patient.

One suitable approach to performing the threshold tests uses a standard statistical linear regression technique using a least squares error fit. The least squares error fit can be calculated as follows:

$$y = \beta_0 + \beta_1 x \tag{1}$$

$$\beta = \frac{SS_{xy}}{SS_{xx}} \tag{2}$$

$$SS_{xy} = \sum_{i=1}^n x_i y_i - \frac{\left(\sum_{i=1}^n x_i \right) \left(\sum_{i=1}^n y_i \right)}{n} \tag{3}$$

$$SS_{xx} = \sum_{i=1}^n x_i^2 - \frac{\left(\sum_{i=1}^n x_i \right)^2}{n} \tag{4}$$

where n is the total number of measures, x_i is the time of day for measure i, and y_i is the value of measure i, β_1 is the slope, and β_0 is the y-intercept of the least squares error line. A positive slope β_1 indicates an increasing trend, a negative slope β_1 indicates a decreasing trend, and no slope indicates no change in patient condition for that particular measure. A predicted measure value can be calculated and compared to the appropriate indicator threshold 129 for determining whether the particular measure has either exceeded an acceptable threshold rate of change or the absolute threshold limit.

For any given patient, three basic types of comparisons between individual measures stored in the monitoring sets 27 are possible: self referencing, peer group, and general population, as explained above with reference to FIG. 6. In addition, each of these comparisons can include comparisons to individual measures stored in the pertinent reference baselines 24.

The indicator thresholds 129 for detecting a trend indicating progression into a state of congestive heart failure or

a state of imminent or likely congestive heart failure, for example, over a one week time period, can be as follows:

- (1) Respiratory rate (block 170): If the respiratory rate has increased over 1.0 SD from the mean respiratory rate in the reference baseline 26 (block 171), the increased respiratory rate and time span over which it occurs are logged in the combined measures set 95 (block 172).
- (2) Heart rate (block 173): If the heart rate has increased over 1.0 SD from the mean heart rate in the reference baseline 26 (block 174), the increased heart rate and time span over which it occurs are logged in the combined measures set 95 (block 175).
- (3) Pulmonary artery diastolic pressure (PADP) (block 176) reflects left ventricular filling pressure and is a measure of left ventricular dysfunction. Ideally, the left ventricular end diastolic pressure (LVEDP) should be monitored, but in practice is difficult to measure. Consequently, without the LVEDP, the PADP, or derivatives thereof, is suitable for use as an alternative to LVEDP in the present invention. If the PADP has increased over 1.0 SD from the mean PADP in the reference baseline 26 (block 177), the increased PADP and time span over which that increase occurs, are logged in the combined measures set 95 (block 178). Other cardiac pressures or derivatives could also apply.
- (4) Transthoracic impedance (block 179): If the transthoracic impedance has decreased over 1.0 SD from the mean transthoracic impedance in the reference baseline 26 (block 180), the decreased transthoracic impedance and time span are logged in the combined measures set 95 (block 181).
- (5) Arterial oxygen score (block 182): If the arterial oxygen score has decreased over 1.0 SD from the arterial oxygen score in the reference baseline 26 (block 183), the decreased arterial oxygen score and time span are logged in the combined measures set 95 (block 184).
- (6) Venous oxygen score (block 185): If the venous oxygen score has decreased over 1.0 SD from the mean venous oxygen score in the reference baseline 26 (block 186), the decreased venous oxygen score and time span are logged in the combined measures set 95 (block 187).
- (7) Cardiac output (block 188): If the cardiac output has decreased over 1.0 SD from the mean cardiac output in the reference baseline 26 (block 189), the decreased cardiac output and time span are logged in the combined measures set 95 (block 190).
- (8) Patient activity score (block 191): If the mean patient activity score has decreased over 1.0 SD from the mean patient activity score in the reference baseline 26 (block 192), the decreased patient activity score and time span are logged in the combined measures set 95 (block 193).
- (9) Exercise tolerance quality of life (QOL) measures (block 194): If the exercise tolerance QOL has decreased over 1.0 SD from the mean exercise tolerance in the reference baseline 26 (block 195), the decrease in exercise tolerance and the time span over which it occurs are logged in the combined measures set 95 (block 196).
- (10) Respiratory distress quality of life (QOL) measures (block 197): If the respiratory distress QOL measure has deteriorated by more than 1.0 SD from the mean respiratory distress QOL measure in the reference base-

line 26 (block 198), the increase in respiratory distress and the time span over which it occurs are logged in the combined measures set 95 (block 199).

- (11) Atrial fibrillation (block 200): The presence or absence of atrial fibrillation (AF) is determined and, if present (block 201), atrial fibrillation is logged (block 202).
- (12) Rhythm changes (block 203): The type and sequence of rhythm changes is significant and is determined based on the timing of the relevant rhythm measure, such as sinus rhythm. For instance, a finding that a rhythm change to atrial fibrillation precipitated circulatory measures changes can indicate therapy directions against atrial fibrillation rather than primary progression of congestive heart failure. Thus, if there are rhythm changes (block 204), the sequence of the rhythm changes and time span are logged (block 205).

Note also that an inversion of the indicator thresholds 129 defined above could similarly be used for detecting a trend in disease regression. One skilled in the art would recognize that these measures would vary based on whether or not they were recorded during rest or during activity and that the measured activity score can be used to indicate the degree of patient rest or activity. The patient activity score can be determined via an implantable motion detector, for example, as described in U.S. Pat. No. 4,428,378, issued Jan. 31, 1984, to Anderson et al., the disclosure of which is incorporated herein by reference.

The indicator thresholds 129 for detecting a trend towards a state of congestive heart failure can also be used to declare, a priori, congestive heart failure present, regardless of pre-existing trend data when certain limits are established, such as:

- (1) An absolute limit of PADP (block 170) exceeding 25 mm Hg is an a priori definition of congestive heart failure from left ventricular volume overload.
- (2) An absolute limit of indexed cardiac output (block 191) falling below 2.0 l/min/m² is an a priori definition of congestive heart failure from left ventricular myocardial pump failure when recorded in the absence of intravascular volume depletion (e.g., from hemorrhage, septic shock, dehydration, etc.) as indicated by a reduced PADP (e.g., <10 mmHg).

FIG. 12 is a flow diagram showing the routine for evaluating the onset, progression, regression and status quo of congestive heart failure 140 for use in the method of FIGS. 8A and 8B. The purpose of this routine is to evaluate the presence of sufficient indicia to warrant a diagnosis of the onset, progression, regression, and status quo of congestive heart failure. Quality of life and symptom measures set 25a, 25b can be included in the evaluation (block 230) by determining whether any of the individual quality of life and symptom measures set 25a, 25b have changed relative to the previously collected quality of life and symptom measures from the monitoring sets 27 and the reference baseline 26, if used. For example, an increase in the shortness of breath measure 87 and exercise tolerance measure 89 would corroborate a finding of congestive heart failure. Similarly, a transition from NYHA Class II to NYHA Class III would indicate deterioration or, conversely, a transition from NYHA Class III to NYHA Class II status would indicate improvement or progress. Incorporating the quality of life and symptom measures set 25a, 25b into the evaluation can help, in part, to refute or support findings based on physiological data. Next, a determination as to whether any changes to interventive measures are appropriate based on threshold stickiness ("hysteresis") is made (block 231), as further described below with reference to FIG. 16.

The routine returns upon either the determination of a finding or elimination of all factors as follows. If a finding of congestive heart failure was not previously diagnosed (block 232), a determination of disease onset is made (block 233), as further described below with reference to FIGS. 13A–13C. Otherwise, if congestive heart failure was previously diagnosed (block 232), a further determination of either disease progression or worsening (block 234) or regression or improving (block 235) is made, as further described below with reference to FIGS. 14A–14C and 15A–15C, respectively. If, upon evaluation, neither disease onset (block 233), worsening (block 234) or improving (block 235) is indicated, a finding of status quo is appropriate (block 236) and noted (block 235). Otherwise, congestive heart failure and the related outcomes are actively managed (block 238) through the administration of, non-exclusively, preload reduction, afterload reduction, diuresis, beta-blockade, inotropic agents, electrolyte management, electrical therapies, mechanical therapies, and other therapies as are known in the art. The management of congestive heart failure is described, by way of example, in E. Braunwald, ed., “Heart Disease—A Textbook of Cardiovascular Medicine,” Ch. 17, W.B. Saunders Co. (1997), the disclosure of which is incorporated herein by reference. The routine then returns.

FIGS. 13A–13B are flow diagrams showing the routine for determining an onset of congestive heart failure 232 for use in the routine of FIG. 12. Congestive heart failure is possible based on two general symptom categories: reduced exercise capacity (block 244) and respiratory distress (block 250). An effort is made to diagnose congestive heart failure manifesting primarily as resulting in reduced exercise capacity (block 244) and/or increased respiratory distress (block 250). Several factors need be indicated to warrant a diagnosis of congestive heart failure onset, as well as progression, as summarized below with reference to FIGS. 13A–13B in TABLE 1, Disease Onset or Progression. Reduced exercise capacity generally serves as a marker of low cardiac output and respiratory distress as a marker of increased left ventricular end diastolic pressure. The clinical aspects of congestive heart failure are described, by way of example, in E. Braunwald, ed., “Heart Disease—A Textbook of Cardiovascular Medicine,” Chs. 1 and 15, W.B. Saunders Co. (1997), the disclosure of which is incorporated herein by reference.

Per TABLE 1, multiple individual indications (blocks 240–243, 245–250) should be present for the two principal findings of congestive heart failure related reduced exercise capacity (block 244), or congestive heart failure related respiratory distress (block 250), to be indicated, both for disease onset or progression. A bold “++” symbol indicates a primary key finding which is highly indicative of congestive heart failure, that is, reduced exercise capacity or respiratory distress, a bold “+” symbol indicates a secondary key finding which is strongly suggestive, and a “±” symbol indicates a tertiary permissive finding which may be present or absent. The presence of primary key findings alone can be sufficient to indicate an onset of congestive heart failure and secondary key findings serve to corroborate disease onset. Note the presence of any abnormality can trigger an analysis for the presence or absence of secondary disease processes, such as the presence of atrial fibrillation or pneumonia. Secondary disease considerations can be evaluated using the same indications (see, e.g., blocks 141–144 of FIGS. 8A–8B), but with adjusted indicator thresholds 129 (shown in FIG. 5) triggered at a change of 0.5 SD, for example, instead of 1.0 SD.

In the described embodiment, the reduced exercise capacity and respiratory distress findings (blocks 244, 250) can be established by consolidating the individual indications (blocks 240–243, 245–250) in several ways. First, in a preferred embodiment, each individual indication (blocks 240–243, 245–250) is assigned a scaled index value correlating with the relative severity of the indication. For example, decreased cardiac output (block 240) could be measured on a scale from ‘1’ to ‘5’ wherein a score of ‘1’ indicates no change in cardiac output from the reference point, a score of ‘2’ indicates a change exceeding 0.5 SD, a score of ‘3’ indicates a change exceeding 1.0 SD, a score of ‘4’ indicates a change exceeding 2.0 SD, and a score of ‘5’ indicates a change exceeding 3.0 SD. The index value for each of the individual indications (blocks 240–243, 245–250) can then either be aggregated or averaged with a result exceeding the aggregate or average maximum indicating an appropriate congestive heart failure finding.

Preferably, all scores are weighted depending upon the assignments made from the measures in the reference baseline 26. For instance, transthoracic impedance 104 (shown in FIG. 4) could be weighted more importantly than respiratory rate 103 if the respiratory rate in the reference baseline 26 is particularly high at the outset, making the detection of further disease progression from increases in respiratory rate, less sensitive. In the described embodiment, cardiac output 100 receives the most weight in determining a reduced exercise capacity finding whereas pulmonary artery diastolic pressure 99 receives the most weight in determining a respiratory distress or dyspnea finding.

Alternatively, a simple binary decision tree can be utilized wherein each of the individual indications (blocks 240–243, 245–250) is either present or is not present. All or a majority of the individual indications (blocks 240–243, 245–250) should be present for the relevant congestive heart failure finding to be affirmed.

Other forms of consolidating the individual indications (blocks 240–243, 245–250) are feasible.

FIGS. 14A–14B are flow diagrams showing the routine for determining a progression or worsening of congestive heart failure 233 for use in the routine of FIG. 12. The primary difference between the determinations of disease onset, as described with reference to FIGS. 13A–13B, and disease progression is the evaluation of changes indicated in the same factors present in a disease onset finding. Thus, a revised congestive heart failure finding is possible based on the same two general symptom categories: reduced exercise capacity (block 264) and respiratory distress (block 271). The same factors which need be indicated to warrant a diagnosis of congestive heart failure onset are evaluated to determine disease progression, as summarized below with reference to FIGS. 14A–14B in TABLE 1, Disease Onset or Progression.

Similarly, these same factors trending in opposite directions from disease onset or progression, are evaluated to determine disease regression or improving, as summarized below with reference to FIGS. 15A–15B in TABLE 2, Disease Regression. Per TABLE 2, multiple individual indications (blocks 260–263, 265–270) should be present for the two principal findings of congestive heart failure related reduced exercise capacity (block 264), or congestive heart failure related respiratory distress (block 271), to indicate disease regression. As in TABLE 1, a bold “++” symbol indicates a primary key finding which is highly indicative of congestive heart failure, that is, reduced exercise capacity or respiratory distress, a bold “+” symbol indicates a secondary key finding which is strongly suggestive, and a “±” symbol

indicates a tertiary permissive finding which may be present or absent. The more favorable the measure, the more likely regression of congestive heart failure is indicated.

FIG. 16 is a flow diagram showing the routine for determining threshold stickiness (“hysteresis”) 231 for use in the method of FIG. 12. Stickiness, also known as hysteresis, is a medical practice doctrine whereby a diagnosis or therapy will not be changed based upon small or temporary changes in a patient reading, even though those changes might temporarily move into a new zone of concern. For example, if a patient measure can vary along a scale of ‘1’ to ‘10’ with ‘10’ being worse, a transient reading of ‘6,’ standing alone, on a patient who has consistently indicated a reading of ‘5’ for weeks will not warrant a change in diagnosis without a definitive prolonged deterioration first being indicated. Stickiness dictates that small or temporary changes require more diagnostic certainty, as confirmed by the persistence of the changes, than large changes would require for any of the monitored (device) measures. Stickiness also makes reversal of important diagnostic decisions, particularly those regarding life-threatening disorders, more difficult than reversal of diagnoses of modest import. As an example, automatic external defibrillators (AEDs) manufactured by Heartstream, a subsidiary of Agilent Technologies, Seattle, Wash., monitor heart rhythms and provide interventive shock treatment for the diagnosis of ventricular fibrillation. Once diagnosis of ventricular fibrillation and a decision to shock the patient has been made, a pattern of no ventricular fibrillation must be indicated for a relatively prolonged period before the AED changes to a “no-shock” decision. As implemented in this AED example, stickiness mandates certainty before a decision to shock is disregarded.

In practice, stickiness also dictates that acute deteriorations in disease state are treated aggressively while chronic, more slowly progressing disease states are treated in a more tempered fashion. Thus, if the patient status indicates a status quo (block 330), no changes in treatment or diagnosis are indicated and the routine returns. Otherwise, if the patient status indicates a change away from status quo (block 330), the relative quantum of change and the length of time over which the change has occurred is determinative. If the change of approximately 0.5 SD has occurred over the course of about one month (block 331), a gradually deteriorating condition exists (block 332) and a very tempered diagnostic, and if appropriate, treatment program is undertaken. If the change of approximately 1.0 SD has occurred over the course of about one week (block 333), a more rapidly deteriorating condition exists (block 334) and a slightly more aggressive diagnostic, and if appropriate, treatment program is undertaken. If the change of approximately 2.0 SD has occurred over the course of about one day (block 335), an urgently deteriorating condition exists (block 336) and a moderately aggressive diagnostic, and if appropriate, treatment program is undertaken. If the change of approximately 3.0 SD has occurred over the course of about one hour (block 337), an emergency condition exists (block 338) and an immediate diagnostic, and if appropriate, treatment program is undertaken as is practical. Finally, if the change and duration fall outside the aforementioned ranges (blocks 331–338), an exceptional condition exists (block 339) and the changes are reviewed manually, if necessary. The routine then returns. These threshold limits and time ranges may then be adapted depending upon patient history and peer-group guidelines.

The form of the revised treatment program depends on the extent to which the time span between changes in the device

measures exceed the threshold stickiness 133 (shown in FIG. 5) relating to that particular type of device measure. For example, threshold stickiness 133 indicator for monitoring a change in heart rate in a chronic patient suffering from congestive heart failure might be 10% over a week. Consequently, a change in average heart rate 96 (shown in FIG. 4) from 80 bpm to 95 bpm over a seven day period, where a 14 beat per minute average change would equate to a 1.0 SD change, would exceed the threshold stickiness 133 and would warrant a revised medical diagnosis perhaps of disease progression. One skilled in the art would recognize the indications of acute versus chronic disorders which will vary upon the type of disease, patient health status, disease indicators, length of illness, and timing of previously undertaken interventive measures, plus other factors.

The present invention provides several benefits. One benefit is improved predictive accuracy from the outset of patient care when a reference baseline is incorporated into the automated diagnosis. Another benefit is an expanded knowledge base created by expanding the methodologies applied to a single patient to include patient peer groups and the overall patient population. Collaterally, the information maintained in the database could also be utilized for the development of further predictive techniques and for medical research purposes. Yet a further benefit is the ability to hone and improve the predictive techniques employed through a continual reassessment of patient therapy outcomes and morbidity rates.

Other benefits include an automated, expert system approach to the cross-referral, consideration, and potential finding or elimination of other diseases and health disorders with similar or related etiological indicators and for those other disorders that may have an impact on congestive heart failure. Although disease specific markers will prove very useful in discriminating the underlying cause of symptoms, many diseases, other than congestive heart failure, will alter some of the same physiological measures indicative of congestive heart failure. Consequently, an important aspect of considering the potential impact of other disorders will be, not only the monitoring of disease specific markers, but the sequencing of change and the temporal evolution of more general physiological measures, for example respiratory rate, arterial oxygenation, and cardiac output, to reflect disease onset, progression or regression in more than one type of disease process.

While the invention has been particularly shown and described as referenced to the embodiments thereof, those skilled in the art will understand that the foregoing and other changes in form and detail may be made therein without departing from the spirit and scope of the invention.

TABLE 1

Disease Onset or Progression.		
Individual Indications	Congestive Heart Failure (Reduced Exercise Capacity) Finding (block 244, 274)	Congestive Heart Failure (Increasing Respiratory Distress) Finding (block 250, 280)
Decreased cardiac output (blocks 240, 260)	++	±
Decreased mixed venous oxygen score (blocks 241, 261)	+	±
Decreased patient activity score (block 243, 263)	+	±

TABLE 1-continued

<u>Disease Onset or Progression.</u>		
Individual Indications	Congestive Heart Failure (Reduced Exercise Capacity) Finding (block 244, 274)	Congestive Heart Failure (Increasing Respiratory Distress) Finding (block 250, 280)
Increased pulmonary artery diastolic pressure (PADP) (block 245, 265)	±	++
Increased respiratory rate (block 246, 266)	±	+
Decreased transthoracic impedance (TTZ) (block 248, 268)	±	+

TABLE 2

<u>Disease Regression.</u>		
Individual Indications	Congestive Heart Failure (Improving Exercise Capacity) Finding (block 304)	Congestive Heart Failure (Decreasing Respiratory Distress) Finding (block 310)
Increased cardiac output (block 300)	++	±
Increased mixed venous oxygen score (block 301)	+	±
Increased patient activity score (block 303)	+	±
Decreased pulmonary artery diastolic pressure (PADP) (block 305)	±	++
Decreased respiratory rate (block 306)	±	+
Increased transthoracic impedance (TTZ) (block 308)	±	+

What is claimed is:

1. A system for diagnosing and monitoring congestive heart failure for automated remote patient care, comprising:
 - a database storing a plurality of monitoring sets which each comprise recorded measures relating to patient information recorded on a substantially continuous basis;
 - a server retrieving and processing a plurality of the monitoring sets, comprising:
 - a comparison module determining at least one patient status change by comparing at least one recorded measure from one of the monitoring sets to at least one other recorded measure from another of the monitoring sets with both recorded measures relating to a type of patient information; and
 - an analysis module testing each patient status change for one of an onset, a progression, a regression, and a status quo of congestive heart failure against a predetermined indicator threshold corresponding to a type of patient information as the recorded measures which were compared, the indicator threshold corresponding to a quantifiable physiological measure of a pathophysiology indicative of congestive heart failure.
2. A system according to claim 1, further comprising:
 - an analysis submodule managing the congestive heart failure through a means of performing at least one of

preload reduction, afterload reduction, diuresis, beta-blockade, inotropic agents, electrolyte management, electrical therapies, and mechanical therapies.

3. A system according to claim 1, further comprising:
 - one of a medical device adapted to be implanted in an individual patient and an external medical device proximal to the individual patient for recording device measures, and a medical device database module periodically receiving a monitoring set for an individual patient each recorded measure in the medical device monitoring set having been, recorded by the one of a medical device adapted to be implanted in an individual patient and an external medical device proximal to the individual patient when the device measures are recorded and storing the received monitoring set in the database as part of a patient care record for the individual patient.
4. A system according to claim 3, further comprising:
 - a set of at least one further indicator thresholds, each indicator threshold corresponding to a quantifiable physiological measure used to detect a pathophysiology indicative of diseases other than congestive heart failure;
 - a comparison submodule comparing each patient status change to each such further indicator threshold corresponding to the same type of patient information as the at least one recorded measure and the at least one other recorded measure; and
 - an analysis submodule testing each patient status change against each such further indicator threshold corresponding to the same type of patient information as the recorded measures which were compared.
5. A system according to claim 1, further comprising:
 - a comparison submodule determining a change in patient status by comparing at least one quality of life measure stored in one of the monitoring sets to at least one other corresponding quality of life measure stored in another of the monitoring sets.
6. A system according to claim 1, further comprising:
 - a set of at least one stickiness indicators for each type of patient information, each stickiness indicator corresponding to a temporal limit related to a program of patient diagnosis or treatment;
 - a comparison submodule comparing a time span occurring between each patient status change for each recorded measure to the stickiness indicator relating to the same type of patient information as the recorded measure being compared; and
 - an analysis submodule determining a revised program of patient diagnosis or treatment responsive to each patient status change occurring subsequent to a time span exceeding the stickiness indicator.
7. A system according to claim 1, further comprising:
 - a database module retrieving the plurality of monitoring sets from one of a patient care record for an individual patient, a peer group, and a overall patient population.
8. A system according to claim 1, further comprising:
 - the database further storing a reference baseline comprising recorded measures which each relate to patient information recorded during an initial time period and comprise either medical device measures or derived measures calculable therefrom; and
 - a database module obtaining at least one of the at least one recorded measure and the at least one other recorded measure from the retrieved reference baseline.

9. A system according to claim 1, wherein the indicator threshold relates to at least one of a finding of reduced exercise capacity and respiratory distress.

10. A system according to claim 9, wherein the indicator threshold relating to the finding of reduced exercise capacity is selected from the group comprising decreased cardiac output, decreased mixed venous oxygen score and decreased patient activity score.

11. A system according to claim 9, wherein the indicator threshold relating to the finding of respiratory distress is selected from the group comprising increased pulmonary artery diastolic pressure, increased respiratory rate and decreased transthoracic impedance.

12. A method for diagnosing and monitoring congestive heart failure for automated remote patient care, comprising: storing a plurality of monitoring sets which each comprise recorded measures relating to patient information recorded on a substantially continuous basis in a database;

retrieving a plurality of the monitoring sets from the database;

determining at least one patient status change by comparing at least one recorded measure from one of the monitoring sets to at least one other recorded measure from another of the monitoring sets with both recorded measures relating to a type of patient information; and testing each patient status change for one of an onset, a progression, a regression, and a status quo of congestive heart failure against a predetermined indicator threshold corresponding to a type of patient information as the recorded measures which were compared, the indicator threshold corresponding to a quantifiable physiological measure of a pathophysiology indicative of congestive heart failure.

13. A method according to claim 12, further comprising: managing the congestive heart failure through administration of at least one of preload reduction, afterload reduction, diuresis, beta-blockade, inotropic agents, electrolyte management, electrical therapies, and mechanical therapies.

14. A method according to claim 12, further comprising: periodically receiving a monitoring set for an individual patient, each recorded measure in the monitoring set having been recorded by one of a medical device adapted to be implanted in an individual patient and an external medical device proximal to the individual patient when the device measures are recorded; and storing the received monitoring set in the database as part of a patient care record for the individual patient.

15. A method according to claim 14, further comprising: defining a set of further indicator thresholds, each indicator threshold corresponding to a quantifiable physiological measure used to detect a pathophysiology indicative of diseases other than congestive heart failure;

comparing each patient status change to each such further indicator threshold corresponding to the same type of patient information as the at least one recorded measure and the at least one other recorded measure; and

testing each patient status change against each such further indicator threshold corresponding to the same type of patient information as the recorded measures which were compared.

16. A method according to claim 12, further comprising: determining a change in patient status by comparing at least one quality of life measure stored in one of the

monitoring sets to at least one other corresponding quality of life measure stored in another of the monitoring sets.

17. A method according to claim 12, further comprising: defining a set of stickiness indicators for each type of patient information, each stickiness indicator corresponding to a temporal limit related to a program of patient diagnosis or treatment;

comparing a time span occurring between each patient status change for each recorded measure to the stickiness indicator relating to the same type of patient information as the recorded measure being compared; and

determining a revised program of patient diagnosis or treatment responsive to each patient status change occurring subsequent to a time span exceeding the stickiness indicator.

18. A method according to claim 12, further comprising: retrieving the plurality of monitoring sets from one of a patient care record for an individual patient, a peer group, and an overall patient population.

19. A method according to claim 12, further comprising: retrieving a reference baseline comprising recorded measures which each relate to patient information recorded during an initial time period and comprise either medical device measures or derived measures calculable therefrom; and

obtaining at least one of the at least one recorded measure and the at least one other recorded measure from the retrieved reference baseline.

20. A method according to claim 12, wherein the indicator threshold relates to at least one of a finding of reduced exercise capacity and respiratory distress.

21. A method according to claim 20, wherein the indicator threshold relating to the finding of reduced exercise capacity is selected from the group consisting of decreased cardiac output, decreased mixed venous oxygen score and decreased patient activity score.

22. A method according to claim 20, wherein the indicator threshold relating to the finding of respiratory distress is selected from the group consisting of increased pulmonary artery diastolic pressure, increased respiratory rate and decreased transthoracic impedance.

23. A computer-readable storage medium having code for diagnosing and monitoring congestive heart failure for automated remote patient care, the code comprising:

code for storing a plurality of monitoring sets which each comprise recorded measures relating to patient information recorded on a substantially continuous basis in a database;

code for operatively retrieving a plurality of monitoring sets from the database;

code for operatively determining at least one patient status change by comparing at least one recorded measure from one of the monitoring sets to at least one other recorded measure from another of the monitoring sets with both recorded measures relating to a type of patient information; and

code for operatively testing each patient status change for one of an onset, a progression, a regression, and a status quo of congestive heart failure against a predetermined indicator threshold corresponding to a type of patient information as the recorded measures which were compared, the indicator threshold corresponding to a quantifiable physiological measure of a pathophysiology indicative of congestive heart failure.

24. A storage medium according to claim 23, further comprising:

code for operatively managing the congestive heart failure through administration of at least one of preload reduction, afterload reduction, diuresis, beta-blockade, inotropic agents, electrolyte management, electrical therapies, and mechanical therapies.

25. A storage medium according to claim 23, further comprising:

code for operatively periodically receiving a monitoring set for an individual patient, each recorded measure in the monitoring set having been recorded by one of a medical device adapted to be implanted in an individual patient and an external medical device proximal to the individual patient when the device measures are recorded; and

code for operatively storing the received monitoring set in the database as part of a patient care record for the individual patient.

26. A storage medium according to claim 25, further comprising:

defining a set of at least one further indicator thresholds, each indicator threshold corresponding to a quantifiable physiological measure used to detect a pathophysiology indicative of diseases other than congestive heart failure;

comparing each patient status change to each such further indicator threshold corresponding to the same type of patient information as the at least one recorded measure and the at least one other recorded measure; and

testing each patient status change against each such further indicator threshold corresponding to the same type of patient information as the recorded measures which were compared.

27. A storage medium according to claim 23, further comprising:

code for operatively determining a change in patient status by comparing at least one quality of life measure stored in one of the monitoring set to at least one other corresponding quality of life measure stored in another of the monitoring sets.

28. A storage medium according to claim 23, further comprising:

code for operatively defining a set of stickiness indicators for each type of patient information, each stickiness indicator corresponding to a temporal limit related to a program of patient diagnosis or treatment;

code for operatively comparing a time span occurring between each patient status change for each recorded measure to the stickiness indicator relating to the same type of patient information as the recorded measure being compared; and

code for operatively determining a revised program of patient diagnosis or treatment responsive to each patient status change occurring subsequent to a time span exceeding the stickiness indicator.

29. A storage medium according to claim 23, further comprising:

code for operatively retrieving the plurality of monitoring sets from one of a patient care record for an individual patient, a peer group, and a overall patient population.

30. A storage medium according to claim 23, further comprising:

code for operatively retrieving a reference baseline comprising recorded measures which each relate to patient

information recorded during an initial time period and comprise either medical device measures or derived measures calculable therefrom; and

code for operatively obtaining at least one of the at least one recorded measure and the at least one other recorded measure from the retrieved reference baseline.

31. An automated collection and analysis patient care system for diagnosing and monitoring congestive heart failure for remote patient care, comprising:

a database storing patient monitoring information, comprising:

a plurality of monitoring sets, each monitoring set comprising recorded measures which each relate to patient information and comprise either medical device measures or derived measures calculable therefrom, the medical device measures having been recorded on a substantially continuous basis;

a set of at least one stored indicator threshold, each indicator threshold corresponding to a quantifiable physiological measure of a pathophysiology indicative of congestive heart failure and relating to a type of patient information as at least one of the recorded measures; and

a server diagnosing a congestive heart failure finding comprising one of an onset, a progression, a regression and a status quo of congestive heart failure, comprising:

an analysis module determining a change in patient status by comparing at least one recorded measure to at least one other recorded measure with both recorded measures relating to a type of patient information; and

a comparison module comparing each patient status change to the indicator threshold corresponding to a type of patient information as the recorded measures which were compared.

32. A system according to claim 31, wherein the device measures are recorded by a medical device that is one of a medical device adapted to be implanted in an individual patient and an external medical device proximal to the individual patient when the device measures are recorded.

33. A system according to claim 31, wherein each of the monitoring sets comprises recorded measures relating to patient information solely for the individual patient, further comprising:

a database module retrieving each monitoring set from a patient care record for an individual patient and obtaining the at least one recorded measure and the at least one other recorded measure from the retrieved monitoring sets.

34. A system according to claim 31, wherein each of the monitoring sets comprises recorded measures relating to patient information for a peer group of patients to which the individual patient belongs, further comprising:

a database module retrieving at least one monitoring set from a patient care record for the individual patient, retrieving at least one other monitoring set from a patient care record in the same patient peer group, and obtaining the at least one recorded measure from the at least one monitoring set and the at least one other recorded measure from the at least one other monitoring set.

35. A system according to claim 31, wherein each of the monitoring sets comprises recorded measures relating to patient information for the general population of patients, further comprising:

a database module retrieving at least one monitoring set from a patient care record for the individual patient, retrieving at least one other monitoring set from a patient care record in the overall patient population, and obtaining the at least one recorded measure from the at least one monitoring set and the at least one other recorded measure from the at least one other monitoring set.

36. A system according to claim 31, further comprising: the reference baseline database storing a reference baseline comprising recorded measures which each relate to patient information recorded by the medical device adapted to be implanted during an initial time period and comprise either device measures recorded by the medical device adapted to be implanted or derived measures calculable therefrom; and

a database module obtaining at least one of the at least one recorded measure and the at least one other recorded measure from the retrieved reference baseline.

37. A system according to claim 36, wherein the reference baseline comprises recorded measures relating to patient information for one of the individual patients solely, a peer group of patients to which the individual patient belongs, and a general population of patients.

38. A system according to claim 31, wherein the set of stored indicator thresholds relate to reduced exercise capacity selected from the primary group consisting of decreased cardiac output, the secondary group consisting of decreased mixed venous oxygen score and decreased patient activity score, and the tertiary group consisting of increased pulmonary artery diastolic pressure, increased respiratory rate and decreased transthoracic impedance.

39. A system according to claim 31, wherein the set of stored indicator thresholds relate to respiratory distress selected from the primary group consisting of increased pulmonary artery diastolic pressure, the secondary group consisting of increased respiratory rate and decreased transthoracic impedance, and the tertiary group consisting of decreased cardiac output, decreased mixed venous oxygen score and decreased patient activity score.

40. A system according to claim 31, further comprising: a comparison submodule grading the comparisons between each patient status change and corresponding indicator threshold on a fixed scale based on a degree of deviation from the indicator threshold and determining an overall patient status change by performing a summation over the individual graded comparisons.

41. A system according to claim 31, further comprising: a comparison submodule determining probabilistic weightings of the comparisons between each patient status change and corresponding indicator threshold based on a statistical deviation and trends via linear fits from the indicator threshold and determining an overall patient status change by performing a summation over the individual graded comparisons.

42. A system according to claim 31, wherein each monitoring set further comprises quality of life and symptom measures recorded by the individual patient, the server further comprising:

a quality of life module determining a change in patient status by comparing at least one recorded quality of life measure to at least one other corresponding recorded quality of life measure; and

the server incorporating each patient status change in quality of life into the congestive heart failure finding to either refute or support the diagnosis.

43. A system according to claim 31, further comprising: a set of at least one stored further indicator thresholds, each indicator threshold corresponding to a quantifiable physiological measure used to detect a pathophysiology indicative of diseases other than congestive heart failure of disease; and

the server diagnosing a finding of a disease other than congestive heart failure, the comparison module further comprising comparing each patient status change to each such further indicator threshold corresponding to the same type of patient information as the at least one recorded measure and the at least one other recorded measure.

44. A system according to claim 31, further comprising: a timer measuring a time span occurring between each patient status change for each recorded measure; a set of at least one stickiness indicators, each indicator threshold corresponding to a temporal limit related to a course of patient care; and

a feedback module comparing a time span between each patient status change for each recorded measure to the stickiness indicator corresponding to the same type of patient information as the recorded measure being compared.

45. A system according to claim 31, further comprising: a feedback module providing automated feedback to an individual patient when a congestive heart failure finding is indicated.

46. A system according to claim 45, further comprising: the feedback module performing an interactive dialogue between the individual patient and the patient care system regarding a medical condition of the individual patient.

47. A method for diagnosing and monitoring congestive heart failure using an automated collection and analysis patient care system, comprising:

storing a plurality of monitoring sets in a database, each monitoring set comprising recorded measures which each relate to patient information and comprise either medical device measures or derived measures calculable therefrom, the medical device measures having been recorded on a substantially continuous basis;

retrieving a plurality of monitoring sets from the database;

defining a set of at least one stored indicator threshold, each indicator threshold corresponding to a quantifiable physiological measure of a pathophysiology indicative of congestive heart failure and relating to a type of patient information as at least one of the recorded measures; and

diagnosing a congestive heart failure finding comprising one of an onset, a progression, a regression, and a status quo of congestive heart failure, comprising:

determining a change in patient status by comparing at least one recorded measure to at least one other recorded measure with both recorded measures relating to a type of patient information; and

comparing each patient status change to the indicator threshold corresponding to a type of patient information as the recorded measures which were compared.

48. A method according to claim 47, wherein the device measures are recorded by one of a medical device adapted to be implanted in an individual patient and an external medical device proximal to the individual patient when the device measures are recorded.

49. A method according to claim 48, wherein each of the monitoring sets comprises recorded measures relating to patient information solely for the individual patient, further comprising:

retrieving each monitoring set from a patient care record for an individual patient; and

obtaining the at least one recorded measure and the at least one other recorded measure from the retrieved monitoring sets.

50. A method according to claim 47, wherein each of the monitoring sets comprises recorded measures relating to patient information for a peer group of patients to which the individual patient belongs, further comprising:

retrieving at least one monitoring set from a patient care record for the individual patient;

retrieving at least one other monitoring set from a patient care record in the same patient peer group; and

obtaining the at least one recorded measure from the at least one monitoring set and the at least one other recorded measure from the at least one other monitoring set.

51. A method according to claim 47, wherein each of the monitoring sets comprises recorded measures relating to patient information for the general population of patients, further comprising:

retrieving at least one monitoring set from a patient care record for the individual patient;

retrieving at least one other monitoring set from a patient care record in the overall patient population; and

obtaining the at least one recorded measure from the at least one monitoring set and the at least one other recorded measure from the at least one other monitoring set.

52. A method according to claim 47, further comprising: retrieving a reference baseline comprising recorded measures which each relate to patient information recorded by the medical device adapted to be implanted during an initial time period and comprise either device measures recorded by the medical device adapted to be implanted or derived measures calculable therefrom; and

obtaining at least one of the at least one recorded measure and the at least one other recorded measure from the retrieved reference baseline.

53. A method according to claim 52, wherein the reference baseline comprises recorded measures relating to patient information for one of the individual patients solely, a peer group of patients to which the individual patient belongs, and a general population of patients.

54. A method according to claim 47, wherein the set of stored indicator thresholds relate to reduced exercise capacity selected from the primary group consisting of decreased cardiac output, the secondary group consisting of decreased mixed venous oxygen score and decreased patient activity score, and the tertiary group consisting of increased pulmonary artery diastolic pressure, increased respiratory rate and decreased transthoracic impedance.

55. A method according to claim 47, wherein the set of stored indicator thresholds relate to respiratory distress selected from the primary group consisting of increased pulmonary artery diastolic pressure, the secondary group consisting of increased respiratory rate and decreased transthoracic impedance, and the tertiary group consisting of decreased cardiac output, decreased mixed venous oxygen score and decreased patient activity score.

56. A method according to claim 47, further comprising: grading the comparisons between each patient status change and corresponding indicator threshold on a fixed scale based on a degree of deviation from the indicator threshold; and

determining an overall patient status change by performing a summation over the individual graded comparisons.

57. A method according to claim 47, further comprising: determining probabilistic weightings of the comparisons between each patient status change and corresponding indicator threshold based on a statistical deviation and trends via linear fits from the indicator threshold; and determining an overall patient status change by performing a summation over the individual graded comparisons.

58. A method according to claim 47, wherein each monitoring set further comprises quality of life and symptom measures recorded by an individual patient, the operation of diagnosing a congestive heart failure finding further comprising:

determining a change in patient status by comparing at least one recorded quality of life measure to at least one other corresponding recorded quality of life measure; and

incorporating each patient status change in quality of life into the congestive heart failure finding to either refute or support the diagnosis.

59. A method according to claim 47, further comprising: defining a set of further indicator thresholds, each indicator threshold corresponding to a quantifiable physiological measure used to detect a pathophysiology indicative of diseases other than congestive heart failure; and

diagnosing a finding of the disease other than congestive heart failure, comprising comparing each patient status change to each such further indicator threshold corresponding to the same type of patient information as the at least one recorded measure and the at least one other recorded measure.

60. A method according to claim 47, further comprising: defining a set of stickiness indicators, each indicator threshold corresponding to a temporal limit related to a course of patient care; and

comparing a time span between each patient status change for each recorded measure to the stickiness indicator corresponding to the same type of patient information as the recorded measure being compared.

61. A method according to claim 47, further comprising: providing automated feedback to the individual patient when a congestive heart failure finding is indicated.

62. A method according to claim 61, further comprising: performing an interactive dialogue between the individual patient and the patient care system regarding a medical condition of the individual patient.

63. A computer-readable storage medium having code for diagnosing and monitoring congestive heart failure using an automated collection and analysis patient care system, the code comprising:

code for storing a plurality of monitoring sets from a database, each monitoring set comprising recorded measures which each relate to patient information and comprise either medical device measures or derived measures calculable therefrom, the medical device measures having been recorded on a substantially continuous basis;

code for operatively retrieving a plurality of the monitoring sets from the database;

code for operatively defining a set of at least one indicator threshold, each indicator threshold corresponding to a

quantifiable physiological measure of a pathophysiology indicative of congestive heart failure and relating to the same type of patient information as at least one of the recorded measures; and

code for operatively diagnosing a congestive heart failure finding comprising one of an onset, a progression, a regression, and a status quo of congestive heart failure, comprising:

code for operatively determining a change in patient status by comparing at least one recorded measure to at least one other recorded measure with both recorded measures relating to the same type of patient information; and

code for operatively comparing each patient status change to the indicator threshold corresponding to the same type of patient information as the recorded measures which were compared.

64. A storage medium according to claim **63**, wherein each of the monitoring sets comprises recorded measures relating to patient information solely for the individual patient, further comprising:

code for operatively retrieving each monitoring set from a patient care record for the individual patient; and

code for operatively obtaining the at least one recorded measure and the at least one other recorded measure from the retrieved monitoring sets.

65. A storage medium according to claim **63**, wherein each of the monitoring sets comprises recorded measures relating to patient information for a peer group of patients to which the individual patient belongs, further comprising:

code for operatively retrieving at least one monitoring set from a patient care record for the individual patient;

code for operatively retrieving at least one other monitoring set from a patient care record in the same patient peer group; and

code for operatively obtaining the at least one recorded measure from the at least one monitoring set and the at least one other recorded measure from the at least one other monitoring set.

66. A storage medium according to claim **63**, wherein each of the monitoring sets comprises recorded measures relating to patient information for the general population of patients, further comprising:

code for operatively retrieving at least one monitoring set from a patient care record for the individual patient;

code for operatively retrieving at least one other monitoring set from a patient care record in the overall patient population; and

code for operatively obtaining the at least one recorded measure from the at least one monitoring set and the at least one other recorded measure from the at least one other monitoring set.

67. A storage medium according to claim **63**, further comprising:

code for operatively retrieving a reference baseline comprising recorded measures which each relate to patient information recorded by the medical device adapted to be implanted during an initial time period and comprise either device measures recorded by the medical device adapted to be implanted or derived measures calculable therefrom; and

code for operatively obtaining at least one of the at least one recorded measure and the at least one other recorded measure from the retrieved reference baseline.

68. A storage medium according to claim **63**, the operation of comparing each patient status change further comprising:

code for operatively grading the comparisons between each patient status change and corresponding indicator threshold on a fixed scale based on a degree of deviation from the indicator threshold; and

code for operatively determining an overall patient status change by performing a summation over the individual graded comparisons.

69. A storage medium according to claim **63**, the operation of comparing each patient status change further comprising:

code for operatively determining probabilistic weightings of the comparisons between each patient status change and corresponding indicator threshold based on a statistical deviation and trends via linear fits from the indicator threshold; and

code for operatively determining an overall patient status change by performing a summation over the individual graded comparisons.

70. A storage medium according to claim **63**, wherein each monitoring set further comprises quality of life and symptom measures recorded by the individual patient, the operation of diagnosing a congestive heart failure finding further comprising:

code for operatively determining a change in patient status by comparing at least one recorded quality of life measure to at least one other corresponding recorded quality of life measure; and

code for operatively incorporating each patient status change in quality of life into the congestive heart failure finding to either refute or support the diagnosis.

71. A storage medium according to claim **63**, further comprising:

code for defining a set of at least one further indicator thresholds, each indicator threshold corresponding to a quantifiable physiological measure used to detect a pathophysiology indicative of diseases other than congestive heart failure; and

code for diagnosing a finding of the disease other than congestive heart failure, comprising comparing each patient status change to each such further indicator threshold corresponding to the same type of patient information as the at least one recorded measure and the at least one other recorded measure.

72. A storage medium according to claim **63**, further comprising:

code for defining a set of at least one stickiness indicators, each indicator threshold corresponding to a temporal limit related to a course of patient care; and

code for comparing a time span between each patient status change for each recorded measure to the stickiness indicator corresponding to the same type of patient information as the recorded measure being compared.

73. A storage medium according to claim **63**, further comprising:

code for operatively providing automated feedback to the individual patient when a congestive heart failure finding is indicated.

74. A storage medium according to claim **73**, further comprising:

code for operatively performing an interactive dialogue between the individual patient and the patient care system regarding a medical condition of the individual patient.

75. An automated patient care system for diagnosing and monitoring congestive heart failure for remote patient care, comprising:

a medical device regularly recording measures relating to at least one of monitoring reduced exercise capacity and respiratory distress;

a database maintaining information for an individual patient, comprising organizing a plurality of monitoring sets in a database, and storing the recorded measures for the individual patient on a substantially continuous basis into a monitoring set in the database;

a server evaluating a finding of at least one of an onset, a progression, a regression, and a status quo of congestive heart failure, comprising:

a database module periodically retrieving a plurality of the monitoring sets from the database;

a comparison module determining at least one patient status change by comparing at least one recorded measure from each of the monitoring sets to at least one other recorded measure with both recorded measures relating to a type of patient information; and an analysis module testing each patient status change for congestive heart failure against predetermined indicator thresholds corresponding to a type of patient information as the recorded measures which were compared, the indicator thresholds corresponding to quantifiable physiological measures of pathophysiology indicative of reduced exercise capacity and respiratory distress.

76. A system according to claim 75, wherein the indicator threshold relating to reduced exercise capacity is selected from the primary group consisting of decreased cardiac output, the secondary group consisting of decreased mixed venous oxygen score and decreased patient activity score, and the tertiary group consisting of increased pulmonary artery diastolic pressure, increased respiratory rate and decreased transthoracic impedance.

77. A system according to claim 75, wherein the indicator threshold relating to respiratory distress is selected from the primary group consisting of increased pulmonary artery diastolic pressure, the secondary group consisting of increased respiratory rate and decreased transthoracic impedance, and the tertiary group consisting of decreased cardiac output, decreased mixed venous oxygen score and decreased patient activity score.

78. A method for diagnosing and monitoring congestive heart failure in an automated patient care system, comprising:

regularly recording measures relating to at least one of monitoring reduced exercise capacity and respiratory distress;

maintaining information for an individual patient, comprising:

organizing a plurality of monitoring sets in a database; storing the recorded measures for the individual patient on a substantially continuous basis into a monitoring set in the database;

periodically retrieving a plurality of the monitoring sets from the database;

evaluating a finding of at least one of an onset, a progression, a regression, and a status quo of congestive heart failure, comprising:

determining at least one patient status change by comparing at least one recorded measure from each of the monitoring sets to at least one other recorded measure with both recorded measures relating to a type of patient information; and

testing each patient status change for congestive heart failure against predetermined indicator thresholds corresponding to a type of patient information as the recorded measures which were compared, the indicator thresholds corresponding to quantifiable physiological measures of pathophysiology indicative of reduced exercise capacity and respiratory distress.

79. A method according to claim 78, wherein the indicator threshold relating to reduced exercise capacity is selected from the primary group consisting of decreased cardiac output, the secondary group consisting of decreased mixed venous oxygen score and decreased patient activity score, and the tertiary group consisting of increased pulmonary artery diastolic pressure, increased respiratory rate and decreased transthoracic impedance.

80. A method according to claim 78, wherein the indicator threshold relating to respiratory distress is selected from the primary group consisting of increased pulmonary artery diastolic pressure, the secondary group consisting of increased respiratory rate and decreased transthoracic impedance, and the tertiary group consisting of decreased cardiac output, decreased mixed venous oxygen score and decreased patient activity score.

81. A computer-readable storage medium having code for diagnosing and monitoring congestive heart failure in an automated patient care system, the code comprising:

code for regularly recording measures relating to at least one of monitoring reduced exercise capacity and respiratory distress;

code for maintaining information for an individual patient, comprising:

code for organizing a plurality of monitoring sets in a database;

code for storing the recorded measures for the individual patient on a substantially continuous basis into a monitoring set in the database;

code for periodically retrieving a plurality of the monitoring sets from the database;

code for evaluating a finding of at least one of an onset, a progression, a regression, and a status quo of congestive heart failure, comprising:

code for determining at least one patient status change by comparing at least one recorded measure from each of the monitoring sets to at least one other recorded measure with both recorded measures relating to a type of patient information; and

code for testing each patient status change for congestive heart failure against predetermined indicator thresholds corresponding to a type of patient information as the recorded measures which were compared, the indicator thresholds corresponding to quantifiable physiological measures of pathophysiology indicative of reduced exercise capacity and respiratory distress.

* * * * *

UNITED STATES PATENT AND TRADEMARK OFFICE
CERTIFICATE OF CORRECTION

PATENT NO. : 6,908,437 B2
DATED : June 21, 2005
INVENTOR(S) : Bardy, Gust H.

Page 1 of 1

It is certified that error appears in the above-identified patent and that said Letters Patent is hereby corrected as shown below:

Column 22,

Line 10, "patient each recorded measure in the medical device" should read
-- patient, each recorded measure in the medical device --;

Line 11, "monitoring set having been, recorded by the one of a" should read
-- monitoring set having been recorded by the one of a --.

Line 16, "database as part of a patent care record for the indi-" should read
-- database as part of a patient care record for the indi- --.

Column 23,

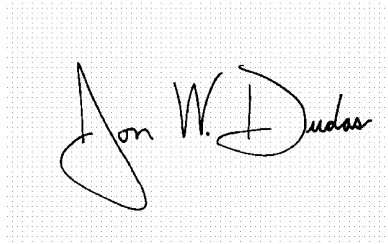
Line 24, "monitoring acts to at least one other recorded measure" should read
-- monitoring sets to at least one other recorded measure --.

Column 26,

Line 25, "comprising one of an onset, a progression, a regression" should read
-- comprising one of an onset, a progression, a regression, --.

Signed and Sealed this

Twenty-seventh Day of December, 2005

A handwritten signature in black ink on a light gray grid background. The signature reads "Jon W. Dudas" in a cursive style.

JON W. DUDAS

Director of the United States Patent and Trademark Office

专利名称(译)	用于诊断和监测用于自动远程患者护理的充血性心力衰竭的系统和方法		
公开(公告)号	US6908437	公开(公告)日	2005-06-21
申请号	US10/646105	申请日	2003-08-22
[标]申请(专利权)人(译)	BARDY GUST ^ h		
申请(专利权)人(译)	BARDY GUST H.		
当前申请(专利权)人(译)	心脏智能CORPORATION		
[标]发明人	BARDY GUST H		
发明人	BARDY, GUST H.		
IPC分类号	G06F19/00 A61B5/00 A61B5/02 A61B5/0205 A61B5/024 A61B5/0402 A61B5/0452 A61B5/07 A61B5/08 A61B5/11		
CPC分类号	A61B5/0002 A61B5/02055 A61B5/024 A61B5/0402 A61B5/076 A61B5/1112 A61B5/14546 G06F19/322 G06F19/3418 G06F19/3431 G06F19/3487 A61B5/0004 A61B5/0006 A61B5/0245 A61B5/04012 A61B5/486 A61B5/686 A61B5/7275 A61B5/7278 A61B5/7282 A61B5/0031 A61B2505/03 A61B5/0205 A61B5/0452 A61B5/0816 A61B5/11 A61B5/145 A61B5/14532 A61B2560/0242 G06F19/324 G06F19/325 Y10S128/923 G16H10/60 G16H15/00 G16H40/67 G16H50/30		
其他公开文献	US20040147982A1		
外部链接	Espacenet	USPTO	

摘要(译)

提出了一种用于诊断和监测用于自动远程患者护理的充血性心力衰竭的系统。数据库存储与基本连续记录的患者信息有关的多个监测组。检索和处理监控组的服务器包括比较模块，其通过将来自一个监控组的至少一个记录的测量值与来自另一个监控组的至少一个其他记录的测量值与两个与类型相关的记录的测量值进行比较来确定患者状态变化根据对应于作为记录的测量的患者信息类型的预定指示器阈值，患者信息和分析模块测试充血性心力衰竭的发作，进展，回归和现状之一的每个患者状态变化。指标阈值对应于指示充血性心力衰竭的病理生理学的可量化生理测量。

