



US007186966B2

(12) **United States Patent**
Al-Ali

(10) **Patent No.:** **US 7,186,966 B2**
(45) **Date of Patent:** ***Mar. 6, 2007**

(54) **AMOUNT OF USE TRACKING DEVICE AND METHOD FOR MEDICAL PRODUCT**

4,685,464 A 8/1987 Goldberger et al.
4,960,128 A 10/1990 Gordon et al.
4,964,408 A 10/1990 Hink et al.
4,996,975 A 3/1991 Nakamura

(75) Inventor: **Ammar Al-Ali**, Tustin, CA (US)

(73) Assignee: **Masimo Corporation**, Irvine, CA (US)

(*) Notice: Subject to any disclaimer, the term of this patent is extended or adjusted under 35 U.S.C. 154(b) by 0 days.

(Continued)

FOREIGN PATENT DOCUMENTS

This patent is subject to a terminal disclaimer.

EP 0262 779 A1 4/1988

(21) Appl. No.: **11/311,212**

(Continued)

(22) Filed: **Dec. 19, 2005**

OTHER PUBLICATIONS

(65) **Prior Publication Data**

US 2006/0097135 A1 May 11, 2006

<http://www.masimo.com/systemo.htm>, "System Overview & Performance," 2 pages reviewed on Sep. 17, 1999.

Related U.S. Application Data

(Continued)

(63) Continuation of application No. 11/065,994, filed on Feb. 24, 2005, now Pat. No. 6,979,812, which is a continuation of application No. 10/357,531, filed on Feb. 3, 2003, now Pat. No. 6,861,639, which is a continuation of application No. 09/502,032, filed on Feb. 10, 2000, now Pat. No. 6,515,273, which is a continuation-in-part of application No. 09/420,544, filed on Oct. 19, 1999, now Pat. No. 6,580,086.

Primary Examiner—Que T. Le
(74) *Attorney, Agent, or Firm*—Knobbe Martens Olson & Bear LLP

(60) Provisional application No. 60/150,922, filed on Aug. 26, 1999.

(57) **ABSTRACT**

(51) **Int. Cl.**
H01L 31/00 (2006.01)

Aspects of the present disclosure include systems and methods for indicating an amount of use of a pulse oximetry sensor. According to one embodiment, the system includes an oximeter that monitors the amount of use for a given sensor. The oximeter and/or the sensor may advantageously include a visual alarm, an audio alarm, a vibrational alarm, a power down function, or the like, which can be activated when a predetermined amount of use has expired. According to another embodiment, the system includes a sensor having a memory device storing a unique identifier.

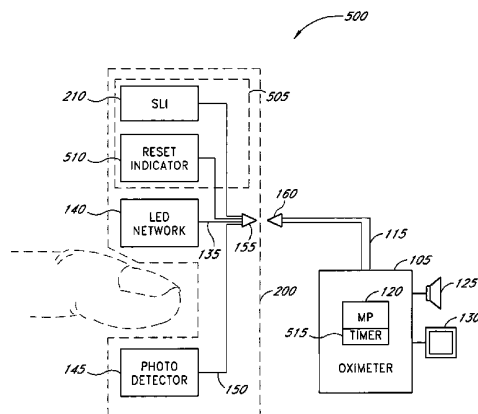
(52) **U.S. Cl.** **250/214.1; 250/559.1**
(58) **Field of Classification Search** 250/214.1, 250/559.1, 214 R; 600/300, 344
See application file for complete search history.

(56) **References Cited**

U.S. PATENT DOCUMENTS

4,621,643 A 11/1986 New, Jr. et al.

20 Claims, 8 Drawing Sheets



U.S. PATENT DOCUMENTS

RE33,643 E	7/1991	Isaacson et al.	6,256,523 B1	7/2001	Diab et al.
5,041,187 A	8/1991	Hink et al.	6,263,222 B1	7/2001	Diab et al.
5,069,213 A	12/1991	Polczynski	6,278,522 B1	8/2001	Lepper, Jr. et al.
5,090,410 A	2/1992	Saper et al.	6,280,213 B1	8/2001	Tobler et al.
5,163,438 A	11/1992	Gordon et al.	6,285,896 B1	9/2001	Tobler et al.
5,170,786 A	12/1992	Thomas et al.	6,334,065 B1	12/2001	Al-Ali et al.
5,188,098 A *	2/1993	Hoffman et al. 128/204.23	6,349,228 B1	2/2002	Kiani et al.
5,247,931 A	9/1993	Norwood	6,360,114 B1	3/2002	Diab et al.
5,309,908 A	5/1994	Friedman et al.	6,371,921 B1	4/2002	Caro et al.
5,313,940 A	5/1994	Fuse et al.	6,377,829 B1	4/2002	Al-Ali
5,319,355 A	6/1994	Russek	6,388,240 B2	5/2002	Schulz et al.
5,337,744 A	8/1994	Branigan	6,397,091 B2	5/2002	Diab et al.
5,431,170 A	7/1995	Mathews	6,430,525 B1	8/2002	Weber et al.
5,438,986 A	8/1995	Disch et al.	6,463,311 B1	10/2002	Diab
5,452,717 A	9/1995	Branigan et al.	6,470,199 B1	10/2002	Kopotic et al.
5,482,036 A	1/1996	Diab et al.	6,501,975 B2	12/2002	Diab et al.
5,490,505 A	2/1996	Diab et al.	6,515,273 B2	2/2003	Al-Ali
5,494,043 A	2/1996	O'Sullivan et al.	6,525,386 B1	2/2003	Mills et al.
5,533,511 A	7/1996	Kaspari et al.	6,526,300 B1	2/2003	Kiani et al.
5,588,427 A	12/1996	Tien	6,541,756 B2	4/2003	Schulz et al.
5,590,649 A	1/1997	Caro et al.	6,542,764 B1	4/2003	Al-Ali et al.
5,632,272 A	5/1997	Diab et al.	6,580,086 B1	6/2003	Schulz et al.
5,638,816 A	6/1997	Kiani-Azarbayjany et al.	6,584,336 B1	6/2003	Ali et al.
5,638,818 A	6/1997	Diab et al.	6,597,933 B2	7/2003	Kiani et al.
5,645,440 A	7/1997	Tobler et al.	6,606,511 B1	8/2003	Ali et al.
5,660,567 A	8/1997	Nierlich et al.	6,632,181 B2	10/2003	Flaherty et al.
5,685,299 A	11/1997	Diab et al.	6,640,116 B2	10/2003	Diab
D393,830 S	4/1998	Tobler et al.	6,643,530 B2	11/2003	Diab et al.
5,743,262 A	4/1998	Lepper, Jr. et al.	6,650,917 B2	11/2003	Diab et al.
5,758,644 A	6/1998	Diab et al.	6,654,624 B2	11/2003	Diab et al.
5,760,910 A	6/1998	Lepper, Jr. et al.	6,658,276 B2	12/2003	Kianl et al.
5,769,785 A	6/1998	Diab et al.	6,671,531 B2	12/2003	Al-Ali et al.
5,782,757 A	7/1998	Diab et al.	6,678,543 B2	1/2004	Diab et al.
5,785,659 A	7/1998	Caro et al.	6,684,090 B2	1/2004	Ali et al.
5,791,347 A	8/1998	Flaherty et al.	6,697,656 B1	2/2004	Al-Ali
5,807,248 A	9/1998	Mills	6,697,658 B2	2/2004	Al-Ali
5,810,724 A	9/1998	Gronvall	RE38,476 E	3/2004	Diab et al.
5,810,734 A	9/1998	Caro et al.	6,699,194 B1	3/2004	Diab et al.
5,817,010 A	10/1998	Hibl	6,714,804 B2	3/2004	Al-Ali et al.
5,823,950 A	10/1998	Diab et al.	RE38,492 E	4/2004	Diab et al.
5,830,131 A	11/1998	Caro et al.	6,725,075 B2	4/2004	Al-Ali
5,833,618 A	11/1998	Caro et al.	6,745,060 B2	6/2004	Diab et al.
5,860,919 A	1/1999	Kiani-Azarbayjany et al.	6,760,607 B2	7/2004	Al-All
5,890,929 A	4/1999	Mills et al.	6,770,028 B1	8/2004	Ali et al.
5,904,654 A	5/1999	Wohltmann et al.	6,771,994 B2	8/2004	Kiani et al.
5,919,133 A	7/1999	Taylor et al.	6,792,300 B1	9/2004	Diab et al.
5,919,134 A	7/1999	Diab	6,813,511 B2	11/2004	Diab et al.
5,934,925 A	8/1999	Tobler et al.	6,816,741 B2	11/2004	Diab
5,939,609 A	8/1999	Knapp et al.	6,822,564 B2	11/2004	Al-Ali
5,940,182 A	8/1999	Lepper, Jr. et al.	6,826,419 B2	11/2004	Diab et al.
5,987,343 A	11/1999	Kinast et al.	6,830,711 B2	12/2004	Mills et al.
5,991,355 A	11/1999	Dahlke	6,850,787 B2	2/2005	Weber et al.
5,995,855 A	11/1999	Kiani et al.	6,850,788 B2	2/2005	Al-Ali
5,997,343 A	12/1999	Mills et al.	6,852,083 B2	2/2005	Caro et al.
6,002,952 A	12/1999	Diab et al.	6,861,639 B2	3/2005	Al-Ali
6,011,986 A	1/2000	Diab et al.	6,898,452 B2	5/2005	Al-Ali et al.
6,027,452 A	2/2000	Flaherty et al.	6,920,345 B2	7/2005	Al-Ali et al.
6,036,642 A	3/2000	Diab et al.	6,931,268 B1	8/2005	Kiani-Azarbayjany et al.
6,045,509 A	4/2000	Caro et al.	6,934,570 B2	8/2005	Kiani et al.
6,067,462 A	5/2000	Diab et al.	6,939,305 B2	9/2005	Flaherty et al.
6,081,735 A	6/2000	Diab et al.	6,943,348 B1	9/2005	Coffin, IV
6,088,607 A	7/2000	Diab et al.	6,950,687 B2	9/2005	Al-Ali
6,110,522 A	8/2000	Lepper, Jr. et al.	6,961,598 B2	11/2005	Diab
6,151,516 A	11/2000	Kiani-Azarbayjany et al.	6,970,792 B1	11/2005	Diab
6,152,754 A	11/2000	Gerhardt et al.	2001/0045532 A1	11/2001	Schultz et al.
6,157,850 A	12/2000	Diab et al.			
6,165,005 A	12/2000	Mills et al.			
6,184,521 B1	2/2001	Coffin, IV et al.			
6,206,830 B1	3/2001	Diab et al.			
6,229,856 B1	5/2001	Diab et al.			
6,236,872 B1	5/2001	Diab et al.			

FOREIGN PATENT DOCUMENTS

EP	0 481 612 A1	4/1992
EP	0 745 348 A1	12/1996
EP	0 832 598 A2	9/1997
EP	1 424 036 A1	6/2004
JP	02 017462 A	1/1990

WO WO 97/23159 7/1997
 WO WO 97/29678 8/1997

OTHER PUBLICATIONS

<http://www.masimo.com/pandt.htm>, "Products & Technology," 1 page reviewed on Sep. 17, 1999.
<http://www.masimo.com/cables.htm>, "Patient Cables," 1 page reviewed on Sep. 17, 1999.
<http://www.masimo.com/adt.htm>, "Inop-adt—Adult Disposable Digit Sensor," 1 page reviewed on Sep. 17, 1999.
http://www.mrequipment.com/products/pulse_oximetry.htm, "MR Equipment Magnetic Resonance Equipment Corporation, Pulse Oximetry in MRI Model 3500 Pulse Oximeter," 2 pages reviewed on Sep. 17, 1999.
http://www.mrequipment.com/products/oximetry_patient_mntrg.htm, "MR Equipment Magnetic Resonance Equipment Corporation, MR-Compatible High-Performance Optical Fiber Sensors, Pulse Oximetry Sensors for MRI Fiber Optic Sensors for use with MR-Compatible Pulse Oximeter," 2 pages reviewed on Sep. 17, 1999.
 Article entitled "Masimo Corporation, Discrete Saturation Transform Example," reviewed on Sep. 17, 1999.
<http://www.dalsemi.com>, "Dallas Semiconductor," p. 1 only, reviewed on Jan. 12, 2000.
http://www.dalsemi.com/Prod_info/AudoID/index.html, "Dallas Semiconductor Automatic Information Overview," 10 pages reviewed on Jan. 12, 2000.
 Awtrey, "Sensors: The Journal of Applied Sensing Technology, Transmitting Data and Power over One-Wire Bus," 4 pages, Feb. 1997.

Dallas Semiconductor, Application Note 30, "Recording Power Cycling Information Using the DS1602/DS1603," pp. 7-9, 1993.
 Dallas Semiconductor, "DS 1602 Elapsed Time Counter," pp. 468-476, 1993.
 Dallas Semiconductor, "DS 1603 Elapsed Time Counter Modul," pp. 477-484, 1993.
 Dallas Semiconductor "DS2401 Silicon Serial Number," 10 pages, Oct. 21, 1999.
 Dallas Semiconductor "DS2502 1Kbit Add-Only Memory," pp. 149-169, 1993.
 Patent Abstract of Japan; Publication No.: 10314149; Publication Date: Feb. 12, 1998; U.S. Appl. No. 09/129,922; Application Date: May 20, 1997; Inventor: Suzuki Hiroaki; Title Probe Exchangeable Electric Measurement Device, Probe Management Method and Pulse Oximeter.
 Patent Abstract of Japan; Publication No.: 1053662; Publication Date: Feb. 26, 1999.
 Patent Abstract of Japan; Publication No.: 02017462; Publication Date: Jan. 22, 1990.
 Patent Abstract of Japan; Publication No.: 11185193; Publication Date: Jul. 9, 1999.
 PCT International Search Report, App. No.: PCT/US 00/ 22849, App. Date: Aug. 21, 2000, 4 pages.
 PCT International Search Report, App. No.: PCT/US01/04265, App. Date Feb. 9, 2001, 4 pages.
 International publication corresponding to copending U.S. Appl. No. 09/420,544, filed on Oct. 19, 1999.
 European Search Report, App. No.: EP 06 00 6843, 2 pages.

* cited by examiner

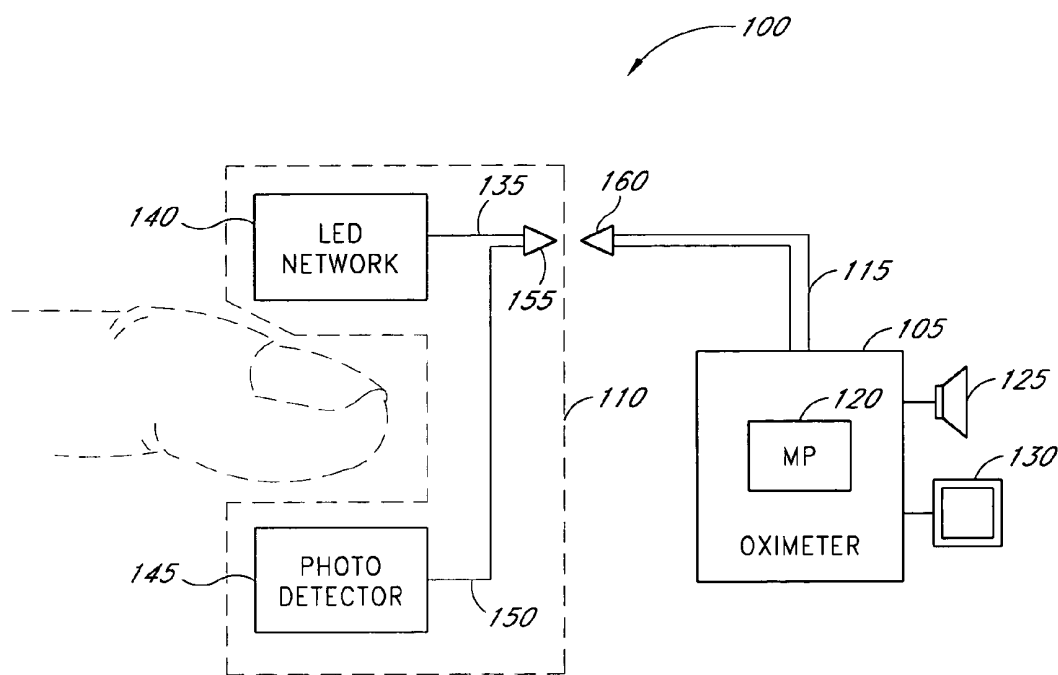


Fig. 1

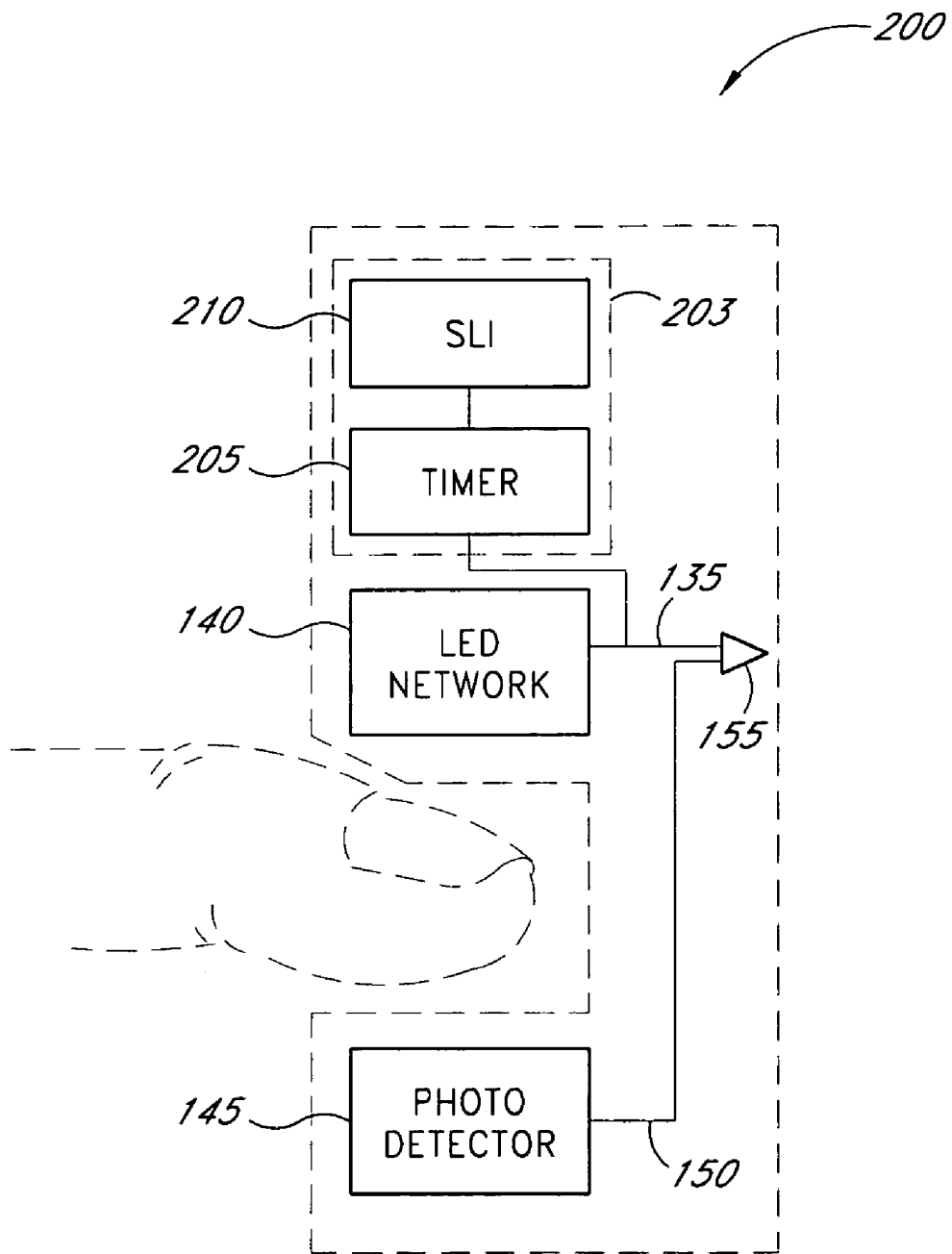


Fig. 2

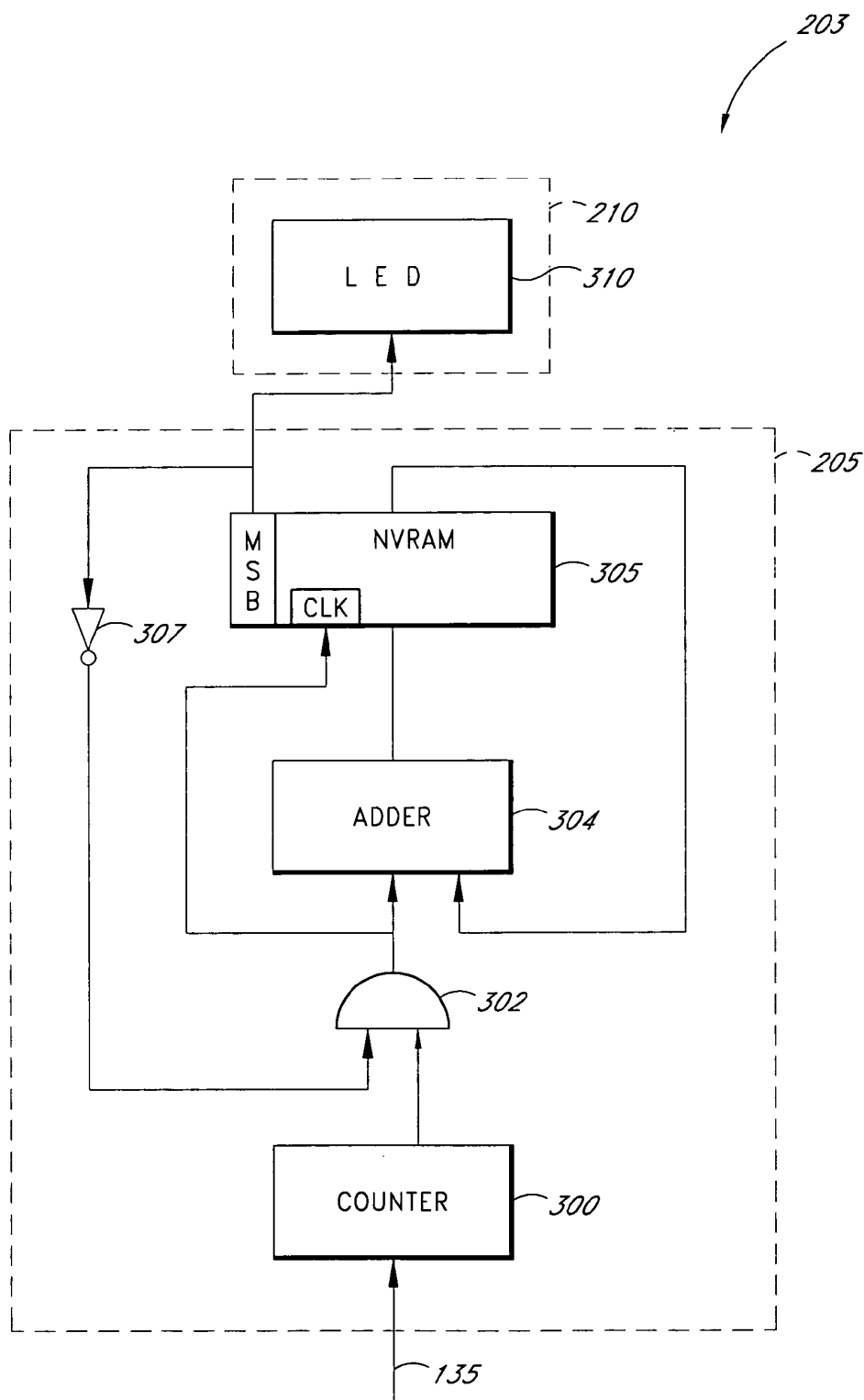


Fig. 3

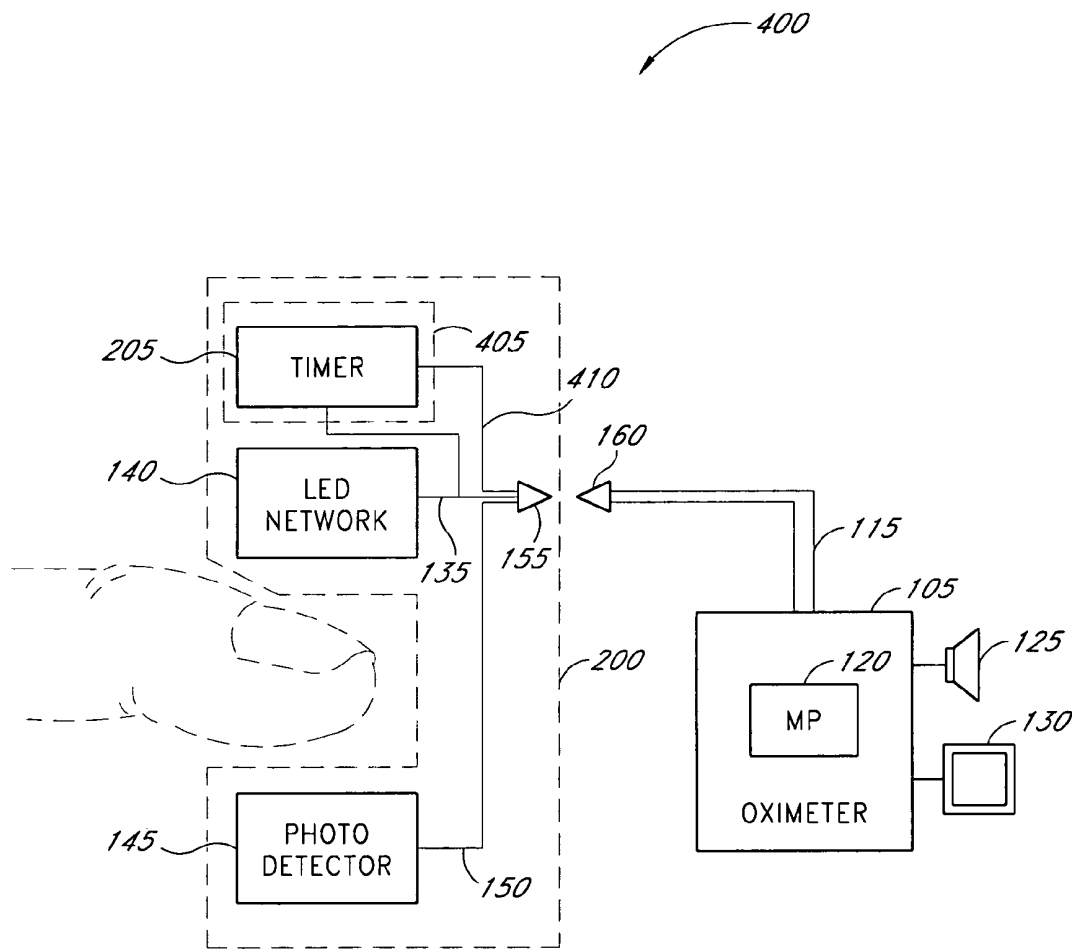


Fig. 4

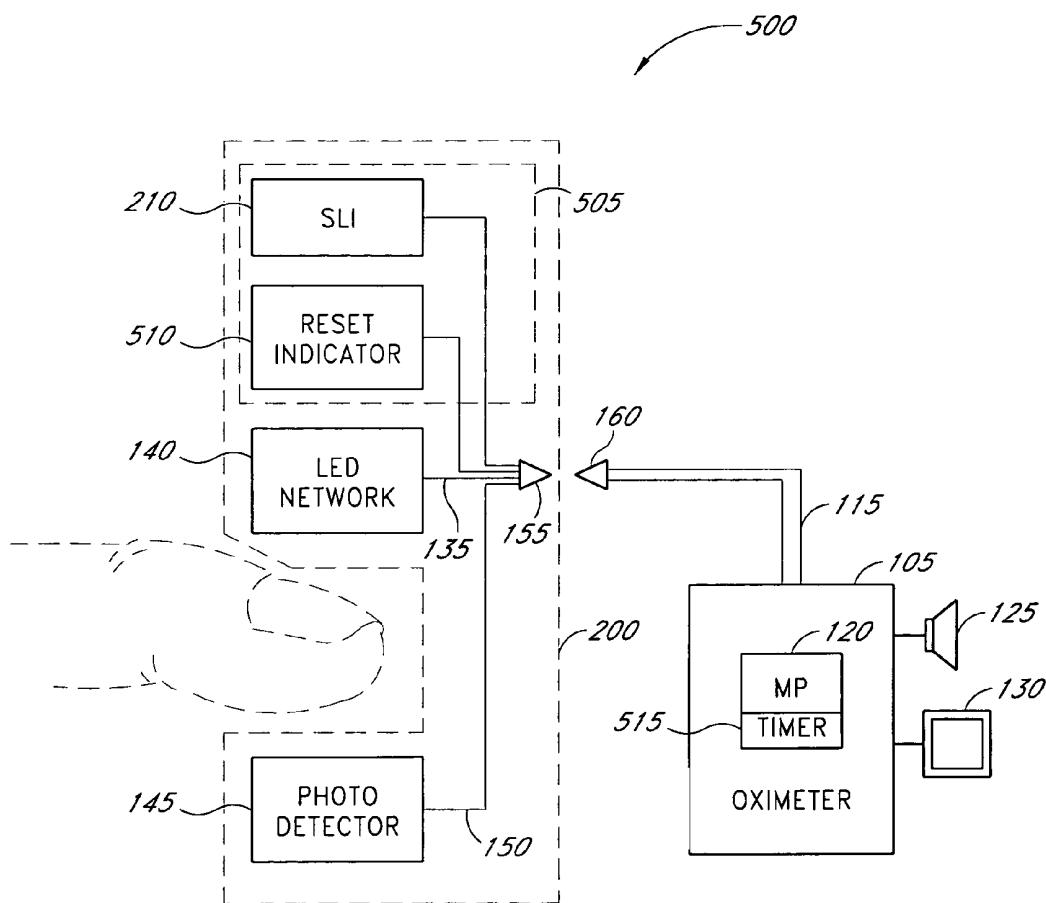


Fig. 5

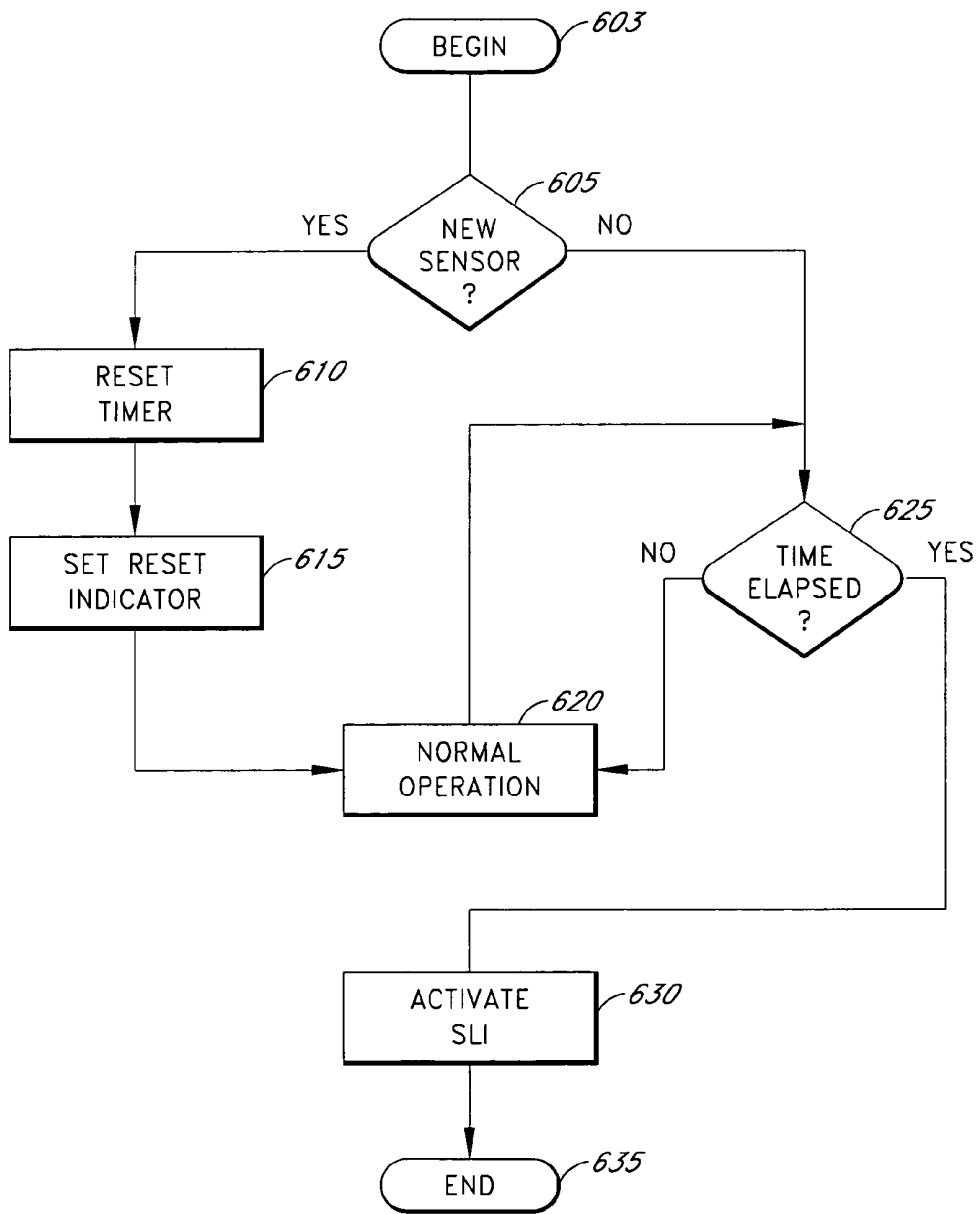


Fig. 6

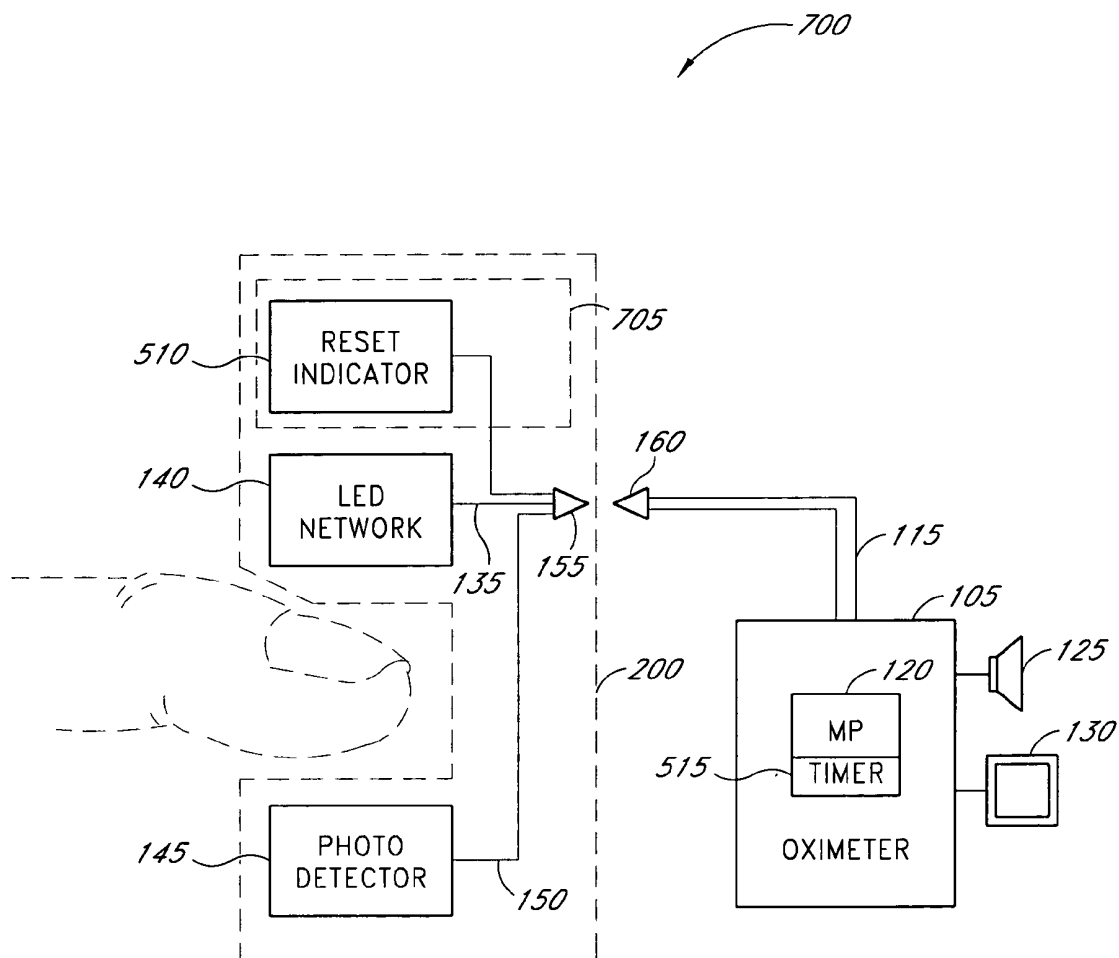


Fig. 7

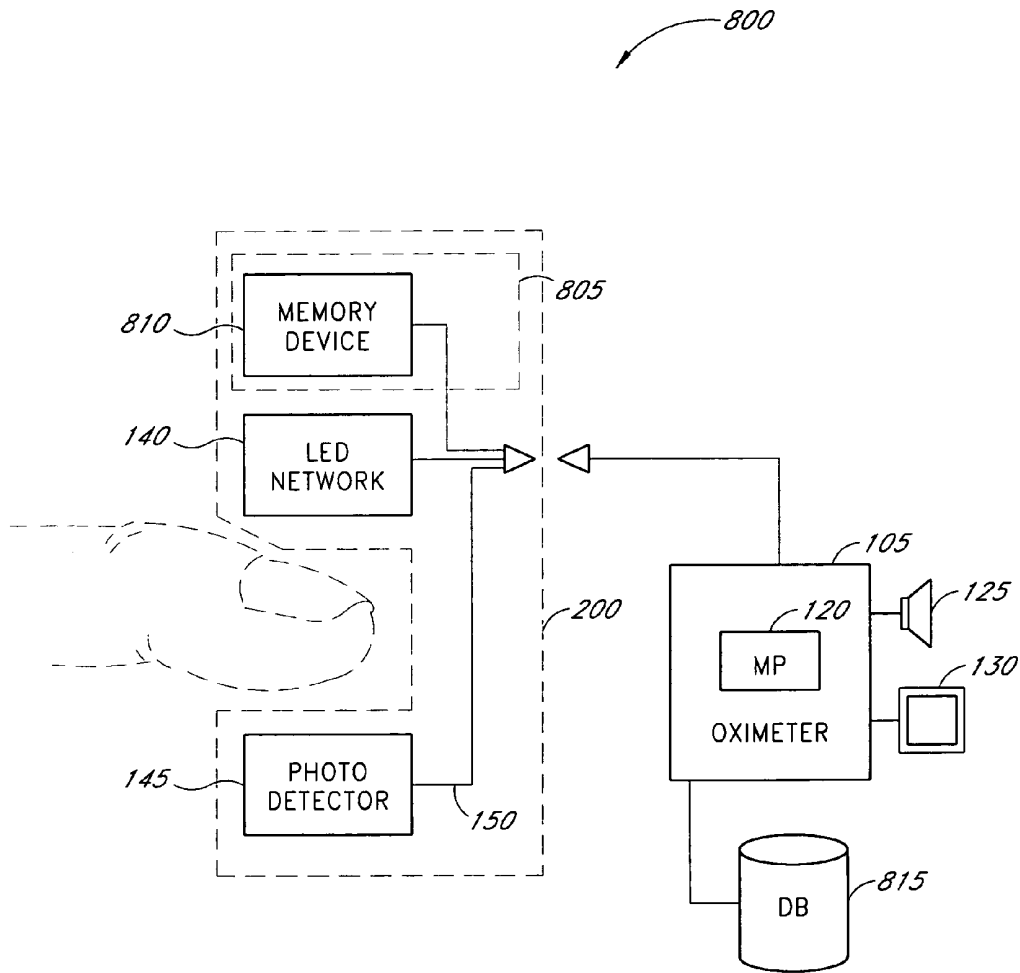


Fig. 8

AMOUNT OF USE TRACKING DEVICE AND METHOD FOR MEDICAL PRODUCT

REFERENCE TO RELATED APPLICATION

The present application claims priority benefit under 35 U.S.C. § 120 to and is a continuation of U.S. patent application Ser. No. 11/065,994, filed Feb. 24, 2005, entitled "Systems and Methods for Indicating an Amount of Use of a Sensor," now U.S. Pat. No. 6,979,812, which is a continuation of U.S. patent application Ser. No. 10/357,531, filed Feb. 3, 2003, entitled "Systems and Methods for Indicating an Amount of Use of a Sensor," now U.S. Pat. No. 6,861,639, which is a continuation of U.S. patent application Ser. No. 09/502,032, filed Feb. 10, 2002, entitled "A System for Indicating the Expiration of the Useful Operating Life of a Pulse Oximetry Sensor," now U.S. Pat. No. 6,515,273, which is a continuation-in-part of U.S. patent application Ser. No. 09/420,544, filed Oct. 19, 1999, entitled "Shielded Optical Probe and Method," now U.S. Pat. No. 6,580,086, which claimed a priority benefit under 35 U.S.C. § 119(e) to U.S. Provisional Patent Application Ser. No. 60/150,922, filed Aug. 26, 1999, by the same title. The present application incorporates the foregoing disclosures herein by reference.

BACKGROUND OF THE INVENTION

1. Field of the Invention

The present invention in general relates to sensors for measuring oxygen content in the blood, and, in particular, relates to an apparatus and method for monitoring the life of a pulse oximetry sensor.

2. Background

Early detection of low blood oxygen is critical in a wide variety of medical applications. For example, when a patient receives an insufficient supply of oxygen in critical care and surgical applications, brain damage and death can result in just a matter of minutes. Because of this danger, the medical industry developed pulse oximetry, a noninvasive procedure for measuring the oxygen saturation of the blood. A pulse oximeter interprets signals from a sensor attached to a patient in order to determine that patient's blood oxygen saturation.

A conventional pulse oximetry sensor has a red emitter, an infrared emitter, and a photodiode detector. The sensor is typically attached to a patient's finger, earlobe, or foot. For a finger, the sensor is configured so that the emitters project light from one side of the finger, through the outer tissue of the finger, and into the blood vessels and capillaries contained inside. The photodiode is positioned at the opposite side of the finger to detect the emitted light as it emerges from the outer tissues of the finger. The photodiode generates a signal based on the emitted light and relays that signal to the pulse oximeter. The pulse oximeter determines blood oxygen saturation by computing the differential absorption by the arterial blood of the two wavelengths (red and infrared) emitted by the sensor.

The foregoing conventional sensor is typically detachable from the oximeter to allow for periodic replacement. Periodic replacement is advantageous for a wide variety of reasons. For example, the sensor can become soiled, thereby possibly inhibiting sensor sensitivity or causing cross-patient contamination. Furthermore, the electronic circuitry in the sensor can become damaged, thereby causing sensor failure or inaccurate results. Moreover, the securing mechanism for the sensor, such as an adhesive substrate, can begin

to fail, thereby improperly positioning the sensor in proximity to a measurement site and providing inaccurate data. Accordingly, periodic replacement of the sensor is an important aspect of maintaining a sterile, highly sensitive, accurate pulse oximetry system.

However, a conventional pulse oximetry sensor is wholly reliant on an operator for timely replacement of soiled, damaged, or otherwise overused sensors. This approach is problematic not only from the standpoint of operator mistake or negligence, but also from the perspective of deliberate misuse for cost saving or other purposes.

Based on the foregoing, significant drawbacks exist in the reliance on the operator for the periodic replacement of conventional pulse oximetry sensors. Accordingly, a need exists for a pulse oximetry sensor having the ability to monitor its own usable life.

SUMMARY OF THE INVENTION

Accordingly, one aspect of the present invention is to provide an inexpensive, highly accurate sensor life monitoring system for monitoring the useful and safe life of a pulse oximetry sensor. According to one embodiment, the sensor life monitoring system includes a timer and a sensor life indicator. According to another embodiment, the timer includes a divide-by-n counter and a non-volatile RAM, while the sensor life indicator includes at least one LED or incandescent bulb.

Therefore, one aspect of the present invention is a pulse oximetry sensor comprising a drive connection carrying a drive signal, wherein the drive signal has pulses. The pulse oximetry sensor further comprises a timer connected to the drive connection and configured to generate a timer output signal after a predetermined number of pulses are generated in the drive signal; and a sensor life indicator connected to the timer output signal and configured to provide an indication when the timer output signal is generated. The pulse oximetry sensor further comprises an LED network connected to the drive connection and configured to project light through a measurement site when pulsed by the drive signal; and a photodetector configured to detect the projected light and output a signal representative of constituents or characteristics of the measurement site.

Another aspect of the present invention is a sensor life monitoring system comprising a timer connected to a sensor drive signal; and a sensor life indicator connected to the timer such that the sensor life indicator is configured to indicate the expiration of the useful or safe life of a pulse oximetry sensor.

Another aspect of the present invention is a pulse oximetry system that comprises a pulse oximeter; a sensor connected to the pulse oximeter; and a sensor life monitor connected to the sensor and configured to monitor the useful and safe life of the sensor.

Another aspect of the present invention is a method of manufacturing a sensor. The method comprises connecting a timer to one of a sensor input and a sensor output; and connecting an indicator to the timer such that when the timer expires, the indicator is activated.

Another aspect of the present invention is a method for monitoring the life of an oximetry sensor. The method comprises monitoring a parameter responsive to repeated use of a sensor. When the parameter indicates that the sensor has expired, the method generates an expiration indication.

Another aspect of the present invention is an oximetry sensor life indicator that comprises a non-volatile counter connected to receive a drive signal having a plurality of

transitions where the counter changes a count value in response to the transitions. The oximetry sensor life indicator further includes a sensible indicia connected to the counter, where the sensible indicia has a first state, and a second state and the sensible indicia changes from the first state to the second state to indicate the end of life of the oximetry sensor when the count value in the counter reaches a predetermined value.

Another aspect of the present invention is an oximetry system comprising an oximeter; a sensor attached to the oximeter through a cable; a timer connected to at least one of a sensor drive signal and a sensor return signal; and a sensor life indicator connected to the timer.

Another aspect of the present invention is an oximetry system comprising a sensor having a timer, wherein the timer produces a sensor expiration signal. An oximeter is connected to the sensor and is configured to receive the sensor expiration signal from the timer.

Another aspect of the present invention is an oximetry system comprising a sensor having a reset indicator. An oximeter is connected to the sensor and is configured to monitor whether the reset indicator has been set.

Another aspect of the present invention is a pulse oximetry system comprising a pulse oximeter and a sensor connected to the pulse oximeter. The sensor is adapted to measure a physiological parameter. The pulse oximetry system also comprises a memory device connected to the sensor and adapted to measure the useful life of the sensor.

Another aspect of the present invention is a pulse oximetry system comprising a sensor having an emitter, a detector, and a memory device storing a characteristic of the sensor. The pulse oximetry system also comprises a pulse oximeter connected to the sensor and adapted to read the characteristic of the sensor and the output of the detector. The pulse oximetry system also comprises a database connected to the pulse oximeter and adapted to store the characteristic along with a longevity measurement corresponding to the sensor.

For the purposes of summarizing the invention, certain aspects, advantages, and novel features of the invention have been described. Of course, it is to be understood that not necessarily all such advantages may be achieved in accordance with any particular embodiment of the invention. Thus, the invention may be embodied or carried out in a manner that achieves or optimizes one advantage or a group of advantages, as taught herein, without necessarily achieving other advantages as may be taught or suggested herein.

Other aspects and advantages of the invention will be apparent from the detailed description below and the appended claims.

BRIEF DESCRIPTION OF THE DRAWINGS

The present invention is described in more detail below in connection with the attached drawings, which are meant to illustrate and not limit the invention, and in which:

FIG. 1 illustrates a block diagram of a typical oximetry system;

FIG. 2 illustrates a block diagram of a sensor life monitoring system according to an embodiment of the invention;

FIG. 3 illustrates a block diagram of the sensor life monitoring system of FIG. 2, according to another embodiment of the invention;

FIG. 4 illustrates a block diagram of an oximetry system having a sensor life monitoring system, according to yet another embodiment of the invention;

FIG. 5 illustrates a block diagram of an oximetry system having a sensor life monitoring system, according to yet another embodiment of the invention;

FIG. 6 illustrates a flow diagram of the operation of a microprocessor of the oximetry system of FIG. 5;

FIG. 7 illustrates a block diagram of an oximetry system having a sensor life monitoring system, according to yet another embodiment of the invention; and

FIG. 8 illustrates a block diagram of an oximetry system having a sensor life monitoring system, according to yet another embodiment of the invention.

DETAILED DESCRIPTION

The inventions are described in detail below with reference to the figures, wherein like elements are referenced with like numerals throughout.

FIG. 1 illustrates a block diagram of a typical oximetry system **100** used to determine arterial oxygen saturation. The oximetry system **100** includes an oximeter **105** and a sensor **110** connected to the oximeter **105** via a patient cable **115**. The oximeter **105** includes a microprocessor (μ p) **120**, a speaker **125** and a display **130**. The sensor **110** includes a drive connection **135** connected to at least one LED network **140**, a photo detector **145** connected to a return signal connection **150**, and a cable connector **155** housing one end of each of the drive connection **135** and the return signal connection **150**. As mentioned, the sensor **110** attaches to the oximeter **105** via the patient cable **115**. The patient cable **115** includes a sensor connector **160** for electrically mating with the cable connector **155** of the sensor **110**.

As previously mentioned, the typical oximetry system **100** produces a drive signal and transmits the drive signal through the patient cable **115** and the drive connection **135** to the LED network **140** such that light energy is transmitted from the LED network **140** through tissue. The photo detector **145** senses the light energy, which has now been attenuated by the blood in tissue, and sends a representative signal of the light energy back to the oximeter **105** through the return signal connection **150** and the patient cable **115**. The oximeter **105** analyzes the representative signal from the photo detector **145** to determine constituency and characteristics of the blood in the tissue.

The sensor **110** typically includes the foregoing electronic circuitry and an attachment mechanism formed to secure the electronic circuitry to a measurement site. The sensor **110** may be disposable, wherein the attachment mechanism is likely formed from an adhesive structure. Moreover, the sensor **110** may be reusable, wherein the attachment mechanism is likely formed from a clip-on structure. Also, the sensor **110** may be a combination of the disposable and reusable type sensors, wherein a disposable attachment mechanism removably attaches the electronic circuitry such that the electronic circuitry is reusable. Furthermore, the sensor **110** may include an information element electrically connected to the LED network **140**. Such an information element advantageously provides quality control, security, and identification functions.

An example of the combination sensor having an information element distributed in the disposable attachment mechanism is described in U.S. patent application Ser. No. 09/456,666, filed on Dec. 9, 1999, titled, "Responsible Pulse Oximetry Sensor," assigned to the assignee of the current application, and incorporated by reference herein.

FIG. 2 illustrates a block diagram of a pulse oximetry sensor **200**, according to an embodiment of the invention. As shown in FIG. 2, the sensor **200** includes a wholly incor-

porated sensor life monitoring system 203. The sensor life monitoring system 203 includes a timer 205 and a sensor life indicator (SLI) 210. According to this embodiment, the timer 205 is electrically connected to the drive connection 135 such that the timer 205 also receives the drive signal from the oximeter 105. The timer 205 also connects to the sensor life indicator 210.

As the oximeter 105 drives the LED network 140, the timer 205 monitors the number of drive pulses produced and keeps a running count. After the oximeter 105 produces a predetermined number of drive signals, the timer 205 provides a signal to the sensor life indicator 210, such that the sensor life indicator 210 produces an indication that the sensor 200 has expired and should be replaced.

FIG. 3 illustrates a block diagram of an example of the sensor life monitoring system 203 of FIG. 2, according to one embodiment of the invention. As shown in FIG. 3, the timer 205 advantageously comprises a non-volatile counter. One embodiment of the non-volatile counter advantageously comprises a counter 300 having an output that connects to an input of a logic gate 302. An output of the logic gate 302 connects to an adder 304. As used herein, an "adder" can be an arithmetic unit, which may also be implemented as a subtractor or the like. The adder 304 connects to a non-volatile (NV) RAM 305 (A non-volatile RAM does not lose data when the power is turned off or otherwise terminated). An output of the NVRAM 305 reconnects as feedback to the adder 304. Also, an output of the most significant bit (MSB) of the NVRAM 305 connects to both an inverter 307 and the sensor life indicator 210. The inverter 307 connects as feedback to another input of the logic gate 302. Moreover, the output of the logic gate 302 activates or clocks the NVRAM 305.

According to one embodiment, the counter 300 comprises a divide-by-n counter, producing an incremental output count only after n input pulses, or transitions, of the drive signal. Using a divide-by-n counter advantageously reduces the capacity requirements of the NVRAM 305. Furthermore, according to one embodiment, the logic gate 302 is an AND gate, the adder 304 is a plus-one adder. Thus, each time the adder 304 receives an input, it adds one to the current count stored in the NVRAM 305. According to one embodiment, the NVRAM 305 is a seventeen-bit non-volatile memory that clocks, for example, on the trailing edge of the output of the logic gate 302.

According to an embodiment of the invention, the sensor life indicator 210 comprises a sensible indicia, such as visible light. For example, the sensible indicia may advantageously be an LED 310, or the like. Alternatively, the sensible indicia may be audible, vibrational, a power down of the sensor 200 or the oximeter 105, or the like.

The operation of the foregoing timer 205 and sensor life indicator 210 will be disclosed with reference to two differing time frames. The first time frame refers to when a new sensor 200 is initially attached to the oximeter 105 and provided with a drive signal. The second time frame refers to when the sensor 200 has previously been used, and a new drive signal is applied.

First Use of the Sensor 200

According to the foregoing embodiment, the sensor life monitoring system 203 initially functions as follows. The oximeter 105 outputs a drive signal at, for example, one kHz. The counter 300 comprises a divide-by-1000 counter that advantageously produces, for example, an output only after one thousand cycles of the drive signal, or every one second. Furthermore, assuming the count stored in the

NVRAM 305 is initially zero, the output of the MSB of the NVRAM 305 is zero. The inverter 307 inverts the output of the MSB such that the logic gate 302 passes the output of the counter 300 to the adder 304. Thus, according to this example, the adder 304 receives a pulse every second from the counter 300. With each pulse, the adder 304 adds one to count stored in the NVRAM 305. Thus, after one second, the adder 304 places a one in the NVRAM 305. After another second, the adder 304 places a two in the NVRAM 305, and so forth until the NVRAM 305 fills to capacity, or the oximeter 105 ceases producing the drive signal. Both events are further discussed as follows.

Subsequent Use of the Sensor 200

When the oximeter 105 sends pulses to a previously used sensor 200, the NVRAM 305 will already have a previous count stored therein. The previous count is loaded into the adder 304 such that as the logic gate 302 outputs the foregoing signal every second, the adder 304 adds one to the previous count. For example, if the previous count were one hour, or 3,600 seconds, the first pulse received by the adder 304 from the counter 300 will store 3,601 in the NVRAM 305. Thus, much like an automobile odometer, the NVRAM 305 stores a running count, or times, the used life of the sensor 200.

When the count stored in the NVRAM 305 reaches capacity (in other words, sets the MSB), the output of the MSB switches. Therefore, the output of the inverter 307 switches such that the logic gate 302 blocks any future signals output from the counter 300 from reaching the adder 304. Moreover, the output of the MSB further activates the LED 310 such that the LED 310 indicates the sensor 200 has expired. This indication by the LED 310 signals the operator to replace the used sensor 200 with a new one. The indication advantageously provides multiple people with the knowledge that the sensor 200 should be changed. For example, doctors, nurses, visitors, and even the patient may perceive the indication that the sensor 200 has expired.

According to the foregoing embodiment where every second that the oximeter 105 sends drive pulses to the sensor 200, the seventeen-bit NVRAM 305 is incremented, the MSB of the NVRAM 305 will set after 131,072 seconds, or, one day, twelve hours, twenty-four minutes and thirty two-seconds. In other words, according to this embodiment, the useful life of the sensor 200 expires after the sensor 200 has received drive pulses for a combined total of the foregoing time.

A skilled artisan will understand that a wide number of differing logic mechanisms may be employed in the foregoing embodiment. For example, employing different sized counters 300 or NVRAMs 305 will adjust the predetermined expiration time. Moreover, the counter 300 may advantageously divide by more than one thousand, thereby further reducing the capacity requirements of the NVRAM 305. Also, the timer 205 may advantageously comprise a non-volatile counter that has internal registers that retain their values when the power is turned off. Such non-volatile counters are available, for example, from Dallas Semiconductor Corporation of Dallas, Tex. These non-volatile counters may include, for example, Dallas Semiconductor's DS1602 or DS1603. In the foregoing embodiments employing a non-volatile counter, the adder 304 and the counter 300 may not be needed.

A skilled artisan will also understand that the sensor 200 may advantageously employ a wide variety of differing timers 205 and differing sensor life indicators 210. Moreover, the choice may advantageously coincide with particu-

lar types of the sensor **200**. For example, a purely disposable sensor suggests a less costly solution than that of the reusable sensor because of manufacturing costs and the relatively short life of the disposable sensor. On the other hand, the combination sensor may incorporate a more expensive solution into the reusable portion of the electronic circuitry without dramatic cost changes to the disposable portion.

Moreover, a skilled artisan will recognize that the timer **205** may advantageously comprise a capacitor that is charged when the sensor **200** is connected to the oximeter **105**. In such case, the capacitor has known discharge characteristics such that the voltage across the capacitor can be used to measure the useful life of the sensor **200**. Also, rather than using the pulses of the drive signal, the timer **205** may employ an oscillator configured to trigger at the beginning of sensor use.

Further, the sensor life indicator **210** may include several LEDs of differing colors, such as green and red, to indicate whether the sensor **200** has expired. The sensor life indicator **210** may comprise an incandescent light, an audio or vibrational alarm, a digital or LCD display, or other sensible indicia. Moreover, the sensor life indicator **210** may include a blocking signal for automatically terminating the functionality of the sensor **200**. For example, a logic gate may be advantageously added to the drive signal such that the logic gate has the drive signal as an input and has the output of the timer **205** as the another. When the output of the timer **205** is a logic level signaling expiration, the logic gate blocks the drive signal from passing, thus rendering the sensor **200** inoperative. The foregoing logic circuit may also be used to block the signal transferred through the return signal connection **150**. On the other hand, the blocking signal may also comprise a fuse that once blown, renders the sensor **200** inoperative.

Accordingly, a skilled artisan may perceive a variety of differing devices to measure the longevity of the sensor **200**. Furthermore, the type of the sensor **200** may provide guidance on which of the wide variety of devices to use.

FIG. 4 illustrates a block diagram of yet another embodiment of an oximetry system **400** including a sensor life monitoring system **405**. According to this embodiment, the sensor life monitoring system **405** employs the timer **205** and a return signal **410** to the oximeter **105**. Similar to the foregoing embodiment, the timer **205** connects to the drive connection **135** and uses the pulses of the drive signal to measure the useful and safe life of the sensor **200**. In contrast to the foregoing embodiment, the timer **205** then outputs an incremental count of pulses to the oximeter **105** via the return signal **410**, the cable connector **155**, the sensor connector **160**, and the patient cable **115**. In this embodiment, the microprocessor **120** of the oximeter **105** receives the incremental count from the timer **205** and compares the incremental count with a predetermined amount. If the count is greater than the predetermined amount, the microprocessor **120** issues an expiration indication of the sensor **200** through the oximeter **105**.

A skilled artisan will recognize that the oximeter **105** may issue the expiration indication through a wide variety of devices including, but not limited to, those described in relation to the sensor life indicator **210** of FIGS. 2-3. Moreover, the oximeter **105** may take advantage of the more costly technology already associated therewith. For example, the oximeter **105** may issue the expiration indication by employing an audio alarm through the speaker **125**,

a visual alarm through the display **130**, or a power-down function where the oximeter **105** is inoperable until the sensor **200** is replaced.

FIG. 5 illustrates a block diagram of yet another embodiment of an oximetry system **500** including a sensor life monitoring system **505**. According to this embodiment, the sensor life monitoring system **505** employs a reset indicator **510** and the sensor life indicator **210**, as an integral part of the sensor **200**. The reset indicator **510** and the sensor life indicator **210** connect to the oximeter **105** through the cable connector **155**, the sensor connector **160**, and the patient cable **115**. Also according to this embodiment, the microprocessor **120** includes a timer **515**.

According to this embodiment, the microprocessor **120** measures the useful and safe life of the sensor **200**. For example, the microprocessor **120** may track the pulses in the drive signal created by the microprocessor **120**, or take advantage of a date/time function to measure actual time. Furthermore, the microprocessor **120** employs the reset indicator **510** on the sensor **200** to indicate whether the sensor **200** is newly attached or has previously expired. For example, the reset indicator **510** may comprise a one-bit memory or a fuse technology, wherein the one-bit memory is set, or the fuse is blown, when the sensor **200** first connects to the oximeter **105** through the mating of the cable and sensor connectors, **155** and **160** respectively.

As shown in FIG. 5, the sensor life indicator **210** remains an integral part of the sensor **200** and, therefore, may advantageously take any of the forms discussed above with reference to FIGS. 2 and 3. Preferably, the sensor life indicator **210** comprises the LED **310** of FIG. 3.

FIG. 6 illustrates a flow diagram **600** of the steps taken by the microprocessor **120** of the oximetry system **500** of FIG. 5, according to one embodiment of the invention. As shown in FIG. 6, the process begins when the oximeter **105** is activated to a sensing state by, for example, an operator, in a STEP **603**. The oximeter **105** first checks the reset indicator **510**, in a STEP **605**, to determine whether the sensor **200** has been previously used. If the sensor **200** is new, the microprocessor **120** resets the timer **515**, in a STEP **610**, and sets the reset indicator **510** on the sensor **200**, in a STEP **615**. The microprocessor **120** then proceeds with normal operation, e.g., to output a drive signal to the sensor **200**, in a STEP **620**.

On the other hand, if in the STEP **605**, the reset indicator **510** indicates that the sensor **200** has been previously used, or when the sensor **200** is in normal operation, in the STEP **620**, the microprocessor **120** checks whether the timer **515** indicates the sensor **200** has reached its predetermined longevity, in a STEP **625**. For example, the timer **515** may advantageously compare the number of drive pulses to a predetermined number to conclude whether the sensor **200** has expired.

If the sensor **200** has not expired, the microprocessor **120** again proceeds with normal operation, in the STEP **620**. On the other hand, if the timer **515** indicates that the sensor **200** has expired, the microprocessor **120** activates the sensor life indicator **210**, in a STEP **630**, and then the process terminates, in a STEP **635**.

One having ordinary skill in the art will understand that the microprocessor **120** may employ an interrupt driven mechanism for the timer **515**. For example, during normal operation, the microprocessor **120** may not continually, or periodically, check the timer **515**, as in the STEP **625**. Rather, the microprocessor **120** may continually send drive pulses until the timer **515** generates an interrupt that instructs the microprocessor **120** to activate the sensor life

indicator **210**. A skilled artisan will appreciate that there are a wide number of mechanisms for generating microprocessor interrupts.

FIG. 7 illustrates a block diagram of yet another embodiment of an oximetry system **700** including a sensor life monitoring system **705**. According to this embodiment, the oximetry system **700** is similar to that described in reference to FIG. 5. Like FIG. 5, the microprocessor **120** of the oximeter **105** includes the timer **515**, or timer-like functions. Also, the sensor life monitoring system **705** advantageously employs the reset indicator **510** to ensure replacement of new sensors when the sensor **200** expires. Moreover, like FIG. 4, the oximetry system **700** employs the oximeter **105** to provide an expiration indication once the sensor **200** expires.

Thus, according to one embodiment, the microprocessor **120** of the oximeter **105** checks the reset indicator **510** to ensure the sensor **200** has not previously been used. Then, the microprocessor **120** drives the LED network **140** and tracks the timing functions. When the predetermined number of drive pulses is reached, the microprocessor **120** employs various mechanisms on the oximeter **105** to generate the expiration indication. For example, the microprocessor **120** may use the speaker **125** or the display **130**, even power down the oximeter **105**, or the like, to create the expiration indication.

FIG. 8 illustrates a block diagram of yet another embodiment of an oximetry system **800**. According to this embodiment, the oximetry system **800** includes a sensor life monitoring system **805** having a memory device **810**. The memory device **810** is preferably a single wire memory device having a unique identifier, such as memory devices commercially available from companies such as Dallas Semiconductor Corporation. For example, Dallas Semiconductor's DS2401 includes a unique, 64-bit identification number. In this way, the memory device **810** can uniquely identify the sensor **200** from all other sensors.

The oximetry system **800** further includes the microprocessor **120** of the oximeter **105** connected to a memory, such as a database **815**. According to the preferred embodiment, the database **815** is stored locally in the memory of the oximeter **105**. The oximeter **105** reads the unique identifier from the memory device **810** on the sensor **200** and, if necessary, creates a record in the database **815** corresponding to the unique identifier. Then, as the sensor **200** is used, the oximeter **105** accesses the record corresponding to the unique identifier so as to update the information relating to the longevity of the sensor **200**. This information may advantageously include timing information, such as a decremented or incremented chronological count. The information may also, or alternatively, include the number of times the sensor **200** has been used, the number of drive signals the sensor **200** has received, or other similar methods of determining the amount of use for the particular sensor **200** having the particular unique identifier.

According to this embodiment, when the information stored in the database **815** reaches a predetermined threshold for a particular unique identifier, the oximeter **105** advantageously produces the expiration indication in a similar manner to that described in reference to FIG. 4. For example, the oximeter **105** may issue the expiration indication by employing an audio alarm through the speaker **125**, a visual alarm through the display **130**, or a power-down function that renders the oximeter **105** inoperable. These expiration indications may advantageously continue until the sensor **200** having the unique identifier is replaced with one having a different unique identifier.

Although the database **815** is described as being stored in memory associated with the oximeter **105**, the invention is not meant to be limited thereby. Rather, a skilled artisan would recognize that the database **815** may advantageously be stored in a central location, such a remote server connected through a wide number of known technologies, such as a local or wide area network, the internet, or other communications connection. In this way, a monitoring authority, ranging from a pair of pulse oximeters, to one or a number of hospitals, to a particular sensor manufacturer, and the like, can monitor the useful life of sensors identified through their unique identifier stored in the memory device **810**.

As an alternative to, or in addition to, the foregoing embodiment where the memory device **810** includes a unique identifier, the memory device **810** may include the ability to store data. Again, such memory devices are commercially available from, for example, Dallas Semiconductor Corporation, and typically allow for read/write access over a single wire. For example, Dallas Semiconductor's DS2502 has the ability to accept new data for non-volatile storage.

According to this embodiment, the oximeter **105** reads data stored in the memory device **810** relating to longevity, and updates that data according to use. For example, the oximeter **105** may read the memory device **810** of sensor **200** and determine that the sensor **200** has been in use for one increment of time, such as one minute. After the sensor **200** has been used for another increment of time, such as another minute as measured by the oximeter **105**, the oximeter may write to the memory device **810** such that the memory device **810** now reflects that the sensor **200** has been used for two minutes. This periodic read and write to the memory device **810** continues until the memory device **810** reflects a longevity measurement greater than a predetermined threshold. At that time, the oximeter **105** may advantageously issue the foregoing expiration indication.

A skilled artisan would recognize that a wide variety of timing schemes may be implemented using the foregoing read/write technique. For example, the oximeter **105** may advantageously decrement from a predetermined threshold stored in the memory device **810**. On the other hand, the memory device may store the number of times the sensor **200** has been used, the number of drive signals the sensor **200** has received, or other similar methods of determining the amount of use for the particular sensor **200**.

Moreover, a skilled artisan would recognize that the foregoing embodiments may advantageously be combined such that the memory device **810** includes both the unique identifier and the ability to store other data. This other data may advantageously include the foregoing read/write timing data, manufacturing data such as sensor type, manufacturing source indication, tolerance levels, operating characteristics, and the like.

Although the foregoing invention has been described in terms of certain preferred embodiments, other embodiments will be apparent to those of ordinary skill in the art. For example, a skilled artisan will recognize the distinction in the foregoing embodiments between those components described as being integral with the sensor **200**, or on-sensor components, and those components described as not being integral with the sensor **200**, or off-sensor components. The on-sensor components may advantageously be housed in the disposable, reusable, or combination sensors. With respect to the combination sensors, the on-sensor components may

11

be advantageously housed in the disposable portion, the reusable portion, or both portions, of the combination sensor.

Further, the off-sensor components may be housed in any of the longer lasting components associated with the oximeter 105. For example, the off-sensor components may be advantageously located on the sensor connector 160 or on the patient cable 115 where they are readily seen, heard, or felt by the operator or patient.

Moreover, the foregoing embodiments incorporating the memory device 810 of FIG. 8 may advantageously be combined with those embodiments describing the sensor life indicator 210 housed on the sensor 200. In such embodiment, the oximeter 105 may advantageously provide the expiration indication to the sensor life indicator 210 when the oximeter 105 determines that the sensor 200 had expired.

Additionally, other combinations, omissions, substitutions and modifications will be apparent to the skilled artisan in view of the disclosure herein. Accordingly, the present invention is not intended to be limited by the reaction of the preferred embodiments, but is to be defined by reference to the appended claims.

What is claimed is:

1. A method of tracking an amount of use of electronics of a noninvasive optical probe to alert a caregiver when the electronics have expired, the method comprising:
 - determining a cumulative amount of use of a noninvasive optical probe, the noninvasive optical probe including at least one of a plurality of emitters and a detector capable of detecting light attenuated by tissue; when the cumulative amount of use is exceeds a predetermined amount of use, activating one or more indications that the noninvasive optical probe has expired.
2. The method of claim 1, wherein the activating one or more indications comprises activating at least one of an audio and visual alarm on the noninvasive optical probe.
3. The method of claim 2, wherein the at least one of an audio and visual alarm comprises an LED.
4. The method of claim 1, wherein the activating one or more indications comprises activating at least one of an audio and visual alarm on a patient monitor.
5. The method of claim 1, wherein the noninvasive optical probe comprises reusable and disposable components.
6. The method of claim 5, wherein the cumulative amount of use comprises a cumulative amount of use of the reusable components.
7. The method of claim 1, wherein the cumulative amount of use comprises a cumulative amount of use of reusable components of the noninvasive optical probe.
8. The method of claim 1, wherein the activating one or more indications comprises eventually rendering the noninvasive optical probe unusable.

12

9. An patient monitoring system comprising: reusable components of a noninvasive optical probe, wherein electronics of the optical probe are capable of detecting light attenuated by tissue; and

a memory storing information usable to determine a measure of use the reusable components of the optical probe.

10. The patient monitoring system of claim 9, further comprising a processor capable of determining whether the measure of use of the reusable components exceeds a threshold.

11. The patient monitoring system of claim 10, further comprising one or more indicators capable of providing one or more expiration indications when the processor determines that the measure of use exceeded the threshold.

12. The patient monitoring system of claim 11, wherein one of the one or more indicators comprises an audio or visual alarm.

13. The patient monitoring system of claim 9, wherein the noninvasive optical probe includes the memory.

14. The patient monitoring system of claim 9, further comprising a patient monitor, and wherein the patient monitor includes the memory.

15. A product use tracking device, comprising:

- a noninvasive medical product;
- a timer capable of tracking an amount of use of the product; and
- an indicator capable of providing an indication that the amount of use exceeded an acceptable amount of use of the noninvasive medical product.

16. The product use tracking device of claim 15, wherein the noninvasive medical product comprises at least reusable sensor components, the reusable sensor components including a plurality of noninvasive emitters and a detector capable of detecting light attenuated by tissue.

17. The product use tracking device of claim 16, wherein the noninvasive medical product comprise a reusable sensor and wherein the reusable sensor comprises the reusable sensor components.

18. The product use tracking device of claim 15, further comprising instructions for using the noninvasive medical product.

19. The product use tracking device of claim 15, wherein the noninvasive medical product comprises an oximeter.

20. The product use tracking device of claim 15, wherein the noninvasive medical product comprises a patient monitor, and wherein the patient monitor includes at least the timer.

* * * * *

UNITED STATES PATENT AND TRADEMARK OFFICE
CERTIFICATE OF CORRECTION

PATENT NO. : 7,186,966 B2
APPLICATION NO. : 11/311212
DATED : March 6, 2007
INVENTOR(S) : Ammar Al-Ali

Page 1 of 1

It is certified that error appears in the above-identified patent and that said Letters Patent is hereby corrected as shown below:

At page 3, column 2 (Other Publications), line 2, please delete "DS1602/DS1603,"**0**" and insert -- DS1602/DS1603," --, therefor.

At column 12, line 1, in Claim 9, before "patient" please delete "An" and insert -- A --, therefor.

Signed and Sealed this

Fifth Day of August, 2008

A handwritten signature in black ink that reads "Jon W. Dudas". The signature is written in a cursive style with a large, looped initial "J".

JON W. DUDAS
Director of the United States Patent and Trademark Office

专利名称(译)	用于医疗产品的使用量跟踪装置和方法		
公开(公告)号	US7186966	公开(公告)日	2007-03-06
申请号	US11/311212	申请日	2005-12-19
[标]申请(专利权)人(译)	AL ALI AMMAR		
申请(专利权)人(译)	AL-ALI AMMAR		
当前申请(专利权)人(译)	摩根大通银行, NATIONAL ASSOCIATION		
[标]发明人	AL ALI AMMAR		
发明人	AL-ALI, AMMAR		
IPC分类号	H01L31/00 G01N21/27 A61B5/00 A61B5/024 A61B5/145 A61B5/1455		
CPC分类号	A61B5/02427 A61B5/14552 A61B5/6826 G07C3/00 A61B5/6838 A61B5/145 A61B2560/0276 A61B2560/028 A61B2562/08		
优先权	60/150922 1999-08-26 US		
其他公开文献	US20060097135A1		
外部链接	Espacenet USPTO		

摘要(译)

本公开的各方面包括用于指示脉搏血氧饱和度传感器的使用量的系统和方法。根据一个实施例，该系统包括血氧计，其监测给定传感器的使用量。血氧计和/或传感器可以有利地包括视觉警报，音频警报，振动警报，断电功能等，其可以在预定量的使用期满时被激活。根据另一实施例，该系统包括传感器，该传感器具有存储唯一标识符的存储器设备。

