



(19) **United States**

(12) **Patent Application Publication**
Tamaki et al.

(10) **Pub. No.: US 2002/0016553 A1**

(43) **Pub. Date: Feb. 7, 2002**

(54) **BODY TEMPERATURE MANAGING METHOD AND DEVICE, STORAGE MEDIUM, BODY TEMPERATURE MANAGING SYSTEM, AND PROGRAM**

(30) **Foreign Application Priority Data**

Jun. 13, 2000	(JP)	176734/2000
Jun. 13, 2000	(JP)	176735/2000
Jun. 13, 2000	(JP)	176984/2000
Jun. 13, 2000	(JP)	176983/2000

(76) **Inventors: Yuko Tamaki, Tokyo (JP); Masae Oba, Kanagawa (JP); Junko Kawanishi, Kanagawa (JP); Kanako Hashimoto, Saitama (JP)**

Publication Classification

(51) **Int. Cl.⁷ A61B 5/00**
(52) **U.S. Cl. 600/549**

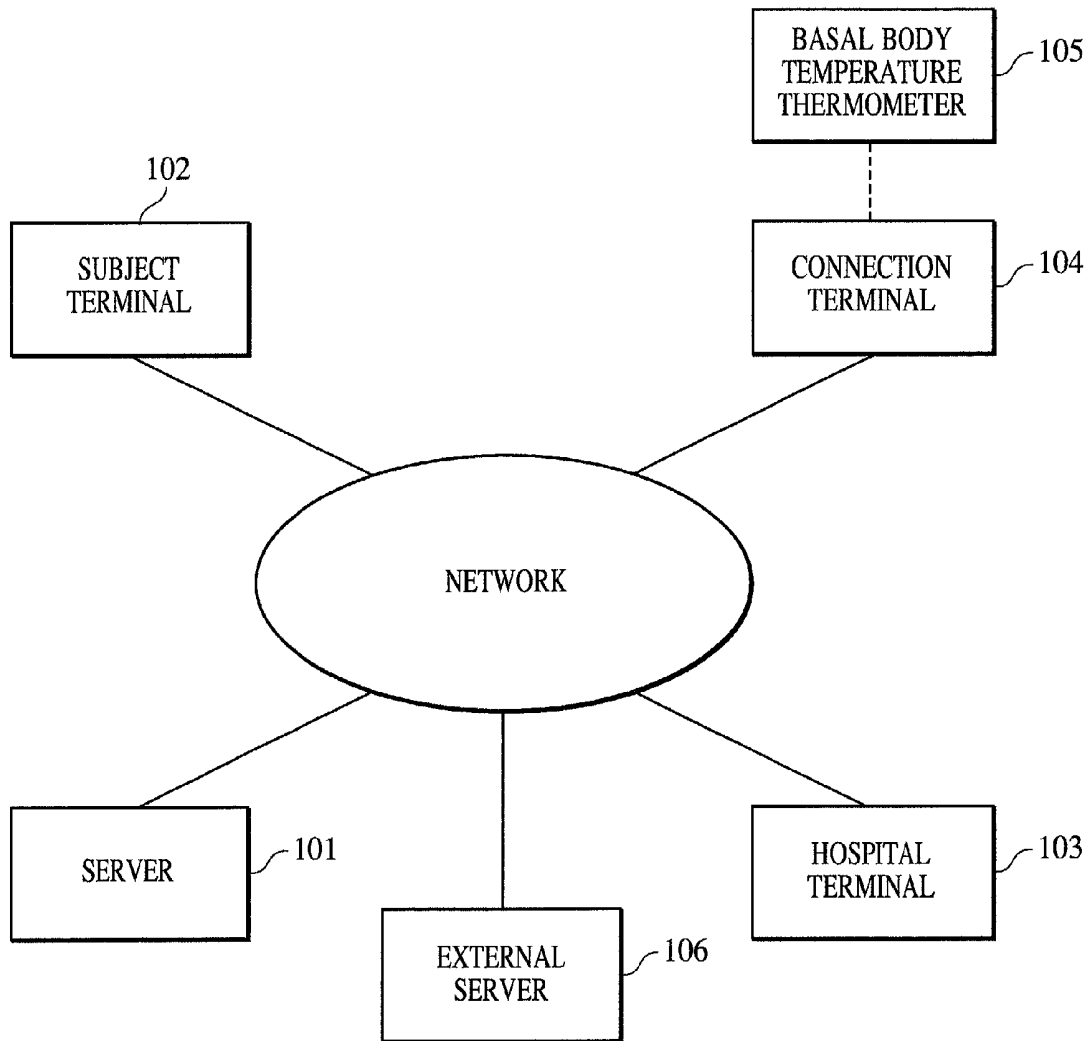
Correspondence Address:
FITZPATRICK CELLA HARPER & SCINTO
30 ROCKEFELLER PLAZA
NEW YORK, NY 10112 (US)

(57) **ABSTRACT**

Data measured by a thermometer is temporarily stored in a connection terminal, then transmitted to a server from the connection terminal via a network, and stored. The server makes analyses based on the stored temperature data, and transmits the analysis results. Thus, a body temperature managing and analyzing method, providing information unobtainable with a thermometer alone, can be provided by managing and analyzing body temperature over a network.

(21) **Appl. No.: 09/867,614**

(22) **Filed: May 31, 2001**



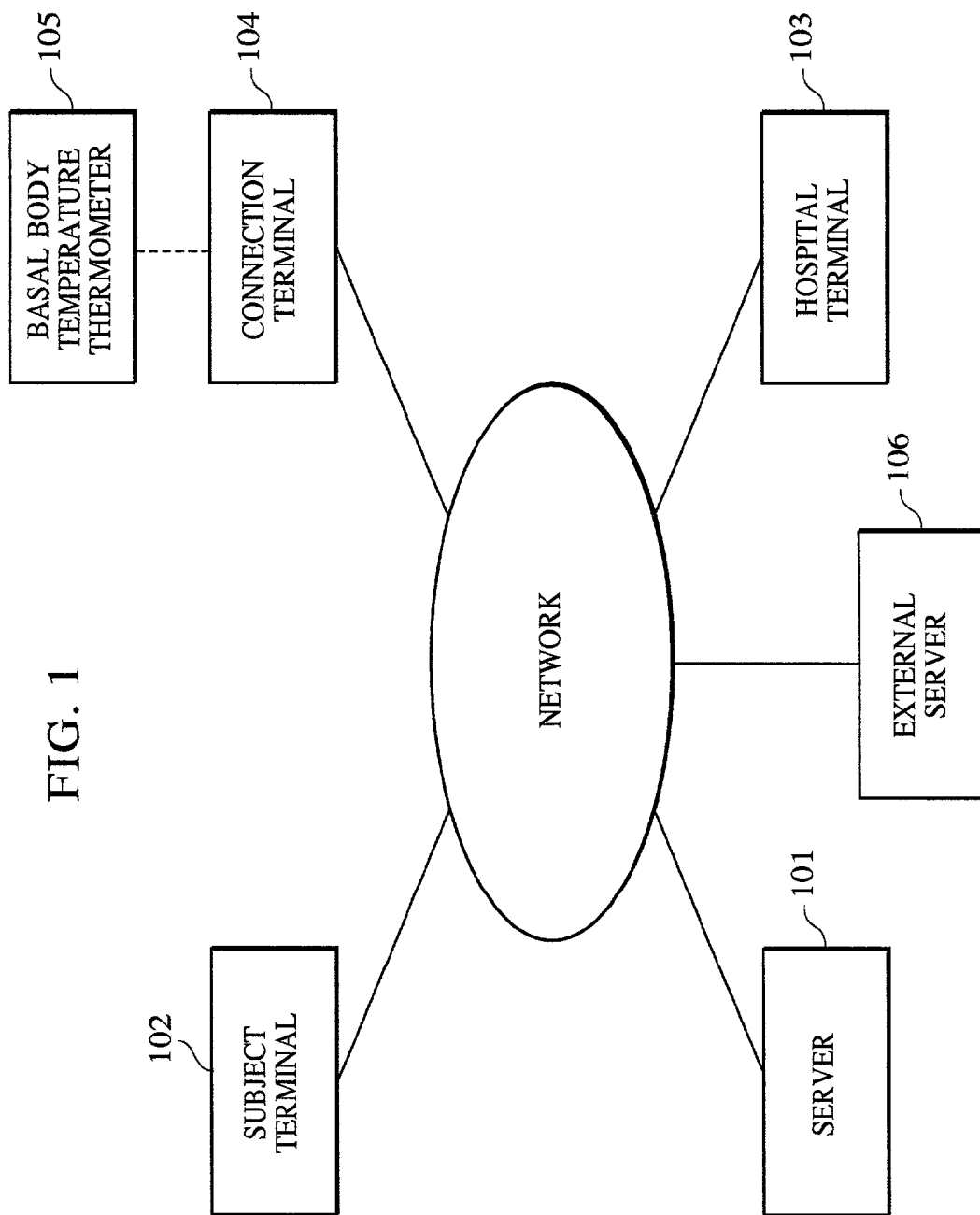
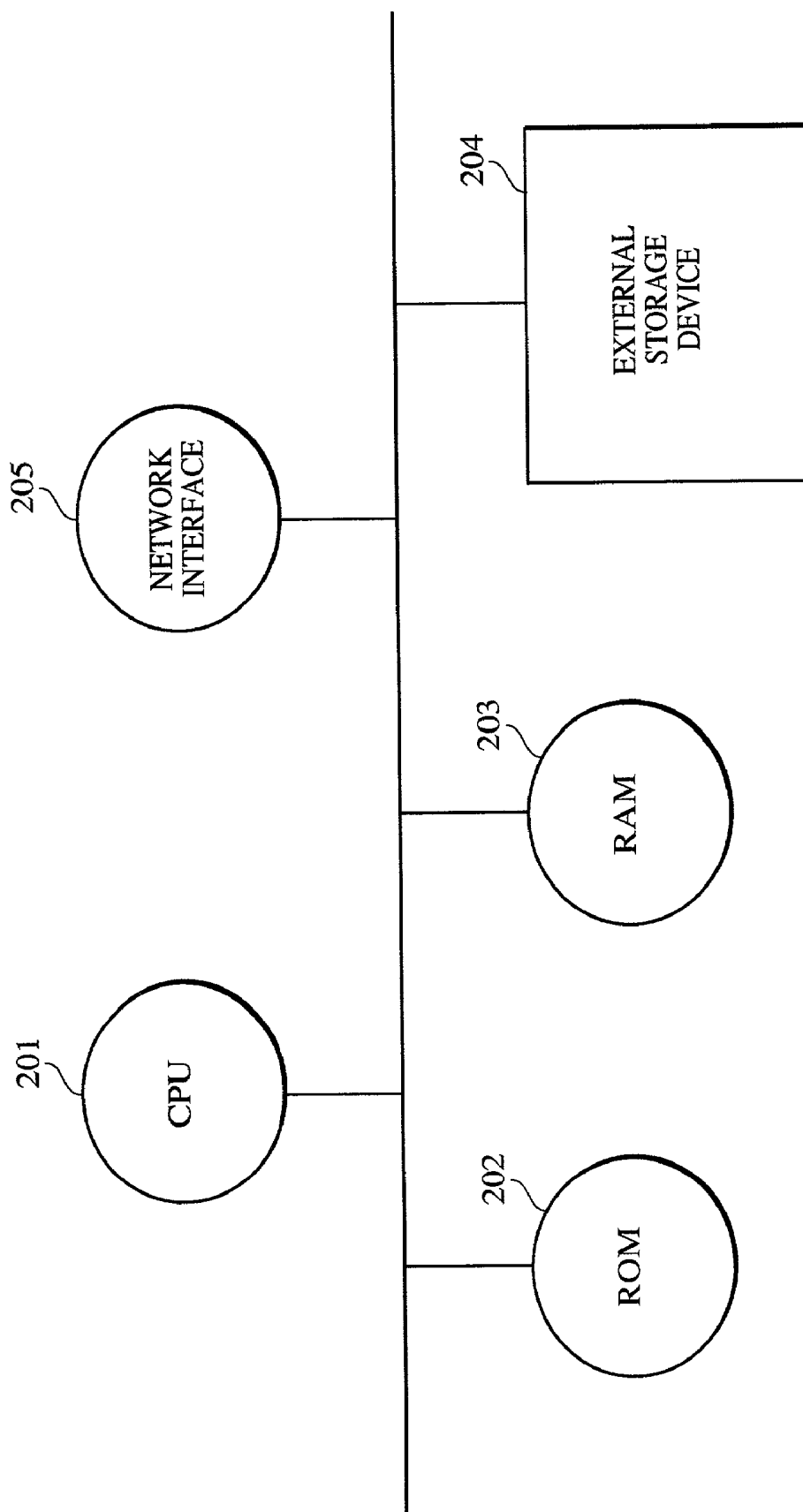


FIG. 1

FIG. 2



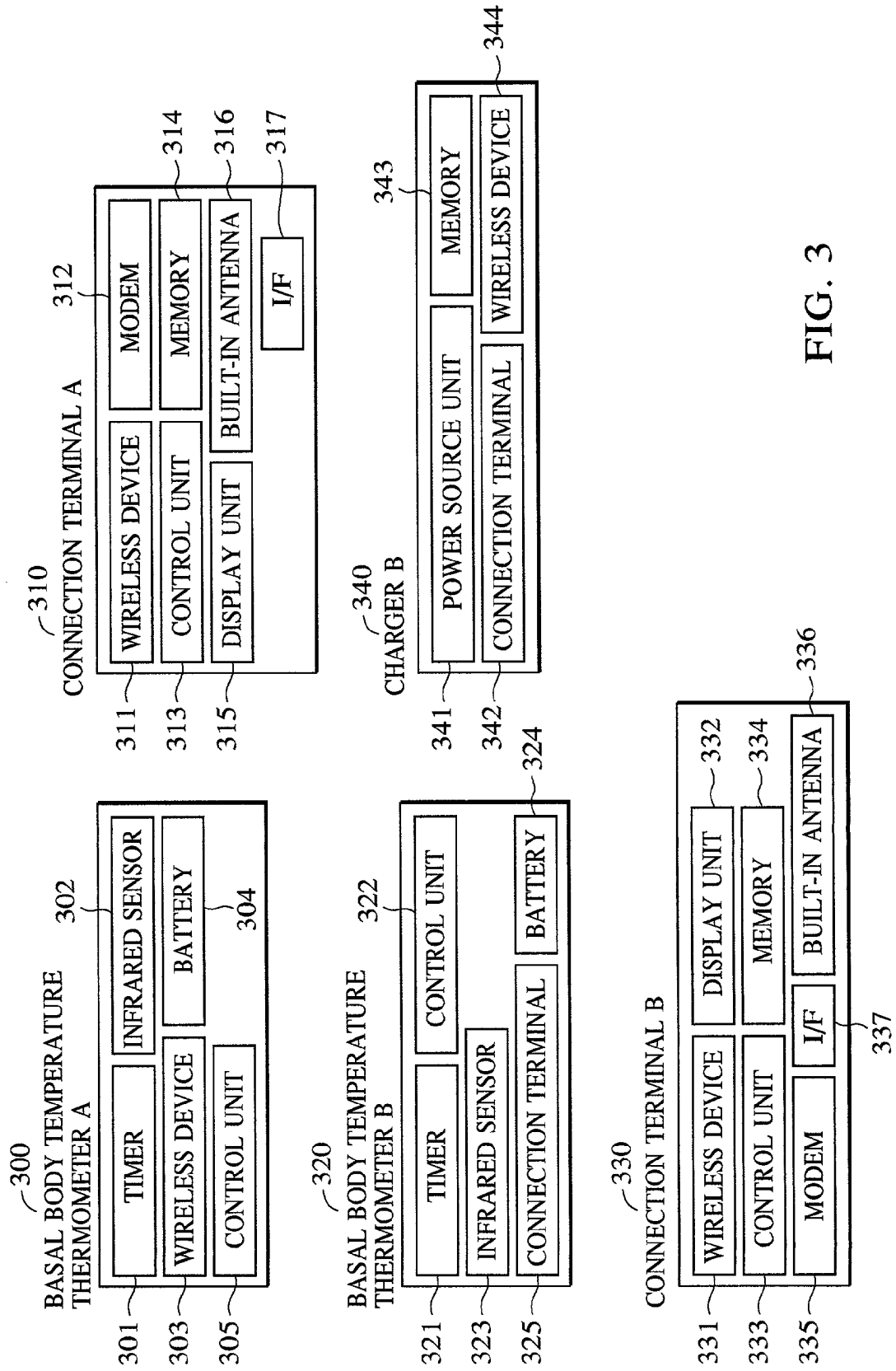


FIG. 3

FIG. 4

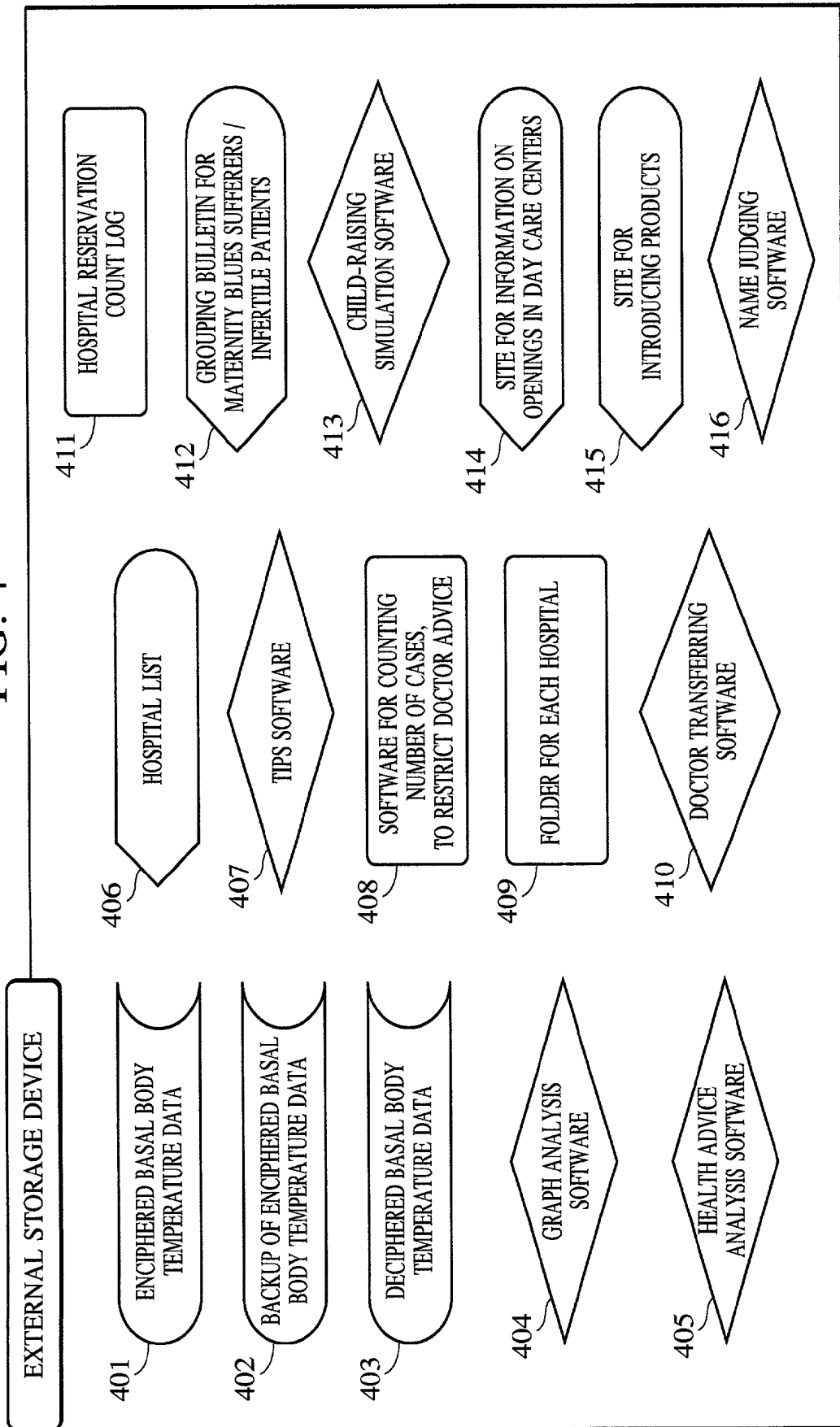


FIG. 5

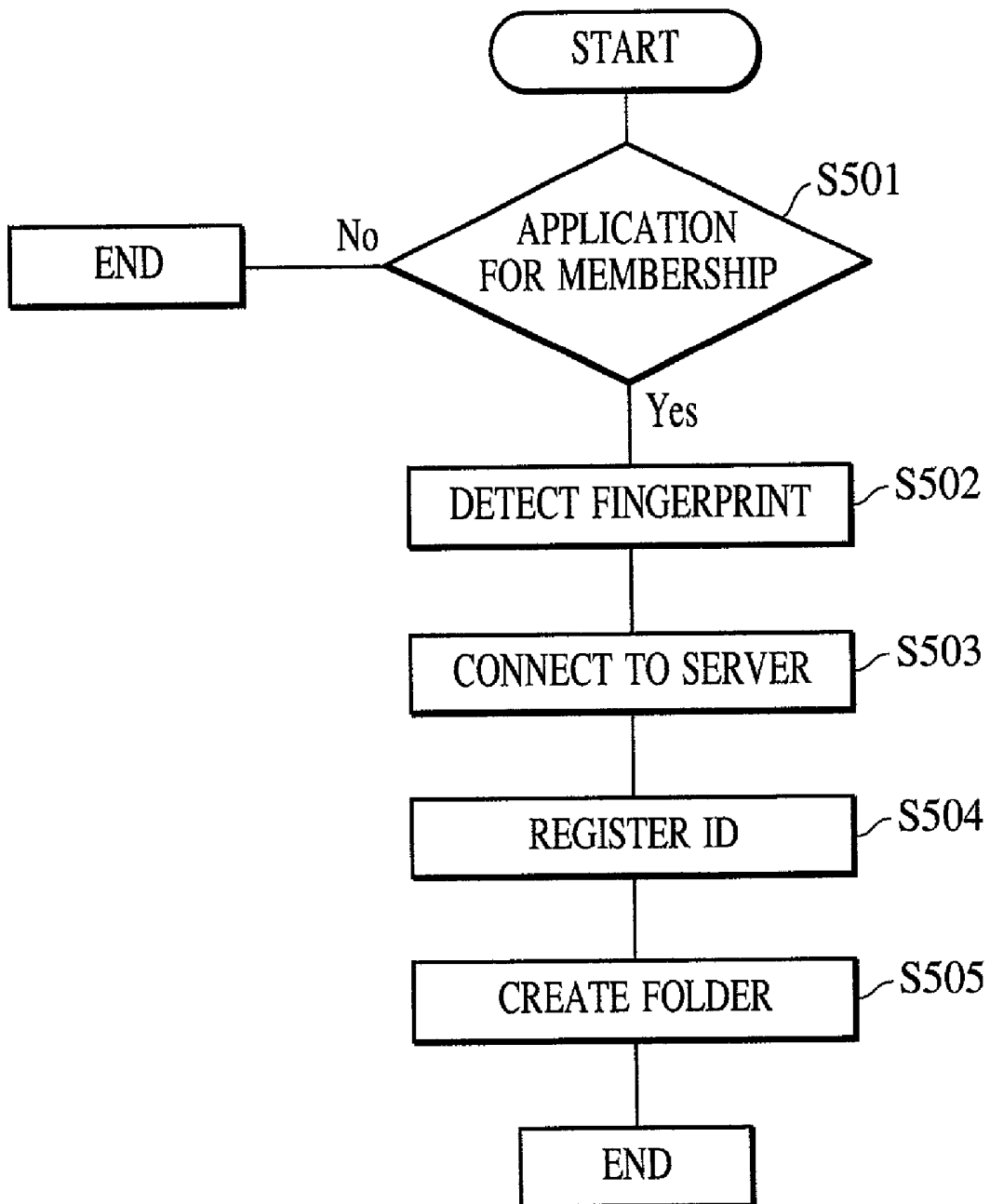
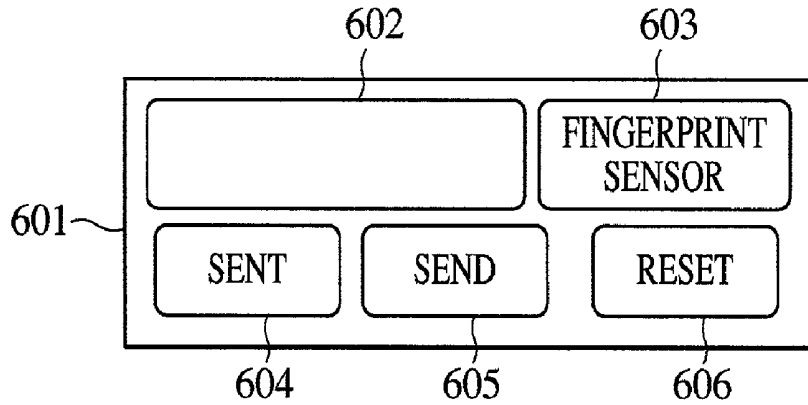
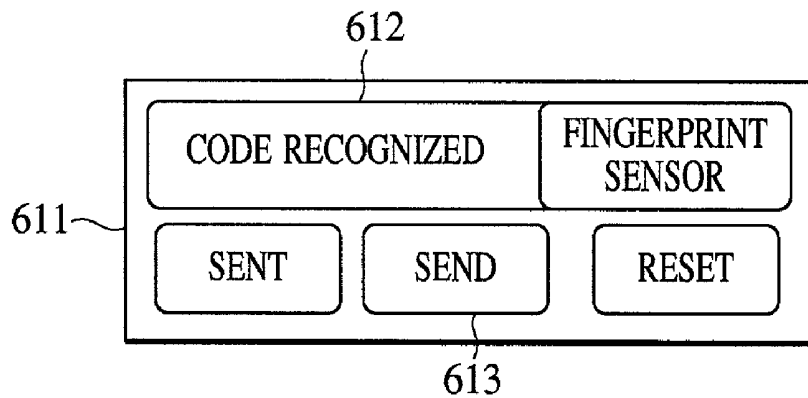


FIG. 6

MEMBERSHIP APPLICATION DEVICE DESCRIPTION 1



MEMBERSHIP APPLICATION DEVICE DESCRIPTION 2



MEMBERSHIP APPLICATION DEVICE DESCRIPTION 3

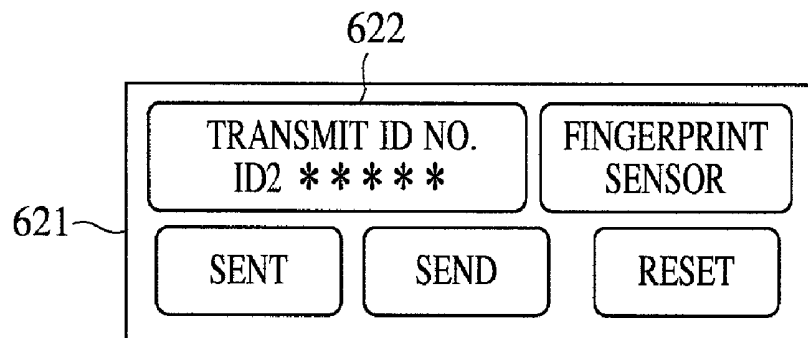


FIG. 7

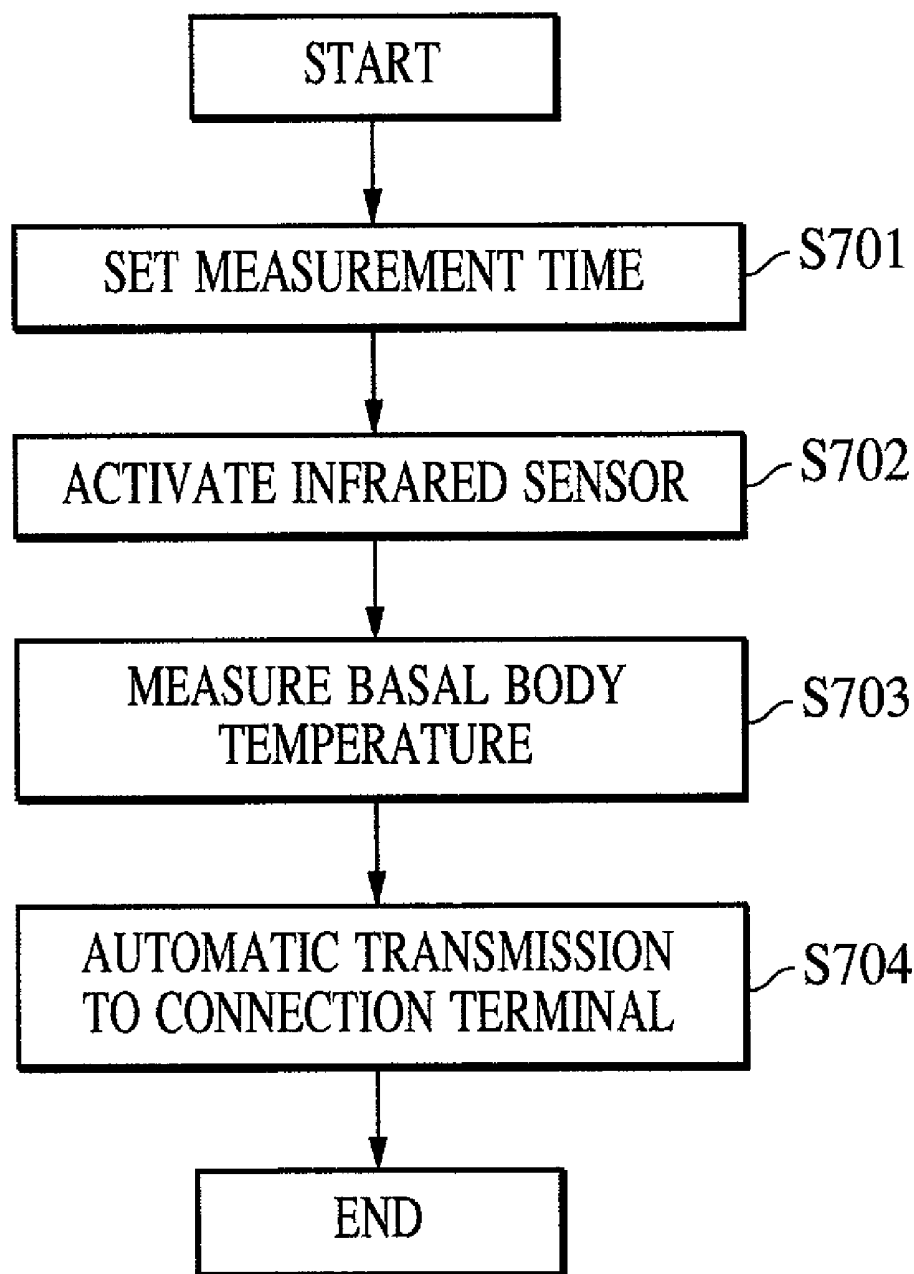


FIG. 8

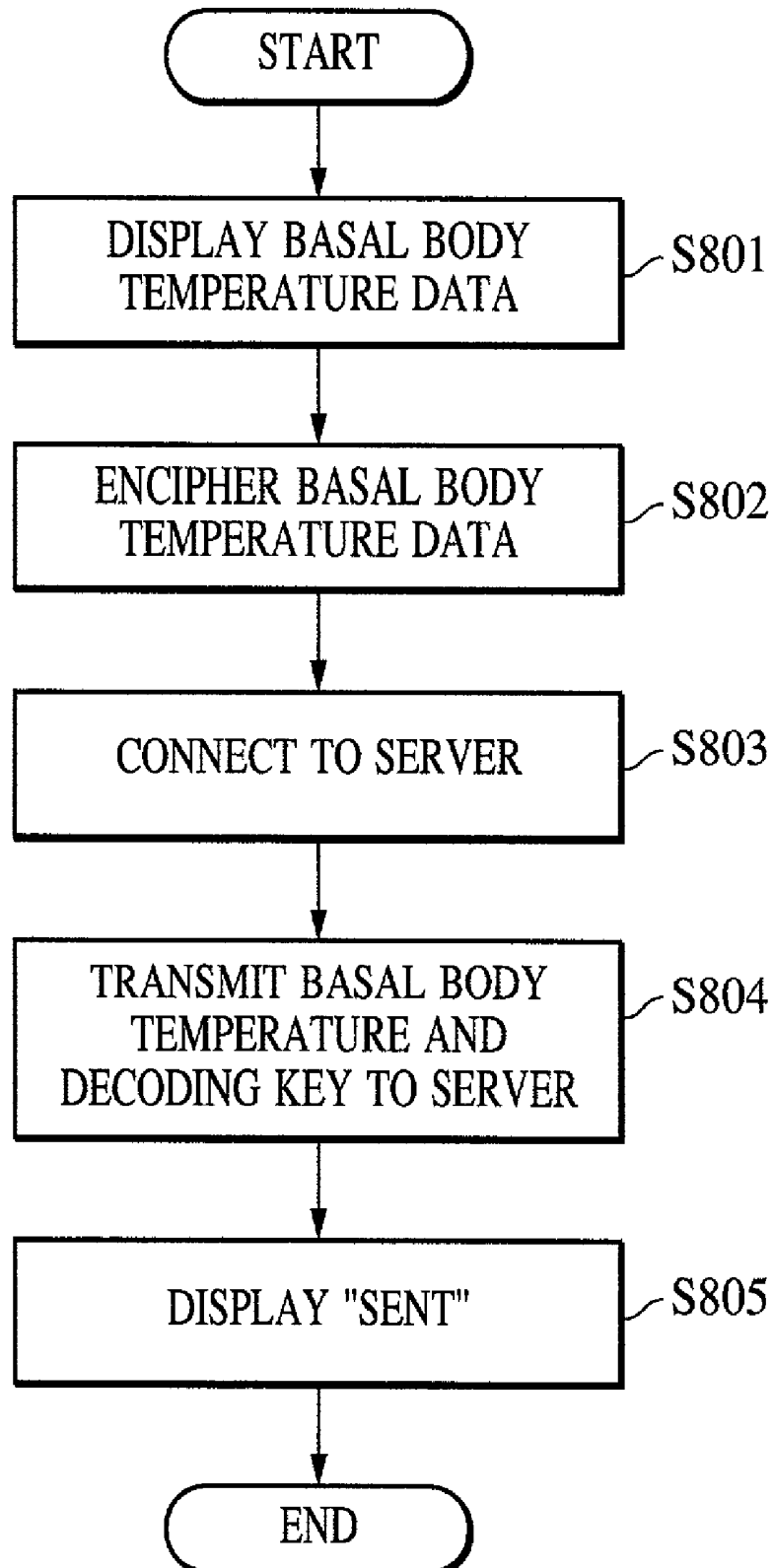


FIG. 9

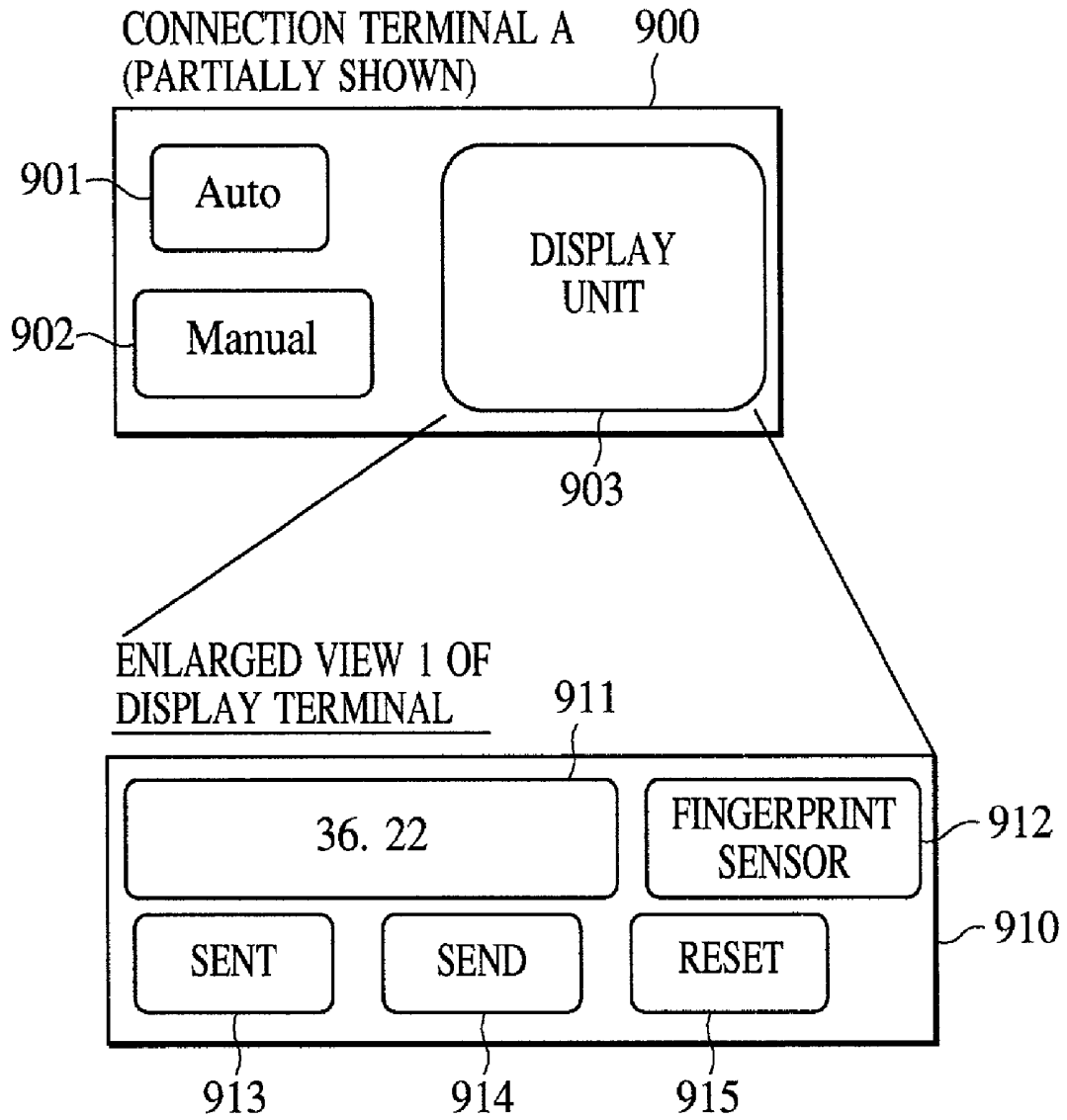


FIG. 10

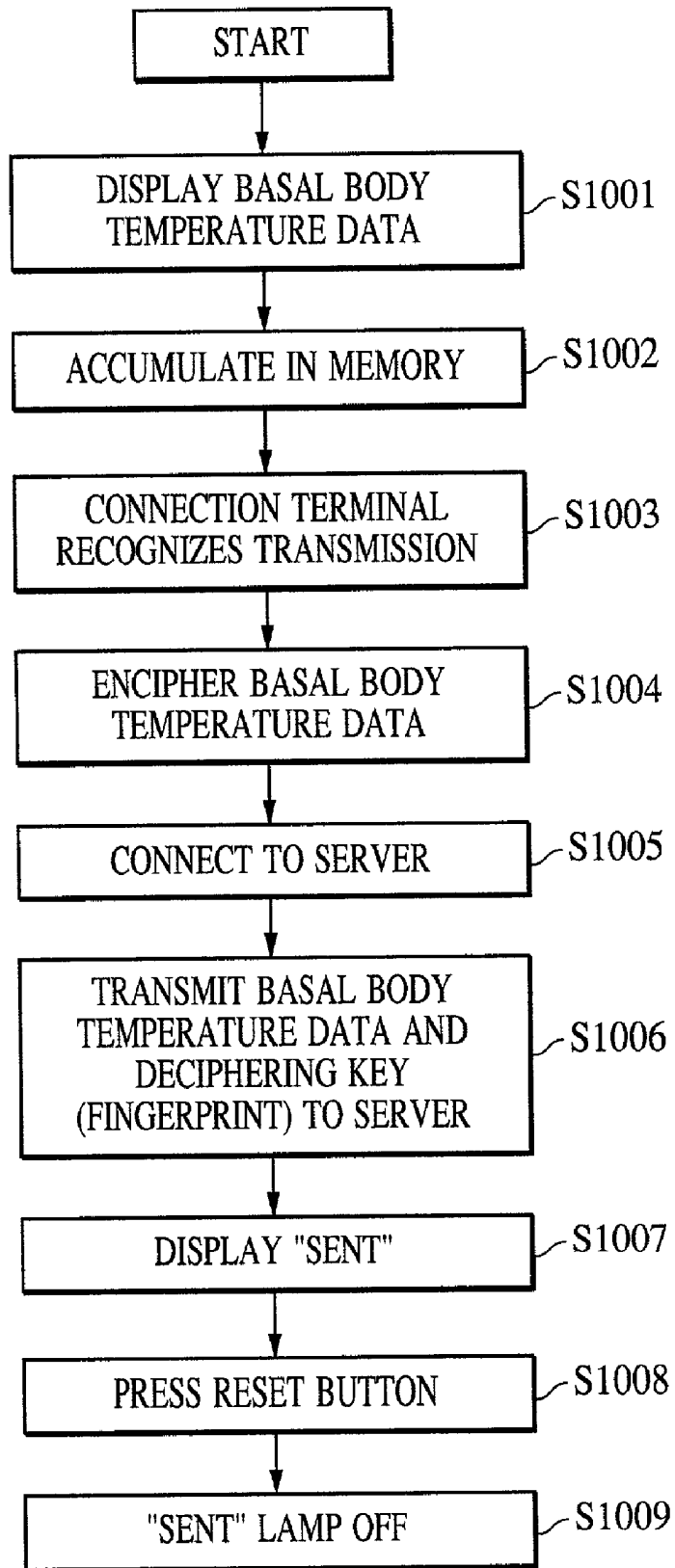


FIG. 11

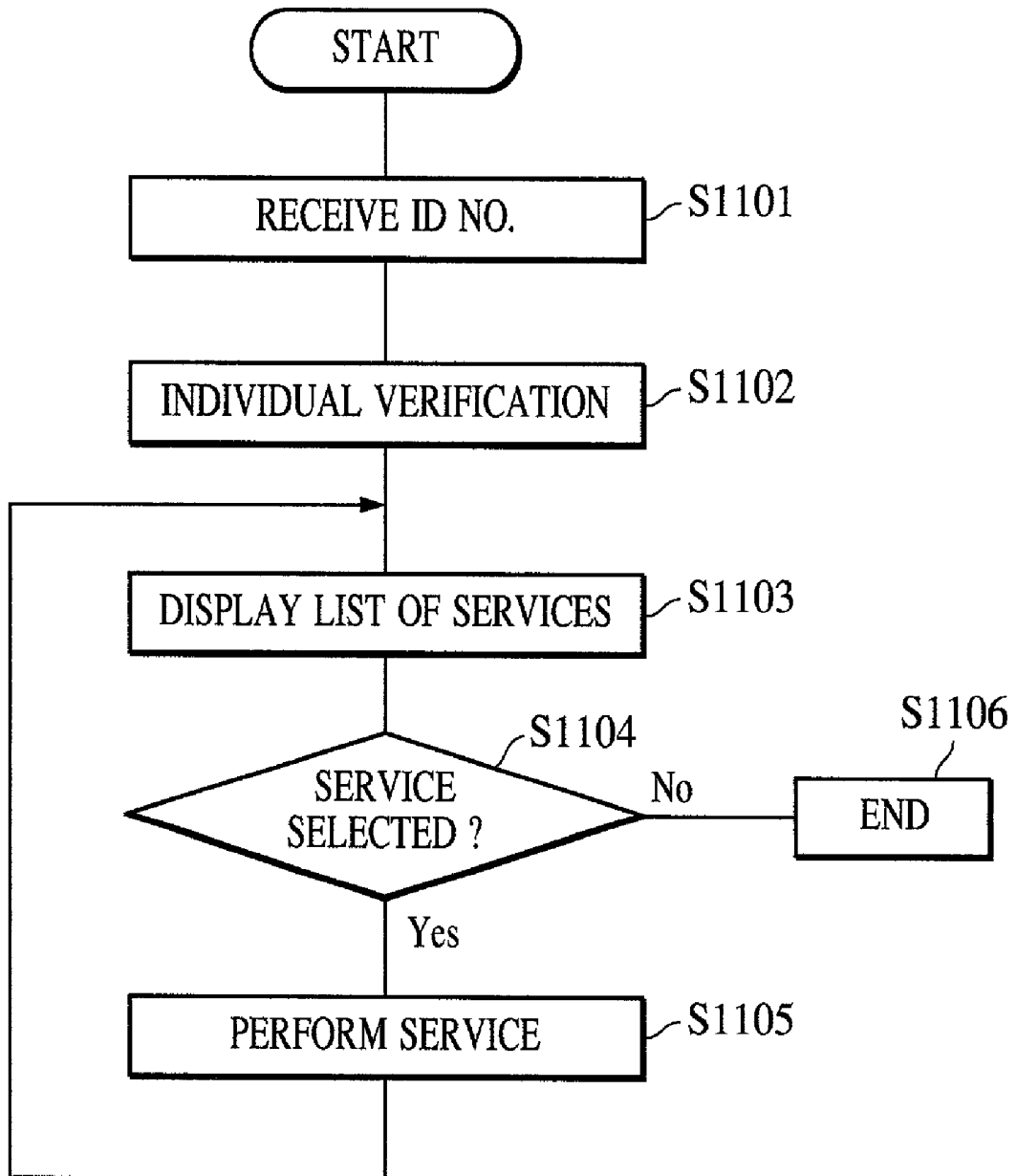


FIG. 12

1201

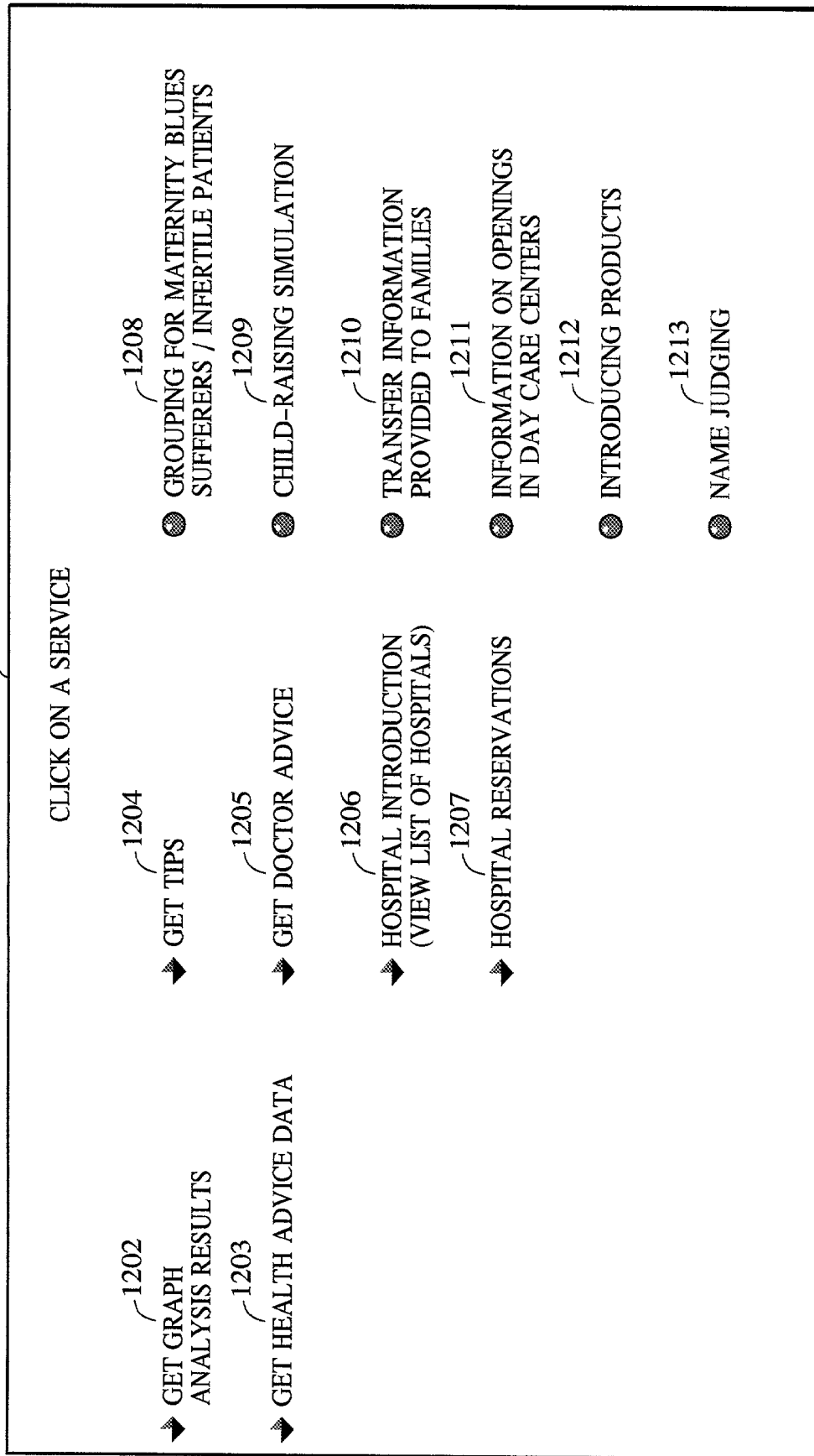


FIG. 13

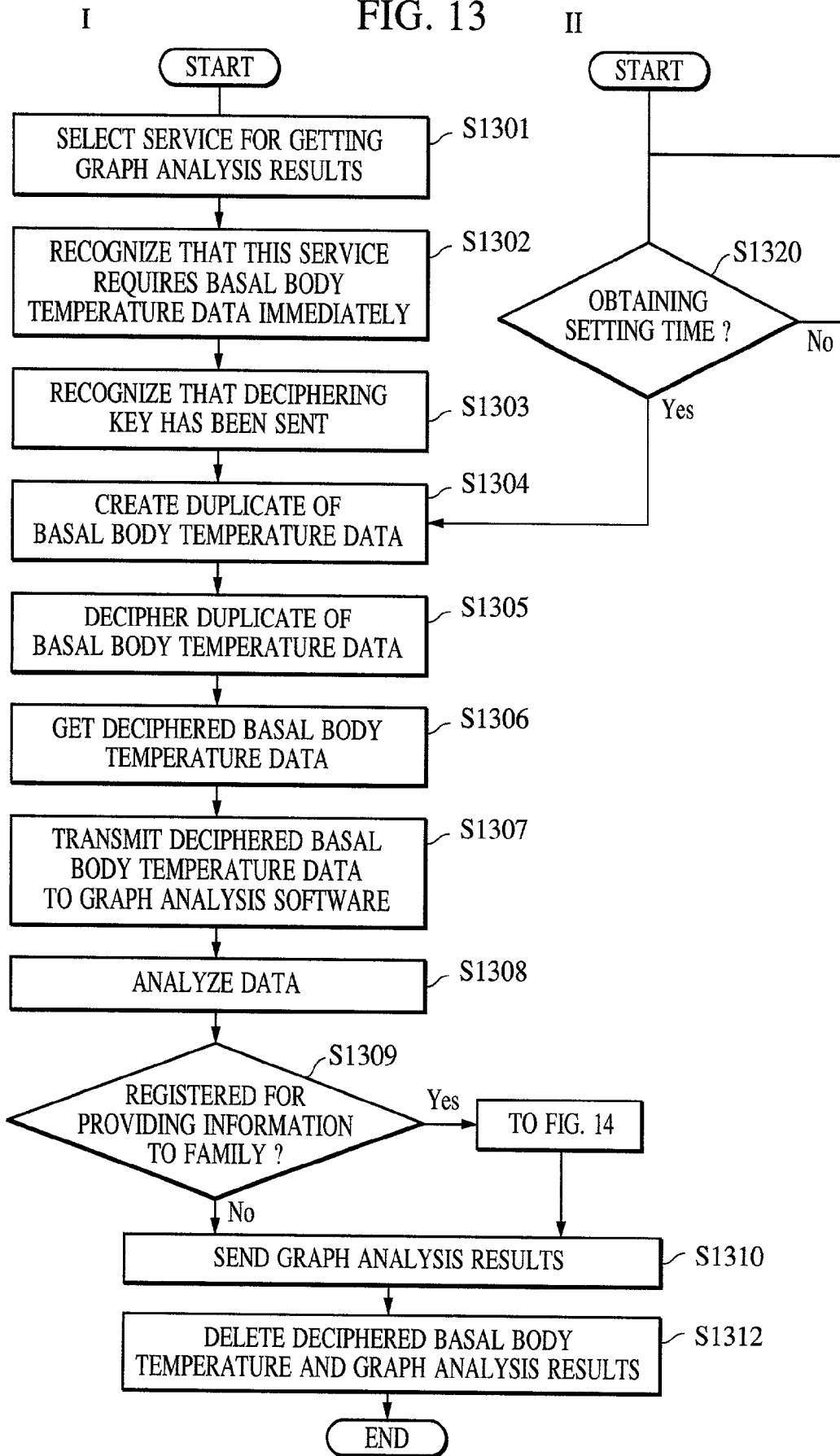


FIG. 14

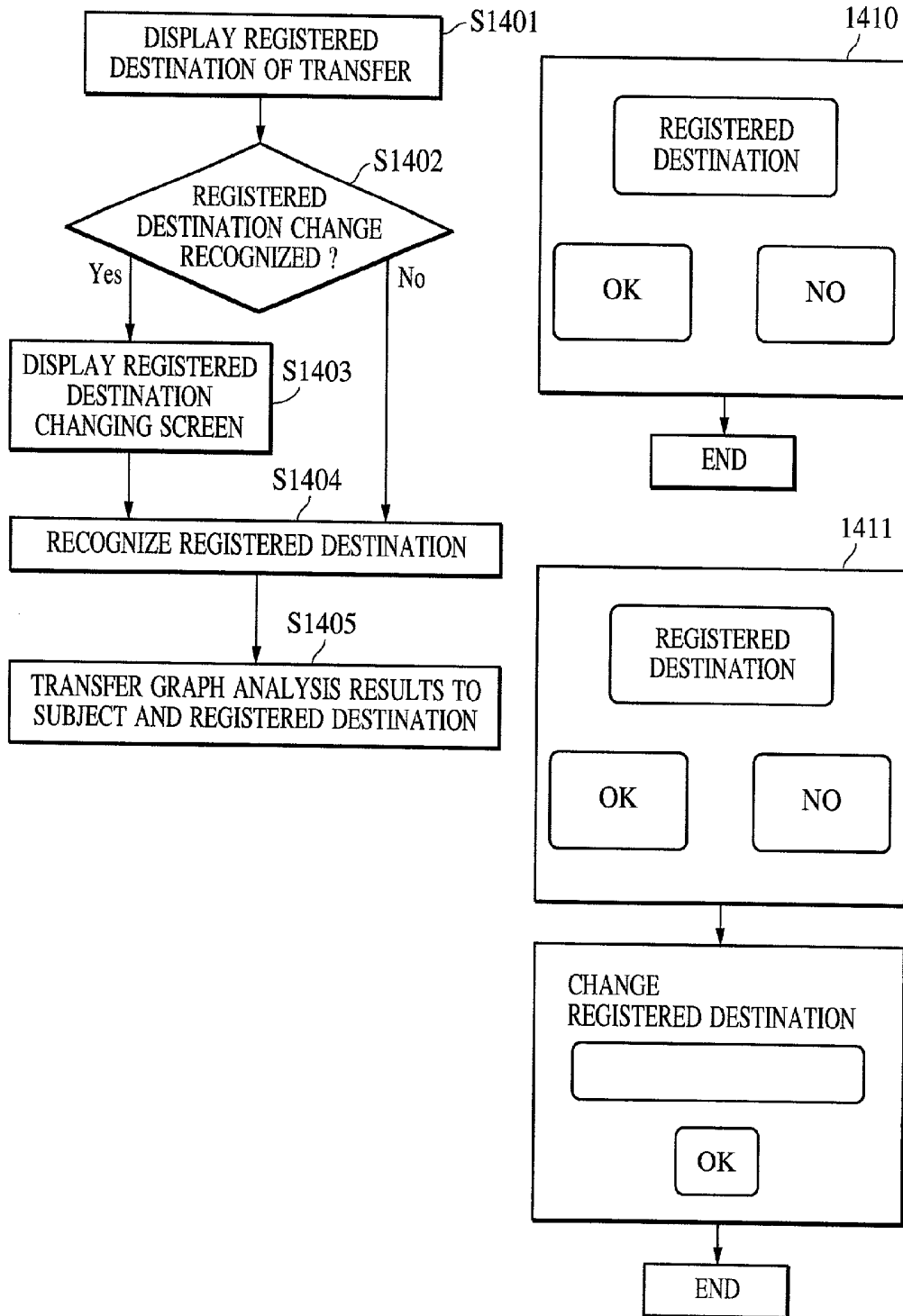
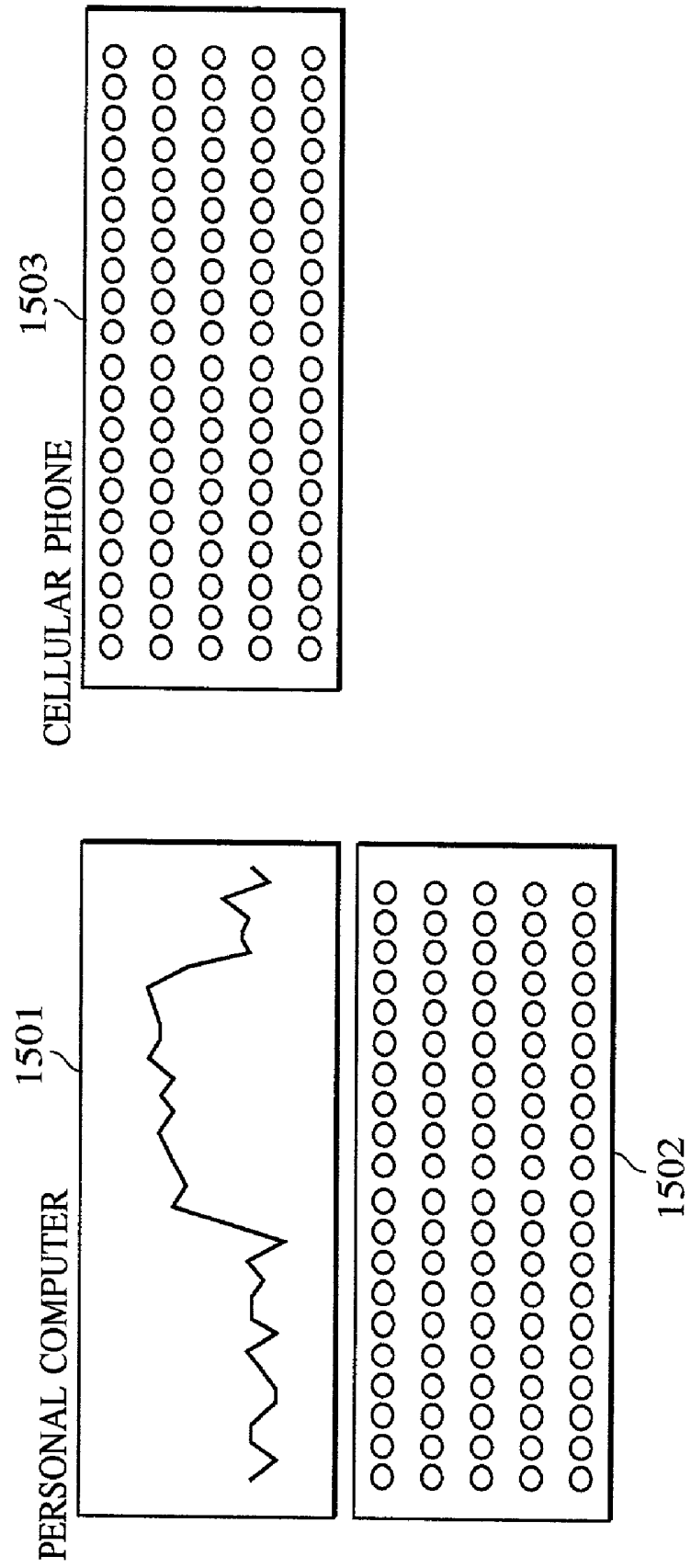


FIG. 15



I FIG. 16 II

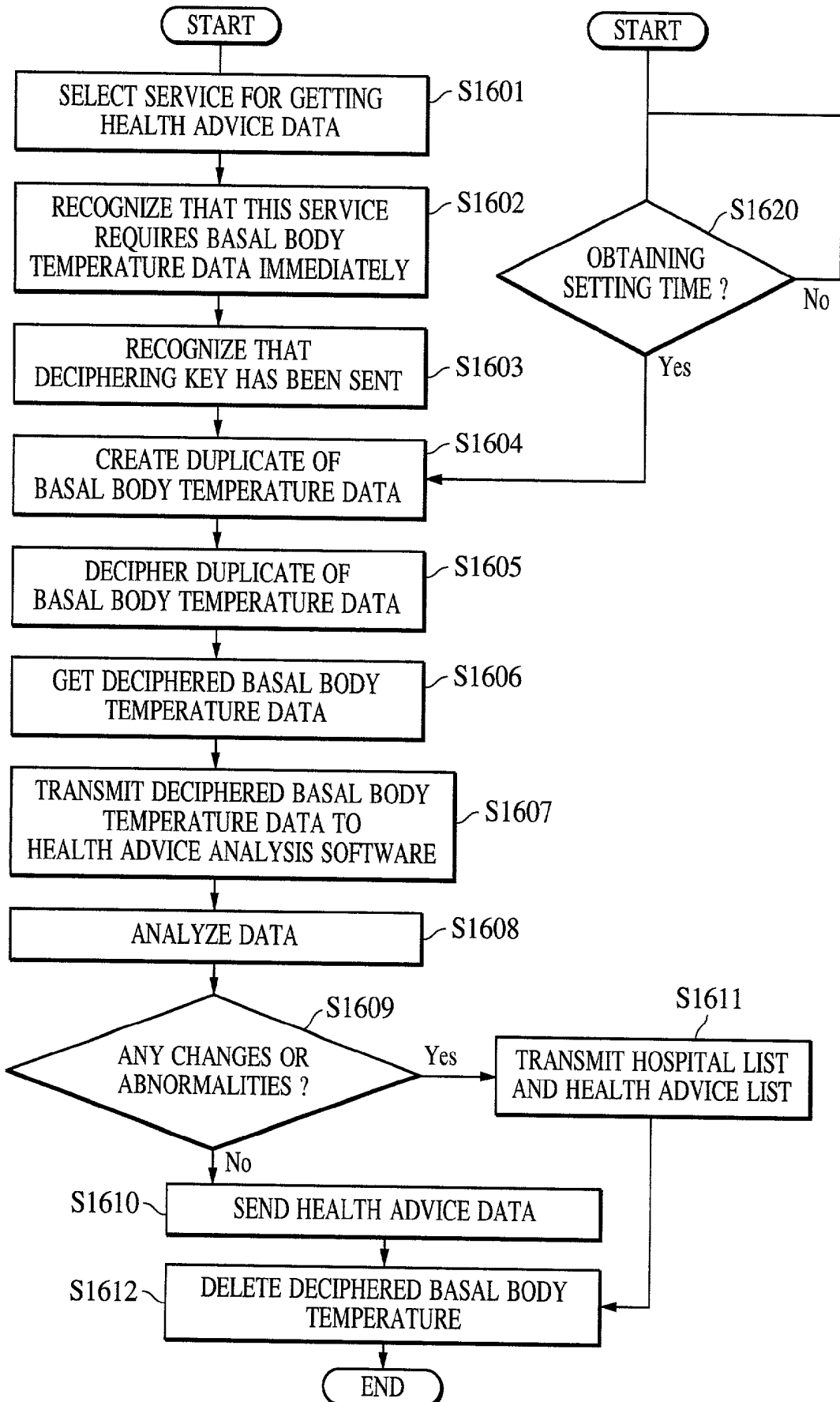


FIG. 17

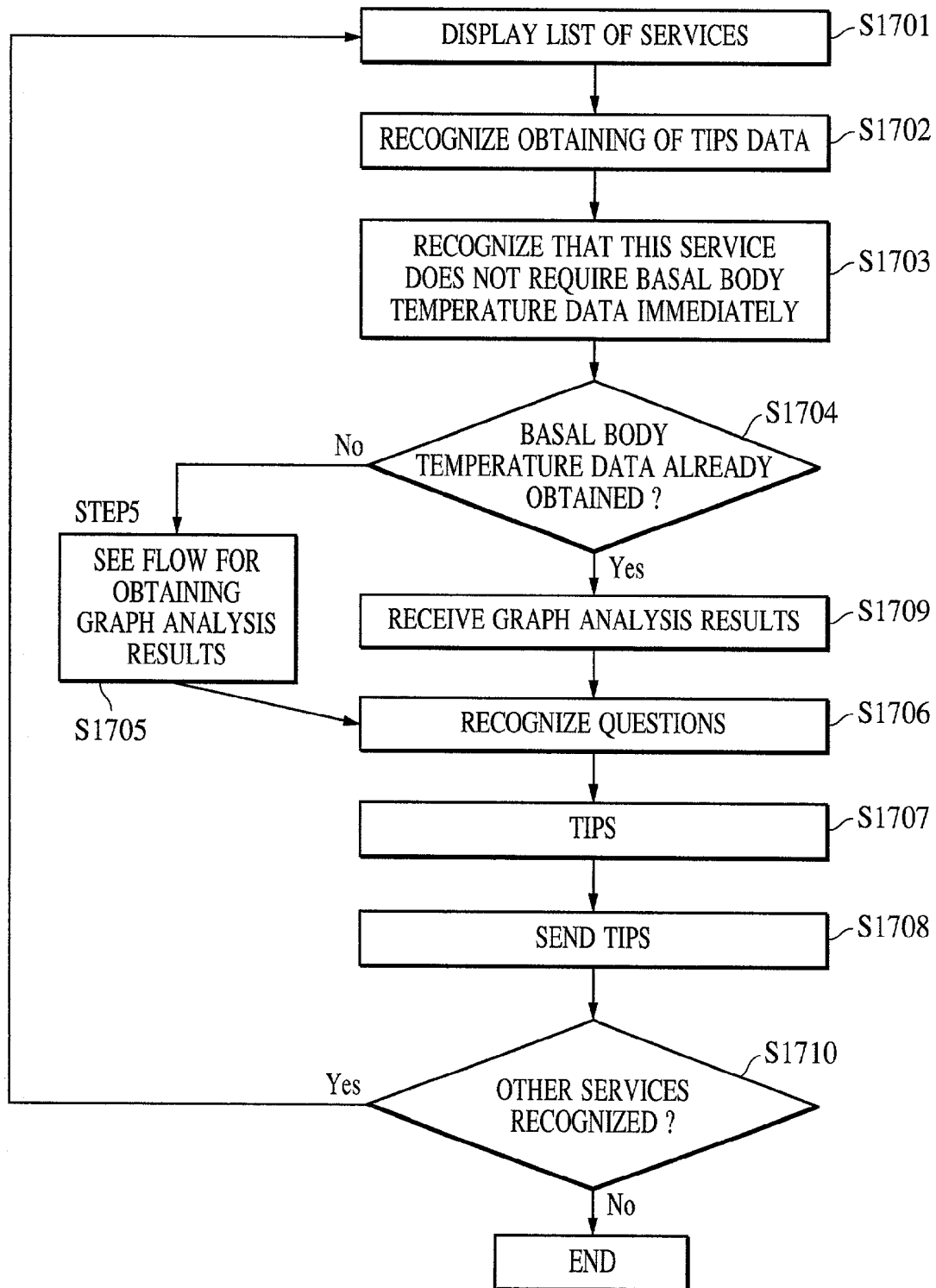


FIG. 18

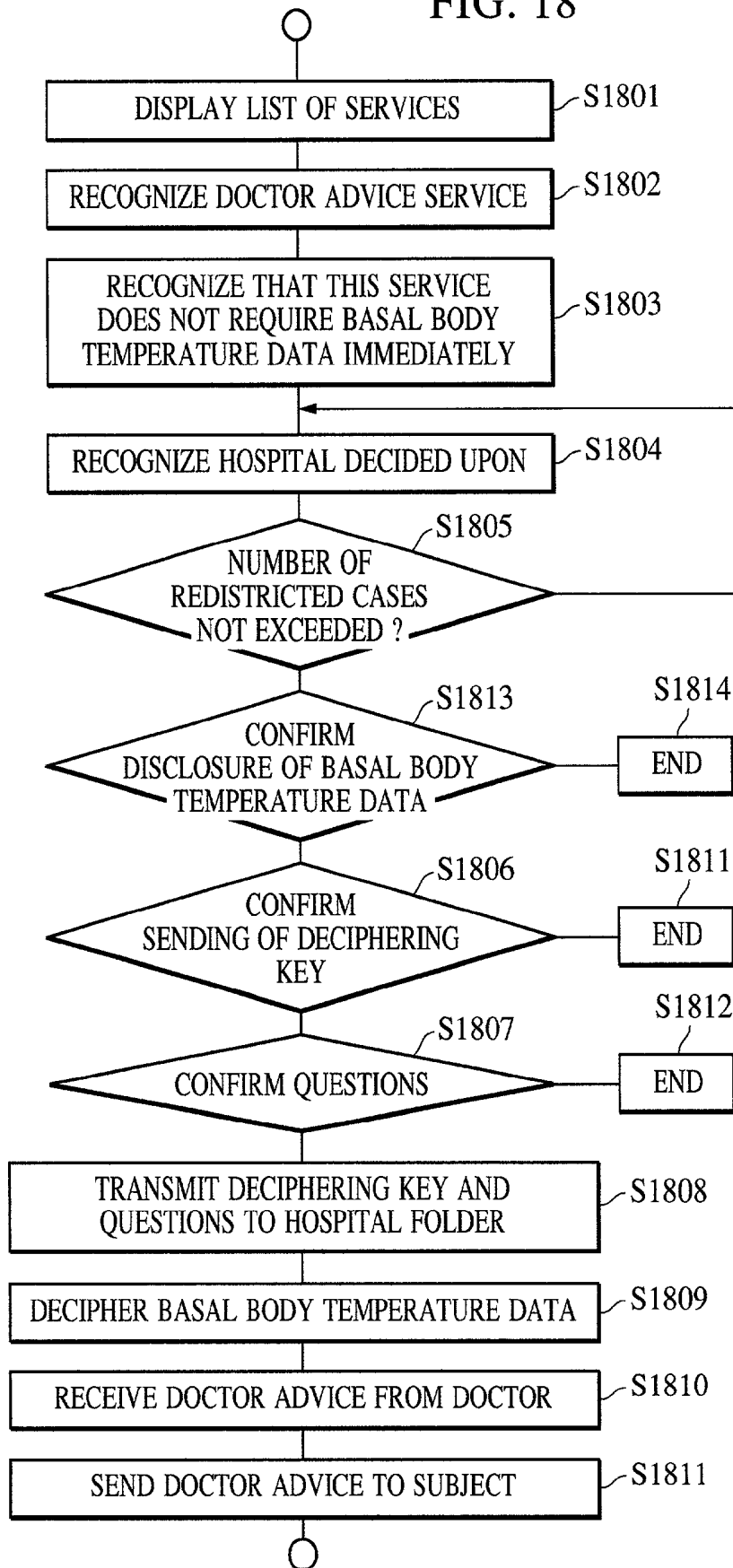


FIG. 19

DOCTOR ADVICE DATA

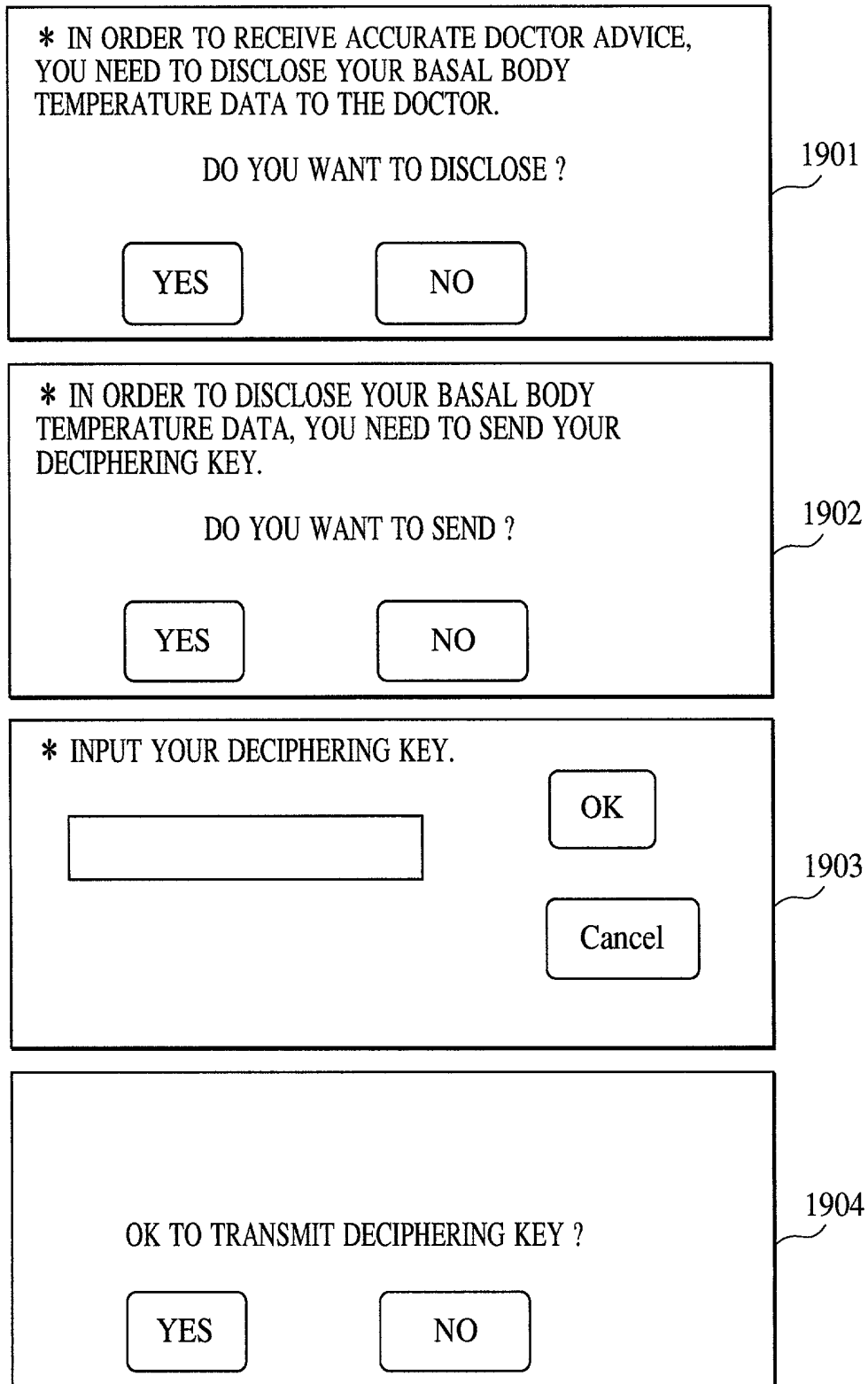


FIG. 20

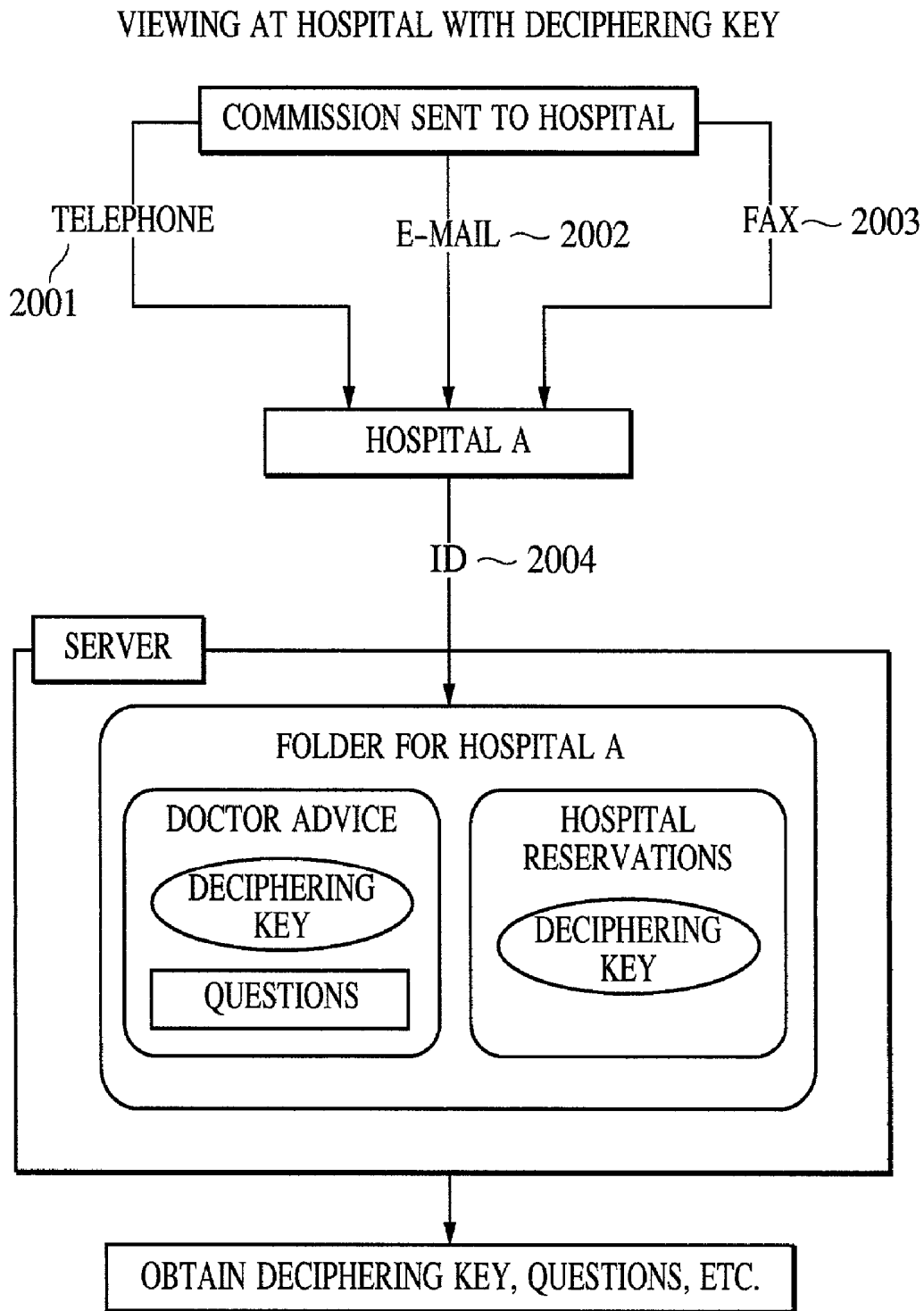


FIG. 21

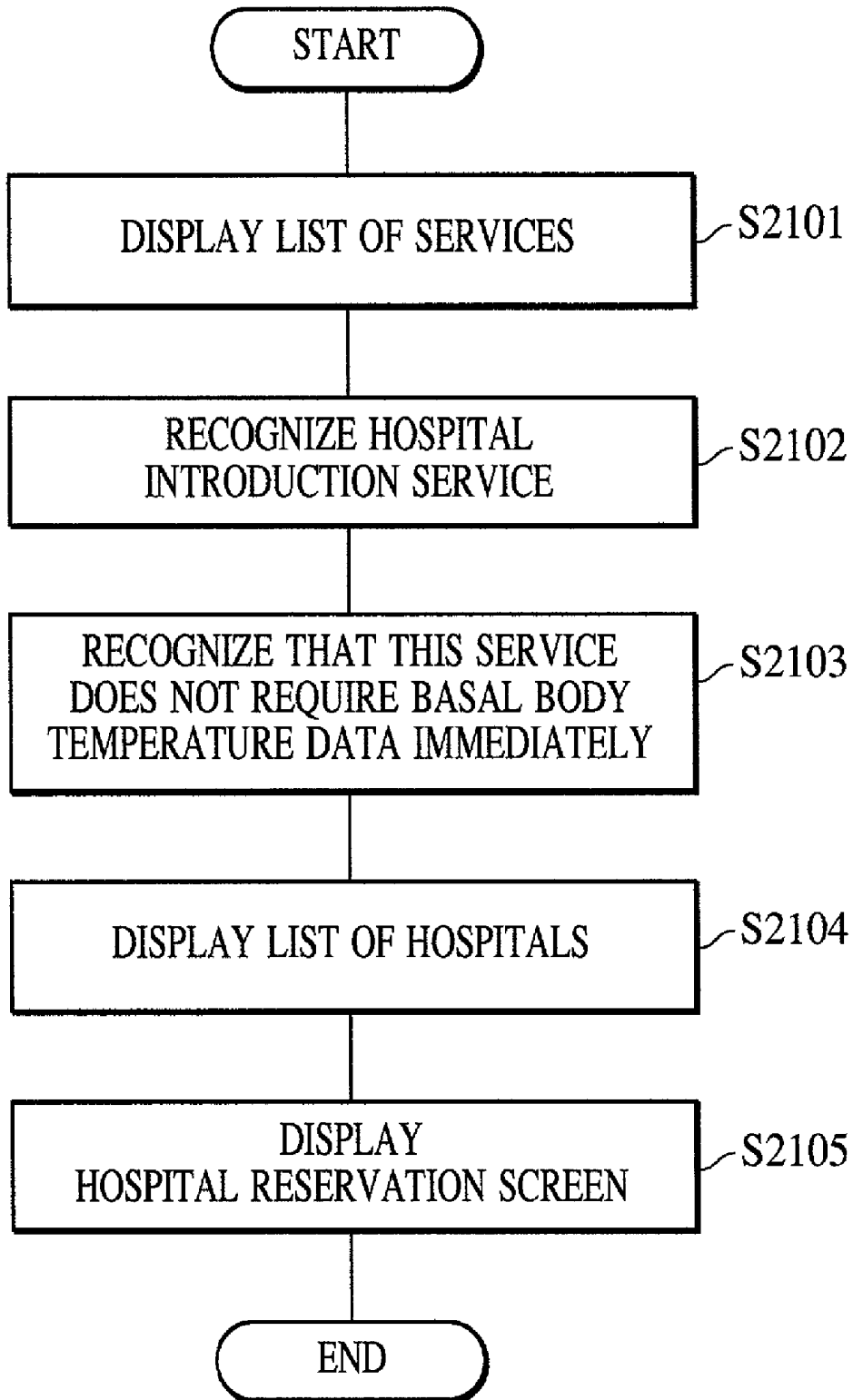
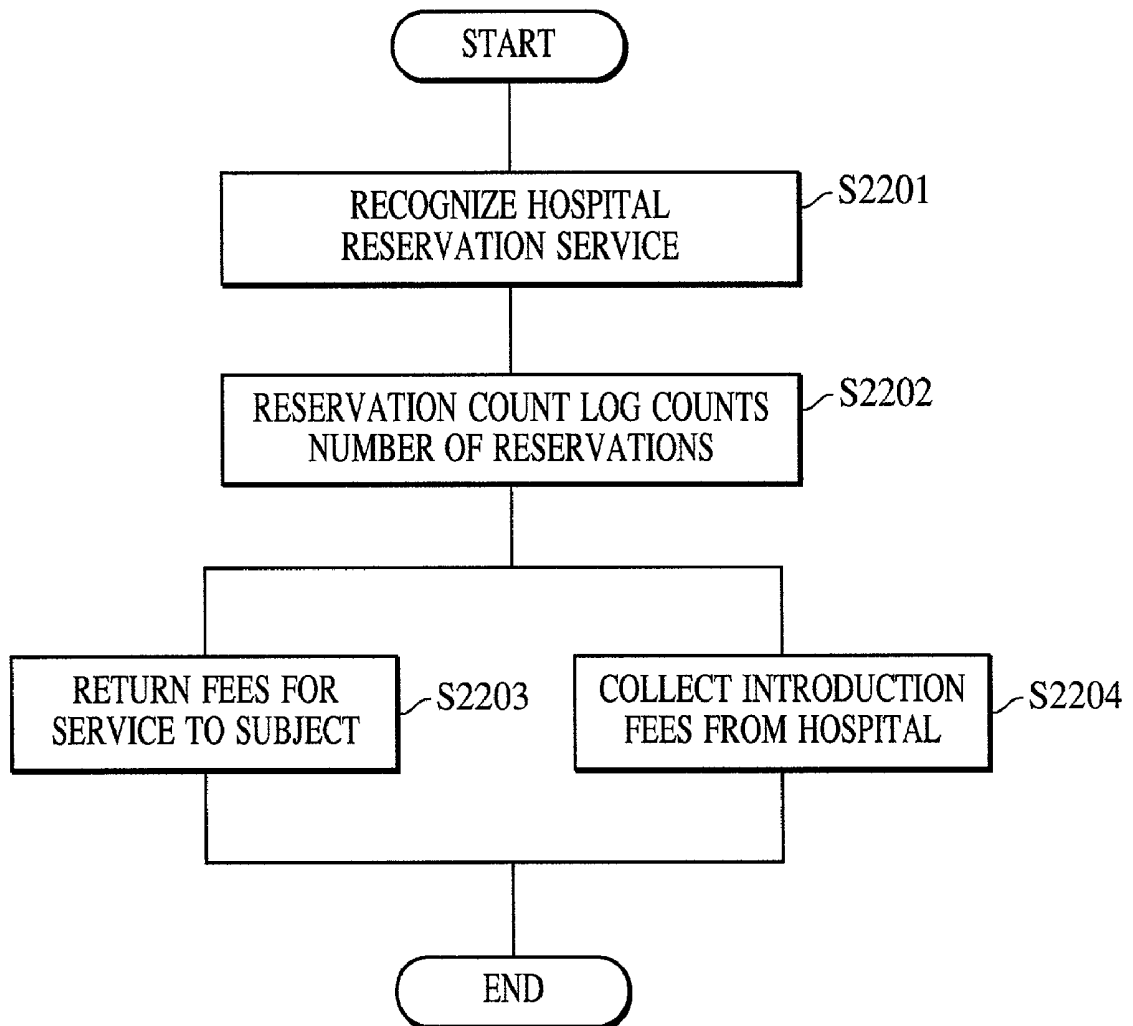


FIG. 22



HOSPITAL LIST

FIG. 23

* WHICH STATE DO YOU WANT TO VIEW LIST OF HOSPITALS FOR ?

STATE

2301

* CLICK ON A DISTRICT

<input type="button" value="CITY A"/>	<input type="button" value="TOWN D"/>
<input type="button" value="CITY B"/>	<input type="button" value="TOWN E"/>
<input type="button" value="CITY C"/>	<input type="button" value="TOWN F"/>

2302

e.g.

CLICK ON A HOSPITAL THAT YOU WANT TO VIEW

<input type="button" value="HOSPITAL A"/>
<input type="button" value="CLINIC B"/>
<input type="button" value="HOSPITAL C"/>
<input type="button" value="."/>
<input type="button" value="."/>
<input type="button" value="."/>
<input type="button" value="."/>

2303

e.g.

CLICK ON THE RESERVATION BUTTON IF YOU WANT TO MAKE A RESERVATION

· HOSPITAL A LOCATION HOURS ETC. · · ·	<input type="button" value="RESERVATION"/>
--	--

2304

FIG. 24

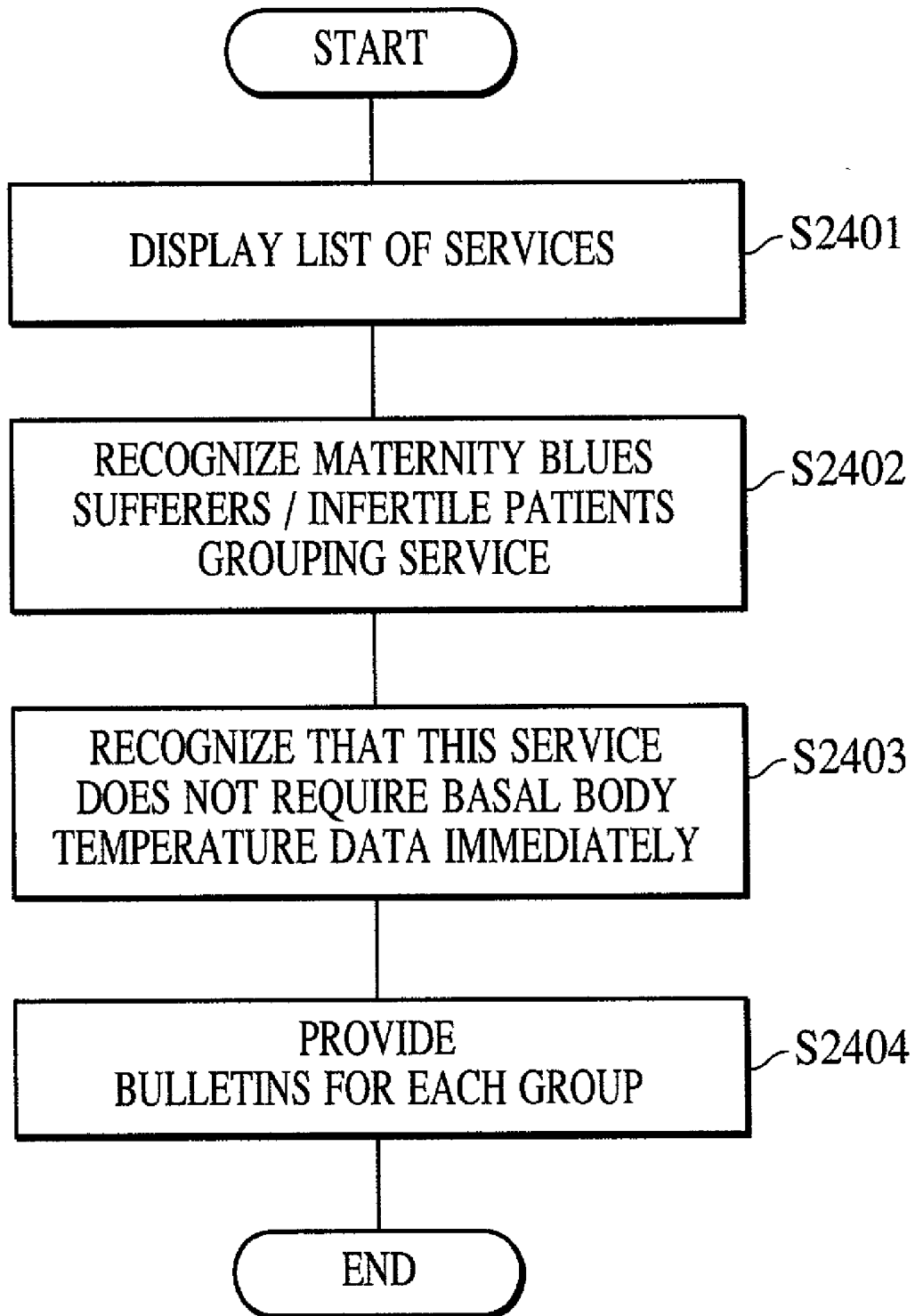


FIG. 25

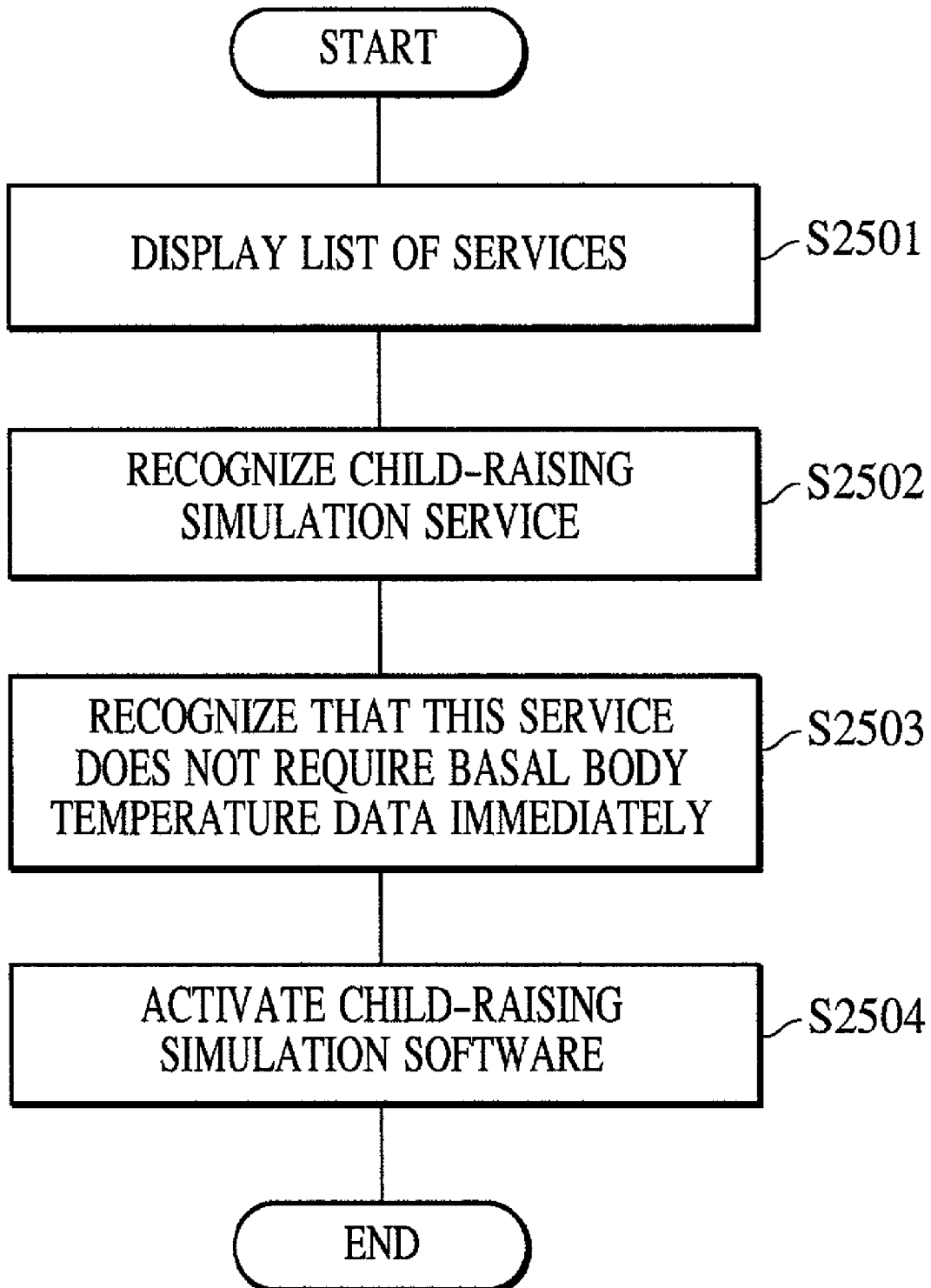


FIG. 26

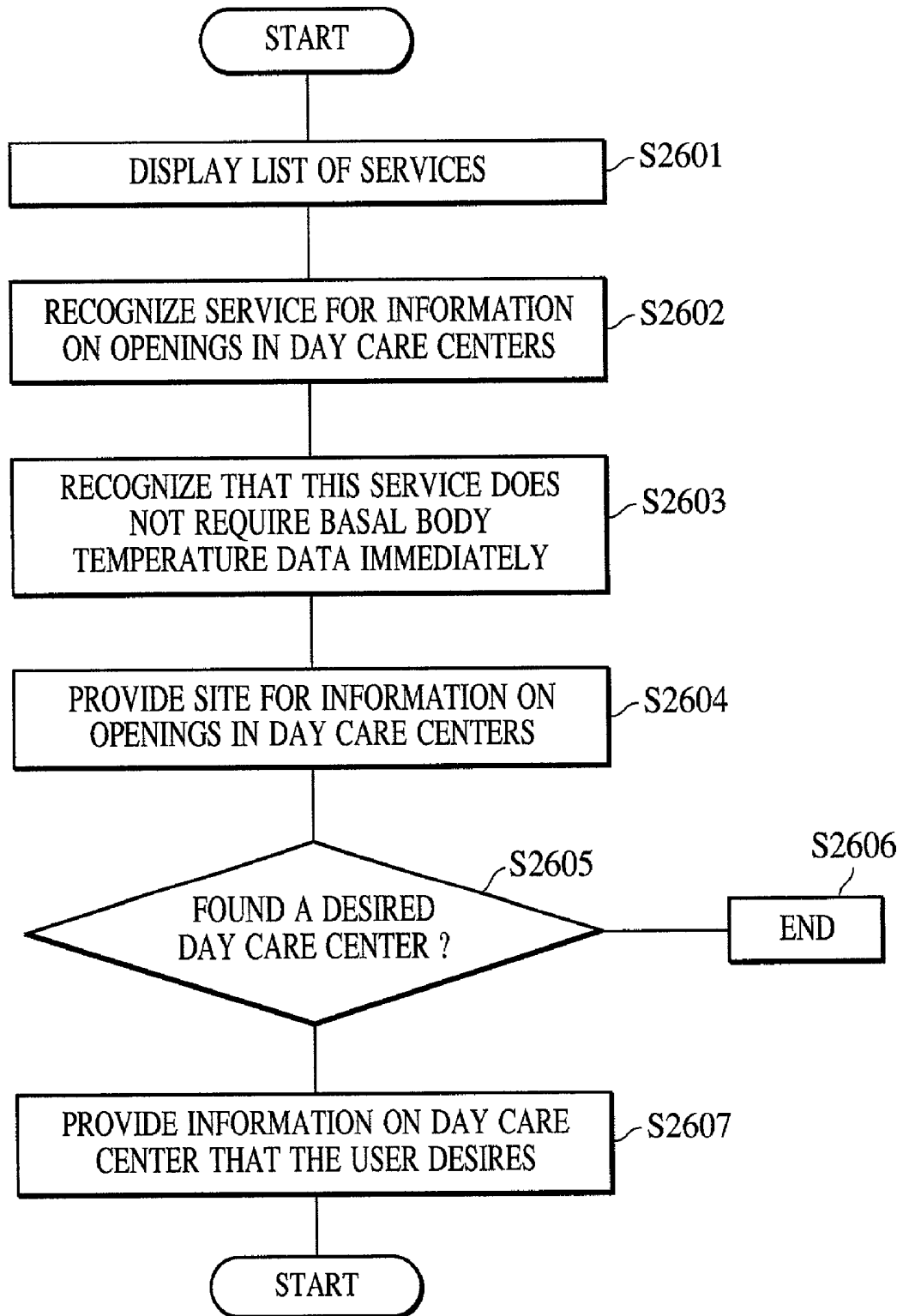


FIG. 27

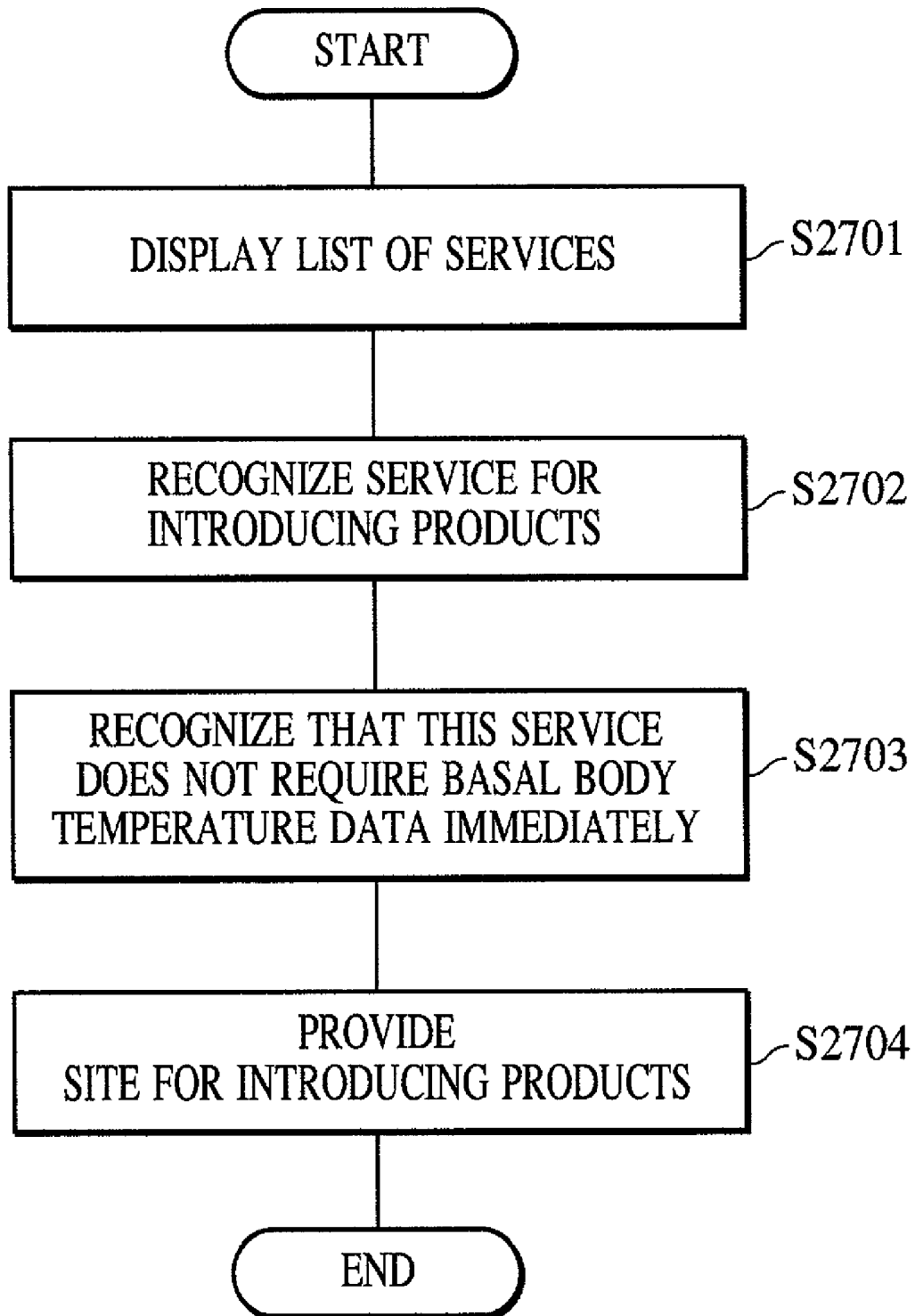
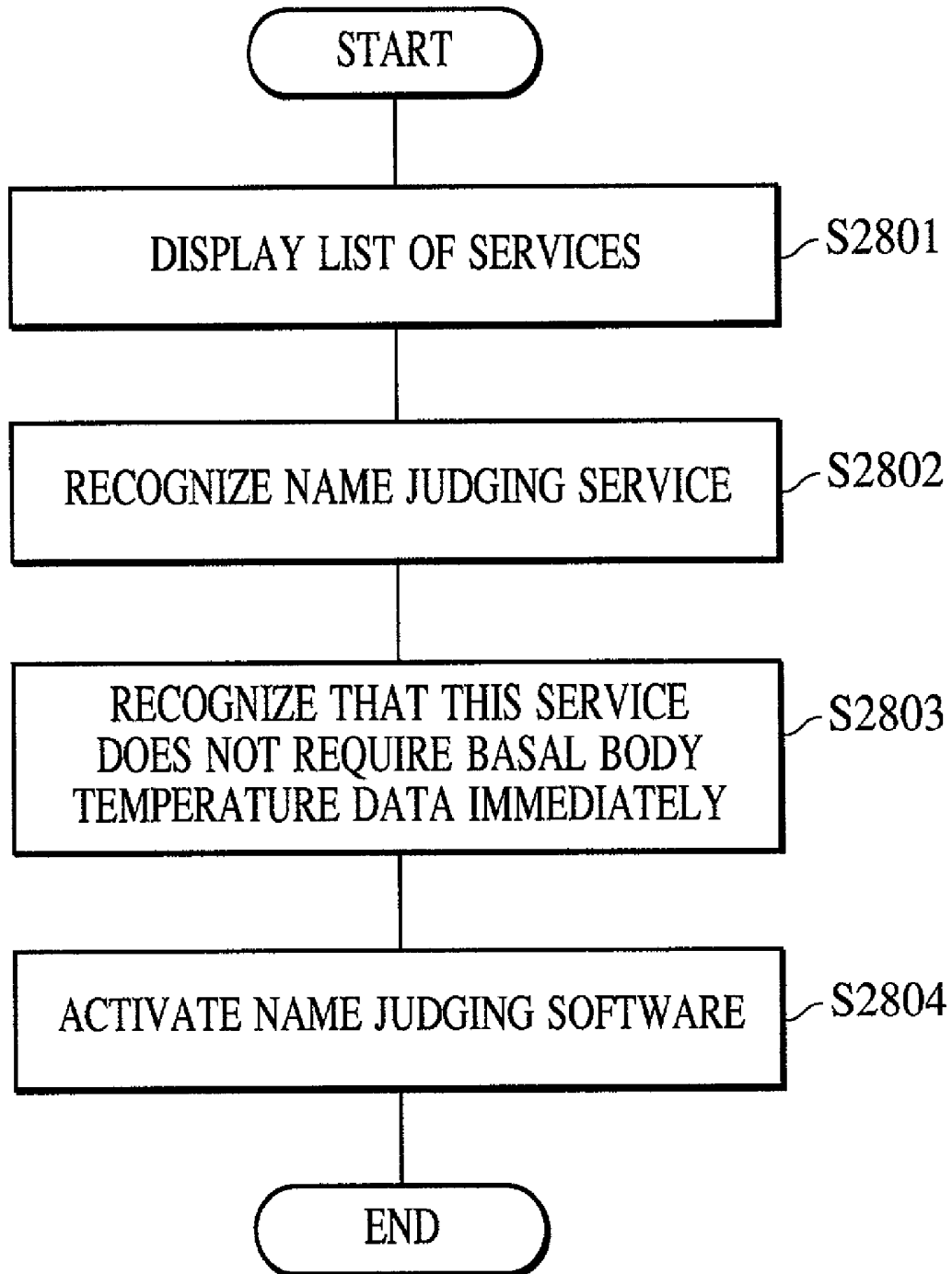


FIG. 28



**BODY TEMPERATURE MANAGING METHOD
AND DEVICE, STORAGE MEDIUM, BODY
TEMPERATURE MANAGING SYSTEM, AND
PROGRAM**

BACKGROUND OF THE INVENTION

[0001] 1. Field of the Invention

[0002] The present invention relates to a method and a device for managing body temperature, a storage medium thereof, a system for managing body temperature, and a program thereof.

[0003] 2. Description of the Related Art

[0004] Conventionally, in the event of a subject using a so-called gynecological thermometer to measure basal body temperature, wherein the subject simply measures the basal body temperature by placing the thermometer under the underarm or in the mouth in a resting state, the subject must fill out a graph following taking the basal body temperature, and items such as ovulation, infertile period, fertile period, menstruation, etc., are predicted based on complicated calculations which necessitate information known to the subject. There have also been methods for predicting or graph displaying of ovulation, infertile period, fertile period, menstruation, etc., in Japanese Patent Laid-Open No. 11-316161 (gynecological thermometer), Japanese Patent Laid-Open No. 11-84036 (wristwatch for notifying ovulation), Japanese Patent Laid-Open No. 5-296851 (body temperature managing system), Japanese Patent Laid-Open No. 9-122132 and the like, wherein body temperature measured in one way or another is sent to a terminal having storing means or control means, where judgment is made by the control means without necessitating judgement by the user.

[0005] However, advances in science have made it clear that information obtained by taking such basal body temperature can be used for not only the conventionally analyzed items, but also for items such as anovulation, periods wherein dieting is effective, body conditions such as skin conditions, and so forth, and accordingly, the knowledge of the subject and control means within a terminal of the subject may very well be insufficient for making judgment regarding such items. Moreover, such issues should preferably be judged by analysis made on the newest information.

[0006] Another problem has been that, even in the event that the subject does take basal body temperature, the subject often does not have the time to actually go to the hospital each time there is some change in the information obtained thereby, and further, even in the event that the subject might have the time, the subject has to go to a gynecologist to have the diagnosis made, which is in itself a factor why many individuals tend to postpone analysis.

[0007] Also, while managing individual information on the Internet is advantageous from the perspective of obtaining information, concerns over private information leaking out are always-present. Basal body temperature is information which requires particular protection, and leakage of the data on a network is a matter of concern.

SUMMARY OF THE INVENTION

[0008] Accordingly, it is an object of the present invention to solve the above problems, and provide management and

analysis over a network to obtaining information difficult to obtain by basal body temperature alone.

[0009] Another object of the present invention is to provide judgment and medical analysis based on the newest analysis of the data of the subject, and to provide various services relating to basal body temperature data, by managing and analyzing the basal body temperature using a network.

[0010] Another object of the present invention is to provide a system wherein individuals can receive diagnosis based on measured basal body temperature without actually having to visit the hospital, under thorough management information to prevent leakage of the body temperature data of the subject in all steps, thereby completely protecting private data from external leakage.

[0011] To this end, according to a first embodiment of the present invention, a body temperature managing method comprises a body temperature data obtaining step for obtaining body temperature data, a body temperature data storing step for storing the body temperature data obtained in the obtaining step, a body temperature data analyzing step for analyzing the body temperature data based on the body temperature data stored in the storing step, and an analyzed data transmitting step for transmitting data that has been analyzed in said analyzing step.

[0012] Further objects, features and advantages of the present invention will become apparent from the following description of the preferred embodiments with reference to the attached drawings, in which like reference numerals designate the same or equivalent parts throughout the figures thereof.

BRIEF DESCRIPTION OF THE DRAWINGS

[0013] The accompanying drawings, which are incorporated in and constitute a part of the specification, illustrate embodiments of the invention and, together with the description, serve to explain the principles of the invention.

[0014] **FIG. 1** is a diagram of the system configuration of an embodiment of the present invention;

[0015] **FIG. 2** is a block diagram illustrating the system configuration of a server;

[0016] **FIG. 3** is a block diagram illustrating the configuration of a basal body temperature thermometer and a connection terminal according to an embodiment of the present invention;

[0017] **FIG. 4** is a diagram illustrating data stored in an external storage device according to an embodiment of the present invention;

[0018] **FIG. 5** is a diagram illustrating the flow for gaining membership using a fingerprint sensor;

[0019] **FIG. 6** is a diagram illustrating the display for application for membership;

[0020] **FIG. 7** is a flowchart illustrating the flow for measuring basal body temperature;

[0021] **FIG. 8** is a flowchart illustrating the flow for automatically transmitting basal body temperature to a server;

[0022] FIG. 9 is a diagram illustrating a display on a terminal device for transmitting basal body temperature to the server;

[0023] FIG. 10 is a flowchart illustrating the flow for manually transmitting basal body temperature to the server;

[0024] FIG. 11 is a flowchart illustrating the flow of various services according to an embodiment of the present invention;

[0025] FIG. 12 is a diagram illustrating a list of services;

[0026] FIG. 13 is a diagram illustrating the flow for obtaining graph analysis results for basal body temperature;

[0027] FIG. 14 is a diagram illustrating the flow and method for a service for transferring to family;

[0028] FIG. 15 is a conceptual diagram of a screen for viewing the various services;

[0029] FIG. 16 is a flowchart illustrating the flow of a service for obtaining health advice data;

[0030] FIG. 17 is a flowchart illustrating the flow of a service for obtaining tips;

[0031] FIG. 18 is a flowchart illustrating the flow of a doctor advice service;

[0032] FIG. 19 is a display screen for the doctor advice service;

[0033] FIG. 20 is a diagram illustrating transferring to a hospital for the doctor advice service;

[0034] FIG. 21 is a flowchart illustrating the flow of a hospital introduction service;

[0035] FIG. 22 is a flowchart illustrating the flow of a hospital reservation service;

[0036] FIG. 23 is a diagram illustrating a hospital list;

[0037] FIG. 24 is a flowchart illustrating the flow of a "grouping for maternity blues sufferers/infertile patients" service;

[0038] FIG. 25 is a flowchart illustrating the flow of a child-raising simulation;

[0039] FIG. 26 is a diagram illustrating the flow of a service for information on openings in day care centers;

[0040] FIG. 27 is a diagram illustrating the flow of a service for introducing products; and

[0041] FIG. 28 is a diagram illustrating the flow of a name judging service.

DESCRIPTION OF THE PREFERRED EMBODIMENTS

[0042] The preferred embodiments of the present invention will now be described in detail with reference to the attached drawings.

[0043] FIG. 1 is a diagram illustrating a system configuration according to an embodiment of the present invention. Reference numeral 101 denotes a server computer (hereafter referred to simply as "server"), and 102 denotes a subject terminal. The subject terminal is a terminal necessary for the subject to receive the later-described various services, such as a personal computer, cellular phone, portable terminal,

and so forth. Reference numeral 103 denotes a hospital terminal, 104 denotes a connection terminal for receiving basal body temperature data and transmitting this to a server, 105 denotes a basal body temperature thermometer, and 106 denotes an outside server which provides various services, such as a server of a service-providing corporation. The outside server is connected to the terminals via networks such as the Internet, and the connection terminal 104 and the basal body temperature thermometer perform wireless communication.

[0044] FIG. 2 is a diagram illustrating the device configuration of the server 101 according to an embodiment of the present invention. The server 101 is made up of a CPU 201 which reads out a program and executes actual processing, ROM 202 which stores beforehand control means for the CPU 201, RAM 203 which the CPU 201 uses for executing the processing, an external storage device 204 which is a recording medium for supplying program code, a communication interface 205 used at the time of making connection to a network, and so forth.

[0045] FIG. 3 is a block diagram illustrating the configuration of the basal body temperature thermometer and the connection terminal according to an embodiment of the present invention. With the basal body temperature thermometer and the connection terminal according to the embodiment of the present invention, the basal body temperature is measured while the subject is sleeping, in order to obtain a measurement more accurate than that of conventional basal body temperature measurements. Also, this lightens the load of taking measurements on the subject, which have been considered to be quite troublesome, and further the measured basal body temperature data can be enciphered to receive services from the server such as accumulation and analysis, via a telephone line. General specifications which are characteristic of the basal body temperature thermometer and the connection terminal according to the embodiment of the present invention will now be described with reference to FIG. 3.

[0046] Reference numeral 300 denotes a basal body temperature thermometer A which is an embodiment of the present invention. The basal body temperature thermometer A can be worn directly in the ear of the subject, and can be arranged to automatically measure the basal body temperature of the subject while sleeping. Reference numeral 301 denotes a timer, 302 denotes an infrared sensor, 303 denotes a wireless device, 304 denotes a battery, and 305 denotes a control unit. The timer 301 has clocking functions, and transmits the timing for measuring the basal body temperature to the control unit 305. The control unit 305 instructs the infrared sensor 302 to measure the basal body temperature, receives the measured basal body temperature from the infrared sensor 302, and transmits the measured basal body temperature to a connection terminal A 310 via the wireless device 303. Each of the processes are executed by receiving supply of electric power from the battery 304. The battery is preferably charged by electricity generated by light from fluorescent lamps or the like, as with conventional thermometers.

[0047] Reference numeral 310 denotes a connection terminal A which is an embodiment of the present invention. Reference numeral 311 denotes a wireless device, 312 denotes a modem, 313 denotes a control unit, 314 denotes

memory, **315** denotes a display unit, **316** denotes a built-in antenna, and **317** denotes an interface. The control unit **313** obtains the basal body temperature received by the built-in antenna **316** via the wireless device, and instructs the basal body temperature to be stored in the memory **314**. The memory **314** is capable of accumulating several days worth of measured data until a reset button is pressed, and the data can be transmitted as a batch to the server at a later time, thereby saving on the telephone bill for connecting to and accessing the server. The contents displayed on the display unit **315** will be described later. The interface **317** is an interface unit for connecting to a network, and data can be transmitted to the server from wire telephones, cellular phones, and so forth, via this interface **317**.

[0048] Also, as a separate form of the basal body temperature thermometer according to the embodiment of the present invention, the basal body temperature thermometer may be a rechargeable type instead of having a wireless device in the portion mounted in the ear, taking into consideration the fact that the device is worn in the ear and that wireless devices may affect the human body. In this arrangement, reference numeral **340** denotes a charging mount which has a wireless device **344**. Upon rising, the subject places the basal body temperature thermometer B on the charging mount B, and the wireless device **344** in the charging mount B transmits the basal body temperature data to the connection terminal B **330**. Details of the basal body temperature thermometer B **320** and the connection terminal B **330** will be omitted here, since the details have already been described in the description of the basal body temperature thermometer A **300** and the connection terminal A **310**. Note, however, that the basal body temperature thermometer B has a connection terminal **325** instead of the wireless device **303**.

[0049] Also, using Bluetooth wireless technology for the wireless devices of the basal body temperature thermometer A **300** and the connection terminal A **310**, and the basal body temperature thermometer B **320** and the connection terminal B **330**, enables exchange of data to be performed only at close proximity and with secrecy, so leakage of data can be prevented. Also, using a connection terminal having such wireless devices allows remote control between various home appliances having the same wireless devices, and is not limited to basal body temperature.

[0050] Though the present embodiment is described as an arrangement wherein the basal body temperature thermometer is worn in the ear, arrangements may be used wherein the measurement is taken at the underarm or mouth as with conventional methods, and the means for transmitting the data may be via wire instead of wireless.

[0051] Also, the connection terminals A and B may be arranged so as to manage multiple basal body temperature thermometers with a single connection terminal, thereby allowing the connection terminal to be shared among sisters or family members, for example.

[0052] The following embodiment will be described with reference to an embodiment using a basal body temperature thermometer A **300** and a connection terminal A **310**.

[0053] The following is a description of the procedures for gaining membership with the basal body temperature thermometer A **300** using a fingerprint sensor, and transmission

of basal body temperature to the server, with reference to **FIGS. 5 and 6**. With the present embodiment, the subject performs fingerprint recognition at the time of registering the subject, since basal body temperature, which is data that requires protection, is going to be handled. Further, due to concerns of basal body temperature data leaking out on the network, the basal body temperature data is managed using digitized data read from the fingerprint sensor as identification of the subject. Subsequent services with this system are received using the enciphered digitized data read from the fingerprint sensor as the decoding key, so user registration and verification can be easily performed with simple operations. Further, registering an ID number provided to the connection terminal beforehand protects private information from external leakage. Also, though the present basal body temperature does serve as a basal body temperature thermometer whereby much information can be obtained using the server to manage basal body temperature, the thermometer can be used in the same manner as a conventional thermometer. In this case, the basal body temperature thermometer can be used as is without registration of the subject. Also, verification can be made by a conventional arrangement wherein a password or the like is used, rather than fingerprint identification.

[0054] **FIG. 5** is a diagram illustrating the procedures for gaining membership using a fingerprint sensor, and **FIG. 6** is a diagram illustrating the display screen of a touch panel for the procedures of gaining membership. The display screens denoted by reference numerals **601**, **611**, and **621** are screens displayed on the display units **315** and **332** of the connection terminals A and B. Reference numerals **602**, **612**, and **622** denote display portions for providing guidance of the procedures, **603** denotes a fingerprint sensor, **604** denotes a display unit for displaying that sending has been completed, **605** denotes a send button, and **606** denotes a reset button.

[0055] The procedures for applying for membership will be described following the flowchart shown in **FIG. 5**. In step **S501**, the subject first selects whether or not to receive services. Subjects who choose not to receive services can use the thermometer as a conventional basal body temperature thermometer, without applying for membership.

[0056] In the event that the subject selects application for membership in step **S502**, and places her finger on the fingerprint sensor **603** of the connection terminal A **300** for performing subject registration, the fingerprint is detected. Once the fingerprint is detected, the fingerprint read by the fingerprint sensor **603** is digitized at the control unit **313**, and stored in the memory **314**. The digitized data is then enciphered, thereby serving as a deciphering key necessary for receiving the later-described various services with the present system. Once the digitized data is stored in the memory **314**, a message **612** notifying that subject recognition by the fingerprint sensor **603** has been completed is displayed on the display unit **315**, and at the same time the send button and reset button are lit.

[0057] In step **S503**, pressing the send button **605** activates the interface **317**, and the connection terminal A is connected to the server **101**. Pressing the reset button **606** instead deletes the recognized data.

[0058] In step **S504**, once connection to the server **101** is established, the blinking of the reset button **606** stops, the

send button **613** begins to blink, and the enciphered digitized data is transmitted. Following the transmission, the server **101** makes a reply in the form of a digitized data registration completion notification. When the completion notification is returned, a message (**622** in **FIG. 6**) is displayed on the display unit **601**, prompting the subject to send the ID No., provided beforehand to the connection terminal, to the server **101**. Pressing the send button **605** again transmits the ID No., which is recognized at the server **101**.

[**0059**] In step **S505**, once the ID is recognized at the server, the server creates a folder for the subject. After completions of the procedures, the sent button **604** is lit, and pressing the reset button **606** ends preparation for receiving services.

[**0060**] **FIG. 7** is a diagram illustrating the procedures for measuring the basal body temperature. In step **S701**, following setting the measuring time with the timer **301** of the basal body temperature thermometer **A 300**, the subject wears the thermometer in her ear at the time of going to bed. In step **S702**, the infrared sensor **602** is activated at the set time. In step **S703**, the basal body temperature at the eardrum is measured by the infrared sensor **302**. In step **S704**, the basal body temperature measured by the control unit **305** is converted into data, and is automatically transmitted to the connection terminal **A 310** by the wireless device **303**.

[**0061**] **FIG. 8** is a diagram illustrating the flow for automatically transmitting basal body temperature to the server, and **FIG. 9** is a diagram illustrating the display at the terminal device for transmitting the basal body temperature to the server. This automatic transmitting to the server **101** consists of measuring the basal body temperature at a time set beforehand by the subject, and automatically transmitting this from the connection terminal **A 310** to the server, so that the subject can omit the procedure of making transmission to the server **101**. To this end, the subject sets "Auto"**901** in the display screen denoted by **900**, shown in **FIG. 9**. Reference numeral **900** in **FIG. 9** denotes an enlarged view of the display portion indicated by reference numeral **315** in **FIG. 3**, and an enlarged view of the portion denoted by reference numeral **903** is shown, denoted by reference numeral **910**.

[**0062**] The flow of making automatic transmission of basal body temperature will be described with reference to **FIG. 8**. In step **S801**, the measured basal body temperature is displayed digitally on the display unit **903** of the connection terminal, as shown by **900** in **FIG. 9**. In step **S802**, the basal body temperature is enciphered by the control unit **305** of the connection terminal **A 310**. In step **S803**, the send button **914** is automatically activated, and connection is made to the server. In step **S804**, the enciphered basal body temperature data is transmitted to the server along with the deciphering key. Once the transmission is completed, a sent sign denoted by reference numeral **913** is lit. In the event that a connection cannot be made due to problems on the telephone line or the like, a redial function can redial multiple times. Also, the basal body temperature displayed in step **S801** remains displayed until stored in the memory **314** and the reset button **915** is pressed, so the subject can confirm this along with the sent sign **913** at the time of rising. The sent sign can be turned off by pressing the reset button **915**.

[**0063**] **FIG. 10** is a diagram illustrating the flow in the event of manually transmitting the basal body temperature to the server. First, in order to transmit manually, the subject selects "Manual", indicated by the reference numeral **902** in **FIG. 9**. In the case of manual transmission, the manual sending button **902** on the display unit **900** is lit.

[**0064**] The flow for manually transmitting the basal body temperature will be described with reference to **FIG. 10**. In step **S1001**, the measured basal body temperature is digitally displayed on the display unit **903** of the connection terminal **A 310** indicated by reference numeral **900** in **FIG. 9**, and in step **S1002**, the basal body temperature is stored in the memory **314**. At this point, the raw data for the basal body temperature is stored in the memory **314**, and this is not enciphered until the send button **914** is pressed. Several days worth of data can be accumulated in the memory **314**, and can be sent in batch fashion to the server **101** later, which is handy since the subject can transmit the data later at one time even when taking a trip, etc. Also, the telephone bill for connecting to and accessing the server **101** can be conserved. Thus, providing the connection terminal **A 310** with storage functions serves as means effective for markedly reducing troublesome procedures regarding basal body temperature measurement.

[**0065**] In step **S1003**, pressing the send button **914** causes the connection terminal **A 310** to restrict transmission instructions. In step **S1004**, the basal body temperature data is enciphered. In step **S1005**, the line is connected via the modem **312**. The send button **914** continues to blink as long as the line is connected. In step **S1006**, the enciphered basal body temperature data is transmitted along with the deciphering key wherein the fingerprint has been digitized. In step **S1007**, at the time of transmission to the server **101** ending, the sent sign is lit, thereby allowing the subject to confirm that the data has been transmitted. The sent sign can be turned off by pressing the reset button **915**.

[**0066**] Though the present embodiment is described with an arrangement wherein the basal body temperature is enciphered at the time of transmission, the basal body temperature may be enciphered at the time of completing measurement, so that enciphered data is accumulated.

[**0067**] Further, though the present embodiment is described with an arrangement wherein the data is transmitted following measurement, the data may be transmitted in real-time.

[**0068**] **FIG. 4** is a diagram illustrating the data stored in the external storage device. Reference numeral **401** denotes a storage area for storing enciphered basal body temperature data transmitted from the basal body temperature thermometer **A**, **402** denotes an area for storing backup data of the enciphered basal body temperature data in **401**, **403** denotes an area for storing deciphered basal body temperature data, **404** denotes graph analyses software used for the graph analysis results obtaining service, **405** denotes health advice analysis software used for the health advice service, **406** denotes a hospital list used for the doctor advice obtaining service, **407** denotes tips software used with the tips service, **408** denotes software for counting number of cases to restrict doctor advice for the doctor advice obtaining service, **409** denotes folders for each of the hospitals, created at the time of signing contracts with each of the hospitals, to be used for the doctor advice obtaining service, **410** doctor

transfer software used for the doctor advice obtaining service, **411** denotes a hospital reservation count log used for the doctor advice obtaining service, **412** denotes a grouping bulletin used for the maternity blues sufferers/infertile patients grouping service, **413** denotes child-raising simulation software used for the child-raising simulation service, **414** denotes an area where information relating to a site for information on openings in day care centers, for the service for information on openings in day care centers, **415** denotes an area where information relating to a site for introducing products, for the products introducing service, and **416** denotes name judging software used for the name judging service.

[0069] The details of each set of data will be described later at the time of describing each service. Also, the data stored in the external storage device **204** is by no means restricted to the data shown in **FIG. 4**; rather, data corresponding to various services can be stored.

Services

[0070] Next, the services using the basal body temperature thermometer according to the present invention will be described. **FIG. 11** is a diagram illustrating the flow for executing the services. In step **S1101**, the ID No. provided with the basal body temperature thermometer, which the subject desiring to receive services has input from the subject terminal **102**, is received. In step **S1102**, the server receives the input ID No. from the subject, and makes verification of the subject desiring to receive services. In step **S1103**, a list of services denoted by reference numeral **1201** in **FIG. 12** is displayed. In step **S1104**, the subject selects a desired service from the list of services. In the event that one is selected, the flow proceeds to step **S1105**, and the service which the subject has selected is executed. The contents of service execution will be described later. In the event that the subject selects Cancel instead of a service in step **S1104**, the processing ends.

Graph Analysis Results Obtaining Service

[0071] **FIG. 13** is a diagram illustrating the flow of a service for obtaining the results of graph analysis. First, description will be made regarding a case wherein the subject arbitrarily selects the graph analysis results obtaining service. In the event of receiving this service, in step **S1301** the subject selects the Graph analysis results obtaining service, denoted by reference numeral **1202** in the list of services shown in **FIG. 12** (step **S1104** in **FIG. 11**). In step **S1302**, the server recognizes that this is a service which requires basal body temperature data immediately. In step **S1303**, the subject sends to the server the deciphering key wherein the fingerprint has been digitally converted, and the server recognizes that the deciphering key has been sent. Once the server recognizes that the deciphering key has been sent, the flow proceeds to step **S1304**, and a duplicate of the enciphered basal body temperature data accumulated in the server is created. In step **S1305**, the duplicate of the basal body temperature data thus created is deciphered based on the deciphering key that has been sent. In step **S1306**, the deciphered basal body temperature data is obtained.

[0072] In step **S1307**, the recognized basal body temperature data is transferred to the graph analyzing software. At this time, the arrangement is such that the deciphered basal

body temperature data denoted by reference numeral **403** does not remain in the deciphered basal body temperature data area denoted by **403** in **FIG. 4**. In step **S1308**, the transferred basal body temperature data is analyzed. In step **S1309**, in the event that the subject has registered beforehand for a service to transfer to family, the server recognizes that that the subject has registered for the service to transfer to family, and the registered destination for transfer is displayed. In the event that the subject has not registered beforehand for the service to transfer to family, the flow proceeds to step **S1310**, and the graph analysis results are transmitted to the subject. In the event that the subject is registered for the service for transfer to family, the graph analysis results are transmitted to the subject, and also are transmitted to the registered destination for transfer. In step **S1312**, in order to effectuate protection from external leakage of information, the deciphered basal body temperature data and graph analysis results are deleted following transmission of the graph analysis results.

[0073] **FIG. 14** illustrates the flow and registration method for the service for providing and transferring information to family. In step **S1401**, the registered destination of transfer is displayed on the subject terminal **102**. In the event that the server recognizes change to the registered destination in step **S1402**, a registered destination change screen **1411** is displayed on the subject terminal **102** in step **S1403**, and the registration destination is recognized at the server in step **S1404**. In the event that the server recognizes no change to the registered destination in step **S1402**, the registration destination is recognized at the server in step **S1404**. In step **S1405**, the graph analysis results are transferred to the subject and to the registered destination. Note that this registered destination may be registered to persons other than family, or may also be registered to a separate terminal of the subject.

[0074] Next, description will be made regarding a service wherein the subject does not select the Graph analysis results obtaining service, but rather the analysis results are transmitted at a predetermined time. In step **S1320**, when the time set for obtaining the graph analyses results comes, a duplicate of the enciphered basal body temperature data is automatically created by the server (step **S1304**), and the duplicate of the basal body temperature data is deciphered (step **S1305**). Now, the time set here is imagined to be a predetermined daily time, such as 6 o'clock AM for example, but the time may be set and then set to come at predetermined intervals such as every 24 hours or every 48 hours, for example. In the following description, the flow is the same as the case wherein the subject arbitrarily selects the graph analysis results obtaining service, and thus description thereof will be omitted. After the graph analysis results are sent to the subject, the subject is prompted whether or not she would like to use other services. In the event that the server recognizes intent to obtain other services, the list of services shown in **FIG. 12** is displayed again, and in the event that the server recognizes no such intent, the present service system ends.

[0075] **FIG. 15** is a screen displayed on the terminal **102** of the subject, showing the screen for viewing the services. Reference numeral **1501** denotes a graph of the measured basal body temperature, and **1502** is a conceptual representation of the analysis results of the services in text. In the event of viewing the services on a personal computer, the

analysis results are displayed as graph and text as indicated by **1501** and **1502**. Reference numeral **1503** denotes a conceptual representation of the analysis results of the services in text alone. With terminals such as cellular phones or the like wherein display of images might be difficult, the display may be made in text alone. Examples of the contents of the text might include displays such as “ovulation on MM/DD”, “currently in high-temperature phase”, and so forth. (Health advice data obtaining service)

[0076] **FIG. 16** is a diagram illustrating the flow for the Health advice data obtaining service. This service is for cases wherein the subject desires data in further detail than the above-described Graph analysis data obtaining service. In step **S1601**, the subject selects the Health advice data obtaining service, denoted by reference numeral **1203**, from the list of services shown in **FIG. 12**. The flow from step **S1602** through **S1606** is the same as the flow from step **S1302** through **S1306** in **FIG. 13**, and accordingly description thereof will be omitted here.

[0077] In step **S1607**, the server **101** transmits the deciphered basal body temperature data to the health advice analysis software. At this time, the arrangement is such that the deciphered basal body temperature data does not remain in the deciphered basal body temperature data area denoted by **403** in **FIG. 4**, following transmitting thereof. In step **S1607**, the server **101** analyzes the deciphered basal body temperature data with the health advice analysis software. In step **S1609**, the server **101** judges whether or not there are any physical changes or abnormalities in the conditions of the body, based on the results analyzed with the health advice analysis software. Normally, the health advice data is sent to the subject (step **S1610**), but in the event that the analysis results show changes or abnormalities such as indications of pregnancy or the like, a URL for a hospital list **406** is transmitted to the personal computer or the cellular phone of the subject, along with the health advice data (step **S1611**). Upon receiving the URL of the hospital list **406**, the subject can further receive the later-described hospital introduction and hospital reservation services. Following transmission of the data, the deciphered basal body temperature data and the health advice data are deleted from the server **101**. After the health advice data is sent to the subject, the subject is inquired regarding whether or not she would like to use other services. In the event that the server recognizes intent to obtain other services, the list of services shown in **FIG. 12** is displayed again, and in the event that the server recognizes no such intent, the present service system ends.

Tips Service

[0078] **FIG. 17** is a diagram illustrating the flow of a service for obtaining brief tips with the tips software. In step **S1701**, list of services shown in **FIG. 12** is displayed by the server. In the event that the subject selects the tips service, denoted by reference numeral **1204** in the list of services, the server recognizes in step **S1702** that the tips service has been selected. In step **S1703**, the server recognizes that this is a service which does not immediately require basal body temperature data.

[0079] In step **S1704**, the server checks whether or not the subject has already obtained the basal body temperature data, and if so, the server receives the graph analysis results from the subject in step **S1709**, and the flow proceeds to step

S1706. If not, the flow jumps to the Graph analysis results obtaining service shown in **FIG. 13**, and upon obtaining the graph analysis results, the flow proceeds to step **S1706**. In step **S1706**, in the event that selection of prepared questions is recognized, the tips software is activated in step **S1707**. Multiple sample graphs are prepared beforehand with this software, and judgment is made regarding the state of the graph of a field relating to the question of the subject, upon comparison thereof. In step **S1708**, the results of the tips software are transmitted to the subject. Once sent to the subject, the tips are deleted from the server. In the event that execution of another service is recognized in step **S1710**, the flow proceeds to that other service, and in the event that this is not recognized, the flow ends.

Doctor Advice Service

[0080] **FIG. 18** is a flowchart illustrating the flow of the doctor advice service, **FIG. 19** is a display screen for the doctor advice service, and **FIG. 20** is a diagram illustrating the transfer of the doctor advice service to a hospital. The doctor advice service allows a doctor to view the basal body temperature data without the subject directly going to a hospital, and thus accurate doctor advice can be obtained. **FIG. 18** illustrates the flow of operations made by the server for this doctor advice service.

[0081] In step **S1801**, the list of services is displayed by the server, and the subject selects the doctor advice service, denoted by reference numeral **1205**, from the list. In step **S1802** the server receives information indicating that the subject has selected the doctor advice service, and thus the server recognizes that the subject has selected the doctor advice service. In step **S1803**, the server recognizes that this is a service which does not immediately require basal body temperature data. In step **S1804**, the hospital which the subject has selected from the registered hospitals is recognized. Selection of the hospital may be performed by selecting a hospital from a hospital list provided in the later-described hospital introduction list, or a family doctor may be selected beforehand, provided that this family doctor is registered with the present system. In step **S1805**, the system checks whether or not the restricted number of cases registered by the hospital has been exceeded. Each hospital is limited in the number of cases that the hospital can deal with, so there is the need to manage the number of cases that each hospital is capable of dealing with, in order to accurately and speedily provide individual advice from doctors. In the event that this restricted number of cases has been exceeded, the subject must attempt selection of a different hospital. In the event that this restricted number of cases has not been exceeded, confirmation is made in step **S1805** with the subject regarding whether or not to disclose the basal body temperature data, and whether or not to transmit the deciphering key to the hospital (**1901** and **1902**). Then, as indicated by **1903**, the deciphering key is input by the subject, and the deciphering key is transmitted by instructing transmission of the deciphering key, as indicated by **1904**. In the event that consent to transmit is not obtained, the processing ends (step **S1811**).

[0082] In step **S1807**, confirmation is made with the subject regarding whether or not there are any questions for the doctor. In step **S1808**, any questions are transmitted to the folder **409** for the hospital within the server, which was created at the time of signing the contract with the hospital.

The doctor transfer software **410** within the server recognizes that there has been a commission for this server, and this is transferred to the doctor by a method such as; ① vocal notification by telephone (**2001**), ② notification by e-mail/voice mail (**2002**), ③ notification by facsimile, and so forth, as shown in **FIG. 20**. Once the doctor recognizes that there has been commission of the present service, the doctor inputs the hospital ID No. (**2004**) appropriated at the time of contract, which enables the doctor to view the folder **409** for the hospital to which the doctor belongs, and to recognize the deciphering key and questions of the subject (**2005**).

[**0083**] In step **S1809**, the hospital inputs the recognized deciphering key, and upon individual verification succeeding, a backup is created of the enciphered basal body temperature data accumulated in the server, the backup data is transferred to the hospital folder and deciphered with the deciphering key. The doctor makes a diagnosis by viewing the deciphered basal body temperature data and the questions, and creates doctor advice data. In step **S1810**, the server receives the doctor advice, and in step **S1811**, the received doctor advice is transmitted to the subject. The doctor advice data and the deciphered basal body temperature data are deleted from the server following transmission to the subject, in order to thoroughly protect from external leaking out.

[**0084**] Though the present embodiment has been described with reference to an arrangement wherein the subject selects the hospital, an arrangement may be made wherein the subject registers beforehand desired conditions for a hospital, and the server selects a hospital matching the conditions from the hospital list.

[**0085**] Also, though the present embodiment has been described with reference to an arrangement wherein the doctor views the basal body temperature data in the hospital folder located in the server, an arrangement may be made wherein the basal body temperature data is transmitted to a terminal at the hospital, where the doctor views the data.

[**0086**] Also, an arrangement may be made wherein the doctor can view not only the basal body temperature data, but also data obtained from the Graph analysis results obtaining service, and so forth.

Hospital Introduction Service

[**0087**] **FIG. 21** is a flowchart illustrating the flow of the Hospital introduction service (viewing a hospital list). In step **S2101**, the server instructs displaying the list of the services shown in **FIG. 12**. The subject selects the Hospital introduction service denoted by reference numeral **1206** from the list display of the services. In step **S2102**, the server recognizes that the subject has selected the Hospital introduction service. In step **S2103**, the server recognizes that this is a service which does not immediately require basal body temperature data. This brings up displays for restricting the area, denoted by reference numerals **2301** and **2302** in **FIG. 23**, and a hospital list for that area (**406**, **2303**) is displayed in step **S2104**. In step **S2105**, the hospital reservation screen denoted by reference numeral **2304** in **FIG. 23** is displayed.

[**0088**] Note that the hospital list may be a list display of individual hospitals, or may be a list display of individual doctors.

Hospital Reservation Service

[**0089**] **FIG. 22** is a flowchart illustrating the flow of the Hospital reservation service. The subject selects the Hospital reservation service denoted by reference numeral **1207** from the list of services shown in **FIG. 12**, or arrives at this point via the above-described Health advice data obtaining service or Hospital introducing service, whereby a hospital list is displayed. In step **S2202**, in the event that the server recognizes that the subject has made a hospital reservation selection from the hospital list **406**, the hospital reservation count log **411** of the server counts the number of reservations in step **S2202**. Depending on the number of reservations, cash is returned to the subject from the service fees at the time of the automatic bank transfer made each month, in step **S2203**, and in step **S2204** introduction fees are collected from the hospital monthly.

Maternity Blues Sufferers/Infertile Patients Grouping Service

[**0090**] **FIG. 24** is a flowchart illustrating the flow of the Maternity blues sufferers/infertile patients grouping service. In step **S2401**, the server displays the list of services shown in **FIG. 12**. In the event that the subject selects the Maternity blues sufferers/infertile patients grouping service denoted by reference numeral **1208** from the list display of services in **FIG. 12**, in step **S2402** the server recognizes that the subject has selected the Maternity blues sufferers/infertile patients grouping service. In step **S2403**, the server recognizes that this is a service which does not immediately require basal body temperature data. In step **S2404**, the server provides bulletins to the groups.

Child-raising Simulation Service

[**0091**] **FIG. 25** is a flowchart illustrating the flow of the Child-raising simulation service. In step **S2501**, the server displays the list of services shown in **FIG. 12**. In the event that the subject selects the Child-raising simulation service denoted by reference numeral **1209** from the list display of services in **FIG. 12**, in step **S2502** the server recognizes that the subject has selected the Child-raising simulation service. In step **S2503**, the server recognizes that this is a service which does not immediately require basal body temperature data. In step **S2504**, the server activates the child-raising simulation software.

Service for Information on Openings in Day Care Centers

[**0092**] **FIG. 26** is a flowchart illustrating the flow of the Service for information on openings in day care centers. In step **S2601**, the server displays the list of services shown in **FIG. 12**. In the event that the subject selects the Service for information on openings in day care centers, denoted by reference numeral **1211** from the list display of services in **FIG. 12**, in step **S2602** the server recognizes that the subject has selected the Service for information on openings in day care centers. In step **S2603**, the server recognizes that this is a service which does not immediately require basal body temperature data. In step **S2604**, the server presents a site for information on openings in day care centers. In the event that the user selects a day care center in step **S2605**, in step **S2606** the server presents the information of that day care center to the subject, and otherwise, the flow ends at step **S2606**.

Products Introduction Service

[0093] FIG. 27 is a flowchart illustrating the flow of the Products introduction service. In step S2701, the server displays the list of services shown in FIG. 12. In the event that the subject selects the Products introduction service denoted by reference numeral 1212 from the list display of services in FIG. 12, in step S2702 the server recognizes that the subject has selected the Products introduction service. In step S2703, the server recognizes that this is a service which does not immediately require basal body temperature data. In step S2704, the server displays a Products introduction site.

Name Judging Service

[0094] FIG. 28 is a flowchart illustrating the flow of the Name judging service. In step S2801, the server displays the list of services shown in FIG. 12. In the event that the subject selects the Name judging service denoted by reference numeral 1213 from the list display of services in FIG. 12, in step S2802 the server recognizes that the subject has selected the Name judging service. In step S2803, the server recognizes that this is a service which does not immediately require basal body temperature data. In step S2804, the server activates the name judging software.

[0095] In this way, the present system is not restricted to data analysis of basal body temperature data, but rather is capable of providing the subject with detailed health data with health advice analysis software, tips based on data comparison, and further is capable of tying in with hospitals to provide hospital information, systematic hospital reservations, doctor advice from sent basal body temperature data, and so forth, in order to aim for more effective health management.

[0096] Also, services which can be provided include subject grouping services wherein infertile patients or pregnant individuals can communicate with individuals in the same state, systematic information on openings in day care centers for individuals who want to put their child in a day care center after birth, introduction of products, name judging systems, child-raising simulations, transfer of information to family, and so forth, i.e., overall services relating to basal body temperature can be provided.

[0097] Of course, the arrangement may be such that anyone can use the services which do not require basal body temperature data, not only subjects.

[0098] Also, simple body temperature may be used instead of basal body temperature.

[0099] Also, means for recording dates of menstruation may be provided to record this along with the basal body temperature.

[0100] Also, with regard to the services which use basal body temperature data, the past two months worth of basal body temperature data counting back from the present is used for analysis of the basal body temperature data in the initial state, but all data from the point of gaining membership may be used, or the subject or doctor may specify the period to be used, counting back from the present.

[0101] Also, though the above-described arrangement involves the list of services shown in FIG. 12 coming up at the point that a service is completed, an arrangement may be

made wherein results of the service, or service menus customized for the subject, come up.

[0102] Also, though the present embodiment has been described with reference to an arrangement wherein the program is kept in ROM, the present invention is not restricted to this arrangement, and may be realized using any recording media. Also, this may be realized with a circuit acting in the same manner.

[0103] Also, the present invention can be applied to systems configured of multiple servers, or a device configured of a single server. It is needless to say that the functions of the above-described embodiments can be achieved by an arrangement wherein a recording medium storing software program code for realizing the functions of the above embodiment is supplied to the system or device, and the system or device is operated by the computer (CPU or MPU) of the system or device reading out and executing the program code stored in the recording medium. In this case, the program code itself read out from the recording medium realizes the functions of the above-described embodiment, and the recording medium storing the program code comprises the invention.

[0104] Examples of recording mediums which can be used for storing the program code include floppy disks, hard disks, optical disks, magneto-optical disks, CD-ROMs, CD-Rs, magnetic tape, non-volatile memory cards, ROM, and so forth.

[0105] Also, it is needless to say that the present invention encompasses cases not only where the computer executing the program code realizes the functions of the above embodiment, but also where the operating system or other applications running on the computer perform all or part of the actual processing based on instructions of the program code, whereby the functions of the above embodiment are realized.

[0106] Further, the scope of the present invention also encompasses arrangements wherein the supplied program code is written to memory provided to function expansion boards inserted to the computer or memory provided to function expansion units connected to the computer, following which a CPU or the like provided to the function expansion boards or function storing units performs all or part of the actual processing based on instructions of the program code, so as to realize the functions of the above embodiment thereby.

[0107] Thus, as described above, according to the present embodiment, medical management and analysis of basal body temperature data can be performed on a network while effectuating protection of private data from external leakage, and judgment and analyses based on newest information analysis, various services relating to basal body temperature data, etc., can be provided on a network, using information communication networks such as cellular phones and the Internet.

[0108] While the present invention has been described with reference to what are presently considered to be the preferred embodiments, it is to be understood that the invention is not limited to the disclosed embodiments. On the contrary, the invention is intended to cover various modifications and equivalent arrangements included within the spirit and scope of the appended claims. The scope of the

following claims is to be accorded the broadest interpretation so as to encompass all such modifications and equivalent structures and functions.

What is claimed is:

1. A body temperature managing method, comprising:
 - a receiving step for receiving body temperature data;
 - an accumulating step for accumulating body temperature data received in said receiving step until predetermined operations are performed; and
 - a transmitting step for enciphering and transmitting said body temperature data accumulated in said accumulating step.
2. A body temperature managing method according to claim 1, wherein said body temperature is basal body temperature.
3. A body temperature managing method according to claim 1, wherein body temperature data wirelessly transmitted from a thermometer is received.
4. A body temperature managing method according to claim 1, wherein said receiving step further comprises a display step for displaying received body temperature data.
5. A body temperature managing method according to claim 1, wherein said transmitting step further comprises a notifying step for notifying that the transmitting step has concluded.
6. A body temperature managing method according to claim 1, wherein said transmitting step transmits body temperature data via a wire or wireless line.
7. A body temperature managing device, comprising:
 - receiving means for receiving body temperature data;
 - accumulating means for accumulating body temperature data received by said receiving means until predetermined operations are performed; and
 - transmitting means for enciphering and transmitting said body temperature data accumulated by said accumulating means.
8. A body temperature managing device according to claim 7, wherein said body temperature is basal body temperature.
9. A body temperature managing device according to claim 7, wherein body temperature data wirelessly transmitted from a thermometer is received.
10. A body temperature managing device according to claim 7, wherein said receiving means further comprises display means for displaying received body temperature data.
11. A body temperature managing device according to claim 7, wherein said transmitting means further comprises notifying means for notifying that said transmitting means has concluded.
12. A body temperature managing device according to claim 7, wherein said transmitting means transmits body temperature data via a wire or wireless line.
13. A storage medium, storing:
 - program code for a receiving step for receiving body temperature data;
 - program code for an accumulating step for accumulating body temperature data received in said receiving step until predetermined operations are performed; and
 - program code for a transmitting step for enciphering and transmitting said body temperature data accumulated in said accumulating step.
14. A storage medium according to claim 13, wherein said body temperature is basal body temperature.
15. A storage medium according to claim 13, wherein body temperature data wirelessly transmitted from a thermometer is received in said receiving step.
16. A storage medium according to claim 13, wherein said receiving step further comprises a display step for displaying received body temperature data.
17. A storage medium according to claim 13, wherein said transmitting step further comprises a program code for a notifying step for notifying that the transmitting step has concluded.
18. A storage medium according to claim 13, wherein said transmitting step transmits body temperature data via a wire or wireless line.
19. A body temperature managing method, comprising:
 - a receiving step for receiving body temperature data; and
 - a transmitting step for enciphering and transmitting said body temperature data received in said receiving step.
20. A body temperature managing device, comprising:
 - receiving means for receiving body temperature data; and
 - transmitting means for enciphering and transmitting said body temperature data received by said receiving means.
21. A storage medium, storing:
 - program code for a receiving step for receiving body temperature data; and
 - program code for a transmitting step for enciphering and transmitting said body temperature data received in said receiving step.
22. A body temperature managing system comprising a thermometer and a body temperature terminal;
 - said thermometer comprising
 - measuring means for measuring body temperature, and
 - transmitting means for transmitting body temperature data measured by said measuring means; and
 - said body temperature terminal comprising
 - receiving means for receiving body temperature data transmitted by said transmitting means,
 - accumulating means for accumulating body temperature data transmitted from said transmitting means, until predetermined operations are performed, and
 - outside transmitting means for outside transmitting of body temperature data accumulated by said accumulating means.
23. A body temperature managing method, comprising:
 - a body temperature data storing step for storing body temperature data;
 - a body temperature data disclosing step for disclosing to a hospital said body temperature data stored in said storing step, in the event that instructions for receiving advice from a professional are received;

- a diagnosis data receiving step wherein diagnosis data, diagnosed by a professional based on said body temperature disclosed in said body temperature data disclosing step, is received; and
- a diagnosis data transmitting step for transmitting diagnosis data received in said diagnosis data receiving step.
- 24.** A body temperature managing method according to claim 23, wherein said body temperature is basal body temperature.
- 25.** A body temperature managing method according to claim 23, wherein body temperature data obtained in said body temperature data obtaining step is enciphered body temperature data.
- 26.** A body temperature managing method according to claim 23, wherein said disclosing step further comprises a deciphering step for deciphering said enciphered body temperature data.
- 27.** A body temperature managing method according to claim 23, wherein the destination of transmission of said transmitted diagnosis data in said diagnosis data transmitting step is one of at least a personal computer, cellular phone, or a portable terminal.
- 28.** A body temperature managing method according to claim 23, further comprising a selecting step for selecting a hospital, wherein said body temperature data disclosing step discloses body temperature data to the hospital selected in said selecting step.
- 29.** A body temperature managing method according to claim 23, wherein said professional is a doctor.
- 30.** A body temperature managing device, comprising:
- body temperature data storing means for storing body temperature data;
 - body temperature data disclosing means for disclosing to a hospital said body temperature data stored in said storing means, in the event that instructions for receiving advice from a professional are received;
 - diagnosis data receiving means wherein diagnosis data, diagnosed by a professional based on said body temperature disclosed in said body temperature data disclosing means, is received; and
 - diagnosis data transmitting means for transmitting diagnosis data received in said diagnosis data receiving means.
- 31.** A body temperature managing device according to claim 30, wherein said body temperature is basal body temperature.
- 32.** A body temperature managing device according to claim 30, wherein body temperature data obtained by said body temperature data obtaining means is enciphered body temperature data.
- 33.** A body temperature managing device according to claim 30, wherein said disclosing means further comprises deciphering means for deciphering said enciphered body temperature data.
- 34.** A body temperature managing device according to claim 30, wherein the destination of transmission of said transmitted diagnosis data in said diagnosis data transmitting means is one of at least a personal computer, cellular phone, or a portable terminal.
- 35.** A body temperature managing device according to claim 30, further comprising selecting means for selecting a hospital, wherein said body temperature data disclosing means discloses body temperature data to the hospital selected in said selecting means.
- 36.** A body temperature managing device according to claim 30, wherein said professional is a doctor.
- 37.** A storage medium, storing:
- program code for a body temperature data storing step for storing body temperature data;
 - program code for a body temperature data disclosing step for disclosing to a hospital said body temperature data stored in said storing step, in the event that instructions for receiving advice from a professional are received;
 - program code for a diagnosis data receiving step wherein diagnosis data, diagnosed by a professional based on said body temperature disclosed in said body temperature disclosing step, is received; and
 - program code for a diagnosis data transmitting step for transmitting diagnosis data received in said diagnosis data receiving step.
- 38.** A storage medium according to claim 37, wherein said body temperature is basal body temperature.
- 39.** A storage medium according to claim 37, wherein body temperature data obtained in said body temperature data obtaining step is enciphered body temperature data.
- 40.** A storage medium according to claim 37, wherein said disclosing step further comprises program code for a deciphering step for deciphering said enciphered body temperature data.
- 41.** A storage medium according to claim 37, wherein the destination of transmission of said transmitted diagnosis data in said diagnosis data transmitting step is one of at least a personal computer, cellular phone, or a portable terminal.
- 42.** A storage medium according to claim 37, further comprising program code for a selecting step for selecting a hospital, wherein said body temperature data disclosing step discloses body temperature data to the hospital selected in said selecting step.
- 43.** A storage medium according to claim 37, wherein said professional is a doctor.
- 44.** A body temperature managing system comprising:
- a server; and
 - hospital terminals connected to said server by a network; said server comprising
 - body temperature data storing means for storing body temperature data,
 - judgment receiving means for receiving judgment regarding whether or not to receive professional advice,
 - body temperature data disclosing means for disclosing said body temperature data stored in said storing means to a hospital in the event that said judgment receiving means receives judgment to receive professional advice,
 - diagnosis data receiving means for receiving diagnosis data of a diagnosis made by a professional based on the body temperature data disclosed by said body temperature data disclosing means, and

diagnosis data transmitting means for transmitting diagnosis data received by said diagnosis data receiving means; and

said hospital terminal comprising viewing means for viewing body temperature data disclosed by said body temperature data disclosing means, and

diagnosis data transmitting means for transmitting to said server diagnosis data of a diagnosis made by a professional based on the body temperature data, viewed by said viewing means.

45. A body temperature managing system according to claim 44, wherein said viewing means comprises body temperature data transmitting means wherein said body temperature data is transmitted from said server to said hospital terminal.

46. A body temperature managing system according to claim 44, wherein said viewing means comprises in-server viewing means for viewing said body temperature data stored within said server, by the hospital inputting a deciphering key.

47. A body temperature managing system comprising:

a server; and

thermometer terminals connected to said server by a network;

said thermometer terminal comprising

first receiving means for receiving body temperature data measured by a thermometer,

storing means for storing body temperature data received by said first receiving means, and

transmitting means for transmitting body temperature data stored by said storing means; and

said server comprising

second receiving means for receiving body temperature data transmitted by said transmitting means,

disclosing means for disclosing to a hospital said body temperature data received by said second receiving means,

diagnosis data receiving means for receiving diagnosis data of a diagnosis made by a professional based on the body temperature data disclosed by said disclosing means, and

outside transmitting means for outside transmitting of diagnosis data received by said diagnosis data receiving means.

48. A body temperature managing system according to claim 47, wherein said outside comprises at least a terminal of the subject of said body temperature data.

49. A body temperature managing method, comprising:

a storing step for storing enciphered body temperature data;

a duplicate creating step for creating a duplicate of said body temperature data;

a data deciphering step for deciphering said body temperature data created in said duplicate creating step;

an analyzing step for analyzing body temperature data deciphered in said data deciphering step; and

a deleting step for deleting said deciphered body temperature data following completion of said analyzing step.

50. A body temperature managing method according to claim 49, wherein said body temperature is basal body temperature.

51. A body temperature managing device, comprising:

storing means for storing enciphered body temperature data;

duplicate creating means for creating a duplicate of said body temperature data;

data deciphering means for deciphering said body temperature data created by said duplicate creating means;

analyzing means for analyzing body temperature data deciphered by said data deciphering means; and

deleting means for deleting said deciphered body temperature data following said analyzing means finishing.

52. A body temperature managing device according to claim 51, wherein said body temperature is basal body temperature.

53. A storage medium, storing:

program code for a storing step for storing enciphered body temperature data;

program code for a duplicate creating step for creating a duplicate of said body temperature data;

program code for a deciphering step for deciphering said body temperature data created in said duplicate creating step;

program code for an analyzing step for analyzing body temperature data deciphered in said data deciphering step; and

program code for a deleting step for deleting said deciphered body temperature data following completion of said analyzing step.

54. A storage medium according to claim 53, wherein said body temperature is basal body temperature.

55. A body temperature managing system wherein a server, thermometer terminal for transmitting body temperature data, and a thermometer are connected via a network;

said thermometer comprising

measuring means for measuring body temperature, and

transmitting means for transmitting body temperature data measured by said measuring means;

said body temperature terminal comprising

body temperature data receiving means for receiving body temperature data transmitted by said body temperature data transmitting means,

storing means for storing body temperature data received with said body temperature data receiving means,

enciphering means for enciphering body temperature data stored in said storing means, and

enciphered data transmitting means for transmitting enciphered data enciphered by said enciphering means; and

said server comprising

enciphered data receiving means for receiving enciphered data transmitted by said enciphered data transmitting means;

storing means for storing enciphered data received by said enciphered data receiving means,

duplicate creating means for creating a duplicate of said enciphered data stored by said storing means,

deciphering means for deciphering said enciphered data created by said duplicate creating means,

analyzing means for analyzing deciphered data deciphered by said data deciphering means, and

deleting means for deleting said deciphered data following said analyzing means finishing.

56. A body temperature managing method, comprising:

a body temperature data obtaining step for obtaining body temperature data;

a body temperature data storing step for storing said body temperature data obtained in said obtaining step;

a body temperature data analyzing step for analyzing body temperature data based on said body temperature data stored in said storing step; and

an analyzed data transmitting step for outside transmitting of analyzed data analyzed in said analyzing step.

57. A body temperature managing method according to claim 56, wherein said body temperature data is basal body temperature data.

58. A body temperature managing method according to claim 56, wherein data obtained in said body temperature data obtaining step is enciphered data.

59. A body temperature managing method according to claim 56, further comprising a judging step for judging whether or not a predetermined time has come, wherein in the event that judgment is made in said judging step that said predetermined time has come, said body temperature data is analyzed in said body temperature data analyzing step based on said body temperature data.

60. A body temperature managing method according to claim 56, further comprising an instructing step for instructing analyzing of body temperature data, wherein, in the event that analyzing is instructed in said instructing step, analyzing is performed in said analyzing step.

61. A body temperature managing method according to claim 56, wherein said body temperature data analyzing step further comprises a deciphering step for deciphering said body temperature data.

62. A body temperature managing method according to claim 56, further comprising a destination of transmission setting step for setting an arbitrary destination of transmission as the destination of transmission of analyzed data transmitted in said analyzed data transmitting step, other than a predetermined destination of transmission.

63. A body temperature managing method according to claim 56, wherein the period used for analyzing body temperature data analyzed in said body temperature data analyzing step is a predetermined period or an arbitrarily set period.

64. A body temperature managing method according to claim 56, further comprising a presenting step for presenting a list of hospitals according to the analysis results analyzed in said body temperature data analyzing step.

65. A body temperature data managing method according to claim 64, further comprising:

a counting step for counting the number of reservations, in the event that reservations have been made at an arbitrary hospital from the hospital list presented in said presenting step; and

a cash-back step which gives back cash to the individual making reservations, depending on said counted number.

66. A body temperature managing method according to claim 64, said analyzed data transmitting step comprising:

a second transmitting step for transmitting analyzed data to a hospital selected from said hospital list presented in said presenting step; and

an obtaining step for obtaining results diagnosed based on said body temperature data at said hospital.

67. A body temperature managing method according to claim 56, wherein the destination of transmission of said analyzed data transmitted in said diagnosis data transmitting step is one of at least a personal computer, cellular phone, or a portable terminal.

68. A body temperature managing device, comprising:

body temperature data obtaining means for obtaining body temperature data;

body temperature data storing means for storing said body temperature data obtained by said obtaining means;

body temperature data analyzing means for analyzing body temperature data based on said body temperature data stored in said storing means; and

analyzed data transmitting means for outside transmitting of analyzed data analyzed by said analyzing means.

69. A body temperature managing device according to claim 68, wherein said body temperature data is basal body temperature data.

70. A body temperature managing device according to claim 68, wherein data obtained by said body temperature data obtaining means is enciphered data.

71. A body temperature managing device according to claim 68, further comprising judging means for judging whether or not a predetermined time has come, wherein in the event that judgment is made by said judging means that said predetermined time has come, said body temperature data is analyzed by said body temperature data analyzing means based on said body temperature data.

72. A body temperature managing device according to claim 68, further comprising instructing means for instructing analyzing of body temperature data, wherein, in the event that analyzing is instructed by said instructing means, analyzing is performed by said analyzing means.

73. A body temperature managing device according to claim 68, wherein said body temperature data analyzing means further comprises deciphering means for deciphering said body temperature data.

74. A body temperature managing device according to claim 68, further comprising destination of transmission setting means for setting an arbitrary destination of transmission as the destination of transmission of analyzed data transmitted by said analyzed data transmitting means, other than a predetermined destination of transmission.

75. A body temperature managing device according to claim 68, wherein the period used for analyzing body temperature data analyzed by said body temperature data analyzing means is a predetermined period or an arbitrarily set period.

76. A body temperature managing device according to claim 68, further comprising presenting means for presenting a list of hospitals according to the analysis results analyzed by said body temperature data analyzing means.

77. A body temperature data managing device according to claim 76, further comprising:

counting means for counting the number of reservations, in the event that reservations have been made at an arbitrary hospital from the hospital list presented by said presenting means; and

cash-back means which gives back cash to the individual making reservations, depending on said counted number.

78. A body temperature managing device according to claim 76, said analyzed data transmitting means comprising:

second transmitting means for transmitting analyzed data to a hospital selected from said hospital list presented by said presenting means; and

obtaining means for obtaining results diagnosed based on said body temperature data at said hospital.

79. A body temperature managing device according to claim 68, wherein the destination of transmission of said analyzed data transmitted by said analyzed data transmitting means is one of at least a personal computer, cellular phone, or a portable terminal.

80. A storage medium, storing:

program code for a body temperature data obtaining step for obtaining body temperature data;

program code for a body temperature data storing step for storing said body temperature data obtained in said obtaining step;

program code for a body temperature data analyzing step for analyzing body temperature data based on said body temperature data stored in said storing step; and

program code for an analyzed data transmitting step for outside transmitting of analyzed data analyzed in said analyzing step.

81. A storage medium according to claim 80, wherein said body temperature data is basal body temperature data.

82. A storage medium according to claim 80, wherein data obtained in said body temperature data obtaining step is enciphered data.

83. A storage medium according to claim 80, further comprising program code for a judging step for judging whether or not a predetermined time has come, wherein in the event that judgment is made in said judging step that said predetermined time has come, said body temperature data is analyzed in said body temperature data analyzing step based on said body temperature data.

84. A storage medium according to claim 80, further comprising program code for an instructing step for instructing analyzing of body temperature data, wherein, in the event that analyzing is instructed in said instructing step, analyzing is performed in said analyzing step.

85. A storage medium according to claim 80, wherein said body temperature data analyzing step further comprises a deciphering step for deciphering said body temperature data.

86. A storage medium according to claim 80, further comprising program code for a destination of transmission setting step for setting an arbitrary destination of transmission as the destination of transmission of analyzed data transmitted in said analyzed data transmitting step, other than a predetermined destination of transmission.

87. A storage medium according to claim 80, wherein the period used for analyzing body temperature data analyzed in said body temperature data analyzing step is a predetermined period or an arbitrarily set period.

88. A storage medium according to claim 80, further comprising program code for a presenting step for presenting a list of hospitals according to the analysis results analyzed in said body temperature data analyzing step.

89. A storage medium according to claim 88, further comprising:

program code for a counting step for counting the number of reservations, in the event that an arbitrary hospital has been selected from the hospital list presented in said presenting step; and

program code for a cash-back step which gives back cash to the individual making reservations, depending on said counted number.

90. A storage medium according to claim 88, said analyzed data transmitting step comprising:

program code for a second transmitting step for transmitting analyzed data to a hospital selected from said hospital list presented in said presenting step; and

program code for an obtaining step for obtaining results diagnosed based on said body temperature data at said hospital.

91. A storage medium according to claim 80, wherein the destination of transmission of said analyzed data transmitted in said diagnosis data transmitting step is one of at least a personal computer, cellular phone, or a portable terminal.

92. A body temperature managing system wherein a server, a thermometer terminal for transmitting body temperature data, and a thermometer are connected via a network;

said thermometer comprising

measuring means for measuring body temperature data, and

first transmitting means for transmitting body temperature data measured by said measuring means;

said body temperature terminal comprising

receiving means for receiving body temperature data transmitted by said first transmitting means, and

second transmitting means for transmitting body temperature data received by said receiving means; and

said server comprising

body temperature receiving means for receiving body temperature data transmitted by said second transmitting means;

analyzing means for analyzing said body temperature data received by said receiving means, and

analyzed results transmitting means for outside transmitting of analyzed results analyzed by said analyzing means.

93. A body temperature managing method, having beforehand sample data for making comparative reference with body temperature data, said method comprising:

a body temperature data obtaining step for obtaining body temperature data;

a body temperature data storing step for storing said body temperature data obtained in said obtaining step;

an analyzing step for analyzing said body temperature data stored in said storing step;

a diagnosing step for diagnosing by making comparative reference of analyzed results analyzed in said analyzing step with said sample data; and

a transmitting step for transmitting the diagnosis results diagnosed in said diagnosing step.

94. A body temperature managing device, having beforehand sample data for making comparative reference with body temperature data, said method comprising:

body temperature data obtaining means for obtaining body temperature data;

body temperature data storing means for storing said body temperature data obtained by said obtaining means;

analyzing means for analyzing said body temperature data stored in said storing means;

diagnosing means for diagnosing by making comparative reference of analyzed results analyzed by said analyzing means with said sample data; and

transmitting means for transmitting the diagnosis results diagnosed by said diagnosing means.

95. A storage medium having beforehand sample data for making comparative reference with body temperature data, said storage medium storing:

program code for a body temperature data obtaining step for obtaining body temperature data;

program code for a body temperature data storing step for storing said body temperature data obtained in said obtaining step;

program code for an analyzing step for analyzing said body temperature data stored in said storing step;

program code for a diagnosing step for diagnosing by making comparative reference of analyzed results analyzed in said analyzing step with said sample data; and

program code for a transmitting step for transmitting the diagnosis results diagnosed in said diagnosing step.

96. A computer-executable program, comprising:

a receiving step for receiving body temperature data;

an accumulating step for accumulating body temperature data received in said receiving step until predetermined operations are performed; and

a transmitting step for enciphering and transmitting said body temperature data accumulated in said accumulating step.

97. A computer-executable program, comprising:

a body temperature data storing step for storing body temperature data;

a body temperature data disclosing step for disclosing to a hospital said body temperature data stored in said storing step, in the event that instructions for receiving advice from a professional are received;

a diagnosis data receiving step wherein diagnosis data, diagnosed by a professional based on said body temperature disclosed in said body temperature disclosing step, is received; and

a diagnosis data transmitting step for transmitting diagnosis data received in said diagnosis data receiving step.

98. A computer-executable program, comprising:

a storing step for storing enciphered body temperature data;

a duplicate creating step for creating a duplicate of said body temperature data;

a deciphering step for deciphering said body temperature data created in said duplicate creating step;

an analyzing step for analyzing body temperature data deciphered in said data deciphering step; and

a deleting step for deleting said deciphered body temperature data following completion of said analyzing step.

99. A computer-executable program, comprising:

a body temperature data obtaining step for obtaining body temperature data;

a body temperature data storing step for storing said body temperature data obtained in said obtaining step;

a body temperature data analyzing step for analyzing body temperature data based on said body temperature data stored in said storing step; and

an analyzed data transmitting step for outside transmitting of analyzed data analyzed in said analyzing step.

100. A computer-executable program for a body temperature managing method having beforehand sample data for making comparative reference with body temperature data, said program comprising:

a body temperature data obtaining step for obtaining body temperature data;

a body temperature data storing step for storing said body temperature data obtained in said obtaining step;

an analyzing step for analyzing said body temperature data stored in said storing step;

a diagnosing step for diagnosing by making comparative reference of analyzed results analyzed in said analyzing step with said sample data; and

a transmitting step for transmitting the diagnosis results diagnosed in said diagnosing step.

专利名称(译)	体温管理方法和装置，存储介质，体温管理系统和程序		
公开(公告)号	US20020016553A1	公开(公告)日	2002-02-07
申请号	US09/867614	申请日	2001-05-31
[标]申请(专利权)人(译)	TAMAKI YUKO OBA雅惠 川西顺子 桥本加奈子		
申请(专利权)人(译)	TAMAKI YUKO OBA雅惠 川西顺子 桥本加奈子		
当前申请(专利权)人(译)	佳能株式会社		
[标]发明人	TAMAKI YUKO OBA MASAE KAWANISHI JUNKO HASHIMOTO KANAOKO		
发明人	TAMAKI, YUKO OBA, MASAE KAWANISHI, JUNKO HASHIMOTO, KANAOKO		
IPC分类号	A61B5/00 G06F19/00		
CPC分类号	A61B5/0008 G06F19/3418 G06Q40/08 G06Q50/24 Y10S128/92 Y10S128/903 Y10S128/905		
优先权	2000176984 2000-06-13 JP 2000176983 2000-06-13 JP 2000176734 2000-06-13 JP 2000176735 2000-06-13 JP		
其他公开文献	US7198600		
外部链接	Espacenet USPTO		

摘要(译)

由温度计测量的数据临时存储在连接终端中，然后通过网络从连接终端发送到服务器并存储。服务器根据存储的温度数据进行分析，并传输分析结果。因此，可以通过管理和分析网络上的体温来提供体温管理和分析方法，其提供单独使用温度计无法获得的信息。

