



US008945016B2

(12) **United States Patent**  
**Voss et al.**

(10) **Patent No.:** **US 8,945,016 B2**  
(45) **Date of Patent:** **Feb. 3, 2015**

(54) **METHODS AND APPARATUS FOR CONTROL OF NON-INVASIVE PARAMETER MEASUREMENTS**

(75) Inventors: **Gregory I. Voss**, Solana Beach, CA (US); **Gregory J. Martin**, Carlsbad, CA (US); **Manouchehr Goharlaee**, Encinitas, CA (US)

(73) Assignee: **Tensys Medical, Inc.**, San Diego, CA (US)

(\* ) Notice: Subject to any disclaimer, the term of this patent is extended or adjusted under 35 U.S.C. 154(b) by 207 days.

(21) Appl. No.: **13/154,315**

(22) Filed: **Jun. 6, 2011**

(65) **Prior Publication Data**  
US 2011/0237961 A1 Sep. 29, 2011

**Related U.S. Application Data**

(60) Continuation of application No. 11/300,019, filed on Dec. 13, 2005, now Pat. No. 7,955,267, which is a division of application No. 10/211,115, filed on Aug. 1, 2002, now Pat. No. 6,974,419.

(51) **Int. Cl.**  
**A61B 5/02** (2006.01)  
**A61B 5/022** (2006.01)  
**A61B 5/00** (2006.01)

(52) **U.S. Cl.**  
CPC ..... **A61B 5/022** (2013.01); **A61B 5/7207** (2013.01); **A61B 5/7264** (2013.01)  
USPC ..... **600/499**; **600/481**; **600/485**; **600/490**; **600/500**

(58) **Field of Classification Search**  
USPC ..... **600/481-507**  
See application file for complete search history.

(56) **References Cited**

U.S. PATENT DOCUMENTS

3,880,145 A 4/1975 Blick  
4,280,494 A 7/1981 Cosgrove, Jr. et al.  
(Continued)

FOREIGN PATENT DOCUMENTS

JP A-2-177937 7/1990  
JP A-3-7139 1/1991

OTHER PUBLICATIONS

Clinical Cardiology article entitled "Apparent Bigeminy and Pulsus Alternans in Intermittent Left Bundle-Branch Block" by Laszlo Littman, M.D. and Jeffrey R. Goldberg, M.D., Departments of Internal Medicine and Family Practice, Carolinas Medical Center, Charlotte, NC (Jun. 1999) ( 3 pages) (www.clinicalcardiology.org).

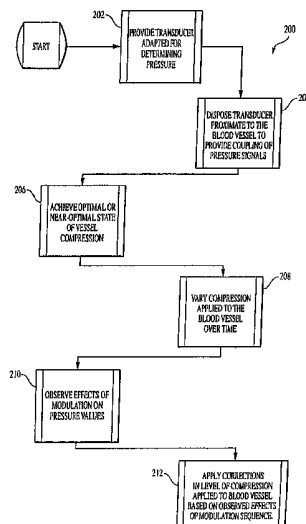
(Continued)

*Primary Examiner* — Michael Kahelin  
*Assistant Examiner* — Karen Toth  
(74) *Attorney, Agent, or Firm* — Gazdzinski & Associates, PC

(57) **ABSTRACT**

Improved methods and apparatus for non-invasively assessing one or more parameters associated with fluidic systems such as the circulatory system of a living organism. In a first aspect, an improved method of continuously measuring pressure from a compressible vessel is disclosed, wherein a substantially optimal level of compression for the vessel is achieved and maintained using perturbations (e.g., modulation) of the compression level of the vessel. In one exemplary embodiment, the modulation is conducted according to a pseudo-random binary sequence (PBRs). In a second aspect, an improved apparatus for determining the blood pressure of a living subject is disclosed, the apparatus generally comprising a pressure sensor and associated processor with a computer program defining a plurality of operating states related to the sensed pressure data. Methods for pressure waveform correction and reacquisition, as well as treatment using the present invention, are also disclosed.

**40 Claims, 25 Drawing Sheets**



(56)

## References Cited

## OTHER PUBLICATIONS

## U.S. PATENT DOCUMENTS

4,539,997	A	9/1985	Wesseling et al.	
4,718,427	A	1/1988	Russell	
4,869,261	A	9/1989	Penaz	
4,880,013	A	11/1989	Chio	
4,924,871	A	* 5/1990	Honeyager	600/485
5,005,581	A	* 4/1991	Honeyager	600/494
5,094,244	A	3/1992	Callahan et al.	
5,119,822	A	6/1992	Niwa	
5,158,091	A	10/1992	Butterfield et al.	
5,261,412	A	11/1993	Butterfield et al.	
5,261,414	A	11/1993	Aung et al.	
5,322,069	A	6/1994	Gallant et al.	
5,329,931	A	7/1994	Clauson et al.	
5,485,848	A	* 1/1996	Jackson et al.	600/485
5,494,043	A	* 2/1996	O'Sullivan et al.	600/500
5,533,511	A	7/1996	Kaspari et al.	
5,649,542	A	7/1997	Archibald et al.	
5,680,869	A	10/1997	Ogura	
5,755,670	A	5/1998	McKown et al.	
5,762,610	A	* 6/1998	Narimatsu et al.	600/500
5,797,850	A	8/1998	Archibald et al.	
5,833,602	A	11/1998	Osemwota	
5,848,970	A	12/1998	Voss et al.	
5,882,311	A	3/1999	O'Rourke	
5,908,027	A	6/1999	Butterfield et al.	
5,964,711	A	10/1999	Voss et al.	
6,047,201	A	4/2000	Jackson, III	
6,068,601	A	5/2000	Miyazaki et al.	
6,176,831	B1	1/2001	Voss et al.	
6,228,034	B1	* 5/2001	Voss et al.	600/485
6,270,461	B1	8/2001	Chio	
6,290,650	B1	9/2001	Butterfield et al.	
6,322,516	B1	* 11/2001	Masuda et al.	600/493
6,334,850	B1	1/2002	Amano et al.	
6,340,349	B1	1/2002	Archibald et al.	
6,371,921	B1	* 4/2002	Caro et al.	600/485
6,554,773	B1	4/2003	Nissila et al.	
6,554,774	B1	4/2003	Miele	
6,612,993	B2	9/2003	Narimatsu	
6,632,181	B2	10/2003	Flaherty et al.	
6,711,424	B1	3/2004	Fine et al.	
6,730,038	B2	5/2004	Gallant	
7,048,691	B2	5/2006	Miele et al.	
7,291,112	B2	11/2007	Martin et al.	
7,976,471	B2	7/2011	Martin et al.	
2002/0038090	A1	3/2002	Sunagawa et al.	
2002/0055680	A1	5/2002	Miele	
2011/0166458	A1	* 7/2011	Gallant et al.	600/485

Article entitled "A Fourier Transform Based ToF-Hreels Spectrometer" by R.H. Jackson, L.J. LeGore, Z. Yang, P. Kieban and B.G. Frederick, Laboratory for Surface Science and Technology (LASST) and Dept of Chemistry, Univ. of Maine, Orono, ME (no date) (1 page/p. O-36).

System Theory and Frequency-Selective Filters (Jun. 20, 2003) G. Baura, (6 pages/pp. 1, 24-28); System Theory and Practical Applications of Biomedical Signals, Wiley-Interscience, A John Wiley & Sons, Inc., Publication (.Copyrgt. 2002).

Article entitled "Dynamic Ventilatory Response to CO.sub.2 in Congestive Heart Failure Patients With and Without Central Sleep Apnea" by Zbigniew L. Topor, Linda Johannson, Jerry Kasprzyk and John E. Remmers, Center for Biomedical Engineering, Univ. of Kentucky (rec'd Feb. 7, 2000/accepted Feb. 28, 2001) (9 pages/pp. 408-416) ([www.jap.org](http://www.jap.org)).

American Journal of Respiratory and Critical Care Medicine, vol. 158, No. 4 article entitled "Instability of Ventilatory Control in Patients with Obstructive Sleep Apnea" by David W. Hudgel, Elizabeth A. Gordon, Sitthep Thanakitchara and Eugene M. Bruce, Case Western Reserve Univ. MetroHealth Medical Center, Cleveland, Ohio (Oct. 1998) (2 pages) (<http://ajrcm.atsjournals.org>).

American Journal Regulatory Integrative Comp Physiol article entitled "Dynamic Baroreflex Control of Blood Pressure: Influence of the Heart vs. Peripheral Resistance" by Huang-Ku Liu, Sarah-Jane Guild, et al., Depts. of Physiology and Electrical and Electronic Engineering, Univ. of Auckland, New Zealand (rec'd Aug. 14, 2001/accepted Mar. 22, 2002) (10 pages/pp. R533-R542) ([www.alpregu.org](http://www.alpregu.org)).

"Monitoring Vital Signs in Clinical and Research Animals" by Janice M. Bright, Cardiology Consultant, Vetronics, Inc.—Current Separations 16:2 (1997) (4 pages/pp. 43-46).

"Annals of Internal Medicine Established in 1927 by the American College of Physicians" by M. Chiara Cavallino, MD, et al., vol. 124, Issue 10, (11 pages/pp. 877-883), (May 15, 1996) (<http://www.annals.org>).

Circulation 1996; 93:2135-2141 article entitled "Randomized, Double-Blind, Placebo-Controlled Study of Supplemental Oral L-Arginine in Patients With Heart Failure" by Thomas S. Rector, PhD, et al. (pp. 1-5 of 18) (<http://circ.ahajournals.org>).

Clinical Science (1998) 95, 669-679 article entitled "Non-Invasive Measurements of Arterial Structure and Function: Repeatability, Interrelationships and Trial Sample Size" by Yu-Lu Liang, et al. (13 pages) (<http://www.clinsci.org>).

\* cited by examiner

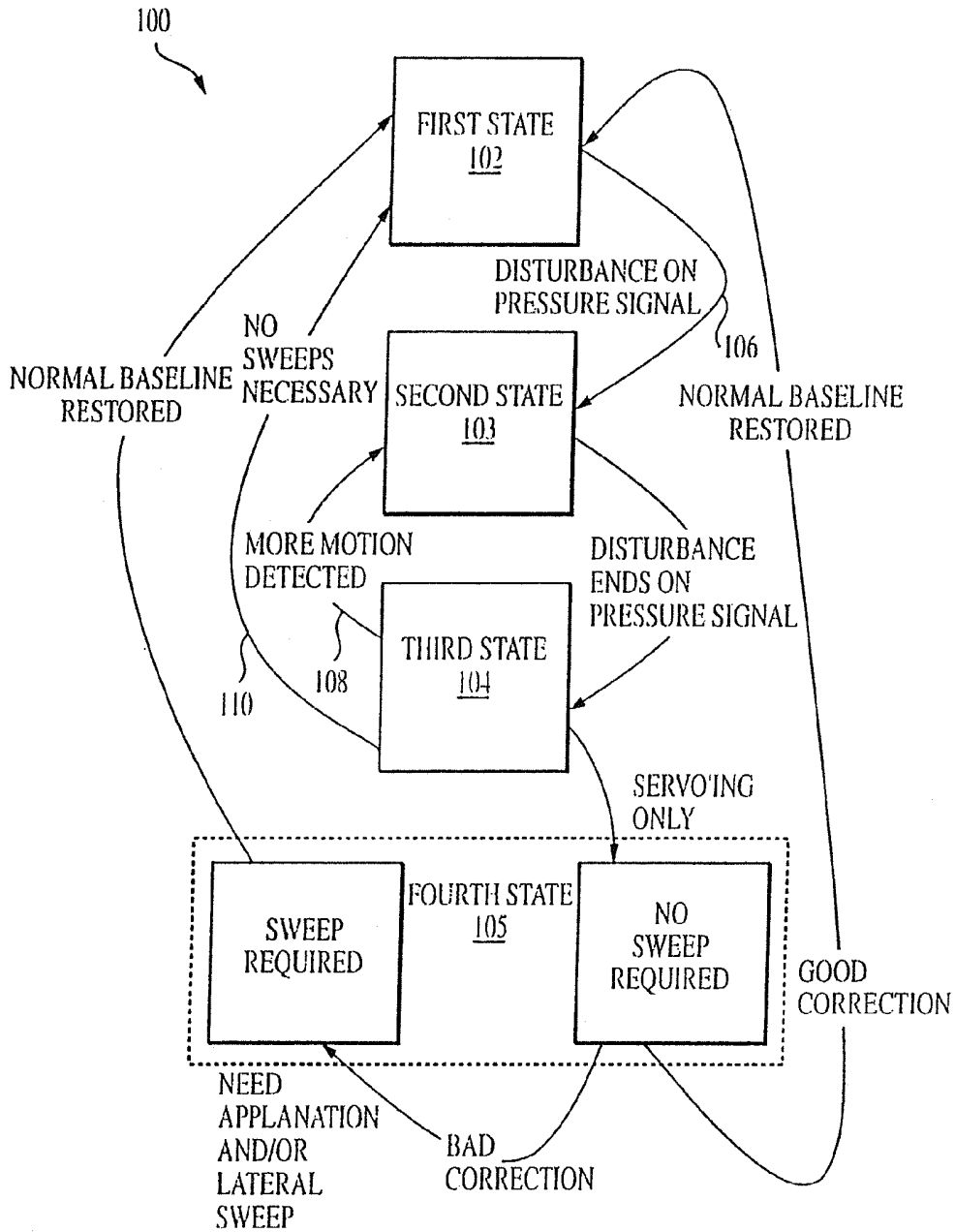


FIG. 1

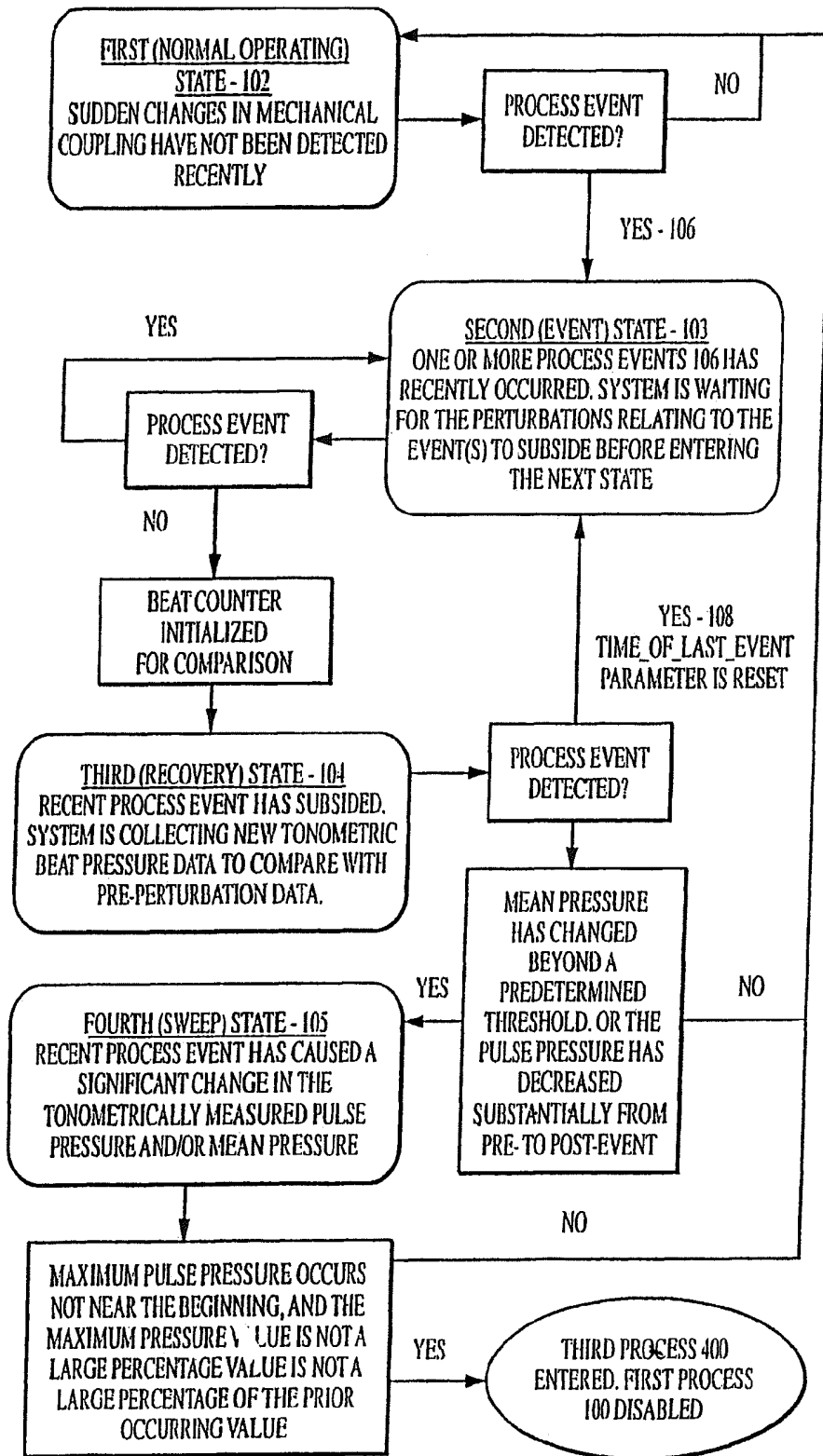


FIG. 1a

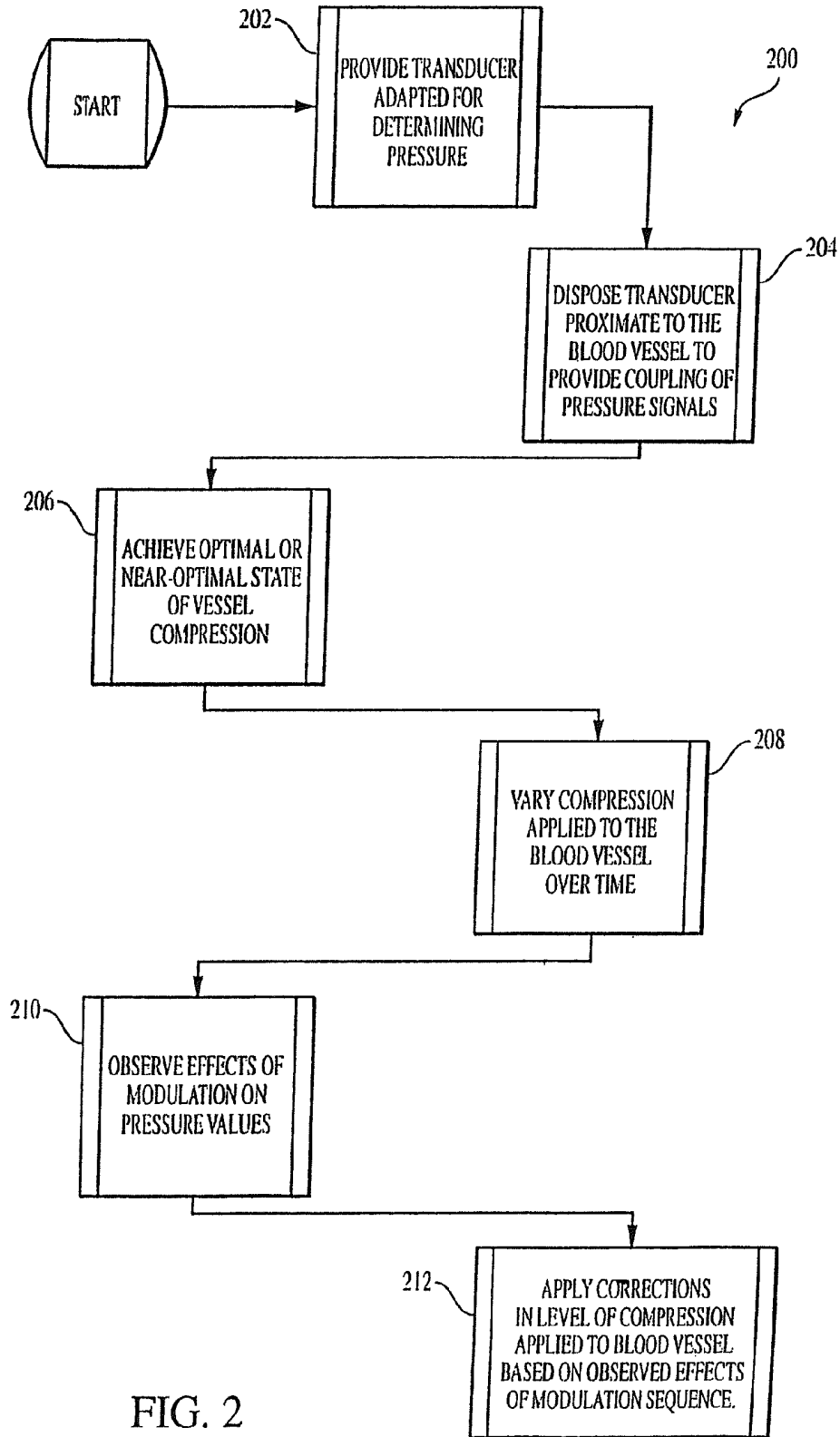


FIG. 2

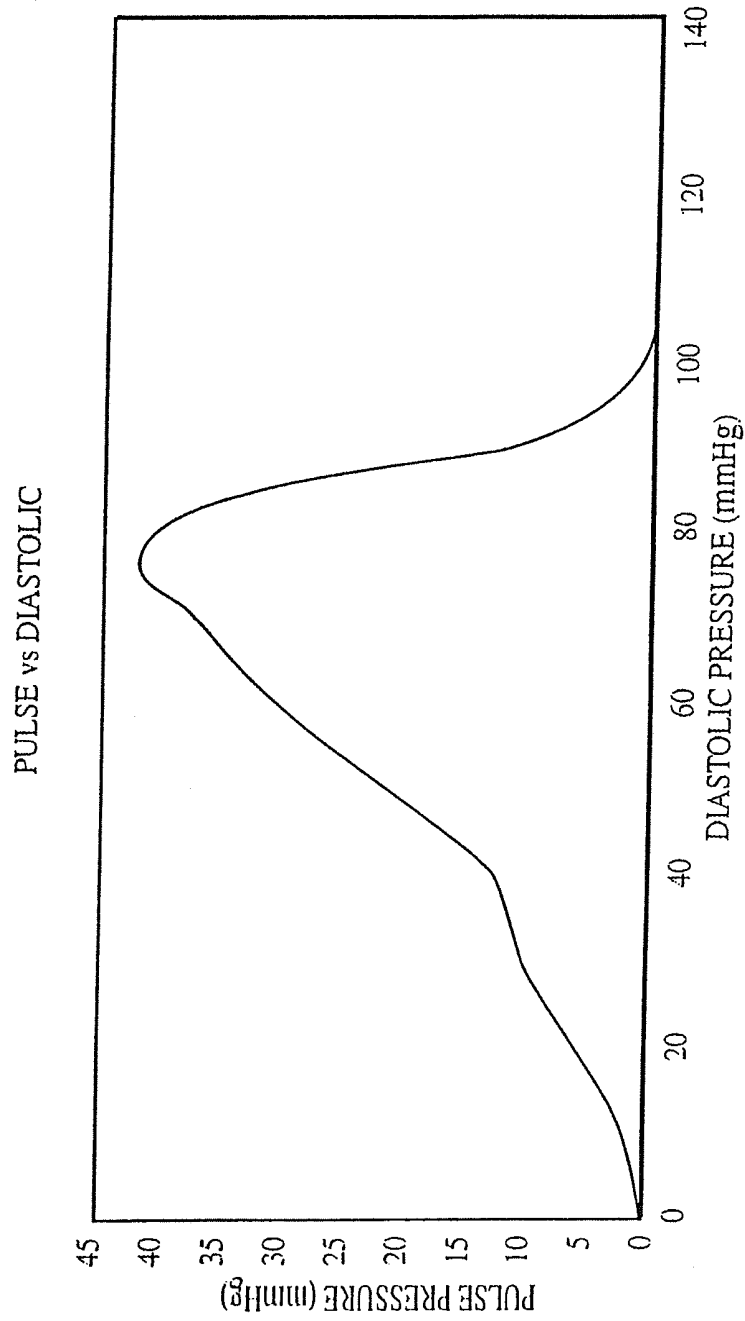


FIG. 2a

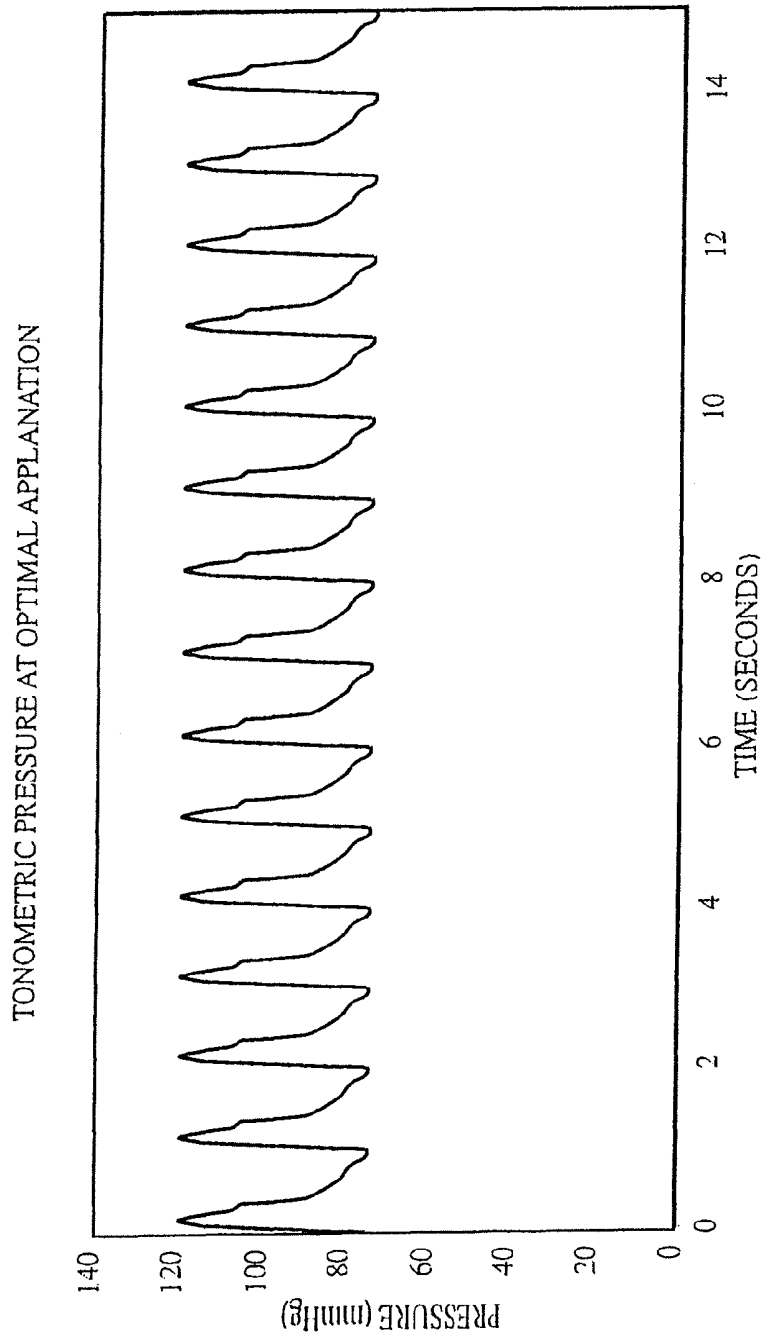


FIG. 2b

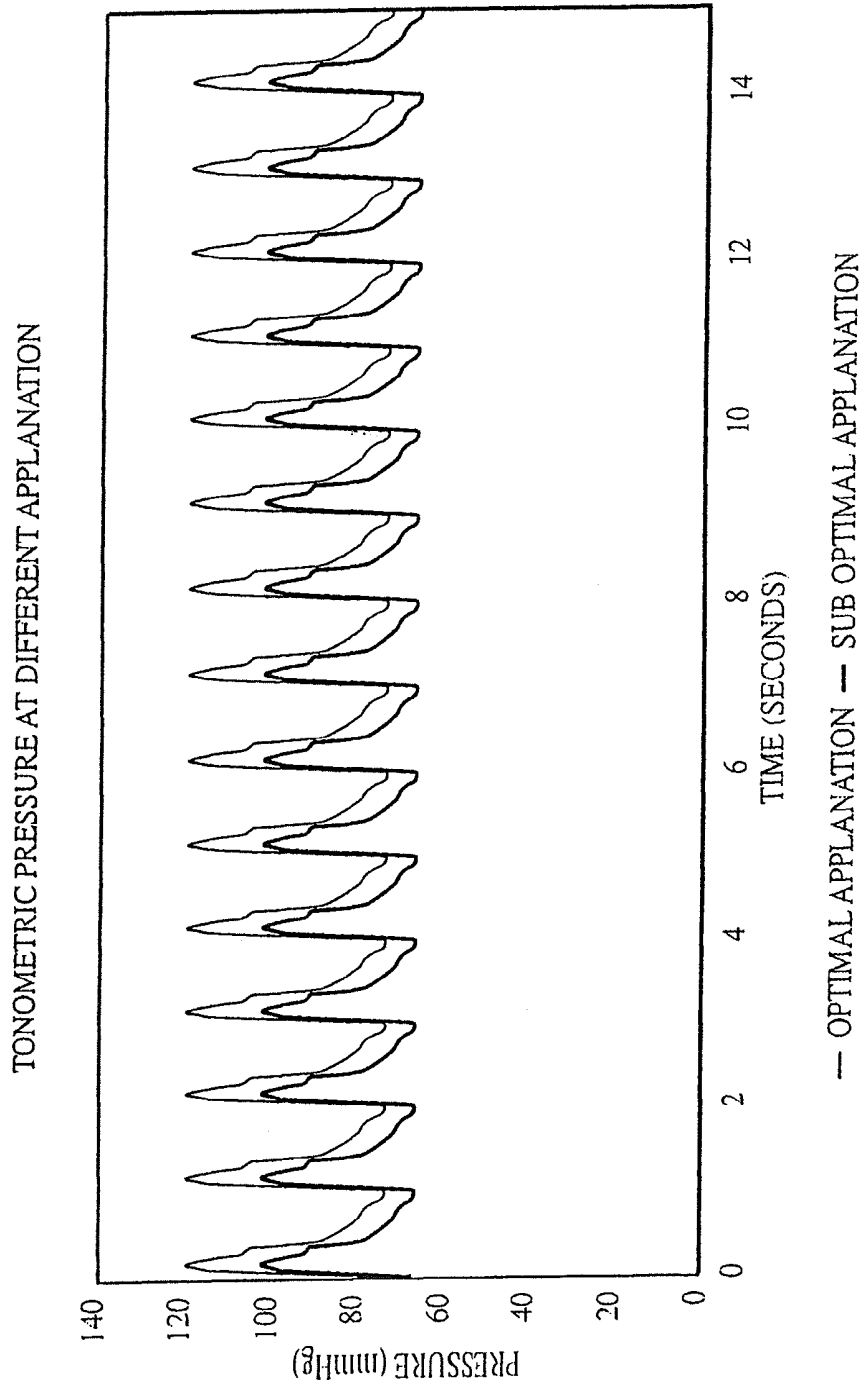


FIG. 2c

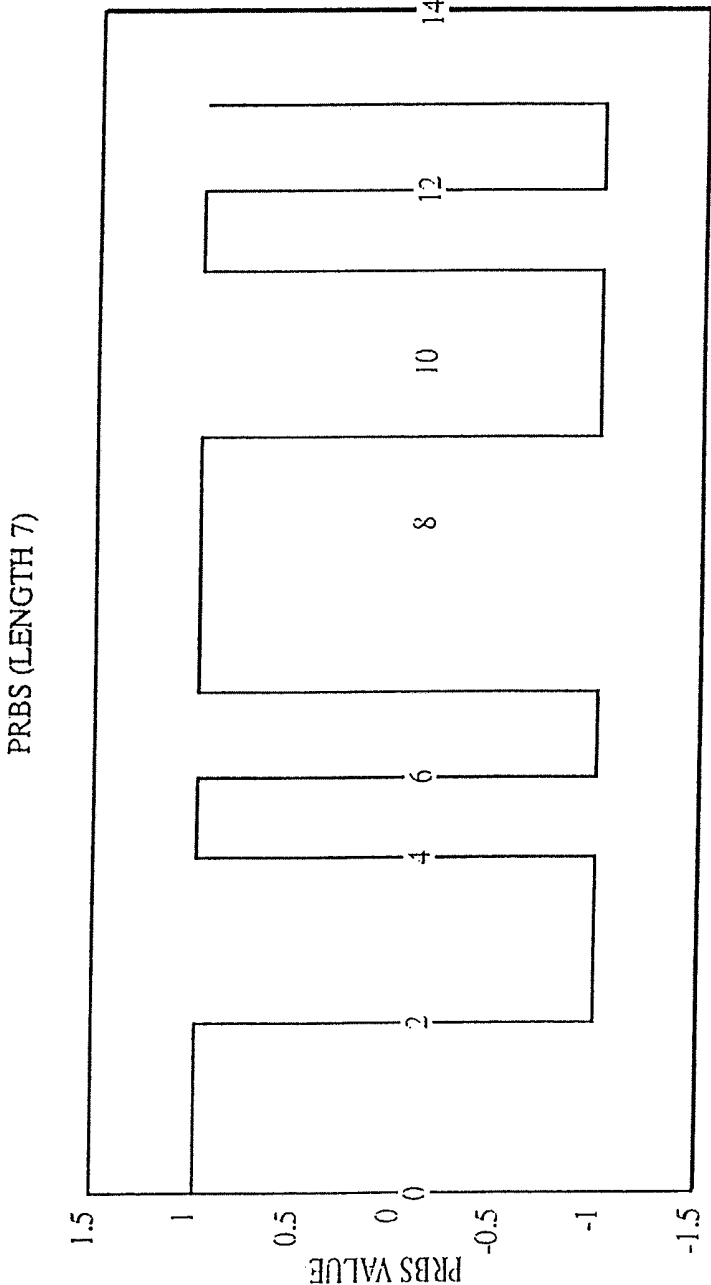
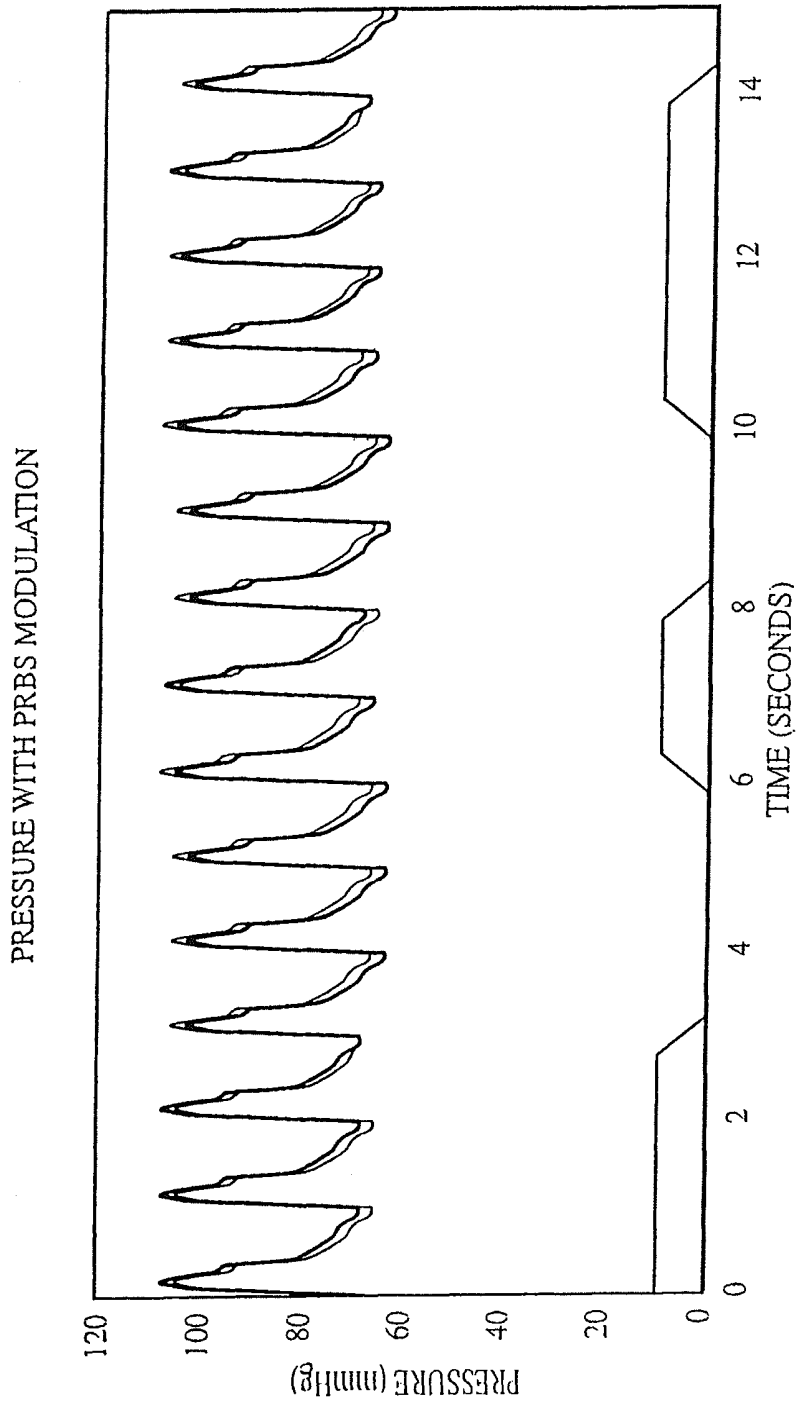
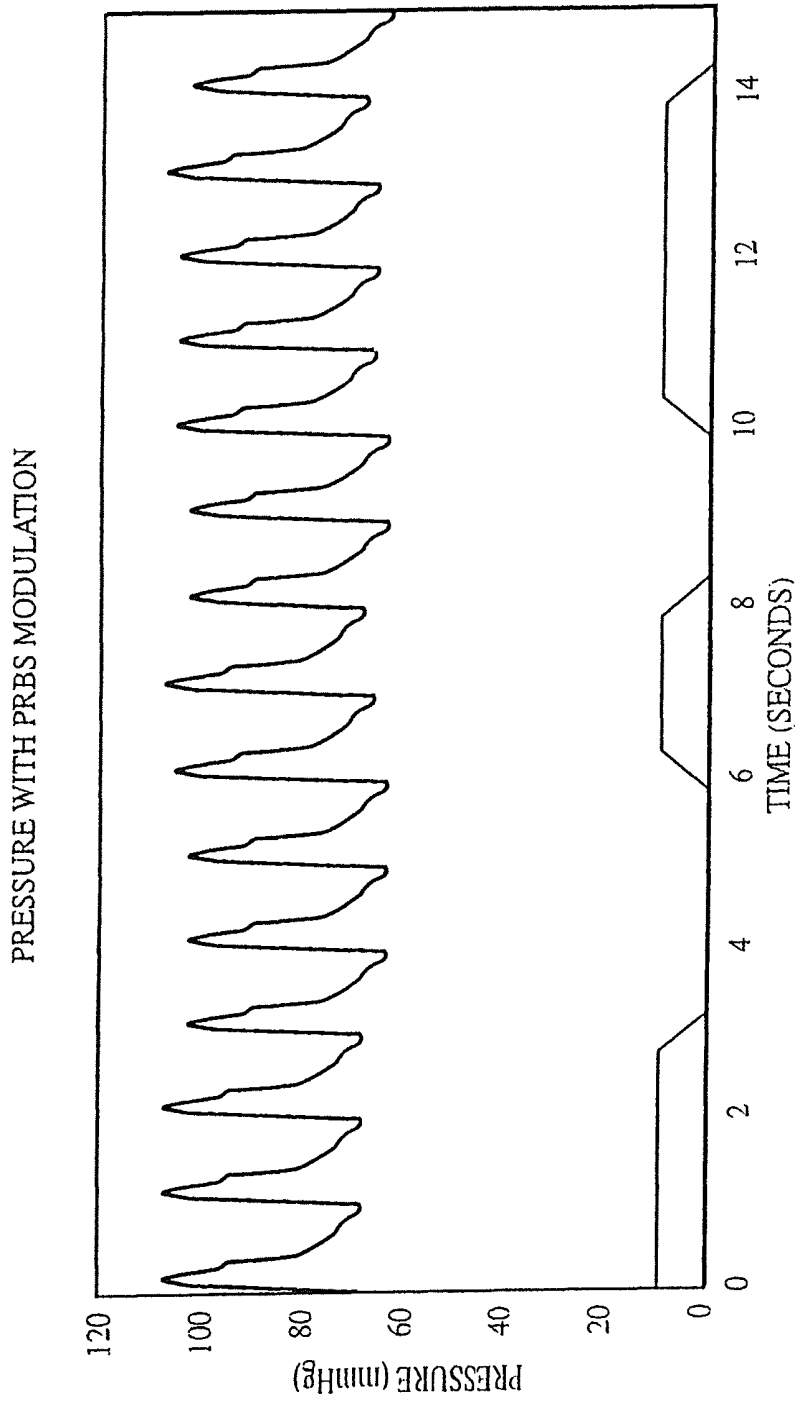


FIG. 2d



— PRBS PRESSURE — PRBS APPLANATION — SUB OPTIMAL APPLANATION

FIG. 2e



— PRBS PRESSURE — PRBS APPLANATION — SUB OPTIMAL APPLANATION

FIG. 2f

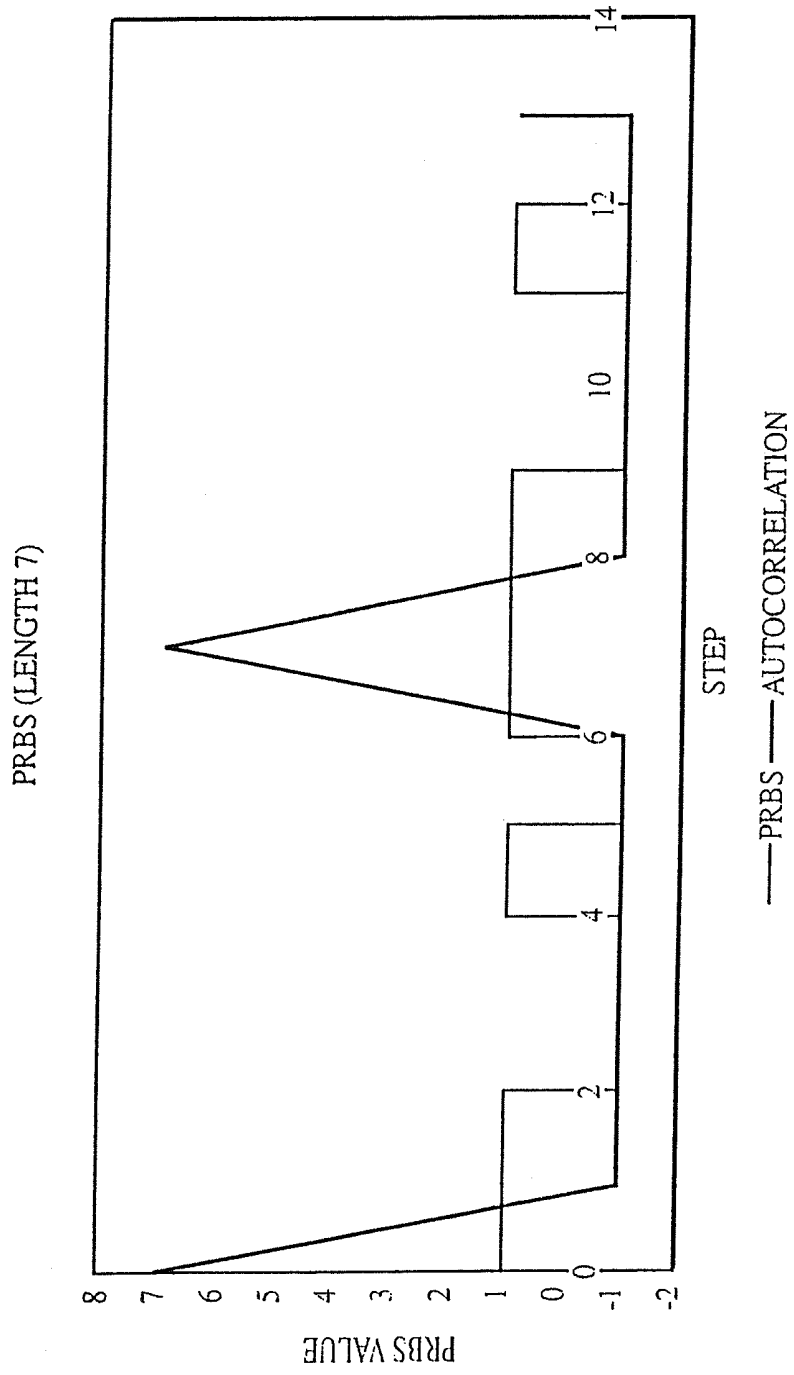


FIG. 2g

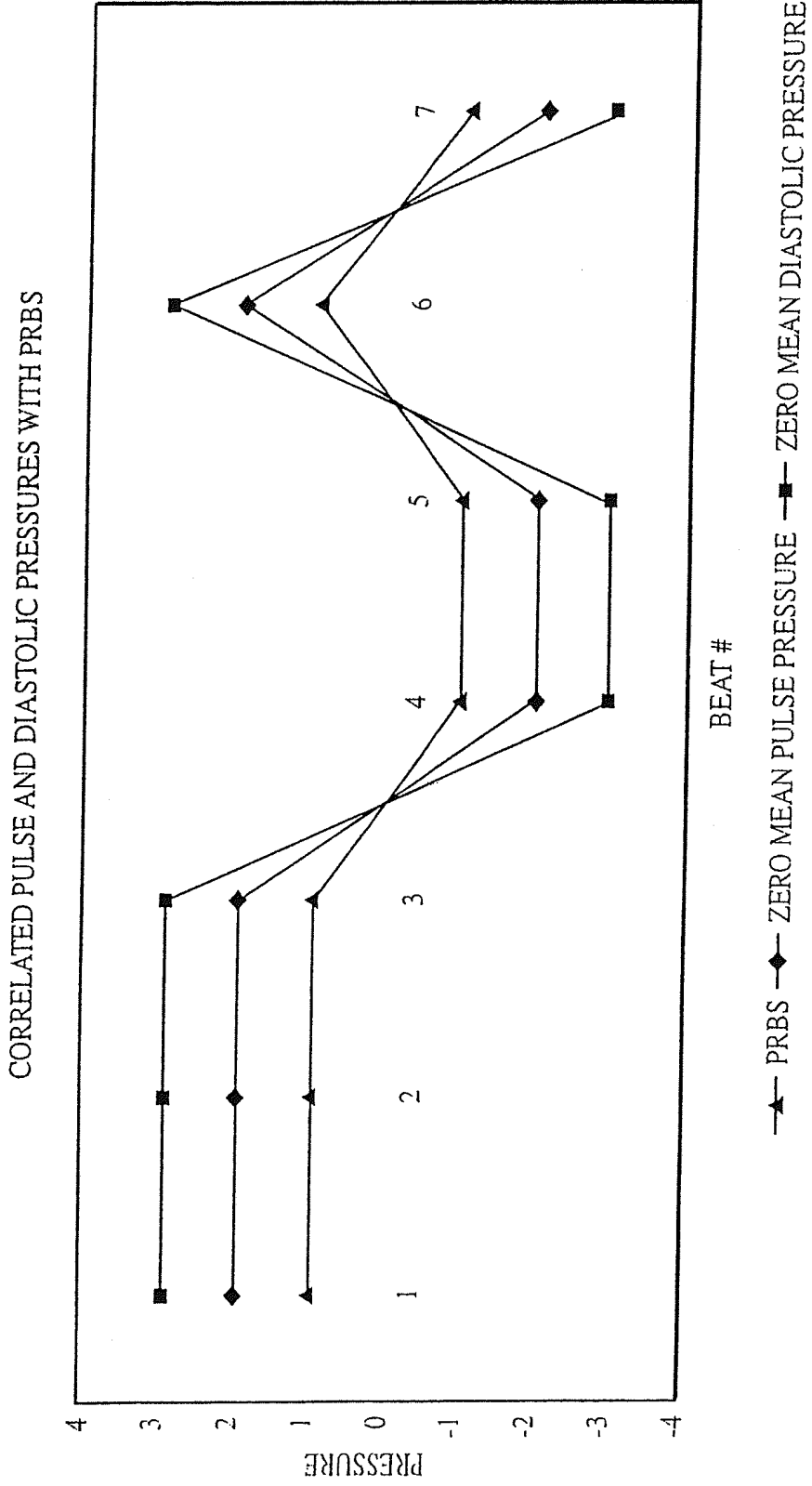


FIG. 2h

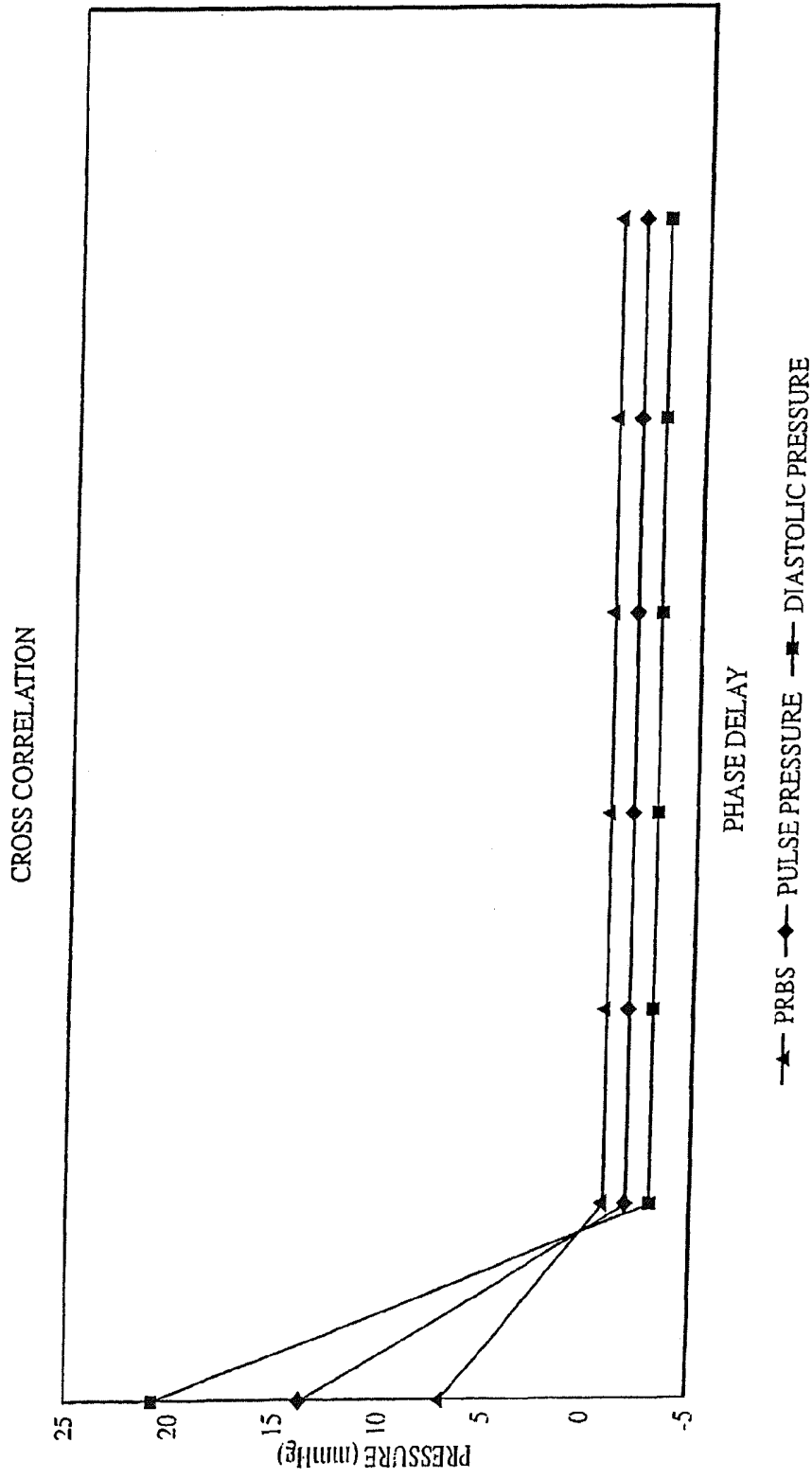


FIG. 2i

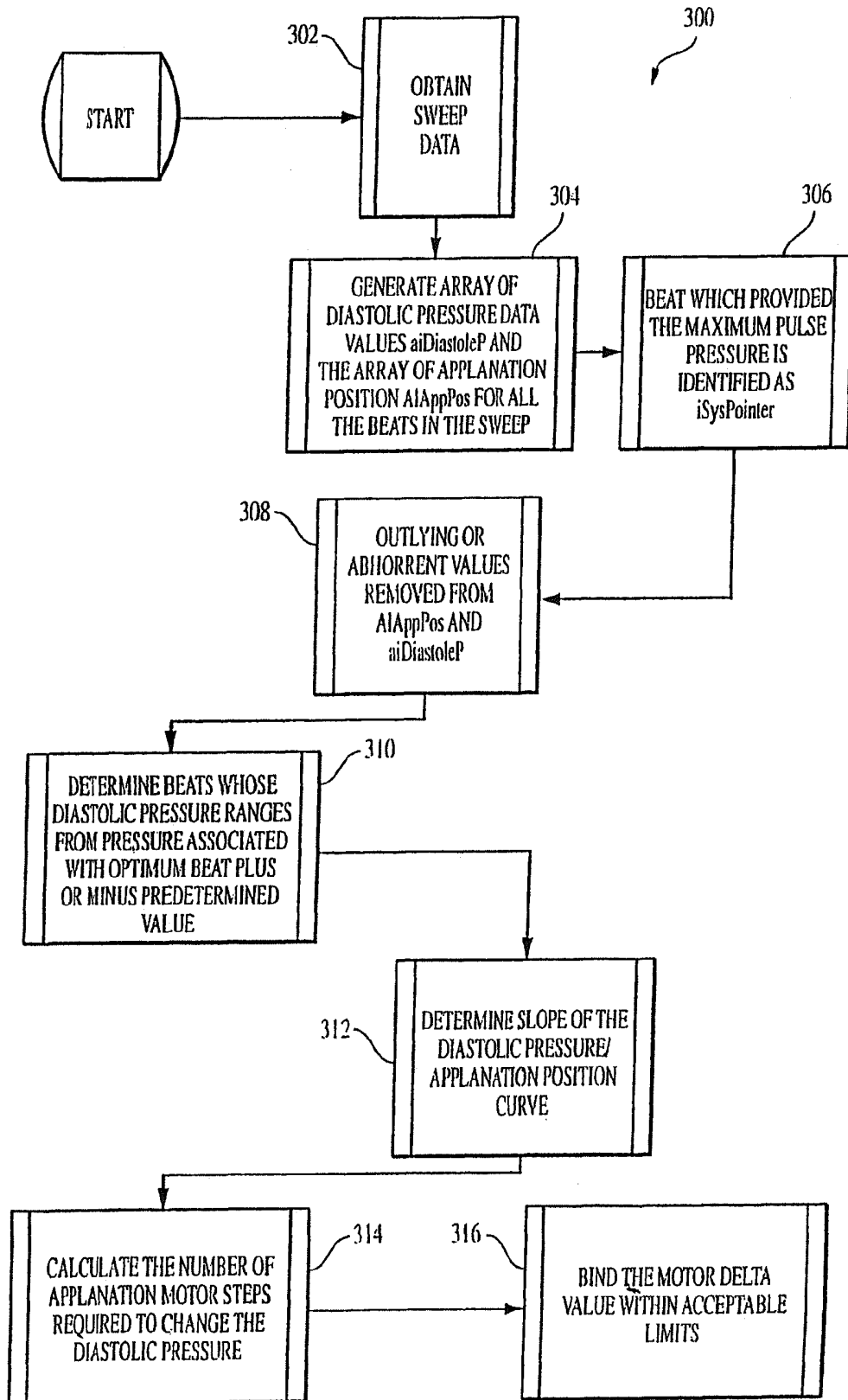


FIG. 3

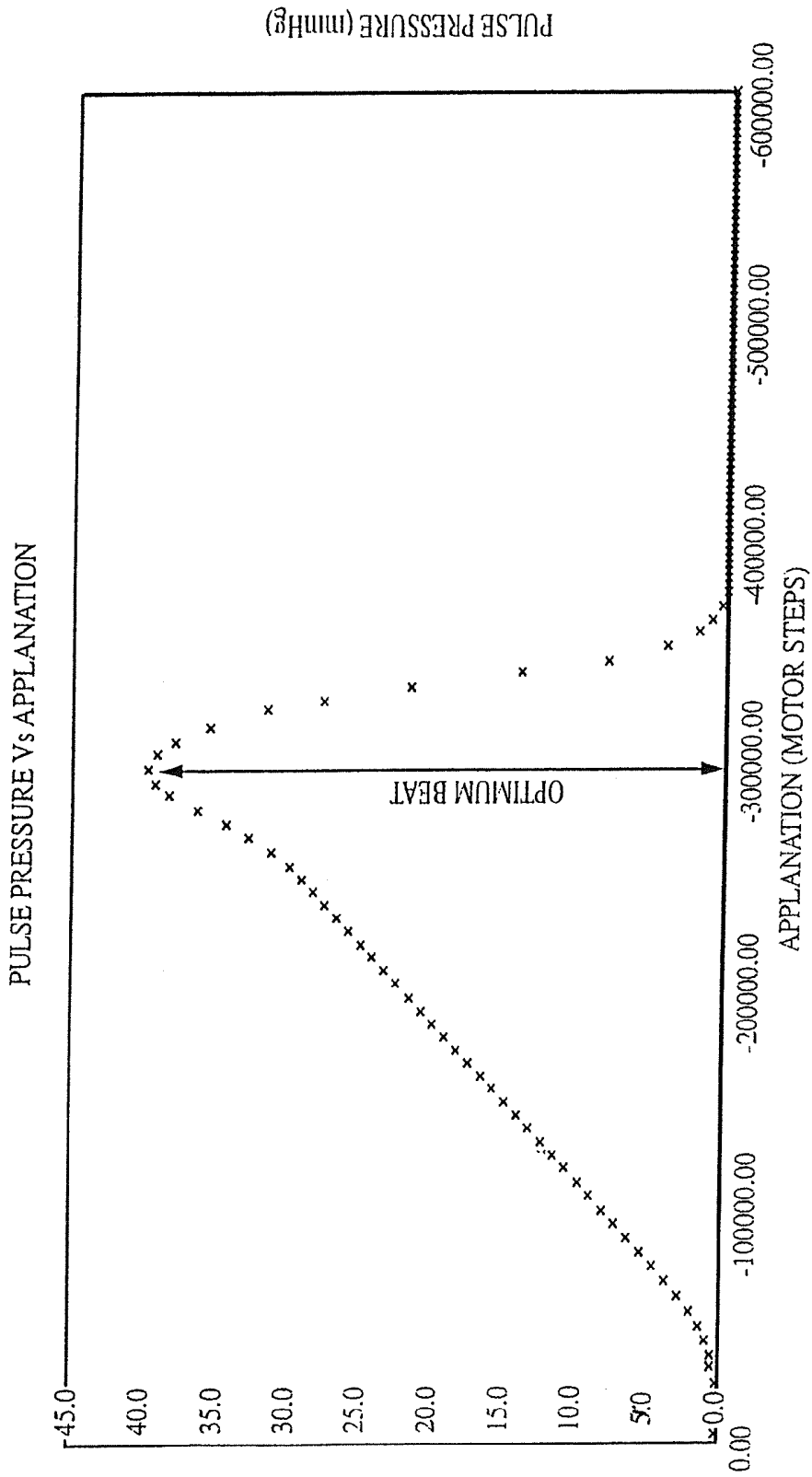


FIG. 3a

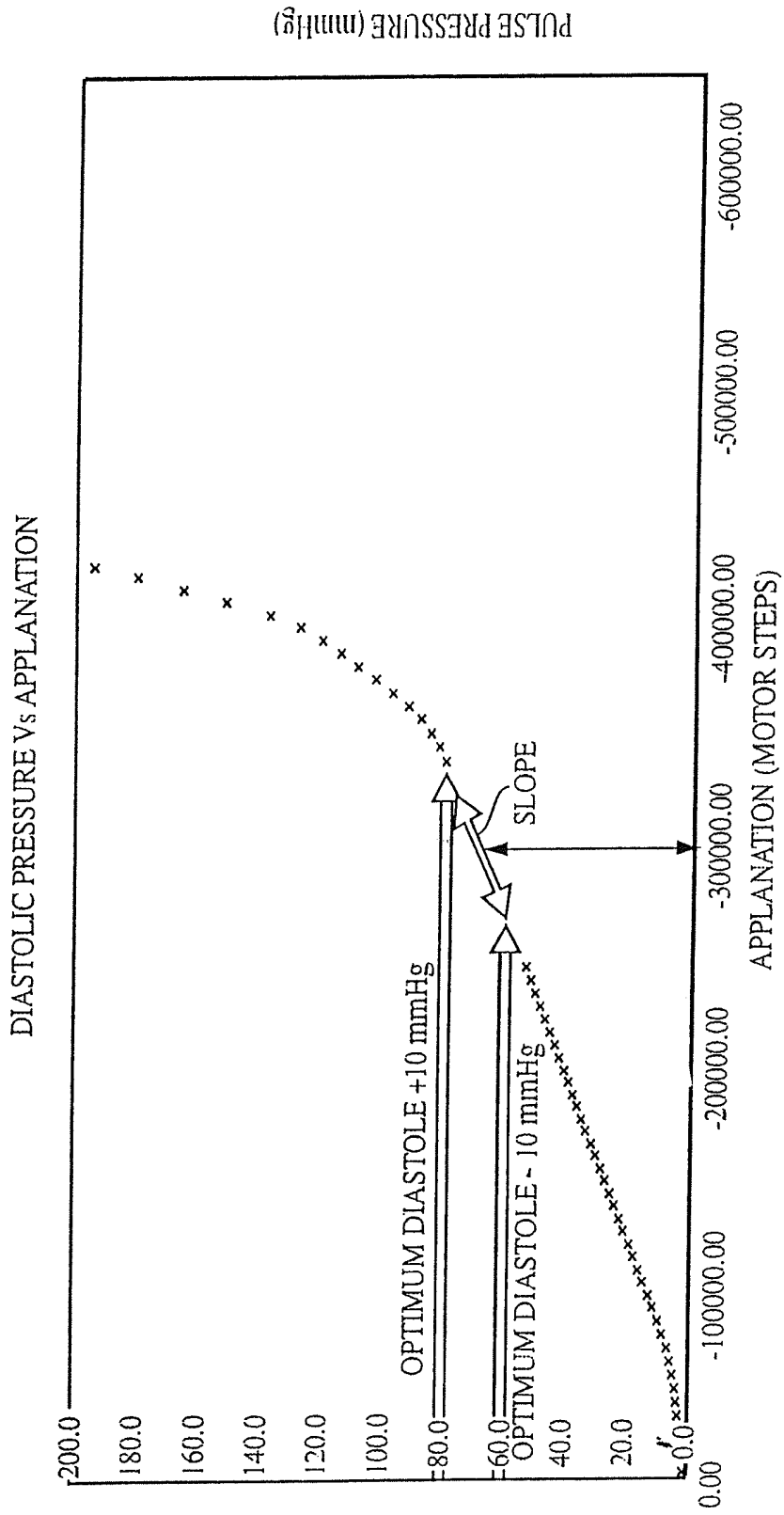


FIG. 3b

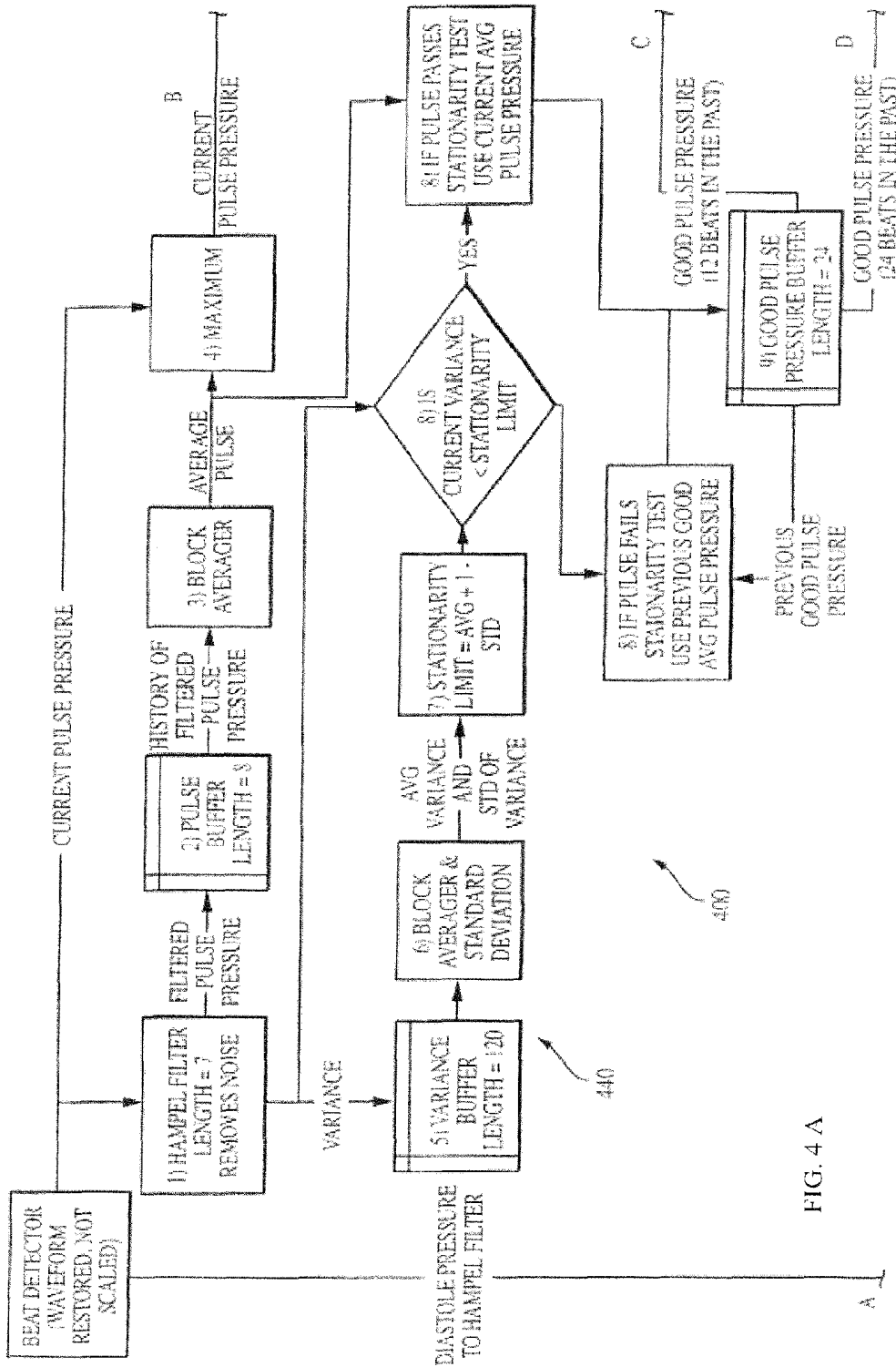


FIG. 4 A

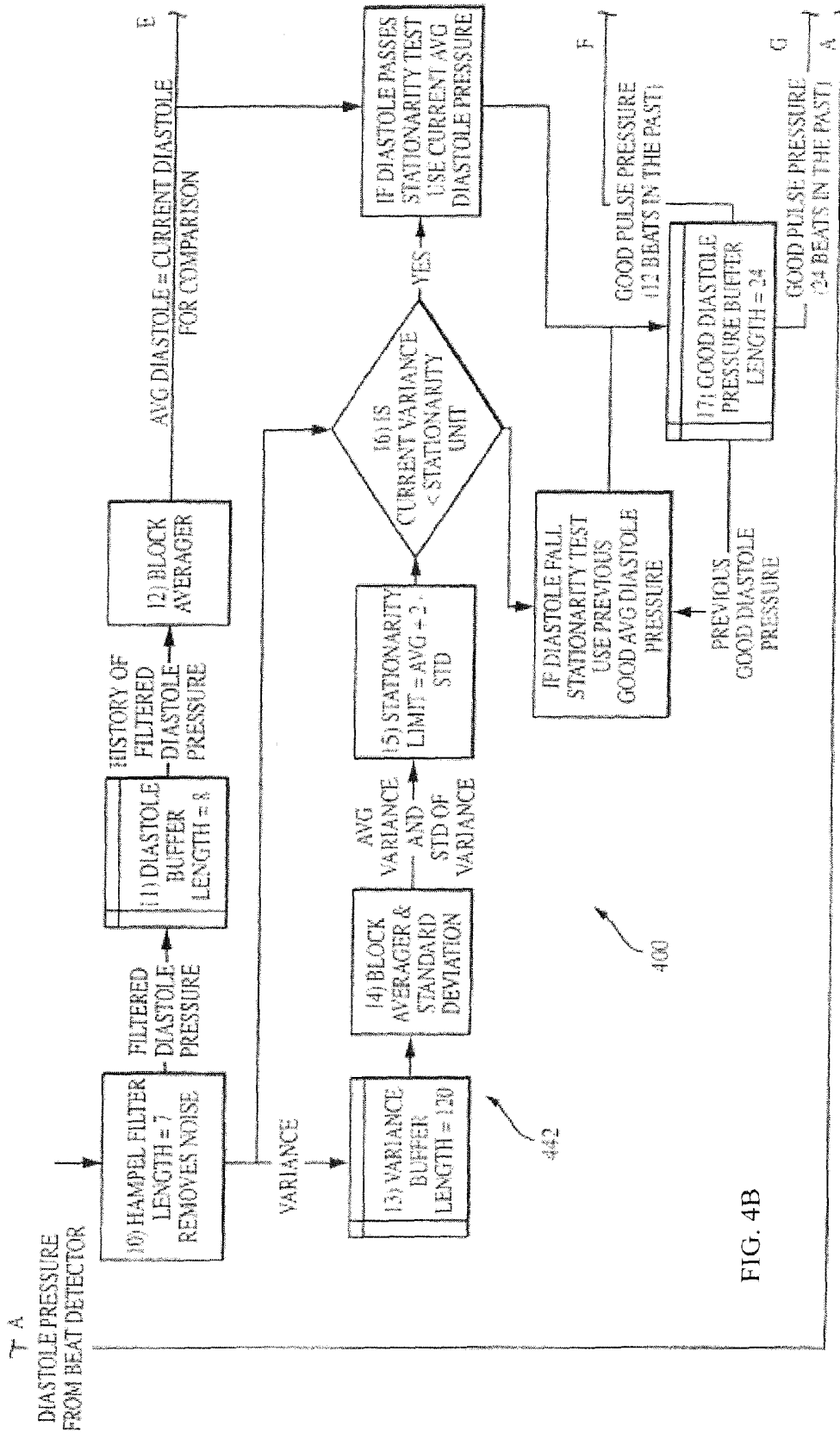


FIG. 4B

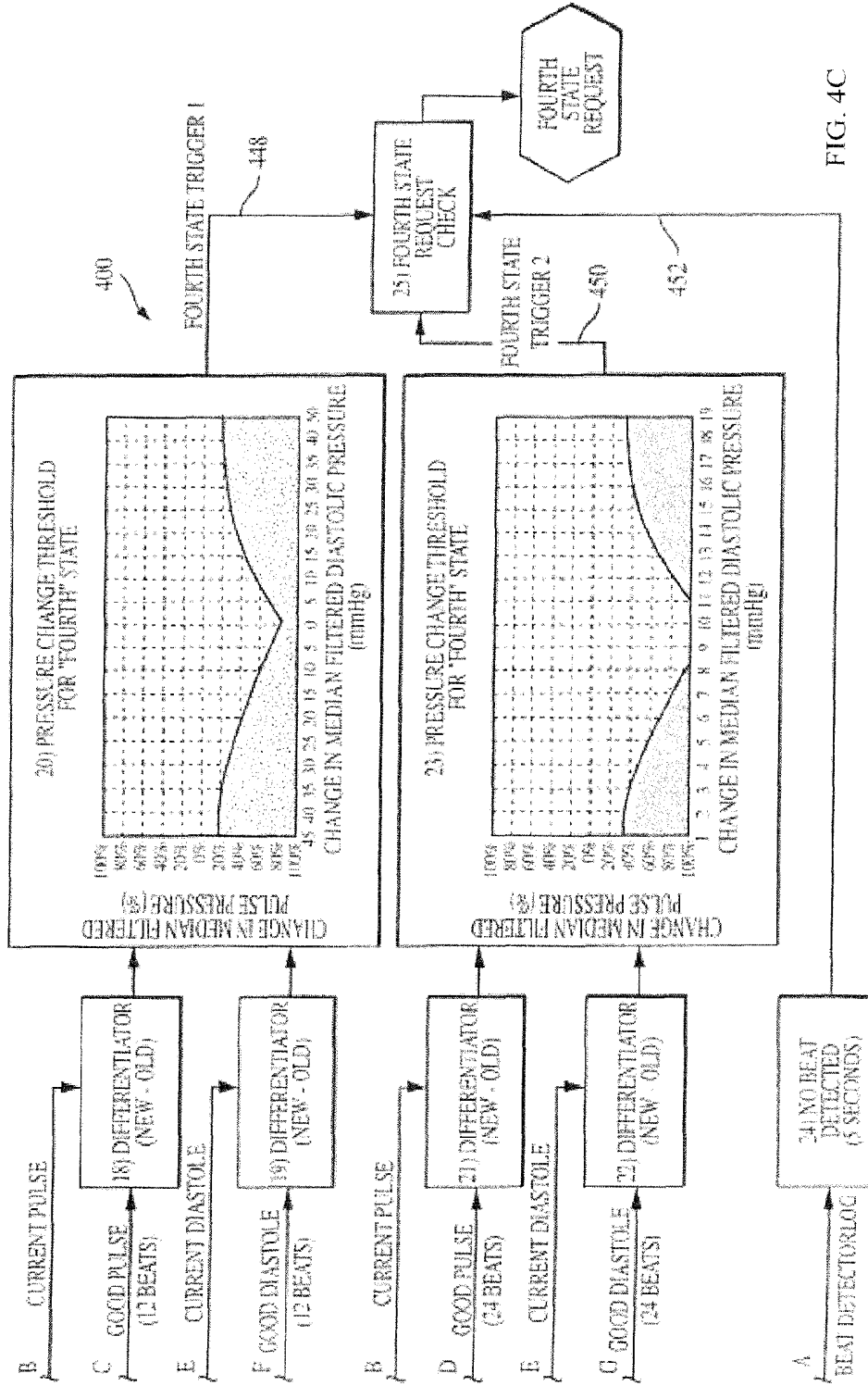


FIG. 4C

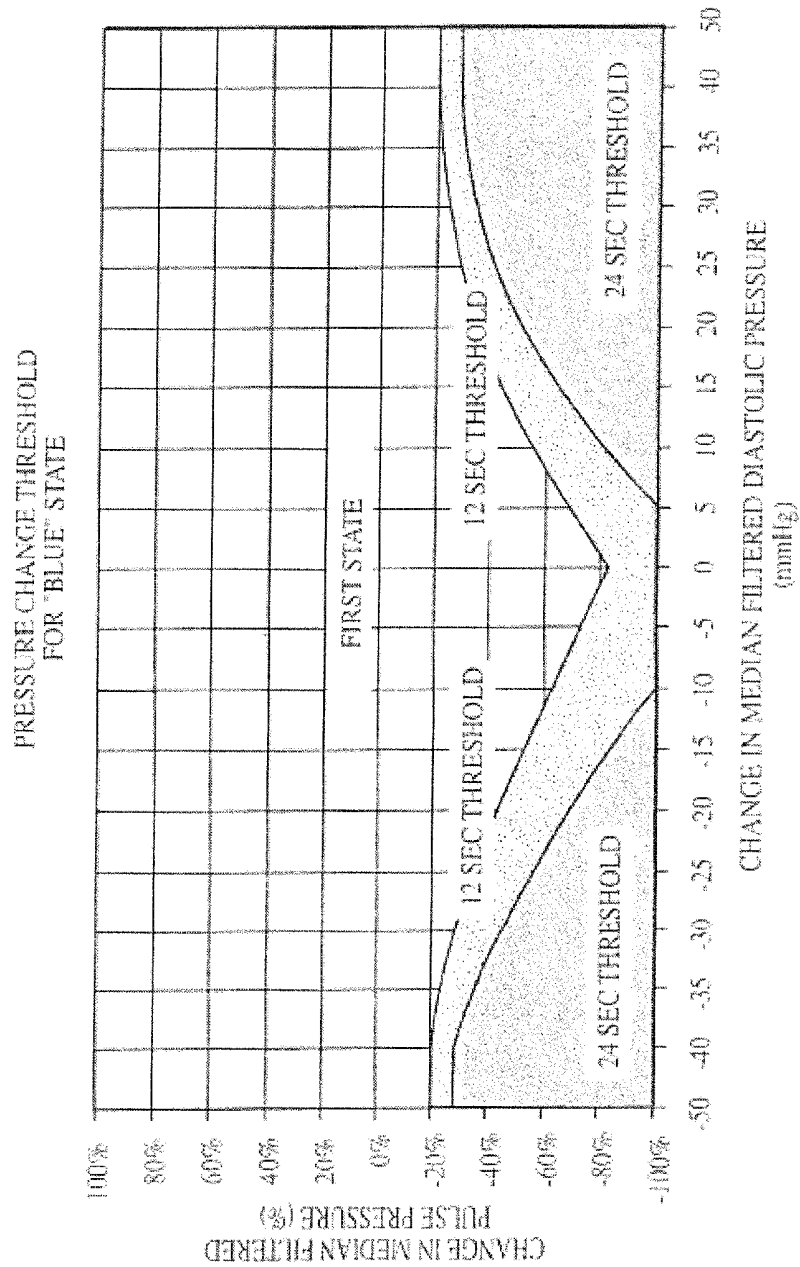


FIG. 4D

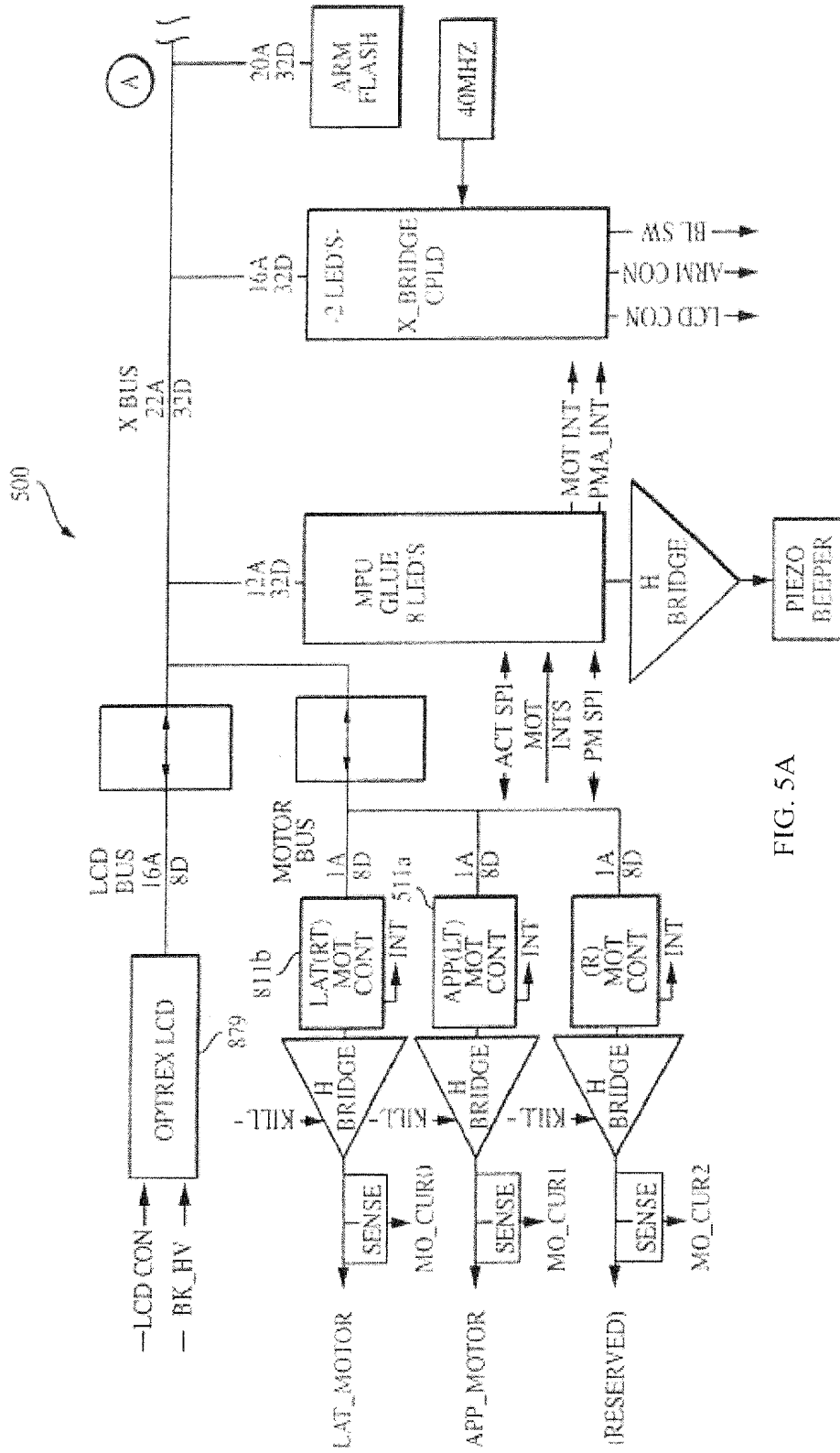


FIG. 5A

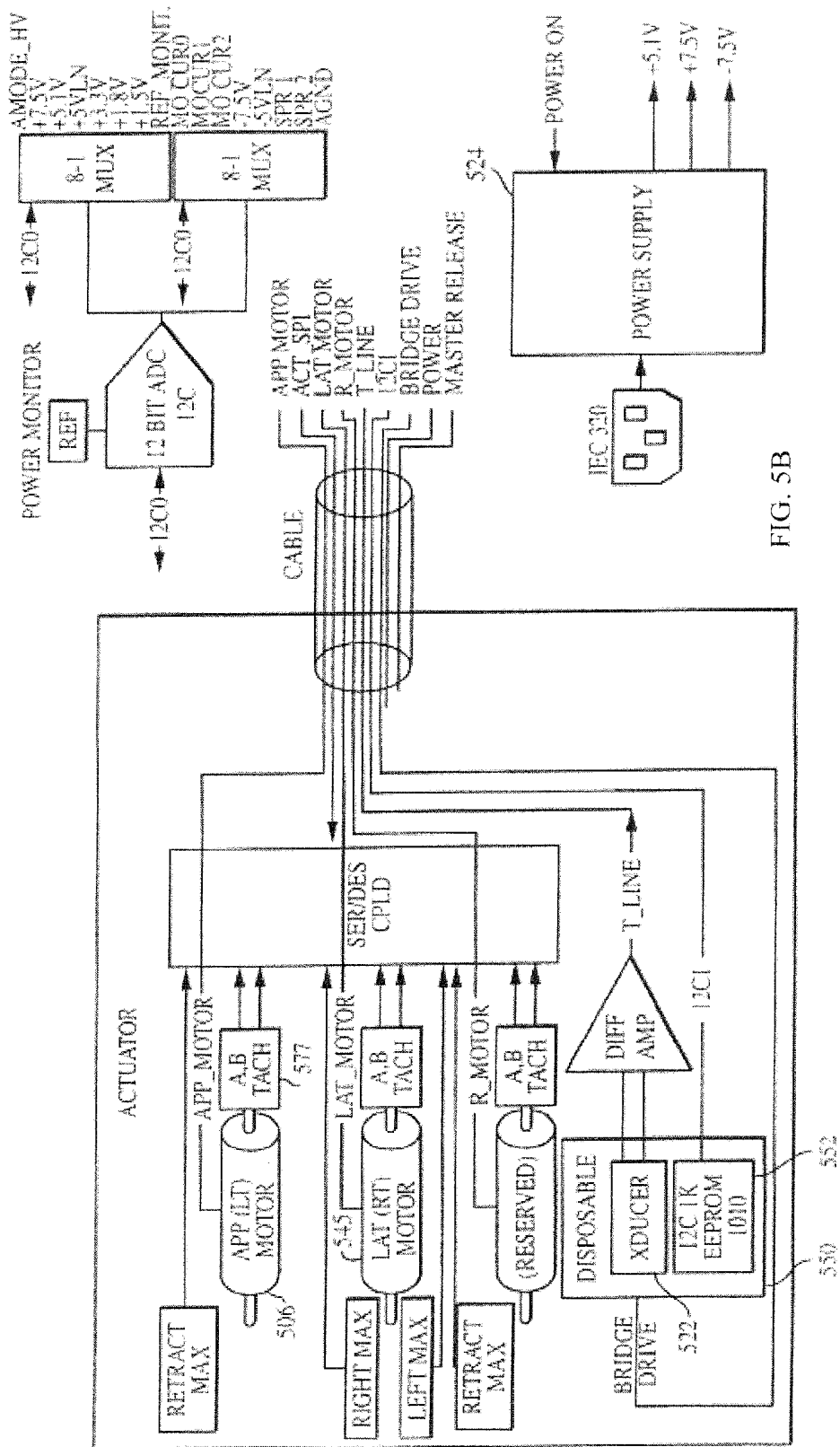


FIG. 5B

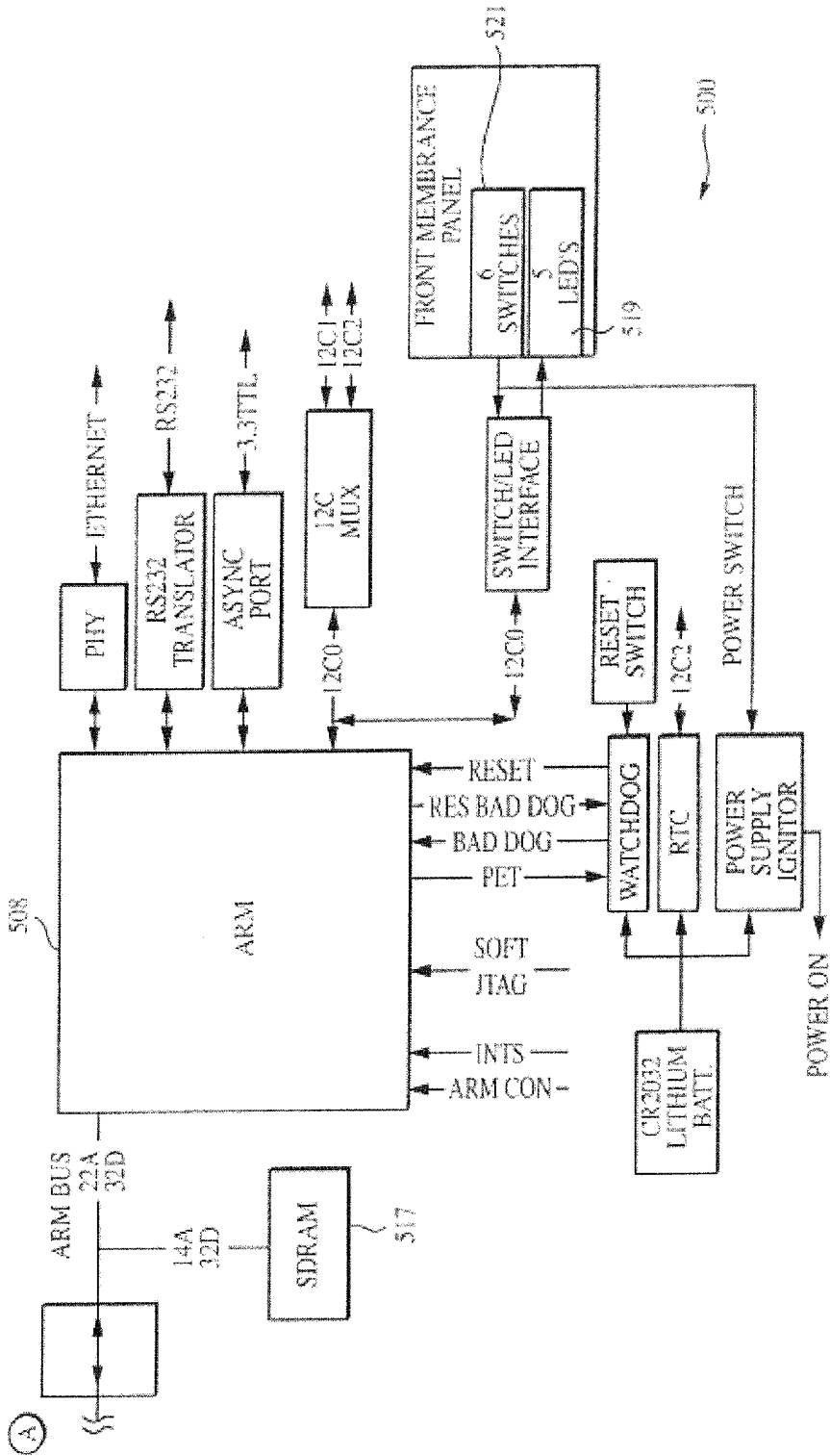


FIG. 5C

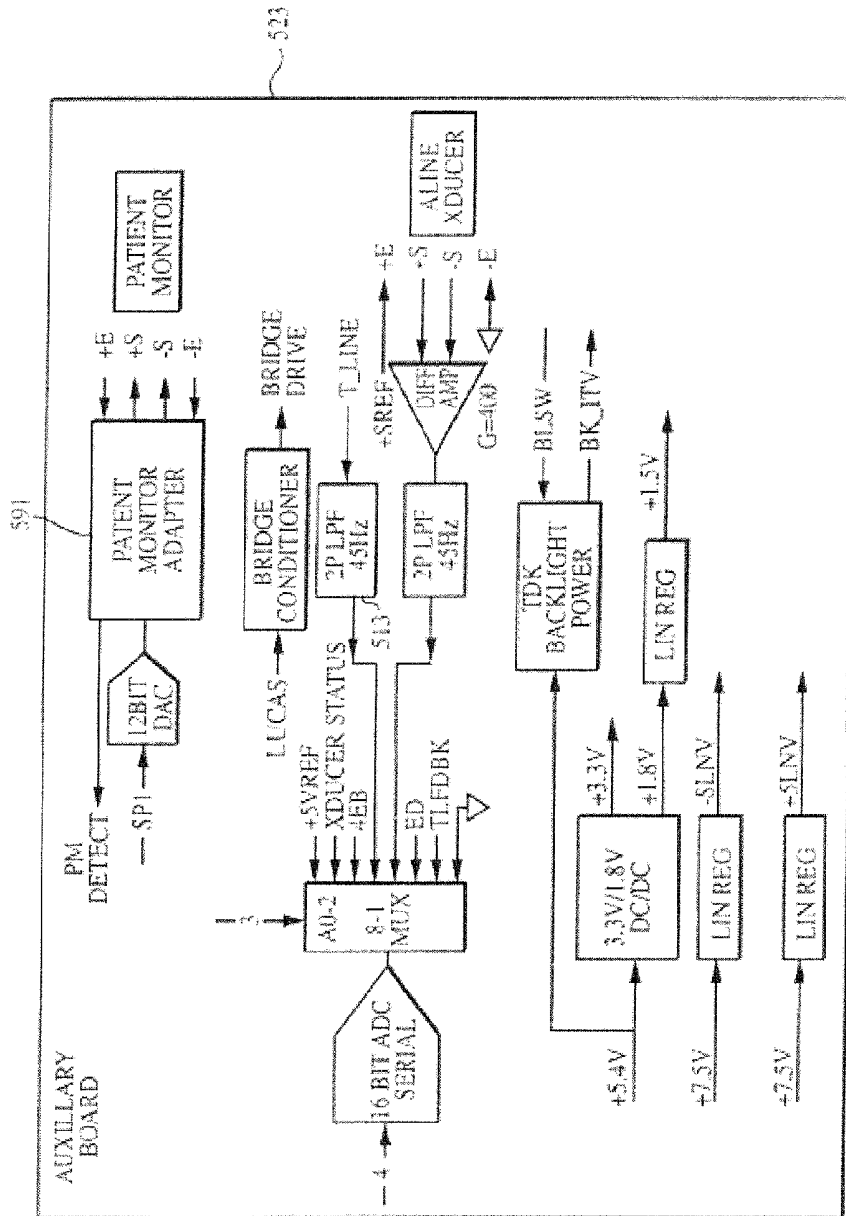


FIG. 5D

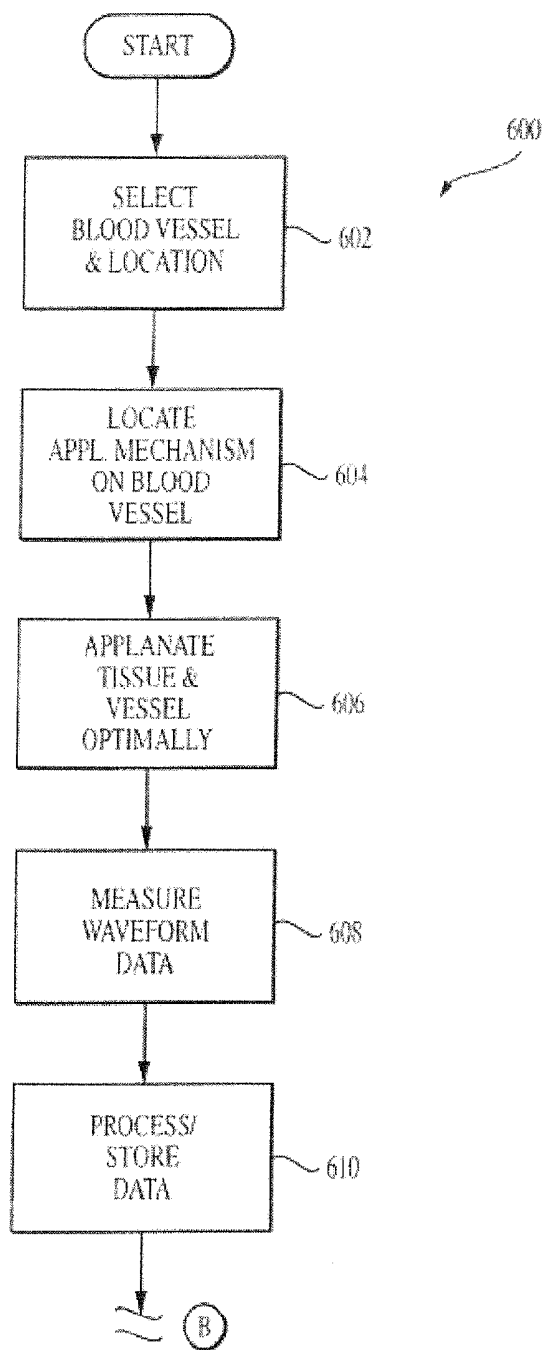


FIG. 6A

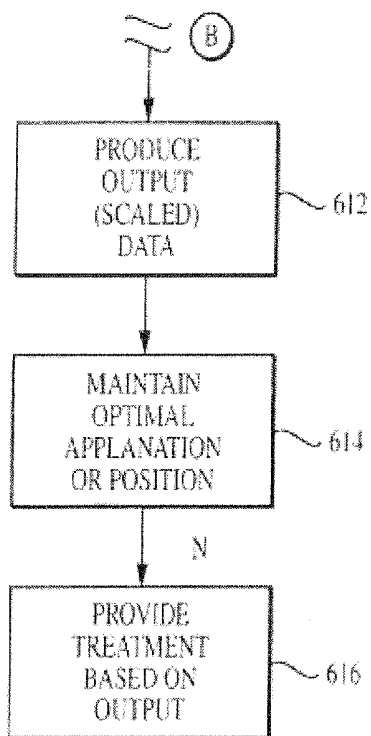


FIG. 6B

## METHODS AND APPARATUS FOR CONTROL OF NON-INVASIVE PARAMETER MEASUREMENTS

### PRIORITY

This application is a continuation of and claims priority to U.S. patent application Ser. No. 11/300,019, filed Dec. 13, 2005 of the same title, which is now issued as U.S. Pat. No. 7,955,267, which is a divisional of and claims priority to U.S. patent application Ser. No. 10/211,115, filed Aug. 1, 2002 of the same title, which is now issued as U.S. Pat. No. 6,974,419, all of the foregoing incorporated herein by reference in their entirety.

### COPYRIGHT

A portion of the disclosure of this patent document contains material that is subject to copyright protection. The copyright owner has no objection to the facsimile reproduction by anyone of the patent document or the patent disclosure, as it appears in the Patent and Trademark Office patent files or records, but otherwise reserves all copyright rights whatsoever.

### BACKGROUND OF THE INVENTION

#### 1. Field of the Invention

This invention relates generally to methods and apparatus for monitoring parameters associated with circulating fluid systems, and specifically in one aspect to the non-invasive monitoring of arterial blood pressure in a living subject.

#### 2. Description of Related Technology

The accurate, continuous, non-invasive measurement of blood pressure has long been sought by medical science. The availability of such measurement techniques would allow the caregiver to continuously monitor a subject's blood pressure accurately and in repeatable fashion without the use of invasive arterial catheters (commonly known as "A-lines") in any number of settings including, for example, surgical operating rooms where continuous, accurate indications of true blood pressure are often essential.

Several well known techniques have heretofore been used to non-invasively monitor a subject's arterial blood pressure waveform, namely, auscultation, oscillometry, and tonometry. Both the auscultation and oscillometry techniques use a standard inflatable arm cuff that occludes the subject's peripheral (predominately brachial) artery. The auscultatory technique determines the subject's systolic and diastolic pressures by monitoring certain Korotkoff sounds that occur as the cuff is slowly deflated. The oscillometric technique, on the other hand, determines these pressures, as well as the subject's mean pressure, by measuring actual pressure changes that occur in the cuff as the cuff is deflated. Both techniques determine pressure values only intermittently, because of the need to alternately inflate and deflate the cuff, and they cannot replicate the subject's actual blood pressure waveform. Thus, continuous, beat-to-beat blood pressure monitoring cannot be achieved using these techniques.

Occlusive cuff instruments of the kind described briefly above have generally been somewhat effective in sensing long-term trends in a subject's blood pressure. However, such instruments generally have been ineffective in sensing short-term blood pressure variations, which are of critical importance in many medical applications, including surgery.

The technique of arterial tonometry is also well known in the medical arts. According to the theory of arterial tonom-

etry, the pressure in a superficial artery with sufficient bony support, such as the radial artery, may be accurately recorded during an applanation sweep when the transmural pressure equals zero. The term "applanation" refers to the process of varying the pressure applied to the artery. An applanation sweep refers to a time period during which pressure over the artery is varied from overcompression to undercompression or vice versa. At the onset of a decreasing applanation sweep, the artery is overcompressed into a "dog bone" shape, so that pressure pulses are not recorded. At the end of the sweep, the artery is undercompressed, so that minimum amplitude pressure pulses are recorded. Within the sweep, it is assumed that an applanation occurs during which the arterial wall tension is parallel to the tonometer surface. Here, the arterial pressure is perpendicular to the surface and is the only stress detected by the tonometer sensor. At this pressure, it is assumed that the maximum peak-to-peak amplitude (the "maximum pulsatile") pressure obtained corresponds to zero transmural pressure. Note that other measures analogous to maximum pulsatile pressure, including maximum rate of change in pressure (i.e., maximum  $dp/dt$ ) can also be implemented.

One prior art device for implementing the tonometry technique includes a rigid array of miniature pressure transducers that is applied against the tissue overlying a peripheral artery, e.g., the radial artery. The transducers each directly sense the mechanical forces in the underlying subject tissue, and each is sized to cover only a fraction of the underlying artery. The array is urged against the tissue, to applanate the underlying artery and thereby cause beat-to-beat pressure variations within the artery to be coupled through the tissue to at least some of the transducers. An array of different transducers is used to ensure that at least one transducer is always over the artery, regardless of array position on the subject. This type of tonometer, however, is subject to several drawbacks. First, the array of discrete transducers generally is not anatomically compatible with the continuous contours of the subject's tissue overlying the artery being sensed. This can result in inaccuracies in the resulting transducer signals. In addition, in some cases, this incompatibility can cause tissue injury and nerve damage and can restrict blood flow to distal tissue.

Other prior art techniques have sought to more accurately place a single tonometric sensor laterally above the artery, thereby more completely coupling the sensor to the pressure variations within the artery. However, such systems may place the sensor at a location where it is geometrically "centered" but not optimally positioned for signal coupling, and further typically require comparatively frequent re-calibration or repositioning due to movement of the subject during measurement.

Tonometry systems are also commonly quite sensitive to the orientation of the pressure transducer on the subject being monitored. Specifically, such systems show a degradation in accuracy when the angular relationship between the transducer and the artery is varied from an "optimal" incidence angle. This is an important consideration, since no two measurements are likely to have the device placed or maintained at precisely the same angle with respect to the artery. Many of the foregoing approaches similarly suffer from not being able to maintain a constant angular relationship with the artery regardless of lateral position, due in many cases to positioning mechanisms which are not adapted to account for the anatomic features of the subject, such as curvature of the wrist surface.

Furthermore, compliance in various apparatus components (e.g., the strap and actuator assembly) and the lack of soft

padding surrounding the sensor which minimizes edge effects may adversely impact the accuracy of tonometric systems to a significant extent.

One very significant limitation of prior art tonometry approaches relates to the magnitude and location of the applied applanation pressure during varying conditions of patient motion, position, mean pressure changes, respiration, etc. Specifically, even when the optimum level of arterial compression at the optimal coupling location is initially achieved, there are commonly real-world or clinical factors beyond reasonable control that can introduce significant error into the measurement process, especially over extended periods of time. For example, the subject being monitored may voluntarily or involuntarily move, thereby altering (for at least a period of time) the physical relationship between the tonometric sensor and the subject's tissue/blood vessel. Similarly, bumping or jarring of the subject or the tonometric measurement apparatus can easily occur, thereby again altering the physical relationship between the sensor and subject. The simple effect of gravity can, under certain circumstances, cause the relative positions of the sensor and subject blood vessel to alter with time as well.

Furthermore, physiologic responses of the subject (including, for example, relaxation of the walls of the blood vessel due to anesthesia or pharmacological agents) can produce the need for changes in the applanation level (and sometimes even the lateral/proximal position of the sensor) in order to maintain optimal sensor coupling. Additionally, due to the compliance of surrounding tissue and possibly measurement system, the applanation level often needs to adjust with changes in mean arterial pressure.

Several approaches have heretofore been disclosed in attempts to address the foregoing limitations. In one prior art approach, an occlusive cuff is used to provide a basis for periodic calibration; if the measured pressure changes a "significant" amount or a determined time has elapsed, then the system performs a cuff calibration to assist in resetting the applanation position. Reliable pressure data is not displayed or otherwise available during these calibration periods. See for example U.S. Pat. No. 5,261,414 to Aung, et al issued Nov. 16, 1993 and entitled "Blood-Pressure Monitor Apparatus," assigned to Colin Corporation (hereinafter "Aung"). See also U.S. Pat. No. 6,322,516 issued Nov. 27, 2001 and entitled "Blood-Pressure Monitor Apparatus," also assigned to Colin Corporation, wherein an occlusive cuff is used as the basis for calibration of a plurality of light sensors.

In another prior art approach, a pressure cuff or a pelotte equipped with a plethysmographic gauge, such as an impedance or a photo-electric device, is used to drive a servo control loop. See, e.g., U.S. Pat. No. 4,869,261 to Penaz issued Sep. 26, 1989 and entitled "Automatic noninvasive blood pressure monitor," assigned to University J. E. Purkyne v Brne (hereinafter "Penaz"). In this device, the sensor is connected through at least one amplifier and a phase corrector to an electro-pressure transducer. All these components constitute the closed loop of a servo control system which (at least ostensibly) continuously changes the pressure in the cuff and attempts to maintain the volume of the artery at a value corresponding to zero tension across the arterial wall. The servo control system loop further includes a pressure vibration generator, the frequency of vibration being higher than that of the highest harmonic component of blood pressure wave. A correction circuit is also provided, the input of which is connected to the plethysmographic sensor and output of which is provided to correct the setpoint of the servo control system. The Penaz system therefore in effect constantly "servos" (within a cardiac cycle) to a fixed light signal level

received from the sensor. Unlike the Colin systems described above, the system continuously displays pressure to the operator. However, the operation of the plethysmographic sensor of Penaz limited the application of this device to a peripheral section of a limb (preferably a finger) where the peripheral pressure, especially under conditions of compromised peripheral circulation, may not accurately reflect aortic or brachial artery pressure. This presents a potentially significant cause of error.

Yet another prior art approach uses a series of varying pressure "sweeps" performed successively to attempt to identify the actual intra-arterial blood pressure. The applanation pressure applied during each of these sweeps is generally varied from a level of arterial undercompression to overcompression (or vice-versa), and the system analyzes the data obtained during each sweep to identify, e.g., the largest pressure waveform amplitude. See, e.g., U.S. Pat. No. 5,797,850 to Archibald, et al issued Aug. 25, 1998 and entitled "Method and apparatus for calculating blood pressure of an artery," assigned to Medwave, Inc. (hereinafter "Archibald"). The system of Archibald is not truly continuous, however, since the sweeps each require a finite period of time to complete and analyze. In practice the sweeps are repeated with minimal delay, one after another, throughout the operation of the device. During applanation mechanism resetting and subsequent sweep operations, the system is effectively "dead" to new data as it analyzes and displays the data obtained during a previous sweep period. This is clearly disadvantageous from the standpoint that significant portions of data are effectively lost, and the operator receives what amounts to only periodic indications of the subject's blood pressure (i.e., one new pressure beat display every 15-40 seconds).

Lastly, the techniques for non-invasive pressure measurement disclosed by the Assignee of the present invention in U.S. Pat. Nos. 6,228,034, 6,176,831, 5,964,711, and 5,848,970, each entitled "Apparatus and method for non-invasively monitoring a subject's arterial blood pressure" and incorporated herein by reference in their entirety, include modulation of applanation level at, inter alia, frequencies higher than the heart rate (e.g., sinusoidal perturbation at 25 Hz). While the foregoing methods are effective, Assignee has determined over time that it is desirable at certain circumstances to control the applanation level according to other modulation schemes and/or frequencies, and/or which are not regular or deterministic in nature. Furthermore, certain modulation schemes (e.g., intra-beat modulation) can place significant demands on the applanation hardware, since more rapid (and often precise) variations in applanation level must occur. Accordingly, the more capable hardware required in such applications ultimately raises the cost of the parent device in which it is used.

Based on the foregoing, there is needed an improved methodology and apparatus for accurately and continuously controlling the non-invasive measurement of parameters such as pressure. Such improved methodology and apparatus would ideally allow for, inter alia, continuous measurement (tonometrically or otherwise) of one or more hemodynamic parameters, the measured values of such parameters being reflective of true intra-arterial parameters, while also providing robustness and repeatability under varying environmental conditions including motion artifact and other noise. Such method and apparatus would also be easily utilized by both trained medical personnel and untrained individuals, thereby allowing subjects to accurately and reliably conduct self-monitoring if desired.

#### SUMMARY OF THE INVENTION

The present invention satisfies the aforementioned needs by improved methods and apparatus for non-invasively and

continuously controlling the measurement of parameters in a fluidic system, including arterial blood pressure within a living subject.

In a first aspect of the invention, an improved method of continuously measuring pressure from a compressible vessel is disclosed, the method generally comprising: disposing a pressure sensor in proximity to the vessel; identifying a substantially optimal level of compression for the vessel; achieving the substantially optimal level of compression; measuring pressure data from the vessel using the sensor; identifying non-optimal levels of compression; and adjusting applanation to maintain or reacquire the optimal level of compression. In one exemplary embodiment, the sensor is applied tonometrically, and the method of maintaining optimal level of compression comprises at least periodically perturbing the level of compression of the vessel during the act of measuring to produce an observable effect on the measured pressure data; and adjusting the level of compression based at least in part on the effect. In one exemplary embodiment, the vessel comprises a blood vessel, and the applied perturbations comprises pseudo-random binary sequences which are used to modulate the level of compression applied to the vessel over time. Effects on the sensed pressure are correlated to the modulation, and necessary corrections applied thereto.

In a second aspect of the invention, an improved apparatus for determining the blood pressure of a living subject is disclosed, the apparatus generally comprising: a tonometric pressure sensor device adapted for sensing the pressure at the skin surface of a living subject and generating pressure data relating thereto; and a processor adapted to run a computer program thereon, the computer program defining a plurality of operating states, the use of each of the operating states by the apparatus in determining blood pressure being related at least in part to the pressure data. In one exemplary embodiment, the computer program comprises three (3) distinct sub-processes relating to transient detection and compensation, servoing (or slower-rate changes to coupling), and reacquisition after loss of coupling, respectively. The first process in this exemplary embodiment employs four (4) distinct but related states which govern applanation and lateral/proximal positioning.

In a third aspect of the invention, a method of modulating tonometric blood pressure measurements is disclosed. The method generally comprises: providing a transducer adapted for determining pressure, the transducer being disposed proximate a blood vessel; and varying the level of compression applied to the blood vessel over time, the act of varying comprising modulating the level of compression. In an exemplary embodiment the modulation operates according to a modulation sequence, wherein the modulation sequence comprises a PRBS as previously described, although other random or deterministic sequences may be used.

In a fourth aspect of the invention, a method of correcting tonometric pressure measurements is disclosed, the method generally comprising providing a transducer adapted for determining pressure, the transducer disposed proximate to a blood vessel; varying the level of compression applied to the blood vessel over time; measuring pressure from the blood vessel using the transducer, and correcting the measured pressure based at least in part on the correlation between the acts of varying and measuring. In the exemplary embodiment, the aforementioned modulation sequence is used to generate effects within the sensed pressure waveform; these effects are correlated to the modulation sequence and corrections to the sensed pressure values generated based thereon.

In a fifth aspect of the invention, an improved apparatus for measuring the blood pressure within a blood vessel is dis-

closed. The apparatus generally comprises: a tonometric pressure sensor adapted for sensing the pressure at the skin surface of a living subject and generating an electrical, signal relating thereto; a signal converter adapted to convert the electrical signal to the digital domain; a digital processor in data communication with the converter; a computer program adapted to run on the digital processor, the program being further adapted to modulate the position of the tonometric sensor over time according to the aforementioned modulation sequence. In one exemplary embodiment, an applanation apparatus controlled by the computer program is coupled to the pressure sensor, and the level of applanation varied according to the modulation sequence. In another embodiment, the lateral and/or proximal position of the sensor is controlled using a comparable modulation scheme.

In a sixth aspect of the invention, an improved method of identifying changes in the coupling between a tonometric sensor and the tissue of a subject is disclosed, the method generally comprising: disposing the sensor in proximity to the tissue; measuring data from the tissue using the sensor; and identifying at least one change in a parameter associated with the coupling based at least in part on the measured data. In one exemplary embodiment, the measured parameters include pressure velocity and acceleration.

In a seventh aspect of the invention, a transient-resistant apparatus for determining the blood pressure of a living subject is disclosed. The apparatus generally comprises a tonometric pressure sensor adapted for sensing the pressure at the skin surface of a living subject and generating a waveform relating thereto; motive apparatus adapted to reposition the pressure sensor; a controller operatively coupled to the motive apparatus; and a processor in data communication with the sensor and operatively coupled with the controller, the processor adapted to run a computer program thereon, the computer program being configured to (i) establish an initial substantially optimal position of the sensor for at least one epoch; (ii) measure pressure data from the blood vessel using the sensor; (iii) detect the occurrence of a transient event by analyzing changes in the pressure data, the transient event altering the coupling between the blood vessel and sensor; (iv) initiate a sensor sweep via the controller and motive apparatus to identify a second substantially optimal sensor position based on the altered coupling; and (v) establish the second substantially optimal sensor position for at least one epoch.

In an eighth aspect of the invention, an improved method of identifying changes in the coupling between a tonometric pressure sensor and the tissue of a subject during a blood pressure measurement based on particular portions of the cardiac cycle is disclosed. The method generally comprises: disposing the sensor in proximity to the tissue; measuring pressure data from the tissue using the sensor; determining at least one parameter from the data; comparing the at least one parameter to a criterion, the criterion being determined at least in part by the portion of the cardiac cycle during which the pressure data was measured; and identifying a change in coupling based at least in part on the act of comparing. In one exemplary embodiment, the parameter comprises both pressure velocity and acceleration, and the criterion comprises threshold values for each relating to either the systolic (upstroke) or diastolic (downstroke) portions of the cardiac cycle.

In a ninth aspect of the invention, an improved method of maintaining an optimal or near-optimal level of compression (or alternatively, position) for a blood pressure measuring apparatus is disclosed. The method generally comprises using a correlation process to analyze curves existing in relation to

a “target”, the curves relating pressure as a function of a spatial position parameter. In one exemplary embodiment, the pressure comprises pulse pressure and/or diastolic pressure, and the spatial position parameter comprises motor position (e.g., applanation, lateral, or proximal drive motor). The method analyzes the slope of the curves by, inter alia, obtaining a first derivative (e.g.,  $d(\text{Pulse Pressure})/d(\text{Motor Position})$  and/or  $d(\text{Diastolic Pressure})/d(\text{Motor Position})$ ), and correlates these slope values to identify the optimal or near-optimal “target” position.

These and other features of the invention will become apparent from the following description of the invention, taken in conjunction with the accompanying drawings.

#### BRIEF DESCRIPTION OF THE DRAWINGS

FIG. 1 is a state diagram illustrating the relationship of the four states associated with a first exemplary embodiment of the first process of the present invention.

FIG. 1a is logical flow diagram illustrating the operation of the exemplary embodiment of the first process of FIG. 1.

FIG. 2 is logical flow diagram illustrating the operation of one exemplary embodiment of the second process (e.g., servoing or maintaining optimal applanation level) according to the invention.

FIG. 2a is a graph of pulse pressure versus diastolic pressure for an exemplary patient.

FIG. 2b is a graph of tonometric pressure versus time for the optimal arterial compression (applanation) of the patient of FIG. 2a.

FIG. 2c is a graph of tonometric pressure versus time for both optimal and non-optimal applanation level applied to the patient of FIG. 2a.

FIG. 2d is a graph of an exemplary embodiment of the modulation scheme according to the present invention, illustrating the PRBS modulation value versus applanation motor step number.

FIG. 2e is a graph of the tonometric pressure obtained from the patient of FIG. 2a with and without PRBS modulation applied to non-optimal applanation, illustrating the effects of PRBS modulation.

FIG. 2f is a graph of the corrected or restored tonometric pressure waveform after application of PRBS modulation to the non-optimal applanation profile.

FIG. 2g is a graph of an exemplary embodiment of the PRBS modulation of the invention (PRBS length=7), illustrating the correlation between modulation and corrected pulse pressure.

FIG. 2h is a graph of pressure versus beat number illustrating the correlation between the weighted zero mean values for exemplary pulse pressure and diastolic pressure, and PRBS modulation.

FIG. 2i is a graph of pressure versus phase delay for pulse pressure, diastolic pressure, and PRBS modulation according to one embodiment of the invention.

FIG. 3 is a logical flow diagram illustrating one exemplary embodiment of the method of determining the optimal initial modulation according to the present invention.

FIGS. 3a and 3b are graphs illustrating various aspects of the calculations supporting the methodology of FIG. 3.

FIG. 4a is a logical flow diagram illustrating the operation of one exemplary embodiment of the third process (e.g., reacquisition) according to the invention.

FIG. 4b is a logical flow diagram illustrating the operation of one exemplary embodiment of the third process (e.g., reacquisition) according to the invention.

FIG. 4c is logical flow diagram illustrating the operation of one exemplary embodiment of the third process (e.g., reacquisition) according to the invention.

FIG. 4d is a graphical illustration of an exemplary embodiment of the fourth (“sweep”) state entry criteria associated with the third process of the invention.

FIG. 5a is a block diagram of one exemplary embodiment of the apparatus for measuring hemodynamic parameters within the blood vessel of a living subject according to the invention.

FIG. 5b is a block diagram of one exemplary embodiment of the apparatus for measuring hemodynamic parameters within the blood vessel of a living subject according to the invention.

FIG. 5c is a block diagram of one exemplary embodiment of the apparatus for measuring hemodynamic parameters within the blood vessel of a living subject according to the invention.

FIG. 5d is a block diagram of one exemplary embodiment of the apparatus for measuring hemodynamic parameters within the blood vessel of a living subject according to the invention.

FIG. 6a is a logical flow diagram illustrating one exemplary embodiment of the method of providing treatment to a subject using the aforementioned methods.

FIG. 6b is a logical flow diagram illustrating one exemplary embodiment of the method of providing treatment to a subject using the aforementioned methods.

#### DETAILED DESCRIPTION OF THE INVENTION

Reference is now made to the drawings wherein like numerals refer to like parts throughout.

It is noted that while the invention is described herein primarily in terms of a method and apparatus for the control of non-invasive measurements of hemodynamic parameters such as blood pressure obtained via the radial artery (i.e., wrist) of a human subject, the invention may also be readily embodied or adapted to monitor such parameters at other blood vessels and locations on the human body, as well as monitoring these parameters on other warm-blooded species. Similarly, the techniques of the present invention can be applied to other similar fluidic systems which have similar properties to those of the circulatory system of a living being. All such adaptations and alternate embodiments are readily implemented by those of ordinary skill in the relevant arts, and are considered to fall within the scope of the claims appended hereto.

As used herein, the term “hemodynamic parameter” is meant to include parameters associated with the circulatory system of the subject, including for example pressure (e.g., diastolic, systolic, pulse, or mean pressure), derivatives or combinations thereof, arterial flow, arterial wall diameter (and its derivatives), cross sectional area of the artery, and arterial compliance.

Additionally, it is noted that the terms “tonometric,” “tonometer,” and “tonometry” as used herein are intended to broadly refer to non-invasive surface measurement of one or more hemodynamic parameters, such as by placing a sensor in communication with the surface of the skin, although contact with the skin need not be direct, and can be indirect (e.g., such as through a coupling medium or other interface).

The terms “applanate” and “applanation” as used herein refer to the compression (relative to a state of non-compression) of tissue, blood vessel(s), and other structures such as tendon or muscle of the subject’s physiology. Similarly, an applanation “sweep” refers to one or more periods of time

during which the applanation level is varied (either increasingly, decreasingly, or any combination thereof). Although generally used in the context of linear (constant velocity) position variations, the term “applanation” as used herein may conceivably take on any variety of other forms, including without limitation (i) a continuous non-linear (e.g., logarithmic) increasing or decreasing compression over time; (ii) a non-continuous or piece-wise continuous linear or on-linear compression; (iii) alternating compression and relaxation; (iv) sinusoidal or triangular waves functions; (v) random motion (such as a “random walk”; or (vi) a deterministic profile. All such forms are considered to be encompassed by the term.

As used herein, the term “epoch” refers to any increment of time, ranging in duration from the smallest measurable fraction of a second to more than one second.

As used herein, the terms “spatial” and “position”, although described in terms of a substantially Cartesian coordinate system having applanation (i.e., Z-axis), lateral (X-axis) and (Proximal refers to closer to the heart) longitudinal or (proximal-distal) (Y-axis) components, shall refer to any spatial coordinate system including, without, limitation, cylindrical, spherical, and polar. Such use of alternate coordinate systems may clearly be independent of any particular hardware configuration or geometry (e.g., by performing simple mathematical translations between a Cartesian-based apparatus and the non-Cartesian coordinate system), or alternatively make advantageous use of such geometries. The present invention is therefore in no way limited to certain coordinate systems of apparatus configurations. As one example, it will be recognized that the methods and apparatus of the present invention may be embodied using a cylindrical coordinate system modeled around the radial artery, such that a particular point in space for the tonometric sensor(s) can be specified by the Z, r, and  $\theta$  parameters. This approach may have advantages since the forearm/wrist area of the human being very roughly comprises a cylindrical form.

Lastly, the term “digital processor” is meant to include any integrated circuit or other electronic device (or collection of devices) capable of performing an operation on at least one instruction including, without limitation, reduced instruction set core (RISC) processors such as those manufactured by ARM Limited of Cambridge, UK, CISC microprocessors, microcontroller units (MCUs), CISC-based central processing units (CPUs), and digital signal processors (DSPs). The hardware of such devices may be integrated onto a single substrate (e.g., silicon “die”), or distributed among two or more substrates. Furthermore, various functional aspects of the processor may be implemented solely as software or firmware associated with the processor.

#### Overview

In one fundamental aspect, the present invention comprises methods and apparatus for controlling an applanation or other positioning mechanism used in non-invasive hemodynamic parameter measurements in order to, inter alia, maintain optimal coupling between a parameter sensor and the blood vessel of interest. Techniques for determining the optimal applanation level, position, and coupling are described in detail in, e.g., co-pending U.S. patent application Ser. No. 10/072,508 entitled “Method And Apparatus For Non-Invasively Measuring Hemodynamic Parameters Using Parametrics” filed Feb. 5, 2002, which is assigned to the Assignee hereof and incorporated by reference herein in its entirety.

While the techniques described in the aforementioned co-pending patent application have been determined by Assignee to be highly effective, their robustness and utility in practical (e.g., clinical) settings is enhanced through the addi-

tion of one or more of the various aspects of the present invention. Such additional robustness is highly desirable, since it effectively removes many operational restrictions on a clinician, caregiver, or user (hereinafter “operator”) when measuring hemodynamic parameters such as blood pressure. Specifically, the operator is substantially relieved of having to monitor the signal derived from the measurement apparatus to detect anomalies, motion artifact, and under certain circumstances will even identify to the operator when error conditions which cannot be corrected have in fact occurred.

After the applanation and lateral (and proximal, if desired) positions that provide the optimal mechanical coupling between the system sensor and the underlying blood vessel have been determined, the invention of the present disclosure is used to control and adjust the level of applanation and/or the lateral/proximal positions to maintain the optimal coupling under potentially adverse environmental conditions such as might be encountered in the average clinical setting. Due to the nature of the clinical setting and all of its variables, not every environmental condition or influence can always be compensated for, and hence the present invention has as another function the ability to identify conditions where changes in mechanical coupling have impacted the accuracy or reliability of hemodynamic measurements in a meaningful manner.

Three separate but substantially interactive processes are used in the present invention to provide the aforementioned control and identification functionalities: (i) a first process adapted to identify sudden changes in the mechanical coupling, as indicated for example by changes in the measured parameter (such as tonometrically measured pressure or pressure velocity) that exceed expected norms, and reacquire either/both the optimal applanation level or lateral/proximal positions where appropriate; (ii) a second process adapted to continuously identify time varying changes in compression coupling, and controllably adjust the applanation position accordingly (“servoing”); and (iii) a third process adapted to operate interactively with the first state and provide warning and protection against loss of optimal coupling in one or more domains, as well as performing a new determination(s) of optimal position in an optimized fashion.

The techniques and apparatus of the present invention may be used with a single sensor (or array of sensors) as described in detail herein and the aforementioned and incorporated co-pending application, or in conjunction with literally any type of other apparatus adapted for hemodynamic parameter measurement, including for example the devices described in co-pending U.S. patent application Ser. Nos. 09/815,982 entitled “Method and Apparatus for the Noninvasive Assessment of Hemodynamic Parameters Including Blood Vessel Location” filed Mar. 22, 2001, and 09/815,080 entitled “Method and Apparatus for Assessing Hemodynamic Parameters within the Circulatory System of a Living Subject” also filed Mar. 22, 2001, both of which are assigned to the assignee hereof and incorporated herein by reference in their entirety. For example, ultrasound measurements of blood pressure via blood flow kinetic energy or velocity can be used as a confirmatory technique for a fundamentally tonometric pressure-based approach. As another example, lateral positioning based on analysis of the acoustic signals relating to vessel wall detection may be used in addition to (or in place of) the pressure-based techniques described in the originally cited co-pending patent application. Hence, the various aspects of the present invention are advantageously compatible with a number of different hemodynamic assessment techniques. It will also be recognized that the techniques and apparatus described herein are in no way limited to tonometric applica-

tions; rather, these features may be implemented even in occlusive cuff or pelotot-based systems.

Since signals under measurement (e.g. pressure) are time variant, iteration and optimization are substantially used by the methodology of the present invention to account for this variation. Specifically, the pressure signal associated with a blood vessel is time variant over the short period of the cardiac cycle, over the longer period of the respiratory cycle, and potentially over the even longer or shorter period of hemodynamic changes resulting from varying drug concentrations and volume changes. Accordingly, the three processes referenced above utilize the aforementioned applanation and lateral/proximal positioning mechanisms to continually find and maintain the optimal position and level of applanation, thereby maintaining an environment conducive for accurate, continuous, and non-invasive parametric measurement. In those very limited circumstances where such optimal position and level cannot be reasonably or reliably maintained (such as an abrupt and jarring dislocation of the apparatus from the subject's anatomy), the present invention identifies such conditions accordingly, and optionally alerts the operator or provides other notification.

Table 1 below summarizes the functionality and features of one exemplary embodiment of the invention incorporating the three aforementioned processes.

TABLE 1

Feature	First Process	Second Process	Third Process
Detection Time	>5 Hz	All Frequencies	>20 Seconds
Frequency of Changes			
Recovery Method	Applanation Sweep	Continuous Adjustment	Applanation Sweep
Time to Recover	10-20 seconds (Largely Uncorrelated to Magnitude of error)	20-120 seconds (Correlated to Magnitude of error)	10-20 seconds (Largely Uncorrelated to Magnitude of error)
Lateral/Proximal Search	Possible	No	No
Pressure Display Continuous	No: Recovery Sweeps	Yes	No: Recovery Sweeps

Description of First Process

Referring now to FIG. 1-1a, a first exemplary embodiment of the method of identifying sudden changes in the mechanical coupling and reacquisition of either/both the optimal applanation level or lateral/proximal positions according to the invention is described in detail. A detailed discussion of the electronic and signal processing apparatus used to support the operation of the processes described herein is provided with respect to FIGS. 5a-5d below. It will be appreciated that while portions of the following discussion are cast in terms of applanation (and lateral/proximal positioning) motors of the stepper-type, the techniques of the present invention may be utilized in conjunction with other types of applanation and positioning apparatus, and accordingly are in no way limited to the specific embodiments of apparatus described herein.

It will also be recognized that while the first process is described subsequently herein with respect to a tonometric pressure transducer, the methodology of the invention can be applied more generally to other signal domains. For example, sudden changes in the mechanical coupling of an ultrasonic transducer to a subject's tissue can be identified using, inter alia, parameters which exceed physiological norms as indicia thereof or measurable distortion in the measurement pro-

cess. Sudden changes in mechanical coupling will alter the measurement of many parameters, both physiological in nature and otherwise.

Furthermore, it will be appreciated that while described in the context of the aforementioned apparatus (i.e., a tonometric pressure sensor which also acts to provide varying levels of compression of the underlying tissue and blood vessel(s)), the methodology of the present invention may be practiced using apparatus having separate components which provide these functions. For example, the control of the pressure sensor may be partly or completely decoupled from the applanation control system, such that the level of applanation can be varied independently from the coupling of the active surface(s) of the sensor.

The first process of the present embodiment continuously checks for (sudden) changes in the mechanical coupling between a tonometric pressure sensor and the underlying vessel/tissue. Sudden changes in mechanical coupling can be identified by corresponding sudden changes in tonometrically derived pressure PT (first or second derivative of pressure) that exceed physiologic norms. A velocity parameter, Vp[k], is calculated as in Eqn. 1:

$$P_T[k]-P_T[k-3] \tag{Eqn. 1}$$

where k represents the current sample, k-3 represents three samples in the past where the sample rate is 160 Hz. Tonometrically measured acceleration, Ap[k], is calculated as in Eqn. 2:

$$V_P[k]-V_P[k-1]=P_T[k]+P_T[k-4]-(P_T[k-1]+P_T[k-3]) \tag{Eqn. 2}$$

For each sample the pressure, velocity and acceleration are compared with fixed (or deterministic) thresholds. If any one of these parameters exceeds their respective thresholds, then a process "event" is triggered. Note that the pressure, velocity, and acceleration are typically greater during the systolic pressure upstroke than during the diastolic pressure downstroke, hence the thresholds of the present embodiment are set accordingly, providing effectively a "buffer" between physiologic norms and process event triggers. This buffer enhances system robustness, in that trigger events occurring at physiologic norms are avoided.

For example, the ranges of velocity and acceleration of a patient's blood pressure should fall within some limits around zero (generally not symmetric). Changes in mechanical coupling could also be observed as changes (velocity or acceleration) in tonometrically observed pressure. The first process 100 focuses on those changes in mechanical coupling that are both comparatively large and rapid, thus producing velocity or acceleration values that are not realizable from the patient's arterial pressure alone. The buffer of the present embodiment comprises that "cushion" between the range of measurable velocity and acceleration that is naturally occurring (from patient's arterial pressure) and the trigger threshold for the first process 100. It will be recognized, however, that such buffer or cushion may be at least partly obviated through use of one or more sensors that specifically measure changes in mechanical coupling, such as for example a pad sensor, which would allow the system to identify and possibly respond to smaller changes and/or lower frequency changes in mechanical coupling.

When sudden changes in mechanical coupling are detected, tonometric pressure data are compared for periods occurring before and after the process event. For instance, if the pulse pressure (defined for the present discussion as the difference between systolic and diastolic pressures) decreases from the maximum, or the mean pressure changes significantly, then a limited scope pressure sweep is imple-

mented to achieve the optimal applanation. If, despite this pressure sweep, a comparable pulse pressure is not achieved, then a reacquisition state (described in greater detail below) must be entered.

Note that in the present embodiment, the first process is active except in conditions where the system initialization, initial lateral search and applanation sweeps are being performed or when operating in the aforementioned reacquisition state. The second process is also active at the same time as the first process, except in conditions where the first process is performing the limited scope pressure sweep as previously described. It will also be noted that during the limited scope pressure sweep, the current value of  $P_T$  is not displayed. Excessive periods, where the current  $P_T$  is not available limits the clinical utility of the device, as previously described herein with respect to the prior art. Thus, the present invention minimizes the need for the limited scope pressure sweeps invoked by a process event, thereby improving the overall performance and continuity of the technique over prior art solutions.

The first process **100** of the present embodiment consists of **4** discrete but related states **102**, **103**, **104**, **105** as illustrated in FIG. **1**; (i) first state (“normal operation”) **102**; (ii) second state (“event”) **103**; (iii) third state (“recovery”) **104**; and (iv) fourth state (“sweep”) **105**. The impact of a process event on the servo control system (described in greater detail below with respect to FIGS. **2** and **5**), depends largely on the then-existing state. Each of these four process states **102-105** are now described in detail.

(i) First (Normal Operation) State—The first state **102** is the initial and default operating state. This state is entered when a sweep completes, or following the detection of a sudden change in mechanical coupling little change was observed between pre- and post-pressure data. If a process event occurs, then the most recent median filtered tonometric mean and pulse pressures are stored for future comparisons. A temporal parameter (e.g., Time\_of\_Last\_Event) is set to zero (units in seconds), and the process state is set to the second state (event). If no process event is detected, the first state (normal operation) is maintained. Note that in the present embodiment, the second process **200** (i.e., servoing, discussed below with respect to FIGS. **2-2i**) is active during this first normal operating state **102**.

(ii) Second (Event) State—The second or event state **104** indicates that one or more process events **106** has recently occurred, and the system is waiting for the perturbations relating to the event(s) to subside before entering the next state. If a process event occurs then, the temporal parameter (e.g., Time\_of\_Last\_Event) is reset. However, if a sufficient time (i.e., 2 seconds) has elapsed since the last event (as determined by the existing value Time\_of\_Last\_Event), then the beat counter (Beat\_Counter) value is initialized for comparisons, and the process is set to the third (recovery) state. The prescribed time delay of the present embodiment advantageously minimizes the risk of corrupted pressure data from being incorporated in the post-process event pressure data. As in the first state described above, the second process (servoing) is active during the second state **103**.

(iii) Third (Recovery) State—Entry into this third state **104** indicates that the recent process event has subsided, and the system is collecting new tonometric beat pressure data to compare with pre-perturbation data. Upon exit from the third state **104** and before entering the next state, if a process event occurs, then the Time\_of\_Last\_Event parameter is reset, and the process state is set to the second (event) state **103** per step **108**. Otherwise, if a new tonometric beat has been identified then, the system beat counter parameter (e.g., Beat\_Counter)

is incremented for comparisons, and new mean and pulse pressures are written to the storage device (FIGS. **5a-5d**) for subsequent comparisons.

Note that if the beat counter has reached a predetermined threshold value, then a comparison of the tonometric pulse and mean pressures stored both before and after the triggering process event is performed. If, upon performing this comparison, the mean pressure has changed beyond a predetermined threshold, or the pulse pressure has decreased substantially from pre- to post-event, then the state of the process **100** is set to the fourth (i.e., sweep) state **105**, the sweep initialization parameter (e.g., Initialize\_Sweep) is set to “true”, and the second process (servoing) is disabled. The motor position parameter (e.g., Motor\_Position) is accordingly set to a target motor position value. Target motor position in the illustrated exemplary embodiment is set to either 0 (fully retracted) or  $-50000$  (fully extend out toward the radial artery) where units are motor steps. Target motor position is set to 0 if the post-event mean pressure is greater than the pre-event mean pressure. Target motor position is set to  $-50000$  if the post-event mean pressure is less than the pre-event mean pressure. If the mean pressure has not increased beyond the threshold (and the pulse pressure has not decreased substantially between pre- and post-event), the state of the first process **100** is set to the normal operating (first) state **102** per step **110** of FIG. **1**.

If the beat counter has not reached its predetermined threshold, the first process **100** remains in the third (recovery) state **104**. As with the first and second states **102**, **103** described above, the second (servoing) process **200** remains, in the illustrated embodiment, active during the recovery state **104**.

(iv) Fourth (Sweep) State—Entry into this fourth state **105** indicates that the recent process event has caused a significant change in the tonometrically measured pulse pressure and/or mean pressure. In response, the system performs a limited scope pressure sweep to reset the optimal applanation level. Specifically, if the sweep initialization variable (Initialize\_Sweep) is set true, the initial search direction as determined for target motor position in (iii) above, and the applanation motor(s) are moved in the proper direction (ramp continuously in the present embodiment, although other profiles may be used). Additionally, the sweep pressure memory is initialized, and the “first pass” parameter flag (e.g., FirstPass\_Flag) is set to “true,”

If a new beat has been identified, then the process appends the tonometric pressure data associated with the new beat to that existing in the memory array and the Beat\_Counter value is incremented for comparisons. Specifically the data for each beat includes average applanation position, mean tonometrically measured pressure, systolic tonometric pressure, diastolic tonometric pressure, and tonometric pulse pressure (i.e., systolic minus diastolic), which are stored in parameter-specific one dimensional arrays within memory.

If the measured mean pressure has reached its minimum goal and current pulse pressure values (median filtered) are significantly less than maximum pulse pressures (median filtered) observed during the sweep, then additional analysis is performed. Specifically, if the maximum pulse occurred close to beginning of the applanation sweep, and the first pass flag (FirstPass\_Flag) equals “true” then the FirstPass\_Flag is set to “false”, and the applanation motor(s) are moved, e.g., to ramp continuously, in the direction opposite from the prior direction of travel. If the maximum pulse pressure did not occur near the beginning of the sweep, and if the maximum pulse pressure (median filtered) is a large percentage (e.g., 80% or greater in the present embodiment) of that occurring prior to the triggering event then the state of the process **100**

is set to the first state **102**, and servoing at the maximum pulse pressure is initialized. In the context of the present embodiment, the measured mean pressure reaching its “minimum goal” comprises the median filtered mean pressure at least reaching and searching beyond the pre event trigger mean pressure. Note that this requirement can be dependent on the direction of the search (i.e., whether extending or retracting the sensor); specifically, the median filtered mean pressure is greater than the pre-event trigger mean pressure for the sensor extension case, or less than the pre-event trigger mean pressure for the retraction case.

However, if the maximum pulse pressure occurs not near the beginning, and the maximum pressure value is not a large percentage of the prior occurring value, then the reacquisition process (the third process **400** discussed below with respect to FIGS. **4a**, **4b**, and **4c**) is entered, and the first process **100** is disabled.

It is also noted that second process **200** (FIG. **2**) is not active during the fourth state **105** of the first process **100**.

FIG. **1a** provides a detailed flow chart representation of the exemplary first process **100** of FIG. **1**.

It will further be recognized that the first process **100** may be applied to blood pressure measurements irrespective of the mechanism used to originally attain optimal applanation position. In this scenario, the first process operates effectively as if a large transient event had occurred, and uses the foregoing method (in conjunction with the third or reacquisition process **400** described below with respect to FIGS. **4a-4c**) to settle onto optimal positions for these parameters.

It will be recognized that as referenced above, the first process of the present invention need not operate using a “physiologic” parameter. One exemplary alternative approach of the present invention is to apply and accelerometer or force transducer of the type well known in the art on or contiguous with the sensor surface; i.e., not necessarily over the blood vessel of interest itself. Similarly, such accelerometer or transducer may be located on the apparatus coupling the sensor to the patient (e.g., wrist brace or strap), or alternatively on the shaft (not shown) between the actuating mechanism and the sensor/pad (or within the actuating mechanism itself). Since the first process of the present invention fundamentally detects rapid motion corresponding to potential mechanical coupling disruptions, literally any physical configuration and/or parameter which provides information relating to such motion and disruptions may be used consistent with the invention. As yet another alternative embodiment, an optical sensor of the type well known in the electronic arts may be positioned near the skin and accordingly used as the mechanism to detect sudden changes in sensor/patient relative position.

It can be appreciated that the use of the tonometric pressure sensor as the basis for measurement of the physical parameter (as described in detail above with respect to the exemplary embodiment) provides the benefits of both simplicity and reduced cost by eliminating the need for an added sensor or added complexity of the actuating mechanisms. However, certain benefits relating to the decoupling of the parameter signal from the arterial pressure signal (as compared to the use of the tonometric pressure signal as described above) may be realized through use of one of the alternate embodiments set forth above. For example, use of a non-hemodynamic parameter allows for the separation of mechanical coupling changes from the physiologic signal, since no (or at least minimal) physiologic content exists in the measurements obtained in this fashion. Furthermore, the use of non-physiologic parameter (e.g., pad force or pressure as measured by the force on the applanation motor shaft as described above)

allows the use of a much smaller buffer zone, since there is effectively no overlap in the frequency and amplitude of the pressure signal as measured by the pad relative to the pressure changes induced by disruptions in mechanical coupling.

#### Description of Second Process

Referring now to FIGS. **2-2i**, one exemplary embodiment of the method of identifying changes in the compression coupling and readjustment of the applanation level back to optimal (i.e., “second process”) according to the invention is described in detail. It will be appreciated that while the following discussion of the exemplary embodiment is cast primarily in terms of the adjustment of the tonometric applanation level (i.e., level of compression), the techniques of the present aspect of the invention may be equally applied to the other spatial domains associated with the tonometric measurement environment; e.g., lateral position and proximal position. Such applications may be coupled to that associated with the applanation domain, or alternatively be entirely independent.

It will also be appreciated that while the following discussion is cast in terms of an exemplary embodiment utilizing Pseudo Random Binary Sequences (PRBS) generally complying with a structured sequence of the form  $(2^n - 1)$ , other white noise, random/pseudo-random, or pseudo-noise (PN) processes may be substituted with success, and hence the following discussion is merely illustrative of the broader principles of the invention. For example, as one alternative, a pseudo-random generation algorithm of the type well known in the communications arts (such as that used for example in generating FHSS hop or CDMA pn “long code” sequences) is seeded with a given initial seed value and generates a pseudo-random sequence, the latter used to modulate the applanation level in the present invention. Other perturbations or sequences (any movement surrounding the optimal applanation position including for example sinusoidal perturbations) may also be substituted consistent with the present invention; however, the methods described with respect to the exemplary embodiment above have inherently good signal-to-noise ratio (SNR) across the frequency band of interest.

FIG. **2** shows a logical flow diagram of the exemplary embodiment of the second process **200**. The process **200** generally comprises first providing a transducer adapted for determining pressure (step **202**). The transducer is disposed proximate to the blood vessel of interest (step **204**), in order to provide coupling of pressure signals from the blood vessel wall through the tissue and to the active surface(s) of the sensor. Note that an intermediary coupling agent (such as a gel) may be used if desired. Next, an optimal or near-optimal state of vessel compression is achieved per step **206**. It will be recognized that such compression may be applied via the pressure transducer itself, or alternatively via another mechanism (such as a contact pad). The optimized level of compression can be determined using, inter alia, the methods of the aforementioned co-pending U.S. patent application Ser. No. 10/072,508 filed Feb. 5, 2002. The level of compression applied to the blood vessel is next varied, over time (step **208**). In the illustrated embodiment, the act of varying the level of compression per step **208** comprises modulating the level of compression in comparatively small magnitude “perturbations” according to a modulation sequence having particular desirable properties, although other schemes (e.g., non-sequential) may be used. The effects of the modulation on the observed pressure values (e.g., pulse pressure, diastolic, etc.) are then observed per step **210**, and corrections in the level of compression applied to the blood vessel made per step **212** based on the observed effects of the modulation sequence.

It will be appreciated that the second process 200 (and associated apparatus) need not measure the applied pressure or compression, such as via a force sensor or the pressure transducer). Rather, the present embodiment is largely effects-based in that applanation level (compression) can be adjusted based simply on the observed effects of the modulation. Hence, the applanation mechanism can advantageously be made “dumb”, thereby simplifying the mechanism as well as other aspects of the system. However, if explicit monitoring of the applied force or compression is desired, such intelligence can be utilized in conjunction with the invention as well.

As previously discussed, one clinical objective of the second process 200 is to maintain the tonometrically observed mean pressure within a given value (e.g.,  $\pm 10$  mmHg) of the optimum tonometric pressure, which produces maximum pulse pressure. During the second process 200, both the patient's arterial pressure and the mechanical coupling between the tonometric transducer and the underlying artery can change. Either type of change introduces a variation in the tonometrically observed pressure. Hence, the present invention seeks to differentiate between physiologically-induced changes (e.g., those stemming from the patient's physiology, such as for example due to the introduction of pharmacological agents), and mechanical coupling changes in the tonometrically observed pressure. It also seeks to constantly correct for the second type of change (i.e., change in the mechanical coupling).

Sudden changes in the mechanical coupling between the tonometric pressure transducer and the artery (i.e. acceleration or “bumping” of the transducer or the wrist) can be detected by several techniques, as previously described herein with respect to FIGS. 1, as well as that of FIGS. 4a-4d described below. Slower changes in the mechanical coupling must be detected and corrected by other means.

One method of detecting and correcting slower changes in mechanical coupling involves perturbing the system by modulating the compression of the artery and observing the resultant changes in tonometrically measured pulse pressure. The method and degree of perturbation should be optimized in accordance with the overall clinical objectives.

Accordingly, the Assignee hereof has developed exemplary clinical objectives for use in accordance with the exemplary process 200 described herein. It will be recognized that these objectives are merely illustrative, and may be adapted and modified as needed to particular clinical environments or desired levels of performance and accuracy.

(i) Display disruption—First, the disruption of the system pressure display by the induced perturbation should be minimized. Noticeable discontinuities in the pressure display and delays in transfer of the pressure signal to the patient monitor (e.g., based on a predetermined criterion such as delays of 0.1 seconds or greater) are unacceptable.

(ii) Responsiveness—The tonometrically observed pressure from 20 mmHg of optimum T-Line pressure to within 10 mmHg occurs in accordance with a given period of time (e.g., 1 minute). From a clinical perspective, excursions beyond roughly 10-15 mmHg in mean tonometrically measured pressure from the actual intra-vascular pressure (such as A-Line pressure) for extended periods, e.g., longer than 1-2 minutes, are often clinically undesirable. Although measurement error can occur, as reflected by prevailing FDA requirements for cuff accuracy ( $\pm 5$  mmHg mean error with a standard deviation of 8 mmHg), more frequent and longer duration divergences between tonometrically sensed pressure and true intravascular pressure reduce the clinical desirability of a device. Thus, a clinically useful system should operate such

that it responds with reasonable speed and accuracy to changes in mechanical coupling.

(iii) Device Limitations—Limitations exist relating to the motion of the applanation motor of the system. These limitations include for example limits in the applied electrical power and resulting output (mechanical) power and torque, the control of wear over time (i.e., motor longevity), and limits in the motor velocity and acceleration which preclude instantaneous (i.e. step) changes in applanation. From bench data obtained by Assignee, diastolic pressure in representative patients changes on average 7 mmHg per 1000 motor steps (within the range of 4-10 mmHg per 1000 motor steps) at an applanation level near optimum. Furthermore, pulse pressure changes for the same individuals an average of 8 mmHg per 1000 motor steps (ranging from 4-14 mmHg per 1000 motor steps). One exemplary actuator and motor scheme utilized by the Assignee hereof suggests a maximum rate of about 1000 motor steps per second. Changes in actuator design to alleviate some of these limitations are not considered. Hence, it can be inferred that maximum rates of diastolic and pulse pressure change of about 7 mmHg/sec and 8 mmHg/sec, respectively, can be achieved with the aforementioned exemplary apparatus.

(iv) Variations in Pulse Pressure—The patient's pulse pressure is time variant. As is well documented in the literature, arrhythmias can produce cyclical changes in pulse pressure (i.e. pulsus alternans, wherein a succession of high and low pulses exist in such a manner that a low pulse follows regularly a high pulse, and this low pulse is separated from the following high pulse by a shorter pause than that between it and the preceding high pulse.) See, e.g., “*Apparent Bigeminy and Pulsus Alterans in Intermittent Left Bundle-Branch Block*”, Laszlo Littmann, M.D., and Jeffrey R. Goldberg, M.D., Departments of Internal Medicine and Family Practice, Carolinas Medical Center, Charlotte, N.C., USA, which is incorporated by reference herein. It is well documented that patient respiration can produce sizeable changes in pulse pressure as well. Hence, a perturbation and servo-control system would ideally be largely if not completely insensitive to cyclical and random fluctuations in arterial pulse pressure.

In addition to the foregoing objectives and limitations, the properties of the tonometric measuring and control system must be determined. It is well known that the insertion of so-called “white noise” into a system is a useful means of identifying properties associated with that system. In the present context, the introduction of such white noise generates a pattern which effectively cannot be produced by the patient physiology. The inputs to the system include applanation motor position, and the “system” is the tonometrically obtained pulse pressure as a function of applanation level. Cross-correlating the changes in applanation position induced by the white noise with the resultant observed pulse pressure produces a relationship between the applanation motor position and pulse pressure. This relationship is advantageously quite robust in the presence of random or periodic fluctuations in pulse pressure, due largely to the insertion of the white noise.

However, several considerations exist with respect to the practical implementation of white noise modulation of applanation motor position in the present invention. First, true “white noise” assumes a normal or Gaussian distribution of motor position. Such normal distributions can contain very large excursions from the mean albeit with increasingly less frequency (theoretically not bounded), whereas in contrast the motor position in the physical implementation of the present invention is bounded.

Second, the time to travel from one position limit to the other (if such travel is needed) is significant, as previously discussed with respect to maximum motor rate. Instantaneous changes in applanation mechanism position are therefore not possible.

Third, white noise identification theoretically requires an infinite period time for convergence, even approximations of which are not practical in the clinical setting. Ideally, a useful clinical device would employ control systems which would converge in a very short period of time, thereby enhancing the continuity of the tonometric pressure measurement.

As is known in the mathematical arts, Pseudo Random Binary Sequences (PRBS) are a defined sequence of inputs (+/-1) that possess correlative properties similar to white noise, but converge in within a give time period. In addition, the inputs can be specified (and thereby optimized) to produce more effective signal-to-noise ratio (SNR) within the constraints of the system. One common type of PRBS sequence generator uses an n-bit shift register with a feedback structure containing modulo-2 adders (i.e. XOR gates) and connected to appropriate taps on the shift register. The generator generates a maximal length binary sequence of length  $(2^n - 1)$ . The maximal length (or "m-sequence") has nearly random properties that are particularly useful in the present invention, and is classed as a pseudo-noise (PN) sequence. Properties of m-sequences commonly include:

- (a) "Balance" Property—For each period of the sequence, the number of '1's and '0's differ by at most one. For example in a 63 bit sequence, there are 32 '1's and 31 '0's.
- (b) "Run Proportionality" Property—In the sequences of '1's and of '0's in each period, one half the runs of each kind are of length one, one quarter are of length two, one eighth are of length three, and so forth.
- (c) "Shift and add" Property—The modulo-2 sum of an m-sequence and any cyclic shift of the same sequence results in a third cyclic shift of the same sequence.
- (d) "Correlation" Property—When a full period of the sequence is compared in term-by-term fashion with any cyclic shift of itself, the number differences is equal to the number of similarities plus one (1).
- (e) "Spectral" Properties—The m-sequence is periodic, and therefore the spectrum consists of a sequence of equally-spaced harmonics where the spacing is the reciprocal of the period. With the exception of the de harmonic, the magnitude of the harmonics are equal. Aside from the spectral lines, the frequency spectrum of a maximum length sequence is similar to that of a random sequence.

Accordingly, detecting and correcting slower-rate changes in mechanical coupling as previously described can be accomplished by applying PRBS modulation of the applanation position, and observing the resultant changes in tonometrically observed pulse pressure. In one exemplary embodiment of the present invention, the physical implementation of such a system contains three interactive "components": (i) a modulator; (ii) a signal restoration entity; and (iii) an identification/servo control entity. It will be recognized by those of ordinary skill that the term "entity" as used herein relates to any number of a wide variety of implementations, ranging from a corporeal entity (e.g., electronics and associated integrated circuits) to a completely virtual or intangible one (e.g., one manifest in the form of algorithms, routines, or software objects or components resident across the various hardware environments of a system).

The following exemplary description illustrates the operation of the aforementioned multi-component system according to one embodiment of the invention.

Referring now to FIGS. 2a-2c, the characteristics and response of an exemplary patient are described. As shown in FIG. 2a, the patient exhibits a given pulse pressure versus diastolic pressure relationship 230. The maximum pulse pressure 232 (e.g., 42 mmHg in the illustrated example) occurs at a diastolic pressure of about 75 mmHg 234.

Furthermore, it is assumed for purposes of illustration that the applanation motor is held at a constant position (at the point of optimal compression corresponding to maximal pulse pressure), and that the patient has a time-invariant arterial pressure with a heart rate of 60 bpm with the shape 236 shown in FIG. 2b. If the patient's artery is not sufficiently compressed, a lower diastolic pressure 237 (e.g., diastolic pressure=67 mmHg in this example) will result, as indicated by the "sub-optimal" waveform 238 of FIG. 2c. Note that the pulse pressure (systolic minus diastolic) at a tonometrically measured diastolic pressure of 67 mmHg is only approximately 36 mmHg. Under this condition, the system must identify the fact that the artery is under-compressed and adjust the applanation level appropriately over time.

Referring now to FIGS. 2d-2e, the modulation entity of the servo process 200 of the invention is described in the context of the foregoing example. The modulator of the present embodiment introduces changes in artery compression (applanation position) over a limited range around the "optimal" operating point. These changes are in the present embodiment synchronized with the downward slope of the arterial pressure waveform, this downward slope being associated with diastolic relaxation of the heart. Other synchronizations (or even lack of synchronization) may be used if desired, however. The modulations induced by the modulation entity ramp the applanation mechanism position from one extreme to an equal and opposite extreme (e.g., 400 motor steps in the present embodiment) around the operating point over a brief period (e.g., 0.5 seconds), although other profiles (symmetric or non-symmetric) and durations may be substituted if desired. The decision to move from one extreme to another is controlled in this embodiment by a Pseudo Random Binary Sequence (PRBS) of the type previously described. This modulation scheme produces changes in pressure offset, and may produce highly correlated changes in pulse pressure.

In the illustrated embodiment, a PRBS sequence of length=7 is implemented (i.e., 1, 1, 1, -1, -1, 1, -1) to modulate the pressure waveform as shown in FIG. 2d. Note that for the clinical application, the respiratory period of the patient, and its corresponding cyclical fluctuations in pulse pressure, approximates the repetition period of the PRBS of length 7. Hence, clinical embodiments of the application incorporate a PRBS of appropriate length such as length=15 (i.e., 1, 1, -1, 1, -1, 1, 1, 1, -1, -1, -1, 1, -1, -1) or length 31 (i.e., 1, 1, 1, 1, -1, 1, 1, -1, -1, 1, 1, 1, -1, -1, -1, 1, 1, -1, 1, -1, 1, -1, 1, -1, -1, 1, -1, -1, -1, 1, -1, 1) Specifically, the PRBS sequence repeats every 7, 15, 31 beats if one does not allow for transition beats, and in the exemplary case 11, 22, or 47 beats respectively allowing for transition beats. Any noise source that repeats in the same time base (sinusoidal noise frequency) will have a greater impact on system performance than noise sources with other frequency content. Respiration period occurs in the range of 5-7 seconds; hence, during this period, anywhere from 4-14 heartbeats could be observed. Thus, a PRES sequence of length 7 with an effective length 11 when transition beats are included falls directly within the respiration period. The longer sequences do not have that problem. Conversely, however, the noise rejection properties

require a complete cycle of data for proper function. Hence, control using sequences that are excessively long are prone to sluggish control, thereby detracting from system performance.

FIG. 2e depicts the practical implementation of PRBS changes in appplanation level. Practical mechanical considerations relating to the appplanation motor preclude step changes in appplanation level of sufficient magnitude to produce a significant change (e.g., 6 mmHg) in observed tonometric pressure. Thus, for the present embodiment, the appplanation position is ramped over a period of time (e.g., 0.5 seconds), as shown in the PRBS portion 239 of FIG. 2e. Since no guarantee exists that the ramp will complete by the end of the beat, a variable delay in the PRBS, which is a function of heart rate and number of motor steps traveled, is included within each transition period without loss of the correlative properties. Typically this delay is 1 heart beat but at high heart rates could extend to two and possibly more beats. It is noted that the PRBS portion 239 of FIG. 2e is dimensionless. In effect, two classes of beats are created in the present implementation; "measurement" beats and "transition" beats. When the motor is moved, transition beats are added (e.g., for a length=15 sequence, 7 or 8 transition beats are added).

Referring now to FIGS. 2e and 2f, the signal restoration entity of the invention is described in detail. As shown above, the modulation entity will introduce changes in the measured pressure waveform. These changes in the pressure waveform may be disruptive to the clinician under certain circumstances. Note that the PRBS-modulated pressure waveform 240 of FIG. 2e varies significantly around the tonometric pressure 242 that would otherwise be observed if the PRBS or other modulation was not active. Hence, the signal restoration entity must anticipate the changes in the observed tonometric pressure waveform introduced by the modulation entity, and (mathematically or otherwise) restore the modulated waveform to a shape that is clinically equivalent to the un-modulated tonometric waveform.

Specifically, by implementing a linear ramp during the period when the modulation is active, the original un-modulated waveform can be restored. This process assumes the amount of change that is observed by the modulation is not large (e.g., <roughly 6 mmHg in the illustrated embodiment) and is adaptively identified (i.e., the cross-correlation of the PRBS modulation sequence and diastolic pressure from which the average diastolic pressure has been removed can be used to provide an estimate of the expected change in pressure produced by the modulation).

Note that the foregoing process in essence adds or subtracts a pressure correction offset to the measured pressure. When the modulation entails extension of the sensor from the mechanism (in the exemplary embodiment), the pressure offset correction is subtracted from the measured pressure data, and vice-versa. The value (units in mmHg) of the offset correction can not be directly determined unless compared with a source of true intravascular pressure (e.g., A-Line, thus defeating the purpose of the tonometric sensor), but it can be estimated by evaluating the change in diastolic, systolic, mean, pulse, or similar pressure values correlated to the change in motor position. Thus, for example, the cross-correlation between the PRBS and the diastolic pressures (mean pressure removed) can be used to estimate the offset correction. This estimate can be updated with each new beat producing a continuous estimate of the offset correction. Note that during appplanation motor ramping, the offset correction of the exemplary embodiment also ramps from one extreme to the other. Additionally, it will be recognized that the amount of modulation (e.g., number of motor steps in the

illustrated embodiment) can be adjusted to produce the desired amount of pressure change. In the present embodiment, the modulation level is continuously adjusted to achieve 5 mmHg peak-to-peak excursion subject to a limit; i.e., provided that the peak-to-peak excursion is limited to between 50 and 800 motor steps. Other modulation schemes and limits can be used consistent with the invention, however.

Note that lead/lag relating to the assumed start of the motor movement (as opposed to the actual start of movement), and the introduced changes in pressure, can lead to small artifacts or "bumps" in the pressure waveform display; however, these are often imperceptible to the operator, and advantageously no points of discontinuity exist in the display, unlike prior art systems.

Errors between the actual and predicted pressure change (i.e., those predicted by the signal restoration entity relating to the applied modulation) are exhibited as small jitter synchronized with the PRBS in the diastolic pressure display. FIG. 2f depicts the "restored" waveform 242; i.e., the waveform(s) of FIG. 2e after correction by the restoration entity. Note that the error produced by the linear ramp approximation is small compared to both (i) the pulse pressure, and (ii) pixel resolution of the monitor. Thus, the process of restoring a clinically equivalent waveform is readily achieved using the techniques described herein.

Referring now to FIGS. 2g-2i, the identification/servo control (ISC) entity of the present embodiment is described.

As shown in FIG. 2f, the corrected ("restored") pulse pressure values associated with points on the restored waveform 242 fluctuate around corresponding ones of the nominal, non-modulated sub-optimal appplanation waveform 238. Further, it will be recognized that these fluctuations, albeit comparatively small in magnitude, generally correlate with the modulation in appplanation level, as illustrated by FIG. 2g.

The ISC entity of the present embodiment takes advantage of the correlative properties of white noise. As shown in FIG. 2g, an auto-correlation of the PRBS modulation is performed. The auto-correlation of the PRBS signal has a gain equal to the PRBS length (e.g., 7) for zero phase delay, and negative unity gain for other phase delays until the PRBS repeats. The PRBS modulation, time synchronized tonometrically measured pulse pressure, and un-corrected diastolic pressures for the preceding example are displayed in Table 2. Note that the PRBS values labeled "T" indicate transition beats where the appplanation motors are still in the process of ramping from one position to the next. These beats are removed from the subsequent cross-correlation without loss of the correlative properties of the PRBS.

TABLE 2

Beat	PRBS	Pulse Pressure	Un-Corrected Diastolic Pressure
1	1	38	70
2	1	38	70
3	1	38	70
4	T	35	66
5	-1	34	64
6	-1	34	64
7	T	37	68
8	1	38	70
9	T	35	66
10	-1	34	64
11	T	37	68
12	1	38	70
13	1	38	70

FIG. 2h illustrates the weighted zero-mean values for pulse pressure and diastolic pressure (after removing the "transi-

tion" (T) beats) for the first 7 beats, and synchronized to the PRBS modulation. It will be noted that the pulse pressure values **250** and diastolic pressure values **252** are well correlated with the PRBS modulation of applanation level **254**.

Performing the cross-correlation between the PRBS modulation of applanation and the pulse and diastolic pressures produces a large signal at phase delay=0, as shown in FIG. 2i. For diastolic pressure, the change induced by the modulation equals 21 mmHg divided by the PRBS length=21/7=3 mmHg. This means that the modulation process (extending the sensor out from operating point "0" during the modulation) caused a 3 mmHg increase in diastolic pressure. The total excursion (from PRBS="−1" to PRBS="1" thus equals 6 mmHg (70 mmHg−64 mmHg) using the table above. Similarly, the modulation-induced change in pulse pressure as shown in FIG. 2i equals 14/7 or 2 mmHg. Thus, the system recognizes that increasing compression (applanation) will increase the observed pulse pressure. Subsequently, the control system can change the operating point (applanation motor position around which PRBS modulation operates) appropriately to maintain optimal coupling. Using this approach, the control system can accurately track on a beat-by-beat basis the motor position corresponding to the applanation level that produces maximum pulse pressure.

A circular buffer arrangement is used in the exemplary embodiment of the apparatus implementing the foregoing technique; this advantageously allows the calculation to be updated once per beat. It will be recognized, however, that other arrangements may be used to implement the desired functionality.

It will also be recognized that the techniques described above with respect to the second process may be equally applied to the other domains of spatial variation; i.e., the lateral and/or proximal search algorithms with proper selection of random/pseudo-random sequence (e.g., PRBS) parameters, thereby providing continuous tracking in the selected direction(s) as well as in the application domain. Such application and selection are readily implemented by those of ordinary skill given the present disclosure, and accordingly are not described further herein.

Based on observations and testing performed by the Assignee hereof, the performance of the present invention may be further enhanced under certain circumstances by the inclusion of one or more optional control and signal processing features; use of these features can enable the system to respond more quickly to an event by, inter alia, mitigating control overshoot and/or eliminating unwanted noise and other artifacts from the processed signals(s). These features include: (i) Hampel filtering of pulse and diastolic pressures; (ii) the addition of a proportional component to the control (servo) loop; (iii) the adjustment of integral control of the servo loop through estimation of the SNR; (v) increasing the precision of the diastolic cross-correlation; (vi) control of the initial settings for the diastolic pressure cross-correlation arrays; (vii) adjusting the integral gain based on the average pulse pressure; and (viii) correcting for BMI or other scaling artifact. Each of the foregoing features are now described in detail.

(i) Hampel Filter for Pulse and Diastolic Pressures—Improperly detected beats, noise, and cardiac arrhythmias can introduce large one-time changes in pulse pressure measurements that are not reflective of the applanation state of the patient. In the context of the second process **200** described above, these beats can potentially disrupt the feedback control. One exemplary method of removing most of these beats comprises independently applying a Hampel filter of the type well known in the signal processing arts to each of the positive

PRBS pulse pressure and negative PRBS pulse pressure values in the respective arrays. The Hampel filter is advantageously employed as opposed to other filtering techniques including low pass filters or median filters which increase the time lag in the servo control loop.

(ii) Addition of Proportional Component to Servo Loop Integral Control—The PRBS-based algorithm described above operates generally as a sophisticated block filter with a lag equal to ½ of the PRBS length. In the second process **200**, transition beats (PRBS length/2) are added to the computation, thereby creating a lag (e.g., 11.25 beats in the above example) from a change in coupling to its full impact to its identification through the cross-correlation with the PRBS and subsequent servo control. This lag can produce an overshoot in the integral servo control system when recovering from a manually introduced step change in artery compression (such as may be experienced when the NIBP measurement apparatus is jarred), and the integral gain is set too large. Adding a proportional component to the servo control algorithm and returning the integral control gain advantageously reduces the magnitude of this overshoot. Since the servo control system operates based on changes in the "target" applanation level, a proportional control component may take the form of Eqn. 4 below:

$$M_{TP}(t) = K_P * (X_{corr}[t] - X_{corr}[t-k]) \quad (\text{Eqn. 4})$$

where  $M_{TP}(t)$  is the new target applanation motor position,  $X_{corr}$  is the 0<sup>th</sup> delay of the cross-correlation of the PRBS and zero mean pulse pressures,  $t$  is the current pulse, and  $k$  is the number of beats past. In one exemplary embodiment, values of ( $k=3$ ) and  $K_P=1 \times (\text{integral gain})$  are utilized.

(iii) Integral Control of the Servo Loop by Estimating SNR—The non-zero terms of the aforementioned cross-correlation provide some indication of the noise potentially present in the pulse pressure estimates. Adding a "governor" to the servo control system which is triggered upon attaining one or more predetermined criteria; e.g., when the non-zero terms (average absolute or maximum absolute) are a percentage of the 0<sup>th</sup> term, can decrease the sensitivity of the system to such noise. For example, a manually introduced step change in artery compression can introduce a large change in the operating state (see discussion of the first process **100** above), which can drive the initial recovery from the event in the wrong direction until the aforementioned identification lag is overcome. Meanwhile, the non-zero elements of the cross correlation also become large until the lag is also overcome. The governor mechanism described herein mitigates the effects of these non-zero elements during the lag period.

(iv) Improved Precision on Diastolic Cross-Correlation—As described above with respect to the "nominal" embodiment of the present invention, cross-correlations are performed between the diastolic pressure and the PRBS component. The accuracy of these cross-correlation calculations may be increased by using the time varying signed modulation signal as the basis of the cross-correlation, rather than the PRBS as previously described. When the signed modulation signal is implemented, the cross-correlation value is divided by the average absolute modulation signal for the period under consideration; otherwise, the servo adjustment to subsequent modulation counts and operating applanation position may be adversely impacted.

(v) Control of Initial Settings for Diastolic Pressure Cross-Correlation Arrays—To provide an initially reactive system and to speed initial convergence, the nominal system is initialized to provide comparatively large modulations. On some patients, however, the modulation (measured in the present context in terms of "motor delta" which is defined as the

estimated absolute change in applanation motor position in steps required to change end diastolic pressure by a predetermined quantity such as 2.5 mmHg) is initially excessive; e.g., up to 8 or 10 times the number of motor steps otherwise required. If motor delta is set too large, then the applanation motor will initially move much farther than necessary/desired during PRBS, and the patient's diastolic pressure will change much greater than anticipated. Waveform reconstruction will not sufficiently compensate for changes in diastolic pressure, thus shifts or oscillations in diastolic pressure will be noticeable on the pressure display, which is undesirable. Nonetheless, the large motor delta will aid in the rapid convergence to the applanation position corresponding to maximum pulse pressure. On the contrary, if the motor delta is set too small, then applanation will not sufficiently excite the system, thus slowing convergence to the applanation position corresponding to maximum pulse pressure. Meanwhile, the restoration process will overcompensate for the change in diastolic pressure with PRBS modulation, and produce noticeable shifting in the displayed pressure.

To address this issue, the initial modulation level can be controlled, such that a predetermined maximum number of steps (e.g., 150) are utilized, or alternatively by applying a more sophisticated technique of determining the optimal initial modulation as illustrated in FIGS. 3-3b. Specifically, the initial applanation pressure sweep provides sufficient data to estimate the necessary motor delta to change diastolic pressure by a predetermined amount (e.g., 2.5 mmHg). The sweep data is first obtained (step 302 of FIG. 3), and is used to generate the array of diastolic pressure data values, aiDiastoleP[ ], and the array of applanation position, alAppPos[ ], for all the beats in the sweep (step 304). At the end of the applanation sweep process, the beat which provided the maximum pulse pressure is identified as iSysPointer (step 306).

In one exemplary embodiment of the method 300, outlying or abhorrent values are first removed from alAppPos[ ] and aiDiastoleP[ ] via a Hampel filter of the type well known in the art, using for example a 3- or 4-standard deviations (a) outlier test or comparable mechanism (step 308). Other filter types can also be substituted, as will be appreciated by those of ordinary skill.

Next, in step 310, those beats whose diastolic pressure ranges from that associated with the optimum beat minus a predetermined value (e.g., -10 mmHg) to that corresponding to optimum beat plus the predetermined value (+10 mmHg) is determined.

The slope of the diastolic pressure/applanation position curve (in units of mmHg per motor step in the present embodiment) over that region of interest is next determined in step 312. This provides in effect a sensitivity of diastolic pressure to motor position.

In step 314, the slope value(s) determined in step 312 are used to calculate the number of applanation motor steps required to change the diastolic pressure by a desired amount (e.g., motor delta=2.5/slope in the illustrated embodiment). In the illustrated embodiment, the PRBS process is simply a method of determining the slope around the nominal.

Lastly, in step 316, the motor delta value is bounded within acceptable limits which will reduce initial "overstepping" of the modulation as previously described. For example, in one embodiment, the allowed initial motor delta value is bounded on the low end by 40 motor steps, and on the high end by 400 motor steps.

It will also be recognized that a similar issue (i.e., "overstepping") may arise when initiating an applanation sweep subsequent to the first process 100 described above with

respect to FIG. 1. Accordingly, the aforementioned methods of mitigating excessive modulations can be employed in this context as well.

(vii) Gain Adjustment Based on Average Pulse Pressure—Adjustments to integral gain (i.e., autocorrelation gain with zero phase delay) is in the above-described embodiment independent of the underlying average pulse pressure, as reflected in the following relationship:

$$M_{TP}(t) = (K_i * K_{pp}[t] * K_n[t] * X_{corr}[t]) + M_{TP}(t-1) \quad (\text{Eqn. 5})$$

where  $M_{TP}(t)$  is the new target applanation motor position,  $M_{TP}(t-1)$  is the previous target applanation motor position,  $X_{corr}$  is the 0<sup>th</sup> delay of the cross-correlation of the PRBS and zero mean pulse pressures,  $t$  is the current pulse,  $K_i$  is the fixed integral gain,  $K_{pp}[t]$  is the integral gain modifier that is inversely related to pulse pressure, and  $K_n[t]$  is the integral gain modifier that is related to the signal-to-noise ratio.

Thus, as an example, a pulse pressure cross-correlation of magnitude 2 has the same control "impact" at an average pulse pressure of 60 mmHg as it does at 20 mmHg. Making the value of this gain quasi-inversely proportional to the underlying average pulse pressure makes the control system more responsive both for individuals with low pulse pressure, and for all individuals when the system is not situated close optimum. It will be recognized that the foregoing coupling between the integral gain and pressure may take on other forms as well. For example, the gain adjustment need not be proportional or quasi-proportional, but rather may be based on a limited number of continuous or non-continuous discrete pressure ranges if desired (e.g., 0-10 mmHg, >10-<25 mmHg, etc.), or made deterministic upon other measured or observed parameters. Furthermore, the gain adjustment may be coupled to underlying criteria other than pulse pressure; e.g., diastolic or systolic pressure, mean pressure, blood flow velocity or kinetic energy, vessel diameter, body mass index, etc.

(viii) Correction for Scaling on Observed Pressure Waveforms—Clinical observations made by the Assignee hereof indicate that under some circumstances, limited changes in the pressure displayed to the operator may be induced in part by the modulation occurring during the second process 200 described above. One cause of this behavior relates to the interaction of the pressure waveform restoration and scaling (e.g., BMI) algorithms with changing mean pressures. To address this behavior, an alternate scaling implementation may be used. Specifically, the high-pass filter (HPF) component of the pressure waveform ( $2^{nd}$  order 0.25 Hz cutoff frequency) is scaled, and combining the HPF component multiplied by the scaling factor (e.g., BMI scale factor) with the raw pressure waveform to produce the scaled pressure waveform.

It will be recognized that the foregoing features (i)-(viii) are purely optional in nature, and may be selected by the system designer at time of apparatus design and manufacture based on the anticipated applications. Alternatively, production devices may incorporate the functionality for each enhancement (as well as others), with the end-user having the ability to select which features they wish to employ in particular applications (such as via a GUI configuration menu, API, or similar mechanism).

As yet another alternative, the production device may be configured to automatically or adaptively determine if particular performance enhancements should be utilized. For example, during start-up or monitoring, the device may be configured to institute or "turn on" a given feature or group of features, monitor the effects on the output data in light of prior data collected while the enhancement feature(s) were inop-

erative, and then decide which if any features should be utilized and under what conditions. As a simple example, consider where the Hampel filter (Item (i) above) is applied over time to the PBRS pulse pressure at times where sudden change in values are expected (i.e., start or re-entrance into the servo control system). The system may be programmed to disable the Hampel filter during these periods of servo control or during the period immediately following an ipsilateral oscillometric cuff deflation.

Hence, the present invention contemplates the use of innate "intelligence" within the device hardware and software adapted to selectively control the application of one or more enhancement features during device operation. Such innate control can be readily implemented by those of ordinary skill given the present disclosure, and accordingly are not described in greater detail herein.

#### Interaction of First and Second Processes

The first process **100** and second process **200** described above are in the exemplary embodiment adapted to operate in concert with each other. As discussed, the first process **100** responds to sudden changes in mechanical coupling between tonometric sensor and the underlying artery while the second process is designed to, inter alia, counteract lower frequency drifting in the mechanical coupling. Generally speaking, the more quickly that the second process **200** can respond to changes in mechanical coupling, the less restrictive the constraints that are placed on the performance of the first process **100**. With the presence of the second process **200**, the first process **100** need not be reactive to small mechanical coupling changes; the second process **200** can be used to provide recovery without the need to disable current pressure display for any period of time to perform the limited pressure search.

Accordingly, the following comprise exemplary values for various parameters used by the first and/or second processes of the invention, which are "tuned" so as to provide maximum efficiency and efficacy of the two processes when they are both present in a given system. It will be readily apparent that other values (and in fact parameters) may be substituted depending on the particular application(s) in which they are applied.

(i) Tonometric Pressure Velocity and Acceleration Triggers used with first process **100**:

POS\_VEL\_TRIGGER=45 mmHg:

$$(45 \text{ mmHg}/3 \text{ samples}) * (160 \text{ Sample}/1 \text{ Second}) = 2400 \text{ mmHg}/\text{sec}$$

NEG\_VEL\_TRIGGER=-20 mmHg:

$$(-20 \text{ mmHg}/3 \text{ samples}) * (160 \text{ Sample}/1 \text{ Second}) = -1067 \text{ mmHg}/\text{sec}$$

POS\_ACCL\_TRIGGER=15 mmHg:

$$(15 \text{ mmHg}/3 \text{ samples}) * (160 \text{ Sample}/1 \text{ Second})^2 = 800 \text{ mmHg}/\text{sec}^2$$

NEG\_ACCEL\_TRIGGER=-12 mmHg:

$$(-12 \text{ mmHg}/3 \text{ samples}) * (160 \text{ Sample}/1 \text{ Second})^2 = 640 \text{ mmHg}/\text{sec}^2$$

MEAN\_PRESSURE\_CHANGE\_TRIGGER=8 mmHg

(ii) Event trigger comparison of tonometric mean and pulse pressures of first process **100**:

PULSE\_RANGE\_PERCENT=10; a 10% decrease in decrease in tonometric pulse pressure triggers a limited pressure sweep (fourth state **105**).

MEAN\_RANGE\_PERCENT=10; a 10% change in tonometric mean pressure and +/-8 mmHg change in mean pressure triggers a limited pressure sweep (fourth state **105**).

Note that the second process **200** is in the exemplary embodiment made active when first process **100** is active in either the first state **102**, second state **103**, or third state **104** of the first process **100**. The Assignee hereof has also determined that under certain circumstances, scrubbing or elimination of the beats immediately surrounding a first process event from use in the second process **200** may be helpful, since the measurement of mean pressure and pulse pressure for beats surrounding the process event are corrupted.

Additionally, the exemplary embodiment renders the second process **200** inactive when the first process **100** is active in its fourth state **105**. The applanation motor position variable is set to the target position upon entry into this fourth state **105**, and the second process **200** is reinitialized upon return of the first process **100** from its fourth state **105** to its first state **102**.

The second process, **200** can also be called from within the first process **100** using any one of a number of well known software call routines in response to each new heart beat, and in concert with the previously described first process states **102-105** and initializations.

Additionally, the tonometric pressure velocity and acceleration triggers (i.e., POS\_VEL\_TRIGGER, NEG\_VEL\_TRIGGER, POS\_ACCL\_TRIGGER, and NEG\_ACCEL\_TRIGGER) associated with the first process **100** can be increased to provide a larger buffer between normal physiologic changes in pressure and trigger levels, as follows: POS\_VEL\_TRIGGER=50 mmHg; NEG\_VEL\_TRIGGER=-25 mmHg; POS\_ACCL\_TRIGGER=20 mmHg; and NEG\_ACCEL\_TRIGGER=-15 mmHg.

Furthermore, the checks of beat-to-beat changes in mean pressure previously described with respect to the first process **100** may be eliminated when the two processes **100**, **200** are used concurrently. These mean pressure checks are designed primarily for use as protection against slow changes in mechanical coupling (via periodic sweep-calibration) when the first process **100** is used in a stand-alone configuration (i.e., without the presence of the second process **200**). The presence of the second process **200** obviates the need for this component, and thereby also possible false first process events caused by arrhythmias (i.e. pulsus alternans) and other physiologic events.

Concurrent use of the first and second processes **100**, **200** also advantageously allows more frequent use of "tuning" comparisons between pre- and post-event values of tonometrically measured mean and pulse pressures associated with the first process **100**. This feature reduces the frequency of periods where disabling or freezing of the display of current pressure is required to perform the limited applanation sweeps, by simply allowing the second process **200** to recover from these smaller changes in mechanical coupling. Exemplary values are as follows: PULSE\_RANGE\_PERCENT=20; and MEAN\_RANGE\_PERCENT=20.

It will also be recognized that while the foregoing exemplary embodiment of the second process **200** is interactive with the first process **100**, the second process may operate independently of the first. For example, the second process may be used to adjust and/or maintain the desired applanation level (or position in the case of lateral and proximal cases) irrespective of the methodology used to initially determine the optimal applanation/position. In effect, the second process **200** of the invention used without the first process **100** will hunt and eventually converge on the optimal position itself. This approach, however, has been found by the Assignee hereof to be less temporally efficient than the approach previously described (i.e., determining optimal using the initial sweep process), but may none-the-less be

desirable in certain circumstances where hardware/software simplicity can be traded for longer acquisition and settling times. Hence, the present invention should in no way be considered to be restricted to embodiments wherein both first and second processes **100**, **200** are employed.

#### Third Process

Referring now to FIGS. **4a-4d**, the third process of the exemplary embodiment of the present invention is described.

During patient monitoring mode, the second process **200** previously described is capable of controlling the appplanation of the sensor/pad against the subject artery and overlying tissue, thereby compensating for slow changes (drifts) in the mechanical coupling between the sensor/pad and, the underlying tissue. Furthermore, the second process **200** can be most effective over appplanation ranges where the pulse pressure is strong (higher signal-to-noise ratio), which exist near the optimal appplanation position. However, for large shifts in the mechanical coupling between sensor/pad and the tissue (i.e. flexing of the wrist), the second process **200** may require several minutes to applanate to the proper level to maximize tonometric pulse pressure. Thus, an opportunity exists to improve the performance of the system as a whole by detecting shifts in mechanical coupling that would incur an extended recovery period, and implement a more direct recovery process. The exemplary embodiment of the third process **400** shown in FIGS. **4a-4c** therefore takes a recovery “shortcut” as it were in those limited circumstances where recovery via the second process **200** would require an undesirably long time.

Thus, an important goal of the third process **400** of the present invention is to detect rapid shifts in mechanical coupling that induce sizeable error in pulse pressure and/or diastolic pressure, and implement an optimal recovery approach.

In a first exemplary embodiment, the third process **400** is operated in conjunction with the first process **100** previously described. Specifically, the third process **400** operates during the first state **102** of the first process **100** (see FIG. **1**), and triggers the fourth state **105** when an appreciable shift in the mechanical coupling is detected. Advantageously, the approach to detecting rapid shifts in coupling described herein does not require any significant mechanical or electrical changes to the system. The approach is based on identifying changes in tonometric pressure over a comparatively short period of time that jointly are of the nature and degree to not likely occur physiologically. Such changes also indicate that the second process **200** might require significant time to properly recover. For example, when a patient’s diastolic pressure increases, pulse pressure typically remains constant (or increases). Thus, detecting changes in pressure where diastolic pressure increases and pulse pressure decreases significantly over a short time period can be used to detect rapid shifts in mechanical coupling. Furthermore, episodes where the pulse pressure either remains constant or increases are not problematic regardless of the change in diastolic pressure. Since the pulse pressure remains very strong, the probability that the second process **200** can adjust the appplanation level (if necessary) within a reasonable period of time remains high.

In the exemplary embodiment of FIGS. **4a-4c**, the process for detecting rapid shifts in mechanical coupling (third process **400**) employs one or more metrics for detecting joint shifts in parameters. In the illustrated embodiment, diastolic pressure and pulse pressure are used as the referenced parameters, although it will be appreciated that other parameters (physiologic or otherwise) may be substituted consistent with the invention.

On exemplary scheme for detecting rapid shifts in mechanical coupling is depicted in FIG. **4d**. The process **400** investigates changes in the current block averaged pulse and diastolic pressures from “qualified” block averaged pulse and diastolic pressures from moving windows (e.g., both 12 beats and 24 beats in the past in the illustrated embodiment). If the pulse pressure decreases and diastolic pressure deviates from the previous diastolic pressures (12 or 24 beats past), then fourth state **105** of the first process **100** is triggered.

Note that FIG. **4d** depicts a percentage change in pulse pressure (the selected parameter). Calculations may also be performed based upon change in absolute blood pressure (mmHg), where for example 40 mmHg is equivalent to 100% and should trigger the fourth state **105** if either the percent change or absolute change in pulse pressure in conjunction with the change in diastolic pressure exceeds the prescribed thresholds. It will be recognized, however, that other triggering criteria and schemes may be utilized if desired. Such alternate criteria and schemes may even be made specific to individual patient’s or groups of patients, based for example on historical or anecdotal data or other indicia.

The operation of the exemplary embodiment of the rapid shift detection algorithm according to the present invention is now described in detail. As shown in FIGS. **4a-4c**, the algorithm of this embodiment is based upon the waveform-restored but unsealed beat pressure diastolic and pulse pressure data are in this embodiment processed through similar (yet not identical) parallel sub-processes to calculate current and past pressure data for use in the aforementioned threshold determinations of the third process **400**. A primary difference between these two sub-processes is that in the first sub-process **440**, drops in pulse pressure are of most concern, whereas in the second sub-process **442** changes in diastolic pressure are considered. Exemplary embodiments of these sub-processes **440**, **442** are now described in greater detail, although it will be appreciated that other parameters (e.g., besides pulse pressure and diastolic pressure) may be used as the basis for rapid shift detection, and/or other specific configurations of these sub-processes may be substituted.

Furthermore, while the exemplary algorithms and functionality are described in terms of first-in-first-out (FIFO) buffers, other buffering arrangements may be utilized depending on the desired functionality for a given application. For example, under certain circumstances, it may be desirable to replace portions of data in a LIFO (last-in-first-out) manner. Alternatively, “intelligent” (e.g., algorithmically driven) queuing and de-queuing of data may be incorporated. All such alternate approaches are readily implemented by those of ordinary skill in the data processing arts, and accordingly not described further herein.

i) Pulse Pressure Sub-process (Pre-filtering and Averaging)—The following pre-filtering and averaging features are employed in the exemplary embodiment of the first sub-process **440** used in analyzing pulse pressure:

a. Hampel Filter—A Hampel filter (length 7) of the type previously described is used to remove abhorrent pulse pressure values from subsequent calculations, as shown in Eqn. 6 below. Note that a by-product of the exemplary Hampel Filter is the calculation of variance among the pulse pressures over the last 7 beats. This information is used subsequently to determine if the current pulse pressure should be included in the “acceptable” pulse pressure circular buffer.

$$PP_n(k) = \text{Hampel Filter}\{PP(k), PP(k-1), PP(k-2), \dots, PP(k-6)\} \quad (\text{Eqn. 6})$$

where k represents the current beat number,  $PP_h(k)$  is the Hampel filtered pulse pressure, and  $PP(k)$  is the current unfiltered pulse pressure.

Furthermore, the Hampel filter of the present embodiment also calculates the variance of the data. The variance is a measure of distribution around the mean. It is computed as the average squared deviation of each number from its mean, as illustrated in Eqn. 7:

$$PP_{var}(k) = \frac{((PP(k)-u)^2 + (PP(k-1)-u)^2 + \dots + (PP(k-6)-u)^2)}{7}, \quad (\text{Eqn. 7})$$

where k represents the current beat number,  $PP_{var}(k)$  is the variance of the pulse pressure over the last 7 beats, and u is the average unfiltered pulse pressure for the last 7 beats.

b. Pulse Buffer—A pulse buffer (length=8 in the exemplary embodiment) is a circular buffer containing the Hampel-filtered pulse pressure values. With each beat, the oldest beat is replaced with the most recent Hampel-filtered data.

c. Block Averager—A block averaging routine calculates the mean for the Hampel-filtered pulse pressure data stored in the aforementioned pulse buffer, as illustrated by Eqn. 8 below.

$$\underline{PP}_h(k) = [PP_h(k) + PP_h(k-1) + \dots + PP_h(k-7)]/8 \quad (\text{Eqn. 8})$$

where  $\underline{PP}_h(k)$  is the block averaged Hampel filtered pulse pressure data.

ii) Pulse Pressure Sub-process (Determining Current Pulse Pressure)—The following features are utilized in the present embodiment of the pulse pressure sub-process 440 for determining the current pulse pressure:

a. Maximum—This feature of the algorithm determines the maximum difference between the current pulse pressure and the block averaged Hampel-filtered pulse pressure data, as shown below in Eqn. 9. This maximum is used in subsequent analysis as the Current Pulse Pressure variable.

$$\text{If}(PP_h(k) > PP_h(k)) PP_{max}[k] = PP_h(k) \text{ Else } PP_{max}[k] = \underline{PP}_h(k) \quad (\text{Eqn. 9})$$

where  $PP_{max}[k]$  is used in subsequent comparisons to detect shifts in mechanical coupling. Note that the trigger for the fourth state 105 of the first process 100 is, in the illustrated embodiment, dependant on a significant decrease in pulse pressure. Thus, under conditions where the average pulse pressure is small, the system should not trigger if the pulse pressure from the last beat is large.

iii) Pulse Pressure Sub-process (Determining Past Qualified Pulse Pressures)—The following features are used in the present embodiment for determining past (e.g., 12 & 24 beat) qualified pulse pressure values.

a. Variance Buffer—In the exemplary embodiment, a variance buffer (e.g., length =120) comprises a circular buffer containing the variance in the pulse pressure for the last “x” (e.g. 7) beats, as calculated within Hampel filter operation. With each beat, the data of the oldest beat is replaced with the most recent variance.

b. Block Averager and Standard Deviation—These features calculate the mean pressure for the variance in the Hampel filtered pulse pressure data stored in the buffer, as illustrated in Eqns. 10 and 11 below, respectively. With the buffer length set at a comparatively large value (e.g., 120), these calculations provide a statistical benchmark for typical average and range of variance observed for the blocks of pulse pressure data. Output of these algorithms is both block average and standard deviation (or alternatively an equivalent measure that will enable detection of pulse pressures that are not within normal limits of the average mean pressure for the

last number of beats n, where n=120 in the present embodiment).

$$\underline{PP}_{var}(k) = [PP_{var}(k) + PP_{var}(k-1) + \dots + PP_{var}(k-119)]/120 \quad (\text{Eqn. 10})$$

where  $\underline{PP}_{var}(k)$  is the block averaged Hampel filtered pulse pressure data.

$$SD_{PP_{var}}(k) = \left( \frac{((PP_{var}(k) - \underline{PP}_{var}(k))^2 + (PP_{var}(k-1) - \underline{PP}_{var}(k))^2 + \dots + (PP_{var}(k-119) - \underline{PP}_{var}(k))^2)}{120} \right)^{1/2} \quad (\text{Eqn. 11})$$

where  $SD_{PP_{var}}(k)$  is the standard deviation in the Pulse Pressure Variance data.

c. Stationarity Limit—The stationarity limit feature calculates an upper limit of the pulse pressure variance or standard deviation that permits the current block (e.g., 7 beats) average pulse pressure to be included in the history of “qualified” pulse pressure values for future comparisons. One exemplary approach comprises comparing the variance of the current pulse pressure block with the value (average pulse pressure+1 standard deviation of the variances observed over the last. 120 beats), which constitutes the upper limit of acceptable pulse pressures variance, as shown in Eqn. 12 below:

$$\text{StationarityLimit}_{PP}(k) = \underline{PP}_{var}(k) + SD_{PP_{var}}(k) \quad (\text{Eqn. 12})$$

Note, however, that other methods of determining an upper limit for the observed variance may readily be substituted or used in conjunction with the foregoing. For example, analysis of the current variance (e.g., current variance <40<sup>th</sup> largest out of 120 beats) may be utilized. It will be recognized that the aforementioned median filter can be easily modified to recursively determine this value. Other configurations may also be employed consistent with the invention, such configurations being readily determined by those of ordinary skill.

d. Identification of Pulse Pressure value to be included in Pulse Pressure History Buffer—The exemplary embodiment of the invention further includes functionality which determines whether the current average pulse pressure value or most recent acceptable pulse pressure value should be added to the circular buffer containing a history of average pulse pressures, as shown in Eqn. 13 below. This is accomplished using the stationarity limit calculated previously.

$$\text{If}(PP_{var}(k) > \underline{PP}_{var}(k) + SD_{PP_{var}}(k)) PP_{history}(k) = PP_{history}(k-1) \text{ Else } PP_{history}(k) = \underline{PP}_h(k) \quad (\text{Eqn. 13})$$

where  $PP_{history}(k)$  is the history of “acceptable” Pulse Pressures

e. Update Pulse Pressure History Buffer—In the exemplary embodiment, a pulse pressure history FIFO buffer (e.g., length=24) is employed. The history buffer comprises a circular buffer containing the history of past “acceptable” average pulse pressure values. With each beat, the data associated with oldest beat is replaced with that of the most recent. Values which are a prescribed number of beats in the past (e.g., 12 and 24 beats) from this array are used in subsequent calculations to determine the change in pulse pressure over this period.

iv) Diastolic Pressure Sub-process (Pre-filtering and Averaging)—The following pre-filtering and averaging features are employed in the exemplary embodiment of the first sub-process 440 used in analyzing pulse pressure:

a. Hampel Filter—The exemplary embodiment of the diastolic sub-process 442 uses a Hampel filter (e.g., length 7) to remove abhorrent diastolic pressure values from subsequent calculations, similar to the pulse pressure sub-process 440 (see Eqn. 14 below). A by-product of the Hampel Filter is the calculation of the variance of diastolic pressure over the previous number (e.g., 7) of beats. This information is used

subsequently to determine if the current diastolic pressure should be included in the “acceptable” diastolic pressure circular buffer.

$$D_n(k)=\text{Hampel Filter}\{D(k),D(k-1),D(k-2),\dots, D(k-6)\} \quad (\text{Eqn. 14})$$

where k represents the current beat number,  $D_n(k)$  is the Hampel filtered diastolic pressure, and  $D(k)$  is the current unfiltered diastolic pressure. Furthermore, the Hampel filter also calculates the variance of the data, as shown in Eqn. 15:

$$D_{var}(k)=((D(k)-u)^2+(D(k-1)-u)^2+\dots+(D(k-6)-u)^2)/7, \quad (\text{Eqn. 15})$$

where k represents the current beat number,  $D_{var}(k)$  is the variance of the diastolic pressure over the last 7 beats, and u is the average diastolic pressure over the last 7 beats.

b. Pulse Buffer—A FIFO pulse buffer of a determinate length (e.g., length=8) is used in the present embodiment; this buffer comprises a circular buffer containing the Hampel filtered diastolic pressure values. With each successive beat, the data for the oldest beat is replaced with the most recent Hampel filtered data.

c. Block Averager—A block averaging routine is used to calculate the mean for the Hampel filtered diastolic pressure data stored in the buffer, as shown in Eqn. 16 below:

$$\underline{D}_n(k)=[D_n(k)+D_n(k-1)+\dots+D_n(k-7)]/8 \quad (\text{Eqn. 16})$$

where  $\underline{D}_n(k)$  is the block averaged Hampel filtered Diastolic pressure data.

v) Diastolic Pressure Sub-process (Current Value Determination)—The diastolic sub-process 442 determines the current value of the diastolic pressure using a straightforward methodology. Specifically, the current diastolic pressure is simply the most recent block averaged Hampel-filtered diastolic pressure value. Note that the trigger for the fourth state 105 of the first process 100 is dependant on a significant change in diastolic pressure.

vi) Diastolic Pressure Sub-process (Determining Past Qualified Diastolic Pressures)—The sub-process 442 also contains mechanisms for determining past qualified diastolic pressures (e.g., those of 12 and 24 beats past), as follows:

a. Variance Buffer—A FIFO variance buffer of determinate length (e.g., length=120) comprising a circular buffer containing the variance in the diastolic pressure for the last 7 beats (as calculated within Hampel filter operation) is used in the present embodiment of the diastolic sub-process 442. With each beat, the variance of the oldest beat is replaced with the most recent variance.

b. Block Averager and Standard Deviation—These functions calculate the mean for the variance in the Hampel-filtered diastolic pressure data stored in the variance buffer. With the buffer length set at a comparatively large value, these calculations provide a statistical benchmark for the typical average and the range of variance observed for the blocks of pulse pressure. Output from, these processes is both block average and standard deviation (or an equivalent measure) that will enable detection of pulse pressures that are not within normal limits of the average mean pressure for the last “n” beats), as shown in Eqns. 17 and 18 below (for n=120):

$$\underline{D}_{var}(k)=[D_{var}(k)+D_{var}(k-1)+\dots+D_{var}(k-119)]/120 \quad (\text{Eqn. 17})$$

$$SD_{D_{var}}(k)=(((D_{var}(k)-\underline{D}_{var}(k))^2+(D_{var}(k-1)-\underline{D}_{var}(k))^2+\dots+(D_{var}(k-119)-\underline{D}_{var}(k))^2)/119)^{1/2} \quad (\text{Eqn. 18})$$

where  $\underline{D}_{var}(k)$  is the block averaged Hampel filtered diastolic pressure data.

c. Stationarity Limit—The stationary limit function of the diastolic sub-process 442 calculates an upper limit of the

diastolic pressure variance (or standard deviation) that permits the average diastolic pressure of the current block of data (e.g., 7 beats-worth) to be included in the history of diastolic pressure values for use in future comparisons, as shown in Eqn. 19:

$$\text{StationarityLimit}_D(k)=\underline{D}_{var}(k)+/-SD_{D_{var}}(k) \quad (\text{Eqn. 19})$$

d. Identify Diastolic Pressure value to be included in Diastolic Pressure History Buffer—Using the stationarity limit previously calculated, this feature of the diastolic sub-process 442 determines whether the current average diastolic pressure value or most recent “acceptable” diastolic pressure value should be added to the circular buffer containing a history of average pulse pressures. If the new Diastolic Pressure is within limits of the stationarity limit described above, then it is included in the diastolic pressure history, else the most recent diastolic pressure history value is duplicated.

e. Update Diastolic Pressure History Buffer—In the exemplary embodiment, the diastolic sub-process 442 includes a circular FIFO buffer of determinate length (e.g., length=24) containing the history of past “acceptable” average diastolic pressures. With each beat, the data associated with the oldest beat is replaced with that of the most recent. Values derived from one or more past beats (e.g., 12 and 24 beats in the past from the current array) are used in subsequent calculations to determine the change in pulse pressure over the period of interest, as shown in Eqn. 20 below:

$$\text{If}(D_{var}(k)>D_{var}(k)+SD_{D_{var}}(k))\text{Dhistory}(k)=\text{Dhistory}(k-1) \text{ Else Dhistory}(k)=D_n(k) \quad (\text{Eqn. 20})$$

vii) Analysis for Detection of Shifts in Mechanical Coupling

a. Threshold detection—In order to detect rapid shifts in mechanical coupling, the third process 400 of the invention performs threshold detection over the prior first number (e.g., 12) of beats in the exemplary embodiment as follows: 1) Pulse Pressure Difference—The third process 400 calculates the difference between the current pulse pressure (Current Pulse Pressure variable referenced with respect to Item ii.a. of the pulse pressure sub-process 440 above) and the first number (e.g., 12) of qualified pulse pressure beats in the past (stored in the circular history buffer by the pulse pressure sub-process 440 as previously described in iii.d. above). This calculation is shown in Eqn. 21 below:

$$\text{PulsePressureDifference12}=PP_{max}[k]-PP\text{history}(12) \quad (\text{Eqn. 21})$$

2) Diastolic Difference—The third process 400 calculates the difference between the current diastolic pressure (output from the diastolic sub-process block averager as described above) and the qualified diastolic pressure for, e.g., 12 beats in the past (stored in the circular history buffer by the diastolic sub-process as described in Item vi.d. above), as shown in Eqn. 22:

$$\text{DiastolicPressureDifference12}=\underline{D}_n(k)-\text{Dhistory}(12) \quad \text{Eqn. 22}$$

3) Detector—In accordance with the temporal threshold shown in FIG. 4d, if the pulse pressure difference (Item vii.a.1) above) is sufficiently negative, and the diastolic pressure difference (Item vii.a.2) above) is sufficiently different from zero, then a “Trigger 1” value 448 associated with the fourth state 105 of the first process 100 is set to TRUE.

b. Additionally, the third process 400 of the invention performs threshold detection over the prior second number (e.g., 24) of beats in the exemplary embodiment as follows:

1) Pulse Pressure Difference—The third process 400 calculates the difference between the current pulse pressure (Current Pulse Pressure variable referenced above) and the qualified second number (e.g., 24) of pulse pressure beats in

the past (stored in the circular history buffer by the pulse pressure sub-process 440 as previously described), as shown in Eqn 23 below:

$$\text{PulsePressureDifference}_{24} = PP_{\max}[k] - PP_{\text{history}}(24) \quad (\text{Eqn. 23})$$

2) Diastolic Difference: Calculates the difference between the current diastolic pressure (as previously described) and the qualified diastolic pressure 24 beats in the past, as illustrated by Eqn. 24 below:

$$\text{DiastolicPressureDifference}_{24} = D_n(k) - D_{\text{history}}(24) \quad (\text{Eqn. 24})$$

3) Detector—In accordance with the temporal (e.g., 24 second) threshold shown in FIG. 4d, if the pulse pressure difference (Item vii.b.1) above) is sufficiently negative, and the diastolic pressure difference (Item viii.b.2) above) is sufficiently different from zero, then the “Trigger 2” value 450 for the fourth state 105 of the second process is set TRUE.

c. Beat Evaluation over Most Recent Period—Additionally, the third process 400 of the present invention is optionally configured to evaluate beats detected within a prior interval (e.g., prior five seconds), as follows:

1) No beat detected during interval—If a beat of acceptable quality has not been detected over the interval and “noise” on the pressure signal has not caused the lack of a good beat, then the “Trigger 3” value 452 for the fourth state 105 is set TRUE.

d. Fourth State Request Check—The third process 400 performs a logic check based on the presence of a Trigger 1, Trigger 2, or Trigger 3 value 448, 450, 452 set to TRUE. If any of the aforementioned Triggers are set TRUE, and the first process 100 is in the first state 102, then the first process 100 should enter the fourth state 105 (i.e., accelerated recovery). All fourth state Triggers 448, 450, 452 are then reset to FALSE.

Note that if the first process 100 is in either the second state 103 or third state 104, the proper new state option is subsequently determined. Alternatively, if the first process is currently in the fourth state 105, then the aforementioned request to enter the fourth state 105 is ignored.

It will be recognized that while the foregoing embodiment of the third process methodology addresses the problem of identifying rapid shifts in mechanical coupling based on a substantially probabilistic approach (which is tailored using an understanding of common changes in a patient’s arterial pressure during the course of various physiologic events), this approach does not measure directly (or even indirectly) changes in the mechanical coupling between the tonometric pressure sensor and its associated contact pad and the underlying tissue. Accordingly, the exemplary implementation of the third process 400 is not immune to error. The second process 200 of the present invention, however, advantageously insulates the system against failure of the third process 400 to detect rapid changes in coupling, since the second process will converge on the optimal level of applanation irrespective of the third process (albeit over a period of several minutes) as previously described. Furthermore, false triggering by the third process 400 (i.e., indication that a rapid coupling change has been experienced when in fact it has not) will induce an applanation sweep, and possibly a lateral/proximal position sweep, which enables the system to recover as well. Hence, any errors associated with the probabilistic implementation of the third process 400 do not adversely affect the accuracy of the system, but rather merely the speed with which it converges on the proper applanation level and/or lateral or proximal position. The exemplary embodiment of the present invention will therefore not generate “bad” data, but rather simply not update data until optimal applanation/position is achieved.

It will also be noted that examination of a patient’s data history as described above with respect to the pulse pressure and diastolic sub-processes 440, 442 may encompass examinations of selected segments of the data history for that patient as well as the examination and comparison of segments of data for that patient against comparable data for other patients. Furthermore, the analysis described above may be applied in both historical and/or predictive fashion; for instance, one or more historical data segments may be analyzed via an algorithm which predicts future ranges or values for one or more parameters. If the subsequent measurement of the parameter(s) is not within the prediction, instigation of the applanation/position sweep(s) can then be conducted and the optimal position reacquired. For example, wherein an analysis of the historical data for a patient relating to diastolic pressure indicates that a future measurement within a given time epoch  $\tau$  outside the range of 50-80 mmHg would correspond to an unphysical situation or event, any diastolic pressure reading outside that range occurring within  $\tau$  could trigger reacquisition.

It will further be recognized that numerous combinations of analyzed parameters (e.g., systolic, diastolic, pulse, or mean pressure, and combinations or derivations thereof), time periods (historical, historical/predictive, or purely predictive), and acceptance/rejection criteria (e.g., parameter range at a discrete epoch, continuity or variation over time, statistics, etc.) may be utilized either alone or in combination consistent with the present invention to effectuate the goal of maintaining optimal position of the sensor under all operating environments and conditions. All such methods and approaches are readily implemented within the framework of the present invention by those of ordinary skill in the programming and mathematical arts, and accordingly are not described further herein.

#### System Apparatus for Hemodynamic Assessment

Referring now to FIGS. 5a-5d, an apparatus for measuring hemodynamic properties within the blood vessel of a living subject is now described. In the illustrated embodiment, the apparatus is adapted for the measurement of blood pressure within the radial artery of a human being, although it will be recognized that other hemodynamic parameters, monitoring sites, and even types of living organism may be utilized in conjunction with the invention in its broadest sense.

The exemplary apparatus 500 of FIGS. 5a-5d fundamentally comprises an applanation assembly (including one or more pressure transducers 522) for measuring blood pressure from the radial artery tonometrically; a digital processor 508 operatively connected to the pressure transducer(s) 522 (and a number of intermediary components) for (i) analyzing the signals generated by the transducer(s); (ii) generating control signals for the stepper motor 506 (via a microcontroller 511a operatively coupled to the stepper motor control circuits); and (iii) storing measured and analyzed data. The motor controllers 511, processor 508, auxiliary board 523, and other components may be housed either locally to the applanator 502, or alternatively in a separate stand-alone housing configuration if desired. The pressure transducer 522 and its associated storage device 552 are optionally made removable from the applanator 502.

The pressure transducer 522 is, in the present embodiment, a strain beam transducer element which generates an electrical signal in functional relationship (e.g., proportional) to the pressure applied to its sensing surface 521, although other technologies may be used. The analog pressure signals generated by the pressure transducer 522 are converted into a digital form (using, e.g., an ADC 509) after being optionally low-pass filtered 513 and sent to the signal processor 508 for

analysis. Depending on the type of analysis employed, the signal processor **508** utilizes its program either embedded or stored in an external storage device to analyze the pressure signals and other related data (e.g., stepper motor position as determined by the position encoder **577**, scaling data contained in the transducer's EEPROM **552** via I2C1 signal, need for reacquisition per FIGS. **4a-4c**, etc.).

As shown in FIGS. **5a-5d**, the apparatus **500** is also optionally equipped with a second stepper motor **545** and associated controller **511b**, the second motor **545** being adapted to move the applanator assembly **502** laterally across the blood vessel (e.g., radial artery) of the subject as described above. A third stepper motor (not shown) and associated controls may also be implemented if desired to control the proximal positioning of the applanation element **502**. Operation of the lateral positioning motor **545** and its controller **511b** is substantially analogous to that of the applanation motor **506**, consistent with the methodologies previously described herein.

As previously discussed, continuous accurate non-invasive measurements of hemodynamic parameters (e.g., blood pressure) are highly desirable. To this end, the apparatus **500** is designed to (i) identify the proper level of applanation of the subject blood vessel and associated tissue; (ii) continuously "servo" on this condition to maintain the blood vessel/tissue properly biased for the best possible tonometric measurement; optionally (iii) scale the tonometric measurement as needed to provide an accurate representation of intravascular pressure to the user/operator; and (iv) identify conditions where transient or "unphysical" events have occurred, and correct the system accordingly to regain the optimal applanation level and lateral/proximal positions.

During an applanation "sweep", the controller **511a** controls the applanation motor **506** to applanate the artery (and interposed tissue) according to a predetermined profile. Similarly, the extension and retraction of the applanation element **502** during the later states of the algorithm (i.e., when the applanation motor **506** is disposed at the optimal applanation position, and subsequent servoing around this point) are controlled using the controller **511a** and processor **508**. Such "servo" control schemes may also be employed with respect to the lateral and proximal motor drive assemblies if desired, or alternatively a more static approach (i.e., position to an optimal initial position, and then reposition only upon the occurrence of an event causing significant misalignment). In this regard, it will be recognized that the control schemes for the applanation motor and the lateral/proximal positioning motor(s) may be coupled to any degree desired consistent with the invention.

The apparatus **500** is also configured to apply the methodologies of the first, second, and third processes **100**, **200**, **400** previously discussed with respect to FIGS. **1-4**, as well as the initial sweep and scaling methodologies described in the aforementioned co-pending patent application Ser. No. 10/072,508 previously incorporated by reference herein. Details of the implementation of these latter methodologies are provided in the co-pending application, and accordingly are not described further herein.

The physical apparatus **500** of FIGS. **5a-5d** comprises, in the illustrated embodiment, a substantially self-contained unit having, inter alia, a combined pressure transducer **522** and applanation device **500**, motor controllers **511**, RISC digital processor **508** with associated synchronous DRAM (SDRAM) memory **517** and instruction set (including scaling lookup tables), display LEDs **519**, front panel input device **521**, and power supply **523**. In this embodiment, the controllers **511** is used to control the operation of the combined pressure transducer/applanation device, with the control and

scaling algorithms are implemented on a continuing basis, based on initial operator/user inputs.

For example, in one embodiment, the user input interface comprises a plurality (e.g., two) buttons disposed on the face of the apparatus housing (not shown) and coupled to the LCD display **579**. The processor programming and LCD driver are configured to display interactive prompts via the display **579** to the user upon depression of each of the two buttons.

Furthermore, a patient monitor (PM) interface circuit **591** shown in FIGS. **5a-5d** may be used to interface the apparatus **500** to an external or third-party patient monitoring system. Exemplary configurations for such interfaces **591** are described in detail in co-pending U.S. patent application Ser. No. 10/060,646 entitled "Apparatus and Method for Interfacing Time-Variant Signals" filed Jan. 30, 2002, and assigned to the Assignee hereof, which is incorporated by reference herein in its entirety, although other approaches and circuits may be used. The referenced interface circuit has the distinct advantage of automatically interfacing with literally any type of patient monitor system regardless of its configuration. In this fashion, the apparatus **500** of the present invention coupled to the aforementioned interface circuit allows clinicians and other health care professionals to plug the apparatus into in situ monitoring equipment already on hand at their facility, thereby obviating the need (and cost) associated with a dedicated monitoring system just for blood pressure measurement.

Additionally, an EEPROM **552** is physically coupled to the pressure transducer **522** as shown in FIGS. **5a-5d** so as to form a unitary unit which is removable from the host apparatus **500**. The details of the construction and operation of exemplary embodiments of such coupled assemblies are described in detail in co-pending U.S. application Ser. No. 09/652,626, entitled "Smart Physiologic Parameter Sensor and Method", filed Aug. 31, 2000, assigned to the Assignee hereof, and incorporated by reference herein in its entirety, although other configurations clearly may be substituted. By using such a coupled and removable arrangement, both the transducer **522** and EEPROM **552** may be readily removed and replaced within the system **500** by the operator.

It is also noted that the apparatus **500** described herein may be constructed in a variety of different configurations, and using a variety of different components other than those specifically described herein. For example, it will be recognized that while many of the foregoing components such as the processor **508**, ADC **509**, controller **511**, and memory are described effectively as discrete integrated circuit components, these components and their functionality may be combined into one or more devices of higher integration level (e.g., so-called "system-on-chip" (SoC) devices). The construction and operation of such different apparatus configurations (given the disclosure provided herein) are readily within the possession of those of ordinary skill in the medical instrumentation and electronics field, and accordingly not described further herein.

The computer program(s) for implementing the aforementioned first, second, and third processes (as well as scaling) are also included in the apparatus **500**. In one exemplary embodiment, the computer program comprises an object ("machine") code representation of a C++ source code listing implementing the methodology of FIGS. **1-4**, either individually or in combination thereof. While C++ language is used for the present embodiment, it will be appreciated that other programming languages may be used, including for example VisualBasic™, Fortran, and C+. The object code representation of the source code listing is, compiled and may be disposed on a media storage device of the type well known in the

computer arts. Such media storage devices can include, without limitation, optical discs, CD ROMs, magnetic floppy disks or “hard” drives, tape drives, or even magnetic bubble memory. These programs may also be embedded within the program memory of an embedded device if desired. The computer program may further comprise a graphical user interface (GUI) of the type well known in the programming arts, which is operatively coupled to the display and input device of the host computer or apparatus on which the program is run.

In terms of general structure, the program is comprised of a series of subroutines or algorithms for implementing the applanation and scaling methodologies described herein based on measured parametric data provided to the host apparatus **500**. Specifically, the computer program comprises an assembly language/micro-coded instruction set disposed within the embedded storage device, i.e. program memory, of the digital processor or microprocessor associated with the hemodynamic measurement apparatus **500**. This latter embodiment provides the advantage of compactness in that it obviates the need for a stand-alone PC or similar hardware to implement the program’s functionality. Such compactness is highly desirable in the clinical and home settings, where space (and ease of operation) are at a premium.

#### Method of Providing Treatment

Referring now to FIGS. **6a** and **6b**, a method of providing treatment to a subject using the aforementioned methods is disclosed. As illustrated in FIGS. **6a** and **6b**, the first step **602** of the method **600** comprises selecting the blood vessel and location to be monitored. For most human subjects, this will comprise the radial artery (as monitored on the inner portion of the wrist), although other locations may be used in cases where the radial artery is compromised or otherwise not available.

Next, in step **604**, the applanation mechanism **502** is placed in the proper location with respect to the subject’s blood vessel. Such placement may be accomplished manually, i.e., by the caregiver or subject by visually aligning the transducer and device over the interior portion of the wrist, by the pressure/electronic/acoustic methods of positioning previously referenced, or by other means. Next, the first applanation element **502** is operated per step **606** so as to applanate the tissue surrounding the blood vessel to a desired level so as to identify an optimal position where the effects of transfer loss and other errors associated with the tonometric measurement are mitigated. Co-pending U.S. patent application Ser. No. 10/072,508 previously incorporated herein illustrates one exemplary method of finding this optimum applanation level.

Once the optimal level of applanation for the applanator element **502** is set, the pressure waveform is measured per step **608**, and the relevant data processed and stored as required (step **610**). Such processing may include, for example, calculation of the pulse pressure (systolic minus diastolic), calculation of mean pressures or mean values over finite time intervals, and optional scaling of the measured pressure waveform(s). One or more resulting outputs (e.g., systolic and diastolic pressures, pulse pressure, mean pressure, etc.) are then generated in step **612** based on the analyses performed in step **610**. The relevant portions of the first, second, and third processes **100**, **200**, **400** of the present invention are then implemented as required to maintain the subject blood vessel and overlying tissue in a continuing state of optimal or near-optimal compression (as well as maintaining optimal lateral/proximal position if desired) per step **614** so as to provide continuous monitoring and evaluation of the subject’s blood pressure. This is to be distinguished from the

prior art techniques and apparatus, wherein only periodic representations and measurement of intra-arterial pressure are provided.

Lastly, in step **616**, the “corrected” continuous measurement of the hemodynamic parameter (e.g., systolic and/or diastolic blood pressure) is used as the basis for providing treatment to the subject. For example, the corrected systolic and diastolic blood pressure values are continuously generated and displayed or otherwise provided to the health care provider in real time, such as during surgery. Alternatively, such measurements may be collected over an extended period of time and analyzed for long term trends in the condition or response of the circulatory system of the subject. Pharmacological agents or other courses of treatment may be prescribed based on the resulting blood pressure measurements, as is well known in the medical arts. Similarly, in that the present invention provides for continuous blood pressure measurement, the effects of such pharmacological agents on the subject’s physiology can be monitored in real time.

It is noted that many variations of the methods described above may be utilized consistent with the present invention. Specifically, certain steps are optional and may be performed or deleted as desired. Similarly, other steps (such as additional data sampling, processing, filtration, calibration, or mathematical analysis for example) may be added to the foregoing embodiments. Additionally, the order of performance of certain steps may be permuted, or performed in parallel (or series) if desired. Hence, the foregoing embodiments are merely illustrative of the broader methods of the invention disclosed herein.

While the above detailed description has shown, described, and pointed out novel features of the invention as applied to various embodiments, it will be understood that various omissions, substitutions, and changes in the form and details of the device or process illustrated may be made by those skilled in the art without departing from the spirit of the invention. The foregoing description is of the best mode presently contemplated of carrying out the invention. This description is in no way meant to be limiting, but rather should be taken as illustrative of the general principles of the invention. The scope of the invention should be determined with reference to the claims.

#### What is claimed is:

1. A hemodynamic measurement apparatus configured to obtain hemodynamic data and identify a transient event which affects a coupling between a sensor and a tissue surface that at least partially overlies a blood vessel of interest, said apparatus comprising:

a pressure sensor configured to collect said hemodynamic data, said pressure sensor configured to generate a waveform related to said hemodynamic data;

an applanation and/or positioning mechanism configured to establish an optimal coupling between said sensor and said tissue surface that at least partially overlies said blood vessel of interest;

a controller in signal communication with said sensor and said applanation and/or positioning mechanism, said controller configured to detect said transient event;

a modulator process configured to, upon detection of said transient event, introduce changes in said waveform via said applanation and/or positioning mechanism, said changes being associated with a modulation of a compression applied to said tissue surface via a pseudo-random binary sequence; and

a signal restoration process configured to anticipate said changes in said waveform introduced by said modulator process and to correct at least portions of said waveform

by use of a pressure correction offset to restore said waveform to a shape that is equivalent to an un-modulated waveform;

wherein upon detection of said transient event, said controller is further configured to: (i) temporally cease collection of and/or use of said hemodynamic data during a period which said hemodynamic data is unreliable, and (ii) resume at least one of collection and/or use of said hemodynamic data upon termination of said transient event.

2. The apparatus of claim 1, wherein said controller is further configured to cease collection of and/or use of said hemodynamic data during said period which said hemodynamic data is unreliable only when a parameter related to said determination of unreliability of said hemodynamic data is of sufficient magnitude that recovery from said transient event would exceed a first criterion.

3. The apparatus of claim 2, wherein said first criterion comprises a time period or duration.

4. The apparatus of claim 2, wherein said apparatus is further configured to perform a pressure sweep to re-establish said optimal coupling when said parameter related to said determination of unreliability of said hemodynamic data is of sufficient magnitude that recovery from said transient event would exceed said first criterion.

5. The apparatus of claim 1, wherein said period during which said data is unreliable is terminated via a selective adjustment of said applanation and/or positioning mechanism via a control signal so as to re-establish said optimal coupling between said sensor and said tissue surface that at least partially overlies said blood vessel of interest.

6. The apparatus of claim 1, wherein said pseudo-random binary sequence comprises a plurality of modulation states, at least some of said modulation states configured to have a duration different from that of others of said plurality of states.

7. The apparatus of claim 1, wherein said pseudo-random binary sequence comprises a deterministic binary sequence.

8. The apparatus of claim 1, wherein said modulator process further comprises an operation thereof over a limited range around an optimal coupling point.

9. A non-transitory computer readable apparatus comprising a plurality of instructions which are configured to, when executed by a processor:

cause optimal coupling to be established between an applanation and/or positioning mechanism having at least a sensor associated therewith and a tissue surface that overlies a blood vessel of interest;

cause said sensor to collect hemodynamic data, said hemodynamic data comprising one or more parameters;

evaluate said collected hemodynamic data to identify an occurrence of a transient event which affects said optimal coupling via analysis of changes in said one or more parameters; and

when said changes to said one or more parameters meet one or more criterion:

cause said sensor to cease collection of said data;

cause said applanation and/or positioning mechanism to initiate a pressure sweep to re-establish said optimal coupling; and

cause said sensor to resume collection of said hemodynamic data upon termination of said transient event and said re-establishment of said optimal coupling.

10. The computer readable apparatus of claim 9, wherein said transient event comprises a motion initiated by a subject from which said hemodynamic data is being collected.

11. The computer readable apparatus of claim 9, wherein said plurality of instructions are further configured to, when executed, detect said occurrence of said transient event via identification of at least one artifact within a waveform related to said hemodynamic data.

12. The computer readable apparatus of claim 9, wherein said changes in said one or more parameters adversely affect an accuracy of said collected hemodynamic data.

13. The computer readable apparatus of claim 9, wherein said plurality of instructions are further configured to, when executed, detect a reduction in a magnitude of one or more pressure values.

14. The computer readable apparatus of claim 9, wherein said plurality of instructions are further configured to, when executed, detect said occurrence of said transient event via analysis of changes in said one or more parameters and via identification of one or more cardiac beats and/or absence thereof.

15. The computer readable apparatus of claim 9, wherein said hemodynamic data comprises blood pressure, and said sensor comprises a tonometric or non-invasive pressure sensor.

16. The computer readable apparatus of claim 9, wherein said blood vessel of interest comprises a radial artery.

17. The computer readable apparatus of claim 9, wherein said plurality of instructions are further configured to, when executed, detect a reduction in a magnitude of at least one of said one or more parameters represented by said hemodynamic data.

18. The computer readable apparatus of claim 17, wherein said reduction in a magnitude comprises a reduction in magnitude of a pulse pressure.

19. The computer readable apparatus of claim 9, wherein said plurality of instructions are further configured to, when executed, analyze changes in said one or more parameters via comparison of at least one of: (i) a measured pulse pressure, (ii) a measured diastolic pressure (iii) a measured velocity and/or (iv) a measured acceleration, with one or more predetermined values.

20. The computer readable apparatus of claim 9, wherein said plurality of instructions are further configured to, when executed, analyze changes in said one or more parameters via comparison of at least one of: (i) a pulse pressure difference between a current pulse pressure and a previous qualified pulse pressure, and (ii) a diastolic pressure difference between a current diastolic pressure and a previously qualified past diastolic pressure, with said one or more criterion.

21. A non-transitory computer readable apparatus comprising a plurality of instructions which are configured to, when executed by a processor:

establish an optimal coupling between a sensor and a tissue surface that at least partially overlies a blood vessel of interest;

generate a waveform related to a plurality of hemodynamic data collected by said sensor;

detect a transient event which affects said coupling between said sensor and said tissue surface that at least partially overlies said blood vessel of interest;

upon detection of said transient event:

introduce changes in said waveform via an applanation and/or positioning mechanism, said changes being associated with a modulation of a compression applied to said tissue surface via a pseudo-random binary sequence;

anticipate said changes in said waveform and correct at least portions of said waveform by use of a pressure

correction offset to restore said waveform to a shape that is equivalent to an un-modulated waveform; temporally cease collection of and/or use of said hemodynamic data during a period which said hemodynamic data is unreliable; and

resume at least one of collection and/or use of said hemodynamic data upon termination of said transient event.

22. The computer readable apparatus of claim 21, wherein said plurality of instructions are further configured to, when executed, cease collection of and/or use of said hemodynamic data during said period which said hemodynamic data is unreliable only when a parameter related to said determination of unreliability of said hemodynamic data is of sufficient magnitude that recovery from said transient event would exceed a first criterion.

23. The computer readable apparatus of claim 22, wherein said first criterion comprises a time period or duration.

24. The computer readable apparatus of claim 22, wherein said plurality of instructions are further configured to, when executed, perform a pressure sweep to re-establish said optimal coupling when said parameter related to said determination of unreliability of said hemodynamic data is of sufficient magnitude that recovery from said transient event would exceed said first criterion.

25. The computer readable apparatus of claim 21, wherein said period during which said data is unreliable is terminated via a selective adjustment of said applanation and/or positioning mechanism via a control signal so as to re-establish said optimal coupling between said sensor and said tissue surface that at least partially overlies said blood vessel of interest.

26. The computer readable apparatus of claim 21, wherein said pseudo-random binary sequence comprises a plurality of modulation states, at least some of said modulation states configured to have a duration different from that of others of said plurality of states.

27. The computer readable apparatus of claim 21, wherein said pseudo-random binary sequence comprises a deterministic binary sequence.

28. The computer readable apparatus of claim 21, wherein said plurality of instructions are further configured to, when executed, operate over a limited range around an optimal coupling point.

29. A method of operating a hemodynamic assessment apparatus comprising an applanation and/or positioning mechanism, a sensor, and computerized logic configured to identify a transient event affecting a coupling between said sensor and a tissue surface overlying a blood vessel of interest, said method comprising:

establishing an optimal coupling via said applanation and/or positioning mechanism;  
collecting hemodynamic data using said sensor, said hemodynamic data comprising one or more parameters;

detecting, using said computerized logic, an occurrence of said transient event affecting said optimal coupling by determining that changes in said one or more parameters of said collected hemodynamic data meet one or more criterion; and

during said transient event:

ceasing collection of said data by said sensor; and  
initiating a pressure sweep to re-establish said optimal coupling via said applanation and/or positioning mechanism; and

upon termination of said transient event, said sensor resuming collection of said hemodynamic data and said re-establishing said optimal coupling.

30. The method of claim 29, wherein said transient event comprises a motion initiated by a subject from which said hemodynamic data is being collected.

31. The method of claim 29, wherein said act of detecting the occurrence of said transient event comprises identifying at least one artifact within a waveform related to said hemodynamic data.

32. The method of claim 29, wherein said changes in said one or more parameters adversely affect an accuracy of said collected hemodynamic data.

33. The method of claim 29, wherein said act of detecting further comprises detecting a reduction in a magnitude of one or more pressure values.

34. The method of claim 29, wherein said act of detecting an occurrence of said transient event comprises identifying one or more cardiac beats and/or absence thereof.

35. The method of claim 29, wherein said hemodynamic data comprises blood pressure, and said sensor comprises a tonometric or non-invasive pressure sensor.

36. The method of claim 29, wherein said blood vessel of interest comprises a radial artery.

37. The method of claim 29, wherein said act of detecting comprises detecting a reduction in a magnitude of at least one of said one or more parameters represented by said hemodynamic data.

38. The method of claim 37, wherein said act of detecting said reduction in a magnitude comprises detecting a reduction in magnitude of a pulse pressure.

39. The method of claim 29, wherein said act of detecting said occurrence of said transient event comprises comparing at least one of: (i) a measured pulse pressure, (ii) a measured diastolic pressure (iii) a measured velocity and/or (iv) a measured acceleration, with one or more predetermined values.

40. The method of claim 29, wherein said act of detecting said occurrence of said transient event comprises comparing at least one of: (i) a pulse pressure difference between a current pulse pressure and a previous qualified pulse pressure, and (ii) a diastolic pressure difference between a current diastolic pressure and a previously qualified past diastolic pressure, with said one or more criterion.

\* \* \* \* \*

专利名称(译)	用于控制非侵入性参数测量的方法和设备		
公开(公告)号	<a href="#">US8945016</a>	公开(公告)日	2015-02-03
申请号	US13/154315	申请日	2011-06-06
[标]申请(专利权)人(译)	VOSS GREGORY我 MARTIN GREGORY J GOHARLAEE马努切赫尔		
申请(专利权)人(译)	VOSS GREGORY我 MARTIN GREGORY J GOHARLAEE马努切赫尔		
当前申请(专利权)人(译)	TENSYS MEDICAL , INC.		
[标]发明人	VOSS GREGORY I MARTIN GREGORY J GOHARLAEE MANOUCHEHR		
发明人	VOSS, GREGORY I. MARTIN, GREGORY J. GOHARLAEE, MANOUCHEHR		
IPC分类号	A61B5/02 A61B5/00 A61B5/022		
CPC分类号	A61B5/022 A61B5/7207 A61B5/7264 A61B5/02007 A61B5/02028 A61B5/024 A61B5/684 A61B5/6843 A61B5/7203		
其他公开文献	US20110237961A1		
外部链接	<a href="#">Espacenet</a> <a href="#">USPTO</a>		

#### 摘要(译)

用于非侵入性地评估与诸如生物体的循环系统的流体系统相关的一个或多个参数的改进的方法和设备。在第一方面，公开了一种连续测量来自可压缩容器的压力的改进方法，其中使用容器压缩水平的扰动（例如，调制）来实现和维持容器的基本上最佳的压缩水平。在一个示例性实施例中，根据伪随机二进制序列（PBRs）进行调制。在第二方面，公开了一种用于确定活体的血压的改进装置，该装置通常包括压力传感器和相关处理器，其具有计算机程序，该计算机程序定义与所检测的压力数据相关的多个操作状态。还公开了用于压力波形校正和重新获取的方法，以及使用本发明的治疗。

Improved methods and apparatus for non-invasively assessing one or more parameters associated with fluidic systems such as the circulatory system of a living organism. In a first aspect, an improved method of continuously measuring pressure from a compressible vessel is disclosed, wherein a substantially optimal level of compression for the vessel is achieved and maintained using perturbations (e.g., modulation) of the compression level of the vessel. In one exemplary embodiment, the modulation is conducted according to a pseudo-random binary sequence (PBRs). In a second aspect, an improved apparatus for determining the blood pressure of a living subject is disclosed, the apparatus generally comprising a pressure sensor and associated processor with a computer program defining a plurality of operating states related to the sensed pressure data. Methods for pressure waveform correction and reacquisition, as well as treatment using the present invention, are also disclosed.