

US008983854B2

(12) **United States Patent**
Park et al.

(10) **Patent No.:** **US 8,983,854 B2**
(45) **Date of Patent:** **Mar. 17, 2015**

(54) **SCALE-TYPE NONCONSTRAINED HEALTH CONDITION EVALUATING APPARATUS AND METHOD**

USPC 705/2, 3; 128/714; 600/500, 509, 600/300-301, 407, 527-529, 481, 483, 485
See application file for complete search history.

(75) Inventors: **Kwang Suk Park**, Seoul (KR); **Jae Hyuk Shin**, Seoul (KR)

(56) **References Cited**

(73) Assignee: **SNU R & DB Foundation**, Seoul (KR)

U.S. PATENT DOCUMENTS

(*) Notice: Subject to any disclaimer, the term of this patent is extended or adjusted under 35 U.S.C. 154(b) by 1046 days.

4,528,690	A *	7/1985	Sedgwick	381/67
4,836,215	A *	6/1989	Lee	600/527
4,838,275	A *	6/1989	Lee	600/483
5,002,060	A *	3/1991	Nedivi	600/484
5,620,003	A *	4/1997	Sepponen	600/527
5,995,858	A *	11/1999	Kinast	600/323
6,478,744	B2 *	11/2002	Mohler	600/485

(21) Appl. No.: **12/425,955**

(Continued)

(22) Filed: **Apr. 17, 2009**

FOREIGN PATENT DOCUMENTS

(65) **Prior Publication Data**
US 2010/0210921 A1 Aug. 19, 2010

KR	P0137272	B1	4/1998	
KR	10-2005-0079235	A	8/2005	
WO	WO 2010004502	A1 *	1/2010	A61B 5/11

(30) **Foreign Application Priority Data**

OTHER PUBLICATIONS

Nov. 26, 2008 (KR) 10-2008-117883

Korean Office Action for Korean Patent Application No. 10-2008-0117883 which corresponds to U.S. Appl. No. 12/425,955.

(51) **Int. Cl.**
A61B 5/02 (2006.01)
A61B 5/11 (2006.01)
A61B 5/0205 (2006.01)
A61B 5/0402 (2006.01)
A61B 5/00 (2006.01)
G01G 19/414 (2006.01)

Primary Examiner — Hiep V Nguyen
Assistant Examiner — Teresa Williams
(74) *Attorney, Agent, or Firm* — LRK Patent Law Firm

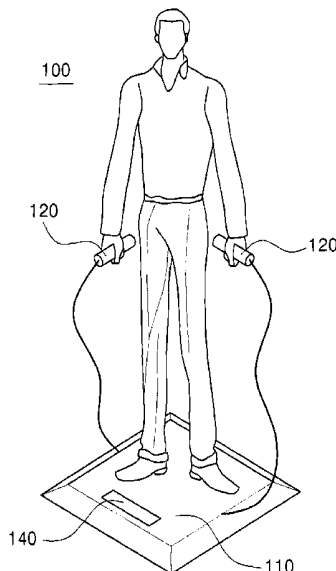
(52) **U.S. Cl.**
CPC **A61B 5/1102** (2013.01); **A61B 5/0205** (2013.01); **A61B 5/0402** (2013.01); **A61B 5/6825** (2013.01); **A61B 5/6829** (2013.01); **G01G 19/4146** (2013.01)
USPC **705/2**; 600/300; 600/301; 600/527; 705/3

(57) **ABSTRACT**

A scale-type nonconstrained health condition evaluating apparatus includes a load cell sensor for sensing a ballistocardiogram signal and a weight signal from a measured person, an electrocardiogram sensor for sensing an electrocardiogram signal from the measured person, and a signal processor for calculating at least one of the heart rate, normalized stroke volume force, blood pressure and equilibrium sense abnormality of the measured person from the ballistocardiogram, weight and electrocardiogram signals sensed by the load cell sensor and the electrocardiogram sensor.

(58) **Field of Classification Search**
CPC A61B 5/021; A61B 5/024

12 Claims, 8 Drawing Sheets



(56)

References Cited

U.S. PATENT DOCUMENTS

7,226,418	B2*	6/2007	Kim	600/485	2005/0119711	A1*	6/2005	Cho et al.	607/42
8,206,309	B2*	6/2012	Oh et al.	600/485	2006/0149139	A1*	7/2006	Bonmassar et al.	600/300
2002/0193692	A1*	12/2002	Inukai et al.	600/500	2008/0161700	A1*	7/2008	Sachanandani et al.	600/481
2004/0249258	A1*	12/2004	Tupin et al.	600/407	2008/0183232	A1*	7/2008	Voss et al.	607/24
2005/0004483	A1*	1/2005	Lin	600/509	2008/0214942	A1*	9/2008	Oh et al.	600/485
2005/0043645	A1*	2/2005	Ono et al.	600/529	2009/0024044	A1*	1/2009	Virtanen et al.	600/509
					2009/0203972	A1*	8/2009	Heneghan et al.	600/301
					2010/0094147	A1*	4/2010	Inan et al.	600/500

* cited by examiner

Fig. 1

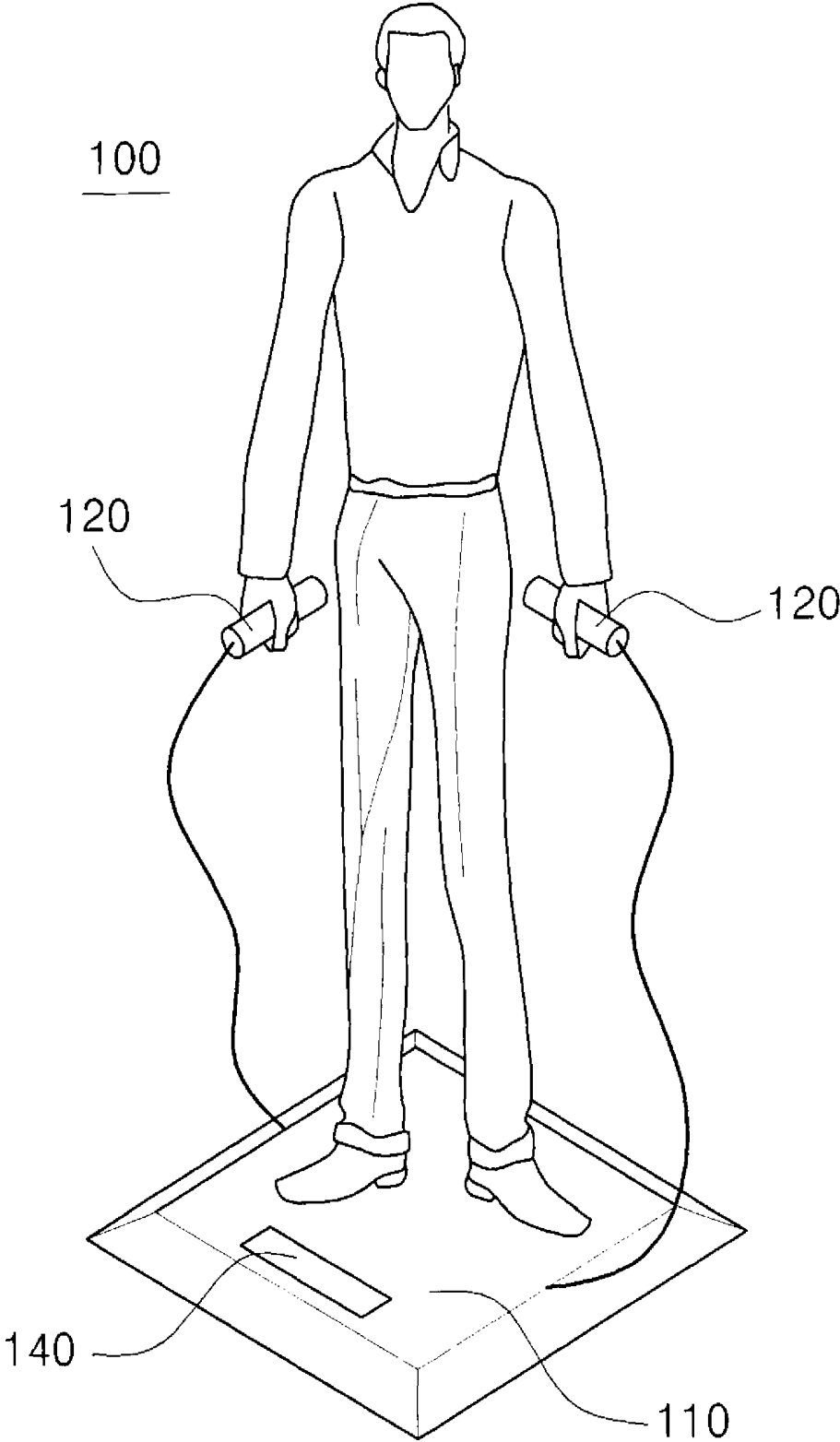


Fig. 2

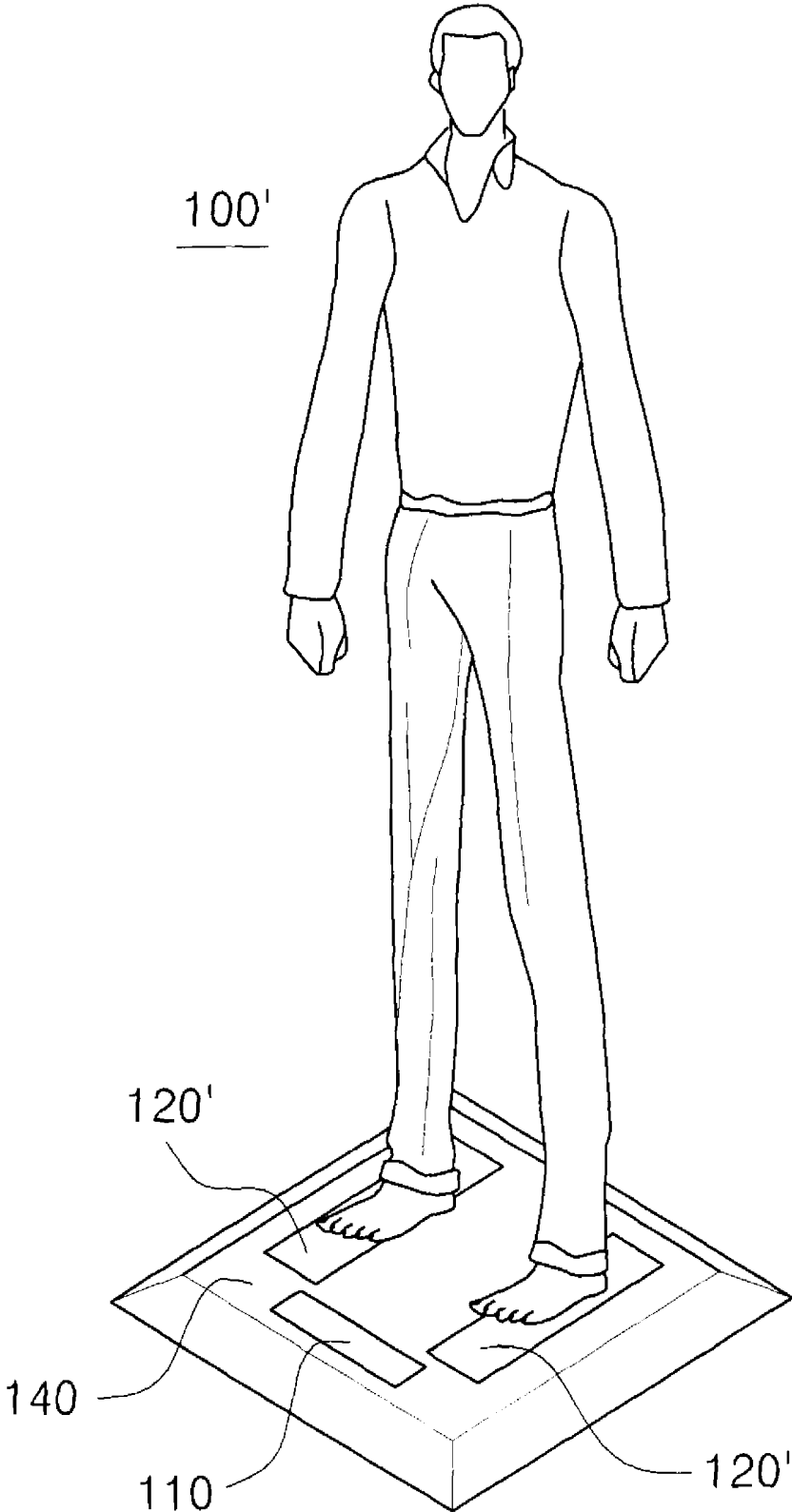


FIG. 3

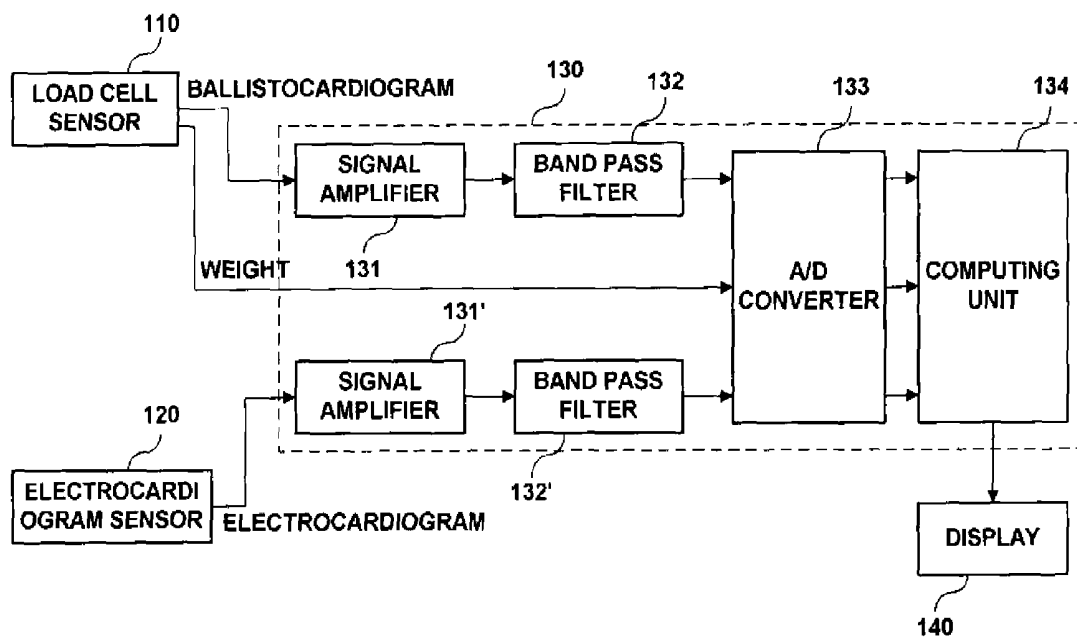


FIG. 4

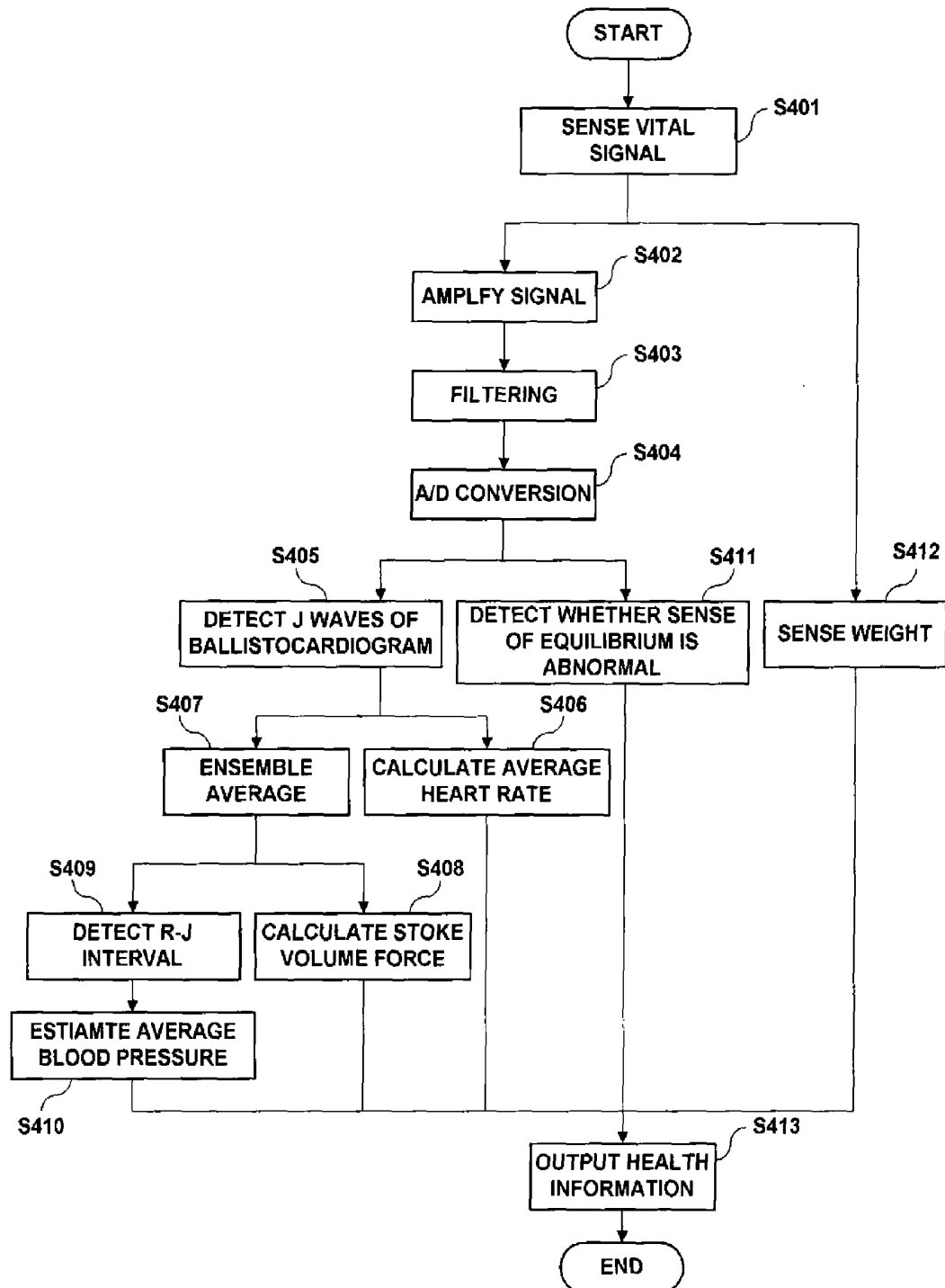
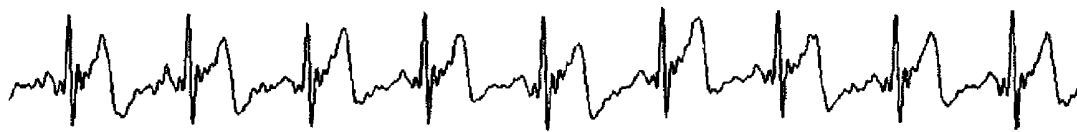


FIG. 5

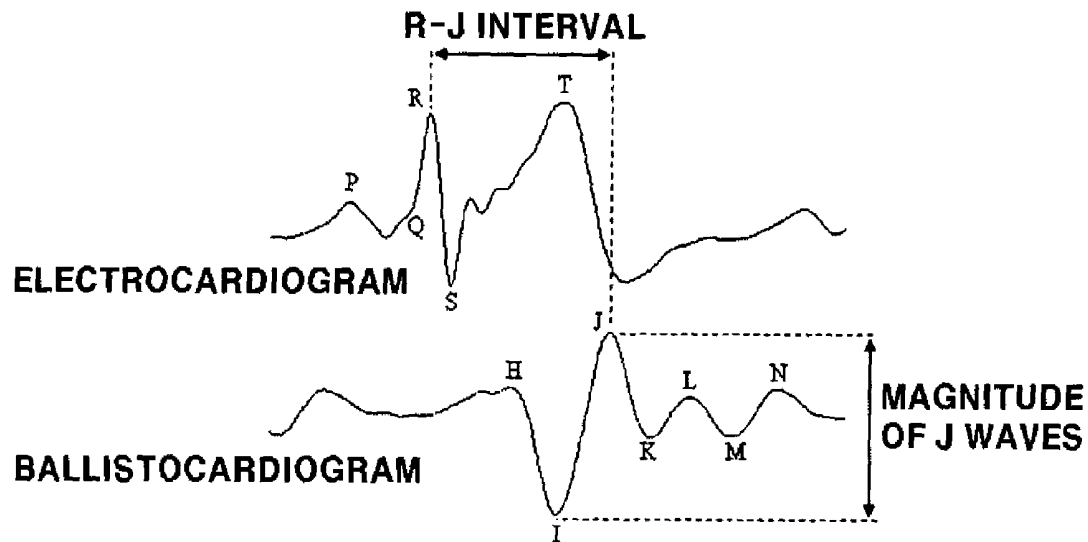


ELECTROCARDIOGRAM



BALLISTOCARDIOGRAM

FIG. 6



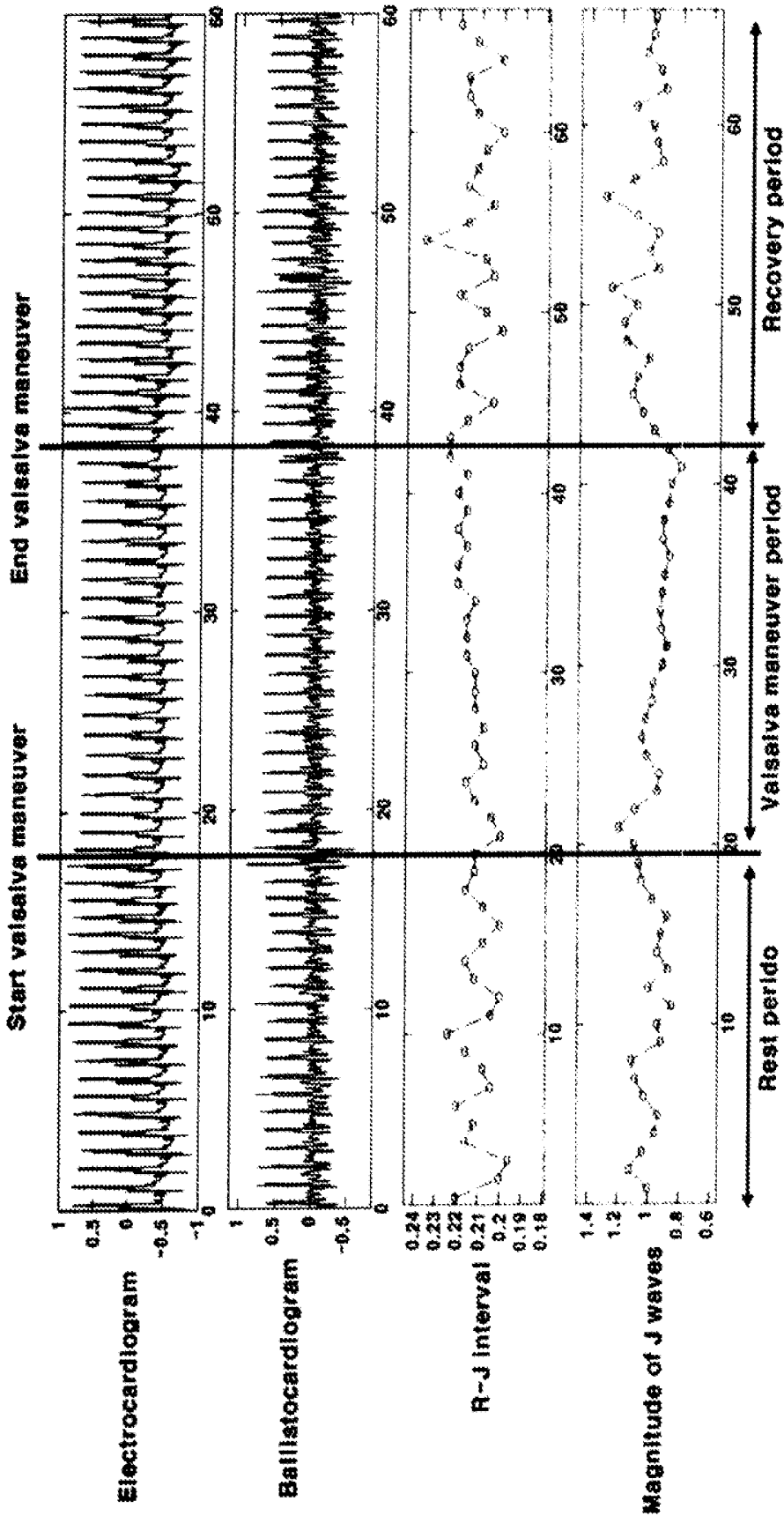
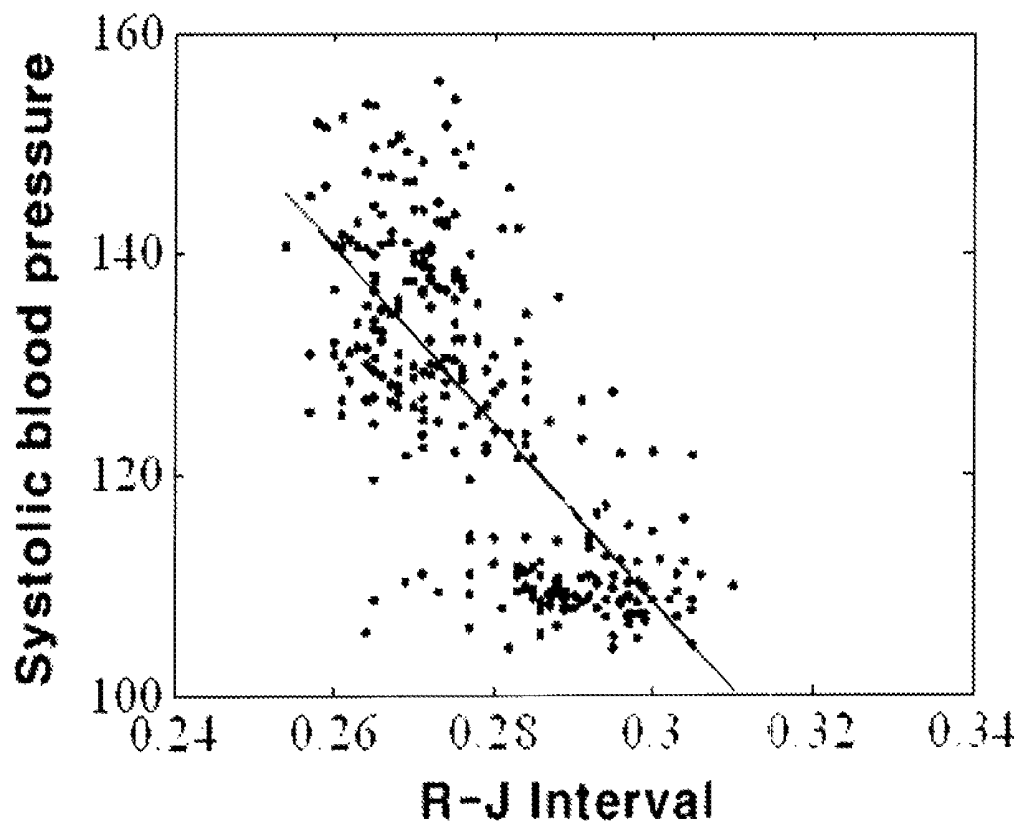


FIG. 7

FIG. 8



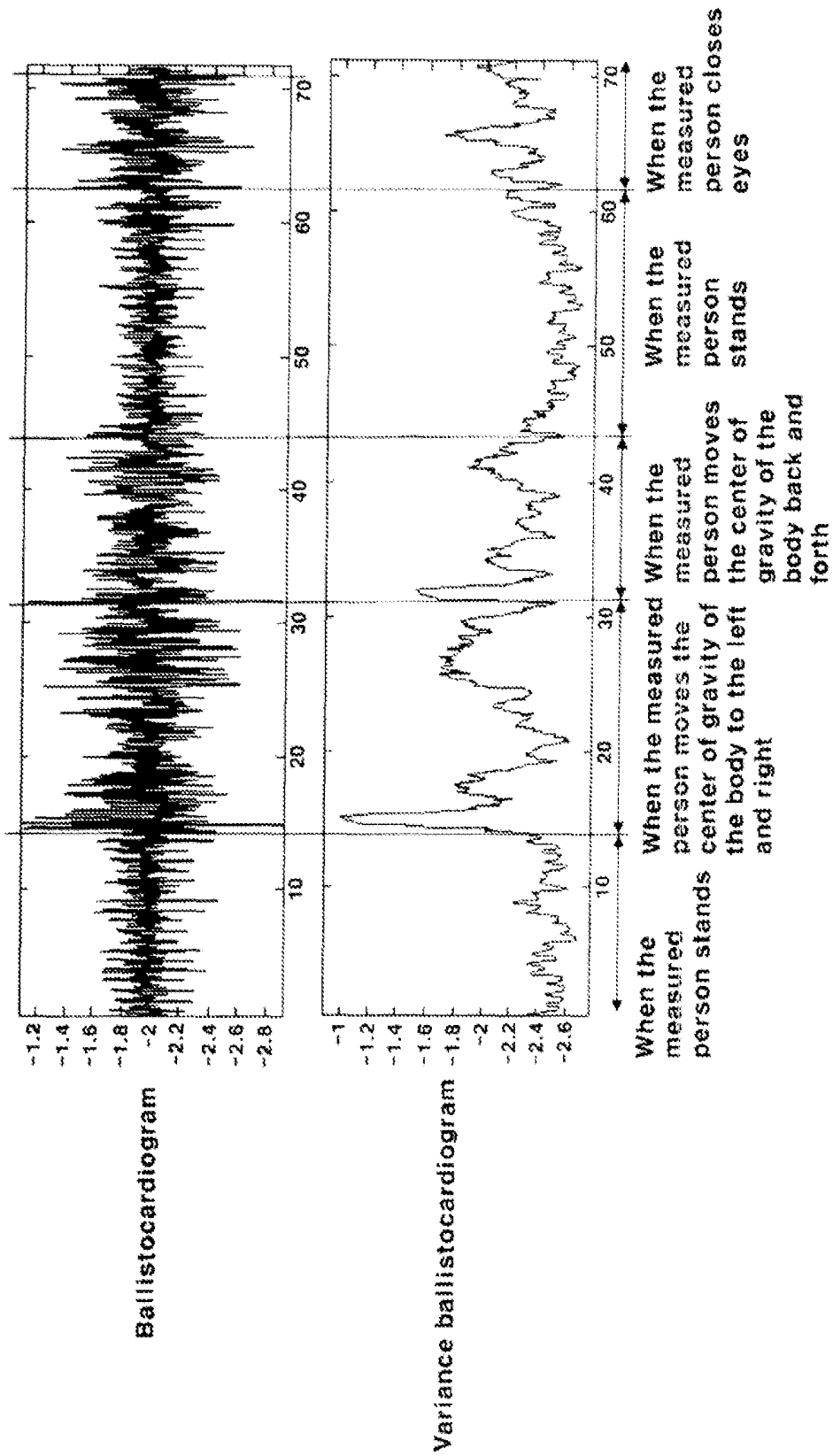


FIG. 9

SCALE-TYPE NONCONSTRAINED HEALTH CONDITION EVALUATING APPARATUS AND METHOD

BACKGROUND OF THE INVENTION

1. Field of the Invention

The present invention relates to a scale-type nonconstrained health condition evaluating apparatus and method, and more particularly, to a scale-type nonconstrained health condition evaluating apparatus and method for measuring electrocardiogram, ballistocardiogram and weight signals from a measured person in a nonconstrained manner, calculating at least one of the heart rate, normalized stroke volume force, blood pressure and equilibrium sense abnormality of the measured person from the measured signals and outputting the calculation result.

2. Background of the Related Art

As widely known, cardiovascular disorders such as myocardial infarction, angina pectoris, cardiac failure, arteriosclerosis, embolism, hypertension, atherosclerosis and thrombus frequently occur in highly industrialized countries and become the biggest cause of death together with cancers and cerebrovascular disorders in advanced countries.

Recently, cardiovascular disorders have increased in Korea as income levels of people increase and food, clothing and housing environments become westernized. Accordingly, a device for monitoring cardiovascular states of people only through simple measurement at home and indoors is required. However, conventional health devices adopt a method of flowing current to a measured person to measure the health condition of the person, and thus the devices may have bad influence on the body of the measured person and have limitations in providing information sufficient for monitoring cardiovascular disorders.

SUMMARY OF THE INVENTION

Accordingly, the present invention has been made in view of the above-mentioned problems occurring in the prior art, and it is a primary object of the present invention to provide a scale-type nonconstrained health condition evaluating apparatus and method for measuring an electrocardiogram signal, a ballistocardiogram signal and a weight signal from a measured person in a nonconstrained manner, calculating at least one of the heart rate, normalized stroke volume force, blood pressure and equilibrium sense abnormality of the measured person from the measured signals and outputting the calculation result.

To accomplish the above object of the present invention, according to the present invention, there is provided a scale-type nonconstrained health condition evaluating apparatus comprising a load cell sensor for sensing a ballistocardiogram signal and a weight signal from a measured person; an electrocardiogram sensor for sensing an electrocardiogram signal from the measured person; and a signal processor for calculating at least one of the heart rate, normalized stroke volume force, blood pressure and equilibrium sense abnormality of the measured person from the ballistocardiogram, weight and electrocardiogram signals sensed by the load cell sensor and the electrocardiogram sensor.

The scale-type nonconstrained health condition evaluating apparatus may further comprise a display that outputs the heart rate, normalized stroke volume force, blood pressure or equilibrium sense abnormality of the measured person, calculated by the signal processor.

The electrocardiogram sensor may include two bar-shaped exposed electrocardiogram electrodes and measure the electrocardiogram signal from both hands of the measured person. Otherwise, the electrocardiogram sensor may include two electrocardiogram electrodes that are attached to the top face of the load cell sensor to measure the electrocardiogram signal from both feet of the measured person.

The signal processor may comprise a signal amplifier for amplifying the ballistocardiogram and electrocardiogram signals sensed by the load cell sensor and the electrocardiogram sensor; a band pass filter for filtering only necessary bands of the ballistocardiogram and electrocardiogram signals amplified by the signal amplifier; an A/D converter for converting the ballistocardiogram and electrocardiogram signals filtered by the band pass filter into digital signals; and a computing unit for calculating at least one of the heart rate, normalized stroke volume force, blood pressure and equilibrium sense abnormality of the measured person from the weight of the measured person, sensed by the load cell sensor, the ballistocardiogram and electrocardiogram signals converted into the digital signals by the A/D converter.

The band pass filter may filter only 0.5 through 30 Hz components of the ballistocardiogram signal amplified by the signal amplifier and filter only 0.5 through 35 Hz components of the electrocardiogram signal amplified by the signal amplifier.

The computing unit may detect J waves from the ballistocardiogram signal converted by the A/D converter into the digital signal and calculate an interval of the J waves to obtain an average heart rate of the measured person.

The computing unit may synchronize the electrocardiogram signal with the ballistocardiogram signal based on the J waves of the ballistocardiogram signal to obtain an ensemble average so as to generate averaged electrocardiogram and ballistocardiogram signals, obtain the magnitude of the J waves from the averaged ballistocardiogram signal and calculate the normalized stroke volume force of the measured person according to the following equation.

$$\text{Normalized stroke volume force} = \frac{\text{J-wave magnitude}}{\text{weight}}$$

The computing unit may detect an R-J interval from the averaged ballistocardiogram and electrocardiogram signals and calculate the blood pressure of the measured person from a regression equation derived from data about correlation of the R-J interval and a systolic blood pressure.

The computing unit may measure the extent of a variation of the ballistocardiogram signal and determine whether the sense of equilibrium of the measured person is abnormal from the measurement result.

The signal processor may identify the measured person through at least one of the calculated heart rate, normalized stroke volume force, blood pressure, equilibrium sense abnormality and weight of the measured person.

To accomplish the above object of the present invention, according to the present invention, there is provided a method for evaluating the health condition of a measured person in a scale-type nonconstrained health condition evaluating apparatus, which comprises a first step of sensing ballistocardiogram and weight signals from the measured person; a second step of sensing an electrocardiogram signal from the measured person; and a third step of calculating at least one of the heart rate, normalized stroke volume force, blood pressure and equilibrium sense abnormality of the measured person from the sensed ballistocardiogram, weight and electrocardiogram signals.

The method may further comprise the step of outputting the calculated heart rate, normalized stroke volume force, blood pressure or equilibrium sense abnormality after the third step.

The third step may comprise the steps of amplifying the sensed ballistocardiogram and electrocardiogram signals; filtering only necessary bands of the amplified ballistocardiogram and electrocardiogram signals; converting the filtered ballistocardiogram and electrocardiogram signals into digital signals; and calculating at least one of the heart rate, normalized stroke volume force, blood pressure and equilibrium sense abnormality of the measured person from the weight of the measured person and the ballistocardiogram and electrocardiogram signals converted into the digital signals.

To accomplish the above object of the present invention, according to the present invention, there is provided a method for calculating the blood pressure of a measured person by using an R-J interval, which comprises a first step of detecting the R-J interval from ballistocardiogram and electrocardiogram signals measured from the measured person and a second step of calculating the blood pressure of the measured person according to a regression equation derived from data about correlation of the R-J interval and a systolic blood pressure.

The first steps may comprises the steps of detecting J waves from the ballistocardiogram signal; synchronizing the electrocardiogram signal with the ballistocardiogram signal based on the detected J waves of the ballistocardiogram signal to obtain an ensemble average to as to generate averaged electrocardiogram and ballistocardiogram signals; and detecting the R-J interval from the averaged electrocardiogram and ballistocardiogram signals.

As described above, the present invention can easily monitor the cardiovascular health condition of a measured person at home and indoors all the time by using the scale-type apparatus. Furthermore, the health condition evaluating apparatus can safely measure the health condition because it uses a nonconstrained method that does not flow current to the measured person and only measures a vital signal.

BRIEF DESCRIPTION OF THE DRAWINGS

The above and other objects, features and advantages of the present invention will be apparent from the following detailed description of the preferred embodiments of the invention in conjunction with the accompanying drawings, in which:

FIG. 1 illustrates a scale-type nonconstrained health condition evaluating apparatus according to a first embodiment of the present invention;

FIG. 2 illustrates a scale-type nonconstrained health condition evaluating apparatus according to a second embodiment of the present invention;

FIG. 3 is a block diagram of the scale-type nonconstrained health condition evaluating apparatus according to the present invention.

FIG. 4 is a flowchart of a nonconstrained health condition evaluating method according to the present invention;

FIG. 5 illustrates an electrocardiogram signal and a ballistocardiogram signal measured according to the present invention;

FIG. 6 illustrates averaged electrocardiogram and ballistocardiogram signals obtained through an ensemble average;

FIG. 7 is a graph illustrating a variation in R-J interval of a measured person when valsalva maneuver is performed;

FIG. 8 is a graph illustrating correlation of an R-J interval and a systolic blood pressure; and

FIG. 9 is a graph illustrating a ballistocardiogram signal and variance of the ballistocardiogram signal according to a situation of a measured person.

DETAILED DESCRIPTION OF THE PREFERRED EMBODIMENT

The present invention will now be described more fully with reference to the accompanying drawings, in which exemplary embodiments of the invention are shown. The invention may, however, be embodied in many different forms and should not be construed as being limited to the embodiments set forth herein; rather, these embodiments are provided so that this disclosure will be thorough and complete, and will fully convey the concept of the invention to those skilled in the art.

FIG. 1 illustrates a scale-type nonconstrained health condition evaluating apparatus 100 according to a first embodiment of the present invention.

Referring to FIG. 1, the scale-type nonconstrained health condition evaluating apparatus 100 includes a load cell sensor 110, an electrocardiogram sensor 120 and a display 140.

The load cell sensor 110 is located under the feet of a standing measured person. The load cell sensor 110 may be placed under the hips of the measured person when he or she sits and located under the chest of the measured person when he or she lies down. The weight of the person can be measured from a weight signal measured by the load cell sensor 110 and the weight signal can be amplified and filtered by a signal processor 130, which will be explained later, to obtain a ballistocardiogram signal according to a variation in the cardiovascular state of measured the person.

The electrocardiogram sensor 120 includes two bar-shaped exposed electrocardiogram electrodes that come in contact with the palms of the measured person to measure the electrocardiogram of the person.

The functions and detailed configurations of the load cell sensor 110, the electrocardiogram sensor 120 and the display 140 will be explained in detail with reference to FIG. 3.

FIG. 2 a scale-type nonconstrained health condition evaluating apparatus 100' according to a second embodiment of the present invention.

Referring to FIG. 2, the scale-type nonconstrained health condition evaluating apparatus 100' has an electrocardiogram sensor 120' located in a position different from that of the scale-type nonconstrained health condition evaluating apparatus 100 according to the first embodiment of the present invention. Specifically, two electrocardiogram electrodes of the electrocardiogram sensor 120' are attached to the top face of the load cell sensor 110 to measure an electrocardiogram signal from both feet of the measured person.

FIG. 3 is a block diagram of the scale-type nonconstrained health condition evaluating apparatus according to the present invention.

Referring to FIG. 3, the scale-type nonconstrained health condition evaluating apparatus according to the present invention includes the load cell sensor 110, the electrocardiogram sensor 120, the signal processor 130, and the display 140.

The load cell sensor 110 measures a ballistocardiogram signals and a weight signal from a measured person. The electrocardiogram sensor 120 measures an electrocardiogram signal from the measured person and may be constructed in such a manner that the electrocardiogram signal is measured from the hands or feet of the measured person, as described above.

The signal processor **130** calculates at least one of the heart rate, normalized stroke volume force, blood pressure and equilibrium sense abnormality of the measured person from the ballistocardiogram, weight and electrocardiogram signals measured by the load cell sensor **110** and the electrocardiogram sensor **120**.

The display **140** outputs information on the at least one of the heart rate, normalized stroke volume force, blood pressure and equilibrium sense abnormality calculated by the signal processor **130** in a form recognizable by the sense of sight and hearing of the measured person.

The signal processor **130** will now be explained in more detail. The signal processor **130** includes a signal amplifier **131**, a band pass filter **132**, an A/D converter **133** and a computing unit **134**.

The signal amplifier **131** amplifies the ballistocardiogram and electrocardiogram signals sensed by the load cell sensor **110** and the electrocardiogram sensor **120**.

The band pass filter **132** filters only necessary bands of the ballistocardiogram and electrocardiogram signals amplified by the signal amplifier **131**.

More specifically, the band pass filter **132** filters 0.5 through 30 Hz components of the amplified ballistocardiogram signal and filters 0.5 through 35 Hz components of the amplified electrocardiogram signal.

The A/D converter **133** converts the ballistocardiogram and electrocardiogram signals filtered by the band pass filter **132** into 1 kHz and 16-bit digital signals.

The computing unit **134** calculates at least one of the heart rate, normalized stroke volume force, blood pressure and equilibrium sense abnormality of the measured person from the weight of the person, sensed by the load cell sensor **110**, the ballistocardiogram and electrocardiogram signals converted into the digital signals by the A/D converter **133**.

FIG. 4 is a flowchart of a nonconstrained health condition evaluating method according to the present invention.

A ballistocardiogram signal, an electrocardiogram signal and the weight of a measured person are sensed by the load cell sensor **110** and the electrocardiogram sensor **120** in step **S401**. The sensed ballistocardiogram and electrocardiogram signals are amplified and necessary bands thereof are filtered through the signal processor **130**. Then, the filtered signals are converted into digital signals in steps **S402**, **S403** and **S404**. FIG. 5 illustrates the ballistocardiogram and electrocardiogram signals converted into the digital signals through the aforementioned operation.

Subsequently, J waves are detected from the digital ballistocardiogram signal in step **S405** and an interval of the J waves is calculated to obtain an average hear rate of the measured person in step **S406**.

Furthermore, a normalized stroke volume force and an average blood pressure of the measured person can be obtained from the digital ballistocardiogram and electrocardiogram signals.

When the electrocardiogram signal is synchronized with ballistocardiogram signal based on the J waves of the ballistocardiogram signal, which are detected in step **S405**, to obtain an ensemble average in step **S407**, averaged ballistocardiogram and electrocardiogram signals from which an error due to a motion of the measured person or electrostatic noise has been removed can be obtained, as illustrated in FIG. 6. FIG. 6 illustrates the averaged ballistocardiogram and electrocardiogram signals obtained through the aforementioned operation.

When the magnitude of the J waves, which increases in proportion to cardiaoutput generated for a single stroke, is obtained from the averaged ballistocardiogram signal calcu-

lated in step **S407** and divided by the weight according to the following equation, the normalized stroke volume force can be obtained in step **S408**.

$$\text{Normalized stroke volume force} = \frac{\text{J-wave magnitude}}{\text{weight}}$$

A step of obtaining the blood pressure of the measured person will now be explained.

An R-J interval is detected from the averaged ballistocardiogram and electrocardiogram signals, which are calculated in step **S407**, in step **S409**.

The R-J interval reflects a cardiovascular state varied according to valsalva maneuver or other stimuli. For example, the R-J interval of the measured person increases when the valsalva maneuver is performed, as illustrated in FIG. 7.

Correlation of the R-J interval and a systolic blood pressure is as illustrated in FIG. 8 and correlation coefficient thereof is 0.73. Accordingly, if an expression that represents the correlation of the R-J interval and the systolic blood pressure is obtained using a linear regression equation, it is possible to calculate the blood pressure of the measured person by using only the R-J interval according to the following equation in step **S410**.

$$SBP(n) = -803.6091 \times RJI(n) + 349.6055$$

Here, SBP(n) represents an average blood pressure for n stokes of the measured person and RJI(n) denotes an average R-J interval.

The extent of a variation of the measured ballistocardiogram signal can be measured to determine how much the measured person stands in a stabilized pose and it is possible to check whether the equilibrium sensory organ of the measured person is abnormal by using the determination result in step **S411**.

FIG. 9 illustrates the ballistocardiogram signal and variance of the ballistocardiogram signal when the measured person stands on the load cell sensor, when the measured person moves the center of gravity of the body to the left and right, when the measured person moves the center of gravity of the body back and forth, and when the person closes his or her eyes and tries to maintain equilibrium. It can be known from FIG. 9 that the variance of the ballistocardiogram signal increases when the body of the person moves. Accordingly, it is possible to evaluate the extent of unstable motion over the entire test section.

The weight of the measured person can be measured from an unprocessed weight signal output from the load cell sensor **110** in step **S412**.

Furthermore, measured persons can be identified by using at least one of the heart rate, normalized stroke volume force, blood pressure, equilibrium sense abnormality and weight of each of the measured persons in an environment in which members of a family or ten constituent members or less use the scale-type nonconstrained health condition evaluating apparatus according to the present invention.

The information on the heart rate, normalized stroke volume force, blood pressure, equilibrium sense abnormality and weight of the measured person, which are calculated through the aforementioned operations, is output through the display in a form recognizable by the sense of sight and hearing of the measured person in step **413**.

While the present invention has been described with reference to the particular illustrative embodiments, it is not to be restricted by the embodiments but only by the appended claims. It is to be appreciated that those skilled in the art can change or modify the embodiments without departing from the scope and spirit of the present invention.

What is claimed is:

1. A scale-type unconstrained health condition evaluating apparatus loaded on at least one hardware processor and comprising:

a load cell sensor which is loaded on the at least one hardware processor and senses a ballistocardiogram signal and a weight signal from a measured person;

an electrocardiogram sensor which is loaded on the at least one hardware processor and senses an electrocardiogram signal from the measured person; and

a signal processor which is loaded on the at least one hardware processor and calculates at least one of the heart rate, normalized stroke volume force, blood pressure and equilibrium sense abnormality of the measured person from the ballistocardiogram, weight and electrocardiogram signals sensed by the load cell sensor and the electrocardiogram sensor,

wherein the load cell sensor is configured to be placed under feet of the measured person in a standing position or under hips of the measured person in a sitting position,

wherein the signal processor comprises:

a signal amplifier which amplifies the ballistocardiogram and electrocardiogram signals sensed by the load cell sensor and the electrocardiogram sensor;

a band pass filter which filters only necessary bands of the ballistocardiogram and electrocardiogram signals amplified by the signal amplifier;

an A/D converter which converts the ballistocardiogram and electrocardiogram signals filtered by the band pass filter into digital signals; and

a computing unit which calculates at least one of the heart rate, normalized stroke volume force, blood pressure and equilibrium sense abnormality of the measured person from the weight of the measured person, sensed by the load cell sensor, the ballistocardiogram and electrocardiogram signals converted into the digital signals by the A/D converter,

wherein the computing unit synchronizes the electrocardiogram signal with the ballistocardiogram signal based on the J waves of the ballistocardiogram signal to obtain an ensemble average so as to generate averaged electrocardiogram and ballistocardiogram signals,

wherein the computing unit detects an R-J interval from the averaged ballistocardiogram and electrocardiogram signals and calculates the blood pressure of the measured person from a regression equation derived from data about correlation of the R-J interval and a systolic blood pressure as follows:

$$SBP(n) = -803.6091 \times RJI(n) + 349.6055$$

wherein SBP(n) represents an average blood pressure for n strokes of the measured person, and RJI(n) denotes an average R-J interval, and

wherein a display displays the resulting detected R-J interval from the averaged ballistocardiogram and electrocardiogram signals and calculated blood pressure of the measured person from the regression equation for health compliancy.

2. The scale-type unconstrained health condition evaluating apparatus according to claim 1, further comprising the display that outputs the heart rate, normalized stroke volume force, blood pressure or equilibrium sense abnormality of the measured person, calculated by the signal processor.

3. The scale-type unconstrained health condition evaluating apparatus according to claim 1, wherein the electrocardiogram sensor includes two bar-shaped exposed electrocar-

diogram electrodes and measures the electrocardiogram signal from both hands of the measured person.

4. The scale-type unconstrained health condition evaluating apparatus according to claim 1, wherein the electrocardiogram sensor includes two electrocardiogram electrodes that are attached to the top face of the load cell sensor to measure the electrocardiogram signal from both feet of the measured person.

5. The scale-type unconstrained health condition evaluating apparatus according to claim 1, wherein the band pass filter filters only 0.5 through 30 Hz components of the ballistocardiogram signal amplified by the signal amplifier.

6. The scale-type unconstrained health condition evaluating apparatus according to claim 1, wherein the band pass filter filters only 0.5 through 35 Hz components of the electrocardiogram signal amplified by the signal amplifier.

7. The scale-type unconstrained health condition evaluating apparatus according to claim 1, wherein the computing unit detects J waves from the ballistocardiogram signal converted by the A/D converter into the digital signal and calculates an interval of the J waves to obtain an average heart rate of the measured person.

8. The scale-type unconstrained health condition evaluating apparatus according to claim 1, wherein the computing unit obtains the magnitude of the J waves from the averaged ballistocardiogram signal and calculates the normalized stroke volume force of the measured person according to the following equation:

$$\text{Normalized stroke volume force} = \frac{\text{J-wave magnitude}}{\text{weight}}$$

9. The scale-type unconstrained health condition evaluating apparatus according to claim 1, wherein the computing unit measures the extent of a variation of the ballistocardiogram signal and determines whether the sense of equilibrium of the measured person is abnormal from the measurement result.

10. The scale-type unconstrained health condition evaluating apparatus according to claim 1, wherein the signal processor identifies the measured person through at least one of the calculated heart rate, normalized stroke volume force, blood pressure, equilibrium sense abnormality and weight of the measured person.

11. A method for calculating blood pressure of a measured person by using an R-J interval, the method implemented in a scale-type unconstrained health condition evaluating apparatus loaded on at least one hardware processor and comprising:

detecting, by a signal processor loaded on the at least one hardware processor, the R-J interval from ballistocardiogram and electrocardiogram signals measured from the measured person; and

calculating, by the signal processor, the blood pressure of the measured person according to a regression equation derived from data about correlation of the R-J interval and a systolic blood pressure as follows:

$$SBP(n) = -803.6091 \times RJI(n) + 349.6055$$

wherein SBP(n) represents an average blood pressure for n strokes of the measured person, and RJI(n) denotes an average R-J interval,

wherein the scale-type unconstrained health condition evaluating apparatus is configured to be placed under feet of the measured person in a standing position or under hips of the measured person in a sitting position.

12. The method according to claim 11, wherein the detecting the R-J interval comprises:

detecting J waves from the ballistocardiogram signal;
synchronizing the electrocardiogram signal with the bal-
listocardiogram signal based on the detected J waves of
the ballistocardiogram signal to obtain an ensemble
average to as to generate averaged electrocardiogram 5
and ballistocardiogram signals; and
detecting the R-J interval from the averaged electrocardio-
gram and ballistocardiogram signals.

* * * * *

专利名称(译)	尺度型无约束健康状况评估装置和方法		
公开(公告)号	US8983854	公开(公告)日	2015-03-17
申请号	US12/425955	申请日	2009-04-17
[标]申请(专利权)人(译)	首尔大学校产学协力团		
申请(专利权)人(译)	首尔大学R & DB基金会		
当前申请(专利权)人(译)	首尔大学R & DB基金会		
[标]发明人	PARK KWANG SUK SHIN JAE HYUK		
发明人	PARK, KWANG SUK SHIN, JAE HYUK		
IPC分类号	A61B5/02 A61B5/00 A61B5/0205 A61B5/0402 A61B5/11 G01G19/414		
CPC分类号	A61B5/1102 A61B5/0205 G01G19/4146 A61B5/6825 A61B5/6829 A61B5/0402 A61B5/4023		
优先权	1020080117883 2008-11-26 KR		
其他公开文献	US20100210921A1		
外部链接	Espacenet USPTO		

摘要(译)

标度型非约束健康状况评估装置包括用于感测心冲击描记图信号和来自被测量者的重量信号的测力传感器，用于感测来自被测人员的心电图信号的心电图传感器，以及用于计算至少一个的信号处理器测量人的心率，归一化的每搏输出量，血压和平衡感异常，来自心冲击描记图，由称重传感器和心电图传感器检测的重量和心电图信号。

