



(11) **EP 1 674 034 B1**

(12) **EUROPEAN PATENT SPECIFICATION**

(45) Date of publication and mention of the grant of the patent:
25.08.2010 Bulletin 2010/34

(51) Int Cl.:
A61B 5/00 ^(2006.01) **A61B 1/00** ^(2006.01)
G07C 3/00 ^(2006.01)

(21) Application number: **06006843.4**

(22) Date of filing: **09.02.2001**

(54) **Sensor life monitor method**

Verfahren zur Überwachung der Lebensdauer eines Sensors

Méthode de surveillance de durée de vie d'un capteur

(84) Designated Contracting States:
DE GB

(30) Priority: **10.02.2000 US 502032**

(43) Date of publication of application:
28.06.2006 Bulletin 2006/26

(62) Document number(s) of the earlier application(s) in accordance with Art. 76 EPC:
01909052.1 / 1 257 190

(73) Proprietor: **Masimo Corporation**
Irvine, CA 92618 (US)

(72) Inventor: **Al-Ali, Ammar**
Tustin, California 92782 (US)

(74) Representative: **Vossius & Partner**
Siebertstrasse 4
81675 München (DE)

(56) References cited:
EP-A- 1 424 036 WO-A-97/29678
US-A- 4 996 975 US-A- 5 939 609
US-A- 5 987 343 US-A- 5 991 355

- **PATENT ABSTRACTS OF JAPAN** vol. 014, no. 160 (P-1028), 28 March 1990 (1990-03-28) & JP 02 017462 A (HITACHI LTD), 22 January 1990 (1990-01-22)

EP 1 674 034 B1

Note: Within nine months of the publication of the mention of the grant of the European patent in the European Patent Bulletin, any person may give notice to the European Patent Office of opposition to that patent, in accordance with the Implementing Regulations. Notice of opposition shall not be deemed to have been filed until the opposition fee has been paid. (Art. 99(1) European Patent Convention).

Description**Background of the Invention****Field of the invention**

[0001] The present invention in general relates to sensors for measuring oxygen content in the blood, and, in particular, relates to an apparatus and method for monitoring the life of a pulse oximetry sensor.

Background

[0002] Early detection of low blood oxygen is critical in a wide variety of medical applications. For example, when a patient receives an insufficient supply of oxygen in critical care and surgical applications, brain damage and death can result in just a matter of minutes. Because of this danger, the medical industry developed pulse oximetry, a noninvasive procedure for measuring the oxygen saturation of the blood. A pulse oximeter interprets signals from a sensor attached to a patient in order to determine that patient's blood oxygen saturation.

[0003] A conventional pulse oximetry sensor has a red emitter, an infrared emitter, and a photodiode detector. The sensor is typically attached to a patient's finger, earlobe, or foot. For a finger, the sensor is configured so that the emitters project light from one side of the finger, through the outer tissue of the finger, and into the blood vessels and capillaries contained inside. The photodiode is positioned at the opposite side of the finger to detect the emitted light as it emerges from the outer tissues of the finger. The photodiode generates a signal based on the emitted light and relays that signal to the pulse oximeter. The pulse oximeter determines blood oxygen saturation by computing the differential absorption by the arterial blood of the two wavelengths (red and infrared) emitted by the sensor.

[0004] The foregoing conventional sensor is typically detachable from the oximeter to allow for periodic replacement. Periodic replacement is advantageous for a wide variety of reasons. For example, the sensor can become soiled, thereby possibly inhibiting sensor sensitivity or causing cross-patient contamination. Furthermore, the electronic circuitry in the sensor can become damaged, thereby causing sensor failure or inaccurate results. Moreover, the securing mechanism for the sensor, such as an adhesive substrate, can begin to fail, thereby improperly positioning the sensor in proximity to a measurement site and providing inaccurate data. Accordingly, periodic replacement of the sensor is an important aspect of maintaining a sterile, highly sensitive, accurate pulse oximetry system.

[0005] However, a conventional pulse oximetry sensor is wholly reliant on an operator for timely replacement of soiled, damaged, or otherwise overused sensors. This approach is problematic not only from the standpoint of operator mistake or negligence, but also from the per-

spective of deliberate misuse for cost saving or other purposes.

[0006] US 5,991,355 describes a device for counting the number of usage cycles of a sensor such as electrode catheters, which includes a detection unit and a sensing unit. The detection unit causes a sensing unit to read a sensor identification code in the counting unit whenever the sensor is connected so as to determine, from information about sensor usage stored in a main computer, whether conditions for a new usage cycle have been met and, if so, increments the counter's contents by one usage cycle.

[0007] Based on the foregoing, significant drawbacks exist in the reliance on the operator for the periodic replacement of conventional pulse oximetry sensors. Accordingly, a need exists for a pulse oximetry sensor having the ability to monitor its own usable life.

Summary of the Invention

[0008] The present invention provides a method of tracking an amount of use of electronics of a non invasive optical probe as claimed in independent claim 1. Further preferred embodiments according to the present invention are defined in the dependent claims. One aspect of the present invention is to provide an inexpensive, highly accurate sensor life monitoring method for monitoring the useful and safe life of a pulse oximetry sensor. According to one embodiment, the sensor life monitoring system includes a timer and a sensor life indicator. According to another embodiment, the timer includes a divide-by-n counter and a non-volatile RAM, while the sensor life indicator includes at least one LED or incandescent bulb.

[0009] Therefore, according to one aspect a pulse oximetry sensor comprising a drive connection carrying a drive signal, wherein the drive signal has pulses. The pulse oximetry sensor further comprises a timer connected to the drive connection and configured to generate a timer output signal after a predetermined number of pulses are generated in the drive signal; and a sensor life indicator connected to the timer output signal and configured to provide an indication when the timer output signal is generated. The pulse oximetry sensor further comprises an LED network connected to the drive connection and configured to project light through a measurement site when pulsed by the drive signal; and a photodetector configured to detect the projected light and output a signal representative of constituents or characteristics of the measurement site.

[0010] Another aspect is a sensor life monitoring system comprising a timer connected to a sensor drive signal; and a sensor life indicator connected to the timer such that the sensor life indicator is configured to indicate the expiration of the useful or safe life of a pulse oximetry sensor.

[0011] Another aspect is a pulse oximetry system that comprises a pulse oximeter; a sensor connected to the

pulse oximeter; and a sensor life monitor connected to the sensor and configured to monitor the useful and safe life of the sensor.

[0012] Another aspect is a method of manufacturing a sensor. The method comprises connecting a timer to one of a sensor input and a sensor output; and connecting an indicator to the timer such that when the timer expires, the indicator is activated.

[0013] An aspect of the present invention is a method for monitoring the life of an oximetry sensor. The method comprises monitoring a parameter responsive to repeated use of a sensor. When the parameter indicates that the sensor has expired, the method generates an expiration indication.

[0014] Another aspect is an oximetry sensor life indicator that comprises a non-volatile counter connected to receive a drive signal having a plurality of transitions where the counter changes a count value in response to the transitions. The oximetry sensor life indicator further includes a sensible indicia connected to the counter, where the sensible indicia has a first state, and a second state and the sensible indicia changes from the first state to the second state to indicate the end of life of the oximetry sensor when the count value in the counter reaches a predetermined value.

[0015] Another aspect is an oximetry system comprising an oximeter; a sensor attached to the oximeter through a cable; a timer connected to at least one of a sensor drive signal and a sensor return signal; and a sensor life indicator connected to the timer.

[0016] Another aspect is an oximetry system comprising a sensor having a timer, wherein the timer produces a sensor expiration signal. An oximeter is connected to the sensor and is configured to receive the sensor expiration signal from the timer.

[0017] Another aspect is an oximetry system comprising a sensor having a reset indicator. An oximeter is connected to the sensor and is configured to monitor whether the reset indicator has been set.

[0018] Another aspect is a pulse oximetry system comprising a pulse oximeter and a sensor connected to the pulse oximeter. The sensor is adapted to measure a physiological parameter. The pulse oximetry system also comprises a memory device connected to the sensor and adapted to measure the useful life of the sensor.

[0019] Another aspect is a pulse oximetry system comprising a sensor having an emitter, a detector, and a memory device storing a characteristic of the sensor. The pulse oximetry system also comprises a pulse oximeter connected to the sensor and adapted to read the characteristic of the sensor and the output of the detector. The pulse oximetry system also comprises a database connected to the pulse oximeter and adapted to store the characteristic along with a longevity measurement corresponding to the sensor.

[0020] For the purposes of summarizing the invention, certain aspects, advantages, and novel features of the invention have been described. Of course, it is to be un-

derstood that not necessarily all such advantages may be achieved in accordance with any particular embodiment of the invention. Thus, the invention may be embodied or carried out in a manner that achieves or optimizes one advantage or a group of advantages, as taught herein, without necessarily achieving other advantages as may be taught or suggested herein.

[0021] Other aspects and advantages of the invention will be apparent from the detailed description below and the appended claims.

Brief Description of the Drawings

[0022] The present invention is described in more detail below in connection with the attached drawings, which are meant to illustrate and not limit the invention, and in which:

FIGURE 1 illustrates a block diagram of a typical oximetry system;

FIGURE 2 illustrates a block diagram of a sensor life monitoring system according to an embodiment of the invention;

FIGURE 3 illustrates a block diagram of the sensor life monitoring system of FIGURE 2, according to another embodiment of the invention;

FIGURE 4 illustrates a block diagram of an oximetry system having a sensor life monitoring system, according to yet another embodiment of the invention;

FIGURE 5 illustrates a block diagram of an oximetry system having a sensor life monitoring system, according to yet another embodiment of the invention; FIGURE 6 illustrates a flow diagram of the operation of a microprocessor of the oximetry system of FIGURE 5;

FIGURE 7 illustrates a block diagram of an oximetry system having a sensor life monitoring system, according to yet another embodiment of the invention; and

FIGURE 8 illustrate a block diagram of an oximetry system having a sensor life monitoring system, according to yet another embodiment of the invention.

Detailed Description of the Preferred Embodiment

[0023] The inventions are described in detail below with reference to the figures, wherein like elements are referenced with like numerals throughout.

[0024] FIGURE 1 illustrates a block diagram of a typical oximetry system 100 used to determine arterial oxygen saturation. The oximetry system 100 includes an oximeter 105 and a sensor 110 connected to the oximeter 105 via a patient cable 115. The oximeter 105 includes a microprocessor (p) 120, a speaker 125 and a display 130. The sensor 110 includes a drive connection 135 connected to at least one LED network 140, a photo detector 145 connected to a return signal connection 150, and a cable connector 155 housing one end of each of

the drive connection 135 and the return signal connection 150. As mentioned, the sensor 110 attaches to the oximeter 105 via the patient cable 115. The patient cable 115 includes a sensor connector 160 for electrically mating with the cable connector 155 of the sensor 110.

[0025] As previously mentioned, the typical oximetry system 100 produces a drive signal and transmits the drive signal through the patient cable 115 and the drive connection 135 to the LED network 140 such that light energy is transmitted from the LED network 140 through tissue. The photo detector 145 senses the light energy, which has now been attenuated by the blood in tissue, and sends a representative signal of the light energy back to the oximeter 105 through the return signal connection 150 and the patient cable 115. The oximeter 105 analyzes the representative signal from the photo detector 145 to determine constituent and characteristics of the blood in the tissue.

[0026] The sensor 110 typically includes the foregoing electronic circuitry and an attachment mechanism formed to secure the electronic circuitry to a measurement site. The sensor 110 may be disposable, wherein the attachment mechanism is likely formed from an adhesive structure. Moreover, the sensor 110 may be reusable, wherein the attachment mechanism is likely formed from a clip-on structure. Also, the sensor 110 may be a combination of the disposable and reusable type sensors, wherein a disposable attachment mechanism removably attaches the electronic circuitry such that the electronic circuitry is reusable. Furthermore, the sensor 110 may include an information element electrically connected to the LED network 140. Such an information element advantageously provides quality control, security, and identification functions.

[0027] An example of the combination sensor having an information element distributed in the disposable attachment mechanism is described in U.S. Patent Application No. 09/456,666, filed on December 9, 1999, titled, "RESPOSABLE PULSE OXIMETRY SENSOR," assigned to the assignee of the current application.

[0028] FIGURE 2 illustrates a block diagram of a pulse oximetry sensor 200. As shown in FIGURE 2, the sensor 200 includes a wholly incorporated sensor life monitoring system 203. The sensor life monitoring system 203 includes a timer 205 and a sensor life indicator (SLI) 210. The timer 205 is electrically connected to the drive connection 135 such that the timer 205 also receives the drive signal from the oximeter 105. The timer 205 also connects to the sensor life indicator 210.

[0029] As the oximeter 105 drives the LED network 140, the timer 205 monitors the number of drive pulses produced and keeps a running count. After the oximeter 105 produces a predetermined number of drive signals, the timer 205 provides a signal to the sensor life indicator 210, such that the sensor life indicator 210 produces an indication that the sensor 200 has expired and should be replaced.

[0030] FIGURE 3 illustrates a block diagram of an ex-

ample of the sensor life monitoring system 203 of FIGURE 2. As shown in FIGURE 3, the timer 205 advantageously comprises a non-volatile counter. One embodiment of the non-volatile counter advantageously comprises a counter 300 having an output that connects to an input of a logic gate 302. An output of the logic gate 302 connects to an adder 304. As used herein, an "adder" can be an arithmetic unit, which may also be implemented as a subtractor or the like. The adder 304 connects to a non-volatile (NV) RAM 305 (A non-volatile RAM does not lose data when the power is turned off or otherwise terminated). An output of the NVRAM-305 reconnects as feedback to the adder 304. Also, an output of the most significant bit (MSB) of the NVRAM 305 connects to both an inverter 307 and the sensor life indicator 210. The inverter 307 connects as feedback to another input of the logic gate 302. Moreover, the output of the logic gate 302 activates or clocks the NVRAM 305.

[0031] The counter 300 comprises a divide-by-n counter, producing an incremental output count only after n input pulses, or transitions, of the drive signal. Using a divide-by-n counter advantageously reduces the capacity requirements of the NVRAM 305. Furthermore the logic gate 302 is an AND gate, the adder 304 is a plus-one adder. Thus, each time the adder 304 receives an input, it adds one to the current count stored in the NVRAM 305. The NVRAM 305 is a seventeen-bit non-volatile memory that clocks, for example, on the trailing edge of the output of the logic gate 302.

[0032] The sensor life indicator 210 comprises a sensible indicia, such as visible light. For example, the sensible indicia may advantageously be an LED 310, or the like. Alternatively, the sensible indicia may be audible, vibrational, a power down of the sensor 200 or the oximeter 105, or the like.

[0033] The operation of the foregoing timer 205 and sensor life indicator 210 will be disclosed with reference to two differing time frames. The first time frame refers to when a new sensor 200 is initially attached to the oximeter 105 and provided with a drive signal. The second time frame refers to when the sensor 200 has previously been used, and a new drive signal is applied.

FIRST USE OF THE SENSOR 200

[0034] The sensor life monitoring system 203 initially functions as follows. The oximeter 105 outputs a drive signal at, for example, one kHz. The counter 300 comprises a divide-by-1000 counter that advantageously produces, for example, an output only after one thousand cycles of the drive signal, or every one second. Furthermore, assuming the count stored in the NVRAM 305 is initially zero, the output of the MSB of the NVRAM 305 is zero. The inverter 307 inverts the output of the MSB such that the logic gate 302 passes the output of the counter 300 to the adder 304. Thus, according to this example, the adder 304 receives a pulse every second from the counter 300. With each pulse, the adder 304

adds one to count stored in the NVRAM 305. Thus, after one second, the adder 304 places a one in the NVRAM 305. After another second, the adder 304 places a two in the NVRAM 305, and so forth until the NVRAM 305 fills to capacity, or the oximeter 105 ceases producing the drive signal. Both events are further discussed as follows.

SUBSEQUENT USE OF THE SENSOR 200

[0035] When the oximeter 105 sends pulses to a previously used sensor 200, the NVRAM 305 will already have a previous count stored therein. The previous count is loaded into the adder 304 such that as the logic gate 302 outputs the foregoing signal every second, the adder 304 adds one to the previous count. For example, if the previous count were one hour, or 3,600 seconds, the first pulse received by the adder 304 from the counter 300 will store 3,601 in the NVRAM 305. Thus, much like an automobile odometer, the NVRAM 305 stores a running count, or times, the used life of the sensor 200.

[0036] When the count stored in the NVRAM 305 reaches capacity (in other words, sets the MSB), the output of the MSB switches. Therefore, the output of the inverter 307 switches such that the logic gate 302 blocks any future signals output from the counter 300 from reaching the adder 304. Moreover, the output of the MSB further activates the LED 310 such that the LED 310 indicates the sensor 200 has expired. This indication by the LED 310 signals the operator to replace the used sensor 200 with a new one. The indication advantageously provides multiple people with the knowledge that the sensor 200 should be changed. For example, doctors, nurses, visitors, and even the patient may perceive the indication that the sensor 200 has expired.

[0037] Where every second that the oximeter 105 sends drive pulses to the sensor 200, the seventeen-bit NVRAM 305 is incremented, the MSB of the NVRAM 305 will set after 131,072 seconds, or, one day, twelve hours, twenty-four minutes and thirty two-seconds. In other words, according to this embodiment, the useful life of the sensor 200 expires after the sensor 200 has received drive pulses for a combined total of the foregoing time.

[0038] A skilled artisan will understand that a wide number of differing logic mechanisms may be employed in the foregoing embodiment. For example, employing different sized counters 300 or NVRAMs 305 will adjust the predetermined expiration time. Moreover, the counter 300 may advantageously divide by more than one thousand, thereby further reducing the capacity requirements of the NVRAM 305. Also, the timer 205 may advantageously comprise a non-volatile counter that has internal registers that retain their values when the power is turned off. Such non-volatile counters are available, for example, from Dallas Semiconductor Corporation of Dallas, Texas. These non-volatile counters may include, for example, Dallas Semiconductor's DS1602 or DS1603. In the foregoing embodiments employing a non-volatile

counter, the adder 304 and the counter 300 may not be needed.

[0039] A skilled artisan will also understand that the sensor 200 may advantageously employ a wide variety of differing timers 205 and differing sensor life indicators 210. Moreover, the choice may advantageously coincide with particular types of the sensor 200. For example, a purely disposable sensor suggests a less costly solution than that of the reusable sensor because of manufacturing costs and the relatively short life of the disposable sensor. On the other hand, the combination sensor may incorporate a more expensive solution into the reusable portion of the electronic circuitry without dramatic cost changes to the disposable portion.

[0040] Moreover, a skilled artisan will recognize that the timer 205 may advantageously comprise a capacitor that is charged when the sensor 200 is connected to the oximeter 105. In such case, the capacitor has known discharge characteristics such that the voltage across the capacitor can be used to measure the useful life of the sensor 200. Also, rather than using the pulses of the drive signal, the timer 205 may employ an oscillator configured to trigger at the beginning of sensor use.

[0041] Further, the sensor life indicator 210 may include several LEDs of differing colors, such as green and red, to indicate whether the sensor 200 has expired. The sensor life indicator 210 may comprise an incandescent light, an audio or vibrational alarm, a digital or LCD display, or other sensible indicia. Moreover, the sensor life indicator 210 may include a blocking signal for automatically terminating the functionality of the sensor 200. For example, a logic gate may be advantageously added to the drive signal such that the logic gate has the drive signal as an input and has the output of the timer 205 as the another. When the output of the timer 205 is a logic level signaling expiration, the logic gate blocks the drive signal from passing, thus rendering the sensor 200 inoperative. The foregoing logic circuit may also be used to block the signal transferred through the return signal connection 150. On the other hand, the blocking signal may also comprise a fuse that once blown, renders the sensor 200 inoperative.

[0042] Accordingly, a skilled artisan may perceive a variety of differing devices to measure the longevity of the sensor 200. Furthermore, the type of the sensor 200 may provide guidance on which of the wide variety of devices to use.

[0043] FIGURE 4 illustrates a block diagram of yet another embodiment of an oximetry system 400 including a sensor life monitoring system 405. According to this embodiment, the sensor life monitoring system 405 employs the timer 205 and a return signal 410 to the oximeter 105. Similar to the foregoing embodiment, the timer 205 connects to the drive connection 135 and uses the pulses of the drive signal to measure the useful and safe life of the sensor 200. In contrast to the foregoing embodiment, the timer 205 then outputs an incremental count of pulses to the oximeter 105 via the return signal 410, the cable

connector 155, the sensor connector 160, and the patient cable 115. In this embodiment, the microprocessor 120 of the oximeter 105 receives the incremental count from the timer 205 and compares the incremental count with a predetermined amount. If the count is greater than the predetermined amount, the microprocessor 120 issues an expiration indication of the sensor 200 through the oximeter 105.

[0044] A skilled artisan will recognize that the oximeter 105 may issue the expiration indication through a wide variety of devices including, but not limited to, those described in relation to the sensor life indicator 210 of FIGURES 2-3. Moreover, the oximeter 105 may take advantage of the more costly technology already associated therewith. For example, the oximeter 105 may issue the expiration indication by employing an audio alarm through the speaker 125, a visual alarm through the display 130, or a power-down function where the oximeter 105 is inoperable until the sensor 200 is replaced.

[0045] FIGURE 5 illustrates a block diagram of yet another embodiment of an oximetry system 500 including a sensor life monitoring system 505. According to this embodiment, the sensor life monitoring system 505 employs a reset indicator 510 and the sensor life indicator 210, as an integral part of the sensor 200. The reset indicator 510 and the sensor life indicator 210 connect to the oximeter 105 through the cable connector 155, the sensor connector 160, and the patient cable 115. Also according to this embodiment, the microprocessor 120 includes a timer 515.

[0046] The microprocessor 120 measures the useful and safe life of the sensor 200. For example, the microprocessor 120 may track the pulses in the drive signal created by the microprocessor 120, or take advantage of a date/time function to measure actual time. Furthermore, the microprocessor 120 employs the reset indicator 510 on the sensor 200 to indicate whether the sensor 200 is newly attached or has previously expired. For example, the reset indicator 510 may comprise a one-bit memory or a fuse technology, wherein the one-bit memory is set, or the fuse is blown, when the sensor 200 first connects to the oximeter 105 through the mating of the cable and sensor connectors, 155 and 160 respectively.

[0047] As shown in FIGURE 5, the sensor life indicator 210 remains an integral part of the sensor 200 and, therefore, may advantageously take any of the forms discussed above with reference to FIGURES 2 and 3. Preferably, the sensor life indicator 210 comprises the LED 310 of FIGURE 3.

[0048] FIGURE 6 illustrates a flow diagram 600 of the steps taken by the microprocessor 120 of the oximetry system 500 of FIGURE 5, according to one embodiment of the invention. As shown in FIGURE 6, the process begins when the oximeter 105 is activated to a sensing state by, for example, an operator, in a STEP 603. The oximeter 105 first checks the reset indicator 510, in a STEP 605, to determine whether the sensor 200 has been previously used. If the sensor 200 is new, the mi-

croprocessor 120 resets the timer 515, in a STEP 610, and sets the reset indicator 510 on the sensor 200, in a STEP 615. The microprocessor 120 then proceeds with normal operation, e.g., to output a drive signal to the sensor 200, in a STEP 620.

[0049] On the other hand, if in the STEP 605, the reset indicator 510 indicates that the sensor 200 has been previously used, or when the sensor 200 is in normal operation, in the STEP 620, the microprocessor 120 checks whether the timer 515 indicates the sensor 200 has reached its predetermined longevity, in a STEP 625. For example, the timer 515 may advantageously compare the number of drive pulses to a predetermined number to conclude whether the sensor 200 has expired.

[0050] If the sensor 200 has not expired, the microprocessor 120 again proceeds with normal operation, in the STEP 620. On the other hand, if the timer 515 indicates that the sensor 200 has expired, the microprocessor 120 activates the sensor life indicator 210, in a STEP 630, and then the process terminates, in a STEP 635.

[0051] One having ordinary skill in the art will understand that the microprocessor 120 may employ an interrupt driven mechanism for the timer 515. For example, during normal operation, the microprocessor 120 may not continually, or periodically, check the timer 515, as in the STEP 625. Rather, the microprocessor 120 may continually send drive pulses until the timer 515 generates an interrupt that instructs the microprocessor 120 to activate the sensor life indicator 210. A skilled artisan will appreciate that there are a wide number of mechanisms for generating microprocessor interrupts.

[0052] FIGURE 7 illustrates a block diagram of yet another embodiment of an oximetry system 700 including a sensor life monitoring system 705. The oximetry system 700 is similar to that described in reference to FIGURE 5. Like FIGURE 5, the microprocessor 120 of the oximeter 105 includes the timer 515, or timer-like functions. Also, the sensor life monitoring system 705 advantageously employs the reset indicator 510 to ensure replacement of new sensors when the sensor 200 expires. Moreover, like FIGURE 4, the oximetry system 700 employs the oximeter 105 to provide an expiration indication once the sensor 200 expires.

[0053] The microprocessor 120 of the oximeter 105 checks the reset indicator 510 to ensure the sensor 200 has not previously been used. Then, the microprocessor 120 drives the LED network 140 and tracks the timing functions. When the predetermined number of drive pulses is reached, the microprocessor 120 employs various mechanisms on the oximeter 105 to generate the expiration indication. For example, the microprocessor 120 may use the speaker 125 or the display 130, even power down the oximeter 105, or the like, to create the expiration indication.

[0054] FIGURE 8 illustrates a block diagram of yet another embodiment of an oximetry system 800. The oximetry system 800 includes a sensor life monitoring system 805 having a memory device 810. The memory de-

vice **810** is preferably a single wire memory device having a unique identifier, such as memory devices commercially available from companies such as Dallas Semiconductor Corporation. For example, Dallas Semiconductor's DS2401 includes a unique, 64-bit identification number. In this way, the memory device 810 can uniquely identify the sensor 200 from all other sensors.

[0055] The oximetry system 800 further includes the microprocessor 120 of the oximeter 105 connected to a memory, such as a database 815. The database 815 is stored locally in the memory of the oximeter 105. The oximeter 105 reads the unique identifier from the memory device 810 on the sensor 200 and, if necessary, creates a record in the database 815 corresponding to the unique identifier. Then, as the sensor 200 is used, the oximeter 105 accesses the record corresponding to the unique identifier so as to update the information relating to the longevity of the sensor 200. This information may advantageously include timing information, such as a decremented or incremented chronological count. The information may also, or alternatively, include the number of times the sensor 200 has been used, the number of drive signals the sensor 200 has received, or other similar methods of determining the amount of use for the particular sensor 200 having the particular unique identifier.

[0056] When the information stored in the database 815 reaches a predetermined threshold for a particular unique identifier, the oximeter 105 advantageously produces the expiration indication in a similar manner to that described in reference to FIGURE 4. For example, the oximeter 105 may issue the expiration indication by employing an audio alarm through the speaker 125, a visual alarm through the display 130, or a power-down function that renders the oximeter 105 inoperable. These expiration indications may advantageously continue until the sensor **200** having the unique identifier is replaced with one having a different unique identifier.

[0057] Although the database **815** is described as being stored in memory associated with the oximeter **105**, the invention is not meant to be limited thereby. Rather, a skilled artisan would recognize that the database **815** may advantageously be stored in a central location, such as a remote server connected through a wide number of known technologies, such as a local or wide area network, the internet, or other communications connection. In this way, a monitoring authority, ranging from a pair of pulse oximeters, to one or a number of hospitals, to a particular sensor manufacturer, and the like, can monitor the useful life of sensors identified through their unique identifier stored in the memory device 810.

[0058] As an alternative to, or in addition to, the foregoing embodiment where the memory device 810 includes a unique identifier, the memory device 810 may include the ability to store data. Again, such memory devices are commercially available from, for example, Dallas Semiconductor Corporation, and typically allow for read/write access over a single wire. For example, Dallas Semiconductor's DS2502 has the ability to accept new

data for non-volatile storage.

[0059] The oximeter **105** reads data stored in the memory device **810** relating to longevity, and updates that data according to use. For example, the oximeter 105 may read the memory device 810 of sensor 200 and determine that the sensor 200 has been in use for one increment of time, such as one minute. After the sensor 200 has been used for another increment of time, such as another minute as measured by the oximeter 105, the oximeter may write to the memory device 810 such that the memory device 810 now reflects that the sensor 200 has been used for two minutes. This periodic read and write to the memory device 810 continues until the memory device 810 reflects a longevity measurement greater than a predetermined threshold. At that time, the oximeter 105 may advantageously issue the foregoing expiration indication.

[0060] A skilled artisan would recognize that a wide variety of timing schemes may be implemented using the foregoing read/write technique. For example, the oximeter 105 may advantageously decrement from a predetermined threshold stored in the memory device 810. On the other hand, the memory device may store the number of times the sensor 200 has been used, the number of drive signals the sensor 200 has received, or other similar methods of determining the amount of use for the particular sensor 200.

[0061] Moreover, a skilled artisan would recognize that the foregoing embodiments may advantageously be combined such that the memory device 810 includes both the unique identifier and the ability to store other data. This other data may advantageously include the foregoing read/write timing data, manufacturing data such as sensor type, manufacturing source indication, tolerance levels, operating characteristics, and the like.

[0062] Although the foregoing invention has been described in terms of certain preferred embodiments, other embodiments will be apparent to those of ordinary skill in the art. For example, a skilled artisan will recognize the distinction in the foregoing embodiments between those components described as being integral with the sensor 200, or on-sensor components, and those components described as not being integral with the sensor 200, or off-sensor components. The on-sensor components may advantageously be housed in the disposable, reusable, or combination sensors. With respect to the combination sensors, the on-sensor components may be advantageously housed in the disposable portion, the reusable portion, or both portions, of the combination sensor.

[0063] Further, the off-sensor components may be housed in any of the longer lasting components associated with the oximeter 105. For example, the off-sensor components may be advantageously located on the sensor connector 160 or on the patient cable 115 where they are readily seen, heard, or felt by the operator or patient.

[0064] Moreover, the foregoing embodiments incorporating the memory device 810 of FIGURE 8 may advan-

tageously be combined with those embodiments describing the sensor life indicator 210 housed on the sensor 200. In such embodiment, the oximeter 105 may advantageously provide the expiration indication to the sensor life indicator 210 when the oximeter 105 determines that the sensor 200 had expired.

[0065] Additionally, other combinations, omissions, substitutions and modifications will be apparent to the skilled artisan in view of the disclosure herein. Accordingly, the present invention is not intended to be limited by the reaction of the preferred embodiments, but is to be defined by reference to the appended claims.

Claims

1. A method of tracking an amount of use of electronics of a noninvasive optical probe to alert a user when the electronics have expired, the method comprising:

reading a unique identifier from a memory device (810) of a noninvasive optical probe (200), said probe including electronics comprising at least one of a plurality of emitters or a light sensitive detector (145) capable of detecting light attenuated by tissue;

accessing a cumulative measure of a number of drive signals received or an increment of time of use of electronics of the noninvasive optical probe stored in a database (815) remote from said noninvasive optical probe (200);

determining whether the cumulative measure exceeds a predetermined number of drive signals or increment of time; and if the cumulative measure exceeds a predetermined number of drive signals or increment of time, activating an indicator capable of informing a user that the electronics have expired;

if the cumulative measure does not exceed a predetermined number of drive signals or increment of time, allowing and detecting use of electronics of the noninvasive optical probe (200) and

updating the cumulative measure of a number of drive signals received or increment of time of use of the electronics.

2. The method of claim 1, wherein the expiration is associated with overuse of the electronics.
3. The method of claim 1, wherein the noninvasive optical probe comprises a combination of disposable and reusable components and wherein reusable components include at least some of the electronics.
4. The method of claim 1, wherein the activating the indicator comprises activating at least one of an au-

dio or visual alarm.

5. The method of claim 1, wherein the cumulative measure of number of drive signals received by the electronics of the noninvasive optical probe is accessed.
6. The method of claim 1, wherein the cumulative measure of the increment of time of use of electronics of the non-invasive optical probe is accessed.
7. The method of claim 6, wherein the increment of time comprises a decremented chronological count.
8. The method of claim 6, wherein the increment of time comprises an incremented chronological count.

Patentansprüche

1. Verfahren zum Verfolgen eines Umfangs der Benutzung der Elektronik einer nichtinvasiven optischen Sonde, um einen Benutzer zu alarmieren, wenn die Elektronik abgelaufen ist, wobei das Verfahren aufweist:

Auslesen einer eindeutigen Kennung aus einer Speichervorrichtung (810) einer nichtinvasiven optischen Sonde (200), wobei die Sonde Elektronik umfasst, die mindestens einen von mehreren Emittern oder einen lichtempfindlichen Detektor (145) umfasst, der dazu geeignet ist, von Gewebe geschwächtes Licht zu detektieren;

Zugreifen auf ein kumulatives Maß einer Anzahl von empfangenen Treibersignalen oder eines Zeitinkrements der Benutzung der Elektronik der nichtinvasiven optischen Sonde, die in einer von der nichtinvasiven optischen Sonde (200) entfernten Datenbasis (815) gespeichert sind; Bestimmen, ob das kumulative Maß eine vorbestimmte Anzahl von Treibersignalen oder ein vorbestimmtes Zeitinkrement übersteigt; und Aktivieren eines Indikators, der in der Lage ist, einen Benutzer zu informieren, dass die Elektronik abgelaufen ist, wenn das kumulative Maß eine vorbestimmte Anzahl von Treibersignalen oder ein vorbestimmtes Zeitinkrement übersteigt;

Zulassen und Detektieren der Benutzung der Elektronik der nichtinvasiven optischen Sonde (200), wenn das kumulative Maß eine vorbestimmte Anzahl von Treibersignalen oder ein vorbestimmtes Zeitinkrement nicht übersteigt, und

Aktualisieren des kumulativen Maßes einer Anzahl von empfangenen Treibersignalen oder eines Zeitinkrements der Benutzung der Elektro-

- nik.
2. Verfahren nach Anspruch 1, wobei das Ablaufen mit einer übermäßigen Benutzung der Elektronik verknüpft ist. 5
 3. Verfahren nach Anspruch 1, wobei die nichtinvasive optische Sonde eine Kombination aus wegwerfbaren und wieder verwendbaren Komponenten aufweist und wobei wieder verwendbare Komponenten zumindest einen Teil der Elektronik umfassen. 10
 4. Verfahren nach Anspruch 1, wobei das Aktivieren des Indikators das Aktivieren eines Audioalarms und/oder eines visuellen Alarms umfasst. 15
 5. Verfahren nach Anspruch 1, wobei auf das kumulative Maß der Anzahl von Treibersignalen, welche von der Elektronik der nichtinvasiven optischen Sonde empfangen werden, zugegriffen wird. 20
 6. Verfahren nach Anspruch 1, wobei auf das kumulative Maß des Zeitinkrements der Benutzung der Elektronik der nichtinvasiven optischen Sonde zugegriffen wird. 25
 7. Verfahren nach Anspruch 6, wobei das Zeitinkrement eine dekrementierte chronologische Zählung umfasst. 30
 8. Verfahren nach Anspruch 6, wobei das Zeitinkrement eine inkrementierte chronologische Zählung umfasst. 35

Revendications

1. Procédé de suivi de quantité d'utilisation de l'électronique d'une sonde optique non invasive pour avertir un utilisateur lorsque la durée de vie de l'électronique a expiré, le procédé consistant à :
 - lire un identifiant unique dans un dispositif de mémoire (810) d'une sonde optique non invasive (200), ladite sonde comprenant une électronique comprenant au moins l'un d'une pluralité d'émetteurs ou d'un détecteur photosensible (145) capable de détecter une lumière atténuée par un tissu ;
 - accéder à une mesure cumulative d'un nombre de signaux de commande reçus ou d'un incrément de temps d'utilisation de l'électronique de la sonde optique non invasive mémorisée dans une base de données (815) à distance de la sonde optique non invasive (200) ;
 - déterminer si la mesure cumulative dépasse un nombre de signaux de commande ou un incrément de temps prédéterminé ; et si la mesure

cumulative dépasse un nombre de signaux de commande ou un incrément de temps prédéterminé, activer un indicateur capable d'informer un utilisateur du fait que la durée de vie de l'électronique a expiré ;

si la mesure cumulative ne dépasse pas un nombre de signaux de commande ou un incrément de temps prédéterminé, permettre et détecter l'utilisation de l'électronique de la sonde optique non invasive (200) ; et

mettre à jour la mesure cumulative d'un nombre de signaux de commande reçus ou d'un incrément de temps d'utilisation de l'électronique.

2. Procédé selon la revendication 1, dans lequel l'expiration est associée à une utilisation excessive de l'électronique. 35
3. Procédé selon la revendication 1, dans lequel la sonde optique non invasive comprend une combinaison de composants jetables et réutilisables et dans lequel des composants réutilisables comprennent au moins une partie de l'électronique. 40
4. Procédé selon la revendication 1, dans lequel l'activation de l'indicateur comprend l'activation d'au moins l'une d'une alarme audio ou d'une alarme visuelle. 45
5. Procédé selon la revendication 1, dans lequel la mesure cumulative du nombre de signaux de commande reçus par l'électronique de la sonde optique non invasive fait l'objet d'un accès. 50
6. Procédé selon la revendication 1, dans lequel la mesure cumulative de l'incrément de temps d'utilisation de l'électronique de la sonde optique non invasive fait l'objet d'un accès. 55
7. Procédé selon la revendication 6, dans lequel l'incrément de temps comprend une valeur de comptage chronologique décrétementée.
8. Procédé selon la revendication 6, dans lequel l'incrément de temps comprend une valeur de comptage chronologique incrémentée.

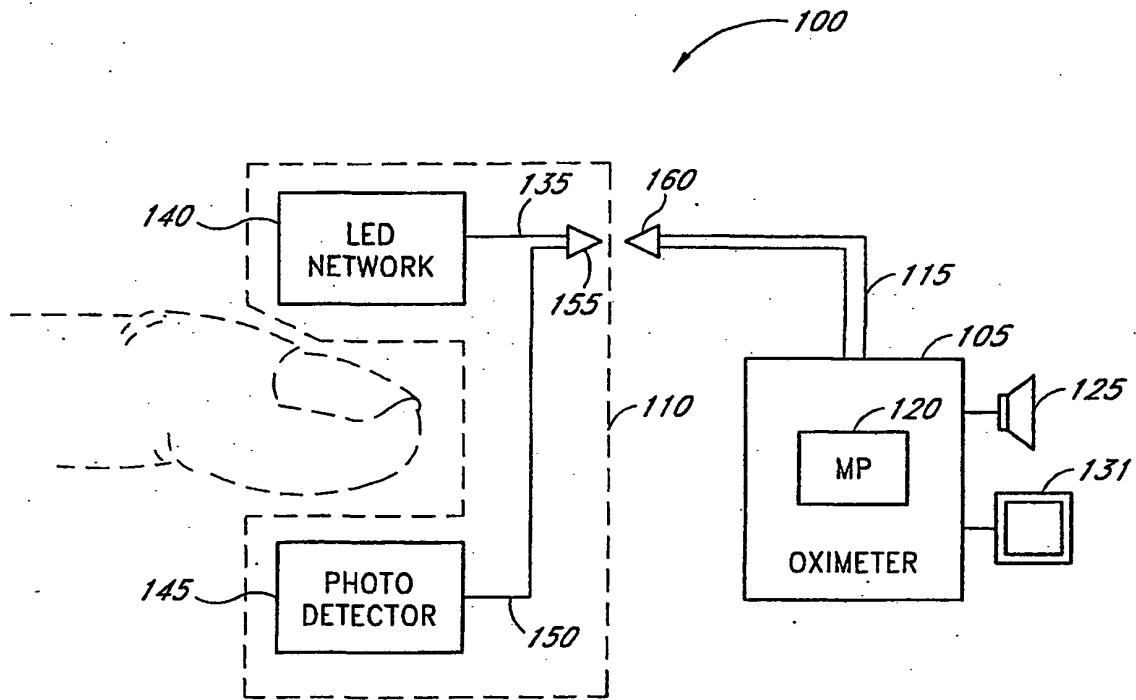


Fig. 1

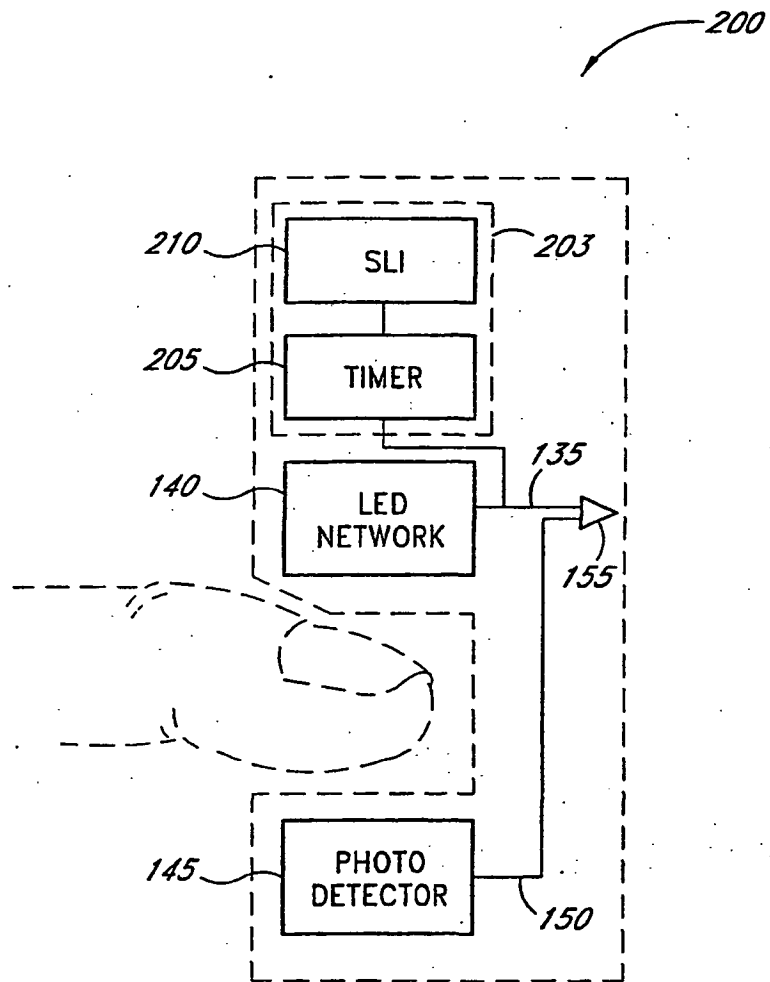


Fig. 2

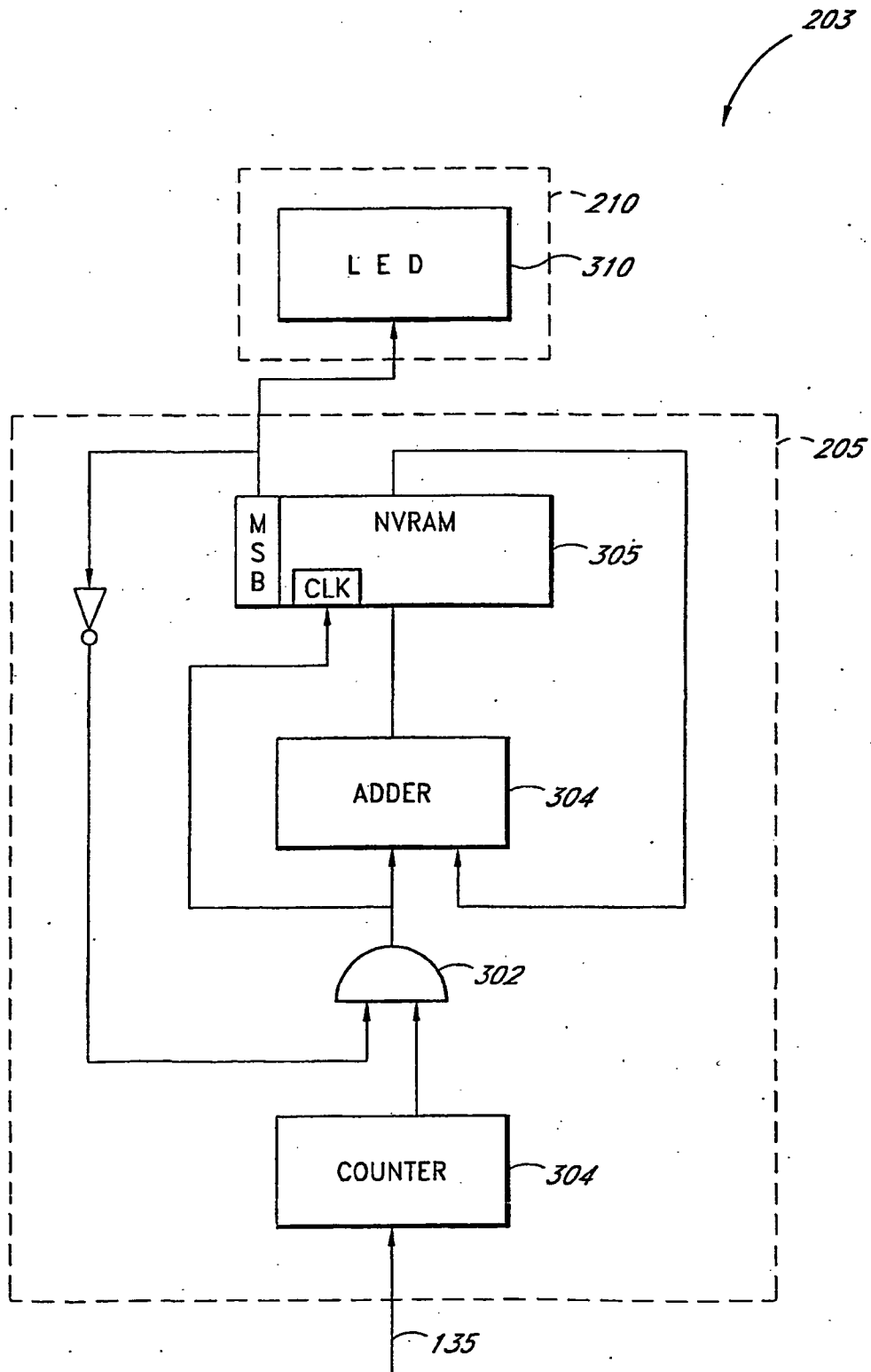


Fig. 3

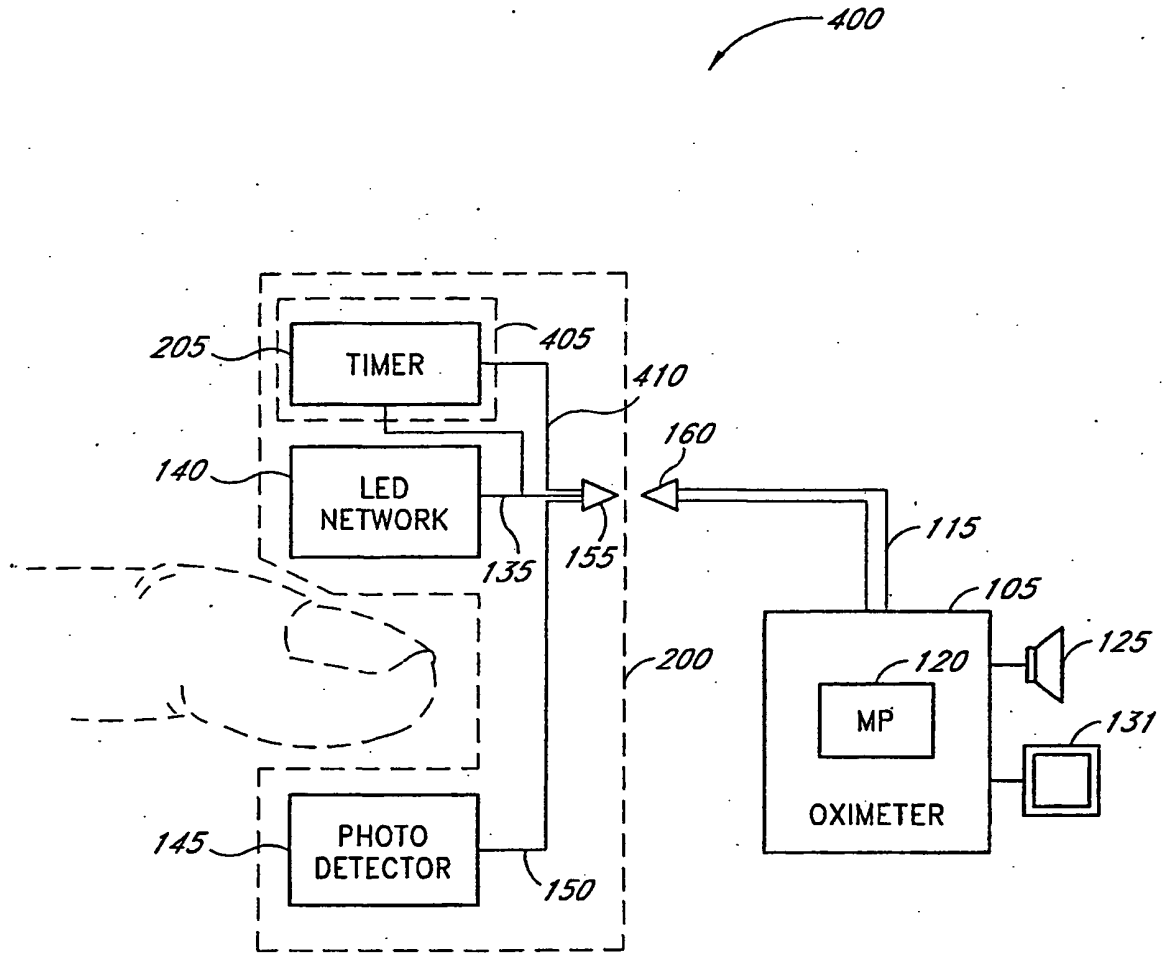


Fig. 4

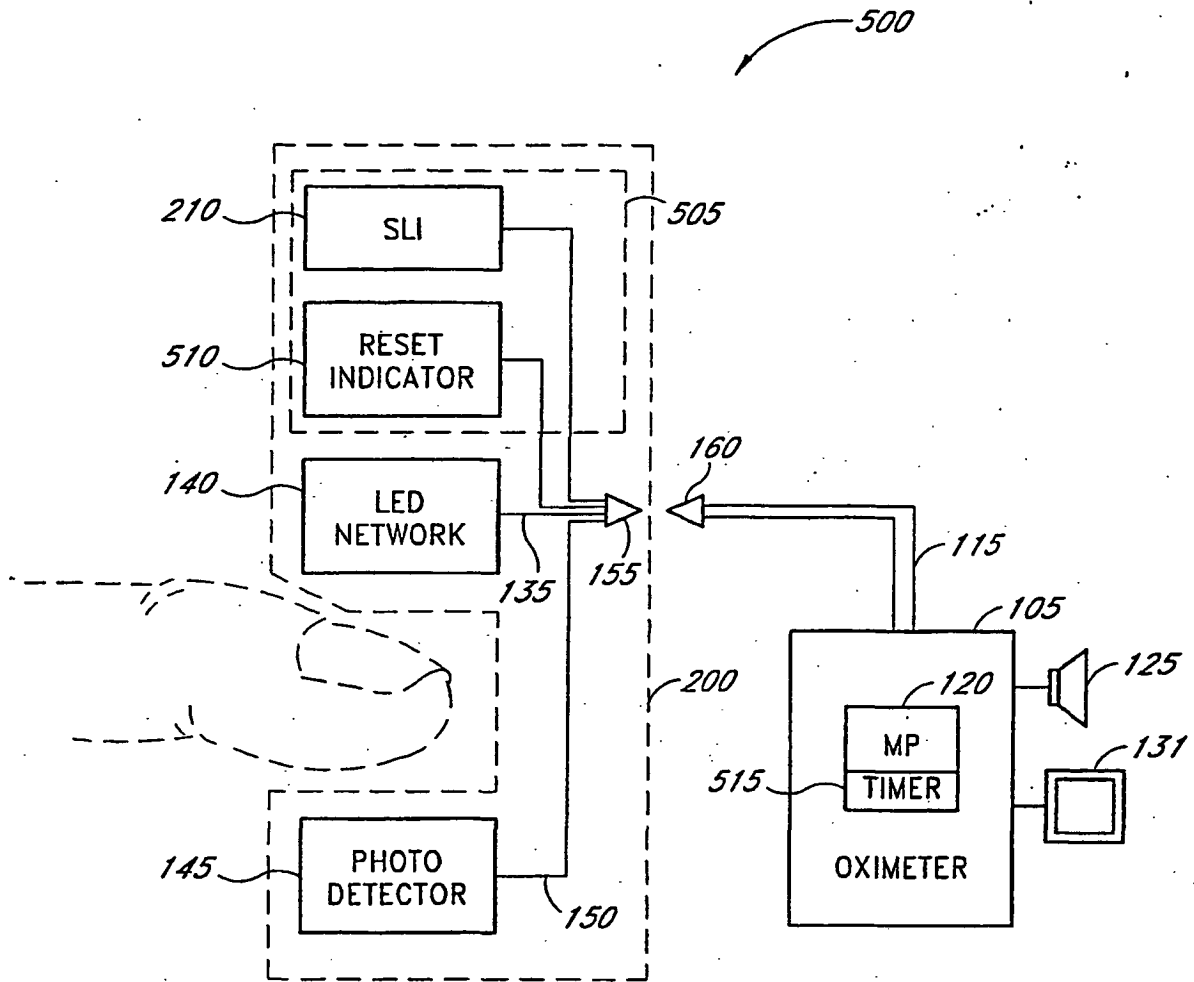


Fig. 5

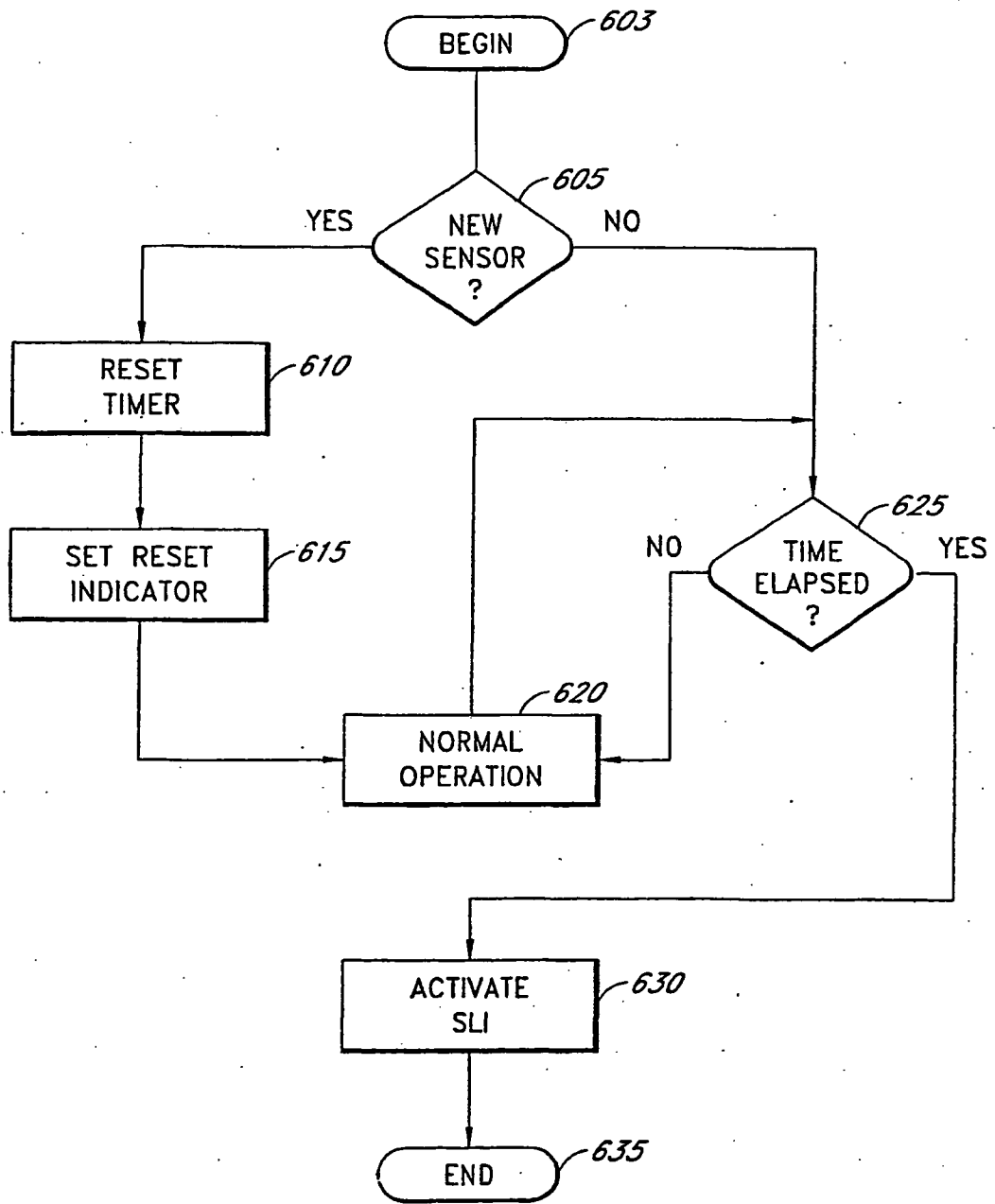


Fig. 6

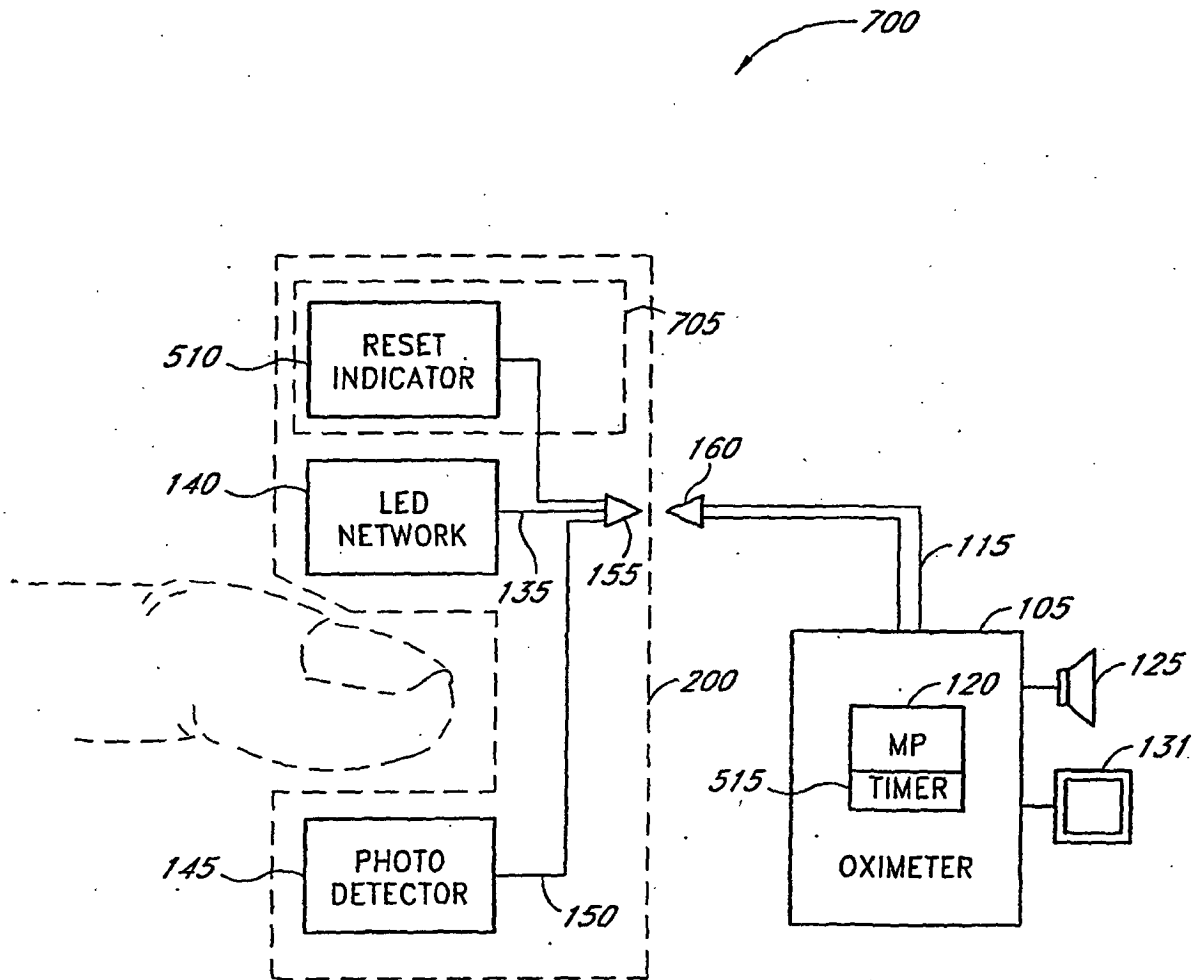


Fig. 7

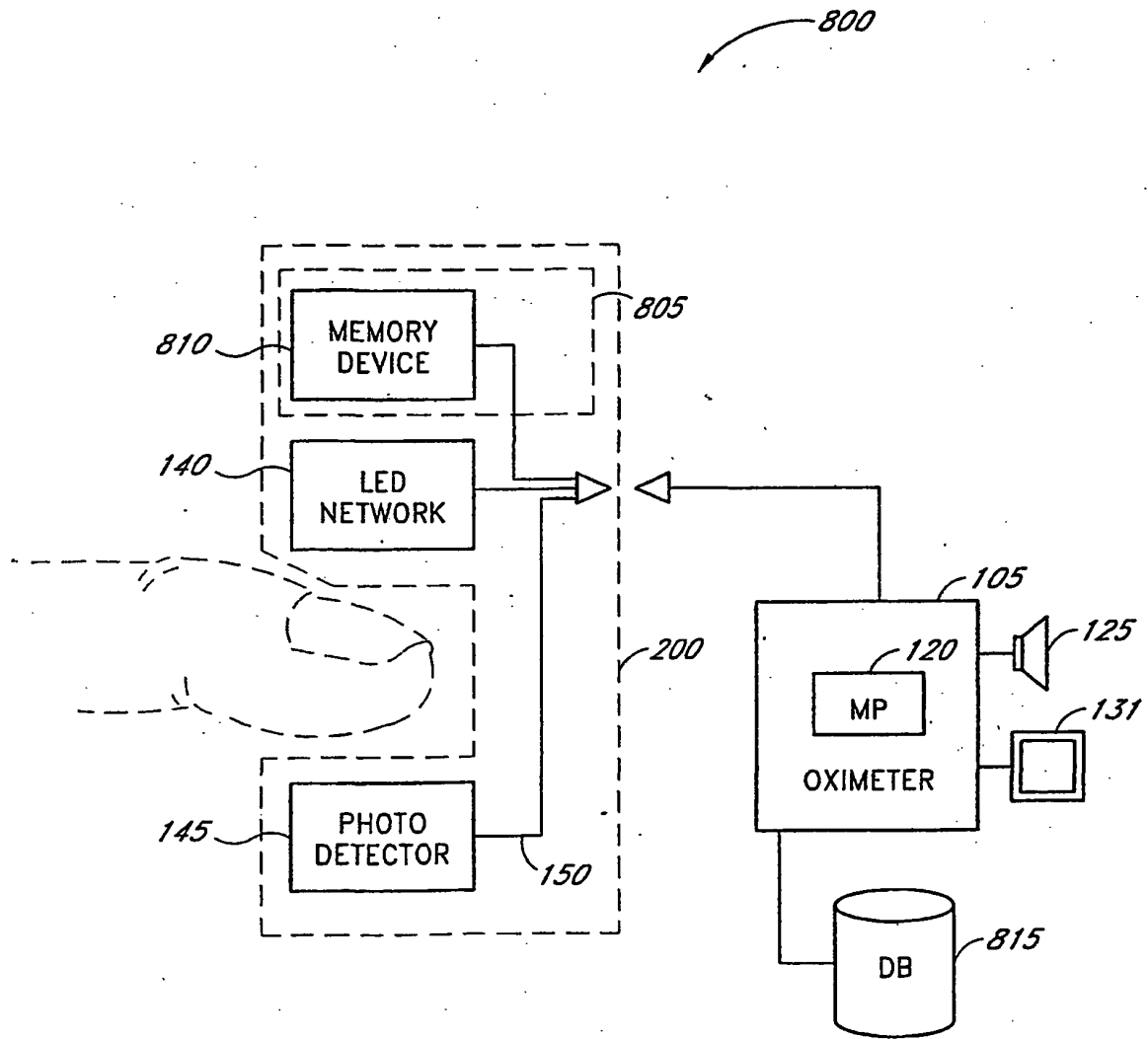


Fig. 8

REFERENCES CITED IN THE DESCRIPTION

This list of references cited by the applicant is for the reader's convenience only. It does not form part of the European patent document. Even though great care has been taken in compiling the references, errors or omissions cannot be excluded and the EPO disclaims all liability in this regard.

Patent documents cited in the description

- US 5991355 A [0006]
- US 456666 A [0027]

专利名称(译)	传感器寿命监测方法		
公开(公告)号	EP1674034B1	公开(公告)日	2010-08-25
申请号	EP2006006843	申请日	2001-02-09
[标]申请(专利权)人(译)	梅西莫股份有限公司		
申请(专利权)人(译)	Masimo公司		
当前申请(专利权)人(译)	Masimo公司		
[标]发明人	AL ALI AMMAR		
发明人	AL-ALI, AMMAR		
IPC分类号	A61B5/00 A61B1/00 G07C3/00 G01N21/27 A61B5/024 A61B5/145 A61B5/1455		
CPC分类号	G07C3/00 A61B5/02427 A61B5/145 A61B5/14552 A61B5/6826 A61B5/6838 A61B2560/0276 A61B2560/028 A61B2562/08		
代理机构(译)	法思博事务所		
优先权	09/502032 2000-02-10 US		
其他公开文献	EP1674034A1		
外部链接	Espacenet		

摘要(译)

系统和方法监测脉搏血氧饱和度传感器的有效和安全寿命。根据一个实施例，该方法包括检测非侵入式光学探针的电子器件的使用，其中非侵入性光学探针的电子器件包括多个发射器或能够检测由组织衰减的光的光敏检测器中的至少一个；更新电子设备使用量的累积量度；确定累积量度是否超过预定的使用量；并激活能够通知用户电子设备已经过期的指示器。

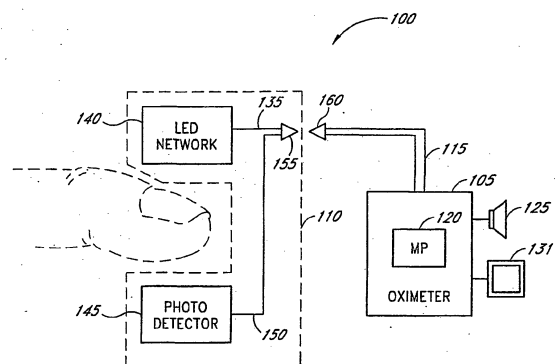


Fig. 1