

(19) World Intellectual Property
Organization
International Bureau



(43) International Publication Date
21 July 2005 (21.07.2005)

PCT

(10) International Publication Number
WO 2005/065538 A2

(51) International Patent Classification⁷: **A61B 5/00**

(21) International Application Number:
PCT/US2004/041985

(22) International Filing Date:
15 December 2004 (15.12.2004)

(25) Filing Language: English

(26) Publication Language: English

(30) Priority Data:
10/750,080 31 December 2003 (31.12.2003) US

(71) Applicant (for all designated States except US):
MEDTRONIC MINIMED, INC. [US/US]; 18000
Devonshire Street, Northridge, CA 91325-1291 (US).

[US/US]; 26749 Wyatt Lane, Stevenson Ranch, CA 91381 (US). **PATEL, Himanshu, P.** [IN/US]; 18013 Devonshire Street, #228, Northridge, CA 91325 (US). **MASTRO-TOTARO, John, J.** [US/US]; 10642 Lindbrook Drive, Los Angeles, CA 90024 (US). **FREDRICKSON, Linda, P.** [US/US]; 10820 Wicks Street, Sunland, CA 91040 (US). **HOLTZCLAW, Kris, R.** [US/US]; 24416 McBean Parkway, #231, Valencia, CA 91325 (US). **WENHOLZ, Bruce, R.** [US/US]; 1125 E. Broadway, #59, Glendale, CA 91205 (US). **ESTES, Mark, C.** [US/US]; 662 Breckenridge Place, Simi Valley, CA 93065 (US). **SAIDARA, Frank** [US/US]; 2170 Century Park East, #1407, Los Angeles, CA 90067 (US).

(74) Agent: **WOOD, William, J.**; Gates & Cooper LLP, Suite 1050, 6701 Center Drive West, Los Angeles, CA 90045 (US).

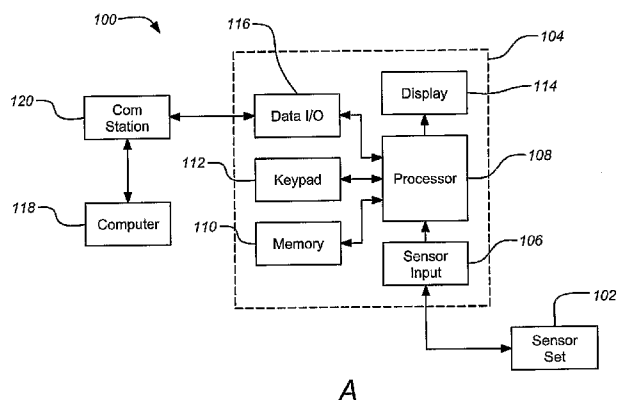
(72) Inventors; and

(75) Inventors/Applicants (for US only): **SIDDIQUI, Uzair**

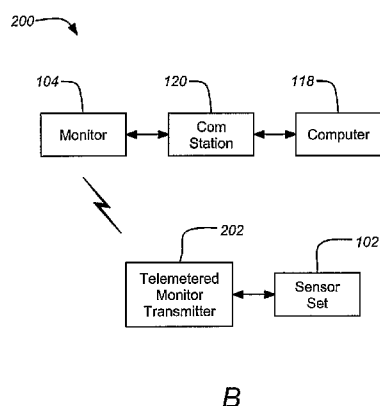
(81) Designated States (unless otherwise indicated, for every kind of national protection available): AE, AG, AL, AM,

[Continued on next page]

(54) Title: SYSTEM FOR MONITORING PHYSIOLOGICAL CHARACTERISTICS



(57) Abstract: Apparatuses and methods for medical monitoring physiological characteristic values such as blood glucose levels for the treatment of diabetes, are presented. The apparatuses and methods provide advanced alarm and reminder functions, as well as advanced data presentation tools to further facilitate convenient and efficient management of various physiological conditions. For example, an alarm repeat delay can be used to prevent redundant alarms for a specified period and an alarm snooze function can be used to prevent alarms generally for a specified period.





AT, AU, AZ, BA, BB, BG, BR, BW, BY, BZ, CA, CH, CN, CO, CR, CU, CZ, DE, DK, DM, DZ, EC, EE, EG, ES, FI, GB, GD, GE, GH, GM, HR, HU, ID, IL, IN, IS, JP, KE, KG, KP, KR, KZ, LC, LK, LR, LS, LT, LU, LV, MA, MD, MG, MK, MN, MW, MX, MZ, NA, NI, NO, NZ, OM, PG, PH, PL, PT, RO, RU, SC, SD, SE, SG, SK, SL, SY, TJ, TM, TN, TR, TT, TZ, UA, UG, US, UZ, VC, VN, YU, ZA, ZM, ZW.

(84) Designated States (*unless otherwise indicated, for every kind of regional protection available*): ARIPO (BW, GH, GM, KE, LS, MW, MZ, NA, SD, SL, SZ, TZ, UG, ZM, ZW), Eurasian (AM, AZ, BY, KG, KZ, MD, RU, TJ, TM),

European (AT, BE, BG, CH, CY, CZ, DE, DK, EE, ES, FI, FR, GB, GR, HU, IE, IS, IT, LT, LU, MC, NL, PL, PT, RO, SE, SI, SK, TR), OAPI (BF, BJ, CF, CG, CI, CM, GA, GN, GQ, GW, ML, MR, NE, SN, TD, TG).

Published:

— *without international search report and to be republished upon receipt of that report*

For two-letter codes and other abbreviations, refer to the "Guidance Notes on Codes and Abbreviations" appearing at the beginning of each regular issue of the PCT Gazette.

SYSTEM FOR MONITORING PHYSIOLOGICAL CHARACTERISTICS

CROSS-REFERENCE TO RELATED APPLICATIONS

[0001] This continuation-in-part application claims priority under 35 U.S.C. §120 from United States Patent Application No. 10/034,139, filed December 27, 2001, and entitled
5 “SYSTEM FOR MONITORING PHYSIOLOGICAL CHARACTERISTICS,” which is incorporated herein by reference.

BACKGROUND OF THE INVENTION

1. Field of the Invention

[0002] This invention relates generally to medical monitoring systems. More specifically,
10 this invention relates to methods and systems for monitoring physiological characteristics in individuals including those associated with physiological conditions (e.g. monitoring blood glucose levels in diabetics).

2. Description of the Related Art

[0003] A variety of electrochemical sensors have been developed for detecting and/or
15 quantifying specific agents or compositions in a patient's blood. Notably, glucose sensors have been developed for use in obtaining an indication of blood glucose levels in a diabetic patient. Such readings are useful in monitoring and/or adjusting a treatment program which typically includes the regular administration of insulin to the patient. Periodic blood glucose readings significantly improve medical therapies using semi-automated medication infusion
20 devices. Some exemplary external infusion devices are described in U.S. Patent Nos. 4,562,751, 4,678,408 and 4,685,903, while some examples of automated implantable medication infusion devices are described in U.S. Patent No. 4,573,994, all of which are herein incorporated by reference.

[0004] Electrochemical sensors can be used to obtain periodic measurements over an
25 extended period of time. Such sensors can include a plurality of exposed electrodes at one end for subcutaneous placement in contact with a user's interstitial fluid, blood, or the like.

A corresponding plurality of conductive contacts can be exposed at another end for convenient external electrical connection with a suitable monitoring device through a wire or cable. Exemplary sensors are described in U.S. Patent Nos. 5,299,571; 5,390,671; 5,391,250; 5,482,473; and 5,586,553, which are all incorporated by reference herein.

5 **[0005]** Conventional glucose monitoring systems are somewhat limited in features that they provide to facilitate the monitoring of blood glucose levels. Typically, a glucose monitor will take readings as directed by the user and might provide a warning if a reading is deemed at an unsafe level (e.g., a hyper- or hypoglycemic condition). However, by the time the warning occurs, the user may already be experiencing negative symptoms. Furthermore,
10 it may be unacceptable to address this by simply reducing (or raising) the value which triggers an indicator (e.g. a display, an alarm or the like) of an unsafe condition, because this may prompt a user to take “remedial” action (such as administering an additional bolus) when no unsafe condition would have actually materialized. Such an approach merely increases the occurrence of false positive alarms. As a consequence, the unnecessary “remedial” action
15 can actually provoke an unsafe condition. As described above, although existing glucose monitors adequately detect blood glucose levels upon entering the hyperglycemic (or hypoglycemic) range, they do not anticipate these conditions.

[0006] As is known in the art, a glucose crash occurs when blood glucose levels of an individual are in a state of rapid decline and its symptoms are similar to those associated with
20 hypoglycemia. The symptoms are caused by the dynamics of a declining glucose level and not by an absolute glucose level. Specific symptoms can include a feeling of light headedness, sweating, tremors, nervousness and/or disorientation. Disorientation is a particular risk to the patient. If the patient becomes disoriented while operating machinery, the patient could harm himself or others. A glucose crash can be caused by any of the
25 following events: excess insulin administration; an unexpected increase in insulin sensitivity; a fall of free fatty acids in the blood; heavy exercise; or mental or physical stress. As previously mentioned, ordinary glucose monitors provide only for detection of hypoglycemic and hyperglycemic levels.

[0007] Impaired fasting glucose (IFG) is another condition which is not predicted by conventional glucose monitors. The American Diabetes Association (ADA) identifies IFG as an undesirable glucose condition, defined as a 126 mg/dL or higher blood glucose level at wakeup. Repeated IFG events can contribute to diabetic morbidity. One cause of IFG is an inadequate nocturnal insulin basal infusion rate. Although a patient can deal with the IFG after waking by administering an insulin bolus, it is preferable for the patient to avoid IFG incidents entirely.

[0008] Conventional monitors are designed to alert the user of unsafe conditions; however, many other factors and situations are also important to the user in managing treatment. For example, events such as meals or exercise, as well as entering calibration values are not tied to reminders issued by conventional monitors. Typical monitors provide only a single alarm to call attention to the user. This can be problematic in contexts of varying physiological states because a user is not made aware of the specific condition and/or the appropriate degree of urgency. In conventional alarm systems, until the user investigates, there is often no indication of the reason for the alarm or the severity of the situation.

[0009] Furthermore, the alarm settings and features for many monitoring systems are very limited. Such systems can provide duplicative warnings that can frustrate users and become ignored if they are excessive. In addition, typical monitoring systems will alarm during predictable periods during which a user does not wish to be disturbed.

[0010] Thus, conventional glucose monitoring systems are somewhat limited in features they provide to facilitate the monitoring of blood glucose levels. There is a need for monitoring systems for a physiological characteristic (such as blood glucose levels) with convenient features and settings that allow users flexibility in tailoring the system's operation to their personal needs and lifestyle. Particularly, there is a need for such systems that provide advanced alarm functions to reduce or eliminate redundant alarms. In addition, there is a need for monitoring systems that allow a convenient review of measurement and alarm histories. These and other needs are met by the present invention.

SUMMARY OF THE INVENTION

[0011] The invention as embodied and disclosed herein pertains to apparatuses and methods for monitoring physiological characteristics such as blood glucose levels.

Embodiments of the invention include dynamic monitoring functions that can perform

5 predictive analyses to anticipate harmful conditions, such as hyperglycemic (or hyperglycemic) incidents, before they occur. These dynamic functions can be used to monitor normal physiological functions, as well as in a variety of other contexts including the optimization of athletic performance. Other embodiments of the invention include advanced alarm and reminder functions, as well as advanced data presentation tools.

10 Embodiments of the invention disclosed herein facilitate the convenient and efficient management of diseases such as diabetes.

[0012] One embodiment of the invention includes a method of monitoring a physiological characteristic of a user using a device including an input element capable of receiving a signal from a sensor that is based on a sensed physiological characteristic value of the user, and a

15 processor for analyzing the received signal. In typical embodiments of the invention, the processor determines a dynamic behavior of the physiological characteristic value and provides an observable indicator based upon the dynamic behavior of the physiological characteristic value so determined. In a preferred embodiment, the physiological characteristic value is a measure of the concentration of blood glucose in the user. In

20 another embodiment, the process of analyzing the received signal and determining a dynamic behavior includes repeatedly measuring the physiological characteristic value to obtain a series of physiological characteristic values to determine how the physiological characteristic is changing over time.

[0013] In some embodiments of the invention, each of the series of physiological

25 characteristic values includes a smoothing filtered group of repeated physiological characteristic value readings. In such embodiments, a slope of a line fit to the series of physiological characteristic values can be calculated if a most recent of the series of physiological characteristic values is within a qualifying range. In some embodiments of the invention, the physiological characteristic value readings may be decreasing and the slope is

negative. Typically, the indicator can also include a warning alarm that is responsive to the dynamic behavior profile of the physiological characteristic value. The warning alarm can also announce an anticipated glucose crash or merely low glucose levels, depending on the operating parameters of the particular dynamic analysis, including comparison of the slope to
5 a threshold rate (e.g., 1% to 3% per minute) and comparison of the current measured value to a qualifying range (e.g., 60 to 150 mg/dL). In typical embodiments, the series of values analyzed is taken from a defined span of time (e.g., ten to thirty minutes).

[0014] In other typical embodiments of the invention, an anticipated physiological characteristic value is determined from an extrapolated curve based upon the series of
10 physiological characteristic values. In such embodiments the indicator can provide a warning of an anticipated morning glucose incident. In preferred embodiments, the series of values analyzed can also be taken from a defined span of time (e.g. one hour). In one embodiment, the extrapolated curve is determined from a slope of a line fit to the series of physiological characteristic values and an average of the series of physiological characteristic
15 values. In another illustrative embodiment, the anticipated physiological characteristic value can be determined approximately three hours before an anticipated wakeup time. In addition, in certain embodiments, the indicator can be provided if the anticipated value is outside a qualifying range (e.g., approximately 60 mg/dL to 126 mg/dL).

[0015] In related embodiments of the invention, a slope of a line fit to the series of
20 physiological characteristic values is calculated if a most recent of the series of physiological characteristic values exceeds a threshold value and the slope is positive. In such embodiments, the indicator can provide a warning of an anticipated hyperglycemic incident. In an illustrative embodiment, the series of physiological characteristic values spans a time period of approximately thirty minutes and the indicator will be provided if the slope is
25 steeper than a threshold rate. In this context a typical threshold rate can be approximately 3% per minute and the threshold value can be approximately 180 mg/dL. In such other embodiments, the indicator can provide a warning of an anticipated hypoglycemic incident. In an illustrative embodiment, the series of physiological characteristic values spans a time period of approximately thirty minutes and the indicator will be provided if the slope is

steeper than a threshold rate. In this context a typical threshold rate can be approximately 3% per minute and the threshold value can be approximately 70 mg/dL.

[0016] Another embodiment of the invention includes a physiological characteristic monitor (and corresponding methods for its use) including an input device capable of receiving a signal from a sensor and a processor capable of analyzing the received signal and providing multiple alarms, each of which can be based upon different conditions associated with the physiological characteristic value of the user. In preferred embodiments, the signal is based on a physiological characteristic value of a user. In some embodiments, the multiple alarms are distinguishable from each other and can include any one of a wide variety of signals such as audible signals, visual signals, tactile signals, displays, and/or the like.

[0017] In some embodiments of the invention, the processor determines a physiological characteristic value from the received signal and the multiple alarms are based upon that value. In such embodiments, each of the multiple alarms can then be triggered if the physiological characteristic value exceeds an associated threshold value.

[0018] In other embodiments of the invention, one of a first pair of the multiple alarms can be triggered when a narrow range of physiological characteristic values is exceeded. The first pair of the multiple alarms is typically associated with a first upper threshold value and a first lower threshold value, respectively. In further embodiments, a second pair of multiple alarms can be triggered by events a wide range of physiological characteristic values (e.g. exceeding a predetermined value). The second pair of the multiple alarms can be associated with a second upper threshold value and a second lower threshold value, respectively.

[0019] In yet another embodiment of the invention, a physiological characteristic monitoring method and device are disclosed which include an input device capable of receiving a signal from a sensor and a processor for analyzing the received signal. Typically, the signal is based on a physiological characteristic value of a user. In preferred embodiments, the processor initiates a timer based upon a condition associated with the physiological characteristic value of the user and provides a reminder to the user following expiration of the timer. In some embodiments of the invention, the reminder can include an alarm signal selected from the group consisting of an audible signal, a visual signal, a tactile

signal, a display, and/or the like. Typically, the duration of the timer is preset based upon the specific initiating condition.

[0020] In preferred embodiments of the invention, conditions which trigger the one or more alarms can vary. For example, the conditions which trigger the one or more alarms can be an event marker such as meal markers, exercise markers, high blood glucose markers and low blood glucose markers. The condition(s) which trigger the one or more alarms can further be a reference value that is entered into the monitor and the reminder can indicate that a new reference value should be entered.

[0021] In other embodiments of the invention, the processor can determine a physiological characteristic value from the received signal and the triggering condition is then based upon that physiological characteristic value. For example, the triggering condition can be situations where the physiological characteristic value exceeds a predetermined threshold value.

[0022] Other embodiments of the invention include a physiological characteristic monitor including an input device capable of receiving a signal from a sensor, a processor for analyzing the received signal and determining physiological characteristic value data of the user from the received signal, a memory for storing the physiological characteristic value data of the user and a display. Typically, the signal is based on a physiological characteristic value of a user. In preferred embodiments, the display provides a retrospective display of the physiological characteristic value data. In some embodiments of the invention, the stored physiological characteristic value data includes a minimum and maximum blood glucose value and the retrospective display shows the minimum and maximum blood glucose value with a respective time and date. In other embodiments, the stored physiological characteristic value data can include a first number of excursions above an upper blood glucose value and a second number of excursions below a lower blood glucose value and the retrospective display shows the first and second number.

[0023] In other embodiments of the invention, the stored physiological characteristic value data can include a distribution of blood glucose values and the retrospective display shows a first portion of the blood glucose values above an upper blood glucose value, a second

portion of the blood glucose values below a lower blood glucose value and a third portion of the blood glucose values between the upper value and the lower value. In preferred embodiments, the portions can be shown as percentages, times or numbers of readings. The display can include a total time for the physiological characteristic value data as well as the
5 total number of readings for the physiological characteristic value data. In preferred embodiments of the invention, the first portion and the second portion can be shown as integrated values. The integrated values can be based on the sums of magnitude differences from the upper blood glucose value and the lower blood glucose value for the first and second portion, respectively. In such embodiments, the integrated values can be divided by a
10 respective duration of sensor use.

[0024] In yet other embodiments of the invention, further advanced alarm functions are employed such as an alarm repeat delay to prevent redundant alarms for a specified period and an alarm snooze function to prevent alarms generally for a specified period. In addition, embodiments of the invention include a monitor that performs a status check routine based
15 on sensor activity, sensor calibration and telemetry. Other embodiments of the invention include a measurement entry time and value display for a monitor as well as a real-time and historical measurement display function.

BRIEF DESCRIPTION OF THE DRAWINGS

[0025] Referring now to the drawings in which like reference numbers represent
20 corresponding parts throughout:

[0026] FIG. 1A is a block diagram of a characteristic monitor embodiment of the present invention;

[0027] FIG. 1B is a block diagram of a telemetered characteristic monitor embodiment of the present invention;

25 [0028] FIG. 2A is a flowchart of a status check algorithm for a characteristic monitor embodiment of the present invention;

- [0029] FIG. 2B is a flowchart of screens for entering a reference value to calibrate a characteristic monitor embodiment of the present invention;
- [0030] FIG. 3A is a flowchart of a method for anticipating a glucose crash;
- [0031] FIG. 3B is a flowchart of a method for detecting an inadequate nocturnal basal rate;
- 5 [0032] FIG. 3C is a flowchart of a method for anticipating a hyperglycemic incident;
- [0033] FIG. 3D is a flowchart of a method for maximizing athletic performance;
- [0034] FIG. 4A illustrates a multiple alarm function of the invention;
- [0035] FIGS. 4B and 4C illustrate respectively hypoglycemia and hyperglycemia alarm screens;
- 10 [0036] FIGS. 4D and 4E illustrate respectively flowcharts of screens for setting hypoglycemia and hyperglycemia alarms (Underlined text indicates one that's blinking on the current screen, awaiting to be changed by the user. From screens 1-8, SEL aborts and goes to the next major screen);
- [0037] FIG. 4F illustrates a flowchart of screens for setting a hyperglycemia alarm snooze
15 (Underlined text indicates one that's blinking on the current screen, awaiting to be changed by the user. From screens 1-2, SEL aborts and goes to the next major screen);
- [0038] FIG. 4G illustrates a flowchart of screens for reviewing a history of glycemia alarms in accordance with an embodiment of the invention;
- [0039] FIG. 5 illustrates a reminder function of an embodiment of the invention;
- 20 [0040] FIG. 6A illustrates minimum and maximum data presentation;
- [0041] FIG. 6B illustrates excursion data presentation;
- [0042] FIG. 6C illustrates characteristic value distribution data presentation;
- [0043] FIG. 6D illustrates integrated characteristic value data presentation; and
- [0044] FIG. 7 illustrates screens for viewing real-time and historical measurements of a
25 physiological characteristic value in an embodiment of the invention.

DETAILED DESCRIPTION OF THE PREFERRED EMBODIMENT

1. Overview

[0045] Embodiments of the present invention encompass methods and systems for the convenient operation of monitoring physiological characteristics (“characteristic monitoring systems”). The description provided here encompasses the architecture of the apparatus as well as its control and convenience features. The control and convenience features of the present invention can be implemented in a wide range of detailed characteristic monitoring system designs. Although embodiments of the present invention are primarily described in the context of glucose monitors used in the treatment of diabetes, the embodiments of the invention are applicable to a wide variety of patient treatment programs where a physiological characteristic is periodically monitored to use in estimating the responsive treatment. For example, embodiments of the invention can be used to determine the status and/or levels of a variety of characteristics including those associated with agents such as hormones, cholesterol, medication concentrations, pH, oxygen saturation, viral loads (e.g., HIV), or the like. As is known in the art, a sensor for the characteristic monitor can be implanted in and/or through subcutaneous, dermal, sub-dermal, inter-peritoneal or peritoneal tissue. Such sensors typically communicate a signal from the sensor set to the characteristic monitor.

[0046] General embodiments of the invention include a physiological characteristic monitor coupled to a sensor set. In preferred embodiments, the sensor set and monitor are for determining glucose levels in the blood and/or body fluids of the user without the use of, or necessity of, a wire or cable connection between the transmitter and the monitor.

[0047] Embodiments of the characteristic monitor system of the invention are primarily adapted for use in subcutaneous human tissue. Alternatively, embodiments of the invention can be placed in a variety of other types of physiological milieus, such as muscle, lymph, organ tissue, veins, arteries or the like, as well as being used in related environments such as animal tissue. Embodiments of the invention can provide sensor readings on an intermittent, near-continuous or continuous basis.

[0048] Embodiments of the invention include sensing and advanced predictive functions of the monitor which are designed to anticipate unsafe conditions for a user before they occur. In addition, predictive functions can be employed so that a user can obtain feedback to obtain a desired physical objective, such as maximizing athletic performance. Other
5 functions of the monitor include multiple programmable alarms and reminders and diagnostic functions. Advanced alarm functions also include an alarm repeat delay function and a snooze function that can be set by a user. Embodiments of the invention can include advanced display tools to facilitate easy and quick interpretation of information related to the user's condition, including a display function for an alarm history as well as a history of
10 measurements.

2. Glucose Monitor

[0049] FIG. 1A is a block diagram of a characteristic monitoring system 100 in accordance with an embodiment of the present invention. The characteristic monitoring system 100 generally includes a sensor set 102 that employs a sensor that produces a signal that
15 corresponds to a measured characteristic of the user, such as a blood glucose level. The sensor set 102 communicates these signals to a characteristic monitor 104 that is designed to interpret these signals to produce a characteristic reading or value for the user, i.e. a measurement of the characteristic. The sensor signals enter the monitor 104 through a sensor input 106 and through the sensor input 106 the signals are conveyed to a processor
20 108. The processor 108 determines and manipulates the sensor readings within the monitor 104. In addition, but not limited to, the characteristic monitor 104 provides additional functions that will aid in the treatment regime to which the characteristic reading applies. For example, but not limited to, the monitor may track meals, exercise and other activities which affect the treatment of diabetes. These additional functions can be combined with or
25 independent from the characteristic readings determined by the monitor 104.

[0050] Other components of the monitor 104 support the processor 108 in performing functions. A memory 110 is used to store data and instructions used by the processor 108. A data entry device 112 such as a keypad is used to receive direct input from the user and a display 114 such as a liquid crystal display (LCD), or the like, is used to relate information to

the user. In addition, the monitor 104 includes a data port 116, such as a digital input/output (I/O) port.

[0051] The data port 116 can be used for the monitor 104 to communicate with a computer 118. To facilitate communication, the monitor 104 may interface with the computer 118 through a communication station 120 that can serve as a docking station for the monitor 104, for example. In some embodiments, the data port 116 within the monitor 104 can be directly connected to the computer 118. Through the communication link, data may be downloaded from the monitor 104, such as stored characteristic readings, settings, programs and other information related to the monitor's function. Thus, advanced analysis can be performed on the computer 118, freeing memory 110 within the monitor 104. Data such as characteristic readings, settings and programs can also be downloaded to the monitor 104. In this way, the monitor 104 can be conveniently reprogrammed without requiring tedious manual entry by the user.

[0052] FIG. 1B is a block diagram of a telemetered characteristic monitoring system embodiment of the invention. In this system embodiment 200, the sensor input 106 of the monitor 104 is a wireless receiver, such as a radio frequency (RF) receiver. The sensor set 102 provides a signal via wired link to a telemetered monitor transmitter 202, where the signal is interpreted and converted to an RF signal. The wireless receiver sensor input 106 of the monitor 104 converts the signal to data understandable to the monitor processor. With some advantages, the telemetered characteristic monitoring system can perform any or all the functions of the characteristic monitoring system of FIG. 1A.

[0053] A characteristic monitoring system 100, in accordance with a preferred embodiment of the present invention, includes a sensor set 102 and characteristic monitor device 104. The sensor set 102 generally utilizes an electrode-type sensor. However, in alternative embodiments, the system can use other types of sensors, such as electrically based sensors, chemically based sensors, optically based sensors, or the like. In further alternative embodiments, the sensors can be of a type that is used on the external surface of the skin or placed below the skin layer of the user. Preferred embodiments of a surface mounted sensor utilize interstitial fluid harvested from underneath the skin. The sensor set 102 is connected

to the monitor device 104 and provides a signal based upon the monitored characteristic (e.g., blood glucose). The characteristic monitor device 104 utilizes the received signal to determine the characteristic reading or value (e.g., a blood glucose level). In still other embodiments, the sensor may be placed in other parts of the body, such as, but not limited to, subcutaneous, dermal, sub-dermal, inter-peritoneal or peritoneal tissue

[0054] The telemetered characteristic monitor transmitter 202 generally includes the capability to transmit data. In alternative embodiments, the telemetered characteristic monitor transmitter 202 can include a receiver, or the like, to facilitate two-way communication between the sensor set 102 and the characteristic monitor 104. In alternative embodiments, the characteristic monitor 104 can be replaced with a data receiver, storage and/or transmitting device for later processing of the transmitted data or programming of the telemetered characteristic monitor transmitter 202. In addition, a relay or repeater (not shown) can be used with a telemetered characteristic monitor transmitter 202 and a characteristic monitor 104 to increase the distance that the telemetered characteristic monitor transmitter 202 can be used with the characteristic monitor 104. For example, the relay can be used to provide information to parents of children using the telemetered characteristic monitor transmitter 202 and the sensor set 102 from a distance. The information can be used when children are in another room during sleep or doing activities in a location remote from the parents. In further embodiments, the relay can include the capability to sound an alarm. In addition, the relay can be capable of providing telemetered characteristic monitor transmitter 202 data from the sensor set 102, as well as other data, to a remotely located individual via a modem connected to the relay for display on a monitor, pager or the like. The data can also be downloaded through the communication station 120 to a remotely located computer 118 such as a PC, laptop, or the like, over communication lines, by modem or wireless connection. As disclosed herein, some embodiments of the invention can omit the communication station 120 and use a direct modem or wireless connection to the computer 118. In further embodiments, the telemetered characteristic monitor transmitter 202 transmits to an RF programmer, which acts as a relay, or shuttle, for data transmission between the sensor set 102 and a PC, laptop, communication station 118, a data processor, or the like. In further alternatives, the telemetered characteristic monitor transmitter 202 can

transmit an alarm to a remotely located device, such as a communication station 118, modem or the like to summon help.

[0055] In addition, further embodiments can include the capability for simultaneous monitoring of multiple sensors and/or include a sensor for multiple measurements.

5 **[0056]** A purpose of the characteristic monitoring system 100 is to provide for better treatment and control in an outpatient or a home use environment. For example, the monitoring systems 100, 200 can provide indications of glucose levels, a hypoglycemia/hyperglycemia alarm and outpatient diagnostics. Embodiments of the invention are also useful as an evaluation tool under a physician's supervision.

10 **[0057]** The characteristic monitor device 104 receives characteristic information, such as glucose data or the like, from the sensor set 102 and displays and/or logs the received glucose readings. Logged data can be downloaded from the characteristic monitor 104 to a PC, laptop, or the like, for detailed data analysis. In further embodiments, the characteristic monitoring system 100, 200 can be used in a hospital environment, or the like. Still further
15 embodiments of the present invention can include one or more buttons to record data and events for later analysis, correlation, or the like. Further buttons can include a sensor on/off button to conserve power and to assist in initializing the sensor set 102. The characteristic monitoring system 200 can also be employed with other medical devices to combine other patient data through a common data network system.

20 **[0058]** Further embodiments of the sensor set 102 can monitor the temperature of the sensor set 102, which can then be used to improve the calibration of the sensor. For example, for a glucose sensor, the enzyme reaction activity may have a known temperature coefficient. The relationship between temperature and enzyme activity can be used to adjust the sensor values to more accurately reflect the actual characteristic levels. In addition to
25 temperature measurements, the oxygen saturation level can be determined by measuring signals from the various electrodes of the sensor set 102. Once obtained, the oxygen saturation level can be used in calibration of the sensor set 102 due to changes in the oxygen saturation levels and its effects on the chemical reactions in the sensor set 102. For example, as the oxygen level goes lower, the sensor sensitivity can be lowered. In alternative

embodiments, temperature measurements can be used in conjunction with other readings to determine the required sensor calibration.

[0059] In preferred embodiments, the sensor set 102 facilitates accurate placement of a flexible thin film electrochemical sensor of the type used for monitoring specific blood parameters representative of a user's condition. Preferably, the sensor monitors glucose levels in the body, and can be used in conjunction with automated or semi-automated medication infusion devices of the external or implantable type as described in U.S. Pat. Nos. 4,562,751; 4,678,408; 4,685,903 or 4,573,994 (which are incorporated herein by reference), to control delivery of insulin to a diabetic patient.

[0060] Embodiments of the flexible electrochemical sensor can be constructed in accordance with thin film mask techniques to include elongated thin film conductors embedded or encased between layers of a selected insulative material, such as polyimide film or sheet, and membranes. The sensor electrodes at a tip end of the sensing portion are exposed through one of the insulative layers for direct contact with patient blood or other body fluids, when the sensing portion (or active portion) of the sensor is subcutaneously placed at an insertion site. The sensing portion is joined to a connection portion that terminates in conductive contact pads, or the like, which are also exposed through one of the insulative layers. In alternative embodiments, other types of implantable sensors, such as chemical based, optical based, or the like, can be used. Further description of flexible thin film sensors of this general type are be found in U.S. Patent. No. 5,391,250, entitled "METHOD OF FABRICATING THIN FILM SENSORS", which is herein incorporated by reference. The connection portion can be conveniently connected electrically to the monitor 104 or a telemetered characteristic monitor transmitter 202 by a connector block (or the like) as shown and described in U.S. Pat. No. 5,482,473, entitled "FLEX CIRCUIT CONNECTOR", which is also herein incorporated by reference. Thus, in accordance with embodiments of the present invention, subcutaneous sensor sets 102 are configured or formed to work with either a wired or a wireless characteristic monitoring system 100, 200.

A. Glucose Monitor Status Checks

[0061] The physiological characteristic monitoring system 100, 200 can perform a status check to confirm that the monitor 104 is operating properly and calibrated to take glucose measurements. The processor 108 determines the status of the monitor for receiving the
5 signal from the sensor set 102. The monitor status is based upon at least one of a plurality of conditions including the sensor activity condition, the sensor calibration condition and the telemetry condition. The display 114 shows different observable indicators depending upon the status of the monitor 104.

[0062] FIG. 2A is a flowchart 220 of an exemplary status check algorithm for a
10 characteristic monitor embodiment of the present invention. Beginning at the default time screen 222 showing the current time, a user can press a key (e.g. the UP key) to initiate the status check. The processor 108 first performs a sensor activity condition check 224 to determine if there is an expired or dead sensor. If the sensor is determined to be dead, the display 114 shows a sensor "REPLACE" prompt 226 with the current time, which indicates
15 that the sensor has expired and replacement of the sensor set 102 is required immediately. If the sensor is determined to be active by the sensor activity check 224, the processor 108 performs a telemetry condition check 228 to determine if the monitor 104 is synchronized with the telemetered monitor transmitter 202 coupled to the sensor set 102. If the monitor 104 and the transmitter 202 are not synchronized, a "NO SYNC" indicator 230 is shown on
20 the display 114. If the devices are synchronized, a calibration condition check 232 is performed by the processor 108 to determine first whether a calibration of the sensor set 102 is pending (i.e., whether the monitor 104 is currently processing a previously entered blood glucose reference value, for example from a meter, to calibrate the sensor set 102). If a calibration is pending, the display 114 shows a "PENDING" indicator 234. If a calibration
25 is not pending, the processor 108 checks whether the sensor calibration is currently valid 236. If the calibration is not valid, the display shows an "ENTER BG" indicator 242 with the current time, which indicates that a blood glucose reference value (e.g., from a blood glucose meter) is required by the monitor 104 to calibrate the sensor set 102. If the calibration is valid, the processor 108 then checks that the sensor expiration time is after the
30 next calibration due time 238, and the display 114 shows a "BG DUE" indicator 240 with

the time that the next calibration is due. If the sensor expiration time is before the next calibration due time, the display 114 shows the "REPLACE" prompt 226 with the time that the sensor will expire and replacement of the sensor set 102 will be required.

B. Glucose Monitor Calibration Reference Value Entry

5 [0063] FIG. 2B is an exemplary flowchart 250 of screens for entering a reference value to calibrate a characteristic monitoring system 100, 200 in accordance with an embodiment of the present invention. While a calibration is pending or valid as a result of entry of a calibration reference value (e.g., a blood glucose value measured by a blood glucose meter), the display 114 shows the calibration reference value and time of the most recent valid entry
10 in the meter screen 252. In particular embodiments, the time of the most recent valid entry is unaffected by a change in a system time setting of the monitor 104. In other embodiments, the time of the most recent valid entry may be shifted in accordance with a change in a system time setting of the monitor 104. From the meter screen 252, pressing a button (e.g., the ACT/activate button) allows entry of a new calibration reference value in
15 the entry screen 254. After entry of the new value (e.g., using the up and down arrow buttons and then pressing the ACT/activate button), the display 114 shows a confirmation screen 256, which requires confirmation of the value entered (e.g., by pressing the ACT/activate button) to release the display to the default time screen 258.

3. Dynamic Glucose Monitoring Functions

20 [0064] Embodiments of the present invention include different types of continuous glucose monitors that identify trends in blood glucose dynamics to facilitate enhanced treatment of diabetes. In general, a first illustrative monitor can be used to anticipate a glucose "crash" (or other hypoglycemic incident) before the onset of debilitating symptoms. Another illustrative monitor can be used to detect an inadequate nocturnal basal rate and
25 alert the patient in order to avoid an impaired fasting glucose incident. Another illustrative monitor can anticipate hyperglycemic (or hypoglycemic) incidents by detecting trends toward those levels and help the patient avoid such incidents. Another illustrative monitor can assist a patient in maximizing athletic performance in endurance type activities (e.g., a marathon race) by detecting trends toward hypoglycemic levels.

[0065] The disclosed embodiments monitor the dynamics of a physiological characteristic such as blood glucose levels. These embodiments utilize this dynamic monitoring to provide functionality including the anticipation of glucose crash and alerting the patient, the detection of inadequate nocturnal basal rate, the anticipation of hyperglycemic (or hypoglycemic) incidents and maximizing athletic performance. All of these features can be implemented in software operating in the monitor's microprocessor and/or designed into an application specific integrated circuit (ASIC) or other specialized circuitry. Also, dynamic glucose monitoring functions use periodic measurements of a glucose level.

A. Monitor for Anticipating a Glucose Crash

[0066] In one embodiment of the invention, a monitor anticipates a glucose crash by monitoring trends in glucose levels. For example, the monitor can alert the patient when glucose levels are rapidly decreasing. By monitoring such trends or a rate information of measured glucose levels, the monitor can provide a much better warning system to alert the user with enough time to stabilize and reverse a dangerous physiological condition.

[0067] In some embodiments of the invention, the monitor measures glucose more frequently than typical glucose monitoring devices. For example, one embodiment of the invention measures approximately every minute, whereas other monitors measure at a lower rate (e.g., but not limited to, once per 5 minutes). Frequent measurements are taken because of the short time intervals which are evaluated. Alternative embodiments may utilize more frequent measurements, such as, but not limited to, 10 seconds, 1 second, or the like.

[0068] In an illustrative embodiment, the monitor periodically measures glucose, analyzes the present trend, determines whether a glucose crash incident is probable and appropriately alerts the patient. At some frequent interval (e.g., but not limited to, once per minute), the device measures the glucose level, applies a smoothing filter to the result, and records the filtered value. The smoothing filter may take a weighted sum of past sensor values (so called finite impulse response- FIR -filter), a weighted sum of past sensor values and past filtered values (so called infinite impulse response – IIR –filters), may use simple clipping algorithms (e.g. limit the percent change in filtered output), or employ models to predict the output (e.g. Wiener and Kalman filter designs). For example, if the most recent (filtered) value is in the

“qualifying range”, the monitor can calculate the slope of a line fit to the most recent values (most likely, but not limited to, using a Saritzky gulag filter) and determine if the slope is steeper than a selected threshold rate (e.g., but not limited to, 3% or declining at more than 30 mg/dL in ten minutes). If the slope equals or exceeds the threshold rate, a glucose crash incident is likely and the monitor alerts the patient accordingly.

[0069] Those skilled in the art will understand that in some embodiments the qualifying range can be a closed range (e.g., but not limited to, between 100 and 150 mg/dL) and in other embodiments the qualifying range can be an open range (e.g., but not limited to, greater than 100 mg/dL). By first identifying whether a most recent value is within the qualifying range, further calculation of the dynamic behavior of the physiologic characteristic can be avoided. Thus, the determination of a glucose crash can be unconcerned with rate magnitudes occurring when the current characteristic value is outside of the range (of course, other alarms, which merely monitor the current characteristic value, can be triggered when the reading is too high or too low). However, in alternate embodiments, the slope can be calculated and compared to the threshold rate with every new value. In further embodiments, multiple qualifying ranges and threshold rates can be applied to evaluate the glucose dynamics and determine triggering a glucose crash warning.

[0070] In one preferred embodiment, the monitor determines that a glucose crash is likely if three criteria are met. The criteria are as follows. The first, dG/dT (the rate of glucose level change) is negative, can be considered for example in situations where blood glucose levels are dropping (e.g., but not limited to, when a value pertaining to the rate of glucose change is negative). The second, $|dG/dT|$ exceeds a threshold rate, can be considered in contexts, for example where a specified blood glucose change rate is exceeded for a specified sustained period (e.g., but not limited to, greater than 3% per minute for 10 minutes). The third, G , the glucose level, can be considered for example, when this value begins dropping starting within a specified range, (e.g., but not limited to, 100 - 150 mg/dL).

[0071] In some embodiments, these criteria can be parameterized to allow the user to customize the values. The qualifying range, threshold rate and period can be general values, applied to all users, or determined from factors specific to the individual user. For example,

the monitor can include a feature to adjust the qualifying glucose level range, the maximum rate of glucose change, or in some embodiments, the sustained time period length. In addition, in some embodiments, any or all of the dynamic glucose monitoring functions can be enabled or disabled, selectively or together.

- 5 **[0072]** The following control program pseudo code provides an example of a programming routine performed by the processor of the monitor to implement an embodiment of the invention.

```

REPEAT every minute)
10   {
      Measure glucose level  $g_i$ 
      Filter  $g_i$  and store the filtered value  $g'_i$ 
      IF( $g'_i$  is in range 100 - 150 mg/dL)
        THEN
15          Fit a line to the most recent 10 filtered (or, alternatively, unfiltered) values
          IF (dG/dT for that line < ( - 3% per minute )
            THEN
              Alert the patient and record in history
            ENDIF
20          ENDIF
        }
    END REPEAT

```

- 25 **[0073]** FIG. 3A is a flowchart of a method for anticipating a glucose crash 300. At block 302, a characteristic level is repeatedly measured to obtain a group of characteristic level values. Following this at block 304, a smoothing filter can be applied to the group of characteristic level values to produce a filtered measurement value. The filtered measurement value is recorded at block 306. At block 308 it is determined if the recorded value falls within a qualifying range (e.g., but not limited to, between 100 to 150 mg/dL). If

not, the process returns to block 302. If the recorded measurement is within the range, a slope of a line fit to a recent series of recorded filtered values is calculated at block 310. The calculated slope is compared to a threshold rate (e.g., but not limited to, -3% per minute) at block 312. If the calculated slope is not steeper than the threshold rate the process returns to
5 block 302. If the slope exceeds the threshold rate, an anticipated glucose crash is indicated at block 314. Alternative embodiments may utilize similar logic for when the glucose level is already outside of the range and continues to drop. In addition in an alternative preferred embodiment of the invention, one can utilize a raw data measurement (e.g. a group of characteristic level values) to determine a derivative as an alternative to using a filtered
10 measurement value to determine a derivative.

B. Monitor for Detecting an Inadequate Nocturnal Basal Rate

[0074] In another embodiment of the invention, the characteristic monitor can be used to detect an inadequate nocturnal basal rate. This embodiment generally applies to diabetic patients using an insulin infusion device that continually administers insulin at a patient
15 controlled basal rate. The monitor detects an inadequate basal rate (i.e., but not limited to, “low basal rate” or a “high basal rate”), by monitoring trends in glucose levels. The monitor then alerts a patient in the early morning, when glucose levels are high and relatively steady, low and relatively stable or changing rapidly. This gives the patient time to adjust the basal rate of the infusion device upward or downward to and avoid an impaired fasting glucose
20 incident.

[0075] The monitor operates to track the characteristic level rate. For example, every 5 minutes the monitor measures and records the glucose level. Once a day (e.g., but not limited to, 3 hours before to the anticipated wakeup time), the monitor calculates the average blood glucose and the rate of blood glucose change for the previous hour. The monitor can
25 then determine a prediction of the “morning glucose” level at wake up based upon the calculated average blood glucose and the rate of blood glucose change. In one embodiment the “morning glucose” is predicted assuming that the rate of change remains constant, however in other embodiments nonlinear characteristic curves and functions can be applied in making the prediction. If the anticipated “morning glucose” level is greater than a high

threshold value (e.g., but not limited to, 126 mg/dL), or less than a low threshold value (e.g., but not limited to, 60 mg/dL), an alarm is sounded. This will allow time for the infusion device basal rate to be adjusted appropriately. In alternative embodiments, different times before anticipated wakeup, different high threshold values, or different low threshold values, may be used.

[0076] In some embodiments, the triggering criteria can also be parameterized to allow the user to customize the values. In some embodiments, the user is allowed to set the values for the controlling parameters. For example, the user can set the qualifying low and high glucose levels as well as the anticipated waking time. For each of the settings a default value can be used in the absence of a user setting. For example, a default low glucose level of 60 mg/dL, a default high glucose level of 126 mg/dL and an anticipated waking time of 7:00 AM can be used. In addition, the entire function can be enabled and disabled.

[0077] FIG. 3B is a flowchart of a method for detecting an inadequate nocturnal basal rate 320. At block 322, the method begins by measuring a characteristic level to obtain a measurement value. The value is recorded at block 324. Measuring and recording is repeated periodically to obtain a series of values at block 326. At block 328, the average of the series of values is calculated. At block 330, a slope of a line fit to the series of values is calculated. The calculated slope and average of the series of values are then used to determine a predictive curve at block 332. At block 334, the curve is extrapolated to predict a glucose level at wakeup. Those skilled in the art understand that such calculations are not limited to slope $y = mx + b$, and that, in this context, one can use alternative filtered arrangements as are known in the art. The extrapolation is performed some time before wakeup (e.g., but not limited to, 3 hours prior) to provide enough time to correct any impending negative condition. The predicted glucose level is compared to an acceptable range at block 336. If the predicted glucose value falls within the range, the process ends. If the predicted glucose value falls outside the range, a morning glucose incident is reported at block 338.

C. Monitor for Anticipating Hyperglycemic Incidents

[0078] In another embodiment of the invention, a glucose monitor anticipates a hyperglycemic (or hypoglycemic) incident by monitoring trends in glucose levels. The monitor alerts the patient when a “relatively steady increase” (or decrease) in glucose levels occurs. The monitor periodically measures glucose, analyzes the present trend, determines whether a hyperglycemic (or hypoglycemic) incident is probable and appropriately alerts the patient.

[0079] In one embodiment, the device measures glucose values at a specific time interval (e.g. once every minute), and then, e.g. at 5 minute intervals, applies a smoothing filter to this group of values and records the filtered value. If the most recent (filtered) value exceeds a threshold value (e.g., but not limited to, 180 mg/dL), the monitor calculates the slope of a line fit to a recent series of recorded values (for example, but not limited to, six values). If the slope is greater than a threshold rate (e.g., but not limited to, 3% per minute), a hyperglycemic incident is likely and the monitor alerts the patient. For hypoglycemic incidents, values and thresholds corresponding to low glucose levels would be used.

[0080] The threshold value is applied in a similar manner to the “qualifying range” applied in determining a glucose crash previously discussed. The threshold value effectively operates as an open range (e.g., but not limited to, greater than 180 mg/dL). In other embodiments, the threshold value can be a closed range. Therefore, determining a hyperglycemic incident can be unconcerned with values below the threshold value (as determining a hypoglycemic incident can be unconcerned with values above a threshold value). In one embodiment, a slope calculation can be avoided if the current reading is outside the range. However, in alternate embodiments, the slope can be calculated and compared to the threshold rate with every new reading. In further embodiments, multiple qualifying ranges and threshold rates can be applied to evaluate the glucose dynamics and determine triggering a hyperglycemic (or hypoglycemic) incident warning.

[0081] Here again, in some embodiments the criteria can be parameterized to allow the user to customize the controlling values for anticipating hyperglycemic (or hypoglycemic) incidents. For example, some embodiments can allow the user to set the glucose threshold

level and/or the threshold rate. Embodiments of the invention can also use default parameters if no user settings are provided (e.g., but not limited to, a threshold level of 180 mg/dL and a maximal rate of 3% per minute). Embodiments of the invention can also enable and disable this function.

5 [0082] FIG. 3C is a flowchart of a method for anticipating a hyperglycemic incident 350. The method begins at block 352 by repeatedly measuring a characteristic level to obtain a group of values. At block 354, a smoothing filter is applied to the group of values to obtain a filtered measurement value. The filtered value is recorded at block 356. The recorded value is compared to a threshold value at block 358. If the recorded value does not exceed
10 the threshold value (e.g., but not limited to, 180 mg/dL), the process returns to block 352. If the recorded value does exceed the threshold value, a slope of a line fit to a recent series of values is calculated at block 354. The calculated slope is compared to a threshold rate (e.g., but not limited to, +3% per minute) at block 362. If the slope is not steeper than the threshold rate, the process returns to block 352. If the slope is steeper than the threshold
15 rate, an anticipated hyperglycemic incident is reported at block 364. For hypoglycemic incidents, corresponding steps for low glucose levels would be used. As noted previously, estimates of dG/dt may be calculated by a variety of methods known in the art including the slope (and that such calculations are not limited to, for example, determinations based on $y = mx + b$).

20 D. Monitor for Maximizing Athletic Performance

[0083] Dynamic monitoring can also be used to provide feedback based upon the engaged activity of the user. For example, the monitor can be used to maximize performance during an endurance type activity (e.g., but not limited to, a marathon race). The endurance athlete strives to burn glucose rather than fat and accordingly needs to anticipate low glucose levels
25 and ingest carbohydrates early enough to avoid low glucose levels.

[0084] In such embodiments, the monitor anticipates low glucose levels and alerts the athlete to ingest carbohydrates. It is important to note that this embodiment is not strictly anticipating hypoglycemic incidents. Instead it is anticipating low glucose levels where it

would otherwise be too late for the athlete to compensate by ingesting carbohydrates and still perform effectively and/or at full capacity.

[0085] In one embodiment, once a minute, the device measures a glucose level, applies a smoothing filter and records the filtered value at 5-minute intervals. If the most recent
5 recorded (i.e., filtered) value is in a qualifying range (e.g., but not limited to, 60 - 140 mg/dL), the processor calculates the slope of a line fit to the most recent six filtered values and determines if the slope is steeper than -1 % (i.e., but not limited to, 30 mg/dL in 30 minutes). If the rate of decline exceeds this threshold, a low glucose level is likely and the monitor alerts the athlete accordingly. Thus, for example, but not limited to, to trigger an alarm, the
10 glucose level rate, dG/dT , is negative with a magnitude greater than 1% per minute for 30 minutes beginning in range 60 - 140 mg/dL.

[0086] Similar to the glucose crash monitor, in embodiments for maximizing athletic performance, the qualifying range can be a closed range (e.g., but not limited to, between 60 and 140 mg/dL) or an open range (e.g., but not limited to, less than 140 mg/dL). By first
15 identifying whether a most recent value is within the qualifying range, further calculation of the dynamic behavior of the physiologic characteristic is avoided. However, other alarms which merely monitor the current characteristic value can be triggered when the reading is too high or too low. In alternate embodiments, the slope can be calculated and compared to the threshold rate with every new value. In further embodiments, multiple qualifying ranges
20 and threshold rates can be applied to evaluate the glucose dynamics and determine triggering a low glucose warning.

[0087] Here too, these criteria can be parameterized to allow the user to customize the values. Typically, the monitor will allow a user to set the qualifying glucose range and/or enable and disable the function. A default qualifying range (e.g., but not limited to, 60-140
25 mg/dL) can be used.

[0088] FIG. 3D is a flowchart of a method for maximizing athletic performance 370. The process begins at block 372, where a characteristic level is repeatedly measured to obtain a group of characteristic level values. Following this at block 374, a smoothing filter can be applied to the group of characteristic level values to produce a filtered measurement value.

The filtered measurement value is recorded at block 376. At block 378 it is determined if the recorded value falls within a qualifying range (e.g., but not limited to, between 60 to 140 mg/dL). If not, the process returns to block 372. If the recorded measurement is within the range, a slope of a line fitted to a recent series of recorded filtered values is calculated at
5 block 380. The calculated slope is compared to a threshold rate (e.g., but not limited to, -1% per minute) at block 382. If the calculated slope is not steeper than the threshold rate the process returns to block 372. If the slope exceeds the threshold rate, an anticipated low glucose level is indicated at block 384. As noted previously, estimates of dG/dt may be calculated by slope as well as other methods known in the art.

10 4. Glucose Alarm Functions

[0089] Embodiments of the invention can utilize various advanced alarm functions. For example, in some embodiments multiple alarms can be independently set by the user. In further embodiments, user input can direct review of the alarm history and also alter the alarm display to suit the user's preference. Alarm settings for embodiments of the invention
15 can also include an alarm snooze or "blackout" period as well as an alarm repeat delay.

A. Multiple Glucose Alarm Functions

[0090] Embodiments of the invention can employ multiple alarms that can be independently set by the user. For example, a continuous glucose monitoring system can have multiple alarms for different glucose values. The system can allow a user to set
20 threshold glucose values that define a "narrow" glucose range (as compared to the ordinary alarm limits). If the user's glucose level passes outside the "narrow" range, an alarm can sound. This alarm alerts the user to monitor his glucose levels more closely. The system can sound a second alarm (preferably having a sound distinguishable from the first "narrow" range alarm) in the event the user's glucose level reaches a more dangerous condition
25 requiring immediate action. Alarm indications may be audible, tactile, vibratory, visual, combinations of alarm indications, or the like. In the case of visual alarm indications, but not limited to, green lights can be displayed while the user's glucose level remains within the defined "narrow" range; yellow for the first alarm level; and red for the second alarm level.

The visual alarm indications may flash and/or also be combined with other alarm indications.

[0091] Although the above example describes a two-layer alarm system, further embodiments of the invention can incorporate multiple alarm layers. In addition, the alarms can be set in ranges, or separate high and low glucose level alarms can be set. Distinctive sounds can be used for each alarm. For example, each successive high glucose level alarm can have, but is not limited to having, a higher pitch. Successive low glucose level alarms can each have, but are not limited to having, lowering pitches. Alternately, intermittent or wavering volumes that also increase in pitch according to the severity of the condition can be used. In still other embodiments, the user can select or program alarm tones and other sounds and assign them to the various alarms. Also, in some embodiments, these distinguishable alarms can also be set at different volume levels. In addition, as discussed above, the alarms are not limited to audible signals; some embodiments of the invention can also utilize visual alarms, such as flashing lights or displays, or tactile alarms, such as vibrating indicators.

[0092] In still further embodiments, threshold values and associated alarms can be set according to a schedule. For example, but not limited to, particular alarms can be set to be active only during selected portions of the day.

[0093] FIG. 4A illustrates a multiple alarm function of the invention. A plot of the monitored characteristic value 400 (e.g., blood glucose) changing over time is shown. A typical wide alarm range 402 is defined by an upper threshold value 404 and a lower threshold value 406. If the monitored characteristic value 400 should exceed the defined range and cross either threshold, an alarm is initiated to indicate to the user to check his blood glucose. In one embodiment, a distinctive alarm can be associated with the alarm range 402. Thus, the same alarm is produced whether the range 402 is exceeded by passing the upper threshold value 404 or the lower threshold value 406. In other embodiments, distinctive alarms can be assigned to each threshold value 404, 406. In further embodiments of the invention, other alarm ranges can also be set. For example, a second narrower range 408 can be set with a lower upper threshold value 410 than that of the wider range 402; and a

higher lower threshold value 412 than that of the wider range 402. As with the wider range 402, an alarm is initiated if the narrower range is exceeded by the monitored characteristic value 400. Here also, alarms can be the same or different for each threshold value 410, 412.

[0094] The ability to set different ranges and associated alarms allows the monitor to immediately convey some information about the condition of the user even before checking the actual readings. Particularly, using the narrower range 408 and associated alarms allows the user to know of a negative trend that does not require the same urgency as an alarm triggered by the wider range 402. In effect, the user is able to set multiple alarms, each indicating a different level of urgency and/or different conditions. In some embodiments, threshold values for alarms can also be set independent from ranges.

[0095] In still further embodiments, alarms or indicators can be set according to the direction in which a threshold value is crossed by the monitored characteristic value 400. For example, as the monitored characteristic value 400 crosses a lower threshold value 412 from the narrow range (e.g., but not limited to, at point 414), one type of alarm can be provided. However, when the monitored characteristic value 400 crosses a lower threshold value 412 from the wider range 402 (e.g., but not limited to, at point 416), another type of alarm can be provided. The difference in the alarms is appropriate because only the former case indicates a worsening of the user's condition. In the latter case, the transition actually indicates an improvement in the user's condition. Thus, in some embodiments of the invention, alarms will only be given when crossing a threshold indicates a worsening of the user's condition. In other embodiments, an indicator will also be given when a threshold has been crossed in an improving direction. In these cases, either the same indicator (sound, light, display or other) or different indicators can be used. In a similar manner, reminders can be set to indicate to a user various conditions (not necessarily negative) that will aid in convenient therapy management.

[0096] The multiple alarm function of the invention can be readily incorporated with any of the individual alarm functions and settings such as discussed hereafter.

B. Individual Alarm Functions and Settings

[0097] In further embodiments of the invention, a physiological characteristic monitor can incorporate various individual alarm functions and settings to enhance convenient operation by a user. As typical of the monitoring system 100, 200 shown in FIGS. 1A and 1B, the monitor includes a sensor input capable of receiving a signal from a sensor, the signal being based on a sensed physiological characteristic value of a user, and a processor for operating an alarm based on user input from an input device. The alarm indicates an alarm condition where the sensed physiological characteristic value exceeds a set range. In preferred embodiments of the invention, the physiological characteristic value is a measurement related to a blood glucose level in the user and the alarm indicates a glycemic condition. Operating the alarm comprises setting parameters of the alarm based on the user input from the input device. For example, the blood glucose level or value that will activate a hypoglycemia or hyperglycemia alarm may be set by the user utilizing the input device. The hypoglycemia alarm may be set to trigger if the user's blood glucose level is less than or equal to 60, 65, or 70 mg/dl (or any other desired level), and the hyperglycemia alarm may be set to trigger if the user's blood glucose level is greater than or equal to 150, 160, or 175 mg/dl (or any other desired level).

[0098] FIGS. 4B and 4C illustrate the hypoglycemia and hyperglycemia alarm screens, respectively. In each case, the display shows the measurement of the concentration of blood glucose indicating the glycemic condition, preferably until the alarm is acknowledged by the user. Furthermore, the display shows a time of the alarm. In particular embodiments, the alarm indicates the glycemic condition only if the monitor is calibrated, although in alternative embodiments, the alarm may indicate the glycemic condition regardless if the monitor is calibrated.

[0099] In the illustrated embodiment, the display shows a LOW indicator when the measurement of the concentration of blood glucose is below a specified level for a hypoglycemia alarm, such as 60 mg/dl. Similarly, the display shows a HIGH indicator when the measurement of the concentration of blood glucose is above a specified level for a hyperglycemia alarm, such as 150 mg/dl. In some embodiments, alarm indications may be

other visual indicators (e.g., lights, flashing displays, or the like), audible, tactile, and/or vibratory. For example, a hypoglycemia alarm can be indicated by at least two audible descending tones, and a hyperglycemia alarm can be indicated by at least two audible ascending tones.

5 **[0100]** In further embodiments of the invention, an alarm repeat delay period is employed. Subsequent alarms are prevented for the alarm repeat delay period after the measurement of the concentration of blood glucose first indicates a glycemic condition. For example, the alarm repeat delay period can be less than 20 minutes (e.g. approximately 17.5 minutes) for the glycemic condition comprising a hypoglycemic condition. In another example, the alarm
10 repeat delay period is less than 1 hour (e.g. approximately 52.5 minutes) for the glycemic condition comprising a hyperglycemic condition. In alternative embodiments, the alarm repeat delay period may be other time periods, such as 10 minutes, 15 minutes, 30 minutes, 1½ hours, 2 hours, or the like.

[0101] In particular embodiments, the level of the measurement of the concentration of
15 blood glucose from the sensor that will trigger a low limit (or hypoglycemia) alarm or a high limit (or hyperglycemia) alarm can be set based upon input from the user. Particularly, these two alarm levels can be separately set. FIGS. 4D and 4E show exemplary hypoglycemia and hyperglycemia alarm setting algorithms, respectively. FIG. 4D shows an exemplary hypoglycemia alarm setting flowchart 420. To begin setting the hypoglycemia alarm, from
20 the hypoglycemia alarm setting screen 422, the ACT/activate button is pressed, and the hypoglycemia alarm activation screen 424 is entered. From this screen 424, the user can select setting the hypoglycemia alarm on, off or entering the alarm repeat setting function menu. If the user sets the hypoglycemia alarm off and presses the ACT/activate button, an alarm off confirmation screen 426 is presented. If the hypoglycemia alarm is set on and the
25 ACT/activate button is pressed, the low limit entry screen 428 is presented. The low limit entry screen 428 allows the user to scroll through low limit alarm level settings using up and down arrow buttons to specify that the hypoglycemia alarm will trigger if the user's blood glucose level is less than or equal to 60, 65, or 70 mg/dl, or any other desired level. After setting the low limit alarm level, pressing the ACT/activate button again presents a

hypoglycemia low limit alarm level confirmation screen 430 for confirming the specified hypoglycemic blood glucose level.

[0102] From the hypoglycemia alarm activation screen 424, if the alarm repeat setting function is selected, the alarm repeat display screen 432 is entered, which allows the user to set a period for delaying a repeated check of the hypoglycemia alarm condition. The current alarm repeat delay period is shown in the alarm repeat display screen 432. Pressing the ACT/activate button allows the user to enter the repeat time select screen 434. Alternatively, the alarm repeat display screen 432 may be omitted, and the repeat time select screen 434 is entered once the alarm repeat setting function is selected. In the repeat time select screen 434, the alarm repeat delay period blinks while being set by the user utilizing the input device. The user can scroll through a list of delay increments and select the desired alarm repeat delay period from the list of delay increments. The alarm repeat delay period has a default value of 20 minutes for the hypoglycemia (low limit) alarm level. For convenience, the scrolled list of delay increments can wrap around, beginning again when one end of the list is reached. For the low limit alarm level, the alarm repeat delay period can be selected from a group of values differing in 10 minute increments. For example, the alarm repeat delay period can be selected from 20, 30, 40, 50 and 60 minutes for the low limit alarm level. In alternative embodiments, the alarm repeat delay period may be selected from a group of values differing in other time increments, such as 5, 15, or 20 minutes, or further, may be specified using up and down arrow buttons and then pressing the ACT/activate button. After selecting the alarm repeat delay period, pressing the ACT/activate button displays the alarm repeat delay confirmation screen 436 for confirming the period selection.

[0103] FIG. 4E shows an exemplary hyperglycemia alarm setting flowchart 440. From the hyperglycemia alarm setting screen 442, if the ACT/activate button is pressed, the hyperglycemia alarm activation screen 444 is entered. From this screen 444, the user can select setting the hyperglycemia alarm on, off or entering the alarm repeat setting function menu. If the user sets the hyperglycemia alarm off and presses the ACT/activate button, an alarm off confirmation screen 446 is presented. If the hyperglycemia alarm is set on and the ACT/activate button is pressed, the high limit entry screen 448 is presented. The high limit

entry screen 448 allows the user to scroll through high limit alarm level settings using up and down arrow buttons to specify that the hyperglycemia alarm will trigger if the user's blood glucose level is greater than or equal to 150, 160, 170, 175, or 180 mg/dl, or any other desired level. After setting the high limit alarm level, pressing the ACT/activate button again
5 presents a hyperglycemia high limit alarm level confirmation screen 450 for confirming the specified hyperglycemic blood glucose level.

[0104] The alarm repeat delay period for the hyperglycemia alarm is set in the same manner as that for the hypoglycemia alarm described above with respect to FIG. 4D; however, the alarm repeat delay period is typically set separately for a low limit alarm level
10 and a high limit alarm level because the desired delays are different in each case. In general, the hyperglycemia alarm repeat delay period may be longer than that of the hypoglycemia alarm. From the hyperglycemia alarm activation screen 444, if the alarm repeat setting function is selected, the alarm repeat display screen 452 is entered, which allows the user to set a period for delaying a repeated check of the hyperglycemia alarm condition. The current
15 alarm repeat delay period is shown in the alarm repeat display screen 452. Pressing the ACT/activate button allows the user to enter the repeat time select screen 454. Alternatively, the alarm repeat display screen 452 may be omitted, and the repeat time select screen 454 is entered once the alarm repeat setting function is selected. In the repeat time select screen 454, the hyperglycemia alarm repeat delay period is selected in a manner similar to the
20 hypoglycemia alarm repeat delay period described above with respect to FIG. 4D, and then pressing the ACT/activate button displays the alarm repeat delay confirmation screen 456 for confirming the period selection. The alarm repeat delay period can have a default value of 1 hour for the hyperglycemia (high limit) alarm level. For the high limit alarm level, the alarm repeat delay period can be selected from a group of values differing in 30 minute
25 increments. For example, the alarm repeat delay period can be selected from 1, 1½, 2, 2½ and 3 hours for the hyperglycemia alarm level. In alternative embodiments, the alarm repeat delay period may be selected from a group of values differing in other time increments, such as 15 or 20 minutes or 1 hour, or further, may be specified using up and down arrow buttons and then pressing the ACT/activate button.

[0105] As noted above, the multiple alarm function of the invention can be incorporated with various specific alarm features. For example, the alarm repeat delay function can be set differently for hypoglycemic alarms and hyperglycemic alarms of different severities. If a lower threshold hyperglycemic alarm is triggered, a relatively long repeat delay may be invoked. However, if a higher threshold hyperglycemic alarm is triggered, a shorter repeat delay may be used so that the user is warned more frequently because of the severity of his condition.

[0106] FIG. 4F illustrates a hyperglycemia alarm snooze setting flowchart 460. The hyperglycemia alarm snooze function sets an alarm snooze period for temporarily disabling the alarm. The snooze function is set by the user utilizing the input device. In some embodiments, the alarm snooze period is only available for a hyperglycemia alarm, although in other embodiments, the alarm snooze period may also be available for a hypoglycemia alarm. Generally, the snooze function is available only when the snooze period is running and the monitor is calibrated, although in alternative embodiments, the snooze function may be available regardless if the monitor is calibrated. Further, the alarm snooze period is preferably deactivated upon any adjustment of the hyperglycemia alarm setting described above with respect to FIG. 4E. The snooze setting flowchart 460 begins at the snooze display screen 462, which can be entered by scrolling past the default time screen 464 and the BG due screen 466. From the snooze display screen 462, pressing the ACT/activate button will produce the snooze time select screen 468. In this screen 468, a user can select the desired period for the snooze function to operate, and the alarm snooze period blinks while being set by the user utilizing the input device. The alarm snooze period can be set by the user scrolling through a list of snooze period increments and selecting the desired alarm snooze period from the list of snooze period increments. For example, the list of snooze period increments can include 1, 2, 3, 4, 5, 6, 7, 8, 9, 10, 11 and 12 hours, and for convenience, the list of snooze period increments wraps around as it is scrolled by the user. In alternative embodiments, the snooze period may be selected from a list of other time increments, such as 15 or 30 minutes, or further, may be specified using up and down arrow buttons and then pressing the ACT/activate button. When the snooze function is activated,

the display shows time remaining of the alarm snooze period and an indicator (e.g. an "S") showing that the snooze function is active.

[0107] It may be instructive to note that, although both the alarm repeat delay function and the alarm snooze function prevent alarms for specified periods, they are not the same.

5 One difference between the two functions can generally be identified by how each function is initiated. The alarm repeat delay is initiated (assuming the function is activated and set by the user) in response to a first alarm. In contrast, the alarm snooze function is activated by the user directly, either by directing the monitor to snooze immediately or scheduling a snooze at a specified time. For example, a user may schedule a snooze during sleeping hours
10 that occur at some known time.

[0108] Just as with the alarm repeat delay, the multiple alarm function of the invention can also be incorporated with the alarm snooze function. For example, the snooze function can be set differently for hypoglycemic alarms and hyperglycemic alarms of different severities. The snooze function can function normally when a lower threshold hyperglycemic alarm is
15 set (i.e. ignore the alarm). However, when a higher threshold hyperglycemic alarm is set, the snooze function may be overridden due to the severity of the user's condition.

[0109] FIG. 4G illustrates glycemia alarm history review in accordance with an embodiment of the invention. Operating the alarm history review can allow a user to review a historical list of the alarms indicating a glycemic condition occurrence. The alarm history
20 review flowchart 470 shows the alarm history is entered by pressing the ACT/activate button from the alarms menu screen 472. If no alarm history exists, a screen 474 indicating "NONE" will be displayed. However, if at least one alarm event has occurred, the entries will be displayed in a historical list 476. In one embodiment, the display shows a single glycemic alarm in the historical list at a time. The display shows a physiological characteristic
25 value (e.g. blood glucose value) and time of the glycemic condition occurrence indicated for each alarm in the historical list. The time of the glycemic condition occurrence can also include a date of the alarm. Further, the display can show at least a portion of the time of the glycemic condition occurrence in blinking text. The historical list typically includes a limited number of stored entries. For example, the historical list can comprise the 20 most

recent alarms indicating a glycemic condition occurrence. In alternative embodiments, the historical list may include more or less alarms, such as the 10, 15, 30, or 50 most recent alarms.

[0110] As part of the display of the historical list, the display can show the blood glucose measurements only within a specified range. For example, the specified range can be the operational range of the sensor, such as from 40 to 400 mg/dl, although the range may span other values, such as from 20 to 600 mg/dl. When a measurement in the historical list is above the specified range, the display shows a HI indicator. Similarly, the display shows a LO indicator for the measurements below the specified range.

5 5. Advanced Blood Glucose Reminder Functions

[0111] Another aspect of the invention allows the user to set reminders that will be provided by the monitor. The reminders can be alarm signals (including, but not limited to, auditory, visual, tactile, etc.) that are initiated after a timer has run to prompt the user to take action or merely inform the user of a particular status. The reminder is started (i.e. the timer is initiated), when an event occurs and/or certain conditions are met. The alarm signals can be the same or different based upon the triggering events or conditions. These reminders can be used to further assist the user in managing insulin delivery for optimum results. For example, but not limited to, reminders can be set for event markers, blood glucose values, reference values, high or low sensor measurements.

[0112] Characteristic monitors and infusion devices can use event markers that place tags in the data for events the user experiences (e.g., but not limited to, meals, exercise, and high or low blood glucose). For example, but not limited to, when an infusion device identifies a high or low blood glucose event marker, it can start a timer that reminds the user to check blood glucose levels. This is intended to make therapy safer by encouraging more frequent checks during times that the patient may be at risk from hypoglycemia or hyperglycemia. In addition, this feature can also be applied to characteristic monitors. For example, but not limited to, a characteristic monitor that is used to show low or high blood glucose tags can have a timer set to remind a user to check their blood glucose levels at a later time.

[0113] In addition, a reminder timer can be set that is triggered if a blood glucose value is entered. For example, but not limited to, the reminder can be if the user enters a low or high blood glucose value into the monitor as a reference or calibration value.

5 [0114] A reminder timer can also be triggered by a user providing a reference value to the monitor. Thus, the user can be reminded to supply a new reference value after a minimum time period has elapsed. In this way calibration of the monitor is assured.

[0115] A blood glucose reminder can also be triggered by high or low measurement from the sensor. Thus, the monitor will request a blood glucose reference value during an excursion away from the normal range of values. The trigger for this reminder can be
10 tempered by setting a minimum time between reminders to avoid pestering the user. This reminder can be used to provide more robust data for curve fitting as correlation improves with variability in the data pairs. The reminder promotes more frequent data collection during more critical periods (e.g., but not limited to, when blood glucose is too high or too low) and therefore the interpolated curve for this period is more reliably representative of the
15 true curve.

[0116] One aspect behind the use of these reminders is that they also serve to prevent redundant and excessive alarms for the user. For example, if the timer is removed from the previously described high or low measurement reminder, the result would be a simple hypoglycemia or hyperglycemia alarm. Using a reminder, however, the message is not that
20 the user's blood glucose is out of range. Rather, the reminder's message is to check the user's blood glucose with a meter, or the like. If a user's blood glucose is very near an alarm triggering threshold, an alarm might be triggered repeatedly as the value passes back and forth across the threshold. A reminder will set a timer, preventing duplicative warnings for a short period of time, but reminding the user to check blood glucose again when that period
25 has expired. This can provide a better or easier path through the regulatory process. Thus, reminders are less likely to become a nuisance to the user and also prompt more useful data collection. In alternative embodiments, the alarm is triggered again, regardless of the presence of a time, if the glucose level continues to change in the direction of the trend.

- [0117] FIG. 5 illustrates a reminder function of the invention triggered by high or low characteristic values. A plot of a monitored characteristic value 500 (such as, but not limited to, blood glucose) is shown. One or more ranges 502, 504 define safe characteristic values (e.g., but not limited to, a first range 502 being a warning range and a second range 504 being a critical range), such as can be employed using multiple alarms as previously described. When a range is exceeded (e.g., but not limited to, at time 506), an alarm can be triggered but also a timer is started such that a reminder is also initiated after its expiration (e.g., but not limited to, at time 508). Over the timer period further occurrences of exceeding the threshold (e.g., but not limited to, at point 510) will not result in a duplicative alarm.
- [0118] However, the situation can be somewhat different when the intervening triggering event is not identical to the first triggering event. For example, if a first range 502 is exceeded (e.g., but not limited to, at time 512) and a timer is started, but before a reminder can be issued (e.g., but not limited to, at time 514) a second range 504 is exceeded (e.g., but not limited to, at time 516), then the second alarm will be issued and the timer will be restarted. No reminder will be indicated at the theoretical expiration of the first timer (e.g., but not limited to, at time 514), but a reminder will be issued at the expiration of the second timer (e.g., but not limited to, at time 518). In this case, exceeding the second range overrides the first reminder because the second alarm is a different, albeit related, condition. As previously described, however, the use of reminders is not limited to monitoring high and low characteristic values. In a similar manner, reminders can be triggered by user's supplied reference values for calibration as well as event markers entered into the monitor.

6. Glucose Monitoring Information Management

- [0119] Another aspect of the invention is to provide meaningful retrospective information to the patient using the sensor. In particular, a retrospective display of one or more physiological values can provide significantly useful data. As disclosed, the retrospective displays can be designed in a variety of ways to provide various useful information. For example, but not limited to, as the sleeping user receives no benefit from a real-time display, a retrospective view of data is important. While a simple listing of previous values has value, it can be time consuming to review, provides information that is difficult to visualize and

comprehend and requires significant memory space within the device. Providing useful information that is easy to understand and that can be stored within a small memory space is very important. The ability to review data from the previous sleep period is particularly helpful to a user with nocturnal hypoglycemia or “dawn effect”, as there is typically no witness to the real-time display. These measures can be even more important in cases where the alarm system can exhibit many false positives and/or false negatives, which might otherwise frustrate the user and lead to non-use of the monitor.

[0120] The following advanced data presentation tools can be used to conveniently and efficiently store and display useful information on a screen for a user to review while the monitor is in use. The tools provide useful information while requiring only a minimal amount memory space. These data presentation tools can also be used in any retrospective analysis package, such as software running on a computer or network designed to analyze trends and provide advise regarding a treatment regime.

[0121] The tools operate by processing that compares actual reading to high and low value limits (e.g., but not limited to, acceptable blood glucose ranges). For example, but not limited to, the limits can be the adjustable hypoglycemic and hyperglycemic alarm thresholds of a monitor. Alternately, for standardization, the tools can be applied to a fixed definition of a target blood glucose range that is independent of the hyperglycemic and hypoglycemic alarm thresholds for the particular user/monitor.

[0122] FIG. 6A illustrates one minimum and maximum data presentation. A display of the minimum and maximum values 600 of the characteristic monitor that have been measured for the user can be displayed on the monitor. The minimum value and maximum values can be conveniently displayed along with the date and time of their occurrence. Such a display 600 is useful, but becomes more useful when combined with an excursion count, a distribution of values, and/or integrated values as discussed below

[0123] FIG. 6B illustrates an excursion data presentation. The number of excursions above or below the respective blood glucose limits is also very useful to have summarized for the user. An excursion display 602 provides good information, particularly when there are no alarms active on the monitor (either because the monitor is not turned on or alarms are

not being employed by the user). A display 602 of the number of excursions above the hyperglycemic limit and the number of excursions below hypoglycemic limit give the user an idea of performance of a treatment program at a glance. A high number of incidents exceeding either limit indicate a need for improvements.

5 **[0124]** FIG. 6C illustrates a characteristic value distribution data presentation. A simple distribution of sensor values offers a very powerful tool. In a preferred embodiment, the distribution is described in percentages that are automatically scaled with the duration of monitor use. Optionally, a monitor can include the total time of use with a percentage distribution. Awareness of a total time provides perspective for reviewing the percentage
10 distribution. A time based distribution can also be used, but requires the total time to be included in the analysis as a reference. A distribution can also be presented based upon the total number of readings, but requires the total time is required in the analysis.

[0125] For example, but not limited to, the display can show a percentage of readings above a hyperglycemic alarm level, a percentage of readings below a hypoglycemic alarm
15 level and a percentage of readings of readings within alarm range as shown in FIG. 6C. Optionally, the total time covered in the analysis can also be displayed. Similarly, an alternate display can show the time spent above a hyperglycemic alarm level, the time spent below a hypoglycemic alarm level and the time spent within alarm range (not shown). As mentioned, the time base display requires a known total time as part of the analysis. Finally, a display can
20 also include the number of readings above hyperglycemic alarm level, the number of readings below a hypoglycemic alarm level and the number of readings within alarm range (not shown).

[0126] FIG. 6D illustrates an integrated characteristic value data presentation. Performing an integration of the readings outside the alarm levels with respect to time can provide a
25 measure of the hypoglycemic and hyperglycemic events' severity. In addition, these results can also be scaled these by a total sensor time to provide a measure that is duration independent.

[0127] For example, a "hyperglycemic area" can be calculated as the sum of the differences between the readings and the hyperglycemic alarm limit. A "hypoglycemic area" can be

calculated from the sum of all the differences between the hypoglycemic alarm limit and the readings. A “hyperglycemic index” is calculated by taking the “hyperglycemic area” and dividing it by the duration of sensor use. Similarly, the “hypoglycemic index” can be calculated by taking the “hypoglycemic area” divided by the duration of sensor use.

- 5 [0128] Various alarms and/or monitoring aspects discussed above may be combined or utilized with other alarms and/or monitoring aspects. The possible embodiments and/or combinations should not be limited to the specific embodiments described above.

7. Real-Time Glucose Display and History

- 10 [0129] In other embodiments of the invention, a physiological characteristic monitor 104 is used for reviewing a history of measurements of the sensed characteristic value based on user input from an input device with a display for showing the history of the measurements of the sensed characteristic value. As discussed above with respect to the alarm history, the display may show the measurements only within a specified range, such as the operational range of the sensor (e.g. 40 to 400 or 20 to 600 mg/dl). Outside the specified range, a HI or
15 LO indicator is shown.

- [0130] FIG. 7 illustrates the real-time and history display 700 of an embodiment of the invention. Three exemplary screens 702, 704, 706 are shown for the display of real-time or historical measurement data. The in-range screen 702 is used when the measurement is within the specified range; the actual measurement is shown. The high screen 704 (showing
20 a HI indicator) is used when the measurement is above the specified range, and the low screen 706 (showing a LO indicator) is used when the measurement is below the specified range. The display shows a no measurement indicator where no value was recorded in the history.

- [0131] The user input also directs scrolling through a history of the measurements of the
25 sensed characteristic value. In a typical embodiment, the display shows a single measurement at a time. The display shows a time of acquisition by the sensor for each measurement in the history. In the example in-range screen 702, the current measurement is being shown, indicated by the “NOW” indicator. The time of acquisition can be shown as a value relative

to a most recent measurement of the history. For example, the high and low screens 704, 706 each show values measured 5 hours and 25 minutes before the current time interval. Alternatively, the actual date and time of the measurement may be shown.

5 **[0132]** The history of the measurements of the sensed characteristic value can be scrolled through in even time increments. In further embodiments, the even time increment can have a selectable size (e.g. selectable between 5 minute or 30 minute increments), and the selected time increment can be indicated on the display as the history is reviewed. The history itself can comprise a fixed total period from the present backward. For convenience, scrolling through the history wraps around after an end of the history is reached.

10 **[0133]** In further embodiments of the invention, when no measurement is currently available, the NOW indicator can be replaced by a status message indicating no calibration, noise or a missed measurement.

15 **[0134]** This concludes the description including the preferred embodiments of the present invention. The foregoing description including the preferred embodiment of the invention has been presented for the purposes of illustration and description. It is not intended to be exhaustive or to limit the invention to the precise form disclosed. Many equivalent modifications and variations are possible in light of the above teaching.

20 **[0135]** It is intended that the scope of the invention be limited not by this detailed description, but rather by the claims appended hereto. The above specification, examples and information provide a description of the manufacture and use of the apparatus and method of the invention. Since many embodiments of the invention can be made without departing from the scope of the invention, the invention resides in the claims hereinafter appended. Throughout this application, various publications are referenced. The disclosures of these publications are hereby incorporated by reference herein in their entireties.

WHAT IS CLAIMED IS:

1. A physiological characteristic monitor, comprising:
a sensor input capable of receiving a signal from a sensor, the signal being based on a sensed physiological characteristic value of a user; and
5 a processor for operating an alarm based on user input from an input device;
wherein the alarm indicates an alarm condition when the sensed physiological characteristic value exceeds a set range.
2. The physiological characteristic monitor of claim 1, wherein operating the
10 alarm comprises setting parameters of the alarm based on the user input from the input device.
3. The physiological characteristic monitor of claim 2, wherein the physiological characteristic value is a measurement of the concentration of blood glucose in the user and the alarm indicates a glycemic condition.
4. The physiological characteristic monitor of claim 3, wherein the display
15 shows the measurement of the concentration of blood glucose indicating the glycemic condition until the alarm is acknowledged by the user.
5. The physiological characteristic monitor of claim 4, wherein the display shows a time of the alarm.
6. The physiological characteristic monitor of claim 3, wherein the glycemic
20 condition comprises a hypoglycemic condition and the parameters of the alarm set based on the user input include a specified hypoglycemic blood glucose level, and further wherein the alarm indicates the hypoglycemic condition when the measurement of the concentration of blood glucose in the user is less than or equal to the specified hypoglycemic blood glucose level.
7. The physiological characteristic monitor of claim 6, wherein the display
25 shows a low indicator to indicate the hypoglycemic condition.

8. The physiological characteristic monitor of claim 3, wherein the glycemic condition comprises a hyperglycemic condition and the parameters of the alarm set based on the user input include a specified hyperglycemic blood glucose level, and further wherein the alarm indicates the hyperglycemic condition when the measurement of the concentration of blood glucose in the user is greater than or equal to the specified hyperglycemic blood glucose level.

9. The physiological characteristic monitor of claim 8, wherein the display shows a high indicator to indicate the hyperglycemic condition.

10. The physiological characteristic monitor of claim 3, wherein the alarm indicates the glycemic condition only if the monitor is calibrated.

11. The physiological characteristic monitor of claim 3, wherein the glycemic condition comprises a hypoglycemic condition, and the alarm is indicated by at least two audible descending tones.

12. The physiological characteristic monitor of claim 3, wherein the glycemic condition comprises a hyperglycemic condition, and the alarm is indicated by at least two audible ascending tones.

13. The physiological characteristic monitor of claim 3, wherein subsequent alarms are inhibited for an alarm repeat delay period after the measurement of the concentration of blood glucose indicates the glycemic condition.

14. The physiological characteristic monitor of claim 13, wherein the alarm repeat delay period is approximately 20 minutes for the glycemic condition comprising a hypoglycemic condition.

15. The physiological characteristic monitor of claim 13, wherein the alarm repeat delay period is approximately 1 hour for the glycemic condition comprising a hyperglycemic condition.

16. The physiological characteristic monitor of claim 3, wherein an alarm repeat delay period for delaying a repeated check of the alarm condition is set by the user input.

17. The physiological characteristic monitor of claim 16, wherein the alarm repeat delay period is different based upon an alarm threshold triggering the alarm, and
5 wherein multiple alarm thresholds are used to indicate different severities of the glycemic condition.

18. The physiological characteristic monitor of claim 16, wherein the alarm repeat delay period is set by the user scrolling through a list of delay increments and selecting the desired alarm repeat delay period from the list of delay increments.

10 19. The physiological characteristic monitor of claim 16, wherein the alarm repeat delay period is set by the user utilizing up arrow and down arrow buttons.

20. The physiological characteristic monitor of claim 16, wherein the alarm repeat delay period is set separately for the glycemic condition comprising a hypoglycemic condition and a hyperglycemic condition.

15 21. The physiological characteristic monitor of claim 20, wherein the alarm repeat delay period has a default value of approximately 20 minutes for the glycemic condition comprising the hypoglycemic condition.

22. The physiological characteristic monitor of claim 20, wherein the alarm repeat delay period has a default value of approximately 1 hour for the glycemic condition
20 comprising the hyperglycemic condition.

23. The physiological characteristic monitor of claim 3, wherein an alarm snooze period for temporarily disabling the alarm is set by the user input.

24. The physiological characteristic monitor of claim 23, wherein the alarm snooze period is different based upon an alarm threshold triggering the alarm, and wherein
25 multiple alarm thresholds are used to indicate different severities of the glycemic condition.

25. The physiological characteristic monitor of claim 23, wherein the alarm snooze period is only available for a glycemic condition comprising a hyperglycemic condition.

26. The physiological characteristic monitor of claim 23, wherein the alarm
5 snooze period is deactivated upon adjusting a hyperglycemic alarm setting.

27. The physiological characteristic monitor of claim 23, wherein the display shows a snooze indicator when the snooze period is running and the monitor is calibrated.

28. The physiological characteristic monitor of claim 23, wherein the display shows time remaining of the alarm snooze period.

10 29. The physiological characteristic monitor of claim 23, wherein the alarm snooze period is set by the user scrolling through a list of snooze period increments and selecting the desired alarm snooze period from the list of snooze period increments.

30. The physiological characteristic monitor of claim 23, wherein the alarm snooze period is set by the user utilizing up arrow and down arrow buttons.

15 31. The physiological characteristic monitor of claim 1, wherein operating the alarm comprises reviewing a historical list of alarms based on the user input from the input device.

32. The physiological characteristic monitor of claim 31, wherein the physiological characteristic value is a measurement of the concentration of blood glucose in
20 the user and the alarm indicates a glycemic condition.

33. The physiological characteristic monitor of claim 32, wherein the display shows the measurements of the concentration of blood glucose in the user only within a specified range of the monitor.

34. The physiological characteristic monitor of claim 33, wherein the specified
25 range is from 40 to 400 mg/dl.

35. The physiological characteristic monitor of claim 33, wherein the display shows a high indicator for the measurements above the specified range.

36. The physiological characteristic monitor of claim 33, wherein the display shows a low indicator for the measurements below the specified range.

5 37. A physiological characteristic monitor, comprising:
a sensor input capable of receiving a signal from a sensor, the signal being based on a sensed physiological characteristic value of a user;
a processor for determining a status of the monitor for receiving the signal from the sensor; and
10 a display for showing an observable indicator of the status of the monitor;
wherein the status is based upon at least one condition of the group comprising a sensor activity condition, a sensor calibration condition and a telemetry condition.

38. The physiological characteristic monitor of claim 37, wherein the physiological characteristic value is a measurement of the concentration of blood glucose in
15 the user.

39. The physiological characteristic monitor of claim 37, wherein the observable indicator comprises a calibration pending indicator after the sensor telemetry condition indicates telemetry synchronization and the sensor calibration condition indicates pending calibration.

20 40. The physiological characteristic monitor of claim 37, wherein the observable indicator comprises a sensor replacement prompt after the sensor activity condition indicates a dead sensor.

41. The physiological characteristic monitor of claim 40, wherein the display shows a current time.

42. The physiological characteristic monitor of claim 37, wherein the observable indicator comprises a no synchronization indicator after the sensor telemetry condition indicates no telemetry synchronization.

43. The physiological characteristic monitor of claim 42, wherein the observable
5 indicator comprises a no synchronization indicator after the sensor activity condition indicates an active sensor.

44. The physiological characteristic monitor of claim 37, wherein the observable indicator comprises an enter characteristic measurement prompt after the sensor telemetry condition indicates telemetry synchronization, the sensor calibration condition indicates no
10 pending calibration and the sensor calibration condition indicates an invalid calibration.

45. The physiological characteristic monitor of claim 44, wherein the display shows a current time.

46. The physiological characteristic monitor of claim 37, wherein the observable indicator comprises a characteristic measurement due prompt after the sensor telemetry
15 condition indicates telemetry synchronization, the sensor calibration condition indicates no pending calibration, the sensor calibration condition indicates a valid calibration and the processor determines that a sensor expiration time will occur after a next calibration due time.

47. The physiological characteristic monitor of claim 46, wherein the display
20 shows the next calibration due time.

48. The physiological characteristic monitor of claim 37, wherein the observable indicator comprises a sensor replacement prompt after the sensor telemetry condition indicates telemetry synchronization, the sensor calibration condition indicates no pending calibration, the sensor calibration condition indicates a valid calibration, and the processor
25 determines that a sensor expiration time will occur before a next calibration due time.

49. The physiological characteristic monitor of claim 48, wherein the display shows the sensor expiration time.

50. The physiological characteristic monitor of claim 37, wherein the display shows a value and time of a most recent valid reference measurement of the physiological
5 characteristic value after the sensor calibration condition indicates no pending calibration and a valid calibration.

51. The physiological characteristic monitor of claim 50, wherein the time of the most recent valid measurement of the sensed physiological characteristic value is unaffected by a change in a system time setting of the monitor.

1/18

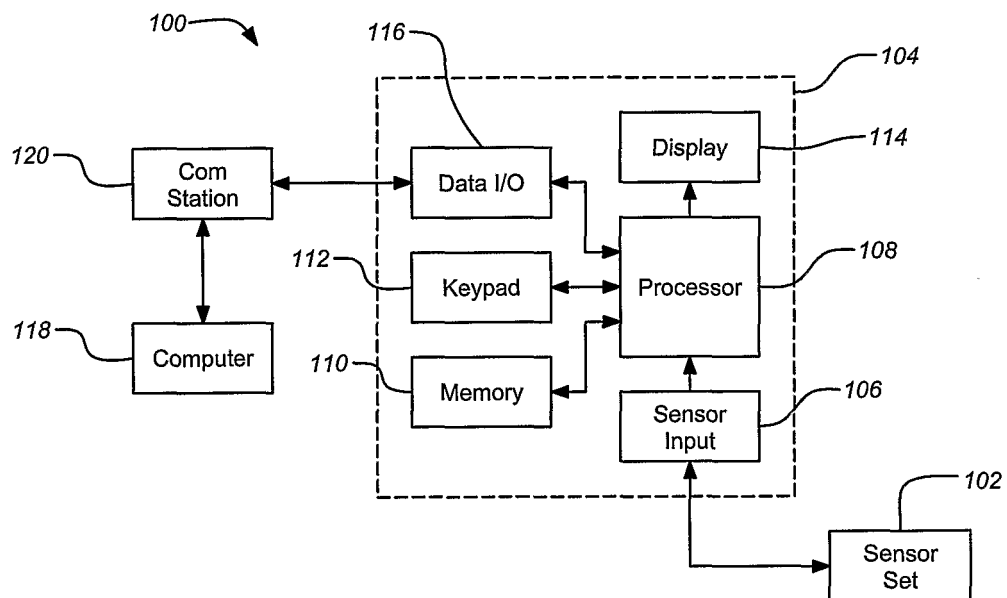
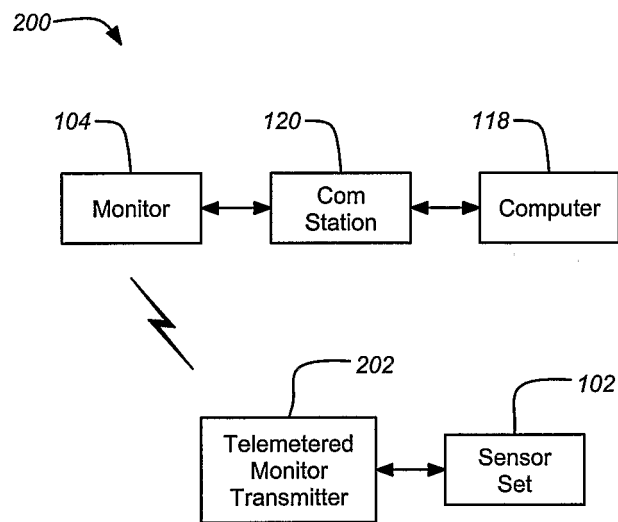


FIG. 1A

2/18

*FIG. 1B*

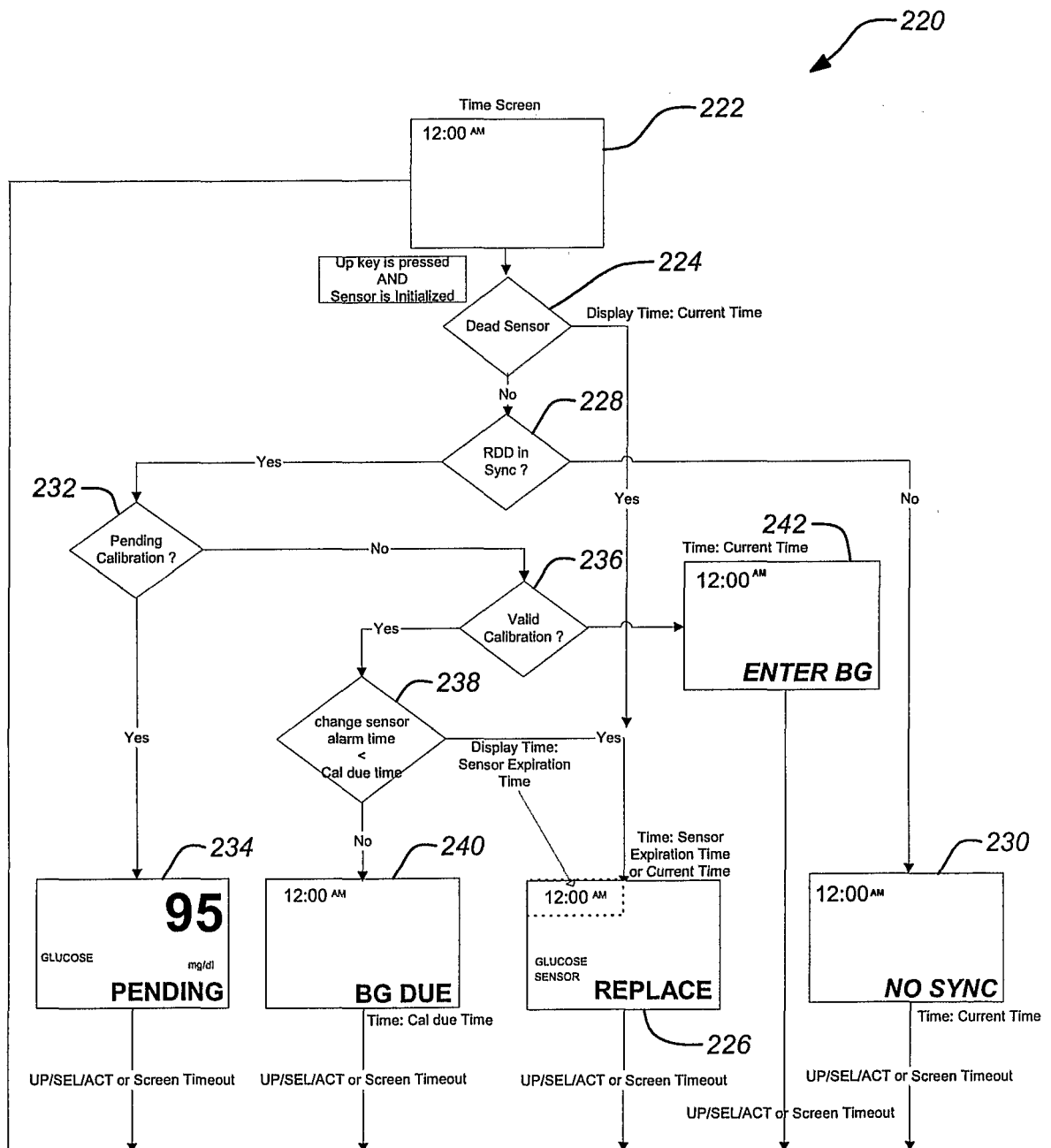


FIG. 2A

4/18

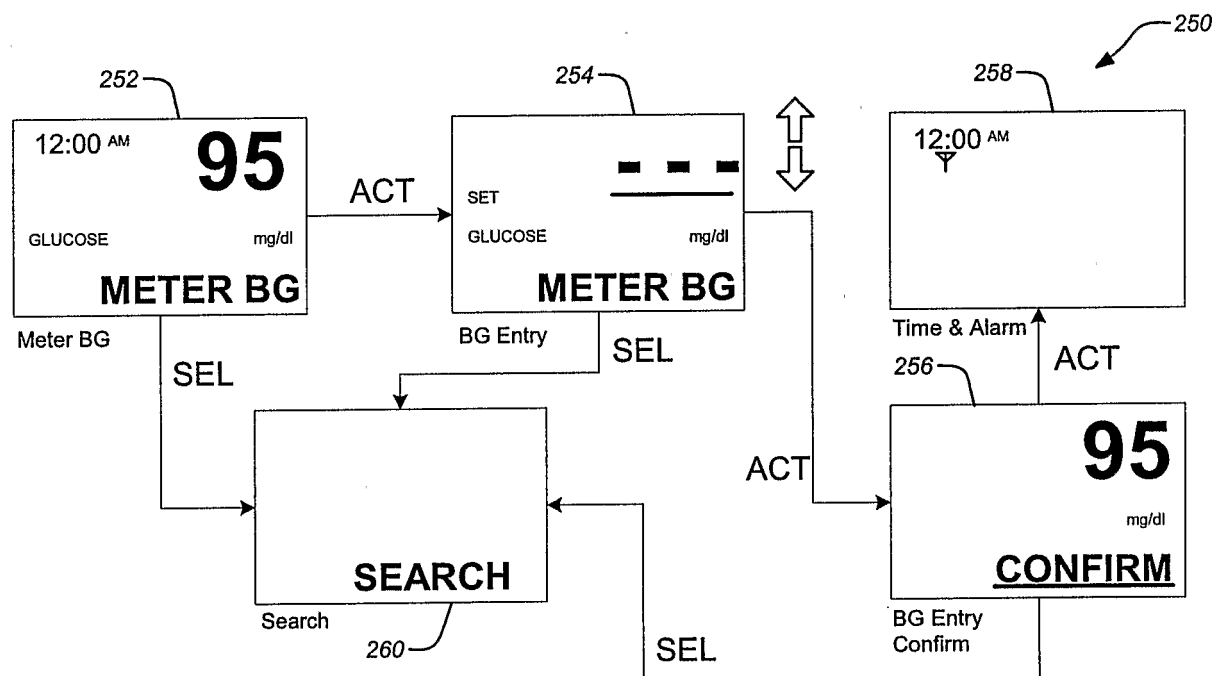


FIG. 2B

5/18

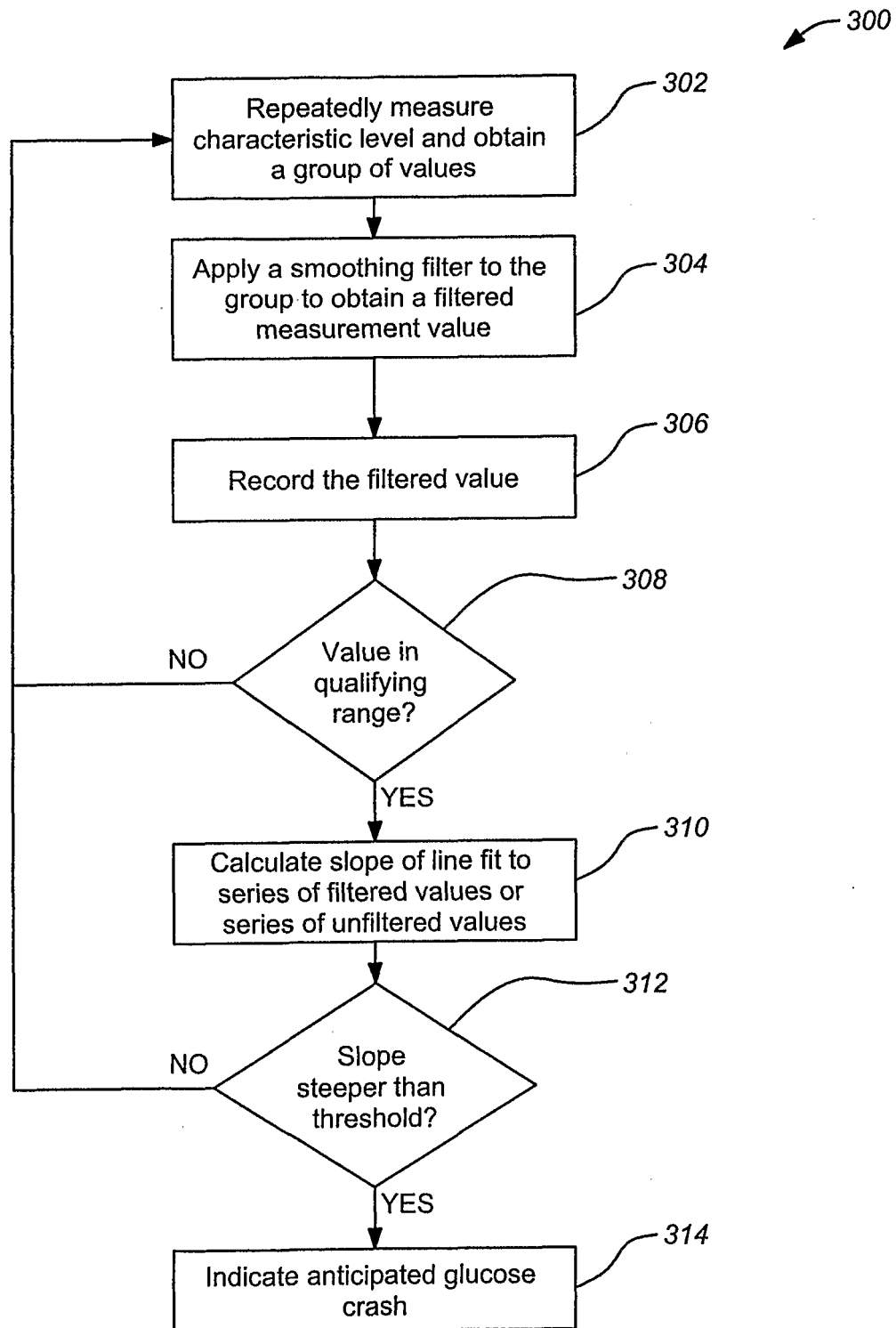


FIG. 3A

6/18

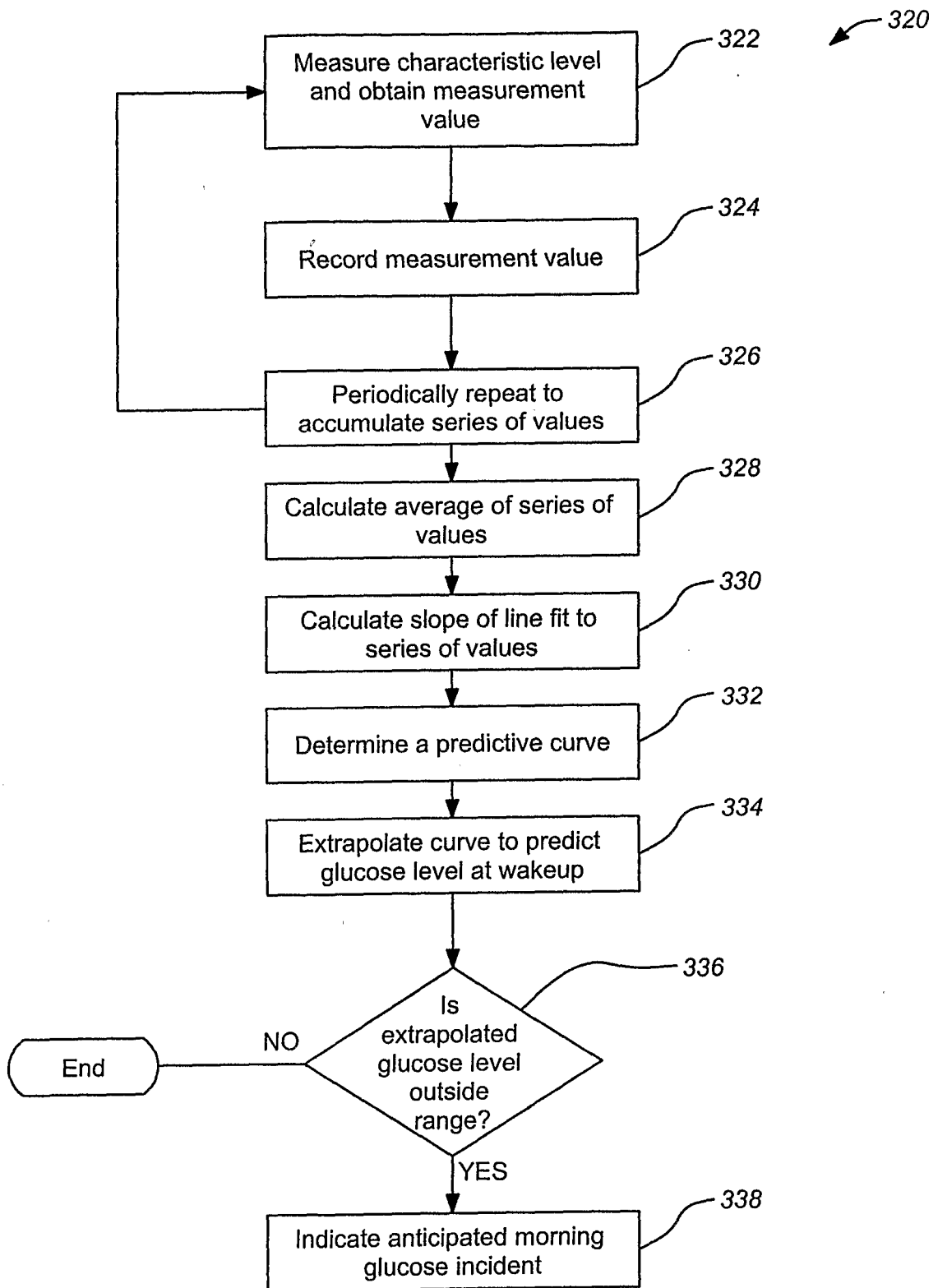


FIG. 3B

7/18

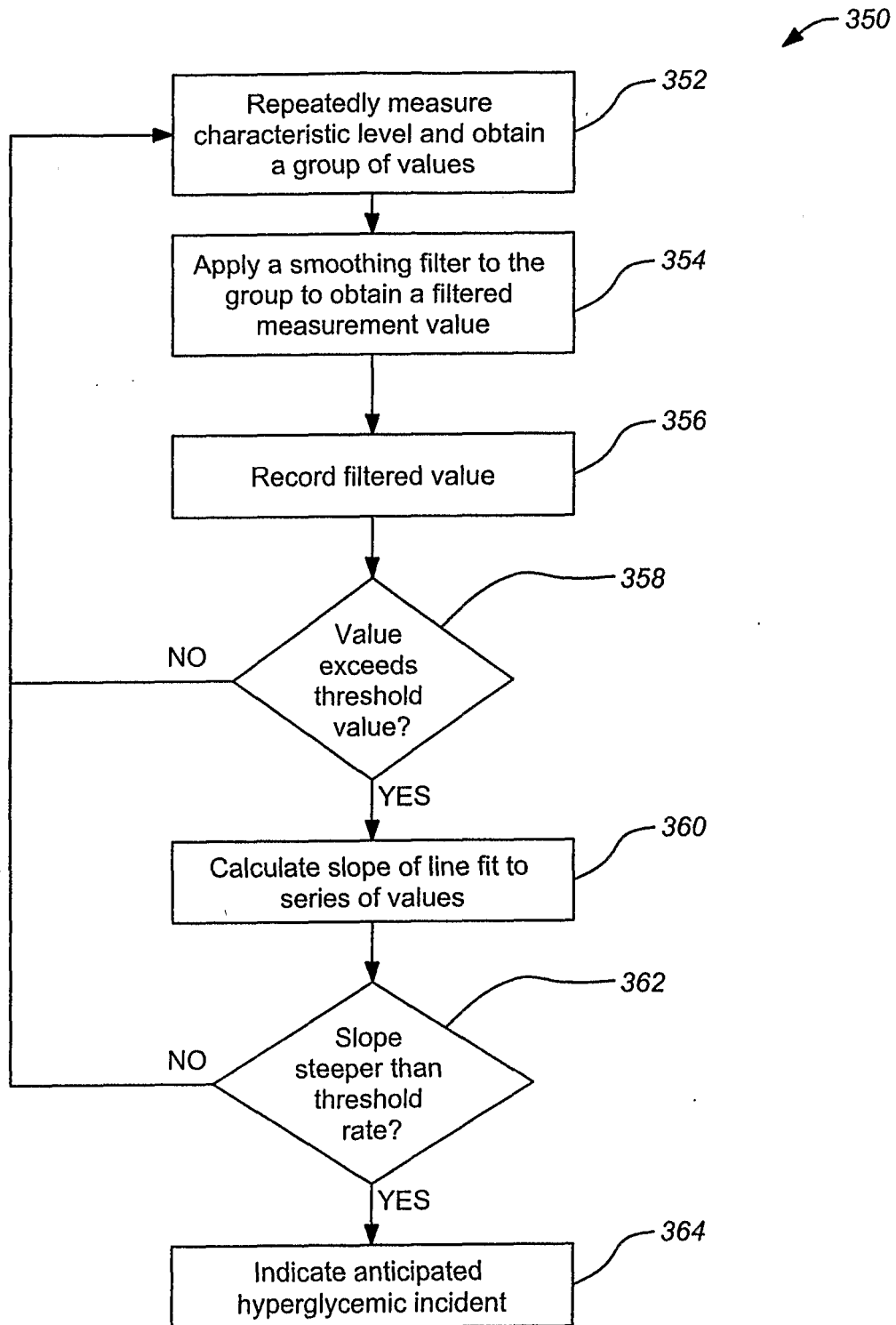


FIG. 3C

8/18

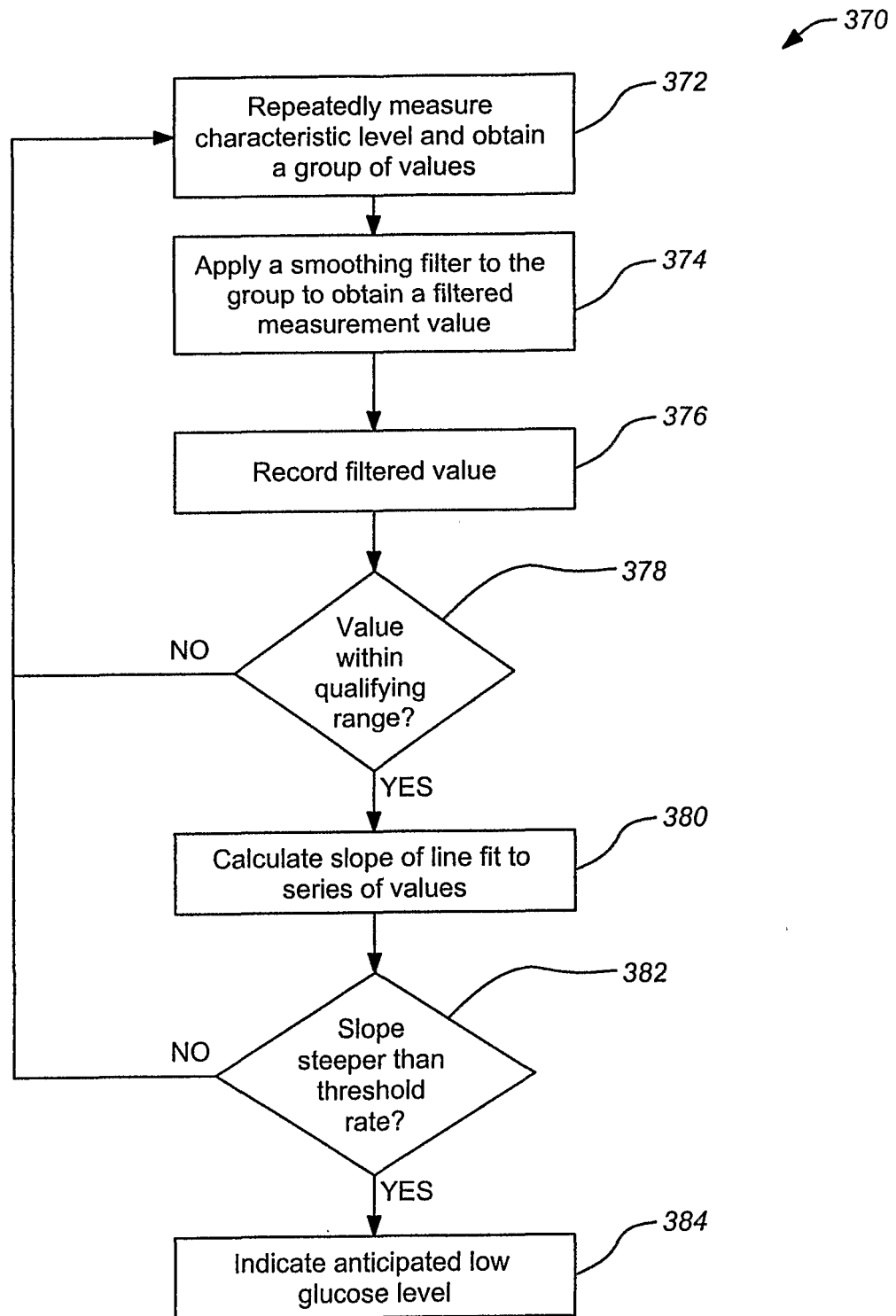


FIG. 3D

9/18

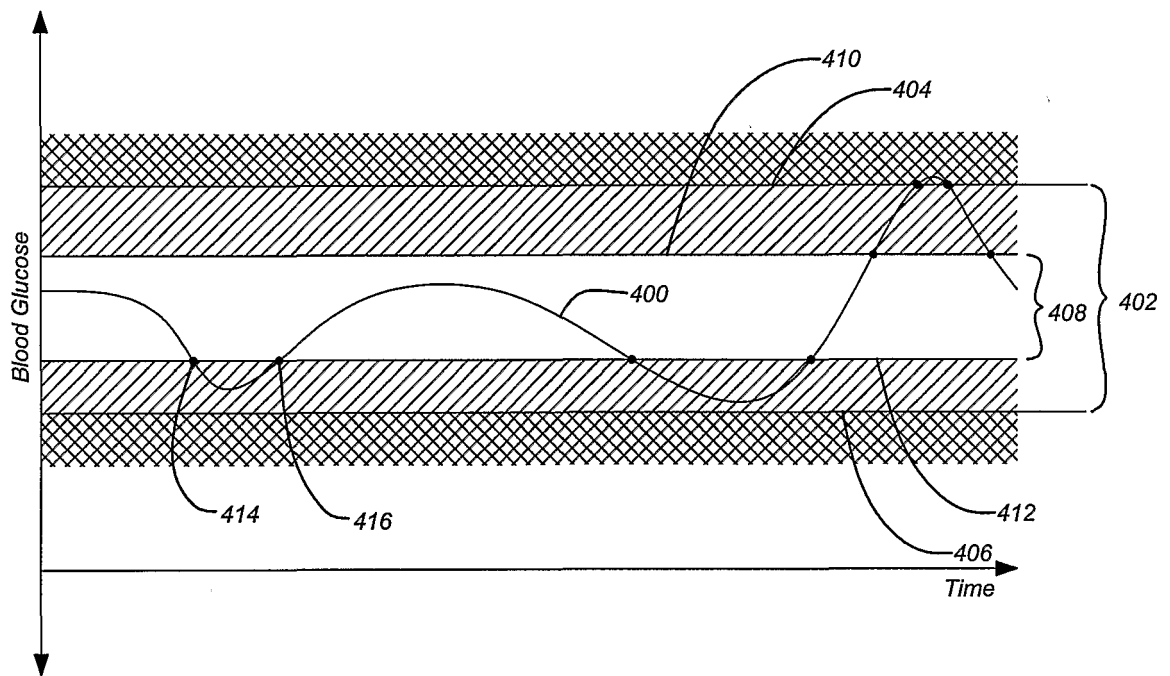
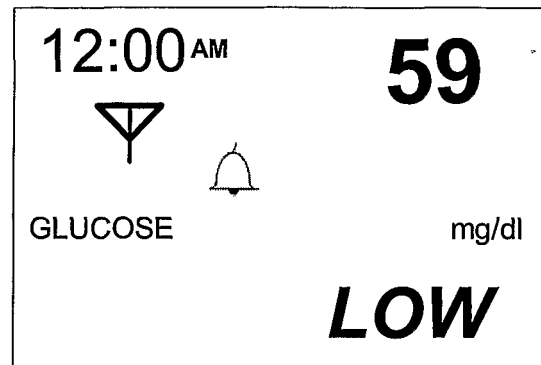
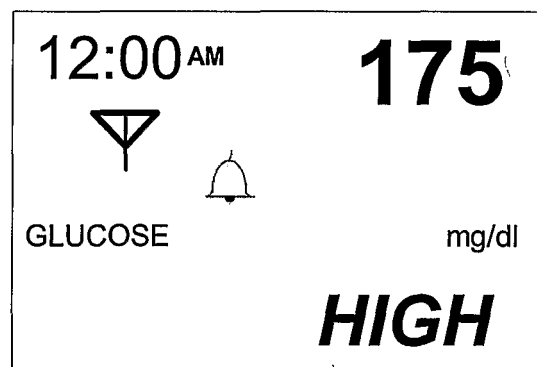


FIG. 4A

10/18

*FIG. 4B**FIG. 4C*

11/18

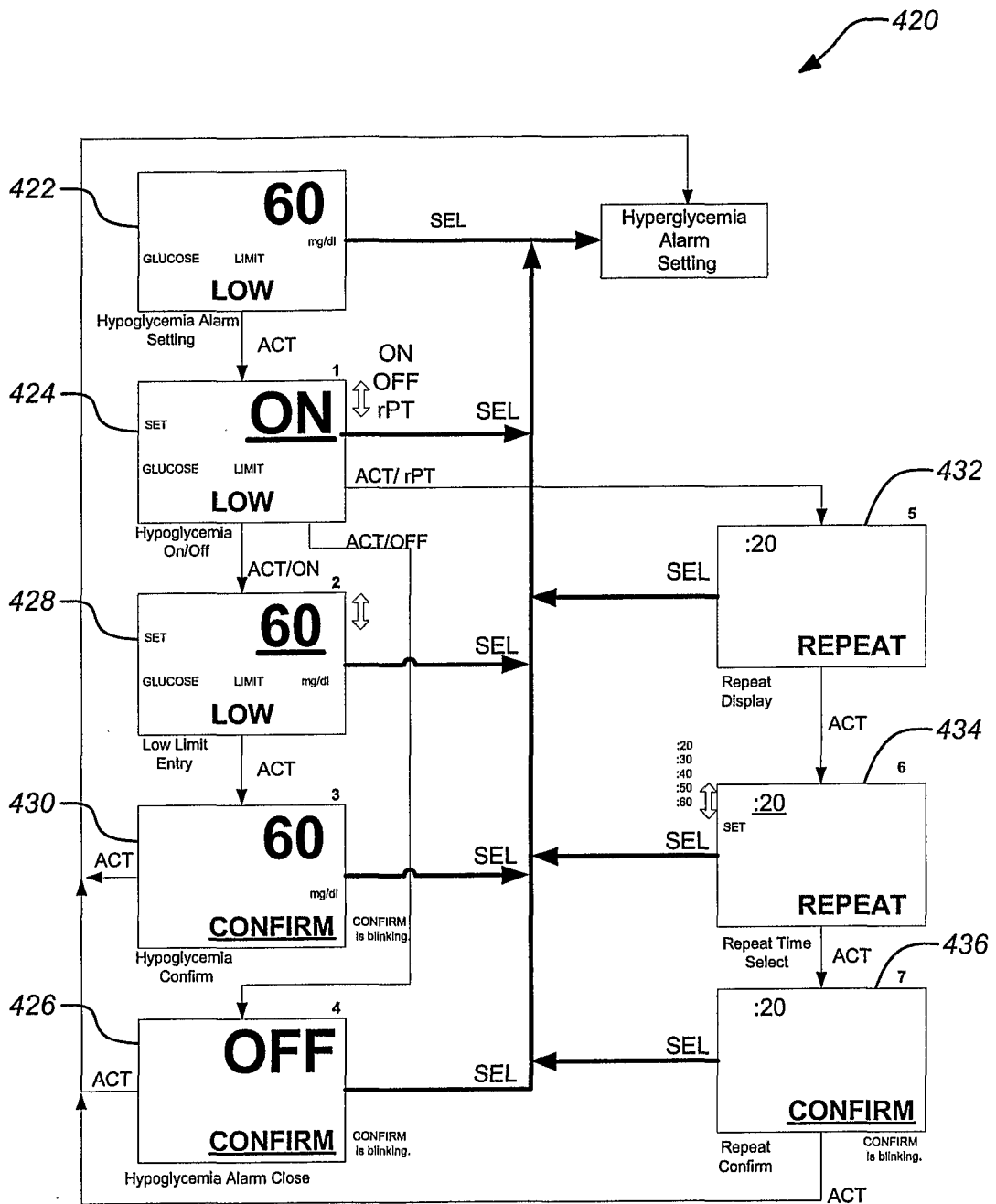


FIG. 4D

12/18

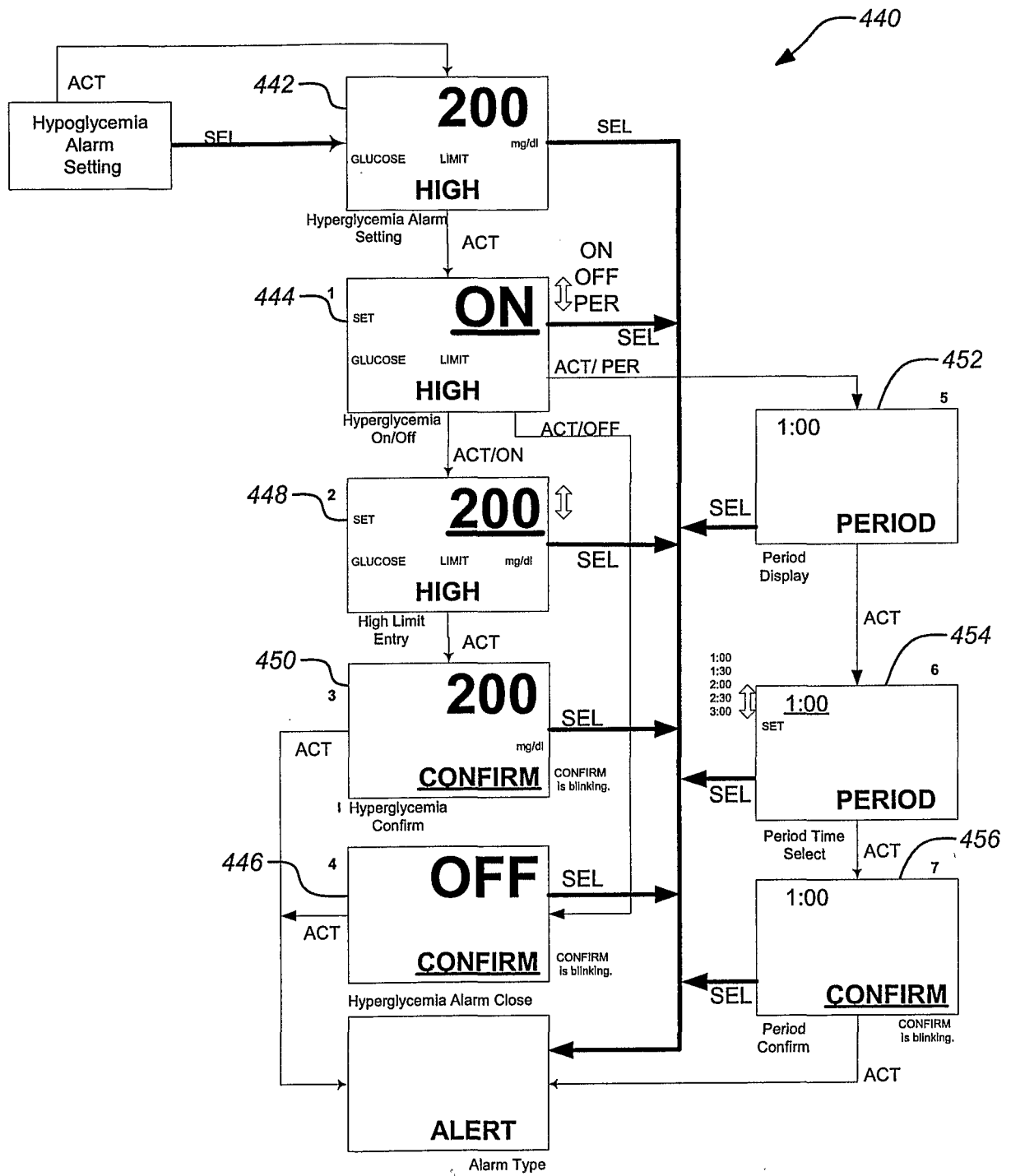


FIG. 4E

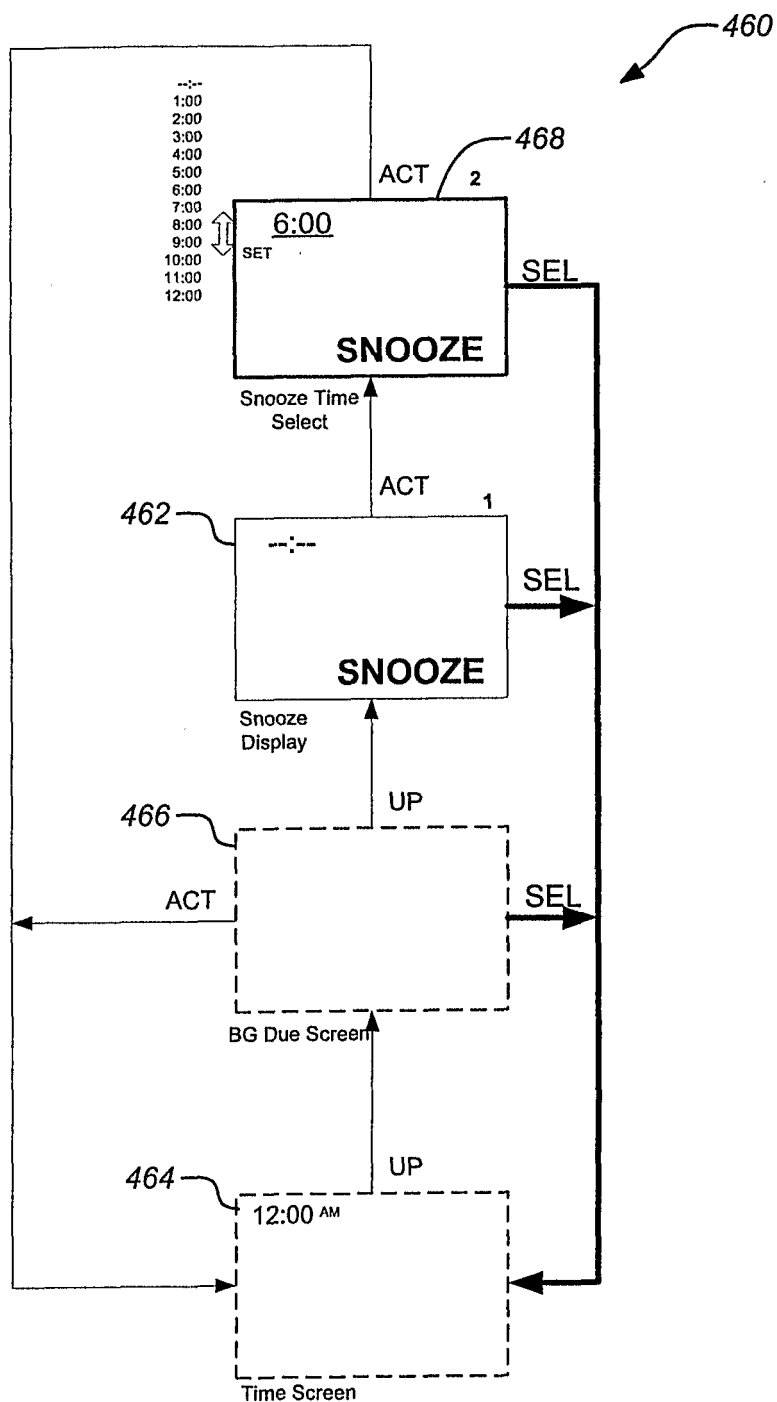


FIG. 4F

14/18

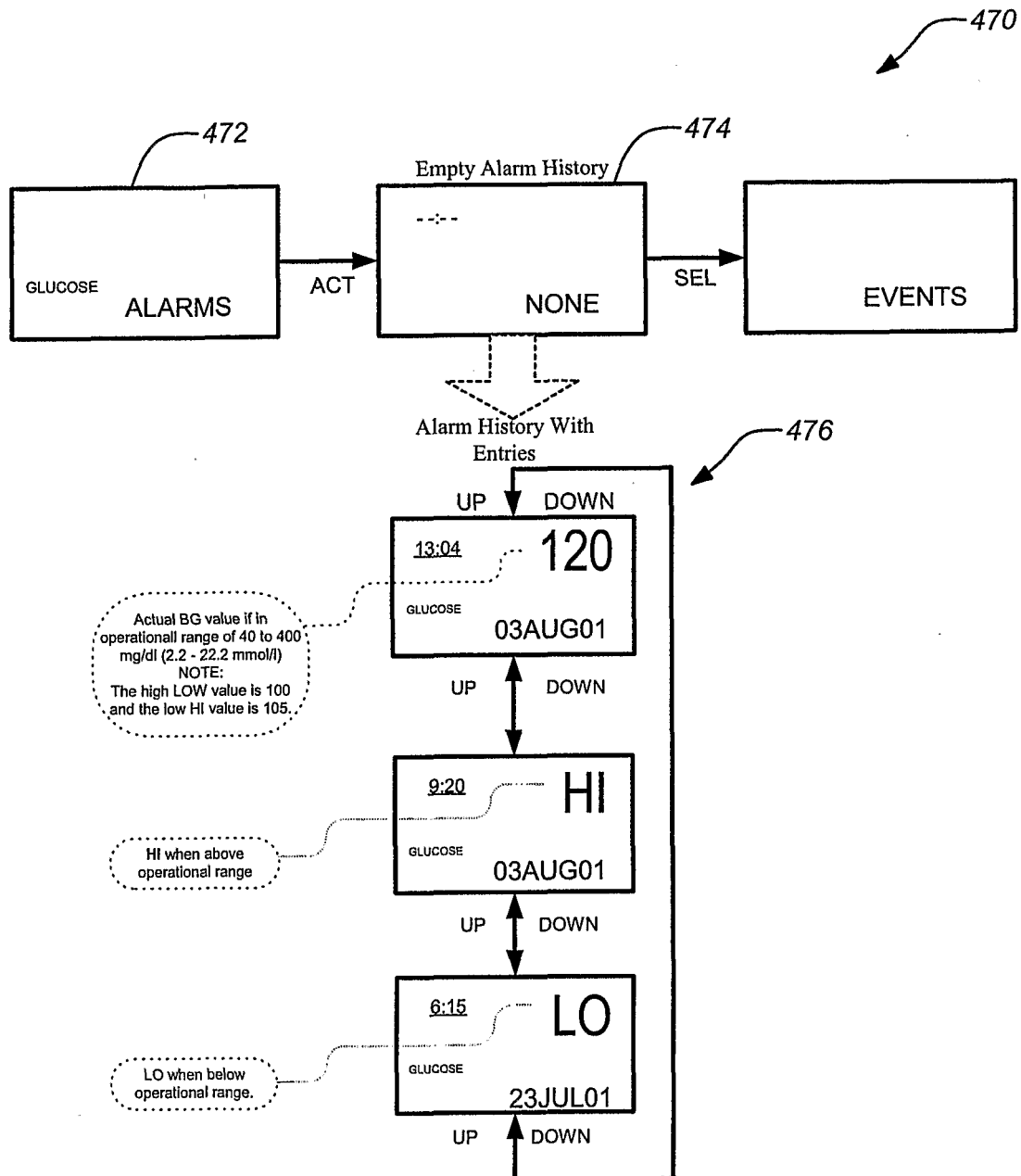


FIG. 4G

15/18

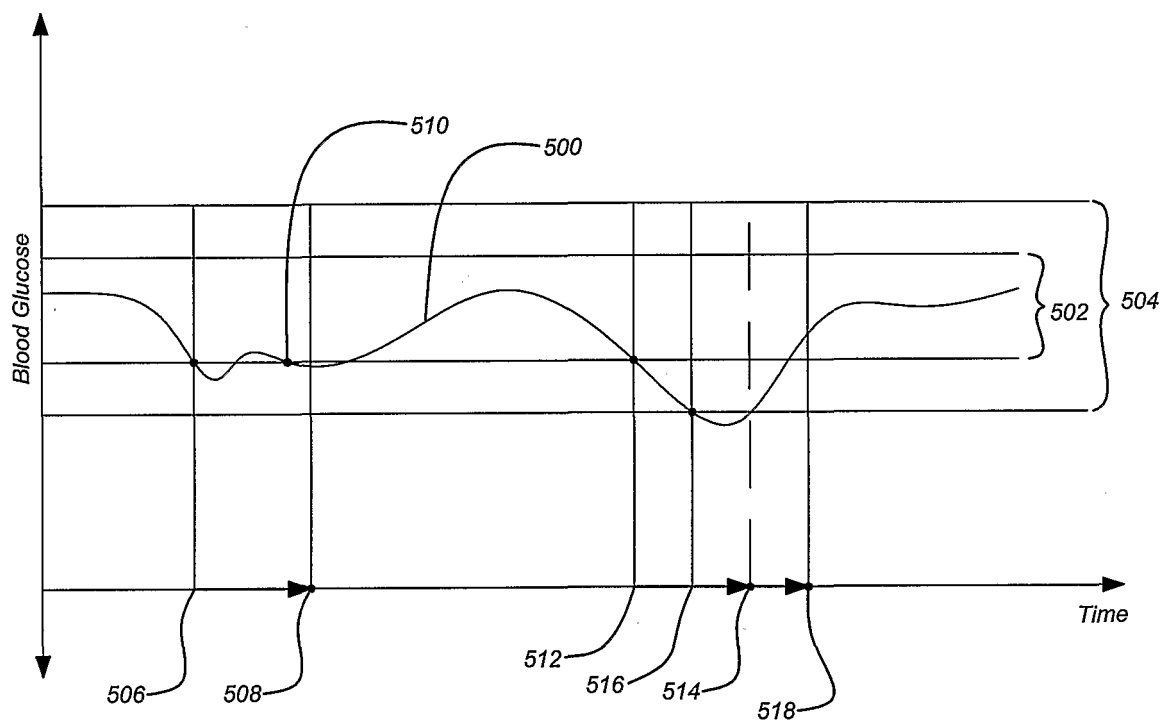
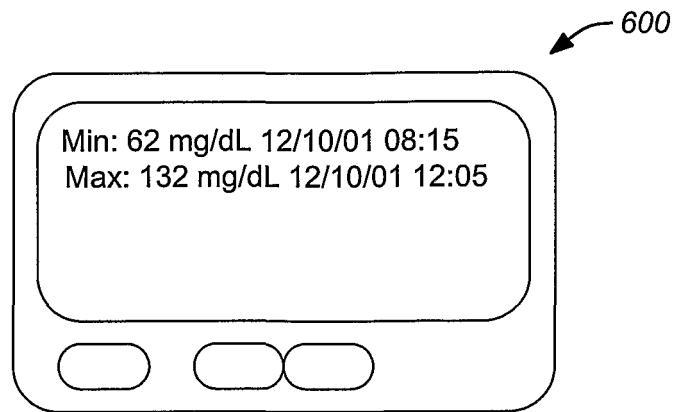
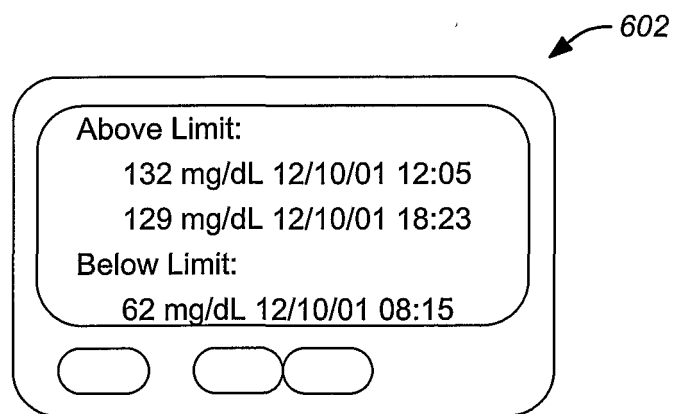
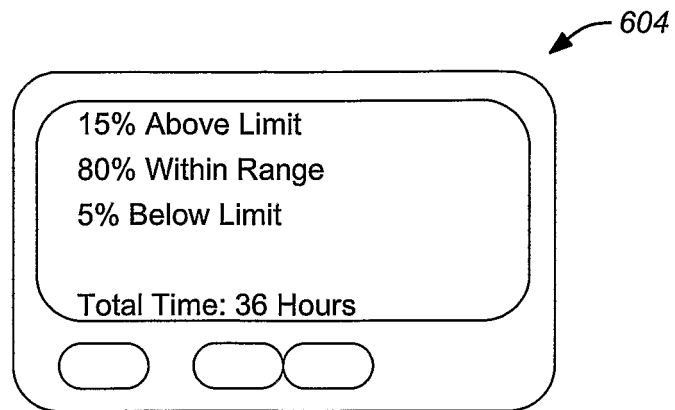
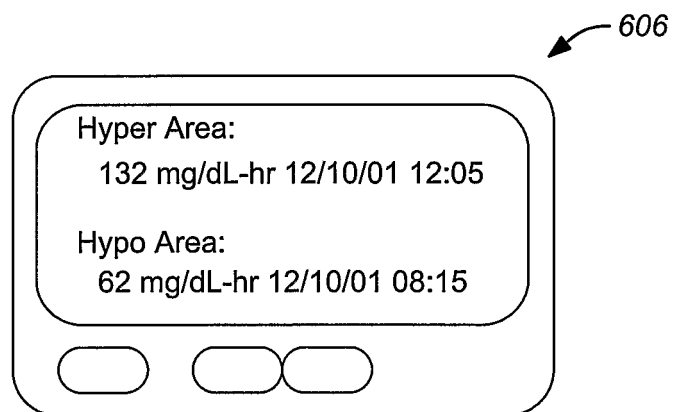


FIG. 5

16/18

**FIG. 6A****FIG. 6B**

17/18

*FIG. 6C**FIG. 6D*

18/18

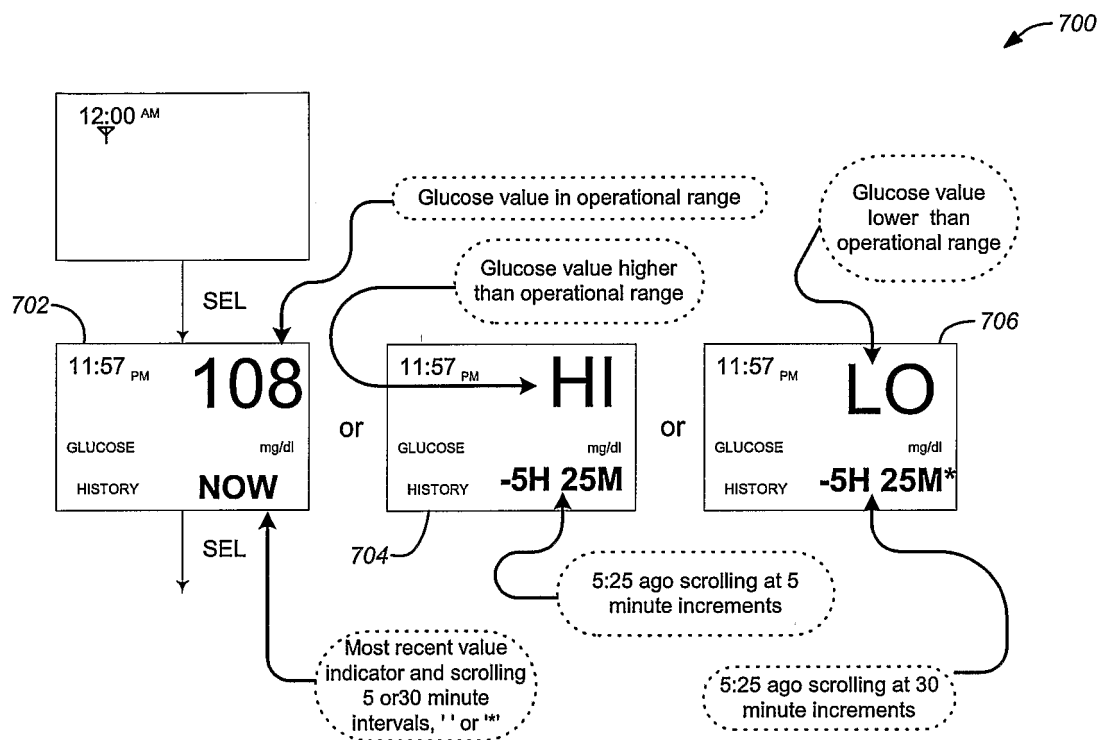


FIG. 7

专利名称(译)	用于监测生理特征的系统		
公开(公告)号	EP1703839A2	公开(公告)日	2006-09-27
申请号	EP2004814197	申请日	2004-12-15
[标]申请(专利权)人(译)	美敦力迷你迈德公司		
申请(专利权)人(译)	MEDTRONIC MINIMED INC.		
当前申请(专利权)人(译)	MEDTRONIC MINIMED INC.		
[标]发明人	SIDDIQUI UZAIR PATEL HIMANSHU P MASTROTOTARO JOHN J FREDRICKSON LINDA P HOLTZCLAW KRIS R WENHOLZ BRUCE R ESTES MARK C SAIDARA FRANK		
发明人	SIDDIQUI, UZAIR PATEL, HIMANSHU, P. MASTROTOTARO, JOHN, J. FREDRICKSON, LINDA, P. HOLTZCLAW, KRIS, R. WENHOLZ, BRUCE, R. ESTES, MARK, C. SAIDARA, FRANK		
IPC分类号	A61B5/00		
CPC分类号	A61B5/1495 A61B5/0002 A61B5/14532 A61B5/1468 A61B5/1486 A61B5/7275 A61B5/746 A61B2560/0223 A61B2560/0252 A61B2560/045 G06F19/3418 G06F19/3456 G16H15/00 G16H40/63		
优先权	10/750080 2003-12-31 US		
其他公开文献	EP1703839B1		
外部链接	Espacenet		

摘要(译)

提出了用于医学监测生理特征值的装置和方法，例如用于治疗糖尿病的血糖水平。该装置和方法提供高级警报和提醒功能，以及高级数据呈现工具，以进一步促进各种生理条件的方便和有效管理。例如，可以使用警报重复延迟来防止指定时间段内的冗余警报，并且可以使用警报贪睡功能来防止通常在指定时间段内发出警报。