



(12) **EUROPEAN PATENT APPLICATION**

(43) Date of publication:
29.12.2004 Bulletin 2004/53

(51) Int Cl.7: **A61H 31/00, A61N 1/39,
G06F 19/00, A61B 5/00**

(21) Application number: **04253736.5**

(22) Date of filing: **23.06.2004**

(84) Designated Contracting States:
**AT BE BG CH CY CZ DE DK EE ES FI FR GB GR
HU IE IT LI LU MC NL PL PT RO SE SI SK TR**
Designated Extension States:
AL HR LT LV MK

(72) Inventors:
• **Boucher, Donald R.**
Andover, Massachusetts 01810 (US)
• **Geheb, Frederick**
Danvers, Massachusetts 01923 (US)

(30) Priority: **27.06.2003 US 609001**

(74) Representative: **Charig, Raymond Julian**
Eric Potter Clarkson,
Park View House,
58 The Ropewalk
Nottingham NG1 5DD (GB)

(71) Applicant: **Zoll Medical Corporation**
Chelmsford, Massachusetts 01824-4105 (US)

(54) **Cardio-pulmonary resuscitation device with feedback from measurement of pulse and/or blood oxygenation**

(57) An apparatus for assisting a rescuer in performing CPR on a victim. The apparatus comprising at least one of a pulse sensor for measuring the pulse rate of the victim and an SpO₂ sensor for measuring blood ox-

ygenation; electronics for processing the output of the sensor or sensors and determining one or more actions that the rescuer should perform to improve the CPR being performed; and a prompting device for conveying the one or more actions to the rescuer.

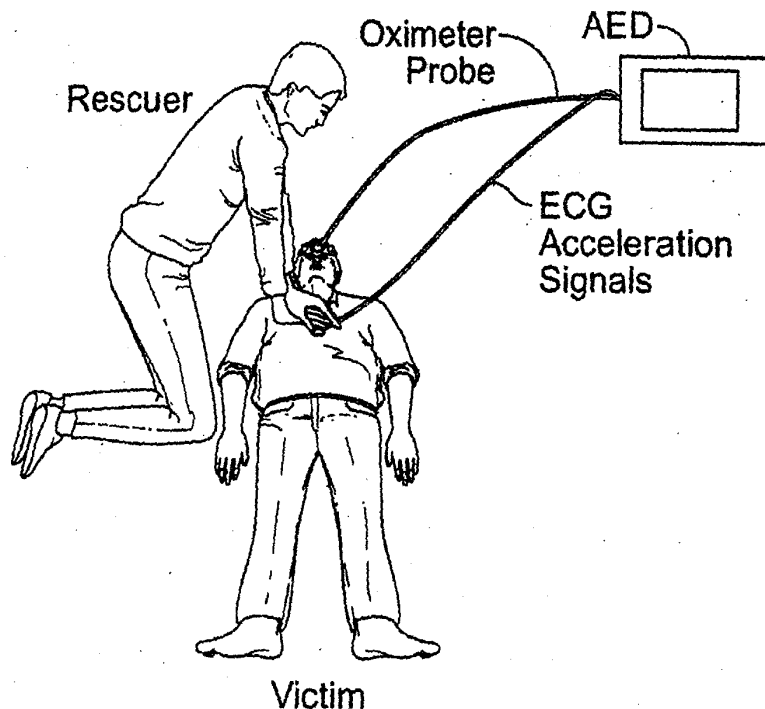


FIG. 1

Description

Technical Field

[0001] This invention relates to devices for assisting cardiac resuscitation.

Relationship to Other Applications

[0002] The following copending applications are incorporated by reference: U.S. Serial No. 10/370,036, filed on February 19, 2003; U.S. Serial No. 09/794,320, filed on February 27, 2001; U.S. Serial No. 10/421,652, filed on April 23, 2003; U.S. Serial No. 09/846,673, filed on May 1, 2001; and U.S. Serial No. 10/441,933, filed on May 20, 2003.

Background

[0003] This invention relates to the field of cardiac resuscitation, and in particular to devices for assisting rescuers in performing cardio-pulmonary resuscitation (CPR). CPR is used to mechanically support circulation in subjects with cardiac arrest. Although, the American Heart Association (AHA) has proposed guidelines for CPR, the effectiveness of this intervention is difficult to actively assess as it is performed, The ZOLL Medical AED Plus system provides rescuers with valuable feedback on compression rate (metronome) and depth (audible prompts) to promote the proper CPR methodology.

Summary

[0004] I have discovered that improved feedback can be provided to a rescuer providing CPR by providing adjustments to the metronome and additional audible prompts based on the effectiveness of the CPR on the victim's circulation as measured by pulse rate and SpO₂ from oximetry.

[0005] In a first aspect, the invention features an apparatus for assisting a rescuer in performing CPR on a victim. The apparatus comprises at least one of a pulse sensor for measuring the pulse rate of the victim and an SpO₂ sensor for measuring blood oxygenation; electronics for processing the output of the sensor or sensors and determining one or more actions that the rescuer should perform to improve the CPR being performed; and a prompting device for conveying the one or more actions to the rescuer.

[0006] Preferred implementations of this aspect of the invention may incorporate one or more of the following. The apparatus may further comprise an external defibrillator. The apparatus may comprise an SpO₂ sensor but not a pulse sensor. The apparatus may comprise a pulse sensor but not an SpO₂ sensor. The apparatus may further comprise a chest compression sensor. The chest compression sensor may be an accelerometer. The electronics may be provided with information on com-

pression rate. The compression rate may be sensed or derived from a chest compression sensor. The prompting device may comprise a device that conveys a desired rate of compression to the rescuer. The device that conveys a desired rate of compression to the rescuer may comprise a metronome. The prompting device may comprise a speaker and associated electronics for conveying audible instructions. The electronics may comprise a digital computer executing computer software.

The electronics may compare compression rate to a desired CPR rate. The electronics may compare a measured level of blood oxygenation to a desired level. The electronics may provide a prompt instructing the rescuer to release from the chest during CPR delivery if the sensors indicate that the rescuer is not adequately releasing from the chest. The electronics may provide a prompt to the user to press harder if the pulse sensor indicates that there is no measured pulse rate. The electronics may provide a prompt to press harder if the sensor indicate that a pulse is detected but SpO₂ is below a defined level. The electronics may provide a prompt to increase compression rate if the sensors indicate that a pulse is detected, that chest compressions are at a defined level, and that SpO₂ is still below a defined level. The electronics may provide prompts to increase compression rate and compression pressure simultaneously based on measurements from sensors. The electronics may provide a prompt for the user to interrupt chest compressions to give one or more breaths. The prompt to give one or breaths may be issued when sensor measurements show that blood circulation is occurring and that the cause of a falling SpO₂ level may be an increase in metabolism. The electronics may provide a prompt to continue CPR without interruption for breathing based on SpO₂ levels that were above a given threshold so as to ensure that there would be no break in circulation when blood oxygen levels remained high and ventilation was not yet required.

[0007] Other features and advantages of the invention will be apparent from the following detailed description, and from the drawings and claims.

Brief Description of the Drawings

[0008]

FIG. 1 is a diagrammatic view of a rescuer providing CPR to a victim with the aid of an implementation of the invention.

FIG. 2 is a block diagram of an implementation of the invention.

FIG. 3 is a flow chart of the operation of an implementation of the invention.

[0009] Detailed Description

There are a great many possible implementations of the invention, too many to describe herein.

Some possible implementations that are presently preferred are described below. It cannot be emphasized too strongly, however, that these are descriptions of implementations of the invention, and not descriptions of the invention, which is not limited to the detailed implementations described in this section but is described in broader terms in the claims.

[0010] The descriptions below are more than sufficient for one skilled in the art to construct the disclosed implementations. Unless otherwise mentioned, the processes and manufacturing methods referred to are ones known by those working in the art

[0011] FIGS. 1-2 show an AED implementation of the invention that can measure CPR rate and depth with an accelerometer, and SpO2 and pulse rate with an oximeter probe (FIG. 1). These measures are provided as inputs to a software module, which assesses whether the CPR is producing adequate pulse rate and oxygenation (FIG. 2). The SpO2 sensor can be located in various locations, e.g., on the finger to provide measurements on the peripheral circulation and/or on the forehead to reflect cerebral circulation.

[0012] The user is initially prompted with the use of a metronome (i.e., a rate indicating prompt) and audible instructional prompts to perform CPR optimally according to AHA guidelines (100 cpm, 1.5 - 2.0 inch compression). Based on the current compression rate, compression depth, SpO2 measurement, and pulse rate, the compression rate and compression depth can be altered from the recommended guideline via the metronome and voice prompts to improve circulation. For example, the feedback control system via the AED metronome and audible prompts can operate with the user in the following ways based on the state of the CPR and the state of the patient (FIG. 3):

1. If a pulse rate is measured that matches the CPR rate and the SpO2 has reached a defined level, CPR may be considered adequate and no changes to the metronome or additional voice prompts may be required.
2. The user may be prompted to release the chest if the CPR system has determined that the chest is not being completely released at the end of each compression.
3. If there is no pulse rate from the oximeter, the user may be prompted to pressure harder until the pulse rate is detected.
4. If there is a detected pulse rate and the SpO2 level has not reached a defined level, the user may be prompted to press harder to increased in the oxygen saturation.
5. If the increase in compression depth meets a safe maximum and does not achieve the desired SpO2 level (in item 3), the metronome rate can be increased to a safe maximum rate to increase saturation.
6. Based on the current state of the compression

rate and depth and the pulse rate and SpO2, both the metronome rate and the compression prompts can be used simultaneously to more quickly move to a desired operating point.

7. The user may be prompted to continue CPR without interruption for breathing based on SpO2 levels that were above a given threshold. This would ensure that there would be no break in circulation when blood oxygen levels remained high and ventilation was not yet required. There is literature which indicates that within an initial period following collapse there is sufficient oxygen reserve in the blood that ventilation is not necessary and CPR should not be interrupted. Monitoring the SpO2 and guiding the user through audible prompts would suppress breathing and direct uninterrupted CPR.

[0013] The feedback system may, also, be used to prompt the rescuer to deliver rescue breathing when chest compression depth and rate are appropriate but arterial blood oxygen saturation is falling from a previously higher level. This condition may indicate that although chest compressions are adequate to circulate blood, the level of blood oxygen has diminished due to metabolism and additional oxygen delivery (accomplished by rescue breathing) is required to improve the victim's condition. Based upon detection of this set of conditions, the feedback control system will issue audible prompts instructing the rescuer to stop compressions for a brief period and deliver one or several rescue breaths. The system will then prompt the rescuer to resume chest compressions as it monitors CPR, pulse and oxygen saturation parameters to estimate the success of CPR efforts and provide further prompts related to compression rate, depth and breathing.

[0014] Similarly, if the pulse oximetry sensor detects an increase from a lower level to a higher level of blood oxygen saturation in peripheral tissues during CPR, the feedback control system may determine that CPR is being effectively delivered. Under these conditions, the system will continue prompting the rescuer to maintain his/her rate and depth of chest compressions until the oxygen saturation plateaus and/or begins to decrease. When this occurs, the feedback system may (based upon detected compression rate, depth, pulse rate and blood oxygen saturation) prompt the rescuer to change his/her chest compression depth or rate or alternatively recommend the delivery of rescue breaths to the victim.

[0015] The system is designed as a feedback control system utilizing program logic (Figure 3), or linear and/or non-linear optimization techniques focused on maximizing the SpO2 as the cost function.

[0016] The CPR rate and depth measures can be used to ensure the control system remains within reasonable bounds based on predefined compression rate and depth ranges. These ranges are determined based on the established range for effective CPR.

[0017] Many other implementations of the invention

other than those described above are within the invention, which is defined by the following claims. For example, other types of sensors could be used to provide SpO₂ and pulse rate; each could be measured by a separate sensor. In some implementations, only one or the other of the parameters could be measured and used as the basis for feedback to the rescuer. The term SpO₂ sensor has been used herein, but it should be understood that any sensor that provides a measure of blood oxygenation or pulmonary function is within what is meant by SpO₂ sensor. Similarly, the pulse sensor can be any of various types that detect pulsatile movement of blood in the circulatory system (e.g., pulse oximetry based pulse sensors, piezoelectric sensors, etc.).

Claims

1. Apparatus for assisting a rescuer in performing CPR on a victim, the apparatus comprising:
 - at least one of a pulse sensor for measuring the pulse rate of the victim and an SpO₂ sensor for measuring blood oxygenation;
 - electronics for processing the output of the sensor or sensors and determining one or more actions that the rescuer should perform to improve the CPR being performed; and
 - a prompting device for conveying the one or more actions to the rescuer.
2. The apparatus of claim 1 further comprising an external defibrillator.
3. The apparatus of claim 1 wherein the apparatus comprises an SpO₂ sensor but not a pulse sensor.
4. The apparatus of claim 1 wherein the apparatus comprises a pulse sensor but not an SpO₂ sensor.
5. The apparatus of claim 1 further comprising a chest compression sensor.
6. The apparatus of claim 5 wherein the chest compression sensor is an accelerometer.
7. The apparatus of claim 1 wherein the electronics is provided with information on compression rate.
8. The apparatus of claim 7 wherein the compression rate is sensed or derived from a chest compression sensor.
9. The apparatus of claim 1 wherein the prompting device comprises a device that conveys a desired rate of compression to the rescuer.
10. The apparatus of claim 9 wherein the device that conveys a desired rate of compression to the rescuer comprises a metronome.
11. The apparatus of claim 1 wherein the prompting device comprises a speaker and associated electronics for conveying audible instructions.
12. The apparatus of claim 1 wherein the electronics comprises a digital computer executing computer software.
13. The apparatus of claim 1 wherein the electronics compares compression rate to a desired CPR rate.
14. The apparatus of claim 1 wherein the electronics compares a measured level of blood oxygenation to a desired level.
15. The apparatus of claim 1 wherein the electronics provides a prompt instructing the rescuer to release from the chest during CPR delivery if the sensors indicate that the rescuer is not adequately releasing from the chest
16. The apparatus of claim 1 wherein the electronics provides a prompt to the user to press harder if the pulse sensor indicates that there is no measured pulse rate.
17. The apparatus of claim 1 wherein the electronics provides a prompt to press harder if the sensor indicate that a pulse is detected but SpO₂ is below a defined level.
18. The apparatus of claim 1 wherein the electronics provides a prompt to increase compression rate if the sensors indicate that a pulse is detected, that chest compressions are at a defined level, and that SpO₂ is still below a defined level.
19. The apparatus of claim 1 wherein the electronics provides prompts to increase compression rate and compression pressure simultaneously based on measurements from sensors.
20. The apparatus of claim 1 wherein the electronics provides a prompt for the user to interrupt chest compressions to give one or more breaths.
21. The apparatus of claim 20 wherein the prompt to give one or breaths is issued when sensor measurements show that blood circulation is occurring and that the cause of a falling SpO₂ level may be an increase in metabolism.
22. The apparatus of claim 1 wherein the electronics provide a prompt to continue CPR without interruption for breathing based on SpO₂ levels that were

above a given threshold so as to ensure that there would be no break in circulation when blood oxygen levels remained high and ventilation was not yet required.

5

10

15

20

25

30

35

40

45

50

55

5

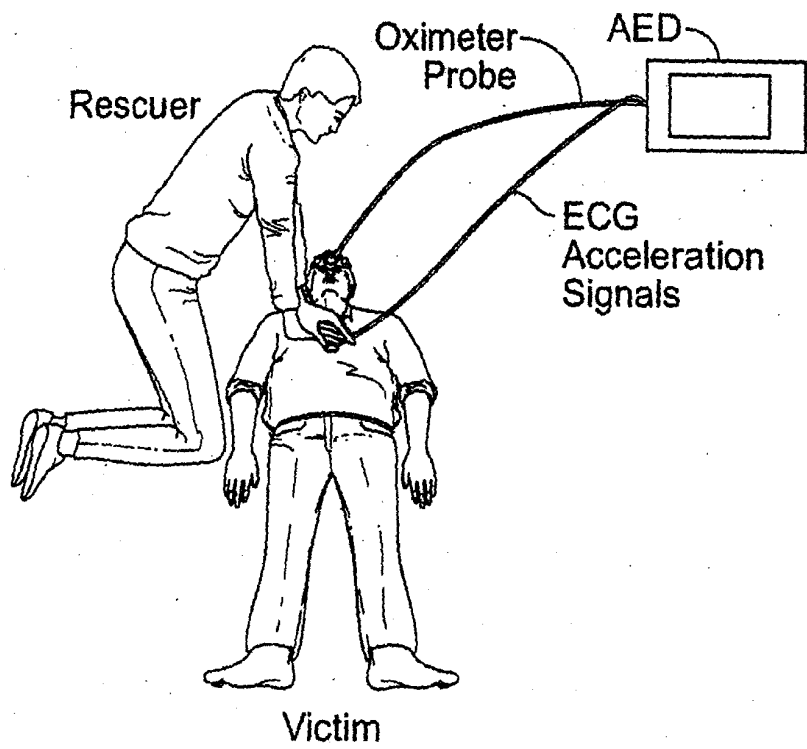


FIG. 1

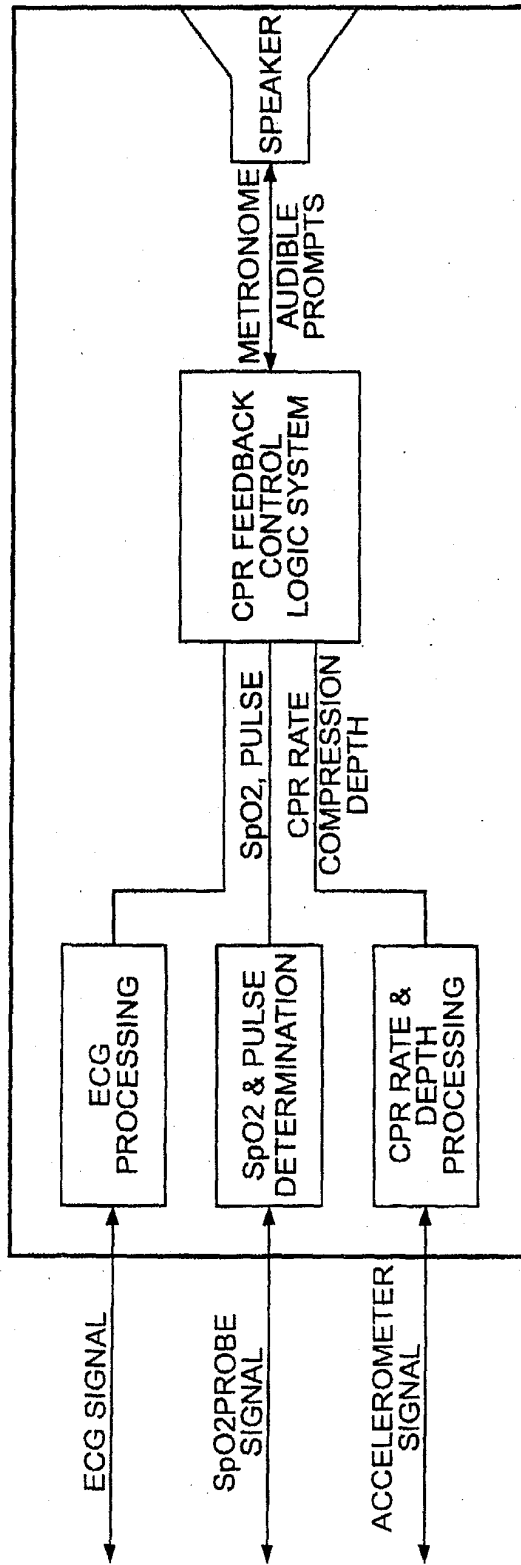


FIG. 2

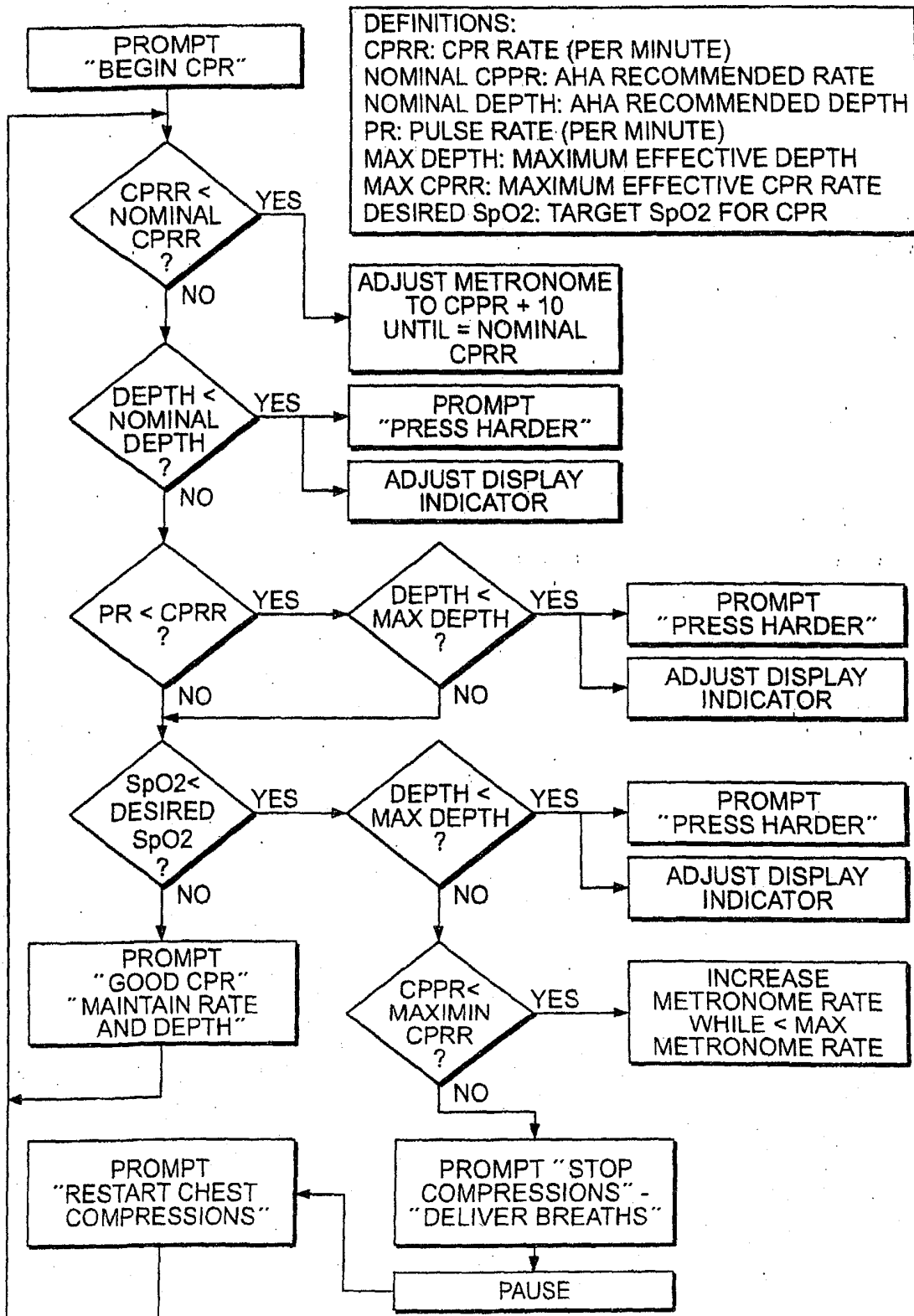


FIG. 3



European Patent Office

EUROPEAN SEARCH REPORT

Application Number
EP 04 25 3736

| DOCUMENTS CONSIDERED TO BE RELEVANT | | | |
|--|---|---|---|
| Category | Citation of document with indication, where appropriate, of relevant passages | Relevant to claim | CLASSIFICATION OF THE APPLICATION (Int.Cl.7) |
| X | US 2001/047140 A1 (FREEMAN GARY A) 29 November 2001 (2001-11-29) | 1-8,11, 12,15, 16,20,21 | A61H31/00 A61N1/39 G06F19/00 A61B5/00 |
| Y | * paragraphs [0013], [0016], [0017], [0019], [0033], [0034], [0039], [0040], [0042], [0049], [0050], [0056]; figure 1 * | 9,10 | |
| Y | --- WO 02/091905 A (CPRX LLC) 21 November 2002 (2002-11-21) | 9,10 | |
| A | * page 4, line 10 - line 13 * | 1-5 | |
| X | --- US 2003/028219 A1 (PICARDO ANTHONY G ET AL) 6 February 2003 (2003-02-06) * paragraphs [0033], [0036], [0051], [0059], [0065], [0072] * | 1,4 | |
| A | --- US 5 020 516 A (BIONDI JAMES W ET AL) 4 June 1991 (1991-06-04) * column 3, line 51 - column 4, line 6 * * column 6, line 3 - line 39; figures 1,2,2A * | 1,12 | TECHNICAL FIELDS SEARCHED (Int.Cl.7) A61H A61B A61N G06F |
| A | --- WO 98/55015 A (PALSMA HARMEN JACOB ;BRUGTS JACK (NL)) 10 December 1998 (1998-12-10) * page 6, line 11 - page 7, line 32; figure 3 * | 1-22 | |
| ----- | | | |
| The present search report has been drawn up for all claims | | | |
| Place of search MUNICH | | Date of completion of the search 18 August 2004 | Examiner Georgiou, Z |
| CATEGORY OF CITED DOCUMENTS X : particularly relevant if taken alone Y : particularly relevant if combined with another document of the same category A : technological background O : non-written disclosure P : intermediate document | | T : theory or principle underlying the invention E : earlier patent document, but published on, or after the filing date D : document cited in the application L : document cited for other reasons ----- & : member of the same patent family, corresponding document | |

EPO FORM 1503 03/82 (P04C01)

**ANNEX TO THE EUROPEAN SEARCH REPORT
ON EUROPEAN PATENT APPLICATION NO.**

EP 04 25 3736

This annex lists the patent family members relating to the patent documents cited in the above-mentioned European search report. The members are as contained in the European Patent Office EDP file on
The European Patent Office is in no way liable for these particulars which are merely given for the purpose of information.

18-08-2004

| Patent document cited in search report | Publication date | Patent family member(s) | Publication date |
|--|------------------|-------------------------|------------------|
| US 2001047140 A1 | 29-11-2001 | AU 3484601 A | 14-08-2001 |
| | | EP 1251908 A1 | 30-10-2002 |
| | | JP 2003521355 T | 15-07-2003 |
| | | WO 0156652 A1 | 09-08-2001 |
| ----- | | | |
| WO 02091905 A | 21-11-2002 | WO 02091905 A2 | 21-11-2002 |
| ----- | | | |
| US 2003028219 A1 | 06-02-2003 | EP 1412027 A1 | 28-04-2004 |
| | | WO 03009895 A1 | 06-02-2003 |
| ----- | | | |
| US 5020516 A | 04-06-1991 | AU 1516792 A | 25-06-1992 |
| | | AU 620097 B2 | 13-02-1992 |
| | | AU 3547789 A | 16-10-1989 |
| | | DK 235490 A | 28-09-1990 |
| | | EP 0407463 A1 | 16-01-1991 |
| | | FI 103376 B1 | 30-06-1999 |
| | | JP 2504596 T | 27-12-1990 |
| | | JP 4012979 B | 06-03-1992 |
| | | NO 904250 A | 28-11-1990 |
| | | WO 8909041 A1 | 05-10-1989 |
| ----- | | | |
| WO 9855015 A | 10-12-1998 | WO 9855015 A1 | 10-12-1998 |
| ----- | | | |

EPO FORM P0458

For more details about this annex : see Official Journal of the European Patent Office, No. 12/82

| | | | |
|----------------|--|---------|------------|
| 专利名称(译) | 具有来自脉搏和/或血氧测量的反馈的心肺复苏装置 | | |
| 公开(公告)号 | EP1491175A1 | 公开(公告)日 | 2004-12-29 |
| 申请号 | EP2004253736 | 申请日 | 2004-06-23 |
| [标]申请(专利权)人(译) | 卓尔医学产品公司 | | |
| 申请(专利权)人(译) | ZOLL医疗公司 | | |
| 当前申请(专利权)人(译) | ZOLL医疗公司 | | |
| [标]发明人 | BOUCHER DONALD R GEHEB FREDERICK | | |
| 发明人 | BOUCHER, DONALD R. GEHEB, FREDERICK | | |
| IPC分类号 | A61B5/0402 A61B5/00 A61B5/024 A61B5/0245 A61B5/11 A61B5/145 A61H31/00 A61N1/39 A62B9/00 A62B33/00 G06F19/00 | | |
| CPC分类号 | A61H31/005 A61B5/024 A61B5/0402 A61B5/11 A61B5/1102 A61B5/145 A61B5/6833 A61B5/7455 A61B2562/0219 A61B2562/0247 A61H31/007 A61H2031/002 A61H2201/5007 A61H2201/5043 A61H2201/5048 A61H2201/5061 A61H2201/5071 A61H2201/5079 A61H2201/5084 A61H2230/04 A61H2230/06 A61H2230/207 A61N1/39 A61N1/3925 G16H15/00 G16H40/63 H01H2215/004 | | |
| 优先权 | 10/609001 2003-06-27 US | | |
| 其他公开文献 | EP1491175B1 EP1491175B2 | | |
| 外部链接 | Espacenet | | |

摘要(译)

一种辅助救助者对受害者进行心肺复苏的装置。该装置包括用于测量受害者脉搏率的脉冲传感器和用于测量血氧的SpO2传感器中的至少一个；用于处理传感器或传感器的输出并确定救助者应该执行的一个或多个动作以改善正在执行的CPR的电子设备；以及用于将一个或多个动作传达给救助者的提示装置。

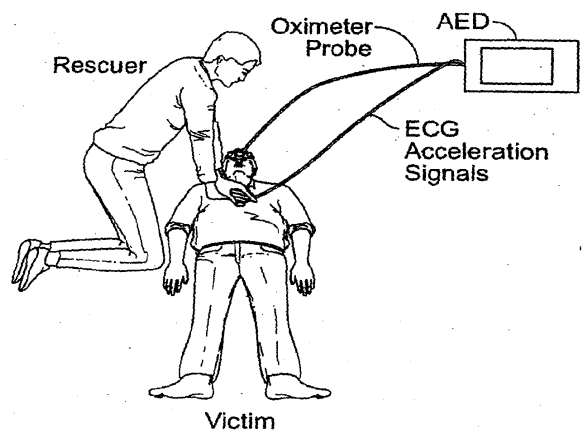


FIG. 1