



(12) **EUROPEAN PATENT APPLICATION**

- (43) Date of publication: **31.05.2017 Bulletin 2017/22**
- (51) Int Cl.: **A61B 18/02 (2006.01)** **A61B 5/00 (2006.01)**
A61F 7/00 (2006.01) **A61F 7/02 (2006.01)**
A61F 7/10 (2006.01) **A61H 23/00 (2006.01)**
- (21) Application number: **17150653.8**
- (22) Date of filing: **17.03.2003**

(84) Designated Contracting States:
AT BE BG CH CY CZ DE DK EE ES FI FR GB GR HU IE IT LI LU MC NL PT RO SE SI SK TR

(72) Inventors:

- **Anderson, Richard Rox**
Boston, MA 02114-3130 (US)
- **Manstein, Dieter**
Boston, MA 02114-3130 (US)

(30) Priority: **15.03.2002 US 365662 P**

(62) Document number(s) of the earlier application(s) in accordance with Art. 76 EPC:
10181697.3 / 2 260 801
07117532.7 / 1 917 935
03716609.7 / 1 490 005

(74) Representative: **Maiwald Patentanwalts GmbH Engineering**
Elisenhof
Elisenstrasse 3
80335 München (DE)

(71) Applicant: **The General Hospital Corporation**
Boston, MA 02114 (US)

Remarks:
This application was filed on 09.01.2017 as a divisional application to the application mentioned under INID code 62.

(54) **METHOD AND DEVICES FOR SELECTIVE DISRUPTION OF FATTY TISSUE BY CONTROLLED COOLING**

(57) The present invention relates to methods for use in the selective disruption of lipid-rich cells by controlled cooling. The present invention further relates to a device for use in carrying out the methods for selective disruption of lipid-rich cells by controlled cooling.

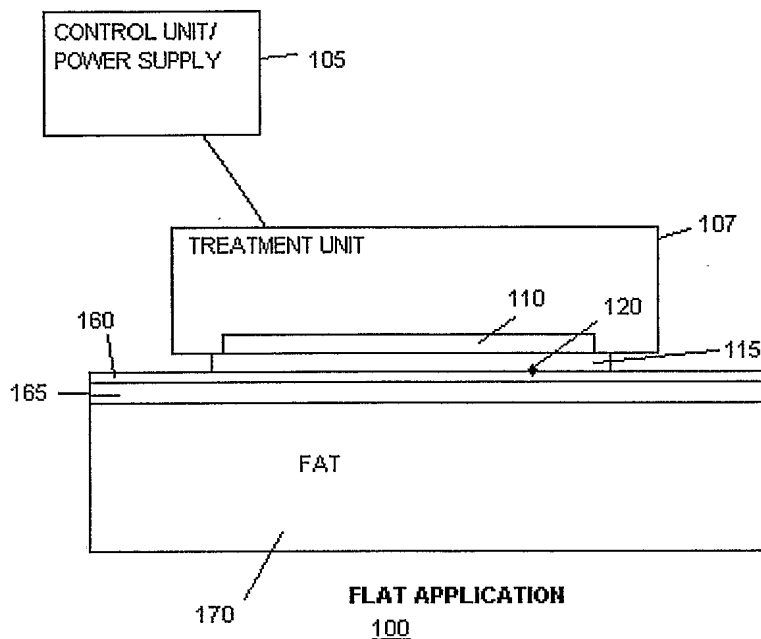
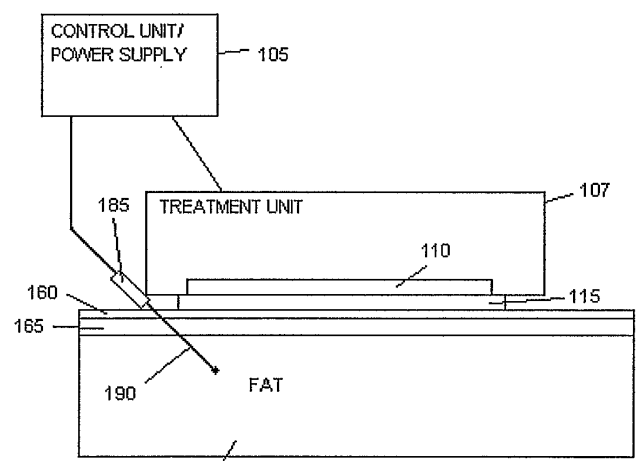
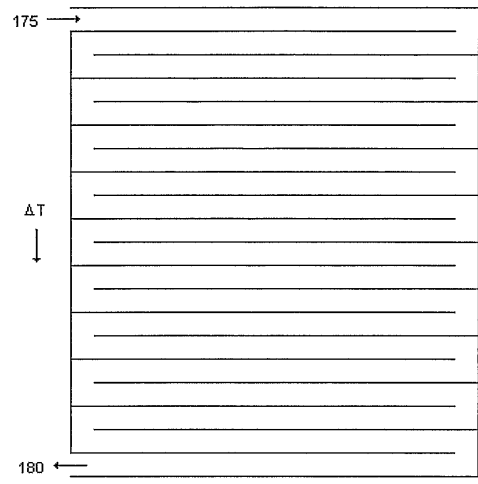
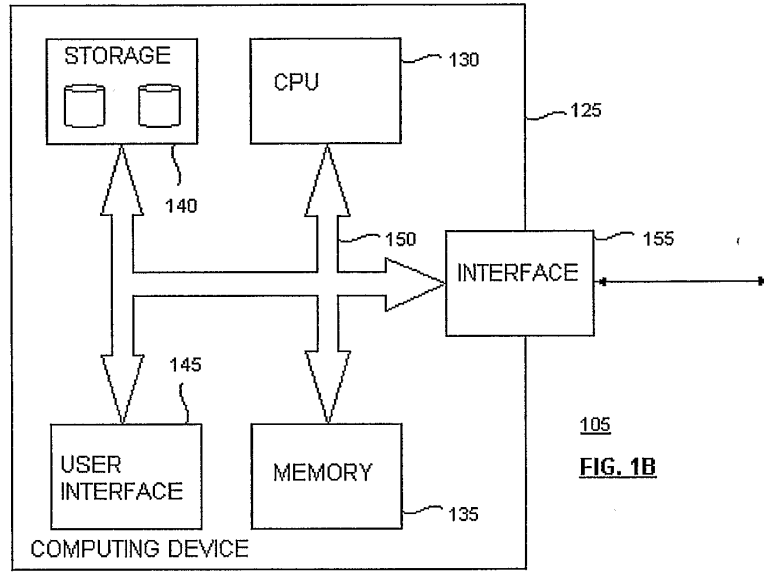


FIG. 1A



DescriptionRELATED APPLICATIONS/PATENTS & INCORPORATION BY REFERENCE

5 **[0001]** This application claims priority to U.S. Application Serial Number 60/365,662, filed on March 15, 2002, the contents of which are herein expressly incorporated by reference.

10 **[0002]** Each of the applications and patents cited in this text, as well as each document or reference cited in each of the applications and patents (including during the prosecution of each issued patent; "application cited documents"), and each of the PCT and foreign applications or patents corresponding to and/or claiming priority from any of these applications and patents, and each of the documents cited or referenced in each of the application cited documents, are hereby expressly incorporated herein by reference. More generally, documents or references are cited in this text, either in a Reference List before the claims, or in the text itself; and, each of these documents or references ("herein-cited references"), as well as each document or reference cited in each of the herein-cited references (including any manufacturer's specifications, instructions, etc.), is hereby expressly incorporated herein by reference.

STATEMENT OF RIGHTS TO INVENTIONS MADE UNDER FEDERALLY SPONSORED RESEARCH

15 **[0003]** Not applicable.

FIELD OF THE INVENTION

20 **[0004]** The present invention relates to methods for use in the selective disruption of lipid-rich cells by controlled cooling. The present invention further relates to a device for use in carrying out the methods for selective disruption of lipid-rich cells by controlled cooling. Other aspects of the invention are described in or are obvious from the following disclosure (and within the ambit of the invention).

BACKGROUND

30 **[0005]** The subcutaneous fatty tissue of newborns is unusually sensitive to the cold. In newborns, the intracellular lipid content of the subcutaneous fat cells, or "adipocytes," comprises increased ratios of highly saturated triglycerides. Even moderately cold temperatures can adversely affect cells having a highly saturated lipid content, rendering newborn subcutaneous fatty tissue vulnerable to adipocyte necrosis following exposure to the cold. Hypothermia of subcutaneous fatty tissue can result in associated inflammation of the dermis and/or epidermis. For example, disorders of cold panniculitis in newborns are known to produce painful skin lesions.

35 **[0006]** As newborns mature, the ratio of saturated to unsaturated fatty acids among intracellular triglycerides of adipocytes gradually decreases. Having a higher content of unsaturated fatty acids is more protective against the cold, and the occurrence of cold panniculitis in infants gradually subsides. For detailed reviews on the subject of cold panniculitis, see Epstein et al. (1970) *New England J. of Med.* 282(17):966-67; Duncan et al. (1966) *Arch. Denn.* 94:722-724; Kellum et al. (1968) *Arch. Derm.* 97:372-380; Moschella, Samuel L. and Hurley, Harry J. (1985) *Diseases of the Corium and Subcutaneous Tissue*. In *Dermatology* (W.B. Saunders Company): 1169-1181; John C Maize (1998) *Panniculitis In Cutaneous Pathology* (Churchill Livingstone): 327-344; Bondei, Edward E. and Lazarus, Gerald S. (1993) *Disorders of Subcutaneous Fat (Cold Panniculitis)*. In *Dermatology in General Medicine* (McGraw-Hill, Inc.): 1333-1334

40 **[0007]** In adults, the intracellular lipid content varies among cell types. Dermal and epidermal cells, for instance, are relatively low in unsaturated fatty acids compared to the underlying adipocytes that form the subcutaneous fatty tissue. For a detailed review of the composition of fatty tissue in mammals, see Renold, Albert E. and Cahill, Jr., George F. (1965) *Adipose Tissue*. In *Handbook of Physiology* (American Physiology Society):170-176. As a result, the different cell types, e.g., lipid-rich and non-lipid-rich cells, have varying degrees of susceptibility to the cold. In general, non-lipid-rich cells can withstand colder temperatures than lipid-rich cells.

45 **[0008]** It would be highly desirable to selectively and non-invasively damage adipocytes of the subcutaneous fatty tissue without causing injury to the surrounding dermal and epidermal tissue. Both health and cosmetic benefits are known to result from reduction of fatty tissue, however, current methods, such as liposuction, involve invasive procedures with potentially life threatening risks (e.g., excessive bleeding, pain, septic shock, infection and swelling).

50 **[0009]** Current methods for non-invasive removal of subcutaneous fatty tissue include the use of radiant energy and cooling solutions. U.S. Patent No.s 5,143,063, 5,507,790 and 5,769,879 describe methods for using radiant energy to reduce subcutaneous fatty tissue, however, the applied energy levels are difficult to control and often there is collateral damage to the dermis and/or epidermis. Cooling solutions proposed by WO 00/44346 do not stabilize skin surface temperatures and therefore, also fail to adequately protect against collateral damage to the dermis and/or epidermis.

55 **[0010]** A previous study conducted in Guinea Pigs described the removal of subcutaneous fatty tissue by cryo-damage.

Burge, S. and Dawber, R. (1990) Cryobiology 27:153-163. However this result was achieved using relatively aggressive cooling modalities (e.g., liquid nitrogen), which induced epidermal damage. Ideally, removal of subcutaneous fatty tissue by cooling would not cause associated damage to the epidermis.

5 [0011] Temperature controlled methods and devices for selectively damaging lipid-rich cells (e.g., adipocytes comprising the subcutaneous fatty tissue) without causing injury to non lipid-rich cells (e.g., dermis and/or epidermis) were heretofore unknown.

SUMMARY

10 [0012] It has now been shown that adipose tissue comprising lipid-rich cells can be selectively disrupted without causing injury to the surrounding non lipid-rich tissue (e.g., dermal and epidermal tissue) by controlling the temperature and/or pressure applied to the respective tissues.

15 [0013] In one aspect, the invention relates to a cooling method for selective disruption of lipid-rich cells in a non-infant human subject comprising applying a cooling element proximal to the subject's skin to create a temperature gradient within a local region sufficient to selectively disrupt and thereby reduce the lipid-rich cells of said region, and, concurrently therewith maintain the subject's skin at a temperature wherein non lipid-rich cells proximate to the cooling element are not disrupted.

20 [0014] In one embodiment, the invention relates to a method for treating a region of a subject's body to achieve a desired reduction in subcutaneous adipose tissue, comprising a) applying a cooling element proximal to the subject's skin in the region where subcutaneous adipose tissue reduction is desired to create a temperature gradient within said region sufficient to selectively disrupt lipid-rich cells therein, and, simultaneously therewith maintain the subject's skin at a temperature wherein non lipid-rich cells proximate to the cooling element are not disrupted; b) repeating the application of the cooling element to the subject's skin of step (a) a plurality of times until the desired reduction in subcutaneous adipose tissue has been achieved.

25 [0015] In another aspect, the invention relates to a device for selectively disrupting lipid-rich cells in a non-infant human subject by cooling comprising: means for creating a temperature gradient within a local region of the subject's skin to selectively disrupt and thereby reduce lipid-rich cells of the region, while, concurrently therewith, maintaining the subject's skin at a temperature whereby non lipid-rich cells are not disrupted.

30 [0016] In one embodiment, the invention relates to an apparatus for locally reducing lipid-rich cells, comprising a treatment device operable to receive a cooling agent; a cooling agent source connected to the treatment device for supplying said cooling agent; a control unit coupled to the treatment device and the cooling agent source for controlling a cooling temperature of said cooling agent, wherein said treatment device exposes target tissue to said cooling agent, which selectively induces damage to lipid-rich cells at said target tissue.

35 [0017] In another embodiment, the invention further relates to an apparatus for locally reducing lipid-rich cells, comprising a means for setting a cooling agent to a predetermined temperature; and a means for applying said cooling agent to target tissue, whereby the cooling agent selectively induces damage to lipid-rich cells at said target tissue.

40 [0018] In this disclosure, "comprises," "comprising," "containing" and "having" and the like can have the meaning ascribed to them in U.S. Patent law and can mean "includes," "including," and the like; "consisting essentially of" or "consists essentially" likewise has the meaning ascribed in U.S. Patent law and the term is open-ended, allowing for the presence of more than that which is recited so long as basic or novel characteristics of that which is recited is not changed by the presence of more than that which is recited, but excludes prior art embodiments.

[0019] These and other objects and embodiments are described in or are obvious from and within the scope of the invention, from the following Detailed Description.

DESCRIPTION OF THE DRAWINGS

[0020]

Figure 1A illustrates a treatment system.

50 Figure 1B depicts a diagram illustrating a configuration of control unit.

Figure 1 C depicts a diagram showing cooling/heating element.

Figure 1D illustrates a flat cooling treatment system with a probe controller.

Figure 2A illustrates a treatment system for cooling lipid-rich cells within a skin fold.

Figure 2B illustrates a treatment system for cooling lipid-rich cells within a skin fold with a probe controller.

55 Figure 3A illustrates a treatment system that includes a suction unit.

Figure 4 illustrates a treatment system that is combined with suction system to provide treatment of an isolated area.

Figure 5A, B illustrate a treatment system which can enclose circumferentially a target tissue mass.

Figure 6 depicts an image of the skin surface showing indentation after 17 days at some areas matching cold

exposure sites.

Figure 7 depicts histology of the subcutaneous adipose tissue 17 days after cold exposure (Pig II, Site E). Figure 7A shows the low magnification view and Figure 7B shows the high magnification view.

Figure 8A, B depicts Site C; 8 C, D depicts Site E; and 8 E, F depicts Site F; each of which show histology of the subcutaneous adipose tissue 17 days after cold exposure (Pig II, Site C, E and F).

Figure 9 depicts an image of the device used to administer cooling to Pig III.

Figure 10A, B, C, D, E, F, G, H, I, and J depicts temperature plots of the exposure sites 1,2, 7,11, 12,13, 14, 15, 16 and 18 of Pig III in various tissue depths.

Figure 11 depicts an ultrasound image of test Site 11, 3.5 months after exposure..

Figure 12A, B depicts histology of test Site 8, 6 days after exposure. Figure 12C, D depicts histology of test Site 9 (control).

Figure 13A, B, C, D, and E depicts macroscopic sections through the center of test Sites 1, 3, 11, 12 and 15, 3.5 months after exposure.

DETAILED DESCRIPTION

[0021] The present invention relates to a method for locally reducing adipose tissue comprising applying a cooling element to a subject at a temperature sufficient to selectively disrupt lipid-rich cells, wherein the temperature does not produce unwanted effects in non lipid-rich cells. Preferably, the cooling element is coupled to or contains a cooling agent.

[0022] In one aspect, the invention relates to a cooling method for selective disruption of lipid-rich cells in a non-infant human subject comprising applying a cooling element proximal to the subject's skin to create a temperature gradient within a local region sufficient to selectively disrupt and thereby reduce the lipid-rich cells of said region, and, concurrently therewith maintain the subject's skin at a temperature wherein non lipid-rich cells proximate to the cooling element are not disrupted.

[0023] In one embodiment, the invention relates to a method for treating a region of a subject's body to achieve a desired reduction in subcutaneous adipose tissue, comprising a) applying a cooling element proximal to the subject's skin in the region where subcutaneous adipose tissue reduction is desired to create a temperature gradient within said region sufficient to selectively disrupt lipid-rich cells therein, and, simultaneously therewith maintain the subject's skin at a temperature wherein non lipid-rich cells proximate to the cooling element are not disrupted; b) repeating the application of the cooling element to the subject's skin of step (a) a plurality of times until the desired reduction in subcutaneous adipose tissue has been achieved.

[0024] Cooling elements of the present invention can contain cooling agents in the form of a solid, liquid or gas. Solid cooling agents can comprise, for example thermal conductive materials, such as metals, metal plates, glasses, gels and ice or ice slurries. Liquid cooling agents can comprise, for example, saline, glycerol, alcohol, or water/alcohol mixtures. Where the cooling element includes a circulating cooling agent, preferably the temperature of the cooling agent is constant. Salts can be combined with liquid mixtures to obtain desired temperatures. Gasses can include, for example, cold air or liquid nitrogen.

[0025] In one embodiment, cooling elements can be applied such that direct contact is made with a subject, via either the agent or the element. In another embodiment, direct contact is made via the agent alone. In yet another embodiment, no direct contact is made via either the agent or the element; cooling is carried out by proximal positioning of the cooling element and/or agent.

[0026] Preferably, the temperature of the cooling agent is less than about 37°C, but not less than -196°C (i.e, the temperature of liquid nitrogen).

[0027] Preferably, the temperature range of the administered cooling element is between about 40°C and -15°C, even more preferably between 4°C and -10°C if the cooling agent is a liquid or a solid. Generally, the cooling element is preferably maintained at an average temperature of between about -15°C and about 35°C, 30°C, 25°C, 20°C, 15°C, 10°C, or 5°C; about -10°C and about 35°C, 30°C, 25°C, 20°C, 15°C, 10°C, or 5°C; about -15°C and about 20°C, 15°C, 10°C, or 5°C.

[0028] The cooling element and/or agent can be applied for up to two hours. Preferably, the cooling element is applied for between 1 to 30 minutes. The cooling element can be applied for at least one hundred milliseconds (e.g., shorter durations are envisioned, for instance, with sprays). For example, liquid nitrogen can be applied in very short intervals (e.g., about 1 second), repeatedly (e.g., about 10-100 times) and between applications, a temperature that does not cause epidermal damage is maintained (e.g., about 0°C to -10°C, depending on the length of exposure). In a gentle cooling regime, for example, the liquid nitrogen can be sprayed from a distance (e.g., from about 10 to 30 cm) wherein some portion of the liquid nitrogen droplets evaporate during the spraying and/or mix with ambient air.

[0029] Cooling elements and/or agents of the present invention are applied, for example, to the skin surface through either direct or indirect contact. A subject's skin comprises the epidermis, dermis or a combination thereof. The cooling element and/or agent is a non-toxic cooling agent when applied directly to the skin surface.

[0030] The cooling element and/or agent can be applied more than once, for example, in repetitious cycles. The cooling agent can be applied in a pulsed or continuous manner. The cooling element and/or agent can be applied by all conventional methods known in the art, including topical application by spray if in liquid form, gas or particulate solid material. Preferably, application is by external means, however, cooling elements and/or agents of the present invention can also be applied subcutaneously by injection or other conventional means. For example, the cooling agent can be applied directly to the subcutaneous tissue and then either removed after contact or left in the subcutaneous tissue to achieve thermal equilibration and therefore cooling of the lipid-rich tissue (e.g., subcutaneous injection of a liquid cooling agent or of small cooling particles, such as pellets or microbeads).

[0031] Preferably, methods of the present invention are non-invasive (e.g., superficial, laparoscopic or topical procedures not requiring invasive surgical techniques).

[0032] The cooling element and/or agent can be applied to one defined area or multiple areas. Spatial distribution of the cooling element and/or agent can be controlled as needed. Generally, the dimension of the surface area (e.g., where the cooling agent is in contact with the skin) should be at least three times the depth of subcutaneous fatty tissue that is targeted for cooling. Preferably, the minimum diameter of the surface area is at least 1 cm². Even more preferably, the diameter of the surface area is between 3 to 20 cm². Determination of the optimal surface area will require routine variation of several parameters. For example, larger surface areas, such as those over 3500 cm², can be cooled according to the methods of the present invention if hypothermia is prevented by additional means. Hypothermia can be prevented by compensating for the heat transfer away from the body at other sites (e.g., applying warm water at one or more additional sites). Multiple cooling elements and/or agents can be employed, for example, in contacting larger surface areas (e.g., greater than 3500 cm²).

[0033] The cooling element and/or agent can follow the contour of the area to which it is applied, For example, a flexible apparatus can be used to follow the contour of the surface area where cooling is applied. The apparatus can also modify the shape of the contacted surface such that the surface is contoured around or within the cooling agent or the apparatus containing the cooling agent upon contact. The cooling element and/or agent can contact more than one surface at once, for example, when the surface is folded and contacted on either side by the cooling element and/or agent. Preferably, a skin fold is contacted on both sides by the cooling element and/or agent to increase the efficiency of cooling.

[0034] Preferably, the solid cooling element and/or agent is shaped to enhance thermodynamic heat exchange ("thermal exchange") at the contacted surface (e.g., skin surface). In order to enhance conduction, a liquid can be used at the interface between the solid cooling agent and the contacted surface.

[0035] Where necessary, application of the cooling element and/or agent can be coupled with use of a pain management agent, such as an anesthetic or analgesic (cooling alone has analgesic properties, thus use of additional pain management agents is optional). Local anesthetics, for example, can be topically applied at the point of contact either before, after or during application of the cooling agent. Where necessary, systemic administration of the anesthetic can be provided through conventional methods, such as injection or oral administration. The temperature of the cooling agent can be changed during the treatment, for example, so that the cooling rate is decreased in order to provide a treatment causing less discomfort. In addition, methods of the present invention can be performed in combination with other fat reduction procedures known in the art, such as liposuction.

[0036] Preferably, lipid-rich cells of the present invention are adipocytes within subcutaneous fatty tissue or cellulite. Thus, lipid-rich cells comprising the subcutaneous adipose tissue are targeted for disruption by methods of the present invention. In addition, it is within the ambit of the invention to target disruption of lipid-rich cells comprising adventitia surrounding organs or other internal anatomical structures.

[0037] The intracellular lipids of adipocytes are confined within the paraplasmatic vacuole. There are univacular and plurivacular adipocytes within the subcutaneous fatty tissue. Most are univacular, and greater than about 100um in diameter. This size can increase dramatically in obese subjects due to an increase in intracellular lipid content.

[0038] Preferably, lipid-rich cells of the present invention have a total intracellular lipid content of between 20-99 %. Preferably, lipid-rich cells of the present invention have an intracellular lipid content comprised of about 20- 50% saturated triglycerides, and even more preferably about 30-40% saturated triglycerides. Intracellular triglycerides include, but are not limited to, saturated fatty acids e.g., myristic, palmitic and stearic acid; monounsaturated fatty acids, e.g., palmitoleic and oleic acid; and polyunsaturated fatty acids e.g., linoleic and linolenic acid.

[0039] Preferably, lipid-rich cells of the present invention are located within subcutaneous adipose tissue. The saturated fatty acid composition of subcutaneous adipose tissue varies at different anatomical positions in the human body. For example, human subcutaneous adipose tissue in the abdomen can have the following composition of saturated fatty acids: myristic (2.6 %), palmitic (23.8 %), palmitoleic (4.9%), stearic (6.5%), oleic (45.6%), linoleic (15.4 %) and linolenic acid (0.6%). The subcutaneous adipose tissue of the abdominal area can comprise about 35% saturated fatty acids. This is comparatively higher than the buttock area, which can comprise about 32% saturated fatty acids. At room temperature, saturated fatty acids of the abdominal area are in a semisolid state as a result of the higher fatty acid content. The buttock area is not similarly affected. Malcom G. et al., (1989) Am. J. Clin. Nutr. 50(2):288-91. One skilled

in the art can modify temperature ranges or application times as necessary to account for anatomical differences in the response to cooling methods of the present invention.

[0040] Preferably, non lipid-rich cells of the present invention have a total intracellular lipid content of less than 20%, and/or are not disrupted by cooling methods of the present invention. Preferably, non lipid-rich cells of the present invention include cells having an intracellular lipid content comprising less than about 20% highly saturated triglycerides, even more preferably less than about 7-10% highly saturated triglycerides. Non lipid-rich cells include, but are not limited to, those surrounding the subcutaneous fatty tissue, such as cells of the vasculature, peripheral nervous system, epidermis (e.g., melanocytes) and dermis (e.g., fibrocytes).

[0041] Damage to the dermis and/or epidermis that is avoided by the methods of the present invention can involve, for example, inflammation, irritation, swelling, formation of lesions and hyper or hypopigmentation of melanocytes.

[0042] Without being bound by theory, it is believed that selective disruption of lipid-rich cells results from localized crystallization of highly saturated fatty acids upon cooling at temperatures that do not induce crystallization of highly saturated fatty acids in non lipid-rich cells. The crystals rupture the bilayer membrane of lipid-rich cells, causing necrosis. Thus, damage of non lipid-rich cells, such as dermal cells, is avoided at temperatures that induce crystal formation in lipid-rich cells. It is also believed that cooling induces lipolysis (e.g., metabolism) of lipid-rich cells, further enhancing the reduction in subcutaneous adipose tissue. Lipolysis may be enhanced by local cold exposure inducing stimulation of the sympathetic nervous system.

[0043] In one embodiment, the temperature of the lipid-rich cells is not less than about -10°C. Preferably, the temperature of the lipid-rich cells is between -10°C and 37°C. More preferably, the temperature of the lipid-rich cells is between -4°C and 20°C. Even more preferably, the temperature of the lipid-rich cells is between -2°C and 15°C. Preferably, the lipid-rich cells are cooled to less than 37°C, for up to two hours. Generally, the lipid-rich cells are preferably maintained at an average temperature of between about -10°C and about 37°C, 35, 30°C, 25°C, 20°C, 15°C, 10°C, or 4°C; about -4°C and about 35°C, 30°C, 25°C, 20°C, 15°C, 10°C, or 4°C; about -2°C and about 35, 30°C, 25°C, 20°C, 15°C, 10°C, or 5°C.

[0044] In yet another embodiment, the temperature range of the lipid-rich cells oscillates between 37°C and -10°C. Methods of pulse cooling followed by brief periods of warming can be used to minimize collateral damage to non lipid-rich cells. More preferably, the temperature range of the lipid-rich cells oscillates between -8°C and 33°C. Even more preferably, the temperature range of the lipid-rich cells oscillates between -2°C and 15°C. The temporal profile of the cooling of the skin can be performed in one continuous cooling act or in multiple cooling cycles or actually a combination of cooling with active heating cycles.

[0045] Cooling methods of the present invention advantageously eliminate unwanted effects in the epidermis. In one embodiment, the temperature of the epidermis is not less than about -15°C. Preferably, the temperature of the epidermis is between about -10°C and 35°C. More preferably, the temperature of the epidermis is between about -5°C and 10°C. Even more preferably, the temperature of the epidermis is between about -5°C and 5°C.

[0046] Cooling methods of the present invention advantageously eliminate unwanted effects in the dermis. In one embodiment, the temperature of the dermis is not less than about -15°C. Preferably, the temperature of the dermis is between about -10°C and 20°C. More preferably, the temperature of the dermis is between about -8°C and 15°C. Even more preferably, the temperature of the dermis is between about -5°C and 10°C. In a preferred embodiment, the lipid-rich cells are cooled to about -5°C to 5°C for up to two hours and the dermal and epidermal cells maintain an average temperature of about 0°C. In a most preferred embodiment, the lipid-rich cells are cooled to about -5 to 15°C for times ranging from about a minute, up to about two hours.

[0047] Methods of the present invention can be applied in short intervals (e.g., 1 minute, 5 minute, 15 minute, 30 minute and 60 minute time intervals) or long intervals (e.g., 12 hour and 24 hour time intervals). Preferably intervals are between 5 and 20 minutes. Heat can optionally be applied between intervals of cooling.

[0048] Feedback mechanisms can be employed to monitor and control temperatures in the skin (i.e., dermis, epidermis or a combination thereof) subcutaneous adipose tissue. A feedback mechanism can monitor the temperature of a subject's skin to ensure that the temperature therein does not fall below a predetermined minimum temperature, for example, about -10°C to about 30°C. A non-invasive device can be externally applied to measure surface temperature at the point of contact and/or the surrounding region. An invasive device, such as a thermocouple, can be used to measure internal temperatures.

[0049] Feedback mechanisms can include all known in the art to monitor temperature and/or crystal formation. Crystal formation can be measured, for example by ultrasound imaging and acoustical, optical, and mechanical measurements. Mechanical measurements can include, for example, measurements of tensile strength.

[0050] In one embodiment, a multilayer model can be employed to estimate temperature profiles over time and within different depths. Temperature profiles are designed to produce a temperature gradient within the tissue, having a lower temperature at the surface. In a preferred embodiment, temperature profiles are designed to minimize blood flow during cooling. Feedback mechanisms comprising, for example, thermocouples, ultrasound (e.g., to detect phase changes of the subcutaneous adipose tissue) or shock wave propagation (e.g., propagation of a shock wave is altered if a phase transition occurs) can be employed to achieve optimal temperature gradients.

[0051] Substantial cooling of the subcutaneous adipose layer, for example to a target temperature between about -5°C and 15°C, by cooling at the skin surface has several requirements. Heat extracted from the skin surface establishes a temperature gradient within the skin, which in turn cools first the epidermis, dermis, and finally subcutaneous adipose layers. Dermal blood flow brings heat from the body core to the dermis. Dermal blood flow can therefore severely limit cooling of the deep dermis and subcutaneous adipose. Therefore, it is strongly preferred to temporarily limit or eliminate cutaneous blood flow, for example by locally applying a pressure to the skin greater than the systolic blood pressure, while cooling as a treatment to achieve reduction in subcutaneous adipose. A general requirement is that the time of cooling at the skin surface must be long enough to allow heat to flow from the dermis and subcutaneous adipose layers in order to achieve the desired temperature for treatment of the same. When the subcutaneous adipose is cooled to a temperature below that for crystallization of its lipids, the latent heat of freezing for these lipids must also be removed, by diffusion. The skin surface cooling temperature and cooling time can be adjusted to control depth of treatment, for example the anatomical depth to which subcutaneous adipose is affected. Heat diffusion is a passive process, and the body core temperature is nearly always close to 37°C. Therefore, another general requirement is that the skin surface temperature during cooling, must be lower than the desired target (e.g., adipocytes) temperature for treatment of the region, for at least part of the time during which cooling is performed.

[0052] When cooling a diameter of skin greater than about 2 cm, and with no blood flow, one-dimensional heat diffusion offers a good approximation for estimating temperature profiles in skin over time during cooling. Heat diffusion is governed by the general diffusion equation, $\delta T/\delta t = \kappa \delta^2 T/\delta z^2$, where $T(z,t)$ is the temperature in skin as a function of depth z and time t , and κ is the thermal diffusivity, which is approximately $1.3 \times 10^{-3} \text{ cm}^2\text{s}^{-1}$ for skin tissue. Solutions and approximate solutions to the heat diffusion equation have been made for planar geometry of a semi-infinite slab, approximating the situation for skin. When the surface of the skin ($z = 0$) is held at a given lower temperature, a useful approximation is that heat flow from a depth z requires a time of approximately $t = z^2$ to achieve a temperature difference $1/2$ of the initial difference, where t is in seconds and z is in millimeters. Thus, z^2 can be considered an approximate value for a thermal time constant. For example, if the initial skin temperature is 30 C, and ice at 0 C is placed firmly against the skin surface, it requires about 1 second for the temperature at a depth of 1 millimeter, to reach about 15 C. The subcutaneous fat layer typically begins at about $z \approx 3$ mm, and extends for millimeters up to many centimeters thick. The thermal time constant for heat transfer from the top of the subcutaneous adipose layer, is therefore about 10 seconds. To achieve substantial cooling of subcutaneous adipose, at least several and preferably greater than 10 thermal time constants of cooling time are required. Therefore, cooling must be maintained for about 30-100 seconds at the skin surface, and in the absence of dermal blood flow, for the temperature of the topmost portion of subcutaneous adipose to approach that of the cooled skin surface. The latent heat of crystallization for lipids, mentioned above, must also be removed when the fat temperature drops below that for crystallization. Therefore in general, cooling times over 1 minute are desired, and cooling times greater than about 1 minute can be used to adjust the depth of adipocytes affected, for times up to more than an hour.

[0053] Accordingly, in yet another embodiment, the dermis is cooled at a rate sufficient to induce vasoconstriction. Blood circulation within the dermis stabilizes the temperature of the dermis close to body temperature. In order to cool subcutaneous adipose tissue to temperatures below body temperature, blood flow can be minimized. Fast cooling of the epidermal surface can achieve reflectory vasoconstriction that limits blood circulation in an appropriate way.

[0054] In yet another embodiment, a vasoconstrictive drug is administered to induce vasoconstriction. Vasoconstrictive drugs, for example, can be topically applied at the point of contact either before, after or during application of the cooling agent. Where necessary, systemic administration of the vasoconstrictive drug can be provided through conventional methods, such as injection or oral administration. The vasoconstrictive drug can be any known in the art. Preferably, the vasoconstrictive drug is EMLA cream or epinephrine.

[0055] In yet another embodiment, pressure is applied to a surface, either at the point of contact with the cooling agent or in proximity thereto, such that lateral blood flow is limited. Pressure can be applied, for example, to a skin surface by compressing the skin surface into a skin fold comprising single or multiple folds. Pressure can also be by applying a vacuum either at the point of contact with the cooling agent or in proximity thereto.

[0056] Without being bound by theory, it is believed that the rate of formation of crystals in lipid-rich cells can be altered by the application of pressure during the cooling process. Sudden crystallization, rather than a slow accumulation of crystals, would cause greater damage to the lipid-rich cells. It is also believed that the application of pressure can force the movement of the crystals within the lipid-rich cells, enhancing the damage to the bilayer membrane. Furthermore, different compartments of the subcutaneous adipose tissue have different viscosities. In general, the viscosity is enhanced at colder temperatures (e.g., those particularly close to the point of phase change). Because the phase change for lipid-rich cells occurs at higher temperatures than non lipid-rich cells, non-uniform tension lines form within the subcutaneous adipose tissue upon the application of pressure. It is believed that pronounced damage occurs within these tension lines.

[0057] In yet another aspect, the temperature of the dermis and/or epidermis oscillates between 35°C and -15°C. More preferably, the temperature of the dermis and/or epidermis oscillates between -10°C and 10°C. Even more pref-

erably, the temperature of the dermis and/or epidermis oscillates between -8°C and 8°C. Oscillating temperatures at the skin surface can provide intermittent warming to counteract potential side effects of the cooling process (e.g., crystal formation in the dermal or epidermal cells).

5 [0058] In yet another aspect, application of the cooling agent is coupled with the application of electric or acoustic fields, either constant or oscillating in time, localized in the dermis and/or epidermis to reduce or eliminate crystal formation therein.

[0059] Figure 1A illustrates a treatment system 100 for cooling a target area in accordance with an embodiment of the invention. As shown in Figure 1A, treatment system 100 may include a control unit 105 and a treatment unit 107, which may include a cooling/heating element 110 and a treatment interface 115.

10 [0060] Control unit 105 may include a power supply, for example, control unit may be coupled to a power source, for supplying power to treatment unit 107. Control unit 105 can also include a computing device having control hardware and/or software for controlling, based on inputted properties and/or parameters, cooling/heating element 110 and treatment interface 115. Treatment interface 115 can include a detector 120.

15 [0061] Figure 1B is a diagram illustrating a configuration of control unit 105 in accordance with an embodiment of the invention. As shown in Figure 1B, control unit 105 can comprise a computing device 125, which can be a general purpose computer (such as a PC), workstation, mainframe computer system, and so forth. Computing device 125 can include a processor device (or central processing unit "CPU") 130, a memory device 135, a storage device 140, a user interface 145, a system bus 150, and a communication interface 155. CPU 130 can be any type of processing device for carrying out instructions, processing data, and so forth. Memory device 135 can be any type of memory device including any one or more of random access memory ("RAM"), read-only memory ("ROM"), Flash memory, Electrically Erasable Programmable Read Only Memory ("EEPROM"), and so forth. Storage device 140 can be any data storage device for reading/writing from/to any removable and/or integrated optical, magnetic, and/or optical-magneto storage medium, and the like (e.g., a hard disk, a compact disc-read-only memory "CD-ROM", CD-ReWritable "CD-RW", Digital Versatile Disc-ROM "DVD-ROM", DVD-RW, and so forth). Storage device 140 can also include a controller/interface (not shown) for connecting to system bus 150. Thus, memory device 135 and storage device 140 are suitable for storing data as well as instructions for programmed processes for execution on CPU 130. User interface 145 may include a touch screen, control panel, keyboard, keypad, display or any other type of interface, which can be connected to system bus 150 through a corresponding input/output device interface/adaptor (not shown). Communication interface 155 may be adapted to communicate with any type of external device, including treatment unit 107. Communication interface 155 may further be adapted to communicate with any system or network (not shown), such as one or more computing devices on a local area network ("LAN"), wide area network ("WAN"), the internet, and so forth. Interface 155 may be connected directly to system bus 150, or can be connected through a suitable interface (not shown). Control unit 105 can, thus, provide for executing processes, by itself and/or in cooperation with one or more additional devices, that may include algorithms for controlling treatment unit 107 in accordance with the present invention. Control unit 105 may be programmed or instructed to perform these processes according to any communication protocol, programming language on any platform. Thus, the processes may be embodied in data as well as instructions stored in memory device 135 and/or storage device 140 or received at interface 155 and/or user interface 145 for execution on CPU 130.

20 [0062] Referring back to Figure 1A, treatment unit 107 may be a handheld device, an automated apparatus, and the like. Cooling/heating element 110 can include any type of cooling/heating component, such as a thermoelectric cooler and the like.

25 [0063] Figure 1C is a diagram showing cooling/heating element 110 in accordance with an embodiment with the present invention. As shown in Figure 1C, cooling/heating element 110 can include a network of passages where a cooling/heating fluid flows through. The passages may be formed by any heat conducting tubing and the like. The cooling/heating fluid can be directed into element 110 through an input 175 and expelled through an output 180. The cooling/heating fluid may be any fluid having a controlled temperature, such as cooled air/gas or liquid. For example, a saltwater or acetone bath that is cooled using ice or frozen carbon dioxide may be used as a source of cooled liquid pumped through element 110. A circulating system may, thus, be formed where fluid expelled at output 180 is re-cooled at the fluid source and redirected into input 175. The temperature of the fluid source and/or element 110, which may include the rate at which cooling fluid is pumped through element 110, can be monitored and controlled by control unit 105. Thus, the temperature of cooling/heating element 110 can be controlled or programmed using control unit 105. As further shown in Figure 1C, there can be a temperature difference, ΔT , between regions of element 110. For example, heat from the target tissue may be transferred to the cooling fluid during treatment causing fluid near output 180 to have a higher temperature than the cooling fluid near input 175. Such ΔT may be reduced by reducing the size of element 110. In accordance with an embodiment of the invention, the configuration of the passages in element 110 and the corresponding application of element 110 to target tissue can account for any difference in temperature needed for treating various tissue targets. For example, the region of element 110 near exit 180 can be applied to treatment areas requiring a higher treatment temperature, and so forth. The passages of element 110 can, thus, be configured in accordance with the size, shape, formation, and so forth, of target tissue that require the various treatment temperatures.

Cooling/heating fluid can also be pumped through element 110 in a pulsing manner.

5 [0064] Referring back to Figure 1A, treatment interface 115 can be any type of interface between cooling/heating element 110 and the epidermis 160 for effecting treatment onto the epidermis 160, dermis 165 and fat cells 170. For example, treatment interface 115 may include a cooling (conductive) plate, a cooling fluid-filled vessel, a free-forming membrane (for a complementary interface with an uneven epidermis), a convex cooling element (for example, as shown in Figure 3), and the like. Preferably, treatment interface 115 comprises a heat conducting material that complements the epidermis 160 for maximum heat transfer between cooling/heating element 110 and the epidermis 160, dermis 165 and/or fat cells 170. For example, treatment interface 115 can be a fluid-filled vessel or a membrane so that the change in pressure from cooling element 110 caused by a pulsing flow of cooling fluid may be transferred to the target tissue. Furthermore, treatment interface 115 may simply be a chamber where cooling/heating fluid may be applied directly to the target tissue (epidermis 160, dermis and fat cells 170), for example by using a spraying device and the like.

10 [0065] Detector 120 can be a temperature monitor, for example, a thermocouple, a thermistor, and the like. Detector 120 may include any thermocouple type, including Types T, E, J, K, G, C, D, R, S, B, for monitoring tissue cooling. Detector 120 may also include a thermistor, which can comprise thermally-sensitive resistors whose resistances change with a change in temperature. The use of thermistors may be particularly advantageous because of their sensitivity. In accordance with an embodiment of the invention, a thermistor with a large negative temperature coefficient of resistance ("NTC") can be used. Preferably, a thermistor used for detector 120 may have a working temperature range inclusive of about -15°C to 40°C. Furthermore, detector 120 can include a thermistor with active elements of polymers or ceramics. A ceramic thermistor may be most preferable as these can have the most reproducible temperature measurements. A thermistor used for detector 120 can be encapsulated in a protective material such as glass. Of course, various other temperature-monitoring devices can also be used as dictated by the size, geometry, and temperature resolution desired. Detector 120 can also comprise an electrode which can be used to measure the electrical resistance of the skin surface area. Ice formation within superficial skin structures like the epidermis or dermis causes an increased electrical resistance. This effect can be used to monitor ice formation within the dermis. Detector 120 can further consist of a combination of several measurement methods.

20 [0066] Detector 120 can, thus, extract, inter alia, temperature information from the epidermis 160, dermis 165 and/or fat cells 170 as feedback to control unit 105. The detected temperature information can be analyzed by control unit 105 based on inputted properties and/or parameters. For example, the temperature of fat cells 170 may be determined by calculation based on the temperature of the epidermis 160 detected by detector 120. Thus, treatment system 100 may non-invasively measure the temperature of fat cells 170. This information may then be used by control unit 105 for continuous feedback control of treatment unit 107, for example, by adjusting the energy/temperature of cooling/heating element 110 and treatment interface 115, thus maintaining optimal treatment temperature of target fat cells 170 while leaving surrounding epidermis 160 and dermis 165 intact. As described above, the cooling/heating element 110 can provide adjustable temperatures in the range of about -10°C up to 42°C. An automated temperature measurement and control sequence can be repeated to maintain such temperature ranges until a procedure is complete.

30 [0067] It is noted that adipose tissue reduction by cooling lipid-rich cells may be even more effective when tissue cooling is accompanied by physical manipulation, for example, massaging, of the target tissue. In accordance with an embodiment of the present invention, treatment unit 107 can include a tissue massaging device, such as a vibrating device and the like. Alternative a piezoelectric transducer can be used within treatment unit 107 in order to provide mechanical oscillation or movement of the cooling /heating element 107 (or better treatment unit?). Detector 120 can include feedback devices for detecting changes in skin viscosity to monitor the effectiveness of treatment and/or to prevent any damage to surrounding tissue. For example, a vibration detecting device can be used to detect any change in the resonant frequency of the target tissue (or surrounding tissue), which can indicate a change in tissue viscosity, being mechanically moved or vibrated by a vibrating device contained in treatment unit 107.

40 [0068] To further ensure that the epidermis 160 and/or the dermis 165 is not damaged by cooling treatment, an optical detector/feedback device can be used to monitor the change of optical properties of the epidermis (enhanced scattering if ice formations occur); an electrical feedback device can be used to monitor the change of electric impedance of the epidermis caused by ice formation in the epidermis; and/or an ultrasound feedback device may be used for monitoring ice formation (actually to avoid) in the skin. Any such device may include signaling control unit 105 to stop or adjust treatment to prevent skin damage.

50 [0069] In accordance with an embodiment of the invention, treatment system 100 may include a number of configurations and instruments. Algorithms that are designed for different types of procedures, configurations and/or instruments may be included for control unit 105.

55 [0070] As shown in Figure 1D, treatment system 100 may include a probe controller 175 and a probe 180 for minimal invasive temperature measurement of fat cells 170. Advantageously, probe 180 may be capable of measuring a more accurate temperature of fat cells 170, thereby improving the control of treatment unit 107 and the effectiveness of treatment.

[0071] It is noted that treatment system 100 may be controlled remotely. For example, the link between control unit

105 and treatment unit 107 may be a remote link (wired or wireless) providing control unit 105 remote control over cooling/heating element 110, treatment interface 115, probe controller 175, and probe 180.

5 [0072] While the above exemplary treatment system 100 is illustrative of the basic components of a system suitable for use with the present invention, the architecture shown should not be considered limiting since many variations of the hardware configuration are possible without departing from the present invention.

10 [0073] Figure 2A illustrates a treatment system 200 for cooling fat cells 170 by folding the target tissue in accordance with an embodiment of the invention. As shown in Figure 2A, treatment system 200 may include corresponding control units 105 and treatment units 107 on two sides coupled to a compression unit 205. Compression unit 205 may be adapted to pull treatment units 107 together, thereby folding (or "pinching") target tissue (epidermis 160, dermis 165 and fat cells 170) up between treatment units 107. The treatment interface 115 of the respective treatment units 107 on either side of the target tissue may thus cool fat cells 170 from multiple sides with greater effectiveness, as described above. Detectors 120 can be included to measure and monitor the temperature of the target tissue. As shown in Figure 2A, control units 105 may be connected to form an integrated system. In accordance with an embodiment of the present invention, the various components of system 200 may be controlled using any number of control unit(s).

15 [0074] As described before, physical manipulation of target tissue may improve the effectiveness of cooling treatment. In accordance with an embodiment of the present invention, compression unit 205 may vary the force with which treatment units 107 are pulled together around the target tissue (epidermis 160, dermis 165 and fat cells 170). For example, compression unit 205 can apply a pulsing force for alternately tightening and loosening the fold (or "pinch") of the target tissue. Resistance to the tightening can further be monitored for detecting any changes in the characteristics (for example, the viscosity) of the target tissue, and thus ensuring the effectiveness and safety of the treatment.

20 [0075] Figure 2B illustrates system 200 with a probe 180 similar to that of system 100 shown in Figure 1C for minimal invasive temperature measurement of fat cells 170. As described above, probe 180 may be capable of measuring a more accurate temperature of fat cells 170, thereby improving the control of treatment unit 107 and the effectiveness of treatment.

25 [0076] Figures 3A and 3B are diagrams showing a treatment system 300 in accordance with an embodiment of the present invention. As shown in Figure 3A, system 300 may include a suction unit 305, and treatment unit 107 may include treatment interface 115 having a curved surface, which for example forms a dome, for forming and containing a chamber 310 above the epidermis 160. As shown in Figure 3B, suction unit 305 may be activated to draw the air from chamber 310 such that target tissue (epidermis 160, dermis 165 and fat cells 170) is pulled up into contact with treatment interface 115. Advantageously, treatment interface 115 may surround target fat cells 170 for more effective cooling. Treatment interface 115 can consist of a solid stiff or flexible material, which is in contact with the skin or a thermal coupling agent between the skin surface and the treatment unit. The surface of the interface 115 can also have multiple openings connected to suction unit 305. The skin is partially entered into these multiple openings, which can increase the total surface area of the epidermis 160 in thermal contact to the treatment interface (e.g., stretching of the skin). Stretching of the skin decreases the thickness of the epidermis and dermis, facilitating cooling of the fat 170. A number of detector(s) 120 and/or probe(s) 180 can be included in treatment system 300 for monitoring tissue temperature during treatment, as described above with reference to Figures 1A, 1C, 2A and 2B, detailed description of which will not be repeated here.

30 [0077] Figure 4 illustrates a treatment system 400 in accordance with an embodiment of the invention. As shown in Figure 4, suction unit 305 can be connected to a ring opening around treatment interface 115 so that, when activated, a suction seal 410 is formed with the epidermis 160 around treatment interface 115. As a result, treatment can be effected at treatment interface 115 to an isolated target tissue area.

Advantageously, the subject or body part may be immersed in a warming bath and the treatment at interface 115 can be unaffected. Consequently, treatment area can be increased while a surrounding warming environment can prevent general hypothermia.

35 [0078] Figures 5A and 5B are diagrams showing a treatment system 500 in accordance with an embodiment of the present invention. As shown in Figures 5A and 5B, treatment system 500 may form a band (or cylinder) around a target tissue mass 515. Treatment system 500 may comprise any flexible or rigid material. Cooling/heating fluid can be pumped through treatment system 500 via input 175 and output 180, as shown in Figure 5B. Cooling/heating element 110 can be formed by an internal vessel or a network of passages, such as tubing and the like. Heat transfer with target tissue mass 515 can be effected via treatment interface 115, which can include any heat conducting material. Treatment system 500 can further include a fastening mechanism 510, such as a hook and loop fastener and the like, for fastening and wrapping around tissue mass 515. Furthermore, treatment interface 115 can include a flexible material such that the pressure of cooling fluid pumped through treatment system 500 can be transferred to the target tissue 515. For example, with reference to Figure 5A, treatment system 500 can apply inward pressure to target tissue mass 515. Target tissue mass 515 can be any section, body part or extremity of a subject. For example, target tissue mass 515 can be an arm, the upper or lower leg, the waist, and so forth, of a subject. The pressure and flow of the cooling fluid in system 500 can be controlled by control unit 105 to an optimal treatment temperature and/or pressure. A tight fit around tissue mass 515 and increased inward pressure can also allow for the subject to be immersed in a warming bath. As described before,

fluid flow can be a pulsing flow.

[0079] The present invention is additionally described by way of the following illustrative, non-limiting Examples, that provide a better understanding of the present invention and of its many advantages

5 EXAMPLES

Example 1

10 Selective Damage to Fatty Tissue by Controlled Cooling *In Vivo*

[0080] Methods of the present invention were carried out on a white, 6 months old, female, Hanford miniature pig ("Pig I") and a black, 6 months old, female Yucatan Miniature Pig ("Pig II"). The pigs were anesthetized using Telazol/Xylazine (4.4 mg/kg im + 2.2 mg/kg im). Inhalant anesthetics (Halothane or Isoflurane (1.5-3.0%) with Oxygen (3,0 L/min) was delivered by mask and filtered with an F-Air canister only if the injectable anesthetics did not provide enough somatic analgesia. Several test sites were be marked with micro tattoos by applying India Ink to the corners of each test sites. After mapping of the test sites cold exposures were performed using a cooling device as described in Figure 1A. The area of the treatment interface was a flat area of the size of 2 x 4 cm² with a built-in temperature sensor. The interface was in thermal contact with a thermoelectric chiller, which was electronically regulated by a control unit such that the temperature at the surface of the interface was kept constant to a pre-set temperature. During the cold exposure the cooling device was applied to the skin with minor to moderate pressure that did not cause significant mechanical compression of blood flow. The cooling element was applied to the skin without any manipulation of the surface profile.

[0081] Various combinations of pre-set cooling interface temperatures and exposure times were tested. For some sites a thermo-conductive lotion was applied between the skin and the cooling interface, This thermoconductive lotion consisted mainly of glycerol. Pig I was observed for 61 days until excision biopsies from all test sites were procured and the pig was sacrificed. From test Site C there was an additional punch biopsy procured at day 2.

[0082] The biopsies were processed for routine light microscopy and stained with Hematoxylin & Eosin. The indicated temperature is that of the applied cooling element. Table 1 depicts the parameters of the cooling application and the results obtained at various sites in Pig I:

30 Table 1

Site	Temperature	Time	Lotion	Results
A	-6 °C	1 minute	+	At 61 days: No epidermal damage. No dermal damage. No obvious indentation. No obvious histological alterations.
B	-6 °C	1 minute	-	At 61 days: No epidermal damage. No dermal damage. No obvious indentation. No obvious histological alterations.
C	-6 °C	5 minutes	+	At 61 days: No epidermal damage. No dermal damage. Indentation due to loss of subcutaneous adipose tissue (1 week to 61 days). Decreased average size of adipocytes at a depth of between about 3-6 mm. Obvious histological damage to the adipose tissue. At 2 days: Tissue inflammation and panniculitis

EP 3 173 042 A1

(continued)

Site	Temperature	Time	Lotion	Results
D	-3.5 °C	5 minutes	+	At 61 days: No epidermal damage. No dermal damage. No obvious indentation. Borderline histological damage to the adipose tissue. Decreased average size of adipocytes.
E	Control		adipose	Normal- no changes within the epidermis, dermis and subcutaneous adipose tissue.

[0083] Pig II was observed for 50 days until excision biopsies from all test sites were procured and the pig was sacrificed. From test Site E an additional biopsy was procured at day 17. The biopsies were processed for routine light microscopy and stained with Hematoxylin & Eosin as described above. The indicated temperature is that of the applied cooling element. Table 2 depicts the parameters of the cooling application and the results obtained at various sites in Pig II:

Table 2

Site	Temperature	Time	Lotion	Results
C	-6 °C	5 minutes	-	At 50 days: Pronounced indentation (2-3 mm) due to loss of subcutaneous adipose tissue. No epidermal damage. No dermal damage. No pigmentary changes, however, decreased size of adipocytes and histological damage to adipose tissue.
D	-8 °C	5 minutes	-	At 50 days: Pronounced indentation (2-3 mm) due to loss of subcutaneous adipose tissue. No epidermal damage. No dermal damage. No pigmentary changes, however, there was damage to the adipocytes to a depth of about 6 mm. Decreased size of adipocytes and histological damage to adipose tissue.
E	-9 °C	5 minutes	-	At 50 days: Pronounced indentation (2-3 mm) due to loss of subcutaneous adipose tissue. No epidermal damage. No dermal damage. No pigmentary changes, however, there was damage to the adipose cells to a depth of about 6 mm. Decreased size of adipocytes and histological damage to adipose tissue. At 17 days: Signs of panniculitis.
F	-22 °C	5 minutes	-	At 50 days: Pronounced epidermal damage with pronounced hypopigmentation. Scar formation with dermal contraction and complete ablation of the subcutaneous adipose tissue.

[0084] Figure 6 depicts an image of the skin surface of test Sites D, E and F of Pig II, 17 days after exposure. An indentation that matches the site of the cold exposure can be seen at 1, which matches test Site D and 2, which matches

test Site E. No abnormal epidermal changes can be seen at these test sites. At 3, which matches the test Site F, where aggressive cooling methods were applied, damage to the epidermis is pronounced (e.g., loss of pigmentation and a central crust formation).

[0085] Figure 7 depicts histology of test Site E (Fig II), 17 days after cold exposure at -9°C for 5 minutes, in samples taken from an area below the site of cold exposure. Figure 7A depicts a low power magnification (1,25x) and Figure 7B depicts a close up with medium power magnification (5x) of the same specimen. The epidermis 701, dermis 702, subcutaneous adipose 703 and muscle layer 704 are shown. The histology reveals signs of lobular and septal panniculitis within subcutaneous adipose 703, which is an inflammation of the adipose tissue. The average size of fat cells is decreased compared to the sample from the unexposed area. No evidence of tissue alterations is seen in the epidermis, dermis or muscle layer.

[0086] A decrease in subcutaneous adipose tissue was demonstrated by clinical observation of indentation within the skin surface at the precise site of cooling, as well as by histology (Hematoxylin & Eosin staining), Figure 8A, B, C, D, E, and F depicts histology 50 days after exposure with low power magnification of 2.5x (Figures 8A, 8C and 8E) and medium power magnification of 5x (Figures 8B, 8D and 8F) of test Site C (Figures 8A and 8B), test Site E (Figures 8C and 8D) and test Site F (Figures 8E and 8F). The epidermis 801 and dermis 802 is not damaged in test Sites C and E while the more aggressive cooling regime applied to test Site F resulted in damage to the epidermis and dermis (e.g., scar formation and inflammation can be seen). The subcutaneous adipose 803 shows a decrease of adipocyte size and structural changes (e.g., apparent condensation of the fat cell layer with fibrous septae is included in the condensed fat layer). As a result of the aggressive cooling regime applied to test Site F, almost the entire layer was removed, leaving only some residual fat cell clusters. Thus, where an aggressive cooling regime is applied (test Site F) non-selective and pronounced damage is observed in the epidermis and dermis.

[0087] Taken together, the results demonstrate that selective disruption of subcutaneous adipose tissue is achieved using cooling methods of the present invention without causing damage to the epidermis and dermis.

[0088] Measurement of temperature during skin surface cooling at -7°C applied with pressure sufficient to stop skin blood flow, was performed to illustrate the time- and depth- dependence of cooling, in a live pig. Thermocouples inserted at depths of 0, 2, 4, and 8 millimeters were used to record temperature. Although the conditions of this experiment were not ideal (the skin cooler did not maintain strictly -7°C at the surface), it is clear that cooling of the dermis (2 mm) and fat (4 mm, 8 mm) occurred generally as expected (see for example, Figure 10).

Example 2

Temperature profile Measurements at Various Tissue Depths

[0089] This study was performed using a 6-months old female black, hairless Yucatan Minipig (Sinclair Research Center, Columbia, MO). The pig will was anesthetized using Telazol/Xylazine (4.4 mg/kg im + 2.2 mg/kg im). Inhalant anesthetic (Halothane or Isoflurane (1.5-3.0%) with Oxygen (3.0 L/min) was delivered by mask and filtered with an F-Air canister only if the injectable anesthetic did not provide enough somatic analgesia. The test sites were marked with micro tattoos by applying India Ink to the corners of each test site and inserting hypodermic needles into such test site corners. The cold exposure was performed with a convex round copper plate attached to a heat exchanger, which was chilled by a circulating cooling agent tempered to -7°C. The exposure time ranged between 600 to 1200s. Table 3 depicts the parameters of the cooling application and the results obtained at various sites in Pig III. The cold plate had three central openings of approximately 1mm in diameter through which thermocouples were placed to monitor the temperature profile at different depth of the tissue during cold exposure. The cold exposure device, shown in Figure 9, was firmly held to the test site during cold exposure. Cold exposures were performed on two different experimental days, one week apart. On the first experimental day the thermocouples were occasionally displaced during the cold exposure leading to a 0.5mm variability of the thermocouple depth measurement. An additional set of exposures with thermocouples were performed on the second experimental day at well-defined depths with minimal to no variability in the depth of the thermocouples. The location of the thermocouples on the first experimental day for test Sites 1,2,3,7,11 and12 was at 2.5, 4.5 and 10 mm depth (+/- 0.5mm). Test Sites 14,15,16 and18 were treated on the second experimental day at a thermocouple depth of 2,4 and 8 nun, with minimal to no displacement. A certain variability of the thermocouple depth may still be present due to tissue compression during the cold exposure exposure. A glycol containing solution was used to ensure good thermal contact at the skin surface. The pig was observed for 3 ½ months after treatment, until sacrificed and the tissue of the test sites harvested for analysis. Table 3 depicts the parameters of the cooling application and the results obtained at various sites in Pig III:

Table 3

Site	Temperature (coolant agent)	Exposure time	Location	Temp _{min} @ depth	Temp _{min} @ depth	Temp _{min} @ depth	Temp _{min} @ depth	Indentation 3 ¹ / ₂ months	Relative decrease of superficial fat layer @ 3 1/2 months
1	-7 °C	5 minutes	Flank	0°C@2.5mm	7°C@5mm	24°C@10mm		+	66%
2	-7°C	5 minutes	Flank	"2°C@2.5mm	N/A	21°C@10mm		+	
3	Control		Flank					-	9%
7	-7 °C	10 minutes	Abdomen	- 3°C@2.5mm	7°C@5mm	19°C@10mm		+	
9	Control		Abdomen						
11	-7 °C	10 minutes	Buttock	N/A	N/A	12°C@10mm		++	79%
12	-7 °C	10 minutes	Buttock	- 4°C@2.5mm	N/A	13°C@10mm		+	57%
13	-7 °C	10 minutes	Buttock	-4°C@2mm	N/A	7°C@10mm		+	
14	-7°C	21 minutes	Buttock	-4°C@2mm	3°C@4mm	12°C@8mm		+	
15	-7 °C	11 minutes	Buttock	-4°C@2mm	1°C@4mm	12°C@8mm		+	
16	-7 °C	to minutes	Buttock	-4°C@2mm	0°C@4mm	14°C@8mm		++	
18	-7°C	15 minutes	Flank	-3°C@2mm	N/A	15°C@8mm		+	66%

[0090] The test sites were exposed to the device, set to a coolant temperature of -7°C and exposed for 600 to 1200s. The dermis hardened immediately after the cold exposure, as determined by palpation, and became viscose as it returned to its normal temperature, approximately a minute after exposure. There was no epidermal damage or alteration evident by close-up examination with polarized magnifier lens minutes after exposure. There was no blister formation and Nikolsky-sign was negative. During the entire survival period there was no gross damage to the epidermis. No crusting, blister or pronounced pigmentary changes were observed. Some test sites exhibits a minor increase in epidermal pigmentation. This mild hyperpigmentation could be removed after few months by gentle rubbing of the epidermis.

[0091] The temperature measurements of the thermocouples depended on depth, body location, and the pressure with which cooling was applied. The temperature plots at different tissue depths during the cold exposure are shown in Figures 10 A-J for various test sites and are also summarized in Table 3. For some test sites, temperature oscillations that might be related to a nearby blood vessel was observed. Some temperature plots were not considered due to movements or misplacement of the thermocouple (labeled 'error' in table 3). The temperature within the deep dermis or superficial fat layer is within the range of -2°C to -4°C . The temperature within 4-5 mm depth is within the range of about 0°C to 7°C depending on variations in contact pressure and anatomical area. This location demonstrated a high variability of the different temperature plots. The temperature within 8-10 mm depth, which corresponds to a depth within the subcutaneous fat layer had a temperature in the range of $7-24^{\circ}\text{C}$.

[0092] Histology of a control (Site 9) and cold exposed site (Site 8) (-7°C , 600s) was procured 6 days post exposure and analyzed by a dermatopathologist. The following was described at the control and the cold exposed site:

The epidermis of both samples is normal and exhibits basket-woven stratum corneum with normal thickness, normal rete ridges as compared to the control. Within the cold exposed site there is a mild perivascular, lymphocytic infiltrate present. However no frank signs of vasculitis present in both samples.

[0093] The subcutaneous fat of the control exhibit the normal morphology. The subcutaneous fat of the cold exposed site exhibits clear signs of lobular and septal panniculitis. Most of the adipocytes are surrounded by lymphocytic infiltrate with occasional lipid containing macrophages. The thickness of the subcutaneous septae is increased. Mild vascular changes however no frank signs of vasculitis. Three and one half months after the cold exposure the pig was sacrificed and tissue at the exposure sites was harvested by full thickness excision, after 20 MHz ultrasound imaging was performed through selected test sites. The in-vivo ultrasound images clearly demonstrated loss of fatty tissue in the area of treatment by skin cooling vs. the non-cold exposed surrounding tissue. An in-vivo ultrasound image 3 ½ months after cold exposure is shown in Figure 11.

[0094] The harvested tissue was cut macroscopically through the test sites and images were taken from the macroscopic tissue cross-sections. The macroscopic cross sections of Sites 1,3,11,12 and 18 are shown in Figure 13 A-E. A decrease of the thickness of the subcutaneous fat layer was observed for all cold exposed sites vs. the non-cold exposed adjacent fat layer. The macroscopic cross sections matched well with the ultrasound images. Two different compartments within the subcutaneous fat could be identified, a superficial fat layer and a deep fat layer. Thickness of the superficial fat layer was dramatically reduced at sites of cold treatment, while the deep fat layer was not significantly changed. The percentage of decrease of the superficial fat layer inside the test area vs. outside is listed for some test sites in Table 3. A change of the subcutaneous fat layer was observed for cold exposed Sites 1,11,12 and 18. The average decrease of thickness for the superficial fat layer within the evaluated test sites was 47%. For the unexposed control side, no significant decrease of thickness was found in either fat layer.

[0095] These examples confirm that it is possible in a pig model to achieve selective tissue damage of the subcutaneous adipose tissue by external cooling within a specific range of external cooling temperature and exposure time, without significant damage to the epidermis and dermis. Removal of subcutaneous fat was also demonstrated by an obvious indentation at the treated skin surface, which matched exactly with the cooling exposure, and with the measurements of the fat layer in relation to the cold exposure site by ultrasound and macroscopic cross sections after sacrifice. Pronounced histological changes, which were selective to the subcutaneous adipose tissue were observed 6 days after cold exposure. Histologically a panniculitis with a decrease in fat cell size was observed. There was evidence that the response to the cold can vary for different sites and that the more superficial fat layer is more affected by tissue loss than the deeper fat layer. The results of Pig III however imply that there is enhanced fat removal at the superficial fat layer vs. the deeper layer. The explanation for this is a) the superficial fat layer is exposed to colder temperatures because of the gradient and/or b) the deeper fat layer in pigs may be less susceptible to selective cold damage.

[0096] Figure 9 depicts an image of the device for the cold exposure of Pig III. The cold copper plate 91 is brought in contact with the skin. The temperature profile within the skin during cold exposure is measured by thermocouples 92 inserted into the tissue in different depths. The device is spring loaded 93 to provide a pressure during the cold exposure.

[0097] Figures 10 depicts the temperature profile in various depths during the cold exposure of Pig III for different test Sites: 10A (Site 1), 10B (Site 2), 10C (Site 7), 10D (Site 11), 10E (Site 12), 10F (Site 13), 10G (Site 14), 10H (Site 15), 10I (Site 16) and 10J (Site 18). The temperature in various depths is labeled with T3-E (surface), T0-B (2-2.5mm), T1-

C (4-5mm) and T2-D (8-10mm).

[0098] Figure 11 depicts an ultrasound image of test Site 11 taken 3 ½ months after exposure. The section below 1105 is outside the cold exposed area the section below 1106 is within the cold exposed area. The dermis 1102 can be clearly distinguished from the fat layer 1103 and the muscular layer 1104. Within the fat layer 1103 two distinct layers can be distinguished: the superficial fat layer 1103a and the deep fat layer 1103b. The ultrasound image matches well with the macroscopic cross section of the same tissue in Figure 13c.

[0099] Figure 12 depicts histology of test Site 8 (Figure 12A and 12B) six days after cold exposure (-7°C, 600s) and test Site 9, which is an unexposed control (Figure 12C and 12D). The micrographs show an image of low power magnification (1,25x) in Figures 12A and 12C and a medium power magnification (5x) in Figure 12B and 12D. The images showing the epidermis 701, the dermis 702 and the subcutaneous fat 703. While the unexposed control exhibits normal tissue morphology, the cold-exposed tissue exhibits clear signs of panniculitis in the subcutaneous fat. Inflammatory cells have migrated into this area and the average fat cell size is decreased.

[0100] Figures 13 A- E depict macroscopic sections through the center of different test Sites after the pig was sacrificed, 3 ½ months after cold exposure; 13A (Site 1), 13B (Site 3), Figure 13C (Site 11), Figure 13D (Site 12) and Figure 13E (Site 18). Each Figure exhibits a scale 1300, which has 1 cm units and 1mm subunits. The epidermis 1301, the dermis 1302, the superficial fat layer 1303 and the deep fat layer 1304. For the unexposed control Figure 13B no change of thickness of different layers can be seen. Figures 13A, 13C, 13D and 13E show the cross section of cold exposed areas, which is matched to the central 4-5 cm of tissue and non-cold exposed areas surround. A decrease of thickness within the superficial fat layer of the cold exposed areas vs. the non-cold exposed areas can be seen in all cold exposed samples. The change in % of thickness for each of the sample is listed in Table 3.

[0101] A number of embodiments of the invention have been described. Nevertheless, it will be understood that various modifications may be made without departing from the spirit and scope of the invention. Accordingly, other embodiments are within the scope of the following claims.

Aspects of the invention are further described by the following numbered paragraphs:

1. A cooling method for selective disruption of lipid rich cells in a non-infant human subject comprising:

applying a cooling element proximal to the subject's skin to create a temperature gradient within a local region sufficient to selectively disrupt and thereby reduce the lipid rich cells of said region, and, concurrently therewith maintain the subject's skin at a temperature wherein non lipid rich cells proximate to the cooling element are not disrupted.

2. The method of paragraph 1, wherein the lipid rich cells are adipocytes within subcutaneous adipose tissue or cellulite.
3. The method of paragraph 1, wherein the cooling element contacts the subject's skin.
4. The method of paragraph 1, wherein the lipid rich cells are cooled to a temperature less than or equal to about 37°C.
5. The method of paragraph 1, wherein the lipid rich cells are reduced in size.
6. The method of paragraph 1, wherein the lipid rich cells are reduced in number.
7. The method of paragraph 1, wherein the subject's skin comprises the epidermis, dermis or a combination thereof.
8. The method of paragraph 1, wherein the cooling element is applied to the subject's skin and includes a conductive cooling element.
9. The method of paragraph 8, wherein the cooling element is actively cooled.
10. The method of paragraph 9, wherein the cooling element includes a thermoelectric cooling element.
11. The method of paragraph 8, wherein the cooling element includes a cooling agent circulating through the cooling element.
12. The method of paragraph 1, wherein the cooling element includes a conductive cooling element.
13. The method of paragraph 12, wherein the conductive cooling element includes a circulating cooling agent that contacts the subject's skin.
14. The method of paragraph 1, wherein the cooling element includes an evaporative cooling element.
15. The method of paragraph 1, wherein the cooling element is maintained at an average temperature between about -15 and 35°C.
16. The method of paragraph 15, wherein the cooling element is maintained at an average temperature between about -15 and 30°C.
17. The method of paragraph 15, wherein the cooling element is maintained at an average temperature between about -15 and 25°C.
18. The method of paragraph 15, wherein the cooling element is maintained at an average temperature between about -15 and 20°C.
19. The method of paragraph 15, wherein the cooling element is maintained at an average temperature between

about -15 and 15°C.

20. The method of paragraph 15, wherein the cooling element is maintained at an average temperature between about -15 and 10°C.

5

21. The method of paragraph 15, wherein the cooling element is maintained at an average temperature between about -15 and 5°C.

22. The method of paragraph 15, wherein the cooling element is maintained at an average temperature between about -10 and 35°C.

23. The method of paragraph 15, wherein the cooling element is maintained at an average temperature between about -10 and 30°C.

10

24. The method of paragraph 15, wherein the cooling element is maintained at an average temperature between about -10 and 25°C.

25. The method of paragraph 15, wherein the cooling element is maintained at an average temperature between about -10 and 20°C.

15

26. The method of paragraph 15, wherein the cooling element is maintained at an average temperature between about -10 and 15°C.

27. The method of paragraph 15, wherein the cooling element is maintained at an average temperature between about -10 and 10°C.

28. The method of paragraph 15, wherein the cooling element is maintained at an average temperature between about -10 and 5°C.

20

29. The method of paragraph 15, wherein the cooling element is maintained at an average temperature between about -5 and 20°C.

30. The method of paragraph 15, wherein the cooling element is maintained at an average temperature between about -5 and 15°C.

25

31. The method of paragraph 15, wherein the cooling element is maintained at an average temperature between about -5 and 10°C.

32. The method of paragraph 15, wherein the cooling element is maintained at an average temperature of between about -5 and 5°C.

33. The method of paragraph 1, wherein the temperature of the subject's skin is provided as feedback to ensure that the temperature therein is not cooled below a predetermined minimum temperature.

30

34. The method of paragraph 33, wherein the subject's skin comprises the epidermis, dermis or a combination thereof.

35. The method of paragraph 33, wherein the predetermined minimum temperature is about -10°C.

36. The method of paragraph 33, wherein the predetermined minimum temperature is about -5°C.

37. The method of paragraph 33, wherein the predetermined minimum temperature is about 0°C.

38. The method of paragraph 33, wherein the predetermined minimum temperature is about 5°C.

35

39. The method of paragraph 33, wherein the predetermined minimum temperature is about 10°C.

40. The method of paragraph 33, wherein the predetermined minimum temperature is about 15°C.

41. The method of paragraph 33, wherein the predetermined minimum temperature is about 20°C.

42. The method of paragraph 33, wherein the predetermined minimum temperature is about 30°C.

40

43. The method of paragraph 33, wherein the feedback temperature is provided by a temperature measuring mechanism located on or within the subject's skin.

44. The method of paragraph 43, wherein the subject's skin comprises the epidermis, dermis or a combination thereof.

45. The method of paragraph 1, wherein the temperature of the subject's subcutaneous adipose tissue is provided as feedback to ensure that the temperature in the dermal tissue is not cooled below a predetermined minimum temperature.

45

46. The method of paragraph 33, wherein the feedback temperature is provided by a temperature measuring mechanism located on a cooling surface of the cooling element.

47. The method of paragraph 1, wherein in the cooling element has a skin contacting surface.

48. The method of paragraph 1, wherein in the cooling element has a flat surface. The method of paragraph 1, wherein in the cooling element has a contoured surface.

50

49. The method of paragraph 1, wherein the cooling element is applied to the subject's skin with a pressure that is approximately equal to or greater than the systolic blood pressure in the subject's dermis so as to decrease the blood flow within the dermis.

50. The method of paragraph 1, wherein the cooling element is applied to the subject's skin with a pressure that is approximately equal to or less than the systolic blood pressure in the subject's dermis so as to decrease the blood flow within the dermis.

55

51. The method of paragraph 1, wherein the cooling element is applied to the subject's skin with pressure in an amount sufficient to decrease the blood flow within the dermis.

52. The method of paragraph 1, wherein the cooling element is applied to a fold in the subject's skin.

53. The method of paragraph 52, wherein the fold in the subject's skin is pressured between the cooling element and a second cooling element.
54. The method of paragraph 1, wherein the lipid rich cells are cooled to a temperature between about -10 and 37°C.
55. The method of paragraph 54, wherein the lipid rich cells are cooled to a temperature between about -10 and 35°C.
56. The method of paragraph 54, wherein the lipid rich cells are cooled to a temperature between about -10 and 30°C.
57. The method of paragraph 54, wherein the lipid rich cells are cooled to a temperature between about -10 and 25°C.
58. The method of paragraph 54, wherein the lipid rich cells are cooled to a temperature between about -10 and 20°C.
59. The method of paragraph 54, wherein the lipid rich cells are cooled to a temperature between about -10 and 15°C.
60. The method of paragraph 54, wherein the lipid rich cells are cooled to a temperature between about -10 and 10°C.
61. The method of paragraph 54, wherein the lipid rich cells are cooled to a temperature between about -10 and 4°C.
62. The method of paragraph 54, wherein the lipid rich cells are cooled to a temperature between about -4 and 35°C.
63. The method of paragraph 54, wherein the lipid rich cells are cooled to a temperature between about -4 and 30°C.
64. The method of paragraph 54, wherein the lipid rich cells are cooled to a temperature between about -4 and 25°C.
65. The method of paragraph 54, wherein the lipid rich cells are cooled to a temperature between about -4 and 20°C.
66. The method of paragraph 54, wherein the lipid rich cells are cooled to a temperature between about -4 and 15°C.
67. The method of paragraph 54, wherein the lipid rich cells are cooled to a temperature between about -4 and 10°C.
68. The method of paragraph 54, wherein the lipid rich cells are cooled to a temperature between about -4 and 4°C.
69. The method of paragraph 54, wherein the lipid rich cells are cooled to a temperature between about -2 and 35°C.
70. The method of paragraph 54, wherein the lipid rich cells are cooled to a temperature between about -2 and 30°C.
71. The method of paragraph 54, wherein the lipid rich cells are cooled to a temperature between about -2 and 25°C.
72. The method of paragraph 54, wherein the lipid rich cells are cooled to a temperature between about -2 and 20°C.
73. The method of paragraph 54, wherein the lipid rich cells are cooled to a temperature between about -2 and 15°C.
74. The method of paragraph 54, wherein the lipid rich cells are cooled to a temperature between about -2 and 10°C.
75. The method of paragraph 54, wherein the lipid rich cells are cooled to a temperature between about -2 and 4°C.
76. The method of paragraph 54, wherein the lipid rich cells are cooled to a temperature between about 20 and 30°C.
77. The method of paragraph 54, wherein the lipid rich cells are cooled to a temperature between about 20 and 25°C.
78. The method of paragraph 54, wherein the lipid rich cells are cooled to a temperature between about 25 and 30°C.
79. The method of paragraph 1, wherein the lipid rich cells are cooled for a time period between about 10 seconds and 30 minutes.
80. The method of paragraph 1, wherein the lipid rich cells are cooled for a time period between about 1 and 15 minutes.
81. The method of paragraph 80, wherein the lipid rich cells are cooled for a time period between about 1 and 10 minutes.
82. The method of paragraph 80, wherein the lipid rich cells are cooled for a time period between about 1 and 5 minutes.
83. The method of paragraph 1, wherein the disruption in lipid rich cells results from crystal formation therein.
84. The method of paragraph 83, further comprising obtaining feedback that crystals have formed in the lipid rich cells.
85. The method of paragraph 84, wherein the feedback that crystals have formed is provided by at least one of the group consisting of ultrasound imaging, optical measurement, mechanical measurement and acoustical measurement.
86. The method of paragraph 85, wherein the mechanical measurement is of tensile strength.
87. The method of paragraph 84, wherein the feedback that crystals have formed is provided by a temperature feedback mechanism disposed in lipid rich cells.
88. The method of paragraph 1, wherein the disruption of lipid rich cells results from metabolic changes therein.
89. The method of paragraph 1, wherein a mechanical motion is provided to the lipid rich cells prior to, simultaneous with, or following application of the cooling element.
90. The method of paragraph 89, wherein the mechanical motion is provided by vibration.
91. The method of paragraph 89, wherein the mechanical motion comprises at least one pulsation.
92. The method of paragraph 89, wherein the mechanical motion is provided by massage.
93. The method of paragraph 1, further comprising applying a high-thermal-conductivity material to the subject's skin before applying the cooling element thereto.
94. The method of paragraph 1, wherein the method is applied to the subject a plurality of times to achieve a desired reduction.
95. The method of paragraph 94, wherein the plurality comprises 15 minute time intervals.
96. The method of paragraph 94, wherein the plurality comprises 30 minute time intervals.
97. The method of paragraph 94, wherein the plurality comprises 60 minute time intervals.
98. The method of paragraph 94, wherein the plurality comprises 12 hour time intervals.
99. The method of paragraph 94, wherein the plurality comprises 24 hour time intervals.

100. The method of paragraph 94, wherein the plurality comprises time intervals spanning several days.

101. The method of paragraph 94, wherein the plurality comprises time intervals spanning several weeks.

102. A method for treating a region of a subject's body to achieve a desired reduction in subcutaneous adipose tissue, comprising:

5

a) applying a cooling element proximal to the subject's skin in the region where subcutaneous adipose tissue reduction is desired to create a temperature gradient within said region sufficient to selectively disrupt lipid rich cells therein, and, simultaneously therewith maintain the subject's skin at a temperature wherein non lipid rich cells proximate to the cooling element are not disrupted;

10 b) repeating the application of the cooling element to the subject's skin of step (a) a plurality of times until the desired reduction in subcutaneous adipose tissue has been achieved.

103. The method of paragraph 102, wherein the cooling element contacts the subject's skin.

15 104. The method of paragraph 102, wherein the lipid rich cells are cooled to a temperature less than or equal to about 30°C.

105. The method of paragraph 102, wherein the lipid rich cells are reduced in size.

106. The method of paragraph 102, wherein the lipid rich cells are reduced in number.

107. The method of paragraph 102, wherein the subject's skin comprises the epidermis, dermis or a combination thereof.

20 108. The method of paragraph 102, wherein the plurality comprises 15 minute time interval s.

109. The method of paragraph 102, wherein the plurality comprises 30 minute time intervals.

110. The method of paragraph 102, wherein the plurality comprises 60 minute time intervals.

111. The method of paragraph 102, wherein the plurality comprises 12 hour time intervals.

112. The method of paragraph 102, wherein the plurality comprises 24 hour time intervals.

25 113. The method of paragraph 102, wherein the plurality comprises time intervals spanning several days.

114. The method of paragraph 102, wherein the plurality comprises time intervals spanning several weeks.

115. The method of paragraph 102, wherein the cooling element applied to the subject's skin includes a conductive cooling element.

116. The method of paragraph 115, wherein the cooling element is actively cooled.

30 117. The method of paragraph 116, wherein the cooling element includes a thermoelectric cooling element.

118. The method of paragraph 116, wherein the cooling element includes a cooling agent circulating through the cooling element.

119. The method of paragraph 102, wherein the cooling element includes a conductive cooling element.

35 120. The method of paragraph 119, wherein the conductive cooling element includes a circulating cooling agent that contacts the subjects skin.

121. The method of paragraph 102, wherein the cooling element includes an evaporative cooling element.

122. The method of paragraph 102, wherein the cooling clement is maintained at an average temperature between about -15 and 35°C.

40 123. The method of paragraph 122, wherein the cooling element is maintained at an average temperature between about -15 and 30°C.

124. The method of paragraph 122, wherein the cooling element is maintained at an average temperature between about -15 and 25°C.

125. The method of paragraph 122, wherein the cooling element is maintained at an average temperature between about -15 and 20°C.

45 126. The method of paragraph 122, wherein the cooling element is maintained at an average temperature between about -15 and 15°C.

127. The method of paragraph 122, wherein the cooling element is maintained at an average temperature between about -15 and 10°C.

50 128. The method of paragraph 122, wherein the cooling element is maintained at an average temperature between about -15 and 5°C.

129. The method of paragraph 122, wherein the cooling element is maintained at an average temperature between about -10 and 35°C.

130. The method of paragraph 122, wherein the cooling element is maintained at an average temperature between about -10 and 30°C.

55 131. The method of paragraph 122, wherein the cooling element is maintained at an average temperature between about -10 and 25°C.

132. The method of paragraph 122, wherein the cooling element is maintained at an average temperature between about -10 and 20°C.

EP 3 173 042 A1

133. The method of paragraph 122, wherein the cooling element is maintained at an average temperature between about -10 and 15°C.
134. The method of paragraph 122, wherein the cooling element is maintained at an average temperature between about -10 and 10°C.
- 5 135. The method of paragraph 122, wherein the cooling element is maintained at an average temperature between about -10 and 5°C.
136. The method of paragraph 122, wherein the cooling element is maintained at an average temperature between about -5 and 20°C.
- 10 137. The method of paragraph 122, wherein the cooling element is maintained at an average temperature between about -5 and 15°C.
138. The method of paragraph 122, wherein the cooling element is maintained at an average temperature between about -5 and 10°C.
139. The method of paragraph 122, wherein the cooling element is maintained at an average temperature of between about -5 and 5°C.
- 15 140. The method of paragraph 102, wherein the temperature of the subject's skin is provided as feedback to ensure that the temperature therein is not cooled below a predetermined minimum temperature.
141. The method of paragraph 140, wherein the subject's skin comprises the epidermis, dermis or a combination thereof.
142. The method of paragraph 140, wherein the predetermined minimum temperature is about -10°C.
- 20 143. The method of paragraph 140, wherein the predetermined minimum temperature is about -5°C.
144. The method of paragraph 140, wherein the predetermined minimum temperature is about 0°C.
145. The method of paragraph 140, wherein the predetermined minimum temperature is about 5°C.
146. The method of paragraph 140, wherein the predetermined minimum temperature is about 10°C.
- 25 147. The method of paragraph 140, wherein the predetermined minimum temperature is about 15°C.
148. The method of paragraph 140, wherein the predetermined minimum temperature is about 20°C.
149. The method of paragraph 140, wherein the feedback temperature is provided by a temperature measuring mechanism located on or within the subject's skin.
150. The method of paragraph 149, wherein the subject's skin comprises the epidermis, dermis or a combination thereof.
- 30 151. The method of paragraph 102, wherein the temperature of the subject's subcutaneous adipose tissue is provided as feedback to ensure that the temperature in the dermal tissue is not cooled below a predetermined minimum temperature.
152. The method of paragraph 151, wherein the feedback temperature is provided by a temperature measuring mechanism located on a cooling surface of the cooling element.
- 35 153. The method of paragraph 102, wherein in the cooling element has a skin contacting surface.
154. The method of paragraph 102, wherein in the cooling element has a flat surface. The method of paragraph 102, wherein in the cooling element has a contoured surface.
155. The method of paragraph 102, wherein the cooling element is applied to the subject's skin with a pressure that is approximately equal to or greater than the systolic blood pressure in the subject's dermis so as to decrease the blood flow within the dermis.
- 40 156. The method of paragraph 102, wherein the cooling element is applied to the subject's skin with a pressure that is approximately equal to or less than the systolic blood pressure in the subject's dermis so as to decrease the blood flow within the dermis.
157. The method of paragraph 102, wherein the cooling element is applied to the subject's skin with pressure in an amount sufficient to decrease the blood flow within the dermis.
- 45 158. The method of paragraph 102, wherein the cooling element is applied to a fold in the subject's skin.
159. The method of paragraph 158, wherein the fold in the subject's skin is pressured between the cooling element and a second cooling element.
160. The method of paragraph 102, wherein the lipid rich cells are cooled to a temperature between about -10 and 50 37°C.
161. The method of paragraph 161, wherein the lipid rich cells are cooled to a temperature between about -10 and 35°C.
162. The method of paragraph 161, wherein the lipid rich cells are cooled to a temperature between about -10 and 30°C.
- 55 163. The method of paragraph 161, wherein the lipid rich cells are cooled to a temperature between about -10 and 25°C.
164. The method of paragraph 161, wherein the lipid rich cells are cooled to a temperature between about -10 and 20°C.

165. The method of paragraph 161, wherein the lipid rich cells are cooled to a temperature between about -10 and 15°C.

166. The method of paragraph 161, wherein the lipid rich cells are cooled to a temperature between about -10 and 10°C.

5 167. The method of paragraph 161, wherein the lipid rich cells are cooled to a temperature between about -10 and 4°C.

168. The method of paragraph 161, wherein the lipid rich cells are cooled to a temperature between about -4 and 35°C.

169. The method of paragraph 161, wherein the lipid rich cells are cooled to a temperature between about -4 and 30°C.

170. The method of paragraph 161, wherein the lipid rich cells are cooled to a temperature between about -4 and 25°C.

171. The method of paragraph 161, wherein the lipid rich cells are cooled to a temperature between about -4 and 20°C.

10 172. The method of paragraph 161, wherein the lipid rich cells are cooled to a temperature between about -4 and 15°C.

173. The method of paragraph 161, wherein the lipid rich cells are cooled to a temperature between about -4 and 10°C.

174. The method of paragraph 161, wherein the lipid rich cells are cooled to a temperature between about -4 and 4°C.

175. The method of paragraph 161, wherein the lipid rich cells are cooled to a temperature between about -2 and 35°C.

176. The method of paragraph 161, wherein the lipid rich cells are cooled to a temperature between about -2 and 30°C.

15 177. The method of paragraph 161, wherein the lipid rich cells are cooled to a temperature between about -2 and 25°C.

178. The method of paragraph 161, wherein the lipid rich cells are cooled to a temperature between about -2 and 20°C.

179. The method of paragraph 161, wherein the lipid rich cells are cooled to a temperature between about -2 and 15°C.

180. The method of paragraph 161, wherein the lipid rich cells are cooled to a temperature between about -2 and 10°C.

181. The method of paragraph 161, wherein the lipid rich cells are cooled to a temperature between about -2 and 4°C.

20 182. The method of paragraph 161, wherein the lipid rich cells are cooled to a temperature between about 20 and 30°C.

183. The method of paragraph 161, wherein the lipid rich cells are cooled to a temperature between about 20 and 25°C.

184. The method of paragraph 161, wherein the lipid rich cells are cooled to a temperature between about 25 and 30°C.

185. The method of paragraph 102, wherein the lipid rich cells are cooled for a time period between about 10 seconds and 30 minutes.

25 186. The method of paragraph 185, wherein the lipid rich cells are cooled for a time period between about 1 and 5 minutes.

187. The method of paragraph 185, wherein the lipid rich cells are cooled for a time period between about 1 and 15 minutes.

30 188. The method of paragraph 185, wherein the lipid rich cells are cooled for a time period between about 1 and 10 minutes.

189. The method of paragraph 102, wherein the reduction in lipid rich cells results from crystal formation therein.

190. The method of paragraph 189, further comprising obtaining feedback that crystals have formed in the lipid rich cells.

35 191. The method of paragraph 190, wherein the feedback that crystals have formed is provided by at least one of the group consisting of ultrasound imaging, optical measurement, mechanical measurement, and acoustical measurement.

192. The method of paragraph 191, wherein the mechanical measurement is of tensile strength.

193. The method of paragraph 190, wherein the feedback that crystals have formed is provided by a temperature feedback mechanism disposed in subcutaneous adipose tissue.

40 194. The method of paragraph 102, wherein a mechanical motion is provided to the lipid rich cells prior to, simultaneous with, or following application of the cooling element.

195. The method of paragraph 194, wherein the mechanical motion is provided by vibration.

196. The method of paragraph 194, wherein the mechanical motion comprises at least one pulsation.

197. The method of paragraph 194, wherein the mechanical motion is provided by massage.

45 198. The method of paragraph 102, further comprising applying a high-thermal-conductivity material to the subject's skin before applying the cooling element thereto.

199. The method of paragraph 102, wherein the disruption in lipid rich cells results from metabolic changes therein.

50 200. A device for selectively disrupting lipid rich cells in a non-infant human subject by cooling comprising: means for creating a temperature gradient within a local region of the subject's skin to selectively disrupt and thereby reduce lipid rich cells of the region, while, concurrently therewith, maintaining the subject's skin at a temperature whereby non lipid rich cells are not disrupted.

Claims

- 55 1. A cosmetic treatment method for locally reducing adipose tissue at a local region of an abdominal area, a buttock area, an extremity, an arm, a leg, a waist, or a flank of a non-infant subject's body, comprising:

EP 3 173 042 A1

(a) applying a cooling means of a device at a defined area of the subject's skin in a local region where subcutaneous adipose tissue reduction is desired;

(b) controlling the cooling means whereby the cooling means is maintained at an average temperature between about -15°C and +10°C for up to two hours in a manner that selectively disrupts lipid rich cells in the local region, and, simultaneously therewith maintains the subject's skin at a temperature whereby non lipid rich cells proximate to the cooling means and non-lipid rich cells surrounding the subcutaneous fatty tissue are not disrupted, and
(c) modifying a shape of the local region to contour a surface of the local region.

2. The method of claim 1, wherein the surface is contoured within the device.

3. The method of claim 1 or 2, wherein modifying the shape of the local region occurs upon applying the cooling means to the defined area.

4. The method of any one of claims 1-3, wherein the lipid rich cells are cooled to a temperature between about -10 and 10°C, or a temperature between about -10 and 4°C, or a temperature between about -4 and 10°C, or a temperature between about -4 and 4°C, or a temperature between about -2 and 10°C, or a temperature between about -2 and 4°C.

5. The method of any one of claims 1 to 4, further comprising:

controlling a temperature of the cooling means such that the temperature is maintained at an average temperature between about -15 and 5°C, or between about -10 and 10°C, or between about -10 and 5°C, or between about -5 and 10°C, or between about -5 and 5°C.

6. The method of any one of claims 1 to 5, wherein the cooling means is applied to a fold in the subject's skin.

7. The method of any one of claims 1 to 6, wherein the fold in the subject's skin is pressured between the cooling means and a second cooling means.

8. The method of any one of claims 1 to 7, wherein a cooling time period is from 10 seconds to 30 minutes.

9. The method of any one of claims 1 to 8, further comprising the step of: repeating the application of the cooling means to the subject's skin a plurality of times until the desired reduction in subcutaneous adipose tissue has been achieved.

10. The method of claim 9, wherein the plurality comprises 15 minute time intervals, or 30 minute time intervals, or 60 minute time intervals, or 12 hour time intervals, or 24 hour time intervals, or time intervals spanning several days, or time intervals spanning several weeks.

11. The method of any one of claims 1 to 10, further comprising the step of utilizing at least one feedback device for monitoring temperature and/or crystal formation to provide feedback information to control the cooling means.

12. The method of claim 11, wherein a temperature of the subject's skin is provided as feedback by the at least one feedback device to ensure that the temperature therein is not cooled below a predetermined minimum temperature.

13. The method of claim 12, wherein the predetermined minimum temperature is about -10°C, or about -5°C, or about 0°C, or about 5°C, or about 10°C.

14. The method of claim 12 or 13, wherein the at least one feedback device is a temperature measuring mechanism located on or within the subject's skin.

15. The method of any one of claims 12 to 13, wherein the at least one feedback device is a temperature measuring mechanism located on a cooling surface of the cooling means.

16. The method of any one of claims 1 to 15, wherein the cooling means is applied to the subject's skin with a pressure that is approximately equal to or greater than the systolic blood pressure in the subject's dermis so as to decrease the blood flow within the dermis.

17. The method of any one of claims 1 to 15, wherein the cooling means is applied to the subject's skin with a pressure

that is approximately equal to or less than the systolic blood pressure in the subject's dermis so as to decrease the blood flow within the dermis.

5 **18.** The method of any one of claims 1 to 17, wherein the cooling means is applied to the subject's skin with pressure in an amount sufficient to decrease the blood flow within the dermis.

19. The method of any one of claims 1 to 18, wherein a mechanical motion is provided to the lipid rich cells prior to, simultaneous with, or following application of the cooling means.

10 **20.** The method of claim 19, wherein the mechanical motion is provided by vibration, at least one pulsation and/or by massage.

21. A device for selectively disrupting lipid rich cells in a non-infant human subject by cooling comprising:

15 means for creating a temperature gradient within a local region of the subject's skin to selectively disrupt and thereby reduce lipid rich cells of the region, while, concurrently therewith, maintaining the subject's skin at a temperature whereby non lipid rich cells are not disrupted.

20 **22.** Device according to claim 21 for use in the treatment of selectively disrupting lipid rich cells in a non-infant human subject by cooling.

25

30

35

40

45

50

55

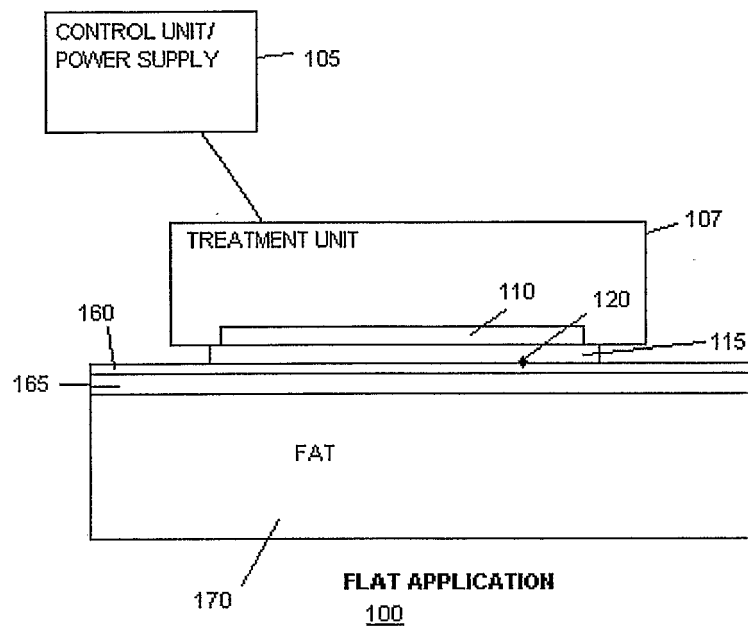
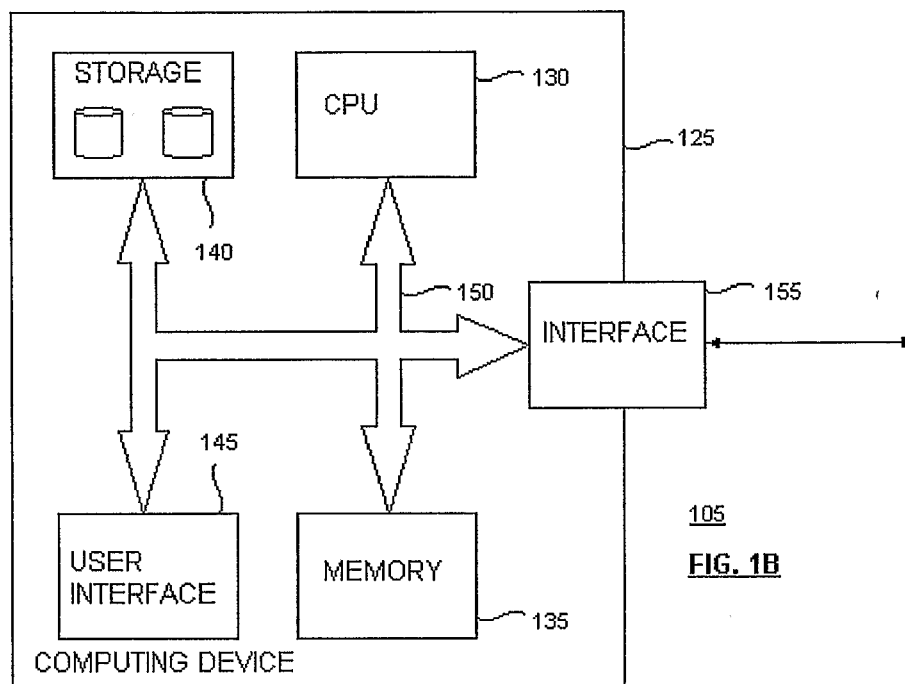
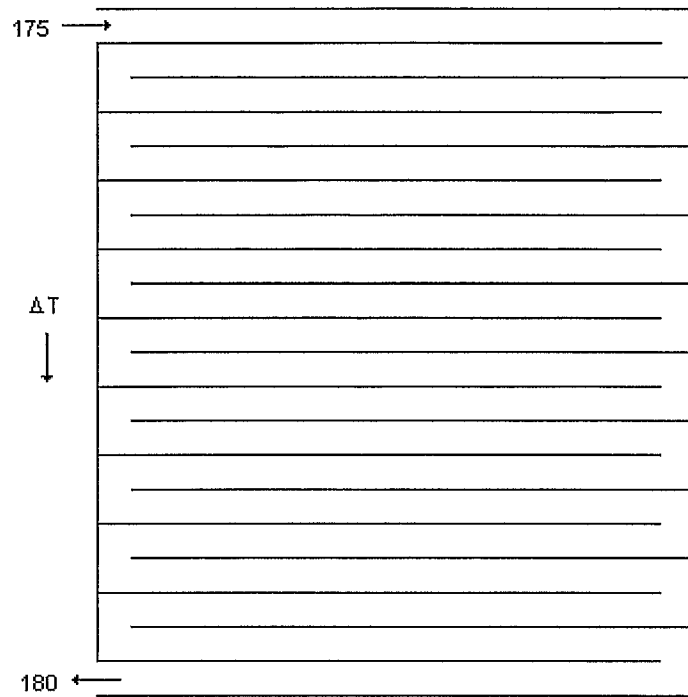


FIG. 1A

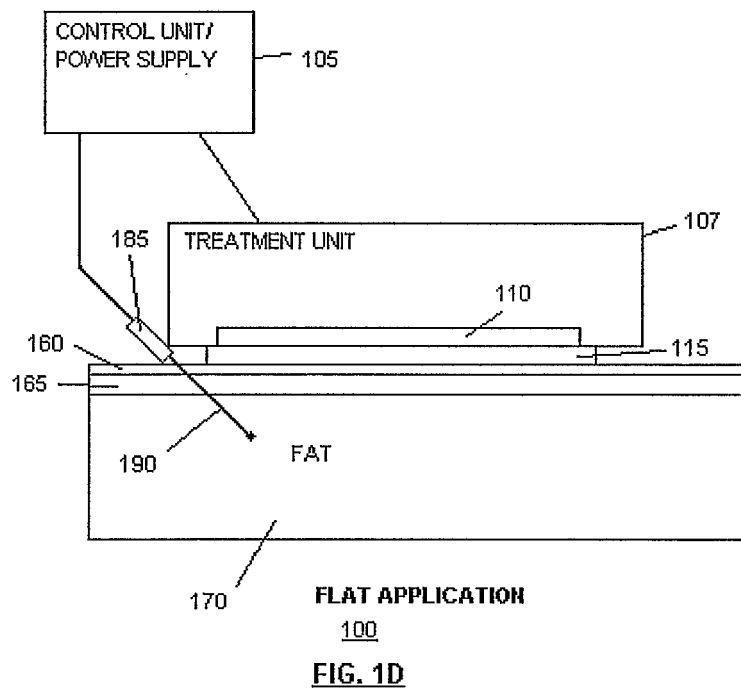


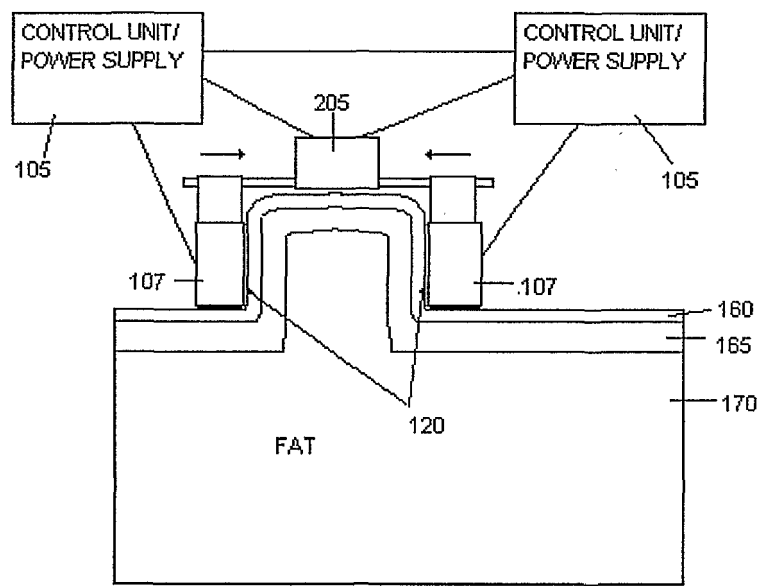
105
FIG. 1B



110

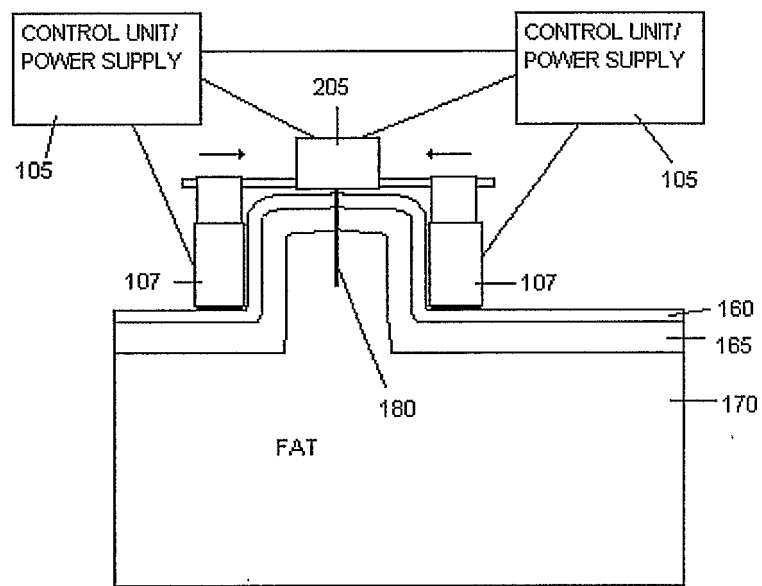
FIG. 1C





FOLDER APPLICATION

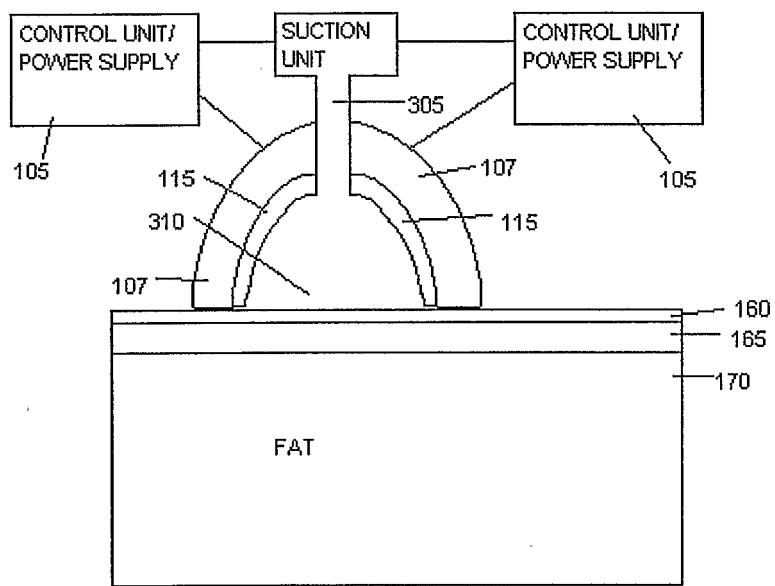
200
FIG. 2A



FOLDER APPLICATION

200

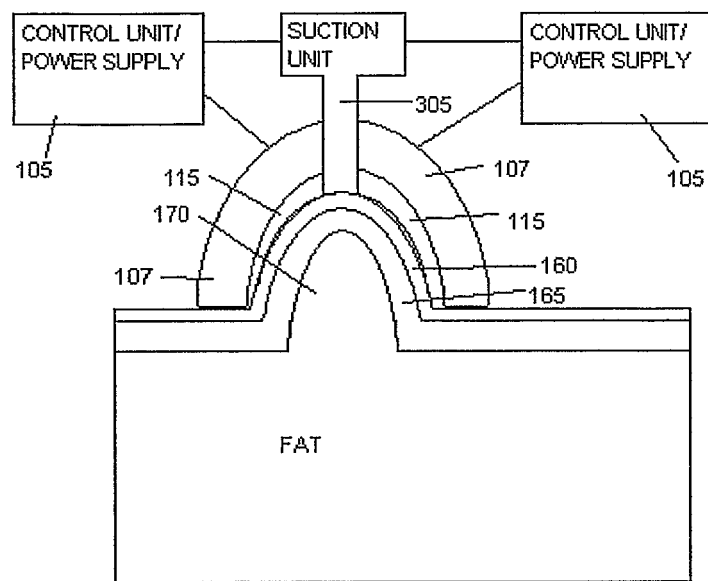
FIG. 2B



SUCTION APPLICATION

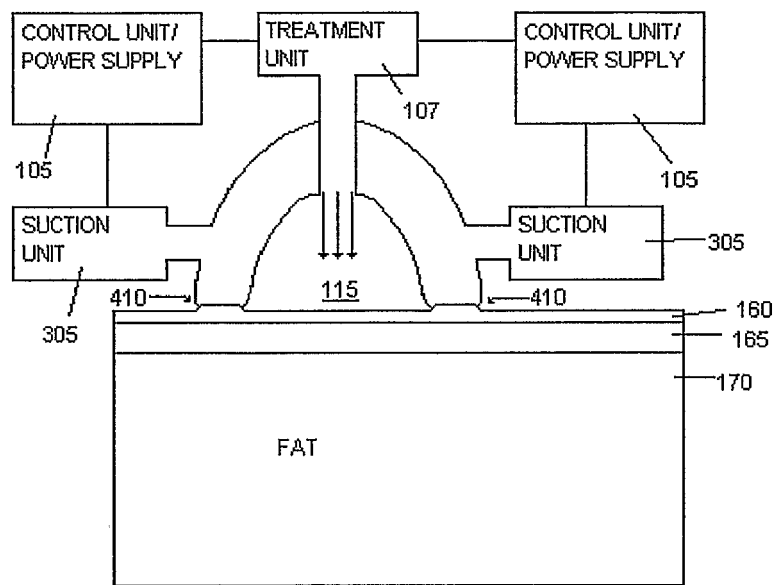
300

FIG. 3A

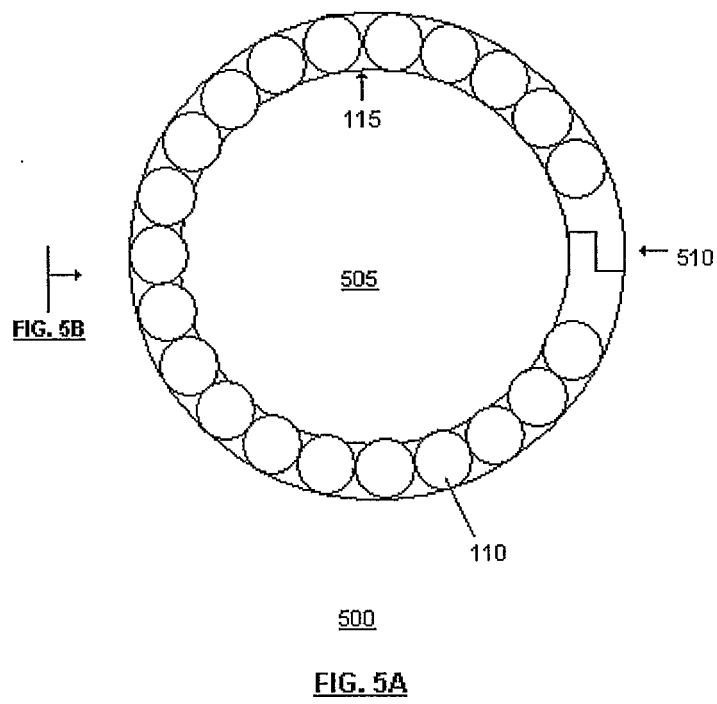


SUCTION APPLICATION
300

FIG. 3B



400
FIG. 4



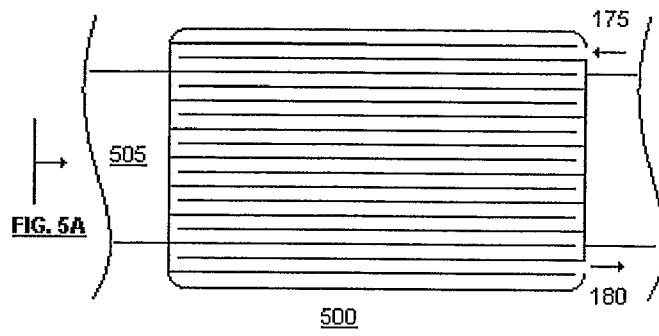


FIG. 5B

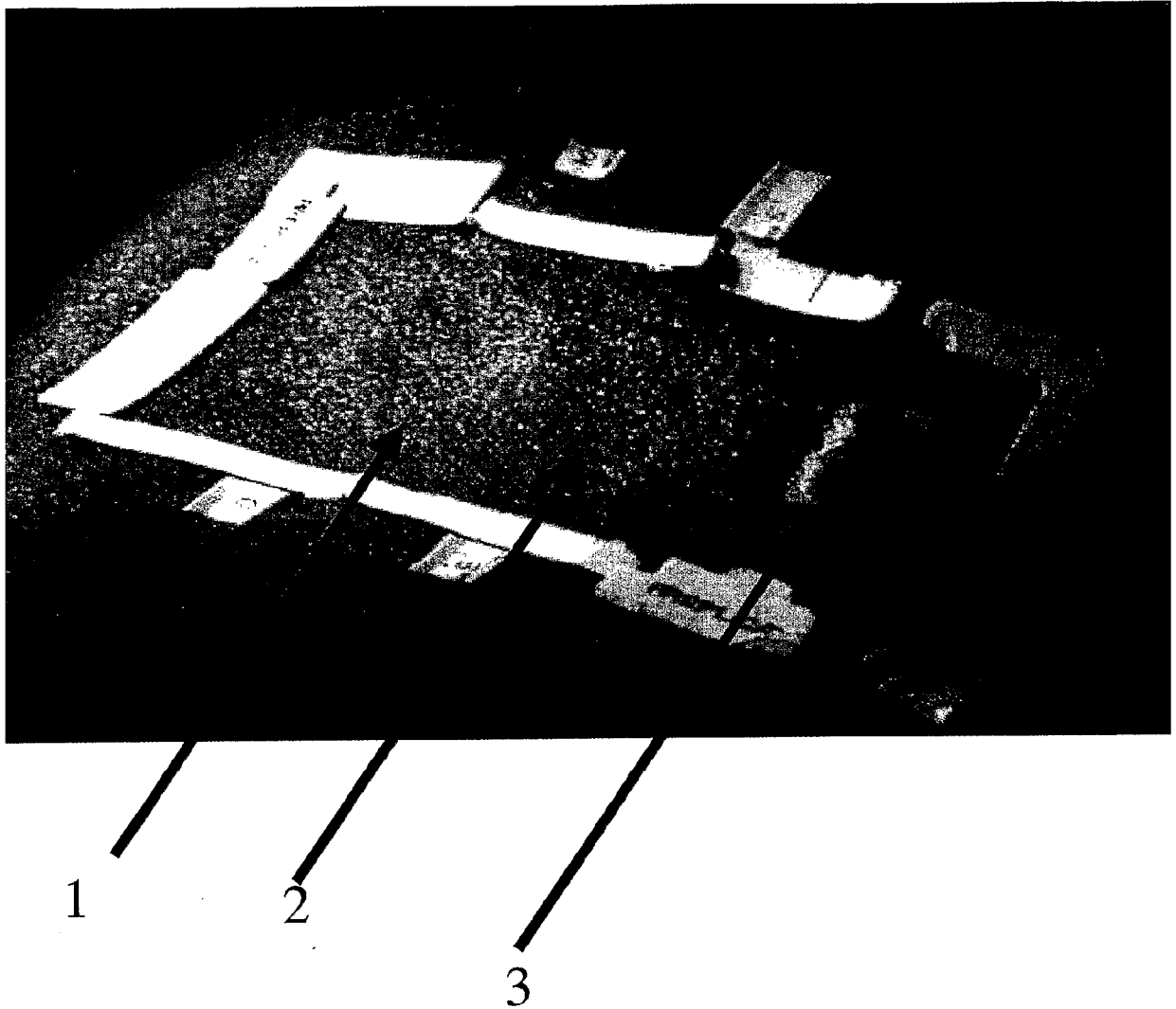


Figure 6

Figure 7a



Figure 7 b



Figure 7

Figure 8a

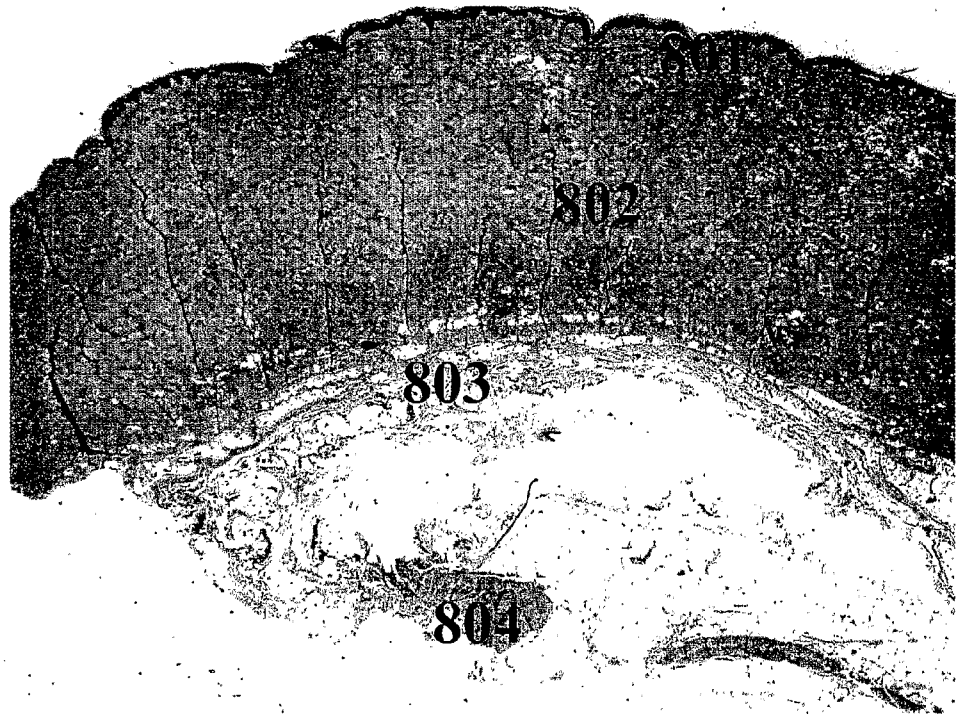


Figure 8 b

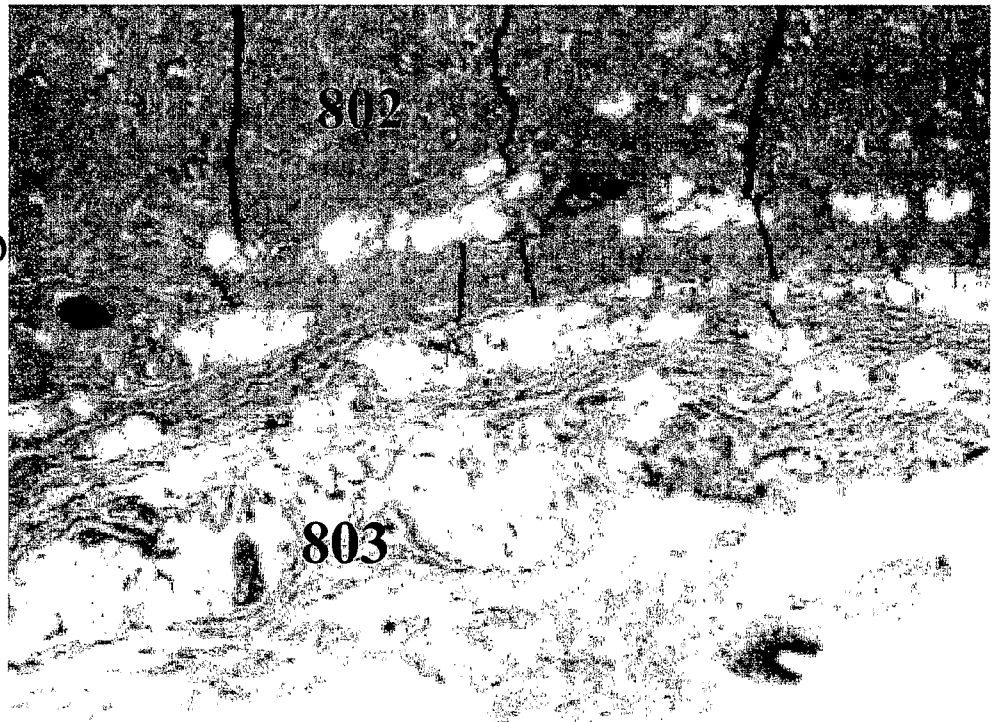


Figure 8

Figure 8c

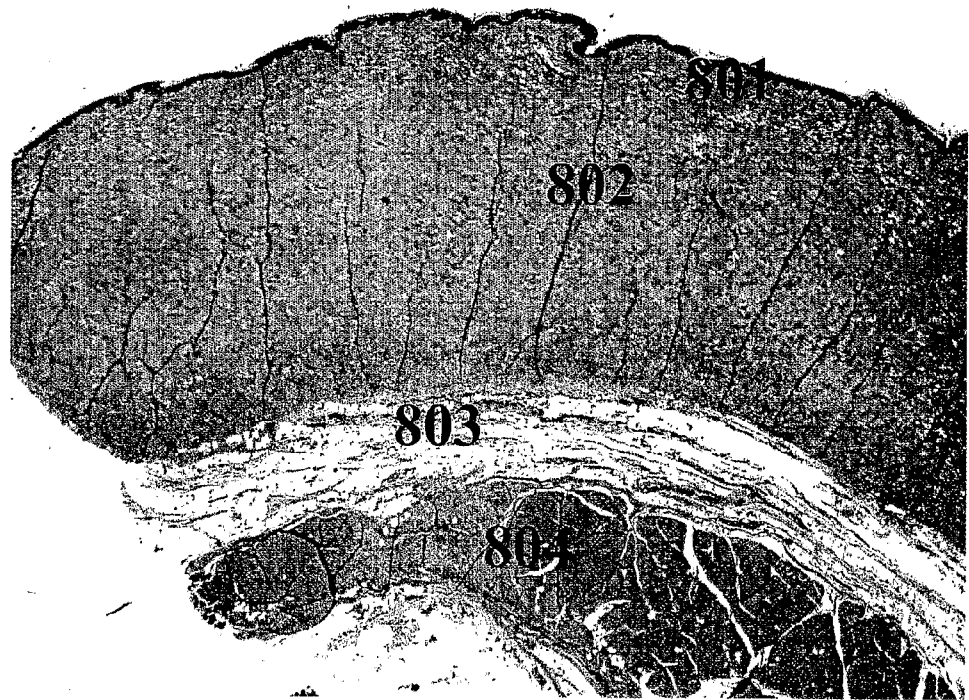


Figure 8 d

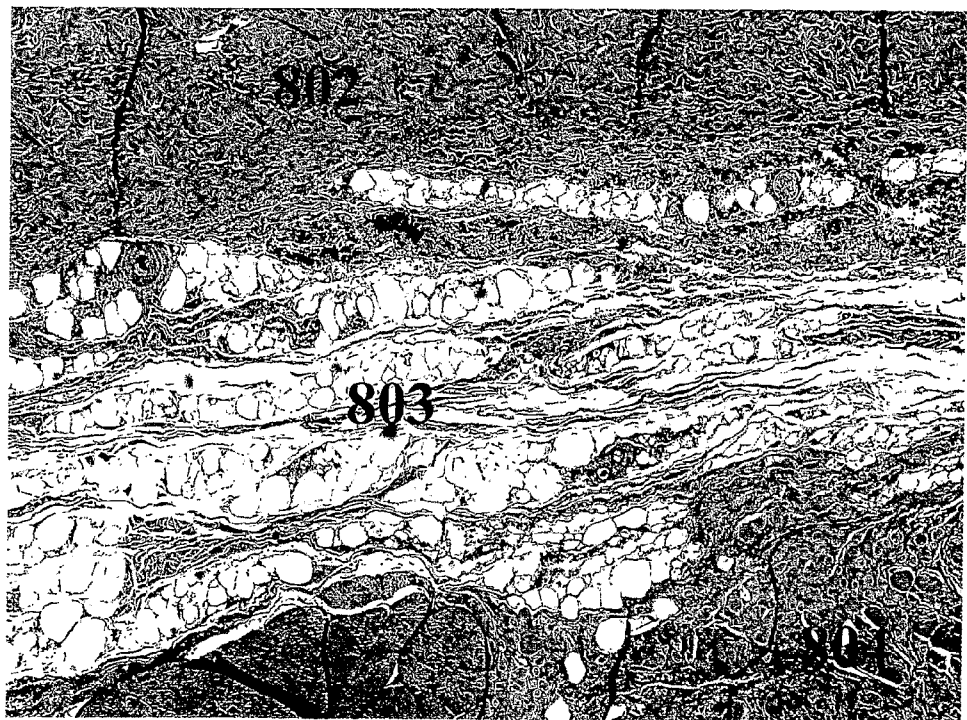


Figure 8

Figure 8 ~~a~~
e

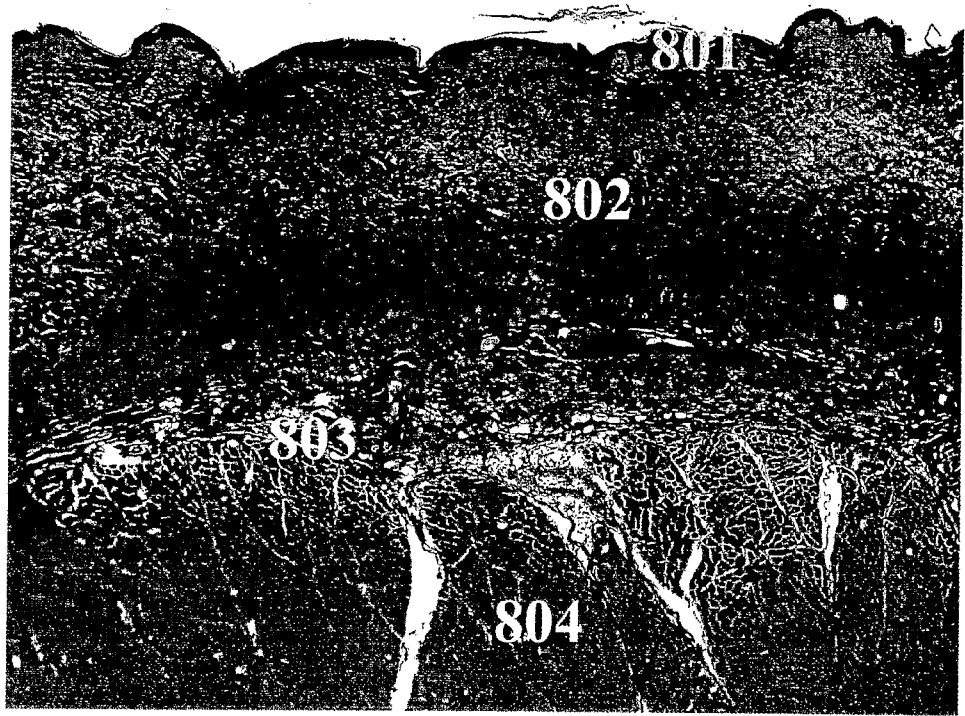


Figure 8 ~~b~~
f

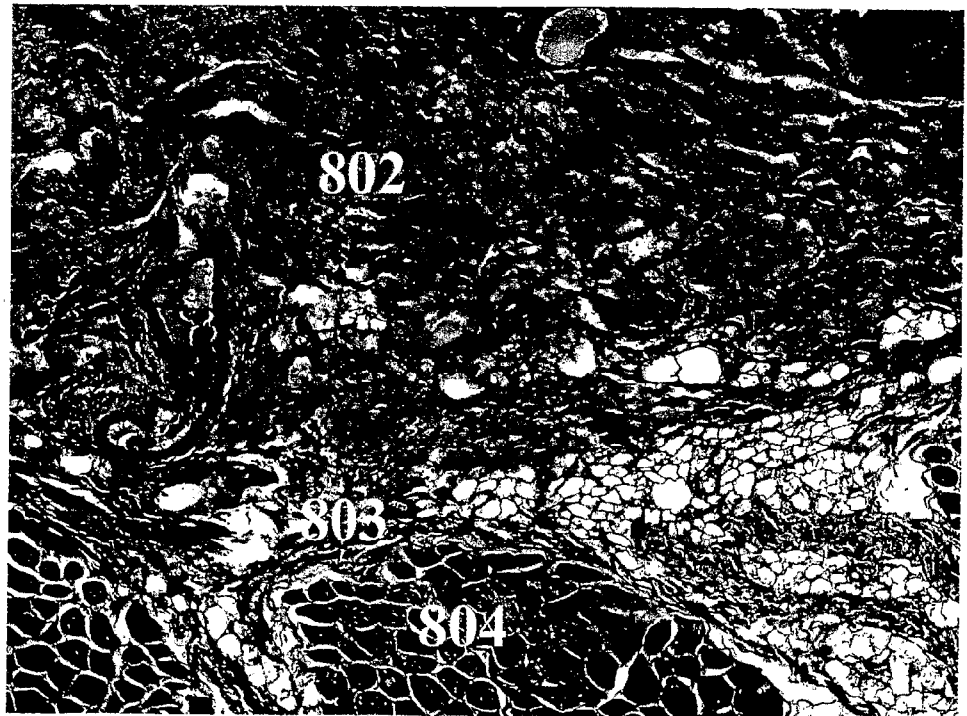


Figure 8

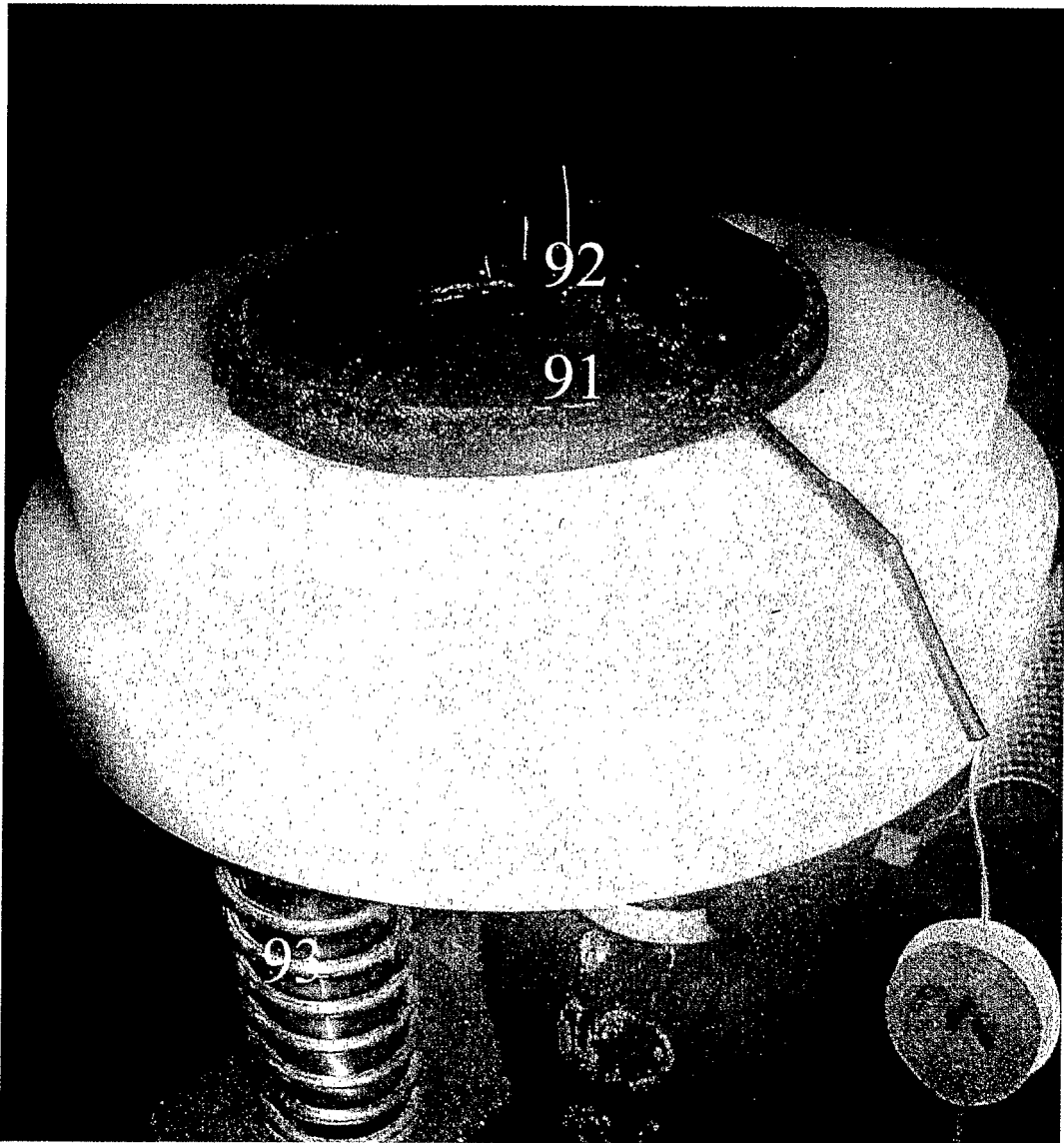


Figure 9

Figure 10 a

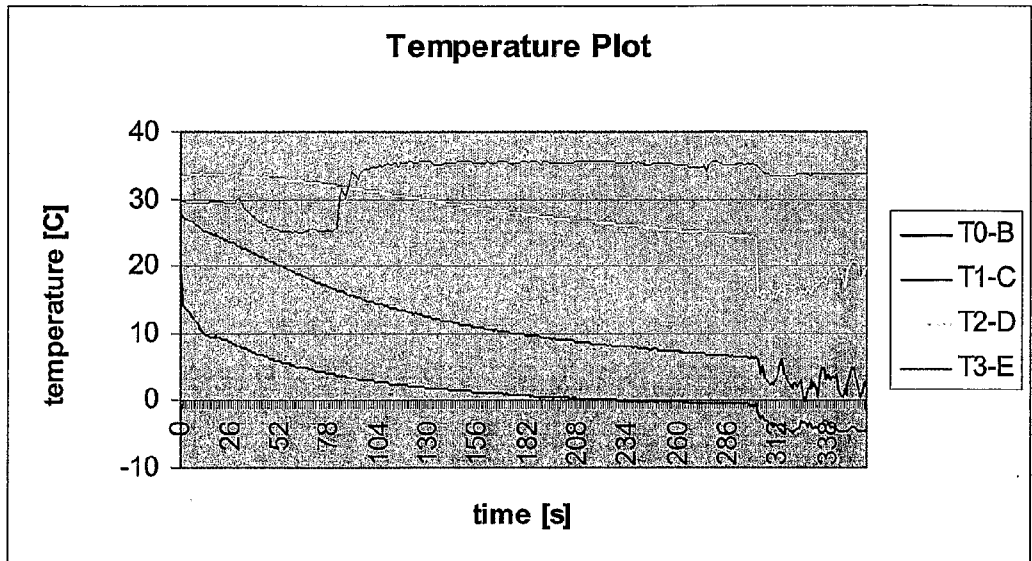


Figure 10 b

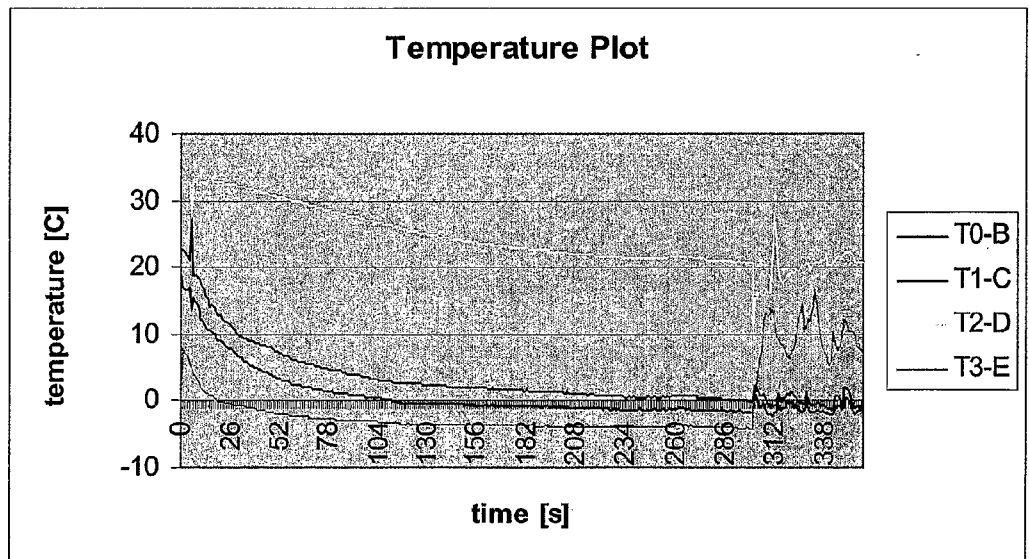


Figure 10

Figure 10 c

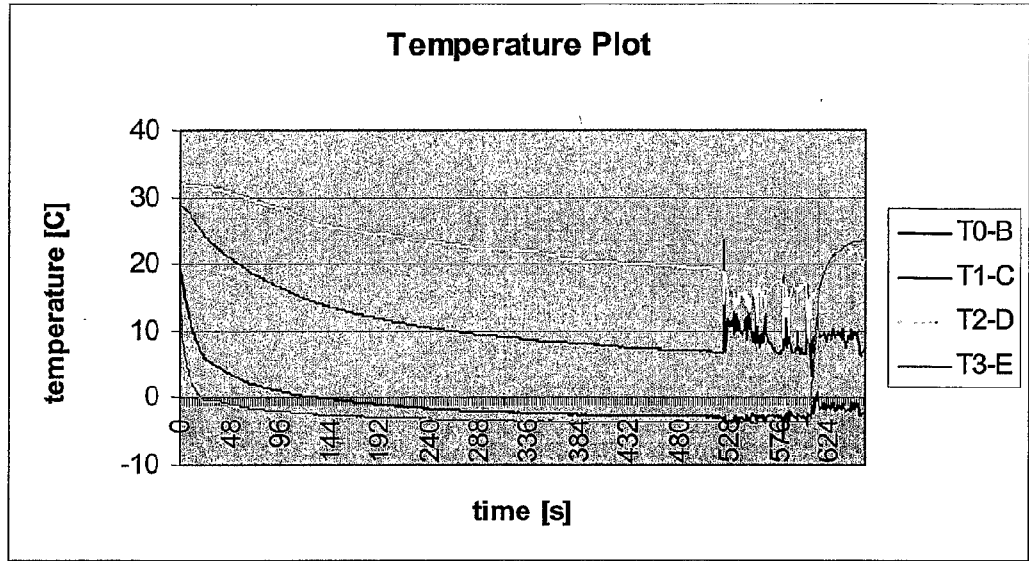


Figure 10 d

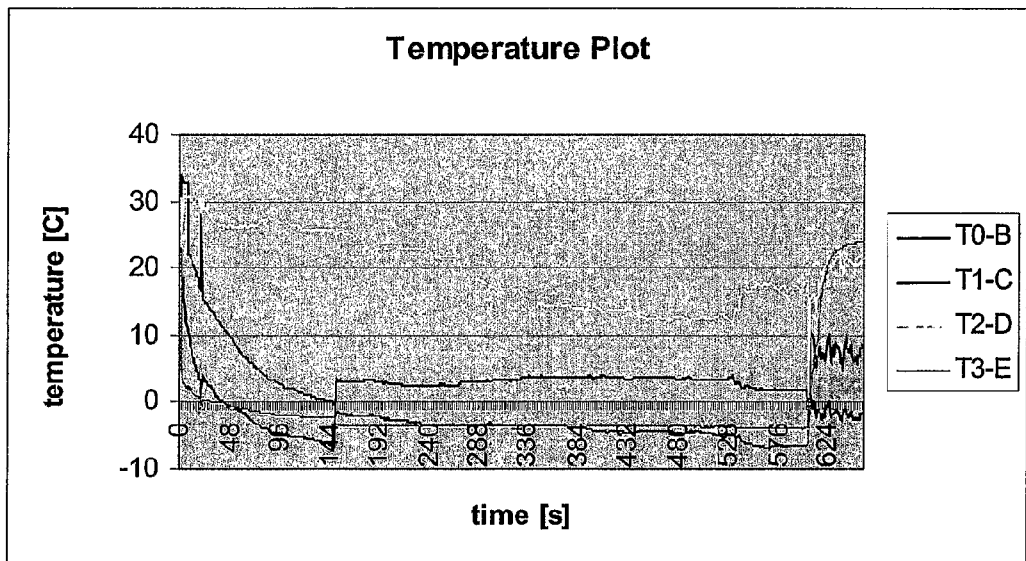


Figure 10

Figure 10 e

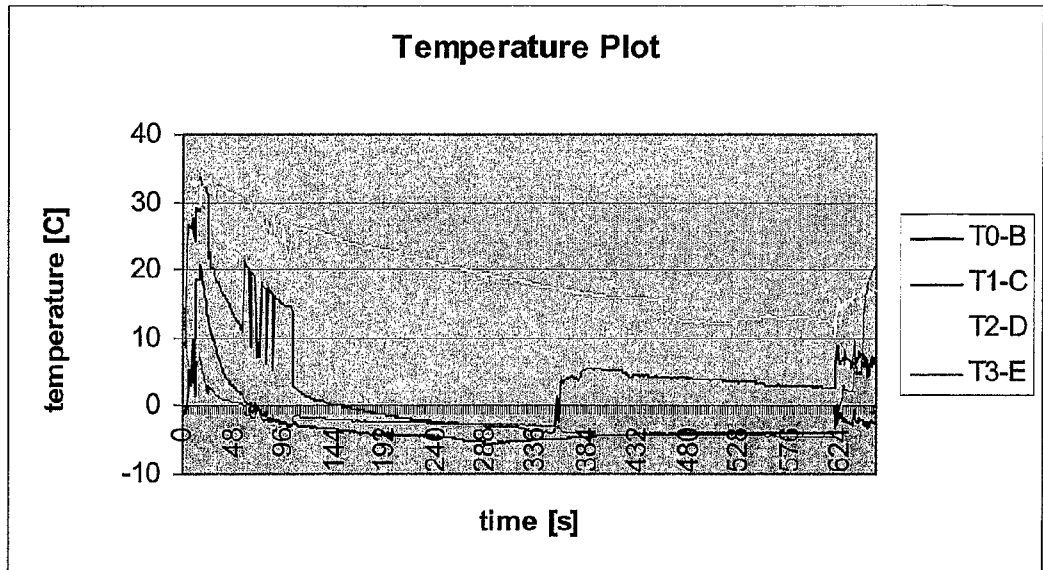


Figure 10 f

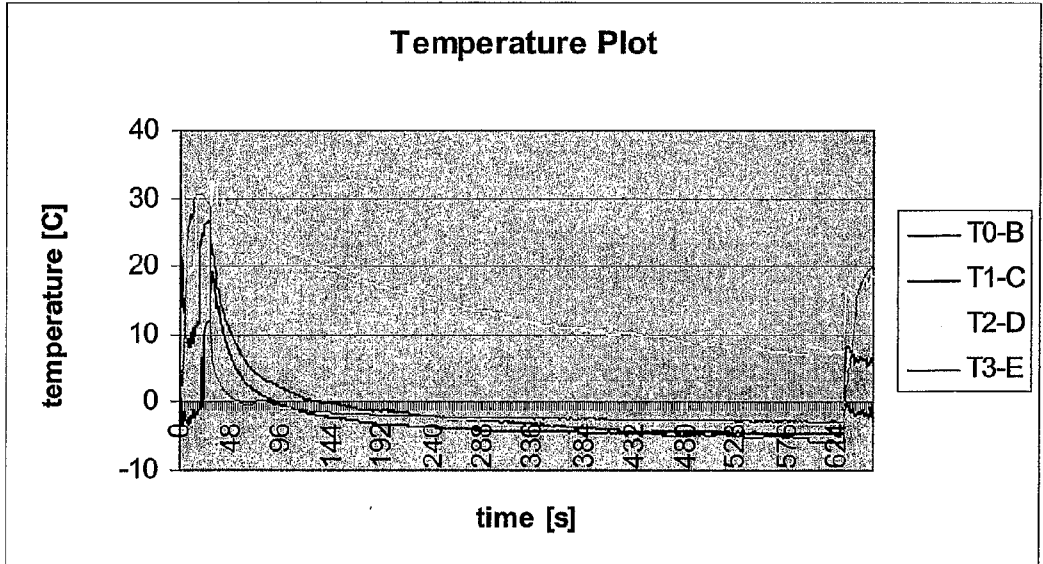


Figure 10

Figure
10 g

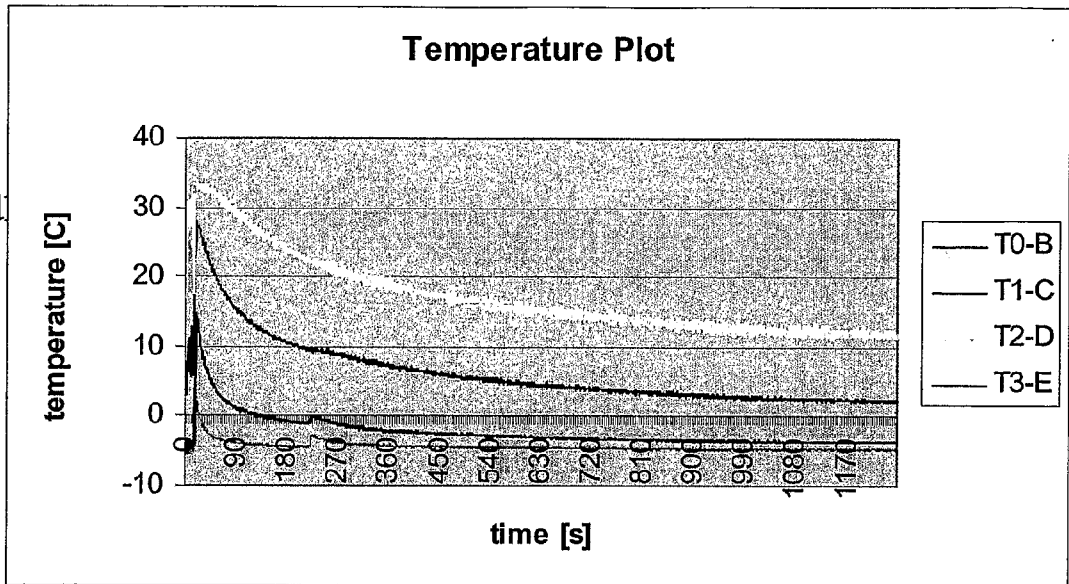


Figure
10 h

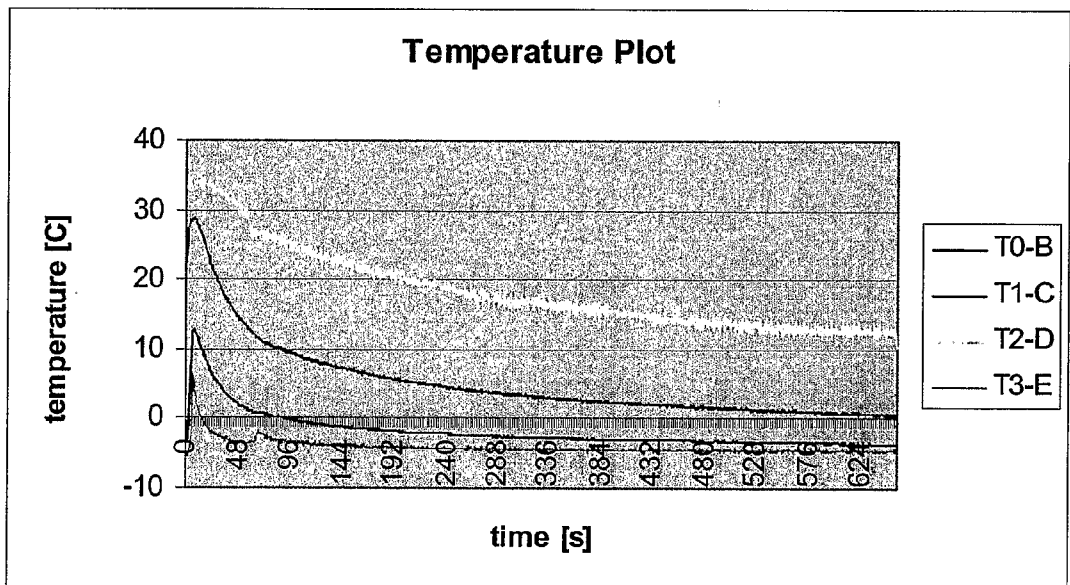


Figure 10

Figure 10 i

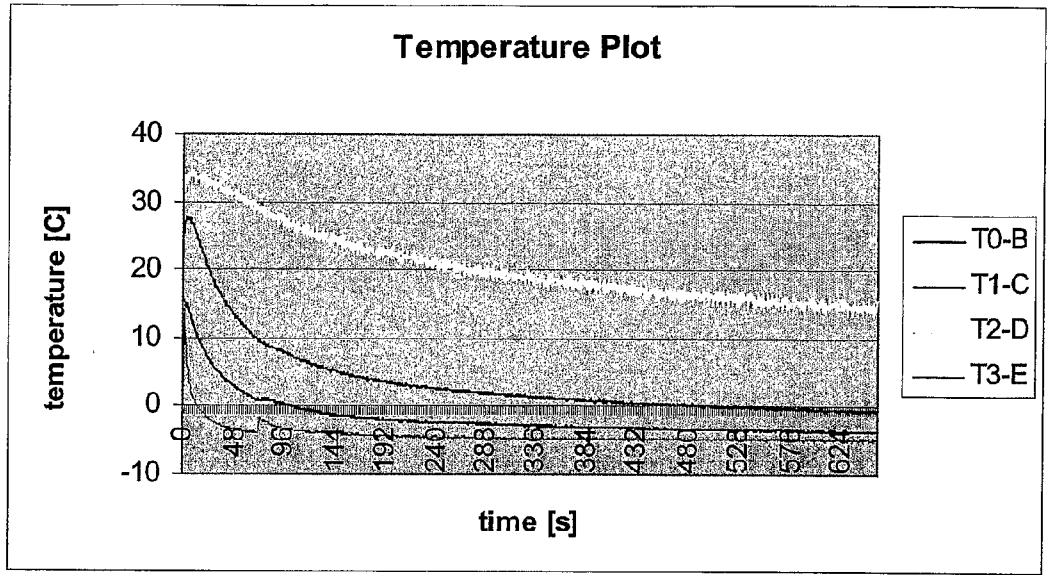


Figure 10 j

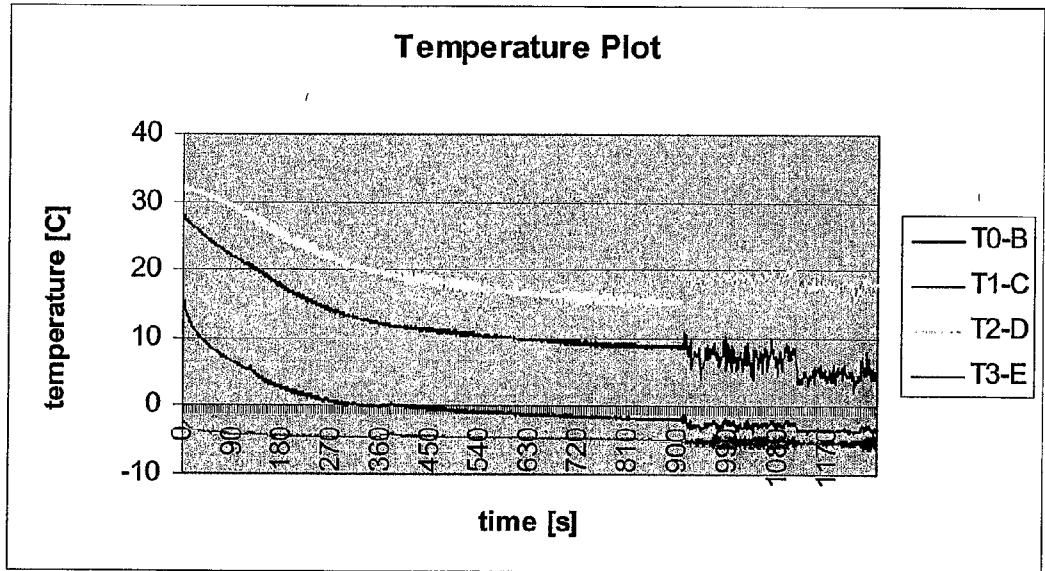


Figure 10

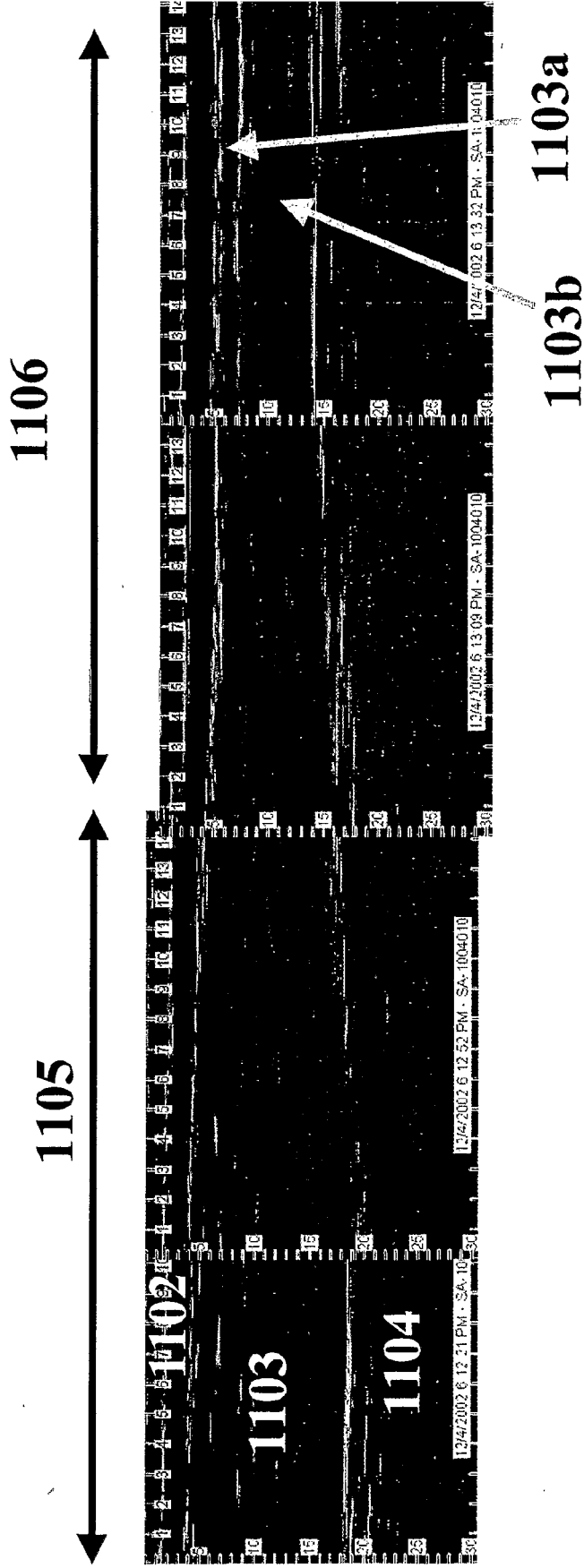


Figure 11

Figure 12 a



Figure 12 b

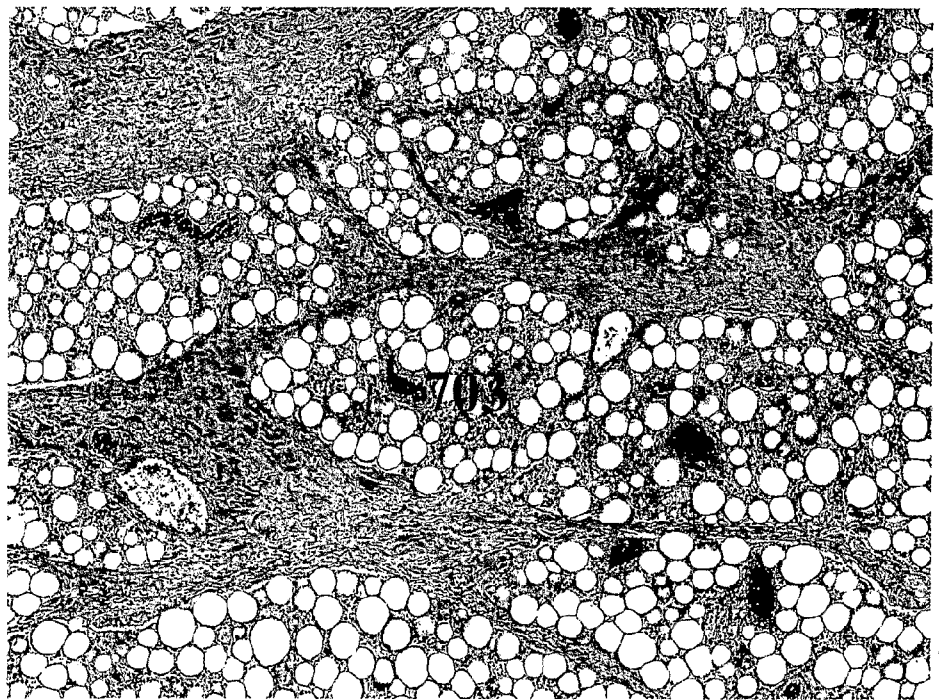


Figure 12

Figure 12 c

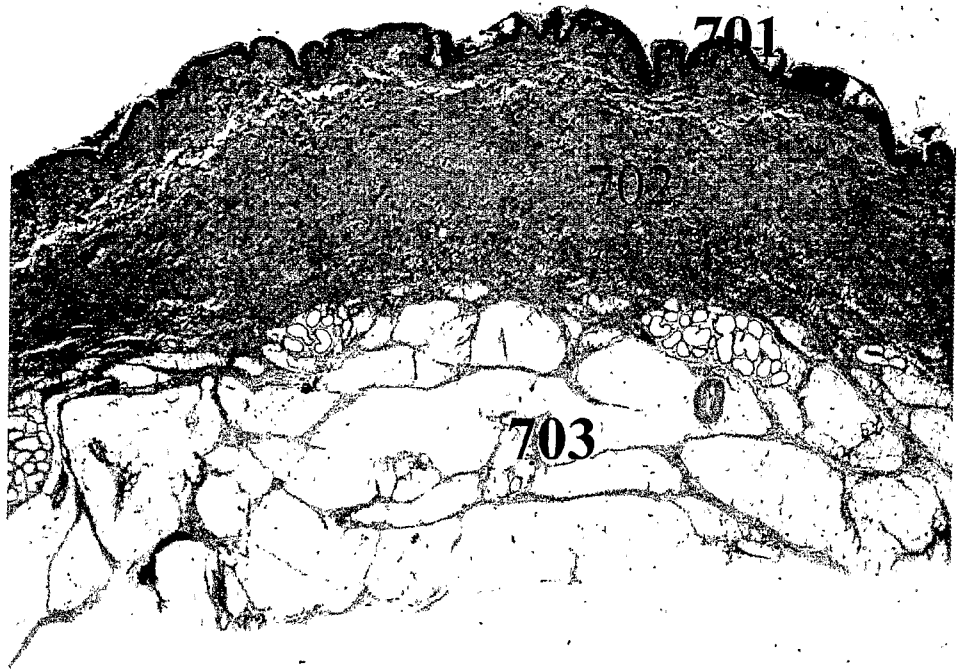


Figure 12 d

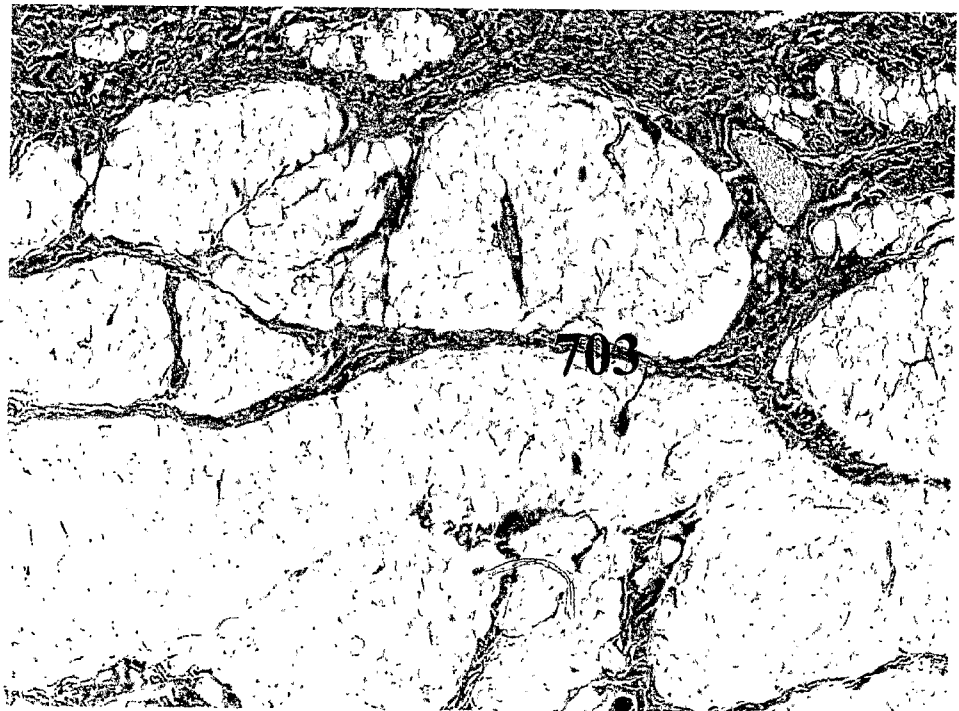


Figure 12

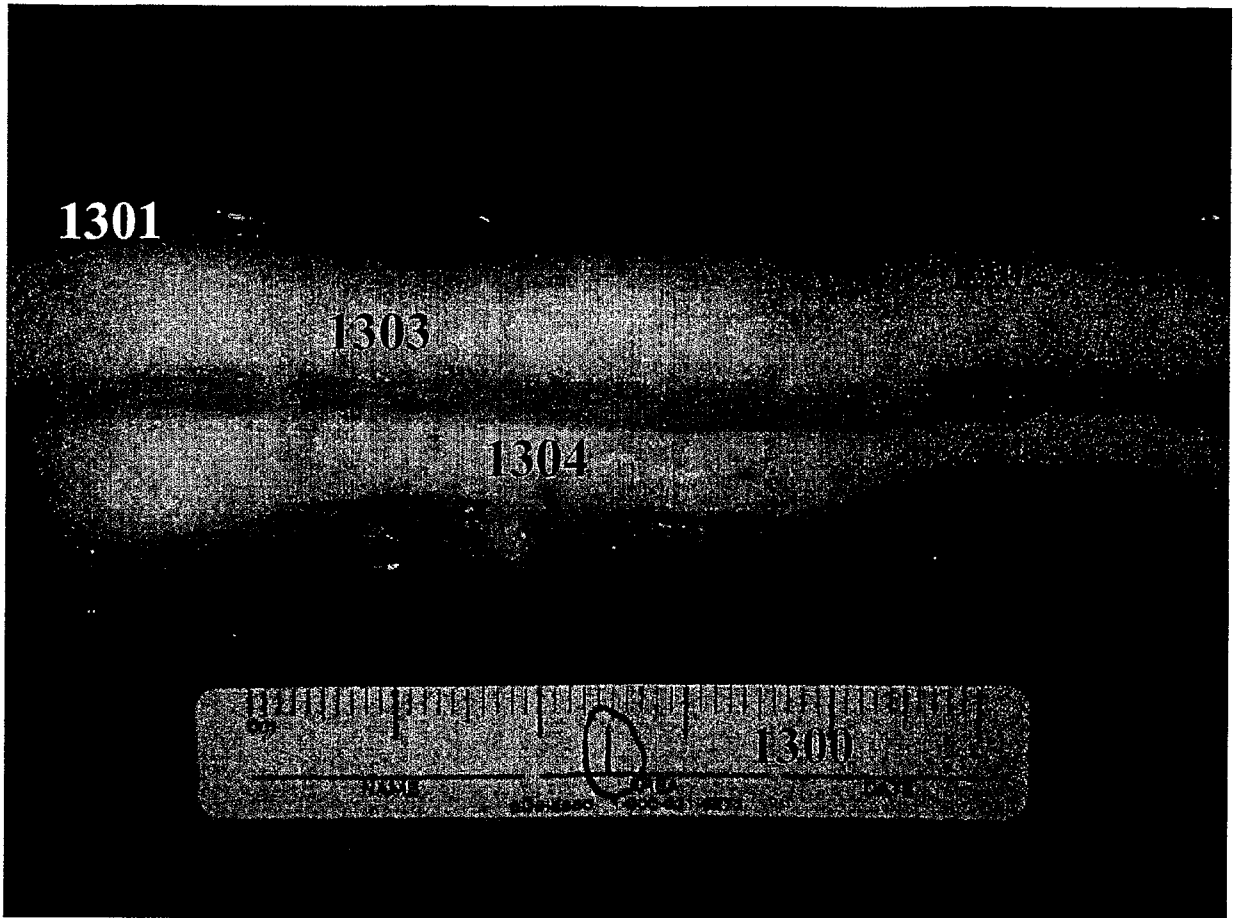


Figure 13 a

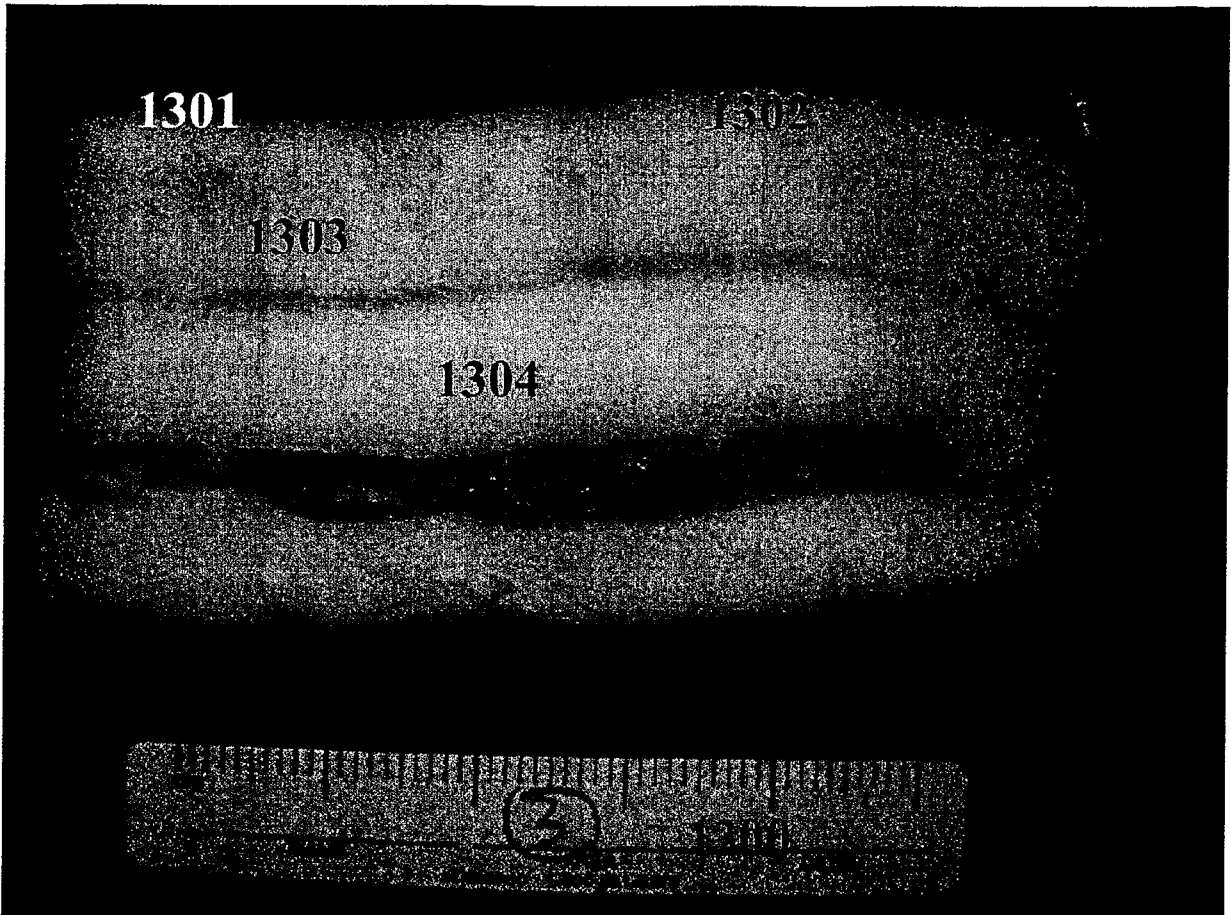


Figure 13 b

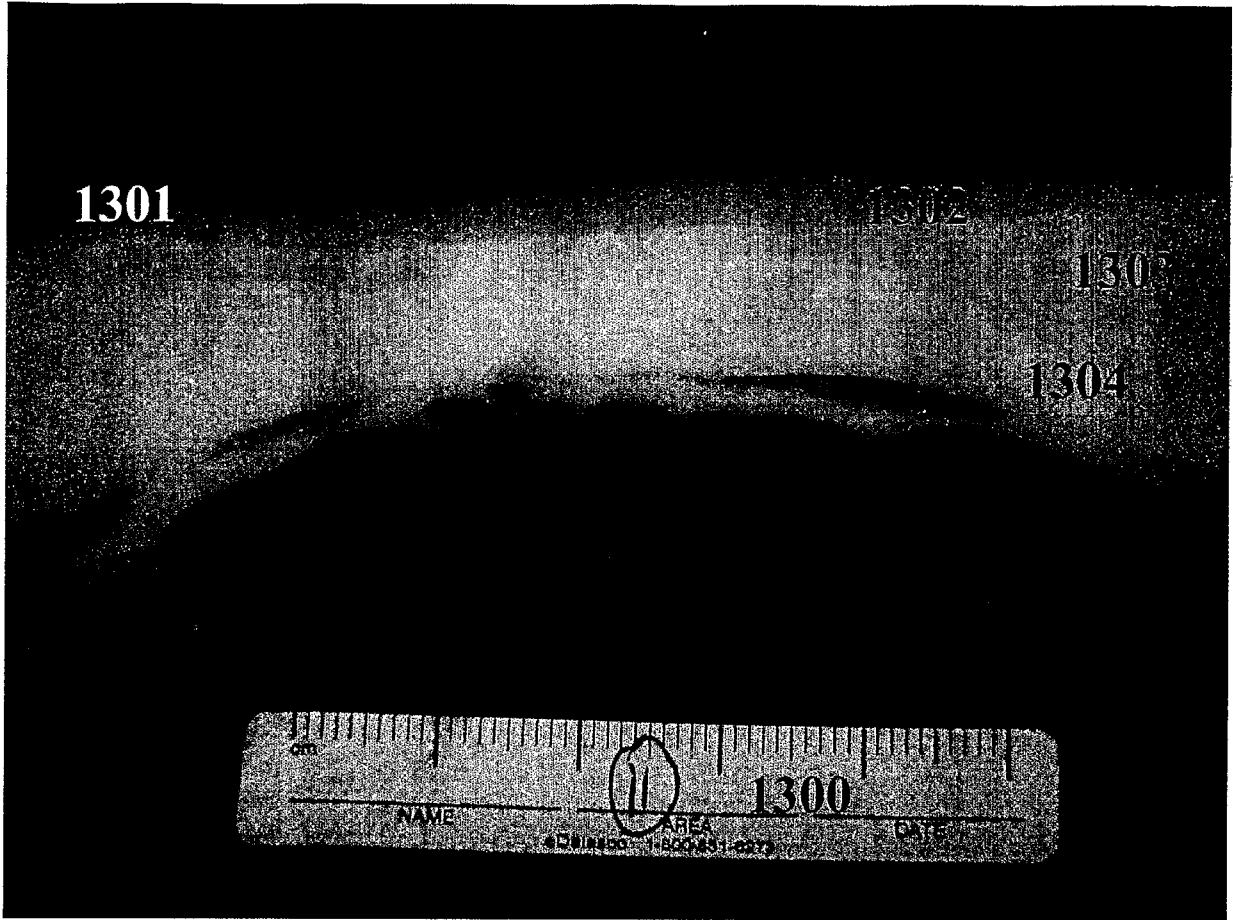


Figure 13 c

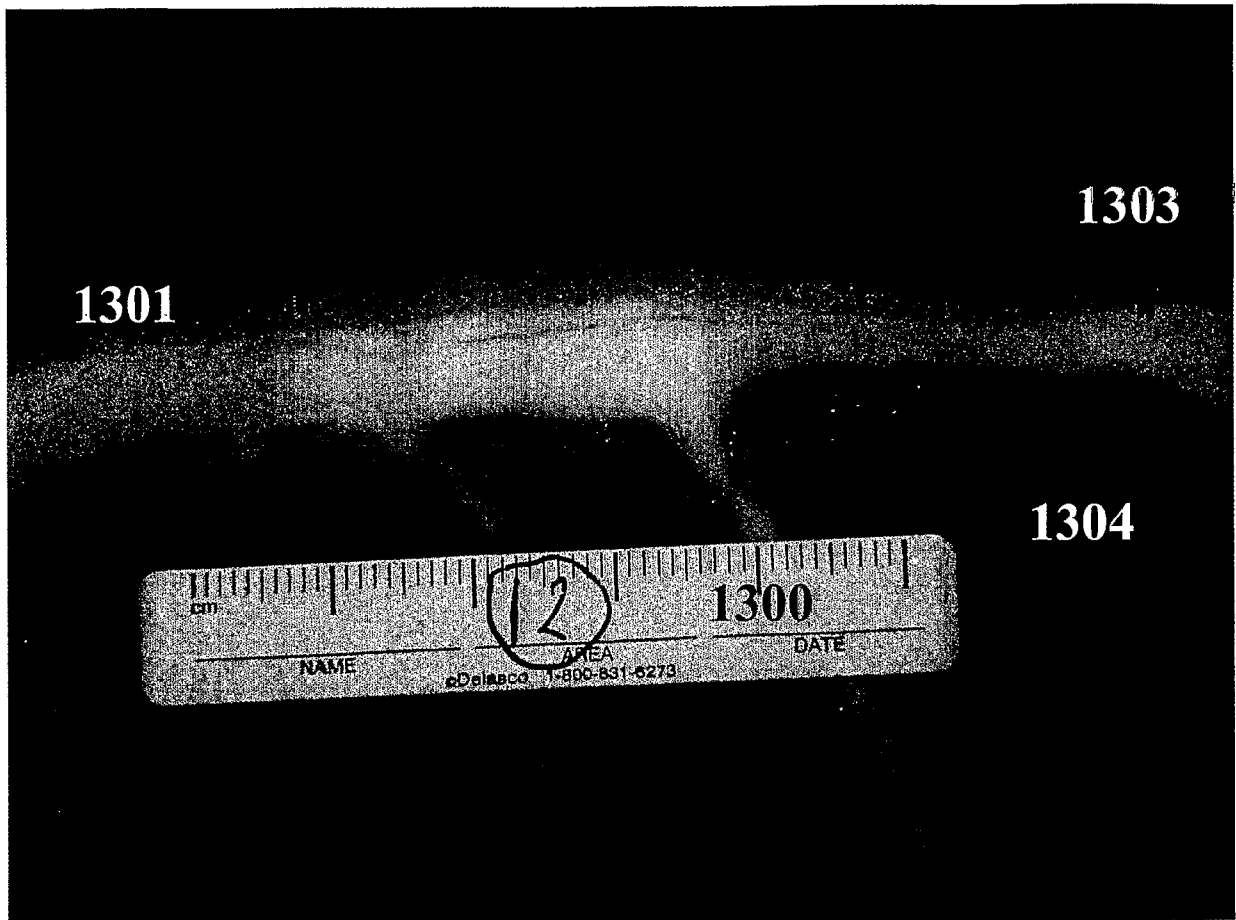


Figure 13 d

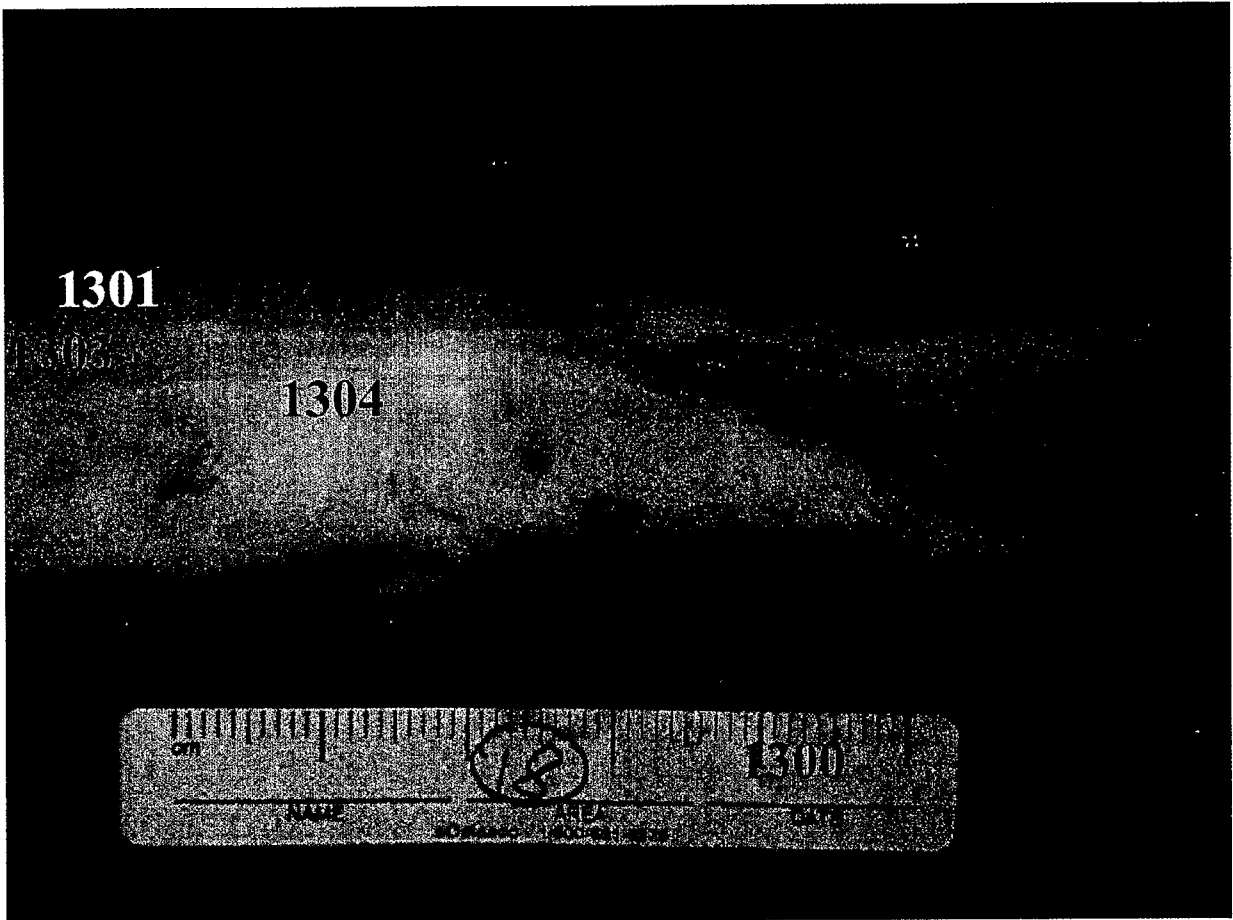


Figure 13 e



EUROPEAN SEARCH REPORT

Application Number
EP 17 15 0653

5

10

15

20

25

30

35

40

45

50

55

DOCUMENTS CONSIDERED TO BE RELEVANT			
Category	Citation of document with indication, where appropriate, of relevant passages	Relevant to claim	CLASSIFICATION OF THE APPLICATION (IPC)
X	US 6 017 337 A (PIRA ET AL) 25 January 2000 (2000-01-25) * column 16, line 27 - line 39; figure 1 *	21,22	INV. A61B18/02
X	GB 2 286 660 A (DAVID * THORNER) 23 August 1995 (1995-08-23) * page 4, paragraph 4; figure 1 *	21,22	ADD. A61B5/00 A61F7/00 A61F7/02 A61F7/10 A61H23/00
X	US 5 339 541 A (OWENS ET AL) 23 August 1994 (1994-08-23) * column 6, line 24 - line 63; figures 12-14 *	21,22	
X	US 4 869 250 A (BITTERLY ET AL) 26 September 1989 (1989-09-26) * column 5, line 5 - line 11; figure 1 *	21,22	
X	US 2001/023364 A1 (AHN MOON-HWI [KR]) 20 September 2001 (2001-09-20) * abstract; figure 1 *	21,22	
A,D	BURGE, S.; DAWBER, R: CRYOBIOLOGY, vol. 27, 1990, pages 153-163, XP002769198, * the whole document *	11-15	TECHNICAL FIELDS SEARCHED (IPC) A61F A61B A61K
X	WO 00/44346 A1 (HASSLER GERARD [US]) 3 August 2000 (2000-08-03) * abstract; figure 1 *	21,22	
A		11-15	
X	WO 96/23447 A1 (GEN HOSPITAL CORP [US]) 8 August 1996 (1996-08-08) * abstract; figure 1 *	21,22	
X	WO 99/49937 A1 (GEN HOSPITAL CORP [US]; PALOMAR MEDICAL TECH INC [US]) 7 October 1999 (1999-10-07) * page 14, line 21 - page 15, line 3 *	21,22	
-/--			
The present search report has been drawn up for all claims			
Place of search The Hague		Date of completion of the search 12 April 2017	Examiner Mayer-Martenson, E
CATEGORY OF CITED DOCUMENTS X : particularly relevant if taken alone Y : particularly relevant if combined with another document of the same category A : technological background O : non-written disclosure P : intermediate document		T : theory or principle underlying the invention E : earlier patent document, but published on, or after the filing date D : document cited in the application L : document cited for other reasons & : member of the same patent family, corresponding document	

EPO FORM 1503 03.82 (P04C01)



EUROPEAN SEARCH REPORT

Application Number
EP 17 15 0653

5

10

15

20

25

30

35

40

45

50

55

DOCUMENTS CONSIDERED TO BE RELEVANT			
Category	Citation of document with indication, where appropriate, of relevant passages	Relevant to claim	CLASSIFICATION OF THE APPLICATION (IPC)
X	WO 01/34048 A1 (PALOMAR MEDICAL TECH INC [US]) 17 May 2001 (2001-05-17) * page 7, line 12 - line 28 * -----	21,22	
			TECHNICAL FIELDS SEARCHED (IPC)
The present search report has been drawn up for all claims			
Place of search The Hague		Date of completion of the search 12 April 2017	Examiner Mayer-Martenson, E
CATEGORY OF CITED DOCUMENTS X : particularly relevant if taken alone Y : particularly relevant if combined with another document of the same category A : technological background O : non-written disclosure P : intermediate document		T : theory or principle underlying the invention E : earlier patent document, but published on, or after the filing date D : document cited in the application L : document cited for other reasons & : member of the same patent family, corresponding document	

EPO FORM 1503 03.02 (P04C01)

ANNEX TO THE EUROPEAN SEARCH REPORT
ON EUROPEAN PATENT APPLICATION NO.

EP 17 15 0653

5 This annex lists the patent family members relating to the patent documents cited in the above-mentioned European search report.
The members are as contained in the European Patent Office EDP file on
The European Patent Office is in no way liable for these particulars which are merely given for the purpose of information.

12-04-2017

Patent document cited in search report	Publication date	Patent family member(s)	Publication date	
US 6017337	A	25-01-2000	AT 234448 T	15-03-2003
			AT 308727 T	15-11-2005
			BE 1010730 A7	01-12-1998
			DE 69719667 D1	17-04-2003
			DE 69719667 T2	18-12-2003
			DE 69734534 D1	08-12-2005
			DE 69734534 T2	10-08-2006
			DK 0840078 T3	30-06-2003
			DK 1239239 T3	20-03-2006
			EP 0840078 A1	06-05-1998
			EP 1239239 A2	11-09-2002
			ES 2195111 T3	01-12-2003
			ES 2254597 T3	16-06-2006
SI 840078 T1	31-08-2003			
SI 1239239 T1	30-04-2006			
US 6017337 A	25-01-2000			

GB 2286660	A	23-08-1995	NONE	

US 5339541	A	23-08-1994	NONE	

US 4869250	A	26-09-1989	AU 5624386 A	24-09-1986
			EP 0216857 A1	08-04-1987
			JP S63500565 A	03-03-1988
			US 4869250 A	26-09-1989
			WO 8605088 A1	12-09-1986

US 2001023364	A1	20-09-2001	KR 20010092033 A	24-10-2001
			US 2001023364 A1	20-09-2001

WO 0044346	A1	03-08-2000	AU 3286299 A	18-08-2000
			WO 0044346 A1	03-08-2000

WO 9623447	A1	08-08-1996	CA 2210720 A1	08-08-1996
			CA 2550682 A1	08-08-1996
			CN 1172420 A	04-02-1998
			DE 69621775 D1	18-07-2002
			DE 69621775 T2	06-02-2003
			DE 69633207 D1	23-09-2004
			DE 69633207 T2	15-09-2005
			DE 69635684 T2	24-08-2006
			EP 0806913 A1	19-11-1997
			EP 1219258 A1	03-07-2002
			EP 1230900 A1	14-08-2002
			EP 1495735 A1	12-01-2005
			ES 2179937 T3	01-02-2003

EPO FORM P0459

For more details about this annex : see Official Journal of the European Patent Office, No. 12/82

55

ANNEX TO THE EUROPEAN SEARCH REPORT
ON EUROPEAN PATENT APPLICATION NO.

EP 17 15 0653

5 This annex lists the patent family members relating to the patent documents cited in the above-mentioned European search report.
The members are as contained in the European Patent Office EDP file on
The European Patent Office is in no way liable for these particulars which are merely given for the purpose of information.

12-04-2017

Patent document cited in search report	Publication date	Patent family member(s)	Publication date
		ES 2227387 T3	01-04-2005
		ES 2255597 T3	01-07-2006
		ES 2526531 T3	13-01-2015
		HK 1048754 A1	29-04-2005
		JP 3819025 B2	06-09-2006
		JP 4117846 B2	16-07-2008
		JP 4159595 B2	01-10-2008
		JP H11501231 A	02-02-1999
		JP 2006051388 A	23-02-2006
		JP 2007252945 A	04-10-2007
		JP 2008132368 A	12-06-2008
		US 5735844 A	07-04-1998
		WO 9623447 A1	08-08-1996

WO 9949937	A1 07-10-1999	AU 3363999 A	18-10-1999
		CA 2326120 A1	07-10-1999
		EP 1066086 A1	10-01-2001
		EP 2263749 A2	22-12-2010
		ES 2403359 T3	17-05-2013
		US 6605080 B1	12-08-2003
		US 2003199859 A1	23-10-2003
		US 2004034341 A1	19-02-2004
		WO 9949937 A1	07-10-1999

WO 0134048	A1 17-05-2001	AT 296062 T	15-06-2005
		DE 60020379 D1	30-06-2005
		DE 60020379 T2	26-01-2006
		EP 1211999 A1	12-06-2002
		EP 1559378 A2	03-08-2005
		ES 2242603 T3	16-11-2005
		HK 1046838 A1	18-11-2005
		US 6517532 B1	11-02-2003
		US 8002768 B1	23-08-2011
		US 2002128635 A1	12-09-2002
		US 2003195494 A1	16-10-2003
		US 2005038418 A1	17-02-2005
		US 2006161143 A1	20-07-2006
		US 2011267830 A1	03-11-2011
		WO 0134048 A1	17-05-2001

EPO FORM P0459

For more details about this annex : see Official Journal of the European Patent Office, No. 12/82

REFERENCES CITED IN THE DESCRIPTION

This list of references cited by the applicant is for the reader's convenience only. It does not form part of the European patent document. Even though great care has been taken in compiling the references, errors or omissions cannot be excluded and the EPO disclaims all liability in this regard.

Patent documents cited in the description

- US 36566202 P [0001]
- US 5143063 A [0009]
- US 5507790 A [0009]
- US 5769879 A [0009]
- WO 0044346 A [0009]

Non-patent literature cited in the description

- **EPSTEIN et al.** *New England J. of Med.*, 1970, vol. 282 (17), 966-67 [0006]
- **DUNCAN et al.** *Arch. Denn.*, 1966, vol. 94, 722-724 [0006]
- **KELLUM et al.** *Arch. Derm.* 1968, vol. 97, 372-380 [0006]
- Diseases of the Corium and Subcutaneous Tissue. **MOSCHELLA, SAMUEL L. ; HURLEY, HARRY J.** *Dermatology*. W.B. Saunders Company, 1985, 1169-1181 [0006]
- **JOHN C MAIZE.** Panniculitis In Cutaneous Pathology. Churchill Livingstone, 1998, 327-344 [0006]
- Disorders of Subcutaneous Fat. **BONDEI, EDWARD E. ; LAZARUS, GERALD S.** *Dermatology in General Medicine*. McGraw-Hill, Inc, 1993, 1333-1334 [0006]
- Adipose Tissue. **RENOLD, ALBERT E. ; CAHILL, JR. ; GEORGE F.** In *Handbook of Physiology*. American Physiology Society, 1965, 170-176 [0007]
- **BURGE, S. ; DAWBER, R.** *Cryobiology*, 1990, vol. 27, 153-163 [0010]
- **MALCOM G. et al.** *Am. J. Clin. Nutr.*, 1989, vol. 50 (2), 288-91 [0039]

专利名称(译)	通过控制冷却选择性破坏脂肪组织的方法和装置		
公开(公告)号	EP3173042A1	公开(公告)日	2017-05-31
申请号	EP2017150653	申请日	2003-03-17
[标]申请(专利权)人(译)	通用医疗公司		
申请(专利权)人(译)	总医院CORPORATION		
当前申请(专利权)人(译)	总医院CORPORATION		
[标]发明人	ANDERSON RICHARD ROX MANSTEIN DIETER		
发明人	ANDERSON, RICHARD ROX MANSTEIN, DIETER		
IPC分类号	A61B18/02 A61B5/00 A61F7/00 A61F7/02 A61F7/10 A61H23/00 C12N5/06 A61H23/02		
CPC分类号	A61B5/415 A61B5/6804 A61B18/02 A61F7/10 A61F2007/0056 A61F2007/0075 A61F2007/0094 A61F2007/0096 A61F2007/029 A61B2018/0237 A61B2018/0262 A61F7/00 A61F2007/0054 A61F2007/0082 A61F2007/0239 A61H23/00		
代理机构(译)	MAIWALD专利ADVOCATE GMBH		
优先权	60/365662 2002-03-15 US		
外部链接	Espacenet		

摘要(译)

本发明涉及通过控制冷却选择性破坏富含脂质的细胞的方法。本发明进一步涉及用于实施通过控制冷却选择性破坏富含脂质的细胞的方法的装置。

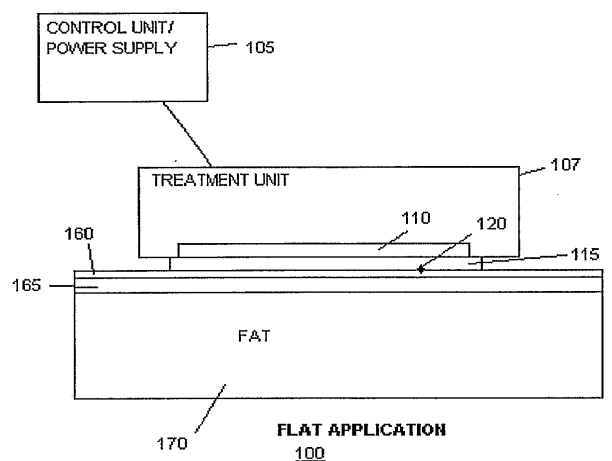


FIG. 1A