



(11) **EP 3 557 479 A1**

(12) **EUROPEAN PATENT APPLICATION**

(43) Date of publication:
23.10.2019 Bulletin 2019/43

(51) Int Cl.:
G06K 9/00 (2006.01) A61B 5/00 (2006.01)

(21) Application number: **19170205.9**

(22) Date of filing: **18.04.2019**

(84) Designated Contracting States:
AL AT BE BG CH CY CZ DE DK EE ES FI FR GB GR HR HU IE IS IT LI LT LU LV MC MK MT NL NO PL PT RO RS SE SI SK SM TR
Designated Extension States:
BA ME
Designated Validation States:
KH MA MD TN

(72) Inventors:
• **GRANATO, Laura McLean, VA Virginia 22101 (US)**
• **KOHONOSKI, Michael M. Leesburg, VA Virginia 20175 (US)**
• **REIGLE, Thomas Woodbridge, VA Virginia 22192 (US)**

(30) Priority: **18.04.2018 US 201815956421**

(74) Representative: **Cooley (UK) LLP Dashwood 69 Old Broad Street London EC2M 1QS (GB)**

(71) Applicant: **Granato Group, Inc. McLean, VA 22101 (US)**

(54) **ADAPTIVE ARTIFICIAL INTELLIGENCE SYSTEM FOR IDENTIFYING BEHAVIORS ASSOCIATED WITH MENTAL ILLNESS AND MODIFYING TREATMENT PLANS BASED ON EMERGENT RECOGNITION OF ABERRANT REACTIONS**

(57) One or more embodiments described herein relate to predicting, using adaptive artificial intelligence techniques, typical and aberrant physiological reactions of a patient to psychiatric counseling.

metric data, and/or modifications to treatment plans can be determined and/or implemented based on emergent recognition of reaction types, such as reclassifying reactions that would previously have been deemed typical as aberrant (or vice versa).

Treatment plans can be determined and calculated based on previously-gathered demographic and/or bio-

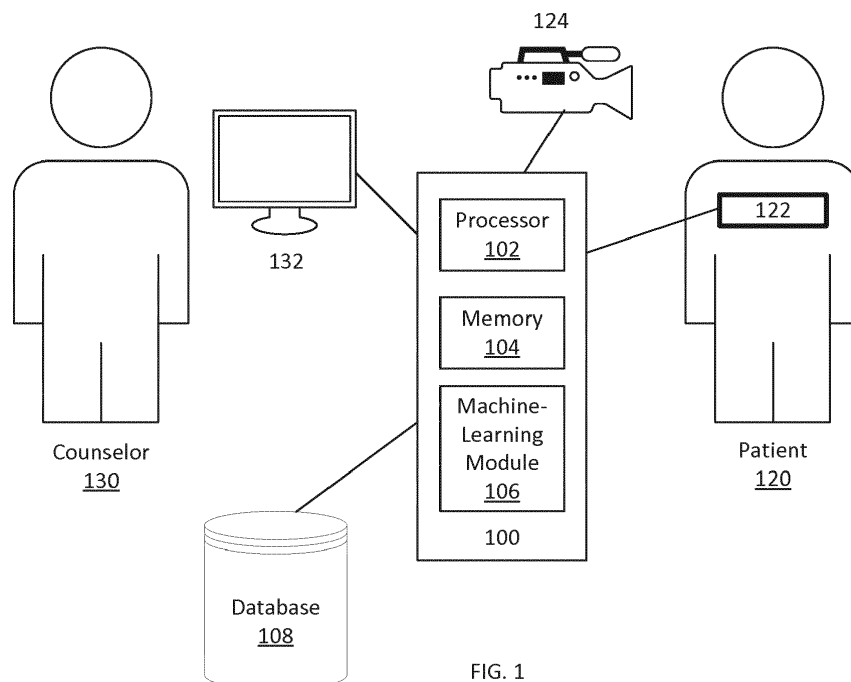


FIG. 1

EP 3 557 479 A1

Description

Cross-Reference to Related Applications

[0001] This application claims priority to pending U.S. Patent Application No. 15/956,421, filed April 18, 2018, the entire disclosure of which is incorporated by reference herein.

Technical Field

[0002] One or more embodiments described herein relate to predicting, using adaptive artificial intelligence techniques, typical and aberrant physiological reactions of a patient to psychiatric counseling. Treatment plans can be determined and calculated based on previously-gathered demographic and/or biometric data, and/or modifications to treatment plans can be determined and/or implemented based on emergent recognition of reaction types, such as reclassifying reactions that would previously have been deemed typical as aberrant (or vice versa).

Background

[0003] It is estimated that 20% of the population of the United States (roughly 60 million people) experience a mental health disorder in any given year. Of these totals, only 45% are treated. This is especially concerning when 70% to 90% of those that are treated see an improvement in their symptoms and quality of life.

[0004] Most treatment options involve multiple sessions with an individual that is specially trained for treating the disorder. Treatment times vary from a few weeks to on-going therapy of indefinite duration.

[0005] The efficacy of the treatment plans depends on a number of factors, such as characteristics of the patient and his or her history and/or psyche, the illness, the counselor, the selection of treatment plan, and the administration of the treatment plan. A shortfall in this process is that any given counselor does not have the ability to know, on a large scale, in near real-time, the efficacy of other treatment plans administered by other counselors to individuals that have the same mental disorder.

[0006] That said, even the best treatment plans have a chance of not working for particular individuals suffering from a mental disorder. An additional challenge is to recognize when a treatment plan is not performing as intended or desired, to identify aberrant behavior and possible events that could cause serious harm to the patient and others, and to intervene to limit this where possible.

[0007] A need exists to regularly provide recommendations for treatment plan(s) or changes to that treatment plan(s) for patients with mental illness that includes a broad analysis of information concerning various treatment efficacies, the patient themselves, their biometrics, the illness type, and the abilities of the counselors that are available to administer the treatment. This will lower

the overall cost and duration of treatment through optimization and therefore allow for greater percentages of the population that have a mental illness to be treated due to lower insurance reimbursement costs.

Summary

[0008] In a first aspect, there is disclosed a system comprising: a plurality of biometric sensors configured to detect a plurality of biometric parameters of a patient; a compute device operably coupled to the plurality of biometric sensors, the compute device configured to perform a machine learning task on data received from the plurality of biometric sensors to quantitatively identify an aberrant reaction of the patient relative to at least one of a typical reaction of the patient or a reaction typical to a cohort to which the patient belongs, the machine learning task configured to quantitatively identify the aberrant reaction of the patient without comparing the plurality of biometric parameters to predefined thresholds; and an output device operably coupled to the compute device, the output device configured to instruct a counselor to modify a treatment plan based on the aberrant reaction being identified.

[0009] In some embodiments, the plurality of biometric sensors includes at least one of a heart rate monitor, a blood pressure monitor, a skin conductivity monitor, a body temperature sensor, a movement detector, or an eye tracking camera. In some embodiments, the aberrant reaction does not correspond to a predefined type of aberrant reaction. In some embodiments, the data received from the plurality of biometric sensors on which the machine learning task is performed and based on which the aberrant reaction is identified does not correspond to a pattern of biometric parameters previously identified as corresponding to an aberrant reaction. In some embodiments, the patient and the plurality of biometric sensors are at a first location and at least one of the compute device or a counselor are at a second location remote from the first location.

[0010] In some embodiments, the compute device is operably coupled to a database containing biometric parameters for a plurality of previous patients and an indication of treatment outcome for each previous patient from the plurality of patients; the compute device is configured to identify the patient as belonging to a cohort that includes a subset of the plurality of previous patients; and the compute device is configured to train the machine learning task using the biometric parameters for the subset of the plurality of previous patients.

[0011] In some embodiments, the plurality of biometric sensors includes a video camera configured to capture at least one of facial expressions or eye movement of the patient. In some embodiments, the output device is configured to warn the counselor of the aberrant reaction.

[0012] In another aspect, there is disclosed a method, comprising: monitoring, during a counseling session, a plurality of biometric parameters of a patient, the plurality

of biometric parameters including at least two of heart rate, blood pressure, skin conductivity, temperature, movement, and eye tracking; identify the patient as being a member of a cohort based on at least one of (i) the plurality of biometric parameters or (ii) demographic information for the patient; identify an aberrant reaction of the patient to the counseling session by applying a machine learning task to values of the plurality of biometric parameters, the aberrant reaction identified when the machine learning task detects a deviation in values of the plurality of biometric parameters from typical values of biometric parameters for at least one of the patient or the cohort, the machine learning task identifying the aberrant reaction without comparing the plurality of biometric parameters to predefined thresholds; and define a modified treatment plan based on the aberrant reaction being identified.

[0013] In some embodiments, the method further comprises: updating the machine learning task with the aberrant reaction such that repeated occurrences of the aberrant reaction will cause the machine learning task to relabel the aberrant reaction as a typical reaction. In some embodiments, the method further comprises monitoring, during the counseling session, a pattern of speech.

[0014] In some embodiments, the counseling session is associated with a treatment plan for post-traumatic stress disorder; the aberrant reaction is associated with anxiety related to a trauma; and the modified treatment plan includes refocusing the counseling away from the trauma to reduce the anxiety.

[0015] In some embodiments, the counseling session is associated with a treatment plan for post-traumatic stress disorder; the aberrant reaction is associated with anxiety related to a trauma; and the modified treatment plan includes focusing on the trauma in connection with prolonged exposure therapy.

[0016] In some embodiments, the counseling session is administered by a first counselor; and the modified treatment plan is administered by a second counselor different from the first counselor.

[0017] In some embodiments, the method further comprises: receiving demographic information for the patient, the patient identified as being a member of the cohort based on the demographic information for the patient, the cohort including a plurality of members; accessing values of biometric parameters for each of the plurality of members of the cohort that was collected during counseling sessions; and training the machine learning task with the values of the biometric parameters for each of the plurality of members of the cohort.

[0018] In some embodiments, the method further comprises: receiving demographic information for the patient, the patient identified as being a member of the cohort based on the demographic information for the patient, the cohort including a plurality of members; accessing values of biometric parameters for each of the plurality of members of the cohort that was collected during coun-

seling sessions; and training the machine learning task with the values of the biometric parameters for each of the plurality of members of the cohort, the machine learning task configured to identify the aberrant reaction based on values of the biometric parameters of the patient being dissimilar from values of the biometric parameters of cohort members having positive treatment outcomes.

[0019] In another aspect, there is provided a non-transitory processor-readable medium storing code representing instructions to be executed by a processor, the code comprising code that, when executed, causes the processor to: receiving demographic information for a patient; identify a cohort having demographic information similar to the patient from a database containing records of biometric data collected during counseling sessions; train a machine learning task with biometric data for the cohort; receive, from sensors measuring the patient, biometric data during a counseling session; identify an aberrant reaction from the patient based on the biometric data and the machine learning task; calculate a modified treatment plan based on the aberrant reaction being identified; and send, to an output device, a warning signal that alerts a counselor to employ the modified treatment plan.

[0020] In another aspect, there is provided a non-transitory processor-readable medium storing code representing instructions to be executed by a processor, the code comprising code that, when executed, causes the processor to: receiving demographic information for a patient; identify a cohort having demographic information similar to the patient from a database containing records of biometric data collected during counseling sessions; train a machine learning task with biometric data for the cohort; receive, from sensors measuring the patient, biometric data during a counseling session; identify an aberrant reaction from the patient based on the biometric data and the machine learning task; and calculate define a modified treatment plan based on the aberrant reaction being identified.

[0021] In some embodiments, the code further comprises code to cause the processor to: send, to an output device, a warning signal that alerts a counselor to employ the modified treatment plan.

[0022] In some embodiments, identifying the aberrant reaction includes identifying a mental health crisis in real-time; calculating the modified treatment plan includes identifying a therapeutic intervention to reduce the impact of the mental health crisis; and the warning signal is sent to the counselor with instructions to employ the modified treatment plan.

[0023] In some embodiments, the database containing records of biometric data collected during counseling sessions includes a success metric; the machine learning task is a supervised machine learning task; and the aberrant reaction is identified based on biometric data from the patient deviating from biometric data from the cohort that is correlated with the success metric.

[0024] In some embodiments, the machine learning

task is an unsupervised machine learning task; and the aberrant reaction is identified based on biometric data from the patient deviating from biometric data from the cohort without associating biometric data from the cohort with a success metric.

[0025] In some embodiments, the counseling session is a first counseling session, the code further comprising code to cause the processor to: store the biometric data received from the sensors during the first counseling session; retrain the machine learning task with the biometric data received from the sensors during the first counseling session; receive from sensors measuring the patient, biometric data during a second counseling session, the biometric data received during the second counseling session consistent with biometric data received during the first counseling session; and identify a typical behavior from the patient based on the biometric data received during the second counseling session and the machine learning task.

Brief Description of Drawings

[0026]

FIG. 1 is a schematic illustration of a system operable to analyzing counseling sessions, detecting aberrant reactions, and/or selecting improved treatment plans, according to an embodiment.

FIG. 2 is an example representing data records that are for a typical patient and that include various demographics related to the patient and the ability to add a weighting factor against each attribute for use in ranking relative importance for specific treatment programs.

FIG. 3 is an example representing data records for each patient, including biometric data collected during each treatment session and time stamped. The frequency of collection will be determined by the biometric that is being collected. Some biometrics could be collected once per minute like blood pressure while others may involve constant, real-time monitoring like facial expressions.

FIG. 4 is an example representing data records that are for a typical counselor and that include various demographics related to the counselor as well as a measure of their success in treating patients. The measure of success can include, for example, time to treat, biometric behavior feedback, and/or overall outcome.

FIG. 5 is an example representing data records for the treatment of various mental illnesses. The treatment plans may be segmented into specific attributes and are unlimited in scope.

FIG. 6 is an example representing data records that track the progress within each treatment plan for a particular patient. Treatment plans can be changed for a patient multiple times while being treated for an illness and the number of sessions conducted are

tracked for each plan. Both the counselor and the patient provide an assessment of each session. This is coupled with biometric behavior feedback, all of which are used to determine if a change in treatment plan is recommended.

FIG. 7 is a flow chart of a method for training and applying a machine learning task, according to an embodiment.

FIG. 8 is a flow chart of a method that includes identifying mental illness treatment plans and counselors for a patient, according to an embodiment.

FIG. 9 illustrates flow chart of a method that includes matching counselors with patients based on Patient Machine Learning Module (PMLM), according to an embodiment.

FIG. 10 is a flow chart of a method that includes changing treatment plans and developing new treatment plans, according to an embodiment.

Detailed Description

[0027] The present disclosure relates to an overall system and method for identifying patient behavior during a counseling session as typical or aberrant. Embodiments described herein are generally described in the context of treatments for patients with various types of mental illness. Embodiments described herein can be applied both the beginning of a treatment plan and for adjusting a treatment plan during its delivery, as well as identifying aberrant biometric behavior of the patient during the treatment process. Demographic, biometric, and time-based information can be collected and processed using a machine learning task, analytics, and/or "big data," to predict the best next steps for a patient with a mental illness that is under treatment by a professional counselor.

[0028] Biometric data that is to be incorporated in a predictive model of patient behavior can be collected, for example, using video streams, voice streams, wearable devices, hand-held devices, smart phones, and other devices/techniques. Biometric data can be captured locally (e.g., via local wired or wireless connections) or transmitted to remote storage and/or compute device via an Internet connection. Biometric and other data described herein can stored either on a local server (collocated and/or remote from a patient and/or counselor) or be stored in the cloud (remote servers hosted on the Internet). Similarly, machine learning tasks described in further detail herein can be performed on a local server (collocated and/or remote from a patient) or in the cloud.

[0029] The demographic information collected for a number of patients can be processed in part and/or in total using a machine learning task to define or create a model of patient behavior (also referred to herein as a predictive model or simply a model). The model can be applied to demographic information for a specific (e.g., new) patient. If the demographic information for the specific patient matches a common pattern seen from other

patients (e.g., of a similar demographic cohort to a new patient), then a new patient's starting treatment plan can be chosen or, if already in treatment, the treatment plan can be modified.

[0030] A machine learning task can process biometric and/or demographic data associated with patients who have undergone counseling sessions to produce a model for a patient. The model can be produced using data from all patients, from a specific patient, and/or from a cohort of demographically (or biometrically) similar patients. As described in further detail herein, biometric data from a target patient - a patient undergoing counseling - can be collected, stored and/or compared to other patients' biometric data (e.g., biometric data for remaining patients for whom biometric data is available, biometric data for that specific patient collected during a previous counseling session, and/or biometric data collected from an appropriate demographic cohort). If the target patient's biometric data is similar to a typical pattern seen from other patients, then the model can indicate that the target patient is having a typical reaction to the counseling session. If, however, the target patient's biometric data is dissimilar from typical patterns seen from other patients, or is similar to an aberrant pattern seen from other patients, then the model can indicate that the target patient is having an aberrant reaction to the counseling session. If an aberrant reaction is detected, a treatment plan for the target patient can be modified based, for example, upon the amount of time that the new patient has been in treatment.

[0031] The types of biometric data collected can include but are not limited to heart rate, blood pressure, skin conductivity, temperature, and movement. Biometric data can further include data obtained by analyzing captured video to determine eye movement, body perspective or language, facial expressions, etc. Additionally, biometric data can include data obtained by analyzing captured audio to determine word selection, sentence structure, pauses in response, length of response, and timeliness of response, etc. Patient demographic data could include but not be limited to age, sex, ethnicity, marital status, geography, income, and previous treatment history. Counselor demographic data could include but not be limited to age, sex, ethnicity, marital status, specialty, and previous history of successfully treating patients. Timing data could include but not be limited to the measurement of the length of time that a feedback session entails, or the amount of time it took a patient to schedule and provide feedback, or the time of the request by a patient for a non-planned treatment session, and timeliness of providing payment for services.

[0032] In some embodiments, demographic and prior treatment data for both patient and counselor are captured and/or stored before the beginning of any new treatment plan. Additional data can be collected during regular, predetermined, and/or ad hoc feedback intervals. Further data could be collected in face-to-face sessions with counselors or using other electronic devices of re-

cording the audio and video treatment feedback or using real-time transmission for either streaming live to local or cloud servers. Counselors would also have the ability, for those sessions in which they were present, to provide input to the model on what they perceive from the patient feedback sessions. In the event that an internet connection is not readily available during the feedback session, a local compute device (e.g., collocated with the patient and/or counselor) can store the information temporarily; such data can be forwarded to an (optionally remote or cloud-based) compute device that can perform machine learning tasks, as described in further detail herein. All of the data collected for a particular patient can be associated with a unique identifier similar but not limited to a userid/password and can be implemented in such a way as to meet all government regulations on privacy and compliance.

[0033] FIG. 1 is a schematic illustration of a system operable for analyzing counseling sessions, detecting aberrant reactions, and/or selecting improved treatment plans, according to an embodiment. A counseling session can involve a patient 120 and a counselor 130. The counseling session can be an in-person or tele-medicine session (e.g., facilitated by audio or video conferencing technology).

[0034] The system includes a compute device 100 that includes a processor 102, a memory 104, and a machine learning module 106. The processor 102 can be for example, a general purpose processor, a Field Programmable Gate Array (FPGA), an Application Specific Integrated Circuit (ASIC), a Digital Signal Processor (DSP), and/or the like. The processor 102 can be configured to retrieve data from and/or write data to memory, e.g., the memory 104, which can be, for example, random access memory (RAM), memory buffers, hard drives, databases, erasable programmable read only memory (EPROMs), electrically erasable programmable read only memory (EEPROMs), read only memory (ROM), flash memory, hard disks, floppy disks, cloud storage, and/or so forth. The compute device 100 can be one or more physical and/or logical devices. Similarly stated, the compute device 100 can be any number of networked processors and memories. The processors and memories can be physically identifiable devices such as servers, and/or virtual devices, such as cloud-implemented services.

[0035] The compute device 100 can be operable to receive data from and/or about the patient 120 and the counselor 130. In particular, the compute device 100 can receive biometric data captured by one or more biometric sensors 122 coupled to the patient. As discussed above, the biometric sensors 122 can include, for example and without limitation, heart rate sensors, blood pressure sensors, skin conductivity sensors, temperature sensors, and/or movement sensors. The compute device 100 can also receive biometric data from a video camera 124 trained on (i.e., detecting or capturing video of) the patient 120. The video camera 120 and/or the compute device 100 can be operable to analyze the video and determine,

for example and without limitation, eye movement, body perspective or language, facial expressions, and so forth of the user. The compute device 100 can also receive demographic data for the patient 120, for example and without limitation, age, ethnicity, sex, veteran status, diagnostic information (such as treatment notes, mental illness diagnoses, distressing events, calming events, etc.) and so forth. The compute device 100 can further receive demographic data for the counselor 130. For example, the patient 120 and/or the counselor 130 can enter data into the compute device 100 via an input device (e.g., keyboard, personal computer, smart phone, etc.).

[0036] The compute device 100 can also be operably coupled to a database 108. The database 108 can store biometric information collected from other patients during other counseling sessions. The database 108 can also include patient identifiers, counselor identifiers, demographic information of patients, demographic information of counselors, indications of success and setbacks, and/or any other suitable information collected over previous counseling sessions. In some embodiments, the database 108 can include data from a large number of previous patients (e.g., 100, 1000, 10000, 100000, etc.) collected over a large number of counseling sessions (e.g., 500, 5000, 50000, 500000, etc.). The database 108 can include, for example, data similar to those example records shown in FIGs. 2-6. The compute device 110 and/or the database can be physically collocated with the counselor 130 and/or the patient 120 or can be remote devices, for example, physically present at one or more datacenters and/or implemented using a third party commercial cloud services provider.

[0037] The compute device 100 can be operably coupled to an output device 132. The output device 132 can be, for example, a monitor configured to present visual information to the counselor 130 before, during, or after a counseling session. In this way, the compute device 100 can present demographic information collected from the patient 120, indications of whether the patient's 120 reactions are typical or aberrant, suggested modifications to the patient's treatment plan, warnings suggesting immediate intervention, and/or so forth to the counselor 130. In other embodiments, the output device 132 can present information to any suitable individual, such as the patient 120, a health care professional other than the counselor 130 overseeing the patient's treatment, a health insurance provider, and/or so forth.

[0038] The machine learning module 106 can be hardware and/or software (e.g., stored in memory 104 and/or executing on processor 102) configured to model patient reactions, predict effective treatments, and perform other functions described in further detail herein.

[0039] FIG. 7 is a flow chart of a method for training and applying a model using machine learning tasks and/or techniques, according to an embodiment. At 710, a machine learning module (e.g., the machine learning module 106) can receive demographic information for a patient, (e.g., the patient 120). The demographic infor-

mation for the patient can be sent from a counselor (e.g., the counselor 130), the patient, and/or retrieved from a database (e.g., the database 108). The demographic information for the patient can be similar to the information shown in FIG. 2.

[0040] At 720, the machine learning module can access records from the database (e.g., the database 108) containing biometric data for multiple patients (e.g., records similar to those shown in FIG. 3, but for multiple patients) and/or demographic data for multiple patients (e.g., records similar to those shown in FIG. 2, but for multiple patients). In some embodiments, the machine learning module can further access database records that include indications of treatment success and/or setbacks, such as records similar to those shown in FIG. 6. In some embodiments, the machine learning module can access biometric data and/or indications of treatment success and/or setbacks for the patient recorded during previous counseling sessions at 720.

[0041] At 730, the machine learning module can select a cohort that is demographically and/or biometrically similar to the patient. For example, the cohort can include patients of similar age (e.g., within 5 years), patients seeking counseling for a similar illness, patients with similar veteran status and/or service records, patients with similar treatment plans, and/or so forth. As another example, in some embodiments, the cohort can be selected based on a comparison of the patient's biometric parameters (e.g., as measured in a previous counseling session) to other patients' biometric parameters. For example, the cohort can include individuals having similar heart rate or other biometric responses to discussing traumatic incidents. In some embodiments, the cohort can only include the patient. Similarly stated, data for the "cohort" can be data associated with the patient that was collected during previous counseling sessions.

[0042] At 740, a machine learning task can define and/or train a model of patient behavior using data from the cohort. In some embodiments, the machine learning task can be supervised and train a model to identify treatment parameters and biometric data associated with successful treatment outcomes. In other embodiments, the machine learning task can be unsupervised (e.g., the model can be trained without indicating success conditions). The model produced by machine learning task can be based on the cohort and/or the illness for which treatment is sought, the demographic data of the individual and the counselor, the type and level of their response to follow-up feedback questioning concerning their treatment, and/or follow-up questioning. The model can therefore be specific to the patient and/or a particular counseling session (e.g., the current counseling session).

[0043] At 750, biometric data for the patient can be received. Biometric data can be received from one or more sensors coupled to or otherwise associated with the patient (e.g., a camera recording the patient and/or a microphone recording the patient). The biometric data can be received during a counseling session. At 760, the

model trained at 740 can process the biometric data received at 750 and identify whether the patient is reacting typically or aberrantly. For example, if the biometric data received at 750 is consistent with positive treatment outcomes, consistent with biometric data previously identified as typical and/or healthy, and/or consistent with common biometric data, the model can identify the biometric data received at 750 as typical. Conversely, if the biometric data received at 750 is inconsistent with positive treatment outcomes, inconsistent with biometric data previously identified as typical and/or healthy, and/or inconsistent with common biometric data, the model can identify the biometric data received at 750 as aberrant.

[0044] In some embodiments, when biometric data is identified as corresponding to (or indicative of) an aberrant reaction, data associated with the aberrant reaction can be stored and studied to, for example, develop a new treatment plan, intervention, and/or modification of a treatment plan. If such a modified treatment plan is successful, for example, if a stimulus similar to that which caused the reaction identified as aberrant is applied according to a modified treatment plan and does not produce an aberrant reaction, the modified treatment plan can be stored into a database of available treatment plans and can be applied to the treatment of other patients.

[0045] Processing the data received at 750 using the model trained at 740 can identify or detect previously undetected, unrecognized, undetectable, and/or unrecognizable aberrant behavior. For example, one known method of detecting aberrant behavior relies on a counselor's subjective impression of the patient's affect. Applying the model at 760 is, in contrast, quantitative rather than qualitative, and does not rely on the counselor's training, experience with the patient, or other subjective analysis. The process of training a model at 740 and applying the model at 760 can quantitatively characterize various patients' reactions using a consistent process even though there is may be no universal threshold for characterizing a reaction as aberrant. Moreover, applying a model defined using a machine learning task goes beyond simply matching observed biometric data to a list of aberrant biometric conditions. Similarly stated, processing the data received at 750 using a model defined or trained using machine learning tasks does not involve simply comparing biometric data to predefined thresholds. Similarly stated, any threshold's or scores for determining whether a reaction is aberrant are not predefined prior to the training a patient-specific model at 740. Instead, the use of a model defined using a machine learning task allows the compute device to produce biometrically-informed evaluations of a patient's reaction to therapy and provide additional insights into patient reactions as compared to simple comparisons of biometric data to thresholds. In this way, the machine learning task can identify aberrant reactions that do not conform to a predefined type of aberrant reaction. Similarly stated the identification of aberrant reactions can be emergent. Furthermore, by modeling multiple biometric parameters in

combination, aberrant behaviors that would appear typical based on one or any biometric parameter viewed in isolation can be identified. For example, on their own, a mildly elevated heart rate, mildly elevated skin conductivity, and mildly evasive eye movements may be typical. In combination and for some cohorts, however, the combination may signal an aberrant reaction.

[0046] At 770, an indication of the typicality and/or aberrancy of the biometric data can be sent to, for example, the counselor (e.g., via the output device 132). In addition or alternatively, the model and/or machine-learning task can suggest treatment modifications at 770. Treatment modifications can include, for example and without limitation, changing the topic of conversation, practicing coping techniques, suggesting more frequent and/or additional counseling sessions, focusing on the topic that triggered the aberrant reaction (e.g., as an element of prolonged exposure therapy), suggesting medication, and so forth. In some instances, the treatment modification suggested at 770 can be the selection of another counselor, for example, a counselor of a different sex, age, experience, etc. Similarly stated, in some embodiments, the machine learning task can be configured to recognize that the patient-counselor pairing could be improved. When the machine learning task suggests the selection of another counselor, the patient can be counseled by a new counselor in a subsequent session.

[0047] In some embodiments, processing biometric data at 760 can identify a mental health crisis in real-time. For example, the model can be operable to identify when a patient undergoing treatment for post-traumatic stress disorder is experiencing flashbacks or panic attacks. The model can similarly be operable to identify a variety of severe reactions that have the potential to negatively affect the treatment. The machine learning task can further be operable to identify an immediate intervention suitable to minimize or reverse the crisis. For example, the machine learning task can compare biometric data associated with the patient undergoing the mental health crisis to data collected from previous patients who may have experienced a similar reaction. The machine learning task can further associate interventions that were previously successful in reducing or reversing the crisis. At 770, a warning alerting the counselor to the crisis and/or suggesting an intervention or treatment to treat the crisis can be sent, for example, during the treatment or after the treatment (e.g., if the crisis is acute). In some embodiments, therefore, the system can provide immediate alerts or warnings to the counselor to minimize the effects of a crisis in real time.

[0048] In some embodiments, providing feedback on patient reactions can be long-term feedback. FIG. 10 is a flow chart of a method that, according to an embodiment, includes changing treatment plans, when warranted, and developing new treatment plans, when appropriate. FIG. 10 illustrates one method for providing feedback on a patient's reaction, at 770 (of Fig. 7). In particular, feedback from the counselor, the patient, and/or analysis

of collected biometric data can be processed by a machine learning task and/or a review board (e.g., a panel of experts set up by a company offering counseling services) to determine whether a change in treatment plan is warranted. If a change in treatment plan is warranted (e.g., the feedback from patient, counselor, and/or biometric data indicates that the current treatment plan is unsuccessful or could be improved), a new treatment plan can be selected. In some embodiments, a database can store multiple treatment plans and/or treatment modifications. The machine learning task can process feedback from the patient, counselor, and/or biometric data and identify and/or recommend a treatment plan. In an instance where a suitable treatment plan or modification is not identified, a new treatment plan can be created (or defined) by the review board and/or the machine learning task. For example, the machine learning task can extrapolate existing treatment plans to new cohorts or patients. The new treatment plan can be assigned at 770.

[0049] At 780, the model can be updated (e.g., retrained) with the biometric data collected at 750 and/or indications of success associated with the counseling session for which biometric data was collected at 750. In this way, biometric data previously identified as aberrant could, in the future, be identified as typical, for example, as additional data is collected that reveals that the biometric data previously identified as aberrant is more common than previously observed, as additional data is collected that reveals that the biometric data previously identified as aberrant is associated with positive treatment outcomes, and/or so forth. For example, training a model at 740 and/or updating a model at 780 can include analyzing biometric data associated with a cohort. If biometric data associated with a behavior that was considered typical is observed occurring less often than was previously expected (e.g., as predicted by the model) and/or if additional data reveals that behaviors previously identified as typical are negatively correlated with successful treatments, such a behavior can be reclassified as aberrant. Conversely, if biometric data associated with a behavior that was previously considered aberrant occurs more frequently than was previously expected (e.g., as predicted by the model) and/or if additional data reveals that behaviors previously identified as aberrant are positively correlated with successful treatments, such a behavior can be reclassified as typical.

[0050] Thus, the machine learning task is adaptive and models defined by the machine learning task can change as additional data associated with a particular patient, the cohort, the disease, and/or any other suitable data is received. With the addition of every new patient into the system, their treatment plan, demographic information, and treatment duration, collected biometrics, and treatment outcome can be added to the database, which the machine learning task can use to train (or retrain) models. In this manner, models produced by the machine learning task become more accurate with each additional patient and associated element of data that is added.

[0051] With the addition of every new counselor into the system, their demographic information, and treatment duration, and treatment outcome can be added to the database and can be used by the machine learning task to train (or retrain) models of patient behavior. In this manner, models produced by the machine learning task become more accurate with each additional counselor and associated element of data that is added.

[0052] The machine learning task can further provide predictions and/or recommendations relating to new patients, existing patients, counselors, and business operation. For patients, these could be but are not limited to the continued treatment under a current plan, treatment moving forward with a new or modified plan, or possibly to request immediate intervention with the patient by either a counselor or law enforcement to ensure the patient's safety.

[0053] A predictive model of patient behavior is operable to classify monitored biometric data as either typical or aberrant for a particular patient, cohort of patient, and/or condition. Whether a particular set of biometric data received during a counseling session is classified as typical or aberrant is not predetermined before the model is trained, before a particular patient begins treatment, and/or before a particular counseling session. Similarly stated, according to some embodiments, the machine learning task does not apply a fixed formula or thresholds to biometric data to determine whether a behavior is typical or aberrant. When a particular biometric behavior is seen with a high degree of frequency, it can be assigned a "typical" classification for that cohort. When a recorded biometric has never been seen before for that patient cohort, it can be classified as aberrant and triaged for possible action as part of the treatment plan. This action may occur as a part of immediate treatment changes or for out-of-treatment actions with family, medical professional or legal authorities. It would be a typical action for the learning system to move some behaviors originally classified as aberrant to typical if their frequency of occurrence warrants.

[0054] The predictive machine learning task could be run (e.g., training and/or retraining a model) at specific times, at specific intervals, or be triggered by any number of events that change or add data concerning anything about a patient or the counselor.

[0055] Many types of machine learning tasks can be used in this application, however, some are more suited to generate models for predicting user behavior than other machine learning tasks. The solution may entail one or more models to provide the level of predictive accuracy and prescriptive solutions that are desired. For those biometric factors that are known non-standard behaviors, a supervised model could be used where it could be easily trained to recognize those behaviors. A more difficult problem to solve is to find those hidden behaviors that are unknown today and would involve more of an unsupervised model to explore the data looking for relevant clusters. The clustering may be accomplished through

one or several algorithms. For instance, a K-means clustering analysis would fit well for discerning relationships between a specific patient and all patient groups. This would lead to identifying effective treatment relationships that would not otherwise be seen. Other options that would be tailored to meet specific treatment/patient classification and grouping goals would include Hierarchical, Gaussian mixture, Neural Nets, and Hidden Markov models.

[0056] Some embodiments described herein involve estimating what will happen next with a particular patient based upon multiple data factors including collected biometrics. In some embodiments, prescriptive analytics can further suggest actions to take in the treatment of patients to achieve improved outcomes. Similarly stated, although embodiments described herein generally relate to descriptive use of models (e.g., is a patient's reaction typical or aberrant), such models can also be used to prescribe therapeutic techniques that minimize aberrant reactions or seek to induce aberrant reactions where therapeutically beneficial. A personalized plan for each patient can be defined based upon their interactions with various treatment options and counselors. In this way, the data will help to drive the treatment instead of having the treatment rely only on pre-existing symptomatic belief sets or known treatment options. FIG. 8, for example, is a flow chart of a method that includes identifying mental illness treatment plans and counselors for a patient. FIG. 9 illustrates flow chart of a method that, in an embodiment, includes matching counselors with patients based on Patient Machine Learning Module (PMLM), which can be structurally and/or functionally similar to the machine learning module 106 described above with reference to FIG. 1, and sending signals to suitable human resources systems or individuals to acquire additional counselors.

[0057] A known challenge facing psychological practices is evaluating counselors and matching counselors to patients. An aspect of some embodiments can aid such practices by, for example, using an adaptive and/or predictive model to analyze the currently employed counselors for their top effectiveness in treating patients with specific mental illnesses. Such a model may reveal for example, that some counselors are particularly effective at treating certain mental illnesses and/or cohorts and less effective at treating other mental illnesses and/or cohorts. Thus, predictive models described herein can be used to steer patients to counselors who are particularly effective at treating that type of patient. Likewise, the embodiments described herein can be used to identify trends in the types of patients that are being served and to then predict what types and quantities of specific future counselors will be needed to serve that predicted population if the trends continue. Such models may also be used to provide feedback to counselors, for example, as part of a review of the counselor's overall effectiveness and/or effectiveness dealing with certain illnesses and/or cohorts. Additionally, such models may be able to more efficiently utilize counselors, for example, by "right-siz-

ing" a counseling practice.

[0058] Machine learning tasks described herein can be used to learn from published medical studies and other repositories of treatment efficacy information to offer suggestions for treatment that meet the criteria set forth in the studies with those of actual patients. These recommendations, once approved by a company internal review board, could be given to both the counselor working with the patient as well as the management team of the business to approve for use. Approved treatment plans would then be incorporated into the overall machine model for continued future use.

[0059] While various embodiments have been described herein, it should be understood that they have been presented by way of example only, and not limitation. For example, some embodiments describe a machine learning task or a model being used to predict patient reactions. It should be understood, however, that any number of machine learning tasks can be used to define and/or train any number of models of patient behavior. For example, multiple models of a single patient's behavior can be defined and/or trained. In some such instances, models that most accurately predict the patient's actual responses can be more heavily weighted and/or selected for providing counseling session feedback, interventions, and/or treatment plan modifications.

[0060] Furthermore, although various embodiments have been described as having particular features and/or combinations of components, other embodiments are possible having a combination of any features and/or components from any of embodiments where appropriate as well as additional features and/or components.

[0061] Where methods described herein indicate certain events occurring in certain order, the ordering of certain events may be modified. Additionally, certain of the events may be performed repeatedly, concurrently in a parallel process when possible, as well as performed sequentially as described above. Furthermore, certain embodiments may omit one or more described events. Where methods are described, it should be understood that such methods can be computer-implemented methods. Similarly stated, a non-transitory processor readable medium can store code representing instructions configured to cause a processor to cause the described method to occur or be carried out.

[0062] Some embodiments described herein relate to computer-readable medium. A computer-readable medium (or processor-readable medium) is non-transitory in the sense that it does not include transitory propagating signals per se (e.g., a propagating electromagnetic wave carrying information on a transmission medium such as space or a cable). The media and computer code (also can be referred to as code) may be those designed and constructed for the specific purpose or purposes. Examples of non-transitory computer-readable media include, but are not limited to: magnetic storage media such as hard disks, floppy disks, and magnetic tape; optical storage media such as Compact Disc/Digital Video Discs

(CD/DVDs), Compact Disc-Read Only Memories (CD-ROMs), and holographic devices; magneto-optical storage media such as optical disks; carrier wave signal processing modules; and hardware devices that are specially configured to store and execute program code, such as ASICs, PLDs, ROM and RAM devices.

[0063] Examples of computer code include, but are not limited to, micro-code or micro-instructions, machine instructions, such as produced by a compiler, code used to produce a web service, and files containing higher-level instructions that are executed by a computer using an interpreter. For example, embodiments may be implemented using Java, C++, or other programming languages (e.g., object-oriented programming languages) and development tools. Additional examples of computer code include, but are not limited to, control signals, encrypted code, and compressed code.

Claims

1. A system, comprising:

a plurality of biometric sensors configured to detect a plurality of biometric parameters of a patient;

a compute device operably coupled to the plurality of biometric sensors, the compute device configured to perform a machine learning task on data received from the plurality of biometric sensors to quantitatively identify an aberrant reaction of the patient relative to at least one of a typical reaction of the patient or a reaction typical to a cohort to which the patient belongs, the machine learning task configured to quantitatively identify the aberrant reaction of the patient without comparing the plurality of biometric parameters to predefined thresholds; and

an output device operably coupled to the compute device, the output device configured to instruct a counselor to modify a treatment plan based on the aberrant reaction being identified.

2. The system of claim 1, wherein the plurality of biometric sensors includes at least one of a heart rate monitor, a blood pressure monitor, a skin conductivity monitor, a body temperature sensor, a movement detector, or an eye tracking camera.

3. The system of claim 1 or claim 2, wherein the aberrant reaction does not correspond to a predefined type of aberrant reaction.

4. The system of any preceding claim, wherein the data received from the plurality of biometric sensors on which the machine learning task is performed and based on which the aberrant reaction is identified does not correspond to a pattern of biometric param-

eters previously identified as corresponding to an aberrant reaction.

5. The system of any preceding claim, wherein the patient and the plurality of biometric sensors are at a first location and at least one of the compute device or a counselor are at a second location remote from the first location.

6. The system of any preceding claim, wherein:

the compute device is operably coupled to a database containing biometric parameters for a plurality of previous patients and an indication of treatment outcome for each previous patient from the plurality of patients;

the compute device is configured to identify the patient as belonging to a cohort that includes a subset of the plurality of previous patients; and the compute device is configured to train the machine learning task using the biometric parameters for the subset of the plurality of previous patients.

7. The system of any preceding claim, wherein the plurality of biometric sensors includes a video camera configured to capture at least one of facial expressions or eye movement of the patient.

8. The system of any preceding claim, wherein the output device is configured to warn the counselor of the aberrant reaction.

9. A non-transitory processor-readable medium storing code representing instructions to be executed by a processor, the code comprising code that, when executed, causes the processor to:

receiving demographic information for a patient; identify a cohort having demographic information similar to the patient from a database containing records of biometric data collected during counseling sessions;

train a machine learning task with biometric data for the cohort;

receive, from sensors measuring the patient, biometric data during a counseling session;

identify an aberrant reaction from the patient based on the biometric data and the machine learning task; and

define a modified treatment plan based on the aberrant reaction being identified.

10. The non-transitory processor-readable medium of claim 9, the code further comprising code to cause the processor to:

send, to an output device, a warning signal that alerts a counselor to employ the modified treatment plan.

11. The non-transitory processor-readable medium of claim 10, wherein:

identifying the aberrant reaction includes identifying a mental health crisis in real-time; 5
 calculating the modified treatment plan includes identifying a therapeutic intervention to reduce the impact of the mental health crisis; and
 the warning signal is sent to the counselor with instructions to employ the modified treatment plan. 10

12. The non-transitory processor-readable medium of any one of claims 9 to 11, wherein:

the database containing records of biometric data collected during counseling sessions includes a success metric; 15
 the machine learning task is a supervised machine learning task; and 20
 the aberrant reaction is identified based on biometric data from the patient deviating from biometric data from the cohort that is correlated with the success metric. 25

13. The non-transitory processor-readable medium of any one of claims 9 to 11, wherein

the machine learning task is an unsupervised machine learning task; and
 the aberrant reaction is identified based on biometric data from the patient deviating from biometric data from the cohort without associating biometric data from the cohort with a success metric. 30

14. The non-transitory processor-readable medium of any one of claims 9 to 13, wherein the counseling session is a first counseling session, the code further comprising code to cause the processor to: 35

store the biometric data received from the sensors during the first counseling session; 40
 retrain the machine learning task with the biometric data received from the sensors during the first counseling session;
 receive from sensors measuring the patient, biometric data during a second counseling session, the biometric data received during the second counseling session consistent with biometric data received during the first counseling session; and 45
 identify a typical behavior from the patient based on the biometric data received during the second counseling session and the machine learning task. 50
 55

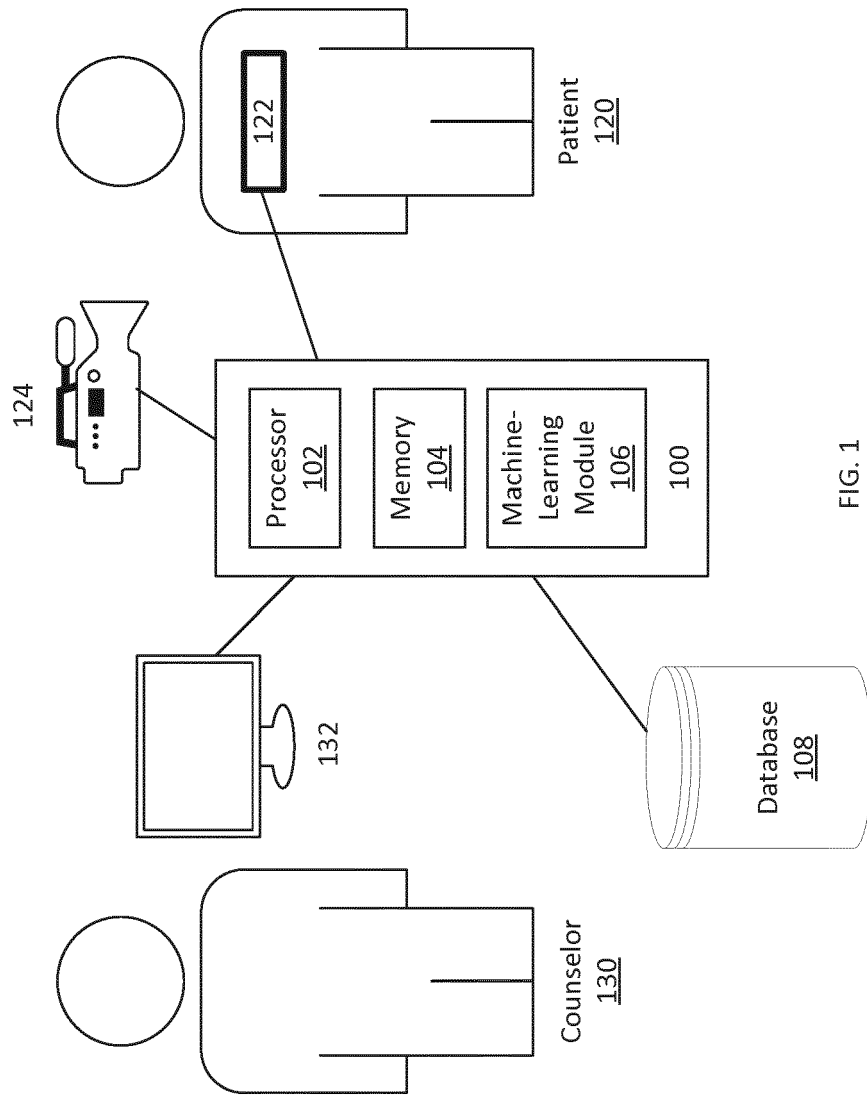


FIG. 1

Patient Database Record				
Unique Identifier	Element No.	Description	Weighting Factor	Sample Data
1298456	1	Age	10	47
1298456	2	Sex	20	Male
1298456	3	Marital Status	70	Divorced
1298456	3	Counseling Need	100	PTSD
1298456	4	Education Level	50	High School
1298456	5	Military Service	80	Yes
1298456	6	Rank	65	Major
1298456	7	Branch of Military	95	U.S. Army
1298456	8	Convicted of felony	25	No
1298456	9	Prior treatment duration	35	720 days
1298456	10	Permission for biometric monitoring	15	Yes
1298456	11	Agree to Remote/Video treatment	15	Yes
1298456	12	Referring party	20	U.S. Government
1298456	13	Accepted for treatment	10	Yes
N	N	N	N	N

FIG. 2

Patient Biometric Feedback Record							
Unique Identifier	Meeting Date	Time	Heart Rate	Blood Pressure	Skin Conductivity	Excessive Eye Movement	Excessive Head/Body Movement
1298456	2/1/2017	13:01:00	60	120/80	05.456	No	No
1298456	2/1/2017	13:02:00	60	120/80	05.556	No	No
1298456	2/1/2017	13:03:00	65	130/75	05.666	No	Yes
1298456	2/1/2017	13:04:00	70	140/80	05.726	No	Yes
1298456	2/1/2017	13:05:00	90	160/90	05.806	Yes	Yes
1298456	2/1/2017	13:06:00	85	155/90	05.784	Yes	Yes
1298456	2/1/2017	13:07:00	90	150/80	06.456	Yes	Yes
1298456	2/1/2017	13:08:00	95	160/85	06.896	Yes	Yes
1298456	2/1/2017	13:09:00	75	135/80	06.456	No	Yes
1298456	2/1/2017	13:10:00	70	130/75	06.294	No	Yes
1298456	2/1/2017	13:11:00	65	125/75	05.873	No	No
1298456	2/1/2017	13:12:00	60	120/80	05.686	No	No
1298456	2/1/2017	13:13:00	60	120/80	05.456	No	No

FIG. 3

Counselor Database Record				
Unique Identifier	Element No.	Description	Weighting Factor	Sample Data
5742981	1	Age	30	47
5742981	2	Sex	20	Male
5742981	3	Years of Experience	90	23
5742981	4	Education Level	25	PhD
5742981	5	Marital Status	80	Single
5742981	6	School	25	Johns Hopkins
5742981	7	Case 1 Counseling Need	80	PTSD
5742981	8	Case 1 time to complete treatment	75	320 days
5742981	9	Case 1 outcome	100	Positive
5742981	10	Case 1 number of patient complaints	90	2
5742981	11	Case 1 Biometric Behavior	85	Aberrant
5742981	12	Case 2 Counseling Need	80	Marriage
5742981	13	Case 2 time to complete treatment	90	186 days
5742981	14	Case 2 outcome	100	Negative
5742981	15	Case 2 number of patient complaints	90	6
5742981	16	Case 2 Biometric Behavior	85	Normal
N	N	N	N	N

FIG. 4

Mental Illness Counseling Treatment Plan Database		
Unique Identifier	Counseling Need	Sample Data
6349180	PTSD	In-person, no remote video, twice a week, 16 week duration, with biometrics
6349181	PTSD	In-person, remote video, once a week, 12 week duration, no biometrics
6349182	PTSD	No in person, remote video only, twice per month, 20 week duration, no biometrics
6349183	Divorce	In-person, remote video, with spouse, every two weeks, 24 week duration, with biometrics
6349184	Divorce	In-person, remote video, no spouse, every two weeks, 24 week duration, no biometrics
6349186	Depression	In-person, remote video, daily, 52 week duration, with biometrics
6349187	Depression	No in-person, remote video, once per week, 52 week duration, no biometrics
6349189	Substance	No in-person, no video, telephone only, daily, 16 week duration, no biometrics
6349191	Anger	In-person, no remote video, twice a week, 16 week duration, with biometrics
6349192	Anger	In-person, remote video, once a week, 12 week duration, no biometrics
N	N	N

FIG. 5

Counseling Event Record Database										
Patient Unique Identifier	Counselor Unique Identifier	Treatment Plan Unique Identifier	Total Meetings this Patient	Total Meetings this Plan	Meeting Date	Meeting Time	Counselor Assessment	Patient Assessment	Biometric Behavior	Treatment Review or Change Required
1298456	5742981	6349180	47	47	11/1/2017	1300	Positive	Positive	Normal	No
1298456	5742981	6349180	48	48	11/13/2017	1400	Negative	Negative	Aberrant	Yes
1298456	5742981	6349182	49	1	11/20/2017	1300	Positive	Positive	Aberrant	No
1298998	5742099	6349186	1	1	9/8/2017	0900	Positive	Positive	Normal	No
1298998	5742099	6349186	2	2	9/15/2017	0900	Positive	Positive	Normal	No
1298422	5742100	6349192	1	1	10/1/2017	0800	Negative	Negative	Aberrant	Yes
1298422	5742075	6349192	2	2	10/5/2017	0800	Positive	Positive	Normal	No

FIG. 6

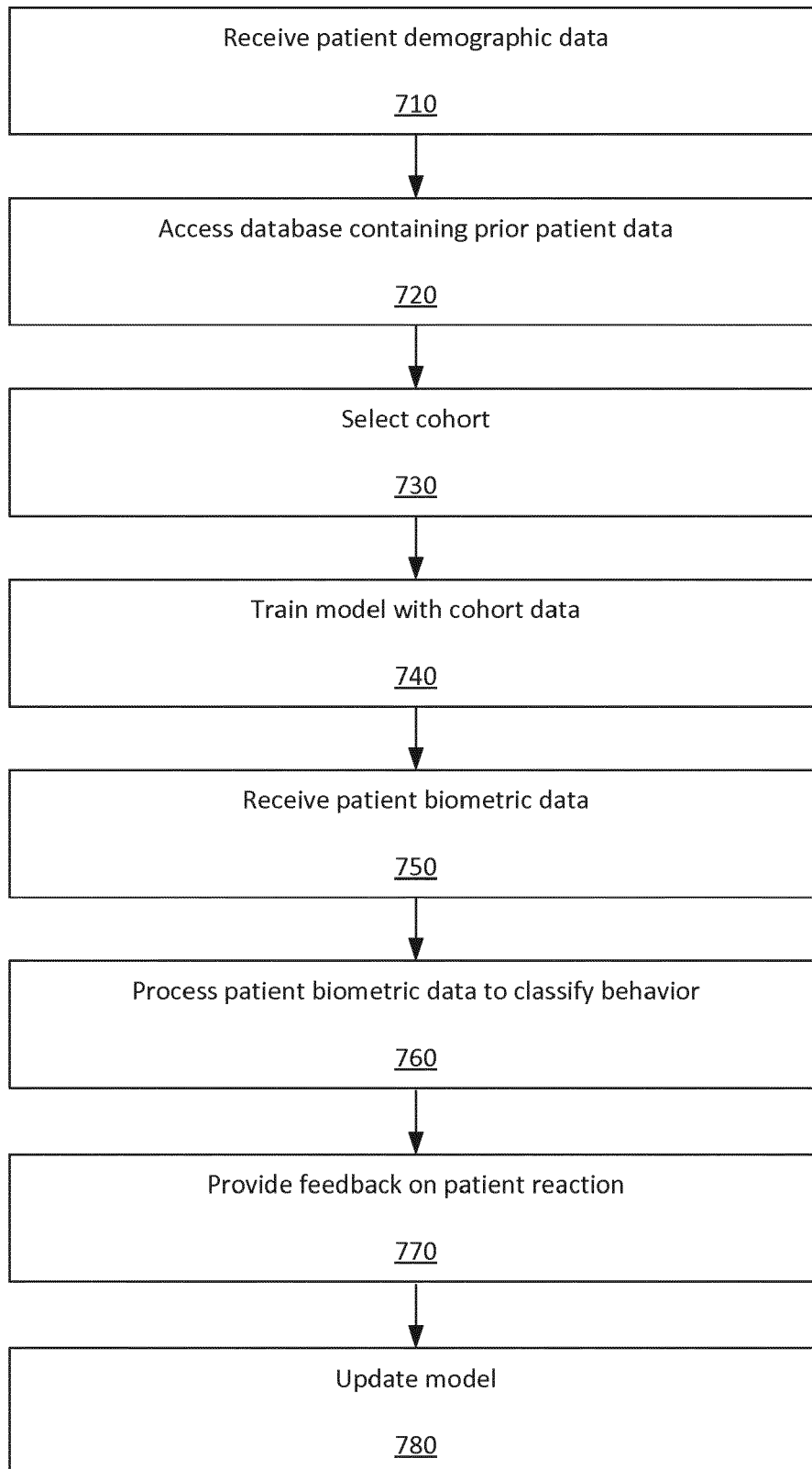


FIG. 7

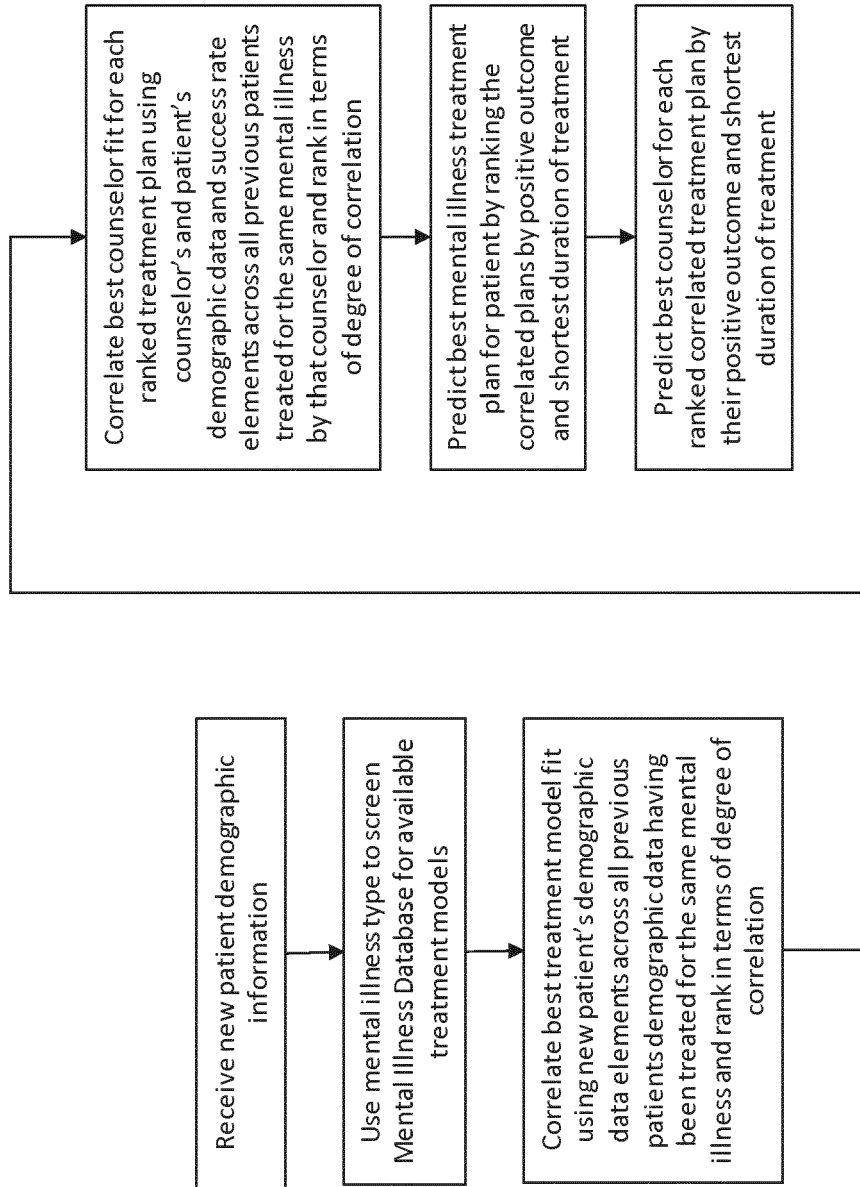


FIG. 8

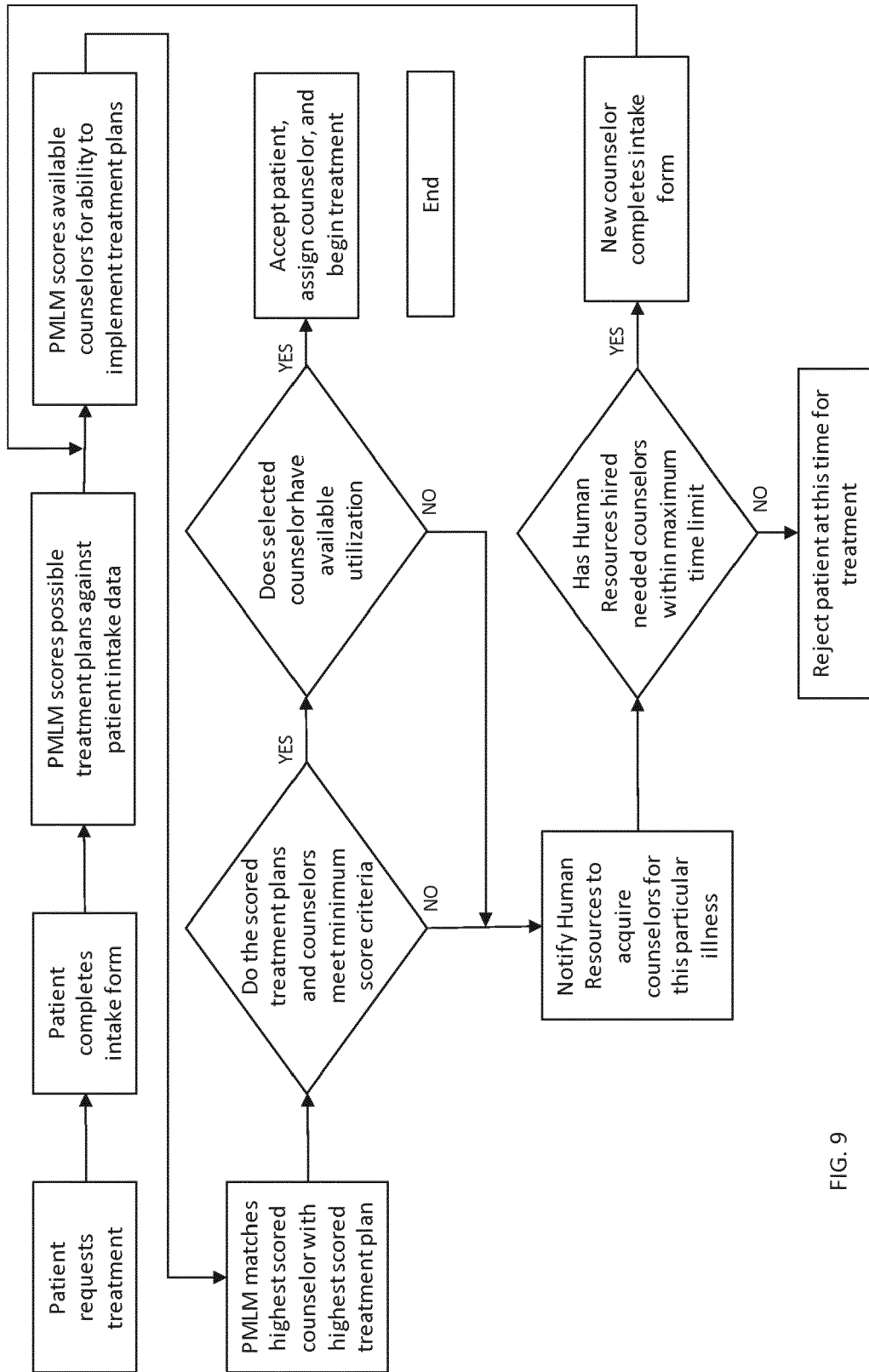


FIG. 9

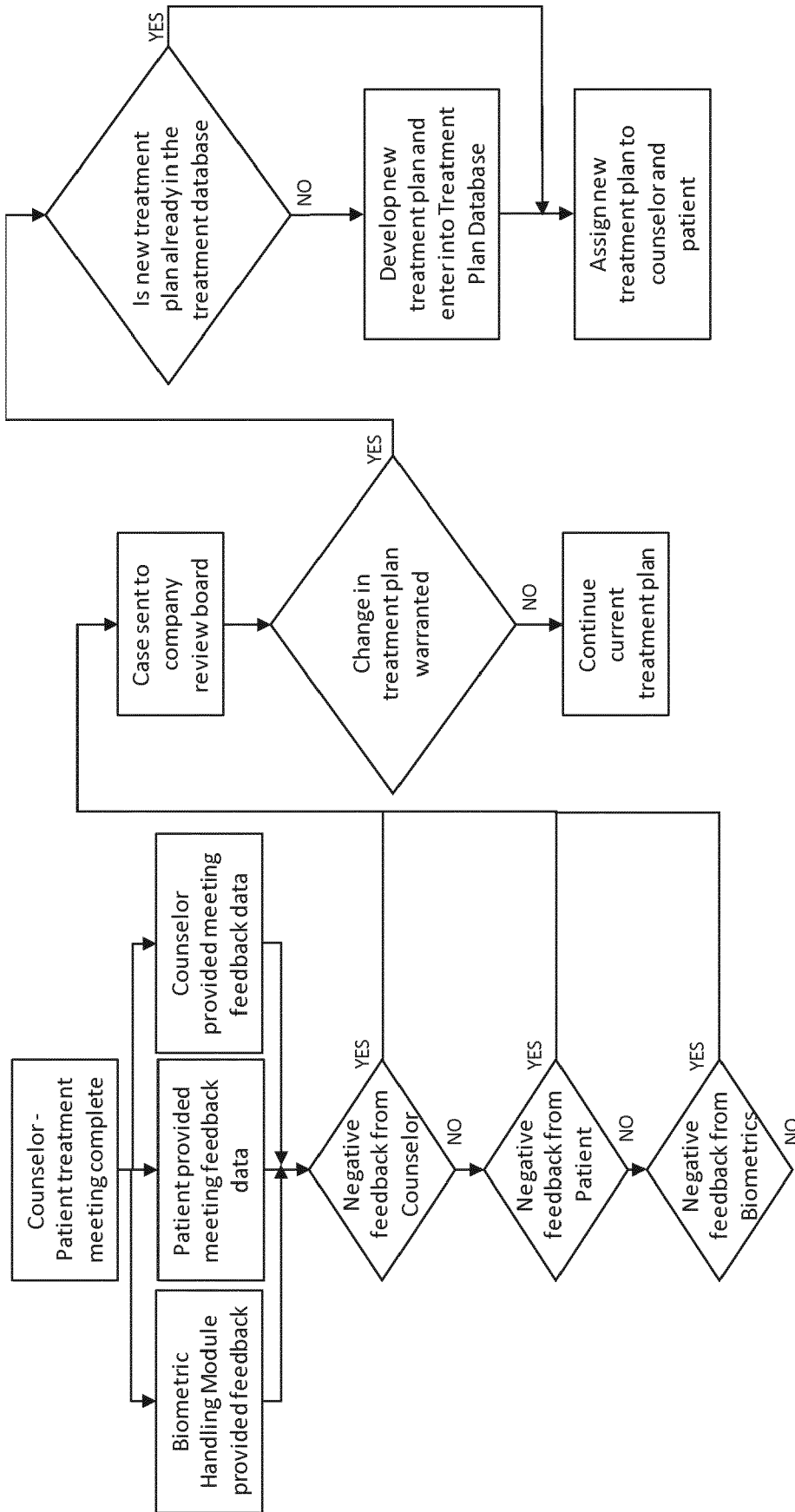


FIG. 10



EUROPEAN SEARCH REPORT

Application Number
EP 19 17 0205

5

10

15

20

25

30

35

40

45

50

55

DOCUMENTS CONSIDERED TO BE RELEVANT			
Category	Citation of document with indication, where appropriate, of relevant passages	Relevant to claim	CLASSIFICATION OF THE APPLICATION (IPC)
X	WO 2017/106770 A1 (COGNOA INC [US]; ABBAS HALIM [US]) 22 June 2017 (2017-06-22) * figures 1B, 2, 4, 6, 8 * * paragraph [0098] - paragraph [0099] * * paragraph [0170] - paragraph [0171] * * paragraph [0178] - paragraph [0180] * * paragraph [0182] - paragraph [0183] * * paragraphs [0213] - [0217] * * paragraphs [0237], [0255] * * paragraph [0281] - paragraph [0282] * -----	1-14	INV. G06K9/00 A61B5/00
			TECHNICAL FIELDS SEARCHED (IPC) G06K A61B
The present search report has been drawn up for all claims			
Place of search The Hague		Date of completion of the search 5 September 2019	Examiner Borges, Pedro
CATEGORY OF CITED DOCUMENTS X : particularly relevant if taken alone Y : particularly relevant if combined with another document of the same category A : technological background O : non-written disclosure P : intermediate document T : theory or principle underlying the invention E : earlier patent document, but published on, or after the filing date D : document cited in the application L : document cited for other reasons & : member of the same patent family, corresponding document			

EPO FORM 1503 03/02 (P04C01)

**ANNEX TO THE EUROPEAN SEARCH REPORT
ON EUROPEAN PATENT APPLICATION NO.**

EP 19 17 0205

5 This annex lists the patent family members relating to the patent documents cited in the above-mentioned European search report.
The members are as contained in the European Patent Office EDP file on
The European Patent Office is in no way liable for these particulars which are merely given for the purpose of information.

05-09-2019

10	Patent document cited in search report	Publication date	Patent family member(s)	Publication date
	WO 2017106770 A1	22-06-2017	CN 108780663 A	09-11-2018
			EP 3394825 A1	31-10-2018
			JP 2019504402 A	14-02-2019
15			US 2019019581 A1	17-01-2019
			US 2019088366 A1	21-03-2019
			WO 2017106770 A1	22-06-2017
20				
25				
30				
35				
40				
45				
50				
55				

EPO FORM P0459

For more details about this annex : see Official Journal of the European Patent Office, No. 12/82

REFERENCES CITED IN THE DESCRIPTION

This list of references cited by the applicant is for the reader's convenience only. It does not form part of the European patent document. Even though great care has been taken in compiling the references, errors or omissions cannot be excluded and the EPO disclaims all liability in this regard.

Patent documents cited in the description

- US 95642118 A [0001]

专利名称(译)	自适应人工智能系统，用于识别与精神疾病相关的行为并基于对异常反应的紧急识别来修改治疗计划		
公开(公告)号	EP3557479A1	公开(公告)日	2019-10-23
申请号	EP2019170205	申请日	2019-04-18
[标]发明人	REIGLE THOMAS		
发明人	GRANATO, LAURA KOHONOSKI, MICHAEL M. REIGLE, THOMAS		
IPC分类号	G06K9/00 A61B5/00		
CPC分类号	A61B5/02055 A61B5/021 A61B5/024 A61B5/0533 A61B5/11 A61B5/163 A61B5/165 A61B5/7267 A61B5/00 G06K9/00536 G16H50/70		
优先权	15/956421 2018-04-18 US		
外部链接	Espacenet		

摘要(译)

本文描述的一个或多个实施例涉及使用自适应人工智能技术预测患者对精神病咨询的典型的和异常的生理反应。可以基于先前收集的人口统计和/或生物统计数据来确定和计算治疗计划，和/或可以基于对反应类型的紧急识别（例如重新分类以前已经进行过的反应）来确定和/或实施对治疗计划的修改。被认为是异常的（反之亦然）。

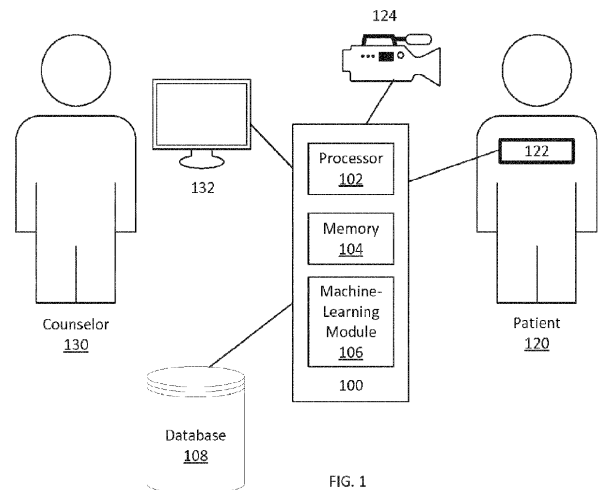


FIG. 1